

Dedicated To Reporting  
Mountainside News  
In An Unbiased Manner

VOL. 6 - No. 15



HOOFBEATS OF UNION County's 4-H Club sound every afternoon at 4:30 p.m. Sunday rd., Mountainside, when the 20 members of the group gather there to carry out the 4-H projects of horsemanship and horse ownership. Three of the Mountainside members, along with their own horses are pictured astride their mounts. They are, from left to right, Sheri Smith on her chestnut mare "Sweet Ginger," Candie Moore on her bay gelding thoroughbred "Eye-Ota," and Janet Moore, astride her chestnut mare "Patsy Doo."

### Board Received Clear 'Mandate,' Hartung Claims

150 'Vote' Against Multiple Housing At First Meeting

## Ditzel Submits Results Of Pool Study; Urges Council To OK Construction



Post Card Poll Gets 650 'Yes' Votes In 1,170

MAP OF MOUNTAINSIDE is examined by fact-politically minded teenagers who are part of the "Young Men's League" of the Mountainside unit of the Republican and Independent Party. The group was organized by Ditzel and is active in the group part of a campaign to elect Ditzel to the Board of Education. Other members include John and Nancy Lockett, A. Lee Mountainside residents.

## Local Equestriennes Triumph 4-Hers Gallop Away With Honors

By RITA ZEISS

Two Mountainside members of the Union County 4-H Club, winners last weekend at the Rock Spring Horse Show in West Orange.

Sheri Smith, 15, of 922 Mountain Circle, riding her chestnut mare "Sweet Ginger," and Janet Moore, 13, of 1124 B. S. H. Rd., riding her bay gelding "Eye-Ota," were the winners of the 4-H horse show.

### EQUESTRIENNES

## Non-Partisan Aid Sought By Mayor In Local Affairs

Mayor Frederick Wilhelm, who is running for a second term, is seeking non-partisan aid in local affairs. He is asking for help from all citizens, regardless of party affiliation, to participate in local government.

Wilhelm, who was recently appointed to the mayoralty by the Borough Council, pointed out that the activities on the various boards and committees of the borough to a large extent determine "the direction and the vitality of the community."

Residents are urged by Wilhelm to attend council meetings and public meetings of the Planning Board and Board of Adjustment.

### 4-H RULES APPLY

The 4-H program is a part of the community life in Mountainside. It is a program that is designed to help young people develop their potential and become responsible citizens.

And they were on their own. They were responsible for their own horses and their own care. They were also responsible for the care of their horses.

In the demonstration, members are required, after careful study of their specific project, to make a presentation to a group and deliver a prepared speech.

## Civic Head Says Voters' Protest May Change Plan

By RITA ZEISS

Mayor Wilhelm said that a voters' protest might change the plan for the new school building. He said that the voters' protest was a sign of the community's concern for the school.

The voters' protest was held on Monday night. It was a peaceful demonstration in which the voters expressed their concerns about the school plan.

Mayor Wilhelm said that he would take the voters' concerns into account in his decision. He said that he would try to find a way to address the concerns of the voters.

## 30 Students Hit Political Trail To Help Republicans For LBJ

By RITA ZEISS

A group of 30 students from the Mountainside School District participated in a political rally to support the Republican Party for Lyndon B. Johnson. The students were led by their teachers and participated in various activities, including singing and speaking.

## GOP Asked To State Stand On Goldwater

By RITA ZEISS

The GOP is being asked to state its stand on Goldwater. The question is whether the GOP supports Goldwater's candidacy for the presidency. The GOP is being asked to make its position clear to the voters.

## GOP RALLY STARS INFORMAL TALKS WITH CANDIDATES

By RITA ZEISS

The GOP rally featured informal talks with candidates. The candidates were given the opportunity to answer questions from the voters and to express their views on various issues.

## Drainage Plans To Be Prepared

By RITA ZEISS

Drainage plans are being prepared for the new school building. The plans will show the location of the building and the drainage system that will be installed. The plans will be submitted to the Borough Council for approval.

## George J. Coughlin

George J. Coughlin has a lot of work cut out for him on his home territory. "Almost an acre," he mounds, "to tend and now and weed." His job as production supervisor at Tung Sol Electric in Bloomfield is a demanding, time-consuming one and seldom leaves much time for fishing, golfing or any of the many other sports he enjoys.

He has three years in as conscientious as I can. When the term is up I won't run again.



GEORGE J. COUGHLIN

## ECHO POLITICAL PROFILES

Joseph Stypa

George J. Coughlin is a member of the Democratic Party. He is a member of the Borough Council and is running for a seat on the Borough Council. He is a member of the Mountainside School District and is a member of the Mountainside School Board.

He is a member of the Mountainside School District and is a member of the Mountainside School Board. He is a member of the Mountainside School District and is a member of the Mountainside School Board.



JOSEPH STYPA

**3 CHILDREN SELL PUMPKINS TO AID KENNEDY LIBRARY**

A trio of Springfield children went into business in a big way last week and for a big purpose. Kevin and Clara Porter and Ellen Kampf spent a whole day selling home-grown pumpkins throughout the neighborhood and they returned with a profit of \$20.

The youngsters are sending this money as their contribution to the John F. Kennedy Memorial Library. The pumpkins were raised in the Porter garden at 11 Tonker pt.

NEIGHBORS WANT YOUR used items. Tell us what you have. 5-10-15-20-25-30-35-40-45-50-55-60-65-70-75-80-85-90-95-100. Class Fee: Col. 88¢-1.00.

**UNICEF Projects To Get Funds Raised By Junior Ghosts, Goblins**

**Army Promotion To Maj. Padalino Ceylonese Teacher Will Survey District**



JOHN R. PELTMAYER

Plastics Concern Lists Promotions For Ton Officers

Olympic 'Champ' To Speak Friday At Youth Canteen

Music Festival Seen Big Success

Regional Faculty To Hear Dr. Hipp

Channel Lumber Breaks Ground For Central Office, Warehouse

Krates Holding Lead

Miss Singer Ends Seton Hall Course

Enrolled At Drew

Southern Coed

**IT'S OUR 10th ANNIVERSARY**

Join With... *Crestmont Savings* AND-LOAN ASSOCIATION In Celebrating Their... 10th Anniversary in Springfield

10 YEARS OF GROWTH: Savings have grown from \$160,000 in 1954 to \$17,000,000 in 1964. Over 10,500 members. Even more important, the number of depositors has grown from 150 in 1954 to over 8,000 today.

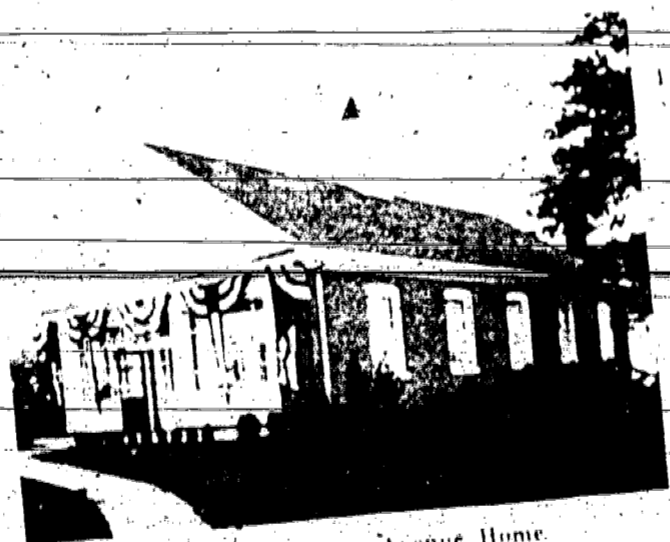
For You... To Help Crestmont Celebrate...

**A USEFUL GIFT!**

During the period of October 26-30, we will present to anyone who opens an account for \$25.00 or adds \$25.00 to their present account, in our Springfield office, only your choice of...

**A FIRST-AID TRAVEL KIT or A POCKET ADDER.**

One gift to a customer... **WHILE THEY LAST!!!**



Crestmont's Morris Avenue Home For The Past Ten Years

**Our Services**

- Deposits and Withdrawals may be made at any one of our convenient offices
- Savings by mail
- Christmas Club
- Mortgage Loans
- Construction Loans
- Improvement Loans
- Loans on Savings Accounts
- Credit Loans
- Money Orders
- Payable Checks
- Gift Checks
- United States Savings Bonds sold and redeemed
- Public Service Payments
- Commonwealth Payments
- Telephone Payments
- Customer Parking

WHERE YOUR DOLLAR WORKS HARDER GROWS BIGGER!

*Crestmont Savings* AND LOAN ASSOCIATION



ECHO PLAZA SHOPPING CENTER

SPRINGFIELD DR 9-6121

Tuscan Office: 1040 CHANCELLOR AVE. Maplewood - PO 1-4300

SPRINGFIELD (Springfield Office) DR 6-5940

MAIN OFFICE: 1886 Springfield Avenue

Maplewood - SO 3-4700

Savings Are Insured up to \$10,000 by The Federal Savings and Loan Insurance Corporation



## Steak Sale!

Red offers the CHOICEST AGED and TRIMMED

Porterhouse or Sirloin lb. \$1.09

---

Fresh SPARE RIBS . . . . . lb. 49¢

Center Cut HAM STEAKS 99¢ lb.

Famous HAM LOAF . . 99¢ lb.

---

FRESH FILET FLOUNDER . . . . . lb. 65¢

---

• THOUGHT FOR THE WEEK •  
To profit from good advice requires more wisdom than to give it!

GARDEN FRESH!!! FANCY SPINACH pkg 25c

WRITE CALIFORNIA SEEDLESS GRAPES lb 25c



RAU

QUALITY MEATS AND PRODUCE

763 Mountain Avenue Springfield DRexel 6-5505

FREE DELIVERY of course!

# Volunteers Starting Drive To Fund Goal

Volunteers opened an active fund-raising drive for the Mountainside Community Center this week with a goal of \$10,000. The drive is being conducted by the committee headed by Mrs. J. M. J. ...



DEERFIELD CUBS: Two members of Cub Pack 10, which meets at Deerfield School, Mountainside, are shown receiving awards from local Indians. ...

# State PBA Gives Silver Life Card To Henry Wester

# Goldwater Gaining, Local Pollster Says

Henry Wester, a prominent local figure, has been awarded a Silver Life Card by the State PBA. ...

A local pollster reports that Goldwater is gaining support in the upcoming election. ...

# Stypa Profile

(Continued from Page 1) Joe Stypa, a local resident, has a long history of community involvement. ...

# Coughlin Bloodmobile To Visit This Area On Nov. 3

A bloodmobile from the Coughlin family is scheduled to visit the area on November 3. ...

# Artist Harry Devlin Named Judge Of Float Contest At Upsala College

Artist Harry Devlin has been named as the judge for a float contest at Upsala College. ...

# Two Teachers Join NJEA Campaign Talk

Two teachers have joined a campaign talk for the NJEA. ...

# Kustop Elected Prexy Of Arizona U. Dorm

Kustop has been elected as the president of the Arizona University dorm. ...

# Named To Dean's List

Several students have been named to the Dean's List for their academic achievements. ...

Joe and Betty Stypa have been married for many years. ...

Joe Stypa has been working in the construction industry. ...

Joe Stypa has received a degree in electrical engineering. ...

Edward Burke, a local resident, has passed away. ...

Edward Burke was a member of the Elks Club. ...

Edward Burke was a member of the Veterans Administration. ...

Edward Burke was a member of the Elks Club. ...

Edward Burke was a member of the Veterans Administration. ...

Edward Burke was a member of the Elks Club. ...

Edward Burke was a member of the Veterans Administration. ...

Joe Stypa has been working in the construction industry. ...

Joe Stypa has received a degree in electrical engineering. ...

Joe Stypa has been working in the construction industry. ...

Joe Stypa has received a degree in electrical engineering. ...

Joe Stypa has been working in the construction industry. ...

Joe Stypa has received a degree in electrical engineering. ...

Joe Stypa has been working in the construction industry. ...

Joe Stypa has received a degree in electrical engineering. ...

Joe Stypa has been working in the construction industry. ...

Joe Stypa has received a degree in electrical engineering. ...

Joe Stypa has been working in the construction industry. ...

Joe Stypa has received a degree in electrical engineering. ...

Joe Stypa has been working in the construction industry. ...

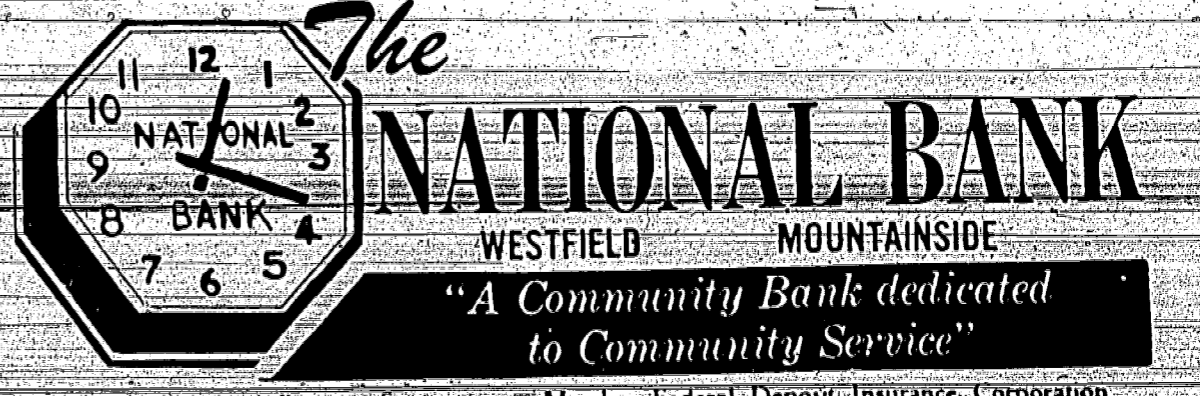
**FINANCE IN ADVANCE**  
**The 65's Are Here ...**



**SHOP FOR YOUR NEW CAR WITH A LOAN APPROVAL IN YOUR POCKET**

With National Bank's 'finance in advance' auto loan plan, you can shop for your new car like a cash buyer. Stop in either office, in Westfield or Mountainside, and get the complete details on how you can enjoy the convenience of the "NABOW" 'finance in advance' auto loan.

**QUICK ... CONFIDENTIAL SERVICE AT EITHER OFFICE!**



**WESTFIELD MOUNTAINSIDE**  
**"A Community Bank dedicated to Community Service"**

Member of Federal Reserve System Member Federal Deposit Insurance Corporation

**Fine Furs!**

Make this the most luxurious fall or winter ever with that Fur Coat you've always wanted.

Specializing in Repairing and Restyling of furs in the latest designs in fur fashions by Wolff Brothers.

**Millburn Fur Shoppe**  
WOLFF BROTHERS  
214 Millburn Ave. • Millburn • DR 9-4145

**COMMUNITY AND SOCIAL** affairs keep the Coughlin family busy. ...

**ON DEAN'S LIST** Robert J. Van Nest of Mountainside has been named to the Dean's List at St. Lawrence University. ...

**Equestriennes** Janet A. Senior, a local equestrian, has won several awards. ...

**Pledges Fraternity** Grantville O'Neil has pledged to the Fraternity. ...

**Plumbers Attention!** Call your services to 30,000 local families with a few dollars. ...

# First Road Fatality In More Than Year

# Fugman Oil Tops Borough Bowling

# Abuse Of Officer And MV Charges Cost Driver \$250

# Borough Schools In Pilot Project

# Get Mandate



# Card Party, Plant Sale Set Today By Trail Gardeners

# ART OF ORIGAMI TOPIC YESTERDAY AT CLUB MEETING

# 150 AT RECEPTION FOR MRS. DWYER, LOCAL HOPEFULS

# Borough Council

# Mountainside Newcomers Install Slate At Anniversary Dinner; Name Chairman



MR. DONALD SKOOG

# African Students To Attend Local World Day Service

# On Regional Varsity

**OCTOBER is RUG CLEANING TIME!**

Let our expert craftsmen restore the original beauty, softness and life into your Rugs or Carpet NOW - your initial investment is well worth the results!

**RUGS 9 x 12 ..... Now \$10.75\***  
**WALL TO WALL ..... 10c sq. ft.**

Give your home or office a "Brehm's Beauty Treatment"

**Brehm's**

WESTFIELD 224 E. RIVER ST. N. BRIDGE ST. WESTFIELD, N. J. 07090

Essex County: 855-1111 Middlesex County: 701-1111 York County: 436-4570

We Operate Our Own Modern Plant FREE PICKUP DELIVERY \*Ornate & Washed Bags Slightly Higher

**Books WORLD BOOK ENCYCLOPEDIA**

FOR PRICES & TERMS CALL MARGARET ANFIELD, FIG. 1, MOF AD 14641

Mountainside, N. J. (AP) - A fatal car crash on Route 22 in Mountainside, N. J., ended a streak of more than a year without a road fatality in the town.

The crash occurred at 10:15 p.m. on Oct. 26, when a 1962 Ford Mustang driven by a 21-year-old man struck a 1964 Chevrolet. The Mustang driver was killed.

The driver of the Mustang was identified as James J. ...

When the borough council met last night, the discussion followed the discussion of the ...

... the council ...

A study meeting on the "American Family in A Changing World" is scheduled for next Thursday evening by the Mountainside Chapter of the American Association of University Women.

The meeting will be held at 8 o'clock in the home of Mrs. Lee ...

**TEDDY'S Restaurant And Cocktail Lounge**

Steaks - Chops - Seafood

Congenial Atmosphere

Delicious Food at MODERATE PRICES

**DANCING**

FRI. & SAT. EVES.

Featuring: THE GEORGE HOWARD TRIO

1072 ROUTE 22 MOUNTAINSIDE

Next to Somerset Bus Terminal

For Reservations Call AD 2-1761

**Mountainside Echo Subscription Form**

To: Mountainside Echo  
2 New Providence rd., Mountainside, N. J.

Enclosed find \$3- (check or money-order) for a one-year subscription to the Mountainside Echo.

Name (Print) \_\_\_\_\_

Address (Print) \_\_\_\_\_

Phone Number \_\_\_\_\_

Subscription will take effect one week after receipt of this form and continue for 52 weeks.

Please check one:  
 New Subscription or  Renewal

The council ...

... the council ...

**WOMEN'S GROUP MEETING TODAY IN MOUNTAINSIDE**

The meeting ...

**Volers**

(Continued from Page 1)

... the council ...

**Mountainside Echo**

7 New Providence Road, Mountainside, N. J.

Published Each Thursday by Trimmer Publishing Corp. Second Class Postage Paid at Mountainside, N. J.

Five Cents Per Copy. Mailed Subscription Rate \$3 per year.

Phone: 686-7700

**Gray**

Funeral Directors SINCE 1897

**WESTFIELD**  
A. Salberg Mgr.  
318 E. Broad St.  
AD-3-0113

**CRANFORD**  
F. H. Gray Jr. Mgr.  
12 Springfield Ave.  
BR-6-0882

**Mountain Spring Bake Shop**

Butter Makes It Better!

Every Thursday HOME MADE **White Bread 20c** Thurs. Only

Specializing in all cakes BIRTHDAYS - WEDDINGS PARTIES

791 MOUNTAIN AVE. DE 4-4948 SPRINGFIELD, N. J.

**FIRST in friendly service!**

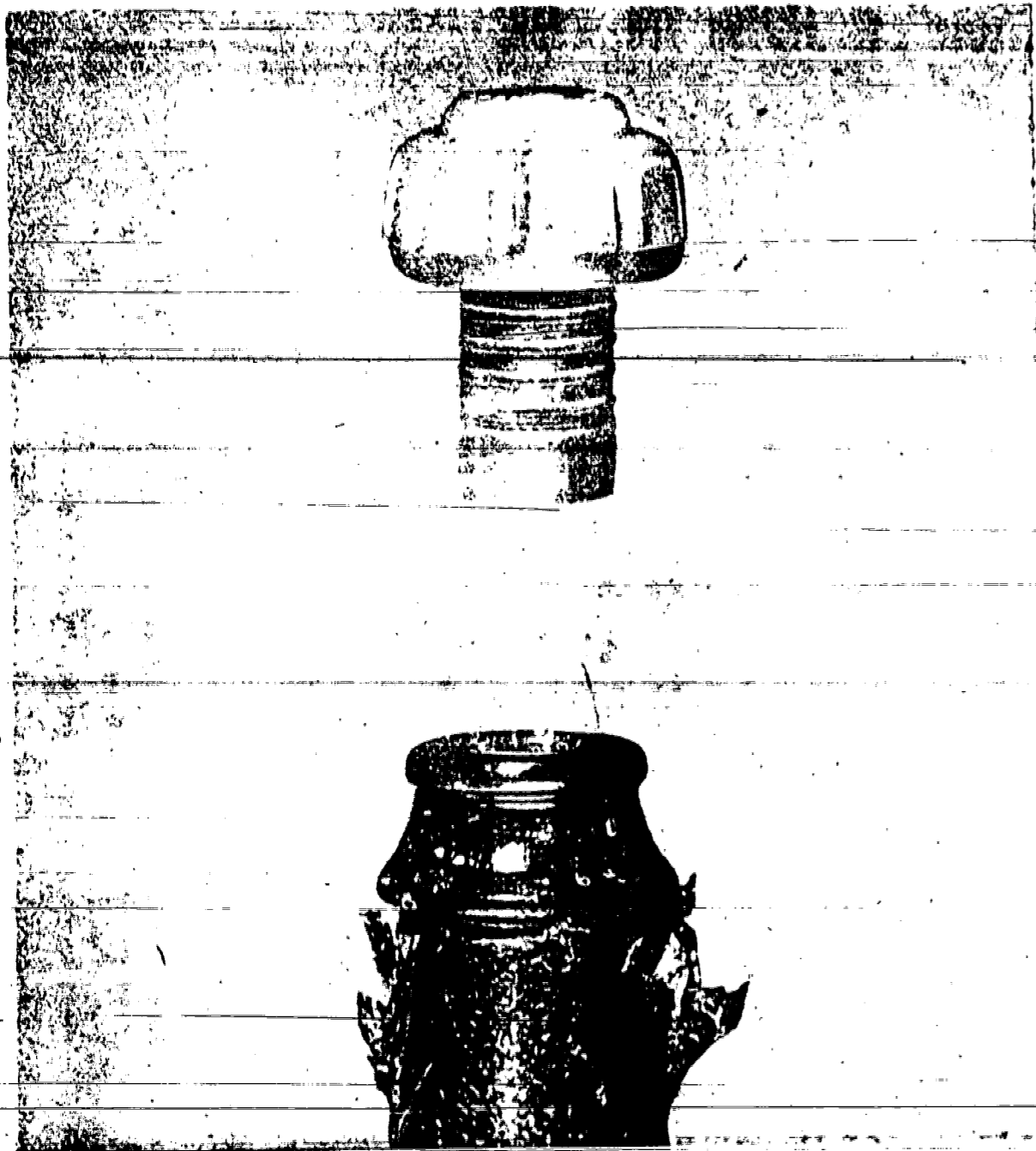
**LANDLORD OF ALL HE SURVEYS!**

It's a nice, comfortable feeling to own the home you live in. Make your purchase this Fall. Terms on our Home Buying Loans are more favorable for you now than they ever have been. Get the facts this week.

Open-End Privileges No Pre-Payment Penalty

**FIRST FEDERAL SAVINGS**

150 ELM STREET, WESTFIELD, NEW JERSEY



WE  
TOAST  
TO THIS  
GALA  
EVENT!



COME IN, BROWSE AND JOIN US IN CELEBRATING OUR FABULOUS

# GRAND RE-OPENING

## BAPHAM LIQUORS



## ROUTE 22 UNION, N. J.

BIGGER AND BETTER THAN EVER!  
LARGE SELECTIONS OF  
TOP QUALITY FAMOUS BRANDS!

IT'S A CONNOISSEUR'S CORNER, IN OUR  
SHOP-RITE SUPERMARKET!  
Tastes to please the most discriminating!

Everything For Entertaining Needs... Now at  
One-Stop Shopping Convenience!

**COUPON SAVINGS**

THIS COUPON WORTH **10<sup>c</sup>**

...toward the purchase of  
**ANY 5 PACK CIGARS**

Coupon good at  
Any Shop-Rite Super Market  
Where Item is Available  
COUPON LIMIT - ONE PER FAMILY  
Coupon expires Saturday, Oct. 31st, 1964  
Coupon redeemed only on purchase of item listed

**SAVE  
35<sup>c</sup>  
WITH THESE  
COUPONS**

**COUPON SAVINGS**

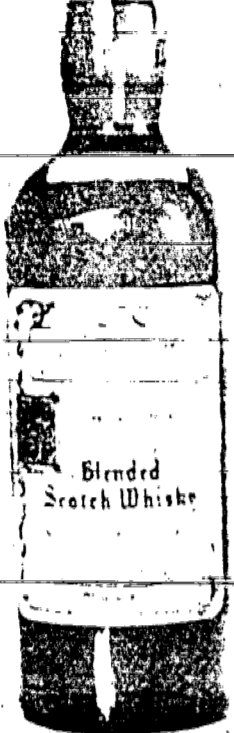
THIS COUPON WORTH **25<sup>c</sup>**

...toward the purchase of  
**ANY CASE OF SHOP-RITE CANNED  
OR BOTTLED SODA!**

Coupon good at  
Any Shop-Rite Super Market  
Where Item is Available  
COUPON LIMIT - ONE PER FAMILY  
Coupon expires Saturday, Oct. 31st, 1964  
Coupon redeemed only on purchase of item listed

# ALL SHOP-RITE SUPERMARKETS JOIN IN THE GRAND RE-OPENING

OF THE NEW & EXPANDED BAPHAM LIQUORS OF RT. 22, UNION  
 ALL BUY-RITE, BLEND-RITE & SHOP-RITE WINES ARE EXCLUSIVES OF BAPHAM LIQUORS!



**BUY-RITE IMPORTED SCOTCH**  
 SPECIAL RESERVE  
 fifth **3.59**  
 mellow and light, 80 proof.



**SHOP-RITE**  
 Kentucky STRAIGHT BOURBON WHISKEY  
 One of the finest Bourbons from Kentucky  
 fifth **3.69**  
 4.49 8.79



**BUY-RITE GIN or VODKA**  
 fifth **2.56**  
 Perfect for screwdrivers, orange blossoms. Safe to please the most discriminating connoisseur.



**SHOP-RITE SUPERIOR QUALITY KOSHER WINES**  
 full quart **93**  
 • CHERRY • BLACKBERRY  
 • MALAGA • CONCORD GRAPE  
 full quart 1.69 3.15

THESE ARE OUR EVERYDAY PRICES - ALCOHOLIC BEVERAGES ARE NOT SALE PRICED!

Grand re-opening of Bapham's all new Shop-Rite Liquor Department! Bigger and better than ever! Large selections of top quality famous brand and Shop-Rite liquors!

Everything for your entertaining needs... now at one-stop shopping convenience! Glassware, mixers, plus fine quality whiskeys, cordials, wines and beer.



**SHOP-RITE**  
 NEW YORK STATE CHAMPAGNE  
 OR SPARKLING BURGUNDY  
 fifth **1.99**

YOUR CHOICE

OUTSTANDING QUALITY... for that special occasion!

CASE OF 12 **22.69**



NOW! BAPHAM LIQUORS CARRIES THE LARGEST SELECTION OF BEERS IN THE WORLD!

Famous name brands, imported and domestic! Beer, the international thirst quencher... yours for the picking! Come in soon and pick your favorite... Bapham Liquors!

**BLEND-RITE COCKTAILS**  
 fifth **1.99**

Manhattan or Martini... Prepared ready to serve, delicious and so smooth too!

**BLEND-RITE BLACKBERRY FLAVORED BRANDY**  
 fifth **3.49**



70 prc. 100% before dinner aperitif.

**SHOP-RITE FRUIT WINES**  
 IMPORTED FROM DENMARK

24-oz. **1.39**  
 • CHERRY • RASPBERRY  
 • BLACKBERRY • STRAWBERRY  
 case of 12 **15.02**



**SHOP-RITE CALIFORNIA SWEET OR DRY VERMOUTH**



FULL QUART **99¢**

Excellent For  
Manhattans or Martinis

HALF GALLON **1.85**  
GALLON **3.49**

CASE OF 12 11.29



SHOP-RITE DELUXE 5 10 YR OLD

**WHISKEY**

FULL 86 PROOF — 40% blend  
Finest whiskey available

fifth **3.99**

quart 4.95 half gallon 6.96

**IMPORTED SHOP-RITE GERMAN WINES**



24-OZ.

**99¢**

Wines with a beautiful bouquet. Pleasing to the most discriminating.

MOSELBLUMCHEN—LIEBFRÄULICH



**100% PURE CALIFORNIA HARVEST WINES**

Port, Tawny Sherry, Angelica, Cream Sherry, Dry Sherry, Muscatel.

full gallon **2.89**

full quart 89¢ half gallon 1.59

**BURGUNDY—SAUTERNE—RHINE ZINFANDEL**

full gallon **1.89**

fifth 59¢ half gallon 1.15

**SHOP-RITE DELUXE SCOTCH**



**SCOTCH**  
BOTTLED IN SCOTLAND

**4.69** fifth

Outstanding Light Bodied Scotch

THESE ARE OUR EVERYDAY PRICES! ALCOHOLIC BEVERAGES ARE NOT SALE PRICED!



**IMPORTED FOR SHOP-RITE VINTAGE 1961 CHIANTI**

full quart **89¢**

World famous Del Gamba Chianti. Its rich robust flavor tells you about the quality.

case of 12 9.62



**SHOP-RITE CORDIALS**

BLACKBERRY, APRICOT, PEACH, CREME DE CACAO, CREME DE MENTHE (Green or White), CHERRY, CREME DE CAFE, ANISETTE AND KUMMEL.

fifth **2.59**

STOP SHOPPING! YOU'LL FIND EVERYTHING ON YOUR SHOPPING LIST AT YOUR FRIENDLY SHOP-RITE LIQUOR MARKET!

**SHOP-RITE FRENCH BRANDY**



Imported from France where the art of making Brandy is world known!

fifth **3.59**

All your favorite name brands . . . for the asking! It's a connoisseur's corner . . . names like — Barton's, Bellows, Calvert, Carstairs, Fleischmann, Four Roses, Hunter, Imperial, Seagrams, Old Thompson, Wilson, Paul Masson, Taylor, and many, many more . . .

ALL SHOP-RITE SUPERMARKETS JOIN IN THE

# GRAND RE-OPENING

OF THE NEW & EXPANDED BAPHAM LIQUORS OF RT. 22, UNION



**FROZEN FOODS!**

Libby or Tip Top—7 Flavors  
**FRUIT DRINKS**  
 Shop-Rite or Libby White, Pink or La Colois  
**LEMONADE**  
 Shop-Rite or Downy Flake 5-oz. pkg.  
**WAFFLES**  
 YOUR CHOICE **10 95¢** pkgs.

Shop-Rite  
**Orange Juice** 4 6-oz. 89¢  
 Morton  
**Honey Buns** 9-oz. 19¢  
 Packers Label Egg or Crinkle Cut  
**Potatoes** 12 9-oz. 99¢  
 Packers Label Peas and Carrots or  
**Green Peas** 10 10-oz. 99¢

**BAKERY DEPT!**

**APPLE PIE**  
 SHOP-RITE large 49¢  
 Old Fashion 8" pie

Gold, Marble, Raisin  
**Pound Cake** 1 1/2-lb. 49¢  
 Chocolate Fudge  
**Layer Cake** 2-lb. 79¢  
 Twin-Pack  
**Potato Chips** 3-oz. 39¢  
 Sunshine Flip Bars 16-oz. or  
**Vienna Fingers** 1 1/4-lb. 37¢

**NABISCO FAMILY FAVORITES**  
 PREMIUM SALTNES, 1 1/2-lb. 4 \$1  
 CHOC. CHIP COOKIES, 8 1/2-oz.  
 HERMIT COOKIES, 8 1/2-oz.  
 BROWN SUGAR COOKIES, 1 1/2-lb.

**DELI DEPT!**

**SLICED BACON**  
 OSCAR MAYER QUALITY 1-lb. 59¢

Taylor, Mild, Sliced  
**Pork Roll** THICK OR THIN 3-lb. 89¢  
 Hormel  
**Canned Ham** 4-lb. \$2.99  
 Vacuum Packed—Bologna, Lunch Loaf, Pepper Loaf, Pickled  
 & Pimento, Plain Loaf, Olive Loaf, Cooked Sliced  
**Cold Cuts** Hand Chopped, Old Fashioned Loaf 3-lb. 89¢  
 Shop-Rite All Meats - All Beef  
**Frankfurters** 1-lb. 49¢

**WHY PAY MORE?**

**LARGE CANDY BARS**  
 Hershey Milk Chocolate, Almond, Good  
 for, Hestle Milk Chocolate, Almond,  
 Crunch, Fruit Bar, Butter Crisp 3 large bars \$1

Planters  
**Peanuts** 1 1/2-lb. 59¢  
 Dog Food  
**Red Heart** 8-lb. \$1  
 Shop-Rite  
**Puddings** Over, Vanilla, Butterstrach 4 1/2-lb. 25¢  
 Assorted  
**Glade Spray** 7-oz. 49¢  
 Shop-Rite with Meat  
**Ravioli** 4 15-oz. 89¢  
 Johnson's  
**Pledge** 1-lb. \$1.09  
 Shop-Rite  
**Spray & Wipe** 14-oz. 69¢  
 Shop-Rite  
**Floor Wax** 49¢

**SHOP-RITE TOP QUALITY ALL BEEF SALE**

## STEAK SALE

Flavorful and Lean **CHUCK** 45¢ lb.  
 The Usual Good Trim **SIRLOIN** 85¢ lb.  
 The Usual Good Trim **PORTERHOUSE** 95¢ lb.

**Rib Steaks** Cut Short For Broiling .79¢  
**Ground Chuck** Fresh & Lean .65¢  
**Ground Beef** Delicious .45¢  
**Shoulder Steaks** Cut For London Broil .99¢  
**Cube Steaks** All Meats No Waste .99¢  
**Beef Short Ribs** For Braising .49¢  
**Beef Cubes** Cut For Stew .75¢  
**Calif. Pot Roast** Always Tasty .65¢

**ALWAYS A REAL TREAT**  
**RIB ROAST** OVEN READY 69¢ lb. REGULAR STYLE 59¢ lb.

**Rib Roast** First Cut 89¢  
**Top Round Roast** Tasty 95¢  
**Chuck Roast** Boneless Delicious 75¢  
**Newport Roast** Always Family Treat \$1.09  
**Top Round Steak** \$1.09  
**Top Sirloin Steak** \$1.09  
**Flank Steaks** For London Broil 99¢  
**Sausage Meat** ARMOUR or HORMEL FROZEN 1-lb. 35¢

**LEAN MEATY SHOP-RITE QUALITY**  
**ROAST SALE** BOTTOM ROUND OR CROSS RIB 85¢ lb.

EVERYTHING'S PRICED RIGHT AT SHOP-RITE!

**SPRY SHORTENING**  
 TOP NATIONAL BRAND 2 lb. 10-oz. can 67¢

**MAXWELL HOUSE**  
 INSTANT COFFEE 10¢ OFF 6-oz. 107 99¢

**Tomato Catsup** Shop-Rite 6 1/2-lb. \$1  
**Prune Juice** Shop-Rite 3 40-oz. 1 \$1  
**Coffee** CHASE & SANBORN REG. or DRIP 10¢ OFF 2-lb. \$1.49  
**Instant Coffee** CHASE & SANBORN REG. or DRIP 10¢ OFF 4-oz. 95¢  
**Apple Juice** Shop-Rite 4 1-lb. 89¢  
**Detergent** Shop-Rite Controlled Suds 25 1/2-lb. \$2.59

**Shop-Rite Bleach** 1-lb. 43¢  
**Applesauce** Shop-Rite 8 1-lb. \$1  
**White Tuna** Shop-Rite Solid Pack 3 1-lb. \$1  
**Pie Filling** COMSTOCK CHERRY 4 1-lb. 40¢ \$1  
**Wesson Oil** Why Pay More? 1 1/2-gal. \$1.49  
**Cake Mixes** Betty Crocker 6¢ off Brownie Mix or Pillsbury 3 1-lb. 69¢ \$1

**STOKELY PEACHES**  
 YELLOW CLING Halves or Sliced 4 1-lb. 13-oz. cans \$1

**PRUNE JUICE**  
 SHOP-RITE WHY PAY MORE? 4 1-lb. 13-oz. cans \$1

**SOS Soap Pads** 4 1/2-lb. 89¢  
**Preserves** STRAWBERRY 3 1/2-lb. 89¢  
**Applesauce** Verifine 30-oz. 39¢  
**Savarin Instant** Coffee 1-lb. \$1.29  
**Corn** Shop-Rite Whole Kernel in brine or cream 6 1-lb. 89¢  
**Soup** Campbell's (Ch. Noodle, Ch. Rice, Cream, Mushroom, Veg. Beef) 6 1-lb. \$1

**Shop-Rite Honey** 5-lb. \$1.19  
**Alpo Dog Food** Beef, Chicken, Lamb, Horsemeat, Chicken 4 1-lb. \$1  
**Apple Cider** Shop-Rite 67¢  
**Applesauce** Verifine 4 1-lb. \$1  
**Maxwell House** INSTANT COFFEE 10¢ OFF 6-oz. \$1.39  
**Yuban Instant** COFFEE 20¢ OFF 1-lb. \$1.33

**ALL DETERGENT**  
 HOME LAUNDRY 40¢ OFF 20-lb. box \$3.59

**POLYNESIAN PUNCH**  
 GRAPE or ORANGE 4 1-lb. 13-oz. cans \$1

**PRODUCE DEPT.!**

**BROCCOLI**  
 ANDY BOY large bunch 29¢  
**CARROTS** CALIF. SWEET 10-lb. 29¢  
**CELERY** CALIFORNIA PASCAL 10-lb. 19¢  
**GRAPEFRUIT**  
 INDIAN RIVER FLORIDA 3-lb. 29¢  
**SPINACH** WASHED CLEAN 10-lb. 25¢  
**ONIONS** YELLOW U.S. #1 10-lb. 3-lb. 29¢

**APPLES**  
 WESTERN FANCY RED DELICIOUS 2-lb. 29¢

**WHY PAY MORE?**

**COTTAGE CHEESE**  
 SHOP-RITE CREAMY 2-lb. 35¢

**Betty Crocker** **Cookies** 3-lb. \$1  
**Lucky Whip**  
**Topping** 39¢  
**Sweet Butter** 37¢  
**Neufchatel** 2-lb. 49¢  
**Fruit Salad** 69¢

**APPT. DEPT. (where available)**

**CHOPPED HAM**  
 IMPORTED Sliced to Order 1-lb. 99¢

**Virginia Ham** 69¢  
**Kielbasi** 69¢

**Shop-Rite 59¢ Sale!**  
**SALAMI** MIX or MATCH YOUR CHOICE  
**PLYMOUTH ROCK SPICED HAM** 59¢  
**TRIPLES PASTEURIZED SWISS AMERICAN CHEESE**

**WHY PAY MORE?**

**MAXWELL HOUSE COFFEE** ALL GRINDS 1-lb. 79¢

**Final Touch** 1-lb. 67¢  
**Fluffy All** 65¢  
**Cold Water All** 65¢  
**Detergent** 59¢  
**All Detergent** 70¢  
**All Detergent** 72¢

**RONZONI**  
 No. 8 Spaghetti - No. 9 Spaghetti  
 Medium Shells No. 22  
 2-lb. boxes 45¢

**SEAFOOD DEPT!**

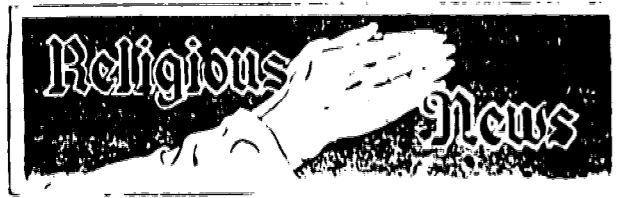
**TASTY SHRIMP**  
 JUMBO 26 to 30 count per pound 99¢  
 LARGE 41 to 50 count per pound 79¢  
 5-lb. box \$4.79  
 3-lb. box \$3.79

THERE'S A SHOP-RITE NEAR YOU!

UNION CENTER 963-Stuyvesant Ave. Union	ROUTE 22-UNION Rt. 22 & Springfield Rd. Near to Atlantic Thruway Center • OPEN SUNDAY • 8:30 a.m. - 6 p.m.	LYONS-SHOP-RITE 327 Lyons Ave., Newark • OPEN SUNDAY • 8 a.m. - 6 p.m.	RAHWAY-SHOP-RITE 1064-St. Georges Ave. • OPEN SUNDAY • 9 a.m. - 6 p.m.	LINDEN-SHOP-RITE 22-St. Georges & Wood Aves. • OPEN SUNDAY • 8:30 a.m. - 6 p.m.	CRANFORD-SHOP-RITE South Ave. & Union St. Cranford, N.J.	WATCHUNG-SHOP-RITE Rt. 22, Watchung, N.J. • OPEN SUNDAY • 9 a.m. - 6 p.m.	Roselle Park Shop-Rite 7-11 E. Westfield Ave. Roselle Park, N.J. Open Sunday, 9-6 p.m. SCOTCH PLAINS 1377 Park Ave., Scotch Plains	CLARK-SHOP-RITE 49 Central Ave. Clark, N.J. Open Sunday 12 noon - 6 p.m.
--	--	---	---	--	--	--	---	--

Prices effective through Saturday Night, October 24th, 1964. Not responsible for typographical errors. We reserve the right to limit quantities.





# Residents Sponsor Teenage Indian Girl



# Regional Classes Join To Hear 'Spanish With Musical Accent'

**Guilts Of Church Outline Activities**

**Reformed Church Chapel**  
212 Summit St.  
Above Ballston Way  
Rev. George J. Robertson  
Rev. William T. Benson

**Springfield Emanuel Methodist**  
Main St. and Academy St.  
Springfield  
Rev. James Stewart  
Pastor

**HAPPY GOLDEN** ... will speak at the ...

**THE BIBLE SPEAKS TO YOU**

SUNDAY

THE POWER OF HUMILITY

**Change In Family; Talk At Emanu-El Studies Problem**

**Ledig Enrolled At Johns Hopkins**

**St. James**  
45 S. Springfield Ave.  
Springfield  
Rev. Francis X. Castle, pastor  
Rev. Edward Lebling and Rev. Richard Neidinger, assistant pastors

**Services Sunday For Reformation**

FALL BRIDGE SET FOR SCHOLARSHIP

**THE FLOOR SHOP**  
EST. 1934

... AT A COMPETITIVE PRICE ... TRY US!

**Vinyl Asbestos Tile 8¢**

540 North Ave. Union  
Open Mon., Wed., Thurs. to 9 • EL 2-7400

**Saint Stephen's Episcopal Church**  
Main St. opposite Taylor rd.  
Millburn N. J.  
Rev. James E. Landles, Rector

**First Church Of Christ Scientist**  
Springfield

**First Baptist Church**  
Travmor To Address YWCA Kaffekatsch

**TOUR OF GARDENS OF DUKE ESTATE SCHEDULED TODAY**

**Name Dr. Stanton As Club Manager**

Single Young Adults

**Temple Sharey Shalom**  
S. Springfield Ave. and Shunpike rd., Springfield  
Rabbi Israel S. Dresner  
Cantor: Mark J. Hiddelman

**First Presbyterian Church**  
Morris Avenue at Main Street  
Springfield, New Jersey  
Ministers: Bruce W. Evans  
Donald C. Weber

**Kempers shoes**

There's fitting skill in these hands

Edwards

IRVINGTON UNION LIVINGSTON

ALL STORES OPEN FRIDAY TO 9 P.M.

**HOW YOU CAN GET RID OF YOUR FEARS AND GET MORE OUT OF LIFE**

**WHY NOT CHANGE YOUR THINKING?**

SUN., OCT. 25 at 3:30 P.M.

**FANWOOD-SCOTCH PLAINS SENIOR HIGH SCHOOL**

**Clinton Hill Baptist**  
415 Morris Ave. Union  
Rev. John D. Fassel pastor

**Community Presbyterian**  
Rev. Limer D. Talcutt, Jr.  
Meeting House Lane  
Mountainide

Springfield Member

**Battle Hill Community Moravian**  
325-335th Ave.  
Rev. D. F. Alcherman pastor

**St. John's Lutheran**  
387 Springfield Ave.  
Summit  
Rev. Richard E. Peterman  
Pastor

**Holy Cross Lutheran Church**  
The Church of the Redeemer  
"Lutheran Hour" and "This is the Life"  
639-641 Mountain Ave.  
Springfield, N. J.

GET IRVINGTON RAMBLER'S SPECIAL BONUS

**1¢ DURING OUR 3-DAY ACCESSORY SALE!**

ABSOLUTELY NO GIMMICKS!

**'65 RAMBLERS**

WILL BE SOLD TODAY, FRI. & SAT. WITH THE FOLLOWING OPTIONAL EQUIPMENT PRICED AT 1¢

HEATER and DEFROSTER	1¢	2-SNOW TIRES	1¢	BACK-UP LIGHTS	1¢
FRONT SAFETY BELTS	1¢	SIDE-VIEW MIRROR	1¢	PARKING BRAKE WARNING LIGHT	1¢
DOWNGARD UNDER-COATING	1¢	CURB FEELERS	1¢	COURTESY LIGHTS	1¢

**THE SPRINGFIELD PHARMACY**

Is Now Located At

**242 Mountain Ave., Springfield**

Phone 376-5050 • WALLACE KLEINMAN, R.P.

**BATHROOMS • KITCHENS ENTRANCES**

Ceramic - Marble - Terrazzo

**WOLFO FILE**

From All Over The World THE MOST HELPFUL STORE TO DO-IT-YOURSELFERS

Tel. 376-7750

Route 22, Springfield, N.J.

**Legal Notice**

**Temple Beth Ahm**  
An Affiliate Of The United Synagogue of America  
Rabbi Reuben H. Declue  
Cantor: Israel Welsman  
on Ballston Way

**SAT. ONLY!!!**

Were having a Party to bring the Lady Teller Circus Clown to life here!

FREE refreshments including Hot Dogs, Soda, Candy, Col. Ice-cream

**Irvington RAMBLER**

N.J.'s Oldest Rambler & Jeep Dealer

**665 CHANCELLOR AVE., IRVINGTON**

ES 4-1200 OPEN DAILY 9 TO 9

# Union Adult School Parents Learn About 'Opening The Door To College'



Non-Graded Schools Topic Of Dart Talk

## CULTURAL ART CENTER

LOCUST SCHOOL, LOCUST STREET, ROSELLE, N. J.  
Open to Children and Adults of Union County  
INFORMATION AND REGISTRATION DAY  
Sunday, October 25, 1964  
2:00 P.M. to 4:00 P.M.  
LOCUST SCHOOL  
LOCUST STREET, ROSELLE, N. J.

— COURSES —

- BALLET, TOE, TAP** — Instructor: Milica Stanc  
Character and modern dancing class for teenagers. Specializing in classical ballet for professionals.
- VOICE** — Instructor: Prudence Curtis  
Fundamentals of voice singing and techniques of singing.
- DRAMA** — Instructor: Marilyn Cohen  
Basic dramatics, diction, acting and elocution.
- FINE & COMMERCIAL ART** — Instructor: Joann Spicer  
Painting, illustrating, design and graphic arts.

Classes will be held every Friday between the hours of 3:30 and 6:30, except on holidays.

Theatrical Arts under the direction of Milica Stanc. Fine and Commercial Arts under the direction of Rudolph Schultz.

For further information, call

CH 1-0905 — Theatrical Arts

CH 1-1816 — Fine and Commercial Arts

NOT RESTRICTED TO ROSELLE RESIDENTS

EDUCATION THROUGH ART — Union High art teacher Emanuel S. ... on Monday ...

of eight lectures for fellow teachers on the use of art as an aid to teaching all subjects.

## Hike, Cook-Out In Friberger Park Held By Union Girl Scout Troop

## J. R. Pollatschek Again President Of State CP Group



J. R. POLLATSCHER

### Legal Notice

PLEASE TAKE NOTICE that the undersigned, J. R. POLLATSCHER, has been elected President of the Communist Party of the State of New Jersey for the term ending on the 31st day of December, 1964. The undersigned is a resident of the State of New Jersey and is qualified to hold the office of President of the Communist Party of the State of New Jersey.

## Back Bond Issue At Newark State

## Cub Scouts Win Costume Contest

## Union Firms Share Foreign Aid Orders

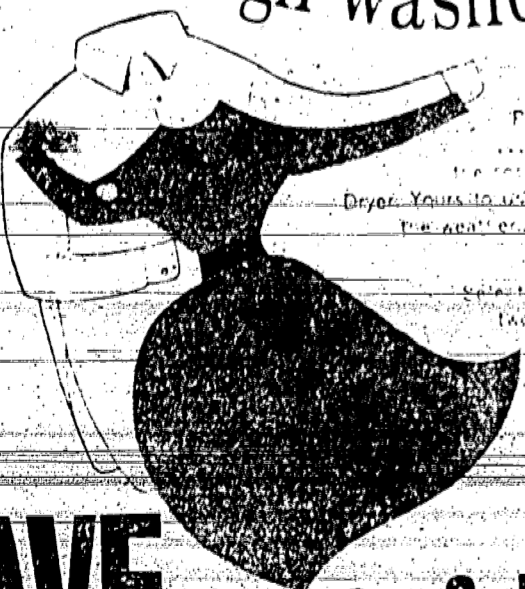
Industrial orders totaling \$1,000,000 under the United States foreign aid program to India and Pakistan have been awarded to Union firms. The Agency for International Development reported that the orders include \$500,000 worth of material to India under a New York contract awarded from the South Asian region. The Verona Dyestuffs division of Verona-Pharmaceuticals Corp., Springfield

WHY WAIT FOR THE WEATHER?



Drug Store Robber Sent To Bordentown

waltz through washday!



Pay less for the washday. The new RCA Whirlpool Dryer. Yours to wash in matter what the weather. Or better, for the weather.

Choose from one of these two models. Specially designed for the apartment. The Dryer. S.E.

SAVE \$40



Model D61 2020 or RCA Whirlpool LMG 467-1

NO DOWN PAYMENT \$5 per month Free Normal Installation Free Venting 5 YEAR SERVICE FREE Delivery



ELIZABETH 17 West Jersey Street 200 North Broad Street EL 2-8109  
METUCHEN 452 Main Street ME 6-1700  
PERTH AMBOY 220 Market Street TAE 4-1700  
RAHWAY 311 North Avenue 446-6100  
WESTFIELD 144 Elm Street AU 4-1700

## Receives Burns As Clothes Ignite

MAX, SR. & PAUL SCHOENWALDER  
3 Generations of Dependable Service

## AUTOMATIC HEAT - QUICK, QUIET

FOR STEAM HEATING SYSTEMS



### GAS-FIRED BOILERS

- Specially designed cast iron burners with "rivet" drilled ports for more efficient combustion.
- Long-life cast iron boiler sections for high heat transfer, maximum efficiency.
- Extra-heavy glass fibre casing insulation to prevent wasteful heat loss.
- 3-1/2" sectional pilot. Rapid start.



HEATING ESTIMATE  
RESIDENTIAL - COMMERCIAL - INDUSTRIAL  
MAX, SR. & PAUL SCHOENWALDER  
EST. 1914  
Plumbing & Heating Contractors  
• Gas Water Heaters • Gas Heat  
1226 Struyvesant Ave. Union, N. J. MURdock 6-0749

## GO GAS HEAT WITH GOLDSTEIN'S Little PLUMBER®

## STOP BURNING MONEY!

Old furnaces waste fuel dollars. modernize now and save

## AMERICAN-Standard GAS BOILER

RUGGED CAST-IRON CONSTRUCTION... in smart cabinet styling!

- Automatic
- Economical
- Clean
- Quick
- Uses No Electricity



BY CALLING EL 2-1314

Est. 1914 - Now in our 50th Year

M. GOLDSTEIN & SON  
PLUMBING, AIR CONDITIONING HEATING Contractors  
89-91 FIRST STREET • ELIZABETH  
Phone EL 2-1314

# Memorial Volunteer Guild Slate Card Party, Nov. 13

The Memorial Volunteer Guild will hold its annual slate card party on Thursday, Nov. 13, at the Y.W.C.A. Ball Room, 1000 Springfield Road, Springfield, N.J. The party will be held from 7:30 p.m. to 11:00 p.m. and will feature a variety of entertainment, including a musical program, a dance, and a raffle. The proceeds from the party will be used to support the Guild's various community service projects.

A special feature of the party will be the presentation of a new nurse aide course. This course, which will be held at the Y.W.C.A. Ball Room, is designed to provide training for individuals interested in becoming nurse aides. The course will cover a wide range of topics, including anatomy, physiology, and patient care. It is expected that the course will be very popular and will attract many students.

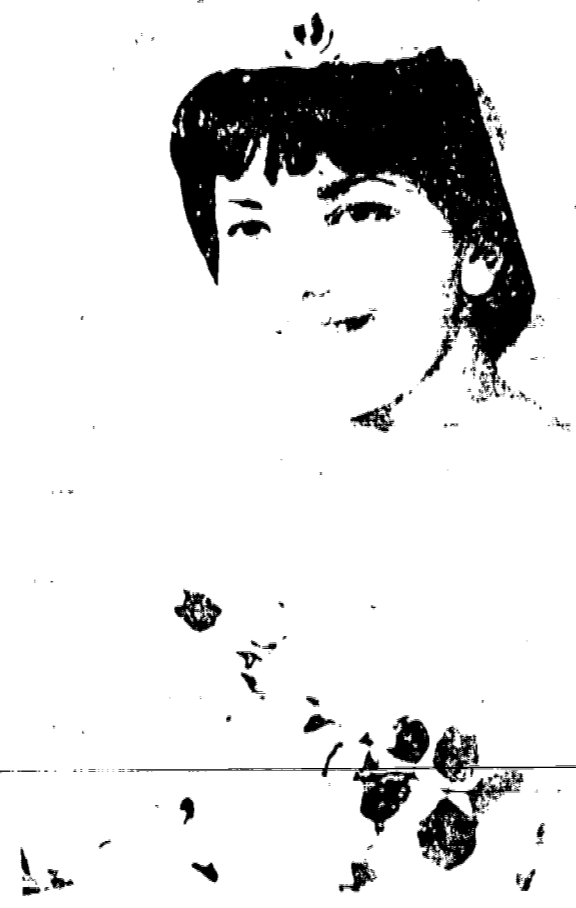
## Junior Hostesses Set Servicemen's Dance

The Junior Hostesses of the Memorial Volunteer Guild will be sponsoring a servicemen's dance on Friday, Nov. 14, at the Y.W.C.A. Ball Room. The dance will be held from 8:00 p.m. to 11:00 p.m. and will feature a variety of music and dancing. The Junior Hostesses are looking forward to a very successful evening and are hoping to raise a significant amount of money for the Guild's projects.

To Celebrate 50th  
The Memorial Volunteer Guild is celebrating its 50th anniversary. The Guild was founded in 1914 and has since then been dedicated to providing community service and support to those in need. The Guild's various projects, including the nurse aide course and the servicemen's dance, are a testament to its commitment to the community.

## MR. SAM KIMOWITZ TO BE HONORED ON HIS 76TH BIRTHDAY

Mr. Sam Kimowitz, 76, of Springfield, N.J., will be honored on his 76th birthday. Mr. Kimowitz has spent most of his life in Springfield and has been a member of the Memorial Volunteer Guild for many years. He is a well-known and respected member of the community and is known for his generous contributions to various charitable organizations.



## Lucille Maiorana Is Bride Of Michael Stuart Lesser

Lucille Maiorana, 25, of Springfield, N.J., was married to Michael Stuart Lesser, 28, of Springfield, N.J., on Saturday, Oct. 22, at the Y.W.C.A. Ball Room. The wedding was a beautiful affair and was attended by many family and friends. The bride wore a traditional white gown and the groom wore a tuxedo. The ceremony was officiated by a local minister.

## Deborah Park Union Guild To See Broadway's 'Dolly'

The Deborah Park Union Guild will be sponsoring a trip to New York City to see the Broadway musical 'Dolly Parton'. The trip will be held in November and will include travel, accommodations, and tickets to the show. The Guild is looking forward to a very enjoyable and memorable trip.

Halloween Party Set  
By Young Mothers  
Copy Deadline  
All orders for this ad must be received by the copy deadline of 11:00 a.m. on the day before the party. The party will be held on Oct. 31 at the Y.W.C.A. Ball Room and will feature a variety of games, prizes, and refreshments.

## REPAIRED in less than 1 day!



FREE  
Estimate  
Call  
687-5593

## AMERICAN STANDARD PACKAGED HOME- HEATING GAS BOILER

Compact, attractive design  
Easy to install  
Low maintenance  
Long life expectancy

Anthony Jukosky  
Packaged Home Heating  
1000 Springfield Road, Springfield, N.J.

### THE WESTERN KIDS

of THE PROFESSIONALS WITH BUGSIE WANNER

BUGSIE WANNER  
WESTERN HOME SERVICE  
MOUNTAINVIEW, A.D. 3100

*John & Company*

## Westfield

store hours daily:  
9:45 A.M. to 5:30 P.M.  
open Wednesday nights 'til 9

U.S. Government figures PROVE that

# GRAND UNION SUPERMARKETS

Food is a BARGAIN

## Play "ONLY 19"

Food-Is-A-Bargain Game

WIN 50 FIRST PRIZES OF \$1400 EACH  
684 SECOND PRIZES OF \$117 EACH

GET YOUR "ONLY 19" CARD AT GRAND UNION

The biggest food bargain in the world is in the U.S.A. ... Only 19¢ of your after tax dollar is spent for food. (15 years ago it was 26¢)

FRESH DRESSED EASTERN SHORE

<p>GRAND UNION <b>Fruit Cocktail</b> 5 1-lb. cans \$1.00</p> <p><b>SUGAR</b> 5-lb. 49¢ <b>MAZOLA OIL</b> 5-lb. \$1.69</p> <p><b>WHITE BREAD</b> 2-lb. 35¢ <b>MIRACLE WHIP</b> 5-lb. 53¢</p> <p><b>Savarin Coffee</b> 1-lb. can 79¢</p> <p><b>COFFEE</b> 1-lb. 69¢</p> <p><b>VIENNA</b> 4-lb. 43¢</p> <p><b>COOKIES</b> 2-lb. 89¢ <b>PASTA ROMANO</b> 6-lb. \$1.00 <b>GARBAGE CANS</b> 10-gallon galvanized \$1.89</p> <p><b>Campbell's Soups</b> OLD FASHIONED VEGETABLE 4-lb. 49¢ HOODLES &amp; GROUND BEEF 4-lb. 89¢</p> <p><b>WHITE TUNA</b> 3-lb. \$1.00 <b>HORMEL SPAM</b> 2-lb. 89¢ <b>SCOTTIES</b> 3-lb. 69¢ <b>HUDSON</b> 2-lb. 27¢</p> <p><b>GREEN GIANT-FROZEN Vegetables</b> SWEET PEAS, CARROT HUGGETS, MIXED VEGETABLES 4-10-oz. pkg. \$1.00</p>	<p><b>CHICKENS</b> WHOLE lb 29¢ BREASTS 59¢ LEGS 49¢ CHICKENS 39¢</p> <p><b>PORK LOINS</b> LOIN PORTION lb 33¢ LOIN PORTION lb 39¢</p> <p><b>PORK CHOPS</b> CENTER CUT ROAST OR PORK CHOPS lb 79¢</p> <p><b>VEAL SALE</b> Loins and Rumps lb 49¢</p> <p>Loin Veal Chops 89¢ Rib Veal Chops 79¢ Cubed Steaks 89¢ Shoulder 69¢ SLICED BACON 59¢ SAUERKRAUT 15¢ SWORDFISH 69¢ FLOUNDER 69¢</p> <p><b>APPLES</b> 5-lb. bag 39¢ <b>GRAPES</b> 2-lb. 29¢ <b>SPINACH</b> 25¢ <b>ONIONS</b> 3-lb. 29¢</p> <p><b>10 PASTRIES</b> 6-49¢</p>	<p><b>Del Monte Drink</b> 3 1-qt. 79¢</p> <p><b>INSTANT COFFEE</b> \$1.39</p> <p><b>CAKE MIXES</b> 3 \$1.00</p> <p><b>GREEN BEANS</b> 2-lb. 25¢</p> <p><b>Meat Pot Pies</b> 2 8-oz. 35¢</p> <p><b>CHOC. CAKE</b> 6-oz. 69¢</p> <p><b>PIZZARETTES</b> 2 85¢</p> <p><b>FISH</b> 4-oz. 49¢</p> <p><b>JUICES</b> 4-oz. 89¢</p> <p><b>Toothpaste</b> EXTRA LARGE SIZE 59¢</p> <p><b>PEACHES</b> HALVES 3 89¢</p> <p><b>MILK FROSTED</b> 49¢</p> <p><b>SARDINES</b> 29¢</p> <p><b>MAXWELL HOUSE</b> 99¢</p> <p><b>APPLE PIE</b> 49¢</p> <p><b>POUND CAKE</b> 49¢</p>
---	---	--

### 3-DAY EXPANSION SALE!

THURSDAY - FRIDAY - SATURDAY

Here we grow again... thanks to you, our wonderful customers. SOOO... in addition to our traditional sale at this time of year we decided to offer you even greater bargain buys on all our famous brands — so you'll come a-runnin'!

**Special Group SUITS**

REG. 69.95	SALE 44.95
REG. 79.95	SALE 54.95
REG. 89.95	SALE 64.95

**Special Group TOP COATS**

REG. 39.95	SALE 39.95
REG. 49.95	SALE 49.95
REG. 59.95	SALE 59.95

**Special Group RAINCOATS**

REG. 19.95	SALE 14.95
REG. 29.95	SALE 19.95

**Special Group SPORT COATS**

REG. 39.95	SALE 24.95
REG. 44.95	SALE 29.95
REG. 49.95	SALE 34.95

**Special Group SLAX**

REG. 17.95	SALE 12.95
REG. 12.95	SALE 7.95

UP TO 50% OFF ON FURNISHINGS AND OUTER WEAR

## DENISON CLOTHIERS

Clothing Haberdashery Hatters Footwear

ROUTE 22, UNION — at Springfield Road  
Daily 9 to 9 Sat. 11 to 6  
MURdock 8-7252

ROYAL COURT IMPORTED PORCELAIN CHINA

UNION — 5 Points Shopping Center at Chestnut St. — Open late Thurs., Fri. & Sat. 11:00 p.m. OPEN SUNDAY 9 A.M. to 2 P.M.  
SPRINGFIELD — General Greene Shopping Center, Morris & Mountain Ave. — Open Monday thru Thursday, 9 a.m. to 9 p.m. Friday 9 a.m. to 10 p.m.  
Saturday 8 a.m. to 9 p.m. Sunday 9 a.m. to 6 p.m.

Visit your Triple-S Redemption Center, Madison Shopping Center, Main & Dwyer, Madison. Open Fri. 11:00 p.m. All Redemption Centers closed Mondays

# League Of Women Voters Data On Referendum Questions, Candidates

The following is taken from data compiled by the League of Women Voters of Union County. Public questions and League explanations are included along with biographical information and candidates' replies to League questions.

### Public Questions

PUBLIC QUESTION NO. 1  
N. J. INSTITUTIONS CONSTRUCTION BOND ISSUE

PUBLIC QUESTION NO. 2  
N. J. COLLEGE AND UNIVERSITY CAPITAL CONSTRUCTION BOND ISSUE

### QUESTIONS

1. How do you feel about the proposed bond issue for the construction of new college and university buildings in New Jersey?

Edward M. Shannoy  
DEMOCRAT

### ANSWERS

I am in favor of the proposed bond issue for the construction of new college and university buildings in New Jersey. I believe that such a program is essential for the future of our State and for the education of our youth.

Richard J. Traynor

### DEMOCRAT

As a member of the public school system, I am in favor of the proposed bond issue for the construction of new college and university buildings in New Jersey. I believe that such a program is essential for the future of our State and for the education of our youth.

Harriet A. Williams  
DEMOCRAT

I am in favor of the proposed bond issue for the construction of new college and university buildings in New Jersey. I believe that such a program is essential for the future of our State and for the education of our youth.

U. S. Senate

### House Of Representatives

Term of office: 1965-1967  
Salary: \$12,000 per year

### QUESTIONS

1. How do you feel about the proposed bond issue for the construction of new college and university buildings in New Jersey?

Florence P. Dwyer  
REPUBLICAN

I am in favor of the proposed bond issue for the construction of new college and university buildings in New Jersey. I believe that such a program is essential for the future of our State and for the education of our youth.

### Union County Freeholders

Term of office: 1965-1967  
Salary: \$12,000 per year

### QUESTIONS

1. How do you feel about the proposed bond issue for the construction of new college and university buildings in New Jersey?

Gene I. Griffin  
REPUBLICAN

I am in favor of the proposed bond issue for the construction of new college and university buildings in New Jersey. I believe that such a program is essential for the future of our State and for the education of our youth.

### QUESTIONS

1. How do you feel about the proposed bond issue for the construction of new college and university buildings in New Jersey?

High Caldwell  
DEMOCRAT

I am in favor of the proposed bond issue for the construction of new college and university buildings in New Jersey. I believe that such a program is essential for the future of our State and for the education of our youth.



## THE NATIONAL STATE BANK

ELIZABETH HILLSIDE KENILWORTH RAHWAY  
ROSELLE PARK SPRINGFIELD SUMMIT WESTFIELD  
MEMBER FEDERAL DEPOSIT INSURANCE CORPORATION

Got your eye on a better car? We can put you behind the wheel with an auto loan at low bank rates. Our service is fast, friendly, completely confidential. And payments are conveniently fitted to your income. You'll like doing business with National State Bank, where you get the best in local auto loan service.

*Make a date with National State... Union County's Leading*

(Continued on next page)

League Of Women Voters Data On Referendum Questions, Candidates

(Cont. from preceding page) Recreation, Advisory Com- mittees Active Scouting Kijwanis Hospital Health Churchdrives Veteran WW II DLW married 2 children

Union-Man Promoted To Sergeant's Rank Officers Training Corps

Matthew J. Rinaldo UNION REPUBLICAN Union resident Elizabeth...

George J. Forrester ELIZABETH REPUBLICAN 21 years old - born in Scotland...

Edward J. Wilusz ELIZABETH DEMOCRAT Living Union County Resident...

Frank T. Cuchie CLINTON DEMOCRAT Educated Elizabeth School...

John V. Donohue ROSSELL DEMOCRAT As full time Freeholder since...

CANDIDATES FOR 3-YEAR TERM Henry P. Wester MOUNTAINSIDE REPUBLICAN

Engineer, Western Electric, awarded U. S. Patent, Police Commissioner, Elected Councilman...

Officers Training Corps Union-Man Promoted To Sergeant's Rank

Union resident Elizabeth...

Living Union County Resident...

Educated Elizabeth School...

As full time Freeholder since...

Synopsis of Minutes Of Board of Freeholders Meeting

SYNOPSIS OF MINUTES OF REGULAR MEETING OF THE UNION COUNTY BOARD OF CHOSEN FREEHOLDERS SEPTEMBER 17, 1964

COLONIAL CLASSICS From Our American Heritage EXTRAORDINARY AUTUMN SALE! 7-PC SOLID NORTHERN MAPLE 4-PC SOLID CHERRY SET 3-PC SOLID CHERRY BEDROOM WHITE COLONIAL BEDROOM 9-PC CHERRY VALLEY COLLECTION

Legal Notice

Legal Notice

Legal Notices

NOTICE OF INTENTION TO CHANGE NAME...

NOTICE OF HEARING TO WHOM IT MAY CONCERN...

NOTICE OF SETTLEMENT NOTICE IN HEREBY GIVEN...

NOTICE OF SETTLEMENT NOTICE IN HEREBY GIVEN...

COLONIAL CLASSICS 324 Chestnut St. Use Our Convenient Credit Terms. Open daily till 9:30 - Sats. till 6:00

**Nunzio To Address  
Accordionist Session**

The Association of New Jersey accordionists will hold a session at the home of Mrs. Nunzio in Union, N. J., on Thursday, Oct. 22, at 8 p.m. The session will be held at the home of Mrs. Nunzio, 1726 Morris Ave., Union, N. J. The session will be held at the home of Mrs. Nunzio, 1726 Morris Ave., Union, N. J. The session will be held at the home of Mrs. Nunzio, 1726 Morris Ave., Union, N. J.

**NEW HOWARD BONUS**

The new Howard Bonus is a new model of the famous Howard Bonus. It is a new model of the famous Howard Bonus. It is a new model of the famous Howard Bonus. It is a new model of the famous Howard Bonus. It is a new model of the famous Howard Bonus.

**Ask Amy**  
BY AMY ADAMS



Treat goes back as far as I can remember... but treating people, doing bodily harm or defacing property is almost out of fashion. It is deplorable the way Halloween has degenerated into threats and violence. But something new has been added... a new tradition at least in my neighborhood the children are equipped by our local PTA with collection cans from the United Nations Children's Fund (UNICEF) which aids some 70 million children... and instead of asking for tricks or treats their little voices ask from behind their masks for contributions to help these needy children all over the world. Forgive me for preaching.

Dear Mother  
The custom of Trick or

but every parent should expect to find their PTA... for those... for each one of their children... and in this manner they are taught... THE PTA...

Dear Barbara  
Whether your escort decides to give a gift or not is entirely up to him. However if he asks your advice tell him a note of appreciation to your mother since she is making the wedding and a card of congratulations to the married couple would suffice.

Address all letters to  
AMY ADAMS  
THIS NEWSPAPER  
For a personal reply enclose a stamped self-addressed envelope.

Antiques Fair Offers  
Variety Of Exhibits

Winter Coat Preview  
Show At Hahn & Co.

**BUSINESS OPPORTUNITY**

**SUNOCO** SPRINGFIELD

Minimum facilities 20,000 gallons plus per month, low financial requirement — quick action for the right man...

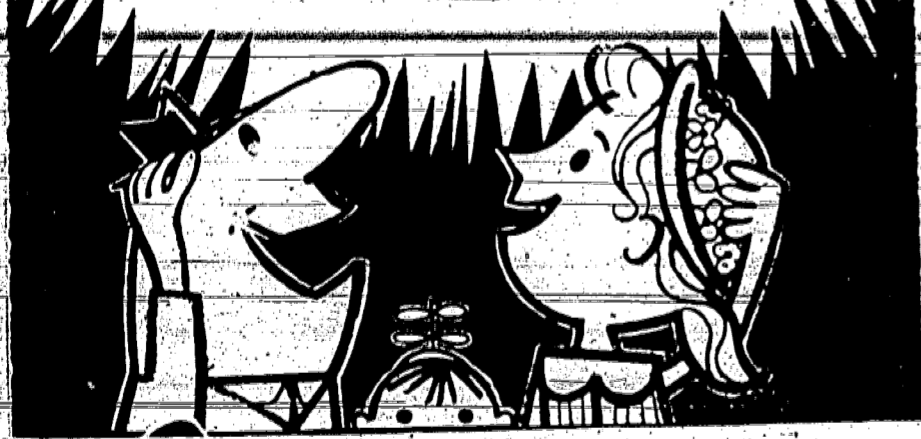
**ACT NOW...**

MI 3-8300 after 7 p.m. DR 6-0283

HERE COMES THE  
**BIGGEST SAVINGS NEWS**  
OF YOUR LIFE!

NATIONALLY FAMOUS

**ATLANTIC**  
*Gift Center*



**GREAT NEW  
EXTRA-DISCOUNT  
DEPARTMENT STORE**

**IN UNION**  
ROUTE 22  
AT SPRINGFIELD

AT THE FORMER SITES OF THE NATIONAL FAMILY STORES

**'A WHOLE NEW WORLD OF SAVINGS!'**

**TODAY**

**BRICK CHURCH APPLIANCE**

**SALE-A-RAMA**

SENSATIONAL  
3 DAY  
CLEARANCE OF  
FAMOUS BRAND  
APPLIANCES  
AND TV!

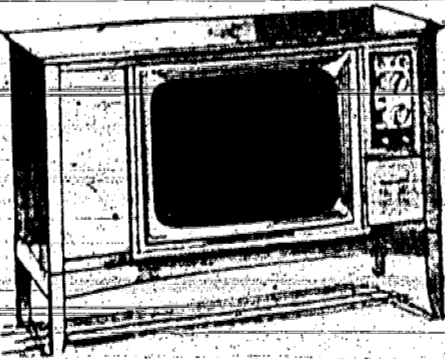
THURSDAY AND FRIDAY 'TIL 9PM—SATURDAY 'TIL 6PM

**MOTOROLA**

23" COLOR TV  
IS SO GOOD IT'S  
GUARANTEED FOR  
ONE FULL YEAR!

**MOTOROLA**  
**Color/65**  
with the new rectangular tube

You get a rectangular picture from a slim set that fits close to the wall



Model 23CK302A — popular Contemporary styling, 23" diag. tube means 27 1/2" x 17 1/2" picture viewing area.

NOW \$579.88  
ONLY

FAMOUS 2 DOOR  
REFRIGERATOR

**\$188.**

\* Automatic defrost • 107 lb. top freezer • Oldsmar shelf • Super

HAMILTON AUTOMATIC  
GAS DRYER

**\$168.**

\* Multibest thermal • 20-lb. cap. • Low air stream drying • Deluxe

ALL PORCELAIN  
GAS RANGE

**\$68.**

\* Full width oven • Oven control • 4 burners • All porcelain

MAYTAG  
2 SPEED WASHER

**\$209.**

\* 2 speeds, 7 cycles • Wash-rinsing temp. control • 12-lb. capacity

HOTPOINT  
AUTOMATIC DRYER

**\$108.**

\* All porcelain in and out • 20-lb. cap. • Easy-reach lint trap (R324)

KELVINATOR 2 DOOR  
REFRIGERATOR

**\$228.**

\* 14 cu. ft. • Automatic defrosting • San. freezer • Part. crispers (R321)

OFFICE - DEN - BAR  
REFRIGERATOR

**\$69.**

\* 13 cu. ft. • Freezer compartment • Compressor operated • Super

HOTPOINT  
2 SPEED WASHER

**\$168.**

\* 2 speeds, 7 cycles • 12-lb. cap. • All porcelain in and out

HOTPOINT  
DISHWASHER

**\$128.**

\* Top loading portable • Full auto. • Needs no plumbing (R311)

HOTPOINT 630-LB.  
UPRIGHT FREEZER

**\$268.**

\* Over 18-lb. size • Door-lock • Dr. shelves • Built-in (FMOC)

FAMOUS 11 FOOT  
REFRIGERATOR

**\$148.**

\* Full width cross-top freezer • Dr. shelves • Full width veg. crispers

WESTINGHOUSE  
AUTOMATIC WASHER

**\$138.**

\* Fully automatic • Wash-rinses, spins dry • Loading platform door

ROPER DELUXE  
30" GAS RANGE

**\$138.**

\* Oven window and light • Full width oven • Elec. clock & timer

WESTINGHOUSE  
ELECTRIC RANGE

**\$178.**

\* Full width oven • Automatic clock control turns oven on or off



**EASY CREDIT TERMS - NO CASH DOWN - 3 YRS. TO PAY!**

G-E ELECTRIC BLANKETS <b>\$12.88</b> * Fully automatic • Twin size • Thermostat control • Super	30-CUP AUTOMATIC PERCOLATOR <b>\$8.88</b> * Brews 12-30 cups, automatically • Pausing signal • Super Value!	G-E "PREMIER" FLOOR WAXER <b>\$22.88</b> * Twin brush • Waxes, buffs, polishes, scrubs, even shampoos rugs	"NEWPORT" BATH SCALE <b>\$2.44</b> * Non-skid mat • 250-lb. capacity • All colors • \$4.95 Value!	2 SLICE POP-UP TOASTERS <b>\$8.50</b> * All chrome • Crumb tray • Auto. pop-up • Quar. 5 years!
---	---	--	---	---

**FREE! DELIVERY - INSTALLATION - SERVICE FREE!**

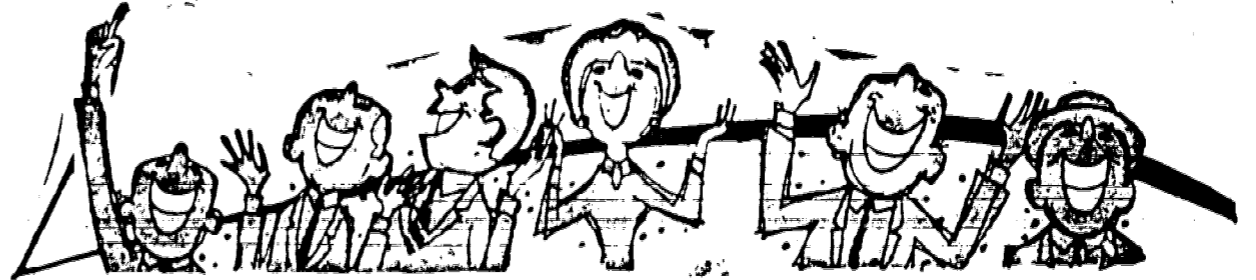
**BRICK CHURCH APPLIANCE** 8 Great Street  
"NEW JERSEY'S MOST RESPECTED APPLIANCE CHAIN"

<b>UNION</b> 2714 MORRIS AVE. 687-2288 OPEN WEEKDAY EVES. 'TIL 9 P.M.	<b>RAHWAY</b> 1735 ST. GEORGES AVE. 382-0699 SATURDAY 'TIL 6 P.M.
--	--

# Presenting...

An outstanding group of fine community newspapers... dedicated to reporting local news in an unbiased manner and presenting news of local interest to you... your friends and neighbors:

- ★ UNION LEADER
- ★ LINDEN LEADER
- ★ SPRINGFIELD LEADER
- ★ MOUNTAINSIDE ECHO
- ★ IRVINGTON HERALD
- ★ SPECTATOR OF ROSELLE AND ROSELLE PARK
- ★ VAILSBURG LEADER
- ★ SUBURBAN LEADER OF KENTLWORTH



Your neighbors --- people who read --- think --- BUY!

**35,000**  
**FAMILIES**  
**WHO BUY THRU**  
**CLASSIFIED**  
**WANT ADS**

In neighboring communities served by our

**8 NEWSPAPERS**

- Union • Irvington • Linden
- Vailsburg • Springfield
- Mountainside • Kentlworth
- Roselle & Roselle Park

FIND IT... FAST... IN THE CLASSIFIED!

**Sell...**

- thru "WANT ADS":
- HOMES • SERVICES • YOUR TIME
  - BRIC-A-BRAC FROM YOUR ATTIC & CELLAR
  - Find: • Baby Sitters • Carpenters • Electricians
  - Painters • Plumbers
  - Rent: • Tools • Trucks • Office Space

for low-cost results...

**dial**

**686-7700**

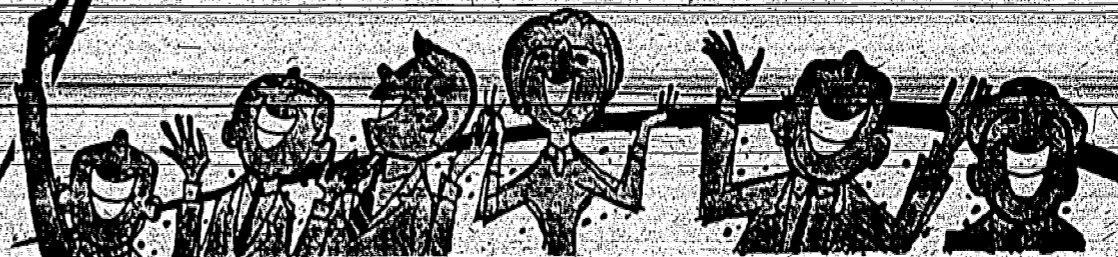
ask for an

**"ad-girl"...**

---she'll prepare your "WANT AD" for you!

**only 04¢**  
**PER WORD**

BASED UPON 5 AVERAGE LENGTH WORDS PER LINE. MINIMUM CHARGE... \$2.50 FOR 4 LINES.



# Built-ins For Storage Space Provide Attractive Decor

**MODERNIZE WITH THESE CROWN TILE SPECIALS**

NEW 1965

**Armstrong**  
EMBOSSED EXCELO  
FLOOR TILE — 13c ea

1st Quality  
**CERAMIC**  
WALL TILE — 5 1/2c ea

Comes In In New Decorator Colors

**CROWN TILE CO.**  
HIGHWAY 22 UNION  
MU 7-8114

**MARKO AUTO CENTERS** NOBODY BEATS OUR ALLEST!  
DIRECT TO YOU FACTORY PRICES

**AUTOMATIC TRANSMISSIONS**

WANT TO OVERHAUL? \$30

No Money Down

70	70	92	123
89	89	123	123

**MARKO AUTO CENTERS**

**SERVICE DISCOUNT ON AIR-CONDITIONING REPAIRS** — \$3

HOUSE CALLS - Reg. \$6.50 With Coupon

WE ALSO REPAIR

- WASHERS
- DRYERS
- REFRIGERATORS

354-4931

SAVE THIS COUPON • GOOD ANY TIME

IT'S TIME TO...  
**SWITCH NOW TO GAS HEAT**

**WEIL-McLAIN COMPACT GAS BOILER**  
For hot water or steam systems

**D. J. HARTNETT & CO., INC.**  
PLUMBING AND HEATING CONTRACTORS  
1254 U. S. Route 22, Mountainside  
AD 2-8825

## PAUL SEVERANCE & SON PAINT SPECIALS!

THURS. • FRI. • SAT. • MON.

While They Last!

**GALLON CANS**  
Assorted Paints

Discontinued colors in Flat, Semi-Gloss, and House Paint

**99c**

INVENTORY STOCK CLEARANCE!

MURALO and **FlowKote** RUBBER BASE PAINT

\$2.49 gal.  
QT. 75c



**ARTIST SUPPLIES**

**50% OFF**



**NOBODY... BUT NOBODY BEATS OUR PRICES!**

Our carload buying means you get **LOWEST POSSIBLE PRICES!**

WE CARRY THE COMPLETE LINE OF **Dutch Boy Paints**

We're headquarters for this famous top quality line of interior and exterior paints. Before you start your next paint job, come check our low, low prices. You'll like the savings!



NO DRIP

**LATEX** 3.45 gal.

FINEST 5-lb. Cut

**SHELLAC** 2.50 gal.

**PORCH & DECK** 2.95 gal.

**HOUSE PAINT** 2.95 gal.

INTERIOR

**LATEX PAINT** 2.45 gal.

Complete 7" Set

**PAN & ROLLER** 49c

9x12 Vinyl

**DROP CLOTHS** 9c

INTERIOR OIL BASE

**FLAT WHITE** 1.75 gal.

ENDS STAINING!  
ENDS CHALKING!

Lead & Titanium Formula

**SCOTCH LADDIE** House Paint

VISIT OUR MODERN WALLPAPER SHOWROOM

**BIGGEST DISCOUNTS**

TERrific SAVINGS IN OUR BUDGET DEPT.

**SANITAS & WALLTEX** Single roll 1.29

BIG SELECTION TO BRIGHTEN EVERY ROOM

**WALLPAPERS** from 39c

WINDOW SHADES

4-Ely White Vinyl Up to 35" with roller 99c



SALE PRICED!

**ALUMINUM LADDERS**

16 Ft. 11.98

20 Ft. 14.98

24 Ft. 19.98

28 Ft. 23.98

32 Ft. 28.98

**ALUMINUM STEP LADDERS**

5 Ft. 8.98

6 Ft. 9.98

4 Ft. 6.98

Atlantic Thrift To Open Today With Festivities

Special Police To Honor Hero At Thursday Fete

The N. J. State Rural Police Association will hold its annual dinner-dance Tuesday night at the Club Diana, Union, with some 500 expected to attend.

Joseph Zdravski, retiring sergeant of the force, said that the program will be highly dignified and presented in the association's honor.

William Lambert of West Paterson, a special policeman who made headlines this past winter when he rescued two youngsters from the Passaic River, Lambert will also be a guest.

Balantine & Son, the first that company has presented to special officers.

Zdravski is prominent secretary of the association. Other trustees serving as officers are Dan Lally, secretary, and...

from **ATTIC to BASEMENT BUILDING CONTRACTOR**

**LIGUORI CONSTRUCTION CO., INC.**  
General Mason-Contractor & Builder  
COMMERCIAL • RESIDENTIAL • INDUSTRIAL  
ALTERATIONS • REPAIRS • ADDITIONS

1254 ROUTE 22  
MOUNTAINSIDE, N. J.

Daytime — 232-0902  
Evenings — 277-0163

**GO OIL HEAT**

With today's modern oil heating system and fuel oil you will have the cleanest, most economical and safest heat on the market. We satisfy your complete heating and fuel needs with our personalized service.

ESTIMATES & SURVEYS FREE OF CHARGE

24 HOUR OIL BURNER SERVICE.

Look! More heat for your home from less fuel with the new revolutionary **NEW GULF SOLAR HEAT**

**ECONOJET**

**Real comfort**

all winter long with our **Gulf housewarming plan**

Look what you get:

1. Expert heating equipment service — Choose from low-cost efficiency, tune-up to complete, year-round coverage.
2. Easy payment plan — At no extra cost to you, we divide your estimated annual heating costs into equal monthly payments.
3. Automatic delivery — We deliver Gulf Solar Heat "automatically" so that you are never without an adequate supply.
4. Gulf Solar Heat — The world's finest heating oil that burns hotter and cleaner to give you real comfort — economically!

**Gulf SOLAR HEAT heating oil**

**A, B. & C. FURNACE & BURNER PLANS AVAILABLE**

• We keep your tank filled on our degree day basis.

• Use Our **EASY-PAY** Even Payment **BUDGET PLAN** Serving Union & Essex Counties for 36 Years

**KINGSTON FUEL CO.** MU 6-5552

**FALK FUEL CO.** MU 6-5528

2304 Vaux Hall Rd., Union, N. J.

**PAUL SEVERANCE & SON**

STORE HOURS: Open daily until 6 p.m. Mon. & Fri. until 9 p.m.

**1049 STUYVESANT AVE., UNION AT THE CENTER**

• FREE PARKING REAR OF STORE • FREE DELIVERY MU 6-1956

NEED A JOB? Read the Help Wanted Section of the Classified Pages. You can probably find an employer who can use your services. If you are a qualified person in an employment wanted ad, you will see 7700 and ask for Ad-Taker.



# Point System, Speed Program Cost 21 Motorists Licenses

# Wallcovering Can Set Mood

**THEY'RE HERE! at PEPPER BROS.!**  
**NEW, NEW, NEW**  
**PAINTS, WALLPAPERS & SANITAS** for 1965!  
*(Bring in this Ad!)*

- OIL FLAT WHITE Paint gal. 1.25
- PAINT THINNER 1/2 gal. 19¢
- WHITE WORK GLOVES (LIMIT 2) pr. 13¢
- PURPLE SHELLAC 1/2 gal. 2.65
- ALCOHOL SEATED CAN gal. 89¢
- PLASTER OF PARIS 1/2 gal. 24¢
- FLAT WHITE 1/2 gal. 1.25
- ALUMINUM PAINT 1/2 gal. 2.99
- WHITE ENAMEL 1/2 gal. 2.95
- WINDOW SHADES 19" TO 36" Wide 79¢
- GRAY Porch Floor Concrete Paint 1/2 gal. 2.99
- SANITAS & WALLTEX 1.69 1.98
- WALLPAPER SALE 50% OFF 25% OFF roll 29¢-39¢-49¢
- VENETIAN BLINDS 1/2 gal. 2.49

**PEPPER BROS. PAINTS**

Irvington 1098 Clinton Ave. 15-3-6880  
Newark 101 Broadway 15-2-4189

Other stores in  
Paterson • Plainfield  
Jersey City • Manhattan  
Brooklyn • Queens  
Most stores open to 9 P.M.



HOWARD SCHWARTZ  
Rt. 22 Shop Rite  
Completes New  
Liquor Section

**if** ... Your Plan is to  
Remodel Your  
Kitchen ...

then **WE** are the **FIRST** people  
**YOU** should talk to!

Come See ... New Jersey's Largest Kitchen Cabinet  
and Bathroom Vanity Factory Showroom!

**BUILDER'S FAIR** DOLLY MADISON  
KITCHENS  
Phone ... 379-6070  
22 Route 22 (Westbound Lane) Springfield

**HART & REED**  
REMODELING  
RESIDENTIAL • COMMERCIAL • INDUSTRIAL  
**BUILDING SPECIALTIES**  
STATE HIGHWAY 10 • WILDFLY, N. J.

**QUALITY WINDOW SHADES**  
OF EVERY DESCRIPTION

- COMPLETE LINE OF VENETIAN BLINDS
- WOVEN WOODS AND RELATED PRODUCTS
- TRAVERSE RODS SOLD AND INSTALLED

EST. 1910 **AWNINGS** FREE ESTIMATES

Awnings Taken Down • Stored • Re-Hung  
RESIDENTIAL AND COMMERCIAL

**Aluminum Windows**  
Industrial Canvas and Aluminum Canopies  
Terrace Covers  
NO JOB TOO LARGE — NO JOB TOO SMALL

761-8585 or SO 2-1230

**MAPLEWOOD**  
**AWNING and SHADE CO.**  
1861 Springfield Avenue • Maplewood

Go Gas Heat  
**ATTENTION ... HOME OWNERS!**  
No Drafts • No Dirt and  
No Cold Spots!

**AMERICAN-Standard**  
GAS BOILER

ACT NOW! Take advantage of our special pre-season installation terms. We are offering them for a limited time only, on the famous American-Standard boiler.

**REYNOLDS**  
Plumbing & Heating Co., Inc.  
Industrial and Domestic Contractors  
6 SOUTH AVENUE, E.  
CRANFORD BRIDGE 6-5367

**REPLACE THAT WORN OUT HEATING BOILER NOW WITH AN UP-TO-DATE GAS HEATING ...**

**AMERICAN-Standard**  
GAS BOILER

for as little as **\$3.** A WEEK

- fast, clean even heat
- automatic operation
- work-free comfort
- extra-low upkeep
- compact, lightweight
- installed anywhere
- economical, built-in water heater

**WE SELL, INSTALL AND SERVICE ONLY THE BEST: AMERICAN-Standard**

**Bornstein Sons**  
Plumbing • Heating  
Air Conditioning

SHOWROOM  
487 HAWTHORNE AVE.  
NEWARK, N. J.

Licensed by the N. J. State Dept. of Banking & Insurance, License No. 22988

ES-4-6500

**GIGANTIC PAINT SALE!**

NOW ONLY **\$4.98** GAL. **\$6.45** GAL.

**SAPOLIN** Fashion Color  
ONE COAT LATEX FLAT

With Exclusive One Coat Written Guarantee!

SAVE 20% ON NEWEST SAPOLIN LATEX PAINTS  
LATEX SEMI-GLOSS WHITE ENAMEL  
Can't see how yellow? NOW \$2.33

LATEX DEEPTONE FLAT  
Vibrant accent colors! NOW \$2.33

**R & R PAINT & WALLPAPER**  
1400 STUYVESANT AVE. UNION • MU 8-5555

**Shanley Charges Opponent Plays Loose With Facts**

Richard M. Shanley, Republican candidate for U.S. Senate, charged today that William J. Steen, Democrat, was playing loose with facts in his campaign.

Shanley said Steen had accused him of being a "pork barrel" spender and a "crony" capitalist.

"The facts are that in the past year I have spent more money on my campaign than any other candidate in the state," Shanley said.

He said he had spent \$100,000 on his campaign, while Steen had spent only \$50,000.

Shanley said he had won the support of the voters of Essex County, and that he would not let Steen get away with it.

**HOUSE PAINTED**  
INSURED  
NO MONEY DOWN  
10 TO 15 YEARS TO PAY  
As Low As **\$199**

DUTCH BOY DU PONT SHERWIN-WILLIAMS

Call Collect ES-3-7040  
**STEEN PAINTING CO.**  
26 Essex St., Irvington

**HOME SOUGHT FOR LOST PUPPY**

A short-haired male white puppy with gold spots is looking for a loving family to adopt him. Mrs. Stephanie Straus of 41 Laurel ave., Irvington, who is temporarily housing the pup, said the pup appears to be about six months old, is paper broken, obedient and friendly. Anyone interested in adopting the pup may contact Mrs. Straus at ES-3-0543.

**Bible Quiz**

By MILT HAMMER

Do you know what Bible books come immediately before and after the following?

1. Exodus 2. Numbers 3. 1 Samuel 4. 2 Samuel 5. Jeremiah 6. Jonah 7. Proverbs 8. Ruth 9. Daniel 10. 1 Corinthians

Answers  
1. Leviticus 2. Deuteronomy 3. 1 Kings 4. 1 Kings 5. 1 Kings 6. 1 Kings 7. 1 Kings 8. 1 Kings 9. 1 Kings 10. 1 Kings

you get one of these in every room with **ELECTRIC HEAT**

Yes, one big advantage of Electric Heat is room-by-room temperature control. Because each room has its own thermostat every member of the family can choose their own comfort level. This means that baby's room can be kept extra warm, the kitchen cooler, the living room just right. Room-by-room temperature control is just another in a long list of "extras" you get with Electric Heat. It is quiet, dependable, automatic, clean. If you are building or buying a new home, insist on modern Electric Heat.

Now, thanks to Public Service's special new low rate for heating your entire home electrically, Electric Heat is more economical than ever before. Call Public Service right now for full details. We'll also be glad to help you plan your new Electric Heat system, without charge.

**PUBLIC SERVICE ELECTRIC AND GAS COMPANY**  
TAKING SERVANT OF A GREAT STATE

686-7700...For An 'Ad Taker' WANT AD SECTION 686-7700...For An 'Ad Taker'

REAL ESTATE - HELP WANTED - FOR SALE - WANTED TO BUY... BUSINESS DIRECTORY

Help Wanted - Women Help Wanted - Women Help Wanted - Women Real Estate For Sale For Sale BUSINESS DIRECTORY

TOYS TOYS TOYS... DRESSMAKER... ASSISTANT BOOKKEEPER... GIRLS... STENOGRAPHER... WOMEN TO WORK FULL AND PART TIME... WOMEN... HELP - WOMEN "Double Dollar Time"...

COMPTOMETER OPERATORS... HELP WANTED - MALE... MANAGEMENT ASSISTANT... RAMBERGERS NEWARK... 10 MEN... STARTING SALARY... SUPERMARKET PERSONNEL... SHOP-RITE GROWS AGAIN...

Apartment to Rent... I HAVE A LUXURIOUS ROOMY APARTMENT TO RENT... SOMERVILLE... You get MORE for your money at BROOKSIDE GARDENS... Three to Four Rooms \$75 - \$120...

LADIES WINTER COATS SUITS CAR COATS RAIN COATS... GLORIA COAT FACTORY... 6 WHIPPANY STREET MORRISTOWN... WE BUY BOOKS... PIANO WANTED... BUSINESS DIRECTORY... REPOSSESSED... BUILDERS... CABINETMAKER... CAMERA - PHOTOGRAPHIC SUP... CARPENTRY... HOME IMPROVEMENTS... PAINTING & PAPERHANGING... PAINTING & DECORATING...

Cemetery Plots... Instruction - Schools... Cleaning... Clothing - Household Gifts... Coal & Fuel... Landscape Gardening... Dressmaking... Driving Instruction... Drugs & Cosmetics... Masonry... PLASTERING - PATCHING... Dry Cleaning & Tailoring... Electrical Service & Repair... Entertainment... Floor Waxing... Furniture Repair... Garage Doors... Gutters & Leaders... Music, Dancing, Dramatic... MUSIC INSTRUCTION... Odd Jobs... PAINTING & PAPERHANGING... PAINTING & DECORATING...

PAYROLL CLERK... STENOGRAPHER... WOMEN TO WORK FULL AND PART TIME... WOMEN... HELP - WOMEN "Double Dollar Time"...

REPORT SWAN MOTEL... SUPERMARKET PERSONNEL... SHOP-RITE GROWS AGAIN... REAL ESTATE Real Estate... Houses for Sale... WE MUST SELL... Moving & Storage... Office Space to Lease... Elderly Person - Board... Garage Wanted... House For Rent... Houses for Sale... Salos, Rentals, Appraisals... Dogs, Cats, Pits...

FOREST HILL TERRACE GARDEN APPTS... Room-Apts... 880... 25 Gratton Ave. Newark NJ 07102... BRAND NEW APARTMENTS... 18 Brun Avenue... Moving & Storage... Office Space to Lease... Elderly Person - Board... Garage Wanted... House For Rent... Houses for Sale... Salos, Rentals, Appraisals... Dogs, Cats, Pits...

Wanted To Buy... WE BUY BOOKS... PIANO WANTED... BUSINESS DIRECTORY... REPOSSESSED... BUILDERS... CABINETMAKER... CAMERA - PHOTOGRAPHIC SUP... CARPENTRY... HOME IMPROVEMENTS... PAINTING & PAPERHANGING... PAINTING & DECORATING...

Cleaning... Clothing - Household Gifts... Coal & Fuel... Landscape Gardening... Dressmaking... Driving Instruction... Drugs & Cosmetics... Masonry... PLASTERING - PATCHING... Dry Cleaning & Tailoring... Electrical Service & Repair... Entertainment... Floor Waxing... Furniture Repair... Garage Doors... Gutters & Leaders... Music, Dancing, Dramatic... MUSIC INSTRUCTION... Odd Jobs... PAINTING & PAPERHANGING... PAINTING & DECORATING...

WOMAN... DOMESTIC HELP WID. - FEMALE... SITUATIONS WANTED - FEMALE... HELP WANTED - MEN... NEWSBOYS WANTED... CALLING MR. INCH... HELP WANTED - MEN, WOMEN... ELIZABETH... PURCHASING - SCHEDULING... WE HAVE JOB NEAR YOU... PART-TIME OFFICE CLEANING... WOMAN OR COUPLE... III 8-1600

REAL ESTATE Real Estate... Houses for Sale... WE MUST SELL... Moving & Storage... Office Space to Lease... Elderly Person - Board... Garage Wanted... House For Rent... Houses for Sale... Salos, Rentals, Appraisals... Dogs, Cats, Pits...

FOREST HILL TERRACE GARDEN APPTS... Room-Apts... 880... 25 Gratton Ave. Newark NJ 07102... BRAND NEW APARTMENTS... 18 Brun Avenue... Moving & Storage... Office Space to Lease... Elderly Person - Board... Garage Wanted... House For Rent... Houses for Sale... Salos, Rentals, Appraisals... Dogs, Cats, Pits...

Wanted To Buy... WE BUY BOOKS... PIANO WANTED... BUSINESS DIRECTORY... REPOSSESSED... BUILDERS... CABINETMAKER... CAMERA - PHOTOGRAPHIC SUP... CARPENTRY... HOME IMPROVEMENTS... PAINTING & PAPERHANGING... PAINTING & DECORATING...

Cleaning... Clothing - Household Gifts... Coal & Fuel... Landscape Gardening... Dressmaking... Driving Instruction... Drugs & Cosmetics... Masonry... PLASTERING - PATCHING... Dry Cleaning & Tailoring... Electrical Service & Repair... Entertainment... Floor Waxing... Furniture Repair... Garage Doors... Gutters & Leaders... Music, Dancing, Dramatic... MUSIC INSTRUCTION... Odd Jobs... PAINTING & PAPERHANGING... PAINTING & DECORATING...

WOMAN... DOMESTIC HELP WID. - FEMALE... SITUATIONS WANTED - FEMALE... HELP WANTED - MEN... NEWSBOYS WANTED... CALLING MR. INCH... HELP WANTED - MEN, WOMEN... ELIZABETH... PURCHASING - SCHEDULING... WE HAVE JOB NEAR YOU... PART-TIME OFFICE CLEANING... WOMAN OR COUPLE... III 8-1600

REAL ESTATE Real Estate... Houses for Sale... WE MUST SELL... Moving & Storage... Office Space to Lease... Elderly Person - Board... Garage Wanted... House For Rent... Houses for Sale... Salos, Rentals, Appraisals... Dogs, Cats, Pits...

FOREST HILL TERRACE GARDEN APPTS... Room-Apts... 880... 25 Gratton Ave. Newark NJ 07102... BRAND NEW APARTMENTS... 18 Brun Avenue... Moving & Storage... Office Space to Lease... Elderly Person - Board... Garage Wanted... House For Rent... Houses for Sale... Salos, Rentals, Appraisals... Dogs, Cats, Pits...

Wanted To Buy... WE BUY BOOKS... PIANO WANTED... BUSINESS DIRECTORY... REPOSSESSED... BUILDERS... CABINETMAKER... CAMERA - PHOTOGRAPHIC SUP... CARPENTRY... HOME IMPROVEMENTS... PAINTING & PAPERHANGING... PAINTING & DECORATING...

Cleaning... Clothing - Household Gifts... Coal & Fuel... Landscape Gardening... Dressmaking... Driving Instruction... Drugs & Cosmetics... Masonry... PLASTERING - PATCHING... Dry Cleaning & Tailoring... Electrical Service & Repair... Entertainment... Floor Waxing... Furniture Repair... Garage Doors... Gutters & Leaders... Music, Dancing, Dramatic... MUSIC INSTRUCTION... Odd Jobs... PAINTING & PAPERHANGING... PAINTING & DECORATING...

WOMAN... DOMESTIC HELP WID. - FEMALE... SITUATIONS WANTED - FEMALE... HELP WANTED - MEN... NEWSBOYS WANTED... CALLING MR. INCH... HELP WANTED - MEN, WOMEN... ELIZABETH... PURCHASING - SCHEDULING... WE HAVE JOB NEAR YOU... PART-TIME OFFICE CLEANING... WOMAN OR COUPLE... III 8-1600

REAL ESTATE Real Estate... Houses for Sale... WE MUST SELL... Moving & Storage... Office Space to Lease... Elderly Person - Board... Garage Wanted... House For Rent... Houses for Sale... Salos, Rentals, Appraisals... Dogs, Cats, Pits...

FOREST HILL TERRACE GARDEN APPTS... Room-Apts... 880... 25 Gratton Ave. Newark NJ 07102... BRAND NEW APARTMENTS... 18 Brun Avenue... Moving & Storage... Office Space to Lease... Elderly Person - Board... Garage Wanted... House For Rent... Houses for Sale... Salos, Rentals, Appraisals... Dogs, Cats, Pits...

Wanted To Buy... WE BUY BOOKS... PIANO WANTED... BUSINESS DIRECTORY... REPOSSESSED... BUILDERS... CABINETMAKER... CAMERA - PHOTOGRAPHIC SUP... CARPENTRY... HOME IMPROVEMENTS... PAINTING & PAPERHANGING... PAINTING & DECORATING...

Cleaning... Clothing - Household Gifts... Coal & Fuel... Landscape Gardening... Dressmaking... Driving Instruction... Drugs & Cosmetics... Masonry... PLASTERING - PATCHING... Dry Cleaning & Tailoring... Electrical Service & Repair... Entertainment... Floor Waxing... Furniture Repair... Garage Doors... Gutters & Leaders... Music, Dancing, Dramatic... MUSIC INSTRUCTION... Odd Jobs... PAINTING & PAPERHANGING... PAINTING & DECORATING...

ALPHABETICALLY LISTED BY CLASSIFICATION

Table of business listings including categories like Painting & Paperhanging, Plumbing - Heating, Rug Cleaning, and more.

Mental Hospitals In Jersey Overcrowded

Advertisement for heating equipment featuring 'URGENT' and 'Gas Heating Equipment'.

YOUR FAVORITE PLACES FOR... DINING

Advertisement for BAVARIAN VILLAGE, BLUE SHUTTER INN, and KINGSTON RESTAURANT.

Advertisement for BRASS HORN, THE CAMPTOWN, THE GASLIGHT, and OLDE COLONIAL INN.

Advertisement for CHANCELLOR DELICATESSEN, THE CONTINENTAL, and TALLYHO.

Advertisement for ALEX ENG, EXECUTIVE LUNCHEON CLUB, GARDEN STATE COCKTAIL LOUNGE, and TONDIA LOUNGE.

Advertisement for HARRY'S, HOLIDAY INN KENILWORTH, and BROOKSIDE INN.

Advertisement for HARRY'S, HOLIDAY INN KENILWORTH, and COLONIAL INN.

DEATH NOTICES

Multiple columns of death notices and obituaries.

PERSONALS section containing various notices.

Automotive section containing listings for car services and parts.

Advertisement for Hollywood Florist.

Large advertisement for the 'YES' COLLEGE BOND ISSUE Nov. 3.

Large advertisement for MIDAS MUFFLER SHOPS.

Advertisement for Country Dining.

Advertisement for BROOKSIDE INN.

Advertisement for COLONIAL INN.

Advertisement for PED-E-FLOUS.

**My Neighbors**

**Works Of Jersey Negroes Featured At Fairleigh Dickinson Art Exhibit**

**Seek Volunteers For TB League's 'Letter Stuffing'**

**Announce Sessions For Skating Center**

**NAACP Planning Special Program At Union School**

**Social Security Is COPO Topic**

**Legion Sets Meeting On Veterans Benefits**

"I moved up here to get away from the poll takers!"

"Union's Cigar Headquarters"

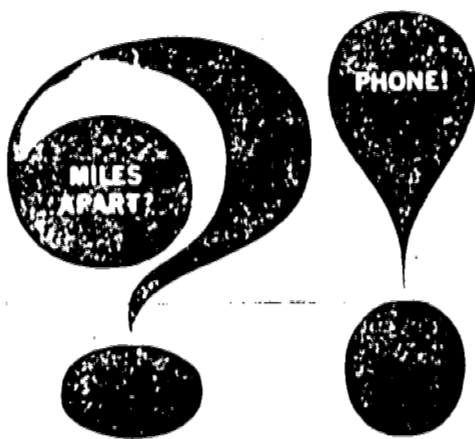
Visit Our New Toy Dept.!

**TOM'S SMOKE SHOP**

974 Stuyvesant Ave., Union

MU 8-4334

FRIDAY DEADLINE  
All news items that appear in this newspaper should be in our office by Friday to insure publication in the next issue.



**GOLDWATER on the U.N.:**

"The world is not ready for the U. N. and may not be for a hundred years."

"I have advocated withdrawal from the U. N. in the past."

"I've never advocated withdrawing from the United Nations; in fact, I've given more support to the United Nations than some of my critics."

**VOTE FOR JOHNSON**

**SAVE A BUNDLE ON These Exciting BUYS!**

**1964 DODGE POLARA V-8**

\$2475.00

**1964 DODGE DART GT HARD TOP**

\$2175.00

**1963 DODGE POLARA V-8 500**

\$2195.00

**CLOSE OUT! CLOSE OUT! Dodge Darts and Full Size Dodge! 1964 left overs still available at TREMENDOUS SAVINGS!!!**



**UNION MOTORS - DODGE DEALER**  
1604 Stuyvesant Ave., Union MU 6-4114

**JERRI'S (AN AUCTIONEERS RETAIL STORE)**

**THIS WEEK FEATURING:**

**FOR MEN:**  
Sport Shirts, "McGregor" etc. Reg. 4.00 ..... \$1.95  
Jac-Shirts, "Gang" & "Doc" Reg. 4.95 ..... 2.95  
Tapered Slax, "HLS" & others, Reg. 6.00 ..... 2.95  
Jayson Pajamas ..... 2 for 5.00  
Men's Hose, "Foot Fashion", Banlons, nylons, etc. Reg. \$1.50c  
Sport Jackets, 100% wool, Reg. \$20 to \$25 ..... 10.00  
Shorts & Tee Shirts, "Rain", Reg. \$1 ..... 3 for 2.00  
Car, Ski or Top Coats, etc. Reg. \$15 to \$40 ..... NOW 7.50 to 17.50  
Sweaters, wool, mohair, etc. styles Reg. 8.95 to \$15 NOW 3.95 to 6.95  
Better Wool Slax, Reg. 12.95 to 16.95 NOW 6.95 to 8.95

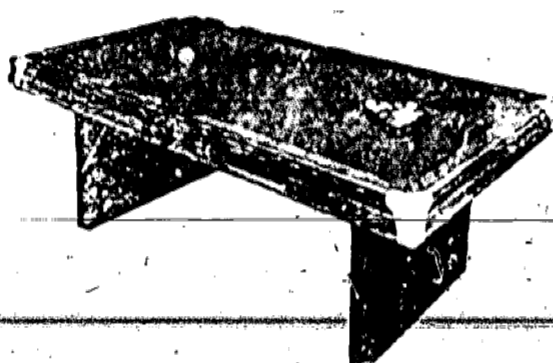
**FOR KIDS:**  
Boy's Suits, Jackets, Overwear, etc. At 1/2 Price  
Boy's Sportshirts, Reg. 2.95 ..... NOW 1.50  
Boy's Better Sweaters, Reg. 7.95 ..... NOW 3.95  
"Stretchen" Tights, Children's, Reg. 1.99 NOW 1.25  
Children's Hats, (wool, leather caps, etc.) Reg. 1.95 to 3.50 ..... 79c  
Snow Suits - Coats ..... 40% Off Regular Price  
Plus Baby Gifis, Dresses, Corduroy Sets, etc. at 50% to 65% Off

**FOR THE LADIES:**  
Dresses, Car Coats, Ski Jackets, Slax, Blouses, Bras, etc. 50% to 70% Off Regular Prices

**JERRI'S IN STUDIO AT**  
REAR OF 1227 MORRIS AVE.  
697-6267 Open: Friday 10 a.m. - 11 p.m. Sat. 10 a.m. - 11:30 p.m.

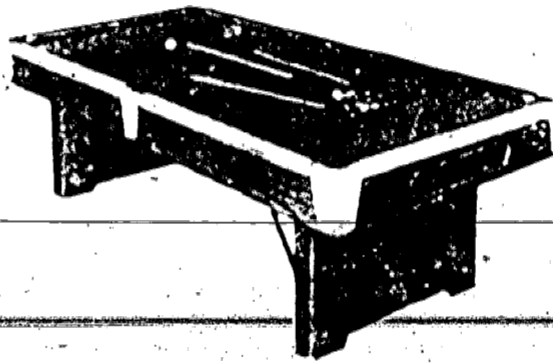
**POOL TABLES**

CHANNEL OFFERS QUALITY, VARIETY & VALUE, PLUS FAST FREE DELIVERY



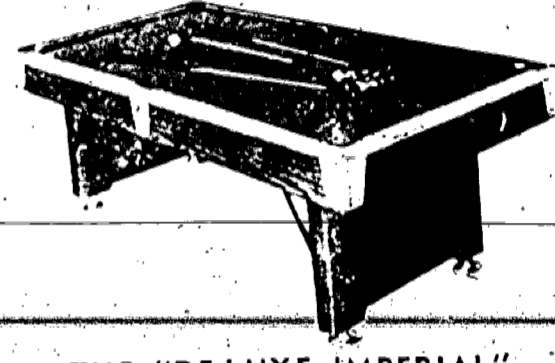
DELUXE "TROPHY" TEEN TABLE

'PT 7502 7' TABLE **69<sup>95</sup>**



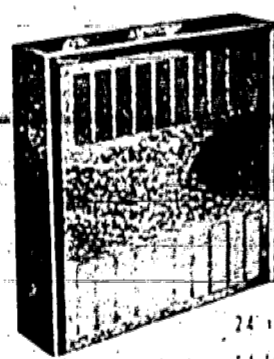
"THE PROFESSIONAL" TABLE

'7414 7' TABLE **94<sup>95</sup>**  
'8414, 8' TABLE 109.95



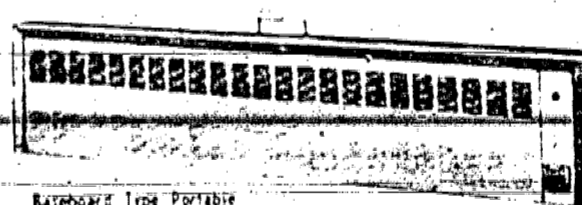
THE "DELUXE IMPERIAL"

'PT 8668 8' TABLE **179<sup>95</sup>**



HOT DUTY PORTABLE ELECTRIC RADIATOR

**39<sup>97</sup>**



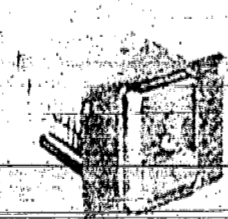
BASEBOARD TYPE PORTABLE ELECTRIC HEATER

**3397** **3997**

CUE STICKS	CUE STICKS 2-PIECE
48" 297	<b>8<sup>69</sup></b>
52" 397	
57" 529	

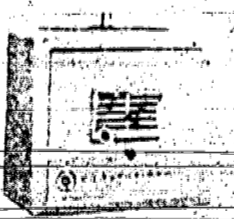
CUE REPAIR KIT

**149**



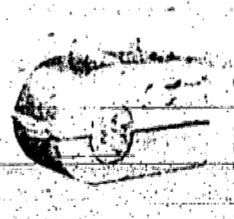
HOT AIR HUMIDIFIER

**9.95**



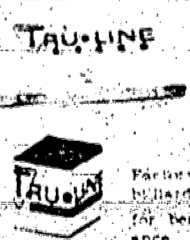
HOT AIR HUMIDIFIER

**32.95**



HOT AIR HUMIDIFIER

**59.95**



CUE CHALK

Each 6c  
Dozen 59c

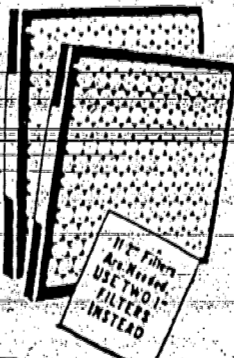
**FIRESTONE ANTI-FREEZE**



2 Gallon Can **288**  
(That's only 1.44 a gallon, plus free gas cap!)



**PRESTO LOGS**  
Slow burning, high heat  
Clean, convenient fuel  
BOX OF 4 PIECES **89c**

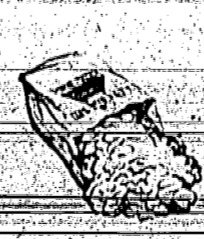


**FURNACE FILTERS**

Replace old, dirty filters now. You need maximum efficiency of your heating plant to guard your family's health.

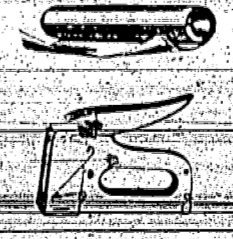
If 2-Inch Filters Are Needed - Use Two One-Inch Filters Instead  
**6 FILTERS BOXED 288** (4.00 Value)

Channel's Leisure Living Center offers a complete selection of Tents & Camping Equipment at Channel's low-low discount prices!



**INSULATION**

HEAT-RETAINING FIBER  
FIBERGLASS BATT  
16" x 48" x 3 1/2" R-11  
16" x 48" x 2 1/2" R-9  
16" x 48" x 1 1/2" R-7  
16" x 48" x 3/4" R-5  
16" x 48" x 1/2" R-4  
16" x 48" x 1/4" R-3  
16" x 48" x 1/8" R-2  
16" x 48" x 1/16" R-1



**INSULATION**

ALUMINUM FOIL  
Type B, Two Side Alu.  
Type C, One Side Alu.  
Type D, One Side Alu.  
Type E, One Side Alu.  
Type F, One Side Alu.  
Type G, One Side Alu.  
Type H, One Side Alu.  
Type I, One Side Alu.  
Type J, One Side Alu.  
Type K, One Side Alu.  
Type L, One Side Alu.  
Type M, One Side Alu.  
Type N, One Side Alu.  
Type O, One Side Alu.  
Type P, One Side Alu.  
Type Q, One Side Alu.  
Type R, One Side Alu.  
Type S, One Side Alu.  
Type T, One Side Alu.  
Type U, One Side Alu.  
Type V, One Side Alu.  
Type W, One Side Alu.  
Type X, One Side Alu.  
Type Y, One Side Alu.  
Type Z, One Side Alu.



**INSULATION**

VERMICULITE - an effective cold and heat insulator - pour it between the attic floor joists.  
**1.89**

ORDER BY PHONE 763-4800  
AMERICA'S MOST UNUSUAL LUMBER, HARDWARE HOUSEWARE STORES  
**CHANNEL LUMBER**  
CHANNEL AT TOPPS, TOTOWA, LIVINGSTON, CLIFTON, SPRINGFIELD, NEWARK, SA YREVILLE, NEWARK  
Leisure Living Center Adjoins CHANNEL STORE On Route 22, Springfield  
CREDIT PLANS: 1. NO COST CHARGE-IT (No Down Payment, No Interest, 12 Months to Pay) 2. FLEXO-COM, CREDY (No Down Payment, No Interest, 24 to 36 Months to Pay) FREE Estimates of Job, Loans and 1144-1444 FREE Purchase of 128 in 1964