

Heart Association fund campaign to begin with meeting of volunteers

The Union County Heart Association will begin its annual drive for funds tomorrow

COAL		LEHIGH PREMI- ANTHRACITE	
NUT or STOVE TON	PEA TON	BUCK TON	PREMIUM FUEL OIL 13.7 gal. Over 150 Gal. Delivery
\$23.95	\$21.95	\$21.00	

Simone Bros. Coal & Fuel Co.
1405 Harding Ave. Linden
HU 6-2726 HU 6-0059
Prices subject to change without notice
OIL BURNER INSTALLATIONS • Free Est.

night at a meeting to be held in White Laboratories, Kenilworth. More than 200 volunteer workers are expected to attend the session.

Alex Stadkus of Elizabeth, chairman of the association's board of directors, will open the session. Leslie Okun, 13-year-old daughter of Mr. and Mrs. Philip Okun of Linden, will light a torch signifying the start of Heart Month in Union County. Miss Okun, who has successfully undergone heart surgery, is serving this year as "Little Miss Heart Fund."

Dr. Lawrence Gilbert, director of thoracic and cardiac surgery at Beth Israel Hospital, Newark, will be the speaker. Dr. Gilbert, who was graduated from the medical school at the University of Edinburgh, is a diplomat in surgery; a fellow of the American College of Cardiology, the American College of Chest Physicians, the American College of Surgeons, and a former associate professor of clinical

medicine at the New York Medical College and Flower Fifth Avenue Hospital.

A consultant to St. Elizabeth, Alexian Brothers and Elizabeth General Hospitals, Dr. Gilbert has been supported by the Union County Heart Association in a number of research efforts. The author of more than 25 medical papers, Dr. Gilbert will discuss advances in heart surgery and research.

Robert Thompson, personnel director at White Laboratories, will be host for the meeting. Guests will be greeted by Mrs. Dominic Menzaco of Linden, chairman of the county association's special meetings committee.

Matthew J. Rinaldo of Union, chairman of the 1967 fund drive effort, will announce the Heart Association's goal for the campaign that will be held during February. Among those expected to attend are Mrs. Marie Moscaritolo, Heart Association chairman for Kenilworth; George C. Walasek, chairman Roselle; Fred Colucci, Roselle Park; Donald W. Rinaldo, Springfield; Chester Koby, Union, and Mr. and Mrs. Francis Kelly, Winfield.



DR. LAWRENCE GILBERT

lecting those candidates which they feel will best represent the Republican party.

"2. This subversion is accomplished by placing candidates who are running against the screening committee choices in a disadvantageous position on the ballot, that is, on a line below the 'organization line.'"

"3. In many cases it further handicaps a highly qualified non-screening committee choice by his position on a lower line next to perennially losing candidates."

"4. It will tend to produce charges and suspicion of bossism and political deals when several members of a screening committee can dictate the choice of candidates."

The resolution called for the permanent discontinuance of the "organization line" practice, which was used for the first time in the 1966 Union County Republican primary.

NEED A JOB? Read the Help Wanted section. Better still... let prospective employers read about you. Call 686-7700 for a 14¢ per word Employment Wanted ad. \$2.80 (minimum)

Residents urged to watch Palsy Telethon Saturday

Julius R. Pollatschek, president of the United Cerebral Palsy League of Union County, this week urged all residents of the County to view the 16th Annual United Cerebral Palsy Telethon, to be televised on WOR-TV Channel 9, Saturday 10:30 p.m. to Sunday, 5:30 p.m.

"Funds raised from this annual event will help the Cerebral Palsy League continue its program of services to the cerebral palsied, residing in Union County," Mr. Pollatschek said. "Pledges received during the 19-hour period from Union County residents will benefit more than 100 boys and girls who attend our Center at 216 Holly St., Cranford. Our aim is to insure the development of these children to their greatest potential."

Kathy Murray, five-year-old daughter of Mr. and Mrs. William Murray of Rahway, has been appointed Junior Chairman for the Telethon. Kathy was examined at the Center three years ago, and could not walk, Pollatschek said. She was enrolled in a physical therapy and occupational program at that time. Recently, Dr. Charles I. Nadel, medical director, prescribed control braces and Kathy is now able to walk with special crutches, he said.

DURING THE 19-HOUR telethon period, entertainment will be provided by movie, television and radio stars, including Dennis James, master of ceremonies, and Steve Lawrence and Eydie Gorme, host and hostess.

In addition to the entertainment, boys and girls with Cerebral Palsy will demonstrate progress made through therapy received at United Cerebral Palsy Centers during the past year. Viewers may watch a taped demonstration of Speech Therapy with five year old Debra Faderwick, daughter of Mr. and Mrs. Richard D. Faderwick, of Fords, who will give speech therapist will be seen on Sunday morning. Debra is receiving physical, occupational, and speech therapy, as well as a school readiness program at United Cerebral Palsy of Middlesex County's Cerebral Palsy Center in Edison.

One hundred and twenty-five telethons will be manned by volunteers at the United Cerebral Palsy Telethon Center during the 19-hour period, to receive pledges from New Jersey residents. Participating New Jersey affiliates are United Cerebral Palsy Association of New Jersey, United Cerebral Palsy of North Jersey (Essex, Bergen and Passaic Counties), United Cerebral Palsy of Monmouth-Ocean Counties, United Cerebral Palsy League of Union County, United Cerebral Palsy of Hudson County and United Cerebral Palsy of Middlesex County. Affiliates in New York State and Connecticut will also participate.



JULIUS POLLATSCHEK

"We are grateful," Pollatschek said, "for the fine response of more than 500 volunteers, who will work at our message center."

THE FLOOR SHOP EST. 1934

ARMSTRONG

9" x 9" x 1/16"

LINOLEUM TILE

5¢ each

IRREGULARS

reg. 12¢ ea.

Disc. Patterns • Limited Quantity

"QUALITY AT A COMPETITIVE PRICE... TRY US!"

CARPETS • LINOLEUM • TILE

540 NORTH AVE., UNION

(Near Morris Ave.)

OPEN MONDAY, WEDNESDAY, THURSDAY TO 9

352-7400

PARK IN OUR LOT ADJACENT TO BUILDING

Young GOP raps 'organization line'

A resolution condemning the use of the "organization line" in Republican party primaries was unanimously passed by the Union County Young Republicans County Council last week. The County Council consists of two voting delegates from each of the 10 municipal units.

The "organization line", which places screening committee choices on one line on the ballot and relegates those who wish to run against them to a lower line, was scored as follows:

"1. It attempts to subvert the purpose of the party primary election which is to give the Republican voters the opportunity of se-

County club plans hikes

Two hikes are scheduled for the members and guests of the Union County Hiking Club this weekend.

On Saturday, Miss Irma Heyer, Elizabeth, will lead an afternoon ramble in the Watchung Reservation. The group will meet at the parking area above Lake Surprise at 1 p.m.

On Sunday, Leo and Trudy Zappe, Orange, will lead a 12-mile hike in the Ramapo Mountains in Northern New Jersey. The hikers will meet at the Administration Building of the Union County Park Commission, Warinanco Park, Elizabeth, at 9 a.m.

1967
A NEW YEAR
A NEW OFFICE
A NEW OFFER

YOU CAN OPEN
A "CHARTER" ACCOUNT
AT THE 5 POINTS OFFICE
NOW!

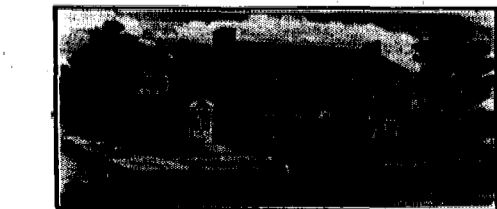
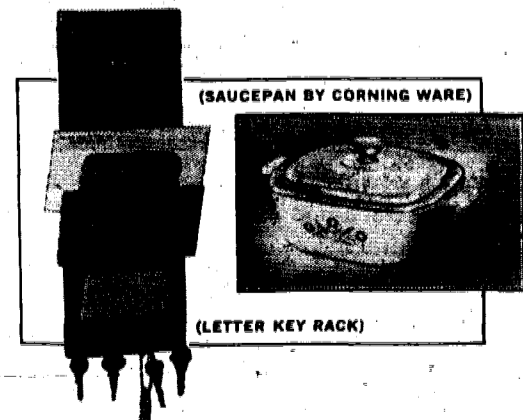
Yes, just open your account at any office and tell them you want a "Charter" 5 Points account. When the new office is opened, your records will automatically be transferred to 5 Points.

FREE GIFTS DURING JANUARY AND FEBRUARY

Purchase a 5% Savings Certificate or open a Regular Checking Account or a Savings Account of \$100 or more, and select one of these outstanding gifts.



Open a Regular Checking Account or a Savings Account of \$50 or more, and take your choice of either of these two gifts.



Our 5 Points Office will be ready soon. We hope you will plan to attend our opening celebration.

The **FIRST STATE BANK OF UNION**

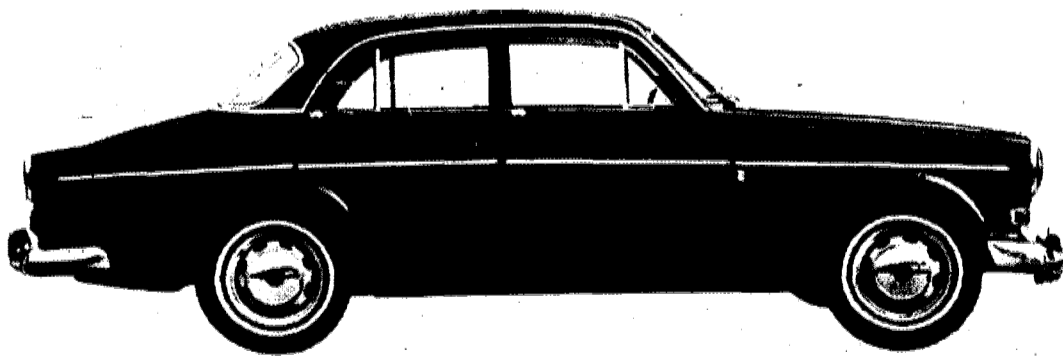
UNION NEW JERSEY

MEMBER FEDERAL DEPOSIT-INSURANCE CORPORATION

There's a brand new Volvo dealer in Summit:

Smythe Volvo, Inc.

A DIVISION OF SMYTHE RAMBLER, INC.
326 Morris Ave., Summit 273-4200



Want four good reasons for dropping in?

1. Volvos run away from other popular-priced compacts in every speed range.
2. Volvos get over 25 miles to the gallon (even with automatic transmission).
3. Volvos last an average of eleven years in Sweden where there are no speed limits on the highways, where there are over 70,000 miles of unpaved roads.
4. When you buy a Volvo, you can keep it a long time, and get out from under car payments for a change.



STOP BY AND SEE US AT OUR FORMAL OPENING THURSDAY, FEB. 2nd 6:30-10 P.M.

FEATURED WILL BE ALL OF THE LATEST VOLVO MODELS...VOLVO FACTORY REPRESENTATIVES WILL BE ON HAND FOR QUESTIONS. REFRESHMENTS

Amusement News



ROMANTIC COMEDY—James Mason helps Lynn Redgrave in scene from "Georgy Girl," which started its sixth week at the Ormont Theater, East Orange, yesterday.

Western drama now at Millburn

"The Professionals," Western film drama, concerning some gunmen hired by a wealthy man to recapture his wife from a Mexican revolutionary leader, comes to the Millburn Theater in Millburn tomorrow.

'Beatles' star on screen at New Plaza Theater

The Beatles are taking over the New Plaza screen this week through next Tuesday with their two films, "A Hard Day's Night" and "Help!"

Performing Arts to begin season with stage drama

The Newark Center of Performing Arts, formerly the Queen of Angels Players, will present as its first production of the new season, Lorraine Hansberry's award-winning stage drama, "A Raisin in the Sun," Feb. 10 at 8:15 p.m. at St. Benedict's Theater.

Polish show, actor booked on screen, stage, at Sanford

The Sanford Theater, Irvington, is featuring a special film and stage presentation, Wednesday and Feb. 2, "The Polish Film," "Jada, Goscie, Jada" ("Guests Are Coming"), produced by Mitchell Kowal Films.

Last two weeks

"Doctor Zhivago," David Lean's sweeping motion picture, is currently in its last two weeks at the Clairidge Theater, Montclair.

'Spies,' 'Batman' arrive at Grove

"Where the Spies Are," starring David Niven, as a bumbling amateur recruited for mid-East espionage mission, arrives today on a double bill with "Batman" at the 16th Avenue Grove Theater, Irvington.

Sanford - Irv.

Wednesday & Thursday Eve. February 1-2 ALL POLISH ENGLISH SUB-TITLES "JADA, GOSCIE, JADA" (GUESTS ARE COMING)

16th Ave. Grove

NOW THRU SUNDAY SUNS CONTINUOUS ALL DAY "WHERE THE SPIES ARE" - also - "BATMAN"

IN CONCERT THE YOUNG RASCALS AND THE HAPPENINGS AT DREW

FRIDAY, FEBRUARY 3, 1967 BALDWIN GYMNASIUM 8:30 pm ALL SEATS \$3.50

Theater Time Clock

All times listed are furnished by the ART (Ir.)—WHO'S AFRAID OF VIRGINIA WOOLF? Thur., Mon., Tues., 7:45, 9:40; Fri., Sat., 7:20, 9:50; Sun., 2:10, 4:35, 7:00; KINSEY'S REPORT ON LOVE, Thur., Mon., Tues., 9:20; Fri., Sat., 7:05, 9:30; Sun., 4:15, 6:45, 9:20.

BELLEVUE (Mtc.)—SOUND OF MUSIC, matinees, Wed., Sat., Sun., 2 p.m.; evenings, Monday through Saturday, 8:30 p.m., Sunday, 7:30 p.m.

CLAIRIDGE (Mtc.)—DOCTOR ZHIVAGO, matinees, Wed., Sat., Sun., 2 p.m.; evenings, Mon., Tues., Wed., Thur., 8 p.m.; Fri., Sat., 8:30 p.m., Sun., 7:30 p.m.

CRANFORD—ROMEO AND JULIET BALLET, Thur., 2:30, 8:30; ARRIVEDERCI BABY, Fri., Mon., Tues., 1:15, 9:20; Sat., Sun., 5:05, 8:35; SECONDS, Fri., Mon., Tues., 3, 7:35; Sat., Sun., 6:45, 10:10; CARTOONS, Sat., 1:20, 3; LITTLE RED RIDING HOOD, 12, 1:40, 3:20.

GROVE (16th Avenue, Ir.)—WHERE SPIES ARE, Thur., Fri., Sat., 8:30; Sun., 3:25, 7:30; BATMAN, Thur., Fri., Sat., 6:45, 10:25; Sun., 1:10, 5:15, 9:25; THREE STOOGES, CARTOONS, Sat., 1:30; Sun., 2:55, 7.

HOLLYWOOD (E.O.)—ROMEO AND JULIET, Thur., 2:30, 8:30; SPY WITH A COLD NOSE, Fri., Mon., Tues., 2:05, 7:35, 9:45; Sat., 1:40, 3:50, 6:10, 8:20, 10:40; Sun., 1:10, 3:25, 5:40, 8:50; FEATUETTE, Fri., Mon., Tues., 1:35, 7:15; Sat., 1, 3:15, 5:30, 7:50, 10:10; Sun., 2:45, 5, 7:25.

MILLBURN—ROMEO AND JULIET, Thur., 2:30, 8:30; PROFESSIONALS, Fri., Mon., Tues., 1:15, 9:15; Sat., 1:25, 5:45, 10; Sun., 1:10, 5:10, 9:20; WHAT DID YOU DO IN THE WAR, DADDY?, Fri., Mon., Tues., 3:10, 7:20; Sat., 3:20, 7:50; Sun., 3:15, 7:25.

ORMONT (E.O.)—GEORGY GIRL, Thur., Fri., Mon., Tues., 2:23, 8, 10:06; Sat., Sun., 2, 3:58, 5:56, 8:04, 10:12; FEATUETTE, Thur., Fri., Mon., Tues., 2:06, 7:40, 9:46; Sat., Sun., 1:43, 3:41, 5:39, 7:47, 9:55.

PLAZA (Linden)—HARD DAY'S NIGHT, Thur., Fri., Mon., Tues., 7, 10:05; Sat., 1:30, 6:05, 9:10; Sun., 1:30, 4:55, 8:05; HELPI, Thur., 8:35; Fri., 8:40; Sat., 3, 7:30, 10:35; Sun., 3:05, 6:20, 9:30.

REGENT (Eliz.)—ROMEO AND JULIET, Thur., 2, 4:30, 8:30; SPY WITH COLD NOSE, Fri., Mon., Tues., 3:05, 6:42, 10:19; Sat., 7:43, 11:20; Sun., 6:51, 10:28; OSCAR, Fri., Mon., Tues., 1, 4:37, 8:14; Sat., 5:38, 9:15; Sun., 4:46, 8:23; LITTLE RED RIDING HOOD; MONSTER, Sat., 1, 3:07; Sun., 1, 2:53.

SANFORD (Ir.)—ROMEO AND JULIET, Thur., 8:30; SWINGER, Fri., 7, 10:10; Sat., Sun., 5:25, 8:40; Mon., Tues., 7, 10; ARRIVEDERCI BABY, Fri., 8:40; Sat., Sun., 6:45, 10; LITTLE RED RIDING HOOD, MONSTERS, Sat., 1:15, 3:05; Wed., Thur., (Feb. 1 and 2); ALL POLISH SHOW, 7, 9; POPE PAUL, 8:45.

UNION (Union Center)—AFTER THE FOX, Thur., Fri., Mon., Tues., 1:15, 8:25; Sat., 5:15, 8:30; Sun., 4:40, 8; FRANKIE AND JOHNNY, Thur., Fri., Mon., Tues., 3, 7, 10; Sat., Sun., 1:10; Sun., 6:25, 9:40; LITTLE RED RIDING HOOD; MONSTERS, 1:25, 3:10 (Sat., Sun.).

CROSSWORD PUZZLE

A crossword puzzle grid with numbers 1 through 46 indicating starting positions for words.

- ACROSS 1. Pier 6. Flower 11. Fame 12. Girl's name 13. Regard 15. Bear constellation 16. Social affair 17. Sounded, as a duck 19. Pinical 20. Attics 23. Mother of Pear Gynst 26. Indo-European 27. Belonging to Othello's foe 29. Drone or worker 30. Decorative pendants 33. Small bump marks 35. Girl's name 36. Eggs' partner 39. Cornucopia 40. Short sleep 42. Swiftly 44. Belonging to a W. Ind. tale

Advertisement for NEW PLAZA featuring "A Hard Day's Night" and "The Beatles".

Advertisement for UNITED CEREBAL PALSY TELETHON featuring "WATCH! ENJOY! PLEDGE!" and "WOR-TV Channel 9".

Spy spoof on 2 screens at Stanley-Warner

"The Spy With a Cold Nose" arrives on a single bill Friday at the Hollywood Theater, East Orange, and on a double bill with "The Oscar" at the Regent Theater, Elizabeth.

On panoramic screen

The breathtaking "Sound of Music," continues on the panoramic screen of the Bellevue Theater, Upper Montclair, starring Julie Andrews, Christopher Plummer, Eleanor Parker, Richard Haydn, Peggy Wood and Chairman Carr.

EARLY COPY

Publicity chairmen are urged to observe the Friday deadline for other than spot news. Include your name, address and phone number.



MANY FACES OF PETER SELLERS—Versatile British actor, Peter Sellers is seen as a crook, a movie director, a padre, a cop, and many other characters in "After the Fox," new comedy film, opening today at the Union Theater in Union Center. His wife, Britt Ekland "co-stars."

Ballet set at Cranford; comedy starts tomorrow

"Romeo and Juliet," motion picture ballet, will be shown for the last times this afternoon and this evening at the Cranford Theater in Cranford.

'Kiss Me Kate' musical opens at Meadowbrook

Earl Wrightson and Lois Hunt, will star in the Meadowbrook Dinner Theater production of Cole Porter's musical, "Kiss Me Kate," which opens the theater's eighth season of musicals, tonight.

Favorite Places for DINING

Advertisement for BLUE SHUTTER INN, 2660 Morris Ave., Union, MU 8-6150. CATERING. One of N.J.'s largest and finest facilities for Banquets - Weddings, etc.

Advertisement for HARRY'S, 225 Fabyan Place, Newark, N.J. WA 9-9688. Ample Parking. Air-Conditioned. DO YOU LIKE SEAFOOD? We serve Steamed Clams & Clams on the Half.

Advertisement for TALLYHO COCKTAIL LOUNGE & RESTAURANT, 943 MAGIE AVE., UNION, N.J. ELizabeth 2-6251. (Formerly - Coach & Horse).

Advertisement for BRASS HORN, Johnny Murphy's Restaurant & Cocktail Lounge, Elizabeth 4-8767. Luncheon & Dinner Daily. Expertly prepared from the finest foods.

Advertisement for IRVINGTON RATHSKELLER & RESTAURANT, 1425 Springfield Avenue, Irvington, N.J. 375-5890. New Jersey's Newest Authentic German Rathskeller.

Advertisement for TOWNLEY'S, 580 North Ave., Union, EL 2-9092. Parking on Premises. It's Always Good Taste and Fun To Eat at Townley's.

Advertisement for CHANCELLOR DELICATESSEN AND RESTAURANT, 378 Chancellor Ave., Newark, WA 9-9872. Open 11 a.m. RESTAURANT CATERING.

Advertisement for LEE TOY CHINESE-AMERICAN RESTAURANT, 720 CHANCELLOR AVE., IRVINGTON. CHINESE RESTAURANT.

Advertisement for TRETOLA'S, At Five Points, Union, N.J. MU 7-0707. FOR OVER 30 YEARS... A family place for Continental and American food.

Advertisement for CHATEAU 1664 COCKTAIL LOUNGE - RESTAURANT, 1664 STUYVESANT AVE., UNION. DAILY LUNCHEON SPECIAL.

Advertisement for OLD EVERGREEN LODGE, Evergreen Ave., Springfield. DR 6-0489. DR 9-9830. James Brescia, Manager.

Advertisement for UNION HOFBRAU RESTAURANT TAVERN & COCKTAIL BAR, 1252 Stuyvesant Ave., Union, 687-7020. LUNCHEON & DINNERS SERVED DAILY.

Advertisement for CIRO'S RESTAURANT COCKTAIL LOUNGE, ECHO PLAZA, ROUTE 22, SPRINGFIELD, N.J. DR 4-3900. PARTIES • BANQUETS • TO 500.

Advertisement for OLYMPIC RESTAURANT, 877 Springfield Ave., Irvington, Essex 2-9647 - Essex 4-7699. CATERING DANCING.

Advertisement for Country Dining, featuring a photograph of a dining room and the text "Country Dining".

Advertisement for EXECUTIVE LUNCHEON CLUB, West Chestnut at Route 22, Union, N.J. Members and their guests Monday thru Friday.

Advertisement for PETER PAN DINER, 2431 Morris Ave., Union, MU 7-2260. (Air-Conditioned). LUNCHEON • DINNERS.

Advertisement for MAISON BILLIA RESTAURANT FRANCAIS, 1260 Terrill Rd., Scotch Plains, FA 2-8242. Acclaimed by Gentlemen's Quarterly.

Advertisement for GARY'S, Mablewood 1790 Springfield Ave., Springfield 50 2-7247. Whether for luncheon, dinner or just a snack.

Advertisement for THE RAVEN'S NEST COCKTAIL LOUNGE & RESTAURANT, Entrance through Union Motor Lodge, Route 22, Union 1 Mile West of Flagship 687-8600.

Advertisement for Dine Graciously At Any Of The Fine Eating Places Listed Here.



MIKE TOBIA . . .
YOUR "ONE GUY IN HILLSIDE"
SAYS:

"If you want to save money on your next purchase of a large or small appliance, then we invite you to visit our beautiful new showroom where you'll find famous name brands selling at below discount prices. . . we have a huge selection of models to choose from with price tags so low you'll have to look twice to believe it. . . At Tobia's you receive full satisfaction and service on the appliances you buy, but we also service appliances purchased elsewhere."

HERE'S
WHERE YOU ALWAYS...

SAVE

SAVE SAVE

SAVE SAVE

Large Size.
U.S. FLAG
2⁸⁸
Reg. 8.95
With Pole & Mounting Bracket

ALL ELECTRICAL APPLIANCES REDUCED FOR CLEARANCE

	Comp. Value	SALE		Comp. Value	SALE
Sunbeam • Westinghouse ELECTRIC BLANKET	17.95	10⁶⁶	Whirlpool AUTOMATIC WASHER	169.95	99⁸⁸
General Electric STEAM IRON	10.88	7⁸⁸	Motorola PORTABLE 18" TV	129.88	99⁸⁸
General Electric PORTABLE RADIO	14.95	9⁸⁸	Hamilton GAS DRYER	239.88	198⁰⁰
Motorola TABLE RADIO	12.95	9⁸⁸	Admiral 22" CONSOLE TV	219.00	149⁸⁸
Hamilton Beach ELECTRIC KNIFE	23.95	16⁸⁸	Admiral Crosstop, 2-Door REFRIGERATOR-FREEZER	SALE	189⁰⁰
Sunbeam ELECTRIC VACUUM CLEANER	69.95	39⁸⁸	Frigidaire Copper, Auto. Controls DOUBLE OVEN	329.95	239⁸⁸
Edison PORTABLE HUMIDIFIER	49.95	39⁸⁸	Famous Make COLOR TV		
Edison Deluxe Model PORTABLE HUMIDIFIER	69.95	54⁸⁸	18" CONSOLE Real Sharp	439.00	299⁸⁸
			Motorola CONSOLE STEREO	399.88	299⁸⁸
			Admiral Duplex Model D-1964 REFRIGERATOR-FREEZER	SALE	349⁰⁰

priced for a great
SELL-OUT

TV TROUBLES?
DRYER DESPAIR?
APPLIANCE AGGRAVATION?
WASHING MACHINE WOES?

Call the **TOBIA'S FIX-IT MAN!**
WA 3-7768

Like most home-owners today, you face the fearful task of keeping a house full of electrical appliances in working order. Unless you boast a degree in electrical engineering you've found that modern appliances are beyond the do-it-yourself abilities of most home owners. You're tired, too, of paying high repair bills for work that never seems to be done correctly; perhaps you've even reached the "it's-cheaper-to-buy-a-new-one" state of mind. If you have appliance trouble, of any kind

CALL THE TOBIA'S FIX-IT MAN!
TODAY! NOW!
WA 3-7768

Quick dispatch of one of our service experts will bring an end to your problems. Tobia's repair organization is staffed with a crew of factory-trained, highly skilled, professional repair men, each a specialized technician in his field. Tobia's backs them up with a laboratory of the most modern testing equipment available and a supply department stocked with genuine factory-original replacement parts. Tobia's protects you with an unconditional service guarantee that assures your complete satisfaction OR YOU DON'T PAY A CENT! Solve your service problems with a call to

TOBIA'S Now! WA 3-7768
SERVICE CALLS

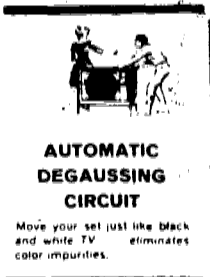
HI-FI • STEREO
TV
SERVICE CALL
\$4⁹⁵
Black & White Sets
Plus Parts
\$6.95 COLOR (plus parts)

Refrigerators & Air Conditioners
SERVICE CALL
\$5⁹⁵
(plus parts)

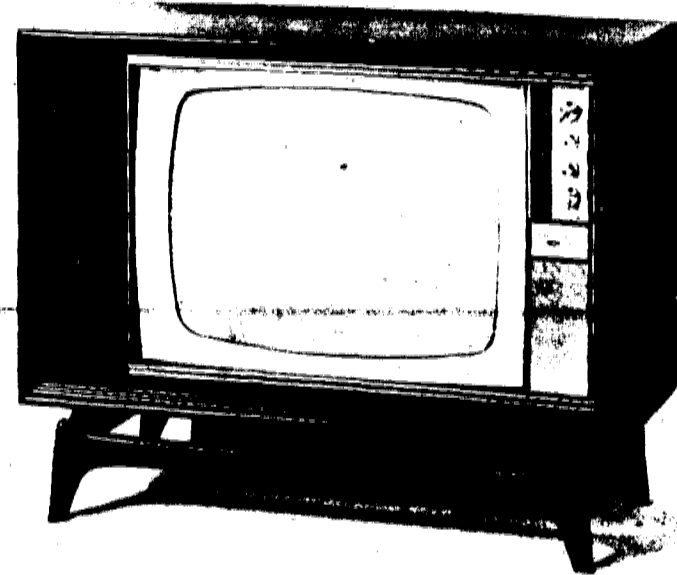
Washing Machines & Dryers
SERVICE CALL
\$5⁹⁵
(plus parts)

Admiral
LARGEST COLOR SCREEN AVAILABLE

BIG 295 SQ. IN. VIEWING AREA
DANISH MODERN COLOR TV CONSOLE
Every family wants to enjoy Color TV—and here's a top-rated set from Admiral, tagged lower-than-low . . . to go fast!



- Brilliant color reception with advanced Q-26 chassis.
- Automatic degausser and color balancer.
- Upfront slide-rule tuning, and lighted channel selectors.
- "Conversation-piece" cabinet in walnut wood veneers and matched-finish solids.



MODEL AK5581

FREE

ONE YEAR GUARANTEE ON ALL PARTS AND TUBES, INCLUDING SERVICE, ON ALL ADMIRAL COLOR TELEVISION SETS.

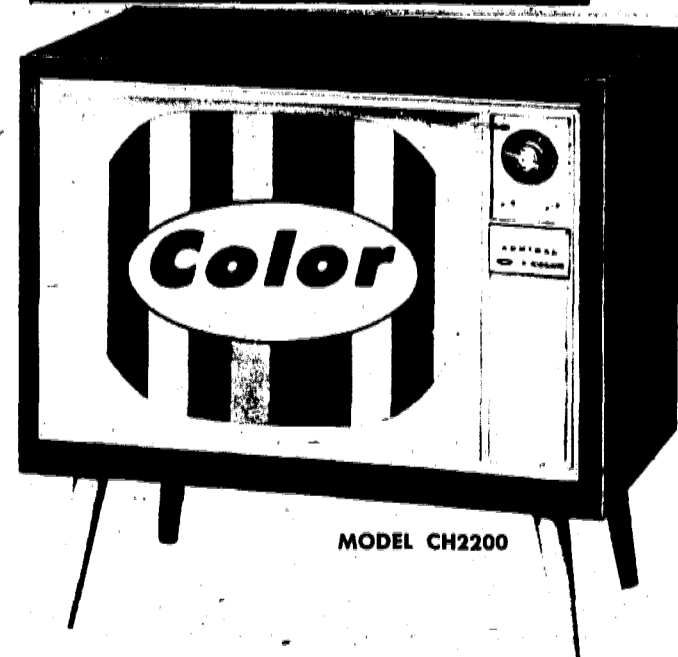
Admiral
GIANT-SCREEN COLOR TV

ONLY

265 sq. in. viewing area! All-channel UHF-VHF tuning for sharp, clear pictures. Filtered face plate boosts contrast. Front-mounted Peaking Control.

Buy in Confidence
EASY TERMS
Ready for Immediate Delivery!

\$369



MODEL CH2200

. QUALITY . SERVICE . DISCOUNT PRICES

• HARDWARE DEPARTMENT CLEARANCE •
WE'RE CLEARING OUR STOCK OF \$30,000 WORTH OF HARDWARE INVENTORY TO MAKE ROOM FOR THE RENOVATION OF OUR NEW STORE.....COME IN NOW & SAVE \$\$\$

HARDWARE
UP TO 50% OFF

PAINT
UP TO 50% OFF TOP NAME BRANDS
DUPONT LUCITE • BENJAMIN MOORE • MANY MORE!
ENAMELS-OIL and LATEX Base Paints in Pints, Quarts, Gallons...Discontinued Colors

TOBIA'S

APPLIANCE CENTER

WA 3-7768 1299 LIBERTY AVENUE HILLSIDE N.J.

Visit Our New, Exclusive MAGNAVOX CENTER at 1321 Liberty Ave., Hillside

NEW, EXCLUSIVE VISIT OUR MAGNAVOX CENTER
1321 LIBERTY AVE. HILLSIDE
TVs • STEREOS • EVERYTHING