



Computer helps solve communications woes

A computer system named VISTA has just put two million pieces of paper out of work at New Jersey Bell. VISTA - short for Visual Information System Trunk Administration - is a computer crammed with millions of facts about New Jersey Bell equipment and cable routes. It is the only system of its kind now in operation in the nationwide Bell System. Ask it a question and it snaps back the answer in about 1-1/2 seconds. Suppose there is a rush call for unusual communications arrangements, such as the Glassboro summit conference. Sit down at one of the 36 consoles New Jersey Bell has at its 540 Broad St. office in Newark, and before you can say supercalifragilisticexpialidosis, VISTA flashes on a video-type screen descriptions of all transmission fa-

cilities immediately available; it can also offer suggestions on alternate routing. Or suppose a cable is damaged and you want to know which central offices are affected. Ask VISTA, and it will tell you. If you want a copy of the answer, just push another button and a teletypewriter nearby will print out the message shown on the screen.

VISTA HAS AN elephant's capacity for facts. It has already memorized 2,075,000 records about telephone transmission systems - cable, wire and microwave radio relay - and about switching and central office equipment, special service circuits and facilities that inter-connect central offices.

But for all its knowledge, the part VISTA shows its public is a compact console which fits easily on a desk - a row of buttons on the right side is used to ask VISTA questions; a screen on the left side displays the answers. The consoles are connected to banks of unglamorous-looking units which make up VISTA's logic and memory system.

For New Jersey Bell, VISTA means savings in time and



TRUNK LINE--Mrs. Mary Tarantino checks the screen of the VISTA computer system at New Jersey Bell's headquarters, Newark. VISTA--Visual Information System Trunk Information--automatically provides answers to countless questions about telephone facilities and equipment. It replaces two million paper records.

Improved customer service, a spokesman said. Instead of employees searching through paper files, VISTA can give them answers right at their desks. In addition, all 36 persons can have access to the same record at the same time and additional access stations can be added as required. Although New Jersey Bell has been developing the system for the last six years - and pouring information into it for about 1-1/2 years - the system has been operational only a month.

BOWCRAFT
Serving Campers
Since 1940
Rt. 22
SCOTCH PLAINS
233-0675

- Gery Mountaineering Equip.
- Eureka Drawlites Tents
- Coleman Sales & Service
- Klepper Folding Boats
- Alport Sailfish-Sunfish
- Dehydrated Food-Books
- Canoe & Camping Rentals

YOUR SON CAN
PREPARE FOR COLLEGE
WITH LESS DIFFICULTY
Carteret
Small classes of 12 to 15 boys.
Tutoring also is available.
SUCCESS = IQ + I CAN + I WILL

Boys are taught to develop their mental abilities (IQ), encouraged to have more confidence (I CAN), helped to show more determination (I WILL), drilled in the subjects required for College Entrance. Grades 9-12 or PG. HOW TO STUDY is stressed. Individual needs served. Sports: Football, Soccer, Basketball, Baseball and many others. Choice of returning home afternoons or Five Day Boarding returning home Friday afternoons. Request catalog and book "Royal Roads" (free) on good study habits. Enroll now for Fall.

CARTERET SCHOOL - WEST ORANGE, N.J.

A BUSINESS OF YOUR OWN
Find it through the Want Ad Section!

IMPERIAL FURNITURE
(Formerly of Bergen St. Newark)

IS PLEASED TO ANNOUNCE THEY ARE DOING BUSINESS AS USUAL AT THEIR NEW LOCATION

627 EAGLE ROCK AVE. WEST ORANGE, N.J.
(Just Below Pleasant Valley Way)

Herbert Reichman • Arnold Mirsky

RE. 1-6200

PLEASE DRIVE SAFELY

A wee bit of Scotland to take you on the high road - A traditional kilt with stitch drawn pleats, in pure wool tartan - To show you're a bonnie lass, wear a ruffled front Scottish shirt, in oxford cloth. Tatting edged and French cuffed - all by John Meyer

Country Manikin
441 Springfield Avenue Summit 310 South Orange Avenue South Orange

YOU HAVE AN INSECURITY COMPLEX--VERY SIMPLE TO OVERCOME--JUST BUY U.S. SAVINGS BONDS FOR REAL SECURITY!!

GREAT! I'LL JOIN THE PAYROLL SAVINGS PLAN TODAY!

BARNEY'S BARGAIN STORE
1327 LIBERTY AVE. HILLSIDE, N.J.
1/2 BLOCK below Route 22 & Bloy St. overpass.
AIR-CONDITIONED FOR YOUR SHOPPING CONVENIENCE

SELLING OUT
MURRAY LEVINE'S ENTIRE SHOE STORE of BERGEN ST. NEWARK

BOYS' and GIRL'S SHOES SAVINGS UP TO 70%

EDWARDS FLEET AIR GOLOS GERBERICH CORRECT WEAR

\$2.99 \$3.99 \$4.99 \$5.99 None Higher

BACK TO SCHOOL DRESSES \$1.99 3-6X Wore 7-14 \$4.98-\$8.98	BOY'S SUITS SPORT JACKETS PANTS AT BARNEY'S LOW, LOW PRICES	GIRL'S SLIPS 99¢ 1/2 & Full FAMOUS BRAND Reg. \$1.98 to \$3.98	PF SNEAKERS BOY'S & GIRL'S \$2.99 \$3.99 Selling Regularly At \$4.95 & \$6.50
---	---	---	---

HUNDREDS OF OTHER BARGAINS THROUGHOUT THE STORE

OPEN EVERY WEEK THURSDAY, FRIDAY, SATURDAY ONLY
HOURS: Thurs., Fri., 9:30-9:00 - Sat. 9:30-6:00

THE STRIDE RITE SHOE
GIRLS' SMART 3-STRAPPER 9.98 to 11.98 according to size
"Sandy" comes in black, red, and coach brown leather. From our Stride Rite collection for girls and boys.

LAZY-BONES
NEWEST SLIP-ONS FOR BOYS 10.98 and 11.98 according to size
Handsome black leather. From our large collection of styles in sturdy Lazy Bones for boys and girls.

Robin Hood SHOES FOR BOYS AND GIRLS
GIRLS' NEW OXFORD TIES 7.98 and 8.98 according to size
"Kiwi" fashionable service oxford. Golden squash buck, brown leather or black boathide. From a broad range of styles for girls and boys.

Kempler shoes
GIRLS' SMART 2-STRAPPER 11.98 and 12.98 according to size
Designed exclusively for Kempler's with saucy fringe shield. Tan or black grained leather.

Kempler shoes
BOYS' SCUFF-TIP OXFORDS 8.50 and 9.50 according to size
Sturdy all-occasion oxfords from Kempler's own exclusive brand of children's shoes.

Kempler shoes
EVERYBODY'S FAVORITE LOAFER
The all-American classic...Weejuns are a way of life.
GIRLS' PENNY LOAFERS 14.98
GIRLS' TASSEL LOAFERS 13.98
MEN'S PENNY LOAFERS 18.98

California COBBERS
GENUINE HAND SEWN VAMP
apache mocs BY PLYMOUTH
MEN'S DEMI-BOOT 18.98
WOMEN'S 2-TONE PUMP 11.98
From our large collection of famous Apache loafers. Other styles priced from 17.98.
From our fine selection of Cobblers. Flattering new flat heel-pump.

WEEJUNS
STYLES FOR EVERY AGE 8.98 to 12.98 according to size
Wide choice for the whole family. Breathin' Brushed Pigskin that brushes like new in a second.

Hush Puppies
BRAND CASUALS

Use a Convenient Kempler Charge or Uni-Card

IRVINGTON 1055 Springfield Ave. ESsex 2-8367
UNION 996 Stuyvesant Ave. MURdock 8-8367
LIVINGSTON 25 W. Northfield Ave. WYman 2-8353

OPEN FRIDAY TO 9 P.M. • IRVINGTON & UNION ALSO OPEN MONDAY TO 9 P.M.

Famous brands toe the mark in the back to school parade
New Jersey's largest selections for kindergarteners to the college crowd

Our experts know how to fit young people of every age. And we have the complete assortments of styles, colors and sizes to do it exactly right. We're ready for school... are you?
Complete Selections of Uniform Shoes for All Parochial Schools

Lynn and Conway Dance Studios
WE SPECIALIZE IN BALLROOM
Pre-Teen Beginning Ballroom
5th & 6th Grades
7th & 8th Grades

For The Entire Family

ANNOUNCE THE FALL OPENING OF THEIR CLASSES

TEENAGERS and ADULTS
Both Group and Private Instruction

CLASSES IN
Beginning Intermediate Advanced
BALLET TAP TOE

SPECIAL
Teenagers - MODERN JAZZ
Ladies - EXERCISE & DANCE
BABIES BALLET - 3 - 4 1/2 Yrs.

1045 STUYVESANT AVE. IRVINGTON, N. J.
ESsex 5-2653

REGISTRATION STARTS SEPTEMBER - 9, 1967

PROFILE---Isabel Heller

Isabel Heller, who wears, she reports with amusement, the title of "team coordinator" for the younger group of the municipal pool's swim teams, moves with the easy grace of the water ballet performer she was back in early high school days.



ISABEL HELLER

ALTHOUGH SHE and her family have lived in their present home on Meeting House Lane for over three years, Mrs. Heller feels that volunteer work at the pool has made her feel "more involved with the community."

Richard, Stevie and Susan, 7, are on the pool swim teams. Susan has developed "into quite a swimmer" and even six-year-old Jackie is showing "wonderful progress."

When this swimming season is over, she will probably get back to knitting, sewing and

School hours

(Continued from page 1)

Sylvan lane at Saddle Brook rd.; Pheasant hill at Saddle Brook rd.; Summit lane at Outlook dr.; New Providence rd. at Bayberry lane; Coles ave. at Chapel hill; Coles ave. at Ackerman ave.; Coles ave. at Tanagar way; #1538 Deer path; Beechwood School.

Deerfield School (Shuttle pupils board the bus for Echobrook School); Corrine ter. at Summit rd., p.m. only; Sunny slope at Darby lane, p.m. only; Ledgewood rd. at Sunny View, p.m. only; Old Grove rd. at Elston dr., p.m. only; Old Grove rd. at Charles st., p.m. only; Longview dr. at Foothill way; Short dr. at Ridge dr.; Short dr. at Central ave.; Briar patch at Stony Brook; a.m. only; Briar patch at Wood Valley rd., a.m. only; Wood Valley rd. at Bridle path, a.m. only; Echobrook School.

Deerfield School (Shuttle pupils board the bus for Echobrook School); Corrine ter. at Summit rd., p.m. only; Sunny slope at Darby lane, p.m. only; Ledgewood rd. at Sunny View, p.m. only; Old Grove rd. at Elston dr., p.m. only; Old Grove rd. at Charles st., p.m. only; Longview dr. at Foothill way; Short dr. at Ridge dr.; Short dr. at Central ave.; Briar patch at Stony Brook; a.m. only; Briar patch at Wood Valley rd., a.m. only; Wood Valley rd. at Bridle path, a.m. only; Echobrook School.

Evening hours

(Continued from page 1)

be provided with "fair compensation" for the additional working time. The program will be instituted on a trial basis.

NOTING THAT INCREASED competition for fewer spaces in eastern colleges has resulted in a heavier demand for guidance counseling, Dr. Davis urged parents and students to take greater advantage of guidance counseling available at all regional high schools during the summer.

Notes 30th year with research firm

Russell R. Johnson, of 1415 Chapel Hill rd., Mountainide recently celebrated his 30th anniversary of service with Esso Research and Engineering Co.



RUSSELL R. JOHNSON

Allocation

(Continued from page 1)

and fifth grades who live on and west of Central ave., from Wood Valley rd. (both sides) south to Rt. 22, plus those who live on Blazo ter., Iris dr., and Corinne ter., will go to Echobrook School; other fourth graders in this district will attend Beechwood and the balance of the fifth graders will go to Echobrook.

Beachwood School - District 4: Audrey W. Alenson, Jennifer Bradshaw, Diana Butler, Todd Colarusso, Robert Cullen, Lisa Ann Ferricola, Marybeth Knerim, Penny Aleen Levitt, Peter Paszek, Richard Picut, Sally Romano, Lauren Shields, Leslie Weeks, Roy Zitomer, Laurel Metzgar.

Beachwood School - District 4: Melanie Callahan, Robert Cleveland, Toni Giovanello, Marcus Keller, Kathleen Kelly, Ellen Kiell, Suzanne McDowell, Edwin Ochmanek Jr., Michael O'Connell, William Pellegrina.

Beachwood School - District 4: Deborah Jeffries, Donna Jean Coghlan, Ann Cromarty, Jeffrey Ehrlich, Thomas FitzGibbon, Stephen Jurczak, Kenneth Klebous, Brian LeGrange, Donna Marie Minard, Jeffrey Musso, Barbara Sherer, James K. Willis.

High school

(Continued from page 1)

Urges vaccination against measles

Mountainside's Health Officer, Charles Dotto, this week reminded parents of the necessity of having their children immunized against measles.

The director also announced that she and two trustees, Mrs. William Johnson and Harry Devlin, will attend the 1967 New Books Preview to be held Monday, Tuesday and Wednesday at the Statler-Hilton Hotel, New York City.

Strike slows

and four members of the committee, Mr. and Mrs. Donald Goff and Mr. and Mrs. Harry Nash, presented for discussion tentative plans for starting a record library and supplying listening equipment.

Annual luncheon

Crantford, fifth at Echobrook, replacing Mrs. Vid Florio; Mrs. Edith M. Ross of 1269 Poplar ave., Mountainside, kindergarten at Deerfield; replacing Mrs. Virginia Fritz; Mrs. Gloria Wachman of Manlewood, eighth grade English at Deerfield, replacing Mrs. Katrine Savage;

GARY'S CORNER



WEEKLY SPORTS FEATURE

by GARY LESSING, Manager SOMERSET TIRE SERVICE

Following our writing a few weeks back on the famous Indianapolis Motor Speedway a visitor to our shop took us to task for not mentioning one of the prime movers of this racing event.

Locally, the shop offering seekers of the finest in air-conditioners---the "biggest purse in town"---is SOMERSET TIRE SERVICE, Rt. 22 at Springfield rd., Union. We're closing out our sale of these fine CLIMATIC-AIR air conditioners.....the best make for the lowest cost!

FOR PROFESSIONAL INSURANCE ADVICE... Call Bob Tansey at: BENNINGER, TANSEY & CO. 233-5400

Silversmiths EST-4600 Silver Plating & Repairing Antiques Restored & Refinished

J&M Supermarket 856 Mountain Ave. MOUNTAINSIDE, N.J. SHOP AT HOME FREE DELIVERY

Sherwood Civic sets block party

The Sherwood Forest Civic Association will hold its annual block party on Sept. 9. Festivities will begin at 7:30 p.m. at the top of Nottingham way, Mountainside, and continue as long as the party mood holds.

Mountainside ECHO Published each Thursday by Trumar Publishing Corp. NEWS DEPARTMENT Rita Zeiss, Editor

Why slave over a hot sink! \$126 Buys a new GENERAL ELECTRIC PORTABLE DISHWASHER. Washes to 12 Settings Sparkling Clean in One Load!

New! General Electric NO-WRINKLE DRYER. Cuts down ironing! Relaxes wrinkles, air fluffs Permanent Press. Wash 'n Wear, all synthetic fabrics back to original shape! \$139.95

NO DOWN PAYMENT! EASY TERMS! General Electric Thoro-Wash Dishwasher really takes over in the kitchen!

Before you buy any washer---compare these features with other washers at anywhere near this price! Powerful 1/2 Hp motor. Non-clogging pump. Lint-collecting G-E Filter.

Thanks to this GE Dryer, clothes come out sunshine-fresh fluffly, lint-free. And no ironing needed when you tumble dry permanent press garments in this dryer.

Smart Styling and Originality from the 1890's Pure Americana Art Nouveau TIFFANY LEAD GLASS CATALINA LIGHTING 106 Central Ave. 232-4223 Westfield

WESTFIELD'S ONLY G-E DEALER FOR MAJOR APPLIANCES. Auster's 143 E. Broad St., Westfield • AD 3-2121 Open Monday & Friday 'Til 9 - Daily To 6

ATLANTIC Thrift Centers

GREAT 4-DAY

PETITES! JUNIORS!
MAKE THE 'SCHOOL' SCENE IN
new fashion
DRESSES
\$4

SPECIAL PURCHASE!

Minis, shifts, baby dolls, blouses 'n pleated skirts! Stripes, plaids 'n prints! Avril's rayon, Dacron® polyester 'n cotton 'n Kodol® polyester 'n cotton blends! Season's newest shades, 3 to 15.

LADIES' DRESS DEPT.

CALIFORNIA SEPARATES!

DOUBLE KNIT TEXTURED ACETATE
PANT TOPS 2.99
 Long sleeve turtle neck with zipper back! Stripes, ribs, solids, color panels! Sizes 34 to 40.

DOUBLE KNIT TEXTURED ACETATE
PANTS 3.99
 Beautifully tailored with set-in elastic waistband, front and back darts! Rich new colors! Sizes 8 to 16.

LADIES' SPORTSWEAR

FAMOUS NAME PENS

EVERSHARP WEAREVER SCHAEFFER

For back to school! Choice of cartridge with refills, retractable 'n stick ball points 'n glidewriter pens!

79¢

JEWELRY DEPT.

COLONY MEMO HOLDER WITH PAPER

Only **69¢**

10" high

HOUSEWARES DEPT.

WEBSTER'S DICTIONARY

SUPER BUY! 49¢

For home, office, school!

STATIONERY DEPT.

ALL-PURPOSE CLIP 'N' CARRY CASE

SUPER BUY! 88¢

Use as portable desk... Holds all your supplies.

STATIONERY DEPT.

PAINT BY NUMBERS SET

59¢

Choose from a wide variety of characters! Two pictures, assorted colors and brush!

TOY DEPT.

LADIES' FIGURE FLATTERING COTTON BRAS

Embroidered, circle-stitched cups. Elastic back sections. Back hook. White. 32 to 36A; 32 to 40B; 34 to 40C.

OUR EVERY DAY PRICE 88¢

69¢

FOUNDATION DEPT.

LADIES' LONG LEG PANTY GIRDLES

Only **1.99**

So comfortable and flattering Lycra power-elastic reinforced side sections, satin Luster™ back, diamond Luster™ front panel. White. Sizes S,M,L,XL.

LADIES' FOUNDATION DEPT.

BEAUTIFULLY DETAILED PETTICOATS

Only **66¢**

Dacron®-polyester, nylon-cotton blend half-slip! Assorted lace 'n applique trims! White, pink, blue 'n maize. Petite S,M,L.

LADIES' LINGERIE DEPT.

WESTCLOX "NILE" ELECTRIC WALL CLOCK

Modern design, mounts flush to wall or stands alone! Sweep second hand, white face with black outstanding numerals!

1.99

JEWELRY DEPT.

ATLANTIC Thrift Centers

SCHOOL SALE

500 COUNT FILLER PAPER
Fantastic at
 Fine quality paper for all school, office, home needs! Wide or narrow margins! Save! Limit 2 to a customer while they last!
59¢
 STATIONERY DEPT.

COIL BOUND THEME BOOKS
 1.96 VALUE!
 10 1/2" x 8". Choose from wide or narrow margins. Assorted colors.
4 FOR 88¢

250 SHEETS TYPING PAPER
 High quality, for home, school or office!
49¢
 STATIONERY DEPT.

SWINGLINE "TOT" 50" STAPLER
 98c VALUE!
 Complete with 1000 staples! Durable, long lasting!
48¢

LOOK! FILLED PENCIL CASES
Only
 High fashion colors, 1 ruler, pen, 6 pencils.
49¢
 STATIONERY DEPT.

1 1/2" FILLED VINYL BINDER with CLIP
 Includes:
 • 32 page Webster dictionary
 • theme book
 • 40 sheets filler paper
 • subject dividers
 • zippered pencil pouch
1 27

ALL METAL LUNCH KITS
Only
 Famous characters such as Tarzan, Twiggie, etc. Can hold half pint bottle, sandwiches in fruit!
69¢
 HOUSEWARES DEPT.



GIRLS' SIZES 3 to 14

GIRLS' DRESSES! SKIRT SETS!

Scoop Buy!
2 99
 OUR EVERY DAY PRICE 3.99 ea.

SCHOOL DRESSES: Solids, prints and plaids! Tents, A-line and waist! Cotton blends and 100% cotton. Assorted colors.
2-PC. SKIRT SETS: Solids, prints 'n plaids! Pleated skirts, some with belts! A-lines, printed blouses jacket tops! Cotton blends and 100% cotton. Assorted colors.
 GIRLS' DEPT.

BOYS' SIZES 6 to 16
SPORT SHIRTS
Only
1 49
 PERMANENT PRESS
 Long sleeves, Koratron finish, flat fold ivy! Tapered 'n tails, banded. Polyester and cotton blend, assorted woven plaids.

BOYS' SIZES 6 to 16
BELTED SLACKS
Only
2 99
 PERMANENT PRESS
 Dress up jeans, cougar cords 'n diagonal twills, vinyl belt! Polyester 'n cotton blend, assorted colors.
 BOYS' DEPT.

GIRLS' 2-PC. SLACK SETS
Only
 OUR EVERY DAY PRICE 1.49
1
 Print shirts with solid boxer back slacks! 100% cotton, assorted colors, sizes 2 to 6X.
 GIRLS' DEPT.

GIRLS' SIZES 7 to 14
POODLE COATS
 OUR EVERY DAY PRICE 11.97
8 97
 3 to 6X.
 6.97.
 Wool and rayon poodle coat lined in acrylic pile on cotton back. Interlined with reprocessed wool and other fibers. Plush collar of 100% acrilan on cotton back! In new season colors.
 GIRLS' DEPT.

BOYS' 100% ORLON
ACRYLIC CARDIGANS
 SAVE NOW!
1 99
 SPECIAL BUY!
 Small-Medium-Large.
 Cable 'n panel stripes, popcorn solid stitch, cable solid weave! Blue, green, red heather tones, sizes s, m, l.
 BOYS' DEPT.


GIRLS' SIZES 3 to 14
SWEATERS
 OUR EVERY DAY PRICE 2.88 & 2.99 ea.
2 FOR 5
 Slip-ons and cardigans! Bulky and flat-knits! 100% Orlon acrylic, assorted colors.
 GIRLS' DEPT.

GIRLS' SIZES 4 to 14
SLIPS & HALF SLIPS
2 FOR 1
 Lace and ribbon trims! 100% cotton, assorted colors.
 GIRLS' DEPT.

MEN'S PERMANENT PRESS
IVY SPORT SHIRTS
1 77
 Tapered 'n tails, button down collar, no ironing ever! Machine wash, tumble dry 'n wear! 100% combed cotton oxford cloth. Assorted colors, long sleeves. Sizes s, m, l.
 MEN'S DEPT.

Ask Amy

By AMY ADAMS



Dear Amy: I don't know what wild thoughts my husband was thinking when he chose my birthday gift, but he gave me the most impractical, useless, yet expensive, lingerie. For a woman my age (I'm 52), who needs it!

Is it advisable to return the gift for something more in keeping...with sleeping?
No Juliet

Dear No: I wouldn't advise returning the gift. It could have been prompted by an over-anxious sales-

Public Notice

NOTICE TO PERSONS IN MILITARY SERVICE OR PATIENTS IN VETERANS HOSPITALS AND TO THEIR RELATIVES AND FRIENDS.

If you are in the military service or are a patient in a veterans hospital and desire to vote, or if you are a relative or friend of a person who is in the military service or is patient in a veterans hospital, who you believe will desire to vote in the Primary Election to be held September 12, 1967 kindly write to the undersigned at once, making application for a military service ballot to be voted in said election to be forwarded to you, if you are in the military service or are a patient in a veterans hospital, stating your name, age, serial number, home address, and that address at which you are stationed or can be found, or if you desire a military service ballot for a relative or friend then make an application under oath for a military service ballot to be forwarded to him, stating in your application that he is over the age of 21 years, and stating his name, serial number, home address and the address at which he is stationed or can be found.

—FURNISHING INFORMATION—
JEAN KRULISH, Borough Clerk
Borough Hall
Roselle, N. J.
The Spectator Aug. 24, 31, 1967 (Fee \$12.00)

NOTICE TO PERSONS DESIRING ABSENTEE BALLOTS (CIVILIAN)

If you are a qualified and registered voter of the State who expects to be absent outside the state on Tuesday, September 12, 1967 for a qualified and registered voter who will be within the state on Tuesday, September 12, 1967 but because of illness or physical disability, or because of the observance of a religious holiday pursuant to the tenets of your religion or because of resident attendance at a school, college or university, will be unable to cast your ballot at the polling place in your district on said date and you desire to vote in the Primary Election to be held on Tuesday, September 12, 1967 kindly write or apply in person to the undersigned at once requesting that a civilian absentee ballot be forwarded to you. Such request must state your home address and the address to which your ballot should be sent and must be signed with your signature and state the reason why you will not be able to vote at your usual polling place. No civilian absentee ballot will be furnished or forwarded to any applicant unless request therefor is received not less than eight days prior to the election, and contains the foregoing information.

JEAN KRULISH, Borough Clerk
Borough Hall
Roselle, N. J.
The Spectator Aug. 24, 31, 1967 (Fee \$12.00)

Get that King-of-the-Road Feeling



124 SEDAN

"the car of the year"

Fiat's 124 Sedan is the "Car of the Year" selection of automotive editors from 12 countries. Know why? Because of its...

- Lively pickup, performance and handling
- Fuel-squeezing economy (up to 35 mpg. on regular gas)
- 5-passenger comfort — a family car
- 18 safety features, including 4-wheel disc brakes
- Loads of "extras" as standard equipment
- 13.6 cu. ft. of trunk space

YOUR AUTHORIZED DEALER
NEMETH BROS., Inc.
ONE OF NEW JERSEY'S LARGEST FIAT DEALERS
SALES • SERVICE • PARTS • BODY SHOP
STUDEBAKER PARTS & SERVICE
921 CLINTON AVE. IRVINGTON, N.J.
372-3333 Open 9-8, Sat. 9-4 372-3342

Record dividend for U.S. Savings

The largest dividend in its history was announced yesterday by the United States Savings Bank of Newark, Orange and Roseland.

William B. Licklider, president, said the \$2,200,000 dividend will be paid to all savings depositors for the quarter ending Sept. 1.

The dividend, together with the three previous quarterly dividends, brings the yearly total to more than \$8,500,000.

Public Notice

NOTICE TO CREDITORS
ESTATE OF CHARLES R. RUSSELL

Pursuant to the order of MARY C. KAHANE, Surrogate of the County of Union, made on the twenty-eighth day of July A.D. 1967, upon the application of the undersigned, as Administratrix of the estate of said deceased, notice is hereby given to the creditors of said deceased to submit to the undersigned under oath or affirmation their claims and demands against the estate of said deceased within six months from the date of said order, or they will be forever barred from prosecuting or recovering the same against the undersigned.

Florence M. Russell, Administratrix
200 N. Broad Street
Elizabeth, N. J.
The Spectator, Aug. 3, 10, 17, 24, 1967.
(o a w Fee: \$19.20)

NURSERY SCHOOL

1162 STUYVESANT AVENUE
SPONSORED BY
TEMPLE B'NAI ISRAEL

Morning Session 9:15 A.M. - 12 Noon Monday Through Friday

Afternoon Session 1:00 - 3:45 P.M.

PROFESSIONAL SUPERVISION
Mid Period Snacks
Full Playground Facilities
LIMITED REGISTRATION
Tuition: \$150. Per Term
Transportation Available at Moderate Extra Charge
STATE APPROVED
Apply at Nursery 372-1510 or Temple, 706 Nye Ave., 372-9656

PARENTS BRIEFING BY TEACHERS
Thursday, September 7th
8:00 P.M.
at the Nursery

Staff GOOD DEAL

Chase & Sanborn All Method Coffee 2 lb. can \$1.29	Beechnut Baby Foods 6 4-oz. jars 59¢	White Rose Red Tea Sweetened Or. 59¢ White Rose Red Tea Unsweetened Or. 59¢
Dristan Tablets 24's 99¢	Royal Cheese Cake Mix 10-oz. box 53¢	SCOTT 7-oz. COLD CUPS 40 ct. 39¢ SCOTT DISPENSER with CUPS ea. 59¢ SCOTT 5-oz. REFILL 3 boxes of 50 89¢
Q Tips Box of 170 59¢	Staff Colombian Coffee 1-lb. can 69¢	Del Monte Peas 4 16-oz. cans \$1
Del Monte Pineapple/Apricot Drink 46-oz. can 37¢	Del Monte Pineapple Orange Drink 46-oz. can 37¢	Del Monte Pineapple Pear Drink 46-oz. can 37¢
Broadcast Corned Beef Hash 2 1/2-oz. can 71¢	MRS. PAUL'S DEVIL CRAB 2 6-oz. pkgs. 99¢ MRS. PAUL'S DEVIL CRAB MINIATURES 7-oz. pkg. 55¢	Freezer: Queen Gravy & Sliced Turkey 2 lb. box \$1.59
Broadcast Beef Stew 26-oz. can 59¢	App's Lasagna 4 lb. box \$1.87	Pampers Daytime Box of 30's \$1.59 Box of 15's 85¢ Pampers Newborn Box of 30's \$1.49 Pampers Overnight Box of 12's 85¢
Morton Honey Buns 2 9-oz. pkgs. 55¢	Howard Johnson's Corn Toastees 7 1/2-oz. pkg. 33¢	Welch's Grape Juice 4 6-oz. cans 79¢
Morton Danish Twists 12-oz. pkg. 65¢	Righ's Eclair's 7-oz. pkg. 49¢	Vanish - Tin 35-oz. 45¢
Mrs. Paul's Family Fish Sticks 14-oz. pkg. 61¢	Morton Danish Twists 12-oz. pkg. 65¢	Nabisco Spoon Size Shredded Wheat 12-oz. box 31¢
		Dinty Moore Corned Beef 12-oz. can 57¢
		Burry Happy Family Assortment Cookies 12-oz. box 37¢

Crime doesn't pay... taxes.

The victims of crime aren't the only ones who pay its penalty. Your tax dollars must support more police, more correctional institutions. Crime doesn't pay taxes... it eats into them. The Democratic Legislature believes one answer is crime prevention... with such measures as strict gun controls, expanded watch on consumer frauds, uniform crime reporting, laws against unlawful intrusion into schools. Of course, some didn't like it. But we needed the laws. And we got them.

The Democratic Legislature.

The courage to do what is right.

NOW! JUST \$199

(with TEFLON oven too!)

new 30 inch TOTAL CLEAN HOTPOINT



Model #RB641H

CLEAN-WIPE CONTROL PANEL has porcelain finish; removable knobs for easy cleaning.

REMOVABLE DRIP PANS slip out and clean quickly in the kitchen sink.

REMOVABLE OVEN DOOR lifts up and off for easier cleaning.

REMOVABLE STORAGE DRAWER detaches completely for cleaning under range.

RECESSED SPILL-PROOF TOP protects counter and range front from messy spills.

TEFLON-COATED OVEN WALLS slide out and sponge clean. No scouring ever!

HOTPOINT - CLEANS AS EASILY AS IT COOKS!

Brick Church Appliance

UNION RAHWAY ORANGE

2714 Morris Ave. 667-2288 Open Even Ttl 5
1735 St. Georges Ave. 382-0699 Open Even Ttl 9
170 Central Ave. OR 6-8300 Open Even Ttl 9:30

OTHER STORES:
E. ORANGE, NEWARK, BLOOMFIELD, HANOVER, MORRISTOWN, BERGENFIELD, PARLIPPANY.

BONUS GIFT

11-PIECE SET WEAR-EVER TEFLON-COATED COOKWEAR

...is yours absolutely free with your purchase of a flameless electric range after Aug. 21 and installed on JCP&L or NJP&L lines by October 14, 1967.

JCP&L-NJP&L
REDDY KILOWATT COOPERATING DEALER

OFFER ENDS SEPTEMBER 30TH

Public Notice

BOROUGH OF ROSELLE
Union County, N. J.

NOTICE OF PRIMARY ELECTION NOTICE IS HEREBY GIVEN that in accordance with an Act entitled "An Act to Regulate Elections," P. L. 1957, Revised Statutes of New Jersey and the amendments and supplements thereto, the District Election Boards in and for the Borough of Roselle will sit in the places hereinafter designated on Tuesday, Sept. 12, 1967, between the hours of 7:00 a.m. and 8:00 p.m. (EST) for the purpose of conducting a Primary Election for the nomination of candidates as hereinafter listed:

Two Members of the General Assembly One At-Large Member of the General Assembly

Three Members of the Board of Chosen Freeholders

A Mayor for the Borough of Roselle, two-year term

A Councilman for the Second Ward, three-year term

A Councilman for the Third Ward, three-year term

ALSO THERE WILL BE ELECTED:

One Republican and One Democratic Committeeman from each of the twenty election districts.

One Republican and One Democratic Committeewoman from each of the twenty election districts.

WARD POLLING PLACE

DIST. 1-1 Wesley Meth. Church, Sheridan & 3rd Ave.

2 Wesley Meth. Church, Sheridan & 2nd Ave.

3 Harrison Avenue School (Gym)

4 Warren Street School (Gym)

5 Harrison Avenue School (Gym)

6 Abraham Clark High School

7 Fire House

8 Borough Hall-First Floor

9 Borough Hall-Basement

10 American Legion - Grove Street

11 Warren Street School (Auditorium)

12 Harrison Avenue School (Gym)

13 Washington School

14 Fire House

15 Borough Hall-First Floor

16 Borough Hall-Basement

17 American Legion - Grove Street

18 Washington School

19 Lucas Street School

20 Grace Wilsey School

JEAN KRULISH, Borough Clerk
Borough Hall
Roselle, N. J.
The Spectator Aug. 24, 31, 1967 (Fee \$25.00)

FURS & FUR-TRIMMED COATS

NOW AT

AUGUST SALE SAVINGS

Morris's MILLBURN

FREE ALTERATIONS—Except Budget Merchandise
MILLBURN: Millburn Ave. at Essex St.
Open Even. Mon. & Thurs. to 9 P.M.

DRESS UP YOUR WINDOW



with SCALLOP and FRINGE!

DURABLE CLOTH WINDOW SHADES

WASHABLE and STAINPROOF
VINYL COATED for years of EXTRA WEAR

DECORATOR WINDOW SHADES
TABLE PADS - PORCH SHADES
TRAVERSE RODS
WOVENWOOD PRODUCTS
ALUMINUM SHADES

COUPON

20% OFF

TRAVERSE CAFE CURTAIN RODS

CAPITOL AWNING & VENETIAN BLIND CO.

405 BOYDEN AVE. (at Jacoby St.)
MAPLEWOOD
FREE SHOP AT HOME SERVICE
OPEN DAILY: 9-6 - Mon.-Wed.-Fri. 'til 9
- Sat. 9-12
761-5920

TV's HULLABALOO
Is Coming scene
To RAHWAY -1488 Irving St.

PLEASE
DRIVE SAFELY!

ARTISTS' MATERIALS



The *Helene Beck*
art shop

ARTISTS' MATERIAL GRUMBACHER, TALENS
WINSON & NEWTON, PERMANENT PIGMENTS
NEW MASTERS REMBRANDT BIENFANG PAPER
STOP & VISIT OUR ART SHOP—IN A 100 YEAR OLD BARN
45th ST. MAPLEWOOD
(at Springfield and Chancellor Aves)
761-4898

**Billie H. Ehrlich,
Arthur P. Fisch
are wed Aug. 17**

Miss Billie Harris Ehrlich, daughter of Mrs. Richard Ehrlich of East Orange, and the late Mr. Richard Ehrlich, was married last Thursday, Aug. 17, to Arthur Philip Fisch, son of Mr. and Mrs. Sidney Fisch of 1695 Walker ave., Union.

Rabbi Barry Greene officiated at the ceremony at the home of the bride's uncle and aunt, Mr. and Mrs. Raymond Reitman of South Orange.

Miss Elizabeth Reitman of South Orange, cousin of the bride, served as maid of honor. Mark Fisch of Union served as best man for his brother.

Mrs. Fisch, who was graduated from Boston University, is a teacher in Burlington, Mass. Her husband, who was graduated from Rutgers University, New Brunswick, is a third year medical student at Boston University.

Following a honeymoon trip to Bermuda, the couple will reside in Watertown, Mass.



MRS. ARTHUR PHILIP FISCH



MRS. MICHAEL POLL

**Michael Poll weds
Patricia Schmon
in Hillside church**

Miss Patricia Schmon, daughter of Mr. and Mrs. Frederick Schmon Sr. of Hillside, was married Saturday afternoon to Michael Poll, son of Mr. and Mrs. Max Poll of 35 Michigan ave., Kenilworth.

The Rev. William Smalley officiated at the 3:30 p.m. wedding ceremony in Christ the King Church, Hillside. A reception followed at the College Inn, Hillside.

Miss Joanne Schmon served as maid of honor for her sister. Bridesmaids were Mrs. Carol Magdon, Miss Carol Matarrazzo and Miss Mary Crawford.

Kenneth Poll served as best man for his brother. Ushers included Fred Schmon Jr., brother of the bride; Robert McIntyre and Russell Greenhalgh, cousin of the groom.

Mrs. Poll was graduated from Hillside High School. Her husband, who was graduated from Jonathan Dayton Regional High School, Springfield, is attending Automation Institute, Newark. Both are employed by Schering Corp., Union.

Mr. and Mrs. Poll are spending their honeymoon in Florida.

EARLY COPY

Publicity chairmen are urged to observe the Friday deadline for other than spot news. Include your name, address and phone number.

FORMICA COUNTER?
TOP OUTDATED
Replace it with a genuine,
new
**FORMICA
COUNTER TOP**
Custom Crafted
in your Choice of
86 COLORS & PATTERNS

Free
374-1818 Estimate
FREE! Lunch & Serve Board
with each Counter Top!

Kitchens by
TANKI'S
A name you can trust
Showroom: 1048 Clinton Ave.
Irvington
Open Mon., Wed., Fri. 'til 9 p.m.

MUSCULAR DYSTROPHY
ASSOCIATIONS OF AMERICA
presents

**JERRY
LEWIS**



**LABOR DAY
TELETHON**
19 Hours with the Stars

starting
9 P.M. Sunday, Sept. 3rd
LIVE from the AMERICANA
OVER WNEV-TV
CHANNEL 5
SPACE FOR THIS ADVERTISEMENT
CONTRIBUTED BY THIS NEWSPAPER

**GRAND UNION
SUPERMARKETS**

WE GIVE
TRIPLE-S BLUE STAMPS
SSS
THEY'RE ON US... NOT YOU!

the SUPERMARKET WITH THE
woman's touch

Grand Union

The right touch! The quality touch. One that's been a Grand Union policy for nearly a century. Like serving the finest for the lowest possible price. On everything from USDA choice beef to always Grade A poultry. And we'll guarantee that... Unconditionally!

FOR FRICASSEE OR SALADS
FRESH FOWL
WHOLE **29¢** CUT UP **33¢**

1-lb. **59¢** 1-lb. **73¢**
FRANKS BACON
SWEET SPICY STEER LIVER 49¢ SPECIAL POLISH KIELBASI 89¢

BUY THE PARTS YOU LIKE BEST...
CHICKEN QUARTERS
Your Choice **39¢** LEGS with back BREASTS with wing

Shenandoah
Boneless TURKEY ROASTS
white and dark meat to please everyone

69¢
lb
AVG. WGT. 3 1/2 to 5-lbs.

Seasoned, rolled and tied... Ready to roast or barbecue

A five-pound boneless roast gives you as much tender, deliciously flavored turkey as a 10-pound whole bird. And every slice is round, perfect, beautiful! Slice it just like a loaf of bread!

ALL GRINDS
Chock Full O' Nuts COFFEE
1-lb. can **79¢**

LIFTON
FROSTEA 77¢
GRAND UNION **CREAM CORN** 4 79¢
FABRIC FINISH **BONNIE FLUFF** 89¢
BORDO'S INSTANT **POTATOES** 55¢
ROSE LOTION **VEL LIQUID** 59¢
JONHON'S **JUBILEE WAX** 69¢
GRAND UNION - STRAINED **BABY FOODS** 6 49¢
GRAND UNION - JERICHO **BABY FOODS** 6 77¢

MADE WITH FRESH LEMON JUICE
Kraft Mayonnaise
qt. jar **69¢**

Frozen Foods
EASY AND CONVENIENT

BREAKFAST DRINK
Birds Eye Awake
3 89¢

GRAND UNION **PEAS & CARROTS** 3 39¢
DOWNEY FLAKE **WAFFLES** 8 100¢
MINUTE MAID **LEMONADE** 4 89¢
GRAND UNION **FLOUNDER** 10 49¢
GRAND UNION ALL BUTTER **CINN. NUT TWIST** 12 59¢

ALL VARIETIES
Mortons Cream Pies
4 100¢

STOUTER **CASSEROLE TUNA** 11 49¢
STOUTER **ROAST BEEF HASH** 11 89¢
PATIO **MEXICAN DUNKER** 15 49¢
HERBERT **ESKIMO PIES** 6 59¢
HERBERT **ITALIAN ICES** 6 59¢

GRAND UNION
POT PIES
8-oz. pkg. **19¢**
Chicken, Beef, Turkey or Tuna

SHENANDOAH 4-5 LBS. AVG. WGT.
Turkey Breast ALL WHITE MEAT **69¢**

FRESH-LEAN **GROUND CHUCK** 1-lb. **69¢**
BONELESS **CHUCK FILLET** 1-lb. **89¢**
BEEF CHUCK **FLANKEN RIBS** 1-lb. **59¢**
SWEET'S PREMIUM **FRANKS** ALL MEAT - ALL BEEF OR KING SIZE 1-lb. **69¢**

PETTY'S **B-B-Q CHICKENS** 1/2 or 1-lb. **59¢**
FULTON L.L. SERVE **VEAL STEAKS** CHOPPED AND SHAPED 1-lb. **89¢**
STAKE SLICED **HALIBUT STEAKS** 1-lb. **69¢**
PAN READY **WHITING** 5-lb. **89¢** 1-lb. **19¢**

Dairy Features tasty and nourishing

PAST PROCESS CHEESE SPREAD 1-lb. **59¢**

Kraft Velveeta

FLORA DANICA - IMPORTED **DANISH BLUE** 4-oz. **33¢**
FRESH BUTTER **BISCUITS** SWEETENED OR BUTTERMILK 8-oz. **9¢**

GRAND UNION **BABY MUENSTER** 12-oz. **59¢**
KRAFT CALORIE WISE **NEUFCHATEL CHEESE** 8-oz. **29¢**

FRESH DAILY *Nancy Lynn* BAKED GOODS

NANCY LYNN LEMON OR **Pineapple Pies** 8" pie **49¢**
FRESHNESS - SLICED **SANDWICH BREAD** 3 1-lb. 8-oz. loaves **89¢** NANCY LYNN - DELUXE PECAN **DANISH RING** 12-oz. pie **49¢**

Fresh Taste Best
SHOP GRAND UNION FOR THE FRESHST PRODUCE IN TOWN

SWEET-BEE RIFE **WATERMELON** 1/2 **5¢**
SWEET-MILD **GREEN PEPPERS** 2-lb. **29¢**
FRESH-TENDER **CARROTS** 2 1-lb. **29¢**
GARDEN FRESH **EGG PLANT** 1 **19¢**

VINE RIPPENED **Tomatoes** 1-lb. **25¢**
DELICIOUS HOME GROWN FLAVOR

VALUABLE COUPONS

100 STAMPS
With This Coupon & Purchase of One 1-lb. 8-oz. pkg. GRAND UNION FROZEN **BEEFBURGERS**
Coupon Good Thru Sat., Aug. 26

100 STAMPS
With This Coupon & Purchase of One Package of 10 **WILKINSON SWORD BLADES**
Coupon Good Thru Sat., Aug. 26

50 STAMPS
With This Coupon & Purchase of One Pkg. of WHITE LAMB. ONE-PANEL OR CRUISE **DISPOSABLE DIAPERS**
Coupon Good Thru Sat., Aug. 26

REG. 95c VALUE TOOTH PASTE **59¢**

Colgate

REGULAR 95c VALUE FOR QUICK EXCEDRIN RELIEF 60-tablet box **69¢**

Honeydews
SWEET VINE RIPPENED
extra large B size **59¢**
large B size **79¢**
Select the size that serves your needs

MAKE GRAND UNION YOUR HEADQUARTERS FOR
BACK TO SCHOOL STATIONERY

DELUXE **STARTER SET** \$2.49 PLUS **FILLED BINDER** \$1.19

300 BALL PEN 3 **49¢** MEMO PADS 25 **25¢** LEAD PENCILS 49 **49¢**
LUNCH KIT 3 **52¢** NOTEBOOK 25 **25¢** CONSTRUCTION PAPER 49 **49¢**
GRAND UNION TYPEWRITER TABLET 25 **25¢** COMPOSITION BOOK 39 **39¢** STEM NOTEBOOK 25 **25¢**
A PLUS FILLER TABLET 39 **39¢** THEME BOOK 49 **49¢** SCRATCH PADS 29 **29¢**

Save more... Shop our complete assortment.

MAN 'N LAD Shops
ATTIRE FOR MEN & YOUNG MEN

get ready to go...
back to **CLASSICS!**

News from our back-to-school fashion hot-line! New fall styles for the elementary through college crowd are now in-stock at Man 'n Lad Shops in the latest of mellow tones and patterns. You'll find straight-forward styling and straight-forward pricing, soooooo shop and compare!

NEVER A CHARGE FOR ALTERATIONS

1992 Morris Ave. Union • 964-1230 Open Fri. & Mon. 'til 9
261 Morris Ave. Springfield • 379-1920 Open Thurs., Fri. & Mon. 'til 9

Plenty of Free Parking at Both Stores

Now is the time to replace your worn out steps with the famous **SHAWNEE CONCRETE STEPS**

- 10-year guarantee
- 1-day installation
- Steps cost as 1-piece unit
- Steps reinforced for extra strength
- Wide non-skid safety treads

AS LOW AS **\$148** WEEKLY DEL. & INSTALLED

CARPORT & PATIO COVERS
Make your patio more beautiful. Provide protection from sun and rain. Wonderful for outdoor living... The perfect summer spot for barbecues.
Choice of colors. 100' x 84' **\$95**

ALUMINUM SIDING
Eliminate Maintenance Cost! Cuts Fuel Bills, Insulates against Summer Heat, Winter Cold. Choice of colors. Up to 1,000 sq. ft. **\$345**

WHITE BAKED ENAMEL ALUMINUM STORM WINDOWS
Add beauty to your home. Won't corrode, pit, won't dull. Finish guaranteed for 15 years. **\$11.95**

Finished Basements
Attics • Porch Enclosures
Alterations
**LOW PRICES
FREE ESTIMATES**

PROGRESS CONSTRUCTION CO.
2515 VAUXHALL ROAD, UNION MEMBERS OF CHAMBER OF COMMERCE
CALL COLLECT **MU 6.0891 • MA 4.4030**
NOW DAY-NIGHT-SUNDAY

UNION - 5 Points Shopping Center at Chestnut St. - Open late Thurs. - Fri. & Sat. 'til 9 p.m. OPEN SUNDAY 9 A.M. to 2 P.M.
SPRINGFIELD - General Green Shopping Center, Morris & Mountain Ave. - Open Monday thru Thursday, 9 a.m. to 9 p.m., Friday 9 a.m. to 10 p.m. Saturday, 8 a.m. to 9 p.m., Sunday, 9 a.m. to 6 p.m.

Visit your Triple-S Redemption Center, Madison Shopping Center, Main & Dwyer, Madison.
Open Thurs., 'til 9 p.m. All Redemption Centers closed Mondays.

Trailside Garden Club show set Sept. 9, 10

Several Union County garden clubs will participate in the annual fall flower show sponsored by the Trailside Garden Club of Union County on Saturday, Sept. 9 and Sunday, Sept. 10 from 1 to 5 p.m. at the Trailside Nature and Science Center, Wachung Reservation. The show entitled "The Big Top" will consist of 10 classes for adults and four for juniors in the Artistic Arrangements Division. All Artistic Arrangement classes are open to any amateur exhibitor. Entries must be made in advance by Sept. 6.

All classes in the Horticulture Division are open to amateur exhibitors residing in Union County. Exhibits must be entered between 9 and 10 a.m. Saturday, Sept. 9.

The Horticulture Division classes are as follows: Any 1967 All American Selection Annual, zinnias, marigolds, asters, any other annual, chrysanthemums and any other perennials, dahlias, gladiolus and any other bulbous or tuberous flower, roses, berried or flowered vines or shrubs, house plants, vegetable and fruit displays.

The committee chairmen are as follows: Chairman of the Show Mrs. Arnold Santoro, Cranford; vice-chairmen, Mrs. Wesley Phlo, Cranford, Mrs. Charol Hoffman, Clark; Horticulture chairman, Mrs. Charol Hoffman, Clark; junior arrangements and horticulture, Mrs. Wesley Phlo, Cranford; Publicity, Mrs. Carl Haurand, Summit; Mrs. L. P. Sudrabin, Berkeley Heights; Hospitality, Mrs. Harvey T. Brown, Westfield; judges luncheon, Mrs. Wesley Phlo, Cranford, Sunny Acres Garden Club; classification and placement, Mrs. Kenneth Doremus, Westfield, Mrs. Frank Fedowitz, Scotch Plains.

Art work, Mrs. Clinton McLoughlin, Cranford; consultants, Mrs. George S. Braun, Westfield; invitation class, Mrs. Kenneth Doremus, Westfield; arrangements book, Mrs. Charles Blinn, Mahway; Staging, Harvey T. Brown, Westfield, Garden Dept. of the Women's Club of Westfield; horticulture staging, Trailside Garden Club; classification, Men's Garden Club of Westfield; Entries, Mrs. Charol Hoffman, Clark, The Blue Star Garden Club of Mountaintop; placement, Mrs. Meta McLoughlin, Cranford; Mountaintop Garden Club, Four Seasons Garden Club of Cranford; judges aides (arrangements) Berkeley Heights Four Seasons.

Schedules may be obtained at the Trailside Museum or Warinac Park or from any member of the Committee. The show will open to the general public, with no admission charge.

Inheritance tax return listed for Union County

Surrogate Mary C. Kanane reported this week that the return on inheritance tax to Union County for the year ending June 30 is \$226,655.00. This amount is \$26,655 more than was anticipated for budgetary purposes and is \$25,942.14 more than the return in 1966.

The figure represents 5 percent of inheritance tax paid to the state by persons receiving legacies under wills of decedents and distributive shares of persons dying intestate for the fiscal year beginning July 1.

FRIDAY DEADLINE
All items other than spot news should be in our office by noon on Friday.

**IT'S HAPPENING!
HAPPENING! HAPPENING!**

at
"THAT PLACE"

Union's newest and finest fashion bow-tique

WE'RE OPEN NOW!

but watch for our
GALA GRAND OPENING
after Labor Day

• Surprises • Guests •
• Fashion Previews •

See us for fashions by:
Charlie's Girls • Symphony
Ellie Pant's • Kandy Kaye

1901 MORRIS AVE., UNION
(Just a few doors from Mr. John Hairstylista)

SLIP COVER SPECIALS
CUSTOM MADE 2 Piece Set

1 Sofa
1 Chair

\$69
(extra chair \$25.)

Includes: Overlocking, cut & fitted in your home. Free delivery & installation. zippers & webbing—Guaranteed fabric vix & dyed-preshrunk

15% OFF
ON ALL FABRICS & MERCHANDISE
IN THIS STORE

WITH THIS AD!

(No discount on decorator work)
offer expires Aug. 31, 1967

TERMINAL MILL ENDS
962 Stuyvesant Ave.
Union MU 8-9416

Open daily 9:30 A.M. to 6 P.M. Mon & Fri till 9 P.M.

HERMAN GOLD
Introduces his

Exciting New Fall Collection of FURS

- THEATRE ENSEMBLES and Fabulous Group of:
- IMPORTED KNIT WEARS
- WALKING SUITS
- COATS & DRESSES
- COSTUMES & CASUALS

ORDER YOUR FUN-FUR TODAY!

HERMAN GOLD, INC.
358 Millburn Ave. Millburn, N.J.
Hours: 9:30 to 6 P.M.
Thurs till 9 P.M.
Phone 379-6368

Public Notice

THE ORDINANCE herewith was introduced and passed at a meeting of the Mayor and Council of the Borough of Mountaintop, County of Union, New Jersey, held on the 15th day of August, 1967, and will be further considered for passage after public hearing at a meeting of said Mayor and Council to be held on the 10th day of September, 1967, at Schoolhouse School, Mountaintop, New Jersey, at 8:00 P.M.; Pre-waiting Time.

Proposed Ordinance #100-57
AN ORDINANCE TO PROVIDE FOR THE CONSTRUCTION OF CURBS AND RIDGE DRIVES, WHEREAS, Samuel Enterprises, Inc., of 206 Higwood Road, Springfield, N.J., has received final approval for a major subdivision of Lots 6, 7 and 8, in Block 5-B on the Official Tax Map of the Borough of Mountaintop as shown on a map entitled "Preliminary Plan and Profiles for Lots 6, 7 & 8, Block 5-B, Borough of Mountaintop, Union Co., N.J., May 14, 1967 revised to April 7, 1967 prepared by Arthur H. Lennox, Engineer & Surveyor, Springfield, N.J., and

WHEREAS, the roadbeds of Hechal and Ridge Drives shall be extended and joined pursuant to this subdivision, and

WHEREAS, it is in the best interest of the Borough of Mountaintop that Hechal Drive and Ridge Drive remain as separate dead-end streets and that the Governing Body to join these streets when and if the interests of the Borough of Mountaintop require.

NOW, THEREFORE, BE IT ORDAINED by the Mayor and Council of the Borough of Mountaintop, Union County, New Jersey that:

SECTION 1: Two curbs shall be constructed in the center of the connecting extension of Hechal and Ridge Drives between the north and south curbs as extended and joined as shown on the final subdivision plan of Samuel Enterprises Inc., entitled "Preliminary Plan and Profiles for Lots 6, 7 & 8, Block 5-B, Borough of Mountaintop, Union Co., N.J., May 14, 1967 revised to April 7, 1967 prepared by Arthur H. Lennox & Son, Engineer & Surveyor, Springfield, N.J." The area between the curbs shall be filled with crushed stone.

SECTION 2: The placement and spacing of said curbs across the extension of Hechal and Ridge Drives shall allow reasonable street access and frontage to all lots of the said subdivision of Samuel Enterprises, Inc.

SECTION 3: The location and construction of the improvement provided herein shall be under the supervision of the Municipal Engineer and in accordance with the plans and specifications to be prepared by the Municipal Engineer.

SECTION 4: The sum of \$50,000 is hereby appropriated from the Capital Improvement Fund for this construction. Any unexpended balance shall be returned to the Capital Improvement Fund.

SECTION 5: This Ordinance shall take effect after final passage and publication according to law.

ALICE M. FRAMENSKI, Clerk
Borough of Mountaintop
Mountaintop Echo Aug. 24, 1967. (Fee \$12.00)

NOTICE TO ABSENT DEFENDANTS
SUPERIOR COURT OF NEW JERSEY
CHANCERY DIVISION
UNION COUNTY
Docket No. P-3903-66
(L.S.)

STATE OF NEW JERSEY TO:
Samuel J. Goldberg, Alfred Kirk,
Charles S. Dentzer and Irwin M. Schulman, trading as Goldberg Brothers Co., Defendants.

You are hereby summoned and required to serve upon Ralph J. Smalley, Jr., plaintiff's attorney, whose address is 212 Park Avenue, Plainfield, New Jersey, an answer to the complaint and amendments to complaint filed in a civil action, in which Plaintiff Savage Bank is Plaintiff and Anastole J. Theorese et al., are defendants, pending in the Superior Court of New Jersey, within 30 days after September 7, 1967, exclusive of such date, if you fail to do so, judgment by default may be rendered against you for the value hereinafter in the complaint and amendments to complaint. You should file your answer and proof of service in duplicate with the Clerk of the Superior Court, State House Annex, Trenton, New Jersey, accordance with the rules of civil practice and procedure.

The action has been instituted for the purpose of foreclosing a mortgage dated August 11, 1961, made by Anastole J. Theorese and Lillian M. Theorese, his wife, as mortgagors, payable to Plaintiff Savage Bank as mortgagee and concerns real estate located at 14 Woodland Road, in the Borough of New Providence, Union County, New Jersey. You are made a defendant because you are the holder of a judgment against Anastole Theorese in the sum of \$1,773.50 and interest and costs, entered in the Superior Court of New Jersey on December 25, 1964, Docket No. J-3229-64.
Dated: August 14, 1967
Mortimer G. Newman, Jr.,
Clerk of the Superior Court
Mountaintop Echo Aug. 17, 24, 31, 1967. (Fee \$30.00)

PUBLIC NOTICE

NOTICE IS HEREBY GIVEN THAT a public hearing will be held by the Board of Adjustment in the Borough Hall, Mountaintop, N.J., on September 11, 1967 at 8:00 P.M., on application of Donald E. Barber, Plaintiff for One Family Dwelling at 379 Forest Hill Way Block 3K Lot 49, contrary to sections 15B and 4 of the Zoning Ordinance of the Borough of Mountaintop.

Alice M. Framenski
Secretary
Mountaintop Echo Aug. 24, 1967 (Fee \$2.00)

ORIENTAL OCCULT
Even Western-trained Vietnamese usually consult a medium, an astrologer or a geomancer before making important decisions.

5%
5%
5%

SAVINGS CERTIFICATES
& OTHER STOCK INVESTMENTS

4³/₄%
4³/₄%
4³/₄%

PASSENGER SAVINGS FOR ONE YEAR

CITY FEDERAL SAVINGS
LARGEST PERSONAL SAVINGS IN NEW JERSEY
OFFICES IN MORRIS - UNION - ESSEX

Need Help?

Been shopping for furniture for two or three months in five or six stores? Can't get started, perhaps you are more confused than when you began?

LIFSON'S MIGHT BE THE ANSWER!
Coordinating styles and colors, choosing the proper quality for your specific needs, and doing all this within a budget takes time, a great deal of thought and usually requires some help.

WE'RE GOOD AT THIS - JUST ASK AROUND!
We take the time, have the know-how, have the selections and are eager to help. Come in - a warm welcome awaits you.

REMEMBER, LIFSON'S HAS BEEN FURNISHING HOMES FOR ALMOST 4 GENERATIONS. RIGHT NOW OUR 72nd AUGUST FURNITURE SALE IS IN PROGRESS - A GOOD TIME TO VISIT US... SEE HUNDREDS OF GREAT BUYS IN QUALITY FURNITURE.

8-FLOOR STORE DIRECTORY

LOWER LEVEL
Kitchen Furniture Dept.

MAIN FLOOR
Coordinated Living Room, Bedroom and Dining Room Displays

MEZZANINE
Occasional Living Room Furniture

THIRD FLOOR
Dual Sleep Dept., Living Room Chairs

FOURTH FLOOR
Dining Room and Dinette Furniture
Bedding Dept.

FOURTH FLOOR ANNEX
Upholstered Living Room Furniture

FIFTH FLOOR
Bedroom Furniture

SIXTH FLOOR
Early American Furniture
Floor Coverings

FREE CUSTOMER PARKING AT OUR REAR ENTRANCE

Enjoy the convenience of free parking when shopping at Lifson's. Easy to reach - just turn into Commerce Place opposite the Telephone Building on E. Grand Street (half a block east of Broad Street).

Lifson's
furniture
since 1894

221 BROAD ST., ELIZABETH
(By THE ARCH)

Open Monday, Thursday and Friday Until 9 P.M.

Fischer Jania

PAINTING CONTRACTORS

ROSELLE PARK, N.J.

SPECIALIZING IN SUPERIOR QUALITY

- INTERIOR - EXTERIOR
- TWO CREWS - PROMPT SERVICE
- 20 YEARS IN BUSINESS
- "AIRLESS" HYDRA-SPRAY
- SCHOOL-TRAINED MEN
- BRUSH and ROLLER WORK

CALL US FOR A FREE ESTIMATE!

WE'LL SHOW YOU OUR FULLY ILLUSTRATED REFERENCE ALBUM. SATISFIED CUSTOMERS—OUR BEST REFERENCES.

241-4266 **CALL TODAY** **241-1183**



SUMMER SCHOLARS--The Vacation Bible School recently concluded at Holy Cross Lutheran Church in Springfield attracted 70 young pupils from Springfield, Mountainside, Hillsdale, Berkeley Heights, Millburn, Murray Hill, Summit and Union. Shown with the youngsters, teachers and helpers (back row, center) is the Rev. Kenneth J. Stumpf, pastor.

Religious News

HOLY CROSS LUTHERAN CHURCH
(The Church of the Radio "Lutheran Hour" and TV's "This Is the Life")
639 MOUNTAIN AVE., SPRINGFIELD
REV. K.J. STUMPF, PASTOR
Sunday -- 8:15 and 10:45 a.m., worship services, 9:30 a.m., Sunday School.

FIRST PRESBYTERIAN CHURCH
MORRIS AVE., AT MAIN ST., SPRINGFIELD
BRUCE W. EVANS, MINISTER:
Sunday -- 10 a.m., union worship service in the Presbyterian Church, The Rev. Bruce

FUNERAL DIRECTORS
Fred H. Gray, Jr. Pres. & Gen. Mgr.
C. Frederick Poppy Vice President
(Reside: of Mountainside)
Gray
Established 1897.
WESTFIELD
William A. Doyle, Manager
318 E. Broad Street
PHONE 233-6143
CRANFORD
Fred H. Gray, Jr., Manager
12 Springfield Avenue
PHONE 276-0092

W. Evans will preach, John H. Bunnell will be guest soloist. Child care for pre-school children provided in the Chapel.

TEMPLE SHAREY SHALOM
AN AFFILIATE OF THE UNION OF AMERICAN HEBREW CONG.
S. SPRINGFIELD AVE. & SHUNPIKE ROAD, SPRINGFIELD
RABBI ISRAEL S. DRESNER
CANTOR IRVING KRAMERMAN
Tomorrow -- 8 p.m., Sabbath evening service in air conditioned chapel. Services will be conducted by Lawrence Lerner.

EVANGEL BAPTIST CHURCH
242 SHUNPIKE RD., SPRINGFIELD
WARREN W. WEST, PASTOR
Sunday -- 9:45 a.m., Sunday School, classes for all ages, 11 a.m., morning worship; Dr. Feinberg preaching, 7 p.m., bible conference, Dr. Charles Feinberg, dean of Talbot Theological Seminary, La Mirada, Calif. 8:30 p.m., YP's "Singspiration" at the home of Mr. and Mrs. Herbert Knoll, 42 Canterbury la., Berkeley Heights.
Wednesday -- 8 p.m., prayer meeting.

ANTIOCH BAPTIST CHURCH
S. SPRINGFIELD AVE., SPRINGFIELD
REV. CLARENCE ALSTON, PASTOR
Today -- 8 p.m., Gospel Chorus rehearsal.
Saturday -- 1 p.m., Church School Choir rehearsal.
Sunday -- 9:30 a.m., Sunday School, 11 a.m. worship service, 5:30 p.m., Baptist Youth Fellowship, 7 p.m., Church School teachers' meeting, 8 p.m., mid-week service.

SPRINGFIELD EMANUEL METHODIST CHURCH
MAIN STREET AT ACADEMY GREEN, SPRINGFIELD
JAMES DEWART, PASTOR
Sunday -- 9 a.m., German language service conducted by Emanuel Schwing and Theodore Reimlinger. 10 a.m., union worship service.

SKY TOP FARMS
1340 SUMMIT LANE, MOUNTAINSIDE, N.J.
Horsemanship Classes
GROUP AND PRIVATE
FROM BEGINNER
TO SHOW RING
CLASSES START SEPTEMBER 11.
REGISTER NOW.
CALL 233-4751.
1340 SUMMIT LANE, MOUNTAINSIDE

Adana and Sons
INTERIOR DECORATORS and CUSTOM UPHOLSTERING
• Furniture Refinishing
• Chair Caning
• Antiques Restored
• Slip Covers
• Drapes -- Bedspreads
• Plastic and Leather Work
857-859 STUYVESANT AVE. IRVINGTON
ES-2-3256 ES 4-1218

ice at the First Presbyterian Church of Springfield with the Rev. Bruce Evans, minister of the Presbyterian Church, preaching. In case of illness or hospitalization members of the Methodist Church should contact the Rev. Bruce Evans at the Presbyterian Church office, 379-4320. Mr. Evans will provide pastoral services for both congregations until Sept. 4.

Regular Sunday worship schedule will be resumed on Sunday, September 10 at 9:30 a.m., with divine worship in the Trivett Chapel; German language service in the Sanctuary and Church School. 11 a.m., divine worship in the Sanctuary.

TEMPLE BETH AHM
AN AFFILIATE OF THE UNITED SYNAGOGUE OF AMERICA
60 BALTUSROL WAY, SPRINGFIELD
RABBI REUBEN R. LEVINE
CANTOR ISRAEL WEISMAN
Friday -- 8:30 p.m., Sabbath service.
Saturday -- 9 a.m., Sabbath service.
Daily services, 7 a.m. and 8:15 p.m.

ST. JAMES
4 S. SPRINGFIELD AVE., SPRINGFIELD
MSGR. FRANCIS X. COYLE, PASTOR
REV. EDWARD OEHLING, AND REV. RICHARD NARDONE ASSISTANT PASTORS
Saturday confessions from 4 p.m., to 5:30 p.m., and from 7:30 to 9 p.m.
Sunday -- Masses at 7, 8, 9, 10 and 11 a.m. and 12:15 p.m.
Daily masses at 7 a.m. and 8 a.m. Confessions Monday after novena devotions. Baptisms -- every Sunday at 2 p.m. sharp. Arrangements must be made in advance with one of the priests.

OUR LADY OF LOURDES
300 CENTRAL AVE., MOUNTAINSIDE
REV. GERARD B. WHELAN
REV. RAYMOND D. AUMACK ASSISTANT PASTORS
Sunday -- Masses at 7, 8, 9:15, 10:30 a.m., and 12 noon.
Weekdays -- Masses at 7:30 and 8 a.m. Holydays -- Masses at 6, 7, 8 and 10 a.m. First Fridays -- Masses at 8 and 11:30 a.m. Miraculous Medal Novena Monday at 8 p.m. Benediction during the school year on Fridays at 2:30 p.m. Baptisms on Sunday at 2 p.m., by appointment.
Confession every Saturday from 4 to 5:30 and from 7:30 to 9 p.m.

COMMUNITY PRESBYTERIAN DEER PATH, MOUNTAINSIDE
REV. ELMER A. TALCOTT JR., PASTOR
Sunday -- 9:30 a.m., morning worship.
Wednesday -- 7:30 p.m., Open house for teen-agers, high school and college students; drama, arts, music and recreation.

PAWNBROKER SIGN
The three-ball pawnbroker emblem was inspired by the family coat-of-arms of the Medicis of Florence, Italy.

TO PUBLICITY CHAIRMEN:
Would you like some help in preparing newspaper releases? Write to this newspaper and ask for our "Tips on Submitting News Releases."



ALBERT ADLER

Adler is appointed director of school

Albert Adler, whose appointment as educational director was announced this week at Temple Israel of the Oranges and Maplewood, South Orange, was formerly a faculty member at the Religious School of Temple Beth Ahm, Springfield. Adler holds a bachelor's degree in history and a master's degree in education. He has studied at Long Island University, Hunter College and Columbia University. A resident of Livingston, he has taught in the New York City and Yonkers, N.Y., public schools and at Weequahic High School in Newark. He is now a faculty member at Livingston High School. Adler has also been a teacher at a number of Jewish religious schools throughout the Newark area.

Award Monticello his captain's bars

SCHWETZINGEN, Germany -- Anthony J. Monticello, 25, son of Mr. and Mrs. Frank Monticello of 92 Washington Ave., Springfield, N.J., was promoted to Army captain Aug. 1 near Schwetzingen, Germany, where he is serving with the U.S. Army Strategic Communications Command-Europe. Capt. Monticello, chief of data services in the command's headquarters, entered the Army in February, 1965, and was last stationed in Paris, France. A 1960 graduate of Jonathan Dayton Regional High School, he received a bachelor of science degree in business administration from Seton Hall University, South Orange, N.J., in 1964. His wife, Judith, is with him in Germany.

Adrienne Marder wed on Sunday to Rutgers graduate

The wedding of Miss Adrienne N. Marder to Howard M. Stroger took place Sunday evening at Maplewood Manor, Maplewood, with Rabbi Reuben R. Levine and Cantor Israel J. Weisman officiating. The bride is the daughter of Mr. and Mrs. Seymour Marder of 74 Kew dr., Springfield. The groom's parents are Mr. and Mrs. Ralph Stroger of Freehold. Meredith Chotner and Mrs. Barry Marder, the bride's sister-in-law, were maid and matron of honor, respectively. Barbara Levy and Sharon Stroger, sister of the groom, were bridesmaids. Jeffrey Stroger was best man for his brother. Ushers were Barry Marder, brother of the bride, Bruce Shaw and Charles Davis.

Mrs. Stroger is a senior at Douglass College. Her husband is a graduate of Rutgers University and now attends Rutgers School of Law.



MRS. HOWARD M. STROGER

A.J. Verlangieri, Maureen Halloran marry in Hillsdale

The marriage of Miss Maureen Regina Halloran, daughter of Mr. and Mrs. Henry E. Halloran of Hillsdale to Anthony Joseph Verlangieri, son of Mr. and Mrs. Anthony John Verlangieri of 136 Meisel ave., Springfield was held Saturday. Father Meyers performed the ceremony in St. John the Baptist Church, Hillsdale. A reception followed at Stonybrook Field Club, also in Hillsdale.

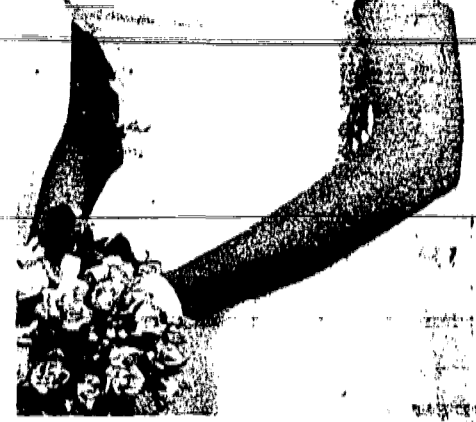
Mrs. Robert Landt served as matron of honor. Bridesmaids were Diane and Carol Verlangieri, sisters of the groom, and Cathy McCarthy, Mary Ann Verlangieri, another sister of the groom, was flower girl. Frank Anastasio served as best man. Ushers were Chris Halloran, brother of the bride, Jack Vassallo, cousin of the groom, and Robert Landt, Joel Verlangieri, brother of the groom, was ring bearer.

Mrs. Verlangieri graduated from Newark State College and is a teacher in the East Brunswick school system. Her husband attends Rutgers University, New Brunswick.

Following a wedding trip to Montreal, the couple will reside in Piscataway.

Springfield couple reach milestone at family dinner party

Mr. and Mrs. Charles Phillips of 106 Morris ave., Springfield celebrated their 60th wedding anniversary last Saturday at a family dinner held at the William Pitt, Chatham. Attending were Mr. and Mrs. Charles Phillips Jr. of Wayne, Mr. and Mrs. Frank Phillips of Morristown, Mr. and Mrs. James Mornberg of Somerville, Mrs. Arthur Phillips of Ocean Grove and Mrs. Edmund Smith of La Grange Park, Ill. Mr. Phillips is a veteran of the Boer War. He and Mrs. Phillips were married in Leeds, England in 1907 and came to the United States in 1910. They lived in the Newark area for 10 years before moving to Springfield. They lived at 82 Battle Hill ave. for 30 years before moving to their present address.



RENT THAT ROOM with a Want Ad. Only 14¢ per word (min. \$2.80) Call 686-7700.

SCHMIDT - FORD
"QUALITY DEALINGS FOR 33 YEARS"
Sales **Ford** Service
Mustang Falcon Fairlane Thunderbird Galaxie Trucks
Auto Rentals - Day-Week-Long Term
227-1665
290-306 Broad St. Summit

SUN DESTINATIONS
San Juan Jamaica Bahamas Aruba
Springfield Travel Service
NEVER A SERVICE CHARGE
DR 9-6767
250 Mountain Ave., Springfield, N.J.

GOLDEN TOUCH COIFFURES
Under The Personal Supervision Of...
Mr. Roger
formerly of Europe
Expert Hair Cutting Stylist
AUGUST SPECIAL
Permanent Wave
Reg. \$25 perm \$15.
Specializing in:
• Hair Frosting •
165 Mountain Ave.
Professional Bldg.
Springfield 379-7949
Open Tues.-Sat. 9 to 6
Thurs. till 9. Ample Parking in Rear

FREE PARKING
Drive-Up Windows
3 LOCATIONS
WHOO! WHERE! WHAT!
IT PAYS YOU TO SAVE AT OUR THREE CONVENIENT LOCATION!
FIRST FEDERAL SAVINGS
WESTFIELD
Elm Street
MENLO PARK
Shopping Center Parking Lot
Opposite Cinema
MOUNTAINSIDE
Mountain Avenue
INSURED
MASTECTOMY FITTINGS
GIVEN EXPERT ATTENTION

SUNDAY'S SERMON
ESSENCE OF SIN
We are inclined to think of sin as some purposeful wrong
EVANGEL BAPTIST CHURCH
242 Shunpike Road, Springfield (opposite Baltusrol Golf Club) Air Conditioned Church
SUNDAY, 7 P.M.
BIBLE CONFERENCE
Heart
Dr. Charles Feinberg, Dean, Talbot Theological Seminary, La Mirada, Cal 11 A.M.
Dr. Feinberg, preaching 9:45 A.M. BIBLE SCHOOL
WED. 8 P.M. PRAYER MEETING
deed, the willful act of doing something we ought not to do. Yet it is also true that the essence of sin is leaving undone some good thing that should be done. We are told that the day of judgment will come for those who leave undone the good deed that needs doing. It is written of the last judgment that the King shall come in the glory of his Father with holy angels, and with all nations gathered before him, say unto those gathered on his left hand, "Depart from me... for I was a stranger and ye took me not in, I was hungry and ye fed me not, I was sick and ye visited me not." We must love God in a positive way; our lives must establish a record of positive goodness.

Custom Fitted By BILLIE HORWITZ
Morris's MILLBURN
253 Millburn Ave.
Millburn, N.J. 379-1463
The Foundation Department has a complete selection of Girdles and Bras, and specializes in the fitting and altering to the individual need of each figure.

I'm SOLD!! and you will be too!
On These "Back-to-Campus" USED CAR SPECIALS!
'67 SS 396 Chevelle Conv. \$2895.
Demonstrator, fully equipped executive car.
'67 Camaro \$2595. Demonstrator, fully equipped hardtop sport coupe.
'66 Belair \$1995. 4 dr. sed., fully equipped w/AIR CONDITIONING.
'67 Caprice Sport \$3095. Demonstrator, loaded executive car.
'67 Malibu \$3095. Demonstrator, fully equipped, AIR CONDITIONED.
'66 Biscayne \$2095. Fully equipped!
L&S CHEVROLET
Morris & Commerce Aves., Union Open Even. Phone MU 6-2800

RAU QUALITY Meats

Fresh killed **FRYERS** lb. 39¢

Genuine spring **LEGS OF LAMB**... lb. 69¢

FLANK STEAKS... lb. 99¢ for Bar-B-Q

NUTRITIOUS DELICIOUS PRODUCE

Large heads **LETTUCE** 25¢

Large Calif. **Cantaloupes**... 3 for \$1

Delicious **Green Peppers** 2 lbs. 25¢

Stop in and Check Our In Store Specials

763 Mountain Avenue Springfield DR 6-5505
956 Stuyvesant Avenue Union MU 8-8622

Trailside visitors offered a choice of two programs

The Sunday afternoon visitors to the Union County Park Commission's Trailside Nature and Science Center, in the Watchung Reservation, will have a choice of two programs being offered on Sunday.

James B. Hawley, of Summit, will conduct a tour of the historic "Deserted Village," located in the valley between the first and second ridges of the Watchung Ranges.

The guided tour is open to the public and will start from the Trailside Nature and Science Center at 2 p.m. and proceed to the site of the "Village," a short distance away.

Hawley will discuss the 300-year history and tradition of the area from the time of the Indians and earliest settlers to its present state as unit of the Union County Park System. He will point out many historic features and identify and tell interesting facts about both the native and exotic plant and animal life that exists in the area.

The second program offered will be color sound film to be presented in the auditorium of the Trailside Nature and Science Center at 3 p.m. The movie, entitled "Happy Holidays... Anywhere in Michigan," is a travelogue taking the viewer on a tour through Michigan by car. Visits include historic Greenfield Village, Detroit, Mackinac Island, and Soo Locks.

On Monday, Tuesday, Wednesday, and Thursday, Aug. 31, at 4 p.m. each day, Donald W. Meyer, director of Trailside, and Miss Irma H. Heyer, educational assistant at Trailside, will present one-half hour nature talks for children. The topic to be discussed during the four days is "Seashore Wildlife." The talks will be illustrated with color slides. Following the lectures on Wednesday and Thursday a half hour walk will be conducted on the nature trails adjacent to the Nature Center.

The Trailside Nature and Science Center is open to the public every day, except Friday, from 1 to 5 p.m.

EARLY COPY
Publicity chairmen are urged to observe the Friday deadline for other than spot news. Include your name, address and phone number.

Social security warns of delay in filing

About one of every five applicants for social security disability benefits delays so long before making his application that he risks possible loss of some payments, Ralph W. Jones, district manager of social security in Elizabeth, said this week.

In an effort to remedy this situation, the Social Security Administration is asking anyone who might possibly qualify for disability benefits to get in touch with a social security office as soon as possible.

"Some people fail to apply because they don't realize that they can benefit from the program," Jones said. "Younger people often think that social security payments are only for people in their sixties, whereas the disability program was specifically set up to protect the wage earner who is forced to stop working before he is old enough to collect retirement benefits."

A person under 65 can receive monthly payments if he has a physical or mental impairment that has kept or will keep him from working for a year or more. Individual benefits range from \$44 to \$152 a month. If the worker has dependents, total family benefits can amount to as much as \$339 monthly.

"Others don't file because they are under the impression that they have to be permanently disabled. This was generally true before a 1965 change in the law, but now payments can go to a person whose disability has lasted, or is expected to last, for 12 months or longer," Jones pointed out.

Benefits begin after a person has been disabled for six full months. No benefits can be paid for months during this "waiting period." Also, the law limits the back benefits a person can collect to the 12 months before the month in which he applies.

This means that the latest a person can file without losing any back benefits is the month that comes after the 18th month of disability.

Jones cautioned, however, that benefits can be paid only if a person's disability is severe enough to prevent him from doing not only his usual job, but also any work in keeping with his age, education and experience. And, to be eligible, a person must have

worked under social security for at least five of the 10 years before he became disabled.

Benefits continue for as long as the disability lasts, or until the beneficiary reaches 65. At age 65, disability benefits are converted to retirement benefits, without any change in the amount.

Currently, over a million disabled persons—plus more than a million of their dependents—are receiving benefits under the program.

"If you know of anyone who might qualify," Jones urged, "tell him to phone, write, or visit the nearest social security office. The office in Elizabeth is located at 268 North Broad St., Elizabeth."

A BUSINESS OF YOUR OWN... find it through the Want Ad Section!

might quality," Jones urged, "tell him to phone, write, or visit the nearest social security office. The office in Elizabeth is located at 268 North Broad St., Elizabeth."

A BUSINESS OF YOUR OWN... find it through the Want Ad Section!



At Compact Bank Rates

Buying a luxury size... or a compact car, where you finance does make a difference. Check the list below and you'll see why it costs less when we say yes to your financing needs. Stop by any office of First State Bank for more information, without obligation.

Cash You Receive	12 Monthly Payments*	24 Monthly Payments*	36 Monthly Payments*
\$1,000	\$ 87.22	\$ 45.56	\$31.69
1,500	130.83	68.34	47.54
2,000	174.44	91.12	63.38
2,500	218.05	113.91	79.23
3,000	261.66	136.69	95.08

* Monthly payments as shown include cost of life insurance protection.

The **FIRST STATE BANK OF UNION**

UNION NEW JERSEY

FEDERAL DEPOSIT INSURANCE CORPORATION

Daily Express Bus Service To...
ASBURY PARK SEASIDE HEIGHTS
Via Garden State Parkway
Consolidated Shore Lines

NIESL'S
Union Center, Union 688-9848

KATHARINE GIBBS
PRIVATE BUS SERVICE
WESTFIELD, HANOVER, AND VINELAND TO
KATHARINE GIBBS
In MONTCLAIR
One and Two-Year Courses
SECRETARIAL

Write or telephone for information for further information
23 Plymouth St., Newark N.J. 07102 201-744-2010
Also schools in Boston, Providence and 200 Park Ave., New York 10017
Fully Accredited

Goldfinger's

AUGUST SALE

Except Lenox China

LAMPS
TABLES
SOFAS
PICTURES

SUMMER HOURS: 9 a.m. to 6 p.m.

128 LYONS AVE.

Air-Conditioned

Cor. Parkview Terr.

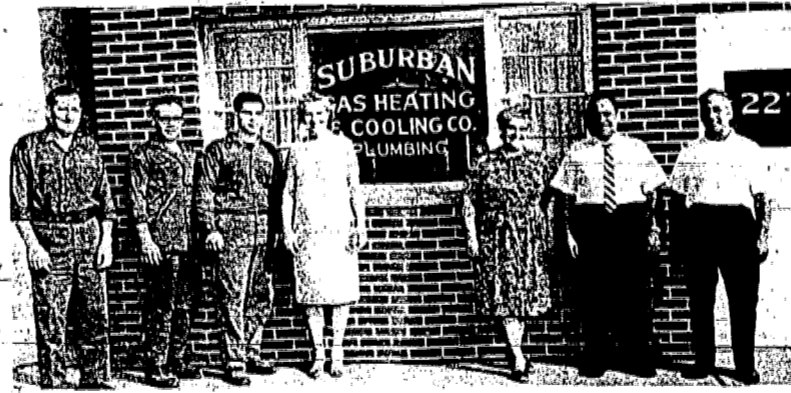
Newark, N.J.

SWITCH TO GAS HEAT NOW!

New Home of Suburban Gas Heating & Cooling Co.

Established 1938

Owned and Operated by the Falcone Bros. - Sal and Jerry



Our company has installed over 8,000 gas heating units in Elizabethtown area. We are licensed master plumbers and take pride in our work.

Authorized **bryant** dealer - Automatic Gas Water Heaters

Call 245-2100 for FREE Home Heating Survey

SUBURBAN GAS

Heating & Cooling Co.

227 W. Clay Ave., Roselle Park

Easy Terms Arranged

JONAS' BACK-TO-SCHOOL SPECIALS plus SUMMER CLEARANCE SALE!

Short Sleeve **SHIRT JACKS** only 50¢ With purchase of any shirt (see our regular stock at \$4, \$5, \$6, \$7, \$8)



QUALITY DOESN'T COST A FORTUNE!
by **Career Club**
PERMANENT PRESS TRADITIONALS

Truval

65% Dacron, 35% cotton, contemporary styles. No ironing, wash, press, wash! soft roll bust-down collar, tapered body.

FROM \$4



VAN HEUSEN
vanopress

"Contour Crafted" for the neat, tailored look. It's 65% Dacron-Polyester and 35% cotton.

FROM 5

TOP NAME BRAND FURNISHINGS FOR MALES FROM GRADE SCHOOL THROUGH COLLEGE LEVEL...Including Boys 6-12, Prep School Age, College groups. SPORT JACKETS, SHIRTS, ITALIAN KNITS, SWEATERS, SLACKS, CHINOS, RAINCOATS, JEANS, OUTERWEAR, UNDERWEAR, JEWELRY & ACCESSORIES.

from VAN HEUSEN, TRUVAL, SWANK, HANES, LEE, Others!
1112 LIBERTY AVE. 289-2149
JONAS' CLOTHING
Hillside Shopping Center
Open Daily 9-6; Thurs., Fri. 9-9

(Note: Our Only Other Store Is In Jersey City!)

THE FLOOR SHOP EST. 1934

CARPET REMNANTS

25% TO 60% OFF!

Sizes 5'x12' to 8'x15'

\$8 TO \$95

For small dens, bedrooms, foyers, stairs, halls... also cut for throw and area rugs.

BINDING NOT NECESSARY

We Carry ARMSTRONG, KENTLE, CONGOLEUM NAIRN, LEES, CABIN CRAFT, FIRTH, CALLAWAY, PRISCILLA TURNER, MOHAWK, plus imported ORIENTAL RUGS

"QUALITY AT A COMPETITIVE PRICE... TRY US!"

CARPETS • LINOLEUM • TILE
540 NORTH AVE., UNION
(Near Morris Ave.)

OPEN MONDAY, WEDNESDAY, THURSDAY TO 9
352-7400

PARK IN OUR LOT ADJACENT TO BUILDING

UNION BOOTERY

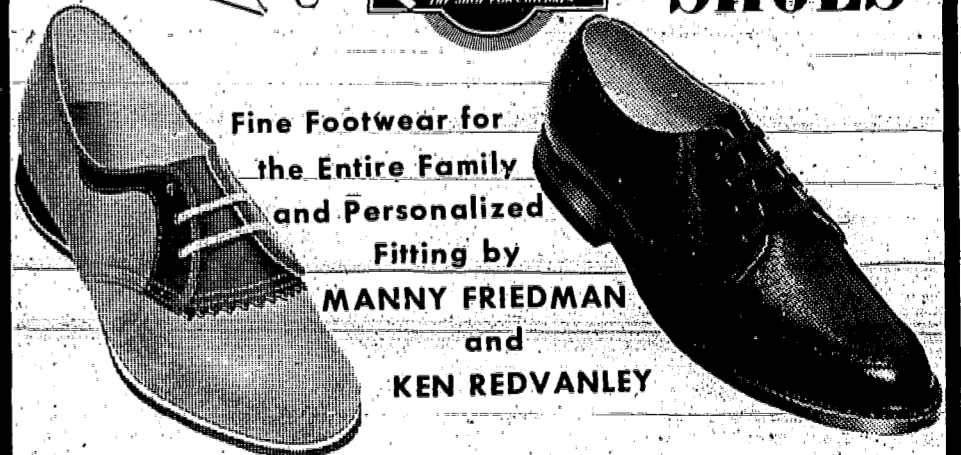
MAKE THE GRADE IN SMART LOOKING SHOES



Edwards
The Shoe That Counts

Fine Footwear for the Entire Family and Personalized Fitting by

MANNY FRIEDMAN and **KEN REDVANLEY**



First day of school... and Edwards shoes put you way ahead of the class. Smart styles to please the fussiest girls and the most particular boys. Selections are unlimited. So is the care and attention of your Edwards fitter.

1030 Stuyvesant Avenue MU 6-5180
Open Monday and Friday Evenings Until 9 p.m.

Union



Maxine Goldberg becomes bride of Morris Kraemer

Miss Maxine Goldberg, daughter of Mr. and Mrs. Sidney Goldberg of 312 Huguenot ave., Union, was married Sunday evening to Morris Kraemer, son of Mr. and Mrs. Jack S. Kraemer of Newark.

Rabbi David Friedman of Irvington officiated at the 7 p.m. ceremony in the Alpine, Maplewood, where a reception followed.

Miss Susan Goldberg of New York City served as maid of honor for her sister, Mrs. Harvey Zanger of Irvington was matron of honor.

Ronald Weinberger of Morristown served as best man. Ushers were Jeffrey Goldberg of Union, brother of the bride; Edwin Chesler of Leavittown, L.I., cousin of the groom; Joel Herman of Irvington, cousin of the groom; Richard Fresolone of Trenton and Dennis Goldstein of Maplewood.

Mrs. Kraemer, who was graduated from Union High School and Pennsylvania State University, University Park, Pa., is employed as a speech and hearing therapist for the Union Board of Education.

Her husband, an alumnus of Weequahic High School, Newark, and Fairleigh Dickinson University, Madison, attended Bradley University, Peoria, Ill. He is studying at Fairleigh Dickinson University for a master's degree in psychology, and is associated with the Anti-Poverty Program in Newark and with the New Careers Program.

Mr. and Mrs. Kraemer are on a honeymoon trip to St. Thomas, Virgin Islands.

MRS. MORRIS KRAEMER



MRS. DAVID WEINSTEIN

ALUMNUS EDITS BOOK

An alumnus of Union Junior College, Cranford, Dr. Edward C. Cell, associate professor of philosophy at Albion College, Michigan, has edited a book, "Religion and Contemporary Western Culture," published by Abingdon Press. Dr. Cell, a graduate of Merimac High School, Boston, graduated from Union Junior College in 1948.

B'nai B'rith names Springfield woman head of campaign

Mrs. David Weinstein of Springfield was recently named overall chairman of a special membership campaign to be sponsored by the Northern New Jersey Council of B'nai B'rith Women, it was announced by Mrs. Leo Grossman, council president.

Mrs. Weinstein is first vice-president in charge of membership for the council and a past president of the Springfield chapter.

An orientation meeting for all participants in the campaign was to have been held last night at 8:30 at the home of Mrs. Sam Gan, 55 Smithfield dr., Springfield, according to Mrs. Weinstein. She announced that the theme of the campaign will be "Your Wish Is Our Command," and the campaign will be launched Sept. 12, 13 and 14 by the Springfield Chapter of B'nai B'rith Women.

Among those attending the meeting were council personnel Mrs. Grossman; Mrs. Nathan Schanen of Linden and Mrs. Arthur Kesselhaut of Springfield.

Representing the Springfield Chapter were Mrs. Arthur Falkin, president; Mrs. Sidney Piller, membership vice president; Mrs. Mende Jeeff, Mrs. Harold Fried, Mrs. Martin Karp, Mrs. Simon Hetschuber, Mrs. Paul Miller, Mrs. Moe Schlanger, Mrs. Lewis Gash, Mrs. Frank Hodes, Mrs. Paul Nitkin and Mrs. Max Raab, all of Springfield.

CLEANING CHROME

To clean chrome on kitchen appliances, wipe with a paper towel dipped into alcohol.



MRS. CORDELL W. REINHARDT

Thursday, August 24, 1967- Cordell Reinhardt of Union marries Phyllis E. Berry

Miss Phyllis Ethel Berry, daughter of Mr. and Mrs. George E. Berry of Martinsville, was married Saturday afternoon to Cordell W. Reinhardt, son of Mr. and Mrs. Edward J. Reinhardt of 860 Townley ave., Union.

The Rev. Canon Robert H. Booker officiated at the 4:30 p.m. ceremony in St. Paul's Episcopal Church, Bound Brook. A reception followed at the Martinsville Inn, Martinsville.

Miss Sandra Forte of Raritan served as maid of honor. Bridesmaids were Miss Janet Berry and Miss Jeanne Berry of Martinsville, sisters of the bride.

Gerald M. Lind of Hazlet served as best man. Ushers were Lowell E. Reinhardt of Branchburg and Melvin C. Reinhardt of Union, brothers of the groom.

Mrs. Reinhardt, who was graduated from Bridgewater Raritan High School, is employed by Hanover Life Insurance Co., Murray Hill.

Her husband, who was graduated from Union High School, Albright College, Reading, Pa. with a B.A. degree, and Seton Hall University with an M.A. degree, in a social studies teacher at Thomas Jefferson High School, Elizabeth.

Following a honeymoon trip to the Poconos, the couple will reside in Elizabeth.

FRIDAY DEADLINE

All items other than spot news should be in our office by noon on Friday.

Choice large in selecting new range

By MABEL G. STOLTE
COUNTY HOME ECONOMIST

When you start thinking about selecting the best range for your home, you have many decisions to make.

First, do some thinking about the kind of range you want. Do you want gas or electric? Do you want a built-in wall oven and surface units, a wall range or a conventional free standing range? What size do you want? How many ovens?

The old wives' tale of gas being faster than electric but dirtier is no longer true with a new range. The reliability of service for gas and electric within our community is more important. If the power fails, how long must you wait for a return? How do the monthly charges compare? Then, too, if you consider switching types, remember to obtain some installation estimates.

A built-in will give your kitchen a custom look and may be more easily placed at a convenient height. It is purely preference, however, whether you prefer having top of stove cooking separate from the oven. Watch out that your built-in doesn't take up valuable counter space and make ventilation more expensive than you realized it would be. Some cabinet work is inevitable, so figure on that, also.

Free standing ranges come in a variety of sizes with one and two ovens. Electric ranges have four surface burners and gas may have four or six. Some ranges have built-in or plug-in griddles on top.

Range storage space has been found inefficient and today's trend is toward one large oven. Your over-all kitchen arrangement storage and family's baking needs should determine the size you buy.

Self-cleaning ranges are gradually becoming more within the price range of "Average Mrs. Consumer." It is a time saver but remember, like every other convenience feature, you have to pay for it! The initial cost is bound to be higher and the life of the equipment will probably be shortened. The latter fact has yet to be researched.

Unionite returns from Atlanta visit

Mrs. Alfred Stein of 959 Caldwell ave., Union, returned home Sunday evening after a 17-day visit with the family of her son-in-law and daughter, Mr. and Mrs. Roger Worden, and sons, David and John, of Atlanta, Ga. Mrs. Stein was accompanied on the trip by a teenage granddaughter, Miss Joann Daneski of Livingston.

During the Atlanta visit, the family took a tour of the State Capitol, and had a chat with Governor Lester Maddox in his office. They also visited the Atlanta Baseball Stadium, Stone Mountain and Grant's Park's Cyclorama.

PLUMBING HINTS

If you're building a new home, make sure it has plenty of cleanout plugs and shutoff valves at all major plumbed-in equipment. Cleanout plugs make it possible to remove obstructions in the pipe without a lot of trouble and expense. Shutoff valves enable you to shut off the water at one fixture, should an emergency arise, without shutting off the water in the rest of the house.

To publicity chaimen:

Would you like some help in preparing newspaper releases? Write to this newspaper and ask for our "Tips on Submitting News Releases."

WESTFIELD

Hahne & Company

campus bound...

our grand collection by john meyer

All coeds like to collect suits, sweaters and skirts ... because it's great fun to mix and match them! An A-line skirt, sizes 8 to 18, with a brass buttoned cardigan, sizes 34 to 40. Each 15.98. The self-belted, plaid Vassar suit with modified A-line skirt, sizes 8 to 16, 44.98. Turtleneck top, small, medium, large, 7.98, with a plaid kilt, sizes 8 to 16, 19.98. Front pleated, cottage plaid skirt, sizes 8 to 16, 17.98, with a heavenly soft, pocketed pullover, sizes 34 to 40, 18.98. Shades of russet, bayberry, stafford blue and mallard green in the group.

Misses' Sportswear, Hahne & Company • Westfield

Houses For Sale 111 CRANFORD - SPACE - If space is what you need we have just the house...

Houses For Sale 111 IRVINGTON - 4 family, 18 rooms, new oil heat, garage, excellent condition...

Houses For Sale 111 WESTFIELD AREA FOR WESTFIELD MOUNTAINIDE FANWOOD SCOTCH PLAINS

Stores For Rent 121A IRVINGTON CENTER 100% location; available September 1, 1967...

Automotive Service 124 IMPORTED CAR SERVICE All Makes - All Models CHECKER JERSEY SALES CORP.

16 grandchildren and 6 great-grandchildren. Funeral was conducted from "Haberle & Barth Colonial Home," 1100 Pine Ave., corner Vaux Hall Rd., Union.

McCracken Funeral Home, 1500 Morris Ave., Union, on Thursday, High Mass of Requiem at Holy Spirit Church.

Freeman of Elizabeth, the funeral service was held at "Terrill's Home for Funerals," 660 Stuyvesant Ave., Irvington, on Sunday, August 20, interment at the convenience of the family.

deceased father of Mrs. Grace Lane and Mrs. Lorraine Libby; brother of Otto and John Ruppel; also survived by 3 grandchildren...

ELIZABETH - 2 family, frame construction, copper & brass plumbing, hardwood floors...

ELIZABETH - Custom family Colonial, 7 rooms, living room, dining room, 4 bedrooms...

ELIZABETH - 4 family, 4 room apartments semi-modern kitchens & baths, 3 separate steam units...

ELIZABETH - 4 family, 4 room apartments semi-modern kitchens & baths, 3 separate steam units...

ELIZABETH - 4 family, 4 room apartments semi-modern kitchens & baths, 3 separate steam units...

GREEN'S AGENCY REALTORS - INSURORS 151 Jefferson Ave., Elizabeth S 8/24

THE ROYLE CO. REAL ESTATE SINCE 1905 The Colonial Building - Open 9-8 355 Jersey Ave., E., Newark EL 3-4200 B 8/24

CRANFORD COLONIAL Move-in condition, 2 large bedrooms on 2nd story plus beautiful bath...

CRANFORD SPLIT Four bedroom, 2 1/2 bath executive split, A-1 condition. Best construction...

CRANFORD SPLIT Four bedroom, 2 1/2 bath executive split, A-1 condition. Best construction...

UNION WASHINGTON SCHOOL Colonial, 8 rooms, 2 1/2 baths; including paneled TV room, cherry paneled den with built-in bookcases...

UNION PUTNAM MANOR - Modern Colonial home, 6 rooms, den, attached garage...

UNION WESTFIELD FOUR BEDROOMS MODERNIZED, CLEAN - Older home close to school and town...

UNION WESTFIELD FOUR BEDROOMS MODERNIZED, CLEAN - Older home close to school and town...

UNION WESTFIELD FOUR BEDROOMS MODERNIZED, CLEAN - Older home close to school and town...

UNION WESTFIELD FOUR BEDROOMS MODERNIZED, CLEAN - Older home close to school and town...

UNION WESTFIELD FOUR BEDROOMS MODERNIZED, CLEAN - Older home close to school and town...

UNION WESTFIELD FOUR BEDROOMS MODERNIZED, CLEAN - Older home close to school and town...

UNION WESTFIELD FOUR BEDROOMS MODERNIZED, CLEAN - Older home close to school and town...

UNION WESTFIELD FOUR BEDROOMS MODERNIZED, CLEAN - Older home close to school and town...

UNION WESTFIELD FOUR BEDROOMS MODERNIZED, CLEAN - Older home close to school and town...

UNION WESTFIELD FOUR BEDROOMS MODERNIZED, CLEAN - Older home close to school and town...

UNION WESTFIELD FOUR BEDROOMS MODERNIZED, CLEAN - Older home close to school and town...

UNION WESTFIELD FOUR BEDROOMS MODERNIZED, CLEAN - Older home close to school and town...

UNION WESTFIELD FOUR BEDROOMS MODERNIZED, CLEAN - Older home close to school and town...

UNION WESTFIELD FOUR BEDROOMS MODERNIZED, CLEAN - Older home close to school and town...

UNION WESTFIELD FOUR BEDROOMS MODERNIZED, CLEAN - Older home close to school and town...

YOUR "SECOND HOME" LAKE & SHORE • VACATION • RETIREMENT • INVESTMENT

TIMBER HILL SKI AREA - HOMESITES - HAMMER & SHINGLE SALE JULY & AUG. ONLY - \$2000 buys 1/2 acre plus season pass...

PRIVATE CAMPSITES IN THE POCONOS - Pitch your tent, park your travel trailer, camper or mobile home...

WATERFRONT or WOODED LOTS from \$16.04 per month NO DOWN PAYMENT - NOW for the first time you can own a beautiful seashore...

MYSTIC ISLANDS ON THE JERSEY SHORE TUCKERTON, N. J. COMPLETELY FINISHED YEAR 'ROUND WATERFRONT HOMES from \$5,250.

POCONO LAUREL LAKE - HOMESITES - No Down Payment BOAT - SWIM - HUNT - FISH SKIING and GOLFING NEARBY

PLEASANT VALLEY ESTATES - Vacation homesites closest to Philadelphia... while you're looking in the Poconos be sure to see

LOCUST LAKES in the POCONO MOUNTAINS - The four-season community that has everything a vacation home colony should have...

EMERALD LAKES ESTATES - Beautifully wooded, natural spring-fed lakes - 3 miles of shoreline, Lake-front/lake-view sites available...

CHECK CASHING LICENSED BY THE STATE OF N.J. ALL CHECKS CASHED Money Orders • Notary Public • Mimeo Service • Utility Bills Paid Here

Shell Heating Oil now climatized for Union County Area - Shell scientists have created over 10 different blends of Shell Heating Oil...

NEED HELP? An inexpensive HELP WANTED on the Classified pages of this newspaper will reach over 30,000 nearby reader-families...

Hollywood Florist 1682 STUYVESANT AVE. UNION - IRVINGTON - We specialize in Funeral Dignity and Sympathy Arrangements...

