

A CHRISTMAS PARTY AND SLEIGH RIDE!

This Christmas marks the fifth anniversary of the Old Mill. Horse-drawn sleigh ride and party for the youngsters. (If no snow, wagon will be substituted.)

The dates are Sunday, Dec. 12 and 19, 1:30-4:30 p.m. Free chocolate and cookies will be served complimentary in the Copper Top Lounge and for two groups, an arithmetic W-ssall bowl.

Dinner is served from 12 noon thru 8 p.m. Reservations are suggested.

Plan to begin your New Year's Eve celebration with dinner at the Old Mill Inn!

Reservations - JE-8-1418, 788-1180

Raymond M. Cantini, Manager

Old Mill Inn
On Route 302, Brevardville, N. J.

Hitting fence costs \$485, driver finds

Judge M&K Sherman in Springfield Municipal Court Monday night ordered an Elizabethtown driver to pay \$485 for damages to a fence on Morris avenue at the Rt. 75 overpass. The driver, James L. Woody, was ordered to pay the amount during a three-month probationary period. Woody also appeared before Judge Sherman on careless driving charges, for which he paid a \$25 fine, and received a 90-day suspended jail sentence and on charges of driving without a license or registration in his possession, for which he paid \$20.

Three other drivers appeared in court Monday to face charges of careless driving. They include: Patrick M. Tomaro, fined \$10 for careless driving on Mountain avenue; Jay J. Pauro of Summit, fined \$30 for careless driving on Morris and Mountain avenues; and Francis J. Kelly of Plainfield, fined \$10 for careless driving on an excessive speed (45 in a 35-mile zone) on Mountain and Hobbins avenues.

George A. Smith of Danellen was fined \$30 for tailgating and speeding on Mountain and Hillside avenues. He was also fined \$10 for having no driver's license or registration in his possession.

SUNDAY'S SERMON

Someone has said that happiness is a running stream. It cannot be a stagnant pool. Think about it for a moment and you will realize that one cannot find happiness by the side of the road. Happiness must be found in the mainstream of life. We cannot capture a single moment and hold on to it forever. Today must blend with the setting of the sun, leaving us ready for tomorrow will come.

Look for happiness to come your way tomorrow in the shape of opportunity. You will find it only if you realize that happiness is not a discovery and not a point in time. Happiness is a byproduct of successful living.

HANUKKAH ENTERTAINERS - Farid and Sheila will present a Hanukkah folk concert Wednesday at Temple Beth Ahm for the benefit of the Cantor's Institute of the Jewish Theological Seminary. Farid is Cantor Farid Dardashti of the Temple and Sheila is his wife.

Cantor and wife to entertain at folk concert for Hanukkah

A Hanukkah folk concert will be held Wednesday at 9:30 p.m. at Temple Beth Ahm, Springfield. Featured are Farid and Sheila.

Martin J. King, stockbroker, 49

Services were held Saturday for Martin J. King, 49 of 113 Sylvan lane, Mountainside, who died Wednesday in Roosevelt Hospital, N.Y. Arrangements were made by the Paul Ippolito Summit Memorial, 7 Summit ave, Summit.

Born in New York City, he came to Mountainside eight years ago. Mr. King was a stockbroker with the Halle-Siegitz Co., Newark. He was a member of the Masonic Lodge of Morrisstown and the New York University Club. Surviving are his wife, Maria M., and his mother, Mrs. Lala King.

Farid is Cantor Farid Dardashti of the Temple. Sheila is Mrs. Dardashti.

Farid and Sheila have toured professionally in the New York, New Jersey metropolitan area and abroad. They sing in English, Greek, Hebrew, Spanish, Yiddish, Russian, French and Persian.

Cantor Dardashti, born in Iran, was known as a radio and television personality there while a teenager. He came to America after his family emigrated to the United States. The son of a cantor, he decided to follow his father's career.

He is a graduate of the Cantor's Institute. Mrs. Dardashti, who also comes from a musical family, majored in music at college and had performed professionally before and after their marriage.

Tickets may be obtained at the Temple Beth Ahm office (278-9239) or from the temple's Sisterhood, Men's Club or Youth Group. More information may be obtained by contacting any of the following individuals: Mrs. Proctor, 379-9148; Dr. Werfel, 376-1187; or Irwin and Mitchell Koller, 376-7563.

McGovern unit looks to students

The People's Alliance for McGovern, which has headquarters in Mountainside, this week announced that it is forming a student group in Cranford.

Danny Pastore Jr., chairman, said that Mike Scavio of 71 Burnside ave., Cranford, will head the new group.

Pastore also announced that the group plans

to form a student group at Gov. Livingston Regional High School in Berkeley Heights. The People's Alliance for McGovern is still seeking more volunteers, from all age groups.

Anyone interested may contact the group at 222-2394, or write Danny Pastore, People's Alliance for McGovern, 167 Mountainview dr., Mountainside.

Battle offers subject for bank mural

A mural, commissioned by the Springfield State Bank for the lobby of its new main office, will be dedicated next Thursday, Dec. 16, at 4 p.m., in the office at Hillside avenue and Rt. 22.

The sixty-16-foot mural, painted by Allyn Scheffer of Fanwood, depicts the historic battle of Springfield on June 22, 1780. The focal point of the painting is the original Presbyterian Church, which was burned by British troops during the Revolutionary War.

Parson Caldwell, pastor of the church, is shown distributing Watts hymnals, the pages of which he instructed the patriots to use as wadding for their muskets. The expression, "Give 'em Watts," is attributed to Parson Caldwell.

Others expected to attend are: Hazel Hardgrave, president of the Springfield Historical Society; Janice Biorgianni, regent of the local affiliate of the Daughters of the American Revolution; Richard Swain, Sons of the American Revolution; and Mayors Neil Stokes of Springfield and Thomas Hoelzer of Mountainside, the two communities served by Springfield State Bank.

WALTERS has it all... for Christmas.



A FESTIVE COLLECTION OF HOLIDAY GIFTS FOR EVERY MAN (OR BOY OR GIRL) IN YOUR LIFE! THE STOCK COAT by Casual Craft richly lined for super warmth. Wide, deep pockets, heavy leather buttons. \$30.00.

To Publicity Chairman: Would you like some help in preparing newspaper releases? Write to this newspaper and ask for our "Tips on Submitting News Releases."

WALTERS
14 MAPLE STREET, SUMMIT, 272-1511
OPEN EVERY EVENING UNTIL 9 P.M.
SOME CLOTHING DEPARTMENT

We make sure they fit as good as they look.

Stride Rite makes all their shoes to fit. And we make doubly sure they do. No wonder parents rely on us.



FUTTER'S SHOES

383 MILLBURN AVE., MILLBURN
Open Thurs. Even. Parking across the street

His'n Hers!

Clarks TREK™

IS FOR TRAVELING

WALLABEES

- Sand Suede
- Brown Calf

Clarks OF ENGLAND

All kinds of traveling — up mountains or dreaming in the hammock. They are very, very comfortable and very, very tough. The design gives barefoot freedom; the wedge sole gives extra support. In Ox Hide leather and soft sand suede. Both men's and women's sizes are \$26.00.

Designed for maximum comfort with a shape that exactly fits the foot. Glove-soft leather uppers, unique soft-padded inside construction and plantation crepe wedge soles combine to relax the foot. Try a pair. You'll want to take them off. Women's at \$24., men's at \$26., the pair.

FRIDAY DEADLINE

Attorneys other than spot news should be in our office by noon on Friday.

Mrs. Eisler joins council

Mrs. Edgar Eisler of Hillside has been appointed to the Clean Air Council by Governor Cahill.

The Clean Air Council is an advisory body in the N.J. Department of Environmental Protection and is comprised of 17 members, six of whom represent the general public. The council is empowered by law to study the State's Air Pollution Control Program and the need for long range technical support. It makes recommendations to the commissioner of Environmental Protection and must hold at least one public hearing a year.

Mrs. Eisler is president of the New Jersey Citizens For Clean Air, a non-profit, tax-exempt organization founded in 1966 to alert the public to dangers of air pollution which maintains a speaker's bureau and distributes educational material and testifies at public hearings.

Mrs. Eisler is also a member of the Union County Environmental Health Advisory Committee, an advisory group to the Union County Freeholders, and a member of the Hillside Conservation and Beautification Committee, an advisory group to the Hillside Township Committee.

Nature Club plans club

The Summit Nature Club will hold its annual social night Dec. 16 at the Lincoln School. John Miller will present his film on "Morris County - Survival in the Future," an investigation of water resources.

William and Jay Bromley, Fairleigh Dickinson University students, produced the film under the auspices of the Summit Nature Club and the university.

The James W. Hand Jr. Conservation Award will be presented to a New Jersey area resident in recognition of his conservation efforts. Refreshments and a short film segment of past year field trips will conclude the evening's activities.

The meeting will begin at 8:15 in the Lincoln School auditorium. Woodland reserve, Summit. The price has been invited to attend.

Where Else!

FAMOUS BRAND LINENS FROM AMERICA'S FINEST MILLS AT LESS THAN WHITE SALE PRICES 365 DAYS A YEAR!

45% TO 50% OFF

JUST ARRIVED!
NO-IRON PERCALE, PRINTED DESIGNER SHEETS
2 FOR 7.00

72" x 104" Twin fitted, Elizabeth \$7.95
1.25 ea. double fitted 81" x 104" 2 for \$9.00
12.00 ea. Queen fitted 90" x 110" 2 for \$12.00
16.00 ea. King fitted 100" x 120" 2 for \$16.00

THE QUALITY & SOME SLIGHTLY IRREGULAR
"You will recognize the famous label!"

HAND-TOWELS
• ALL 1st QUALITY
• FAMOUS MILLS
VALUE 2 FOR 1.00

NETTLE CREEK THROW PILLOWS
\$300 ea. Huge Assortment Reg. \$7 to \$15- Buy 2, save additional 10 per cent Buy 3, save additional 15 per cent Buy 4, save additional 20 per cent

FUTTER'S SHOES

383 MILLBURN AVE., MILLBURN

USE YOUR CREDIT CARD

WE FRAME & LITHOGRAPH. WATER COLORS.

We Frame Creative Needlework • Cross-stitch Embroidery • Etchery You Name It... We Frame It

2120 Springfield Ave. VAUXHALL, N.J. 07088 (OPEN POST OFFICE)

687-9393

IN STOCK EXTRA LONG-FITTED TWIN SHEETS

Be in Bath

770 MORRIS TURNPIKE SHORT HILLS

OPEN DAILY 10:00 A.M. TO 8:00 P.M.

Honor roll

(Continued from page 1) Koehler, Lisa Kohl, Jane Kray, Scott Kuffer, John Kuntz, William Kuntz, Dennis Lada, Robert Lada, David Landwehr, Jane Seclia, Karen Lunge, Elaine Lausnik, William Lannan, Linda Layton, Jay Lester, Linda Littlefield, Andrea Susan Lyons, John Mayhew, Brian Mayell, Mary-McKea, Don Meyer, Barbara Middicauff, David Miller, Guy Miller, Nancy Miller, Laurel Nottoli, Cynthia Morris, ...

Choirs will sing cantatas Sunday

"Rejoice, Beloved Christians," a short Advent cantata will be featured at the 8:30 and 11 a.m. services at the First Baptist Church of Westfield on Sunday, Dec. 12. The selection will be presented by the combined adult choir of the First Baptist Church and the County Presbyterian Church of Mountainide.

The choirs have been prepared and the presentation will be directed by William Reiser, organist of the Mountainide Church and Evelyn Bleske, organist-director of the Westfield Church. Alfred Stiefel will be the guest bass soloist.

Y fun club for boys set

A week-long "vacation fun" program will be held for boys in grades 1 through 6 spend their Christmas time off from school. The program will be held at the Westfield YMCA Dec. 27 through 31. Mountainide residents may also participate.

The program will begin at 10 a.m. and end at 4 p.m. daily. Divided by age into groups of 10 boys will help to create a friendly atmosphere around their own interests with the help of counselors. Y program director John A. Leitch will supervise the program.

Deadline for registration, which is limited to 50 boys, is Dec. 24. Those enrolled will bring their own lunches. Much will be provided.

The fee is \$20 for full-privilege members, \$22 for non-members who reside in Westfield and \$25 for all others.

Expensive auto proves to be stolen

A routine check of a car on Rt. 22 in the early morning hours last Monday led to the arrest of a Newark man who was charged with being in possession of a stolen car valued at \$10,000. Stephen Walker of Newark, 38, was arrested before Judge Jacob Bauer in Mountainide Municipal Court last night.

According to police, Walker was stopped on the highway at about 4:30 a.m. The car Walker was driving was stolen from Wells Cadillac in South Orange in June 1970.

DAWSON FORD, Inc. (Formerly Schmidt Ford) is continuing the fine tradition of low, low prices. QUALITY SERVICE - A-1 USED CARS. WALTER A. RIEGLER, GENERAL SALES MANAGER. 290-306 BROAD ST. SUMMIT 277-1665

SEW WHAT? THE BIBLE QUIZ. Insert twice over the dashes reading down, the name of the Bible character who was asked to rule over Israel replied: "I will not rule over you, neither shall I rule over you; the Lord shall rule over you." When correctly done, you will receive 100 perfect words reading across.

DAWSON FORD, Inc. (Formerly Schmidt Ford) is continuing the fine tradition of low, low prices. QUALITY SERVICE - A-1 USED CARS. WALTER A. RIEGLER, GENERAL SALES MANAGER. 290-306 BROAD ST. SUMMIT 277-1665

FUNERAL DIRECTORS. Westfield: Fred H. Gray, Jr., Pres. & Gen. Mgr. Cranford: William A. Davis, Manager. 276-0092

Letters To Editor

"STILL INVOLVED" "I'm fed up with old men dreaming up wars for young men to die in..." So spoke Sen. George McGovern recently. Again, it's opposed our military involvement in Indochina for eight years.

In September of 1968, Sen. McGovern uttered the Senate floor to criticize our Vietnam policy. He was the first U.S. senator to do this. And on that day, Sen. McGovern warned us of the direction this policy would take us. No one listened.

He said on that day in 1968: "The trap we have fallen into there will haunt us in every corner of this revolutionary world if we do not properly appraise its lessons."

Since that day over eight years ago, Sen. McGovern's words have become reality. And since that time, he has continuously spoken out against the war. Since last September when I decided to put together a group for McGovern, I met and talked to many people, young and old, about Sen. McGovern and the Vietnam war. And no matter where I was, or whom I talked with, there was always a feeling of "why bother with the war, the war is really over?" These people seem to think that President

Nixon has ended our involvement in Vietnam. That we can now go about our business as usual. Go to all the football games on Saturday. Go to all the parties over the weekend. The war is really over, nothing really to worry about. But these few little things bother me. We are spending \$1 billion to bomb Southeast Asia. During the Nixon years, the US has dropped more tons of bombs on Southeast Asia than we dropped during all of World War II.

The war has expanded; we are killing people in Cambodia and Laos as well as Vietnam now. And during the 2 1/2 years President Nixon has been in office, over 18,000 Americans have been killed, many tens of thousands more wounded.

And here is a small catch for you to think about: President Nixon says he will leave a "residual force" in Vietnam. It seems to me that no matter how you look at it, we are still very much involved. Business as usual? DANNY PASTORIN Chairman People's Alliance for McGovern 167 Mountainide Dr.

School board

(Continued from page 1) Persons wishing to circulate petitions may obtain these from McDonough, as secretary of the Board of Education. Petitions must be returned to McDonough by a p.m. Dec. 30. Requirements for board candidates may also be obtained from McDonough. A candidate must be a resident of the school district for two years and of legal age to qualify for office.

Dec. 30 is also the deadline for registering to vote in the school election. Persons who are not now registered may do so at the office of the local municipal clerk or at the County Board of Elections on Highway Avenue in Elizabeth. The Mountainide clerk's office is open from 9 a.m. to 5 p.m. and the county office is open from 9 a.m. to 4 p.m. both Monday through Friday. Change of address notification must be made by mail by Dec. 30.

TURN ON'S

TURN ON'S THE LIFE OF A MAN AND THE LIFE OF A WOMAN

BARRY'S Frame Shop 475 PARK AVENUE, SCOTCH PLAINS, Corner Westfield Ave. Distinctive Custom Picture Framing Original Oil

Water Colors A Signed Limited Editions "THERE IS AN ART TO GOOD FRAMING" PAINTING IN REAR OF STORE

SEAMLESS 247c NYLONS PAIR PACK Latest fashion styles. LIMIT 2 PR.

IVORY LIQUID 22 Oz. REG. 79c

LADY FAIR TOILET TISSUE 10-Pack. REG. 79c. 75c VALUE. SCOPPO ICE CREAM 49c. 75c VALUE. Choice of flavors.

APPLIANCE SAVINGS. CLAIROL'S HAIRSETTER \$16.89. MAKE UP MIRROR \$16.88. MODEL CTP-2002. PERKALATOR \$10.99. COMPACT PORTABLE TAPE RECORDER \$19.99.

SEW WHAT? THE BIBLE QUIZ. Insert twice over the dashes reading down, the name of the Bible character who was asked to rule over Israel replied: "I will not rule over you, neither shall I rule over you; the Lord shall rule over you." When correctly done, you will receive 100 perfect words reading across.

HEALTH & BEAUTY AID SAVINGS. \$1.50 VALUE PROP.P.H. \$1.27. \$1.15 VALUE 1 OZ. TUBE BRVLGREEN DRESSING \$0.69. \$1.50 VALUE 16 OZ. BOTTLE ROYAL INSTANT BALSAM HAIR CONDITIONER \$1.27. \$2.25 VALUE 13 OZ. PROTEIN 21 HAIR-SPRAY \$1.99. \$1.50 VALUE 16 OZ. BOTTLE BRYLCREEM DRESSING \$1.27. \$1.50 VALUE 16 OZ. BOTTLE BRYLCREEM DRESSING \$1.27.

CRYSTAL MASCARA \$1.47. \$1.50 VALUE 16 OZ. BOTTLE BRYLCREEM DRESSING \$1.27. \$1.50 VALUE 16 OZ. BOTTLE BRYLCREEM DRESSING \$1.27.

THE PEOPLE PLEASE! SAV-ON drug stores. YOUR CHRISTMAS GIFT NEED-QUARTERS. OPEN 9 A.M. TO 9 P.M. SUN. DEC. 12 & 19. PRICES GOOD THROUGH SATURDAY, DEC. 11.

LOOK WHAT 9c BUYS! FRAGRANCE CANDLES 9c. ENVELOPES 9c. WIDE VARIETY COLORING BOOKS 9c. BOX OF 200 BICIGETS 9c. BOX OF 16 LIGHTER FLUID 9c. CHOICE OF STYLE GIFT TAGS 9c. GENERAL ELECTRIC REPLACEMENT BULBS 9c. DISPENSER CELLO TAPE 9c.

DECK THE HALLS SAVINGS. 25 BULB STRIP OUTDOOR TREE LIGHTS \$2.77. DELUXE ASSORTMENT CARDS \$1.99. SCOTCH PINE \$4.99. CHRISTMAS COLORS GIFT WRAP \$0.69. DELUXE ASSORTMENT 17 & 21 JEWEL WRIST WATCHES \$29.95. SUITCASE FOR MEN OLD SPICE GIFT SET \$1.09.

TOYS FOR GOOD GIRLS AND BOYS. CENTER BALANCED BATTLE \$0.99. KENNER BATTERY OPERATED DUNE BUGGY \$26.88. FAMILY ENTERTAINMENT MONOPOLY GAME \$3.99. SUPER SOFT POWER CARS \$1.99. US 10" Long, Heavy Model in 1/2 Scale \$1.99.

TOYS FOR GOOD GIRLS AND BOYS. CENTER BALANCED BATTLE \$0.99. KENNER BATTERY OPERATED DUNE BUGGY \$26.88. FAMILY ENTERTAINMENT MONOPOLY GAME \$3.99. SUPER SOFT POWER CARS \$1.99. US 10" Long, Heavy Model in 1/2 Scale \$1.99.

TOYS FOR GOOD GIRLS AND BOYS. CENTER BALANCED BATTLE \$0.99. KENNER BATTERY OPERATED DUNE BUGGY \$26.88. FAMILY ENTERTAINMENT MONOPOLY GAME \$3.99. SUPER SOFT POWER CARS \$1.99. US 10" Long, Heavy Model in 1/2 Scale \$1.99.

TOYS FOR GOOD GIRLS AND BOYS. CENTER BALANCED BATTLE \$0.99. KENNER BATTERY OPERATED DUNE BUGGY \$26.88. FAMILY ENTERTAINMENT MONOPOLY GAME \$3.99. SUPER SOFT POWER CARS \$1.99. US 10" Long, Heavy Model in 1/2 Scale \$1.99.

LOOK WHAT 9c BUYS! FRAGRANCE CANDLES 9c. ENVELOPES 9c. WIDE VARIETY COLORING BOOKS 9c. BOX OF 200 BICIGETS 9c. BOX OF 16 LIGHTER FLUID 9c. CHOICE OF STYLE GIFT TAGS 9c. GENERAL ELECTRIC REPLACEMENT BULBS 9c. DISPENSER CELLO TAPE 9c.

DECK THE HALLS SAVINGS. 25 BULB STRIP OUTDOOR TREE LIGHTS \$2.77. DELUXE ASSORTMENT CARDS \$1.99. SCOTCH PINE \$4.99. CHRISTMAS COLORS GIFT WRAP \$0.69. DELUXE ASSORTMENT 17 & 21 JEWEL WRIST WATCHES \$29.95. SUITCASE FOR MEN OLD SPICE GIFT SET \$1.09.

TOYS FOR GOOD GIRLS AND BOYS. CENTER BALANCED BATTLE \$0.99. KENNER BATTERY OPERATED DUNE BUGGY \$26.88. FAMILY ENTERTAINMENT MONOPOLY GAME \$3.99. SUPER SOFT POWER CARS \$1.99. US 10" Long, Heavy Model in 1/2 Scale \$1.99.

TOYS FOR GOOD GIRLS AND BOYS. CENTER BALANCED BATTLE \$0.99. KENNER BATTERY OPERATED DUNE BUGGY \$26.88. FAMILY ENTERTAINMENT MONOPOLY GAME \$3.99. SUPER SOFT POWER CARS \$1.99. US 10" Long, Heavy Model in 1/2 Scale \$1.99.

TOYS FOR GOOD GIRLS AND BOYS. CENTER BALANCED BATTLE \$0.99. KENNER BATTERY OPERATED DUNE BUGGY \$26.88. FAMILY ENTERTAINMENT MONOPOLY GAME \$3.99. SUPER SOFT POWER CARS \$1.99. US 10" Long, Heavy Model in 1/2 Scale \$1.99.

TOYS FOR GOOD GIRLS AND BOYS. CENTER BALANCED BATTLE \$0.99. KENNER BATTERY OPERATED DUNE BUGGY \$26.88. FAMILY ENTERTAINMENT MONOPOLY GAME \$3.99. SUPER SOFT POWER CARS \$1.99. US 10" Long, Heavy Model in 1/2 Scale \$1.99.

TOYS FOR GOOD GIRLS AND BOYS. CENTER BALANCED BATTLE \$0.99. KENNER BATTERY OPERATED DUNE BUGGY \$26.88. FAMILY ENTERTAINMENT MONOPOLY GAME \$3.99. SUPER SOFT POWER CARS \$1.99. US 10" Long, Heavy Model in 1/2 Scale \$1.99.

ECHO PLAZA SHOPPING CENTER Mountain Ave. & Route 22 SPRINGFIELD, N.J. DR 6-4134. THIS CHRISTMAS SEND AMERICAN GREETING CARDS.

LOOK WHAT 9c BUYS! FRAGRANCE CANDLES 9c. ENVELOPES 9c. WIDE VARIETY COLORING BOOKS 9c. BOX OF 200 BICIGETS 9c. BOX OF 16 LIGHTER FLUID 9c. CHOICE OF STYLE GIFT TAGS 9c. GENERAL ELECTRIC REPLACEMENT BULBS 9c. DISPENSER CELLO TAPE 9c.

DECK THE HALLS SAVINGS. 25 BULB STRIP OUTDOOR TREE LIGHTS \$2.77. DELUXE ASSORTMENT CARDS \$1.99. SCOTCH PINE \$4.99. CHRISTMAS COLORS GIFT WRAP \$0.69. DELUXE ASSORTMENT 17 & 21 JEWEL WRIST WATCHES \$29.95. SUITCASE FOR MEN OLD SPICE GIFT SET \$1.09.

TOYS FOR GOOD GIRLS AND BOYS. CENTER BALANCED BATTLE \$0.99. KENNER BATTERY OPERATED DUNE BUGGY \$26.88. FAMILY ENTERTAINMENT MONOPOLY GAME \$3.99. SUPER SOFT POWER CARS \$1.99. US 10" Long, Heavy Model in 1/2 Scale \$1.99.

TOYS FOR GOOD GIRLS AND BOYS. CENTER BALANCED BATTLE \$0.99. KENNER BATTERY OPERATED DUNE BUGGY \$26.88. FAMILY ENTERTAINMENT MONOPOLY GAME \$3.99. SUPER SOFT POWER CARS \$1.99. US 10" Long, Heavy Model in 1/2 Scale \$1.99.

TOYS FOR GOOD GIRLS AND BOYS. CENTER BALANCED BATTLE \$0.99. KENNER BATTERY OPERATED DUNE BUGGY \$26.88. FAMILY ENTERTAINMENT MONOPOLY GAME \$3.99. SUPER SOFT POWER CARS \$1.99. US 10" Long, Heavy Model in 1/2 Scale \$1.99.

TOYS FOR GOOD GIRLS AND BOYS. CENTER BALANCED BATTLE \$0.99. KENNER BATTERY OPERATED DUNE BUGGY \$26.88. FAMILY ENTERTAINMENT MONOPOLY GAME \$3.99. SUPER SOFT POWER CARS \$1.99. US 10" Long, Heavy Model in 1/2 Scale \$1.99.

To Buy or Sell - - Or Dig A Well
 For Personals- - or Personnel -
 Clean Rugs? Kill Bugs?
 Find Antique Mugs?
 Alter Coats, Renting Boats -
 Baby Sitters, Puppy Litters -
 Roofing, Siding,
 Horseback Riding-
 Mowers, Towers,
 Garden Growers -

CLASSIFIED IS FOR

YOU

**FOR FAST RESULTS YOUR AD CAN APPEAR IN
 8 NEWSPAPERS**

• IRVINGTON HERALD • UNION LEADER • SPRINGFIELD LEADER • VAILSBURG LEADER
 • THE SPECTATOR (Rosalia & Rosalia, Pa.) • LINDEN LEADER • SUBURBAN LEADER (Kearlwood) • MOUNTAINSIDE ECHO

USE THIS EASY WANT AD FORM...

Five (5) Words Of Average Length Will Fit On One Line - For Extra Long Words Allow Two (2) Spaces - Figure Your Cost By Multiplying The Number Of Words By 16¢ Minimum Charge \$3.20 (20 Average Words).

SUBURBAN PUBLISHING CORP.
 1291 Steyerger Ave., Union, N.J.

Please insert the following classified ad:

1	2	3	4	5
6	7	8	9	10
11	12	13	14	15
16	17	18	19	20

If additional words are required, attach separate sheet of paper.

Name _____

Address _____

City _____ Phone _____

Insert Ad _____ Times (s) Per Insertion Starting _____ (Date)

Amount Enclosed () Cash () Check () Money Order

**OR
 CALL
 US**



Only 16¢ per word

Based on 5 average length words per line.
 Minimum charge \$3.20 - 4 line ad

Deadline: Tuesday Noon, for Thursday publication

Break-ins reported last week by police

Two cases of break and entry were reported by Springfield police last week, one at a residence and one at a business.

Thieves broke into the offices of a business on Victory road on Tuesday and took a number of

office machines, police reported.

On Wednesday, thieves forced their way into a residence on Taylor court and ransacked bedrooms in the home, police said.

Emanuel United Methodist shares Christmas oratorio

The Chancel Choir of Springfield Emanuel United Methodist Church, Church Hall at Academy Green, will present "The Wonder of Christmas" an oratorio by John W. Peterson, at the 11 a. m. service this Sunday. The choir will be directed by Norman Simons, organist.

The Church School meets at 9:30 a. m. with children through the sixth grade in Wesley House, seventh and eighth grades on the third floor of the church annex and senior high schoolers in Fellowship Hall. The 9:30 a. m. chapel service will not be held because of the oratorio. German lutheran worship at 3:30 a. m. in the sanctuary will be conducted by Edward Schilling. His paper-His services will be entitled "Gospel of the Kingdom," based on Matthew 24:14.

Senior and junior high both meet at 6 p. m. The Methodist men will hold their Christmas party and game night on Tuesday evening at The Women's Society of Christian Service will enjoy its Christmas covered dish luncheon and program on Tuesday at 11 a. m.

Miss Leber rites today

Funeral services for Miss Kile W. Leber, 20 Blacks Lane, Springfield, will be held at 11 a. m. today in North and South Suburbs, 412 Morris Ave., Springfield.

Miss Leber died Monday at the King James Nursing Home in Durham, Tennessee. She was 80 years old.

A lifelong resident of Springfield, she was one of the oldest members of the Presbyterian Church of Springfield. She is survived by a niece, Miss Isten L. Brill.



Another Realty Corner Sale - This lovely property at 27 Gail Court, Springfield, New Jersey sold for Mr. & Mrs. Julia Freeman. This sale was arranged by Gloria Rapp, an associate of Anne Sylvester's "All Girl" Real Estate Office.

MEMBER OF REAL ESTATE EXECUTIVE HOMEOWNERS ASSOCIATION OF NEW JERSEY
Call 374-2200 for individual consultation on our methods of selling your property.

THE CHILDREN'S INSTITUTE

a day treatment center for emotionally disturbed children

presenting
DR. RUDOLF EKSTEIN
Director of Reiss-Deviss Child Study Center, U.S.C.A.
Clinical Professor of Medical Psychology at L.O.C.C.A.

lecture and discussion
"The Interplay of Psychological and Education in Dealing with the Disturbed Child"

Thursday, December 16, 8:00 p.m.

8144 Jeshurun - 1025 South Orange Ave., Short Hills, N.J.

Contributions: Professionals Adults \$5.00 Ms. Litovsky, Director Students 2.50 337 So. Harrison St., E. Orange 977-1133

Tax reform topic at YW

"Plan, Worry, Worry, Foul!" is a stimulating program to be held in New Jersey produced by the state tax committee of the League of Women Voters, will be featured at the Summit YWCA monthly public affairs luncheon on Tuesday, December 15. Luncheon will be served at 12:30 p. m. and conclude at 1 p. m. Mrs. Rowland Kelly of the Summit League of Women Voters, are sponsored by the public affairs committee of the YWCA. They combine luncheon and speakers on a wide variety of topics of current concern and are held regularly on the second Tuesday of each month. Reservations for "Lunch and Learn" must be made in advance by phoning the YWCA.

Bank names Cole operations officer

NEW YORK. — The promotion of John L. Cole of Mountaineer to operations officer of the Bank of New York was announced this week by Samuel H. Woolley, chairman and chief executive officer.

Cole joined the bank in 1961 and was appointed assistant operations officer in 1969. He is involved in the servicing of fiduciary accounts through the 1361 360 system. He attended New York University and Long Island University and served in the Air National Guard from 1960-66. He is a member of the Alexander Hamilton Institute, the American Management Association, and the National Municipal Association. Cole, his wife, Joan, and their son, Gregory, live in Mountaineer.



JOHN L. COLE

FREE! '72 CALENDAR WIN PRIZES! WIN PRIZES!

IT'S IN THE MAIL!! IF YOU HAVEN'T ALREADY SEASON'S GIFT CATALOG STOP IN FOR YOUR COPY TODAY!

BOXED CHRISTMAS CARDS by BUZZA-CARDOZ ALL DISCOUNTED!

CLOSEOUT! COLOR FLO(R) PLASTIC FLOWERS 1/2 PRICE

LADY BUBBLES MIRACLE FIT PANTY HOSE \$6.99 66c

SYLVANIA FLASH CUBES REG. \$1.53 75¢

FISHER PRICE TOYS Not Just One by Two! \$15.00 \$10.00

10 PERCENT DISCOUNT ALL RADIOS IN DISCOUNT PRICES!

Special Week's Special 30" MUSICAL SANTAS & SNOWMANS REG. \$12.50 \$9.00

A Great Gift for the "Yuletide" Buy Now & Save! \$6.50

SPECIAL RUFF BASKETBALL Perfect Indoor Softball \$24.99

20% OFF on DEVELOPING FILM

Bob Lissner's **SPRINGFIELD PHARMACY**

EARLY COPY
Publicity Chairmen are urged to get their names in the Friday deadline for other than spot news. Include your name, address and phone number.

NIH THE SEARCH FOR HEALTH

A REPORT FROM THE NATIONAL INSTITUTES OF HEALTH NATIONAL BUREAU

AIR POLLUTION AND CANCER

Each minute we inhale and exhale about 200 liters of air. If the air is polluted with microscopic particles of metals, ash, and oils, we inhale these contaminants too. It appears likely that prolonged exposure to impurities that produce cancer in animals can readily lead to cancer in man.

Scientists tell us that the body's airways have ways of eliminating foreign particles. The larger foreign particles are trapped in the mucus lining the larger airways of the lungs. When larger particles get caught in the mucus, they are coughed up or the airways, the cilia sweep them out of the lungs with a whip-like motion.

Polluted air can alter the body's defense mechanisms designed to eliminate foreign particles. Synthetic smog, for instance, slows down the ciliary action and changes the rate at which mucus is produced. Then impurities can get further into the lungs where the passageways aren't so well protected. There, they irritate the passage walls and can promote cancer.

Other epidemiologists—scientists who study the distribution and causes of cancer—have determined that lung cancer occurs three times as often in urban areas as in rural areas. Cancer of the bladder, esophagus, prostate, and large intestine are also more frequently detected in urban than rural populations.

Several habits, such as more cigarette smoking among urbanites, may account for some of the higher cancer incidence, but researchers suspect that air pollution may also contribute to the higher urban rate.

The air in U.S. cities is six times more polluted than that in non-urban areas, and the chemistry of some air pollutants is similar to that of cigarette smoke.

Benzyrene, a chemical known to cause cancer in animals, is found in the polluted air of many cities.

Epidemiologists suggest that one, but severe, element in polluted air may work together with cigarette smoke or viruses to produce cancer.

In a recent study, scientists injected laboratory mice with influenza virus. The mice that survived had a slightly higher cancer rate than normal. When these animals were exposed to artificial smog, however, the cancer incidence was increased manifold.

Research scientists use several methods in determining whether substances present in air, water, or other media; by repeatedly painting the animals' skin with a pollutant, or by injecting it under the skin, or placing the rodent in an artificially polluted environment.

By eliminating first one, then another, chemical component of the pollutant, they can determine which chemical agent causes a cancerous tumor.

Chemicals which induce cancer in animals have been found in a variety of pollutants, including tars in tobacco smoke, soot, oils, and products of incomplete burning of organic materials, such as the smoke of trash and tobacco.

They get the air from the engine exhausts of cars, trucks and buses, smoke from coal and oil burned in houses, factories, power plants, and from incinerators and burning garbage dumps.

Great Eastern

Spectacular Toy Event

SAVE 30% to 50% AND MORE!

Remote Controlled "Matchbox" Motorway

597

Regular low price — \$9.00

UNBELIEVABLE! First time ever sold below cost price! Save over \$11 on this amazing 30 piece remote controlled "Matchbox" Motorway. Set includes 3 remote control units, 2 matchbox cars, 14 ft. over 1/2 under track, power pack, transformer, 6 elevated road treaties, 2 motor houses, decals, 10 reusable activator pins, plus instruction booklet! FANTASTIC VALUE! Hurry in!

SAVE 11.02

TO GET

Cute Reclining Doll Stroller

799

SAVE 14

Regular low price — \$8.00

Just right for walking dolls! Folding doll stroller with reclining back, fringed canopy and chrome tubular frame.

Ideal's Wild Tornado Bowl

284

SAVE 2.15

Regular low price — \$3.00

Wild & wacky! The tornado top turns wild, slamming pins in all directions. Who can stop the tornado top? Age 7-14. As seen on TV.

Ideal's Talking Crissy or Velvet

899

SAVE 17

Regular low price — \$9.00

Lovely, pretty dolls that speak their mind to anybody who puts their hands on them. A great toy for your own little doll lover!

General Electric Show 'n Tell

2188

SAVE 3.11

Regular low price — \$6.00

Show 'n Tell Photo-Voice shows bright, full color pictures in time-to-words and music. High quality 2 speed record player.

Solid Rock Maple Toy Chest

1188

SAVE 4.11

Regular low price — \$5.00

Ideal for toys, records, games. Solidly constructed northern rock maple. Safety lid, heavy duty hinges. Equipped with casters.

Remco's Dune Buggy Wheelies

357

SAVE 2.42

Regular low price — \$3.00

Press remote control of button and watch it roar up on its rear wheels and take off! Automatic steering. Balanced roll stop.

Springfield State Bank

1072 WORLD BANK INCUBATOR AND CHILD CRAFT

Mrs. Edmund Larson Leggett, Incubator Specialist

Diene Boyman, 525-4721

WE RESERVE THE RIGHT TO LIMIT QUANTITIES.

STARTING ON DEC. 12 GREAT EASTERN WILL BE OPEN WEEKDAYS TO 10 P.M. THE NIGHT BEFORE.

SANTA CLAUS IS COMING TO SPRINGFIELD STATE BANK

The Great Man will be on hand in the lobby of the new Springfield State Bank next Thursday, December 16, next Friday, December 17, and next Saturday, December 18. He'll be there to greet every youngster who drops in to see him. Every one of Santa's young visitors will be given a free stocking full of toys and candy.

Santa will be in our lobby from 3 to 5 P.M. next Thursday and Friday and from 9 to noon next Saturday.

So, come on in and meet Santa. There's plenty of free parking.

Springfield State Bank

"The Sensitive Bank That's in Town to Help You!"

Hillside Avenue at Route 22 — Entrance east on Hillside Avenue
Springfield, New Jersey 07081

Regional spotlight shifts to basketball now

By JOHN BARRY
 Coach Ralph Bianchi, after changing Conference and Union County championships, has Livingston Regional High shifted his attention to his

varsity basketball squad, along with soccer players Karl Mohas, Ron Stach, Bob Mikulas and Brad Stone. Mohas, a key factor in the Highlanders' 1971 season a year ago, figures to direct Bianchi's offense from the guard position. Stach and Mikulas gained a good deal of varsity experience last season. Also returning are Don Reynolds, a consistent scorer last season, and two football quarterbacks, Dave Corrigan and John Barry. Corrigan started with junior Peter Huberstrol on the JV squad last year. Barry gained varsity experience towards the end of the season. Juniors Huberstrol, Jay Grief and

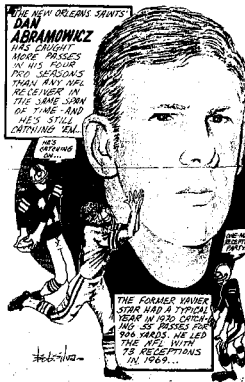
Jim Wiechelsau, as well as senior Tom Burns, should help the team.
 Meanwhile, wrestling Coach Michael Sorrentino will be working with football players Kevin-Dowling, Rich Wood, the soccer-playing brothers Scott and Todd Shallock, and some outstanding performers from last season — Kevin Keyes, Bob Preston and Mike LaFrance — in preparation for the varsity wrestling season. With District champs Brian Ruff and Keyes, Sorrentino has a strong nucleus to build around.
 Another winter sport once considered minor, but now demanding recognition because of G.L.'s success, is

bowling. The Highlanders were county champs a year ago and the returning tandem of Alex Jankowski and Bill Ferdinand promise to keep the team rolling. Bob, average around 180.
 Opening in second competition season this year, the swimming team is anticipating a good turnout. Returning from last year is senior boatstroke stand-out Jack Apple; one of the best swimmers in the county. In addition, senior Alex Wellington, who swam on the varsity relay team last year, junior Jon Jones and sophomore Tom Phillips are expected to contribute. Besides those keenly competitive swimmers, there are some who are planning to participate just for conditioning. Senior Scott Katten, for instance, is going out because he wants to prepare himself for a job as a lifeguard this coming summer.
 The indoor track program is simply a few months in preparation for the coming track season. Among those engaging in this sport will be hardlers Kent Rauscher and Les Langill and long distance runners Fred Anderson and Bob Frieland.
 The winter sports session to be the busiest for G.L. athletes, and each team promises to make it a successful one. Active backing from the student body and the people of Mountainide and Berkeley Heights is merited by these dedicated athletes.

DR. ALBERT J. ROSE

announces that he is moving
 his chiropractic offices
 to the new

Mountainside Village Mall
 615 Sherwood Parkway
 Mountainside, New Jersey
 233-4774



THE NEW ORLEANS SAINTS
DAN ABRAMOWICZ
 WOULD BE A GOOD SIGN IN HIS FUTURE WITH ANY OF THE NEW ORLEANS SAINTS. HE'S THE SAME SOB WHO SINGS "I'M A LITTLE SHOOTIN' STAR".

THE FORMER WINGER STAR
 HAD A TYPICAL HIGH SCHOOL CAREER. IN HIS JUNIOR YEAR HE LED HIS TEAM TO THE STATE CHAMPIONSHIPS.

MODERNIZATION WITH IMAGINATION

HOW IS YOUR CASTLE?

LET US CREATE TO YOUR TASTE:

- AN ORIGINAL FAMILY ROOM
- AN EFFICIENT KITCHEN
- AN ELEGANT BATHROOM
- AN EXCITING ALL-YEAR PORCH
- AN EYE CATCHING EXTERIOR

WE FURNISH SUPPLANTS, FURNITURE AND CARE FOR COMPLETE MAINTENANCE.

HAIN & REED
 25 YEARS EXPERIENCE

FOR A SURVEY OF YOUR HOME OR AN APPOINTMENT TO SEE OUR NEW IDEA-FILLED SHOWROOM
 Phone 867-1122 or 763-2000

Conserving Natural Gas

By Charlotte Mitchell
 Director of Consumer Information
 Elizabethtown Gas

Christmas comes 1,095 times a year...



with a self-cleaning gas range!

Most of you already know about the energy shortage in America. It's real. It's serious. It affects everyone who uses natural gas, electricity, petroleum and coal.
 If you remember a few simple tips for using natural gas efficiently, there should be enough to go around until we've exhausted our petroleum supplies.
 There are a few cooking tips that conserve time and natural gas. For one thing, plan your meals for the top of the range. Broiler meat cook faster than oven-prepared meat and use less fuel. And using the outer burner helps maintain required cooking temperatures without prolonged high flame.
 Of course, another great way to conserve natural gas is to become a master chef. It helps you use your old gas range with one of the modern appliances now on the market. And it saves other house furnishings so you require less gas for even more precise control of the flame.
 Burners with a brain and low temperature oven means little extra cooking without fuel flame.
 Another tip is to move efficient use of gas energy and great dollar savings for you. Let us save you the headache of eating in your family.
 If you have any questions on consumer information regarding natural gas, write to me at Elizabethtown Gas, P.O. Box 10, N.J. 07021.

This Christmas, give Mom the gift that keeps on giving all thru the day, all thru the year. What could be more delightful for homemakers—and their deserving families—than a modern gas range from Elizabethtown Gas?
 It's almost an Assistant Chef for that busy lady you love. The latest gas range turns itself on and off, controls its own temperature, bakes automatically, even cleans its own oven.
 See what Santa has in store for Mom now at our nearest showroom. You'll behold a glittering selection of styles, sizes and colors by Glenwood, Tappan, Magic Chef and Harwick.
 Budget-pleasing prices include delivery, normal installation and 2-year warranty on parts and service. Liberal credit terms, too.

Elizabethtown Gas
 Gas, Clean Energy of the Future.

ELIZABETH One Elmore Plaza 289-5000
 WESTFIELD 114 Elm St 289-5000
 BERND PARK Open area 111-3030 Opp. Menlo Park Shopping Center In Executive Plaza Bldg. / 289-5000

These showrooms open shopping nights and Saturdays. Offer good only in areas serviced by Elizabethtown Gas.

CHRISTMAS GIFT that lasts a lifetime...

... give your children, grandchildren, and anyone else close to you, a gift that they can appreciate for a lifetime. A Savings Account earning a high interest rate and starting them on the road to success, that they'll long remember you for. Open a savings account today!



FIRST FEDERAL SAVINGS

with branches in—
WESTFIELD WOODBRIDGE MOUNTAINSIDE GRANT CITY, CLARK MENLO PARK SHOPPING MALL

Great Eastern



SALE STARTS THURSDAY, DEC. 9
 SALE ENDS SATURDAY, DEC. 11

Sensational Savings on Outerwear

EXTRA VALUE DAYS FOR Merry Christmas Giftings

Big Outerwear Selection All At Terrific Savings!



\$10 each
 Regular low price 15.99 to 19.99
 Pile lined jackets, nylon ski jackets, cambr. ranchers with ringer pockets, selected corduroy Norfolk and clicker jackets. Choose from a tremendous selection of dress or sport wear in great seasonal shades. Hurry! Now's the time you've been waiting for 36-46, S.M.L.XL.

\$15 each
 Regular low price 19.99 to 19.99
 Corduroy ranchers, bush and flight jackets, pile or Sherpa lined Norfolk jackets and Navy pea coats; uncol corduroy flight jackets, quilt lined plaid ranchers, long coats, more! Great selection of seasonal colors! 36-46, S.M.L.XL. MEN'S DEPT.

Now's The Time For Great Savings On The Latest Style Boys' Outerwear

\$8
 Regular low price 12.99 to 14.99
 Sizes 4-7

\$10
 Regular low price 12.99 to 14.99
 Sizes 8-18

GREAT EASTERN DISCOUNT DEPT. STORES
 LITTLE FALLS | NEW BRUNSWICK | UNION | JERSEY CITY | PLAINFIELD
OPEN MONDAY THRU SATURDAY 10 A.M. TO 10 P.M. SUNDAY 10 A.M. TO 6 P.M.
 STARTING ON DEC. 9, GREAT EASTERN WILL BE OPEN WEEKDAYS TO 11 P.M. THIS SUNDAY TO 7 P.M.

WE RESERVE THE RIGHT TO LIMIT QUANTITIES.

Open Sundays, 10 a.m. - 5 p.m.

Come On Down To The FLORIDA ORANGE BOWL

Fresh Florida Citrus Fruit
Direct From Our Own Groves

Juice Oranges • Temples Grapefruits
• Tangelos • Murcotts • Duncan
• Valencia • Seedless Oranges • Tangerines
• Pomelos • Pomegranates • Citrus Candy

WALHEIM & ASSOCIATES, Inc. 231 Main St., 4th Floor, Chatham, Mass. 01925
Phone: 438-2311

CITRUS ALSO SOLD IN FULL CASES
Specialty Gifts • Your Florida Answer to the Continental United States • Citrus and Citrus Products • Free and Express Shipping

FLORIDA ORANGE BOWL

231 Main St., 4th-5th Floors, Chatham
Open Mon-Sat., 9 a.m. to 6 p.m.

Spas name a key exerc

Neil Kirchner of Pompton Lakes has been appointed district manager of all of the European Health Spas of Jersey. Jerry Jerome, regional area director, announced this week.

In his new post, Kirchner will be responsible for the hiring and training of personnel for European Health Spas in Paramus, Wayne, Woodbridge and Short Hills. Under his direction will be more than 200 Spa employees involved in providing service to club members, including Spa directors, service coordinators, counselors, instructors, maintenance men and attendants.

5th graders take educational odyssey

(The article which follows was written by Lawrence Dill, Cindy Drueker, Hertenbach, Susan Kuperstein, Shari Lehrman, Andrea Tamara, Cliff Westerman, and Elizabeth Young. They are students at the Thomas Sandinger School.)

Recently, the fifth graders of Thomas Sandinger School visited the County Outdoor Education Center at Berkeley Heights. They went on the field trip because they wanted to learn about the outdoors.

Judith Iskahn's group studied soil. They looked at different kinds of soil from various areas and compared them. They learned how to test soil to see if it was good. Debbie, their instructor, put some chemicals on samples which would show change colors.

When the soil turned yellow it meant that it had a lot of acid. Green meant that the soil was neither too acid nor too sweet, and purple meant that the soil was too sweet. The most useful lesson they remembered was "that dead and live, decayed animal life, air, water, sun, rocks, and minerals contribute to the making of soil."

Erica Sauer's class, studying survival, learned what to do when lost in the woods. Anne Neale, the instructor, taught the class how to use the abilities of the nose of a raccoon. She also showed them where to get water. The boys and girls learned that to purify water a pill called halazone is used.

The most important information they were taught concerned preparations for taking a hike. Now they know to tell someone where they are going, when they will return and what basic equipment to bring along when hiking.

They also learned about bird identification by using binoculars to spot many types of birds. Randi Fish noticed a woodpecker: Steven Coleman saw a blue jay, an owl, and a Pileated Woodpecker, a mourning dove.

Oscar Noroff, the instructor, gave the girls a recipe to use to attract birds: mix a cup of bacon drippings, peanut butter and

corn meal; then apply to pine cones or trees and watch the variety of birds appear for the week.

For studying pond life, each person had a net and cup. They put the net in the water and shook out what was caught. Steven Gelman caught three salamanders this way, and others caught crickets. All pond life was brought back to the laboratory and examined under the microscope.

When the pupils studying entomology found insects or spiders they put them in tubes for later examination under microscopes. Glenn

Blisk found a beetle and David Wirtenbaum spotted a bug caught in a spider's web.

The group believes that spiders are important because they eat insects that destroy plants. They learned that spiders belong to different groups because of their body structure. As an example, the moon has three body parts and two with its antennae whereas the spider has two body parts and feels with hairs on its body.

The fifth graders studying plant life saw plants of the meadow as well as trees such as the dogwood, black and red oak, basswood, and gray birch. They learned how to identify some leaves and learned which were better. The samples that were gathered were taken back to one of the houses in Deerwood Village where the group mounted, painted or drew around the specimens.

A poem that they learned helped them to tell

3 to face charges of lottery operation after Friday's raid

Three persons arrested in Springfield on charges dealing with the operation of a lottery are scheduled to appear in Springfield Municipal Court on Dec. 20.

The three, all free on \$1,000 bail, were arrested by Springfield police officers and investigators from the Union County prosecutor's office on a factory in Springfield's industrial section off Rt. 22 on Friday afternoon, detectives reported. They are Clarence Penn, 33, Gilberto Canino, 40 and Wendell Phillip Reynolds, 45, all of Newark, police said.

Complaints from the prosecutor's office charge each of the three with operating a lottery, engaging as messengers for a lottery and possession of lottery paraphernalia, all in connection with offenses allegedly committed before the arrests.

Penn is also charged with possession of lottery paraphernalia at the time of his arrest on a complaint signed by Pitt Andrew Calabrese.

3 to face charges of lottery operation after Friday's raid

Three persons arrested in Springfield on charges dealing with the operation of a lottery are scheduled to appear in Springfield Municipal Court on Dec. 20.

The three, all free on \$1,000 bail, were arrested by Springfield police officers and investigators from the Union County prosecutor's office on a factory in Springfield's industrial section off Rt. 22 on Friday afternoon, detectives reported. They are Clarence Penn, 33, Gilberto Canino, 40 and Wendell Phillip Reynolds, 45, all of Newark, police said.

Complaints from the prosecutor's office charge each of the three with operating a lottery, engaging as messengers for a lottery and possession of lottery paraphernalia, all in connection with offenses allegedly committed before the arrests.

Penn is also charged with possession of lottery paraphernalia at the time of his arrest on a complaint signed by Pitt Andrew Calabrese.

Yule green sale will benefit Y

The Summit Area YMCA at 67 Maple St., Summit, will sell Christmas trees, wreaths, holly, garlands, and greens now through Dec. 24 for the benefit of its youth programs. Balsams, Douglas firs, and Scotch pines will be available in the YM's parking area located on Cedar Street behind the pool.

Sale hours will be Monday through Friday, 10 a.m. to 9 p.m., Saturday, 9 a.m. to 7:30 p.m., and Sunday, 9 a.m. to 6 p.m.

NEED HELP? FIND THE RIGHT TREE WITH A WANT AD. Call 486-7100.

Union College appoints new athletic director

The appointment of Harold Fisher of Plainfield as director of athletics at Union College, was announced this week by Dr. Kenneth W. Iverson, president.

Fisher, who will continue in his major assignment as director of Union College's Plainfield campus, will succeed William Martin of Cranford, who resigned because of the press of other duties as head basketball coach of Cranford High School, and as athletic director and director of health, safety and athletics for the Cranford public schools.

Dr. Iverson said Martin has agreed to continue his affiliation with the Union College in a consulting capacity.

Union College's athletic program now includes basketball, tennis and golf. The Faculty Intercollegiate Athletic Committee, under the direction of Prof. Charles Varela, is preparing a long range plan for the expansion of the athletic program. The faculty has already recommended that wrestling be added as a varsity sport next year.

Fisher has an extensive athletic background, both as an athlete and professional player. At Van Meter, Ohio, Junior College, he made first team in basketball, football, and baseball.

As a member of the 1942-43 American Football Team and won the Most Valuable Player Award for 1947. Following his graduation from the University of Idaho, Fisher signed a free agent with the Pittsburgh Steelers, professional football team.

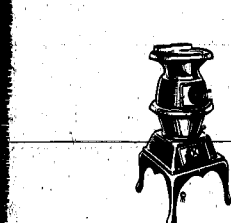
Fisher served three years in the Army and was named physical fitness champ of the Fifth Army area.

SOLD BY GEORGIA McMULLEN, Home at 42 Lyon Place sold for Mr. & Mrs. Preston Van Name to Mr. & Mrs. Charles Garuba formerly of Irvington. This sale was arranged by Verna Anderson, an Associate of the GEORGIA McMULLEN CORPORATION.

Georgia McMullen Corp.
REALTORS 41 MOUNTAIN AVE.
Members Multiple Listing

CARDINALS ATTENTION! Sell your seat to 50,000 families with a low cost Want Ad. Call 486-7100.

SPRINGFIELD BRANCH HOURS:
Mon. thru Fri. 8 A.M. to 6 P.M.
SATURDAY 9 A.M. to 12 Noon



IF THE HEAT'S ON... COOL IT!

So, what if the furnace is broken and the kids need braces for their teeth and it's Christmas shopping time - we can help you swing a speedy loan, and help keep the boiling point down.

THE UNION CENTER FINANCIAL

INSURED BY F.D.I.C. TO \$20,000

UNION - SPRINGFIELD

MAIN OFFICE: 150 N. BROAD ST., SPRINGFIELD, N.J. 07081
BRANCH OFFICE: 231 MAIN ST., 4TH FLOOR, CHATHAM, MASS. 01925

TELEPHONE 939-0000

Time to sign for Y swim

The Summit Area YMCA is now taking registration for all winter swim classes scheduled to begin the week of January 3. This includes the ten-week progressive swim instruction for boys and girls in grades 1 through 12, and junior and senior lifesaving.

Progressive swim classes meet after school on weekdays and are limited in size for individual instruction. All youngsters presently enrolled must re-register for the winter term with YMCA membership required.

Junior lifesaving class meets Monday after school and senior lifesaving on Tuesday evenings. A course fee is charged and non-members are welcome. Call the YM for further information, 272-3330.

Singer division picks ad agency

The North American industrial products division of the Singer Company, Somersville, has named Keyco, Martzke & Company of Springfield, in its advertising and public relations agency for the U.S., Canada and South American markets.

The industrial products division of Singer manufactures sewing machines, pressing equipment, sewing accessories, ticket-o-graph piece work control systems, needle-waivers.

To Publicity Chairman: Would you like some help in preparing newspaper releases? Write to this newspaper and ask for our 'Type out Your Substantive News Releases.'

Great Eastern

Super Spectacular Shirt Event!

EXTRA VALUE DAYS FOR Merry Christmas Offers

FROM ONE OF AMERICA'S FINEST MAKERS

Misses Shirts With Today's Look Styles

2.99 each

Singer division picks ad agency

Time to sign for Y swim

Singer division picks ad agency

To Publicity Chairman: Would you like some help in preparing newspaper releases? Write to this newspaper and ask for our 'Type out Your Substantive News Releases.'

Long Sleeve Slipovers

SPECIAL PURCHASE! 3.99

Don't miss this fabulous collection of famous named misses shirts with contoured bodies, long sleeves, button fronts and cuffs plus long pointed collars, 65% Dacron & polyester/35% cotton. Fashion colors. Sizes 8-16.

SPORTSWEAR DEPT.

GREAT EASTERN INNOVATION DEPT. STORES

LITTLE FALLS | HUNTSVILLE | WINDY HARBOR | BOSTON
OPEN EVERY DAY SATURDAY 10 A.M. TO 6 P.M. SUNDAY 11 A.M. TO 5 P.M.

YOUR ONE-STOP CHRISTMAS HEADQUARTERS

TRADITIONAL GRAVE BLANKETS
Finished with red Bases and White Borders

ALL PRICES & SIZES

- WREATHS - Choose from Preweeded Decorated and Undecorated - All Sizes Trimmed the way you like them!
- TREES - Individually selected Fresh Cut Balsam, Scotch Pine, Douglas Fir, Spruce
- HOLLY BUSHES & Boughs
- CHRISTMAS PLANTS • FIREWOOD

WAYSIDE GARDENS
54 MORRIS TURNPIKE SUMMIT 657 MOUNTAIN AVE. SPRINGFIELD

SALE STARTS THURSDAY, DECEMBER 9. SALE ENDS SATURDAY, DECEMBER 11

Youth, 20, faces charges of assault, possession of drug

Charges of assault and possession of marijuana have been brought against a young Kentworth man who reportedly engaged in a struggle with two Springfield police officers who tried to prevent him from allegedly disposing of a quantity of marijuana by swallowing it.

Ulrich Geiger, 20, of Kentworth was released on Friday Saturday following his arrest for charges on Monday, Dec. 7.

According to the police report, Geiger was stopped for a routine driver check on Meisel avenue by Patrolmen William Cieri and Joseph Fusco. When police approached, Geiger allegedly reached into the glove compartment, took something out and began swallowing it. Cieri and Fusco, attempting to rescue evidence of what they reported to be marijuana, engaged in a struggle with Geiger during the struggle, Geiger kicked Fusco in the face, police charged.

Del Vecchio joins bank staff; was postmaster for 16 years

Former Springfield Postmaster Val Del Vecchio has joined Springfield State Bank. Del Vecchio, who lives at 20 Greenwood ave., Springfield, will serve the bank in marketing, public relations and other areas, according to a bank spokesman.

Del Vecchio, a career postal employee who was postmaster in Springfield from 1954 until his retirement last year, was with Motors Insurance Corporation of Somerset before joining Springfield State Bank.

A native of Newark, Del Vecchio received a bachelor of science degree in chemical engineering from Newark College of Engineering in 1946. He worked in the Newark Post Office from 1946 until he received his commission as Springfield postmaster.

During World War II, he was captain in the Army for two years and active for two years during the Korean War, he is a retired lieutenant colonel in the Air Force Reserve.

A resident of Springfield since 1960, Del Vecchio has been active in civic affairs. He served two years on the board of Heart Fund, Inc. and on the board of the local chapter of the Springfield United Fund, which he helped to found. He is president of the local chapter of the Kiwanis Club. Currently secretary of the Springfield Lions Club, he served a term as the organization's president and as a deputy district governor. Del Vecchio is a member of the Springfield Senior Citizens Housing Commission.

He and his wife the former Frances Yust, are the parents of two children.



VAL DEL VECCHIO

Audubon film to focus on forests of Northwest

"The Untamed Olympics," third Audubon Wildlife film to be presented by the Summit Nature Club for the current season, will begin at 8 p. m. on Wednesday, at the senior high school, Kent Place boulevard, Summit.

Walter H. Berber will present surfturfed beaches, snow capped peaks, dense rain forests and jibo elk, mountain beaver, osprey and other wildlife that live in the Pacific Northwest wilderness.

Staff Editor of 17 Years

Nancy Lee Scelera of 17 years for Springfield, is staff editor for "The Campana," the Montclair State College yearbook, which will be issued next fall.

Public Notice

NOTICE TO CREDITORS: I, the undersigned, have been appointed executor of the estate of the late WILLIAM H. DEUTCHLER, deceased, and hereby give notice to all persons having claims against the estate of the said deceased to present the same to me at my office, 274 Springfield Ave., Springfield, N.J., on or before the 15th day of January, 1972, at which time I will receive and pay the same as I may be lawfully entitled to do. Claims not so presented will be barred. Dated Dec. 9, 1971. RALPH HORICELLO, Executor.

Public Notice

NOTICE TO CREDITORS: I, the undersigned, have been appointed executor of the estate of the late WILLIAM H. DEUTCHLER, deceased, and hereby give notice to all persons having claims against the estate of the said deceased to present the same to me at my office, 274 Springfield Ave., Springfield, N.J., on or before the 15th day of January, 1972, at which time I will receive and pay the same as I may be lawfully entitled to do. Claims not so presented will be barred. Dated Dec. 9, 1971. RALPH HORICELLO, Executor.

Two cars hit poles separate accidents

Springfield police reported two accidents early Saturday morning when cars ran into poles. One driver was injured.

According to P.I. Richard Kitch, Kaminster Cyscazone, 25, of Irvington was slightly injured during the accident.

When his car ran into a pole on Shungite road near Baller's way at 1:30 a. m., Cyscazone was taken to Overton Hospital by the Springfield Fire Aid Squad, treated and released.

The accident occurred when Cyscazone tried to slow down on Shungite and the car pulled to the left, Kitch reported.

The second accident occurred on Rt. 22 two hours later. Curtis Seymour of Plainfield was the driver of a car which hit a pole on Rt. 22 west near the Lido Drive, P.I. Edward R. Blumber reported. Seymour told police that someone cut him off.

H.C. Deuchler Optician advertisement featuring a portrait of a woman and text about eye exams and contact lenses.

Public Notice regarding the estate of William H. Deuchler, mentioning executor Ralph Horicello.

Large advertisement for Great Eastern store featuring 'HOLIDAY SAVINGS!' and various products like Wilson Tennis Racket, Mustang Bowling Ball, Johnny Unitas Football Helmet, and Hoppe's Gun Cleaning Kits.

Advertisement for Springfield Market featuring 'Notice To The Residents of Springfield' and listing products like groceries, meats, and fruits.

New voters' view's much like elders, Rep. Dwyer learns in study of polls

WASHINGTON—Rep. Florence P. Dwyer (R-18) Dec. 8, J. opened the door a crack this week on the year's chief political enigmas—the views of newly enfranchised under-21 voters—when he reported that “younger voters seem to differ from older citizens more in degree than in substance.”

a comparison of recent polls she conducted, the first in early summer for voters of all age groups and the second in early fall for newly registered voters under 21. The questions, she noted, were identical.

to be more united and to feel more strongly about several of the issues.

POW families

The Veterans Administration pays for education of POW's wives and children

President Nixon received “a somewhat lower rating” on his performance in office from younger voters than from voters as a whole, Congressman Dwyer noted.

The under-21 group, she said, rated the President 12 percent good, 42 percent fair, and 39 percent poor, while the older group rated him 34 percent good, 38 percent fair, and 28 percent poor.

Mrs. Dwyer pointed out that respondents to her first poll were predominantly middle-aged, upper-middle income, male, and Republican, while those under 21 were evenly divided between male and female and between Republican and Democratic, though political independents greatly outnumbered both of the latter.

“Given these differences in background,” Mrs. Dwyer commented, “one could argue that the nature of agreements between the two groups were more significant than those in which they disagreed.”

Disagreements on issues where there was greater unanimity among younger voters, including war, military spending and pollution control, majorities of both groups took the same position.

“In addition, both younger and older voters felt the quality of life had worsened in recent years in all areas but the threat of nuclear war; they were ready to pay higher taxes to secure results in key programs; they supported wage-

When, where, how to sign up for the Medicare benefits

Medicare—How do I sign up? “An important question,” said Robert J. Jones, manager of the Elizabeth Social Security Office, “and one which faces every person approaching age 65.”

According to Jones, “the answer is as close as the nearest telephone.”

“If you will become 65 years old within the next five months and you are not receiving Social Security payments, merely phone the nearest Social Security office and the people there will be happy to sign you up for Medicare, advise you what documents will be needed for you to claim and answer your questions as to what Medicare does and does not cover.”

Jones stressed the point that Medicare payments can be made to those who continue working after age 65 even though no regular Social Security benefits are payable to them while working.

“If you are already receiving Social Security benefits, the process is even easier,” said Jones. “Hospital coverage is automatic at age 65 for people who are receiving payments, and if you wish the optional coverage which helps pay doctor bills and other medical expenses, simply check the ‘yes’ box on the card which is automatically mailed to you several months before your 65th birthday, sign your name and return it in the envelope provided.”

“Additional information concerning Medicare is available from the Social Security office. Simply phone and ask for booklet SS1 50. The phone number of the Elizabeth office is 531-3291, and the office is located at 308 N. Broad st.

Keep your heart healthy Yule dips low in cholesterol

“The season to be jolly, but the Union County Heart Association suggests that holiday feasts give some thought to lowering the cholesterol content of their party fare.”

The association, which conducts a diet counseling service in its party room, has prepared recipes for three fat-controlled dips that can be served at parties. The first dip is a savory cottage cheese spread, a garbanzo dip featuring chick peas, and caponata is high in polyunsaturated fats and low in cholesterol.

“These dips, which are tasty as well as being healthy, are easy to prepare,” according to Donna D'Amato, the diet counselor of the Union County Heart Association. “All it takes are the ingredients and the desire to help your guests’ hearts.”

SAVORY COTTAGE CHEESE SPREAD

- 1 1/2 c. low fat cottage cheese
- 4 drained anchovy fillets
- 1 Tbsp. caraway seeds
- 1 Tbsp. chopped capers
- 1 Tbsp. chopped chives
- 1 tsp. prepared mustard

Whip cottage cheese until smooth and fluffy. Mix anchovies and work into cheese. Add caraway seeds, capers, chives, paprika and mustard. Chill in small bowl until ready to serve. Garnish with parsley and slices of pimiento-stuffed olives. Serve with Meica toast, thin pumpernickel or raw vegetables.

GARBANZO DIP (Chick Pea)

- 1 1/2 lb. of can chick peas
- 1 c. polyunsaturated oil
- 1 tsp. sesame seeds
- 1/2 tsp. salt
- 1/2 cup ground pepper
- 1 large clove garlic, minced
- 2 Tbsp. lemon juice

Drain chick peas thoroughly. Whip in blender with oil, sesame seeds, salt, pepper, garlic and lemon juice.

lemon juice until smooth and creamy. Chill. Serve as a dip with raw vegetables as a New Year appetizer.

CAPONATA

- 1 medium sized eggplant
- 1 clove garlic, minced
- 1 onion, coarsely chopped
- 1/2 cup tomato sauce
- 1/2 c. celery, chopped
- 1 green pepper, diced
- 2 Tbsp. capers
- 1/2 large stuffed green olives, sliced
- 2 Tbsp. sugar
- 1/2 tsp. freshly ground black pepper to taste

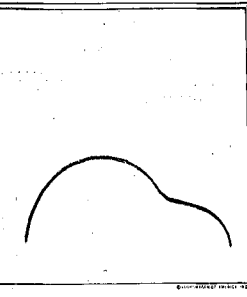
Prep eggplant and cut into 1/2" thick slices (cut slices into 1" cubes. In large heavy skillet, heat 3 Tbsp. oil and saute eggplant until brown. Remove eggplant with slotted spoon and set aside. Add remaining tablespoon of oil and add minced garlic and chopped onion. Cook until golden.

Add tomato sauce, chopped celery and sliced green pepper and simmer, covered, for 15 to 20 min. or until celery and pepper are tender. Add a little water if the sauce cooks down. Heat eggplant to admit and add capers and sliced olives. Heat vinegar and sugar together and add to eggplant. Add salt and pepper to taste. Stir the mixture in min. longer, stirring frequently so it will not stick. Chill. Place on a bed of lettuce to serve. May be served with Meica toast or raw vegetables.

Publicity Chairman are urged to observe the Friday deadline for other than spot news. Include your name, address and phone number.

EARLY COPY

Publicity Chairman are urged to observe the Friday deadline for other than spot news. Include your name, address and phone number.



The shape of things to come.

Prediction
The Volkswagen Beetle will be around for years to come.

Prediction
Someone else somewhere will introduce a new economy car and there will be lots of excitement.

Prediction
The excitement will die down.

Prediction
As in the past, people who own old Volkswagens will trade them in for new Volkswagens because (we guess) they like Volkswagens.

Prediction
Our engineers will continue to improve the way the car works and our stylists will continue to be frustrated.

Prediction
Sometime in 1972, the Beetle will become the most popular single model automobile ever made in the world, by-passing the Model T Ford with production of over 15 million vehicles.

Prediction
We won't let that last prediction go to our heads.

DOUGLAS MOTORS CORP.
435 MORRIS AVENUE
SUMMIT 277-3300

Edwards shoes make the scene!

Boys and girls know what makes the scene, especially with school shoes. Edwards, specialists in Children's shoes, makes the shoes youngsters love best...with the colors and styles that set the pace.

Edwards shoes, deceptively sturdy, can withstand the extra wear children give them. Edwards shoes make the comfort and fashion sense for every occasion, and we see to it that they fit...perfectly.

Edwards
1030 Myerstown Ave.
Union 6 686-3400
Open Hours: 9 A.M. - 5 P.M., until 9 P.M.

2 treks set for hike club

Two rambles are scheduled this weekend for members and guests of the Union County Hiking Club.

On Saturday, Julia Samer of Union will lead a six-mile morning ramble in the Watchung Reservation. The group will meet at the Trailside Nature and Science Center at 10 a.m.

On Sunday, Bob Evers of Irvington will lead a combination ramble and Christmas party in the Watchung Reservation. The group will meet at the Skytop picnic area at 10 a.m.

Additional information may be obtained from the recreation department of the Union County Park Commission.

Check pressure

Tires should be checked for proper inflation pressure when they are cool, before starting out on a trip. Pressure can increase several pounds when tires warm up from driving.

Great Eastern

Savings to 33% And More!

HOLIDAY SAVINGS!

20 Lite Twinkling Flower Mini Set

69¢

Regular low price \$9

Flower petal lights twinkle in beautiful colors. New heavy gauge wiring. A beautiful addition to any holiday decor.

TRIM-A-TREE DEPT.

The Gift Set By Blanchard

\$2

Regular low price \$7.99

Feel pampered and pretty this holiday season with the gift set by Blanchard. Jealousy quashing perfume and spray cologne. It works!

ORUG DEPT.

39" Illuminated Outdoor Candle

2.99

Regular low price 6.69

Brightly colored in red with decorative white trim and yellow flame U.L. approved wiring and socket. Value!

TRIM-A-TREE DEPT.

Blacklight Fixture & Bulb

5.88

Regular low price 8.99

W/ 15 watt U.V. tube. Popp Art beautiful colors. Comes complete with switch, cord and plug. Hurry in for great savings!

LIGHT-O-RAMA DEPT.

GREAT EASTERN DISCOUNT DEPT. STORES

LITTLE FALLS | NEW BRUNSWICK | UNION | JERSEY CITY | PLAINFIELD

OPEN HOURS: THRU SATURDAY 10 A.M. TO 9 P.M. SUNDAY 10 A.M. TO 6 P.M.

WE'RE HAPPY TO LIMIT QUANTITIES.

During Dec. 11, Great Eastern will be open weekdays to 10 P.M.

TUXEDO'S

Jeebies

The Perfect Vodka

UNITE 22 WEST UNION
IN UNION PLAZA SHOPPING CENTER

INCREDIBLE TUXEDO RIOT

FANTASTIC SAVINGS!
FANTASTIC SELECTION!
ALL SIZES!

We also have new, factory fresh TUXEDOS and DINNER JACKETS For those unbelievably low prices!

NEW TUXEDOS \$49.95 **DINNER JACKETS \$29.95**

A multitude of styles, colors, fabrics available.
(Sorry no alterations on sale suits.)

From Our Large Rental Stock, We're Able to offer you these incredible buys! Get your formal wear now, while we have in!

TUXEDOS \$19.95 **DINNER JACKETS \$9.95**

Rt. 22 in Union Plaza Shopping Center. (With Pattnark & Rickett)

Thursday, December 9, 1971.

B'nai B'rith hears comedian Monday

Springfield B'nai B'rith Beth Ahm on Monday evening Lodge will meet at Temple at 8:30, featuring Joey Russell, comedian, master of ceremonies and toastmaster.

He has performed at many hotels and nightclubs and before major organizations. Along with singer Lynn Kellogg, Joey recently ended a long engagement at the Copacabana Club, New York, where he was the featured comedian. The meeting is open to the public and refreshments will be served. Sam Freeman is president of the lodge and Leslie Schuman is program chairman.

FRIDAY DEADLINE
All items other than spot news should be in our office by noon on Friday.



Reinettes of Springfield

Infants to Juniors Boys' Wear to Size 20
Complete Unisex Dept.
REGULAR HOURS
DAILY 9:30 A.M. to 9:30 P.M. & THURS. 9:30 A.M. to 9:00 P.M.
OPEN EVERY NIGHT TILL CHRISTMAS DE 8:15 P.M.

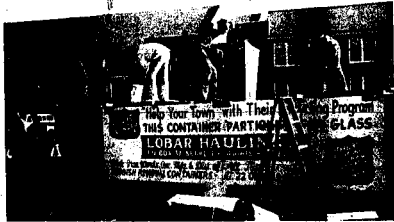
Board spokesman explains plans for land next to school

An explanation of the Springfield Board of Education's decision to acquire property adjacent to the James Caldwell School was made by Ruth Weisman, board public relations chairman, at a recent meeting of Florence Gaudinier School parents Spacing at a PPA. Mrs. Weisman outlined the board's plans to enlarge the playground facilities at the Caldwell School. She pointed out that the Caldwell School, with the largest enrollment of all the K-5 elementary schools in Springfield, has the smallest play area and has been suffering from this lack of space for many years. She stated that the board has obtained an option to purchase the Bednarik property,

directly adjacent to the Caldwell School and running from Caldwell place to Keeler avenue, subject to voter approval of the acquisition on Dec. 21. Acquiring this property will enable the board to provide safe, free play with grassy areas for playground purposes and will permit the board to install a blacktop strip for the children's passage into school without having to either leave through the driveway and parking lot. Voter approval of this proposal will permit the board to acquire the Bednarik property for \$40,000, with the provision that the Bednarik family may continue to occupy the house and 100 feet surrounding the house for a maximum period of three years. Mrs. Weisman explained bond anticipation notes would be used to pay off the debt in a three-year period without increasing taxes, she added. The election is scheduled for Tuesday, Dec. 21, and polls at the following locations will be open from 3 to 8 p.m.: Districts 7 to 10, Florence Gaudinier School; Districts 1 to 6, James Caldwell School; Districts 11 to 13, Edward Walton School.

Insurance: total listed

Creative Financial Planning Associates Inc. of Springfield this week reported that during the first year of business, ending Sept. 30, 1971, the company had its insurance production of \$12,882,076. The announcement was made by Rudy Sempreviva, president. Creative Financial Planning Associates, with offices on Dundas road, Springfield, is a subsidiary of Intercontinental Life Company, whose executive offices are at 30 Clinton st., Newark. The publicly-held, financially-oriented holding company shares are listed for trading



RECYCLERS AT WORK — Concerned young men of the community help with the disposal of bottles and other items collected at the "Glass" conducted Saturday at Jonathan Dayton Regional High School by the Springfield Save Our Environment Committee.

WALL TO WALL CARPETING CLEANED
• References on request • Fully Insured
CALL COLLECT 355-2997
Per Sq. Ft. \$25 MINIMUM
SCIENTIFIC CARPET CLEANERS
Est. 1955 of Hingham, D. Friedman

GIFT IDEAS FOR A MERRY CHRISTMAS
PORTABLE TYPEWRITERS
COPIERS & ADDING MACHINES
Expert Repairs on All Portable Typewriters & Adding Machines
JK OFFICE MACHINES
SALES • SERVICE • RENTALS • SUPPLIES
2 Bank St., Summit 273-8811

on the National Stock Insurance Company of Exchange and also traded on Puerto Rico Inc.; Inter- the over-the-counter market, continental Growth Plans Other Intercontinental Life Inc., Intercontinental Company subsidiaries are: Securities Inc., and Inter- Intercontinental Life continental, Life and Inter- Inc.

PONTIAC GM
A CUT ABOVE THE COMPETITION FOR 1972
And so is COLONIAL, offering you quality, service and satisfaction. Plus convenience. We're only steps away from the railroad station and only steps away from our door. PONTIAC and COLONIAL — a winning combination.
• NEW AND USED CARS • SERVICE • PARTS
• BODY SHOP • DAILY AND LONG TERM RENTALS
• UNUSUAL TIRE DISTRIBUTORS
Colonial PONTIAC
215 BROAD STREET SUMMIT 277-6700

Make it Pants Place for Gifting!
be it a skinky rib top, Velveteen blazer, plaid embroidered skirt or Lamb Coat or Pert pant sets plus great jewelry, fun hats, glove sets, fashion handbags
PANTS PLACE
Charge it with Master Charge, Bank Americard or of course Pants Place charge!
MILWAUKEE: 241 Milwaukee Ave.

Artifacts on display at museum

The Union Township Historical Society will exhibit on Sunday at the Caldwell Parsonage Museum, a large part of the Indian artifacts collection of John Jacquemet of Milltown. Jacquemet, who was born in England, and came to this country at the age of 22, has been collecting Indian items for nearly 50 years. Almost his entire collection, totaling over 2,000 pieces, was dug up by him on farms within 15 miles of Milltown. Among his finds are vases, grain and paint pestles, a paint mortar and a stone used as a last for making children's moccasins. He also treasures a polished ceremonial ax head. Exhibit hours on Sunday will be from 2 to 4 p.m. The Museum is located at 999 Milltown ave., Union. Jacquemet exhibited a part of his collection at the museum in 1970. He plans on bringing with him a number of items that he was unable to exhibit on his first visit. Jacquemet said that years ago he used to visit neighborhood farms, especially those situated near the water's edge, as this was where the Indians set up their villages and camped, and secure permission from the farmer to dig. Farms and fields that had been recently plowed were places where he could find stone relics. Sites where Indians had camped for any length of time were almost sure spots for anyone digging to unearth a large number of Indian items, he added. "With the coming of housing of housing developments, Jacquemet said, many of the farmlands had disappeared and there are not too many places to dig for these artifacts any more. Most of the items were made and used by the Leni Lenape Indians, who inhabited New Jersey before the colonists. Visitors to the museum on Sunday will be given a tour of the museum, and carriage house. The Caldwell Parsonage Museum was built in 1782. Admission to the museum and exhibit are free.

Archers bag record deer

Final totals for the 1971 bow and arrow deer season reveal the harvest to be the third highest in record, reports the Division of Fish, Game and Shell Fisheries. The final tally of 1,353 animals is surpassed only in 1967 when 1,486 were taken and again in 1960 when the present record of 1,501 was set. The top producing county continues to be Hunterdon where a record 341 were taken, up 52 from 1970. Other counties showing increases were Cumberland - 47, up 4; Gloucester - 19, up 8; Mercer - 34, up 14; Morris - 41, up 31; Salem - 47, up 12; and Warren - 174, up 22. HUNTERS WANT YOUR USED ARROWS. For what you have, turn in your bow classified Ad. Call 867-7000.

Great Eastern
SALE STARTS THURSDAY, DEC. 9
SALE ENDS SATURDAY, DEC. 11
Savings to 33% And More!
HOLIDAY SAVINGS!

Four Corner Desk Pads
2 for \$2
Sturdy board with mosaic blotter. Washable "Leatherex" corners with gold trim. In many decorative colors. Sizes. STATIONERY DEPT.

Velvet and Velveteen
\$2 yd.
Regular low price 2.88 yd.
Crushproof, washable 38" x 42" wide, cutout-free lengths. Make many beautiful things for your family and save! LINEN DEPT.

Disneyland Storytellers
\$2 ea. LP
Regular low price 3.99
Popular childrens records feature The Aristocats. Each 72" LP includes a 12 page book. Other favorites available. RECORD DEPT.

Aquarium Tank
\$5
Regular low price 7.99
Metal frame 10 gallon aquarium tank. Features glassing metal frame. Large, roomy size. Limit 1 per customer. Hurry! PET DEPT.

660 Amplex Cassette Album
3 for \$2
Regular low price 1.49 each
Holds your cassette tapes neatly in order. Perfect for storage or taking them places. Hurry in while supply lasts! CAMERA DEPT.

Wools and Acrylics
\$2 yd.
Regular low price 3.99 yd.
Choose from machine washable polyester and wool blends, turbo acrylics, 58"-60" wide. Great color! Value! LINEN DEPT.

Parker "Jotter" Pen, Pencil Set
\$2
Regular low price 2.87
Attractively gift boxed for the holidays. Assorted color barrels. Additional refills are available. Hurry! IN STATIONERY DEPT.

12 Volt Car Vacuum Cleaner
888
Plugs into any car lighter. Powerful pickup for fast, easy cleaning. Value! AUTOMOTIVE DEPT.

PLEASE DRIVE SAFELY

GREAT EASTERN DISCOUNT DEPT. STORES
LITTLE FALLS | NEW BRUNSWICK | UNION | JERSEY CITY - PLANNED
OPEN MONDAY THRU SATURDAY 10 A.M. TO 10 P.M. SUNDAY 10 A.M. TO 6 P.M.
Biking - Dec. 10, Great Eastern will be open weekdays to 11 P.M. This Sunday to 7 P.M.
WE RESERVE THE RIGHT TO LIMIT QUANTITIES.

Economic Stabilization

Questions and Answers



This column of questions and answers on the President's Economic Stabilization Program is provided by the local office of the U.S. Internal Revenue Service and is published as a public service. The column answers questions most frequently asked about wages and prices.

Q. Will raw agricultural products, such as fresh fruit and vegetables, be excluded from the standards for prices set by the Price Commission?

A. Yes, just as during the freeze, raw agricultural products will be excluded.

Q. How will prices and wages be controlled by the Price Commission and the Pay Board?

A. The Price Commission and the Pay Board have published standards and criteria for the control of all prices and wages which will be covered during the post-freeze period. In addition, the economy will be divided into three price or wage tiers for surveillance and reporting procedures.

Certain large firms and collective bargaining units that are of critical importance for the control of inflation will be required to notify the Board or Commission in advance of proposed wage or price increases.

Other large economic units will be required to report periodically on their prices, employee compensation, and other matters as may be specified.

The behavior of prices and wages in the remainder of the economy comprising the larger number of economic units (especially smaller firms), will be monitored by spot-checks and investigations of compliance by the Internal Revenue Service.

Q. Are dividends and interest subject to legal restraints under the Economic Stabilization Program?

A. No. However, the Committee on Interest and Dividends, established by the President, will formulate and execute a program for obtaining voluntary restraints on selected interest rates. The Committee will also continue the mandatory restraints on selected dividend payments, subject to possible changes of standards and coverage.

The President has asked Congress for amendments to the Economic Stabilization Act to provide standard authority to impose mandatory control of interest rates and dividend payments. However, the use of this authority is not expected to be necessary.

Q. How long will the second phase of the Economic Stabilization Program last?

A. A 90-day limit is being set. The objective is to end the program as soon as possible, but it will be kept in operation until the pattern of inflation clearly is changing and has been broken. It will be ended when stability has been restored to the economy.

Monmouth College opens registration for spring institute

Students and teachers from more than 30 high schools have already signed up to attend the spring's annual Monmouth College Educational Institute.

Paul V. Zigo, assistant director of communications and media coordinator, said the schools are being registered now, even though the institute is still months away, to give interested students enough time to work on original research papers on some aspect of the program's theme.

Registration for the institute is scheduled to be held Saturday, March 15, and will study "Our Welfare System - Challenge of the 70's."

Zigo says the best papers submitted by the students will be read by their authors during the institute. Zigo explains that the institute will include federal, state, and municipal officials, as well as hundreds of students and teachers.

Deadlines for submission of student research papers is Feb. 7. The papers will be judged by a panel of experts.

"In past years, we have found many of the students like to begin work early on their research," Zigo explains. "The objective is to give them a portion of their Christmas-New Year's vacation period in libraries digging out their research material."

New Jersey horse population gallops

New Jersey has seen its horse population just about double in the past decade despite the fact it is the most urbanized state in the union, according to Secretary of Agriculture Phillip Alampi.

The remarkable growth of the horse industry in a state so heavily populated has been documented in a study done for the New Jersey Equine Advisory Board, a unit of the New Jersey Department of Agriculture.

Conducted over a six-month period beginning last spring by Equine Research Corporation, an internationally known, research firm based in Princeton, the survey is believed to be one of the first in-depth studies of equine trends carried out in any of the 50 states in recent years.

It indicates that the horse industry, with its racing and pleasure horse branches, represents a quarter-billion dollar industry in the Garden State in direct economic activity. Nearly 35,000 horses are currently stabled in New Jersey, as compared to approximately 18,000 horses accounted for in 1961, when the last definitive horse census was taken.

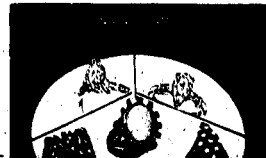
Horses are stabled in all 21 counties, with all geographic regions but one showing substantial growth.

FRIDAY DEADLINE
All items other than spot news should be in our office by noon on Friday.

Freelaid Raceway has a horse population which exceeds 6,000, largest county total in the state. The remainder of the region's horses are distributed among Ocean, Atlantic and Cape May.

In between the coast counties and those of the north are three central counties, Mercer, Middlesex and Somerset, that are a mixture of urban, suburban and rural areas. Together they count more than 5,700 horses among the wild sectors, having the largest share with Somerset having the largest population, more than 7,200 head, is the last in five southern and southwestern counties, Burlington, Camden, Cumberland, Gloucester and Salem. Burlington boasts the most animals.

The Old Times



"The trouble with putting things in their place is the children can't find them."

NEWARK TITLE SUPPLY CO.

OPEN 1st mortgage refinancing

MODERNIZE YOUR KITCHEN & BATHROOM WITH CERAMIC TILE

It's the finest material you can use in your home!

Never send postage or receive bills or pay in installments. We'll come to you and take care of the contractor for you. No money down.

NEWARK TITLE SUPPLY CO.
1000 Broad St., Newark, N.J. 07102

FANTASTIC BARBARS AT HOME WEAR

Travel Sets
Terrifics or Sleepwear
Robes

PEARL LEVITT

418 Ridgewood Rd.
Maplewood, N.J.
Every Day 11:30 to 1:30

Workshop slated on noise pollution

Noise pollution and its control in industry and community will be the subject of a three-day workshop at Rutgers University beginning next Tuesday in its Labor Education Center.

This is the first in a series of such workshops to be offered by the College of Agriculture and Environmental Science, according to Joseph J. Soporowitz Jr., specialist in environmental sciences.

Cook up habits of safety when working in kitchen

When preparing those holiday goodies this season, the manufacturer's instructions for kitchen equipment.

1. Conform to the manufacturer's instructions for kitchen equipment.
2. Keep food and non-flammable products on separate shelves.
3. Wipe up spills on the floor and walls.
4. Wear sensible, safe shoes and clothing.

PREPARE FOR COLLEGE BOARD EXAMS

COURSES BEGINNING MON

March Schedule: April 15th (S.A.T.)

SATURDAY CLASSES - WEEKDAY CLASSES

COLLEGE REVIEW CENTER

DIRECTOR: Irving J. Sussman, B.A., M.A., M.P.A.
Morton Seltzer, B.A., M.A., M.P.A.

For Information Call: F.A.M. to P.P.M.

731-3995 - 731-3928 239-3114

BBD

VALUE

THE BEST VALUE APPLIANCE STORE

1000 Broad St., Newark, N.J. 07102

B & H WAREHOUSE OUTLET

OPEN DAILY 10:00 A.M. - 10:00 P.M.

MASTER CHARGE • LAYAWAY

SPECIAL PURCHASES • FAMOUS NAME

JUNIOR Value to \$40

★ DRESSES
★ PANTS
★ SKIRTS

MEN'S UP TO 50% OFF

★ SHIRTS
★ TIES
★ PANTS

NEG. CLOSETOUT!

MEN'S SUITS 64.75

★ Skirt & Waist
★ Value to \$125

THESE FASHIONS ARE ALSO AVAILABLE IN COVERS, COATS, & SPORTSWEAR.

Cook up habits of safety when working in kitchen

When preparing those holiday goodies this season, the manufacturer's instructions for kitchen equipment.

1. Conform to the manufacturer's instructions for kitchen equipment.
2. Keep food and non-flammable products on separate shelves.
3. Wipe up spills on the floor and walls.
4. Wear sensible, safe shoes and clothing.

everyday DISCOUNT PRICES

MEAT

Round Steak	\$1.48	Chuck Roast	\$1.48
Top Sirloin Steak	\$1.48	California Pot Roast	\$1.79
Cube Steak	\$1.29	Pot Roast	\$1.79
Chuck Steak	\$1.29	Chuck Deckle	\$1.29
Chuck Steak	\$1.29	French Roast	\$1.29
Chicken Steak	\$1.39	Middle-Chuck	\$1.29
Skirt Steak	\$1.19	Silver Top Roast Beef	\$1.29
Swiss Steak	\$1.39	Silver Tip Roast Beef	\$1.29
Chuck Steak	\$1.29	Rib Side	\$1.19
Side Steak	\$1.29	Loin Side	\$1.19
Pepper Steak	\$1.29	Rib End	\$1.19
Shoulder Steak	\$1.39	Loin End	\$1.19
Flank Steak	\$1.39	Eye of Round	\$1.19
Bar & Que Beef Ribs	\$1.39	Shoulder Ham Chops	\$1.39
California Steak	\$1.39	Hip Pot Chops	\$1.39
Boneless Chuck Steak	\$1.08	Loin Rib Portion	\$1.39
Flank Steak	\$1.39	Frank Hot Fresh Ham	\$1.48
Shin Meat	\$1.39	Hot Half Fresh Ham	\$1.48
Shin Meat	\$1.39	Fresh Pot Shoulders	\$1.39
Stewing Beef	\$1.39	Roasting Pot	\$1.39
Chuck Steaks	\$1.39	York Neck Bones	\$1.39
Round Ground	\$1.39	Fresh Pork Hocks	\$1.39
London Broil	\$1.49	Three Sausage	\$1.08
Ground Beef	\$1.39	Italian Sausage	\$1.39

GROCERY

Santa Chocolate	\$1.79	Skillet Dinners	\$1.79
Hunts Tea Bags	\$1.99	Chutney	\$1.34
Hills Apple Sauce	\$1.18	Marshmallows	\$1.34
Buloni Spaghetti	\$1.21	Pope Peppers	\$1.19
Dressing	\$1.45	Tomato Juice	\$1.19
Crisco Oil	\$1.10	Apple Juice	\$1.39
Steamed Clams	\$1.41	Uncle Ben's Rice	\$1.17
Cremora	\$1.38	Red Cabbage	\$1.22
Instant Milk	\$1.23	Shrimp	\$1.33
Hills Purple Plums	\$1.29	H.O. Farina	\$1.67
Nobel Corn	\$1.20	Chicken Broth	\$1.14
Ragu Macaroni	\$1.29	Scotch Eggs	\$1.32
Progresso Soup	\$1.19	Mop & Dip	\$1.39
Scottish Napkins	\$1.19	Electrol	\$1.39
Diets Refills	\$1.33	S.O.S. Soap Pads	\$1.43

everyday DISCOUNT PRICE

Overnight Diapers	49¢
-------------------	-----

everyday DISCOUNT PRICE

Calrose Peaches	27¢
-----------------	-----

everyday DISCOUNT PRICE

Baking Potatoes	5¢ 39¢
-----------------	--------

DELICATESSEN

Extra Lean Billed Ham	\$1.30
Bologna & Liverwurst	\$1.39
Rich's All White Chicken Roll	\$1.39
Rice Filled Chicken	\$1.39
Satani & Bologna	\$1.29
Prime Corned Beef	\$1.79
Hills Coriander	\$1.39

SEAFOOD

Flounders or Bluefish	\$1.49
Cooked Shrimp	\$1.39
Scallop	\$1.39
Canned Smelts	\$1.39
Shrimp Roll	\$1.39

FROZEN

Swanson Dinner	\$1.39
French Fried Potatoes	\$1.39
Brook's Ice Creamed Spinach	\$1.39
Waterford Cold Meat	\$1.39
Hills Sole Fillet	\$1.39
John's Pies	\$1.39
Permaloma	\$1.39
Birds Eye Vegetables	\$1.39
Banquet Beef Stew	\$1.39
On-Gor Beef Entrées	\$1.39
Swanson Entrees	\$1.39

DAIRY

Mrs. Filberts Margarine	\$1.39
Brookshire's Tangy-Tan	\$1.39
Arctic White Cream	\$1.39
Hills Cottage Cheese	\$1.39
Kraft American Singles	\$1.39
Monsieur Slices	\$1.39
Hills Margarine	\$1.39

BAKERY

Gourmet Big Loaf	\$1.39
Arnold White Bread	\$1.39
Arnold Dinner Rolls	\$1.39
Rollin' Top Loaf	\$1.39
Hostess Cup Cake Jr.	\$1.39

GIFT IDEAS AT VALUE PRICES

from your VALUE-SERVICE Appliance Centers

BBD

VALUE

THE BEST VALUE APPLIANCE STORE

1000 Broad St., Newark, N.J. 07102

SERVICE

FISHER

80 WATT FM/FM, MULTIPLEX COMPACT STEREO SYSTEM with 2 TWO-WAY SPEAKERS

299.95

Quality features include Stereo Basses, two-track stereo, automatic volume control, auto-reverse, auto speaker and remote speaker. Features include 21 push buttons, auto-reverse, automatic-humless bass booster, auto-muting, the perfect gift!

BONUS STEREO HEADPHONES

PHOENIX Appliance Center

RADIO SALES Appliance Centers

2000 Prices & Values which will be in effect from 12/10/71 to 1/31/72

47 Middl. St. 227-4000

177 Broad St. 227-4000

everyday DISCOUNT PRICES

PRODUCE

Navel Oranges	\$1.29	Melanch Apples	\$1.29
Yellow Oranges	\$1.29	Tangerines	\$1.29
Red Pears	\$1.29	South Greens	\$1.29
Red Onions	\$1.29	Spanish Onions	\$1.29
Golden Delicious	\$1.29	Yellow Turnips	\$1.29
Escolar	\$1.29	Roasted Peanuts	\$1.29

DELICATESSEN

Extra Lean Billed Ham	\$1.30
Bologna & Liverwurst	\$1.39
Rich's All White Chicken Roll	\$1.39
Rice Filled Chicken	\$1.39
Satani & Bologna	\$1.29
Prime Corned Beef	\$1.79
Hills Coriander	\$1.39

FROZEN

Swanson Dinner	\$1.39
French Fried Potatoes	\$1.39
Brook's Ice Creamed Spinach	\$1.39
Waterford Cold Meat	\$1.39
Hills Sole Fillet	\$1.39
John's Pies	\$1.39
Permaloma	\$1.39
Birds Eye Vegetables	\$1.39
Banquet Beef Stew	\$1.39
On-Gor Beef Entrées	\$1.39
Swanson Entrees	\$1.39

DAIRY

Mrs. Filberts Margarine	\$1.39
Brookshire's Tangy-Tan	\$1.39
Arctic White Cream	\$1.39
Hills Cottage Cheese	\$1.39
Kraft American Singles	\$1.39
Monsieur Slices	\$1.39
Hills Margarine	\$1.39

BAKERY

Gourmet Big Loaf	\$1.39
Arnold White Bread	\$1.39
Arnold Dinner Rolls	\$1.39
Rollin' Top Loaf	\$1.39
Hostess Cup Cake Jr.	\$1.39

Conservationists learn about grants

The Association of New Jersey Conservation Commissioners and the State Department of Environmental Protection will hold an information workshop on Federal, state and private grant programs Wednesday in Trenton. The meeting will be held in the Health and Agriculture Building Auditorium, John Fitch Plaza.

A business meeting of the association will precede the grants session. Speakers will include Howard Wolf, who will discuss the Green Acres bond issue approved by the voters last month; Albert Guide of the Bureau of Outdoor Recreation; and Jan Walker, who will talk about the Ford Foundation's \$2,000 matching grant program.

EARLY COPY

Publicity Chairmen are urged to observe the Friday deadline for other than spot news. Include your name, address and phone number.

Tribute dinner to raise funds for new May research center

NEW YORK, N.Y. — Plans for the creation of the Samuel D. and Isabel May Heart Research Institute in Israel in a medical institution affiliated with Tel Aviv University, have been announced by Amnon Barness, chairman and president of the Fund for Higher Education in Israel.

Funds for the institute will be raised at a tribute dinner honoring Samuel D. May on Saturday, Jan. 8 at the New York Hilton Hotel. May is vice-chairman of the board, Daylin, Inc., (NYSE), Beverly Hills, Calif., and president of Diana Stores Corp., North Bergen. Active in many philanthropic activities, May is president of the Harry Greenberg Foundation, which for the past 12 years has contributed to cancer, heart and arthritis research. He established a cancer research laboratory at the University of Chicago; another cancer facility at the Columbia Presbyterian Medical Center affiliated with

Columbia University; and in conjunction with the Miami University Medical School, contributed toward the construction of an arthritis research foundation at Jackson Memorial Hospital. He also participated in the construction of an extended care pavilion at the Miami Heart Institute. The Foundation was a founder of the Albert Einstein College of Medicine in New York as well as the Long Island Jewish Medical Care Center.

In announcing the new heart institute, Barness said, "It is desired to become one of the leading research facilities in the Middle East."

He pointed out that there is no research of the type envisioned for the May Institute under way in that part of the world.

"Such a facility associated with a major university will bring benefit not only to the State of Israel, but to mankind everywhere," Barness said. "It is fitting that his aid to fellow-students should be named for Sam and Isabel May who have devoted their lives to helping others."

The Sam May tribute dinner will be attended by friends and business associates. Barness will serve as dinner chairman, with Max Candy and Dave Flinitz, both officers and directors of the Fund for Higher Education in Israel, serving as dinner co-chairmen.

Arnold Siegel, who is an associate of May, is general chairman. Contributions to the Fund for Higher Education in Israel are tax deductible. There currently are four buildings under construction at the Hebrew University in Jerusalem and the Weizmann Institute of Science with money raised through the Fund.

Grocery saving tips

Some tips to save at the grocery store: Take note of food ads in local media, plan menus in advance to avoid waste and extra trips to the store, observe which days are best for shopping, make a list to save steps and time, and, if possible, enough to consider quality and available alternatives.

Open house

at St. John's

JAMAICA, N.Y. — St. John's University's new Notre Dame College of Staten Island will hold an "open house" high school students and their parents, Saturday from 9 a.m. to 4 p.m.

The open house will give students and parents the opportunity to meet informally with the dean and with faculty members and to discuss with them the many aspects of college preparation and college life. An informal tour of the estate-like Grymes Hill campus and its facilities.

Persons wishing further information may contact: Edward Pierilli, director of admission, 464-884.

Jersey Symphony will get a grant for its youth concerts

The New Jersey Symphony Orchestra will receive a grant of \$20,000 from the National Endowment on the Arts to enable it to continue and expand its youth concerts throughout the state. It was announced this week by Sen. Harrison A. Williams Jr. (D-N.J.) in Washington, D.C.

The grant is an increase of \$10,000 over the amount given to the orchestra last year for the same purpose and is intended to allow the orchestra to present youth concerts in several new locations in the state. Sen. Williams said Alan V. Lowenstein, president of the New Jersey Symphony Orchestra, said: "This grant represents an important vote of confidence at the national level in the orchestra's accomplishments."

He continued: "For our overall program, however, it represents a small step in the right direction. We must emphasize that it does not materially change the financial picture of the orchestra. We remain acutely in need of funds to continue the orchestra's many concert activities, and have embarked upon a program to meet our financial needs."

Protect Your Home Against Burglary

PHONE NOW! NO OBLIGATION

686-0100

Post Office announces deadlines

Dec. 10 — Packages to local areas and airmail packages and cards to overseas areas, Alaska and Hawaii

Dec. 15 — Cards to local areas and distant states and airmail packages and cards to Alaska and Hawaii

Dec. 23 — Airmail cards to distant states

All-Back program set by Seton Hall groups

The Seton Hall University Choral Society and String Orchestra will present an All-Back Festival Dec. 14 at 8 p.m. at Sacred Heart Cathedral in Newark.

The program will consist of three Bach cantatas and will feature four soloists along with the 40-voice choir.

MEAT WITH OIL OIL HEAT COMFORT

is a LOW COST LUXURY FOR HOME OR FACTORY ECONOMY IS A BONUS

No Other Heat is Cheaper Or As Safe

We Satisfy Your Complete Heating Requirements And Save You Money

CALL FOR A FREE SURVEY

OIL BURNER Conversion and Installation

FUEL OIL - Sales and Service

KINGSTON CO.

215 Highway 22 W. Hillside, N.J. EST. 1928

686-0690 686-5552

ON YOUR FORTHCOMING EUROPEAN HOLIDAY

MINIMUM TRAVEL FOR YOUR PLEASURE



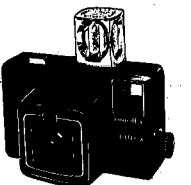
A CAR UNLIMITED FREE MILEAGE SOME FREE LODGINGS AND SENSATIONAL LOW AIR FARES

WE ACCEPT MOST MAJOR CREDIT CARDS: DISCOVER, VISA, BANK AMERICAN, AMERICAN EXPRESS, ETC.

KUHNEN TRAVEL INC.

944 Sheepshead Ave., Union Center


DOMESTIC INTERNATIONAL MU 7-4220



Minolta Autopak® 600-X...

designed for itself when to flash

- Automato Flash Without Batteries Keep an X-cube on the Autopak-day and night, indoors or out. When you need it, the X-cube flashes. When you don't it doesn't, automatically.
- Go/No-Go Signals in Finder Warn you to add or change X-cubes.
- Automato Daylight Photography Sensitive electric eye adjusts shutter for perfect exposure.
- Optical-Glass Retaker 1/2 Lens Assures razor-sharp color slides... color or black-and-white snapshots.
- Instant Loading Ussu drop-in 125-speed film cartridges.



UNION CAMERA exchange

2009 MORRIS AVENUE, UNION

OPEN EVERY DAY (EXCEPT BANK HOLIDAYS)


688-6573

New "Scotch" Brand High Energy could make ordinary cassettes obsolete... but not your cassette recorder.

Today, a new "Scotch" Brand cassette, High Energy, makes ordinary cassettes sound as old-fashioned as 78 rpm records. For good reason. Its new, cobalt-energized tape is a major breakthrough in magnetic sound technology. Not just a little better. A lot. With 3 to 5 decibels improved signal to noise, 50% more output than today's high density cassette tapes.

Best of all, High Energy gives you unsurpassed sound quality, right now on your present cassette system. With none of the compatibility problems other new cassettes may create. There's no need to buy new equipment. No adjustments to make on your recorder. And when you change cassette tapes, there's no extra switch to set. Or forget.

"Scotch" High Energy cassettes make only one thing out-dated: the sound you heard from yesterday's cassettes.




Special value certificate


To receive your "Scotch" Brand High Energy C-90 cassette tape of extra value, you must purchase two "Scotch" Brand High Energy C-90 cassettes in one purchase. This special offer is available while supplies last. See your authorized Scotch distributor for details.

Buy the exclusive "Scotch" cobalt-energized High Energy cassettes at your favorite dealer now. Don't miss this special savings offer. Offer ends December 31, 1971, so don't wait.

Magnetic Products Division



From Marlboro to America's low tar cigarette smokers-




Marlboro Lights

Lighter in taste, low in tar.

Some people prefer the taste of a low tar and nicotine cigarette. For them, we made Marlboro Lights.

The same great quality you get with famous Marlboro Red... only Lights were developed especially for those who prefer the lighter taste of a low tar smoke.



Marlboro Lights—the new low tar cigarette from America's fastest-growing brand.

Marlboro Lights: 14 mg "tar," 1.1 mg. nicotine av. per cigarette by FTC method.

Happy XMAS GIFT TO YOU!
 This Coupon Worth \$1.00
 On Each and Every COUPON GOOD THRU DEC 20

2725 MORRIS AVE. UNION, N. J.

A nine-point checklist to ready car for winter

1. Not enough people take time to prepare their cars for the long winter ahead. Those who put it off suffer most from winter miseries," points out Don Vista, safety director of the Allstate Insurance Companies.
2. "A little effort now can save a great deal of time and trouble later," according to Vista. He offers the following suggestions as a checklist for motorists.
3. Snow belt indicators should change to their strobeflash in advance of that first snow. Also tire surfaces should be checked for treads and foreign objects such as rocks and small stones.
4. Radiator fluids should be checked. Remember, there is a two-year life on original equipment antifreeze. If anti-freeze is old the radiator

FRIDAY DEADLINE
 All items other than spoons should be in our office by noon on Friday.

Many prizes await new 'princess'

5. A six-month membership in a health spa, more than \$100 in cash prizes, an opportunity for paid public appearances throughout the year; a trophy, and, perhaps most important of all, a crown — could be won by 11-year-old young woman between 17 and 21.
6. But to have a chance at these prizes you must appear in the fourth annual New Jersey "Princess" contest.
7. The deadline is Dec. 15.
8. To be eligible you must be unmarried and reside in or attend school in New Jersey. It is essential for preliminary judging that you submit a full-length photograph clearly depicting face and figure. It would also be advisable, although not required, to submit a portrait, as all preliminary selections are made from photographs. All photographs become the property of the New Jersey Health Products Council and cannot be returned.
9. Sets finalists will be asked to appear for inspection judging on Jan. 12. This will take place at the Trenton Holiday Inn and will follow a luncheon for the candidates, their chaperones, the judges and guests.
10. The finals of the contest and the crowning of the new princess will take place at the Golden Rag Banquet which is held each year during New Jersey Farmers Week. The banquet will take place Thursday, Jan. 27, at the Nassau Inn in Princeton.
11. Finalists in the contest will receive a three-month membership in the health spa as well as trophies and cash prizes.
12. Entry blanks may be obtained by writing to the Health Products Promotion Council, New Jersey Department of Agriculture, P.O. Box 1888, Trenton, N.J. 08625. All entries under 21 must submit written permission of their parents or guardians.

THE MART FURNITURE GALLERIES
CLEANS OUT THEIR WAREHOUSE
IN OUR END OF THE YEAR GARAGE SALE!
STARTS TODAY WITH GUARANTEED SAVINGS UP TO
ON EVERY ONE-OF-A-KIND FLOOR SAMPLE & SURPLUS INVENTORY 25%

SUPER HOLIDAY SPECIAL!
 Our own beautiful Limoges

Cookie Plate
SALE \$2.95

THE Silver Gallery
 1346 Springfield Ave., Union, N.J. Tel. 373-9249
 Open Daily 10:00 AM - 6:00 PM THRU DEC 20th

Gill will send 20 to study in Soviet
 The late school, Berhardsville, announced this week that it will sponsor a study program of Soviet literature in Translation at the Soviet Home from Dec. 29 to Jan. 10, during which 20 of the top upper school unit plan program.

POPULARITY PARTY
 763-1443
BALLET
 763-1443



GIFT IDEAS at VALUE PRICES
 from your **VALUE-SERVICE** Appliance Centers

BBD APPLIANCE CO. OF

23" diag.
AUTOMATIC FINE TUNING
COLOR CONSOLE
499⁸⁸

Quality features include Chromatic Brain Color Demodulator, Automatic Fine Tuning, Sunbrite Color Picture Tube and Titan-60 broadcast channels for dependability. CBS11

18" diag.
PORTABLE COLOR TV
359⁹⁵

Sunbrite tube, 42 channel system, handcrafted chassis.

Portable STEREO with Detachable Speakers
49⁹⁵

Automatic speed changer, dual channel amplifier.

- EVERY DINETTE SET REDUCED _____ 15%
- EVERY LAMP IN THE SHOWROOMS REDUCED _____ 20%
- EVERY PAINTING AND PICTURE REDUCED _____ 20%
- EVERY THOMASVILLE DISCONTINUED SOFA REDUCED _____ 25%
- EVERY COCKTAIL TABLE REDUCED _____ 20%
- EVERY SPANISH STYLE BEDROOM REDUCED _____ 15%
- EVERY CRAFT FLOOR SAMPLE REDUCED _____ 25%
- EVERY HIDEAWAY BED REDUCED _____ 20%
- EVERY ODD OCCASIONAL CHAIR REDUCED _____ 20%
- EVERY RECLINING CHAIR REDUCED _____ 10%
- EVERY DESK OR BOOKCASE REDUCED _____ 10%
- EVERY FLOOR SAMPLE DINING ROOM SUITE REDUCED _____ 10%
- MANY OTHER ONE-OF-A-KIND ITEMS REDUCED _____ 25%

PHOENIX Appliance Center
 200 Morris Ave., Springfield • 376-6380
 Shop Mon. thru Fri., 10:30 a.m. - 7:00 p.m.

RADIO SALES Appliance Centers
 47 Maple St., Summit • 273-6800
 327 Millburn Ave., Millburn • 379-4200
 Shop Mon. thru Fri., 10:30 a.m. - 7:00 p.m.

the Mart
FURNITURE GALLERIES

ROUTE 22, UNION, N.J. 688-5500 ROUTE 35, MIDDLETOWN, N.J. 671-0400
 OPEN EVERY NITE THU 9:00 — SAT. TIL 6 • USE OUR CONVENIENT CHARGE PLANS

Mrs. Craver to tell women of Christmaste in Bulgaria

"Yuletide in Bulgaria" will be the program for the Mountaineer Women's Club at the Mountaineer Inn Wednesday at noon. Eliza B. Craver of Mountaineer, a native of Sofia, Bulgaria will give her recollections of Christmas there.



Mrs. Craver to tell women of Christmaste in Bulgaria

Eliza B. Craver of Mountaineer, a native of Sofia, Bulgaria will give her recollections of Christmas there. She lived near the Greek-Yugoslav border and attended Sofia American College. She received an A.B. degree from the American College for Women, Istanbul, Turkey, and while teaching English at Sofia American College, met Bradford N. Craver, an American who had gone to Bulgaria to teach language. After coming to the United States, Mrs. Craver took an M.A. degree at Boston University and did social service at settlement house while her husband studied for his M.D. and Ph.D. degrees.

In recent years, Mrs. Craver has contributed scripts on American community life and culture to the Bulgarian service of the Voice of America, and is the author of Bulgarian folk tales and Christmas stories. For two years she was a member of the speakers' bureau of the Chicago Council on Foreign Relations. She is active in the Presbyterian Church and the YWCA of Westfield. Mrs. Zora Roberts is chairman of the program, and hostesses are Mrs. Henry Hayward and Mrs. William Cochran. Four high school girls attended the recent "College Day" at Douglas College, New Brunswick, at the invitation of the Woman's Club. They are Laura Brockbill, Janice Cullen, Katherine Fisher and Sonia Brazalovic, all of Mountaineer. It was announced by Mrs. Joseph Britton, education chairman.

Christmas meeting on Chrismons set by church women

The Christmas meeting of the Ladies' Evening Group of the Springfield Presbyterian Church will be held Wednesday at 8:15 p.m. in the Presbyterian Parish House. Members of the group will present their program and the Chrismons which were made at the November meeting.

Chrismons is a combination of parts of two words, Christ and monogram. A Chrismon is a monogram of Christ and dates from the earliest of Christian history. The monograms were found in many places—some on jewelry and utensils, others on doors or in catacombs or in buildings. Those to be used by the Ladies' Evening Group will present the Christmas story. Using Scripture and song, the following women will present the Christmas story: Ann Jones, Ruth Wuestz, Eva Becker, Fannie Croset, Lorella Yanchok, Rita Carafino, Evelyn Peterson, Beatrice Heineman, Audrey Heineman, Kathy Foley, Beatrice Roth, Charlotte Pierson, Lucille Hinzler, Alice Humphrey, Jean Rodde, Patricia Pearce, Mollie Richards, Edith Casera, Frieda Klein, Mildred Schneider, Janice Bongiovanni, Elaine Auer, Jean Iley, Doris Ries, Clarice Ellis and Elizabeth Evans. The Chrismons will be served by the hospital committee headed by Janice Bongiovanni.

Consumer official to speak Monday at meeting of HNS

The Holy Name Society of Our Lady of Lourdes Church, Mountaineer, will have as guest speaker at its next meeting, Henry Kolber, section chief of the Automotive Division of the consumer affairs bureau of the State Department of Law and Public Safety. The meeting will be held Monday evening at 8:30 in the school auditorium. Refreshments will be served.

Kolber's topic will be "Consumer Protection." Kolber has years of experience as an insurance adjuster, factory service representative and insurance appraiser. He is also deputy director of the Lions Club's Department of Law and Public Safety. The meeting will take place on Sunday at the 9:15 a.m. Mass in the church.

Cecilia Gentile and George Zarneck, delegates, will attend the meeting of the Union County Federation of Holy Name Societies on Sunday afternoon at St. Peter and Paul's Church, Elizabethtown. "Catholic Ball": A New Year's Eve party sponsored by the combined Holy Name and Rosary Altar societies, will be held in the school auditorium on Friday, Dec. 11. A hot and cold buffet will be served with dancing from 10 p.m. to 2 a.m. to the tune of Joseph Beatrix and his Orchestra. Tickets are \$55 per couple and must be purchased and reservations made with Raymond and Dorothy Herrgott not later than Dec. 26. Their telephone is 525-1285.

Coast girl engaged to Frank Palumbo

Mr. and Mrs. Albert Herrell of Oakland, Cal., have announced the engagement of their daughter Susan to Frank Palumbo, son of Mr. and Mrs. Leo Palumbo of 301 Cherry Hill rd., Mountaineer.

The bride-elect is a graduate of Capuchino High School in Oakland, Cal. Her fiance is a graduate of Gov. Livingston Regional High School in Berkeley Heights. He served for four years in the U.S. Navy and was assigned to a utility aboard aircraft carrier U.S.S. Ranger. He is currently employed with his father's firm, ABCO Die Casting Co. of Newark, N.J. The couple is planning a wedding in California.

It's a boy

Mr. and Mrs. Vincent P. Roman of North Plainfield became the parents of a son, Michael Vincent, Nov. 28 at Overlook Hospital, Summit. Mrs. Roman is the former Rhonda Axelrod of Springfield.



Clifton girl to wed Michael Kretzer

Mr. and Mrs. Andrew W. Goodell of Clifton have announced the engagement of their daughter, Andrea Lynn, to Michael Stewart Kretzer, son of Mr. and Mrs. William Kretzer of 61 Friedlander dr., Springfield. Mrs. Goodell is a junior at Saint Joseph's State University where she is majoring in physical education. Her fiance graduated from East Tennessee State with a B.S. degree in business administration. He is with Roadway Express Inc. in South Kearny.

Cathy R. Piccione plans fall wedding

Mr. and Mrs. Sam Piccione of 11 Hilltop at Springfield, have announced the engagement of their daughter, Cathy Rose, to Michael Brodzicki, son of Mr. and Mrs. Benne Brodzicki of Elizabethtown. Cathy Piccione, a graduate of Jonathan Dayton Regional High School in Springfield, is employed by St. Barnabas Medical Center, Livingston. Her fiance is a graduate of Thomas Edison Vocational and Technical High School in Elizabethtown. He served four years in the Navy Seabees in Vietnam and Midway, and is now employed as a foreman with B. Brodzicki and Son Electrical Contracting Co. Inc. of Elizabethtown. A fall 1972 wedding is planned.

Yule decorations garden club topic

"Signs of Christmas," a member-participation program of Christmas decorating ideas directed by the program chairman, Mrs. George A. Lewis will be held by the Mountaineer Garden Club at the home of Mrs. W. Earl Wyman of Westfield on Tuesday at 1 p.m. Assisting the hostess will be J.P.M. Barber of Westfield and Mrs. Freeman S. Miller of Mountaineer. Members will bring wrapped Christmas gifts for judging in three categories. Mrs. Walter C. Jackson will then deliver them to patients at the John E. Hummel Hospital at Berkeley Heights. Pouring tea that afternoon will be Mrs. William H. Bannet and Mrs. Henry J. Bogelso. The program will be held at 1:30 p.m. and 7:30 p.m.

Jewish Women hold luncheon at Emanu-El

The membership luncheon of the Greater Westfield Section of the National Council of Jewish Women was held on Tuesday, at Temple Emanu-El in Westfield. The National Council of Jewish Women is a voluntary organization dedicated to serving the community through services in the fields of education, mental health and social action.

Garden Club plans pot luck luncheon, decoration judging

There will be a "pot luck luncheon" for the members of the Mountaineer Trail Garden Club at the home of Mrs. John J. Suaki, 226 Apple Tree Lane, Mountaineer, on Tuesday at 11 a.m. Gift box decorations done by the members will be judged and prizes will be awarded.

Again this year, the Garden Club members are making Christmas arrangements for the patients at Hummel's Hospital. These arrangements will be delivered today by Mrs. George H. Bachan and Mrs. John J. Suaki and other club members, who will help with the Christmas decorating at the hospital. Christmas wreaths, donated and trimmed by the club, will again this year be placed at the Mountaineer municipal buildings. The buildings to be decorated are the Borough Hall, Inn and police headquarters, rescue squad office and post office. An annual donation has been made to Lyons Hospital for the purchase of Christmas decorations.

Christmas messages and co-chairmen were announced recently by the club president, Mrs. George Bachan. They are: Mrs. Michael Celso and Mrs. Joel Mitchell. A copy of the "American Garden Book" was presented to the club president by Mrs. Susan K. in appreciation for her services. The December arrangement at the Mountaineer Hospital is being done by Mrs. Howard Rhodes.

Chinese cookery to be demonstrated

The 87th 8th Women's Chapter of Springfield will meet on Wednesday at 12:30 p.m. at Thoreau Shanty Station, S. Springfield. The program for this meeting will be devoted to Chinese cookery. Rita Kaufman and Lila Klein of Oradell will prepare a two-course luncheon, with a chicken and a fish dish for members to taste. Both women took courses at the Chinese Institute in New York. Mrs. Morton Weiss is program chairman. Mrs. Elizabeth P. is president of the Springfield Chapter.

EARLY COPY Publicity Chairman 2 is urged to observe the Friday deadline for other than spot news. Include your name, address and phone number.

Holiday food subject topic

The auditorium of the Cooperative Extension Service office at 300 North Avenue East, Westfield, will be the site of a demonstration of edible holiday goodies Monday at 1:30 p.m. and 7:30 p.m. Mrs. Joan H. Oull and Mrs. Henry E. Weigand of County Extension economists, have announced that they will offer a registration fee of 50 cents for the session. The public is invited.

The theme, as presented by the Extension home economists, will be edible decorations to add a flare to holiday traditions. Table decorations, trout quivers, heighten and much will be demonstrated and recipes will be available. The program will be devoted to days of shopping, party planning, drop-in guests and family gatherings.

Bats protected

A royal edict protects the "flying fox" of Tonga Islands. "Flying foxes" actually are cave-dwelling bats that often raid mango groves by night.



Miss Gold to wed Arthur A. Miller 3rd

Mr. and Mrs. Felix N. Gold of Springfield have announced the engagement of their daughter, Shelley Ann, to Arthur Andrew Miller 3rd, son of Mr. and Mrs. Arthur Andrew Miller Jr. of Warrington, Pa., formerly of Springfield. The prospective bride is a graduate of Jonathan Dayton Regional High School, Springfield. She attended Morris Harvey College in West Virginia and is a senior at Bloomfield College, majoring in English. Her fiance is also a graduate of Dayton Regional High School in Springfield, and is a business major at Bucks County College, Pottsville. He is associated with Spray King Corporation and plans to continue his education in the fall to earn his bachelor's degree. The wedding will take place at 4 p.m. August 1972.

Change for Pictures There is a charge of \$5 for wedding and engagement pictures. There is no charge for the announcement, whether with or without a picture. Persons submitting wedding and engagement pictures may utilize the 25 percent to include a note asking that they be billed.

OPEN EVERY NIGHT UNTIL

9

Through December 23rd • Saturdays 11:30-3:00 p.m.
The Tweed Room Restaurant opens at 7:45 p.m.
Saturdays 10:00 a.m. to 4:45 p.m.
Sula Fifth Avenue
Millburn and Short Hills Avenues, Springfield

Our 1972 Christmas Clubs pay interest at 1 1/2%

Did you know that there are over 28 million veterans in the United States?

See how our Christmas Club accounts build up over a 50-week period:

\$.50 a week—\$ 25.00
1.00 a week— 51.12
2.00 a week— 102.25
3.00 a week— 153.37
5.00 a week— 259.62
10.00 a week— 511.25
20.00 a week—1,022.50

on completed Clubs

Be Wise and Save For '72
Join The Central Jersey Bank and Trust Company Christmas Club now. Memberships start from \$10.00 as 50¢ a week. We don't just collect your Christmas Club money we pay 4 1/2% interest on it.

THE CENTRAL JERSEY BANK AND TRUST COMPANY

Formerly THE NATIONAL BANK OF WESTFIELD
Westfield Office, Broad & Elm Streets Telephone 232-7500
Mountaineer Office, 855 Mountain Ave. 232-7500

MEMBER FEDERAL DEPOSIT INSURANCE CORPORATION
SERVICE IS OUR BIGGEST ASSET!

Plainfield Maternities

Just One of Many.

Black and white check blouse with black and white quilted vest. \$42.00
Just one of many fall length gowns for day or evening wear. \$42.00
Come in and browse around!

30 Prospect St., Plainfield
All credit cards accepted
Open 10:00 a.m. to 6:00 p.m.
Thursday until 9 p.m.

We're having a Christmas sing-out!

Come join the Millburnaires from Millburn High School as they make merry with the joyous songs and grand old favorites of Christmas. Everyone's invited, every afternoon at 3:30 p.m. from 3:30 to 4:30 starting Saturday, December 11th right on through Christmas Eve.

We are open every weekday night until 9:00 p.m. and till 5:30 on Saturdays, through December 23rd.

Sula Fifth Avenue
Millburn and Short Hills Avenues, Springfield

SUBURBAN

Want Ads

GET RESULTS

...and we get the nicest letters about it.

"The response was quite overwhelming so that I will no longer require the ad for the entire four week plan as originally arranged."

MISS M.F.

"Your ad brought results. I was able to sell my piano. Thank you."

MRS. H.I.

"We were surprised and pleased that your papers gave us far more replies in our ad for a secretary than the large dailies."

MR. L.K.

"Received a very nice job through the ad...better than expected... and want to thank you very much."

MRS. F.B.

"From the response I have received it is apparent that your circulation is truly extensive in this and surrounding communities."

MRS. L.S.

"You sure helped me a great deal through the ad...in your papers"

MISS J.I.

YOUR AD CAN REACH OVER 30,000 FAMILIES

with this and 7 other newspapers in adjoining suburban communities

• UNION • IRVINGTON • SPRINGFIELD • LINDEN • MOUNTAINSIDE
• ROSELLE & ROSELLE PARK • KENILWORTH • VAILSBURG

← USE THIS EASY WANT AD FORM

... OR CALL US →



**Deadline: Tuesday Noon
For Thursday publication**

Five (5) Words Of Average Length Will Fit On One Line. For Extra Long Words Allow Two (2) Spaces. Figure Your Cost By Multiplying The Number Of Words By 16 (Minimum Charge \$3.20 (30 Average Words)).
SUBURBAN PUBLISHING CORP.
1291 Sheepshead Ave., Union, N.J.

Please insert the following classified ad:

1	2	3	4	5
6	7	8	9	10
11	12	13	14	15
16	17	18	19	20

If additional words are required, attach separate sheet at paper.

Name: _____
Address: _____
City: _____ Phone: _____

Open Ad _____ Time (x) _____ Per Insertion Starting _____ (Date)
Amount Enclosed _____ Cash _____ Check _____ Money Order _____



Station Breaks

TURNTABLE TREATS (good listening) SUGAR Muffins, LOUIE ARMSTRONG'S "HELLO, DOLLY!" 12 "great" selections featuring Louis' infectious gravel voice and driving trumpet. The original hit version of "Hello, Dolly," "It's Been A Long, Long Time," "A Lot of Livin' To Do," "A Kiss To Build A Legend On," "Somebody," "Hey, Hey, My My, Where's My Baby," "I Still Get Jealous," "Moon River," "Be My Life's Companion," "Honey Bee," "You Are Woman, I Am Man" and "Jeepers Creepers." (KAPP KS-358)

GOLDEN HITS (Vol. 2): by Roger Williams. Eleven selections on this LP: "Gentle On My Mind," "Cavalier," "Alfie," "Happy Heart," "Bittersweet Hill," "You Are Woman, I Am Man" and "Zorba The Greek." (The Impossible Dream) "A Taste Of Honey," "Harmony Hall," "Up With You," "Up With You," "Love Theme From 'Romeo And Juliet'" and "Softly, As I Leave You." (KAPP KS-360)

JACK JONES' GREATEST HITS. Jack showcases 11 vocal gems on this LP: "Call Me Irresponsible," "A Day In The Life Of A Fool," "Dear Heart," "Alfie," "The Race is On," "Lady," "Wives And Lovers," "Charade," "Love, Love And Lollipops" and "Sweet Little Thing." (KAPP KS-359)

PEARLY SHELLS FROM HAWAII. By The Walkies. Here are "Sweet Lullaby," "Pearly Shells," "The Hawaiian Wedding Song," "Hawaiian Fever" ("Blue Hawaii"), "The Real," "Wa Lei O Hawaii," "Tiny Bubbles," "Moonlight And Showers," "Honey Sweet," "Aloha March" and "I'll Remember You." All 12 songs that sing of the glistering Pacific, the white beaches, the swaying hips, the tantalizing eyes. (KAPP KS-355)

BBD APPLIANCE CO-OP



Yule songs, '50s rock for Drew

The annual Drew Choral Christmas concert and a rock concert featuring the so-called "grease music" of the 1950s will join with theological and graduate school lectures on the events calendar at Drew University, Madison during the pre-Christmas season.

There will be three Christmas concerts by the Drew Choral this year, two this Sunday at 4 and 8 p.m., and one on Monday at 8 p.m. All three will be given in S. W. Boone Great Hall. Seals will be reserved and tickets for the free performances are available at the Drew University Center information desk.

In the first section of a three-part program, the choral will present J.S. Bach's cantata "For Us a Child is Born," a work for tenor, alto, bass and chorus with instrumental accompaniment. The second section will consist of traditional and contemporary anthems, including the Praetorius work "Today is Born Emmanuel," Dietrich's "Praise God the Lord," Britten's "Jesus, as Thou art our Saviour" and Choral's "Two Kings." The final portion of the program will be a performance of Francis Poulenc's "Gloria," a major work for solo voices and chorus by one of France's leading contemporary composers.

Two rock and roll groups, Sha Na Na and Supa, will give a single concert, "Unswerving," beginning at 8 p.m. in Baldwin Auditorium. The event is sponsored by students in the College of Liberal Arts. Tickets, at \$4 to the general public, are on sale at the University Center information desk. No tickets will be sold at the door on the night of the concert.

3 concerts for weekend

Two major works by French composers will highlight the next series of concerts by the New Jersey Symphony Orchestra.

The orchestra will perform at Montclair High School tomorrow; at Millburn High School on Saturday; and at Orto de Noeyre Auditorium in Hackensack on Sunday.

Under the baton of Henry Lewis, music director, the orchestra will play Symphonie Fantastique, the five-movement symphony of Hector Berlioz.

The other French work to be performed is Maurice Ravel's Concerto in G, a three-movement work in which Ravel in 1911.

In the three years since its inception, the Dance Theatre Project has established itself as a leading dance company in the area.

Admission to the presentation will cost 50 cents.

CROSSWORD PUZZLE

- | | |
|--------------------------|----------------------|
| ACROSS | DOWN |
| 1. Water pitcher | 1. One whitpool |
| 5. Outrigger | 2. Heel on |
| 10. Peace symbol | 3. Uniform shirt |
| 14. Laundry | 4. Matter |
| 15. Laundry, for example | 5. Two-footed animal |
| 16. Military formation | 6. Quod |
| 17. (2 wds.) | 7. Indignant |
| 18. All — up | 8. Chickadee |
| 19. (2 wds.) | 9. Intended (Heaton) |
| 20. (Heaton) | 10. (Heaton) |
| 21. (Heaton) | 11. (Heaton) |
| 22. (Heaton) | 12. (Heaton) |
| 23. (Heaton) | 13. (Heaton) |
| 24. (Heaton) | 14. (Heaton) |
| 25. (Heaton) | 15. (Heaton) |
| 26. (Heaton) | 16. (Heaton) |
| 27. (Heaton) | 17. (Heaton) |
| 28. (Heaton) | 18. (Heaton) |
| 29. (Heaton) | 19. (Heaton) |
| 30. (Heaton) | 20. (Heaton) |
| 31. (Heaton) | 21. (Heaton) |
| 32. (Heaton) | 22. (Heaton) |
| 33. (Heaton) | 23. (Heaton) |
| 34. (Heaton) | 24. (Heaton) |
| 35. (Heaton) | 25. (Heaton) |
| 36. (Heaton) | 26. (Heaton) |
| 37. (Heaton) | 27. (Heaton) |
| 38. (Heaton) | 28. (Heaton) |
| 39. (Heaton) | 29. (Heaton) |
| 40. (Heaton) | 30. (Heaton) |
| 41. (Heaton) | 31. (Heaton) |
| 42. (Heaton) | 32. (Heaton) |
| 43. (Heaton) | 33. (Heaton) |
| 44. (Heaton) | 34. (Heaton) |
| 45. (Heaton) | 35. (Heaton) |
| 46. (Heaton) | 36. (Heaton) |
| 47. (Heaton) | 37. (Heaton) |
| 48. (Heaton) | 38. (Heaton) |
| 49. (Heaton) | 39. (Heaton) |
| 50. (Heaton) | 40. (Heaton) |
| 51. (Heaton) | 41. (Heaton) |
| 52. (Heaton) | 42. (Heaton) |
| 53. (Heaton) | 43. (Heaton) |
| 54. (Heaton) | 44. (Heaton) |
| 55. (Heaton) | 45. (Heaton) |
| 56. (Heaton) | 46. (Heaton) |
| 57. (Heaton) | 47. (Heaton) |
| 58. (Heaton) | 48. (Heaton) |
| 59. (Heaton) | 49. (Heaton) |
| 60. (Heaton) | 50. (Heaton) |
| 61. (Heaton) | 51. (Heaton) |
| 62. (Heaton) | 52. (Heaton) |
| 63. (Heaton) | 53. (Heaton) |
| 64. (Heaton) | 54. (Heaton) |
| 65. (Heaton) | 55. (Heaton) |
| 66. (Heaton) | 56. (Heaton) |
| 67. (Heaton) | 57. (Heaton) |
| 68. (Heaton) | 58. (Heaton) |
| 69. (Heaton) | 59. (Heaton) |
| 70. (Heaton) | 60. (Heaton) |
| 71. (Heaton) | 61. (Heaton) |
| 72. (Heaton) | 62. (Heaton) |
| 73. (Heaton) | 63. (Heaton) |
| 74. (Heaton) | 64. (Heaton) |
| 75. (Heaton) | 65. (Heaton) |
| 76. (Heaton) | 66. (Heaton) |
| 77. (Heaton) | 67. (Heaton) |
| 78. (Heaton) | 68. (Heaton) |
| 79. (Heaton) | 69. (Heaton) |
| 80. (Heaton) | 70. (Heaton) |
| 81. (Heaton) | 71. (Heaton) |
| 82. (Heaton) | 72. (Heaton) |
| 83. (Heaton) | 73. (Heaton) |
| 84. (Heaton) | 74. (Heaton) |
| 85. (Heaton) | 75. (Heaton) |
| 86. (Heaton) | 76. (Heaton) |
| 87. (Heaton) | 77. (Heaton) |
| 88. (Heaton) | 78. (Heaton) |
| 89. (Heaton) | 79. (Heaton) |
| 90. (Heaton) | 80. (Heaton) |
| 91. (Heaton) | 81. (Heaton) |
| 92. (Heaton) | 82. (Heaton) |
| 93. (Heaton) | 83. (Heaton) |
| 94. (Heaton) | 84. (Heaton) |
| 95. (Heaton) | 85. (Heaton) |
| 96. (Heaton) | 86. (Heaton) |
| 97. (Heaton) | 87. (Heaton) |
| 98. (Heaton) | 88. (Heaton) |
| 99. (Heaton) | 89. (Heaton) |
| 100. (Heaton) | 90. (Heaton) |

1	2	3	4	5	6	7	8	9	10	11	12	13	14	15	16	17	18	19	20	21	22	23	24	25	26	27	28	29	30	31	32	33	34	35	36	37	38	39	40	41	42	43	44	45	46	47	48	49	50	51	52	53	54	55	56	57	58	59	60	61	62	63	64	65	66	67	68	69	70	71	72	73	74	75	76	77	78	79	80	81	82	83	84	85	86	87	88	89	90	91	92	93	94	95	96	97	98	99	100
---	---	---	---	---	---	---	---	---	----	----	----	----	----	----	----	----	----	----	----	----	----	----	----	----	----	----	----	----	----	----	----	----	----	----	----	----	----	----	----	----	----	----	----	----	----	----	----	----	----	----	----	----	----	----	----	----	----	----	----	----	----	----	----	----	----	----	----	----	----	----	----	----	----	----	----	----	----	----	----	----	----	----	----	----	----	----	----	----	----	----	----	----	----	----	----	----	----	----	-----

Children's eye exams: The earlier the better

It has been estimated that one in 20 preschool age children in the United States has a form of sight defect. If left untreated, these defects can not only impede a child's progress in school but can adversely affect other aspects of his life as well.

The National Society for the Prevention of Blindness says that a professional eye examination administered when a child is three or four years old can measure the difference between good and poor vision for the rest of his life. Because it is only by means of such an examination that many children's vision defects can be detected, particularly in the early stages when the most successful correction is possible.

Many very young children have vision problems which, according to the society, their parents do not discover until far-advanced. The reason is that the child's eyes may look perfectly normal and healthy, and since he has no way of knowing how well he should be able to see, he does not complain.

One of the more common vision problems in children is a condition called amblyopia—"lazy eye"—which is improper vision caused by the disease of one eye. This disease occurs when the child's vision is distorted because of an eye muscle imbalance or other defect.

Early detection of amblyopia is critical for proper correction. Once diagnosed, treatment includes first correction of the pre-existing condition—the muscle imbalance or whatever it is—and then patching the good eye. The child is thus forced to use his amblyopic eye which is thereby strengthened and in which visual acuity is gradually restored.

Because many parents are not aware of the extreme importance of detecting amblyopia and other sight defects in children while still very young, the society sponsors periodic preschool vision screenings in communities around the country, conducted by specially trained volunteers.

Skills get you the better job.

Teaching woman the office skills that better jobs demand is the Sawyer School's specialty. Call or write for your free booklet that tells how training can help you get the better job.

The Sawyer School
1111 Broadway, Elizabeth, N.J. 07208
Phone 35-1550

WIDE-CALF BOOTS WIDE-WIDE SHOES

Large Selection Of Imported and Domestic Styles. Comfortable, Fashionable, Strong Arch Support For The Entire Foot.

SALAMANDER SHOES
1060 Springfield Ave.
Irvington, N.J. 07036

YOUR WANT AD IS EASY TO PLACE JUST PHONE 680-7700

ZENITH CHROMACOLOR

NOW, CHOOSE EITHER CONSOLE OR COMPACT CHROMACOLOR SETS

\$380

Priced from

Model 02772 Chromacolor
Model 02773 Chromacolor

ZENITH CHROMACOLOR

NOW, CHOOSE EITHER CONSOLE OR COMPACT CHROMACOLOR SETS

\$380

Priced from

Model 02772 Chromacolor
Model 02773 Chromacolor

ZENITH COLOR TV

LETS YOU PLAY SANTA TO YOUR WHOLE FAMILY...

With a Gift that will go on giving for years to come!

23" diag. screen

AUTOMATIC FINE TUNING COLOR CONSOLE

499⁸⁸ Model 02903 Chromacolor

Handcrafted with Zenith quality, this console features Automatic Fine Tuning, 17000 channels for long lasting performance and dependability, and Zenith's Sunbeam Color Picture tube for brilliant color pictures.

ZENITH 19" diag. PORTABLE TV

139⁸⁸ Model 02908 Chromacolor

Smaller reception, even in fringe areas... superior dependability... handcrafted to the Zenith tradition of quality... superior reception, built-in carrying handle... 10000 channels plus a handcrafted cabinet that will show in any home.

LET BBD SEND YOU TO HAWAII in our Pick-a-Pal Sweepstakes

Plus over 30 STEREO PHONES and 300 RADIOS to be given away.

Just fill out this coupon and bring it with you to a BBD store. Indicate your favorite salesman, he'll enter a price. Drawings to be held on 12/26/77, on December 31st/77. One winner per family. You need not be present to win. No purchase necessary; you will be notified if you are a winner.

BBD Appliance Centers are Individually Owned and Operated. This Means that at BBD You Always Buy from a Man You Know! IT'S BBD FOR BEST SERVICE, PERSONAL ATTENTION!

<p>CRANFORD</p> <p>CRANFORD RADIO</p> <p>26 EASTMAN ST. 276-1776</p>	<p>ELIZABETH</p> <p>ALTON APPLIANCES</p> <p>1316 ELIZABETH AVE. 354-6525</p>	<p>HILLSIDE</p> <p>TODIA'S APPLIANCE</p> <p>1295 LIBERTY AVE. 523-7103</p>
<p>LINDEN</p> <p>LINDEN RADIO</p> <p>29 G. ELIZABETH AVE. 680-1001</p>	<p>IRVINGTON</p> <p>WILDEROTT'S</p> <p>610 SPRINGFIELD AVE. 385-1284</p>	<p>SPRINGFIELD</p> <p>PHOENIX APPLIANCE</p> <p>701 MORRIS AVE. 376-0266</p>

Amusement News

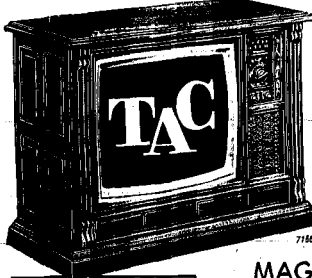
'Billy Jack' arrives

'Billy Jack' film story about a person who protects children and other young things...

we invite you

Showcase East Famous For Fine Entertainment Nitey Announces... Grand Opening

DECEMBER 10th, 15th & 16th of JOE RAY'S (formerly showman) 'Superb Italian Kitchen'



Give FUN for the HOLIDAYS!

Everyone in the family will enjoy a lifetime of fun on ice with RALPH EVANS ICE SKATING LESSONS...

Theater Time Clock

All times listed are furnished by the theaters. ELMOHA (Elizabeth)... ESCAPE FROM THE PLANT OF THE APES...

Comedy, drama, Big band singer Brito heads 1972 Heart Fund campaign

A former big band singer of the 1940s and 1950s has been named 'Heart Ambassador' for the 1972 Heart Fund campaign in New Jersey.



PHIL BRITO charity, and the one closest to him now, is the Heart Association. Phil hopes to attend Heart Fund activities throughout New Jersey in order to raise funds for heart research...

FRIDAY DEADLINE

All items other than spot news should be in our office by noon on Friday.

Paper Mill season features top stars

The Paper Mill Playhouse in Millburn will open its 1972 season Dec. 10 with a cast of three plays, 'Last of the Red Hot Lovers'...

The Perfect Gift... Tower... CHINESE AMERICAN RESTAURANT

MAGNAVOX 25" diag. Screen TOTAL AUTOMATIC COLOR TV CONSOLES \$548... A Choice of 4 MAGNAVOX STEREO RADIO-PHONES \$398

Drama held in Westfield

'The French Connection,' which continues next at the Rialto Theater, Westfield...

Musical film revived

'West Side Story,' the Leonard Bernstein musical which won 10 Academy Awards...

FOR ENJOYMENT IN EATING OUT

NEW YEAR'S EVE PARTY... CHARLEY O'S... DICKENS RESTAURANT... Tretola's... imon hotbrau... IRVINGTON POLISH HOME... TALLY-HO

Hillside Players to present musical

Thursday, December 9, 1971

The Hillside Community Players will present the children's musical, "Cinderella," on Saturday, Dec. 11, at 11 a.m. and 2 p.m. at Hillside High School, Liberty Avenue, Hillside.

The show is directed by Rene Parker, with choreography by Dore Gross. The title role will be played by Phyllis Solar, France Charming, by Jane Ulander, the Fairy Godmother, by Judy Pincus, the mean stepmother, by Kathy Alfano, the three stepsisters, by Carol Pollock, Vivian Diamond

and Sue Jimenez, the Prince. Minister, by Steven Giebin. Others in the cast will be Barbara Goldman, Barbara Schwartz, Sue Goldberg, Linda Voltaggio, Robin Trember, Adrienne Gardner, Jerry Miles, Mark Weinglas, Ira Steinman and Michael Luft.



REHEARSAL — Rene Parker, left, director of the children's musical "Cinderella" for the Hillside Community Players, susses some lines in the script to Judy Pincus, who plays the Fairy Godmother, and Kathy Alfano, the Stepmother in the children's classic. The program will be presented Dec. 11 at Hillside High School on 11 a.m. and 2 p.m.

The Theater Seen

'The Prisoner' makes a perfect escape play

BY ROBERT LYONS
Neil Simon has written the American Gothic horror Play in the only way it can be here in 1971—with laughter. Cascades of it. If there is any secret we all share, then it must be that we are all going down for the second time. And though we are ferretting clues, we are also just as certain that there is not going to be any third time. Call it stubbornness; call it indomitable; it isn't going to happen.

WELL, it's the kind of breakdown you would almost like to have for a short time. Mel puts on his nice warm sweater, takes his baseball glove and steps into the last two innings of the game with the nearby sandlotters. His three sisters and brother arrive to help and there unfolds one of the funniest low key scenes in recent memory as they discuss financial arrangements and speak of their brother as if this is a funeral. There is virtually no movement in the scene as the four super comic actors play with the precision of an Accutron watch. But not before the apartment is robbed with the systematic efficiency that even includes the thieves taking the dental floss.

One night there is no hot water and Mel's wife starts to crack up herself. Suddenly Mel decides to recover, to control his destiny with less ambition, maybe less authority, but control it nonetheless.

UNDER MIKE NICHOLS' invisible-waves-of-energy direction everything goes upturnily wrong in the Edison apartment. The air conditioner doesn't work and we hear five ever-increasingly funny jokes about it. The walls are thin and two old ladies' conversations live next door "who never fly anywhere." Mel looks like "I'm forty-seven." They go out and get two twenty-three and a half-year-olds to replace me!

His wife Edna goes to work which further reduces his ego. Finally the nervous break-

GIFTS THAT GO ON GIVING ...FOR YEARS TO COME REFRIGERATORS by Famous GIBSON

ON SALE NOW at OVER 100 BBD STORES



GIBSON FROST CLEAR 2-DOOR, TOP FREEZER REFRIGERATOR \$239

Small price, big capacity, the ultimate in convenience is yours. This reversible-defrosting refrigerator from Gibson. Adjustable interior shelves, deep door shelves, twin crispers, butter and egg keepers. On sale now at an unusually low price, \$232.

GIBSON 18 CU. FT. 100% FROST CLEAR SIDE-BY-SIDE 388⁸⁸

More features and more convenience...dollar-for-dollar...than any other side-by-side we sell. First storage capacity in both refrigerator and freezer area, plus the convenience of never having to defrost. See it today at your BBD Appliance Center.

JOE MAIN ST
WEDNESDAY
8:00 PM
"THE BOOK THAT SPOKE OVER"
with...
JOHN BOY
"THE GUN"
with...
"THE BOTTOM, THE FLOOR"
with...
"THE LAST OF THE BROTHERS"
with...

U.I. UNION
"THE GREATEST STORY EVER TOLD"
with...
"KAYAK COME HOME"with...

CLUB DIANA
WEDNESDAY
8:00 PM
"WEDDINGS"
"BANQUETS MEETINGS"
with...

MAYNARD
"THE MARRIAGE OF A YOUNG STOCKBROKER"
with...
"THE SEVEN MINUTES"
with...

N.I. DANCE THEATRE GUILD
Presents
"THE WUTCRACKER"
A ballet in 2 acts.
Director: Alfredo Corvino
December 17
10:00 PM
PLAINFIELD HIGH SCHOOL
100 PARK AVE., PLAINFIELD, N.J.
Box 6 Meet \$2. Meet \$10
Tickets made check payable
to N.I. Dance Theatre Guild
100 Park Ave., Plainfield, N.J. 07077
Reserve tickets, specify act, or see print.

FRIDAY DEADLINE
All items other than spot news should be in our office by noon on Friday.

"BEST PICTURE"
winner of 10
ACADEMY AWARDS
WEST SIDE STORY
in color
with...
"FOR THE LOVE OF JANE"
with...

RIALTO 232-1788
"IN THE GREAT TRADITION OF AMERICAN THRILLERS"
with...
"20 Century Fox presents"
THE FRENCH CONNECTION
COLOR BY DE LUXE

SOMETHING NEW AS A BIRTHDAY PARTY SUGGESTION!
a ROLLER SKATING PARTY at...
NO AGES! NO FEES! LEAVE EVERYTHING TO US!
Prices includes...
All for \$2.00...
MAKE RESERVATIONS NOW

THE FRENCH CONNECTION
COLOR BY DE LUXE

LIVINGSTON ROLLER RINK
615 SO. LIVINGSTON AVE., 992-6161

MAPLEWOOD
with...
BILLY JACK
with...

THE Meadowbrook
THEATRE / RESTAURANT
NOW THRU DEC 13
SHEILA MACRAE
in
"HELLO, DOLLY!"
with...
"GALA NEW YEARS EVE"
with...
"THE FOURTH LEAF"
with...

MINNIE
with...
GINGER
with...

PICK-A-PAL SWEEPSTAKES
Nov. 26th thru Dec. 24th, 1971

NAME _____
ADDRESS _____
TELEPHONE NO. _____
BY "PICK-A-PAL" SALESMAN _____
STORE NAME _____

LET BBD SEND YOU TO HAWAII
in our Pick-a-Pal Sweepstakes
Plus over 30 STEREO PHOTOS and 100 RADIOES to be given away.
Just fill out this coupon and bring it with you to a BBD store. Indicate your favorite appliance, we'll give a prize. No. Drawings to be held on 12/24/71. No. Saturday Third Prize winners. The Grand and Second prizes drawing will be held on 12/29/71. One winner per family, you need not be present in win. No purchase necessary, you will be notified if you are a winner.

BBD Appliance Centers are Individually Owned and Operated.
This Means that at BBD You Always Buy from a Man You Know!
IT'S BBD FOR BEST SERVICE, PERSONAL ATTENTION!

CRANFORD CRANFORD RADIO 28 EASTMAN ST. 276-2776	ELIZABETH ALTON APPLIANCES 1134 ELIZABETH AVE. 364-4025	HILLSIDE TOBIA'S APPLIANCE 1225 LIBERTY AVE. 929-1700
LINDEN LINDEN RADIO 30 E. ELIZABETH AVE. 406-2361	IRVINGTON WILDERNOTTER'S 614 SPRINGFIELD AVE. 829-1200	SPRINGFIELD PHOENIX APPLIANCE 706 MORRIS AVE. 374-4300

Case: Navy plans to study off-shore sites for dumping

Senator Clifford P. Case said this week the Navy has agreed to his request to conduct a survey of deep water munitions dumping sites off the coast of New Jersey.

The senator said he was informed of the Navy's decision in a letter from Secretary of the Navy John Chafee. Chafee responded in a letter in which Senator Case said the Navy's current programs of monitoring munitions dumping sites seemed to ignore the fact that thousands of nerve gas and chemical tanks off the New Jersey coast represent the greatest threat of any of the stores of munitions deposited at sea.

"You have raised a number of important questions," Chafee told Senator Case in his letter, "and I have had our research people carefully review this whole subject."

"I am happy to inform you that we have decided to schedule a survey off the New Jersey coast."

Chafee said the survey would be conducted "at the earliest possible time" and promised to contact Senator Case with "a complete description of our plans" as soon as the details are worked out.

In his earlier letter to the senator, Senator Case urged expansion of current studies to include a survey to determine the precise location of six munitions-battered hulks that were sunk and abandoned off the New Jersey coast. Once the hulks are located, Senator Case urged, the Navy should conduct periodic and sustained monitoring of all these vessels, particularly those containing nerve gas and other chemical munitions.

Three of the hulks sunk off the New Jersey coast contained only conventional munitions. Two others, known as the D.W. 11 and the D.W. 8, contained mustard gas, GB nerve gas,

Rechargeable pacemaker on the way

American, Israeli team up on development

A Columbia University engineer and a team of Israeli researchers have developed an electronic heart pacemaker powered by batteries that can be recharged without removing them from the patient's chest.

The nickel-cadmium batteries, which are expected to last for about 25 years, are recharged by transmitting radio frequency power to them through the patient's skin, according to Dr. Robert I. Bernstein.

Bernstein, a professor of electrical engineering at Columbia's School of Engineering and Applied Science, said this new cardiac pacemaker had distinct advantages over current models, which depend upon mercury cells.

The mercury cell batteries, he said, "run down after 18 to 24 months of use and must be replaced by a surgical operation, and that means anesthesia, hospitalization, exposure to infection and a good deal of money."

Recharging pacemaker batteries without surgery, he said, is an obvious improvement.

IT IS HELPFUL that about 50,000 Americans now have implanted pacemakers, with another 10,000 added to the list each year now. Essentially, the device is needed to keep the heart beating at a proper, life-sustaining rhythm, and it takes the place of the heart's own biological pacemaker, which is either non-functioning or arrhythmic because of heart disease.

The new electronic pacemaker was developed in Israel last year while Dr. Bernstein was a Visiting Fellow at the Weizmann Institute in Israel. His research colleagues are Mrs. H. Flechter and F. Frei, of Weizmann Institute, and Dr. E. Kaplanki and H. N. Soudki of the Tel Hashomer Heart Institute.

So far the reliability of the micro-electronics

in the new device has been tested only in dogs, with three more animal tests scheduled for the next six weeks. Clinical testing with humans is expected to begin right after the first of the year at the Haberman Institute.

The American manufacturer of the new cardiac pacemaker was identified as Electro-Catheter Corp. of Italy. Although its work is far from being set, Dr. Bernstein said the responsibility of the cost of non-rechargeable pacemakers will be "under \$1,000, which is approximately the cost of non-rechargeable pacemakers."

In comparison, another possible development in the long-term cardiac pacemaker field, the so-called "atomic pacemaker" which will be powered by a radioactive device is expected to cost somewhere in the \$5,000 to \$10,000 vicinity.

THE PACEMAKER invented by Dr. Bernstein and his Israeli colleagues is triangular shaped, about two and one-quarter inches long in one side, and about five-eighths of an inch thick. It has three nickel-cadmium batteries arranged in a row, each the size of a 25-cent piece, but several times as thick.

To recharge the batteries, every four to six months, a small transmitter is strapped to the patient's chest, and it sends radio frequency waves to a receiving coil in the implanted pacemaker. The received power is rectified and the resulting current is regulated by circuits within the pacemaker.

The internal voltage of the pacemaker is about 2.6 volts, or more than twice the amount of the average flashlight battery.

It takes approximately eight to 10 hours for a full recharge, which can take place overnight even while the patient is sleeping either in a special clinic or in his own home. There is no discomfort to the procedure, Dr. Bernstein says.

On the basis of data collected so far in tests, he adds, "it appears that the rechargeable batteries should be useful for up to 25 years before requiring replacement."

ANOTHER PLANNED FEATURE of the new pacemaker is so-called "demand" electricity. Many electronic pacemakers are inserted only on a temporary basis, until the heart's natural pacemaker begins working properly again.

But with almost all of the present pacemakers, this presents a problem, because as the natural pacemaker gets healthy and becomes operative, it begins competing with the electronic pacemaker.

The new rechargeable pacemaker, however, has built-in sensing devices which monitor and

Artists will teach classes at museum

Four well-known New Jersey artists - Avery Johnson, Adolf Krutzal, Joseph Domarecki and Nicholas Reale - will be the instructors in the second session of the Montclair Art Museum's advanced painting class which begins next month.

The class is conducted in alternating sessions of instruction, open studio, and critical evaluation. The sessions are given in a pattern of three-week periods over each visting artist with instruction the first week, followed by open studio with no instruction the second, and a critique by the same artist the third week.

Adult classes in the museum's art school include painting, drawing, portraiture, ceramic and weaving. Classes are held on Tuesday, Wednesday and Thursday mornings, Tuesday afternoon, and Tuesday and Thursday evenings. Instructors, in addition to those in the advanced class, are Frances McQuillan,

Seymour Geller, Scott Duncan, W. Douglas Pitzer, Tom Vincent, Thomas Greenbank and Edwin Iwata. Registration is now being taken for all Term II classes which begin the week of Jan. 11.

FUEL OIL

Top Grade 17.5 per 200 Gallons

CALL NOW

To recondition your furnace and burner and SAVE on your fuel bill.

Allstate Fuel Co.

Waverly 3-4446

Getting a new record player?

SELL YOUR OLD ONE WITH A WANT AD

Just Call **686-7700**
Ask For Classified



PASSBOOK

Like having a special savings account for health emergencies.

People don't usually think about New Jersey Blues. Until an unexpected hospitalization occurs.

When you need us, we pay participating doctors or hospitals directly. With a minimum of out-of-pocket, in many cases "paid in full."

Leaving the patient little to worry about except getting well fast. Because at New Jersey Blues we specialize in health benefits. Nothing else.

Through our non-profit status and our constant efforts to keep overhead down, less than 6¢ of your health-care dollar goes to administration.

When your hospital or medical expenses have to be paid, we're like "money in the bank."

NEW JERSEY BLUE CROSS AND BLUE SHIELD

Our only interest is people and people's good health.
Hospital Service Plan of New Jersey / Medical-Surgical Plan of New Jersey

Protein allowance

The recommended daily allowance for protein is 65 grams for an adult man, 50 for an adult woman, 45 for a 10 to 12-year-old boy and 50 for a young girl.

EXECUTIVES read our Want Ads when making employees' Brass about payment for only \$3.99. Call 686-7700, daily 9 a.m. to 5 p.m.

REASONS TO BUY FROM THE MOST RESPECTED ZENITH DEALER

- Our great buying power
- Free home delivery
- A complete factory trained service team
- Large selection of special sale service

POST'S ZENITH SALES & SERVICE SALON
1529 SPRINGFIELD AVE., MAPLEWOOD (NEAR BOYDEN AVE.)
PARK FREE ON PREMISES

OPEN
Monday thru Friday 10-6

SALES & SERVICE
761-4674
674-1327
372-3327

SPECIAL OFFER

NEW BELL & HOWELL SPORTSTER GIFT SET

BELL & HOWELL 31MP ZOOM SUPER MOVIE CAMERA

Zoom in and capture the action.

Exclusive Focus-Matic for clear, crisp moments every time.

Precision 1:2.8 zoom lens.

C65 Electric Eye sets proper exposures automatically.

Thru the Lens reflex viewfinder, you see exactly what your camera is capturing on film.

Autoload film loading - just pop in a film cartridge.

ALL THIS FOR ONLY \$99.99

BELL & HOWELL SPORTSTER CARRYING CASE

Handsome and rugged black simulated leather finish. Designed for travel on the go. Compare with standard carrying strap.

VULCAN 17 JEWEL SPORTSTER CHRONOGRAPH-WATCH

It's a precision chronograph, timer and stopwatch... all in one. Beautifully styled yet rugged enough for the sportsman. 17 Jewel Swiss movement. In distinguished presentation case.

Canon FT QL SINGLE LENS REFLEX CAMERA

FEATURES

- Tough-plastic Spot Meter
- Fast CL Film Loading System
- Servo-actuated Auto Metering
- Fast Microprism Focusing
- 1 to 1/1000 Second Shutter
- Six A-Hwell Quinacres
- And Lots More!

With 50mm 1:1.8 Lens **\$179.99**

See us for a demonstration of this camera.

2009 MORRIS AVENUE UNION (Next to the Bank) Photo Supplies/Type Recorders

SPECIAL FOOTBALL POSTER OFFER!

Come in today and see the new Bell & Howell Sportster Gift Set and you'll receive a 9" x 11" Full Color Football Poster for only Fifty-Cents.

Open Every Evening 'til Christmas
Phone 686-6573

Report dangerous toys, Yule shoppers urged

Shoppers looking for toys for Christmas may play a part in a consumer watch for child protection by notifying the Consumers League of New Jersey of any products that might be dangerous or of any accidents with toys.

Under the 1969 Child Protection and Toy Safety Act, toys are being inspected and unsafe toys are being removed from the market, a league spokesman said, but it is still possible for potentially dangerous toys to get on the market. "Since there is no government requirement for a pre-marketing safety check on toys and since the proliferation of new toys is great, consumer awareness and reporting can play a major part in identifying unsafe playthings," the league spokesman said.

Shoppers finding any toys they might wish to report should note reasons for believing the toy to be potentially dangerous, the name of the toy, model number and description, the name and address of the manufacturer and distributor and the name of the store selling the toy should also be included, the league spokesman said.

The information should be mailed to the Consumers League of New Jersey, Inc. (Burch St., Montclair, N.J. 07042).

Museum shows Creative artists eligible for grants up to \$1,000

Original sketches made by Verona artist Alta Ann Parkins during a walking tour through Southern Greece will be displayed at the Montclair Art Museum beginning Sunday, Dec. 12.

The drawings have been published in a book called Pictures of the Mani, taking its title from its subject, a region of the Peloponnese peninsula.

FRIDAY DEADLINE
All items other than spot news should be in our office by noon on Friday.

VACATION AT HOME...

Living at home in a most economical fashion. Enjoy the luxury of a private bathroom, kitchen and breakfast room in your own home. No need to travel. No need to leave home. No need to pay for hotel, meals and other expenses.

\$14,990

IN THE CITY OF CAPE MAY, N.J.

Over 2000 sq. ft. of living space. Drive to Cape May. No need to travel. No need to pay for hotel, meals and other expenses.

Call for more information: 486-2222

JULETIDE HOME FIX-UP SALE

Add to your Holiday pleasures by fixing up your home now.

ADJUSTABLE SHAVING BRACKETS Sturdy and yet attractive. Ideal for shaving, toothbrush, soap, etc. Includes other items. 49¢	ELECTRIC DRILL 1 1/2 IN. \$899	CABINET HARDWARE We carry a complete line for today's most popular kitchen cabinets. 99¢
INTERIOR SHUTTERS These shutters add a bit of elegance to your home. All sizes. 99¢	ELECTRIC SANDER \$1199	MISCELLANEOUS PAINT Decorate your home for the coming holidays. \$3.99
CHAINS It doesn't take a skilled craftsman for a new selling. 10¢	SABRE SAW \$1599	STUDS 2x4-8 \$105
ELECTRIC DRILL 3/8 IN. \$599	TUB ENCLOSURE \$2295	PANELING Add elegance to your home. See us for the new look. \$399

Jaeger LUMBER

— TWO STORES TO SERVE YOU —

2322 MORRIS AVE. UNION, N.J. 07080

1239 VALLEY RD. STIRLING, N.J. 08150



Christmas Gifts that let her 'CLEAN-UP'

EUREKA 1 Horsepower CANISTER VAC 26⁸⁸

A lightweight vacuum with a high-powered motor that cleans deep. Also features flip-top lid for easy bag changes, soft vinyl bumper and cast-iron wheels. 900072

EUREKA 1 1/8 Horsepower CANISTER VAC 44⁹⁵

Smart styling plus a power adjuster for each cleaning need. 110-watt motor for extra strength and an air jet hose connection for spraying and cleaning crevices. 758

EUREKA 1 3/4 Horsepower CANISTER VAC 59⁹⁵

Eureka's Fan Jet motor makes vacuuming fast and easy! Also features Tool Pak, step-on power switch, vinyl bumper plus a super-size disposable dust bag. 1004

EUREKA DIAL-A-NAP UPRIGHT VACUUM 64⁹⁵

Dial-A-Nap adjusts suction power for maximum cleaning efficiency on any carpet 3-position handle and floor construction to alert water treatment. 2620

Listen for BBD's "Value-Specials" as heard over WVNJ RADIO

Pick-a-Pal Sweepstakes ENTRY BLANK

Name: _____
Address: _____
City: _____
Telephone: _____
My Pick-a-Pal Selection: _____
Store Name: _____

Pick-a-Pal Sweepstakes, Nov. 26th thru Dec. 24th, 1971. All entries must be made on this form. Prizes: \$100,000, \$10,000, \$1,000, \$500, \$250, \$100, \$50, \$25, \$10, \$5, \$2, \$1. Prizes are awarded on 12/24/71, at 8 p.m. EST. For complete rules and regulations, see newspaper or radio station. Void where prohibited. No cash prize for prizes not claimed. Void where prohibited. No cash prize for prizes not claimed.

BBD Appliance Centers are individually Owned and Operated. This Means that at BBD You Always Buy from a Man You Know ...FOR BEST SERVICE-PERSONAL ATTENTION

CRANFORD CRANFORD RADIO 35 EASTMAN ST. 276-1775	ELIZABETH ALTON APPLIANCES 1120 ELIZABETH AVE. 394-6009	HILLSIDE TORINA'S APPLIANCE 1200 LIBERTY AVE. 629-1740
LINDEN LINDEN RADIO 10 E. ELIZABETH AVE. 949-0911	IRVINGTON WILDBROTHER'S 610 SPRINGFIELD AVE. 399-1300	SPRINGFIELD PHOENIX APPLIANCE 700 MORRIS AVE. 376-4260

STRICTLY PERSONAL

By Pat and Marilyn Davis
Copley News Service

Dear Pat and Marilyn: I have tried for two years to change my husband, and I might as well give up. He will not wear the latest fashion. He has refused to wear flared slacks and always insists on buying the most conservative tie in the store. The climax came when I surprised him with one of the new flowered shirts. I was turned white and said, "I wouldn't be caught dead in that. Return it!"

I've nagged and pleaded lead in his dress as if he were What can I do?

Martha: You can stop nagging. No matter how thin you sleep nagging it is bad habit. If the fact that your husband doesn't dress in the latest fashion is the only thing you have to worry about, I would say you are very lucky. You do not concentrate on your husband.

good points" I want to break up with a boy we can call John. John and I went steady for over a year and he is quite irritated that I am dating others. I have not seen John for over a month, and my new boyfriend knows all about him. Here's the problem. John is spreading rumors all over town. He is telling all the boys that I see him after my new boyfriend takes me home and that we go to a motel. This is absolutely untrue, and it is ruining my reputation. I have had many phone calls, but I refuse to see John since John started his story telling that I ever had before. What can I do to stop him?

I caught There is one way to ease the embarrassment caused by such rumors. Ignore, ignore.

People who know you will not believe such fiction and those who might believe the rumors will soon discover the truth. John will slip up somewhere and get caught in his own web. I would be glad to help you if you need it.

Dear Pat and Marilyn: I want to break up with my girl friend. She is sweet and wonderful, but I have grown tired of dating only one person. I simply do not know how to tell someone I thought I loved that I want out. She tells me she wants to get married and we did seriously consider it at one time. I feel as though I am caught between common sense and emotion. I know that she is perhaps the most understanding person I have ever come in contact with, but at the same time, other girls certainly had good to me. Perhaps I should tell her that we have gone steady since we were both 16 and are now 20. What should I do?

Prepared: Dear Persephora: Going steady since I was 16

and do try to follow his directions. Point out your excellent driving record and assure your father that you intend to keep up the good work. As time goes on, you will gain confidence and relax. Be patient.

Dear Pat and Marilyn: I want to break up with my girl friend. She is sweet and wonderful, but I have grown tired of dating only one person. I simply do not know how to tell someone I thought I loved that I want out. She tells me she wants to get married and we did seriously consider it at one time. I feel as though I am caught between common sense and emotion. I know that she is perhaps the most understanding person I have ever come in contact with, but at the same time, other girls certainly had good to me. Perhaps I should tell her that we have gone steady since we were both 16 and are now 20. What should I do?

Prepared: Dear Persephora: Going steady since I was 16

Safety campaign is planned by Parkway

Chairman John P. Gallagher of the New Jersey Highway Authority announced this week that a special safety campaign will be undertaken on the Garden State Parkway to encourage motorists to use seat belts and tread-tough tires in winter driving.

Gallagher said that while seat belts and adequate tires are important to safety year-around, they are especially so under the treacherous winter conditions. He urged motorists to replace bald tires immediately and use seat belts constantly.

In the special effort on the Parkway, toll collectors will hand out leaflets to passing motorists to call special attention to the driving needs and State Police will spot-check tires at plazas along the road. In prompt public awareness of defective tires.

"The Highway Authority Commission and I were delighted with the relative safety of travel on the Parkway since the long Thanksgiving Day weekend," Chairman Gallagher said, "but we recognize that the full force of winter weather with its inclemences is just ahead." The campaign to help overcome the driving dangers ahead, he added, will be started immediately. It will be continued beyond New Year's to maintain the public good.

"The basic purpose is to give the motorist a safe, friendly encouragement," Gallagher said. "We want to instill firmly in the public mind the need for special attention to wear seat belts on the road and to elimination of bald surface tires on cars."

If you have a question, write: Pat and Marilyn Davis, Copley News Service, P.O. Box 100, San Diego, Calif. 92112.

If you are as popular as you believe, what is your problem? If you have a question, write: Pat and Marilyn Davis, Copley News Service, P.O. Box 100, San Diego, Calif. 92112.

That's the bargain basement!"



Storing tires
Tires removed for storage should be placed flat in a cool, dry area away from sunlight and electrical equipment.

Do Something Beautiful for Christmas

Trim a tree. Hang some mistletoe. Come to our glittering storehouse filled to the rafters with fabulous gifts, games, watches and remembrances from around the world. Come browse. Make a selection. Then, watch the pleasure of their surprise on Christmas morn.

One of a kind rings in 14 karat gold, A. Dome, \$250. B. Opal and diamond, \$125. C. Amethyst, \$75. D. Jade and diamond, \$160. E. Angel \$300 coral and diamond, \$95.

Diamond dinner ring in 18 kt. gold, \$625.

Diamond rings for the man in 14 kt. gold: A. \$1000. B. \$1100. C. \$585.

Striking silver Georgian Rose tea and coffee set. Coffee pot, tea set, cups and saucer bowl and creamer, \$55. Silver-plated tray, \$95. Silver-plated cup, \$95.

Do Something Beautiful...

Wiss
The Jewelers Since 1878
665 Broad Street, Newark

Montclair. The Fashion Center, Paramus. The Mall, Short Hills. Woodbridge Center, Woodbridge. Willowbrook Mall, Wayne. Nansau Center, Nansau, N.Y.

GIFT IDEAS at VALUE PRICES
from your VALUE-SERVICE Appliance Centers

BBD
BUYER'S BEST BUY

VALUE
BEST VALUE APPLIANCE CENTER

SERVICE
BEST SERVICE APPLIANCE CENTER

KLH COMPACT Stereo System 179⁹⁵
Reg. 209.95 Save '30

KLH FM RADIO Stereo-Phono 399⁹⁵
Special Holiday Value

Designed to produce a maximum of music with a minimum of visible equipment. Guarded changer with Pictorial magnetic cartridge. Model 1139

Enjoy first-rate music on the FM radio. Also features Guarded changer for the ultimate in fine listening enjoyment. Model 39

PHOENIX Appliance Center
200 Morris Ave., Springfield • 376-6300
Shop Mon. thru Fri. '11 to 9, Sat. '11 to 6

RADIO SALES Appliance Centers
47 Maple St., Summit • 273-6800
327 Millburn Ave., Millburn • 379-4200
Shop Mon. thru Fri. '11 to 9, Sat. '11 to 6

CHRISTMAS GIFT GUIDE

BAKED GOODS • **APPAREL** • **CAMERAS** • **CD'S** • **CHRISTMAS CARDS** • **BICYCLES** • **BREMEN BIKER SHOP** • **BOWLING BALLS** • **BILINKAS BROS. BOWLING BALLS** • **PERNICO FLORIST** • **GEM APPLIANCE & GIFT CO., INC.** • **ERV & OTTO** • **RECHOSSETTING JEWELERS** • **WINE LIQUOR STAR LIQUOR** • **MOTORCYCLES** • **WIGS** • **WIGS BY GIGI** • **YOCKS - SKI SHOP** • **TRAINS** • **Kemper Shoes** • **BOB'S CYCLE CENTER** • **LIVINGSTON CALDWELL**

JUNIOR VILLAGE
Fashion for the Jr. People & Teen
120 Westfield
914-944-1144

32 OFF
any camera
with
Professional
with
WOLSTENHAY PROJECTOR SHOTS
1625 Springfield Ave., N.Y.
373-0300

KODAK GIFT CENTER
100 Westfield
914-944-1144

FUR
From
BERNERT KOPPEL
974 Stuyvesant Ave., Union
City, N.J. 686-1775

JAY'S GIFT SHOP
100 Springfield Ave.
914-944-1144

GIFTS
Gift for All Year Christmas Month
For Men, Women & Women.
1205 Chestnut Ave., Tor. Smith 513
212-367-1111

MUELLER'S STAR LIQUOR
FINE LIQUOR
WINE LIQUOR BEER
Gift Wrapping
Free Delivery
180 Westfield
914-944-1144

100% CHRISTMAS INVESTMENT
1205 Chestnut Ave., Tor. Smith 513
212-367-1111

COLANTON'S SHOE STORES
245 Morris Ave.
Springfield 376-2682
212-367-1111

SKI EQUIPMENT
27 Westfield Ave.
914-944-1144

WIGS BY GIGI
Featuring New Synthetic "Euros"
with
1205 Stuyvesant Avenue, Union
City, N.J. 686-1775

YOCKS - SKI SHOP
Specialize in ski equipment &
ski clothing & parts
1205 Stuyvesant Avenue, Union
City, N.J. 686-1775

TRAINS
27 Westfield Ave.
914-944-1144

Kemper Shoes
Winter Boots
Slippers
Handbags
And many other items
for the entire family.
LIVINGSTON CALDWELL

BOB'S CYCLE CENTER
101 S. Hwy 90 E., Ramsey, N.J.
Hours: Mon. thru Fri. 10 to 6

LIVINGSTON CALDWELL
27 Westfield Ave.
914-944-1144

FOR INFORMATION ABOUT THIS SPACE
Call 686-7700

SAVE THIS HANDY GIFT GUIDE FOR REFERENCE FOR ALL YOUR CHRISTMAS GIFTING

POTIONS FOR BOTTLES FOR FREE INSTRUCTIONS BLOCKING NEEDS. BUCKINGHAM 764-1336 YARN BOUTIQUE 197 Morris Ave.



TRIMMER REUNION
AN AFFILIATE OF THE UNITED SYNAGOGUE OF AMERICA
 1402 W. 10th ST., SPRINGFIELD
RAULIE RUBIN R. LEVINE
CANTOR FARID DARSHTI
 Today—8:30 p.m., Hanukkah meeting, 8:30 p.m., Hanukkah meal.
 Friday—8:45 p.m., Sabbath services.
 Saturday—10 a.m., Sabbath services.
 Monday—8:30 p.m., Past. Rivik, Men's meeting.
 Wednesday—8:30 p.m., Cantor's Assembly concert.

COMMUNITY PHENYTERIAN CHURCH
MEETING HOUSELAND
MOUNTAINSIDE
MINISTER: THE REV. ELMER A. TALCOTT
DIRECTOR OF CHRISTIAN EDUCATION: LINDA GAUJ
 Saturday—9:30 a.m., Cantor choir rehearsal.
 Sunday—10:30 a.m., morning worship, 8 p.m., organ recital by Jim Christie.
 Monday—8:30 p.m., Christian education meeting.
 Tuesday—1:30 p.m., confirmation class, 8 p.m., Friday's meeting.
 Wednesday—10 a.m., Mothers' and Others' meeting, 7 p.m., Westminster Chapel Choir rehearsal, 8 p.m., Chancel Choir rehearsal, Dec. 10th meeting.

HOLY CROSS LUTHERAN CHURCH
(THE CROSS OF THE RADIO)
LUTHERAN HOUR
TV'S "THIS IS THE LIFE"
59 MOUNTAIN AVE., SPRINGFIELD
THE REV. ROEL R. VON PASTOR
TELEPHONE: DR-4323
 Sunday—8:30 a.m., worship, 9:30 a.m., Sunday School and Bible classes, 10:45 a.m., Holy Communion.
 Monday—9:30 a.m., World Friendship Circle, 4 p.m., Confirmation II.
 Tuesday—4 p.m., Confirmation II—8 p.m., leadership meeting.

SPRINGFIELD EMANUEL UNITED METHODIST CHURCH
MALCOLM ACADEMY GREEN SPRINGFIELD
THE REV. JAMES DEWART, MINISTER
 Today—12:30 p.m., Wesley Choir and fellowship, Fellowship Hall, 9 p.m., Chancel Choir, Trinity Chapel.
 Friday—8 p.m., Busy Fingers of Wesleyan Service Guild at 47 Clinton Ave.
 Sunday—Third Sunday of Advent, 9:30 a.m., Church School for all ages, 9:30 a.m., German language services, Christmas, Advent preaching, Sermon: "Gospel of the Kingdom," Matthew 24:14, 10:30 a.m., coffee and conversation in Fellowship Hall, 11 a.m., church nursery, Wesley House, 11 a.m., morning worship, "The Wonder of Christmas," an oratorio by John W. Peterson, will be presented by the Chancel Choir and soloists, under the direction of Norman Simons, organist and choirmaster, 8 p.m., Junior Highs and Senior High.
 Monday—8 p.m., Methodist Men's annual Christmas party and game night.
 Tuesday—11 a.m., Women's Society of Christian Service, Christmas covered-dish luncheon and program.
 Wednesday—8 p.m., German Bible study group.

EVANGELIST BAPTIST CHURCH
245 SHUNPINE RD., SPRINGFIELD
REV. WILLIAM C. SCHMIDT JR., PASTOR
TEN. JAMES WESTERLY, JR., ASSISTANT
 Sunday—9:45 a.m., Sunday School, 11 a.m., morning worship, 6:45 p.m., youth groups, 7 p.m., evening Gospel services.
 Wednesday—7:45 p.m., prayer meeting.

TEMPLE SHARBY SHALOM
AN AFFILIATE OF THE UNION OF AMERICAN SYNAGOGUES
160 SPRINGFIELD AVE. & SHUNPINE RD., SPRINGFIELD
HANBU HANBU CANTOR IRVING KRAMERMAN
 Scott Adam Grayson, son of Mr. and Mrs. Stuart Grayson of Springfield, will read the Torah as the Bar Mitzvah at the Sabbath morning service last Saturday.
 Today—9:30 a.m., adult education class in intermediate Hebrew, 10:30 to 11:30 a.m., adult education class in Jewish history on Rebekah Weiner's book, "My Mystics," 8 p.m., Sisterhood bridge tournament.
 Tomorrow—8:45 p.m., Sabbath evening service by the confirmation class, creative service by the confirmation class.
 Saturday—9:30 a.m., Sabbath morning service, Confirmation Shabbat will continue after services with attendance of the confirmation class. In the afternoon, "The Rothschilds," in the afternoon. The class will then return to the temple for Havdalah and dinner.
 Sunday—2 p.m., Hanukkah party. All preschool religious school students are invited. The afternoon will feature songs and dances of Hanukkah, traditional food and games and a Punch and Play puppet show, 8 p.m., youth group meeting.

FIRST PRESBYTERIAN CHURCH
MORRIS AVENUE AT CHURCH MALL, SPRINGFIELD
PASTOR: THE REV. BRUCE W. EVANS, D.D.
DIRECTOR OF CHRISTIAN EDUCATION: MRS. SHEILA KILBOURNE
 Today—7:15 p.m., Girls' Choir rehearsal, 8 p.m., Senior Choir rehearsal.
 Saturday—8 p.m., Fireside Group Christmas tree trimming party, Lillian Pool will present a program, "Setting the Scene for Christmas." Carol singing and holiday refreshments will follow.
 Sunday—9:15 a.m., Church School. Classes for 1-year-olds to grade 7 are taught in the Parish House. Confirmation class meets on the second floor of the Chapel. Nursery service for 1 and 2-year-olds is also available on the second floor of the Chapel, 9:30 and 11 a.m., identical Advent worship services, Dr. Evans presiding. The sacrament of baptism will be administered at the 11 o'clock service. A special floral arrangement featuring the advent wreath and two trees decorated with Christmas will enhance the sanctuary. Child care for preschool children provided on the second floor of the Chapel, 7 p.m., worship service on the front lawn of the Parish House, lighting the third candle on the Advent Wreath, 7:15 p.m., Westminster meeting for all high-school-age young people featuring Mr. and Mrs. Milton Pope of Creighton Presbyterian Church, Elizabeth, explaining their tutoring program, 8:15 p.m., Brownie, 7 p.m., Girl Scouts, 7 p.m., Women's Bowling Christmas party.
 Tuesday—8 p.m., Methodist Men's annual Christmas party and game night.
 Wednesday—8 p.m., German Bible study group.



"You have a choice of three meals — meat loaf with fixings, meat loaf with mushrooms, or meat loaf plain!"

ANTIOCH BAPTIST CHURCH
MERCER ST. AND SPRINGFIELD
SPRINGFIELD
REV. CLARENCE ALSTON, PASTOR
 Saturday—3 p.m., Church School choir rehearsal.
 Sunday—9:30 a.m., Sunday School, 11 a.m., worship service, 7 p.m., evening fellowship.
 Wednesday—8 p.m., midweek service.

ST. STEPHEN'S EPISCOPAL CHURCH
10 MARIST MILLBURN
REV. JOSEPH HERING, RECTOR
REV. JOSEPH J. COYLE, PASTOR
 Sunday—8 a.m., Holy Communion, 10 a.m., Holy Communion, 11 a.m., Church School, 7 p.m., evening fellowship and festival occasions; morning prayer and 11:15 a.m., Church School, Sabotville at 10 a.m., Weekdays when announced.

ST. JAMES
45 SPRINGFIELD AVE., SPRINGFIELD
MSGR. FRANCIS COYLE, PASTOR
REV. EDWARD OEBLING
REV. ROCCO L. CONSTANTINO
REV. PABLO J. KOCH
ASSISTANT PASTORS
 Saturday—Confessions from 4 to 5 p.m., Mass at 7 p.m.
 Sunday—Masses at 7, 8:15, 9:30 and 10:45 a.m., and at noon.
 Daily Masses at 7 and 8 p.m.
 Confessions Monday through Friday from 7:15 to 7:45 p.m. No confessions on Sundays.
 Holy days and eves of Holy Days.
 Masses—On eves of Holy Days at 7 p.m. on Holy days at 7, 8, 9 and 10 a.m. and 7 p.m. on Baptism—2 p.m. Arrangements must be made in advance.

ST. STEPHEN'S EPISCOPAL CHURCH
10 MARIST MILLBURN
REV. JOSEPH HERING, RECTOR
REV. JOSEPH J. COYLE, PASTOR
REV. EDWARD OEBLING
REV. ROCCO L. CONSTANTINO
REV. PABLO J. KOCH
ASSISTANT PASTORS
 Saturday—Confessions from 4 to 5 p.m., Mass at 7 p.m.
 Sunday—Masses at 7, 8:15, 9:30 and 10:45 a.m., and at noon.
 Daily Masses at 7 and 8 p.m.
 Confessions Monday through Friday from 7:15 to 7:45 p.m. No confessions on Sundays.
 Holy days and eves of Holy Days.
 Masses—On eves of Holy Days at 7 p.m. on Holy days at 7, 8, 9 and 10 a.m. and 7 p.m. on Baptism—2 p.m. Arrangements must be made in advance.

Santa's coming to The Garwood Mall
 See him arrive by helicopter FRIDAY, DECEMBER 10 at 3 P.M.
 Visit him in THE SANTA HOUSE Every day (Mon.-Sat.) 'til Christmas from 11 a.m. to 7:30 p.m., with FREE GIFTS FOR THE CHILDREN & PHOTOS WITH SANTA AVAILABLE!

MOUNTAINSIDE UNION CHAPEL
ROUTE 22, MOUNTAINSIDE
REV. RONALD S. DENNIS, PASTOR
HOME PHONE: 654-3811
STUDY PHONE: 242-3844
 Sunday—9:45 a.m., Sunday School for all ages, 11:00 a.m., morning worship service (nursery and children's church provided), 8:40 p.m., youth and senior youth groups, 7 p.m., evening worship service.
 Monday—7 p.m., Pioneer Girls for all girls, grades 2-12.
 Tuesday—8 p.m., midweek prayer service.
 Thursday—8 p.m., choir practice.

HILLARY OF LINDRICH
301 CENTRAL AVE., MOUNTAINSIDE
REV. GERALD J. MURPHY, PASTOR
REV. GERALD H. WISLAN
REV. RAYMOND D. AICMACH
ASSISTANT PASTORS
 Sunday—Masses at 7, 8, 9:15, 10:30 a.m. and 12 noon.
 Saturday evening Mass, 7 p.m.
 Wednesdays—Masses at 7 and 8 a.m.
 First Fridays—7, 8 and 10:30 a.m.
 Miraculous Medal Novenas and Masses—Masses at 8 p.m.
 Benediction during the school year on Friday at 7:30 p.m.
 Baptisms on Sunday at 2 p.m. by appointment.
 Confessions—Every Saturday and eves of Holy Days and first Fridays, from 4 to 6 and from 7:45 to 8:30.

ST. STEPHEN'S EPISCOPAL CHURCH
10 MARIST MILLBURN
REV. JOSEPH HERING, RECTOR
REV. JOSEPH J. COYLE, PASTOR
REV. EDWARD OEBLING
REV. ROCCO L. CONSTANTINO
REV. PABLO J. KOCH
ASSISTANT PASTORS
 Saturday—Confessions from 4 to 5 p.m., Mass at 7 p.m.
 Sunday—Masses at 7, 8:15, 9:30 and 10:45 a.m., and at noon.
 Daily Masses at 7 and 8 p.m.
 Confessions Monday through Friday from 7:15 to 7:45 p.m. No confessions on Sundays.
 Holy days and eves of Holy Days.
 Masses—On eves of Holy Days at 7 p.m. on Holy days at 7, 8, 9 and 10 a.m. and 7 p.m. on Baptism—2 p.m. Arrangements must be made in advance.

Frank W. Maxwell, car firm executive

Max was offered Saturday in St. Rose of Lima Church, Short Hills, for Frank W. Maxwell Jr., 53, of 11 Lewis dr., Westfield, formerly of Springfield, who died Wednesday at his home.
 Funeral arrangements were made by the Fether and Smith (Suburban), 415 Morris Ave., Springfield.
 Born in North Bergen, he resided in Springfield for 12 years. Mr. Maxwell was an executive with Union County Volkswagen, Plainfield, for two years.
 Surviving are his wife, Catherine; two daughters, the Misses Rosemary and Ellen Maxwell; three sons, Frank W. III, James and Lawrence; and his mother, Mrs. Celeste Maxwell.

EARLY COPY
 Publicity Chairman are urged to observe the Friday deadline for other than spot news. Include your name, address and phone number.

Fireside to hold tree trim party

A Christmas tree trimming party will be held on Saturday evening by the Fireside Group of the Springfield Presbyterian Church. The festivities will get under way at 8 in the Parish House, 21 Church Hall St. and Mrs. Charles (Ioth) are in charge of the program.
 Each year the couples club of the church decorates the large tree which stands in the auditorium of the Parish House, followed by a Christmas devotional program. This year, Lillian Frost will present a program, "Setting the Scene for Christmas." Mrs. Paul, whose husband is retired from the masters of the First Reformed Church in Union City, has spoken before numerous church groups in the north Jersey area. In her talks Mrs. Paul uses many of the stories, such as madonnas, bells and

figures, which she has collected over the years during her travels in the country and abroad.
 A card song and holiday refreshments will add to the spirit of the evening.

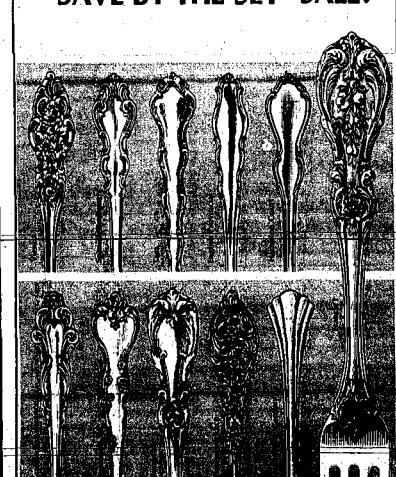
To Publicity Chairman:
 Would you like a name help in preparing newspaper releases? Write to this newspaper and ask for our "Tips on Submitting News releases."



Look at the Marantz Model 2245 AM/FM Stereophonic Receiver with 45 watts RMS per channel. If you place it next to all the other Marantz Stereophonic Receiver models, you'll find it almost impossible to SEE the difference. Because the Marantz people don't think trim is a valid reason for you to pay more or less for a receiver. Instead, they challenge their engineers to stick to engineering. Building each successive model with a little more. None with less than the best for its price.
 Then, Stuart takes over. Bench-testing every component in our own service department before you take delivery.
 Model 2245 by

Stuart's Audio Inc.
 544 NORTH AVENUE, E. WESTFIELD
 Mon., Thurs. & Fri. 9:30-9:00 • Tues. & Sat. 9:30-6:00 • Closed the Appointment on request. PHONE: 322-0843

Reed & Barton Sterling
"SAVE BY THE SET" SALE!

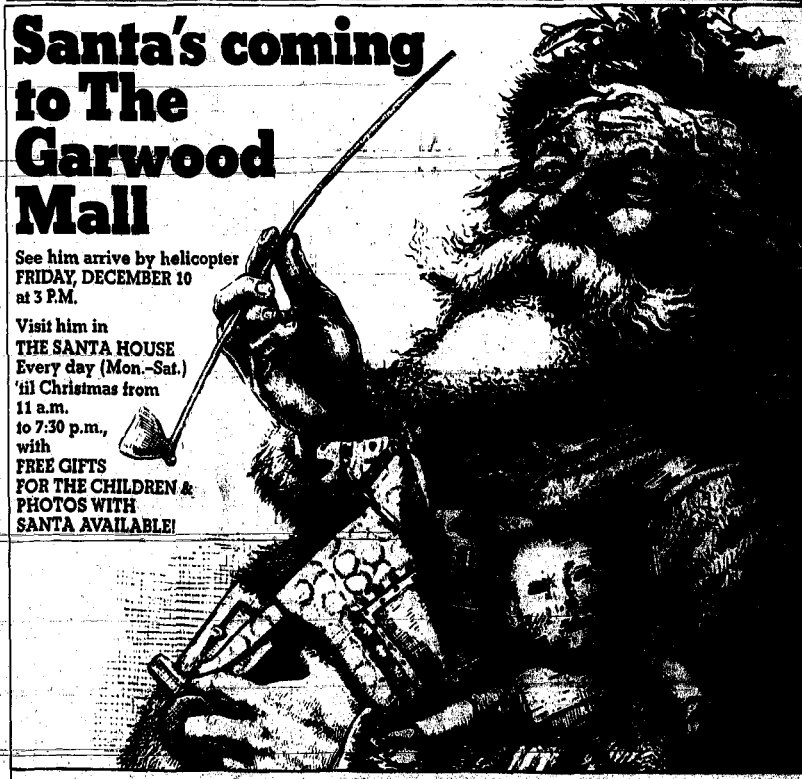


Here's what you save!

No. of Pieces in Place Setting	Savings on Sets 16-4	Savings on Sets 16-6	Savings on Sets 16-8	Savings on Sets 16-12
4-Pc.	\$ 50	\$ 45	\$ 40	
5-Pc.	50	42	36	32
6-Pc.	45	35	30	25

Special savings on setting pieces, too!

Julius Olsenhorn
 300 MILLBURN AVE., MILLBURN 376-1696
 (OPEN WEEKDAYS TILL 9 P.M., SATURDAYS TILL 6 P.M.)



The Garwood Mall "Where The Shopping's Good"
 330 South Avenue, Garwood, New Jersey (Between Cranford and Westfield)
 The Garwood Mall Merchants Invite You To Visit Them
 Downtown Convenience Without The Fuss • Acres of Free Parking • Open Late Every Night • Holiday Values Galore!
 Allied Radio Shack • Beauty Chalon • Betty Brite Dry Cleaners • Brown's Variety Fair • Fabs Fashion Fabrics
 Fey-Garwood Laundromat • Medi Mart • Parrot King • Pat's Barber Shop • The Pottery Bazaar • Shoe-Town • Stop-A-Shop • Tino's Lunch

Staggered work hours examined in Manhattan

NEW YORK—The leading civic, trade and business associations of midtown Manhattan have begun an in-depth exploration to determine how effective staggered work hours can be in relieving the tremendous congestion which now occurs on transportation systems during the peak starting and quitting times of 9 a.m. and 5 p.m.

Charles S. Eysaell, chairman of the Midtown Task Force on Staggered Work Hours, said that the first step in the feasibility study involves a work schedule survey which is being sent to some 2,300 midtown corporations. The purpose of the survey is to determine the predominant work schedules followed in midtown Manhattan, the modes of transportation used by midtown workers in commuting to and from

work and where the workers live.

"We have had enthusiastic cooperation thus far from 17 business associations, nine public agencies and community planning boards in getting up a Task Force to examine staggered work hours in Midtown," Eysaell said.

"Transportation congestion is one of New York's most severe problems and there appears to be general recognition that staggered hours can go a long way toward relieving it and saving all of us a more precious trip to and from work."

The midtown area under study in the program runs from 4th to 58th streets and immediately adjacent areas, river to river. There are some 1.5 million men and women working in this area and with the tremendous volume of new office construction now under way, substantial job growth will undoubtedly occur throughout the decade of the 1970's.

"Moreover, with the failure of the transportation bond issue and the reduced availability of capital monies for physical improvements which this implies, we feel it is doubly important to examine the potential of staggered work hours at this time," Eysaell noted.

The work schedule surveys will be supplemented by a series of transportation studies to be conducted by the Port of New York Authority, the Metropolitan Transportation Authority and various agencies of the City of New York, also members of the Task Force.

The transportation studies include the present levels of peak hour congestion on subway and commuter rail lines, bus routes and key pedestrian corridors in the Midtown Area.

"We will review the results of the work schedule survey and of the transportation studies with the appropriate transportation agencies and Midtown business associations to determine whether we should recommend a staggered hours program for Midtown," Eysaell said.

"If it looks favorable, we would plan to make recommendations for work schedule changes to major midtown corporations in the spring of 1972," he added.

The examination of staggered work hours in midtown is a natural extension of a highly successful program which is now operating in the Lower Manhattan business community.

The Lower Manhattan program, sponsored jointly by the Downtown-Lower Manhattan Association and the Port Authority, includes participation by 116 private and public organizations. More than 70,000 men and women have already changed their work schedules in Lower Manhattan, mostly from 9 to 5 to 8:30 to 4:30, and a goal of 120,000 participants is now being pursued.

Opinion surveys conducted among the participants indicate that they are enthusiastic about the schedule changes. Moreover, surveys after the initiation of the program indicated that peak volumes on PATH trains have been reduced and congestion has been alleviated at PATH's World Trade Center Terminal and at three main subway stations in Lower Manhattan.

Eysaell, chairman of the Midtown Development Council, was named to head the Midtown Staggered Work Hours Task Force at an organizational meeting last summer.

"Do You Know What's In Your Future?"

DAVID BURR'S

GROWING!

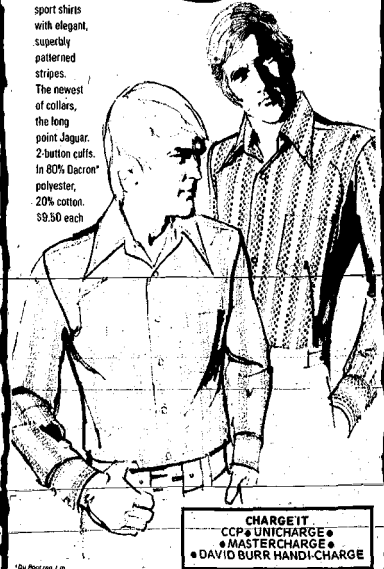
"NEXT DOOR"

TREAT THE MAN IN YOUR LIFE TO THE BEST...

VAN HEUSEN

FASHION STRIPES: Van Heusen revitalizes sport shirts with elegant, superbly patterned stripes. The newest of collars, the long point Jaguar. 2 button cuffs. In 80% Dacron polyester, 20% cotton. \$9.50 each

Hamshire House



CHARGE IT
 • C.P.C. UNCHARGE •
 • DAVID BURR HANDI-CHARGE

david BURR
 clothes for career men and boys
 1059 SPRINGFIELD AVE. IRVINGTON CENTER
 OPEN EVERY EVENING TILL CHRISTMAS



BBD
 APPLIANCE CO.-OP

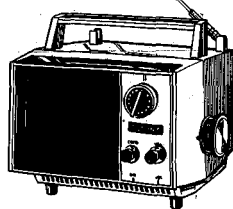
NOW! SONY 'Tummy' TV
 in your choice of

COLOR or Black & White

SONY 9" diag. TRINITRON PORTABLE COLOR TV

SPECIAL HOLIDAY PRICES

Tummy Trinitron for on-the-move TV viewers with an eye for color! Compact, for easy room to room portability. Sharper focus and greater brightness for superior performance. KV-8000J



SONY 5" diag. PORTABLE TV

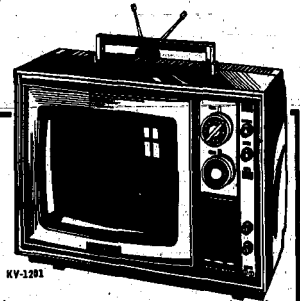
SPECIAL HOLIDAY PRICES

"Stand-out" performance is yours both indoors and outdoors! The non-glare filter screen provides you with glare-free outdoor viewing. Operates on AC or DC. TV-3200

SONY 7" diag. Black Screen PORTABLE TV

SPECIAL HOLIDAY PRICES

Uniquely styled cube-shaped design with solid state circuitry gives the set greater reliability and dependability. Distinct controls for true convenience. TV-730



KV-1201

New! SONY 12" diag. Trinitron COLOR TV PORTABLE

SPECIAL HOLIDAY PRICES

Exciting true-to-life color pictures are yours with a Sony Trinitron color TV! Automatic color control and fine tuning control, provide you with a perfect color picture every time. Handsomely styled cabinet to enhance any room.



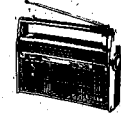
SONY DIGITAL CLOCK RADIO
 29⁹⁵



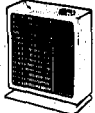
SONY PORTABLE AM RADIO
 9⁹⁵



SONY 7-SIDED DESK RADIO
 13⁹⁵



SONY Public Service Band FM/AM RADIO
 69⁹⁵



SONY FM/AM TABLE RADIO
 29⁹⁵

PICK-A-PAL SWEEPSTAKES
 Nov. 26th thru Dec. 24th, 1971

NAME _____
 ADDRESS _____
 TELEPHONE NO. _____
 MY "PICK-A-PAL" SALESMAN _____
 STORE NAME _____

LET BBD SEND YOU TO HAWAII
 in our Pick-a-Pal Sweepstakes

Plus over 30 STEREO PHONES and 100 RADIOS to be given away.

Just fill out this coupon and bring it with you to a BBD store. Indicate your favorite salesman, he'll win a prize, too. Drawings to be held on 12/24/71, to determine Third Prize winners. The Grand and Second prize drawing will be held on 12/29/71. One winner per family, you need not be present to win. No purchase necessary, you will be notified if you are a winner.



BBD Appliance Centers are Individually Owned and Operated. This Means that at BBD You Always Buy from a Man You Know! IT'S BBD FOR BEST SERVICE, PERSONAL ATTENTION!



<p>CRANFORD CRANFORD RADIO 28 EASTMAN ST. 210-2776</p>	<p>ELIZABETH ALTON APPLIANCES 1135 ELIZABETH AVE. 354-9525</p>	<p>HILLSIDE TOBIA'S APPLIANCE 2201 LIBERTY AVE. 822-7064</p>
<p>LINDEN LINDEN RADIO 28 E. ELIZABETH AVE. 684-5862</p>	<p>IRVINGTON WILDEROTTER'S 618 SPRINGFIELD AVE. 399-1200</p>	<p>SPRINGFIELD PHOENIX APPLIANCE 200 MORRIS AVE. 370-6263</p>

SYLVANIA HOLIDAY VALUES

BBD

Appliance Co-op



YOUR CHOICE

539⁹⁵

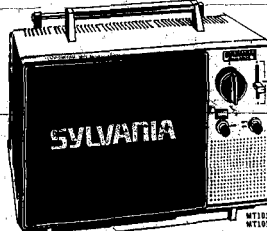
Listen for BBD's 'Value-Specials' as heard over WJWJ Radio

GTE SYLVANIA INCORPORATED

25" diag.

COLOR TV CONSOLES

Choose from Early American model CL1243K or Mediterranean model CL1247P. Both feature Color Bright 100 picture tube for the sharpest, brightest picture possible. Gibraltar 58 chassis for solid-state performance and reliability. APG push button locks in line tuning and Picture-Tilt locks in placing fresh tones automatically! And with Instant Color, a perfect color picture in just seconds, no warm-up time required. Sylvania brings you two outstanding all-screen color buys!



YOUR CHOICE

89⁹⁵

GTE SYLVANIA Memory Fine Tuning PORTABLE TV



GTE SYLVANIA 40-Watt Air Suspension Speaker Stereo Phone

25" diag. COLOR TABLE MODEL 469⁹⁵

Contemporary style cabinet of unusual Gold color. Features Color Bright 100 picture tube for the sharpest, brightest color picture possible. Gibraltar 58 chassis and APG push-button, CL1243K



OFFICES THE TOPIC — Dr. John N. Shive, left, examines equipment used in New Jersey Bell's new science talk, "Optics in Communications." Looking, from left, are Dr. Carl L. Madburger, New Jersey Commissioner of Education; Frederick J. Griffin Jr., assistant vice-president, New Jersey Bell public relations, and Dr. Richard B. Schneitz, supervising consultant for school-industry cooperation in the State Department of Education. Dr. Shive is manager of science lectures and demonstrations at Bell Telephone Laboratories.

DEATH NOTICES

SARLES—Ella Burr, of 118 Woodford Dr., Springfield, N.J., died at 10:00 P.M. on Saturday, Dec. 3, 1971, of a heart ailment. She was 83 years old. Burial in the Northwood Memorial Park, Flemington, N.J., on Monday, Dec. 6, 1971, at 11:30 A.M. Interment in the same place. Friends may call at the funeral home of the McCracken Funeral Home, 210 Morris Ave., Union, N.J., on Monday, Dec. 6, 1971, from 10:00 A.M. to 12:00 P.M. The funeral service will be held at 1:00 P.M. in the funeral home. In lieu of flowers, contributions may be made to the American Cancer Society, 200 Madison Ave., New York, N.Y. 10017.

SWAN—On Friday, Dec. 3, 1971, Alexander J., of 140 Woodford Dr., Springfield, N.J., died at 10:00 P.M. of a heart ailment. He was 83 years old. Burial in the Northwood Memorial Park, Flemington, N.J., on Monday, Dec. 6, 1971, at 11:30 A.M. Interment in the same place. Friends may call at the funeral home of the McCracken Funeral Home, 210 Morris Ave., Union, N.J., on Monday, Dec. 6, 1971, from 10:00 A.M. to 12:00 P.M. The funeral service will be held at 1:00 P.M. in the funeral home. In lieu of flowers, contributions may be made to the American Cancer Society, 200 Madison Ave., New York, N.Y. 10017.

WALSH—On Friday, Dec. 3, 1971, Mrs. Mary C. Walsh, of 140 Woodford Dr., Springfield, N.J., died at 10:00 P.M. of a heart ailment. She was 83 years old. Burial in the Northwood Memorial Park, Flemington, N.J., on Monday, Dec. 6, 1971, at 11:30 A.M. Interment in the same place. Friends may call at the funeral home of the McCracken Funeral Home, 210 Morris Ave., Union, N.J., on Monday, Dec. 6, 1971, from 10:00 A.M. to 12:00 P.M. The funeral service will be held at 1:00 P.M. in the funeral home. In lieu of flowers, contributions may be made to the American Cancer Society, 200 Madison Ave., New York, N.Y. 10017.

WILSON—On Friday, Dec. 3, 1971, Mrs. Mary C. Wilson, of 140 Woodford Dr., Springfield, N.J., died at 10:00 P.M. of a heart ailment. She was 83 years old. Burial in the Northwood Memorial Park, Flemington, N.J., on Monday, Dec. 6, 1971, at 11:30 A.M. Interment in the same place. Friends may call at the funeral home of the McCracken Funeral Home, 210 Morris Ave., Union, N.J., on Monday, Dec. 6, 1971, from 10:00 A.M. to 12:00 P.M. The funeral service will be held at 1:00 P.M. in the funeral home. In lieu of flowers, contributions may be made to the American Cancer Society, 200 Madison Ave., New York, N.Y. 10017.

BLANCHARD—Gertrude (nee Farnell) of 140 Woodford Dr., Springfield, N.J., died at 10:00 P.M. on Wednesday, Dec. 3, 1971, of a heart ailment. She was 83 years old. Burial in the Northwood Memorial Park, Flemington, N.J., on Monday, Dec. 6, 1971, at 11:30 A.M. Interment in the same place. Friends may call at the funeral home of the McCracken Funeral Home, 210 Morris Ave., Union, N.J., on Monday, Dec. 6, 1971, from 10:00 A.M. to 12:00 P.M. The funeral service will be held at 1:00 P.M. in the funeral home. In lieu of flowers, contributions may be made to the American Cancer Society, 200 Madison Ave., New York, N.Y. 10017.

WATSON—On Friday, Dec. 3, 1971, Mrs. Mary C. Watson, of 140 Woodford Dr., Springfield, N.J., died at 10:00 P.M. of a heart ailment. She was 83 years old. Burial in the Northwood Memorial Park, Flemington, N.J., on Monday, Dec. 6, 1971, at 11:30 A.M. Interment in the same place. Friends may call at the funeral home of the McCracken Funeral Home, 210 Morris Ave., Union, N.J., on Monday, Dec. 6, 1971, from 10:00 A.M. to 12:00 P.M. The funeral service will be held at 1:00 P.M. in the funeral home. In lieu of flowers, contributions may be made to the American Cancer Society, 200 Madison Ave., New York, N.Y. 10017.

WILSON—On Friday, Dec. 3, 1971, Mrs. Mary C. Wilson, of 140 Woodford Dr., Springfield, N.J., died at 10:00 P.M. of a heart ailment. She was 83 years old. Burial in the Northwood Memorial Park, Flemington, N.J., on Monday, Dec. 6, 1971, at 11:30 A.M. Interment in the same place. Friends may call at the funeral home of the McCracken Funeral Home, 210 Morris Ave., Union, N.J., on Monday, Dec. 6, 1971, from 10:00 A.M. to 12:00 P.M. The funeral service will be held at 1:00 P.M. in the funeral home. In lieu of flowers, contributions may be made to the American Cancer Society, 200 Madison Ave., New York, N.Y. 10017.

WILSON—On Friday, Dec. 3, 1971, Mrs. Mary C. Wilson, of 140 Woodford Dr., Springfield, N.J., died at 10:00 P.M. of a heart ailment. She was 83 years old. Burial in the Northwood Memorial Park, Flemington, N.J., on Monday, Dec. 6, 1971, at 11:30 A.M. Interment in the same place. Friends may call at the funeral home of the McCracken Funeral Home, 210 Morris Ave., Union, N.J., on Monday, Dec. 6, 1971, from 10:00 A.M. to 12:00 P.M. The funeral service will be held at 1:00 P.M. in the funeral home. In lieu of flowers, contributions may be made to the American Cancer Society, 200 Madison Ave., New York, N.Y. 10017.

WILSON—On Friday, Dec. 3, 1971, Mrs. Mary C. Wilson, of 140 Woodford Dr., Springfield, N.J., died at 10:00 P.M. of a heart ailment. She was 83 years old. Burial in the Northwood Memorial Park, Flemington, N.J., on Monday, Dec. 6, 1971, at 11:30 A.M. Interment in the same place. Friends may call at the funeral home of the McCracken Funeral Home, 210 Morris Ave., Union, N.J., on Monday, Dec. 6, 1971, from 10:00 A.M. to 12:00 P.M. The funeral service will be held at 1:00 P.M. in the funeral home. In lieu of flowers, contributions may be made to the American Cancer Society, 200 Madison Ave., New York, N.Y. 10017.

WILSON—On Friday, Dec. 3, 1971, Mrs. Mary C. Wilson, of 140 Woodford Dr., Springfield, N.J., died at 10:00 P.M. of a heart ailment. She was 83 years old. Burial in the Northwood Memorial Park, Flemington, N.J., on Monday, Dec. 6, 1971, at 11:30 A.M. Interment in the same place. Friends may call at the funeral home of the McCracken Funeral Home, 210 Morris Ave., Union, N.J., on Monday, Dec. 6, 1971, from 10:00 A.M. to 12:00 P.M. The funeral service will be held at 1:00 P.M. in the funeral home. In lieu of flowers, contributions may be made to the American Cancer Society, 200 Madison Ave., New York, N.Y. 10017.

WILSON—On Friday, Dec. 3, 1971, Mrs. Mary C. Wilson, of 140 Woodford Dr., Springfield, N.J., died at 10:00 P.M. of a heart ailment. She was 83 years old. Burial in the Northwood Memorial Park, Flemington, N.J., on Monday, Dec. 6, 1971, at 11:30 A.M. Interment in the same place. Friends may call at the funeral home of the McCracken Funeral Home, 210 Morris Ave., Union, N.J., on Monday, Dec. 6, 1971, from 10:00 A.M. to 12:00 P.M. The funeral service will be held at 1:00 P.M. in the funeral home. In lieu of flowers, contributions may be made to the American Cancer Society, 200 Madison Ave., New York, N.Y. 10017.

WILSON—On Friday, Dec. 3, 1971, Mrs. Mary C. Wilson, of 140 Woodford Dr., Springfield, N.J., died at 10:00 P.M. of a heart ailment. She was 83 years old. Burial in the Northwood Memorial Park, Flemington, N.J., on Monday, Dec. 6, 1971, at 11:30 A.M. Interment in the same place. Friends may call at the funeral home of the McCracken Funeral Home, 210 Morris Ave., Union, N.J., on Monday, Dec. 6, 1971, from 10:00 A.M. to 12:00 P.M. The funeral service will be held at 1:00 P.M. in the funeral home. In lieu of flowers, contributions may be made to the American Cancer Society, 200 Madison Ave., New York, N.Y. 10017.

WILSON—On Friday, Dec. 3, 1971, Mrs. Mary C. Wilson, of 140 Woodford Dr., Springfield, N.J., died at 10:00 P.M. of a heart ailment. She was 83 years old. Burial in the Northwood Memorial Park, Flemington, N.J., on Monday, Dec. 6, 1971, at 11:30 A.M. Interment in the same place. Friends may call at the funeral home of the McCracken Funeral Home, 210 Morris Ave., Union, N.J., on Monday, Dec. 6, 1971, from 10:00 A.M. to 12:00 P.M. The funeral service will be held at 1:00 P.M. in the funeral home. In lieu of flowers, contributions may be made to the American Cancer Society, 200 Madison Ave., New York, N.Y. 10017.

PICK-A-PAL Sweepstakes
Nov. 25th thru Dec. 24th, 1971

LET BBD SEND YOU TO HAWAII

Plus over 50 STERO PHONES AND RADIOS to be given away!

Just fill out this coupon and bring it with you to a BBD store. Indicate your favorite television, no TV's or VCR's, too. Sweepstakes to be held on 12/24/71. To determine Third Prize winners, The Grand and Second prize drawings will be held on 12/28/71. One winner per family. You need not be present to win. No purchase necessary. You will be notified if you are a winner.

BBD Appliance Centers are Individually Owned and Operated
This Means that at BBD You Always Buy from a Man You Know!
IT'S BBD FOR BEST SERVICE, PERSONAL ATTENTION!

ELIZABETH ALTON'S 1158 Main St. Ave. 354-6525	HILLSIDE TUBIA APPLIANCE 1292 Liberty Ave. 523-7746	IRVINGTON WILDERSTERS 916 Springfield Ave. 599-1280	RAHWAY UNITED DEFENSABLE PRODUCTS 1700 St. George Ave. 381-3600	SPRINGFIELD 380 March Ave. 374-4300
--	--	--	--	--

HOLLYWOOD FLORS
700 Main St. Ave.
354-6525

Trailsides will offer film on pollution of our environment

"All The Difference," a color sound film will be shown at the Union County Park Commission's Trailsides Nature and Science Center at the Watchung Reservation, on Sunday at 2 p.m. The film studies the problem of environmental pollution. The event is also on Sunday, at 3 p.m. and 4 p.m. Donald W. Mayer, director of Trailsides, will present a program in the Trailsides Planetarium entitled "Skies Over Palestine." The program will discuss the story of the skies over Palestine some 1,200 years ago. The story of the Christmas Star will be presented from both the miraculous point of view as well as the possible astronomical explanation. This event is free.

The same program will be presented on Wednesday at 8 p.m. and on Monday, Tuesday, Wednesday and Thursday, Dec. 10, at 4 p.m. As the Trailsides Planetarium can seat only 35 persons at a performance, it is necessary to obtain a ticket from the Trailsides office the day of the show. Tickets are issued on a first-come, first-served basis. Children under eight years of age are not permitted in the Planetarium chamber.

The Trailsides Nature and Science Center is open to the public each weekday, except Friday, from 9 a.m. to 5 p.m., and on Saturdays and Sundays from 9 a.m. to 5 p.m.

Bob Lee Association to hold 'thanks' social

Arns J. Highsmith of Elizabeth, chairman of the newly formed Bob Lee Association, announced this week that "the fine showing of Sheriff candidate Robert W. Lee in the recent election" was the impetus for the formation of that association.

The objectives of the association, according to Highsmith, will be to promote civic and urban improvement and to further involve youth in the governmental issues of today. Highsmith said that the association will sponsor a "post campaign" thank you social tonight from 6 to 9 o'clock at the Scotch Hills Country, Jerusalem rd., Scotch Plains.



DR. HENRY E. SCOTT JR.

Synagogue plans altar rededication

Rabbi Leonard S. Zull of Temple Beth El in Elizabeth announced this week that a rededication of the Bimah (altars) will be held at the synagogue on Friday, Dec. 17.

The design of the altar was made by Milton Kandler of Union, president of the temple, and executed to wood by Robert Rubinowitz of Springfield. The altar's coverings were sewn by Rabiner's mother.

Another feature of the evening will be the dedication to twin Kiddush wine cups donated by Dr. and Mrs. Burton Cohen in honor of the Bimah of their son, Hugh.

The guest speaker will be Rabbi Ballou Brickner, director of interfaith activities of the Union of American Hebrew Congregations. Mr. and Mrs. George Cook of Union, chairman of the evening, have invited the public to join in this religious event on the life of Temple Beth El.

New dean to act as liaison between two county schools

The appointment of Dr. Henry E. Scott, Jr., of Fair Haven, as dean of educational development for Union College, Cranford, Elizabeth and Plainfield, and Union County Technical Institute, Scotch Plains, was announced last week by Dr. Kenneth W. Iversen, president of Union County, and Dr. George Reed, president of U.C.T.I.

Dr. Scott, who was director, Programs for Independent College and Universities, State Department of Higher Education, Trenton, began his new duties last Thursday. He will report directly to Dr. Iversen and hold the rank of associate professor at Union College. His primary responsibility will be to develop new educational programs to be offered jointly by

Union College and Union County Technical Institute. Dr. Iversen said, as well as new programs for both institutions.

Union College and Union County Technical Institute are serving jointly under contract with the Union County Coordinating Agency for Higher Education as Union County's community college in lieu of a County College. The position of dean of educational development was recommended to both institutions by the Coordinating Agency.

Dr. Iversen and Dr. Baxel said Dr. Scott will serve as liaison officer between the two institutions, study educational needs and develop new educational programs for both institutions "with special reference to the student who does

not desire nor require a transfer or technical program," and provide "coordination in every possible area between Union College and Union County Technical Institute and make recommendations to the President of both institutions as to the President of both institutions to be better served by either or both institutions, individually or collectively."

Dr. Scott will also serve on the Union College Union County Technical Institute Liaison Committee and as a member of educational Commission in Union County for the Union County Coordinating Agency for Higher Education on a consulting basis.

Dr. Scott is a graduate of Northeast Missouri State Teachers College where he majored in English with a minor in speech. He received his master's degree in English from the University of Chicago and his doctorate from the University of Wisconsin where he was awarded a teaching fellowship.

Star photography will highlight talk

Robert Little of Coleston, Inc., will be the guest speaker at a meeting of Amateur Astronomers, Inc., Friday, Dec. 17, at 8 p.m. in the theater, Union College, Cranford. It was sponsored by John H. Bauman of Westfield, president.

Little's topic will be "Astrophotography." AAL is open to anyone over 14 years of age with an interest in any phase of astronomy. The organization, in cooperation with Union College, operates the Spence Observatory on the College's Cranford campus.

Meetings are conducted on the third Friday of the month September through May and are open to the public. On all other Fridays, AAL members conduct public viewing sessions at the observatory.

BERKELEY SAVINGS AND LOAN ASSOCIATION

NEW HOME OFFICE!

521 Millburn Avenue
Millburn

(OPP SAKS
5th AVENUE)

INTEREST PAID QUARTERLY

6% SAVINGS CERTIFICATES

Guaranteed from 2 to 5 years
2 1/2% - 5% Annual

REGULAR SAVINGS ACCOUNTS 5%

Interest paid from day of deposit to day of withdrawal.

*Priority membership available to members

Accounts insured to \$20,000 by F.S.I.C.
Millburn office open daily 10:30-7:30. Thurs. evs. 6 to 8
Sat. 9:30 to 11. 467-2800

TRIPLE VALUE

VOLVO VALUE

SMYTHE

Lowest Total Cost of Ownership

YOUR WANT AD IS EASY TO PLACE - JUST PHONE 686-7700

Ask for "Ad-Taker" and she will help you with a Reply-Coupon Mail ad.

LAMP CITY'S STIFFEL GALLERY

Light was never so lovely as in these Lamps by STIFFEL

STIFFEL Lamps are distinctive in design, flawless in craftsmanship. Each lamp is a treasure from Stiffel - artisans in lampcraft. Chosen from more than 1,000 designs, these lamps are one in fit, beauty into your home, fit neatly into your budget. There are no like lamps made. Prices range from 60" to 235"

THE IDEAL LAMP FOR YOU OR FOR GIFT GIVING!

"America's Showplace of Famous Brands"
U.S. ROUTE 22
N.J. 088-8421
Near Hopatcong Eastbound Lane
New Jersey
EYES. TO - SAT. TO 5

Two Guys FOOD SUPERMARKETS

8 OFF Toward the purchase of CHIFFON REGULAR SOFT MARGARINE 1 LB. PKG. GOOD ONLY AT TWO GUYS FOOD SUPERMARKETS. Good Thru Sat. Dec. 11, 1971.

10 OFF Toward the purchase of CHASE & SANBORN COFFEE 1 LB. CAN 88¢ WITH COUPON VALUE 1/20¢ OFF 10¢. GOOD ONLY AT TWO GUYS FOOD SUPERMARKETS. Good Thru Sat. Dec. 11, 1971.

50 OFF Toward the purchase of CHASE & SANBORN INSTANT COFFEE 10 OZ. JAR 88¢ WITH COUPON VALUE 1/20¢ OFF 50¢. GOOD ONLY AT TWO GUYS FOOD SUPERMARKETS. Good Thru Sat. Dec. 11, 1971.

10 OFF Toward the purchase of AXAY LAUNDAIRY DETERGENT 5# WITH COUPON 59¢ WITH COUPON. GOOD ONLY AT TWO GUYS FOOD SUPERMARKETS. Good Thru Sat. Dec. 11, 1971.

12 OFF Toward the purchase of 3 ROLLS BOUNTY JUMBO SIZE PAPER TOWELS 3 FOR 39¢ WITH COUPON. GOOD ONLY AT TWO GUYS FOOD SUPERMARKETS. Good Thru Sat. Dec. 11, 1971.

15 OFF Toward the purchase of PROF FABRIC FINISH 19 WITH COUPON. GOOD ONLY AT TWO GUYS FOOD SUPERMARKETS. Good Thru Sat. Dec. 11, 1971.

25 OFF Toward the purchase of ANY JAR OF VLASIC PICKLES 46¢ or SIZE. GOOD ONLY AT TWO GUYS FOOD SUPERMARKETS. Good Thru Sat. Dec. 11, 1971.

Two Guys PLUS YOUR MOST VALUABLE

TRADING STAMPS FREE!

SOME FOOD FOR YOUR MONEY

GENUINE SPRING NEW ZEALAND

LEGS OF LAMB

WHOLE 69¢ LB.

OVEN READY FRESH FROZEN

GROUND BEEF 69¢	GROUND CHUCK 79¢	GROUND ROUND 89¢
CHUCK STEAK 49¢	CORNISH HEN 49¢	GOV'T INSPECTED CHICKEN LEGS 49¢
SWISS ITALIAN SAUSAGE 79¢	GENUINE SHOULDERS LAMB CHOPS 98¢	GRADE A-DUCKS 59¢
ROASTING FRANKS 85¢	SMOKED PICNIC 49¢	SUGAR CURED SHOULDER 49¢
CITY CUT SPARE RIBS 69¢	GOV'T INSPECTED BACON 69¢	BEEF LIVER 49¢
USDA CHOICE BONELESS CROSS RIB ROAST 1.19	ARMOUR STAR MIRACURE SLICED BACON 79¢	HYORADE'S WEST VIRGINIA SLICED BACON 79¢
USDA CHOICE (ROUND) SILVER TIP ROAST 1.25	USDA CHOICE (ROUND) TOP ROUND ROAST 1.29	BOLOGNA OR LIVERWURST 59¢
USDA CHOICE BONELESS RUMP ROAST 1.45	PROGRESSO SALES!	SOUPS
CHICK PEAS 5-20 99¢	MINISTRONE, UNTIL SCAROLE OR BEANS & MARGARINE	5-20 99¢
SPAGHETTI SAUCES 3-16 99¢	CLAM SAUCES 3-10 99¢	RED OR WHITE
BOLD DETERGENT 10.18 11.02 2.79	MARLO MAJORS 43¢	WALLERS 39¢

Two Guys TRADING STAMPS FREE!

SOME FOOD FOR YOUR MONEY

PRODUCE DEPARTMENT

BANANAS GOLDEN RIPE 10¢

ORANGES CALIF NAVEL 18 79¢

COOKING BAGS

MEAT OR CHICKEN BURGERS TURKEY CHILI ALI KING 5 99¢

FRIED CHICKEN BREAST 10 OZ 59¢

DOLE FROZEN JUICES

ALL VARIETIES 6 99¢

DAIRY DEPARTMENT

BORDEN'S BIG TEN BISCUITS 6 99¢

MARGARINE CHIFFON SOFT 2 89¢

Two Guys FOOD SUPERMARKETS

FRUIT COCKTAIL 4 99¢

PRINCE & CURLEY LASAGNA 3 pkgs. 99¢

TWO GUYS ALL PURPOSE DETERGENT BLUE ENZYME 48 39¢

DRY CAT FOOD LITTLE FRISKIES 4 lb. pkg. 79¢

MARTINSON'S PREMIUM COFFEE 2 lb. 1 59

LIQUID DETERGENT THRILL 22 oz. bt. 57¢

Two Guys FOOD SUPERMARKETS

BEANS OR SWEET PEAS 6 99¢

PRIDE OF COLUMBIA COFFEE 3 lb. can \$1 89

REYNOLDS' BROYLERS PANS 37¢

MARTINSON'S COFFEE FREEZE DRIED 4 oz. 79¢

VANITY FAIR REGAL PRINT BATHROOM TISSUE 39¢

VANITY FAIR REGAL PRINT FACIAL TISSUES 3 79¢

Two Guys FOOD SUPERMARKETS

CITRUS PUNCH 49¢

IMPORTED BULGARIA 69¢

CHOPPED HAM 45¢

SWISS SPY WATCHES 1.87

WEEKLY BONUS SPECIAL STAINLESS STEEL SAUCE PAN 68¢

Two Guys FOOD SUPERMARKETS

OPEN DAILY 9:30 A.M. TO 11 P.M. GUADALUPE, N.J. 07033. For Sales Allowed by Law.

UNION Rt. 22 at Morris Ave.

We reserve the right to limit quantities. Not responsible for typographical error. Prices Effective Nov. 28, Dec. 11, 1971.