





# County Charter Commission member charges freeholders scuttling reform

A member of the Union County Charter Study Commission this week attacked the "sudden decision" of the Board of Freeholders to hire a county administrator, charging that the board members "are backing away from their earlier commitment to a change in county government."

The blast came from Mrs. Joan Palin, a member of the commission which was created last year and which has issued a report calling for a county manager. A referendum on the commission recommendations will be held at the general election Nov. 5.

Noting that the freeholders decided to hire a county administrator "just six weeks before the referendum," Mrs. Palin said:

"The commissioners are of the opinion that the general public is unaware of the difference between a county administrator and a county manager and may well feel that a complete reform has already taken place when, in fact, the change is minimal."

Charles F. Kennedy, commission chairman, said that "under the present law, a county administrator has absolutely no power—the freeholders may only delegate some of their work assignments to him." He added:

"One of the freeholders' main complaints is that they have very little power over affairs of the county in the present form of government and they feel strongly, according to their

testimony, that they need more legal authority to manage the county more effectively.

That being the case, it is apparent that naming a county administrator is no reform at all. Most of the problems the freeholders complained about to the commission would still be there—for example, lack of fiscal control, lack of authority over the various autonomous bodies, and the fact that they have direct control of only 500 out of the 1,600 county employees and of about 20 percent of the budget.

Now they seem to feel that by turning over some of their assignments to an administrator, some effective change can be accomplished. It won't work. If their motives were sincere, they could have waited another six weeks until after the election to avoid deluding the public who will be called upon in November to vote on the first change in the form of Union County Government since it was founded in 1857."

Kennedy charged that "there are at least three factors that are the real reasons behind the freeholders' foot-dragging on a charter change."

"One is the possible loss of patronage, because a county manager would be empowered to hire and fire non-civil service employees (department heads).

Another is the fact that all freeholders' terms would expire immediately after the election in November 1975 if the charter question passes

this year and they would have to run again if they wished to serve in the new government. This provision in the law insures that all freeholders taking office then would be committed to the new form of government.

A third element is the matter of citizens rights which would be assured to the public after a charter change. Under the present law, there is no way for citizens to move for the recall of a county official or to demand a referendum on an unpopular ordinance passed by the freeholders."

Kennedy added, "If we were now operating under the county manager plan, citizens who oppose the Pingry purchase, for example, could, by getting the signatures on a petition of 15 percent of the registered voters, demand a referendum on the matter. Under present law they are powerless to do anything but protest."

**Saving on treadwear**

Keep your tires properly aligned to steer more safely and save on treadwear. Tires which roll straight make proper, economic use of tread design.

**FRIDAY DEADLINE**  
All items other than spot news should be in our office by noon on Friday.

# Warinanco rink lists schedule of skating sessions

Girl Scouts will have opportunities for group ice skating merit badge instruction, beginning next week, at the Warinanco Park Ice Skating Center.

Sessions will be conducted for eight one-half hour periods, commencing on Monday. Group sessions for 20 or more girls will be scheduled on Mondays, Tuesdays, Thursdays and Fridays, at 3:30, 4:14 and 5 p.m.

Other group skating sessions began this week, also for eight one-half hour sessions. Tots 3 to 5-years old have classes on Wednesday at 10 a.m., youths 6 to 12 on Wednesday at 3:30 p.m. with a beginner women's group the same day at 3:30 p.m.

The schedule for adults, 16 and over, begins today at 8:30 p.m. Youths 13 to 15 begin on Friday at 6:30 p.m. and on Saturday at 10:30 a.m. An intermediate group for women is slated to begin instruction on Tuesday at 10 a.m.

A few vacancies still exist for some of these group sessions. Application can be made at the Ice Skating Center or by telephoning 241-3263. Although entrants are late in the start of the eight sessions they can attend make up classes

# Model railroad show to be held in Cranford

Model railroad exhibits ranging from the smallest to the latest popular scales will be featured at the 1974 Model Railroad Hobby Show, Nov. 2-3 in Cranford.

Layouts and displays for the show, sponsored by the Model Railroad Club, Inc. of Union, will range from N-scale to half-inch scale. A prototype car 40 feet long measures three inches in N-scale, but is 20 inches long in half-inch scale.

The annual show will be held at Hillside Avenue Junior High School, Cranford,

starting at 10 a.m. on Nov. 2, and at noon on Nov. 3. The show continues each day until 6 p.m.

More than 7,000 square feet of space will be occupied by exhibits in a variety of scales and with a variety of themes. Hobbyists will be able to buy items offered by a number of dealers.

# Three to attend board session

Three members of the board of education of the Union County Vocational-Technical Schools will attend the 22nd annual workshop of the New Jersey School Boards.

They are: William McKinlay, board president; Mrs. Helen Huber, vice-president, and Dr. Harvey Charles, superintendent of schools.

**arban**  
INCORPORATED

\* Previously Located at 415 Chestnut Street Union, New Jersey

\* NOW LOCATED AT OUR NEW AND LARGER SHOWROOM

206 N. Wood Avenue  
Linden, N.J. 486-4300

GREENBERG'S INC.  
an affiliate member

Showroom Hours  
Mon. Tues. Thurs. 9:30 to 4  
Fri. 9:30 to 7, Sat. 9:30 to 5  
Closed Wednesday at 1 P.M.

BULLSEYE!  
To reach the person you want, use an inexpensive way out in this newspaper. It's so simple.

DIAL  
686-7700  
Ask for Classified

# ROOM SIZE REMNANTS SAVE UP TO 60% AT LFO

Hundreds of room size remnants. You're certain to find the color, size and style you need. Each remnant is A-1 new carpet. Below are a few of the over 300 great buys now on display. For your convenience, shop by number.

LFO No.	Size	Description	Reg. Price	Sale Price	Save
1990	15'x20'	Wedgewood Kodel random shear	\$305.60	\$175.00	SAVE \$130.60
2003	15'x13'6"	Lime Tweed Nylon	131.78	79.99	SAVE 51.79
2004	15'x17'	Erin Green Nylon sculptured	167.15	125.00	SAVE 42.15
2005	12'x20'	Orange 1 1/2" Nylon shag	186.42	125.00	SAVE 61.42
2006	12'x12'6"	Deep Red nylon shag	116.52	99.99	SAVE 16.53
2008	12'x15'6"	Heather Blue Herculon tweed	123.81	79.99	SAVE 43.82
2009	12'x16'9"	Blue Green Herculon strips	111.42	79.99	SAVE 31.43
2010	12'x15'	Lemon Ice Nylon shag	139.80	99.99	SAVE 39.81
2011	15'x12'9"	Burn. Gold nylon sculptured	148.53	79.99	SAVE 68.54
2012	12'x17'7"	Red Plaid print Nylon	211.26	125.00	SAVE 86.26
2013	12'x18'6"	Basque Blue polyester shag	172.44	125.00	SAVE 47.44
2014	12'x14'	Silver Frost Hi-low Nylon	205.18	125.00	SAVE 80.18
2016	12'x11"	Orange Polyester shag	146.70	99.99	SAVE 46.71
2017	12'x15'	Nutmeg outdoor tweed	79.80	50.00	SAVE 29.80
2018	15'x13'	Coffee Nylon Olefin	129.80	79.99	SAVE 49.81
2019	15'x14'9"	Sage Polyester shag	172.44	99.99	SAVE 72.45
2020	15'x12'2"	Gold Acrylic Velvet	199.80	99.99	SAVE 99.81
2021	15'x13'4"	Gold Acrylic Velvet	222.20	99.99	SAVE 122.21
2022	12'x12'11"	Olive Rust Nylon tweed	101.83	79.99	SAVE 21.84
2023	11'x14'6"	Brown Acrylic sculptured	189.50	79.99	SAVE 109.51
2024	12'x11'6"	Rust Nylon tweed	91.82	79.99	SAVE 11.83
2025	15'x16'9"	Avocado Nylon velvet	139.32	79.99	SAVE 59.33
2026	12'x10'8"	Brown lustrated nylon velvet	279.86	125.00	SAVE 154.86
2027	15'x19'6"	Parrot Green Acrylic velvet	325.00	125.00	SAVE 200.00
2028	12'x14'9"	Bronzotone Nylon tweed	137.49	79.99	SAVE 57.50
2029	10'4"x14'	Turquoise Nylon sculptured	102.36	79.99	SAVE 22.37
2030	11'9"x12'5"	Bronze Nylon sculptured	79.84	50.11	SAVE 29.84
2031	6'4"x16'11"	Gold Sculptured Nylon	77.00	50.00	SAVE 27.00
2032	12'x17'9"	Gold Polyester Random Shear	189.12	99.99	SAVE 89.13
2033	11'7"x17'3"	Blue Green Acrylic outdoor	225.00	99.99	SAVE 125.01
2034	12'7"x14'2"	Green Nylon Velvet	189.50	99.99	SAVE 89.51
2035	10'x14'9"	Champagne Wool velvet	320.00	125.00	SAVE 195.00
2036	15'x15'	Red Nylon sculptured	174.75	125.00	SAVE 49.75
2037	12'x14'7"	Teak Nylon twist	135.11	79.99	SAVE 55.12
2039	12'x11'9"	Avocado Nylon Shag	106.94	79.99	SAVE 26.95
2040	12'x9'6"	Blue Green Nylon tweed	75.89	50.00	SAVE 25.89
2041	12'x14'6"	Blue Green Nylon tweed	115.78	79.99	SAVE 35.79
2042	12'x16'9"	Gold Herculon tweed	133.75	79.99	SAVE 53.76
2043	12'x14'5"	Gray Nylon print	199.95	99.99	SAVE 99.96

**SALE!** Also remnants of vinyl inlays, No-wax and cushioned. Up to 12 sq. yds. Only \$2.00 sq. yd.

## SHORT ROLLS REDUCED up to 50%

<p><b>LEVEL LOOP</b></p> <p>Only <b>\$2.94</b> sq. yd.</p> <p><small>Tweeds and candy stripes! Extra durable nylon pile that's tightly tufted for heavy duty service. 7 colors, some with padding attached.</small></p>	<p><b>SCULPTURED NYLON</b></p> <p>Only <b>\$3.97</b> sq. yd.</p> <p><small>Extra durable hi-low tufted nylon pile that puts the emphasis on beauty and value. Choose from 6 handsome colors. Hurry for this!</small></p>	<p><b>RICH SHAG</b></p> <p>Only <b>\$3.99</b> sq. yd.</p> <p><small>New beauty for your home with low pile nylon shag; miscellaneous groupings of seven fashion "right" textures and colorations.</small></p>	<p><b>KITCHEN PRINTS</b></p> <p>Only <b>\$4.47</b> sq. yd.</p> <p><small>Densely tufted level loop nylon pile. Printed in a dozen designs. Padding attached. First quality.</small></p>
<p><b>SHEARED KODEL</b></p> <p>Only <b>\$4.96</b> sq. yd.</p> <p><small>Dramatic hi sheared styling! This is one of the thickest, most luxurious carpet styles. Famous mills as Roxbury, Aldon, World.</small></p>	<p><b>WILD SHAG</b></p> <p>Only <b>\$5.44</b> sq. yd.</p> <p><small>1 1/2" Luxury shag that still offers one of the most stunning effects in carpet. Can be used commercially, as well.</small></p>	<p><b>ELEGANT VELVET</b></p> <p>Only <b>\$5.99</b> sq. yd.</p> <p><small>A collection of some of the most elegant velvets we have sold in recent years. Acrylics, wools and polyesters.</small></p>	<p><b>SAXONY PLUSH</b></p> <p>Only <b>\$6.99</b> sq. yd.</p> <p><small>Combines the modern look of a low pile nylon shag with the softness of a plush. The most desirable look in carpet today.</small></p>

**LFO**  
LINOLEUM & CARPET

**NEWARK**  
81 CLAY ST.  
(One block from Broad St.)  
Mon., Wed., Fri. 9 a.m. to 6 p.m.  
Tues., Thurs., Sat. 9 a.m. to 6 p.m.  
**485-0600**

**SPRINGFIELD**  
ROUTE 22  
2 DOORS WEST OF BAMS  
Open Daily 11 a.m. to 9 p.m.  
Saturday 11 a.m. to 6 p.m.  
**376-5220**

**ASBURY PARK** 1400 Asbury Ave. 774-3817 Wed., Fri. 9 to 9, Tues., Thurs. Sat 9 to 6.  
**DENVILLE** Route 44 next to Denville Boat Shop 627-7202 Mon., Wed., Fri. 9 to 9, Tues., Thurs. Sat. 9 to 6  
**TOMS RIVER** Route 37, 341-2322: Mon thru Sat. 9 to 5:30, Fri. 9 to 9

Armstrong floor fashion center.

BANKAMERICAN  
G.E. REVOLVING CHARGE  
Master Charge



Play safe...

Protect Your Money  
...Invest It In a

# HARMONIA

REGULAR SAVINGS ACCOUNT  
that pays the Highest Interest Rate

You Can Be Sure of Your Interest  
and You Can Deposit or Withdraw  
Anytime Without Loss of Interest

**5.47%** \* IS THE EFFECTIVE ANNUAL YIELD ON **5 1/4%** \*  
A YEAR A YEAR

Withdrawals anytime without losing interest provided you maintain a balance of \$5.00 or more.

\*Effective Annual Yield Applies When Principal and Interest Remain on Deposit for a Year.

You'll Sleep Better with a  
**HARMONIA**  
**SAFE DEPOSIT**  
**BOX**

It's wise to protect your valuables from theft, fire or disaster with a low-cost safe deposit box. These very special papers and items will be secure in our vault — and available whenever you want them.

NOW AVAILABLE

... for Our Savings  
Account Depositors

**FREE CHECKING**

★ NO MINIMUM BALANCE

★ NO SERVICE CHARGE

... and Your Checks  
Are Absolutely FREE!



# HARMONIA

The Family Savings Bank

In ELIZABETH: 1 UNION SQUARE & 540 MORRIS AVENUE • 289-0800

In SCOTCH PLAINS: 2253 NORTH AVE. (Cor. Crestwood Rd.) • 654-4622

Member Federal Deposit Insurance Corp.













# Byrne will address opening of school boards' workshop

More than 3,000 of New Jersey's school board members will seek solutions to the problems of providing a "thorough and efficient" education at the New Jersey School Boards Association's 22nd annual Workshop Oct. 23-25 at the Haddon Hall Hotel, Atlantic City.

Governor Brendan T. Byrne will speak on the theme of the workshop, "Education In Search of Answers," at the first general session on Wednesday, Oct. 23. Commissioner of Education Frederick G. Burke will discuss "The Changing Nature of Decision-Making in Education" on the second day.

Barbara Sizemore, superintendent of schools, Washington, D.C., will be the guest speaker at the third general session Friday; Art Bumwald, nationally-known columnist, will speak on "I Never Danced the White

House" at the Good Fellowship Banquet, Thursday, Oct. 24; and Carl B. Stokes, NBC news anchorman and former mayor of Cleveland, will be the keynote speaker for the Urban Boards Program on Thursday.

Participants in the workshop, who represent nearly every board of education in the state, will attend group sessions and questions and answer roundtables on various topics relating to school operation and statewide educational concerns.

Legislative leaders participating in the sessions will include Senator James Dugan, Raymond Garramone, John Russo and Eugene Bedell and Assemblyman Steven Perskie, who will speak on "Alternate Tax Plans for Funding Public Education."

A session, "Legislative Leaders on Educational Issues," will be presented by Senator Wayne Dumont, Assemblyman Albert Burstein, chairman of the Assembly Education Committee and Assemblyman William Hicks.

A debate entitled "Educational Control—How Much is Too Much?" will present Dr. Frederick L. Hipp, executive director of the New Jersey Education Association, and David Martin, executive vice-president of the Ohio School Boards Association.

# Slump continues in state economy

"There was a further slowdown in the New Jersey economy in August," Commissioner Joseph A. Hoffman of the N.J. Department of Labor and Industry said this week, after reviewing the current issue of the department's monthly business conditions report, "New Jersey Economic Indicators."

The report, prepared by the Department's Division of Planning and Research, cited slumps in manufacturing and construction and an increase in unemployment as some of the currently adverse features.

Employment in New Jersey has not grown over the past year, said the report, as increases in public sector jobs have been offset by declines in the private sector.

### FRIDAY DEADLINE

All items other than spot news should be in our office by noon on Friday.

### LAFF OF THE WEEK



'OHMIGOSHI Mr. Whipschnibble. He's paying CASH! What do I do?'

# JWV testimonial for Wasserman

The Elin-Unger post, 273 and its ladies auxiliary, Jewish War Veterans, will honor Al Wasserman of Union at a testimonial breakfast at the VFW Camptown Post Home, 56 Chestnut Ave., Irvington, on Sunday, Oct. 27 at 9:30 a.m.

A post honorary member, Wasserman served on many committees for nearly 30 years, receiving many awards and citations for his outstanding achievements. He was post quartermaster for several years and in 1972 was named "Man of the Year."

Past National Commander Milton A. Waldor of West Orange will be the guest speaker. Past Commander George Vice of Maplewood will be the toastmaster. Co-chairmen include Past Commander Vic Levin of Union.

# Eagleton poll finds New Jerseyans oppose Nixon pardon by 2-1 margin

By almost two to one, New Jerseyans disapprove of President Ford's pardon of former President Nixon. According to the latest New Jersey Poll, conducted by the Eagleton Institute of Rutgers University, 62 percent disapprove of the President's action, 33 percent approve and 5 percent have no opinion.

Dr. Stephen A. Salmore, director of the New Jersey Poll, observed that "a feeling that the concept of equal justice under law was violated by the pardon is a major reason for dissatisfaction with President Ford's decision." By a margin of 70-26, respondents to the poll agreed that "the Nixon pardon was unfair because it means that all people are not treated equally by the law." Among those disapproving of the pardon, the margin agreeing with this statement is an overwhelming 93-6. Those approving of the pardon, however, disagree by a 61-30 margin.

New Jersey voters, by a margin of 53-43, disagree with the statement that "we should close the books on the Watergate affair and get on with other problems." The minority approving of the pardon, however, agrees with this statement by the wide margin of 87-10.

By a narrow edge of only 44-42, New Jerseyans rejected the statement that "the pardon

was part of an agreement President Ford made with Nixon before he resigned. Salmore noted that "more than two people out of five do not believe President Ford's denial that a 'deal' was involved in granting the pardon. Ford will have to try to convince these skeptics when he testifies before Congress this week if he is to avoid the credibility problems that plagued his two predecessors."

By 54-41, a majority disagree that "the main reason why President Ford granted the pardon was out of compassion for Mr. Nixon's health."

By the wide margin of 68-25, a majority agreed that "it is very likely now that Nixon has been pardoned we will never learn the full story of Watergate."

Despite criticism of the pardon for Nixon, the Poll found that a majority of 53-33 agrees that

"it is only fair that others involved in the Watergate should also be pardoned." Even those who disapprove of the Nixon pardon agree with this statement by a 55-41 margin.

Among the major population groups in the state, only among Republicans did a majority approve of the Presidential pardon. Particularly opposed to Ford's action in this matter are those under 30, men, non whites and liberals. Even conservatives, however, disapprove of the pardon, although by a narrower margin than the sample as a whole.

The 12th New Jersey Poll was conducted by telephone from the Eagleton Institute of Politics in New Brunswick, N.J. between September 23 and 29. A scientifically selected random sample of 1,005 New Jersey residents 18 years of age or older were interviewed.

**UNION CAMERA exchange**

**"Believe in America Parade" SPECIALS**

**Announcing**

**FIRST TIME IN NEW JERSEY!!**

**CANON DEMONSTRATION & SERVICE CLINIC**

FEATURING SALES & SERVICE REPRESENTATIVES FROM CANON USA

**FRI., OCT. 18 FROM NOON TO 9 P.M.**

**SAT., OCT. 19th FROM 10 A.M. TO 3 P.M.**

**BRING IN YOUR CANON CAMERA FOR FREE TESTING & CLEANING**

**Canon FTb (New) \$269.99**

Here's a truly versatile 35mm SLR camera with all those extra touches you want. Like full aperture or stop-down metering to assure you of perfect exposures. Plus automatic flash control capabilities for precisely exposed flash pictures. Shutter speeds ranging from 1 second to 1/1000 second, plus B for time exposures. And the FTb accepts a wide variety of lenses to increase your photographic options. It even accepts a booster accessory to extend your metering range. All this and Canon's own Quick-Loading system...and much more.

When your customer comes to you asking your advice on a good, easy-to-operate 35mm camera and you recommend the G-III 17, you can sell him with the confidence that he's getting a camera which will give him years of fine performance with a minimum of operational bother. Best of all, his trust in your recommendation will keep him coming back to you.

**Canon Canonet G-III 17 \$129.99**

There isn't another fully automatic, electronic SLR on the market with features that compare with the new Canon EF-1. Customers in the market for a second camera for their F-1 system to customers just getting into photography will all find the sophisticated EF an ideal photographic tool. And they'll know plenty about the EF when they come in to order it. Since it accepts many of the accessories designed for the F-1, its return-sales potential is fantastic.

**Canon EF-1**

Every year, the Canon F-1 gains more and more of a following—and it's no wonder. It is rapidly becoming acknowledged as the professional single-lens reflex camera system, with more than 40 fine Canon lenses and 200 accessories—all with built-in sales appeal. Your F-1 buyer wants a system, so that every F-1 you sell means greater profits in the future.

**Canon AUTO ZOOM 814 ELECTRONIC**

The Auto Zoom 814 Electronic has just about every feature your serious Super 8 customer needs for top-quality filmmaking under any conditions. The camera body, with full exposure information visible, through-the-lens viewing and focusing and optional unannounced capability is a fitting partner to the superb Canon F-1.4 lens with a phenomenal 8:1 zoom ratio and instant macro focusing. It's the ideal camera for the serious Super 8 photographer, and opens the way to future sales of accessories designed to make its scope even broader.

**Canon SUPER 8 AUTO ZOOM 518**

For your more advanced Super 8 movie maker, the 518 SV offers the features he'll appreciate—like easy loaders, a fast 5:1 zoom lens, with a range that can be extended from with optional converters, multiple filming speeds and through-the-lens viewing and focusing. With all these features, plus Canon quality and craftsmanship, you'll win a repeat customer for sure.

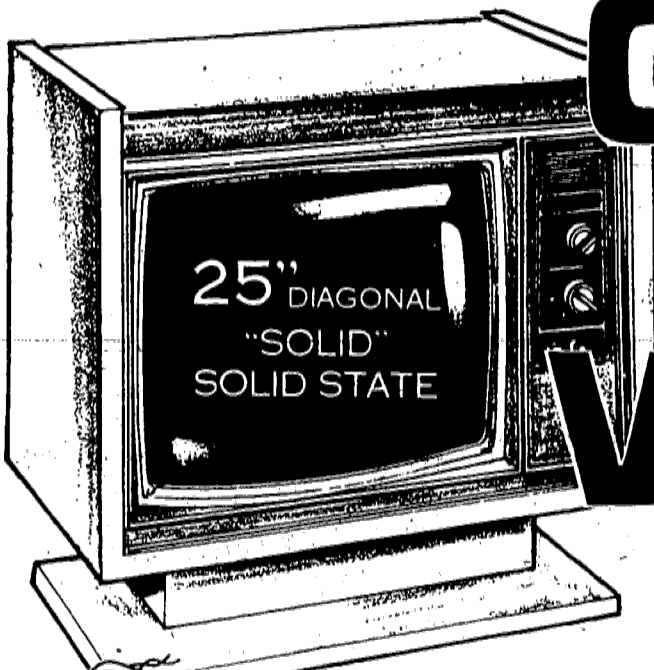
**UNION CAMERA exchange**

**2009 MORRIS AVE. UNION**

(Next to the Bank)

**Phone 688-6573** Open Mon. & Fri. Eves.

# Regal Magnavox



SAVE \$100 LIMITED TIME OFFER!

Model 4730 has an "electronic eye" which actually watches for changes in room light...and instantly and automatically adjusts the picture's brightness, contrast and color to the changes it sees. You get ideal viewing in any light, any room. It has one-button tuning...and 100% solid state chassis, of course

INCLUDES 1-YEAR SERVICE

# GRAND SLAM VALUES

**Magnavox 25" diagonal Screen**

100% SOLID STATE VIDEOMATIC COLOR TV

REDUCED TO **549.95**

**Magnavox 17" diagonal Screen**

100% SOLID STATE COLOR TV

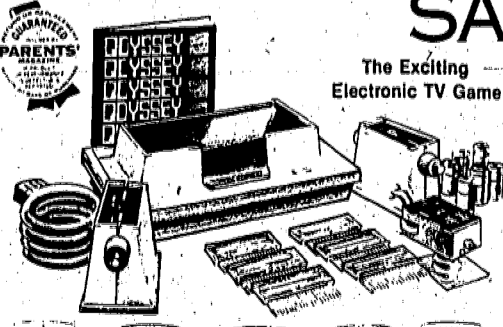
REDUCED TO **319.95**

Model 4220 features a 100% solid state chassis, automatic fine tuning, solid state detent tuning and precision in-line picture tube system. It come in 3 decorator colors, too.

SAVE \$30

**ODYSSEY** NOW ONLY **69.95**

with the purchase of any Magnavox Color or Black & White TV...17" diagonal or larger. 12 exciting games to play, many to choose from.



- TENNIS
- HOCKEY
- ANALOGIC
- ROULETTE
- FOOTBALL
- BKI
- SUBMARINE
- STATES
- CAT AND MOUSE

**Regal Magnavox GUARANTEES**

- SELECTION
- SAVINGS
- SERVICE
- SATISFACTION

# Regal Magnavox 6 GREAT HOME ENTERTAINMENT CENTERS TO SERVE YOU

**LINDEN**  
911 W. St. George Avenue  
at Stiles Street  
486-9080

Other Store Locations in NEW JERSEY:  
EATONTOWN • EAST BRUNSWICK  
in NEW YORK:  
NEW YORK CITY • STATEN ISLAND

**UNION**  
2121 Morris Avenue  
2 blocks west of Center  
687-5701

**APPLES SWEET CIDER PUMPKINS**

Fresh cider without preservatives...Fruits and vegetables...Home style fruit pie...Preserves... Pure honey...Maple syrup...Hickory smoked hams and bacon

**WIGHTMAN FARMS**  
ROUTE 202 MORRISTOWN  
5 MILES SOUTH OF MORRISTOWN



52 or better? Monthly fees here won't go up in '74-75!

How is it possible? At Crestwood Village, the residents set and manage community-wide contracts covering most costs of home maintenance, repairs, municipal and community services. Reflecting efficient, sound management, our (Manchester) township realty taxes actually have gone DOWN! Result: Full municipal and community services for our residents at fixed monthly payments during fiscal year 1974-75 actually LOWER (on most models) THAN IN OUR 1973 COOP'S. Visit Crestwood Village and see for yourself how residents' participation in community management has created a serene and secure environment for 5,000 people. Why not you?



**THE DOLLARS MAKE SENSE!**  
A single monthly fee \$50.80 to \$91.25 (depending on the model you select)

- INCLUDES:**
- real estate taxes
  - water, sewer
  - roof/ exterior painting/ repairs
  - community TV antenna
  - street cleaning
  - 24-hour Emergency Service
  - trash/ garbage
  - clubhouse
  - lawn care
  - courtesy bus
  - community TV antenna
  - 24-hour Emergency Service

**Here's what a Full-service community means to you:**

- Shopping Center with food market, pharmacy, gift shop, barber shop, beauty parlor, bank, auto service station
- Medical, dental offices
- 4 hospitals nearby
- 2 ambulances on standby, 24 hours a day
- 3 clubhouses
- Full municipal services
- Grow-your-own gardens



See not 3, or 5, or 7, but... TWELVE model homes

**\*15,975 to \*39,950**



Rt. 530, Box 166, Whiting, N.J. 08759 201-350-1000

Now open 9-7 p.m., 7 days a week for your convenience

**DIRECTIONS:**  
From New York and North: Garden State Parkway (Exit 80) & N.J. #530  
From Philadelphia: Ben Franklin Bridge, N.J. #70 & #530  
From Trenton: Routes #33, #526 to Allentown, then Rts. #539 & #530

This advertisement is not an offering. No offering is made except by prospectus filed with the Bureau of Securities, Department of Law and Public Safety of the State of New Jersey. The Bureau of Securities of the State of New Jersey has not passed on or endorsed the merits of this offering.

Send coupon for full information today

Crestwood Village, Dept. W  
Box 166, Whiting, N.J. 08759  
Please mail free illustrated brochure on the full-service, active adult community.

Name \_\_\_\_\_  
Address \_\_\_\_\_  
City \_\_\_\_\_  
State \_\_\_\_\_ Zip \_\_\_\_\_



## Greenbriar is designed for retiree lifestyle

Greenbriar is an adult community of single-family homes in a country-estate setting in Brick Town. It has its own golf course, parks and nature trails but the real estate is less important than the ideas on which the community was created, according to William Steinfield, vice-president of U.S. Home Corporation New Jersey. Today's adult citizens reject the notion that retirement and vegetation are synonymous. They are interested and active in civic, social and cultural affairs. Steinfield points out, "Their attitude is that the end of an active business career is just the beginning of a fuller and more rewarding lifestyle."

U.S. Home set out to develop Greenbriar after research into the needs and desires of retirees and those approaching retirement. One of the key findings, says Steinfield, was that mature people can adjust psychologically to a new environment and become interested in new activities, but they don't want to be overwhelmed with predetermined schedules.

As a result, the basic equipment and space at Greenbriar provides for participation of many kinds, from athletic events to cultural affairs, but the residents are not "scheduled" to take part in anything except what appeals to them. Another element in the community's success, the developer believes, is that the retiree does not really want to venture far from his home. The lure of Florida and other distant points is greatly exaggerated, Steinfield says. Today's retiree wants independence and freedom, but he still likes to be near enough to enjoy the company of children and grandchildren on something more than a once-a-year basis.

"In addition," the U.S. Home vice-president points out, "behavioral scientists have repeatedly said that older citizens have personal interests and human relationships that make long-distance retirement an unrealistic psychological solution for the retirement years."

Older people also place great importance upon a sense of security. This is recognized at Greenbriar in 24-hour security guards upon the

# Your Guide To Better Living in the SUBURBAN REAL ESTATE MART

• City • Suburbs • Farm Country • Lake • Shore



READY FOR SHOWING - The 17-story Channel Club Tower luxury condominium at Monmouth Beach is expected to be fully completed by the end of the year. Preview showings begin this month.

## Preview showings near for Channel Club Tower

The 17-story Channel Club Tower luxury condominium at Monmouth Beach is nearing completion. James H. Lynch, vice-president, marketing and sales, stated, "We expect the Tower to be fully completed by the end of the year. Occupancy is scheduled to begin during the fall." Riding along Route 36, progress is evident. The Tower soars above the Shrewsbury River, its balconies as white as the yachts in the marina below. A closer look shows that the tennis courts, heated pool and

## American Housing

Independence Place, the shore community of American Housing Systems has opened its fifth model. The Jefferson, for inspection. The model offers three levels consisting of more than 1900 square feet of living space. It contains four bedrooms, two bathrooms all on the third level. The master bedroom has a connecting private bathroom, dressing area and walk-in closet. The second level in this design contains the living room, dining room and kitchen. The kitchen is an L-shape incorporating an eating area. It opens into a gracious dining room, which leads to the living room. The feeling of space is enhanced by the cathedral ceiling. Descending the stairs to the first level, an optional log burning fireplace is seen in the corner of the spacious family room with a sliding glass door leading out to the patio. On this level is the utility laundry room, half bath and the garage. A second car garage is optional. The Jefferson is carpeted throughout and offers a choice selection of decorator colors to the buyer. Landscaped lots are a minimum of 75' by 100'. Sewers, city water, streets and sidewalks are in and all utilities are underground. Independence Place is easy to reach. Take the Garden State Parkway to exit 67, turn left on to Rte. 534, to Rte. 9, then turn right and go 1 1/2 miles to Independence Place



There... just beyond the trees - your new home at

## Oakley Hill

New Prospect Rd., Jackson Twp., Ocean County, N. J.

**GRAND CLOSING**

Six unique models of varied designs with 3, 4 and 5 bedrooms from low 40's. Immediate Occupancy. Conveniently located for easy commuting.

From points North take Garden State Pky. to exit 91. Straight 1/2 mile to Rt. 526. West on 526 for 5 miles to New Prospect Rd. (Brook Plaza). Right 1/4 mile. Models open every day 10-6. Phone (201) 367-3220.



THE FIRST NAME IN SINGLE FAMILY HOMES

## Camelot Woods notes sales rise

A custom home within a community in the right locality - this is the kind that will continue sales in spite of today's difficult housing market, according to builder Sam Patmas whose Camelot Woods, Toms River, has totaled more than 150 percent rise in sales ahead of the first half of 1973. Easy to reach by auto or bus, Camelot Woods is heir to the construction advantages and other benefits that have caused value rise in homes of other communities planned and built by Patmas during the past five years. Camelot Woods homes are priced from \$43,990 to \$55,000. Models shown are a basic ranch, two classic two-story models, a two-story Dutch colonial, Cape Cod, as a split level, and a raised ranch or bi-level. Camelot Woods is the newest section of the Squire Village community, a series of homes facing winding roads and cul de sacs on one of the highest hilltops of seashore Ocean County. Many of the homesites have views of Barnegat Bay and the ocean. Models are open seven days a week from 10 a.m. to 6 p.m.

## For those 52 or over... We've just made it three times easier to buy a home!

1. Closing Costs Included!
2. First year's maintenance fee paid by builders!
3. Contracts will be accepted contingent on sale of your present home!



**\$19,990**

If you think \$19,990 is a great price, you'll think it's even better once you see our marvelous condominium community. Our homes are the biggest surprise. Amazingly luxurious, they feature central air conditioning; patios, porches or balconies; tiled decorator bathrooms; ultra-modern kitchens. Unquestionably worth every penny. You also get paved streets, sidewalks, curbs, sewers, city water and underground electric lines. Our recreational facilities are another nice surprise. There's a beautiful swimming pool. Shuffleboard courts. Plus a social and recreational building for arts and crafts, sewing and just shooting the breeze with your congenial neighbors... all in a friendly, comfortable atmosphere. You'll have plenty of time to enjoy this good life: A sensible monthly maintenance fee covers all recreational facilities plus exterior maintenance service. Not to go unmentioned are the great tax and equity advantages of condominium ownership... so essential during these inflationary times. Plus the fact that our location is excellent... just one mile from the Garden State Parkway for a smooth ride to New York and all parts of New Jersey. In short, at \$19,990 Cheesequake Village offers you real, honest-to-goodness value—a near-miracle for this day. And this age.

**CHEESEQUAKE VILLAGE**

DIRECTIONS: Garden State Parkway south to exit 120, then turn right to Cliffwood Rd. (first right turn). Right on Cliffwood Rd. to end (Gordon Rd.). Right on Gordon Rd. to Cheesequake Village. **ARMSTRONG FLOORS & CARPETS** Models open Daily and Sunday, 11 a.m. to 6 p.m. Closed Thursday. **AT THE ENTRANCE TO CHEESEQUAKE PARK** Phone: (201) 568-4900

## 45 or better: GRAND OPENING Pine Ridge II at Crestwood

A private club-community of manufactured homes secluded in the beautiful quiet, unspoiled... Jersey countryside... with towering trees, pure water, delicious clean air... only minutes from beaches, recreation and major shopping, but worlds removed from urban congestion and pollution.

**House Of The Week**  
**THE BERKSHIRE II**  
a luxury ranch at a pennypinching price, with two full bedrooms, cross-ventilated 20-foot living room, separate dinette with its own exterior entry, all GE kitchen, carpet, draperies, garden shed, storm windows and doors, concrete patio and many other deluxe extras included in the basic price. **\$18,950 FULL PRICE**

6 OTHER MODELS FROM \$13,450 FINANCING AVAILABLE  
Single monthly Resident's Fee includes: heat, full municipal services, courtesy bus service, all clubhouse facilities, site rental, community TV antenna.

**Pine Ridge II at Crestwood**  
the full-service active-adult community  
Visit Mon. thru Sat., 9-7 p.m. Sorry, closed Sunday  
10 minutes west of Toms River, Route #530  
6 miles west of Garden State Pkwy, Exit 80  
Write Box 3-W, Whiting, N.J. 08759  
or phone 201-350-0000 for brochure.

## 5 CREATIVELY DESIGNED MODELS



MODELS OPEN FROM NOON CLOSED THURSDAYS  
Welcome to... **Evergreen Woods Park**

HERBORN AVE., BRICKTOWN, N.J. AT EXIT 91 GARDEN STATE PARKWAY  
CONDOMINIUM HOUSING FOR ALL AGES  
THE 5 BEAUTIFUL MODELS INCLUDE ALL OF THESE QUALITY FEATURES

- CENTRAL AIR CONDITIONING
- WALL TO WALL CARPETING
- INSULATED WINDOWS AND DOORS
- 40 GAL. HOT WATER HEATER
- REFRIGERATOR
- EYE-LEVEL DOUBLE OVEN/RANGE
- WASHER AND DRYER
- 150 AMP ELECTRICAL SERVICE
- SWIMMING POOL
- ELECTRIC HOT AIR HEAT
- CUSTOM CRAFTED KITCHEN
- TILED BATHS W/VANITY SINKS
- SPACIOUS BEDROOMS
- BRICK FRONTS
- CINDER BLOCK FIREWALLS
- ALUMINUM LEADERS & GUTTERS
- UNDERGROUND CABLE T.V.
- BASKETBALL COURT
- TENNIS COURT

RANCHES ONLY-RENT WITH OPTION TO BUY  
FROM \$22,990 \$1,190 DOWN  
CLOSING COSTS INCLUDED

DIRECTIONS: From New York & No. Jersey take N.J. Turnpike to Exit 11. South on Garden State Pkwy. to Exit 91, make right on Burnt Tavern Rd. to Herborn Ave. then right to models.  
AGENT: McConnell & Co. PHONE: 201/477-8702  
MODEL SALES OFFICE PHONE: 201/458-3550



# Your Guide To Better Living in the SUBURBAN REAL ESTATE MART

• City • Suburbs • Farm Country • Lake • Shore



## Scenic life found at the Fountains

Although 60 percent of the Fountains, a luxury condominium on Sea Bright's Ocean Avenue, have been sold, Mann Enterprises, developers, still offer 90 percent financing to qualified buyers and as an added incentive, no closing fees are presently being charged. The Fountains setting has attracted many who seek a convenient yet natural living style. The 64 units overlook the Atlantic Ocean, with the Shrewsbury River adding to the scenery from the west. Rock gardens enhance the natural atmosphere of the complex, but the major attractions are the fountains. Add to all this the added attraction of a private swimming pool as well as the future completion of total marina facilities. Phyllis Carlisle of Olde Towne Realty, exclusive agent for the Fountains, said that the pool and upcoming marina facilities prove to be the most popular features of the community to most buyers. The one-bedroom apartments are priced at \$31,500 and the two bedroom at \$42,500. Each unit includes wall-to-wall carpeting, individually controlled air conditioning and heat, and a built-in vacuum and intercom system. The kitchen features color-coordinated appliances, side-by-side refrigerator-freezer, double oven, self-cleaning range, dishwasher,

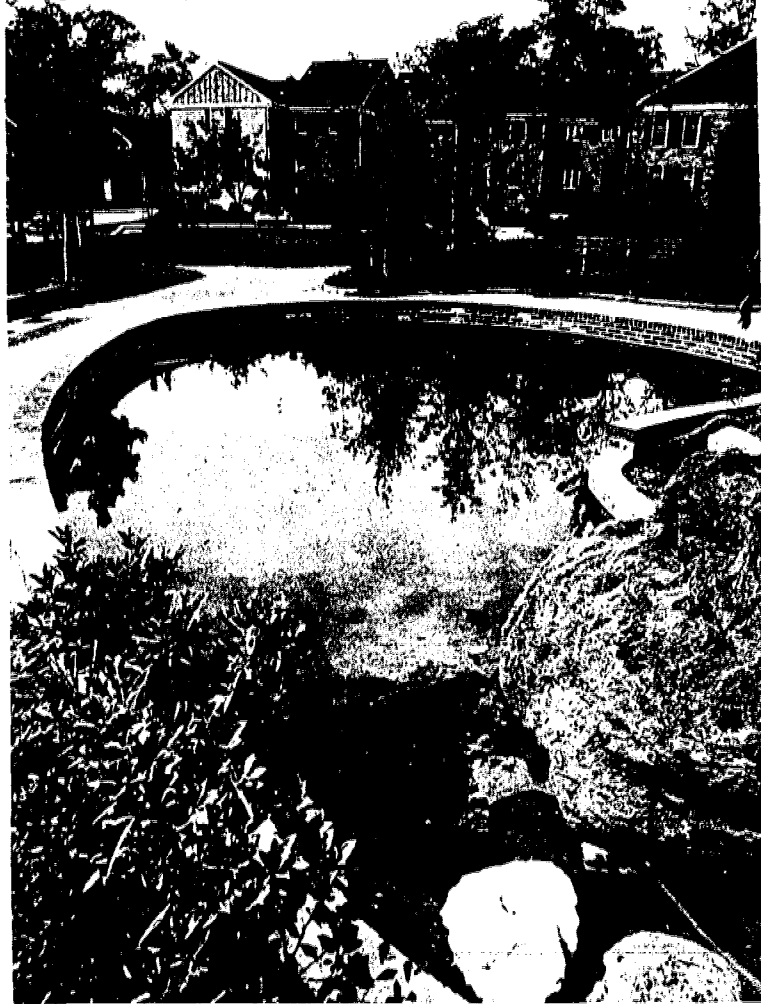
## Recreation facilities at Leas condo

Residents of Hickory Leas, Toms River will be able to enjoy a swim or a game of tennis or outdoor cooking, since the new condominium complex offers on-site pool, courts and barbecue area. Gregory Hogan, Hickory Leas' project manager, said, "These features, in addition to the five percent down, 30-year mortgage, are attracting young couples and singles." to the one-bedroom condominiums. According to Hogan, "We chose the acreage off Rt. 37, East to construct because of its prime location. Shopping, schools, houses of worship and public transportation are all within easy reach of the condominium site." He also pointed out the advantages of condominium ownership "maintenance chores are eliminated. However, all the advantages of home ownership such as equity building, appreciation and tax benefits remain."

## Variety of living modes noted at Laurel in Pines

Laurel in the Pines, located on North Lake drive in Lakewood, is a townhome community offering a wide variety of living models, ranging from 950 square-foot single-level models to more than 1,800 square feet on three levels. Prices begin at \$26,990. "Regardless of the particular floor plan or price, our townhouses represent a unique value in today's residential market," comments marketing director Ron Ponsini. "If this community were being built today, prices would have to be far higher, because of increased costs," he continues. "But it was completed before the unprecedented inflationary jolt the industry experienced over the past couple of years."

Plan-D, one of the mid-range homes, is typical of the quality to be found in this community. Built on three levels, it has two full baths, two powder rooms and a total of 1,730 square feet of living space. There are six rooms, including the eat-in kitchen, dining room, living room, two bedrooms and paneled recreation room. There is a storage and laundry room which shares the first level with the rec room. The living room is accented by sliding glass doors which provide access to the private terrace. There is an emphasis on closet space throughout, from one in the spacious entry foyer to five in the two bedrooms. Like all townhouses in the community, this model is furnished with General Electric appliances. These include new self-defrosting refrigerator-freezer, self-cleaning wall oven and hooded range, and sound-conditioned dishwasher. With six-panel Colonial exteriors setting the architectural mood, townhomes at Laurel in the Pines are separated by concrete block walls to provide optimum privacy and soundproofing. The community's master TV antenna system brings in television stations from both New York and Philadelphia. Individual outlets are provided in living, recreation and master bedrooms. "Interiors," says Ponsini, "provide the same sense of adaptability that one finds in a detached home. Clearly defined levels for living and recreation areas allow for easy separation. And the lower level storage area is large enough to permit the inclusion of hobby interests, such as photography or woodworking." Although it offers the charm and flexibility of a traditional residence, Laurel in the Pines eliminates the equally traditional problems, such as lawn care, snow removal, exterior painting and related chores. Under the condominium plan, all outside maintenance jobs are handled by professionals for a modest monthly fee. There is a "handyman service" to take care of occasional interior problems involving appliances, plumbing and heating systems. Available on a per call basis, this assistance will assure residents that repairs are being handled by knowledgeable personnel. Ponsini said, "While residents of Laurel in the Pines are enjoying the tax benefits of private ownership, they have the satisfaction of steadily increasing equity in their individual townhomes," he said. "There is also the assumption that the value of these condominium properties will increase over the years, making them a significant investment as well as desirable homes."



BEAUTY AND SERENITY abound at Laurel in the Pines, where condominium ownership offers exceptionally spacious two and three-level homes. On North Lake drive overlooking Lakewood's beautiful lake, the architecturally attractive community has a variety of on-site recreational offerings; it is a short walk to town and transportation conveniences. Shown here is partial view of Laurel in the Pines' tranquil landscaped setting.

**Announcing...**  
**5 exciting new model homes at South Wind**

The latest innovations in residential convenience are featured in the brand new model homes now on display at South Wind. Designed specifically for life style of folks 55 and over. See dream kitchens, spacious living rooms, luxurious bathrooms — all decorator designed and accessorized. The nice surprise about our homes is that you buy what you see. All homes are completely furnished including name brand major appliances, carpeting, drapes, storm and screen windows, accessories — even a storage shed. Models start at \$10,600 built to ANSI A119.1—construction standards.

Impossible? Come on down and find out for yourself. Your best residential investment is a mobilehome. South Wind is one of New Jersey's newest and most modern mobilehome communities. Privacy and security in a cherished country atmosphere within commuting distance of Manhattan and North Jersey.

**LITTLE MAINTENANCE  
LITTLE WORK**

**JUST THE YEAR-ROUND PLEASURE  
YOU'VE WORKED SO HARD FOR  
AT LESS COST THAN YOU EVER  
THOUGHT POSSIBLE.**

**LATE MODEL RESALES AVAILABLE**

Open daily 10 a.m. to 5 p.m.  
**SOUTH WIND**  
Route 528, Jackson, New Jersey  
7 miles from Lakewood  
Phone for directions (201) 928-0952  
Write for FREE brochure  
Box 110, Lakewood, NJ 08701

Prospective buyers can inspect the onsite model between 9 a.m. and 8 p.m., Monday through Sunday. S.E.L. Realty of Forked River is the exclusive sales agent.

## Builder gets large loan

Prel Corporation (ASE), Saddle Brook, announced this week that it has concluded a \$25.1 million loan agreement with a consortium of banks headed by First National City Bank. The four-year secured term loan replaced existing long- and short-term secured and unsecured loans with various banks, aggregating \$20.6 million. Jacob Hurstyn, chairman and chief executive officer, said in announcing the loan agreement, "We are pleased in these times of depressed conditions in the housing industry to be able to conclude this type of an agreement." The \$4.5 million of additional financing, of which \$1.5 million has already been advanced, will be used primarily for operating purposes.

## The battle against inflation:

<b>Rental vs.</b>	<b>Sylvan Glade Ownership</b>
<b>\$226 a month for:</b>	<b>\$226* a month for:</b>
<ul style="list-style-type: none"> <li>• A tiny apartment</li> <li>• A pile of rent receipts</li> </ul>	<ul style="list-style-type: none"> <li>• (incl. principal, interest, taxes, maintenance)</li> <li>• A spacious 1-bedroom &amp; den garden home</li> <li>• Hefty federal tax deductions</li> <li>• Equity build-up</li> <li>• Protection against inflation</li> <li>• Central air conditioning</li> <li>• Laundry closet with washer &amp; dryer</li> <li>• Wall-to-wall carpeting</li> <li>• Magnificent kitchen with oven/range, custom-crafted wood cabinets</li> <li>• Patio or balcony with sliding glass doors</li> <li>• Adult &amp; kiddie swimming pools</li> <li>• Saunas, social hall, game rooms, nursery</li> <li>• Professional exterior maintenance service</li> <li>• Beautiful, safe neighborhood</li> <li>• Great shopping and recreation nearby</li> <li>• Fine schools</li> <li>• Easy commuting via Garden State Parkway and Rts. 34, 35 &amp; 9</li> </ul>

**CONDOMINIUM  
Townhouse & Garden Homes**

**SYLVAN  
GLADE PARK**

Herbertsville Road, Brick Town, N.J.

Open Every Day Except Wed.  
11 A.M. to 5 P.M.  
Phone: (201) 892-2707

It's just no contest — Sylvan Glade wins hands down. So stop fighting a losing battle with rent. And put your money with a winner. See Sylvan Glade today!

**1-bedroom and den  
Garden Homes from  
\$20,990  
\$1,190\*  
DOWN FOR ALL!**

\*For qualified buyers. Based on the Sequoia or Cedar Model priced at \$20,990. \$1,190 down. 360 equal payments of \$226 (incl. principal, interest, taxes and maintenance). Mortgage of \$19,800 at 9.5% ANNUAL PERCENTAGE RATE plus 1/8% M.I.P.

**DIRECTIONS:** Garden State Parkway to Exit 11. Turn right on approximately 11 miles to the end of the road. Turn left on the road that is marked "Sylvan Glade Park" and turn right on the road that is marked "Sylvan Glade Park".

Another member of PRL's Family of Communities

**PEACE...  
It's Wonderful**

Enjoy sweet, clean country living at a price you can afford. Homestead Run offers a low maintenance, modern apartment size home from \$12,500\*... peaceful secure living in pine scented atmosphere of Toms River, New Jersey... a community club house and pool, congenial adult neighbors... the Atlantic Ocean and beaches only 15 minutes away... three nearby towns for shopping, working and worshipping

- modern mobile units
- paved, lighted streets
- fully landscaped
- underground utilities
- city water and sewerage
- permanent community

Does not include 5% N.J. Sales Tax

**HOMESTEAD RUN**  
Adult Mobile Home Community  
Route 70 - Toms River, N.J.  
Tel. 201/341-4400

Open daily 9 to 5, except Sunday.  
From North Jersey, Garden State Parkway to Exit 88, west on Route 70, five miles.

**Homestead Run**  
Adult Mobile Home Community

## Look us over inside...



## and out...again.



When you visit The Villages, you're in for a surprise. We're not just another adult playground. We'll show you 6 different homes (from \$28,490 to \$36,190), all superbly constructed and gorgeously landscaped. Including climate control central air conditioning; high quality Westinghouse appliances; luxurious wall-to-wall carpeting throughout the house, and much more.

There's also on-site shopping for your convenience, security service for your peace of mind, and complete exterior and lawn maintenance. Plus our swimming pool, stocked lake, boating, picnic areas, pitch and putt golf course and shuffle board courts, where you'll make lots of new friends. It's all only 50 miles from New York. With 120 public buses making the trip every day, taking over 50% of the Villagers to work. We also have our own community bus for local shopping. So visit us soon. Because The Villages is more than a year round vacation. It's a wonderful place to live.

**The Villages**

**Hovnanian's uncrowded community  
for adults 52 and over.**

12 Dag Hammarskjöld Blvd. Freehold, N.J. 07728 (201) 431-2400  
Open 7 days a week 10 AM to 6 PM

**BUY NOW  
at today's prices.  
Price increases  
effective Nov. 6th.**

**DIRECTIONS:** N.J. Tpke. South to Exit 11. South on Garden State Pkwy. to Exit 125. South on Rte. 9, 20 miles to The Villages. Watch for our signs.

NAME \_\_\_\_\_  
ADDRESS \_\_\_\_\_  
CITY \_\_\_\_\_ STATE \_\_\_\_\_ ZIP \_\_\_\_\_

**Twin Lights Terrace**

**DIRECTIONS:** Garden State Parkway to Exit 11. Turn right on approximately 11 miles to the end of the road. Turn left on the road that is marked "Twin Lights Terrace" and turn right on the road that is marked "Twin Lights Terrace".



OPPORTUNITY SAVINGS PROFITS RESULTS

THEY'RE ALL IN SUBURBAN CLASSIFIED

Help Wanted Men & Women

Help Wanted Men & Women

Help Wanted Men & Women

Help Wanted Men & Women

Help Wanted Men & Women

Help Wanted Men & Women

Help Wanted Men & Women

Help Wanted Men & Women

Merchandise for Sale

BANK TELLERS Part Time Hours: 12 Noon-6 p.m. Turn Your Spare Time Into Money, At FRANKLIN STATE BANK

DIRECTOR OF NURSING SERVICES Memorial General Hospital has a challenging opportunity for a R.N. with at least 5 years experience in Administration.

MAINTENANCE Instrument Engineer Plant Engineering We are seeking an experienced Instrument Engineer to act as Plant Engineer's Authority on all matters which concern new or revised process control instrumentation.

NURSING CAREER OPPORTUNITIES RN'S NO ROTATION REQUIRED SPECIALITY AREAS: ICU & SCU

CUSTOM made 2 pc. sectional sofa, each section, dark green slip covers included. Corner table, bleached mahogany, coffee table, club chair with slip cover.

Franklin State Bank 355 Chestnut Street Union, N.J. 07083 We are Proud to be An Equal Opportunity Employer M.F.

MEMORIAL GENERAL HOSPITAL 1000 Galloping Hill Rd. Union, New Jersey 07083

MAINTENANCE FOREMAN Will be working at our Carteret facility. Requires industrial experience related to a manufacturing operation.

STAND BY PERSONNEL CELEBRATES THEIR 2ND ANNIVERSARY Many thanks to all our Temporaries who made it possible. It has been made possible through our staff's sincere effort!

SWIMMING POOL COVERS MADE TO ORDER! Available Tight Weave Mesh 15' dia. \$36.25

ACCOUNTING CLERK GENERAL ELECTRIC CO. Millburn, N.J. Duties involve accounts receivable work. Applicant must be College graduate with degree in business administration or accounting.

MACHINIST All Around Excellent opportunities All fringe benefits TOP PAY FOR TOP ABILITY Richard Best Pencil Co. 211 Mountain Av., Springfield

SECRETARY EXECUTIVE SECRETARY The N.J. Medical School has a vacancy for an experienced secretary well versed in typing and stenographic.

STAND-BY PERSONNEL PERMANENT TEMPORARY 427 Chestnut St., Union 964-7717 in Del Ray Bldg.

COMPLETE BEDROOM SET 4 Piece, 12' x 12' Bed, 12' x 12' Dressing Table, 12' x 12' Chair, 12' x 12' Bench.

STATOR WINDER Experienced in inserting and connecting AC fractional HP motors \*GOOD WAGES \*ADVANCEMENT OPPORTS. \*CO-PAID WELFARE PLAN

RECEPTIONIST TYPIST A knowledge of switchboard is helpful, but not necessary for this excellent spot. Good typing skills required.

TELLERS Need tellers to work in our Springfield office. Want pleasant individuals who enjoy working with the public.

CLERK-TYPIST Springfield Office If you have bookkeeping knowledge and can type 40 WPM we'll train you for General Ledger work.

BRAND NEW Air conditioners. Used 6 months, (1) 17'00 BTU, (1) 6,000 BTU. Call 370-1715.

AVON TELL ME WHAT YOU WANT FOR CHRISTMAS. I'll tell you how to earn the \$5 to \$12 a week when you become an Avon Representative.

SALES TRAINER OFFICE MACHINES Excellent career opportunity in rapid growth office machines industry for bright, ambitious person.

SOCIAL WORKER MASTERS DEGREE REQUIRED One year experience in social work. Good starting salary.

TOOL & DIE MAKER EXPERIENCED In small progressive dies. GOOD OPPORTUNITY FOR RIGHT PERSON WHO IS NOT AFRAID TO WORK. COMPANY PAID BENEFITS.

PIANO RENTAL Rent a Wurlitzer Piano. From \$8.00 per month. Applicable to purchase.

AVON TELL ME WHAT YOU WANT FOR CHRISTMAS. I'll tell you how to earn the \$5 to \$12 a week when you become an Avon Representative.

SECRETARIES FULL TIME Diversified duties in areas of operations, security and maintenance. Good typing skills and steno required.

TELLERS (Head-Tellers) If you're doubtful about your chances to move ahead in your present position and if you're an experienced teller consider what we have to offer.

PIANO RENTAL Rent a Wurlitzer Piano. From \$8.00 per month. Applicable to purchase.

DOG BODIES Dog Training course, \$30. Union, Westfield, Elizabeth, Iselin and Summit, N.J. DOG COLLEGE, 687-2393.

NOTICE TO JOB APPLICANTS This newspaper does not knowingly accept Help Wanted ads from employers covered by the Fair Labor Standards Act which applies to employment in interstate commerce.

RECEPTIONIST TYPIST National company has opening for permanent person with typing, general clerical & receptionist skills.

STATISTICAL CLERK Adapt at figures, excellent typist, 24 hrs. day shift, even. Nov. 22-05 Hr. Day Shift, Even. Sat. shift. Call 371-6222.

WOMAN TO PREPARE and serve dinner, 2-4 days a week, between 4:30 - 6:30 P.M. Own transportation. Springfield area. 273-2420

WANTED OLD TOYS AND METAL TOYS 245-4340





## Highways group backs bond issue for roads, transit

A proposed \$200 million transportation bond issue has received the endorsement of the New Jersey Highway Users Conference. It will appear on the Nov. 5 ballot.

Chairman Arthur D. McTigue said, "This bond issue has several features of benefit to everyone in New Jersey.

"As proposed, the bond issue should result in a significant lowering of the state's accident rates by making possible long-overdue bridge repairs, elimination of hazardous features at traffic circles and other needed safety projects.

"Although a bond issue to improve highways, it also would have a positive effect on improving mass transit. It has to be recognized that the most used form of mass transportation in New Jersey is the bus which must depend upon a good road network.

"In view of today's economic climate, we also must consider the fact that success of this bond issue would help the state's economy by creating needed jobs. This not only would be true for the construction workers who build and repair the roads. A better road system also fosters capital expansion in the industrial and commercial sectors.

"A careful review of the Transportation Department's suggested program confirms that most of this bond issue money would be used to improve and make safer existing roads. There should be no doubt in the minds of the motoring public that the suggested projects are urgently needed."

## Search for history begins at home Attics, cellars combed by U.S. children

WASHINGTON, D.C. — If your children all of a sudden start delving through the attic or basement, cellar or storage shed don't be surprised, there's a good chance they are taking part in the commemoration of the nation's Bicentennial.

Should your grandchildren or great-grandchildren show a sudden interest in how life was "way back then," reminisce with them. If they want to tape record your memories, let them. You'll be contributing to the preserved history of the United States as it embarks on its third century.

Searching out "lost" documents, photographs, letters, furniture, dress and other memorabilia from days gone by, or recapturing from memories the fullness and flavor of life in earlier times are part of a nationwide Above Ground Archaeology Bicentennial Administration.

Sponsored by the American Revolution Bicentennial Administration (ARBA), the project is one means of tapping the "grass roots" history of the nation. By and large, ordinary citizens have left little recorded testament of their lives, but it is living history. A new effort to reach and retain these previously mute sources is being made during the Bicentennial.

The ARBA has published a booklet describing the basic techniques of collecting and preserving items which can give the

"archaeologist" an understanding and appreciation of what life was like in the past.

Though developed primarily for high school teachers and students, the booklet and the program are available to any interested group or individual. Above Ground Archaeology is available for 60 cents from the Superintendent of Documents, U.S. Government Printing Office, Washington, D.C. 20402 (Stock No. 2405-9052B).

Text of the booklet was written by Dr. John L.

Cotter, associate professor of American Civilization at the University of Pennsylvania. Dr. Cotter is also an associate professor of American Historical Archaeology, University Museum, in Philadelphia. The text was initiated in behalf of the society for state and local history and the ARBA.

The booklet describes how, with patience and curiosity, one can capture the history of his or her community, and get a glimpse of how its citizens made their living, played and wor-

shipped as the nation was growing. It gives younger people a chance to gain personal appreciation of life before cars, planes, dishwashers, television, air-conditioning, and indoor plumbing.

The booklet carefully explains how to catalog and preserve historical documents and other items expected to be found in the nationwide search, and provides reference sources for help and advice on this and other historical projects.

In the short time since the project began, attics have coughed up two major finds. An eighth grade student in Wilkes-Barre, Pennsylvania recovered a rare edition of the Federalist Papers in his grandparents' attic. A Kennebec River bateau, believed to be the

second oldest boat built in the United States that is still in existence, was found in a Dreen, Maine, attic. The craft is typical of the ones used on the Kennebec River before the Revolutionary War.

The booklet also suggests making a historic base map of your community, township or county. With overlays, it is possible to construct a map showing the succession of prehistoric periods, such as the earliest Indian (called Paleo-Indian) life, up through a community's earliest settlement, to a record of the development of roads, farms, industries and, finally, the modern city, town or countryside.

TEEN-AGERS, find jobs by running Want Ads. Call 686-7700 - now!

### Jamaica refuge bird walk slated

A morning bird walk to the Jamaica Bay Refuge Wednesday, Oct. 23, has been scheduled by the Turtle Back Zoo, 560 Northfield Ave., West Orange.

The trip will begin at 7:30 a.m. in the zoo parking lot; transportation will be provided to the birding area. No reservation is necessary. For more information, readers may call the zoo at 731-5800.


### FRIDAY DEADLINE All items other than spot news should be in our office by noon on Friday.

Portraits  
In Deep Rich Color  
Painted exclusively by  
**Butt Press**  
1732 Springfield Ave.  
Maplewood  
762-2975

SINCE 1954  
100% Guaranteed  
60 DAYS - 2,000 MILES  
Quality Used Cars  
2 Months or 2,000 miles, whichever comes first. Front axle assembly, rear axle, brake system, engine, transmission. Parts and labor paid by Aircooled.

**AIRCOOLED**  
AUTOMOTIVE CORP.  
2195 MILLBURN AVE.  
MAPLEWOOD • 763-4567

Authorized PULSAR Dealer



The button makes it a calendar

**w.kodak jewelers**  
CORNER MORRIS & STUYVESANT UNION, N.J.  
MIDDLESEX MALL SOUTH PLAINFIELD, N.J.  
Diamond Appraisals

NOW IN STOCK

## STRICTLY PERSONAL

By Pat and Marilyn Davis

Dear Pat and Marilyn:  
I am getting married in two months. We will have very little money and Joe has suggested that we live with his mother. She does have enough room for us but I just can't see starting out living with my mother-in-law. Why can't my future husband understand?

Helen  
No house containing a

mother-in-law is large enough for newlyweds. And don't assume I'm against in-laws, I'm not.

You will be happier in a small apartment. Every young couple requires privacy to settle problems which are bound to arise. If you do not have enough money to support yourselves, postpone your marriage. Don't marry with the idea of changing your fiancé. It won't happen.

Dear Pat and Marilyn:

My wife was a beautiful girl when we were married five years ago, but you should see her now. She goes around with her hair in rollers, cream on her face and wears a sloppy robe all day. In fact, she even cooks my dinner in this condition—if you can call it cooking. She opens cans! You might wonder what she does all day. Well, I'll tell you. She listens to soap operas or talk shows on the radio. Her head is crammed with bits and pieces of information. She has gained 20 pounds on her newfound life-style. In the words of a popular radio

personality, "She is a porker." What can I do?

Questioning  
Dear Question:  
Personal habits are important. Tell your wife that you love her, but tell her of your complaints.

Dear Pat and Marilyn:

I have a relative who has been drinking heavily. I tried to talk to him about this and he told me that it was none of my business. I'm really worried. How can I convince him to stop drinking?

E.D.

Dear E. D.:  
You can't. Your relative must make his own decision. You can suggest Alcoholics Anonymous. AA has done a great deal in rehabilitating alcoholics. This organization is listed in your telephone book. Good luck.

Dear Pat and Marilyn:

My problem is my mother and sister. If the three of us have a disagreement, the two of them are always against me. My sister is older than I am and my mother always listens to her. My Mom won't allow me out after 10 p.m. but my sister stays out until 2 a.m. and tells Mom she got in at 11:30. Shall I tell on my sister? Can you help?

Needs It

Dear Needs It:  
Jealousy between brothers and sisters has always existed. This rivalry can be handled wisely or it can be an endless round of fighting, tattling and accusations. Tell your mother just what you have told me. I feel quite certain that she will understand your side.

Confidential to Mrs. L. N.:  
Yes, loss of hair can be related to extreme nervousness. However, when the tension and nervousness are relieved, the hair usually grows back. Nervousness alone doesn't generally cause permanent hair loss. If the problem continues, consult a dermatologist.

tell your neighbor

KNOW  
CANCER'S  
WARNING  
SIGNALS  
AMERICAN  
CANCER  
SOCIETY

**FURNITURE ASSOCIATES**  
With This Coupon  
**20% to 40%**  
Below Retail  
on Name Brand  
Furniture  
Call 964-1834

"Satisfaction Guaranteed"  
50 Years Experience  
Purveying Fine Furniture

Chubby's 8 1/2 to 20 1/2 Regulars 4 to 6x 7 to 14

SPECIAL FIT FASHIONS FOR THE EXTRA SPECIAL GIRL

**Chubbies!**  
"NAME BRAND MERCHANDISE AT POPULAR PRICES and ONE OF THE LARGEST SELECTIONS FOR CHUBBIES IN NEW JERSEY"

Everything for Fall & Winter for the Chubby is at Miss Cindy!

Dresses • Pant Suits  
Slacks & Tops • Jackets

Ask About Our Convenient L-a-w-ry  
Use Your Master Charge or BankAmericard

OAKWOOD SHOPPING PLAZA  
OAK TREE ROAD & WOOD AVENUE  
EODON, NEW JERSEY  
201/548-2229

Garden State Exit 131, Turn Right to First Traffic Light (Wood Ave.), Then Right Again to Oakwood Shopping Plaza (On Your Left)

RICKY CROSTA, President of RICHARDS MOTORS says:

**WE'VE GOT THE BIGGEST SAVINGS EVER ON 1974 AMC CARS**

**'74 MATADOR Brougham**  
4-door Sedan, Tan with black vinyl top, individual reclining seats, 304 V-8 2-barrel carburetor, automatic transmission, whitewall tires, air-conditioning, power steering, tinted glass, rear window defogger, wheel covers, remote control light group, push button radio. 9,925 miles. Stock No. 1508.

**'74 MATADOR Brougham**  
2-door Coupe, automatic transmission, 304 V-8 2-barrel carburetor, factory air-conditioning, power steering, tinted glass, bucket seats, center arm rest and cushion, whitewall tires, remote mirror, light group, push button radio, rear defogger, slings orange, black vinyl top. 10,805 miles. Stock No. 1510.

**'74 AMBASSADOR Brougham**  
4-door, 360 V-8 2-barrel carburetor, automatic transmission, push button radio, factory air-conditioning, individual reclining bucket seats, power steering, power disc brakes, remote mirror, whitewall tires, wheel covers, tinted glass. 9,520 miles. Green w/ green vinyl top.

**SAVE \$987 ON THIS CAR**

**SAVE \$987 ON THIS CAR**

**SAVE \$1206 ON THIS CAR**

MANY OTHERS TO CHOOSE FROM INCLUDING GREMLINS & HORNETS

**RICHARDS**  
MOTORS OF UNION  
595 CHESTNUT ST., UNION  
Telephone: 688-6566

Comin' on Stronger than ever before!  
**AMC '74**

**SPECIAL DINNERS FOR THE MONTH OF OCTOBER**  
One price \$4.25 complete

Geigers proudly presents a special menu for weekday dinners during the month of October. These dinners are chosen for their high quality and exceptional value.

**MONDAY** Old Fashioned Pot Roast of Beef with carrot chunks and oven roasted potatoes.

**TUESDAY** Homemade Meat Loaf with mushroom gravy, choice of vegetable and potato.

**WEDNESDAY** Corned Beef and Cabbage with boiled parsley potatoes.

**THURSDAY** Baked fresh Ham with scalloped apples and cider gravy. Choice of potato and vegetable.

**FRIDAY** Fried breaded fillet of Flounder with tartar sauce, choice of potatoes and vegetable.




All of the above dinners are complete with soup or juice, tossed salad, coffee or tea, pie or ice cream, bread and butter. Served from five until nine each day. Cocktails and gratuity not included.

Our broad menu and daily specials for luncheon and dinner are sure to please you and your companions.

We invite you to come as you are and to bring the children. Our informal, friendly service is sure to please.

OPEN 11:30 A.M. TILL 10 P.M.  
FRI. & SAT. UNTIL 12:30  
Coffee Shop open 8:30 A.M. till 9 P.M.

**APPLE VARIETIES**  
McIntosh  
Cortland  
Red Delicious  
Golden Delicious  
McCoun

**GEIGER'S**

Restaurant:  
Open 11:30 AM to 10 PM  
233-2260

Bakery:  
Open 9 AM to 9 PM  
Seven Days A Week  
233-3444

560 Springfield Avenue • Westfield, N.J.