



### Girl Scouts plan Chinese auction, spaghetti dinner

Springfield Girl Scout Cadette Troop 611 will have a spaghetti dinner and Chinese auction on Sunday, from 2 to 7 p.m. at the American Legion Hall on N. Trivet street.

### Mrs. Eig to be guest speaker at B'nai B'rith award dinner



MRS. ALVIN EIG

Mrs. Alvin Eig, past president of the Northern New Jersey Council, B'nai B'rith Women, will be the guest speaker on Monday, Feb. 10, at 8:15 p.m. at Temple Beth Ahm, Springfield.

### Mrs. Lancaster named president of history group



HARRIERS HONORED—Shown at recent meeting as Springfield Continental Post, American Legion, honored members of the Jonathan Dayton Regional High School cross-country team are, from left, Coach Martin Toglianti, George Broch, Jeff Goldstein, John Keenan, Ben Geltzler, Gary Warner, Bob Selander, post commander, and Daved Brown of Springfield, New Jersey AAU chairman for the 1976 Olympics. (Photo by Matt Allen)

Mrs. Madeline E. Lancaster was elected president of the Springfield Historical Society at a meeting held recently in the Sarah Bailey Recreation Center.

### JCPL to convert to envelope billing as of February

Beginning in February the Jersey Central Power & Light Company customers will receive their bills for electric service in envelopes.

### 3 persons injured in two accidents during past week

Three persons were injured in auto accidents on Springfield streets last week, according to township police.

### Miss Ragosa cited among Who's Who

Diane Ragosa of Greenhill road, Springfield, a student at the New Jersey Institute of Technology, formerly Newark College of Engineering, has been selected to be in this year's Who's Who Among Students in American Universities and Colleges.

### 7 in Springfield safety units finish programs at UC

Seven members of the Springfield Fire and Police departments are among 201 law enforcement personnel who have been awarded certificates for completing in-service training programs conducted at Union College through the Union County Police Training Academy and Union College's criminal justice department.

### Grand jury will mull charges against Berkeley Heights man

The case of a Berkeley Heights man charged with atrocious assault and battery was sent to the Union County Prosecutor's Office for possible Grand Jury action after coming before Judge Joseph A. Horowitz at Monday night's session of Springfield Municipal Court.

### Sherry, Scotch stolen by couples

Saturday night means party night for many people, and apparently two men and two women who paid a visit to Springfield liquor stores that evening were planning quite a bash.

### Mrs. Teuscher succumbs at 80

Funeral services were held Tuesday afternoon for Mrs. Erna L. Teuscher of Clark, formerly of Springfield, who died Sunday in Rahway Hospital after a brief illness.

### Consumer action will be discussed

Mrs. John Stuchlik, president of the Consumers League of New Jersey, will discuss consumer action at a food marketing seminar.

### Weekend break-in nets checks, cash

Traveler's checks worth a total of \$300 and \$100 in cash were reported stolen last week from Extravaganza Inc. 773 Mountain Ave. Springfield.

### Springfield State Bank issues 5 pct. dividend

Springfield State Bank has announced that it will pay a 5 percent dividend to its shareholders.

### St. Stephen's selects Mrs. Carls for vestry

Mrs. Barbara Carls of Springfield was elected to the vestry of St. Stephen's Episcopal Church, Millburn, at last week's annual church meeting.

### Fasulo candidate for speaker's job

Two Summit Area YMCA delegates to the 17th annual YMCA Youth and Government Program have been elected by their colleagues in Zone 4 to be nominees for state offices when elections are held March 15 at a pre-legislative conference at Rider College, Trenton.

### Burger Express will open Monday

After nearly half a century the White Diamond Express Restaurant, Morris Avenue near Millburn Avenue, will be replaced this Monday with the Burger Express, also operated by the Bridges family.

### Break-entry probed

Springfield police are investigating a break-in at a hardware store in the area.

### Steno class at YWCA

Two new courses in shorthand are being offered at the Summit YWCA beginning in February.

### Aggar on dean's list

Arno Aggar, daughter of Mr. and Mrs. John L. Aggar of Morristown road, Springfield, has been named to the dean's list at Lebanon Valley College in Annville, Pa. for the first semester of the 1974-75 academic year.

The Dissolution of an Arizona Ranch couldn't have come at a better time. There is a lot of confusion about where to get your ranch-estate bills. Our office is helping you get your ranch-estate bills in order. Call us today for a free consultation.

YOUR WANT AD IS EASY TO PLACE JUST PHONE 686-7700. Call for ad rates and conditions. Only \$100 a week. No charge for proof.

SEMI-ANNUAL SHOE SALE. WOMEN'S FLORESHEIM SHOES \$12.90. MEN'S FLORESHEIM SHOES \$19.90. Values to \$35.95. FUTTER'S SHOES 335 Millburn Ave., Millburn.

SWARNING, the Springfield Democrats gather to congratulate Harry Pappas of Garden oval who was sworn in last week as Union County purchasing agent. Pappas is also chairman of the N. J. Young Democrats advisory board.

IF YOU'VE BEEN THINKING YOU COULDN'T AFFORD THE ELEGANT Summit Squire TAKE ANOTHER LOOK!! Luncheons from \$2.75 Dinner Entrees from \$6.95. RESERVATIONS 277-3900 359 Springfield Ave. Summit

PUNCH LINE OF THE WEEK. UNCLE SAM COULD SPEED MAIL SERVICE BY SENDING POSTAL EMPLOYEES THEIR CHECKS BY MAIL.

Save Steps... Save Energy. We're as near as your Corner Mail Box. We pay the Highest Interest Rate in New Jersey-By Law! Making Your Hometown Bank More Convenient. Springfield State Bank. ECHO PLAZA AREA | MAIN OFFICE Mountain Avenue | Millburn Ave. & Rt 22. Open Daily 9:00 a.m. - 5:00 p.m. Member F.I.C. & I.R.A.



# Getting down to the roots Dental Clinic opens its doors

Pupils from the Cerebral Palsy Center of Union County are the first patients as the Union County Technical Institute Dental Clinic begins full-time operation.

## Library benefits now reciprocal at 3 colleges, UCTI

Under a new program developed by the Consortium of East Jersey College members staff personnel are eligible to utilize the library facilities of any of the participating institutions.

The Consortium of East Jersey Colleges, a group of four colleges, the University of North Carolina, the University of South Carolina, the University of North Carolina at Charlotte and the University of North Carolina at Greensboro, has agreed to share its library facilities with the Consortium of East Jersey Colleges.

The program was developed by the Consortium of East Jersey Colleges and the Consortium of North Jersey Colleges. It is a reciprocal arrangement that allows students and faculty members of the Consortium of East Jersey Colleges to use the library facilities of any of the participating institutions.

The program was developed by the Consortium of East Jersey Colleges and the Consortium of North Jersey Colleges. It is a reciprocal arrangement that allows students and faculty members of the Consortium of East Jersey Colleges to use the library facilities of any of the participating institutions.

The program was developed by the Consortium of East Jersey Colleges and the Consortium of North Jersey Colleges. It is a reciprocal arrangement that allows students and faculty members of the Consortium of East Jersey Colleges to use the library facilities of any of the participating institutions.

The program was developed by the Consortium of East Jersey Colleges and the Consortium of North Jersey Colleges. It is a reciprocal arrangement that allows students and faculty members of the Consortium of East Jersey Colleges to use the library facilities of any of the participating institutions.

## Real estate class in Spanish at UC

A new course in Spanish real estate will be offered at the University of Connecticut. The course is designed for students who are interested in real estate and who speak Spanish.

The course is designed for students who are interested in real estate and who speak Spanish. It will cover the basics of real estate in Spanish and will include a field trip to a real estate office.

The course is designed for students who are interested in real estate and who speak Spanish. It will cover the basics of real estate in Spanish and will include a field trip to a real estate office.

The course is designed for students who are interested in real estate and who speak Spanish. It will cover the basics of real estate in Spanish and will include a field trip to a real estate office.

## Non-essential use of gas is deplored

William A. Salant, vice president of the National Petroleum Council, has deplored the use of gasoline for non-essential purposes.

Salant said that the use of gasoline for non-essential purposes is a waste of a valuable resource. He called for more conservation of gasoline.

Salant said that the use of gasoline for non-essential purposes is a waste of a valuable resource. He called for more conservation of gasoline.

Salant said that the use of gasoline for non-essential purposes is a waste of a valuable resource. He called for more conservation of gasoline.

## Summit group to offer 'Everything in Garden'

The Summit Garden Group will be offering a variety of plants and flowers for sale. The group is dedicated to promoting local gardening.

The Summit Garden Group will be offering a variety of plants and flowers for sale. The group is dedicated to promoting local gardening.

The Summit Garden Group will be offering a variety of plants and flowers for sale. The group is dedicated to promoting local gardening.

The Summit Garden Group will be offering a variety of plants and flowers for sale. The group is dedicated to promoting local gardening.

The Summit Garden Group will be offering a variety of plants and flowers for sale. The group is dedicated to promoting local gardening.

The Summit Garden Group will be offering a variety of plants and flowers for sale. The group is dedicated to promoting local gardening.

The Summit Garden Group will be offering a variety of plants and flowers for sale. The group is dedicated to promoting local gardening.

Last Thursday, seven children, age three and up, from the Cerebral Palsy Center on Clermont terrace in Union, began treatment at the Institute of Preventive Dental Health Clinic.

"Working with handicapped children demands special time and patience," says Lawrence Seidel, public education director of the Center. "Cerebral Palsy can affect a victim's saliva glands and make it difficult for the person to take in food. Because of this, many of our children experience dental problems early in their life."

Union County Technical Institute dental hygiene students performed the work on the visiting patients under the direction of Dr. Harmon Zaccaro, director of dental programs. The patients' teeth were cleaned, polished, examined, x-rayed and where necessary, stainless fluoride treatments were applied. "In addition," said Dr. Zaccaro, "all patients were counseled for a proper nutritional program to help prevent tooth decay."

"We're very happy to start our children on their way to a valuable pattern of proper dental health care," said Mrs. Seidel. "By such visits, we hope that students with dental problems can be referred to dentists early for proper dental treatment."

With the beginning of the second semester, the Union County Technical Institute's brand new Pre-Preventive Dental Health Care Clinic has opened its doors to several community organizations as part of the educational program for students in the two-year dental hygiene program.

Many community organizations and groups have already made arrangements for their members to visit the Preventive Health Clinic, including Project Head Start, Elizabeth CETA and several day care centers and senior citizens' groups. Mrs. Seidel said.

In early December, before the clinic was ready for full-time operation, students from the Union Township Community Action Day Care Center visited for a pre-opening treatment.

Dental hygiene is one of nine career-oriented courses in the Health Careers offered at the Union County Technical Institute, 1774 Harlan Road, Scotch Plains. In addition to courses at the Technical Institute, Dental Hygiene students attend class at Union College in Elizabeth and the New Jersey College of Medicine and Dentistry in Jersey City.

## Emergency sale by Elizabethtown

Elizabethtown Gas has completed negotiations for an emergency sale of 400,000 cubic feet of natural gas to the independent South Jersey Natural Gas Co.

The South Jersey utility has been particularly hard hit by continuing curtailments from the Transcontinental Gas Pipeline Corp. Trainee's gas supply.

Without the emergency relief from Elizabethtown Gas and Public Service, the residents in the area would have faced major curtailments by South Jersey gas manufacturers and other industries in the area which rely heavily on natural gas.

In making the announcement of the emergency sale, John Keas, president of Elizabethtown Gas, said that before the sale was consummated it was uncertain that enough of Elizabethtown's own customers would not be affected.

## 4-H Club forms girls' fashion unit

As part of the Union County 4-H Program, a fashion unit for girls between the ages of 10 and 15. The club will provide workshops and speakers on sewing, dressmaking and fashion design.

Meetings will be held once a month until the middle of April when meetings will be more frequent. The goal of the club is to have the girls create the equivalent of four outfits and Mary Harrington, president of the club, will show off the club's work.

The girls will be required to sew two outfits of their choice and submit one to the club. Interested girls should contact the club at 270 Morris Avenue, Scotch Plains, N.J. 07076 on weekdays evening.

## Meetings slated; 'food dollar' topic

Four food dollar meetings will be held for a series of these meetings to be conducted by Elmer Mack in the community center of the Union County Extension Service, 300 North Ave. East, Elizabeth. The organization leaders may call for help.

Through education and information means of community food dollar programs. The meetings will be held on Feb. 13, 20, 27 and March 6, 13, 20, 27. The meetings will cover planning, shopping, saving, and distribution of food dollars.

When should you buy? and when can you buy? and when should you ask for a refund? Community programs are open to the public without obligation and are a part of national programs.



FRED SICHEL of Elizabeth, formerly of Union has been appointed national chairman of the Committee on Intermediate Cities Service by the Council of Jewish Federations and Welfare Funds. Long active in campaign activities, Sichel is a member of the national United Jewish Appeal campaign cabinet, and recently was named as one of only 89 American Jews to serve on the Assembly of the Jewish Agency.

## Couple's mission to Israel planned by Jewish group

In response to an invitation from President Ephraim Katzir of Israel, the Jewish Federation of Central New Jersey has planned a couple's mission to Israel, leaving on Sunday, Feb. 16, and returning on Wednesday, Feb. 26. According to mission leaders Mr. and Mrs. Leonard Posnock of Clark and Mr. and Mrs. Alfred Gelfond of Watchung, the group is scheduled to meet with President Katzir at his home during the trip.

Other plans include meetings with a number of Israel government officials, and visits to military installations and absorption centers. The mission will be in Israel during Purim, and plans have been made for the group to attend a Purim party at a Youth Aliyah village.

According to the Posnocks and Gelfonds, the trip will be an "intense study mission, giving participants the chance to learn the full story about current conditions in Israel, and to observe how the average Israeli citizen is being affected by inflation and the recent devaluation of the pound."

Those who go on the mission are expected to make a commitment of \$1,000 or more to the 1975 United Jewish Campaign men's division, according to the chairman.

Accommodations have been arranged in Jerusalem, Tel Aviv and Safed, where the group will spend Shabbat. Anyone wishing further information, or to make a reservation, should call the Federation.

## House Republicans appoint Rinaldo to Commerce panel

WASHINGTON — Rep. Matthew J. Rinaldo (R-12th Dist.-N.J.) has been appointed to the powerful Interstate and Foreign Commerce Committee. The committee is expected to deal with many of President Ford's proposals on energy, including a tax on crude oil and deregulation of natural gas.

The House Republican Conference also appointed Rinaldo to the House Merchant Marine and Fisheries Committee. Rinaldo is a strong proponent of the 200-mile fishing limit and represents a district that includes Port Elizabeth, the largest and busiest container port in the world.

The Commerce Committee, which is overwhelmingly controlled by the Democrats, has been given added responsibilities under a new reorganization plan. Its jurisdiction includes health, the environment, energy, consumer protection, foreign investment control and railroads.

The Union County congressman will give up his seat on the House Banking and Currency Committee in order to take the Commerce Committee post. Rinaldo had filled a vacancy on Banking and Currency left by his predecessor, former Congressman Florence P. Dwyer. Rinaldo served two years on the Banking Committee, which was responsible for enacting the new Housing and Community Development Act.

"My only regret in taking the new assignment to one of the most important Committees in the new Congress is that it required me to relinquish my seat on the Banking and Currency Committee. Serving on the Banking and Currency Committee provided me with a broad perspective of our national and international economic situation and of the needs of our country," Rinaldo said.

## N.J. Jewish unit in Israeli movie

A television crew from Israel was in the United States recently to film a documentary on American Jewry and the Jewish Federation of Central New Jersey was selected to demonstrate the work of federations in this country.

Among the activities that were filmed were a budget and planning meeting, the solicitation of pledges for the United Jewish Campaign and a meeting with Congressman Matthew Rinaldo during which he discussed issues pertinent to the Jewish constituency with members of the Federation.

The documentary will be presented on Israel television during the next three or four months.

For Everyone . . .

**REGULAR SAVINGS ACCOUNTS**

**TIME SAVINGS ACCOUNTS**

**HOME IMPROVEMENT LOANS**

**MORTGAGE LOANS**

**HARMONIA**

The Family Savings Bank

. . . Serving Every Member of the Family Since 1851!

**FREE BANKING BY MAIL**

**TRAVELERS CHECKS**

**FREE CHECKING**

**NO MINIMUM BALANCE \* NO SERVICE CHARGE**

. . . and Your Checks Are Absolutely FREE!

A \$50.00 deposit to open a checking account is all that is required of savings account depositors.

**SATURDAY HOURS**

**DRIVE-IN AND WALK-UP BANKING**

9 A.M. to 12:30 P.M. at ALL LOCATIONS

**SAFE DEPOSIT BOXES**

It's wise to protect your valuables from theft, fire or disaster with a low cost safe deposit box.

**DRIVE-IN & WALK-UP BANKING**

**Extra banking hours at all locations for your convenience.**

**BANKING HOURS**

**MAIN OFFICE—UNION SQUARE, ELIZABETH**  
Lobby: Daily 9 A.M. to 3 P.M., Monday 9 P.M. to 8 P.M.  
Drive-In: Daily 8 A.M. to 6 P.M., Monday 8 A.M. to 6 P.M.  
Walk-Up: Daily 8 A.M. to 9 A.M. and 3 P.M. to 6 P.M.  
Drive-In & Walk-Up: Saturday 9 A.M. to 12:30 P.M.

**SCOTCH PLAINS AND MORRIS AVENUE, ELIZABETH**  
Lobby: Daily 9 A.M. to 3 P.M.; Thursday 6 P.M. to 8 P.M.  
Drive-In: Daily 8 A.M. to 6 P.M.; Thursday 8 A.M. to 8 P.M.  
Walk-Up: Daily 8 A.M. to 9 A.M. and 3 P.M. and 6 P.M.  
Drive-In & Walk-Up: Saturday 9 A.M. to 12:30 P.M.

**HARMONIA**

The Family Savings Bank

In ELIZABETH: 1 UNION SQUARE & 540 MORRIS AVENUE • 289-0800

In SCOTCH PLAINS: 2253 NORTH AVE. (Cor. Crestwood Rd.) • 654-4622

**DISCOUNTS!**

**Confused?**

**MIKE CHEVROLET HAS THE ANSWERS AND THE CARE!**

**SEVERAL '75 CHEVROLETS**

ONE OF THE LARGEST INDEPENDENTS IN CHEVY IN NEW JERSEY AND SURROUNDING AREAS

**MIKE**

**CHEVROLET "YOUR NEAREST CHEVY DEALER"**

**7777 INDOOR AVE. UNION • 685-7200**

Open Daily 9 A.M. - 6 P.M. Mon. & Sat. 10 A.M. - 5 P.M.







Religious News

TEMPLE BETH AHM AN AFFILIATE OF THE UNITED SYNAGOGUE OF AMERICA HARTWIGS ROAD, SPRINGFIELD...

HOLY CROSS LUTHERAN CHURCH (THE CHURCH OF THE RADIO) 'LUTHERAN HOUR' AND TV'S 'THIS IS THE LIFE'...

MOUNTAIN SIDE GOSPEL CHAPEL 330 SPRUCE DRIVE BLOCK OFFICE 22 WEST CHURCH OFFICE 222 1426...

COMMUNITY PRESBYTERIAN CHURCH MEETING HOUSE LANE MOUNTAIN SIDE, MINISTER: THE REV. ELMERA TALCOTT...

THE LADY OF LOURDES 300 CENTRAL AVE. MOUNTAIN SIDE, REV. GERALD J. MCCABIN, PASTOR...

FIRST PRESBYTERIAN CHURCH 200 BIRCH AVE. AT CHURCH MALL, SPRINGFIELD, PASTOR: REV. BRUCE W. EVANS, D.D.

SPRINGFIELD MOUNTAIN VEDDERS 3705 MOUNTAIN VIEW, REV. JAMES J. COUGHLIN, PASTOR...

ST. PAUL'S EPISCOPAL CHURCH 10 EAST BROAD ST. WESTFIELD, REV. JAMES RICHARDSON, HARRISMAN...

ST. STEPHEN'S EPISCOPAL CHURCH 215 MAIN ST. BERLIN, REV. JOHN P. HARRIS, HARRISMAN...

EVANGEL BAPTIST CHURCH 20 SHUNFRIED SPRINGFIELD, REV. WILLIAM C. SCHMIDT, JR.

EARLY COPY Publishers are urged to order their copies...

Dinner scheduled by Ladies Group

The annual Fish 'n Chips Dinner sponsored by the Ladies' Evening Group of the Springfield Presbyterian Church will be held on Saturday evening, Feb. 8...

Mrs. Bruno Becker is serving as chairman for the dinner, assisted by members, as well as others in the congregation...

A feature of the dinner will be selections on the bagpipes by Mary Ellen Geisic and Nancy Crockett...



DIANE K. LASHER Diane K. Lasher, Mr. Melici to wed

Meeting planned by Women's Club

The Springfield Women's Club will meet Wednesday evening, Feb. 5, at 8:15 at the National State Bank meeting room...

Youth program offered by Westfield Hadassah

The Westfield-Mountaineers Chapter of Hadassah will meet on Feb. 10 at 12:30 p.m. at the home of Fran Ditch...

Small fish, hot grill

A good rule to remember: The smaller the fish, the hotter the grill should be. Also, grease the grill prior to cooking...

Mr. and Mrs. Jack A. Lasher of Iris drive, Mountaineers, have announced the engagement of their daughter, Diane K. to Brian A. Melici...

BUYING WISELY

From Better Business Bureau of Metropolitan New York, Inc.

I really am in an awful mess. A year ago a friend asked me to co-sign on a \$2,500 loan he needed to make improvements on his home...

Dear Carrie: Under a law in New Jersey, you can't have an income execution attached to your wages unless you're making \$40 a week in New Jersey...

Dear Carrie: I'm in a quandary as to what type of swimming pool I should buy. My wife is keen on an above ground pool and I'm all for an in-ground one...

Dear Carrie: The decision has to be yours. You should discuss each pool's advantages and disadvantages with a contractor...

Enjoy this Scotch meal Girl Scouts prepare recipes

A "how to" sheet for a Scotch meal was prepared by a Mountaineers committee under the direction of Janet Wingard...

- APPETIZER: CHEESE STRAWS (to make about 30 straws) 1/2 cup unsalted butter chilled and cut into 1/2" bits...

and meat are tender, but not broken up. Add the parsley just before serving to give a nice fresh taste.

- DESSERT: BLACK BUN Black bun is a rich and delicious fruit cake formerly eaten on Twelfth Night...

ENTREE: HOTCH-POTCH (serves 10-12) Also called hairst bree, meaning harvest broth. The essence of this soup-stew is that it should be made with good, fresh meat...

For the filling: 1 lb. seedless raisins, 1 1/2 lb. currants, 1 lb. chopped blanched almonds...

THE REAL QUESTION Then there's the real \$64 question: "Would you lend me \$64?"

Women will hear consumerism talk

Ruth Ballou, coordinator of the N.J. Division of Consumer Affairs, will address the Sisterhood of Temple Beth Ahm...

Dear Saver: These gimmicks do not work. The Better Business Bureau has recently issued a warning to consumers about such devices...

State women's group appoints Mrs. Robson

Mrs. Kenneth E. Robson of Springfield has been appointed by the Past Presidents' Club of the Seventh District to its ways and means committee...

Get your share! LOSE WEIGHT FAST. Now almost free... MERLE NORMAN SUMMIT. Look like a model!

SAVON. 100% Pure Glycerine Soap. Softens and cleanses skin.

MERLE NORMAN SUMMIT. Look like a model! Fashion for a FREE Beauty Lesson.

THOUGHT FOR FOOD. BLUEBERRY SPICE. 2 packages of blueberry spice...

EVANGEL BAPTIST CHURCH. 242 Shunfried Rd., Springfield. Pastor: Rev. William C. Schmidt, Jr.

COLFAX MANOR. 31 1/2 Room Apt., 1218, Air Cond. 5 Room Apt., 1278, Air Cond.

Charge for Pictures. There is a charge of \$5 for printing and mounting...

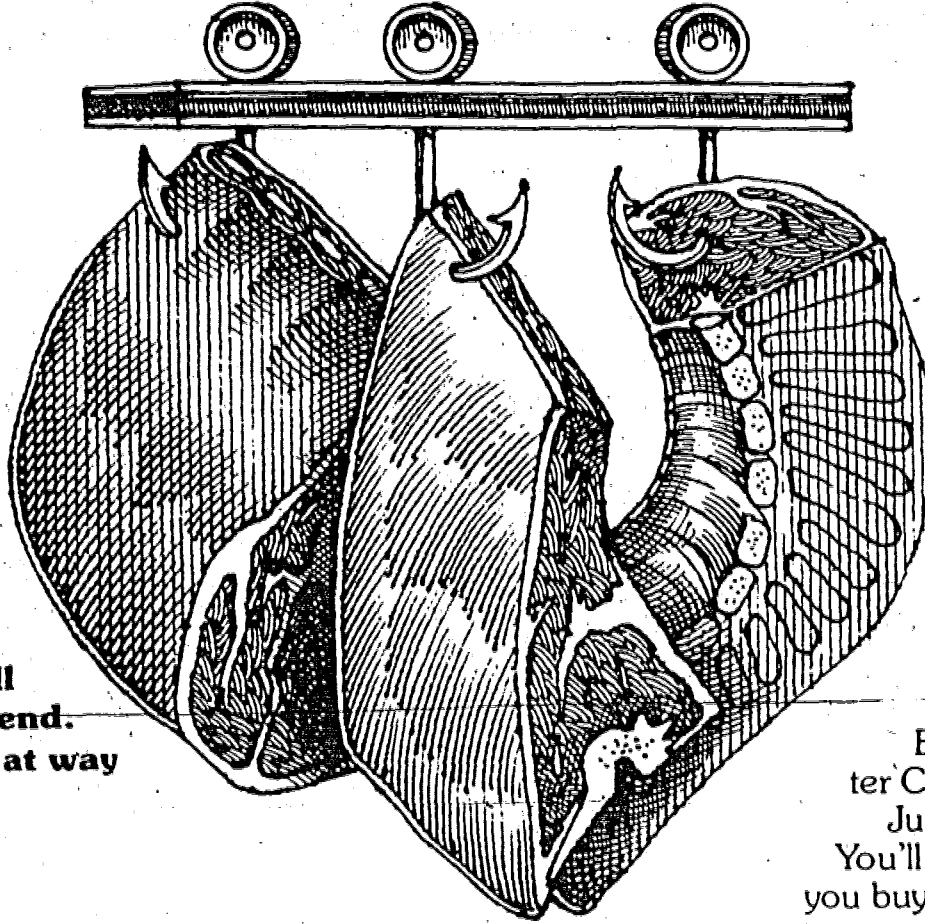
Dr. Hollinger Yung Long. PEDIATRIST. ANNOUNCES THE OPENING OF HIS OFFICE.

SALE OF SALES! DRESSES. BUY ONE FOR \$15 GET THE 2nd FOR ONLY \$1. DORE ANN SHOP. 263 MORRIS AVE., SPRINGFIELD.



# NOW YOU CAN BUY MEAT THE WAY YOUR BUTCHER BUYS IT.

## Save on Large Quantities of Meat, and Have it Cut to Order Free!



Most likely, you've never bought a Beef Outside Round or a Whole Beef Rib. That's because they're the big "primal cuts" your butcher buys from the packing plant.

Well, now at Grocers' Food Depot, you can buy your meat that way too. Then our butchers will custom-cut these pieces for you free of charge. You end up with individual, meal-size cuts at substantial savings.

**If you don't think you can handle a big "primal cut" all by yourself, buy it with a friend. Or two friends. Or more. That way everyone saves.**

Here's what some of our "primal cuts" yield. For example, buy a **Whole Beef Rib** and get 1 Rib Roast, 6 to 8 Rib Steaks, 3 to 4 Boneless Club Steaks, 2 packages of Short Ribs, 2 packages of Ground Beef, and three packages of Lean Stewing Beef.

\* A **Beef Top Sirloin** yields 2 to 3 Boneless Steaks, 5 to 6 Thin Sliced Sandwich Steaks, 1 to 2 Roasts, and 1 package of Ground Sirloin. A **Whole Pork Loin** yields 1 Rib End Roast, 5 to 6 Loin End Pork Chops, and 24 to 28 Center Cut Pork Chops. Just shop Grocers' Food Depot once. You'll see how much you can save when you buy meat the way your butcher buys it.

### STRICTLY PERSONAL

By Pat and Marilyn Davis  
Copley News Service

Dear Pat and Marilyn:

Yesterday my boyfriend informed me that he is married. I have been dating him for more than a year. I had no idea that he was attached. We have been seeing each other weekends and during the week. I still cannot figure out how he managed to sneak out so much.

I had his number at work and always called him there. Things came to a head when I asked him just where our relationship was going. I felt that he owed me some sort of commitment. That was when he dropped the bomb. He wants to continue seeing me, but I told him to close the door behind him and keep going. Why would any person behave in such a despicable manner?

Taken

Dear Taken:

Just be thankful that he is out of your life, and next time be more careful. Any man who hasn't given you his home phone number or taken you to his apartment in a year is open to suspicion. Next time be a little more like Sherlock Holmes.

Dear Pat and Marilyn:

I belong to a women's club. One gal in our membership tries to maneuver all of us into working like crazy. I think that this club is her whole life. She works all of the time on our charity projects. How one woman can accomplish what she does is nearly superhuman. She types, calls, and maintains a high degree of efficiency in the club. I do not know how she keeps up her home.

The problem begins when this lady tries to corner everyone else into becoming a workhorse. She feels that the rest of us should do as much as she does. As an example, she has volunteered my house for two meetings this week. This means that I must get refreshments, etc. How can we turn this eager beaver off?

Dear Girls:

Tell her that your home is not available without notice. It is simple to say "NO" once you get the hang of it.

Dear Pat and Marilyn:

How old do you think a girl should be before she wears makeup? I am 11 and I would like to use some lipstick and maybe a little blusher. My mother has said no until I am 14. Do you know what grade I'll be in then? I'll be a sophomore in high school.

Everyone else is wearing lipstick. My mom has a lot of really strict rules. I am not allowed to go to parties where boys will be and I won't be able to date until I'm 15. I think that all of these rules are outdated. Maybe they were in when mom was a girl but they are really out now. How can I get some of the prudish ideas out of her head? I am becoming the dumbest looking girl in class without lipstick.

Dear Jane:

Your mother is not someone out of the dark ages. She has experienced being 11—and not that long ago. Eleven is young to be wearing lipstick. A nice compromise would be to use a lip gloss. These add only a hint of color and are very attractive. Max Factor makes this product in variety of shades.

Dear Pat and Marilyn:

Three years ago I had a little boy. I wasn't married. My parents were wonderful and took care of my son while I finished college. Now he is living with me.

I have been seeing a very nice young man. He has never asked me about my son's father and I have not volunteered any information. Should I bring this up or wait until he asks? He is nice to my son and I want to handle this correctly. This man means a great deal to me.

Dear Mark:

Until things get serious, I would not bring up the subject. If he inquires, tell the truth. There is no need for detail. The past is never all that interesting.

SEWING MACHINE NEEDLING YOU?

CALL ACCUSEW  
VALESBURG 374-6624  
GOOD SERVICE AND GUARANTEED WORK  
EVENING CALLS ALSO SAME DAY SERVICE IN MOST CASES

<b>Outside Round</b> YOU GET: • 2 BOTTOM ROUND ROASTS • 2-3 EYE ROUND ROASTS • 1 RUMP ROAST • 11-12 CUBE STEAKS • 3 PKGS. GROUND ROUND <b>\$122</b> WHOLE 1 lb. BOTTOM & EYE		<b>Whole Round of Beef</b> YOU GET: • 2-3 BONELESS TOP SIRLOIN STEAKS • 5-6 THIN SLICED SANDWICH STEAKS • 4-5 ROUND STEAKS • 18 TO 20 CUBE STEAKS • 1-2 TOP SIRLOIN ROASTS • 2-3 PKGS. ROUND LONDON BROIL • 2-3 ROUND ROASTS • 5 PKGS. GROUND ROUND • 2 BOTTOM ROUND ROASTS • 2-3 EYE ROUND ROASTS • 1 RUMP ROAST 50-LB. AVG. <b>\$145</b> 1 lb.		<b>Shell of Beef</b> YOU GET: • 12-13 SHELL STEAKS • 2 PKGS. GROUND BEEF <b>\$149</b> WHOLE 1 lb. 22-LB. AVG.	
<b>Pork Loin</b> YOU GET: • 1 RIB END ROAST • 5-6 LOIN END CHOPS • 24 TO 28 CENTER CUT CHOPS <b>98c</b> WHOLE 1 lb. 12-15-LB. AVG.		<b>Rib of Beef</b> YOU GET: • 1 RIB ROAST • 6 TO 8 RIB STEAKS • 3 TO 4 BONELESS CLUB STEAKS • 2 PKGS. SHORT RIBS • 2 PKGS. GROUND BEEF • 3 PKGS. STEWING BEEF <b>\$129</b> WHOLE 1 lb. 25-LB. AVG.		<b>Top Round</b> YOU GET: • 2-3 PKGS. ROUND LONDON BROIL • 4-5 ROUND STEAKS • 2-3 ROUND ROASTS • 1 PKG. GROUND ROUND • 7 TO 8 CUBE STEAKS <b>\$149</b> WHOLE 1 lb. 15-LB. AVG.	
<b>Loin of Beef</b> YOU GET: • 8 TO 10 SIRLOIN STEAKS • 12 TO 14 T BONE STEAKS • 3 PKGS. GROUND BEEF <b>\$139</b> WHOLE 1 lb. 45-LB. AVG.		<b>Bonnie Brand Sliced Bacon</b> 5 1-LB. PKGS. <b>\$4<sup>40</sup></b> BANDED		<b>Beef Neck</b> YOU GET: • 12 TO 14 CHUCK STEAKS • 3-4 PKGS. CUBE STEAKS • 5-7 PKGS. GROUND BEEF • 4-5 PKGS. STEWING BEEF • 2-3 PKGS. MEATY SOUP BONES <b>89c</b> WHOLE 1 lb. 50-LB. AVG.	
<b>Whole Luncheon Loaf</b> 2½-LB. AVG. <b>78c</b> 1 lb.	<b>Ground Chuck</b> 5-LB. PKG. <b>78c</b> 1 lb.	<b>Veal Cutlets</b> 5-LB. PKG. <b>\$169</b> 1 lb. SHOULDER	<b>Veal Stew</b> 5-LB. PKG. <b>\$129</b> 1 lb.	<b>Filet Mignon</b> WHOLE 8-LB. AVG. <b>\$229</b> 1 lb. YOU GET 10 TO 12 STEAKS	
<b>Montini Tomatoes</b> CASE OF 24 35-OZ. CANS <b>\$13<sup>50</sup></b> 56¢ PER CAN WHEN YOU BUY A CASE OF 24	<b>Palmolive Plus Soap</b> CASE OF 72 REG. BARS <b>\$11<sup>72</sup></b> 16¢ PER BAR WHEN YOU BUY A CASE OF 72	<b>Nucoa Margarine</b> CASE OF 30 1-LB. PKGS. <b>\$20<sup>70</sup></b> 69¢ PER PKG. WHEN YOU BUY A CASE OF 30	<b>Green Giant Corn on Cob</b> CASE OF 12 PKG. OF 4 EARS <b>\$7<sup>92</sup></b> 66¢ PER PKG. WHEN YOU BUY A CASE OF 12	AT OUR DELI DEPT. <b>Swiss Cheese</b> <b>\$139</b> 1 lb. DOMESTIC MINIMUM PURCHASE 1-LB.	
<b>Marcial Paper Towels</b> CASE OF 30 JUMBO ROLLS <b>\$11<sup>76</sup></b> 39¢ PER ROLL WHEN YOU BUY A CASE OF 30	<b>Canada Dry Soda</b> CASE OF 12 28-OZ. BTL. <b>\$4<sup>29</sup></b> 36¢ PER BTL. WHEN YOU BUY A CASE OF 12	<b>Kraft Whipped Cream Cheese</b> CASE OF 6 4-OZ. PKGS. <b>\$2<sup>00</sup></b> 28¢ PER PKG. WHEN YOU BUY A CASE OF 6	BIRDSEYE <b>French Green Beans</b> CASE OF 24 9-OZ. PKGS. <b>\$7<sup>92</sup></b> 33¢ PER PKG. WHEN YOU BUY A CASE OF 24	AT OUR DELI DEPT. <b>Boiled Ham</b> <b>\$169</b> 1 lb. MINIMUM PURCHASE 1-LB.	
<b>Marcial Paper Towels</b> CASE OF 30 JUMBO ROLLS <b>\$11<sup>76</sup></b> 39¢ PER ROLL WHEN YOU BUY A CASE OF 30		<b>Canada Dry Soda</b> CASE OF 12 28-OZ. BTL. <b>\$4<sup>29</sup></b> 36¢ PER BTL. WHEN YOU BUY A CASE OF 12		U.S. #1 - YELLOW GLOBE VARIETY <b>Yellow Onions</b> 10 LB. BAG <b>69c</b>	

PRICES EFFECTIVE TO SUN. FEB. 2

NOT RESPONSIBLE FOR TYPOGRAPHICAL ERRORS.

# GROCERS' FOOD DEPOT

• Jersey City, Route 440 & Danforth Ave. (next to Great Eastern) • Union, Springfield & Vauxhall Rd. (next to Great Eastern)  
 STORE HOURS-Open Tues. To Sat. 10 A.M. To 9 P.M. Sunday 10 A.M. To 5 P.M. Closed Monday

## Your Guide To Better Living in the SUBURBAN REAL ESTATE MART • City • Suburbs • Farm Country • Lake • Shore

# Clearbrook an exception to condominium slump

While a large percentage of current 1975 condominium sales are up and down the country have been experiencing a staggering decline in sales in the last

several months, Clearbrook, the adult condominium community ideally located mid-way between Philadelphia and New York, has pulled ahead to double its

residency growth in the past year. Why Clearbrook has emerged as a leader in its field is probably because of its combination of luxury living in a private, guarded community complete with its own parklands, lakes, pool and clubhouse in a locale that is still close to family, friends and within easy commuting distance to North Jersey and midtown Manhattan.

However, in order to achieve the type of success that Clearbrook has attained, there are many other underlying factors.

Here are what some community residents have to say about why they chose Clearbrook for their home. Edward A. Pauls of La Grange III says, "The minute I walked in I said this is where I want to live."

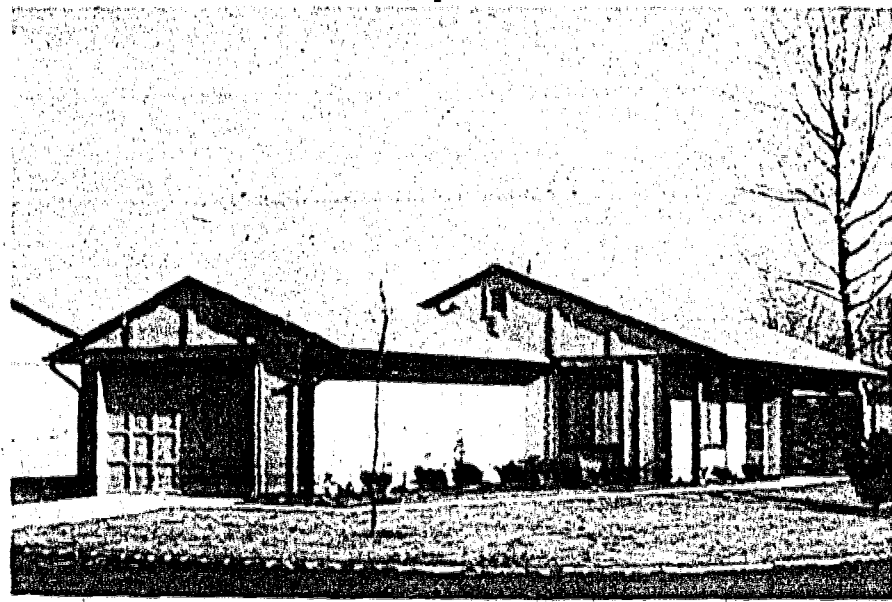
Another resident, Arthur Murphy, originally from Boston, enjoys not only the spaciousness of Clearbrook's interior designs, but its park-like setting. "Fifty-five acres of golf course and lake ought to be enough for me to roam around in," he comments.

In the middle of the Clearbrook community nestles a nine-hole par 3 golf course that could challenge the best golfer and still offers, with its practice putting greens and driving range, ample opportunity for beginners.

"For my money, they're the most respectable builders ever to come down the pike," says Leon Swift, formerly of Crosswicks, about the community developers. Clearbrook homes are being built by Aaron Construction Company, Longtime developers in Middlesex County, Clearbrook is the result of years of planning and experience in the field of "adult communities."

Aaron Cross, president of Aaron Cross Construction Company, has assisted in the construction of thousands of homes and apartments in California.

On March 10, 1971 the Aaron Cross Construction Company Inc. was formed and the Clearbrook Planned Adult Community concept was formulated. Clearbrook will contain more than 2,000 condominium homes, as well as a golf course, two clubhouses and two swimming pools.



**EVERGLADE** model at Clearbrook. Homes include attached garage, large living room with optional fireplace, dining room, kitchen and bedroom. Current sales price is \$28,990. Three other plaza units are shown at Clearbrook which feature two bedrooms or two bedrooms and den priced to \$28,990. Clearbrook is restricted to adults over 48 and is located off exit 8A of the New Jersey Turnpike.

Clearbrook homes are designed to please people who have spent a lifetime in a private, single-family dwelling. While relieving owners of maintenance burdens, they do not require that people forsake a more gracious way of life.

Another Clearbrook feature that has wide appeal is the spacious utility areas. "I didn't have as many appliances in our apartment as I have here," comments Ronelle Dubois, formerly of Union, about the large utility areas available for her convenience appliances. Helen Keough, who moved from South Haven, N.J., especially enjoys the large storage areas.

Others appreciate that for a reasonable monthly fee, presently \$92 per month, they receive access to a 25,000 square foot clubhouse with an Olympic-size swimming pool and areas for billiards, croquet, sculpturing, a sewing center, card room, art studio and a completely equipped woodworking shop.

Some feel more secure because the clubhouse houses a medical center, staffed by registered nurses on call 24 hours, seven days a week. Recently a public computer terminal has been established between Clearbrook and New York City, which is the best way to get home.

Also, 8 1/2 percent mortgage money is available to qualified buyers, with 100 percent cash, a price range from \$18,990 to \$28,990 for the three-story buildings with elevator service. The plaza homes are priced from \$22,990 to \$28,990 and, along with the three-story units, include storm windows and screens, exhaust fans and garbage disposal units.

Also, 8 1/2 percent mortgage money is available to qualified buyers, with 100 percent cash, a price range from \$18,990 to \$28,990 for the three-story buildings with elevator service. The plaza homes are priced from \$22,990 to \$28,990 and, along with the three-story units, include storm windows and screens, exhaust fans and garbage disposal units.

Harry Hovanson, president of Hovanson, said, "I am extremely happy with the success of Holiday City at Berkeley and am pleased that careful planning, large home selection and the recreational facilities we offer have made the project most appealing to the senior population."

The 2,000th home was sold to Tom and Molly Sannicola, formerly of Dumont.

To celebrate the 2,000th sale, Hovanson Incorporated is sending the Sannicolas an all-expense paid trip to Miami.

Hovanson noted, "The Sannicolas were surprised and delighted at the news. They had no idea we planned to send the 2,000th home buyer to Florida." Sannicola said he and his wife couldn't think of a better way to start a new life of leisure.

The couple married 29 years, has three children, six grandchildren and one grandchild on the way.

He is a retired taxi cabbie and she a former hair dresser. The launch sale represents acquisition of two thirds of the total number of planned homes.

The retirement community offers a choice of seven home models and a variety of recreational facilities. Prices start at \$24,990.

Holiday City at Berkeley is located on Route 21, west of Parkway and 92A.

### PEACE... It's Wonderful

Homestead Run is a peaceful, quiet community where you can afford to relax and enjoy the peace of mind that only comes from a well-planned, well-located community. Homestead Run is a peaceful, quiet community where you can afford to relax and enjoy the peace of mind that only comes from a well-planned, well-located community.

**Homestead Run**  
A Quiet Mobile Home Community

# TRY OUT A VACATION HOME IN THE POCONOS NEXT WEEKEND FOR \$25 and the groceries are on us!

## The incredible Wild Acres Weekend Overnight accommodations in a beautiful fully-furnished home at wonderful Wild Acres Lakes in the Poconos for a great Winter weekend only 83 miles from the George Washington Bridge.

Imagine a private home not among five sparkling lakes and fabulous recreation facilities yours to enjoy for a weekend for only \$25 - and we'll provide a bag of groceries too. Bring the kids for only \$7.50 each. Incredible! It's our way of showing you the many advantages of owning a home here at this great four-season private recreation community. There are a limited number of homes available each weekend this winter. Call today or send the coupon and reserve yours now. Don't wait. The incredible Wild Acres Weekend is for the few who act now!

# Wild Acres Lakes

FOR INFORMATION CALL:  
New York: (212) 663-2320  
New Jersey: (201) 489-6565

Name \_\_\_\_\_  
Address \_\_\_\_\_  
City \_\_\_\_\_  
State \_\_\_\_\_  
Zip \_\_\_\_\_

## Hovsons milestone

Hovsons Incorporated, developers of Holiday City at Berkeley, a retirement village, recently announced occupancy of the community's 2,000th home.

Harry Hovanson, president of Hovanson, said, "I am extremely happy with the success of Holiday City at Berkeley and am pleased that careful planning, large home selection and the recreational facilities we offer have made the project most appealing to the senior population."

The 2,000th home was sold to Tom and Molly Sannicola, formerly of Dumont.

To celebrate the 2,000th sale, Hovanson Incorporated is sending the Sannicolas an all-expense paid trip to Miami.

Hovanson noted, "The Sannicolas were surprised and delighted at the news. They had no idea we planned to send the 2,000th home buyer to Florida." Sannicola said he and his wife couldn't think of a better way to start a new life of leisure.

The couple married 29 years, has three children, six grandchildren and one grandchild on the way.

He is a retired taxi cabbie and she a former hair dresser. The launch sale represents acquisition of two thirds of the total number of planned homes.

The retirement community offers a choice of seven home models and a variety of recreational facilities. Prices start at \$24,990.

Holiday City at Berkeley is located on Route 21, west of Parkway and 92A.

## Join the Payroll Savings Plan.



**SAVE, SAVE, SAVE**  
OLD ENGLISH VILLAGE IN WESTFIELD  
8 1/2% MORTGAGE MONEY AVAILABLE.

CENTER HALL COLONIAL & ENGLISH FLOORS  
STARTING PRICES AT \$28,990 UP

VIC WYCHWOOD ESTATES

Suburban Realty  
2149 ROUTE 214 N. WESTFIELD, N.J. 07090

**LOWEST MORTGAGE RATES AVAILABLE IN N.J.**  
10% DOWN 30 YR. MORTGAGES

Bi-Level 4 B.R. 1 1/2 Baths \$47,990  
Cape Cod 4 B.R. 2 Baths \$51,990  
Bi-Level 4 B.R. 1 1/2 Baths \$51,990  
Colonial 4 B.R. 2 1/2 Baths \$51,990  
Split Level 4 B.R. 2 1/2 Baths \$55,990  
Colonial 4 B.R. 2 1/2 Baths \$58,990  
Colonial 4 B.R. 2 1/2 Baths \$61,990

1 1/2 Acre Lots Cedar Shakes  
Magic Chef Appliances  
Wall to Wall Carpeting  
Central Air Conditioning Standard on Some Models  
Some Homes-For Immediate Occupancy  
Fireplaces standard on some models

31 MINS. TO N.Y.C  
VIA PA. R.R.

Office: 201-469-8112  
Evenings: 201-257-8544

GREATER AMERICAN COMMUNITIES  
Financed by Punia Mortgage  
Sales Office open 7 days 11:30-7:00

# \$34,990 still buys all this at Clearbrook!

- 2 large bedrooms
- 2 1/2 baths w/tp
- Covered entry
- Attached 1 1/2 car garage
- Lowest entry level
- Beautifully landscaped
- Attention with tile floors and garbage disposal
- Central air conditioning
- Dining room with sliding glass doors
- Laundry and storage areas
- Generous closet space
- Plus many available options including brick fireplace, large enclosed patio, walk-in closet, etc.
- Call for more information.

Clearbrook  
CLEARBROOK, P.O. Box 168, Cranbury, N.J. 08512

# Bicentennial medal to be offered in gold

Washington, D.C. - The American Revolution Bicentennial Administration (ARBA) plans to offer the 1976 national Bicentennial commemorative medal in gold, as well as bronze and silver. Design and other details have not as yet been decided but the medal will be available on or about Jan. 1, 1976.

The ARBA's announcement was made after Congress passed, and the President signed, on Jan. 2, a law authorizing the gold content. Under the law, the ARBA has been designated as the only agency which can authorize national medals struck in gold, subject to approval of the Secretary of the Treasury.

Public Law 93-167 states: "Except with respect to medals in commemoration of the bicentennial of the American Revolution authorized to be struck by Public Law 92-228 (approved Feb. 15, 1972), no national medals made for public sale under authority of any law of the United States shall contain any gold without the express prior approval by law of the Congress of the United States."

P.L. 92-228 authorized a maximum of 13 medals commemorating specific historical events of great importance for the Bicentennial, and directs a national medal commemorating the year 1776 and its significance in American independence. The medals are struck by the U.S. Mint.

Sizes of medals, metals, emblems and inscriptions are determined by the ARBA, subject to the approval of the Secretary of the Treasury. Consultations on these mat-

## Post goes to Siverd

Clifford D. Siverd, chairman and chief executive officer of American Cyanamid Co., has been elected chairman of the board of overseers of the Foundation at New Jersey Institute of Technology, Newark.

Dr. Neil V. Hakala, president of Exxon Research and Engineering Co., is now vice chairman.

Siverd succeeds Robert D. Lally, who served as chairman of the private, non-profit affiliate of the institute since 1968. Lally is president of American Telephone and Telegraph Co.

## SPRING 1975 CONTINUING EDUCATION AT KEAN COLLEGE

Of New Jersey, formerly Newark State College Union, New Jersey

The Center for Continuing Education is a unique community resource offering non-credit college courses, alternative degree opportunities for adults, special services for industry, vocational and career guidance for women and many other stimulating programs and events on and off-campus.

### SELECTED PROGRAM HIGHLIGHTS

- War Against Inflation**  
Can the Consumer win? A free public forum. The energy dollar, the savings dollar and the food dollar discussed in three practical and informative sessions.
- Sunday Theatre**  
See three important New York productions, four Lincoln Center, Broadway and off-Broadway theatre districts with related lecture-discussions.
- Memory and Concentration**  
Sharpen your skills for social, scholastic and business success.
- Literature of Our Era**  
No need to fear Virginia Woolf, or Agnes Lawrence, McCullers and other important contemporary novelists whose lives and works will be discussed.
- Fundamentals of Tennis**  
Anyone can play. Strokes, strategy and etiquette. Singles and doubles.

### FOR MORE INFORMATION CALL (201) 527-2163

For a complete and detailed listing of course and program offerings, please fill out and mail the coupon below to:

**Center for Continuing Education  
KEAN COLLEGE OF NEW JERSEY  
Union, N.J., 07083**

Please send me \_\_\_\_\_ copies of your Spring 1975 program brochure.

Name \_\_\_\_\_  
Address \_\_\_\_\_  
City \_\_\_\_\_ State \_\_\_\_\_ Zip \_\_\_\_\_

A statement and offering statement has been filed with the Department of State of the State of New York. The filing does not constitute an approval of the sale or issue of securities. The Department of State of New York has no jurisdiction over the sale of securities. The Department of State of New York has no jurisdiction over the sale of securities. The Department of State of New York has no jurisdiction over the sale of securities.



# Oscar-winning director used 'Capra touch' in 53 movies

BY STEVE McMANUS



FRANK CAPRA

## 9 Yates children join Mill series

The Paper Mill Playhouse... The Yates family... The Paper Mill Playhouse will bring a dramatic series...

## Final Iturbi tour to begin in Union

The final tour... Iturbi's tour... The tour will be held in Union...

## Bergman drama comes to Elmora

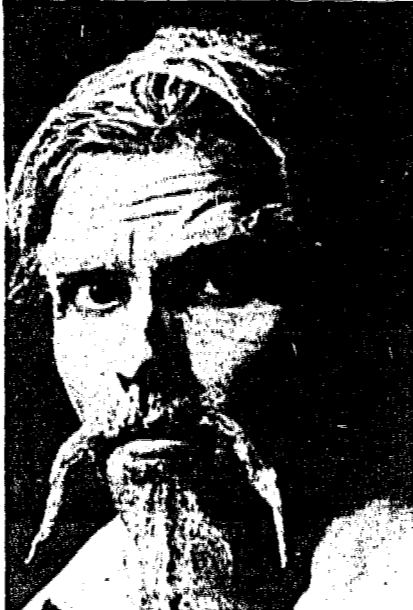
Bergman's drama... The play... The State Theatre of New Jersey...

## First of 'triple' series

The first of a series... The play... The State Theatre of New Jersey...

# Amusement News

## Teacher has lead in stage musical



DAVID CHRISTOPHER... The new playhouse has been renovated...

## Bronson, Pacino in movies at Park

Death Wish and Serpico... The Park Theatre...

## Oscar nominee stars in Fox's 'Nickel Ride'

Jason Miller... The Nickel Ride... Fox Theatre...

# Theater Time Clock

All times listed are furnished by the theaters.

CASTLE (Irvington) — Thursday through Tuesday: CARLA'S THING, 1:50, 4:25, 7:35; HOT CROSS BUN, 2:40, 5:15, 7:50, 10:25; TEENAGER SWINGER, 3:25, 6, 8:40.

ELMORA (Elizabeth) — SCENES FROM A MARRIAGE, Thur., Fri., Mon., Tues., 8; Sat., 6, 9; Sun., 2, 5, 8; FEATUURETTE, Thur., Fri., Mon., Tues., 7:40; Sat. mat., cartoons, 2:30; THE BOY WHO CRIED WEREWOLF, 1, 2:35.

FIVE POINTS CINEMA (Union) — THE ODESSA FILE, Thur., Mon., Tues., 8; Fri., 7:20, 9:30; Sat., 7:25, 9:35; Sun., 4:15, 6:30, 8:45; Sat., Sun., matinees, JESSE JAMES MEETS FRANKENSTEIN'S DAUGHTER, 1:30.

FOX-UNION (Rt. 22) — NICKLE RIDE, Thur., Mon., Tues., 7:30, 9:20; Fri., 7:30, 9:30; Sat., Sun., 2, 3:45, 5:30, 7:15, 9:30.

LOST PICTURE SHOW (Union) — MACON COUNTY LINE, Thur., Fri., Mon., Tues., 7, 8:30, 10:05; Sat., 6:50, 8:20, 9:55; Sun., 1:30, 3:40, 6, 7:35, 9:15.

MAPLEWOOD — YOUNG FRANKENSTEIN, Thur., Fri., Mon., Tues., 7:15, 9:15; Sat., 1, 3, 5:15, 7:30, 9:45; Sun., 2:15, 4:30, 6:45, 9.

NEW PLAZA (Linden) — MACON COUNTY LINE, Thur., Fri., Mon., Tues., 7, 10:15; Sun., 9:45; DILLINGER, Thur., Fri., Mon., Tues., 8:30; Sat., 8:35; Sun., 4:45, 8:05; Sat., Sun., matinees, MUNSTER GO HOME, 1:30.

OLD RAHWAY (Rahway) — THE ODESSA FILE, Thur., Mon., Tues., 9, Fri., 11:15; Sat., 9:20, 9:45; Sun., 5:20, 9:25; CALIFORNIA SPLIT, Thur., Mon., Tues., 7:15; Fri., 7:30; Sat., 8, Sun., 7:40; Sat., Sun., matinees, MUNSTER GO HOME, 1:30.

PARK (Roselle Park) — SERPICO, Thur., Fri., Mon., Tues., 7:15; Sat., 4, 8, Sun., 3:15, 7:15; DEATH WISH, Thur., Fri., Mon., Tues., 9:30; Sat., 6, 10; Sun., 1:30, 5:25, 9:25; Sat., cartoons, 1:30; KING KONG VERSUS GODZILLA, 1:45.

## Travel film series slated by Institute

The Greatness of Spain... A color travel film... The Institute for the Arts...

## Movie rights to 'Oil' acquired by producer

HOLLYWOOD — Producer Don Devlin has acquired the film rights to 'Oil'...

## CROSSWORD PUZZLE

Crossword puzzle grid and clues. Includes sections for 'ACROSS' and 'DOWN' with numbered clues.

# 'The Odessa File' seen on screens at Cinema, Rahway

'The Odessa File,' which opened at two theaters yesterday, has Jon Voight and Maximilian Schell in leading roles. The picture opened on a single bill at the Five Points Cinema, Union, and on a double bill with 'California Split,' at the Old Rahway Theater, Rahway.

## Columbia to release a rock opera picture

HOLLYWOOD — Columbia Pictures and the Robert Stigwood Organization have retained a team of consultants to work on all phases of the release of 'Tommy,' the Ken Russell film, which Columbia will distribute in the United States and Canada next spring.

## 'Macon County Line' seen in Union, Linden

'Macon County Line,' which has a "youth-against-the-world" theme, is being shown at the Lost Picture Show, Union, and on a double bill with "Dillinger" at the New Plaza Theater, Linden.

# DISC 'N DATA

Turntable Treat... THE LITTLE PRINCE (PIP RECORDS-6813), narrated by Richard Burton... The LP recording, like the motion picture, is based on Antoine de Saint Exupery's beautiful fantasy for "all grown-ups who were once children—although few of them remember it."

## 'New' horror tale: Brooks' creation

'Young Frankenstein,' Mel Brooks' parody of the famed horror tale, came to the Maplewood Theater, Maplewood yesterday. Gene Wilder, who wrote the screenplay with Brooks for 20th Century-Fox release, plays a new Frankenstein who creates a new monster, with Transylvania and laboratory trappings as settings.

## FRIDAY DEADLINE

All items other than spot news should be in our office by noon on Friday.

THE RED CRAB A COMPLETE PET SHOP & AQUARIUM PUPPIES... Includes contact information for a pet shop in Springfield, N.J.

Winter Musicals for Children, 1975. SATURDAYS Performances at 10:30 a.m. and 1:30 p.m. PRICES: \$2.50, 2.25, 2.00, 1.75

PAPER MILL The State Theatre of New Jersey

DINING GUIDE

HEDY'S DINER RESTAURANT NEVER CLOSED... HEDY cordially invites you to try our DINNER BUFFET...

Chestnut Tavern & Restaurant 475 Chestnut St., Union... THE finest in ITALIAN AMERICAN CUISINE

Trotola's Continental Cuisine... Enjoying is your taste with the price

Various theater and restaurant advertisements including Godspell, Young Frankenstein, and local dining spots.

FOR THE WOMAN OF TODAY! EPIC... Includes an advertisement for a women's clothing store and a 'SAVE' graphic.

'Godspell' to end its run Feb. 16

'Aloha' acquired

CAR TO SELL? CALL CLASSIFIED 686-7700

DANCE PARTY & SOCIAL... EVERGREEN LODGE

THE NEW CELEBRATION PLAYHOUSE... 116 South Ave., Cranford

FIGHT INFLATION Shop the... DISCOUNT OUTLET DIRECTORY



CALL AN 'AD-VISOR' 686-7700 TODAY! DEADLINE TUES. NOON FOR THURS. PUBL.

OPPORTUNITY SAVINGS PROFITS RESULTS CLASSIFIED

Help Wanted Men & Women | Help Wanted Men & Women | Help Wanted Men & Women | Help Wanted Men & Women | Help Wanted Men & Women

BANKING OPERATIONS INTERESTING BANKING POSITIONS AVAILABLE. First National State Bank of New Jersey has openings for ambitious people. EXPERIENCED in the banking field. We are offering an excellent salary and abundant and generous benefits from weeks long vacations to 12 paid holidays, insurance and hospitalization. Trans. & Proof Machine Operators (All Shifts) Minimum 1 year experience preferably on the Burroughs 3100 & NCR 315. Will consider experience on other related equipment. Reconciliation-Transit (All Shifts) Requires 1 year experience reconciling MICR entries. Sorter Operators (All Shifts) 1 1/2 years experience on the Burroughs 4 P41 or IBM Sorter down off line and on line sorting under the IP3 system. Key punch Operators (All Shifts) Minimum 1 year experience on the 629 or 639.

WORLDWIDE OIL OPPORTUNITIES MAINTENANCE ENGINEERS & TECHNICIANS. Through us you can explore worldwide opportunities with prestige companies without searching magazines and newspapers or answering scores of ads. ENGINEERS Applicants must be Graduate Engineers with experience ranging from JUNIOR with 1-3 years to SENIOR with 10-20 years in maintenance programs. Must have power utilization and construction equipment requirements. Must know planning, scheduling and execution of a major maintenance program. Must be familiar with systems analysis in plants with related automation and modern technology. TECHNICIANS/MACHINIST 2 years experience with at least 3 years of high speed pressure and high temperature rotating equipment. Must be able to troubleshoot and repair steam or combustion gas turbines on 30,000 HP range. Candidates with field maintenance experience also required. ELECTRONICS INSTRUMENT 3 years experience maintenance & repair of instrumentation equipment involving process & control systems. 1 1/2 year training, schools and recreational facilities are available as well as liberal annual vacation program. Good savings opportunities. Apply for job or explore these positions at absolutely NO COST TO YOU. Our clients pay our fees. State complete the coupon and return it to us. Upon receipt we will mail you 22 color photos and return to us with your resume if you have one. If not, we will send you a resume and you will be interviewed at a free cost. Please complete: NAME ADDRESS ZIP CODE

Charles R. Lister International, Inc. Personnel Consultants. 1160 Route 1917, Newark, N.J. 07102. New York, N.Y. 10020. South West Regional Office, 4500 Main St., Denver, Colorado 80202.

NURSING CAREER OPPORTUNITIES RN'S NO ROTATION REQUIRED. Speciality Areas: ICU & SCU. Good starting salaries. Liberal employee benefits. Excellent working conditions. Apply or call Personnel Dept. OVERLOOK HOSPITAL 193 Morris Ave. Summit, N.J. 07901. (201) 522-2244. An Equal Opportunity Employer.

OPPORTUNITY KNOCKS! Circulation Manager. Suburban weekly newspaper chain, 9 publications located in New Jersey, wants a take-charge circulation manager familiar with all phases of circulation work. Excellent company benefits. Call Mrs. Wollenberg, 686-7700.

WANTED! ADVERTISING TELEPHONE SOLICITOR. Call Mrs. Loomer 686-7700.

Must Sell contents of bedroom, kitchen, recliner, dining table, etc. MUST sell Jr. dining room set. MUST sell Jr. dining room set. MUST sell Jr. dining room set. MUST sell Jr. dining room set.

ATTENTION TRUCKERS!! Will pay cash for 2 way radios previously used on trucks. Underwood trucking co. system. Call Joe Pierce at 257-3630. Attention: Tractor Parts. Attention: Tractor Parts. Attention: Tractor Parts.

CLERK TYPIST The Type Of Job You've Been Looking For? PETERSON STEELS INC. ADMITTING CLERK OVERLOOK HOSPITAL

Respiratory Therapy Technicians. Overlook Hospital. 193 Morris Ave. Summit, N.J. 07901. (201) 522-2244.

21 DAY TRIP TO POLAND June 15 to July 7, 1975. Sponsored by Group 311. 1160 Route 1917, Newark, N.J. 07102. (201) 522-2244.

BRIDAL GOWNS BRIDES TO BE BRAND NEW BRIDAL GOWNS. DISCOUNT CARPET OUTLETS. DISCOUNT OUTLET DIRECTORY.

ALTERATIONS. SMALL JOBS. OVER 23 YEARS EXP. NO JOB TOO SMALL!! CALL SAL: 687-5059.

CLERICAL ASSISTANT. MICRO STAMPING CORP. CLEAN TRIP.

SECRETARY PART TIME. SECRETARY FULL TIME. SECRETARY EXEC.

WANTED!! ADVERTISING TELEPHONE SOLICITOR. Call Mrs. Loomer 686-7700.

DISCOUNT CARPET OUTLETS. DISCOUNT OUTLET DIRECTORY.

ALTERATIONS. SMALL JOBS. OVER 23 YEARS EXP. NO JOB TOO SMALL!! CALL SAL: 687-5059.

CLERICAL ASSISTANT. MICRO STAMPING CORP. CLEAN TRIP.

SECRETARY PART TIME. SECRETARY FULL TIME. SECRETARY EXEC.

WANTED!! ADVERTISING TELEPHONE SOLICITOR. Call Mrs. Loomer 686-7700.

DISCOUNT CARPET OUTLETS. DISCOUNT OUTLET DIRECTORY.

ALTERATIONS. SMALL JOBS. OVER 23 YEARS EXP. NO JOB TOO SMALL!! CALL SAL: 687-5059.

CLERICAL ASSISTANT. MICRO STAMPING CORP. CLEAN TRIP.

SECRETARY PART TIME. SECRETARY FULL TIME. SECRETARY EXEC.

WANTED!! ADVERTISING TELEPHONE SOLICITOR. Call Mrs. Loomer 686-7700.

DISCOUNT CARPET OUTLETS. DISCOUNT OUTLET DIRECTORY.

ALTERATIONS. SMALL JOBS. OVER 23 YEARS EXP. NO JOB TOO SMALL!! CALL SAL: 687-5059.

CLERICAL ASSISTANT. MICRO STAMPING CORP. CLEAN TRIP.

SECRETARY PART TIME. SECRETARY FULL TIME. SECRETARY EXEC.



Thursday, January 30, 1975

## Product hazards now reportable any hour of day

WASHINGTON — The U.S. Consumer Product Safety Commission has established a call center system so that manufacturers, distributors and retailers can call the commission 24 hours a day, seven days a week to report possible substantial product hazards.

Under commission regulations, manufacturers, distributors and retailers are required to report such potentially hazardous products to the commission within 24 hours after discovery.

The call center system will make it possible to communicate with a CPSC staff member after regular working hours and on weekends. The telephone number is 202-456-7001, the same number used during normal working hours.

When calling after hours, a taped message will instruct the caller to stay on the line while the call is automatically transferred to the residence of a staff member in the off-hours Product Defect Identification. If the line is busy, the recording instructs the caller to try again in several minutes.

This system is part of the commission's toll-free consumer hotline and should be used only by manufacturers, distributors and retailers reporting a product they feel may present a substantial hazard to consumers.

## HOW'S YOUR HEARING?

Free electronic hearing tests will be given at the following hearing aid service offices on Monday and Tuesday:

For more information and to schedule your hearing aid service, call 201-261-1234.

Anyone who has trouble hearing or is considering a hearing aid should have a hearing test. The test will determine if you have a hearing problem and what kind of hearing aid you need.

A hearing test is a simple procedure. It involves listening to a series of tones and words through headphones. The test will determine if you have a hearing problem and what kind of hearing aid you need.

The hearing test will be given at the following hearing aid service offices on Monday and Tuesday:

## Drew attempts to 'humanize' process leading to admission

The College of Liberal Arts at Drew University, Madison, has modified its admissions process to spare unqualified applicants the time and expense of formal application and the pain of rejection.

The changes, which were introduced earlier this month, also provide for more pre-application interaction between qualified applicants and the admissions staff and faculty.

Applications to Drew are at a three-year high for January, while inquiries are at an all-time high. Though College Board score averages of recent freshman classes have declined at Drew, as everywhere else, high school class standing figures and other qualitative indicators have held up.

Nevertheless, according to Robert de Veer, associate director of college admissions, high school seniors are apparently being counseled to "aim high" in higher education's current "buyer's market." Consequently, the number of applications rejected by Drew is running three times ahead of the total a year ago at this time. And last year's sum total of rejections was significantly higher than it was the year before.

Here's how the new admissions procedure works:

Prospective students who inquire about applications receive a pre-application form along with a personal letter from the director of college admissions. Those who apparently meet Drew's standards are then sent an application form and admissions materials also.

## ICBO announces winter semester

The International Council For Business Opportunity, 10100 of New Jersey announced this week that the winter semester of the ICBO business education program will begin the week of Feb. 14 at the Rutgers Newark campus.

Since these courses are free and are always more advanced than most group members who are interested should apply at once. ICBO said individual courses in recordkeeping, bookkeeping and business management will be presented each course meets one night per week in weeks for two hours. Certificates are awarded to students who meet the requirements for the past six years. 1,500 certificates have been given to graduates.

Applicants can enroll by mail by contacting Bernard H. Suspenzion, education director, at the ICBO office, 24 Commerce Street, Newark, N.J. 07102, 422-4272.

within a week, they receive a telephone call either from a member of the admissions staff or from a faculty member teaching a subject in which they have expressed interest.

Those who apparently do not meet Drew's standards receive a letter counseling against

applying. Those whose pre-application forms are incomplete or inconclusive are encouraged to provide more information by formally applying for admission.

According to Karl Salathe, University director of resources, the changes were prompted by a concern on the part of the admissions staff to "humanize" procedures "at a time when so much else in our society seems headed in the other direction."

The changes are expected to reduce the number of misdirected applications (applying to the wrong school for what the applicant has in mind) as well as rejections.

## Panel at Rutgers to talk on epilepsy

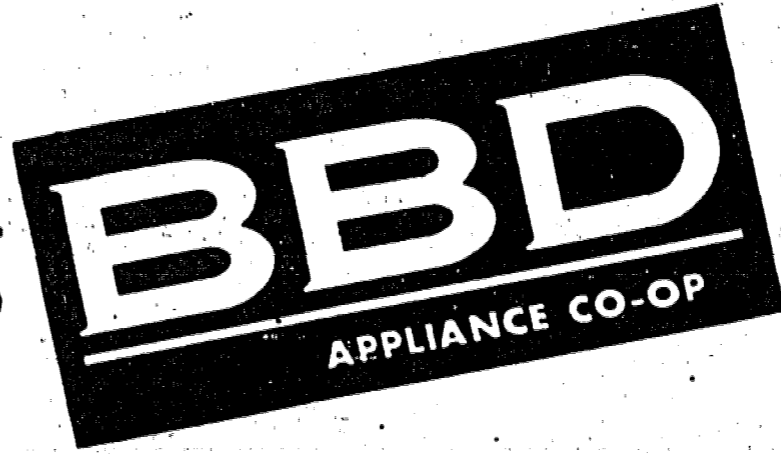
A seminar to discuss parental concerns regarding the needs of individuals with seizure disorders will be sponsored by the New Jersey Chapter of the Epilepsy Foundation of America on Feb. 4 from 7:30 to 10:30 p.m. The free public seminar will be held at the College of Medicine and Dentistry of New Jersey, Rutgers Medical School, on Hoopes Lane in University Heights, Piscataway.

The EFA-NJ, in cooperation with the Division of Vocational Rehabilitation, is sponsoring this program to reach parents of

epileptic children and to answer their questions regarding the medical treatment, recreation, education and social and vocational aspects of their children's lives. A panel of four, including a neurologist, a pharmacologist, a rehabilitation counselor and the director of services of the Epilepsy Foundation, will answer all questions for the public.

For further information concerning the seminar, which will be held in the Basic Science Building, Room L-201, readers may call 828-8889.

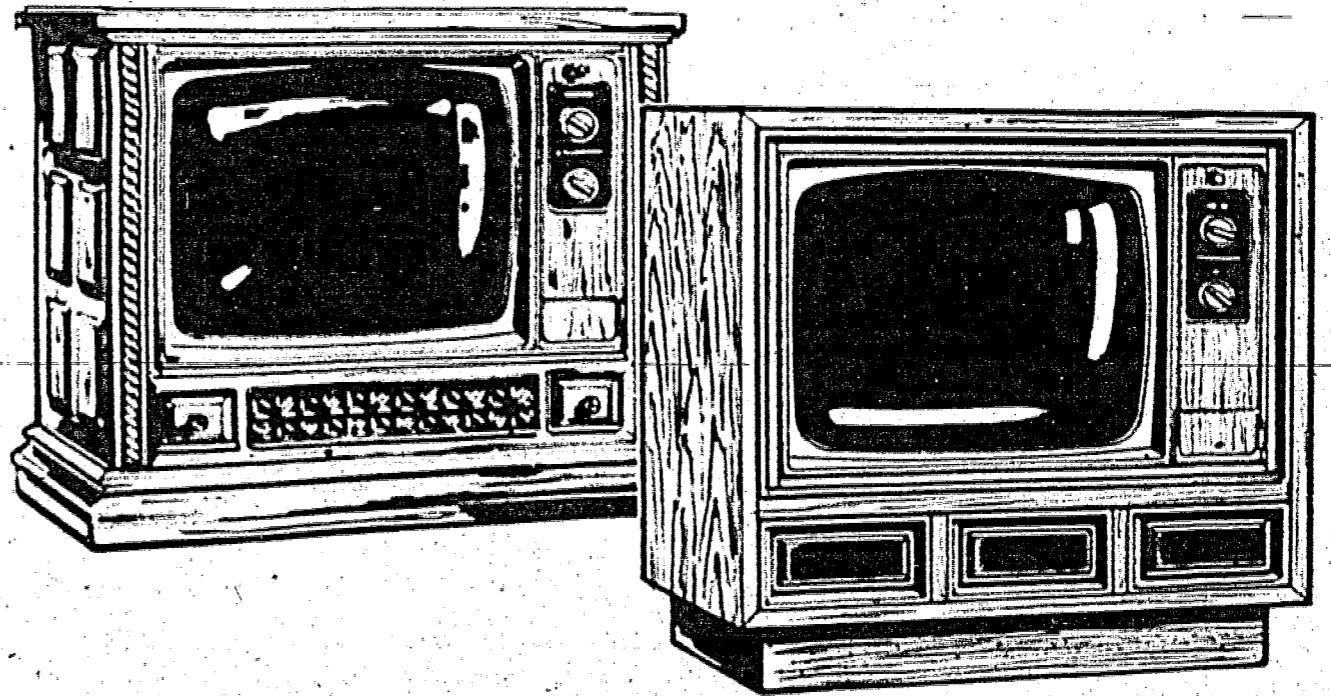
NOW AT ALL 150



APPLIANCE CENTERS

# ZENITH COLOR TV WINTER VALUES

A SUPER WINTER VALUE ON THE FINEST TV'S MADE



ZENITH 100% SOLID-STATE 23" diagonal CHROMACOLOR II CONSOLE TV'S

Choice of 2 Cabinet Styles

\$540

Quality designed consoles featuring new advanced Chromacolor picture tube, 100% solid-state T-jan 300V chassis, Exclusive Power Sentry System and solid-state Super Gold Video Guard Tuning System. Your choice of 2 handsome cabinet styles.

CRANFORD CRANFORD RADIO 25 EASTMAN ST. 276-8776

IRVINGTON WILDEROTTER'S 210 SPRINGFIELD AVE. 270-1270

HILLSIDE TOBIA'S APPLIANCE 1233 LIBERTY AVE. 213-7714

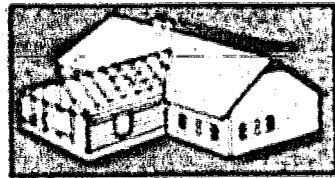
LINDEN LINDEN RADIO 20 E. ELIZABETH AVE. 468-2881

ELIZABETH ALTON APPLIANCES 1125 ELIZABETH AVE. 334-6523

SPRINGFIELD PHOENIX APPLIANCE 290 MORRIS AVE. 276-6388

Don't put it off

Let Premier Homes ADD-A-ROOM



Not as costly as you think! \$2890\*

BETTER THAN GOLD INVEST IN YOUR HOME!

\*Premier will build the frame and foundation complete with roofing, siding, window casings and a 4' square four door garage plus the finishing. Or Premier will build a complete custom designed room.

ADD ALL LEVEL KITCHENS BATHS OTHER HOME IMPROVEMENTS NOT AS COSTLY AS YOU THINK

Call Premier today for a free information packet and to schedule your free estimate.

SCHEDULED CUSTOMERS ONLY. THIS INFORMATION IS FOR INFORMATION ONLY.

Call 256-6400

WE BUILD EVERYWHERE IN NEW JERSEY

Premier Homes New Jersey State License No. 21094

PREMIER HOMES

Member International Builders Association

1000 Morris Ave. • 256-6400 • The Premier Building Program

## Heavens, it's free

Metals shows lunar eclipses and other astronomical events that will be visible during 1975 are detailed on a free essential calendar being offered by the New Jersey State Museum Planetarium, Trenton.

This year's expanded edition of the Planetarium's annual calendar includes individual star charts for each month in addition to its regular information on moon phases, distant planets and other sky happenings. These charts are suitable for amateur stargazing. The calendar also contains a brief description of the Planetarium and its services. Single copies of the 1975 essential calendar are available free by writing to the N.J. State Museum Planetarium, 205 W. State Street, Trenton, NJ 08620. In planning call 292-6000.

## State post for Lupton

Edward H. Lupton, chairman of the New Jersey Commission on Financing Postsecondary Education, has announced the appointment of Andrew H. Lupton as executive director of the commission.

The commission was created by the State Board of Higher Education to study long-range financial issues facing institutions of postsecondary education.

For the past year Lupton served as associate commissioner for the Division of Higher Education. On that capacity, he directed a state-wide distance study of postsecondary education in Indiana.

## OMEGA DIGITAL WITH CALENDAR



A complete daily alarm system that gives you the right time, date, day of the week, month and minute. Includes an alarm that will sound when you are late for work or school. Also includes a date window that shows the month and day. Also includes a date window that shows the month and day. Also includes a date window that shows the month and day.

\$595

Kodak Jewelers

1000 Morris Ave. • 256-6400

Member International Builders Association

Call 256-6400