



LUNCHEON PLANNERS Gail Brandstatter (center), daughter of Mr. and Mrs. William Brandstatter Jr. of Grouse Lane, Mountainside, will be among the Newark Academy students modeling styles from Lord & Taylor at a Dec. 2 fashion show sponsored by the Livingston school's Mothers Association. Mrs. James H. McGraw (left) and Mrs. Henry G. Sifral, both of Short Hills, are among the committee members planning the luncheon program, to be held at the Chanticleer in Millburn. Gift boutiques opening at 11 a.m. also will be featured.

Dayton sophomores selected for Washington Workshops

Alan Platoff of Summit road, Mountainside, and Mindy Schneider of Avon road, Springfield, sophomores at Jonathan Dayton Regional High School, have been chosen to participate in the 1977 Washington Workshops Congressional Seminar in Washington, D.C.

The seminars are conducted by the Washington Workshops Foundation, a non-profit, nonpartisan association, founded in 1967. Now in its 10th annual series, the Congressional Seminar has been attended by thousands of students since its inception.

Throughout the coming year, 10 one-week seminars have been scheduled, all held in cooperation with Marymount College of Virginia, where the students are housed. The seminars provide intensive study of American government for selected high school students from across the nation and abroad.

Participants travel daily to Capitol Hill where they confer with government leaders. In dialogue sessions with members of Congress, Supreme Court Justices, Cabinet members and other officials, the students receive commentary on the operation of the government of the United States and in turn submit their questions and comments concerning government activities.

The students also spend time observing the workings of the national government first hand, as they attend sessions of the House and Senate as well as committee hearings, and meet individually with their own congressmen and senators.

Each seminar features the student-run *Session of the Seminar* in which students

Temple presents rabbi's lectures

Rabbi Zalman Schachter, whose experiences range from Biblical scholarship to Zen, from Hebrew literature to the encounter movement, will share his views of "Worship as Celebration" and "Meditation and the Inner Life," with Westfield's Temple Emanu-El on two successive Sunday evenings, Dec. 5 and 12.

A communal supper preceding the lectures will provide an opportunity to meet informally with Rabbi Schachter. Reservations for the supper, which begins at 6, must be made in advance. Lectures are scheduled for 7:30, with tickets available both in advance and at the door. Those wishing to attend the supper and lecture may send \$5 for each reservation to Temple Emanu-El Adult Education, 756 E. Broad st., Westfield 07090.

Tickets for the lecture alone are \$3 per person for each lecture, or \$1.50 for students and senior citizens.

Meeting scheduled for Regional board

The Union County Regional High School District Board of Education will hold an adjourned regular meeting Tuesday at 8 p.m. in the instructional media center at the Gov. Livingston Regional High School, Watchung boulevard, Berkeley Heights.

The anticipated agenda includes the Jonathan Dayton band camp and exchange students from England coming to Arthur L. Johnson.

MOUNTAINSIDE Echo

Member SUBURBAN NEWSPAPERS OF AMERICA

Published each Thursday by Trumar Publishing Corp.

Asher Mintz, publisher

NEWS DEPARTMENT

Karen Zauty, Editor

Abner Gold, Supervising Editor

Les Malenut, Director

BUSINESS DEPARTMENT

Robert H. Brumell, vice president of advertising

William Friedman, retail display advertising manager

Charles Loomer, national advertising manager

James D. Parks, circulation manager

Doreen Malley, ass. circulation manager

Sam Howard, Publisher, 1974-1975

Milton Mintz, retired, Publisher, 1971-1975

Second Class Postage paid at Mountainside, N.J.

25 cents per copy

Mailed subscription rate \$2.00 per year

2 New Providence Road, Mountainside, N.J.

Phone: 484-7700

Represented Nationally by U.S. SUBURBAN PRESS INC.

3 pay \$215 fines on traffic charges in municipal court

Three motorists, one charged with driving while under the influence of alcohol and two charged with driving while their licenses were suspended, were fined \$215 each by Judge Jacob R. Bauer at the Nov. 10 session of Mountainside Municipal Court.

The drunk driving charge, against Clarence J. Hobson of Paterson, who had been apprehended on Rt. 22, also resulted in a two-year revocation of Hobson's license. The other motorists were Kenneth J. Molkens of Warren, ticketed on Sky Top drive, and James A. Braxton of East Orange, whose summons was issued on Rt. 22.

A \$115 fine was the penalty for Bernard N. Vale of Elizabeth, charged with leaving the scene of a Rt. 22 accident. Passing loading school buses on New Providence road and Hillside avenue respectively, brought \$25 fines to Grace M. Holman of Pittstown and Margaret Kantor of Westfield.

Others appearing at the session were Wilfredo Velez of Brooklyn, who paid a total of \$30 for operating an unregistered vehicle on Rt. 22 and for being an unlicensed driver; Gregory F. Morgan of Piscataway, \$15 for using an expired driver's license, Rt. 22, and Linda Dorn of Cranford, \$10 for loitering after dark at the water tower in the Watchung Reservation.

School Lunches

REGIONAL HIGH SCHOOL

Monday: Choice of one—meat ravioli with tomato sauce and Italian bread, butter, peas, tossed salad with dressing, applesauce; baked ham, bread, peas, mashed potatoes, applesauce; salami and cheese or tuna fish salad sandwich, peas, tossed salad with dressing, applesauce. Salad entree: Meat loaf platter. Soup: Beef vegetable.

Tuesday: Choice of one—breaded veal steak with gravy, bread, French fried potatoes, carrots, fruited Jello; cold submarine sandwich, fruit, bologna or tuna fish salad sandwich, French fried potatoes, carrots, fruited Jello. Salad entree: Sliced turkey platter. Soup: Tomato noodle.

Wednesday: Choice of one—pizza, Salisbury steak with gravy, bun; boiled ham or tuna fish salad sandwich. Choice of two or three—corn, mixed vegetables, cole slaw, tossed salad with dressing, fruit, juice. Salad entree: Egg salad platter. Soup: Chicken rice.

Thursday and Friday: Thanksgiving vacation. Menus are subject to change.

Weiler named to staff of Ashland newspaper

Gary Weiler, son of Albert Weiler of Wood Valley road, Mountainside, is on the staff of the Ashland (Ohio) College Collegian, the weekly student newspaper, for the 1976-77 academic year.

Weiler, a radio-TV major, is a sophomore.



SPRECHEN SIE DEUTSCH?—Students who will be inducted Tuesday evening into the Jonathan Dayton Regional High School chapter of the German National Honor Society include (front, from left) Mary Ellen Oesterle, Kathy Krajcik, Gail Heitenbach, Jean Kascin, Kristen Peterson, Robert

Gilbert; (rear, from left) William Solosy, Robert Balic, Michael Meixner, Greg Rusbarsky, Dan Smith and James Barrett. Allison Hart, Rick Spina and Robin Umber also will be among the new members who will participate in the 8 p.m. ceremony at the Springfield Public Library. Society members serve as tutors for German 1 and 2 students.

Inoculations

(Continued from page 1)

teered his time to serve as "physician in attendance" to answer any questions.

The Westfield Area Red Cross, Fish of Westfield and volunteers from town will transport any person in need of help to attend either clinic, but the name or names must be submitted ahead of time, so that persons may be worked into a schedule being set up.

A spokesman added, "The state rule that a person needing the bivalent vaccine must have a written note from their physician has been rescinded; registrars will take your word." For further information, readers may call Borough Hall, 232-5335 or 232-2046.

Dr. Birne, as coordinator of Area 3, will conduct a meeting of Mountainside volunteers on Monday at 10 a.m. in the community room of the Community Presbyterian Church on the corner of Deer Path and Meeting House lane, Mountainside.

Joseph Motley, Westfield health officer assisting Birne, Joseph Car, president of the local Board of Health, and Walter Kucher, N.J. State coordinator for Union County, will be present.

Mrs. Robert W. Thompson of Greenwood road, Mountainside, volunteer coordinator, stated most of the 70 nonclinical as well as 28 clinical workers plan to attend.

SALES CLIMB

Sales of U.S. manufacturing corporations in the second quarter of 1976 were eight percent higher than in the first quarter and 16 percent higher than in the second quarter of 1975.

TEEN-AGERS, find jobs by running Want Ads. Call 686-7700 - now!

Bauer awarded master's degree

Robert G. Bauer of Poplar avenue, Mountainside, received a master of education degree at the September graduation of Boston University's School of Education.

The School of Education's graduates included recipients of certificates of advanced graduate study and of bachelor's, master's, and doctoral degrees in 30 different fields of concentration. Bauer majored in mathematics.

test is a method of granting college credit for life experiences," stated Mrs. Diamond.

Tonight's program is the first in a series of information meetings. Representatives from technical, nursing and secretarial schools are scheduled for later dates to discuss opportunities in education with area adults.

For And About Teenagers

I'm a 16-year-old guy I met this 22-year-old woman where I work. We got to be good friends. We would do different things a couple times a week. I really care for her a lot and she knows it. One night, we had a relationship. She said she cared for me but it couldn't be—because of the age difference. Now, I want to see her all the time. But she doesn't want to see me. Could you please help me?

OUR REPLY: Probably not, but we'll try. If she doesn't want to see you, how much fun would it be for you to see her? You've got to accept her position. If she's determined that your relationship is through, then it can't continue. While you may not think so, a relationship where only one person is giving just doesn't make it.



ERIKA AMATO of Summit lane, Mountainside, was inducted into Kent Place School's Brownie troop recently.

To Publicity Chairmen:

Would you like some help in preparing newspaper releases? Write to this newspaper and ask for our "Tips on Submitting News Releases."

UNION BOOTERY

DESCO

THE WONDER

Featuring style... comfort... price. Here is a boot that has everything. Exclusive features designed for comfort by Desco... styled for every taste and occasion; get into 'em... your man (and your feet) will love them.

UNION BOOTERY

1030 Stuyvesant Ave., Union

686-5480

Open Mon. & Fri. Evenings

Save Natural Gas

Save Jobs

My Husband's Job Depends on Natural Gas.

"Joe works in a chemical plant, and he's worried. He says that if the natural gas shortage continues, it could affect his job. You see, they use natural gas as a starting material in making the chemicals that Joe works with."

"Joe says he's not alone. There are millions of hard-working people whose jobs depend on the availability of natural gas. That's why I've started to use less gas in our home. I turn the thermostat down, shut the oven off as soon as the food is cooked, and keep the water heater temperature setting at normal."

"Won't you join me? Only if we all conserve in our usage of natural gas will there be enough to keep industry humming and people working. Besides, we'll be saving money as well."

"So, when you use natural gas, think about convenience, think about clean energy, but please think about using it wisely."

Joe's job depends on it!

Elizabethtown Gas

A SUBSIDIARY OF NATIONAL UTILITIES & INDUSTRIES

One Elizabethtown Plaza, Elizabethtown, New Jersey 07207 (201) 289-5000

Electrolysis

Hair Removal

Licensed by Kree Institute. The only permanent method of removing hair approved by the Medical Association.

MERLE NORMAN COSMETICS

974 Stuyvesant Ave.

Union 687-8061

Mon. thru Sat., Thurs. Even.

By Appointment Only!

Grant to Kean College for new M.A. program

The National Endowment for the Humanities has awarded Kean College, Union, a grant of up to \$50,000 for the development of a curriculum for the master of arts degree in liberal studies.

According to Dr. Ronald S. Berman, chairman of the Humanities Endowment, "The

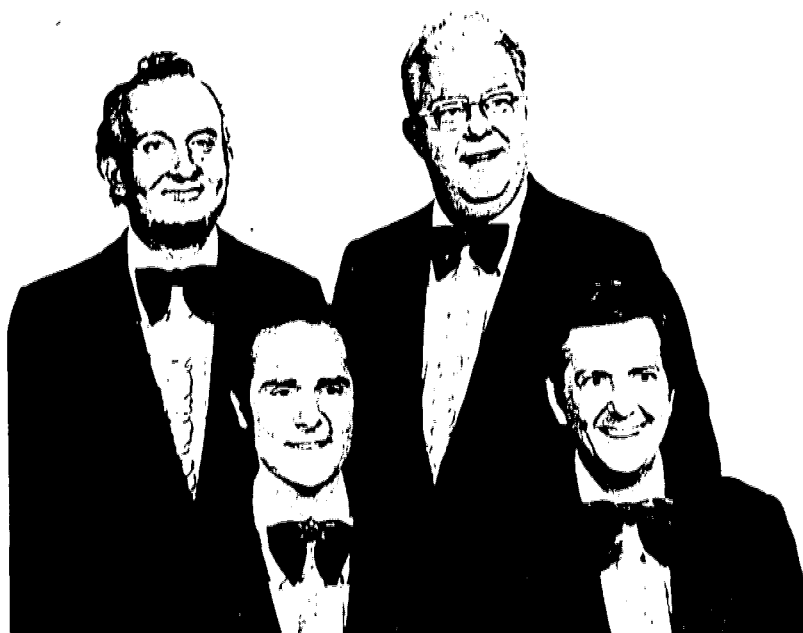
improvement of instruction in the humanities disciplines is one of the major concerns of the endowment. Support for the development and implementation of new courses and programs of study... is the primary means of accomplishing this goal."

Kean College will use the grant to put into effect its "pilot" program in liberal studies, which was developed over two years of research and through a restructuring of its interdisciplinary graduate offerings. Dr. Stephen Haselton, dean of the School of Arts and Sciences, expressed the hope that the course of study which grew out of the pilot program will lead to approval by the Department of Higher Education of an M.A. in liberal studies as a part of the formal curriculum at Kean Among New Jersey colleges, only Drew University offers such a program.

The NEH grant will cover an 18-month development period which will emphasize the fine arts, literature, and music concentration. It is expected that, when completed, the course of study will include concentrations in history and philosophy, economics, political science, psychology and sociology, and educational policy sciences.

Students enrolled in a master of arts in liberal studies program at Kean will be required to complete an introductory seminar, designed to expose the individual to interdisciplinary subject matter and method, an advanced seminar in a chosen concentration, and a continuation of this seminar into either a major research paper or an M.A. thesis project. In addition to course work within his or her own area, the student must complete two courses from each of the complimentary disciplines.

According to Dr. Eileen Kennedy, member of the college's English Department and director of the pilot project, "The curriculum should appeal to persons wishing to expand their cultural horizons."



THE EASTERNAIRES will be among the groups featured at the Dec. 3 and 4 'Harmony Holiday' presentation of the Colonial Chorus... the barbershop harmony society. The show will be at Westfield High School each evening. Tickets, at \$4 each, may be obtained by calling any of the following numbers: 548-4192, 688-5874, 376-3050 or 233-6296.

Weeks in concert choir at Bloomsburg State

Kristy Weeks, daughter of Mr. and Mrs. H.M. Weeks of Meeting House Lane, Mountainside, is a member of the Bloomsburg, Pa., State College Concert Choir, directed by Dr. William Decker. The choir will perform the Requiem by Gabriel Faure on Monday at the Haas Center for the Arts on the campus.

Later in the year, the choir will tour in eastern Pennsylvania, New York and New Jersey as well as to present an all-Gershwin concert on April 1 on the Bloomsburg campus.

Miss Owens is elected to 'congress' at college

Maureen A. Owens of Mountainside was recently elected "congressperson" of the Student Government Association at New Hampshire College in Manchester, N.H. Student government at the college is the responsibility of the Student Government Association, which is composed of an executive council and legislative branch, elected by the students.

The daughter of Mr. and Mrs. Joseph M. Owens of Wyoming drive, Maureen is a third-year student enrolled in the college's four-year accounting program.

Know Your Government

From N.J. Taxpayers Association

Among the last measures ratified by Congress prior to its pre-election adjournment were amendments to the State and Local Fiscal Assistance Act of 1972, reports the New Jersey Taxpayers Association. Enacted into law with the President's signature, the act extends the general revenue sharing program for another three and three-fourths years during which period nearly \$26.6 billion will be distributed to states and local governmental units. New Jersey and its governments will receive approximately \$210 million of the total authorization with four quarterly payments in calendar 1977, one under the expiring law and three under the 1976 amendments.

The amendments, developed by a conference committee of the House and Senate, make several major changes effective Jan. 1, 1977. Most significant are those which remove the limitations on how the funds can be expended. Eliminated by the new amendments are eight priority expenditure categories and the prohibition on recipient units' using revenue sharing funds to match federal grants received under other programs. These changes provide a much greater degree of spending discretion for local governing bodies.

On the other hand, the new law places additional responsibilities on recipient units. Two public hearings are required. The first, conducted specifically to consider proposed uses of general revenue sharing funds, must be held at least seven calendar days before the annual budget is presented to the governmental body responsible for enacting it. Citizens must be given opportunity to provide written or oral comment on how the federal funds are to be used.

Subsequently, at least one public hearing on the proposed use of such funds in relation to the entire budget must be held at which citizens are given opportunity to speak or ask questions. It is expected that the public hearing on the annual budget now mandated by the New Jersey Municipal Budget law will comply with this requirement. Within 30 days after the budget is adopted, recipient governmental units must make available for public inspection, at a place designated in a newspaper notice, a summary of the adopted budget, including proposed use of revenue sharing funds.

After the close of each fiscal year, recipient units must submit to the Secretary of the Treasury a financial report, also available for public inspection, setting forth details of how revenue sharing monies have been budgeted and actually expended and their relation to relevant functional items in the budget.

In connection with the public hearings, the law specifically charges recipient units to provide senior citizens and their organizations with an opportunity to be heard on final allocation of federal general revenue sharing funds.

New requirements for a financial and compliance audit at least once every three years will not necessitate changes in New Jersey where all governmental units have an annual audit.

Broader non-discrimination provisions are added. Those prohibitions may be applied to all programs and activities of a government unless it can be clearly demonstrated that a challenged program or activity is not funded with revenue sharing funds. Specific procedures and time schedules are set forth for discrimination hearings.

One of the major criticisms leveled at the federal general revenue sharing program is the additional "red tape" in the form of special, often costly procedures required to qualify for revenue comprising less than five percent of the total revenue of most recipient governmental units, comments NJTA.

Report from Washington

By Rep. Matthew J. Rinaldo

Two bills passed by Congress before it recessed for the election period have special significance for New Jersey, and are particularly pleasing to me since I helped to draft them in the House.

One is the Toxic Substances Control Act, which helps our state to identify and combat cancer-causing pollutants.

The other, the Alaskan Natural Gas bill, helps to safeguard natural gas and crude oil supplies for the Garden State.

Between them they provide valuable long-term safeguards and benefits for the state. The Toxic Substances Control bill, which I co-sponsored and had amended to provide \$1.5 million for cancer research in New Jersey, has now been signed into law by the President.

Consequently, for the first time in the history of our nation, chemicals must be tested before they are marketed. The tests, under federal supervision, will assess the impact of new chemicals on public health and allow a ban to be imposed or require modifications rather than continue the risk of testing by public use.

The need for such precautionary action is particularly acute in New Jersey where the highest cancer mortality rate in the nation has been recorded.

With two million man-made chemical compounds in use, another 25,000 new ones emerging from the laboratories annually and 1,000 others going into production each year, the federal government must insist on testing toxic substances before they enter our environment.

Scientists have attributed the Garden State's high cancer rate to the prevalence of carcinogenic—cancer-causing—pollutants in the environment.

Under terms of the new law, lethal PCBs—polychlorinated biphenyls—which have been found in New Jersey rivers and soil, will be phased out of production. This provision was made through an amendment to the bill which I helped to promote on the floor of the House and in the House Interstate and Foreign Commerce Committee.

Additionally, the new law gives New Jersey substantial federal aid to establish a program for the identification of cancer-causing pollutants in its atmosphere, soil and water. This kind of research is essential to plan an effective war against cancer-causing pollution.

Funds are available under the Act to help New Jersey establish a program to regulate the production, use and disposal of dangerous chemicals. Emphasis in such programs would be placed on tracing the path of chemicals through the environment—from production to disposal and back into nature.

The other bill, speeding determination of a pipeline route for Alaska's estimated 26 trillion I fought against this in Congress, and had the bill changed to stipulate that both oil and natural gas supplies from Alaska be made available to New Jersey and other parts of the northeast and midwest.

Households and industry in New Jersey depend heavily on natural gas for basic fuel needs. At present our state—like the rest of the northeast—depends increasingly on foreign oil imports.

Instant Replay cartoon by G.E. The new theater isn't so bad.

Time To Spare cartoon by GERALD ANDREWS, Retirement Adviser.

DO IT YOURSELF article about furniture refinishing.

BICENTENNIAL BYPATHS article about General Cornwallis crossing the Hudson River.

YOUR WEEK AHEAD By DAMIS horoscope forecast for November 21 to 27.

SEASON'S GIFTINGS FROM UCTC. Free Gift and 5% for Christmas Club members! Advertisement for United Counties Trust Company.

depiatron advertisement for hair removal treatment.

SEIKO watch advertisement.

W. Kodak Jewellers advertisement for diamond appraisals.

Taste Barrier Broken.

'Enriched Flavor' breakthrough ends struggle to bring taste to low tar smoking.

For years, dependency on tar for taste has created a taste barrier for low tar smoking.

Now that barrier has been broken. Broken for good by a remarkable new cigarette called MERIT.

MERIT is packed with 'Enriched Flavor' tobacco.

The result of a radical new discovery so successful at boosting flavor, MERIT actually delivers the taste of cigarettes having more tar.

Up to 60% more tar.
Yet MERIT has only 9 mg. of tar. One of the

© Philip Morris Inc. 1976
9 mg. tar, 0.7 mg. nicotine av. per cigarette by FTC Method

Warning: The Surgeon General Has Determined That Cigarette Smoking Is Dangerous to Your Health.



MERIT and MERIT MENTHOL

Tests Verify Taste

MERIT was taste-tested against current leading low tar brands ranging from 11 mg. to 15 mg. tar.

Thousands of smokers were involved. The majority report: *even if the cigarette tested had up to 60% more tar than MERIT, MERIT still delivered as much—or more—taste.*

You've been smoking "low tar, good taste" claims long enough.

Now smoke the cigarette.

MERIT

New AF project offers late sign-up

Young men and women may reserve a specific Air Force job and entry date up to nine months in advance, according to Sgt. Bill Harvey, AF recruiter for the Elizabeth area.

The Delayed Enlistment Program allows Air Force enlistees to accrue time for active duty and retirement pay purposes from the day they enlist. People interested in the educational and job training opportunities offered by the Air Force may qualify for guaranteed training in a specific job or may elect training in one of four occupational areas: mechanical, electrical, instrumentation or general.

Further information about the program is available by contacting Sgt. Harvey at 354-2370.

Stargazers' expedition Colombia eclipse destination

"If we get to see the eclipse, that will be the icing on the cake," the Rev. Allen Tinker of Summit reported on his return from Bogota, Colombia, where he spent close to two weeks arranging for an eclipse expedition to that country next year for members of Amateur Astronomers, Inc.

The 55-second solar eclipse on Oct. 12, 1977 is expected to attract some 200 members of the Union College based astronomer's group.

It will be a fantastic trip. Mr. Tinker, pastor of Christ Church in Summit, related as he described eastern Colombia where the eclipse can be seen best. "It's a fascinating part of the

country," he said. "It's wild cow country, not unlike what our west must have been in the early 1900s. The people are friendly and gracious, the food gourmet, the native foods, leather and woolens beautiful and inexpensive."

Describing the emerald mines, the old Spanish fort, the salt mine in which a cathedral has been carved, the primitive art, Rev. Tinker noted that even without an eclipse, Colombia is a great place for a vacation.

The side attractions are important, he said, since the cloud cover in Bogota at that time of year may not make for good eclipse viewing. Three sites have been chosen to maximize the opportunity to see the eclipse. One will be airborne.

A veteran of AAI's 1973 eclipse expedition to Mauritania Africa, to see what was described as "the eclipse of the century," Mr. Tinker is, nonetheless, hopeful that the conditions will be right for a clear view of the moon just blotting out the sun.

"It's expected to be a beautiful sight," he said, "very red." Every eclipse is different, he added, noting that the shorter eclipse will enable astronomers to see more of the sun's inner corona. The outer corona is the focal point in a longer eclipse.

FUNNYSIDE



Recreation unit award to Dr. Benson of Kean

Dr. Kenneth R. Benson, chairman of the Department of Health and Recreation at Kean College, Union, was the recipient of the "Town and Gown" Award at a recent conference of the National Parks and Recreation Association in Boston.

Dr. Benson's award was given in recognition of his "outstanding accomplishments in recreation and leisure activity and for innovative and professional leadership in developing cooperative support programs among colleges, universities, and both public and private youth agencies."

UC's greenhouse will be named for late science dean

Union College in Cranford will dedicate the greenhouse in the Science Building to the memory of the late John J. Siburn of Westfield, former dean of science, in special ceremonies Tuesday, Dec. 7, at 12:30 p.m., it was announced by Dr. Saul Orkin, president.

"It is a fitting tribute to a man whose dedication to science was expressed in a concern for all living things," Dr. Orkin stated. Dean Siburn, who died in 1974 at the age of 42, had been a member of the Union College faculty since 1959, when he was appointed an instructor in biology. He was named chairman of the biology department in 1961 and dean of science in 1972.

Dean Siburn, a graduate of Fordham University, received his master's degree from Rutgers University, where he was enrolled in a doctoral program at the time of his death.

In a special tribute to Dean Siburn, Dr. Kenneth C. MacKay, president emeritus of Union College, said, "The plants that bloom and thrive in his greenhouse will symbolize, for the privileged company who knew John, a joyous living testament to a great humanist who gladly taught and gaily adorned our collegiate family."

Participating in the dedication ceremonies will be Dean Siburn's widow, Frances, and sons David and James. Mrs. Siburn will unveil the plaque to be installed in the greenhouse. Guests

will also include members of the Union College board of trustees, faculty, administrators, students and staff.

Dr. Bernard Solon of Westfield, current dean of science, is chairman of the dedication planning committee. Serving on the committee are Dr. Marcia Meyers of West Orange, chairman of the biology department; Jack Farrell of Edison, director of the computer center; Dr. Kenneth W. Iversen of Cranford, former president of Union College; Prof. Farris S. Swackhamer of Cranford, member of the chemistry department; Dr. Robert Markoff of Madison, dean of arts, and Mrs. Alice Conroy of Metuchen, director of public information.

**WHY PAY SHOPPING MALL PRICES
SHOP SPRINGFIELD**

"THE KRACKER BOX" BOUTIQUE
236 MORRIS AVE., SPRINGFIELD • 467-0488

Open 10 A.M. to 5:30 P.M.; Thurs., 11:30 P.M.

All First Quality And Name Brands **DISCOUNTED**

SALE 10% OFF ALL TAGS

name game

FIND THE LETTERS IN THIS PICTURE THAT SPELL EAST WEST

LFO
LINOLEUM & CARPET

Decorate Your Home For The Holidays!

LFO HAS EXPANDED OUTWARD AND INWARD... AND YOUR SELECTIONS ARE NOW BIGGER THAN EVER!

- NEW STORE in FREEHOLD at 40 W. MAIN ST.
- NEW DECORATING DEPTS. in SPRINGFIELD, ASBURY PARK and FREEHOLD

SPECIAL!
\$9.99 Sq. Yd.

OUR FAMOUS CUSTOM INSTALLATION OPTIONAL at additional cost

New Soft, Silky Fashion Look in Carpet
"Adoration"... subtly patterned

by PHILADELPHIA

LFO
LINOLEUM & CARPET

...big enough to serve you, yet small enough to care!

Armstrong CASTILIAN
CUSHIONED VINYL

Choose from these and other "natural look" patterns in a variety of colors. Install it yourself for big savings... available in 12' width for seamless installation in most rooms. Easy to maintain, too!

ONLY \$6.99 SQ. YD.

LFO
LINOLEUM & CARPET

NEWARK
81 Clay St.
(One Block from Broad)
485-0600
Mon., Wed., Fri., 9 to 9 Tues., Thurs., Sat., 9 to 6

SPRINGFIELD
Route 22
2 Doors West of Sam's
376-5220
Mon., Tues., Wed., Fri., 9 to 9 Thurs. & Sat., 9 to 6

• FREEHOLD -- Freehold Floor Covering, 40 W. Main Street, 462-0082
• ASBURY PARK • TOMS RIVER

CHARGE YOUR PURCHASE Master Charge BankAmericard G.E. Revolving Charge

Foundation set up at Y

Bert Jagust, president, this week announced the formation of the Green Lane Foundation, a non-profit organization to receive funds or property as a permanent endowment fund and have net income from investments paid to the Eastern Union County YM-YWHA.

The YM-YWHA will conduct a seminar for professionals on Tuesday afternoon, Dec. 7 and a seminar for lay people on Wednesday evening, Dec. 8. The Tax Act of 1976 and its impact on personal and business financial planning will be discussed.

Harold Krevsky will be chairman of the seminar. The participants will be Harold Kamen, Jagust, Sanford Levine and Sidney Neidich. The topics to be discussed are tax shelters, tax deferred investments, business and personal tax planning, and charitable gifts.

Inquiries should be made to Leonard Whitken, seminar coordinator, at 289-8112.

Ferrara piano concert at college on Dec. 3

Pianist Lawrence Ferrara of Union will present a free classical concert at Union College, Cranford, on Friday, Dec. 3 at 8 p.m. in the Campus Center Theatre, it was announced by Robert Sloan of Cranford, president of the Student Government Association.

The SGA-sponsored concert will include the works of Bach, Mozart, Liszt, Chopin and Schumann.

Ferrara has performed extensively throughout the United States and has been

featured on WNYC's Keyboard Artist program. He is a cum laude graduate of Montclair State College and received his master's degree magna cum laude from the Manhattan School of Music. He also held a fellowship at the Yale University Graduate School of Music and is currently completing his doctorate at New York University.

Ferrara is a member of the Fine Arts Department at Union College and teaches piano at New York University.

SPACIOUS APARTMENTS IN GARDEN SETTING

Air Conditioned
3 1/2 Rms. - \$255 - 5 Rms. - \$310

Full dining room, large kitchen that can accommodate your own clothes washer & dryer. Beautifully landscaped garden apt. Walk to all schools & train—25 minute express ride to Penn Station, N.Y.C. Excellent shopping close by. Quality maintenance staff on premises.

COLFAX MANOR
Colfax Ave. W., At Roselle Ave., W.
Roselle Park Res. Mgr., 245-7963

A NEW STORE OPEN IN FLORHAM PARK

FACTORY OUTLET SHOPPING GUIDE says "Pearl Levitt Loungewear—Beautiful Loungewear from designers houses and good name brands. Labels are out."

LOUNGEWEAR DISCOUNT STORE

Robes • Gowns • Terris • Bras
Long T-shirts • Slippers • Travel Sets

A SMASHING OPENING SALE

- Sexy Black Shortee Gowns, Val. \$29.00 \$4.00
- Bed Jackets, If Perf. \$17 \$5.75
- Short Terry Shifts, Val. \$18 \$6.00
- T-Shirts-Long Polyester Knits, If Perf. to \$25 \$4 to \$6
- Cotton Quilted Robes, Val. \$30 \$11.00
- Designer Tunic Pajamas, Val. \$80 \$19.00
- Terry Wraps-Most Luxurious Cotton, Velour Komonos, If Perf. \$66 from \$10.75
- Satin Sleepwear-Challis Lined Val. to \$32

Plus a large selection of fine Hostess Robes 40% to 50% OFF New, New Styles

Pearl Levitt
184 COLUMBIA TPK., FLORHAM PARK
Crescent Plaza (near Lehighman)
Hours: 10:30 to 5:00 CALL 822-9897
410 RIDGEWOOD RD., MAPLEWOOD
Hours: 12:30 to 4:40 CALL 763-9714

HARMONIA'S

"Gift" to 1977 Chanukah and Christmas Club Members

A FULL **5 1/4%** yearly*

FROM DAY OF DEPOSIT on your completed Chanukah and Christmas Club Accounts

The highest rate in the Garden State why settle for less than the best?

*This rate will be paid at maturity on completed Clubs only. Accounts may be opened NOW and will receive dividends next October.

HARMONIA'S
The Family Savings Bank

OUR 125th ANNIVERSARY • 1851-1976

In ELIZABETH: 1 UNION SQUARE & 540 MORRIS AVE. • 289-0800
In SCOTCH PLAINS: 2253 NORTH AVE. (Cor. Crestwood Rd.) • 654-4622
In MIDDLETOWN: 1 HARMONY ROAD • 671-2500
Member F.D.I.C. — SAVINGS INSURED TO \$40,000

HARMONIA SAVINGS BANK
P.O. BOX G, ELIZABETH, N.J. 07207

Sure, you've got the dividend paying 1977 Chanukah or Christmas Club for me. I enclose \$_____

Please open a Chanukah or Christmas Club for me. I want to make a weekly payment of \$_____

NAME _____
ADDRESS _____
SIGNATURE _____

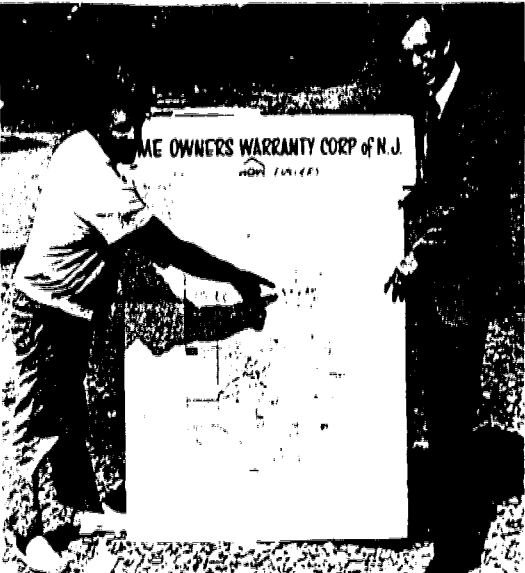
INDICATE CLUB YOU WISH TO JOIN

<input type="checkbox"/> CHANUKAH	<input type="checkbox"/> CHRISTMAS
Make 50 Weekly Payments	Receive Next October
<input type="checkbox"/> \$ 1	\$.50
<input type="checkbox"/> 2	1.00
<input type="checkbox"/> 3	1.50
<input type="checkbox"/> 5	2.50
<input type="checkbox"/> 10	5.00
<input type="checkbox"/> 20	10.00

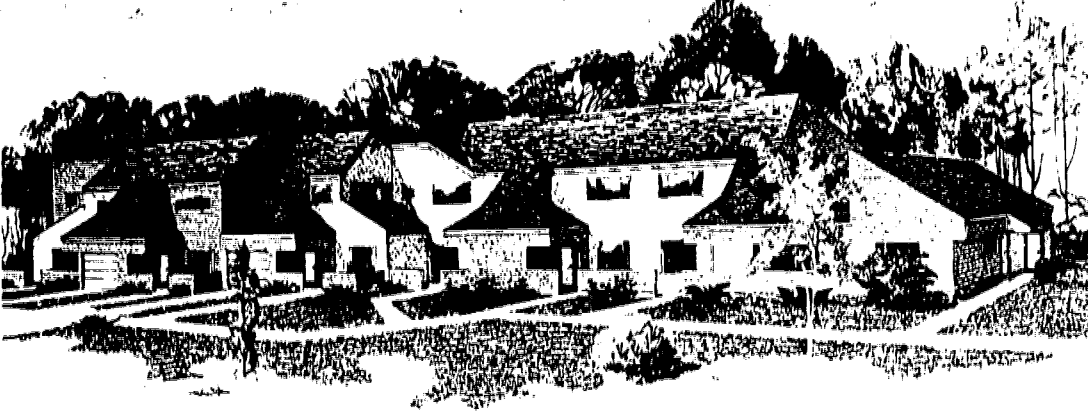
*PLUS 5 1/4% ANNUAL DIVIDEND ON COMPLETED CLUBS

Your Guide To Better Living in the SUBURBAN REAL ESTATE MART

• City • Suburbs • Farm Country • Lake • Shore



HOW Frank Farnella Jr. (left), president, and David M. Trotter, executive director of the Home Owners Warranty Corp of N.J., check progress of registered builders. The service offers a 10-year warranty package protecting buyers of new homes against major structural defects. Materials and workmanship are covered for one year and wiring, piping and duct work for two years.



GEORGETOWNE at Lindenwood will have two bedroom units with either 1 1/2 or 2 baths and three bedroom, 2 1/2 bath units when the 27 new townhomes are completed. They feature central air conditioning and padded wall to wall carpeting.

'Fast equity appreciation' forecast for Wick homes

Rambling Hills West, located in East Brunswick, Middlesex County, follows in the tradition of Wick communities, featuring five single family models. Rambling Hills West's location is convenient to major highways, mass transportation, schools and recreational facilities.

Wick's newest project has the advantage of being adjacent to an established community of homes built by Wick over the past five years.

Directors Louis Cytol Jr. and Eli Stern pointed out, "When the subdivision name is used to describe an entire section of a town by the residents of the township you know it has become a prestigious and proven community."

Sales and marketing manager Harold Feist's comments support Cytol's statement. According to Feist, the resale prices of a sought after neighborhood are naturally higher than normal and the value of newly constructed homes in such an area accelerates quickly in the first few years.

"The Rambling Hills area of East Brunswick is a prime example, in fact, the values of the homes have increased by nearly 25 percent in the past four years. The purchasers at Rambling Hills West will undoubtedly experience the same sort of fast equity appreciation."

"The dollar piece of mind at Rambling Hills West also is accompanied by quality features, such as underground telephone and electric wiring, optional cable television and spacious living room and dining room."

The price of homes at Rambling Hills West start at \$54,900 with 90 percent financing available.

To reach Rambling Hills West, take the New Jersey Turnpike to Exit 9, then Rt. 18 East to the Racetrack road exit and follow the signs. Additional information is available by calling the sales representative at 238-1130. The model homes are open for inspection daily, except Thursdays from 11 a.m. to 5 p.m. Sales are being handled by the Wick Agency of Edison.

27 townhomes at Georgetown

DCA Corporation of New Jersey, builders of Georgetown Condominiums in Lindenwood, has announced that it has 27 new townhomes now under construction.

Housed in four buildings the new condominiums include the 2-bedroom, 1 1/2 bath Forest Hills model; the 2-bedroom, 2 bathroom and den La Costa Ranch model; and the 3-bedroom, 2 1/2 bathroom and attached garage Wimbledon model. Prices range from \$26,500 to \$34,990.

All units include all-electric appliances - range, refrigerator-freezer, washer, dryer, dishwasher, and garbage disposal. In addition, all are individually centrally air-conditioned and feature padded wall-to-wall carpeting in living and dining rooms, bedrooms, stairs and hallways.

For added comfort and privacy, all Georgetown condominiums are constructed with super insulation 10-inches thick in ceilings and 4-inches in walls, plus Crossley insulated, double-pane windows. For outdoor living, every unit comes with a large, completely private backyard patio.

Buyers of any Georgetown Condominium model are entitled to the use of the club and the new \$350,000 DCA-built and resident-owned recreation center which is equipped with tennis courts, a huge pool, and a clubhouse which includes game rooms, exercise room and saunas. For those with youngsters, Georgetown is currently installing a brand new playground.

All out-door chores such as lawn mowing, snow shoveling, leaf raking and outside painting are included in a modest monthly maintenance fee and are the responsibility of the Condominium Association which is comprised of all home owners.

The Georgetown Condominiums are located at Laurel and Chews Landing Roads in Lindenwood - only 4 1/2 minutes from the Lindenwood Station of the PATCO Hi Speed Line and convenient to all modern shopping malls and centres, schools, hospitals and houses of worship.



COUNTRY LIVING - Pictured is a portion of Section One of Luv at Stanhope. A total of 360 units will be built in the section, set amid hilly, scenic terrain.

Homes insured against defects

Seven area builders have already been certified and licensed by the Home Owners Warranty - HOW - Corporation of N.J. and are now eligible to offer new homes with a 10-year, insurance backed protection to their buyers.

More than 125 builders throughout the state have satisfactorily met the HOW screening criteria in terms of technical competence, financial soundness and fair dealing with customers, since registration for the HOW Program began in February.

"Under the Program," explained HOW President Frank P. Farnella Jr., "new home buyers are guaranteed a 10-year package of protection which includes a one-year warranty on materials and workmanship, two years protection on the wiring, piping and duct work in the systems of the home, and insurance protection against major structural defects for 10 full years, if they buy from a HOW insured builder."

The program was established by the National Association of Home Builders, which licensed the New Jersey Builders Association to form and operate a separate corporation.

To assist prospective buyers in learning about the HOW Program, as well as the names of HOW approved builders, the HOW Corporation has established a special toll-free "Answer Line." The number is 800-352-4873.

Marc Heights spotlights new four-bedroom home

Responding to a call for even bigger homes, the Howard Siegel Companies have introduced a new model at Marc Heights, the single-family-home community on Keyport-Holmdel road in Hazlet. The new model is the Twain Marc IV, a four-bedroom, 2 1/2-bath two-story home priced at \$51,990.

The Twain Marc IV offers a master bedroom suite, three additional bedrooms, family room, front-facing living room, dining room and kitchen. As is true of all the models at Marc Heights, where the homes are priced from \$45,990, the financing includes 8 1/2 percent mortgages, with as little as 10 percent down for qualified buyers.

Marc Heights is situated close to Exit 117A (Matawan) of the Garden State Parkway, with proximity to both the northern metropolitan area and seashore resorts.

Trips to New York can be made quickly by access to the state's two major highways. In addition, the nearby Pennsylvania Railroad provides regular transit to the north. The seashore beaches are as little as 10 minutes away. Sandy Hook, Sea Bright and Long Branch are all within 30 minutes of Marc Heights by Rts. 34 and 35. For the boatsman, there are marinas with inlet passage to the sea.

In addition to the railroad station, there are schools, shopping areas and restaurants all close at hand. Hazlet offers motion picture houses and, for the best of warm weather entertainment, there is the Garden State Arts Center just a mile down the Parkway. The area is also graced with several state, county and local parks, and there are all kinds of farmers' markets and fresh seafood outlets.

Finally, there is the Marc Heights property, itself, private and pastoral.

"The location, quality and diversity of the models, along with the financing available, have added up to a fast sales pace," a spokesman commented. "Even before the grand opening, the first section was almost completely sold out. In October, the first residents were expected to be moving in."

When it comes to financing, qualified buyers have their choice. They can either have 8 1/2 percent mortgages and pay no closing costs at all, or they can have the 8 1/2 percent mortgages, but pay the closing costs, which generally are approximately \$800.

Marc Heights is open weekdays noon to dusk, weekends from 11 a.m. to dusk; it is closed Wednesdays. To reach the community, take the Garden State Parkway to Exit 117 (Hazlet), then take Rt. 35 to the first traffic light, which is Keyport-Holmdel road. Turn right on the site. Or take Rt. 1 or 9 south to Rt. 35, south to Keyport-Holmdel road, and turn right to the site.

Scarborough is geared to realty market changes

Whatever direction the home-buying market takes in late 1976 and early 1977, the Scarborough Corp. is geared to meet changing conditions.

"We've become increasingly flexible in our residential offerings, and the chief beneficiaries are the families who will be buying homes over the next six months," said Jack Sansom, president of Scarborough.

Sansom believes there are some cross-current trends at work in the market which make it essential for builders to offer the widest variety of residential choices possible.

"Some buyers still lean heavily toward the 'back-to-basics' home, and we're including them in many of our new communities," Sansom stated. "As the economy improves, however, we encounter more buyers who are looking for the larger, more complete home. A family 'moving up' to a higher priced home constituted a major part of our market throughout the 1960's. There are signs of resurgence in this area, after a period of inactivity."

"The one thing that's certain is that home-building costs have become stable for the first time in three years, and this should be a genuine incentive for families to buy," Sansom concluded.

The confidence of Scarborough's chief executive is being translated into reality in no less than 10 separate communities across southern New Jersey.

A major new community is being unveiled in Burlington County, while an even larger residential area is successfully "closing out" there.

Equally ambitious Scarborough projects are under way in Camden, Gloucester and Ocean counties.

Work is nearing completion on three model homes which will launch Tarnsfield, a new Scarborough community in Westampton, between Mt. Holly and Burlington in Burlington County. There are some 50 homes in the first section, with about 400 sites available all told.

Tarnsfield has a number of features, including the fact its initial residential offerings include the Wexford, a two-story colonial home personally designed by Bob Scarborough, founder of the Scarborough Corp. and chairman of the board. Other designs are the Durham, a bi-level; and the Saybrooke, a Cape Cod.

Tarnsfield enjoys a key location within minutes of Exit 5 of the New Jersey Turnpike and two miles from the intersection of Rts. 295 and 541.

Other Scarborough communities in Burlington County are Tenby Chase and Harrowgate.

Tenby Chase is the firm's largest community in Burlington County, with almost 1,100 homes built and sold there. The final section of the Delran community is now being sold out.

Harrowgate represents Scarborough's first venture in central Burlington County, and more than 20 sales have already been recorded there since the community was opened in May.

Key features of Harrowgate's popularity are lot size and location. Each lot averages one acre. In addition, the Tabernacle Township locale of the community is convenient to the 8,700 acres of the Wharton Tract, and just minutes away from the historic sites of Batsto, Indian Mills and Kirby's Mill.

Harrowgate is just beyond Medford Township and may be reached by taking Tuckerton road to the intersection of Rt. 541; remain on Tuckerton road for another mile to Oakshade road, then turn left for one mile.

There are four separate residential styles available at Harrowgate, and each may be semi-customized.

Kings Croft consists of 17 individual buildings located north of Church road and east of Kings Highway, convenient to both Exit 4 of the New Jersey Turnpike, and to Rts. 38 and 73.

All three-story residences within Kings Croft have been sold out. The remaining two-story homes are available in both two-bedroom and three-bedroom models. Kings Croft condominiums are priced from the low 40's to the low 50's.



SPACIOUSNESS is the keyword for the Jamestowne ranch, a new model offered at Pine Ridge at Crestwood, a manufactured-home retirement community in Ocean County. Shown above is the appliance-equipped kitchen, with snack bar and den at rear. The two-bedroom home, priced at \$22,450, also includes an L-shaped living-dining room with built-in buffet and mirrored accent wall, carpeting and draperies.

throw away the Rake this FALL! and snow shovel too

WE'LL DO IT ALL FOR YOU

In a One Bedroom and Den CONDOMINIUM TOWNHOUSE

From only **\$19,990**

AND ONLY 5% DOWN

NO CLOSING COSTS

7 3/4% 30 YEARS


*Cash Price: \$19,990. \$1,000 down payment. Mortgage balance of \$18,990 and 360 monthly payments of \$138.59 principal and interest; 7 3/4% Annual Percentage Rate plus 1/2% Mortgage Insurance Premium.

GREENWOOD PARK

DIRECTIONS: Garden State Parkway exit 91, then bear left onto Herbertville exit to Rt. 549. Right on Rt. 549, then right at Texaco Station over Pkwy. to Lanes Hill Rd. (first left turn). Left on Lanes Hill Rd. to Greenwood Park.

Open 11 to 5 - Fri., Sat. & Sun.

Lowest Taxes In State



BUY A PRESTIGE \$59,990 SHADOW OAKS HOME FOR THE SAME MONTHLY CARRYING COST AS A HOME PRICED AT \$45,000 ELSEWHERE -

Taxes in Holland Twp. Hunterdon County's finest community, range from \$50.00 to \$62.00 per month on our fine homes selling from only \$59,990 to \$72,990.

SHADOW OAKS

MIN. 1 ACRE OF LAND
MODEL OPEN WEEKENDS 11 A.M. TO 5 P.M. (201) 996-2181
Garden State Land Co., Sales Agent
Clinton, New Jersey (201-735-7700)

Directions: Interstate 76 West to Paterson Exit. Follow signs to Paterson, Go 1/2 miles south to Little York Inn. Left turn and bear right at fork, 1/2 mile to Sales Office.

Visit these homes of pure solid value

by Scarborough

Weatherly

"The Family Place," in Pleasant Plains, Ocean County

Its all here - nature and man in perfect harmony together with space to spare and room to roam homes, that will grow in value every year that you own one. All the conveniences are close at hand too - schools, churches and the brand new Ocean County Mall, plus all seashore activities. And, the commuting is a breeze.

Directions: Garden State Parkway south to Exit 88 to Rt. 70 West. Continue on Rt. 70 (approx. 4 miles) to junction Rt. 527, Whitesville Rd. Turn left and travel approx. 2 miles to models adjacent to Ocean County Agricultural Bldg.

Via Rt. 9 Travel south to junction Rt. 571. Turn right and proceed on Rt. 571 to fork in road. Bear right onto Rt. 527 and proceed approx. 200 feet to models adjacent to Ocean County Agricultural Bldg.

THE OXFORD - Others From **\$36,900**

The Cedars in Dover From **\$36,800**

Fox Hollow in Manchester From **\$33,900**

Model homes open for inspection 7 days weekly, 10 AM-5 PM or call 201-341-4700. 8 1/2% financing to qualified buyers.

Classic Townhouse Condominiums, Off Rt. #549, North on Hooper Ave. to Barns Lane. Models open Sat. thru Weds. 10 AM - 5 PM. 8 1/2% financing. Tel. (201) 244-4550.

Single Family homes on one acre plots off Rt. #530 to Lake Rd. (near Crestwood). Models open Sat. thru Weds. 10AM-5PM 8-3/4% financing. Tel. 201-350-0220

FEDERAL HOUSING OPPORTUNITIES

A Weyerhaeuser Company

Commuting Executives Paradise



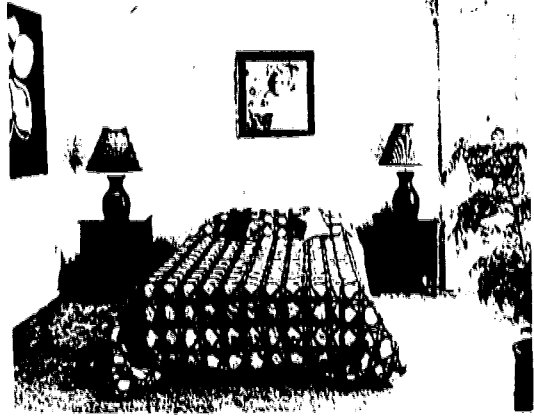
Centennial Fair AT MIDDLE TOWN

FROM \$56,990.

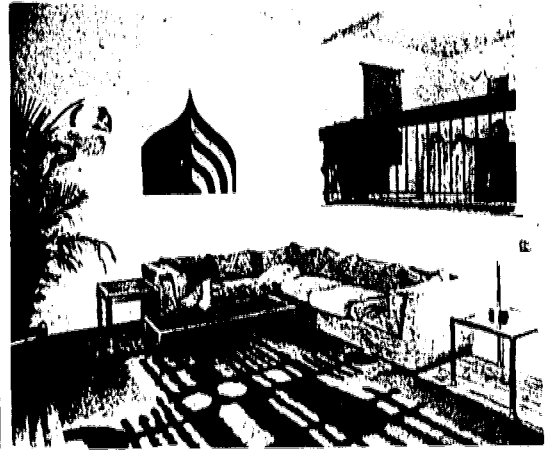
Spacious living in Colonials with basement, color coordinated kitchen with electric oven and range, oak flooring, ceramic tiled color coordinated bath and entry, hardwood floors, central air conditioning and water, and a fully insulated steel rack garage. Choice of four models.

787-1989
739-2222

MODELS OPEN 12 NOON - 7 DAYS

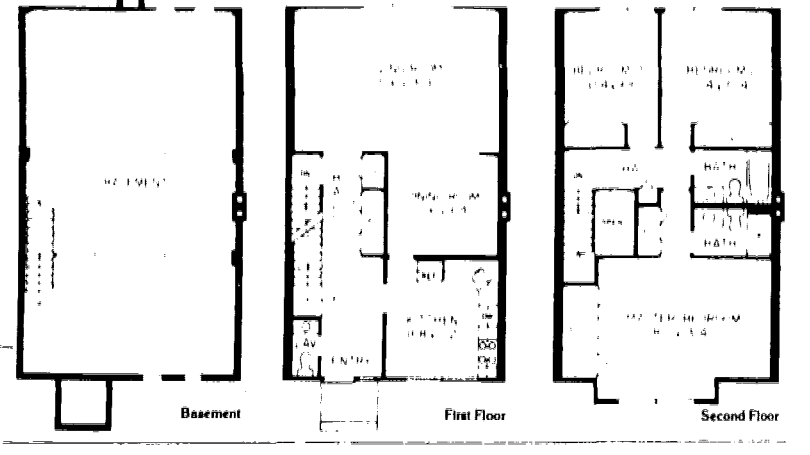


MASTER BEDROOM in townhouse at Brookside Square, Hillsborough Township, measures more than 18 ft. by 13 ft. and features large front-facing window and wall-to-wall closet (now shown). The spaciousness of the rooms have proven a big draw with homebuyers in community, performance reports.



SPACIOUSNESS IS KEYWORD—Balconied dining room overlooks the 20 foot sunken living room in the Eden model at Brookside Square in Hillsborough Township. The feeling of spaciousness is accentuated by the room's 12 foot ceiling. Townhouses in the community feature 1,600 sq. ft. of living space.

BROOKSIDE PLAN Shown here is the floorplan of the 1,600 sq. ft. three-bedroom Aspen townhouse at Brookside Square in Hillsborough Township. Three bedroom units in the community are priced at \$42,900. Also available are two bedroom with den—price at \$38,900.



SUBURBAN REAL ESTATE MART

Commuter aid

Ma Bell reports that 1,600 commuter car pools (among employees of just one of its affiliates) are saving an estimated 900,000 gallons of gasoline a year. That stimulates a logical thought: Why not mini-bus commuter lines sponsored by mass employment industries which usually are not served by public utility lines?

BUYING....
A Home or Condominium LOOK....
Through Our Real Estate Mart NOW....
For One of Your Best Selections in New Jersey

PAINTERS' ATTENTION! Sell yourself to over 50,000 families with a low cost Want Ad. Call 684-7700.

Prepare Yourself For The "Good Life"

Surrounded by ecological beauty, the quality custom homes of Dover Heights offer you close proximity to all of Toms River's facilities and surrounding recreational amenities. Enjoy parks, beaches, golf courses, tennis courts, fine restaurants, theaters and modern shopping centers. Excellent new elementary and junior high schools are within walking distance. Everything you need is here to experience the Good Life at Dover Heights.

from **8 3/4 % INTEREST**
from **10 % DOWN**

5 models from \$46,990 up to 30 yr. mortgages*

DIRECTIONS: U.S. Parkway to exit 82 to route 37 east. Proceed to 2nd traffic light (Hooper Ave.) Turn left onto Hooper using jughandle. Go to 3rd traffic light (Indian Hill Rd.) Make right. Continue to Dover Heights on left.

PHONE: 201-244-3900 201-341-8558

DOVER HEIGHTS
Indian Hill Road off Hooper Avenue
Toms River, New Jersey
(201) 244-3900

Now, you can buy our 2-bedroom 2-bath apartment home for just \$39,990. That's right. \$39,990.

View illustration of Parker Imperial, a condominium.

A Parker Imperial condominium home adds to your lifestyle in every way. Rooms are large. The setting is secure. Views are spectacular (across the river from 86th St., Manhattan, across the street from a 167-acre public park). There's plenty to do (16 tennis courts at the park plus swimming pool on the property). Commuting is easy (mid-Manhattan is 15 minutes, about 3.5 miles, away by scheduled bus). And you gain the tax and financial benefits of home ownership. See the furnished models today.

Also available: 1, 2 and 3 bedrooms, \$39,990 to \$76,000/\$55,000 maximum mortgages/Over 275 sold out of 308 apartments.

Total monthly charges following 20% down payment, on Plan #11, \$555 includes mortgage principal and interest, estimated real estate taxes and estimated common area charge, of which \$385 is tax deductible. Real estate taxes and mortgage interest are tax deductible.

Parker Imperial
7855 Boulevard East, North Bergen, N.J. Phone: (201) 866-6900
Sponsor: West Shore Development Corp., 104-70 Queens Boulevard, Forest Hills, N.Y. 11375

This advertisement is not an offering, which can only be made by formal prospectus, N.Y. 343.

Hunterdon site chosen

The Shadow Oaks community designs, known for 20 years throughout Somerset County, are now being brought to Hunterdon County, with Holland Township the first site chosen for construction of a new development.

A Shadow Oaks spokesman noted, "Shadow Oaks means innovation of design, but also the heritage of early American architecture. The two-story colonial is our trademark."

Discussing the Hunterdon County location, he said, "The natural beauty of the terrain, coupled with the most important economic advantage of one of the lowest tax rates in the state, should attract not only those people who seek elegant homes, but also those who are conscious of saving dollars."

Prices at Shadow Oaks start at \$59,990. The first model, available on a one-to-three-acre site, features four bedrooms, 2 1/2 baths, formal dining room, family room, two-car garage and full basement.

To reach Shadow Oaks, take Rt. 78 west to the Pattenburg exit. Follow signs to Pattenburg and go 4 1/2 miles south to the Little York Inn. Make a left turn and bear right at the fork; from there it's one-quarter mile to the sales office.

The office is open Saturdays and Sundays from 11 a.m. to 5 p.m. Readers may call 996-2181 or 735-7700 for an appointment.

Spacious homes for 'Brookside'

With 1,600 sq. ft. of living space, the three-bedroom townhome units at Brookside Square, Hillsborough Township, Somerset County, are bigger than many detached homes on today's market—yet they are priced at \$42,000.

Location is convenient to the major metropolitan work centers in North Jersey and New York.

"Living is easy" at Brookside Square, according to builders Jack Denholtz and Dave Savage of the Sigma Construction Corp. "The major chores of snow shoveling and removal, lawn care and garbage collection are taken care of—so you can spend more time doing the things you want to do around your home, or with your family, or enjoying the excellent recreational facilities that Sigma is building at Brookside Square."

Available at Brookside Square—in addition to the 1,600 sq. ft., three-bedroom, 2 1/2 bath townhomes—are 1,450 sq. ft. two-bedroom plus den (which can be converted to a third bedroom) townhomes priced at \$38,990. All units include private fenced-in yard, central air-conditioning, formal dining room and full basement.

The builder says sales have progressed "beyond all expectations" with 136 units sold since the opening this summer. "Brookside Square has enjoyed more sales than the next five competing communities combined," he stated.

The club program at Brookside Square includes a private clubhouse, free-form swimming pool and children's wading pool, tennis and basketball courts, picnic areas and special "farm" and garden area.

Brookside Square is located on Andria Avenue (off Rt. 206) in Hillsborough Township. Directions from the Union-Essex County area: Take Rt. 22 west to Somerville to Rt. 206; then Rt. 206 south approximately five miles to Andria Avenue (just before Foodtown shopping center); turn right approximately 200 yards to models on right.

Sales office is open seven days a week until 6 p.m. Readers may phone 359-3200 for additional information.

If one of you is 52

Wherever you live, however you live, our Low-Upkeep Homes offer a most attractive alternative.

Some for immediate occupancy

Prices to be increased December 1

\$32,920.

from

Monthly Association Dues as low as \$52¹⁹

Maybe the kids are gone and you don't need the large house. Perhaps you're torn between maintenance-free apartment living and the financial benefits of a house. Could be you just sold a home and you're trying to avoid a capital-gains tax. Or you may just be tired of endlessly rising rents.

Welcome to the Low-Upkeep Homes at Shadow Lake Village. The sensational revolutionary homes that conserve energy, conserve natural resources, preserve beauty and save you important dollars every month.

You save money other ways, too. Included in your Monthly Association Dues are unlimited golf, swimming and tennis, 24-hour security and exterior maintenance. Plus the use of a magnificent clubhouse.

Even the location is ideal: on the rim of Shadow Lake. Less than a mile from yacht basins. About 10 miles from the sun and surf of the Atlantic Ocean. About a mile from Red Bank with its fine shopping, restaurants, theatre and medical facilities. As well as direct service to Newark and New York on the Penn Central.

You must see Shadow Lake Village to appreciate it.

Come visit soon.

THE BEST HOME... THE BEST PRICE AND THE BEST LOCATION...

THE BEST IS YOURS

AT RAMBLING HILLS WEST

Today, Rambling Hills West at East Brunswick offers you better living for tomorrow with the independence and pride of your own home in the distinguished town of East Brunswick.

The location, the design and quality of construction makes Rambling Hills West the ideal community.

Visit us soon, see our live model homes and custom fit one to your family's life style.

5 MODELS PRICED FROM

\$54,990

FOR INFORMATION PHONE (201) 238-1131

WICK AGENCY
A DIVISION OF WICK REALTY

RAMBLING HILLS WEST
at East Brunswick

CHURCHILL ROAD, EAST BRUNSWICK, N.J.
DIRECTIONS: New Jersey Turnpike to Exit 9; then Route 18 East (toward East Brunswick) approximately 3-1/2 miles to Race Track Road. Then left on Race Track Road to Old Bridge Turnpike, turn right then left onto Figler St., proceed on Figler St. to Helena St. Turn left then right onto Churchill Road to model homes.

SALES OFFICE OPEN DAILY 11 A.M.-5 P.M., CLOSED THURS.

Paste this inside your medicine cabinet.

Cancer's seven warning signals

1. Change in bowel or bladder habits.
2. A sore that does not heal.
3. Unusual bleeding or discharge.
4. Thickening or lump in breast or elsewhere.
5. Indigestion or difficulty in swallowing.
6. Obvious change in wart or mole.
7. Nagging cough or hoarseness.

If you have a warning signal, see your doctor.

American Cancer Society

Great Waterfront Living!

From \$70,000

Laguna Village

2133 Bridge Ave. by Point Pleasant, N.J. Trend (201) 892-3636 Homes

Thimble Brook at Shadow Lake Village

Middletown, N.J.

by Kevork S. Hovnanian

DIRECTIONS: New Jersey Turnpike south to Exit 11, then Garden State Parkway south to Exit 117, then south on Route 35 (follow signs) to Navesink River Rd. Turn right on Navesink River Road to end. Turn right on Nutswamp Road to Shadow Lake Village entrance. OPEN 10AM TO 6PM, 7 DAYS A WEEK. PHONE: (201) 842-9400

SUBURBAN REAL ESTATE MART

• City • Suburbs • Farm Country • Lake • Shore

Glenwood units offer convenience

Glenwood Estates boasts of \$500,000 in sales over the past few weeks, with sales sharply on the upswing, the developer is pushing for early spring completions, according to Dolores DeJenne, vice-president of McConnell & Co., Lakewood, exclusive sales agent.

According to sources close to the New Jersey real estate market, builders of new residential homes have been experiencing a slight upswing in the number of houses sold since the recession that began in 1974.

Barrymor market study a factor in firm's success

After having analyzed the prospective homebuyer's housing needs and wants, the Barrymor Co. designs and builds the home product most sought after within the average residential real estate market.

Barrymor at Cypress, the firm's current project, is directly off Rt. 9 in Lakewood "amidst rolling hills and tall trees," said Weshnak.

Chuck Moore, sales director, has announced that only eight home sites remain in section two of the project. He further stated that buyers of these sites will receive an automatic dishwasher, compliments of Barrymor Enterprises.

models, including split-level two-story colonial, Cape Cod, bi-level and ranch styles, ranging in price from \$36,990 to \$46,990. Thirty-year mortgages from eight percent interest and acceptance of down payments from 10 percent are offered to qualified buyers.

Home models may be seen way Exit 91 on Rt. 526 between at Barrymor Estates off Park- 10 a.m. and 6 p.m. daily.

NOT a Condominium - NO Maintenance Fees

\$19,990.

Taxes Approx. \$40/Mo. - Down Payment \$1040.

BUYS DIRECT FROM BUILDER \$155 Per Month

PRICE INCLUDES: ATTACHED RANCH HOME FOR \$155 Per Month

Barnegat Woods

Call Collect (609) 698-7723

DOLLAR SAVERS!!

- PISCATAWAY-raised ranch**, on one-third superbly wooded acre, 4 bdrms., 2 1/2 baths, living rm., dining & family rms., new 1975 kitchen, 2 car garage, walk to schools, \$51,000.
- MILLBURN-expanded cape cod**, 3 bdrms., 1 1/2 baths, completely finished basement, 2 car garage, recently expanded & renovated, many extras, \$67,000.
- WATCHUNG-exec. transfer, classic French Normandy**, 4 bdrms., 2 1/2 baths, full basement, formal dining rm. for entertaining, living rm., country kitchen, family rm. with fireplace, 1 1/2 wooded acres, \$169,000, terms.
- SUMMIT-classic norman tudor**, 4 bdrms., 3 baths, living, dining rms., newly modernized kitchen, new heating & central air-cond., unusually large rms., overlooks golf course, must be seen, \$169,000.

BOB BUTCHER & Associates
REALTORS-MLS
41 SPRINGFIELD AVE.
BERKELEY HEIGHTS, N.J.
464-7500

GRAND OPENING OF FINAL SECTION! UNBELIEVABLE VALUE YET SO CLOSE TO UNION & ESSEX COUNTIES!

No new home community that has opened in New Jersey in the past 3 years has achieved the phenomenal sales success of Brookside Square. The reason? Good solid value. And a community that's been designed with the recreational-conscious new young family in mind.

Townhomes include:

- 3 bedrooms or 2 bedrooms plus den.
- Central air conditioning
- Natural gas heat
- 1 1/2 and 2 1/2 baths
- Formal dining room
- Large living room
- Dine-in kitchen with oven, range, hood and dishwasher
- Large basement
- Private fenced-in patio area
- Thermal windows and screens
- Energy-efficient super insulation

People are also talking about the extraordinary Brookside Square clubhouse which includes:

- Private clubhouse
- Tennis courts
- Swim pool
- Basketball, horseshoes and picnic areas
- Private "farm" or garden areas

And so that you and your family can have time to enjoy all of these leisure time activities, the club will take care of lawn care, snow removal and garbage collection.

Yes, Brookside Square is a success because New Jersey people love owning their own homes and the lots they are built on. And because New Jersey people like spacious well-built homes in a prestigious setting. Make this your weekend to see Brookside Square. You may have missed out on Section I, but don't miss out on Section II.

A Great Neighborhood and a Private Club For the Price of a Home.

2 BEDROOM PLUS DEN HOMES (1450 sq. ft. plus private fenced-in yard, central air conditioning and full basement) **\$38,990**

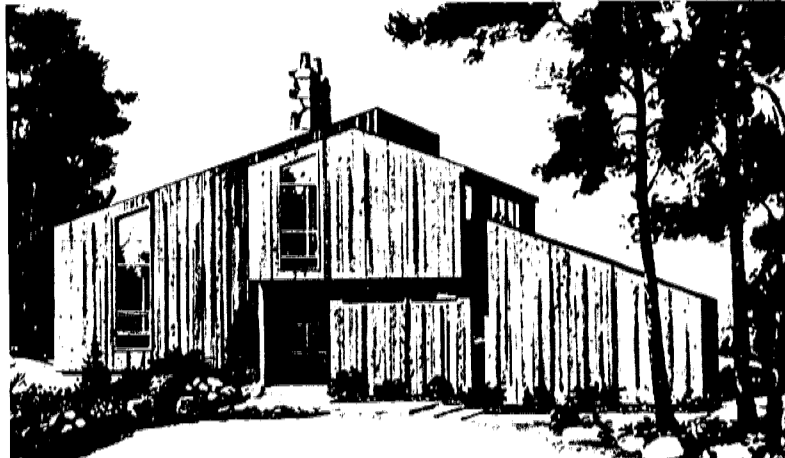
3 BEDROOM HOMES (2 1/2 BATHS) (1600 sq. ft. plus private fenced-in yard, central air conditioning and full basement) **\$42,000**

LOW AS 5% DOWN (To Qualified Buyers) INTEREST RATES FROM 8 1/2 %

HURRY! Prices increase December!

Directions: Route 206 West to Somersetville, then Route 206 South approx. 5 mi. to Andria Ave. Just before Foodtown Shopping Center, turn right to models on right... OR... Route 287 to Route 206 South then continue to above.

Sales office open 'til 6 P.M.
Andria Avenue (Off Route 206) Hillsborough Township, New Jersey
Phone: (201) 359-3200



INNOVATIVE INSULATION—The Franklin home design (shown above) is one of 41 models sold by Viceroy Homes, Inc., which now feature a 'super-insulation' package: triple glazed windows, six-inch wall insulation and eight-inch ceiling insulation.

'Super-insulated' homes introduced by Viceroy

With the impact of today's increases in home heating costs, Viceroy Homes' introduction of "super-insulation" throughout its entire line of permanent and vacation homes, at little or no additional cost, has been hailed as "an outstanding achievement" in energy conservation.

"This innovation represents a departure from conventional building techniques in the treatment of window, wall and roof construction to create a truly energy-efficient home," a Viceroy spokesman said.

Every window in the new Viceroy home construction is now triple-sealed with two air spaces between three panes of glass. "Tests of this construction reveal heat loss 40 percent less than with conventional double-glazed windows. This saving is easily appreciated in Viceroy Homes, whose dramatic design is achieved through high utilization of glass," the spokesman commented.

The exterior walls of all Viceroy Homes are now framed with 2-inch by 6-inch studs on 24-inch centers, rather than the conventional 2-inch by 4-inch studs on 16-inch centers. This new construction allows for 6-inch insulation rather than the usual 3 1/2-inch. In addition to the energy saving impact of this feature, the use of heavier studding reportedly increased the external strength of the homes by 30 percent, while producing no appreciable effect on costs, since fewer studs are required.

In addition, the use of new flat roof trusses in the ceilings allows for eight inches of insulation rather than the four inches in common use. "Architecturally, this construction produces striking cathedral ceilings in every room," the spokesman said.

"To prove the insulation superiority of its new home construction, Viceroy in collaboration with Ontario Hydro of Toronto, built one of its models in Penetanguishene, Canada. Extensive tests were conducted by the Ontario Research Foundation with far superior results being shown over traditional construction and insulation methods. For example, the R-Factor, or thermal resistance, was found to be raised from R-12 to R-20 due to the new wall construction. Similarly, the new ceiling construction resulted in a thermal resistance increase from R-12 to R-28."

In a letter to Viceroy, H. K. Wright, director of energy conservation division of Ontario Hydro, stated: "Viceroy Homes, through a series of original and innovative design improvements, has created an energy efficient home that represents a major step forward in fuel savings. Viceroy's decision to change over its entire home production to energy efficient specifications shows leadership and initiative. We at Ontario Hydro are pleased to see this outstanding achievement in energy conservation..."

According to Viceroy president, Gaylord Lindal, "In addition to the significant savings that will accrue to owners from the new 'super-insulation', Viceroy home owners gain significant upfront savings from the pre-engineered and prefabricated unitized panels and easy-to-assemble building systems that are features of all Viceroy Homes."

Full information on Viceroy Homes and the new energy saving features is available at the Viceroy display court on Rt. 17 in Mahwah.

GRAND OPENING!

elegant 2 & 3 bedroom townhouses

SOME UNITS AVAILABLE FOR IMMEDIATE DELIVERY!!!

from **\$35,490**

COMPARE AND YOU WILL CHOOSE!!!!

- Central air-conditioning
- Color coordinated bathroom and two powder rooms including ceramic tiles & full vanities
- Kitchens include wood cabinets, refrigerator, dishwasher, range & hood
- Spacious closets throughout
- Full basements including laundry area
- Insulated windows throughout with screens
- Insulated and tempered glass sliding doors
- Wall-to-wall carpeting

MODEL PHONE: 201/359-6800

AGENT: McConnell & Co. 201/363-4300

AS LOW AS 10% DOWN

8 1/2% MORTGAGES

AVAILABLE TO QUALIFIED BUYERS

somerset park
A CONDOMINIUM...
Amwell & Marshall Roads • Hillsborough Twp., N.J.

DIR: FROM NEWARK & NORTH JERSEY: Route 22 West to Route 206 South and continue to Amwell Road (Route 514 traffic light). Turn right for approximately 1 1/2 miles to Marshall Road then right to models on left. FROM NEW YORK & STATEN ISLAND: N.J. Turnpike South to Route 287 North. Continue to Route 22 West and continue as above. FROM PRINCETON & TRENTON: North on Route 206 to Amwell Road (Route 514 traffic light). Turn left and proceed as above. FROM NORTH BRUNSWICK: Route 514 West, cross Route 206 and continue straight (Amwell Road) and proceed as above.

You can only come out ahead with... THE BUY-BACK-PLUS

If a luxurious oceanfront lifestyle appeals to you, this unique homeownership opportunity is not to be missed. Because if you're anything short of delighted with Eastpointe's leisurely elegance at the end of your first 3 years of ownership, for whatever reason, we'll buy back your condominium home for your original purchase price... plus a 5% bonus! It's an unprecedented offer. And frankly, we wouldn't make it if we weren't convinced that you'll fall in love (and stay in love) with your Eastpointe home and all its pleasures.

6% MORTGAGES
for the first 3 years and low 7 1/2% mortgages for 27 years - saving you over \$13,000 on our least expensive model during the life of your mortgage as compared to a conventional 9% mortgage (available through November 30, 1976)

1-Bedroom, 1-Bedroom with Den 2-Bedroom/2-Bath Condominiums
from **\$1850 DOWN**
\$36,990 to \$71,500
NO CLOSING COSTS. IMMEDIATE OCCUPANCY.

eastpointe

One Scenic Drive, Highlands, N.J.

Directions: From Verazano Bridge, Lincoln Tunnel, G.W. Bridge and from New Jersey Turnpike, Take N.J. Turnpike (south) to Exit 117, then Garden State Parkway (south) to Exit 117, then proceed east on Route 98 approx. 13 miles to the Redbank-Scenic Rd. Exit in Highlands, Make U-turn left turn and follow Scenic Rd. to Eastpointe.

Sales Office Phone: (201) 291-4500
Models Open 7 Days a Week—10 am to 6 pm and by appointment

General Electric Credit CORPORATION

Fawn Lakes
A Condominium Community for People 45 and Over
THE MANCINI COMPANY
Rt. 72 & Meadow Road
Manahawkin, N.J.
(609) 597-1776

THINK OF RETIREMENT AS A VACATION YOU CAN ENJOY RIGHT NOW!
(Summers, Holidays, Weekends) AT

We Know You'll Fall in Love With One of Our Lovely Communities

PARKWOOD ESTATES

WALL TOWNSHIP
ON 1/2 ACRE WOODED LOTS
MODELS FROM **\$53,990**
RANCHES-COLONIAL-BI-LEVELS
8 1/2% MORTGAGES
LOW DOWN To Qualified Buyers

DIRECTIONS: Garden State Parkway south to exit 98, Route 34 south to left light (Allentown Rd.) left on Allentown Rd. to 18th Ave. left on 18th Ave. & follow Parkwood Estates signs to models.

Stanley C. Clayton, Realtor
Open Weekends 1-5 P.M.
Weekdays by Appointment
Phone: 528-7600

The New... Village Green

LOCATED IN THE BOROUGH OF WESTLONG BRANCH

Custom Homes
at a Price You Can Afford
4 BEDROOM COLONIALS
Priced **\$56,990** From...

8% MORTGAGES (CONVENTIONAL)
10% DOWN To Qualified Buyers

DIRECTIONS: Garden State Parkway south to exit 105, exit on Rt. 36 to Balantown Circle (or Rt. 32 to Circle) around Circle to Wall St. Right on Wall approx. 1 mile to Whale Pond Road, Turn right to Village Green. Models approx. 1000 yds.

Samuel Fromkin Co., Inc.
BUILDER & DEVELOPER

OPEN 7 DAYS 1-5 P.M.
SEND FOR FREE BROCHURE
Phone: 870-2414

Catholic schools seeking to attract more students

The Newark Archdiocesan School System is embarking on a program in parishes throughout Bergen, Essex, Hudson and Union Counties to start a school population climbing again. It was announced this week by Superintendent of Schools Dr. Richard T. Corrado.

Dr. Corrado, the first lay schools superintendent in the Newark Archdiocese, said the recruitment campaign is designed to support the religious formation goals of the Catholic Church while attracting students to parochial schools because of their high educational standards and excellent environment.

Corrado cited a recent academic measurement of Catholic school students in the Archdiocese showing above average proficiency in basic skills including English, mathematics and reading. The study indicated that the average student in local Catholic schools ranks close to the top third of all students, both public and private, throughout the country.

"We think this is indicative of excellent teaching, good administration and an orderly environment in which to learn," said Corrado. The enrollment campaign is organized, he

stated, to focus on family to family contact. There will be parent leaders in each of the four counties as well as each of the 25 deaneries into which the Archdiocese is divided. Participating parishes and schools will provide recruitment leaders and a cadre of recruiters for their area.

Those in the program will be trained by professionals who are now developing the entire campaign under Corrado, including training manuals, campaign brochures and other material and supportive publicity.

"We began organizing in October," said Corrado, "and we expect to complete all training prior to Christmas. We'll have a rally early in January, and the actual recruiting will take place right into February, culminating in Catholic Schools Week Feb. 6-11."

Corrado said the religious substance of the program was an integral part of the drive and that he had not set a numerical goal for the recruiting.

"If we can support the religious formation goals of the Church and show an increase in our student population, the effort will be a success," he declared.

After a period of rather severe decline in the late '60s, the decrease in the numbers of students in Catholic schools each year has moderated to the point where the 1975-76 year showed only a slight decrease. The figures indicate to me that we have bottomed out," Dr. Corrado said, "and we are now ready to turn that decrease into an increase next year."

To inform parents about teaching standards, the campaign brochure also pinpoints the following about Catholic Schools in the Newark Archdiocese:

- a low ratio of teachers to students - one to 19 in the elementary grades and one to 17 in high school;

- 86 percent of administrators and teachers hold bachelors or master's degrees on the elementary level;

- all high school teachers have degrees and are certified and 25 percent have advanced degrees;

- a new five-year plan of evaluation and accreditation on the elementary level was started last year, and within four years all elementary schools in the Archdiocese will have gone through accreditation.



"200 YEARS OF AMERICAN ILLUSTRATION," the first retrospective exhibit of American book, magazine, newspaper and poster illustration will open tomorrow at the New-York Historical Society, Central Park West at 77th street, New York City. The show, which offers a colorful visual history of the facts, fantasies and foibles of life in America during the nation's first two centuries, is displayed on the fourth floor. It will be open to the public free through Feb. 15. Hours are from 1 to 5 p.m. Sundays and Tuesdays through Fridays and 10 a.m. to 5 p.m. Saturdays. The museum is closed Mondays.

Teen to talk to parents

A recently-formed group, Parents of Amputee Children Together (PACT), will hear a teenage speaker, Wally Thomas, at Kessler Institute of Rehabilitation, Pleasant Valley Way, West Orange, on Saturday, at 9:30 a.m.

Thomas, who lives in Ocean City, is a tennis player, although he was born without his right arm. Following his talk, he will answer questions by PACT parents and their children.

As part of the program, parents will take part in discussion groups. Children will meet separately for games and activities. PACT this week urged parents of amputee children living in New Jersey to attend the meeting. The meeting is open to the public. Further information may be obtained by calling Felice Celikyol at Kessler Institute, 731-3600, or PACT president Carole Swenson, at 239-1798.

Holiday dinner for secretaries

The Suburban Chapter of the National Secretaries Association will sponsor a holiday buffet dinner Dec. 9 at 6:15 p.m. at the Forest Hill Field Club in Bloomfield.

The program will feature carol singing and a gift exchange.

CARE's holiday cards aid overseas families

"As the holiday season approaches, CARE is providing a special way for people to send greetings to family, friends and business associates while at the same time helping needy families overseas," Frank L. Goffio, executive director of CARE, said this week.

He was announcing the international aid and development agency's seasonal gift card plan.

"The cards let each person know that you have given in his or her name to help needy families in developing countries in Asia, Africa, Latin America and the Middle East."

"Through CARE your gift helps provide nourishing food for hungry children, materials to build rural schools, equipment for villagers to construct water systems, tools and equipment for struggling farmers to grow more food and other self-help projects."

"And through CARE-MEDICO you help send teams of doctors and nurses to teach better health care and more modern medical practices in remote areas," Goffio explained.

Anyone interested may send the names and addresses on their list with a minimum contribution of \$2 for each name to CARE, Dept. HOL, Tri-State Regional Office, Box 570, New York, N.Y. 10016.

Allow ample time for mailing. "Through these greeting cards you can do a lot more than you think," Goffio said. "For example, \$5 serves up to 30 children a daily bowl of nourishing porridge for a month; \$10 provides a group of farmers with training and supervision in food production techniques; \$15 keeps a CARE-MEDICO nurse on duty training local staff and treating patients for a full day, and \$25 gives thousands of children nourishing food vital to normal development."

Conference to examine past decade in Newark

The last ten years of Newark's history, from the riots of 1967 to the 1977 plans for the future, will be examined in a major conference to be held next fall. Announcement of the event came from the four colleges located in Newark who will jointly sponsor detailed aspects of the city's recent development.

Titled "Conference on an Assessment of Newark, 1967-1977," the gathering will draw upon representatives of the community to describe their views of the last decade and to provide insight into the future of the city.

It will mark the 10 years since New Jersey's largest city was torn by riots that took 26 lives and resulted in nearly \$16 million in property damage. Participants will analyze the causes and effects of the riots both within Newark and surrounding communities. Economic and cultural trends in the city today will also be noted.

Faculty and staff at the four major Newark educational institutions Rutgers, Essex County College, the College of Medicine and

Dentistry of New Jersey, and New Jersey Institute of Technology are conducting studies for presentation at the conference.

The meeting will be held at the NJIT campus, adjacent to Newark's principal business district.

Each of the four institutions has a member of its staff on the executive committee of the conference. These include Dr. Charles Vivier, executive vice-president of the College of Medicine; Dr. Clement Price of Rutgers Newark; Kara Smith of Essex County College, and Dr. Stanley Winters of NJIT, conference director.

Part of the expenses of the conference will be met through a \$5,300 grant from the New Jersey Committee for the Humanities, a state-level affiliate of the National Endowment for the Humanities. It will cover basic preparatory costs and the publication of a proceedings.

Several Newark City Council members will participate and Mayor Kenneth Gibson has been invited to speak at a general session of the conference.

Nov. 27 concert by Saenger-Chor

The Saenger Chor of Newark will present its 51st Anniversary Concert at Kean College in Union on Saturday, Nov. 27, at 8:30 p.m.

Featured artists will be soloists Cecelia Dempsey, soprano; Katsuko Eskai, violinist, and the Hall String Quartet. Music director Alfred Heberer's program will include works by Schubert, Mozart, Bartok and Johann Strauss.

Emil A. Veith of Springfield, chairman of the event and vice-president of the organization, and Werner Schmidt of Mountainside, president of the organization, said tickets will cost \$4 in advance and \$4.50 the night of the concert.

RENT THAT ROOM with a Want Ad. Minimum 4 lines (20 average length words) \$6.00. Call 686-7700.

THE Curtain Bin 1036 Stuyvesant Ave. UNION CENTER 686-5015

Where Personal Service Costs You Nothing Extra!

LIMITED TIME...BUY NOW!!!

"CORTLEY" READY MADE SPECIAL ORDER

rapery program which includes 100's of styles and colors to choose from... still have time for Christmas delivery... take advantage of these low prices and save, save, save!

30% OFF REGULAR LOW PRICES

NO "GIMMICKS"... THE FINEST DRAPERIES MADE IN THE NEWEST COLORS... DELUXE PLEATING ALSO AVAILABLE FOR THAT CUSTOM LOOK... COME-IN NOW WITH YOUR MEASUREMENTS!

NEED HELP? Find the RIGHT PERSON with a Want Ad. Call 686-7700.

Seton Hall art exhibit

An art exhibit consisting of preliminary sketches, drawings and blueprints for two Bicentennial murals recently completed by artist Edwin Havas of Parsippany will be the next attraction at the Seton Hall University Student Center Art Gallery, South Orange. The exhibit will open Sunday and continue until Jan. 7. Gallery hours are from 10 a.m. to 10 p.m. weekdays and Saturdays, and from 2 p.m. to 10 p.m. Sundays.

The artist, an assistant professor of art at the university, was commissioned by the Arts Association and Kiwanis Club of Livingston to paint the two paintings for the Livingston Town Hall.

The murals depict scenes in the life of William Livingston, New Jersey's first governor and an important figure in the American Revolutionary era.

LIMITING WOMEN'S WORK

The first law limiting the working hours of women to 10 hours a day was passed in Ohio in 1852, according to "Important Events in American Labor History," published by the U.S. Department of Labor.

NEED HELP? Find the RIGHT PERSON with a Want Ad. Call 686-7700.

Seton Prep fetes bishop

Seton Hall Preparatory School, South Orange, will honor Bishop Dominic A. Marconi from the class of 1945 as the "Outstanding Alumnus for 1976" on Sunday at the annual Father-son Communion Breakfast. Earlier this year, Bishop Marconi was appointed auxiliary bishop of the Archdiocese of Newark by Pope Paul VI. He serves as episcopal vicar for Union county.

A Mass will be offered at 9 a.m. in the Seton Hall Chapel with Bishop Marconi as the principal celebrant. Breakfast will follow in the Galleon Room of the Student Center. Prep alumni, students and fathers will attend. Reservations at \$4 per person will be accepted by the school office.

Take stock in America.

Join the Payroll Savings Plan.

MEN & WOMEN WANTED

To Participate in Testing New Anti-Perspirant Products

Candidates Must Be 21-65 Years of Age And Available Weekdays 8-12 A.M.

Volunteers Will Be Remunerated Accordingly.

For Further Information Contact:
Diana Hess
Bristol Myers Products, Research & Development
On Tuesdays Between 1:30-3:00 P.M. At
923-5000 (Extension 275)

BERT KARTZMAN SAYS...

"Place Your Order Now For... THANKSGIVING!"

---ENJOY---

The Extra Goodness Of Our Quality **TURKEYS** and Other Holiday Favorites!

TURKEY DINNERS

DINNER FOR 8 12-LB. TURKEY STUFFED (Before Roasting) \$29⁹⁵	DINNER FOR 15 18-LB. TURKEY STUFFED (Before Roasting) \$52⁹⁵
--	---

INCLUDES:

- APPETIZER
- Chopped Liver
- SOUP Consomme & Matzoh Balls
- Giblet Gravy
- Dinner Rolls
- Candied Sweet
- Pumpkin Pie

●Homemade Cranberry Sauce

● 35 Hors d'oeuvres

- Consomme and Matzoh Balls
- Dinner Rolls
- Giblet Gravy
- Noodle Pudding & Potato Pudding
- 1 Rye Bread
- 2 Large Pies

● CHICKEN or LONG ISLAND DUCKLING with GIBLET GRAVY ● CHICKEN SOUP ● CHICKEN-IN-THE-POT ● KREPLACH ● STUFFED CABBAGE ● MOTZOH BALLS ● POTATO and NOODLE KUGEL ● KISHKE ● CHOPPED LIVER ● GEFILTE FISH

AND FROM OUR OWN BAKERY

- Pumpkin, Apple, Mince or Cream Pies, etc.
- Assorted Coffee Cakes and Bobkas
- Many Other Delicious Holiday Treats

PHONE YOUR ORDER NOW
374-2600

Julius Kartzman & SON
DELICATESSEN & BAKERY
25 MILL ROAD, IRVINGTON

Shoes for Sports

Over 125 styles for tennis, golf, football, basketball, hiking, hunting, riding, soccer, running, baseball, bowling, and more... Names like ADIDAS, PUMA, CONVERSE, RIDDELL, SPOTBILT, BATA, NIKE, KEYS, TRETORN and ARNOLD PALMER.

Also socks for all occasions by BURLINGTON, WIGWAM, RUSSELL, NELSON, SHAMROCK and LION'S PRIDE.

SHOE COUPON

15% off any tennis shoe in stock

Solomon's SPORTING GOODS
1171 ELIZABETH AVE., ELIZABETH, N.J. Phone: 352-0404-5
FREE PARKING in our lot across the street
OPEN Thursday and Friday 'til 9 p.m.

Because Our Thanksgiving Pies Get Gobbled Up Fast...

... here's our suggestion. Why not pick up one of our fresh-frozen pies Monday or Tuesday. Then pop it in the oven Thanksgiving day for that wonderful just-baked taste.

Of course, if you don't mind waiting in line, we'll be selling our fresh-baked pies all day Wednesday, and Thursday morning, while they last—first come, first served.

And while you're here, don't forget Geiger's fresh natural cider, homemade ice cream, and home-baked cider doughnuts—a "must" for Thanksgiving.

HOURS:
THANKSGIVING DAY: Bakery and produce store open 9 a.m.—2 p.m.
Restaurant closed all day.
FRIDAY: Restaurant, bakery and produce store open as usual.

Happy Thanksgiving!

Geiger's

RESTAURANT
Mon.-Sat. 11:30 a.m. to 10 p.m. 233-2260
Sun. 12 p.m. to 10 p.m.

COFFEE SHOP BAKERY & PRODUCE
8 a.m. to 9 p.m. 233-3444
9 a.m. to 9 p.m.

OPEN 7 DAYS • 560 SPRINGFIELD AVE., WESTFIELD, N.J.

FROM SPRINGFIELD
FROM PLAINFIELD
ROUTE 22
FROM UNION
FROM WESTFIELD & KENILWORTH

BUY SELL TRADE... CALL AN "AD-VISOR" FOR ACTION, TODAY! - 686-7700... HELP HIRE RENT

DEADLINE IS TUESDAY NOON FOR THURSDAY PUBLICATION

WOMEN HELP WANTED MEN CENTURY 21 PMS REALTY COMPANY INC 373-9088 1032 CLINTON AVENUE IRVINGTON, NEW JERSEY 07111

HOMEWORK Help Wanted-Men & Women Earn money from home. Make your own hours. Send stamped self addressed envelope to: NATIONAL 11, Box 289, Linden, N.J. 07036.

SHIPPING & RECEIVING CLERK Aggressive individual to process orders. Experienced in handling phone orders, inventory records, and shipping all benefits.

TIPIST DICTAPHONE Leading insurance company seeks individual with good typing skills (50 WPM) and spelling aptitude for our transcription dept.

MRS. ROSE 925-6507 PSYCHIC READINGS Gifted Spiritual Reader. Advice on All Affairs of Life.

JOSHUA BREAKSTONE is now accepting students at all levels in guitar, music theory, harmony & improvisation 675-8669.

FOR SALE TIRES 3 new tires with rims \$78.14 CALL: 373-7984

ITALIAN Prov. lighted bar & stereo room for TV. Excellent cond. \$325. 7 ft pool table w accor. 665. 687-2283 after 3 P.M.

ACCOUNTS payable supervisor, experience necessary. Supervise 3 people. Salary commensurate with experience. Call Mr. Kelly, 964-1536.

APPLIANCES REPAIR PERSON who can handle washers, dryers, refrigerators, AC, etc. You can make a bundle if you can handle. Want a share of the gravy? Call me at 686-0344, 9 to 6, and we'll talk.

PART TIME TELLER SPRINGFIELD Experience is desired but we will train qualified individuals. Work daily 10:30-3 P.M.

PERSONNEL DEPT. 354-3400 THE NATIONAL STATE BANK Elizabeth, N.J. Equal Opportunity Employer M-F

BORED? Real estate must be just what the doctor ordered! All you need is experience, empathy & enthusiasm. Want to know more? Call Peggy at 376-2300.

BRANCH OFFICE SECRETARY For over fifty years, FEDERAL PRODUCTS CORPORATION, one of the nation's leading gauge manufacturers, with home offices in Providence, Rhode Island, has been offering steady, challenging opportunities and an unusual array of profit sharing plans to employees.

EXECUTIVE COORDINATOR Tremendous growth & expansion plans in Metropolitan N.J. offer opportunity for life time security & advancement.

KITCHEN HELP APPLY IN PERSON PARK AVE DELI 313 NO PARK AV LINDEN 925-1300

CLERK-TYPIST The Going Is Good! Make a move to join Kemper, one of America's leading insurance organizations. If you can type at least 50 WPM we'll provide the challenge.

TEMP HIGHER PERM NO FEE TEMPORARY JOBS "INSTANT WORK" ALL OFFICE SKILLS NEEDED PAY DAY EVERY FRIDAY

THE WORLD'S largest training school is hiring. Where else can you learn the jobs listed below, and get paid while you learn?

ORDER CLERK M/F Aggressive individual to process orders. Experienced in handling phone orders, inventory records, and shipping all benefits.

PART TIME legal secretary for modern New York law firm. Call Mrs. Hoffman, 424-2155. K 11-20-11

Accounting-Bookkeeping 18 ACCOUNTANT-Business Consultant-cash flow & cost analysis-tax work, well versed in new tax laws for small & medium size companies. 762-5748.

TEXAS OIL COMPANY needs mature person for short trips surrounding Union & Essex counties. Contact customers. We train. Write J.N. Dick, Pres. Southwestern Petroleum, P.O. Box 11339, Fort Worth, Texas.

Accounting-Bookkeeping 18 ACCOUNTANT-Business Consultant-cash flow & cost analysis-tax work, well versed in new tax laws for small & medium size companies. 762-5748.

Electric Repairs 37 ELECTRICIAN CHET ERICKSON Small jobs special-wood lights, outlets, etc. 399-9794.

Home Improvements 50 ATTENTION IRVINGTON HOME OWNERS Repair violations done in accordance with Irvington code, carpentry work, tile, floor painting, fireplace, etc.

Masonry 63 STEPS, sidewalks. All masonry quality work. Reasonable prices. Fully insured. M. DEUTSCH, SPRINGFIELD, 379-9099.

Moving & Storage 64 MOVERS, big & small jobs. Move anything, also buy old furniture. Clean cellars & attics. 925-2274 bet. 6:30 P.M. & midnight. Sam Chapman, 1125-64.

Remodeling 45 J&J FLOOR WAXING AND OFFICE CLEANING Private Residential-Industrial Call 241-6327. K 11-25-42

HOLLYWOOD MEMORIAL PARK Cemetery Plots. Call 488-4300.

FOR SALE Merchandise, Garage Sales, Basement Sales, Yard Sales, etc.

HOUSEHOLD goods, clothes, oil paintings, toys, art, flower arrangements, & containers. Jewelry & more. Sat. Nov. 20, 10 A.M. to 3 P.M. 115 Indian Run Pkwy. S. Union (opp Chestnut Tavern).

TRUCKING 'You call - We haul!' Attics, Appliances, Garages cleaned, baggage, furniture moving, etc. Job too small. FREE Estimates. 686-8379.

PAINTING & PAPERHANGING DAN'S PAINTING AND DECORATING, INT. & EXT. REASONABLE PRICES. ESTIMATES INSURED. 689-8200.

PAINTING & PAPERHANGING J. JANNIK Exterior & Interior Painting, Papering & Paperhanging. Free estimates. Call 687-2268 or 687-6819 anytime.

PAINTING & PAPERHANGING J. JANNIK Exterior & Interior Painting, Papering & Paperhanging. Free estimates. Call 687-2268 or 687-6819 anytime.

KEVIN MORE PORTABLE WASHING MACHINE GOOD CONDITION 375-6819

POOL TABLE very good condition, regulation size with ping pong top & some accessories. Will deliver. Firm 370-3033. Call after 3 P.M. 371-2159.

SAVINGS UP TO 50 PERCENT On normal retail prices! 1st quality, brand name mens & women's clothing over 200 pieces of jewelry, plus many gift ideas at discount prices. Hrs by appt. evenings & weekends. 241-6999-241-3811.

INTERIOR & EXTERIOR Painting, Papering, etc. Free estimates. Insured. Stuen Deo, 233-3561, 254-6580.

PAINTER-Interior & exterior. Free estimates. Fully insured. R. Semanski. 467-8785.

PHOTOGRAPHY INSTANT PASSPORT PHOTOS also Xerox copies. PHOTARAMA, 83-A Mt. Vernon Pl., Vailsburg (by Hill Shop area). 371-25-69.

PLUMBING & HEATING PLUMBING & HEATING Repairs, remodeling, violations. Bathroom, kitchen, hot water boilers, steam, hot water systems. Modern sewer cleaning. Commercial, residential. Call Herb Tricifier, ES 2-6660. Z11-71

BUSINESS and SERVICES DIRECTORY •686-7700 These Experts Are As Near As Your Telephone •686-7700

WOMEN HELP WANTED MEN CENTURY 21 PMS REALTY COMPANY INC 373-9088 1032 CLINTON AVENUE IRVINGTON, NEW JERSEY 07111

SHIPPING & RECEIVING CLERK Aggressive individual to process orders. Experienced in handling phone orders, inventory records, and shipping all benefits.

TIPIST DICTAPHONE Leading insurance company seeks individual with good typing skills (50 WPM) and spelling aptitude for our transcription dept.

JOSHUA BREAKSTONE is now accepting students at all levels in guitar, music theory, harmony & improvisation 675-8669.

FOR SALE TIRES 3 new tires with rims \$78.14 CALL: 373-7984

Bell-ringer anniversary

25 years of direct dialing

Remember when you had to dial "0" to make any long distance call? A lot of people don't they take direct dialing for granted. But until a quarter century ago operators completed all long distance calls. Direct Distance Dialing (DDD) was introduced on Nov. 10, 1951, when Englewood Mayor M. Leslie Denning seated at a table in the Englewood central office dialed 10 digits and in 18 seconds was talking with Mayor Frank Osborn in Alameda, Calif.

Hearing Tests Set For Elizabeth

Free electronic hearing tests will be given at Belmont Hearing Aid Service offices at 11 Broad St., Elizabeth, next Monday and Wednesday.

Factory trained hearing aid specialists will be at the office those days to perform the tests. Anyone who has trouble hearing or understanding is welcome to have a test using the latest electronic equipment to determine his or her particular loss. Diagrams showing how the ear works and some of the causes of hearing loss will be available. Everyone should have a hearing test at least once a year, if there is any trouble at all hearing clearly. Even people now wearing hearing aids, or those who have been told nothing could be done for them should have a hearing test and find out about the latest methods of hearing correction. The free hearing tests will be given at Belmont, 11 Broad St., Elizabeth. If you can't get there call 353-7886 and arrange for an appointment in the privacy of your own home.

That first DDD call ushered in an era of change that has sharply lowered the cost of long distance calls and made calling faster and easier.

The event was recreated at the same central office on Wednesday, Nov. 10, when Englewood Mayor Sondra Greenberg called Mayor C. J. Corica of Alameda before an audience of the press, public officials and telephone company executives.

Direct dialed calls now reach California in about eight seconds. And the cost of a three-minute DDD coast-to-coast call has dropped from \$2 in 1951 to 52 cents today for a call placed at night or on weekends.

DDD was made possible by the Bell System's development of a universal numbering plan so that a caller could dial phones anywhere in the nation. The result was the introduction of the now familiar seven-digit local numbers and three digit area codes.

Other developments included a long distance switching system that could accept and forward telephone signals from a wide variety of local equipment. New electronic signaling techniques routed calls, replacing verbal routing instructions. The high capacity coaxial cable network needed to carry DDD calls was already in place. Other circuits became available to expand the new long distance calling capability when the Bell System opened a coast-to-coast microwave radio relay network in August 1951.

Today, virtually all of the nation's 149 million phones have DDD service. Last year, about 86 percent of the 9.3 billion toll calls made in the United States were direct dialed.

DID YOU KNOW?

EAGLES

USUALLY LIVE 30 YEARS OR MORE IN CAPTIVITY AND 20 IN WILDS. OTHERWISE, THE NEST OF AN EAGLE IS CALLED AN EYRIL. BALD EAGLES BUILD THEIR NESTS ON TOP OF TALL TREES, WHILE A GOLDEN EAGLE PREFERS HIGH CLIFFS. EACH YEAR EAGLES ADD MORE STICKS TO THEIR NESTS SO THAT AN OLD NEST MAY BE 10' WIDE AND 20' DEEP. THEY STAY IN THEIR NESTS UNTIL THEY'RE ABOUT 3 MONTHS OLD. EAGLES HUNT ONLY DURING THE DAY. THERE ARE 40 KINDS OF EAGLES IN THE WORLD. THEY'RE FOUND ALMOST EVERYWHERE EXCEPT THE ANTARCTIC. THE U.S. CHOSE THE BALD EAGLE AS ITS NATIONAL BIRD IN 1782. FEMALE EAGLES ARE LARGER THAN MALES.

'Beauties' will compete

Mr. Upsala pageant tonight

The women of Upsala College East Orange, will hold a "Mr. Upsala" contest tonight to raise funds for their Women's Day program to be held next spring.

Professors, football players, maintenance men and office workers will compete in gym shorts, men's suit and talent competitions. The winners, one in the faculty-staff and the other in the student categories, will be crowned with Viking helmets, symbolic of the Swedish heritage of the 84-year-old college.

The crowning ceremony will be performed by Linda Cofer Hawkins, a former Miss Upsala who was a finalist in the Miss New Jersey pageant of the Miss America competition.

Polly Williams, coordinator of the program, said the panelists will consist of one "token" male judge (Walter W. Weller Jr., chairman of the college's board of trustees), and four women judges: Professor Carolyn Thorburn, reference librarian Elizabeth Rumics, and students Judy Good and Karin Godomski.

The women also will have their answer to Bert Parks. She is Iris Rodgers of the Upsala purchasing department who will wear black tails, tight, high heel boots and top hat and will introduce the candidates. Because of a budgetary limitation, an orchestra will not be available, but Upsala music professor William Deguire will provide accompaniment on the piano.

Ms. Williams said it had been planned first to include tuxedos in the formal attire competition, but the planning committee relented and allowed business suits because of the cost involved in renting tuxedos. Also, the committee banned bikinis in the competition, just as they are banned in the Miss America pageant. "This event is going to have class," said Ms. Williams.

Because of the expected large number of entrants, the talent competition will be limited to six finalists.

Ms. Williams said the contestants also will be asked "meaningful, intellectual questions," such as "What is the role of men in the world?" The program will begin at 8 p.m. in the College Center.



"Here's an interesting obituary. It says 'in lieu of flowers send champagne'."

Nemetz to be awarded Columbia scholarship

Klaus Nemetz, a member of the physical education department at Kean College, Union, will be awarded the second annual Harry Alexander Scott memorial scholarship by Teachers College, Columbia University, tomorrow.

Nemetz, a doctoral candidate in motor learning, will receive the \$2,000 award at a special convocation and reception.



The Elizabeth Agency Group
INSURANCE CONSULTANTS
15 PRINCE STREET, ELIZABETH, N.J. 07208

Geico Policyholders!

Contact Us For Auto Coverage BEFORE Your Policy Expires...We Are The Largest Agency For Auto, Fire and Homeowners Coverage in Union County...There's A Reason Why!...Customer Service!

PHONE 355-5536 or PL 6-7975

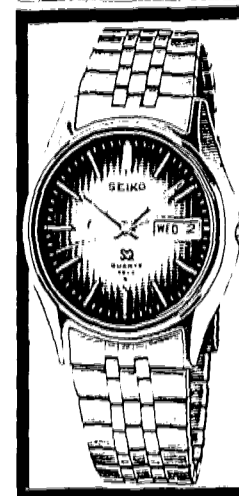
'Ugly American' movie discussion

"The Ugly American," starring Marlon Brando as a misguided U.S. ambassador, will be the subject of the American Issues Forum film discussion at the Ethical Society, 516 Prospect St., Maplewood, on Saturday at 8 p.m. This third program in the forum series will be moderated by the Rev. Robert Antczak, head of the Classics Department at Seton Hall University.

"This film should give us a better understanding of the kind of foreign policy that led us into the involvement in Southeast Asia," Dr. Antczak said.

Refreshments will be served. Admission is free.

FRIDAY DEADLINE
All items other than spot news should be in our office by noon on Friday.



SEIKO

Yellow top-stainless steel back, textured smokey brown dial, HARDLEX mar-resist crystal, adjustable bracelet.

Authorized SEIKO Dealer

w.kodak jewelers
CORNER MORRIS & STUYVESANT UNION, N.J.

MIDDLESEX MALL, So. Plainfield, N.J.
LEDGEWOOD MALL, LedgeWOOD, N.J.
MORRIS CO. MALL, Morristown, N.J.
WORLD TRADE CENTER, New York City
DIAMOND APPRAISALS

Oldsters are keen about Kean studies

If you think that retirement holds nothing more than the prospect of "puttering around" the house, take a look at what's going on at Kean College. Fifty students, all between the ages of 62 and 77, are enrolled in courses for both fun and credit this semester.

Through a program sponsored by the college's Office of Community Services, these senior citizens pay no tuition for their course work and can utilize all of Kean's facilities, including some set up specifically for their benefits.

When the board of trustees approved the program last June, it was anticipated that perhaps 15 or 20 individuals would want to take advantage of it. College administrators are surprised at the large number of students, some already having college degrees and others with just a desire to learn and the time in which to do it. Spaces were found in 40 classes ranging from Music 3652 (Studio Cello) to Public Administration 3350 (Collective Bargaining).

Faculty members agree that senior citizens who are students become valuable sources of information to their classmates. Dr. Nathan Weiss, president of Kean College, teaches the course in Collective Bargaining.

Commenting on one of his senior citizen students, Morris Barnett of Elizabeth, Dr. Weiss observes, "He is a gold mine of information. His experience in dealing with institutions such as the United Auto Workers collective bargaining unit gives the class examples of practical application of the techniques we discuss."

The older students encounter some of the problems common to college freshmen. Some special services are provided to help ease the way through these problems. Since senior citizens enroll on a space available basis, they register, at a time set aside specifically for them, thus avoiding the long lines typically associated with in-person registration.

Each senior citizen registering this spring will also be assigned a "Big

Brother" or "Big Sister" from the undergraduate population who will be able to acquaint him with the variety of educational, cultural and personal opportunities that are a part of college life.

In addition, Charles Hartman, a retired guidance counselor, serves as a volunteer liaison to senior citizen groups around the state, providing frequent feedback of the kind of programs and services they would like to see offered by Kean College.

Discussion on casinos

A discussion on "The Impact of Casino Gambling on the State" will highlight the bi-annual open meeting of the board of directors of the New Jersey Hotel-Motel Association when the group meets today at the Ramada Inn in East Brunswick.

Featured speaker will be the state's Commissioner of Labor and Industry, John J. Horn, who will outline plans and programs to increase tourism and travel for New Jersey.

Casino gambling in Atlantic City and its impact on the remainder of the state will be discussed by Assemblyman Steven P. Perskie of Atlantic City, who introduced the state bill for casino gambling.

NJTV topic: family woes

Problems of the family are tackled from several directions when Ruth Alampi welcomes Polly G. Cancilla, senior caseworker and supervisor of the Family Service Association of Middlesex County, and Avon Arnold, executive director of the Planned Parenthood Association of the Mercer County area, on "Jerseyfile" Monday at 8:30 p.m. on Channels 50 and 58.

The program, to be repeated Nov. 26 at 10:30 p.m. will help viewers to obtain assistance from both facilities. The Planned Parenthood headquarters recently moved to 437 E. State St., Trenton.

Your Want Ad Is Easy To Place . . . Just Phone 686-7700

Ask for 'Ad Taker' and she will help you with a Result-Getter Want Ad.

FECO ELECTRONICS

- Burglar & Fire Alarm Systems
- Sales, Service and Leasing
- FREE ESTIMATES

371-4300

THE ARMY CAN HELP YOUR SON OR DAUGHTER SAVE \$8100 FOR COLLEGE OVER THE NEXT THREE YEARS.



INTRODUCING A NEW EDUCATIONAL ASSISTANCE PROGRAM.

Starting January 1, 1977, your son or daughter can accumulate up to \$8100 for college or vocational-technical school during just 36 months in the Army.

Under this Educational Assistance Program, they can save from \$50 to \$75 each month, with their savings matched 2 for 1! And that adds up.

FOR EVERY DOLLAR THEY SAVE TOWARD COLLEGE, TWO WILL BE ADDED.

By participating in the new program, a young person gets three dollars back for every dollar saved toward college or vocational-technical school—the dollar saved plus the additional two dollars of matching funds.

If the maximum of \$75 a month is saved (\$2700 over 36 months), \$5400 will be added for a total of \$8100. If the minimum of \$50 a month is saved (\$1800 over 36 months), \$3600 will be added for a total of \$5400.

HOW DO THEY COLLECT?

Assuming your son or daughter has finished the 36-month enlistment in the Army and has deposited, for example, \$75 in the educational fund each month, the \$8100 accumulated under the pro-

gram will be paid in monthly installments of \$225 for each month of college or vocational-technical school completed.

If they decide not to continue schooling after the Army, they get back all the money saved. The matching funds will be paid only if used toward completing up to four years of college or vocational-technical school. The extra \$5400 matching amount becomes a strong incentive for a young person to continue with school.

THEY CAN ALSO GO TO COLLEGE WHILE IN THE ARMY AND WE PAY UP TO 75% OF THE TUITION.

If your son or daughter enlists in today's Army, all kinds of educational opportunities are open for earning college or vocational-technical credits right on post with the Army paying up to 75% of the tuition. Under Project AHEAD, for example, a young person can enlist in the Army and enroll in college or vocational-technical school at the same time. Over 1400 colleges and universities

around the country now participate in Project AHEAD. It's a great chance for a young person to get a jump on the future.

YOUR LOCAL ARMY REPRESENTATIVE IS THE PERSON TO TALK TO NEXT.

This new Educational Assistance Program, along with all of the other educational benefits the Army offers, will help your son or daughter serve their country better as soldiers now, citizens later. There's no better time to start getting that education than now. Your local Army Representative has full details on all the educational and other opportunities for young people in today's Army. Or, if you'd like us to send the information to you, just mail the coupon. Or call 800-431-1976 toll free. In NY, call 800-243-5614.

Army Opportunities
P.O. Box 1776, Mount Vernon, NY 10550
Please send me more information about the new Educational Assistance Program and other opportunities for young people in today's Army.

Sr. M. M. _____
Address _____
City _____ State _____ Zip _____
Phone _____

The telephone number and address of your local Army Representative is listed in the Yellow Pages under "Recruiting."

Join the people who've joined the Army. It's an education, too.

OLIN MARK IV
Short, high-performance skis.

OLIN MARK VI
Competition, slalom skis.

Boots by **NORDICA**
"Where Form Follows Function!"
Recreational, Freestyle, Expert to Elite Racer. Each designed to meet the needs of the individual skier.

1008 South Ave., Westfield, N.J. 233-8636
the skiers shop

IMMEDIATE AVAILABILITY. SAVE \$100.

wesco Custom Dinettes
214 RT. 10, EAST HANOVER (NEXT TO 2-GUYS) 994-0691
OPEN EVERY EVE 'TIL 9 P.M.; SAT. 'TIL 5 P.M.

Supplement to: Morristown Daily Record, Hanover Regional News, West Orange Chronicle, West Essex Tribune, Millburn & Short Hills Item, Maplewood/South Orange News Record, Summit Herald, Caldwell Progress, Madison Eagle, Chatham Courier, Berkeley Heights/New Providence Dispatch, Union Leader, Springfield Leader, Mountainside Echo, Valisburg Leader, Thursday, November 18, 1976.



ON MALL

Santa's Arrival

Old St. Nick will arrive in front of the Mall main entrance at 10 a.m. on Saturday, November 27.

White of the...
...ankers...
...W. E. Radio...
...Mayor Colburn of...
...Wilmington

...arrival Santa...
...Wilmington Santa...



Lerner Shops

LIVINGSTON MALL

Pre-Holiday

Sale

THURSDAY, FRIDAY, SATURDAY

fashion-new jumpsuits

20% off our reg. low prices

example: reg. 20.99 ... sale 16.79

Carefree polyesters, corduroys*, more! Some hooded. Jrs., misses. *cotton

bulky cardigans

20% off our reg. low prices

example: reg. 13.99 ... sale 11.19

Toasty tweeds & stripes, including belted & wrap styles. S-M-L.

panti-hose special

sale **\$1 pr.** (2 prs., 1.85)

reg. 1.29 pr.

Save on non-run Cantece® nylon leg flattery in the most wanted fashion shades. Stock up now!

girls' jumpsuits

sale **8⁷⁹ to 12⁷⁹**

reg. 10.99 to 15.99

Pre-washed denims* & polyester gabardines. Belted and zipper styles, more! In 3-6x & 7-14. *cotton

TIMELY SAVINGS ON GIFT-ED FASHIONS!



\$699. One carat[†] diamond solitaires flashing with thunderbolts of light in round, oval, pear and marquise shapes. The settings: 14K white or yellow gold adorned with two radiant baguettes. Come see these very special Littman jewels.

[†]One carat total weight including baguettes.

*Enlarged to show detail.

Littman jewelers

24 fine stores in New Jersey, New York, Pennsylvania

Livingston Mall, Livingston (Lower Level) • Mon. thru Sat. 10 til 9:30

Major charge cards or Littman Flexi-Charge

Watch for the GRAND OPENING of a New SETCO Office!

Saturday, December 4, on the Livingston Mall!

- Free Gifts!
- Souvenirs!
- Fun for the whole family!
- Two Giant Sweepstakes!
- Don't miss it!



MEMBER OF THE SUMMIT BANCORPORATION

Member FDIC

Deposits Federally Insured to \$40,000

SAM GORDON'S PERSONAL GUARANTEE OF SATISFACTION! Sam Gordon guarantees complete satisfaction or replacement of any persistently troublesome major appliance sold by Sam Gordon's Appliance Supermarkets within 1 year . . . TV and Stereo 90 days!



Sam Gordon's NOW WITH APPLIANCE PRICES SKY-ROCKETING . . .

SAVE UP TO 50%

On the Top Brand Appliances and TV's - Many at or below wholesale replacement cost.

Come and get the hottest buys of the season! Some floor samples! Some slightly scratched and dented (but in good working order). Some previous models! But all brand new & all backed by the original factory warranty and Sam Gordon's Personal Guarantee of Satisfaction. Installation, Delivery and Service additional on some sale items.

Order now for Christmas Eve delivery. Layaway now.


SAVE \$90!
RCA XL 100 COLOR TV'S
 Complete with in home service.
 Reg. \$389.95
 Sale
\$299⁹⁵



SAVE \$10!
SUPER PONG by ATARI
 4 Exciting TV Games, on screen digital scoring—plug into any size TV.
 Was \$89.95
\$79⁹⁵



SAVE \$40! SANKYO
Micro Mini Cassette Recorder
Smaller Than a Calculator!
 Introductory bonus offer - 3 FREE Tapes
 Value \$189.95
\$149⁹⁵



Lowest Price Ever!
Amana Radarange MICROWAVE OVEN
 Automatic Defrost Cycle
 Was \$399.99
\$299⁹⁵



SAVE! \$100

SAVE \$60! PANASONIC
19" diag. COLOR TV'S
 Quintrex II in line. Picture Tube
 Was \$439.95
\$379.95



SAVE \$70! PIONEER
CENTREX AM/FM 8-TRACK STEREO SYSTEM
 With huge 22" Speakers. Mfr. Suggested Retail Price \$219.95
Now \$149⁹⁵



SAVE \$10!
PANASONIC AM/FM DIGITAL CLOCK RADIO
 With 24-hour Timer
 Reg. \$39.95
 Sale
\$29⁹⁵



LIMITED QUANTITY!

Presto Burger Hamburger Maker	\$21.25	\$12.95
Hamilton Beach Little Mac	21.95	14.95
GE Cassette Tape Recorder	29.95	22.95
Mr. Coffee I Drip Coffee Brewer	39.95	27.95
Portable 8-Track Player	39.95	29.95
GE AM/FM Clock Radios	25.95	20.95
CB AC-DC Power Converter	29.95	23.95
Electric Char-B-Que Grills	69.95	39.95
Hoover Upright Vacuums	69.95	49.95
Speed Queen 115 V. Electric Dryers	125.95	59.95
Pioneer Car Stereos	59.95	49.95
Kitchen Aid Hot Water Dispensers	99.95	69.95
23-Channel CB Radios	129.95	69.95
Solid State 12" B/W TV	99.95	69.95
AM/FM 8-Track Stereo Systems	99.95	69.95
Magnavox 3 Game Odysseys	129.95	69.95
Eureka Upright Vacuum with Tools	99.95	69.95
Phone Secretary-Automatic Answer	129.95	79.95
Soundesign 8-Track Stereo System	159.95	99.95
Hy Gain-Metered - CB Radios	139.95	99.95
Whirlpool Portable 115V. Electric Dryers	199.95	99.95
Zenith Black & White TV's	119.95	99.95

SAVE \$100!
ZENITH 25" Diagonal COLOR CONSOLE TV
 Never before at this low, low price.
 Sug. List \$649.95
\$549⁹⁵



SAVE \$200!
FISHER Deluxe STEREO SYSTEM
 With Separate Turntable
 If Sold Separately \$419.80
\$219⁸⁰



Available For Immediate Delivery!
SONY BETAMAX VIDEO CASSETTE RECORDERS
 See What You've Been Missing!



- Record and playback programs whenever it is convenient.
- Watch one program while you record another.
- Record (with timer) even while you are away.

You Can Put Your Trust In
Sam Gordon's
 AMERICA'S MOST RELIABLE DEALER

LIVINGSTON MALL
 Upper Level
 Adjacent to Sears
 Phone: 992-8283

MADISON
 33 Central Ave.
 Phone: 377-5000

DOVER
 K Mart
 Shopping Plaza
 Phone: 366-8100

These are warehouse pick up prices. Delivery is optional and additional.
 DOVER & MADISON Stores open every night to 9 and Sat. to 6; Livingston store open every night, including Sat., 'til 9:30.
 Not responsible for typographical errors.

Bamberger's Assistant Buyers' Sale

THEY KNOW A BARGAIN WHEN THEY SEE ONE: FASHIONS / FURNITURE /

MISSES' WINTER OUTERWEAR, STORMCOATS, BOOT COATS, PANTCOATS, JACKETS, MORE

Sale \$49 to 99.99

Warm wool and wool-nylon boot length coats. Single or double breasted styles, wraps. Pantcoats and jackets in wool-nylon, wool blanket fleece and 100% wool. Hooded and belted styles, scarf coats or pea jackets looks. Stormcoats, cowhide jackets, boot length leather coats.

MISSES' FASHION DRESSES, DESIGNER DRESSES AND CONTEMPORARY

20% to 40% off

Soft and easy to care for polyester-jersey dresses. The classic polyester-wool styles, for casual or more dressy holiday wear. 8-18. Reg. \$35-\$60 **Sale \$28-\$48**
Designer created dresses and suits in woven or knit fabrics. Reg. \$66-\$180
20%-40% Off

WARM WINTER COATS FOR BIG AND LITTLE BOYS, BIG AND LITTLE GIRLS

20% to 30% off

Reg. \$22-\$58

Big boys' real down ski jackets or vests. Nylon shell, inner liner. Little boys 4-7, wool-polyester, nylon, or corduroy coats with acrylic pile lining. Big and little girls' wool meltons or acrylic pile lined canvas coats, plaids, solids.

MISSES' COORDINATES FROM A FAMOUS MAKER: acrylic and polyester coordinates. Pants in solid or plaid fashion shades. Printed shirts and long sleeved solid color sweaters.

Reg. \$14-\$16 **Sale \$9-\$11**

MISSES' COWL NECK AND JACKET SWEATERS: acrylic or wool cowls in solids, stripes and multi-color. Jackets in ethnic designs, hoods and colorful wrap styling.

Reg. \$10-\$45 **Sale \$7-\$36**

MISSES' NEW FASHION LEATHER BOOTS: great to wear with the new gauchos. Stacked wooden heels, leather covered heels. Soft leg hugging leather. Black, brown, rust.

Reg. \$40-\$65 **Sale \$30-48.75**

MISSES' WARM FLEECY FIRESIDE ROBES: silky, soft Arnel® rayon robes for cozy winter nights. Zippered fronts with yoke shoulder seaming. Red, Blue, green, or brown.

Reg. \$26 **Sale \$20**

FASHION SAVINGS FROM OUR WOMAN'S WORLD: a select group of winter pant coats in wool or wool-nylon. Famous maker pull-on pants and coordinates. Plus holiday dresses, pantsuits, gowns.

Reg. \$18-\$75 **Sale \$9-\$55**

BIG AND LITTLE GIRLS' JUMPSUITS AND SLACK SETS: just in time for the holidays. Find cotton, cotton corduroy, denim or polyester knit in the new fashions styles and colors.

Reg. \$11-\$20 **20% off**

JUNIOR BOOT LENGTH PLUSH COATS Wool or wool-nylon coats for sport or dress. Single or double breasted styles with shoulder tucking, notch collars, accent stitching, more.

Reg. 69.90 **Sale \$49**

MISSES' POLYESTER PRINT BOW BLOUSES Essential for the new layered look. The fashion bow, for several different looks. This season's newest and nicest prints. 10-18.

Reg. \$18 **Sale \$10**

JUNIORS' ACRYLIC TURTLENECK PULLOVERS The timeless turtleneck sweater. Wear it with slacks, jeans, skirts, even gauchos. In easy to match, white, rust, navy, red, brown and more.

Reg. \$10 **Sale \$7**

FAMILY OUTERWEAR SAVINGS

For misses: plush coats, acrylic fur trims or hooded looks. Reg. \$40-\$72 **25% OFF**
For Juniors: wool or wool-nylon boot coats, gaucho jackets and pant coats. Reg. \$20-\$70 **SALE \$15-\$52**
For men: new fashions rainwear, outerwear, ski jackets and more. Reg. \$16-\$90 **SALE 12.80 to \$72**
For children: big boys, and big or little girls snorkel and ski jackets. Reg. \$16-\$30 **SALE 11.20 to \$24**

PLUS THESE EXCEPTIONAL SAVINGS

FAMILY SWEATER SAVINGS

For misses: Polyester turtlenecks, acrylic big tops and tunic sweaters. Reg. \$6-\$15 **SALE 3.99-9.99**
For women: pullovers, cardigans and wraps. Polyester cowl necks or tunic tops. Reg. \$8-\$18 **SALE 6.40-\$14**
For juniors: acrylic tunics with split crew necks, turned back cuffs. **SPECIAL PURCHASE 9.99**
For men: acrylic shawl collared pullovers. Fisherman knit crewneck styles, in natural shades. **SPECIAL PURCHASE 9.99**
For teens and girls: acrylic turtlenecks, wraps, cardigans, bulkies and light weight sweaters. Reg. \$8-\$20 **SALE 6.40-\$16**

Budget Store savings at Bamberger's Livingston Budget Store

Sorry, no mail or phone. Savings for the family at Bamberger's



Days Friday & Saturday

APPLIANCES/TV'S/HOME FURNISHINGS/GIFTS...AND YOU COME OUT AHEAD

MEN'S SUIT SALE: TRADITIONAL AND CONTEMPORARY STYLES

20% off

Orig. \$130 to \$170

Intermediate markdowns have been taken. Find 100% wool, polyester-wool or texturized polyester suits in the fit you prefer. Traditional styling or a more fitted European look. Two button jackets, flared trousers. Some with vests. Choose the season's newest solids, stripes, or patterns.

*There is a charge for alterations.
Not at Morristown*

OUTERWEAR SAVINGS FOR MEN PILE LINED JACKETS, CASUAL COATS

20% off

Reg. \$40-\$50

Jackets for sport or dress. Select cotton corduroy jackets with snap fronts and warm acrylic pile lining. New fashion colors. Also save on poplin knockabout coats with acrylic pile lining.

SAVINGS FOR MEN ON ALL SLACK AND SPORT SEPARATES IN OUR STOCK

25% off

Reg. \$14-\$16

Fashion flared slacks in polyester knits or wovens in solids or patterns. Shirt jackets, blazers and vests with matching or contrasting slacks. Great for a more casual, yet put together look. Save also on coordinating casual shirts, sweaters and pants.

THE LATEST LOOKS IN MEN'S SPORT SHIRTS

Famous maker polyester-cotton flannel plaids in assorted colors. Also find striped pullover shirts, rugby shirts and fancy acrylic styles.

Reg. \$13-\$17 **Sale \$10 to \$12**

SAVINGS ON MEN'S SPORTCOATS AND SLACKS

Perfect separates for today's more casual lifestyle. Two button jackets with fashion lapels, flared trousers. Cotton corduroy, wool, polyester-wool, more.

Orig. 23.50-\$95 **20%-25% off**
Intermediate markdowns have been taken

MEN'S BRUSHED DENIM AND CORDUROY JEANS

Fashion jeans in soft brushed denim or cotton corduroy. Flared styles with belt loops, 2 front and 2 back pockets. Navy, tan or brown.

Reg. \$16-\$18 **Sale \$12**

MEN'S NEW FALL SWEATERS OR PATTERNED

Acrylic or acrylic-wool, sculptured pointelles or solids. Crew necks, shawl collared wraps, wing collars, vests, fisherman's and more.

Reg. \$12-\$25 **Sale 9.50-\$19**

25% OFF EVERY YOUNG MEN'S SUIT

Find vested suits with a lightly shaped traditional fit or a slimmer European cut. Select from an assortment of styles and fabrics.

25% Off regular prices
Not at Morristown

WOMEN'S NYLON SKI PARKAS

100% nylon ski jackets with drop in hoods and elastic snow cuffs. Zippered fronts, and pockets. Solid color.

Reg. \$36 and \$42 **Sale \$27 and \$31**
Men's ski parka Reg. \$36 **Sale \$27**

BOYS' FAMOUS MAKER CORDUROY COORDINATES

Ribless cotton corduroy separates. Zip front flared slacks, with pleated front pockets. Matching C.P.O. style jacket in navy, rust or grey.

Reg. \$11-\$16.50 **20% Off**

BOYS' FASHION ACRYLIC-WOOL SWEATERS

The newest looks in sweaters. Find shawl collared wraps and pullovers. In solids, patterns even Aztec designs. Also save on knitted boucle sweaters.

Orig. \$11-\$25 **20% Off**

25%-43% OFF IMPORTED LEATHER LUGGAGE

Amelia Earhart striped vinyl luggage. Plus Columbian hand tanned leather luggage. Soft and crushy yet durable. Find totes, carry-ons, pulmans, more.

Reg. 22.95-\$140 **13.75 to \$79**

FROM OUR BUDGET STORE

SHIRTS FOR MEN AND YOUNG MEN

Shirts for every man and his individual way of dressing. Find casual cotton flannel long sleeved shirts. In this season's plaids and checks, two breast pockets. Save also on polyester long sleeved dress shirts. Perfect for the office or after. Select prints, stripes, solids or floral patterns.

Reg. 6.50-\$9 **Sale 4.99**

MISSES' SEPARATES FROM CRICKET LANE

Famous maker coordinates that go everywhere, for sport or dress. Select vests, comfortable pull-on pants and shirt jackets in easy care, washable acrylics. Match or contrast your outfits in the latest solid fashion shades.

Reg. \$12-\$18 **Sale 8.80 to 14.40**

and at Morristown, Newark and Willowbrook.

Livingston and at Morristown, Newark and Willowbrook unless otherwise specified.

Bamberger's

Bamberger's Assistant Buyers' Sale

THEY KNOW A BARGAIN WHEN THEY SEE ONE: FASHIONS / FURNITURE /

**SAVE \$100:
19" COLOR TV WITH
1 GUN COLOR SYSTEM**

Regularly \$400

Sale \$300

19" pic. meas. diag.

New solid state Sigma 500 chasis is designed to work longer and need fewer repairs. Superb true-to-life color with one gun, one lens "Linytron" color system. Attractive white plastic cabinet.

**FINE CHINA OR IRONSTONE
SETS, OPEN STOCK
AND PLACE SETTINGS**

15% to 50%

Off regular prices

Start a set or add to your pattern. You'll find fine china and ironstone from such famous makers as Mikasa, Minton, Sango, Johnson Bros., J&G Meakin. Choose from floral, geometric and traditional patterns.

**IRREGULARS OF
DAKOTAH "DESERT"
NO-IRON PERCALE SHEETS**

Twin size **Sale 3.75**

If perfect 7.50

Sand swept dunes, hills and cacti in deep and pastel tones of rust-and-green. Other sizes at similar savings.

ADD THE MATCHING COMFORTER IRREGS.

Twin If perf. \$40 **Sale \$19**
Other sizes at similar savings.

**CHANNEL MASTER STEREO
WITH 8-TRACK
RECORDER-PLAYER** AM/FM/FM stereo receiver with built-in recorder player. Full size BSR automatic record changer, two 19" base reflex tuned port speakers.

Regularly \$200 **Sale \$140**

**MINOLTA SR-T200
PRECISION CAMERA** Single lens reflex system, multi-coated 50mm f/2 lens, through the lens metering, Shutter speeds from 1 to 1/1000th second.

Originally \$300 **Now \$170**

**HOOVER UPRIGHT
VACUUM CLEANER** Beats as it sweeps, as it cleans. With edge cleaner for easy baseboard cleaning, bumper guards to protect furniture. All steel construction.

Special purchase 54.99

**MIDLAND 23-CHANNEL
MOBILE CB RADIO** Illuminated easy-to-read top panel, fully variable squelch. S/RFO meter, PA/CB selector and more

Originally \$130 **Now \$50**

Note: CB radio license applicants must be 18 years of age or older. Temporary CB permits are available with any CB purchase.

**MICREL LED
DIGITAL WATCH** Easy to read watch shows hours, minutes, seconds and date. Continuously on, it works off reflected light. Back lighted display for easy night reading.

Regularly \$80 **Sale \$40**

**CONAIR WATERFINGERS®
SHOWER MASSAGER** Three spray settings help you relax while they soothe and gently massage. Complete with body and scalp brushes. Hand held.

Originally \$28 **Now 19.99**

Sectional sleeper or sleeper/loveseat set Reg. \$1050. **Sale \$700 your choice**
5'6"x8'6" Oriental design rug from Belgium. Reg. \$150. **Sale \$100**
4 best selling sofas solids, stripe. Reg. \$500-\$645. **Sale \$375 your choice**
Cut velvet sofa, matching 60" loveseat. Reg. \$1350. **Sale \$799**
89" Sleeper-sofa and 67" loveseat set. Reg. \$900. **Sale \$595**
Sofa and loveseat in leather-look vinyl. Reg. \$825. **Sale \$595**
Sofa, loveseat, chair. Early American styles. Reg. \$1175. **Sale \$799**
Herculon® shelter sofa, 7' long, 3½' high. Reg. \$950. **Sale \$650**
Modular velvet seating group. Your Choice, spec. purch. \$175 ea.
6-pc. dining room set in country oak. Reg. \$1245. **Sale \$995**
Contemporary vinyl club chair, light brown. Reg. \$235. **Sale \$165**
Smoked glass table, 4 directors chairs. Reg. \$525. **Sale \$299**
4-shelf etagere, contemporary styling. 32x13x72". Reg. \$255. **Sale \$175**
Pecan finish occasional tables. Reg. \$185-\$225. **Sale \$139**
Triple arch bookcase, walnut veneer. 86x86x16". Reg. \$2250. **Sale \$1199**

Solid oak roll top desk, Colonial style. Reg. \$345. **Sale \$275**
Handmade India rugs, 4 sizes. 8x10'. Reg. \$425. **Sale \$350**
Fiber rugs from India. 6x9' size. Reg. \$70. **Sale \$49**
Dacron® polyester ninon curtain panels. Special purchase \$6
Assorted shorties curtains in many colors, sizes. Reg. \$6-\$30. **Sale 4.50-22.50**
Custom draperies, made to measurements. **25% off regular prices**
Custom length draperies, standard widths. **25% off regular prices**
Semi-sheer Dacron® polyester draperies. Reg. \$18-\$72. **Sale \$12-\$48**
Assorted slipcovers. Orig. \$25-\$45. **Now 12.50-\$30**
Famous maker bath sheet irregs. If perf. \$10-\$13. **Sale 6.50**
"Answer" blanket irregs. by Martex. If perf. \$36. **Sale \$19** Twin
Venetian Scroll tablecloth in 6 sizes. Your choice, spec. purch. \$10
Bathroom rugs and ensembles. Reg. \$4 to \$22. **Sale 2.50-\$14**
*Brass floor lamps with shades: 3 styles. Reg. \$60. **Sale \$39-\$68**
Parisian plant cart, white/baked-on enamel. Reg. \$25. **Sale 12.50**
Holiday bar stools, 24" or 30". Reg. \$50-\$82. **Sale \$39-\$68**

*Not at Morristown

Sorry, there are no mail or phone orders. There is an additional delivery charge on TV's, and Furniture. Savings for the Home, at Bamberger's Livingston

Bamberger's

Days Friday & Saturday

APPLIANCES/TV'S/HOME FURNISHINGS/GIFTS...AND YOU COME OUT AHEAD

SAVE 50%
OPEN WEAVE DRAPERIES
BY KENNETH, WAMSUTTA

Now \$8

Originally \$16

No-iron washable in solids and textures. Assorted decorator colors. Many styles to choose from, contemporary to traditional. Size 48x84". Use 2 pairs for double window, 3 pairs for triple.

SAVE 29% TO 37%
SERTA EXTRA FIRM
QUILTED MATTRESS
Sale 49.95

Regular \$80 each

Twin mattress or foundation

Print cover quilted to Serta® Foam for lasting comfort. Heavy duty insulation plus hundreds of heavy gauge Tru-Flex® steel coils for deep-down support.
\$100, Sale 69.95

Full, reg. \$100, Sale 69.95
Queen, reg. \$140, Sale 99.95

SAVE \$4 TO \$8 A SQ. YD.
TREVIRA® POLYESTER PILE
LUXURY BROADLOOM

Sale 9.99 SQ. YD.
INSTALLED

Regularly 13.99-22.99

Soft Trevira® polyester looks and feels just like wool, and stays beautiful for years, with less shedding and less static, too. Now in elegant saxonomies, opulent plushes and formal velvets form 3 of the most famous names you know.

Not at Morristown

*Sale price includes custom tackless installation. Wall-to-wall over sponge rubber padding. There is an additional labor charge for custom stairwork and for orders if less than 16 sq. yds.

BEDSPREADS TWIN TO KING
AT ONE LOW PRICE Rayon-acetate, polyester fiberfill. Oriental look bamboo design on stripes will complement any decor. Blue or gold.

Special purchase \$16

Matching draperies, 48x84",
Spec. Purch. \$14

CRYSTAL AND SILVERPLATED
GIFTS Filigree food warmers, cut crystal and silverplated salad servers, silverplated coffee sets, crystal and silverplated coffee carafes.

Sale \$5 to \$25

Regularly \$10 to \$50

CLOSE-UP RECLINER,
WORKS 3" FROM THE WALL When you lean back, it glides forward. Traditional style in multi-colored Herculon® tweed or brown leathery vinyl. Biscuit-tufted back and magazine pouch.

Regularly \$220 **Sale \$160**

Not at Morristown

ASSORTED OPEN WEAVE
CURTAIN PANELS Find heavy yarn textures, solids and vari-colored panels. Choose from gold, white, brown or green. 60" wide, 63", 84", and 90" lengths.

Originally \$17-\$22 **Now 8.50 to \$11**

"OLD HOMESTEAD"
STAINLESS FLATWARE FOR 8
Hand-turned solid pine handles. Includes 4 each: dinner knives, dinner forks, salad forks, soup spoons plus 8 teaspoons.

Regularly 19.98 **Sale 9.99**

GRANDINETTI ELECTRIC
NON-STICK CREPE PAN Non-stick coated aluminum, thermostatically controlled for steady, even heat. Plug it in, dip in batter, flip and serve. With batter pan, spatula, recipe book.

Originally \$30 **Now \$20**

Cut lead crystal stemware, 4 sizes. Reg. \$64 **Sale \$32**
Mr. Coffee drip coffeemaker, 10-cup size. Reg. \$36 **Sale 26.99**
Oster 10-speed blender in harvest. Special purchase **19.99**
Proctor toaster oven with 2-slice pop-up. Special purchase **19.99**
Weaver party corn popper, thermostat control. Reg. \$15 **Sale 10.99**
40-piece ironstone for 8, white swirl pattern. Reg. \$25 **Sale \$20**
Ekco 9-pc. "Baker's Secret" bake set. Reg. 14.95 **Sale 12.99**
50-piece stainless steel flatware for 8. Special purchase **\$20**
Farberware 5-qt. crocker-cooker. Reg. \$23 **Sale 15.99**
Corningware 7-pc. cook and brew set, 3 patterns.
Reg. 29.99-36.99 **Sale 23.99-29.95**
7-pc. "Staff of Life" cook set. If purch. sep. 73.50 **Sale \$34**
7-pc. teakwood salad set, serves 6. Reg. \$35 **Sale \$16**
Spice rack with battery clock, spice-filled bottles. Reg. \$35 **Sale \$20**
Rival 3½-qt. crock pot slow cooks. Reg. \$20 **Sale 11.99**
4 Hand-blown beer mugs, 3 styles. Special purchase **\$10**
Regina 3-speed electric broom. Orig. 39.99 **Now 29.99**

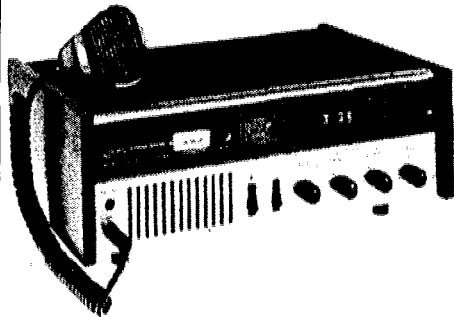
Eureka upright vacuum, complete with tools. Spec. purch. **99.99**
Welco 1000 watt hair blower with temperature control.
Reg. \$15 **Sale 11.99**
Vista Sunbeam steam-dry iron, 26 vents. Spec. purch. **10.99**
Magnavox console color TV, large screen. Reg. \$650 **Sale \$480**
ERC AM/FM stereo with 8-track player. Reg. \$150 **Sale \$100**
Pioneer stereo, BSR changer, 3-way speakers. Reg. \$430 **Sale \$300**
Panasonic AM/FM/FM stereo portable radio. Orig. \$80 **Now \$50**
G.E. 2-speed washer with filter-flo. Reg. \$300 **Sale \$250**
Panasonic AM/FM 5-band radio, battery operated. Orig. \$50 **Now \$36**
Bell and Howell sound movies outfit. Special purchase **\$375**
Magic Chef 30" gas range. White. Reg. \$320 **Sale \$270**
Litton micro-wave oven, 14-pc. cooking set. Reg. \$300 **Sale \$250**

Major Appliances, Stereos, CB radios, Radios, Vacuums, Small Appliances, Cameras, Digital Watches and at Morristown, Newark and Willowbrook unless otherwise specified.

Bamberger's

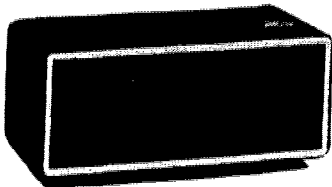
Harty electronics

Christmas Gift Ideas



- CB
- Car Radios*
- Calculators
- Digital Watches
- Portable Radios

• 8 Track & Cassette Decks



- TV Games
- Clock Radios
- Stereo Systems
- * Installation Available



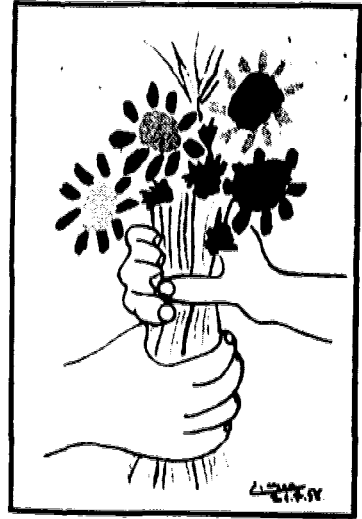
HOCKEY

5% Discount on any item with this Ad Offer expires Nov. 25, 1976

LIVINGSTON MALL • 994-2283

Lower Level Near Bamberger's

WE FRAME WHILE-U-WAIT!



*That's right... In most cases we can frame while you wait! Choose from our large selection of standard size and custom frames at popular prices.

Bring in your diplomas, photographs, posters, prints, lithos, graphics, etc. for fast and expert framing. We'll have you on your way in no time at all.

Prints N Things

- Fashion Center, Rt. 17, Paramus—652-5574
- Livingston Mall, Livingston—994-4142
- Willowbrook Mall, Wayne—256-1050

- Woodbridge Center, Woodbridge—638-0977
- Meads Park Mall, Edison—548-3833
- Echelon Mall, Voorhees—609/772-2960



Man in wool, shaped by Ralph Lauren for Chaps. Here's a name designer man can truly claim as his own. His women's wear fame came only recently. Typical Ralph Lauren artistry, his classic pure wool vested suit with shaped body, traditional soft shoulders. Blue or brown, 210.00. Typical too of the choice you have in our kind of suburban stores where it's easy to shop, easy to find exactly what you want, easy to pick up your finished garment. And be pleased. Especially when you're after a pure wool suit. Wool. In a class by itself.

Natekons.

Family owned group of stores in Red Bank, New Brunswick, Elizabeth, Livingston Mall, N.J.; Stamford, Fairfield, Connecticut.

1 Livingston Mall, near Sears, enter from Walnut Street area.



The Woolmark is a registered trademark of the International Woolmark Commission. Pure Wool.



MATERNITY CLEARANCE!

Nov. 18-19-20

25% TO 50% OFF

Storewide savings on selected pant suits, pants, tops, and dresses!

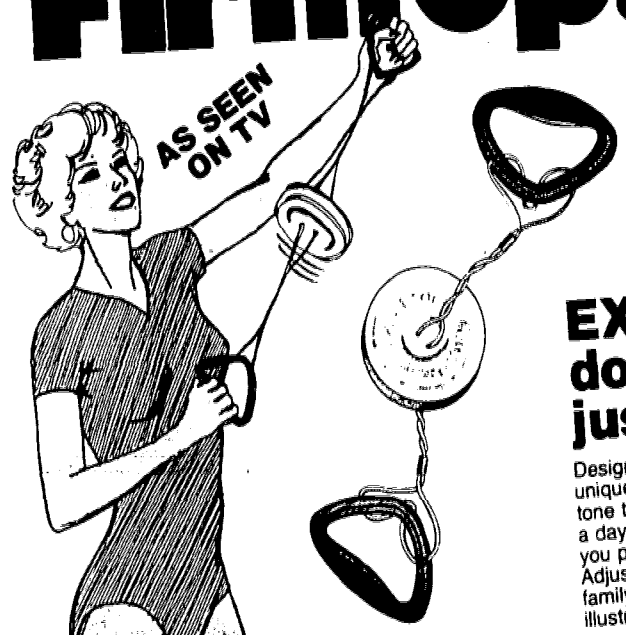
Motherhood
MATERNITY SHOPS

Livingston Mall

(Upper Level Behind Morrow's)

HERMAN'S

Shape Up! Firm Up! Tone Up!



The Original
BUTTON & STRING
EXERCISE THING
does wonders in
just 5 minutes a day!

Designed for both men and women, this unique exerciser helps shape, firm, and tone the body. Use it for just five minutes a day, setting your own pace... The harder you pull, the greater the resistance. Adjusts to the needs of every member of the family. Comes with complete, fully illustrated exercise program. By Healthway's.

7⁹⁹



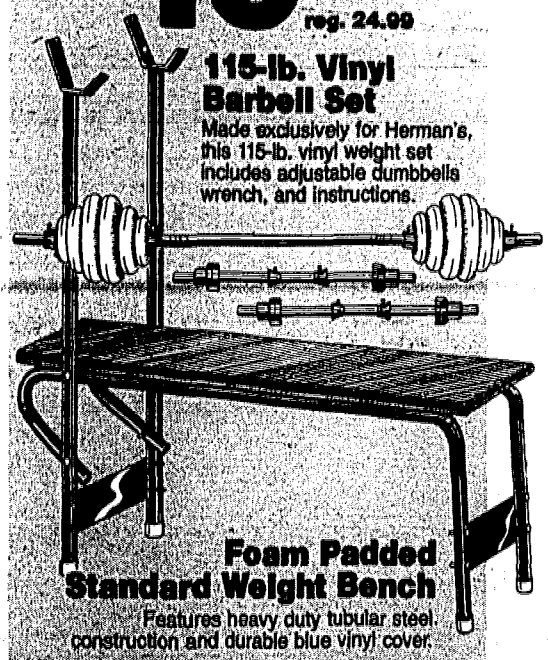
**Diversified
Weight Bench or
Billard
Barbell Set**

Your
Choice

19⁹⁹
reg. 24.99

**115-lb. Vinyl
Barbell Set**

Made exclusively for Herman's, this 115-lb. vinyl weight set includes adjustable dumbbells, wrench, and instructions.



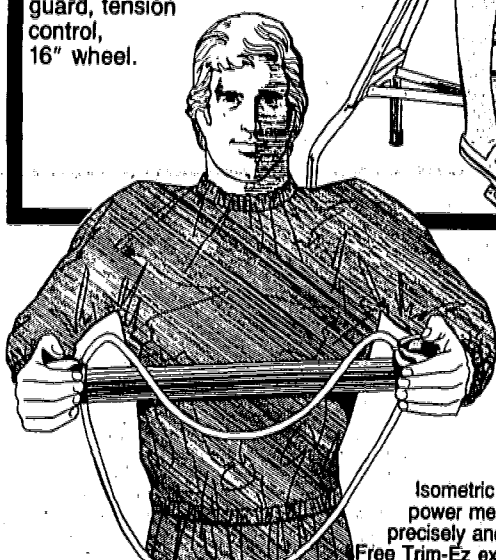
**Foam Padded
Standard Weight Bench**

Features heavy duty tubular steel construction and durable blue vinyl cover.

**Easy shape-up!
AMF TR25
Exercise Bike**

39⁹⁹
reg. 49.99

Pedal your way to fitness! 20" welded frame, adjustable handlebars, full chain guard, tension control, 16" wheel.



**Bullworker
Plus Free Trim-Ez
Exercise Suit**

reg. 49.98 **39⁹⁹**

Isometric exerciser with newly developed power meter that is calibrated to measure precisely and automatically as you exercise. Free Trim-Ez exercise suit induces perspiration.

We're Number One!
Herman's
World of Sporting Goods

**LIVINGSTON MALL
LIVINGSTON**
OPEN DAILY TO 9:30 P.M.
MAJOR CREDIT CARDS ACCEPTED



Roy White, New York Yankees



Bob Fitzsimmons, WNEW Radio

SANTA'S ARRIVAL CELEBRATION

Livingston Mall kicks off its Christmas activities with the Santa's Arrival celebration on Saturday, November 20 at 11 a.m. Riding atop a Livingston Fire Department fire engine, escorted by the Livingston Police Department, Santa will arrive in front of the Mall main entrance where he'll be met by a celebrity-filled entourage which will include Bob Fitzsimmons of WNEW Radio, Roy White of the New York Yankees, Livingston Deputy Mayor Colburn and C.O. Sniffen, President of the Livingston Mall Merchants Association.

Upon arrival, the party will move to the Sears Court in the Mall where a short ceremony and autograph-signing session will take place.

A Bronx native, Bob Fitzsimmons graduated from All Hallows High School and Boston University. After his two-year stint as a WNEW traffic reporter and record library assistant, Fitz went on-the-road to get on-the-air, hosting his own show at WRKL (New York, NY), WFMJ (Youngstown, Ohio) and WPEN (Philadelphia) before returning to New York to join WHN. In 1973, he had his real New York homecoming when he kept his promise . . . and took over his own time slot at WNEW. After a "hiatus" on WNBC, Fitz rejoined WNEW in 1974.

Also on hand to greet Santa will be Roy White, outfielder for the New York Yankees. Roy, who is a resident of Wayne, N.J., comes

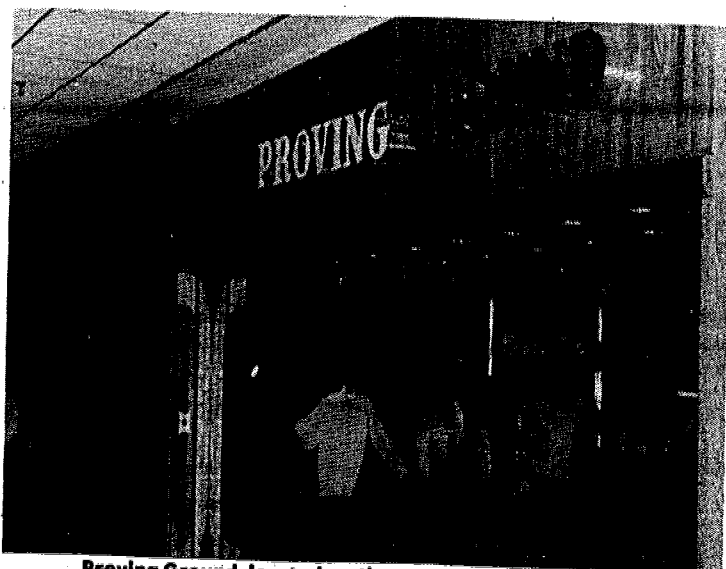
from the baseball hotbed of Campton, California. During his Yankee career, Roy has accomplished a great deal including hitting .290 or better three straight years, making two All-Star teams, setting an American League record for sacrifice flies (17 in 1971), tying a major league record by becoming the first outfielder to field over 1,000 in a season (1971) as well as holding the current longest running playing streak in the American League—394 straight games going back to August 31, 1971.

Santa will make Livingston Mall his home for the duration of the Christmas season and will be available with all his fans in the Center Court of the Mall.

For your holiday shopping convenience, Mall hours will be as follows:

November 26 - December 14	10 am - 10 pm
December 15 - December 21	10 am - 11 pm
December 22 & December 23	9 am - 11 pm
December 24, Christmas Eve	9 am - 6 pm

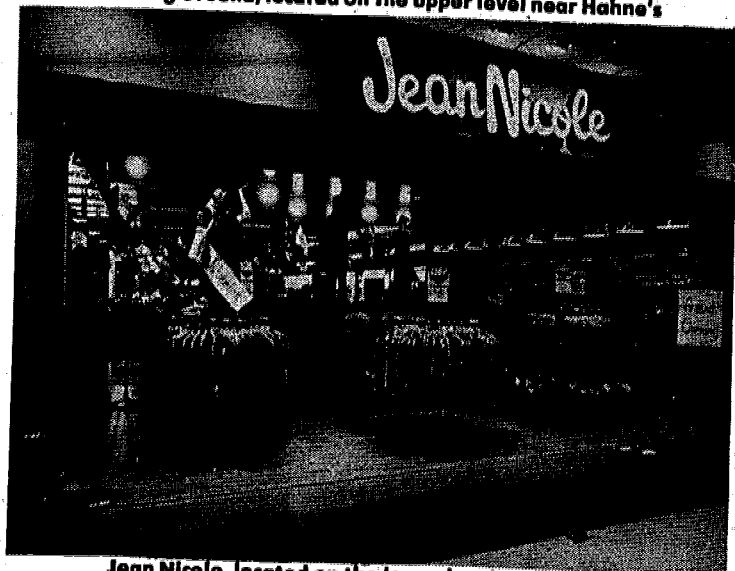
NEW STORES NEW DIMENSIONS AT MALL



Proving Ground, located on the upper level near Hahne's



Orient Express, located on the upper level, side corridor near Hahne's.



Jean Nicole, located on the lower level near Carlin's.



Superhero Shop, located on the lower level next to Peter Williams for Her

THE WORLD'S LARGEST RECORD TAPE & AUDIO DEALER

- We honor
 - Diners Club
 - BankAmericard
 - Master Charge
 - American Express
- on purchases of \$5 or more

SAM GOODY, INC.

• LIVINGSTON, N.J. — Livingston Mall
Hours: Mon. thru Sat. 10-9:30 • (201) 994-9076
• WAYNE, N.J. — Wayne Hills Mall (Hamburg Turnpike at Berdan Ave.)
Hours: Mon. thru Sat. 10-9:30 • (201) 694-0630
• PARAMUS, N.J. — Garden State Plaza
Hours: Mon. thru Sat. 10-9:30 • (201) 843-3773
• WOODBRIDGE, N.J. — Woodbridge Center
Hours: Mon. thru Sat. 10-9:30 • (201) 836-3643
• EATONTOWN, N.J. — Monmouth Mall (Rte. 35 & Wyckoff Road)
Hours: Mon. thru Sat. 10-9:30 • (201) 542-8941

PAGE 11, NOVEMBER 1976

In our Audio Dept. . .



The extreme accuracy of its reproduction allows you the luxury of fine-tuning your audio system exactly the way you want it. With the 2000Z you can exaggerate highs, accentuate lows or leave it flat.

THIS WEEK! **79⁹⁵**

BONUS OFFER!

Trade-in Your Old Cartridge for this Empire 2000Z and we will Give You **\$10.00 OFF** Our already Discounted Price. **PLUS** Show us Your Receipt that you Bought Your Old Cartridge from Sam Goody & We Will Give You Another **ADDITIONAL \$10.00 OFF.**

THIS OFFER GOOD THRU NOV. 20, 1976

**THIS WEEKS LP & TAPE SPECIALS!
NOW THRU NOVEMBER 20, 1976**

Your choice of ANY

- ★ CAPITOL ★ APPLE ★ ANGEL
 - ★ A&M ★ ODE ★ MCA
 - ★ HARVEST ★ ARIOLA ★ ANGEL/MELODYIA ★ SERAPHIM
- LP RECORD or PRE-RECORDED TAPE in our huge Inventory—
In the Price Categories Listed

LP Records

Mrs. Sugg. List Price \$3.98 Each

THIS WEEK! **249** EACH LP

Mrs. Sugg. List Price \$6.98 Each

THIS WEEK! **419** EACH LP

Mrs. Sugg. List Price \$7.98 Each

THIS WEEK! **479** EACH LP

On Tape Where Available

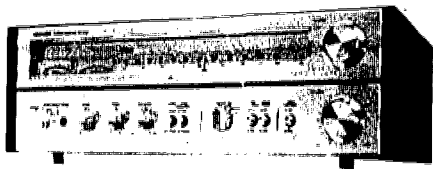
Mrs. Sugg. List Price \$7.98 Each

THIS WEEK! **549** Each Tape

Sets of 2 LPs or more—multiply no. of LPs in set by above prices

In our Radio Dept. . .

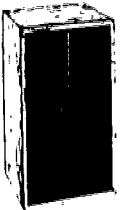
TOP QUALITY & GREAT SOUND
COMBINES THIS EXCELLENT
BUDGET STEREO SYSTEM!



TOSHIBA SA-320

AM/FM STEREO RECEIVER

Features a continuous power output of 15 watts per channel, min. RMS at 8 ohms or 15 watts per channel at 4 ohms, both channels driven, from 20 to 20,000 Hz, with no more than 0.4% total harmonic distortion • Attractive functional double-decker design • Superb reproduction of all Stereo sources • Ample reserves of low distortion power • Direct-coupled symmetrical complementary circuit • Balanced power line with OCL output • Low noise PCT transistors throughout

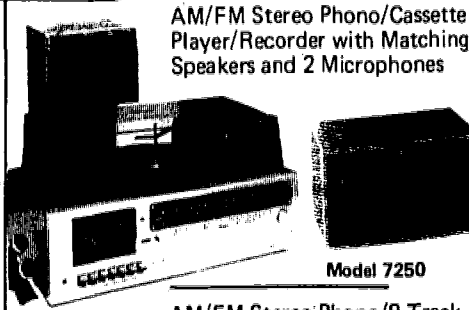


JENSEN Model 20 SPEAKERS

Two-way speaker system with 8-inch woofer and 2-inch cone tweeter.

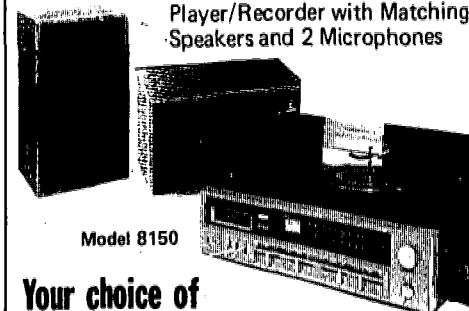
B-I-C 920

Multiple Play Manual Turntable
The B-I-C 920 Turntable features • Built-in cueing • Anti-skating • SHURE M75CS Cartridge with diamond stylus
Dust cover optional and extra.



AM/FM Stereo Phono/Cassette Player/Recorder with Matching Speakers and 2 Microphones

Model 7250



AM/FM Stereo Phono/8-Track Player/Recorder with Matching Speakers and 2 Microphones

Model 8150

Your choice of either of these Kings Point Compacts

THIS WEEK! **169⁹⁵** EACH SYSTEM COMPLETE AS SHOWN

THIS OFFER GOOD THRU NOV. 20, 1976.

THE PERFECT STEREO DUO FOR YOUR CAR!

IN-DASH AM/FM/MPX CASSETTE PLAYER from J.I.L.

J.I.L. Model 604

Reg. \$119.95

89⁹⁵

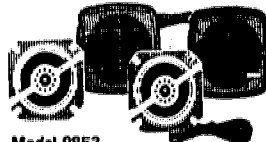
- Volume, Balance and Tone Controls • AM/FM Switch • Mono/Stereo • Fast Forward • Eject button

THIS OFFER GOOD THRU NOV. 20, 1976.

JENSEN 5/4 COAXIAL CAR SPEAKERS

Reg. \$45.95 Per Pair

29⁹⁵ PER PAIR

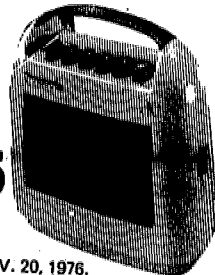


Model 9853

THIS OFFER GOOD THRU NOV. 20, 1976.

PANASONIC Portable Cassette Recorder/Player

- Condenser Microphone
- Pushbutton operation
- Available in Red, White and Blue.



THIS WEEK! **26⁹⁵**

THIS OFFER GOOD THRU NOV. 20, 1976.

THIS WEEK! **279⁹⁵** COMPLETE SYSTEM AS SHOWN

THIS OFFER GOOD THRU NOV. 20, 1976.

In our Blank Tape Dept. . .

TDK 8-TRACK EXTRA SPECIAL 2-PACKS!!!

• Wide dynamic range • Full fidelity sound range, bright and warm, no special recorder setting need—good for car stereo, portable and home hi-fi deck • Precision molded cartridge and guaranteed jam proof mechanism.

8-TR 45D

45 minutes of Recording/Playing Time (Total 90 minutes)

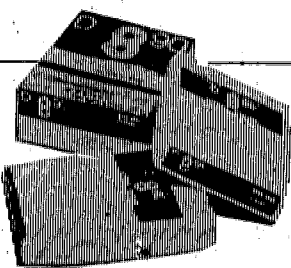
Now the Special 2-Pack! **344** EACH 2-PACK

8-TR 90D

90 minutes of Recording/Playing Time (Total 180 minutes)

Now the Special 2-Pack! **419** EACH 2-PACK

You must buy the Special 2-Pack to take advantage of this Special Offer
THIS OFFER GOOD THRU NOV. 20, 1976.



SHURE V-15 Type III

Stereo "Plus" Cartridge

Among its most notable features are a revolutionary laminated core structure and an ingenious new stylus assembly with 25% lower mass. Result? Higher-than-ever trackability at whiplash weight tracking forces. An astonishingly flat frequency response. And a significantly extended dynamic range.

THIS WEEK! **54⁹⁵**

THIS OFFER GOOD THRU NOV. 20, 1976.

WHERE CAN YOU BUY A...

- Piece of French Brie
- Garlic Pickle or Stick of Pepperoni
- Wedge of English Stilton
- Ham on rye to go
- Piece of Greek Feta
- Frozen Quiche or piece of Cheesecake
- Piece of Italian Gorgonzola
- Coke or coffee to go
- Piece of Domestic Kasseri
- Package of Filo Pastry Dough
- Sack of Jumbo Prunes
- Personalized Cheese Gift

More than just a cheese store...



95 Livingston Mall, Lower Level near Bam's.
 992-2494
 Located near entrance opposite Airport Shop
 on the Eisenhower Parkway Side

Ed's
TROPICAL
Aquariums
LIVINGSTON MALL

LIVINGSTON, NEW JERSEY (201) 994-2390
We reserve right to Limit Quantities. EXPIRES NOV. 24, 1976

NEW STORE IN WAYNE, N.J. WESTBELT MALL 256-9393

BOTH STORES OPEN TILL 9:30 P.M.

MASTER CHARGE BANK AMERICARD DINERS CLUB ACCEPTED

COMPLETE 10 GALLON STARTER-SET
INCLUDES: AQUARIUM AIR PUMP, HEATER, BOTTOM FILTER, FLOSS, CARBON, TUBING, BOOK & FOOD
9.99

HIGHLINE AQUARIUMS NOW IN STOCK

DECORATED AQUA LUME (AQUARIUM LAMP) WITH COLORFUL GRAVEL & PLANTS
24.99

29 GALLON STARTER-SET
INCLUDES: ALL GLASS TANK DELUXE STAND & GLASS CANOPY
27.99

DECORATED BRANDY INHALER WITH PLANTS & GRAVEL
5.99

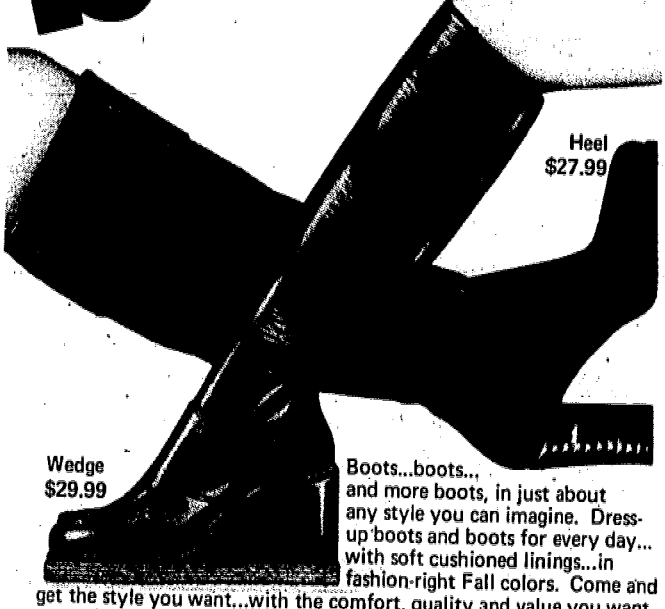
CHRISTMAS STARTER SETS

5 1/2 GALLON DECORATED AQUARIUM WITH PLANTS & COLORFUL GRAVEL
6.99

WOOD & GRAIN TANKS NOW IN STOCK

OTHER LOCATIONS
TONKERS, FOREST HILLS, LYMBROOK, ROOSEVELT FIELD, FARMINGDALE

boots!



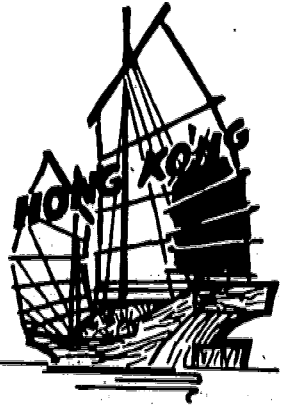
Wedge \$29.99

Heel \$27.99

Boots...boots... and more boots, in just about any style you can imagine. Dress-up boots and boots for every day... with soft cushioned linings...in fashion-right Fall colors. Come and get the style you want...with the comfort, quality and value you want.

national shoes
 LIVINGSTON MALL

HONG KONG ORIENTAL GIFTS, LTD.



Christmas Headquarters for Over 9000 Unusual Oriental & Domestic Items From All Over The World. Gifts At Prices You Can Afford.

SEE OUR SPECIAL GOURMET SELECTION OF CHINESE FOODS

ASSORTED STATUARY, ORIENTAL FIGURINES & VASES, WALL HANGINGS & RELIGIOUS ARTICLES.

Full Line of Xmas Studio Cards Stocking Stuffers, Jewelry, Bongs, Pipes and Poster Sets.

LIVINGSTON MALL
 UPPER LEVEL NEAR SEARS 892-8605



SAVE \$20 TO \$25
two best selling car coats
at one special value price
49⁹⁹ regularly \$70 to \$75

Exceptional buy from the country's most respected makers of quality suburban coats. Plus pile lining and collar. Pure-wool in camel or grey; texturized polyester in camel, navy, sand. Sizes 38 to 46.
Long sizes, regularly \$75 to 77.50..... **NOW 49.99**



SAVE \$20
young men's down vests
19⁹⁹ regularly \$30

The new kick, this vest is made of rip-proof nylon with the same prime northern down fill. Navy, light blue, red in sizes S,M,L,XL.



SAVE \$20
young men's down parkas
49⁹⁹ regularly \$60

Rip-stop nylon shell is filled with authentic prime northern down and hooded for extra warmth. Navy, light blue, tan, bottle, sizes S,M,L,XL.

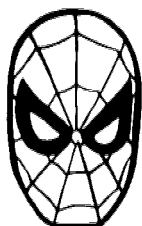
KENNEDY'S

Livingston Mall • Woodbridge Center.

GIVE YOUR KIDS A **SUPER X-MAS**
WITH A GIFT FROM

SUPERHERO SHOP

(COMICDOM'S ONLY DEPARTMENT STORE!)



AND HERE'S A SUPER SPECIAL FOR YOU! MY OWN COMIC ACTION ASSEMBLY KIT FROM AURORA FOR ONLY \$1.49 OR A BATMAN BIKE HORN FOR ONLY \$1.69 EACH! A SUPER VALUE!

COME SEE OUR COLLECTION OF SUPER TOYS, GAMES, BOOKS, PUZZLES, OLD & NEW COMICS, PJ'S, T-SHIRTS & SWEATSHIRTS FEATURING BATMAN, WONDER WOMAN, SPIDEY, ME AND OUR OTHER SUPERHEROS. COME NOW!! **HULK SAYS SO!!**



SEARS BAMBURGERS
X
SUPERHERO SHOP
994-9207
10 AM TO 9:50 PM

WE BUY OLD COMICS! BRING THEM IN FOR A FREE APPRAISAL!

P.S. - OR VISIT OUR STORE IN RANDOLPH • ON CENTER GROVE RD. & RT. 10 361-6327

archrival

athletic shoes

FEATURING BASKETBALL SHOES BY:

- **Adidas** (Including Superstar, Pro Models & Tournaments)
- **Puma** (Including the new Super Cyldes)
- **Nike** (Including Bruins & Blazers)
- **Converse** (All Stars)
- **Pro Keds**

WRESTLING SHOES BY:

- **Adidas**
- **Tiger**

LIVINGSTON MALL - Lower Level Opposite Herman's

This is not a \$57 FRYE BOOT



This is a \$29.99 MILES BOOT

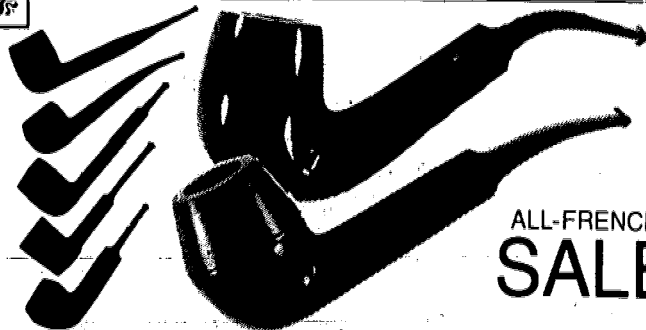
MILES
for today's women

This is not a \$26 BASS BOOT



This is a \$14.99 MILES BOOT

MILES
LIVINGSTON MALL



ALL-FRENCH SALE

Parisian matte & Marseille pipes **5.95** EA.

Made in the pipe centers of France. These pipes are fashioned in Corsican briar by old-time craftsmen. Choice of unique French shapes.



F.S. King cigar 50's 4.49
Factory fresh repacks of famous President-size by a top American maker.

F.S. #80 cigar 50's 2.39
Factory-fresh repacks of top-selling little Corona-size cigars.

Skandinavik Tobacco Reg. or Aromatic \$3.75 Large Tin 2.99

Bic Disposable Lighter Mir's. Suggested List Price \$1.49 69¢

Perkins Tobacco

Tobacconists Since 1862
One of the Stop & Shop Companies

Livingston Mall
LIVINGSTON
Also available at
Bergen Mall
PARAMAS

Rogers Clothes · Rogers Clothes · Rogers Clothes

Great holiday get-together!
Our great styles, plus
our great buys!

Vested Suits _____ \$99 to \$195

Denim Casuals:
Jackets _____ from \$23.95
Pants _____ from \$15

Outerwear _____ from \$40

Suedes and Leathers _____ from \$75

Dress Shirts and Sport Shirts
• Arrow • Van Heusen • Damon



Rogers Clothes

You bring the body
We've got the clothes

Stores throughout New Jersey

• LIVINGSTON MALL
(Ground level between Sears & Mahnes)
Open Every Night & Sat. to 9:30

• MORRISTOWN: 19 PARK PLACE
Open Wed. & Fr. Nights to 9

• WILLOWBROOK MALL, WAYNE
Open Every Night & Sat. to 9:30

FREE (Lifetime)
ALTERATIONS

Instant Credit
Open a Rogers Charge Account

Copyright 1976 Rogers Clothes

parklane HOSIERY

the Fashion COMBO.



Eves Rib
7.99
IN 12 EXCITING COLORS

The Shirt
7.99
IN 8 FASHION COLORS

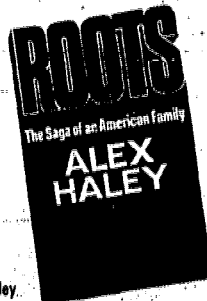
parklane HOSIERY

LIVINGSTON MALL

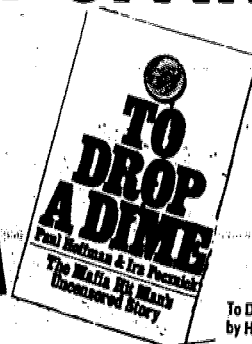
992-1173

Waldenbooks

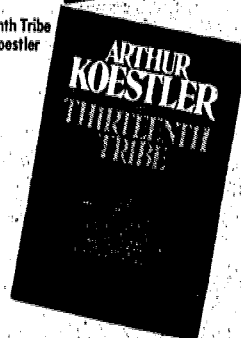
GREAT BOOKS FOR HOLIDAY GIVING!



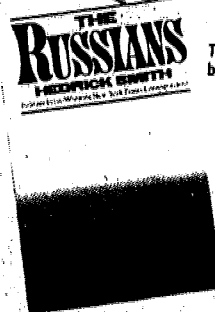
Roots by Alex Haley.



To Drop A Dime by Hoffman & Pecznick



The Thirteenth Tribe by Arthur Koestler



The Russians by Hedrick Smith

Available at these and all Waldenbooks locations,
where buying books is a pleasure.

LIVINGSTON MALL

Lower Level
Near Sears

Waldenbooks
WALDEN BOOKS

BUTCHER BLOCK FOR THE BAKER & CANDLE-STICK MAKER...



THE ACCOUNTANT, HOUSEWIFE, LAWYER, POLICEMAN, TEACHER, DOCTOR, LETTER CARRIER, ENGINEER, GRANDMOTHER, SALESMAN, WAITER, PHYSICIST, CHEF, EXECUTIVE, ARTIST, FIREMAN, MUSICIAN, ANYONE ELSE ON YOUR HOLIDAY GIFT LIST.

This year, give a gift as solid as your friendship. Give genuine butcher block furniture and accessories from Woodshed.



GIFT CERTIFICATES TOO!

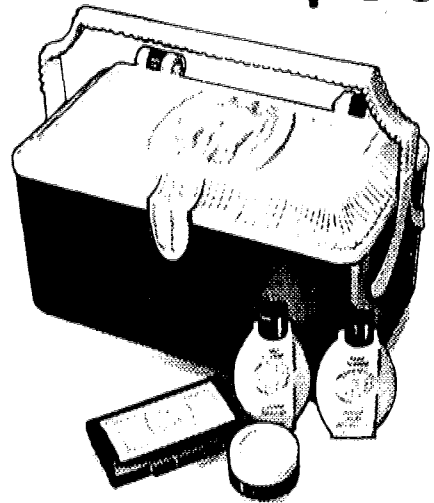
Mastercharge
BankAmericard
Revolving Charge

WOODSHED BUTCHER BLOCK CO.

NEW YORK: 243 E. 60 St. / 212-751-7640
QUEEN: 70-40 Austin St., Forest Hills / 212-544-1411
NASSAU: 315 Sunrise Hwy., Lynbrook / 516-887-4486

NEW JERSEY: Livingston Mall, Livingston / 201-992-9110
BRUNSWICK SQUARE MALL: East Brunswick / 201-238-3268
MONMOUTH MALL: Eatontown / 201-544-1994

JUST \$5...



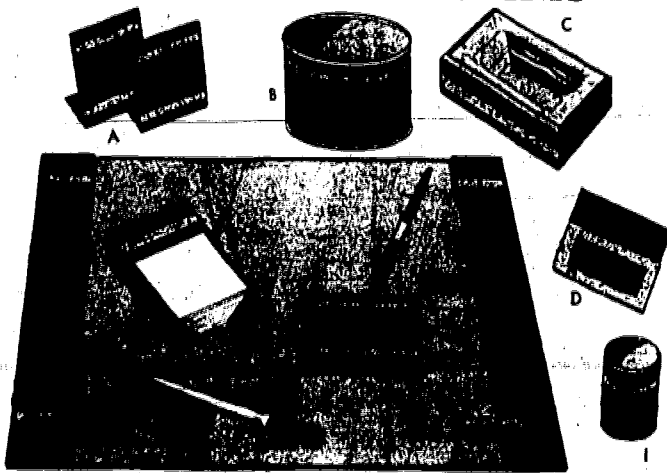
with any \$25 purchase of Merle Norman cosmetics. Four of our most exciting new fall items are packed in the most versatile purse you'll ever own!

A great gift idea. For yourself...or for someone almost as nice!

MERLE NORMAN COSMETICS

LIVINGSTON MALL
Lower Level-Hahne's Entranceway
994-3621

OPEN STOCK SALE! DESK ACCESSORIES



Matching Accessories in six lovely colors

USUAL 2.99 EA.

YOUR CHOICE **2³⁹**

- A. Book ends
- B. Oval desk basket
- C. Ashtray
- D. Stationary rack
- E. Memo holder
- F. Pen and base

Matching leathertex coverings with gold tooling . . . in good looking brown, green, pink, blue, yellow only.

- G. Desk pad, sizes 12"x19", 14"x24", 16"x21", 19"x24"
- H. LETTER OPENER, USUAL 1.50 1.19
- I. PENCIL CUP, USUAL 1.50 1.19



SCOTTY

STATIONERY STORES

LIVINGSTON MALL — Lower Level Near Bama

"America's Leading Full-Line Stationery & Luggage Store"

PHONE 992-0484

Give her love!

Delicious little demi-doll and bikini set swirls saucily in see-through Nylol bordered by exotic Marabou trim.

\$30

frederick's
OF HOLLYWOOD
Livingston Mall

... from a collection of holiday gift gowns, baby dolls and peignoirs.

USE YOUR MASTER CHARGE BANKAMERICARD AMERICAN EXPRESS

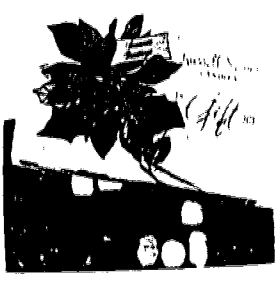


For a Merry Christmas



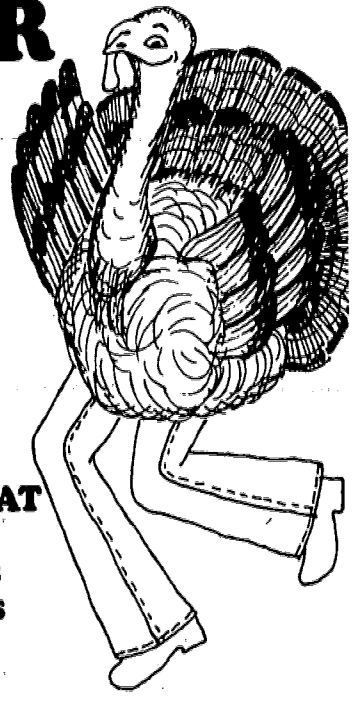
ASSORTED CHOCOLATES
...a very popular assortment in a variety of sizes... creams, fruits, nuts, caramels, nougats, toffeescotch, nut crunches and chewy centers...dipped in finest dark and milk chocolate.

THE GIFT BOX
...an exquisite gift package filled with a variety of chocolates and butter buns...creams, nuts, crisp and chewy centers.



Mrs. Stover's
CANDIES
LIVINGSTON MALL

THE GREAT
GOBBLER
SALE.
25%-40%
OFF



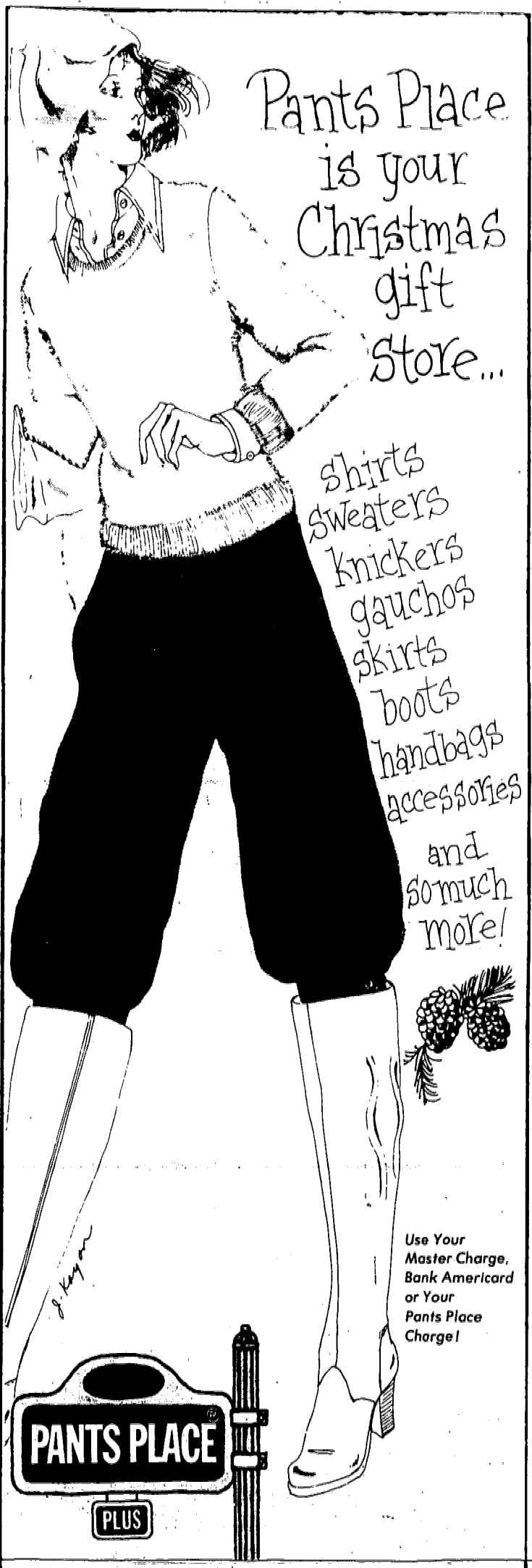
HUNDREDS OF GREAT
VALUES ON:
• Guys pants & shirts
• Gals tops & bottoms
• Kids pants & shirts

NOV.
18-28

Good selection although
limited styles, colors & sizes.



LIVINGSTON MALL



Pants Place
is your
Christmas
gift
store...

shirts
sweaters
knickers
gauchos
skirts
boots
handbags
accessories

and
so much
more!



Use Your
Master Charge,
Bank Americard
or Your
Pants Place
Charge!



LIVINGSTON MALL



B. DALTON BOOKSELLER
WHERE YOU CAN FIND SANTA,
MRS. CLAUS, THE REINDEER,
THE ABOMINABLE SNOWMAN,
THE GRINCH THAT STOLE
CHRISTMAS, CHARLEY BROWN,
TINY TIM . . . AND OVER 50,000
OTHERS, IMMORTALIZED
IN PRINT.

B. Dalton
BOOKSELLER

UPPER LEVEL
 LIVINGSTON MALL
 994-2250

WHEN IT COMES TO COMPLETENESS WE WROTE THE BOOK.

JEANS WEST
PRE-HOLIDAY
SALE

A SELECT GROUP OF PULLOVERS AND SLACKS - VALUED UP TO 26.00 NOW 12.90

-LIVINGSTON-

YOUR CHOICE!
 from **Kimball**



• NEW 37-in. height fits today's room sizes
 • Italian Provincial, Contemporary, Early American
 • Exclusive "Unlock Back" for longer piano life
 reg. \$1195.

Kimball's exclusive Entertainer makes this Swinger easy to play. The most advanced electronic technology makes it affordable, versatile, and fun to play. All in all, it's the kind of value you can expect from Kimball, the largest keyboard manufacturer in the United States.
 reg. \$1195.

SAVE \$307⁰⁰

NOW \$888

Kimball FLOOR MODELS

All merchandise fully warranted. Save up to \$1,000.

<p>Floor Model #1 #110 organ reg. \$895. NOW \$695.- Save \$200.- with rhythm attachment</p>	<p>Floor Model #2 #300 organ. reg. \$1395.- NOW \$1295.- Save \$100.- with "Swinger Bass" patterns</p>	<p>Floor Model #3 #400 organ reg. \$1695. NOW \$1395.- Save \$300.- play melody chords with one finger</p>	<p>Floor Model #4 #500 organ reg. \$1895. NOW \$1595.- Save \$400.- with featured "Syntha Swinger II"</p>
---	---	---	--

<p>Floor Model #5 #900 organ reg. \$2295.- NOW \$1895.- Save \$400.- play like a pro using "Entertainer II"</p>	<p>Floor Model #6 #1100 organ reg. \$3295.- NOW \$2795.- Save \$500.- create any effect you want to hear</p>	<p>Floor Model #7 #1500 organ reg. \$4995.- NOW \$4395.- Save \$600.- full console equipped with all features</p>	<p>Floor Model #8 #1700 organ reg. \$5995.- NOW \$4995.- Save \$1000.- total effects & three separate channels of sound.</p>
--	---	--	---

PLUS MANY MORE TO CHOOSE FROM
 EASY TERMS AVAILABLE

WE OFFER QUALIFIED DEGREED TEACHERS

ENROLL NOW IN OUR BEGINNING ORGAN CLASS

\$1195 includes all materials

Anthony's **MUSIC**
LIVINGSTON MALL

(NEXT TO BAMBERGER'S)
 LIVINGSTON, N.J. MON.-SAT. 10-9:30 • 994-0995
 OTHER LOCATIONS: ELIZABETH, MENLO PARK MALL, BERGEN MALL



"Put A Little Light In Your Life"

ANGEL CHIMES **3.50**

Refill Candles 7 3/4" box of 12

WICKS 'N STICKS

LIVINGSTON MALL
UPPER LEVEL NEXT TO BAMS



**COHEN'S FASHION OPTICAL
PRESENTS HIGH FASHION HOLIDAY
EYEWEAR FEATURING *Silhouette***



**GLASSES
MADE
IN YOUR
PRESCRIPTION
IN 1 HOUR ***

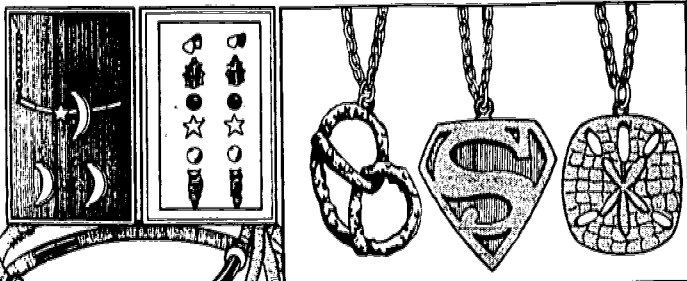
- COMPLETE EYE SERVICE CENTER
- PRESCRIPTIONS FILLED & LENSES DUPLICATED
- WIDE VARIETY OF FASHION TINTED LENSES
- LARGEST SELECTION OF ALL DESIGNER FRAMES & SUNGLASSES BY *Avant-Garde*

**COHEN'S
FASHION OPTICAL**

LIVINGSTON MALL
LOWER LEVEL NEAR SEARS
201/994-1444
Mon. - Sat. 10-9:30

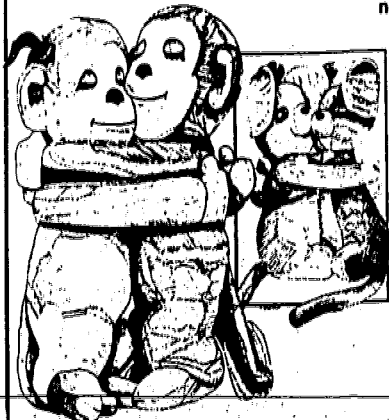
*In most cases
MAJOR CREDIT CARDS
N.Y. - N.J. - CONN. - FLA. LOCATIONS

VERY MERRY CHRISTMAS GIFTS



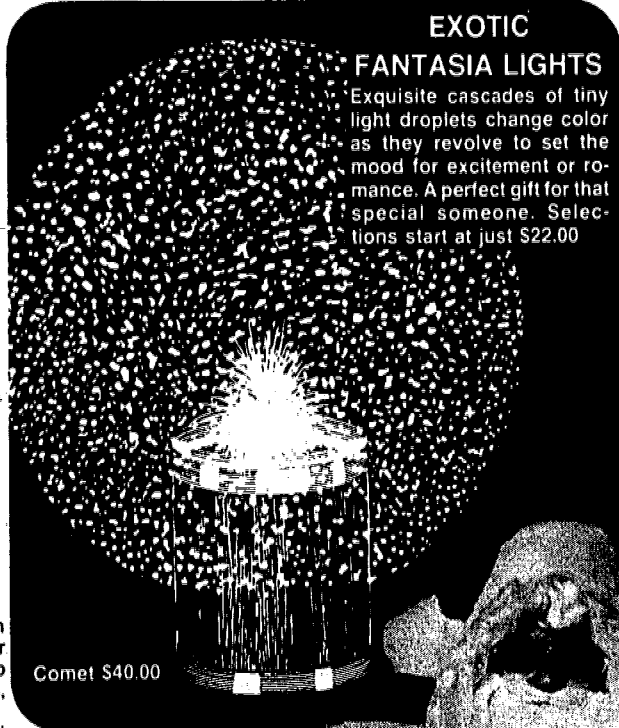
**"HIS 'N MS."
JEWELRY COLLECTION**

An assortment of bold pewter necklaces and leather chokers make terrific gifts for him. And for her, delicate necklaces and matching stud earring sets in gift boxes. Or choose a gift assortment of six pairs of earrings.
pewter or leather \$3.00 each
earring sets \$3.00 each
necklace and earring sets \$4.00 each



PLUSH HUGGABLES

These soft and lovable pets are sure to win your heart! They cuddle up and stay together with velcro material on their hands—no snaps or buttons to break. Perfect for teens, little ones and grown-ups, too.
Choose "Monkey Around" or "Eeny and Meeny" \$10 ea.



**EXOTIC
FANTASIA LIGHTS**

Exquisite cascades of tiny light droplets change color as they revolve to set the mood for excitement or romance. A perfect gift for that special someone. Selections start at just \$22.00

Comet \$40.00

spencer GIFTS
AMERICA'S GALLERY OF UNUSUAL GIFTS
LIVINGSTON MALL

BANKAMERICARD • MASTER CHARGE • LAYAWAY • GIFT CERTIFICATES

SHOP SMARTER

FOR VITAMINS AT



Quantities Limited-Hurry! Shop the GNC Store Nearest You—NOW THRU December 31, 1976
LIVINGSTON MALL MORRIS COUNTY MALL - PARAMUS PARK MALL
 UPPER LEVEL WILLOWBROOK MALL - WOODBRIDGE CENTER

VITAMIN C COMPARE & SAVE! VITAMINE

500mg. No. 994
 with Rose Hips
\$1.99
 100
 250-\$4.75

500mg. No. 37
 Ascorbic Acid
\$1.49
 100
 250-\$3.70

COMPARE Squibs
Therapran-M
 to Supertron
 MULTIVITAMIN WITH MINERALS
 SAME FORMULA
\$1.98
 100

COMPARE Miles
CHOCKS plus
 IRON TO NUTRI
 CHEWS WITH
 IRON
\$1.79
 SAME FORMULA

100IU. No. 986
 Capsules
79c
 100
 250-\$3.95

400IU. No. 991
 Capsules
\$2.99
 100
 250-\$7.45

1000mg. No. 992
 with Rose Hips
\$3.49
 100
 250-\$8.39

1000mg. No. 2611
 Ascorbic Acid
\$1.98
 100
 500-\$8.75

LIQUID PROTEIN
 PREDIGESTED SOLUBLE
 15 Grams of Predigested Protein per ounce
 PLEASANT TASTING
 16 oz. **\$6.50** 32 oz. **\$12.00**

COMPARE Squibs
Therapran to
 Therapeutic
 Multi-Vitamins
 SAME FORMULA
\$1.79
 100

COMPARE Miles
ONE-A-DAY
 to UNI-GEN
 SAME FORMULA
89c
 100

400IU. No. 995
 Capsules
\$1.59
 100
 250-\$3.95

1000IU. No. 989
 Capsules
\$8.99
 100
 500-\$43.99

FOR FAST WEIGHT LOSS!
"GRAPEFRUIT"
 DIET PLAN
 Eat No Grapefruit.
 And Enjoy A Tasty
 Meal Daily.
\$2.98
 100 (15 day supply)
 250 (30 day supply)

MILLERS UNPROCESSED
BRAN
 7 oz. **45c**
 16 oz. **69c**
 Rich in Dietary Fiber
 NOT BY MAIL

VALUABLE GNC COUPON
SEA SALT
 FREE 25¢/lb.
 FLAVORING FOR SHAKES
9c
 LIMIT ONE-NOT BY MAIL

Famous Diet Formula
ALL IN ONE
 Kelp, Lecithin, Olive
 Flaxseed, Vitamin B-6
79c
 America's Most Wanted Formula!
 100 100-1.79



100% Natural 2 lb. **\$5.95**
Deluxe Holiday Fruit Cake
 70% Fruit/No. 1794

Tasty Seasoned Almonds
 4 Varieties of roasted almonds
 No. 1459 **\$5.99**

Holiday Snack Pack
 10 packages of good tasting, nutritious seeds and nuts
 No. 183 **\$5.49**

Honey Gift Assortment
 Colorful gift carton contains 10 oz. each of Yucatan, Holly, Orange Blossom, Clover, and Wildflower Honey
 No. 195 **\$6.95**

AMERICA'S FAVORITE VITAMINS

Ginseng 100-1.98
 400 mg. TABLETS No. 2512 **2/\$3.49**

ZINC 100-4.95
 10 mg. TABLETS No. 2522 **3/\$9.80**

VITAMIN B-6 100-79c
 500 mg. TABLETS No. 2514 **79c**

BRAN 400-1.99
 500 mg. TABLETS No. 2521 **\$1.99**

VITAMIN B-12 100-1.39
 500 mcg. **\$1.39**

Dolomite 100-49c
 11 GRAIN TABLETS No. 544 **49c**

KELP TABLETS 100-50c
 3/\$1.20 No. 51

SUPEREX 100-27.6
 22 Tablets No. 2523 **3/\$5.50**

GARLIC CAPSULES 100-2.50
 3/\$2.50 No. 310

NATURAL VITAMINE 100-2.10
 3/\$5.50 No. 2510

NATURAL VITAMINE 100-2.25
 3/\$7.00 No. 2511

LOSE FAT

"MODEL-ETTS" HELPS CURB YOUR APPETITE HELPS YOU LOSE THAT EXTRA WEIGHT *NO CALORIE COUNTING!
 *NO EXERCISES! *NO SPECIAL DIETS!

Thanks to a group of New York doctors, you can now lose pounds of ugly fat without going on any special diet, without cutting out any special foods.

HELPS REDUCE HUNGRY MOMENTS
 These New York doctors discovered a food adjuvant called "MODEL-ETTS." "Model-etts" does remarkable things. It helps you cut down your caloric intake by a natural automatic curbing of the appetite and of the desire for foods, resulting automatically in a reduced intake of food.

The doctors carefully checked results, and here is what they found:
 1. Weight losses of 6 to 20 pounds without any ill effects whatsoever.
 2. 98% of the men and women who used "Model-etts" lost weight.
 "Model-etts" is absolutely safe. It is a food adjuvant—not a drug. So, start today to shed those unwanted pounds and inches. If your condition is glandular or organic, see your doctor. "Model-etts" may help you stay on the diet your doctor recommends. Ask him about it.

One "Model-etts" Water has the hunger-satisfying capacity of 1 lb. of boiled potatoes or 4 eggs or 5 slices of white bread, yet it contains only 8 calories.

2-MONTH SUPPLY only \$5.00
 No. 787

FREE Fruit-Flavored Chewable Natural VITAMIN-C

Taste it...and enjoy the most delicious & complete Vitamin C nutrition that ever melted in your mouth.

Nutritional science knows that you need Vitamin C every day; it affects every single cell in your body. Yet your body can't store it. But, without a sufficient supply of Vitamin C, your body can't manufacture a special cement called "collagen"—the cement that holds every single cell in the body together. So you can see how important it is to be sure of getting enough Vitamin C.

That's where Nutrition Square Natural Vitamin C with Acerola comes in. These new, chewable Vitamin C tablets have such a wonderfully tangy true-fruit taste, people love to chew them like candy.

We're so sure that, once your family tastes Nutrition Square Natural Vitamin C with Acerola tablets, everyone in your family will insist on them...we're offering you this free taste test.

Why Nutrition Square Chewable Vitamin C Tablets are made with Natural Acerola Berries.
 The tropical acerola berry is one of nature's wonders. It is amazingly rich in natural Vitamin C—up to 80 times as rich as an equal amount of orange juice.

Valuable GNC Coupon
 Bring this coupon to any General Nutrition Center to receive your 14-day supply of Vitamin C-FREE
 (100 mg. per tablet)
 Limited to 1 free supply.
 Address: Nutrition Square, 1000 N. 1st St., Phoenix, AZ 85004

VALUABLE GNC COUPON 10¢ OFF
BROWN RICE 79c

VALUABLE GNC COUPON 10¢ OFF
RAISIN BRAN GRANOLA 79c

VALUABLE GNC COUPON 10¢ OFF
PARTY MIX \$1.19

VALUABLE GNC COUPON 10¢ OFF
GRANOLA COOKIES 79c

VALUABLE GNC COUPON 10¢ OFF
WHEAT GERAL 2/99c

VALUABLE GNC COUPON 10¢ OFF
WHEAT 49c

VALUABLE GNC COUPON 10¢ OFF
WHEAT 79c