

Your Want Ad  
Is Easy To Place—  
Just Phone 686-7700

# MOUNTAINSIDE Echo

An Official Newspaper  
For The Borough Of Mountainside

The Zip Code  
for Mountainside is  
07092

VOL. 18-NO. 51

Second Class Postage  
Paid at Mountainside, N.J.

MOUNTAINSIDE, N.J., THURSDAY, NOVEMBER 25, 1976

Published Each Thursday by Trumar Publishing Corp.  
7 New Providence Road, Mountainside, N.J. 07092

Subscription Rate  
\$8.00 Yearly

25¢ per copy



**EXPERT APPRAISAL**—Marlo Coddington (center) and Maureen Kellerk await the verdict of 21-month-old taste tester Matthew Cook as he samples one of the new Girl Scout cookie varieties, chocolate chip. Little Matthew gave his approval to it and six other flavor choices offered in the

annual cookie sale—a fund-raising effort for the Washington Rock Girl Scout Council. Mountainside Scouts will be taking orders for the cookies through Sunday; deliveries will be made in January.

(Photo-Graphics)

## Community Fund campaign now at full speed in borough

The Mountainside Community Fund drive is in full swing, according to the 1976 chairman, Mabel Young of Deer Path. She urged residents who have not yet responded to do so at their earliest convenience.

"Now that Thanksgiving is upon us, our thoughts quite naturally move toward appreciation for all the good things we have. And the residents of Mountainside can once again display their appreciation for the life-saving work our own Rescue Squad provides," she said.

Mrs. Young also cited the "worthwhile contributions made in the community" by other groups which are recipients of the money the Community Fund collects. They range from the Girl and Boy Scouts to the Visiting Nurses. "They all help make life in Mountainside the kind of quality existence we can all be thankful for. This is the right time of the year for us to express our feelings."

Mrs. Young, who is active in a number of community organizations, had high praise for her fellow trustees in the fund drive. "I think we have one of the hardest working groups of citizens involved in this year's drive as ever before. Residents can be proud that their local community fund has, over the years, been able

to distribute all the money it collects to the worthwhile organizations chosen." She noted that the expenses for printing and postage are paid by the interest the money gains in a savings account while the drive is in progress.

Two previous Community Fund chairmen, Nancy Rau (1974) and Timothy B. Benford

1975, are among this year's trustees.

Mrs. Young indicated that residents or businesses who may not have received a contribution envelope can forward their donations to the Mountainside Community Fund, Box 1164, Mountainside.



**MAJOR ATTRACTION**—Fishing pond held magnetism for youngsters at the Community Presbyterian Day Nursery, Meeting House lane, Mountainside, during recent science 'discovery and exploration' days. Children from the Westfield Day Care Center also participated in the program. Fishers shown above are (from left) Kelly Plante of Westfield and Brian Martin and Christine Esemplare, both of Mountainside.

(Photo-Graphics)

## Regional students take a good look at future developments in education

By ANNE ANGLETON

Jonathan Dayton Regional High School in Springfield was host at a "Journalism Press Day" held last week by the four Union County Regional High Schools. Student representatives of the journalism departments of these

schools considered "Critical Issues in Education," such as tenure and funding.

With schools now being funded to an increasing degree by the state income tax, people are expecting improvements and changes. Yet, as Assemblyman Donald T. DeFrancesco

stated, "More money does not necessarily mean better education."

The question being raised is whether or not the state should impose minimum standards to promote higher levels of learning.

Students attending the conference felt, however, that the minimum standards level would vary greatly depending on the city or district, and that in order to improve the educational system throughout the state, there must be a revision of the present tenure laws as well as possible recertification of teachers.

The conflict between teacher protection and the best possible education raised much concern, for delegates felt that where there is inefficiency and just cause, teachers should be dismissed. Under the present system, teachers are given the right to a defense, making the

(Continued on page 3)

## Recreation unit offers ski, skate, ballet jaunts

The Mountainside Recreation Department this week announced that several trips of interest to borough residents of all ages are scheduled in the coming weeks. This Saturday, family ice skating at the Warinanco Ice Rink is scheduled from 6 to 8 p.m. The Recreation Commission has reserved the rink exclusively for borough residents.

The annual "Nutcracker Ballet" trip will be held on Sunday Dec. 19. A ski trip to Jack Frost Mountain in the Poconos is set for Dec. 28. Roller skating is scheduled for Dec. 29. On Jan. 16, the Ice Capades featuring Dorothy Hamill will be the featured event.

The "Nutcracker Ballet" registration fee of \$5 per person includes orchestra seat and bus transportation. The bus will leave Deerfield School at 12:15 p.m. and return at approximately 3:30.

The ski trip is for high school students and adults. The registration fee of \$12.50 includes

lift ticket and bus transportation. Rentals are available for an additional \$6.50, and lessons for \$4. The bus will leave Deerfield School at 6:30 a.m. and return at approximately 7 p.m.

The Dec. 29 roller skating trip is for third graders and above. The registration fee of \$2.50 includes admission, skate rental and bus transportation. The bus will leave Deerfield School at 1:15 p.m. and return at 5:30.

The Jan. 16 trip to Madison Square Garden for the Ice Capades with Dorothy Hamill is set. The registration fee is \$9.50; it includes ticket and bus transportation. The bus will leave Deerfield School at noon and return at 4:30 p.m.

Reservations for all of these trips are being accepted at the Borough Hall weekdays from 9 a.m. to 4 p.m. Payment must accompany registration, and all reservations are on a first-come, first-served basis. Readers may call the Recreation office, 232-0015, for additional information.

## Stein tells court he paid \$38,000 to bank president

The owner of a Mountainside business, admitted in federal court last week that he conspired with the former president of the Springfield State Bank, Donald Spears, to misapply bank funds, make false statements and submit false documents.

Ralph Stein of Livingston, principal owner of Contract Expo International, Rt. 22, Mountainside, told the court he paid \$38,000 to Spears in order to receive \$345,000 in loans from the bank.

Stein, his partner Alfred Rossi, Spears and his wife, Veronica, were among those indicted by federal authorities Nov. 9 in the bank loan scheme. Rossi pleaded innocent to charges of conspiring to misapply bank funds.

Spears, who did not appear at the hearing, pleaded innocent to charges of receiving payment to arrange for bank loans through his attorney. Spears, the attorney said, was too ill to stand trial because of a heart condition. Mrs. Spears pleaded innocent to one count of subscribing to a false income tax return for 1975. The prosecution is considering dropping 12

(Continued on page 3)

## Ballet troupe to dance for pupils at Lourdes

The N.J. Ballet Company, under the direction of Carolyn Clark, will hold a workshop at our Lady of Lourdes School, Mountainside, on Wednesday.

The purpose of the exhibition is to expand the cultural education of the students by demonstrating the relationship of ballet to athletics. The public has been invited to attend the 1 p.m. performance, which is being sponsored by the OLL Home and School Association.

## Swine flu clinics

Swine flu immunization clinics for Mountainside will be held next Thursday, Dec. 2, from noon to 2:30 p.m. at the Community Presbyterian Church at Deer Path and Meeting House lane, and Friday, Dec. 10, from 4 to 8 p.m. at the Deerfield School, Central avenue.



**STEPPING OUT**—Leading the way for the Jonathan Dayton Regional High School marching band during the West Orange game Thursday at 10:30 a.m. at Meisel Field in Springfield will be, left to right, Lorraine MacArthur, majorette; Lisa Bupin, Jacquie Connolly and Barbara Gialmo, color guard; and Debbie Clickenger, majorette.

(Photo-Graphics)



**ENTHUSIASTS**—Cheerleaders featured at Jonathan Dayton Regional High School football games, including the final against West Orange Thursday at 10:30 a.m. at Meisel Field in Springfield, are, from left, front, Linda Shan, Laurie

Gerstein, Kathy Kelly; second row, Karen Kozub, Rosanne Gagliano, Cheryl Goldberg, Joanne Martin, Amy Nitkin; rear, Beisy Wright, Cheri Swanson, Jean Leber, Trish Greeley and Margaret Grimaldi.

(Photo-Graphics)

# Dayton grid team facing W. Orange to close schedule

By MICHAEL PETRO

The Jonathan Dayton Regional High School football team is prepping for its game against West Orange on Thanksgiving Day at 10:30 a.m. at Meisel Field, Springfield.

The Dayton Bulldogs, who are 35 on the year, will play in what has become a yearly rivalry for both teams. West Orange is 2-6 and in last place in the Suburban Conference.

The Bulldogs' leading offensive threats are running backs Brandon Gombie and Ted Parker and quarterback Bryant Burke. Burke's favorite targets are tight end Brian Belliveau and wide receiver Brian McNany and Jim Stadler.

The standouts on defense are Joe Ragucci, Steve Pepe, Randy Wissel and Donald Lusardi.

Dayton will be trying to salvage a year that has seen many injuries and disappointments. At one time as many as four starters were sidelined with injuries.

The Dayton junior varsity football team has completed its season with an 0-6 record. Coaches Bill Kozub and William Sowder said they were disappointed in the record but noted many of the bright spots.

"We had an outstanding defense this year," said Kozub. "They played tough, getting ball our offense, though, had trouble getting points on the board."

The leading players on the team were Ken Bell, Rich Cederquist, John Ferry, Paul Matyazack and Tom Medevielle on defense.

On offense Albert Preziosi, Bob Roff, Nick Caricato, Eddie McGrady and Larry Irene were the top stars.

"The boys really played tough football," commented Kozub. "It's unfortunate that our record does not reflect that fact."

The Dayton freshmen football team ended the season with a 2-5-1 record.

"It was a very frustrating year," said Coach Richard Iacano and William Kindler. "We had a very poor turnout at the beginning of the year and as a result we were unable to win consistently."

There were some standouts on the team though. Joe Polcastro, Anthony Circelli, Greg Chickenger and Ken Clebous led the offense.

The defense was headed by Robert Tom Holman and Robert Cleveland.

## Regional team puts 4 runners on all-star unit

By MICHAEL PETRO

The Jonathan Dayton Regional High School cross-country team has placed four runners on the first team all conference squad and two on the second team, it was announced last week.

Bob Roche, Bob Phillips, Brad Weiner and Charles Kiell were picked to the first team, and Greg Rusbarsky and Jeff Knowles were named to the second team. It is the first time in conference history that four runners from one team made the first team all conference squad.

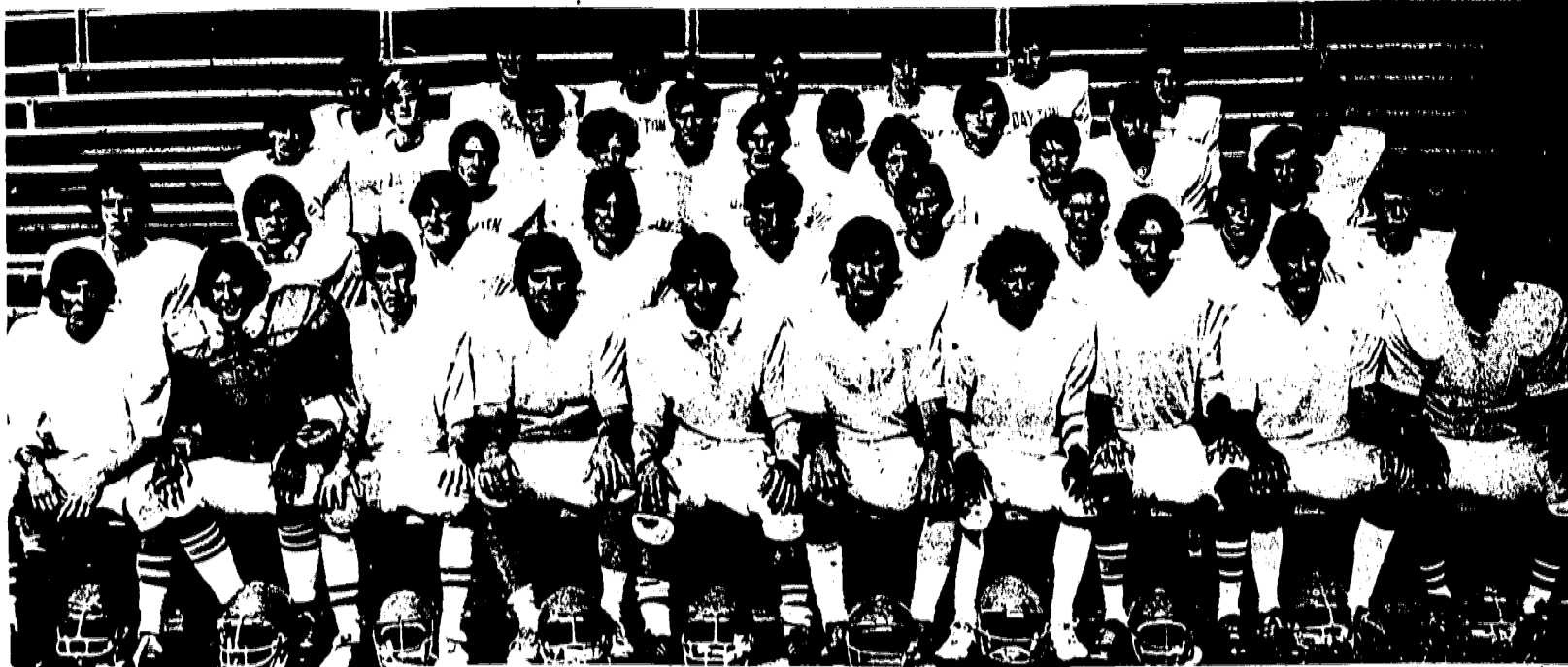
The highlight of Roche's season was victory in the Suburban Conference race in which he outdistanced 56 runners. Phillips who was the team's most consistent runner finished fourth in the Suburban Conference race and seventh in the state sectionals.

Head Coach Martin Taglienti commented on Roche and Phillips. "They gave me more than I expected. I never thought at the beginning of the season Roche would be the conference champ, but he along with Phillips proved that with hard work and sacrifice you can perform beyond expectations."

Weiner, a junior, and Kiell, a senior, also were extremely consistent throughout the year. Their best races were in the Suburban Conference meet where Weiner finished third and Kiell came in fifth.

Rusbarsky and Knowles were the final ingredients that made this season the most successful year the Dayton cross country team has experienced. Rusbarsky, a junior, finished 10th in the conference race while Knowles only a freshman, came in 11th.

Although three of the top four Dayton runners will graduate at the end of this year many seasons of success are expected for the future. As Taglienti says, "These boys have a desire to win—something a coach can never teach an athlete."



**RULLDOG VARSITY**—Members of the Jonathan Dayton Regional High School football team, which will end its season against West Orange at Meisel Field in Springfield Thursday at 10:30 a.m. are, from left, front Jim Stadler, Bob Conte, Brian McNany, Brandon Gombie, Joe Ragucci, Bryant Burke, Carmine Apicella, Steve Pepe, Brian Belliveau, Andy Herkalo; second row, Mark Miller, Bill Young, Bob Ventura, Don Lusardi, Randy Wissel, Van Vitale, George Roessner, Mark McCourt, Tom

Medevielle; third row, Al Preziosi, Bob Roff, Dan Pepe, Keith Owens, Mike Blackman, John Medevielle; fourth row, Mark Ackerman, Steve Baranek, John Ferry, Pete Rossomondo, Dave Flood, Rob Bohrod, Skip Liguori, Bob Silva; rear, Greg Shomo, Paul Matysek, Ken Bell, Larry Irene, Rich Cederquist, Ed McGrady and Pat Picciuto.

(Photo-Graphics)

## Freshman booters honored as only winning soccer team

By MIKE MEIXNER

The Jonathan Dayton Regional High School freshman soccer team finished the fall season with a record of 7-6. Coach Tony Falzone's booters were the only Dayton soccer team to finish with a winning record this year.

After the season, a dinner was held in honor of the team. Winning awards were Tim Harrigan as MVP, Billy Rose, Steve Tannenbaum, who took the "Mr. Hustle" award, and William Ward, for his on and off-field sportsmanship.

The team employed a front line of insides, Harrigan and Rose, and wings Mike King and Kerry Leslauer. The top substitute on the line was Benjamin Scatturo, who contributed two goals to the team this year.

The halfback line was led by Paul Jeka, center halfback and a hustling team member. Surrounding him on the halfback line were Steve (Rocky) Tannenbaum and Billy Ward. Reserve Marty Swanson filled in ably.

The fullback line shut off many opposing rallies. The starting fullbacks were Agapios Kyrtisis, Ed Drummond and Dave Wasserman. Ronnie Zirkel was the top substitute. Another promising fullback, whose play was hurt by a nagging earache, was big Doug Foreman. However, Doug still was a key defensive factor.

The goaltender for the squad was Joe Huber. Huber was excellent in the goal throughout the season. Another fine goalie was Scott Worwick.

Along with Scatturo's two goals, Harrigan led with nine, Rose drilled seven, King popped in two and Ward and Jeka booted one each.

Falzone, a rookie coach, exhibited fine skills and knowledge of the game. A hard-working man, he drove his team to four season-opening victories by forcing team spirit into his players. Despite a poor team performance at the conclusion of the season, his efforts were greatly appreciated by all team members, many of them commented.

## 7-10 record ends girls' tennis season at Dayton

The Jonathan Dayton Regional High School girls' tennis team has ended its season with a record of 7-10 directed by Coach Ed Jasinski. After the season ended, the team's outstanding members travelled to the Union County tournament, where Dayton ace, Kathy Gerndt advanced to the third singles finals before bowing out.

The squad employed a steady combination throughout the year. Exhibiting her talents at first singles was Sandy Crane with fine racquet control.

Gerndt played at second singles and possessed a fine record. Employed at third singles was Sophomore Barbara Martino. Martino, a determined player, helped the team considerably.

The tough tandem of Jill Craner and Lori Gabay, both of whom will be returning to the squad next year, played at first doubles. The most frequently used pair at second

doubles was junior Randi Kessler and Sue Wallach.

Other strong players whose actions were helpful throughout the year were Tina Segali and Arlene Heiman. They also showed promise at second doubles.

Also winning games for the determined Bulldogs were Anne Angleton and Bonnie Geltzeiler, employed almost exclusively at second doubles.

Rounding out the squad were Arlene Zuckerberg and sophomores Meryl Manders, Michelle Gan and Karen D'Amada. These three players are being counted upon for future productivity.

Coach Jasinski said he has much to look forward to since his team was young and able.

## To Publicity Chairmen:

Would you like some help in preparing newspaper releases? Write to this newspaper and ask for our "Tips on Submitting News Releases."



**BASEBALLERS PLAY**—Willie Randolph, second baseman for the New York Yankees, will be one of the baseball stars who will play in a benefit basketball game against the faculty of Union Catholic High School in the school gymnasium, Dec. 4 at 8 p.m.

# SOCCER SCENE

By BILL WILD

The battle of the undefeated ended in a scoreless tie last Sunday when the Elizabeth Lancers, leaders of the Major Division South, played against the Greek Americans, who are the leaders in the Northern Division. The Lancers now sport a 7-0-1 record and the Greek booters stand at 6-0-2.

Most people think last week's match was a preview of the league championship match when the two first place teams play for league honors, but I think the Lancers will meet one of the Italian teams for the championship. It will be either the Brooklyn Italians or Inter.

The Lancers were in control of the game most of the time and had more chances to score

but the Greeks also had their moments.

Both the Lancers and the Union County SC are not scheduled to play this Sunday. Farcher's Grove would be idle, but as it stands now there will be an exhibition game between the Bergen Kickers and the Union County eleven. Game time will be at 2:30 with a preliminary match at 12:30.

Union County is still in first place in the Second Division North, with Polonia, Scotland and Eintracht breathing down their necks. Polonia will meet Scotland on Dec. 5 in Kearny. If Scotland wins this match they will eliminate the advantage Polonia has over the Union booters in the loss column.

Scotland and Eintracht are even with Union in games played and are just one point behind them. All I can say to Farcher's Grove regulars is that you should all go to Kearny that day and root for Scotland, because both home teams are playing in New York that day.

The Soccer Allstars program on Channel 13 this Saturday evening at 6 will feature Manchester United vs. Leicester City, Birmingham City vs. Manchester City will be broadcast on Dec. 4, same time, same station.

## Anglers' club honors treasurer on Dec. 7

Charles Bunting, retiring treasurer of the Newark Bait and Flycasting Club, will be honored by the organization at its Dec. 7 meeting at the Kingston Restaurant, Union. The program will begin with dinner at 6:30 p.m. and will also include fishing films.

Herman Slifer, president, said all anglers are invited to attend the main program, which begins at 8:30 p.m., without charge.

## Rinaldo to speak at boxers' affair

The Union County Boxers Association will hold an awards night on Friday, Dec. 3, at the Town & Campus, Union. Keynote speaker will be Rep. Matthew J. Rinaldo and master of ceremonies will be Jerry Malloy.

The organization will honor John Halleck, George Forrester, Frankie D'Antico and the late Benny O'Neill. Ring celebrities scheduled to attend include Red Cochrane, Rocky Graziano, Tippy Larkin, Al Couture, Joe Walcott and Chuck Wepper.

Co-chairmen for the event are Charlie Gillen and John Gonzalez. Honorary chairman is Elizabeth Mayor Thomas G. Dunn.

LET'S GO HUNTING DEER SEASON OPENS DEC. 4

SMALL GAME SEASON NOW OPEN

Select from famous brands: Browning, Remington, Ithaca, Winchester, Savage, W&R and others. Everything you need for hunting: Coats, Pants, Hats, Socks, Boots, Underwear, Etc.

ICE SKATES \$11.95 to \$55 FOR THE FAMILY

ICE SKATES SHARPENED.

MUTT'S SPORT SHOP

5 blocks from Union Center Towards Irvington Free Parking

1354 Stuyvesant Union

MU 8-8282

Open Fridays Till 9; Other Days Till 6

MASTER CHARGE and BANKAMER/CARDS

**Doran** Ford

Rents Cars? Yes We Sure Do!

WEEKEND SPECIAL

Thurs. \$39.95 100 to Mon. FREE MILES

Long Term Leasing Also Available

RENT-A-CAR

For Special Rates Call BOB DELSANDRO RENTAL MANAGER 686-0040

2037 Morris Ave., Union

Live-In Person... Lange Superstar

# BILLY BURT

Amazing acrobat on skis

Watch Billy demonstrate Burt ski bindings in a performance so incredible, you have to see it to believe it!

**BURT**

World's only automatic recovery binding. Automatically pulls your skis back on after a fall! No runaway straps! No anti-friction plates!

**BURT**

**SATURDAY NOV. 27 1 P.M.**

OUR GUARANTEE: WE WILL NOT BE UNDERSOLD!

**WORLD OF SPORTS**

726 BOULEVARD, KENILWORTH, N.J. (201) 241-2070

1 Block off Garden State Parkway Exit 130

STORE HOURS: MON-THRU SAT. 10 TO 9 SUNDAY 10 TO 2

THE BARE MINIMUM. That's what we've got our ski prices down to at World of Sports. Ski days are here again.

... and our Ski Department is featuring one of New Jersey's largest selections of '77 fashions, color coordinated bib suits, jackets, pants, skis, boots and vests. Come in... you'll find terrific savings on all ski items as well as great bargains on complete ski packages.

OUR GUARANTEE: WE WILL NOT BE UNDERSOLD!

**WORLD OF SPORTS**

726 BOULEVARD, KENILWORTH, N.J. (201) 241-2070

1 Block off Garden State Parkway Exit 130

STORE HOURS: MON-THRU SAT. 10 TO 9 SUNDAY 10 TO 2

# Chatham Borough halts Mountainside Jets 6-0

After winning their second game of the year, 13-0 over Summit on Nov. 7, the Mountainside Jets lost, 6-0, to a well-drilled Chatham Borough team.

Chatham dominated the first half as the Mountainside Jets held off Chatham drives.

The key defensive plays during the first half included Frank Gagliano's touchdown-saving tackle, Damian O'Donnell coming up from the secondary to stop several off-tackle runs and M.J. Castello consistently stopping end sweeps. On offense, the Jets moved with sustained drives opening up the holes were Jeff Wilde, Frank Gagliano, Alex Caiola, John Alder, M.J. Castello, Joseph Sefack, Doug Schon and Kevin Dougherty. The play calling was shared by Peter Ruggiero and Jimmy Cleveland. Sharing the ball carrying duties were Mike Caricato, David Crane, John Caricato, and Michael Kontra. During the first half of the game, the Chatham Borough team outplayed the Mountainside Jets and scored on a long run which was aided by a penalty.

The second half was a completely different ball game-- Chatham Borough team had the

ball for a total of six plays on offense. During these six plays, the Mountainside Jets led by Robby Martignetti, Jimmy Cleveland, Scott Burdge, Steven Poole, John Merklinger, Doug Adams and Ron Zimmerman, held the opponents to no gain. Robby Martignetti on three different occasions drove the offensive center into the backfield and at the same time, tackled the quarterback for a loss.

On offense, it was Michael Caricato and David Crane carrying the ball and ripping off large chunks of yardage. During this 24-minute period, the Jets gained 180 yards; on one drive, the Jets made six successive first downs, one when Mike Caricato drove through eight of the opponents, helped by key blocks from his brother John, David Crane, Jeff Wilde and Joe Sefack. The game ended with the Jets threatening, but unable to score.

The Jets will end the season at the Deerfield School field on Friday, Nov. 26, with the Lightweights game starting at 10 a.m., and the Middleweights game starting at noon with a rematch against the Chatham Borough Cardinals.



LITHE SPIRITS—Members of the Jonathan Dayton Regional High School gymnastics team, which has just completed its most successful season, included, from left, front, Coach Nancy Dougherty, Ellen Kaplan, Barbara Calamusa, Moira Holpin, Alison Bromberg, Shari Reich, Karen Lenhart; rear,

Captain Debbie Arcidiacono, manager Donna Weinzimer, JoAnn Magers, Susan Belenets, Mary Jane Gagliano, manager Penny Levitt, Denise Francis, Karen Krop and manager Lynn Ross. Not shown are Jill Lipton and Carol Wingard. (Photo-Graphics)

## Police investigate, break-in, larceny at borough homes

Mountainside police are investigating break-in, larceny at two borough homes.

The first crime occurred at a Woodacres drive residence Nov. 13 between 4:10 and 10:35 p.m. Police said the owner returned to home find the front door open; he did not enter the house, but went to a neighbor's to call headquarters. Investigating officers reported the intruders gained entry by placing a garbage can on top of an air conditioner, climbing on it to a porch roof and then breaking the window of a second-story bedroom.

Listed as stolen were two portable television sets and a short-wave radio. Police are awaiting a report on any other missing items.

On Nov. 16, between 4:10 and 6:05 p.m., burglars entered an Upland road home, stealing jewelry, a number of gold pieces and a set of silver commemorative medals. Police said entry was made via the rear yard, with the intruders forcing open a porch door and breaking a pane of glass in the kitchen door. One bedroom was ransacked; a list of all missing items is to be submitted by the homeowner.

## Jets' defenders stand fast in 0-0 Springfield contest

After a heavy downpour, the Mountainside Jets Middleweights took the field to avenge an earlier loss to the Springfield Minutemen. The game ended in a scoreless tie.

The tempo for the game was established on the first series of plays as the defense kept the Minutemen for minus yardage the entire game.

Defensive standouts were Alex Caiola and Robby Martignetti, each credited with four unassisted tackles. Frank Gagliano, M.J. Castello and Joe Sefack each stopped a pass play unassisted. Fred Alholm's tackle caused a fumble, which he recovered. The linebacking corps, led by Mike Caricato and David Crane, were all over the field, stopping running plays and knocking down passes. The defensive backs included Jim Cleveland, who intercepted a pass, Doug Adams, Greg Van Name, Damian O'Donnell, Mark Dougherty and Steven Poole.

Important assists on tackles were credited to Scott Burdge, John Alder and John Merklinger. Although the game ended in a 0-0 tie, it was not indicative of the sustained offensive drives carried out by the Jets on three occasions.

Led by the ball handling and passing of Quarterback Peter Ruggiero and Jim Cleveland, the offense averaged 3 yards a carry. Running the ball were Mike Caricato, Ricky Kontra, David Crane, John Caricato, Damian O'Donnell.

Key plays included David Crane carrying for a key first down dragging two defensive players 5 yards; Mike Caricato, who carried for 65 yards on 13 carries and a quarterback around end play by Jim Cleveland, netting 25 yards. All of this was made possible by the blocking up front by Jeff Wilde, M.J. Castello, Alex Caiola, John Alder, Joe Sefack, Frank Gagliano, John Schon, Greg Van Name, Kevin Dougherty, Ricky Kontra and John Caricato.

The coaching staff was totally satisfied with the performance of the entire team.

## Summons is given to motorist, 90

Mountainside police reported that a 90-year-old man was involved in a car accident last Friday afternoon. He was charged with careless driving after three people, including himself, were injured.

Police said that George N. Brown, 90, of Springfield was trying to get into the left lane turnaround from the right lane on Rt. 22 when he cut off another car, driven by Flora S. Ingalls, 53, of Plainfield. In addition to Miss Ingalls and Brown, Victoria Ingalls, also of Plainfield, was injured in the accident.

## Regional school board will meet Tuesday night

The Regional High School District Board of Education will hold an adjourned regular meeting Tuesday at 8 p.m. in the instructional media center (library) at Gov. Livingston Regional High School, Berkeley Heights.

The board last week adopted procedures to assign students to appropriate groups for physical education, in conformity with state regulations for equality of opportunity for male

and female students. The regulations stated: "The student is to have opportunity of choice regarding participation in one of the elective physical education activities offered."

"Instruction in the skills of the activity will be provided prior to individual or group participation."

"Testing of each student, to determine ability and skill levels of the activity, will be conducted prior to individual or group participation."

"Placement in an activity group will be based on ability and skill with a consideration of the risk of harm factor; sex will not be a factor."

In other business, the board approved participation by the marching band of Jonathan Dayton Regional High School, Springfield, in a band camp Aug. 28 to Sept. 2 at the Frost Valley Camp in New York State. The program will be sponsored by the Dayton Band Parents organization.

Members approved participation in professional conferences by two staff members.

Thomas Santaguida, Dayton athletic director, will attend the National Conference of High School Athletic Directors Dec. 12-15 in San Diego. Topics will include "The Medical Care of Athletes," "Building Interest in Girls' Sports Programs," "Title IX Compliance," "Athletic Evaluation" and "Good Sportsmanship and Crowd Management."

Carolyn Markuson, district director of instructional media centers, will take part in the American Library Association's midwinter conference Jan. 30 to Feb. 3 in Washington, D.C. Because of budget limitations, the board will pay only \$125 of the cost, with the remainder to be paid by Mrs. Markuson.

## School conference

(Continued from page 1)

firing process difficult as well as costly the students felt.

With current regulations regarding income tax and tenure, it was the general feeling that too much responsibility has been left to local boards of education. Students questioned the qualifications of board members in whose hands their education rests.

The issue was raised in response to a presentation by Don Calderon, field representative for the N.J. School Boards Association.

A controversial issue was that of funding of school activities and the boards' distribution of the state allotment. Students complained that because of a decrease in the budget, field trips have been cut down by 60 percent and sex discrimination has been eliminated—only to cut out the funding of girls' teams and integrate them into coeducational sports where females play inferior roles.

Other interpretations of the state decisions were attacked by the students. The underlying question was how education would improve with such budget cuts.

The press conference featured five speakers. Dr. T. Leslie MacMitchell of the Education Testing Service spoke on the factors which have led to the recent decline of Scholastic Aptitude Test scores throughout the nation.

Marvin Reed, communications director for the N.J. Education Association; Assemblyman DeFrancesco, and William Bureat of the Union County office of the State Department of Education spoke on the influence of the new method of funding education by the income tax. Representing the NJSBA was Calderon.

### TO PUBLICITY CHAIRMEN:

Would you like some help in preparing newspaper releases? Write to this newspaper and ask for our "Tips on Submitting News Releases."

# MOUNTAINSIDE Echo



Member SUBURBAN NEWSPAPERS OF AMERICA

Published each Thursday by Trumar Publishing Corp.

Asher Mintz, publisher

NEWS DEPARTMENT

Karen Zautyck

Robert H. Brunell, Editor

Les Malinut, Director

BUSINESS DEPARTMENT

William Friedman

Charles Loomer, vice president of advertising

national advertising manager

James O. Parks, circulation manager

Doreen Nalley, asst. circulation manager

Sam Howard

Publisher - 1938-1947

Milton Mintz-retired

Publisher - 1971-1975

Second Class Postage paid at Mountain Side, N.J.

25 cents per copy

Mailed subscription rate \$8.00 per year

2 New Providence Road, Mountain Side, N.J.

Phone: 686-7700

Represented Nationally by U.S. SUBURBAN PRESS INC.

## Newcomers plan holiday luncheon

The Newcomers Club will hold its annual Christmas luncheon at L'Affaire on Wednesday, Dec. 8 at noon. A quilt made by the club members will be awarded. A plant and bake sale will also be included in the list of activities planned.

Reservations may be made by contacting Mrs. John Koetheke, chairwoman, at 233-9482 or Mrs. William Rickerhauser at 654-5242 by Dec. 4.

Proceeds from the luncheon will be donated to the Children's Specialized Hospital and the Mountainside Rescue Squad.

Your Classified Ad as near as your phone



Call 686-7700

## Motorist begins jail sentence for failure to finish paying fine

A Plainfield man, charged in Mountainside in February with driving while his license was suspended, has been remanded to Union County Jail, Elizabeth, in lieu of paying the \$190 he still owes on his \$215 court fine for the offense.

The defendant, Ulysses G. Hayes, was picked up on a warrant after he failed to make further payments on the original fine. If he serves out his 30-day jail term, no more payments will be required; however, if he is bailed out, the fine stands.

In action at Mountainside Municipal Court Nov. 17, with Judge Jacob R. Bauer presiding, penalties were levied against five other motorists. A bail forfeit totalling \$270 was ordered for motorcyclist August M. Fratesi of South Plainfield, charged with driving on Rt. 22 while his license was suspended and for passing on the shoulder of the highway.

Wilson B. Thompson of Newark paid \$215 for driving on Rt. 22 while his license was suspended, \$15 for failure to have a valid insurance identification card in his possession, and \$15 for not having registration in his possession. Eddie Lee Anderson of Plainfield was fined \$215 for driving while his license was suspended; he also had been apprehended on Rt. 22.

Driving 49 mph in a 35-mile zone on Deerpath resulted in a \$30 penalty for Abe Newman of Friar Lane. Margaret M. Smith of Scotch

Plains paid \$20 for passing a loading school bus on New Providence road.

In other court action, Lance M. Wiedman of Watchung was fined \$65 and was placed on six months' probation for having been in possession of less than 25 grams of marijuana.

Arthur A. Silva of Ledgewood road was given a suspended sentence and paid \$5 court costs for violating a borough ordinance by allowing a dog to run at large on a neighbor's property.

John F. Denman of Plainfield, accused of leaving the scene of a Mountain avenue accident and of driving under the influence of alcohol, had the charges against him dismissed.

Also dismissed were charges and countercharges filed against each other by Robert M. Goense of Central avenue and John Merklinger of Woodacres drive. Goense charged that Merklinger has assaulted him by pulling him from his auto on Woodacres drive. Merklinger had signed a summons against Goense on charges of careless driving also on Woodacres.

## Bank

(Continued from page 1)

other counts against Slein if he testifies against Spears and Rossi, according to Assistant U.S. Attorney Frank Razzano. Charges against Stein of conspiring to commit murder were dismissed 11 months ago. Those charges were in connection with the murder of Eli Smith, an Irvington businessman whose body was found in Union.

## School Lunches

### REGIONAL HIGH SCHOOL

Monday—Choice of one: steamed frankfurter on frankfurter roll, sloppy joe on bun, spiced ham and cheese or tunafish salad sandwich. Choice of two or three: baked beans, sauerkraut, tossed salad with dressing, cole slaw, fruit, fruit cup.

Salad entree: rainbow salad platter; a la carte soup, chicken noodle.

Tuesday—Choice of one: hot sliced chicken sandwich with gravy, minute steak on roll, ham salad or tunafish salad sandwich.

Choice of two or three: whipped potatoes, peas, tossed salad with dressing, cole slaw, fruit, applesauce.

Salad entree: cold cut salad platter; a la carte soup, beef barley.

Wednesday—Choice of one: spaghetti with meat sauce, Italian bread and butter, tossed salad with dressing, chilled juice; grilled cheese sandwich, French fried potatoes, tossed salad with dressing, chilled juice; chicken salad or tunafish salad sandwich, French fried potatoes, tossed salad with dressing, chilled juice.

Salad entree: chief salad bowl; a la carte soup, Yankee bean.

Thursday—Choice of one: oven grilled hamburger on hamburger bun, whole kernel corn, carrots, fruit; chicken-chow mein with vegetables, bread, steamed rice, cole slaw, fruit; salami sandwich or tunafish salad sandwich, whole kernel corn, carrots, fruit.

Salad entree: California salad platter; a la carte soup, garden vegetable.

Friday—Choice of one: oven baked fish sticks with tartar sauce on bun; baked sausage patty with tomato sauce on roll; American cheese and tomato or tunafish salad sandwich.

Choice of two or three: French fried potatoes, string beans, tossed salad with dressing, cole slaw, fruit, fruit brown Betty.

Salad entree: deviled egg salad platter; a la carte soup, cream of tomato.

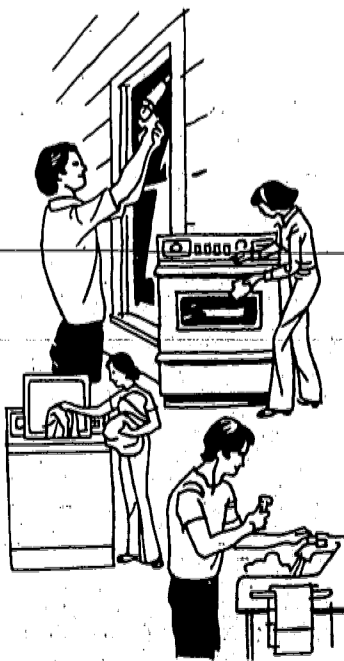
# You can save on your gas bills

Like almost everything else these days, the cost of gas has been rising, and we are unable honestly to predict that rates can be reduced in the foreseeable future.

But the situation isn't entirely hopeless, by any means.

We can suggest lots of ways that you may be able to cut your consumption of gas without any great sacrifice... things like sealing your home against the cold, and cooking, bathing, heating and washing with a sharp eye turned toward saving gas and saving money.

If you'd like further information on this subject, "Ask E-Town Gas" for our free folder, "How To Save On Your Gas Bill". Call 289-5000, Ext. 228, or write to Dept. G, Elizabethtown Gas.



**Elizabethtown Gas**  
One Elizabethtown Plaza, Elizabethtown, N.J. 07207  
A NATIONAL UTILITIES & INDUSTRIES COMPANY



**THE DRESS RACK MEANS BUSINESS!**  
**WE'RE NOT CONCERNED WITH "PROFITS"!**  
**WE'RE NOT CONCERNED WITH "OVERHEAD"!**  
**WE'RE ONLY CONCERNED WITH "MOVING MERCHANDISE"!!**

**SO--- SELECT YOUR HOLIDAY ATTIRE, NOW!**  
**---SELECT YOUR CHRISTMAS GIFT ITEMS, NOW!**  
**YOU COULDN'T SELECT A BETTER TIME! HUGE NEW SHIPMENTS ARRIVING DAILY!**

**ALL SALES FINAL -- NO SPECIAL ORDERS**

# The Dress Rack

142 ELMORA AVE. ELIZABETH, N.J. 289-7222  
ECHO PLAZA, RT. #22 SPRINGFIELD, N.J. 376-0502

**OPEN: MONDAY, THURSDAY & FRIDAY 9:30 A.M. to 9:00 P.M.**  
**THURSDAY, WEDNESDAY & SATURDAY 9:30 A.M. to 6:00 P.M.**

Theater Time Clock

ELMORA (Elizabeth)—OLD RAHWAY (Rahway)—BUGS MALONE, Thurs., 7, 10:15, Fri. 2:45, 7:10, 30, Sat. 3:15, 6:45, 10:15, Sun. 3:15, Sat. 1, 7:35, Sun. 3:30, 7:40, 9:40, 10:15, Mon and Tues., 9:45, 10:15, Wed., 10:15, Thurs., 9:05, 9:45, Sat., 3:05, 5:30, 9:40, Sun., 1:30, 5:35, 9:45, 10:15, Mon and Tues., 7:30

FIVE POINTS CINEMA (Union) SILENT MOVIE, Thurs., Mon., Tues., 7:30, 9:15, Fri., 1:30, 7:30, 9:15, Sat., 1:30, 7:15, 9:30, Sun., 1:30, 7:15, 9:30, 9:15

FOX UNION (Fri. 22) ALEX AND THE GYPSY, Thurs. 2:30, 4:15, 6:10, Fri. 8:10, Sat. 4:6, 8:10, Sun. 4:6, 8:10, Mon, Tues., 7:30, 9:20, Fri. Sat. midnight show, 11:30 p.m. matinees BLUE BIRD, Fri. 1:30, Sat. 2:15, Sun. at 8 p.m. SILENT STREAM

FOX WOODBRIDGE, ALEX AND THE GYPSY Call theater at 634-9644 for times, etc.

LOST PICTURE SHOW (Union)—ONE FLEW OVER THE CUCKOO'S NEST, Thurs. 5:15, 7:30, 9:45, Fri. 7:30, 9:40, Sat. 5:30, 7:45, 10:15, Sun. 2:15, 4:40, 7:45, 9:45, Mon and Tues. 7:15, 9:25

MAPLEWOOD TWO MINUTE WARNING, Thurs. 4:15, 6:45, 9:45, Fri. Mon. and Tues. 7, 9, Sat. 1, 3, 5, 7, 9, 9:45, Sun. 2, 4, 30, 6:45, 9:45

NEW PLAZA (Linden)—SILENT MOVIE, Thurs. 5:30, 6:55, 8:30, 10:10, Fri. 7:8, 8:05, 10:05, Sat. 1:40, 3:25, 5:05, 6:50, 8:30, 10:15, Sun. 1:30, 3:10, 4:50, 6:30, 8:10, 9:55, Mon., Tues., 7:15, 9:15

NEW PLAZA (Linden)—SILENT MOVIE, Thurs. 5:30, 6:55, 8:30, 10:10, Fri. 7:8, 8:05, 10:05, Sat. 1:40, 3:25, 5:05, 6:50, 8:30, 10:15, Sun. 1:30, 3:10, 4:50, 6:30, 8:10, 9:55, Mon., Tues., 7:15, 9:15

NEW PLAZA (Linden)—SILENT MOVIE, Thurs. 5:30, 6:55, 8:30, 10:10, Fri. 7:8, 8:05, 10:05, Sat. 1:40, 3:25, 5:05, 6:50, 8:30, 10:15, Sun. 1:30, 3:10, 4:50, 6:30, 8:10, 9:55, Mon., Tues., 7:15, 9:15

NEW PLAZA (Linden)—SILENT MOVIE, Thurs. 5:30, 6:55, 8:30, 10:10, Fri. 7:8, 8:05, 10:05, Sat. 1:40, 3:25, 5:05, 6:50, 8:30, 10:15, Sun. 1:30, 3:10, 4:50, 6:30, 8:10, 9:55, Mon., Tues., 7:15, 9:15

NEW PLAZA (Linden)—SILENT MOVIE, Thurs. 5:30, 6:55, 8:30, 10:10, Fri. 7:8, 8:05, 10:05, Sat. 1:40, 3:25, 5:05, 6:50, 8:30, 10:15, Sun. 1:30, 3:10, 4:50, 6:30, 8:10, 9:55, Mon., Tues., 7:15, 9:15

NEW PLAZA (Linden)—SILENT MOVIE, Thurs. 5:30, 6:55, 8:30, 10:10, Fri. 7:8, 8:05, 10:05, Sat. 1:40, 3:25, 5:05, 6:50, 8:30, 10:15, Sun. 1:30, 3:10, 4:50, 6:30, 8:10, 9:55, Mon., Tues., 7:15, 9:15

NEW PLAZA (Linden)—SILENT MOVIE, Thurs. 5:30, 6:55, 8:30, 10:10, Fri. 7:8, 8:05, 10:05, Sat. 1:40, 3:25, 5:05, 6:50, 8:30, 10:15, Sun. 1:30, 3:10, 4:50, 6:30, 8:10, 9:55, Mon., Tues., 7:15, 9:15

NEW PLAZA (Linden)—SILENT MOVIE, Thurs. 5:30, 6:55, 8:30, 10:10, Fri. 7:8, 8:05, 10:05, Sat. 1:40, 3:25, 5:05, 6:50, 8:30, 10:15, Sun. 1:30, 3:10, 4:50, 6:30, 8:10, 9:55, Mon., Tues., 7:15, 9:15

NEW PLAZA (Linden)—SILENT MOVIE, Thurs. 5:30, 6:55, 8:30, 10:10, Fri. 7:8, 8:05, 10:05, Sat. 1:40, 3:25, 5:05, 6:50, 8:30, 10:15, Sun. 1:30, 3:10, 4:50, 6:30, 8:10, 9:55, Mon., Tues., 7:15, 9:15

NEW PLAZA (Linden)—SILENT MOVIE, Thurs. 5:30, 6:55, 8:30, 10:10, Fri. 7:8, 8:05, 10:05, Sat. 1:40, 3:25, 5:05, 6:50, 8:30, 10:15, Sun. 1:30, 3:10, 4:50, 6:30, 8:10, 9:55, Mon., Tues., 7:15, 9:15

NEW PLAZA (Linden)—SILENT MOVIE, Thurs. 5:30, 6:55, 8:30, 10:10, Fri. 7:8, 8:05, 10:05, Sat. 1:40, 3:25, 5:05, 6:50, 8:30, 10:15, Sun. 1:30, 3:10, 4:50, 6:30, 8:10, 9:55, Mon., Tues., 7:15, 9:15

NEW PLAZA (Linden)—SILENT MOVIE, Thurs. 5:30, 6:55, 8:30, 10:10, Fri. 7:8, 8:05, 10:05, Sat. 1:40, 3:25, 5:05, 6:50, 8:30, 10:15, Sun. 1:30, 3:10, 4:50, 6:30, 8:10, 9:55, Mon., Tues., 7:15, 9:15

NEW PLAZA (Linden)—SILENT MOVIE, Thurs. 5:30, 6:55, 8:30, 10:10, Fri. 7:8, 8:05, 10:05, Sat. 1:40, 3:25, 5:05, 6:50, 8:30, 10:15, Sun. 1:30, 3:10, 4:50, 6:30, 8:10, 9:55, Mon., Tues., 7:15, 9:15

NEW PLAZA (Linden)—SILENT MOVIE, Thurs. 5:30, 6:55, 8:30, 10:10, Fri. 7:8, 8:05, 10:05, Sat. 1:40, 3:25, 5:05, 6:50, 8:30, 10:15, Sun. 1:30, 3:10, 4:50, 6:30, 8:10, 9:55, Mon., Tues., 7:15, 9:15

NEW PLAZA (Linden)—SILENT MOVIE, Thurs. 5:30, 6:55, 8:30, 10:10, Fri. 7:8, 8:05, 10:05, Sat. 1:40, 3:25, 5:05, 6:50, 8:30, 10:15, Sun. 1:30, 3:10, 4:50, 6:30, 8:10, 9:55, Mon., Tues., 7:15, 9:15

NEW PLAZA (Linden)—SILENT MOVIE, Thurs. 5:30, 6:55, 8:30, 10:10, Fri. 7:8, 8:05, 10:05, Sat. 1:40, 3:25, 5:05, 6:50, 8:30, 10:15, Sun. 1:30, 3:10, 4:50, 6:30, 8:10, 9:55, Mon., Tues., 7:15, 9:15

NEW PLAZA (Linden)—SILENT MOVIE, Thurs. 5:30, 6:55, 8:30, 10:10, Fri. 7:8, 8:05, 10:05, Sat. 1:40, 3:25, 5:05, 6:50, 8:30, 10:15, Sun. 1:30, 3:10, 4:50, 6:30, 8:10, 9:55, Mon., Tues., 7:15, 9:15

NEW PLAZA (Linden)—SILENT MOVIE, Thurs. 5:30, 6:55, 8:30, 10:10, Fri. 7:8, 8:05, 10:05, Sat. 1:40, 3:25, 5:05, 6:50, 8:30, 10:15, Sun. 1:30, 3:10, 4:50, 6:30, 8:10, 9:55, Mon., Tues., 7:15, 9:15

NEW PLAZA (Linden)—SILENT MOVIE, Thurs. 5:30, 6:55, 8:30, 10:10, Fri. 7:8, 8:05, 10:05, Sat. 1:40, 3:25, 5:05, 6:50, 8:30, 10:15, Sun. 1:30, 3:10, 4:50, 6:30, 8:10, 9:55, Mon., Tues., 7:15, 9:15

NEW PLAZA (Linden)—SILENT MOVIE, Thurs. 5:30, 6:55, 8:30, 10:10, Fri. 7:8, 8:05, 10:05, Sat. 1:40, 3:25, 5:05, 6:50, 8:30, 10:15, Sun. 1:30, 3:10, 4:50, 6:30, 8:10, 9:55, Mon., Tues., 7:15, 9:15



GREASEPAINT PLAYERS—Area performers 11 to 24 years old, are shown in scene from The Me Nobody Knows, which will premiere at Burnet Junior High School. Union. Play will be staged Friday and Saturday evenings Dec. 10 and 11 and Sunday afternoon, Dec. 12, sponsored by the Foundation for the Performing Arts

New-type musical scheduled in Union

'The Me Nobody Knows', starring Irwin Sablosky, Peter Smerald, Sandra Terrell, Scott Winters, Scott Segall, Robert Young, Anita Borden and Gloria Boulware, is set for production at Burnet Junior High School. The production, sponsored by the Foundation for the Performing Arts, will be directed by Norman Noll of Union, who also serves as choreographer. Walter Both is musical director.

Yule music scheduled

A program of holiday music featuring the Vivaldi 'Gloria' will be presented by the Recital Stage Chorus Sunday afternoon, Dec. 5, at 3 p.m. in Connecticut Farms School, Union. The chorus, directed by Dennis Boyle, will be sponsored by the Foundation for the Performing Arts.

DISC 'N' DATA

PICK OF THE LP'S—LISTEN TO THE CITY, by Tim Weisberg (A&M SP-4545) This is Tim's fifth A&M LP and his most ambitious undertaking yet, a concept album focusing on the range of moods and energies concentrated in the American city.

SUBURBAN CALENDAR

The information contained in these listings originates with the sponsors of the events. Readers are advised to call the sponsors (telephone number is included in each listing) if they require additional information.

Music, dance: METUCHEN—N.J. Symphony Orchestra, conductor Jesse Levine, performs, Dec. 1, 8:30 p.m., Metuchen High School, 674-8203. PLUCKEMIN—Bob Wilber and orchestra in a program of Ellington music, Nov. 28, 3 p.m., Watchung View Inn, sponsored by N.J. Jazz Society, 688-3315 or 688-3643.

Film: MOUNTAIN SIDE—Nature films, Sundays at 2, 3 and 4 p.m., Trailside Nature and Science Center, Watchung Reservation, 272-9700.

Theater: CRANFORD—The 'Hot 1 Baltimore', by Lanford Wilson, Oct. 22-Nov. 27, performances Fridays and Sundays at 8:30 p.m., Saturdays at 7 and 10 p.m., Celebration Playhouse, 118 South Ave., 272-5704 or 351-5033.

Museums: MONTCLAIR—Montclair Art Museum, 3 South Mountain Ave., 742-7555. Sundays 2 to 5:30 p.m.

CHILDREN

MILLBURN—Babies in Toyland, presented by the Producers' Association, Nov. 20 and 21, 10:30 a.m. and 1:30 p.m., Paper Mill Playhouse, Brookside drive, 376-4343.

Art

ELIZABETH—Lithographs by Judith Solodkin, through Nov. 30, Elizabeth Public Library, 11 South Broad St., 354-6066.

Children

UNION—The Wizard of Oz, presented by the Prince Street Players, Nov. 27, 11 a.m. and 1 p.m., Wilkins Theatre, Kean College, 527-2213.

CROSSWORD PUZZLE

A crossword puzzle grid with clues for Across and Down. Clues include 'Expense', 'Snooze time', 'Patriotic song', 'Pungency', 'City in Pakistan', 'Sailor', 'Skin problem', 'Athlete's award', 'Bottled in', 'Gainsay', 'Fairy tale opener', 'Thorax', 'Engender', 'Sport side', 'Speakers' platform', 'Essays of...', 'Spring highlight', 'Pie - mode', 'Formal dance (Fr.)', 'Old musical note', 'Library', 'Mourning band', 'Free from covering', 'Spirit lamp', 'English bobby', and 'She blows!'.

NEW PLAZA (Linden)—SILENT MOVIE, Thurs. 5:30, 6:55, 8:30, 10:10, Fri. 7:8, 8:05, 10:05, Sat. 1:40, 3:25, 5:05, 6:50, 8:30, 10:15, Sun. 1:30, 3:10, 4:50, 6:30, 8:10, 9:55, Mon., Tues., 7:15, 9:15

NEW PLAZA (Linden)—SILENT MOVIE, Thurs. 5:30, 6:55, 8:30, 10:10, Fri. 7:8, 8:05, 10:05, Sat. 1:40, 3:25, 5:05, 6:50, 8:30, 10:15, Sun. 1:30, 3:10, 4:50, 6:30, 8:10, 9:55, Mon., Tues., 7:15, 9:15

NEW PLAZA (Linden)—SILENT MOVIE, Thurs. 5:30, 6:55, 8:30, 10:10, Fri. 7:8, 8:05, 10:05, Sat. 1:40, 3:25, 5:05, 6:50, 8:30, 10:15, Sun. 1:30, 3:10, 4:50, 6:30, 8:10, 9:55, Mon., Tues., 7:15, 9:15

NEW PLAZA (Linden)—SILENT MOVIE, Thurs. 5:30, 6:55, 8:30, 10:10, Fri. 7:8, 8:05, 10:05, Sat. 1:40, 3:25, 5:05, 6:50, 8:30, 10:15, Sun. 1:30, 3:10, 4:50, 6:30, 8:10, 9:55, Mon., Tues., 7:15, 9:15

NEW PLAZA (Linden)—SILENT MOVIE, Thurs. 5:30, 6:55, 8:30, 10:10, Fri. 7:8, 8:05, 10:05, Sat. 1:40, 3:25, 5:05, 6:50, 8:30, 10:15, Sun. 1:30, 3:10, 4:50, 6:30, 8:10, 9:55, Mon., Tues., 7:15, 9:15

NEW PLAZA (Linden)—SILENT MOVIE, Thurs. 5:30, 6:55, 8:30, 10:10, Fri. 7:8, 8:05, 10:05, Sat. 1:40, 3:25, 5:05, 6:50, 8:30, 10:15, Sun. 1:30, 3:10, 4:50, 6:30, 8:10, 9:55, Mon., Tues., 7:15, 9:15

NEW PLAZA (Linden)—SILENT MOVIE, Thurs. 5:30, 6:55, 8:30, 10:10, Fri. 7:8, 8:05, 10:05, Sat. 1:40, 3:25, 5:05, 6:50, 8:30, 10:15, Sun. 1:30, 3:10, 4:50, 6:30, 8:10, 9:55, Mon., Tues., 7:15, 9:15

NEW PLAZA (Linden)—SILENT MOVIE, Thurs. 5:30, 6:55, 8:30, 10:10, Fri. 7:8, 8:05, 10:05, Sat. 1:40, 3:25, 5:05, 6:50, 8:30, 10:15, Sun. 1:30, 3:10, 4:50, 6:30, 8:10, 9:55, Mon., Tues., 7:15, 9:15

NEW PLAZA (Linden)—SILENT MOVIE, Thurs. 5:30, 6:55, 8:30, 10:10, Fri. 7:8, 8:05, 10:05, Sat. 1:40, 3:25, 5:05, 6:50, 8:30, 10:15, Sun. 1:30, 3:10, 4:50, 6:30, 8:10, 9:55, Mon., Tues., 7:15, 9:15

NEW PLAZA (Linden)—SILENT MOVIE, Thurs. 5:30, 6:55, 8:30, 10:10, Fri. 7:8, 8:05, 10:05, Sat. 1:40, 3:25, 5:05, 6:50, 8:30, 10:15, Sun. 1:30, 3:10, 4:50, 6:30, 8:10, 9:55, Mon., Tues., 7:15, 9:15

NEW PLAZA (Linden)—SILENT MOVIE, Thurs. 5:30, 6:55, 8:30, 10:10, Fri. 7:8, 8:05, 10:05, Sat. 1:40, 3:25, 5:05, 6:50, 8:30, 10:15, Sun. 1:30, 3:10, 4:50, 6:30, 8:10, 9:55, Mon., Tues., 7:15, 9:15

5 POINTS CINEMA UNION - 964-9633 MEL BROOK'S 'SILENT MOVIE' (PG) Matinees: Fri., Sat., Sun., 1:30

Elmora 151-1117 51 ALL SEATS \$1 KAREN BLACK OLIVER REED BURNETT HICKORY SURGEONS MENDITH 'BUFFALO BILL AND THE INDIANS, or SITTING BULLS HISTORY LESSON

Burnt Offerings 51 ALL SEATS \$1 WALTER MATTHAU TATUM O'NEAL 'THE BAD NEWS' 'THE DOG WHO SAVED HELLWOOD'

N.J. Dance Theatre Guild presents 'THE NUTCRACKER' Complete Scenic Effects SAT., DEC. 18th 3:00 p.m.

SUNDAY DEC. 19th 1:00 & 4:30 p.m. Plainfield High School Auditorium 950 PARK AVENUE PLAINFIELD, N.J.

Make a date go... ROLLER SKATING It's Great Fun! AIR CONDITIONED LIVINGSTON ROLLER RINK 615 So. Livingston Ave. Livingston, 992-6161

BRING THE FAMILY TO THE UNION HOFBRAU For an enjoyable Thanksgiving Dinner. Full course dinners being served starting 12 NOON

Dining Elegance Gourmet Excellence SHADOWBROOK Zween Family Serving THANKSGIVING DINNERS From 12:30 To 11:00 P.M.

Enjoy Dinner Out Thanksgiving

A collection of restaurant advertisements for Thanksgiving. Includes Clare and Coby's, Kingston Restaurant, Galaxy Diner, Kless Restaurant, Lynna, Betsy Ross, Nicolas, Happy Time Saloon, Peter Pan Diner, Don's Diner, and Union Hofbrau. Each ad lists the restaurant's name, address, phone number, and special Thanksgiving offers.

O ROMEO! ROMEO!

wherefore art thou Romeo? You can find him and many more of Shakespeare's characters next semester in English 2215 at KEAN COLLEGE OF N.J. We also offer hundreds of other courses in the Humanities, Sciences, Education, Business or the Liberal Arts.

We have traditional (and some not so traditional) programs for students 17 to 70. Spring Semester begins January 31. For applications or other information call: 527-2195; or write KEAN ADMISSIONS, Union, N.J. 07083

Make a date go... ROLLER SKATING It's Great Fun! AIR CONDITIONED LIVINGSTON ROLLER RINK 615 So. Livingston Ave. Livingston, 992-6161

### Ehrhardt-Moore wedding is held at township library

The meeting room of the Springfield Public Library was the setting Saturday for the wedding of Karen Ehrhardt, daughter of Mr. and Mrs. W.J. Ehrhardt of Glenview drive, Springfield, to Charles Moore of Irvington, son of Mr. and Mrs. Charles E. Moore Sr. of Captiva, Fla.

Springfield Mayor Robert Weltchek officiated at the ceremony, the first of its kind ever held in the library. A reception followed at the Hotel Suburban in Summit.

Kathryn M. Poston of Chester, Vt., the bride's twin sister, was matron of honor. William Flanagan of Jersey City served as best man.

Mrs. Moore, a graduate of Holy Trinity High School, Westfield, is secretary to the manager of the Cranford branch of the Union County Trust Co. Mr. Moore is treasurer of Yale Transport Corp., Secaucus.

The couple is honeymooning in Antigua and Florida.

**FIRST PRESBYTERIAN CHURCH**  
MORRIS AVENUE AND CHURCH MALL, SPRINGFIELD  
REV. BRUCE WHITEFIELD EVANS, D.D., PASTOR

MRS. SHEILA KILBOURNE, DIRECTOR OF CHRISTIAN EDUCATION  
Wednesday—8 p.m., Thanksgiving Eve community service.

Sunday—9:30 and 11 a.m., church worship services; Communion Sunday and first Sunday in Advent, 9:30 a.m., Children's Church and Bible presentation, 3:30 to 5 p.m., family Advent workshop.

Monday—9:11-30 a.m., Weekday Nursery School, 3:15 p.m., Brownies, 7 p.m., Girl Scouts.

Tuesday—9:11-30 a.m., Weekday Nursery School, 9:30 a.m., Kaffeeklatsch Prayer Group with Ladies' Benevolent Society, 10 a.m., Ladies' Benevolent Society Bible study, 11 a.m., Ladies' Benevolent Society workshop.

Wednesday—1:30 p.m., Ladies' Benevolent Society meeting with Groups 1 and 2 of the Springfield Senior Citizens program; the Westfield Presbyterian Church bell ringers.

**TEMPLE BETH AHM**  
AN AFFILIATE OF THE UNITED SYNAGOGUE OF AMERICA  
BALDUSLOW WAY, SPRINGFIELD  
RABBI REUBEN R. LEVINE  
CANTOR ISRAEL BARZAK

Wednesday—8 p.m., interdenominational Thanksgiving service at Presbyterian Church Morris avenue and Church Mall.

Friday—8:45 p.m., Sabbath services.

Saturday—10 a.m., Sabbath services.

Tuesday—7:30 p.m., USY college admissions program.

**COMMUNITY PRESBYTERIAN CHURCH**  
MEETING HOUSE LANE, MOUNTAINSIDE  
MINISTER:  
THE REV. ELMER A. TALCOTT  
ORGANIST AND CHOIR DIRECTOR:  
JAMES LITTLE

Sunday—9:30 a.m., adult Bible class, 10:30 a.m., morning worship with Mr. Talcott preaching; Church School, Cradle Roll through eighth grade, 7 p.m., Senior High Fellowship.

Tuesday—4:30 p.m., confirmation class.

Wednesday—3 p.m., choir rehearsal for Grades 1-3, 4:30 p.m., Junior Choir rehearsal, 8 p.m., Senior Choir rehearsal.

**SPRINGFIELD EMANUEAL UNITED METHODIST CHURCH**  
40 CHURCH MALL, SPRINGFIELD  
THE REV. GEORGE C. SCHLESINGER, PASTOR

Thursday—8 p.m., Chancel Choir.

Friday—8 p.m., Busy Fingers.

Saturday—7:30 p.m., Alcoholics Anonymous.

Sunday—9:30 a.m., German worship service, the Rev. Fred Gruber preaching "What Shall It Profit a Man?" 9:30 a.m., Chapel Church School, 10:30 a.m., fellowship hour, 11 a.m., morning worship; "Making Visible the Invisible," 6 p.m., Youth Fellowship.

Monday—8 p.m., administrative board meeting.

**ST. JAMES CHURCH**  
45 S. SPRINGFIELD AVE., SPRINGFIELD  
MSGR. FRANCIS X. COYLE, PASTOR  
REV. STEPHEN P. LYNCH,  
REV. EDWARD R. OEHLING,  
REV. PAUL J. KOCH,  
ASSISTANT PASTORS

Sunday Masses—7 p.m. Saturday—7, 8:15, 9:30, 10:45 a.m. and noon, Daily—7 and 8 a.m.

Holydays—on eves of Holyday, 7 p.m.; on Holydays at 7, 8, 9, 10 a.m. and 7 p.m.

Confessions—Saturday, 1 and 2 p.m., Monday through Friday, 7:15 and 7:45 p.m. No confessions on Sundays, Holydays and eves of Holydays.

**Allens have son, Keith**  
Mr. and Mrs. Matthew Allen of Henshaw avenue, Springfield, have announced the birth of their son, Keith Jason, on Nov. 10 at Morristown Memorial Hospital. The child joins a brother, Darren, and a sister, Kristen. The maternal grandparents are Mr. and Mrs. Alfred Rutz formerly of Springfield, and the paternal grandparents are Mr. and Mrs. Allen of Springfield.

**TO PUBLICITY CHAIRMEN:**  
Would you like some help in preparing newspaper releases? Write to this newspaper and ask for our "Tips on Submitting News Releases."

**The Unusual In ALBUMS and PORTRAITS**  
Marty Feins STUDIO  
252 MOUNTAIN AVE.  
SPRINGFIELD • 379-7666

**TRAVEL TIP:**  
Approval of the U.S. Department of Agriculture is required before any plants, vegetables, fruits, etc. can be brought in the U.S.

This a vacationer's delight. Reserve early. Come to SPRINGFIELD TRAVEL SERVICE, 250 Mountain Avenue... If anywhere in Europe rivals the Alps for scenery, it's Scandinavia. A three nation paradise of staggering natural beauty and modern capitals. Don't miss it! ... Call 379-6767... Open daily 9-5:30 Wednesday evenings until 7:30 Saturday 9-1.

**TRAVEL TIP:**  
Approval of the U.S. Department of Agriculture is required before any plants, vegetables, fruits, etc. can be brought in the U.S.



MRS. ERNEST BUCKSTINE

### Noreen Coll wed to New York man in local ceremony

Norene Coll, daughter of Mr. and Mrs. Joseph J. Coll of Morris avenue, Springfield, was married Oct. 10 to Ernest R. Buckstine 2nd son of Mr. and Mrs. Ernest R. Buckstine Jr. of Somers, N.Y.

The Rev. Paul J. Koch officiated at the ceremony in St. James Roman Catholic Church, Springfield. A reception followed at the Galloping Hill Inn, Union.

The bride and groom were escorted by their parents, Diane Coll, sister of the bride, served as maid of honor. Bridesmaids were Judith Matthews of Roselle Park, Maryanne Harmon of Dayton, Ohio, and Joanne Vogt of Newark, sister of the bride.

William Buckstine of Mt. Kisco, N.Y., served as best man for his brother. Ushers were James Sprague of New York, Kenneth Vogt of Newark, brother-in-law of the bride, and Joseph Coll Jr., brother of the bride.

Mrs. Buckstine, who was graduated from Jonathan Dayton Regional High School, Springfield, is employed as an executive secretary for AT&T in Basking Ridge.

Her husband, who graduated from Hobart College, Geneva, N.Y., is a staff specialist for AT&T in Basking Ridge.

The newlyweds, who took a honeymoon trip to Paradise Island, Nassau and Florida, reside in East Orange.

### Springfield club plans guest night

The Springfield Woman's Club will meet on Wednesday at 8:15 at the Presbyterian Parish House, Church Mall, to celebrate "Federation Guest Night." Guests will be all the presidents and chairmen of the state organization's seventh district.

Mildred Levens, program chairman has arranged a holiday program. Adelaide Benson Waring, soprano, will present "Joy to the World." Miss Waring has had extensive training both here and abroad and includes among her credits the Amato Opera in New York. She also teaches voice. She is a resident of Livingston.

Mrs. Stanley Grossman will be hostess, assisted by her committee. The table centerpiece will be arranged by Mrs. Victor Bracht.

### Supper saver

For a quick supper, combine any style of frozen broccoli with canned tuna and cream of mushroom soup. Top with potato chip crumbs and bake for half an hour.

### Food allergies

The most common food allergies are caused by fish, berries, nuts, eggs, cereals, milk, pork, chocolate, beans and various fresh fruits.

**CARPENTERS, ATTENTION!**  
Sell yourself to over 80,000 families with a low-cost Rent Ad. Call 666-7700.

**TRI-CITY CAB**  
273-4499 • 635-6929  
SPECIAL RATES FOR  
N.W.K. AIRPORT • N.Y. CITY  
SPORTS COMPLEX

**SHOP HERE EARLY** We're rushing the season to help you save!

## THE CLOTHES LINE SALE

**30% OFF** All Fall Merchandise  
**20% OFF** All Cruise & Holiday Merchandise

277 Main Street, Millburn, N.J. 379-7761 10-5 Daily, Thurs. 'til 9

### Newcomers Club holds membership coffee on Dec. 2

The Mountainside Newcomers Club will hold a membership coffee at the home of Mrs. Robert Poole next Thursday, Dec. 2, at 8 p.m.

The membership chairwoman Mrs. Thomas Von Der Linn (233-9428), should be contacted for reservations. Members, new members and prospective members are welcome to attend, she said.

New members include Mrs. Anthony Carrelli, Mrs. Daniel Chiswick, Mrs. Robert Di Bella, Mrs. John Hurley, Mrs. William Johnson, Mrs. Gary Kuperman, Mrs. John Rees and Mrs. Tony Uyttendaele.

The annual Christmas luncheon of the newcomers Club will be held on Dec. 8, noon at 1 Affaire at a cost of \$5 per person. All proceeds from this luncheon will benefit the Children's Specialized Hospital and the Mountainside Rescue Squad.

The Jonathan Dayton Chorale will provide entertainment. A bake sale and plant sale will be featured.

Reservations may be made by contacting Mrs. John Koetckhe (233-9482) or Mrs. William Beckerhauser (654-5242) by Dec. 4.

Friendship roses will be presented to Mrs. Nicholas Dascoli and Mrs. Jerrold Kolton.



BERNADETTE KELLER

### Bernadette Keller engaged to wed

Mr. and Mrs. George Keller of Springfield have announced the engagement of their daughter, Bernadette, to George F. Devonshire, son of Mr. and Mrs. Joseph Devonshire of Edgewater.

Miss Keller, a graduate of Jonathan Dayton Regional High School, is employed by St. Barnabas Medical Center, Mr. Devonshire, a graduate of Ramapo College, works for General Foods Corp.

A September wedding is planned.



ADELAIDE BENSON WARING

## Christmas party set Dec. 14 by Springfield Woman's Club

Plans for a Christmas party were announced at a meeting of the executive board of the Springfield Woman's Club at the home of Mrs. Edward Schubert. Mrs. Adam LaSota presided over the meeting. Co-hostesses were Mrs. Schubert and Mrs. James Diamond.

Mrs. Robert Roessner, chairman for American home, announced that the Christmas party will be held Dec. 14. Festivities will include the exchanging of gifts.

Muriel Sims, in the absence of Mrs. Theodore Stiles, chairman, announced that the creative arts group will share a pot luck dinner at the home of Mrs. Arthur Moore on Dec. 8. The group is working on programs for the December meeting.

A report from the education department stated that five girls were to attend "College Day" at Douglass College, New Brunswick on Saturday.

Muriel Sims, chairman of the literature department, reported that the group will meet on Dec. 6 at the home of Miss Alice Rueg. Miss Alice Holland will be guest reviewer of Christmas stories.

Mrs. Edward Schubert, chairman of the social services department, stated that the group will meet at the Wedgewood for lunch on Dec. 14. Members will also exchange gifts. The group is busy preparing gifts for patients at Greystone Hospital.

The club will participate in a donor day on Jan. 5, sponsored by the A&P. Details will be forthcoming.

The Woman's Club reported that it was the first to volunteer its services to do clerical work at the flu shot clinic.

### Antiques, art topics of alumnae unit session

A program on "Late Antiques and Early Christian Art" will be presented by Katherine Brown, assistant curator of medieval art at the Metropolitan Museum next Thursday, Dec. 2, at the home of Mrs. Walter Fedor, 12 Greenbriar dr., Summit, for the Essex Alumnae Association of Kappa Kappa Gamma.

Prior to the meeting Kappas in the area who wish to become affiliated may call the membership chairman, Mrs. Herbert Christiansen at 376-0939.



SARA JANE BLOUIN

### Sara Jane Blouin to wed Mr. Flood

Mr. and Mrs. Marcel Blouin of Rising way, Mountianside, have announced the engagement of their daughter Sara Jane, to Michael Joseph Flood, son of Mr. and Mrs. John Flood 2nd of Rising Way, Mountianside.

Miss Blouin, who was graduated from Gov. Livingston Regional High School in Berkeley Heights, attended the Brynmar School for Medical Assistants. She is employed by Dr. Raymond Delfino, a pediatrician in Maplewood.

Her fiance, who was graduated from Jonathan Dayton Regional High School in Springfield, is employed as an auto machinist in Maplewood.

The wedding is set for Aug. 13, 1977, at Our Lady of Lourdes Church in Mountianside.

**Time To Spare**  
By GERALD ANDREWS  
Retirement Advisor

More than 15 million Americans were covered by pension plans administered by life insurance companies at the beginning of this year. That's an increase of 1.6 million over the previous year.

The total includes not only retired persons already receiving pension benefits but those who have left employment with vested pension credits not yet being used and those still actively at work. Pension reserves behind plans administered by life insurance companies totaled \$71.7 billion at the beginning of 1976—an increase of 18 percent over the previous year and nearly three times more than 10 years ago. The reserves guarantee pension payments when they become due.

The number of persons receiving payments under pension plans administered by life insurance companies has more than doubled in the past 10 years. The annual payments are more than three-and-a-half times as large. Last year, \$2.5 billion was paid out.

**SPRINGFIELD AVE.**

HEADING WEST? — USE PROSPECT OFFICE AT PROSPECT ST.

HEADING EAST? — USE HILTON OFFICE AT JACOBY ST.

**FULL SERVICE OFFICES ON BOTH SIDES OF SPRINGFIELD AVE.**

**The MAPLEWOOD BANK and Trust Company**  
MEMBER OF FEDERAL DEPOSIT INSURANCE CORPORATION

## UNION BOOTERY

**STYLISH PROTECTION For Those Wintry Days**

by **andiamo**.  
MADE IN U.S.A.

Now you can have protection from ice, snow and cold weather without sacrificing good looks. Our warm-lined boots have style, comfort and durability. Be sure you get yours today!

**UNION BOOTERY**  
1030 Stuyvesant Ave.  
Union Center Phone MU 6-6480  
Open Mon. & Fri. Eves. 'til 9

Master Charge  
BankAmericard

**Travel Along with SY ROSENBLUM**

You will like a lot of things about Sweden. You will like the fresh, clean good looks of the people—it is a surprise to find that only about 20 per cent of them are blond. The lakes, the mountains, and the woods are beautiful. You will like the artistry of the Swedish people, expressed in their fine, clean, modern furniture and household accessories, their beautiful glassware, and their functional architecture. The city of Stockholm makes Sweden even more friendly—do your major site-seeing via a boat ride.

...  
This a vacationer's delight. Reserve early. Come to SPRINGFIELD TRAVEL SERVICE, 250 Mountain Avenue... If anywhere in Europe rivals the Alps for scenery, it's Scandinavia. A three nation paradise of staggering natural beauty and modern capitals. Don't miss it! ... Call 379-6767... Open daily 9-5:30 Wednesday evenings until 7:30 Saturday 9-1.

...  
**TRAVEL TIP:**  
Approval of the U.S. Department of Agriculture is required before any plants, vegetables, fruits, etc. can be brought in the U.S.

# 'Washington's troops' to retreat across county on Dec. 4

Union County residents have been invited to participate in an unusual Bicentennial activity next week—the commemoration of an American flight from British troops.

On Dec. 4, there will be a reenactment of Washington's retreat through the county, as he led approximately 2,000 members of the Continental Army in a march from their Fort Lee garrison to Philadelphia with the troops of Lord Cornwallis in pursuit.

The retreat commemoration began last Saturday in Fort Lee, with Bergen County citizens completing the first leg of the march to a bridge across the Passaic River at Wallington. There, battle flags were transferred to Passaic County marchers; residents of Essex County will take up the standards this weekend, following the retreat route to Newark's border with Union County in Hillside.

This county's march will start at 9 a.m., Dec. 4, at Williamson Avenue and North Broad street in Hillside. From there, the "army" will proceed along North Avenue in Union to Elmora Avenue, Elizabeth, and then along Westfield Avenue into Roselle Park, crossing the Walnut street bridge. The final portion of the walk will be along Chestnut Street, Roselle, to St. George Avenue in Linden and Rahway.

The total length of the route is 10 miles, and the flag will be turned over to Middlesex County groups, who will march Dec. 11 and 12. The retreat is scheduled to end Dec. 19 at the War Memorial Building in Trenton.

"All individuals or groups, regardless of place of residence, are invited to participate in a portion of the walk," said a spokesman for the Union County Cultural and Heritage Programs Advisory Board, an agency founded by the Board of Freeholders.

"As citizens join the walk, they will commemorate a fortuitous journey which led to a regrouping of courage and eventual victory. As Washington's men were able to renew their faith, so we will renew our faith in this country's future."

There will be no floats or marching bands, but colonial fife and drum corps will be permitted to take part. Motor vehicles also are prohibited from joining the retreat, with the exception of police cars or first aid vehicles serving as escorts.

This Sunday at 3:30 p.m. at Weequahic Park in Newark, there will be a ceremony at which Essex County representatives will turn over the "battle flags" to those from Union County as a preliminary to next week's commemoration. Middlesex County representatives will receive the flags in Rahway at approximately 2:30 p.m. Dec. 4.

The retreat commemoration is not a part of the state Bicentennial Commission's official programs, but rather a "grass-roots" activity promoted by local Bicentennial committees, historical societies and other organizations and individuals.

Arnold H. McCloy, president of the Hillside Historical Society, is coordinating the intercommunity efforts in Union County. For further information on the march, readers may call their local Bicentennial chairmen or the office of the Union County Cultural and Heritage Programs Advisory Board at

**Ice rink holiday hours**  
The Winanco Ice Skating Center, Roselle, will be closed Thanksgiving Day from 9 a.m. to 6 p.m. The skating center will be open from 8:30 to 10:30 that evening.

MacKay Library, Union College, Cranford, 272-3140.

The original retreat saga began on Nov. 20, 1776, when Washington's Continental Army was compelled to flee Fort Lee in the face of a much larger and better-equipped British force. The commander-in-chief opted for flight, with the hopes of reaching the relative safety of Pennsylvania. Historians believe that if the Americans had been caught by the British and forced into battle during the retreat, it would have resulted in the Americans' surrender and the end of the Revolution.

Washington, however, brought the troops safely to Trenton and across the Delaware River. Then, on Dec. 24, 1776, with the army's spirits rallied, he recrossed the river, attacked and defeated a Hessian force in Trenton—an event seen as the turning point in the war.


The retreat commemoration leads up to the state Bicentennial Commission's "Ten Crucial Days" program, which begins Christmas day with a reenactment of Washington's crossing of the Delaware. Also scheduled are: Dec. 26—Reenactment of the march to Trenton and the skirmish with the Hessians; Dec. 27-Jan. 1—Military exhibits and encampments at Trenton.

**PAINTERS, ATTENTION!** Sell yourself to over 80,000 families with a low cost Want Ad. Call 686-7700.

**TABLE PADS ONE DAY SERVICE GUARANTEED HEATPROOF \$26.95 and WATERPROOF \$26.95**  
Lowest Factory Prices on Guaranteed Table Pads. We Measure.  
**ACE TABLE PAD CO. 642-6500**

Princeton and Washington's Crossing; Jan. 2—Reenactments of the "Second Battle of Trenton" and the Continental Army's march to Princeton; Jan. 3—Reenactment of the Battle of Princeton.

**Arthur L. Wells**  
Your **OPTICIAN** in **SPRINGFIELD**  
248 MORRIS AVE. • 376-6108  
SPRINGFIELD, N.J. (Closed Wednesdays)



WE HAVE THE **ARTHUR ASHE** TENNIS GLASSES  
**FREE PARKING IN REAR**

## County Bar unit to install B.W. Hehl as president

Bernard Warren Hehl of Arbor Lane Union, will be installed as president of the Union County Bar Association at a dinner at the Town and Campus, Union, on Dec. 1. He will succeed Alfred L. Wolin of Westfield.

Hehl was instrumental in expanding adult evening law education programs throughout Union County while serving as adult education chairman for the Bar Association.

He is a partner in Romano Hehl, Romano and Wilde in Union. Previously Hehl had formed a law partnership in 1958 in Union with A. Donald McKenzie, who is now a Union County Superior Court judge. Judge McKenzie will serve as toastmaster at the installation dinner.

The incoming president received his law degree from Fordham University and his undergraduate degree cum laude, from Seton Hall University. He was admitted to the practice of law in New Jersey in 1951.

Hehl serves as a field representative for Congressman Matthew J. Rinaldo. He previously was a legislative aide when Rinaldo was a member of the New Jersey State Senate. In addition to his service with the County Bar Association as a member of the legislative and speakers committees, Hehl is a member of the general council of the State Bar Association and was an organizer and first president of the Union Lawyers Club.

He is a member of St. Michael's Parish Council in Union, president of Orchard Park Civic Association, a member of Suburban Golf Club and a board member of Warren Brook Country Club. Hehl also is a past grand knight of the Union Council, Knights of Columbus, past president of the Columbian Club, Union, and is a member and former director of Union Township Chamber of Commerce.

Hehl also served as president of the Union Rotary Club and was one of the organizers of the Union Township Historical Society. He is a combat veteran of World War II.

He is married to the former Emma Tretola of Union. They have four children, Warren, Stephen, Mary Katherine and Joseph. He has been a resident of Union since 1947. His father, F. Butler Hehl, was the owner of the Union Bakery in Union.

Donald Conway, president of the New Jersey Bar Association and V. William Di Buono, Assignment Judge of Union County, will speak at the installation dinner, according to Frank Pizzi Jr., of Summit, dinner chairman. Reservations may be obtained by contacting the Union County Bar Association, Room 307, Union County Court House, Elizabeth.

## Italian-Chinese flavor for fund-raising event

A spaghetti dinner and Chinese auction will be held Sunday, Dec. 5 from 2 to 7 p.m. at the Drop Zone Restaurant, 121 E. 2nd Ave., Roselle, with all proceeds to benefit the Union County Division of the National Council on Alcoholism.

Tickets are \$5 per person, \$3.50 for children under 12. They may be obtained from the National Council on Alcoholism, 300 North Ave., East, Westfield; 233-8810.

## Reprocessed material

According to scientists, everything in the solar system has been reprocessed from material left behind by earlier stellar explosions.

**CAKE & FOOD DECORATING SUPPLIES**  
Pastry Bags & Tubes • Novelty Books • Specialty Pans • Cookie Cutters • Complete Holiday Cake Decorations!

**Classes Now Forming**  
ALMOND PASTE, LEKVAR, APRICOT, POPPYSEED  
**CREATE-A-CAKE**

911 MAGIE AVE. UNION, N.J. 289-4185  
Open Tues. thru Sat. 10 to 5 P.M.  
Wed. & Thurs. Eve 7 to 9 P.M.; Closed Mon.

**FACTORY OUTLET SHOPPING GUIDE** says Pearl Levitt Loungewear—Beautiful Loungewear from designers houses and good name brands. Labels are out.

**LOUNGEWEAR DISCOUNT STORE**  
Robes • Gowns • Terries • Bras  
• Long T-shirts • Slippers • Travel Sets

**AT HOME LOOKS THAT GO PLACES**  
From \$12.00 to \$54.00 (Values to \$100)  
**SAVE 40% to 50%**

**Pearl Levitt**  
410 RIDGWOOD RD., MAPLEWOOD, N.J.  
Hours: 12:30 to 4:30 CALL 762-9716  
**A NEW STORE OPEN IN FLORHAM PARK**  
184 COLUMBIA TURNPIKE  
CRESCENT SHOPPING MALL  
Hours: 10:30 to 5:00 CALL 822-9897



BERNARD WARREN HEHL

## Star Party at UC on Saturday night

Amateur Astronomers, Inc., the organization which operates the Sperry Observatory at Union College, Cranford, jointly with the college, will host a Star Party on Saturday, at 7:30 p.m. at the Observatory.

The observatory's 24-inch reflector and 10-inch refractor telescopes will be augmented by some dozen smaller telescopes set up on the grounds of the observatory for the party. Each telescope will be focused on a different celestial object, with members of AAI present to explain to guests what they are looking at, according to Arthur Cacella of East Brunswick, AAI president.

"If it can be predetermined," Cacella said, "one telescope will be focused on a star that is over 350 light years away, coinciding with our first Thanksgiving."

The Star Party is open to the public free of charge. Children under 12 must be accompanied by an adult.

In the event of inclement weather, those planning to attend may call 276-STAR, AAI's 24-hour sky news service, to determine if the party is to take place as scheduled.

## Spaulding opens drive for support

Spaulding for Children, a private, free adoption service, this week announced an appeal for financial support.

"In America, more than 350,000 children live in foster homes or institutions," a Spaulding spokesman said. "Spaulding has placed, in its five years of existence, more than 300 children in adoptive homes."

According to Spaulding, "not only have the children and their adoptive families benefited, but so have the taxpayers. More than a half-million dollars a year has been saved in the budgets of public foster institutions because of these placements."

Spaulding, located in the Red Cross building, 321 Elm St., Westfield, is a non-profit organization, and all donations are tax deductible.

## Thanksgiving dance

Emanu-El Singles will hold a Thanksgiving dance on Sunday, at 7:30 p.m. at Temple Emanu-El, 657 E. Broad St., Westfield. There will be continuous music, L.A. Hustle instruction and refreshments.

## Summit arts unit plans juried show

Brochures are being mailed to artists and craftspeople inviting them to submit works in the Summit Art Center's Juried Show I: Fiber, Wood, Stone, Plastic, slated for Feb. 13-March 6.

The judges panel for the show is composed of Paul Smith, director of the Museum of Contemporary Crafts, Jeanne Siegel, art critic, historian and chairperson of the fine arts and art history departments of the School of Visual Arts, and Richard Lorber, writer and contributing editor for Arts magazine and staff member of the Parsons School of Design.

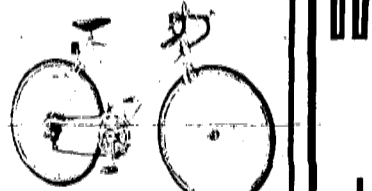
Six awards of \$200 will be presented. Artists may submit only one entry, which will be limited to 50 by 80 inches for any 2-D or wall-hanging, and seven feet in height (including pedestals) for free-standing works. Receiving dates for entries are Jan. 23-24. For a prospectus readers may write the Summit Art Center, 68 Elm St., Summit 07901, or call Jean Dumont, 273-4102.

## Ostomy group to meet Dec. 7

The Ostomy Association of Union County will meet Tuesday, Dec. 7, at 8 p.m. at the Schering-Plough Corp., Kenilworth.

Norman Berger of the Social Security Administration office in Elizabeth, will be the speaker. The program is open to the public. Refreshments will be served.

**SPECIAL CHRISTMAS VALUES!**  
**SCHWINN**  
**10-SPEED BIKES**



10-Speed Gear! Sport Styling!  
**SCHWINN SPORTABOUT \$118.95**

Choice of frame sizes: 26, 22, 24 inch, New Canary Yellow Color!

- Schwinn electro-forged forged frame, 27" wheels
- Drop-style handlebars — sporty
- Tubular fork, racing saddle
- High-pressure gumwall tires
- 10-speed SunTour derailleur
- Schwinn built in Chicago, Illinois

LOW PRICE INCLUDES ALL THESE EXTRAS!  
Every new Schwinn is completely assembled, adjusted to fit properly and ready-to-ride. At the end of 30 days we provide a free 30-day check-up tool. See our Complete Selection of Schwinn bikes for Christmas. Over 60 models to choose from.

Available at:

**GARDEN STATE CYCLE**  
397 Broad St., Summit  
273-5055

and at  
**AARON'S BICYCLES**  
804 First Ave., Eliz.  
352-7454

**CIRCLE PLAYERS list casting call**

The Circle Players of Piscataway will hold open casting for "Veronica's Room," a play by Ira Levin, author of "Rosemary's Baby," on Dec. 14 and 15 at 8 p.m. at the Playhouse, 416 Victoria Ave., Piscataway.

Roles to be filled include: two females, one 18 to 25 and one 35 to 50; two males, one 18 to 25 and one 35 to 50.

**AUTO INSURANCE**  
Geico Policyholders or Anyone Unhappy With Their Present Auto Insurance!

Call Us **964-8770** 9 A.M. to 9 P.M.

**RATES QUOTED ON PHONE!**

46 Years of Service  
**JOHN J. ALBIEZ INSURANCE AGENCY**  
2035 Rt. 22 (Cor. W. Chestnut St.) Union

**HOME MORTGAGE LOANS**  
**Low Rates Available**

For 125 years Harmonia has aided thousands of New Jersey families in attaining home ownership. You may obtain a conventional home mortgage loan with as little as 20% down.

Also available . . . Construction and Home Improvement loans.

**Interested? Drop In or Call the Harmonia Office Nearest You for Full Particulars.**

**BANKING HOURS**

**MAIN OFFICE — UNION SQUARE, ELIZABETH**  
Lobby: Daily 9 A.M. to 3 P.M.; Monday 6 P.M. to 8 P.M.  
Drive-In: Daily 8 A.M. to 6 P.M.; Monday 8 A.M. to 8 P.M.  
Walk-Up: Daily 8 A.M. to 9 a.m. and 3 P.M. to 6 P.M.  
Drive-In & Walk-Up: Saturday 9 A.M. to 12:30 P.M.

**SCOTCH PLAINS AND MORRIS AVENUE, ELIZABETH**  
Lobby: Daily 9 A.M. to 3 P.M.; Thursday 6 P.M. to 8 P.M.  
Drive-In: Daily 8 A.M. to 6 P.M.; Thursday 8 A.M. to 8 P.M.  
Walk-Up: Daily 8 A.M. to 9 A.M. and 3 P.M. to 6 P.M.  
Drive-In & Walk-Up: Saturday 9 A.M. to 12:30 P.M.

**MIDDLETOWN**  
Lobby: Daily 9 A.M. to 3 P.M.; Friday 6 P.M. to 8 P.M.  
Drive-In: Daily 8 A.M. to 6 P.M.; Friday 8 A.M. to 8 P.M.  
Walk-Up: Daily 8 A.M. to 9 A.M. and 3 P.M. to 6 P.M.  
Drive-In & Walk-Up: Saturday 9 A.M. to 12:30 P.M.

**HARMONIA**  
The Family Savings Bank

**OUR 125th ANNIVERSARY • 1851-1976**

In ELIZABETH: 1 UNION SQUARE & 540 MORRIS AVE. • 289-0800  
In SCOTCH PLAINS: NORTH AVE. & CRESTWOOD RD. • 654-4622  
In MIDDLETOWN: 1 HARMONY ROAD • 671-2500

Member F.D.I.C. — SAVINGS INSURED TO \$40,000

The Family Savings Bank

**HARMONIA Savings Bank**

**HARMONIA REGULAR SAVINGS ACCOUNTS PASSBOOK**

**"There's No Friend Like An Old Friend"**

... AND IN TIME OF NEED IT CAN BE VERY FRIENDLY

Invest Your Money In a **HARMONIA REGULAR SAVINGS ACCOUNT** that pays the Highest Interest Rate

You Can Be Sure of Your Interest and You Can Deposit or Withdraw Anytime Without Loss of Interest

**5.47%\*** A YEAR IS THE EFFECTIVE ANNUAL YIELD ON **5 1/4%** A YEAR

\*Withdrawals Anytime Without Losing Interest Provided You Maintain a Balance of \$5.00 or More.

\*Effective Annual Yield When Principal and Interest Remain on Deposit for a Year. Interest is Computed from Day of Deposit to Day of Withdrawal and is Compounded Daily and Credited Monthly.

**FREE PERSONAL CHECKING FOR DEPOSITORS:**

**NO MINIMUM BALANCE • NO SERVICE CHARGE** and Your Checks Are Absolutely FREE  
Also **FREE BANKING BY MAIL** Postage Paid Both Ways By Harmonia

**★ SAFE DEPOSIT BOXES**  
**★ SATURDAY HOURS ALL OFFICES**  
**★ DRIVE-IN & WALK-UP BANKING**

# SUBURBAN REAL ESTATE MART

## Social activities abound at Fawn Lakes clubhouse

A lively tempo of activities provides a pleasant pace for residents of Fawn Lakes, the Mancini Co.'s condominium community on Rt. 72 in Manahawkin, which offers one and two-bedroom homes to people 45 years of age and over.

Pre-retirees and young retirees make up a large portion of the early movers-in, according to Fawn Lakes sales manager Fred Duffy, who cited the vacation atmosphere of the Long Beach Island area as being "as important to homebuyers as the spacious individual homes and quickly blossoming social activities."

Fawn Lakes, which offers homes priced from \$24,950 to \$34,750, is planned for a total of 2,200 homes. Each Fawn Lakes unit—in buildings of single homes, two-to-a-structure and four-to-a-structure clustered among pine-filled green areas—is designed for individual privacy and energy conservation, with more-than-ample storage, garage or carport and individual entry.

As a condominium, Fawn Lakes offers full ownership of the personal home and a share of common elements, including clubhouse, pool, green areas and natural lakes. When the community is complete, there will be several lakes for fishing, nature walk paths, clubhouses at various

locations, swimming pools, and a nine-hole golf course, which is expected to be completed when the majority of homes are sold.

For now, Clubhouse I is a beehive of activity, with shuffleboard court, swimming pool, barbecue areas, pool room, arts and crafts rooms, kitchen—from which a community Thanksgiving dinner party will be planned—central social hall, and a card room, which hosts a chess club.

Residents who spent the summer months vacationing at Fawn Lakes are now coming down on weekends, according to Duffy. "As we anticipated, many Fawn Lakes homebuyers plan to live here full-time after they retire, and in the meantime they are enjoying the 'headstart' and advantages of owning a 'vacation home' ahead of retirement time.

Especially for people who enjoy the sports activities of the Long Beach Island area, Fawn Lakes offers the opportunity of investing instead of renting for summer vacations."

The community offers a mini-bus for residents' planned trips to shopping and other nearby centers, plus the convenient local Dial-a-Ride free transportation mini-bus service. The Southern Ocean County Hospital, with full medical and dental facilities,



**BROOKSIDE SQUARE**—is a relatively new 198-townhome community in Hillsborough Township. Located off Rt. 206, the community opened in July and registered 136

sales. Builders claim that the key is probably the size and value of the homes.

## Brookside has appealing value

According to builders Jack Denholtz and Dave Savage of Red Lion Development Corporation, Brookside

is approximately two miles from the main Fawn Lakes entry.

James Mancini, president of the Mancini Co., Long Beach Island area builder, admits a new kind of pleasure in seeing the culmination of years of planning at Fawn Lakes. "For a long time, it was all planning and building roads, curbs, lakes and that kind of thing. Now it's a great pleasure to stop by and find homeowners enjoying a Sunday barbecue or a social get-together inside the first clubhouse."

Fawn Lakes is located 2.5 miles west of the Garden State Parkway exit to Long Beach Island, on Rt. 72, main artery to Philadelphia. Sales office and newly decorated models are open seven days a week from 10 a.m. to dusk and by appointment.

Square has proven to be extremely popular with people who live or work in Union and Essex counties. The new community off Rt. 206 in Hillsborough Township has proved a sales phenomenon since its opening in July, registering 136 sales in the \$38,990 to \$42,000 price range.

"The size and value of our townhouses as compared with detached homes is probably the key. If you examine any one of the five

models we have for sale, you will find three ample size bedrooms, formal dining room, a large dine in kitchen, an impressive entry foyer, a large living room and a basement large than those in most homes," according to Denholtz. "The public has responded favorably to all this space and value so close to major metropolitan community points."

"All services including snow shoveling, lawn care and garbage collection are taken

care of for you," added Savage. This he said, leaves time for the Brookside Square resident to enjoy the swimming, tennis, clubhouse, gardens and other facilities built into the community.

Adding to the rapid acceptance is the fact that Brookside Square is a "fee-simple" community rather than a condominium. This means that residents actually own their homes and the lots they are built on. "New Jerseyans seem to prefer that type of ownership," according to Denholtz. They also appreciate the private fenced-in yard that is included in each and every unit. The Brookside Square townhouse has all the features of any single-family home plus the recreational club and the groundskeeping staff that no single-family home could ever offer."

All homes at Brookside Square include as part of the purchase price: central air conditioning, natural gas heat, 1 1/2 to 2 1/4 baths and thermal windows and screens. Favorable terms include 5 percent down payment and interest rates from 8 1/4 percent.

Easy access to Rts. 287, 22 and 206 have given the community a commuter-type resident profile.

Built in features include complete hook-ups for laundry facilities in basement, pre-wired TV antenna system on both floors, pre-wired telephone outlets in every room, dishwashers, oven and range with exhaust hood, ceramic-tiled baths, quality oak flooring, decorator vanities and floor-to-ceiling bi-fold closet doors.



**LUXURY TOWNHOME**—The Granville, priced at \$74,900, is one of four townhome designs introduced at Panther Valley, a community located on Rt. 517 one mile south of Rt. 80. The Granville features three bedrooms, 2 1/2 baths, 20-foot paneled family room, 19-foot living room, kitchen, and two-car garage. Other two-bedroom-with-den designs are priced from \$58,500.



**ELIZABETH CONDO**—Polonaise II, a former rental building on N. Broad street, has been converted into a condominium, with two-bedroom apartment prices starting at \$29,900. Six floor plans are available.

## Polonaise condo now open in city

The r.e. Scott Co. has announced the opening of Polonaise II, a condominium apartment home at 712 N. Broad st., Elizabeth, for which they are exclusive sales agents.

While the building itself has been in existence for a few years with apartment rentals, the condominium apartments actually are a new concept. They feature modern kitchens with dishwashers and refrigerators, balconies, individually controlled air conditioning, spacious rooms, oversized closets, washers and dryers on each floor and ample parking.

The building itself, a contemporary high-rise, has been made more attractive with new lobby decor and landscaping. Pricing for a two-bedroom, two-bath apartment starts at \$29,900. There are six floor plans to choose from.

Robert Scott, head of the r.e. Scott organization, predicts that Polonaise II will be "the

new life style for urban living." He said, "Offering all of the conveniences of 1977 condominium life at 1974 prices has got to be intriguing to homeowners in this area who are tired of maintenance problems, tax problems and homes that no longer suit their original needs."

"It offers all of the conveniences and none of the homeowner responsibilities. It's all offered at a price so easy to afford, especially with the excellent financing available for qualified buyers."

Scott added that his organization not only will act as sales agent but also will retain a r.e. Scott representative on the premises at all times "to assure proper management control."

The model apartment is open Saturday and Sunday from 1 to 5 p.m., and Tuesday, Wednesday, and Thursday, 7 to 9 p.m. or by appointment by calling 355-8100 or 352-9494.

## DOLLAR SAVERS!!

**PISCATAWAY**-raised ranch, on one-third superbly wooded acre, 4 bdrms., 2 1/2 baths, living rm., dining & family rms., new 1975 kitchen, 2 car garage, walk to schools, \$51,000.

**SUMMIT**-classic norman tudor, 4 bdrms., 3 baths, living, dining rms., newly modernized kitchen, new heating & central air cond., unusually large rms., overlooks golf course, must be seen, \$169,000.

**MILLBURN**-expended cape cod, 3 bdrms., 1 1/2 baths, completely finished basement, 2 car garage, recently expanded & renovated, many extras, \$67,000.

**WATCHUNG**-exec. transfer, classic French Normandy, 4 bdrms., 2 1/2 baths, full basement, formal dining rm. for entertaining, living rm., country kitchen, family rm., with fireplace, 1 1/2 wooded acres, \$169,000. terms.

**BOB BUTCHER & Associates**

REALTORS-MLS  
441 SPRINGFIELD AVE.  
BERKELEY HEIGHTS, N.J.

464-7500

## Kislak sale in Roselle

A three-story brick apartment building at 323 Chestnut st., Roselle, has been sold for the owners, Grimaldi-Basili Associates, to an investing client of J. I. Kislak Realty Corp. in a transaction negotiated by area representatives Barry Tobias.

The property, containing seven three-room units and six four-room units, is fully rented.

Tobias, whose 18 year career in real estate sales covers all phases of property investments, said the Roselle building is "a good example of the well maintained, smaller apartment properties that are of special interest to many real estate investors."

Located near the center of Roselle, the Chestnut street building is within walking distance of shopping schools

and public transportation, and has convenient access to the Garden State Parkway. "The building itself and its location both possess advantages that make the property most at-

tractive for an investment vehicle," Tobias said.

**NOT a Condominium - NO Maintenance Fees**

# \$19,990.

Taxes Approx. \$40/Mo. - Down Payment \$1040.

**BUYS** DIRECT FROM BUILDER ATTACHED RANCH HOME FOR \$155<sup>00</sup> PER MONTH

PRICE INCLUDES

**Burnham Woods**

Call Collect (609) 698-7723

Thursday, November 25, 1974

Carpeters, Attention! Sell yourself to over 80,000 families with a low-cost Want Ad. Call 666-7700.

# The amazing, incredible, indestructible Bond.

Nothing can hurt a U.S. Savings Bond. Or stolen. Or burned. No problem.

Just let us know they're missing. And we'll replace them.

So you see, if Bonds can't make you feel secure, probably nothing will.



## Take stock in America.

Join the Payroll Savings Plan.

## PROPERTY OWNERS:

# Viceroy introduces the "Super-Insulated" home

**Energy conservation should be part of everyone's life.**

Viceroy proves that your new permanent or vacation home can have more warmth and use less fuel. Viceroy, "The Innovators", have put unconventional building techniques into their designs.

**A 30% increase in external strength of home**

is achieved by walls built of 2"x6" studs on 24" centers instead of the usual 2" x 4" studding on 16" centers. This allows for 6" insulation instead of the usual 4". Ceilings get 8" of insulation instead of 3 1/2".

**Triple-seal windows with 40% less heat loss**

gives a complete beat-the-cold package, an energy efficient home in keeping with today's demands. Thermal resistance "R" factor has been increased by 60% in walls and 133% in the ceiling.



**Viceroy's Home System gives a tremendous flexibility**

in savings, designs and a wonderful opportunity for do-it-yourselfers to finish the job themselves and save even more. Viceroy's leadership, initiative and the use of pre-engineered and production-line methods have cut costs to where the home you want is available today—and at costs considerably less than you might believe.

**Viceroy does more for you.**

Outstanding Viceroy permanent and vacation homes—shell erected on your foundation in only 10 days.

Viceroy's full-color Home Planning Guides are available at the Mahwah Display Court—Route 17 northbound, just South of Route 202.

See 4 display models now.

## Viceroy Homes

201 Rte. 17, Mahwah, N.J. 07430  
Call 201-529-2840

Open 10 am to 6 pm weekdays  
11 am to 4 pm weekends

• VICEROY HOMES INC.

• 201 Route 17

• Mahwah, N.J. 07430

• Please make an appointment for me

• Enclosed is my check for \$3.00,

• please send me Viceroy's full-color Home Planning Kit:

• Name

• Address

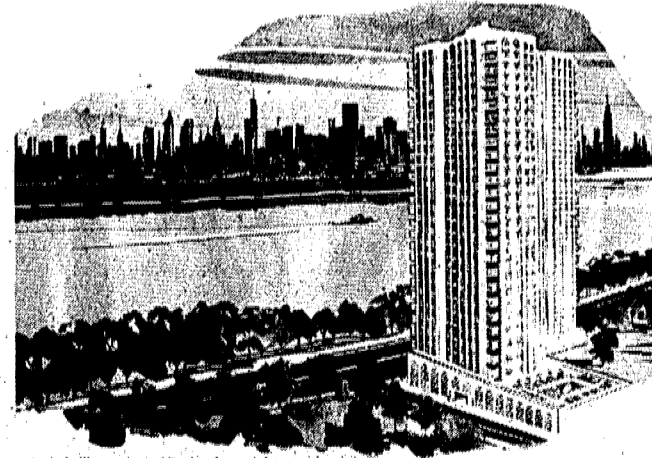
• Town, State, Zip

• Home Phone

• Office Phone

• I own land at

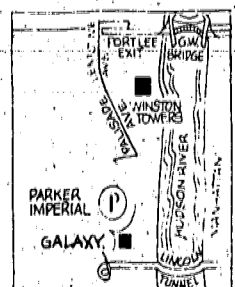
## Now, you can buy our 2-bedroom 2-bath apartment home for just \$39,990. That's right. \$39,990.



A Parker Imperial condominium home adds to your lifestyle in every way. Rooms are large. The setting is secure. Views are spectacular (across the river from 86th St., Manhattan, across the street from a 167-acre public park). There's plenty to do (16 tennis courts at the park plus swimming pool on the property). Commuting is easy (mid-Manhattan is 15 minutes, about 3.5 miles, away by scheduled bus). And you gain the tax and financial benefits of home ownership. See the furnished models today.

**Also available: 1, 2 and 3 bedrooms, \$39,990 to \$76,000/\$55,000 maximum mortgages/Over 275 sold out of 308 apartments.**

Total monthly charges following 20% down payment, on Plan 4H, \$355 includes mortgage principal and interest, estimated real estate taxes and estimated common area charge, of which \$35 is tax deductible. Real estate taxes and mortgage interest are tax deductible.



Directions: Lincoln Tunnel to Boulevard East exit. Go north on Boulevard East 2 1/2 miles to sales office. Or: G.W. Bridge upper level to Fort Lee exit. Take Lemoine Ave. (Rte. 67) south, which becomes Parkside Ave., 4 1/2 miles to Boulevard East. Left on Boulevard East to Sales Office.

# Parker Imperial

7855 Boulevard East, North Bergen, N.J. Phone: (201) 868-4411  
Sponsor: West Shore Development Corp., 104-70 Queens Boulevard, Forest Hills, N.Y. 11375

This advertisement is not an offering, which can only be made by formal prospectus, N.Y. 343.

# SUBURBAN REAL ESTATE MART

• City • Suburbs • Farm Country • Lake • Shore



**FALISADES PARK VIEW** The 167-acre North Hudson Park adjoins the property of the 30-story Parker Imperial condominium apartment building on the Falisades in North Bergen. Residents have use of the condo's outdoor swimming pool and indoor health club, as well as the park's recreational facilities including boating, fishing and tennis.

## Choice condos still available at Parker Imperial

Parker Imperial, a 30-story condominium located at 79th street and Kennedy boulevard East in North Bergen, across from the 79th street boat basin in Manhattan, still has a number of one, two, and three-bedroom apartment homes available with river or park views.

Although 90 percent of the 308 units at Parker Imperial have been sold, there are still five one-bedroom models, two two-bedroom models, and a three-bedroom model available.

All maintenance from landscaping to snow removal will be provided by the Condominium Association. Each apartment owner will be entitled to deduct from his gross income for federal income tax purposes, the real estate taxes assessed against his apartment and the mortgage interest, as well.

Every resident at Parker Imperial is entitled to free indoor reserved parking plus recreational facilities, which include outdoor pool and indoor health club. All are included in the purchase price.

Parker Imperial, located at the end of a 167-acre county park, has views of the Hudson River, the Manhattan skyline, the mountains to the west, and the park itself. Boating, fishing and 16 tennis courts are available in the park, a few steps away from the front door.

A number of buyers at Parker Imperial cited the public transportation facilities as one of the reasons they selected the condominium. There is a bus stop right at the doorstep, so residents can be in Manhattan in minutes. If you must take your car into Manhattan, the city is accessible from Parker Imperial either over the George Washington Bridge, four miles to the north, or through the

## Public sale on estates

Adams and Martin Real Estate and Marketing Co. has arranged with Marcus Weiner, president of Hyde Park Inc., to offer three and five-acre estates to the public. Hyde Park is near the recreational belt of Ocean and Burlington Counties.

About 15 minutes from Long Beach Island, Hyde Park offers recreational facilities including swimming, fishing, boating, surfing, shopping and entertainment.

Atlantic City can be reached within a 45-minute drive. The area is known for its fast growth patterns and there are several developments offering 1-acre parcels.

Martin Zsholtz, president and marketing director of Adams and Martin, feels the average investor should have a chance to own larger parcels where his or her estate can benefit.

The price for the parcels start at \$6,000 with \$690 down and \$75 per month. There are 27 parcels offered.

Homes at Hyde Park are being offered by Decorative Construction Unlimited, Inc. of Parsippany.

Lincoln Tunnel, two miles to the south.

"The condominium is close enough to the city to be convenient to work and cultural activities, yet is also removed from the hectic pace of urban living," a spokesman for the developer noted.

The trip by bus to the Port Authority bus terminal at 41st street and 8th avenue is less than 20 minutes. A trip to the Port Authority terminal in the Washington Heights section of Manhattan takes about the same time via public bus service.

To reach Parker Imperial from the Union—Essex County area, take the Garden State Parkway or N.J. Turnpike north to the Rt. 3 East exit heading toward the Lincoln Tunnel. Continue on Rt. 3 to the last exit in New Jersey (Pleasant avenue). Continue down the hill to Kennedy boulevard East, turn left and drive north on Kennedy boulevard East for 2 1/4 miles to the Parker Imperial, at 79th street and Kennedy boulevard East, North Bergen.

Model apartments on the 29th floor are open every day from 10 a.m. to 5 p.m. Readers may call 868-6900 for additional information.

## Guide to the 'Patriots' Path' offered by conservationists

A report on the current status of Patriots' Path, a linear greenbelt park along the Whippany River, Morris County, has been published by the New Jersey Conservation Foundation and the Friends of Patriots' Path. A spokesman for NJCF said that the report can be used as a guide for those interested in the 27-mile long park.

The 10-page booklet details the topography of the river, outlines the history of the path and its planning and growth over the past decade.

According to the NJCF spokesman, the park was first proposed in 1966 in conjunction with the Morris County Park Commission and the Morristown Rotary Club as a means of protecting the river corridor from further encroachment, improving water quality and preserving open space for recreational purposes.

The path, about a quarter of which has thus far been opened, will link parks and historical sites in Morristown, Mendham borough and the

townships of Hanover, East Hanover, Mendham and Morris.

The report shows the location of the path in each town. It lists the locations of sections of the park now open for hiking or bicycling.

It also includes a map of the park, prepared by Judy Keith of Morristown, which indicates completed and proposed sections of the path and shows side trails, park and recreation areas along the route and natural, historical and educational points of interest in the area.

According to the NJCF spokesman, approximately 50 percent of the land needed for the path is now in public ownership.

"Patriots' Path: Summary and Status Report" can be obtained for \$1 at the office of the New Jersey Conservation Foundation, 300 Mendham rd., Morristown 07960.

## College presents Williams drama

"Cat on a Hot Tin Roof," Tennessee Williams' drama of love and morality in the Deep South, will be featured in the Major Theater Series at Montclair State College Dec. 1-4. Evening performances will be at 8:30, with one matinee scheduled Dec. 3 at 2:15 p.m. The production will be staged in the Memorial Auditorium on the college campus in Upper Montclair.

Tickets are \$2.50 with discount rates of \$2 for senior citizens and \$1.25 for students. Tickets may be reserved by writing to the college box office or by calling 746-9120 from 9 a.m. to 9 p.m. daily.

## National Antiques Show in Garden Feb. 19-27

The 3rd annual national Antiques Show will be open in the Exposition Rotunda of Madison Square Garden from Feb. 19 through the 27. Approximately 200 exhibitors are expected.

For the eighth consecutive year, a separate Con A Rama, directed by Stanley Schaeffer, will show commemorative stamps and coins, numismatic rarities, and commodities which preceded money as mediums of exchange in African and Oceanic societies. About 30 dealers will participate in the Con A Rama.

Three charities benefit from the show: Irvington House which is affiliated with the NYC Medical Center, will have a booth of donated arts and antiques as will the

Community Committee of the Brooklyn Museum. Another service is the show's Appraisal Clinic sponsored for charity by the Appraisers Association of America. The clinic is staffed by a rotating panel of member appraisers prepared to appraise anything, charging a nominal scaled fee which goes to a national philanthropy. These fees are tax exempt.

Among the antiques and historical memorabilia at the National Antiques Show are netsukes, antique maps and prints, rare silver, estate jewelry, photographic artifacts, Wedgwood from antique to Keith Murray Art Deco, trade signs, Handel, Parpoint and Tiffany lamps, Buffalo pottery and early toys and steam engines, Wootton desks, John Henry Belter cabinetwork, English mocha, American Indian beadwork, coverlets, royalty items, figural napkin rings, Chinese trade porcelain, paintings on rice paper and silk, Art Judaica, lacquer, teakwood and mother-of-pearl inlaid furniture, buttons and badges, Roman glass, etc.

Hours for the show are 1 p.m.-10 p.m. daily and 1 p.m.-7 p.m. Sundays. Admission is \$3.

## Wine, cheese on party menu

The Four Seasons Ski Club will hold its annual wine and cheese tasting party on Sunday, Dec. 5 from 4 to 8 p.m. at the Russian Hall, 4-6 Woodhall ave., Little Falls just south of the Willowbrook Mall.

The admission of \$5.50 will cover wines and cheeses, to sample, music and prizes. The activity is open to anyone over 18.

## 'Minstrels' at museum

Tickets are still available for the Cartoon Opera Minstrel Theatre performance to be given at the Montclair Art Museum on Saturday at 2 p.m.

The Cartoon Opera is a troupe of four performers who tell stories through song, dance, mime and music. Their tales are inspired by the folklore of both East and West and include rarely-heard legends and fables.

The performance is one of two Thanksgiving weekend programs being offered through the museum's education department. Tickets are \$1.25 for children, \$2 for adults.

## Cartoon Opera offers program

The Cartoon Opera Minstrel Theatre will present a children's program Saturday at the Montclair Art Museum, 5 South Mountain ave. The program will begin at 2 p.m.

With an orchestra of electric piano, bass, synthesizer, guitar, marimba, chimes, recorder and kazoo, the Cartoon Opera company performs ancient and original tales from the East and West.

Tickets for the performance are \$1.25 for children, \$2 for adults and \$1 for members' children.

**Give till it helps.**

The American Red Cross The Good Neighbor.

# CITY FEDERAL SAVINGS

Barnggat / Bedminster / Berkeley Heights / Bernardsville / Blackwood / Bnck Town / Camden / Carteret / Cherry Hill / Deptford / East Brunswick / East Orange / Easton / Elizabeth / Elmora / Flemington / Florham Park / Freshfield / Garwood / Haddonfield / Hazlet / Kenilworth / Lakewood / Lakehurst / Larchmont / Laureton / Linden / Marlboro / Phillipsburg / Perth Amboy / Parsippany / North Newark / North Elizabeth / New Providence / Morristown / Moorestown / Menlo Park / Point Pleasant / Point Pleasant Beach / Roselle / Roxbury / Silverton / South Plainfield / Summit / Tom's River / Turnersville / Union / Washington / Whippany / Woodbridge / Woodbury.

## SAVE ON TAXES while you save for Retirement...

at N.J.'s Billion Dollar Family Financial Center.

**I.R.A. PLAN**  
Employed? This is the plan for you. You'll be able to set aside 15% of your yearly income—up to a maximum of \$1,500. The money put into a retirement account earns big interest.

**KEOGH PLAN**  
Self-employed? This is for you. Delay paying taxes on up to \$7,500 of your yearly income—you pay tax only as you receive funds after retirement.

City Federal Savings and Loan Association  
New Jersey's Largest

Cranford: South Avenue at Walnut  
Kenilworth: Boulevard at North Nineteenth  
Linden: North Wood Avenue at Elm  
Linden Pathmark: Pathmark Shopping Plaza, Ste. George's Ave.  
Roselle: Roselle Shopping Center, Wood Ave. at Rantan Rd.  
Union: Stuyvesant Avenue near Vauxhall Road.  
Union Larchmont: Morris Avenue at Liberty Avenue  
Union Townley: Morris Avenue at Lorraine Avenue.  
Deposits Insured by FSLIC

CLIP COUPON AND MAIL TO US FOR ADDITIONAL INFORMATION

PLEASE SEND ME BOOKLETS GIVING FULL DETAILS ABOUT:

INDIVIDUAL RETIREMENT PLAN    KEOGH PLAN

NAME \_\_\_\_\_

ADDRESS \_\_\_\_\_

CITY \_\_\_\_\_ STATE \_\_\_\_\_ ZIP \_\_\_\_\_

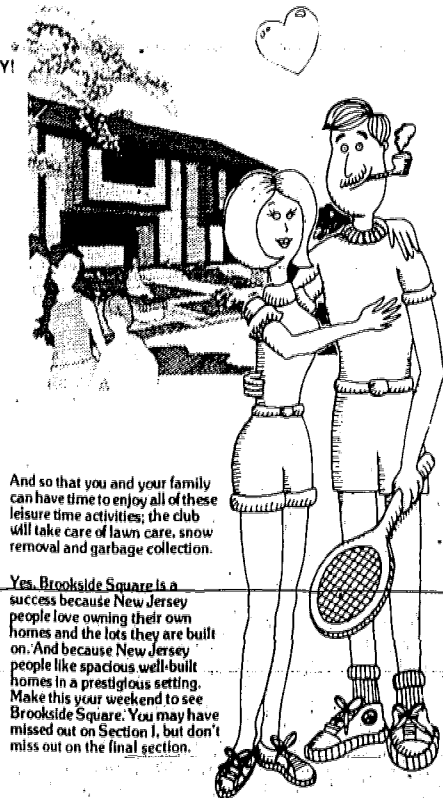
## HURRY! PRICES TO INCREASE IN 2 WEEKS!

BUY NOW AT GUARANTEED PRICES AND TERMS FOR SPRING AND SUMMER DELIVERY!

No new home community that has opened in New Jersey in the past 3 years has achieved the phenomenal sales success of Brookside Square. The reason? Good solid value. And a community that's been designed with the recreational-conscious new young family in mind.

### Townhomes include:

- 3 bedrooms or 2 bedrooms plus den
- Central air conditioning
- Natural gas heat
- 1 1/2 and 2 1/2 baths
- Formal dining room
- Large living room
- Dine-in kitchen with oven, range, range hood and dishwasher
- Large basement
- Private fenced-in patio area
- Thermal windows and screens
- Energy-efficient super insulation



And so that you and your family can have time to enjoy all of these leisure time activities, the club will take care of lawn care, snow removal and garbage collection.

People are also talking about the extraordinary Brookside Square club which includes:

- Private clubhouse
- Tennis courts
- Swim pool
- Basketball, horseshoes and picnic areas
- Private "farm" and garden areas

Yes, Brookside Square is a success because New Jersey people love owning their own homes and the lots they are built on. And because New Jersey people like spacious well-built homes in a prestigious setting. Make this year weekend to see Brookside Square. You may have missed out on Section I, but don't miss out on the final section.

### A Great Neighborhood and a Private Club For the Price of a Home.

**2 BEDROOM PLUS DEN HOMES** (1450 sq. ft. plus private fenced-in yard central air conditioning and full basement) **\$38,990**

**3 BEDROOM HOMES (2 1/2 BATHS)** (1600 sq. ft. plus private fenced-in yard central air conditioning and full basement) **\$42,000**

LOW AS 5% DOWN (To Qualified Buyers) INTEREST RATES FROM 8 1/4%

**Brookside Square**

Directions:  
Route 22 west to Somerville to Route 206; then Route 206 south approx. 5 mi. to Andria Ave. (just before Foodtown Shopping Center) turn right to models... OR Route 287 to Route 206 South; then continue as above.

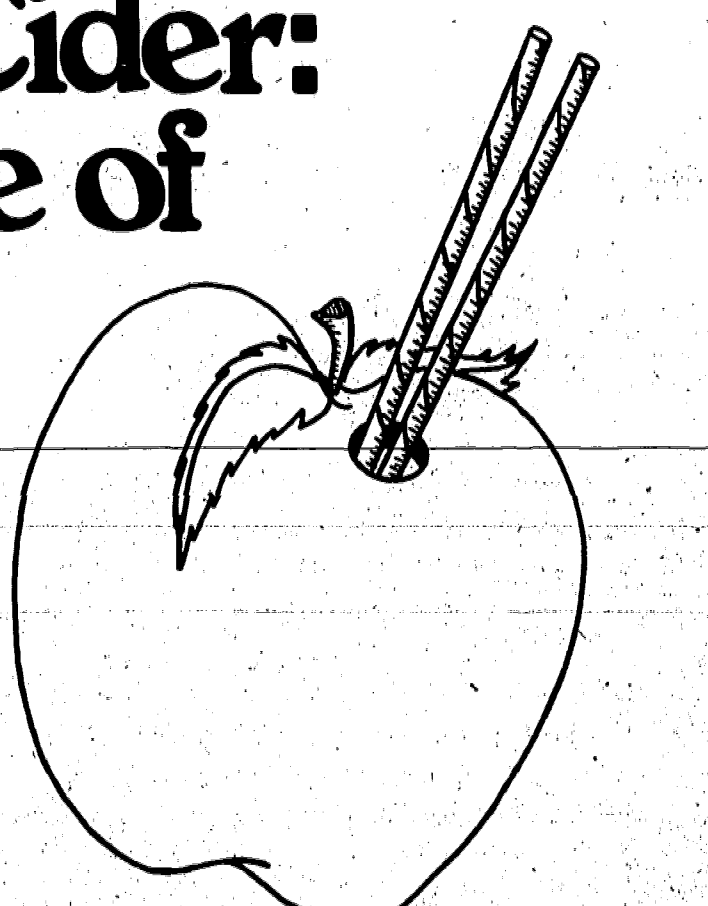
Sales office open 'til 6 P.M.

**Andria Avenue (Off Route 206) Hillsborough Township, New Jersey**  
Phone: (201) 359-3200

# Geiger's Cider: The Apple of Our Eye

We're extremely proud of our cider—a 100% pure and natural beverage made everyday in the same way for over 75 years. And now, during the fall season, Geiger's cider is at its best—fresh, tangy and indescribably delicious. Join the growing number of natural food enthusiasts who've discovered the joys of Geiger's homemade cider right in their own backyard in Westfield.

We're proud of our apples too—grown on our own family orchards in upstate New York, harvested at the peak of flavor, and handpicked to bring the "Pick of the Crop" to you. Right now we are offering the following fall varieties: Red, Golden Delicious, and McIntosh.

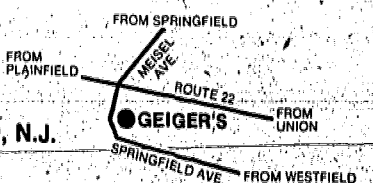


# Geiger's

**RESTAURANT**  
Mon-Sat. 11:30 a.m. to 10 p.m.  
Sun. 12 p.m. to 10 p.m.  
233-2260

**COFFEE SHOP BAKERY & PRODUCE**  
8 a.m. to 9 p.m.  
233-3444

OPEN 7 DAYS • 560 SPRINGFIELD AVE., WESTFIELD, N.J.





# Marlboro Lights

The spirit of Marlboro  
in a low tar cigarette.



Lighter in taste. Lower in tar.  
And still offers up the same quality  
that has made Marlboro famous.

Warning: The Surgeon General Has Determined  
That Cigarette Smoking Is Dangerous to Your Health.

13 mg. tar, 0.8 mg. nicotine av. per cigarette, FTC Report Apr. '76.

CALL AN "AD-VISOR" FOR ACTION, TODAY! - 686-7700

BUY SELL TRADE

DEADLINE IS TUESDAY NOON FOR THURSDAY PUBLICATION

HELP WANTED RENT

WOMEN HELP WANTED MEN

ACCOUNTANT INTERNAL
OFFICE SKILLS WAITING ALL NOT HELP
A-1 TEMPS
PARKING ATTENDANTS needed
PART TIME floor maintenance

LIVE IN HOME
IMMEDIATE OPPORTUNITIES
INTERVIEWING
PATIENT CARE, INC.

AVON
PART TIME LADIES MEN WORK
PRIVATE TUTORING

MUSIC INSTRUCTIONS
PIANO, ORGAN & VOICE LESSONS

PASTE UP ARTIST
RANCH HANDS
SECRETARY-EXPERIENCED

PERSONNEL DEPT.
STATE BANK
BOOKKEEPER
BORED??

CLERK-TYPIST
The Going is Good!

KEMPER INSURANCE COMPANIES
FULL TIME liquor clerk
FURNITURE MOVERS

SPEND A YEAR IN SUMMIT
Your ability to work with figures

PERSONALS
Diet properly with Midland
In celebration of the opening of the house of Jaija P.

Lost and Found
LOST: Kitchen 2 mos. old, white with red & black on Saturday

Tutoring
PRIVATE TUTORING

MUSIC INSTRUCTIONS
PIANO, ORGAN & VOICE LESSONS

FOR SALE
Merchandise, Gas Sales, Real Estate

WANTED TO BUY
LIONEL TRAINS-Pay at least \$2000

ACCOUNTING-BOOKKEEPING
ACCOUNTANT-BUSINESS

Building Materials
DISTRIBUTOR-MIG, wood windows, doors, trim, hardware

Cabinet Making
Cabinet Maker

CARPENTER CONTRACTOR
All types remodeling, additions, repairs & alterations

Garage Sale
GARAGE SALE: Nov. 28 & 29, Fri. & Sat. 9-5 P.M.

Wanted to Buy
U.S. PLATE BLOCKS
Original Recyclers Scrap Metal

OLD CLOCKS WANTED
Any condition, top prices paid

STONE OFFER
Mason contractor has fieldstone and ledge rock leftover

USED REFRIGERATORS, washers, dryers
VITAMINS & MINERALS

Pets, Dogs, Cats
DOG OBEDIENCE-10 lesson course

Business Directory
Cabinet Making

Electric Repairs
ELECTRICIAN

Home Improvements
ATTENTION IRVINGTON HOME OWNERS

KITCHEN CABINETS
Kitchen Cabinets

Furniture Repairs
FURNITURE POLISHING

Garage Doors
Garage Doors

Carpet & Rugs
KARPET KARE

L & L Catering
CATERING

Moving & Storage
MOVING-LIGHT & HEAVY TRUCK

Tree Service
COMPLETE TREE SERVICE

Gen. Services
A & B APPLIANCE SERVICE

REAL ESTATE
CENTURY 21

IRVINGTON
3-FAMILY BRICK FRONT HOME

REPLACEMENT WINDOWS
White Anodized aluminum

MOVING
Local & Long Distance

Florida Specialist
DON'S

KELLY MOVERS
LOCAL & LONG DISTANCE

Houses For Sale
IRVINGTON HOME SWEET HOME

ROSELLE PARK
371 PARKWAY, PLAINFIELD

SPRINGFIELD
DIPSEY SPLIT

WINNER!
Outstanding 3 bedroom home

IRVINGTON
3-FAMILY BRICK FRONT HOME

REPLACEMENT WINDOWS
White Anodized aluminum

MOVING
Local & Long Distance

Florida Specialist
DON'S

KELLY MOVERS
LOCAL & LONG DISTANCE

Houses For Sale
WESTFIELD
North Side Col. 4 bedrms., new

APARTMENTS FOR RENT
IRVINGTON
2 1/2 & 4 1/2 room apart.

LANDLORDS!
If you have clean apartments

ELIZABETH
2 bedrm. apt. in Elizabeth's finest

IRVINGTON
3 room apart. freshly decorated

IRVINGTON
Lovely 3 room apartment

IRVINGTON
Desirable 2 1/2 room apt.

IRVINGTON
3 room apt. Dec. 1st, heat & hot water

IRVINGTON
Lovely newly painted 3 room apt.

IRVINGTON
Modern 2 1/2 room apt.

IRVINGTON
Desirable 2 1/2 room apt.

Houses For Sale
IRVINGTON
Home Sweet Home

APARTMENTS FOR RENT
IRVINGTON
2 1/2 & 4 1/2 room apart.

LANDLORDS!
If you have clean apartments

ELIZABETH
2 bedrm. apt. in Elizabeth's finest

IRVINGTON
3 room apart. freshly decorated

IRVINGTON
Lovely 3 room apartment

IRVINGTON
Desirable 2 1/2 room apt.

IRVINGTON
3 room apt. Dec. 1st, heat & hot water

IRVINGTON
Lovely newly painted 3 room apt.

IRVINGTON
Modern 2 1/2 room apt.

IRVINGTON
Desirable 2 1/2 room apt.

APARTMENTS FOR RENT
IRVINGTON
2 1/2 & 4 1/2 room apart.

LANDLORDS!
If you have clean apartments

ELIZABETH
2 bedrm. apt. in Elizabeth's finest

IRVINGTON
3 room apart. freshly decorated

IRVINGTON
Lovely 3 room apartment

IRVINGTON
Desirable 2 1/2 room apt.

IRVINGTON
3 room apt. Dec. 1st, heat & hot water

IRVINGTON
Lovely newly painted 3 room apt.

IRVINGTON
Modern 2 1/2 room apt.

IRVINGTON
Desirable 2 1/2 room apt.

IRVINGTON
3 room apt. Dec. 1st, heat & hot water

BUSINESS AND SERVICES DIRECTORY

Accounting-Bookkeeping 18
Electric Repairs 37
Home Improvements 50
Masonry 63
Odd Jobs 66
Painting & Paperhanging 68
Interior & Exterior Painting, Leader & Gutter work
RUBBISH REMOVED
TRUCKING
L.L. PAINTING
PAINTING & PAPERHANGING
FLORIDA SPECIALIST
DON'S
KELLY MOVERS
PAINTING & PAPERHANGING
Interior & Exterior Painting, Leader & Gutter work
RUBBISH REMOVED
TRUCKING
L.L. PAINTING
PAINTING & PAPERHANGING
FLORIDA SPECIALIST
DON'S
KELLY MOVERS
PAINTING & PAPERHANGING
Interior & Exterior Painting, Leader & Gutter work
RUBBISH REMOVED
TRUCKING
L.L. PAINTING
PAINTING & PAPERHANGING
FLORIDA SPECIALIST
DON'S
KELLY MOVERS

CALL THE EXPERTS TO DO THE JOB RIGHT!

Apartment For Rent 97
IRVINGTON (UPPER)
3 rooms, gas, heat, hot water & gas supplied. Security required. Immediate occupancy. Call for appointment. 372-6347.

Office Space for Rent 112
UNION
30 FT. PANELED, 1ST FLOOR, Stuyvesant Ave. location. Call 686-4896.

Puzzle Corner
By MILT HAMMER
1. What state is called "The Pathway of the Revolution?"



HOW DOES IT WORK?—Christopher Pastore, age 2, of Princeton studies the complex control panel of the Pacific Southern Railway, situated in Rocky Hill, the railroad will hold its 13th annual model railroad show on Dec. 4 and 5 and on Dec. 11 and 12.

Byrne proclaims 'Adoption Week' for needy children

Governor Brendan T. Byrne has signed a proclamation declaring this week as "New Jersey Adoption Week" to coincide with the national observance. The governor said he wished to acknowledge with efforts of adoption agencies, adoptive parents and concerned citizens throughout the state.

She said of the 495 children placed for adoption during last year, 130 or 26 percent had special problems while 325 or 66 percent were over ten years old.

PSE&G picks Pollock for board of directors

Stewart G. Pollock, a former member of the New Jersey Board of Public Utility Commissioners, has been elected to the board of directors of Public Service Electric and Gas Co.

Middlesex
Hamiltonian apartments, Westville & Boundbrook Rd., near Rte. 28, 1 & 2 bedroom, from \$225. Newly decorated, A.C. Includes cooking gas, heat & hot water. Swimming pool included. on-site parking. Call 968-0615 or see Supt. in Apt. 37.

Buying a New Car?
Moneyworth Magazine says a new car broker can save you up to \$300, or more. We can try us. See Call Community Auto Brokers. 687-1198.

Registry for reading clinic open
The Reading Clinic of Kean College is accepting applications for the spring semester. Parents of children in need of remedial reading or corrective reading may contact the Reading Clinic.



FOLLOW THE TRAIN ROUTE—The Pacific Southern-Railroad of Rocky Hill is planning its 13th annual model railroad exhibition on Dec. 4 and 5 and Dec. 11 and 12. The train route, being studied by four-year-old Jay Pastore of Princeton, spans approximately 100 miles of track.

Deaths Notices

CLARK—Ruth H. Weber, of Bricktown, formerly of Springfield, N.J., on Thursday, Nov. 19, 1976, wife of the late Frank T. Clark, mother of Mrs. Edward Moorey and Mrs. Robert Flynn, sister of Scott and Mrs. Robert Zingg, also survived by six grandchildren. Funeral was held from SMITH AND SMITH (SUBURBAN), 415 Morris Ave., Springfield, N.J., on Monday, Nov. 22, 1976, at 10:30 a.m. Relatives and friends attended Interment Fairview Cemetery, Westfield.

Houses for Rent 101
UNION
7 room split overlooking golf course \$500 month plus utilities, plus security. Realtor, McAlister & Sommer, 686-3434.

PONTIAC ASTRE
\$200. Cash rebate or use against your down payment on any new Astre. Order before Dec. 10, or delivered out of stock before Jan. 10.

F&M holds 2 programs
Franklin and Marshall College will conduct two open houses programs in December to give high school juniors and seniors in Essex, Union, Somerset and Morris Counties a chance to meet students and faculty and to learn about the college.

Model railroad show to open four-day stand in Rocky Hill

The 13th annual Model Railroad Exhibition sponsored by the Pacific Southern of Rocky Hill, the largest HO gauge model railroad in New Jersey, will be held Dec. 4 and 5 and Dec. 11 and 12.

Model railroads in show at Kean

Model railroaders, railfans and people who just like to run trains around the Christmas tree, will gather on the campus of Kean College, Morris Avenue, Union, Dec. 4 and 5 at the sixth annual Model Railroad Hobby Show.

BRIDGEWATER
11 prime lots located on Hwy. 202, zoned light industry. Will sell or build to suit.

Cardiac's Towing
24 hr. service. Highest prices paid for junk cars & trucks. 352-1894.

Aetna gives to colleges
Thirteen New Jersey colleges and universities have received \$12,642.50 in 1976, under Aetna Life & Casualty's aid to higher education program.

Two-day closing for MV stations

Motor Vehicles Director John A. Waddington has announced that all state inspection stations, driver qualification centers and motor vehicle agencies will be closed Friday as well as Thanksgiving Day. However, on the next day, inspection stations that are normally open on Saturdays will remain open.

Telecollege takes school to shut-ins

A new program at Montclair State College, called Telecollege for Confined Adults, is bringing homebound students right into the classroom via two-way telephone hookups.

ATTENTION Fund Raisers
Geiger's offers its famous cider at discount prices to such organizations as Boy Scouts/High Scouts and girl school social committees.

Join in our Bi-Centennial Celebration
Fly the Flag in your Want Ad.

Stamps, coins in N.J. show
A stamp and coin show will be held this Sunday from 10 a.m. to 5 p.m. at the Ramada Inn, Rt. 18, at Turnpike Exit 9 in East Brunswick.

Yule clubs set record

More than 115,000 New Jersey residents began sharing last week in a \$28.6 million pre-holiday Christmas Club payment by the state's 20 mutual savings banks.

STAR STRUCK

Your "WANT AD" can be "STAR STRUCK"
Gain extra attention for your classified ad by asking your "Ad-visor" to place a star in the top stars can be ordered in 2-line, 4-line or 6-line stars. (See samples below).

10% DISCOUNT REFRESHMENTS
GEIGER'S Cider and Cider Doughnuts
Special Discount for organizations. Serve 100 people cider and a doughnut for under \$20. FREE cups with cider.

ADVENTURELAND TURBOCHARGED
1977 HONDA'S AT 1976 PRICES
We are also taking orders for 1977 Honda Super Sports. ORDER YOURS NOW!

Plan now to step up your future
AIR-CONDITIONING
AUTO-MECHANICS
LINCOLN 47

HOLLYWOOD FLORIST
762-1700 Stuyvesant Ave.
Union-irvington
We specialize in Funeral Design and Sympathy Arrangements for the bereaved family. Just Phone 686-1838

