

# Incumbents defeated, budget approved



CHORAL FLORAL TIME—Kirk Yogy and Theresa Curiale are among vocal music students who will be selling flowers door to door from 9:30 a.m. to 5 p.m. Saturday in annual project sponsored by the Jonathan Dayton Regional High School Choral Parents' Society to raise funds for equipment and scholarships. (Photo-Graphics)

## Board head comments on budget 'coverage'

Scott Schmedel, president of the Mountainside Board of Education, this week released a statement criticizing this newspaper's coverage of recent decisions concerning the local school budget. Schmedel, in a letter also sent to James Clancy, county superintendent, and Dr. Ralph Lataille, state deputy commissioner of education, said: "The Echo's front-page article, in the issue of March 29, about a letter to the Mountainside Board of Education from the office of the county superintendent of education should have made two things clear. "First, the Echo got the letter from the county office before any Mountain-

side board member saw it. In my own case, as board president, I learned about the letter, by telephone, from our board office late Wednesday, March 28. By then, The Echo already had the letter. I didn't get home that evening until after 10:30 p.m. when I found a copy of the letter waiting for me. I don't consider that delivering a letter to the board office is the same as delivering it to the board members. I am very disturbed that the State Department of Education seems more concerned about communicating directly with the public, through the press, in this matter than it is about communicating with our board. I have stated my opinion both to the county superintendent, James Clancy, in person, and to the deputy state commissioner of Education, Ralph Lataille, by telephone. "Second, your article quoting me as refusing to discuss the letter or reveal its contents seems to indicate that your reporter spoke to me after the letter was received. As you know, that is not the case. To the best of my knowledge, (Continued on page 2)

## Budget has easy time in regional vote

Carrying five of the six constituent towns, the Regional High School District budget for 1979-80 swept to victory on Tuesday by a margin of 760 votes, 2,289 to 1,529. At the same time, three unopposed candidates were elected for three-year terms—incumbents Natalie Waldt in Springfield and John Conlin in Clark and newcomer David M. Hart in Mountainside. Hart succeeds his wife, Dr. Marilyn Hart. Noting that this was the first year the regional and local school board elections had been held on the same day, Dr. Donald Merachnik, superintendent of schools, commented that the regional budget passage had been aided by issues in several of the towns which tended to bring pro-budget voters to the polls. These included heavy pressure in Springfield for a local budget which had won at least part of an appeal to the State Board of Education to exceed its state-imposed cap; strong feelings in Mountainside over a budget rejected by the county superintendent as inadequate; a controversy over possible closing of an elementary school in Clark and pressure to introduce foreign languages in the middle school in Kenilworth. Final figures showed that 9.6 percent of the eligible voters participated in the regional election this year, as compared to 1.87 percent last year—when (Continued on page 2)

## Municipal budget gets total OK

### No residents attend hearing

The 1979 Mountainside municipal budget was unanimously adopted Tuesday night in a public hearing that lasted less than 30 minutes and attracted no members of the community. After approximately five minutes of general discussion about the budget, the Borough Council adjourned for 10 minutes to wait to see if any members of the public would show up to question the governing body on the proposed budget. When no one showed to join the audience of two—Frank Clooney, from the Council's auditing firm, Suplee and Clooney, and this reporter—Lee Voorhees, Borough administrator, read the resolution adopting the budget and polled the five councilmen present. Tim Benford was the only councilman absent.

Council members suggested that the timing of the hearing may have been in part responsible for the no-show of local residents. At the same time as the hearing, Board of Education elections were in the final hour. Another suggested reason for the absence of residents was the small increase in the tax levy. After receiving approval from the Division of Local Government Services early Tuesday afternoon, councilmen cited examples of substantial jumps in taxes in surrounding communities.

Mayor Thomas Ricciardi said the "sound conservative attitude" by all six council members and a watchful eye on the surplus in the budget have allowed for the small increase—a six-point overall jump. As explained by Nick Bradshaw, finance chairman, the hike of six cents in the tax rate, from \$3.33 to \$3.39, is divided between a nine-cent county jump, a three-cent regional high school tax increase, a seven-cent local district school tax drop and a one-penny rise in the municipal rate.

Although these are not concrete figures, Clooney assured council that (Continued on page 2)



KEEP ON MOVING—Louise Isaac was caught during one of her daily 10 mile runs. This Mountainside resident runs from her home to Springfield, Westfield, Roselle and sometimes as far as Elizabeth. After giving up a three-pack a-day cigarette habit, this former nurse runs to release nervous energy and for her health.

## Jogging is her outlet

### Healthy life her goal

"When I die, I want to be in good health," Louise Isaac of Woodacres drive said. That is the reason she gives for her daily jogging, which totals over 10 miles. The nurse had worked for Overlook as well as the Mountainside school system, and had seen a cigarette habit grow to three packs a day. Mrs. Isaac was not ordered by her doctor to quit but only needed a reminder of all the autopsies she had helped perform of young people with advanced artery diseases as an incentive. "I knew that if I could have an outlet, I could quit smoking," she said. "I have so much nervous energy, so I turned to exercise."

"I can do a seven-minute mile, but it usually takes about nine minutes. I do it for endurance and not speed." The biggest advantage of her daily exercise, she said, is that it keeps her weight down. When she first quit smoking, she gained 37 pounds right off the bat, but with exercise and a strict diet, her weight dropped to 88 pounds. At her doctor's instructions, she again began to eat normally and regained a normal weight.

"Exercise is the only answer. After I run, I am not going to go and spoil it by gorging on food. I think people should make exercise a part of their day, as (Continued on page 2)

## District Dems plan screening talks Saturday

The board of trustees of the Regular Democratic Party Organization of Union County will meet at 2 p.m. Saturday at 18 Poplar st., Rahway, to vote again on its endorsement of County Freeholder Joanne Rajoppi, former mayor of Springfield, for the vacant State Senate seat from the 22nd District. The board also will screen candidates Saturday for the two State Assembly seats from the 22nd District. Harry Pappas of Springfield, county Democratic party chairman and husband of Rajoppi, made the announcement that the State Senate backing, as well as the Assembly endorsements, will be on the agenda Saturday. The party board, also known as the political-action committee, endorsed Rajoppi for Senate in January. But the endorsement at that time brought charges from Kenilworth Mayor Livio Mancino, who also wants the Senate nomination, that Pappas had pressured the screeners to back Rajoppi.

Republican regulars gave their endorsements March 24 to Donald T. DiFrancesco of Scotch Plains for the Senate seat and to William Maguire of Clark and Robert Franks of Berkeley Heights for the Assembly seats. DiFrancesco and Maguire, currently the assemblymen from the district, competed for the Senate endorsement, which virtually guarantees the party nomination in the June primary. The traditionally Republican district covers Berkeley Heights, Clark, Fanwood, Kenilworth, Mountainside, Plainfield, Rahway, Scotch Plains and Springfield in Union County, as well as Chatham Township in Morris County. Republican Peter McDonough of Plainfield quit the Senate seat last winter to operate a public-relations firm. DiFrancesco and the Democratic nominee will be seeking an unexpired term ending in January of 1981.

## PTA urged to stop sitting back: drugs too accessible for youths

Drugs and drug paraphernalia are too easily accessible for our young people, Mrs. Gerri Silverman told parents at a Mountainside PTA meeting. Mrs. Silverman urged the PTA to become involved in combating the growing drug problem, citing evidence that drug use is spreading to even younger age groups.

"Now is the time to act," she said. "We can stop this problem but it will take all of us, acting together. The PTA numbers 350,000 members. That's a large enough group to have some effect, but we can't sit back and just let things happen. Our children are the target of the greatest mass merchandising effort ever, promoting drugs as a fun thing. Unfortunately, our children interpret our silence as tacit consent," she commented.

Citing a report by an Essex County grand jury convened to study the drug problem in schools, she said parents are obliged to make a "deep investment and commitment."

A resident of Short Hills, she chaired a group which led to the removal of drug paraphernalia from Livingston Mall last December. She is chairman of the Drug and Drug-Related Paraphernalia Abuse Committee of the Millburn Conference of Parents and Teachers. The crusade began as a concern of the local PTA unit and gained the support of the New Jersey PTA. The New Jersey Education Association is expected to vote soon on a resolution supporting state legislation banning the sale of drug-related paraphernalia.

Mountainside attention was focused on the drug problem this year when the Board of Education passed a resolution against the decriminalization of marijuana. Board member Pat Knodel effectively and successfully urged the New Jersey School Boards Association Delegate Assembly to pass a similar

resolution against the decriminalization of marijuana and all other controlled drug substances.

Noting that awareness is a first step toward solving any problem, Silverman showed a group of 60 parents and teachers many of the ads geared directly to junior high and middle school students.

She displayed many examples of "toys" and harmless-appearing devices related to the use of what are lauded in advertising as "recreational drugs." The examples ranged from innocuous-looking, dual-purpose belt buckles and earrings to contrived ballpoint pens and felt-tip markers—to legitimate brand-name containers which had been appropriated by

companies and converted to other uses. The latter included a motor oil can and various brands of lip balm.

The exhibits came from Silverman's collection of drug paraphernalia. Many were used as evidence in the lawsuit against the two shops in Livingston Mall. Knodel commented, "It is important to hear what people like Mrs. Silverman have to say. I am very concerned that our townspeople understand the problem and do something about it. We have to bring pressure on our legislators to get them to protect our children from the professionals who are appealing to our youngsters through very effective Madison Avenue tactics."



PECULIAR PARAPHERNALIA—Taking a sober look at an array of drug paraphernalia, from left, are Gerri Silverman, drug abuse crusader; Camie Delaney, Mountainside PTA program chairman, and Pat Knodel, Mountainside Board of Education member. Mrs. Silverman spoke at a recent meeting of the PTA.

## Marinelli, Barre top balloting

### Funding still lacks okay from Clancy

By JAMES SWEENEY and BARBARA WALCOFF

Two incumbents running for a second three-year term on the Mountainside Board of Education were soundly defeated Tuesday while the current expense portion of the local school budget was approved by more than a 2-1 margin.

Bart Barre, who collected the greatest number of votes, 623, and Carl Marinelli with 532 votes, will join the seven member school board in May. Peggy Reilly and Scott Schmedel received 281 and 212 votes respectively.

The budget adoption, by a 585-223 margin, was the first in Mountainside since 1976. It came on a budget which County Superintendent James Clancy has refused to approve because of cuts made by the board after it drew up its original spending plan for 1979-80. Clancy has ordered the board to restore \$17,000 for special services without increasing the tax levy.

The overwhelming approval of the budget was received warmly by board members, teachers, parents, members of the Borough Council and Mayor Thomas Ricciardi, informally following the council meeting. PTA President Peggy Wilson was "elated." She attributed a large part of the reason for the budget victory to the massive two-month campaign waged by her organization.

The current expense portion of the budget approved totals \$1,656,684.

Although the voter turnout was described as light—902, or 18 percent of the 4771 eligible voters—residents nearly doubled the 502 ballots cast during last year's election when the budget was turned down by two votes. Of the 902 votes, 27 were absentee ballots.

"Tonight's results indicate the public wants the board to go in a new direction," Barre said. "The board of Education has to reach out to the public to improve community interest within the school system." He called for more guidance from the board in dealings with the public relation consultant.

The board member-elect said that the board must re-address the budget problems but added that the board must come up with plans to implement the cuts they have made. After openly campaigning against drastic cuts in library aid, Barre expressed hope that he might effectively work to assure "what is best for the children—within the budget boundaries." He said that his business background as well as Marinelli's will be an asset in service and improved direction.

"A good education can be had at a (Continued on page 2)

## Pancake breakfast planned on Sunday

The Youth Fellowship of the Community Presbyterian Church of Mountainside will sponsor a pancake breakfast on Palm Sunday, from 9 to 10:30 a.m., in the assembly room of the church on Deer Path and Meeting House lane.

The breakfast menu will include orange juice, pancakes, sausage and a choice of coffee, tea, or milk. Tickets, which may be purchased at the door, are \$2 for adults and \$1.50 for children. Proceeds from the breakfast will be used for fellowship activities.

## Tax office open on Tuesday night

Leroy Mumford, Mountainside's tax collector, will hold office hours the second Tuesday of each month. His office, located in the municipal building, will be open from 7:30 to 9 p.m. and persons interested in talking with the tax collector may visit during these hours.

Anyone wishing to contact Mumford at any other time during the month may leave a message with the municipal clerk at 233-2400.

## Echo regrets ethnic tag

The Echo regrets having stated in a recent article about a holdup man that "police said he may possibly be Italian." Information provided by local police had presented this newspaper with a difficult problem.

On the one hand, there is a need to provide any information which may lead to the apprehension of a criminal. On the other, the Echo has no desire to print material which would be offensive to an ethnic group which has made major contributions to the growth of the nation and the local community.







# GOOD HEALTH IS UP TO ME!



## Health Education Day May 10, 1979

Health Education Day has been proclaimed by Gov. Brendan Byrne. The statewide program is being coordinated at The College of Medicine and Dentistry of New Jersey with a grant support from the Hunterdon Health Fund.

### EVE program begins sign-up for spring term

EVE, a community service of Kean College, will continue its series of Spring programs with several workshops scheduled to begin this month.

A workshop on "Overcoming Shyness" will meet on six Thursdays, April 19 to May 24, 7:40 to 9:40 p.m. The fee is \$50 and final registration date is April 12.

A six-session "Vocational Development Group" for women considering employment, further education or future career development will meet on Tuesdays, 9:30 to noon, from April 24 to May 29. Mary Ann Bormann of Short Hills, EVE counselor, is the instructor. The fee, which includes vocational interest testing, is \$45, and the deadline for registration is April 17.

You're O.K.-Math's O.K., - and necessary!" provides a re-introduction to mathematics for those returning to school or to math and is aimed at developing a positive attitude among the math-anxious and math-avoiding. This five-session workshop will meet on Tuesdays, 7 to 9 p.m., April 24 to May 22; the fee is \$25. Registration deadline is April 17.

## Health Education Day May 10 will stress preventive medicine

Grandpa checks his blood pressure regularly, Mom exercises daily, cousin Bob is cutting back on his smoking, and seven-year-old Linda has learned to brush her teeth regularly and properly.

This family is practicing preventive medicine by taking more responsibility for its health, a philosophy which is behind "Good Health Is Up To Me," the slogan of the fourth annual statewide Health Education Day.

Gov. Brendan Byrne has proclaimed May 10 as the special day to encourage preventive medicine and has asked the College of Medicine and Dentistry of New Jersey (CMDNJ) to provide leadership in the statewide program. Supported by a grant from the Hunterdon Health Fund, a private organization, the program is a grassroots effort to encourage New Jerseyans to become more involved in their own health care and to take greater responsibility for their health.

CMDNJ; Office of Consumer Health Education and Department of Public Affairs have distributed packets of resource information and a poster stressing "Good Health Is Up To Me" to schools, libraries, hospitals, phar-

macies, health agencies, non-profit organizations and community groups. For CMDNJ, May 10 has added significance. On that day College Hospital, the final piece of the "superblock" that makes up the college's Newark campus, will be dedicated. The \$78-million, 520-bed hospital replaces Martland Medical Center as the teaching facility for CMDNJ-New Jersey Medical School and as a major health care provider for Newark citizens.

May 10 also marks the fourth anniversary of the dedication of the \$200-million Newark campus. Besides the Newark complex, with its four schools, hospital, library and community mental health center, the college comprises the CMDNJ-Rutgers Medical School and its community mental health center, Piscataway, and the CMDNJ-New Jersey School of Osteopathic Medicine, Piscataway and

Camden.

Dr. Stanley S. Bergen Jr., CMDNJ president, said the college aims to provide guidance to the consumer on sound health habits and to the professional community for its continuing education needs.

"We must inspire New Jerseyans of all ages to become more involved in their own health care," Dr. Bergen said. "People must be aware of their role."

Information on community participation is available from Tomi Higgins, project coordinator, Office of Consumer Health Education, department of Community Medicine, CMDNJ-Rutgers Medical School, Piscataway, 08854, or by calling (201) 463-4500.

**CONSTRUCTION COSTS**  
During 1978, cost of construction rose 13 percent — prices, however, rose only 9 percent.

**JUST WATCH ME!**  
Believe it or not, it's impossible to sneeze and keep one's eyes open at the same time.

**Schmidt's Pork Store**  
1697 STUYVESANT AVE.  
Most Of Our Items Are Nitrite-Free

FREE PARKING UNION, N.J. 964-1314  
CLOSED MONDAY

Home Made POLISH KIELBASY \$1.49 lb.	Home Made HAMBURGER PATTIES \$1.49 lb.
Home Made Hot or Sweet ITALIAN SAUSAGE \$1.49 lb.	Home Made BREAKFAST SAUSAGE Pure Pork \$1.49 lb.
All Natural - NONNITRITE BACON Home Made \$1.40 1/2 lb.	

SPECIALS GOOD THRU APRIL 11th

### Human values confab topic

A conference on the human values that apply in dealing with cancer will be held for allied health professionals, as well as for cancer patients and their families on April 20 and 21, at the Town and Campus in West Orange. Funded by a grant from the J. Elwood Lee Jr. estate, the two-day conference is being sponsored by the American Cancer Society's New Jersey Division. Speakers and discussion panelists will include ranking specialists in various aspects of cancer, ranging from its detection through treatment to rehabilitation, re-adaptation and re-employment. Continuing education credits are being made available to doctors, nurses and pharmacists.

SELL BABY'S old toys with a Want Ad. Call 686-7700, daily 9 to 5:00.

### Accounting courses start at Kean in April

Two accounting courses, one designed for those working in non-profit organizations, the other for the small business entrepreneur, will start this month at Kean College. The Center for Continuing Education courses will be taught by management science department faculty members.

"Fund Accounting for Government and Non-Profit Agencies" will be taught by Charles Bellon, mayor of Westwood. Bellon will discuss the basic budgetary accounting systems used in municipal governments, schools, hospitals and non-profit agencies, comparing them with commercial accounting. The six-session course, from 7:40 to 10:10 p.m. on Wednesdays, will begin April 18. Registration deadline is April 11, and the fee is \$50.

"Financial and Accounting Problems in Small Business Management" will be held from 9 to 11:30 a.m. on six Saturdays, beginning April 21. Instructor James Casey will cover typical problem areas in small business, including cash flow, collection of accounts receivable, inventory management, control of overhead expenses and financial planning. Registration deadline is April 13, and the fee is \$50.

In both courses, students will discuss and find practical help in the specific accounting problems they meet in work situations.

Additional information is available from Kean's Center for Continuing Education, 527-2210 or 2163.

### The Cupola

for senior citizens invites you to live in the grand manner to which you've been accustomed.

If you're used to the best, you'll want to consider The Cupola - the ultimate in senior citizens living. All suites are private (for individuals or couples), each with kitchenette and available unfurnished or furnished to suit your own personal taste. Featured are 3 superb meals a day from a diversified menu, maid service, planned activities, theatre, pool, barber and beauty shops, card & game rooms, libraries, delightful greenhouse, even a fully staffed infirmary... all for one modest monthly fee you never buy a thing! Excellent shopping, right nearby.

So, come make your next years the very best years of your life... at The Cupola. ASK FOR OUR BROCHURE - "THE CUPOLA STORY"

W. 100 Ridgewood Avenue Paramus, N.J. 07652 (201) 444-8200

**"If the IRS calls you in, we'll go with you. No extra charge."**

When we prepare your return, we stand behind our work. So if the IRS should call you in, H&R Block will go along with you at no charge. Not as your legal representative, but to answer any questions about how your taxes were prepared. That's another reason why we should do your taxes... which ever form you use, short or long.

**H&R BLOCK**  
THE INCOME TAX PEOPLE

<b>ELIZABETH</b> 211 Broad St. 353-6072	<b>RAHWAY</b> 1407 Main St. 381-8808
<b>IRVINGTON</b> 1344 Springfield Ave. 372-3548 835 Springfield Ave. 374-8333	<b>SCOTCH PLAINS</b> 1547 E. Second St. 322-2232
<b>LINDEN</b> 241 W. St. Georges Ave. 923-1750	<b>SHORT HILLS</b> American Nat'l Bank 800 Morris Tpke. 447-3043
<b>NEWARK</b> 988 Broad St. 424-4712 403 Chancery Ave. 923-2122 159 A. Bloomfield Ave. 484-4287	<b>UNION</b> 1945 Morris Ave. 487-6049
<b>PLAINFIELD</b> 205 Park Ave. 541-3093	<b>WESTFIELD</b> 309 South Ave. 233-7274
	<b>WOODBURGH</b> 826 St. George Ave. 636-4729

Our offices are open 9-9 weekdays, 9-5 Sat.-Sun.  
Appointments Available  
Open Sunday

(Also in) **Sears** IRVINGTON-372-8383  
WATCHUNG-755-2772  
MAMA, ROEBUCK AND CO.  
(During Regular Store Hours)  
Appointments Available

Can put your kids IN THE EASTER PARADE

See our new spring styles by **StrideRite**  
Your choice for growing feet

**KEMPLER SHOES**  
996 STUYVESANT AVE  
UNION CENTER • UNION

**Mirons Ethan Allen Gallery**

## Sleeper Sofa Sale!

**Lawson Sleep Sofa.** Rust, beige, or gold tweeds. Length 71" reg. 579.50 sale 459.50

Choose from three of our best-selling styles available now in a special selection of durable long-wearing Herculon® fabrics and Scotchgard® protected prints. The luxurious Ethan Allen innerspring mattress easily adjusts to a convenient sit-up position for reading or watching TV. Turn your living room or den into a spare bedroom now! Come in to Mirons Ethan Allen Galleries soon!

**Roll Arm Wing Sleep Sofa.** Rust, green, or gold tweeds. Length 72" reg. 639.50 sale 529.50

\*For Immediate Delivery

**Tuxedo Sleep Sofa.** Rust, green, or blue tweeds. Length 72" reg. 774.50 sale 639.50

**MIRONS - Ethan Allen Galleries**  
ROUTE 22, WATCHUNG • ROUTE 18, EAST BRUNSWICK  
Open Daily to 9:30, Sat. to 6 • Open Sundays 1-5 for Browsing Only  
Master Charge, BankAmericard and Extended Charge Plans

**EASTER AT Geiger's**

NEW DRIED FLOWERS ICE CREAM

SAVE 25% OFF ANY PIE OR PIECE OF CHEESE CAKE Expires 4/15/79

SAVE 50% ON PURCHASE OF EASTER CANDY OVER \$5.50 Expires 4/15/79

EASTER BASKETS CHEESE CAKE EASTER CANDY

PIES PIES

EASTER COOKIES STRAWBERRY CHEESE PIE

**RESTAURANT OPEN 12 - 9 EASTER DAY**

Bakery & Produce 8:30 am to 9 pm 233-3444

Restaurant Mon.-Thurs. 11:30 am to 9 pm Fri.-Sat. 11:30 am to 10 pm Sun. 12 pm to 9 pm 233-2260

OPEN 7 DAYS • 560 SPRINGFIELD AVE., WESTFIELD, N.J.

MAIL CHUCK LATE BUNNY



# Star watchers open doors for Space Day

Members of Amateur Astronomers, Inc. (AAI) will join other astronomy groups throughout the country to observe the first National Astronomy and Space Day on Saturday at the Sperry Observatory at Union College.

## Walk-a-thon May 6; to start at Westfield Y

With "We Walk As One On The Road To Renewal" as its theme, the 1979 JACY-UJA Walk-A-Thon of Union County will be held Sunday, May 6, beginning at 9:15 a.m. Ted Gast of Belle Mead is chairman. JACY (the Jewish Association of Centers and Y's) includes the Plainfield JCC, the Eastern Union County YM-YWHA and the Greater Westfield YM-YMHA.

Julie Gelb of Union is in charge of registration; Larry Gelb of Union, checkpoints; Joe Fass of Scotch Plains, routes; Mark Walters of Clark, co-chairman and special events; Roz Helfen of Westfield, food, and Len Rubin of Cranford, publicity.

The 1979 JACY-UJA Walk-A-Thon will begin from the Greater Westfield Y and go through Westfield, Scotch Plains, North Plainfield and Plainfield, concluding with activities at the Plainfield Jewish Community Center. Buses will transport walkers from the Eastern Union County Y and the Plainfield JCC to the Greater Westfield Y at 8:45 a.m.

Residents of the area served by JACY and the Jewish Federation of Central N.J. interested in participating as walkers or sponsors may contact Rich Rubin at the Eastern Union County Y, Green Lane, Union, 289-8112, or Penny Margolies at the Greater Westfield YM-YWHA, 305 Elm St., Westfield, 232-5514.

president of AAI, said the observatory, which is operated jointly by AAI and Union College, will be open to the public beginning at 1 p.m. Members of AAI will give brief lectures on various aspects of astronomy, answer questions and make slide presentations on the space program and the space shuttle.

A "Star Party" is planned at dusk for viewing through the 24-inch reflector and 10-inch refractor telescopes. In addition, smaller telescopes will be set up on the grounds by AAI members who will explain to viewers what they are seeing.

This is a particularly good time to see Saturn and Jupiter, according to Arthur Caccella of East Brunswick, lecturer at Union College and education chairman of AAI.

"Saturn's rings are in the process of 'crossing,' and by October the rings will be on edge, or lined up, and will not be visible. Then Saturn will look like any other planet," Caccella said. This phenomenon occurs once in about every 15 years.

Viewers also will be able to see Jupiter's moons, "Io," "Ganymede" and others which were photographed by Explorer 1.

Observance of Astronomy Day was first initiated last year by a West Coast group called Astronomy for America to lead the public to a better awareness and understanding of astronomy and space science and to call attention to the observation facilities available in local areas. The idea was endorsed by the Astronomical League and most amateur and professional astronomical organizations, Chaplenko said. This year astronomers around the U.S. were asked to join in the observance.

## Parking lot site sold to hospital

Elizabeth General Hospital has acquired the 2 1/2-acre property one-half block from the hospital at the northeast corner of Rt. 1 and 9 and East Jersey street to help ease the longstanding need for adequate parking in the hospital vicinity.

The hospital acquired the property at a cost of \$500,000 from Realmart, Inc. The property will provide 150 additional parking spaces immediately, and as many as 300 with the razing of the building. For the present time, the hospital plans to continue existing leases.

## Parents' guild plans party, fashion show

The Parents' Guild of Benedictine Academy, 840 North Broad St., Elizabeth, will sponsor its annual "pink champagne card party and fashion show" tomorrow at 7:30.

Tickets are \$5 and will be available at the door. Fashions will consist of bridal and prom gowns by Beth's Bridal Shoppe of Linden.

## UC teacher at Seton Hall

Dr. Marsha Meyers, chairperson of the Biology Department at Union College, Cranford, is teaching an anatomy course at Seton Hall University, South Orange, as part of a faculty exchange program within the Consortium of East Jersey. The Consortium consists of Union College, Seton Hall University, Union County Technical Institute at Scotch Plains and Kean College of New Jersey in Union.

## Nice Stuff

take it from the top

ask about our new Nice Stuff charge account! thru saturday

**new spring shirts 4.99**

Just three of many styles... Choose from a rainbow of new spring shades... open weave poly/cotton blend, perfect for skirts, pants or jeans... all first quality in sizes S M L and selling regularly to \$20.

NEW PROVIDENCE 584 Central Avenue • 464-4130  
CHATHAM 455 Main Street • 635-5700  
UNION 1714 Stuyvesant Avenue • 687-2312  
EAST ORANGE 45 Glenwood Place • 672-4198

Open Mondays and Thursdays 10 a.m. to 6 p.m. Other days 10 a.m. to 6 p.m.  
When in Florida visit our Miami and Hallandale stores.  
All our merchandise is tagged regular to protect manufacturer.  
we reserve the right to limit quantities



SOMETHING NEW UNDER THE STARS — The Union County Unit of the American Cancer Society will hold its ninth annual Crimson Ball on April 27 at Pegasus East, in the Meadowlands. Smiles reign as, from left, Carolyn Schon; co-chairman, Dolores Mayer; chairman, Jacqueline Dooley of Mountinside and unit president, Lois Gannon of Plainfield, meet with Honorary Chairman Congressman Matthew J. Rinaldo to finalize plans for the \$100 per plate, black tie affair. Reservations are limited to 250.

## Crimson Ball to raise funds for cancer unit

Pegasus, the recently completed, \$13 million penthouse of the Meadowlands Race Track, is the site for the American Cancer Society's ninth annual Crimson Ball on April 27. Congressman Matthew J. Rinaldo will serve as honorary chairman for this year's \$100-per-person, black tie affair which is to benefit the Union County unit.

W. Emilen Roosevelt, president of the National State Bank and county crusade chairman, along with the

members of the Crimson Ball executive committee, said the event will help the unit realize its record goal of \$260,000.

In addition, a race will be named in the honor of the American Cancer Society with a representative from the Union County unit to present a trophy in the winner's circle.

Money is raised enables the unit to provide service and education for residents of Union County. Mrs. Charles E. Dooley Jr., ball chairperson, Mrs. Edward M. Mayer, co-chairman and Herbert Lutz of Mountinside, crusade committee chairman, and volunteers, Mrs. Henry T. Gibson of Summit and Mrs. Werner Schon of Mountinside, and Mrs. Lois Gannon and Mrs. Anthony Gentile of Plainfield, said reservations are limited to 250.

Cocktails begin at 7 p.m., followed by dinner at 8 p.m. Music will be provided by the Lester Lanin Orchestra. More information concerning the ball is available by calling 354-7373 or 232-0641.

## Red Cross trip being planned

The Special Projects Committee of the American Red Cross Eastern Union County will sponsor a trip to the Margherita and Bianchi Restaurant in Greenwich Village, New York City. The cost includes transportation, dinner and entertainment. The group will leave from Chapter House in Elizabeth on Friday, May 11, at 5:30 p.m. and arrive in time for dinner and entertainment.

Also scheduled in May is an overnight trip to Atlantic City. This trip includes transportation, hotel room, dinner and show at Resorts International Hotel. The group will leave from Chapter House in Elizabeth on Saturday, May 19, and return to Elizabeth the next day. The first 50 to respond to either event will be accommodated. Other information is available from Jackie Canavan at 276-3060.

## Naturalist club meets Tuesday

A program, "American West—A Personal View," will be presented by Yuan Li at a meeting of the Echo Lake Naturalists' Club at 8 p.m. Tuesday at the Cranford Extended Care Center on Birchwood Avenue.

Robert Walker of Cranford will lead an all-day birding field trip to Institute Woods in Princeton on April 21. The spring Sunday morning bird walks will begin April 29 at Echo Lake Park, followed by walks on May 6 in the Watchung Reservation and May 13 in Tamaques Park, Westfield. The Sunday bird walks begin at 6 a.m.

## Debutante unit names officers

Mrs. Marie Moscaritolo of S. Michigan Avenue Kenilworth, has been elected president of the American Italian Debutante Foundation of New Jersey, formerly known as the Italian Heritage Debutante Foundation.

Elected vice-president was Anthony La Bracio (Tony Allen, star of the show Festa Italiana on radio station WJDM); recording secretary, Grace Vaccaro; treasurer, Joseph Nufrio; corresponding secretary, Ann Fiumefreddo; financial secretary, Louise Sbarro; legal advisor, Anthony Palumbo; sergeant-at-arms, Nicholas Remite.

Trustees of the statewide foundation, which sponsors a debutante ball in November each year, are Frank Fiumefreddo, Angie Marcone, Howard Freund, Mary Small and Dr. Rocco Moscaritolo.

Mrs. Moscaritolo announced the selection of the following committees chairmen: scholarship, Denise Moscaritolo; fashion show, Mary Small; Debutante Ball, Louise Sbarro; publicity, Howard Freund and Tony Allen.

Meetings are held each month at the City Federal Savings Bank in Linden.

# Lawyers offer bonds to teen essay writers

The Union County Bar Association is sponsoring a Law Day essay contest, open to every student attending a high school in Union County.

Alan J. Schnirman, Linden attorney and chairman of the county Bar Association's Law Day Committee, said every high school in the county, whether public or private, has been contacted and asked to submit the best essay from its student body on the contest theme, "Our Changing Rights."

Schnirman said he and other Law Day committee members Richard A. Gordon and David B. Littman, both Linden attorneys, and Victor A. Padlo, a Rahway attorney—will select five outstanding essays. Authors of these essays will each receive a \$100 savings bond from the County Bar Association at Law Day ceremonies Tuesday, May 1, in the Union County Courthouse in Elizabeth.

The ceremonies will begin at 9 a.m. in the courtroom of Superior Court Judge William Di Buono, assignment judge of Union County. Superior Court Judge Donald Mc Kenzie will give the keynote speech. John Boyle Union attorney and County Bar Association president, will present the savings bonds.

Two of the five student winners also

will participate in the New Jersey Bar Association Law Day program on April 23 in Trenton. The Trenton program will include a visit to the New Jersey Supreme Court; a luncheon at the Trenton Motor Lodge; a visit with Gov. Brendan Byrne, who will sign a Law Day proclamation, and a visit to the State Assembly and Senate chambers. The two students' Trenton-trip expenses will be paid by the Union County Bar Association.

## Wheelchair athletes to compete Saturday

More than 100 wheelchair athletes will compete Saturday in the second annual Central Jersey Invitational Wheelchair Meet at Elizabeth High School.

The meet for the handicapped co-sponsored by Children's Specialized Hospital in Mountinside and the John F. Kennedy Medical Center in Edison will begin at 10 a.m. in the high school gym.

Sharon Malakoff, meet director for Children's Specialized Hospital, said wheelchair athletes may

## Baby parade slated for fair

The Union County 4-H will hold its fourth annual Baby Parade at the Union County Fair July 15 at 2 p.m. at the Warnanco Park stadium. Babies between the ages of 9 months and 4 years are eligible. Registration will be at the information booth at the fair between 10 a.m. and 8 p.m. or prior to the fair by calling Lynne Rosberger at the 4-H Office, 233-9366.

Prizes will be awarded in the categories of Disney World characters, Animal Kingdom, and general dress. Applications are limited.

**GOODYEAR**  
and  
**REMINGTON TIRES**

- Computerized Wheel Balance
- Computerized Tune-ups
- Brakes & Shocks
- Wheel Alignment

N.J. STATE INSPECTION  
**FRAEBEL BROS.**

1071 Commerce Ave.  
Union - 688-8870

8:30 a.m. Daily 8:30-1:58 p.m.  
Bank Americard/Master Charge

**PALM SUNDAY**  
**APRIL 8TH**

**FEATURING:**

- Cut Flowers
- Silk Arrangements
- Fresh Center Pieces
- Variety of Unusual Gifts

**FIRESIDE PLANTS & GIFTS**  
2376 Morris Ave., Union  
**686-6039** Open Daily 10 to 6

## Richner gives recital May 4

The 12th annual piano recital to be performed by D. Thomas Richner at Union College, Cranford, will be given on Friday, May 4, at 8:30 p.m. in the theater of the Campus Center.

Dr. Richner is a member of the music faculty of Douglass College and first organist with the Mother Church of Christ, Scientist, in Boston. He has performed in concerts throughout Europe, Asia, Africa and North and South America.

**FIGHT CANCER WITH A CHECKUP AND A CHECK**

**AMERICAN CANCER SOCIETY**

**Specializing In Income Tax Preparation Services**

**STRYCHNIEWICZ INC.**  
PUBLIC ACCOUNTANTS  
TAX CONSULTANTS

17 REMER AVENUE, SPRINGFIELD, N.J.  
**467-9585**

Tax Shelters  
Financial Planning  
Real Estate  
Estates & Trusts  
Other Investments

**New 6 Month Savings Certificate**  
\$10,000 Minimum

**9.859%** effective annual yield  
**9.496%** annual rate

**Rate Week of April 5-11**

This is an Annual Effective Yield. However, it is subject to change at Renewal. The rate offered is fixed for the 26 week life of the account. Interest and principal would have to remain on deposit for a full year to earn the yield shown. To earn it, you would have to renew at maturity for another term at the same rate. Current rates, however, cannot be guaranteed beyond 6 months. Early withdrawals, when permitted, are subject to FSLIC penalties and regulations. \*If funds are withdrawn before maturity, no interest will be paid.

**THIS OFFER CAN BE WITHDRAWN WITHOUT NOTICE AT ANY TIME.**

**Berkeley Federal Savings AND LOAN**

UNION: 324 Chestnut Street/687-7030  
Hours: Monday thru Friday, 9:45 to 3:30  
Friday Evenings, 6:00 to 8:00/Saturday, 9:30 to 1:00  
Other branches in: Short Hills (main office), Newark, East Hanover, Livingston, Whiting, Lakehurst

**GRAND OPENING**  
Friday, April 6th

We cordially invite you to visit our new Jewelry Showroom conveniently located at 2464 Morris Avenue and Burnet Avenue in Union.

On display is a collection of 14 and 18 kt. gold and diamond jewelry at incomparable values and savings that only Dan Mar Jewellers can bring you.

**Dan Mar JEWELERS**  
2464 Morris Avenue, Union  
964-1034

Open Daily and Sat. 8:30 AM to 8:30 PM Monday and Friday Even 'til 8:30 PM

- Craftsmen on premises to set diamonds, design and repair jewelry
- We buy old gold, jewelry, diamonds
- Gem Institute of America Appraisals

**GRAND OPENING - GET ACQUAINTED SPECIAL!**  
20% to 30% OFF  
**ALL GOLD JEWELRY & WATCHES**





# SUBURBAN REAL ESTATE MART

City • Suburbs • Farm Country • Lake • Shore



NEW SERIES—The Rutledge, priced at \$64,000, is one of three new models in Clearbrook's Regency series of duplex homes for those who desire adult condominium living combined with year-round leisure-oriented lifestyle. It is shown here in an artist's drawing.

## Shadow Lake chief predicts '79 sellout

Kevin S. Hovnanian, president of Hovnanian Enterprises and founder of Shadow Lake Village, predicts that this adult community in Middletown will be sold out by September.

Shadow Lake, Hovnanian said, will close out its construction as one of the region's more successful condominium developments.

Since construction began in 1971, the rate of sales and values of Shadow Lake homes have both accelerated rapidly, he said. Annual sales during the first year, he noted, averaged around 80

homes while the current annual rate is almost 250 per year. The first models were priced from \$27,990. New models are selling from \$42,990 to \$74,990. The owner of one older model has just resold it for \$99,000, according to Hovnanian. He said many original buyers have used appreciated equity to finance a second home in Florida. Many have purchased in one of two Hovnanian communities in Florida, he added.

Shadow Lake includes cycling and nature walk trails, a trout-stocked lake for sailing and fishing, a large swimming pool, a clubhouse with sauna, gameroom, social and banquet facilities, lighted tennis courts and golf courses.

Shadow Lake's staff maintains all recreational facilities. A private security force mans a 24-hour guard house at the entrance and carries out regular patrols within Shadow Lake.

To qualify for residence at Shadow Lake, one member of the family must be at least 52 years of age.

Hovnanian said about 90 percent of the Shadow Lake residents moved there from elsewhere in New Jersey, including 60 percent from within 12 miles. Most formerly lived in single-family homes, he added. About half paid all cash, and more than two thirds of the families still have members in the work force.

The Homeowners Association recently purchased a new 25-passenger bus to replace a smaller one. The new bus transports residents to commuter connections and on daily shopping tours. The bus runs on a regular schedule. Hovnanian said many Shadow Lake homeowners have found that a family can get along without a second car or even one automobile because of the bus.



A SEASONAL ADVENTURE—Mr. and Mrs. Richard F. O'Brien look over a brochure telling of life aboard the Doric, which will take the couple on a 10-day cruise. With them is Bill Ferry (right), vice-president and marketing director for Lions Head, contributor of the cruise.

## More lots available

With approximately 25 sales recorded since opening, the second section of Landing Lane estate, being developed in Old Bridge, is now available for lot selection.

Landing Lane Estates, designed and built by the Donald Kiken companies, features four outstanding models. The choice of Colonial and split level homes also includes tudor, mediterranean, colonial, and contemporary front elevations. Providing the supplied plans meet the rigid specifications of the development, custom building is also available.

This planned community of 60 home sites has half acre lots with 120-foot frontages at the building set-back line, which helps preserve the natural woodland in which these homes are located. Landing Lane Estates models are priced from \$84,000 and are conveniently located. The information center is open noon to 5 daily, except Wednesday, and may be reached by telephone at 201-679-6363.

For inspection of the models, exit from the Garden State Parkway at 123 (Route 9 South) and continue south on Route 9 bearing right at the exit Throckmorton lane-Ticetown road (Glenwood Diner) and proceed to traffic light. Turn left and continue to Norman Lane (second right turn). Turn right and continue two blocks to Ellen court, then right to models.

## Houses at Barnegat cheaper than renting

When it costs less to own a home than to pay a landlord each month, today's young marrieds will be among the first to find out about it.

At Barnegat Woods, small "hidden" community of two and three-bedroom attached ranch and townhouse homes in Barnegat, several young marrieds are making their first home their investment in the future at a monthly outlay of less money than they would be paying for rental of a home with less space!

"Why pay rent when you can own for so little?" one young wife said, stressing a trend that has surprised the developers of Barnegat Woods, which was planned as a 120-homes community and is already more than half sold out.

The attached homes of Barnegat Woods are not condominiums, so buyers do not have to pay monthly maintenance fees. Each home comes with its own land, sodded and landscaped, plus private parking in front. These are some of the plus-benefits that attract young buyers as homeowners.

The two-bedroom ranch at Barnegat Woods has a tremendous expanse of living-dining room that makes for easy decorating and easy entertaining. The three-bedroom townhouse has both formal living room and an oversized country kitchen-dining

room arrangement that fits in well with today's casual lifestyle.

The back yards of these homes spacious enough for outdoor entertaining

during warm weather months, with plenty of space for barbecue and other outdoor treats. There is also an exterior storage shed, for furniture

or lawn equipment. Excellent financing of only five percent down payment lets young people begin owning a Barnegat Woods home for as low as

\$1,390, with monthly outlay after that about \$275 for principle, interest and taxes—an exceptionally low cost for high value in good living.

FAR HILLS?  
SHORT HILLS?  
UPPER MONTCLAIR?

PANTHER VALLEY

AIRW



## When you live at Panther Valley, it shows.

Panther Valley -- the 1600-acre private luxury community. 24-hour security, private tennis and swimming. Within Panther Valley are the Panther Valley Golf & Country Club and its 18-hole championship course designed by Robert Trent Jones. Mortgages Available to Qualified Buyers.

Single-family home from \$114,500  
Townhomes from \$51,740



DIRECTIONS: Use best route to Interstate Highway 80 west. Proceed on 80 to exit 19 (Andover-Hackettstown). From exit ramp turn left onto Route 517. Continue 1/4 mile to Panther Valley entrance on right. Model hours are 10 A.M. - 5 P.M. daily.

MOBILE HOME OWNERS AT SOUTH WIND EXPECT TO LIVE HERE FOR THE REST OF THEIR LIVES.

...THEY USED TO LIVE IN "SITE-BUILT" HOMES.

CALL (201) 928-0952 (COLLECT) FOR DIRECTIONS OR WRITE FOR BROCHURE TO South Wind ROUTE 526 JACKSON, N.J. 08527

"FOR PEOPLE WHO WEREN'T BORN YESTERDAY"

## Sale told of 21 units

Jordan Baris, Inc., the Irvington-based real estate brokerage firm, has announced the sale through stock transfer of the 61-unit garden apartment complex at 161-167 Lincoln ave., Newark.

Jordan Baris, president, credited two of the firm's sales associates, Harold Carrillo and Florence Chambers, with arranging the transaction for buyer William Young.

The apartment complex has been a landmark in the northern section. Jordan Baris, Inc., a leader in real estate brokerage and investment sales in Essex County for 27 years, is located at 380 Stuyvesant ave., Irvington.

# YOU, TOO, CAN SHARE "THE AMERICAN DREAM!"

The New York Times

"We wanted a share of the 'American Dream' before it disappears." Ask Joseph and Gwen Komyati why they decided to purchase a home now at Holly Oaks, a development under way in Manchester Township, Ocean County, and that is what they will tell you. And they are not alone.



The Dogwood model with 3 bedrooms, 2 1/2 baths, attached garage and full basement.

As stated in the recent lengthy "New York Times" article, The American Dream (of spacious, quality-built homes at the right price, with low real estate taxes and affordable financing) comes true at Holly Oaks.

The dream comes true for young people who seek quality home life with all the important tax and equity advantages of home ownership.

The dream comes true for families who need lots of elbow room, as well as a private setting that's also near schools, services, shopping and highway commutation.

In all, the dream has come true for more than 150 Holly Oaks families. They got more home value (up to \$9000 more), and pay less

in taxes (up to \$80 in savings per month versus comparable homes elsewhere).

The reality is that every Holly Oaks home is on a beautiful wooded homesite with city water, paved driveway, 150-amp electrical service, oven and range with hood, 240-pound self-sealing roof shingles, full-thick wall and ceiling insulation, plus a long list of other fine standard features—at no extra cost.

Priced at \$60,900, the Dogwood model shown above comes complete with magnificent vaulted entry foyer & living room, dining room, spacious 27 foot family room, full basement, 3 bedrooms, 2 1/2 baths and attached garage. Other Holly Oaks models from \$54,900.

9 1/2% Mortgages available from 10% down\*



at Manchester

## Choice Homesites For Fine Homes

A mile of new roads with all utilities underground has just been opened. 1 1/2 to 5 acre lots... some are wooded, some are open, most have views. From \$25,900 attractive terms available for qualified buyers. Colonial homes start at 2400 sq. ft. Ranches at 1800 sq. ft. Each will be custom built by your builder or ours. You'll love it here... only an hour from New York City, 45 minutes from Bergen County and 35 minutes from Morristown.



COME OUT THIS WEEKEND AND PICK UP OUR FULL COLOR BROCHURE

Follow Interstate 80 to Allamuchy Exit 19. Turn right and drive two miles north on Route 517. Turn left onto Kennedy Road at the Old Tranquility White Church. Drive into Tranquility village. You have arrived at Sussex Green shortly after you cross the Poquest River bridge.



Tranquility and Grandell Green Township Sussex County, N.J. (1 hr. from Geo. Wash. Bridge)

EXCLUSIVE REALTORS Alexander Summer Co. 222 CEDAR LANE TEANECK, N.J. 07666 (201) 836-4800 WEEKENDS (201) 852-3637



Sales Office open daily and weekends (201)367-4242 DIRECTIONS: Take Garden State Parkway to Exit 88. Turn right onto Route 70 West. Continue 5 miles to Wilbur Avenue & Holly Oaks sales office on right.



# SUBURBAN REAL ESTATE MART

City • Suburbs • Farm Country • Lake • Shore

## New series is added at adult communities

Clearbrook and Rossmoor are sister adult condominium communities for adults over 48. It is 43 miles from mid-Manhattan, off Exit 8A of the New Jersey Turnpike in Monroe township. From a living style viewpoint, residents here might be said to be having their cake and eating it too. They enjoy a way of life that is different, a mixture of country club and small town. They also get freedom from the arduous chores of house maintenance. A well-trained staff maintains the grounds and home exteriors; a gateman and a roving security patrol protect each community 24 hours a day. All of the tax advantages and equity

buildup of home ownership without any of the work and headaches are here. When they step outside, it's like stepping out into a private country club with the huge sweep of lush lawns and well-cared for, meticulous, colorful foundation planting accenting the individual homes. Two clubhouses provide recreation. Each community has its own olympic-size swimming pool, tennis and shuffleboard. Each clubhouse has fully equipped hobby rooms, library, meeting rooms and billiards. Each has a private golf course: 18 holes at Rossmoor, nine holes at Clearbrook, available at a nominal fee.

If the pools are not enough the ocean at the nearby Jersey shore is only a half hour away. Education and recreation departments plan dances, dinners, theater parties and a wide selection of activities. Designed to accommodate every comfort with a choice of handsome colonial or contemporary architecture and built to the highest of standards, Rossmoor and Clearbrook, Guardian Development Corp. built and sponsored communities have imagination and style. They have just added a new series of three models, the Regency Duplex Series at Clearbrook, making a total of 22 models to choose from.



ONLY TWO units are left at Tina Court in Toms River, one acre plus home sites, with 300-foot frontages, amid tall oaks and maples. Custom homes ranging from \$100,000 to \$135,000 are being built. Pictured is a

100-foot long French provincial ranch in white brick. Tina Court is located one mile north of the Bee Lea Golf Course, on Bay avenue, in Toms River. Ronald Cabrick, of Toms River, is the architect.

## Community previews large Colonial homes

A new community, Cherie Manor II, is now previewing Colonial homes of three, four and five bedrooms at a wooded location in Bricktown just east of Garden State Parkway Exit 91. Prices start at \$51,900, including the large homesites.

The Red Oak Colonial—a huge 4-bedroom home of classic proportions that includes a den-family room at the opposite side of the main level from the full formal living room and dining room. The largest of the Cherie Manor homes, the Red Oak Colonial is priced at \$59,900.

Choice of oak hardwood floors or wall-to-wall broadloom carpeting are among the special items included in the basic prices of Cherie Manor II homes. Exteriors are of natural wood shingle siding, and interiors are finished in wood trim throughout.



NEW BRICKTOWN COMMUNITY near Parkway Exit 91 will hold preview showing of Cherie Manor II. It offers ranch, bi-level and two-story colonial homes priced from \$51,900. Blue Spruce (shown above) is expanded bi-level design with cedar shake exterior, priced at \$57,900. It features three bedrooms on the main level plus family room and den on lower level. One-and-a-half baths are included, with full formal living room, full dining room and eat-in kitchen. Two car garage offers extra storage space in large wooded homesites and closets are ample. Cherie Manor II is located on Green Grove road, off Burrsville road, about one-half mile from Bricktown directional of Exit 91. Century 21, the Circle Agency, Bricktown, is sale agent.

## Deitz is given sales duties

The reassignment of Kandace Deitz of Union to sales associate of Jordan Baris, Inc., the Irvington-based real estate agency specializing in residential and investment properties, has been announced by Jordan Baris, president.



KANDACE DEITZ

Deitz, who joined the firm as a secretary 18 months ago, "realized the potential in real estate sales and, although busily engaged in raising two young children, managed to complete a course in real estate and pass the New Jersey Board's examination," Baris said. "Not only did she finish near the top of her class,"

he added, "but, upon receiving her license, has been involved in several sales of homes. She has the personality and desire to become a leader in our field."

A graduate of Mountain High School in West Orange in 1967, Deitz was a secretary for one year and an administrative assistant for two years in a business machines firm before becoming what she calls "a full-time housewife and mother."

She returned to the business world as a secretary at Jordan Baris in the summer of 1977. Deitz lives in Union with her two children, Richard, 6, and Kerl, 3.

The 26-year-old Baris agency, at 380 Stuyvesant ave., Irvington, is headed by Jordan Baris. He is a past president of the Real Estate Board of Newark, of Laurelton Circle, Bricktown.

Deitz lives in Union with her two children, Richard, 6, and Kerl, 3. The 26-year-old Baris agency, at 380 Stuyvesant ave., Irvington, is headed by Jordan Baris. He is a past president of the Real Estate Board of Newark, of Laurelton Circle, Bricktown.

NEED HELP! An inexpensive HELP WANTED ad in the Classified pages of this newspaper will reach over 30,000 nearby reader families. To place your ad, call 686-7700

**COUNTRY CLUB LIVING** In the Village of Toms River

River Rise, located across from the Toms River Country Club, in beautiful Toms River, in the finest of neighborhoods. Sample homes are open for inspection daily & Sunday, closed Tuesday.

Priced from the mid \$90's

**RIVER RISE**

(201) 349-7771  
(201) 341-6215

Directions: Garden State Parkway Exit 82 East 1st light Rte. 106 Main St. Turn right Proceed to 1st light (Washington St) turn left 1 mile to Clifton Ave. and models on left.

# New Jersey calls us home.

The best single family home values on the map. Priced in the \$50's, \$60's, \$70's and \$80's. For young couples. Families. And very active adults.

**The Princeton Collection**  
8 models priced from the upper-\$70's.  
Just off Route 1, Plainsboro  
(609) 799-8301

**Glen Arden**  
5 models priced from the low-\$60's.  
Just off Route 9, Howell  
(201) 367-7500

**Greenbriar II (for adults 48 & over)**  
3 models priced from the mid-\$50's.  
Garden State Parkway Exit 91,  
Burnt Tavern Road, Brick Town (201) 458-9500

**Whittier Oaks**  
6 models priced in the mid-\$80's.  
On Route 9, Marlboro  
(201) 536-9846

U.S. Home is the leading builder of one-family homes in New Jersey. Planned in excellent locations, our communities are designed to create fine residential neighborhoods. Our homes are quality-built to increase in value as the years pass, and feature carpeting, appliances and all the living space your family needs. All

at a price you can comfortably afford. And all backed by the HOW 10-year protection plan.

Visit any or all of the fine communities shown and inspect the furnished models. Once you see us, you'll never want to leave us. **Financing available.**

Prices, terms, availabilities subject to change without notice.

**America calls us home**  
**US·HOME**  
NEW JERSEY DIVISION  
(201) 462-4860



# If you hold out, you could be left out.



This is the last — repeat, last — section ever at Shadow Lake Village — the community that's the last word in carefree living for people 52 or over. Once these truly superb homes go, that's it — forever. And judging by the reaction we're already getting, it won't take long. An no wonder — where else but at Shadow Lake Village can you have all this:

- Fantastic lifestyle
- Marvelous neighbors
- Golf on your own private course

- Tennis on lighted courts
- Sailing on mile-long Shadow Lake
- Swimming in your own olympic-size pool
- Extravagant clubhouse — always bustling
- Professional maintenance of grounds and exteriors
- Gatehouse security and patrols
- Ideal location — near trains, buses, great shopping and the Garden State Parkway (right off exit 114)

So don't be left out. See Shadow Lake Village today!

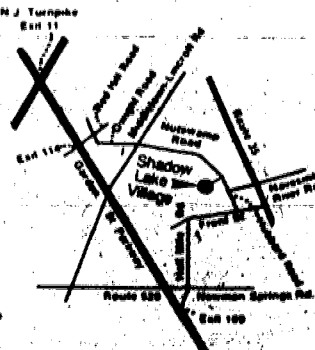
**8 magnificent floor plans from \$41,990 to \$56,990**

Prices effective through April 14 only.

**DIRECTIONS:** (From the North) N.J. Turnpike South to Exit 11; then G.S. Parkway South to Exit 114; turn left on Red Hill Rd. for 1/4 mi.; right on Dwight Rd. (becomes Nut Swamp Rd.) for approx. 3 mi. to entrance of Shadow Lake Village on right. (From the South) G.S. Parkway North to Exit 109; cross Rt. 520 (Newman Springs Rd.) and proceed on Half Mile Rd. for 1/2 mi. to end; right on Front St. approx. 1 mi. to Hubbard Rd.; left on Hubbard Rd. (becomes Nut Swamp Rd.) Approx. 1 mi. to entrance of Shadow Lake Village on left. Sales Office open 7 days a week 9 A.M. to 6 P.M. Phone: 842-9400.

If one of you is 52 or over...

**Shadow Lake Village**  
Middletown, N.J.  
by **Houmanian INTERESTS**



# SUBURBAN REAL ESTATE MART

City • Suburbs • Farm Country • Lake • Shore

## Panther Valley adds third townhome unit

The lure of Panther Valley's luxurious lifestyle has been so great that another section of medium-priced Country Townhomes—the third in a single year—is being opened in the exclusive community near Rt. 80 in Allamuchy. Charles Knoeller, sales director, announced.

The new section, featuring two- and three-bedroom townhomes priced from \$71,900 to \$91,600, is set among thickly wooded, rolling

hills dotted with single-family homes.

One can take the winding road past the community's private recreation grounds—tennis, platform tennis, swimming and other activities—lakes and landscaped grounds to the property and enjoy a breath-taking view of the surrounding countryside.

"Panther Valley is known as the community for families who can afford to live anywhere," Knoeller stated, "but Country Townhomes are appealing to young people on their way up as well as couples whose children have grown and who no longer require large homes of their own. The three-bedroom models, of course, are ideal for couples with two children of any age."

Country Townhomes is one of three separate townhome neighborhoods at Panther Valley. There also are Westgate, with two-to-three-bedroom homes priced from \$51,740 to \$60,490, and Audubon Woods, with three-to-four bedrooms priced from \$92,500 to \$111,500.

Wherever one lives at Panther Valley, townhome or custom-built, single family home with extensive property priced at a quarter-million dollars and more, the privilege of enjoying a fabulous life-style is similar. All residents share the private tennis, platform tennis and swimming and the 1,600

acres of nature. Within Panther Valley is the Panther Valley Golf and Country Club, and its 18-hole championship course designed by Robert Trent Jones.

Only 55 miles from New York on express Rt. 90 and in the center of the New Jersey-Pennsylvania ski areas, residents also share the peace of mind derived by the 24-hour manned gatehouse and security patrols which ensure safety within the community. Road, snow removal, lawn care, exterior maintenance and other services are provided through the homeowners' association.

There is an attractive, Colonial-style shopping center just outside the community gates, and the area boasts some of the finest public and private schools in the state.

"The population of Panther Valley is growing more rapidly than we anticipated," Knoeller pointed out, "mostly because residents have discovered how quickly they can commute and they tell their friends about it. The way the community is planned, however it cannot be over-populated. There will always be woods and green fields, and the high stone cliffs with panoramic view.... as well as spaciousness of the rooms themselves."

"More and more families are discovering that it's not only a prestigious community where they meet other professional people and business executives, but one of the best investments they can make."

To visit Panther Valley, take Rt. 80 west to the Andover-Hackettstown exit. Turn left. The community entrance will be on your right approximately 3/4 of a mile ahead. The community is being developed by Mathews-Phillips Management Co.

## Couple sent packing--for a 10-day cruise

Lions Head, the popular new community for active adults in Bricktown, announced that it is sending one active couple "packing."

Mr. and Mrs. Richard F. O'Brien are the winners of the community's Caribbean sweepstakes, so they will be packing for a 10-day, all-expense paid cruise aboard the Home Lines "Doric," compliments of Lions Head.

To qualify for the drawing, all participants had to do was visit the Lions Head sales display in Bricktown. "We know we've got an exciting, glamorous, adult lifestyle here," explained Bill Ferry, vice-president and marketing director for Lions Head. "So to call the public's attention to it, we offered this exciting, glamorous sweepstake."

Based on their introductory sales figures, the public is already well aware of Lions Head, however. In fact, the first section proved so popular that Section II is almost ready to open - months ahead of schedule.

Each Lions Head home includes two bedrooms, up to two full baths and standard features like central air conditioning,

upgraded wall-to-wall carpeting, deluxe GE appliances, genuine oak kitchen cabinetry, R-30 ceiling insulation, sheetrocked garages and screened terraces. Five basic model designs are available, with 12 different exteriors and as many

optional floorplan designs. Prices range from \$43,990 to \$54,990.

Lions Head has a thorough list of glamorous extras, too. This resort-at-home community offers tennis courts, swimming pool, sundeck, horseshoe pits, illuminated shuffleboard courts, barbecue pits and a lavish private clubhouse with billiards, card, craft and game rooms. A nine-hole golf course that will surround a private lake 1/4 mile from Lions Head is proposed, as well as an elaborate waterfront facility on

Barnegate Bay, that will offer swimming, fishing, boating, sunbathing and a wildlife observatory. Both will be available to residents for a nominal membership charge.

While active adults looking for an active lifestyle are too late for the Caribbean cruise, they can still find plenty of other attractions at Lions Head. The models are open from 9 to 5 daily. Directions and further information is available by calling 920-8300

Two model apartments have been decorated for visitors' better understanding of the wide space usage, stressing the versatility of formal and informal living areas. A country kitchen-dining room arrangement is featured in the three-bedroom townhouse, and the two-bedroom ranch

## Down payment low at Barnegat

Excellent location and construction plus low cost of purchase and low upkeep spell out a variety of uses for the two and three-bedroom attached homes of Barnegat Woods, "hidden" community of fine homes in Barnegat's bay-side township.

Offering two-bedroom ranch homes and three-bedroom townhouses, all attached, Barnegat Woods is priced from \$26,990. Excellent financing with down payment as low as \$1,390 makes Barnegat Woods available as full year-round home or as second home for vacation use in the shore area.

Pre-retirees and retirees equally find the community inviting, reports JoAnn LaTerra, who is both sales director and production supervisor. "This makes for an

interesting mix of residents," she points out, adding that investors have also found Barnegat Woods to be well worth looking into.

The community is not a condominium, so there are no monthly maintenance fees. The location is near Barnegat Bay, between Garden State Parkway Exit 67 and Route 9. Marinas, fishing and bathing are nearby at the Bay.

Homes include wall-to-wall carpeting, excellent insulation, well designed kitchens and both front and back yards. There is private parking at the front of each home, and an outdoor storage shed at the rear where sliding glass doors from dining areas lead to patios.

Various buildings that are divided into the two-story

townhouses and the ranch homes have different exterior coloring and materials, so there is strong individuality in exterior appearance of the homes.

Two model apartments have been decorated for visitors' better understanding of the wide space usage, stressing the versatility of formal and informal living areas. A country kitchen-dining room arrangement is featured in the three-bedroom townhouse, and the two-bedroom ranch

offers a tremendous expanse of living and dining room that favors entertaining formality as well as at-home casual lifestyle. Closets are abundant throughout all the homes of Barnegat Woods.

Barnegat Woods sales office and decorated models are open seven days a week, at Bowline avenue, near the Barnegat Elementary School.

You don't look at Industrial Buildings and Office Space in New Jersey every day...



For information please call: **ARCHIE SCHWARTZ COMPANY REALTORS**  
New Jersey's largest real estate brokerage firm specializing in industrial real estate and office space  
7 Glenwood Avenue East Orange, N.J. 07017  
N.J. (201) 672-5500 N.Y. (212) 319-4070

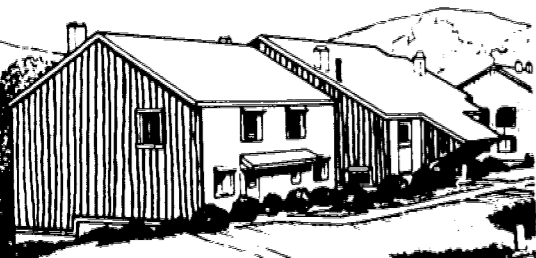


**EARLY BIRD PREVIEW**  
**CHERIE MANOR II**  
217 Choice lots available now and going fast!  
• RANCHES  
• BI-LEVELS  
• COLONIALS  
\$51,900 to \$59,900  
10% down to qualified buyers.  
Model open 10 a.m. to 6 p.m. by appointment  
Call 899-4411  
Exclusive Agent



**The Circle Agency**  
1673 Hwy 88 WEST  
Bricktown, N.J.  
892-5600  
Each office independently owned.  
Directions: From North Jersey Parkway south to exit 114 (Harbortville Pt. Pleasant). Right at traffic light, first right over bridge. Follow Bursville Road one mile to left on Green Grove Road; model one block.

## BYE-BYE STANHOPE MOUNTAIN HIGH



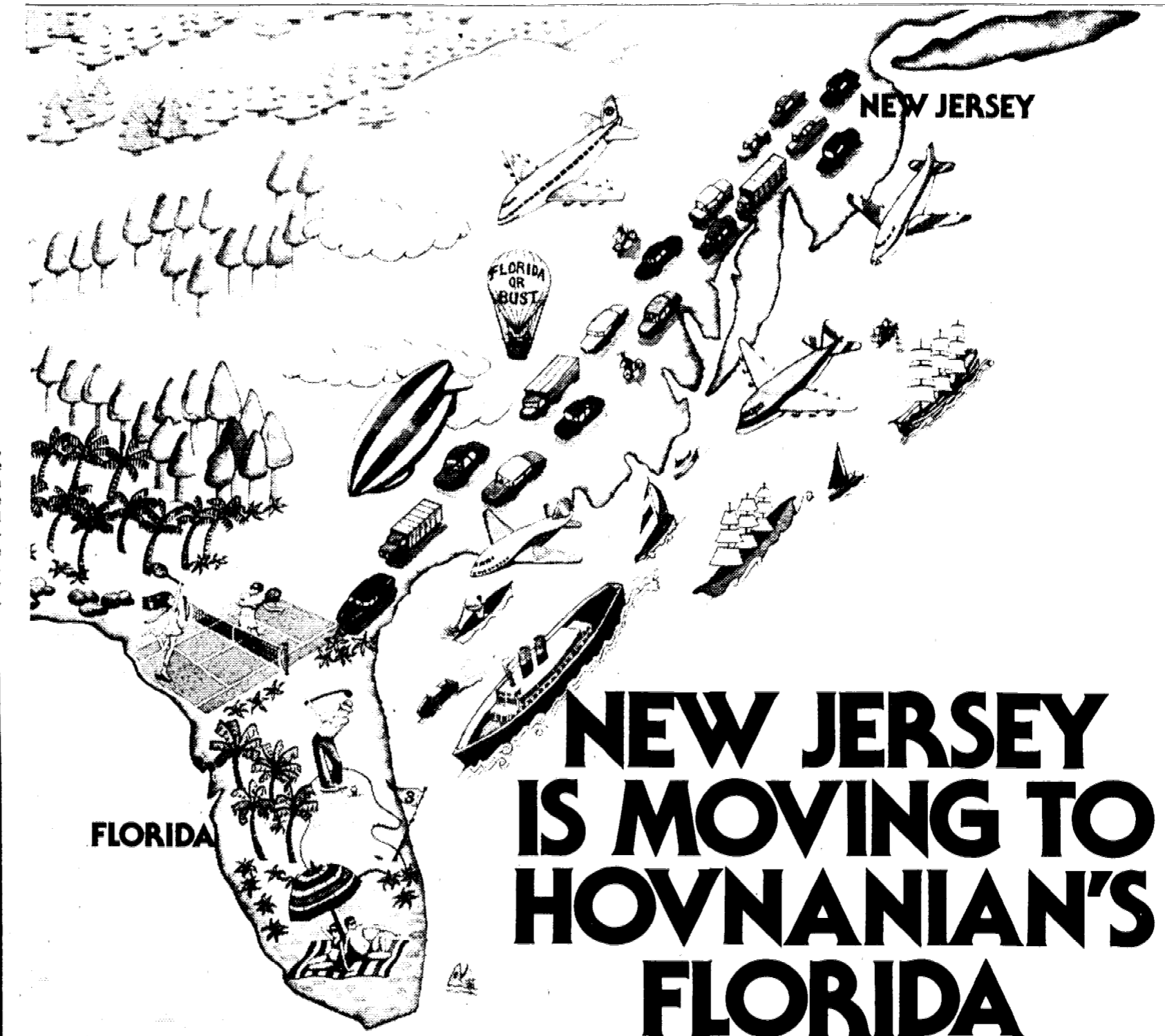
Later this year, we expect to say good-bye to the last remaining chalet like natural wood townhomes of HighPoint at Stanhope, the mountain and lake country homes that have been most popular with singles, young couples, and those young at heart. Good-bye to a perfect location near Route 80. Good-bye to the tax and equity advantages of home ownership for what others pay for rent elsewhere. HighPoint at Stanhope. Buy now or say bye-bye later.

Last mountain townhomes from **\$357** per month\*  
5% down 7 3/4% for first 2 years  
9% for the remainder of 30 year mortgages, to qualified buyers.



Directions: Parkway or Route 280 to Route 80 west. Take Stanhope Newton exit and bear right on exit ramp to Route 181. Follow signs.  
Sales office open noon to dusk (except Thurs.)  
Call (201) 347-6747

**Next time you light up a cigarette, get a look at your kid's face**



What's hotter than the balmy Florida sunshine? Sales at La Pinata Condominiums at Pine Ridge, Hovnanian's new adult community in the beautiful Palm Beaches.

What's so hot about Pine Ridge? Everything. And that's why smart New Jerseyans have been hurrying down here with their sunglasses on and their checkbooks out. In fact, Sections I and II were virtually sold out in just 12 weeks (that's almost 1 year faster than we anticipated!) So we locked our engineers and planners behind closed doors, and made them work overtime to get Pine Ridge III ready for you—a full year ahead of schedule!

Now here it is... Pine Ridge III. And it's just as hot as our earlier sections. For a lot of dazzling reasons. Like our five spacious 1-bedroom, 1-bedroom plus den and two bedroom models, for one. With plush carpeting. Central air conditioning. Screened terraces. Modern, equipped kitchens. Plus a private swim club, shuffleboard courts, picnic groves and acres of nature, lakes and landscaping.

Another reason for our sizzling sales success is price. Just \$29,950 to \$36,250 for some of the best looking homes south of the Mason-Dixon line.

But perhaps as important as anything else is Hovnanian's extraordinary guarantee: when you buy a home at Pine Ridge now, Hovnanian promises—in writing—that your maintenance costs will stay from \$23 to \$29 a month for at least the next five years! Guaranteed!

And the good news doesn't stop there. If you reserve a home in New Jersey, and sign a sales contract after flying down to visit Pine Ridge in Florida, your airfare will be deducted from the purchase price of your home. Now you know where New Jersey is moving—and why. If you've been thinking about a vacation, retirement or permanent home in Florida, you'd better get moving, too. To one of Hovnanian's convenient New Jersey sales exhibits. You'll discover values you didn't think existed in 1979. And a way of life that doesn't exist anywhere else.

To get to the sales exhibit in Manalapan, take the Garden State Parkway south to Exit 123 and proceed south on Route 9 for 9 miles to Hovnanian's Covered Bridge.

To reach the sales exhibit in Middletown, take the Garden State Parkway south to Exit 114. Turn left on Red Hill Road for 2/10 mile, then right on Dwight Road (which becomes Nut Swamp Road/Hubbard Road after 1 1/2 miles) and proceed approximately 3 miles to Hovnanian's Shadow Lake Village.

Open every day until 6 p.m. Or call 536-5440 (Manalapan) or 842-9402 (Middletown.)

**Fast-selling one and two bedroom adult condominiums from \$29,950 to \$36,250 \$23 to \$29 Monthly Maintenance.**



An offering statement is filed with the New Jersey Real Estate Commission. The New Jersey Real Estate Commission neither approves the offering nor in any way passes upon the merits and value of the property. Obtain the New Jersey Public Report and Broker's Release from the registered N.J. Broker and read it before signing anything. NJA 39GHF.

**NOW SHOWING 2nd Section EDISON, N.J.**

**JUST A FEW MOMENTS AT DOVER WOODS — YOU'LL SPEND A LIFETIME!**

*A Magnificent New Community*  
**DOVER WOODS**  
EDISON, N.J.  
**1/2 of 9 1/2%** Mortgages Available

**THE BIRCH - Bi-level**

MODEL HOURS: Monday thru Sunday 1-6 p.m. - Closed Tuesdays  
MODEL PHONE: 201-382-5154  
Sales Agent: Gene A Tomasso Agency • 283-0041  
**ANOTHER FINE COMMUNITY FROM AMI CONSTRUCTION**

Directions: Garden State Parkway to Route 27, Exit 131, left one light to Oak Tree Road, left on Oak Tree Road to Wood Avenue, right on Wood Avenue, first light (New Dover Road) make left then proceed approximately 1 mile to models on right.

# Your Guide To Better Living in the SUBURBAN REAL ESTATE MART

• City • Suburbs • Farm Country • Lake • Shore

## Pine Ridge receives housing show award

Pine Ridge at Crestwood received an award during the 43rd national Manufactured Housing Show in Louisville, Ky. Pine Ridge is an adult community with nearly 1,500 residents, founded six years ago by the sponsors of the adjacent Crestwood Village. The plaque was presented to Joyce A. Guerin, Pine Ridge sales manager, by Arthur Decio, chairman of the board of Skyline Corporation, the largest home manufacturer in the country, with 37 plants in 20 states. The award cited Pine Ridge for leadership in community planning for retirees as well as design originality and quality construction standards for manufactured homes. All Pine Ridge residences are

produced to the exact specifications of Crestwood room layouts, equipment wood's engineering and insulation department.



AWARD WINNER—Pine Ridge at Crestwood is honored by Skyline Corporation, nation's largest home manufacturer, with award for outstanding achievement in community planning, design and construction standards and sales leadership. The presentation to executives of the adult community, located on Rt. 530 in Whiting, Ocean County, took place at the National Manufactured Housing Show in Louisville, Ky. From left are Pine Ridge general manager George Leopold and sales manager Joyce Guerin, Skyline chairman Arthur Decio, Pine Ridge vice-president Jerry J. Kokes and Skyline Division sales manager Eric R. Merling.

George Leopold, Crestwood Communities' general manager, said: "This is the 11th award we have received in the past few years. It is indeed gratifying to be so recognized and signally honored by the professionals in our field."

## Salesman gets 'unique' award

Joseph Santoro, Union County sales representative for Archie Schwartz Co., East Orange based Realtors, was awarded by Elmer Schwartz, president of the firm, the annual president's award for the most unique transaction of the year involving the huge former Pyro Plastics plant on Chestnut Street, Union. Santoro arranged the simultaneous sale and leasing to six firms of the entire plant area. In order to arrange the financing for the vacated plant, it was necessary for the company to obtain commitments for 100 percent occupancy, which was arranged in a three-week period.



JOSEPH SANTORO

NEED HELP? Find the RIGHT PERSON with a Want Ad. Call 686-7700.

## Workshops aimed at new proprietors

A schedule of seminars and workshops has been announced by the New Jersey Department of Labor and Industry in cooperation with the New Jersey District Office of the United States Small Business Administration (SBA).

Commissioner John J. Horn of the State Labor and Industry Department said the workshops and seminars were designed to prepare the would-be business owner as well as enhance the managerial and technical capabilities of those already in business.

Among subject areas are: buying or expanding a business; legal, tax and insurance requirements; success and failure factors; how to secure government contracts; in-depth business planning; bonding strategies; record-keeping; financial management; marketing and advertising, and special emphasis workshops for women and minorities.

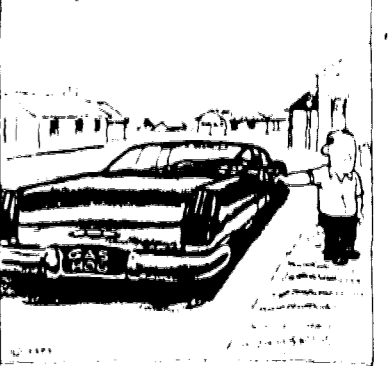
Additional information is available from the Small Business Development Office, N.J. Department of Labor and Industry, P.O. Box 2766, Trenton 08625, or by calling the department at (609) 292-9587 or the SBA at (201) 645-6065.

## Dysautonomia unit meets in Springfield

The Northern New Jersey Chapter of Dysautonomia will hold its regular monthly meeting tonight at 8:30 at the Temple Sha'arey Shalom, Springfield. The slate of incoming officers will be read.

Reading matter will be available and questions will be answered concerning the disease which strikes the autonomic nervous system. Helen Volein will preside.

## Good-Bye Or Paint...



## High school students invited by college

High school junior and senior girls throughout the state have been invited to experience college life at a mini-weekend April 27 to 29 at the College of Saint Elizabeth, Convent Station. Deadline for reservations, which will be limited to 125, is Friday, April 6. Plans for the weekend are being coordinated by Sister Maureen Sullivan, director of admissions, and Dorothy Callaghan, admissions counselor.

## WATER HEATERS

A.O. Smith Automatic Water Heaters On SALE

- All Sizes • Quick Installation Available
- 10-YEAR FREE REPLACEMENT GUARANTEE
- Credit Cards Accepted

## BEAUTIFUL BATHS

"The Water Heater Store"  
2317 ROUTE 22, UNION  
Center Isle  
687-8555

# Ocean County's finest adult community introduces its most exciting new model.

## Grand Opening-The Elliot



Featuring dramatic cathedral-ceiling living room with floor-to-ceiling brick fireplace.

It's no small feat to follow the kind of success that Lions Head has enjoyed in the short time since it opened. The first section proved to be such a hit, we were able to open Section II way ahead of schedule. So how do you improve on success? You add to it.

a bold, beautiful room. The kind that invites frequent use... from casual entertaining to quiet fire-gazing.

And of course, like every other Lions Head home, The Elliot is loaded with features you'd probably pay extra for elsewhere. Superior wall-to-wall carpeting. Central air conditioning. Deluxe G.E. appliances. Genuine oak furniture-finish kitchen cabinetry. R-30 ceiling insulation. Garages

that are sheetrocked and painted. Screened porches and/or patios. And on and on.



Tennis anyone? On our two all-weather surface courts.

There's even a private clubhouse with fully equipped game and hobby rooms. Through the non-profit Lions Head Homeowners Association, you'll have plenty of time to enjoy yourself. Because while you own your fee simple home, the maintenance chores are taken care of for you by experts.

Lions Head. If one of you is at least 48, you shouldn't settle for less. We're easy to reach — right off Garden State Parkway Exit 88 — only a few miles from the ocean. And we're surrounded by a full range of services and facilities. But why not come see for yourself... because nobody deserves our wonderful lifestyle more than you!

Lions Head also offers the most complete array of resort-at-home pleasures you'll ever hope to see. A heated swimming pool. Tennis courts. Fishing. Boating. Golf. And much more.



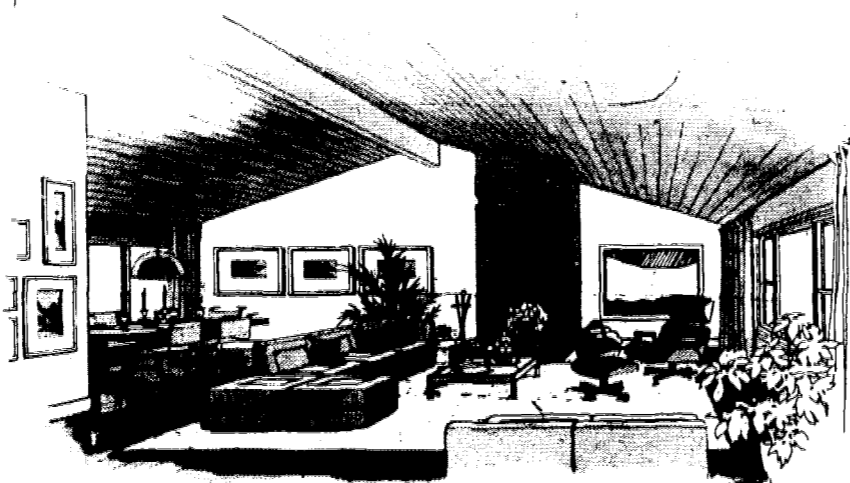
Relax in our heated outdoor pool; or take sun on our poolside sundeck.

from \$43,990 to \$54,990

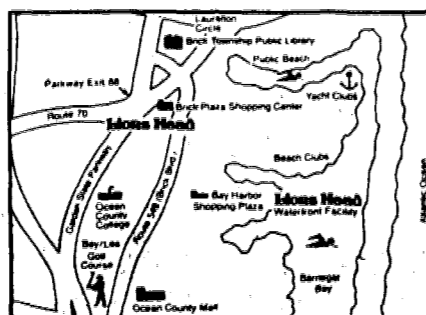


Fore! You'll soon be teeing off on Lions Head's private 9-hole executive golf course, proposed for the south side of Beaverson Boulevard; just 1/4 mile from Lions Head.

Introducing The Elliot. A brand new 2-bedroom home, featuring a dramatic cathedral ceiling living room with floor-to-ceiling brick fireplace and energy-saving heat-o-lator. It's



Living-Dining Room area of the new Elliot Model



When in Ocean County, be sure to see the best.

## Lions Head

"A... who want more out of life shouldn't settle for less"  
Lions Head Boulevard off Beaverson Boulevard  
Briek Township, Ocean County, New Jersey

From the Lincoln and Holland Tunnels: Take the New Jersey Turnpike south to Exit 11. Then take the Garden State Parkway south to Exit 88. Turn left on Route 70 to first light (Shorrock St.). Turn right to end. Turn left onto Beaverson Blvd. and proceed to Lions Head entrance.

From Philadelphia and Camden: Take Route 70 east to the first light past Garden State Parkway Exit 88 (Shorrock St.). Turn right to end. Turn left onto Beaverson Blvd and proceed to Lions Head entrance.

Open daily 9-5. Sales Office Phones: (201) 920-8300/920-8301

\*Proposed golf course and waterfront facility available to residents on an optional membership charge basis.

## Audition date told

Open auditions for professional quality solo-singers and choristers in all voice categories will be held by Suburban Opera Theatre on Monday at 7:30 p.m. at South Orange Junior High School, 70 North Ridgewood Rd., South Orange.

The opera organization includes members from throughout Union County, according to Floyd Worthington of Springfield, general director.

The first production of the season, under the direction of Worthington and Dita Delman will be Mozart's "The Impresario" and Leon Cavallo's "I Pagliacci." Singers are asked to bring a resume and be prepared to sing two arias, one of them in English. Tenors and baritones are particularly urged to audition.

Singers may arrange for their audition time by calling Delman at 763-7969. Those interested in backstage work were also asked to call Delman.

## SHOWER GIFTS

for the BRIDE-TO-BE

Have a Bridal Shower Coming Up? Here Is The Place To Start Looking For That Perfect Gift!

- SPREADS...  
All colors, all fabrics and all sizes from tiny twin to king size. All price ranges, too.
- TOWELS...  
Including pretty face towels to big, thick and thirsty bath size sets. Choose from colors galore.
- BATH BOUTIQUES...  
You name it...we have it in our new bath shop. Hundreds of new and unique gift ideas. Come in.

THE **Curtain Bin** and Bath Shop

"Where Personal Service Costs You Nothing Extra"

1036 Stuyvesant Ave. UNION

## the suit



### THE BENTLY PATCH

4 piece, 6 way combiaine; A complete wardrobe in one suit. Solid 3 piece vested suit, reversed check vest and solid pants, solid 2 piece suit, sportcoat with solid vest and check pants, without vest and with check pants or with check vest and check pants.

185.



## the place

Martin Edward

1024 Stuyvesant Ave.  
Union, N.J. 687-4633  
Open Evenings Monday & Friday

**Mastroianni held in Union**  
 "Wifemistress," Italian stars Marcello Mastroianni and Laura Antonelli. It was directed by Marco Vicario.  
 The Picture, in color.

**Plays set for young**

Saturday musicals for children continue at the Paper Mill Playhouse in Millburn at 10:30 a.m. and 1:30 p.m.  
 "Pinocchio" will be presented Saturday by the Traveling Playhouse. "Heidi" will be staged April 14 by the Yates Musical Theater, which also will present "Jack and the Beanstalk" on April 28, "Peter Pan" on May 19 and a new version of "Mary Poppins" on June 16. "Little Red Riding Hood" and "The Three Little Pigs" will be shown May 12 by the Gingerbread Players and Jack. "Cinderella" will be presented June 2 by the Traveling Playhouse.

**'Funny Girl' to be staged**

The Scotch Plains Players will present their spring production of the stage musical, "Funny Girl," May 4, 5, 11, 12, 18 and 19, at Junior High School on Martine avenue, at 8 p.m.  
 Additional information may be obtained by calling 654-4393 or 889-8165.

**Disc & Data**

By MILT HAMMER

Pick Of The LP's. HOG HEAVEN: by Elvin Bishop (CAPRICORN CPN-0215).

The Tulsa-born Bishop began his career when he went to the University of Chicago as a National Merit Scholar in the early '60s and ran into Paul Butterfield. After a stint with the legendary Butterfield Blues Band, Elvin formed his own band and embarked on a prolific career.

After a few albums, he came to Capricorn Records in 1974 with the pivotal LP "Let It Flow." His exposure as a good-rockin' performer and recording artist grew through "Juke Joint Jump" and then Elvin exploded in 1976 with "Struttin' My Stuff," which spawned the smash gold single "Fooled Around And Fell In Love."

The logical followup was "Hometown Boy Makes Good," and then in 1977 came the live double LP "Raisin' Hell," a cross-section of Elvin's best to that point.

The albums show a consummate musician, one of the finest guitarists in the world, and a man who's not afraid to rock and roll. As he explained, none of that's changed, he's just decided to show people that this artist can successfully touch on different styles—while

retaining the unique Bishop brand of rock and roll.

Recorded at the Automatt in San Francisco, "Hog Heaven" proudly displays lots of Elvin's friends and a potpourri of some of the finest musicians around. "Some of the material," Elvin notes, "has been around for a while, just like 'Fooled Around' had been, and then some of it's new."

Some of the many highlights are the rollicking "It's A Feeling" sporting a vocal duet with Elvin and Maria Muldaur, greatly enhanced by keyboard whiz Phil Aaberg's saloon-style "tack" piano, "Arkansas" is closer to the familiar funlovin', boisterous Elvin, was its cooking shuffle and stinging guitar licks.

**Fashion show will aid opera**

The Greater Newark Chapter of the Friends of the New Jersey State Opera will hold its annual fashion show on Thursday, May 3, at the Newark Museum. The show, with fashions by Saks Fifth Avenue, will begin at 11:30 a.m. with champagne and refreshments in the Museum Garden.

**Two plays by Albee**

Edward Albee will direct two of his own plays at the YM-YWHA of Metropolitan New Jersey, 760 Northfield ave., West Orange, on Sunday evening, April 15, at 8 p.m.

The performances of "The American Dream" and "The Zoo Story," two one-act plays, will be presented as part of the Y's Theater Series. The cast for "The American Dream," written by Albee in 1960, will include Patricia Kilgarriff, Wyman Pendleton, Anne Barclay, Eileen Burns and Stephen Rowe. Wyman Pendleton and Stephen Rowe will perform "The Zoo Story," which was written by Albee in 1958.

"The Zoo Story" was the first play written by Albee, and was awarded the 1958 Vernon Rice Award. "The American Dream" followed two years later, and received the Foreign Press Award. A year later Albee wrote "Who's Afraid of Virginia Woolf?," which was given the Drama Critics Circle Award for Best Play. In the following years Albee received Pulitzer Prizes for the 1966 production, "A Delicate Balance," and again in 1974 for "Seascape." His most recent work was "The Lady from Dubuque," and he also has directed the Broadway premiere of "Seascape," the revival of "Who's Afraid of Virginia Woolf?," and the American Premieres of "Counting the Ways" and "Listening."

**Energy cost control planned for hospitals**

The first statewide energy cost containment in the nation involving hospitals will be initiated in New Jersey, it was announced in a joint press conference held by the State Departments of Energy and Health and the New Jersey Hospital Association.

Spokesmen at the press conference held at Newark Beth Israel Medical Center said energy audits, technical assistance and conservation techniques will be provided to hospitals volunteering for the program, which has been endorsed by Governor Brendan T. Byrne.

Participating in the joint announcement were Jack W. Owen, president of the New Jersey Hospital Association (NJHA); Joel R. Jacobson, State Commissioner of Energy; Dr. Joanne E. Finley, M.D., State Commissioner of Health, and Harvey H. Morris, President of Fuel and Energy Consultants, Inc. (FEC).

Up to 117 member hospitals of the NJHA could participate in the two-year program, which has been designed to serve as a model for the rest of the nation. Utility usage is expected to be reduced by 10 to 15 percent overall through implementation of the program.

Funding for the program is expected to derive in part from a state grant

application to the federal government's Schools, Hospitals, Local Government and Public Care Buildings Grant Program under the National Energy Act. The remaining share will come from Blue Cross and Medicaid add-on adjustments to the hospital per diem rates.

Commissioner Jacobson complimented the NJHA for agreeing to be project manager for the "Hospital Energy Cost Containment Program." Jacobson said he believes "New Jersey, with the assistance of your staff, has been able to forge a comprehensive, innovative program which exceeds the requirements of the federal guidelines and will effectively begin to control soaring energy costs in the health care area."

**EARLY SPRING SAVINGS**  
**K L M J ASSOC. INC.**  
 Quality Home Improvements  
 Roofing & Siding Specialists  
**688-4800**  
 1235 MORRIS AVE. UNION  
 (Executive Building)

**BRASS CLASSIC FLOOR LAMPS**  
 ORIG. \$29.95 to \$68.95

**YOUR CHOICE 39.95 EACH**

These handsome brass lamps are tailored with white butcher linen self-trimmed shades in 3 popular styles.

- DOWN BRIDGE 52" HIGH
- SWING ARM 57" HIGH
- 6-WAY 59" HIGH

**LAMP CITY ROUTE 22, UNION**  
 OPEN EVES. TILL 9 SAT. TILL 5 **688-9430**

**WE'RE CONTINUING OUR 50TH Anniversary Sale**

**NO NAMES PLEASE!**  
 Select Group  
 The World's Most Exclusive  
**NAME BRAND WATCHES**  
**40% TO 50% OFF!**

*Masur's*  
 A FAMILY TRADITION SINCE 1929

505 MILLBURN AVE., SHORT HILLS, N. J. 07078  
 (Cor. Short Hills Ave.)  
 (201) 376-5400

**CROSSWORD PUZZLE**

ACROSS

- Starting point
- Attack
- Nimble
- The 400
- Baffling problem
- Sweet potato
- Civil wrong
- Brooch
- "- of Eden"
- Seaman
- Willy of the rockets
- Winged
- Register
- Nonsense!
- Con man's "pigeon"
- Abound
- Symbol of freshness
- Redolence
- Hire
- Idea; perception
- Bay window
- New book?
- Postpone
- Knot

DOWN

- Treat gently
- Taj Mahal city
- Thai's old country
- Asian river
- Lookout man
- Beverage
- Overjoy
- Family member, for short
- French season
- Thrice; prefix
- Pitch
- Excavation
- Choir member
- Observed
- Phoenician port
- Shopping center
- Medicinal plant
- Evaluate
- Worshipping
- Original
- Graven image
- Modern inn
- Valley
- Etna's refuse
- German river
- Rossini opera hero
- Witticism
- Pitcher's stat
- Pen point
- Calendar abbreviation

TODAY'S ANSWER

**'Antipasta' set**

A full-length play by a student, senior Joy Santangelo of Shrewsbury, is the major spring production of the theatre arts department at Drew University. Titled "Antipasta," it may be seen on the Bowne Theatre stage tonight through Sunday at 8 p.m. Admission is free.

**TERMITE Swarming - call BLISS**

BE SURE... BLISS has been serving the Home Owner for 97 YEARS. For a complete FREE INSPECTION of your home by a Termite Control Expert, supervised by the finest technical staff, phone:

SUMMIT-UNION SPRINGFIELD 277-0077	IRVING-VAILSBURG MILLBURN-MPLWD. 676-8888
WESTFIELD-KENILWORTH MOUNTAINSIDE 233-4448	ROSELLE-ROSELLE PK. LINDEN-EUZABETH 353-8752

**BLISS TERMITE CONTROL**  
 DIV. OF BLISS EXTERMINATOR COMPANY • EST. 1882  
 One of the Oldest & Largest

**Julius Kartzman & SON Passover Foods**

ENJOY THE EXTRA GOODNESS AND SUPERIOR QUALITY OF ALL THESE HOLIDAY FAVORITES

- ROAST TURKEY, ROAST CHICKEN OR LONG ISLAND DUCKLING, WITH MATZOH STUFFING
- ROAST BRISKET
- CHICKEN-IN-THE-POT
- CHICKEN SOUP • MATZOH BALLS
- POTATO OR MATZOH KUGEL
- CHOPPED LIVER • GEFILTE FISH
- KISHKE • STUFFED CABBAGE
- HOMEMADE HORSERADISH
- STUFFED BREAST OF VEAL

AND FROM OUR OWN BAKERY:

- Sponge Cake and Honey Cake
- Delectable Assorted Fruit Cakes
- Assorted Macaroons
- and many other delicious holiday treats

PHONE YOUR ORDER NOW **374-2600**  
**JULIUS KARTZMAN & SON**  
 35 MILL RD., IRVINGTON  
 FREE PARKING

**Dine Out TEaster**

Treat the family to a delicious **EASTER SUNDAY DINNER** at the **UNION HOFBRAU**  
 Full course dinner Being served Starting 12 NOON  
 1252 STUYVESANT AVE. UNION 687-7020

For a Truly Enjoyable Easter Dinner **CLARE and COBY'S RESTAURANT**  
 Junctions of Routes 9 and 34 Madison Township  
 South of Parkway, Exit 123  
 RESERVATIONS NOT REQUIRED  
 721-4898

ESSEX FORUM  
 1473 Springfield Ave. (Cor. Chancellor Ave.)  
 Mapledown 763-5400 (Open 24 hours)  
 Full Menu featuring American & Continental Cuisine for **EASTER DINNER**  
 Special Menu for Children  
 Enjoy your Easter Dinner at our fun, seasonal breakfast  
**OUR FAMOUS DESSERTS ARE BAKED DAILY ON THE PREMISES.**

**ROSELLE MANOR**  
 Diner-Restaurant Cocktail Lounge  
 2401 Wood Ave., Roselle (Off St. George Ave.)  
**ENJOY EASTER DINNER WITH US!**  
 \*Open Sided Bar With The Finest Of Appetizers\*  
 Superb Baking Done On Premises  
 241-3850  
 Ample Parking\* Open 24 Hours

**OLDE UNION HOUSE**  
 \*With a Panoramic view of Newark River\*  
 11 Wharf Ave., Red Bank (G.S. Plwy. exit 109, Red Bank, follow signs to Riverview Hospital)  
 For Reservations call (201) 842-7575

**GALAXY DINER**  
 "For Excellent Dining"  
 293 St. George Ave., Rahway At Junction Routes 35 & 27  
 Cocktails Salad Bar  
 Complete dinners served from 11 A.M. until 9 P.M.  
**SPECIAL CHILDREN'S DINNER**  
 American Express Dining Club  
 Master Charge  
 388-4220  
 Open 24 hrs. 7 days a week

**THE PINES MANOR**  
 Route 27 Edison, N.J.  
 Invites you to **SPECIAL EASTER FULL COURSE DINNER** (or SMORGASBORD (Table of Plenty) MENU AVAILABLE  
 Serving from Noon Make Reservations Early  
**CALL 287-2222**

**ANGE & MINS**  
 HAVE EASTER DINNER WITH US  
**FAMOUS FOR REAL HOME COOKED ITALIAN FOODS STEAKS, CHOPS SEAFOOD**  
 Serving 12:00 P.M. - Easter Sunday only Boulevard & 26th St. Kenilworth 241-0031

**PARADISE ISLAND**  
 Restaurant - Lounge Chinese & Polynesian  
 Rt. 22 W. Springfield, N.J.  
 Luncheon Dinner Supper - Take Out  
**SMORGASBORD**  
 Mon. & Tues. (Except Holidays) \$7.95  
 Children \$3.50  
**379-9550**

**DASTI'S MOUNTAINSIDE INN**  
 1230 Rt. 22, Mountainside  
**EASTER DINNER SPECIALS**  
 Children under 12 - 1/2 Price!  
 Call for Reservations **232-2969**  
 (Served 12 noon to 9 p.m.)

**KINGSTON RESTAURANT & COCKTAIL LOUNGE**  
 BANQUET FACILITIES SPECIAL EASTER MENU  
 Also Children's Menu All Family Groups Welcome **MAKE RESERVATIONS EARLY**  
**686-2537**  
 1161 Morris Ave., Union

**The most important part of teaching is caring.**

If I didn't care, I wouldn't be a teacher. But my caring alone is not enough. You should care too. Care about what's going on inside your schools. About what's going on outside your schools with things like budgets and improvements.

You should be involved, interested and concerned. Then and only then can your children get the most out of the caring their teacher gives them.

Teachers and parents — the more you work together, the more you'll help our children.

**Help me to help them.**

**njea**  
 people who care about your kids

For Information On How You Can Help, Write New Jersey Education Association  
 180 W. State St., P.O. Box 1211, Trenton, N.J. 08607

TEEN-AGERS, find jobs by running Want Ads. Call 686-7700 now!



He can't understand you... yet



Michael Salerno is not a stereo buff. He is learning to recognize sounds at a United Cerebral Palsy center.

A child born with cerebral palsy may suffer lack of motor control, seizures, spasms, mental retardation, abnormal sensations or perceptions, poor sight, poor hearing or poor speech.

Now the good news. This is a fine time for a baby to be born. Through research, doctors have almost cut in half the chances of being born with cerebral palsy.

You can make the good news even better by helping this research continue. Watch the Cerebral Palsy Telethon on WOR-TV January 29th and 30th and please send your tax deductible contribution to:

PALSY/BOX 555 TRENTON, N.J. 08604

Think what your money buys.



United Cerebral Palsy

American Cancer Society advertisement with logo and text.

Charmglow V & E SALES advertisement for parts and accessories.

Pace Buick advertisement for Franklin Place in Summit, N.J.

Death Notices section containing multiple obituaries and funeral announcements.

EXECUTIVE SECRETARY advertisement for a mature experienced executive secretary.

Getting a new lamp? advertisement for a lamp.

APARTMENTS FOR RENT advertisement for a 2-bedroom apartment.

FACTORY TRAINERS advertisement for various job training programs.

TEMPORARIES advertisement for temporary employment services.

NOTICE TO EMPLOYERS advertisement regarding labor relations.

MANPOWER advertisement for temporary staffing services.

APARTMENTS FOR RENT advertisement for a 1-bedroom apartment.

New Community Roseville Senior Citizen Apartments advertisement.

APARTMENTS FOR RENT advertisement for a 2-bedroom apartment.

APARTMENTS FOR RENT advertisement for a 1-bedroom apartment.

APARTMENTS FOR RENT advertisement for a 1-bedroom apartment.

APARTMENTS FOR RENT advertisement for a 1-bedroom apartment.

APARTMENTS FOR RENT advertisement for a 1-bedroom apartment.

APARTMENTS FOR RENT advertisement for a 1-bedroom apartment.

APARTMENTS FOR RENT advertisement for a 1-bedroom apartment.

APARTMENTS FOR RENT advertisement for a 1-bedroom apartment.

TAX RETURNS PREPARED advertisement for tax preparation services.

FLORIDA'S leading Home Builders advertisement for home construction.

REAL ESTATE advertisement for real estate services.

REAL ESTATE advertisement for real estate services.

REAL ESTATE advertisement for real estate services.

REAL ESTATE advertisement for real estate services.

REAL ESTATE advertisement for real estate services.

REAL ESTATE advertisement for real estate services.

REAL ESTATE advertisement for real estate services.

MUSIC INSTRUCTIONS advertisement for music lessons.

PIANO & GUITAR INSTRUCTIONS advertisement for piano and guitar lessons.

FOR SALE advertisement for a house.

FOR SALE advertisement for a house.

FOR SALE advertisement for a house.

FOR SALE advertisement for a house.

FOR SALE advertisement for a house.

FOR SALE advertisement for a house.

FOR SALE advertisement for a house.

FOR SALE advertisement for a house.

