

# MOUNTAINSIDE Echo

An Official Newspaper For The Borough Of Mountainside

The Zip Code for Mountainside is 07092



(USPS 166 860)

VOL. 22 NO. 16

Paid at Mountainside, N.J. Second Class Postage

MOUNTAINSIDE, N.J., THURSDAY, MARCH 20, 1980

Published Each Thursday by Truman Publishing Corp 2 New Providence Road, Mountainside, N.J. 07092

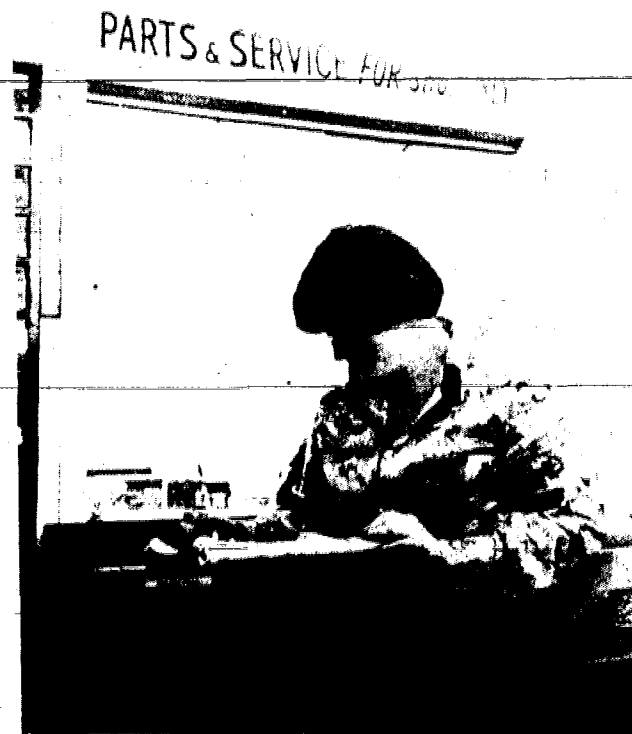
Subscription Rate \$10.50 Yearly

30c Per Copy



**TRYING THEIR HAND AT A TRADE** — Above from left, Debra Limeira of Kenilworth, a 1979 graduate of the regional schools, and Phillip Solomon, top right, of Springfield, a senior at Jonathan Dayton High School, work machinery at Paul Steets Co., a machine parts manufacturer in Kenilworth. Below right, Terri Rossiter, assistant parts manager for Mondial International Corp., a recreational equipment company in Springfield, writes up an order. Rossiter is a senior at Jonathan Dayton. All three got their jobs through the regional high school job placement program.

(Photos by Tracy Schroth)



## Proficiency test is cut as biology prerequisite

BY TRACY SCHROTH

The biology classroom door was opened wider for future ninth graders Tuesday night by the Union County Regional Board of Education.

Passing a proficiency test and passing eight-grade Algebra, both required now for freshmen to take biology, will not be required for ninth graders to enter the biology classroom in the fall.

While biology is normally a sophomore-entry course, freshmen who qualify and take it are permitted to hurdle the standard earth science prerequisite.

In spite of a plea made by regional science administrators, the regional board voted unanimously that the test and certain other criteria used this year to select students for the advanced placement be eliminated.

Effective next September, the students will be permitted to enroll in biology based almost entirely upon the recommendation of the principal of the elementary school they attended. The board advised that the recommendation be based on academic achievement, ability in mathematics and grade level in reading and self-motivation for success.

The ruling by the board came after many residents challenged the current selection process, calling it arbitrary and unfair. The process being used requires six criteria to be met in order for a student to be allowed to take biology his freshman year, normally, a sophomore year offering. They include overall academic achievement in the seventh and eighth grades, Algebra in the eighth grade, grade 10 reading level, independence and self-motivation and qualification as determined by a proficiency test designed by the science teachers in the regional system. Each student had to have been recommended by the elementary school principal.

The majority of the approximately 50 residents present at Tuesday's meeting targeted their complaints at the proficiency test, constituted this year, which they charged is not an accurate judge of a student's ability. They claimed that the students were not given sufficient notice of the test, and that it assumed his or her knowledge in earth science, a course that most of the

student have not taken in elementary school. Twenty seven of the 92 students who took the test this year qualified for the advanced placement. Dr. Donald Menachuk, regional school superintendent, said.

According to school officials, a proficiency test was instituted in 1976, but was eliminated after one year. It was brought back, Menachuk said, after several elementary school teachers requested it.

In the manner that the policy was implemented, said John Elwood of Berkeley Heights, "Not many people even knew about the test. It's totally unfair."

Dr. Levin Hangan, superintendent of schools in Mountainside, charged that the test was "a little bit rigged." He said that the policy that the elementary school teachers and administration could not see the test in order to help prepare the students was unjust.

Dr. Martin Siegel said that the test is given to insure a student's understanding of earth science, enabling him to forego the earth science course. (Continued on page 3)

## School board hopefuls in 'to-the-point' debate

BY SAM FINNELL

Six candidates for the Mountainside Board of Education gathered in the Deerfield School cafeteria Monday night for a good-natured and to-the-point candidates' night.

Three dozen residents listened to and questioned the candidates who, several times during the hour-and-a-half-long program, said the borough is fortunate to have qualified candidates to choose from Tuesday.

The candidates for the three-year terms are incumbents Dr. Arthur Williams and Pat Knodel and challengers Linda Schneider and Robert Gardella are running for a 2 one-year term.

The program, with Margaret Walker of the Westfield League of Women Voters as moderator had each of the six candidates give a five-minute speech, answer questions from the audience and conclude with a two minute wrap-up.

The first question, to Williams, came from Blanche Watts of Short Drive, who

asked the board president to explain what she called the "\$50,000 gift" to retiring superintendent of schools Dr. Levin Hangan, which is compensation for unused vacation and sick time. A letter, written by Adam Evans of Friar Lane, alleged the board has no documentation for the unused time and the money represents three points in the borough tax rate.

Williams said the board president receives a record of unused sick and vacation time yearly and that \$40,000 of the sum was authorized by a board of education in 1977. He also said Hangan's pension of \$17,500 a year is paid by the state.

A question on the closing of the Beechwood School was posed by Norman Hobbit of Sawmill Road. Burdge said she concurred, for the time being, with the School Facilities Advisory Committee report, which urged that the issue be looked at annually. Gardella also said he favored keeping the schools open, for now, citing the problems of finding a site for a new school or the cost of rehabilitating Beechwood if it is

reopened. Although Knodel said "we have a school we really don't need," she added, "I do not want that school sold. We should lease it to another educational institution. If we couldn't find a tenant, we should keep it open."

Attenasio, who headed the advisory committee, said the school should be preserved but not at all costs. He said the lack of available building sites in the borough would make building a new school impossible and that closing the school now and moving the students to Deerfield would actually lower property values, canceling out any savings from the move.

Schneider said that in view of the advisory committee report, the school can be left open but an annual review is "imperative." The school should not be sold, and if it were shut down, it should be leased for local community use or to an educational service, she said.

Williams also endorsed the annual review and said the school, if it were closed, should not simply be boarded. (Continued on page 3)

## Students get help from school when they're looking for a job

By TRACY SCHROTH

Breaking into the job market can be lonely and frustrating—especially for those who lack experience, a specific skill or a college diploma. Well, for many students and graduates of the Union County Regional High School system, the realities of life won't be quite so harsh.

Thanks to the regional high school's job placement program, many students already are getting a taste of what it's like to work in the "real world" and, lucky for them, they're not having to face it alone.

For seven years, the regional schools have provided a job placement service for students in grades nine through 12 who are interested in securing employment. It helps students find full-time jobs for the summer or after they graduate, or part-time jobs while attending school.

"We want to provide them with some sort of instruction before they go out," said Barbara Ullom, job placement coordinator for the four regional high schools. "It helps them when they go out to look for another job or apply to colleges. Colleges are looking for a full, well-rounded student. When a student can hold down a job, it shows maturity."

Ullom emphasized that the job placement service is not connected in any way with the work-study program. "We cooperate with them but they are a separate operation," she said. "The students I work with do not get credit for working."

Ullom said that most of her clients are students who only attend school half-day, usually upper classmen who have less of a work load than the freshman and sophomores.

"Although she tries to line up the youngsters with a job that fits their interests or future career plans, Ullom said, most of the students are interested

primarily in earning money or getting some sort of job experience. "Many of the jobs I find for the kids are unskilled related. Students are anxious to work. They need money for college or whatever," Ullom said. The jobs range from babysitting and snow shoveling to clerical work and occupational apprenticeships, according to Ullom. She said the highest paying and most frequent job opening is clerical, usually starting at \$200 a week.

Ullom provides the students with a job listing and the students take it from there, she explained. "The students set up their own interviews after they decide they're interested in the job." The job placement service maintains a listing of approximately 2,500 businesses and industries in the area. The school currently has students working for manufacturers, banks, legal offices, engineering firms, clothing stores, veterinarians and dentists.

Many of the students stay with the jobs they got through the placement program several years, many working full-time following their high school graduation, Ullom boasted. One recent graduate started working for a legal office while she was in high school. She is now office manager for that firm and recently returned to the regional job placement service looking for prospective employees.

"Overall, the students and the employers have been very satisfied with the results," said Ullom.

Last year, Ullom said, she placed more than 959 students. She said their total estimated earnings were \$64,500. Ullom added that the program includes placement for the handicapped, which she handles as well, although the regional school system is planning to hire a person to deal strictly with jobs for the handicapped. "Right now I'm dealing with both and it takes a great

deal of time," she said.

Philip Solomon of Springfield, a senior at Jonathan Dayton Regional High School, thinks the job placement program is a "great idea." Solomon is working in the machine shop for Paul Steets Co., a Kenilworth machine parts manufacturer.

"The job placement found me this job and it's really worked out well," he said. Solomon works from 2 to 6 p.m. weekdays. He gets out of school at 1 p.m. "It has no relation to my career plans," Solomon admits, "but I'm making money. I've already bought a car with money I earned here." Solomon, who hopes to be a fireman in California some day, operates more than 15 machines at Steets.

Debbie Limeira of Kenilworth was graduated from high school last year. She has worked in the same machine shop as Solomon for the past two years. Her job—working a machine called the drill press. Although Limeira is only one of three girls who work at the factory, and admits the work is "dirty," she doesn't seem to mind and is happy with the money she makes. She said that eventually she hopes to go to college.

Not only do the students think the placement program is worth while, the employers appear quite satisfied with the program's results.

Emily Wantz, part owner of Paul Steets Co., has been quite pleased with the majority of the approximately 30 students she has employed over the years from the regional school system. "The program is working very well. As long as they like it here, they can stay. We always have one or two from the school every year," said Wantz.

She said that many students have stayed on for several years. She said two employees have been with them for 15 years. They both got the job through the regional school program in 1965, as part of a work study.

## 1 dead, 4 held after car chase

A 22-year-old East Orange man, found dead from a gunshot wound in the head after a high speed chase on Route 22 Sunday, probably shot himself accidentally when the car crashed into a signpost in Union, according to Detective Sgt. Jerome Rice of the Mountainside Police Department, who is conducting the investigation along with members of the Union County prosecutor's office.

"We're pretty much satisfied that it (the wound) was self-inflicted," Rice said. The incident is still being investigated, he said. The man, identified as Donald Rainey, was found in the back seat with a single gunshot wound. Mountainside police also recovered a

38-caliber pistol in the vehicle, reported stolen from Maplewood Feb. 29, according to a police department press release.

The Union County Medical Examiner's office listed the cause of death as shock and hemorrhage due to a gunshot wound.

Also in the car were Robert Martin, 21, and Tyrone Moore, 23, both of Newark. The men are being held in the Union County Jail in lieu of \$15,000 bail on charges of possession of a stolen vehicle, possession of a weapon, eluding police, and on various motor vehicle charges. They were to have a preliminary hearing last night, Rice said.

Union police arrested two men in another car that was travelling with the first car, Rice said. The men were apprehended when the car in which they were riding crashed. Gary Whitehurst of Irvington and Jeffrey Mustafa Caffé of Los Angeles have been charged with possession of a weapon, receiving a stolen motor vehicle, disorderly conduct, leaving the scene of an accident and using fictitious plates. They were arraigned in Union Municipal Court on Monday and are being held in Union County Jail in lieu of \$15,000 bail, according to Union Police. A preliminary hearing is set for Monday. The second car had been reported stolen from Montclair, police said.

## Candidates for school board



Arthur Attenasio

"I have been a Mountainside resident for four years, living at Pembroke Road with my wife Kathie and three



Pat Knodel

Pat Knodel, a member of the Mountainside Board of Education for eight years, has served as its vice president for three terms and as president for two months. She has been a member of the board's legislation, transportation, finance and negotiations committees.

She served three years as a member of the board of directors of the Union County Educational Services Commission, and four years as legislative delegate to the New Jersey Board and alternate to the Union County School Board, constituent boards and PTA.

A former teacher, she was employed by St. Paul's School, Irvington; the Mountainside public school system and the Edison Township public schools. Mrs. Knodel earned a bachelor of arts degree in biology, physical science and secondary education from Caldwell College. She received her elementary education credits at Newark State College.

She and her husband John are the parents of eight children; seven were graduated from the Mountainside (Continued on page 3)



Dr. Arthur Williams

Dr. Arthur Williams, 54, has been a resident of Mountainside since 1960 and practiced dentistry in the borough since 1972. In June he was forced to retire because of an accident, and he is now engaged in private consulting work to the dental profession. He previously had practiced in Irvington from 1949 to 1972. A native of Newark, he attended Springfield (Mass.) College and was graduated from Temple University's College of Liberal Arts and School of Dentistry. He is a veteran of the U.S. Navy Dental Corps, having attained the rank of lieutenant.

His professional affiliations include membership in the Union County and New Jersey Dental Societies, the American Dental Association and the American Academy of Dental Practice Administration, of which he is president-elect. He has lectured nationally and internationally on dentistry on the post-graduate level, has addressed undergraduates and dental schools, has spoken at numerous career (Continued on page 3)

(Continued on page 3)

(Continued on page 3)

(Continued on page 3)



Trash or treasure?  
Get Cash...

# Sell it!

to our  
320,000 readers

- ★ Garage Sales
- ★ Yard Sales
- ★ Washers & Dryers
- ★ TV & Stereos
- ★ Bikes & Toys
- ★ Pools & Furniture
- ★ Refrigerators
- ★ Musical Instruments
- ★ Drapes
- ★ Air Conditioners
- ★ Etc., Etc., Etc.

- Check or Money Order Must Accompany Ad.
- Private Parties Only
- No Commercial, Businesses Real Estate or Automotive not included

in this offer.

# lines 2 times

Example:



# \$3

★ THURSDAY-EIGHT NEWSPAPERS  
★ SUNDAY-The SUBURBANAIRE

★  
**Use this  
easy  
Want Ad  
form, today!**

Four (4) Words Of Average Length Will Fit On One Line. For Extra Long Words Allow Two (2) Spaces. Figure Your Cost by Multiplying The Number Of Lines By \$1.00. Minimum Charge \$3.00 ( 3 Average Lines). Additional lines... **\$1.60** per line.

Mail To:  
SUBURBAN PUBLISHING CORP.  
1291 Stuyvesant Ave.,  
Union, N.J. 07083

Please insert the following classified ad:

Insert Ad.....Time(s) at \$.....

Per Insertion Starting.....(Date).....

Amount Enclosed ( ) Check ( ) Money Order

**Check or money order must accompany order.**

Want Ad Form must be in our office by Monday noon for ad to appear in that week's papers.

.....	.....	.....	.....
1	2	3	4
.....	.....	.....	.....
5	6	7	8
.....	.....	.....	.....
9	10	11	12
.....	.....	.....	.....
13	14	15	

(If additional words are required, attach separate sheet of paper)

Name .....

Address .....

City ..... Phone .....



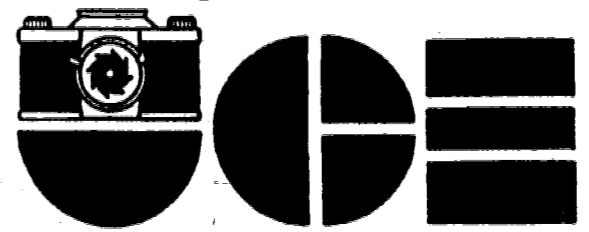


# FREE PHOTOS

## With the EASTER BUNNY!



Compliments Of



UNION CAMERA exchange

and  
**SUBURBAN PUBLISHING CORPORATION**

Here's how it works:

Just fill out the handy subscription form below and send it with payment to Suburban Publishing Corp. this week. We'll send you a coupon for up to 2 free color photos with the Easter Bunny. Then take your child to Union Camera Exchange on the dates and times listed below for your free photo:

<b>MONDAY MARCH 31</b> 1-5 pm 7-9 pm	<b>TUESDAY APRIL 1</b> 1-5 pm	<b>WEDNESDAY APRIL 2</b> 1-5 pm	<b>THURSDAY APRIL 3</b> 1-5 pm
--	----------------------------------	------------------------------------	-----------------------------------

**But Hurry!** To get your free photos, we must receive your paid subscription by Friday, March 28th.

(Limit two photos per new subscription. Children under 18 must be accompanied by parent or guardian)

**CLIP COUPON**

CHECK BOX FOR 52 WEEKS HOME DELIVERY

UNION LEADER '12"       SPRINGFIELD LEADER '12"

MOUNTAINSIDE ECHO '10"       LINDEN LEADER '10"

ROSELLE-ROSELLE PARK SPECTATOR '10"

NAME.....

ADDRESS.....

PHONE.....

Mail Coupon with Check to: **SUBURBAN PUBLISHING**  
1291 STUYVESANT AVE.  
UNION, NEW JERSEY 07083

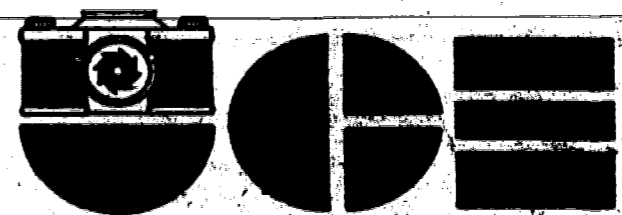
Subscriptions are non-refundable during this promotion.

If you're already a subscriber, or if you don't wish to subscribe just yet, photos are available for just \$1.29. Just go to Union Camera Exchange on the dates and times listed above.

### SUBURBAN PUBLISHING CORPORATION

Publishers of the Union Leader, Irvington Herald, Kenilworth Leader, Spectator, Vailsburg Leader, Springfield Leader, Mountainside Echo, Linden Leader and Suburbanaire.

1291 Stuyvesant Ave., Union  
686-7700



UNION CAMERA exchange

2009 Morris Ave., Union Center  
688-6573

# Amusement News

MOVIES THE THEATER OTHER ENTERTAINMENT



HANNA SCHYGULLA stars in the title role in 'The Marriage of Maria Braun,' which continues its run at the Lost Picture Show, Union.

## Disc & Data

By MILT HAMMER  
Pick Of The LPs: WE'RE THE BEST OF FRIENDS, by Natalie Cole and Peabo Bryson (CAPITOL RECORDS SW-12019).  
When two contemporary music's most talented, soulful singers and writers—Natalie Cole and Peabo Bryson—took their friendship into the studio, sparks fly. Out of those magical moments comes their first album of duets. It's a striking collection of love songs showcasing some of the warmest, most spontaneous vocal interplay recorded by a man and woman in a long, long time.

The seed for this album

**ADULTS \$15.00**  
**MAPLEWOOD**  
LITTLE MYKING  
COPS WHO HAS 12 PAGES IN PLAYBOY  
DAN DELVINE ANNE BANCROFT  
CANDICE ALEXA ROY CARLEY  
**FATSO** (PG)

**UABELLEVUE**  
Upper Montclair • 744-1455  
**EARLY BIRD \$2.00**  
DAILY MATINEES  
FIRST SHOW ONLY TO CAPACITY  
**COAL MINER'S DAUGHTER**  
SISSY SPACEK, TOMMY LEE JONES

**5 POINTS CINEMA**  
UNION • 964-9633  
**THE FOXES** (R)  
Matinees Sat. & Sun.  
MAGIC OF LASSIE 1:30  
Fri., Sat., midnight:  
"THE ROCKY HORROR SHOW"

**Elmora**  
ADULTS \$15.00  
DAN DELVINE ANNE BANCROFT  
CANDICE ALEXA ROY CARLEY  
**FATSO** (PG)  
**ADULTS \$15.00**  
**PARK**  
RICHARD GERE  
LAUREN HUTTON  
"AMERICAN GIGOLO"

**Chestnut Tavern & Restaurant**  
149 Chestnut St., Union • AMPLE FREE PARKING 686-9795  
Open Daily 11:30 A.M. - 11:00 P.M.  
Midnight Fri. & Sat. Till 1 A.M.  
Closed Tuesday  
**the finest in ITALIAN AMERICAN CUISINE**  
COCKTAILS-LIQUOR-BUSINESSMAN'S LUNCH

**CHARLIE BROWN**  
Steak, Prime Ribs and Seafood with Friendly Service in a Tastefully Decorated Colonial Atmosphere  
2376 NORTH AVE., SCOTCH PLAINS 232-3443

**CHARLIE BROWN**  
Enjoy quiet intimate dining in a nostalgic atmosphere that's softly lighted by Tiffany lamps. Featuring choice steaks and other house specialties.  
754-1181 45 STIRLING RD., WARREN

**WHAT'S YOUR BEEF (II)**  
The rustic spirit remains in this turn-of-the-century meathouse beautifully converted into a charming dining facility. Start off at the alder butcher's counter and select your own cut of beef to be prepared to your specifications.  
254 E. THIRD ST., PLAINFIELD 755-6661

**JOLLY TROLLEY SALOON**  
Steak, Prime Ribs and Seafood specialties are featured in the up-tempo spirit of the authentic turn-of-the-century saloon and restaurant.  
411 NORTH AVE., WESTFIELD 232-1207

Restaurant tastefully decorated in earth tones and hanging plants.  
• Bar Lounge decorated in turn-of-century wall lamps.  
• Featuring steaks, seafood and dilly specials.  
374-1724 25 Main St. MILLBURN

## Musicals for Mill

The Paper Mill Playhouse, in cooperation with the Millburn Board of Education, has announced that a series of Saturday musicals for children will be presented at Millburn High School, 462 Millburn Ave.

There will be two performances each day at 11 a.m. and 2 p.m. beginning with "Peter Rabbit" on East Saturday, April 5, followed by "Mary Poppins," May 10; "Little Red Riding Hood" and "The Three Little Pigs," May 24; "Heidi," May 31, and "Cinderella," June 14.

## 'Foxes' held at Cinema

"Foxes," adult film which tells the stories of four teenage girls growing up in the San Fernando Valley, is being held over for another week at the Five Points Cinema, Union. The picture stars Jodie Foster, Sally Kellerman and Scott Baio and was photographed in color.

"The Rocky Horror Picture Show" continues to play Fridays and Saturdays at midnight at the Cinema.

## 'Fatso' movie on 3 screens

"Fatso," starring Anne Bancroft and Dom DeLuise, opens tomorrow at the Old Rahway Theater, Rahway, and continues its run at the Maplewood Theater and on a double bill with "Silver Streak" at the Elmora Theater, Elizabeth.

## Film drama due at Strand

"Breaking Away," a film drama about four local college people, who are looked down upon by Indiana University college students, opens tomorrow at the Strand Theater, Summit.  
"Electric Horseman," starring Robert Redford and Jane Fonda, ends its run tonight at the Strand.  
"Breaking Away" stars Dennis Christopher, Paul Dooley and Barbara Barrie. It was directed by Peter Yates.



CISSY SPACEK portrays Loretta Lynn in 'Coal Miner's Daughter,' film biography about star of western music, which continues for another week at the Bellevue Theater, Upper Montclair.

## WEEKEND CROSSWORD

TODAY'S ANSWER

1	2	3	4	5	6	7	8	9	10
11	12	13	14	15	16	17	18	19	20
21	22	23	24	25	26	27	28	29	30
31	32	33	34	35	36	37	38	39	40

ACROSS  
1 Bayonet thrust  
5 Put together  
10 Equestrian sport  
11 Ceramist  
13 Pig or cast  
14 Astolat beauty  
15 Broadway luminary  
17 Goddess: Lat.  
18 Of course  
19 Colorado Indian  
20 Cey of the Dodgers  
21 Obstruct  
22 Philistine god  
25 France's longest river  
26 Region  
27 Kind of appeal  
28 Author, - Yutang  
29 Actress Arthur  
30 Hawaiian game  
33 Printing process  
36 Relaxed  
37 Otherwise  
38 Trample  
39 Ceaseless  
40 Winged

DOWN  
41 Smooth consonant  
1 Saw  
2 Rich cake  
3 Waikiki greeting  
4 It's often in contention  
5 Primates  
6 Blemishes  
7 Rose essence  
8 Incentives  
9 One of 100  
12 Break one's word  
16 French city  
20 Brown kiwi  
21 Wally of the late show  
22 Super drunk team  
23 Operatic song  
24 Refined river  
25 Bound  
27 Free from care  
29 Make drunk  
30 Ax handle  
31 German city  
32 French river  
34 Mulberry cloth  
35 Old dance

## Movie Times

All times listed are furnished by the theaters.

**BELLEVUE** (Montclair) COAL MINER'S DAUGHTER, Thur., Fri., Sat., Sun., Mon., Tues., Wed., 2:30, 5, 7:30, 9:55

**ELMORA** (Elizabeth) SILVER STREAK, Thur., Fri., Mon., Tues., Wed., Thur., 7:30, Sat., 4:15, 8:10, Sun., 3:45, 7:40; FATSO, Thur., Fri., Mon., Tues., Wed., Thur., 9:30, 9:30, Sat., 2:30, 6:25, 10:10, Sun., 2, 6, 9:30

**FIVE POINTS CINEMA** (Union) FOXES, Thur., Mon., Tues., Wed., Thur., 7:30, 9:15, Fri., Sat., 7:30, 9:30, Sun., 3:30, 5:30, 7:30, 9:15, Fri., Sat. mid night, ROCKY HORROR SHOW, Sat., Sun., matinee, MAGIC OF LASSIE, 1:30

**LINDENTWIN ONE** FIFTH FLOOR, Fri., 7, 10:25 (sneak preview), CHANGING, 8:30, Sat., FIFTH FLOOR, 1:15, 3, 4:50, 6:35, 8:25, 10:15, Sun., 2:30, 4:20, 6:10, 8, 9:50; Mon., Tues., Wed., Thur., 7:30, 9:20

**LINDENTWIN TWO**

**LITTLE MISS MARKER**, Fri., 7:15, 9:25, Sat., 1, 3:10, 5:20, 7:30, 9:40, Sun., 2:15, 4:25, 6:35, 9: Mon., Tues., Wed., Thur., 7, 9:05

**LOST PICTURE SHOW** (Union) MARRIAGE OF MARIA BRAUN, Thur., Mon., Tues., Wed., Thur., 7:15, 9:30, Fri., 7:30, 9:45; Sat., 5, 7:30, 9:45, Sun., 2:30, 4:45, 7, 9:15

**MAPLEWOOD** FATSO, Thur., Mon., Tues., 7:15, 9; Fri., 7:15, 9:10, Sat., 2:15, 4:10, 6, 8, 10, Sun., 3:15, 5:10, 7, 9

**OLD RAHWAY** FATSO, Fri., 7:30, 9:15, Sat., 1:30, 3:10, 4:50, 6:30, 8:20, 10: Sun., 1:15, 2:50, 4:40, 6:20, 8, 9:45; Mon., Tues., Wed., Thur., 7:30, 9:15

**PARK** (Roselle Park) AMERICAN GIGOLO, Thur., Fri., Mon., Tues., Wed., Thur., 9:10, Sat., Sun., 2, 5:40, 9:40; BLOODLINE, Thur., Fri., Mon., Tues., Wed., Thur., 7:15, Sat., Sun., 3:30, 7:50

**STRAND** (Summit) BREAKING AWAY Starts, Friday Call theater at 273-3900 for timeclock

## Gere, Hutton star at Park

The Park Theater, Roselle Park, is holding over its double feature for another week. They are "American Gigolo" and "Bloodline." Richard Gere and Lauren Hutton star in "American Gigolo," an adult film about a gigolo and the unfaithful wife of a politician who fall in love. Paul Schrader directed the movie. The associate feature, "Bloodline," stars Audrey Hepburn, Ben Gazzara, James Mason, Romi Schneider and Omar Sharif.

Discover the **Minolear** Restaurant  
Luncheon-Dinner-Cocktail  
Entertainment Fri. & Sat. Nights  
5 Highland Place-Maplewood-763-3083

**ROSELLE MANOR**  
DINER RESTAURANT & COCKTAIL LOUNGE  
FRESH SEAFOOD, STEAKS & CHOPS  
Open 7 Days 24 Hours  
Variety of 20 Different Specialties  
In Our Unique Salad Bar FREE With Entrees  
Businessmen's Luncheons Mon.-Fri.  
All Baking Done on Premises  
2401 Wood Ave.  
Roselle 241-3850  
Master Charge • Visa

**The Crab House Inc.**  
Cocktail Lounge • Sea Food Restaurant  
**CHEF'S DELIGHTS!**  
Mon., Tues., Wed.  
FRIED SHRIMP \$5.95  
Potatoe or Linguini & Salad  
CHICKEN PARMIGIANA \$5.95  
Potatoe or Linguini & Salad  
BROILED HADDOCK, SCROD \$4.95  
EOR BLUEFISH  
Restaurant 353-3900  
Fish Market 353-3788  
248-258 MORRIS AVE.  
ELIZABETH  
Happy Hour Mon. thru Fri. 4 PM - 6 PM  
AMPLE FREE PARKING IN OUR PARKING LOT  
Closed Sundays

Take stock in America.

**NEW JERSEY PUBLIC THEATER**  
STUDIO OF ACTING  
**10 WEEK SPRING TERM**  
118 South Ave., Cranford  
REGISTRATION: Mon., March 31, 4-8 pm  
Tues., April 1, 4-8 pm  
MORE INFO? David Christopher 276-0276 or 272-5704

Let us make your dream come true  
ELEGANT ROOMS TO CHOOSE FROM \$10.00  
BEAUTIFUL CANDLE LIGHTS  
SERVING SEAFOOD  
WATER ALL DAY  
V.I.P. ONLY  
**The Famous OPA STEAK HOUSE**  
FOR A BEAUTIFUL ELEGANT WEDDING FROM \$17.95  
Route 22, Scotch Plains, N.J.  
For appointment call 276-2726

**FARCHER'S GROVE RESTAURANT**  
SPRINGFIELD ROAD (OFF ROUTE 22 West-nr. Milltown Road)  
UNION • 688-1421  
**CHEF'S SPECIAL DINNER MENU**  
**SUNDAY, MARCH 30** 12 Noon to 6 P.M.  
APPETIZER ... Fruit Cocktail  
entrees  
**SAUERBRATEN** with Dumplings and Red Cabbage **\$7.00**  
**RIBS OF BEEF** with Baked Potato and Buttered String Beans **\$9.50**  
DESSERT ... Strawberry Jello, Ice Cream  
Beverages ... Coffee, Tea or Milk

Come to Bob's and try our **Special Lenten Fare \$2.99**  
11am to 9pm

• Tender fillet of fish, served on a special roll  
• Golden brown french fries  
• Bob's All-You-Can-Eat Salad Bar

**Bob's BIG BOY Restaurants**  
a division of Marriott Corporation  
Plaza Shopping Center  
Rt. 22 W. Union







MR. AND MRS. VACCA

### Miss Padfield becomes bride of Tony Vacca

Laurette Padfield, daughter of Mr. and Mrs. Edward Padfield of Union, was married Sept. 22 to Tony Vacca, son of Mrs. and Mrs. Italo Vacca of Colonial Avenue, Union.

The Rev. John Brown officiated at the ceremony in St. Joseph's Roman Catholic Church, Maplewood. A reception followed at the Club Navaho Manor.

The bride was escorted by her parents. Patricia Lewan of Livingston served as matron of honor for her sister. Bridesmaids were Denise Kmiecik of Silverton and Maria Mack of Union, both sisters of the bride, and Elizabeth Macheska of Union. Gary Macheska of Union served as best man. Ushers were Gary Ignace of Union, Jack Lightholder of New Brunswick, and Robert Graham of Saddlebrook.

Mrs. Vacca, who was graduated from Union High School, is employed by Mulberry Metal Products.

Her husband, who was graduated from Union High School, is employed by G and A Shell Service.

The newlyweds, who took a honeymoon trip to Disney World in Florida, reside in Lebanon.



MR. AND MRS. SACHAROW

### Marriage held of Union man to Jill Singer

Jill Singer of New York City, daughter of Mrs. Claire Singer of New York City, and Mr. Jerry Singer of Brooklyn, N.Y., was married Dec. 1 to Mark Sacharow, son of Mr. and Mrs. Mel Sacharow of Sheridan Street, Union.

Rabbi Meyer Korbman and Cantor Hillel Sadowitz officiated at the ceremony at the Colonial Mansion, Brooklyn, where a reception followed.

The bride was escorted by her father. Vivian Tuft of New York City served as maid of honor, and Mrs. Ellen Mandroukakis of New York City, aunt of the bride, served as matron of honor. Bridesmaids were Ruth Sacharow of Union, sister of the groom; Marcia Lemberg of Elizabeth, Barbara Rubino of Brooklyn and Bonnie Fidler.

Barry Sacharow of Woodbridge served as best man for his brother. Ushers were David Colter of New York City, Scott Singer of New York City, brother of the bride; Jay Rosansky of Union and Tommy Rubino of Brooklyn.

Mrs. Sacharow, who was graduated from Seward Park High School, Manhattan, attended the Boro of Manhattan Community College. She is employed by Diamond D. in Houston, Tex.

Her husband, who was graduated from Union High School, attended Roger Williams College in Rhode Island. He is employed by Scientific Designs Corp., Houston.

The newlyweds reside in Houston.



NANCY L. BERGER

### Nancy Berger plans wedding

Mr. and Mrs. Alan Berger of MacArthur Drive, Union, have announced the engagement of their daughter, Nancy Lynne, to Paul Alfred Schragger, son of Dr. and Mrs. Alan Schragger of New Tripoli, Pa.

The bride-elect, who was graduated from Union High School, is in her senior year at Lehigh University, Bethlehem, Pa., where she is majoring in mechanical engineering.

Her fiancé, who was graduated from Moravian Academy, Bethlehem, is in his fourth year of a five-year program at Lehigh University, where he will earn degrees in both electrical engineering and physics.

A June 1981 wedding is planned.



BARBARA JEROME TERRY DIESS

### Miss Jerome betrothal told

Mr. and Mrs. Ben Jerome of Morrison Avenue, Union, have announced the engagement of their daughter, Barbara Jeanne, to Terry R. Diess, son of Mr. and Mrs. Louis Diess of Cedar Grove.

The bride-elect, who was graduated from Union High School, is a legal secretary for Francis J. Simone, Esq., Union.

Her fiancé, who was graduated from Montclair State College, Upper Montclair where he received a B.A. degree, is a music instructor and is employed by Rae Lithographers, Cedar Grove.

An April, 1981 wedding is planned.



MAUREEN LIEBNER

### Unionite plans date next year

Mr. and Mrs. James Liebner of Willingboro have announced the engagement of their daughter, Maureen, to Chip Brown, son of Mr. and Mrs. Norbert Brown of Union.

The bride-elect, who attends St. Elizabeth's College, will be graduated next year with a B.S. degree in foods and nutrition.

Her fiancé, who was graduated from Seton Hall Preparatory High School and Seton Hall University, as a lieutenant in the United States Infantry.

A May, 1981 wedding is planned.



CYNTHIA ANTHONY

### Miss Anthony to be married

The Rev. and Mrs. Chester Anthony of Springfield have announced the engagement of their daughter, Cynthia, to Roderick Eugene McCreary, son of Mr. Vincent H. McCreary of Los Angeles, and Mrs. Ina B. McCreary of Union.

The bride-elect, who was graduated from Jonathan Dayton Regional High School, Springfield, attends Bloomfield College. She is a junior accountant for ESNA Division of Amerace Corp., Union.

Her fiancé, who was graduated from West Side High School, Newark, Seton Hall University and Columbia University, Graduate School of Business, is employed by the Newark Board of Education and is a management consultant for Acker Merrall and Condit, Inc.

An August wedding is planned.

## REGM to present check to Health Science Center

Rosary Morelli, president of the Ruth Estrin Goldberg Memorial (REGM) will present the last installment of \$4,250 of a \$17,000 grant to Dr. C. Kent Osborne of the University of Texas Health Science Center, San Antonio, Tex., Saturday at 11:45 a.m. at the Westmont Country Club, West Paterson. The grant is for a receptor for epidermal and fibroblast growth factors in human breast cancer and will be presented to Dr. Osborne during the 31st annual luncheon and fashion show.

Bonwit Teller of Short Hills will present the spring fashions and use its professional models. Ticket chairmen are Joan Herzfeld, Gale Liantonio and Paula Weinstock, all of Union. Harlene Sternback of Union is one of the hostesses.

The group will hold a general meeting Monday at 8 p.m. in Temple Sha'arey Shalom, Springfield. Mrs. Rosary Morelli will preside.

Fern Kerbel and Marilyn Axelrod of Union, program chairmen, will present Norma Lehroff Altman of Millburn who will speak on "Women and Real Estate."

Among those assisting Judy Goldberg, nominating committee chairman and past president will be Arlene Arman, Gale Liantonio and Joan Herzfeld, all of Union and Iris Talesnick of Springfield. It was announced that sit and sell week will take place April 15 to April 22.

Reservations for international night and installation of new officers will be taken tonight. Additional information may be obtained by writing to REGM, care of P.O. Box 194 Springfield (07081).

### Israeli to get Peace Award

Abie Nathan, Israeli humanitarian and former World War II R.A.F. pilot, who has worked for more than 30 years in the Middle East, will be the first recipient of Hadassah's Lovers of Peace Award at a Lovers of Peace dinner Sunday at the Plaza Hotel, New York City.

Dinner guests, known as "Lovers of Peace," will contribute a minimum of \$2,500 to the Hadassah Medical Organization and their names will appear on a special Lovers of Peace wall at the Hadassah-Hebrew University Medical Center in Jerusalem, it was announced by Bernice S. Tanenbaum, national president of Hadassah. Additional information may be obtained by calling Mrs. Elana Schipper at 763-3630.

**ADD GREENS**  
Greens are a valuable addition to the diet. They are high in vitamins A and C, as well as the important minerals, calcium and iron. Remember, all dried vegetables should be stored in a dry, cool, dark place.

### Holy Spirit Society plans annual auction

The Holy Spirit Society of St. Joseph's Roman Catholic Church will hold its annual auction on Friday, April 25, 7:30 p.m. in the parish hall, 400 Avenue and Suburban Road. Auction items will be \$1 a person, only for the public. Items include a television, a refrigerator, a microwave oven, a vacuum cleaner, a washing machine, a dryer, a car stereo, a car radio, a car stereo, a car radio, a car stereo, a car radio.

Mrs. Mary E. Farnsworth, president, and Mrs. Dolores M. Mariani, chairman of the auction.

### Elizabeth Auxiliary will meet April 15

The Ladies Auxiliary of the Elmora Hebrew Center, Elizabeth, is celebrating its 34th anniversary. It will meet April 15 at the center at 420 West End Avenue.

Final arrangements will be made for the group's April 23 annual dinner at the Crystal Plaza, Livingston, beginning at 6 p.m. New members have been invited to attend the meeting.

**FRIDAY DEADLINE**  
All items other than spot news should be in our office by noon on Friday.

### MILT HAMMER'S Bible Quiz

Name the speaker of each of the following Old Testament Bible quotations.

- "Sell me this day thy birthright."
- "I will now put forth a riddle unto you."
- "I have gotten a man from the LORD."
- "I am sower of speech, and of a slow tongue."
- "Am I my brother's keeper?"
- "Divide the living child in two, and give half to the one, and half to the other."

**ANSWERS**  
1. JACOB (Gen. 25:31) 2. SAMSON (Judg. 14:1) 3. EVE (Gen. 4:1) 4. JUDITH (Judg. 14:1) 5. CAIN (Gen. 4:9) 6. SOLOMON (1 Kings 3:25)

**Charge for Pictures**  
There is a charge of \$5 for wedding and engagement pictures. There is no charge for the announcement, whether with or without a picture. Persons submitting wedding or engagement pictures should enclose the \$5 payment.

SELL BABY'S old toys with a Want Ad. Call 686-7700, daily 9 to 5:00

Major Charges Gladly Accepted

**Special Purchase**  
Sweater jackets

long \$80  
short \$64  
\$75  
\$60

great over dresses, pants, jeans.. whatever

**Stan Sommer**

Union — Mon. and Fri. 'til 9 • Westfield — Thurs. 'til 9

**GET FRAMED AT TEST-RITE!**

**TEST RITE OPTICAL CO. INC.**

Mon, Tue, Fri 9-6  
Thurs 9-7:30  
Sat 9-2:30  
Closed Wed

1219 LIBERTY AVENUE, HILLSIDE 354-8300  
OTHER LOCATIONS IN LIVINGSTON AND CHATHAM TOWNSHIP

**CONSUMER CHECKLIST**

Giv' Her a Gift Of...  
**CUSTOM DESIGNED JEWELRY**

We specialize in custom designed jewelry made to your specifications in our own workshop. So, if you have diamonds, bring them to us and we will design something special just for her!

**WE BUY OLD GOLD**

**Savoy Jewelers**  
970 Stuyvesant Ave., Union 688-2600

**THE GOOD OLD DAYS ARE GONE!**

If you are tired of being overlooked, overcharged and overwhelmed at the Malls then you've overdue to take another look at UNION CENTER.

If you are looking for children's and young junior's apparel, come to the SUSAN SHOP and the JUNIOR CIRCLE, UNION CENTER where we've been for the past 23 years.

If you are wondering what service and selection means we have one of the largest selections of infants, childrens and young junior clothing in the state and our service matches our selection.

THE GOOD OLD DAYS ARE GONE but we can still show you today how it was to be a satisfied customer in THE GOOD OLD DAYS!

This Message Sponsored By

**SUSAN SHOP & SUSAN JR. CIRCLE**  
1050 Stuyvesant Ave.  
Union Center

- UNION CAMERA EXCHANGE
- SUSAN SHOP & JR. CIRCLE
- ESTELLE'S UNIFORM SHOP
- ANN LOUISE CORSET SHOP
- MARTIN EDWARD MEN'S SHOP
- REIMER'S CHILDREN'S WORLD
- CURTAIN BIN & BATH SHOP
- B & M ALUMINUM
- STAN SOMMER
- UNION BOOTERY
- BEAUTY ETC.
- HARLAN'S
- GRUBERS
- MAXINE'S



# BUY RITE LIQUOR

# bigger

...newly enlarged store!

# better

...newly reduced prices!

## CANADIAN CLUB

was \$20.36 **18<sup>45</sup>** 1.75 liter  
Price Includes Tax



was \$11.03 **9<sup>95</sup>** quart  
Price Includes Tax

was \$9.08 **8<sup>22</sup>** fifth  
Price Includes Tax

**BETTER...  
NEWLY  
REDUCED  
PRICES!**

## CLAN MCGREGOR

was \$13.64 **12<sup>11</sup>** 1.75 liter  
Price Includes Tax

was \$7.76 **6<sup>73</sup>** quart  
Price Includes Tax

was \$6.77 **5<sup>95</sup>** fifth  
Price Includes Tax



**BIGGER...NEWLY  
ENLARGED STORE!**

## SOUTHERN COMFORT

was \$8.09 **7<sup>09</sup>** 750 ml  
Price Includes Tax



## RIUNITE

Red, White, Rose

was \$5.98 **4<sup>79</sup>** 50.7 oz.  
Price Includes Tax

was \$3.30 **2<sup>59</sup>** 750 ml  
Price Includes Tax



## SMIRNOFF

was \$7.75 **6<sup>93</sup>** quart  
Price Includes Tax



## DRAMBUIE

was \$14.69 **13<sup>74</sup>** 23 oz.  
Price Includes Tax



## DEWAR'S

was \$13.39 **11<sup>08</sup>** quart  
Price Includes Tax

was \$10.70 **8<sup>82</sup>** fifth  
Price Includes Tax



## SEAGRAM'S 7

was \$6.98 **5<sup>99</sup>** fifth  
Price Includes Tax



**BETTER...  
NEWLY  
REDUCED  
PRICES!**

**BIGGER...  
NEWLY  
ENLARGED  
STORE!**

## FLEISCHMAN GIN

was \$7.13 **6<sup>24</sup>** quart  
Price Includes Tax



## FINLANDIA

Imported vodka  
was \$9.75 **7<sup>98</sup>** 750 ml  
Price Includes Tax



## BUDWEISER

12-oz. CANS  
Was 6 for \$2.25  
**6 for 1.99**

**BIGGER...  
NEWLY  
ENLARGED  
STORE!**

**BETTER...NEWLY REDUCED PRICES!**

**MANY, MANY  
MORE  
PRICE REDUCTIONS**

— ★ —

**see our  
unadvertised  
in-store specials**

## SPRING LIQUORS

**ECHO PLAZA SHOPPING CENTER  
ROUTE 22 and MOUNTAIN AVENUE  
SPRINGFIELD, N.J. 379-4992**

**PLENTY OF FREE PARKING  
OPEN MON. THRU SAT. - 9 A.M. to 10 P.M.**

**SUBURBAN  
REAL ESTATE MART**  
City • Suburbs • Farm Country • Lake • Shore

## Clearbrook homes astride a golf course

Joining the tremendously popular Clearbrook adult condominium community, the newest series of Clearbrook units, "Fairway Homes"—set astride their private golf course—is nearing completion. Spacious and luxurious in concept, "Fairway Homes" embody unusual livability features, usually found in the most exclusive and costly homes. John G. Andriessen, vice president and director of marketing for Guardian Development Corporation, developers and sponsors of Clearbrook (Monroe Township) for active adults over 48, announced enthusiastic response to this new section.

An electric radiant ceiling heating system is one of the unusual luxury features offered. Throughout the interiors of the homes, separate room thermostats control invisible energy-efficient heat, providing new dimensions in economy and heating comfort. The heating system heats by electric current panels in the ceiling, banishing a major source of grime and dirt in the home. The system eliminates blowers and the air currents that circulate dirt.

Gone are the dusty baseboards and blower-

dirt-streaked drapes and curtains. With no heat outlets and blowers to worry about, virtually unobstructed wall spaces miraculously appear. Each room can be kept at an individual comfort range with individual thermostats to suit different needs. Uniform heat travels invisibly to every corner, warming each object as though touched by sun. Designed to operate at low temperature, the radiant heating element distributes heat uniformly and economically, and is clean and safe.

Free-standing wood-burning fireplaces, spacious living and dining areas and large eat-in kitchens—with deluxe furniture-finished kitchen cabinets and double stainless steel sinks with "instant" hot water faucet, built-in garbage disposal and GE oven and range with exhaust hood vented to the outside—will satisfy the most discerning home buyer.

The four models—Belair, Meadowbrook, Edgemont and Tamarack—boast luxurious light, airy oversized bedrooms with massive closet space, two full baths with ceramic tile floors and full vanities with integral

bowls and luxury faucets. Large two car garages have ample storage space for golf carts, screens, tools, etc. Laundry areas are conveniently located and every home has an early warning smoke and fire detector. Spacious patios offer extra outdoor livability or can be enclosed for additional indoor leisure living.

"Fairway Homes" start at \$73,400.

## Women in key posts at Archie Schwartz

Real estate traditionally has been considered a man's field but in the past few years the ranks of women has been on the upswing. Due to the changing attitudes of society, women are electing to return to the work force in even greater numbers than ever before.

Elmer Schwartz, president of the Archie Schwartz Company, East Orange based realtors, realizes this, and commends his staff for its outstanding expertise.

"The women are very important to the company," he said. "In the last few years while the company has doubled its operations, these

women have maintained a balance with our office personnel and outstanding clientele that is a crucial element in our success.

"Most businessmen do not acknowledge the importance of women in business, but I know I am not alone in seeing that women with intelligence and integrity are vital to the success of any company."

Maureen Marone is office coordinator for the company. Her responsibilities include coordinating the entire office personnel into cohesive independent operating units, arranging and heading monthly meetings in order to keep

the channels of communication open, troubleshooting areas of specific real estate concerns, and organizing weekly and monthly sales meetings.

In the fiscal department Stephanie Tsemberlis and Anna Munford handle accounts receivable and accounts payable. Stephanie handles the submission of all financial reports from accounts at various executive meetings, commission agreements, as well as the organization of monthly billing files.

Anna's responsibilities include the supervision of weekly and monthly payroll submissions and the payment of existing

accounts, as well as the monthly bank reconciliation statement.

Lorraine Francisco, advertising director, is the newest member of the firm. She is responsible for promotional material for brochures and magazines. She also maintains a current in-house mailing list of more than 100,000 names of top corporations, as well as arranging for the publication of newsworthy articles. Her publicity assistant is Leslie Venson.

Ruth Omenn and Lori Hanman, saleswomen at Archie Schwartz, find the field of real estate an ideal career opportunity for women to grow in. Much of their time is

spent canvassing the area, scheduling meetings with clients of corporations, touring prospective sites, and meeting to discuss financing arrangements with property owners.

The divisions are separated according to county and each is headed by a senior vice-president and assistant vice-president. The assistant vice-presidents—all are female—act as a liaison between the senior vice-presidents and 15 to 20 salesmen. Their specific duties include keeping open communication channels in the organization of all activities which originate within the division.

In the Union-Middlesex Division is Maggie Flannery; in the Bergen County Division Roseanne Maccarone; in the Office Space Division Georgia Valvano; in the Passaic County Division Mindy Dudas; in the Essex County Division Angie Alfano, and in the Investment Division Beverly Fiore.

**SALT INVENTION**  
Encapsulated salt, important in prolonging the "shelf life" of frozen meat products, was invented by food scientists at the New Jersey Agricultural Experiment Station of Rutgers University's Cook College. The station marks its 100th birthday this year.

## Townhome's appeal cited for high sales

The combination of recession and inflation has curtailed home buying in the metropolitan area but not at Panther Valley, the private luxury residential environment in Allamuchy. There, the same factors are being credited for the sales success of the community's three varieties of townhome neighborhoods.

"The opportunity to own a home within Panther Valley for as little as \$63,740 continues to be compelling," explained Charles Knoeller, sales manager for the 1500-acre community off Exit 19 of Route 80. "This has been especially true for singles, newly-married couples and older couples."

The young people, Knoeller stated, seize the opportunity to live at the top while they're on the way up. The adults, meanwhile, appreciate the appropriate spaciousness of the townhomes, the community's security systems and many household and community maintenance services provided all townhome residents—the snow removal, road-work, landscaping, lawn care, exterior home maintenance and upkeep of community recreational facilities overseen by the homeowners' association.

In effect, the townhome residents enjoy the same benefits and pleasures as the residents of the Panther Valley single-family homes which are priced from \$142,900.

They have the use of their own neighborhood tennis, platform tennis, swimming pool and children's playground facilities. They have the same encompassing views of the surrounding high stone mountain walls. And they have the

same peace of mind resultant from the gatehouse, which is manned at all hours, and the security patrol that watches over the privacy and safety within the community.

The three townhome neighborhoods at Panther Valley are the Westgate two- and three-bedroom models priced from \$63,740, the Country townhomes priced from \$80,000 and the deluxe Audubon Woods townhomes priced from \$90,420, both series of which include models with up to four bedrooms, patios, wood sundecks or both. Many also have basements which can be converted into customized extra rooms. And, offered as an option in each Audubon Woods models is an in-home spa with steam bath and whirlpool.

New tennis and paddle tennis courts, along with a new swimming pool and bath house, have been added on a peninsula that juts out into the lake between the Westgate and Country Townhome areas.

Also attractive at Panther Valley are the community's rich natural beauty and its convenient country location—only 55 miles from New York City and only 20 miles from New Jersey's ski areas.

Of high importance currently is Knoeller's report that ample mortgage financing for buyers has been obtained at Panther Valley. Immediate occupancy is available on selected townhome models.

To reach Panther Valley, take Route 80 west to the Andover-Hackettstown Exit (19). Turn left at the end of the ramp; the community entrance is on the right about three-quarters of a mile ahead.



# HERE WE GO AGAIN, NEW JERSEY.

**H**ovnanian's done it again, New Jersey.

If you missed the greatest homeowning opportunity of 1979—if you missed Pine Ridge in Florida's Palm Beaches—you'll be glad to know you've got one more chance. One last sun-drenched opportunity to get in on the good life at a great price.

Introducing Pine Ridge South. The new adult condominium community that offers seven of Hovnanian's famous, full-featured models. Studio, one bedroom, one bedroom/den and two bedroom apartment homes. For \$32,950 to \$41,950. Want to read that last sentence again to make sure it wasn't a misprint? Okay. \$32,950 to \$41,950. This includes extras you don't pay extra for, like central air-conditioning. Screened porches. GE appliances. And wall-to-wall carpeting. For openers.

Pine Ridge South also offers a private swim club, sundecks, shuffleboard courts, picnic groves and acres of lakes and landscaping.

For closers, there's Hovnanian's incredible guarantee. The one that fixes your maintenance costs at \$39 a month for at least the next five years. Think about it. Five years of inflation-proof maintenance costs.

It's value like this that convinced over 500 New Jerseyans to buy at Pine Ridge last year. It's value like this that sold out Pine Ridge in record time. And it's value like this that's got everybody talking again. About Pine Ridge South.

Don't miss this extra chance. Visit Florida today. Right here in Middletown, New Jersey. Hovnanian has an actual furnished model right in their office building at 10 Route 35.

To reach the Pine Ridge model display in New Jersey, take the Garden State Parkway south to Exit

117. Then take Route 35 south for 12 miles to the beautiful gold office building before Route 35 crosses the bridge into Red Bank. The model exhibit is on the second floor and it's open Monday-Friday 10-5:30, Saturday and Sunday 10-6. Or call (201) 842-9402.

## Grand Opening

Village I

# Pine Ridge South

by *Hovnanian*  
OF PALM BEACH, INC.

Adult condominiums from \$32,950 to \$41,950.  
\$39 monthly maintenance guaranteed for 5 years.

Pine Ridge was Florida's first great buy. Pine Ridge South is the last.

**elegant condominiums**  
The excitement of the seashore in exclusively beautiful apartments and penthouses.

**Esplanade** from \$58,300 to \$148,300

321 Sunset Ave.  
North Asbury Park, N.J. 07712  
(201) 775-4464

# SUBURBAN REAL ESTATE MART

City • Suburbs • Farm Country • Lake • Shore

## 800 sales last year amazed Pine Ridge

It was quite a first year for Pine Ridge Hovnanian's adult condominium community in Florida's Palm Beaches. With home prices, mortgage rates, maintenance costs and virtually everything else continuing to rise and with consumer interest consequently starting to drop—it might not have been the most auspicious time for Pine Ridge to open. Thanks to a combination of smart design, highly visible value and aggressive marketing, however, Pine Ridge is now enjoying a very happy birthday.

While tight conditions were generally the rule up and down the East Coast, Pine Ridge proved to be a glaring exception. Week after week, people continued to visit the Pine Ridge sales centers in New Jersey and Florida and more than 800 purchased Hovnanian's homes during Pine Ridge's first year, nearly 500 of them coming from the Garden State. "We knew we could offer more home for the money than anybody in the market," John Strama, executive vice president, said. "And Hovnanian Enterprises has had an outstanding

reputation in New Jersey for more than 20 years. We anticipated being able to sell as many as 300 homes in 1979. Selling more than 800 homes surpasses even our most optimistic projections." Price has been a factor in Pine Ridge's success. Five one-and two-bedrooms models are offered, ranging from \$35,250 to \$40,250, based on Feb. 15 price levels. Furthermore, Hovnanian provides a written guarantee that maintenance costs will stay at \$29 a month for five years.

Included with each Pine Ridge home are standard items as standard air conditioning, carpeting, screened terraces and equipped kitchens.

The community also has its own swim club, picnic groves, shuffleboard courts, bicycle and jogging trails.

Jim Barry, New Jersey sales director of Hovnanian's Florida subsidiary, pointed out that Pine Ridge's record sales rate makes it unlikely that Pine Ridge homes will be available much longer. "Reservations have already been accepted for more than 50 percent of the homes available in our final section," Barry said.

Towards the middle of last year, when the Hovnanian organization realized the magnitude of Pine Ridge's appeal, they constructed an actual furnished model on the second floor of their office building at 10 Route 35, Middletown. This model is open to the public. Hovnanian Enterprises, founded by Kevork S. Hovnanian, its president, is a developer of residential communities in New Jersey, Florida, Texas, Georgia and Pennsylvania.

## Berg unit sets mark

Margaretten & Company, a mortgage banking firm headquartered in Perth Amboy, completed its fiscal year with record mortgage production. The company, which has operations in six states, closed just under a quarter of a billion dollars in residential mortgages secured by one to four-family homes.

million of purchased mortgages.

The New Jersey-based company continued to produce the most loans in its home state—more than \$50 million of the closings, followed closely by California (\$45 million) and Florida (\$42 million). The company believes that its total closings are larger than those of any other mortgage banker headquartered in the state.

Based on current servicing additions, the company expects to reach \$500 million in servicing this month.

Margaretten & Co. is an operating part of Berg Enterprises, Inc. The parent company is publicly-owned and listed on the American Stock Exchange.

**LARGEST BUILDING**  
The largest building in the United States is the Boeing 747 Manufacturing Plant in Everett, Wash., covering 47 acres.

According to Felix Beck, board chairman, the dollar volume of closings (\$248,405,000) was primarily produced by the company's 14 branch offices. "The company's progress in mortgage origination and servicing, our two prime areas of operations, continues to advance strongly and steadily," Beck said. "The decade of the 1970s has been outstandingly productive for us."

According to the chief executive, the mortgage closings included \$211 million generated by Margaretten offices themselves and \$37

## Wishnik cites price spiral

Returning from the annual convention of the National Association of Home Builders, Herbert Wishnik, senior partner and chief financial officer at Crestwood Communities, said that "the experts agree—home prices will continue to rise as labor and material costs rise. There is no way to reverse inflation. Builders, realty industry leaders, economists and federal government officials were unanimous." Crestwood is the pioneer community of Ocean County retirement villages along Route 530 in Whiting, Manchester Township.



HERBERT WISNIK

With regard to the downturn in mortgage interest rates, Wishnik stated, "If this trend continues, and history indicates that it should, it will spark a turnaround in new-home construction starts and a revival in mortgage placements for existing home sales. In December it was already apparent that the historic peak in borrowed-fund interest rates had been reached. The tide turned, and the prime rate started moving down towards more realistic levels just as, in 1975, it sharply declined from previous historic highs. The new federally-insured mortgage programs will greatly alleviate pressure on the conventional money markets and this, too, will power an upward trend in home sales."

"Hence, we conclude there will be no better time than now for the purchase of a new home by buyers of retirement age. Prices will never be lower. Delaying the purchase could become very costly. Though it is inevitable that prices will climb at least 10 percent this year, we at Crestwood will hold to our 1979 prices as long as possible. We have an inventory of land and long-range buying power for construction materials. Because of our size and purchasing power, the principle of 'economy of

scale' operates here to the buyer's benefit. Crestwood has, therefore, geared up for a massive marketing effort, enlisting the resources of a statewide network of realtors and mortgage specialists. The network will offer assistance in helping customers sell their existing home and providing financing for that sale."

Wishnik added, "While we cannot stop inflation, we can and do minimize its effects here in Crestwood. Community Service Charges, which include such basic living costs as home maintenance, recreation and clubhouse membership, bus transportation and many other municipal-type services, are fixed on annual contract negotiated by our residents through their elected representatives."

## Realtors award to Unionites

Union Center Realty Corp. received the Consumer Research Bureau's 1979 Excellence Award for Customer Relations, according to an announcement this week by Ivo and Al David, principals of the real estate firm in Union.

This annual award is given to business establishments for providing the highest levels of consumer satisfaction. Union Center Realty, a multifaceted real estate organization with offices at 1238 Stuyvesant Ave., specializes in residential, commercial and industrial properties in Union County and its surroundings.

The Consumer Research Bureau was organized in 1964 for public service, and is dedicated to monitoring and raising the standards of real estate firms which serve the public. Each year, hundreds of thousands of survey questionnaires are mailed to recent home purchasers requesting their evaluation of the services they received.

## 2 management courses slated

Two American Management Association Extension Institute (AMAEI) courses rated equal to those at top graduate business school will be offered for the first time this spring by the Center for Corporate Education at Kean College, Union.

The courses provide the option for corporate center students to obtain a Kean College AMAEI certificate in business management. Within a year the complete series of AMAEI courses will be offered at Kean. Eight of them must be completed to receive certification. The courses are patterned after the case method of instruction used at major graduate schools.

The Communication Skills for Managers course will meet from 7:30 to 10:30 p.m. on six Mondays starting April 7. What Managers Do will meet from 7:30 to 10:30 p.m. on six Tuesdays starting April 8. Classes

will convene on campus. The fee for each is \$175. Tax deductions are allowed for all expenses toward continuing management education to improve professional skills.

Communications Skills will concentrate on getting ideas across in business situations. Verbal and written skills, careful listening, nonverbal communication and public speaking with confidence will be stressed. The instructor is Richard L. Sandhusen of Summit, a member of the Kean economics and management science department, a business publications editor and writer, author and consultant.

What Managers Do is a step-by-step guide to improved performance that helps the student strike a balance between pace and quality. It emphasizes planning, organizing, delegating, appraising and motivating.

The instructor, George C. Frajt of Westfield, is campus graduate and an administrator in the undergraduate business catalog division of J.C. Penny Co. Inc., New York City. Kean's corporate employer development center also offers on-site courses.

## WOW! SPRINGFIELD COIN & COLLECTIBLES

268 Morris Ave., Springfield, N.J.  
Dealers of coins, stamps, baseball cards and precious metals fair prices for everyone, from the novice to experts.  
Price depends on condition and collectible interest. Call for metal prices. All better coins and collectibles must be viewed for proper grading and appraisal.  
**OPEN 10 A.M. 'TIL 6 P.M. MONDAY THRU SATURDAY THURSDAY 'TIL 8 P.M.**  
For more information or daily price quotes Please call **467-8019** after 10 a.m.  
Sam & Bill

## PUBLIC NOTICE DON'T DEPEND ON OPEC Switch To American Natural Gas

**WE HAVE ALL SIZES OF**  
Gas Heating, Hot Water & Steam Boilers as well as Warm Air Furnaces In Stock... Ready for IMMEDIATE INSTALLATION. Sizes from 70,000 B.T.U. to 300,000 B.T.U.

### Advantages Of Gas

- ★ Local gas companies have ample supplies of natural gas
- ★ Gas costs less
- ★ Gas heat is clean
- ★ Gas heat requires less service
- ★ You pay for gas after you use it... not before
- ★ Your gas main is your storage facility
- ★ The government must approve gas price increases
- ★ The price of natural gas today supplied by Elizabethtown Gas Company is equal to oil selling at 57¢ per gallon.

Installers of Gas Heating for Over 30 Years  
★ HOT WATER ★ STEAM ★ WARM AIR

**FOR FREE SURVEY**  
of the Size and Cost of Converting Your Heating System to Gas  
**CALL: DAYS 925-8592, NIGHTS 382-1520**

**ATLANTIC HEATING CORP.**  
LINDEN, N.J.

**CAR TO SELL?**  
CALL CLASSIFIED  
686-7700

**TERMITES Swarming - call BLISS**  
BE SURE... BLISS has been serving the Home Owner for 97 YEARS. For a complete FREE INSPECTION of your home by a Termites Control Expert, supervised by the finest technical staff, phone our nearest local office:  
UNION-SPG.-MTL. ESSEX COUNTY  
277-0079 676-8888  
ROS-KENIL-LINDEN  
ELIZ 353-8752  
BLISS TERMITE CONTROL  
Div. Bliss Exterminator Company - EST. 1882  
One of the Oldest & Largest

## One Million A Day In Mortgages



One million dollars a day. Impressive numbers. Even more impressive when you consider that Kennedy Mortgage is less than five years old. And still more impressive given the current economic pressures on the mortgage and real estate industries.  
But \$1,000,000 a day is more than just numbers. It symbolizes the fact that we, at Kennedy, are making mortgage commitments and closing loans... and doing it when others can't or won't make commitments to the home buying public.  
We're doing it with innovation, cognizant of the rapidly changing industry of which we are a part, and excited about the promise of a richer era for our clients and us. From the historic 'Building and Loan' days to today's computer technology, Kennedy isn't keeping pace... we're setting the pace, working with mortgage programs for the '80's and beyond. FHA 245 Graduated Payment Mortgages, expanded GI loans, FHA's and Conventional, tailoring our industry to the demands of a

new economy. Working hard with broker, buyer, and seller in the real estate marketplace.  
That's Kennedy Mortgage Co., in the mortgage business every day and doing business to the tune of a million a day.

MOBILE HOMES AT SOUTH WIND HAVE 3 1/2" OF INSULATION IN THE WALLS AND 4 1/2" IN THE CEILING.

...SORRY WE CAN'T SAY THE SAME ABOUT MOST "SITE-BUILT" HOMES.

South Wind Homes are being bought at the rate of one every 96 hours... ONLY 1,056 HOURS LEFT BEFORE WE'RE SOLD OUT!  
COMMON DOWN AND SEE WHAT ADULT OVER AGE 50 MOBILE HOME LIFE IS REALLY LIKE.  
HOMES FROM \$18,750  
CALL (201) 926-0952 (COLLECT) FOR DIRECTIONS OR WRITE FOR BROCHURE TO  
South Wind  
ROUTE 526, JACKSON, N.J. 08527  
FOR PEOPLE WHO WEREN'T BORN YESTERDAY

## IMMEDIATE CASH PAID FOR

- GOLD
- DIAMONDS
- SILVER
- JEWELRY
- PLATINUM (ANY CONDITION)



SELL DIRECTLY TO REFINER NO MIDDLEMAN

## TOP DOLLAR PAID!

OPEN 7 DAYS A WEEK  
DEALER INQUIRIES INVITED  
MON.-FRI. 10-5:30 P.M.  
SAT. & SUN. 10-3:30 P.M.  
**ADAM STERLING & COMPANY, INC.**

Tel. **276-GOLD 4653** 547A BOULEVARD KENILWORTH, N.J.  
1 mile west of G.S. Pkwy. Exit 138 — Kenilworth; From Route 22 East — Turn Right at McDonalds

**K KENNEDY MORTGAGE CO.**  
11 Allison Dr., Cherry Hill, NJ (609) 424-9300 1 Oxford Valley, Langhorne, PA (215) 752-5700  
900 Route #9, Woodbridge, NJ (201) 636-3330 111 South Ave., Meda, PA (215) 565-4610  
10 Clona Lane, Fairfield, NJ (201) 227-7373 23 West Third St., Williamsport, PA (717) 322-1794  
120 Tilton Rd., Northfield, NJ (609) 646-4900 200 Eagle Rd., Wayne, PA (215) 687-6050

# Business news

**CALLAN PHOTO MOUNT CORPORATION** of Jersey City has officially opened its new 10,000 square foot warehouse facility on a recently purchased four-acre tract at Liberty Park in Jersey City.

This is the third additional location in the corporation's continued expansion. The State of New Jersey Economic Development Authority has issued a \$670,000 loan for the Callan Company to build an additional 48,000

square foot facility at the Liberty Industrial Park site, which is located at exit 14B of the New Jersey Turnpike.

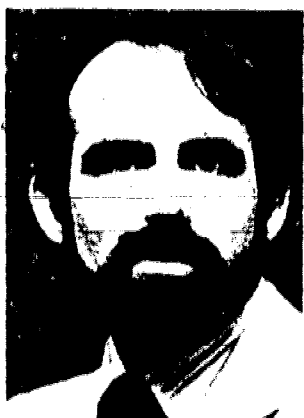
Callan Photo markets products to the photo studio, camera dealers, art galleries, art supply dealers and the arts and crafts industries.

**WILLIAM NIERSTEDT** of Roselle has joined the Cranford nursery firm of M. Robinson and Son Inc., which is celebrating its 52nd year as one of the

oldest nurseries in the area. Nierstedt is a recent graduate of Cook College of Rutgers University with a bachelor of science degree in landscape architecture. Nierstedt has worked part-time with the firm for six years.

**MARTIN E. KAPIN** of Cranford has been appointed Eastern Region vice president of Lincoln Technical Institute. His new administrative duties include supervision of the Lincoln Technical Institute schools in Union and Pennsauken, Philadelphia and Allentown, Pa., Washington, D.C., and Baltimore, Md.

Kapin has been associated with Lincoln Technical Institute since 1949. He had previously served as automotive instructor, chief automotive instructor and training officer school director.



**LARRY THELEN** has been appointed vice president and associate creative director of the New Jersey operation of **Bozell & Jacobs, Rt. 22, Union, one of the top 20 U.S. advertising agencies.** Bozell & Jacobs is an operating agency of **Bozell & Jacobs, International, which operates offices in Union and 12 other major U.S. cities as well as three in Canada and one in England.**

Worldwide sales for the Hoechst Group Somerville, rose 11.1 percent to \$14.765 billion in 1979. Profit figures for the group will be published May 1.

Hoechst said the sales expansion was caused by increased volume of products sold plus price increases based on higher energy and raw material costs.

Business in Western Europe, North America and Africa was especially buoyant, the company reported. Sales increases above the average 11.1 percent were achieved by the organic chemicals, plastics and waxes, plastic films, synthetic resins and surfactants and auxiliaries divisions, Hoechst said.

Sales in January 1980 remained at a high level, the leader producer of chemicals, plastics and pharmaceuticals reported. In spite of the current uncertainties,

Hoechst said, the firm remains confidently optimistic.



**HELEN MAKO** has been appointed assistant vice president of **Union Center National Bank.** A graduate of Union High School, she is a member of the American Institute of Banking.

**E D W A R D BLAUMEISER** of Union has been named Avon Products' creative director, fragrance development, in the Product Planning, Research and Development Department. Blaumeiser had been manager of creative fragrance development.

Before joining Avon in 1972 as senior fragrance

planner, Blaumeiser had been a research chemist for International Flavors & Fragrances, Inc. He is a 1958 graduate of Seton Hall University with a degree in organic chemistry. He has also completed post graduate work and holds a diploma in fine arts.

**Cancer group**  
The Flo Okin Cancer Relief group will meet Wednesday at 8:00 p.m. at Temple Sha'rey Shalom, Springfield.

Karen Kessler, vice president, announced that the speaker from the Livingston Communication Group, will discuss how to communicate more effectively.

## Real estate class set

A course on evaluation and appraisal of residential real estate for brokers and sales persons will be offered by the Center for Continuing Professional Education at Kean College, Union.

Julius Klein of Hillside, a senior member of the National Association of Independent Fee Appraisers, will be the instructor. Registration closes March 31. Classes will meet on six Mondays

from 7:40 to 9:40 p.m. beginning April 7. The fee is \$30.

The course, Real Estate Appraisal in the Residential Market, will emphasize the one-family home. Topics will include site and neighborhood analysis and approaches to value such as cost, market data and capitalization of income.

Additional information can be obtained at 527-2163.

## New writers meeting

New authors from the Union County area are invited to a meeting of the New Jersey Authors Reading II Thursday, March 27, from 6:45 to 8:45 p.m. at the Elizabeth Public Library Auditorium, 11 South Broad St.

Experienced and new writers will discuss their works with writers of all ages, forms (poetry, prose) and backgrounds. The New Jersey Authors Readings are under the direction of Chris Mazauskas. Further information is available at 354-6060.

## Easter Bunny will arrive

The Easter Bunny will arrive at Livingston Mall on March 21. A special area for the bunny will be set up on the lower level near Florsheim Shoes. The bunny will greet friends and will be available for pictures on Monday through Friday, from 11 a.m. until 8 p.m. and on Saturdays, from 11 a.m. until 9 p.m.

For further information, contact Harriet Zocks, director of marketing and promotions at 994-9391.

## Social Security lists extra-earnings limits

The fact that there is a limit on the amount of earnings a person can have and still receive Social Security checks continues to be one of the most controversial aspects of the Social Security system.

The so-called "retirement test" applies not only to retirees, but to people receiving Social Security benefits as dependents of retired or disabled workers and to survivors of deceased workers.

Under present law, the amount of money you can make and still get Social Security depends on your age. People 65 and older can earn \$5,000 in 1980; people under 65 can make \$3,720. Earnings over the limit generally reduce the Social Security check \$1 for each \$2 of excess earnings. At 72 (age 70 beginning in 1982) the earnings test does not apply.

The retirement test plays an important role in the effective functioning of the Social Security system. Essentially it saves money by targeting benefits to those who are retired or who were dependent upon the earnings of a retired, disabled or deceased person. The amount of earnings a person has is an indication of retirement.

It is estimated that it would cost from \$6 to \$7 billion to eliminate the

retirement test. And the people most likely to benefit from the change are those who already have substantial income.

An estimated 10 percent of retired Social Security beneficiaries currently have their checks reduced or stopped because they earn more than the annual exempt amount. Although there is no indication of how many people would actually work if there were no earnings limit, many still would not because of health and physical reasons, even if they could find jobs in the current tight job market.

The amount that people can earn and still receive all of their benefits will increase in the future. The law provides for automatic raises of \$500 a year in the amount of money people 65 and older can make until the annual amount reaches \$6,000 in 1982. For those under 65, the amount increases automatically with increases in general wage levels, as it will for people 65 and over after 1982.

As a result, most people are better off working than not working, and are able to augment their Social Security income substantially. For example, a person who is 65 and is eligible for the maximum Social Security benefit of \$553 a month — \$6,636

annually — could have \$5,000 in earnings for a total of \$11,636 in income. He or she could earn \$18,272 before all of the Social Security benefits for the year are withheld.

Likewise a 62-year old worker receiving a Social Security benefit of \$402.80 could earn an additional \$3,720 for a total of \$8,573 annually without affecting Social Security checks. He or she could earn \$13,326 before all of the benefits would be withheld for the year.

It is important for people planning to retire the check with their Social Security office about the rules affecting earnings. During the first year of retirement, for example, a monthly test is generally applied. Benefits can be paid for months a person does little or no work, regardless of total earnings for that year. To find out how the test could affect you, it's best to discuss your plans with us beforehand.

"My old tax service didn't double-check everything. I should have come here last year."

We make sure we thoroughly understand your tax situation before we prepare your return. And then we double-check every return for accuracy.

**H&R BLOCK**  
THE INCOME TAX PEOPLE

<b>UNION</b> 1965 Morris Ave.	<b>SCOTCH PLAINS</b> 1587 E. Second St. 322-2232
<b>ELIZABETH</b> 211 Broad St.	<b>RAHWAY</b> 1407 Main St.
<b>LINDEN</b> 241 W. St. George Ave. City Federal Savings North Wood Ave. at Elm	<b>WESTFIELD</b> 309 South Ave.
<b>PLAINFIELD</b> 205 Park Ave.	<b>WOODBIDGE</b> 826 St. Georges Ave.

Offices open daily from 9 a.m. to 9 p.m.  
Open Sat. & Sun. 9 a.m. to 5 p.m.

Appointments Available

Also in **Sears** during regular store hours

**New writers meeting**

New authors from the Union County area are invited to a meeting of the New Jersey Authors Reading II Thursday, March 27, from 6:45 to 8:45 p.m. at the Elizabeth Public Library Auditorium, 11 South Broad St.

Experienced and new writers will discuss their works with writers of all ages, forms (poetry, prose) and backgrounds. The New Jersey Authors Readings are under the direction of Chris Mazauskas. Further information is available at 354-6060.

**Easter Bunny will arrive**

The Easter Bunny will arrive at Livingston Mall on March 21. A special area for the bunny will be set up on the lower level near Florsheim Shoes. The bunny will greet friends and will be available for pictures on Monday through Friday, from 11 a.m. until 8 p.m. and on Saturdays, from 11 a.m. until 9 p.m.

For further information, contact Harriet Zocks, director of marketing and promotions at 994-9391.

**Social Security lists extra-earnings limits**

The fact that there is a limit on the amount of earnings a person can have and still receive Social Security checks continues to be one of the most controversial aspects of the Social Security system.

The so-called "retirement test" applies not only to retirees, but to people receiving Social Security benefits as dependents of retired or disabled workers and to survivors of deceased workers.

Under present law, the amount of money you can make and still get Social Security depends on your age. People 65 and older can earn \$5,000 in 1980; people under 65 can make \$3,720. Earnings over the limit generally reduce the Social Security check \$1 for each \$2 of excess earnings. At 72 (age 70 beginning in 1982) the earnings test does not apply.

The retirement test plays an important role in the effective functioning of the Social Security system. Essentially it saves money by targeting benefits to those who are retired or who were dependent upon the earnings of a retired, disabled or deceased person. The amount of earnings a person has is an indication of retirement.

It is estimated that it would cost from \$6 to \$7 billion to eliminate the retirement test. And the people most likely to benefit from the change are those who already have substantial income.

An estimated 10 percent of retired Social Security beneficiaries currently have their checks reduced or stopped because they earn more than the annual exempt amount. Although there is no indication of how many people would actually work if there were no earnings limit, many still would not because of health and physical reasons, even if they could find jobs in the current tight job market.

The amount that people can earn and still receive all of their benefits will increase in the future. The law provides for automatic raises of \$500 a year in the amount of money people 65 and older can make until the annual amount reaches \$6,000 in 1982. For those under 65, the amount increases automatically with increases in general wage levels, as it will for people 65 and over after 1982.

As a result, most people are better off working than not working, and are able to augment their Social Security income substantially. For example, a person who is 65 and is eligible for the maximum Social Security benefit of \$553 a month — \$6,636

**THE Christadelphians**

INVITE YOU TO PUT GOD IN YOUR LIFE

For A Moment Of Meditation

Call: 201-583 4328

**northAmerican**  
VAN LINES / AGENT

Expert packing □ free estimates □ local and worldwide moving □ storage complete door-to-door service □ special equipment □ experienced people

**METRO MOVING & STORAGE**  
1601 W. Edgar Road Bldg. G  
Linden, N.J. 07036

Free Estimates **574-9477**

We moved the treasures of a king.

We move the treasures of your world.

**KEMPLER'S NEW LOOK**

WE'VE GOT THE LOOK YOU WANT TO KNOW BETTER FASHION AND STYLES AT THE GREATEST PRICES EVER

**Bass**

Join us soon for a cup of coffee and a look at just what Kempler Shoes' new look is all about.

**KEMPLER SHOES**

Mastercharge **966 STUYVESANT AVE., UNION** Visa  
AT UNION CENTER Municipal Parking Lot Off Morris Ave., Behind Our Store Open Mon. & Fri. Until 9 P.M. **688-8367**

Former premises Paul Severance & Sons Inc.

**Seagreen**  
The Paint & Wallpaper Store  
National Brands Outlet

#1 in Famous Brand... **PAINT**

**\$2 REBATE\*** IN STORE STOCK ONLY

**LUCITE House Paint**

**LUCITE Wall Paint**

**CEILING OR WALL PAINT 575 GAL. AFTER REBATE\***

**HOUSE PAINT 795 White Only GAL. AFTER REBATE\***

**WALLPAPER RIOT! 50% OFF** MFG'S LIST PRICES

Special Order

**STRAHAN**

YOUR CHOICE OF 30 BOOKS TO CHOOSE FROM Newest 1980 Books on Sale. No discount lower than 25% on every book in our store. Over 20,000 patterns, styles, and colors. Fabric backed vinyls, gas treated mylars, foils and hand prints.

**IN STOCK WALLPAPER 50% TO 75% OFF!**

**Dutch Boy** ARCHITECTURAL LATEX CEILING **395 GAL.**

**Dutch Boy** DIRTYFIGHTER LATEX WALL PAINT **795 GAL.**

**REGAL WALL SATIN LATEX WALL 895 GAL.**

**Moore PAINTS**

**964-5812**  
470 Chestnut Street  
Union, New Jersey

Tues., Wed., Thurs. & Sat. 7:30 A.M. - 6 P.M.  
Monday & Friday 7:30 A.M. - 9 P.M.

**Julius Kartzman & SON**

**Passover Foods**

ENJOY THE EXTRA GOODNESS AND SUPERIOR QUALITY OF ALL THESE HOLIDAY FAVORITES

- ROAST TURKEY, ROAST CHICKEN OR LONG ISLAND DUCKLING, WITH MATZOH STUFFING
- ROAST BRISKET
- CHICKEN-IN-THE-POT
- CHICKEN SOUP • MATZOH BALLS
- POTATO OR MATZOH KUGEL
- CHOPPED LIVER • GEFILTE FISH
- KISHKE • STUFFED CABBAGE
- HOMEMADE HORSERADISH
- STUFFED BREAST-OF-VEAL

AND FROM OUR OWN BAKERY:

- Sponge Cake and Honey Cake
- Delectable Assorted Fruit Cakes
- Assorted Macaroons
- and many other delicious holiday treats

PHONE YOUR ORDER NOW **374-2600**

**JULIUS KARTZMAN & SON**  
35 MILL RD., IRVINGTON  
FREE PARKING

**What does it take to make a good teacher say, "That's enough"?**

Good teachers really love their work. They work hard and take pride when their students succeed.

But sometimes students refuse to do homework and parents act as though they couldn't care less — school boards cut budgets with an indiscriminate axe — violent students are sent back to terrorize classes again and again — and one day these good teachers say, "That's enough!"

The time has come for action. Parents, administrators, school board members, and State bureaucrats shouldn't sit back and just complain.

The time has come to work together to make things better — for children.

To learn with whom you can work in your community, write to: New Jersey Education Association, P.O. Box 1211, Trenton, N.J. 08607

**njea**  
people who care about your kids

### Irvington '32 grads

Help in locating members of the Irvington High School Class of 1932 is being sought by members of the committee planning a reunion in October.

Anyone who knows the current address of any graduate has been asked to call or write: Harold Albrecht, 1099 Schneider Ave., Union, 688-3790; Harry Stevenson, 34 Clinton Ter., Irvington, 375-8466.

## Business news

First National State Bank of New Jersey, with headquarters in Newark, again heads all New Jersey banks in the American Banker trade newspaper's annual listing of the nation's 300 largest banks. First National State, with deposits of about \$1.5 billion as of last Dec. 31, ranked 88th

among the nation's individual banks. First National State is the lead bank among the six affiliates of First National State Bancorporation, the state's largest bank holding company. United Jersey Bank of Hackensack, with deposits of \$1.2 billion, ranked second in this state and 183th nationally. Midlantic National Bank of Newark, at \$1.1 billion, was third in the state and number 123 nationally.

### POW unit will meet

The Garden State Chapter 1, American Ex-Prisoners of War, will meet at the Elizabeth Armory Sunday at 2 p.m. The national organization is comprised of ex-prisoners of war from all wars.

All former prisoners of war may obtain more information by writing James Segal, Box 106, North Brunswick, 08902, (201) 247-8649.



RICHARD P. MOTTA has been named vice president and treasurer, it was announced by Walter B. Kissinger, chairman and chief executive officer of the Allen Group Inc., Melville, N.Y. Motta joined Allen in 1974 as assistant treasurer. The Allen Group Inc. is an international manufacturer and marketer of automotive products and accessories, truck components and mobile communications antennas.

### Books exhibit opens at FDU

An exhibit of rare books on the history of Russian and Soviet art of the '20s will be displayed at Fairleigh Dickinson University's Friendship Library, Florham-Madison Campus, throughout March.

The books are a gift from the late Lydia Nadegena, chairman of the art department at Finch College, New York.

The free public exhibit can be viewed Monday to Thursday from 8:30 a.m. to 11 p.m., Friday to 5 p.m., Saturday 10 a.m. to 6 p.m. and Sunday 2 to 11 p.m.

### S.S. BENEFITS

About 34.6 million Americans collected Social Security benefits in 1978, up 500,000 or 1.5 percent, from 1977, the American Council of Life Insurance reports.

### Fire chiefs to meet

The 2,000 member New Jersey State Fire Chiefs' Association will observe its 75th anniversary at a conference May 16 to 18 at the Flanders Hotel, Ocean City.

The annual Valour Awards for Volunteer Firemen will be presented at the Banquet. Further information is available from the association secretary, Louis Carlson, at Box 39, Wanage, 07465.

### BATHROOM REMODELING

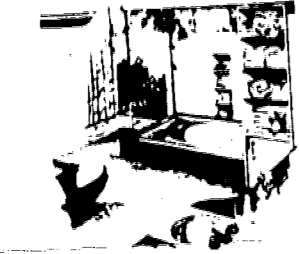
or Refurbishing

As Low As

**\$1995.**

Present This Ad and receive

**\$100<sup>00</sup> OFF**



Compare our Low Price! No Salesman's Commissions!

## LAMCO

UNION, N.J. 964-4206  
Fully Insured • Member Better Business Bureau  
New Jersey State License 5156 and 5224

### DIAMOND Cleaners

Dry Cleaners of Distinction  
Dry Cleaning  
Laundering  
Fur Cleaning  
Box Storage  
Furniture Cleaning  
Tailoring  
Rearweaving  
Dyeing  
1350-1358 Galloping Hill Rd. UNION  
For Pick up and Delivery Service call 687-3585

10% discount for Senior Citizens

### GARDEN STATE LEGAL CLINICS

Will (Simple)	\$45	Real Estate Sale (Home)	\$150
(Spouse Same)		Real Estate Purchase (Home)	250
Cross Will only \$5)		Bankruptcy - Individual	250
Divorce (Uncontested)	200		

Accident Claims; Negligence; Workmen's Compensation  
All fees plus court costs and disbursements  
INDIVIDUAL, FEDERAL AND STATE INCOME TAX PREPARED BY AN ATTORNEY

1040A - \$7.50  
1040 (incl. Schedules A&B) - \$20  
N.J. with 1040A - \$7.50  
N.J. with 1040 - \$10

3 LOCATIONS:

Garden State Free Market 35 MARKET ST. ELMWOOD PARK Friday 5-9 P.M. Saturday 9-11 A.M. & 2-6 P.M. Sunday 10 A.M. - 7:30 P.M.	The Union Market 7445 SPRINGFIELD AVE. UNION Friday 5-9 P.M. Saturday 11 A.M. - 9:30 P.M. Sunday 11 A.M. - 6 P.M.	U.S. #1 Flea & Antique Market U.S. #1 NEW BRUNSWICK Friday 5-9 P.M. Saturday 10 A.M. - 9 P.M. Sunday 10 A.M. - 7:30 P.M.
---	--	---

WEEKDAY PHONE: 688-7202

### one car short?

## RENT-A-CAR

AS LOW AS **\$10 PER DAY** & 10 cents a mile WITH THIS AD

- Special weekly and monthly rates, with free miles.
- Special insurance company, replacement rates.
- We honor most major credit cards.

### ai AMERICAN INTERNATIONAL RENT-A-CAR

475 Rte. 22 East Springfield, N.J. 376-4220  
16 W. Elizabeth Ave. Linden, N.J. 925-3080

## VANNOY JEWELERS

The Keepsake Diamond Center  
and The Clock Gallery, Ltd.

NOW THRU JUNE 30  
**25% OFF ALL ENGAGEMENT RINGS and WEDDING BANDS**  
in stock  
Priced From **\$200.** to **\$10,000.00**

Now, in addition to fine clocks we offer a complete line of jewels and gems, watches, rings, pendants and Lladro figurines...Also watch and jewelry repairs.

Center Isle • Union, N.J. • 686-2700  
½ Mile West of the Flagship, Hours: 10 am to 9 PM, Sat. 10 am to 6 pm

## Color this egg and win.

### Win a FREE trip to Barbados!

Includes complete round-trip air fare for 2 adults, 2 children, Washington-Barbados, Miami-Barbados portion on BWIA International Airlines

Stay 7 days, 6 nights at **Marriott**  
Sam Lord's Castle, Breakfast daily for family is included.

**2nd PRIZE: \$100**  
**3rd PRIZE: \$ 50**

Union Rte. 22 West Plaza Shopping Center

### Win a FREE JUNIOR HAMBURGER and FRIES!

Kids under 12: Paint, color, crayon, decorate the egg any way you want! Bring completed drawing to Bob's Big Boy (fill in coupon below) and get a FREE JUNIOR HAMBURGER AND FRIES! It's as easy as that!

YOUR NAME \_\_\_\_\_ AGE \_\_\_\_\_

PARENT'S NAME \_\_\_\_\_ PHONE \_\_\_\_\_

ADDRESS \_\_\_\_\_

PARENT'S SIGNATURE \_\_\_\_\_

No carry-out. Offer for children 12 and under only. One offer per visit. No purchase necessary. Each child must be accompanied by his or her parent. Families of Marriott Corp. employees or advertising agencies not eligible for three major prizes. Offer expires midnight, April 6, 1980.

Semi-finalists in three categories will be selected at each store and put in final grand drawing: one age 5 and under, one between ages 6-9, one between ages 10-12.

## THE OUTLET STORE

A "DRESS RACK DIVISION"

WILL BE OPEN FRIDAYS AND SATURDAYS

Each Week New Additions In Apparel Will Be Brought To "The Outlet Store" From Our Other Stores!

Prices On Dresses Will Start At Values To \$150<sup>00</sup> **\$ 500**

Loads Of Half Sizes At Unbelievably Low Prices

Prices On Sportswear Will Start At Values To \$160<sup>00</sup> **\$ 500**

## THE OUTLET STORE

17 MILL ROAD (Near Kartzmans) IRVINGTON N.J. 371-7595

NO TRY ONS — SELF SERVICE



Help Wanted-Men & Women 1
PART TIME SEASONAL AQUATIC DIRECTOR...
WAREHOUSE WORKER
2ND SHIFT
TYPIST CASHIER
WOMAN M-F
EMPLOYMENT WANTED 2
GRANDMA NEEDED FOR 9...
PHYSICAL THERAPIST
P-T DRIVER
RECEPTIONIST
RECEPTIONIST-TYPIST
RECEPTIONIST
SALES CAREER
SALES CAREER
SALES PERSON
BUYER-EXPEDITER
SECRETARY
SECRETARY
SECRETARY
STOCK
IMMEDIATE DISCOUNT APPLY PERSONNEL
SEARS
SWITCHBOARD
TYPIST
TYPIST
TYPIST

FOR SALE
CEMETERY PLOTS
HOLLYWOOD MEMORIAL PARK
DINING ROOM SET
DINING ROOM SET
DOLL HOUSE
DRAPES, DOVEN WOODS
END TABLES
FLEA MARKET
FLEA MARKET
GARAGE SALE
GOLD POKER
HAVE YOU SEEN THIS UNUSUAL CRAFT SHOP?
HEALTH FOODS
HOLLYWOOD MEMORIAL PARK
HUMMELS 1980
LIGHTING FIXTURES
LIVING ROOM SET
MOVING-WOODEN DESK
NEW MATTRESSES
NEW STYLISH DRESSERS
REFRIGERATOR
SEWING MACHINE
SOFA, CLUB chair and server
STICK LAMPS
THINKSPRING!
VERTIGO INDUSTRIES
WANTED DEALERS
WANTED DEALERS
WANTED DEALERS
WANTED DEALERS
WANTED DEALERS
WANTED DEALERS
WANTED DEALERS
WANTED DEALERS
WANTED DEALERS
WANTED DEALERS

Wanted to Buy
Class Rings WANTED
LIONEL TRAINS
Old Lionel Trains
Pianos WANTED
STAMPS
TOP CASH PAID
USED PIANOS WANTED
WE BUY AND SELL BOOKS
REAL ESTATE
Houses For Sale
CRANFORD
Sprawling Ranch
2-FAMILY
5-FAMILY
ELIZABETH
KENILWOTH
1st AD
BRICK RANCH
RAHWAY
ESTATE SALE
Wanted to Buy
BASEBALL CARDS
BOOKS
BUYING-SILVER
CASH FOR OLD MAGAZINES
CASH FOR SCRAP
CASH FOR SCRAP
CASH FOR SCRAP
CASH FOR SCRAP
CASH FOR SCRAP
CASH FOR SCRAP
CASH FOR SCRAP
CASH FOR SCRAP
CASH FOR SCRAP
CASH FOR SCRAP

Houses For Sale
UNION
CHOICE SPLIT
ROSELLE PARK
Spacious Apartments in Garden Setting
Air Conditioned
3 1/2 Rms. \$355.
5 Rms. \$410.
COLFAX MANOR
Colfax Ave. W.
Roselle Park
Resale Mgr.
245-7963
APARTMENTS FOR RENT
IRVINGTON (Upper) 4...
IRVINGTON-3 1/2 rooms...
IRVINGTON-2 1/2, 3 & 4 room...
IRVINGTON-3 large rooms...
IRVINGTON-3 1/2 decorated...
IRVINGTON (Upper) 2 1/2...
IRVINGTON-3 rooms...
LANDLORDS-NO fee...
WAREHOUSE SPACE WANTED
2,500 to 3,000 square feet...
WILDLAND CREST-1 & 2...
AUTOMOBILES FOR SALE
'79 LEFT-OVERS SAVE \$\$ NOW!
'69 THUNDERBIRD-New...
'79 MUSTANG II, 4 cylinder...
'75 ELITE-Mint condition...
'75 HORNET, 6 cylinder...
'75 OLDS, 98 regency...
LATE MODELS
'77 to '79 models at wholesale...
SUBARU BUYERS
V & E VACUUM CLEANER CITY
SALES & SERVICE
ALL MAKES & MODELS
1219 Springfield Ave.
Irvington
373-5441
SUBARU AUTHORIZED DEALER
Specialists in repairing
ALFA ROMEO, FIAT,
TOYOTA, V.W. BRITISH,
VOLVO, LEXUS AND DATSUN
Phone Mike Carracchio
762-9433
South Orange
Imported Cars, Inc.
343 VALLEY STREET

Automobiles for Sale
'72 OLDS DELTA Royale...
'73 BEETLE Automatic...
'73 CHEVY MALIBU, 2 door...
'73 PONTIAC CATALINA...
'74 CHEVY MALIBU CLASSIC...
'74 MUSTANG II, 4 cylinder...
'75 ELITE-Mint condition...
'75 HORNET, 6 cylinder...
'75 OLDS, 98 regency...
LATE MODELS
'77 to '79 models at wholesale...
SUBARU BUYERS
V & E VACUUM CLEANER CITY
SALES & SERVICE
ALL MAKES & MODELS
1219 Springfield Ave.
Irvington
373-5441
SUBARU AUTHORIZED DEALER
Specialists in repairing
ALFA ROMEO, FIAT,
TOYOTA, V.W. BRITISH,
VOLVO, LEXUS AND DATSUN
Phone Mike Carracchio
762-9433
South Orange
Imported Cars, Inc.
343 VALLEY STREET

Apartment for Rent
ROSELLE PARK
Spacious Apartments in Garden Setting
Air Conditioned
3 1/2 Rms. \$355.
5 Rms. \$410.
COLFAX MANOR
Colfax Ave. W.
Roselle Park
Resale Mgr.
245-7963
APARTMENTS FOR RENT
IRVINGTON (Upper) 4...
IRVINGTON-3 1/2 rooms...
IRVINGTON-2 1/2, 3 & 4 room...
IRVINGTON-3 large rooms...
IRVINGTON-3 1/2 decorated...
IRVINGTON (Upper) 2 1/2...
IRVINGTON-3 rooms...
LANDLORDS-NO fee...
WAREHOUSE SPACE WANTED
2,500 to 3,000 square feet...
WILDLAND CREST-1 & 2...
AUTOMOBILES FOR SALE
'79 LEFT-OVERS SAVE \$\$ NOW!
'69 THUNDERBIRD-New...
'79 MUSTANG II, 4 cylinder...
'75 ELITE-Mint condition...
'75 HORNET, 6 cylinder...
'75 OLDS, 98 regency...
LATE MODELS
'77 to '79 models at wholesale...
SUBARU BUYERS
V & E VACUUM CLEANER CITY
SALES & SERVICE
ALL MAKES & MODELS
1219 Springfield Ave.
Irvington
373-5441
SUBARU AUTHORIZED DEALER
Specialists in repairing
ALFA ROMEO, FIAT,
TOYOTA, V.W. BRITISH,
VOLVO, LEXUS AND DATSUN
Phone Mike Carracchio
762-9433
South Orange
Imported Cars, Inc.
343 VALLEY STREET

Getting a new lamp?
Your Message Gets Across Better IN WANT ADS
NOTICE TO JOB APPLICANTS
This newspaper does not knowingly accept Help Wanted ads from employers covered by the Fair Labor Standards Act which applies to employment in interstate commerce, if they offer less than the legal minimum wage (\$3.10 per hour) or fail to pay the applicant overtime. This newspaper does not knowingly accept Help Wanted ads that discriminate in Employment Act. Contact the United States Labor Department's local office for more information. The address is: 970 Broad St., Newark, N.J., or Telephone 645-2411.
Just Call 686-7700 Ask For Classified

Errors
Sometimes they happen in spite of our efforts to be accurate. If you have an error, please call immediately. Suburban Publishing Corp. cannot be responsible for errors after the first issue of publication.
Call 686-7700
To make corrections, a word about:
Garage Sales, etc.
This newspaper accepts no responsibility for publishing advertisements which do not comply with town ordinances that control private sales from homes. It is the responsibility of the advertiser placing the "For Sale" ad to comply with local regulations.

HONDA MAXON #1 DEALER FOR 13 CONSECUTIVE YEARS. ACCORDS • CIVICS Immediate delivery! ALL CARS IN STOCK ARE AVAILABLE IMMEDIATE DELIVERY! TRUCK LOADS ARRIVING AT MAXON EVERYDAY! Large selection of high mileage Hondas. Many with various colors and optional equipment.
No. #1 Deal On Any Truck In Stock!
'58 Years Of Dependable Service
Twin Boro Ford
TRUCK REBATES \$500 DIRECT FROM FORD MOTOR CO.
MUST SELL ALL TRUCK INVENTORY NOW! NO REASONABLE OFFER REFUSED!!
NOW - NOW \$4999
BRAND NEW 1980 FORD PICK-UP IN STOCK - NO WAITING!
6-cylinder, 3-speed manual trans., power steering, manual brakes, gauges, western mirrors, 2 in stock. List Price \$6,000.
Other models available with optional equipment. Prices listed exclude license fee and tax. F-100 Not Illustrated.
'79 LEFT-OVERS SAVE \$\$ NOW!
6-Cylinder Trucks
4-Cylinder Trucks
Dump Trucks
Vans - Window, Panels
18-Ft. Van Bodies
Parcels - Save \$\$
4-Wheel Drives - 4x4's
Are Why Ford Trucks Are The Best Sellers
Best American-built standard pickup
19 EPA MPG / 29 EST HWY MPG
FORD Puts Its Money Where The Mileage Is!
TWIN BORO FORD Puts The Savings In Your Pocket!
FORD COOPER TRUCKS Available Now! Best of the Top Selling Compact! 4-Cyl. Economy!
VANS Best Economy! Built By Ford!
TWIN BORO FORD
158 E. WESTFIELD AVENUE, ROSELLE PARK, 245-6100

Keep The Honey-moon Going With Our Little Limousine. BUICK CENTURY LTD. 1980
As Low As \$5858
High Trade-In • Low Down Payment @ 48 Mos. To Pay
UNION COUNTY BUICK
339 NO. BROAD ST. ELIZABETH 354-3300

DEATH NOTICES

ALLISTON—Alfred E., of Mountside, N.J., on March 11, 1980, at the home of his wife, Ethel (Schneider) Alliston, brother of Mrs. Mary Pugh and Mrs. Mary Pugh and Mrs. Mary Pugh...

ANGILO—On March 5, 1980, Angelo, of Hillside, N.J., beloved husband of Anna (Mocick) Angilo, devoted father of Dominick and Connie DeMarco, brother of Nunzio...

ANDOLINO—Vincent, on March 9, 1980, of Irvington, beloved husband of the late Thea (nee Blonsky), father of Vincent, stepfather of Edward G. Sherman of Old Las Vegas, Nevada, and Mrs. Angolina Cantella of Irvington...

BUTLER—Estelle M., on March 16, 1980, of Irvington, beloved wife of the late Edward, mother of Mrs. Dolores Muccione of Newark, relatives and friends attended the service at the CHARLES F. HAUSMANN & SON FUNERAL HOME, 1507 Sanford Ave., Irvington, on March 19, interment Glendale Cemetery, East Hanover.

CHEEK—On March 14, 1980, Seth B., of Union, N.J., beloved wife of the late Ernest J. Cheek, devoted mother of Mrs. Velma Fox, half-sister of Malden and True Berry, also survived by five grandchildren, one great-grandchild. Funeral service was held on March 17 at the CHARLES F. HAUSMANN & SON FUNERAL HOME, 1507 Morris Ave., Union, interment Graceland Memorial Park.

CICCOCELLI—On March 17, 1980, Anne (Deloe) Cicco, of Union, N.J., beloved wife of Daniel Cicco, devoted mother of Mrs. Carmen Ryan, sister of Val DellaPelle, Mrs. Claire Santoro, Mrs. Adeline Ditta, Mrs. Josephine Profita, Mrs. Theresa LoDato and Mrs. Eva LeGrecia, also survived by two granddaughters. The funeral will be conducted from the CHARLES F. HAUSMANN & SON FUNERAL HOME, 1507 Morris Ave., Union, on March 20 at 9:45 A.M. The funeral Mass 9:15 A.M. at St. Michael's Church, Union. Contributions may be made to N.A.P.H., c/o Charles Reichert, 97 Main St., West Orange, or Callmen's Emergency Unit No. 1, Union.

DEBIAK—Stanley Jr., on March 12, 1980, of Newark, beloved son of Stanley Sr. and Celia Debiak, brother of Miss Gloria Debiak of Newark. Relatives and friends attended a memorial service at the Emanuel United Church of Christ, 478 Ave. Lincoln, Lincoln Place, Irvington, on March 15. The family suggests donations to the memorial fund of the Emanuel United Church of Christ, Irvington. Arrangements by CHARLES F. HAUSMANN & SON FUNERAL HOME, 1057 Sanford Ave., Irvington.

DEDRICK—Frank S., of W. Sixth Avenue, Roselle, on March 6, 1980, beloved husband of the late Ruby (Ashby), devoted father of Jack Dredrick, also survived by two grandchildren. Relatives and friends attended the funeral service at the SULLIVAN FUNERAL HOME, 146 E. Second Ave., Roselle, on March 8, interment Evergreen Cemetery, Hillside. Please contribute to the Rahway Hospital Fund.

DEMISIA—On March 4, 1980, Henry L., of Union, N.J., beloved husband of Evelyn (Melia), devoted father of Mrs. Susan Chase and Mrs. Nancy Dentz; brother of Edward Demisia, Joseph Demsey, Walter Demisia, Mrs. Stephen Pikor and Mrs. Ann Burger; also survived by two grandchildren. The funeral was conducted from the MCCRACKEN FUNERAL HOME, 1500 Morris Ave., Union, on March 8. The funeral Mass at St. Gabriel's Church, Elizabeth, interment Mt. Calvary Cemetery, Linden.

COVERT—On March 9, 1980, Madeline (Armand), of Union, N.J., beloved wife of Charles J.; devoted mother of Curtis and Mrs. Gail Gaiser, sister of Clemence Bidwell, Jean Klewz and Gertrude Gidley, also survived by two grandchildren. The funeral service was held on March 12 at the CHARLES F. HAUSMANN & SON FUNERAL HOME, 1500 Morris Ave., Union, interment Graceland Memorial Park.

FISCHER—Louis H., on March 9, 1980 of Irvington, beloved husband of Gladys (nee Ellick), father of Mrs. Kaye Ring of Lebanon, and Miss Gail Fischer of Springfield, brother of John of Toms River, also survived by two grandsons. Relatives and friends attended a memorial service at the Evangelical Baptist Church, Shunpike Road, Springfield, on March 15. The family suggests donations to the Evangelical Baptist Church, 8411 119th St., Union. Arrangements by CHARLES F. HAUSMANN & SON FUNERAL HOME, 1057 Sanford Ave., Irvington.

FOLLEY—On March 15, 1980, Frank F., of Newark, N.J., beloved husband of Elizabeth (Stehy), devoted father of Edward, Richard and Kenneth Foley and Mrs. Grace Barts, brother of Robert and William Foley, also survived by nine grandchildren and several great-grandchildren. The funeral was held on March 17 at the MCCRACKEN FUNERAL HOME, 1500 Morris Ave., Union, on March 19, the funeral Mass at Holy Spirit Church, Union.

FULMER—On March 4, 1980, William P., of Hillside, N.J., beloved husband of the late Anna (nee Gasser) Fulmer, brother of Mrs. Myrtle Madrone, Mrs. Helen McClain, Mrs. Helen Mrs. Dorabelle Covv, Mrs. Bertha Fox, Mrs. Jennie and Mrs. Marie Fulmer, also survived by seven grandchildren. The funeral service was held on March 17 at the MCCRACKEN FUNERAL HOME, 1500 Morris Ave., Union, interment Graceland Memorial Park.

SABOL—Helen (nee Silivinski), on March 13, 1980, of Union, N.J., beloved wife of the late Benjamin Schneider and the late Martha Steinko. Relatives and friends, also including Mrs. Carol Distributing Co., Newark, attended the service at the CHARLES F. HAUSMANN & SON FUNERAL HOME, 1057 Sanford Ave., Irvington, on March 15, interment Graceland Memorial Park, Kenilworth.

Kean provides grad student aid

Several newly-funded graduate assistantships are being offered for the fall 1980 semester at Kean College. The scholar-

ships, for graduate students, include 18 to 24 tuition-free credits, a 20-hour-per-week job at the college for the academic year and an \$80 per week stipend.

An applicant may be matriculated at Kean or another college, or may be planning to enroll in a graduate or professional diploma program at Kean College.

The office of institutional research at Kean offers a job for a graduate assistant with a research background in the social sciences and knowledge of basic statistics and computer programming preferred. The graduate assistant will assist the professional research staff in data collection, statistical analyses and report preparation.

The office of the dean of arts and sciences needs a graduate assistant with good communication and research skills and a computer background who will assist the dean with record maintenance and research in areas of curriculum design and program development.

The office of liberal studies requires a graduate assistant with creative ability and good communication skills, to answer correspondence, prepare bibliographies, advise prospective students and handle telephone inquiries.

The admissions office at Kean needs a graduate assistant with a business background to help in recruitment, in processing applications and to interview.

Deadline for application is March 28. Information is available from Meg Pratt at 527-2665.

Boat guide for handicapped

Physically handicapped people may be able to take a more active part in boating thanks to a new safety and information guide prepared under a grant from the U.S. Coast Guard.

"Boating for the Handicapped: Guidelines for the Physically Handicapped" was written by Dr. Eugene Hedley of the Human Resources Center, himself a physically-handicapped boater. The guide deals largely with safety for the handicapped boater and lists the types of boating activities available to the disabled.

The book discusses personal flotation devices, emergency equipment and procedures to follow if a boat capsizes or a person falls overboard. Also covered are procedures for transferring disabled boaters to and from the dock and handling special equipment for individual needs.

CLASSIFIED ADS SHOPPER'S GUIDE TO EVERYTHING

FIRST PRESBYTERIAN CHURCH Roselle, New Jersey FLEA MARKET Saturday, March 22, 1980

BRICK CHURCH APPLIANCE & TV 2714 MORRIS AVE., UNION, NEW JERSEY 687-2288

WHY PAY MORE?

COMPARE OUR LOW, LOW, PRICES ON TOP BRAND NAMES SUCH AS: AMANA, CALORIC, GENERAL ELECTRIC, HOTPOINT, KITCHENAID, MAGIC CHEF, MGA, MAGNAVOX, MAYTAG, RCA, SONY, TAPPAN, ZENITH AND MANY MORE.

DELUXE 12" DIAGONAL B & W PORTABLE \$68 MITSUBA VR220

SONY 12" TRINITRON COLOR PORTABLE \$338 KV1206

DELUXE 13" DIAGONAL COLOR PORTABLE \$228 MITSUBA CR401

MGA MITSUBISHI ELECTRIC THE MOST EXCITING COLOR TV YOU WILL EVER WATCH SEE IT NOW!

25" DIAGONAL COLOR CONSOLE \$468 25YM9804

Emerson. COMPLETE AM/FM STEREO SYSTEM \$108 M2100

Hotpoint AUTOMATIC WASHER \$238 WLW3000

Hotpoint ENERGY SAVER DISHWASHER \$238 DA460

FAMILY SIZE ELECTRIC RANGE \$168 SUNRAY STE22AA

TAPPAN 30" GAS RANGE \$228 32-1006

HOTPOINT AUTOMATIC DRYER \$188 DLB1250

HOTPOINT ELECTRONIC TOUCH MICROWAVE OVEN \$358 REV42

INDESIT 10.3 CU.FT. REFRIGERATOR \$218 F250

SANYO COUNTER TOP REFRIGERATOR \$88 SR4802

NATIONAL BY RHEEM 6.1 CU. FT. CHEST FREEZER \$188 NC5

BRICK CHURCH APPLIANCE & TV CHOOSE FROM HUNDREDS OF TOP BRAND NAMES ON DISPLAY 3 GREAT LOCATIONS UNION 2714 MORRIS AVE. 687-2288 RAHWAY 1735 ST. GEORGES AVE. 382-8888 LINDEN 28 E. ELIZABETH AV. 488-2881