

FOCUS

on
Union
County

Section Two of the Union Leader, Springfield Leader, Mountainside Echo, Linden Leader, The Spectator, Kenilworth Leader

December 18, 1986
Over 70,000 Readers

Fantasy coming true for this 'Clara'

By KENNETH
SCHANKLER

Linden residents attending tonight's opening performance of the New Jersey Ballet Company's "The Nutcracker" at the Paper Mill Playhouse in Milburn might notice a familiar face playing the lead role of Clara.

The face belongs to Barbie Greco, 16, a Linden resident who is a student at Roselle Catholic High School and a four-year member of the New Jersey Ballet.

For Greco, who has had a lifelong ambition to become a dancer, the four years with the company have come to represent a serious attempt at mastering her art.

"I've been dancing seriously for four years, but I've been dancing for 11 years altogether," Greco said.

Since joining the New Jersey Ballet, Greco has progressed from her initial role as lead clown at 13 to an angel at 14, then became an understudy to Clara while still filling other parts in the traditional Christmas production.

The company's elaborate production will be staged 16 times at the Paper Mill, beginning with this evening's 8 o'clock performance. All told, "The Nutcracker's" array of sugar plum fairies and marching wooden soldiers will appear on the Paper Mill stage 16 times from tonight through Dec. 28.

Evening performances will be given every night at 8 p.m. except Christmas Eve and Christmas through Dec. 28, while 3 p.m.

matinees are scheduled for Saturday and Sunday and Dec. 26, 27 and 28.

Matinees at 4 p.m. are also planned for Monday and Tuesday.

The Paper Mill shows will follow scheduled performances at the John Harms Theatre in Englewood.

Excerpts have also been performed at Kean College.

Greco will be appearing as Clara tonight and Tuesday. During the other performances, she will play either the Snow Queen or company roles.

When she first joined the company four years ago, Greco noticed a distinct difference between it and her previous training in dancing school and with the late Carol Freed.

"I think, in my first year," Greco explained, "it was different than going to a local dancing school — it's more serious."

At the New Jersey Ballet, which is a professional organization, Greco has noticed progress in her dancing performances as her training has intensified.

"I started out with one class and now I'm taking nine classes," she said. "By taking more classes, I guess you can progress."

In her various roles in "The Nutcracker," Greco noted she has to be flexible, with different things expected in each type of performance.

Where the role of Clara gives the dancer a chance to solo, a part like the Snow Queen requires teamwork.

"As the Snow Queen, you have to learn to

work with a corps, with other people," Greco said, later adding, "Everything's hard work, whether you're doing corps or solo work."

As a soloist, however, those who play Clara are asked to bring something of themselves to the role.

"As far as the steps are concerned, it's a specific dance," she said, "but we're told, 'we want to see your Clara.'"

As much as the soloist role means to Greco, though, one of her unfulfilled aspirations is to become part of a professional company.

"I like their repertoire and I like the things they do," Greco said.

Aside from working with the New Jersey Ballet, Greco has performed with the Linden

Summer Playhouse for five years, filling the role of Billy Bigelow's daughter Louise in last summer's production of "Carousel."

Performing with the Linden Summer Playhouse and the New Jersey Ballet are two different worlds.

"First of all, this is a professional company," Greco said. "That was dancing and acting and this is ballet."

A fan of New York City Ballet prima ballerina Suzanne Farrell, Greco got a big thrill last summer when she spent a week with the dancer and her husband in the Adirondacks in upstate New York.

But most of Greco's present energies are devoted to the Christmas performances at the Paper Mill and that requires a lot of energy.

Before rehearsals

even began, all members of the performance must pass an audition.

"You have an audition every year," she said. "Sometimes you have to audition more than once."

Then, there are three to four weeks of rehearsals, a lot of wear and tear on the feet. During the course of rehearsals and performances, Greco said she can go through four to six pairs of ballet shoes.

The trials and tribulations of being a member of the company, attending dance classes, going to school, taking part in lectures and demonstrations and rehearsing don't stop when the young dancer is finished with her day's work, however.

"Then you go home and soak your feet," she said.



BARBIE GRECO

Warm bread, hot soup a holiday treat

Bread Remedies

Even the best bakers occasionally experience a baking failure. Here are some common causes of trouble and advice from the experts at the Fleischmann's Yeast test kitchens.

□ Adding too much flour when kneading: The dough should be soft and slightly sticky. Too much flour will result in a stiff dough and a dry, dense bread.

□ Under-kneading the dough by hand, or over-kneading the dough in a food processor (60 second maximum), yields a loaf with a dry crumb. Follow recipe directions.

□ Water temperature too warm, or too cool for activating the yeast; bread won't rise.

□ Rising time was too long if bread falls flat and the crumb is doughy.

□ Baking time was too short if a good crumb is evident, but bread has a doughy center.

□ Free form doughs risk spreading too much when rising if dough is too soft. They should be firm when shaped.

THE PERFECT LOAF

While every loaf of homemade bread possesses its individual characteristics, here are some guidelines to use as a comparison for signs of a well-made loaf:

□ Loaf: Take a look at the loaf as a whole. It should be symmetrical with a well-rounded, smooth top.

□ Crust: The color should be warm, rich and even. Careless brushing when glazing will result in an uneven crust color.

□ Crumb: Once the loaf has

cooled, examine a slice of bread. The inside or crumb, should show even air cells throughout. The color will be bright and light, and have a texture that won't tear when buttered.

□ Aroma: You should be able to smell that great nutty yeast aroma even when the bread cools down.

□ Flavor: A sweet nutty flavor is typical of yeast breads.

Glazing and Baking CRUST BEAUTIFIERS

Simple breads come out of the oven with light golden brown crusts. With a few easy touches, these breads can be enhanced. Generally the treatments are applied after the final rising, just before baking. The experts at Fleischmann's Yeast recommend the following:

□ Egg Wash: Brush oven-ready bread with one egg or egg white beaten with a little water for a super shiny crust.

□ Margarine or Butter: For less shine but a deep golden brown color, brush margarine or butter on bread just out of the oven.

□ Milk: If you brush loaves with milk, you'll get a slightly soft crust with a somewhat dull shine.

□ Water: For a crisp crust, brush or lightly spray dough with water.

□ Seeded Breads: Poppy, sesame seed or rolled oats are eye-appealing and tasty. Brush unbaked loaves with an egg white and then sprinkle on seeds or oats.

□ Slashing: After dough rises,

glaze and slash top with a sharp knife about 1/4 inch deep. Loaves look professional and decorative.

BAKING

Breads should always be placed in a preheated oven on the lowest possible rack position, unless recipe indicates otherwise.

Check the progress of the bread about three-fourths of the way through the recipe's recommended baking time. If the loaf is getting too brown, lightly tent it with aluminum foil. Bake a few minutes longer than the original baking time if the loaf appears too pale.

IS IT DONE?

If the bread is baked through, it will slide easily out of the loaf pan. Tap the bottom of the loaf sharply with your fingers; it will sound hollow when the bread is done. If not, return it to the oven for 5 to 10 more minutes.

For information on Fleischmann's Yeast's "Meal In a Loaf" contest, send a self-addressed, stamped envelope to: Rules, P.O. Box 1093, Libertyville, IL 60198.

CREAMY CHEDDAR CHEESE SOUP

(Makes 5 Cups)

4 tbsp. unsalted butter or margarine
1 medium onion, chopped
2 ribs celery, chopped
1/2 cup all-purpose flour
1/2 cup milk
13 3/4 oz. can chicken broth
8 oz. sharp cheddar cheese, grated
1/4 cup Drambuie

1/2 tsp. dry mustard
1/8 tsp. cayenne pepper
Salt and pepper to taste.

Melt butter in a large saucepan over medium low heat. Add onion and celery; cook until softened. Whisk in flour; cook 2 minutes, stirring. Gradually add milk and chicken broth, whisking constantly until smooth. Bring to boil, stirring often. Reduce heat to low and add cheddar cheese, Drambuie, mustard and cayenne pepper. Cook until cheese melts. Season with salt and pepper.

SWEET POTATO VICHYSSOISE

(Makes 7 Cups)

1 1/2 cups cold water
2 lbs. sweet potatoes, peeled and cut into chunks
White part of 3 medium leeks, sliced and rinsed to remove sand
1 rib celery, chopped
1 1/2 cups chicken broth
Salt and pepper to taste
1 cup heavy cream
1/4 cup Drambuie
Snipped chives for garnish

In large saucepan with water, boil potatoes, leeks and celery over high heat. Reduce heat to medium, cover and cook 20 minutes, until vegetables are very soft. Drain, puree vegetables in blender and return to saucepan. Add chicken broth and season with salt and pepper. Stir in heavy cream and Drambuie. Transfer to bowl, cover and refrigerate several hours until very cold. Taste and season as needed. Garnish with chives.

Scholarships are offered

Application forms for the two \$1,000 scholarships to study press photography are available from the Bob Baxter Scholarship Foundation, c/o New Jersey Newsphotos, Airport International Plaza, Route 1, Newark 07114.

An applicant for the scholarships must be a resident of New Jersey, a senior in high school who has been admitted to a recognized school of photography, or college student studying press photography.

In addition to filling out the application form, the applicant must submit two letters of recommendation and a portfolio showing a cross-section of his or her work. The applicant is encouraged to include photographs that have appeared in school, weekly or daily newspapers, magazines or school yearbooks with proof of publication on the back of the photographs. Deadline for filing the application, letters and portfolios is April 30, 1987.

Twelve scholarships have been awarded since the foundation was established in 1980, at the suggestion of the late Bob Baxter, a freelance photographer. Baxter, who died in May 1982, suffered a spinal cord injury in a swimming pool accident which paralyzed him in August, 1971.

Additional information about the foundation may be obtained from Jean Rae Turner, the administrator, at New Jersey Newsphotos.

Deadlines

The deadline for all editorial copy for the Dec. 31 edition of this newspaper is noon on Monday, Dec. 22. We appreciate your cooperation in meeting these early deadlines.

Calendar

Art

Tomasulo Gallery/Union County College, exhibition, Mike Howard, Springfield Avenue, Cranford, through Dec. 24, Monday to Saturday, 1 to 4 p.m.; Monday to Thursday, 6 to 9 p.m., 276-2600, Ext. 306 or 311.

Morris Museum, Morristown, Dressing for the Occasion, a holiday doll exhibition, through Jan. 3. Papua/New Guinea: A People and Art in Transition, primitive art objects created by tribal craftsmen for ritual uses, through February 1987. Endangered Species: Extinction or Survival?, a natural science exhibition that explains what makes a species endangered and why plants and animals become extinct, through Dec. 31.

Summit Art Center, third annual holiday pottery sale, 68 Elm St., Summit, Dec. 20 and 21, noon to 4 p.m.; works of 27 prominent still-life artists exhibition, "Objects Observed," through Dec. 30, noon to 4 p.m. weekdays, and 2 to 4 p.m. weekends; Archival Mounting and Matting Workshop, Dec. 20, 12:30 to 3 p.m.; Introduction to Design Workshop, Dec. 18, 7:30 to 10 p.m., 273-9121.

The Mortimer Gallery, Gill St. Bernard's School, Gladstone, "New Jersey Photographers — Their View," through Dec. 19; "Romancing the Tome: The Book Cover Art of Charles and Susan Tang," Feb. 1 to March 6, 10 a.m. to

4 p.m., Mondays through Fridays, 234-1611.

Blackwell Street Gallery, group show, "Special Invitation," Blackwell Street, Dover, through Dec. 24, 7:30 to 10 p.m., 328-9628 or 627-6517.

YM-YWHA, "A Sampling of Judaic Crafts by Top New Jersey Artisans," exhibition and sale, 760 Northfield Avenue, West Orange, Dec. 21 to Jan. 18, Monday to Thursday, 10 a.m. to 10 p.m., Friday, 10 a.m. to 4 p.m., Sunday, 10 a.m. to closing, 736-3200 ext. 523.

Theater

Cranford Health Extended Care Center, Christmas play, Birchwood Avenue, Cranford, Dec. 23, 2:30 p.m., 379-1371.

George Street Playhouse, children's musical, "Peter And The Wolf," through Jan. 3, Wednesday, Thursday, Friday, 11 a.m. and 1 p.m., Saturdays, 10:30 a.m. and 12:30 p.m., Sundays, 10:30 a.m., no performances Dec. 24, 25, 31 and Jan. 1, 246-7717.

Crossroads Theater Company, "Eubie," Memorial Parkway, New Brunswick, through Jan. 18, Wednesdays, Thursdays, Fridays, 8 p.m., Saturdays, 4 p.m. and 8:30 p.m., Sundays, 3 p.m. and 7:30 p.m., 249-5560.

George Street Playhouse, "Every Ticket In The Book," through Jan. 4,

no performances Dec. 24, 25, 31 and Jan. 1, Tuesdays, Wednesdays and Thursdays, 8 p.m., Fridays and Saturdays, 8:30 p.m., Sundays, 2:30 p.m. and 7:30 p.m., Wednesdays at noon, Saturdays at 3:30 p.m., 246-7717.

All Children's Theater, traveling troupe, auditions deadline Dec. 13, auditions, Dec. 20, 335-5328.

Forum Theater Group, "The Emperor's New Clothes," Dec. 23, 4 p.m.; "The Incredible Merlin Magic Show," Dec. 26, 2 p.m., Main Street, Metuchen, 548-0582.

Circle Players, Neil Simon's Comedy "Last of the Red Hot Lovers," Jan. 9 to Jan. 30, 968-7555.

Singles

New Expectations, discussion groups, Morristown Unitarian Fellowship, Normandy Heights Road, Morristown, every Friday, 8 p.m., 984-9158.

Single Faces, dances, Saturdays, 8:30 p.m.; Sundays, 8 p.m., 238-0972 or 679-4311.

New Jersey Moonrakers Club, club for tall and single adults, meetings followed by dancing, every second Tuesday of the month, Meadowlands Hilton, 2 Harmon Plaza, Seacaucus, 8:30 p.m., 298-0964.

Jewish Singles World, Shabbat Service followed by discussion and Oneg Shabbat reception, Congregation Ahavath Achim B'nai

Israel, Nye Avenue, Irvington, Dec. 19, 8 p.m.; annual Hanukkah house party, Union, Dec. 20, 8 p.m.; holiday dance party, Woodbridge Hilton, Dec. 24, 9 p.m., 964-8086.

Catholic Alumni Club, dance, Ramada Inn, Fairfield, Dec. 19, 9 p.m. to 1 a.m., 584-0127 or 539-7121.

Parents Without Partners Chapter 236, open holiday ball, Hyatt Regency, Rt. 27, New Brunswick, dinner, Dec. 21, 7 to 9 p.m. and dance, 9 p.m. to 1 a.m., advance reservations, 396-0707; party dance, Ramada Inn, Rt. 514, Edison, Dec. 28, 8:30 p.m. to 12:30 a.m., 396-0707.

Jingles/Jewish Singles, dance, East Brunswick Sheraton, Route 18 south, Dec. 24, 8:30 p.m., 549-0992.

YM-YWHA Singles Programs, Hanukkah party, Dec. 27, 8 p.m.; Northfield Avenue, West Orange, 736-3200.

Parents Without Partners 418, dance/social, second Monday of every month, 527-0497 or 647-7169.

Music

Somebody's Place Coffeehouse, "Somebody's Place Christmas Spectacular," Cranford Alliance Church, Retford Avenue and Cherry Street, Dec. 20, 8 p.m., 276-1617.

YW-YWHA, Young People's Theater Series, folksinger Oscar Brand, singalongs and musical games, 760 Northfield Avenue, West Orange, Dec. 30, 2:30 p.m., 736-3200 ext. 523.

Support groups

Chapter Two, for couples married more than once, Holiday party, Jewish Community Center of Middlesex County, 1775 Oak Tree Road, Edison, Dec. 20, 8 p.m., 382-8779.

Potpourri

Trailside Stocking Stuffers, purchase science related stuffers like fossils, minerals, magic rocks, Trailside Science and Nature Center, Coles Avenue and New Providence Road, Mountainside, 527-4900.

Trailside Nature and Science Center, the musical movie, "The Christmas Star," Dec. 21 and Dec. 28, 2 p.m. and 3:30 p.m., 232-5930.

Etz Chaim Young Couples Unit of B'nai B'rith, dessert party, Dec. 22, 241-7383 or 329-3317.

Stamp Collectors Open House, North Main Street, Milltown, Dec. 21, 10 a.m. to 4 p.m., 247-1093.

Echo Lake Naturalists Club, Audubon Christmas Bird Count in cooperation with the Summit Nature Club, Dec. 20, in cooperation with the Watching Nature Club, Jan. 4, 654-4895.

Beta Alpha Omega Chapter, Newark chapter of the Alpha Kappa Alpha Sorority, after work adj. party, Dec. 19, 5 p.m. to 9 p.m., Peppermint Lounge, Orange, 321-1450.

Holiday gifts for youngsters

By BETH GIORDANO
FRAN SULLIVAN

Parents, step parents, aunts, uncles, neighbors and friends...confused about what to get the children for the holidays?

Who isn't! The advertising is overwhelming and just a five-minute walk through your local toystore is bound to leave you traumatized if you didn't take steps to prepare yourself. And we won't even mention those lists addressed to the North Pole that beg Santa for every latest gizmo in sight.

Anyway, our suggestions follow. Educational, of course. To compile our list, we made the rounds to department stores, specialty stores, hobby stores, flea markets and fairs and we found they all have something to offer. Make all the stops if time permits, but be sure to save a few minutes for one little treasure trove of a store called DATA School Products or the "Creative Teacher's Store." Located on South Broad Street in Elizabeth, it's definitely not just for teachers. The store is crammed with great things that help all the children on your list to learn and the owners are knowledgeable, helpful and friendly.

In planning your expedition, see if you can take a personal day from work and start out bright and early. Bring a list and a budget and stick to it. Remember that every child should get at least one book for the holidays and draw the line firmly when it comes to stuff you know will be relegated to the junk pile by Feb. 1.

Here are a few ideas:

Ages three to five:

Puzzles! Yes, get them for the three year-olds too! For tots you'll find puzzles made of foam rubber and wood and some even have convenient little handles to make "puzzling" less work for tiny hands. Tots will learn about shapes and colors while older children will learn about vowels, consonants, numbers and words. Don't forget to pick up the puzzles that feature favorite cartoon characters.

Flashcards. They're not what they used to be! Not only can you flash colors, numbers and the alphabet, you can now flash animals, foods, professions, money, community helpers, personal safety ideas and even dinosaurs. One excellent series is titled "It's OK to Say NO."

Get counting frames, blocks, puppets (check the "face puppet" variety — they're flat cardboard masks that children can hold up to their faces and make up stories to go along with the features.) Get non-toxic finger paints, large pads of paper, flannel boards that children can put stories and ABCs and numbers on, reams of construction paper and fun books.

Ages six to eight:

Bead kits, artist's easels, books of mazes, clocks for learning to tell time, strips of colored paper printed with dotted lines for writing sentences (ask for "sentence strips") are all wonderful fun. Look for "step by step" kits for learning how to draw and holiday activity books that will keep children busy with activities on Valentine's Day and Memorial Day too. Get decorative letters and borders children can use to decorate a section of a play room, a toy box or bulletin board. Loads of "bulletin board aids" that teachers use can be had at the Creative Teachers' Store — they're inexpensive and educational and they make wonderful room decorations. Here are a few of the diverse topics: seasons, manners, patriotism, nutrition, the earth, solar system, health habits, the senses, grocery bags, the changing sea, traffic symbols.

Get children banks, plasticene clay (find it in hobby stores — it's best because it never hardens up and children can keep changing and improving their sculptures), and musical instruments if they are so inclined. If you're not sure about your child's interest or if it's too great an expense, see about renting.

Ages nine to twelve:

Does your child like monsters?

How about a game like "Get to the Heart of the Division Monster" or the "Famous Explorers and Inventors Game." Lincoln Logs, erector sets, biology sets, chemistry sets and the like are good bets — and please! Remember the girls here.

Of course, at this age especially, computer-related and computer readiness materials abound. As you probably know, adult supervision is minimal as children work on computers. If you've been thinking about investing in one, remember, this time of the year is one of the best to buy. You'll find many sales and specials on software as well. We have no preference for a single variety. Although Apple is known to be more "graphic" than the other types. It's a marvelous learning tool, and, of course, you can use it too!

For the gifted, the Teachers' Store offers beautifully written project books designed to stimulate and direct growing minds. The titles sound fascinating — Halley's Comet, Scientific Encounters, Dream Scenes, Mind Glow: Encounters with Creative Thinking, and Antarctic.

Other ideas:

What about some children's magazine subscriptions? Or a subscription to the Disney Channel or Nickelodeon if your cable system carries it. Don't overlook the bookstores for calendars, word games, children's cookbooks, etc.

Finally, it may be too late for this holiday season, but these catalogs are among the best you can find for fun, educational toys and activities. Get on the mailing lists and order beautiful birthday presents for your child and his or her friends. You'll find all items to be most reasonably priced:

Construction Playthings 1-800-255-6124; Toys to Grow On, P.O. Box 17, Long Beach, CA 90801, Ravensburger, 603-279-7081.

This year, enjoy your shopping and be sure to pick up a little something educational for yourself.

Christmas 'pests' can be avoided

As we approach the holidays in good cheer, insects and pests are not likely to be on our mind. But, warns an expert, some of the holidays' most enduring symbols — natural Christmas trees and firewood among them — can bring with them uninvited guests in the form of small insects.

William Kolbe, training and technical services manager for Western Termite & Pest Control, says pests associated with holiday items generally are harmless and merely a nuisance, but they can be avoided.

"Firewood can contain carpenter ants, bark beetles, long-horned borers and even field mice, so it pays to check the wood before it enters the home," Kolbe says. "Generally these pests will not re-infest the wood that was used to construct the house, such as hardwood floors, but still they are nuisances that can be avoided in the home."

Kolbe advises that all firewood be stored outside and away from the house, and people bring in only an amount of firewood to be burned that

day. "You should also check the wood for small, one-eighth inch holes which may indicate that the wood is infested with powder-post beetles," he says.

Natural Christmas trees — some 32 million are sold in the United States each year — can also harbor or attract insects.

"Spiders and aphids (small plant feeding insects) have been found in natural Christmas trees," Mr. Kolbe says. "During the cold weather these insects remain dormant in the trees. However, when they are brought inside these pests may become active. It is important to note that these pests are generally harmless."

Kolbe adds, "Once in the house the Christmas tree should be checked occasionally for spider webs."

Other holiday-related items such as chestnuts, food stuffings and other stored products can also be home to tiny pests such as the bruchid weevil. "Many of these small insects find adequate food and shelter in these goods and often originate from the storage facilities the products came from," Mr. Kolbe

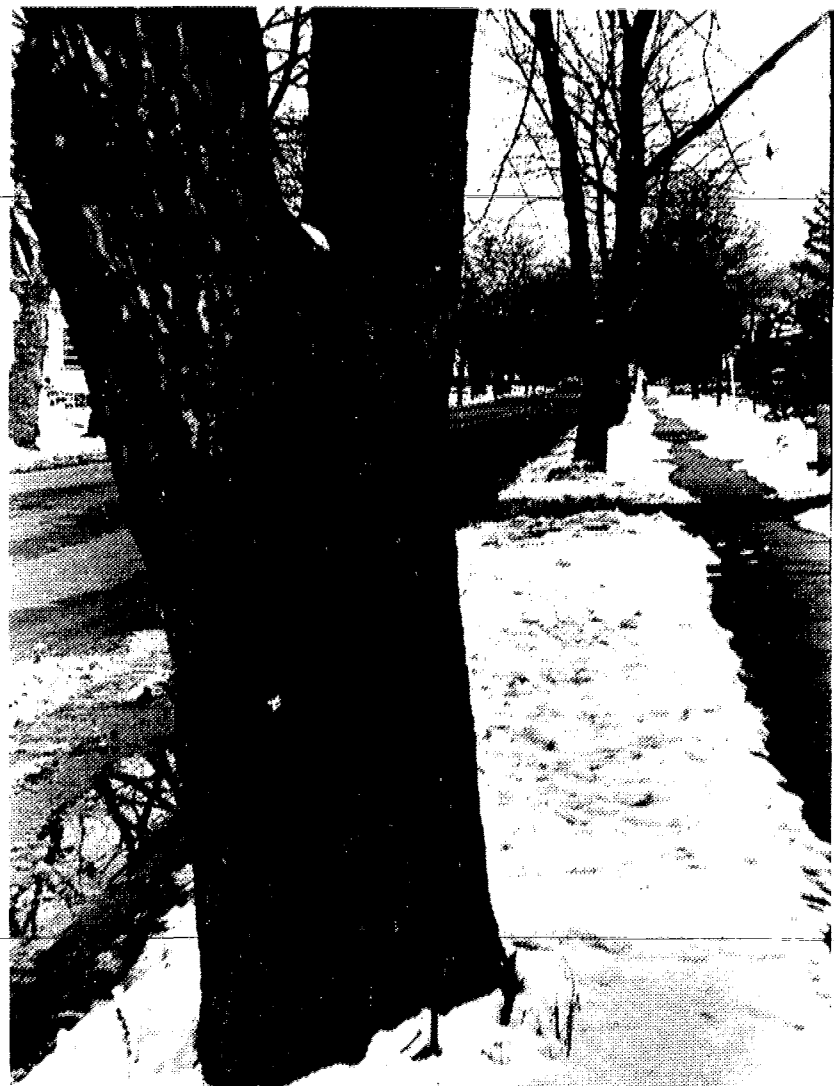
says. "The problem intensifies when items such as flour, croutons, spices, stuffing and other food products are left open in kitchen cabinets for a long period of time. Items should be inspected before use, and all infested products should be disposed of."

Western Termite & Pest Control operates 25 offices in New Jersey, Pennsylvania, Delaware, Maryland, the District of Columbia, Virginia and Florida (Quality Pest Control). The parent company is Western Industries Inc. of Parsippany.

Art show slated

A one-artist show of works by William Coombs in oils and with acrylic polymer, drawings and prints is on display in the East Wing at Children's Specialized Hospital, 150 New Providence Road, through Jan. 5.

Artists who wish to display artwork at the hospital may contact Biegler, by calling 233-3720, Ext. 234.



COLD MORNING—by Nicki Montaperto of Roselle is among the photographs being displayed in the student gallery in Vaughn-Eames Hall, Kean College, Union. 'Photography '86' also includes art work from Kevin Chin of Union, a senior visual communications major, and Shirley Grey, a retired Linden elementary school teacher with a master's degree plus credits in fine arts education.

Sheba's visit a myth

By DR. JOHN B. WOLF

Professor, Union County College

The Queen of Sheba's visit to King Solomon is a part of Ethiopian mythology. Contemporary scholars, however, claim she was an Arab, perhaps resident of the historic kingdom of Saba. Believed to have been situated within the confines of modern-day Yemen, a country adjacent to the confluence of the Red Sea and the Indian Ocean, Saba was traversed by caravans carrying European products to be exchanged for Asian goods.

Christmas legends support historical evidence that links both Ethiopia and Yemen to ancient commercial routes adjacent to the Red Sea. Sheba's trek to the Holy Land is recorded in the Bible. The description of how she tested Solomon's wisdom is legendary.

The story of the Three Wise Men of the East who brought gifts to the Infant quartered in the stable in Bethlehem is another biblical story. Melchior, according to the story, offered gold, the emblem of royalty. In token of kingship, Gaspar gave frankincense. Balthazar presented myrrh, considered an allusion to man's mortality as it was once part of the burial rite.

For the birds

Derived from East African trees, frankincense is burned as incense. Myrrh is a sap exuded from several Arabian and Ethiopian shrubs. It has been used since ancient times by embalmers.

Sheba's mythical route along the Red Sea is flown over by migrating birds flying from Europe and Asia to East Africa or vice versa. One of the unique birds that uses this highway in the sky is the Hoopoe.

This bird is unmistakable. It's about a foot long and boldly barred in black and white across its wings and tail. The Hoopoe's other distinctive marks are its long black-tipped and fan-like crest, curved bill and pinkish-brown back and stomach.

According to an ancient tale, birds acquired wisdom by soaring in the air. This lofty exercise enabled them to foresee future events. Was Solomon's wisdom obtained from the birds? There is a story that he owned a magic ring which enabled him to understand the language of animals.

Reportedly, Solomon once gave the Hoopoe a golden crown. Was the headpiece a reward for furnishing information to the King?

But the Hoopoe was discontented. Everyone tried to steal its crown. Frustrated, the bird appealed to Solomon for help. Anxious to preserve his information source in the animal world, Solomon took back his gift, giving the Hoopoe a crest of black-tipped cinnamon feathers instead. People enjoy gold and glitter, but fancy feathers are "FOR THE BIRDS."

Port Authority ready for Yule

Holiday music and decorations will gladden the hearts of commuters and travelers from near and far using the Port Authority and George Washington Bridge bus terminals, Newark and John F. Kennedy International Airports and the PATH transit system during this Holiday Season.

At Kennedy Airport, various professional and amateur groups — including barbershop quartets, jazz and brass bands, choral groups and airport employees — will perform in

the International Arrivals Building on a daily basis. Performances will run through Dec. 23 from 4 to 6 p.m.

Professional musicians and musical groups from schools in New York and New Jersey will entertain patrons at the midtown Bus Terminal and Newark Airport from 4 p.m. to 6 p.m. daily.

The Bus Terminal programs will run each weekday through Dec. 23 in the North Wing, and will be supplemented by a Christmas doll display in the South Wing exhibit area. The Newark Airport programs will run through Dec. 18 at Terminals A and B and the North Terminal.

PATH patrons will be entertained by school choral groups from Dec. 16 to 18 on the concourses of PATH's Journal Square and World Trade Center terminals. At Journal Square, programs will begin at 4:15

p.m. and run until 5:45 p.m. At the World Trade Center, show time is 4:30 p.m. to 6 p.m.

Travelers on PATH's 33rd Street to Journal Square and Hoboken to World Trade Center lines can see an underground Christmas tree on the left side of the train as it approaches the Pavonia Avenue station. The three-foot-tall lighted tree is put up each year by employees of PATH's Signal and Communications Division.

School groups, dancers and professional musicians will perform for Holiday travelers at the George Washington Bridge Bus Station Dec. 18, 19, 22 and 23 from 4:30 p.m. to 6:30 p.m. on the main concourse. On the subway concourse, a special international holiday exhibit will run Dec. 5 through Jan. 9, and a doll exhibit will run December 8 through 23.

Lottery

Following are the winning New Jersey Lottery numbers for the weeks of Nov. 10, 17, 24 and Dec. 1:

PICK-IT AND PICK-4

- Nov. 10—890, 4876
- Nov. 11—180, 8743
- Nov. 12—975, 3731
- Nov. 13—978, 8938
- Nov. 14—748, 7382
- Nov. 15—814, 1258
- Nov. 17—430, 3356
- Nov. 18—680, 7047
- Nov. 19—933, 2635
- Nov. 20—013, 4188
- Nov. 21—951, 9130
- Nov. 22—862, 8054
- Nov. 24—097, 6489
- Nov. 25—104, 4429
- Nov. 26—950, 7191
- Nov. 27—661, 0494
- Nov. 28—614, 9994
- Nov. 29—493, 1302
- Dec. 1—034, 5393
- Dec. 2—196, 7779
- Dec. 3—809, 9847
- Dec. 4—997, 9116
- Dec. 5—374, 8458
- Dec. 6—825, 9105

PICK 6

- Nov. 10—4, 5, 11, 16, 27, 36; bonus — 27053.
- Nov. 13—3, 4, 10, 18, 19, 32; bonus — 49907.
- Nov. 17—6, 10, 12, 16, 17, 25; bonus — 12369.
- Nov. 20—12, 21, 29, 34, 36, 42; bonus — 11423.
- Nov. 24—13, 15, 25, 26, 38, 39; bonus — 21445.
- Nov. 27—1, 7, 36, 37, 40, 41; bonus — 01872.
- Dec. 1—2, 10, 16, 26, 28, 39; bonus — 76111.
- Dec. 4—4, 12, 15, 17, 39, 41; bonus — 67469.

Concert to be shown

Television station WOR has announced an encore presentation of a cultural event, the Christmas Eve broadcast of The Cathedral Symphony of Newark, Wednesday from 9 to 11 p.m. on Channel 9. Dedicated to the memory of the late conductor, Maestro Thomas Michalak, the concert, performed at the Cathedral Oct. 27, 1985, features performances by the Cathedral Symphony Orchestra, a special guest performance by violinist Yehudi Menuhin, a performance of New Jersey composer Richard Nane's Symphony No. 1 in B Flat and Schubert's "Ave Maria," sung by the Newark Boys Chorus.

Hostess for the WOR-TV special will be Celeste Holm, actress. The program will feature classical music performed in classical setting, Newark's Cathedral of the Sacred Heart. The cathedral, a national historic site, "is considered to be one of the finest examples of

French Gothic architecture in the western hemisphere."

Highlighting the musical program will be interviews, features and profiles on the cathedral and the principal performers. In addition to the musical, historical and architectural aspects, the features "will explore a concert relating to the urban renaissance in Newark, one of New Jersey's oldest and largest cities."

The station WOR-TV, has arranged for special outside assistance to produce and videotape the concert program, such as director, Jay Millard, music consultant, Howard Heller, and an audio consultant, Craig Dory, and a consultant firm, Imero Fiorentino and Associates. It was announced that WOR-TV also had two mobile production units on-site, which are the same units used for the acclaimed "Live from Lincoln Center" telecasts.

Orchestra lists concert dates

The Adelphi Chamber Orchestra has scheduled concerts during the 1986-1987 season featuring soloists, George Marge, Janina Robinson, Joanne Rodland and Paul VanNess.

A concert will be in the Central Unitarian Church, Paramus, Sunday at 8:15 p.m. Marge will be featured performing the Bloch Suite Modale for flute and string orchestra. Lindberg will conduct. On March 22, at 2 p.m. at Fairleigh-Dickinson University in the Wilson auditorium, Hackensack, Robinson will be the featured soloist in Mozart's Violin Concerto in D Major.

Ensemble plans concert

The Ric Charles Choral Ensemble will offer its seventh annual Christmas concert Saturday at 7:30 p.m. in the Crescent Avenue Presbyterian Church, Seventh Street and Watchung Avenue, Plainfield.

This year's program will feature Bach's Magnificat, with guest soloists and orchestra. The guest organist will be Roland M. Carter, head of the school of music at Hampton University.

The concert will open with "Joy to the World," accompanied by a brass quartet. It will close with the performance of the "Hallelujah Chorus" from Handel's "Messiah." The ensemble also will perform traditional carols, spirituals and gospels.

The Ric Charles Choral Ensemble is a nonprofit organization that has performed at public events throughout the metropolitan area, at colleges and universities in the mid-Atlantic region, and at churches and public schools. It also performs benefit concerts for senior citizens, retarded children, disabled veterans and prison inmates.

Tickets can be purchased at the door or obtained in advance by calling 753-1332.

Dickens tale at McCarter

For the sixth year, a holiday tradition has return to McCarter Theater, Princeton, for 12 performances from last Saturday through Christmas Eve. It will be Nagle Jackson's adaptation of Dickens' holiday tale, "A Christmas Carol."

It will feature Brian Martin's "turntable" set, with lighting by Richard Moore, sound by Rob Gorton and costumes by Liz Covey.

Additional information can be obtained by calling (609) 452-5200.

UNION GALLERIES

1330 Struyvesant Ave. Union 964-1440

Fine Antique & Decorator Furniture, Giftware, Jewelry

- Sets of Furniture
- Estate Jewelry
- Antique Paintings & Graphics
- Accent & Decorative Pieces
- Antique Porcelain & Art Glass
- Collectibles—Litho, Copal, etc.
- Tiffany Favorite Style Lamps & Chandeliers
- Brasses & Marble Statues
- Buffets, Waterford, etc.

5,000 Sq. Ft. Selected Estate Items—Deep Discount Prices

\$5 OFF

Any purchase up to \$20 with this ad

\$10 OFF

Any purchase over \$20 with this ad

Recipe for Yummier Holidays

our famous

Dresden Stollen



with a delectable Marzipan filling and pineapple, pecans, raisins and cherries.

and another treat, our

Packaged Cookie Platters



with the widest assortment of fancy favorites
A great way to treat yourself, your guests or a great give-away.

also offering

Our Special Christmas Cookies

Anise Drops • Springerle • Pheffernuss

and our very, very special

Gingerbread House

First come, first served since we can only build sixty houses.

We're prepared for fast and friendly service.

Open Mon, Dec 22nd / Closed Christmas Day
Sunday 7am-2:30pm Tues-Sat 7am-6:30pm



Suburban Dessert Shoppe

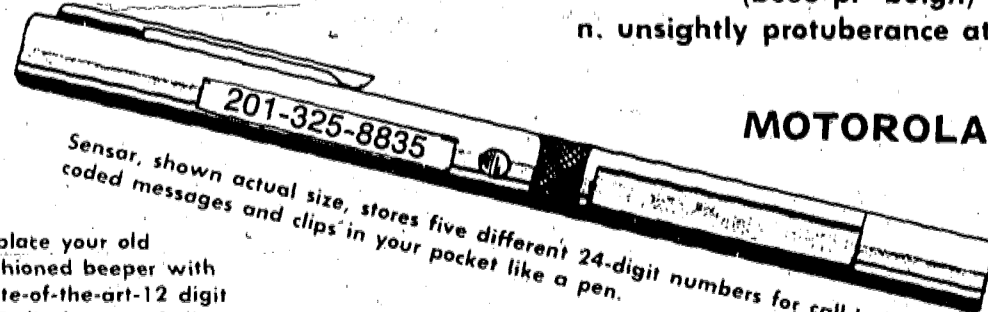
269 Millburn Avenue, Millburn

For Holiday Orders Call 376-4393

Sorry, no orders can be accepted after Mon 12/22

DESTROY BEEPER BULGE!

(bee pr' bulgh)
n. unsightly protuberance at belt level



MOTOROLA UNIT

Actual Size

Sensor, shown actual size, stores five different 24-digit numbers for call-back or coded messages and clips in your pocket like a pen.

Replace your old fashioned beeper with state-of-the-art-12 digit LCD display — 24 digit capacity. 5 message storage. Compare it to the pen in your pocket or purse

ADVANCED DIGITAL PAGING INC.

325-8835
WEST ORANGE

846-2272
EAST BRUNSWICK



DISCUSSING PLAY FOR WORLD PREMIERE—The American Stage Co. members discuss new serio-comedy, 'Villa Sererna,' which opened recently in the Beckton Theater, Fairleigh Dickinson University, Teaneck. It will run through Sunday. Left to right are American Stage co-producer Ted Rawlins, artistic director and actor Paul Sorvino, director Paul Shyre and playwright Rick Johnston. Additional information can be obtained by calling 692-7744.

Schneider is versatile person

By MILT HAMMER

Within a few years, John Schneider has become one of the entertainment industry's most prolific creative talents. Since he first received national fame as co-star of the popular television series, "The Dukes of Hazzard," John has proven himself to be a capable producer, screenwriter and director.

He's a singer, who's reached higher and higher levels of fame as a recording artist and concert performer, with best-selling singles and albums to his credit.

He's a canny businessman, whose ability as a barometer of America's taste stands to manifest itself in a stream of upcoming film, television and music projects.

And he's a committed humanitarian, whose concerns extend from cancer research to a charitable foundation that contributes huge amounts of money to children's hospitals across the country.

Though he's been performing for most of his life, John Schneider's multi-faceted career is only beginning to reach its full potential.

Born in Mt. Kisco, John began acting at the age of eight, and joined a local community theater group. When at 14 he moved to Atlanta with his mother, John was already a seasoned veteran of the legitimate

stage. Following graduation from high school at 17, he divided his time between working in a dinner theater group, writing and staging plays for the Academy Children's Theater acting in commercials and feature films and playing music for tips in local nightspots.

In September, 1977, John heard that the producers of an upcoming CBS-TV series were auditioning actors in Atlanta. Discovering that the role was that of a "good ol' boy," he primed himself for the part by renting a pickup truck and driving it around town for a few weeks, allowing his beard to grow to a week's worth of stubble and entered the audition with a beer can in hand. His authenticity, contrasted with most of the others aspiring to the

part who arrived in suits and fresh haircuts, sufficiently impressed the powers that be, and John was hired to create the role of Bo Duke in "The and "Happy Endings," co-starring Catherine Hicks (1983). A third movie of the week, "Gus Brown & Midnight Brewster," with Ron Glass and Teri Copley, aired on NBC in 1985. Slotted against the prestigious Tony Awards program and the network premiere of Stanley Kubrick's "The Shining," the Schneider movie won its time period.

In 1986 John continues his ascension in the television industry, starring in the CBS-TV remake of the 1939 John Ford classic, "Stagecoach," starring John Wayne. And he's keeping quite good

Disc 'n Data

Dukes of Hazzard." It became a solid, heartland hit during its seven-season network run. The show was then syndicated for an impressively high fee and can now be seen around the world — several times a day in some markets.

By the end of the series' network run, John had extended his credits in several directions. As an actor, he had appeared in two CBS-TV movies of the week, "Dream House," co-starring Marilu Henner (1981),

company in the Movie of The Week version, as the incomparable crew of Willie Nelson, Johnny Cash, Waylon Jennings, and Kris Kristofferson will likely establish the remake as a classic in its own right.

John also has guest-starred on numerous variety, talk and awards shows and produced two network specials for his own company, "John Schneider Back Home" and "John Schneider's Christmas Holiday."

JAEGER OVERHEAD GARAGE DOOR



- INSTALLATION
- REPAIRS
- AUTOMATIC OPENERS
- PARTS & HWDE.
- RESIDENTIAL
- COMMERCIAL
- INDUSTRIAL

Division
JAEGER LUMBER

2322 Morris Ave.
Union, N.J. 07083 **686-0074**

1 Year parts & 90 days Service & Labor Warranted by ZENITH-Additional 9 months Service & Labor Warranted by POST TV Sales & Service, Inc. Ask us for details.



ZENITH
COLOR T.V.

not shown

• Cable Capabilities

• Financing Available

• Tri-focus Picture Tube



1987 MODEL

\$289⁹⁵ Diagonal Cable TV

Model C1992

POST RADIO & T.V. SERVICE

1529 Springfield Ave., Maplewood
Distributor-Authorized Dealer
Same Day Service with every sale

761-4674

372-3327

964-0646

ZENITH V.C.R.'s

Our Every Day Low Price

2 Heads **\$324⁹⁵**

VR18-10

4 Heads **\$379⁹⁵**

VR18-20

'Wales' play is new

"A Child's Christmas In Wales," based on the story by Wales' poet Dylan Thomas, in a new adaption with music by Jeremy Brooks and Adrian Mitchell, is holding its east coast premiere at the New Jersey Shakespeare Festival, Drew University, Rt. 24, Madison.

The production, which has been made possible with support from AT&T, opened yesterday and will run through Jan. 4, 1987 on a special schedule with added matinees and reduced price tickets for children. Early reservations are recommended for the three-week run; tickets are available by calling the Festival Box Office at 377-4487 or by writing to Shakespeare, Madison, N.J. 07940.

Starring Kevin Hogan as Dylan Thomas, the story is an autobiographical recounting of Thomas' memories of childhood Christmases in his native village of Swansea, Wales.

At the Festival, the play will be preceded by a concert of Christmas music sung by the Festival madrigals under the direction of Deborah Martin. The cast also includes David Cessarini, Ed Dennehy, Margery Shaw, Albert Sinkys, Sherry Skinker, Thea Ruth White and Zeke Zaccaro. Festival artistic director Paul Barry directs the final production of the 1986 festival season.

Aleph Duo due on Saturday

Cafe Devorah will present a performance by the Aleph Duo on Saturday at 8:30 p.m. at the YM-YWHA of Metropolitan New Jersey, 760 Northfield Ave., West Orange.

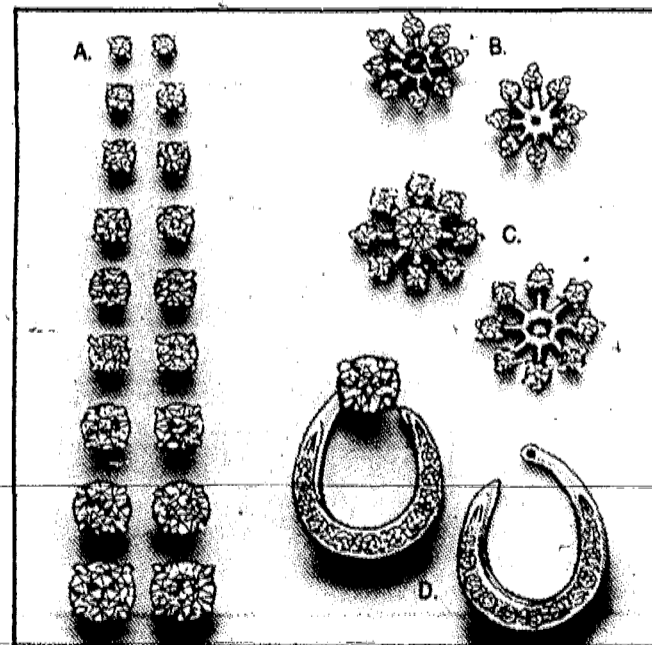
The Aleph Duo, Avraham Albrecht and Avshalom Zifra, have been singing together since 1982 and present a variety of songs in Yeminite, Ladino, Neopolitan,

Spanish, Italian, Yiddish, Hebrew and English.

Albrecht was principal soloist in the Israel Army Choir and recipient of the America-Israel Cultural Foundation Award. He has toured in Yiddish concerts with Molly Picon and has appeared in operas in Israel with the Jerusalem Symphony, the Camarata Ensemble and the National Opera.

Walter Bauman Jewelers

DAZZLING VALUE!



DIAMOND STUD EARRINGS AND JACKETS IN 14 KT. GOLD

- A. Diamond stud earrings
 - .06 Ct. T.W. **\$29.98** 1 4 Ct. T.W. **\$149.98** 3 4 Ct. T.W. **\$499.98**
 - 1 10 Ct. T.W. **\$46.98** 1 3 Ct. T.W. **\$189.98** 1 Ct. T.W. **\$749.98**
 - 1 5 Ct. T.W. **\$109.98** 1 2 Ct. T.W. **\$299.98** 2 Ct. T.W. **\$2398.00**
- B. 1 4 Ct. T.W. Diamond jackets **\$169.98**
- C. 1 3 Ct. T.W. Diamond jackets **\$298.00**
- D. 1 2 Ct. T.W. Diamond jackets **\$489.98**

Enlarged to show detail.

Offer expires Dec. 24, 1986

Walter Bauman Jewelers

WEST ORANGE 643 Eagle Rock Ave
Pleasantdale Center 731-3155
UNION Galloping Hill Mall
at Five Points 687-4437
PARSIPPANY Arlington Shopping Plaza
Route 46 West 263-1303
SHORT HILLS 734 Morris Turnpike
Next to Mandee's 376-0036

E. BRUNSWICK Loehmann's Shopping Plaza
Route 18 247-4170
EDISON Oak Tree Shopping Center
1665 Oak Tree Road 549-5499
NORTH PLAINFIELD 112 Rt. 22 East (8 Mtn. Ave)
Across from Ethan Allan 753-1111
HOURS: All stores: Mon-Fri, 10 AM-9 PM, Sat 10 AM-5 PM (in Pld until 7 PM); Sun 11 AM-5 PM

A FAMILY TRADITION SINCE 1868

Rebecca's forecast

For week of Dec. 18 to Dec. 25

ARIES (3/21-4/20) New light may be shed on an old problem early in this week. Professional dealings are highlighted. Curb the urge to splurge; you're just getting back on-track financially. Later, others may be surprised by your actions or words. Your sheer determination this year will pay off soon.

TAURUS (4/21-5/21) This continues to be a rather intense period for many. Both

material and emotional security crowd your thoughts and your own moods swing easily, perhaps leaving others a little bewildered. Later, you smooth over a dispute, share timely family news and plan celebrations with loved ones.

GEMINI (5/22-6/21) You can easily take center stage now, the pace is stepped up and dealings with those at a distance are highlighted. Be wary of accepting things at face value at mid-week. Later in this period,

you attend to last-minute preparations, accept impromptu invitations and keep a secret... for now.

CANCER (6/22-7/23) Seeing eye-to-eye may prove difficult at the onset of this period. Disagreements revolve around sensitive or personal issues. Local travel is highlighted and unexpected visitors on the home front could change plans. Later, the early promises of 1986 may finally be in the offing for many.

LEO (7/24-8/23) This may be a rather complex emotional period for many. Moods and feelings fluctuate and you could find yourself reminiscing on more than one occasion. Later in the week, financial news is favorable. Avoid over indulgences and plan activities close to home throughout the holiday period.

VIRGO (8/24-9/23) Extra burdens or obligations may cut into your holiday plans. Career, health and dependents' interests all vie for your attention. Later in the week you attend social gatherings, share news with family and friends and sneak a peek at the new opportunity for financial gain evident in '87.

LIBRA (9/24-10/23) Unexpected news or messages may put a damper on your spirits early this week. Annoying health problems may flare up and last minute shopping may yield a real bargain. Later, you relax with loved ones, social functions are highlighted and encounter unusual meetings before week's end.

SCORPIO (10/24-11/22) You may begin this period feeling a bit under the weather. Demanding schedules and personal obligations may contribute to this. Use the early part of this week to finish up lingering tasks then allow time for social pursuits. Later, you feel comfortable and secure with loved ones.

SAGITTARIUS (11/23-12/21) Tempers may flare under the pressure of recent months. You can smooth this over with the right words early this period. Your more generous mood inclines you to indulge loved ones. Later in the week, travel is highlighted, and social invitations crowd your calendar and lift your spirits.

CAPRICORN (12/22-1/20) It's best to defer travel early this week. You may be feeling a bit nervous or edgy and overly emotional reactions may result. Later, you're feeling better all the way around. More control is indicated and special family gatherings complete this period for many.

AQUARIUS (1/21-2/19) The week begins on a hectic note. You may feel rushed and irritable as a result. Decisions and choices seem particularly difficult at this time. Later in the week, a financial windfall highlights this period for some. The week ends on a merry note, social gatherings are most enjoyable.

PISCES (2/20-3/20) Romantic, creative and children's interests are highlighted early this week. You may be handling conflicting feelings where loved ones are concerned and personal confusion may be part of the problem. Later, travel plans could hit a snag, and social invitations crowd your calendar as usual.

CROSSWORD PUZZLE

Edited by Trude Michel Jaffe

ACROSS

- 1 Snooze
- 4 Mont Blanc et al.
- 8 Short distance
- 12 Niger's neighbor
- 13 Cheer for the home team
- 14 Zodiac sign
- 15 "Miss — Regrets"
- 16 Stravinsky
- 17 Perfect
- 18 Stamping steeds
- 21 Football field, e.g.
- 22 Appropriate
- 23 Fall guy
- 26 Did a conductor's work
- 27 One of the Keatons
- 31 Vittorio de —
- 32 December visitor
- 33 Eller and Em
- 34 Goes underground
- 39 Mohammedan deity
- 40 Embrace
- 41 Rex, the critic
- 42 Cause to see red
- 44 Pen's pal
- 47 Moon machine
- 48 Ring king
- 49 Junkyard candidate
- 51 Houdini et al.
- 56 Before city or circle
- 58 Shave off
- 59 Editor's note
- 60 Measure, in London
- 61 Uniform
- 62 Fumbles
- 63 Pillar's partner
- 64 Do nothing
- 65 Alarming letters?

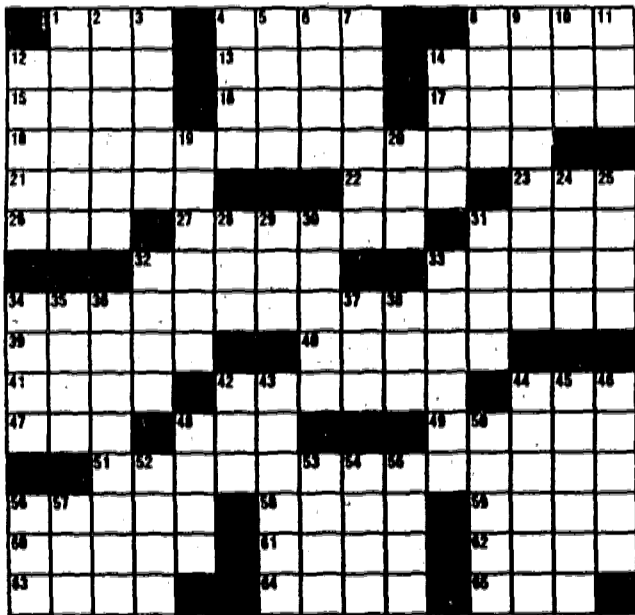
- 4 Operatic highlight
- 5 Sluggish
- 6 Milne character
- 7 Walked purposefully
- 8 Viewpoint
- 9 Laundry chore
- 10 Moslem chief
- 11 Lon —
- 12 Aesop's point
- 14 Workbench item
- 19 River at Terre Haute
- 20 Karl Capek's robot play
- 24 Arthritis aid: Abbr.
- 25 Obsolete
- 28 Numero —
- 29 R-V tie
- 30 Turkic tribesman
- 31 Clubs, e.g.
- 32 Type of nail
- 33 Phase
- 34 A Marx

- 35 Robert —
- 36 Weather conditions
- 37 Seraglio section
- 38 Moor cover
- 42 High note
- 43 Young laddie
- 44 Man from Havana
- 45 Beavers' cousins
- 46 Defeats
- 48 Estate segment
- 50 Levitates
- 52 Spanish muralist
- 53 Homophone for eve
- 54 Mythical hawk
- 55 Let
- 56 Little monkey
- 57 Beginner

ANSWER TO PREVIOUS PUZZLE:

```

ADAM SCORE MESS
LIMA TRAIL ALOE
PRINCE OF A FELLOW
SEEDLESS STANS
RAPPS SETA
STAYS ETTTE GET
PARK ALATE ENE
QUEEN OF DIAMONDS
RTE ADLER BOOT
SED TEAR SMEAR
STAT SPAD
BASTE SCARIEST
EMPEROR CONCERTO
LEAR THANK NOON
ANNE TONES TOPS
    
```



DOWN

- 1 Mother —
- 2 Put in order
- 3 Resident of a city on the Arno

LOOKING-GLASS Lounge

ReOpening Monday, Dec. 15th

NEW HOURS:
Mon.-Sat.
4 p.m. till closing
Entertainment
Wed. thru Sat.



NEW HOST:
BILL
HELWIG



741 N. STYLES ST., LINDEN (part of Linden Lanes)
925-5330



"IF IT'S
AUTOMOTIVE
MOST LIKELY
WE HAVE IT"

WHOLESALE
TO THE PUBLIC

AUTO PARTS
We Carry all the
hard to get items.



OPEN SUNDAY 8 A.M.-2 P.M.
SATURDAYS 7:30 A.M.-5:45 P.M.
WEEKDAYS 7:30 A.M.-7 P.M.
CLOSED WED. EVE. 5:45 P.M.

2091 SPRINGFIELD AVE.
VAUXHALL (UNION), N.J.
Call 688-5848

**BUY-WISE
AUTO PARTS**

Send a basket of holiday cheer.

The FTD® Holiday Cheer™ Bouquet.
Call or visit us today.

®Registered trademark of FTDA.

RIMMELE'S FLOWER SHOP
1638 Stuyvesant Ave.
Union 688-7370

HOLLYWOOD FLORIST
1682-1700 Stuyvesant Ave.
Irvington • Union
Phone 686-1838
Charge it By Phone
Most Major Credit Cards Honored

LEAHY-BURKE FLORISTS
316 Morris Ave.
Elizabeth, N.J. 07208
352-4460

**2707 Morris Ave.
Union, N.J. 07083
686-0955**

WALTER THE FLORIST
Serving Union & Vicinity over 25 Years
1354 Stuyvesant Ave.
Union 688-0920

REKEMEIER'S FLOWERS

143 Chestnut St.
Roselle Park
241-9797

130 West Third Ave.
Roselle
241-2700

116 North Ave. W.
Cranford
276-4700

STEUERNAGEL'S
Westfield Flower Shop
250 Springfield Ave.
Westfield 233-3650

FIORI'S UNION FLORIST INC.
2162 Morris Ave.
Union • 688-6872
Major Credit Cards Accepted by Phone

happy holidays
TO OUR
valued
CUSTOMERS

Social notes and news

Bozykowski-Dubiel



MR. AND MRS. DUBIEL

Lori Bozykowski, daughter of Mr. and Mrs. Casmer Bozykowski of Thoreau Terrace, Union, was married recently to Carminę Dubiel, son of Mr. and Mrs. John Dubiel of New Jersey Avenue, Union.

The Rev. Glenn D. Engelhardt officiated at the ceremony in Christ Lutheran Church, Union. A reception followed at Big Stash's in Linden.

The bride was escorted by her father. Donna Bozykowski of Union served as maid of honor for her sister. Bridesmaids were Patricia Dubiel of Union and Brenda Grafas of Millburn, both sisters of the groom. Kimberly Deo of Hillside, cousin of the groom, served as flower girl.

John Dubiel Jr. of Union served as best man for his brother. Ushers were Jeffrey Deo of Union, cousin of the groom, and Larry Grafas of Millburn, brother-in-law of the groom. Scott Bruno of Piscataway, nephew of the bride, served as ring bearer.

Mrs. Dubiel, who was graduated from Union High School, is employed by George L. Benninger, attorney at law.

Her husband, who also was graduated from Union High School, is a self-employed contractor.

The newlyweds, who took a honeymoon trip to the Poconos and Atlantic City, reside in Union.



MR. AND MRS. LORTIE

Garry-Lortie

Laura Jean Garry, daughter of Mr. and Mrs. Bernard Garry of Springfield, was married recently to Timothy Donald Lortie, son of Mr. and Mrs. Donald Lortie of Warren.

The Rev. William Hewitt officiated at the ceremony in Our Lady of the Mount Church, Warren. A reception followed at the Monday Afternoon Club, Plainfield.

The bride was escorted by her father. Marybeth Garry of Basking Ridge served as maid of honor for her sister. Bridesmaids were Laren Kornett of Holmdel, cousin of the bride, and Lisa Ofcharsky of Mountainside and Larriane Gracie of Bridgewater.

Gene Lortie of Warren served as best man for his brother. Ushers were Don Lorti of Warren, brother of the groom, and Michael Longo of Wayne and Bob Spye of California.

Mrs. Lortie, who was graduated from Jonathan Dayton Regional High School, Springfield, and Seton Hall University, is an account executive for Ted Bates Advertising, New York City.

Her husband, who was graduated from Watchung Hills High School, Warren, and West Virginia University, is an associate research scientist for Warner-Lambert, Morris Plains.

Wedding held in Kenilworth

Mary Elizabeth Vogel, daughter of Mr. and Mrs. Edwin A. Vogel of Union, was married Oct. 26 to Mark Marcketta of Somerville, formerly of Chester, son of Mr. Rocco Marcketta of Roselle and Mrs. Joan Marcketta of Roselle.

The Rev. Edward R. Oehling officiated at the ceremony in St. Theresa's Roman Catholic Church, Kenilworth. A reception followed at the Coachman Inn, Cranford.

The bride was escorted by her father. Kathleen Neroda of Colonia served as matron of honor for her sister. Bridesmaids were Cecelia Neroda of Reno, Nev., sister of the bride; Michelle Neroda of Colonia, niece of the bride, Donna Silance of Maplewood and Susan Festa of Elizabeth.

Robby Marcketta of Roselle served as best man for his brother. Ushers were Ricky Marcketta of Roselle Park, brother of the groom; Michael Couch of Avenel, cousin of the groom, Keith Roberts of Middletown and Fred Toth of Port Murray. Michael Neroda and Christopher Neroda, both of Colonia, nephews of the bride, served as junior ushers.

Mrs. Marcketta, who was graduated from Girls Catholic High School, and Stafford Hall School of Business, is a senior administrative assistant for Warner Lambert Co., Morris Plains.

Her husband, who was graduated from Millburn High school and Middlesex County Collge, is a project manager for Data Processing at Beneficial Finance Co., Peapack.

The newlyweds took a honeymoon trip to Paradise Island.



MR. AND MRS. GIANNATTASIO

Pair feted on 50th year

Mr. and Mrs. Gabriel A. Giannattasio of Milltown Road, Springfield, were honored by their children and grandchildren at a family dinner celebration of their 50th wedding anniversary in September at Snuffy's Pantagis Restaurant, Scotch Plains.

Among those attending were sons in law and daughters, Walter and Joan Bjschoff of Branchville, and Louis Jr. and Elaine Klubenspies of Mountainside, and grandchildren, Gary and Glenn Bischoff and Louis

III and Julia Klubenspies.

The Giannattasios were married in September 1936 in St. Elias Church, Carteret. They resided in Millburn before moving to Springfield 37 years ago. The celebrants are communicants of St. James Roman Catholic Church, Springfield.

Mr. Giannattasio retired as a superintendent after 46 years with Public Service Gas Co.

Viewing the Watchung Mountains

Pantagis RENAISSANCE

WEDDING DREAMS COME TRUE

5 Hours Open Bar
Cocktail Hour
7 Course Dinner
Tiered Wedding Cake
Silver Candelabras and Flowers
Flaming Jubilee Show, Private Bridal Rooms, White Glove Service

FROM \$29⁹⁵

NEW YEAR'S EVE PARTY

5 ELEGANT ROOMS WITH SEPARATE BANDS

Old Famous SNUFFY'S

CHRISTMAS SEAFOOD BUFFET \$16⁹⁵

★ 6 HOUR OPEN BAR
★ SHRIMP COCKTAIL
★ FULL COURSE PRIME RIB DINNER
★ CHAMPAGNE TOAST
★ CONTINENTAL BREAKFAST

DAILY SPECIALS INCLUDES: SHRIMP COCKTAIL, SOUP & SALAD BAR OPA-OPA DRINK

\$9⁹⁵

PARK & MOUNTAIN AVE., SCOTCH PLAINS 322-7726



MR. AND MRS. KAMINSKI

Kennedy-Kaminski

Deborah Ann Kenney, daughter of Mr. and Mrs. Raymond J. Kennedy of Irwin Street, Springfield, was married recently to Mark Daniel Kaminski of South Orange, son of Mrs. Catherine Kaminski of Wilkes-Barre, Pa., and the late Mr. Steven Kaminski.

The Rev. Tom Arminio officiated at the ceremony in St. Teresa's Church, Summit. A reception followed at the Summit Hotel.

The bride was escorted by her parents. Donna Anagnos of Springfield served as maid of honor. Bridesmaids were Nancy Ann Jeklinski of Lake Hopatcong and Michele Kennedy of Springfield, both sisters of the bride, and Patty Ganger of Berkeley Heights.

James Proeller of San Antonio, Tex., served as best man. Ushers were Mark Mc Kearan of Columbus, Ohio, John Jeklinski of Lake Hopatcong and Greg Kaminski of San Antonio, brother of the groom.

Both Mr. and Mrs. Kaminski were graduated from West Chester University. Mrs. Kaminski is employed by Automatic Data Processing, Inc.

Her husband is employed by AT&T Communications.

The newlyweds, who took a honeymoon trip to Aruba, reside in Randolph.

Kimberly Yoggy is engaged to William Francis Koonze

Mr. and Mrs. George Yoggy of Aniston, Ala., formerly of Mountain-side, have announced the engagement of their daughter, Kimberly Ann, to William Francis Koonz Jr., son of Mr. and Mrs. William F. Koonz of Skylark Road, Springfield.

The bride-elect, who attended Jonathan Dayton Regional High School, Springfield, and DuCret School of the Arts, is an office super-

visor for Office Furniture & Design Co.

Her fiance, who was graduated from Oratory Preparatory School and Seton Hall University, is a general manager of Koonz Sprinkler Supply.

An April 1987 wedding is planned in St. James Church, Springfield, and a reception will follow at the Baltusrol Country Club, Springfield.

Marcheska-Keller

Lisa Macheska, daughter of Mr. and Mrs. Peter Macheska of Church Drive, Union, was married recently to Robert Keller of Elizabeth, son of Mrs. Lillian Keller of Toms River.

The Rev. Nicholas Yuschak officiated at the ceremony in St. Michael's Church, Newark. A reception followed at the Clinton Manor, Union.

Elizabeth Macheska of Union, sister-in-law of the bride, served as matron of honor. Bridesmaids were Bernadette Devonshire of Paramus and Elizabeth Givens of Kenilworth, both sisters of the groom, and Cynthia Di Marrantonio of Linden. Caroline Marie Macheska of Union, niece of the bride, served as flower girl.

George Keller of Flanders served as best man for his brother. Ushers were Gary Macheska of Union, brother of the bride; Steven Holm of Morris Plains and Gregory Cavallo of Union.

Mrs. Keller is employed by Visiting Nurse & Health Service, Elizabeth.

Her husband is employed by Prudential Insurance Co., Roseland.

The newlyweds, who took a honeymoon trip to Bermuda, reside in Elizabeth.



MR. AND MRS. KELLER

Stork club

A 9-pound, 7-ounce son, David James Wilkinson, was born Aug. 20 to Mr. and Mrs. Clifford Wilkinson of Springfield. He joins a brother, Brian, 3.

Mrs. Wilkinson, the former Judy Simon, is the daughter of Mr. and Mrs. Philip Simon of Livingston. Her husband is the son of Mr. and Mrs. Clifford Wilkinson of West Chesterfield, N. H. Great-grandparents are Mr. and Mrs. Edward Simon of Matawan, Mrs. Ruth Betz of Lakewood and Mrs. Violet Fairbanks of West Brattleboro, Vt.

STUYVESANT HAIRCUTTING
Quality Hair Cuts at Affordable Prices!
Senior Citizen **25% OFF** Special MON. thru FRI.
OPEN MON. thru SAT.
1654 Stuyvesant Ave., Union

Repetti's
BANQUET SPECIALS
WEDDINGS & PARTIES • BAR/BAT MITZVAHS
IN OUR NEWLY DECORATED BANQUET ROOM

- 5 Hour open bar
- Hors d'oeuvres
- 5 Course Dinner
- Dessert
- Flowers

\$25.95 per person complete plus tax & grat.

572 BOULEVARD, KENILWORTH
ALL MAJOR CREDIT CARDS **276-7775** minutes from Garden St. PKWY Exit 138

Add extra sparkle to the holidays.



Send the FFD® Candlelight™ Bouquet. Call or visit us today.

Registered trademark of FTDA.

RIMMELE'S FLOWER SHOP
1638 Stuyvesant Ave.

Union 688-7370

HOLLYWOOD FLORIST

1682-1700 Stuyvesant Ave.
Irvington • Union

Phone 686-1838

Charge it By Phone

Most Major Credit Cards Honored

LEAHY-BURKE FLORISTS

316 Morris Ave.
Elizabeth, N.J. 07208

352-4460

2707 Morris Ave.
Union, N.J. 07083

686-0955

WALTER THE FLORIST

Serving Union & Vicinity over 25 Years
1354 Stuyvesant Ave.

Union 688-0920

REKEMEIER'S FLOWERS

143 Chestnut St.
Roselle Park

241-9797

130 West Third Ave.
Roselle

241-2700

116 North Ave. W.
Cranford

276-4700

STEUERNAGEL'S

Westfield Flower Shop
250 Springfield Ave.

Westfield 233-3650

FIORI'S UNION FLORIST INC.

2162 Morris Ave.

Union • 688-6872

Major Credit Cards Accepted by Phone

FIRESIDE FLORIST

"Happy Holidays to All"
2376 Morris Ave.

Union 686-2184

We accept major credit cards by phone

Clubs plan events

The Springfield Chapter of Hadassah will meet tonight at 8 o'clock in Temple Beth Ahm, Springfield. Reports will be made by Dorothea Schwartz on "Entertainment" books, Iris Segal on Calendar Journal, Dorothy Brief on tributes and Mildred Seidman on Book and Author dinner.

Frances Ostrofsky, program vice president, has announced that a Zionist report will be given by Dr. Pearl Lieff, and a Hanukkah candlelight ceremony will be presented by past presidents. "Eleven doctors, nurses and paramedical personnel from nine countries are studying for master's degrees in Public Health at the

Farms, Union, will visit the children at United Cerebral Palsy Center League in Elizabeth Monday at 12:30 p.m. Jeannette Cantalupo, president, and Judy Fitzgerald and Marion Mihalker, co-chairmen, will deliver Christmas gifts to the children. Smocks, shirts and bibs for use in finger-painting are among the gifts made by the members. Christmas stockings filled with cookies will be distributed. Hylda Zierman, chairman of international affairs department, has announced recently that about \$35 has been collected from the club members, and the contribution will be sent to New Jersey State Federation of Women's Club headquarters in New

Clubs in the news

Hebrew University-Hadassah School of Public Health and Community Medicine. Medical professionals from Guatemala, Panama, Colombia, Bolivia, Ecuador, Argentina, Brazil, Lesotho and Thailand are participating in a 15-month English language course," it was reported by Henrietta Lustig, president. Phyllis Zlatin is fund-raising vice president.

THE MAAYAN GILA Group of Springfield Hadassah will sponsor a Hanukkah roller skating party Sunday at the Florham Park roller rink from 4:30 to 8:30. Further information can be obtained by contacting Ruth Pinhasovitch at 376-0812 or Jackie Schuyler at 522-1949.

ELLEN TOMKO and Valarie Baker co-membership chairmen of the GFWC Junior Woman's Club of Connecticut Farms, Union, have announced the acceptance of two new members, Judy Mack and Cindy Rostack, to the club.

The women have completed the membership requirements and are now members reportedly of the largest volunteer women's organizations in the world. The Connecticut Farms Juniors are part of the Junior Membership Department of the New Jersey State Federation of Women's Clubs. An annual membership holiday party was held Friday at the Old Mansion in Elizabeth, organized by Denise Lloyd and Phoebe Pitarresi. Music chairman Jackie Perger has planned a caroling at Cornell Hall, Union, by members and their children, and a children's Christmas party also is set for tomorrow with stories and a visit from Santa. Additional information can be obtained by calling 964-5883 or 851-0994.

THE NORTHERN NEW JERSEY Region of Hadassah Career Women will hold a dinner meeting and Women's Financial Consulting Service, today at 5:30 p.m. at the Marriott Hotel, Saddle Brook. Participants in a panel discussion will be Ruth W. Friedland, attorney-at-law; Ilene T. Nadel, insurance agent and estate planner; Gail Cass, assistant vice president and trust officer; Jacqueline Klein, accountant and tax preparer, and Debra Kass, C.P.A. Hadassah members and prospective members who are "involved in the business world" are invited to the special program. Further information can be obtained by calling Sally Wovsaniker of Hillside at 354-3377 or 923-6649.

MEMBERS OF THE SOCIAL services department of the GFWC Woman's Club of Connecticut

Brunswick earmarked for Unicef, an annual federation project.

The executive board will meet next month at the home of Doris Hanson. Plans for a fund-raising white elephant sale will be discussed. Adele Pabish, first vice president, is collecting items for the sale. Additional information can be obtained by calling 686-8649.

HEALTH CO-CHAIRMEN Kathy Seiple and Risa Walsh, of the GFWC Junior Woman's Club of Connecticut Farms, Union, have announced the completion of a project for the New Jersey Foundation for the Blind. The profit received from a Tupperware party will be donated to the Diamond Spring Lodge, a facility provided by the Foundation for the Blind, in Denville. A second project will be the wrapping of 120 holiday gifts for clients at the Ruth Kliman Memorial Dialysis Center in Hillside. The Connecticut Farms Juniors also keep a lending library supplied with paperback books at the dialysis center. Anyone wishing to donate paperback books can call 964-5883 or 686-3488.

The non-profit service club which has members working in Union and the surrounding communities, has announced that women between the ages of 18-35 who want to "serve their community and make new friends" can call 964-5883 for more information.

THE THIRD ANNUAL banquet of the Springfield Folk Art Guild will be held tomorrow at 7 p.m. at the home of Elizabeth Markwith, guild president. Mrs. Markwith, known professionally as Madam Elizabeth of Montreal, has exhibited her work in craft shows in the area. Members expected to attend are Giovanna Beyer, Chris Campos, Meredith Francis, Pat Gargiulo, Jan Greene, Marge Halpin, Marilyn Lang, Joan Lynch, Elaine Palusak, Florence Quinzel, Nina Saia, Lorraine Scriba and Olga Vasselli. Students of the Folk Art Guild use the Joyce Howard and Millie Smith styles of painting.

Stork club

A 9-pound, 7-ounce son, David James Wilkinson, was born Aug. 20 to Mr. and Mrs. Clifford Wilkinson of Springfield. He joins a brother, Brian, 3.

Mrs. Wilkinson, the former Judy Simon, is the daughter of Mr. and Mrs. Philip Simon of Livingston. Her husband is the son of Mr. and Mrs. Clifford Wilkinson of West Chesterfield, N. H. Great-grandparents are Mr. and Mrs. Edward Simon of Matawan, Mrs. Ruth Betz of Lakewood and Mrs. Violet Fairbanks of West Brattleboro, Vt.

Make your special occasion a towering success. Reserve your date now.



Our castle creates the perfect setting for any party or business function.

Why have your special occasion at any hotel when you can hold it at the new Tara Hotel in Parsippany—in an elegant castle-like setting, amid woods and overlooking a quiet lake.

Whether you're planning an intimate party for 20 or a reception for 2,000, we'll make it a legendary event. With your own private entrance, white glove service and a menu created just for you.

So whatever the occasion—wedding, anniversary, Bar/Bat Mitzvah, company party, sales meeting or reception—make sure it's a towering success.

Call us today at 201-515-2000 and reserve your date at the Castle.



NEW IN PARSIPPANY!
Tara Hotel
THE FLATLEY COMPANY

I-287 & I-80 on Smith Road, Parsippany, NJ

GREAT PLACE
TO BUY...SELL
TRADE OR RENT

the Classifieds!

Happy Holidays from Action AMC-Jeep-Renault!

OVER 215 NEW CARS AVAILABLE

70 ALLIANCES
20 COMANCHES
80 CHEROKEES
20 WRANGLERS

2 SPORTSWAGONS
20 ENCORES
3 GRAND WAGONEERS
5 WAGONEERS LTDS

0%

apr financing and up to \$1,700 in tax savings to boot!

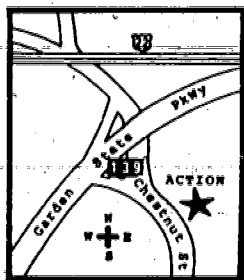


 <p>1987 ALLIANCE RENAULT, 4 cyl eng., auto trans, pwr str/brks, buc sts, Stk. No. 064-7, VIN No. 105501, LIST PRICE \$6696 FULL PRICE \$6195 SAVE \$501</p>	 <p>1987 ALLIANCE RENAULT, 4 cyl eng., auto trans, pwr str/brks, buc sts, Stk. No. 084-7, VIN No. 105569, LIST PRICE \$6645 FULL PRICE \$6195 SAVE \$450</p>	 <p>1987 ALLIANCE GTA RENAULT, 4 Cyl. eng., 5 spd man trans. pwr str/brks, buc sts, fog lamps, Stk. No. 104-7 VIN NO. 105473, LIST PRICE \$9578 FULL PRICE \$8579</p>	 <p>1987 COMANCHE JEEP, 6 cyl eng., 5 spd man trans, pwr str/brks, tilt whl, sp mirrors, intermittent wipers, AM/FM/Stereo, tint gl., Stk. No. 159-7, VIN No. 050685, LIST PRICE \$10,407 FULL PRICE \$8995 SAVE \$1412</p>
 <p>1987 WRANGLER JEEP, 6 cyl eng., auto trans., pwr str/brks, buc sts, sp mirrors. Stk. No. 024-7, VIN No. 510386, LIST PRICE \$11,320 FULL PRICE \$10,261 SAVE \$1059</p>	 <p>1987 CHEROKEE JEEP, 4 cyl eng., 4 spd. man. trans., pwr str/brks, buc sts, AM radio Floor carpet. stk. No. 055-7, VIN No. 003736, LIST PRICE \$13,038 FULL PRICE \$11,995 SAVE \$1043</p>	 <p>1987 EAGLE AMC, 6 cyl eng., auto trans., pwr str/brks, tilt whl, rf rack, pwr ant., sp mirrors, AM/FM/Stereo/Cass., wire whl cov., Stk. No. 087-7, VIN No. 700402, LIST PRICE \$14,271 FULL PRICE \$12,561 SAVE \$1710</p>	 <p>1987 TRUCK JEEp 5.9 Litre eng., auto trans., pwr str/brks, sp mirrors, sp str whl, sliding r win, Stk. No. 111-7, VIN No. 028128, LIST PRICE \$13,876 FULL PRICE \$12,595 SAVE \$1281</p>

USED CAR DEPARTMENT

<p>1979 PINTO FORD, 4 cyl eng., auto trans, pwr str/brks, r def, bod sid mldg, W/W tires, buc sts, AM radio, Stk. No. AU221, VIN No. 136750, 50,415 miles. FULL PRICE \$795</p>	<p>1978 GL SAAB, 4 cyl eng., 4 spd man trans, pwr str/brks, r def, buc sts, sp mirrors, AM/FM/stereo/cass, Stk. No. AU220, VIN No. 005139, 74,976 miles. FULL PRICE \$795</p>	<p>1979 SPIRIT AMC, 8 cyl eng., 4 spd man trans, pwr str/brks/dr lcks, a/c, r def, buc sts, sp mirrors, AM/FM/stereo/tape, Stk. No. AU108, VIN No. 149771, 70,857 miles. FULL PRICE \$995</p>	<p>1977 LTD FORD, 8 cyl eng., auto trans, pwr str/brks, a/c, rf rack, r def, bod sid mldg, sp mirrors, AM/FM/stereo, Stk. No. AU167, VIN No. 167100, 96,619 miles. FULL PRICE \$1195</p>	<p>1979 PRELUDE HONDA, 4 cyl eng., 5 spd man trans, man str, pwr brks, r def, bod sid mldg, buc sts, sp mirrors, sun rf, AM/FM/stereo, Stk. No. AU228, VIN No. 003817, 76,383 miles. FULL PRICE \$1295</p>	<p>1982 ZEPHYR MERCURY, 4 cyl eng., auto trans, pwr str/brks, a/c, W/W tires, r def, bod sid mldg, AM/FM/stereo, Stk. No. AU216, VIN No. 605572, 87,547 miles. FULL PRICE \$1495</p>	<p>1981 GRANADA FORD, 6 cyl eng., auto trans, pwr str/brks, a/c, W/W tires, r def, bod sid mldg, sp mirrors, AM/FM/stereo, Stk. No. AU203, VIN No. 127999, 89,605 miles. FULL PRICE \$2295</p>	<p>1982 LN7 MERCURY, 4 cyl eng., 4 spd man str, man str/brks, rally tilt whl, r def, buc sts, bod sid mldg, sun rf, Stk. No. AU190, VIN No. 627882, 60,495 miles. FULL PRICE \$2495</p>	<p>1981 GRANDPRIX PONTIAC, 6 cyl eng., auto trans, pwr str/brks, a/c, tilt whl, W/W tires cr con, sp mirrors, AM/FM/stereo/tape, Stk. No. AU109, VIN No. 555516, 51,156 miles. FULL PRICE \$2895</p>	<p>1979 CELICA TOYOTA, 4 cyl eng., 5 spd man trans, pwr str/brks/ant, a/c, sunrf, AM/FM/stereo/cass, Stk. No. AU260, 78,783 miles. FULL PRICE \$2995</p>
<p>1984 TEMPO FORD, 4 cyl eng., auto trans, pwr str/brks, r def, W/W tires, bod sid mldg, buc sts, AM/FM/stereo, Stk. No. AU12, VIN No. 232004, 31,488 miles. FULL PRICE \$3995</p>	<p>1985 TERCEL TOYOTA, 4 cyl eng., 5 spd man trans, pwr brks, man str, r def, buc sts, AM/FM/stereo/tape, Stk. No. AU098, VIN No. 324194, 23,523 miles. FULL PRICE \$4995</p>	<p>1982 CELICA TOYOTA, 4 cyl eng., 5 spd man trans, pwr str/brks, r def, buc sts, tilt whl, bod sid mldg, cr con, sp mirrors, AM/FM/stereo/cass, Stk. No. AU231, VIN No. 085952, 40,706 miles. FULL PRICE \$5995</p>	<p>1983 CJ7 JEEP, 6 cyl eng., auto trans, pwr str/brks, r def, buc sts, sp mirrors, AM/FM/stereo/cass, Stk. No. AU230, VIN No. 066881, 19,069 miles. FULL PRICE \$7995</p>	<p>1984 GL-10 SUBURU, 4 cyl eng., auto trans, pwr str/brks, a/c, tilt whl, rf rack, r def, bod sid mldg, buc sts, sp mirrors, sun rf, AM/FM/Stereo, Stk. No. AU236, VIN No. 424397, 21,770 miles. FULL PRICE \$7995</p>	<p>1986 COMANCHE JEEP, 4 cyl eng., 4 spd man trans, pwr str/brks, sp mirrors, Stk. No. CG197, VIN No. 046516, 2857 miles. FULL PRICE \$8495</p>	<p>1984 TORNADO OLSMOBILE, 8 cyl eng., auto trans, pwr str/brks/sts/win/dr lcks, a/c, tilt whl, W/W tires, r def, bod sid mldg, cr con, sun rf, AM/FM/stereo/cass, Stk. No. AU232, VIN No. 314736, 56,094 miles. FULL PRICE \$8995</p>	<p>1981 280 ZX DATSUN, 4 cyl eng., 5 spd man trans, pwr str/brks/win/ant, r def, buc sts, bod sid mldg, cr con, sp mirrors, sun rf, AM/FM/stereo/cass, Stk. No. AU082, VIN No. 1866452, 62,899 miles. FULL PRICE \$8995</p>	<p>1985 COUGAR MERCURY, 6 cyl eng., auto trans, pwr str/brks/win/sts/dr lcks, a/c, tilt whl, r def, sp mirrors, AM/FM/stereo/cass, Stk. No. AU259, 5900 miles. FULL PRICE \$8995</p>	<p>1983 WAGON VOLVO, 4 cyl eng., auto trans, pwr str/brks/win, a/c, r def, bod sid mldg, buc sts, sp mirrors, AM/FM/stereo/cass, Stk. No. AU234, VIN No. 495666, 37,145 miles. FULL PRICE \$9995</p>

Prices exclude tax and license fees. Immediate delivery on all cars in stock. Allow 2-6 weeks delivery on all cars not in stock. Prices in this ad cancel and supercede all previous offers. Ad must be presented at time of deposit to qualify for advertised prices. Not responsible for typographical errors. 0% APR fin. avail. for 24mths, on selected '86 models with no money down. Other low int. rates also avail.



ACTION

AMC-JEEP-RENAULT

595 Chestnut St. Union, N.J. 07083 201-686-6566

CALL MR. BUSCH
FOR SAME DAY
CREDIT APPROVAL
HABLAMOS
ESPAÑOL
& PORTUGUESE

AUTOS FOR SALE

1977 PONTIAC Gran Prix-301 V8, power steering and brakes, air condition, am/fm. \$495. 232-7974.

1978 PONTIAC Bonnyville-Black with red velour interior. PS, PB, rear window defogger. Low mileas, very clean. Must see. Asking \$3,000 or best offer. Call Ernest, 276-8017.

1984 PONTIAC GRAND PRIX LE - V6, fully equipped, AM/FM cassette stereo, all power options, T-roof, alarm. Good condition, 45,500 miles. Asking \$6,900. Call 964-8832.

1982 SAAB 900S - 4 door walnut, 5 speed, excellent condition, garaged 78,000 miles. \$6100. Call after 7PM, 335-4527.

1979 SUBARU - 2 door, air conditioning, AM/FM radio, automatic trans, 68,000 plus miles. Must sell. Call 688-8457 evenings.

1981 TOYOTA CELICAGT-31,000 miles, 5 speed, 2 door, \$3200 or best offer. 396-4721.

1981 TERCEL Sedan-47,000 miles, auto, 4 door, am/fm. Excellent condition. \$2750-Negotiable. Call 467-1407.

1974 TOYOTA Celica-New body work. New front end, new clutch. Runs good. Asking \$600. Call Anthony, 964-1884, after 6pm.

1984 TOYOTA COROLLA. Four door deluxe, five speed, air conditioning, power steering, power brakes, sunroof, dual mirrors. 45K miles. Mint condition. Asking \$5,900. Call 687-5859.

1980 TOYOTA COROLLA - Station Wagon, P/S, P/B, automatic transmission, AM/FM radio, air conditioning, high mileage, 1 owner, excellent condition. \$1200. Call eves: 564-9371.

1973 VOLKSWAGEN BUG - One owner, good condition, standard transmission. \$800. Call 245-6052.

1974 260Z- Body in excellent condition. Good for college student. \$3,000. Call 851-0525.

AUTOS WANTED

TOP \$\$\$ IN CASH
For ALL Cars & Trucks
CALL DAYS
589-8400
or **EVES.**
688-2044
(Same day Pick-ups)

We Buy Junk Cars
TOP \$\$ PAID
24 hr. serv. 688-7420

WE PAY CASH- FOR YOUR JUNK CAR OR TRUCK. 375-1253. IRVINGTON. HIGHEST PRICES PAID!

TRUCKS FOR SALE

1984 CHEVY - S10 Pick-up, 2 tone paint with matching cap, extended cab with jump seats, PS, PB, automatic overdrive, V6, AM/FM stereo, 38,000 miles. \$7500 or best offer. Call 687-5171, after 5:30pm.

CJ 7- RENEGADE 1979 - 52,000 miles. Automatic, silver and blue 258 six heavy duty jeep set up for plowing. Mechanically sound with Western 6 1/2 ft. Excellent condition. \$3,500 or best offer. Also, 1976 Dodge power wagon 4 x 4 dump single rear wheel. \$3,500 or best offer. Call Brian after 7 PM 688-3699.

1982 DATSUN PICK-UP - Tonto cover, light bar, AM/FM Cassette, spoke wheels, excellent condition 72,000 miles. \$2750. Call after 7PM, 335-4527.

2-ANNOUNCEMENTS

ENTERTAINMENT

ACCORDIONIST - VIOLINIST OR TRIO. For Social or Christmas Parties.

JOHN LENARD 353-0841

ENTERTAINMENT

Having The Perfect Party?
Call
PERFECT SOUND
Experienced D.J.'s with
Music For
ALL Occasions
CALL
226-7387
NOW!

LOST AND FOUND

Lost & Found ads will run for two weeks FREE as a service to residents in our 9 Communities.

FOUND - Brown/Orange colored striped kitten, declawed, very friendly. Found on Vauxhall Road by Beth Shalom Synagogue, Union. Call 964-4913 after 5pm.

LOST - Dog, Maltese, small with long white hair, male, has Roselle Park tags, answers to "Muffin". If found please call 382-1066 between 9am - 6pm, or 486-1359. \$100 REWARD.

LOST-Cat-The Pointe, Fairway Drive area. Balck and white female with 1 eye. answers to Kittywink. Reward. Please call, work, 686-3132, ext. 274, home 686-2139.

LOST - Dog, Medium size, mixed breed, female, black, white and brown. Sick 87 year old woman is heartbroken. Please help her find her pet. 992-1453, 687-4243.

PERSONALS

A TRUE PSYCHIC
MRS. RHONDA
READER & ADVISOR
I give all types of Readings and Advice. I can and will help you where others failed. I have been established in Union, since 1968. By appointment 686-9685 or 964-7289. 1243 Stuyvesant Ave., Union, near Food-town. Open daily from 9 to 9.

BIBLE
MOMENT
Start Your Day Right
Please Call:
964-6356

CEMETERY PLOTS
HOLLYWOOD
MEMORIAL PARK
Gethesmane Gardens,
Mausoleums. Office: 1500 Stuyvesant Ave., Union.
688-4300

LOSEWEIGHT- FEEL GREAT.
LOSE INCHES. FEEL STRESS
FREE. TRY NEW AND IMPROVED
HERBAL PRODUCTS. CALL
992-8567.

THANKSGIVING
TO SAINT JUDE
O Holy St. Jude, Apostle and Martyr, great in virtue and rich in miracles, near kinsman of Jesus Christ, faithful intercessor of all who invoke your special patronage in time of need, to you I have recourse from the depth of my heart and humbly beg to whom God has given such great power to come to my assistance. Help me in my present and urgent petition. In return I promise to make your name known and cause you to be invoked. Say three Our Fathers three Hail Marys and Glorias. St. Jude pray for us and all who invoke your aid. Amen. This novena has never been known to fail. I have had my request granted, publication promised. J.F.

PERSONALS

THANKSGIVING
TO SAINT JUDE
O Holy St. Jude, Apostle and Martyr, great in virtue and rich in miracles, near kinsman of Jesus Christ, faithful intercessor of all who invoke your special patronage in time of need, to you I have recourse from the depth of my heart and humbly beg to whom God has given such great power to come to my assistance. Help me in my present and urgent petition. In return I promise to make your name known and cause you to be invoked. Say three Our Fathers three Hail Marys and Glorias. St. Jude pray for us and all who invoke your aid. Amen. This novena has never been known to fail. I have had my request granted, publication promised. V.L.

VICTIM
Of burglary and severe beating left disabled. No assets. Destitute with soaring bills. Please God send help. Please reply P.O. Box 512, Vauxhall Road, Union, N.J. 07088.

WORD OF LIFE
FAMILY CHURCH CARES
ARE YOU HURTING?
.....LONELY?
DO YOU NEED A FRIEND?
ARE DRUGS OR ALCOHOL A
PROBLEM?
We Care And Would Like To Help
PLEASE CALL
Pastors Efrain & Phyllis Valentine
At Church Office 687-4447

3-EMPLOYMENT

CHILD CARE
I-Will babysit your child starting January 5 in my Roselle Park home. Near transportation. Lots of T.L.C. Also crib and other accommodations. Reasonable rates. 241-7251.

LOOKING - For full time babysitter in your home, Union area. Please call Debbie at 779-9545 days, 686-5770 evenings.

LOVING Person-Needed 2 or 3 days per week to care for 2 children in our Millburn home. Some housekeeping. References. 564-6357.

EMPLOYMENT WANTED

BOOKKEEPING
Done at home for small businesses. Call 272-5290 or 527-0479 after 6pm.

NURSES AIDE - Takes care of the sick and elderly, 3pm-11pm or 11pm-7am. Also cleaning service. Call 674-4932 or 675-8919.

NEED Something typed? Experienced typist working in home with experience in legal work-IBM Correcting Selectric 2. Call 964-0919.

HELP WANTED

AIRLINES - Now hiring. Flight attendants, agents, mechanics, customer service. Salaries to \$50K. Entry level positions. Call 1-805-687-6000 Ext. A-499T.

ADULT CARRIERS
Permanent part time positions are available near your home early mornings. Newspaper routes earning \$350 - \$400 per month plus cash incentives will help you supplement your income. Make your early mornings productive and profitable. Approximately 1 - 1 1/2 hours per day, seven days. Call toll free 1 (800) 242-0850 or 877-4222.

AIRLINE - CRUISE SHIP jobs now hiring. Big money. Will train. 716-882-2900, including evenings, EXT. 6064.

HELP WANTED

AUTO
MANAGEMENT
OPPORTUNITIES
JIFFY LUBE, one of the fastest growing franchises in America, is opening several new locations in:
•SPRINGFIELD •ROCKAWAY
•MONTVILLE •CRANFORD
•UNION
We have immediate positions available for:
•MANAGERS
•ASSISTANT MANAGERS
Applicants should have some supervisory or management experience in a service oriented business but WE ARE WILLING TO TRAIN highly personable and career oriented individuals.
For more information call or forward resume including salary history and location of interest to Ms. Jane Ryan:
Suburban Lubrications, Inc.
258 Park Street
Upper Montclair, NJ 07043
201-745-4088

BANKING
FLOATING
TELLERS
You benefit more
from United Jersey!
United Jersey is a fast-growing, progressive bank that offers top salaries, excellent working conditions and outstanding benefits to staff.
Must have 1 year plus teller experience with excellent proof record or customer service rep background and own car to travel among our 10 branches in Middlesex and Union counties. Salary, depending on experience, up to \$275/wk plus mileage.
We offer:
• Good starting salaries
• Excellent benefits
• Paid vacation and holidays
• Free checking
For more information, or to arrange an interview, please call (201)354-7400 ext. 321. We are an equal opportunity employer M/F/H/V.
United Jersey
The fast-moving bank

AIRLINES Now Hiring-Flight attendants, agents, mechanics, customer service. Salaries to \$50K. Entry level positions. Call 1-805-687-6000, Ext. A-1448.

AUTOMOTIVE- OFFICE HELP Start the new year in a brand new office facility with a new staff and new computer. Two positions to fill. Diversified duties include billing, A/R, A/P, MV, etc. Full benefits. Call 273-6060. Ask for Janet.

BANKING
ASSISTANT BRANCH
MANAGERS
Crestmont Federal has immediate full time opportunities available at our Springfield & Clark branches.
The ideal candidate will have 1-2 years teller experience. Excellent customer service skills. We offer competitive salary, excellent benefits and pleasant work environment.
If you feel you would like to work in an exciting, fast paced environment, call for immediate consideration.
763-4700, Ext 234
CRESTMONT
FEDERAL
SAVINGS

3.9% / OR \$3000

APR FINANCING

AVAIL. TO QUAL. BUYERS*

REBATE on select models

'86 CROWN VICTORIA LTD
 Ford, Std. Eq: 5.0 Liter E.F.I. V-8 with Auto. Overdrive Trans., W/W Tires, Luxury Rr. Half Vinyl Roof; Pwr. Strg., Pwr. Brks.; Opt. Eq: Spd. Cntrl., Frt. & Rr. Bumper Rub Strips, Rr. Wind. Defr., Air Cond., Rt. Remote Mr., Rocker Panel Mldgs., Tnt. Glis., Lt. Grp. Stk. No. 7637, 8929 Miles, Demo.
MFR. SUGG. LIST PRICE \$14,474
WYMAN FORD DISCOUNT 2,000
\$12,474

BRAND NEW FORD '87 MUSTANG LX 2 DR.
 Std. Eq: 2.3 Liter 4 Cyl. Engine, Pls, P/B, Opt. Eq: A/C, Rear Window Defrost, Tint Glass, Automatic Overdrive Transmission, P195 75 R/4 White Sidewall Tires. Stock No. 7882
\$10,322
\$623
MFR. SUGG. LIST PRICE \$10,945
WYMAN FORD DISCOUNT 1,246
\$9699

BRAND NEW FORD '87 ESCORT 2 DR.
 Std. Eq: Pwr/Brks., 4 Cyl., Frt. Whl. Drive, Opt. Eq: Auto. Wide Body Side Mldgs., AM/FM Stereo, Dig. Clock, Tint Glis., Pwr/Strg., Interval Wipers, Instr. Group, Dual Elec. Mtrs., Rr. Defr., Air Cond. Stock No. 7780
\$9574
\$660
MFR. SUGG. LIST PRICE \$10,234
FORD DISCOUNT 1,935
WYMAN FORD DISCOUNT 1,999
\$8293

BRAND NEW FORD '87 TEMPO 4 DR.
 Std. Eq: Pwr/Brks., Pwr/Strg., 2.3 Liter 4 Cyl., Frt. Whl. Drive, Opt. Eq: Tint Glis., Dual Elec. Mtrs., AM/FM Stereo, Pwr/Locks, Pwr/Seats, Pwr/Winds., Auto., Rr. Defr., Air Cond. Stock No. 7770
\$11,316
\$333
MFR. SUGG. LIST PRICE \$11,649
FORD DISCOUNT 1,416
WYMAN FORD DISCOUNT 1,000
\$10,233

Motorcraft

VALUABLE COUPON
\$ MOTORCRAFT LUBE, OIL & OIL FILTER SPECIAL
 Includes up to 5 quarts of Motorcraft oil, Motorcraft oil filter and installation. Diesel equipped vehicles slightly higher.
TOTAL PRICE \$19.95
PARTS & LABOR
EXPIRES 12/31/86

VALUABLE COUPON
\$ MOTORCRAFT ENGINE TUNE-UP SPECIAL
 Solid state tune-up includes installation of Motorcraft spark plugs; inspection of choke, throttle linkage, spark plug wires & distribution cap; adjustment of idling & timing. Aerostars & Econolines slightly higher.
TOTAL SPECIAL PRICE PARTS & LABOR: 1.6-CYL. \$49.95 2-CYL. \$59.95 3.0-CYL. \$62.95
EXPIRES 12/31/86

FREE CALCULATOR

While They Last. With This Ad.

SUBURBAN TRADED USED CARS		
'82 BUICK REGAL WAGON 4 DR 6 Cyl., Auto., Air Cond., Pwr. Strg., Pwr. Brks., Pwr. Winds., Pwr. Locks, Pwr. Sts., Cruise, AM/FM Stereo, Rf. Rack, Rr. Defr., 82,957 mi. \$2895	'84 MERCURY TOPAZ 4-DR. 4 Cyl., Auto., Pwr. Strg., Pwr. Brks., Air Cond., AM/FM Stereo, Rr. Wind. Defogger. 32,276 mi. \$4895	'82 FORD T-BIRD TOWN LANDAU 2 DR. 8 Cyl., Auto, AC, P/S/B/ wnds/Ant, 6-Wy P/Sts, Cruise, Tilt, AM/FM Ster. Tape, Cust Whis, Vel. Int, Land. Rf, Rr Wind Def., Wht W/Red Int. 65,539 mi. \$4295
'84 FORD LTD 4 DR. 6 Cyl., Auto., Air Cond., Pwr. Strg., Pwr. Brks., AM/FM Stereo, Rr. Wind. Defr. 54,054 mi. \$4795	'80 LINCOLN TOWN CPE 2-DR. 8 Cyl., Auto., AC, Pwr. Strg., pwr. Brks., Pwr. dr. Lks, Pwr. Sts., Leath. Int., Land. Rf., Tilt, Cruise, AM/FM Ster. Cass. Tape, Dig. rdout Sys., Rr. Wind. Def. 71,226 mi. \$4995	'84 FORD TEMPO 4 DR. 4 Cyl., Auto., Air Cond., Pwr. Strg., Pwr. Brks., AM/FM Stereo, Rr. Wind. Defogger. 32,846 mi. \$4995
'83 CHEVY CAPRICE CLASSIC 4 DR. 6 Cyl., Auto., AC., Pwr. Strg., Pwr. Brks., Wire Whis., Rr. Wind. Defogger. 45,758 mi. \$5495	'83 OLDS CUTLASS CUSTOM CRUISER STATION WAGON 8 Cyl., Auto., AC, Pwr. Strg., Pwr. Brks., Pwr. Dr. Lks, pwr. Sts., Pwr. Rr. Wind., AM/FM Ster. Cass., Rf. rack, Rr. Wind. Defogger. 54,278 mi. \$4995	'79 FORD FAIRMONT STATION WAGON 6 Cyl., Auto, Air Cond., Pwr. Strg., Pwr. Brks., Rr. Wind. Defogger, AM/FM Stereo. 51,262 mi. \$1995

Prices incl. freight & prep; excl. tax & lic. fees. *3.9% financing avail. for 24 months or \$300 Rebate offer expires 1/4/87.

One of the Oldest Ford Dealers in New Jersey

We're an In-Town No-Hassle, Down-to-Earth Dealership with Over 50 Years of Honesty & Integrity.

WYMAN FORD

OPEN DAILY 9-9
 FRI 9-6 SAT 9-5



1713 SPRINGFIELD AVE., MAPLEWOOD 761-6000

HELP WANTED

BANK

TELLERS

Our Tellers Have A Secret They Want to Share Their Salaries Are Among The Highest In The State!

As a key element in our concerted team effort they are:

- Professional
- Intelligent
- Well-Trained
- Highly Motivated

and above all
 •Financially Rewarded
 Part Time/\$7.50-9.50 *Min Starting Salary
 Depending Upon Experience

THE CHATHAM TRUST CO.

PART TIME
 *MORRISTOWN AND CONVENT STATION
 Mon., Fri., 11 AM-3 PM

THE SUMMIT TRUST CO.

PART TIME

*CLARK
 *SHORT HILLS

THE MAPLEWOOD TRUST & BANK CO.

PART TIME
 *PARKER OFFICE

Previous teller experience is always preferred but will DEFINITELY consider individuals who have the right stuff—effective communication skills, figure aptitude, and good interpersonal ability.

FLOATING TELLERS
 \$260 Min. Starting Salary
 FULL TIME

At least one year teller experience preferred but will consider individual with two years cashier experience. Must be willing to learn various on-line teller systems. You will travel between corporate banking centers and must provide own transportation. (Mileage allowance).

**PART TIME
 FLOATING TELLERS**
 \$8.50 -10.50/Hour
 PLUS 7.50 A Day BONUS
 Mon., Thurs., Fri.

Prior teller experience required (at least 9 months) hour are flexible (under 20 per week). Must be able to work in our various branches in central New Jersey and provide own transportation.

Take the first step toward joining our team of professionals by calling our Human Resources Department, Monday-Thursday between 9 AM-3 PM.

(201) 522-3680



100 Industrial Road
 Berkeley Heights, NJ 07922
 Equal Opportunity Employer M/F/H

ACCOUNTS PAYABLE

Small electronics manufacturer in Springfield has an opening for an individual with some experience. Some posting of inventory records included with duties.

**VICTORY ENGINEERING
 PERSONNEL MANAGER**
 379-5900, Ext. 22

ASSIST-Mentally retarded residence in learning independent living skills in group home. Creative, rewarding and responsible positions offering varied schedules and excellent benefits. For further information call June Anderson, 464-8008.

HELP WANTED

HELP WANTED

BOOKKEEPER

Experience with one write A/R, A/P Systems. Extremely busy office, much paper work and follow-up. Call Kathy for Appointment between hours of 1pm-5pm:

686-3100

ADMITTING REPRESENTATIVE

Work part-time, 3-8PM on Tuesdays and Wednesdays in our busy Admitting Office. Relevant experience desired.

Apply Personnel Dept., 687-1900

UNION HOSPITAL

1000 Galloping Hill Rd.
 Union, NJ 07083
 an equal opportunity employer

BANK TELLER EXPERIENCED

For cash desk position. Full or part time positions available. Duties include reconciling daily cash receipts and making bank deposits. Call 731-4663 and/or 731-2360.

BILLING CLERK

Full-time position is currently available in the fast-paced Billing Department of our modern teaching hospital. We seek an individual who has had experience in hospital/third party billing.

Competitive salary and benefits. Apply Personnel Dept., 687-1900.

UNION HOSPITAL

1000 Galloping Hill Rd
 Union, NJ 07083
 an equal opportunity employer

CLERICAL

Immediate openings in Union area. For bright ambitious person to perform various office duties include light typing, filing, and switchboard relief. Full Benefits package. Non-smoker preferred.

Call for appointment between 2pm & 5pm

686-3100

CLEANING SERVICE. Night person. Eight hours per night. Three days per week. \$4.00 per hour. Call 371-1158.

CABLEMAN/W - Experienced only, to install cable TV in large apartment complex. Also to make minor repairs. Call 373-2242.

CLERICAL-TYPIST/ADV.

Be part of a dynamic team for busy Union Advertising Agency. Immediate opening for bright, excellent typist with good clerical skills and telephone manner. Must be able to work independently and pay strict attention to details. Profit sharing/Pension Plan/excellent salary. Pleasant, congenial office. We will train the right person. Ideal for person returning to work force or other qualified applicant. Call Vera at 964-8746.

COOK SUPERVISOR - Full time, temporary, Monday-Friday, 6am-2pm, experience necessary, modern nursing home. Call Monday-Friday, 10am-4pm for appointment, 371-7171.

CLERICAL - Position available for insurance agency. Apply 1292 Stuyvesant Ave., Union.

HELP WANTED

BANKING

Would You Like A Career In Banking, RETIREMENT ACCOUNTS SPRINGFIELD

An excellent full time opening is now available in the Retirement Accounts Department of our growing savings and loan.

The ideal candidate will have excellent communication skills for customer contact, good figure aptitude, organizational skills, and light typing ability. Prior banking experience a definite plus.

**COMPETITIVE SALARY
 BENEFITS PACKAGE
 ADVANCEMENT OPPY'S
 TUITION ASSISTANCE**

Please call for an appt:

763-4700 EXT.234



Equal Opportunity Employer

HELP WANTED

CLERICAL

Springfield regional office of life insurance company seeks flexible person who enjoys working with people. Interesting and diversified responsibilities. Light typing, computer work, good communication skills a must. Excellent benefits and working conditions. Call Joan at 564-8510.

CLERK TYPIST - Part time, 2-4 hours per day, 5 days per week. Call MALLOR-MC CABE & CO., 564-8100.

COOK- For New Year's Eve. To prepare dinner for 100 people. Call 686-0005.

DRIVERS

Part time. Suitable for retiree. Excellent working conditions. Flexible hours. Company vehicle. Call Ben: **241-6900**

DRIVER

Part time opportunity working on an as needed basis between 8 am & 1 pm for mature person with valid N.J. driver's license and good driving record. Will drive employees from case to case. Car will be supplied. Call 379-3368.

OMC

Health Care Systems
 120 Millburn Av. Millburn
 Equal oppy employer m/f

DRIVER - Part time, full time delivery person for local expanding company. Call 564-6355.

FLOOR Polisher-Strip and wax with floor machine. Experienced only. Cal 373-2242.

CRT OPERATOR/DATA BASE INFORMATION CLERK

Immediate full time position vacancy for a CRT Operator/Data Base Information Clerk. Responsibilities will include data entry, maintaining files, updating Data Base, and controlling information. Individual must possess good organizational skills and be able to function independently. A company benefits package and competitive starting salary accompany this 37 1/2 hour a week position. If interested call Personnel, 277-8633.

Summit Medical Group, P.A.

170 SUMMIT AVENUE • SUMMIT, NEW JERSEY 07901

BANKING

TELLERS

WE'D LIKE TO MEET YOU...

Crestmont Federal with over \$1 Billion in assets offers excellent growth opportunities for both experienced and entry level tellers in our branch system. We currently have a number of full and part time openings available for bright individuals who are good with figures and have proven their ability to work well with people in a service environment.

- | | | |
|--------------|------------------|-------------------|
| •SPRINGFIELD | FULL TIME | •SOUTH PLAINFIELD |
| •MORRISTOWN | •MADISON | •EDISON |

- | | | |
|-------------------|------------------|-------------|
| •MORRISTOWN | PART TIME | •WOODBRIDGE |
| •MADISON | | •WESTFIELD |
| •PLAINFIELD | | •MIDDLETOWN |
| •SOUTH PLAINFIELD | | •MAPLEWOOD |

CUSTOMER SERVICE

- | | |
|--------------------|------------------|
| •SPRINGFIELD (F/T) | •MAPLEWOOD (F/T) |
|--------------------|------------------|

Crestmont Federal offers excellent advancement opportunities and competitive salaries. Our part time positions offer excellent hours for students and homemakers - with the opportunity to make extra cash. Our full time positions offer a full benefits package including medical and tuition refund. Please call Daisy Pascuale in our Human Resources Department at:

763-4700 EXT.235



Equal Opportunity Employer

APPRENTICE FIRE RESTORATION WORK

If you are responsible and diligent and looking for steady employment, this could be just what you're looking for. We are a leading company in the field of fire cleaing. 6 day week. Must have valid driver license. Fine benefits. Call 686-7790 for additional information.

BUSINESS BROKERAGE-SALES

Springfield company specializing in the sale of businesses ranging from \$50,000 to \$5,000,000 plus, seeks business oriented individuals to join sales team. Full training and ongoing support team. Larry Bodner 376-1032.

CLERICALS
Our Customers are Selective
Our Employees are Superior
SELECTIVITY AND SUPERIORITY
Do These Qualities Describe You?

Internal promotions and continuing expansion have created these diversified positions:

FULL TIME**Commercial Loan Clerk**

MORRISTOWN-This entry level position has a variety of diversified tasks - typing, record keeping, update and file maintenance, phones, etc.

Purchasing Clerk

BERKELEY HEIGHTS-Heavy typing, phone contact, filing, able to use PC. Ideal for recent business school grad.

Receptionist

CHATHAM-Greet customers, light typing, filing, etc. Front office appearance required.

Our Salaries are highly competitive and we offer an outstanding benefits package including savings plan.

**PART TIME
Berkeley Heights Location****Junior Maintenance Engineer**

Three full days 8 AM-4:30 PM. Ideal for recently retired individual or student attending local college part time. Some heavy lifting, valid N.J. drivers license.

Cash Management Clerk

Monday - Friday 9 AM - 1 PM. Processing equity payments and lock boxes.

Find out more by calling our Human Resources Department Monday - Wednesday between 9 AM - 3 PM.

(201) 522-3680



100 Industrial Road
Berkeley Heights, N.J. 07922

Equal Opportunity Employer M/F/H/V

CUSTOMER SERVICE REP
You benefit more from United Jersey!

United Jersey is a fast-growing, progressive bank that offers top salaries, excellent working conditions and outstanding benefits to staff.

This position is located at our office in Mountainside, NJ, Route 22. 6 months bank platform experience essential, teller or supervisor background preferred.

- We offer:
- Good starting salaries
 - Excellent benefits
 - Paid vacation and holidays
 - Free checking

For more information, or to arrange an interview, please call (201) 354-7400 ext. 321. We are an equal opportunity employer M/F/H/V.



The fast-moving bank

FLOORSanders-To sand and finish wood floors. Experienced only. Call 373-2242.

GLASSMAN/W - Experienced only, to install glass in large apartment complex. Call 373-2242.

DATA PROCESSING CONTROL CLERK

Full time position available in our multi specialty Group Practice facility for a Data Processing Control Clerk. Individual will coordinate all information flowing through, and processed by, the Data Processing department to assure completeness and accuracy. Typing experience and previous exposure to use of a Data Terminal a plus. Willing to train. We offer a comprehensive benefits package and a salary commensurate with ability. If interested, please call Personnel, 277-8633.

Summit Medical Group, P.A.

120 SUMMIT AVENUE SUMMIT, NEW JERSEY 07901

ENGINEERING DRAFTSMAN

Linden, New Jersey, Engineering Department

Duties - Shall include the preparation of drawings for all phases of municipal engineering including drainage, roads and sewers. Experience preferred but not required.

Liberal fringe benefits.
Salary commensurate with experience.
Linden residents preferred.
Equal Opportunity Employer.

Send resume to John A. Ziemian, City Engineer, 301 N. Wood Avenue, Linden, New Jersey, 07036. - Call for interview (201) 486-3800.

ELECTRONIC TECHNICIAN

We have an immediate opening for a qualified technician of 2 way mobile radios. Good Benefits. Salary negotiable. Call for an appointment:

245-6307

FULL TIME CLERICAL - Small busy Union office with pleasant atmosphere. Light typing and scheduling appointments, good spelling and excellent phone skills a must. Non-smoker. Insurance background helpful but not necessary. Call 964-4228.

FULL TIME-Office help. Available for busy office in Union. Must type and possess good business manner. Call Joann, 687-5962.

GOVERNMENT JOBS - \$16,040-\$59,230 year. Now hiring. Call 1-805-687-6000 Ext. R-4991 for current federal list.

GOVERNMENT JOBS 16,040 - \$59,230/yr. Now Hiring. Call 805-687-6000 Ext. R-1448 for current federal list.

GAL/GUY FRIDAY
Mature, responsible, accurate person for general office work including typing, filing, phones, people contact for busy Essex County office. Experienced only. Salary commensurate with experience. Call 373-2242.

GROUNDMAN

For tree service work. Experience preferred, but will accept trainee. Drivers license required. Call-245-1919.

HOUSEKEEPER - COMPANION - Springfield. Hours preferably 1 PM - 7 PM, 5 days. Saturday hours flexible. Car helpful. By appointment call 376-1622.

INVENTORY P/T DAYS YEAR-ROUND TEMP JAN-MARCH

National inventory company seeks 20-30 reliable individuals, with cars. Average 25-35 hrs. weekly. \$5.50 to start. Paid training in December. Travel & auto allowances. Call for interview between Mon-Fri, 12-5pm ONLY at:

686-5967

MEDICAL ASSISTANT

Part time afternoon position available. Phone 376-2965, between 9-4pm.

JUNIOR CARRIERS

Boys and girls who are interested in earning money, winning cash and prizes are needed in the Union County area. Deliver the Star Ledger in your neighborhood. You must be at least 11 years old. Call toll free 1 (800) 242-0850 or 877-4222.

**Legal Secretaries
Springfield**

Busy firm needs experienced Secretaries with good real estate background. Steno required. Knowledge of Word Perfect a plus. Excellent benefits and working conditions. Call Mrs. Peek at:

467-4444

For an Appointment

PART TIME PERSONNEL CLERICAL

Hillsode mfg. seeks person with at least one year personnel/clerical experience to handle clerical/typing duties in Personnel Department. Hours are 9 AM - 1 PM. Applicants please call Mr. Cushman between 1 PM and 2 PM at 353-6700, Ext. 216.

HEALTH CARE OPPORTUNITIES

The Summit Medical Group, P.A., A Multi-Specialty Group Practice, is now accepting applications for the following ideal opportunities:

CRT Operator/Data Base Info. Clerk

Data Processing Clerk F/T

File Clerks F/T

File Clerks P/T Evenings

Insurance Patient Rep F/T

Medical Technologist F/T

Medical Transcribers FT/PT

Phlebotomists F/T

Receptionists FT/PT

X-Ray Technicians P/T Watchung Office

We offer excellent salaries plus company paid benefits with most positions. If interested, please call Personnel, 277-8633.

Summit Medical Group, P.A.

120 SUMMIT AVENUE • SUMMIT, NEW JERSEY 07901

INSURANCE PATIENT REPRESENTATIVE

Full time position available in our Insurance Department. Typing and proficiency in math skills required. Insurance background preferred but not necessary. If interested, please call Personnel 277-8633.

Summit Medical Group, P.A.

120 SUMMIT AVENUE SUMMIT, NEW JERSEY 07901

MECHANIC

Work in machine shop environment. Call:

276-2100

P/T OFFICE WORK

3 to 4 hours/day, 9 or 10 to 1 or 2. Get mail, answer phone, will train on felex. Mountainside Export Company office. Ideal work while kids are in school. Call 233-9262.

PART TIME TELEPHONE SOLICITOR

Cal Mark Cornwell At:

686-7700

OFFICE Worker-Answer telephone, varied office duties for small appliance distributor. Full time, permanent. Call for interview, 379-1200. **GOLDEN ELECTRIC CO.**, 70 E. Willow Street, Millburn.

PART Time Work-from home on new telephone program. Earn \$6.00, \$10.00 or more per hour. Call 688-0753.

MEDICAL TECHNOLOGIST

Immediate full time day position in our Group practice Facility for medical technologist, ascp registered or eligible. Previous microbiology experience and proficiency in all phases of laboratory procedures are required. We offer a 37½ hour work week, competitive salary, excellent company paid benefits program and are located in Suburban Summit, just minutes from the Garden State Parkway. Please call Personnel: 277-8633.

Summit Medical Group, P.A.

120 SUMMIT AVENUE • SUMMIT, NEW JERSEY 07901

Small Ads... Big Results! CLASSIFIED ADS!

WEST ORANGE 5 rooms heat and air conditioning. Call 674-4137.

ORANGE Large spacious 5 1/2 room apartment, ranch type. Air conditioned, good location and view. Call 373-1248.

HOUSE SALE - 104 Prospect St. (off Parker St.) Sun. 10-4. Walnut floors, 4 bedrooms, 4 1/2 baths, 6 rugs, 6 bookshelves, and other. No checks. No early birds. Call 771-8843.

PAINTERS - Results for prices. Call 771-8843.

HEY YOU!!!! - Odd jobs done. Call or Steve 7A, 1712.

CELLARS, Y.A. - Cleaned Tear garages. App removed. James 96.

NEW & USED - Body & Fender Parts Available at

HELP!

HELP WANTED

MEDICAL RECORDS FILE CLERKS FULL/PART TIME

Full time 37 1/2 hour position vacancies available in our Medical Records Department accompanied by an excellent benefits package.

Part time position available to work 11 PM-7 AM Thursday and Sunday nights.

If interested, call Personnel, 277-8633.

Summit Medical Group, P.A.
120 SUMMIT AVENUE • SUMMIT, NEW JERSEY 07901

HELP WANTED

NEWARK AIRPORT MARRIOTT HOTEL

Various positions available:
**SWITCHBOARD OPERATORS
DRIVERS
LINE COOKS
HOUSEKEEPERS (part time)**

Experience preferred for above positions. Please call for interview, Monday-Friday:
**623-0006, ext. 6696
EOE M/F/H/V**

HELP WANTED

PROGRAMMER

Minimum 5 years experience with RPG-11 needed in busy Union Manufacturing Firm. Currently converting to IBM-36. Experienced with software modification necessary. Non-smoker. Full benefits package. Send resume & Salary requirements to:
**P.O. BOX 1719
Union, NJ 07083
Attn: M. Duffus**

HELP WANTED

REFRIGERATION Repair Men - Experienced only. Call 373-2242.

RECEPTIONIST CLERK

Full time. Experienced. General office work. Typing and phones a must. Company benefits. Salary commensurate with experience. Call 265.

SUPERVISORS NEEDED ABSOLUTELY NO INVESTMENT

Career opportunity to hire, train and manage party plan personnel. Teaching, business or home party plan background a plus. Free training provided. Call Arlene, 831-0133.

HELP WANTED

RESTAURANT HELP

Denny's has full and part time positions, all shifts open at their Union location for:

***WAITERS/WAITRESSES
*HOST/HOSTESS**

We offer paid vacations, benefits, flexible hours and more. Please apply to:
DENNY'S RESTAURANT, INC.
2401 Highway 22 West
Union, N.J. 07083
E.O.E. M/F

PART-TIME TELLERS
You benefit more from United Jersey!

United Jersey is a fast-growing, progressive bank that offers top salaries, excellent working conditions and outstanding benefits to staff. Openings exist at:


WESTFIELD
Teller or cashier experience essential. Hours Mon, Tues, Weds & Fri, 3-5pm; Thurs., 3-7pm and Sat. 9-12noon.

PORT PLAZA
Experienced people with pleasant personality to work Wed & Thurs, 10am-4pm and Fri, 10am-6pm. Own car essential.

UJPLAZA
Hours: Mon-Thurs. 2-6:15pm and Fri, 2-7pm.

We offer:
• Good starting salaries
• Excellent benefits
• Paid vacation and holidays
• Free checking

For more information, or to arrange an interview, please call (201) 354-7400 ext. 321. We are an equal opportunity employer M/F/H/V.

 **United Jersey**
The fast-moving bank

PART TIME

Drivers. Suitable for retiree. Excellent working conditions. Flexible hours. Company vehicle. Call Ben:
241-6900

PART TIME TYPIST

Leading import auto agency has an immediate opening in their Service/Parts Department for a bright individual with typing skills. Applicant will be responsible for entering information into computer and answering phones. Part time position with flexible hours. Contact Skip Berndt for details.

AIRCOOLED AUTOMOTIVE CORP.
2195 Millburn Ave. Maplewood
763-4567

MEDICAL TRANSCRIBERS FULL TIME/PART TIME

Immediate full/part time positions available. Proficient typing skills and medical terminology required. Flexible daytime hours. Pleasant atmosphere and comprehensive benefits package. If interested call Personnel, 277-8633.

Summit Medical Group, P.A.
120 SUMMIT AVENUE • SUMMIT, NEW JERSEY 07901

RETAIL ADVERTISING POSITIONS AVAILABLE
Short Hills Area

ASSISTANT TO TRAFFIC MGR - Responsibilities include scheduling ads with newspapers, coordinating deliveries, proofreading, light typing, and general clerical functions. Experience a plus, but will be happy to train a highly motivated, detail oriented, entry level candidate.

PROOFREADER - Full time position. Involves proofreading supermarket ads, circulars and other printed material. Very detail work. Position also involves some clerical work, such as light typing and filing. Call Muriel Cruger at 654-6930, Monday thru Friday, between 4 & 5 PM ONLY.

RN's/LPN's

Progressive long term care facility is looking for caring nurses interested in providing quality care to the elderly.

- Excellent Salary and Benefits package.
- Choose which days you want to work.
- Be eligible for sign-up bonus program.
- Receive meals free.
- Receive double time on specified holidays.
- 5% weekend differential.

Call Linda Stevens RN
Director of Nursing **233-9700**


MERIDIAN NURSING CENTER-WESTFIELD
1515 Lamberts Mill Road
Westfield, NJ 07090

NURSES AIDES FULL TIME

Challenge your skills in our 201-bed teaching hospitals working in our Med/Surg areas or as part of our FLOAT team.

Positions are available on the 3-11PM or 11PM-7AM shifts for certified nurses aides with hospital experience.

We offer a competitive salary and benefits package. Contact Karen Hollis, RN, Administrative Coordinator, Employment and Staffing, at 687-1900, ext. 3231. 1000 Galloping Hill Rd., Union, NJ 07083.

 **UNION HOSPITAL**
an equal opportunity employer

MAINTENANCE FULL TIME

Full time position available to do stock work, deliveries and outside grounds work of professional buildings. New Jersey state drivers license necessary. A comprehensive benefits package accompanies this 40 hour week position. If interested call Personnel 277-8633.

Summit Medical Group, P.A.
120 SUMMIT AVENUE SUMMIT, NEW JERSEY 07901

PART TIME CLEANING - Springfield/Florham Park area. Evenings, Monday-Friday. Good for husband and wife. Must have car. Call 239-1351.

PORTERS - General cleaning. Large apartment building. Experienced only. Call 373-2242.

PAINTERS - Experienced. Interior painting. Call 373-2242.

PART-TIME - Office help needed. General clerical duties. Ability to work with numbers a must. Call Mrs. Dryden at 467-5550.

PART TIME - Flexible hours. General office work. Must type. Maplewood/Union line. 761-1100.

PART-TIME - Senior citizen or retiree who enjoys cooking. Must have transportation. Call mornings or evenings. 688-5993.

PART TIME - Office help. Available for busy office in Union. Must type and possess good business manner. Call Joanne 687-5962.

PART TIME help needed - Evenings and Saturdays. Average 20 hours per week. License and car a must. Call Union Sandwich Shop, 964-9550.

RECEPTIONIST HELP!!!

Fast paced Real Estate office with extremely busy phones, has a full time receptionist position available for the right individual with a pleasant phone manner and a good sense of humor. If you can handle 8 plus incoming lines, numerous extensions, large but congenial sales force, light typing and, most times, intense phone work, contact Ann Marie at 376-2422. CALL US TODAY, WE NEEDED YOU YESTERDAY.

SUPERINTENDENT - Experienced only. Heavy plumbing, electrical and general maintenance. Responsible person to oversee apartment building and small crew of men. Call 373-2242.

SHIPPING/RECEIVING CLERK

Entry level position for bright, energetic person. Some heavy lifting. Drivers license required. Please call:
241-3803

PATIENT ACCOUNTS REPRESENTATIVE

Full time entry level position available in our Credit Department. Proficient typing required. Pleasant atmosphere, excellent company benefits package. If interested call Personnel 277-8633.

Summit Medical Group, P.A.
120 SUMMIT AVENUE • SUMMIT, NEW JERSEY 07901

Small Ads... Big Results! CLASSIFIED ADS!

PART TIME Business Forms, personality, billing, record keeping 7-11-82
 MER HELP elect Also Porter M. Steady work Cycle Transformer West Orange
 day week Mon 9 30 4 30 Call 2 Beacon Hill Co
 STANT EX
 mattress, customer. \$25.00, pair of maple twin bed frames with out mattresses or 5 pair
 Buses 674 4137
 WEST ORANGE 5 rooms heat and
 ORANGE Large spacious 3 1/2 room apartment, ranch type. Air conditioned, good location. App
 HANDYMAN, GENERAL REPAIR Maintenance. Can do any
 HOUSE SALE 2 J PROSPECT ST. (off Parker Sun 10 4 Walnut 4 1/2 for 6 rugs, and books, and other No checks much more No checks No early birds
 PARK leaders results for prices Call 7-1-8843
 HEY YOU!!! odd jobs done comes? Call or Steve JA, 1713
 CELLARS, YA cleaned Tear garages App removed James 964
 NEW & USED Body & Fender Parts Available at
 HELP!

HELP WANTED

RECEPTIONISTS FULL TIME/PART TIME
 Various positions available, both full time and part time. Please call Personnel at 277-8633 to discuss hours and schedules.
Summit Medical Group, P.A.
 120 SUMMIT AVENUE • SUMMIT, NEW JERSEY 07901

HELP WANTED

SECRETARY - For Millburn law firm. Experience desired, but not necessary if you have good typing and dictaphone skills. Excellent compensation and benefits. Call 762-4700.

HELP WANTED

TELEPHONE RECEPTIONIST
 Experienced telephone person. Pleasant telephone voice, light typing. Excellent benefit package and salary for right person. Call 688-9430. Surrey Electric Supply Corp., 2432 Rt. 22, Union, N.J.
WANTED- OVERWEIGHT People to try new herbal diet. If seriously interested call 669-3804.

HELP WANTED

WAREHOUSE PERSON
 Minimum 2 years experience pulling and packing orders for U.P.S. and truck shipment. Contact Matt at: **355-6700**

HELP WANTED

WORD PROCESSING
WANG IBM PC DISPLAY WRITER 3
DECKMATE MULTIMATE IMMEDIATE ASSIGNMENTS
 For Experienced Operators Excellent positions with **TOP COMPANIES** in Essex & Union Counties **TOP PAY!** **MAJOR MEDICAL with Dental Option LIFE INSURANCE PAY EVERY WEEK FREE GIFTS! REFERRAL BONUSES**

Sales

Work Part Time In the BIG TIME

At Radio Shack, we don't equate "part time" with "small time." Unlike most companies, we consider our part-time salespeople to be a vital part of our organization. We reward them accordingly — with the same commission on sales, over 6%, and the same unsurpassed advancement potential as our full-time people receive. In addition, our part-timers choose their own hours (15-20 per week) in accord with their particular needs. So whether you're a student, a freelancer or a housewife returning to the work force, look into these part time opportunities in the big time... at Radio Shack.

DAYS & SATURDAYS SHORT HILLS AREA CALL WAYNE AT: 467-0788

"Share In Our Proud Tradition"

Radio Shack
 A DIVISION OF TANDY CORPORATION
 An Equal Opportunity/Affirmative Action Employer

TELEPHONE OPERATOR/ RECEPTIONIST
 Growing computer company seeks individual to handle busy phones and greet people, pleasant phone manner a must. Good company benefits. Call Rosanne for interview between 9am-12pm, 686-1100.

TYPESETTERS/PROOFREADERS
 This is it! An excellent opportunity to become part of one of the largest advertising/commercial typographers in N.J. We are in the process of becoming the absolute largest and are moving to brand new expanded facilities within the next six months. If you are the best in your shop, join us and be paid for it. Don't hesitate, we have immediate openings. For appointment, call Rick, Mon - Fri. 241-6161.

TRAVEL AGENT
 Full Time EXPERIENCED

If you really want to go places in this business, you'll find plenty of opportunity and great working conditions at our Springfield, N.J. agency! We are looking for an experienced vacation agent to start on January 19. Salary fully commensurate with background, excellent benefits, FAM trips and more! Call Lorrie or Iris at CREATIVE TRAVEL, (201) 467-3383.

TYPIST
 Roselle Park Office
 Type at home, form appraisals, must be able to pick up work at our office. Call Stan Jay's office, 241-6000.

TEXAS REFINERY CORP. - NEEDS MATURE PERSON NOW IN ESSEX AND UNION COUNTIES AREA. REGARDLESS OF EXPERIENCE, WRITE, A.H. HOPKINS, BOX 711, FORT WORTH, TX 76101.

WAREHOUSE PERSON
 Immediate opening for warehouse help. Duties include order picking/packing and loading/unloading. Please apply in person.
LUMINCO INC.
 2234 Morris Ave. Union, NJ **687-3800**

THIS HOLIDAY SEASON Enjoy the Special Advantages of Olsten People

WITH **SAME WEEK FRIDAY PAY**

- TOP PAY
- FLEXIBLE SCHEDULES
- BONUSES
- SKILL IMPROVEMENT
- WORK & TRAVEL
- MEDICAL PLAN

WORD PROCESSORS/PC OPERATORS SECRETARIES/TYPISTS DATA ENTRY/CRT

BLOOMFIELD.....748-7561
 574 Bloomfield Ave.
UNION.....686-3262
 2333 Morris Ave. Suite A17

Olsten SERVICES

Equal Opportunity Employer M/F/H/V

SALES PERSON
 Experience in jewelry sales preferred. Full time for fine jewelry store in Westfield. Call for an appointment.
233-6900

SERVAIR INCORPORATED
 Cargo agents, full & part time & Xmas help. Hiring immediately. Cargo ramp & warehousing. Valid NJ driving license required. \$5.00 per hour. Call:
961-2505

SUPERINTENDENT
 Part time, Compact modern garden apartments (23 units) Suburban Essex County. Mature-minded male/female couple, experienced in light maintenance and rentals. 1 bedroom apartment. Utilities and compensation. Call 10 A.M. - 2 P.M. 233-6227.

WAITRESS/WAITER - Experienced for full time shift in busy luncheonette in Short Hills. Call 376-8053.

X-RAY TECHNICIANS PART TIME
 We are now accepting applications for ARRT registered xray technicians for our new satellite office in Watchung. Daytime/evening/weekends/holiday hours available. If interested call Personnel: 277-8633.
Summit Medical Group, P.A.
 120 SUMMIT AVENUE SUMMIT, NEW JERSEY 07901

4-INSTRUCTIONS

SUCCESSFUL MATH TUTOR
 Over 25 Years Teaching High School/College Algebra 1 thru Calculus RESULTS PRODUCED **686-6550**

TUTORING BY BELL LABS SCIENTIST & EXPERIENCED TEACHER MATH & PHYSICS HELP WITH ANY PROBLEMS Reasonable Rates 233-6210

5-SERVICES OFFERED

AARON MAINTENANCE
 20 YEARS IN BUSINESS COMPLETE CHIMNEY SERVICE
 ROOFING-MASONRY
 COMPLETE SERVICE
DAN - 379-6865

BOOKKEEPING
 Done at home for small businesses. Call 272-5290 or 527-0479 after 6pm.

SERVICES OFFERED

B.F. WORLDWIDE AIR FREIGHT

INTERNATIONAL COMPETITIVE DEPENDABLE FAST
 Handling Shipments Worldwide Local Pick Ups
 CALL: 997-6577

CREATIVE CALLIGRAPHY FOR EVERY OCCASION
 REASONABLE RATES
 CALL JESSICA 467-4605

SWEDISH MASSAGE CERTIFIED MASSEUSE CALL 761-7273

CARPENTRY
 CARPENTRY-Interior painting, furniture repairs and refinishing. Call Ken after 6pm weekdays, 331-0271.

CARPENTRY

AWL CARPENTRY

•Stairs•Doors
•orches•Decks
heetrocking•Paneling
eiling•Repairs
FREE ESTIMATES
352-8099

G & K CARPENTRY
All Types Of Carpentry
INSURED

ESTIMATES & REFERENCES
GIVEN
381-7910
688-4524

G. GREENWALD
Carpenter Contractors
All type repairs, remodeling, kit-
chen, porches, enclosures, cellars,
attics. Fully insured, estimates
given 688-2984. Small jobs.

**GARRIGAN CUSTOM
CARPENTRY**
FULLY INSURED
All Types Of Carpentry
FREE ESTIMATES
351-9119

JOE DOMAN
686-3824
•Alterations/Repairs
•CLOSETS/CABINETS
•CUSTOMIZED TABLES/
•STORAGE AREAS
•FORMICA/WOOD
/PANELING/SHEETROCK
/WINDOWS/DOORS

CARPET CARE

CARPET SALES
\$4 - \$6 Sq. Yard

Buy At Builders Prices
Free Measuring
(Min. 50 Sq. Yards)

- Home or Office
 - Large Selection
 - Many Colors
- 686-1121

HOLIDAY SPECIAL - Affordable
carpet cleaning, professionally
steam cleaned rooms \$40 and down.
Also, sheetrocking, gen. carpentry,
wallpapering and rms. painted.
Very reasonable. Call Jay 298-0495.

CHIMNEY CLEANING

**AARON
MAINTENANCE**

20 YEARS IN BUSINESS

**COMPLETE
CHIMNEY SERVICE**

Roofing-Masonry

DAN - 379-6865

CLEAN UP SERVICE

BMC CLEANING CO.
WE CLEAN
•Attics•Basement
•Garages•Etc.
WE HAUL AWAY
Mike- 862-2160, 9-3pm
Bob- 925-3378, 5-8pm

CLEAN UP SERVICE

**ATTENTION
CONTRACTORS**

5-7 Yard Dump Truck and Driver
Available for Small and Large Jobs.
Removal of Concrete, etc.
372-0556
688-7426

HOME CLEANING

For People On The Go.
"Specialty Of The House."
Programs Designed By
YOU
To Meet
YOUR
Needs!
245-1945
Executive & Professional
Home Care, Inc.
Fully Insured

ALUMINUM SIDING

**ALL PRO
VINYL SIDING**

Save energy this winter, seal your
home with insulation & siding.

**GUARANTEED
LOWEST PRICES
HIGHEST QUALITY**

We will beat any bonafide quote.
Quick Service/Sr Citizen Discount
753-2981/751-4494

ALL-TYPES - Of Surface cleaning.
Hot & Cold pressure washing. Free
estimates. DAVE'S STEAM
CLEANING, 762-0027. Leave
message.

DRIVEWAYS

F&D PAVING

Asphalt Driveways
Parking Areas

- Concrete Sidewalks
- Brick Stoops
- Patios

FREE ESTIMATES

964-7854

R & T PUGLIESE
ASPHALT PAVING
DRIVEWAYS
PARKING LOTS
CURBS & CONCRETE
QUALITY WORK
Fully Insured
Free Estimates

Residential & Commercial
272-8865

SEAL-A-DRIVE - Save Your
Driveway. Make it look better and
last longer by having a Seal-A-Drive
Application. Call 273-8588 For Free
Estimate.

ELECTRICIANS

SPURR ELECTRIC

NEW AND
ALTERATION WORK
Specializing in recessed lighting and
service changing, smoke detectors,
yard and security lighting, altera-
tions, and new developments.

License No. 7288
Fully Insured

NO JOB TOO SMALL
851-9614

GARAGE DOORS

GARAGE DOORS installed, garage
extensions, repairs & service, elec-
tric operators & radio controls.
STEVEN'S OVERHEAD DOOR,
241-0749.

METROPOLITAN DOOR CO.
Residential, Commercial,
Sales, Repairs & Installed
Service & Parts Department
Automatic & radio control
door openers.
Free estimates. Fully insured
241-5550

GENERAL SERVICES

WAKE UP SERVICE

Tired of oversleeping? Don't be late
anymore. For more information
call:

353-0872

HOME IMPROVEMENTS

**BARTHES
CONTRACTING INC.**

Rooms •Additions •Kitchens •Baths
•Doors (interior/exterior) Replace-
ment Windows •Attics •Basements
•Sheetrock •Ceilings (All types. Ful-
ly insured). Free estimates. All
work guaranteed.

964-5959

HOME IMPROVEMENTS

**SPECIALIZING IN
SMALL to MEDIUM
JOBS**

CALL:
688-8285

**IMPROVE YOUR HOME
WITH GIL**

DECKS

Custom Built & Repairs
Wood Fences & Basements
FREE ESTIMATES
964-8364
964-3575

**INTERIOR
HOME
REMODELING**

Finishing Basements
And
Attics
REASONABLE
FRIENDLY
DEPENDABLE

379-5366

**J & R
WOODWORKING**

All items custom designed, specializing in
hard wood and formica.

- WALL UNITS•DESKS•
 - COUNTER TOPS•
 - VANITIES•
 - BOOKCASES
 - TABLES
- FREE ESTIMATES.
964-4676

HOME IMPROVEMENTS

**J&R
Contracting**

- Carpentry
 - Masonry
 - Additions
 - Decks
 - Windows & Doors
- FULLY INSURED
REFERENCES
372-0556
688-7426

**MAKE OLD
CEILINGS
NEW**

- SHEET ROCK
- SUSPENDED
PLASTER
- PATCHING
Days

824-7600

After 5 P.M.
687-4163

**MARGOLIN
HOME IMPR. CO.**

- SIDING •DECKS •KITCHENS •
- BATHROOMS •ROOFING •
- PAINTING •ADDITONS •
- DORMERS

Formica
Specialists
•REFACING •VANITIES •

COUNTER TOPS •MODULARS

686-8980

**PAINTING/
PAPERHANGING
AND ALL ODD JOBS
WEEKENDS ONLY
CALL 379-5266**

**P&S
MAINTENANCE**
Complete Home Repairs
ATTICS•BASEMENTS
CARPENTRY
Insulation Work
Kitchen & Bathrooms
From Minor Repairs
To Major Renovation
375-4221

**RMC
CONSTRUCTION**

- CARPENTRY
- MASONRY
- ROOFING & SIDING
- TILE
- WATERPROOFING
- BATHROOMS & KIT-
CHENS

FULLY INSURED
FREE ESTIMATES

CALL 388-9424

SUMP PUMP
DOUBLE PROTECTION
Free Estimate 272-8768

HOME IMPROVEMENTS

**R.E. FRAME
REMODELING**

- Kitchens
- Rec Rooms
- Porch Enclosures

Serving Union County
FREE ESTIMATES
654-6459

**THE
PROFESSIONALS
CARPENTRY**

- Additions•Decks
- Basements•Attics
- Porch Enclosures
- Kitchens

ROOFING
• Wood•Slate
• Asbestos
• Asphalt Shingles

PAINTING
• Interior
• Exterior
FULLY INSURED

AL 372-4282

**UNITY INTERNATIONAL
CONSTRUCTION COMPANY**

**BUILDING & REMODELING
DORMERS•ADDITIONS**

All phases of interior and exterior
work. 10% discount for interior work
done through Jan. 31.

CALL 688-2460

Since 1968

JEWELERS

**NEW JERSEY
•NEW YORK
•ANTWERP**
DIAMOND SETTING
EXTRAORDINAIRE
MANUFACTURING
SPECIAL ORDERS
OFFICIAL G.I.A.
IMPORTER
APPRAISER

SKI SETTING CO.

905 Mountain Ave.
Springfield, New Jersey
376-8881
or 376-8880

KITCHEN CABINETS

JAN'S KITCHENS INC.
CUSTOM KITCHENS AT
STOCK CABINET PRICES
European & Traditional Concepts.
Featuring the Dorwood Custom
Cabinet Line.
Call Jan at 647-6556
For a Free In Home Estimate.

LANDSCAPING

D'ONOFRIO & SON

Spring & Fall Clean-up
Complete Landscape
Clean-up-Tree Expert
General Contractor
Free Estimate

CALL ANTHONY
763-8911

MOVING & STORAGE

AMERICAN RED BALL
Local & worldwide movers. Red Carpet service to FLORIDA. Agent UNIVERSITY Van Lines. 276-2070. 1601 W. Edgar Road, Linden. PC 00102.

BERBERICK & SON
Expert MOVING & STORAGE at low cost. Residential, Commercial. Shore Trips. Local & Long Distance. No job too small. 298-0882. Lic 00210.

DON'S-MOVING AND STORAGE.
(The Recommended Mover) Our 25th Year. PC 00019. 375 Roseland PLace, Union. 687-0035.

PAUL'S M & M MOVERS
Formely of Yale Avenue, Hillside. Local and long distance moving. PM 00177 688-7768 1925 Vauxhall Rd. Union.

RITTENHOUSE MOVING
Low cost moving by experienced men. Call 241-9791 for free estimate.

ODD JOBS

FALL LEAF CLEAN UP
CALL TOM: 241-5017
LEAVE MESSAGE

HOME HANDY MAN
Painting, paperhanging, carpentry & odd jobs, clean-ups. No job too small. 964-8809.

HANDYMAN-Odd jobs. Painting, carpentry, general repairs, indoor-outdoor cleanups, also auto repair. No job too big or too small. Call Jeff at 245-4382.

RUBBISH REMOVAL

RUBBISH REMOVED
All furniture wood & metals taken away. Attics, basements & garage cleaned. Reasonable rates. 325-2713 228-7928 "We Load*Not You"

PAINTING

LOU'S PAINTING
Fall Painting

- ROOFING
 - GUTTERS & LEADERS
- 964-7359

J.L. CAROLAN PAINTING

INTERIOR•EXTERIOR
Quality Workmanship
Reasonable Rates
Free Estimates
634-3475/688-5457

J & J PAINTING CO.
The Finest In Painting
INTERIOR•EXTERIOR
Serving Union & Essex Counties
FREE ESTIMATES
CALL JOHN 374-9846

FAIRWAY PAINTING CONTRACTORS
Serving All Of Union County
Quality Work•Reasonable Priced
Interior•Exterior
Commercial•Residential
Free Estimates•Fully Insured
276-2181

PAINTING

INTERIOR & EXTERIOR
Painting. Leaders & Gutters. Free estimates. Insured. Stephen Deo. 233-3561.

K. SCHREIHOFFER-Painting interior, exterior. Free estimates, insured. 687-9268, 687-3717, eves, weekends.

CALL AND SAVE!

One coat on exterior, \$475 & up. Rooms, hallways, stores, offices painted or papered, \$45.00 & up. Free estimates, fully insured. 374-5436 or 761-5511.

MASTER PAINTER - Twenty-two years experience. Inside/Outside. Price very reasonable. Free estimates. Call Ben 851-2610 anytime.

Painting By
First Class Tradesman
HOME OR COMMERCIAL

Advice on your home painting problems. 30 Years Experience in the Trade.
PHONE NICK
245-4835
ANYTIME

PAINTING & PLASTERING
25 YEARS EXPERIENCE
FREE ESTIMATES
CALL: LENNY TUFANO
273-6025

WILLIAM E. BAUER
Professional Painting
Exterior/Interior
Paperhanging
INSURED
964-4942

ROOFING

No Job Too Small or Too Large
All Types of Repairs
Gutters Leaders

DOTSY LOU
Roofing Contractors
Union, NJ
374-6137

WILLIAM H. VEIT
Roofing - Seamless Gutters. Free Estimates. Own work. Insured. Since 1932. 241-7245.

MASONRY

A.S.&SONS, INC.
All Kinds of Masonry Work
PATIOS
Fully Insured Free Estimates
289-3843
(after 4:30 p.m.)

RENATO CAVALLARO
MASONRY/PAVING
Brick Work-Steps-Patios-Sidewalks-Stone Work-Driveways.
FREE ESTIMATES
272-0955

SLIPCOVERS-DRAPERIES

CUSTOM- SLIPCOVERS, DRAPERIES AND RE-UPHOLSQTERY. Guaranteed workmanship. Your fabric or ours. 36 years experience, formerly at STEINBACH'S. Discount for Senior Citizens. FREE shop at home service. Call Walter Canter at 757-6655.

TILE WORK

DENICOLO TILE CONTRACTORS

Established 1935

Kitchens-Bathrooms
Repairs-Grouting
Tile Floors
Tub Enclosures
Showerstalls
FREE ESTIMATES
FULL INSURED
No job too small or too large
686-5550/390-4425
P.O. BOX 3695
Union, N.J.

TREE SERVICE

5

AL P. BOYEA & CO.

Complete Tree Care
•Landscape Design
•Tree & Stump Removal
•Crane Rentals
•Contracting

FREE FIREWOOD
(Unsplit) and
GARDEN MULCH

245-1919
FULLY INSURED

BLUE JAY TREE SERVICE

Our Specialty, taking down difficult trees. Removal-Trimming-Firewood-Fully Insured-land Clearing. Free Estimates. Serving Union County. Call: 486-2207

PARK TREE SERVICE

- Removals•Pruning•
 - Planting•Bracing•
 - Feeding•Cabling•
- 241-9684

WOODSTACK TREE SERVICE
All Types Tree Work
•Free Estimates
•Senior Citizen Discount
•Immediate Service
•Insured
276-5752

TYPEWRITER SERVICE

PROFESSIONAL TYPIST

Resumes, Dissertations, Statistical Tables, Letters, Theses, Term Papers, Legal and Medical Transcripts. Reasonable Rates. Call Eileen 964-1793.

WINDOWS

SPRING SPECIAL!!
15 WINDOWS-\$45.00
Each Additional Window \$3.50.
Call Diane or Roy at: 851-0868

MISCELLANEOUS

FLEA MARKETS

SHOP-Warren Flea Market for Christmas. Every Sunday, 8am-3pm. Crafts, new, collectibles. 469-1571.

FOR SALE

FOR SALE

ANTIQUE - Record cabinet \$125, small wine table \$25, antique drum table \$50, mahogany side chair \$50, mahogany butler coffee table \$50, small oak table \$15. All in good condition. Negotiable. Call 687-2230 after 6pm.

CHRISTMAS-SPECIAL. Free knitting machine stand (\$50. value) with any model knitting machine sold. Financing is available. Free lessons. Limited supply of imported yarn. Telephone Kathy 964-6048. Authorized Studio Dealer.

(1 COL BORDER-TABLE PADS)

CHANDELIER - Gold and crystal and 2 marble top cocktail tables. Ask for Julia, call 376-2774.

ESTATE SALE/UNION
1330 Stuyvesant Ave.

Thurs to Sat, Dec.18-20 10-6
Antique carved and inlaid furniture, porcelain, art glass, sterling, paintings, clocks, bronzes, old Hummels, chandeliers. Estate jewelry, diamonds, gold, pearls. Bargain Prices. UNION GALLERIES, 964-1440.

FIREWOOD

Split•Unsplit
Pick up or delivered

245-1919

WANTED "I" LAST HOME
IN 1986

To dsplay new insulated vinyl siding made by EXXON CORPORATION Qualified homes will receive huge discounts.

100% FINANCING
CALL:
286-2477

FIREWOOD

Split and seasoned hardwood. One year old, full cord!

CALL:
636-0278 or 583-5885

FIREWOOD- SEASONED OAK,
GUARANTEED TO BURN. CALL 379-6041.

TABLE PADS

Custom made to fit your dining room table, vinyl top, felt bottom, all colors, order now for Christmas. Call after 6 p.m. 356-4727

SNOW- Tires. Very good condition. Very reasonable. Call 688-2399.

X-MAS TREES

10% OFF WITH THIS AD!!
CUT OR LIVE TREES
WHILE THEY LAST!

Evenings 6PM to 10:30PM
51 Progress St. Union
(in the rear)

686-2322

UNION TICKETS
2022 Morris Ave
Union, New Jersey
851-2880
•David Lee Roth
•Billy Joel
•Rangers
•Knicks

FUR JACKET - Otter, ladies, new, size 12/14, length 31", width 57", certified appraisal on 12/10/86 for \$1850. Best offer. 688-0959 days.

HUNTING JACKETS - 2, new, 1 red & black Woolrich size 42, 1 all orange Ted Williams size 48. Both for \$100. Call after 2:30pm, 687-6920.

WIRELESS GUITAR SYSTEM

Samson. Used 5 times. \$100 or best offer (Cash or Trade). Call Mark at:

686-7700, Ext. 23 Days
371-9057
Leave Message

FURNITURE- Green sofa, green recliner, kitchen table set, various odds and ends. Contact 688-4410 anytime.

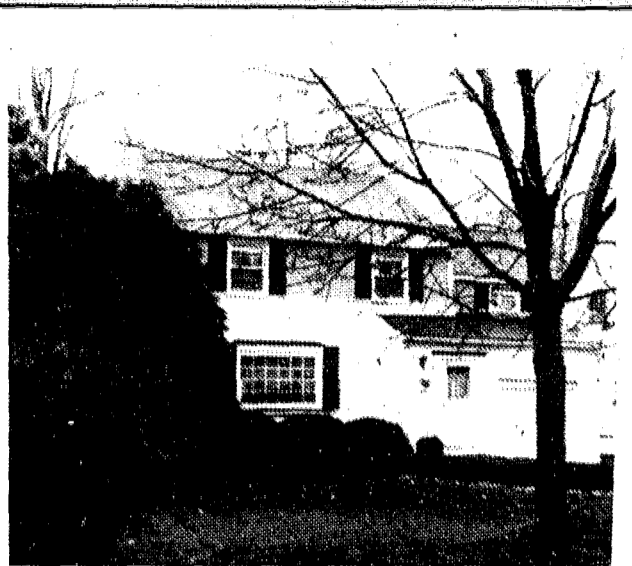
SCHLOTT

REALTORS



ROSELLE SPACIOUS COLONIAL

Featuring a spacious living room, a formal dining room and 3 large bedrooms, this spacious Colonial is in move-in condition. Interior also boasts a first floor den, 1 1/2 baths and many amenities. A great home, hurry to see this home before someone else buys it. \$129,900 Call 687-5050 (UNI127)



UNION PUTNAM MANOR

A spacious living room with a cozy fireplace is just the beginning of this 7-room custom-built modern Colonial home. Interior boasts a formal dining room, a first floor den with skylights, 3 extra large bedrooms, and many more amenities. And all on one of Union's finest streets. \$259,000 Call 687-5050 (UNI121)

UNION'S MILLION DOLLAR QUALIFIERS



Joan Casserly



Joy Kaplan



Sue Gold

Call Our Extra-Effort People
at the Office Listed Below:

UNION
530 Chestnut St.
687-5050

Offices in
New Jersey, New York,
Connecticut, Pennsylvania
and Florida.



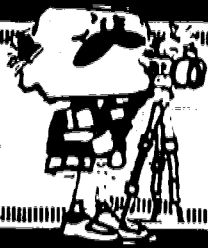
UNION MINT CONDITION

This owner occupied 12-room, 2-family home is in mint condition, and is a perfect opportunity for the right owner. Interior boasts a 3-bedroom and a 2-bedroom apartment. There is a large family room in the owner apartment. Home also boasts a nice yard, modern kitchens and baths, and all separate utilities. \$239,900 Call 687-5050 (UNI123)



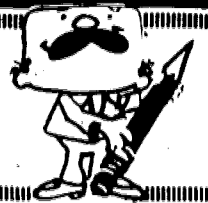
UNION STARTER HOME

This aluminum-sided home offers 3 bedrooms, a dine-in-kitchen, finished basement and detached garage. A superb location on a quiet street 2 blocks from 5 Points conveniences. An ideal starter home. Perfect for retirees too. In Washington School area. \$149,900 Call 687-5050 (UNI124)

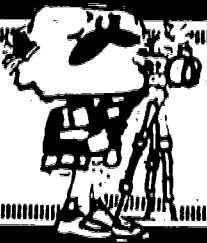


Let an expert do it!

Use this handy reference to nearby businesses and services. They're as close as your telephone!

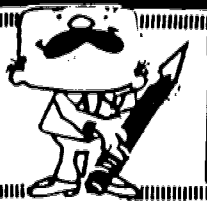


<p>CALLIGRAPHY</p> <p>CREATIVE CALLIGRAPHY FOR EVERY OCCASION</p> <p>REASONABLE RATES</p> <p>CALL JESSICA 467-4605</p>	<p>AUTO DEALERS</p>  <p>OLDSMOBILE Oldest & Largest Exclusive Olds Dealer in Union County ELIZABETH MOTORS, INC. Value Rated Used Cars 582 Morris Ave. Elizabeth 354-1050</p>	<p>AUTO DEALERS</p>  <p>EXCLUSIVE VOLVO DEALER 326 MORRIS AVE. SUMMIT 273-4200 AUTHORIZED FACTORY SERVICE LONG TERM LEASING</p>	<p>AUTO DEALERS</p> <p>AUTO LEASING TERMS ONE TO FIVE YEARS ALL MAKES AND MODELS</p>  <p>service leasing, 1561 Morris Avenue Union, N.J. 07083 (201)687-7200 Commercial and Professionals</p>	<p>AUTO PARTS</p>  <p>WHOLESALE TO THE PUBLIC</p> <p>OPEN 7 DAYS Sun 8 a.m. to 2 p.m. Wed & Sat 7:30 to 5:45 p.m. Weekdays 7:30 a.m. to 7 p.m. 688-5848 Vauxhall Section 2091 Springfield Ave., Union</p>	<p>AUTOS WANTED</p>  <p>TOP \$\$\$ IN CASH For All Cars & Trucks</p> <p>CALL DAYS 589-8400 or EVES. 688-2044 (Same day Pick-ups)</p>
<p>CARPENTRY</p> <p>JOE DOMAN 686-3824</p>  <p>ALTERATIONS/REPAIRS</p> <p>New or Enlarged CLOSETS/CABINETS Customized TABLES/STORAGE AREAS FORMICA/WOOD Panelling/Sheetrock WINDOWS/DOORS</p>	<p>CARPENTRY</p> <p>G & K CARPENTRY</p> <p>All Types Of Carpentry INSURED ESTIMATES & REFERENCES GIVEN!</p>  <p>381-7910 688-4524</p>	<p>CARPENTRY</p> <p>J & R GENERAL CONTRACTING</p> <ul style="list-style-type: none"> •Carpentry •Additions •Replacement Windows & Doors •Masonry •Decks •References <p>688-7426 372-0556 Fully Trisured</p> 	<p>CARPET</p> <p>WALL TO WALL CARPET SALE</p> <p>Residential/Commercial</p> <ul style="list-style-type: none"> • Lowest Prices • Free Measuring • • Huge Savings • Expert Installation • • Quality Padding • Shop at Home <p>Master Card Visa 686-1121</p> <p>WHY PAY MORE</p>	<p>CHIMNEYS</p>  <p>AARON MAINTENANCE</p> <p>20 YEARS IN BUSINESS</p> <p>COMPLETE CHIMNEY SERVICE Roofing-Masonry</p> <p>DAN-379-6865</p>	<p>CONTRACTORS</p> <p>ATTENTION CONTRACTORS</p> <p>5-7 YARD DUMP TRUCK AND DRIVER AVAILABLE FOR SMALL AND LARGE JOBS.</p>  <p>REMOVAL OF CONCRETE, ETC. 372-0556 688-7426</p>
<p>CONCERT TICKETS</p> <p>UNION TICKETS 2022 Morris Avenue Union, New Jersey</p> <p>851-2880</p> <ul style="list-style-type: none"> • David Lee Roth • Peter Gabriel • Billy Joel • Rangers • Knicks 	<p>DRIVEWAYS</p> <p>F & D PAVING INC.</p> <p>ASPHALT DRIVEWAYS PARKING AREAS</p> <ul style="list-style-type: none"> •Concrete Sidewalks •Brick Stoops •Patios  <p>FREE ESTIMATES 964-7854</p>	<p>ELECTROLYSIS</p> <p>CHRISTINE'S ELECTROLYSIS</p> <p>Medically Approved Method Of Permanent Hair Removal</p> <ul style="list-style-type: none"> •First Treatment 1/2 Price •Free Consultation •Reasonable Rates <p>245-7467</p> 	<p>DRIVEWAYS</p> <p>R & T PUGLIESE ASPHALT PAVING</p> <p>DRIVEWAYS PARKING LOTS CURBS & CONCRETE WORK</p> <p>Professionally Done Fully Insured Free Estimates</p> <p>Residential & Commercial 272-8865</p> 	<p>ELECTRICIAN</p> <p>SPURR ELECTRIC Lic. No. 7288</p> <ul style="list-style-type: none"> •Recessed Lighting •Smoke Detectors •Yard & Security Lighting •Alterations •New Developments  <p>EXCELLENT SERVICE REASONABLE RATES</p> <p>No Job Too Small 851-9614</p>	<p>ENTERTAINMENT</p> <p>Having The Perfect Party?</p> <p>CALL PERFECT SOUND</p> <p>Experienced DJ's with music for All occasions.</p> <p>CALL: 226-7387 NOW!</p> 
<p>HOME IMPROVEMENTS</p>  <p>RMC CONSTRUCTION</p> <p>CARPENTRY•MASONRY ROOFING•SIDING•TILE WATERPROOFING BATHROOMS & KITCHENS</p> <p>FREE ESTIMATES FULLY INSURED CALL 388-9424</p>	<p>HOUSE CLEANING</p> <p>HOME CLEANING FOR PEOPLE ON THE GO!</p> <p>"SPECIALTY OF THE HOUSE" PROGRAMS DESIGNED BY YOU TO MEET YOUR NEEDS!</p> <p>245-1945</p> <p>EXECUTIVE and PROFESSIONAL HOME CARE, INC. FULLY INSURED</p> 	<p>HOME IMPROVEMENTS</p> <p>THE PROFESSIONALS</p> <p>ADDITIONS•KITCHENS•BASEMENTS•ATTICS•DECKS PORCH ENCLOSURES•ALL CARPENTRY</p> <p>ROOFING •Wood •Slate •Asbestos •Asphalt Shingles</p>  <p>PAINTING •Interior •Exterior</p> <p>FULLY INSURED 372-4282</p>	<p>HOME IMPROVEMENTS</p> <p>MARGOLIN HOME IMPR. CO.</p> <ul style="list-style-type: none"> •SIDING •Decks •KITCHENS •BATHROOMS •ROOFING •PAINTING •ADDITIONS •DORMERS <p>Formica Specialist</p> <p>REFACING •VANITIES •COUNTER TOPS •MODULARS</p> <p>686-8980</p>		
<p>HOME IMPROVEMENTS</p>  <p>HOLLYWOOD CONSTRUCTION</p> <p>General Contractors Commercial • Residential Carpentry</p> <ul style="list-style-type: none"> • ADDITIONS • ALTERATIONS • PAINTING • SHEETROCKING • CEILINGS • DECKS • BATHROOM • KITCHEN <p>•ALL PHASES OF CONSTRUCTION</p> <p>REASONABLE RATES FREE ESTIMATES FULLY INSURED</p> <p>688-9538 763-5992</p>	<p>HOME IMPROVEMENTS</p> <p>P & S MAINTENANCE</p> <p>ATTICS • BASEMENTS CARPENTRY INSULATION WORK KITCHENS & BATHROOMS FROM MINOR REPAIRS TO MAJOR RENOVATIONS</p> <p>375-4221</p>	<p>HOME IMPROVEMENTS</p> <p>J & R WOODWORKING</p> <p>All items custom designed specializing in hard wood and formica</p> <ul style="list-style-type: none"> * WALL UNITS * DESKS * COUNTER TOPS * * VANITIES * * BOOKCASES * <p>FREE ESTIMATES 964-4676</p>	<p>HOME IMPROVEMENTS</p> <p>IMPROVE YOUR HOME WITH GIL</p> <p>DECKS</p> <p>CUSTOM BUILT & REPAIRS Wood Fences — Basements</p> <p>Free Estimate 964-8364 964-3575</p>	<p>HOME IMPROVEMENTS</p> <p>UNITY INTERNATIONAL CONSTRUCTION COMPANY</p> <p>BUILDINGS & REMODELING DORMERS • ADDITIONS</p> <p>All phases of interior and exterior work. 10% dis count for interior work done through Jan. 31.</p> <p>CALL 688-2460 Since 1968</p>	
<p>HOME IMPROVEMENTS</p>  <p>MAKE OLD CEILINGS NEW</p> <ul style="list-style-type: none"> •SHEET ROCK •SUSPENDED •PLASTER •PATCHING <p>Days 824-7600 After 5 P.M. 687-4163</p>	<p>HOME IMPROVEMENTS</p>  <p>R.E. FRAME Serving All Union Co. Interior Remodeling</p> <ul style="list-style-type: none"> • Kitchens • Rec Rooms • Porch Enclosures <p>FREE ESTIMATES. 654-6459</p>	<p>HOME IMPROVEMENTS</p>  <p>HOME IMPROVEMENT Specializing in Small to Medium Jobs</p> <p>CALL: 688-8285</p>	<p>KITCHEN CABINTES</p> <p>JAN'S KITCHENS, INC.</p> <p>CUSTOM KITCHENS AT STOCK CABINET PRICES</p> <p>European & Traditional Concepts Featuring the "Dorwood Custom Cabinet Line"</p> <p>Call Jan at 647-8558 For a Free In-Home Estimate</p> 	<p>JEWELERS</p> <p>NEW JERSEY-ANTWERP DIAMOND SETTING EXTRAORDINARY MANUFACTURING SPECIAL ORDERS GRADUATE OFFICIAL G.I.A. IMPORTER APPRAISER</p> <p>SKI SETTING CO.</p> <p>905 Mountain Ave Springfield, New Jersey 376-8880 376-8881</p>	<p>SIDING</p> <p>ALL PRO VINYL SIDING</p> <p>Save energy this winter Seal your home with insulation & siding</p> <p>GUARANTEED LOWEST PRICES HIGHEST QUALITY</p> <p>We will beat any bonafide quote Quick Service/Sr. Citizen Discount</p> <p>753-2981/751-4494</p>



Let an expert do it!

Use this handy reference to nearby businesses and services. They're as close as your telephone!





ELIZABETH FORD

N.J.'s Fastest Growing Dealership!

3.9%
A.P.R.
FINANCING
OR FACTORY CASH
REBATE
Available on select models,
stop in for details!

WE WANT YOUR BUSINESS!

WE WON'T ADVERTISE PHONEY DEALS THAT COST YOU MORE MONEY!

NEW '87 TEMPO GL SPORT

FORD 2-dr. inclgd. Std. 2.3 HSO EFI 4-cyl. eng. 5-spd. man. trans. pwr. strg/brks. P185170R14 Perf. B/S/W tires, w/optn'l: conv. group, frt. & cent. armrest, spd. control, tilt, rr. dfrstr. pwr. equip. grp/lks/wdws. 6-way pwr. drive seat. Special Value pkg. man. AIR COND, Prem. Sound, lower accent paint treatment. 1 in stk. #7042.

EQUIPPED NOT STRIPPED!

11 TO CHOOSE WITH POPULAR OPTIONS!

LIST PRICE \$11,506
ELIZ. FORD DISCT. -1,707
YOU PAY \$9,799

'86 THUNDERBIRD LIKE NEW!

FORD, 2-dr. w/Optn'l: AIR COND, pwr. wdws/lks., clearcoat paint, int. wprs., conventional spare, elec. dig. clk. tilt, spd. cont, 6-way pwr. dr. st, Style Rd. Whls, tint. gls, light grp, AM/FM St/cass, rr. dfrstr, accent paint stripe, inclgd. Std: 3.8 ltr. V-6 EFI eng, auto. trans. 3,229 demo mi. Stk. #6274.

EQUIPPED NOT STRIPPED!

SAVE!

LIST PRICE \$14,417
ELIZ. FORD DISCT. -2,518
YOU PAY \$11,899

NEW '87 ESCORT GL

FORD, 2-dr. HATCHBACK, w/Optn'l: pwr. strg, AIR COND, Special Value pkg. W/V/B/S/Molding, AM/FM Stereo w/4-way speakers, dig. clk. w/O/H Console, tint. gls., int. wprs., frt./rr. bmpr. strips, bumper rub strip, instr. grp, dual elec. mirrs, trimmings & center hub, rr. dfrstr, auto. trans. inclgd. Std: 1.9 Ltr. EFI 4-cyl. eng. pwr. brks 1 in stk. No. 7036

EQUIPPED NOT STRIPPED!

10 TO CHOOSE WITH POPULAR OPTIONS!

LIST PRICE \$9574
ELIZ. FORD DISCT. -1485
YOU PAY \$8089

NEW 1986 ESCORT PONY

FORD, 2-dr. HATCHBACK, w/Optn'l: rr. dfrstr, inclgd. Standard: 1.9 Ltr. 2V 4-cyl. eng, 4-spd. manual trans, power brakes, manual steering, 1 in stk. #6185.

SAVE!

LIST PRICE \$6,495
ELIZ. FORD DISCT. -496
YOU PAY \$5,999

NEW '87 TAURUS GL

FORD, 4-dr. w/Optn'l 3.0 Ltr. EFI V-6 eng. AIR COND, Pref equip. pkg. rr. dfrstr, Rocker panel molding, spd. cont, light grp, tilt, paint stripe, fanned whl. covs. P205/70R14 Blk side/walls, frt./rr. flr. mats, rem. fuel dr. deck lid rel. pwr. lks. Stereo/Radio/w/cass. 6-way pwr. dr. sts. pwr. wdws. inclgd. Std: auto O/D trans. pwr. strg/brks 1 in stk. No. 7038

EQUIPPED NOT STRIPPED!

SAVE!

LIST PRICE \$15,495
ELIZ. FORD DISCT. -2327
YOU PAY \$13,168

NEW '87 E-150 CARGO VAN

FORD, w/Std: Buck. st. (pass.), pwr. strg/brks, 138" whl. base, Performance equip. pkg. 740, w/optn'l. 5.0 V-8 cyl. eng, auto O/D trans, swing-out side rr. gls, Std. mldg. trim, P205/75R B/S/W All Season tires, Bright Swing-out rec. mirrs, H/D Battery, Handling pkg. 1 in Stk. #7042.

EQUIPPED NOT STRIPPED!

SAVE!

LIST PRICE \$13,495
ELIZ. FORD DISCT. -2,096
YOU PAY \$11,399

NEW '87 LTD CROWN VIC LX

FORD, 4-dr. w/Optn'l: frt./rr. flr. mats, int. wprs. P215/70R15 W/S/W, conventional spare, cornering lamps, tilt, leather wrap strg. whl, spd. cont, frt./rr. bmpr. grds., rr. dfrstr., AM/FM St./Cass., pveting frt. vent wdws., locking w/w covs., lk. grp., inclgd. Std: 5.0 Ltr. EFI V-8 eng, auto O/D trans, pwr. strg/brks., Lux. rr. hall vin. rf. 1 in stk. No. 7002.

EQUIPPED NOT STRIPPED!

SAVE!

LIST PRICE \$17,700
ELIZ. FORD DISCT. -2789
YOU PAY \$14,911

NEW '86 F-150 PICK-UP TRUCK

FORD, w/Std: Style Type 4x2, 4.9 6-cyl. eng, pwr. strg/brks, 8' bed, w/optn'l: 4-spd. man. O/D trans, tach, 54-50GVW, axle line flip rr, instal. pkg, bright low mount swing away mirrs, AM/FM St, Super eng. cooling sys, P215/75R15 Blk. S/W all season tires. 1 in Stk. #6207.

EQUIPPED NOT STRIPPED!

SAVE!

LIST PRICE \$10,564
ELIZ. FORD DISCT. -2,165
YOU PAY \$8,379

VISIT OUR FORD PARTS STORE!
CHRISTMAS GIFT CERTIFICATES AVAILABLE!
PARTS STORE Motorcraft

USED CAR SPECIALS!

'80 200 SX
DATSUN, Red, 4-cyl. eng, auto. trans, pwr. strg/brks, AIR COND, ant. 84,568 mi.
\$3495

'84 T-BIRD ELAN
FORD, 6-cyl. eng, auto. trans, pwr. strg/brks, sts/lks/ant, cruise, tilt, case, rad. wheels. 28,190 mi.
\$8499

'81 MARK VI
LINCOLN, 8-cyl. eng, auto. trans, pwr. strg/brks, lks/sts/ant, AIR COND, AM/FM Ster/cass, alum. whls, LOADED. 55,203 mi.
\$7999

'83 CELICA GT
TOYOTA, 4-cyl. eng, 5-spd. man. trans, pwr. strg/brks, AIR COND, tint. gls, CREAM PUFFI 14,431 mi.
\$6299

'83 ZEPHYR
MERCURY, 6-cyl. eng, auto. trans, pwr. strg/brks, tint. gls, AIR COND. 47,748 mi.
\$3999

All prices exclude taxes & MV fees.

- TOP TRADE-IN ALLOWANCES!
- FINEST SERVICE!
- QUICK CREDIT APPROVAL!

OPEN DAILY
9 A.M. — 9 P.M.
SATURDAY 9-6



ELIZABETH FORD

550 NORTH BROAD ST., ELIZABETH • 353-3100