

New Jersey's professional theaters to gather for annual job fair

The New Jersey Theater Alliance, the consortium of New Jersey's professional, not-for-profit theaters, will hold its 15th annual Job Fair Saturday from 10 a.m. to 3 p.m. at the State Theater, 19 Livingston Ave., New Brunswick.

More than 15 of the state's professional theater companies will be in attendance to interview candidates for dozens of administrative, technical and production jobs. Theaters will be seeking qualified applicants to fill internship, entry-level jobs and staff positions for full- and part-time seasonal and year-round schedules. Acting jobs are not available through the New Jersey Theater Alliance's annual Job Fair.

Upon arrival at the Job Fair, applicants will receive a comprehensive listing of positions for which the theaters will be interviewing throughout the day. Applicants then schedule appointments for interview that day with as many theaters as they choose. Advance registrants with an e-mail address will be sent listings at least one day prior to the Job Fair.

At press time, participating theaters include American Stage Company, Teaneck; Bickford Theater, Morristown; Dreamcatcher Repertory Theater and Luna Stage Company, Montclair; Forum Theater Company, Metuchen; George

Street Playhouse, New Brunswick; Growing Stage Theater, Netcong; McCarter Theater, Princeton; New Jersey Shakespeare Festival and Playwrights Theater of New Jersey, Madison; Palistage, Tenafly; Paper Mill Playhouse, Millburn; Passage Theater, Trenton; Pushcart Players, Verona; TheaterFest, Upper Montclair; TriState Actors Theater, Hamburg; Two River Theater Company, Red Bank, and Union County Arts Center, Rahway.

Theater professionals who are unable to attend the Job Fair or who want to multiply their exposure to potential employers will be interested in the New Jersey Alliance's annual Job Bank. This service keeps resumes in circulation to dozens of performing arts organizations for one year. Job Bank participants also receive up-to-the-minute listings of job openings at organizations across the tri-state area via e-mail.

Early registration is recommended in order to receive important information, directions to the State Theater and lower registration fees. The Job Fair Registration fee at the door is \$20. The registration fee for both the Job Fair and Job Bank at the door is \$25. The cost of registration for the Job Bank only is \$10.

For registration information, contact the New Jersey Theater Alliance at (973) 593-0189, send e-mail to njtg@nj.com or visit the New Jersey Theater Alliance web site at www.njtheatrealliance.com and click on the "What's Playing" button for a hyperlink to the Job Fair information.

The New Jersey Theater Alliance programming helps to increase and create public awareness, appreciation, and support for theater in New Jersey. For more than a decade, the members of the New Jersey Theater Alliance have been the center of an exciting, expanding, nationally-acclaimed theater community. Under this umbrella organization, New Jersey's professional theaters participate in a wide number of programs that benefit arts patrons, educators, artists and theater administrators throughout the state.

The 15th annual Job Fair is sponsored by Johnson and Johnson. Funding for the New Jersey Theater Alliance has been made possible, in part, by the New Jersey State Council on the Arts/Department of State, a partner agency of the National Endowment of the Arts.

WBGO FM Jazz station to salutes Miles Davis

WBGO Jazz 88.3 FM, in association with Symphony Space, presents a live broadcast of "Wall to Wall Miles Davis," an exhilarating, 12-hour musical marathon featuring the music of Miles Davis Saturday from noon to midnight. Funding is provided by the Doris Duke Charitable Fund, the National Endowment for the Arts and the members of WBGO.

An all-star cast of musicians, singers and speakers will commemorate this visionary artist's 75th birthday, with musical tributes that touch on every aspect of Davis' expansive career from his early days as a be-bopper, to his birth of the cool and modal jazz innovations, to his radical fusion experiments.

WBGO announcers Gary Walker, Rhonda Hamilton and Michael Bourne will be both the on-air and on-stage hosts, for the program organized into six two-hour segments. Each segment will capture at least three distinct viewpoints of Davis. While some artists will focus on a specific work or album, other artists will cut across periods and themes, with all artists personalizing their respective performances.

Among the list of participants currently confirmed are Adam Holzman, Anthony Coleman, Ashley Kahn, Ben Allison, Bob Belden,

Bobby Previte's Voodoo Down Orchestra, Burnt Sugar, Cameron Brown, Clarence Penn, Dave Douglas, David Sanchez, Don Byron Music for Six Musicians, Eddie Henderson, Frank London, George Avakian, Graham Haynes, Greg Tate, Idris Mohammad, Ingrid Jensen, Jimmy Cobb, Joe Lovano, Kevin Hayes, Leon Gruenbaum, Mamadou Diabate, Maria Schneider Orchestra, Melba Joyce, Melvin Gibbs' Liberation Theology featuring Pete Cosey, Michael Blake, Miles Evans, Mulgrew Miller, Nora York, Olu Dara, Russell Gunn, Sexmob with Bill Frisell and DJ Logic Tamango, Terrell Stafford, Tom Harrell, Uri Caine, Vernon Reid and Masque, Wallace Roney, Bobby Watson and Horizon, John Lewis, Jon Faddis, James Williams, Jane Ira Bloom, Paquito D'Rivera and more.

This is the 31st annual "Wall to Wall" event at the Symphony Space, Broadway at 95th Street in New York City. The event is free; neither tickets nor reservations are necessary. Previous "Wall to Walls" have honored such prominent composers as Kurt Weill, Frank Loesser, Johann Sebastian Bach and Duke Ellington. For information about the event, the "Wall to Wall" hot line number is (212) 864-1414, ext. 403.

Exhibit at UCC gallery features 'inspiring' images

Gloria Rodriguez' exhibition, "The Image to Inspire," can be seen at the Tomasulo Gallery at Union County College, Cranford, through April 19. The exhibition is comprised of paintings and collage.

The title of the show, "The Image to Inspire," establishes a new type of syncretism, not only religious, but social and cultural in nature. Her paintings evoke a range of archetypal themes and employ a new vocabulary of classical and urban origin. The new translation of multi-cultural and religious images are made familiar to the viewer in a sensitive and personal manner that all ages and ethnicities can identify and relate to the icons.

Rodriguez' technique of acrolage painting is an evolution of mixed media, and a term she coined in the late 1980s. Acrolage is the layering and glazing of luminous colors, textures and blending of fermenting surfaces stenciled with rice and imaged paper. The simplicity and elegance in her painting gives a dramatic intensity and depth of color which produces a striking impression.

Gloria Rodriguez' collages relate to the more social and urban commentary of life. The collage is a medium where she is able to express more freely her personal encounters with her environment. At first glance, the torn and fragmented images have a sensitive humor, but upon more study, they leave one with the social-political comment of the times.

The distinctive quality, the empowerment of the spiritual and the emotional define the creation of her work and Gloria Rodriguez. Rodriguez has received many awards, and in the year 2000, her achievements have been honored with a New York Foundation

for the Arts fellowship in painting, New Jersey State Council on the Arts fellowship to the Rutgers Center of Innovative Print and Paper, and a Geraldine R. Dodge Foundation fellowship for the Vermont Studio Center in Johnson, Vt. She is in the collection of many New Jersey museums, as well as other museums, institutions and private collections. She is represented by the American Gallery in New York; the Second Dimensions Gallery, New Hope, Pa.; the Landor Gallery, Newark, and the Arts Gallery, Union City. Her works have been reproduced in many articles and magazines.

The Tomasulo Gallery is located on

the first floor of the MacKay Library on the campus of Union County College, 1033 Springfield Ave., Cranford. Gallery hours are from 1 to 4 p.m. Mondays through Thursdays and Saturdays. Evening hours are from 6 to 9 p.m. Tuesdays through Thursdays. For more information, call the Tomasulo Gallery at (908) 709-7155.

while the actress Liv Ullman directed it. "Faithless" is a cutting examination of the careless deceptions, guilts and damages of infidelity in marriage. Because it is recognizably autobiographical and referenced to earlier Bergman film in many of its details, and it is so faultlessly acted, "Faithless" seems to be almost perfect, if harrowing, truth-telling by the great Swedish auteur.

Finally, I recently presented a program on William Kennedy's "Ironweed" as seen through the novel and the film made from the novel. Written as a part of the Albany series about the Depression, this Pulitzer Prize-winning book was interpreted by none other than Meryl Streep and Jack Nicholson, to express not only the hard times, but the shared humanity the author created.

For seniors, particularly, each film then is a unique and easily accessed opportunity to embrace a portion of life seen through an artist's vision. That is a real plus, and a great way to get away from television sitcoms and the survivor program mentality.

Seniors, movies — perfect together

On the Arts

By Jon Plaut

A very good friend recently remarked to me that the movies are great cultural recreation for seniors. That is true. When my parents were retired and New York City with its theater and ballet were no longer accessible to them, the current movies were a constant source of conversation and comparison. When my mother was very aged, she had as her number-one goal when any member of my family visited, a trip to the movies. The movies, you see, took her out of herself and enlarged her view of the world.

These thoughts seem particularly on target over the last few weeks, as I experienced four movies made outside our usual Hollywood industry by authors and artists who sought to express ideas and the fabric of life as they perceived it. In each case, the creative artist of the movie is an auteur or writer in film, who enhances the story on the screen through a style of communication and entertainment.

The Korean "Chunhyang" is a magical re-telling of a folk story about young love between a politician's son and a courtesan's daughter in an 18th-century country town. The movie is romantic and beautifully expressed, but what it makes it special is a musi-

Jon Plaut is a resident of Summit. Save your newspaper for recycling.

Westfield Art to present its 'Salon 2001'

The Westfield Art Association will present "Salon 2001," its 77th annual judged members' exhibit, Saturday to April 1, in the Community Room, located in the front of the Municipal Building, 425 E. Broad St., Westfield.

The reception for the exhibit is scheduled for Sunday from 2 to 4 p.m., with presentation of awards at 3 p.m.

Exhibit hours include all four Saturdays and Sunday afternoons — March 24, 25, 31 and April 1 — from noon to 4 p.m. The exhibit is also open Wednesday afternoon from 1 to 6 p.m., and March 30 from 7 to 9 p.m.

"Salon 2001" is the Art Association's most comprehensive indoor show. All fine art media are included: oil painting, acrylics, watercolor, pastel, drawing, printmaking, sculpture, photography, and mixed media.

In addition to cash prizes, Awards of Excellence, Awards of Merit, and Honorable Mentions, donations have established memorial awards honoring Betty Rappold, Norman Webb, Kathryn and Denzil Bush, and Catherine Barnett and Fred Sitzer. The New Jersey chapter of the American Artists' Professional League offers a plaque and \$100 as an award for traditional realism.

Miklos Sebek of Passaic Park will decide the awards. This versatile sculptor works in both representational and abstract styles, and in diverse materials. Besides exhibiting internationally and locally, he has been Senior Vice President of the Audubon Artists of New York since 1999.

For information, contact "Salon 2001" co-chairpersons Linda Kolar of Westfield at (908) 233-2393 or Sandy Wygledowski of Mountainside at (908) 789-0717 evenings, who share duties with president Barbara Schwinn at (908) 232-7058.

Your business can grow with more customers. Reach the potential customers in your newspaper with an ad by calling 1-800-564-8911.

A Grand Slam Opening

The X-Factor in Sports

While baseball teams are still thawing out in the Sunbelt - Arena Sports Connexion is gearing up for a grand slam opening on Saturday, March 24th.

We're bringing a new dynamic to the sports store. We've combined the display features of a showroom with the convenience of a retail store.

We'll supply sports gear to teams on all levels in any sport, or sponsor clinics for coaches who want to sharpen their skills.

We'll satisfy distinctive tastes in sporting wear, or create apparel for a corporate golf outing.

If the sports arena is your passion, come and see us at Arena Sports Connexion.

Remember the date:
A Grand Slam Opening!
Saturday, 24th



1049 Raritan Road
Clark, NJ 07066
(732) 381-5652

Your Connexion to a Sporting Lifestyle

Store Hours:
Mon, Tues and Wed 10-7
Thur 10-9 Fri 10-7 Sat 10-6

FREE GOALIE CLINIC!

We will raffle a 6-session Goalie Clinic, to be conducted by Mike Romeo internationally renowned soccer coach from Wardlaw High School

FREE T-SHIRT!

The first 50 customers at our Grand Opening will receive a FREE T-SHIRT!

Bill Van Sant,
Editor

©Worrall Community Newspapers
Inc. 2001 All Rights Reserved

Organizations submitting releases to the entertainment section can mail copy to 1291 Stuyvesant Ave., P.O. Box 3109, Union, New Jersey, 07083.

Leisure Lifestyles

The Historian's Corner

Museum Guide

The Museum Guide is compiled by Worrall Community Newspapers. It is a list of museums and historical sites in Union County and the surrounding area. To add to the list, send the relevant information to Arts and Entertainment Editor Bill VanSant at Worrall Community Newspapers, 1291 Stayvesant Ave., Union, NJ 07083.

- Little-Lord Farmhouse, Museum and Farmstead, 31 Horseshoe Road, Berkeley Heights. Open 2 to 4 p.m. the third Sunday of each month from April through December or by appointment. Call (908) 464-0961.
- Dr. William Robison Plantation Museum, 593 Madison Hill Road, Clark. Open 1 to 4 p.m. the first Sunday of each month from April through December. Call (732) 381-3081.
- Crane-Phillips House Museum, 124 Union Ave. North, Cranford. Open 2 to 4 p.m. Sundays from September through June, or by appointment. Call (908) 276-0082.
- Belcher-Ogden Mansion, 1046 E. Jersey St., Elizabeth. By appointment only. Call (908) 351-2500.
- Boxwood Hall, 1073 E. Jersey St., Elizabeth. Open 9 a.m. to 5 p.m. Monday through Friday. Call (908) 648-4540.
- Woodruff House/Easton Store Museum, 111 Conant St., Hillside. Open 2 to 4 p.m. the third Sunday of each month or by appointment. Call (908) 352-9270.
- Deacon Andrew Hetfield House, Constitution Plaza, 1385 Route 22, Mountainside. By appointment only.
- Trailside Nature and Science Center, 452 New Providence Road, Mountainside. Open 1 to 5 p.m. daily. Call (908) 789-3670.
- The Saltbox Museum, 1350 Springfield Ave., New Providence. Open 1 to 3 p.m. the first and third Sundays of the month, and 10 a.m. to noon on each Thursday of the month.
- Drake House Museum, 602 W. Front St., Plainfield. Open 2 to 4 p.m. Sundays September to June. Call (908) 755-5831.
- Merchants and Drivers Tavern, 1632 St. Georges Ave., Rahway. Currently under restoration. By appointment only. Call (732) 381-0441.
- Abraham Clark House, 101 W. Ninth Ave. at Chestnut Street, Roselle. By appointment only. Call (908) 486-1783.
- Roselle Park Museum, 9 W. Grant Ave. at Chestnut Street, Roselle Park. Open Mondays from 7 to 9 p.m. and Wednesdays from 10 a.m. to 2 p.m. Call (908) 245-1776.
- Osborn Cannonball House, 1840 Front St., Scotch Plains. Open 2 to 4 p.m. the first Sunday of the month. Call (908) 233-9165.
- The Cannonball House, 126 Morris Ave., Springfield. By appointment only. Call (973) 379-2634.
- Donald B. Palmer Museum of the Springfield Public Library, 66 Mountain Ave., Springfield. Open 10 a.m. to 8:30 p.m. Mondays, Wednesdays and Thursdays; 10 a.m. to 4:30 p.m. Tuesdays and Fridays. Call (973) 376-4930.



The Benjamin Carter House, at 90 Butler Parkway in Summit, is the oldest house in the city. The home to the Summit Historical Society, the Carter House is open 9:30 a.m. to noon Tuesdays; 1:30 to 4 p.m. Wednesdays; 2 to 4 p.m. the first Sunday of the month; and by appointment. Call (908) 277-1747.

- Benjamin Carter House, 90 Butler Parkway, Summit. Open 9:30 a.m. to noon Tuesdays; 1:30 to 4 p.m. Wednesdays; 2 to 4 p.m. the first Sunday of the month; and by appointment. Call (908) 277-1747.
- Reeves-Reed Arboretum, 165 Hobart Ave., Summit. Grounds are open daily from dawn to dusk; office is open from 9 a.m. to 3 p.m. Mondays, Tuesdays, Thursdays and Fridays. Call (908) 273-8787.
- Caldwell Parsonage, 909 Caldwell Ave., Union. Open 2 to 4 p.m. the third Sunday of the month or by appointment. Closed December and January. Call (908) 687-8129.
- Liberty Hall Museum, 1033 Morris Ave., Union. Open 10 a.m. to 4 p.m., Wednesdays to Sundays. Call (908) 527-0400.
- Miller-Cory House Museum, 614 Mountain Ave., Westfield. Open 2 to 5 p.m. Sundays from September through June — closed during the summer — and 2 to 4 p.m. Sundays in January and February, or by appointment. Call (908) 232-1776.
- Deserted Village of Feltsville-Glenside Park. By appointment only during daylight hours. Call (908) 527-4911.

Crane-Phillips plans a 'fashionable' event

The Cranford Historical Society is sponsoring its first antique clothing fashion show, "Three Hundred Years of Fashion," April 28 at 6:30 p.m. at the Orange Avenue School theater. The event will feature live models showing off beautiful period costumes from the early 1700s all the way through the 20th century. Descriptive narrative about the time periods and costumes will be accompanied by music appropriate to each era. The fashion show is a fund-raising event for the ongoing restoration of the Crane-Phillips House Museum. There will be 25 beautiful gift baskets as part of the fund-raising aspect of the event, as well as a day at Park Salon of Florham Park, valued at \$400, and an outstanding one-week

vacation at a luxury condo in Myrtle Beach, S.C. Coffee and dessert will be served. Tickets are \$12 in advance, \$15 at the door, and \$5 for children younger than 12 years old. They are on sale now at the following retail locations in Cranford: Adam's Goal, Centennial Avenue; The Arrangement, North Union Avenue; Cranberry Lane, North Union Avenue; Dovetails, Eastman Street; and Uptown Peddler, Alden Street. Tickets are also on sale at the Hanson House Annex, 38 Springfield Ave., Monday through Friday, 9 a.m. to noon, and at the Crane-Phillips House Museum, Sundays, 2 to 4 p.m. For more information, call the Cranford Historical Society at (908) 276-0082.

Police officer deaths have risen, fallen in 100 years

By Craig W. Floyd
Correspondent

Sacrifices and triumphs — America's police force has known many in the last century and both have made this country a safer place to live. At the dawning of a new century, 30-year-old William C. Rooney was part of a proud and growing law enforcement profession. Within the next 10 years police officers would begin using fingerprints to track down criminals, a former New York City Police Commissioner named Theodore Roosevelt would become President of the United States, and the first woman in the country to have arrest powers would begin serving with the Los Angeles Police Department. Rooney, a captain with the Colorado Department of Corrections, would never know about any of those historic events. On Jan. 22, 1900, Captain Rooney was stabbed in the heart during a prison escape and died. He was the first of more than 14,286 law enforcement officers in the United States to be killed in the line of duty during the 20th century.

When compared to the years that followed, though, 1900 was a relatively tame period for the officers who served. The year ended with just 40 law enforcement fatalities. All totaled during the 1900s, more than 360 correctional officers lost their lives in the performance of duty. One of the darkest days in police history occurred Nov. 24, 1917, when a suspicious package left outside a church was brought to a Milwaukee police station. The package exploded and nine police officers were killed. Statistically, there was a dramatic rise in law enforcement fatalities from World War I until 1930, with the number of deaths increasing from 76 in 1914 to a high of 246 in 1930. The number of police fatalities and the national homicide rate then declined during the 1930s, '40s and '50s, before sharply increasing in the '60s and '70s. The deadliest decade on record for law enforcement was the 1970s when a total of 2,218 officers were killed in the line of duty. Largely due to the increased use of soft body armor, better training and improved equipment, police deaths have been on the decline for the past two decades. The 134 police deaths in 1999 ranks among the lowest in 30 years. For more NLEOMF information, visit the web site at www.nleomf.com

Craig W. Floyd is chairman of the National Law Enforcement Officers Memorial Fund.

Westfield historical groups will meet in April

The Planning Committee for the Spring Assembly of the Westfield history societies has announced that the group's annual meeting will be held April 18 at 8 p.m. at the First Baptist

Church on Elm Street. Introductory music will start about 7:45 p.m. The assembly is the yearly gathering of the community's five history organization: The Genealogical Soci-

ety of the West Fields, The Miller-Cory House Museum Volunteers, The Westfield Historical Society, the Daughters of the American Revolution, and the West Fields Chapter of

the Sons of the American Revolution. The S.A.R. is the host association this year represented on the committee by Ken Hoover, Steve Clarke, and John Lawson. Other committee members are Bob Miller and Don Mokrauer of the Historical Society, Forrest Blanding of the Genealogical Society, Pat D'Angelo of Miller-Cory, and Joanne Hoover of the D.A.R.

The program will be announced as soon as plans are complete. The feature presentation will be followed by refreshments and the public is invited.

Miller-Cory seeks history-minded volunteers

Have you seen a woman walking around Westfield in Colonial garb complete with a mob cap and apron or perhaps a man with britches, buckles on his shoes and a three-cornered hat?

These are volunteers who work at the Miller-Cory House Museum, a living historic site built in 1740. They help to make the exciting history of the town and the house come alive for visitors.

Located in Westfield at 614 Mountain Ave., the Miller-Cory House is a trip back in time to the period between 1740 and 1820 when the families of Samuel Miller and Joseph Cory lived in the house and worked what was the then-a 100-acre farm.

The Miller-Cory House is staffed by a core of costumed docents dedicated to bringing the past to life for visitors every Sunday and for groups during the week. The museum is seeking volunteers who are interested in presenting what life was like for the typical 18th-century family.

Spots are available for volunteers to provide guided tours on Sundays and/or during the week, for the Showcase outreach program to local schools, to participate in the open hearth cooking which is done every Sunday at the Frazee house on the grounds according to typical 18th-century recipes, to garden in the colonial herb and vegetable gardens on the site, to work in the gift shop or wherever your interests may lie. Full training is provided.

Volunteers can also participate in the popular programs for the community held throughout the year such as Sheep to Shawl planned for April 22 from 1 to 4 p.m., Fall Festival and Annual Maple Sugaring Day. Some of the other Sunday programs are Spoon Dolls, Spinning, Dulcimer Music, Colonial Technology, beehive oven demonstration, pressed flower arrangements, Colonial fashions and May baskets.

Come and take part in the fun. Join the Miller-Cory House volunteers in presenting history. To volunteer, call (908) 232-1776.

MAJOR NETWORK NEWS PROGRAM

ARE YOU IN A PERSONAL FAMILY CRISIS?

Can you help educate the TV public by sharing a major event currently happening in your family?

Health, Divorce, Religious, Sexual, or Mental Health Issues, Inheritance Disagreement, Multiple Birth Problems, any crisis.

However, the crisis should be having a major impact on your life and must not be substantially resolved. Your story will air on a MAJOR NETWORK NEWS PROGRAM.

PLEASE CALL 212-974-9248



CRANFORD REPERTORY THEATRE

Temple Beth-El Mekor Chaulm

SAT MARCH 24th 6:31^{pm} 8:00PM
SUN MARCH 25th & APRIL 1st 2:00PM

All Performances at
Cranford High School

General Admission
Adult Tickets \$10
Students/Seniors \$8

Matinees: Children 10 and under \$5

Reserve Seat Tickets \$12

908-276-9231 908-276-5053

This arts program was made possible in part by a 2001 HEART GRANT from the Union County Board of Chosen Freeholders.

"My bank knows me by my 12-digit account number, not by my name."

At Union County Savings Bank, we're listening.

Are you tired of your account being referred to by its number instead of by your name?

Visit any one of our four convenient offices and be recognized and welcomed by friendly, helpful customer representatives and by officers who sit on the main banking floor and are always available to assist you.

Union County Savings Bank is proud of its forty-five employees who have an average of 12 years of community banking experience. Some have enjoyed relationships with two and three generations of UCSB depositors.

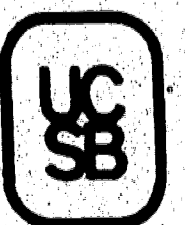
Come in today and talk to the people who know you at Union County Savings Bank.

UNION COUNTY SAVINGS BANK

FOUR CONVENIENT OFFICES TO SERVE YOU

MAIN OFFICE: 320 North Broad St., Elizabeth NJ 354-4600
61 Broad St., Elizabeth, NJ 289-5551
642 Chestnut St., Union, NJ 964-6060
201 North Avenue West, Cranford, NJ 272-1660

Member Federal Deposit Insurance Corporation





NOBODY SELLS DODGES FOR LESS!



NO MONEY DOWN

SECURITY DEPOSIT or BANK FEE
On All Advertised Leases!

SAVE \$6984

With All Factory & Dealer Incentives
WHEN YOU BUY

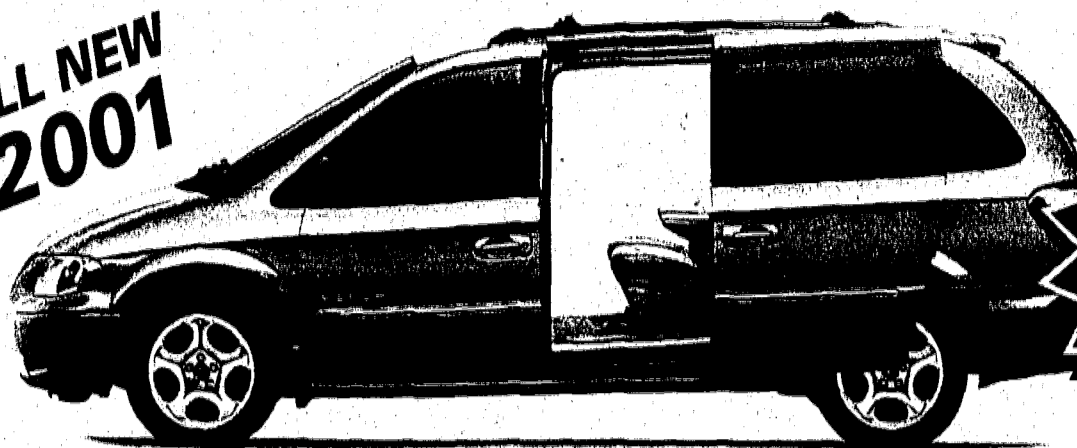
Total of incentives range from \$200.00 to \$6984.00 depending on model

0.9% FINANCING

available for qualified buyers

GRAND CARAVAN SPORT

ALL NEW 2001



39 month lease

**AUTOMATIC • A/C - REAR A/C
3.3L V6 • DUAL SLIDING REAR DOORS**

\$289

LEASE PER MONTH^A

MSRP: \$27,275

- ABS • Pwr Windows & Door Locks • Tilt • Cruise • FWD • Dual Zone A/C • Dual Front & Side Air Bags • Rear Window Defroster • Privacy Glass • Roof Rack • 7 Passenger • #5022. VIN#1R106403

2001 DURANGO

UNBELIEVABLE LEASE AVAILABLE



4x4 SLT

**AUTOMATIC • 4 WHEEL DRIVE
AIR CONDITIONING • 4.7L-MAGNUM V8 ENGINE**

\$25,428

BUY FOR ONLY^A

MSRP: \$31,675

- Power Windows & Locks • Tilt • Cruise • Big Wheel and Tire Group • Power Heated Auto Dimming Mirrors • AM/FM Cass/CD/EQ • #5054 • VIN#1F525733

RAM 2500 DIESEL

UNBELIEVABLE LEASE AVAILABLE



QUAD CAB 4x4 SLT+

**5.9L-CUMMINS 24 VALVE TURBO DIESEL
AIR CONDITIONING • LEATHER INTERIOR**

MSRP: \$40,360

\$33,376

BUY FOR ONLY^A

- Power Windows & Locks • Tilt • Cruise • Power Seats • Snow PlowPrep • Trailer Tow • Anti Spin Differential • Heavy Duty Engine, Trans., Battery & Alternator • Sunscreen Glass • Sliding Rear Window • Clearance Lamps • Front Air Dam • AM/FM Cass/CD/EQ-Infinity Sound • #5049 • VIN#1J519100

DON'T PAY HIGH FINANCE RATES BECAUSE YOU DON'T HAVE PERFECT CREDIT!



CHRYSLER 9.9% 60 months A.P.R. FINANCING IS AVAILABLE FOR YOU!

2001 INTREPID



39 month lease

**AUTOMATIC • AIR CONDITIONING
2.7L V6 DOHC - 24VALVE MPI ENGINE**

\$289

LEASE PER MONTH^A

MSRP: \$21,955
Power Windows & Door Locks • Tilt • Cruise • Front Wheel Drive • Dual Front & Side Air Bags • Luxurious Interior • #5106 • VIN#1H58740

ALL NEW 2001 STRATUS



**AUTOMATIC • AIR CONDITIONING
2.7L V6 - 24 VALVE ACTIVE INTAKE ENGINE**

\$249

LEASE PER MONTH^A

MSRP: \$20,075
Power Windows & Door Locks • Tilt • Cruise • Front Wheel Drive • Dual Front & Side Supplemental Air Bags • 8 Way Power Driver's Seat • Remote Entry • #5168 • VIN#1N535704

2001 NEON



**AUTOMATIC • AIR CONDITIONING
2.0L - 4 CYL-SOHC 16 VALVE ENGINE**

\$11,615

BUY FOR ONLY^A

MSRP: \$15,355
Front Wheel Drive • Dual Front & Side Supplemental Air Bags • Light Group • AM/FM Stereo • #5081 • VIN#1D535772

(973) 762-3500
www.newroyaldodge.com

The New Royal Dodge OF MAPLEWOOD

MAPLEWOOD
ROYAL DODGE
SPRINGFIELD AVE
1830 SPRINGFIELD AVE

DIRECTIONS: Garden State Parkway Southbound Exit # 143 towards Irvington/Springfield Ave. Go straight on Western Parkway which becomes Washington Avenue. Make slight right onto Springfield Ave. (NJ-124). OR: Garden State Parkway Northbound Exit # 140 - Rt 78 Eastbound (Stay to the far right). Make 1st U-Turn get onto Rt 78 Westbound. Exit 50B - Vauxhall Road. At second light make right onto Springfield Ave. Dealership on left side about 1 mile down. Route 78 Eastbound to Exit 49B, Travel 1.5 Miles, Dealership on left OR Route 78 Westbound to Exit 50B, Exit 50B - Vauxhall Road. At second light make right onto Springfield Ave. Dealership on left side about 1 mile down. N.J. Turnpike (North or Southbound) Exit at Newark Airport, take Rt 78 West (local exits) to Exit 50B - Vauxhall Road. At second light make right onto Springfield Ave. Dealership on left side about 1 mile down.

MSRP includes destination charge, excludes tax, license, title, and dealer fees. Actual dealer price may vary. All cars must be financed thru dealer. All must be presented for purchase by 03/31/01. Lease rates are for qualified buyers with good credit. Lease payments are based on 12,000 miles per year. Excess mileage and wear and tear charges may apply. Dealer sets actual price. MSRP includes destination charge, excludes tax, license, title, and dealer fees. Actual dealer price may vary. All cars must be financed thru dealer. All must be presented for purchase by 03/31/01. Lease rates are for qualified buyers with good credit. Lease payments are based on 12,000 miles per year. Excess mileage and wear and tear charges may apply. Dealer sets actual price.

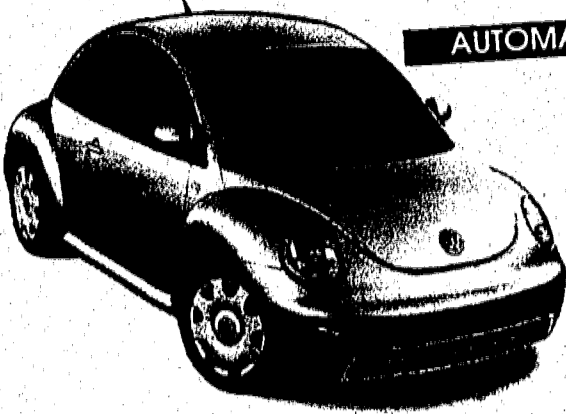


The Choice of a New Generation

Drivers wanted.

NEW 2001 VW NEW BEETLE

AUTOMATIC

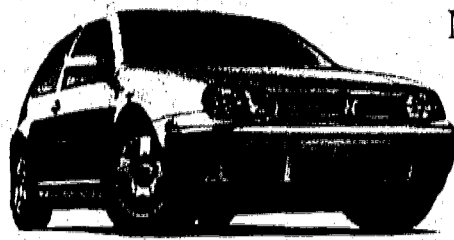


VIN #1M429226, Stk #EV10165, 2 DR, auto, 4 cyl., p/s/ABS/winds/mirrors/trunk, am/fm cass, a/c, tilt, r/def, v/glass, int wpr, fr mats, cloth bkts, alarm, dual air bags, keyless entry, MSRP: \$17,400. Tot pymt/residual/total cost: \$6903/\$11,000/\$8498.

LEASE FOR **\$177** PER MO. 39 MOS.

BUY FOR **\$15,987**

\$1000 down + \$177 1st mo. pymt + \$0 sec dep + \$595 bank fee = \$1772 due at inception + licensing, reg & taxes.



NEW 2001 VW GTi SPORTY

VIN #14028733, Stk #EV10223, 2 DR, 5 spd., 4 cyl., p/s/ABS/winds/mirrors/trunk, am/fm cass, a/c, tilt, cruise, r/def, v/glass, int wpr, fr mats, cloth bkts, alarm, dual air bags, moonroof, alloys, keyless entry, MSRP: \$20,225. Tot pymt/residual/total cost: \$8462/FMV/\$10,058.

LEASE \$217 PER MO. BUY FOR \$17,987 FOR 39 MOS.

\$1000 down + \$217 1st mo. pymt + \$0 sec dep + \$595 bank fee = \$1812 due at inception + licensing, reg & taxes.

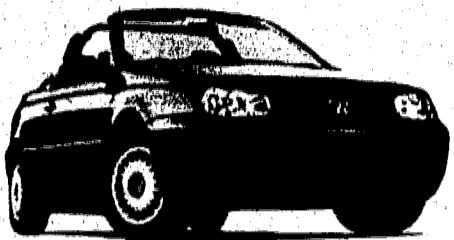


NEW 2001 VW JETTA GLS ALL THE TOYS!

VIN #1M115735, 4 DR, auto, 4 cyl., p/s/ABS/winds/mirrors/trunk, am/fm cass, a/c, tilt, cruise, r/def, v/glass, int wpr, fr mats, leather bkts, alarm, dual air bags, moonroof, alloys, keyless entry, MSRP: \$21,575. Tot pymt/residual/total cost: \$8853/\$12,800/\$10,448.

LEASE \$227 PER MO. BUY FOR \$18,987 FOR 39 MOS.

\$1000 down + \$227 1st mo. pymt + \$0 sec dep + \$595 bank fee = \$1822 due at inception + licensing, reg & taxes.



NEW 2000 VW CABRIO CONVERTIBLE TOP OF THE LINE!

VIN #YV803787, Stk #EV05088, 2 DR, 5 spd., 4 cyl., p/s/ABS/winds/mirrors/trunk, am/fm cass/cd, a/c, tilt, cruise, r/def, v/glass, int wpr, fr mats, leather bkts, alarm, dual air bags, alloys, keyless entry, MSRP: \$24,175.

BUY FOR **\$19,997**



NEW 2000 VW GOLF GLS 1.8T TURBO

VIN #Y4040220, Stk #EV00281, 4 DR, 5 spd., 4 cyl., p/s/ABS/winds/mirrors/trunk, am/fm cd, a/c, tilt, cruise, r/def, v/glass, int wpr, fr mats, cloth bkts, alarm, dual air bags, keyless entry, MSRP: \$18,525.

BUY FOR **\$15,987**

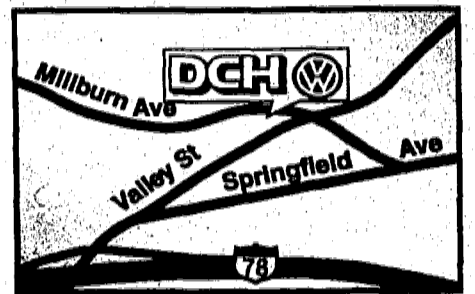
We will buy your car on-line: www.DCHAUTONJ.com

DCH Volkswagen

Under new ownership

2195 Millburn Avenue • Maplewood, NJ 973-762-8500

DCH Auto Group "Your satisfaction is our mission"

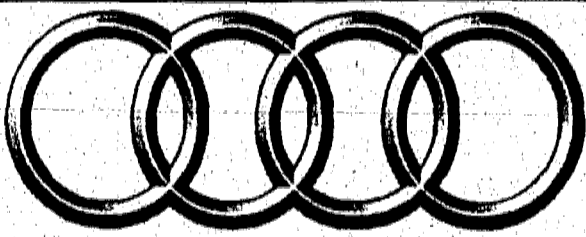


Just minutes from the Short Hills Mall

SHOWROOM HOURS:
Mon-Thurs 9am-9pm, Fri 9am-7:30pm
Sat 9am-6pm
PARTS & SERVICE:
Mon-Fri 7:30am-5:30pm

Prices/Leases incl all costs to be paid by a consumer, except for licensing, reg & taxes. Prices/Leases include all rebates & incentives. Price/Leases include \$400 recent college grad rebate. Close end leases 10,000 mi/yr, 15¢ thereafter. Not responsible for typos, errors or omissions. All financing in lieu of factory rebates, on select models. All rebates to dealer, where applicable. This ad supersedes all other offers. Subject to prior sale.

www.dchessex.com



Audi

AUDI... With Quattro All Wheel Drive!



WE GIVE YOU MORE!
Come see the all-new 2001 AUDI TT
In Stock for Immediate Delivery



Just minutes from the Short Hills Mall

We will buy your car on-line: www.DCHAUTONJ.com

DCH Audi

Under new ownership

2195 Millburn Avenue • Maplewood, NJ 973-762-8500

DCH Auto Group "Your satisfaction is our mission"

SHOWROOM HOURS:
Mon-Thurs 9am-9pm,
Fri 9am-7:30pm
Sat 9am-6pm
PARTS & SERVICE:
Mon-Fri 7:30am-5:30pm

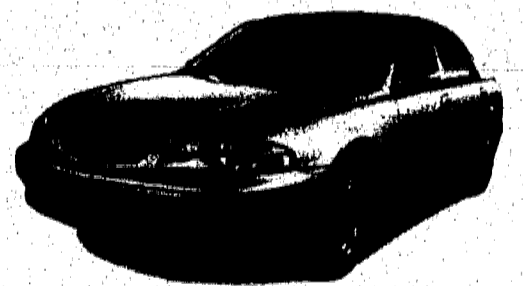
www.dchessex.com

MAZDA Get in. Be moved.

NEW 2000 MAZDA 626 LX

VIN #Y5105333, Stk #EM00013, 4 DR, auto, 4 cyl., p/s/b/winds/mirrors/trunk, am/fm cd, a/c, tilt, cruise, r/def, v/glass, int wpr, fr mats, cloth bkts, dual air bags, keyless entry, MSRP: \$19,725. Includes \$400 recent college grad rebate, if qual.

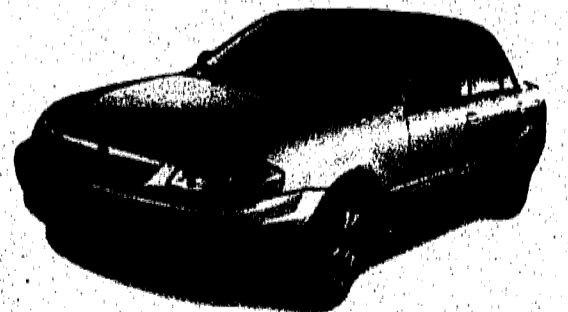
BUY FOR **\$13,998**



NEW 2000 MAZDA PROTEGE LX

VIN #Y0288919, Stk #EM00163, 4 DR, auto, 4 cyl., p/s/b/winds/mirrors/trunk, am/fm cd, a/c, tilt, cruise, fog lights, r/def, v/glass, int wpr, fr mats, cloth bkts, dual air bags, keyless entry, MSRP: \$16,335. Includes \$400 recent college grad rebate, if qual.

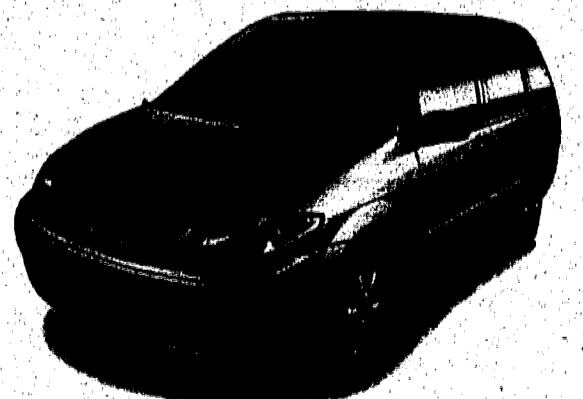
BUY FOR **\$11,998**



NEW 2001 MAZDA MPV DX

VIN #10171114, Stk #EM10045, 5 DR, auto, 6 cyl., p/s/b/winds/mirrors/disk, am/fm cd, a/c, tilt, cruise, r/def, v/glass, int wpr, fr mats, cloth bkts, dual air bags, alloys, roof rk, MSRP: \$22,720. Includes \$400 recent college grad rebate, if qual. \$1000 down + 1st mo. pymt. + \$375 sec dep. + \$595 bank fee = \$2218 due at signing.

LEASE FOR **\$248** PER MO. 42 MOS.



Just minutes from the Short Hills Mall



We will buy your car on-line: www.DCHAUTONJ.com

DCH Mazda

Under new ownership

2195 Millburn Avenue • Maplewood, NJ 973-762-8500

DCH Auto Group "Your satisfaction is our mission"

SHOWROOM HOURS:
Mon-Thurs 9am-9pm,
Fri 9am-7:30pm
Sat 9am-6pm
PARTS & SERVICE:
Mon-Fri 7:30am-5:30pm

Prices incl all costs to be paid by a consumer, except for licensing, reg & taxes. Prices include all rebates & incentives. *39 mos. closed end lease incl. 10,000 mi. yr. 15¢ mi. thereafter. Total pymts./total cost/purch opt: Millenia-\$11,193/\$13,138/\$15,400. Lessee resp. for maint., access wear & tear. Subj. to primary lender approval. Not responsible for typos, errors or omissions. All financing in lieu of factory rebates, on select models. All rebates to dealer, where applicable. *1st time buyers program available see dealer for details. This ad supersedes all other offers. Subject to prior sale.

www.dchessex.com

FORD WORLD



SAVE UP TO \$9000 OFF MSRP



NEW 2001 FORD E-150 CARGO VAN

VIN #1HAB4681

5 DR, 6 cyl, auto, a/c, p/s/ABS/winds/lks/mirrs, am/fm cass, dual air bags, radials, cloth int., alarm/sec sys. MSRP: \$23,010. Includes \$3365 dealer discount.

Buy For **\$17,395**



NEW 2001 FORD FOCUS LX

VIN #1W153574

4dr, 4 cyl, 5 spd man., a/c, p/s/b, am/fm stereo, BSW tires, MSRP: \$13,645. \$2250 down + 1st mo. pymt = \$2419 due at inception. Tot pymt/cost/residual: \$4056/\$6306/\$7096.

Buy For **\$9995**
Lease For **\$169** per mo 24 mos



NEW 2001 FORD F150 4X2 REG. CAB

VIN #1NB13031

6 cyl, auto, a/c, am/fm cass, payload group #2. MSRP: \$20,430. Includes \$2081 dealer discount, \$2500 down + 1st mo pymt + \$200 sec dep + \$0 bank fee = \$2869 due at inception. Tot pymt/cost/residual: \$4056/\$6756/\$9807.

Buy For **\$15,199**
Lease For **\$169** per mo 24 mos



NEW 2001 FORD TAURUS LX

VIN #1G109626

4 DR, 6 cyl., auto, a/c, p/s/b, am/fm stereo, tilt, bkts, 5925 demo mis. Original MSRP: \$18,915. Includes \$1970 dealer discount, \$2500 down + 1st mo. pymt + \$200 ref sec dep. = \$2889 due at inception. Tot pymt/cost/residual: \$6804/\$9504/\$7045.

Buy For **\$14,195**
Lease For **\$189** per mo 36 mos



NEW 2001 FORD WINDSTAR

VIN #1BB18297

4 DR, 6 cyl, auto, a/c, p/s/b/winds/lks, am/fm cass, tilt, r/def, dual air bags, cloth int., radials, MSRP: \$25,865. Includes \$2920 dealer discount, \$2500 down + 1st mo. pymt + \$275 ref sec dep. = \$3024 due at inception. Tot pymt/cost/residual: \$8964/\$11,739/\$10,864.

Buy For **\$19,695**
Lease For **\$249** per mo 36 mos



NEW 2001 FORD EXPLORER XLT 4X4

VIN #1ZAB3755

4 DR, 6 cyl, auto, a/c, p/s/ABS/disc brks/winds/lks/mirrs, am/fm cd, tilt, cruise, dual air bags, MSRP: \$32,660. Includes \$3865 dealer discount, \$2500 down + 1st mo pymt + \$300 ref sec dep. = \$3099 due at inception. Tot pymt/cost/residual: \$7176/\$9976/\$18,943.

Buy For **\$24,295**
Lease For **\$299** per mo 24 mos



NEW 2001 FORD EXPEDITION XLT 4X4

VIN #1LAD5264

8 cyl, auto, a/c, p/mirrs, am/fm cass, cloth int, all terrain, run boards, 16" alum whls, MSRP: \$35,340. \$3406 down + 1st mo. pymt = \$3735 due at inception. Tot pymt/cost/residual: \$7896/\$11,302/\$19,437.

Buy For **\$26,595**
Lease For **\$329** per mo 24 mos



NEW 2001 FORD EXCURSION XLT 4X4

VIN #1EB631064

10 cyl, auto, a/c, p/drivers seat/winds/mirrs, am/fm cass/cd, leather int, third row seat, all terrain, running boards, alum whls, MSRP: \$41,270. \$3435 down + 1st mo pymt = \$3834 due at inception. Tot pymt/cost/residual: \$19,152/\$22,587/\$19,700.

Buy For **\$31,995**
Lease For **\$399** per mo 48 mos

USED CARS • TRUCKS \$99 DOWN OR \$99 A MONTH

- '85 FORD ASPIRE \$3595
VIN #S6132432, 4 DR, 4 cyl, auto, a/c, p/s/b.
- '84 PLYMOUTH VOYAGER \$5995
VIN #RR629206, 3 DR, 4 cyl, auto, a/c, p/s/b/winds/lks, tilt, cruise, alloys, radials, 85,761 mi.
- '84 FORD EXPLORER 4WD \$7995
VIN #W9B90894, 4 DR, 6 cyl, auto, a/c, p/s/ABS/winds/lks/mirrs, am/fm cass, tilt, cruise, r/def, 83,238 mi.
- '85 HONDA CIVIC EX \$7995
VIN #SH17087, auto, a/c, p/s/ABS/winds/lks, mag whls, sunroof, 58,698 mi.
- '88 FORD ESCORT SE \$7995
VIN #WV192253, 4 DR, 4 cyl, auto, am/fm cass, dual air bags, cloth int., alloys, 31,855 mi.
- '88 FORD ESCORT \$8995
VIN #WV150814, 4 cyl, auto, a/c, p/s, cloth seats, and more, 39,320 mi.

- '87 FORD TAURUS GL \$8995
VIN #VA112633, 4 DR, 6 cyl, auto, a/c, p/s/ABS/winds/lks/mirrs, am/fm cass, r/def, dual air bags, 46,051 mi.
- 2000 FORD ESCORT LX \$9995
VIN #YR193972, 4 DR, 4 cyl, auto, p/s/b, cass, 26,590 mi.
- 2000 FORD CONTOUR \$10,995
VIN #YK115312, 4 DR, 6 cyl, auto, a/c, p/s/ABS/disc brks/winds/lks/mirrs/seats, 20,167 mi.
- '88 FORD RANGER \$10,395
VIN #WTA39852, 2 DR, 4 cyl, auto, a/c, p/s/b, am/fm stereo, dual air bags, 38,272 mi.
- '88 PONTIAC SUNFIRE \$10,495
VIN #XS832880, 4 DR, 4 cyl, auto, a/c, p/s/b, 32,509 mi.
- '88 HONDA ACCORD ANNIVERSARY EDITION \$10,995
VIN #TA088259, 4 DR, 4 cyl, auto, a/c, p/s/ABS/winds/lks/mirrs, am/fm cass, tilt, cruise, r/def, dual air bags, cloth int., 48,472 mi.

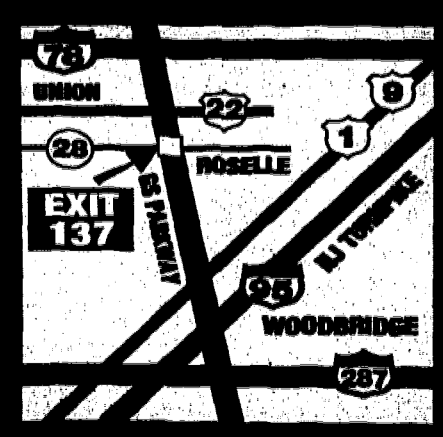
AUTO CREDIT APPROVAL GUARANTEED!

YOUR CREDIT HISTORY WILL EFFECT DOWN PAYMENT & MAKE & MODEL OF VEHICLE PURCHASED. HOWEVER, NO ONE WILL WORK HARDER TO GET YOU THE FINANCING YOU NEED.

1-800-721-4199
Come see us on the web at: www.fordworldnj.com

- '88 MAZDA 626 LX \$11,795
VIN #W5710045, 4 DR, auto, a/c, p/s/ABS/winds/lks/mirrs/seats, am/fm cass, tilt, cruise, r/def, sunroof, dual air bags, leather, 34,333 mi.
- '87 FORD MUSTANG CONVERTIBLE \$11,995
VIN #F132716, 2 DR, 6 cyl, auto, a/c, p/s/b/winds/lks, cass, cruise, r/def, 57,402 mi.
- '88 NISSAN ALTIMA GXE \$12,995
VIN #WC161843, 4 DR, 4 cyl, auto, a/c, p/s/winds/lks/mirrs, am/fm cd, tilt, cruise, r/def, cloth int, alloys, 31,809 mi.
- 2000 FORD TAURUS \$13,995
VIN #G163006, 4 DR, 6 cyl, auto, a/c, p/s/b/winds/lks/mirrs, tilt, cruise, r/def, alloys, radials, 19,050 mi.
- '88 MAZDA MILLENIA \$14,995
VIN #W1420527, 4 DR, 6 cyl, auto, a/c, p/s/ABS/disc brks/winds/lks/mirrs/seats, am/fm cd, tilt, cruise, r/def, moonroof, lgg r/c, dual air bags, leather bkts, alloys, blk wall radials, alarm/sec sys, 32,900 mi.

- '87 FORD EXPLORER XLT \$16,995
VIN #YU878083, auto, a/c, p/s/ABS/winds/lks, mag whls, and more, 41,112 mi.
- '88 LINCOLN CONTINENTAL \$16,995
VIN #W629395, 4 DR, 8 cyl, auto, a/c, p/s/ABS/disc brks/winds/lks/mirrs/seats, am/fm cd, tilt, cruise, r/def, dual air bags, alloys, radials, 33,423 mi.
- '88 CHEVY TAHOE \$20,995
VIN #WGT18181, 2 DR, 8 cyl, auto, a/c, p/s/ABS/winds/lks/mirrs, am/fm cass, tilt, cruise, r/def, dual air bags, leather int, 44,854 mi.
- '88 LINCOLN NAVIGATOR \$29,995
VIN #WLG04340, 4 DR, 8 cyl, auto, a/c, p/s/ABS/winds/lks/mirrs/seats, am/fm cass, tilt, cruise, r/def, roof rack, airbag, 41,094 mi.



FORD WORLD ROSELLE PARK

158 E. WESTFIELD AVE., ROSELLE PARK, NJ
908 245-6100

SALES HOURS:
MON-THURS 9am-9pm
FRIDAY 9am-9pm
SATURDAY 9am-6pm

PARTS & SERVICE HOURS:
MON-FRI 7am-6pm
SATURDAY 8am-1pm