



Union County

- News
- Arts
- Entertainment
- Classified
- Real Estate
- Automotive

WORRALL COMMUNITY NEWSPAPERS

THURSDAY, NOVEMBER 15, 2001 - SECTION B

http://www.local9source.com

Transition

There was a candidate for mayor in Union County who was so certain of his victory that before the election he notified the administrator and other local officials to have their desks vacated by Wednesday, the day after the election. Aside from the fact that the candidate got creamed at the polls, he showed ignorance regarding the process of transition in government.

First some basics. Unlike a junta in a South American banana republic, here in New Jersey the post-election transfer of power takes a number of months. It is a good bet you will read about the new state administration "hitting the ground running" and those departing turning over a "well-functioning operation." The reality is that transition will go deep into 2002. And that is not such a bad thing.

Left Out

By Frank Capece

I had the privilege of seeing the transition process from both ends of the spectrum. In the outgoing Byrne administration I got to respond to the inquiries of the incoming Republicans regarding the operations of the Secretary of State. The involvement of Walter Halpin, then the Union County Clerk, on behalf of the transition team made the experience a lot better for me than anticipated.

Eighty years later, like a mini-McArthur's return, I was permitted to write the transition report on the same department for the incoming Florida administration. It was definitely more fun the second time around.

The transition reports that are generated are actually pretty important. They help to focus the new leadership on the key issues, the pitfalls and the policy directions entrenched. It also lessens to a fairer role, the dependency on the bureaucracy which stays in place no matter which party is in control. But the real action is over the job selection for a relatively small number of positions. The newspaper accounts have already started to appear, speculating on the positions and who will get what. The only thing missing is the odds makers.

Some people actually lobby to have their name appear in speculation stories. The smarter candidates know it can be the kiss of death in the eyes of the small cadre of advisors who have any incoming governor's ear to have your name publicized.

But for the real candidates for the top position, a gauntlet awaits them. The steps include the blessing of the county organization, the approval of the county state senators who have veto power via the use of senatorial courtesy and then there is the need to impress the advisors and the new governor himself.

The so-called vetting process includes a four-way check, i.e. four independent reviews by the State Police. The temptation to let the world know that you have been

See THE, Page B2

Rahway chairman expected to fill freeholder vacancy

By Mark Hrywna
Regional Editor

Rick Proctor, the Democratic municipal chairman in Rahway, is expected to fill the vacancy on the Board of Chosen Freeholders once Linda Stender steps down to be sworn in to the Assembly early next year.

Stender was elected to the Assembly last week with incumbent Gerald Green of Plainfield, defeating Republicans Patricia Walsh, the mayor of Green Brook, and Gabe Spera, a former mayor of Scotch Plains. Stender said she will remain as chairman of the Fanwood Democratic Committee but intends to vacate her freeholder seat.

Union County Democratic Chairman Charlotte DeFillo could not be reached for comment but several Democrats confirmed that Proctor is expected to fill Stender's seat when the time comes. Proctor also could not be reached for comment.

Members of the county Democratic Committee would vote to approve the appointment. At least one Democrat said the decision was made prior to Election Day that Proctor would fill the seat should Stender win the Assembly race.

Proctor, who also is the health officer for the City of Rahway, would be appointed to fill the remainder of Stender's term, which expires at the end of next year. Also up for re-election on the nine-member, all-Democratic board in 2002 will be Nicholas

Soutari of Linden, who has served two terms, and Angel Estrada of Elizabeth, who is completing his first term.

Proctor would become the second freeholder from Rahway on the board, joining former Rahway Councilman Chester Holmes, who earned re-election to a second term last year with Alexander Mirabella of Roselle Park and Deborah Scanlon of Union.

Stender was first elected to the Board of Chosen Freeholders in 1993 and re-elected in 1996 and 1999, serving as chairman of the board in 1997. She also was a member of the Fanwood Borough Council from 1987 to 1990 before earning a four-year term as mayor in 1991.

Freeholders, considered part-time positions, earn \$25,875 annually.

Park supervisors have new contract

By Mark Hrywna
Regional Editor

Supervisors in the Department of Parks and Recreation have a new labor contract, which follows the county's pattern in terms of contract length and wage increases this year.

The Union County Park Foreman's Association represents nearly two dozen supervisors within the Department of Parks and Recreation. In its previous contract, the association received salary increases of 2.9 percent in each year of the deal. The last collective bargaining agreement expired at the end of 2000. The latest settlement will cover 2001 through 2004.

The agreement mirrors virtually every contract the county has settled this year with other labor unions representing county employees. Employees at the maximum on the salary guide will receive wage increases of 1.5 percent for the first half of this year and again for the second half of the year, followed by 4 percent in each of the remaining three years. Those not at the maximum will get the 1.5 percent hikes followed by raises of 3 percent in the second and third years, and 3.5 percent in the final year.

Employees will begin contributing \$10 a month to their health plans and eventually that contribution will rise to \$25 per month in the third year of the contract.

All six agreements were four years in length for Policemen's Benevolent Association Local 199A, representing 41 captains, lieutenants and sergeants in the Division of Corrections; United Electrical, Radio and Machine Workers Local 494, more than 100 rank-and-file employees in the Department of Parks and Recreation; Union Council No. 8, New Jersey Civil Service Association, IEFTE, AFL-CIO, representing 850 white- and blue-collar employees; Detectives and Investigators Superior Association, PBA Local 250, representing 22 captains, sergeants and lieutenants in the Prosecutor's Office, and PBA Local 108, representing 118 sheriff's officers.

Toasting marshmallows



Children young and old gather around a fire to toast marshmallows during The Great Pumpkin Sail Nov. 1 at Echo Lake Park in Mountainside. Photo By Ed Rybak

Interpersonal, communication skills needed in the workplace

By Ahmed Soliman
Staff Writer

In an effort to address the growing problem of decreasing literacy among employees in the workforce, the Union County Board of Chosen Freeholders and the Workforce Investment Board hosted the first Workforce Investment Board Literacy Conference 2001 earlier this month.

Workforce literacy today does not mean the same thing it once did. Today, the literacy of a worker goes beyond their ability to read and write. A literate worker in today's workforce is a reference to a worker who can compute, solve problems and communicate well.

According to the WIB, American businesses are estimated to lose more

than \$60 billion in productivity each year due to employees' lack of basic skills. About 20 percent of America's workers have low basic skills, 75 percent of unemployed adults have reading or writing difficulties, and the number of companies reporting skilled worker shortages more than doubled between 1995 and 1998.

The purpose of the Nov. 2 conference was to "facilitate dialogues among industry representatives, government agencies and the county key WIB staff," according to Freeholder Angel Estrada of Elizabeth.

During the conference, Anna-Lusenberg, external affairs manager at Verizon, moderated a panel discussion aimed at identifying workforce-related issues that hinder productivity.

The panel guests included Jose Acevedo of Verizon, Levi Person of the Wakefern Food Corporation and Anthony Rodriguez of Infnepu/USA LP.

The panelists were asked what specific skills they see lacking among those entering the workforce, and some people who attended the conference were surprised to learn that technical skills are not always at the top of the list.

"Communications skills that employees have are not strong enough for the demand, especially English," Rodriguez said. "They also need interpersonal skills and the ability to negotiate. We look for individuals with communication and interpersonal skills in addition to the technical

skills, which can be obtained on the job more easily than the interpersonal skills can be; those are hard to develop."

Another conference attendee questioned the examination process employers have in place, citing that a person may have the necessary skills in customer relations but fail a test because they may have a learning disorder that bars them from passing the math portion of the exam.

"We have five different tests that test for five different jobs, such as customer service. If we do not do well in one subject, and not in the other, we will tell them 'You didn't do well as a technician, but we see you would be great in customer service,'" said Person.

Before the panel discussion concluded, the panelists were questioned about their recruiting process, including whether or not they have internships available. Acevedo said most of the recruiting process is done in the colleges for professionals such as mechanical engineers, however, they do make an effort to hire full-time support staff workers from among the temporary agencies they hire from.

Beverly Bradford of Abraham Clark High School in Roselle asked if there were any programs in place for high school graduates similar to recruiting programs in place for the colleges.

"We have been involved in school-to-work programs," Person said.

County Clerk unveils land record search web site

Union County Clerk Joanne Rajoppi unveiled a land record search web site which, she predicts, will revolutionize the way residents can search for property in the 21 municipalities of Union County.

The new web site, which is located as a link to the county clerk's site — www.unioncountynj.org — or by direct URL at <http://clerk.unioncountynj.org/UCPA/Docindex>, is only the second property search site in the state and represents one aspect of a long-range program by Rajoppi to make property records more accessible to the public. The second phase

of the program, to be instituted in early 2002, will permit images of the documents on the web site.

The web site contains information recorded into the official land records of Union County from June 1, 1977 through the present. "This 24-year property history," Rajoppi said, "will allow our residents to search for property three different ways: by name of the property owner or seller; by book and page number where the document is recorded or lastly, by the instrument number on the document."

All major property documents including

deeds, mortgages, federal tax liens, cancellations, assignment, release, discharge, foreclosure, lis pendens, UCC and Notices of Settlement are in the search data bank. In addition, a glossary of terms, help page and comment area are included to assist the public in its search.

"Our goal is to make this web site extremely customer-friendly and secure," Rajoppi said. "Toward those ends, we have developed this system on a separate server which permits web access for property records." Rajoppi said the county clerk's office chose IBM software, called Web Sphere, for delivering information

to users. This is the same software eBay, the online auction house, uses.

Aspicent Technologies developed and designed the web site for the county clerk. "We are extremely fortunate to have the same people who helped design our original recording program, which has been in operation since 1987, create the web site," Rajoppi said. "Their experience and knowledge was a boon to the project." The programs were written and designed utilizing state-of-the-art techniques such as java scripts.



M & R AUTO SALES INC.

QUALITY USED CARS & TRUCKS

"Plainfield's Best Kept Secret"

Buy Here • Pay Here • Bank Financing Available

HOURS: Monday thru Saturday 9 AM - 6 PM ★ 4 Locations ★

SATISFACTION GUARANTEED

'98 HONDA CRV LX GREEN	28k	\$12,995	'96 FORD PROBE RED	68k	\$5995
'93 JEEP GRAND CHEROKEE Limited	111k	\$5995	'99 KIA SEPHIA WHITE	22k	\$5495
'96 HYUNDAI ELANTRA GLS BLUE	72k	\$3495	'94 MAZDA MPV AWD GREEN	88k	\$6995
'93 HONDA ACCORD SE	77k	\$7995	'96 DODGE NEON RED.	62k	\$4495
'95 DODGE CARAVAN SILVER	83k	\$4995	'94 BMW 540I WHITE	72k	\$15,995
'96 MITSUBISHI ECLIPSE GST SPIDER	65k	\$11,995	'88 VOLVO 740 TURBO WAGON	173k	\$895
'93 CADILLAC SDV	68k	\$5995	'95 LINC. TOWNCAR SIGN GRAY	44k	\$10,995

Over 300 Cars!!!

No Reasonable Offer Refused

1826 Front St., Plainfield 908-222-7364

ANTHONY MASI

506 PARK AVE., PLAINFIELD 908-769-7722

MICHAEL ANTHONY AUTO SALES INC.

306 RICHMOND ST., PLAINFIELD 908-753-0994

Extended Warranties
Courteous Services

110-116 Fifth St., Plainfield 908-769-5666

Fax: 908-755-5944

COUNTY NEWS

Joint dinner meeting

Are you interested in meeting a Superior Court judge face to face? On Nov. 27 at 6 p.m., there will be a joint dinner meeting of the Union, Hunterdon and Somerset counties Legal Secretaries Associations at B.G. Fields Restaurant, 560 Springfield Ave., Westfield. The guest speaker will be the Carol Ferret, judge of the Superior Court, Essex County. All are welcome. If interested in attending, call Mary Lou Einhorn at 908-241-0611 or 908-527-4200.

The association offers educational opportunities to legal professionals. Members are eligible to receive nationwide discounts on products and services. For more information about the association, call Susie Mack, president of the Union County chapter, at 908-709-3790 or 908-322-2333. Ext. 237. Or Helena Goworek, vice president membership chairwoman at 908-527-4506 or 908-289-7356.

Resume workshops

Despite the spirit of uncertainty that pervades the economy and the county's security overall, you can still rise above layoffs and other negative employment trends by developing an effective resume and honing your job interview skills. This semester, Union County College will offer three, single-session workshops during November in these areas. These include a newly-introduced seminar specifically geared toward people with technical backgrounds in computers, the sciences, medicine and other areas of high technology.

The workshops are designed for persons who recently experienced a layoff, those who believe they may face a job loss, as well as those who wish to upgrade the status in a chosen field or change direction and start an entirely new career path. New graduates are also assisted through the workshops. The seminars are practically oriented and provide participants with significant opportunities to address their own personal concerns. Considerable dialogue is encouraged to enable participants to learn from

their peers as well as from the instructor.

New this semester is "Resume-Writing for Techies," a seminar designed to help people with technical backgrounds to convey their skills and accomplishments in "plain English," while conveying a positive message of their technical expertise. Participants will learn to balance industry jargon with concrete language designed for a reading audience much broader than might be anticipated at the workshop. The college will offer the workshop from 7 to 9 p.m. on Monday at its Cranford campus.

Other related workshops that have been offered by the college in the past and will be presented again:

- "Developing Confidence for the Job Interview" will enable participants to develop strategic selling skills for the employment marketplace. They will learn techniques to prepare effectively for the job interview. This effort can thus help to ease the stress of the experience and equip participants with the ability to refine their presentation for optimal impact. Participants will learn to conduct preliminary research, the importance of networking, types of questions the interviewee needs to ask, negotiating for the salary, and how to close the interview to one's advantage. Role playing will be included as time permits. The college will conduct the seminar from 7 to 9 p.m. on Nov. 26 at its Cranford campus.

Those interested in more information should call the college's Division of Continuing Education and Community Services at 908-709-7600.

Senior outreach services

Union County's Division on Aging in the Department of Human Services has announced its Outreach Services Program for November.

Union County representatives will be available to offer information and provide assistance in completing the necessary applications for a multitude of programs, including gas and electric support, pharmaceutical assistance, home energy assistance, Supplementary Security Income, counseling on health insurance for Medicare enrollees, and the SHARE Food Prog-

ram. A bilingual staff person will be present.

The dates, times and locations for applications are:

- Today: Roselle, Roselle Senior Housing, 250 W. 2nd Ave., 10 a.m. to noon.
 - Nov. 27: Plainfield, Cedarbrook Park Apartments, 1272 Park Ave., starting at 11 a.m.
- For more information on the Outreach Services Program and other programs offered by the Division on Aging, call the division's toll-free number at 888-230-8226.

Blood drives scheduled

The Blood Center of New Jersey will conduct the following blood drives:

- Sunday, 9 a.m. to 2 p.m., Temple Shalom, 815 W. 7th St., Plainfield.
- Monday, 3 to 7 p.m., Union Hospital, 1000 Galloping Hill Road, Union.
- Nov. 25, 11 a.m. to 4 p.m., Knights of Columbus, 1034 Jeanette Ave., Union.
- Nov. 27, 6 to 9 p.m., Masonic Atlas Pythagoras Lodge, 1011 Central Ave., Westfield; Columbia Middle School, 345 Plainfield Ave., Berkeley Heights.
- Nov. 30, 3 to 7 p.m., Union Hospital, 1000 Galloping Hill Road, Union.

For more information, call 800-BLOOD-NJ.

VITA volunteers needed

Volunteers are needed to assist in an income tax preparation program for low-to-moderate income residents, disabled adults and older adult residents of Union County. Community Access Unlimited and the Union County Retired and Senior Volunteer Program will sponsor Volunteer Income Tax Assistance training.

During training, VITA volunteers will learn to prepare both federal and state forms. Upon completion, they will prepare the income tax of eligible residents of sites throughout Union County.

For more information, call Laurie at the RSVP office at Community Access Unlimited at 908-354-3040, Ext. 319.

GRAND OPENING



& Digital Cameras
NEXTEL • MCIWORLD.COM • VOICESTREAM • SPRINT • CINGULAR WIRELESS • AT&T

BRING IN ANY AD AND WE'LL BEAT PRICES TO THE EXTREME
AT&T AUTHORIZED DEALER

Over \$100 In Accessories

AT&T 1 YR \$29.99 & up
250 ANYTIME MINS
1000 N&W MINS
FREE LONG DISTANCE



AT&T 1 YR \$39.99 & up
400 ANYTIME MINS
UNLIMITED N&W
FREE LONG DISTANCE

FREE
NOKIA 3360
NOKIA 8260
ERICSSON R300LX
FREE PHONE PLUS
\$80 AT&T CASHBACK
2 YR. CONTACT REQ.
\$50 NOKIA GIFT CARD
\$100 EXTREME REBATE

FREE
NOKIA 3360
NOKIA 8260
ERICSSON R300LX
FREE PHONE PLUS
\$80 AT&T CASHBACK
2 YR. CONTACT REQ.
\$50 NOKIA GIFT CARD
\$100 EXTREME REBATE

VOICESTREAM FAMILY TALK PLAN
CHOICE OF 2



VOICESTREAM GET MORE PLAN
CHOICE OF 2

FREE
T-28 ERICSSON
NOKIA 3390

3000 TOTAL MINS TO SHARE
1000 ANYTIME MINS
1000 WEEKEND MINS
1000 PHONE TO PHONE MINS.

\$14.99 & up
FREE
60 ANYTIME MINS.
500 WEEKEND MINS
560 TOTAL MINS

\$59.99 PER MONTH
500 ANYTIME MINS.
2500 DIRECT CONNECT MINS
ADDITIONAL \$10.00 receive unlimited nights & weekends

FREE PHONE! YOUR CHOICE
FREE 11000 PLUS
FREE 1550 PLUS
FREE 1508 PLUS
\$49.00 for i85

COUPON FREE
FIRST 10 CUSTOMERS RECEIVE \$25.00 CASH BACK ON ANY PHONE

NOKIA 8260 FREE AFTER AT&T REBATES WITH \$39.99 OR HIGHER PLAN
NOKIA 3360 FREE AFTER AT&T REBATES WITH \$29.99 OR HIGHER PLAN
ALL VOICE STREAM PLANS AFTER 6 MONTHS RECEIVE \$30.00 CASH BACK
ALL PHONES REQUIRE MIN. 1 YEAR CONTRACT

WE CARRY ALL OF TODAY'S TOP OF THE LINE AND NEW DIGITAL EQUIPMENT
COME ON IN AND INQUIRE ABOUT OUR SPECIAL HOLIDAY KITS
SAVE MONEY THIS HOLIDAY SEASON

<p>SONY TRV-30 \$1299.99 SPECIAL PRICE</p> <p>ALSO AVAIL -TRV-17 \$999.99</p>	<p>SONY DCRPC9 \$999.99</p> <p>ALSO AVAIL -PC10 \$1399.99</p>	<p>SONY TRV-730 \$799.99</p> <p>ALSO AVAIL -TRV230 \$649.99</p>
<p>PANASONIC PV-DV-701 \$749.99 AFTER \$50 REBATE OFFER</p> <p>FREE WITH ANY PANASONIC CAMCORDER 16MB MEMORY CARD ALSO AVAIL PV-DV 201 \$499.99 PV-DV101 \$499.99 after rebate</p>	<p>GRAND OPENING HOLIDAY SPECIALS RECEIVE A FREE \$100 VALUE KIT DELUXE VIDEO CASE, TRIPOD, AND LENS CLEANING KIT WITH ANY CAMCORDER PURCHASE</p>	<p>PALM M505 MEMBER PRICE \$399.99</p> <p>ALSO M105 \$128.99 AVAIL M100 \$99.99</p>

<p>CANON G-2 \$789.99</p> <p>ALSO AVAIL \$439.99</p>	<p>CANON 5-110 HOLIDAY GIFT OFFER \$439.99</p> <p>also avail s-40 \$799.99</p>	<p>NIKON COOLPIX 885 \$549.99</p> <p>also coolpix 995 \$649.99 after rebate avail coolpix 775 \$399.99</p>
<p>SONY MAUICA FD-87 \$459.99</p> <p>CO-300 \$999.99 FD-87 \$678.99 ALSO AVAIL FC-62 \$549.99 FD-76 \$378.99</p>	<p>SONY S-75 \$649.99</p> <p>ALSO AVAIL S-85 \$777.99</p>	<p>SONY P5 \$599.99</p> <p>ALSO AVAIL P-80 \$399.99 P-30 \$299.99 P-40 \$239.99</p>

23 WESTFIELD AVE., CLARK
732-381-1800
732-381-7222
OPEN SUN-THUR 10AM-7PM
FRI-10AM-4PM • CLOSED SATURDAYS

The rewards can be great

(Continued from Page B1)
Interviewed about some applicant is huge. After all, you must be pretty important if the State Police want to know your views about some potential cabinet pick.

After this process, the applicant for a top state position is still not founding the home stretch. The state Senate, through the process of advice and consent, gets to review you all over again at the Judiciary Committee. Your party affiliation, geographic location and background is all reconsidered. Your financial disclosures, political contributions, tax returns, and investments are all subject to review.

But for applicants the love of being part of a new state history and having the ability to actually get results is still strong. In these rough economic times, I fear cabinet officers will have to say "no" quite a bit.

For those who get through the selection process though, the rewards are great. But even for most of those who fail and don't get selected, they are very honorable people. I am thankful for most of those who try.

A resident of Cranford, Frank Capoco is an attorney.

HOLIDAY FLOWERS

<p>Fresh & Pretty Plus FULL SERVICE FLORIST WEDDINGS FUNERALS FRUIT BASKETS</p> <p>Local Now Open for Business 1552 Maple Avenue, Hillside Tel 973-926-1773 Fax 973-926-1683 TEL:FLOR04A.FPS</p>	<p>SAM & ANDY'S 163 ELMORA AVENUE, ELIZABETH FRUIT BASKETS & FLOWERS Since 1943 (908) 352-2754</p> <p>Fruit Cakes Sticking Stuffers Balloons Hot Tubs Dried Fruit Gifts Punch Trays Flower Arrangements Christmas Baskets</p> <p>OPEN 7 DAYS A WEEK Delivery Nationwide FAX: (908) 352-8715</p>
<p>FOR ALL YOUR HOLIDAY FLORAL GIFT NEEDS</p> <p>See One Of Our Experts Listed Here!</p>	<p>Home & Garden Flowers and Crafts Specializing in Seasonal Decorations 908 245-9099 184 S. Michigan Ave. Kendallworth</p>

WHERE TO TURN FOR HELP

THE TRAGIC EVENTS OF SEPTEMBER 11 HAVE AFFECTED EVERYONE IN OUR COMMUNITY. AS ALWAYS, UNITED WAY OF UNION COUNTY IS HERE TO HELP HEAL AND REBUILD SHATTERED LIVES, FAMILIES AND COMMUNITIES.

IF YOU HAVE LOST A LOVED ONE, UNITED WAY OF UNION COUNTY CAN HELP.

PLEASE CALL (908) 353-7171
MONDAY - FRIDAY 9:00 AM TO 5:00 PM



United Way of Union County
The way we care for our community.

33 WEST GRAND STREET
ELIZABETH, NJ
www.uwuofunioncounty.org

ARTS & ENTERTAINMENT

Callaway sisters offer 'sweetest sounds' in Paper Mill concert

From the moment the voices of Ann Hampton Callaway and Liz Callaway sounded in the wings in perfect harmony, "Anything You Can Do," the audience at the Paper Mill Playhouse in Millburn on the evening of Nov. 6 was in for a rare treat.

Concert Scene

By Bea Smith
Staff Writer

A unique concert called "Sibling Revelry" offered the sweetest sounds ever to soothe the hearts of music lovers. And the exhilaration of two marvelous singers, at the height of their incredible successes, grasped the audience's heart and zoomed off with it into the heavens.

"I'm Liz," said the blonde singer; "I'm Ann," said the brunette. "And we're sisters," said the two beauties, whose God-given voices sound alike even though they do not look alike. "Liz and I were so different growing up... it was hard being me," said Ann. To the Paper Mill, they said, "We're here! It's time for merry making," standing and sitting on stools.

And everyone made merry onstage and offstage for an unforgettable two hours — that seemed to fly by in seconds.

It was easy to see why the sisters were Broadway sensations and Tony nominees. Their musical program was an absolute sensation, and their warmth and affection for each other — even though they pretended to be rivals — for the happy faces facing them, their mother — a voice teacher.

medley of two songs: "My Buddy," which contains the most beautiful words and music, so soft and emotional, with deep feeling, and "Old Friend," which reminded a listener that everyone has that kind of an old friend — to commiserate at a bar about everything in life and love; the good and the bad and how "nothing lasts and people change."

There were sarcastic but friendly exchanges about their accomplishments: Ann's 26th CD, Liz's Tony nomination, Liz's fifth Broadway show, Ann's MAC Awards. And so on. Truce? Truce.

Once more, in smooth harmony, the sisters sang a duet, "Friendship," and it truly was a perfect blend. And Ann added, "My sister, and my best friend, Liz Callaway."

And Liz proceeded to sing her favorite song, "Meadowlark," in so lovely a voice and in musical narrative, and while she warbled, "Sing for me, my meadowlark," she graciously offered to sing for her appreciative audience.

There were splendid renditions from Broadway musicals including Liz's versions of "My Heart Is So Full of You," a beautiful love song from "The Most Happy Fella"; "The Story Goes On" from "Baby"; and "Another Hundred Lyrics," a parody of "Another Hundred People" from "Company." The two sang "Brother-

Ann's scating and the trumpet and sax sounds that emanated from her throat were triumphant.

hood of Man" from "How To Succeed in Business Without Really Trying," and when Ann sang "Blues in the Night," which she sang in "Swing," the audience went wild.

Then Ann tossed a hum-dinger to the audience in the little-known fact that she wrote the title song, "The Nanny Named Fran," for the ever-popular television series and sang it, as she and Liz do for the sitcom's credits, — bringing back pleasant memories.

Then came the incredible-sounding "Huge Medley," which included "Sisters" from the film "White Christmas"; "If Mama Was Married," from "Gypsy"; the counterpoint "You're Just in Love" from "West Side Story"; "A Boy Like That"/"I Have a Love" plus "I Know Him So Well" from "Chess," among others. Ending the medley with an incredible arrangement of "Happy Days Are Here Again" and "Get Happy." Ann and Liz certainly chased all our cares away.



Liz Callaway and Ann Hampton Callaway

The audience was mesmerized with the smooth, comparable tones of "Our Time" and "There's a Boat Dat's Leaving Soon for New York."

The lights went on and each of the sisters walked up an aisle graciously greeting and shaking hands with the happy and stunned audience. Long

after they bid everyone adieu and the lights were turned on permanently, the fans stood alongside their seats and refused to move. Perhaps they were thinking of a line in the Callaway song that said, "I will never leave you."

Westfield Symphony explores aspects of love in Saturday's concert

The Westfield Symphony Orchestra will present "Whispers of Love" — the second concert in its "Variations on a Fantasy" 2001-02

season — Saturday at 8 p.m. in The Presbyterian Church of Westfield. David Wroe, music director and conductor, selected three works that

depict love in its most enduring and enchanting aspects. The concert begins with Jean Sibelius' passionate Symphony No. 7, New Jersey composer Louis Scarmolin's "Whispers of Love" for violin and orchestra follows in a new arrangement by John Siechel. This performance features violinist Vladimir Sypsin. Scarmolin taught music and was the band director at Union City High School for many years. His works always evoke pride

and passion. The concert concludes with Saint-Saens' Symphony No. 3, also known as "the organ symphony."

The evening's performance honors PNC Bank for the generous contributions it has made to the Westfield community over the past several years, including sponsorship of Saturday evening's performance.

Tickets can be purchased directly from the WSO by calling 908-232-9400; from the Union County

Arts Center box office, 732-499-0441; or at one of the following WSO ticket outlets: Martin Jewelers, 12 North Ave. West, Cranford; Beautiful Things, 1878 E. Second St.; Scotch Plains and Lincaster Ltd., 76 Elm St., and Town Brook Store, 255 E. Broad St., both in Westfield.

The following Westfield restaurants offer a 10-percent discount on pre-concert dinner, with seatings between 5 and 5:30 p.m.: Chez

Catherine, 908-654-4011; Elm Street Cafe, 908-232-3939; Kotobuki, 908-233-6547; Northside Trattoria, 908-232-7320; Ferraro's Pizzeria and Restaurant, 908-232-1105; The Brick Oven, 908-233-9777; South Side Roman Bistrò, 908-233-5334; and Sweet Waters Steak House, 908-317-2599. Patrons must show their tickets to qualify for the discount. Reservations are highly recommended.

Cultural summit is Saturday

The Union County Board of Chosen Freeholders invites Union County residents to share their ideas for the future of the arts, history, and cultural programs and services at a county-wide Cultural Summit Saturday from 9 a.m. to 1:30 p.m. at the Kean University Center, 1100 Morris Ave., Union.

The Cultural Summit, a component of the Union County Cultural Planning Project, seeks input from as many individuals and cultural organizations as possible," said Freeholder Chairman Alexander Mirabella. "We encourage residents and community leaders in education, business, economic development and social and human services as well as the arts and history — anyone who recognizes or wants to learn how important the arts are to everyday life — to come to the Cultural Summit and express their ideas for the future of cultural activities in Union County."

"The arts, history and cultural contribute to the quality of life in Union County as well as to sustainable economic development," said Freeholder Mary Rutolo, liaison to the Cultural and Heritage Programs Advisory Board. "Ideas expressed during the summit will lead to a county-wide Cultural Master Plan."

The project definition of "cultural" relates to visual and performing arts, history, historic preservation, folk/ethnic arts, literature, media/technology and the humanities.

The planning process will also reach the arts and cultural community and the non-arts sectors through forums, focus groups, surveys and interviews. The data gained from this assessment phase will lead to development of a county-wide arts and cultural strategic plan for Union County.

The Union County Cultural Planning Project is collaboration of the Union County Division of Cultural and Heritage Affairs, Department of Economic Development, Kean University, the Gateway Institute for Regional Development, the Union County Alliance, and the Union County Economic Development Corporation. The project is funded in part by the Union County Board of Chosen Freeholders and grants from the New Jersey State Council on the Arts/Department of State, a partner agency of the National Endowment for the Arts, and the New Jersey Historical Commission, Department of State.

For information about the free Cultural Summit or the Cultural Planning Project, contact the Union County Division of Cultural and Heritage Affairs, 633 Pearl St., Elizabeth, 07202; call 908-558-2550, or send e-mail to svoen@countynj.org. NJ Relay users dial 711.

Your business can grow with more customers. Reach the potential customers in your newspaper with an ad by calling 1-800-564-8911.

WE DO MORE THAN GET PEOPLE BACK ON THEIR FEET.

WE LIFT THEIR SPIRITS.

When people of any age experience a serious ailment or injury, they often need more than rehabilitation. They need to recuperate from the emotional trauma, as well. And nothing does more to lift the spirits than speeding the transition from hospital to home.

At ManorCare Health Services and Glenside Nursing and Rehabilitation, we understand. Our highly trained staff of professionals helps get patients back on their feet. Offering a comprehensive range of therapies and specialized care, including:

- Physical, occupational, speech and respiratory therapies
- Stroke and cardiac recovery care
- Complex wound care program

You won't find a better place for physical and emotional recovery.

For more details about our programs, call or visit us on-line at www.hcr-manorcare.com.

HCR ManorCare
Glenside Nursing Center
New Providence
(908) 464-8600

Our exclusive hand-rubbed finish. It's the ultimate in lasting impressions.

Only Wood-Mode offers you the fine furniture quality of our exclusive multi-step hand-rubbed natural finish. Stop in today to see it for yourself.

Wood-Mode
FINE CUSTOM CABINETRY

Fresh Impressions
Designer Kitchens and Baths

326 Route 22 Westbound • Green Brook • 732-424-2200
www.freshimpressions.net • E-Mail: freshimpr@aol.com
Open Sundays

INFOSOURCE

FREE INFORMATION BY TELEPHONE • 24 HOURS A DAY

908-686-9898

IT'S AS EASY AS...

- 1 Call 908-686-9898 from your touch tone phone...
- 2 Press the 4 digit code for the information you want to hear...
- 3 Hear Unlimited Selections Per Call

Infosource is a 24 hour voice information service where callers get free information from the selections shown by calling (908) 686-9898. Calls are FREE if within your local calling area. Out of area calls will be billed as long distance by your telephone company. Infosource is a public service of Worrall Community Newspapers.

Questions or comments about Infosource? ENTER SELECTION #8025

FOR INFORMATION ON ADVERTISING AND SPONSORSHIP OPPORTUNITIES CALL 908-686-7700

BOOK REVIEWS EXTENSION 3305	LOTTERY EXTENSION 1890 Sponsored by The Vitamin Factory	RELIGION EXTENSION 3180
ENTERTAINMENT EXTENSION 3190	MOVIE REVIEWS EXTENSION 3200	SOAPS/TV DRAMAS EXTENSION 3270
FINANCIAL HOTLINE EXTENSION 1250	MUSIC CHARTS EXTENSION 3550	SPORTS EXTENSION 3000
HOROSCOPES EXTENSION 3620	NEWS HEADLINES EXTENSION 1600	TELEVISION EXTENSION 3300
THE INTERNET EXTENSION 6200	NUTRITION EXTENSION 5165	TIME & TEMP EXTENSION 1000
KIDS STUFF EXTENSION 3350	RECIPES EXTENSION 5290	WEATHER EXTENSION 1790

Thanksgiving Dining

Community Dining Guide III

Los Faroles
RESTAURANT
Spanish & International Cuisine
Banquet Facilities

624 Westfield Ave.
Elizabeth
908-289-9289

Open 7 Days a Week
From 9 am - Midnite
Fri & Sat. from 9 am to 2 am
Sun. till 1 am



Los Faroles is located at the corner of Westfield and North Avenues in Elizabeth. For information, call (908) 289-9289.

Staff Writer

Whether you're in the mood for authentic Spanish style cuisine or a more traditional American dish, Los Faroles in Elizabeth offers a variety of reasonably-priced dishes guaranteed to please even the most finicky palate.

Formerly located on Morris Avenue, owner Wilson Londono relocated Los Faroles to its present Westfield Avenue location. The large dining room combines elegance and comfort with more than 20 well-spaced tables. Mirrored walls and soft lighting and music make for a very warm, visually pleasing atmosphere.

As a prelude to our meal my dining companion and I munched on fresh, warm bread accompanied by a hot pepper sauce that resembled a spicy, thin salsa. The sauce can also be used as a topping for some of the foods offered during the main course. Londono also boasts a good wine list as well as pitchers of the finest sangria. I took advantage of the bar located in the dining room and ordered a frosty pina colada bursting with fresh coconut and pineapple juice.

Our appetizer consisted of a generous portion of succulent shrimp drenched in a tangy Spanish garlic sauce - one of the restaurant's specialties. Other appetizers include a variety of traditional and fish soups as well as other shrimp, poultry and meat specialties.

For the main course, I chose a perfectly seasoned grilled flank steak which was accompanied by white rice, french fries and salad. My dining companion chose the arroz con pollo - Spanish style chicken with rice - which was also accompanied by golden french fries. Londono also has a large menu, which he is presently adding to, that includes Colombian and Argentinian menus, as well as a full page of seafood dishes and a variety of pasta and Italian menu items. There are also a number of steak dishes to choose from prepared by Chef Juanita Velardo, who has been with the restaurant for 15 years.

For dessert, Los Faroles offers homemade rice pudding and flan - Spanish custard topped with rich caramel sauce.

In addition to the main dining room, Los Faroles also has a banquet facility which can accommodate 170 people for weddings, birthdays, anniversaries and other parties or events.

The restaurant is open for breakfast at 9 a.m. and closes Monday to Thursday at midnight, Friday and Saturday at 2 a.m. and Sunday at 1 a.m.

Windsor
DINER • RESTAURANT
Always Something New To Please Everyone

BLACKBOARD LUNCH SPECIALS
\$5.95 Includes Soup or Tossed Salad & Beverages
Kids Night • Hot & Cold Salad Bar
Catering On & Off Premises
1030 RARITAN RD., CLARK
(732) 382-7765

INTERNATIONAL HOUSE OF PANCAKES
RESTAURANT
465 N Broad St. • Elizabeth
(908) 351-8833

KIDS EAT FREE
Monday through Friday
Evenings After 4:00 PM
(Kids 10 years & under)
WE DELIVER
\$1.50 delivery charge
7 Days a Week 6:30 am to 6:30 pm

We Serve The Best Breakfast
Open 24 Hours Friday & Saturday

Welcome To Our Mexico!
Pecos Grill
Truly Authentic Mexican Cuisine
Mexico has come to Garwood

Watch for New Opening
for Lunch Specials Galore
Call for Information

Grand Opening - Open 24 Hours
Dinner 4 to 10pm • Sun 3 to 9pm
304 North Ave., Garwood (908) 232-3016
(908) 232-3016

"El Rincon Latino"
Breakfast • Lunch • Dinner
Spanish American Cuisine
All Home Made Cooking
Casual Dining - Family Restaurant
41 Park Ave., Summit (Off Springfield Ave)
908-277-3221
Fax 908-273-5774
MARVIN/PENNY BETANA
Owner/Manager
Hours: Sun. thru Fri. 6-10pm
Sat. 6-11pm
All Major Credit Cards Accepted

Soufflé
Restaurant
"Ultimate French Dining"
Rated "Excellent" by Zagat Survey 2000
For Food Service and Decor
A La Carte menus served daily
Private Parties Available
Reservations suggested on weekends
7 Union Pl. • Summit
(908) 598-0717
Lunch Served Tues. - Fri. 11:30-2:30
Dinner Served Tues. - Fri. 5-10
Sat. 5-11 Sun. 5-9
Catering Available
www.soufflerestaurant.com

Celebrate THANKSGIVING DINNER

Amici
Ristorante
ITALIAN CONTINENTAL CUISINE
Wonderful Food With Great Atmosphere

Full Course Dinner Incl.
Soup, Turkey with all the trimmings,
Pumpkin or Apple Pie, Coffee or Tea **\$18.95**

Whole Turkeys Preordered For Families of 4 & up
Call for Information & Reservations
A la Carte menu also available

1700 W. Elizabeth Ave • Linden (908) 862-0020
www.amiciristorante.com

Chestnut Chateau
Formerly Chestnut Tavern
SEAFOOD & STEAKHOUSE
★★★★ Dining Review Worrall Newspapers

Join Us For Thanksgiving Day Dining
TURKEY WITH ALL THE TRIMMINGS
Reservations Now Being Accepted

We're Celebrating Our Anniversary
For the Month of November
For Lunch Or Dinner Monday thru Friday
Buy 1 Get 1 At 1/2 Price
(Of Equal or Lesser Value Excluding Holidays)

- Open 7 Days -
11:30 to 10 PM • Sat 4PM to 11 PM • Sun. 12 noon to 10 PM
649 Chestnut St., Union
908-964-8696 Fax 908-964-2892

Complete List of Nutrients for your Turkey

Easy Carving Instructions for your Turkey

Find all this information on our website
www.johnsmarket.com

Plus why are
John's Famous Grand Champion Fresh Turkeys
The Finest You Can Buy!!!

PRIME RIB ROASTS
CROWN ROASTS
FILET MIGNON
SPIRAL CUT SMOKED HAM

USDA PRIME DRY AGED BEEF

John's Meat Market
Serving satisfied Customers Since 1939
www.johnsmarket.com
389 Park Avenue • Scotch Plains
(908) 322-7128 • Fax (908) 322-2561

mClynn's
Casual Food
237 Westfield Ave., Clark
(732) 381-4099

Clark's Parkway Diner
Come try our great food at a great value
Via Cater Parties Early Bird Special 6 & up Daily Specials
237 Westfield Ave., Clark
(732) 381-4099
Fax (732) 381-4228
ORDERS QUOTED TAKEN BY PHONE OR FAX

BROADWAY DINER
The World's Best Pancakes
Complete Dinners Starting From \$8.95
OPEN 7 DAYS • 24 HOURS
NOMINAL LUNCH SPECIALS • SEVERAL CATERING SERVICES
55 River Road • Summit
908-273-4353

To Be Part of This
DINING GUIDE
AND TO PUT
Your Restaurant
in The Spotlight
Call
(908) 686-7700

Silver Dragon
50 INTERNATIONAL BUFFET INCLUDES SUSHI

Lunch Buffet \$5.99
Monday to Friday (11:00 am - 4:00 pm)
Children \$3.99

Brunch Buffet \$9.99
Saturday & Sunday (11:00 am - 4:00 pm)
Children \$5.99

Dinner Buffet \$9.99
Monday to Thursday (4:30 pm - 10:00 pm)
Children \$5.99

Weekend Buffet \$11.99
Friday to Saturday (4:30 pm - 10:00 pm)
Sunday (4:30 pm - 6:30 pm)
Children \$8.99

CARRY OUT BUFFET AT LEAST 3 ITEMS PER ORDER
LUNCH \$3.99 PR. LB. DINNER \$4.99 PR. LB. SEAFOOD \$6.99 PR. LB.

SERVING OVER 150 ITEMS DAILY

American Cuisine • Korean Cuisine • Chinese Cuisine • Japanese Cuisine Buffet
• Dim Sum and Much More...

OVER 150 ITEMS DAILY
Including Appetizers, Soup, Dumplings, Mussels, Snow Crab Legs, Peking Duck, Mongolian B-B-Q, Roast Chicken, Lobster, Shrimp, B-B-Q Spare Ribs, Shrimp, Beef, Chicken, Vegetables, Sushi Roll, Pasta, Fruit, Dessert, A variety of Pastery, Ice Cream and Much More...

10% Off
ANYTIME LUNCH BUFFET
11:00 am - 3:00 pm
Not to be combined with other offer. Expires Nov. 21, 2001

15% Off
MON. THROUGH THURSDAY
DINNER BUFFET
Not to be combined with other offer. Expires Nov. 21, 2001

1235 West Chestnut St., Union
908-624-9898

2251 Route 22 W., Union
(Off Rte 22 in the Costco Shopping Center)
908-624-9898

Hours: Mon.-Thurs. 11 am-10:30 pm Fri-Sat. 11am-11pm Sun. 12 noon-10pm

CASUAL TIMES
Steak & Seafood Grill
Thanksgiving Day Menu

Choice of:
Soup
Turkey Barley, Creme of Pumpkin & Salad
Mescaline Salad Baby Green Salad With A Raspberry Vinaigrette Dressing
Caesar Salad Crisp Romaine Lettuce With Shaved Parmigiana Cheese, Croutons And Caesar Dressing
Mixed Green Salad Tossed Fresh Greens With Tomato, Red Onions, Cucumber And Your Choice Of Dressing

Choice of:
Entrée
Roasted Turkey \$19.99
With All The Trimmings: Stuffing, Gravy, Sweet Potato, Cranberry Sauce And Mixed Vegetable
Broiled Salmon \$22.95
Farm Raised Salmon, Grilled To Perfection, Dressed With A Delightful Lobster Cream Sauce Served With Baked Potato And Mixed Vegetable
Filet Mignon \$24.95
An 8 Ounce Broiled Filet Served With Baked Potato And Mixed Vegetable

Reservations Appreciated
Tax and Gratuity Not Included

1085 Central Ave., Clark
732-388-6511

PIECE OF CAKE

10% DISCOUNT WITH AD

As well as "Coconut Snowballs" & Our Famous Sampler Platter...
VISIT OUR RETAIL OUTLET...
62 W. INMAN AVENUE, RAHWAY, NJ (OFF Rte 10)
HOURS: Tues. - Fri. 10-4 Sat. 10-1
732-382-0281

ICE CREAM LOVERS' VARIETY PACK
Featuring A Unique Assortment Of 12 Delicious Ice Cream Treats

GOURMET ICE CREAM DESSERTS

N.J.'S FINEST ICE CREAM MANUFACTURER IS OFFERING THE PERFECT GIFT IDEA...

YOU'LL FLIP OVER OUR DESSERTS!

Thanksgiving Dining

REUNIONS

• Rahway High School Class of 1977 is searching for classmates in preparation for the 25th reunion. Members of this class are asked to contact Charlene Rankins-Jackson at 908-490-1543 or Bob Brandler at 732-821-5774.

• Jonathan Dayton Regional High School Class of 1976 will conduct its 25th reunion Thanksgiving Weekend. Classmates are currently being sought. For information, call Nancy Frischman at 908-380-0878 or send e-mail to murrayco@tdot.net.

• Hillside High School Class of 1981 will conduct its 20th reunion Nov. 23. For information, call Lori Jackson-Williams at 800-343-3846, ext. 461 or Dawn Mayo-Hatcheson at 732-398-0975, or e-mail at djimono5@aol.com.

• Linden High School Class of 1981 will conduct its 20th reunion Nov. 23 at The Westwood in Garwood. Alumni are asked to send mailing addresses to Linden High 1981 Committee, P.O. Box 4425, Metuchen, 08840, or via e-mail to Linden-High1981@aol.com.

• Union High School Class of 1981 will conduct its 20th reunion Nov. 23. For information, call Reunions Unlimited, Inc. at 732-617-1000.

• Jonathan Dayton Regional High School Class of 1976 will conduct its 25th reunion Nov. 24 in The Sherwood Room at Forest Lodge in Warren. Classmates and addresses are needed. For information, call New England Reunions at 877-600-6694 or 860-693-8179.

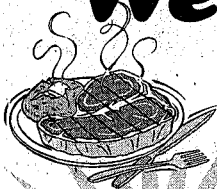
• Summit High School Class of 1982 will conduct its 20th reunion in 2002. For information, call Reunions Unlimited Inc. at 732-617-1000.

PUBLIC NOTICE

The Joint Commission on Accreditation of Healthcare Organizations will conduct an accreditation survey of South Mountain Healthcare and Rehabilitation Center on November 10-14, 2001. Joint Commission standards deal with organizational quality of care before and after the accreditation program in which care is provided. Anyone notified at the time of the accreditation will inform the organization of the request. The organization will notify the interviewee of the date, time and place of the meeting. U/715 WGN Nov. 15, 2001. (\$19.00)

We're Not Just A Diner

Catering On & Off Premises



You Don't Have to go to a Steakhouse to have a great Steak

1 lb. Fresh Cut Choice Steaks \$14⁹⁵

w/Soup & Salad Bar
Prime Rib, Club, Sirloin, Rib Eye

PRIME RIB NIGHT Wednesday only \$10⁹⁵
Includes Soup & Salad Bar

Every Night Hot & Cold Salad Bar

Special Thanksgiving Breakfast Buffet

8 am - 1:00 pm \$8⁹⁵
All You Can Eat
Special Holiday Items

GREAT FOOD WINE AND SPIRITS

"All You Can Eat"

BREAKFAST BUFFET

Every Saturday
8am to 12 noon \$6⁹⁵

Huge Variety of Items to Choose from

The One & Only Restaurant With This Offer

Private Party Room Available up to 70 people
Packages Starting at... \$10⁹⁵

WE NOW DELIVER To your Office Monday thru Friday 11 am to 3 pm (min \$20⁰⁰)



Enjoy...

LIVE ENTERTAINMENT

in the Windsor atrium on Featured Evenings

\$2.00 OFF

Any dinner over \$20.00
May not be used with any other offer

WINDSOR DINER • RESTAURANT

1030 PARTAN ROAD, CLARK, (732) 382-7755

The Gran Centurions presents

A Traditional Thanksgiving Dinner Prepared by Our Award Winning Chefs -featuring-
Tossed Salad Turkey Soup w/Rice
Roast Tom Turkey w/ Apple, Walnut Stuffing
Garlic Mashed Potatoes
Buttered Corn Candied Yams
Choice of Apple Pie or Pumpkin Pie
Apple Cider, Coffee & Tea
-Cocktails & Other Beverages Also Available

\$19.95 Adults \$12.00 Children (4-10)
(PLUS TAX & SERVICE CHARGE)
Seatings @ 1pm & 3pm
Call For Reservations
732-382-1664

440 MADISON HILL ROAD
CLARK, NJ

L'Affaire FINE CATERING

A TRADITIONAL THANKSGIVING HOLIDAY BUFFET

November 22, 2001
Join us with the Entire Family
Buffet Featuring:

Carving Station of Sumptuous Roast Prime Ribs of Beef
Roast Tom Turkey and Baked Virginia Ham
Unlimited Shrimp Cocktail
Melon, Fresh Fruit, Cider, Tossed Green Salad
Stuffing, Yams, Vegetables & Potato, Pasta, Seafood Newburg
Mouth Watering Desserts
Baked Apple, Pumpkin & Pecan Pies
Fruits, Cookies & Rice Pudding
And Many More Delicious Items

Early Seating 12:00 Noon to 12:45 PM

Special Price at \$22.95 for Adults - Children age 5 to 10 - \$15.00

Seating From 1:00 pm to 4:00 pm

Priced at \$27.95 for Adults - Children 5 to 10 - \$15.00
(tax & gratuity not included)

Reserve Early
Call (908) 232-4454

1099 Route 22 East,
Mountainside, NJ



Domani's

Restaurant & Lounge

Join Us For Your

Thanksgiving Day Dinner

Cozy Atmosphere With Fireplace

Reservations Now Being Accepted
Call Early For Best Seating

Entertainment Thursday Nites - DJ

Great Food

Reasonably Priced!

Daily Businessperson's Lunches, Kids Menu

Open 7 Days 11:30 - 2:00AM

230 Westfield Avenue West,
Roselle Park
908-245-2992

Elizabeth council unveils exhibit, showcase

The Elizabeth Arts Council will open its third annual Members' Art Exhibit and Performance Showcase at a reception Sunday from 3 to 5 p.m. at the RexPlex, Ikea Road, Elizabeth.

During the reception, members of the Arts Council will perform musical selections and poetry readings. Following the opening, the exhibit will continue at the RexPlex through Dec. 15. There is no admission charge.

"In the wake of the events of Sept. 11, the council has chosen the theme 'Imagine' from John Lennon's vision of a peaceful and harmonious world," said Paula Borenstein, president of the Elizabeth Arts Council. "In addition, the exhibit will be dedicated to all lives in the attacks, particularly artists and employees of art agencies killed at the World Trade Center."

Among the performers are poet Joe Kaufman, guitarist and vocalist Ron-

nie Bergeron, and Peter Karp and the Road Show Band. In addition to these favorites, other poets and musicians will appear for the first time at an Arts Council showcase.

Gini Pagdon, who coordinated the artwork, is "very happy with the scope of artists and the works they will show. The artworks include paintings, assemblage art, and for the first time, small sculpture. And there is variety among the artists themselves; for example, Bernard Lichten is a longtime Elizabeth resident, and Jrely Tejada received her training in Puerto Rico."

The RexPlex was chosen as the site of the exhibit and showcase because of its location, ample parking and popularity, Borenstein explained. "The RexPlex is a busy place and is an

ideal location to introduce the Elizabeth Arts Council to the patrons, and the RexPlex to the artists. The RexPlex director of coparties sales stated that the facility owners want to continue our practice of being good corporate neighbors, and to give more people an idea of the recreational facilities we offer here. RexPlex is a state of the art, multi-purpose sports and recreational complex which offers affordable family fun in a safe, climate-controlled location."

The Elizabeth Arts Council was founded in October 1998 to support and promote the arts in the city of Elizabeth, although membership is open to anyone directly involved in the arts, or who wishes to enjoy them in and around Elizabeth. For information, call Borenstein at 908-289-3584.

SCOTCH PLAINS TAXI INTRODUCING LOCAL TAXI SERVICE
(Part Of: The Airway Companies)

\$10.00 OFF
ANY FARE \$80.00 & UP OF

\$5.00 OFF
ANY FARE \$35.00 & UP OF

\$1.00 OFF ANY FARE

SEDANS & WAGONS AVAILABLE

LOCAL TAXI SERVICE
IS NOW IN YOUR TOWN

LOCAL LONG DISTANCE AIRPORTS

Serving Union • Middlesex • Somerset Counties

WE HONOR ALL MAJOR CREDIT, DEBIT & CHECK CARDS

800 783-5025 • 908 889-8010



SCOTCH PLAINS TAXI

Cannot Be Combined With Any Other Offer or Discount. Must Redeem Entire Coupon.

LOOKERS

- 30 DANCERS DAILY
- 2 FREE BUFFETS: 4 TO 6PM & MIDNIGHT
- \$2 SHOT SPECIALS EVERY HOUR
- 22 TV'S WITH ESPN, MSG, SPORTS CHANNEL & ALL PAY PER VIEW EVENTS

789 DOWD AVENUE, ELIZABETH
OFF EXIT 13-A FROM NJ TURNPIKE
(908) 351-1231

Spend Your Thanksgiving Breakfast with Egg Professionals...

Broadway Diner

World's Best Pancakes

55 RIVER ROAD, SUMMIT
908-273-4353



AT YOUR SERVICE 24 HOURS DAILY

ST. PETER'S PREP

is coming to YOUR neighborhood!

Community Information Reception

for seventh & eighth grade boys and their families

MONDAY, NOVEMBER 19, 7:00-8:30 PM


St. James School
41 South Springfield Avenue, Springfield

Join Prep students, parents and faculty from your area as we answer your questions about:

- Our 129-year Jesuit educational tradition
- College placement, tuition, financial aid and scholarships
- Athletics and co-curricular activities

Discover why families from almost 100 communities in New Jersey and New York have selected St. Peter's Prep

Please reserve your spot by calling (201) 547-6420



ST. PETER'S PREP
NEW JERSEY'S JESUIT HIGH SCHOOL
144 Grand St. • Jersey City • NJ • 07302
201.434.4400 • www.stpetersprep.org

"Let Us Be Thankful"

Thanksgiving is a day of family and togetherness. Share it with those you love and give thanks for the rich bounty of the past year. May the next bring even more abundance to you all.

St. Michael's Church
1212 Kelly St., Union
Rev. Matthias T. Conva, Pastor
Thanksgiving Day Mass 9:00 am

Church of St. Joseph the Carpenter
Corner 3rd and Walnut Avenues, Roselle
We invite you to our Thanksgiving Mass at 9:00 A.M.
Rev. George P. Gillen, Pastor • Rev. John Spina

Kenilworth Gospel Chapel
South 23rd St. & Newark Ave.
Thanksgiving Eve Service November 21 • 7:30-8:30 pm
Special program with reflections afterwards
For more information call Don Dункerton, 272-6131

Temple Emanu-El
756 E. Broad St., Westfield • 908-232-6770
Rabbi Charles A. Kradoff • Rabbi Renee B. Edelman • Rabbi Mary L. Zamore
Cantor Martin E. Novick • President Stephen Rosenberg

Townley Presbyterian Church
829 Salem Road, Union • 908-686-1028
Sunday Worship 10:00am/Child care available
Rev. Christopher V. Taylor

Temple Israel of Union
2372 Morris Ave., Union 908-687-2120
Rabbi, Meyer H. Korman • Cantor, William Walton
President, Arlene Krivlov

Crossroads Christian Fellowship
2815 Morris Ave., Union • 908-687-9440 • www.ccfou.org
7:30 p.m. Thanksgiving Eve Praise Candlelight Service
The Outdoor Christmas Story: December 7th-9th
Friday: 8:00 p.m./ Saturday & Sunday: 6:30 & 8:00 p.m.

Mountainside Chapel
1180 Spruce Drive, Mountainside 908-232-3456 • www.mountainsidechapel.org
Dr. Gregory Hagg, Senior Minister • Mr. Nick Campagna, Director of Ministries
We invite you to our Thanksgiving Eve Service Wed., Nov. 21 at 7:00 PM
Sunday Worship Celebration at 11:00 AM

Evangel Baptist Church
242 Shanpike Road, Springfield 973-379-4351
Frederick R. Mackey, Senior Pastor • David Stoen, Assistant Pastor
Thanksgiving Service Tuesday, November 20th at 7:30 p.m.
We welcome you to our joint service with Hylswood Baptist Church.

The First Baptist Church of Westfield
170 Elm Street • 908-233-2278 www.thefirstbaptist.org
Sunday morning church school at 9:00 and worship service at 10:30
Thankful to be part of a fine, growing community.

Temple Beth-El Mekor Chayim
338 Walnut Ave., Cranford • 908-276-9231
Rabbi Akiba Lubow • Cantor Frank Lanzron-Tamaroz
President Patricia Werschulz
Proud participant of the Cranford Clergy Council
Thanksgiving Service Nov. 21, 7:30 at
St. Mark's AME Church

St. Theresa's Church
541 Washington Ave., Kenilworth • www.lcatholic.com
Give Thanks to the Lord...
Before heading out to the football game, before watching the parade, or before going to relatives' on Thanksgiving, join St. Theresa's for a special mass at 9:00 am in the church.

St. Mary's Church
232 Central Ave., Rahway • 732-388-0082
Thanksgiving Day Liturgy 9:00 am

Olde World Quality Baking at

Pinho's Bakery

Deli & Grill

1027 Chestnut St., Roselle



ORDER EARLY FOR THE HOLIDAYS

Pies: apple, apple crumb, pumpkin, peach, sweet potatoe, pecan, mince meat, lemon & many more...

A delicious & vast array of European and American pasteries, cakes, fruit tarts, miniatures and cookies.

Complete line of crusty European Breads & Rolls.

Everything you need to complete your holiday feast.

Happy Thanksgiving



908-245-4388

Tues - Sat 5am-7pm Sun 5am-6pm

Open Thanksgiving Day 6am-1pm

Rahway Guild exhibit 'interprets' county artwork

The Arts Guild of Rahway will feature recent works by the New Art Group in an exhibit titled "Interpretations: Images and Objects Inspired by People, Places and Things in Union County." The exhibit runs from Sunday through Dec. 14.

This exhibit is made possible in part by a HEART grant from the Union County Board of Chosen Freeholders.

The New Art Group was formed of members of the Visual Arts Committee of the Watchung Arts Center. 20 artists have been members of the group at times during their eight-year association. Four original members still remain with the group. At each show, the group does has a central theme or focus and each member creates new artworks for each show. What makes the group unique is that it is a group of artists unified by purpose rather than style. The current members are:

- Susan Ahlstrom of Stirling — three-dimensional mixed-media work
 - Jim Fuess of Berkeley Heights — abstract painting
 - Muriel Harris of Edison — representational and abstract painting
 - Frances Heinrich of Princeton — three-dimensional, mixed-media work
 - Thom Lynch of Pottersville — surrealistic tableaux, painting
 - Nancy Ori of Berkeley Heights — photography
 - Paul Pinkman of Plainfield — conceptual painting and drawing
- For more information about the group, visit the Web site at www.newartgroup.com.

Gallery hours are Wednesdays, Fridays and Saturdays from 1 to 4 p.m.; Thursdays from 1 to 3 p.m. and 5 to 7 p.m., or by appointment.

During this exhibit, the Arts Guild will host two art talks by members of the New Art Group:

- Nov. 24 at 1:30 p.m. — Jim

Fuess, "How to Start Exhibiting Your Art"

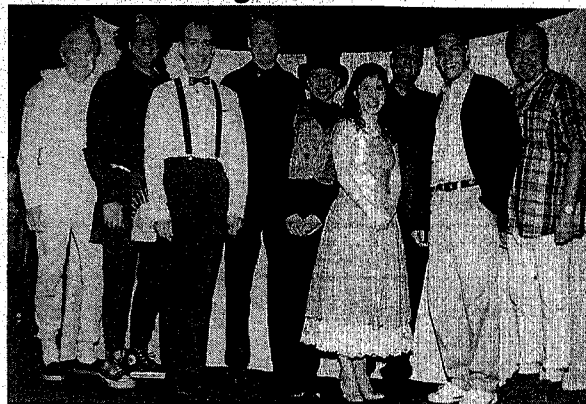
• Dec. 1 at 1:30 p.m. — Paul Pinkman, "The Internet as a Tool for Artists"

These talks are free, with a maximum of 20 people per session. Advance registration is necessary.

Call Lawrence Cappiello at 732-381-7511 to register.

The Arts Guild of Rahway is located at 1670 Irving St., Rahway, and is easily accessible by St. Georges Avenue, the Garden State Parkway, the New Jersey Turnpike, and Routes 1 & 9 north or south.

A 'Fantastick' guest



The cast of Cranford Dramatic Club's recent production of "The Fantasticks" welcomes Tony Noto, producer of "The Fantasticks" at the Sullivan Street Playhouse in New York, to closing night at CDC. From left are George Straley as Henry, Frank Lettera of Scotch Plains as Mortimer, Tom Pedas of Linden as Bellomy, Roger Hayden of Westfield as El Gallo, Rita DeChillo of Cranford as the Mute, Jennifer Mintzer as Luisa, Noto, Eddie Egan of Cranford as Matt, and Bob Fells of Cranford as Hucklebee. For information on upcoming shows, call 908-276-7611.

Asisco WAREHOUSE OPEN TO PUBLIC

BATTERIES FOR EVERYTHING

TRUCKS • AUTOS • CELLULARS
LAPTOPS • CAMCORDERS

New Services Available: We can rebuild your battery packs for cordless tools, laptop computers and most any other application.

Phone (908) 352-7222 • Fax (908) 353-3214
E-Mail Asisco@aol.com, Asisco Co. Inc. • 414 Spring Street (Rt 1-9 South) • Elizabeth

Dr. Daniel S. Brandwein, D.D.M., F.A.C.F.A.S.

SPECIALIZING IN DIABETIC FOOT CARE

HEEL SPURS & ARCH PAIN • BUNIONS & HAMMER TOES • SPORTS MEDICINE • ORTHOTICS

DIPLOMATE, AMERICAN BOARD OF PODIATRIC SURGERY • BOARD CERTIFIED IN FOOT SURGERY
FELLOW, AMERICAN COLLEGE OF FOOT AND ANKLE SURGEONS

WALK-INS WELCOME
HOUSE CALLS AVAILABLE
EVENING HOURS

FREE EXAM AND CONSULTATION!
(X-RAYS NOT INCLUDED)
\$125 VALUE

OFFICE VISITS ONLY • FIRST TIME PATIENTS ONLY • WITH COUPON • EXP. 12/31/01

CALL NOW FOR AN APPOINTMENT
20 NORTH 20th ST • KENILWORTH
908-276-6624

EARN EXTRA MONEY

HEALTHY MALES & FEMALES
18-55 YEARS OF AGE
Needed to Participate in a Clinical Trial
Call 1-800-FOR-CPU3
(1-800-367-2783)

Find Us At: www.centerwatch.com Ther: Clinical Trials, Phase 1

Roselle Park FAMILY DENTISTRY
908 241-2220

Careful and compassionate attention to all of your dental needs from an award-winning dentist skilled in all modern techniques, with a friendly, experienced staff.

We feature general and cosmetic dentistry including, but not limited to:

- Crowns & Bridges • Veneers • Dentures
- Highly effective non-surgical treatment of gum disease
- Non-mercury fillings • Bleaching • Root Canal

FREE Cancer Screenings
Insurance for full or partial payment accepted
Major credit cards accepted • Saturday hours

Maher I. Bakri, D.D.S.
505 Chestnut St., Roselle Park

Rahway Travel

Div. of William Vislocky Travel Inc. EST. 1946
35 East Milton Ave., Rahway
732-381-8800 800-526-2786
Fax 732-381-9890

Full Service Travel Agency
Specializing In
Eastern Europe's Tours
FIT'S - Individual Itineraries,
Ukraine, Czech Republic, Slovakia,
Invitations For Visit,
Special Documentation, Etc.
Irresistible Vacation Spots

PUERTO VALLARTA
PUNTA CANA
THE NEW CARIBBEAN!
BARBADOS -
JUST BEYOND YOUR IMAGINATION
CANCUN

NEW JERSEY'S OLDEST COMMUNITY THEATER

CRANFORD DRAMATIC CLUB PRESENTS

Sleeping Beauty

A Musical for the Young at Heart

Based on a Fairy Tale by Charles Perrault. Adaptation, Book, and Lyrics by Jim Eiler. Music by Jim Eiler and Jeanne Borge

Directed by Hope Weinstein and FJ DeRobertis, Musical Director Shayne Austin Miller, and Choreographer Jennifer Sara Eisenberg

Performances at Friday, Dec. 7 - 7:30 PM
Saturday, Dec. 8 - 10:30 AM, 1 PM & 3:30 PM
Sunday, Dec. 9 - 1 PM & 3:30 PM
\$7.00 Adults/ \$5.00 children under 13 & Senior Citizens

Call Now 908-276-7611

CDC THEATRE

FLOODED ENTERTAINMENT

404 E. WESTFIELD AVE.
ROSELLE PARK N.J. 07204

REC-STORE: (908) 245-8611
STUDIO: (908) 245-8612
FAX: (908) 245-8615

CELLULAR PHONES	12 INCH RECORDS
• AT&T	• Progressive
• Cingular	• Trance
• Nextel	• Hard House
• WorldCom MCI	• Hip-Hop
• Voice Stream	• R&B
NOKIA-MOTOROLA-ERICSSON	MIXED CD'S
• Phone Accessories	• CD Singles

KENT PLACE SCHOOL

MIDDLE AND UPPER SCHOOL OPEN HOUSE • GRADES 6-12

You're invited to experience an Upper School where girls are focused, self-reliant, and leading the way.

Sunday, December 2, 4-3 p.m.

Open House Program
1:00 - 1:30 | Refreshments & Registration
1:30 - 2:00 | Information Session
2:00 - 3:00 | Tours

Kent Place School • 42 Norwood Ave. • Summit, NJ 07902-0308
908-273-0900 • www.kentplace.org

Never Clean Your Gutters Again!

Superior Protection For Your Home... GUARANTEED!

Gutter Helmet, the original gutter protection system, keeps debris from gathering in gutters, eliminating the hassles, the damage and the dangers caused by clogged gutters.

- The #1 Gutter Protection System in the World
- Rain goes in, leaves stay out
- Four season, all-weather protection
- Installs over existing gutters
- Prevents rot and water damage caused by clogged gutters
- Ends costly and dangerous gutter cleaning forever

Call your Gutter Helmet dealer today for a free demonstration and estimate.

Gutter Helmet
GUTTER PROTECTION SYSTEMS

skydell
CONTRACTING, INC.

ESSEX (973) 509-0608
UNION (908) 598-1199
Visit our web site www.skydell.com

Wonderful

WESTFIELD



Shoppers can find all they need in Westfield

By Bill VanSant

Nestled in the heart of Union County, downtown Westfield is a veritable treasure trove of shopping finds in a quaint atmosphere.

Along the tree-lined streets can be found stores ranging from national chains to private "mom and pop" establishments, dining opportunities, entertainment options and more. In fact, one could say that downtown Westfield is "picture perfect," a sentiment that would please photographer Dave Rossi.

Rossi has been providing distinctive photography and video. Rossi specializes in creative portraiture of children, adults and family groups, as well as award-winning commercial illustration photography.

From his style of contemporary or traditional portrait style, to artistic studio and location candid. Rossi truly captures the expression of a family in timeless images. Color, black-and-white or hand-tinted photographs are among his specialties.

"I try to make each visit to my studio a fun and positive experience for every client, and each finished product is necessary. Free consultation is available to discuss portrait style, answer questions, and to recommend the appropriate clothing."

Rossi's Web site can be visited at www.DaveRossi.com.

The cost for a studio portrait sitting includes one 5-by-7 enlargement and starts at \$139. Appointments are necessary. Free consultation is available to discuss portrait style, answer questions, and to recommend the appropriate clothing.

Hours are Tuesdays through Fridays, 10 a.m. to 5:30 p.m., and Saturdays, 10 a.m. to 4 p.m. Thursday evening is the studio's late night, usually until 9 p.m. by request. Patrons are asked to call ahead to confirm. Evening and other hours are available by appointment. The studio is closed Sunday and Monday. All major credit cards are accepted.

With the holiday season fast approaching, what better time to discover Westfield's hidden treasures? A stroll down Broad — or Elm, or Central, or Quimby, or Prospect — not only offers shop after shop, but a relaxing alternative to the mall and shopping centers.

And what could be more relaxing than a gift certificate for a massage?

Actually, it's a practice and a school approved by the Department of Health. "I said Laura Rupp, assistant director of Therapeutic Massage and Muscle Care. Classes through the school are offered in the spring and the fall.

The practice has been in Westfield for almost four years. There are five professionals on staff, plus various specialists who provide workshops for the school. In addition, all therapists are nationally certified.

"I chose Westfield because I think it's a great town, especially for the services I provide," said director Jim Musillo. "It is a very progressive town. I get clients from not only Westfield but all over Union County, from Berkeley Heights to Clark and everything in between — Union, Garwood, Scotch Plains, Mountainside, you name it."

With therapeutic massage, body work and holistic nutritional counseling, Rupp said. "Regarding the holistic nutritional counseling, Rupp said, "It would be just a little bit different from the standard dieting. The recommendations there are different vitamins and lifestyle changes people can utilize safely to help improve their health and well being."

The practice offers Swedish therapeutic, deep tissue, trigger point, prenatal massage, and holistic nutritional counseling. Gift certificates are available for all services except the school.

Therapeutic Massage and Muscle Care is located outside of the downtown area, at 580 Springfield Ave. in Westfield, and can be reached by calling 908-276-4242 or 908-789-2288.

Among the many specialty shops one will find in downtown Westfield is Celtic Imports, located on Prospect Street, right across from the Jolly Trolley restaurant.

According to owner Jim Gilden, the shop carries a wide array of gift and specialty items, all with an Irish theme. Located at 28 Prospect St., Celtic Imports is open Tuesdays, Wednesdays and Fridays from 10 a.m. to 8:30 p.m., Thursdays from 10 a.m. to 8 p.m., and Saturdays from 10 a.m. to 5 p.m. For information, call Gilden at 908-654-3490.

Westfield is not only the location of choice for shoppers, but for business owners as well. In fact, Westfield entrepreneur Elaine Sigal "commutes" all the way from California.

Sigal, the owner and director of The Enrichment Center in Westfield, previously lived in Westfield for 17 years and moved with her husband and family to Los Posos, Calif., last July 4. She is the sole owner of The Enrichment Center, located at 424 Central Ave.

"I have one of the longest commutes to work among all of my family and friends," states Sigal. "Until Sept. 11, I was flying between San Francisco and Newark twice a month. I stayed away from air travel for a few weeks, but I am now traveling again. I am blessed with a superb support staff and marvelous teachers, so my absence was not noticed." Sigal is able to run the school from California with the help of modern technology; she is always on the telephone or the computer. "The parents and students, as well as my teachers, know that I am always available to speak with them. I just need people that there is a three-hour time difference. Six a.m. calls are not my favorite," says Sigal. Asked how parents

Continued on Next Page

The Shoppers Paradise

MASSAGE THERAPY Come to the Professionals



Swedish, Neuromuscular, Pre-Natal, Trigger Point, Holistic Health and Nutritional Counseling

All therapists Nationally Certified

Offering professional massage/bodywork therapy since 1996

Gift certificates available for the holidays or any time

Center for Muscle Care and Relaxation

560 Springfield Ave., Westfield

908-276-4242

Member AMTA & ABMP

By Appointment

The Enrichment Center

424 Central Avenue, Westfield NJ 07090



Elaine Sigal
Owner and Director

can make the difference in your child's education.

Classes for Grades K-8 & High School
Reading, Writing, Math, Science and more.



- Remedial Classes
- Gifted & Talented Classes
- PSAT, SAT, SATII, College Prep
- Private Tutoring
- 4-8 Students per Class
- Personalized Attention
- Flexible Schedule
- State Certified, Experienced Teachers
- Classes 7 days a week, 12 months a year

Call 908-654-0110 to enroll or for a brochure.

Resumes accepted from state certified, experienced teachers.

Celtic Imports Ltd.

For the Holidays...Tins of Jacobs Biscuits...Mikado, U.S.A., Afternoon Teas and Kimberlys...Irish Whiskey Cake, Cream Liqueur Cake and Iced Christmas Cake...Polly Bassetts Pudding and Cadbury's Christmas Stockings...Stop by; We look forward to seeing you...



908-654-3490

Holiday Hours:
Mon.-Sat. 10:55-30 • Thurs. eves till 8
Sun. Noon-5

"Back By Popular Demand"

THE BIGGEST MISTAKES WOMEN INVESTORS MAKE AND HOW TO AVOID THEM

THE FINANCIAL SEMINAR FOR SERIOUS WOMEN INVESTORS

Speaker: Stewart A. Ritter
Senior Vice President-Investments,
Prudential Financial

When: Wednesday, November 28 at 7 p.m.

Where: The Westwood
438 North Avenue
Garwood, NJ

Admission is free but space is limited.
For tickets please call Rosie at 908-789-7827

If You Missed This Seminar Before
Make Sure You Attend Now!

Prudential Financial

"Serving All Your Financial Needs"
908-789-7827 * 800-265-5736

IN UNION COUNTY, IT'S:

Unlimited Communications

SALES • SERVICE • INSTALLATION

FOR CELLULAR PHONES, BEEPERS & PAGERS

Stay Off Route 22

Come to Beautiful
Downtown Westfield for
All Your Shopping Needs

Find Everything You Want
Locally & Conveniently

- Including:
- Cellular Plans
 - For Everyones Needs
 - Personalized Service



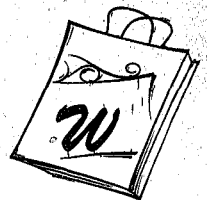
3200
minutes
of
wireless
minutes
&
monthly home airtime
minutes
\$35
monthly rebate
with 1 or 2 year
agreement
*Additional charges apply
for calling fees. See monthly bill for details.
Activation Fee Applies

OWNER OPERATED • SERVING UNION CO.

15 East Broad St. Westfield, NJ
908-654-6440 Fax: 908-654-6441

Wonderful

WESTFIELD



Dave Rossi Photography
distinctive contemporary & traditional portraiture
www.DaveRossi.com
104 Quimby Street, Westfield
908-232-8300

respond to her living in California, she replied, "In today's society, it is not unusual for people to live in a different area from where they work. Most people realize that it just doesn't matter, as I am so closely involved with The Enrichment Center. It doesn't matter where I am when I call, make a decision, or type a letter. It does matter that I know everything that is going on in the business and have complete control of what happens."

The Enrichment Center is located at 424 Central Ave. in Westfield. For information, call Sigal at 908-684-0110.

Westfield features not only opportunities to spend money, but assistance for residents wishing to wisely invest their savings as well. Stewart A. Ritter, senior vice president of investments for Prudential Financial in Westfield, has announced that as a result of the tremendous success of his free recent investment seminar, he will be hosting his complimentary seminar again Nov. 28 at The Westwood in Garwood. Ritter's seminar, titled "The Biggest Mistakes Women Investors Make and How to Avoid Them," is geared to ward the specific investment concerns women share, and shows how women can take greater control of their individual finances.

"Women have traditionally been neglected when it comes to financial education," Ritter said. "One of the most important tools for any investor is knowledge, and that is why I am providing this free educational seminar for women."

Ritter has a 19-year history in the financial services industry. He is committed to educating the public about important financial issues, and he achieves this goal through seminars, workshops and written articles.

Groups from women's clubs and organizations as well as individual investors are encouraged to attend the seminar. For more information and to request tickets, call Ritter's senior marketing coordinator, Rosa DeSimone, at 908-789-7827.

According to Ritter, women investors face several unique concerns when investing, and should therefore consider taking a unique approach to financial planning. Women typically live longer than men and are more likely to take time off during their working years. According to the National Center for Women and Retirement Research, 80 to 90 percent of women will be solely responsible for their finances at some point in their lives.

After a long, enjoyable day visiting the streets of Westfield, falling into a comfortable bed could be just what the doctor ordered — a bed one might find at the Westfield Sleep Center.

"Customer satisfaction is always guaranteed," said owner Tony Santoloci. "When people come in here, we don't just push them out the door and never see them again. I built this business here on referrals. I have a big referral business. Friends send friends and relatives because they can trust us. We always give the best price on a quality mattress."

"You have to get the people to trust you," Santoloci commented on the process of helping customers find the perfect mattress. "You have to find out their problems with sleeping, find out their sleeping habits — if they're side-sleepers, back-sleepers or stomach-sleepers. Do they need something firm or something plush? Do they have aches and pains? If they have aches and pains, they don't want a firm mattress."

The Westfield Sleep Center features not only mattresses, but bed frames, head- and footboards, and futons as well.

"We have the largest selection of Wesley Allen and Amanda Sutton iron beds on the floor," Santoloci said.

In addition, the center boasts a staff experienced in meeting customers' particular needs. All of us have been doing this 18 to 25 years. The Westfield Sleep Center is located at 325 South Ave. West and can be reached by phone at 908-232-8060. There is also a Union location at 2317 Route 22, on the center island; the phone number is 908-688-8070.

From massages to mattresses, from Ireland to investments — Westfield has it all and then some!

SEALY'S GREATEST LINEUP EVER
NOW ON SALE

Sealy Posturepedic
WITH STAY TRUE™ TECHNOLOGY

FREE DELIVERY
FREE Removal of Old Bedding
FREE Bedframe on All Sets

feel the fit of total body support
Stearns & Foster and Sealy Posturepedic AMERICA'S #1 SLEEPER

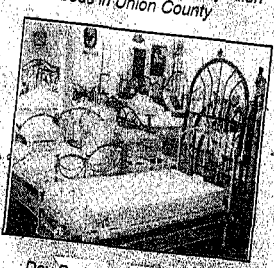
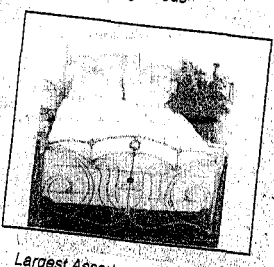
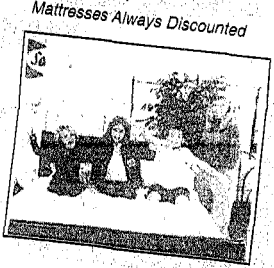
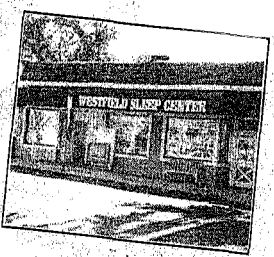
SLEPT ON BY MORE ORTHOPEDIC SURGEONS

Great Savings!
Some overstock inventory but all factory fresh including Sealy Posturepedic® and Stearns & Foster

TAKE AN EXTRA 10% OFF
Anyones Low Sale Prices!
Off Sealy Crown Jewel & Stearns & Foster with this coupon

Everyone loves Westfield Sleep Center except the competition!!!
We crush the competition on a daily basis!!!
Call us for a price today!!! We quote right over the phone our competitors won't!!!

<p>Sealy Firm Queen 2 Pc. Set \$299</p> <p>Twin Ea. Pc.\$229.....\$99 Full Ea. Pc.\$279.....\$139</p>	<p>Sealy Posturepedic Cushion Firm Feel Queen 2 Pc. Set \$399</p> <p>Twin Ea. Pc.\$329.....\$139 Full Ea. Pc.\$399.....\$179 King 3 Pc. Set.....\$1,299.....\$597</p>	<p>Sealy Posturepedic Backsaver Firm Queen 2 Pc. Set \$499</p> <p>Twin Ea. Pc.\$399.....\$179 Full Ea. Pc.\$549.....\$239 King 3 Pc. Set.....\$1,599.....\$749</p>	<p>Sealy Posturepedic Cushion Firm Queen 2 Pc. Set \$599</p> <p>Twin Set\$398 Full Set\$558 King 3 Pc. Set.....\$889</p>
<p>Sealy Posturepedic Extra Firm, Plush or Pillowtop Queen 2 Pc. Set \$699</p> <p>Twin Ea. Set\$478 Full Ea. Set\$638 King 3 Pc. Set.....\$949</p>	<p>Sealy Posturepedic Cushion Firm or Plush Pillowtop Queen 2 Pc. Set \$799</p> <p>Twin Ea. Set\$558 Full Ea. Set\$698 King 3 Pc. Set.....\$1,099</p>	<p>Stearns & Foster Firm or Plush Queen 2 Pc. Set \$849</p> <p>Twin Set\$1,169.....\$649 Full Set\$1,399.....\$749 King 3 Pc. Set.....\$1,999.....\$1,149</p>	<p>Sealy Posturepedic Foam Encased Pillow Top Queen 2 Pc. Set \$899</p> <p>Twin Set\$1,169.....\$699 Full Set\$1,339.....\$799 King 3 Pc. Set.....\$2,599.....\$1,299</p>



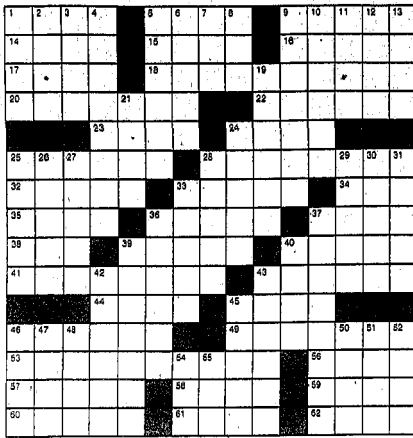
WESTFIELD SLEEP CENTER

325 SOUTH AVE. WEST WESTFIELD
(Across from Westfield Train Station)
FREE Parking In Rear Of Store
908-232-8060
Hours: M-F 10-7 Thu. 10-9 Sat. 10-6 Sun. 12-5

2317 ROUTE 22 Center Island UNION
(Eastbound lanes across from McDonalds)
(Westbound lanes across from Best Buy)
908-688-8070
Hours: M-F 10-9 Sat. 10-7 Sun. 12-5



AKA



ACROSS

- 1 Sunflower center
2 Unvarnished
3 Whirring way
4 Biblical preposition
18 Complete
16. figures in it
17 'Soldier of Fortune' actress
18 WINGER
20 MIX
22 Piggied it up
23 Heavy hydrogen discoverer
24 See 26 Down
25 Moseyed along
28 PAGE
32 Candidales' goals
33 Clobber
34 Square or shirt
35 Gives the boot
36 Life enhancer
37 Clouseau caper
38 Corregio crepus
39 Picher Satchel
40 Flavourful
41 FORD
43 Certain berths
44 Berlin senior citizens
45 Love in Latin
46 Kind of gun
49 KING
53 BARKER
56 Hitchcock thriller
57 Growing waddy
58 Widgeon
59 Swamden's cousin
60 Fragments
61 Lay one on the kisser
62 Knock to the canvas

DOWN

- 1 Cleaner's target
2 Dividing word
3 Bud support
4 Uses referentials
5 Full follower
6 Brooks, who played Hawk
7 Johnny
8 Misread notes
9 Forest of WWI note
10 Elongated fish
11 Exclusive party

- 12 Green land
13 Richard, Thelma, or Mike
19 On Dad's side
21 ___ blent
24 Linda Lavin sitcom
25 Showbiz org.
26 Ben Stiller's mom
27 Southern African
28 Cisco Kid, to Pancho
29 Where troops take five
30 Thor, Od'in, et al.
31 Nourishes
33 ill will
36 Finnegan's grandstand partner
37 Preserved on tape or film
39 Plasterers' boards
40 Work with Bowe
42 Computer
43 Planetary shadows
45 Works with
46 Side order
47 Buckeye State Garr
48 WWII faction
50 Shamen's wisdom
51 On a grand scale
52 Smell like skunk cabbage?
54 Pato munchie
55 Paper needing setting

See ANSWERS on Page B13

What's Going On?

FLA MARKET, BAZAAR, OTHER, SATURDAY, SUNDAY, FRIDAY, CRAFT, FUN AUCTION. Various community events including flea markets, bazaars, craft fairs, and auctions with dates and locations.

HOROSCOPE

NOV. 15-25, ARIES, TAURUS, GEMINI, CANCER, LEO, VIRGO, LIBRA, SCORPIO. Daily horoscope readings for various zodiac signs.

Westfield group provides musical 'links'

The Musical Club of Westfield Scholarship Concert, titled "Linking the Families," will be presented Sunday at 4 p.m. in the First Baptist Church, 179 Elm St. in Westfield. This intriguing and imaginative program will feature a variety of local musicians. It is a joint effort of the Westfield High School and a member of the N.J. Youth Symphony. She played with the Central Regions Orchestra for two years, and is an officer of the Junior Musical Club of Westfield. Also performing in the Albrechtsberger will be Wayne Trager, a professional trumpet player from Edison. The viola played by Robert Pauli of North Plainfield, will be the link to the Vaughan Williams Four Hymns for tenor, viola, and organ. The head of the English Department at Wardlaw-Hartridge School, Pauli is the president of the Plainfield Musical Club, a professional singer at the Crescent Avenue Presbyterian Church and the manager of an ensemble for weddings and other occasions, called Summit Strings. The tenor soloist in the Vaughan Williams will be Kerry Stubbs of Cranford. Linking the last two pieces is the organ, played by F. Allen Artz III of Elizabeth. Artz will play the Vaughan Williams and the last piece, Von Biber's Sonata for six trumpets, organ, bass, and timpani. A prominent recitalist and church musician as well as a national clinician for the American Guild of Organists, he directs the 20-voice "South Mountain Chorale," which specializes in music of the Renaissance. The director of music at the Far Hills School, Artz has led the honor of performing for Pope John Paul II and for President Clinton. All proceeds from this performance will go to the scholarship fund of the Musical Club. Tickets for the concert are \$10, and may be purchased from any club member, at the door on the day of the performance, or by calling 654-1036. The creator of this imaginative and interesting concert is Drake Sparte Roessler of Westfield, whose goal was to provide a cross-section of instruments and voices, students and professionals, and styles and time periods to attract as diverse an audience as possible. Tickets are \$10, and may be obtained at the door, or from any member of the Musical Club of Westfield. All proceeds go to support 10 scholarships for local students majoring in music. Save your newspaper for recycling.

New Jersey PERFORMING ARTS CENTER Young Artist Talent Search SING IT, DANCE IT, DREAM IT, DO IT! Audition for New Jersey's finest Young Artist Training Programs! February 2-3, 2002. Includes information about the search and contact details.

MARINE CORPS RESERVE TOYS FOR TOTS Your Local Dropoff Point Worrall Community Newspapers. Advertisement for the Toys for Tots drive, featuring images of children and toys.

Specializing in quality work: RESIDENTIAL COMMERCIAL INDUSTRIAL. puerari electric, Inc. 908-276-3687. JOSEPH PUERARI President. Family Owned • License #2837-A. Includes services like wiring, lighting, and repairs.

"CELEBRATING MEN" AT LIBERTY BAPTIST CHURCH Sunday November 25, 2001. A service designed to celebrate and honor men will take place Sunday November 25, 8am, 8am & 11am at Liberty Baptist Church, 515 Court St. in Elizabeth, N.J. Musical selections provided by Liberty Baptist Male Chorus. Refreshments will be served. Call 908-354-3382, Press 8 for directions.

RENT PLACE SCHOOL Primary School Open House • GRADES K-5 You're invited to experience a Primary School where girls test their abilities and take joy in learning. Tuesday, December 4, 9-11 a.m. Open House Program: 9:00-9:30 Refreshments & Registration 9:30-10:00 Information Session 10:00-11:00 Tours. Rent Place School • 42 Roswood Ave • Summit, NJ 07901 • 908-382-2300 • www.rentplaceschool.org

Stepping Out is a weekly calendar designed to guide our readers to the many arts and entertainment events in the Union County area. The calendar is open to all groups and organizations in the Union County area. To place your free listing, send information to **Arts and Entertainment Editor Bill Vansant**, **Worrald Community Newspapers, P.O. Box 3109, Union, 07083.**

Stepping Out

Martha Suhr Rolland, will be on exhibit in the Wisner House Gallery at the Reeves-Raed Arboretum in Summit through Jan. 14. A reception will take place today from 7 to 9:30 p.m. Gallery hours are 9 a.m. to 3 p.m. Reeves-Raed Arboretum is located at 165 Hobart Ave., Summit. For information, call 908-273-8787.

METRO RHYTHM CHORUS of Sweet Adelines International is seeking female singers. The group rehearses every Wednesday from 8 to 10 p.m. in the Cranford area. For information, call Janet Manfredonia at 908-854-8841 or send e-mail to manfredonia@postbox.cox.net; or call Judy McCord at 973-955-8883.

WESTFIELD GLEE CLUB is seeking male and female adult singers to participate in the club's 77th season. Rehearsals are held Monday evenings, 8 to 10 p.m., in the Westfield Presbyterian Church choir room. For information, call Dale Juntilla at 908-292-0873.

FALL BOUTIQUE AND RUMMAGE SALE will be sponsored by St. Paul's Episcopal Church of Westfield Friday and Saturday, hours are 9:30 a.m. to 3 p.m. Friday, 9:30 to 11 a.m. Saturday, which is Brog Day. St. Paul's is located at 414 E. Brog Day. For information, call 908-233-3535.

WESTFIELD ART ASSOCIATION member Sheila Leng will have her work on exhibit at Children's Specialized Hospital, 150 New Providence Road, Mountainside, through today.

A STUDENT'S JOURNEY, works by Janet L. Whitman, will be on exhibit in the Members' Gallery of the New Jersey Center for Visual Arts in Summit through Nov. 28.

Gallery hours are Mondays to Fridays from noon to 4 p.m., and Saturdays and Sundays from 2 to 4 p.m. NCVA is located at 68 Elm St., Summit. For information, call 908-273-9121.

INTERPRETATIONS: Recent Artworks inspired by People, Places and Things in Union County by the New Art Group will be on exhibit at the Gallery at the Arts Guild of Rahway Sunday through Dec. 14. A reception will take place Nov. 24 from 1 to 4 p.m.

Gallery hours are Wednesdays, Fridays and Saturdays from 1 to 4 p.m.; Thursdays from 1 to 3 p.m., and 5 to 7 p.m., and by appointment. The Arts Guild of Rahway is located at 1873 Irving St., Rahway. For information, call 732-381-7511.

FAMILIAR PLACES, recent paintings by Patricia Brantano, will be on exhibit at Swain Galleries in Plainfield through Nov. 28.

Gallery hours are Tuesdays to Fridays from 9:30 a.m. to 5:30 p.m., Saturdays from 9:30 a.m. to 4 p.m., and Sundays from noon to 4 p.m. Swain Galleries is located at 703 Watching Ave., Plainfield. For information, call 908-756-1707.

CHILDREN'S SPECIALIZED HOSPITAL in Mountainside will exhibit the works of Jane H. Adams, Andrew Schmitt and Eleanor Morehouse during the month of November. CHS is located at 153 New Providence Road, Mountainside. For information, call 908-789-2075.

STILL LIFES: "Black and White Photographs by Howard Nathanson" will be on exhibit in the Donald B. Palmer Museum in the Springfield Public Library through Dec. 13.

Gallery hours are regular library hours. The Springfield Public Library is located at 68 Mountain Ave., Springfield. For information, call 973-376-4930.

OBJECTS OF DEVOTION, works by Jamie Greenfield, will be on exhibit at the Kent Place Gallery in the Kent Place School in Summit Monday through Dec. 21. A reception will take place Nov. 30 from 8 to 9 p.m.

Gallery hours are Mondays to Fridays, 9 a.m. to 4 p.m., or by appointment. The Kent Place School is located at 42 Norwood Ave., Summit. For information, call 908-273-0900, Ext. 332.

THE TOWN BOOK STORE in Westfield will exhibit the works of members of the Westfield Art Association through the end of December. The Town Book Store is located at 255 E. Broad St., Westfield. For information, call 908-233-3535.

MAKING A MARK — the work of New Jersey artists Gary Brieche, Caroline Burton, Eric McLendon, Gloria Rodriguez and Barbara Stork — will be on exhibit through Jan. 6, 2002 at the New Jersey Center for Visual Arts in Summit.

Gallery hours are Mondays to Fridays from noon to 4 p.m., and Saturdays and Sundays from 2 to 4 p.m. NCVA is located at 68 Elm St., Summit. For information, call 908-273-9121.

field. For information, call 973-376-8544.

MYSTERY READING GROUP will meet at Barnes and Noble in Clark the second Thursday of each month at 7:30 p.m. Barnes and Noble is located at 1180 Ravitan Road. For information, call 732-574-1818.

JEWSH BOOK LOVERS meets at 7:15 p.m. at Barnes and Noble, 240 Route 22 West, Springfield, the third Monday of each month. For information, call 973-376-8544.

SHAKESPEARE OUT LOUD Reading Group will meet at Barnes and Noble, 1180 Ravitan Road, Clark, at 7:30 p.m. the third Friday of each month to read a Shakespeare play out loud. The group is led by Kevin Muller. For information, call 732-574-1818.

WOMEN'S READING GROUP will meet at Barnes and Noble in Clark the last Wednesday of each month. Barnes and Noble in Clark is located at 1180 Ravitan Road. For information, call 732-574-1818.

CONCERTS

KENNY ROGERS will appear in concert Friday at 6:30 and 9 p.m. at the Union County Arts Center in Rahway. Tickets are \$45, \$85 and \$125. UACAC is located at 1501 Irving St., Rahway. For information, call 732-499-9229 or visit www.uacac.org.

WESTFIELD SYMPHONY ORCHESTRA will appear in concert Saturday at 8 p.m. at the Presbyterian Church in Westfield, 140 Mountain Ave. at Broad Street. For information, including ticket prices, call 908-232-9400, or visit www.westfieldnj.com/swo.

THE MUSICAL CLUB OF WESTFIELD will present a concert titled "Linking the Unlikely" Sunday at 3 p.m. at the First Baptist Church, Elm Street in Westfield. Tickets are \$10. For information, call 908-654-1038.

RAHWAY VALLEY JERSEYAIRES will appear in concert Dec. 1 at 1:30 and 8 p.m. in the auditorium of Rahway High School, Madison Avenue in Rahway. Tickets are \$18 for reserved seats and \$12 for general admission at both shows. At the 1:30 p.m. show, senior citizen tickets are \$10 and children's tickets are \$5. For information, call 732-494-3580 or 908-925-2629, or visit www.geocities.com/jerseyaires/.

THE VIENNA BOYS CHOIR will appear in concert Dec. 1 at 8 p.m. at the Union County Arts Center in Rahway. Tickets are \$20 and \$26. UACAC is located at 1501 Irving St., Rahway. For information, call 732-499-9229 or visit www.uacac.org.

NEW JERSEY INTERGENERATIONAL ORCHESTRA will appear in concert Dec. 2 at 3 p.m. at Cranford High School, West End Place in Cranford, and Dec. 5 at 7:30 p.m. at New Providence High School, 35 Pioneer Drive in New Providence. Tickets are \$5 in advance, \$6 at the door. For information, call 908-709-0084, visit www.ijoiorch.com/ijoi.html, or send e-mail to NJIOrch@aol.com.

SUMMIT CHORALE will present "An English Holiday" Dec. 2 at 8 p.m. at Our Lady of Peace RC Church, 95 South St., New Providence. Advance sale tickets are \$18 for adults, and \$11 for students and senior citizens; at the door, tickets are \$18 and \$13, respectively. For information, call 973-762-8488 or visit www.summitchorale.org.

EDISON ARTS SOCIETY WRITERS' CIRCLE, led by Cheryl Racanelli, meets at Barnes and Noble in Clark the second and fourth Monday of each month. Barnes and Noble in Clark is located at 1180 Ravitan Road. For information, call 732-574-1818.

AFRICAN-AMERICAN INTERESTS meets the second Thursday and 10th of each month at Barnes and Noble in Springfield. Barnes and Noble is located at 240 Route 22 West, Springfield.

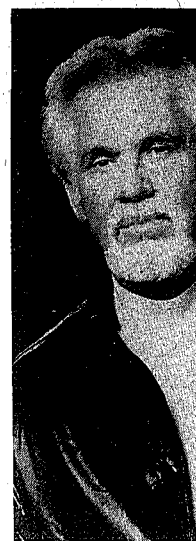
CRAFTS

WESTFIELD WINTER ART-CRAFT MARKET will take place Nov. 30, and

Dec. 1 and 2 at the Westfield Armory, 600 Rahway Ave., Westfield. Hours are 8 to 9 p.m. Nov. 30, 10 a.m. to 6 p.m. Dec. 1, and 10 a.m. to 5 p.m. Dec. 2. A weekend pass is \$30; children younger than 10 are admitted free. For information, call 908-854-9437.

DANCE

SUMMIT FOLK DANCERS continues its 2001-02 season with Friday gatherings at 8 p.m. — beginners are asked to arrive at 7:30 p.m. — at the Conjunction, Morris Avenue and Maple Street, Summit. Gatherings are scheduled for Nov. 30, and Dec. 14 and 28, which is the holiday party. Admission is \$2; special workshops are \$4. For information, call 973-497-9278.



COUNTRY LEGEND KENNY ROGERS will perform two concerts Friday at the Union County Arts Center in Rahway. For information, see the "Concerts" listing on this page.

FILM The Filmmakers Symposium will be sponsored at the Loews Mountainside, Route 22, Mondays, through Dec. 10, the second session in Monday through Dec. 10. Subscriptions are \$121 for six weeks, \$229 for 12 weeks. For information, call 800-531-9410.

THEATRE PAPER MILL PLAYHOUSE in Millburn will present Cole Porter's "Red, Hot and Blue" through Dec. 2. Evening performances are Wednesdays through Saturdays at 8 p.m., and Sundays at 7:30 p.m. matinees are Thursdays and Sundays at 2 p.m., and Saturdays at 2:30 p.m. Adult performances are Nov. 30 at 8 p.m., and Nov. 21 and 28 at 2 p.m. There will be no performances Nov. 22, and no evening performance Dec. 2. Tickets are \$28 to \$58.

HOBBIES

THE MODEL RAILROAD CLUB in Union will sponsor its annual open house and sound-and-light show Nov. 23 to 25. Nov. 30 to Dec. 2, and Dec. 7 to 9 at the clubhouse, 285 Jefferson Ave., Union, off Route 22 eastbound. Hours are Fridays, 7 to 10 p.m., Saturdays, noon to 9 p.m., and Sundays, noon to 6 p.m. Advance-sale tickets are \$4 for adults, \$2.50 for senior citizens 60 years old and older, and \$1.50 for children 12 years old and younger. At the door, tickets are \$5, \$3 and \$2, respectively. For information, call 908-964-9724 or visit www.trmcil.com.

THE GREATER NEW JERSEY STAMP EXPO will take place Dec. 1 and 2 at the Springfield Holiday Inn, 304 Route 22 westbound, Springfield. Hours are 10 a.m. to 6 p.m. Dec. 1 and 10 a.m. to 4 p.m. Dec. 2. Admission is free. For information, call

732-750-8937 or 973-376-9400, visit www.beachphilatelics.com, or send e-mail to mrlamp2@aol.com.

KIDS

CRANFORD DRAMATIC CLUB will present "Sleeping Beauty" Dec. 7 to 9 at the CDC Theater, 78 Winans Ave., Cranford. Shows are at 7:30 p.m. Dec. 7, and 1 and 3:30 p.m. Dec. 8 and 9. For information, including ticket prices, call 908-276-7811.

POETRY

STONY HILL PLAYERS of Summit will sponsor a Coffeehouse-Style Poetry Reading Sunday from 3 to 5 p.m. at Calvary Episcopal Church, 31 Woodland Ave., Summit. Admission is free.

Call 973-376-4343 or visit the Web site at www.papermill.org. **NEW JERSEY SHAKESPEARE FESTIVAL** will present "The Crucible" by Arthur Miller through Sunday in the F.M. Kirby Shakespeare Theater on the campus of Drew University, 98 Mt. Pleasant Ave., Madison. Shows are at 8 p.m. through Saturday, with matinees at 2 p.m. Saturday Sunday. For information, including ticket prices, call 973-408-5600 or visit www.njshakespeare.org.

ELIZABETH PLAYHOUSE will present "Sylvia" by A.R. Gurney Friday through Dec. 16. Shows are at 7:30 p.m. Fridays and Saturdays, 2 p.m. through Saturday, with matinees at 2 p.m. Saturday Sunday. For information, including ticket prices, call 973-408-5600 or visit www.njshakespeare.org.

VARIETY ELIZABETH ARTS COUNCIL will sponsor its annual Members' Art Exhibition and Performance Shows are at 8 p.m. through Saturday, with matinees at 2 p.m. Saturday Sunday. For information, including ticket prices, call 908-255-0077.

CROSSROADS, 78 North Ave. Garwood presents a series of jazz, blues and comedy concerts, as well as football-themed nights.

Every Sunday Sunday Football noon to closing, see all the games with \$2 domestic drafts and wong specials.

Every Monday Monday Night Football Every Tuesday Jazz Jam, all pints are \$2

Every Wednesday Domestic draft beer for \$2 Today Libations and Chouch

Friday Billy Hoctor Saturday Business with Larry Kent Wednesday Silokage

Nov. 22 Movie marathon on the 10-foot screen Nov. 23 20 U Nov. 24 Skydiving in an Airman Brothers Intake

Nov. 28 MiniLace Nov. 29 Railroad Lane Nov. 30 Mountain River Rats Dec. 1 Uncle Sammy

For information, call 908-232-5666

EAT TO THE BEAT Coffeehouse in Rahway will feature appearances by musical artists.

Eat to the Beat Coffeehouse is located at 1465 Irving St. in Rahway at the corner of East Cherry Street. For information, or to sign up for Open Mike Night, call 732-381-0505.

HILTOP CAFE AND GRILL in Summit presents "From Broadway to the Silver Screen" every Sunday at 6 p.m. Presented by an all-star cast of former film stars from 5 to 6 p.m. Cost is \$29.95 and reservations are required. The Hiltop Cafe and Grill is located at 447 Springfield Ave., Summit. For information, call 908-277-0220.

TAVERN IN THE PARK in Roselle Park will present Today's Hook in "An Evening of Frank Sinatra" Saturdays at 9 p.m. Tavern in the Park is located at 147 W. Westfield Ave., Roselle Park. For information, call 508-241-7400.

VAN GOGH'S EAR CAFE, 1017 Stevenson Ave., Union, will present a series of musical evening Tuesday nights are "Acoustic Tuesday," with open mike from 8 to 9 p.m. for folk singers, poets and comedians. Following by a featured folk performer. Open mike participants sign up at 7:30 p.m., and get 10 minutes at the microphone. Jazz and blues are featured Sundays at 8 p.m. Cover charge is \$3 for all Sunday concerts.

Sunday: Electric Braskwater Tuesday: Paul Brubaker Nov. 25: The Joe Taino Trio Nov. 27: Kohn

For information, call 908-810-1844

Come Celebrate With Us...

Call for your **FREE** Trial Class

THE LITTLE GYM IS DIFFERENT.

Our curriculum-based motor skills development programs help children from **4 months to 12 years old** build coordination, confidence and self-esteem. Our non-competitive classes such as Gymnastics, Sports Skills, and Karate encourage youngsters to develop skills that last a lifetime. All of which can give kids a real head start towards a happy, healthy life.

Cranford, NJ
6-20 South Avenue
Cranford Square Shopping Center
(next to Blockbuster)
(908) 497-1500

Also Located in

West Windsor, NJ
(609) 799-7776

Newtown, PA
(215) 579-2766

Book Your Awesome Birthday Bash

Visit us @ www.thelittlegym.com

FLOWER COMFORT, the works of

Community Classified

1-800-564-8911

Search your local classifieds on the internet
<http://www.localsource.com/>

SALES HOURS

Monday through Friday
9:00 AM - 5 PM
After Hours Call
908-686-9898
Selection # 8100

ADDRESS

Classified Advertising
Worral Newspapers
P.O. Box 158
Maplewood, NJ 07040

Phone: 1-800-564-8911 Fax: 973-763-2557
Offices where ads can be placed in person:

ESSEX COUNTY
463 Valley Street, Maplewood
170 Scotland Road, Orange
366 Liberty Street, Bloomfield

UNION COUNTY
1291 Stuyvesant Ave., Union

RATES

CLASSIFIED RATES
20 words or less.....\$16.00 per insertion
Additional 10 words.....\$4.00 per insertion
Display Rates.....\$25.00 per column inch
Contract Rates Available
Blind Box Number.....\$12.00 per insertion

BEST BUY

CLASSIFIED COMBINATION RATES
Ad appears in all 18 newspapers
20 words or less.....\$22.00 per insertion
Additional 10 words.....\$6.00 per insertion
Display Rates.....\$47.50 per column inch
Contract Rates Available

CHARGE IT

All classified ads require prepayment.
Please have your card and expiration date.

NEWSPAPERS

UNION COUNTY
Union Leader • Echo Leader
The Eagle (Cranford/Dunellen) • The Leader
Spectator Leader • Gazette Leader
Railway Progress • Summit Observer

ESSEX COUNTY
News-Record of Maplewood & South Orange
West Orange Chronicle • East Orange Record
Orange Transcript • The Glen Ridge Paper
Nutley Journal • Belleville Post
Irvington Herald • Valisburg Leader
The Independent Press of Bloomfield

DEADLINES

Business Directory 4 PM Thursday
Display - Space reservation 5 PM Friday
Ad Copy 12 noon Monday
In-column 3 PM Tuesday

ADJUSTMENTS

Adjustments: We make every effort to avoid mistakes in your classified advertisement. Please check your ad the first day it runs! We cannot be responsible beyond the first insertion. Should an error occur please notify the classified department. Worral Community Newspapers, Inc. shall not be liable for errors or omissions in cost of actual space occupied by item in which error or omissions occurred. We can not be held liable for failure, for any cause, to insert an ad. Worral Community Newspapers, Inc. reserves the right to reject, revise or reclassify any advertisement at any time.

CLASSIFIED SPECIALS GARAGE SALES

25 words \$21.00 or \$28.00 combo
Garage Sale signs, price stickers, balloons, helpful hints, inventory sheet and Rain Insurance.

ECONOMY CLASS

20 words \$7.00 or \$11.00 combo items for sale under \$100.00 One item per ad price must appear.

AUTOS FOR SALE

20 words - 10 weeks \$31.00 or \$44.00 combo no copy charges

DREAM MACHINES

Photo of your car plus 20 words
4 weeks - \$40.00
Call now 1-800-564-8911

EMPLOYMENT

HELP WANTED

ADMIN. CLERICAL SUPPORT
Hosokawa Micron Powder Systems is a major supplier of the world's most advanced powder processing equipment and systems serving the mineral, chemical, ceramic and pharmaceutical industries.

This critical position in our Parts Sales department requires a minimum of 2 year administrative experience (preferably in a sales office), demonstrated PC skills and organizational abilities are also required. Candidate should possess initiative and the ability to successfully manage multiple priorities.

Responsibilities include typing quotations prepared by Sales personnel, entering sales and purchase orders into computerized business system, answering phones and taking messages preparing and disseminating reports, daily filing and various duties as assigned.

Resumes must include salary requirements and should be emailed with a cover letter to hr@hmicron.com for consideration.

HOSOKAWA MICRON POWDER SYSTEMS
Human Resources Department
C/O AD-PM1
10 Graham Road
Summit, NJ 07901
Equal Opportunity Employer, M/F/H/V

\$3,200 WEEKLY MAILING 800 brochures!
Guaranteed! Free supplies! postage! Mail LSASE, Celebrity Mailers @ 16625 Redmond Way #M233-C, Redmond, WA 98052. www.celebritymailers.com

AMERICA'S AIR Force Jobs available on over 150 specialties, plus up to \$12,000 enlistment bonus! Up to \$10,000 student loan repayment. Prior service openings. High School grad ages 17-27 or prior service members from any branch, call 1-800-423-USA8 or visit www.airforce.com AIR FORCE

ATTENTION: WORK From Home Our Children come to the office everyday! Earn an extra \$500-\$800 part full time! Free book-let (B7) 973-5552. www.simplehomework.com

ATTENTION: WORK From Home Mail Order Business Need help immediately. \$522/week part time \$1,000-\$4,000 week full time. www.MCFinancialLiberty.com 1-800-998-6355.

BABYSITTER NEEDED, 2-3 afternoons per week, from Noon until 6:00. Driver with own car a must. Call Susan, 973-775-8377.

BARTENDERS WANTED, Earn up to \$250 per shift. Make \$\$\$, good tips, Fun exciting environment. Call 800-808-0083 extension 201.

BARTENDERS WANTED, Earn up to \$250 per shift. Make \$\$\$, good tips, Fun exciting environment. Call 800-808-0083 extension 201.

CHILD CARE, full time, loving, experienced caregiver for 2 1/2 year old South Orange Live out. Own car. References: 973-763-1733.

HELP WANTED

CHILD CARE Seeking loving, experienced, reliable Nanny to care for energetic 4 year old and 11 month old in South Orange. Full time, live-in/out, driver preferred. Light housekeeping. Non smoking. Nanny references required. Please call 973-378-3445

CHILD CARE: Experienced person needed 6:45am-7:00pm, Monday to Friday for two boys. Must be fluent in English, non-smoking, own a car and have excellent work habits and references. Glen Ridge area. 973-495-5413 after 5pm

CAREGIVERS NEEDED part time mornings, afternoons, or full time for the elderly. Flexible hours. Non medical companionship, home care, and elderly related errands. No certification required. Free training provided. Driver's license and car required. Home Instead Senior Care, 908-317-9669

CLERICAL FULL TIME Bloomfield accounting office. Typing, faxing, filing, photocopying. Looking for experienced, responsible, neat person with good appearance and pleasant phone manner. Computer knowledge a must. \$8.00 an hour, no benefits. Call Alicia after 10:00 Monday thru Friday 973-496-2826.

CLERICAL, join a winning team all our non-Resale Job locations. Great Books and Microsoft office required. Part/full time. 908-255-5280

CLERICAL/FILING and internet access experience, part time 7:00am-1:00pm; Monday thru Friday Call 908-687-0999 Extension 138 ask for Deb.

COMPUTE to your Dent! Be independent, stay home and work for yourself! Be Free! Set your own hours. Earn excellent income. Get the facts. BeBoss@Free.com

COMPUTER, INTERNET people wanted to work online. Potential \$125-\$175 an hour. Full training, Vacations, bonuses and incentives. Bi-lingual also needed. 48 countries. Free E-Book: www.ProfitPC.net.

CUSTOMER SERVICE REPRESENTATIVES
West Orange, NJ
Western Pest Services, a leading service company for more than 74 years, is looking for skilled individuals to work Monday-Friday in our customer service department. If you possess excellent attention to detail and communication skills and prefer accomplishing goals in a team environment, you should be talking to us. Salary \$27,000+. Benefits include full medical/dental. For info, call 1-800-50-1917. Department 700. www.hpmed.com

COUNTER PERSON, Full Part time for upscale take out deli. Great hours, great pay, great place. Call Mark or Jason at Napoli's 27 So. Livingston Avenue, Livingston, 973-740-1940.

DATA ENTRY full time/part time, no experience needed. Training provided medical billing. High potential up to \$80K. Immediate. Requires 1-800-20-1917. Department 700. www.hpmed.com

DATA ENTRY full time/part time, no experience needed. Training provided medical billing. High potential up to \$80K. Immediate. Requires 1-800-20-1917. Department 700. www.hpmed.com

EX-RAY TECHNICIAN needed part time for Union County Medical Practice. Fax resume to 973-605-3013.

EXPORT CLERK, Full / Part time needed for WOVCC, Cranford area. Fax resume 908-272-1020

EXTRAS/ACTORS All locations needed. Up to \$500 a day. Open 7 days 1-800-260-3949 extension 3045.

FLORAL DESIGNER Permanent and Holidays. Some experience necessary, will train. 20-25 hour week. Clark. 973-361-8888.

FULLY PART TIME help needed for Union County Insurance Agency, with great potential for advancement. Call us today, Doug, 908-964-5588.

HELP WANTED

DENTAL ASSISTANT New Milburn office expanding Full Time and Part Time positions available for friendly and outgoing personality. Experience preferred, but will train. Must have own means of transportation. Fax resume to Elaine at 732-452-0078.

DENTAL ASSISTANT Friendly dental office in Verona looking for part time assistant with experience. 973-689-1229. Leave message or fax resume to 973-689-1229.

DOMESTIC ENGINEERS (housewives) husbands who want to make \$25.00-\$75.00 per hour on their own part time hours. Call 1-800-864-7456

DRIVER FOR Snowplow Truck. Experience helpful. Local account. \$25 per hour. Call 973-647-0127

DRIVER, Part Full time. Knowledge of Essex and Union counties. Drive company car. Call 908-206-2777

DRIVERS, NORTHEAST Regional Drivers needed immediately. Class A driver with hazmat 6 months or more experience. 36 com all miles paid benefits after 30 days, new conventional equipment. Local Terminals. Home weekly. We have educational accounts. Available throughout PA and NJ. Call 1-800-800-7315 ask for ext. 28

DRIVERS, DEDICATED Run! \$1000 bonus! Good steady work, great big paycheck, guaranteed HomeTime. No assigned conventional! Call today 1-800-887-5623 ask for Nikki extension 2932.

DRIVERS, TEAMS up to 48 cents per mile, 5-6,200 miles per week, NE domicile home. More Oiler, Condo Conventios. Lease options available. (No money down) Fuel incentives. Increased holiday orientation pay, etc & SOLOS. Welcome! (No CD, No experience, Need Training)... Call BURLINGTON MOTOR CARRIERS 1-800-887-5623

EARN \$26,000 \$50,000 yearly. Medical Insurance Billing Assistance needed immediate! Use Your Home Computer, get FREE Weblog and free long distance 1-800-291-4883. Welcome! (No CD, No experience, Need Training)... Call BURLINGTON MOTOR CARRIERS 1-800-887-5623

EARN EXCELLENT income processing medical claims for local doctors. Full training and support provided. Home computer required. Call Physician and Healthcare Development toll free: 1-800-772-5933 Ext. 2072.

EASY WORK! Great pay! Earn \$500 plus a week. Mailing, Circulars and assembling products at home! No experience necessary. Call toll free 1-800-267-3944 extension 135.

ELECTRICIAN - START immediately! Good pay plus overtime. Union benefits. Work in Newark and Elizabeth areas. Experience a must. 732-310-8088

EX-RAY TECHNICIAN needed part time for Union County Medical Practice. Fax resume to 973-605-3013.

EXPORT CLERK, Full / Part time needed for WOVCC, Cranford area. Fax resume 908-272-1020

EXTRAS/ACTORS All locations needed. Up to \$500 a day. Open 7 days 1-800-260-3949 extension 3045.

FLORAL DESIGNER Permanent and Holidays. Some experience necessary, will train. 20-25 hour week. Clark. 973-361-8888.

FULLY PART TIME help needed for Union County Insurance Agency, with great potential for advancement. Call us today, Doug, 908-964-5588.

HELP WANTED

GOVERNMENT IS now hiring 2001/2002 Up to \$40,000/year. Benefits/pension. No experience required. Paid training. Call toll free 1-866-839-8008 Postal x7000. Police x7001

GOVERNMENT JOBS, \$11-\$33/hour, full benefits, paid training on entry level positions call 7 days a week 1-800-320-8593 extension 2220

GOVERNMENT POSTAL JOBS, Up to \$47,576 or more. Now hiring. Full benefits, training, and retirement. For application and info 800-337-9730 Department P369, E & E Services.

GOVERNMENT POSTAL JOBS, To 18,351/year. Free call for application and information. Federal hire, full benefits 1-800-642-1659 extension 150. 7am-10pm call 7 days

GROWING BUSINESS needs help! Work from home. Mail order +-commerce. \$522/week part time \$1000-\$4000/week full time. www.dore2000.com

GROWING BUSINESS needs help! Work from home. Mail-order +-commerce. \$522/week part time, \$1,000-\$4,000/week full time. www.klcpalm.com

HOLIDAY CASH \$40K to \$70K year potential. Data Entry. Process medical claims. No experience needed, full training. Computer required. Call today! 1-888-314-1033 Dept. 353

HOUSEWORKERS NEEDED \$635 weekly processing mail. Easy! No experience needed. Call 1-888-220-0280 extension 3020 24 hours.

HARCUTOR, Full Time. All around operator. Milburn. Call 973-379-8460.

LIFEGUARD
Days/Evening hours up to \$20/hour.

BABYSITTER
Monday thru Friday, 9am-12 Noon.
Contact Pat at 908-708-7260, Ext. 12

MANICURIST WANTED for Milburn Salon. Great Salary and commission. Call 973-766-8282.

MEDICAL CLERK PART TIME
Challenging job in an expanding health care field requiring intelligent self-motivated person willing to be trained in medical history taking. Knowledge of computers and good communication skills are necessary. 3 days a week, 9 to 4. Call 973-376-0900 or fax resume: 973-376-1598.

MEDICAL TRANSCRIPTIONIST Work from your computer. Guaranteed employment. Training available. (Hee) Tartan Pub, Inc. 1-800-644-5559.

NOW HIRING, Companies desperately need employees to assemble products at home. No selling, any hours, \$500 weekly potential. Information 1-866-646-1700 department NJ-2845.

Office Assistant
Exciting, fast growth company has an immediate opening. Full-time self-motivated individual, filing, computer, entry, spring mail. You should be responsible, detail oriented & pleasant. Long-term opportunity to work in a comfortable office environment in a brand new building in suburban Essex County. Benefits & competitive pay. Please call Vincent at 973-880-9787 Ext 286 or fax resume w/cover letter to 973-866-2968. EOE

HELP WANTED

PART TIME Administrative Assistant/ Fundraising. Attractive Opportunity to learn Fundraising from the ground up! Busy non-profit development office of highly regarded independent day school looking for a detail-oriented person with facility in computers, word processing, database entry and renewal. Experience with Raiser's Edge (Blackbaud) or other relational database preferred. Flexibility and sense of humor a must! 12 month position. EEOC. Send fax or e-mail cover letter and resume to: Development Office, Fox Brook School, 52 Great Hills Road, Short Hills, NJ 07078. Fax: 973-376-6740. E-mail: CS@genie.com

PART TIME Receptionist. Ad Agency in Maplewood seeks (2) Receptionist/ Administrative Assistants from 8:30-1:00 and 1:00-4:30. Must be proficient in Microsoft Office 2000. Fax resume with salary requirements for consideration to 973-275-9122. Attention: RM

PART TIME Sales in small Maplewood Book Store. Must love books. Call 973-763-4225

PART TIME full time Desk Clerk wanted. Apply within. Town Hall Delapalace Inc., 18 South Orange Avenue, South Orange NJ. 973-311-0131.

PART TIME, Red Wing Shoe Store on Route 22 Union currently looking for help. Call Carlos 908-988-3888.

POSTAL JOBS, Up to \$18,351/year. Hiring for 2001/2002. Full benefits. No experience. Toll free 7:30am-11:00pm CST 1-888-726-9083 x1700.

RESTAURANT EOE
New restaurant opening in Linden, NJ looking to fill the following positions:

SERVERS/BUSPEOPLE
HOST/HOSTESSES
BARTENDERS
COOKS/LINE/PROP
DISHWASHERS/PORTERS

We offer excellent benefit package and great work environment. Please apply in person 10am-6pm.

BOULDER CREEK STEAKS & SALOON
Avenue Place
Rt. 163, Linden, NJ

TRANSIT
The Way To Go.

POLICE OFFICERS
NJ TRANSIT is hiring Certified Police Officers. If you are interested in joining the growing NJ TRANSIT Police Department, dedicated to serving the riding public, please send your resume to:

NJ TRANSIT
Employee Resources Dept-MAC
180 Boyden Avenue, Maplewood, NJ 07040
NO TELEPHONE CALLS PLEASE

Now Hiring:
Sales Specialists
Tabletop
Cookware
Bedding
Bath

Bed Bath and Beyond, one of the nation's leading specialty retail chains, has immediate full and part-time openings for Sales Specialists in our new WATCHING SUPERSTORE. We are looking for service-oriented individuals with a true customer focus and strong knowledge of home selections. These retail professionals must have 2+ years related experience in home products.

IMMEDIATE INTERVIEWS
BED BATH & BEYOND
1511 Route 22 West, Suite 66
Watchung, NJ 07069
(908) 822-1800
We offer excellent compensation and a comprehensive benefits package. Unable to attend? Please fax your resume to: (908) 822-0760. We are an Equal Opportunity Employer.

BED BATH & BEYOND
Beyond any store of its kind!

HELP WANTED

SALES PROFESSIONALS: Career minded professionals for staffing, growing, retail sales force. We are the leading Oak Stores in the Tri-state area. Handsome salary plus commission, 401k, paid vacation, incentive and training. Must have transportation. Fax resume to 908-686-8802.

SECRETARY/ADMINISTRATIVE ASSISTANT - Does this describe you? Very well organized, comfortable with details, resourceful, articulate, assertive, and experienced. If so, we need you to manage the president's time, provided support for a small marketing staff and perform office manager duties. Word and Excel competent. Pleasant business-casual Chairman. Office. Fax resume with salary requirements to Colleen at 973-635-8989.

SECRETARY/RECEPTIONIST, flexible hours, Sunday-Thursdays, 20-25 hours per week, computer literate. Call 908-273-4021 Ext. 15.

SECRETARY/RECEPTIONIST - Full Time or Part Time. Friendly, well organized, computer literate for busy Real Estate office. Resume: Mgmt Dept. P.O. Box 311, Union, NJ 07083

SMART PARENTS, Work From Home, Up to \$1500 part time, \$7000+ full time. Mail order Internet! Free information. 800-444-1871. www.Cash2Health.com

Now Hiring:
Sales Specialists
Tabletop
Cookware
Bedding
Bath

Bed Bath and Beyond, one of the nation's leading specialty retail chains, has immediate full and part-time openings for Sales Specialists in our new WATCHING SUPERSTORE. We are looking for service-oriented individuals with a true customer focus and strong knowledge of home selections. These retail professionals must have 2+ years related experience in home products.

IMMEDIATE INTERVIEWS
BED BATH & BEYOND
1511 Route 22 West, Suite 66
Watchung, NJ 07069
(908) 822-1800
We offer excellent compensation and a comprehensive benefits package. Unable to attend? Please fax your resume to: (908) 822-0760. We are an Equal Opportunity Employer.

BED BATH & BEYOND
Beyond any store of its kind!

A free press is the strength behind democracy.

At Worral Community Newspapers, reporters learn what it takes to become good reporters. Why? Because reporting for one or more of our weekly newspapers means becoming involved in the communities we serve. From news stories to features, from council coverage to police blotters, from community events to the Board of Education, reporters are the eyes and ears of all of our readers.

Worral Newspapers, which publishes 18 newspapers serving 26 towns, has openings for reporters in its Essex and Union County regions. If you think you have what it takes to be a reporter, send resume and clips to Tom Cannavan, P.O. Box 3109, Union, N.J., 07083, or fax to (908) 686-4169.

Be part of a company whose mission is to preserve democracy.
Worral Newspapers is an equal opportunity employer.

ADVERTISING SALES

Worral Community Newspapers is looking for experienced and aggressive salespeople for outside and inside sales. Earning potential commensurate with experience. Call for appointment (908) 686-7700

ARE YOU? Or someone you know diabetic?

Get new ARM TESTING METERS all in one low cost...
Delivered to your home free. No form to fill.
No upfront costs!
CALL (1800) 894-9977 NOW!
All Areas of Hudson Supply Inc. 775-499-0000

Now Hiring:

- Sales Specialists
- Tabletop
- Cookware
- Bedding
- Bath

Bed Bath and Beyond, one of the nation's leading specialty retail chains, has immediate full and part-time openings for Sales Specialists in our new WATCHING SUPERSTORE. We are looking for service-oriented individuals with a true customer focus and strong knowledge of home selections. These retail professionals must have 2+ years related experience in home products.

IMMEDIATE INTERVIEWS
BED BATH & BEYOND
1511 Route 22 West, Suite 66
Watchung, NJ 07069
(908) 822-1800
We offer excellent compensation and a comprehensive benefits package. Unable to attend? Please fax your resume to: (908) 822-0760. We are an Equal Opportunity Employer.

BED BATH & BEYOND
Beyond any store of its kind!

HELP WANTED
SNOWBLOWERS WANTED to drive pickup trucks or owner operators for parking lots...

TELEMARKETING/Party Plus. No Selling. Evening Hours. Hourly plus bonus. Call Mary at Greg. 908-851-0840.

TOW TRUCK Drivers wanted. Apply in person, Parkway Towing, 90 Bloomfield Avenue, Bloomfield, NJ.

U.S. POSTAL Jobs. Up to \$18.35/hour possible. From call for application examination.

EMPLOYMENT
BRAZILIAN HOUSECLEANER, experienced. Excellent references. Free supplies. Please call Liana. 973-274-0154.

CLEANING LADY with experience, references, and own transportation. Looking for work in Essex and Union Counties.

CLEANING: PORTUGUESE woman-reliable, good references, experienced. Will clean your house or office. 732-855-8543.

PRIVATE DUTY-Certified Nursing. Companion to Ambulatory sick or elderly. Live-in. Own Transportation, Excellent References. 973-414-9875.

ANNOUNCEMENTS
BUY NEW Jersey for \$349! The New Jersey Press Association can place your 25-word classified ad in over 150 NJ newspapers...

PERSONALS
ADOPTION-ADOPTING your newborn or our dream in our arms, this precious gift will be provided with all the blessings...

DIAL A BIBLE MESSAGE
The Bible clearly teaches that Jesus built only one CHURCH (Matt. 16:18).

MISCELLANEOUS
LAFAYETTE HILL Antiques Center. Just off Rt. 15, Lafayette, N.J. (Sussex Co.) 973-383-0065.

MISCELLANEOUS FOR SALE
BED NAME brand, mattress and box set. New. In Plastic. Coat 99.99, sacrifice \$250.

MISCELLANEOUS FOR SALE
BEDROOM SET Cherrywood, Lauren Collection. Sligh bed, dresser with mirror, chest 2 night stands.

MISCELLANEOUS FOR SALE
BEDS: BUNK Bed Set, all bedding, set, new in package. \$185. Can deliver. 973-812-1657.

CASKETS, URNS, MARKERS
BUY DIRECT & SAVE UP TO 50% OFF HIGH QUALITY BURIAL PRODUCTS

ADVERTISE!
See PUZZLE on Page B10.
D I S C I A R E A S S E T
U N T O O V E R R A T I O

MISCELLANEOUS FOR SALE
DAYBED: WHITE/Inn. Pop-up trundle, 2 with ortho mattress, complete, new, in box...

MATTRESSES & BOX SPRINGS
Queen \$89 each, King \$79 each, Fullons \$79 each, Daybeds \$49 each.

A-1 FURNITURE
908-888-7354
Route 22 West (West to Skyway)
Free Delivery within 50 Miles.

ESTATE/HOUSE SALE
ESTATE SALE, 566 Jesse Place, Union-Saturday, November 17th, 9:00am-5:00pm.

UNION, 1991 MOUNTAINVIEW Avenue. 1991, 1991, 1991, 1991. Cash and carry. Living room, dining room, kitchen, furniture, chaise, no jewelry.

GARAGE/YARD SALES
KENILWORTH: 102 NORTH 24th Street. Friday, November 16th, 10am-4pm.

MAPLEWOOD, 46 PIERSON Road. Saturday, November 17th, 10am-5pm.

MAPLEWOOD, CRINEWAY corner of Elmwood/Oakland Terrace. Friday, Saturday, 9am-4pm.

ORANGE, 616 WALSH Avenue. November 17th, 18th, 19th, 5pm-8pm.

PLANNING A garage sale? Hold it at Meadowlands Plaza. Thousands of shoppers every Saturday.

SOUTH ORANGE, 161 Meadowbrook Place (Across from Floods Hill) Sunday, November 18th, 9am-5pm.

SOUTH ORANGE, 240 Turin Avenue. Saturday, November 17th, 9am-4pm.

SPRINGFIELD, 34 CALDWELL Place. Saturday, November 17th, 9am-4pm.

UNION, 1183 EDGEWOOD Parkway (off Maple Avenue). Saturday, November 17th, 9am-4pm.

WANTED TO BUY
AAAA LIENS, American Flyer, Ives and other trains and old toys.

ANTIQUE & OLDER FURNITURE, Dining Rooms, Bedrooms, Breakfronts & Secretaries, Etc.

PETS
CAT CAGE enclosure 5'x5'x6'. High with shelves. Ideal for professional breeders.

CARPENTRY
JOE DOMAN 908-666-3824
Alterations/Repairs, Kitchens, Attics, Bathrooms, Basements Remodeled.

CARPETING
Don Antonelli
ROYAL LINOLEUM 7 RUG CO. Famous Brand Carpets, Antiques, Mohawk, Arnic, Marquette, Carpeting, Tile, Free Installation.

CLEANING SERVICE
ALL CLEANING
Houses • Offices • Condos
Good References • Own Transportation

POLISH CLEANING SERVICE
Houses, Apartments, Offices
Free Estimates
Excellent References. Call Rose at 973-371-9212

CLEANUP/RUBBISH REMOVAL
10-30 Yard Containers
Commercial, Industrial, Residential

COMMUNICATIONS
CABELING
• COMPUTER
• TELEPHONE
• TV

TELEPHONE SYSTEMS
BERNARD COMMUNICATIONS
732-298-3191 or 732-495-8097

COMPUTER
NEED A computer but no cash? You're approved! Financing QuakeNet! No cash needed today!

COMPUTER SERVICES
COMPUTER PROBLEMS? We provide home, small office home office help.

CONTRACTOR
MEL CONTRACTORS, INC.
There is no a substitute for experience. Additions, Renovations, Decks, Kitchens, Painting.

DECORATORS
SPECTACULAR WINDOW Treatments and interior decorating. A whole new look created for you by a professional designer.

DRIVEWAYS
PATERNO PAVING
Driveways • Parking Lots
Color Sealing, Concrete Sidewalks, All Type Curbs, Paving Blocks.

ZAVOCKI PAVING CO., INC.
Asphalt Driveways • Extensions
Resurfacing • Parking Lots
Relining Walls • Voids • Sealing

ELECTRICIANS
ABLE ELECTRIC. It's electric, we do it right. Residential, Lighting, Receptacle, New Construction. Free Estimates.

KREDER ELECTRIC, INC.
Residential, Commercial, Industrial
FREE ESTIMATES
Call Tom
973-762-6203

EXTERMINATORS
Aristocrat
Free Estimates
• Commercial
• Residential
• Institutional

FINANCING
500 FASTCASH.COM - Short term loans up to \$500.00! We want your business!

FINANCING
HOME IMPROVEMENT LOANS
Same Day Pre-Approval
Home Equity Not Required

FLOORS
Kean Flooring
Hardwood Floor
"CARPETING OR DON SPECIALLY"
REPAIRING • REFINISHING • REFINISHING • REFINISHING

GUTTERS/LEADERS
GUTTERS-LEADERS UNDERGROUND DRAINS
Thoroughly cleaned, flushed, repaired, replaced. AVERAGE HOUSE \$40-\$70

HANDYMAN
NEED A NICE HANDYMAN?
CALL GARY
732-968-3823
FREE ESTIMATE

HEALTH & FITNESS
MEDICAL PATIENTS using inhalers
asthmator, astromet, combivent, servent, azmacort, flovent, and other inhalers.

HEATING
QUALITY Air Conditioning & Heating, Inc.
Gas, steam, hot water and hot air heat

HOME HEALTH CARE
Comprehensive in-home care
with "Subacute"
Nursing, Physical Therapy, Occupational Therapy, Speech Therapy, etc.

HOME IMPROVEMENTS
10% DISCOUNT with this ad. Siding, Roofing, Windows, Doors, Room Additions, Leaders, Gutters, Masonry Work, Kitchens, Bathrooms, modernized. Free Estimates.

HOME IMPROVEMENTS
BILL KROPKO
GENERAL CONTRACTOR
All Repairs & Remodeling, Flooring, carpeting, tile, wood finished basements, wood trim & cabinetry.

Does Your House Need A Face-Lift?
Frank's Painting & Handyman Service
Small Job Specialist
Interior • Exterior • Repairs

Gary's Home Improvements
Craftsman Quality With Attention To Detail
Satisfaction Guaranteed. All Size Jobs. Free Estimates • Fully Insured. 973-730-7111

HOME REPAIRS
"Work Done Professionally for Less"
Painting • Dry Wall-Speckling
Masonry • Wood Work

J P HOME IMPROVEMENTS
"Job Too Small"
ALL GENERAL REPAIRS
Carpentry, Bathrooms, Sheetrock, Finished Basements/Attics.

MIKE D'ANDREA
All Home Improvements
30 Years Experience
Installation & Service
908-241-3913 (Kantlworth)

PLAZA HOME IMPROVEMENTS
Siding - Windows - Roofing
Kitchens - Bathrooms - Barbecue
Extensions - Concrete - Masonry
Free Estimates • 100% PAYABLE
No Down Payment • Fully Insured

WEATHER AND emergency repairs
of bars, houses and garages. Call Woodford Bros. Inc. for strengthening, jacking, cabling and weather related repairs.

BRIAN'S LANDSCAPING
SNOW REMOVAL
REPAIRS • 100% PAYABLE
COMMERCIAL/RESIDENTIAL
908-964-6277

LANDSCAPING
FOREVER GREEN Brick Paver Walks and patios, Retaining Walls, Fences, Landscape Design, Snow removal.

MASONRY
D&J
Concrete Work, Curbing, Drive Sawn Concrete, Sidelwalks/Patios, Wooden Forms. Free Estimates. 908-241-9323

KANGAROO MEN
All types of moving and hauling. Problem solving our specialty. Call now! 201-680-2376 24 hours.

SCHAEFER MOVING
Reliable, Very low rates, 2 Hour Minimum, Same Rates 7 Days, Insured, Free Estimates.

G.H.I. PAINTING & DRYWALL
Specializing in:
Sheet Rock, Interior/Exterior
Plaster Repairs, Deck Refinishing

HOUSE PAINTING
INTERIOR AND EXTERIOR
Fully Insured
Free Estimates
STEVE ROZANSKI
908-686-6455

JANN'S PAINTING
Interior/Exterior
Fully Insured • Free Estimates
908-486-1691

MARCKETA PAINTING
Family Business for over 50 years!
Interior/Exterior • Blinds and Roller Applications, Powerwashing/Wallpaper Removal. Free Estimates. Fully Insured.

PAINTING & PLASTERING
25 YEARS EXPERIENCE
FREE ESTIMATES
CALL LENNY TUZANO
908-273-0203

SMIG PAINTING
Interior/Exterior Painting
Sheetrock Patching, Plaster Finishes
Gutters, Louvers, Minor Carpentry Repairs

CUSTOM REPLACEMENT
Interior & Exterior
Finishing Basements
Finish Siding & Paving
Asph. Decks & Patios

Suburban Dean Plumbing & Heating
908-687-8383
Main: Roofing, Hot Water, Sinks, Stoves, Gas, etc.

RECYCLING
Industrial Accounts Served
MAX WEINSTEIN'S STORES, INC.
Always Buying Scrap Metals

Use Your Card...
VISA, MASTERCARD, AMERICAN EXPRESS, DISCOVER
Quick And Convenient!

Worrall Community Newspapers, Inc.
announcing
24 HOUR CLASSIFIED AD LINE
CALL 908-686-9898
ENTER SELECTION # 8100

RESUMES
RESUMES AND Consulting T.A. Northern Professional Resume Service. Specializing in all of your professional needs.

GLENN ROOFING COMPANY
State Roads • Leak Repairs • Shingles
Commercial • Insulating Roofing Systems
808 SANFORD AVENUE
IRVINGTON, N.J. 07111

J.B.A. ROOFING & CONTRACTING, LLC
Single, Flat Roof Repairs, Repoint, Stucco & Sprinkle Tile Repairs

RESIDENTIAL COMMERCIAL, all roofs, repairs, reflective coatings specializing in Modified TPO Rubber. We guarantee all work! Free estimates. Call 973-483-1059

WE STOP LEAKS!
CLARK BUILDERS, INC.
• Roof Siding & Repairs
• Full Roofing & Slate
• Gutters & Downspouts

ANYTHING GOES
REMOVAL
Entire Homes Created Out
Auto • Restaurants • Garages
• Junk • Dry Storage

YOUR AD could appear here for as little as \$16.00 per week. Call for more details. Our insured, classified department would be happy to help you. Call 1-800-566-8811

SPECIAL SERVICES
ATTENTION INVENTORS: Don't be out-sold! Patent, Trademark and Copyright. Product Patent assignment. Free information call 1-800-677-5382

TILE
MIKE MUSSO
Ceramic Tile Installation
Repairs & Regrouting
Over 20 Years Experience
NO JOB TOO SMALL

FREE EXPERTS
BOYLE TREE SURGERY CO.
TREE & STUMP REMOVAL
PRUNING
TRIMMING
IN ALL ITS BRANCHES

WOODSTOCK Tree Service, local tree company. All types of tree work. Free estimates. Senior Citizen Discounts. Immediate service insured. Free wood chips. 908-275-5752

Do-It-Yourself Ideas
Harvest Sun & Snowtime Fun
It's so easy to make holiday accents for your own home or give them as gifts. It's so easy to make...

Harvest Sun & Snowtime Fun guidebook
(\$9.95) • \$13.95
(\$6.95) • \$13.95
(\$6.95) • \$13.95

Use Your Card...
VISA, MASTERCARD, AMERICAN EXPRESS, DISCOVER
Quick And Convenient!

Worrall Community Newspapers, Inc.
announcing
24 HOUR CLASSIFIED AD LINE
CALL 908-686-9898
ENTER SELECTION # 8100

REAL ESTATE

PEOPLE IN THE NEWS

Two tie for awards

Grace Rappa and Janice Kodatt, top producing sales associates with the Burdoff ERA Westfield office, were recently honored with the companywide Monthly Sales Award. The two associates tied for the award, which was based on unit production for the month of September.

"Grace and Janice set the pace for the company overall in September," said Judy Reeves, president. "During a month of tragic events, the contributions of these dedicated real estate professionals helped pave the way for the additional companywide September Office Production awards won by the Westfield office."



Grace Rappa

A licensed Realtor since 1978, Rappa has attained membership in the New Jersey Association of Realtors' Million Dollar Sales Club every year since 1983 and has achieved silver level status for the past three years.

Kodatt has been a Realtor for six years and has qualified for the NJAR Million Dollar Club in 1999 and 2000.

The Burdoff ERA Westfield office is a full-service real estate center located at 600 North Ave. For real estate assistance, or to inquire about a career in real estate, call the office at 908-233-0065.

Ramos celebrates

Douglas Ramos, broker-owner of RE/MAX Action Group Realty in Roselle Park, celebrated four years with RE/MAX last month. In October 1997, Ramos affiliated with the RE/MAX network and has had a thoroughly productive and successful career since Ramos and the associates in his office specialize in the listing and sales of residential properties in various locations throughout Union County.



Janice Kodatt

"I have experienced a tremendous amount of success within the RE/MAX system," said Ramos. "I have always appreciated the strong support that comes from both RE/MAX of New Jersey and RE/MAX International, and I am looking forward to utilizing these resources to serve my clients and customers for many more years to come."

Ramos is active in a number of RE/MAX of New Jersey regional activities, and fellow associates know they can count on him for the advice and support that only a seasoned broker can provide.

"RE/MAX of New Jersey is proud to congratulate Douglas on reaching four years with us. It has been a pleasure working with him over the years, and we wish him the best of luck as he continues his career," said Jeff Snyder, RE/MAX of New Jersey regional owner.

RE/MAX Action Group is located at 134 Westfield Ave. in Roselle Park. The majority of the office staff speak English, Spanish and Portuguese fluently, which allows them to service a large segment of the consumer population in their market area. Ramos can be contacted by calling the office at 908-245-9300, Ext. 302, or e-mail at daramos@remax.net.

Snyder ranks sixth

Meryll Snyder, a sales associate with RE/MAX Properties Unlimited in Summit, has ranked as number six for highest dollar volume in the month of September on RE/MAX of New Jersey's Top 50 List. This performance places her at the top of more than 1,670 real estate professionals in the state.

"Since RE/MAX is strictly comprised of full-time top real estate professionals, ranking in the Top 50 with RE/MAX is quite an accomplishment," said Jeff Snyder, RE/MAX of New Jersey regional owner.

Snyder specializes in the listing and sales of residential and commercial properties in various locations throughout Union, Morris and Essex counties. With more than 20 years of experience in the real estate industry, she has been a member of the New Jersey Association of Realtors' Million Dollar Club, various levels, since 1987. Snyder also has earned her Certified Marketing Specialist designation.

"I am very pleased with the success I have experienced as a RE/MAX agent," said Snyder. "It is a wonderful

We want your news

Your real estate company should be getting the publicity it deserves and we would like to help. We have a publicity handbook which explains how to tell your story.

We would like to publicize your employees and accomplishments. If you'd like a handbook, call 908-686-7700 and one will be mailed to you.

BUSINESS OPPORTUNITIES

BUSINESS OPPORTUNITIES

\$100 PER HOUR. Homeowners Needed! Large advertising firm pays \$4 for every voice-mail received. Make \$400-\$500 everyday in your spare time. Limited space. 1-858-643-9713 Ext. 400 (24hours)

A* M & M MARSI NESTLE Established vending route. Will sell by November 26th 2001. Under \$3K minimum investment required. Excellent monthly profit potential. Finance available/good credit. 1-800-261-3700.

A* M & M MARSI NESTLE Established vending route. Will sell by December 3rd Under \$3K minimum investment required. Excellent monthly profit potential. Finance available/good credit. Toll free 888-737-7133.

ALL CASH Candy Route. Do you earn up to \$600/day? Your own local candy route. Includes 30 Machines and Candy All for \$9,995. Call 1-800-958-7820.

STAY HOME! Work your own hours! Receive step-by-step in home training. \$1,200. \$5,800/month part time/full time. Free booklet, 866-979-4088. www.bcl-tomebusiness.com

RENTAL

"All real estate advertised herein is subject to the Federal Fair Housing Act, which makes it illegal to advertise any preference, limitation, or discrimination based on race, color, religion, sex, handicap, familial status, or national origin, or intention to make any such preference, limitation, or discrimination."

"We will not knowingly accept any advertising for real estate which is in violation of the law. All persons are hereby informed that all dwellings advertised are available on an equal opportunity basis."

BELLEVILLE: 3rd floor large one bedroom apartment hardwood floors, freshly painted heat. Hot water included, no pets, walk to NY bus. \$570/month, 1-1/2 month security, available December 1st. Call super. 973-450-4323

APARTMENT TO RENT

NORA GARDENS SENIOR CITIZEN SECTION 8 HOUSING 1775 Burnell Avenue, Union, NJ 07083

Applications will be accepted for the Rental Assistance Program to ESTABLISH A WAIT LIST ONLY for one-bedroom apartments beginning on **Monday, November 19th, 2001.**

Eligible Applicants must be 62 years of age or older and have income (including income from assets) not to exceed the following maximum income limits:

1 person \$25,900. 2 persons \$29,600.

Applications must be picked up in person at the Nora Gardens Rental office located at the above address between the hours of 10 am through 3 pm, **Weekdays only**

EQUAL HOUSING OPPORTUNITY

BUY IT! SELL IT! LIST IT!

Attention Advertisers you can be a part of our Real Estate section and reach over 100,000 potential customers.

For Classified call: 973-763-9411 For Display Ads call: 908-686-7700

Search your local classified on the Internet www.localsource.com

NEW JERSEY MORTGAGE RATES

FOR UPDATED RATES CALL INFO-SOURCE 908-686-9898 AND DIAL THE LENDER CODE

LOOK FOR THESE LEENDERS ON THE INTERNET @ WWW.CMI-MORTGAGE.COM									
PRODUCT	RATE	PTS	APR	PRODUCT	RATE	PTS	APR		
Columbia Savings BK 800-857-4888									
30 YR FIXED	6.88	0.00	6.90	APP 30 YR FIXED	5.75	3.00	5.97	APP	
15 YR ARM	6.13	0.00	6.16	FEF 15 YR FIXED	5.25	3.00	5.48	FEF	
1 YR ARM	5.50	0.00	4.60	NFP 30 YR JUMBO	6.00	3.00	6.24	APP	375
Call for Jumbo mortgage rates									
Commonwealth Bank 800-924-9393									
30 YR ARM	6.33	0.00	6.38	APP 30 YR FIXED	6.38	0.00	6.42	APP	
15 YR ARM	5.88	0.00	5.88	FEF 15 YR FIXED	5.88	0.00	5.92	FEF	
30 YR JUMBO	6.75	0.00	6.75	NFP 30 YR JUMBO	6.63	0.00	6.64	APP	385
Close at home! No App Fee! Free Bi-weekly Avail.									
First Savings Bank 732-776-5494									
30 YR FIXED	5.75	3.00	6.04	APP 30 YEAR FIXED	6.00	0.00	6.19	APP	
15 YR FIXED	5.88	0.00	5.88	FEF 15 YEAR FIXED	5.50	0.00	5.78	FEF	
5/1-30 YR	5.75	0.00	5.37	+ \$350 1 YR ADJ	4.00	2.00	6.18	APP	375
15 year fixed is biweekly									
Gibraltar Savings Bank FSB 973-972-1221									
30 YR ARM	7.63	0.00	7.69	APP 30 YR FIXED	6.38	0.00	6.40	APP	
15 YR ARM	6.75	0.00	6.84	FEF 15 YR FIXED	5.88	0.00	5.92	FEF	
1 YR ADJ	6.00	0.00	6.05	+ \$350 30 YR JUMBO	6.63	0.00	6.68	APP	375
Call for details on No Cost Refinance Program									
Investors Savings BK 800-252-6142									
30 YR ARM	6.63	0.00	6.71	APP 30 YR FIXED	6.375	0.00	6.80	APP	
15 YR ARM	6.13	0.00	6.25	FEF 15 YR FIXED	6.00	0.00	6.08	FEF	
7/1-30 YR	6.38	0.00	5.58	+ \$350 10/1-30 YR	6.63	0.00	6.21	APP	425
Loans to \$1 million dollars. Percentages down varies on jumbos									
Kentwood Financial 800-353-8895									
30 YR ARM	6.80	0.00	6.65	APP 30 YR FIXED	6.38	0.00	6.39	APP	
15 YR ARM	6.00	0.00	6.13	FEF 15 YR FIXED	5.75	0.00	5.77	FEF	
30 YR JUMBO	6.75	0.00	6.88	+ \$150 5/1-30 YR	5.25	0.00	6.47	APP	380
Call us! We'll do the loan shopping for you!									
Northern Trust 800-955-9838									
30 YR ARM	6.63	0.00	6.71	APP 30 YR FIXED	6.375	0.00	6.80	APP	
15 YR ARM	6.13	0.00	6.25	FEF 15 YR FIXED	6.00	0.00	6.08	FEF	
7/1-30 YR	6.38	0.00	5.58	+ \$350 10/1-30 YR	6.63	0.00	6.21	APP	425
Loans to \$1 million dollars. Percentages down varies on jumbos									
Union Center Nat'l BK 808-688-9590									
30 YR ARM	6.80	0.00	6.65	APP 30 YR FIXED	6.38	0.00	6.39	APP	
15 YR ARM	6.00	0.00	6.13	FEF 15 YR FIXED	5.75	0.00	5.77	FEF	
30 YR JUMBO	6.75	0.00	6.88	+ \$150 5/1-30 YR	5.25	0.00	6.47	APP	380
Call us! We'll do the loan shopping for you!									

Rates compiled on November 8, 2001. NFP - Not provided by Institution. Contact lenders concerning additional fees which may apply. C.M.I. and The Worrall Newspapers assume no liability for typographical errors or omissions. To display information, lenders only should contact C.M.I. at 800-224-4545. Rates are supplied by the lenders as presented without guarantee, and are subject to change. Copyright 2001, Cooperative Mortgage Information. All Rights Reserved.

OFFICE TO LET

SPRINGFIELD: INDIVIDUALLY furnished offices with business support services. Call Terri 973-921-3000.

OFFICE SPACE AVAILABLE

West Orange on Main Street Modern, Exceptionally Maintained Furnished, All Office Equipment Included **973-761-7700** On-Site parking Immediately Available

VACATIONS RENTALS

SANibel: 882 NIGHT until January 31st 2002! Discover the charm & comfort of beachfront vacation home. Cozy cottages, affordable condos. Florida - come back to what you know and love. Grande Island Vacations. 800-551-7763 www.grandisland.com

REAL ESTATE

"All real estate advertised herein is subject to the Federal Fair Housing Act, which makes it illegal to advertise any preference, limitation, or discrimination based on race, color, religion, sex, handicap, familial status, or national origin, or intention to make any such preference, limitation, or discrimination."

"We will not knowingly accept any advertising for real estate which is in violation of the law. All persons are hereby informed that all dwellings advertised are available on an equal opportunity basis."

LAND FOR SALE

CHESAPEAKE BAY Area: Eagle Cove Waterfront Cottages. Save thousands from \$49,900. Great retirement area. Buy now. Build later. E-z terms. Owner Broker: 1-888-240-5303 ext 3000.

MOBILE HOMES

UNION COUNTY: 1 bedroom in adult park, immediately available. Rent only \$290 month after purchase (\$7,000). Lomakin Realty, 908-688-8897.

REAL ESTATE WANTED

WE SELL HOUSES ANY AREA - ANY CONDITION We Will Buy, Lease or Take Over the Payment On Your Home **201-776-1132 201-356-6788**

REAL ESTATE FOR SALE

ADULT COMMUNITIES Whiting, New Jersey 1 and 2 bedroom units starting at \$25,000 single homes start \$50,000. For free information and appointment call 1-800-831-5599 Heartland Realty.

OUT-OF-STATE

ABANDONED FARM sale. 25 acres was \$39,000 now \$24,900. Woods, fields, great views, driveway in! Town road, Jerm's Reduced for immediate sale! 1-888-925-5277 SIV.

CATSKILL SACRIFICE 5 acres just \$147,700. NYC! Build your dream get away now! 1-800-325-9277 SIV www.usrealty.com. \$14,500 purchase price. 20% down, balance finish 10 years @ 5% FIRM.

Sell Your Home IN UNION COUNTY CLASSIFIEDS CALL 1-800-564-8911 TO PLACE YOUR CLASSIFIED AD Search your local classifieds on the Internet www.localsource.com

Worrall Community Newspapers

Will Make Your GARAGE or YARD SALE A Success!

RECEIVE A FREE GARAGE SALE KIT when you place your ad in your hometown newspaper

YOUR AD PLUS THIS KIT MAKES HAVING A GARAGE SALE EASY!

UNION COUNTY or ESSEX COUNTY 1 Week \$21.00 / 25 Words **BOTH COUNTIES 1 Week \$28.00 / 25 Words** Ask about our rate day

Union County Union, Kentonworth, Roselle Park, Summit, Mountanside, Springfield, Linden, Rahway, Clark, Cranford, Elizabeth

Essex County Maplewood, South Orange, West Orange, East Orange, Orange, Bloomfield, Glen Ridge, Nutley, Belleville, Irvington, Vailsburg

KIT INCLUDES

- 3 Garage/Yard Sale signs, 12 x 24 inches
- 215 Peel-Off Pricing Labels
- 7 Seven-Step Instruction Sheet
- 1 Secrets Of Money-Making Garage/Yard Sales
- 4 Mini - Signs For Bulletin Boards
- 3 stakes
- 6 Balloons
- 1 Marker For Signs
- 1 Inventory Sheet

TO PLACE YOUR GARAGE or YARD SALE AD Call - 1-800-564-8911

www.localsource.com

Internet Directory

Agape Family Worship Center	http://www.agapecenter.org
American Savings Bank	http://www.americansavingsnj.com
Big Planet i Phone	http://www.bigplanet.com/membership
Bloomfield Chamber of Commerce	http://www.computecomm.com/bcc
Broad National Bank	http://www.broad-national-bank.com
Crossroads Christian Fellowship	http://www.ccbou.org
Eye Care Center of NJ	http://www.eyecarenj.com
First Night of Maplewood So. Orange	http://www.communitynj.com/firstnightso
Foehling Properties Apartments	http://www.springstreet.com/propid/399126
Grand Sanitation	http://www.grandsanitation.com
Holy Cross Church	http://www.holycrossnj.org
Hospital Center at Orange	http://www.hospitalcenteratorange.org
LaSalle Travel Service	http://www.lasalletravel.com
Mountanside Hospital	http://www.atlantichealth.org
NJ Avenue	http://www.njavenue.com
Nutley Pet Center	http://www.nutley.pet.com
Prudential White Realty Co.	http://www.white.realtyco.com
Retis Institute	http://www.retis-institute.com
South Mountain Yoga	http://www.yogisite.com/southmountain
South Orange Chiropractic	http://www.sochiro.com
Sovereign Bank	http://www.sovereignbank.com
Summit Area Jaycees	http://www.angelique.com/summitjaycees
Summit Volunteer First Aid Squad	http://www.summitvfas.org
Synergy Federal Savings Bank	http://www.synergysfb.com
Trinity Hospital	http://www.trinityhospital.com
Turning Point	http://www.turningpointnj.org
Union Center National Bank	http://www.unioncb.com
Union Catholic High School	http://www.unioncatholic.org
Unionian Universalist Church	http://www.unionianuniversalist.org
United Way of Bloomfield	http://www.unioncountynj.com/~unitedway

To be listed call **908-686-7700 X312**

AUTOMOTIVE

The new MP3 from Mazda looks and sounds like a winner

By Mark Maynard
Copley News Service
The Mazda Protege MP3 practical-

ly screams Southern California with its electric blue paint, low-profile good looks and a 280-watt stereo.

In fact, the audio system has a lot more power than the engine, but the so-called performance-oriented Street package will be an easy sell to young drivers. At \$18,500, it's loaded with aftermarket add-ons, but there's no automatic transmission offered nor any other factory options.

Named for the Kenwood MP3 player audio system, this is a project car that evolved from Mazda R&D in Irvine, Calif. These people know what's cool in the import market and like to go fast.

Starting with a top-line Protege ES, the MP3 gets grippy low-profile tires and aftermarket-looking wheels, a large front air dam with integrated driving lights, a rear spoiler and an aerodynamic body kit to make it look low and fast.

Mazda is the first manufacturer to put an in-dash CD/MP3 receiver in a car so drivers can punch up AM-FM radio stations, conventional CDs and MP3 encoded CD-Rs.

Aquaphiles can download 10 hours of music from the Internet onto a CD-R disc, which is about nine hours more than the standard CD. The Kenwood Excelon Z919 system comes with four speakers and a 10-inch, 100-watt sub-woofer the size of a beer keg strapped down in the trunk.

The 140 hp, 2.0-liter 4-cylinder was chipped for more power, beating the Protege ES engine by 10 horses. A modified Powertrain Control Module... the computer chip... tweaks ignition timing, throttle response and the air-to-fuel ratio for more performance on demand.

Then, a revised intake manifold increases top-end performance and a low-back pressure T-304 stainless steel Racing Beat cut-back exhaust system beats up the sound and look of the car.

Despite the hotter computer chip, the MP3 has a workable duplicity... it's sporty not scary. Easy driving around turns yields decent fuel mileage... supposedly the same 25/31 as the 130 hp Protege ES... but



The Mazda Protege MP3 has good upright architecture with open sightlines of the road for aggressive driving. It's named for the Kenwood MP3 player audio system inside.

at low revs it takes a heavier throttle foot to get the car moving.

All the MP3 extras — speaker magnets, aerodynamic moldings and chassis reinforcements — add about 87 pounds to the curb weight.

The 5-speed transmission is untouched, but the shifter has been shortened and the clutch pedal adjusted for firmer feedback. The 4-wheel independent suspension was modified by Racing Beat of Anaheim, Calif., with finely tuned Tokico dampers, stiffer springs, larger stabilizer bars and chassis reinforcements.

Mazda says the MP3 has 30-percent better cornering ability than a stock Protege. A European-spec steering gear gives quicker response more steering feedback and just 2 1/2 turns from lock to lock.

One-piece 17-inch Racing Hart alloy wheels are specific to the MP3 and Dunlop provides the ultra-low-profile, 205/45ZR17 Dunlop SP9000 Z-rated tires. Surprisingly, the 10.2-inch 4-wheel disc brakes are stock.

Special interior touches include white gauges, a three-spoke Nardi steering wheel and MazdaSpeed lightweight performance pedals.

It's definitely a car for the young and not the young of heart and old of bones. The stiff suspension gives the seat bottoms a workout and left them feeling a little numb after about an hour. And though the seats could use more bottom cup, I prefer them to a lot of over-bolstered "sport" seats that can hinder elbow room for shifting.

The suspension, however, is very lively in competitive driving. The car is nicely balanced and sticks to the road. It is responsive to throttle steering and savvy drivers can push the nose out or rotate the rear with just slight adjustments in pedal pressure.

The gas and brake pedals are placed just right for heel-toe shifts, which isn't just a racing trick. Heel-and-toe shifting is a safety technique that allows the driver to hold brake pressure with the left side of his right foot and roll the right side on the gas pedal

to boost the revs for a smooth downshift.

When braking for a freeway exit or stoplight from 55 mph, the driver doesn't have to lose a precious second lifting his or her foot from the brake to flip the throttle and quickly get back on the brake pedal.

And stepping on the MP3 gas pedal is enjoyable. The engine comes alive at 5,000 rpm and above, but there's a lot of room to play until you reach the redline at 6,500 rpm.

At the engine revved and it continues to dig into the power band and just when you think there's nothing left, it pulls a little harder. And thank you, Mazda, for making that engine sound so inviting to rev.

The basic Protege ES is a fun little sedan, but the MP3 is as fun on the slalom course as it is just cruising the beach streets.

Mark Maynard is driving in cyberspace at mark.maynard@uniontrib.com.

2001 Mazda Protege MP3

Body style: Compact 5-passenger, front-wheel-drive sedan
Engine size and type: 2.0-liter, DOHC 16-valve in-line 4, cast-iron block and aluminum alloy head

Horsepower: 140 at 6,000 rpm
Torque: 142 foot-pounds at 4,500 rpm

Transmission: 5-speed manual
Acceleration: 0 to 60 mph, 8.4

EPA fuel economy estimates: 25 mpg city, 31 highway
Fuel capacity: 14.5 gallons

The competition: Honda Civic Si, Toyota Corolla S, Nissan Sentra SE-R, Ford Focus SVT, Subaru WRX, Hyundai Elantra GT, Mitsubishi Lancer OZ

Where assembled: Japan
Length: 175.3 inches

Wheelbase: 102.8 inches
Curb weight: 2,725 pounds

Standard equipment includes: height-adjustable driver's seat and cushion tilt, 60/40 split folding rear seat back, air conditioning, halogen headlights, remote keyless entry, power windows-lock-mirrors, cruise control, rear window defogger, tilt steering wheel, front cup holders and map lights, remote fuel door and trunk lid releases, intermittent wipers

Safety features include: front air bags, 5-passenger 3-point belts with pretensioners, ISO-fix child seat anchors, 4-wheel disc brakes

MP3 equipment: Interior: Dark charcoal trim with silver accents on the doors, console, center stack, steering wheel and shift lever, white-face gauges, 3-spoke Nardi steering wheel, MazdaSpeed lightweight performance pedals

Exterior: Large front air dam with integrated driving light; full body kit; large rear spoiler; electric blue paint; Hart racing wheels

Audio system: Kenwood Excelon Z919 MP3 Player with 1-disc CD player, AM-FM stereo, remote control unit, 280 watts total power, 2 6-by-9-inch three-way speakers on the rear deck, 5-by-7-inch two-way speakers for each of the front doors and a 100-watt, trunk-mounted, 10-inch powered sub-woofer.

Brakes: 4-wheel discs, 10.2-inch front, 10.2-inch rear
Steering: Engine-speed sensitive, variable rack-and-pinion

Suspension: 4-wheel independent. Front, MacPherson struts with a stabilizer bar; rear, twin-trapezoidal link with coil springs and stabilizer bar

Tires and wheels: Dunlop SP9000 205/45Z R17 17-inch and alloy wheels

Pricing
Base price: \$18,500, price as tested, \$18,500

Options on test car: None

Pluses: Fits in your driving hand like a roll of dimes, solid and empowering. Good upright architecture with open sightlines of the road for aggressive driving.

Minuses: Annoying squeak from loose face plate of audio system. Aluminum pedals are slick on soles of street shoes. Road noise from the high-performance tires and wider wheels. Seat bottoms could use more support.

KEEP AMERICA ROLLING!

HELD OVER! LIMITED TIME OFFER!

0.0% APR FINANCING AVAILABLE ON ALL NEW 2001 & 2002 SATURNS

FINANCE SAVINGS OF...
\$2626
IN FINANCE PAYMENTS!



The Brand New 2002 Saturn SL-1 \$199

4 dr, 4 cyl, auto trans, power steering, power brakes, AIR, AM/FM stereo CD, r/def, dual air bags, all season tires, MSRP \$14,290, VIN #2Z110496. \$199 1st month payment & \$796 customer cash = \$995 due at lease signing. Total Payments \$7761. Total Cost \$8567. Purchase option at lease end \$7687.90.

38 MPG HIGHWAY

Lease Per Mo. 39 Mos.*
(Tax, title, license and registration are extra)

SATURN OF UNION
2675 ROUTE 22 WEST, UNION 1-908-686-2810
SATURN OF GREEN BROOK
270 ROUTE 22 WEST, GREEN BROOK 1-732-752-8383
A DIFFERENT KIND OF COMPANY. A DIFFERENT KIND OF CAR.

Prices include all taxes to be paid by consumer except lic. reg. & taxes. Not resp. for taxes. Expires 72 hours from time of publication. Lease and financing programs must be approved by primary lending source. Lessee responsible for excess wear and tear. *\$9.99/mo closed end lease with 12k miles per year/50k threshold. *Up to 36 mos. on all new 2002 models & up to 60 mos. on all new 2001 models. All taxes, license and reg. fees.

0.0% FINANCING ON EVERY NEW CHEVROLET CAR & TRUCK



Brand New 2002 Chevrolet AVALANCHE
1500-4X4-Z71

4 cyl, auto trans w/OD, pwr str/br/wh/d/blk/stm, AIR, AM/FM stereo, cassette, W/D, tilt, cruise, 17" alum wheels, tow hitch, mood, skid plates, 16" mats, load leveling shocks, STK #A5508, VIN #2G11R09, MSRP \$24,400. \$199 1st mo. plus \$796 customer cash = \$995 due at signing. 11 mos. @ \$776.11/mo. Total Cost \$8567.90. *Up to 36 mos. on all new 2002 models & up to 60 mos. on all new 2001 models. All taxes, license and reg. fees.

\$459 Lease Per Mo. 36 Mos. **\$30,997** Buy For



Brand New 2002 Chevrolet PRIZM SEDAN

1.8L DOHC 4 cyl, 3 spd auto trans, pwr str/br/wh/d/blk/stm, AIR, AM/FM stereo, cassette, W/D, tilt, cruise, 17" alum wheels, tow hitch, mood, skid plates, 16" mats, load leveling shocks, STK #A5508, VIN #2G11R09, MSRP \$24,400. \$199 1st mo. plus \$796 customer cash = \$995 due at signing. 11 mos. @ \$776.11/mo. Total Cost \$8567.90. *Up to 36 mos. on all new 2002 models & up to 60 mos. on all new 2001 models. All taxes, license and reg. fees.

\$199 Lease Per Mo. 36 Mos. **\$13,746** Buy For



Brand New 2002 Chevrolet IMPALA SEDAN

4 dr, 2.4L V6, auto trans w/OD, pwr str/br/wh/d/blk/stm, AIR, AM/FM stereo, cassette, W/D, tilt, cruise, 17" alum wheels, tow hitch, mood, skid plates, 16" mats, load leveling shocks, STK #A5508, VIN #2G11R09, MSRP \$24,400. \$199 1st mo. plus \$796 customer cash = \$995 due at signing. 11 mos. @ \$776.11/mo. Total Cost \$8567.90. *Up to 36 mos. on all new 2002 models & up to 60 mos. on all new 2001 models. All taxes, license and reg. fees.

\$18,373 Buy For



Brand New 2001 Chevrolet BLAZER SUV
LS-4X2

4 dr, Vortec 4300 V6 SFI engine, auto trans, W/D, pwr str/br/wh/d/blk/stm, AIR, AM/FM stereo, cassette, W/D, tilt, cruise, 17" alum wheels, tow hitch, mood, skid plates, 16" mats, load leveling shocks, STK #A5508, VIN #2G11R09, MSRP \$24,400. \$199 1st mo. plus \$796 customer cash = \$995 due at signing. 11 mos. @ \$776.11/mo. Total Cost \$8567.90. *Up to 36 mos. on all new 2002 models & up to 60 mos. on all new 2001 models. All taxes, license and reg. fees.

\$21,831 Buy For

Shop Us On The Web www.multichevrolet.com 24 Hours A Day!

multi

CHEVY WE'LL BE THERE

2675 ROUTE 22 W. • UNION • 908-686-2800

Prices incl. all taxes to be paid by the consumer except lic., reg. & taxes. Prices valid from 72 hrs. of publication. GM & Lessee programs subject to change without notice. All payments based on primary lender approval. *Up to 60 mos. on select models. See dealer for details. Lessee responsible for maintenance, repair & excess wear.

SPECIAL SAVINGS FOR CURRENT CHEVY LESSEE, COLLEGE GRADS & AAA MEMBERS

Taxi company will service several Union County towns

A new service in the area has been announced. Scotch Plains Taxi, a 40-year-old local taxi service, is now expanding its services to include local taxi service in a 10-mile radius of Scotch Plains which includes about 40 towns, some of which have no taxi service at all, and most with no public transportation services.

Scotch Plains Taxi will have cars stationed in most towns or in a nearby neighboring town. It will accept all local and long-distance runs by phone only and will provide a toll-free 800 phone number — 800-787-5025. It will not pick up on the street like New York Yellow Cabs without a prior call to its dispatch center requesting a car for security purposes. It will provide 24-hour, 7-day service and dedicate 25 cars initially. Its fleet will be expanded as demand for taxis is needed. Fares will start at \$75 and up for local services.

The entire fleet will be equipped with two-way radios, cell phones, wireless Internet capability for checking flight arrivals, E-Z pass for all bridge, tunnel and highway tolls to speed the trip, and will honor cash and all major credit cards, debit cards and check cards for payment, which include American Express, Visa, MasterCard, Diners Club, Discover/Novis and JCB cards.

Effective Dec. 1, a new law goes into effect in New Jersey. All children younger than the age of 8 years old will be required to be in an infant or child car seat approved by the U.S. Government and punishable by fines to the driver and parents of the children if the child is not in a car seat, with fines of as much as \$25. Scotch Plains Taxi will provide child car seats in all of its cars as a free service to its passengers.

Scotch Plains Taxi is owned and operated by the Airway Companies, which is a conglomerate that owns several limousine, taxi and messenger services. It has 20 years experience in the transportation industry and is a member for each of its companies with the Better Business Bureau, the Union County Chamber of Commerce, Taxicab, Limousine and Paratransit Association, and the Limousine Owners Group. The company operates with Lincoln Town Cars, Mercury Marquis and Ford Crown Victoria sedans plus station wagons. Its office is based in Elizabeth next to Newark International Airport. Its owners have a combined experience of 42 years in the transportation industry.

Safely winterize the car

As the temperature begins to drop, it's a good time to get your vehicle ready for winter. The AAA New Jersey Automobile Club suggests the following steps to make sure your vehicle is outfitted from headlight to taillight.

- **Battery.** Cold weather can kill an ailing battery — the cause of many winter breakdowns. Avoid problems by asking your technician to test your car's charging system output and the battery's condition and charge.

- **Fluids.** Remember to change the oil and check the antifreeze, brake, differential and transmission fluids. Old antifreeze in your car's cooling system may contribute to cooling system failure.

- **Lights.** Enlist a friend to help check your car's high and low beams, and its license plate, fog, parking, side-marker, hazard, turn-signal, reverse, and brake lights.

- **Supplies.** Keep a windshield ice scraper, spray lock defroster — also keep an extra defroster at home — and an extra pair of gloves in the car.

and consider packing a folding shovel and some rock salt, sand or kitty litter. If you'll be driving in the mountains, carry chains, blankets, foul-weather gear, flares, and a tarp, just in case you break down.

- **Wipers.** If your wipers leave streaks across your windshield or back window, the blades or tensioner arms may need replacing. Fill the washer-fluid reservoir with a non-freezing cleaner, and always clear ice that binds your wiper blades before turning on the wipers.

AUTO FOR SALE

BUICK RIVIERA 1995, Jade/le green, leather interior, full loaded, 67,000 miles. Garage kept, \$10,000 or best offer. 908-288-7624.

DODGE AVENGER, 1995, one owner, 60,000 miles, 5 speed, am/fm, cd, dual air bags, full power, garage kept, \$5,900. 973-325-9247.

DODGE CARAVAN LE, 1992, V-6, air conditioning, automatic, am/fm cassette, 7 persons. Power, new tires, 180K miles, great condition. Bluebook \$3,100, best offer, 973-752-8920.

DODGE RAM 2500, 1994, 4x4, all power, mint condition, 135K miles, great for towing or landscaping \$9,000/best offer, 973-798-0562.

FORD BRONCO Eddie Bauer 1988, Excellent condition, good body, 78K miles, power package, radios free phone, \$3200, best offer, 908-353-4658.

FORD TAURUS, 1998, green, 58,000 miles, 4 door, air conditioning, power windows, \$5,500 or best offer, 908-984-9822.

FORD TAURUS SE 1998, 80K miles, good condition, Hunter Green, new brakes, blue book \$5,395. Asking \$5,000. Nm 908-208-1250, Matt.

HONDA ACCORD 1989, 4 door, automatic, well used, 154K miles, \$1450 or best offer. Call 973-762-8580 evenings/weekends.

HONDA ACCORD EX-1992, 5 speed, 98K miles, am/fm radio cassette, air, sunroof, 1 owner, \$5,775. Call 973-859-0971.

JAGUAR XJ6 - 1988, Excellent condition. All power, air conditioning, 139,000 miles, \$3,000. 973-379-1072.

JEEP CHEROKEE Sport 1997, 6 cylinder, 4 wheel drive, power locks, power windows, Dark blue, gray leather, Kenwood am/fm CD with 2 Kenwood 12 inch subwoofers, 54K miles, freshly painted. Brand new, 4 tires and battery, excellent condition. \$10,750. 973-588-0980 or 973-992-0238 evenings.

JEEP GRANDE Cherokee, 1997, 60K, fully loaded, black with leather, excellent condition with warranty. Must sell \$12,500 or best offer. Call 908-244-4333.

MERCEDES 190E, 1997, 91,000 miles, automatic, 4 door, sunroof, dark gray, excellent condition, power, air, \$5,550, best offer 973-255-0250.

MERCUY TOPAZ 1991, Excellent condition, 50,000 miles, all power, air conditioning, 4 cylinder, 4 door \$2,500. 973-379-1072.

VW JETTA, 1999, 5 speed, air bags, air, CD, many extras, \$5,800. 908-956-0740.

WHEELS ORIGINAL OEM Alloys, Mega Steel, Rally New and used (no repaired wheels). Quality inspected. Great prices. Nationwide delivery. Buy, sell, www.ackwheels.com. Toll free 1-888-981-8785.

AUTO PARTS/REPAIR

AUTO WANTED

RECREATIONAL VEHICLES

AUTOMOTIVE

AUTO FOR SALE

ACURA LEGEND coupe LS 1990, excellent condition, 128K miles, meticulously maintained, a beauty, \$2000. 973-714-2094.

BUICK CENTURY 1992, 4 door, 55K miles, AC, power locks, doors, very good condition, asking \$3900, or best offer, 973-8-12-8476.



Enjoy **0%** APR Financing On All 2001 SUZUKI's!



Brand New **2002** Suzuki
GRAND VITARA XL7 4X4

- ✓ Automatic Transmission
- ✓ Power ABS Brakes
- ✓ CD Player
- ✓ 6 Cylinder Engine
- ✓ Power Windows
- ✓ Power Locks

\$199 Lease Per Mo. 48 Mos.

Plus... 4-Door, SUV, Power Steering, Air, Dual Air Bags, Rear Defrost, Limited Glass, VIN #24302752, Six #71102 MSRP: \$27,014.

HILLSIDE 22 AUTOMALL
7 MINUTES FROM NJ TURNPIKE & NEWARK AIRPORT HILLSIDE, N.J.
HOURS: MON-THURS 9-9PM, FRI-9PM, SAT 9-6PM

Call 973-923-4100 hillsideautomall.com

Prices include All Costs to Be Paid by Consumer Except For Lic., Reg., & Taxes. All Cars Sold Generically As Is. This Ad Supersedes All Other Previous Ads. All Advertised Specials In Lieu of Rebates. Best financing. *Based On Finance and Lease for 48 Mos. **Approved Credit Only. Primary Lender. Lessee Responsible For Excess Wear & Tear. Mileage Allow 12,000 Miles/Year. 15¢ Per Mile. Additional \$2.50/24 Hours. 1st 30 Days 1st Mo. 1st \$250 Sec. Dep. \$450. 3rd Mo. 1st \$300. 4th Mo. 1st \$350. 5th Mo. 1st \$400. 6th Mo. 1st \$450. 7th Mo. 1st \$500. 8th Mo. 1st \$550. 9th Mo. 1st \$600. 10th Mo. 1st \$650. 11th Mo. 1st \$700. 12th Mo. 1st \$750. 13th Mo. 1st \$800. 14th Mo. 1st \$850. 15th Mo. 1st \$900. 16th Mo. 1st \$950. 17th Mo. 1st \$1000. 18th Mo. 1st \$1050. 19th Mo. 1st \$1100. 20th Mo. 1st \$1150. 21st Mo. 1st \$1200. 22nd Mo. 1st \$1250. 23rd Mo. 1st \$1300. 24th Mo. 1st \$1350. 25th Mo. 1st \$1400. 26th Mo. 1st \$1450. 27th Mo. 1st \$1500. 28th Mo. 1st \$1550. 29th Mo. 1st \$1600. 30th Mo. 1st \$1650. 31st Mo. 1st \$1700. 32nd Mo. 1st \$1750. 33rd Mo. 1st \$1800. 34th Mo. 1st \$1850. 35th Mo. 1st \$1900. 36th Mo. 1st \$1950. 37th Mo. 1st \$2000. 38th Mo. 1st \$2050. 39th Mo. 1st \$2100. 40th Mo. 1st \$2150. 41st Mo. 1st \$2200. 42nd Mo. 1st \$2250. 43rd Mo. 1st \$2300. 44th Mo. 1st \$2350. 45th Mo. 1st \$2400. 46th Mo. 1st \$2450. 47th Mo. 1st \$2500. 48th Mo. 1st \$2550. 49th Mo. 1st \$2600. 50th Mo. 1st \$2650. 51st Mo. 1st \$2700. 52nd Mo. 1st \$2750. 53rd Mo. 1st \$2800. 54th Mo. 1st \$2850. 55th Mo. 1st \$2900. 56th Mo. 1st \$2950. 57th Mo. 1st \$3000. 58th Mo. 1st \$3050. 59th Mo. 1st \$3100. 60th Mo. 1st \$3150. 61st Mo. 1st \$3200. 62nd Mo. 1st \$3250. 63rd Mo. 1st \$3300. 64th Mo. 1st \$3350. 65th Mo. 1st \$3400. 66th Mo. 1st \$3450. 67th Mo. 1st \$3500. 68th Mo. 1st \$3550. 69th Mo. 1st \$3600. 70th Mo. 1st \$3650. 71st Mo. 1st \$3700. 72nd Mo. 1st \$3750. 73rd Mo. 1st \$3800. 74th Mo. 1st \$3850. 75th Mo. 1st \$3900. 76th Mo. 1st \$3950. 77th Mo. 1st \$4000. 78th Mo. 1st \$4050. 79th Mo. 1st \$4100. 80th Mo. 1st \$4150. 81st Mo. 1st \$4200. 82nd Mo. 1st \$4250. 83rd Mo. 1st \$4300. 84th Mo. 1st \$4350. 85th Mo. 1st \$4400. 86th Mo. 1st \$4450. 87th Mo. 1st \$4500. 88th Mo. 1st \$4550. 89th Mo. 1st \$4600. 90th Mo. 1st \$4650. 91st Mo. 1st \$4700. 92nd Mo. 1st \$4750. 93rd Mo. 1st \$4800. 94th Mo. 1st \$4850. 95th Mo. 1st \$4900. 96th Mo. 1st \$4950. 97th Mo. 1st \$5000. 98th Mo. 1st \$5050. 99th Mo. 1st \$5100. 100th Mo. 1st \$5150. 101st Mo. 1st \$5200. 102nd Mo. 1st \$5250. 103rd Mo. 1st \$5300. 104th Mo. 1st \$5350. 105th Mo. 1st \$5400. 106th Mo. 1st \$5450. 107th Mo. 1st \$5500. 108th Mo. 1st \$5550. 109th Mo. 1st \$5600. 110th Mo. 1st \$5650. 111th Mo. 1st \$5700. 112th Mo. 1st \$5750. 113th Mo. 1st \$5800. 114th Mo. 1st \$5850. 115th Mo. 1st \$5900. 116th Mo. 1st \$5950. 117th Mo. 1st \$6000. 118th Mo. 1st \$6050. 119th Mo. 1st \$6100. 120th Mo. 1st \$6150. 121st Mo. 1st \$6200. 122nd Mo. 1st \$6250. 123rd Mo. 1st \$6300. 124th Mo. 1st \$6350. 125th Mo. 1st \$6400. 126th Mo. 1st \$6450. 127th Mo. 1st \$6500. 128th Mo. 1st \$6550. 129th Mo. 1st \$6600. 130th Mo. 1st \$6650. 131st Mo. 1st \$6700. 132nd Mo. 1st \$6750. 133rd Mo. 1st \$6800. 134th Mo. 1st \$6850. 135th Mo. 1st \$6900. 136th Mo. 1st \$6950. 137th Mo. 1st \$7000. 138th Mo. 1st \$7050. 139th Mo. 1st \$7100. 140th Mo. 1st \$7150. 141st Mo. 1st \$7200. 142nd Mo. 1st \$7250. 143rd Mo. 1st \$7300. 144th Mo. 1st \$7350. 145th Mo. 1st \$7400. 146th Mo. 1st \$7450. 147th Mo. 1st \$7500. 148th Mo. 1st \$7550. 149th Mo. 1st \$7600. 150th Mo. 1st \$7650. 151st Mo. 1st \$7700. 152nd Mo. 1st \$7750. 153rd Mo. 1st \$7800. 154th Mo. 1st \$7850. 155th Mo. 1st \$7900. 156th Mo. 1st \$7950. 157th Mo. 1st \$8000. 158th Mo. 1st \$8050. 159th Mo. 1st \$8100. 160th Mo. 1st \$8150. 161st Mo. 1st \$8200. 162nd Mo. 1st \$8250. 163rd Mo. 1st \$8300. 164th Mo. 1st \$8350. 165th Mo. 1st \$8400. 166th Mo. 1st \$8450. 167th Mo. 1st \$8500. 168th Mo. 1st \$8550. 169th Mo. 1st \$8600. 170th Mo. 1st \$8650. 171st Mo. 1st \$8700. 172nd Mo. 1st \$8750. 173rd Mo. 1st \$8800. 174th Mo. 1st \$8850. 175th Mo. 1st \$8900. 176th Mo. 1st \$8950. 177th Mo. 1st \$9000. 178th Mo. 1st \$9050. 179th Mo. 1st \$9100. 180th Mo. 1st \$9150. 181st Mo. 1st \$9200. 182nd Mo. 1st \$9250. 183rd Mo. 1st \$9300. 184th Mo. 1st \$9350. 185th Mo. 1st \$9400. 186th Mo. 1st \$9450. 187th Mo. 1st \$9500. 188th Mo. 1st \$9550. 189th Mo. 1st \$9600. 190th Mo. 1st \$9650. 191st Mo. 1st \$9700. 192nd Mo. 1st \$9750. 193rd Mo. 1st \$9800. 194th Mo. 1st \$9850. 195th Mo. 1st \$9900. 196th Mo. 1st \$9950. 197th Mo. 1st \$10000. 198th Mo. 1st \$10050. 199th Mo. 1st \$10100. 200th Mo. 1st \$10150. 201st Mo. 1st \$10200. 202nd Mo. 1st \$10250. 203rd Mo. 1st \$10300. 204th Mo. 1st \$10350. 205th Mo. 1st \$10400. 206th Mo. 1st \$10450. 207th Mo. 1st \$10500. 208th Mo. 1st \$10550. 209th Mo. 1st \$10600. 210th Mo. 1st \$10650. 211th Mo. 1st \$10700. 212th Mo. 1st \$10750. 213th Mo. 1st \$10800. 214th Mo. 1st \$10850. 215th Mo. 1st \$10900. 216th Mo. 1st \$10950. 217th Mo. 1st \$11000. 218th Mo. 1st \$11050. 219th Mo. 1st \$11100. 220th Mo. 1st \$11150. 221st Mo. 1st \$11200. 222nd Mo. 1st \$11250. 223rd Mo. 1st \$11300. 224th Mo. 1st \$11350. 225th Mo. 1st \$11400. 226th Mo. 1st \$11450. 227th Mo. 1st \$11500. 228th Mo. 1st \$11550. 229th Mo. 1st \$11600. 230th Mo. 1st \$11650. 231st Mo. 1st \$11700. 232nd Mo. 1st \$11750. 233rd Mo. 1st \$11800. 234th Mo. 1st \$11850. 235th Mo. 1st \$11900. 236th Mo. 1st \$11950. 237th Mo. 1st \$12000. 238th Mo. 1st \$12050. 239th Mo. 1st \$12100. 240th Mo. 1st \$12150. 241st Mo. 1st \$12200. 242nd Mo. 1st \$12250. 243rd Mo. 1st \$12300. 244th Mo. 1st \$12350. 245th Mo. 1st \$12400. 246th Mo. 1st \$12450. 247th Mo. 1st \$12500. 248th Mo. 1st \$12550. 249th Mo. 1st \$12600. 250th Mo. 1st \$12650. 251st Mo. 1st \$12700. 252nd Mo. 1st \$12750. 253rd Mo. 1st \$12800. 254th Mo. 1st \$12850. 255th Mo. 1st \$12900. 256th Mo. 1st \$12950. 257th Mo. 1st \$13000. 258th Mo. 1st \$13050. 259th Mo. 1st \$13100. 260th Mo. 1st \$13150. 261st Mo. 1st \$13200. 262nd Mo. 1st \$13250. 263rd Mo. 1st \$13300. 264th Mo. 1st \$13350. 265th Mo. 1st \$13400. 266th Mo. 1st \$13450. 267th Mo. 1st \$13500. 268th Mo. 1st \$13550. 269th Mo. 1st \$13600. 270th Mo. 1st \$13650. 271st Mo. 1st \$13700. 272nd Mo. 1st \$13750. 273rd Mo. 1st \$13800. 274th Mo. 1st \$13850. 275th Mo. 1st \$13900. 276th Mo. 1st \$13950. 277th Mo. 1st \$14000. 278th Mo. 1st \$14050. 279th Mo. 1st \$14100. 280th Mo. 1st \$14150. 281st Mo. 1st \$14200. 282nd Mo. 1st \$14250. 283rd Mo. 1st \$14300. 284th Mo. 1st \$14350. 285th Mo. 1st \$14400. 286th Mo. 1st \$14450. 287th Mo. 1st \$14500. 288th Mo. 1st \$14550. 289th Mo. 1st \$14600. 290th Mo. 1st \$14650. 291st Mo. 1st \$14700. 292nd Mo. 1st \$14750. 293rd Mo. 1st \$14800. 294th Mo. 1st \$14850. 295th Mo. 1st \$14900. 296th Mo. 1st \$14950. 297th Mo. 1st \$15000. 298th Mo. 1st \$15050. 299th Mo. 1st \$15100. 300th Mo. 1st \$15150. 301st Mo. 1st \$15200. 302nd Mo. 1st \$15250. 303rd Mo. 1st \$15300. 304th Mo. 1st \$15350. 305th Mo. 1st \$15400. 306th Mo. 1st \$15450. 307th Mo. 1st \$15500. 308th Mo. 1st \$15550. 309th Mo. 1st \$15600. 310th Mo. 1st \$15650. 311th Mo. 1st \$15700. 312th Mo. 1st \$15750. 313th Mo. 1st \$15800. 314th Mo. 1st \$15850. 315th Mo. 1st \$15900. 316th Mo. 1st \$15950. 317th Mo. 1st \$16000. 318th Mo. 1st \$16050. 319th Mo. 1st \$16100. 320th Mo. 1st \$16150. 321st Mo. 1st \$16200. 322nd Mo. 1st \$16250. 323rd Mo. 1st \$16300. 324th Mo. 1st \$16350. 325th Mo. 1st \$16400. 326th Mo. 1st \$16450. 327th Mo. 1st \$16500. 328th Mo. 1st \$16550. 329th Mo. 1st \$16600. 330th Mo. 1st \$16650. 331st Mo. 1st \$16700. 332nd Mo. 1st \$16750. 333rd Mo. 1st \$16800. 334th Mo. 1st \$16850. 335th Mo. 1st \$16900. 336th Mo. 1st \$16950. 337th Mo. 1st \$17000. 338th Mo. 1st \$17050. 339th Mo. 1st \$17100. 340th Mo. 1st \$17150. 341st Mo. 1st \$17200. 342nd Mo. 1st \$17250. 343rd Mo. 1st \$17300. 344th Mo. 1st \$17350. 345th Mo. 1st \$17400. 346th Mo. 1st \$17450. 347th Mo. 1st \$17500. 348th Mo. 1st \$17550. 349th Mo. 1st \$17600. 350th Mo. 1st \$17650. 351st Mo. 1st \$17700. 352nd Mo. 1st \$17750. 353rd Mo. 1st \$17800. 354th Mo. 1st \$17850. 355th Mo. 1st \$17900. 356th Mo. 1st \$17950. 357th Mo. 1st \$18000. 358th Mo. 1st \$18050. 359th Mo. 1st \$18100. 360th Mo. 1st \$18150. 361st Mo. 1st \$18200. 362nd Mo. 1st \$18250. 363rd Mo. 1st \$18300. 364th Mo. 1st \$18350. 365th Mo. 1st \$18400. 366th Mo. 1st \$18450. 367th Mo. 1st \$18500. 368th Mo. 1st \$18550. 369th Mo. 1st \$18600. 370th Mo. 1st \$18650. 371st Mo. 1st \$18700. 372nd Mo. 1st \$18750. 373rd Mo. 1st \$18800. 374th Mo. 1st \$18850. 375th Mo. 1st \$18900. 376th Mo. 1st \$18950. 377th Mo. 1st \$19000. 378th Mo. 1st \$19050. 379th Mo. 1st \$19100. 380th Mo. 1st \$19150. 381st Mo. 1st \$19200. 382nd Mo. 1st \$19250. 383rd Mo. 1st \$19300. 384th Mo. 1st \$19350. 385th Mo. 1st \$19400. 386th Mo. 1st \$19450. 387th Mo. 1st \$19500. 388th Mo. 1st \$19550. 389th Mo. 1st \$19600. 390th Mo. 1st \$19650. 391st Mo. 1st \$19700. 392nd Mo. 1st \$19750. 393rd Mo. 1st \$19800. 394th Mo. 1st \$19850. 395th Mo. 1st \$19900. 396th Mo. 1st \$19950. 397th Mo. 1st \$20000. 398th Mo. 1st \$20050. 399th Mo. 1st \$20100. 400th Mo. 1st \$20150. 401st Mo. 1st \$20200. 402nd Mo. 1st \$20250. 403rd Mo. 1st \$20300. 404th Mo. 1st \$20350. 405th Mo. 1st \$20400. 406th Mo. 1st \$20450. 407th Mo. 1st \$20500. 408th Mo. 1st \$20550. 409th Mo. 1st \$20600. 410th Mo. 1st \$20650. 411th Mo. 1st \$20700. 412th Mo. 1st \$20750. 413th Mo. 1st \$20800. 414th Mo. 1st \$20850. 415th Mo. 1st \$20900. 416th Mo. 1st \$20950. 417th Mo. 1st \$21000. 418th Mo. 1st \$21050. 419th Mo. 1st \$21100. 420th Mo. 1st \$21150. 421st Mo. 1st \$21200. 422nd Mo. 1st \$21250. 423rd Mo. 1st \$21300. 424th Mo. 1st \$21350. 425th Mo. 1st \$21400. 426th Mo. 1st \$21450. 427th Mo. 1st \$21500. 428th Mo. 1st \$21550. 429th Mo. 1st \$21600. 430th Mo. 1st \$21650. 431st Mo. 1st \$21700. 432nd Mo. 1st \$21750. 433rd Mo. 1st \$21800. 434th Mo. 1st \$21850. 435th Mo. 1st \$21900. 436th Mo. 1st \$21950. 437th Mo. 1st \$22000. 438th Mo. 1st \$22050. 439th Mo. 1st \$22100. 440th Mo. 1st \$22150. 441st Mo. 1st \$22200. 442nd Mo. 1st \$22250. 443rd Mo. 1st \$22300. 444th Mo. 1st \$22350. 445th Mo. 1st \$22400. 446th Mo. 1st \$22450. 447th Mo. 1st \$22500. 448th Mo. 1st \$22550. 449th Mo. 1st \$22600. 450th Mo. 1st \$22650. 451st Mo. 1st \$22700. 452nd Mo. 1st \$22750. 453rd Mo. 1st \$22800. 454th Mo. 1st \$22850. 455th Mo. 1st \$22900. 456th Mo. 1st \$22950. 457th Mo. 1st \$23000. 458th Mo. 1st \$23050. 459th Mo. 1st \$23100. 460th Mo. 1st \$23150. 461st Mo. 1st \$23200. 462nd Mo. 1st \$23250. 463rd Mo. 1st \$23300. 464th Mo. 1st \$23350. 465th Mo. 1st \$23400. 466th Mo. 1st \$23450. 467th Mo. 1st \$23500. 468th Mo. 1st \$23550. 469th Mo. 1st \$23600. 470th Mo. 1st \$23650. 471st Mo. 1st \$23700. 472nd Mo. 1st \$23750. 473rd Mo. 1st \$23800. 474th Mo. 1st \$23850. 475th Mo. 1st \$23900. 476th Mo. 1st \$23950. 477th Mo. 1st \$24000. 478th Mo. 1st \$24050. 479th Mo. 1st \$24100. 480th Mo. 1st \$24150. 481st Mo. 1st \$24200. 482nd Mo. 1st \$24250. 483rd Mo. 1st \$24300. 484th Mo. 1st \$24350. 485th Mo. 1st \$24400. 486th Mo. 1st \$24450. 487th Mo. 1st \$24500. 488th Mo. 1st \$24550. 489th Mo. 1st \$24600. 490th Mo. 1st \$24650. 491st Mo. 1st \$24700. 492nd Mo. 1st \$24750. 493rd Mo. 1st \$24800. 494th Mo. 1st \$24850. 495th Mo. 1st \$24900. 496th Mo. 1st \$24950. 497th Mo. 1st \$25000. 498th Mo. 1st \$25050. 499th Mo. 1st \$25100. 500th Mo. 1st \$25150. 501st Mo. 1st \$25200. 502nd Mo. 1st \$25250. 503rd Mo. 1st \$25300. 504th Mo. 1st \$25350. 505th Mo. 1st \$25400. 506th Mo. 1st \$25450. 507th Mo. 1st \$25500. 508th Mo. 1st \$25550. 509th Mo. 1st \$25600. 510th Mo.