

# Echo LEADER

Serving Springfield and Mountainside

SPRINGFIELD, N.J., VOL. 73 NO. 32

THURSDAY, APRIL 11, 2002

TWO SECTIONS

## Mountainside to vote on \$10.9-million school bud

### Proposed tax hike nearly \$700

By Joan M. Devlin  
Staff Writer

Chief School Administrator Gerard Schaller was sending home additional information for parents to have prior to the upcoming budget vote on Tuesday. He and school secretary Florence Shukis were discussing the contents.

"What I need to get across to the parents is that, when you are opening a new building — or even renovating facilities — it is absolutely automatic that the tax base has to increase.

"This is because in your new budget is the interest payment on the principal of the debt service."

Schaller believed the reminder was necessary because of the outcry at the last Board of Education meeting on March 26, as the new budget was brought before the community — the highest ever.

The bottom numbers announced were a budget of \$10,928,136, which includes a tax increase of \$2.1 million, representing a proposed increase of \$675 for the average home assessed at \$150,000.

"I think that the community also needs to be aware that when they vote on

Tuesday, they are being asked to approve an increase in the 2002-03 budget that not only reflects the budgetary expense for the reopening of Beechwood School, but shows where we also have a big hit in the tuition increases at Governor Livingston High School, with a 27-student increase."

This year, there are been 214 students, with 48 seniors graduating, and 175 eighth-graders coming in next year, raising the total to 241 students.

"Another big hit that I must be extremely honest about, is the increase in the benefits costs for all eligible employees — and we won't know this true number, until Dec. 31, 2002," Schaller said. "The reason for that is because the school operates on a fiscal year, while the insurance operates on a calendar year, so the new rates go into effect on Jan. 1, 2002. Insurance rates have been going up and up and were a 25 percent increase in the year 2002."

Another point made by Schaller was the salary increase stipulated in the recent teachers contract settlement which came about from the Mountainside Education Association negotiations with the Board of Education. "The purpose is of course to retain our quality teachers and to attract the very best to be part of the staff," said Schaller.

The memo going home to parents also shows that the budget tax levy history

CALL (908) 686-9898 & Enter the four digit selection # below

ELECTION RESULTS  
Your Community's Best  
**Infosource**  
24 HOUR VOICE INFORMATION SERVICE  
Call Tuesday after 10 p.m. for election results.  
7472

in Mountainside over the past four years reflects just an average increase of \$85,290.50 or 0.01 percentage. It notes also that even though the school budget may have increased over the past years, the tax impact had been minimal due to the use of surplus funds received after the dissolution of the Union County Regional High School District.

The dissolution funds previously received have been expended. "Through the efforts of Mountainside Mayor Robert Vigilanti and council, additional dissolution funds still will become available," Schaller said. "Mountainside is entitled to \$8 million, and to receive the funds over a five-year period of time."

The school district is anticipating \$1.6 million of that sum, but not until December — too late for this budget.

## Parking signs continue

By Joshua Zaitz  
Staff Writer

Dr. Jerrold Goldstein has a booming hormone replacement and weight loss practice at 475 Morris Ave. The lot is small and there's no place for his patients to park their cars. So Goldstein hired valets.

They parked on Short Hills Avenue, Baltusrol Way and Spring Brook Road. They parked on Lewis Drive, Park Lane and Colfax Road. They parked on Proffitt Avenue.

"It was pretty chaotic and annoying," said Short Hills Avenue resident Rebecca Kirk. "It was hard to live with. We have over 30 kids in the neighborhood. So if they're playing or going over a neighbor's house and all those cars are on both sides of the street, people coming and going might not see the kids."

Kirk said many times her and her neighbors had to yell, "Stop! There's a car coming!"

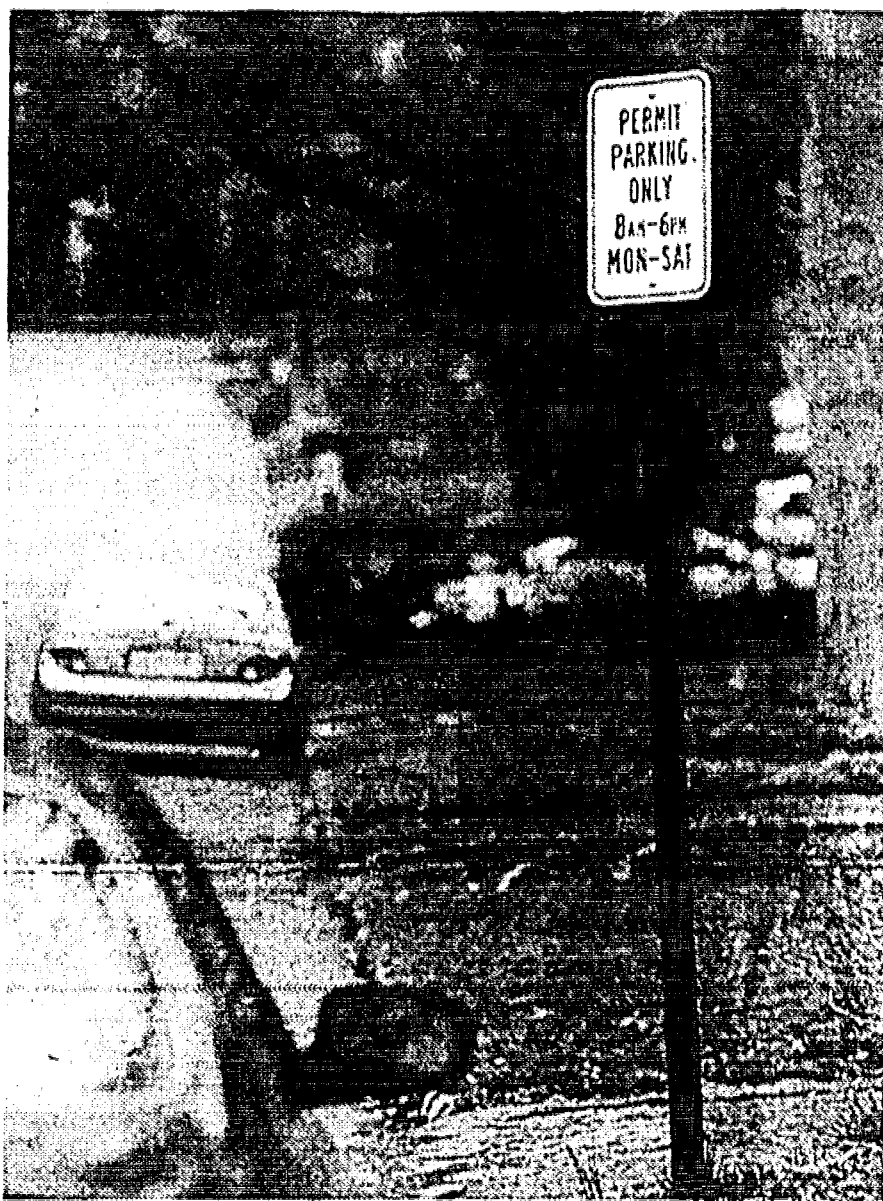
To stop the valet parking on those streets, the Springfield Township Committee has passed several ordinances, allowing the placement of resident-only parking signs on certain streets in the neighborhood.

The ordinance makes the streets resident-only parking on weekdays from 8 a.m. until 6 p.m.

Residents receive one resident parking permit for each vehicle that is principally housed, garaged, or parked at the resident's address. Contractors, service or delivery vehicles are exempt.

Visitor permits are also issued so that when residents have guests visiting they can park without being ticketed. Also, if a resident is having a big party, they can let the Police Department know so that no tickets will be issued to cars parked outside of that residence.

However, there's still a problem.



The proliferation of permit parking only signs like this one on Short Hills Avenue have been the result of homeowners protesting the growing presence of valet parking generated from a medical office building at 475 Morris Ave.

"The cars keep moving to the next street, the next street, the next street," said Kirk. "So they're still in the area, causing problems, but not directly in front of our house like they were."

Residents in the neighborhood said they've seen the valets littering, speeding by parked school buses letting children off, and even urinating.

"There's got to be a law against using public streets for commercial purposes," said Angie Franzoni, a resident in the neighborhood. "The

Board of Adjustment and Planning Board said that if you put a building up on a commercial property there is an ordinance that the number of square feet must require a certain number of parking spaces."

Franzoni said that when Goldstein first leased the property it was the responsibility of the owner of the property to inform him that there wasn't enough parking for his practice.

See RESIDENTS, Page 2

## Voters decide on board budget and candidates on Tuesday night

By Joshua Zaitz  
Staff Writer

In Tuesday's Board of Education election, Springfield residents will vote on whether or not to approve the school district's \$24.6-million spending plan, of which \$22 million will be raised through local property taxes.

If voters pass the \$22,025,430 that will be raised via taxes, it would mean an annual tax increase of \$170 for the average home in Springfield assessed at \$157,000.

The 2001-02 school budget was \$23,755,673. The 2002-03 budget represents an increase of \$801,773 or 3.38 percent.

No present program or service is to be reduced within the 2002-03 budget and money is allocated for new maps and globes in grades one through four, small class sizes will be retained, wireless technology labs have been

CALL (908) 686-9898 & Enter the four digit selection # below

ELECTION RESULTS  
Your Community's Best  
**Infosource**  
24 HOUR VOICE INFORMATION SERVICE  
Call Tuesday after 10 p.m. for election results.  
7482

added to the budget, a music teacher will be hired for the elementary grades, a substance abuse coordinator is planned for the high school, the main gym in the high school will be refurbished, and the maintenance budget for improving the fields has increased.

Teacher salaries make up 62 percent of the budget, with another 15 percent set aside for benefits. This results in 77 percent of the budget consisting of fixed costs.

However, the district has made cuts in other non-student-affected areas. The school administration costs are decreased by 2 percent in the 2002-03

budget, while central office administration costs are decreased by 6 percent.

By state standards, Springfield is considered a wealthy school district, only 6 percent of the district's budget is made up of state aid. The average school district in New Jersey receives 32 percent of its budget from the state.

Another 1 percent of the township's school budget comes from federal aid. In New Jersey, the average received from federal aid is 2 percent.

Springfield taxpayers pay 89 percent of the local school budget while the state average is 61 percent.

## Council to present late budget

By Brian Pedersen  
Managing Editor

Presenting plans to introduce a late draft of their 2002 municipal budget to the public on Tuesday, Mountainside Borough Council members reviewed several items but emphasized that the figures were not complete.

By raising taxes by one point, or \$47,000,000, the borough plans for an estimated tax increase of \$16 on the average home assessed at about \$150,000.

"You have all received a copy of the draft which is not complete for the simple reason that we do not know what the local Board of Education's taxes will be," said Mayor Robert Vigilanti.

Out of this this year's budget, \$1,800,000 of surplus was used. In addition, Vigilanti said \$4,288,034.35 will be raised for borough purposes.

Among some of the key items, group insurance plans rose from \$315,000 to \$373,000. Other insurance went down from \$183,000 to \$150,000.

Police salary and wages increased due to a contractual agreement. Other expenses in the police department portion of the budget are for police cars, uniforms, and other items.

Further increases included an increase of \$31,000 from \$29,000 last year for the Board of Health. Vigilanti also said there was a significant increase in other expenses for the Recreation Department, with a certain amount of money set aside for future projects.

An increase in electricity in the budget is due in part because of the unknown cost of lighting the fields for recreational uses. The borough hopes to recoup some of the money, but do

not know how much they will receive. The public library had a request of \$4,000, while the Rahway Valley Sewage Authority portion of the budget went up \$22,000.

"So we can anticipate that based upon the fact that we've been sealing up the sanitary sewer system that that number should go down," asked Councilman Paul Mirabelli.

Vigilanti said it is uncertain because opening Beechwood School full time and the increase of housing and restaurants will mean more sewage for the borough.

With the increase of taxes by the Board of Education, Vigilanti explained that the council has to retain a reserve of uncollected taxes each year if people choose not to pay them.

"If the residents do not pay their tax bills, we are still obligated by law to give a quarterly check to the Board of Education," said Vigilanti.

## Township to use Reverse 9-1-1 system soon

By Joshua Zaitz  
Staff Writer

You know their number. Everyone does. It's simple. 9-1-1. But what if there was a big storm coming, or a toxic chemical spill, how would the police get in touch with you?

Springfield residents will soon know the answer, as the township prepares its personnel to use the new Reverse 9-1-1, an interactive community policing system.

Although the system will probably not be up and running for another few months, and the full use of all its features is probably a year away, 9-1-1 Coordinator and Firefighter Tom Ernst is already becoming familiar with the system.

"It's something that's going to help with manpower in dealing with the initial notification of residents in regards to emergencies and nonemergencies," said Ernst. "A snowstorm, while it may be an emergency, we're going to notify people maybe a day before that we're expecting this snowstorm to come, so they can remove their cars from the street. Or we can take this and zero in on a certain section of town that is prone to flooding and only notify people in that area that they should take precautions."

Reverse 9-1-1 was developed by Sigma/Micro Corporation in 1993 to give public safety agencies and other service groups the technology to quickly contact citizens in a very specific geographic area and communicate urgent information to them.

A basic system is capable of activating an auto-dial mechanism that calls residents and business owners while a recorded message provides emergency information along with safety precautions.

Reverse 9-1-1 is a Microsoft Windows-based system program that uses a combination of database and computer mapping technology, allowing the user to quickly target a precise geographic area and saturate it with thousands of calls per hour. Or the system can create a list of individuals with common characteristics and contact them quickly whenever necessary.

"The system automatically selects all phone numbers within the map area specified on screen and allows users to include or exclude any number in the selected map area in the call session."

"If you have a critical incident in a specific area, a hazardous material spill, for example, you can go into the system and it'll show you a map of the town," said Township Administrator Richard Sheola. "You can bring that map up and

draw an area, basically a geometric shape, highlight that area of who you have to notify. The system will automatically dial every available number in that area to notify them with a recorded message."

The Reverse 9-1-1 lets the users know if it was able to contact the resident it was calling.

"If it leaves a message on an answering machine it will give us an indicator that it left a message," said Sheola.

If the machine calls a resident and neither a person nor answering machine picks up, the Reverse 9-1-1 can be programmed to call back as many times as officials deem necessary.

Some towns use the Reverse 9-1-1 to send messages alerting residents of a missing child, the last area they were seen, a description of the person and what they were wearing.

"If a big emergency does happen we need to get in touch with the residents as soon as possible," said Ernst. The system is scheduled to be installed April 24 but likely will not be up and running until the end of May when everyone is trained to use it. "In the meantime, one or two of us will be trained so that in an emergency we could use it."

There is no definitive date as to when the system will be activated.

"Some jurisdictions have set up wellness checkups for seniors who are homebound," said Sheola. "where at a predetermined time each day, the machine dials up those residents."

If the senior answers the phone there's a pre-recorded message saying this is your daily check-up call press 1 if everything is fine.

"If someone doesn't answer, the machine can automatically flag dispatch," said Sheola. "Or if they answer and they don't press 1, we can send a patrol car out to check on them."

Sheola said the funds for the Reverse 9-1-1 system came from a special state legislative grant for technological upgrades.

Residents also will be able to call the machine, and type in different four-digit codes to access specific information they want, such as when and where the 4th of July fireworks will be conducted, local bicycle helmet laws, or when holiday garbage pick-up is scheduled.

"That's something we're going to do down the road and make that available, for all the departments in town," said Sheola.

## The pressure's on



Photo By Barbara Kakkalis

The Valiant Verucas were one of the teams participating in the Harry Potter Trivia Quiz at the Thelma L. Sandmeier School in Springfield on Monday. Trying to help out Nevin Mathew with a tough question are teammates Spencer Weiss and Amy Shtafman. Not pictured is teammate Julie Condit.

Welcome to the ECHO LEADER

How to reach us: The Echo Leader is published every Thursday by Worrall Community Newspapers, an independent, family-owned newspaper company. Our offices are located at 1291 Stuyvesant Avenue, Union, N.J., 07083. We are open from 9 a.m. to 5 p.m. every weekday. Call us at one of the telephone numbers listed below.

Residents express concerns

(Continued from Page 1) "If a patient goes to this guy and they park in the street, you can't prevent them from parking because the street is public property," said Franzoni.

"I hope and pray that nobody gets hurt but these guys are running around," said Franzoni. "If you got a patient coming out and he's parked on Colfax, which is the furthest street away, the guy has got to hustle and he does."

"I know that people have been complaining that the township never should have done this. Well they did. It's after the fact. We have to deal with what we have and right now the signs are working."

"Goldstein's lease on the property is not up for two years. This guy is right at the edge of the envelope and he's getting away with it," said Franzoni.

Library waives fees for long overdue books during Amnesty Week

In honor of National Library Week, the Springfield Free Public Library, 66 Mountain Ave., invites members to feel good about returning overdue books during Amnesty Week. From Sunday until April 20, bring back any long overdue books with a canned food donation, and the library will waive any fines.

To celebrate the theme of National Library Week, the Springfield Public Library includes an artist reception for the "Country Heritage" exhibit with artist Nancy Ori on Sunday at 1:30 p.m.; Lunchtime videos touring "Sister Wendy's Story of Painting" on Tuesday; memoir writing at 10:30 a.m. on Wednesday; Great Books Discussion Group on April 18 at 10 a.m.; and Strange World of Reptiles program at 1 p.m. on April 20.

COMMUNITY CALENDAR

- The Community Calendar is prepared by the Echo Leader to inform residents of various community activities and government meetings. Tuesday: The Springfield Free Public Library, 66 Mountain Ave., continues its Lunchtime Video Series "Sister Wendy's Story of Painting" at noon with "Baroque to Romanticism" and "The Age of Revolution."

Committee honors Group 1

The Springfield Township Committee honored the Senior Citizens Group 1 at its meeting Tuesday afternoon, acknowledging the 40th anniversary and proclaiming May 16 as Springfield Senior Citizen Group 1 Day. Approximately 50 senior citizens were in attendance to hear accolades from the Township Committee.

A first-rate honor



Frank Geiger, president of the Mountainside Volunteer Rescue Squad, presents Kit Carson, center, with a gold watch for his 25 years of service to the squad as wife Judy Carson looks on.

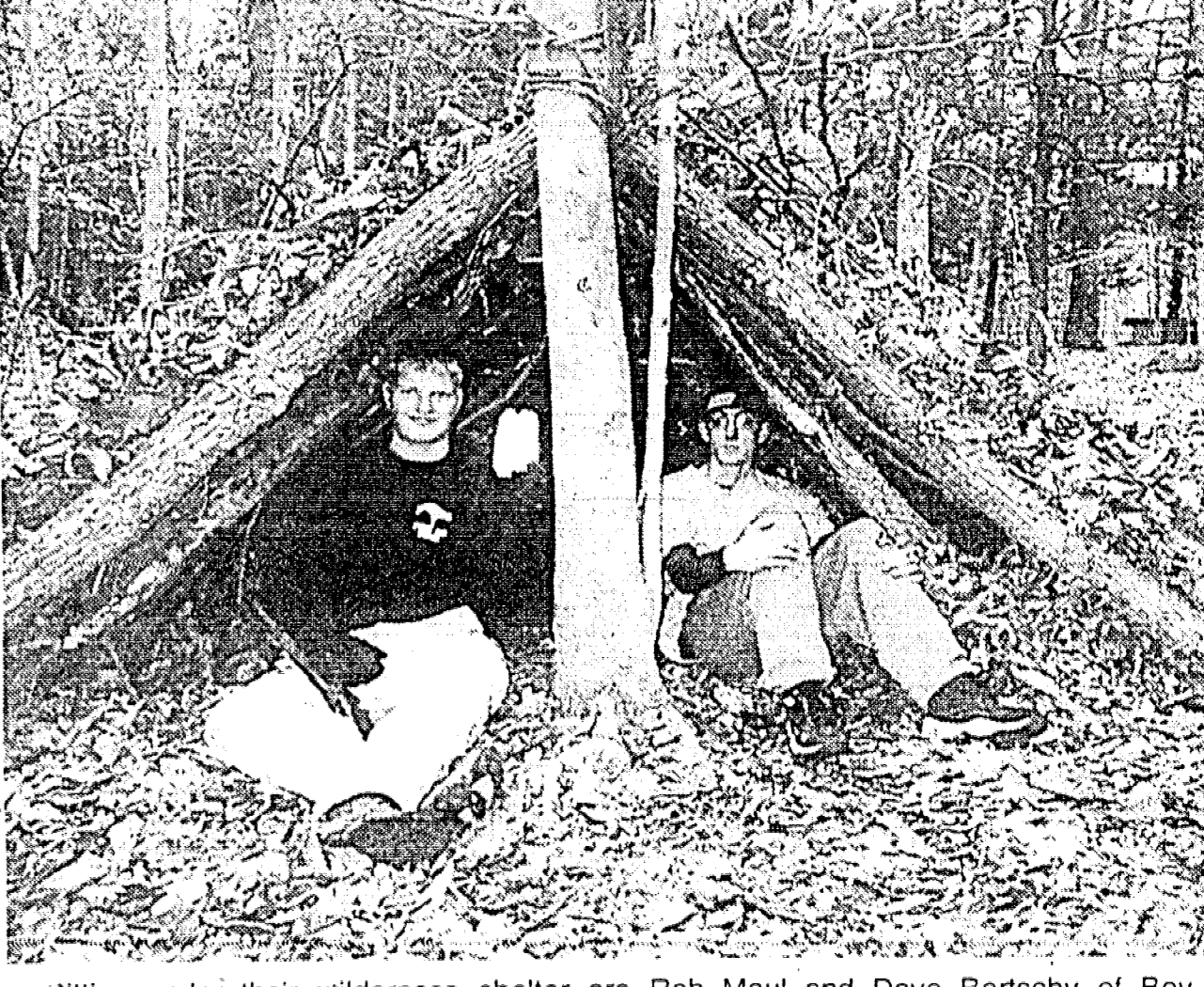
District welcomes new coordinator

Board of Education member Irwin Sablosky asked how the student's confidentiality pertains to the student's parents. Sista said her door is always open and promises the students their confidentiality, as long as what the problem they are having is not harming them or someone else.

Mullman, Montanari file

Two candidates are in the running for the one vacant seat of the Springfield Township Committee. Incumbent Democrat Sy Mullman plans to run once again, having served on the committee for nine years, as mayor twice and deputy mayor once.

Well, it's not exactly home



Sitting under their wilderness shelter are Rob Maul and Dave Bertch of Boy Scout Troop 73 of Springfield who both constructed their own makeshift house during the annual Wilderness Survival Weekend.

Decisions, Decisions...



Life is full of decisions. That's why we try to make things a little easier by providing you with the most choices for investing your savings.

- 2-Year CD 4.07% APY\*
3-Year CD 4.59% APY\*
4-Year CD 4.86% APY\*
5-Year CD 5.12% APY\*

Union Center UNION CENTER NATIONAL BANK. 12 convenient locations in Union and Morris counties. Annual Percentage Yield. Minimum deposit to open account and earn stated APY is \$1,000.

Mountainside On-line FIND IT Quick & Easy www.localsource.com

SHORT HILLS MATHEMATICS Private tutoring to: Improve high school and college performance, Enhance math skills and problem solving, Boost SAT performance.

Robert Spillane Broker/Manager Weichert, Realtors Office benefits for Realtors: Flexible Hours, Work Locally - No Commute, Unlimited Income Potential.

Skills for school. Confidence for everything else. For more than 20 years, Sylvan has helped over a million children develop a love of learning. We get results through a proven process that works — the Sylvan Advantage!

CLEVELAND PLAZA 123 NORTH UNION AVE. CRANFORD 908-709-0202 SYLVAN LEARNING CENTER Learning feels good.

FRENCH is our expertise Now Enrolling for Summer THE LANGUAGE WORKSHOP FOR CHILDREN. French for Tots 6 months - 3 years. French for Children 3 - 8 years.

Hit a Home Run With NorCrown Bank! COMMUNITY. What is it? It's people and businesses sharing interests and passions, working together for a common goal.

Hit a Home Run With NorCrown Bank! Where you work. Where you play. Where you live. Where you bank.

OBITUARIES

Charles A. Schaible
Charles A. Schaible, 65, of Yardley, Pa., former owner of a Springfield oil company, died March 29 in St. Mary Hospital, Yardley.

Donald Perlmutter
Donald Perlmutter, 70, of Springfield died April 3 at home.

Anna Dumbroff
Anna Dumbroff, 90, of Mendham, formerly of Springfield, died April 4 in Holly Manor Center, Mendham.

Manuel Pereira
Manuel Pereira, 87, of Springfield died April 4 in Rumelle's Specialized Hospital, Berkeley Heights.

John Link
John Link, 89, of Cranford, formerly of Mountaintide, died March 18 in the Cranford Health & Extended Care Center.

Lucy E. Braecher
Lucy E. Braecher, 75, of Black Hawk, Colo., formerly of Summit, died March 25 in Exempla Lutheran Hospital, Wheat Ridge, Colo.

Richard S. Martin
Richard Shelton Martin, 78, of Summit died March 30 at home.

Susan M. Thomas
Susan M. Thomas, 70, of Chatham, formerly of Summit, died April 5 in Morristown Memorial Hospital.

Cheryl A. Maiello
Cheryl A. Maiello, 42, of Millburn, formerly of Summit, died April 5 in Morristown Memorial Hospital.

Virginia MacLellan
Virginia MacLellan, 84, of Dillsburg, Pa., formerly of Summit, died April 5 at home.

Cheryl A. Maiello
Cheryl A. Maiello, 42, of Millburn, formerly of Summit, died April 5 in Morristown Memorial Hospital.

Get A Big Edge.

3.25% APY\*
guaranteed through June 30, 2002

Introducing THE bankEdge.

It's a money market account linked to a Checking Edge account, and it provides all kinds of special benefits to you - including a big edge in your interest rate. And we mean big! Open THE bankEdge account now and you'll earn an introductory money market APY of 3.25%.

- To qualify for this great rate, you'll need:
• A minimum daily balance of \$10,000\*\*
• A linked Checking Edge account with a minimum daily balance of \$500\*
• To open your account by June 30, 2002



THE bank for you.

For details, and to open THE bankEdge, visit any of our convenient New Jersey branches. And discover THE bank that gives you a big edge in so many ways.

Toll Free 1-877-4SI-BANK

- BRICK: 1201 S. Martin Blvd.
EAST BRUNSWICK: 455 Old Bridge Rd.
CRANFORD: 104 W. 1st Ave.
EAST BRUNSWICK: 500 Anthony Road.
JACKSON: 731 New Hope Bridge Rd.
KENILWORTH: 270 Boulevard.
LAKEWOOD: 1 Rte. 70.
LAKEWOOD - MADISON BRANCH: 555 Madison Ave.
MARBORO: 342 Route 9N.
SILVERTON: 2100 Hoopes Ave.
SPRINGFIELD: 52 Millburn Ave.

\*The Annual Percentage Yield (APY) for THE bankEdge account is effective as of the date of this publication. The interest rate is 3.25%. Account balances over \$100,000 will not earn interest. A \$15 monthly fee will be imposed if daily balance falls below \$100,000. Fees could reduce the earnings on THE bankEdge account. \*\*Monthly fee of \$10 if checking balance falls below \$500. Other fees and restrictions may apply. Terms and conditions and schedule of fees available upon request. Other rates subject to change without notice.

Hair today, gone tomorrow



Jenni Zocca, a junior at Summit High School, holds the 1 1/2 of hair she is donating to Locks of Love. Based in Palm Springs, Fla., Locks of Love is a charity that provides hairpieces to financially disadvantaged children under the age of 18 with medical hair loss.

RELIGION

Fish 'N' Chips Bonanza
On Friday, St. James the Apostle School, South Springfield Avenue, Springfield, hosts the annual Fish 'N' Chips/Basket Bonanza, catered by the famous Argyle's of Kearny.

Rabbi Finkel speaks at Oak Knoll School
Rabbi Asher Finkel, a Jewish scholar and one of the first rabbis to teach religion full-time at a Catholic university, will speak at Oak Knoll School of the Holy Child, 44 Blackburn Road, Summit, on April 18 at 7:30 p.m.

SJCC offers open house and activities
The Summit Jewish Community Center Religious School, 67 Kent Place Blvd., invites preschoolers to participate in its Jewish Adventure Series. Children 4 years old to pre-K will experience an enriching, appropriate program to learn about Jewish

Activities will consist of music, arts and crafts, dance, cooking and creative fun. Upcoming events include Israel's birthday, April 21. All sessions will take place from 10:45 a.m. to 12:15 p.m. at the community center. Preregistration is required. The cost is \$12 per session, per child for members; \$18 for non-members. For more information, call Stacey David at 908-273-2800.

The religious school offers programs from pre-K through grade 10. The curriculum, which encourages spoken Hebrew in the classroom, traces the traditions, values and pride of the Jewish heritage as well as the skills needed to lead a Jewish life. Class sizes are small, with a student-teacher ratio of 10:1. Temple members as well as non-members are invited to attend. The SJCC is a member of the Conservative movement.

RSVP to Stacey David, education director at 908-273-2800, or e-mail at Stacey@babvelle.com.

Temple Sinai services
Temple Sinai, 208 Summit Ave., offers the following April programs:
• Tuesday, Minyan at 8:30 a.m. followed by 9:30 a.m. by Torah Study.
• Friday, Tot Shabbat Service at 6:30 p.m. This service is a participatory service for preschoolers through early grade school. It features a half-hour service of singing, Torah, and stories followed by a craft or special art project. A snack/kiddush follows the service. A family service begins at 7:30 p.m. with the third annual celebration of Israel in prayer and song.
• Saturday, Minyan at 8:30 a.m. followed by Torah study at 9:30 a.m.
• April 19, Kabbalat Shabbat service at 6:30 p.m.

PRE-SEASON SPRING BLOWOUT
Unbelievable Markdown Prices
SPALDING TOP FLIGHT XL \$999
New Golf Equipment & Clothing
Last Year's CLUBS at Amazing Savings
Wilson Championship Tennis Balls 1.89
New Fischer Racquets at High Country Sports
Hiking
Northface / Marmot
Siera Designs
Camp Trails / Eureka
Lowia
Garment & Many More
Come to the Experts
High Country Sports
Best Service...
• Expert Advice Guaranteed
• 24-Hour Service
• Professional Restringing
• Custom Club Fitting
• Reshafting / Regripping
• Club Extensions
Rt. 10 East • Livingston 973-994-3630

In Our Towns

alphaGraphics
The final pieces are sometimes the most important.
FREE GIFT! Call for appointment and receive a FREE GIFT. Offer Expires 5/7/02
Print solutions for all your business needs.
908.277.3000 P • 908.277.0404 F
47 Maple Street, Summit, NJ 07901

Capture Your Wedding Memories With... PHOTOGRAPHY & VIDEOGRAPHY
Photo Services Available
• Engagement & Bridal Studio
• Portrait Sitting prior to the Wedding
• Select from 200-300 proofs
• A Large Selection of Wedding Albums
• Parent Albums
• Gift Folders
Video Services Available
• The Latest in Video Technology
• 2 Three Chip Digital Cameras
• Wireless Microphones
• Studio Editing
• Special Effects, Music, Interviews & Re-Cap
Peter Wallburg Studio
Call for your appointment today
15 BEECHWOOD RD. • SUMMIT
908-277-2078
Our 38th Year in Summit

KARATE WORLD
Master Jeff Dunn Chief Instructor
Roxanne Dunn Program Director
(908) 241-0066
753 Boulevard, Kenilworth
http://members.home.com/karate-world

Peter Wallburg Studios Photography and Videography
Providing Photography Services in the Community for over 39 years
Weddings - Portraits - Instant Passports
Special Events - School Portraits
Public Relations - Commercial Photography
15 Beechwood Road, Summit 908-277-2078

Psychic Reading by Mrs. Lisa
Call For Appt. (973) 376-0144
295 Morris Avenue Springfield

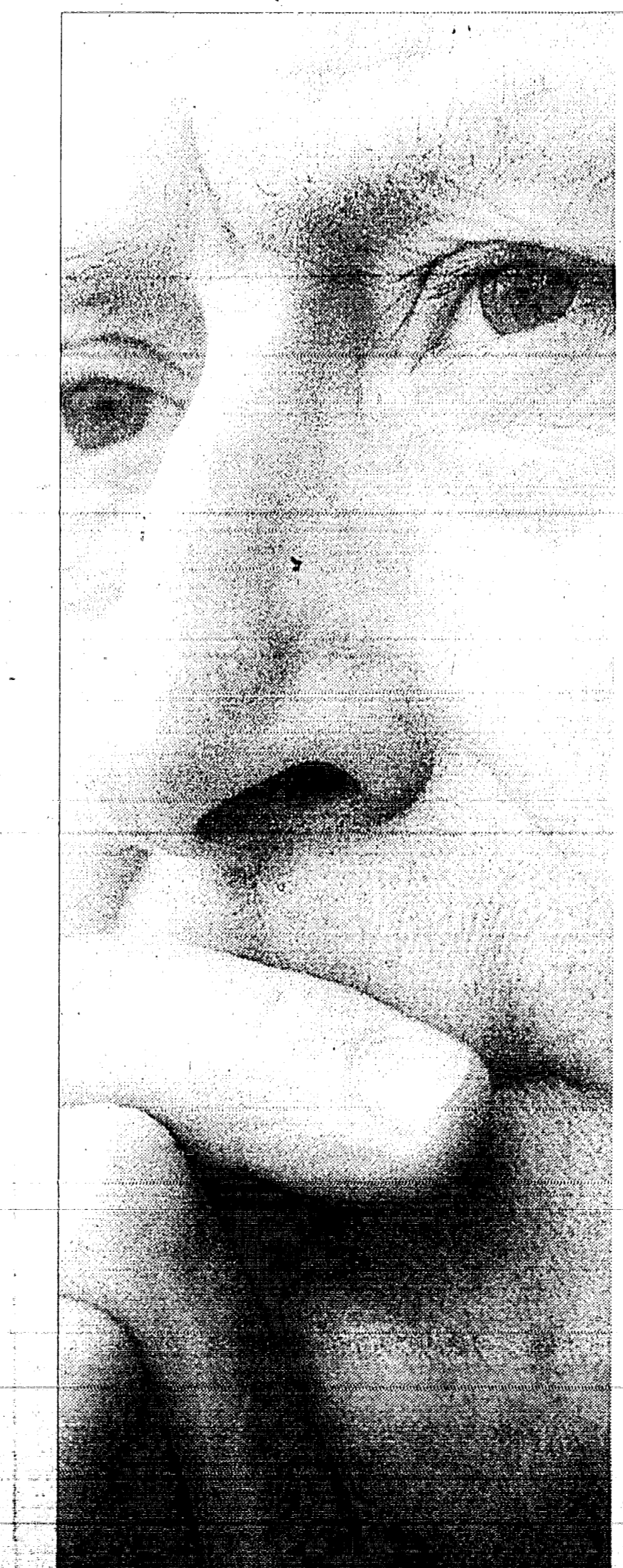
Flatter Your Body LINGERIE & LACE
9 Beechwood Road • Summit • 908.273.0955
Hours: Monday - Friday 10:00-5:30 • Thursday 11:30-5:00 • Saturday 10:00-5:00 • Closed Sunday

BELLE HAVEN CLUB
DR. HERBERT MARVIN, D.C., C.A.P.
164 Shunpike Road, Springfield
Across from Bathurst Golf Course
973-376-7864
FREE CONSULTATION
Gentle Treatment Of
• Back Pain
• Neck Pain
• Headache
• Sciatica
• LATE EVENING AND SUNDAY APPOINTMENTS AVAILABLE
• PRIVATE CONSULTATION WITH THE DOCTOR
• DISCUSSION OF TREATMENT OPTIONS
Mon. & Wed. 10am-5pm, 4pm-8pm, Tues. 3pm-8pm, Thurs. 3pm-8pm
Fri. 10am-2pm, 3pm-5pm, Sat. Closed, Sun. 10am-1pm
Emergency Hours Available

DR. HERBERT MARVIN, D.C., C.A.P.
164 Shunpike Road, Springfield
Across from Bathurst Golf Course
973-376-7864
FREE CONSULTATION
Gentle Treatment Of
• Back Pain
• Neck Pain
• Headache
• Sciatica
• LATE EVENING AND SUNDAY APPOINTMENTS AVAILABLE
• PRIVATE CONSULTATION WITH THE DOCTOR
• DISCUSSION OF TREATMENT OPTIONS
Mon. & Wed. 10am-5pm, 4pm-8pm, Tues. 3pm-8pm, Thurs. 3pm-8pm
Fri. 10am-2pm, 3pm-5pm, Sat. Closed, Sun. 10am-1pm
Emergency Hours Available

Gourmet Chocolates and Candy
Unique Gift Baskets
Balloons and Gifts
Daily Delivery
Nationwide Shipping
26 Beechwood Rd, Summit
908-522-0888
Order your communion favors now!
www.sweet-nothings.com

Karen Aird Miniatures & Dollhouse Shop
Specializing in: Handmade and European Miniatures
380 Springfield Ave., Summit
908-277-0999
Hours:
Tues-Sat 10-5
Thurs 10-7



WHEN IT'S CANCER, "WAIT AND SEE" ISN'T WHAT YOU WANT TO HEAR.

NEW JERSEY'S FIRST PET/CT SCAN PROVIDES ANSWERS, FASTER.

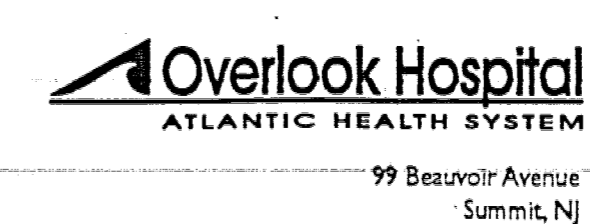
Now, at Atlantic Health System's Overlook Hospital, there's an advanced new tool in the fight against cancer. Doctors can locate and diagnose cancer faster and more accurately than ever before. That's because Overlook is the first hospital in New Jersey to use the GE Discovery LS - a breakthrough technology that combines today's most sophisticated Positron Emission Tomography (PET) with Computed Tomography (CT).

Now, in a single non-invasive examination, Atlantic physicians can answer the most critical questions - in as little as one hour: Where is the tumor? How large is it? Is it spreading? What are my best options? Is my therapy working?

No more multiple tests. Less waiting. Shorter exams. Fewer surgeries or biopsies. No more "wait and see."

It's the knowledge you get faster. And it's here first, close to home.

For more information or a physician referral, please call 1-800-AHS-9580 or visit our website at www.AtlanticHealth.org.



99 Beauvoir Avenue Summit, NJ
Atlantic Health System's Overlook Hospital is a major clinical affiliate of the University of Medicine and Dentistry of New Jersey - New Jersey Medical School.

Threatening phone calls

Mountainside
On April 4 at 4:46 p.m., a Birch Hill Road resident reported that on April 2, he and a Summit Road resident had a verbal dispute regarding an article of clothing.

POLICE BLOTTER

which was kept at his father's residence on New Providence Road, was missing as of April 2 at 9:24 a.m.
On April 4 at 10:59 a.m., Conference Call Service, Route 22 West reported that a Dell computer was stolen from the training room.

escalate borough woman's verbal dispute further

reported that a black, old-fashioned, milk canister, used for decorative purposes was stolen from her front porch on Friday at 2:30 p.m.
On Sunday at 1:35 a.m., a New Providence Road business reported that the second floor urinal overflowed during the evening hours after a valve had broken on the flushing mechanism, resulting in damaged property.

Hadassah has interactive breast health service

Check It Out, Northern New Jersey Region of Hadassah's informative, interactive Breast Health Awareness program for adults and teens, will be offered by the Hadassah Springfield chapter, Temple Sha'arey Sham'arey Halom, 78

bridge police, that his guitar was stolen three weeks earlier.
A Cornell Parkway business reported that a Toshiba Laptop computer, valued at \$1,200, was stolen on April 1 at 9:30 a.m.
On April 4 at 3:30 p.m., a Forest Drive apartment reported a burglary.

Springfield
On April 1 at 3:48 p.m., a Route Park resident reported seeing his guitar for sale at Great Center on Route 22. He had reported, to the Wood-

PUBLIC NOTICE
SHERIFF'S SALE
DIVISION: CHANCERY
COUNTY: UNION
PLAINTIFF: HOME LOAN MORTGAGE TRUST, L.P.

PUBLIC NOTICE
TOWNSHIP OF SPRINGFIELD
OFFICE OF THE SECRETARY OF PLANNING
Take notice that the following decision was made at a regular meeting of the Planning Board held on Wednesday, April 3, 2002.

PUBLIC NOTICE
Attorney for Applicant
UR740 ECL April 11, 2002 (\$7.25)
TOWNSHIP OF SPRINGFIELD
OFFICE OF THE SECRETARY OF PLANNING
Take notice that the following decision was made at a regular meeting of the Planning Board held on Wednesday, April 3, 2002.

PUBLIC NOTICE
NOTICE TO CREDITORS
Estate of AS RITA NEWMAN, ALSO KNOWN AS RITA NEWMAN, Deceased.
Subscribed to the order of James S. Lacorte, Surrogate of the County of Union, made on the 5th day of April, A.D. 2002, upon the application of the undersigned, as EXECUTOR of the estate of said deceased, notice is hereby given to the creditors of said deceased to exhibit to the subscriber under oath of affirmation their claims and demands against the estate of said decedent, or they will be forever barred from prosecuting or recovering the same against the subscriber.

PUBLIC NOTICE
SHERIFF'S SALE
DIVISION: CHANCERY
COUNTY: UNION
PLAINTIFF: HOME LOAN MORTGAGE TRUST, L.P.

SPORTS

Editor: JR Parachini
Can be reached in
Maplewood at 973-763-0700

GL softball off to impressive start

The Governor Livingston High School softball team, sparked by talented pitcher Lindsay Sheppard, entered Tuesday's scheduled Mountain Valley Conference-Mountain Division home game against Roselle Catholic with a 2-1 record and two-game winning streak.

Stick it to them



The Summit High School girls' lacrosse team, which entered Tuesday's scheduled home game against Columbia with a 3-0 record, is sparked by the play of Vicky Pacione (No. 15). The Hilltoppers opened with wins against Roxbury 15-2, Randolph 16-4 and Mendham 9-4.

Bulldogs attempt to remain focused

By Jeff Wolfrum
Staff Writer
KENILWORTH — Stay focused and don't get discouraged. That's what Dayton High School softball coach Dave Rennie feels his team must do after an 0-3 start.

High School Softball

In its 8-4 loss at Brearley last Friday afternoon, Dayton was paced by junior centerfielder Val Zlotzky, who went 2-for-4 with a run scored and three stolen bases.

SJBL tryouts are next Thursday

Summit Junior Baseball League summer travel team tryouts are April 28.

Summit boys' lacrosse team does well to make statement

Posts convincing victory over Westfield

By Jeff Wolfrum
Staff Writer
WESTFIELD — Making a statement. That's what the Summit High School boys' lacrosse team did last Thursday afternoon in defeating Westfield, 12-3 to end its record at 1-1.

Summit girls' lacrosse opens 3-0

The Summit High School girls' lacrosse team, ranked No. 3 in the state to start the season, had an outstanding beginning to its 2002 campaign, going 3-0 last week.

Summit Junior Baseball League summer travel team tryouts are April 28.

The 8-and-under tryouts are noon and the 9-and-under and 10-and-under tryouts are 3 p.m. at Lincoln-Hubbard Field.

The 12-and-under tryouts are 2 p.m. and the 11-and-under tryouts 5 p.m. at the Jefferson School.

This is the only tryout date scheduled.

More information about the Summit Junior Baseball League tryouts may be obtained by calling this number: 908-273-3102.

Schroeder sparks Georgetown lacrosse

Georgetown University men's lacrosse goalie Scott Schroeder of Summit had another outstanding game as he made 12 saves in a 13-7 home win over Bucknell April 3.

Summit track squads capture conference championships

The Governor Livingston High School boys' and girls' track teams captured Mountain Valley Conference-Mountain Division Relay titles home Saturday.

MVC-Mountain Relays

The GL boys' captured the 3,200-meter, sprint medley and distance medley events. Jeremy Pfund, Alex Hotz, Mike Prazak and Mike Carmody combined to win the 3,200 in 8:26.8.

Hilltoppers stick undefeated Ridgewood

Summit improved to 2-1 on Monday by edging undefeated Ridgewood 7-6 in overtime in Summit.

Summit girls' lacrosse opens 3-0

The Summit High School girls' lacrosse team, ranked No. 3 in the state to start the season, had an outstanding beginning to its 2002 campaign, going 3-0 last week.

BUSINESS & SERVICE DIRECTORY

Grid of business advertisements including: ADDITIONS, AIR CONDITIONING, CLEAN-UP/RUBBISH REMOVAL, TIRE OF THE CLUTTER?, MAID TO ORDER, ZAVOCKI PAVING CO., INC., KREDER ELECTRIC, INC., FLOORS, SALEM FLOORS, GUTTER CLEANING SERVICE, HANDYMAN, BUSHY BEE HANDYMAN SERVICE, UGLY? TUB & TILES, MR. UGLY HOME IMPROVEMENT, HOME IMPROVEMENT, J.P. HOME IMPROVEMENTS, LANDSCAPING, Eastern Landscape & Design, Inc., ANTONE LANDSCAPING, BATHROOMS, SPACE AVAILABLE, MASONRY, JACK WILLIAMS & SONS CONSTRUCTION, INC., SCHAEFFER MOVING, All Types of Moving & Hauling, EXCELLENT PAINTING, PAINTING, FULLY INSURED INTERIOR PAINTING, INSIDE OUT, PAINTING, MARCKETTA, GATEWAY plumbing & heating, QUALITY ROOFING AT A REASONABLE PRICE, CARLSON BROTHERS ROOFING, ROOFING, SPACE AVAILABLE, J.B.A. ROOFING & CONTRACTING, LLC, ANTIQUES, Suburban Plumbers & Heating, CARPENTRY, GET READY FOR A BUSY SPRING/SUMMER PLACE YOUR AD HERE, ROOFING, SPACE AVAILABLE

PLANNING A GROUP OUTING OR FUNDRAISER? LET THE NEWARK BEARS MAKE IT EASY FOR YOU WITH DISCOUNTS, GIVEAWAYS, AND GREAT BASEBALL!!! CALL 973.483.6900 TODAY NEWARKBEARS.COM

COUNTY NEWS

Special household waste collection on Saturday

The County of Union will sponsor the first of two spring household special waste collection days Saturday from 8 a.m. to 2 p.m. at Schilling-Flough Corp., 7000 Galloping Hill Road, Kenilworth.

The second special waste collection day will be June 8 from 8 a.m. to 2 p.m. at Lucent Technologies, 600 Mountain Ave., New Providence.

These days are scheduled so that Union County residents can get rid of unwanted household special waste in a safe and environmentally proper manner.

All residents of Union County are eligible to participate at no cost. Registration is not required for these special Saturday collections.

Household special waste collections will be held rain or shine for Union County residents only and not for businesses.

NCJW annual dinner National Council of Jewish Women, Union County Section, will sponsor its annual dinner in support of NCJW's Yad b' Yad Program in

Israel on Wednesday at 6:30 p.m. in the home of Gloria and Richard Brown in Elizabeth.

Through Yad b' Yad, or "Hand in Hand with Israel," NCJW provides grants for literacy, childhood development and enrichment programs for women, children and families in need.

The speaker will be Gloria Brown who will share current information about her recent visit to Israel and her meeting at NCJW's national convention with Shari Eshet, director of NCJW's Israel office.

Parents and students from Union County are invited to learn more about the Union County Vocational-Technical High School and its programs during an open house from 6:30 to 8:30 p.m. on April 18 at the Raritan Road campus.

The annual open house will include guided tours of all available programs and facilities. The open house is designed to ensure parents and students get a comprehensive look at the vo-tech high school's leading occupational and skills training programs.

In addition to refreshments, all visitors will be invited to shop in the school's UCVT's Tech World Supermarket, take advantage of blood pres-

Asisco WAREHOUSE OPEN TO PUBLIC BATTERIES FOR EVERYTHING TRUCKS • AUTOS • CELLULARS LAPTOPS • CAMCORDERS

Kids Golf Camp School Break Week April 22 - 26 Monday thru Friday 1:00pm - 4:00pm

The Wardlaw-Hartridge School 1295 Inman Avenue Edison, New Jersey 08820

NEW JERSEY BOTANICAL GARDENS 1198 DUKE'S PARKWAY W. HILLSBOROUGH, N.J. 08844

WHIRLPOOL BATHS KITCHEN REMODELING FREE EXHAUST FAN or TUB ENCLOSURE WITH BATHROOM REMODELING

OPEN HOUSE 6:30 - 8:30 PM Thursday, April 18, 2002 TOURS • DEMOS • REFRESHMENTS

ARTS & ENTERTAINMENT



Taking to the runway is at the Forum Theater in Metuchen is a wildly hilarious farce on beauty pageants called 'Pageant'.

'King and I' is spectacular

Paper Mill: The State Theater of New Jersey, which has almost always been counted on to deliver quality, polished entertainment, has raised its own standard of excellence.

Currently on the boards at the Millburn theater is a production of Rodgers and Hammerstein's "The King and I" which can only be described in two words: absolutely spectacular.

'Pageant' offers 'unbridled laughter'

If ever one wanted to completely forget for an hour and 45 minutes the troubles of the world and one's own personal problems, and laugh wildly at the hilarious goings on at the Forum Theater in Metuchen, right around the corner from Rahway, hurry over to see the outrageously funny musical comedy, "Pageant."

On the Boards

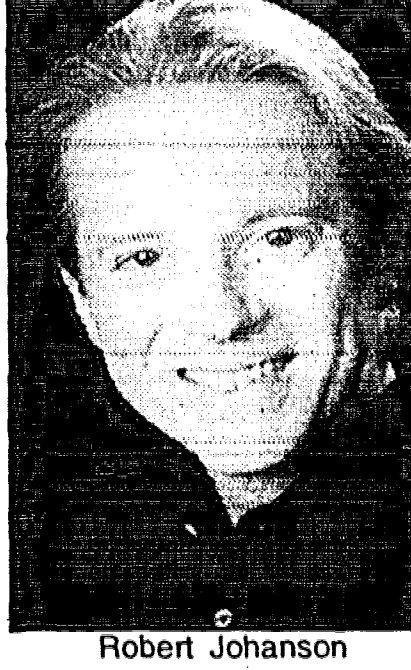
By Bill VanSant Associate Editor home, provides an imposing yet fascinating presence on stage.



Kevin Gray, left, and Carolee Carmello breathe vibrant new life into two classic roles of the American musical theater canon: Anna and the King of Siam in 'The King and I', currently on stage at Paper Mill: The State Theater of New Jersey.

Johanson to step down at Paper Mill

Paper Mill Executive Producer Angelo Del Rossi, the Board of Trustees and Artistic Director Robert Johanson have decided to redefine Johanson's relationship with the playhouse.



Robert Johanson

WOOD GYM OUTLET SPRING SALE Huge Selection Pine, Redwood Accessories Set Service

BATHROOM REMODELING FREE EXHAUST FAN or TUB ENCLOSURE WITH BATHROOM REMODELING

UNLIMITED COMMUNICATIONS SALES • SERVICE • INSTALLATION FOR CELLULAR PHONES, BEEPERS & PAGERS

Cranford Repertory Theatre Inc. Presents Grease Prizes Pre-show contests with Vince Fontaine

UCVTHS Union County Vocational-Technical High School 1776 Raritan Road Scotch Plains, NJ 07076

INFOSOURCE FREE INFORMATION BY TELEPHONE • 24 HOURS A DAY 908-686-9898 IT'S AS EASY AS... 1 Call 908-686-9898 2 Press the 4 digit code





# Extraordinary Spring Savings

## Drivers wanted.®

NEW 2002 VW  
**JETTA GL WAGON**  
**\$15,988**



Buy for VIN #2N78840, S1k #EY20147, 4 DR, 5 spd., 4 cyl., p/s/ABS/winds/mirrs/lcs/trunk, am/fm cass, a/c, tilt, cruise, r/def, tint gls, int wprs, fir mats, cloth bkts, alarm, dual air bags, keyless entry, MSRP: \$18,300.

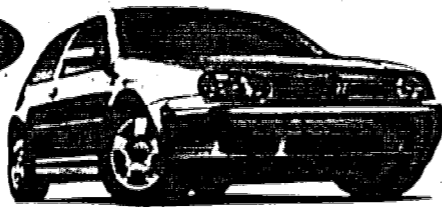
NEW 2002 VW  
**GOLF GLS**  
**\$17,788**



Buy for VIN #24024500, S1k #EY20284, 4 DR, auto, 4 cyl., p/s/ABS/winds/mirrs/lcs/trunk, am/fm cass, a/c, tilt, cruise, r/def, tint gls, int wprs, fir mats, cloth bkts, alarm, dual air bags, moonroof, alloys, keyless entry, MSRP: \$19,350.

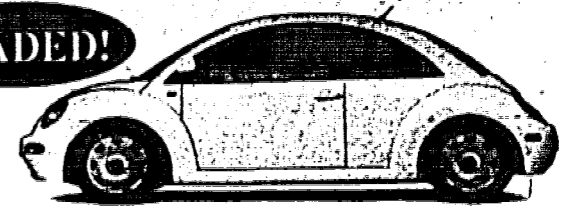
NEW 2001 VW  
**GTI**  
**\$17,788**

DRIVER WANTED!



Buy for VIN #14058233, S1k #EY10773, 2 DR, 5 spd., 4 cyl., turbo, p/s/ABS/winds/mirrs/lcs/trunk, am/fm cass, a/c, tilt, cruise, fog lights, r/def, tint gls, int wprs, fir mats, cloth bkts, alarm, dual air bags, moonroof, alloys, keyless entry, Monsoon sound, MSRP: \$20,400.

NEW 2002 VW  
**NEW BEETLE GLS**  
**\$17,888**



Buy for VIN #2M410668, S1k #EY20087, 2 DR, auto, 4 cyl., p/s/ABS/winds/mirrs/lcs/trunk, am/fm cass, a/c, tilt, cruise, r/def, tint gls, int wprs, fir mats, cloth bkts, alarm, dual air bags, moonroof, alloys, keyless entry, MSRP: \$19,600.

NEW 2001 VW  
**NEW BEETLE SPORT**  
**\$17,988**

2 AVAILABLE!



Buy for VIN #1M481433, S1k #EY10757, 2 DR, 5 spd., turbo, 4 cyl., p/s/ABS/winds/mirrs/lcs/trunk, traction ctrl, am/fm cass, a/c, tilt, cruise, r/def, tint gls, int wprs, fir mats, leather bkts, alarm, fog lights, dual air bags, moonroof, custom whls, keyless, Monsoon sound, heated seats, MSRP: \$20,900.

NEW 2002 VW  
**JETTA GLS 1.8T**  
**\$19,488**

180HP!



Buy for VIN #2M064608, S1k #EY20340, 4 DR, auto, 4 cyl., turbo, p/s/ABS/winds/mirrs/lcs/trunk, traction ctrl, am/fm cass, a/c, tilt, cruise, r/def, tint gls, int wprs, fir mats, cloth bkts, alarm, dual air bags, keyless entry, MSRP: \$21,275.

NEW 2002 VW  
**CABRIO CONVERTIBLE**  
**\$19,988**

SUN & FUN!



Buy for VIN #2N804228, S1k #EY20308, 2 DR, auto, 4 cyl., p/s/ABS/winds/mirrs/lcs/trunk, am/fm cass, a/c, tilt, cruise, r/def, tint gls, int wprs, fir mats, cloth bkts, alarm, dual air bags, keyless entry, MSRP: \$22,125.

NEW 2002 VW  
**PASSAT GLS 4-MOTION 4WD**  
**\$26,988**



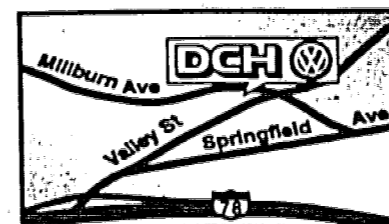
Buy for VIN #2P071612, S1k #EY20112, 4 DR, auto, 6 cyl., p/s/ABS/winds/mirrs/lcs/trunk, traction ctrl, am/fm cass, a/c, tilt, cruise, fog lights, r/def, tint gls, int wprs, fir mats, cloth bkts, alarm, dual air bags, moonroof, alloys, keyless entry, Monsoon sound, heated seats, HomeLink(r), MSRP: \$29,955.

**DCH Volkswagen**  
Under new ownership

2195 Millburn Avenue • Maplewood, NJ 973-762-8500

DCH Auto Group "Your satisfaction is our mission"

SHOWROOM HOURS:  
Mon-Thurs 9am-9pm  
Fri 9am-7:30pm  
Sat 9am-6pm  
PARTS & SERVICE:  
Mon-Fri 7:30am-5:30pm

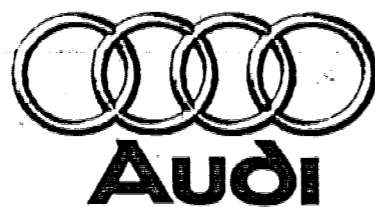


Just minutes from the Short Hills Mall

We will buy your car on-line: [www.DCHAUTONJ.com](http://www.DCHAUTONJ.com)

Prices include licensing & reg. Prices include all rebates & incentives to dealer, \$500 recent college grad rebate, if qual. All financing in lieu of factory rebates, on select models. See dealer for complete details. This ad supersedes all other offers. Subject to primary approval. Not resp. for typographical errors. Expires 4/11/02.

[www.dchessex.com](http://www.dchessex.com)



THE LUXURY OF A4



THE 2002 NEW BODY STYLE  
Clarity and Precision  
VISIT DCH AUDI FOR DETAILS

ADDITIONAL SAVINGS FOR PREVIOUS AUDI OWNERS!



WE GIVE YOU MORE!  
Just minutes from the Short Hills Mall

We will buy your car on-line: [www.DCHAUTONJ.com](http://www.DCHAUTONJ.com)

**DCH Audi**  
Under new ownership

2195 Millburn Avenue • Maplewood, NJ 973-762-8500

DCH Auto Group "Your satisfaction is our mission"

SHOWROOM HOURS:  
Mon-Thurs 9am-9pm  
Fri 9am-7:30pm  
Sat 9am-6pm  
PARTS & SERVICE:  
Mon-Fri 7:30am-5:30pm

[www.dchessex.com](http://www.dchessex.com)

**mazda** Get in. Be moved.

## Mazda-Zoom-Zoom!

NEW 2002 MAZDA  
**PROTEGE**  
LX 2.0



S1k #EY20062, VIN #20540454, 4 DR, 4 cyl., auto, p/s/w/winds/mirrs/lcs/trunk, a/c, am/fm cd, tilt, cruise, r/def, tint gls, int wprs, fir mats, cloth bkts, dual air bags, moonroof, alloys, MSRP: \$17,325.

**\$168** PER MO. LEASE FOR 42 MOS. \$1000 cap cost redact + \$168 1st mo. pymt. + \$0 ref sec dep. + \$395 bank fee = \$1763 due at signing + tax & MV fees. Tot pymt/residual: \$7056/\$7800.

NEW 2002 MAZDA  
**MPV**  
LX



S1k #EY20109, VIN #20305515, 5 DR, 6 cyl., auto, p/s/ABS/winds/mirrs/lcs/trunk, am/fm cd, a/c, tilt, cruise, r/def, tint gls, int wprs, fir mats, cloth bkts, dual air bags, alloys, keyless entry, roof rack, MSRP: \$23,160.

**\$268** PER MO. LEASE FOR 48 MOS. \$1000 cap cost redact + \$268 1st mo. pymt. + \$0 ref sec dep. + \$395 bank fee = \$1863 due at signing + tax & MV fees. Tot pymt/residual: \$12,864/\$9520.

NEW 2002 MAZDA  
**MIATA**  
CONVERTIBLE

TOP SELLING SPORTS CAR!



S1k #EY20088, VIN #20222971, 2 DR, 4 cyl., 5 spd., p/s/w/winds/mirrs/lcs/trunk, am/fm cd, a/c, fog lights, r/def, tint gls, int wprs, fir mats, cloth bkts, dual air bags, alloys, spoiler, MSRP: \$22,095.

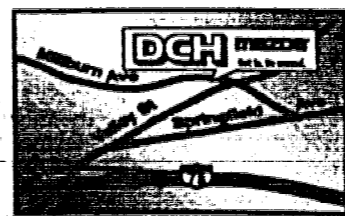
**\$198** PER MO. LEASE FOR 24 MOS. \$1000 cap cost redact + \$198 1st mo. pymt. + \$0 ref sec dep. + \$395 bank fee = \$1793 due at signing + tax & MV fees. Tot pymt/residual: \$4752/\$12,200.

NEW 2002 MAZDA  
**TRIBUTE**  
LX



S1k #EY20222, VIN #20302277, 4 DR, auto, 6 cyl., p/s/w/winds/mirrs/lcs/trunk, am/fm cd, tilt, cruise, fog lights, r/def, tint gls, int wprs, fir mats, cloth bkts, dual air bags, alloys, keyless entry, polished chrome, MSRP: \$23,225.

**\$288** PER MO. LEASE FOR 42 MOS. \$1000 cap cost redact + \$288 1st mo. pymt. + \$0 ref sec dep. + \$395 bank fee = \$1883 due at signing + tax & MV fees. Tot pymt/residual: \$12,096/\$12,200.



Just minutes from the Short Hills Mall

We will buy your car on-line: [www.DCHAUTONJ.com](http://www.DCHAUTONJ.com)

**DCH Mazda**  
Under new ownership

2195 Millburn Avenue • Maplewood, NJ 973-762-8500

DCH Auto Group "Your satisfaction is our mission"

SHOWROOM HOURS:  
Mon-Thurs 9am-9pm  
Fri 9am-7:30pm  
Sat 9am-6pm  
PARTS & SERVICE:  
Mon-Fri 7:30am-5:30pm

Prices include licensing, tag & taxes (due at signing). Closed end lease includes 10000 miles and 15% wear/tear. (Leasee pays for mileage, excess wear & tear. All other costs are the responsibility of the lessee.) All costs are estimates. Actual costs may vary. Dealer's actual cost may be higher. \$5000 initial deposit required. \$10000 cap cost redact. \$1000 1st mo. pymt. + \$0 ref sec dep. + \$395 bank fee = \$1183 due at signing + tax & MV fees. Tot pymt/residual: \$12,096/\$12,200.