

# Echo LEADER

Serving Springfield and Mountainside

SPRINGFIELD, N.J., VOL. 74 NO. 48

THURSDAY, JULY 24, 2003

TWO SECT

S

## Police initiate chase

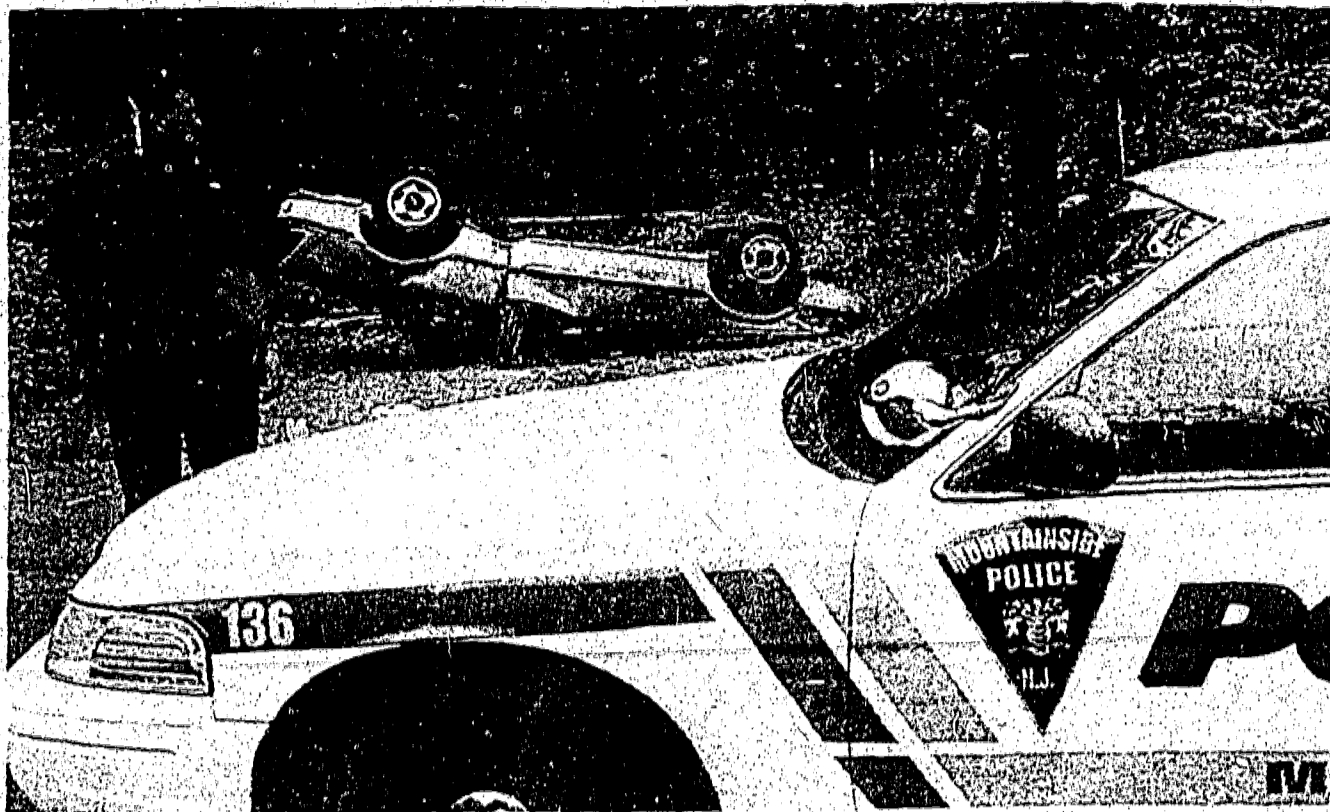
By Steven Reilly  
Staff Writer

Police officers from Mountainside, Union and Hillside were involved in a high-speed chase that began in Mountainside and raced through Union before ending in a crash near the Hillside-Union border.

Police arrested the male driver and the female passenger after their vehicle crashed and rolled over at the interchange of Erhardt Street and Route 22.

The chase began around noon on Friday along Route 22 east in Mountainside when Borough Police Officer Jeffrey Sinner stopped the blue Chevrolet Beretta on motor vehicle violations. The suspect fled from Sinner as he approached the vehicle and Sinner initiated the pursuit. The suspect allegedly rammed several other vehicles on Route 22 in an attempt to elude the officers.

Mountainside's cruisers pursued the vehicle into Union where township officers joined the chase. The two departments made several attempts to stop the vehicle before the suspects



Police officers from Mountainside, Union and Hillside were involved in a high-speed chase that began in Mountainside and raced through Union before ending in a crash at the Union-Hillside border on Friday.

crossed over the border into Hillside. Hillside police officers were ready to join the chase when the driver allegedly lost control of the vehicle and flipped several times.

Both the male driver and the female passenger were transported to University Hospital in Newark where they were treated for their injuries and

released into police custody.

Union police arrested the female passenger, identified as Angel Ward of Newark, and charged her with possession of a controlled dangerous substance. The male driver was identified as William K. Dawkins, 28, also of Newark, who was arrested by Mountainside police.

Dawkins is currently in Union County Jail, according to Mountainside Police Capt. Richard O'Neil. He has been charged with second degree assault, possession and possession with intent to distribute heroin, located in the county.

Managing Editor: Brian Pedersen, contributed to this report.

## Contract dis awaits a decision

By Marc Lightdale  
Staff Writer

A new contract for police and fire personnel in Springfield is still unresolved as both sides await a mediator's decision. Police and fire have been without a new contract since Dec. 31, 2000.

Township Administrator Richard Sheola said the briefs have been filed by the township, which is currently waiting for the reception of the documents by the two unions: Firemen's Mutual Benevolent Association Local 57 and the PBA Local 76.

It's up to the arbitrator to make a decision, according to Sheola, who said that he does not have an estimate of when that could be completed and could not discuss the different positions at this time.

Township Committeeman Steven Goldstein said the police and fire departments are in arbitration and that it takes up to 18 months for the process to be completed.

"All the submissions have been made, and it's awaiting a decision," said Goldstein.

Committeeman Sy Mailman said the fire and police will not discuss the issue because it is in mediation. The issue has been going on for three years, and Mailman pointed out that the police had fired their attorney. At this point, the issue is up to the mediator, he said.

Among the central issues are the use of a 24-hour shift by the fire and police departments. A 24-hour shift for firefighters would be followed by 72 hours off. As of January 2001, the arrangement involved two 10-hour days followed by one day off and two 14-hour nights.

Firefighters objected to this schedule in 2001 because the lack of adequate staff relegated the Fire Department workers to remain on recall during their one day off.

PBA officials could not be reached for comment by presstime Tuesday. In previous interviews, union officials said the department needed 24 patrol officers working at one time but only had five supervisors and 21 patrolmen. The union also has been trying to get a different schedule implemented, one that would have officers work four days, followed by four days off. Each of the four days in a row would consist of shifts of 10 hours and 45 minutes.

## District adopts state policy on bullying

By Marc Lightdale  
Staff Writer

Walter Mahler, superintendent of schools for the Springfield district, gave a report about sexual harassment at the Springfield Board of Education's meeting Monday.

During the meeting, there was a motion introduced and approved regarding equal education opportunity harassment.

According to Mahler, every school district in the state has to revise its policy to meet the requirements from a law that was passed this year and get it to the county superintendent's office by Sept. 1.

The state Department of Education gave detailed requirements, rationale, and model policy language.

Mahler said rather than throw the Springfield district's existing policy away, he attempted to integrate the outline from the previous harassment policy combined with the newly formed language given by the state Department of Education.

"I took the same outline that we had in existing opportunity, and made sure the state Department of Education language was included," said Mahler. "In most cases, it was cut and pasted, in the exact wording."

The Equal Education Opportunity Harassment policy begins with the board prohibiting acts of harassment, intimidation, or bullying.

The policy is defined as such that harassment, intimidation, or bullying means any gesture or written, verbal

or physical act that takes place on school property, at any school-sponsored function that is motivated by a perceived characteristic, effectively harasses, humiliates or damages that property, and has the effect of intimidating or demeaning any student or group.

The physical harassment includes hitting, poking, punching, and tripping and intimidation may be manifested through peer pressure, name calling, teasing, verbal challenges, direct threats, verbal attacks, belittlement, social exclusion, and spreading malicious rumors.

Sexual harassment includes unwelcome leering, sexual slurs, unwanted graphic comments, sexual jokes, sexual rumors, unwelcome touching, intentional limiting of a sexual nature of pupil's access to educational tools, unwanted sexual conduct, cornering or blocking of a sexual nature, or displaying sexually suggestive objects.

At one point, the policy states that a chief school administrator shall ensure that students and their parents and or guardians are provided the rules of the district regarding student conduct.

In other business, another law implemented was the requirement of having a public meeting and report on school violence. The number of incidents of violence, vandalism, or substance abuse is to be recorded.

This information was supposed to be filed electronically.

## A landmark disappears



The Lido Diner, a landmark on Route 22 in Springfield, closed its doors for good Monday. It will be torn down and replaced with a 7-Eleven.

Photo By Joseph Sorrentino

## Township struck by power outages again

By Marc Lightdale  
Staff Writer

Two different power outages occurred in Springfield last week, preceded by one power outage on the previous Saturday, according to David Feyl, area manager for Jersey Central Power and Light.

There are approximately 6,000 customers of JCP&L in Springfield. JCP&L now covers the entire town, whereas Springfield used to be at least partially covered by Public Service Electric & Gas.

On July 12, a commercial customer had an outage in the vicinity of Morris Avenue.

"It was a relatively small outage, the cause was an animal that got into the transformer or fuse and caused a fault in the electricity," Feyl said.

A second call took place on July 15 with the cause of the power outage unknown. The second call had a fuse interrupter that takes place in order to make sure that the electricity is protected.

"We have fuses throughout the system so that the least amount of damage is done," Feyl said.

A fuse protects the infrastructure, Feyl said, adding that without fuse protectors, the company would run the risk of having large areas without power for small reasons.

Fuse protection serves to isolate the fault or problem. In this particular situation, the source could have been a mechanical problem or a falling tree or an animal could have caused the

problem, said Feyl.

There were 44 calls from residents without power in the vicinity of East Hills Road on July 13. Other roads affected included Highland Avenue, Michigan Avenue, Stockton Road, Perimeter, Ashwood Avenue, Greenhill Road, Malvern and Little Brook Road.

Committeeman Steven Goldstein said Springfield does get power outages fairly frequently but speculated that the town had received rolling blackouts.

A rolling blackout takes place when a power company purposely blacks out for a couple of minutes if they're getting overwhelmed.

"It happens during the summer when it gets really hot," Goldstein said of the rolling blackouts, which purposely blackout areas when overwhelmed for energy.

In late 2001 and early 2002, the company did a significant amount of electrical work to address the situation of power outages, according to Feyl.

JCP&L services nine counties in Northern New Jersey, but only a small portion of Union County. In addition to serving all of Springfield, the company serves Summit, New Providence, Berkeley Heights, and a small portion of Mountainside.

Squirrels, trees and the forces of mother nature, such as high winds and summer lightning, have often been pointed out as the causes for outages, according to Feyl.

## Street collapses at intersection

By Steven Reilly  
and Marc Lightdale

Monday morning, rush hour commuters found themselves in even more traffic along westbound Morris Avenue due to a sewer line break at the intersection of Maple Avenue in Springfield.

The break caused part of the roadway to cave and shut the road to traffic at the busy interchange, scrambling repair crews to the site.

Springfield Assistant Engineer Sam Mardini said it all started with a sewer backup on Maple Avenue, which began July 16.

The Springfield Engineering Department tried to clear the line of debris and by using video camera technology, found two areas where the sewer main was broken.

The sewer line broke at the lateral connection of 24 and 26 Maple Ave. Mardini said they had to get a contractor because it was an emergency job to dig up the road and fix the sewer main.

By Friday morning, a three-foot wide, 40-foot long section of Maple Avenue heading toward Union caved.

Workers responded to the road after police and state officials closed it to southbound traffic. Crews worked 12-hour shifts over the next few days to restore traffic to the roadway.

The three-lane, one-way road carried traffic from Morris Avenue to interchanges for Springfield Avenue and Main Street in Millburn.

Police detoured traffic to Morris Avenue while crews dug out the debris from the collapse and prepared to install a new, plastic sewer line.

Crews at the scene noted that raw sewage mixed with a high level of ground water causing the cave-in and the subsequent trench in the area.

By Monday afternoon, crews had excavated all of the debris from the 10-foot deep trench and were dumping stone gravel over the new sewer line.

Traffic was allowed to start flowing from Morris Avenue to Main Street by the evening rush on Monday night. Crews expected to have a layer of asphalt on the road later that night.

The road was closed for four hours on Friday from 6:30 to 11 p.m. and Monday from noon to 4 p.m. It was

**'We wanted to protect the motorists until the critical area was completed. It was an emergency road.'**

— Sam Mardini

open fully after the trench was closed for the weekend.

Because some of the dirt washed into the sewer line, which is typical of sewer breaks, according to Mardini, there were some voids under the pavement, which led to concern about the stability of the road. The type of soil coming down was all sand, he said.

"We wanted to protect the motorists until the critical area was completed," Mardini said. "We had a contractor, it was an emergency road."

South Orange Construction came in to repair the line.



Workers try to repair a sewer line break at the Morris and Springfield avenues intersection in Springfield Monday. The unexpected break caused part of the roadway to cave, shutting down the road to traffic.

Photo By Barbara Kukkala

Welcome to the ECHO LEADER

How to reach us: The Echo Leader is published every Thursday by Worth Community Newspapers, an independent family-owned newspaper company...

To subscribe: The Echo Leader is mailed to the homes of subscribers for delivery every Thursday morning...

Missing newspaper: If your Echo Leader did not get delivered please call 908-686-7700 and ask for circulation.

Back issues: To purchase back issues of the Echo Leader please call 908-686-7700 and ask for circulation.

News items: News releases of general interest must be in our office by Friday at noon to be considered for publication...

Story reprints: For permission to reprint any item printed in the newspaper you must call Tom Canavan at 908-686-7700...

Letters to the editor: The Echo Leader provides an open forum for opinions and welcomes letters to the editor. Letters should be typed double-spaced...

E-mail: The Echo Leader accepts opinion pieces by e-mail. Our address is: Editor@echoleader.com

To place a classified ad: The Echo Leader has a large, well-circulated advertising section. Advertisements must be in our office by Tuesday at 3 p.m.

To place a public notice: Public notices are notices which are required by state law to be printed in local weekly or daily newspapers.

Facsimile transmission: The Echo Leader is equipped to accept your ads, releases, etc. by Fax. Our Fax line is open 24 hours a day.

Web site: Visit our Web Site on the Internet called LocalSource.com at http://www.localsource.com

Postmaster please note: The Echo Leader (USPS 512-7201) is published weekly by Worth Community Newspapers, Inc., 1291 Stuyvesant Avenue, Union, N.J. 07083. Mail subscriptions \$26.00 per year in Union County. 75 cents per copy, non-refundable.

Committee hopes to prevent geese from frequenting pool

By Marc Lightdale Staff Writer
The Township of Springfield has been looking for a way to stem the problem of geese landing on water at the Municipal Pool and leaving goose droppings, but no easy answers have been found in this burgeoning problem...

Trapped crash victims rescued

Mountainside
On Saturday at 2:37 a.m., Mountain side firefighters rescued two people trapped in a motor vehicle on Route 22 East, after the car had crashed into and severed an electrical utility pole...

On Sunday at 8:47 a.m., firefighters responded to an activated fire alarm at a residence on Meeting House Lane. Firefighters used the hydraulic "Jaws of Life" to free the driver and passenger, who were both badly injured and rushed to University Hospital's trauma unit in Newark...

Borough school board meetings address Beechwood, Deerfield work

The Mountain Side Board of Education will conduct a special board meeting on Tuesday in the Deerfield School Media Center, 702 Central Ave., at 8 p.m. A second meeting will be Aug. 19 at 8 p.m. in Council Chambers at Borough Hall, 1385 Route 22 East in Mountainside.

Family tragedy continues film series

The International Film Festival continues today at the Springfield Free Public Library. "The Son's Room" will be shown at noon and 7 p.m. Giovanni leads a contented middle-class life as a psychiatrist...

Videos reveal man's eternal quest

"The Springfield Public Library, 66 Mountain Ave., continues its video series on "Gold: Man's Greatest Obsession" at noon on Aug. 5. "Volume Three: The Staff of Dreams" will be shown. Scholars explore the meaning of the most enduring golden myths...

Stuyvesant HAIRCUTTING Quality Hair Cuts At Affordable Prices
SENIOR CITIZEN SPECIAL Mon., Tues., Wed., Thurs., Fri. 20% OFF
OPEN MON. thru SAT. 1654 STUYVESANT AVE., UNION

COMMUNITY CALENDAR
The Community Calendar is prepared by the Echo Leader to inform residents of various community activities and government meetings. To mail a schedule, send it to Echo Leader, Attn: Managing Editor, P.O. Box 3109, Union, 07083.

August 1
The International Film Festival continues at the Springfield Free Public Library, 66 Mountain Ave. on Tuesday, July 22, at 8 p.m. The Mountain Side Board of Education will conduct a special meeting at 8 p.m. in Council Chambers, Borough Hall, 1385 Route 22 East...

August 2
A Ladies' Night Club for the Mountain Side Newsletters Club will be at 7 p.m. at E.J. Griffin at Route 22 West, Kew-Forest, Fort Mill, North Carolina. The Springfield Planning Board will convene in the Council Room of the Municipal Building, 100 Mountain Ave., at 8 p.m. Park Naturalist Ruth Yoshida will lead guests on a tour of the "Reptiles of New Jersey" at Trandise Nature & Science Center, 452 New Providence Road, Mountainside, from 10 to 12:30 p.m. Participants can meet live snakes and turtles up close. For information, call 908-294-3670.

August 3
The Springfield Board of Education will conduct a special meeting at 8 p.m. in Council Chambers, Borough Hall, 1385 Route 22 East, Mountainside, on 1385 Route 22 East. For the extent presently known, the agenda will include discussion of the construction project at Deerfield and Beechwood Schools and other regular agenda items. The Springfield Planning Board will convene in the Council Room of the Municipal Building, 100 Mountain Ave., at 8 p.m. Park Naturalist Ruth Yoshida will lead guests on a tour of the "Reptiles of New Jersey" at Trandise Nature & Science Center, 452 New Providence Road, Mountainside, from 10 to 12:30 p.m. Participants can meet live snakes and turtles up close. For information, call 908-294-3670.

What's So Special About This ASSISTED LIVING Community?
Everything. From the new friends you'll meet, to the gourmet meals, to our well-trained and caring staff, to the diverse recreational and educational programs, to the luxurious pampering found at our full-service spa—everything at the Village celebrates the finest quality assisted living. At the Village, we celebrate life! Come for a visit and experience the new Kessler Village! Short term stays available. Call now for more information and best suite selection, 973-966-5483

Vehicle damage reported

Springfield
A Flemington resident's vehicle parked on Mountain Avenue in Springfield was damaged during the attempted theft of the vehicle, which resulted in a broken steering column. In addition, there was body damage caused by a motor vehicle accident. An Edison resident parked at Lawrence Road had two headlights of unknown value stolen at noon on Friday.

On July 16 at 1:20 p.m., firefighters answered a medical service call at a Forest Drive apartment complex. At 1:49 p.m., they attended to a medical service call at the municipal pool. At 2:48 a.m. on July 17, firefighters extinguished a dumpster fire at a Springfield Avenue business. At 9:17 a.m., they responded to a motor vehicle accident on Morrison and Poppler Road. At 12:40 p.m., they extinguished a brush fire on Route 22 East. At 1:20 p.m., they attended to an activated fire alarm at Watcher School. At 11:26 p.m., they extinguished an activated carbon monoxide detector at a Springfield Avenue apartment.

On Friday at 10:48 a.m., firefighters responded to a motor vehicle accident on Springfield Avenue. At 11:54 a.m. they completed a fuel leakage from a truck of Prospect Place and Morris Avenue. At 12:32 p.m., they attended to a 1-911 Fire-Headquarters of a multi-alarm fire assignment. At 2:40 p.m., they extinguished a small vehicle fire on Route 75, mile 35. At 4:28 p.m., they attended a medical service call on Shampike Road. On Saturday at 4:08 p.m., they attended to a broken water pipe at a Shampike Road residence.

On July 14 at 4:15 a.m., firefighters investigated an activated fire alarm at a Springfield Road business. At 7:03 a.m., they attended to an activated fire alarm at a Springfield Avenue business. At 8:00 p.m., they responded to a motor vehicle accident on Morrison and Poppler Road. At 12:40 p.m., they extinguished a brush fire on Route 22 East. At 1:20 p.m., they attended to an activated fire alarm at Watcher School. At 11:26 p.m., they extinguished an activated carbon monoxide detector at a Springfield Avenue apartment.

On Sunday at 8:47 a.m., firefighters responded to an activated fire alarm at a residence on Meeting House Lane. Firefighters used the hydraulic "Jaws of Life" to free the driver and passenger, who were both badly injured and rushed to University Hospital's trauma unit in Newark. On July 14 at 4:15 a.m., firefighters investigated an activated fire alarm at a Springfield Road business. At 7:03 a.m., they attended to an activated fire alarm at a Springfield Avenue business. At 8:00 p.m., they responded to a motor vehicle accident on Morrison and Poppler Road. At 12:40 p.m., they extinguished a brush fire on Route 22 East. At 1:20 p.m., they attended to an activated fire alarm at Watcher School. At 11:26 p.m., they extinguished an activated carbon monoxide detector at a Springfield Avenue apartment.

Robert Spillane Broker/Manager Weichert, Realtors Union, NJ 07083 Phone: 908-687-4800
Take advantage of our UNION Office benefits for Realtors: Flexible Hours, Work Locally - No Commute, Unlimited Income Potential, Licensing & Fast Track Training. For a confidential interview call me at (908) 687-4800 or e-mail me at rspillane@weichertrealtors.net

Taking the plunge



These young swimmers aren't afraid to take a plunge into the Mountain Side Community Pool. All age 12, the brave girls are, from left, Taylor Hoy, Danelle McAdam, Kristen Morgan and Samantha Steinberg.

Springfield adopts land use law

Township Committee members, including Mayor Gregory Clarke, adopted the ordinance today. The ordinance is the final document currently being prepared by the Township Committee. It will be available for public comment in the next 10 days. The ordinance will be adopted by the Township Committee at its next meeting on Tuesday, July 22, at 8 p.m. in Council Chambers, Borough Hall, 1385 Route 22 East, Mountainside. The ordinance will be available for public comment in the next 10 days.

The ordinance will be adopted by the Township Committee at its next meeting on Tuesday, July 22, at 8 p.m. in Council Chambers, Borough Hall, 1385 Route 22 East, Mountainside. The ordinance will be available for public comment in the next 10 days. The ordinance will be adopted by the Township Committee at its next meeting on Tuesday, July 22, at 8 p.m. in Council Chambers, Borough Hall, 1385 Route 22 East, Mountainside. The ordinance will be available for public comment in the next 10 days.

The ordinance will be adopted by the Township Committee at its next meeting on Tuesday, July 22, at 8 p.m. in Council Chambers, Borough Hall, 1385 Route 22 East, Mountainside. The ordinance will be available for public comment in the next 10 days. The ordinance will be adopted by the Township Committee at its next meeting on Tuesday, July 22, at 8 p.m. in Council Chambers, Borough Hall, 1385 Route 22 East, Mountainside. The ordinance will be available for public comment in the next 10 days.

STANLEY HARMON, A PROFESSIONAL DIVORCE MEDIATOR, WILL ENABLE YOU TO SPEAK RATIONALLY TO YOUR SPOUSE AND CREATE WORKABLE AND FAIR SOLUTIONS. SUCCESSFUL RESULTS ARE ACHIEVED EVEN WHEN COUPLES ARE VERY ANGRY. IT IS SUGGESTED THAT YOU CALL EVEN IF YOUR SPOUSE IS CURRENTLY NOT INTERESTED IN MEDIATION. MR. HARMON CAN HELP OVERCOME THAT PROBLEM. THERE IS NO CHARGE FOR THE FIRST VISIT. STANLEY HARMON HAS BEEN AN ATTORNEY FOR OVER 25 YEARS. AS A GRADUATE OF THE WHARTON BUSINESS SCHOOL, HE HAS THOROUGH UNDERSTANDING OF FINANCIAL MATTERS. HIS OFFICES FOR DIVORCE MEDIATION ARE LOCATED IN MELBURN AND EDSON. FOR AN APPOINTMENT CALL (732) 409-5469. EVENING AND WEEKEND HOURS ARE AVAILABLE. YOU HAVE EVERYTHING TO GAIN AND NOTHING TO LOSE. FOR MORE INFO REFER TO: WWW.BETTERWAYTODIVORCE.COM Accredited by The N.J. Association of Professional Mediators

Committee plans to keep agendas brief

By Brian Edson Managing Editor
When it comes to meeting agendas for local governing bodies, the length and amount of information contained within them varies from town to town. According to a recent survey of the Union County towns covered by Worth Community Newspapers, Springfield Township Committee agendas have the least amount of information in them. Despite this, Michael Cerra of the New Jersey State League of Municipalities said the agenda for any township meeting is just an itinerary and that the officials running the meeting have full run of what goes on the agenda.

Local municipalities have a wide range of discretion, said Cerra. He said there are no set guidelines that towns must follow, other than listing the name of the ordinance, by title and the nature of appointments that are made. Complete ordinances are required to be published in the legal notices of newspapers. Cerra said many towns are beginning to make their agendas available to the public on the Internet. He said he expects the agendas for the Springfield Township Committee meetings were usually no more than one page. The July 8 agenda contains sentence fragments for listing and introducing resolutions and ordinances, with lists listed as well. Approvals of reports and personnel listed only the department names. Still, Township Committee meetings here let their agendas do not need to include any more information than they already do. For the Tuesday meeting, the agenda has been tweaked slightly to include more descriptive, detailed paragraphs for various ordinances listed. The approval of recreation and pool personnel also lists full names and titles. Committee member Steve Mullinan said when ordinances are presented at the meeting, the committee asks the clerk

Caldwell Swimming Chiefs to meet
The James Caldwell Swimming Chiefs of Springfield invite all individual swimmers and swim teams to participate in their fourth annual Summer Invitational Swim Meet on Saturday at Cedar Street Pool in West Caldwell. Each event—freestyle, backstroke, breaststroke and butterfly—will be open to all age groups. The meet starts at 8:15 a.m. For information or an application, call Elaine Pollara at 973-228-4769 or Steve Trivino at 973-228-6855.

JERSEY FRESH Fresh Jersey Vegetables Under New Ownership
Professional Staff, Highest Quality, Ceramic & Concrete Pottery, Personal Service, Great Selection, We Fill Propane Tanks, Friendly Atmosphere. Please Be Our Guest WAYSIDE GARDENS 54 Morris Turnpike, Summit • 908-273-7022

NORCROWN BANK
Now offering 4.25% APR Home Equity Credit Line. Ask about our other great loan products: Fixed Rate Home Equity Loan, Auto Loans, Installment Loans, Secured Loans. What a Difference our Community Bank Can Make! www.norcowbank.com







STUDENT UPDATE

Bound earns degree
Lauren Bound of Mountaintide was awarded a master of science degree from the Metropolitan Campus of Fairleigh Dickinson University, located in Teaneck.

Chu earns honors
Samson Chu of Mountaintide, a senior majoring in electrical engineering, computer and systems engineering, was among the students at Rensselaer Polytechnic Institute making the dean's list for the spring semester.

Locals graduate FDU
The College of William and Mary in Williamsburg, Virginia, is celebrating the graduation of local graduates.

Zabludovsky makes Delaware dean's list
Shira Zabludovsky recently made the dean's list at the University of Delaware for the spring semester.

Fish wins medal
Rensselaer Polytechnic Institute has announced the winners of the Rensselaer Medal, Larry Fish of Springfield is this year's honoree at Jonathan Dayton High School.

Springfield resident earns dean's list at AU
Michael Oh, a senior at American University majoring in business administration, was named to the spring 2003 dean's list at AU.

Yee graduates Des Moines University
Des Moines University held commencement exercises in May at the Polk County Convention Complex. Des Moines, awarding degrees to 122 graduates.

Homes for wee ones



Almost everyone knows that the Leprechauns have been seen in Ireland, but not everyone knows about wee creatures in the U.S. Hoping to find out are Nikkeet Dharia and Ryan Bonk of Mountaintide, who build a home for magical creatures as part of the Fairies of the Field and Forest at Trailside Nature & Science Center.

EVENTS

Show uncovers magical world of reading
The Read and Grow Magic Show presents a magical look at reading and what can be found between the pages of a book.

Program takes a look at state reptiles
Family Programs at Trailside Nature & Science Center, 452 New Providence Road in Mountaintide, continue with 'Reptiles of New Jersey' from 1:30 to 2:30 p.m. Aug. 6.

St. James Church offers Austrian holiday trip
St. James the Apostle Church in Springfield presents a trip to Austria for Austrian Christmas Markets from Dec. 1-3.

Temple conducts annual rummage sale
The Sisterhood of Temple Sha'arey Shalom, Springfield, will conduct their annual rummage sale at 78 St. Springfield Ave. in the temple's social hall from 10 a.m. to 3 p.m. Aug. 10 and 10 a.m. to noon Aug. 11.

St. James Church offers Austrian holiday trip
St. James the Apostle Church in Springfield presents a trip to Austria for Austrian Christmas Markets from Dec. 1-3.

Tempo conducts annual rummage sale
The Sisterhood of Temple Sha'arey Shalom, Springfield, will conduct their annual rummage sale at 78 St. Springfield Ave. in the temple's social hall from 10 a.m. to 3 p.m. Aug. 10 and 10 a.m. to noon Aug. 11.

AT THE LIBRARY

Antigone comes alive
A new production of the play Antigone will be presented at the Springfield Library on Friday, Aug. 15.

Same Old Song plays in foreign film festival
The International Film Festival will feature the film 'Same Old Song' in its foreign film festival.

St. James Church offers Austrian holiday trip
St. James the Apostle Church in Springfield presents a trip to Austria for Austrian Christmas Markets from Dec. 1-3.

Tempo conducts annual rummage sale
The Sisterhood of Temple Sha'arey Shalom, Springfield, will conduct their annual rummage sale at 78 St. Springfield Ave. in the temple's social hall from 10 a.m. to 3 p.m. Aug. 10 and 10 a.m. to noon Aug. 11.

Making something

If you missed it, last week we came out of the recession. Don't be hung up on a 0.4 percent unemployment rate.

Route 22 named a safety corridor
Violations will bring double the fines
By Joshua Zaitz, Staff Writer
By February, motorists traveling along portions of Route 22 will see signs reading, 'You're now entering a safe corridor.' Where fines for traffic violations will be doubled.

Left Out
By Frank Capace
Before we get to the good, the rest of the bad news is a stunning estimate that seven out of 10 workers in the region are now in the service industry.

Storming the field
The Union County All-Stars take the field at Jay Doyle Field in East Brunswick High School for Shapell Bowl X last week. Union County recorded the first shutout in the series against Middlesex County, posting a 13-0 victory. For more coverage, see the Sports page.

Union County

THURSDAY, JULY 24, 2003 - SECTION B

- News
Arts
Entertainment
Classified
Real Estate
Automotive

http://www.localsource.com



The Department of Transportation has named several 'safety corridors' throughout New Jersey, including Route 22 from Branchburg to Newark, which doubles fines for violations.

Route 22 named a safety corridor

Violations will bring double the fines
By Joshua Zaitz, Staff Writer
By February, motorists traveling along portions of Route 22 will see signs reading, 'You're now entering a safe corridor.' Where fines for traffic violations will be doubled.

These were 3,061 crashes last year on Route 22 between interstates 50 and 60, leading to a crash rate of 1.79, 60 percent higher than the state rate of 1.10 for roads similar to that stretch of Route 22's layout.
'This is a designation because these particular corridors were seen as true hot spots at this time,' said Mike Horan, a Department of Transportation spokesman.

The new law, bill A-527, also increases the minimum fines for commercial motor vehicle equipment violations. The law also requires the completion of a commercial driver's improvement program to restore a suspended commercial driver's license, increases fines for out-of-state overweight trucks, and deducts 50 percent of all safe corridor miles to a new Highway Safety Fund that will be used exclusively for highway safety projects and programs.

The Department of Transportation has named several 'safety corridors' throughout New Jersey, including Route 22 from Branchburg to Newark, which doubles fines for violations.

These were 3,061 crashes last year on Route 22 between interstates 50 and 60, leading to a crash rate of 1.79, 60 percent higher than the state rate of 1.10 for roads similar to that stretch of Route 22's layout.
'This is a designation because these particular corridors were seen as true hot spots at this time,' said Mike Horan, a Department of Transportation spokesman.

The new law, bill A-527, also increases the minimum fines for commercial motor vehicle equipment violations. The law also requires the completion of a commercial driver's improvement program to restore a suspended commercial driver's license, increases fines for out-of-state overweight trucks, and deducts 50 percent of all safe corridor miles to a new Highway Safety Fund that will be used exclusively for highway safety projects and programs.

Additional \$1 million set aside for Trailside

The Union County Board of Chosen Freeholders is expected during its regular meeting tonight to allocate \$1 million from the Open Space, Recreation and Historic Preservation Trust Fund for a \$4-million expansion of the Trailside Nature and Science Museum in Mountaintide.

The expansion is expected to include a 17,000-square-foot addition to the current 170,000-square-foot nature center, adding classrooms, exhibit space and storage areas.
'It's such a popular location that we didn't want... as we have in the past... to unfortunately turn people away from some of our programming because of lack of building space,' said Freeholder Alexander Mirabella. 'This will allow us to have more folks take advantage of the programs up here.'

Trailside is located in the Watchung Reservation, a 2,000-acre preserve containing forests, three ponds, swamps, streams, springs, fields and more than 1.3 miles of color-coded hiking trails.
The nature center opened in 1974 and offers a variety of programs for children and adults.

'It's so well utilized by the community,' said Mirabella. 'Some of the programs that we have there, when the tickets go on sale there are lines forming early in the morning. It's such a popular destination site in the county.'

Mirabella said the county is hoping to keep parts of the complex open during construction, which should be ongoing for approximately two years.
In addition to the \$1 million that will come from the trust fund, the county has already paid DMR Architects of Maywood, the architectural firm hired to design the expansion, nearly \$395,000 for their services, money which came exclusively from the trust fund. The county has already approved \$3.6 million in capital funds for the expansion project.

Storming the field



The Union County All-Stars take the field at Jay Doyle Field in East Brunswick High School for Shapell Bowl X last week. Union County recorded the first shutout in the series against Middlesex County, posting a 13-0 victory. For more coverage, see the Sports page.

Prosecutor's detectives arbitrate new settlement

By Joshua Zaitz, Staff Writer
Ending years of arbitration, the Union County Prosecutor's Office has reached a settlement with the PBA and the county.

Under the new contract, co-payment for PBA members using the county's prescription program will be adjusted from mail order, 50 percent; \$3, single-source, 55 percent; multi-source, \$10, to mail order, 50 percent; \$5, single-source, \$15; and multi-source, \$20. This is consistent with other county contracts that have received approval from the arbitrator.

The settlement was awarded on Jan. 23 with a clarification issued on April 9.
The PBA Local 250 had filed for arbitration on Feb. 2, 2001.
A pre-interest arbitration was conducted by PERC on May 23, 2001, where the county and the PBA could not reach a settlement, resulting in a formal arbitration hearing on Dec. 5, 2001.

'We're pleased that the arbitrator followed what we felt was a pretty strong pattern of settlement that we have had with our other labor units,' Director of Labor Management Relations Joseph Salemi said. 'The wages are essentially the same as with other unions as well as the health benefit concessions.'

'We're pleased that the arbitrator followed what we felt was a pretty strong pattern of settlement that we have had with our other labor units,' Director of Labor Management Relations Joseph Salemi said. 'The wages are essentially the same as with other unions as well as the health benefit concessions.'

Under the new contract, co-payment for PBA members using the county's prescription program will be adjusted from mail order, 50 percent; \$3, single-source, 55 percent; multi-source, \$10, to mail order, 50 percent; \$5, single-source, \$15; and multi-source, \$20. This is consistent with other county contracts that have received approval from the arbitrator.

The settlement was awarded on Jan. 23 with a clarification issued on April 9.
The PBA Local 250 had filed for arbitration on Feb. 2, 2001.
A pre-interest arbitration was conducted by PERC on May 23, 2001, where the county and the PBA could not reach a settlement, resulting in a formal arbitration hearing on Dec. 5, 2001.

'We're pleased that the arbitrator followed what we felt was a pretty strong pattern of settlement that we have had with our other labor units,' Director of Labor Management Relations Joseph Salemi said. 'The wages are essentially the same as with other unions as well as the health benefit concessions.'

'We're pleased that the arbitrator followed what we felt was a pretty strong pattern of settlement that we have had with our other labor units,' Director of Labor Management Relations Joseph Salemi said. 'The wages are essentially the same as with other unions as well as the health benefit concessions.'

Advertisement for Newark Bears Baseball. Includes 'Special Family Fun Pack 4 Tickets \$20 For Only \$20', dates 'Tonight, July 24th 7:05 PM' and 'Tomorrow, July 25th 7:05 PM', and 'Fireworks Extravaganza Presented by IDT After The Game'. Features a photo of a player and a map of the stadium area.

Municipal notices and public notices for the Township of Springfield. Includes sections for 'MUNICIPAL POOL PROJECTS', 'TOWNSHIP OF SPRINGFIELD', and 'NOTICE OF HEARING'. Lists various projects and their associated costs and dates.

Public notices for the Township of Springfield. Lists various projects and their associated costs and dates. Includes sections for 'SECTION 1', 'SECTION 2', 'SECTION 3', 'SECTION 4', 'SECTION 5', 'SECTION 6', and 'SECTION 7'. Includes a table with columns for 'Approximate Amount', 'Estimated Maximum Amount of Bonds to be Issued', and 'Period of Amortization'.

Table with columns for 'Approximate Amount', 'Estimated Maximum Amount of Bonds to be Issued', and 'Period of Amortization'. Lists various projects and their associated costs and dates.

COUNTY NEWS

Community blood drives
The Blood Center of New Jersey and the Tri-County Chapter of the American Red Cross will sponsor the following blood drives...

Applications available on county clerk's Web site
Applications for a Notary Public Commission and a Business Trade Name certificate are now available on the Internet through the Web site of the Union County Clerk's Office...

Local Green Party meets
The Union County local of the Green Party of New Jersey meets at 7 p.m. on the second Tuesdays of the month...

Senior Farmers' Market
The Union County Division of Aging in the Department of Human Services has announced the location of the Senior Farmers' Market...

Donations sought for Sept. 11 memorial
Union County is seeking donations from the public for a permanent memorial being built at Liberty Lake Park...

Time to try something new
Plans for large dogs combine safety and beauty. She is even developing a plan for a group of veterinarians who will make house calls...

Time to try something new (continued)
The memorial will be located at Liberty Lake Park near the flagpole on the site where the summer concerts in the park are held...

ENTER OUR SUMMER GIVE-A-WAY AND WIN A FREE FRUIT TRAY OR ICE CREAM CAKE
Register here-Contest Ends Fri., July 25, 2003 - NOON
As Advertised in Worrall Community Newspapers

Grid of local businesses: Campus Sub Shopp II, Cranford Optical, Cranford Electric Supply, Curves for Women, Delaire Nursing & Convalescent Center, Hersh's Hearing Aid Center, Ladles Workout Express, Merle Norman Cosmetics, Roselle Park Farmer's Market, Simone Brothers Fuel, South Mountain Health Care, The UPS Store, Union Center National Bank, William S. Rich & Son Inc., Wayside Gardens.

Detectives get new deal

PHB members will earn one vacation day for each month of service during the calendar year following the date of employment...
The PBA members' sick leave payout is also consistent with the rest of county's contract settlements...

Trailside work moves forward

The town's share of the open space trust fund money should be used to open space acquisition...
Clark Environmental Commission Chairman William Fidusick said it appears a lot of the allocated money is going toward additional classroom space...

Fines will be doubled

Nationwide studies indicate that by doubling fines on high-risk corridors the number of crashes and fatalities decreases...
Rotonolo says a green stage she even considered going to law school...

ARTS & ENTERTAINMENT

Kole's debut shows promise of stardom

The cabaret world witnessed the birth of what will surely be one of its brightest rising stars last Thursday at The Manor in West Orange...
Kole filled Le Dome with warmth, intimacy and a beaming dose of talent when she presented "A Good Man is Hard to Find..."



Hilary Kole

Life is a Cabaret
Streisand combined with the vocal finesse of Judy Garland in her prime, adding a beautiful pop to the title...
Kole showcased the work of singer-songwriter Johnny Rodgers, a personal friend of hers...

UCAC announces stars, offers
Union County Arts Center in Rahway has announced its 15th anniversary fall/winter season...
Major support for the arts center and its programs comes from the city of Rahway, Merck and Co., the Union County Board of Chosen Freeholders...

'Scapin' not cheap with laughs

Caught in "a touchy situation that needs a little manipulation" just did "SCAM" for "your man"...
In classic comedy style, "That Scoundrel Scapin" involves mistaken identities, long-lost children and cheeky servants...

On the Boards
Geronte "one of the stingiest men who ever lived" into giving him money so Leander can ransom his gypsy girlfriend and marry her...
Clark Carmichael as Leander and Christian Conn as Octavio are appropriately hapless and glibly snubbing to entreat their romances...

James Michael Reilly, left, as Scapin and Robert LuPone as Geronte trade quips and quibbles in "That Scoundrel Scapin" on stage at the Shakespeare Theater of New Jersey's Outdoor Stage through Aug. 3.



James Michael Reilly, left, as Scapin and Robert LuPone as Geronte trade quips and quibbles in "That Scoundrel Scapin" on stage at the Shakespeare Theater of New Jersey's Outdoor Stage through Aug. 3.

County continues to offer HEART Grants

The Union County Board of Chosen Freeholders invites local nonprofit organizations, individual artists and scholars to apply for funding from the 2003 Union County HEART...
Recognizing the importance of culture and the arts to the economy and quality of life, the freeholders established the HEART Grants in 1998...

INFOSOURCE
FREE INFORMATION BY TELEPHONE • 24 HOURS A DAY
908-686-9898
IT'S AS EASY AS...
1 Call 908-686-9898 from your touch tone phone
2 Press the 4 digit code for the information you want to hear.
3 Hear Unlimited Selections Per Call







# Healthy Living

## Practical advice is designed to keep swimmers safe during summer season

With the summer in full swing, children will be spending more time enjoying the warm waters of swimming.

Whether swimming in the ocean or at a pool, supervision and proper supervision from parents because drowning and near-drowning are the leading causes of childhood death and injury.

"It is vital that parents and caregivers be aware of the dangers associated with swimming," says Jeanne Weinmann, R.N., M.S.N., a nurse at the Ambulatory Health Center in St. Barnabas Medical Center in Livingston.

Attention to the available safety tips can avoid serious injuries and deaths. Studies have shown that most children less than 5 years of age drown in pools, bathtubs and buckets, either in the tub or in a bucket, or in the bathtub in the home or apartment swimming pools, and children aged 5 to 13 years most frequently drown in pools, mostly in swimming pools.

Most children were last seen in the home, but were out of eye contact for a caregiver and caregivers reported that they heard the screams. To prevent drowning, the U.S. Consumer Product Safety Commission has issued the following guidelines for parents:

**For infants and children newborn through 4 years of age:**

- Children should never be left alone in a bathtub, even if wading pool, inflatable pool, hot tub, or in a wading pool. If a child is in a bathtub, wading pool, hot tub, or inflatable pool, the caregiver should remain in the room, never leave the child alone, and never use a telephone while the child is in the water.
- Children should never be left alone in a hot tub or wading pool. If a child is in a hot tub or wading pool, the caregiver should remain in the room, never leave the child alone, and never use a telephone while the child is in the water.
- Children should never be left alone in a hot tub or wading pool. If a child is in a hot tub or wading pool, the caregiver should remain in the room, never leave the child alone, and never use a telephone while the child is in the water.

## Permanent cosmetics offer variety of options to many patients

The little-known science of permanent cosmetics is becoming a popular solution among both women and men who want to enhance their appearance.

Also known as "permanent cosmetics," this is a special technique in which pigmented permanent dyes are used to enhance the appearance of the outer layer of the skin.

Permanent cosmetics may include eyeliner, eyebrows, lips, and hair. The procedure is performed by a trained technician who uses a special device to inject the pigments into the skin.

Permanent cosmetics are a long-lasting solution for many patients. The procedure is performed in a clinical setting and is safe and effective.

Lashes may be made to look fuller and longer. Missing or damaged eyelashes can be replaced with permanent eyeliner. This procedure is safe and effective.

Permanent cosmetics are a long-lasting solution for many patients. The procedure is performed in a clinical setting and is safe and effective.

## Fund-raiser is big success for Columbus Hospital

The Columbus Hospital Foundation Auxiliary announced that it raised nearly \$14,000 during its Spring Luncheon Fashion Show recently. More than 400 people attended the event, which was held at the Crystal Plaza in Livingston.

The evening featured a dinner followed by a fashion show highlighting the designs of fantastic friends of Montclair. At the conclusion of the show, a raffle was held and winners went home with the winnings from a 50-50 drawing, boutique gifts and grand-prize baskets, all donated by merchants and vendors.

Columbus Hospital, an affiliate of the Cathedral Healthcare System, opened in 1994 and today is a 210-bed acute-care facility located in Newark's North Ward. As the 2002 recipient of the National Renowned Presbyterian Compass Award for outstanding performance improvement in patient satisfaction, Columbus offers the community a broad range of medical services and wellness programs, including Outpatient/Diagnostic, Pre-Admission Testing, Obstetrics, Care, Pediatrics and Children's Care and Orthopedics.

**"The big banks say they can offer me more services, but all I get are more fees."**  
At Union County Savings Bank, we listen to you.

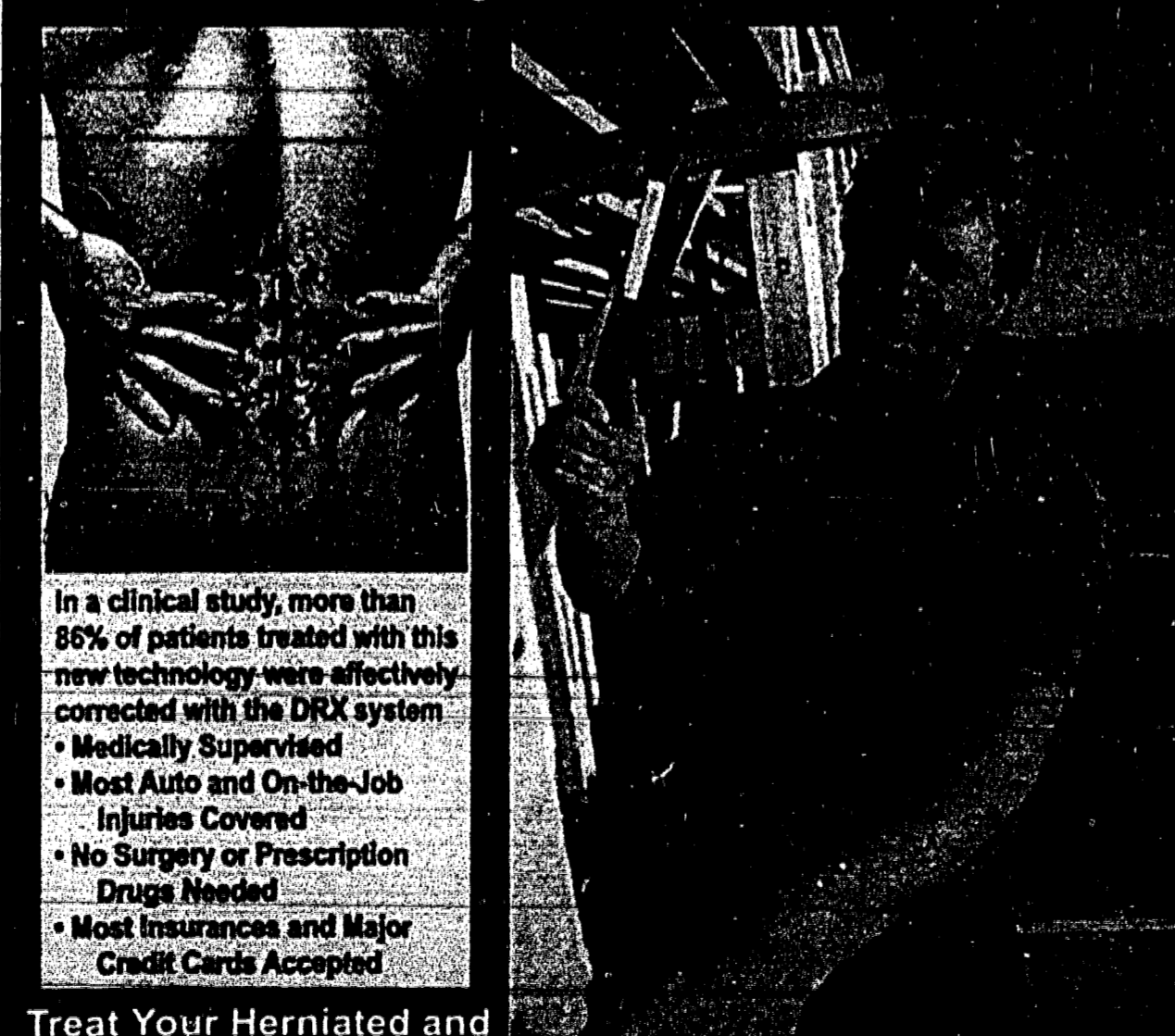
Are you tired of constantly being charged for services including simply having a savings and/or checking account? Are you charged for new checks each time the bank merges with another and changes its name? Is there a fee for returning your checks to you with your monthly statement?

Visit any one of our four convenient offices and open a checking or savings account which will offer the highest interest rates of any bank in the county without the hassle of annoying fees. Come in today and talk to the people at Union County Savings Bank. We hear you!

**UNION COUNTY SAVINGS BANK**  
FOUR CONVENIENT OFFICES TO SERVE YOU

MAIN OFFICE: 320 North Broad St., Elizabeth NJ 354-4600  
61 Broad St., Elizabeth, NJ 289-5551  
642 Chestnut St., Union, NJ 964-6060  
201 North Avenue West, Cranford, NJ 272-1660

**Scientifically Proven! How Hard Does Your Back Work?**  
New Medical Breakthrough Provides Relief to Back Pain Sufferers



In a clinical study, more than 86% of patients treated with this new technology were effectively corrected with the DRX system.

- Medically Supervised
- Most Auto and On-the-Job Injuries Covered
- No Surgery or Prescription Drugs Needed
- Most Insurances and Major Credit Cards Accepted

Treat Your Herniated Discs and Degenerative Discs without Surgery!  
CALL TODAY FOR A FREE CONSULTATION

**DOCTORS CARE**  
Pain Management & Rehabilitation Center

10 North Wood Ave., Suite E, Linden  
Tel: 908-474-9444

# HEALTHY LIVING/ADULT LIVING

## Hospice of NJ offers care with compassion

Hospice of New Jersey, based in Bloomfield and Tom's River, provides compassionate and specialized care for the terminally ill. The hospice's services focus on the patient's needs and the needs of their family.

Hospice focuses on quality of life when length of life cannot be extended. The program is available to terminally ill patients who are no longer under treatment for cure of their disease and are in the final stages of their illness.



## State sponsors program to inform on skin cancer

With beachgoers heading off for fun in the sun, the New Jersey Department of Health and Senior Services invited community members to learn how to "choose your cover" and protect themselves from the dangerous rays of the sun, whether working outdoors or enjoying all that New Jersey's beaches have to offer.

The Melanoma Awareness Campaign kicked off May 22 with an event on the boardwalk in Ocean City to educate the public on why melanoma is one of the cancers experiencing growth in New Jersey. How melanoma can show up years after sun exposure, and that all skin, no matter what ethnicity or age, is at risk.

**Hospice focuses on quality of life when length of life cannot be extended.**

Hospice of New Jersey believes death is a natural process of life which should be approached with dignity and respect. To accomplish this purpose, the staff provides a supportive and understanding network of caring people to aid patients, regardless of age and their families making that journey.

Hospice focuses on quality of life when length of life cannot be extended. The program is available to terminally ill patients who are no longer under treatment for cure of their disease and are in the final stages of their illness.

This newspaper is a reliable means of researching the community market. To assist your business in the community, call our ad department at 908-686-7700 today.

**COST-SAVING PRESCRIPTION DRUGS**  
Call today ... Save up to 80%

Now, a reliable Canadian company sends your prescriptions directly to you. It's easy and can save you money. Call today for complete information.

**CANADIAN PRESCRIPTION DRUGS, INC.**  
Bellevue, Ontario, Canada K9M 1A1  
Tel: 1-877-966-0567  
Fax: 1-633-662-6166  
E-mail: info@canad.com  
Website: www.canad.com

**HOSPICE OF NEW JERSEY**

Hospice of New Jersey, the first licensed hospice in New Jersey, provides comprehensive care focused on aggressive management of physical, emotional and spiritual needs that often accompany the end of life.

Hospice of New Jersey, the first licensed hospice in New Jersey, provides comprehensive care focused on aggressive management of physical, emotional and spiritual needs that often accompany the end of life.

When planning your next business meeting or corporate event, please consider Union County's very own...

**KENILWORTH INN**  
and are why they've been rated as the "Best Price & Best Value" in the area.

Fine Hospitality And Comfort. Conveniently Located At Garden State Parkway, Exit 138 Kenilworth, New Jersey.

- Complimentary Continental Breakfast
- Complete Banquet & Meeting Facilities
- Corporate & AAA Rates Available

908-241-4100  
800-775-3645

ASK FOR MR. GOLDEN FOR SPECIAL RATES "Director Of Sales"

**KEEP YOUR COOL**



When you can't "bear" it Reel-Strong has the solution to help you beat the heat with Rheem Central Air Conditioning.

Call Today For Specials  
908-276-0900

**REEL-STRONG**  
HEATING & COOLING

SINCE 1925

549 Lexington Avenue, Cranford • www.reel-strong.com

Dr. Arnold Baskies, chairman of Gov. McGreevey's Task Force on Cancer Prevention, Early Detection and Treatment of Cancer, is reflected in the sunglasses of a model demonstrating how to prevent exposure to the damaging UV rays of the sun with protective sunglasses and widebrimmed hat during kick-off of New Jersey's statewide "Choose Your Cover" Melanoma Awareness Campaign on the boardwalk in Ocean City.

here will your loved one be while you're on vacation?

We offer total custodial care in a bed & breakfast setting \$70.00 Per Day, \$400.00 Per Week

**Colonial Mottled Care Home**

Family Owned & Operated • Full • 24-Hour • Medication Supervision • Private Bath • In-House Laundry • Full Kitchen • Free Parking • Call For More Information (973) 743-4143 90 Williamson Ave., Bloomfield, NJ

When health is your first priority!

**PRIME HEALTH PHYSICAL THERAPY, INC.**

PRIME HEALTH PHYSICAL THERAPY is a physical therapist owned clinic committed to providing quality service through individual attention to patients and their needs.

We specialize in:

- McKenzie treatment for neck and back pain
- Pre/post surgical rehabilitation
- Orthopedic and sports injuries
- Motor Vehicle Accidents

822 N. WOOD AVENUE LINDEN, NJ 07036 (908) 936-8700

171 ELMORA AVENUE ELIZABETH, NJ 07202 (908) 820-0600

People are talking... about Muhlenberg's NEW Diagnostic Medical Sonography Program

The Schools of Nursing, Medical Imaging and Therapeutic Sciences at the hospital has announced the opening of a Diagnostic Medical Sonography Program to commence in the Fall.

The program joins the highly acclaimed Nursing, Radiography, Nuclear Medicine Technology and Radiation Therapy Technology programs previously established.

This dynamic program headed by Mr. Harry Holdorf is currently seeking students interested in an 18 month career opportunity in the direct patient care area. Students will attend classes and apply their skills in a variety of ultramodern sonography facilities throughout Union, Essex, and Middlesex counties under the supervision of registered sonographers. The accreditation process has been initiated through the Joint Review Committee on Education in Diagnostic Medical Sonography so that graduates will be eligible for certification upon graduation.

Suggested retail price: \$50  
Mail in rebate: \$50  
Your Cost: \$0

**SCHOOLS OF NURSING AND ALLIED HEALTH MUHLENBERG REGIONAL MEDICAL CENTER, INC.**  
Park Avenue & Broad Street, Plainfield, NJ 07064  
An Affiliate of SOLARIS Health System

For further information contact the school directly at 908-668-2884

**HHCH HEALTH CARE, INC.**  
221 WEST ST. GEORGE AVE. LINDEN

"We Will Take The Pressure of Taking Care of Your Loved Ones Off Your Shoulders Into Our Hands"

- PROVIDES 24-HOUR AND 24-HOUR CARE
- LIVES IN CARE AT REASONABLE RATES
- SKILLED NURSING CARE
- CERTIFIED HOME HEALTH AIDES
- PRIVATE DUTY NURSING
- FULLY ACCREDITED, BONDED AND INSURED AGENCY
- KNOWLEDGEABLE, EXPERIENCED
- WELL TRAINED & CARING PERSONNEL
- SUPERVISED BY REGISTERED NURSES
- AT NO EXTRA CHARGE TO PATIENT
- WE SPEAK A VARIETY OF EUROPEAN LANGUAGES INCLUDING RUSSIAN, POLISH, UKRAINIAN, SPANISH AND PORTUGUESE AS WELL AS ENGLISH

**"Exceptional Home Care For Everyone"**  
908-587-1172

*Delaire Nursing & Convalescent Center*  
A Family of Caring

Providing Comprehensive Healthcare

- Long Term Care
- Respite Care
- Assisted-Type Living
- Hospice Care
- Skilled Nursing Care
- Short Term Rehabilitation

Please Call For Information on Schedule Events and Activities

**Delaire Nursing and Convalescent Center**  
400 W. Stimpson Avenue  
Linden, NJ 07036

(908) 862-3399 • Fax (908) 474-9085

Accredited By The J.C.A.H.O.

**NEW JERSEY CELLULAR**  
"ALL YOUR WIRELESS NEEDS"

WITH UNLIMITED NIGHT & WEEKEND MINUTES!  
you can keep the conversation going all across the U.S.

Unlimited Nights & Weekend Minutes  
550 Anytime Minutes (350 included & 200 additional Anytime Minutes)  
Nationwide long distance with no roaming charges (from your National Home Service Area)

All for \$39.99, good for life (with a one-time setup fee)

Suggested retail price: \$50  
Mail in rebate: \$50  
Your Cost: \$0

On-demand news, weather, sports and more. Ask about #121 Voice Service

11 Eastman Street • Cranford  
908-497-2100  
(Near Corner of North Ave., between movie theater & Cafe Rock)







# Your AUTO SPECIALIST

## AUTOMOTIVE

### AUTO FOR SALE

**ASTRO VAN** 1986. 6-cyl. 1500 cc. new motor transmission runs great some bodywork \$1500. Home 908-851-8888, work 732-404-6100 Great Work Van

**AUDI A4** 1997. 2.8 quattro all wheel drive 4 door. 5 speed manual silver. 47K mi power seat \$13,900. 973-763-4149

**CHEVROLET MONTE CARLO** LS 1996. 26,000 miles excellent condition. One owner no accidents. All power \$7,900 firm. 973-328-1238

**FORD EXPLORER** 1993. 2 door Sport 4x4. 93,000 miles all power stereo with CD. Great condition. \$2,600. 908-964-4318

**FORD MUSTANG** 1996. 1901 cubic inch 4-cyl. 1.8 liter. 141,000 miles 42,000 miles. ABS. All power. AM/FM cassette. Cruise. \$6,000. 973-622-8887

**FORD F150** 1987. 4 door. 5.0 liter. 133,000 miles. Running condition. \$2,500. 973-428-0305

**HONDA CIVIC** 1994. 4-cyl. 1.8 liter. 110,000 miles. Asking \$5,200. 908-964-4318

**PONTEAC VECTRA** 1996. 2.0 liter. 4-cyl. 110,000 miles. Asking \$2,200. 908-964-4318

**PONTIAC GRAND AM** 1992. 4-cyl. 1.8 liter. 100,000 miles. Asking \$1,500. 908-964-4318

## Let Us Help You With Our AUTO SPECIAL

20 words - 10 WEEKS of Exposure for \$39.00 in UNION COUNTY or 10 WEEKS of Exposure for \$59.00 in UNION and ESSEX COUNTY

For More Information Please Call The Classified Department 1-800-564-8911

## ADVERTISE UNION COUNTY CLASSIFIEDS

**Lee Myles TRANSMISSIONS**

"The most trusted name in transmissions"

**TRANSMISSION FLUID CHANGE** Includes Filter **\$54.95** Regularly \$75

1415 STUYVESANT AVENUE • UNION (approx. 1/2 mile North of Morris Ave)

**908-687-0300**

## INAPA AUTO PARTS

Foreign & Domestic Auto Parts & Accessories

**A QUART OF OIL 99¢** OIL FILTER \$1.99

1400 Stuyvesant Avenue • Union  
908-964-7933 • Fax 908-687-4366  
Hours: M-F 8am - 6pm • Sat 8am - 5pm

## Navigation Systems

**MOBILE TV & VIDEO PACKAGES**

Flip down screen, DVD Players, VCR's, Wireless Headphones, other options available

**MOBILE CONCEPTS**

64 North Ave. • Garwood • 908-232-8009

## Remote Car Starters Special

Starting at **\$149.99** \*Most Cars

**FREE Cellular Phone** \$19.99

Plans from Assembled Dealers of Nextel, VoiceStream, Verizon

Now Available...  
\*FREE - Nights & Weekends  
\*FREE - Long Distance  
\*FREE - Caller ID  
\*FREE - Voice Mail  
\*FREE ACCESSORIES

Special In: Mobile Audio, Security, Navigation, Accessories, Custom Wheels, Cell Phone

www.mobileconcepts.info

## AUTOS WANTED

WE BUY ALL TYPES OF USED CARS, TRUCKS, VANS, SUVs, Boats, Motorcycles, Snowmobiles, ATVs, Scooters, etc. We pay top dollar for your vehicle. Call today for a free quote. 908-964-4318

## RECREATIONAL VEHICLES

ATV, UTV, Snowmobile, Boat, Motorcycle, Scooter, etc. We pay top dollar for your vehicle. Call today for a free quote. 908-964-4318

## TRUCKS FOR SALE

ALL TYPES OF USED TRUCKS, VANS, SUVs, Boats, Motorcycles, Snowmobiles, ATVs, Scooters, etc. We pay top dollar for your vehicle. Call today for a free quote. 908-964-4318

## ADVERTISE

**Dobbs Autobody** EST. 1954

23 Springfield Avenue • Springfield

**Brad Denning**

Tel: 973-376-3535 Fax: 973-376-8087  
NJ Lic. #03537A

# At Hillside Automall We're Working Hard To Be... YOUR SUBARU DEALER

Surf Your Way To A New Subaru ONLINE! We'll Even E-Mail You A Quote!

**SUBARU**

www.hillsidesubaru.com

"We're Getting Good Word Of Mouse."

**SUBARU** DRIVEN BY WHAT'S INSIDE™

Specials Of The Week

New Subaru Forester X AWD  
SUV 5 Speed Manual Transmission 4 Cylinder Power Windows, Brakes, Steering, Windows, Locks, Air, Cruise, Keyless Entry, CD Player, Roof Rack. VIN #4C704172 STK #514504 MSRP \$21,781 Dealer's Discount \$1788

Buy For **\$19,995** SAVE \$1786 OFF MSRP

New 2003 Subaru Outback Wagon AWD  
All-terrain tires, 4-cylinder, 5-speed manual transmission, power windows, locks, air, cruise, keyless entry, CD player, roof rack. VIN #4C704172 STK #514504 MSRP \$21,781 Dealer's Discount \$1788

Buy For **\$20,995** SAVE \$3858 OFF MSRP

New 2004 Subaru Impreza WRX Wagon AWD  
5 Speed Manual Transmission 4 Cylinder Turbo Power Brakes, Steering, Windows, Locks, Air, Cruise, Keyless Entry, CD Player, Roof Rack. VIN #4C704172 STK #514504 MSRP \$25,463 Dealer's Discount \$2474

Buy For **\$22,995** SAVE \$2474 OFF MSRP

Special Financing On 2003 Subarus

0% APR For 24 Months  
1.9% APR For 36 Months  
2.9% APR For 48 To 60 Months

To All Qualified Buyers With Primary Lender Approval

Drive A Little, Save A Lot...

**Hillside Automall**

Rt. 22 East, Hillside, NJ • Call 973-923-4100 • hillsidesubaru.com

Prices Include All Costs To Be Paid By Consumer Except Lic., Reg., & Taxes. All Cars Sold Cosmetically "As Is". This Ad Supersedes All Other Previous Ads. Not Responsible for Typographical Errors. See Dealer For Details.

# AUTOMOTIVE

**UNION COUNTY CLASSIFIED**

Just \$20.00 for first 20 words  
\$6.00 each added 10 words.

Also available in combination with 10 ESSEX COUNTY newspapers

Print your ad in the spaces below

1.	2.	3.
4.	5.	6.
7.	8.	9.
10.	11.	12.
13.	14.	15.
16.	17.	18.
19.	20.	21.
22.	23.	24.
25.	26.	27.
28.	29.	30.
31.	32.	33.

Print your name, address, phone, city and zip

NAME \_\_\_\_\_ TELEPHONE # \_\_\_\_\_

ADDRESS \_\_\_\_\_

CITY \_\_\_\_\_ ZIP \_\_\_\_\_

**USE A PREPAID CLASSIFIED AD**  
Enclose check or money order to:  
**WORRALD NEWSPAPERS**  
Box 158, Maplewood, N.J. 07040

For more information  
CALL the CLASSIFIED Dept. at  
**1-800-564-8911**

Search your local classifieds on the Internet <http://www.localsource.com/classifieds/>

**We'll Pay You \$1000 & 0% APR FINANCING UP TO 60 MONTHS**

**On All New 2003 Saturns!**

Reduce Your Payments Even More With Your GM Credit Card Points up to \$1000

Plus \$750 Recent College Grad Rebate (if qualified)

**Brand New 2003 Saturn ION 1**

Finance For Only **\$174** Per Month For 72 Months

**Brand New 2003 Saturn L200**

Finance For Only **\$269** Per Month For 72 Months

**Brand New 2003 Saturn VUE**

Finance For Only **\$289** Per Month For 72 Months

MEMO: Toward Your Purchase

MEMO: One Thousand Dollars & 00/100 \$1000

MEMO: Toward Your Purchase

Saturn of Danville Route 10 • 973-361-0400

Saturn of Green Brook Route 22 • 732-752-8383

Saturn of Livingston Route 10 • 973-992-0600

Saturn of Mt. Olive (Hackensacktown) 48C Route 46W • 908-979-3030

Saturn of Morrisstown Rtdge Ave. • 973-538-2800

Saturn of Ramsey Route 17 • 201-327-2500

Saturn of Route 23 Pompton Plains • 973-839-2222

Saturn of Union Route 22 • 908-686-2810

**400 VEHICLE SACRIFICE!**

EVERY CAR • TRUCK • SUV • 4X4 MUST BE SOLD!

**TERMINATE YOUR CURRENT LEASE UP TO 5 MOS. EARLY!**

OUR ADS ARE LEGITIMATE!

You May Also Qualify For Additional Savings:

- COLLEGE GRADS \$400 REBATE
- OLDSMOBILE LOYALTY \$1000 REBATE
- GM LOYALTY \$1000 REBATE
- CONQUEST DISCOUNT \$500
- MILITARY RETIREES & CURRENT \$750 REBATE

**BRAND NEW 2003 CHEVY S10**

1.8 liter 4-cyl. 130,000 miles. Asking \$1,998. 908-964-4318

**BRAND NEW 2003 CHEVY Malibu**

2.2 liter 4-cyl. 130,000 miles. Asking \$12,728. 908-964-4318

**BRAND NEW 2003 CHEVY CAVALIER**

1.8 liter 4-cyl. 130,000 miles. Asking \$1,193. 908-964-4318

**BRAND NEW 2003 CHEVY AVALANCHE**

5.3 liter 8-cyl. 130,000 miles. Asking \$398. 908-964-4318

**SMART BUY FINANCE \$195 MONTH FOR 48 MOS.**

**BUY FOR ONLY \$13,554**

**NO REASONABLE OFFER REFUSED!**

**USED CAR SUPERSTORE**

GUARANTEED AUTO CREDIT!

REGARDLESS OF PAST CREDIT HISTORY!

- No Credit
- The Lemon
- Bankruptcy
- Divorce
- 1st Time Buyers

**YOU'RE APPROVED! YOUR JOB IS YOUR CREDIT!**

**88 Mercury Tracer Sedan** \$3999

**88 Ford Escort Sedan** \$4499

**88 Mercury Sable LS** \$7799

**88 Ford Explorer** \$9999

**88 Ford Windstar** \$10999

**88 Mercury GS** \$12999

**OVER 150 VEHICLES IN STOCK!**

Family Cars • Minivans • SUV's • Trucks • Imports/Domestic

**multi**

2675 ROUTE 22 W. • UNION • 908-686-2800

# FORD WORLD ROSELLE PARK

# USED CAR PRE WHOLESALSALE

**SAVE THOUSANDS OFF ORIGINAL MSRP!**

**THIS IS YOUR CHANCE TO BUY AT PRE-WHOLESALE PRICES... 2 DOORS, 4 DOORS, SPORTS CARS, MINIVANS, SUVs, PICK-UPS, LUXURY CARS, EVERY ONE AT PRE-WHOLESALE PRICES - HURRY IN!!**

**THIS WEEK ONLY**

Ford World and its parent company the World Auto Group is involved in over 2,500 vehicle transactions in any 60 day period. Company policy dictates that we hold trade-in vehicles no more than 60 days, after that they go to the wholesale auction.

- |   |   |  |   |
|---|---|--|---|
| <b>'95 PONTIAC GRAND AM</b> \$2995<br>VIN #SC815426 4 DR 2 cyl auto a/c p/s/ABS/winds/ks/mirs/cass/cd/rf/cruise/air bags 24,361 mi                | <b>'99 FORD TAURUS WGN</b> \$8895<br>VIN #2YV33425 4 DR 4 cyl auto a/c p/s/ABS/winds/ks/mirs/cass/cd/rf/cruise/air bags 44,715 mi                       | <b>'02 MERCURY SABLE</b> \$13,995<br>VIN #2A337721 4 DR 8 cyl auto a/c p/s/ABS/winds/ks/mirs/seat cd/cruise/air bags/air bags 21,634 mi          | <b>'02 FORD F-150 XLT</b> \$18,995<br>VIN #2FV644789 2 DR 6 cyl auto a/c p/s/ABS/winds/ks/mirs/cass/cd/rf/cruise/air bags/air bags 22,350 mi                |
| <b>'97 HYUNDAI SONATA</b> \$3995<br>VIN #VL763497 4 DR 4 cyl 2 seat auto a/c p/s/brks/winds/ks/mirs/cass/cruise/air bags/cd/rf/mir/wash 35,587 mi | <b>'00 NISSAN ALTIMA GXE LTD</b> \$9995<br>VIN #YK195480 4 DR 4 cyl auto a/c p/s/ABS/winds/ks/mirs/cass/cd/rf/cruise/air bags 60,091 mi                 | <b>'00 CHEVY G30 EXT CARGO VAN</b> \$13,995<br>VIN #11202197 8 cyl auto a/c p/s/ABS/cass/cruise/air bags 72,337 mi                               | <b>'02 FORD MUSTANG CONV'T</b> \$19,995<br>VIN #2F158268 2 DR 6 cyl auto a/c p/s/dac/brs/winds/ks/mirs/cass/cd/leather/air bags/air bags 13,902 mi          |
| <b>'96 MERCURY SABLE</b> \$4995<br>VIN #1A63779 4 DR 4 cyl auto a/c p/s/b/winds/ks/mirs/cass/cruise/air bags 51,224 mi                            | <b>'00 FORD MUSTANG</b> \$10,995<br>VIN #4F115415 6 cyl 2 seat man trans a/c p/s/ABS/winds/ks/rf/cruise/cass/cd/air bags 34,408 mi                      | <b>'00 MITSUBISHI ECLIPSE GT</b> \$14,995<br>VIN #4G297756 6 cyl auto a/c p/s/ABS/winds/ks/rf/cruise/cass/cd/air bags 16,021 mi                  | <b>'00 FORD EXCURSION LTD</b> \$23,995<br>VIN #FD17586 5 DR 8 cyl auto a/c p/s/ABS/winds/ks/mirs/cd/leather/cd/rf/cruise 44,182 mi CERTIFIED                |
| <b>'97 CHEVY CAVALIER</b> \$5995<br>VIN #V729405 4 DR 4 cyl auto a/c p/s/b/winds/ks/mirs/cass/air bags 58,499 mi                                  | <b>'00 SUZUKI GRAND VITARA 4WD</b> \$10,995<br>VIN #Y4118945 6 cyl auto a/c p/s/b/winds/ks/air/mir/steer/air bags 17,200 mi                             | <b>'99 FORD ECONOLINE E350 15 PASSNGR VAN</b> \$14,995<br>VIN #FHC20094 3 DR 8 cyl auto a/c p/s/ABS/air bags/a/s/radiats 19,582 mi               | <b>'02 FORD EXPLORER EDDIE BAUER ED.</b> \$24,995<br>VIN #2UAT5930 6 cyl auto a/c p/s/b/winds/ks/mirs/sunroof/leather/cd/air bags 27,900 mi                 |
| <b>'98 MAZDA PROTEGE</b> \$6995<br>VIN #W0207347 4 cyl auto a/c p/s/b/winds/ks/air/mir/steer/air bags 44,956 mi                                   | <b>'98 HONDA ACCORD EX</b> \$11,995<br>VIN #WA227047 4 cyl auto a/c p/s/ABS/winds/ks/rf/cruise/sunroof/leather/cass/cd/air bags 50,441 mi               | <b>'99 LINCOLN CONTINENTAL</b> \$16,995<br>VIN #Y1K19042 Pick-Up V8 auto a/c p/s/ABS/winds/ks/cruise/rf/sunroof/cass/air bags/air bags 41,933 mi | <b>'01 FORD F-150 HARLEY DAVIDSON ED.</b> \$29,995<br>VIN #1KA19042 Pick-Up V8 auto a/c p/s/ABS/winds/ks/cruise/rf/sunroof/cass/air bags/air bags 23,201 mi |
| <b>'96 FORD EXPLORER XLT</b> \$7995<br>VIN #1UB05208 4 DR 8 cyl auto a/c p/s/ABS/winds/ks/mirs/cass/rf/cruise/air bags/roof rack 114,766 mi       | <b>'00 MERCURY GRAND MARQUIS</b> \$12,995<br>VIN #YK172149 4 DR 8 cyl auto a/c p/s/ABS/winds/ks/mirs/seat/cass/cruise/air bags/cd/rf/air bags 43,108 mi |  |   |

## CREDIT IS E-Z AT FORD WORLD!

There is financing available to most working people, even those with severe credit problems like bankruptcy, divorce, late payment history, even repossession.

**START THE PROCESS, CALL: 1-908-245-6100** ASK FOR JOE C.



**AXZ PLANS WELCOMED BRING YOUR PIN!** **"We Will Never Lose A Customer Because Of Price...NEVER!"**

Must present ad prior to sale to receive advertised prices.

**SHOP US FROM YOUR COMPUTER** [www.fordworldnj.com](http://www.fordworldnj.com)

**COME IN OUR BILINGUAL STAFF SPEAKS YOUR LANGUAGE!**

**FORD WORLD** Blue Oval Certified

**ROSELLE PARK 28** **ROSELLE PARK** 158 E. WESTFIELD AVE. ROSELLE PARK, NJ **908 245-6100**

**Sales Hours:** MON-THURS 9AM-9PM, FRIDAY 9AM-8PM, SATURDAY 9AM-7PM  
**Parts & Service Hours:** MON-FRI 7AM-6PM, SATURDAY 8AM-1PM

Prices include all costs to be paid by a consumer except for licensing, registration & taxes. Offers cannot be combined for multiple discounts. Sale prices/specif vehicles available at time of printing. This ad is a coupon and must be presented at time of sale. Offers expire 1 day after publication.

# AUTOLAND

THE WORLD'S LARGEST

**3000 VEHICLES!** My husband bought from Autoland, and then I bought my new Ford, saving \$5000 - Evelyn Vega, Woodbridge, NJ



## ZERO DOWN PAYMENT! ZERO PAYMENTS 'TIL JANUARY 2004! ZERO % APR FOR 60 MONTHS!

ON SELECT MODELS

# PRICES TOO LOW TO ADVERTISE!

<b>555 AVAILABLE</b> <b>FORD</b> My husband bought from Autoland, and then I bought my new Ford, saving \$5000 - Evelyn Vega, Woodbridge, NJ	<b>290 AVAILABLE</b> <b>DODGE/CHRYSLER/JEEP</b> <b>SUMMER SALES DRIVE</b> I bought for the second time at Autoland and saved \$3000 on my new Jeep! - Carol Mulligan, Roselle Park, NJ	<b>352 AVAILABLE</b> <b>TOYOTA</b> When I went to Autoland I bought the cutest little Toyota at great big savings! - Patricia Gables, Scotch Plains, NJ	
<b>BRAND NEW 2003 FORD TAURUS</b> \$2500 FACTORY REBATE OR 0% APR OR GETTER FINANCING THE REBATE	<b>BRAND NEW 2003 DODGE NEON</b> \$2500 FACTORY REBATE OR 0% APR OR GETTER FINANCING THE REBATE	<b>BRAND NEW 2003 CHRYSLER PT CRUISER</b> \$2500 FACTORY REBATE OR 0% APR OR GETTER FINANCING THE REBATE	<b>BRAND NEW 2003 TOYOTA CAMRY LE</b> \$1000 FACTORY REBATE OR 0% APR FOR 36 MONTHS
<b>BRAND NEW 2003 FORD WINDSTAR</b> \$3000 FACTORY REBATE OR 0% APR OR GETTER FINANCING THE REBATE	<b>BRAND NEW 2003 DODGE CARAVAN</b> \$2500 FACTORY REBATE OR 0% APR	<b>BRAND NEW 2003 CHRYSLER SEBRING</b> \$3000 FACTORY REBATE OR 0% APR OR GETTER FINANCING THE REBATE	<b>BRAND NEW 2003 TOYOTA COROLLA CE</b> \$600 FACTORY REBATE OR 0% APR FOR 36 MONTHS
<b>BRAND NEW 2003 FORD EXPLORER XLS 4X4</b> \$3000 FACTORY REBATE OR 0% APR OR GETTER FINANCING THE REBATE	<b>BRAND NEW 2003 DODGE DURANGO SPORT 4X4</b> \$4500 FACTORY REBATE OR 0% APR	<b>BRAND NEW 2003 JEEP LIBERTY</b> \$1000 FACTORY REBATE OR 0% APR	<b>BRAND NEW 2003 TOYOTA 4RUNNER SR5</b> Model 8682 \$1500 FACTORY REBATE

OFFERS AVAILABLE TO QUALIFIED BUYERS WITH PRIMARY LENDER APPROVAL. PRICES INCLUDE ALL COSTS TO BE PAID BY CONSUMER EXCEPT FOR LICENSING COSTS, REGISTRATION FEES AND TAXES. ALL OFFERS AT MSRP. TRIPLE ZERO OFFER AVAILABLE ON NEW DAIMLER CHRYSLER & FORD VEHICLES ONLY. TRIPLE ZERO OFFER EXCLUDES TOYOTA VEHICLES. \*\*MAXIMUM TERM 60 MONTHS SUBJECT TO APPROVAL BY PRIMARY LENDER. INTEREST ACCRUES FROM DATE OF PURCHASE. EX: '03 DODGE NEON, VIN#3D313565, 4 CYL, AUTO, A/C, 0% APR FINANCING FOR 60 MOS, \$208/MO WITH \$0 DOWN, SALE PRICE \$12,488, TOTAL PAYMENTS \$12,488. \*\*FINANCE EX: '03 TOYOTA COROLLA CE 4 CYL, AUTO, A/C, PSB, VIN#208502, MSRP \$15,083, SALE PRICE \$12,889, \$0 DOWN \$358/MO FOR 36 MOS, AT 0% APR TOTAL OF PAYMENTS = \$12,889. \*\*\*MUST BE CURRENTLY LEASING '99-'01 CAMRY, COROLLA OR SIENNA AND QUALIFY THROUGH TOYOTA FINANCIAL SERVICES. PICTURES FOR ILLUSTRATION PURPOSES ONLY. NOT RESPONSIBLE FOR TYPE OMISSIONS OR ERRORS. DEALER RETAINS ALL REBATES & INCENTIVES. SUBJECT TO PRIOR SALE. OFFERS EXPIRE 3 DAYS FROM DATE OF PUBLICATION.

**"I Like It Like That!"** **NOW OPEN** TIL 10PM MONDAY THRU SATURDAY!

# AUTOLAND

**ROUTE 22 EAST SPRINGFIELD, NEW JERSEY**

**3 MINUTES FROM THE GARDEN STATE PARKWAY, EXIT 140**

**SERVICE HOURS:** Mon-Fri 7AM - Midnight • Sat 8AM - 5PM

**1-800-AUTOLAND** **NEED CREDIT? We Want To Help You Get Approved!**

With our flexible financing sources, your application will be considered regardless of your credit history. See store for details. **1-800-AUTOLAND**

# WIGDER CHEVROLET

# TIMING IS EVERYTHING!

**GIFT WITH PURCHASE!**  
We'll give you a Movado watch with any new or used vehicle purchased on July 24, 25 or 26th!

**New 2003 Chevrolet MALIBU 4 DR**

4 cyl. auto, p/w/locks, air, cruise, cd, 1 del. airbag, dash kit, rear, B/W A/S tires. VIN#3N730430 MSRP \$18,850. Price includes \$3000 Factory & \$750 Bonus Cash Rebates and \$1000 Chevrolet Loyalty Bonus & \$500 Conquest Discount if Qualified.

**SAVE \$6500 OFF OVER MSRP**

**\$12,331** buy for

**WITH 0% APR FINANCING ON ALL 2003 CHEVROLETS FOR 60 MONTHS EXCEPT CORVETTES (36 MOS.) OR UP TO \$5000 CUSTOMER CASH ON MOST 2003 MODELS**

**New 2003 Chevrolet 3500 EXPRESS CARGO VAN**

4 cyl. auto, p/w/locks, no air, air/brake, airbag, dash kit, rear, B/W A/S tires. VIN#31122104 MSRP \$26,359. Price includes \$3000 Factory Rebate and \$1000 Chevrolet Loyalty Bonus & \$500 Conquest Discount if Qualified.

**SAVE \$7825 OFF OVER MSRP**

**\$18,531** buy for

**New 2003 Chevrolet IMPALA 4 DR**

4 cyl. auto, p/w/locks, air, cruise, cd, 1 del. airbag, dash kit, rear, B/W A/S tires. VIN#3N7309527 MSRP \$22,825. Price includes \$3000 Factory Rebate & \$750 Bonus Cash and \$1000 Chevrolet Loyalty Bonus & \$500 Conquest Discount if Qualified.

**SAVE \$6950 OFF OVER MSRP**

**\$15,331** buy for

**New 2003 Chevrolet TAHOE LS 4 DR**

4 cyl. auto, p/w/locks, air, cruise, cd, 1 del. airbag, dash kit, rear, B/W A/S tires. VIN#3C7335515 MSRP \$40,395. Price includes \$3000 Factory & \$1000 Bonus Cash Rebates and \$1000 Chevrolet Loyalty Bonus & \$500 Conquest Discount if Qualified.

**SAVE \$10,650 OFF OVER MSRP**

**\$29,731** buy for

**New 2003 Chevrolet VENTURE 4 DR**

4 cyl. auto, p/w/locks, air, cruise, cd, 1 del. airbag, dash kit, rear, B/W A/S tires. VIN#3D309527 MSRP \$22,825. Price includes \$3000 Factory & \$500 Bonus Cash Rebates and \$1000 Chevrolet Loyalty Bonus & \$500 Conquest Discount if Qualified.

**SAVE \$6750 OFF OVER MSRP**

**\$15,831** buy for

**GET ME TO THE BEACH ON TIME!**

- 3- 50th Anniversary Corvette Convertibles
- 2- 50th Anniversary Corvette Coupes
- 2- Blazer Extremes
- 1- Silverado SS Ext-Cab Pickup
- 1- Yellow Monte Carlo SS

## WIGDER CERTIFIED-LIKE NEW-PRE-OWNED!

**1999 JEEP CHEROKEE SPORT 4 DR**

4 cyl. auto, p/w/locks, air, cruise, cd, 1 del. airbag, dash kit, rear, B/W A/S tires. VIN#1J4G242L1P517723

**\$10,931**

**2000 TOYOTA CAMRY LE 4 DR**

4 cyl. auto, p/w/locks, air, cruise, cd, 1 del. airbag, dash kit, rear, B/W A/S tires. VIN#4T108EJ8000000000

**\$12,931**

**2001 FORD F250 REG-CAB 2 DR**

4 cyl. auto, p/w/locks, air, cruise, cd, 1 del. airbag, dash kit, rear, B/W A/S tires. VIN#1F3P30A0000000000

**\$16,931**

**1997 CHEVROLET MALIBU LS 4 DR**

4 cyl. auto, p/w/locks, air, cruise, cd, 1 del. airbag, dash kit, rear, B/W A/S tires. VIN#1G1YD17711000000000

**\$5931**

**2000 SATURN SL1 4 DR**

4 cyl. auto, p/w/locks, air, cruise, cd, 1 del. airbag, dash kit, rear, B/W A/S tires. VIN#1G1YD17711000000000

**\$5931**

**2000 CHEVROLET PRAIRIE 4 DR**

4 cyl. auto, p/w/locks, air, cruise, cd, 1 del. airbag, dash kit, rear, B/W A/S tires. VIN#1G1YD17711000000000

**\$7931**

**2000 FORD CONTOUR SE 4 DR**

4 cyl. auto, p/w/locks, air, cruise, cd, 1 del. airbag, dash kit, rear, B/W A/S tires. VIN#1F3P30A0000000000

**\$8531**

**1999 HONDA ALTIMA GXE 4 DR**

4 cyl. auto, p/w/locks, air, cruise, cd, 1 del. airbag, dash kit, rear, B/W A/S tires. VIN#1F3P30A0000000000

**\$9531**

**2000 CHEVROLET TRACKER 4X4 4 DR**

4 cyl. auto, p/w/locks, air, cruise, cd, 1 del. airbag, dash kit, rear, B/W A/S tires. VIN#1G1YD17711000000000

**\$10,531**

**2001 MITSUBISHI GALANT ES 4 DR**

4 cyl. auto, p/w/locks, air, cruise, cd, 1 del. airbag, dash kit, rear, B/W A/S tires. VIN#1G1YD17711000000000

**\$10,931**

**2000 CHEVROLET IMPALA 4 DR**

4 cyl. auto, p/w/locks, air, cruise, cd, 1 del. airbag, dash kit, rear, B/W A/S tires. VIN#1G1YD17711000000000

**\$12,931**

**2000 CHEVROLET BLAZER LT 4X4 4 DR**

4 cyl. auto, p/w/locks, air, cruise, cd, 1 del. airbag, dash kit, rear, B/W A/S tires. VIN#1G1YD17711000000000

**\$13,531**

**2000 JEEP CHEROKEE LAREDO 4X4 4 DR**

4 cyl. auto, p/w/locks, air, cruise, cd, 1 del. airbag, dash kit, rear, B/W A/S tires. VIN#1G1YD17711000000000

**\$16,531**

**1999 LEXUS ES300 4 DR**

4 cyl. auto, p/w/locks, air, cruise, cd, 1 del. airbag, dash kit, rear, B/W A/S tires. VIN#1G1YD17711000000000

**\$17,931**

**1999 DODGE RAM QUAD-CAB 4X4 4 DR**

4 cyl. auto, p/w/locks, air, cruise, cd, 1 del. airbag, dash kit, rear, B/W A/S tires. VIN#1G1YD17711000000000

**\$23,531**

**1999 CHEVROLET EXPLORER EXPRESS CONVERSION 4 DR**

4 cyl. auto, p/w/locks, air, cruise, cd, 1 del. airbag, dash kit, rear, B/W A/S tires. VIN#1G1YD17711000000000

**\$18,531**

**2001 CHEVROLET SUBURBAN 1500 4X4 4 DR**

4 cyl. auto, p/w/locks, air, cruise, cd, 1 del. airbag, dash kit, rear, B/W A/S tires. VIN#1G1YD17711000000000

**\$29,531**

**2002 CHEVROLET SUBURBAN 4 DR**

4 cyl. auto, p/w/locks, air, cruise, cd, 1 del. airbag, dash kit, rear, B/W A/S tires. VIN#1G1YD17711000000000

**\$37,931**

**1999 FORD EXPEDITION 4X4 4 DR EDDIE BAUER EDITION**

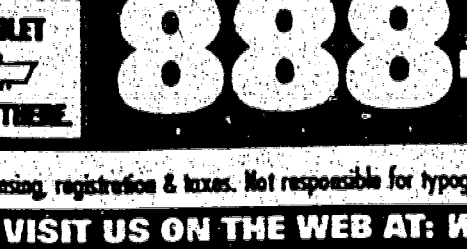
4 cyl. auto, p/w/locks, air, cruise, cd, 1 del. airbag, dash kit, rear, B/W A/S tires. VIN#1G1YD17711000000000

**\$18,931**

# WIGDER CHEVROLET



**RELIABLE SERVICE ALWAYS**  
ROUTE 10 WEST  
LIVINGSTON, NJ



**888-700-9879**  
SE HABLARA EN ESPANOL

Prices include all costs to be paid by consumer except for licensing, registration & taxes. Not responsible for typographical errors. \*Must own a non GM vehicle.