

Fractometer Yields Secrets Of Tobacco Flavor.

Researchers use smoke analysis to isolate key flavor ingredients of tobacco—low tar MERIT with Enriched Flavor achieved.

Not all ingredients of tobacco in cigarette smoke deliver the same amount of taste.

Or tar.

That's what researchers at Philip Morris discovered using an analytical fractometer to "crack" cigarette smoke down into its various parts.

Relying on this very sensitive, very special instrument, over 2000 separate ingredients were isolated and analyzed. What this analysis revealed was startling. There are ingredients in cigarette smoke—key flavor ingredients—that deliver taste way out of proportion to tar. Ingredients that, when packed into a tobacco blend, result in a cigarette that delivers extraordinary flavor without the usual corresponding increase in tar.

The discovery is called "Enriched Flavor." It comes in the tobacco of a remarkable new cigarette, MERIT.

"Enriched Flavor" is extra flavor. Natural flavor. Flavor that can't burn out, can't fade out, can't do anything but come through for you.

In fact, MERIT delivers the flavor of cigarettes having more tar. Up to 60% more tar.

Yet MERIT has only 9 mg. of tar. Lower



than 98% of all cigarettes being sold today. If you're looking to become a low tar smoker, or don't particularly enjoy the taste of the low tar brand you smoke now—you'll be interested.

Taste-tested By People Like You

9 mg. tar MERIT was taste-tested against five current leading low tar brands ranging from 11 mg. to 15 mg. tar. Thousands of filter smokers were involved, smokers like yourself, tested at home.

The results were conclusive. Even if the cigarette tested had 60% more tar than MERIT, a significant majority of all smokers tested reported new Enriched Flavor MERIT delivered more taste.

Repeat deliveries more taste.

In similar tests against 11 mg. to 15 mg. menthol brands, 9 mg. tar MERIT MENTHOL performed strongly too, delivering as much—or more—taste than the higher tar brands tested.

You've been smoking "low tar, good taste" claims long enough. Now you've got the cigarette, MERIT. Incredible smoking pleasure at one of the lowest tar levels in smoking today—only 9 mg. tar.

From Philip Morris.

American Institute of Consumer Opinion. Study available free on request.

© Philip Morris Inc. 1976

Warning: The Surgeon General Has Determined That Cigarette Smoking Is Dangerous to Your Health.

In case of emergency
376-0400 for Police Department
for First Aid Squad
376-7670 for Fire Department

VOL. 47, NO. 21

Springfield Leader

Published Every Thursday by Times Publishing Corp.
41 Mountain Ave., Springfield, N.J. 07081

Subscription Rate: \$5.00 per year
Second Class Postage Paid at Springfield, N.J.

3 Sections 25 Cents Per Copy

The Zip Code for Springfield is 07081



NATILIE WAIDY proposed for reelection Tuesday as a Springfield member of the Regional High School District Board of Education. (See editorial on page 4.)

Board postpones action on closing school

Regional tab adopted by school board

Educators to operate on \$13,999,181 total

The Union County Regional High School Board of Education, after a public hearing Monday night in David Brewster Regional High School, Kenilworth, adopted a 1976-77 budget of \$13,999,181, up \$1,522,537 from the 1975-76 total. The current expense portion, which has risen \$1,190,881 to \$12,299,877, capital outlay to \$222,900, debt service, \$25,130.

Theodore White, Mountaintop's representative to the board and its finance chairman, told the audience of about 50 persons that the total amount to be raised by taxation is \$13.7 million, representing a \$2.94 million increase. He noted, however, that the actual board increase was approximately \$1.8 million. He said \$1.82 million of the tax hike is a result of a new state-mandated \$5,000 reduction in state aid for debt service, and \$225,941 reflects the new state-directed board contribution to the teachers' annuity fund.

"I wish that one item in Mountaintop assessed at \$40,000, the tax bill would be trimmed to an amount of about \$1.78 million," he said. "The current expense budget, which will be presented to the voters in Tuesday's election, includes \$17,200,000 appropriation for general operations, \$1,100,000 for plant operations, \$652,979 for fixed charges, \$2,000,000 for employee pension funds, Social Security, utilities, tuition for students in special schools, \$81,024 for student activities, \$58,881 for transportation, \$416,944 for health services, \$133,838 for adult education, \$29,280 for summer school, \$26,573 for salaries of four cafeteria aides, and \$2,500 for food services.

The capital outlay portion, which is to total an apparently \$2.2 million, covers a program to complete construction of new fine arts doors at Jonathan Dayton, replacement of exterior windows at Dayton, improved lighting for the Dayton and Gov. Livingston Community stabilization of the bank behind the Gov. Livingston football bleachers, new equipment for the Dayton and Gov. Livingston field hockey grounds at Arthur L. Johnson.

Commenting on the budget increase, Springfield board representative George Decker said he viewed the hike as "a state tax." At this time (playing in his district and not supporting other school systems), "he said."

(Continued on page 11)



The Springfield Board of Education decided unanimously Tuesday night not to implement a possible closing of the Edward Walton School in favor of inclusion in the board's 1976-77 budget at the formal budget hearing scheduled for last night. The action, however, does not preclude the school's closing for the 1977-78 school year.

Meeting in open conference before about 40 people at the Raymond Chatham School, the board decided to refer to a subcommittee the various alternatives at an open conference school enrollment.

Dr. Fred Baruchin, superintendent of schools, said that he would like to see the help of other administrators. He will include all relevant facts on a number of alternate plans, as well as the evaluation of the costs and the implications for the school system and the citizen involved. Baruchin was also directed to include his own recommendations in the report.

He will try to complete the study by April 30, he said. The board will relate the study to other staff members who will not be retired next year if no campus for the year in progress by then, however. He said he will relate the study to other staff members who will not be retired next year if no campus for the year in progress by then, however. He said he will relate the study to other staff members who will not be retired next year if no campus for the year in progress by then, however.

Baruchin to study options on Walton

Board session Board session

A standing-room-only audience of about 200 people turned up for the regular meeting of the Springfield Board of Education Monday night at the Raymond Chatham School. Most of them to express their opposition to the closing of any elementary school in the coming year because of a decline in student population as well as the possible loss of more than \$300,000 in state aid.

Board members generally declined to voice their own opinions, although they did provide some statistical information. They stressed that they would have an opportunity to discuss the various alternatives at an open conference session Tuesday, in advance of the formal budget hearing last night.

Both the board members and the public agreed that their prime concern is the welfare of Springfield's children, although there was substantial disagreement as to the merits of the projected consolidation.

One proposal, developed by Dr. Fred Baruchin, superintendent of schools, would close the Edward Walton School, have both the Thelma Sandometer and James Caldwell schools moved from kindergarten to second grade and have grades 3-6 at the Florence Community School. One alternative would be to close the Edward Walton School, have the Thelma Sandometer and James Caldwell schools moved from kindergarten to second grade and have grades 3-6 at the Florence Community School.

The present alignment has K-3 at Sandometer, K-3 at Walton, K-4 at Caldwell and K-5 at Gaudineer. Older students attend Jonathan Dayton Regional High School, which is outside the jurisdiction of the local board.

Most of the criticism stemmed from fears that youngsters would suffer if class size is increased by 15 to 20 percent.

Baruchin said that he would like to see the help of other administrators. He will include all relevant facts on a number of alternate plans, as well as the evaluation of the costs and the implications for the school system and the citizen involved.

Town's budget tax up 4.5 pts.

The Township Committee Tuesday night introduced a 1976 budget of \$2,410,078, which is an increase of about \$200,000 over the 1975 total.

Under the new budget, the township will bring about a 4.5-point increase in the tax rate on a \$40,000 base. They will make major changes in the rate on other classes of property, including: general property, 1 cent; pension fund increase, 1 cent; and Highway Valley Sewerage Authority and insurance bonds and similar items cover which the governing body has little control, 1 cent.

In other business, the committee voted unanimously against a proposed ordinance which would have opened the municipal swimming pool to the general public.

Instead, the committee authorized expansion of a measure to increase pool membership fees from \$90 to \$100 per family, \$20 for single members and \$10 to \$15 for children.

The committee reported that the 1976-77 fiscal year will be a budget year for the township, which is to be taken care of by the State Division.

(Continued on page 11)

'Victory Trail' mapped

Scout conducts Eagle project

For Alan Grossman, of Springfield Boy Scout Troop 172, having 24 new boys and passing an Eagle Scout badge of review were part of a journey that culminated in a 13-mile hike through Union County.

For a Scout on the verge of attaining his status, a 13-mile hike doesn't appear to be much of a challenge. For Grossman's unit, represented by the young men's eagle service project in which he researched and mapped out an historic Revolutionary War "Victory Trail" through Union County.

The Jonathan Dayton Regional High School students, outlined the historic trail. They documented Revolutionary War battles fought in 1776 and 1777 through Union County, and Springfield, the trail's only community center in New Jersey. The trail is a 13-mile hike through Union County, and Springfield, the trail's only community center in New Jersey. The trail is a 13-mile hike through Union County, and Springfield, the trail's only community center in New Jersey.

Board candidates face citizen queries Monday

Springfield voters will have an opportunity to hear and question the seven candidates for the Springfield Board of Education on Monday at 8 p.m. at the Florence Community School.

The candidates are: Theodore White, Mountaintop; Natilie Waidy, Springfield; Theodore White, Mountaintop; Natilie Waidy, Springfield; Theodore White, Mountaintop; Natilie Waidy, Springfield; Theodore White, Mountaintop; Natilie Waidy, Springfield.

Board candidates face citizen queries Monday

The Springfield Board of Education candidates will face citizen queries Monday at 8 p.m. at the Florence Community School. The candidates are: Theodore White, Mountaintop; Natilie Waidy, Springfield; Theodore White, Mountaintop; Natilie Waidy, Springfield; Theodore White, Mountaintop; Natilie Waidy, Springfield.

Meeting announced

The Board of Education of the Union County Regional High School District will hold its regular monthly meeting Monday at 8 p.m. at the Desford School, Mountaintop, N.J. Reservations are invited so please contact your board or host as soon as possible or call the Springfield Board at 376-5800.

Bicentennial plan: three concurrent balls March 20

Three concurrent balls, sponsored by the Springfield Bicentennial Committee, which will begin at 7 p.m. at the Ballroom Country Club, Springfield, Hills and Springfield Country Club, Springfield.

The ball at Ballroom Country Club will be Mrs. Madeline Lancaster as hostess. It will consist of a buffet-casual dinner, formal or semi-formal, and dancing. Prizes will be awarded for the best costumes in the following categories: enhanced man, best dressed woman, and best dressed couple. The cost for the dinner and the ball is \$25 per couple. Tickets are available from Mrs. Lancaster at 376-0929 or 491-1421.

Photo of '23 car given to museum

A framed photograph of a 1923 Franklin Daimler car is given to the Donald B. Palmer Museum of the Springfield Public Library Museum for its permanent collection. Mr. and Mrs. Briggs stepped it down, completely restored the wooden body, repolished the interior, and have restored it to its former glory.

Donors sought for Bloodmobile visit; 11 local groups to take part in drive

An appeal for donors to take part in the first of two 1976 Springfield community bloodmobile drives on Thursday, March 11, from 1:30 to 8:30 p.m. at Temple Park, Union County, has been issued. The drive was sponsored by the Springfield Bloodmobile Drive Committee.

The drive will be held at Temple Park, Union County, on Thursday, March 11, from 1:30 to 8:30 p.m.

The drive will be held at Temple Park, Union County, on Thursday, March 11, from 1:30 to 8:30 p.m.

N.J. Bicentennial plans go on sale in township

Township Clerk Arthur H. Biglieri this week announced that the official New Jersey Bicentennial sale festival plans are available at his office.

Those persons wishing to purchase the festival plans should contact the township clerk's office. The cost is \$1 per plate.

The festival plans are available at his office. The cost is \$1 per plate.

Editorial comment REGIONAL ELECTION

Springfield voters had a busy week with two important elections. The first was the election of the Regional Board of Education and approval of the Regional District budget for the 1976-77 school year.

Mrs. Wald began her career of public service as a member of the Board of Education and served as its president for three years. She also is a member of the Women's Army Corps during World War II. Now she needs every vote to support the re-election of the Regional Board of Education.

There will be some opposition of course because the district budget for 1976-77 is \$1,544,887 in taxes to be raised by the six member communities.

It is a fact that the Regional Board of Education is the only one who have the right to raise taxes in the area.

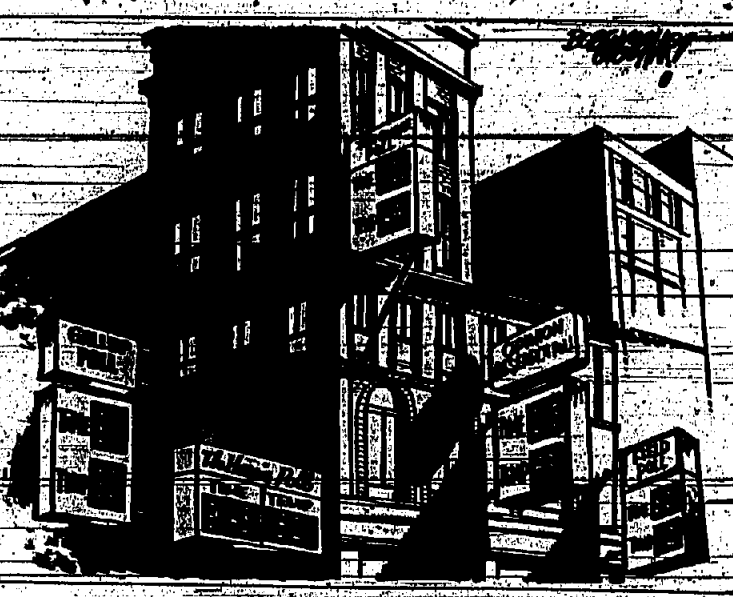
Public meetings
The following is a list of scheduled meetings of local committees, boards and commissions.

Regional High School Board of Education adjourned regular meeting—Thursday, 7:30 p.m., Tynes-Martin Building, 811 Broadway Ave., Springfield.

Regional Board of Education adjourned regular meeting—Thursday, 7:30 p.m., Tynes-Martin Building, 811 Broadway Ave., Springfield.

School lunches

SPRINGFIELD (L.A. Times)—The Regional Board of Education has approved a plan to provide school lunches for all children in the district.



LIBRARY A great man's daughter

By ROBERT S. SMITH
FAMOUSLY SUCCESSFUL
City Father, Richard Russell, Jr.

There was a time when Richard Russell Jr. was known as a great man's daughter. He was the son of a prominent politician and a successful businesswoman.

LETTERS

Every time we see a headline about a new program or service, we are reminded of the need for better services in our community.

Springfield leaders

SPRINGFIELD (L.A. Times)—The Regional Board of Education has approved a plan to provide school lunches for all children in the district.

Election letters

In order to present a complete picture of the candidates for the upcoming election, we are publishing a series of letters from the candidates.

BICENTENNIAL YIGNETTES Robin Hood of N.J. Pines

By JOHN V. CUNNINGHAM
The home of a young boy who was known as Robin Hood of N.J. Pines, was recently discovered by a local historian.

State-local budget links

By PATRICK J. SHEEHAN
The Department of Community Affairs has announced a new program to link state and local budgets.

IN PAST TENSE

THE TOWN OF SPRINGFIELD INTRODUCES ITS 1976 BUDGET. Called for \$1,544,887 to be raised by voters in the April 1976 election.

Representing us In Washington

The Senate
Clifford P. Cramer, Republican of Rahway, 315 Old Senate Office Building, Washington, D.C. 20510.

A general is killed in action

Virginia Major, who was sent to General Hospital in England, was killed in action during the Vietnam War.

Scrapbook

On Sunday, Feb. 22, 1976, a group of friends gathered to look at a scrapbook of memories from the past.

Lung Association points to improved patient care

The home nursing program for lung patients, sponsored by the Lung Association, has been praised for its quality of care.

Glee clubs to sing Haydn on Sunday

The combined clubs of the Trinity School and Princeton High School will perform a concert of Haydn's music on Sunday.

3 courses offered at police academy

Three intensive programs to upgrade the skills of law enforcement officers will be conducted by the Union County Police Training Academy.

Environment unit to meet March 3

The regular monthly meeting of the Environmental Unit will be held on March 3 at the County Administration Building.

UC offers course on landing a job

The world of employment will be explored in a new course offered by the University of Connecticut.

Bank to pay dividend

The Board of Directors of the National State Bank has declared a dividend on the bank's common stock.

Jewish units plan Bicentennial week

Community leaders representing all areas of Jewish life in the Eastern Union County area are planning a week of activities.

Ski Club dance welcomes spring

The Short Hills Ski Club will hold a dance on Tuesday, March 16, at the club's headquarters.

Extension service thinks of spring with workshops

Seminars in vegetable gardening, lawn maintenance and care of trees and shrubs are being offered by the Cooperative Extension Service.

Vocational Evaluation Center enrolls seven with disabilities

The Vocational Evaluation Center, a part of the Union County Vocational Center, is enrolling students with disabilities.

Harris committee analyzes primary

The Harris Committee has completed its analysis of the primary election results in the county.

Screening slated for eye diseases

The Elizabeth Hospital is offering a free eye screening program for the community.

Hospital provides training for UCTI

Elizabeth General Hospital has provided training for the Union County Technical Institute.

Red Cross 'days' listed -this Sabbath, Sunday

This Saturday and Sunday have been designated as Red Cross Sabbath and Red Cross Sunday.

Bank to pay dividend

The Board of Directors of the National State Bank has declared a dividend on the bank's common stock.

Jewish units plan Bicentennial week

Community leaders representing all areas of Jewish life in the Eastern Union County area are planning a week of activities.

Non-credit course registration open at UC next week

In-person registration for non-credit courses to be offered at the Union County Vocational Center is open.

Registration open for courses at Y

Registration is now open at the Elizabeth Y for a variety of courses offered during the spring.

Ostomy unit plans meeting March 1

The Ostomy Unit of the Elizabeth Hospital is planning a meeting for patients and family members.

Harris committee analyzes primary

The Harris Committee has completed its analysis of the primary election results in the county.

Hire drawings picked for show

The drawings for the hire show will be held on Saturday, March 6, at the county administration building.

Red Cross 'days' listed -this Sabbath, Sunday

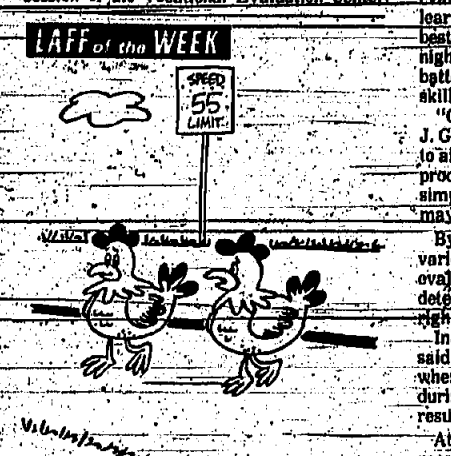
This Saturday and Sunday have been designated as Red Cross Sabbath and Red Cross Sunday.

Bank to pay dividend

The Board of Directors of the National State Bank has declared a dividend on the bank's common stock.

Jewish units plan Bicentennial week

Community leaders representing all areas of Jewish life in the Eastern Union County area are planning a week of activities.



Why am I doing this?

Why am I doing this? It's a question that many of us ask ourselves at one time or another.

Railroad club sets open house dates

The Model Railroad Club will hold its first open house on Saturday, March 6, at the club's headquarters.

Harris committee analyzes primary

The Harris Committee has completed its analysis of the primary election results in the county.

Hire drawings picked for show

The drawings for the hire show will be held on Saturday, March 6, at the county administration building.

Red Cross 'days' listed -this Sabbath, Sunday

This Saturday and Sunday have been designated as Red Cross Sabbath and Red Cross Sunday.

Bank to pay dividend

The Board of Directors of the National State Bank has declared a dividend on the bank's common stock.

Jewish units plan Bicentennial week

Community leaders representing all areas of Jewish life in the Eastern Union County area are planning a week of activities.

For that warm, secure feeling...

Invest with the best! Open a regular savings account at Investors Savings and enjoy that warm, secure feeling that comes from knowing your hard earned dollars are available to you whenever you need them.

REGULAR SAVINGS ACCOUNTS
Investors Savings offers a variety of regular savings accounts to meet your needs.

INVESTORS SAVINGS
A SECURITIES COMPANY
A FIDELITY INVESTMENT COMPANY

Investors Savings is a member of the Fidelity Investments Group, providing a wide range of investment services.

We mourn the death of 22,000 Guatemalan people.



Photo taken three weeks before earthquake in Guatemala.

My wife and I were fortunate to visit this lovely country a few weeks ago. The gentleness of these hardworking and sweet people is vivid in our memory. And the most devastated have been the most innocent of all... the Indians. Their homes have been destroyed. Their bodies broken. Their faith shaken. Their lives completely disrupted. Those still alive are weak, confused, vulnerable... hungry. Only God knows if these two precocious little girls are alive... or maimed... or starving. It is not fair. But you can do something to alleviate their pain... and maybe even save a life. Please. Feel. Care. Love. Respond. Give now. Make a check out today to the American Red Cross, Guatemalan Disaster Relief Fund and mail it to us. We will make sure every penny gets to the right people. Send to: Help Guatemala c/o Miller, Addison, Sreele, Inc., 225 East 60th Street, New York, New York 10022. Every donation will be answered. Thank you. Ken and Asa Miller.

Please help the survivors.

Mrs. Dwyer thanks friends for letters while in hospital

Former Congressman Florence P. Dwyer of Elizabeth, whose right leg was amputated below the knee in early November, said this week she is "delighted" with "the outpouring" of letters she has received from friends and neighbors. She recently returned to Elizabeth General Hospital for specialized testing after spending six weeks at John F. Hummel Hospital in Berkeley Heights, where she had been undergoing rehabilitation therapy.

"I really believe I am doing quite well and am so very anxious to get back home," Mrs. Dwyer said. "I am also anxious to thank you to the hundreds and hundreds of people who have sent their greetings to me. I know every many people are thinking of me."

Mrs. Dwyer had originally entered Elizabeth General last before Labor Day weekend last summer and entered Hummel during Christmas week. She was fitted for her artificial leg in late January and has participated in daily therapy sessions to strengthen her arm and shoulder after five months of hospitalization.

Doctors aren't certain how long Mrs. Dwyer will remain at Elizabeth General this time. She will ultimately return to Hummel to complete the rehabilitation training, however, and friends are invited to write to her at Elizabeth General Hospital, E. Jersey street, Elizabeth, N.J.

Westfield group selects Tillim to judge art show

Stacy Tillim of New York will judge the City will select a judge for the 15th annual Westfield Art Association's 15th annual art show at Union College March 21 to March 28. It was announced this week by Mrs. Dorothy K. Siska of Westfield, chairman.

Tillim will select works for the show. He is an internationally recognized artist, teacher and critic. His works are represented in the collections of the Hirshhorn Museum in Washington, D.C., the New Jersey State Museum in Trenton, the James Michener collection at the University of Texas, the Peter Ludwig collection in Anson, Germany, and in many private collections.

Tillim is a recipient of a National Endowment of Arts grant in 1975. He is a professor of art, history and painting at Barnard College, Columbia University in 1973 and for the past two years at the University of Pennsylvania. He is also a past president of the National Academy of Art and Artistic Education.

The show is open to artists residing in New Jersey who are interested in art and other original works in any medium. The show is open to artists in any medium and is a free and open to all. The show is open to artists in any medium and is a free and open to all.

Skylab film to be shown at Fraillside

A film on Skylab, NASA's first manned space laboratory, will be shown on Sunday at the Union County Park Commission's Fraillside Nature and Science Center in Watchung. The film, produced before the mission, shows the mission's objectives, features and investigations involved in preparing the laboratory for the mission. The film is open to artists in any medium and is a free and open to all.

The film is open to artists in any medium and is a free and open to all. The film is open to artists in any medium and is a free and open to all.

Gardening talks at UC

Union College and the Union County Extension Service are sponsoring a free lecture series for home gardeners, beginning Saturday.

The first Saturday morning lecture, will be devoted to preparing spring and summer gardens. The lecture will cover home vegetable gardening; the summer lawn maintenance and landscaping, and the March 13 lecture, care of trees and shrubs.

Lectures will be conducted from 10 a.m. to noon. Speakers include: Dr. William Frank, extension specialist in vegetable production at Cook College of Rutgers University; Eric H. Peterson, extension specialist in horticulture with the Union County Cooperative Extension Service; and the Union County Cooperative Extension Service.

While all lectures are free, advance registration is required. Registration is limited to 25 persons per lecture. For more information, contact the Union County Cooperative Extension Service, 225 East 60th Street, New York, N.Y. 10022.

County unit names slate

Thomas Jones of Cranford, representing the Eastern Union County Chamber of Commerce, was elected chairman of the Transportation Advisory Committee to the Union County Planning Board at the group's recent meeting.

Other officers include: William Wright, representing the Township of Cranford, named vice-chairman; and Mrs. Evelyn Frank of Union, representing the Senior Citizens Council of the county, named secretary.

The Transportation Advisory Committee is made up of representatives of the municipalities and organizations, which will advise the County Planning Board on transportation matters.

Clarinet recital for dancers

Potential Fred Astaire and Ginger Rogers are being asked to donate their talents to a "One to One" dance marathon at Union College on March 5, 6 and 7.

Sponsored by the Council for Exceptional Children, a non-profit organization, the dance marathon will raise money for the services of 2,000 local children with physical handicaps. The entrance fee will include dancing couples.

Inquiries should be directed to the Council for Exceptional Children, 411 West 121st College Center Building, New York, N.Y. 10027.

March 4 concert scheduled at UC

A free concert featuring the works of Chopin and Liszt will be presented at Union College on Thursday, March 4, at 12:15 p.m. in the Campus Center Theater, Cranford.

Lawrence Ferrara of Nutley, concert pianist and member of the College of the Arts Department, will play selections for the two composers and discuss various aspects of the pieces.

Ferrara will perform the same concert at Weverka's "Cultural Affairs" program on Saturday, March 6.

Ferrara, a former student of world renowned pianist Rosy Goldstein, performs widely and teaches music privately at Union College. He held a fellowship at the Yale University Graduate School of Music and is presently working on a doctorate at New York University.

"Hello Dolly," the longest running musical in Broadway history will come to the stage of the Pingry School in Hillsdale tomorrow and Saturday at 8 p.m., with a special matinee performance at 2 p.m., Monday, March 1.

Medical insurance sign-up under Medicare now open

People who did not sign up for Medicare medical insurance when they first became eligible or who have cancelled the protection can enroll now through March 31 at any social security office, according to Robert E. Williams, social security district manager in Elizabeth.

Medicare medical insurance is offered to people who are 65 and are eligible for social security benefits—and to disabled people under 65 who have been entitled to monthly social security disability benefits for 24 consecutive months or more. Nine out of 10 people eligible are enrolled in the program, according to Williams.

But some people decline the protection when they're first eligible, he said. "And some sign up once and cancel later. They can enroll in the first three months of any year."

The medical insurance helps pay doctor bills and other medical expenses and is the voluntary part of Medicare, funded by individual premiums and Federal general revenues. The basic premium is \$6.70 a month through 1976. It will be increased to \$7.50 for the 12

Antiques exhibit at Greek church

More than 40 dealers will display a wide variety of antiques on March 19 and 20 in the annual antiques show and sale sponsored by the Ladies' Auxiliary of Holy Trinity Greek Orthodox Church, Westfield. The event will be open each day from 11 a.m. to 5 p.m.

In addition to antiques, a dining room will feature Greek and American food. Greek parties served in a tea room.

Mrs. Anthony Gouros and Mrs. Gouros will be on hand to answer questions. The display will include oriental items, silver, chairs, glass, furniture, lamp, jewelry, framed pictures, mirrors, clocks, brooms, brasses, pewter and other collectible items.

Antiques exhibit at Greek church

More than 40 dealers will display a wide variety of antiques on March 19 and 20 in the annual antiques show and sale sponsored by the Ladies' Auxiliary of Holy Trinity Greek Orthodox Church, Westfield. The event will be open each day from 11 a.m. to 5 p.m.

In addition to antiques, a dining room will feature Greek and American food. Greek parties served in a tea room.

Mrs. Anthony Gouros and Mrs. Gouros will be on hand to answer questions. The display will include oriental items, silver, chairs, glass, furniture, lamp, jewelry, framed pictures, mirrors, clocks, brooms, brasses, pewter and other collectible items.

Antiques exhibit at Greek church

More than 40 dealers will display a wide variety of antiques on March 19 and 20 in the annual antiques show and sale sponsored by the Ladies' Auxiliary of Holy Trinity Greek Orthodox Church, Westfield. The event will be open each day from 11 a.m. to 5 p.m.

In addition to antiques, a dining room will feature Greek and American food. Greek parties served in a tea room.

Mrs. Anthony Gouros and Mrs. Gouros will be on hand to answer questions. The display will include oriental items, silver, chairs, glass, furniture, lamp, jewelry, framed pictures, mirrors, clocks, brooms, brasses, pewter and other collectible items.

Antiques exhibit at Greek church

More than 40 dealers will display a wide variety of antiques on March 19 and 20 in the annual antiques show and sale sponsored by the Ladies' Auxiliary of Holy Trinity Greek Orthodox Church, Westfield. The event will be open each day from 11 a.m. to 5 p.m.

In addition to antiques, a dining room will feature Greek and American food. Greek parties served in a tea room.

Mrs. Anthony Gouros and Mrs. Gouros will be on hand to answer questions. The display will include oriental items, silver, chairs, glass, furniture, lamp, jewelry, framed pictures, mirrors, clocks, brooms, brasses, pewter and other collectible items.

Antiques exhibit at Greek church

More than 40 dealers will display a wide variety of antiques on March 19 and 20 in the annual antiques show and sale sponsored by the Ladies' Auxiliary of Holy Trinity Greek Orthodox Church, Westfield. The event will be open each day from 11 a.m. to 5 p.m.

In addition to antiques, a dining room will feature Greek and American food. Greek parties served in a tea room.

Mrs. Anthony Gouros and Mrs. Gouros will be on hand to answer questions. The display will include oriental items, silver, chairs, glass, furniture, lamp, jewelry, framed pictures, mirrors, clocks, brooms, brasses, pewter and other collectible items.

Antiques exhibit at Greek church

More than 40 dealers will display a wide variety of antiques on March 19 and 20 in the annual antiques show and sale sponsored by the Ladies' Auxiliary of Holy Trinity Greek Orthodox Church, Westfield. The event will be open each day from 11 a.m. to 5 p.m.

In addition to antiques, a dining room will feature Greek and American food. Greek parties served in a tea room.

Mrs. Anthony Gouros and Mrs. Gouros will be on hand to answer questions. The display will include oriental items, silver, chairs, glass, furniture, lamp, jewelry, framed pictures, mirrors, clocks, brooms, brasses, pewter and other collectible items.

Antiques exhibit at Greek church

More than 40 dealers will display a wide variety of antiques on March 19 and 20 in the annual antiques show and sale sponsored by the Ladies' Auxiliary of Holy Trinity Greek Orthodox Church, Westfield. The event will be open each day from 11 a.m. to 5 p.m.

In addition to antiques, a dining room will feature Greek and American food. Greek parties served in a tea room.

Mrs. Anthony Gouros and Mrs. Gouros will be on hand to answer questions. The display will include oriental items, silver, chairs, glass, furniture, lamp, jewelry, framed pictures, mirrors, clocks, brooms, brasses, pewter and other collectible items.

Antiques exhibit at Greek church

More than 40 dealers will display a wide variety of antiques on March 19 and 20 in the annual antiques show and sale sponsored by the Ladies' Auxiliary of Holy Trinity Greek Orthodox Church, Westfield. The event will be open each day from 11 a.m. to 5 p.m.

In addition to antiques, a dining room will feature Greek and American food. Greek parties served in a tea room.

Mrs. Anthony Gouros and Mrs. Gouros will be on hand to answer questions. The display will include oriental items, silver, chairs, glass, furniture, lamp, jewelry, framed pictures, mirrors, clocks, brooms, brasses, pewter and other collectible items.

Medical insurance sign-up under Medicare now open

People who did not sign up for Medicare medical insurance when they first became eligible or who have cancelled the protection can enroll now through March 31 at any social security office, according to Robert E. Williams, social security district manager in Elizabeth.

Medicare medical insurance is offered to people who are 65 and are eligible for social security benefits—and to disabled people under 65 who have been entitled to monthly social security disability benefits for 24 consecutive months or more. Nine out of 10 people eligible are enrolled in the program, according to Williams.

But some people decline the protection when they're first eligible, he said. "And some sign up once and cancel later. They can enroll in the first three months of any year."

The medical insurance helps pay doctor bills and other medical expenses and is the voluntary part of Medicare, funded by individual premiums and Federal general revenues. The basic premium is \$6.70 a month through 1976. It will be increased to \$7.50 for the 12

Medical insurance sign-up under Medicare now open

People who did not sign up for Medicare medical insurance when they first became eligible or who have cancelled the protection can enroll now through March 31 at any social security office, according to Robert E. Williams, social security district manager in Elizabeth.

Medicare medical insurance is offered to people who are 65 and are eligible for social security benefits—and to disabled people under 65 who have been entitled to monthly social security disability benefits for 24 consecutive months or more. Nine out of 10 people eligible are enrolled in the program, according to Williams.

But some people decline the protection when they're first eligible, he said. "And some sign up once and cancel later. They can enroll in the first three months of any year."

The medical insurance helps pay doctor bills and other medical expenses and is the voluntary part of Medicare, funded by individual premiums and Federal general revenues. The basic premium is \$6.70 a month through 1976. It will be increased to \$7.50 for the 12

Medical insurance sign-up under Medicare now open

People who did not sign up for Medicare medical insurance when they first became eligible or who have cancelled the protection can enroll now through March 31 at any social security office, according to Robert E. Williams, social security district manager in Elizabeth.

Medicare medical insurance is offered to people who are 65 and are eligible for social security benefits—and to disabled people under 65 who have been entitled to monthly social security disability benefits for 24 consecutive months or more. Nine out of 10 people eligible are enrolled in the program, according to Williams.

But some people decline the protection when they're first eligible, he said. "And some sign up once and cancel later. They can enroll in the first three months of any year."

The medical insurance helps pay doctor bills and other medical expenses and is the voluntary part of Medicare, funded by individual premiums and Federal general revenues. The basic premium is \$6.70 a month through 1976. It will be increased to \$7.50 for the 12

Medical insurance sign-up under Medicare now open

People who did not sign up for Medicare medical insurance when they first became eligible or who have cancelled the protection can enroll now through March 31 at any social security office, according to Robert E. Williams, social security district manager in Elizabeth.

Medicare medical insurance is offered to people who are 65 and are eligible for social security benefits—and to disabled people under 65 who have been entitled to monthly social security disability benefits for 24 consecutive months or more. Nine out of 10 people eligible are enrolled in the program, according to Williams.

But some people decline the protection when they're first eligible, he said. "And some sign up once and cancel later. They can enroll in the first three months of any year."

The medical insurance helps pay doctor bills and other medical expenses and is the voluntary part of Medicare, funded by individual premiums and Federal general revenues. The basic premium is \$6.70 a month through 1976. It will be increased to \$7.50 for the 12

Medical insurance sign-up under Medicare now open

People who did not sign up for Medicare medical insurance when they first became eligible or who have cancelled the protection can enroll now through March 31 at any social security office, according to Robert E. Williams, social security district manager in Elizabeth.

Medicare medical insurance is offered to people who are 65 and are eligible for social security benefits—and to disabled people under 65 who have been entitled to monthly social security disability benefits for 24 consecutive months or more. Nine out of 10 people eligible are enrolled in the program, according to Williams.

But some people decline the protection when they're first eligible, he said. "And some sign up once and cancel later. They can enroll in the first three months of any year."

The medical insurance helps pay doctor bills and other medical expenses and is the voluntary part of Medicare, funded by individual premiums and Federal general revenues. The basic premium is \$6.70 a month through 1976. It will be increased to \$7.50 for the 12

Medical insurance sign-up under Medicare now open

People who did not sign up for Medicare medical insurance when they first became eligible or who have cancelled the protection can enroll now through March 31 at any social security office, according to Robert E. Williams, social security district manager in Elizabeth.

Medicare medical insurance is offered to people who are 65 and are eligible for social security benefits—and to disabled people under 65 who have been entitled to monthly social security disability benefits for 24 consecutive months or more. Nine out of 10 people eligible are enrolled in the program, according to Williams.

But some people decline the protection when they're first eligible, he said. "And some sign up once and cancel later. They can enroll in the first three months of any year."

The medical insurance helps pay doctor bills and other medical expenses and is the voluntary part of Medicare, funded by individual premiums and Federal general revenues. The basic premium is \$6.70 a month through 1976. It will be increased to \$7.50 for the 12

Medical insurance sign-up under Medicare now open

People who did not sign up for Medicare medical insurance when they first became eligible or who have cancelled the protection can enroll now through March 31 at any social security office, according to Robert E. Williams, social security district manager in Elizabeth.

Medicare medical insurance is offered to people who are 65 and are eligible for social security benefits—and to disabled people under 65 who have been entitled to monthly social security disability benefits for 24 consecutive months or more. Nine out of 10 people eligible are enrolled in the program, according to Williams.

But some people decline the protection when they're first eligible, he said. "And some sign up once and cancel later. They can enroll in the first three months of any year."

The medical insurance helps pay doctor bills and other medical expenses and is the voluntary part of Medicare, funded by individual premiums and Federal general revenues. The basic premium is \$6.70 a month through 1976. It will be increased to \$7.50 for the 12

Medical insurance sign-up under Medicare now open

People who did not sign up for Medicare medical insurance when they first became eligible or who have cancelled the protection can enroll now through March 31 at any social security office, according to Robert E. Williams, social security district manager in Elizabeth.

Medicare medical insurance is offered to people who are 65 and are eligible for social security benefits—and to disabled people under 65 who have been entitled to monthly social security disability benefits for 24 consecutive months or more. Nine out of 10 people eligible are enrolled in the program, according to Williams.

But some people decline the protection when they're first eligible, he said. "And some sign up once and cancel later. They can enroll in the first three months of any year."

The medical insurance helps pay doctor bills and other medical expenses and is the voluntary part of Medicare, funded by individual premiums and Federal general revenues. The basic premium is \$6.70 a month through 1976. It will be increased to \$7.50 for the 12

CLIP & SAVE!

Two Guys

FOOD DEPARTMENT

WE SELL ONLY U.S.D.A. CHOICE BEEF!

SMOKED HAM SMOKED CENTER CUT 1.49 LBS. PORTION 79¢	SHANK PORTION SHANK PORTION 79¢	CHUCK STEAK CHUCK STEAK 65¢	POT ROAST POT ROAST 99¢
SHOULDER ROAST SHOULDER ROAST 1.29	GROUND CHUCK GROUND CHUCK 39¢	Our Trim is Better!	
CHUCK STEAK CHUCK STEAK 65¢	POT ROAST POT ROAST 99¢	SHOULDER ROAST SHOULDER ROAST 1.29	GROUND CHUCK GROUND CHUCK 39¢

DEL MONTE CUT GREEN BEANS DEL MONTE CUT GREEN BEANS 89¢	DEL MONTE WHOLE OF DREAM CORN DEL MONTE WHOLE OF DREAM CORN 89¢	DEL MONTE PEAS DEL MONTE PEAS 89¢	DEL MONTE CARROTS DEL MONTE CARROTS 89¢
---	---	---	---

WESTERN LETTUCE WESTERN LETTUCE 3.91	SWEET EATING TEMPLE ORANGES SWEET EATING TEMPLE ORANGES 18.91	HARD RIPE SLICING TOMATOES HARD RIPE SLICING TOMATOES 49¢	FLORIDA HONEY TANGERS FLORIDA HONEY TANGERS 18.91
--	---	---	---

LIBERTY BROADWAY BOLOGNA LIBERTY BROADWAY BOLOGNA 59¢	LIBERTY BROADWAY CHICKEN LIBERTY BROADWAY CHICKEN 59¢	LIBERTY BROADWAY SAUSAGE LIBERTY BROADWAY SAUSAGE 59¢	LIBERTY BROADWAY HAM LIBERTY BROADWAY HAM 59¢
---	---	---	---

LIBERTY BROADWAY CHICKEN LIBERTY BROADWAY CHICKEN 59¢	LIBERTY BROADWAY SAUSAGE LIBERTY BROADWAY SAUSAGE 59¢	LIBERTY BROADWAY HAM LIBERTY BROADWAY HAM 59¢	LIBERTY BROADWAY BEEF LIBERTY BROADWAY BEEF 59¢
---	---	---	---

LIBERTY BROADWAY CHICKEN LIBERTY BROADWAY CHICKEN 59¢	LIBERTY BROADWAY SAUSAGE LIBERTY BROADWAY SAUSAGE 59¢	LIBERTY BROADWAY HAM LIBERTY BROADWAY HAM 59¢	LIBERTY BROADWAY BEEF LIBERTY BROADWAY BEEF 59¢
---	---	---	---

LIBERTY BROADWAY CHICKEN LIBERTY BROADWAY CHICKEN 59¢	LIBERTY BROADWAY SAUSAGE LIBERTY BROADWAY SAUSAGE 59¢	LIBERTY BROADWAY HAM LIBERTY BROADWAY HAM 59¢	LIBERTY BROADWAY BEEF LIBERTY BROADWAY BEEF 59¢
---	---	---	---

ESSEX SPORTS CAR

2100 WEST 121ST STREET
MAYWOOD, N.J. 07096

OPEN ONLY MON. & TUE. 10:00 A.M. - 6:00 P.M.

ENJOY SUMMER '76

SPRING GARDEN COUNTRY CLUB

Bigger and Better Than Ever!

Write or Call for Membership:

BARRY SEGAL - General Manager

73 E. MADISON AVENUE
FLORHAM PARK, N.J. 07932
377-4300

MAXWELL HOUSE COFFEE

1 lb. CAN 99¢

MAXWELL HOUSE COFFEE

1 lb. CAN 99¢

MAXWELL HOUSE COFFEE

1 lb. CAN 99¢

SAVE 56¢

MAXWELL HOUSE COFFEE

1 lb. CAN 99¢

MAXWELL HOUSE COFFEE

1 lb. CAN 99¢

FIESTA SALE

DEL MONTE CUT GREEN BEANS

DEL MONTE WHOLE OF DREAM CORN

DEL MONTE PEAS

DEL MONTE CARROTS

SAVE AS MUCH AS 25¢

LIBERTY BROADWAY BOLOGNA

LIBERTY BROADWAY CHICKEN

LIBERTY BROADWAY SAUSAGE

LIBERTY BROADWAY HAM

SAVE AS MUCH AS 25¢

LIBERTY BROADWAY BOLOGNA

LIBERTY BROADWAY CHICKEN

LIBERTY BROADWAY SAUSAGE

LIBERTY BROADWAY HAM

SAVE AS MUCH AS 25¢

LIBERTY BROADWAY BOLOGNA

LIBERTY BROADWAY CHICKEN

LIBERTY BROADWAY SAUSAGE

LIBERTY BROADWAY HAM

TOILETRIES DEPT.

Efferdent

Head & Shoulders

L'Oréal

Mangano

BAKERY SPECIALS

White Bread

Custard Pie

Spice Bread

Potato Bread

UNION

Rt. 22 at Morris Avenue

We reserve the right to limit quantities.

© Two Guys, Inc., 1976



COMMUNITY PRESBYTERIAN CHURCH

MOUNTAINIDE... MINISTER: THE REV. ELMER A. TALCOTT... WEDNESDAY 7:30 p.m. session meeting...

Rinaldo to speak at a joint meeting in Westfield hall

The Westfield-Mountainide Chapter of the Order of the Eastern Star... will hold a joint meeting on March 7 at 7 p.m. in the lower-level hall of Temple Emmanuel...

Rajoppi-Pappas troth is told, December wedding planned

Mr. and Mrs. THOMAS LOUSSA of Prospect place, Springfield, have announced the engagement of their daughter, Joan Marie Rajoppi, to Peter Pappas of Liberty Avenue, Newark...

Program is listed by Woman's Club on party planning

The Springfield Woman's Club will meet on Wednesday at 8:15 p.m. at the National State Bank at 158 Morris Ave. to discuss the annual party planning program...

50th anniversary for the Gooses

Mr. and Mrs. Cornelius Gooses of Pace drive, Mountainide, have been honored on the occasion of their 50th wedding anniversary with a Mass and a party given by their family and friends...

Area sororities to meet March 17

The 50th anniversary luncheon of the Westfield Area Alumnae Panhellenic Conference will be held Wednesday, March 17, at 12:30 p.m. at the Elmer Club...

Carol A. Klueber to wed Mr. Young

Our Lady of Lourdes Church, Mountainide, will be the scene of the marriage of Carol Ann Klueber and William Young on Saturday, March 13, at 10 a.m. The bride is the daughter of Mr. and Mrs. William J. Klueber of Prospect Ave., Mountainide...

Charge for Pictures

There is a charge of \$3 for wedding and engagement pictures. These pictures are taken at the home of the bride and groom. The charge for the pictures is \$3.00 per couple. The pictures are taken at the home of the bride and groom. The charge for the pictures is \$3.00 per couple.

Week's lunches at Dayton

Luncheon for the week of March 1 at Jonathan Dayton Regional High School will be Monday, March 1, at 11:30 a.m. Luncheon 2: sloppy joe on bun, baked beans, baked potatoes, salad, bread, butter, coffee. Luncheon 3: cold sandwich, baked beans, baked potatoes, salad, bread, butter, coffee.

Women's Center continues series

"Vocational Office and Decision Making" is the topic for Monday in the series "Women in Charge" at the Women's Center of the Unitarian Church. Mrs. Ann Burman, a member of the Unitarian Church, will discuss the topic...

Seniors partake in Valentine lunch

The Springfield Senior Citizens Club will sponsor a Valentine lunch on Monday, Feb. 23, at 12:30 p.m. in the dining room of the club. The lunch will be a special meal for the seniors...

League has party for U.S. birthday

The Bath Alm Senior League conducted an American Birthdays celebration on Monday, Feb. 23, at 12:30 p.m. in the dining room of the club. The celebration was a special meal for the seniors...

Goodman show tickets available

Hal Doan, chairman, announced that tickets for the Goodman show are available. The show will be held at the Springfield Community Center on March 10 at 8 p.m. Tickets are \$5.00 per person. The show will feature a variety of musical numbers...

Town meeting

Water Resources had issued written notices to the Board of Education regarding the proposed changes to the school district's water supply. The meeting will be held on March 10 at 7 p.m. in the school district office...

Board session

The Board of Education will meet on Wednesday, March 3, at 7 p.m. in the school district office. The meeting will discuss the proposed changes to the school district's water supply and other matters...

Students navigate in college course

A course in celestial navigation for yachtmen will be offered at Union College this spring. The course will be taught by Dr. Robert J. Kline, who has extensive experience in celestial navigation...

Report from Washington

Millions of dollars that could be saved over the next few years by the military are being lost because of inefficient procurement practices. A report from the General Accounting Office (GAO) states that the military spends billions of dollars on procurement each year, but a significant portion of that money is wasted...

Richard Cohen to wed May 23

Mr. and Mrs. Mildred F. Guenzler of Cohen, Conn., and Peter Richard Cohen, of Springfield, N.J., are engaged to be married. The wedding will take place on May 23 at 10 a.m. in the church of the bride's parents...

Hammel-Wilson engagement told

Mr. and Mrs. Arnold Hammel of Erie, Pa., have announced the engagement of their daughter, Melissa Wilson, to Richard Paul Wilson of Springfield, N.J. The wedding will take place on May 23 at 10 a.m. in the church of the bride's parents...

Temple Sisterhood conducts meeting

The Sisterhood of Temple Beth Am, Springfield, will meet on Monday, Feb. 23, at 8 p.m. in the synagogue. The meeting will discuss the proposed changes to the school district's water supply and other matters...

Victory Trail

Troopmasters Warren Volinger, a junior at Jonathan Dayton and David Greenman, an eighth grader at the school of Alan... are leading the Victory Trail. The trail will be a series of events that will raise money for the American Cancer Society...

Cancer unit plans golf fundraiser

Edward J. Stomkowski, chairman of the American Cancer Society's education and fundraising unit in Union County, has announced the appointment of Billy Doe, a resident of the county, as the unit's golf fundraiser. The fundraiser will be a golf tournament held on the county golf course...

Boystown auxiliary sponsors Irish night

An Irish night will be held March 13 by the Boystown Auxiliary of the Boy Scouts of America. The night will be held at the Boystown Club and will feature a variety of Irish music and dancing...

Seton Hall dean's list

James McGrady, daughter of Mr. and Mrs. Edward McGrady of Mabel Avenue, Springfield, has been named to the dean's list for the fall semester at Seton Hall University. She is a pre-medical major, she is a member of the Phi Kappa Phi Honor Society...

Church Chunks by GARTWRIGHT

ST. JAMES CHURCH... 48 SPRINGFIELD... MSGB, FRANCIS X. COYLE, EASTOR... REV. STEPHEN P. LYNN... REV. JAMES J. COYLE, EASTOR... REV. STEPHEN P. LYNN... REV. JAMES J. COYLE, EASTOR...

Froks will teach folk dancing class

Informal Folk Dancing for the beginner will begin on Friday, Feb. 27, at 7 p.m. in the school district office. The class will be taught by Mrs. Ann Burman, a member of the Unitarian Church. The class will cover basic folk dancing techniques and will be suitable for beginners...

Print exhibition sale will be held at Upsala

The annual print exhibition sale will be held at Upsala on Saturday, March 6, from 10 a.m. to 5 p.m. in the West Room on the first floor of the Upsala library. The exhibition will feature a variety of prints from the collection of the library...

SPACIOUS APARTMENTS

SPACIOUS APARTMENTS... 1 & 2 Bedroom Units... Air Conditioned... Call: Mrs. A. Roselle, Ave. W. Noelle Park, Res. Mon. 2-67-7665

AMERICAN CANCER SOCIETY

AMERICAN CANCER SOCIETY... 586 MORRIS AVENUE, SPRINGFIELD, N.J. 07081... Call: Mrs. A. Roselle, Ave. W. Noelle Park, Res. Mon. 2-67-7665

FREE! CHICKEN DINNERS

FREE! CHICKEN DINNERS... 586 MORRIS AVENUE, SPRINGFIELD, N.J. 07081... Call: Mrs. A. Roselle, Ave. W. Noelle Park, Res. Mon. 2-67-7665

SEAFOOD PLATES BEST

SEAFOOD PLATES BEST... 586 MORRIS AVENUE, SPRINGFIELD, N.J. 07081... Call: Mrs. A. Roselle, Ave. W. Noelle Park, Res. Mon. 2-67-7665

WISS

WISS... 586 MORRIS AVENUE, SPRINGFIELD, N.J. 07081... Call: Mrs. A. Roselle, Ave. W. Noelle Park, Res. Mon. 2-67-7665

THE NATIONAL STATE BANK

THE NATIONAL STATE BANK... 586 MORRIS AVENUE, SPRINGFIELD, N.J. 07081... Call: Mrs. A. Roselle, Ave. W. Noelle Park, Res. Mon. 2-67-7665

OBITUARIES

HIGERT - John Robert of Springfield, on Feb. 20... KENNEDY - Battin of Springfield, on Feb. 20...

FREE ESTIMATES

FREE ESTIMATES... 586 MORRIS AVENUE, SPRINGFIELD, N.J. 07081... Call: Mrs. A. Roselle, Ave. W. Noelle Park, Res. Mon. 2-67-7665

FOR MORE AQUAMANIES

FOR MORE AQUAMANIES... 586 MORRIS AVENUE, SPRINGFIELD, N.J. 07081... Call: Mrs. A. Roselle, Ave. W. Noelle Park, Res. Mon. 2-67-7665

WISS

WISS... 586 MORRIS AVENUE, SPRINGFIELD, N.J. 07081... Call: Mrs. A. Roselle, Ave. W. Noelle Park, Res. Mon. 2-67-7665

SMALL BUSINESS

SMALL BUSINESS... 586 MORRIS AVENUE, SPRINGFIELD, N.J. 07081... Call: Mrs. A. Roselle, Ave. W. Noelle Park, Res. Mon. 2-67-7665

SMALL BUSINESS

SMALL BUSINESS... 586 MORRIS AVENUE, SPRINGFIELD, N.J. 07081... Call: Mrs. A. Roselle, Ave. W. Noelle Park, Res. Mon. 2-67-7665

SMALL BUSINESS

SMALL BUSINESS... 586 MORRIS AVENUE, SPRINGFIELD, N.J. 07081... Call: Mrs. A. Roselle, Ave. W. Noelle Park, Res. Mon. 2-67-7665

SMALL BUSINESS

SMALL BUSINESS... 586 MORRIS AVENUE, SPRINGFIELD, N.J. 07081... Call: Mrs. A. Roselle, Ave. W. Noelle Park, Res. Mon. 2-67-7665

SMALL BUSINESS

SMALL BUSINESS... 586 MORRIS AVENUE, SPRINGFIELD, N.J. 07081... Call: Mrs. A. Roselle, Ave. W. Noelle Park, Res. Mon. 2-67-7665

SMALL BUSINESS

SMALL BUSINESS... 586 MORRIS AVENUE, SPRINGFIELD, N.J. 07081... Call: Mrs. A. Roselle, Ave. W. Noelle Park, Res. Mon. 2-67-7665

SMALL BUSINESS

SMALL BUSINESS... 586 MORRIS AVENUE, SPRINGFIELD, N.J. 07081... Call: Mrs. A. Roselle, Ave. W. Noelle Park, Res. Mon. 2-67-7665

SMALL BUSINESS

SMALL BUSINESS... 586 MORRIS AVENUE, SPRINGFIELD, N.J. 07081... Call: Mrs. A. Roselle, Ave. W. Noelle Park, Res. Mon. 2-67-7665

SMALL BUSINESS

SMALL BUSINESS... 586 MORRIS AVENUE, SPRINGFIELD, N.J. 07081... Call: Mrs. A. Roselle, Ave. W. Noelle Park, Res. Mon. 2-67-7665

SMALL BUSINESS

SMALL BUSINESS... 586 MORRIS AVENUE, SPRINGFIELD, N.J. 07081... Call: Mrs. A. Roselle, Ave. W. Noelle Park, Res. Mon. 2-67-7665

SMALL BUSINESS

SMALL BUSINESS... 586 MORRIS AVENUE, SPRINGFIELD, N.J. 07081... Call: Mrs. A. Roselle, Ave. W. Noelle Park, Res. Mon. 2-67-7665

SMALL BUSINESS

SMALL BUSINESS... 586 MORRIS AVENUE, SPRINGFIELD, N.J. 07081... Call: Mrs. A. Roselle, Ave. W. Noelle Park, Res. Mon. 2-67-7665

SMALL BUSINESS

SMALL BUSINESS... 586 MORRIS AVENUE, SPRINGFIELD, N.J. 07081... Call: Mrs. A. Roselle, Ave. W. Noelle Park, Res. Mon. 2-67-7665

Francine Shapiro becomes bride Jan. 31 of Bruce Stein

Francine Shapiro, daughter of Mr. and Mrs. Herbert Shapiro of Andover road, Union, was married Saturday evening, Jan. 31, to Bruce Stein, son of Mr. and Mrs. Arthur Frieden of Andover road, Union, and Mrs. Nathan Stein of Andover road, Union.

Rabbi Meyer Rogman and Cantor Hillel Shovitz officiated at the ceremony in the Shertzer Hills Caterers, where a reception followed.

Diane Shapiro of Silver Springs, Md. served as maid of honor for her sister. Bridesmaids were Barbara Stein, sister of the groom, and Marcy Fisher.

The bride is a graduate of the University of Pennsylvania, where she received a Bachelor of Science degree in 1968. She is currently employed as a research assistant at the University of Pennsylvania.

The groom is a graduate of the University of Pennsylvania, where he received a Bachelor of Science degree in 1968. He is currently employed as a research assistant at the University of Pennsylvania.

The couple will reside in Philadelphia. They have one child, a son, who is currently a student at the University of Pennsylvania.

SOCIETY

Janice A. Black married Feb. 14 to James Maletto

The Community Presbyterian Church in Montclair was the setting Feb. 14 for the wedding of Janice A. Black, daughter of Mr. and Mrs. Robert L. Anderson of Bloomfield, and Mr. James Maletto, son of Mr. and Mrs. Alfred Maletto of Jonestown, Pa.

The Rev. James A. Tolson, Jr. officiated at the double ceremony. A luncheon followed at the home of the bride's uncle and aunt, Mr. and Mrs. Hugh Cleveland of Montclair.

Mr. Black, who was graduated from David Brearley Regional High School, Kenilworth, N.J., and will be married to Mrs. Maletto, who was graduated from Montclair State University, Montclair, N.J.

The bride is a graduate of the University of Pennsylvania, where she received a Bachelor of Science degree in 1968. She is currently employed as a research assistant at the University of Pennsylvania.

The groom is a graduate of the University of Pennsylvania, where he received a Bachelor of Science degree in 1968. He is currently employed as a research assistant at the University of Pennsylvania.

Group announces Tay-Sachs tests planned May 16

A representative of the New Jersey Chapter of the National Tay-Sachs and Allied Diseases Association addressed the Marion Rappaport Chapter of B'nai B'rith Women last night at the YWYHA, Green Lane, Union. A background briefing was offered to help members understand the disease.

The group will also ride through the area during the morning and early afternoon, participants may select sites to visit. "Rev. Nancy" has announced that choices are available for such sites as Acorn Hall, a Victorian house with an octagonal tower built by Dr. Schermerhorn in 1833 for a parlor suit in one of the rooms once belonged to William Henry Harrison.

The group will also ride through the area during the morning and early afternoon, participants may select sites to visit. "Rev. Nancy" has announced that choices are available for such sites as Acorn Hall, a Victorian house with an octagonal tower built by Dr. Schermerhorn in 1833 for a parlor suit in one of the rooms once belonged to William Henry Harrison.

'Rev. Nancy' lists schedule for 'Trip of Month' Saturday

The Rev. Nancy Forberg, pastor of the First Congregational Church, Union, has announced that a "Trip of Month" will be held on Saturday, Feb. 27. The trip will include a visit to the historic site of the first settlement in the area.

The trip will include a visit to the historic site of the first settlement in the area. Participants will be accompanied by a guide who will provide information about the site's history and significance.

The trip will include a visit to the historic site of the first settlement in the area. Participants will be accompanied by a guide who will provide information about the site's history and significance.

The trip will include a visit to the historic site of the first settlement in the area. Participants will be accompanied by a guide who will provide information about the site's history and significance.

The trip will include a visit to the historic site of the first settlement in the area. Participants will be accompanied by a guide who will provide information about the site's history and significance.

The trip will include a visit to the historic site of the first settlement in the area. Participants will be accompanied by a guide who will provide information about the site's history and significance.

Help for children with heart defects Rutgers med school opens new treatment unit

An estimated eight children in every 1,000 are born with heart defects and will die within the first year of life. The new unit at Rutgers Medical School will provide specialized care for these children.

The new unit at Rutgers Medical School will provide specialized care for these children. It will include a team of cardiologists, surgeons, and other medical professionals who will work together to provide the best possible care for each child.

The new unit at Rutgers Medical School will provide specialized care for these children. It will include a team of cardiologists, surgeons, and other medical professionals who will work together to provide the best possible care for each child.

The new unit at Rutgers Medical School will provide specialized care for these children. It will include a team of cardiologists, surgeons, and other medical professionals who will work together to provide the best possible care for each child.

The new unit at Rutgers Medical School will provide specialized care for these children. It will include a team of cardiologists, surgeons, and other medical professionals who will work together to provide the best possible care for each child.

The new unit at Rutgers Medical School will provide specialized care for these children. It will include a team of cardiologists, surgeons, and other medical professionals who will work together to provide the best possible care for each child.

Kean vocal units plan busy season Bicenennial tour

Kean College's Chorus, Chorale and Women's Chorus have a busy season ahead of them. They will be performing at various venues throughout the state as part of their bicentennial tour.

Kean College's Chorus, Chorale and Women's Chorus have a busy season ahead of them. They will be performing at various venues throughout the state as part of their bicentennial tour.

Kean College's Chorus, Chorale and Women's Chorus have a busy season ahead of them. They will be performing at various venues throughout the state as part of their bicentennial tour.

Kean College's Chorus, Chorale and Women's Chorus have a busy season ahead of them. They will be performing at various venues throughout the state as part of their bicentennial tour.

Kean College's Chorus, Chorale and Women's Chorus have a busy season ahead of them. They will be performing at various venues throughout the state as part of their bicentennial tour.

Kean College's Chorus, Chorale and Women's Chorus have a busy season ahead of them. They will be performing at various venues throughout the state as part of their bicentennial tour.

Public Advocate lauds office on handling citizen problems

New Jersey's citizen complaint mechanism has been churning out solutions to problems. Public Advocate Joseph P. Vitale has praised the office for its effectiveness in handling citizen complaints.

New Jersey's citizen complaint mechanism has been churning out solutions to problems. Public Advocate Joseph P. Vitale has praised the office for its effectiveness in handling citizen complaints.

New Jersey's citizen complaint mechanism has been churning out solutions to problems. Public Advocate Joseph P. Vitale has praised the office for its effectiveness in handling citizen complaints.

New Jersey's citizen complaint mechanism has been churning out solutions to problems. Public Advocate Joseph P. Vitale has praised the office for its effectiveness in handling citizen complaints.

New Jersey's citizen complaint mechanism has been churning out solutions to problems. Public Advocate Joseph P. Vitale has praised the office for its effectiveness in handling citizen complaints.

New Jersey's citizen complaint mechanism has been churning out solutions to problems. Public Advocate Joseph P. Vitale has praised the office for its effectiveness in handling citizen complaints.

arent you glad you waited?

EXTRA! EXTRA! Final Sale! No more! Save up to 60% on all kinds of coats.

A Large Selection of: Fake Furs, Pant Coats, Leather Coats, Sport Coats, Dress Coats, Capes • Etc.

REDUCED TO SELL

before we ship them to the Summer Place in Seaside Heights... our Famous Outlet Store.

Span Sommer

Franklin's faith studied Sunday

A Bicentennial study of the founding fathers' beliefs and values will continue Sunday with a film and musical presentation.

The program will be held at 7 p.m. at the First Presbyterian Church of Union.

Health officer to speak to Charity Council

Charity Council, an organization for the rehabilitation of cerebral palsy children with most Monday at the YM-YWHA, Green Lane, Union.

The speaker will be Dr. Michael Peter, Health Officer of Union.

Get a Safe Deposit Box FREE at the Union Money Tree

and enjoy double safety.

Securely for your valuables in a Free Safe Deposit Box, and safely for your savings because they're insured by FDIC by an agency of the U.S. Government.

Just deposit \$500 or more in any Bankley Savings Program - Our Regular Savings or any of our new variety of Savings Certificates and we'll give you a safe deposit box, rent free for one full year!

Beneficial Income Tax Service

NEWEST BENEFICIAL TAX OFFICE

101 BOULEVARD, Kenilworth • Phone: 276-2046

The Department is available at these Branch Office Locations:

UNION - 100 BOULEVARD • Phone: 276-2029
 SUZANNE • 277 1/2 1/2 • Phone: 354-8312
 LAYTON • 1207 Springfield Ave. • Phone: 376-1222
 HUNTINGTON • 1207 Springfield Ave. • Phone: 376-1222
 NORTH PLAINFIELD • 149 Summit St. • Phone: 773-8888
 PLAINFIELD • 8 Westside Ave. • Phone: 759-2768

ACT FAST before your child gets lost in the crowd.

Some school boards are enrolling too many children... growing too many children... cutting back on special education and remedial programs.

Call your School Board, Call your State Legislature. Tell them you sure speak out, now. It may be too late.

Cutting school dollars today is cutting your child's chances tomorrow.

There's only one trouble with a cheap education. Your children never stop learning for it.

Our teachers care about the schools... and about the children they teach.

njea

NEW JERSEY EDUCATION ASSOCIATION
 170 W. STATE ST. • NEWARK, N.J. 07102

Don't let your nose come between you and a Lieberkranz love affair

If you let the smell of fluffy Lieberkranz put you off, you could miss a sensuous, taste experience. Lieberkranz lets you take your choice of flavor and aroma. It's fully flavored with a soft, fluffy texture. Softer, younger and milder than its future fragrance is merely a hint, an spread and bite Lieberkranz on dark bread to savor with beer. Experiment. It could mean the beginning of a love affair.

soft, self-stirring flavor ages beautifully every day.

FLUFFY AGED - Real loaves of Lieberkranz are made with soft, fluffy yeast and aged for 2 to 4 weeks before baking. Interior begins to grow golden gold. Lightly moist with a soft, fluffy texture. Don't miss it! Buy it now while it's still available.

NEW! - 4 to 6 weeks before baking. Interior begins to grow golden gold. Lightly moist with a soft, fluffy texture. Don't miss it! Buy it now while it's still available.

MADE IN U.S.A.

ESSEX SPORTS BARS
 2185 MILLBURN AVE.
 MAPLEWOOD • 162-8500

Your Guide To Better Living in the SUBURBAN REAL ESTATE MART

City • Suburbs • Farm Country • Lake • Shore

Friar Glen Woods offers six model home designs

Friar Glen Woods, a new development in Manalapan Township, offers six model home designs. The homes are built on a cul-de-sac street in an area convenient to shopping, dining, and recreation. The designs include the Sherwood, a two-story colonial with a double-door entrance opening into a central foyer with built-in glass closets. This leads to a living room with a fireplace, a dining room with a bay window, a kitchen with a breakfast room, a utility room and a two-car garage. The other five designs offer variations in room layouts and finishes.

Pat B. Realty Inc.

Changing Homes? Call Pat B. Realty Inc. 201-435-7777. Real Estate Division. Specializing in Monmouth, Ocean and Middlesex Counties.

BUILDER'S CLOSE-OUT SALE

ONLY 5% DOWN FOR PRIMARY HOUSING. ONLY 7 1/2% MORTGAGES AVAILABLE TO QUALIFIED BUYERS. CALL (609) 698-3093. PEBBLE BEACH.

ACT NOW!! LIMITED NUMBER OF MORTGAGES AVAILABLE

7 1/2% MORTGAGE MONEY AVAILABLE. ONLY 5% DOWN. CALL (609) 698-3093. PEBBLE BEACH.

now and forever

Novely reads or loves. Here's something beautiful about LUV. Fully furnished homes available. Call (609) 698-3093.

Area goes to local firm

Price reduction at Shadow Lake during February

Shadow Lake Village of 52 homes is being sold by the local firm, Pat B. Realty Inc. The homes are built on a cul-de-sac street in an area convenient to shopping, dining, and recreation. The designs include the Sherwood, a two-story colonial with a double-door entrance opening into a central foyer with built-in glass closets. This leads to a living room with a fireplace, a dining room with a bay window, a kitchen with a breakfast room, a utility room and a two-car garage. The other five designs offer variations in room layouts and finishes.

COVERED BRIDGE has the nicest folks of any condominium community.

Everyone who visits Covered Bridge says the same thing: The people here are warmer and friendlier. More cheerful. And more active. It's a good atmosphere that distinguishes Covered Bridge from any other high-rise community. Call (201) 328-9900.

Builder reports 'cluster' homes

Cluster homes are being built in Dover Township. The homes are built on a cul-de-sac street in an area convenient to shopping, dining, and recreation. The designs include the Sherwood, a two-story colonial with a double-door entrance opening into a central foyer with built-in glass closets. This leads to a living room with a fireplace, a dining room with a bay window, a kitchen with a breakfast room, a utility room and a two-car garage. The other five designs offer variations in room layouts and finishes.

ACT NOW!! LIMITED NUMBER OF MORTGAGES AVAILABLE

7 1/2% MORTGAGE MONEY AVAILABLE. ONLY 5% DOWN. CALL (609) 698-3093. PEBBLE BEACH.

Weatherly

The "Family Place" in Dover Township by Scarborough

Select the home that suits your lifestyle best!

- 1 THE STRATFORD - An authentic Salt Box Colonial with 3 bedrooms, 2 1/2 baths, a large living room, a dining room, a kitchen with a breakfast room, a utility room, and a two-car garage. Price: \$45,900.
- 2 THE OXFORD - A 2 1/2-story Colonial with 3 bedrooms, 2 1/2 baths, a large living room, a dining room, a kitchen with a breakfast room, a utility room, and a two-car garage. Price: \$43,500.
- 3 THE WESTBROOK - A 2-story Colonial with 3 bedrooms, 2 1/2 baths, a large living room, a dining room, a kitchen with a breakfast room, a utility room, and a two-car garage. Price: \$41,900.
- 4 THE LYNN - A 2-story Colonial with 3 bedrooms, 2 1/2 baths, a large living room, a dining room, a kitchen with a breakfast room, a utility room, and a two-car garage. Price: \$36,900.
- 5 THE HANOVER - A 2-story Colonial with 3 bedrooms, 2 1/2 baths, a large living room, a dining room, a kitchen with a breakfast room, a utility room, and a two-car garage. Price: \$35,900.

Call (201) 841-4700. 8 1/2% financing available to qualified buyers.

COVERED BRIDGE has the nicest folks of any condominium community.

Everyone who visits Covered Bridge says the same thing: The people here are warmer and friendlier. More cheerful. And more active. It's a good atmosphere that distinguishes Covered Bridge from any other high-rise community. Call (201) 328-9900.

COVERED BRIDGE has the nicest folks of any condominium community.

Everyone who visits Covered Bridge says the same thing: The people here are warmer and friendlier. More cheerful. And more active. It's a good atmosphere that distinguishes Covered Bridge from any other high-rise community. Call (201) 328-9900.

COVERED BRIDGE has the nicest folks of any condominium community.

Everyone who visits Covered Bridge says the same thing: The people here are warmer and friendlier. More cheerful. And more active. It's a good atmosphere that distinguishes Covered Bridge from any other high-rise community. Call (201) 328-9900.

ACT NOW!! LIMITED NUMBER OF MORTGAGES AVAILABLE

7 1/2% MORTGAGE MONEY AVAILABLE. ONLY 5% DOWN. CALL (609) 698-3093. PEBBLE BEACH.

Weatherly

The "Family Place" in Dover Township by Scarborough

Select the home that suits your lifestyle best!

- 1 THE STRATFORD - An authentic Salt Box Colonial with 3 bedrooms, 2 1/2 baths, a large living room, a dining room, a kitchen with a breakfast room, a utility room, and a two-car garage. Price: \$45,900.
- 2 THE OXFORD - A 2 1/2-story Colonial with 3 bedrooms, 2 1/2 baths, a large living room, a dining room, a kitchen with a breakfast room, a utility room, and a two-car garage. Price: \$43,500.
- 3 THE WESTBROOK - A 2-story Colonial with 3 bedrooms, 2 1/2 baths, a large living room, a dining room, a kitchen with a breakfast room, a utility room, and a two-car garage. Price: \$41,900.
- 4 THE LYNN - A 2-story Colonial with 3 bedrooms, 2 1/2 baths, a large living room, a dining room, a kitchen with a breakfast room, a utility room, and a two-car garage. Price: \$36,900.
- 5 THE HANOVER - A 2-story Colonial with 3 bedrooms, 2 1/2 baths, a large living room, a dining room, a kitchen with a breakfast room, a utility room, and a two-car garage. Price: \$35,900.

Call (201) 841-4700. 8 1/2% financing available to qualified buyers.

Your Guide To Better Living in the SUBURBAN REAL ESTATE MART

City • Suburbs • Farm Country • Lake • Shore

COVERED BRIDGE has the nicest folks of any condominium community.

Everyone who visits Covered Bridge says the same thing: The people here are warmer and friendlier. More cheerful. And more active. It's a good atmosphere that distinguishes Covered Bridge from any other high-rise community. Call (201) 328-9900.

COVERED BRIDGE has the nicest folks of any condominium community.

Everyone who visits Covered Bridge says the same thing: The people here are warmer and friendlier. More cheerful. And more active. It's a good atmosphere that distinguishes Covered Bridge from any other high-rise community. Call (201) 328-9900.

COVERED BRIDGE has the nicest folks of any condominium community.

Everyone who visits Covered Bridge says the same thing: The people here are warmer and friendlier. More cheerful. And more active. It's a good atmosphere that distinguishes Covered Bridge from any other high-rise community. Call (201) 328-9900.

ACT NOW!! LIMITED NUMBER OF MORTGAGES AVAILABLE

7 1/2% MORTGAGE MONEY AVAILABLE. ONLY 5% DOWN. CALL (609) 698-3093. PEBBLE BEACH.

Weatherly

The "Family Place" in Dover Township by Scarborough

Select the home that suits your lifestyle best!

- 1 THE STRATFORD - An authentic Salt Box Colonial with 3 bedrooms, 2 1/2 baths, a large living room, a dining room, a kitchen with a breakfast room, a utility room, and a two-car garage. Price: \$45,900.
- 2 THE OXFORD - A 2 1/2-story Colonial with 3 bedrooms, 2 1/2 baths, a large living room, a dining room, a kitchen with a breakfast room, a utility room, and a two-car garage. Price: \$43,500.
- 3 THE WESTBROOK - A 2-story Colonial with 3 bedrooms, 2 1/2 baths, a large living room, a dining room, a kitchen with a breakfast room, a utility room, and a two-car garage. Price: \$41,900.
- 4 THE LYNN - A 2-story Colonial with 3 bedrooms, 2 1/2 baths, a large living room, a dining room, a kitchen with a breakfast room, a utility room, and a two-car garage. Price: \$36,900.
- 5 THE HANOVER - A 2-story Colonial with 3 bedrooms, 2 1/2 baths, a large living room, a dining room, a kitchen with a breakfast room, a utility room, and a two-car garage. Price: \$35,900.

Call (201) 841-4700. 8 1/2% financing available to qualified buyers.

Your Guide To Better Living in the SUBURBAN REAL ESTATE MART

City • Suburbs • Farm Country • Lake • Shore

Skiing weekend offered at Poconos community

The Poconos community offers a skiing weekend package. The package includes a two-night stay in a luxury private chalet with fireplace and dining area. The chalet is located in the Poconos Mountains and offers a beautiful view of the mountains. The package also includes a round-trip bus to the Poconos Mountains and a round-trip bus to the Poconos Mountains.

Owners offered full recreation at Towers' facility

The Towers' facility offers a full recreation program. The program includes a swimming pool, a tennis court, a basketball court, a racquetball court, and a fitness center. The facility is located in the Poconos Mountains and offers a beautiful view of the mountains. The program also includes a round-trip bus to the Poconos Mountains and a round-trip bus to the Poconos Mountains.

COVERED BRIDGE has the nicest folks of any condominium community.

Everyone who visits Covered Bridge says the same thing: The people here are warmer and friendlier. More cheerful. And more active. It's a good atmosphere that distinguishes Covered Bridge from any other high-rise community. Call (201) 328-9900.

ACT NOW!! LIMITED NUMBER OF MORTGAGES AVAILABLE

7 1/2% MORTGAGE MONEY AVAILABLE. ONLY 5% DOWN. CALL (609) 698-3093. PEBBLE BEACH.

Weatherly

The "Family Place" in Dover Township by Scarborough

Select the home that suits your lifestyle best!

- 1 THE STRATFORD - An authentic Salt Box Colonial with 3 bedrooms, 2 1/2 baths, a large living room, a dining room, a kitchen with a breakfast room, a utility room, and a two-car garage. Price: \$45,900.
- 2 THE OXFORD - A 2 1/2-story Colonial with 3 bedrooms, 2 1/2 baths, a large living room, a dining room, a kitchen with a breakfast room, a utility room, and a two-car garage. Price: \$43,500.
- 3 THE WESTBROOK - A 2-story Colonial with 3 bedrooms, 2 1/2 baths, a large living room, a dining room, a kitchen with a breakfast room, a utility room, and a two-car garage. Price: \$41,900.
- 4 THE LYNN - A 2-story Colonial with 3 bedrooms, 2 1/2 baths, a large living room, a dining room, a kitchen with a breakfast room, a utility room, and a two-car garage. Price: \$36,900.
- 5 THE HANOVER - A 2-story Colonial with 3 bedrooms, 2 1/2 baths, a large living room, a dining room, a kitchen with a breakfast room, a utility room, and a two-car garage. Price: \$35,900.

Call (201) 841-4700. 8 1/2% financing available to qualified buyers.

COVERED BRIDGE has the nicest folks of any condominium community.

Everyone who visits Covered Bridge says the same thing: The people here are warmer and friendlier. More cheerful. And more active. It's a good atmosphere that distinguishes Covered Bridge from any other high-rise community. Call (201) 328-9900.

COVERED BRIDGE has the nicest folks of any condominium community.

Everyone who visits Covered Bridge says the same thing: The people here are warmer and friendlier. More cheerful. And more active. It's a good atmosphere that distinguishes Covered Bridge from any other high-rise community. Call (201) 328-9900.

COVERED BRIDGE has the nicest folks of any condominium community.

Everyone who visits Covered Bridge says the same thing: The people here are warmer and friendlier. More cheerful. And more active. It's a good atmosphere that distinguishes Covered Bridge from any other high-rise community. Call (201) 328-9900.

ACT NOW!! LIMITED NUMBER OF MORTGAGES AVAILABLE

7 1/2% MORTGAGE MONEY AVAILABLE. ONLY 5% DOWN. CALL (609) 698-3093. PEBBLE BEACH.

Weatherly

The "Family Place" in Dover Township by Scarborough

Select the home that suits your lifestyle best!

- 1 THE STRATFORD - An authentic Salt Box Colonial with 3 bedrooms, 2 1/2 baths, a large living room, a dining room, a kitchen with a breakfast room, a utility room, and a two-car garage. Price: \$45,900.
- 2 THE OXFORD - A 2 1/2-story Colonial with 3 bedrooms, 2 1/2 baths, a large living room, a dining room, a kitchen with a breakfast room, a utility room, and a two-car garage. Price: \$43,500.
- 3 THE WESTBROOK - A 2-story Colonial with 3 bedrooms, 2 1/2 baths, a large living room, a dining room, a kitchen with a breakfast room, a utility room, and a two-car garage. Price: \$41,900.
- 4 THE LYNN - A 2-story Colonial with 3 bedrooms, 2 1/2 baths, a large living room, a dining room, a kitchen with a breakfast room, a utility room, and a two-car garage. Price: \$36,900.
- 5 THE HANOVER - A 2-story Colonial with 3 bedrooms, 2 1/2 baths, a large living room, a dining room, a kitchen with a breakfast room, a utility room, and a two-car garage. Price: \$35,900.

Call (201) 841-4700. 8 1/2% financing available to qualified buyers.

IF YOU AND YOUR WIFE'S COMBINED-INCOME TOTAL \$15,000.00 per year

we can possibly show you how to own our new family Barron Model House at GRANBERRY HILL. Only \$34,990. Call (609) 698-3093.

WHERE ELSE CAN YOU GET ALL THIS? FROM \$16,990

Only 5% Down for Primary Housing (to Qualified Buyers). Call (609) 698-3093.

Academy Estates CENTENNIAL FAIR

FROM \$54,490. COMMUTERS' PARADISE. Call (609) 698-3093.

ACT NOW!! LIMITED NUMBER OF MORTGAGES AVAILABLE

7 1/2% MORTGAGE MONEY AVAILABLE. ONLY 5% DOWN. CALL (609) 698-3093. PEBBLE BEACH.

ACT NOW!! LIMITED NUMBER OF MORTGAGES AVAILABLE

7 1/2% MORTGAGE MONEY AVAILABLE. ONLY 5% DOWN. CALL (609) 698-3093. PEBBLE BEACH.

ACT NOW!! LIMITED NUMBER OF MORTGAGES AVAILABLE

7 1/2% MORTGAGE MONEY AVAILABLE. ONLY 5% DOWN. CALL (609) 698-3093. PEBBLE BEACH.

Kean conference to examine state's literary history

Two hundred years of New Jersey literary history will be celebrated April 17 at Kean College...

Parkway traffic at high; deaths at 12-year low

Traffic accidents on the Garden State Parkway in 1975 caused less than one death for every 10 million miles of vehicle travel...

St. Peter's offers special programs

St. Peter's College in Jersey City is sponsoring a series of programs that could enable them to finish college in three years...

Morris festival on arts in April includes contest

A weekend arts festival, expected to involve more than 1,000 artists and performers, will be held at 11:30 a.m. on the campus of Fairleigh Dickinson University...

Physicist blows his horn and out come pure notes

All it takes is 40-watt blower per second, according to Frank S. Crawford, the physicist at the University of California...

Writer to speak to Kean students

The Kean College Department of English and the Department of Student Activities will sponsor the appearance on campus at 3:15 today of writer John A. Williams...

TV's Flieside Kitchen

Dorothy Connolly, host of "Flieside Kitchen," a public television weekly cooking show...

A symposium on New Jersey writing will be led by Dr. Bruce Franklin of Rutgers University...

GNVY-CEA officers: Dr. E. Claire Henley, Montclair State College, president...

FREE 1-YEAR PARTS & SERVICE ON THE PURCHASE OF ANY ZENITH COLOR TV. GUARANTEED! ZENITH TV COLOR PICTURE TUBES INSTALLED! \$149.95

MIKE WASI WHOLESALE & RETAIL PRODUCE INC. DELI DEPT. AT LEHIGH AVE. STORE ONLY

Stamp show at Boystown. New Jersey's Boystown Chapter of the Boy Scouts of America...

Geiger's Beef Bargain Days. During the Whole Month of February You Can Take Advantage of Our Special Beef Purchases

MIKE WASI WHOLESALE & RETAIL PRODUCE INC. BOAST \$1.99 lb. BEEF, BOILED HAM \$1.99 lb.

PSEG rise in earnings. Earnings available for common stock of Public Service Electric and Gas Company...

FRUIT BASKETS AVAILABLE AT OUR TERRIBLE LOW PRICES WE DELIVER ANYWHERE!

Special Children's Menu. Businessman's Lunches. Early Bird Dinners.

Senior Citizens Club. Dining Discount Card. 20% OFF ALL MEALS

New for her. the time of her life!

RESTAURANT. 11:30 to 10:00 MON. - SAT. COFFEE SHOP. OPEN 7 DAYS 8:30 a.m. to 9 p.m.

BAKERY & PRODUCE STORE. OPEN 7 DAYS 8:30 a.m. to 9 p.m. COFFEE SHOP. OPEN 7 DAYS 8:30 a.m. to 9 p.m.

BUY SELL TRADE. DEADLINE IS TUESDAY NOON FOR THURSDAY PUBLICATION

VALLEY FAIR OPENING SOON IN UNION. HELP WANTED FULL AND PART TIME. APPLY IN PERSON

OFFICE CLEANING. We have steady, full time, part time job. Men, women, or couples, also window cleaner & working supervisor

LEADS FURNISHED. Excellent service available. We have a large number of leads for sale

GLERICAL SPEAKING FIGURATIVELY. Current openings for the experienced, experienced typist

INSURANCE FILE-CLERKS. Current openings for the experienced, experienced typist

SECRETARY PERSONNEL. Current openings for the experienced, experienced typist

SECRETARY PERSONNEL. Current openings for the experienced, experienced typist

EXECUTIVE SECRETARY. Current openings for the experienced, experienced typist

HELP HIRE RENT. A-1 TEMPS. THE NATIONAL. TELLER OPERATOR. MAN WITH VAN, CLOTHING DRIVE, ALL AREAS

WORLD-WIDE SERVICES DIRECTORY. INCOME TAX RETURNS. FLORIDA SOCIETY. RUBBISH REMOVED. MAKEUP ARTISTS

Golden Oldies... Old Clocks Wanted... Real Estate... Car Wash... Various small advertisements.

Real Estate listings for various areas including Springfield, Irvington, and other local neighborhoods.

Real Estate listings for various areas including Springfield, Irvington, and other local neighborhoods.

Real Estate listings for various areas including Springfield, Irvington, and other local neighborhoods.

Real Estate listings for various areas including Springfield, Irvington, and other local neighborhoods.

Real Estate listings for various areas including Springfield, Irvington, and other local neighborhoods.

Real Estate listings for various areas including Springfield, Irvington, and other local neighborhoods.

Real Estate listings for various areas including Springfield, Irvington, and other local neighborhoods.

Real Estate listings for various areas including Springfield, Irvington, and other local neighborhoods.

Real Estate listings for various areas including Springfield, Irvington, and other local neighborhoods.

Real Estate listings for various areas including Springfield, Irvington, and other local neighborhoods.

Real Estate listings for various areas including Springfield, Irvington, and other local neighborhoods.

Real Estate listings for various areas including Springfield, Irvington, and other local neighborhoods.

Seion Hall play tonight... The play 'The House' will be presented at Seion Hall...

Tourism bureau distributing state's 1976 map and guide

Gov. Brendan Byrne announced this week that the 1976 Official Map and Guide, prepared by the Department of Transportation, will be distributed to the general public...

Jersey TV plans special programs for 'Festival 76'

'Festival 76', an eight-day celebration of special programming for public television, will begin March 15...

Flower, Garden Show opens this weekend in Morristown

The National Garden Society of Morristown will again bloom with color this weekend as the New Jersey Flower & Garden Show...

Profit ethic topic of talk

Alphron Black, leader emeritus of the New Jersey Society for Ethical Culture, will discuss 'The Work Ethic'...

DEATH NOTICES

Deaths of various individuals including Mrs. Elizabeth M. Smith, Mrs. Mary E. Jones, and others.

Wholesale Auto Parts advertisement for VW and Audi vehicles, listing various models and prices.

Movie workshop for N.J. students

The third annual Young Filmmakers Festival Workshop for Junior and Senior High School students will be held March 27-29...

Japanese Festival to be held on Saturdays at Art Museum

Officials have announced the schedule for the Montclair Art Museum's 20th annual celebration of the Japanese Festival...

Paul's American Tire Exchange advertisement featuring Goodyear tires and a \$76 price point.

Dodge Charger SE advertisement highlighting its price advantage over other models.

Richards Used Car Clearance advertisement featuring a 75 Matador and other vehicles.

In case of emergency
Call
376-5800 for Police Department
or First Aid Squad
376-7670 for Fire Department

Springfield Leader

The Zip Code
for Springfield is
07081

Published Every Thursday by Times Publishing Co.
21 Main St., Springfield, N.J. 07081 • 257-7700

VOL. 47, NO. 22

Springfield, N.J., Thursday, March 4, 1976

Springfield, N.J., Thursday, March 4, 1976

Second Class Postage
paid at Springfield, N.J.

25 Cents Per Copy

Cigarette Market Bombshell.

New 'Enriched Flavor' discovery for 9 mg. tar MERIT achieves taste of cigarettes having 60% more tar.

Low tar, good taste. Others have made the claim. Philip Morris just made the cigarette. MERIT. Only 9 mg. tar. One of the lowest tar levels in smoking today.

Yet MERIT delivers astonishing flavor. Flavor verified by smokers all across the country.

If you're looking to become a low tar smoker, or don't particularly enjoy the taste of the low tar brand you smoke now — you'll be interested.

New 'Enriched Flavor' Discovery

By isolating certain "key" flavor ingredients of tobacco in cigarette smoke, ingredients that deliver taste way out of proportion to tar, researchers at Philip Morris have developed a way to pack extra flavor into tobacco without the usual increase in tar.

The discovery is called "Enriched Flavor." It's extra flavor. Natural flavor. Flavor that can't burn out, can't fade out, can't do anything but come through.

We packed 'Enriched Flavor' into MERIT. And began a series of extensive taste tests. The results were amazing.



Taste-Tested By People Like You

9 mg. tar MERIT was taste-tested against five current leading low tar cigarette brands ranging from 11 mg. to 15 mg. tar.

Thousands of filter smokers were involved, smokers like yourself, all tested at home.*

The results were conclusive: **Even if the cigarette tested had 60% more tar than MERIT, a significant majority of all smokers tested reported new 'Enriched Flavor' MERIT delivered more taste.**

Repeat: delivered more taste.

In similar tests against 11 mg. to 15 mg. menthol brands, 9 mg. tar MERIT MENTHOL performed strongly too, delivering as much — or more — taste than the higher tar brands tested.

You've been smoking "low tar good taste" claims long enough. Now smoke the cigarette. MERIT. Unprecedented flavor at 9 mg. tar. From Philip Morris.

*A complete list of Customer Opinion Study available free on request. Philip Morris Inc., Richmond, Va. 23261.

9 mg. tar, 0.7 mg. nicotine av. per cigarette by FTC method.

Warning: The Surgeon General Has Determined That Cigarette Smoking Is Dangerous to Your Health.

Board candidates urge passage of budget



Left to right: Peter Y. Rosenbaum, president of the Springfield Historical Society, and John Westerveld, president of the Springfield Board of Education. (Photo-Graphic)

Ideas differ on closing of schools

Shared service issue brings disagreement

The tone of the annual Springfield Board of Education candidates' night debate Monday at the Florence Gaudreault School was established when several of the seven candidates for three seats to be filled on Tuesday declared that passage of the school budget is more important than their own individual issues.

All seven candidates joined in calling for support of the budget, which will require \$2,121,000 to be raised in local taxes.

The candidates are Anita Zappala, John Westerveld, John Westerveld, Gloria Starr, William Stegal, Peter Y. Rosenbaum and James Caldwell. The program was sponsored by the Springfield League of Women Voters and the Springfield Council on Education.

The PTA group opened the meeting. Robin Manrocco, past president of the Newark L.W.V., was moderator.

The only issues on which the candidates showed any signs of disagreement were the proposed closing of the Edward Wilson and James Caldwell Schools and the recently approved program of shared services with St. James School.

All candidates agreed with the board decision to request information on the proposed budget, for the 1977-78 year, was requested before closing either school.

However, Stegal and Rosenbaum said they favor a "higher level" of shared services at elementary schools, and Westerveld said it can be a "higher level" of shared services at the high school.

On the shared services issue, Stegal said the board should request information on the proposed budget, for the 1977-78 year, was requested before closing either school.

Nothing that seven lawyers were able to agree, Stegal said, such a case should not be settled by the board, but at a "higher level" without further delay.

Rosenbaum stressed that she believes "in the separation of church and state as called for in the U.S. Constitution."

Westerveld said, "This is not just a matter of church and state, but the welfare of children. If this splits the town as it has, the issue should not have been brought up."

Clarke noted that the board "hasn't really differed with two aspects of the proposed remedial services and the addition of St. James children to gym, shop and homo economics classes at the existing Florence Gaudreault School." It supports the needs of the public over the private sector. "It is not good to be neutral in this kind of issue. I believe the board decision was unfortunate."

Zappala commented, "This was a decision of the board, based on the information that was available to it." (Continued on page 10)



Left to right: Anita Zappala, John Westerveld, Gloria Starr, William Stegal, Peter Y. Rosenbaum, and James Caldwell.

Scale-model battlefield Scout builds 1780 diorama

A diorama depicting the Battle of Springfield in 1780, built by Scout Peter Y. Rosenbaum, of Short Hills, N.J., is on display at the Historical Society and on view in the Cannon Ball House. (Photo-Graphic)

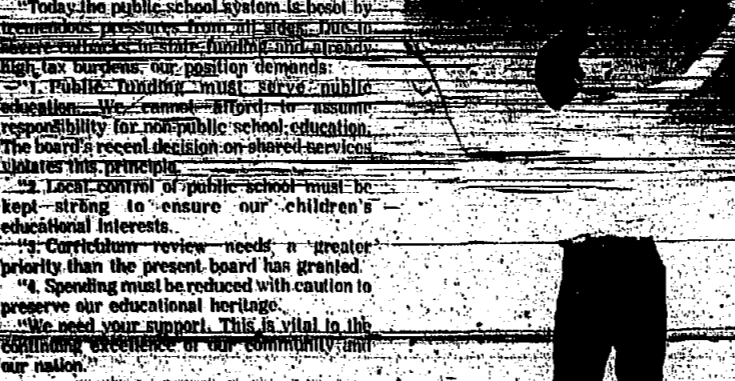
The arrangement of troops, guns and buildings gives a reasonable depiction of the battle during June 23 and 24, 1780. The diorama was presented to Madeline R. Lancaster, president of the Historical Society, during a Washington's Birthday luncheon Feb. 22 at the Cannon Ball House. The Society's headquarters on Morris avenue, it will be placed on permanent display there.

Rosenbaum, a Scoutmaster at the Springfield Scout Council, said he spent 1780 hours on the project. He said the diorama is a "high level" of detail and is a "high level" of detail.

Candidates unite in joint statement regarding issues

Gloria Starr, Gregory Clarke and Laura Rosenbaum, three of the seven candidates for the Springfield Board of Education, this week issued a joint statement outlining what they regard as the key issues in the school board election on Tuesday.

"All knowledgeable voters must realize that Springfield needs guidance and leadership from the Board of Education. We have joined in a unified campaign toward the goal of thoughtful leadership at an affordable cost. Today the public school system is being run as a business, not as a service to the community. We need your support. This is vital in the coming election for our community's future."



Left to right: Peter Y. Rosenbaum, president of the Springfield Historical Society, and John Westerveld, president of the Springfield Board of Education. (Photo-Graphic)

Regional voting defeats budget, 2,121 to 1,950

The Springfield Board of Education last Monday unanimously approved a \$2,121,000 budget for the 1977-78 year. The budget was defeated by the voters at a regional election on Tuesday. The vote was 2,121 to 1,950. The budget would have increased the local tax rate by 1.71 percent. The board's proposal would have increased the local tax rate by 1.71 percent. The board's proposal would have increased the local tax rate by 1.71 percent.

Township schedules environment meeting

The Springfield Environmental Commission will meet on Wednesday at 7 p.m. in the Municipal Building. The meeting is open to the public. The meeting is open to the public. The meeting is open to the public.

Regional voting \$3,209,854 budget due to State school aid loss

The Springfield Board of Education last Monday unanimously approved a \$3,209,854 budget for the 1977-78 year. The budget was defeated by the voters at a regional election on Tuesday. The vote was 2,121 to 1,950. The budget would have increased the local tax rate by 1.71 percent. The board's proposal would have increased the local tax rate by 1.71 percent.

Bloodmobile visit set for March 11

The first of Springfield's ten annual community bloodmobile visits will take place on Wednesday, March 11, from 9 a.m. to 3 p.m. at the North Jersey Blood Center. The bloodmobile will be available to the public. The bloodmobile will be available to the public.

LWV will offer election results

The Springfield League of Women Voters will offer its "Who's Who" service to township residents after the public election on Tuesday. Anyone interested in the election results should call Mrs. Sue Kalem at 376-6282. The service will be available to the public.

Presbyterian Church plans annual World Day of Prayer

The annual World Day of Prayer service will be observed in the Springfield Presbyterian Church tomorrow at 1:30 p.m. The service will be held in the church. The service will be held in the church.

Recreation unit lists summer jobs

The Recreation Department has announced that applications are being accepted for summer employment in townships and at the municipal level. The jobs are available to the public. The jobs are available to the public.