

In case of emergency call 376-0400 for Police Department or 376-7276 for Fire Department. SIXTY-Plus referral service: 376-1344

# Springfield Leader

The Zip Code for Springfield is 07081

VOL. 48-NO. 52

Springfield, N.J., Thursday, September 29, 1977

Springfield, N.J., Thursday, September 29, 1977

Subscription Rate: \$1.50 per copy. Second Class: postage paid at Springfield, N.J. 25 Cents Per Copy

## SUPERSTEIN'S

WHY PAY MORE? GUARANTEED SUPERSTEIN'S IS NEVER UNDERSOLD! NOBODY BEATS OUR PRICES!

CASH & CARRY SALE

FREE! (50¢ Value) PPG Decorating Book

FREE 5 GAL. PLASTIC BUCKET With Each Purchase

### HOUSE PAINT SUPER SPECIAL EXTERIOR VINYL LATEX

WHITE PLUS 16 COLORS WASHUP WITH WATER DRIES IN ONE HOUR GOAL-COVERS Reg. \$8.95

**\$5.50** Gal. SAVE \$4.00

### ADELPHI INTERIOR LATEX FLAT

WHITE PLUS 15 BEAUTIFUL COLORS, OORLESS & WASHABLE. WASH UP WITH WATER. DRIES IN 1 HOUR. INTERIOR LATEX FLAT REG. ENAMEL \$7.95 Gal.

**\$3.90** Gal. SAVE \$4.05

### LATEX SEMI-GLOSS

WHITE PLUS 15 BEAUTIFUL COLORS, OORLESS & WASHABLE. WASH UP WITH WATER. DRIES IN 1 HOUR. INTERIOR LATEX FLAT REG. ENAMEL \$7.95 Gal.

**\$4.90** Gal. SAVE \$4.05

### ENAMEL

INTERIOR WEATHERPROOF SCRIBBLEABLE. WILL NOT CRACK OR FADE. 15 BEAUTIFUL COLORS, PLUS WHITE. \$4.95 Gal. Reg. \$8.95

### HOUSE PAINT WALL SATIN MOORGARD

White Only. In Stock. \$8.25 Gal. Reg. \$11.95

### SHURLINE PAD PAINTER KIT

Includes 7" pad, roller, brush, tray, roller, and 5" foam brush. Washable. \$4.95 Reg. \$11.95

### WALL PAPER DEPARTMENT

EASY TOUCH Super Specialist PAPER BACKED VINYL \$99c Single Roll

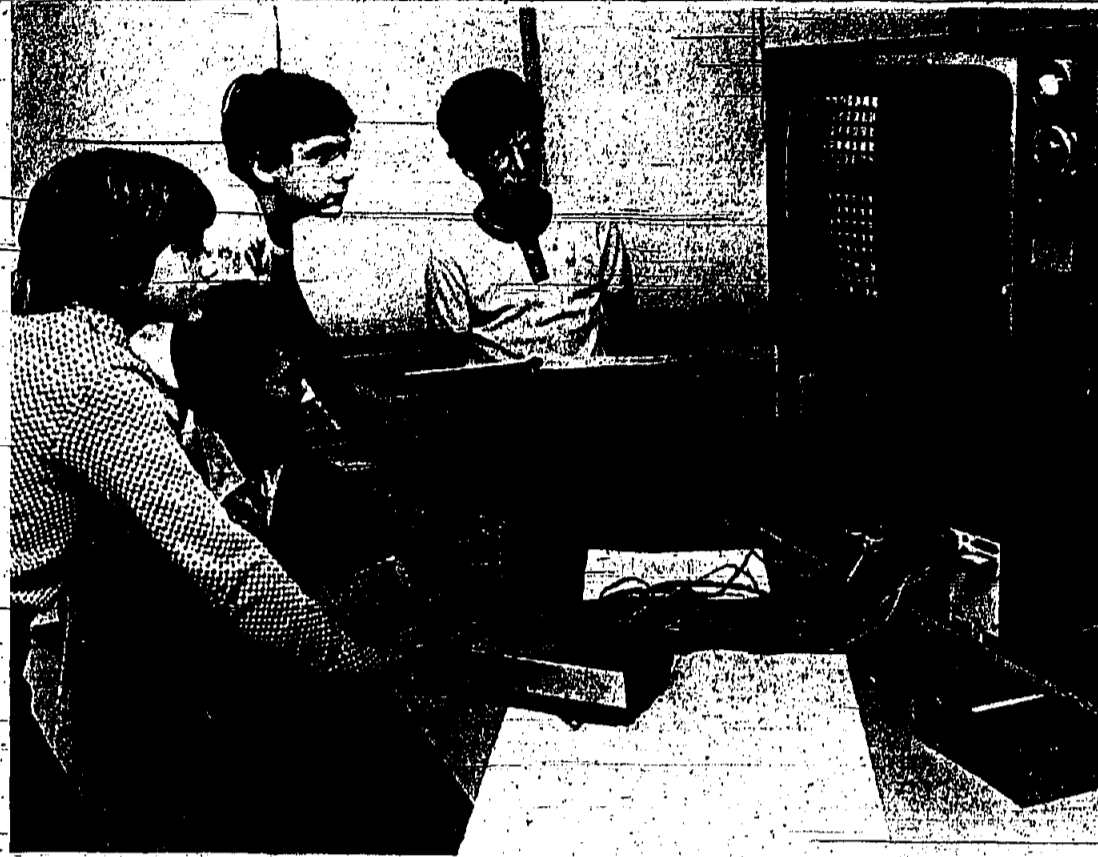
WALL PAPER KIT \$2.25

SAVE UP TO 70% OFF ON WALLPAPER AND VINYL

## SUPERSTEIN'S

2260 E. RT. 22 UNION 688-2000 (Across from The Plugfish) PERMIT OF FREE PARKING

OTHER STORES: NEW PLAINFIELD-935 ROUTE 22 LINDEN-1135 ST. GEORGE AVE. NEW BRUNSWICK-UNION CITY JERSEY CITY-MIDDLETOWN CITY LONG BRANCH-BRICKTOWN-MANLAPAN



CHILD'S WORK - From left, Joseph Cohen, Leon Liam, Steve Dahman and Bill Koppel, all pupils at Florence Guideline School, work on a computer problem.

## Schools seeking an even break for town's brightest youngsters

By HELEN REYNOLDS

"It was a healthy boy with nice parents, a nice home and an IQ above 140—not, it would seem, a deprived child."

But if elementary school is supposed to offer educational challenge, then this academically gifted pupil, with others like him, was being shortchanged in Springfield before a local task force went to work on the problem in January 1974.

The task force of teachers, administrators and parents—later joined by some parents—did the research leading to the local "Discovery" program, launched as a pilot in 1975 in grades six through eight.

Expanded last year to include fourth and fifth graders, "Discovery" will grow again this autumn. There is a November target date for bringing selected second and third graders into the program.

Meanwhile, "Discovery" is discovering widespread enthusiasm for its approach—enthusiasm from educators throughout the state, as well as from parents and children involved in the local program. The New Jersey Department of Education has named Springfield one of 10 model school districts to be emulated by others launching programs to serve gifted and talented children.

IN SPRINGFIELD, the model program serves top types of children: "The academically gifted. Nationally, psychologists roughly define the gifted as those with IQs of 130 or above, 2 to 3 percent of the total population. Springfield—an affluent, middle and upper-middle-class community—would likely have a greater concentration of high IQs than the national average.

"IQs can be an ego trip for the parents," says one "Discovery" staff member, despite evidence that there is less than a 50 percent correlation between the child's IQ and the parents' IQ. The staff emphasizes each child's IQ score and makes it a point to discuss it with parents who insist. But the staff does say that academically gifted children are not exceptional achievers by virtually any standards. From each grade level eligible for "Discovery," about 3 to 4 percent of the children are selected.

The artistically and musically talented. These children may not be academically gifted, and vice versa. The correlation between IQ and ability at pitch discrimination, for example, is very low.

Last year 38 children, including 10 new ones from the fourth and fifth grades, were selected.

(Continued on page 19)

## Library shows special exhibit on handicapped

The Springfield Public Library has prepared a special exhibit to publicize the national "Employ the Physically Handicapped Week," Oct. 2 to 8.

Books by and about individuals who have been successful in their professional and personal lives, despite severe handicaps, are prominently displayed. Among these are Roy Campanella, the Brooklyn Dodger who was hit by a quadriplegic "after a automobile accident; Bill Kimpton, the young schizophrenic whose spinal cord was severed in a ski accident; and Wanda Brown, the young basketball star who lost her eye in basketball during World War II and then went on to become a general and statesman.

There are also stories and illustrations of individuals who have overcome physical handicaps. One is President Franklin Roosevelt's Sammy Davis Jr., Ellen Zeisler, Harold Krentz (author of the play "Bicycle Thief"), and Betty Beermann, a victim of cerebral palsy.

Also included in the display are photographs and biographical materials prepared by the President's Committee on Employment of the Handicapped. These illustrate what can be accomplished with a combination of determination and ingenuity.

The Springfield Library is also displaying a special exhibit planned with the needs of handicapped citizens in mind. It is all on one level, and accessible to wheelchairs. There is a ramp cut into the curb near the front entrance. All doors are wide enough to accommodate wheelchairs, and the restrooms are equipped with safety handrails.

The collections of the library include a number of large-print books and a variety of materials for those with visual impairment. There is also an extensive selection of recordings, not only music, poetry, plays, and speeches, but also of lessons, rhythmic exercises, and foreign language materials. In addition, the staff can make arrangements to borrow special materials through the library for the blind and handicapped.

SPRINGFIELD PUBLIC LIBRARY, 151 W. 11th St., Springfield, N.J. 07081. Tel. 376-1344.

## Library to prosecute, tardiest readers told

The Springfield Public Library is planning to go to court, if necessary, to collect some long-overdue fines, as well as costs of replacing unreturned books, magazines, phonographic records, pictures and other audio-visual materials.

"We want the people to understand that this isn't just a nuisance on the part of the law," said Iris Goodman, public information coordinator at the library.

Helga Krasinski, library director, said that the town ordinance passed in 1965 requires the return of overdue materials, and a 1975 ordinance provides for fines. "Adults and teenagers are worse offenders than small children when it comes to piling up large library fines in Springfield," accused to Mrs. Goodman.

"After a year of study, we have joined together in a single unified approach to raising money to improve health and social service needs," according to Harvey Schramm, president of the United Way of Springfield. "Not only will the 18 service agencies now receiving financial support from the United Way of Springfield benefit from this merger, but the people who live and work in Springfield also will benefit from the 34 voluntary human service agencies of the United Way of Eastern Union County.

He said Ralph Mancini, general counsel for the United Way of Eastern Union County, "was instrumental in the smooth transition of activities regarding the merger."

Agencies supported by the United Way of Eastern Union County's fund drive include: a health association; American Red Cross; Sakers Union County; Summit Area Chapter; Catholic Community Services; Union County Office, Family Service Division; Mental Health Center; Retired Senior Citizens Council; Girl Scouts; Washington Rock County; Senior Citizens Center; Elizabeth Corps; Urban League of Union County; individual and family counseling; Family and Children's Society; Elizabeth; Family Service Association; Janet Memorial Home; Jewish Family Service of Central New Jersey; Youth and Family Counseling.

Child care—Egmont Day Nursery; Elizabeth; Jefferson Park Day Care Center; Elizabeth; Roselle Day Care Center; of the First Presbyterian Church; Union Township Community Action Organization's Day Care.

Health and special services—Mental Health Association; National Council of Alcoholism; N.J. Association for Retarded Citizens; Union County; SAGE (senior citizens) services; Elizabeth; Union County Psychiatric Clinic; United Cerebral Palsy League; Volunteering Homeless; Elizabeth; Union County; Valling Nursing and Health Service; Group work and recreation—Big Brothers, Inc.; Boy Scouts; Union

## Shouting punctuates actions on housing

Mayor Johnnie Rajoppi appointed a blue-ribbon panel Tuesday to seek land for a second state and federally funded housing project for senior citizens, and the Township Committee gave approval for the contractor to bring construction equipment onto the site of the first project of this type in Springfield.

It was a big night for senior housing in Springfield. And it was a night complete with shouting—but not in celebration. In separate developments, Sandy Garwin, one of the directors of Springfield Senior Citizens Housing Inc. resigned his position as president of the non-profit corporation, Bea Einstein, hospitalized with a knee injury. Einstein's statement accused the Township Committee majority of "delaying by at least one month the start of construction" on the apartment complex to be built on township-owned land north of Ruby street in the 5-Springfield Mountain avenues area. Any delay could kill all hope of completing before the winter of 1978-79, according to Einstein. The Democratic majority on the Township Committee—Robert Welchek and Nathan Stokes—hotly denied any action or any desire to delay the project. Welchek, shouting, called Einstein's statement "scandalous, disgusting, the lowest of tactics."

Earlier in the evening Rajoppi, noting that mortgage-closing papers had been signed for the apartment complex, said it is already time to start construction on the second project. A third of Springfield's population is 62 or older, Rajoppi said, and "the growing demand for senior-citizen housing is outstripping the available land." She named a nine-person Mayor's Committee, including herself, to seek a feasible site for a second project.

"The first housing project will be built on land leased from the township, with financing from mortgage bonds issued by the state Housing Finance Authority (HFA). The local housing corporation will provide its mortgage money from HFA, \$4.9 million—in mid-October. Meanwhile, the corporation has no funds for a township building permit fee of about \$12,000. And Einstein thinks the fee should never be paid, except for a small portion that goes to the state.

The apartment complex is officially scheduled for completion in April 1979, but the corporation asked the contractor to start immediately, at all possible before this winter, and aim for completion before the winter of 1978-79. A dispute arose last week when Einstein announced "Tuesday 23" as the contractor's lease of the township-owned site will not take effect until Oct. 13, Kolb pointed out.

"The township is the only one who can give permission to move vehicles onto that land," Kolb said. "I don't have the authority to tell people they can move vehicles onto township land."

EINSTEIN'S STATEMENT accused the committee majority of insisting "this latest unnecessary hurdle." Committee member Norman Banner, a Republican, also complained that he had not been previously informed about any problem. "I received no information about this," he said.

Stokes introduced a resolution, passed unanimously, allowing construction equipment to be moved onto

the site, but asked the contractor to maintain liability insurance. The resolution failed to satisfy Garwin and another director, Jim Smith, representing the housing corporation. They still wanted the township to waive the \$11,780 fee, except for the state's portion.

"We understand that about \$10,000 of that fee goes back to the township," said Smith, "and you should let us keep it for the project."

Smith said the money would allow the corporation to provide some amenities. (Continued on page 19)



SEMI-FINALISTS - Jonathan Dayton students, Christopher Shields and Robert Falter, were National Merit Scholarship semi-finalists in this year's competition. (Photo by Gary Bobka)

## Regional board looks at discipline proposal

The Regional High School District Board of Education Tuesday night turned its attention to disciplinary procedures, ranging from teacher-parent conferences and after-school detention to suspension, which has indicated an interest in paying for the lights.

The assistant principals stressed that while disciplinary problems are increasing, more than 80 percent of the district's 6,000 students "are never in any trouble at all." They added that their main concern is a "small core of 25 to 50 youngsters in each school. They are obviously turned out, and we must have them on."

Natalie Wald of Springfield presided in the absence of Charles Vitale of Kenilworth, board president, and John Goulet of Newark, vice-president.

In other business, the board authorized expenditure of up to \$1,000 for background checks on candidates for a central staff position as part of the construction of four term courts now starting at Dayton. The board is negotiating with the Springfield Township Committee, which has indicated an interest in paying for the lights.

The assistant principals stressed that while disciplinary problems are increasing, more than 80 percent of the district's 6,000 students "are never in any trouble at all." They added that their main concern is a "small core of 25 to 50 youngsters in each school. They are obviously turned out, and we must have them on."

The position paper stated, in part: "Today's administrator working to resolve student discipline problems faces a serious dilemma. On the one hand, the Gallup Poll for seven of the last eight years has found that the public's number one educational concern, more than budgeting, is school discipline. They report that the public expects stringent enforcement of rules and regulations by school administrators. Teachers expect the effective cooperation of misbehaving students. For the other hand, numerous court decisions restrict the options available to administrators for disciplining students. Parents frequently hurl legal challenges at the school regardless of the nature of the offense.

"Despite this dilemma, the pitfalls and problems encountered from today's society, the assistant principals of the Union County Regional District have maintained a firm, fair and constructive system of discipline, a system which gives the latitude to work toward our ultimate goal."

(Continued on page 19)

## Springfield United Way merges with Eastern Union County unit

The United Way of Springfield has merged its fund-raising activities with the United Way of Eastern Union County.

"After a year of study, we have joined together in a single unified approach to raising money to improve health and social service needs," according to Harvey Schramm, president of the United Way of Springfield. "Not only will the 18 service agencies now receiving financial support from the United Way of Springfield benefit from this merger, but the people who live and work in Springfield also will benefit from the 34 voluntary human service agencies of the United Way of Eastern Union County.

Child care—Egmont Day Nursery; Elizabeth; Jefferson Park Day Care Center; Elizabeth; Roselle Day Care Center; of the First Presbyterian Church; Union Township Community Action Organization's Day Care.

Health and special services—Mental Health Association; National Council of Alcoholism; N.J. Association for Retarded Citizens; Union County; SAGE (senior citizens) services; Elizabeth; Union County Psychiatric Clinic; United Cerebral Palsy League; Volunteering Homeless; Elizabeth; Union County; Valling Nursing and Health Service; Group work and recreation—Big Brothers, Inc.; Boy Scouts; Union

## Evening hours for registration

Springfield Township Clerk Arthur H. Baehrer this week announced that additional hours for voter registration will be held on Oct. 17, and 18, when the clerk's office will be open until 9 p.m.

No registration will be held on Oct. 16, as all Municipal offices are closed because of the Columbus Day holiday.

The clerk's office is open daily from 9 a.m. to 4 p.m. and persons not registered may do so any day in addition to the extended hours. Oct. 11 will be the last day to register to be eligible to vote in the general election which will be held on Nov. 8.





CHURCH LEADERS — Recently installed officers and board chairman for Holy Cross Lutheran Church, Springfield, for the 1977-1978 year. From left, back row: Andy Lissy, chairman of trustees; Jim Williams, elder; Joe Natanzon, vice-president; Egon Stark, treasurer; Henry Freudenberg, elder; John Luedeker, trustee; Bob Bobb, chairman of Newkirk, chairman of elders; Mary Gassal, elder; Ruth Eley, assistant financial secretary; Edna Klein, chairman of mission and social concerns; the Rev. Joel Yoss, pastor; Mealy Stark, trustee; Mealy Stark, trustee; Mealy Stark, trustee.

### Church changes name, not spirit Methodists in community for 150 years

(Editor's note: The following article is the third in a series by the pastor of the Springfield Emanuel United Methodist Church, which is celebrating its 150th anniversary this year.)

By GEORGE C. SCHLESINGER

About a year after their organization in 1827, Methodists in the Springfield-Millburn area added the word "Episcopal" to their title, denoting ecclesiastical structure. In 1840, a few years before the Civil War, Methodist Episcopal congregations added the Mason-Dixon line as a geographical boundary. In 1968, both "Episcopal" and "North" disappeared from the names of churches involved in a reunion of three distinct bodies of Methodists in America. Thereafter, until 1964, the local congregation simply called itself the Springfield Methodist Church.

### School Lunches

DAYTON REGIONAL HIGH

Monday—Choice of (1) hamburger on bun, (2) minute steak sandwich or (3) boiled ham sandwich, each with French fries, vegetable or tossed salad, fruit or juice.

Tuesday—Choice of (1) frankfurter on roll with French fries, vegetable or tossed salad, juice, (2) spaghetti or macaroni with meat sauce, Italian bread with butter, tossed salad, juice, (3) submarine sandwich, fruit.

Wednesday—Choice of (1) hamburger on bun, (2) grilled cheese sandwich or (3) chicken salad sandwich, each with French fries, vegetable or tossed salad, fruit or juice.

Thursday, Oct. 6—Choice of frankfurter on roll, French fries, vegetable or tossed salad, fruit or juice.

Friday, Oct. 7—Choice of (1) pizza pie, corn, fruit; (2) meatball submarine sandwich, French fries, tossed salad or (3) cold turkey sandwich, French fries, tossed salad, each choice including a peanut butter cookie.

Daily offerings: Tuna salad sandwich, soup, luncheon-size salad with bread and butter, individual salads and desserts.

FLORENCE GAUDINEER SCHOOL

Monday—Submarine or hero sandwich, tossed salad, fruit cocktail.

Tuesday—Pizza and cheese squares or Belgian sandwich, relish plate, fresh fruit or chocolate pudding.

Wednesday—(1) Peanut butter and jelly sandwich, apple sauce, or (2) hamburger on bun, French fries, tomato slice.

Thursday, Oct. 6—(1) Tuna with grated cheese and potato sauce or (2) egg salad sandwich, juice.

Friday, Oct. 7—(1) Baked fish, potato sauce, mashed potatoes, peas, or (2) cheese sandwich, potato, relish, tomato slice.

Daily offerings: Milk, apple sauce, cooked eggs, cottage cheese, hot or cold peanut butter and jelly sandwiches.

### St. James reports low-cost milk plan

A spokesman for St. James School, Springfield, this week announced that a low-cost milk program that may be available to all children enrolled in the school.

The spokesman said one or two half-pints of milk will be provided for each child from eligible families. Copies of an income scale, determining eligibility, have been sent to all parents, the spokesman said.

### Church course will delve into family in crisis

An expanded educational-hour-for-adults has been scheduled by the First Presbyterian Church of Springfield starting at 9 a.m. Sunday, Oct. 9, in the parish house under the direction of the local Committee on Christian Education. The courses will be taught by Dr. C. William Fiedler of the Rutgers University School of Law and by Dr. J. Milton Bell of the American Bible Society.

Heckel will conduct a discussion class on "The Christian Family in Crisis," stressing both the legal and the church's point of view toward the family. The class is planned as a dialogue, figuratively placing the family—buffeted by moral, economic and societal changes—under the microscope. In addition to his work in numerous community organizations, especially in Newark, Heckel has served as moderator of the Presbyterian Church, the highest executive office in the denomination.

Dr. Bell will be returning to the local church, where he taught a course in New Testament interpretation last spring. His new class will outline "Old Testament Prophecy," "stressing their fulfillment, especially in the Gospel of Matthew. Before his work with the American Bible Society, Dr. Bell was pastor of the Brick Presbyterian Church in East Orange.

### Zimmerman reception to open library exhibit

An artist's reception will be held at the Springfield Public Library at 7 p.m. Monday to introduce a retrospective exhibition of paintings, drawings and pastels by Perry Zimmerman.

Zimmerman, an art teacher at Gaudineer School, has exhibited widely and is represented in collections both in the United States and abroad. He studied at the New Jersey State Teachers College, the Newark College of Fine Arts, New York University, Brooklyn Polytechnic Institute and with Bernard Gussow and Hans Weingartner.

In giving his view of the artist's work, he stated, "Through the arts we derive a contemplative reflection of ourselves and the human condition. Painters, writers and musicians increase our area of awareness and project a point of view. For myself, I find that realism permits me to state concisely and succinctly my attitudes and reactions to the world around me to the widest possible audience."

On Monday, Oct. 24, at 8 p.m., Zimmerman will present a lecture, "Restoration, Conservation and Preservation of Paintings" illustrated with a film of his own making showing the complete preservation process. This will be held in the Meeting Room of the library and the public is invited to attend.

The Zimmerman exhibit will be at the library throughout October.

### Used book sale at Essex Green

Four Springfield women are working on a used book sale sponsored by the Essex County Chapter of Brandeis University National Women's Committee.

More than 30,000 books will be available at the Essex Green Shopping Center from Oct. 10 through Oct. 15 at a fraction of their original cost.

Sue Weinberg of Springfield is in charge of book processing. Other township women working on the sale are Shirley Ross, Ethel Berson and Eleanor Neidert.

FRIDAY DEADLINE

All items other than spot news should be in our office by noon on Friday.

### Art work to be sold

The Sugar Plum Gallery, a new addition to the annual Sugar Plum Shop, a holiday shopping boutique sponsored by the Kent Place School Parents and a d. A l u m n a e Association, Summit, will be open to the public on Monday, Oct. 17, from 10 a.m. to 8 p.m. and "off" Tuesday, Oct. 18, from 10 a.m. to 5 p.m.

The gallery will feature paintings, sculpture, and jewelry by New Jersey artists. The works will be available for purchase.

### WHAT'S NEW

In New Guinea, disco music is still popular. The "wedged hair" is nutritious, will grow anywhere without soil, and is completely safe. The "new" foods, roots and leaves.

## Get More Than Money From Investors

Regular Savings Accounts

5 1/4% per year

Compounded and payable monthly

Day of Deposit to Day of Withdrawal

\$50 minimum balance required

Higher rate savings plans are also available.

Invest with the best!

### INVESTORS SAVINGS

AND LOAN ASSOCIATION

ESLIC

### Seminar topic is announced at Holy Cross

Holy Cross Lutheran Church, 639 Mountain Ave., Springfield, will sponsor a "Seminar on the Three Special Evenings toward Deeper Commitment," from 8 to 9:30 p.m. on Wednesday, Oct. 5, 12 and 19.

Guest lecturer for the seminar will be Prof. Esther Onstad, affiliated with Luther College of Teaneck. She is the author of various Bible study guides. Her most recent publication is a study in the Book of Revelation entitled "Gazing at 'Today,' Hope for Tomorrow."

According to the Rev. Joel R. Yoss, pastor of Holy Cross Church, "Prof. Onstad's presentations will be based upon Paul's letter to the Colossians and will deal with answers to some very contemporary questions, such as: 'Who is Jesus Christ?' 'What about the many new religions on the scene today?' 'What are guidelines for living in today's permissive society?' 'What are questions of tremendous importance to people today?'

The seminar will be open to all interested persons of the community. Mr. Yoss said.

### Vollinger at RPI

Warren R. Vollinger of Keeler Street, Springfield, is one of 1,140 freshmen to begin the fall semester at Rensselaer Polytechnic Institute in Troy, N.Y.

### SY ROSENBLUM

In Ceylon there are ancient ruined cities, mountains and good food, and even valuable things to buy. There are an increasing number of small scale hotels and resort developments. These support a countrywide system of rest houses, simple, austere, and comfortable, located in spectacular locations. The easiest way to take a vacation in Ceylon, which is now known as Sri Lanka, is to make use of the many available package tours.

All modes of travel are available through SPRINGFIELD TRAVEL SERVICE, 230 Mountain Avenue. Come to US where you are really important. Your group—leave—plans, be they family, associations, social groups, or business contact—should be fun to plan from the very beginning. Call 878-9787. Open daily 9-5:30 Wednesday evenings until 7:30 Saturday 9-1.

### TRAVEL TIP

A triple strength magnifying mirror with an attachment to keep your neck keeps hands free for applying makeup.



ON THE SCENE — Norm Banner, left, and Bill Ruocco at the site of the traffic light at Mountain and Hillside avenues, which became a reality during their terms in office.

### Ruocco and Banner list accomplishments

William A. Ruocco and Norman O. Banner, Republican township committee members seeking reelection in November this week reviewed their record of performance which they said benefited all in Springfield.

Ruocco stated, "We had constantly heard of all the efforts made by the Township Committee to install a traffic light at the intersection of Mountain and Hillside avenues. For many years we were told that all necessary applications had been made and the traffic light was forthcoming.

"In 1973, when I served as mayor, we found out that this traffic light was not included in a state plan for signals in Union County. We then met with the Department of Transportation's traffic engineer and convinced him that this traffic light was desperately needed, and he agreed.

"Constant follow-up and persistence made this traffic light a reality. We are proud to say that we were an important part of this accomplishment which, incidentally, was funded completely by state and federal money."

Banner added, "Our concern for recreational facilities for all led us to seek expansion of the Sarah Ballou Civic Center. We actively sought additional facilities and came up with the possibility of two buildings located at the corner of Maple and Morris avenues. This could have been trans-

### Facilities acquired for congregation

Congregation Israel of Springfield has acquired facilities at 42 Shunpike road to house its services and activities during the period of construction of its synagogue center and religious school at Mountain Avenue at Shunpike road. It was announced by David L. Warner, president of the congregation.

"Occupancy of the temporary facilities will begin shortly after the conclusion of the final days of the Sukkot holiday period, Warner said. At that time the present structure on the Mountain Avenue site will be demolished as the first stage in the construction.

The exact date of occupancy of the new structure will be announced in the near future.

Use of the Shunpike road facility was found to be most practical means of housing the congregations program during the construction period, Mr. Warner said. The congregation had ways to services on the Sabbath and holidays.

It was decided, however, to obtain a facility where its entire program could be housed under one roof. The Shunpike road site is especially convenient since it is readily accessible to the majority of the congregations worshippers who walk to services on the Sabbath and holidays.

Warner was joined by Habi Israel E. Turner, spiritual leader of the congregation in expressing appreciation to the Board of Education for its cooperation with the congregation in providing facilities for its High Holy Day services. They expressed special appreciation to Dr. Fred Baruchin, superintendent of schools, Dr. Theima Krasner, principal of the Florence Gaudineer School, and the custodial staff of the school for the help extended to the congregation.

### Mrs. Iannicelli Requiem Mass

A Requiem Mass was offered for Mrs. Isabel R. Iannicelli of Ft. Lauderdale, formerly a Springfield resident, who died last week at the age of 69.

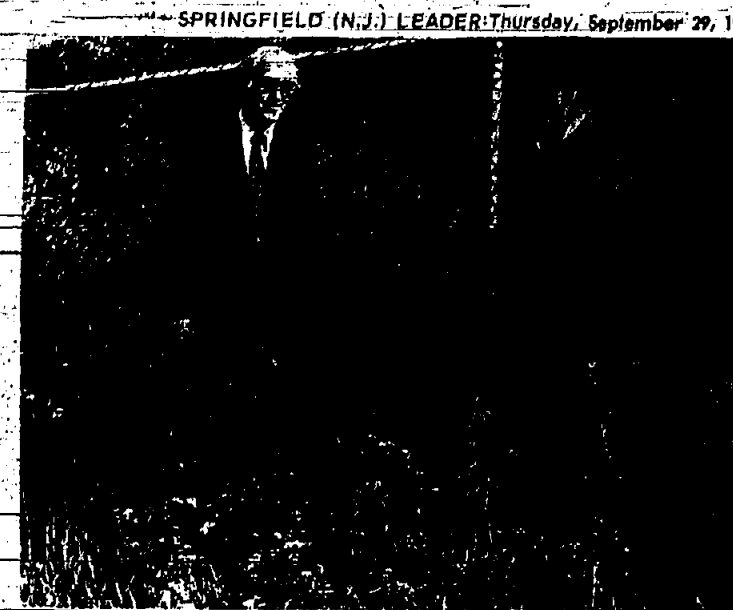
The service was completed by the Smith and Smith Funeral Home in Springfield.

Mrs. Iannicelli was born in Fall River, Mass., and moved to Ft. Lauderdale four years ago.

Surviving are her husband, Thomas; a daughter, Mrs. Beverly A. H. daughter, Mrs. Barbara Shestump of Columbia; a brother, James Phillips; two sisters, Mrs. Margaret Whelan and Mrs. Margaret Shea, all of East Providence, R.I., and five grandchildren.

Three years ago.

"We were looking ahead for Springfield's future," Mrs. Iannicelli said. "I was interested in imaginative government, and not reactionary government."



HARVEST TIME — Bill Cieri, right, and Stanley Kaish, Democratic Candidates for Township Committee find a heavy growth of pollen creating weeds along State Highway. The candidates called for enforcement of Springfield's laws to keep these areas cut.

### Ruocco 'ignores' town, Cieri, Kaish charge

Bill Cieri and Stanley Kaish, Democratic candidates for Springfield Township Committee, this week questioned how one of their Republican opponents, William Ruocco, can sit astride three political chairs at once and hope to serve any of them adequately.

"They said, 'At present, he is a candidate for Springfield Township Committee, a candidate for Union County freeholder, chairman of the Springfield Republican Party, and a member of the Springfield Township Committee. It is no wonder, the Republicans have been silent on local issues.'"

"Ruocco can't even find the time to attend Springfield Township Committee meetings. Let alone write press releases. During the time he has announced for freeholder and the time we first began calling attention to his absenteeism, he missed four of six town meetings."

"Four the whole of 1977 he has missed approximately 25 percent of the meetings at which he is supposed to represent the people of Springfield. The Republicans are worried about two-party representation. With Ruocco we have little representation at all."

"Speaking of non-representation, what about the other Republican seeking reelection. When Mr. Banner accepted his appointment to the Union County Park Commission, he claimed that Springfield would get better representation as a result of his being there."

"Instead we have a situation where he leaves the room whenever a Springfield matter comes up. Our food project is stalled for lack of agreement with the Park Commission. Yet Mr.

### The Unusual In ALBUMS and PORTRAITS

Marty Feins

252 MOUNTAIN AVE. SPRINGFIELD

379-7666

### Marsh presents The Royal Oak by Audemars Piguet



Everything about this ultra-thin, self-winding timepiece, from the tiny hexagonal bolts which lock the bezel to the watch to the concealed escapement case, represents the ultimate refinement of taste and engineering to be fully appreciated, it must be seen, held in the hand. Tried on the wrist, Marsh is one of the few places in the United States where you can do that.

Marsh, Winner of the 1977 DeBeers Diamond Award

Marsh & Sons

Fine Jewellers & Silversmiths since 1908

265 Millburn Ave., Millburn, N.J. Open Mon. & Thurs. 10:00 P.M.

American Express Registered "Master Card"

### ONE COUPON PER CUSTOMER OFFER VALID OCT. 16-31-77

## \$100 OFF FAMILY SIZE BOX OF CHICKEN

8 Large Pieces (Reg. \$4.25)

WITH THIS COUPON

(Available after 11 am)

### BURGER EXPRESS

536 Millburn Ave. SPRINGFIELD

---

### ONE COUPON PER CUSTOMER OFFER VALID OCT. 16-31-77

## \$100 OFF FAMILY SIZE BOX OF CHICKEN

8 Large Pieces (Reg. \$4.25)

WITH THIS COUPON

(Available after 11 am)

### BURGER EXPRESS

536 Millburn Ave. SPRINGFIELD

---

### FIGHT CANCER WITH A CHECKUP AND CHECK

## AMERICAN CANCER SOCIETY

Sold By Norma Lehrhoff Altman

Marilyn Schulman, of Norma Lehrhoff Altman Real Estate, arranged the sale of this lovely home for Mr. Sandy Viano, welcoming Dr. Craig Viano.

### Norma Lehrhoff Altman

"Where Everyone Is Special To Us"

221 MAIN ST., MILLBURN 376-7333

## For lunch, squash.

Keeping fit and vibrant can be fun for the housewife or business executive near Murray Hill (New Providence) — now that MHC offers squash! Millions of Americans remember with affection this active, friendly game from their school days. Now it's available closer to home in the midstate area that carries no charge. If you prefer, it's optional on one of our 10 courts.

Reservations are now being accepted for the upcoming season. All courts are available for ALL SPORTS. Fully air conditioned. Open Year Round.

### MHC

Murray Hill Racquet Club

583 Central Ave., Murray Hill (New Providence), New Jersey (201) 685-1141

Don't let this opportunity pass you by!

Tennis Time Available for Season, beginning Oct. 1

SQUASH & RACQUETBALL COURTS OPEN. COME TRY IT!

## FAMOUS BRAND WOMEN'S CLOTHING DOES NOT HAVE TO BE EXPENSIVE

THE LARGEST SELECTION IN THE AREA. DISCOUNT PRICES!

FAMOUS BRAND OWNERS CO-OWNED. DON'T MAKE MISTAKES. SIZES 8-18. ALL 40% OFF

DENIM SKIRTS, JACKETS, PANTS \$10.00

FORMAL LONG SLEEVES \$15.00

FAMOUS MAKER 1/2 P. PRINT DRESSES \$10.00

BLouses SPECIAL PURCHASE \$10.00

SLACKS SPECIAL PURCHASE \$10.00

20% TO 50% OFF ALL COATS, JACKETS, RAINCOATS, PILE LINED COATS.

SAVE ON ALL SUMMER MERCHANDISE!!!

### eastern CLOTHING OUTLET

107 VALLEY DRIVE S12 SPRINGFIELD 379-6320



# Public meetings

Springfield Township Committee executive meetings, 7:30 p.m., Monday preceding the second and fourth Tuesday of each month. Regular meetings, 8 p.m., second and fourth Tuesday of each month.

Board of Health - 8 p.m., third Tuesday of each month.

Planning Board - 7:30 p.m., first Tuesday of each month.

Board of Adjustment - 8 p.m., third Tuesday of each month.

Rent Levelling Board - 8 p.m., last Tuesday of each month.

Industrial/Commercial Relations Committee - 8 p.m., meets on call. If meeting is held, second Wednesday of each month.

Environmental Commission - 8 p.m., second Wednesday of each month.

Senior Citizen Housing Corporation - 8 p.m., meets on call. If meeting is held, third Thursday of each month.

Schools - Board of Education - 8 p.m., second Thursday of each month at library. (No meetings scheduled during July and August).

Recreation Committee - 8 p.m., third Tuesday of each month, at Sarah Bailey Civic Center.

Youth Council - 7 p.m., first Monday of each month, at Sarah Bailey Civic Center.

Springfield Historical Society - 8:15 p.m., Tuesdays, at Sarah Bailey Civic Center.

Consumers Affairs Office - 10 a.m. to noon, every Tuesday.

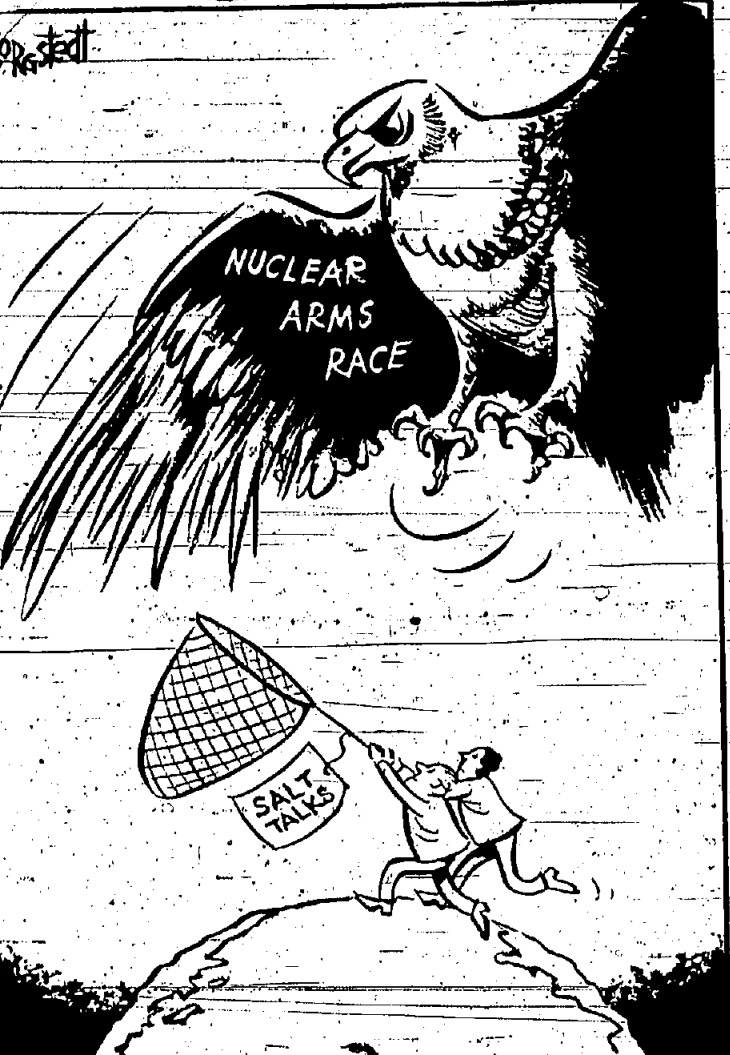
County Food Stamp Program - 9:30 a.m. to 12:30 p.m., last Tuesday of each month.

Mayor's Committee on Aging - 9:30 a.m., third Friday of the month, at the Sarah Bailey Civic Center.

The following committees meet on call: Ethics Committee, Committee on Human Rights, Grants Committee, Flood Committee and Bicycle Board. When these committees meet, they will publish the meeting date.

Springfield Board of Education - 8 p.m., third Monday of each month, at the Raymond Dickinson School.

Union County Regional High School Board of Education - Regular meetings, 8 p.m., first Tuesday of the month, meeting site rotated among member communities. Adjourned regular meetings, 8 p.m., third Tuesday of the month, at the Hayes-Martin Building, 841 Mountain ave., Springfield.



# LIBRARY

**Literary escapades**

**LIBRARY**  
By ROSE P. SIMON  
**A LEGENDARY REPORTER**

**"The Life and Legend of Gene Fowler"**  
By H. Allen Smith

One of the most colorful newspapermen of the twentieth century was the star reporter, Gene Fowler (1890-1960). After a year in the School of Journalism in Boulder, Colorado, Fowler took a job with the Denver "Republican" at six dollars a week. When that proved to be too little, he immediately snatched up by the Rocky Mountain "News", where he served a while as city editor, then temporarily left for a job on the "Post", owned by Bonfils and Tamm. This was where he learned his trade for four years. In preparation for the "backbacking" years working for William Randolph Hearst.

Drink, socializing, women, and excitement became part of this handsome, outspoken, irreverent newsman, whose escapades (most reported here) were legendary. He had a host of friends, among them athletes, artists, writers and directors. Queen Marie de Romania and the Duke of Windsor were his friends. Fowler rose from reporter to managing editor in the Hearst organization. He also worked in Hollywood, writing undistinguished scenarios. However, his novels were better received: "Trumpet in the Dust," "Salute to the Wild," "Sabbath in Lava" and "Salute to Yesterday." Among the subjects of his biographies were William Fallon, Jimmy Walker, Mack Sennet, Jimmy Durante, Bonfils and Tamm, and most notably, of all, John Barrymore ("Good Night, Sweet Prince").

**A TERRORIST AT LARGE**  
"Carlos."  
By Colin Smith

Illich Ramirez Sanchez, the oldest of three sons of a wealthy Marxist lawyer from Venezuela, used to Russia for his education and training in the "Soviet" Kuryevsk School in Moscow offered vigorous courses in politics and Russian. With the goal of producing dedicated revolutionaries, the South London Observer's chief roving reporter depicts the growth of the terrorist in the "Soviet" and "The Terrorist: From the Liberation of Palestine to the Assassination of Kennedy." In 1970, at the age of 28, Carlos became an activist—a killer for the

# LETTERS

**RINALDO VOTE CRITICIZED**

On Tuesday, Aug. 3, Representative Matt Rinaldo voted for the "No Amendment to the HEW appropriations bill." This amendment would disallow the use of Medicaid funds to pay for abortions and would thus force poor women to either carry to term their unplanned pregnancies or seek out illegal abortions.

Representative Rinaldo cast his vote knowing full well, as per his own poll, that an overwhelming majority of his constituents feel that reproduction is a private matter best left to the conscience of each individual woman. The editor of the "Mountain Eagle" says that women and men of Summit Area "strongly protest Mr. Rinaldo's vote and call into question his ability to truly represent" his district.

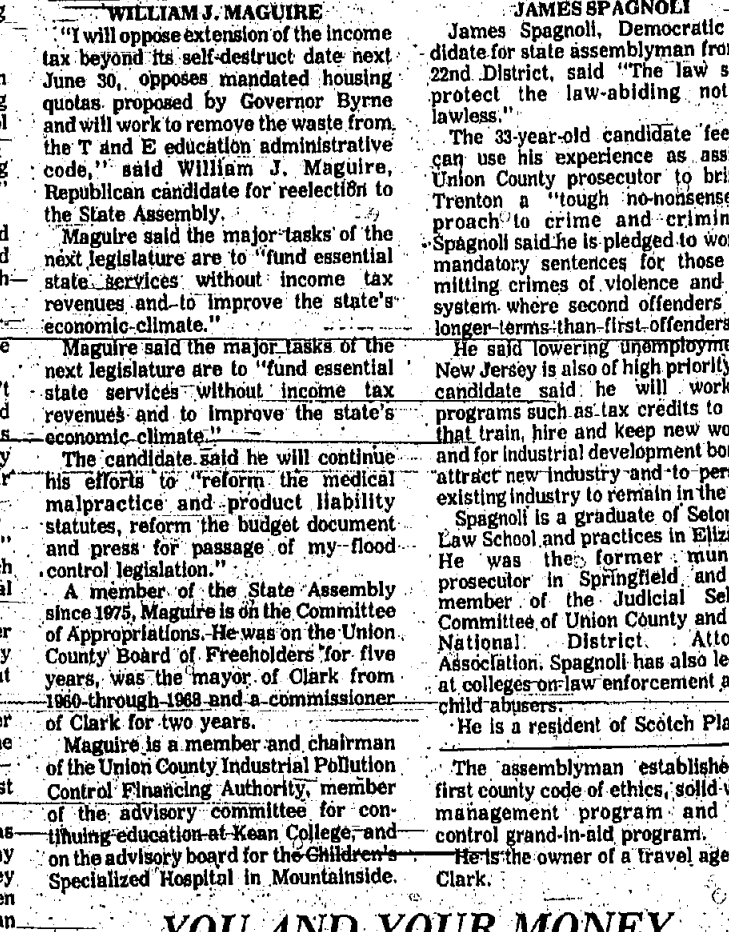
We feel that such a blatant disregard for the views of his constituents, and his vote to ensure that the poor may be forced to bear more children than they want or can afford, should be brought to the attention of the public.

**JANIE V. LIBA, President**  
Summit Area NOW

# First chair--

By Peter Heumann

"Called in sick today," the fellow in the lead chair was telling Sam, his barber. "Actually, I wasn't sick. It was the wife."  
"What could happen if you told her the truth?" asked Sam.  
"Wanda lost a day's pay, that's what. The system's fixed so you gotta lie."  
It occurred to me that this was just another way men laid guilt complexes on each other. People who need a day off to fight their consciences. And everywhere bosses knew that people were lying to them. Resentment and guilt were ways of life.



**JAMES SPAGNOLI**  
Democratic candidate for state assemblyman from the 22nd District.

**Candidate profiles**  
**For the Assembly**  
Maguire Spagnoli

**WILLIAM J. MAGUIRE**  
Maguire was an assistant of the income tax beyond his self-destructed date next June 30, opposes mandated housing quotas proposed by Governor Byrne and will work to remove the waste from the T and E education administrative code, said William J. Maguire, Republican candidate for reelection to the State Assembly.

# For the Birds

By Farris Swackhammer

Hager Tony Peterson picked Cape May as one of his 12 birding hotspots in the United States. The New Jersey Audubon Society has long recognized the importance of the location. Peterson recently installed a staff of naturalists there. Our man in Cape May is Peter J. Pele's nominal address is the Cape May Audubon Society. Pele is an avid birder and has had a keen curiosity about all of nature. Whenever the opportunity arose, Pele was out in the field. All during his college career, he kept an eye on the birds and during his senior year birded over most of the east. He received his B.S. in political science from Cape May College in 1973 and then did a stint as foreman in a rug cleaning factory. Following this experience, he moved the next two years installing carpet and saving up money to bird full time.

# Hikers, bikers list schedule of coming events

Three hikes and a bike ride are scheduled for members and guests of the Union County Hiking Club. Ruth Tomaline will lead the Hartman Canal Hike on Saturday. Hikers will meet at the Howard Johnson's, Route 22, North Plainfield, at 8 a.m. for this hike and must bring their own lunch. The "Jones Point to Bear Mountain Hike" is scheduled for Sunday. Interested hikers will meet leader Stan Ehrlich just past the Essex Toll Plaza of the Garden State Parkway at 8:15 a.m. For further information about the Union County Hiking Club, readers may contact the Union County Park Commission's recreation department.

# Hillside history now published

The Rotary Club of Hillside has announced the publication of "Along The Upper Road, The History of Hillside, N.J." by Jean-Rae Turner, a reporter for The Daily Journal, Elizabeth.

# Four concerts at Middlesex

A series of four Sunday afternoon community concerts will be included in the Middlesex County College division of community services' "open culture" series. The concerts will all be held at 3 p.m. in the College Center at the Edison Campus.

# Dr. Field, Hope at Overlook feere Greek Festival plans

**3-day event in Westfield**

Dr. Frank Field, science reporter and meteorologist for WNBC-TV will act as master ceremonist for the "Greek Future" - a benefit for Overlook Hospital, Oct. 14 at the Governor Morris Inn, Morristown.

# Blue Cross praised for health program

Representative Matt Hows pours into health news, "Rinaldo," "He didn't care, we cannot hope to divert attention to the destruction and financial health education program deterioration resulting conducted this year by poor health habits."

# Union College plans courses in careers

Twenty career and how to start and manage your own business which is a one-day development course as part of day workshop scheduled for the college's continuing education program, Oct. 19.

# UC class in English

Union College Institute for Intensive English Language Learning in Elizabethtown, will register students seeking advancement within their profession or who are seeking new careers, Dec. 15.

# Art society planning exhibition of prints

An exhibit and sale of original prints will be conducted at Union College on Monday, Oct. 10, from 10 a.m. to 4 p.m. in the Nonahagan Building on the Cranford Campus. The event is sponsored by the Union College Art Society, a student organization, and the fine arts department.

**GREAT HABIT TO GET INTO...**  
**SYSTEMATIC SAVINGS at HARMONIA**

Put a little financial cushion in your life by getting into the savings habit. Regular Deposits in an Harmonia Savings Account can prepare you for all your monetary needs. Come in today and get into the habit. There's no better time than NOW to open an.

**HARMONIA**  
**REGULAR SAVINGS ACCOUNT**  
that Earns the Highest Interest Rate Allowed by Law.  
**5 1/4% = 5.47%**  
Effective Annual Yield When Principal & Interest Remain on Deposit (non-cash).

**HOME MORTGAGE LOANS**  
Low Rates Available

**FREE PERSONAL CHECKING**  
NO Minimum Balance  
NO Service Charge  
and YOUR Checks Are Absolutely Free  
**FREE BANKING BY MAIL**  
Postage paid both ways by Harmonia

**TIME SAVINGS ACCOUNTS**  
with Interest Credited and Compounded Quarterly

<b>7% A YEAR</b> TIME ACCOUNTS OF 4 YEARS Minimum Deposit \$1,000	<b>6 1/4% A YEAR</b> TIME ACCOUNTS OF 3 YEARS Minimum Deposit \$500	<b>6 1/2% A YEAR</b> TIME ACCOUNTS OF 2 YEARS Minimum Deposit \$500	<b>6 1/4% A YEAR</b> TIME ACCOUNTS OF 1 YEAR Minimum Deposit \$500
---	---	---	--

**GOODYEAR**  
FRAEBEL BROS. TIRE Expert Auto Repairs  
ALIGNMENT BRAKES TIRES STUTTERS WIPERS TUBES  
REINTEGRATION STATION  
1071 Commerce Ave. Union, N.J. 07080  
Tel: 688-8870  
Member F.D.I.C. - SAVINGS INSURED TO \$40,000

**so many fall shirts to choose from.. at just one low price 5.99**

**Nice Stuff**  
Chatham Union East Orange  
376-6060

**YOU AND YOUR MONEY**  
**Representing us In Washington**  
The Senate  
Clifford P. Gaze, Republican of Rahway, 315 Old State Office Building, Washington, D.C. 20510

# PAST TENSE

**ONE YEAR AGO**  
Mountaintop is holding "Salute to the American States" in recognition of the nation's Bicentennial. MATTHEW POWERS, chairman of the Bicentennial Cultural and Heritage Committee, says 34 entries are lined up for a parade kicking off the day-long festival of music and dance, exhibits and craft demonstrations. The Springfield Chamber of Commerce announces plans for a testimonial dinner Oct. 13 in honor of William D. J. Davis, 54.

# Springfield Leader

**NEWS AND EDITORIAL DEPARTMENT**  
Editor: Robert J. ...  
Publisher: ...  
Address: ...



# Fine, license denied, for hit and run driver

Cindy Kelleit, 17, of Mountaineer, has been ordered to pay \$145 for driving without a license and leaving the scene of a hit-and-run accident that injured a 14-year-old pedestrian Sept. 9 in Springfield.

Springfield Municipal Court Judge Malcolm Bohrod also "banned" Miss Kelleit from applying for a driver's license for a year.

She was apparently taking an unauthorized driving lesson—with a friend, James C. Barakoff, 30, also from Mountaineer, beside her when the car hit the pedestrian, John Kelly, who was treated and released from Overlook Hospital.

A witness said the hit-run car initially stopped, but was driven away before police arrived. The witness, a friend of Kelleit, reported the car's license number to police.

Later Miss Kelleit and Barakoff both claimed responsibility. She pleaded guilty in her appearance this week before Judge Bohrod. Two weeks earlier, Barakoff also had pleaded guilty to leaving the scene of an ac-

cident. Visiting Judge James Leonard ordered Barakoff to pay \$145 for leaving and for letting an unlicensed driver take the wheel.

In another case this week, Judge Bohrod fined Luis A. Medina of Newark \$215, including court costs, for driving while his license was revoked—plus \$75 for trying to elude a policeman who spotted Medina joyriding. The judge suspended the joyriding sentence.

At the Monday court session, Judge Bohrod also levied penalties, including court costs, against:

- Heben H. Arnold of Maplewood and Joseph H. Gonzalez of Bayonne, \$65 apiece for driving without insurance. Their licenses also were revoked for six months, and the woman was ordered to pay an additional \$15 for failure to have auto-registration papers with her.
- Brunilde Melillo of Kenilworth, \$40 for driving 47 miles per hour; Robert L. Voss of Summit \$35 for driving 48 mph, and John Bonis of Roselle, \$25 for doing 58 mph, all in 2 1/2 mile zones.
- Leon A. Picchi of Summit, \$25 for violating a town ordinance by abandoning a motor vehicle in Springfield.



ALLEN-KRIM, center, is flanked by Stanley Kaish, left, and Bill Cieri. Democratic candidates for the Springfield Township Committee, Krim, long active in Newark civic affairs and on an ongoing recreation, was chosen by Kaish and Cieri as their campaign manager.

# Kaish, Cieri choose campaign manager

Allen Krim, of Stone Hill road, Springfield, has been chosen by Democratic candidates Bill Cieri and Stanley Kaish as campaign manager of their effort to elect to Springfield Township Committee.

Krim, who is a retired executive of the YM-YWHA of Essex, and has been active in various civic functions in Newark. He was city supervisor of Public Recreation, president for nine years of the Newark Recreation Teachers' Association, a member of the Newark Board of Education and a vice president of the Newark Board of School Estimates, delegate to the National Association of School Boards, as well as a member of the New Jersey Social Hygiene Association.

Mayor's Committee on City Planning in Newark, Boy Scouts of America Advisory Board and the Boy's Council of Newark; Krim holds a master's from Rutgers University, has taught at Panzer College and New Jersey State Teacher's College and authored numerous articles and booklets on recreation and educational topics.

In announcing the appointment of Krim, Cieri and Kaish commented, "Allen has a lifetime of hard earned knowledge and experience behind him. We have benefited greatly from his council in recent weeks and are grateful that he has accepted our request that he manage our campaign."

**MAPLEWOOD BANK and Trust Company**  
 FULL SERVICE OFFICES ON BOTH SIDES OF SPRINGFIELD AVE.  
 HEADING WEST? — USE PROSPECT OFFICE AT PROSPECT ST.  
 HEADING EAST? — USE HILTON OFFICE AT JACOBY ST.

**Give the world a little gift today. Blood.**

**Whatever you need... WE'RE NATIONAL (400 offices) BUY THROUGHOUT THE U.S. (Behind Short Hills Centers)**

**JK OFFICE MACHINES**  
 corner of Summit Avenue and Bank Street, Summit  
 278-5511



# 'Tree' will be dedicated

Temple Beth Ahm will dedicate the "Tree of Life" (Etz Chaim), newly erected in the lobby during services tomorrow night. The "Tree of Life" was designed under the guidance of Rabbi

# Temple to hold Sukkot service

Temple Sha'arey Shalom of Springfield will celebrate a Sukkot service and dance at 8:45 p.m. tomorrow.

In the spirit of Jewish ancestors who celebrated the festival of the earth's bounty through song and dance, this special Sukkot holiday service will include the congregation in traditional dance movements to an additional Shabbat service music, a temple spokesman explained.

At 8 p.m. Monday, the temple will observe Simchat Torah, literally translated as a "Rejoicing in the Law." This holiday completes the annual cycle of the reading of the Five Books of Moses and begins again with the Story of Creation.

All the family services Monday-Torah scrolls will be taken out of the Ark and will be carried around the sanctuary. Children, holding flags and singing songs, will follow the ark. A part of the service is the unrolling of a Torah scroll around the congregation, the temple spokesman noted.

Also on the temple's schedule is a regular Simchat Torah service, including Viskor, a memorial prayer for the dead, at 10:30 a.m. Tuesday.

# Bond dinner is scheduled

Hattie Segal, chairwoman of the Metropolitan New Jersey Israel Bond Women's Division, said that Mrs. Albert Rabl, of Springfield, will serve as chairwoman of the "Bond Between Us" Luncheon at the Chanticleer on Thursday, Oct. 27. Admission will be by the purchase of a \$20 Israel Bond plus luncheon at \$8.50 per person.

Rothfeld, president of the auxiliary of the Beth Israel Medical Center, is a member of the Board of the Women's Division of Metropolitan New Jersey and the Cabinet of the Metropolitan-New Jersey Israel Bond Women's Division. She is also a board member of the Union County Mental Health Association and is a member of the National Council of Jewish Women.

Services were held in the Memorial Chapel at Millburn, 2560 Vauxhall rd., Union.

**CIERI & KAISH**  
 The best men for the job

**A. Josephowitz, 91**  
 Funeral services were held Sunday for Abraham Josephowitz, 91, of Congregation Ahavas Springfield, who died Friday in United Masons of New York. Born in Austria, Mr. Josephowitz lived in Newark for many years before moving to Springfield last year.

He leaves a son, Philip Joseph; five grand children, and three great-grandchildren.

Services were held in the Memorial Chapel at Millburn, 2560 Vauxhall rd., Union.

**CIERI & KAISH**  
 The best men for the job

**What you need... WE'RE NATIONAL (400 offices) BUY THROUGHOUT THE U.S. (Behind Short Hills Centers)**

**JK OFFICE MACHINES**  
 corner of Summit Avenue and Bank Street, Summit  
 278-5511

# Candidates set for open offices for campaign

Republican State Senator Peter J. McDonough and his running mates, Assemblymen William J. Maguire and Donald T. DiFrancesco, will have the formal opening of their campaign headquarters this Saturday from 11 a.m. to 1 p.m. The three incumbents said their headquarters operation will be a full-time service center through election day.

The headquarters is located at 460 Park Ave. in Scotch Plains. Friends and supporters have been invited to attend the grand opening. Refreshments will be served.

Former middleweight boxer Rocky Graziano, former New York Giant fullback and coach Alex Webster and TV comedian Bobby Woods will share top billing at a campaign fundraiser for the Republican legislative candidates in District 12. The three celebrities will help raise campaign funds for McDonough, Maguire and DiFrancesco at a champagne lunch scheduled for Saturday, Oct. 8, at L'Affaire Restaurant in Mountaineer.

"Tickets for the event," at \$25, are available from any Republican party chairman in the 22nd District or from the "candidates' headquarters at 460 Park Ave.

**FICKLE FOLLICLE.**  
 Hair Designers for Women & Men

**PROUDLY ANNOUNCES**  
**Anthony M. Castello**  
 and  
**Candice Harrah**  
 Formerly of SUBWAY, Millburn  
 Eilene Kaminsky formerly of New York

**Have now Joined our Staff**

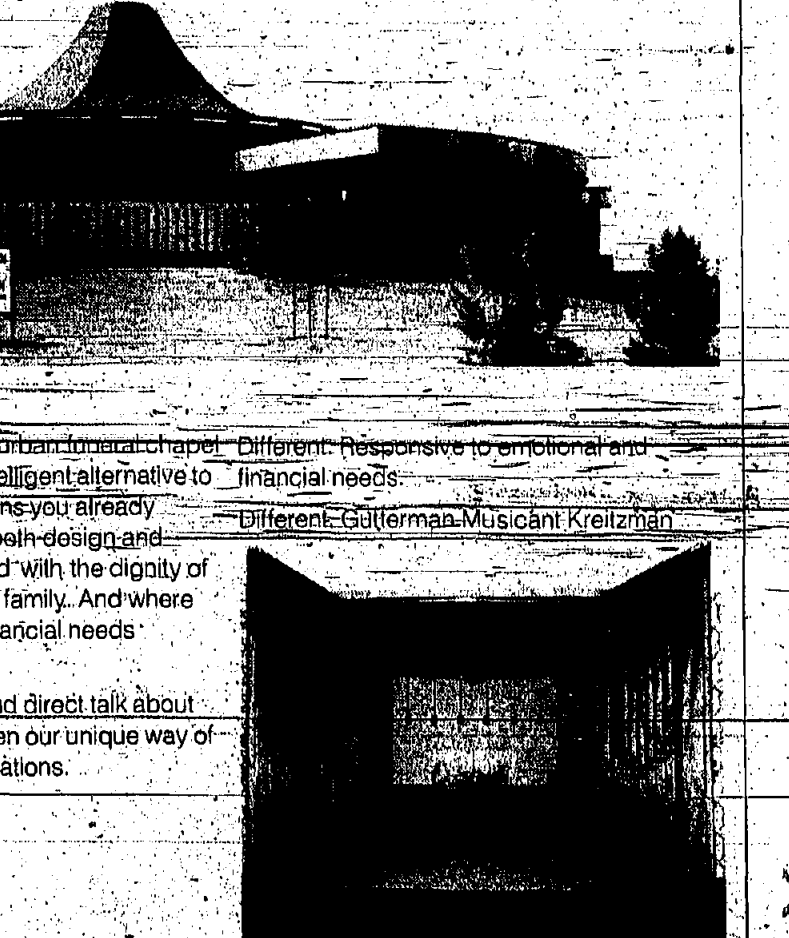
**SENSOR PERM by REVLON REALISTIC**  
 A Perfect Perm Every Time

As featured in Cosmopolitan, New York Times, McCall's, etc.  
 OPEN 7 DAYS 10 A.M. - 7 P.M.

**356 Millburn Ave., Millburn, N.J. 379-9480**  
 (FOUR DOORS FROM MILLBURN MOUNTAIN)

# Emotional and financial.

Our new Suburban Funeral Chapel responds to the emotional and financial needs of the family.



**Guterman Musicant Kreitzman**  
 The Jewish Funeral Directors who make the difference. Since 1922.

Our new Suburban Chapel in Union: Rahway Avenue, 1/2 mile South of Morris Avenue, Union • 355-9100.

Hudson County: Kennedy Boulevard at Union Street, Jersey City, 433-8500

Bergen County: Passaic at Park Street, Hackensack, 489-3800.

Funerals conducted throughout Metropolitan New York and Florida.

New York Direct Line: (212) 794-9000 — Greater Miami Direct Line: (305) 865-7882

Directors: Irving R. Guterman, Henry M. Guterman, Mgr., Stephen M. Guterman, Alan L. Musicant, Mgr., Alan L. Kreitzman, Mgr., Arthur R. Musicant, Stephen C. Richter, Irving Kleinberg, Kenneth M. Zlotnick, Aaron Keresh, Sanford M. Levine, Mark Lazarus, Judith White, Steven Lazarus.

# Ice skating starts Oct. 7 at Warinanco

The Warinanco Skating Center, Warinanco Park, Roselle, will open for the ice skating season on Friday, Oct. 7 at 8 to 9 p.m. with a family session followed by a general session from 9:30 to 10:30 p.m.

Ice skating lessons will be offered beginning Tuesday, Oct. 18.

Tots, ages 4 to 5, begin Wednesday, Oct. 19 at 10 a.m.; youth, ages 6 to 15, begin Wednesday, Oct. 19 at 9:30 p.m. or Saturday, Oct. 22 at 10:30 a.m.; women's beginners begin Wednesday, Oct. 19 at 8:30 a.m.; adults begin Thursday, Oct. 20 at 8:30 p.m. and Tuesday, Oct. 19 at 10 a.m.; and advanced group, comprised of all ages, begins Wednesday, Oct. 19 at 8 p.m.

Lessons consist of eight half-hour classes, except for the advanced class which is one hour. Application fees are: youth, 17 years of age and under, \$17 plus admission; adults, 18 through 31 years of age, \$20 plus admission; and senior citizens, 62 years of age and older, \$17 plus admission.

Club "Ice" skating merit badge instruction begins during the week of Oct. 17. The eight half-hour lessons run Monday through Friday, except Wednesday, at 3:30, 4:15 and 5 p.m. One group may be scheduled for each time.

The \$2 per girl, per session fee is payable at each lesson.

Hockey clinics will be held each Tuesday at 5:45 to 6:45 p.m. beginning Oct. 11 for children 13 years of age and younger. Participants must bring skates, stick, helmet and mouthpiece. A \$1 registration fee is required.

Interested persons may obtain information by calling 241-3283.

# Police training opens at college

The 38th session of the Union County Police Chiefs Basic Training Academy will open Tuesday at the college.

The academy will be in session for 12 weeks. Those who satisfactorily complete the instruction will receive certificates from the N.J. Police Training Commission.

The academy, which is operated jointly by the Union County Police Chiefs' Association and Union College, serves new recruits from law enforcement agencies in Union County and other New Jersey agencies on a space-available basis.

**Police exams slated**  
 Scheduling of the examination to fill patrolman vacancies in the Union County Park Police Department was approved by Union County Park Commission at the regularly scheduled meeting held at the administration building on Sept. 20. No state has been set for the exam. Advanced applications will not be accepted.

**Fall Specials AT STATE PRIZE**

**Leeds**  
 DISTILLED LONDON DRY GIN \$4.49 QUART

**Leeds**  
 CRYSTAL CLEAR VODKA \$4.49 QUART

**BRITISH PEER**  
 94 PROOF GIN \$5.99 QUART

**Whiteside**  
 BLENDED SCOTCH WHISKY \$5.99 QUART

We have a delicious selection of imported wines & champagnes to lift your spirits!

**STATE PRIZE**  
 Liquors & Cheese Shop  
 2191 MORRIS AVENUE  
 UNION • 686-1845

# UC class offers an 'introduction' to solar system

"Introduction to Astronomy," an eight-part lecture series for adults, will be conducted at Union College this fall by Amateur Astronomers Inc., the organization which operates the Sperry Observatory at Union College jointly with the college.

The series is designed to give adults a deeper understanding of the universe and a greater appreciation of current space probes, according to Arthur P. Casella, coordinator.

The series will be conducted on eight consecutive Mondays at 8 p.m. at the Sperry Observatory, beginning Oct. 3.

Topics to be covered include the solar system, galaxies, constellations, birth and death of a star, earth and moon system, cosmology and man in space.

Lectures will include a question and answer period and will be followed by viewing of the planets and stars through the observatory's 24-inch refractor and 10-inch refractor telescopes, weather permitting, Casella said.

Instruction will be provided by members of AA: They include Casella, Charles C. Crane of Linden, Frank Britbauer of Cranford, John Bunnam of Westfield, Lester Vohl of Hillside, Lewis Thomas of North Plainfield and Alan Wittig of Guttenberg.

Tuition for the series is \$18 for Union County residents, \$22 for all others. Registration forms may be obtained by calling Union College 926-2600 or a United States Soccer Federation Association official, who officiated at the New York Cosmos games.

# Plans soccer clinic

The Union County Park Commission will sponsor a soccer officiating clinic on Wednesday at 2 p.m., for anyone interested in learning to officiate the sport. It will be held at the commission's Administration Building, Acme and Canton streets, Elizabeth.

The clinic will be run by Pat McGarry, a United States Soccer Federation Association official, who officiated at the New York Cosmos games.

# Police exams slated

Scheduling of the examination to fill patrolman vacancies in the Union County Park Police Department was approved by Union County Park Commission at the regularly scheduled meeting held at the administration building on Sept. 20. No state has been set for the exam. Advanced applications will not be accepted.

# 9 mental health boards will confer on Saturday

Mental health services will be the focus of study and discussion when representatives of Union County and eight other county mental health boards meet on a one-day conference at the Yvon and Campus restaurant Saturday.

Under the theme, "The Mental Health System - A Diagnosis and Prognosis," the participants will discuss the current status and functions of county mental health boards and how these tasks can be more efficiently administered.

According to Craig Excelsior, coordinator of the New Jersey Conference of County Mental Health Boards and chairman of the Union County Mental Health Board, "Since the passage of the Community Mental Health Service Act of 1963, psychiatrists have been appointed by local boards of freeholders and have been mandated to fulfill four specific roles."

He listed them as:

- (1) To review progress in the development of comprehensive public mental health services in each county and to make their findings known to the appropriate agencies at all levels.
- (2) To review and evaluate mental health programs being considered for state financial aid.
- (3) To plan and develop specific mental health programs for the county; they serve.
- (4) To advise the state government of all requests for funding and alterations in the programs.

"What remains to be made clear," Excelsior said, "is the exact relationship of the county boards to the newly developed Federal Health Systems Agency. We believe that these discussions will go a long way toward clarifying the point, as well as offering a constructive forum for the sharing of other problems and questions."

The Union County official said the conference will also offer the two major gubernatorial candidates or their representatives a chance to state their positions on public mental health programs and issues.

# Gifted students offered courses

A series of enrichment courses in the arts and sciences for gifted and talented children will be offered at INSIGHT Incorporated Saturday for Intellectually Gifted and Highly Talented Children. It was announced by Neil Schulman, coordinator.

The courses, to be offered on nine Saturdays from 1 to 4 p.m. beginning Oct. 15, are designed to provide children with above average ability or a specific talent with learning experiences that cannot be accommodated in public schools, where needs of children of all abilities must be met, Schulman explained.

more than a drug store

**DRUG FAIR**  
 PRESCRIPTIONS FOR LESS

**BLUE CANVAS 6YB BAG 1.99**

**10 OZ. FOAM HOT CUPS 39¢**

**C-80 BLANK CASSETTES 99¢**

**100 PAPER PLATES 77¢**

**TENNIS RACKET 6.99**

**SANDWICH CREAMS 99¢**

**FLANNEL SHIRTS 3.99**

**25 LB. PURINA HIGH PROTEIN 5.99**

**RENT A CARPET MAGIC \$300 OFF COUPON**

**WESTLOX ELECTRIC ALARM CLOCK 1.99**

**UNIVERSAL SMOKE ALARM BATTERY OPERATED 17.99**

**STP GAS TREATMENT 8 OUNCE 49¢**

**PINK LOTION DETERGENT 32 OUNCE 39¢**

**PET LITA 2 1/2 LB. 59¢**

**ENVELOPES 100 COUNT 6 1/2 INCH 39¢**

**ZEREX ANTIFREEZE GALLON 2.99**

**2.00 GIFT CERTIFICATE**

**STURDY STEEL STORAGE SHELVING 7.99**

**EXTRA HEAVY 4 MIL PLASTIC TARPULIN 3.99**

**RUSTPROOF TOOL BOX 59¢**

**DISPOSABLE FLASH LIGHT 77¢**

**STEAM MIST CURLING IRON 8.99**

**COOL-STEAM VAPORIZER 16.88**

**FOSTER SOAP 3 1/2 OZ. BAR 99¢**

**SHORT & SHARP 7 OUNCE 1.27**

**CLAIRESSE HAIR COLOR 1.99**

**MAYBELLINE KISSING LOTION 1.57**

**AZIZA EYES TWO TONE SHADOW 2.19**

**DRISTAN TABLETS BOTTLE OF 50 1.99**

**TEK PRO TOOTH BRUSH 1.69**

**ON VAUXHALL RD. OFF MILLBURN AVE. MILLBURN 964-5700**









MILES FOR DOLLARS—Ten-year-old Cindy Terry-Melner of Mountaintide (second from left) and her mother, Myra Terry-Melner, (third from left) marched the ten-mile trek through Essex County raising funds for the passage of the Equal Rights Amendment (ERA). Cindy raised \$120 and her mother, \$230. The NOW sponsored walkathon raised a total of \$5500.

### Religious Notices

**FIRST PRESBYTERIAN CHURCH**  
10 MORRIS AVENUE, 47  
—CHURCH MALL—  
—SPRINGFIELD—  
—REV. BRUCE WHITEFIELD EVANS, D.D., PASTOR  
—MRS. SHEILA KILBOURNE, DIRECTOR OF CHRISTIAN EDUCATION  
Thursday—7:15 p.m., Boy Scout Court Honor; 7:30 p.m. girls' choir; 8 p.m., senior choir.  
Sunday—9 a.m., church school; 8 a.m. and 10:15 a.m., World Communion Sunday services; 7:30 p.m., Westminster Fellowship.  
Monday through Wednesday—9 to 11:15 a.m., Kinderberg Nursery School; Monday—3:15 p.m., Brownies; 7 p.m., Girl Scouts.  
Tuesday—9:30 a.m., coffee klatch; Wednesday—1:30 p.m., Ladies Benevolent Society discussing "What's New."

**CONGREGATION ISRAEL**  
OF SPRINGFIELD  
55 MOUNTAIN AVENUE  
CORNER SUNNYPKOE ROAD  
RABBI ISRAEL E. TURNER  
Friday—7 a.m., morning minyan service; 8:20 a.m., "Welcome to Sabbath" service.  
Saturday—9:30 a.m., Intermediate Sabbath School; 10:30 a.m., Shabbat service with sermon on "The honeymoon is over, but the marriage is eternal"; Kiddush in sukkah after services; 8:20 p.m., afternoon service, followed by discussion on "Kohleis Ecclesiastes," a book of varying perspectives but not of contradictions and thereby "Parvoh to Sabbath" service.  
Sunday—8 a.m., morning minyan service; 8:20 p.m., afternoon service followed by advanced study session and then by evening service.  
Monday—6:45 a.m., Hoshannah Rabah morning service; 8:20 p.m., afternoon service and Shmini Atzeret evening service.  
Tuesday—9:30 a.m., Shmini Atzeret morning service; 11:15 a.m., Yizkor (memorial service with sermon on "Using above fully"); Kiddush in sukkah after services; 8:20 p.m., afternoon service; 7 p.m., evening service; 7:15 p.m., Hakafot (Torah scrolls) festivity for children and adults.  
Wednesday—9:30 a.m., Simchat Torah morning services featuring Hakafot festivity for children and adults followed by Kiddush after services; 8:20 p.m. services.  
Thursday—7:10 a.m., morning minyan service; 8:20 a.m., 10:30 a.m., religious school classes; 8:20 p.m., afternoon service followed by advanced study session.  
Friday—7:15 p.m., primary school rehearsal; Wednesday—9 p.m., senior choir rehearsal.

**HOLY CROSS LUTHERAN CHURCH**  
(AFFILIATED WITH SPONSORS OF THE "LUTHERAN HOUR")  
—ON RADIO AND "THIS IS THE LIFE" (ON TELEVISION)  
—THE REV. JOEL R. VOSS, PASTOR  
639 MOUNTAIN AVENUE, SPRINGFIELD  
TELEPHONE: 379-4525  
Sunday—10 a.m., Bible Study; Holy Communion; 9:30 a.m., family growth hour; 10:45 a.m., worship.  
Monday—9 a.m., embroidery guild; 4 p.m., Confirmation I; 7:30 p.m., Church elders.  
Tuesday—4 p.m., Confirmation II.  
Wednesday—4:30 p.m., youth choir; 8 p.m., first session of a three-week seminar with Prof. Esther Ostad of Luther College as guest lecturer; "Three Special Evenings Toward Deeper Commitment" will be based on the book of Colossians.  
SPRINGFIELD EMANUEL UNITED METHODIST CHURCH  
40 CHURCH MALL, SPRINGFIELD  
THE REV. GEORGE C. SCHLESINGER, PASTOR  
Today—9 p.m., chancel choir.  
Sunday—9:30 a.m., Singers group; Saturday—7 to 10 p.m., A.A. Springfield group.  
Sunday—9:30 a.m., church school for all ages; 8:30 a.m., German worship; Communion service with Theodore Reiminger preaching on "Remember Jesus"; 10:30 a.m., following hour; 11 a.m., World Communion Sunday service with the Rev. George C. Schlesinger preaching on "The God of All People"; 2:30 p.m., Liebenthal mission rally with the Rev. Herbert Lange as guest speaker; 8 p.m., youth meeting.  
Tuesday—8 p.m., administrative board.  
Wednesday—7:30 p.m., 150th Anniversary Committee.  
COMMUNITY PRESBYTERIAN CHURCH  
MEETING HOUSE LANE  
MOUNTAINSIDE  
MINISTER:  
THE REV. ELMER A. TALCOTT  
ORGANIST AND CHOIR DIRECTOR:  
—JAMES LITTLE  
Thursday—7:30 p.m., junior choir rehearsal; 8 p.m., session meeting with Kenneth Hipple preaching; 10:30 a.m., church school for cradle roll through eighth grade; 7 p.m., senior high fellowship.  
Tuesday—1 p.m., primary school rehearsal; Wednesday—9 p.m., senior choir rehearsal.

**TEMPLE SHARBY RHAILOM**  
AN AFFILIATE OF THE UNION OF AMERICAN HEBREW CONGREGATIONS  
50 SPRINGFIELD AVE. AT SHUNPKER RD., SPRINGFIELD  
RABBI HOWARD SHAPIRO  
CANTOR IRVING KRAMEYMAN  
Sara Barry, daughter of Dr. and Mrs. Eugene Barry of Westfield, was called to the Torah as a Bat Mitzvah last Saturday.  
Friday—8:45 p.m., erev Shabbat Sukkot service of dance.  
Saturday—10:30 a.m., Shabbat morning service.  
Monday—8 p.m., family Simchat Torah service.  
Tuesday—10:30 a.m., Simchat Torah morning service, including Yizkor; 7 p.m., Shabbat paid-up membership dinner.  
Thursday—8 p.m., duplicate bridge.

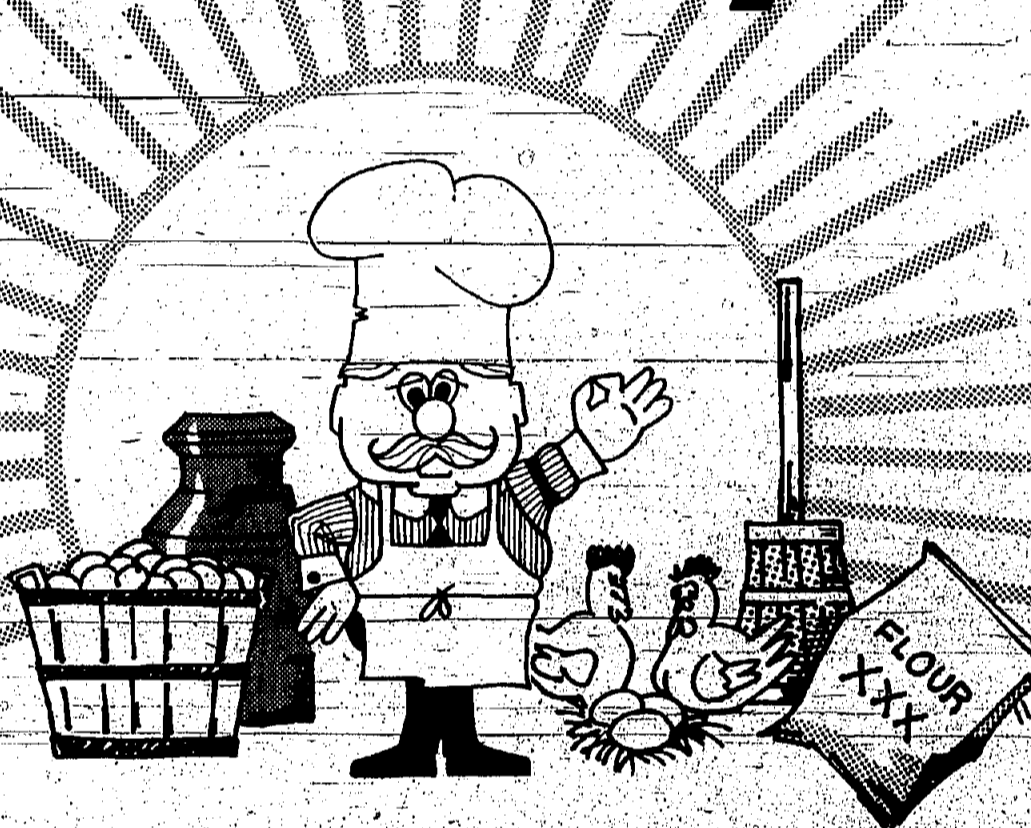
**ANTIOCH BAPTIST CHURCH**  
MECKES STRAEBELAND  
505 SPRINGFIELD AVE., SPRINGFIELD  
REV. CLARENCE ALFON, PASTOR  
Saturday—3 p.m., Church School choir rehearsal.  
Sunday—8:30 a.m., Sunday School, 11 a.m., worship service; 7 p.m., evening fellowship.  
Wednesday—9 p.m., midweek service.

**ST. STEPHEN'S EPISCOPAL CHURCH**  
119 MAIN ST., MILLBURN  
REV. JOSEPH D. HERRING, RECTOR  
Sunday—8 a.m., Holy Communion, 10 a.m., Holy Communion and sermon, first Sunday and festival occasions; morning prayer and sermons, second through fifth Sundays, 10 to 11:15 a.m., Church School, 10 a.m., babysitting.

**ST. JAMES CHURCH**  
65 S. SPRINGFIELD AVE., SPRINGFIELD  
MSGR. FRANCIS X. COVLE, PASTOR  
REV. SEPPHEN P. LYNCH, REV. EDWARD R. OEBLING, REV. FAUL T. KOCH, ASSISTANT PASTORS  
Sunday Masses—7 p.m. Saturday—7, 8:15, 9:30, 10:45 a.m. and noon. Daily—7 and 8 a.m. Holydays—on eve of Holyday, 7 p.m.; on Holydays at 7, 8, 9, 10 a.m. and 7 p.m.  
Confessions—Saturday, 1 and 2 p.m. Monday through Friday, 7:45 and 7:45 p.m. No confessions on Sundays, Holydays and eve of Holydays.

**TEMPLE BETH AYM**  
AN AFFILIATE OF THE TEMPLE SYNAGOGUE OF AMERICA  
BALZUSO WAY, SPRINGFIELD  
RABBI REUBEN R. LEVINE  
CANTOR ISRAEL BARZAK  
Friday—8:45 p.m., Sabbath services and "tree of life" dedication.  
Saturday—10 a.m., Sabbath services.  
Monday—8:30 p.m., Shmini Atzeret services.  
Tuesday—9 a.m., Shmini Atzeret Yizkor service; 7 p.m., Simchat Torah family service.  
Wednesday—9 a.m., Simchat Torah services.  
MOUNTAINSIDE GOSPEL CHAPEL  
LIBRUS PRUCE DR. (ONE BLOCK OFF RT. 22 W.), MOUNTAINSIDE  
CHURCH OFFICE: 328-4499  
PARSONAGE: 324-9173  
THE REV. JOHN PASANO, PASTOR  
Sunday—9:45 a.m., Sunday School for all youth and adults (free bus service is available; call for schedule of routes and pickup times); 10:45 a.m., presider prayer meeting; 11 a.m., morning worship service (coursery care is available); 7 p.m., evening worship service.  
Wednesday—8 p.m., midweek prayer service.

## At Garden State Farms pleasing you has always come Naturally...



### Celebrate our stores 17th Anniversary with 17% off our all natural foods!

- FROZEN YOGURT** PINT Reg. 89¢ NOW 72¢  
Strawberry, Peach, Black Cherry, Blueberry
- Nordica COTTAGE CHEESE** 16 Oz. Reg. 89¢ NOW 72¢  
Large Or. Small Curd
- WHOLE WHEAT DONUTS** Box of 8 Reg. 89¢ NOW 72¢

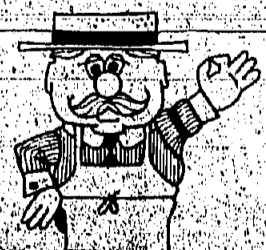
### Van Houten Holland Meal BREAD 41¢

The Whole Wheat Bread With The White Bread Texture. It's Made With Honey

REMEMBER HOW GOOD MILK USED TO TASTE? AT GARDEN STATE FARMS IT STILL DOES! NOW THAT GOOD "OLD FASHIONED" RICH TASTE IS IN A NEW FASHIONED CONTAINER: THE RETURNABLE LEXAN "SUPERJUG," CLEAR AS GLASS, BUT ONE-SIXTH THE WEIGHT... SHATTER-PROOF... TOOL!

### SUPERJUG POUR SPOUT 5¢ ea.

Get Your Regular 25¢ Spout To Make Pouring Even Easier For A Little Handful AT ALL GARDEN STATE FARMS STORES. Offer Ends Oct. 2nd.



### SPECIALS ON SALE SEPT. 29 THRU OCT. 2

## Pleasing You Pleases Us

### Garden State Farms

#### DAIRY STORES

OPEN 7 DAYS A WEEK 10 A.M. TO 10 P.M. COPYRIGHT BY GARDEN STATE FARMS INC. ALL RIGHTS RESERVED. GSF-977-104

## How to get away from it before it gets away from you.

Everybody wants to get away. Trouble is your get-away money probably got away from you faster than you could save it. Okay, outsmart your spending habit. Sign up for the \$5 Savings Bonds through the Payroll Savings Plan. When you sign up for the plan, you agree to have a little money set aside before you ever see your paycheck. A little this way, a little that way. You won't miss it, but the money you do miss and the Bonds earn interest and pretty soon, you've got \$500 U.S. Savings Bonds. They're a great way to make sure you get away before your money gets away from you.

### Elaine Tishler trothannounced

Mr. and Mrs. Laurence A. Tishler of Murray Hill have announced the engagement of their daughter, Elaine Tishler to Marc Ira Marshall, son of Mr. and Mrs. Richard Marshall of Springfield. Miss Tishler is a graduate of Evanston Township High School, Evanston, Ill. and is completing her degree in interior design at Keen College.

### Fall fashions slated Oct. 12

The Flia Open Cancer Relief Young Women's Group will hold a fall fashion show Wednesday evening, Oct. 12, in Temple Emanuel, East Broad Street, Westfield. Dinner will be served at 7 p.m. and the show will begin at 8:30 p.m. Leslie Winter of Springfield, chairman, has announced that featured will be fashions ranging from women's clothes from Chez Na of Westfield, men's fashions from Poor Richards of Livingston, children's fashions from Kids Are People Too of Livingston, and maternity fashions from the Waiting Room of Livingston. It was announced that reservations must be made by tomorrow, and no tickets will be sold at the door. Additional information may be obtained by calling 487-8919. All proceeds will go to aid cancer patients in the Essex-Union County areas.

### Mr. D'Andrea Lois Fair wed

Lois Darcy Fair, daughter of Dr. and Mrs. Richard H. Fair of Chatham Township and Daniel Mathew D'Andrea, son of Mr. and Mrs. Mathew A. D'Andrea of Springfield were married Sept. 17 at St. John's Lutheran Church in Summit.

### Woman's Club speaker named

Next Wednesday's meeting of the Springfield Women's Club will be at 8 p.m. at the Sarah Ballou Civic Center. Mrs. Frank McCourt, program chairman, announced that Dr. L. Richard Evans will speak on "Along the Wine Routes of Europe."

### Growing Older

One of the more important keys to successful retirement is activity. This could be, but is not necessarily, part-time employment; it could be a hobby, participation in civic activities—anything that gives the mind and body a little something to do. Some people approach retirement with a "do nothing" attitude. This can mean boredom and frustration for the individual who has led a busy, active life for a long period of time. Planning how one will spend time in retirement is almost as important as making the proper financial arrangements. Financial security does bring peace of mind, warmth, comfort, but lack of interest and participation in the business of living can bring about a purposeless existence. If you're retired, if you're about to do so, give it some thought. While many retirees tell everyone they plan to "just do nothing," very few really mean it. Find a hobby. Get a job. Do something.

### Mrs. Franklin; church founder

Saturday services were held for Mrs. Nancy J. Franklin, 86, of Springfield at the Antioch Baptist Church. She died last week in Memorial General Hospital in Union.

### MISS BUNNY'S SCHOOL OF DANCE

849 Mountain Ave., Springfield  
Dance Instruction for all ages  
Special Class—Adult Beginners  
Special Alumni Class  
Information call 376-4297, 276-1989  
Studio - 379-5666  
Pianist with all dance classes

### Lynn Gaesfel, John Daly wed in Springfield

The marriage of Lynn Catherine Gaesfel to John Patrick Daly took place Friday-Sept. 16 at Holy Cross Lutheran Church in Springfield. The bridegroom's parents are Mr. and Mrs. John F. Daly of Toronto, Ontario. The bride was escorted by her father, Miss Susan Frank of North Plainfield was maid of honor. Other attendants were Miss Diane Andrus of Springfield, Miss Patricia Trelew of Summit and Miss Louise Daly of Toronto, sister of the groom. Aimee Dakins, a cousin of the bride, was the ring girl.

### Rosary society plans induction

The Rosary Altar Society of Our Lady of Lourdes Church, Mountain Side, will hold its annual Mass and Communion Supper on Monday, Mass will be at 8 p.m. at which time new members will be inducted into the society. The Rev. William Koplik will be the speaker for the evening. Mrs. Sophie Mazur is in charge of the program. All women of the parish have been invited to attend. Tickets may be obtained from Mrs. Mazur at 232-0699.

### Girl for Johnsons

A daughter, Sara Louise, was born to Mr. and Mrs. Allen Johnson of Henshaw Avenue, Springfield, Sept. 15 in Overlook Hospital, Summit. The mother is the former Nora Godwin.

### Educators plan wedding Oct. 13

Mr. and Mrs. Kenneth L. Cropper of Salt Lake City, Utah, have announced the engagement of their daughter, Linda, to H. Kurt Christensen, son of Mr. and Mrs. A. Howard Christensen, former Springfield residents now living in Salt Lake City. Ms. Cropper completed her undergraduate and graduate work at Brigham Young University and has studied at Harvard University. She has taught early childhood education at Brigham Young University and at the University of Wisconsin-Goshute. She is a member of the National Council on Family Relations and the National Association for the Education of Young Children. She served for two years as a missionary in Tahiti for The Church of Jesus Christ of Latter-day Saints, also called the Mormon Church.

### Friday Deadline

All items other than spot news should be in our office by noon on Friday.

# We have a gift for lending



### Choose one of these great gifts free with a UCTC Practical Loan.

- A. FREE with every loan of \$3,500 or more—16 Piece Illuminator 3000 Highway Emergency Kit
- B. FREE with every loan of \$2,500 or more—5 Piece Stadium Kit
- C. FREE with every loan of \$2,500 or more—Choice of 5 Variety Fare Gourmet Gift Packages

United Counties Trust Company  
The practical bank for all your banking needs.  
Serving you locally at Echo Plaza & Route 22 & Hillside Av., Springfield  
MEMBER FDIC



### Miss Ilene Beth Zurav is bride of Mr. Halprin



MISS LAWRENCE HALPRIN

Ilene Beth Zurav, daughter of Mr. and Mrs. David B. Zurav of Springfield and Pompano Beach, Fla., was married Saturday evening to Lawrence Paul Halprin, son of Mr. and Mrs. Justin Halprin of Levittown, Pa. Rabbi Houbert R. Levine officiated at the double ring ceremony in Temple Beth Ahm, Springfield. He was assisted by Cantor Israel Zivak...

### Marriage held of Miss Gesten to Neal Ruda

Suzanne D. Gesten, daughter of Mr. and Mrs. Arthur Gesten of Evergreen parkway, Union, was married Sunday to Neal Ruda, son of Mr. and Mrs. David Ruda of Red Bank. Rabbi Jack Rossi officiated at the ceremony in Clinton Manor, Union, where a reception followed...



MR. AND MRS. RUDA

### Susan La Motta is wed Saturday to Michael Kiel

Susan Ann La Motta, daughter of Mr. and Mrs. Michael La Motta of Spruce lane, Union, was married Saturday afternoon to Michael Kiel, son of Mr. and Mrs. Frank Kiel of Mt. Vernon road, Union. Rabbi David Oshling officiated at the ceremony in St. James Roman Catholic Church, Springfield. A reception followed at the Town and Campus, Union...



MRS. MICHAEL KIEL

### Fight for Sight luncheon slated

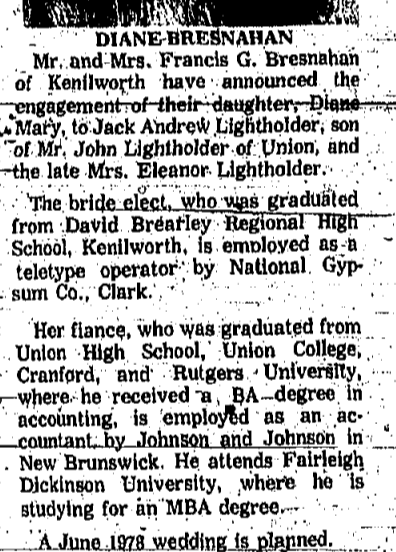
Mrs. Stanley Demburgh, president of the Northern New Jersey League of Fight for Sight, has announced that the group will hold its 22nd annual luncheon Nov. 4 at noon at the Chantier, Millburn. The event will benefit Fight for Sight (a national organization) through the efforts of the New Jersey League...

### Annual card party scheduled Oct. 7

"Autumn Leaves" will be the theme for the ninth annual card party sponsored by the Union Catholic Boys High School, Friday, Oct. 7, at 8 p.m. The party will be held at the school at 1600 Martine avenue. Dessert will be served from 8 p.m. Prizes will be awarded. Additional information may be obtained by calling the school at 898-1600.

### Unionite to wed Kenilworth girl

DIANE BRESNAHAN, daughter of Mr. and Mrs. Francis G. Bresnahan of Kenilworth, was announced to be engaged to her daughter, Diane Mary, to Jack Andrew Lightholder, son of Mr. John Lightholder of Union and the late Mrs. Eleanor Lightholder. The bride-elect, who was graduated from David Brainerd Regional High School, Kenilworth, is employed as a typewriter operator by National Optical Corp. Her fiancé, who was graduated from Union High School, Union College, Cranford, and Rutgers University, where he received a B.A. degree in accounting, is employed as an accountant by Johnson and Johnson in New Brunswick. He attends Fairleigh Dickinson University, where he is studying for an MBA degree. A June 1978 wedding is planned.



DIANE BRESNAHAN

### AAUW to hold panel program

A panel discussion, "All Presidents' Women," will be held at the first meeting of the Elizabeth Branch of the American Association of University Women (AAUW) Wednesday at 8 p.m. in Downs Hall, Keon College of New Jersey, Union. Moderated by Mrs. Alan V. Carter, branch president. Panel members and chairman will be Mary Dion, Theresa Favara, Ida Ozel, Frances Altman, Nancy Adams, Gloria Freundlich, Sadie Richman and Ann Rinaldi. The program was arranged by Stephanie Ciancici, branch program chairman. Mrs. Alice Schafroff, hospitality chairman, will be assisted by Helen Sutton and Mrs. Dorothy Marshall. A game night will be held at the meeting of the Orange V. Couples Club Saturday at 8:30 p.m. in the Green Lane YW-YWHA, Union. Committee members and hosts for the evening will be Mr. and Mrs. Juan Katz and Mr. and Mrs. Harold Hollinsky. Charge for Pictures: The photo of the bride-elect, who was graduated from St. Thomas Aquinas High School, Edison, and Keon College of New Jersey, Union, is employed as an accounting assistant by Western Electric Co., Newark. Her grandfather, the late Mr. Jacob S. Denk, was a Union Police officer for many years, and her uncle, Harold Denk, is a retired Union Fire Department chief. Her fiancé, who was graduated from Montclair State College, where she received a B.A. degree in mathematics. Her fiancé, who attends the New Jersey Institute of Technology, is employed by Singer-Sears Division in Wayne.

### Mr. Goitiandia of Union to wed

MARY ELLEN DENK, daughter of Mr. and Mrs. Jacob Denk Jr. of Colonia, formerly of Union, has announced the engagement of her daughter, Mary Ellen, to William V. Lukedick, son of Mr. and Mrs. William Lukedick of Colonia. The bride-elect, who was graduated from St. Thomas Aquinas High School, Edison, and Keon College of New Jersey, Union, is employed as an accounting assistant by Western Electric Co., Newark. Her grandfather, the late Mr. Jacob S. Denk, was a Union Police officer for many years, and her uncle, Harold Denk, is a retired Union Fire Department chief. Her fiancé, who was graduated from Montclair State College, where she received a B.A. degree in mathematics. Her fiancé, who attends the New Jersey Institute of Technology, is employed by Singer-Sears Division in Wayne.

### Mary E. Denk betrothal told

MARY ANN SPINA, daughter of Mr. and Mrs. Rocco Spina of Wood-Ridge has announced the engagement of her daughter, Mary Ann, to Robert A. Gollandia, son of Mr. and Mrs. Peter Gollandia of Crawford Terrace, Union. The bride-elect was graduated from Montclair State College, where she received a B.A. degree in mathematics. Her fiancé, who attends the New Jersey Institute of Technology, is employed by Singer-Sears Division in Wayne.

### Game night slated

A game night will be held at a meeting of the Orange V. Couples Club Saturday at 8:30 p.m. in the Green Lane YW-YWHA, Union. Committee members and hosts for the evening will be Mr. and Mrs. Juan Katz and Mr. and Mrs. Harold Hollinsky.

### Y dance scheduled

The YMCA of Elizabeth will hold its annual dessert-card party Saturday, Oct. 8, at 1:30 p.m., at the Y at 1391 East Jersey St. The affair will be open to both men and women.

### Elks-Ladies plan auction

The Elks-Ladies Auxiliary of St. Joseph's Rosary Club will hold its annual auction tomorrow, Saturday, Oct. 22, at 2 p.m. in the St. Joseph's Rosary Club. Tickets are \$2 each and may be obtained by calling Lov Geroy, chairman, at 964-0923. Refreshments will be served.

### St. James Rosarians to meet Monday night

The St. James Rosary Society of Elizabeth will hold its regular monthly meeting Monday night, Oct. 27, at 7:30 p.m. in the St. James Church, Elizabeth. The society will hold its annual card party, luncheon and fashion show Saturday, Oct. 22, at 2 p.m. in the St. James Church. A cake sale will be held after the mass service.

### Elks-Ladies plan auction

The Elks-Ladies Auxiliary of St. Joseph's Rosary Club will hold its annual auction tomorrow, Saturday, Oct. 22, at 2 p.m. in the St. Joseph's Rosary Club. Tickets are \$2 each and may be obtained by calling Lov Geroy, chairman, at 964-0923. Refreshments will be served.



### Stan says

It's no wonder with this energy thing that "The Sweater" is big news this year. It has come into its own and is not just an accessory... Whether dress, you wear it with style. That it beats the energy shortage may be incidental but it's a welcome bonus when the mercury drops.

### Fraternity plans supper

St. Joseph's Rosary Fraternity of Maplewood will hold its 26th annual mother and daughter communion supper in Bernard Hall Sunday following the yearbook presentation by the Rev. Bernard Peters. Sister Ann Bernadette, Sister of Charity from St. Elizabeth's College, will be guest speaker. Reservations may be obtained by calling Mrs. Jane Canham, 761-8359, Mrs. Josephine Trosch, 688-0987, Mrs. Edna Marin, 374-1101, or Mrs. Edna Schindler, 782-0695.

### Elks-Ladies plan auction

The Elks-Ladies Auxiliary of St. Joseph's Rosary Club will hold its annual auction tomorrow, Saturday, Oct. 22, at 2 p.m. in the St. Joseph's Rosary Club. Tickets are \$2 each and may be obtained by calling Lov Geroy, chairman, at 964-0923. Refreshments will be served.

### St. James Rosarians to meet Monday night

The St. James Rosary Society of Elizabeth will hold its regular monthly meeting Monday night, Oct. 27, at 7:30 p.m. in the St. James Church, Elizabeth. The society will hold its annual card party, luncheon and fashion show Saturday, Oct. 22, at 2 p.m. in the St. James Church. A cake sale will be held after the mass service.

### Elks-Ladies plan auction

The Elks-Ladies Auxiliary of St. Joseph's Rosary Club will hold its annual auction tomorrow, Saturday, Oct. 22, at 2 p.m. in the St. Joseph's Rosary Club. Tickets are \$2 each and may be obtained by calling Lov Geroy, chairman, at 964-0923. Refreshments will be served.

### St. James Rosarians to meet Monday night

The St. James Rosary Society of Elizabeth will hold its regular monthly meeting Monday night, Oct. 27, at 7:30 p.m. in the St. James Church, Elizabeth. The society will hold its annual card party, luncheon and fashion show Saturday, Oct. 22, at 2 p.m. in the St. James Church. A cake sale will be held after the mass service.

### Elks-Ladies plan auction

The Elks-Ladies Auxiliary of St. Joseph's Rosary Club will hold its annual auction tomorrow, Saturday, Oct. 22, at 2 p.m. in the St. Joseph's Rosary Club. Tickets are \$2 each and may be obtained by calling Lov Geroy, chairman, at 964-0923. Refreshments will be served.

### St. James Rosarians to meet Monday night

The St. James Rosary Society of Elizabeth will hold its regular monthly meeting Monday night, Oct. 27, at 7:30 p.m. in the St. James Church, Elizabeth. The society will hold its annual card party, luncheon and fashion show Saturday, Oct. 22, at 2 p.m. in the St. James Church. A cake sale will be held after the mass service.

### DIAMOND Cleaners

Dry Cleaning, Laundering, Tailoring, etc.

### CHERNEY DANCE STUDIO

Registration Now in Union. Classes include Ballroom, Jazz, Acrobatic, etc.

### you were born fiery opal

HAPPY OCTOBER BIRTHDAY. Jewellery and more.

### MOHAWK Savings

High interest savings accounts. No penalties.

### MOHAWK Savings

High interest savings accounts. No penalties.

### MOHAWK Savings

High interest savings accounts. No penalties.

### More lots available

The American Dream... Lots available in the first section in Saul Drier's new development.

### Shed Your Housing Problems

Community clubhouse and pool, congenial adult neighbors... Limited offer on new mobile unit.

### Homestead Run

An Adult Mobile Home Community... Call Collect 609/658-7723

### Introducing The "Sharpest Pencil"

Three Bedroom Home... Call Collect 609/658-7723

### Shadow Oaks opens models

Directly across the street from the Hampton... See your grandchild and the future in this block.

### You Are Invited To Preview BOSTON WOODS

JACKSON, N.J. THE LARGEST CUSTOM-CRAFTED HOMES in the JACKSON-HOWELL-LAKEWOOD AREA.

### IT MAKES A DIFFERENCE WHERE YOU SAVE!

1 TO 2 1/2 YEAR SAVINGS CERTIFICATES... 6.81% to 6.50%

### WOODLAND settings

When a spacious woodland tract with 19-acre spring-fed lake and saltwater marina... 54-57-80

### WOODLAND settings

When a spacious woodland tract with 19-acre spring-fed lake and saltwater marina... 54-57-80

### Suburban Real Estate Mart

City • Suburbs • Farm Country • Lake • Shore. Sea View completion expected in 2 months.

### Suburban Real Estate Mart

City • Suburbs • Farm Country • Lake • Shore. Sea View completion expected in 2 months.

### Covered Bridge has recreational variety

The heat wave of the past few weeks was a real fun place to live in luxury at Covered Bridge, the adult community of Rt. 9 in Manalapan Township.

### LOOK AT THESE VALUES!

CENTRAL AIR CONDITIONING, BUILT-IN DISHWASHER, MODERN REFRIGERATOR, CLUBHOUSE FACILITIES, POOL & SAUNAS, LAKESIDE AREA, NATURAL GAS HEAT.

### LOOK AT THESE VALUES!

CENTRAL AIR CONDITIONING, BUILT-IN DISHWASHER, MODERN REFRIGERATOR, CLUBHOUSE FACILITIES, POOL & SAUNAS, LAKESIDE AREA, NATURAL GAS HEAT.

### You Are Invited To Preview BOSTON WOODS

JACKSON, N.J. THE LARGEST CUSTOM-CRAFTED HOMES in the JACKSON-HOWELL-LAKEWOOD AREA.

### WOODLAND settings

When a spacious woodland tract with 19-acre spring-fed lake and saltwater marina... 54-57-80

### WOODLAND settings

When a spacious woodland tract with 19-acre spring-fed lake and saltwater marina... 54-57-80

### WOODLAND settings

When a spacious woodland tract with 19-acre spring-fed lake and saltwater marina... 54-57-80

### Suburban Real Estate Mart

City • Suburbs • Farm Country • Lake • Shore. Sea View completion expected in 2 months.

### Suburban Real Estate Mart

City • Suburbs • Farm Country • Lake • Shore. Sea View completion expected in 2 months.

### Covered Bridge has recreational variety

The heat wave of the past few weeks was a real fun place to live in luxury at Covered Bridge, the adult community of Rt. 9 in Manalapan Township.

### LOOK AT THESE VALUES!

CENTRAL AIR CONDITIONING, BUILT-IN DISHWASHER, MODERN REFRIGERATOR, CLUBHOUSE FACILITIES, POOL & SAUNAS, LAKESIDE AREA, NATURAL GAS HEAT.

### LOOK AT THESE VALUES!

CENTRAL AIR CONDITIONING, BUILT-IN DISHWASHER, MODERN REFRIGERATOR, CLUBHOUSE FACILITIES, POOL & SAUNAS, LAKESIDE AREA, NATURAL GAS HEAT.

### You Are Invited To Preview BOSTON WOODS

JACKSON, N.J. THE LARGEST CUSTOM-CRAFTED HOMES in the JACKSON-HOWELL-LAKEWOOD AREA.

### WOODLAND settings

When a spacious woodland tract with 19-acre spring-fed lake and saltwater marina... 54-57-80

### WOODLAND settings

When a spacious woodland tract with 19-acre spring-fed lake and saltwater marina... 54-57-80

### WOODLAND settings

When a spacious woodland tract with 19-acre spring-fed lake and saltwater marina... 54-57-80

### Suburban Real Estate Mart

City • Suburbs • Farm Country • Lake • Shore. Sea View completion expected in 2 months.

### Suburban Real Estate Mart

City • Suburbs • Farm Country • Lake • Shore. Sea View completion expected in 2 months.

### Covered Bridge has recreational variety

The heat wave of the past few weeks was a real fun place to live in luxury at Covered Bridge, the adult community of Rt. 9 in Manalapan Township.

### LOOK AT THESE VALUES!

CENTRAL AIR CONDITIONING, BUILT-IN DISHWASHER, MODERN REFRIGERATOR, CLUBHOUSE FACILITIES, POOL & SAUNAS, LAKESIDE AREA, NATURAL GAS HEAT.

### LOOK AT THESE VALUES!

CENTRAL AIR CONDITIONING, BUILT-IN DISHWASHER, MODERN REFRIGERATOR, CLUBHOUSE FACILITIES, POOL & SAUNAS, LAKESIDE AREA, NATURAL GAS HEAT.

### You Are Invited To Preview BOSTON WOODS

JACKSON, N.J. THE LARGEST CUSTOM-CRAFTED HOMES in the JACKSON-HOWELL-LAKEWOOD AREA.

### WOODLAND settings

When a spacious woodland tract with 19-acre spring-fed lake and saltwater marina... 54-57-80

### WOODLAND settings

When a spacious woodland tract with 19-acre spring-fed lake and saltwater marina... 54-57-80

### WOODLAND settings

When a spacious woodland tract with 19-acre spring-fed lake and saltwater marina... 54-57-80



# SUBURBAN REAL ESTATE MART

City • Suburbs • Farm Country • Lake • Shore

## Revenues up for developer

Leisure Technology quarter reflects higher margins and operating efficiencies. The improved performance of the company's Seven Lakes community at Leisure Village at Port Myers, Fla., and are expected to be introduced early in the fourth quarter to take advantage of the winter sales season. The improved performance of the company's Seven Lakes community at Leisure Village at Port Myers, Fla., and are expected to be introduced early in the fourth quarter to take advantage of the winter sales season. The improved performance of the company's Seven Lakes community at Leisure Village at Port Myers, Fla., and are expected to be introduced early in the fourth quarter to take advantage of the winter sales season.

## DON'T SETTLE FOR MORE OR LESS THAN YOU REALLY NEED.

For those 52 and over, CLEARWATER VILLAGE middle-home community offers the sensible alternative to sky-rocketing apartment rentals and housing costs.

Our easy-to-care-for mobile-homes include spacious living rooms, ample bedrooms with built-in beds, full baths, up-to-date kitchens and a host of other features including wall-to-wall carpeting. All CLEARWATER models have such standard features as: full furnaces, vertical skirting, custom draperies, storm and screen windows and doors and much more. The ideal mix of location and community recreation facilities including a complete recreation center, swimming pool, park with easy access to shops, houses of worship, restaurants and convenient commuting makes CLEARWATER VILLAGE just what you need. Come visit today, we think you'll stay.

**CLEARWATER VILLAGE**  
Manalapan Rd.  
Spotswood, NJ  
(201) 251-5100

Actual Price: \$15,990  
Models available from \$15,990 to \$19,990  
From 12 to 24 months  
Directions: New Jersey Turnpike to Exit 99, Road 18, 5 miles to Spotswood, NJ. Main Street Spotswood, NJ. Turn right, continue 2 miles, bearing left at park, then 1/2 mile to CLEARWATER VILLAGE.

**PARKWOOD**  
WALL TOWNSHIP  
ON 1/2 ACRE WOODED LOTS  
MODELS FROM \$56,990  
RANCHES-COLONIAL-BI-LEVELS  
8 1/4% MORTGAGES  
LOW DOWN To Qualified Buyers

**HOW The New... Village Green**  
10 YEARS HOME BUYERS PROTECTION PLAN  
Custom Homes  
How at a Price You Can Afford  
4 BEDROOM COLONIALS  
Priced From \$58,490  
8 1/4% MORTGAGES (CONVENTIONAL)  
LOW DOWN To Qualified Buyers

Stanley C. Clayton, Realtor  
Open Weekends 1-5 P.M.  
Weekdays by Appointment  
Phone: 223-2222

**Samuel Fronkin Co., Inc.**  
BUILDER & DEVELOPER FOR 41 YEARS  
"A FAMILY OWNED COMPANY"

**Come... SEE AT WAYSIDE**  
**SURREY HILL**  
OCEAN TOWNSHIP, N.J.  
29 Custom Homes  
Priced From \$69,990

Directions: Garden State Parkway south to exit 100, east on Atlantic Ave. to Ocean Grove Rd., left on Ocean Grove Rd. to Wayside. Turn right, 1/2 mile to Wayside.

Shown by Appointment Only  
Call: 870-2414, 24 hrs., a day, 7 days a week

# Suburban Real Estate Mart

City • Suburbs • Farm Country • Lake • Shore

## Revenues up for developer

Leisure Technology quarter reflects higher margins and operating efficiencies. The improved performance of the company's Seven Lakes community at Leisure Village at Port Myers, Fla., and are expected to be introduced early in the fourth quarter to take advantage of the winter sales season. The improved performance of the company's Seven Lakes community at Leisure Village at Port Myers, Fla., and are expected to be introduced early in the fourth quarter to take advantage of the winter sales season.

## DON'T SETTLE FOR MORE OR LESS THAN YOU REALLY NEED.

For those 52 and over, CLEARWATER VILLAGE middle-home community offers the sensible alternative to sky-rocketing apartment rentals and housing costs.

Our easy-to-care-for mobile-homes include spacious living rooms, ample bedrooms with built-in beds, full baths, up-to-date kitchens and a host of other features including wall-to-wall carpeting. All CLEARWATER models have such standard features as: full furnaces, vertical skirting, custom draperies, storm and screen windows and doors and much more. The ideal mix of location and community recreation facilities including a complete recreation center, swimming pool, park with easy access to shops, houses of worship, restaurants and convenient commuting makes CLEARWATER VILLAGE just what you need. Come visit today, we think you'll stay.

**CLEARWATER VILLAGE**  
Manalapan Rd.  
Spotswood, NJ  
(201) 251-5100

Actual Price: \$15,990  
Models available from \$15,990 to \$19,990  
From 12 to 24 months  
Directions: New Jersey Turnpike to Exit 99, Road 18, 5 miles to Spotswood, NJ. Main Street Spotswood, NJ. Turn right, continue 2 miles, bearing left at park, then 1/2 mile to CLEARWATER VILLAGE.

**PARKWOOD**  
WALL TOWNSHIP  
ON 1/2 ACRE WOODED LOTS  
MODELS FROM \$56,990  
RANCHES-COLONIAL-BI-LEVELS  
8 1/4% MORTGAGES  
LOW DOWN To Qualified Buyers

**HOW The New... Village Green**  
10 YEARS HOME BUYERS PROTECTION PLAN  
Custom Homes  
How at a Price You Can Afford  
4 BEDROOM COLONIALS  
Priced From \$58,490  
8 1/4% MORTGAGES (CONVENTIONAL)  
LOW DOWN To Qualified Buyers

Stanley C. Clayton, Realtor  
Open Weekends 1-5 P.M.  
Weekdays by Appointment  
Phone: 223-2222

**Samuel Fronkin Co., Inc.**  
BUILDER & DEVELOPER FOR 41 YEARS  
"A FAMILY OWNED COMPANY"

**Come... SEE AT WAYSIDE**  
**SURREY HILL**  
OCEAN TOWNSHIP, N.J.  
29 Custom Homes  
Priced From \$69,990

Directions: Garden State Parkway south to exit 100, east on Atlantic Ave. to Ocean Grove Rd., left on Ocean Grove Rd. to Wayside. Turn right, 1/2 mile to Wayside.

Shown by Appointment Only  
Call: 870-2414, 24 hrs., a day, 7 days a week

# Fall clearance planned at Pine Acres Manor

Chet Patterson, sales director of Pine Acres Manor, Marketta, Skyline and Model homes are open Manor, adult mobile home. Schull with savings up to \$1,000. Monday through Saturday. Manchester Township, is a special sale being held from 9 a.m. to 6 p.m. by Pine Acres Manor. A skyline model at a calling 293-557-4100. has announced that Pine savings of \$2,000, at Pine Acres Manor can be reached by driving annual fall inventory. All Pine Acres Manor south on the Garden State Parkway through homes are centrally air. Parkway to Exit 82, then October 15. conditioned and come driving west on Route 77. Included in this year's fall inventory are: a two-bedroom, two-bath home priced at \$22,900; a two-bedroom, two-bath home priced at \$24,900; a two-bedroom, two-bath home priced at \$26,900; a two-bedroom, two-bath home priced at \$28,900; a two-bedroom, two-bath home priced at \$30,900; a two-bedroom, two-bath home priced at \$32,900; a two-bedroom, two-bath home priced at \$34,900; a two-bedroom, two-bath home priced at \$36,900; a two-bedroom, two-bath home priced at \$38,900; a two-bedroom, two-bath home priced at \$40,900; a two-bedroom, two-bath home priced at \$42,900; a two-bedroom, two-bath home priced at \$44,900; a two-bedroom, two-bath home priced at \$46,900; a two-bedroom, two-bath home priced at \$48,900; a two-bedroom, two-bath home priced at \$50,900; a two-bedroom, two-bath home priced at \$52,900; a two-bedroom, two-bath home priced at \$54,900; a two-bedroom, two-bath home priced at \$56,900; a two-bedroom, two-bath home priced at \$58,900; a two-bedroom, two-bath home priced at \$60,900; a two-bedroom, two-bath home priced at \$62,900; a two-bedroom, two-bath home priced at \$64,900; a two-bedroom, two-bath home priced at \$66,900; a two-bedroom, two-bath home priced at \$68,900; a two-bedroom, two-bath home priced at \$70,900; a two-bedroom, two-bath home priced at \$72,900; a two-bedroom, two-bath home priced at \$74,900; a two-bedroom, two-bath home priced at \$76,900; a two-bedroom, two-bath home priced at \$78,900; a two-bedroom, two-bath home priced at \$80,900; a two-bedroom, two-bath home priced at \$82,900; a two-bedroom, two-bath home priced at \$84,900; a two-bedroom, two-bath home priced at \$86,900; a two-bedroom, two-bath home priced at \$88,900; a two-bedroom, two-bath home priced at \$90,900; a two-bedroom, two-bath home priced at \$92,900; a two-bedroom, two-bath home priced at \$94,900; a two-bedroom, two-bath home priced at \$96,900; a two-bedroom, two-bath home priced at \$98,900; a two-bedroom, two-bath home priced at \$100,900.

## GRAND OPENING

**The Greatest Little Homes You've Never Seen.**

Two & Three Bedroom Homes from \$38,490

Swimming Pool • Tennis Courts  
Clubhouse • Lawn  
Excellent Schools • Express Bus to And From NYC

From 5% Down  
From 8% Interest  
NO CLOSING COSTS  
To qualified buyers

Rolling Hills  
The Windmill Club  
By The Howard Stage Company

## Beautifully low taxes. Easy commuting. 3-4 BEDROOMS from \$45,500

West Long-Branch near Mottmouth road, Parkwood Estates in Wall Township near the Garden State Parkway Exit 98 and 101, Levas Estates in Wall Township. The Fronkin Company also is getting ready to start a new subdivision in Manalapan. All of the subdivisions are located close to the Garden State Parkway and other major highways. Fronkin offers subdivisions that are heavily wooded, but there are also unwooded lots that are set aside for future solar exposure. All subdivisions have city water and sewer; sidewalks, and underground utilities. Low down payments and 8 1/4 percent mortgages are available to qualified buyers. The Clayton Agency of Wall Township is the exclusive sales agent and may be reached at 223-2222. Models are open weekends and by appointment during the week. Construction office can be reached 24 hours a day, seven days a week at (201) 870-2414.

# SUBURBAN REAL ESTATE MART

City • Suburbs • Farm Country • Lake • Shore

## Weatherly's fall offer: 9 homes available at 'Pines'

A fourth section at Weatherly, "The Family Place" in Ocean County, is being offered by Scarborough Corporation. Featured in this section of new open-space two-story homes is The Simsbury. This two-story, three-bedroom home with 1 1/2 or 2 1/2 baths features a spacious foyer entry, entertainment-size living room, formal dining room, eat-in kitchen and an over-sized garage. Modern color-coordinated appliances, dishwasher, wood cabinets and wall-to-wall carpeting are also included. Options include a fireplace, two-car garage and a patio. This home is located in an unspoiled woodland cul-de-sac and offers space-to-spare plus room to roam. Home values will grow from year to year. All the everyday conveniences are close by including schools, houses of worship, the Ocean County Mall and shopping activities. Commuting is easy too. Scarborough offers the first five homes at a special price of \$44,900. (Homes must be closed in 1977). Other models are from \$48,900. To see the models, open daily and Sunday (except Thursdays and Fridays) from 10 a.m. to 5 p.m., take the Garden State Parkway south to Exit 88 to Rt. 70 West. Continue on Rt. 70 (approximately 4.5 miles) to Exit 100 (approximately 1/2 mile) to the models. Turn left and travel approximately 2 1/2 miles to models adjacent to Ocean County Agricultural Building. Or take Rt. 9 south to Junction of Rt. 571. Turn right on 571 to fork in road. Bear right on 571 and proceed approximately 200 feet to models adjacent to Ocean County Agricultural Bldg. Further information and directions are available by calling (201) 841-6700.

## 2 new sample homes added at Pine Ridge

Pine Ridge at Crestwood, one of two new sample homes added last week to the dining room of the Ashwood, an adult community of manufactured homes in Ocean County. The Ashwood is a two-bedroom, two-bath home priced at \$22,900. The new models include a two-bedroom, two-bath home priced at \$24,900 and a two-bedroom, two-bath home priced at \$26,900. The new models include a two-bedroom, two-bath home priced at \$28,900 and a two-bedroom, two-bath home priced at \$30,900. The new models include a two-bedroom, two-bath home priced at \$32,900 and a two-bedroom, two-bath home priced at \$34,900. The new models include a two-bedroom, two-bath home priced at \$36,900 and a two-bedroom, two-bath home priced at \$38,900. The new models include a two-bedroom, two-bath home priced at \$40,900 and a two-bedroom, two-bath home priced at \$42,900. The new models include a two-bedroom, two-bath home priced at \$44,900 and a two-bedroom, two-bath home priced at \$46,900. The new models include a two-bedroom, two-bath home priced at \$48,900 and a two-bedroom, two-bath home priced at \$50,900. The new models include a two-bedroom, two-bath home priced at \$52,900 and a two-bedroom, two-bath home priced at \$54,900. The new models include a two-bedroom, two-bath home priced at \$56,900 and a two-bedroom, two-bath home priced at \$58,900. The new models include a two-bedroom, two-bath home priced at \$60,900 and a two-bedroom, two-bath home priced at \$62,900. The new models include a two-bedroom, two-bath home priced at \$64,900 and a two-bedroom, two-bath home priced at \$66,900. The new models include a two-bedroom, two-bath home priced at \$68,900 and a two-bedroom, two-bath home priced at \$70,900. The new models include a two-bedroom, two-bath home priced at \$72,900 and a two-bedroom, two-bath home priced at \$74,900. The new models include a two-bedroom, two-bath home priced at \$76,900 and a two-bedroom, two-bath home priced at \$78,900. The new models include a two-bedroom, two-bath home priced at \$80,900 and a two-bedroom, two-bath home priced at \$82,900. The new models include a two-bedroom, two-bath home priced at \$84,900 and a two-bedroom, two-bath home priced at \$86,900. The new models include a two-bedroom, two-bath home priced at \$88,900 and a two-bedroom, two-bath home priced at \$90,900. The new models include a two-bedroom, two-bath home priced at \$92,900 and a two-bedroom, two-bath home priced at \$94,900. The new models include a two-bedroom, two-bath home priced at \$96,900 and a two-bedroom, two-bath home priced at \$98,900. The new models include a two-bedroom, two-bath home priced at \$100,900.

## Kennedy gets a new 'home'

Kennedy Mortgage, one of New Jersey's largest mortgage organizations, has opened a new corporate headquarters in Cherry Hill. Grand opening ceremonies attracted nearly 1,500 persons from the real estate and mortgage banking industries. Thomas C. Martin, president and chief executive officer of Kennedy Mortgage, said the two-story "modern" facility with approximately 12,000 square feet of floor space would increase the company's physical operating capacity by 50 percent. "In the past, Kennedy Mortgage has taken the lead in the introduction of innovative mortgage programs," Martin said, "and we intend to continue by offering ever-expanding services in the mortgage industry. Our new facility, we believe, is an investment in our future and anticipated continued growth." Kennedy Mortgage's new facility is located at 11 Allison Drive, Cherry Hill. The company also operates offices in Philadelphia, Delaware and Newport News, Va.

# SUBURBAN REAL ESTATE MART

City • Suburbs • Farm Country • Lake • Shore

## Weatherly's fall offer: 9 homes available at 'Pines'

A fourth section at Weatherly, "The Family Place" in Ocean County, is being offered by Scarborough Corporation. Featured in this section of new open-space two-story homes is The Simsbury. This two-story, three-bedroom home with 1 1/2 or 2 1/2 baths features a spacious foyer entry, entertainment-size living room, formal dining room, eat-in kitchen and an over-sized garage. Modern color-coordinated appliances, dishwasher, wood cabinets and wall-to-wall carpeting are also included. Options include a fireplace, two-car garage and a patio. This home is located in an unspoiled woodland cul-de-sac and offers space-to-spare plus room to roam. Home values will grow from year to year. All the everyday conveniences are close by including schools, houses of worship, the Ocean County Mall and shopping activities. Commuting is easy too. Scarborough offers the first five homes at a special price of \$44,900. (Homes must be closed in 1977). Other models are from \$48,900. To see the models, open daily and Sunday (except Thursdays and Fridays) from 10 a.m. to 5 p.m., take the Garden State Parkway south to Exit 88 to Rt. 70 West. Continue on Rt. 70 (approximately 4.5 miles) to Exit 100 (approximately 1/2 mile) to the models. Turn left and travel approximately 2 1/2 miles to models adjacent to Ocean County Agricultural Building. Or take Rt. 9 south to Junction of Rt. 571. Turn right on 571 to fork in road. Bear right on 571 and proceed approximately 200 feet to models adjacent to Ocean County Agricultural Bldg. Further information and directions are available by calling (201) 841-6700.

## Homeowners tend gardens at development

One of the most satisfying activities at Covered Bridge is gardening. Most of the residents here moved from New York and never saw a garden in their lives. Prings said "but there's a great satisfaction in cultivating land, planting seeds and watching the plants grow. Our gardens are adjacent to the clubhouse, which many residents visit almost daily." "At first, they just watch. Then they get a lending hand with the work. They enjoy it so much, they ask for a plot of their own. As a result, we've not only run out of plots to allocate, we've a long waiting list." The answer: Formation of a Garden Club, open to all; changing from individual plots to a communal garden, with all Garden Club members participating in the work. "It's fabulous, the way people have taken to gardening," said Prings. To reach Covered Bridge from New York or northern New Jersey persons may take the N.J. Turnpike to Exit 11 or Garden State Parkway to Exit 123 then south on Rt. 9. Follow signs to Covered Bridge.

## The Choice Is Yours at Panther Valley

The great outdoors... the great indoors all yours to enjoy at Panther Valley. Security. Choice of lifestyle. Escape! Our 18 hole golf course was designed by Robert Trent Jones, a world champion golfer with magnificent scenic views on all sides. And of course there's a clubhouse and pro shop. There are tennis courts, lighted for night play. Paddle tennis too. Three swimming pools, with poolside lounge areas for you to soak up the sun. And there are acres of private community countryside for you to stroll as a resident. The choice of leisure activity is yours! A wide choice of fine homes as well. You don't have to compromise on your choice of houses either when you come to Panther Valley. There are a variety of single family homes and exciting townhouses to select from. All are quite different, roomy, prestigious and fun to live in. The prices of these two to five bedroom homes, on this beautiful old estate property run from \$57,000 to \$110,000. The choice is yours. See Panther Valley in all its splendor now. You won't believe you're only a little more than 50 miles from the George Washington Bridge and Newark Airport.

# SUBURBAN REAL ESTATE MART

City • Suburbs • Farm Country • Lake • Shore

## Weatherly's fall offer: 9 homes available at 'Pines'

A fourth section at Weatherly, "The Family Place" in Ocean County, is being offered by Scarborough Corporation. Featured in this section of new open-space two-story homes is The Simsbury. This two-story, three-bedroom home with 1 1/2 or 2 1/2 baths features a spacious foyer entry, entertainment-size living room, formal dining room, eat-in kitchen and an over-sized garage. Modern color-coordinated appliances, dishwasher, wood cabinets and wall-to-wall carpeting are also included. Options include a fireplace, two-car garage and a patio. This home is located in an unspoiled woodland cul-de-sac and offers space-to-spare plus room to roam. Home values will grow from year to year. All the everyday conveniences are close by including schools, houses of worship, the Ocean County Mall and shopping activities. Commuting is easy too. Scarborough offers the first five homes at a special price of \$44,900. (Homes must be closed in 1977). Other models are from \$48,900. To see the models, open daily and Sunday (except Thursdays and Fridays) from 10 a.m. to 5 p.m., take the Garden State Parkway south to Exit 88 to Rt. 70 West. Continue on Rt. 70 (approximately 4.5 miles) to Exit 100 (approximately 1/2 mile) to the models. Turn left and travel approximately 2 1/2 miles to models adjacent to Ocean County Agricultural Building. Or take Rt. 9 south to Junction of Rt. 571. Turn right on 571 to fork in road. Bear right on 571 and proceed approximately 200 feet to models adjacent to Ocean County Agricultural Bldg. Further information and directions are available by calling (201) 841-6700.

## You already know Shadow Lake Village.

Shadow Lake Village is well-known throughout New Jersey as the "prestigious" adult community in one of the most magnificent natural settings in the state. Nestled along a tranquil mile-long lake, and overlooking a meandering golf course, it's known for its 24-hour security gate through which only those whom you desire may pass... its luxurious-but-casual lifestyle... its quality of residences... and so much more.

## Now discover the Villas of Friendship Court.

New Single-story Ranch Models. These 2-bedroom, 2-bath villas with interests and concerns have been asking for. You are invited to see them for yourself. Affordably priced from \$44,990 to \$47,990. Other Models From \$33,990 To \$63,990. Phone: 842-9400.

**Shadow Lake Village**  
Middletown, N.J.  
07244

Directions: From the south N.J. Turnpike south to Exit 11, then G.S. Parkway south to Exit 114, turn left on Rt. 108, then right on Rt. 108, right on Delight Rd. becomes Mt. Swamp Rd., then right on Mt. Swamp Rd. becomes Shadow Lake Village on right.

Name \_\_\_\_\_  
Address \_\_\_\_\_  
Town \_\_\_\_\_  
Phone \_\_\_\_\_

## The Choice Is Yours at Panther Valley

**Panther Valley**  
Allamuchy, New Jersey 07820  
(201) 852-5300

Actual photographs taken at Panther Valley.



**Boystown unit rummage sale**  
The New Jersey's will hold a rummage sale tomorrow starting at 8 p.m. and Saturday at 10 a.m. The sale will be held in the Boystown Gymnasium, 475 Belgrave dr. Kearny.

**Garwood Army Recruiter TODAY!!!**  
Ask for Sgt. Irving A. Bailey, U.S. Army Recruiting Station, 300 South Ave. Garwood, N.J. Tel: 789-1953

### Buying power drops for factory workers

Purchasing power of New York-Northeastern New Jersey area factory production worker take home pay dropped sharply by 2.0 percent in July, it was reported by Herbert Biensstock, regional commissioner of the U.S. Department of Labor's Bureau of Labor Statistics. Noting that average weekly hours of area factory workers were off one hour and six minutes over the month, Biensstock related the decline to lost earnings, resulting from shorter workweeks during the July power failure in New York City.

Gross average weekly earnings of area factory workers declined \$4.84 between June and July to \$23.01. Biensstock attributed the drop entirely to his reduction in average weekly hours which was only partially offset by a three-cent rise in average hourly earnings to \$5.69. Between July 1976 and July 1977, average weekly earnings of area factory workers rose \$14.09. This gain reflected an increase of 35 cents or 6.3 percent in average hourly earnings as well as a six minute lengthening of the average workweek.

The 7.1 percent increase in average weekly earnings more than offset the 5.5 percent rise in the area consumer prices. Coupled with the impact of lower federal taxes resulting from the Tax Reduction and Simplification Act of 1977, which became effective June 1, purchasing power rose 4.3 percent over the year.

### Nurses course offered at Kean

A new course in continuing education for registered nurses, "Death and Bereavement: The Role of the Nurse," will be offered by the Center for Continuing Education at Kean College beginning Oct. 10. The 10-week course will be given Mondays, Oct. 10 to Dec. 12, from 7:40 to 10:10 p.m. on the Union campus. Janis Ramoth of the Health and Recreation Department will be the instructor.

The fee for the course (\$45) includes the textbook, "The N.J. State Nurses Association has granted 30-recognition points to participants. The course will deal with a wide range of topics through lectures and discussion, films and guest speakers.

**FRIDAY DEADLINE**  
All items other than food news should be in our office by noon on Friday.

### Kean program set for writers

"Writing Your Story," a workshop to help participants write autobiographical stories, books or articles will be offered through the Center of Continuing Education, Kean College, Union. The workshop will meet on 10 Monday evenings, 7:40 to 9:40, beginning Oct. 17. The workshop will be led by professional freelance writer Lenore Shapiro. Registration information may be obtained at 527-2107. Registration deadline is Oct. 10.

### Gonzales at Kean

Babs Gonzales, jazz pianist/singer, will play at the Kean College of New Jersey Wilkins Theatre for the performing Arts on Monday at 8 p.m.

The concert is sponsored by the Student Activities Jazz Concert Series, and the admission is free. Lou Donaldson, another jazz performer, is also on the bill.

Gonzales has been a featured performer with Lionel Hampton, Duke Ellington, Count Basie and Josephine Baker.

**BURGLARY DETERRENT**  
Exterior doors with glass panes should have double cylinder deadbolt locks with one-inch throw bolt.

**Seiko The Designer Name In Watches**  
Authorized SEIKO Dealer  
**W. Kodak Jewelers**  
CORNER MORRIS & STUYVESANT BRUNN, N.J.  
MIDDLESEX MALL, So. Plainfield, N.J.  
LEDGEWOOD MALL, Ledgewood, N.J.  
MORRIS CO. MALL, Morristown, N.J.  
WORLD TRADE CENTER, New York City  
DIAMOND APPRAISALS  
\$195

### PUNCH LINE

Time and memory often enhance a first love.

### Fidelity kicks off its new Union office!

**Kick-Off Celebration going on now through October 29 at Route 22 Rickels-Pathmark Shopping Center in Union.**

**FREE GIFTS FOR NEW ACCOUNTS**  
Minimum deposit must remain for 14 months.

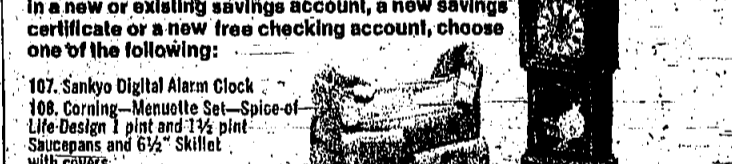
**FREE!** When you deposit \$5,000 or more in a new or existing savings account, a new savings certificate, a new free checking account, a new savings certificate or a new free checking account, choose one of the following:

- 101. Sharp Calculator with Adapter
- 102. Corning 1 1/2 Quart covered Baking Dish
- 103. 8" Square Utility Dish & 8" Pie Dish
- 104. Black & Decker 2-Speed Jig Saw with Blades, Tiling Saw
- 105. Faber-Castell 5 Quart Cook Pot
- 106. Compaq Automatic electric Grape Maker



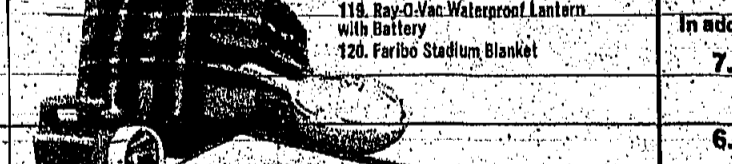
**FREE!** When you deposit \$1,000 or more in a new or existing savings account, a new savings certificate or a new free checking account, choose one of the following:

- 107. Sanjoly Digital Alarm Clock
- 108. Corning -Manette Set - Spice of Life Design 1 pint and 1/2 pint measures and 6 1/2" spatula with covers
- 109. 24" American Electric Wall-Mounted Clock
- 110. Detsels Travel-toile



**FREE!** When you deposit \$100 or more in a new or existing savings account, a new savings certificate or a new free checking account, choose one of the following:

- 111. Bay-O-Vac Waterproof Lantern with Battery
- 112. Farber Standing Blanket
- 113. Corning Two 2 1/2 cup Petite Pans with Plastic covers 3rd-Dish handle - Corntower Design
- 114. Corning 2-Quart Food Server



**7.63% effective yield on 7.25% annual interest rate**  
to 10 year savings certificates. Minimum deposit \$1,000.

**6.81% effective yield on 6.50% annual interest rate**  
to 8 year savings certificates. Minimum deposit \$500.

**6.27% effective yield on 6% annual interest rate**  
to 2 1/2 year savings certificates. Minimum deposit \$500.

Note: Federal law requires substantial interest penalty for early withdrawal.

**BANKING HOURS:**  
Regular Hours: Lobby Drive-in  
Mon.-Thurs. 9 a.m.-3 p.m. 9 a.m.-6 p.m.  
Fri. 9 a.m.-3 p.m. 9 a.m.-7 p.m.  
Sat. 9 a.m.-noon 9 a.m.-noon

**FIDELITY UNION TRUST COMPANY**  
Member Fidelity Union Bancorporation • Member FDIC  
Route 22, Rickels-Pathmark Shopping Center in Union.

**Grand OPENING**  
HUGE DISCOUNTS ON ALL CLOCKS  
**SPECIAL OFFER!**  
7 1/4" GRANDFATHER CLOCK \$299.00  
You will see on display some of the world's finest and most distinguished clocks, that are not only fine quality timepieces, but also family heirlooms that are well worth the investment. Choose that perfect clock to grace your floor, wall or mantel.  
REFRESHMENTS SERVED  
**The Clock Gallery, Ltd.**  
2540 Rt. 22 West, Center Isle  
1/2 Mile West of the Flagship  
Hours: Daily 10 a.m. - 9 p.m.  
Sat. 10 a.m. - 6 p.m.  
Sun. 1 p.m. - 5 p.m.  
Union, New Jersey 686-2700

### Ten money-saving steps to a cozier home this winter.



1. **When the wind starts blowing and the leaves begin to fall, get a move on. Be caught out in the cold. So plan ahead, follow these winterizing tips, and you and your family can stay cozy and save money, too.**
2. **Insulate.** Adequate insulation on your attic floor and sidewalls will conserve more energy than any other single item. And don't forget to insulate ducts and pipes that carry hot air or water. Proper insulation can save you up to 30 percent on your heating bill.
3. **Dial down.** Set your thermostat at 68 degrees or below during the day. 62 degrees or below at night. Once you find your knees comfortable sitting, leave it there. Remember, every degree you put your thermostat over 68 adds about three percent to your heating bill.
4. **Install storm windows and doors.** They'll seal out the cold and reduce heat loss by as much as 10 percent. Even plastic sheeting will help.
5. **Weatherstrip and caulk.** Do it around windows and doors (seal cracks and gaps, keep cold air out and warm air in). Just a 1/4" crack under a door can result in substantial heat loss—and wasted fuel dollars.
6. **Keep the furnace in good shape.** A little routine maintenance can go a long way to save you money. Clean or replace warm-air filters every few months. Check the circulating pump on a hot water system, the water level if you have steam heat. Get your money's worth from the fuel you use.
7. **Humidify.** Dry air makes rooms feel cooler than they really are. A room or furnace humidifier adds moisture to the air and saves fuel, because you'll be more comfortable at a lower temperature.
8. **Don't heat unused rooms.** Turn off the register or radiator in rooms not being used. And close the door.
9. **Don't block your own exit.** Keep furniture and drapes away from registers or radiators. Don't make your furnace work harder to do its job.
10. **Close the fireplace damper.** Don't let warm air rise up the chimney. Close the damper when not in use.
11. **Close the doors.** Keep all exterior doors—as well as those to the garage, attic and basement—but tightly bring the paperboy in when he collects. Say goodbye to friends inside. Keep cold air outside where it belongs.
12. **These simple tips will enable you to stay warm and comfortable for less money. You'll also be helping to conserve supplies of precious fuels. This coming month has been designated Energy Conservation Action Month. Let all patch in!**

**Save Energy Now**  
**PSEG**  
The Energy People

# Marlboro Lights

The spirit of Marlboro in a low tar cigarette.



Lighter in taste. Lower in tar. And still offers up the same quality that has made Marlboro famous.

Warning: The Surgeon General Has Determined That Cigarette Smoking Is Dangerous to Your Health.

12 mg "tar," 0.7 mg nicotine av. per cigarette, FTC Report Aug. 77



# Harriers led by Weiner, Rusbarsky

By MIKE MEIXNER  
The Union Dayton Regional High School cross-country team secured impressive victories over Clark, 23-9, and over Woodbridge, 25-20, last week. Dayton, which ran against Millburn and Summit Tuesday, faces Madison and Verona in a tri-meet next Tuesday which will bring together three of the top Suburban Conference running groups.



TENNIS CHAMPIONS—Members of the Mountaineer team in the Suburban Women's Tennis League celebrated their championship season at a tennis outing at the Four Seasons Tennis Club. Pictured (from left): front row, Harlene Tuncard; Carol Funk; Harlene Gorn; and Judy Crobert; second row, Jacque Dooley, Doty Cron, Sandy Dunlap, Pat Kalk and Romella Geiger; top row, Sue Stevens, Janice Van Borchoten, Sharon Connell, Sandy Weyer, Carol Wood and Ellie Hechler. Missing from the picture are Greta Nonnenmacher, Peggy McDowell, Ginny Wikom, Sue Winans, Lola Wachob, and B team manager Louise Blackwell.

# Ringers meet rescheduled

The 30th annual Union County Horseracing Ringers Tourney, originally scheduled for Sunday, Sept. 18, has been rescheduled for Sunday, Sept. 28. A \$2 entry fee must accompany each entry blank.

# Bulldog booters lose; face W. Orange today

By MIKE MEIXNER  
The Jonathan Dayton Regional High School soccer team dropped a 4-1 decision to Millburn last week, the Mustangs ending their first victory in three matches, faced today at 3:30.

# Dayton host to Hillside Saturday after losing football opener, 23-6

By KIRK KUBACH  
Despite poor weather, the Jonathan Dayton Regional High School football team played the season Saturday at Clark and the Bulldogs absorbed a 23-6 setback. Hoping to avenge the loss, Dayton will play host to Hillside Saturday at 1:30.

# Soccer scene

By BILL WILD  
The vast Cosmopolitan Soccer League machine came to a halt over the past rain-soaked weekend. The Elizabeth Lancers vs. Ridgewood was postponed at the Grove and Union County SC was scheduled to play so we didn't see any first team action at all.

# Schools seeking an even break for town's brightest youngsters

(Continued from page 1)  
"Discovery." There were 46 in the academic portion of the program. Koskolet believes the school district has found a workable solution to the dilemma of the gifted child: keep him in regular classes with children his own age, and he may become bored, lazy or difficult to discipline; skip him or otherwise remove him from regular classes, and he may have trouble adjusting socially.

# Town meeting

(Continued from page 1)  
for the housing project—perhaps a sprinkler system for the garage. "That land sat idle, not bringing a dime into town coffers," Smith said about the housing project site. "Within two years, you'll be collecting \$40,000 a year (in lieu of property taxes), and you'll only have to provide minimal services for the senior citizens who live there. It's a good deal for you; and you shouldn't charge a fee for making it possible. We know you can't afford to waive the rest."

# Regional

(Continued from page 1)  
development of a well organized, orderly environment in which the best possible learning experiences may take place. It has been a hard struggle and a challenge to achieve this goal with the ever increasing problems confronting us.

# Firemen assist in flooded home

Heavy weekend rains caused flooding in the basement of at least one Springfield home. Firemen said they were called to help the resident of the house on Gall court Friday evening.

# C.Y.O. to sponsor dance at Lourdes

The Our Lady of Lourdes C.Y.O. is sponsoring a dance featuring Stone County Rock Band tomorrow night from 8 to 11 p.m. at the AUL auditorium on Central avenue in Mountaineer.

# Holiday observance

The Congregation of Temple Beth Am, Springfield, will celebrate the holiday of Simchat Torah Tuesday afternoon at 7:30 p.m. Traditional jelly-apple and figs will be given to all the children.

# Public Notice

PROPOSAL FOR THE 16 CUBIC YARD CAPACITY... NOTICE TO BIDDERS... TOWNSHIP OF UNION COUNTY, N.J., LICENSE AND REGULATE... SOLICITING IN THE... TOWNSHIP OF UNION COUNTY, N.J., LICENSE AND REGULATE... SOLICITING IN THE... TOWNSHIP OF UNION COUNTY, N.J., LICENSE AND REGULATE... SOLICITING IN THE...

# Mental Health

WHEN GIRLS STARVE THEMSELVES  
The skinny 16-year-old girl sitting with a bowl of soup is not eating. She is only meat for the day. She is quick to tell anyone who will listen how much weight she has lost recently—and the low number of calories she consumes daily. After a few minutes, she leaves in a hurry to hunt up a tennis partner—while the unidentical salad remains on the table. She has anorexia nervosa.

# Bowling Highlights

By JAMES LADIES  
Four seasons: Kathy Ehrhardt, 200-483; Gail Rapczynski, 155-168-471; Joyce Schepel, 151-150-446; Doris Egan, 153-140-444; Madelyn Haines, 159-159-442; Mary Frances Nagler, 151-152-442; Marge Johnson, 156-421; Lorraine Hammer, 161-418; Madelyn Teja, 419; Ruth Kruis, 151-157; Ann Schaeffer, 159-472; Fardinia, 191-407; Claire Foster, 403; Alice Salzano, 161; Loreta Spiesback, 154; Caron Affilio, 150. Top teams at the 19th's, Three Queens and Pin Pals.

# Soccer opens at Gaudineer

The Florence M. Gaudineer School soccer team, planning to open its season this week, has announced an 11-game schedule through November.

# UG plans doubles tourney

Union College will sponsor a mixed doubles tennis tournament for Union County high school students, starting Sunday, Oct. 16, at the Cranford Campus courts. It has been announced by Dennis Amey and Linda Teller, tournament directors.

# Golf tournament to Mrs. Arnold

Mrs. John Arnold, with a net 37, won the Class A competition in an Echo Lake Wednesday golf tournament. Mrs. James Davidson finished second with a net 38.

# Soccer program held Saturdays

The Springfield Recreation Department is sponsoring a soccer program for children-in-grade 4 to 8 in which boys and girls will play together.

# YOUR WEEK AHEAD BY DAMIS

- ARRIS: The full moon on Tuesday sets the emotion. Keep your cool—support the ways of your partner.
- TAURUS: Focus on working relationships can be tested when you're taking care of a responsibility you're not wanting.
- GEMINI: A battle with your partner and your job when friction arises in your dream or job may hurt your business.
- MONTESSINI: The sun in the horns during the full moon transmits domestic harmony to the planet.
- VIRGO: This is not the time to go into financial adventures with money. Study proposals thoroughly before acting.
- LIBRA: Misunderstanding with partner causes you to take a little you carrying a heavy load.
- SCORPIO: Different ways of doing things put new life in the job. Your creative talents are high. Concentrate on working.
- SAGITTARIUS: Your romantic impulses are active. Keep your radar tuned to the desires of loved ones.
- CAPRICORN: Family responsibilities weigh—heavy—this week. Take chances in order. Now you say "yes" things is important.
- AQUARIUS: Keep tuned to the neighborhood news. Plans may have to be revised and changed to please others to know the facts.
- PIESCE: Ship with discretion. It's not the best time for being involved in more romantic schemes. Guard your income.

WOW! DO WE HAVE A BIRD FOR YOU?  
THE PUP TENT  
37 MORRIS TWP.  
37 MORRIS TWP.  
37 MORRIS TWP.

75 BRAND NEW 1977 CHEVROLETS  
ALL MODELS—ALL COLORS—IMMEDIATE DELIVERY!  
76 WINDOW VAN \$4095  
72 MALIBU \$2995  
74 MALIBU CLASSIC \$3995  
74 NOVA HATCHBACK \$2495  
74 MALIBU \$2795  
74 MALIBU \$2795  
74 MALIBU \$2795

# LWV program slated Oct. 6

The Springfield League of Women Voters this week invited all voting ages residents of Springfield to "Meet the League" program on Oct. 6, 6 p.m. at the Springfield Public Library.

# Breastfeeding group will meet

La Leche League will meet on Tuesday at 8:30 p.m. at the home of Liz Cascardi, 24 Fielding rd., Maplewood.

# Firemen assist in flooded home

Heavy weekend rains caused flooding in the basement of at least one Springfield home. Firemen said they were called to help the resident of the house on Gall court Friday evening.

# C.Y.O. to sponsor dance at Lourdes

The Our Lady of Lourdes C.Y.O. is sponsoring a dance featuring Stone County Rock Band tomorrow night from 8 to 11 p.m. at the AUL auditorium on Central avenue in Mountaineer.

# Holiday observance

The Congregation of Temple Beth Am, Springfield, will celebrate the holiday of Simchat Torah Tuesday afternoon at 7:30 p.m. Traditional jelly-apple and figs will be given to all the children.

# Public Notice

PROPOSAL FOR THE 16 CUBIC YARD CAPACITY... NOTICE TO BIDDERS... TOWNSHIP OF UNION COUNTY, N.J., LICENSE AND REGULATE... SOLICITING IN THE... TOWNSHIP OF UNION COUNTY, N.J., LICENSE AND REGULATE... SOLICITING IN THE... TOWNSHIP OF UNION COUNTY, N.J., LICENSE AND REGULATE... SOLICITING IN THE...

Andrew Kovacs Optician  
357 Millburn Ave., Millburn, N.J. 07041  
378-4155  
Milburn's Oldest Established Optician  
Serving the Community for over 30 years

Get Cash  
THE PEAK OF VALUE & SERVICE  
AT SUMMIT  
37 MORRIS TWP.  
37 MORRIS TWP.  
37 MORRIS TWP.

BUSINESS DIRECTORY  
Doran Ford Sales Service Body Shop  
THE NATIONAL STATE BANK  
SCHOENWALDER  
CRESTMONT  
MULIPLE YOUR SAVINGS  
GIERI & KAISH



### Amusement News

#### Concerts are listed

**ROBBY BENSON**—Young actor is star of dramatic movie, "One on One," currently on screen at Old Rathway Theater. He will appear in concert Friday evening, Oct. 27, at the Montclair High School auditorium. Part of the 58th season of Unity Concert Series, sponsored by the Unity Institute of Montclair. The concert will feature "Humanae-born pianist Luigi Kraus."

The remainder of the series will include the Czechoslovakian Folk Ballet; tomorrow evening—recital by Shirley Verrett on Friday evening, Nov. 11; Flamenco guitarist Marco Escudé on Sunday, Oct. 29; and a recital by André Watts, Sunday afternoon, Jan. 8, 1978.

Also, the American Symphony Orchestra, conducted by Neil Simon's "Plaza Suite," tomorrow at 8:40 p.m. It will run for three weeks through Oct. 15, with a Sunday performance on Oct. 9. Additional information may be obtained by calling the box office at 276-7611.

**THE SANFORD**—Under new management, "ROCKY" "OBSESSION" (11:30 p.m.)

**5 POINTS CINEMA UNION**—"ONE ON ONE" (10:30 p.m.)

**MAPLEWOOD**—"HAPPY HOOKER" (10:30 p.m.)

**WASHINGTON**—"HAPPY HOOKER" (10:30 p.m.)

**AMBOYS**—"HAPPY HOOKER" (10:30 p.m.)

**WASHINGTON**—"HAPPY HOOKER" (10:30 p.m.)

**AMBOYS**—"HAPPY HOOKER" (10:30 p.m.)

**AMBOYS**—"HAPPY HOOKER" (10:30 p.m.)

**AMBOYS**—"HAPPY HOOKER" (10:30 p.m.)

**AMBOYS**—"HAPPY HOOKER" (10:30 p.m.)

**AMBOYS**—"HAPPY HOOKER" (10:30 p.m.)

**AMBOYS**—"HAPPY HOOKER" (10:30 p.m.)

**AMBOYS**—"HAPPY HOOKER" (10:30 p.m.)

**AMBOYS**—"HAPPY HOOKER" (10:30 p.m.)

**AMBOYS**—"HAPPY HOOKER" (10:30 p.m.)



**SHENANDOAH MUSICAL**—The five Anderson sons sing "Next to Lovin' (I Like Fighin')" in the Broadway Tony Award-winning, which will be presented at the Paper Mill Playhouse, Millburn, Oct. 26 through Dec. 18. Current stage offering at the Mill is the long-running musical hit, "Grease."

**ELMORA (EHL)**—NEXT STOP—GREENWICH VILLAGE, Thur., Fri., Mon., Tues., 7:30, Sat., 1:30, 8:15, Sun., 3:15, 7:35; ANNIE HALL, Thur., Fri., Mon., Tues., 9:25; Sat., 3:25, 7:30, 10:10, Sun., 2:10, 5:50, 9:30.

**FOX UNION (Rt. 22)**—STAR WARS, Thur., Mon., Tues., 7:30, 9:30, Fri., 7:30, 9:45, 12 midnight; Sat., 2:30, 5, 8:30, 12 midnight; Sun., 2:30, 4:45, 7, 9:30.

**MAPLEWOOD**—Last times today: MACARTHUR, 7:30; SMOKEY AND THE BANDIT, Fri., Mon., Tues., 8:30, Sat., 3:40, 5:30, 7:30, Sun., 7:30.

**NEW PLAZA (Linden)**—SMOKEY AND THE BANDIT, Thur., Mon., Tues., 7:15, 9:05, Fri., 7:30, 9:20; Sat., 1:25, 3, 4:45, 8:25, 10:25; Sun., 1:10, 2:45, 4:30, 6:25, 8:15, 10:05.

**OLD RATHWAY**—ONE ON ONE, Thur., Mon., Tues., 7:15, 9:05.

**FOX UNION**—"A Long time ago in galaxy far, far away..." THE LARZ BERT MATTHEWFEELING ME (10:30 p.m.)

**STAR WARS**—"A Long time ago in galaxy far, far away..." (10:30 p.m.)

**AMBOYS**—"A Long time ago in galaxy far, far away..." (10:30 p.m.)

**AMBOYS**—"A Long time ago in galaxy far, far away..." (10:30 p.m.)

**AMBOYS**—"A Long time ago in galaxy far, far away..." (10:30 p.m.)

**AMBOYS**—"A Long time ago in galaxy far, far away..." (10:30 p.m.)

**AMBOYS**—"A Long time ago in galaxy far, far away..." (10:30 p.m.)

**AMBOYS**—"A Long time ago in galaxy far, far away..." (10:30 p.m.)

**AMBOYS**—"A Long time ago in galaxy far, far away..." (10:30 p.m.)

**AMBOYS**—"A Long time ago in galaxy far, far away..." (10:30 p.m.)

**AMBOYS**—"A Long time ago in galaxy far, far away..." (10:30 p.m.)

**AMBOYS**—"A Long time ago in galaxy far, far away..." (10:30 p.m.)

## SUBURBAN CALENDAR

**Music, dance**  
NEWARK—Offshoots of the "Theatre of the Street" will perform at the Newark Performing Arts Center, Oct. 30, 7:30 p.m. Tickets \$5-\$15.

**MA DISEM—New Jersey Musical Society** will perform "An Enemy of the People" at the Montclair High School, Oct. 27, 7:30 p.m. Tickets \$5-\$15.

**UNION—Bass Gonzalez** jazz ensemble will perform at the Union County College, Oct. 27, 8 p.m. Tickets \$5-\$15.

**MOUNTAINSIDE—Nature** films, "Sundays at 2, 3 and 4 p.m.," "Trillium Nature and Science Center, Watchung Reservation, 235-235."

**Theater**  
CEDAR GROVE—"Floral on Wednesdays" will perform at the Cedar Grove Theatre, Oct. 27, 8 p.m. Tickets \$5-\$15.

**Museums**  
MONTCLAIR—Montclair Art Museum, Oct. 27, 10 a.m. to 5 p.m. Tickets \$5-\$15.

**THE ALIBI**—Route 22, Union, N.J. 688-5550. Businessmen's lunch, 11:30 a.m. to 2 p.m. Monday-Friday.

**JOY GARDEN SHANGHAI**—Chinese Restaurant, 1975 Morris Ave., Union, N.J. 488-5678.

**BETTY LIND DINER & RESTAURANT**—1975 Morris Ave., Union, N.J. 488-5678.

**WUDDY ALLEN** stars in "Annie Hall" film offering at Elmora Theater, Elizabeth, N.J. 276-7611.

**"Dolly" is due Friday, Oct. 7**—"Hello, Dolly!" will open at Neil's New Yorker Dinner Theater, Newark, N.J. 763-2000.

**"Camelot" due to open Oct. 7**—"Camelot," the Lerner and Loewe musical, will open Friday, Oct. 7, at the Craig Theater, Summit, N.J. 261-9000.

**"Bridgeway" at Playhouse**—"The Robber Bridegroom," the Tony award-winning country western-adult musical, will be staged by the Celebration Playhouse, 118 South Avenue, Cranford, tomorrow through Nov. 5. It will be performed Fridays at 8:30 p.m., Saturdays at 7 and 10 p.m., and Sundays at 7:30 p.m. Tickets \$5-\$15.

**Plan workshop**—The Circle Players in Piscataway plan a theater workshop next month free of charge. Additional information may be obtained by calling 599-7228.

**Ferguson set**—The Ferguson set will be used in the new production of "The Merchant of Venice" at the Montclair High School, Oct. 27, 7:30 p.m. Tickets \$5-\$15.

**NOTICE!** Western Cut Steak & Eggs. Large Western Cut Steak Served with French Fry and Light Pancakes or Bagel.

**HA WINSTON & CO.** The Newest Most Exciting Restaurant in Town! For exciting dining & drinking in an informal "turn of the century" atmosphere.

**RESTAURANT**—Morris & Springfield Aves., Springfield, N.J. 376-2000.

**1 WEEK SPECIAL FOR THE WHOLE FAMILY**—Under 10 accompanied by parent (with family meal).

**FREE**—BROILED BEEF LIVER, HOT TURKEY PLATTER, DEEP FRIED FILET OF SOLE PLATTER.

**HA WINSTON & CO.** The Newest Most Exciting Restaurant in Town!

## Business topic of workshop for women at FDU

A one-day comprehensive workshop for women who are considering starting their own business or who already have taken the initial steps toward small business ownership will be held at the "Florian-Madison" Campus of Fairleigh Dickinson University on Saturday, Oct. 14, 9 a.m. to 5 p.m. in the Dreyfus College building.

Henry T. Bleicki, director of the Small Business Institute, and Dr. Lorie Mazzarelli, director of the Development Center for Women, both of the Samuel J. Silberman College of Business Administration at Fairleigh Dickinson, are co-sponsors of the program with the United States Small Business Administration.

Prominent women who have successfully made the transition to business ownership from the home or employment in business or industry will provide insights on the opportunities and the steps involved in owning a small business.

Also, resource people from the U.S. Small Business Administration, U.S. Department of Labor, the banking community, accounting, legal, insurance, advertising and real estate fraternities will be available for practical discussions on who/abilities might be needed for successful small business ownership.

Keynote lectures will be made by Patricia Cleghery, deputy director of the U.S. Small Business Administration; Ava Stern, publisher of "The Enterprising Women," and Diane Sorfin Blank, president of the New York Association of Women Business Owners.

The National Theatre of the Deaf, a theatrical company devoted to the deaf in the Los Angeles Times as "a gift-for-us of unexpected and astonishing beauty" will do a one-night, "high performance of their adaptation of the Three Musketeers at 8 p.m., Oct. 12, in Eugene G. Wilkins Theatre of the Performing Arts on the campus of Kean College in Union. The performance will be sponsored by the Townsend Lecture Series of the college.

The National Theatre of the Deaf, 12 actors who blend the skills of dance, mime and speech to make their performance understandable and entertaining to all. In the company of 12 three hearing actors, the cast of "The Three Musketeers" will do a one-night, "high performance of their adaptation of the Three Musketeers at 8 p.m., Oct. 12, in Eugene G. Wilkins Theatre of the Performing Arts on the campus of Kean College in Union. The performance will be sponsored by the Townsend Lecture Series of the college.

"The Importance and Interpretation of Lab Tests to Lupus Patients" will be the topic of a one-night, "high performance of their adaptation of the Three Musketeers at 8 p.m., Oct. 12, in Eugene G. Wilkins Theatre of the Performing Arts on the campus of Kean College in Union. The performance will be sponsored by the Townsend Lecture Series of the college.

The L.E. Foundation of New Jersey meets on the first Wednesday of the month at Hoffman-La Roche in Nutley. Further information is available from the Foundation at 791-7888, or by writing to the L.E. Foundation, 791-7888.

**UHS class of 1958 will hold a reunion**—A 20th reunion for the Union High School Class of 1958 is in the planning stages. All 1958 graduates are being asked to contact either Joanne Ferrara Chang at 248-6167 or Arlyn Cuffing Mozart at 248-1816.

**Lecture series set**—The Organization of Women for Legal-Awareness and Montclair State College, women's center are co-sponsoring a weekly lecture series on divorce every Tuesday evening at the Montclair State Cafeteria beginning today. A small donation will be charged at the door.

## Women's center at Kean to reopen for third year

Kean College of New Jersey's Campus Center for Women is reopening last week for its third year of operation. The women's center is sponsored by the administration of the college as a part of the college's commitment to the needs of the newly-emerging woman, visible on today's college campuses.

Kean's campus women's center attempts to meet the needs of its broad constituency with educational programming, information and referral services and peer-counseling, and pursues a general advocacy for women on the local campus. The center encourages women to assess their interests and abilities, and then to act on the new information.

The center sponsors a weekly discussion series for women, WOMAN TALK, each Wednesday at noon, in Downs Hall on the Union campus. WOMAN TALK is for those women who wish to investigate college and its daily effects; for women interested in ideas as sources and starting points for dialogue and action in their own lives.

**Reading clinic begins sign-up**—The Reading Clinic of Kean College is accepting applications for the fall semester. Parents with a child in need of remedial reading may contact the Reading Clinic at 272-2251 for an application.

Applicants will be given an appointment for a screening test, which includes a vision test, a hearing test and a reading test. The fee for the screening test is \$10 and is payable on the day of the screening.

If the student is a remedial reader and it is accepted into the clinic, a complete battery of diagnostic tests will be given and the diagnostic report made available to the parents for a fee of \$45. Following the diagnosis, private individual remediation at \$45 will be given in a series of weekly lessons.

**Program is set to aid smokers**—"GIVE UP Tobacco SENSELY" a 300 smoking program, is being sponsored by the Tri-Hospital Educational Coordinating Committee of Elizabeth and the Union County Division of the American Cancer Society. The nine session program is a repeat of the one offered previously to more than 90 participants over the past year.

The program is open to all smokers who wish to kick the habit. It is aimed at educating participants about how smoking affects one's health, and to teach techniques that may help one to stop smoking.

The program is scheduled to begin on Monday, Oct. 10, at 7:30 p.m. in the Education Center of St. Elizabeth Hospital, on the corner of Williamson and Ford streets, Elizabeth. The eight additional sessions will be held on Oct. 20, 27, 31, Nov. 7, 14, 21 and the final session on Nov. 28. All sessions are scheduled from 7:30 to 9:30 p.m.

There is a \$35 registration fee for the program. Participants who attend all sessions will receive a refund of \$20. The Rev. Salvatore P. Citarella, director of the department of education at St. Elizabeth Hospital is director of the program.

Applications may be obtained by writing to him at St. Elizabeth Hospital, 225 Williamson St., Elizabeth, 07207.

The apples are picked and graded on the farm and brought to Westfield in the huge trailers that sit behind the store. The buying of the red apples, which insures that the fruit will be fresh and crisp and delicious when you make your purchase.

During picking time, Geiger's offers a steady stream of coupons that reflect the fact that the apples are direct from the tree and have not incurred the expense of storage and handling that will be part of the price after picking time is complete.

If you like to cook with apples you will appreciate the ten-pound bags of utility grade apples that sell for \$1.75. These are apples from the center of the tree that never got much color. They are fine for cooking or eating. The flavor is as good as the red apples. Geiger's is a wonderful place to visit during the fall.

## Deaf troupe to perform in 'Three Musketeers'

The National Theatre of the Deaf, a theatrical company devoted to the deaf in the Los Angeles Times as "a gift-for-us of unexpected and astonishing beauty" will do a one-night, "high performance of their adaptation of the Three Musketeers at 8 p.m., Oct. 12, in Eugene G. Wilkins Theatre of the Performing Arts on the campus of Kean College in Union. The performance will be sponsored by the Townsend Lecture Series of the college.

The National Theatre of the Deaf, 12 actors who blend the skills of dance, mime and speech to make their performance understandable and entertaining to all. In the company of 12 three hearing actors, the cast of "The Three Musketeers" will do a one-night, "high performance of their adaptation of the Three Musketeers at 8 p.m., Oct. 12, in Eugene G. Wilkins Theatre of the Performing Arts on the campus of Kean College in Union. The performance will be sponsored by the Townsend Lecture Series of the college.

"The Importance and Interpretation of Lab Tests to Lupus Patients" will be the topic of a one-night, "high performance of their adaptation of the Three Musketeers at 8 p.m., Oct. 12, in Eugene G. Wilkins Theatre of the Performing Arts on the campus of Kean College in Union. The performance will be sponsored by the Townsend Lecture Series of the college.

The L.E. Foundation of New Jersey meets on the first Wednesday of the month at Hoffman-La Roche in Nutley. Further information is available from the Foundation at 791-7888, or by writing to the L.E. Foundation, 791-7888.

**UHS class of 1958 will hold a reunion**—A 20th reunion for the Union High School Class of 1958 is in the planning stages. All 1958 graduates are being asked to contact either Joanne Ferrara Chang at 248-6167 or Arlyn Cuffing Mozart at 248-1816.

**Lecture series set**—The Organization of Women for Legal-Awareness and Montclair State College, women's center are co-sponsoring a weekly lecture series on divorce every Tuesday evening at the Montclair State Cafeteria beginning today. A small donation will be charged at the door.

**Women's center at Kean to reopen for third year**—Kean College of New Jersey's Campus Center for Women is reopening last week for its third year of operation. The women's center is sponsored by the administration of the college as a part of the college's commitment to the needs of the newly-emerging woman, visible on today's college campuses.

Kean's campus women's center attempts to meet the needs of its broad constituency with educational programming, information and referral services and peer-counseling, and pursues a general advocacy for women on the local campus. The center encourages women to assess their interests and abilities, and then to act on the new information.

The center sponsors a weekly discussion series for women, WOMAN TALK, each Wednesday at noon, in Downs Hall on the Union campus. WOMAN TALK is for those women who wish to investigate college and its daily effects; for women interested in ideas as sources and starting points for dialogue and action in their own lives.

**Reading clinic begins sign-up**—The Reading Clinic of Kean College is accepting applications for the fall semester. Parents with a child in need of remedial reading may contact the Reading Clinic at 272-2251 for an application.

Applicants will be given an appointment for a screening test, which includes a vision test, a hearing test and a reading test. The fee for the screening test is \$10 and is payable on the day of the screening.

If the student is a remedial reader and it is accepted into the clinic, a complete battery of diagnostic tests will be given and the diagnostic report made available to the parents for a fee of \$45. Following the diagnosis, private individual remediation at \$45 will be given in a series of weekly lessons.

**Program is set to aid smokers**—"GIVE UP Tobacco SENSELY" a 300 smoking program, is being sponsored by the Tri-Hospital Educational Coordinating Committee of Elizabeth and the Union County Division of the American Cancer Society. The nine session program is a repeat of the one offered previously to more than 90 participants over the past year.

The program is open to all smokers who wish to kick the habit. It is aimed at educating participants about how smoking affects one's health, and to teach techniques that may help one to stop smoking.

The program is scheduled to begin on Monday, Oct. 10, at 7:30 p.m. in the Education Center of St. Elizabeth Hospital, on the corner of Williamson and Ford streets, Elizabeth. The eight additional sessions will be held on Oct. 20, 27, 31, Nov. 7, 14, 21 and the final session on Nov. 28. All sessions are scheduled from 7:30 to 9:30 p.m.

There is a \$35 registration fee for the program. Participants who attend all sessions will receive a refund of \$20. The Rev. Salvatore P. Citarella, director of the department of education at St. Elizabeth Hospital is director of the program.

Applications may be obtained by writing to him at St. Elizabeth Hospital, 225 Williamson St., Elizabeth, 07207.

The apples are picked and graded on the farm and brought to Westfield in the huge trailers that sit behind the store. The buying of the red apples, which insures that the fruit will be fresh and crisp and delicious when you make your purchase.

During picking time, Geiger's offers a steady stream of coupons that reflect the fact that the apples are direct from the tree and have not incurred the expense of storage and handling that will be part of the price after picking time is complete.

If you like to cook with apples you will appreciate the ten-pound bags of utility grade apples that sell for \$1.75. These are apples from the center of the tree that never got much color. They are fine for cooking or eating. The flavor is as good as the red apples. Geiger's is a wonderful place to visit during the fall.

**Apple Harvest Time at Geiger's**

### sleepworld ANNIVERSARY CELEBRATION SALE

#### 30% TO 70% SAVINGS ON OUR ENTIRE STOCK

**FREE!** FRAME WITH ANY SET OF BEDDING UPON PRESENTATION OF THIS AD.

**SLEEPWORLD GENTLE FIRM**—With all the quality we offer, it only makes sense that you'll love us as well as we love you. Try it, you'll see. It's not just the price, it's the quality.

**SLEEPWORLD REGULAR FIRM**—Quality workmanship and detailing. Try any mattress. Then try it, you'll see. It's not just the price, it's the quality.

Full Size: \$149.99  
Queen Size: \$199.99

**THE CHAIR BED**—\$159

**BUNK BEDS**—Double decker bunk beds with slatted capacity that every family needs.

**THE ULTRA HI-RISER**—Luxury hi-riser opens to reveal storage with 20 drawers. One set at the top, 10 in the middle. Either way, you get unobstructed sleeping surface.

**THE LAWSON**—This attractive full size convertible is covered in a heavy duty Hercules fabric. A real bargain.

**\$219**

**sleepworld**

ALL SALES FINAL • DELIVERY ADDITIONAL

UNION—2065 Rt. 22 West (1 mile east of Hightop)  
964-9718

## GEIGER'S APPLE FESTIVAL

**Crispy McIntosh** **Sweet Juicy Red Delicious** **CANDY APPLES**

**Snappy Macoun** **Semi-Fat Spartan** **Fresh Homemade Apple & Pumpkin Pies**

**Corland** **Large White Piel**

**GEIGER'S STAND** **GEIGER'S STAND**

**FESTIVAL COUPON—SAVE ON APPLE CIDER**—50¢ gallon, 25¢ 1/2 gal. Expires 10/10/77

**FESTIVAL COUPON—SAVE ON CIDER DONUTS**—25¢ per doz. Expires 10/10/77

**FESTIVAL COUPON—SAVE ON ANY VARIETY APPLES**—4 qt. 35¢ Savings, 1 qt. 10¢ Savings. Expires 10/10/77

**GEIGER'S**

Restaurant! Mon.-Sat. 11:30 am to 9 pm  
Dinner 7 Days a Week  
232-2250

Coffee Shop 8 am to 8 pm

Bakery & Produce Moonshine Club  
8 am to 9 pm  
232-2250

6:00 am to 12:30 pm  
7 days a week  
232-2250

OPEN 7 DAYS • 560 SPRINGFIELD AVE., WESTFIELD, N.J.

## ROLLER SKATING

### FALL OPENING PARTY

FRI., SEPT. 30th - 7:30 to 11 P.M.

GAMES & PRIZES! REG. ADM. \$1.75  
Shoe Skate Rental 50¢

!AIR CONDITIONED!

LIVINGSTON ROLLER RINK  
615 SO. LIVINGSTON AVE., 992-6161

## LUNCHEON EVERY WEDNESDAY IS CREPE DAY AT L'AFFAIRE 22

Soup DuJour  
Choice of Orange  
Glass of Wine-  
Ice Cream or Jello  
Coffee or Tea  
(No Substitutions)

**\$4.50**

232-4454  
Banquet facilities available

**L'Affaire**

109 Route No. 22, Eastbound, Mountainide

## NOTICE!

Western Cut Steak & Eggs

Large Western Cut Steak Served with French Fry and Light Pancakes or Bagel.

Eggs Benedict  
2 Prashed Eggs on Toasted English Muffin with Canadian Bacon & Hollandaise Sauce. Plus Hash Brown Potatoes.

As New Served!

**I SHOP**

INTERNATIONAL HOUSE  
Rt. 22, Center Isle, Union  
Phone 272-2250, 272-2251



