

Springfield man fined \$75 for phone calls

A Springfield man, Donald Agres, was fined \$75 Monday in Municipal Court for making annoying, telephone calls to a Union woman.

Mrs. S. Brown memorial rites slated Saturday

Mrs. Samuel P. Brown of Cayuga Way, Short Hills, died at her home April 4 after a brief illness. She was the former Mrs. William W. Hartz and from 1940 through 1976 she lived at Spring Hill, Springfield.

In addition to her church work, Mrs. Brown was active in the "Good Republican Party" for many years in Springfield. For 30 years she was an active member of the P.E.O. Sisterhood Chapter in Maplewood.

Mrs. Brown is survived by her husband and her three children, Robert E. Hartz of Spring Brook Road, Springfield; Stephen D. Hartz of Edgewood, N.J.; and Mrs. Douglas E. Hartz of Springfield. She is also survived by her three grandchildren, Donald K. of Somerset and Mrs. John A. Winston of Fairfax, Va., and 12 grandchildren.

Town meeting

The county has called upon Springfield to pay \$100,000 for the cost of a storm-purifier retaining basin in Lenape Park. However, Rajopki said she thinks this figure is somewhat negotiable.

Albert Haller of S. Maple Avenue and Allan Zeller of S. Springfield Avenue each asked several questions about the flood-control project and the cost-sharing formula.

Zeller urged the Township Committee that "if they're going to spend money to change the local zoning for multiple residences, they should go all the way."

Edward Olesky of Garden oval responded against the proposed construction of townhouses on Mountain Avenue. "I recognize the need for lower-cost housing," he said.

The township committee also had arisen at the committee's executive meeting Monday night. Without any formal vote, a majority of the committee—Mayor William Clerk, Nathan Stokes and Keith—took a negative position on townhouse development of Mountain Avenue property owned by L.P. Statle Inc. and zoned for single-family housing.

Health Fair planned at Kean this weekend

Kean College in Union will be host to the WNBC-TV "Stay O.K. Health Fair" tomorrow, Saturday and Sunday.

The fair is being co-sponsored by the Elizabeth General School of Nursing, the Lions Institute, Union County American Red Cross and the Union-Township Department of Health.

The health fair will be open from 10 a.m. to 5 p.m. in Downs Hall on Kean's Union campus for each of the three days. Visitors must be 18 or older and should bring two envelopes; one self-addressed and one addressed to their personal physician if blood chemistry is desired, in order for results to be re-mitted promptly.

Golf applications are now available

The Springfield Recreation Department this week announced that applications are available for the Millburn Recreation Department for membership to the par 3 golf course. The fee is \$25 for a single membership and \$40 for a husband and wife.

The application may be obtained at the Sarah Slifer Civic Center, 24 Chestnut Hill, Springfield, from 8:30 a.m. to 4:30 p.m., Monday through Friday.

Open house slated at nursery school

The Summit Jewish Community Nursery School will hold an open house this Tuesday, Wednesday and Thursday, for prospective students and their parents.

The school is located at 127 Chestnut St., Roselle Park, N.J. Openings are available for children aged 2 to 5 years.

Loans with Less Interest

Summit and Elizabeth offer loans with less interest to help you get the things you need. Discounts are on now.

Summit and Elizabeth are now offering a special interest rate on new car loans. The annual percentage rate is just 11%, and you can take up to 48 months to repay.

Corpse-snatch host sentenced to reformatory

Alan J. Tomie, 27, host of a macabre home party last year in Springfield, has been sent to the state reformatory to serve a 30-day term for unlawfully disposing of a human corpse.

County Judge Edward Beglin Jr., pronouncing sentence Friday in the Superior Court, said it will be up to parole authorities to decide how long Tomie should be confined.

Tomie was the last of five Springfield men to be sentenced, and the first to be imprisoned, in the bizarre case which shocked "the consciousness of the community" and polluted human society's reservoir of decency.

The corpse snatchers, Nitello and Nieto, pleaded guilty to burglarizing the corpse in Bryant pond, Springfield, where it was found by an off-duty policeman. Nieto, placed on probation, and Brink were fined \$500 each.

Charges were conditionally dismissed against a sixth Robert Rosenkrantz, 21, of Springfield. Police said he was a first-time offender who cooperated in the investigation.

IMPROVING THE ODDS Cancer strikes one American in four, two families out of three. Long-term survival has improved from one-in-five to one-in-three over the years.

TV-radio personality will speak at library



Joan Smith, producer and moderator of "many radio and television shows, president of Media Management and executive director of the Westfield Chamber of Commerce, will speak at the Springfield Public Library at 3 p.m. Sunday.

Smith has written for major newspapers and magazines and holds membership in national organizations related to theater arts. During the course of her career she has lived in Hollywood and associated with celebrities in many fields.

Smith is producer and moderator of "Viewpoint," a WDM weekly show concentrating on the arts and public affairs program and moderator of a program carried on stations throughout the county.

Mr. Urbanski; Mass offered A Mass for Edward Urbanski, 45, of Springfield was offered April 5 in St. Stanislaus Church, Newark.

Ahrens is honored Hart Gail Ahrens has been named to the Dean's list at the University of Delaware, Newark, Del.

Seniors' health day scheduled April 25 The Health Day for Springfield senior citizens has been changed from this Monday, Monday, April 23.

Teen Talk that credit can be a two-sided coin. It's both a blessing and a burden if used wisely.

School Lunches

REGIONAL HIGH SCHOOL: Monday—"Big Joes" on bun, fish sandwich on bun or peanut butter and jelly sandwich with French fries, other vegetables and fruit.

GAUDINEER SCHOOL: Monday—Pasta and cheese cubes, baked chicken, green bean salad, fruit or pudding, milk.

Elementary schools: Monday—Tuna fish sandwich with lettuce, peas, and milk.

Thursday—Turkey hero, banana, milk.

Friday—Ham and cheese sandwich, apple, milk and peanut butter, milk.

Nellie's If your delight is to browse through a truly remarkable and plentiful bounty of delicious European fashion, then Nellie's will be the perfect shop for you.

Poor Richards The most exciting Men's Store in New Jersey presents for Spring, 1978: NEW MAN jeans and sportswear in a great variety of colors and fabrics.

FIRST AID SQUAD CALLS

12:45 p.m. - Assisted town resident. 10:35 p.m. - Transported town resident complaining of dizziness, to Overlook Hospital.

Woman injured as cars collide A Chatham woman suffered minor injuries last Thursday in a two-car collision at the Mountain Avenue-Caldwell place intersection in Springfield.

Y to mark 92 years The Summit Area YMCA is celebrating its 92nd anniversary on Friday, April 28.

Public Notice Notice is hereby given that the subscriber, Nell A. Mendler, residing at 127 Chestnut St., Roselle Park, N.J., has been appointed administrator of the estate of the late Edward Urbanski.

THE ENERGY Saver COOKING UTENSIL SELECTION CAN SAVE ENERGY. Wise selection of cooking utensils can contribute to energy savings in the home.

THE GROOMING ROOM PROFESSIONAL DOG GROOMING. No Trimming! No Accessories! BY APPOINTMENT ONLY. 467-3450.

Geppetto's Workshop If your child is a young sophisticated, dips funky or love imported European clothes, Geppetto's Workshop is the ultimate.

the kanat shoppe, Ltd. The finest designers here and abroad lend their talents to those of Carl Miller and Lynn Skuratov in bringing you elegant jewelry at affordable prices.

Diamonds & Precious Stones Have Gone Up!

We Know It! We Want You to Know It! Bring in your jewelry for appraisal to update your insurance.

358 MILLBURN AVENUE, MILLBURN, N.J. 07041

the Clothes Patch

HAS BLOOMED! SPECIALIZING IN Junior Size Sportswear For Daughter and Mom

153 East McClellan Ave., Livingston

STOP GIVING YOURSELF AND YOUR WALLET A HERNIA.

Get a thick, green, weed free lawn without using a finger. Call Lawn Doctor. If it probably looks like a hernia, it probably is.

376-2222

Podiatrist will speak

Dr. Hollington Yang, Summit podiatrist, will speak on "The World's Most Important Feet" at the Summit YWCA.

Donation to hospital

New orthopedic surgical equipment will be purchased by Overlook Hospital as the result of a \$2,349 grant by the Sarah Slifer Foundation.

Give till it helps.

Summit and Elizabeth offer loans with less interest to help you get the things you need.

Summit and Elizabeth

Summit and Elizabeth offer loans with less interest to help you get the things you need. Discounts are on now.

livingston fashion experience

four delightful shops with a special message for fashion minded men, women and children:

171 S. Livingston Avenue/corner E. Cedar St./Livingston/Rt. 280, Exit 5A

SPRINGFIELD AVE. PROSPECT ST. JACOBY ST.

HEADING WEST? - USE PROSPECT OFFICE AT AT HEADING EAST? - USE HILTON OFFICE AT AT

FULL SERVICE OFFICES ON BOTH SIDES OF SPRINGFIELD AVE.

A Sneak Preview from the 1979 Piaget Collection

March, Winner of the 1977 Piaget Diamond Award

285 Millburn Ave. Millburn, N.J. 07041 • 201-376-7100

**Your
Local Newspapers**

**All You Need
To Know About:**

- ★ **Municipal**
- ★ **Government**
- ★ **Social Events**
- ★ **Sports**

and much more...

**Can Be Read
Every Week**

"Local Newspapers"

**For Home Delivery Every Week
Call 686-7700 or Mail This Coupon**

CLIP COUPON

CHECK BOX FOR 52 WEEKS HOME DELIVERY

UNION LEADER '11" SPRINGFIELD LEADER '11"

MOUNTAINSIDE ECHO '9"

LINDEN LEADER '9"

ROSELLE-ROSELLE PARK SPECTATOR '9"

NAME.....

ADDRESS.....

PHONE.....

Mail Coupon with Check to: **SUBURBAN PUBLISHING**
1291 STUYVESANT AVE.
UNION, NEW JERSEY 07083

Union Leader

Patricco, Arnald, Fried win board race
Ethics code rescinded; charges hurled

New code is due on Feb. 28

Patricco, Arnald, Fried win board race

Patricco, Arnald, Fried win board race

Springfield Leader

Simpson, Heller, Dahmen to join board
Tax levy approved; vote light

Simpson, Heller, Dahmen to join board

Simpson, Heller, Dahmen to join board

MOUNTAINSIDE Echo

School budget is defeated by 2 votes
Williams faults 2 on board

School budget is defeated by 2 votes

School budget is defeated by 2 votes

Spectator

RCC gains board control; budget loses
Study of recycling program approved

RCC gains board control; budget loses

RCC gains board control; budget loses

Linden Leader

Appointed board bid is rejected
Spending falls; record turnout

Appointed board bid is rejected

Appointed board bid is rejected

Israeli to speak at congregation meeting tonight

"Social Problems and Integrating Immigrants in Israel" will be discussed at the general membership meeting of the congregation Israel of Springfield tonight at 8:15 at the temporary synagogue, 41 Shumpike rd., Springfield.

Woman named bond sale head

Mrs. Lester H. Lieberman of Springfield, a former chairperson of the Metropolitan-New Jersey Israel Bond Woman's Division will serve as organization chairperson of the Metropolitan-New Jersey Jewish Community Council, annual luncheon and leader in the United Jewish Appeal.

Hartt daan's list

Robert F. Gilbert, son of Mr. and Mrs. Frank M. Gilbert of Springfield, has been named to the dean's list for the fall semester at Hartford College of Music, University of Hartford, Conn. Gilbert is a freshman.

FINAL CLEARANCE SALE!

MUST MAKE ROOM FOR NEW MODELS ARRIVING DAILY! ALL FLOOR MODELS ON SALE NOW AT GREAT SAVINGS! HURRY, LIMITED STOCK ON THESE SPECIALS!

Amana 20 20.0 cu. ft. Loads of Amana convenience, features full-width, glide-out shelves, wide rollers, convertible doors and Amana Energy Saver Control.

CHECK OUR LOW PRICE!
(Prices Too Low To Advertise!)

"IT PAYS TO BUY FROM A DEALER WHO GIVES SERVICE WITH EVERY SALE!"

POST APPLIANCE
1529 SPRINGFIELD AVE. • MAPLEWOOD
OPEN DAILY 9-9; SATURDAYS 9-6 • 761-4674

ARTHUR TREACHER'S COMES TO SPRINGFIELD

FRIDAY, APRIL 14 at 570 MORRIS AVENUE

ARTHUR TREACHER'S Fish & Chips

"SERVING THE BEST TASTING FISH & CHIPS AROUND!"

Also Chicken & Chips, Shrimp & Chips, Chicken On A Bun, and Fish Sandwiches

"Try Us... We're Something Else!"

OPEN 10:30 a.m. - 11 p.m., Sun.-Thurs. 11:30 a.m. - 10 p.m., Friday, Sat. and Sun.

Growing Older

Besides his impatient and doctors' coverage, Medicare also helps pay for any covered services of a licensed podiatrist, except for routine foot care. In addition, Medicare payments are available furnished by a licensed podiatrist for dental care—only if it and Medicare-certified surgery of the chiropactor. The only treatment that can be or setting fractures of the covered is manual jaw or facial bones. Care manipulation of the spine in connection with the to correct a subluxation that can be demonstrated by X-ray. Medical insurance does not pay for surgery for impacted teeth, and other surgical diagnostic or therapeutic services furnished by a chiropactor.

FEDERATED ELECTRONICS
155 RT. 22 (Near to Douglas) SPRINGFIELD

N.J.'S FINEST SELECTION OF CP'S, STEREO'S & ELECTRONIC COMPONENTS

ASK FOR: PHILIP ROSE 684-7700

ZEMITH, KENWOOD, GARRARD \$76-8988

BAKERSFIELD, CALIF. MASTERCARD

MAKE THEIR SUMMER SPECIAL!

Register Your Boy and/or Girl (ages 4 to 12) in

OAK KNOLL DAYCAMP

June 26 to August 4

Summit's Oak Knoll School of the Holy Child's indoor and outdoor facilities once again will be the site of a day camp for boys and girls (ages 4-12).

Your child will "have fun learning and growing" in an enjoyable environment, each Monday through Friday from 9 a.m. to 3 p.m. beginning on Monday, June 26, and ending on Friday, August 4.

Children may be enrolled for all or part of the six weeks period.

Qualified and experienced adult teachers and professionals direct the varied programs of the Oak Knoll Day Camp. The happy roster of (16-1) children to staff members assure personalized attention for each child.

Story of an athlete with brains, muscle

Linden Leader

Appointed board bid is rejected

Spending falls; record turnout

OAK KNOLL SUMMER DAY CAMP

Summit, N.J. 07981

For application and brochure, write to address below or call: (908) 375-1155

UCTC Presents The Big Circle of Services.



Here's a great way to put all of your banking eggs in one convenient basket. It's the UCTC Big O Circle of Services and here's how it works.

It begins with The Big O: The checking account for people on the go.

The Big O is Overdraft Checking from UCTC. It's a FREE CHECKING account plus a line of credit of \$500 or more which you can use anytime just by writing a check for more than your balance. Or by using a simple transfer form. It's the convenient and free way of checking for people on the go and grow.

And it's the door opener for a whole range of convenient banking services.

Checking alternatives.

If for some reason you decide you don't want the Big O, UCTC offers three other ways to check for free: 1) Just keep a balance of \$500 or more in any of our savings accounts and authorize us to include the savings balance in the account summary portion of our One-Statement Banking form; 2) keep a minimum balance of \$300 in a regular checking account; or 3) qualify for our free Golden Age Account for individuals 62 or over.

Closing the Circle.

Once you've started the UCTC Big O Circle of Services, it's hard to stop. Because we've got loans of all kinds—for new cars, home improvements, vacations you name it—we'll help finance it. We've got mortgage loans, too. And Secondary Mortgage loans with low-bank rates. Plus Safe Deposit boxes, Travellers Checks, convenient banking hours and professional service at every level.

Add Savings and get the Big I: Convenient One-Statement Banking.

UCTC offers a whole range of high interest savings plans for wise savers. There's our 4 1/2% Electronic Savings Plan for maximum flexibility; our Daily Interest Accounts which pay 5% (5.20% effective annual yield) on balances over \$500; and our 5 1/2% (5.75% Annual Yield) Savings Investment Accounts.

If you open a UCTC savings account to go with your Big O Overdraft Checking Account, you'll also get the convenience of One-Statement Banking, which gives you a complete monthly summary of any UCTC account you wish, including checking, savings, loans (including overdraft, mortgage and installment) plus automatic transfers for paying loans and club savings accounts and from checking to savings.

United Counties Trust Company

The practical bank for all your banking needs.

Serving you locally at Echo Plaza & Route 22 & Hillside Av., Springfield

Get it all together at UCTC

Don't wait for a minute. Get it on the convenience and savings of The Big O Circle of Banking Services. Just visit the UCTC office nearest you today.

Moist March breaks another weather mark

Setting records may be necessary under most circumstances, but in terms of weather it is becoming commonplace, according to Raymond J. Daily, director of Union College's U.S. Cooperative Weather Station.

In his monthly summary for March to the National Weather Service, Daily reported the fourth straight record-breaking month in the station's 18-year history. March, he observed, brought the total precipitation for 1978 to 18.94 inches, setting a new station record. Total precipitation for March alone was 4.36 inches, 0.72 inches above normal, he said.

February was the coldest month in the station's records. January had the most snow and December set a record for the highest temperature.

The past month was also distinguished as colder than average. Daily noted that with a mean temperature of 37.05 degrees, 1.87 degrees below normal. The mean temperature for March 1977 was 45.15.

Total snowfall for the month was 10.5 inches, 6.7 inches above normal, bringing the total snowfall for the season to 60.7 inches, as opposed to 23.25 inches for the month totalized 86.6, bringing the total for the heating season to date to 5,134. Degree days at this time 1978 were 45.15.



Hospital to hit century mark

Elizabeth General Hospital and Dispensary will mark 100 years of service to the Eastern Union County area on May 9, 1978. It was announced by Spencer M. Overton, chairman of the board of trustees.

The hospital will observe its Centennial with a year-long celebration during 1979, which will include professional, social, educational and fund-raising events.

Elizabeth General is the oldest hospital in Eastern Union County. It had its beginnings in a free two-room surgical dispensary which was founded by four Elizabeth physicians. The dispensary provided care to 100 patients during its first year of service.

Welfare board picks Perselay

Leda Perselay of Summit was named to head the Union County Welfare Board at the board's recent reorganization meeting.

A former freeholder, Perselay is a member of the New Jersey Association of County Welfare Board Members and the state planning committee for the annual conference of the state board of public and county welfare board members. She will be a panelist in May at the welfare conference.

Counties agree to regional plan for solid waste

The Department of Environmental Protection said this week that five of the state's northeastern counties have entered into a regional solid waste management agreement in order to prepare a comprehensive management plan to be submitted to DEP by mid-October.

Scheduled to adopt a joint solid waste management plan by Dec. 31 are Bergen, Essex, Hudson, Passaic and Union counties and the Hackensack Meadowlands Development Commission. According to New Jersey's Solid Waste Management Act, each of the state's 21 counties and the Hackensack Meadowlands Development Commission have been divided into three groups to develop regional management plans.

Elizabeth General is the oldest hospital in Eastern Union County. It had its beginnings in a free two-room surgical dispensary which was founded by four Elizabeth physicians. The dispensary provided care to 100 patients during its first year of service.

Help at festival sought by ARC

The Union County unit of the New Jersey Association of Retarded Children (ARC) has issued a call for volunteers to help out at a nature and science festival May 20 at the Trailside Nature and Science Center, Mountaintide.

Volunteers can help with nature walks, rubbings, kite flying, collages, platform shows, nature walks, museum tours and performing arts. The ARC Day program, which is also sponsored by the Union County Park Commission, will run from 10 a.m. to 4 p.m. Further information is available by calling 222-2559.

Flood safety measures listed by Red Cross unit

The Disaster Service Unit of the Eastern Union County Chapter of the American Red Cross this week reminded area residents that they can reduce flood-related losses if they take precautions in advance.

Walter Cocker, disaster chairman, warned of the possibility of serious "backups" flooding this spring. "This winter's heavy snowfalls have left the ground in many areas saturated with a large amount of ground water," he said.

Cocker pointed out that flood-related losses could be greatly reduced if people would take "even the most basic precautions before a flood strikes. 'Always remember that your primary responsibility is yourself and your family—property can be replaced, but lives can't,' he said.

The appointment of Dr. Stephen L. Slavin of Brooklyn as assistant professor in the Economics, Government, History Department at Union College has been announced by Dr. Saul Oskin, president.

Arthur L. Wells Your OPTICIAN in SPRINGFIELD 248 MORRIS AVE. • 374-4148 SPRINGFIELD, N.J. (Close to Broadway) FREE PARKING IN REAR

Bargains Bloom At Louise's KLOTHES KLOSET 2626 MORRIS AVE., UNION, N.J. (Across From Arthur's & Dunkin Donuts) YOU GOTTA SEE IT TO BELIEVE IT! All Merchandise Current and First Quality

Religious Notices

- HOLY CROSS LUTHERAN CHURCH (THE CHURCH OF THE RADIO) 'LUTHERAN HOUR' AND TV'S 'THIS IS THE LIFE'... FIRST PRESBYTERIAN CHURCH MORRIS AVENUE AT CHURCH MALL... BRUCE WHITEFIELD EVANS, D.D., PASTOR... CHRISTIAN EDUCATION... HOLY CROSS LUTHERAN CHURCH... FIRST PRESBYTERIAN CHURCH... BRUCE WHITEFIELD EVANS... CHRISTIAN EDUCATION... HOLY CROSS LUTHERAN CHURCH... FIRST PRESBYTERIAN CHURCH... BRUCE WHITEFIELD EVANS... CHRISTIAN EDUCATION...



Krowne to wed Boston teacher

Mr. and Mrs. John Galaburda of Andover, Mass., have announced the engagement of their daughter, Lilian, to Ronald J. Krowne, son of Mr. and Mrs. Nathan P. Krowne of Springfield and Fort Lauderdale, Fla.

Church women to view slides

"God's Beautiful World" will be the theme of the meeting of the Ladies' Evening Group of the Springfield Presbyterian Church next Wednesday evening at 8 p.m.

Congregation helps with Passover rules

Two traditional pre-Passover customs will be observed under the auspices of Congregation Israel of Springfield, 388 Mountain Avenue, corner Shunpike road, (temporary synagogue, 42 Shunpike road).

The first is called "Mchiras chometz" (sale of chometz). Under Jewish religious law no chometz (food with leavening), or utensils used with such food may remain in the possession of Jewish families during the Passover.

The second custom is called "Siyum Behorin" (repeat of the first born). Traditionally, all first-born males are required to wait the day before Passover because Jewish first-born were spared in Egypt when the angel of death "passed over" Jewish homes on his way to slay the Egyptian first-born.

The Passover seder will be held at 7:30 p.m. on Friday, April 13, at the Westfield High School, the League offices. The seder will be held at 7:30 p.m. on Friday, April 13, at the Westfield High School, the League offices.

Know Your Government

LEGISLATURE TO CONSIDER NEW TAX COURT There is a Tax Court in New Jersey's future? Legislative chances for passage of a series of three bills establishing a Tax Court as a judicial full-time court in the judicial branch in place of the present part-time Division of Tax Appeals appear good after six months of study.

Miss Zapolitz engagement told



Mr. and Mrs. George Zapolitz of Springfield have announced the engagement of their daughter, Michelle, to Robert Shindler, son of Mr. and Mrs. Martin Shindler of Springfield.

League show opens May 12

Local amateur performers are set to give their "professional" all in the Elizabeth-Plainfield Junior League production of "Merry Go Round" May 12 and 13 at 8 p.m. at the Westfield High School, the League offices.

Rosary society sets style show

The Rosary Altar Society of Our Lady of Lourdes Church, Mountaintide, will hold its annual fashion show and card party May 9 and 10 at 8 p.m. in the church auditorium.

Senior citizens plan workshop on health

A workshop on "Health and Well-Being of the Senior Citizen" will be held by the Senior Citizens Council of Union County today at the Courthouse in Cranford. A variety of health-related topics will be covered.

PBA sets date of flea market

PBA Local 73, Union County Park Police, will hold its second Flea Market Saturday, May 20, from 9 a.m. to 5 p.m. Antiques, collectors' items, jewelry and toys are some of the items that will be on sale in the Warmane Park Building.

Womens' Club sets meeting in Summit

The Business and Professional Women's Club of Summit will hold its monthly dinner meeting at the Hotel Suburban, Summit, on Monday at 7 p.m.

Women's Club sets meeting in Summit

The Business and Professional Women's Club of Summit will hold its monthly dinner meeting at the Hotel Suburban, Summit, on Monday at 7 p.m.

Women's Club sets meeting in Summit

The Business and Professional Women's Club of Summit will hold its monthly dinner meeting at the Hotel Suburban, Summit, on Monday at 7 p.m.

Women's Club sets meeting in Summit

The Business and Professional Women's Club of Summit will hold its monthly dinner meeting at the Hotel Suburban, Summit, on Monday at 7 p.m.

Women's Club sets meeting in Summit

The Business and Professional Women's Club of Summit will hold its monthly dinner meeting at the Hotel Suburban, Summit, on Monday at 7 p.m.

Women's Club sets meeting in Summit

The Business and Professional Women's Club of Summit will hold its monthly dinner meeting at the Hotel Suburban, Summit, on Monday at 7 p.m.

Allerton APRIL SAVINGS ON OUR BRAND NAME MERCHANDISE SAVE AT LEAST 20% OFF Regular Retail Prices... ALL WEATHER COATS \$39.95 to \$69.95 FAUNDS MAKER DRESSES \$19.95 to \$49.95 PLUS SIMILAR SAVINGS ON ALL OUR BRAND NAME SPORTSWEAR • SEPARATES • CO-ORDINATES

You know what to look for in a car. Now we'll show you what to look for in a dealer. BRAIN. Pick the dealer who was smart enough to pick Volkswagen as the best car for New Jersey. He's the man who knows the difference between the cheapest price and the best value.

YOU KNOW PRICE • YOU KNOW WHERE LOUISE'S KLOTHES KLOSET 2626 MORRIS AVE., UNION, N.J. (Across From Arthur's & Dunkin Donuts) YOU GOTTA SEE IT TO BELIEVE IT! All Merchandise Current and First Quality

Program listed by Fellowship A Women's Fellowship coffee will be held April 20 at 10 a.m. at the Mountaintide Gospel Chapel, Spruce Blvd., of Central Avenue.

Program listed by Fellowship A Women's Fellowship coffee will be held April 20 at 10 a.m. at the Mountaintide Gospel Chapel, Spruce Blvd., of Central Avenue.

Raymond's of Westfield 189 North Ave., Westfield, N.J. 08886. Lunch: From 11:30 - 1:00 p.m. Dinner: From 5:00 - 10:00 p.m. Sunday: 12:00 - 3:00 p.m. Reservations please.

NEW 6 Year Savings Certificate from 7 7/8% Per Year Compounded Daily. Berkeley Federal Savings 8.06% Other high-rate, short term Certificates available. Berkeley Federal Savings 687-7000

CALENDAR OPENING OF OUR NEW QUARTERS THE CLOTHESLINE 201 MAIN STREET MILLBURN, N.J. We've Moved! So NEAR (right next door) yet so FAR! GIFT CERTIFICATES HOURLY \$10.00

FIGHT CANCER CHECKUP • CHECK AMERICAN CANCER SOCIETY SALE PICTURE FRAMES Reg. \$4.99 Putnam Frame Shop 810 Fairfield Ave. (Corner R.R. & Market St.) KENILWORTH 245-8473

LIMITED ISSUE certificates 7 1/2% minimum deposit. 7 3/4% \$5,000 minimum deposit. 6 year term.

Junior Woman's Club takes part in health fair

Mrs. Louise Patten, president of the Junior Woman's Club of Connecticut Farms, Union, has announced that club members will participate in the health fair to be held at Kean College of New Jersey, Union, this weekend.

Deborah plans annual event

The Suburban Deborah League will hold its annual membership dinner Tuesday at 7 p.m. in Temple Beth Am, Springfield. Mrs. Ellen Koray of Springfield will preside.

Lawrence Matthew is born to Golonkas

An eight-pound, eight-ounce boy, Lawrence Matthew, was born March 20 in Overlook Hospital, Summit, to Mr. and Mrs. L. Wayne Golonka of Union.

Evening party, sale scheduled by AAUW unit

The Elizabeth Branch of the American Association of University Women (AAUW) will hold a card party and white elephant sale in the parish house of St. Luke's Episcopal Church, Roselle, Thursday, April 20, from 7 p.m. to 10:30 p.m. Dessert will be served from 7 to 8 p.m.

Jewish Music lecture slated

Temple Beth El, 174 North Ave., Elizabeth, will present the third lecture in its Adult Education series Sunday at 10 a.m. Max Sevin, violinist and violist, will give a lecture and a concert on "The Heritage of Jewish Music."

Barbara Lynn Weber is wed in Roselle Park

Barbara Lynn Weber of Cleveland, Ohio, daughter of Mr. and Mrs. Richard C. Weber of Malcolm road, Union, was married Sunday, March 19, to Ray Gardner Weber of Cleveland, son of the Rev. and Mrs. George S. Tewksbury of Lakewood, Pakistan.

Miss Kessler plans fall date

Mrs. Laetice Kessler of Marvell street, Union, has announced the engagement of her daughter, Barbara D. Kessler, to Daniel J. Shevkin, son of Mr. Stephen and Mrs. Shevkin of Douglas terrace, Union, and the late Mrs. Julia M. Shevkin.

Card party at St. Paul

The springtime card party sponsored by the past officers of St. Paul the Apostle Society will be held next Thursday at 8 p.m. in St. Paul's School Auditorium.

P.L.A.S.M.A. to meet Sunday

Dr. Samuel Feinsod, a surgeon from Irvington, and president of P.L.A.S.M.A., the Parents League of American Students of Medicine Abroad, has announced that the group will meet Sunday at 1:30 p.m. at Robinson Hall, Room 100, Fairleigh Dickinson University, 1000 River rd., Teaneck.

Annual dinner slated Tuesday

The Hillside Chapter of Hadassah will hold its 30th annual dinner event Tuesday at 6:30 p.m. at the Patrician Cafeteria, Livingston. The event will mark the culmination of the year's fund-raising activities of the chapter.

Flo Okin group plans tag drive

Flo Okin Cancer Relief will sponsor its annual tag drive in the Essex-Union county area from Monday, April 17, to Monday, April 24.

Communication topic planned at meeting

The Rev. James Pudar, a member of the faculty of Seton Hall University, South Orange, will be the guest speaker at a meeting Tuesday afternoon at 1:30 p.m. by the Catholic Woman's Club of Elizabeth. He will discuss "Modern Means of Communication and the Meeting will be held at the Town and Country Club, Elizabeth.

Dysautonomia group meets in Springfield

The Northern New Jersey Chapter of Dysautonomia will meet tonight at 8:30 in Temple Sha'arey Shalom, Springfield. Lorraine Winick will preside.

Flea market slated

The Maplewood Woman's Club will hold an indoor flea market Saturday, April 22, from 10 a.m. to 5 p.m. at 60 Windland rd., Maplewood. Admission will be 25 cents for adults and no charge for children.

Goldas has son, Andrew

A son, Andrew Golda II, was born March 6 in Somerset Hospital, to Mr. and Mrs. Terence Golda of Plainfield.

Second son is born to Robert Frosts

An eight-pound, two-ounce son, Andrew Samuel Frost, was born April 1 in Monmouth Medical Center, Teaneck, to Mr. and Mrs. Robert Frost of West Long Branch. He has a brother, Josias Lee.

Food poisoning

The key to preventing food poisoning is careful and sanitary methods of food preparation and storage. Clean hands, utensils and work areas are essential. Hands and wrists should be washed with soap and hot water. If hands have cuts or sores, rubber gloves should be worn when preparing food.

Century 21 unveils new training center

Century 21 Real Estate Center at Arlington Plaza Corporation has opened its new training center on Route 9, Parsippany, North Jersey. The new training center is designed as a focal point for the company's activities in North Jersey.

The Shore's most successful community

1 bedroom apartments \$52,600/73% mortgage, 10% down/No land lease, no recreation lease

Channel Club Tower

The Shore cure for the blues: Channel Drive, Monmouth Beach, N.J. 07720. Hours: 10 AM to 5 PM or by appointment. Phone: (201) 228-2929 (Call Collect) Sponsor: A.S. Development, Inc.

Rossmoor residents are defeating inflation

ROSSMOOR—The planned colonial look has an air of quiet elegance. The condominium community is located in Monroe. More and more residents are either still working or returning to work.

WAKE UP TO NATURE'S LAKE-COUNTRY LIFE and the tax & equity advantages of home ownership.

Advertisement for Stanhope Mountain High featuring a photo of a house and text: "From \$31,690... Highpoint at Stanhope... From 5% Down... Interest: 8 1/4%... Highpoint at Stanhope... Sales office open noon to dusk... Call 201-447-6444"

SUBURBAN REAL ESTATE MART

Company aids sale of two buildings at 24 and 64 Prospect st. comprising a total of 48 units. The firm recently moved into new headquarters in the Gebroe-Hammer Building at Roosevelt Plaza, Livingston.

LOOK WHAT YOU GET FOR \$16,990 WHEN YOU Retire to the Good Life AT Clearwater Village

Advertisement for Clearwater Village featuring a photo of a house and text: "Those who live here—love it! Those 5 1/2 can't wait for 52... As much as 1152 sq. ft. luxury living space... 2 bedrooms, 1 or 2 baths, luxurious oversized garden tub and shower... Living room, dining room and entertainment-size kitchen... Walk-to-walk carpeting... Complete recreation building, swimming pool and several on-site pet parks... Shops, houses of worship 5 minutes away—Commuting a breeze... Prices start at \$16,990... Models open daily and Sundays 10-5 PM... Clearwater Village... Manalapan Road, Spotswood, New Jersey... (201) 251-5100... DIRECTIONS: New Jersey Turnpike to Exit #9, Route 18 east 5 miles to sign for 'Main Street Spotswood'. Turn right, continue 2 miles bearing left at fork, then 1 mile on right to model area."

Large advertisement for "SATURDAY THE 15th!" featuring a photo of a woman in a dress and text: "Free Gift With the Purchase of Any Dress... Stan wants you to come to his informal modeling show on Saturday... Lenny Danner who will discuss and direct any questions about fashioning clothes and styling for the upcoming Summer and Fall seasons... Free coffee and pastry... 985 Sheepshead Ave., Union Center • Open Mon. & Fri. '78"

Advertisement for "Our April down pour of Diamonds sparkles in a shower of Jeweled Pendants lined up to every leading fashion look Echo... JOIN TOGETHER SINGLE MEN... BROTHERS IN LOVE... Call 201-261-1100"

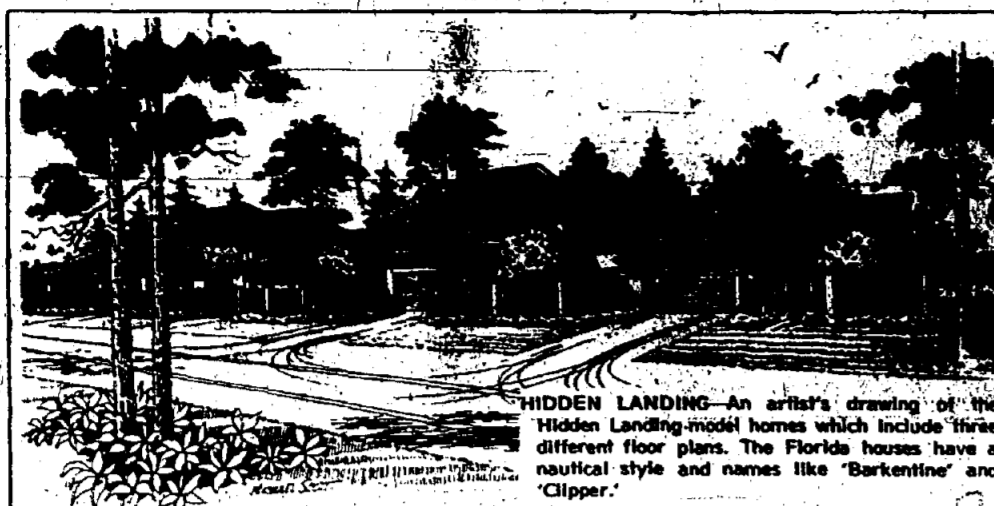
Advertisement for "MOHAWK'S MONEY SAVERS... Your choice FREE when you deposit \$25 or more in a new top-rate Mohawk passbook savings account... FREE!... Let your youngsters enjoy the fun of saving with one of these lovable Walt Disney Coin Banks... And speaking of saving, there's no better way than with Mohawk's passbook savings account... So get your children and yourself in the savings habit with Mohawk's Money Savers... Call your account at Mohawk today."

Large advertisement for "DON'T WAIT! WE'RE NOW WE EXPECT TO BE SOLD OUT NEXT YEAR!" featuring a photo of a house and text: "At the rate these fabulous homes are selling, we plan to be completely sold out by the end of 1979. If you don't want to be disappointed, we strongly urge you to buy now at GUARANTEED PRICES which could save you thousands of dollars."

Advertisement for "COVERED BRIDGE" featuring a photo of a house and text: "Guaranteed prices to beat inflation! Delivered* 1978 1979... One bedroom \$29,990 \$32,990... Two bedroom \$31,990 \$35,190... 2-bedroom Ranch style \$43,990 \$48,390... Above pricing typical. All other models also available under this program. Price guaranteed only if contracted by May 31, 1978... by Homanian Enterprises... If one of you is 52 or over... DIRECTIONS: N.J. Turnpike south to Exit 11 and south on G.S. Parkway to Exit 125 then South on Rt. 9 for 9 miles to Covered Bridge. Sales Office open 10-5 PM. Phone: 536-5440."

Thursday, April 13, 1978
YOUR WANT AD IS EASY TO PLACE...
 JUST PHONE 693-7700

14 SOLD IN FIRST 3 WEEKS
PREVIEW SHOWING
BRONKRISE HILLS
 A new community of 100 homes in the heart of the Garden State Parkway and Metro Bus Station.
 100 Homes from \$74,000
 DIRECTIONS: Garden State Parkway to exit 117 to Route 38 East. Home and garage. 1 mile to the left. Turn right and continue on Leominster Rd. and Model.



Homes stress quiet seclusion

Hidden Landing, at Wellington, Palm Beach, Fla., is secluded in nearly 10 acres of pine trees and bordered by recreational waterways. Wellington, a 7,400-acre community development of Breakwater Housing Corp. along with Gould Florida Inc., has emphasized a bar-mans relationship with nature since building began five years ago.

Single women buying homes

Every year, more and more single women are purchasing homes, according to George Paton, Roselle Park Realtor who serves as vice president of the Union County Multiple Listing Service.

8 Models

- Ranch ● Split
- Colonial
- Spanish
- Contemporary

\$59,900 4 Bedroom Colonial from \$76,900

Briarwood Estates

Phone (201) 341-1101 or (201) 341-3441

SUBURBAN REAL ESTATE MART
 City ● Suburbs ● Farm Country ● Lake ● Shore

both single-story home with a two-car attached garage and large work and storage area, has second floor bedrooms which open onto spacious balconies. It contains 379 sq ft of living space, including garage, balconies and walk-in closets.

House Hunting For Quality At A Price?



Barnegat Woods... is the Answer

Buying "direct from builder" enables you to purchase a top quality home at a price that is easy within your budget. Relax, let our friendly staff build while you enjoy efficiency, comfort and economy.

\$25,990

Barnegat Woods

Call Collect 609/698-7723

SUBURBAN REAL ESTATE MART
 City ● Suburbs ● Farm Country ● Lake ● Shore

3 BEDROOMS
PRICED AT \$36,990
 AS LOW AS 10% DOWN
 30 YEAR BITES.
REBECCA COURT
 201-727-4100

Amid The Trees And Beyond Weatherly



THE SIMSBURY—\$42,990

Seven great "family living models" in safe and spacious settings, affording safety, individual life styles and easy access to all the necessities of everyday family life.

Scarborough
 "means home building excellence"

SUBURBAN REAL ESTATE MART
 City ● Suburbs ● Farm Country ● Lake ● Shore

Past's charm makes Glen Arden special

"It was Shakespeare who wrote sonnets to Anne Hathaway. But it was U.S. Home Corp., with a poetic eye toward design and the charms of the past that has paid her another compliment with the Hathaway IV model home at Glen Arden.

"An elementary school is adjacent to the property," Ms. Harding said. "Also nearby are two shopping malls, many parks, golf courses and other recreational facilities."

PARKWOOD ESTATES
WALL TOWNSHIP
ON 1/2 ACRE WOODED LOTS
MODELS FROM \$65,900
8 1/4% MORTGAGES
LOW DOWN To Qualified Buyers

Hard sale completed

Berkeley Terrace, the 16-unit garden apartment complex in Irvington, has been sold for its original building and the families by G. Lyons & Hammer Associates, a Livingston-based investment real estate sales firm.

NEW 2 FAMILY HOMES & DUPLEXES
Windmill Estates
TOTOWA BORO, N.J.
LOWEST TAX RATE
In Passaic County
PRICED FROM \$119,000

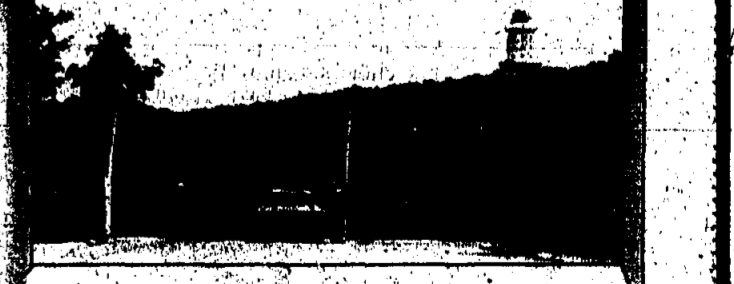
ONE-STOP HOUSING MARKETPLACE
SOLD ON TOMS RIVER
Homes from \$37,900 to \$74,900

ANNOUNCING THE GRAND OPENING OF WESTGATE

The Panther Valley Dream is now a \$44,990 reality

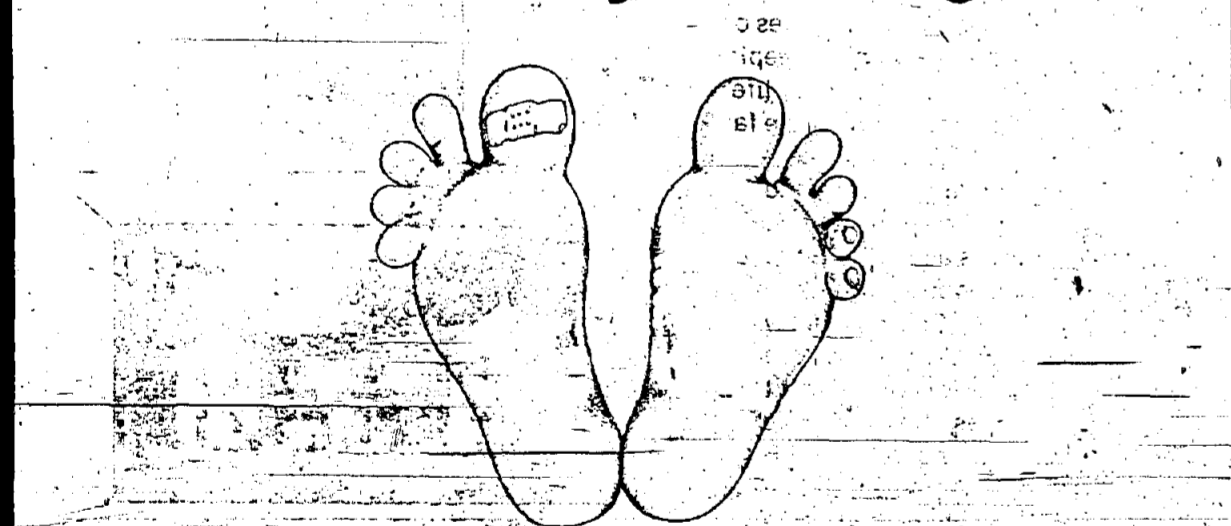


There's nothing else anywhere like the luxury community of Panther Valley. And now, with the introduction of a new series of affordable townhomes, there's nothing keeping you from living the same private luxury life that comes with the community's single family homes.



Residents are automatically members of the Panther Valley Property Owners Association.

You can't count our fun facilities on your fingers.



(You'll need some toes, too.)

When you take a look around either of our active adult communities, you may have a friend to help you relax. And friendly neighbors to help you enjoy.

Leisure Knoll
 Take the Garden State Parkway to Exit 88, turn right on Rt. 70, 1/2 mile to the right. Call Collect (201) 240-6655.

Make the \$10,000 Comparison

A HOLLY OAKS 4-bedroom home costs \$10,000 less to start with -- requires \$3,340 less cash to buy and \$140 less each month to own than a typical 4-bedroom home elsewhere

The HOLLY OAKS with attached garage Four bedrooms, family room, separate dining room and two walk-in closets	A typical home with attached garage Four bedrooms, family room, dining room and one walk-in closet
PRICE \$46,900	PRICE \$56,900
Minimum Down Payment \$2,350	Minimum Down Payment \$5,690
Total Monthly Payments \$390	Total Monthly Payments \$530

Compare everything, and you'll discover how incomparable a Holly Oaks home is. You'll even find that our homes include, at no extra cost, the quality features of a home costing \$10,000 more. Features like wall-to-wall carpeting, fully-wooded homesites, full-thick wall insulation and 9-inch ceiling insulation, double-glazed insulated windows, Owens Corning High-R sheathing, no-maintenance aluminum siding and 240-pound self-sealing roof shingles. For what you get, how much it costs to purchase and pay for, for special financing and even for a most convenient location, there's just no comparison!

Monthly payments on both homes include monthly principal and interest, private mortgage insurance and monthly estimated real estate taxes to qualified buyers.

From \$38,900 to \$46,900
5% Down - 8 1/4% Interest
Lowest tax rate in Ocean County

PARKWOOD ESTATES
WALL TOWNSHIP
ON 1/2 ACRE WOODED LOTS
MODELS FROM \$65,900
8 1/4% MORTGAGES
LOW DOWN To Qualified Buyers

THE NEW... Village Green
Custom Homes
NEW at a Price You Can Afford
4 BEDROOM COLONIALS
PRICED FROM \$68,490
MORTGAGES AVAILABLE
LOW DOWN To Qualified Buyers

YOUR WANT AD IS EASY TO PLACE
JUST PHONE 693-7700
Ask for "Ad Taker" and she will help you with a "Visual Center" Visit Ad.

Westgate
 At Panther Valley
 P.O. Box M
 Allamuchy, New Jersey 07820
 (201) 850-0300

Senior development; small is 'beautiful'

Something like the reality of the giant in this case is making a special small executive jet, a giant of the housing industry was the creator of a concept of developments being marked in North America and Europe. And the giant's creation is a Country Place, the 36-home community on Hope road across from Lake Canastota in Lakewood.

where two-bedroom homes are priced from \$35,900. Less than 10 percent of the home sites are left for potential residents at least 55 years old.

GRAND OPENING... WHEN YOU'RE LOOKING FOR QUALITY, STYLE AND LOCATION FOR YOUR FAMILY'S HOME, LOOK TO MAPLE TREE... THE CAMBRIDGE 2-STORY... from \$39,990...

Just 28 Colonial Homes of Distinction... Evergreen ESTATES... 4 bedrooms including master... \$86,500...

WHEN THE VALUES ARE UNBEATABLE, PEOPLE BEAT A PATH TO YOUR DOOR... Glen Arden is the most successful new home community in all New Jersey...

GLEN GARDEN... Directions: Lake Garden State Parkway, Exit 123 to Route 9 south toward Freeway... US HOME NEW JERSEY COMPANY

SUBURBAN REAL ESTATE MART

New colonial homes have old world flair

The patriotic spirit lives on, two years past the bicentennial, at Monroe Village in Williamstown, the community of entrance three and four-bedroom single-family homes of Gloucester-Williamston road near the Black Horse Pike.

South Wind ADULT MOBILE HOME VILLAGE... AFFORDABLE HOUSING FOR AMERICA... LOOKING FOR AFFORDABLE HOUSING?...

Group to act as sales rep for Towers... The Commodore Group, one of Central Jersey's most well known management organizations, has been retained as the sales and managerial agent for the Towers at Monmouth Beach.

TOWERS GOING DOWN... Our tax rate has been cut from \$1.76 to \$1.55; effective January 1, 1978. On our average \$34,000 home that's only \$527 per year.

BUY YOUR FIRST HOME IN A WOODED RURAL OASIS... LET OUR FAMILY BUILD YOUR FAMILY'S HOME... HEARTHSTONE... FOUNDED 1964 Crestwood COMMUNITIES

VA benefits do not pay for dropped course

James R. Purdy, Veterans Administration regional office director in Newark, this week revealed GI Bill students who might overlook themselves with summer courses.

Offbeat version of tales for children to be staged... The Kean College Children's Theatre will offer "The Rest Stories of Red Riding Hood and the Three Little Pigs" in the Wilkins Theatre for the Performing Arts on the Union campus Saturday at 11 a.m. and 1 p.m.

\$51,832 grant awarded to N.J. New Jersey will receive \$51,832 from the U.S. Department of Agriculture (USDA) to undertake three marketing projects...

Telethon asks for volunteers... Volunteers are needed to participate in a Saturday Night Fight... W. Orange Y offers springtime courses... The YM-YWHA of Metropolitan New Jersey will offer a May mini-camp...

Passover oratorio... "Haggadah: A Search for Freedom" will be presented on New Jersey Public Television on Sunday, April 23, at 6 p.m.

Kartzman & SON... Enjoy The Extra Goodness And Superior Quality of All These Holiday Favorites... ROAST TURKEY, ROAST CHICKEN OR LONG ISLAND DUCKLING, WITH MATZOH STUFFING...

Arts center readies fourth season opener

Expo '78, the outdoor art show at the Garden State Arts Center, is ready to open its fourth summer season.

Antiques show starts April 28... Thirty nationally-known antique exhibitors will offer pieces within a wide price range at Newark's Academy's third annual antiques show and sale on April 28 to 30 at the school on South Orange Avenue, Livingston.

Reunion to be held by 1944 graduates... The January and June 1944 graduating classes of Newark South Side High School are making plans for a 35th reunion, according to Lila Liewter Newman.

NORTH JERSEY GYNCOLOGICAL CENTER... ABORTION SERVICES... FREE PREGNANCY TESTING... TRANSPORT OF NEW JERSEY

What to do when you see this... When teachers indicate that your child has a behavior problem, they're not looking for trouble. They're trying to stop it. Correct a small problem so it doesn't become a big one.

Kissinger talks at Case dinner

Former Secretary of State Henry A. Kissinger will be the keynote speaker at a fund-raising dinner for U.S. Senator Clifford Case (R-N.J.) May 10 at the Short Hills Caterers, Short Hills.

Bloomfield concert to be held April 30... The spring concert of the Bloomfield Symphony Orchestra, under the direction of Edward Napiewocki of Union, will be held Sunday, April 30, at 3 p.m. at the North Junior High School, Huck road, Bloomfield.

Series views women artists... Outstanding American women artists will be the subject of a seven-part series, "The Originalists: Women in Art," premiering Tuesday at 8:30 p.m. and Saturday, April 22, at 6:30 p.m. on New Jersey Public Television.

CALENDAR OF COMING EVENTS... All Events are Free to the Public... Friday, April 14, 10 A.M., Route 22 WOMAN TO WOMAN TALK...

REPORT CARD... NAME: Jane Thompson DATE: 4/11/78... SCHOOL: Sun-Horsholt TEACHER: E. Benson... BEHAVIOR HABITS... SOCIAL HABITS... WORK HABITS...



PIRI THOMAS, Spanish-American poet, film maker and author of "Down These Mean Streets," will be at Kean College's Little Theatre next Thursday, April 20, at 9 p.m.



Trash or treasure?
Get Cash...

Sell it! 3 lines 2 times \$3

to our
320,000 readers

- ★ Garage Sales
- ★ Yard Sales
- ★ Washers & Dryers
- ★ TV & Stereos
- ★ Bikes & Toys
- ★ Pools & Furniture
- ★ Refrigerators
- ★ Musical Instruments
- ★ Drapes
- ★ Air Conditioners
- ★ Etc., Etc., Etc.

- Check or Money Order Must Accompany Ad.
- Private Parties Only
- No Commercial, Businesses Real Estate or Automotive

Use this easy Want Ad form, today!

Four (4) Words Of Average Length Will Fit On One Line. For Extra Long Words Allow Two (2) Spaces. Figure Your Cost by Multiplying The Number Of Lines By \$1.00. Minimum Charge \$3.00 (3 Average Lines). Additional lines... \$1.35 per line.

Mail To: SUBURBAN PUBLISHING CORP., 1201 Stayvesant Ave., Union, N.J. 07083

Example: DEN FURNITURE, 2 pcs., rug, washer & dryer, refrigerator, baby crib. 10-5 p.m. R-4-16

★ THURSDAY-EIGHT NEWSPAPERS
★ SUNDAY-The SUBURBAINE

Please insert the following classified ad:

Insert Ad.....Time(s) at \$.....

Per Insertion Starting.....(Date).....

Amount Enclosed () Check () Money Order

Check or money order must accompany order.

Want Ad Form must be in our office by Monday noon for ad to appear in that week's papers.

1	2	3	4
5	6	7	8
9	10	11	12
13	14	15	

(If additional words are required, attach separate sheet of paper)

Name.....

Address.....

City.....

Softballers top Clark; Madison rallies, 11-8

The Jonathan Dayton softball team opened with a 7-1 victory over A.J. Johnson of Clark today. Madison, 11-8, in a toss-up thriller. The Dayton team, coached by Hope Valenti, defeated Johnson's Conference play today against Caldwell.

Dayton nine plays today at Caldwell

The Jonathan Dayton Regional High School baseball team, after losing close decisions to Berkeley Heights and Madison, will travel to Caldwell today in a bid to improve its 1-2 record.

Regional routs Linden in track; Doty, Spina win two events each

Efforts turned in by juniors Dave Barnes and Mitch Frank in the quarter-mile, Spina outran the field with Vargas second. Russ Laughton won his season mile debut with sophomore Jeff Knowles a close second.

Soccer Scene

This is it. This is the week of our Union Lancers teams invades Giants Stadium in the Meadowlands. The mighty midwest (eight- and nine-year-olds), who boast a 4-0 league record, will play in the first preliminary match this Sunday when the Cosmos meet the Tulsa Roughnecks.

Volleyball team will face Nutley in opener today

The Jonathan Dayton Regional High School varsity volleyball team will open its season tomorrow against Nutley. New coach Melinda Wilson is counting on four returning letter winners.

Soccer Scene

The Cosmopolitan Soccer League. The Kicker's only loss came at the hands of the Union Lancers and that was only decided by one goal, so the match should be a good one.

UCT seedings to use records as of April 25

Records through April 25 will be the basis for consideration when the seeding committees of the Union County Varsity Baseball Tournament prepares pairings for the annual diamond event.

Dayton Boosters meet at 8 tonight

The Jonathan Dayton Regional High School Booster Club will hold its monthly meeting tonight at 8 in the teachers' lounge at the high school.

Bowling Highlights

ST. JAMES LADIES Four Seasons: Ruth Inley, 161-180; 171-512; Joanne Di Pisa, 188-185-156-506; Barbara Bladis, 185-191-501; Madelyn Haines, 171-172-482; Janet Perrino, 189-154-498; Dolores Johnson, 182-165-478; Kay Scheider, 188-150-476; Gall Rapczynski, 158-182-475; Helen Stucki, 174-444; Ann Schaffernoth, 172-171-443; Fong Yen, 156-433; Angela Ragonese, 150-425; Terry Schmidt, 422; Marjorie Seaton, 174-413; Marge Lombardi, 172-413; Ethel Ernst, 152-413; Claire Foster, 405; Jennie Banda, 162; Mena Clemson, 158; Alma Fernandez, 155.

Most rate legislature 'poor' in Maguire poll

More than 50 percent of the voters responding to a questionnaire administered by Assemblyman William J. Maguire (R-22) have rated the work of the legislature as "poor" with only 2 percent willing to give the state lawmakers "good" marks, he said this week.

National swim meet

Scott Warwick of Springfield will represent the Summit Area YMCA at the National YMCA Championships to be held next week in Fort Lauderdale's Summit Pool.

Ruggieri on team

Anville, Pa.—Frank Ruggieri, son of Mrs. Margaret Ruggieri of Hidden Circle, Mountainside, N.J., is a member of the Lebanon Valley College football team.

DON'T JUST CUT GRASS. VACUUM YOUR LAWN.

Both these Snapper Mowers feature a powerful vacuum action that cleans your lawn faster and better than other mowers. They also have extra large grass bags so you don't have to stop as often to empty. So choose the model that fits your lawn. And vacuum it while you mow.

SNAPPER

GENERAL SERVICE
340 South Ridge E.
Westfield

CARDINAL LAWN & GARDEN CENTER
177 Union Ave.
Springfield

Search for Health

The macula is a small yellow-pigmented area in the central part of the retina. Unfortunately, there is no way of effectively treating most forms of macular degeneration, although many patients can be helped to read by low-vision aids such as special eyeglasses and magnifiers.

Some ophthalmologists are using the laser to treat certain forms of macular degeneration. This technique is used only in selected cases, and its effectiveness in preventing or controlling loss of visual acuity has not yet been clearly established.

Through research, progress has been made in understanding the cause and development of macular degeneration which may eventually lead to means of preventing and successfully treating this disease.

One new diagnostic technique involves making a series of photographs of the retina after intravenous injection of two fluorescent dyes. Each eye illuminates a different system of blood vessels in the back of the eye, and dye leaking from damaged vessels shows up on the photograph.

This method, recently developed by scientists at the National Eye Institute, a component of the National Institutes of Health, is presently used primarily in research. However, it promises to aid physicians in the future by helping them diagnose more accurately abnormalities of the ocular blood vessels which underlie diseases like macular degeneration.

NOW SAVE \$346 ON DASHER AIR-CONDITIONING.

If you miss out on our great air-conditioning deal, you could get hot under the collar. Because now Douglas Motors is offering air-conditioning on all new Dashers at tremendous savings. Air that's regularly \$495 is, for a limited time, just \$149.

So hurry. Because our great air-conditioning deal is only a temporary condition.

\$149.00

Retail Value \$495.00

On all new 1978 Dashers purchased now through May 31.

DOUGLAS MOTORS CORP.
430 Morris Avenue, Summit, New Jersey (201) 477-3300



EARL PHILLIPS of South Orange has been named vice-president of operations at the College of Medicine and Dentistry of New Jersey. Phillips formerly served five years as assistant executive director of the Newark Redevelopment and Housing Authority. At CHDMJ, he will be in charge of plant maintenance, campus security, transportation, safety, and the care and use of facilities, property and supplies at campuses in Newark, Piscataway and Camden.

Deadline listed to shift primary party affiliation

Secretary of State Donald Lan noted this week that Monday, April 17, is the last day for a registered voter in New Jersey to change party affiliation for the June 6 primary election. Lan's office administers Title 19, the election laws of New Jersey. Party affiliation has no bearing on the Nov. 7 general election, since a voter has a free, non-party choice at that time. "Party affiliation changes must be made on forms available during office hours from any municipal clerk, county commissioner of registration or county election board," Lan stated. First-time primary election voters may vote for the party of their choice by merely announcing that choice at their polling place on election day. "Those who have never registered to vote, Lan added, may do so until the May 8 cut-off date for the primary election. The registration books will thereafter be reopened for eligibility for the November general election. To be eligible to vote in New Jersey, you must be a United States citizen, 18 by election day, living at present address 30 days or more prior to voting and not denied the voting franchise due to a criminal record.

EVE panel to explore 'Coping with Stress'

A one-day conference on "Coping with Stress" will be presented by EVE (Education, Vocational, Employment) at Kean College on Saturday, April 29, from 9 a.m. to 3:30 p.m. Following a welcoming address by Mae Hoch of Unig, director of EVE, a panel will discuss the causes and effects of stress, coping strategies and a total approach to self-management. Afternoon workshop sessions will address topics such as "Stresses in Personal and Work Relationships," "Relaxation Techniques," "Dealing with Life Transitions" and "Developing Support Systems to Ease Stress."

Mary Ann Bornmann of Short Hills is the conference coordinator. Panelists and resource people include Joan Alveras, director of Feminist Resource Center of Nutley; Dr. Betsy Brown, Westfield psychologist; Patricia Tavo, chief clinical dietitian, Beth Israel Hospital; Renee Jacobs of Summit, psychiatric social worker; Barbara Maher, EVE counselor from Berkeley Heights; and Edith Benish, associate professor of physical education at Kean College.

The fee of \$12 includes a hot lunch and materials. Registration deadline is Saturday. Further information is available from the EVE office, 527-2210.

Montclair Museum to hold 'Family Day'

"Family Day" the Montclair Art Museum's annual multimedia outdoor-in-door event, will take place on Saturday, May 6, from 1 to 4 p.m. It was announced this week by the chairman, Mrs. Kathryn Hanley.

ARE THEY OPEN TONIGHT?

They have been bringing to classrooms throughout New Jersey. Family Day at the Montclair Art Museum is also the day for the outdoor exhibition of the work of students in museum art classes. Work done by adults and children in all classes will be on display.

DOG OBEDIENCE
Enroll Now For CLASSES In:
• UNION • WESTFIELD • SUMMIT • ISELIN
ALL BREEDS Complete Course \$35
N.J. DOG COLLEGE
654-6632
Mention This Paper & Receive A Free Gift While Waiting!

TERMITES
Swarming - call **BLISS**

BE SURE... BLISS has been serving the Home Owner for 96 YEARS. For a complete FREE INSPECTION of your home by a Termites Control Expert, supervised by the finest technical staff, phone:

UNION-SPRINGFIELD 277-0079
ROSELLE-SENBURTH 676-8888
WESTFIELD-CHAMFORD 233-4448
ROSELLE-SENBURTH 353-8753

BLISS TERMITE CONTROL
DIV. OF BLISS EXTERMINATOR COMPANY • EST. 1882
One of the Oldest & Largest

TV examines handicapped
Two documentaries about how families have adjusted to their severely handicapped children make up an hour-long program, "Reach For Tomorrow" and "Kurt, A Retarded Child in the Family," on Sunday at 4 p.m. and Wednesday at 8 p.m. on New Jersey Public Television. "Reach for Tomorrow," a production of Japan Nippon Television Network, chronicles the first 13 years in the life of Takashi Arai, a thalidomide "seal baby." In "Kurt, A Retarded Child in the Family," Mr. and Mrs. Robert Lesko of Mechanicsburg, Pa., recall their initial reactions to their retarded child and the impact he has had on their lives.

TV examines handicapped
The ancient civilization on the Greek island of Crete is considered Europe's oldest.

SPRING CLEAN WITH SIPERSTEIN

SUPERSTEIN'S IS NEVER UNDERSOLD! NOBODY BEATS OUR PRICES!

Free! Pittsburgh Paint T-SHIRT with purchase of \$25 or more, while supply lasts!

WE CARRY PITTSBURGH BEST QUALITY PAINT ONLY

Moore's House Paint
EXTENSION & REPAIR

LOWEST PRICES!

HOUSE PAINT WALL SATIN MOORGARD LATEX HOUSE PAINT

BLACK TOP SEALER 5 Gal. Can \$5.95

LATEX FLAT WALL PAINT

Oil Base \$9.80 Gal.
LATEX FLAT \$6.95 Gal.
LATEX HOUSE PAINT \$8.75 Gal.

WALLPAPER DEPT. Better by Any Measure

FANTASTIC DISCOUNTED PRICES ON:

- DECORATIVE PRINTS
- HANDPRINTS
- MYCARS
- FOILS
- SANDS
- CORKS
- FLOCKS

CHOOSE FROM 550 WALLPAPERING BOOKS

Wallpaper 55% OFF

LADDERS

16 FT.	34.95
20 FT.	43.95
24 FT.	52.95
28 FT.	63.95
32 FT.	74.95
36 FT.	84.95
40 FT.	109.95

ADORN VINYL LATEX \$3.10 Gal.

JUST ARRIVED Large Selection of

VINYL CLOTHES & NYLONS 1.95

PAINT ROLLER & TRAY 90

SANTAS 4.95

MARINE PAINTS 40% OFF COPPER BOTTOM PAINT

ROLEX
The Blue Water Watchmate

Kodak jewelers
CORNER MORRIS & SPRINGFIELD UNION N.J.

MIDDLESEX HALL, 501 Parkside N.J.
LEGGHADDON HALL, 1000 Morris St. N.J.
MORRIS ST. HALL, 1000 Morris St. N.J.
WORLD TRADE CENTER, New York City
53 BROADWAY, Bayonne N.J.

DIAMOND APPRAISALS

Daffodil show in Princeton
The fifth annual New Jersey Daffodil Society show will be held on Thursday, April 20, from 1 to 3 p.m. at the Unitarian Church on Route 206 and Cherry Hill road in Princeton. The show is open to the public with no admission charge. Interested exhibitors may obtain a schedule and entry cards from Mrs. Fern Stafford, 338 The Great road, Princeton, 08540. Any named variety of daffodil, grown in the open by the exhibitor, is eligible.

Summer-time to build a future.

Seton Hall Summer School

After a long, hard winter, both graduate and undergraduate students can utilize the coming summer months to draw a little closer to their goals and objectives in life. Seton Hall University will offer more than 500 courses on a coeducational basis in a variety of situations, both day and evening, to make this summer a time of progress and learning for those who are impatient to move forward.

YOU HAVE A VARIETY OF TIME OPTIONS RUNNING FROM MAY 30 THROUGH AUGUST 4

ARTS AND SCIENCES... EDUCATION... NURSING
BUSINESS, ADMINISTRATION

Catalogs Now Available Telephone 752-9000 Ext. No. 408-409

Write: Director of Summer Sessions
Seton Hall University
South Orange, New Jersey 07078

SETON HALL UNIVERSITY

WE'RE ADDING A **Splash**

OF EXCITEMENT TO OUR ANNUAL SPRING VALUE DAYS SALE

RAIN OR SHINE, IT ALL TAKES PLACE THURS., FRI. & SAT. APRIL 13TH, 14TH & 15TH

LOT

RIVERSIDE SQUARE MALL
Hackensack, N.J.
"By The Foundry" (201) 480-2558

LIVINGSTON MALL
Livingston, N.J.
Upper Level (201) 982-4645

SPRING SALE
NOW IN PROGRESS

1/3

& MORE OFF our orig. low prices
DRESSES & PANTSUITS

Rush in for best selection! Find a sunny young group of Spring's liveliest fashions! Dash out with dresses and pantsuits at happy prices. Yours in junior and misses sizes.

LERNER SHOPS
LIVINGSTON MALL

RJ BOGGS

WE'LL HEM YOU UP IN A DAY

The great slacks you need and want to complement your wardrobe, smartly tailored and affordably priced. Hemmed in one day.

The man's shop

LIVINGSTON MALL
We accept American Express, BankAmericard and Master Charge.

only \$9995

Garmin

SAM GORDON'S SPECTACULAR SPRING CLEARANCE IS JUST WHAT YOU'VE BEEN WAITING FOR . . . BIG SAVINGS, PERSONALIZED SERVICE, PLUS SAM GORDON'S STANDS BEHIND WHAT THEY SELL.

SONY BETAMAX VIDEO TAPE RECORDERS
NOW ONLY **799⁹⁵**

EMERSON QUIET KOOL 5000 B.T.U. AIR CONDITIONERS
PRE SEASON SPECIAL **\$119⁹⁵**

PIONEER CENTREX 8-TRACK STEREO SYSTEM 22 1/2" SPEAKERS
MFG. SUG. LIST 199.95 **\$139⁹⁵**

CALORIC 30" GAS RANGES SEPARATE BROILER DRAWER
\$199⁹⁵

FISHER 8-TRACK PLAY/RECORD STEREO SYSTEM WITH SEPARATE TURNTABLE IF SOLD SEPARATELY \$469.95 **\$229⁹⁵**

MAGNAVOX SOLID STATE PORTABLE COLOR TV'S
MFG. SUG. LIST \$329.95 **\$259⁹⁵**

WESTINGHOUSE HEAVY DUTY 2-speed WASHERS
MFG. SUG. LIST \$334.95 **\$239⁹⁵**

ZENITH CHROMACOLOR II 17" DIAGONAL PORTABLE COLOR T.V.'S
MFG. SUG. LIST \$399.95 **\$299⁹⁵**

AMERICAN FOOD PROCESSOR
\$39⁹⁵

CALORIC OUTDOOR GAS PORTABLE BAR-B-QUE GRILLS
\$79⁹⁵

FREE ANTENNA

PEARCE SIMPSON DELUXE 40 CHANNEL CB RADIOS
\$99⁹⁵

DEHUMIDIFIERS
PRE SEASON SPECIAL **\$119⁹⁵**

RCA 15" DIAGONAL SOLID STATE PORTABLE COLOR TV'S
\$299⁹⁵

CORNWOR COUNTRY MANOR HARDWOOD KITCHEN CABINETS
60% OFF LIST

MORE SPECTACULAR SPRING CLEARANCE SPECIALS

CBS-STEREOS	TELEVISIONS	APPLIANCES	REFRIGERATORS-FREEZERS-RANGES
Famous Make AM/FM 8 Track Stereo with Speakers 79⁹⁵	G.E. 12" Diagonal Black & White TV's 69⁹⁵	Whirlpool 3 Speed 6000 BTU Air Conditioners 159⁹⁵	Caloric Free Standing 30" Electric Ranges 199⁹⁵
Hy Gain 40 Channel Hi-Fidelity CB Radios 99⁹⁵	Zenith 12" Diagonal Black & White TV's 79⁹⁵	Famous Make Apt. Size Compact Washers 169⁹⁵	Famous Make 17 Cu. Ft. Upright Freezers 269⁹⁵
Pioneer AM/FM 8 Track Stereo w/Speakers 119⁹⁵	G.E. 17" Diagonal Deluxe Color TV's 299⁹⁵	Armana Deluxe 6000 BTU Air Conditioners 189⁹⁵	Frigidaire Custom Deluxe 30" Smooth Top Electric Range 399⁹⁵
Magnavox Console Stereo Modern White Cabineetry 149⁹⁵	Zenith 17" Diagonal Portable Color TV's 329⁹⁵	Whirlpool 3 Speed 6000 BTU Air Conditioners 189⁹⁵	Armana 16-Cu. Ft. Frost Free Refrigerators 429⁹⁵
Pioneer Control AM/FM 8 Track Stereo with Turntable 169⁹⁵	Zenith 19" Diagonal Zenith Remote-Control TV 479⁹⁵	G.E. Garbage Trash Compactors 199⁹⁵	Frigidaire 20 Cu. Ft. Refrigerator Freezer 429⁹⁵
Sylvania Multi-Response Console Stereo 179⁹⁵	Magnavox 19" Diagonal (4) Remote Control Color TV's 499⁹⁵	Emerson 220 Volt 12000 BTU Air Conditioners 279⁹⁵	Whirlpool 19 Cu. Ft. Refrigerator w/ice maker 429⁹⁵
Pioneer Centrex AM/FM Cassette Stereo w/Changer 249⁹⁵	Sony Betamax (1 Hr.) Video Tape Recorder 699⁹⁵	Whirlpool Top Model Undercounter Dishwashers 359⁹⁵	G.E. Deluxe Side by Side 24 Cu. Ft. Refrigerator Freezer 599⁹⁵

MADISON
33 Central Ave.
377-3000

LIVINGSTON MALL
Upper Level
ARRANGE TO BUY
992-8283

DOVE
1 East
366-8100

AMERICA'S MOST RELIABLE DEALER

Sam Gordon's
WE DELIVER WHAT WE PROMISE!

SAM GORDON'S PERSONAL GUARANTEE OF SATISFACTION
SAM GORDON GUARANTEES COMPLETE SATISFACTION OR REPLACEMENT OF ANY PERSENTLY TROUBLESHOOTING MAJOR APPLIANCE SOLD BY SAM GORDON'S APPLIANCE SUPERMARKETS WITHIN ONE YEAR . . . TELEVISION AND STEREO 90 DAYS.

Natelsons 90th Anniversary Sale

Men's clothing.

Our Cut-Make-&Trim California weight sport coats, selling at \$95. They attract an ever-enlarging audience. Fabrics are Dacron polyester and worsted wool, woven by Burlington Mills, in a miniature hopsack weave. This year we offer solid shades of light blue, yellow, camel and navy, plus neat checks in blue or tan. We buy our own buttons and linings and have them tailored by a manufacturer we've known for years. Unbeatable value. **72.90**

Natelsons CMT slacks.
Burlington Dacron/wool solid or patterned fabrics, regularly 35.00. **26.90**
Group of new spring
Chaps suits, designed by Ralph Lauren. And some Joshua Trents. Regularly 215.00 and 225.00. **179.00**
Own make Dacron/wool
vested tropical suits: solid tones of navy, grey, tan, blue and olive, plus classic patterns. Regularly 175.00 and 185.00. **139.00**
Blazer and new heathertone
quad suits: matching coat and trousers, plus neat check sport slacks and reversible vest. All of Klopman polyester fabrics. Regularly 175.00. **139.00**

Men's haberdashery & sportswear.

Hathaway short sleeve button down shirts. Cotton blend oxford cloth. Solid colors, white, blue cream, regularly 18.50. **13.98**
Natelsons own make
short sleeve broadcloth dress shirts. Whites, solids, classic stripes. All machine washable. Regularly to 12.00. **Box sale 3/26.98**
Great value
Sox Sale: famous Burlington nylon
rib mid-length, regularly 2.00 **3/4.79**
Gold cup casuals, regularly 1.75 **3/4.19**
Natelsons boxer shorts, reg. 3/7.75 **3/6.49**

Spring and Summer sports needs:
Light weight Dacron/cotton golf jacket with knit collar and sleeves, regularly 25.00. **19.98**
Natelsons own ribbed belled
Dacron/cotton poplin slacks. Khaki, navy, light blue, maize. All machine washable. Regularly 18.50. **14.98**
Natelson label tailored collar
golf shirt, mesh weave, perma-press, machine wash. Regularly 11.00. **8.98**
Natelson own single needle
short sleeve sport shirts, batiste weight, voile dot, regularly 12.50. **9.98**

Young marrieds, young singles.

Britania's hottest pre-washed
jean, regularly 16.00. **12.90**
Blouson jacket, puffy collar,
100% cotton twill with knit collar and
cuffs, button front, side and top entry pockets,
raglan sleeve. Regularly 55.00. **34.90**
Polyester and wool hopsack
blazer, flap patch pockets, center vent.
Regularly 65.00. **54.90**
Unlined fashion trench coat,
belled and double breasted, great lines
and fit. Regularly 85.00. **59.90**

After 90 years in business
selling good clothing to good
customers, Natelsons is in a
strong position with menswear manufacturers.
They go all out to help us bring you the best,
dollar for dollar. This sale, on our Ninetieth
Birthday, is an outstanding example.
Natelsons.
One Livingston Mall. Telephone 992-8000. Enter
direct from Parking Area 24. Open 10 a.m. to 9:30
p.m. Natelsons Charge and Bank Cards.

TAKE ADVANTAGE!
of our FREE COUPON and low sale prices NOW. Sale good through April 30, 1978.

FREE
with this coupon
VITEX VITAMIN E
100 I.U. - 30 tablets

NAME _____
ADDRESS _____
CITY _____ STATE _____ ZIP _____

YOGURT 29¢
Dannon of
Columbo
8 oz. Cup

FORMULA TM \$1.99
100
Tablets

Chewable ACEROLA-C 99¢
100 mg.
100
Tablets

VITAMINS & SUPPLEMENTS		NATURAL FOODS	
Vitamin A Capsules 10,000 I.U.	100's .85	Bran Flakes (limit one)	8 oz. .25
Vitamin B12 sup. Tablets	100's .85	Sea Salt (limit one)	26 oz. .25
Kelp Tablets	100's .85	Cider Vinegar (limit one)	16 oz. .25
Bone Meal Tablets	100's .85	Brown Rice	16 oz. .40
Iron & Yeast Tablets	100's .99	Roasted & Salted Sunflower Seeds	6 oz. .40
90% Protein Tablets	100's .99	Roasted & Salted Soybeans	6 oz. .40
Wheat Germ 6 Min. Capsules	100's .99	Prunes 20/20	16 oz. .99
Formula 8516 Tablets	100's .99	7 Grain Granola	16 oz. .99
Vitamin C-500 with Rose Hips	100's \$1.99	Papaya Concentrate	1 qt. \$1.78
LactinA Granules	8 oz. \$1.99	Safflower Oil	32 oz. \$1.78
Tri-E-1000 I.U. Capsules	100's \$1.99	Flax Sunflower Seeds	14 oz. .99
Polvit 8-50 Tablets	50's \$1.99		

We stock all major national brand vitamins,
health foods, and natural cosmetics.
Livingston Mall

SPECIAL! GROUP OF FUN SHOES
reg. 4.99 to 7.99
3.90 to 6.40

Happy feet is wearing
a little bare slide
for easy-livin' hours.
Savings priced, too!
Style shown, 3.90

Save on handbags and pantyhose, too!

Master Charge - Visa
BAKERS
LIVINGSTON MALL

SALE! BE WELL-DRESSED FOR SPRING IN SAVINGS FROM MAIN FLOOR DRESSES!

REGULARLY 26.00 to 36.00 **19.98**

Spring's simplicity... dresses in great cosmopolitan looks for taking you straight through summer! Jacket dresses in floral prints and solids, seersucker, plaids, pinstripes and neutrals. Short and long sleeve selections in terrific prints and patterns. Two piece dresses in solids and prints and popular styles! For Misses 8 to 18.

MAIN FLOOR DRESSES

Epstein

MORRISTOWN 9:30-5:30, WEDNESDAY AND FRIDAY 9:30-9:00
LIVINGSTON MALL 10:00-9:30, INCLUDING SATURDAY
SOMERSET SHOPPING CENTER 9:30-9:00, SATURDAY 9:30-5:30

spring
-into-
summer

tees
shorts
skirts
tops
dresses
clogs
shoes
accessories

PANTS PLACE

PLUS

- Livingston Mall
- Willowbrook Mall
- Woodbridge Center

Levi's® Wildfire®
Slacks
Comfortable and
Good looks too!

Try the clean look of slacks which let you step up front and leave others behind. The pant that can dress up or down with a simple shirt. All colors for your wardrobe. \$16

Be a
Cooler
man

WILDFIRE

FROM LEVI'S & PANATELA

EARLIN'S

Daily and Saturday, 10-6:30
Rockaway Town Square 265-0071 • Livingston Mall, Livingston 264-6040
Willowbrook Mall, Wayne 785-1477 •
Middletown Mall, Easton 544-8722 • Paramus Park, Paramus 267-1110
Daily and Saturday 8:30-4:30 • Thurs. 8:30-9 • 25 Broad St., Elizabeth 254-7277

Charge it with Bank America! MasterCard, Discover, or better yet, get your own Credit Charge Card!

FOR ONCE,
**Nothing's
NEW**
AT LIVINGSTON MALL.

THAT'S BECAUSE OF
OUR SEMI-ANNUAL
**Antique
Show**

SO, STOP BY AND
HANG YOUR HAT
FOR A SPELL.

THE SHOW WILL BE HERE
**TUESDAY,
APRIL 11TH
THRU SATURDAY,
APRIL 15TH**

"We've put it all together"

**Livingston
Mall**

Elmhurst Parkway @ South Orange Avenue, Livingston, New Jersey
BARBERGERS, HANES, M. EPSTEIN, SEARS PLUS 130 FINE STORES & SERVICES
OPEN MONDAY THRU SATURDAY 10 AM TO 9:30 PM

Produced by
MAIL PUBLICATIONS, INC.

41 MAPLE STREET
SUMMIT, NEW JERSEY 07901
(201) 277-0400

"Sorry. Not good enough for Goody's."

JENSEN

WE HONOR: ON PURCHASE OF \$5 OR MORE!

Toshiba SA-320 AM/FM Stereo Receiver, B+C 920 Belt-Drive Record Changer With Base, Dust Cover, Cartridge, Two Jensen 20 Two-Way Speakers.

Toshiba PC-3080 Stereo Dolby® Cassette Deck.

Here's a golden opportunity to own a total home entertainment system, complete with cassette tape deck, for a surprisingly affordable price.

Toshiba's SA-320 is a gem, delivering 14 clean watts minimum RMS power. It can fill a room with ear-tingling sound, and it's got a panel-full of versatile controls.

B+C's over-reliable 920 record changer is belt-driven for quiet, smooth performance, and it features ejection and anti-skating controls to prevent scratches. The Shure cartridge we've included is an excellent music-giver.

Two Jensen 20 speakers will make sure everything sounds exactly right. Each has an 8" woofer and 2" tweeter for shimmering highs and deep, rich lows.

But the real value of this system is the inclusion of Toshiba's sensational PC-3080 cassette deck. It's got Dolby® circuits for hiss-less taping and an amazing array of sophisticated controls. If you want more sound for your money, check this system out today!

COMPLETE AS SHOWN 499⁹⁵

*Dolby is a registered trademark of Dolby Laboratories, Inc.

RECORD & TAPE SALE!
POP • ROCK • CLASSICAL • FOLK • SOUL • JAZZ

ON THESE 27 LABELS FROM THE MUSIC STORES OF LIFE & THE MUSIC STORES OF MUSIC

• CAPITOL • COLUMBIA • EPIC
• LONDON • COLUMBIA MASTERWORKS • APPLE
• KIRSHNER • PHILADELPHIA INTERNATIONAL • TSCW • T-MECK • PLAYBOY
• IMPACT • BLUE SET • MIRAGE • LIBERATION • CAROLIN • POSTER
• CALLA • BERKELEY • HARVEST • DIAMOND • THRESHOLD • PARROT • HI
• ARGO • TELEFUNKEN • L'ORFÈRE-LYRE

RECORDS

369	439	539	6.99
each	each	each	each

PLUS ANY

ANY ODYSSEY CASSETTE IN OUR INVENTORY 349

PLUS! Two Jensen 6 x 9" Speakers

Sony TC-470 In-Cassette AM/FM With Cassette

SAVE \$50

Reg. 129.95 **\$79**

JENSEN

WHEN YOU PURCHASE OUR BUYER'S AUDIO SYSTEM YOU CAN SAVE \$50 ON A GREAT CAR STEREO SYSTEM!

PLUS! Two Jensen 6 x 9" Speakers

Sony TC-470 In-Cassette AM/FM With Cassette

SAVE \$50

Reg. 129.95 **\$79**

JENSEN

- Gary Thorne, Audio Buyer for Sam Goody!

Our Gary's a tough guy to please. And that's what makes Sam Goody such a great place to buy your audio equipment. You see, in addition to being an audio expert, Gary's a perfectionist. He just won't allow second-best products to be sold at Sam Goody. So when you shop here, you've got Gary's seal of approval on every piece of equipment. (And if you know Gary, you'd know how much that means in terms of your peace of mind.)

You'll find only the finest names in sound at Sam Goody. And we've made sure that you have more than enough different models to choose from so that you don't have to worry about second-guessing yourself later.

So do your ears a favor, and buy your audio equipment at Sam Goody. Because Gary won't sell you anything he wouldn't buy himself!

Koss Pro 444 Stereo Headphones
Full frequency sound with the ultimate in comfort and privacy.

Pioneer SE-4 Stereo Headphones
Clean, clear sound throughout the entire audible spectrum.

YOUR CHOICE 29⁹⁵ EACH

Replace your old or worn cartridge and start hearing a sound difference!

ADC CLM 32-III Stereo Cartridge
OR
Pickering 380C-II Stereo Cartridge

YOUR CHOICE 14⁹⁵ EACH

Sony Mini B-Track Car Stereo Player
Fits anywhere! Features continuous tone control, auto or manual channel selection, more!

Sony Mini Stereo Cassette Player
Locking fast forward, auto start/stop, reversible skip-skip/rewind/reverse.

YOUR CHOICE 44⁹⁵ EACH

RECORDS

369	439	539	6.99
each	each	each	each

TAPES

5.99	6.89	7.79	8.99
each	each	each	each

PLUS ANY

ANY ODYSSEY CASSETTE IN OUR INVENTORY 349

PLUS! Two Jensen 6 x 9" Speakers

Sony TC-470 In-Cassette AM/FM With Cassette

SAVE \$50

Reg. 129.95 **\$79**

JENSEN

THE WORLD'S LARGEST RECORD, TAPE & AUDIO DEALER

SAM GOODY

LIVINGSTON MALL LIVINGSTON, N.J.

PRICES EFFECTIVE THRU SAT. APRIL 15, 1978

APRIL 1978, PAGE 8

Bamberger's Budget Store

A HIGHLIGHT OF OUR SALES MANAGERS' SALE DAYS

SPRING'S AFOOT: MISSES' SUN/FUN SHOES 20% TO 40% OFF

Sale 7.99
THE EASY-DOES-IT CLOGS
(A320) The cut-out heel in molded urethane with cork innersole, no-slip sole. Navy, tan or white. 5 to 10. Reg. \$10.
(B320) The foot-hugger with padded urethane vamp, elastic inserts and no-slip soles. Navy, tan or white. 5 to 10. Reg. \$10.

Sale 2.99
SLINGS, SLIDES AWAY
(C370) The easy urethane slide with comfort-cushioned innersole. Black, tan, blue, doe, yellow and white. 5 to 10. Reg. 3.99.
(D370) The buckled sling back in crissle patent urethane with walking heel. Black, tan or red. 5 to 10. Reg. 4.99.

Sale 7.50 and 8.50
THE CANVAS GAD-ABOUTS
(E320) The envelope espadrille, rope-trimmed on a hemp covered wedge heel. Natural, navy or black. 5 to 10. Reg. \$11 SALE 7.50.
(F320) The platform sandal with buckled ankle strap, stitched low-knot vamp. Natural, navy or black. 5 to 10. Reg. \$12 SALE 8.50.



Phone or write on 7.01 or more for delivery within New Jersey and our delivery areas in N.Y., Pa. and Del. Phone (201) 376-4444 or your local Bamberger's teleservice number or write. There is a 50¢ handling charge on your total mail or phone order. Misses' shoes. Bamberger's Budget store.

It's never too late to plan your cruises... Let us help you with a

Special Entertainment Cruise... or... Honey-moon Cruise

LIVINGSTON TRAVEL AT THE MALL

6 LIVINGSTON MALL, LIVINGSTON, NEW JERSEY 07033 (201) 894-2580

JEANS WEST SPRING SALE

Pants \$9.99

Tops \$7.99

Offer good through April 23

JEANS WEST Livingston Mall

PAGE 9, APRIL 1978

Happy mortgages come from our new Chatham mortgage office.

With low rates—low down payments—and now, even faster approval. Yes, the Howard has home mortgage money available—and we're making it even faster and easier for you to buy your home the Howard powered way. Now there's a regional mortgage office in Chatham, with a full-time staff to handle interviews and appraisals locally. In most cases we can process applications and approve the loan in only 7 working days!

Naturally, you can still apply for a Howard mortgage at any convenient Howard office. But for really speedy approval, stop by our new regional mortgage office at 434 Main Street in Chatham. Or call Chris Schroller at 635-0644 for more information. We're open Monday through Friday, 9 am to 4 pm. The Howard also has mortgage money available for apartment houses, shopping centers and industrial buildings, as well as homes.

the Howard SAVINGS BANK

Regional Mortgage Office: 434 Main Street, Chatham

APRIL 1978 PAGE 10



Mens Shirts
\$7.99 & \$9.99

For the men: A great selection from our regular stock of Levi's and County Seat long sleeve shirts! Choose from a variety of solids, checks and plaids.

Levi's Student Jeans
\$7.99

For the Students: Levi's student (waist sizes 25-30) Carpenter jeans, boot-cut twills and fashion denim jeans at an unheard of price! Reg. \$13-16.00.

LIVINGSTON MALL
(S. Orange Ave. & Elmwood Plwy.)
Phone: 994-9058



**Semi-Annual
Antique Show**
April 11 - April 15

**Fairleigh Dickinson
Jazz Band**
Friday, April 28 at 7:30 p.m.

"Wild World of Exploring"
Saturday, April 29th

"We've put it all together"

**Livingston
Mall**

Livingston Mall is a partnership between Parkway Co. South Orange, New Jersey; Livingston Mall, Livingston, New Jersey; and Bamberger's, Hahnes, M. Epstein's, Sears Plus 130 Fine Stores & Services. OPEN MONDAY THRU SATURDAY 10 AM TO 9:30 PM.

Bank gives away MONEY!

Open a new Statement Savings Account or Charter Investment Account with \$500 or more at SUMMIT's Livingston Mall office, and SUMMIT will deposit \$5 to your account! This limited offer good at Livingston Mall office only.

You have two great accounts to choose from:


5% Effective Annual Yield SUMMIT STATEMENT SAVINGS	5.50% Effective Annual Yield CHARTER INVESTMENT ACCOUNT
5.13% Effective Annual Yield	5.65% Effective Annual Yield

Interest computed from day of deposit to day of withdrawal, compounded daily, credited quarterly. Completely flexible; deposit as you can; withdraw as you need (no passbook necessary). Statements mailed quarterly. Above stated yields are effective when principal and interest are left on deposit for a full year.

Livingston Mall Office—at the Walnut Street entrance between Bamberger's and Hahnes's. 994-3750
Hours: Mon.-Thurs., 9 a.m. to 6 p.m.
Fri., 9 a.m. to 7 p.m. • Sat., 9 a.m. to 2 p.m.

Summit and Elizabeth TRUST COMPANY
MEMBER OF THE SUMMIT BANK CORPORATION

Save \$2.09
Pair off regular price on JPRO's



Men's now \$12.90 - \$16.90
Boys' now \$11.90 - \$14.90

Tube Socks
Men's - 3 pair for \$3.97
Boys' - 3 pair for \$2.99

FATHER & SON
LIVINGSTON MALL

WAYNE STORE OPEN SUNDAYS

FREE FREEZE DRY 99¢ TUBIFLEX WORMS WITH THIS AD (LIMIT ONE PER CUSTOMER)

10 GALLON 3-D BACKGROUNDS SALE 3.99

29 GAL. ALL GLASS AQUARIUM MATCHING DELUXE STAND SALE 29.99

EDY'S 1/2 OZ. MULTI FLAKE FOODS 2 for 1.44

EDY'S 4 OZ. FILTER FLOSS SALE 99¢

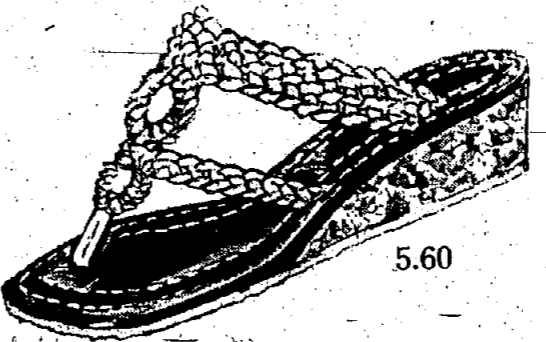
WINES EXOTIC AQUARIUM FISHES BOOK 448 Pages 3.99

OTHER LOCATIONS: WAYNE, TONKERS, FOREST HILLS, LYNDKROOK, ROOSEVELT FIELD, FARMINGDALE

CHANDLERS

Special!
(thru this weekend)

Group of step-ins
reg. 6.99 to 14.99
5.60 to 11.90



Save as you step into summertime! Thongs, clogs, sandals. Macramé and leather tops. Cushy soles. Be early!

Bingo! All fabric handbags 20% off!

Master Charge - Visa
LIVINGSTON MALL

BRING IN THIS AD TO PROFESSIONAL HAIR CUTTERS

FOR A HAIRCUT COSTING \$15 ELSEWHERE, REGULARLY PRICED AT ONLY

\$8

FOR MEN & WOMEN LESS FOR CHILDREN'S CUTS
THIS INCLUDES:
SHAMPOO, CUT & BLOW OUT
PLUS A THERMA FUSE CONDITIONING - A \$2 VALUE AT NO EXTRA CHARGE!

NO APPOINTMENT NECESSARY

OTHER SERVICES: PERMS, LUMINIZING, COLORING & FROSTINGS

Manicurist Friday and Saturday
LIVINGSTON MALL, LOWER LEVEL • 994-2361
Entrance Between Parking Area 6 & 7
Open Mon. - Fri., 9:30 to 9; Sat., 9:30 to 7

CURTAIN WORLD SAVE! 20% OFF



**ON MADE TO MEASURE
AND EXACT LENGTH
DRAPERIES
BY MIDWEST**

Choose from a complete selection of fabrics in prints, solids, antiques, satins, open weaves and sheers. Made in widths from 48" to 240" and finished to length, every INCH UP TO 108" LONG.

- FOUR INCH PLEATED HEADINGS
- BLIND STITCHED BOTTOM HEMS
- DECORATOR FOLDED AT NO ADDITIONAL CHARGE

YOUR OUTLOOK IMPROVES WITH SALE PRICED SHOWER CURTAINS 20% OFF

EVERY SHOWER CURTAIN AND WINDOW CURTAIN IN OUR STOCK WILL BE 20% OFF OUR REGULAR PRICE. CASHIERS WILL DEDUCT 20% OFF THE PRICE TICKET.

OUR DECORATORS ARE FREE

when you **SHOP AT HOME**
FOR CUSTOM DRAPERIES, SHOWER CURTAINS AND REPAIRS
JUST CALL TODAY
992-6311
no charge - no obligation

WINDOW SHADE SALE

QUALITY WINDOW SHADES NOW ONLY **\$2.99** REGULARLY \$10 (IN DECORATIVE STRIPES)
UP TO 37" WIDE
• LAMINATED
• ROOM DARKENER
• COLORS INSIDE
• WHITE OUTSIDE
• WASHABLE
• INSULATING

CUSTOM QUALITY BURLAP SHADES

Burlap textured pattern solid colors of blue, orange, green & yellow.

UP TO
37" WIDE REG. \$ 7 NOW \$2.99
46" WIDE REG. \$10 NOW \$3.99
55" WIDE REG. \$13 NOW \$5.99

BRING OLD SHADES OR INSIDE WINDOW MEASUREMENTS. CUT TO SIZE WHILE YOU WAIT.

CURTAIN WORLD
LIVINGSTON MALL • UPPER LEVEL NEAR SEARS
201-992-8042 • Hours: Mon. Thru Sat. 10:00 - 9:30
ARCHWAY SHOPPING PLAZA ROCKLAND SHOPPING PLAZA TURNPIKE SHOPPING CENTER
SCARSDALE, NEW YORK RT. 56, HANUET, NEW YORK FAIRFIELD, CONNECTICUT

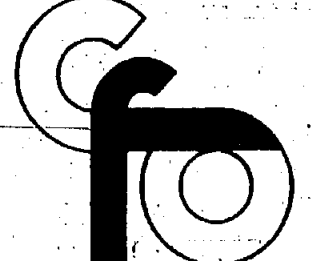
Spring Fashions for your eyes

Complete with SINGLE VISION PLASTIC LENSES ONE YEAR FREE SERVICE ON ALL FRAMES **49.95** (incl. tax & shipping)

- JAC CONE
- FABERGE
- OSCAR
- DE LA RENTA
- DIANE VON FURSTENBERG
- ANTHONY MARTIN

Complete eyeglass service center
1 Hour Service • Prescriptions Filled
Lenses Duplicated • Designer Eyewear
Decorative Mountings • Tinted Glasses
• Contact Lenses

THE LOCAL OPTICIAN
THE SAVINGS ADD UP TO BIG BUCKS



129 Livingston Mall
(Lower Level-near Sears Roebuck)
Livingston, N.J. 07039
201-994-1444

now 25 stores throughout N.Y., N.J., Conn. & Florida.

SCULPTURED WOODS

Know where you can find the season's prettiest shoes...at the season's happiest savings! At A.S. Beck because our shoe fashions are now priced low enough for you to come in and get a pair of each!



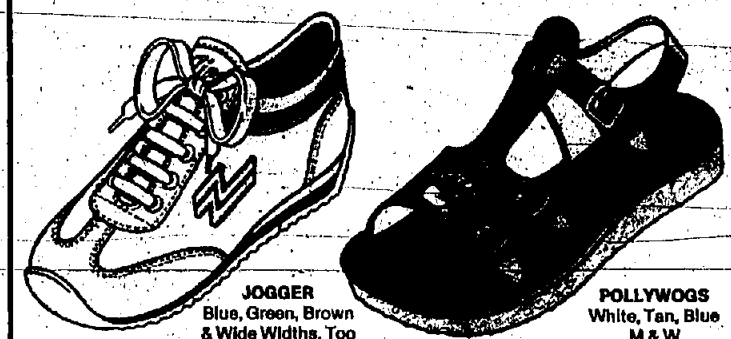
Rope Sandal
Reg. \$14.99
Now \$12.99

Leather Slipper
Reg. \$17.99
Now \$14.99

3-DAY SPECIAL
a.s. beck shoes
LIVINGSTON MALL

ZIPS tickletoes

The sneakers & sandals they liked on TV are now at Stride Rite of LIVINGSTON MALL



JODGER
Blue, Green, Brown
& Wide Widths, Too

POLLYWOGS
White, Tan, Blue
& M & W

One thing you can be sure of, mothers, if they're made by Stride Rite they're made right. Zips and Tickletoes are available in more widths and sizes than any other sneakers and sandals. Zips and Tickletoes... Kids love the way they run, corner and jump. Mothers love the way they're made. by StrideRite®

Prescriptions Filled since 1888
COMPLETE ORTHOPEDIC DEPARTMENT

SLOBODIEN STRIDE RITE SHOES

ONLY AT
MENLO PARK MALL • PERTH AMBOY • BERGEN MALL
WILLOWBROOK MALL • LIVINGSTON MALL • ROCKAWAY MALL

DANNEMANN FABRICS SLIPCOVER SPECIAL

SOFA 3 cushions \$79
LOVE SEAT \$69
CHAIR \$49.50

INCLUDES: Labor (Self-welting, overlock seams and zippers)
SALE FOR TEN DAYS ONLY April 13-22

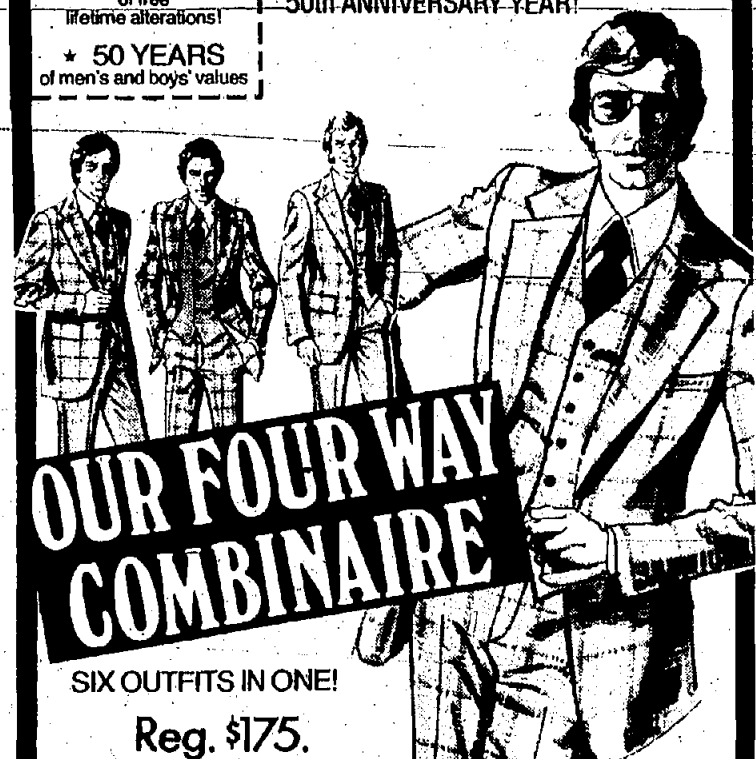
DANNEMANN FABRICS
UPPER LEVEL
41 LIVINGSTON MALL, LIVINGSTON, N.J.
994-3801

Rogers Clothes

50th ANNIVERSARY CELEBRATION

- * 50 YEARS of old-fashioned personal service!
- * 50 YEARS of tremendous selections!
- * 50 YEARS of free lifetime alterations!
- * 50 YEARS of men's and boys' values!

16 GREAT STORES FOR MEN AND BOYS THROUGHOUT NEW JERSEY! TREMENDOUS VALUES — WEEK IN AND WEEK OUT — DURING OUR 50th ANNIVERSARY YEAR!



OUR FOUR WAY COMBINAIRE

SIX OUTFITS IN ONE!
Reg. \$175.

NOW **\$155**

New Botany '500' variation on the classic quad suit!

- Jacket • Reversible Vest
- Matching Trousers
- Contrasting Stripes

Offer ends Sat., April 22nd

Stores throughout New Jersey
Rogers Clothes

LIVINGSTON MALL
(Ground level between Sears & Hynes)
Open Every Night & Sat. to 9:30
MORRISTOWN: 19 PARK PLACE • WILLOWBROOK MALL, WAYNE
Open Wed & Fri. Nights to 9

**OUR LETTERS ARE STONED.
FULL CUT STONED.**

Every single Adler diamond initial of 14K white gold is studded with fine full cut diamonds. With us, the chips are down.

adlers
OVER FIFTY YEARS OF INTEGRITY

GARDEN STATE PLAZA • WESTFIELD • MORRISTOWN
LIVINGSTON MALL • LINDEN • MONMOUTH MALL

Steeplechasers

Kicky high-risers on big wood bottoms. Fun and games. Made expressly for FTM stores at \$25.

ALSO FEATURING FLORESHEIM SHOES FOR WOMEN AND MEN

FLORESHEIM THAYER McNEIL
OPEN YOUR FLORESHEIM THAYER McNEIL CHARGE TODAY

20 LIVINGSTON MALL - UPPER LEVEL

Motherhood
MATERNITY SHOPS

A BLOOMIN' 20% OFF SPECIAL EVENT... FOR A LIMITED TIME ONLY!

APRIL 14 thru 20

Buy any pair of our Maternity Pants at regular price... and pick any flower-fresh top from our regularly priced bouquet at 20% OFF regular price!

Livingston Mall

West Belt Mall (Wayne)
Menlo Park Center (Edison)

wallachs

SPRING SALE DAYS

CLOTHING

OUR MOST FAMOUS MAKER SUITS
REG. 220.00 to 275.00
NOW 169.90

OUR MOST FAMOUS MAKER SPORTCOATS AND BLAZERS
REG. 165.00 to 175.00
NOW 129.90

FAMOUS MAKER AND WALLACHS SLACKS
REG. 37.50 to 42.50
NOW 26.90

SPORTSWEAR

CLASSIC ZIP GOLF JACKETS
19.90

POPLIN CASUAL SLACKS
13.90

FAMOUS MAKER JEANS
14.90

LONG SLEEVE SPORTSHIRTS
13.90

Choose from these selected groupings taken from our regular stock and save substantially. Not every size in every color, so come in early for the best choice. No charge for altering sleeves and cuffs. Nominal charge for other alterations.

wallachs Livingston Mall Livingston.

LARGE SELECTION

NEW SOFT KNIT SWIM SUITS from \$15.95

JOGGING SHORTS from \$4.00

BODY SUITS \$5.99

ASSORTED STICK-PINS \$1.50

parklane
HOSIERY

LIVINGSTON MALL 992-1172

SPRING JACKETS \$24.90
DENIM - POPLIN - DUCK Values to \$38

NYLON SHIRTS \$5.90
Values to \$10

T-SHIRTS \$4.99
NEW SPRING COLORS Values to \$7

POLY GAB PANTS \$10.00
Values to \$21

WOVEN TOPS UP TO 1/3 OFF
SOLIDS AND NOVELTIES

SPECIAL GROUP OF 2 PC. WOVEN DRESSES \$24
Values to \$42

SPECIAL SPRING CLEARANCE
UP TO 1/2 OFF - DRESSES - GOWNS - SUITS
Values to \$75

Perkins International Cigar Month

Perkins brings you premium cigars from around the world... all handmade with long filler and selected wrappers. The tobacco is specially cultivated in various parts of the globe under optimum growing conditions, and is aged for over 3 months to assure unique flavor, mildness, and delicate aroma.

WEEKLY SPECIALS DURING CIGAR MONTH

But 3 cigars of any one size and get the 4th cigar of the same size FREE on these brands:

(APRIL 10-15) THE C.B.P. HONDURAN HANDMADE
(APRIL 17-22) THE MACANUDO
(APRIL 17-22) BOX OF 10 CORPS DIPLOMATIQUE IN CHOICE OF AFTER DINNER, DELAGACION OR AMBASSADEUR ONLY \$2.95

LIVINGSTON MALL - LIVINGSTON

APRIL 1978, PAGE 16

SPRING CLEARANCE SALE
BELT SPECIAL
 All Leather Values to \$12.00
\$2.99 - 2.50

TIMEX WATCHES
 All Styles 20% OFF

LADIES JEWELRY BOXES
 Famous Maker

1/2 Price
NECKWEAR SPECIAL
 Values to \$6.50
99c

Cardinal Ties Livingston Mall
 Lower level Near Bamberg's

Frederick's
 OF HOLLYWOOD

Spring Sale

Some as shown on the Phil Donahue show!

JUMPSUIT
 Orig. \$50.00
 NOW \$29.99

TUBE TOPS
 Orig. \$6.00 - \$9.00
 NOW \$3.99 - \$6.99

SHORTS
 Orig. \$10.00
 NOW \$6.49

SELECTED GROUP WIGS
 Orig. \$20.00 - \$25.00
 NOW \$6.99

LIVINGSTON MALL

Dress Sale
1/3 - 1/2 off

A wide selection of one and two-piece spring dresses. Soft pastel and neutral colors in prints and solids. Hurry in for best selection!

the limited
 LIVINGSTON MALL

WOODWORKS
 by Thom McAn

Woodworks... the natural look from Thom McAn. Natural leather or rope on top and solid wood on the bottom. Wood that's beautifully grained and beautifully stained. Get the natural look. Get Woodworks from Thom McAn. Only \$18.99.

Thom McAn

GNC General Nutrition Centers

World's Largest Health Food Chain - Over 600 Stores To Serve You.

NEW Potent Yeast Food 1 lb. **\$2.99**

VITAMIN C 500 mg. 100 Capsules **\$1.99**
 1000 mg. 50 Capsules **\$3.49**

VITAMIN E 400 I.U. 100 Capsules **50c**
 1000 I.U. 50 Capsules **\$1.99**

NEW! Unsweetened Tropical Papaya Juice 32 oz. **99c**

Try Our Delicious ENERGY SNACKS

Wilderness Pack 4 oz. **59c**

Sunshine Snax 6 oz. **69c**

Energy Mix 6 oz. **79c**

Juice Bowl Juices 5 Varieties 5/\$1.00

Breath Mints 20c

Pure Honey 1 lb. **20c off**

Cold Pressed Corn Oil 16 oz. **79c**

Lecithin Granules 1 lb. **\$3.99**

FREE! Naura Hayden's Best Seller

FREE BROWN RICE 4 oz. Free with Coupon and any \$5.00 purchase. Exp. 4/29/78

SOLOTRON The Only One You Need
 Calcium • Phosphorus • Liver • Magnesium • Potassium • Iron • Bone Meal • Copper • Nickel • Zinc • B-1 • B-2 • B-6 • B-12 • A, D, C, E
 Take One Single Tablet Daily for Potent Multi-Vitamin and Mineral Protection
 100 Tablets **\$9.95** 250 **\$22.95** 500 **\$43.95**

GREAT WAYS TO LOSE WEIGHT!

Start Your Day With Good Nutrition and Get 10c Off on These All Natural Breakfast Cereals

COMPARE & SAVE! on Identical Formulas

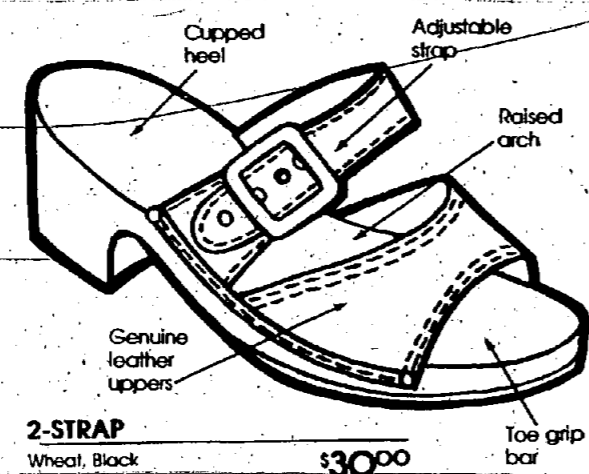
Natural Vitamin Values

Vitamin A 10,000 I.U. 100 Capsules 69c	Vitamin E 400 I.U. 100 Capsules \$4.79
Vitamin B-6 100 mg. 100 Tablets \$9.99	Vitamin A 25,000 I.U. 100 Capsules \$1.75
Potassium Gluconate 595 mg. 100 Tablets \$1.88	Preventron 100 • 20 Free Tablets \$3.95

Shop Smarter for Vitamins at the GNC Nearest You

UPPER LEVEL • LIVINGSTON MALL
 ROCKAWAY TOWNSQUARE • WILLOWBROOK
 WOODBRIDGE • PARAMUS • MORRIS COUNTY MALL

EXP. 4/29/78



2-STRAP
Wheat, Black \$30.00

Oh, those Scholl Shapes...

...the footwear that's "Better than barefoot."

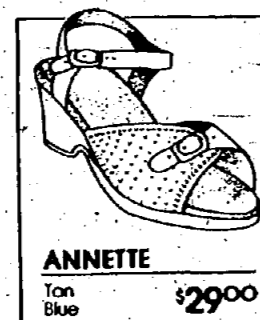
The contoured sole makes the comfortable difference. Lots of styles, colors and sizes. We have the shape and look for you.



CROSS-VAMP
Brown \$30.00



3-STRAP
Bisque Now \$30.00



ANNETTE
Tan Blue \$29.00

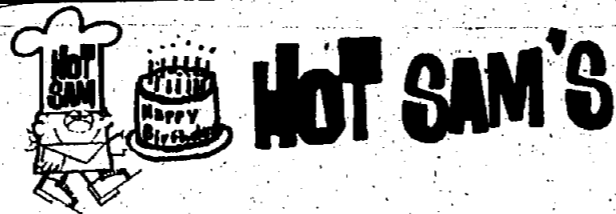


EXERCISE SANDAL
Wheat, Chocolate, Navy, Bone, White \$16.95

All styles and colors may not be in stock in all stores, but are available on request.

Scholl FOOT COMFORT SHOPS

Dr. Scholl's Foot Comfort Shop
LIVINGSTON MALL • 992-8199



Happy Birthday Sale-a-bration

Hot, Fresh, Dutch Style

Pretzels 4/\$1.00

Offer Good thru April 23

Hot SAM
OVER 100 MILLION PRETZELS SOLD

SPRING VALUES

Vacuum Sales & Service Specials
BRING IN YOUR VACUUM FOR OUR SERVICE SPECIAL, **7.95** plus parts



- WITH THIS AD NOW
- New Filter
 - New Filter Bag
 - New Belt
 - Check Overhaul Motor
 - Electrical Inspection
 - Check Bearings
 - Check Fan
 - Check Motor Brushes
- FREE PICK UP & DELIVERY AVAILABLE

HOOVER Black & White Pioneer Drive
Reg. \$169.00 NOW \$133.00

HOOVER CELEBRITY II
with Perimeteric Nozzle
Reg. \$149.00 NOW \$139.00

EUREKA
SAVE \$20
4 Height Adjustments
NOW \$59.95
With Tools

Mail Vacuum Center
994-9050

Lower Level Livingston Mall
Between Parking Area 6 & 7

APR. 13-15 RENOVATION SALE

Mens Painters Pants \$9.90
Reg. \$13

Young Mens Fatigue Pants \$11.90
Reg. \$14

Guys Gauze Shirts \$9.90
Reg. \$13 (Short sleeved)

Kids Assorted Tops \$4.90-6.90
Reg. \$8.50-9.99

Plus hundreds of other great values.

REGISTER TO WIN A 10-SPEED BICYCLE!

Come in from April 13-15 and register to win a his or hers 10-speed bicycle. No purchase necessary.

the gap

LIVINGSTON MALL ONLY

Vanguard presents Bass 100

for women

for men

The one, the only, the original Bass 100's... the comfortable durable casuals that have made it with today's sole searchers. Now great new uppers, but still the same distinctive sole of genuine Goodyear rubber. You already know the track record. Run, don't walk to Bass.

Livingston Mall **VANGUARD**
Footwear for the casual lifestyle

SCOTTY SALE

4-DRAWER STEEL FILE CABINET WITH LOCK AND KEY \$54.99

Heavy-gauge steel construction for years of use. Features full suspension drawers with recessed handles. 2 top drawers lock. 18" x 15" x 15". Choose Black, Tan & Decorator colors. Usual Low Price \$66.99

2-DRAWER STEEL FILE CABINET WITH LOCK AND KEY \$34.99

Compact 28" height fits under your desk! Full suspension drawers 18" deep x 15" wide. Black, Tan & decorator colors. Usual Low Price \$44.99

GUARDIAN STEEL® FIRE-RESISTANT SECURITY CHESTS WITH LOCK AND KEY. Heavy all steel construction. Tan. No. 300 or 85

A. 12-3/4" x 8-1/4" x 4-1/2" Usual Low Price \$12.49 **10.99**

(Not Shown) 12-1/4" x 8-1/4" x 6-1/2" Deeper Model No. 400 or 87 \$13.99

B. LONGER MODEL NO. 500 14 1/2" x 9 1/2" x 4 1/2" Usual Low Price \$17.99 **13.99**

ALL SIZES APPROX.

THE HARDY BOYS & NANCY DREW BOOKS
reg. \$2.95
Sale \$1.99

April 13, 14, 15 & 17

SCOTTY STATIONERY STORES
LIVINGSTON MALL - Lower Level Near Bams
"America's Leading Full-Line Stationery & Luggage Store"
PHONE 992-0484

APRIL 1978, PAGE 20

In celebration of our 11th great store now open in Monmouth Mall, Eatontown, N.J.



Snowbound by Donald Voorhees

Hand signed and double matted lithograph in a handsome 8 x 10" wood frame—only \$12.

Donald Voorhees, past president of the N.J. Watercolor Society, has adapted the watercolor technique to the art of lithography. Five of his beautiful limited editions are now specially priced at Prints 'N Things throughout the New Jersey and Pennsylvania areas.

Mr. Voorhees, listed in "Who's Who in American Art", has spent more than 25 years developing sensitivity in choice of subject and palette. Be sure to visit us soon to see this special showing and all our fine prints—popularly priced for your enjoyment.

Prints 'N Things

New 11 exciting observations:

- Livingston Mall • Oxford Valley Mall • Echelon Mall
- Quaker Bridge Mall • Lehigh Valley Mall
- Montgomery Mall • Willowbrook Mall • Woodbridge Center
- The Fashion Center, Paramus • Rt. 22 Greenbrook • Monmouth Mall

COME JOIN THE FUDGE FESTIVAL

1 1/4 POUNDS FOR THE PRICE OF 1 POUND



Be a Thom Girl In Spring Slings by Thom McAn.



Fashion's in bloom this spring when you strap on Spring Slings by Thom McAn. Free and easy styles to help you step into the season in fashion. In white or bone. Only \$15.99.

LIVINGSTON MALL MILES 533-9632

SECOND SKIN...

dress pants that fit like jeans to function for any occasion

Available in seamless \$16.00
panel pant \$17.00
and wide leg style \$18.00

coordinate them with a short sleeve dress knit shirt \$9.98

CHASS KING

LIVINGSTON MALL

FRIDAY AND SATURDAY SALES MANAGERS' SALE DAYS

PAGE 21, APRIL 1978

30% OFF

Misses' famous maker coordinates. Easy-wear polyester knit blazers, pants, skirts, blouses and tops in spring colors. Orig. \$22-\$46

SALE \$16

Misses' full skirts and pants. Back wrap skirt, belted or elastic waist fly front pants. Cotton-polyester in 4 colors. Reg. \$22

25% TO 33% OFF

Misses' T's and tops. Slouchy-soft blouses, delicate embroidered trims, bright stripes, pastels and vivid solids. Reg. \$8-\$12

20% OFF

Our entire selection of Misses' polyester coats in regular, petite and pant lengths. Many famous makers. Sizes 8 to 18. Washable. Reg. \$48 to \$80.

NOW 39.90.

Misses' rain/shine coats. Single breasted shirts, tents, double-breasted trenchcoats. Sizes 8 to 18. Originally \$50 to \$65.

1/3 OFF

Misses' spring Blüte Knits. Soft 1 and 2-pc. blouse dresses, many with pleated or dirndl skirts. Plus 3-pc. skirt suits, pantsuits. Polyester knit. Orig. \$38 to \$88

20% OFF

Juniors' sun-and-fun dresses. Ruffled tiers, halter tops, tie shoulders, eyelid trims, more in prints and solids. Reg. \$15-\$47

\$15 Special Purchase

Juniors' soft and full spring skirts. Side-buttons, dirndls, A-lines, and drop-yokes, dusty-toned floral prints.

25% OFF

Imported 14 kt. gold chains for your neck, wrist and ankle in 7" to 30" lengths. Box links, serpentine, more. Reg. \$25-\$185



OH CALCUTTA... MISSES' SOFT SEPARATES

Spring's newest calcutta is fuller, softer, more carefree in easy-care cotton polyester. Start with the shirred waist pants or the side tab dirndl skirt with back zip. Over them, the softest cotton knit T's, blouses, tunics in solids and stripes. Add the sporty jackets and you're ready to go. By Donn Kerby. Sizes 8-18, S,M,L. Reg. \$11 to \$23 SALE \$8 to \$16

TERRY TO GO: JUNIORS' T'S, TANKS, SHORTS

Terry's on the move... for jogging, racketball, all the games you play. Try the skinny short sleeve T, the tank or hooded drawstring jacket with kangaroo pockets. Plus the elastic-waist boxer shorts with side slits, in the softest cotton terry in desert clay, string, burgundy red and powder blue. Sizes S,M,L. Reg. \$9-\$24 SALE \$6 TO \$16

KICK UP YOUR HEELS IN LEATHER, CANVAS

Try the footloose and fancy free leather slide on a clog base. Or the sun-loving open-toe canvas espadrille on a rope wedge. And, for night, the knock-em-dead patent leather sandal with sky-high heels, slippy little straps. The clog and sandal in black, natural or white, the espadrille in beige, navy or black. Sizes 5-10. Reg. \$20-\$22 SALE \$13.99

Not all styles, colors or sizes in all stores.



SALE \$6 to \$16

SALE \$8 to \$16

SALE 13.99

Sorry, no mail or phone orders. Savings for Misses, Juniors at all Bamberger stores unless otherwise specified.

EXTRA-SPECIAL BUYS, EXTRA-SPECIAL REDUCTIONS, SUPER-SPECIAL
SALES MANAGERS' SALE



**EVERYTHING FOR SPRING
 FOR BIG, LITTLE GIRLS**

TEENS TOO . . . SUNSATIONAL!
 Everything your girls need for spring and summer, too. All-weather coats. Dress coats. Military looks. Trenches. Hooded drawstring jackets. Vinyl slickers. Floral and pastel sundresses, some with soft ruffles, tiers, lace or eyelet trims, ribbons and bows, big back sashes. Shorts, tops, jeans. Mailot and bikini swimsuits. Coverups. Canvas totes. Carry-alls. Sandals and wedges. Reg. 3.75 to \$50 **20% to 25% OFF**



20% TO 25% OFF

SAVE 20%: BIG/LITTLE BOYS' WEAR

Big and little boys' springweight outerwear. Nylon Reg. 8.50 to \$24 . . . **SALE 6.80-12.80**
 Big/little boys' soccer shirts, football jerseys, baseball shirts, Mickey Mouse novelties. Reg. 3.50-\$7 . . . **SALE 2.80-6.40**
 Big boys' famous make twill jeans plus soft brushed denim jeans. Cotton-polyester. Reg. \$12 . . . **SALE 9.50**
 Big boys' coordinating trousers, vests and blazers in textured polyester. Reg. \$12-\$33. **SALE 9.60-26.40**
 Big boys' woven dress-shirts, including Gant. Long or short sleeves, solids, prints. Reg. 6.50-\$14 . . . **SALE 5.20-11.20**
 Not all styles in every store.

MEN'S AUTOMATIC FOLDING UMBRELLA
 That smart black umbrella, in its own case, folds to fit in attache. Nylon. Reg. \$12 . . . **SALE \$8**

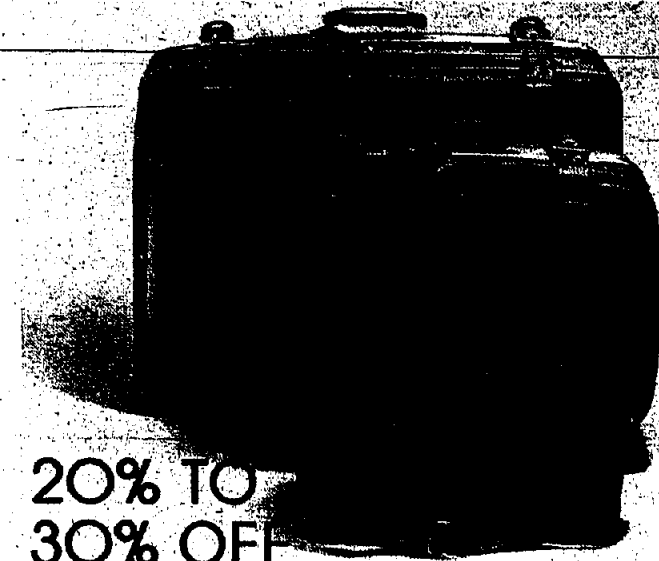
MISSES' ACCESSORY SALES/VALUES
 Shawls for TMI/PM. Triangles, long squares. Slinkies. Crochets. Solids, prints. Reg. \$10-\$25 . . . **20% OFF**
 Sensorator tortoise sunglasses. Spec. Pur. 7.90
 Dearfoam slippers: terry scuffs and ballerinas, embroidered crepe scuffs. S-XL. Spec. Pur. 2.99

CANVAS CARRY-ALLS AND CLUTCHES

All those supersize totes, hobos, slings and shoulder strap carryalls you'll want at the beach, at racquet ball court, for summer shopping, even for picnics. Natural, navy and tan. Some trimmed with leather, braid or vinyl. Plus canvas envelope clutches with swingy handle, full size front zip pocket and contrast color webbing trim. Natural, navy, black. Reg. \$11-\$24 **25% TO 33% OFF**



25% TO 33% OFF



20% TO 30% OFF

**★ TRAVEL LIGHT WITH SEVILLE BY U.S. LUGGAGE,
 SOFT VINYL OVER AIRCRAFT ALUMINUM FRAMES**

Specially-created flexible vinyl expands to hold the gifts and extras you pick up on your travels. Lightweight, with heavy duty frames and rugged straps with large buckles. Recessed combination locks for utmost protection. In go-with-everything, doeskin tan.

	Reg.	SALE
(A97-44) Barrel tote	34.95	24.45
(B97-13) Carry on	59.95	47.95
(C97-13) 25" Pullman	69.95	55.95
(D97-13) 28" Pullman	79.95	63.95
(E97-56) Dress/suit carry-on	49.95	39.95
(F97-23) One-suit carry-on	64.95	51.95
(G97-23) Three-suit carry-on	84.95	67.95

FOR JOGGING, RACQUET BALL, TENNIS

Hs/Ms matching jogging suits with zip pockets on jacket, back pockets on elasticized waist pants. Nylon. Reg. \$32 . . . **SALE \$28**
 Hs/Ms shimmering polyester spandex running shorts. Reg. \$8 . . . **SALE \$6**
 Hs/Ms contrast-trimmed nylon jogging shirts. Reg. \$5 . . . **SALE \$4**
 Hs tennis/racquet ball clothing. White polyester, polyester-cotton with racing stripe shirts, shorts. Reg. \$11-\$15 . . . **SALE \$8-\$12**

Order by mail or phone on 7-01 or more on starred (*) items only for delivery within New Jersey and our delivery area in N.Y., Pa. and Del. Call (201) 376-4444 or your local Bamberger Telephone number or write. There is a 50¢ handling charge on your total mail or phone order. Savings for the family at all Bamberger stores unless otherwise specified.

**SHOP BAMBERGER'S LIVINGSTON, WILLOWBROOK, ROCKAWAY
 SHOP BAMBERGER'S MORRISTOWN MONDAY THRU FRIDAY**

VALUES PLUS LAST 2 DAYS OF BAMBERGER'S STOREWIDE SPRING SALE
DAYS FRIDAY & SATURDAY



20% OFF
 Men's 3-pc. vested suits in the newest colors and patterns for spring. American traditional or European styling. Regularly \$170-\$225

Not at Princeton, Plainfield or Morristown. There is a charge for alterations.

20% OFF
 Men's center-vented 2-button sportcoats, belt loop slacks with ¼-top pockets. Spring solids and plaids. Reg. 27.50-\$90

20% OFF
 Men's famous maker lightweight spring jackets. Golf jackets, safari jackets, hoods, more in cotton-polyester poplin. 38-46. Reg. \$25-29
Not at Plainfield, Princeton and Morristown

25% OFF
 Men's famous maker belt loop flares—Easy-wearing machine-washable polyester doubleknit in navy, brown, grey, tan. Reg. \$15-

20% TO 25% OFF
 Men's active sport shirts from Munsingwear and more. Golf shirts, collared V's, T's in solid, striped polyester-cotton. Regularly \$8-\$15

SALE \$9 TO \$12
 Men's short sleeve sportshirts. Soft knit solids, woven plaids, checks and solids. Cotton-polyester. Reg. \$12-\$15

20% TO 25% OFF
 Men's terry sun/fun shirts. Half zip-pullover with collar, V-neck or collared open placket. In solids. Reg. \$12-\$15

NOW \$14
 Men's famous maker jeans. Brushed cotton denim in blue or tan with contrast stitching. Orig. \$21

20% OFF
 Young men's soft knit and terry tops. Many styles and colors to choose from. Regularly \$11-\$15
Not at Princeton

MEN'S EASY-DOES-IT SPORT COORDINATES

Just right for a casual now-through-summer weekend wardrobe. Put together coordinating blue and white pin leather stacks, short sleeve shirts and short sleeve safari jackets. Or start with tan, blue or navy doubleknit polyester slacks and team them with contrast trimmed short sleeve acrylic Dacron® polyester shirts in loast, pewter and blue.

Reg. \$19-\$7.50 **30% OFF**

MEN'S SPRING DRESS SHIRTS AND TIES

Short sleeve dress shirts from a very famous maker whose impeccable tailoring you'll recognize immediately. Solid and patterned polyester-cotton. Special Purchase, \$8. To go with your new silk shirts, contemporary patterned ties. You'll find paisleys, bias prints and more in silk, cotton. Reg. 7.50-\$15. **25% OFF**

MEN'S SUN, SAND AND SURF SWIMWEAR

Get ready for those sun-baked summer days coming up. Or maybe you're thinking of a Caribbean vacation now. Valley ball trunks look, classic boxers, square legs, trim briefs and more in polyester knits, polyester-cotton and cotton. Navy, white, red, royal blue, more, many with contrast trims and colorful piping. S,M,L,XL. Reg. \$8-\$9 **SALE 5.50 TO 6.50**

Sorry, no mail or phone orders. Savings for Men and Young Men at all Bamberger stores unless otherwise specified.

**MONDAY THROUGH SATURDAY 10 A.M. TO 9:30 P.M.
 9:30 A.M. TO 9:30 P.M. SATURDAY 9:30 A.M. TO 6 P.M.**

APRIL 1978 PAGE 24

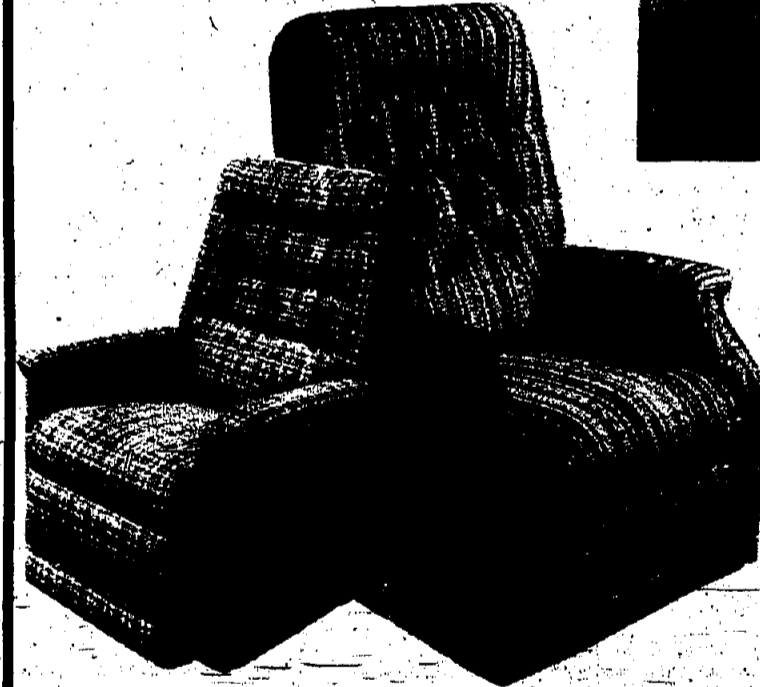
EXTRA-SPECIAL BUYS, EXTRA-SPECIAL REDUCTIONS, SUPER-SPECIAL SALES MANAGERS' SALE

**'120 SEALY
EXTRA FIRM "PLUS"
TWIN SIZE
QUILTED MATTRESS
OR FOUNDATION**

Just \$60
Reg. \$120 Twin size mattress or foundation

Decorator satin print cover quilted to a thick layer of Sealy Foam* for all over body-easing comfort. Pockets of cotton felt and Sealy's exclusive Dura-Flex* insulation provide night-after-night extra firm support. 308* double offset double tempered steel coils for lasting firmness for total over-all durability.

*To the full size.
Full and queen size proportionately sale priced.
Order by mail or phone for delivery in New Jersey and our delivery areas in N.Y., Pa. and Del. Phone (201) 326-4444 or your local Bamberger. Telephone number or write. There is a 50¢ handling charge on your total mail or phone order. There is a \$2 delivery charge on recliners and bedding. Recliners at all Bamberger's stores except Morristown and Princeton. Bedding at all Bamberger's stores except Princeton.



**STRATOLOUNGER
RECLINERS TO EASE YOU,
RELAX YOU, WARM YOU
SALE \$155 YOUR CHOICE**
Regularly \$240 and \$250

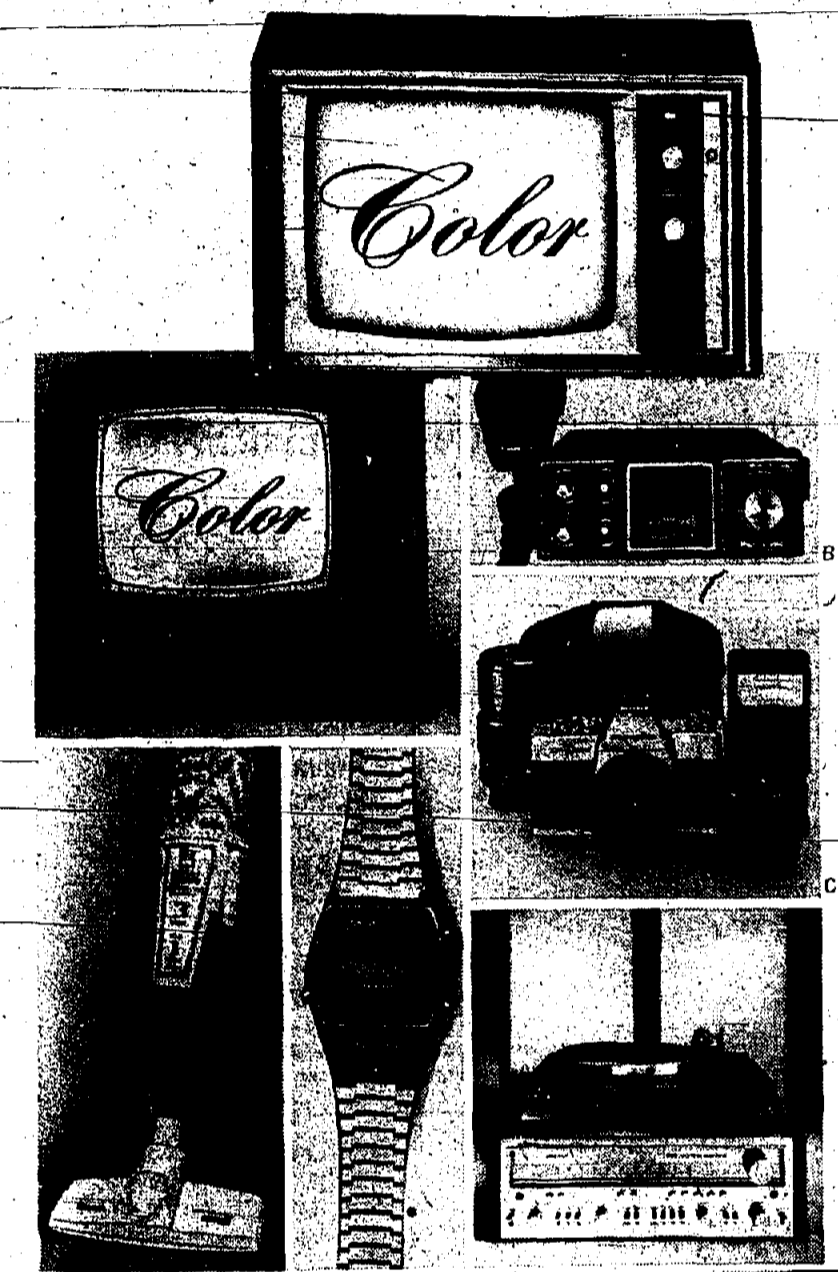
THE STRATOLOUNGER CLOSE-UP*
The recliner you always have enough room for because you can lean back and fully recline just 3" from the wall. Flare arms, button tufted back in brown or green tweed. Herculon® as shown, or in leathery wipe-clean tan vinyl. Regularly \$240

THE STRATOLOUNGER "SPA"
All the full features and comfort of a Stratolounger, plus the luxury of built-in heat and massage. Turn on the heat, adjust the massage from high to low and just lean back and relax. Or just use the heat or massage. In rust/brown/Ozonic Herculon®. Regularly \$250

**SHOP BAMBERGER'S LIVINGSTON, WILLOWBROOK, ROCKAWAY
SHOP BAMBERGER'S MORRISTOWN MONDAY THRU FRIDAY**

VALUES PLUS LAST 2 DAYS OF BAMBERGER'S STOREWIDE SPRING SALE DAYS FRIDAY & SATURDAY

PAGE 25, APRIL 1978



**ZENITH CHROMACOLOR II®
19" TV† WITH AFT**

\$365 SPECIAL PURCHASE
19" picture measured diagonally. Chromacolor II® for-bolder colors, richer contrast. One button automatic fine tuning locks in the best reception. Plus 100% solid state works for dependability, simpler maintenance. Plastic cabinet.

ZENITH 23" CHROMACOLOR II® CONSOLE†
Black matrix picture tube for life-like colors. 100% solid state dependability. Wood and simulated wood cabinet. 23" pic. meas. diag. Orig. \$650. NOW \$535

REGINA 3-SPEED ELECTRIKROOM†
Three cleaning speeds go from bare floors to deep shags. Bonus handle lets you reach walls, draperies. Reusable dirt cup. Regularly \$50. SALE \$35

***LCD SOLAR CHRONOGRAPH WATCH**
(A218-10) It's a watch, it's a stop watch. Solar cell runs on sunlight or any light, auxiliary battery keeps it going in the dark. Stainless steel case and bracelet. By Oron. Originally \$100. NOW \$50

***PANASONIC 40 CHANNEL CB†**
(B123-06) Precise delta tuning pinpoints all channels accurately. Easy-read LED channel indicator, illuminated SIFRO meter. Switchable ANL, squelch control. Orig. \$160. NOW \$70

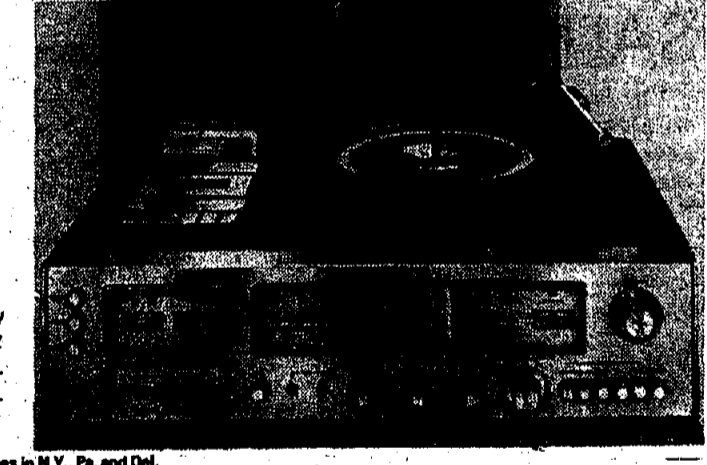
License applicants must be 18 years of age or older. Temporary CB license available with the purchase of any CB. Necessary antennas available. \$30 to \$35

***MINOLTA SR-T200 35MM SLR†**
(C96-16) Just match the needles for fast, perfect shots. Microprism focusing spot. Quick shutter speeds from 1 to 1/1000th of a second. 50mm f/2 lens, hot shoe. Orig. \$230. NOW \$170

Optional accessories shown, also sale priced.
PIONEER 65 WATT* COMPONENT STEREO†
Powerful stereo receiver rated at 65 watts RMS/channel†. Garrard-belt-drive turntable. Pioneer 3-way speakers. If purchased separately \$900. SALE \$600
Receiver \$550, Tunable \$100, Speakers \$250 pr.
*65 watts per channel min. RMS at 8 ohms from 20 to 20,000 Hz, with no more than 0.1% distortion.

**SHARK AM/FM STEREO
WITH 8-TRACK/CASSETTE
RECORDER/PLAYER†
NOW \$200**
Originally \$300

Record your own 8-track or cassette tapes directly from LP's, AM, FM radio, even from deck to deck. 2 recording miles with stands so you can record live. 1AM/FM stereo receiver with built-in BSR changer. Pair of 2 1/2" high speakers.



Phone or write on alternate (a) Home only for delivery within New Jersey and our delivery areas in N.Y., Pa. and Del. Phone (201) 326-4444 or your local Bamberger telephone number or write. There is a 50¢ handling charge on your total mail or phone order. There is a \$2 delivery charge on your total mail or phone order. There is a \$2 delivery charge on cameras, CB's and watches. Savings for the Home, at all Bamberger stores. TV's, stereos, CB's and cameras at Princeton.

**MONDAY THROUGH SATURDAY 10 A.M. TO 9:30 P.M.
9:30 A.M. TO 9:30 P.M. SATURDAY 9:30 A.M. TO 6 P.M.**

EXTRA-SPECIAL BUYS, EXTRA-SPECIAL REDUCTIONS, SUPER-SPECIAL

SALES MANAGERS' SALE

SAVE \$5 TO \$9 A SQ. YD.

WALL-TO-WALL BROADLOOM IN 6 TEXTURES
FROM 4 OF THE BEST NAMES IN THE BUSINESS...
GULISTAN, WORLD, EVANS-BLACK AND MILLIKEN

SALE 11.99

Sq. yd. installed*
Regularly 16.99 to 18.99 sq. yd.
Miliken's wool look-alike. Saxony plush in deep, rich Trevira® Star polyester pile that looks and wears like natural wool, in 14 lustrous solids. Or Miliken's new soft, silky-look textured nylon, in 16 eclectic multicolors.

SALE 13.99

Sq. yd. installed*
Regularly 19.99 sq. yd.
Gulistan luxury Trevira® Star polyester pile plush in choice of 17 decorator solids. Great for the living room, greater yet all around the house. Or Evans-Black contemporary hi-low textured Dacron® polyester plush in 15 new multi-tones.

SALE 15.99

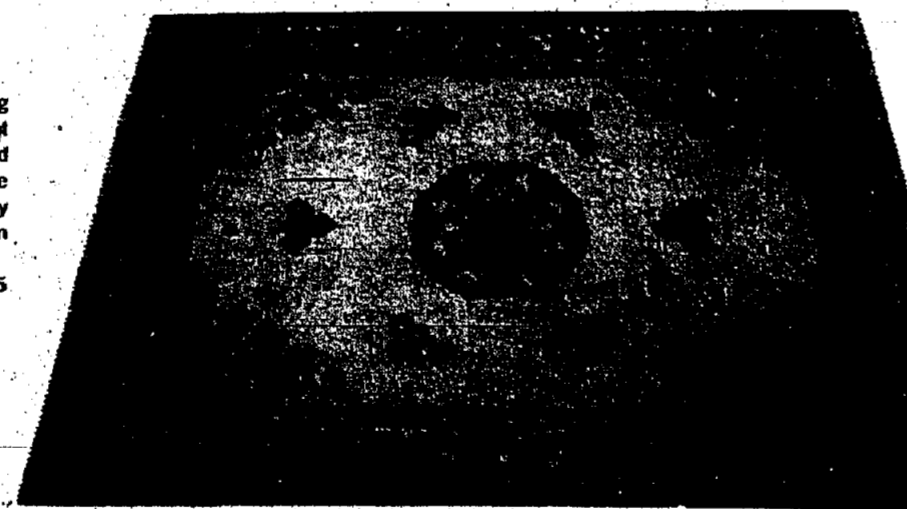
Sq. yd. installed*
Regularly 22.99 to 24.99 sq. yd.
Gulistan's plushiest plush Trevira® Star polyester pile in 17 subdued naturals and vibrant brights. Or World's deep pile nylon plush, remarkably easy to maintain, in 15 superb solids.

*Bamberger's sale prices always include custom tackless wall-to-wall installation over sponge rubber padding. There is an additional labor charge for custom stairwork and for installations of less than 16 sq. yds. Sorry, no mail or phone. Broadloom and rugs, at all Bamberger stores except Princeton and Morristown.

40% OFF: HAND-WOVEN INDIA RUG MASTERPIECES

SALE \$300

8'3" x 11'6" Regularly \$500
The product of India's centuries-old guild of rug artists and handcraftsmen, these magnificent tapestries are woven of lustrous, thick worsted wool. Over 30,000 individual knots per square yard, giving each rug years of enduring beauty and wear. Authentic designs in blue or gold on ivory background.
5'6" x 8'6" size, regularly \$350. SALE \$225



Bamberger's

SHOP BAMBERGER'S LIVINGSTON, WILLOWBROOK, ROCKAWAY
SHOP BAMBERGER'S MORRISTOWN MONDAY THRU FRIDAY

VALUES PLUS LAST 2 DAYS OF BAMBERGER'S STOREWIDE SPRING SALE

DAYS FRIDAY & SATURDAY

25% TO 50% OFF

SEATING ROOM FOR SINGLES, COUPLES
OR A WHOLE HOUSEHOLD:

SOFAS, SECTIONALS, CHAIRS, PITS, LIVING ROOMS



A. FLAMESTITCH PILLOWBACK 86" loose pillowback with wide arms in earlstone flame-stitch Herculon®. Reg. \$600. SALE \$300

B. STRIPED VELVET TUXEDO 91" with loose pillowback and arm bolsters in blue and cream striped velvet. Reg. \$880. SALE \$500

C. VELVET T-CUSHION 81" T-cushion back with wide arms in fawn, brown or orange block cut velvet. Orig. \$700. NOW \$400

SALE \$185 TO \$200

VELVET MODULAR PIT UNITS
Choose from corner units, armless units and pairs of ottomans to put together the seating you need. In patterned and solid velvets. Reg. \$285-\$350.

NOW \$275

T-CUSHION VELVET SOFA
Roomy 81" sofa with T-cushion seat and extra-wide arms in plush fawn or brick velvet that's treated to resist spills and stains. Orig. \$500.

SALE \$625 TO \$950

2-PIECE SOFA-SECTIONALS
Traditional and contemporary styles in cotton floral prints, sturdy Herculon® or cut velvet. Also available as sleeper-sectionals. Reg. \$1100-\$1500.

SALE \$375

OUR BEST SELLING SOFAS
You'll find velvets, Herculons®, quilted floral prints, Haitian cottons, lush velvets and more in contemporary and traditional styles. Reg. \$650.

SALE \$650

2-PC. VINYL/WOOD LIVING ROOM
Choose sofa and matching loveseat or sofas Wallaway® recliner. Reg. \$1025. 79" queen size sleeper-sofa. Reg. \$1225. SALE \$800.

SALE \$495

2 OR 3-PC. PLAID LIVING ROOM
Choose the sofa and matching loveseat or the sofa, matching chair and ottoman. Pine-trimmed plaid Herculon® stands up to lots of family living. Reg. \$800.

25% TO 30% OFF

CHAIRS IN 13 STYLES
Swivel rockers, club chairs, loungers, tub chairs, wing chairs, pillowbacks and many more in velvets, Herculons®, Haitian cotton prints and many more. Reg. or orig. \$165-\$250.

SALE \$595

SOFA-SLEEPER AND LOVESEAT SET
78" loose pillowback sofa with a queen size bed inside, plus matching 55" loveseat. Both covered in sturdy blue and beige plaid Herculon®. Reg. \$1050.

SALE \$500

FAMOUS MAKER VELVET SOFAS
Choose from traditional and contemporary styles in solid, patterned and geometric plush velvet. From Kroehler, Bassett and Broyhill. Reg. \$750-\$880.

Sorry, no mail or phone orders. Furniture, at all Bamberger stores except Princeton, Plainfield and Morristown.

MONDAY THROUGH SATURDAY 10 A.M. TO 9:30 P.M.
9:30 A.M. TO 9:30 P.M. SATURDAY 9:30 A.M. TO 6 P.M.

APRIL 1978 PAGE 28

EXTRA-SPECIAL BUYS, EXTRA-SPECIAL REDUCTIONS, SUPER-SPECIAL SALES MANAGERS' SALE

Bamberger's



★ SILVERPLATED COFFEE SERVICE, FOOD WARMER FROM LEONARD SILVERSMITHS

SALE \$20
Your Choice Regularly \$30

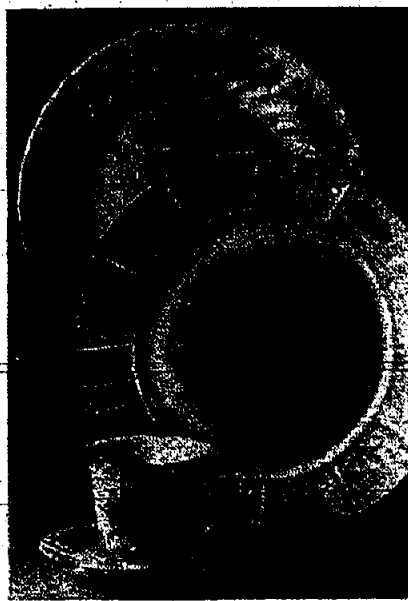
(A5-21) The 4 pc. coffee/tea service with 8-cup pot, covered sugar, creamer, 12" round tray with gasket border.

(B5-19) The 1 1/2-qt. food warmer with oven-proof Pyrex™ inner, candle burner to keep everything hot.



★ 50% OFF: FLORAL ETCHED CRYSTAL STEMWARE SALE \$2 ea. Regularly \$4

(C117-41) To give, to keep, to treasure. Fine European etched crystal, garlanded with a ring of primroses and leaves. Complements your formal dinnerware or a casual luncheon setting. Choose from goblets, wines, champagne and cordials, all with graceful long stems. By Plinyan Dreitzer.



FAMOUS MAKER FORMAL/INFORMAL DINNERWARE: SETS, SERVICES, OPEN STOCK, MORE

20% to 50% OFF

Regular Prices

Fine bone china, Ironstone, Oven-to-table stoneware, Earthenware. From Johnson Bros., Wedgwood, Mikasa, Meakin, Norlake, Sango, Franciscan, Royal Worcester. Complete services for 4, 8 or 12. Place settings, Hostess and completer sets. Serving pieces. Open stock. Bright or pastel florals. Gold and platinum borders. Pottery looks. Contemporary whites-on-white. Swirls. Bold geometrics. Naturals. Mosaic-looks. Oriental prints. Lots more.

IMPORTED ITALIAN LEAD CRYSTAL GIFTS Beautifully faceted crystal to reflect and refract light. For you, for a bride-to-be. Choose oblong tray, covered candy box, bowl or bud vase. By Argentinum.

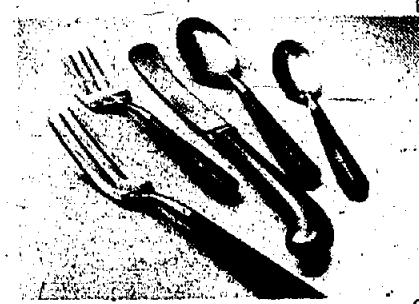
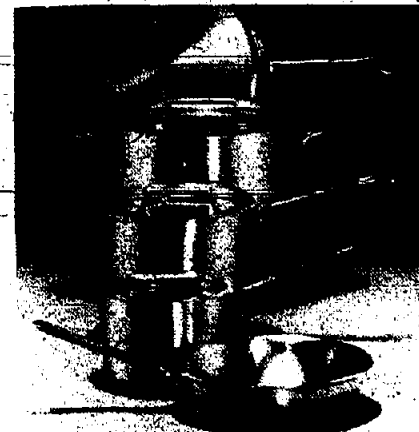
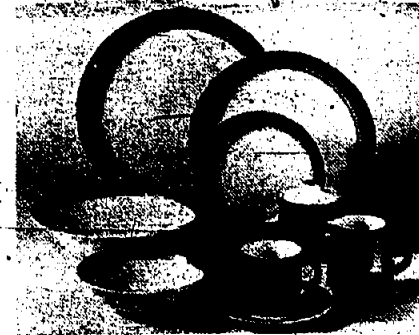
Special Purchase \$12 Your Choice

Warranty for this product is enclosed with the product. Or write for a copy of the warranty to: Bamberger's, P.O. Box 110, Newark, N.J. 07101. Phone (201) 376-4444. Outside NJ, call (201) 376-4444. On order over and food processors. Savings for the Home.

SHOP BAMBERGER'S-LIVINGSTON, WILLOWBROOK, ROCKAWAY SHOP BAMBERGER'S MORRISTOWN MONDAY THRU FRIDAY

VALUES PLUS LAST 2 DAYS OF BAMBERGER'S STOREWIDE SPRING SALE DAYS FRIDAY & SATURDAY

PAGE 28 APRIL 1978



★ POTTERY-LOOK STONWARE 45-PIECE SERVICES FOR 8 (A66-8) Brown, blue or gold bands. Includes 8 each: dinner, salads, cups, saucers, soups, plus vegetable dish, platter, covered sugar, creamer. Reg. \$90 **SALE \$65**

★ KRISCHER 8-PC. "RESTAURANT" ALUMINUM COOKWARE SET (B131-55) Even-heating heavy duty aluminum for long service. 8" omelette pan, 10" fry pan, 1-qt., 2-qt. covered saucepans, 5 1/2-qt. covered Dutch oven. If purch. sep. \$88 **\$60**

★ MELAMINE/STAINLESS FLATWARE (C147-2) Wood-look melamine pistol-grip handles. 50-pc. service for 8 includes 8 each: knives, forks, salad forks and soup spoons, plus 16 teaspoons, 2 serving spoons. Reg. \$100 **SALE \$40**



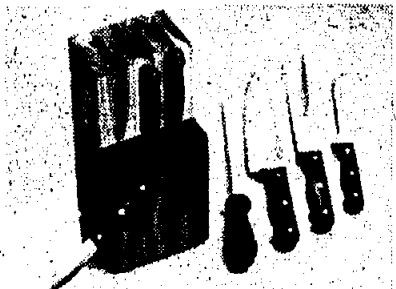
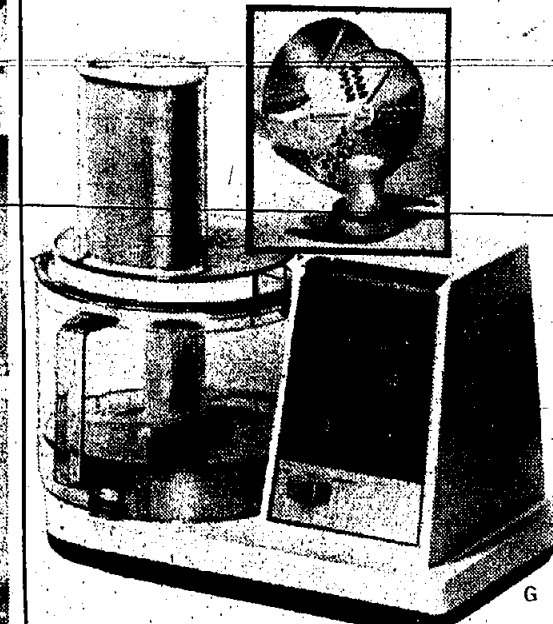
★ 13-PC. PRE-SEASONED CAST IRON COOKWARE SET (D11-14) Conducts heat slowly, evenly. Pre-seasoned so you can start cooking right away. Wooden handles, hanging rings. 1-qt. covered saucepan, reg. \$7. 2-qt. covered saucepan, reg. \$9. 3-qt. covered saucepan, reg. \$10. 4 1/2-qt. covered Dutch oven, reg. \$16. 7" fry pan, reg. \$6. 8" fry pan, reg. \$7. 10" fry pan, reg. \$9. 10" griddle, reg. \$7. 9 1/2" au gratin, reg. \$8. If purch. sep. \$77 **\$39.95**

★ TOASTMASTER BROILER/OVEN (G159-54) Bakes a 9" pie, toasts 4 slices of bread, broils chops. Automatic shut-off. Plus \$3 rebate from Toastmaster. Reg. \$52 **SALE \$38**

★ FREE FORM TEAKWOOD SALAD SET (F110-34) Ruffle edged teakwood salad bowl, 4 individual bowls plus pair of servers. Reg. \$28 **SALE \$20**

★ HAMILTON BEACH FOOD PROCESSOR DOES IT ALL

SALE \$70 Reg. \$80 (G15-78) From just plain good cooking to gourmet, it's all quicker, easier. Chops, mixes, grinds, kneads dough, makes pastry, more. Lexan™ mixing bowl with handle, 4 work blades.



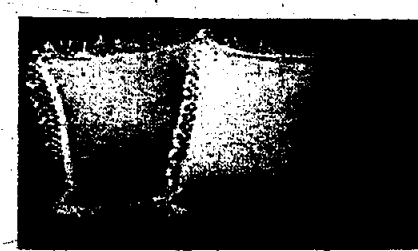
★ WASHINGTON FORGE 8-PC. PROFESSIONAL CUTLERY SET (H147-5) Meritum™ steel blades for long-lasting sharp edges. Safety-grip handles, full tang blades. 3" parer, 5" utility, boner, 6" sandwich, 8" carver, 8" chef, sharpening stone, walnut knife block. If purch. sep. \$86 **\$65**

Bamberger's

Bamberger's Warranty Office, P.O. Box 110, Newark, N.J. 07101 or your local Bamberger's Teleshopping number or write. There is a \$2 handling charge on your total mail or phone order. There is a \$1 delivery charge on sleepwear gifts and stemware, \$2 delivery charge at all Bamberger's stores unless otherwise specified.

MONDAY THROUGH SATURDAY 10 A.M. TO 9:30 P.M. 9:30 A.M. TO 9:30 P.M. SATURDAY 8:30 A.M. TO 8 P.M.

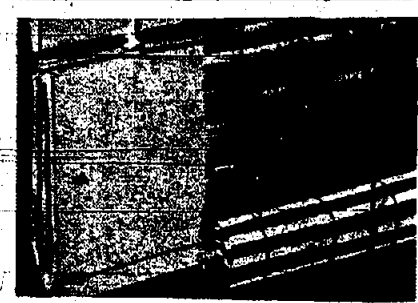
EXTRA-SPECIAL BUYS, EXTRA-SPECIAL REDUCTIONS, SUPER-SPECIAL
SALES MANAGERS' SALE



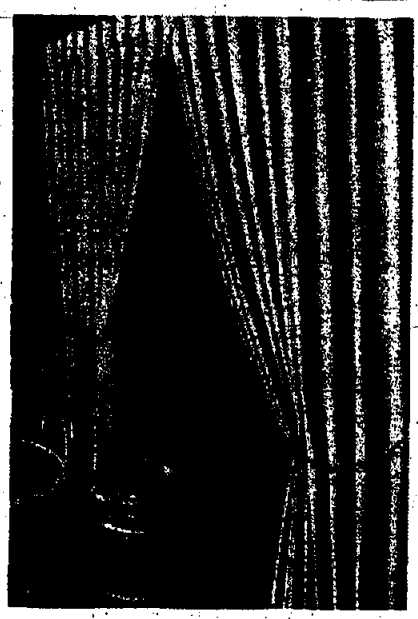
*** 50% OFF
 OUTLINE QUILTED FLORAL
 BEDSPREAD**

(A194-55) "Great Expectations" from Rivardale's Update Collection. Rust/green/berry print on Scotchgard® polyester-cotton. Hand quilted outline quilting over light polyester fiberfill. By Kenneth.

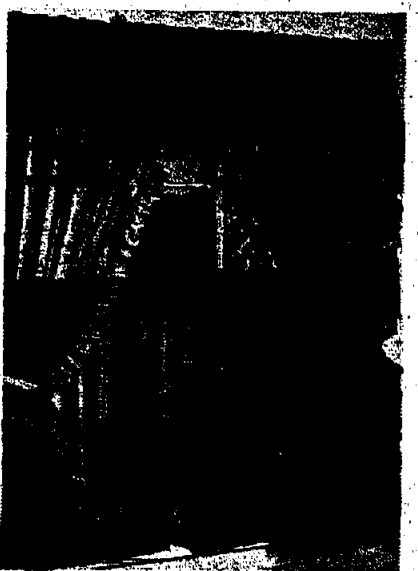
Twin, orig. \$38 **NOW \$19**
 Full, orig. \$50 **NOW \$25**
 Queen, orig. \$60 **NOW \$30**
 Dual, orig. \$60 **NOW \$30**
 48"x84" lined drapes, orig. \$40 **NOW \$25**
 Not at Princeton



BIG, OVERSTUFFED FLOOR CUSHIONS Make your own pillow furniture plan with 27" square cushions. Fringed naturals. Haitian cottons. Woven jacquards. Contemporary prints. By Brentwood. Sunnyside. Orig. \$24-\$76.
 Not at Princeton **20% OFF**



ROLL-UPS, ROMAN SHADES IN CANVAS, BAMBOO, MORE Matchstick, bamboo. Canvas. Tortoise shell. Woven woods. Vinyl and more. With or without attached valances. By Stein Bentley.
 Not at Princeton **20% OFF** Regular Prices



Bamberger's

NOW \$19

Order by mail or phone on 7.01 or more on starred (*) items only for delivery within New Jersey and our delivery handling charges on your total mail or phone order. Savings for the home.
SHOP BAMBERGER'S LIVINGSTON, WILLOWBROOK, ROCKAWAY
SHOP BAMBERGER'S MORRISTOWN MONDAY THRU FRIDAY

CUSTOM DRAPERIES MADE TO YOUR SPECIFICATIONS Come in to make your selection or Shop-At-Home. Lined. Unlined. Satins. Sheers. Textures. Prints. Solids. All by Decorator Industries. Plus save 50% on matching bedspreads.

35% OFF Regular Prices
 Not at Morristown, Plainfield or Princeton.

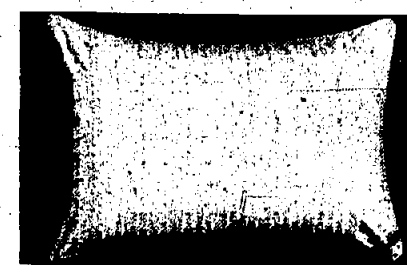
DRAPERIES: SATINS, COTTONS, OPEN WEAVES, TEXTURED'S Custom lengths. Lined antique-cabins. Open weaves. Burlington thermals. Sheers. Textureds. Florals. Washable no-iron fabrics. Solids and prints.
30% TO 40% OFF Regular prices
 Not at Princeton

25% OFF: EVERY TIER AND CAPE COD CURTAIN IN STOCK Solid, print, check and embroidered polyester-cottons, plus some hogsheads. 24", 30" and 36" lengths. Matching valances and swags also sale-priced. Reg. \$5 to \$20
SALE 4.50 to \$15
 Not at Princeton

VALUES PLUS LAST 2 DAYS OF BAMBERGER'S STOREWIDE SPRING SALE
DAYS FRIDAY & SATURDAY



SALE 3.50
 Twin flat or fitted 7.50



*** 33% TO 50% OFF: "DAHLIA" FLOWERBED PERCALES BY SPRINGMAID®** (A92-4) Blooming dahlias scattered all over a sparkling white field. Soft and slay-smooth polyester-cotton percale.
 Twin flat or fitted, reg. 7.50 **SALE 3.50**
 Full flat or fitted, reg. 8.50 ... **SALE \$5**
 Queen flat or fitted, reg. \$12 ... **SALE \$8**
 2 standard cases, reg. 6.50 **SALE 4.50**

VERY FAMOUS MAKER BATH TOWEL IRREGULARS From Fieldcrest, Cannon, Martex, J.P. Stevens and more: big, extra fluffy bath towels for home, for your vacation retreat, for the beach. Many solids, prints and jacquards, polyester-cotton.
 If perft. 4.50-5.50 **SALE 2.75**

SUPERSIZE BATH SHEETS IN VELOUR OR TERRY Giant wrap-ups to take to the shore, bundle in after the shower, even to rig up as a toga or callan. Lots of bright colors and vivid patterns. Soft cotton-velour or-cotton-jerry. Reg. \$15-\$20 **SALE 9.99**

*** SCENIC COMFORTERS AT OUR LOWEST PRICES EVER** The shake-and-make summer bed gives you more time for summer fun. Light, puffy polyester-cotton with polyester fiberfill goes from washer to dryer to top of bed. (B59-26) Desert scene in orange/sand/brown/yellow. (C59-26) Not shown: Mountains and Lakes, in cool blues and naturals.
 Twin, orig. \$34 **NOW \$17**
 Full, orig. \$48 **NOW \$24**
 *Queen/king, orig. \$58 **NOW \$29**
 *Desert scene only

*** MACHINE WASHABLE DACRON® POLYESTER PILLOWS** (D259-32) Non-allergic, medium firm standard pillow. Zip-off floral striped cotton-polyester cover. Standard size. Reg. \$9 **SALE 2 for \$12**

Bamberger's

Shop at N.Y., Pa. and Del. Call (201) 276-4444 for your local Bamberger's Telephone number or write. There is a 50¢ Bamberger's store sales charge specified.
MONDAY THROUGH SATURDAY 10 A.M. TO 9:30 P.M.
9:30 A.M. TO 9:30 P.M. SATURDAY 9:30 A.M. TO 6 P.M.