

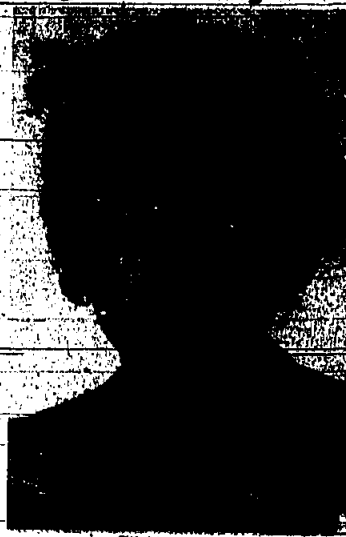




# Watch out for break-in suspects, residents urged by town police



CARMELO COLON



GLADYS COLON

Springfield detectives this week renewed warnings for the public to be on the lookout for Carmelo Colon, 30, his wife Gladys, 19, and young relatives. Members sleeping through a police net for two months in Union and Essex counties.

Detective Sgt. Howard Thompson said the Colon's are suspected of using numerous names and conducting a one-family crime wave of vehicle thefts and household break-ins, including burglaries Nov. 19 on Lakeland Avenue and Nov. 20 on Mountain Avenue in Springfield.

# Backpacking in Asia Zisman, Garner start trip

David Garner and Philip Zisman, alumni of Jonathan Dayton Regional High School and recent college graduates, were scheduled to meet today in Hong Kong for a backpacking tour of Southeast Asia.

# Heart attacks to be discussed at Summit YW

"Heart Attack Prevention" and "After a Heart Attack" will be discussed by Dr. Thomas Ingelsby at the Summit YWCA Kaffeeklatsch program on Wednesday. The talk, which will focus on the risk factors in heart disease, is sponsored by the Union County Chapter of the American Heart Association.

# Norma Crouch; services held

Memorial services were conducted Friday in St. George's Episcopal Church for Norma Crouch of Essex, N.J. Mrs. Crouch died in Philadelphia, Pa. on Jan. 15 in Columbia Hospital, Hahnemann Pavilion, New York City.

# Fasulo is appointed academic assistant

Louis Fasulo, son of Mrs. Louis Fasulo of Timber Acres road, Springfield will serve during the spring semester at Drew University as an academic assistant in the Spanish department.

# 'Who's Who' lists Murphy

Patricia P. Murphy of Springfield, a student at Seton Hall University, South Orange, has been selected for inclusion in the 1979 edition of "Who's Who in American Universities and Colleges."



ON THE BALL—Springfield Baseball League registration... in the third through 10th grades are eligible. Pictured, from left, are: Joey DiPenna, Billy Clark and Joey Clark.

# State chief accused of school cap rigidity

A statewide coalition of school leaders this week recharged that N.J. Education Commissioner Fred Burke plans completely inflexible enforcement of budget caps for 38 percent of the state's school districts, including Springfield.

# Swimmers want a team at Dayton

Charles Berchen, campus athletic director, has set a March 1 target date for his recommendation of student requests for Jonathan Dayton Regional High School to add swimming to its roster of team sports.

# Two talks given by Y executive

Marjorie M. Murphy, assistant general executive of the Summit Area YMCA, presented programs and papers in two professional conferences when she attended the Mid-East District physical director training conference in Gettysburg, Pa. on Jan. 22.

# Historical unit approves project to write a history of Springfield

A special project to write a book containing the complete history of the township of Springfield was approved at the recent 25th annual meeting of the Springfield Historical Society. President Madeline Lancaster appointed Hazel Hargrove as chairman and Howard Wiseman as co-chairman of the committee.

# No insurance, driver to spend 3 months in jail

An Edison man, Gerald Emburga, has been sentenced to spend three months in jail for driving a Springfield without liability insurance. Springfield Municipal Judge Malcolm Bohrod, pronouncing sentence Monday, said Emburga deserved to go to jail because this was his second insurance offense.

# IT'S A BOY! SPRINGFIELD 1st BABY OF 79



Benjamin John Springfield's First Baby Of The Year! Benjamin John was born at 12:35 p.m. on January 17th in Overlook Hospital, to Mr. & Mrs. Barry Wilkens of Shunpike Road, joining his 2 1/2 year old brother Britton. Benjamin will receive the following gifts from local merchants:

# Furnace-use peaks; peak bills also likely

Jersey Central Power & Light Company recorded a ground window and doors, filters and in-paying trouble resulting from higher energy use.

# Philip Bladis, businessman

A Man for Philip J. Bladis, 36, a former chairman of the board of Atlantic Metal Products Co., in Springfield was offered Saturday in Corpus Christi Church, Chatham.

# Ice-fishing derby in Lake Hopatcong

The Knees Deep Hunting and Fishing Club of Lake Hopatcong's third annual ice fishing derby will be held this weekend at Lake Hopatcong.

# YW to begin class sign-up

Registrations for Term III classes at the Summit YWCA, 78 Maple St., are being accepted by mail with in-person registration beginning Monday.

APEX CLEANERS (In The General Greene Shopping Center) 203 MORRIS AVE., SPRINGFIELD. Open Daily 7:30-10:00. Tel: 718-3100 • 378-4694

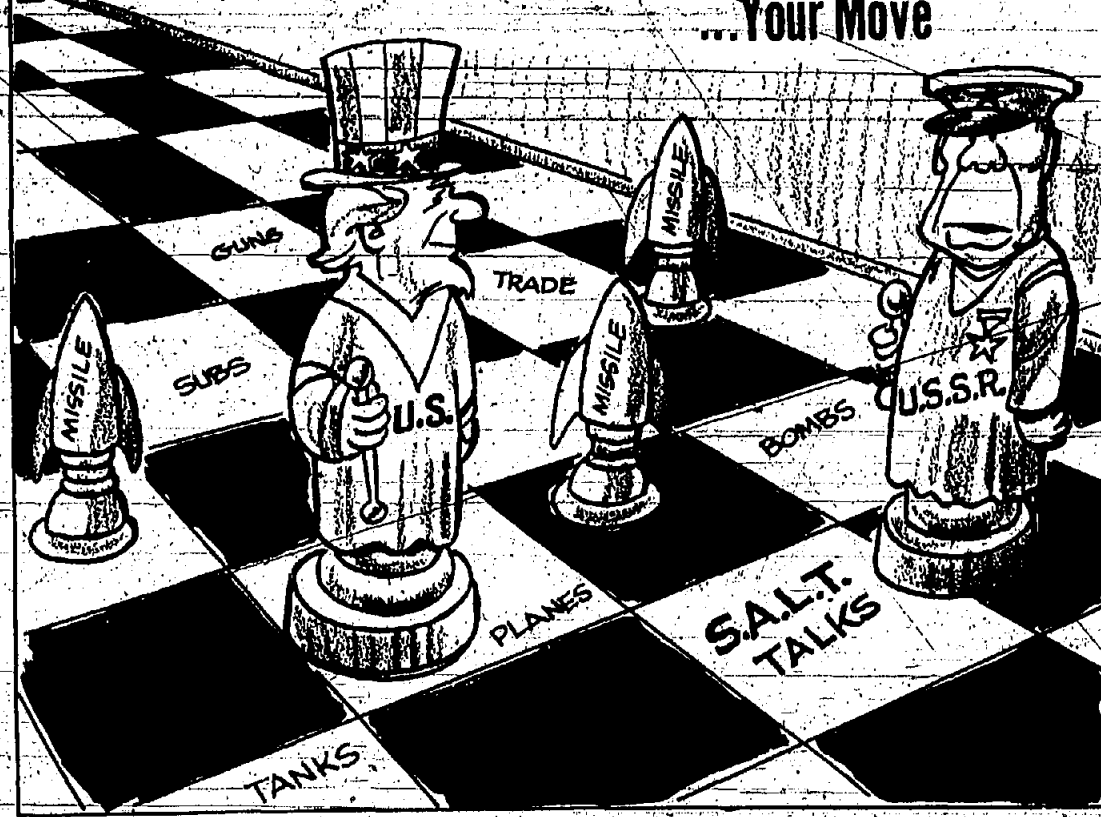
THE LEE MYLES PROS WINTER SPECIAL 10% DISCOUNT ON ALL SERVICES. \* FLUID CHANGES \* REPAIRS \* CLUTCH REPAIRS \* REBUILD TRANSMISSIONS. Lee Myles TRANSMISSIONS. 810 Park Ave. (off Broad St.) Summit 522-1484

JANUARY CLEARANCE SALE LIMITED QUANTITIES! HURRY IN FOR BEST SELECTION! 19" COLOR COMPACT TABLE TV \$379. 25" COLOR CONSOLE TV \$529. ZENITH THE HERCULES KES144. LARGEST ZENITH SHOWROOM AREA. POST'S ZENITH SHOWROOM 1228 SPRINGFIELD AVE. MORRIS AVENUE. SAME DAY SERVICE WITH EVERY SALE.

Springfield Florist 242 Mountain Ave. Springfield • 467-2535. To Springfield's First Baby of the Year \$15 Savings Account Opened. To Springfield's First Baby of the Year \$10.00 Gift Certificate. To Springfield's First Baby of the Year \$10.00 Gift Certificate. To Springfield's First Baby of the Year \$10.00 Gift Certificate.

Make it a Valentine engagement. Oak Ridge Realty. BUSINESS DIRECTORY. Doran SALES-SERVICE-BODY SHOP. THE NATIONAL STATE BANK. SCHENK WALTER. CRESTMONT. LA PETITE PATISSERIE.





# PAST LIBRARY TENSE U.S. artist remembered

ONE YEAR AGO The Union County Regional High School Board of Education wraps up a "reasonable" budget package of \$15,053,577 to be delivered to the voters on election day, Feb. 7. Springfield schools from kindergarten through eighth grade are ordered to stick within their budget for the 1979-80 fiscal year, although state education officials granted the spending limit waivers to all of the other 17 school districts that had asked for them. St. James School will celebrate its 25th anniversary during Catholic School Week, starting next week. Most of Springfield quickly dug its way out of the worst of the storm of the '70s—a near blizzard that paralyzed traffic and made many citizens household names.

TWENTY YEARS AGO DOMINICIA MOTTIA, who has withdrawn as a candidate for the Springfield Board of Education, will seek a court order to compel the Board Secretary A.B. ANDERSON to remove his name from the voting machines in the upcoming election. Anderson says he is not required to remove the name of a withdrawn candidate. The repeal of the township severance ordinance becomes law as the Township Committee unanimously adopts the repeal at the regular meeting. The board also denies CHARLES DE MARCO permission to construct a gasoline service station at the corner of Mountain and Henslow roads. Local supermarket advertisements have prices from 55 cents per pound to 68 cents.

FORTY YEARS AGO Efforts to secure a better fire insurance rating in the township on the strength of minor fire losses will be undertaken by the Township Committee. A local insurance agent, Hummel Brothers, will be asked to request from the Schedule Rating Bureau that a survey be made of the township fire fighting equipment to secure the improved rating. A decrease of \$46,152 in taxes for 1969 throughout the county. While there are strong ties that bind, there are also differences which frequently separate them. This anniversary, a part of the celebration is after Thanksgiving, but is understandable as the cultures of both groups are examined. Many knotty problems are still to be resolved. There are reports of early meetings of Zionists eager to found a homeland in Palestine, the rift among American Jews, the return of the Diaspora, the plight of European Jews during WWII, the refusal of nations to accept refugees. The Holocaust put pressure on many who had opposed a Jewish state; they now rose to its support, and the Zionist movement was reinvigorated. The author writes in detail about the Balfour Declaration, the UN decision to create Israel, the hostility of the Arab world, the meaning of Israel to Jews everywhere and the swift progress within the small country. Also included are the accounts of the various campaigns for financial and political support, and American critical observation. Problems such as the role of doctrine, diverse religious practices, obligations to Israel, influence of the role on American Jewish life, still exist.

SAFEGUARDING HEALTH AT HOME "The Household Pollutants Guide," Center for Science and the Environment in the Public Interest. EPA's study and ecology consciousness have changed the public's view of our outdoor environment, but it is also the condition of our household environment in which we spend the major part of our lives. We should be concerned. Our regulatory agencies have done little or nothing about the pollutants in the home, so the interpretative guide. Individual citizens learn to recognize danger spots, examine their extent, take possible remedial action, and simultaneously prod the government into action. A preliminary home survey is recommended to ascertain "hot spots," including kitchen, bathroom, furnace room, closets, living and dining areas. Listed are 28 classes of pollutants, each containing questions to be answered, 200 in all. Germicides, aerosol sprays, disinfectants, garbage and solid wastes, lead, cover and other cleaners, solvents, tobacco smoke, water contaminants are some classifications. To become knowledgeable about household pollution, we should know what is commercially transported, stored, and sold in taking a consumer market survey. Verbal and written promotion, variety of products, spillage and contamination, consumer education, placement of products. The author names 100 harmful substances, suggests products to avoid and recommends safe substances.

SNOW REMOVAL I want to go on record as criticizing vehemently the lack of proper snow removal and salting of the streets in Springfield. Many of the streets are not attended to until long after the snow has accumulated. In some instances it seems that some of the streets are never attended to at all. It is a disgrace to take care of the problem results in many near and actual accidents and needless endangering the lives of Springfield residents. I especially call attention to Stone Hill road and Shumpey road which are quite hilly and which are extensively used by Springfield residents. At a meeting of the town council on Hill road is the only

SNOW REMOVAL I want to go on record as criticizing vehemently the lack of proper snow removal and salting of the streets in Springfield. Many of the streets are not attended to until long after the snow has accumulated. In some instances it seems that some of the streets are never attended to at all. It is a disgrace to take care of the problem results in many near and actual accidents and needless endangering the lives of Springfield residents. I especially call attention to Stone Hill road and Shumpey road which are quite hilly and which are extensively used by Springfield residents. At a meeting of the town council on Hill road is the only

# Death and Dying: Challenge and Change

This is the first in a series of articles exploring "Death and Dying: Challenge and Change" in this area. Sociologist Robert Fulton of the University of Minnesota provides an overview of the issues that will concern us today and that are discussed in this series. This series was written for Courses by Newspaper, a program developed by University Extension, University of California, San Diego, and published by this newspaper in cooperation with Union College.

From front page headlines to back page funeral announcements; from the six o'clock news and the latest commercial for cemetery plots; from horror movies to punk rock—death is everywhere. Whether, by the time of the television news, the cinema, the communications media present the specter of death to us every day. Yet, paradoxically, until quite recently death has been "taboo" topic in contemporary America. Our society has developed a "cult of youth" and a strong aversion to when to "die" as a social institution or group has freed from the attempt to deny our mortality. In the highest of school, the church, public life, the classroom, the hospital, the mortuary, we have attempted to shield ourselves from the prospect of our own death as well as from the death of others.

Such denial and avoidance reflect profound changes that have occurred in the character and structure of society. The traditional view of death as a theological concept, death as well as a life event, was seen as part of a divine plan. Death was not a failure, but an inevitable fact of life, accepted as the will of God, and confronted openly in the context of public rites and sacred rituals. Today, in contrast, death has become, for a great many, a secular matter. It is a private disaster, to be discussed only by the family or close friends. No longer a matter of public concern, it is a private disaster, to be discussed only by the family or close friends. No longer a matter of public concern, it is a private disaster, to be discussed only by the family or close friends.

CHANGING PATTERNS OF DYING AND DEATH The major issues and problems facing society today are the result of a new social structure, taken on a new significance as the circumstances surrounding dying and death have changed in our society. The progress in medical science and the general enhancement of life in the past half-century have meant that the population of elderly persons in our society has greatly increased. Twenty-two million people, or 18 percent of our population, are currently over 65 years of age, and their number is growing.

HEALTH AT HOME "The Household Pollutants Guide," Center for Science and the Environment in the Public Interest. EPA's study and ecology consciousness have changed the public's view of our outdoor environment, but it is also the condition of our household environment in which we spend the major part of our lives. We should be concerned. Our regulatory agencies have done little or nothing about the pollutants in the home, so the interpretative guide. Individual citizens learn to recognize danger spots, examine their extent, take possible remedial action, and simultaneously prod the government into action. A preliminary home survey is recommended to ascertain "hot spots," including kitchen, bathroom, furnace room, closets, living and dining areas. Listed are 28 classes of pollutants, each containing questions to be answered, 200 in all. Germicides, aerosol sprays, disinfectants, garbage and solid wastes, lead, cover and other cleaners, solvents, tobacco smoke, water contaminants are some classifications. To become knowledgeable about household pollution, we should know what is commercially transported, stored, and sold in taking a consumer market survey. Verbal and written promotion, variety of products, spillage and contamination, consumer education, placement of products. The author names 100 harmful substances, suggests products to avoid and recommends safe substances.

HEALTH AT HOME "The Household Pollutants Guide," Center for Science and the Environment in the Public Interest. EPA's study and ecology consciousness have changed the public's view of our outdoor environment, but it is also the condition of our household environment in which we spend the major part of our lives. We should be concerned. Our regulatory agencies have done little or nothing about the pollutants in the home, so the interpretative guide. Individual citizens learn to recognize danger spots, examine their extent, take possible remedial action, and simultaneously prod the government into action. A preliminary home survey is recommended to ascertain "hot spots," including kitchen, bathroom, furnace room, closets, living and dining areas. Listed are 28 classes of pollutants, each containing questions to be answered, 200 in all. Germicides, aerosol sprays, disinfectants, garbage and solid wastes, lead, cover and other cleaners, solvents, tobacco smoke, water contaminants are some classifications. To become knowledgeable about household pollution, we should know what is commercially transported, stored, and sold in taking a consumer market survey. Verbal and written promotion, variety of products, spillage and contamination, consumer education, placement of products. The author names 100 harmful substances, suggests products to avoid and recommends safe substances.

HEALTH AT HOME "The Household Pollutants Guide," Center for Science and the Environment in the Public Interest. EPA's study and ecology consciousness have changed the public's view of our outdoor environment, but it is also the condition of our household environment in which we spend the major part of our lives. We should be concerned. Our regulatory agencies have done little or nothing about the pollutants in the home, so the interpretative guide. Individual citizens learn to recognize danger spots, examine their extent, take possible remedial action, and simultaneously prod the government into action. A preliminary home survey is recommended to ascertain "hot spots," including kitchen, bathroom, furnace room, closets, living and dining areas. Listed are 28 classes of pollutants, each containing questions to be answered, 200 in all. Germicides, aerosol sprays, disinfectants, garbage and solid wastes, lead, cover and other cleaners, solvents, tobacco smoke, water contaminants are some classifications. To become knowledgeable about household pollution, we should know what is commercially transported, stored, and sold in taking a consumer market survey. Verbal and written promotion, variety of products, spillage and contamination, consumer education, placement of products. The author names 100 harmful substances, suggests products to avoid and recommends safe substances.

# Advanced course set for auxiliary police

Union College, Cranford, and the Union County Police Training Academy will be host to the 1979 Advanced Auxiliary Police Course scheduled to begin on Feb. 3, according to Dr. John Wolf, academy director and chairman of the criminal justice department. Sponsored and conducted by the Union County Department of Public Safety, Division of Civil Defense, for more than 20 years, the course will be held at the Cranford Campus for the first time.

Halpin: Funds from appeals top \$95,000 Union County Clerk Walter G. Halpin says he has received more than \$95,000 in appeals from the county finance director's office. The county finance director's office has received more than \$95,000 in appeals from the county finance director's office.

# Sinnott named to run county's MOD march

Frederick Rose Marie Sinnott has been named to run the annual March of Dimes drive and to neighbor fund-raising appeal. Sinnott, a resident of Union County, is a member of the Union County Board of Education and is currently serving as a member of the Union County Board of Education.

# Police recruits to attend school

The 9th session of the Union County Police Training Academy for law enforcement recruits will open on Monday, Feb. 26, at Union College. The academy is a joint venture of the Union County Police Department and the Union County Board of Education.

# Abortion topic of NOW event

Members of the Union County Chapter of the National Organization for Women and six other organizations will join Saturday to mark the sixth anniversary of the Supreme Court's 1973 decision to legalize abortion. The event will be held at the Union County Chapter of the National Organization for Women.

# Doctor to give talk at meeting

The Union County chapter of the National Foundation for Infant and Child Development will host a meeting on Feb. 27 at the Clark Public Library, 303 Westfield Ave., Clark. The meeting is free and open to the public. Further information is available by calling 922-0294 or 241-2222.

# Y to sponsor Hebrew class

The beginning Hebrew course will begin Monday evening, Feb. 26, at the Y. The course is for those who have no previous knowledge of Hebrew. The course is for those who have no previous knowledge of Hebrew.

New 6 Month Savings Certificate 10.34% effective annual yield 9.70% a year Rate Week of Jan. 25-Jan. 31 \$10,000 Minimum

# Advanced course set for auxiliary police

Union College, Cranford, and the Union County Police Training Academy will be host to the 1979 Advanced Auxiliary Police Course scheduled to begin on Feb. 3, according to Dr. John Wolf, academy director and chairman of the criminal justice department.

Halpin: Funds from appeals top \$95,000 Union County Clerk Walter G. Halpin says he has received more than \$95,000 in appeals from the county finance director's office.

# Sinnott named to run county's MOD march

Frederick Rose Marie Sinnott has been named to run the annual March of Dimes drive and to neighbor fund-raising appeal. Sinnott, a resident of Union County, is a member of the Union County Board of Education.

# Police recruits to attend school

The 9th session of the Union County Police Training Academy for law enforcement recruits will open on Monday, Feb. 26, at Union College. The academy is a joint venture of the Union County Police Department and the Union County Board of Education.

# Abortion topic of NOW event

Members of the Union County Chapter of the National Organization for Women and six other organizations will join Saturday to mark the sixth anniversary of the Supreme Court's 1973 decision to legalize abortion.

# Doctor to give talk at meeting

The Union County chapter of the National Foundation for Infant and Child Development will host a meeting on Feb. 27 at the Clark Public Library, 303 Westfield Ave., Clark.

# Y to sponsor Hebrew class

The beginning Hebrew course will begin Monday evening, Feb. 26, at the Y. The course is for those who have no previous knowledge of Hebrew.

Julius Oksendorn BUYS YOUR DIAMONDS Precious Stones Old Gold-Silver ESTATE SALES and now and then he sells Highest Prices Paid Immediate Payment Bank references available

# A special education aids student's career

Lorraine Hanbicki of Mountainside, N.J., is a student at Union College who is receiving special education services. She is a member of the Union County Chapter of the National Organization for Women.

# Alumni chapter forming at UC

The first New Jersey alumni chapter of Phi Theta Kappa national honor society for two-year college students will be established at Union College. The chapter is being formed by Lorraine Hanbicki.

# Wine, cheese party planned by ski club

The Short Hills Ski Club will hold its winter wine and cheese party on Tuesday, Feb. 27, at 8:30 p.m. at the American Legion Hall in Springfield. The party is open to all members of the club.

Beaten women topic of free program at Y A special free program will feature a discussion on domestic violence. The program is being held at the Y. The program is being held at the Y.

What makes Volkswagen such a great value in the long run, is that it runs so long. we help. American Cancer Society

Julius Oksendorn BUYS YOUR DIAMONDS Precious Stones Old Gold-Silver ESTATE SALES

Aircooled Automotive Corp. 2195 Millburn Avenue Mapletown (201) 763-4567 Douglas Motors Corp. 430 Morris Avenue Summit (201) 277-3300







### Running of stop lights blamed in accidents

Three persons were injured within a seven-day period in two traffic accidents that witnesses blamed on failure to heed stoplights at the intersection of Morris and Maple avenues, according to Springfield police.

### Group voices its support for a SALT pact

The New Jersey Mobilization for Survival (NJSMS) opposes "the priorities of guns over butter in President Carter's new budget" and supports the SALT II treaty, according to Sylvia Zisman of Springfield, Union County.

### Science show to visit school

The traveling science show of the Franklin Institute of Philadelphia will appear at the Springfield Public School, Edward Walton school. The program will be "Push and Pull" demonstrating the laws of motion in motion, laws of gravity, friction, acceleration and inertia.

### Mrs. Eifenbein; services held

Gravide services were conducted Wednesday, Jan. 24, at Mt. Lebanon Cemetery, Iselin, for Mrs. Helen Eifenbein, 68, of Springfield, Mrs. Eifenbein died Jan. 23, 1979.

### Know Your Government

TAXPAYERS RIGHTS TO SEE LOCAL BUDGET DETAILS. As the budget season for local governmental units gets under way, the PTA Parents have been invited to observe.

### Public Notice

TOWNSHIP OF UNION. NOTICE OF AN ORDINANCE TO BE ENACTED BY THE BOARD OF HEALTH OF THE TOWNSHIP OF UNION. BOARD OF HEALTH. NOTICE OF AN ORDINANCE TO BE ENACTED BY THE BOARD OF HEALTH OF THE TOWNSHIP OF UNION.

### CONSUMER GUIDELINES

CONSUMER GUIDELINES. The following information is provided for the consumer's use. It is intended to help the consumer make informed decisions.

### Joanne drums to different beat

Playing with Berry, Ellington band. (Continued from page 1) playing, but he obviously wanted me to go.

### Y will sponsor coronary risk stress tests

The Summit Area YMCA will hold its second exercise stress testing and coronary risk factor evaluation clinic on Saturday, March 17. This clinic will be conducted by the New York Cardiovascular Health Institute of New York, according to Ronald R. Coleman of the YMCA professional staff.

### Matthew Rinaldo

12th District. For all practical purposes, President Carter's \$31 billion package of jobs and guaranteed income to the poor to replace the present welfare system is dead-it was killed by a combination of rising budget deficits, widespread public disenchanted with welfare and a great deal of confusion and controversy over the goals of the President's program.

### Rescue

(Continued from page 1) The physical education classes include Red Cross and swim by instruction, aerobics, modern jazz, dance, "Energetics" and a recreational volleyball.

### Boiler case

(Continued from page 1) The Planning Board for a term extended through December 1981. Deputy Fire Chief Ed Ertwine and Police Captain Robert Raffoe were named to the Committee on Aging.

### Parents are followed to Manalapan area

Many parents have long followed, but son Richard, moved with his family to Manalapan. Covered Bridge, the family to nearby Marlboro. And right after that, the parents of RT 9 in Manalapan.

### Cranheim seals deal

The David Cranheim Co. of Chatham and Newark has arranged a \$200,000 refinancing loan for the Moran Co. for its retail store on Rt. 22 in Union.

### Y classes for winter

The Summit YWCA's dance, ballet, and tumbling classes in Herkimer, Physical Education and Recreation Dept. is now an extensive program.

### January Special

20% off All Cosmetics & Skin Care Products. THE SHOP FOR CUSTOM COSMETICS. boyd's in macdonald ave. 1212

### Nice Stuff

every robe in stock. fantastic savings throughout every department in this store. for guys and gals \$7.99

### The Villas at Eagle Ridge Club

We've got great plans for you in West Orange (201) 731-6064. Introductory Offer. 9 SOLD PRIOR TO OPENING. PRICE INCREASE COMING MARCH. GRAND OPENING.

### AMERICAN CANCER SOCIETY

Sales strong at Hovnanian's Florida site. Hovnanian Enterprises, one of New Jersey's best known building organizations, has done it again. This time in Florida's Palm Beach County, their new adult community, La Pinata Condominiums, located at Pine Ridge, celebrated its grand opening.

### AMERICAN CANCER SOCIETY

The reward for your success. AN OUTSTANDING DEMONSTRATION HOME ON THE MOUNTAIN OFF SOUTH STREET IN MORRIS TOWNSHIP. FEATURING 4 bedrooms plus an 11' x 11' study and 2 1/2 baths.

### SUBURBAN REAL ESTATE MART

City • Suburbs • Farm Country • Lake • Shore. Parents are followed to Manalapan area. Many parents have long followed, but son Richard, moved with his family to Manalapan.

### Affordable choices available in Florida

THE CASA GRANDE featuring Mediterranean style exterior and spacious interior design is characteristic of the quality Florida homes built by Minieri Communities. This elegant home complete with two-car garage, central heat and air conditioning and many outstanding standard features in an affordable housing alternative for under \$200,000.

### Holly Hill Estates

PREVIEW SHOWING Your Dream Home In A Dream Location. Bording Gold's Neck In The Most Exclusive Area Of Marlboro, N.J. UP TO 5 BEDROOMS ON APPROX. 1 1/2 ACRES LOTS. FROM \$115,000. Model Phone: 201/780-4331.

### Panther Valley

Single-family homes from \$114,500. Townhomes from \$49,740. THE HOUSE YOU WANT FOR LESS. 114 HOUSES TO CHOOSE FROM. (201) 852-5100.

### AMERICAN CANCER SOCIETY

Sales strong at Hovnanian's Florida site. Hovnanian Enterprises, one of New Jersey's best known building organizations, has done it again. This time in Florida's Palm Beach County, their new adult community, La Pinata Condominiums, located at Pine Ridge, celebrated its grand opening.

### AMERICAN CANCER SOCIETY

The reward for your success. AN OUTSTANDING DEMONSTRATION HOME ON THE MOUNTAIN OFF SOUTH STREET IN MORRIS TOWNSHIP. FEATURING 4 bedrooms plus an 11' x 11' study and 2 1/2 baths.

### AMERICAN CANCER SOCIETY

Sales strong at Hovnanian's Florida site. Hovnanian Enterprises, one of New Jersey's best known building organizations, has done it again. This time in Florida's Palm Beach County, their new adult community, La Pinata Condominiums, located at Pine Ridge, celebrated its grand opening.

### AMERICAN CANCER SOCIETY

The reward for your success. AN OUTSTANDING DEMONSTRATION HOME ON THE MOUNTAIN OFF SOUTH STREET IN MORRIS TOWNSHIP. FEATURING 4 bedrooms plus an 11' x 11' study and 2 1/2 baths.

### 9 models listed at Pine Branch

Pine Branch Estates, a Maple Knoll and Millstone new 18-home community, offers 9 models of stop-insulated entrance doors. Other quality features include aluminum or cedar shutters, double hung wood windows, and all copper wired ceramic tiled baths.

### Parents are followed to Manalapan area

Many parents have long followed, but son Richard, moved with his family to Manalapan. Covered Bridge, the family to nearby Marlboro. And right after that, the parents of RT 9 in Manalapan.

### AMERICAN CANCER SOCIETY

Sales strong at Hovnanian's Florida site. Hovnanian Enterprises, one of New Jersey's best known building organizations, has done it again. This time in Florida's Palm Beach County, their new adult community, La Pinata Condominiums, located at Pine Ridge, celebrated its grand opening.

### AMERICAN CANCER SOCIETY

The reward for your success. AN OUTSTANDING DEMONSTRATION HOME ON THE MOUNTAIN OFF SOUTH STREET IN MORRIS TOWNSHIP. FEATURING 4 bedrooms plus an 11' x 11' study and 2 1/2 baths.

### AMERICAN CANCER SOCIETY

Sales strong at Hovnanian's Florida site. Hovnanian Enterprises, one of New Jersey's best known building organizations, has done it again. This time in Florida's Palm Beach County, their new adult community, La Pinata Condominiums, located at Pine Ridge, celebrated its grand opening.

### AMERICAN CANCER SOCIETY

The reward for your success. AN OUTSTANDING DEMONSTRATION HOME ON THE MOUNTAIN OFF SOUTH STREET IN MORRIS TOWNSHIP. FEATURING 4 bedrooms plus an 11' x 11' study and 2 1/2 baths.

### AMERICAN CANCER SOCIETY

Sales strong at Hovnanian's Florida site. Hovnanian Enterprises, one of New Jersey's best known building organizations, has done it again. This time in Florida's Palm Beach County, their new adult community, La Pinata Condominiums, located at Pine Ridge, celebrated its grand opening.

### AMERICAN CANCER SOCIETY

The reward for your success. AN OUTSTANDING DEMONSTRATION HOME ON THE MOUNTAIN OFF SOUTH STREET IN MORRIS TOWNSHIP. FEATURING 4 bedrooms plus an 11' x 11' study and 2 1/2 baths.



Amusement News MOVIES THE THEATER OTHER ENTERTAINMENT

Disc & Data

By MILT HAMMER

Pick of the LP's... SECONO WIND... CAPRICORN CPN-0201... Disc & Data section listing various music releases and reviews.

Linden 2 holds film

National Lampoon's Animal House is being held over for another week at the Linden Twin Two Theater...

DELBERT MCCLINTON... "Wake Up Baby" at old Sony Boy-Williamson song, was his first record...

Smoke screened

Cheech and Chong's "Up in Smoke" opened in 12 theaters...

Planet orbits into Rahway

Oreo Welles serves as narrator of the Late Great Planet Earth, which arrives tomorrow at the Old Rahway Theater...

New theater opens season

The Open Road Theater Company, a new regional theater, will begin a four-year season on Tuesday, Feb. 6...

Picture Show holds 'bread'

The Last Picture Show, Union, continues with its screening of the award-winning motion picture "Bread and Chocolate"...

'Robbery' is booked

The Bellevue Theater management in Upper Merionide has announced that it will hold J.R.R. Tolkien's trilogy...

Music, dance

SUMMARY-The Juice Atlanta Dance Company and the Dance Troupe...

Movie Times

All time listed are 8:25, 7:35, 6:40. BELLEVUE-UPPER MERIONIDE... CASTLE (Irvington)...

Point 'is seen on Park screen

"The Turning Point" and "Joseph Andrews" were shown yesterday at the Park Theater, Roselle Park...

Wild play opens Feb. 1

Gloria Cromwell and Natalie Ross will be featured in the New Jersey Theater Forum's production of Oscar Wilde's "The Importance of Being Earnest"...

Crossword puzzle

ACROSS: 1 French city, 2 1000-year-old monument, 3 1000-year-old monument...

Robbery is booked

The Bellevue Theater management in Upper Merionide has announced that it will hold J.R.R. Tolkien's trilogy...

Music, dance

SUMMARY-The Juice Atlanta Dance Company and the Dance Troupe...

Movie Times

All time listed are 8:25, 7:35, 6:40. BELLEVUE-UPPER MERIONIDE... CASTLE (Irvington)...

Point 'is seen on Park screen

"The Turning Point" and "Joseph Andrews" were shown yesterday at the Park Theater, Roselle Park...

Wild play opens Feb. 1

Gloria Cromwell and Natalie Ross will be featured in the New Jersey Theater Forum's production of Oscar Wilde's "The Importance of Being Earnest"...

Crossword puzzle

ACROSS: 1 French city, 2 1000-year-old monument, 3 1000-year-old monument...

Robbery is booked

The Bellevue Theater management in Upper Merionide has announced that it will hold J.R.R. Tolkien's trilogy...

Music, dance

SUMMARY-The Juice Atlanta Dance Company and the Dance Troupe...

Movie Times

All time listed are 8:25, 7:35, 6:40. BELLEVUE-UPPER MERIONIDE... CASTLE (Irvington)...

Point 'is seen on Park screen

"The Turning Point" and "Joseph Andrews" were shown yesterday at the Park Theater, Roselle Park...

Wild play opens Feb. 1

Gloria Cromwell and Natalie Ross will be featured in the New Jersey Theater Forum's production of Oscar Wilde's "The Importance of Being Earnest"...

Crossword puzzle

ACROSS: 1 French city, 2 1000-year-old monument, 3 1000-year-old monument...

SUBURBAN CALENDAR

NEWARK-Traditional Japanese art exhibition... MOUNTAINIDE-Neue Film... MOUNTAINIDE-Neue Film...

Theater

LOOMFIELD-Edward O'Neill's Long Day's Journey into Night... MOUNTAINIDE-Neue Film...

Children

5 POINTS CINEMA UNION-UP IN SMOKE... GASTLE THEATER... "FOUL PLAY"...

Children

5 POINTS CINEMA UNION-UP IN SMOKE... GASTLE THEATER... "FOUL PLAY"...

Children

5 POINTS CINEMA UNION-UP IN SMOKE... GASTLE THEATER... "FOUL PLAY"...

Children

5 POINTS CINEMA UNION-UP IN SMOKE... GASTLE THEATER... "FOUL PLAY"...

Area's rate of cancer mortality 20 percent above national figure

The first phase of a major three-part study of cancer mortality in New Jersey counties and neighboring areas has been released by the state Department of Environmental Protection (DEP)...

Museum offers gown display

A selection of reception and ball gowns created by Charles Frederick Worth, the Parisian dressmaker of the late 19th century, will be on view at the Montclair Art Museum...

Art class tures kin

There is no problem with generation gaps in the art classes of the Montclair Art Museum...

Chamber plans D.C. reception

The economic outlook, taxes and the impact of government regulation are expected to be major topics of discussion Feb. 1...

Taylor works are on display

Landscapes and portraits of West Orange artist Godfrey J. Taylor will be on display at the North Jersey Botanical Center...

Museum offers '30s film trio

Three landmark films of the 1930s, "The Day After Tomorrow," "The Day After Tomorrow," and "The Day After Tomorrow"...

Area's rate of cancer mortality 20 percent above national figure

The first phase of a major three-part study of cancer mortality in New Jersey counties and neighboring areas has been released by the state Department of Environmental Protection (DEP)...

Museum offers gown display

A selection of reception and ball gowns created by Charles Frederick Worth, the Parisian dressmaker of the late 19th century, will be on view at the Montclair Art Museum...

Art class tures kin

There is no problem with generation gaps in the art classes of the Montclair Art Museum...

Chamber plans D.C. reception

The economic outlook, taxes and the impact of government regulation are expected to be major topics of discussion Feb. 1...

Taylor works are on display

Landscapes and portraits of West Orange artist Godfrey J. Taylor will be on display at the North Jersey Botanical Center...

Museum offers '30s film trio

Three landmark films of the 1930s, "The Day After Tomorrow," "The Day After Tomorrow," and "The Day After Tomorrow"...

Area's rate of cancer mortality 20 percent above national figure

The first phase of a major three-part study of cancer mortality in New Jersey counties and neighboring areas has been released by the state Department of Environmental Protection (DEP)...

Museum offers gown display

A selection of reception and ball gowns created by Charles Frederick Worth, the Parisian dressmaker of the late 19th century, will be on view at the Montclair Art Museum...

Art class tures kin

There is no problem with generation gaps in the art classes of the Montclair Art Museum...

Chamber plans D.C. reception

The economic outlook, taxes and the impact of government regulation are expected to be major topics of discussion Feb. 1...

Taylor works are on display

Landscapes and portraits of West Orange artist Godfrey J. Taylor will be on display at the North Jersey Botanical Center...

Museum offers '30s film trio

Three landmark films of the 1930s, "The Day After Tomorrow," "The Day After Tomorrow," and "The Day After Tomorrow"...

Area's rate of cancer mortality 20 percent above national figure

The first phase of a major three-part study of cancer mortality in New Jersey counties and neighboring areas has been released by the state Department of Environmental Protection (DEP)...

Museum offers gown display

A selection of reception and ball gowns created by Charles Frederick Worth, the Parisian dressmaker of the late 19th century, will be on view at the Montclair Art Museum...

Art class tures kin

There is no problem with generation gaps in the art classes of the Montclair Art Museum...

Chamber plans D.C. reception

The economic outlook, taxes and the impact of government regulation are expected to be major topics of discussion Feb. 1...

Taylor works are on display

Landscapes and portraits of West Orange artist Godfrey J. Taylor will be on display at the North Jersey Botanical Center...

Museum offers '30s film trio

Three landmark films of the 1930s, "The Day After Tomorrow," "The Day After Tomorrow," and "The Day After Tomorrow"...

Area's rate of cancer mortality 20 percent above national figure

The first phase of a major three-part study of cancer mortality in New Jersey counties and neighboring areas has been released by the state Department of Environmental Protection (DEP)...

Museum offers gown display

A selection of reception and ball gowns created by Charles Frederick Worth, the Parisian dressmaker of the late 19th century, will be on view at the Montclair Art Museum...

Art class tures kin

There is no problem with generation gaps in the art classes of the Montclair Art Museum...

Chamber plans D.C. reception

The economic outlook, taxes and the impact of government regulation are expected to be major topics of discussion Feb. 1...

Taylor works are on display

Landscapes and portraits of West Orange artist Godfrey J. Taylor will be on display at the North Jersey Botanical Center...

Museum offers '30s film trio

Three landmark films of the 1930s, "The Day After Tomorrow," "The Day After Tomorrow," and "The Day After Tomorrow"...

Area's rate of cancer mortality 20 percent above national figure

The first phase of a major three-part study of cancer mortality in New Jersey counties and neighboring areas has been released by the state Department of Environmental Protection (DEP)...

Museum offers gown display

A selection of reception and ball gowns created by Charles Frederick Worth, the Parisian dressmaker of the late 19th century, will be on view at the Montclair Art Museum...

Art class tures kin

There is no problem with generation gaps in the art classes of the Montclair Art Museum...

Chamber plans D.C. reception

The economic outlook, taxes and the impact of government regulation are expected to be major topics of discussion Feb. 1...

Taylor works are on display

Landscapes and portraits of West Orange artist Godfrey J. Taylor will be on display at the North Jersey Botanical Center...

Museum offers '30s film trio

Three landmark films of the 1930s, "The Day After Tomorrow," "The Day After Tomorrow," and "The Day After Tomorrow"...

Area's rate of cancer mortality 20 percent above national figure

The first phase of a major three-part study of cancer mortality in New Jersey counties and neighboring areas has been released by the state Department of Environmental Protection (DEP)...

Museum offers gown display

A selection of reception and ball gowns created by Charles Frederick Worth, the Parisian dressmaker of the late 19th century, will be on view at the Montclair Art Museum...

Art class tures kin

There is no problem with generation gaps in the art classes of the Montclair Art Museum...

Chamber plans D.C. reception

The economic outlook, taxes and the impact of government regulation are expected to be major topics of discussion Feb. 1...

Taylor works are on display

Landscapes and portraits of West Orange artist Godfrey J. Taylor will be on display at the North Jersey Botanical Center...

Museum offers '30s film trio

Three landmark films of the 1930s, "The Day After Tomorrow," "The Day After Tomorrow," and "The Day After Tomorrow"...

Area's rate of cancer mortality 20 percent above national figure

The first phase of a major three-part study of cancer mortality in New Jersey counties and neighboring areas has been released by the state Department of Environmental Protection (DEP)...

Museum offers gown display

A selection of reception and ball gowns created by Charles Frederick Worth, the Parisian dressmaker of the late 19th century, will be on view at the Montclair Art Museum...

Art class tures kin

There is no problem with generation gaps in the art classes of the Montclair Art Museum...

Chamber plans D.C. reception

The economic outlook, taxes and the impact of government regulation are expected to be major topics of discussion Feb. 1...

Taylor works are on display

Landscapes and portraits of West Orange artist Godfrey J. Taylor will be on display at the North Jersey Botanical Center...

Museum offers '30s film trio

Three landmark films of the 1930s, "The Day After Tomorrow," "The Day After Tomorrow," and "The Day After Tomorrow"...

Seminars eye violent crime, criminal justice

The New Jersey Coalition for Safe Communities will hold six seminars on criminal justice, Jordan Barot, president of the coalition...

Area's rate of cancer mortality 20 percent above national figure

The first phase of a major three-part study of cancer mortality in New Jersey counties and neighboring areas has been released by the state Department of Environmental Protection (DEP)...

Museum offers gown display

A selection of reception and ball gowns created by Charles Frederick Worth, the Parisian dressmaker of the late 19th century, will be on view at the Montclair Art Museum...

Art class tures kin

There is no problem with generation gaps in the art classes of the Montclair Art Museum...

Chamber plans D.C. reception

The economic outlook, taxes and the impact of government regulation are expected to be major topics of discussion Feb. 1...

Taylor works are on display

Landscapes and portraits of West Orange artist Godfrey J. Taylor will be on display at the North Jersey Botanical Center...

Area's rate of cancer mortality 20 percent above national figure

The first phase of a major three-part study of cancer mortality in New Jersey counties and neighboring areas has been released by the state Department of Environmental Protection (DEP)...

Museum offers gown display

A selection of reception and ball gowns created by Charles Frederick Worth, the Parisian dressmaker of the late 19th century, will be on view at the Montclair Art Museum...

Art class tures kin

There is no problem with generation gaps in the art classes of the Montclair Art Museum...

Chamber plans D.C. reception

The economic outlook, taxes and the impact of government regulation are expected to be major topics of discussion Feb. 1...

Taylor works are on display

Landscapes and portraits of West Orange artist Godfrey J. Taylor will be on display at the North Jersey Botanical Center...

Museum offers '30s film trio

Three landmark films of the 1930s, "The Day After Tomorrow," "The Day After Tomorrow," and "The Day After Tomorrow"...

San Francisco 1072 H. 22 West... 15.95 SPECIALS... DANCING... 40¢ to the 70¢...

Chester Tavern & Restaurant... Open Daily... 1000 Morris Ave., Union, N.J. 07081... 687-7122

Jetport... 1000 Morris Ave., Union, N.J. 07081... 687-7122

Winrose... 1000 Morris Ave., Union, N.J. 07081... 687-7122

Let us put you in the winner's circle... 1000 Morris Ave., Union, N.J. 07081... 687-7122

Young Images... Children's Fashioning... 1000 Morris Ave., Union, N.J. 07081... 687-7122

Young Images... Children's Fashioning... 1000 Morris Ave., Union, N.J. 07081... 687-7122

Young Images... Children's Fashioning... 1000 Morris Ave., Union, N.J. 07081... 687-7122

Young Images... Children's Fashioning... 1000 Morris Ave., Union, N.J. 07081... 687-7122

San Francisco... 1072 H. 22 West... 15.95 SPECIALS... DANCING... 40¢ to the 70¢...

Chester Tavern & Restaurant... Open Daily... 1000 Morris Ave., Union, N.J. 07081... 687-7122

Jetport... 1000 Morris Ave., Union, N.J. 07081... 687-7122

Winrose... 1000 Morris Ave., Union, N.J. 07081... 687-7122

Let us put you in the winner's circle... 1000 Morris Ave., Union, N.J. 07081... 687-7122

Young Images... Children's Fashioning... 1000 Morris Ave., Union, N.J. 07081... 687-7122

Young Images... Children's Fashioning... 1000 Morris Ave., Union, N.J. 07081... 687-7122

Young Images... Children's Fashioning... 1000 Morris Ave., Union, N.J. 07081... 687-7122

Young Images... Children's Fashioning... 1000 Morris Ave., Union, N.J. 07081... 687-7122







# Everybody's Market Place CLASSIFIED ADS

Call 686-7700 To Place An Ad • DEADLINES: Tuesday Noon For Thursday • Thursday Noon For Sunday • Call 686-7700 To Place An Ad

### RETAIL MENSWEAR Assistant Managers and Trainees

Outstanding opportunities available for qualified individuals seeking Retail Menswear careers with well established company. Store locations from the East Coast to the Mid-west. We are interested in individuals with retail experience who are available for possible relocation and have strong retail management goals. Some management experience or training helpful, but not essential.

Call Collect: Mr. Goldin, (201) 256-8483

### EMPLOYMENT OPPORTUNITIES AVAILABLE WITH Ginos

Permanent full and part time day shift & night positions available. Flexible hours to meet your needs. No experience necessary. Free meals & uniforms furnished.

APPLY IN PERSON TO MANAGER BETWEEN 2 & 4 P.M. and 7 & 9 P.M. 2650 Route 22, Union, N.J. 07087

### NURSING CAREERS

An excellent career opportunity awaits you at Memorial General Hospital. We are a progressive teaching hospital located in an ideal suburban setting in North Central N.J., less than 5 minutes from the Garden State Parkway.

Immediate openings exist for FULL OR PART TIME RN'S ON THE 11 P.M. TO 7 A.M. SHIFT. These positions are in our soon to be remodeled Med-Surg units and our Emergency Room.

### SECRETARIAL & Clerical Opportunities

Several immediate Full Time positions are available with our major Pharmaceutical Division for the following individuals:

**SECRETARIES**  
We need people with 1-5 years secretarial experience, good dictation and accurate typing. In addition, good written communications skills required.

**CLERK TYPISTS**  
For those openings, we are looking for detail-minded individuals who have at least 3-5 years general office experience and accurate (40-48 wpm) typing skills.

### INSURANCE CAREERS

Royal Globe Insurance Companies, a world wide leader in the property-casualty field, will be interviewing applicants for the following position at the Kenilworth Holiday Inn, Room 100, on Monday, Jan. 29, & Tuesday, Jan. 30, 1979 from 9 A.M. - 4 P.M.

**FIGURE CLERKS**  
Do you have a good figure aptitude and enjoy working with numbers? Perhaps this could be the opportunity you've been looking for as you train for a career in:  
• A Ratee in commercial lines underwriting  
• Accounts Clerk in accounting  
• A CREX Operator in personal lines underwriting.

### CLERK TYPIST

If you can type 35 wpm or more & enjoy diversified duties we have previous business experience, you could qualify to join one of our service departments.

We offer a good starting salary & full benefits package plus a friendly working environment. Convenient location from Garden State Pkwy. & Rte. 280.

To apply for any of these interesting positions, please contact Mrs. Joan Schiari 987-6410.

### ROYAL GLOBE INSURANCE COMPANIES

ALADDIN Employment Agency  
300 N. Front St. Plainfield, N.J.

### BE YOUR OWN BOSS!

Find out if real estate is for you. Call Scott Co. Realtors

### TELLERS TRAINING AND EXPERIENCE

Berkley Federal Savings has immediate openings for tellers. Excellent starting salary & benefits.

Call 686-9000 ext. 212 for further information. Equal Opportunity Employer M/F.

### PLANT MAINTENANCE

Day shift opening in retail fast-food plant. Strong electrical background desirable with good mechanical aptitude. Excellent opportunity for advancement. Apply in person or call Diane

### WEEKEND NURSING SATURDAY & SUNDAY-ALL SHIFTS

A progressive teaching hospital in North Central N.J. seeks licensed RN's to cover our weekend schedules.

16-20 offers very competitive salary and opportunity to work in our Med-Surg units and our E.R. Our hospital is located in a pleasant and secure suburban community. Come join our professional team.

### MEMORIAL GENERAL HOSPITAL

1000 Gallatin Hill Rd. Union, New Jersey 07087

### SECRETARIAL & Clerical Opportunities

Several immediate Full Time positions are available with our major Pharmaceutical Division for the following individuals:

### CLERK TYPISTS

For those openings, we are looking for detail-minded individuals who have at least 3-5 years general office experience and accurate (40-48 wpm) typing skills.

### INSURANCE CAREERS

Royal Globe Insurance Companies, a world wide leader in the property-casualty field, will be interviewing applicants for the following position at the Kenilworth Holiday Inn, Room 100, on Monday, Jan. 29, & Tuesday, Jan. 30, 1979 from 9 A.M. - 4 P.M.

### BE YOUR OWN BOSS!

Find out if real estate is for you. Call Scott Co. Realtors

### FACTORY WORKERS

Opportunity for experienced factory workers in a growing industry. Excellent benefits and advancement opportunities.

### CLERK TYPIST

Excellent opportunity for a detail-oriented clerk typist. Competitive salary and benefits.

### TECHNICAL COMPUTER OPERATOR

Opportunity for a technical computer operator in a dynamic environment. Excellent benefits.

### CLERK TYPISTS

Several immediate Full Time positions are available with our major Pharmaceutical Division for the following individuals:

### INSURANCE CAREERS

Royal Globe Insurance Companies, a world wide leader in the property-casualty field, will be interviewing applicants for the following position at the Kenilworth Holiday Inn, Room 100, on Monday, Jan. 29, & Tuesday, Jan. 30, 1979 from 9 A.M. - 4 P.M.

### CLERK TYPIST

If you can type 35 wpm or more & enjoy diversified duties we have previous business experience, you could qualify to join one of our service departments.

### ROYAL GLOBE INSURANCE COMPANIES

ALADDIN Employment Agency  
300 N. Front St. Plainfield, N.J.

### BE YOUR OWN BOSS!

Find out if real estate is for you. Call Scott Co. Realtors

### LEGAL SECRETARY

Opportunity for a legal secretary in a law firm. Excellent benefits and advancement opportunities.

### CLERK TYPIST

Excellent opportunity for a detail-oriented clerk typist. Competitive salary and benefits.

### TECHNICAL COMPUTER OPERATOR

Opportunity for a technical computer operator in a dynamic environment. Excellent benefits.

### CLERK TYPISTS

Several immediate Full Time positions are available with our major Pharmaceutical Division for the following individuals:

### INSURANCE CAREERS

Royal Globe Insurance Companies, a world wide leader in the property-casualty field, will be interviewing applicants for the following position at the Kenilworth Holiday Inn, Room 100, on Monday, Jan. 29, & Tuesday, Jan. 30, 1979 from 9 A.M. - 4 P.M.

### CLERK TYPIST

If you can type 35 wpm or more & enjoy diversified duties we have previous business experience, you could qualify to join one of our service departments.

### ROYAL GLOBE INSURANCE COMPANIES

ALADDIN Employment Agency  
300 N. Front St. Plainfield, N.J.

### BE YOUR OWN BOSS!

Find out if real estate is for you. Call Scott Co. Realtors

### TELEPHONE SOLUTION

Opportunity for a telephone solution specialist in a growing industry. Excellent benefits.

### CLERK TYPIST

Excellent opportunity for a detail-oriented clerk typist. Competitive salary and benefits.

### TECHNICAL COMPUTER OPERATOR

Opportunity for a technical computer operator in a dynamic environment. Excellent benefits.

### CLERK TYPISTS

Several immediate Full Time positions are available with our major Pharmaceutical Division for the following individuals:

### INSURANCE CAREERS

Royal Globe Insurance Companies, a world wide leader in the property-casualty field, will be interviewing applicants for the following position at the Kenilworth Holiday Inn, Room 100, on Monday, Jan. 29, & Tuesday, Jan. 30, 1979 from 9 A.M. - 4 P.M.

### CLERK TYPIST

If you can type 35 wpm or more & enjoy diversified duties we have previous business experience, you could qualify to join one of our service departments.

### ROYAL GLOBE INSURANCE COMPANIES

ALADDIN Employment Agency  
300 N. Front St. Plainfield, N.J.

### BE YOUR OWN BOSS!

Find out if real estate is for you. Call Scott Co. Realtors

### TELLERS

Opportunity for tellers in a growing industry. Excellent benefits and advancement opportunities.

### CLERK TYPIST

Excellent opportunity for a detail-oriented clerk typist. Competitive salary and benefits.

### TECHNICAL COMPUTER OPERATOR

Opportunity for a technical computer operator in a dynamic environment. Excellent benefits.

### CLERK TYPISTS

Several immediate Full Time positions are available with our major Pharmaceutical Division for the following individuals:

### INSURANCE CAREERS

Royal Globe Insurance Companies, a world wide leader in the property-casualty field, will be interviewing applicants for the following position at the Kenilworth Holiday Inn, Room 100, on Monday, Jan. 29, & Tuesday, Jan. 30, 1979 from 9 A.M. - 4 P.M.

### CLERK TYPIST

If you can type 35 wpm or more & enjoy diversified duties we have previous business experience, you could qualify to join one of our service departments.

### ROYAL GLOBE INSURANCE COMPANIES

ALADDIN Employment Agency  
300 N. Front St. Plainfield, N.J.

### BE YOUR OWN BOSS!

Find out if real estate is for you. Call Scott Co. Realtors

### TELLERS

Opportunity for tellers in a growing industry. Excellent benefits and advancement opportunities.

### CLERK TYPIST

Excellent opportunity for a detail-oriented clerk typist. Competitive salary and benefits.

### TECHNICAL COMPUTER OPERATOR

Opportunity for a technical computer operator in a dynamic environment. Excellent benefits.

### CLERK TYPISTS

Several immediate Full Time positions are available with our major Pharmaceutical Division for the following individuals:

### INSURANCE CAREERS

Royal Globe Insurance Companies, a world wide leader in the property-casualty field, will be interviewing applicants for the following position at the Kenilworth Holiday Inn, Room 100, on Monday, Jan. 29, & Tuesday, Jan. 30, 1979 from 9 A.M. - 4 P.M.

### CLERK TYPIST

If you can type 35 wpm or more & enjoy diversified duties we have previous business experience, you could qualify to join one of our service departments.

### ROYAL GLOBE INSURANCE COMPANIES

ALADDIN Employment Agency  
300 N. Front St. Plainfield, N.J.

### BE YOUR OWN BOSS!

Find out if real estate is for you. Call Scott Co. Realtors

### TELLERS

Opportunity for tellers in a growing industry. Excellent benefits and advancement opportunities.

### CLERK TYPIST

Excellent opportunity for a detail-oriented clerk typist. Competitive salary and benefits.

### TECHNICAL COMPUTER OPERATOR

Opportunity for a technical computer operator in a dynamic environment. Excellent benefits.

### CLERK TYPISTS

Several immediate Full Time positions are available with our major Pharmaceutical Division for the following individuals:

### INSURANCE CAREERS

Royal Globe Insurance Companies, a world wide leader in the property-casualty field, will be interviewing applicants for the following position at the Kenilworth Holiday Inn, Room 100, on Monday, Jan. 29, & Tuesday, Jan. 30, 1979 from 9 A.M. - 4 P.M.

### CLERK TYPIST

If you can type 35 wpm or more & enjoy diversified duties we have previous business experience, you could qualify to join one of our service departments.

### ROYAL GLOBE INSURANCE COMPANIES

ALADDIN Employment Agency  
300 N. Front St. Plainfield, N.J.

### BE YOUR OWN BOSS!

Find out if real estate is for you. Call Scott Co. Realtors



Thursday, January 23, 1979

### Awards to go to survivors of the Holocaust

Jack Spitzer, president of B'nai B'rith International, will make his first appearance in Northern New Jersey on Monday at Temple Emanuel, 756 Broad St., Westfield.

He will present the B'nai B'rith "Man of Destiny" award to five local B'nai B'rith members who survived the Nazi Holocaust and built new lives for themselves in the United States. The five honorees are Symant Gottlieb and Edward Harvitt, both of Kinnelside; Arlo Rabson of Union; Julius Sommer of Hillside; and Siegfried Hermann of Fair Lawn.

Typical is Ziggo Gottlieb, now a successful builder who lives with his wife, Lily and two sons, Peter, 19 and Michael, 18.

His story starts in Kopyevno, Poland, in 1943. The Ukrainians and Germans invaded his home town; of 6,000 Jews there, only 25 survived. Though Gottlieb escaped by crawling into the fields, his mother, father, uncle, aunt and her six-year-old son were caught. His mother was killed immediately. He was captured and was held in the Kamlonki Concentration Camp. He overcame the horrible conditions of hard labor, torture, shootings, malnutrition and disease, he survived.

### Djokic soloist with Symphony

Eighteen-year-old Michelle Djokic of Trenton will be guest soloist when the New Jersey Symphony Orchestra returns to Summit High School Sunday at 1:30 for the second of its three-ticketed Summit Kaleidoscope series.

With music director Thomas Michalak on the podium, Miss Djokic will perform Dvorak's cello concerto, the same concerto which won her top honors in the symphony's auditions last April 13. Michalak and the orchestra will additionally offer Prokofiev's Classical Symphony, "The Swan of Tuonela" by Jan Sibelius, and Ravel's "Alborada del gracioso."

Djokic began studying cello at the age of nine with Joseph Drulan at the Settlement Music School in Philadelphia, and at 11 she entered the Juilliard pre-college division, where she studied with Channing Robbins. Now in her second year in the regular division, she is also studying with Leonard Rose.

According to Mrs. Bernard Berkman of Summit, president of the New Jersey Symphony Orchestra League's Summit Chapter, a few seats are still available for this event. They can be obtained by contacting the symphony box office at 213 Washington St., Newark, 924-9208.

### Course offered in school law

Fairleigh Dickinson University's College of Education, Teaneck, has announced that it will offer a three-credit graduate course in "New Jersey School Law" during the spring 1979 semester at the Teaneck-Hackensack Campus. It is the first school law course in the state to be taught by practicing attorneys.

The course will follow the case study approach to reviewing and analyzing New Jersey education law. In addition to regular University faculty, the course also features lectures by Irving Evers, Harold Springstead and Steven Wels, all prominent New Jersey school board attorneys.

Classes will meet on Wednesday evenings, 6:30 to 9 p.m., from Jan. 31 through May 17. Classes will be held in Bancroft Hall.

### Linden class of '50 seeking classmates

Linden High School Class of 1950 held an organization meeting to plan a class reunion to be held in the fall of 1980. The committee attempting to contact all class members, includes: Doris Mazur (Cyrus) 381-8384, Jeanette Romanowski (Sylwaska) 993-0147, Jeanette (Larkin) 928-2027, Dorothy Walasek (Kinnelside) 928-7058 (home phone) and 283-0444 (work); Janet Vincent (Hollerbaum) 928-0283.



NEW DRUG—A platinum compound is injected into laboratory mice by Dr. Allen Aronson, as Dr. Eric Sifton of the oncology, catalase and chemotherapy research section head at Engelhard Industries, observes. They are of the staff of Engelhard's research center in Menlo Park. Rosenberg said his research will lead to a way to kill "close to 100 percent" of advanced cancers in the testes and cause a regression of 50 percent of cancers in the ovaries and improve life in 70 percent of the cases. Engelhard sponsored the research that led to the development of the drug cisplatin, which will be marketed as Platinol by Bristol Laboratories.

### Help of ex-smokers asked by Cancer unit

Ex-smokers who have succeeded in breaking the cigarette habit are needed by the American Cancer Society to conduct quit-smoking programs for the unprecedented number of persons who are seeking help in quitting.

Anne Marie Singerman of Pittsford, coordinator of ACS New Jersey Division quit-smoking programs, said, "An estimated half a million New Jerseyans quit smoking on Nov. 16, 1978, the day of the American Cancer Society's 'Great American Smokeout.' Many have not gone back to smoking. But many others, who want to quit, are finding it hard to kick the habit. They need and want help in quitting for good."

To meet the need for quit-smoking clinics, the Society is training former smokers to become quit-smoking facilitators. Using ACS educational materials designed to help smokers break the habit, facilitators conduct six-week quit-smoking programs under ACS auspices.

"The U.S. Surgeon General's recent report that irrefutably links smoking with lung cancer, heart disease and other respiratory diseases places high priority on teaching the general public that the upward curve of lung cancer deaths is to be reversed," Mrs. Singerman said. One of the "most alarming aspects" of the Surgeon General's report is the upward trend in smoking among women and young adults, with a parallel rise in lung cancer cases among women.

"It's no exaggeration to call the cigarette habit 'slow suicide.' Accordingly, anyone who has succeeded in breaking the habit and also

helps others to quit would perform a valuable public service in the field."

Those interested in undertaking the brief training course for quit-smoking facilitators may apply to the Public Education Department, American Cancer Society, P.O. Box 1220, Union, N.J. 07083, or call 69-2100.

### Rutgers radio show on the air with broadcast number 1,500

In 1948, when Rutgers officials turned to radio to help educate and inform New Jersey's residents, one of the university's major efforts was to launch the Rutgers University Forum, a weekly public affairs panel discussion of government, politics and current events.

Today, 1,500 programs and nearly 24 years later, the forum continues to provide New Jerseyans with a weekly in-depth look at their state's affairs.

The 1,500th broadcast last week brought together four New Jersey governors to record a piece of New Jersey history. Gov. Brendan T. Byrne and his predecessors, Richard J. Hughes, now chief justice of the State Supreme Court, William Cahill and Robert E. Meyner, discussed the politics and policies of their administrations, which covered 24 of the forum's 34 years.

If such a program were to have been done in 1945 it would have been broadcast by three New Jersey radio stations in New Jersey and on several stations in New York and Pennsylvania with substantial New Jersey audiences.

The original format featured a discussion of current events by three or four faculty members. The program was recorded on a large disc, similar to today's long-playing record album, which was circulated among the participating stations.

The 1989 graduating class of Westquahig High School, Beach, will hold its 40th year reunion Saturday evening, June 9, at the Shackamoon Country Club in Scotch Plains.

Additional information may be obtained by contacting Mrs. Ruth Skolnik Sber, 30 Belgrade Ter., West Orange (970)2-731-6287.

Dr. William J. McGill, president of Columbia University, will be the keynote speaker when Dr. Rose M. Channing is officially inaugurated as president of Middlesex County College, Edison, on the campus at 3 p.m.

Joseph Klegman of Perth Amboy, chairman of the college's board of trustees, points to McGill as a most appropriate keynote speaker since Channing earned both her master's and doctorate degrees at Columbia University.

Rain date is Feb. 4.

### Coin, stamp show

The Lyndhurst Stamp and Coin Club will hold a show at the Lyndhurst Holiday Inn, Rt. 317, (opposite the Meadowlands race track) Sunday from 10 a.m. to 6 p.m. Admission is free.

### Old iron furnaces, glass works in tour

An exploration of historical iron furnaces and glass works in the Pine Barrens will be held Saturday, by the Stockton State College Center for Environmental Research.

The outing will include visits to the old glass works at Estell Manor Park, charcoal and glass ruins near Mays Landing, the Weymouth bog iron furnace on the Great Egg Harbor River, and the Marsha Furnace on a branch of the Wading River.

The expedition will be jointly led by Judith Wilentz, the resident archaeologist and curator of Batsto Furnace, and Dr. Joseph Lindner, Associate Professor, Environmental Studies at Stockton.

Excursion participants will be provided with a discussion of land use history and the historical and archaeological significance of bog iron furnaces and glass works in South Jersey during the trip.

The Pine Barrens supplied the bog iron industry with charcoal to fuel the smelting process that converted the reddish bog clods (one ore) to pig iron. The revolution was

Music, mime in Y program

An unusual fusion of jazz, rock and classical music with mime and dance will be presented at the Y-YVITA of Metropolitan New Jersey Sunday at 8 p.m.

The New City Ensemble and the Y-YVITA of Metropolitan New Jersey will combine to present the program, the first of the Y-YVITA of Metropolitan New Jersey's mixed-media performance series for the entire family to be presented on three Sunday afternoons. The series is supported in part by a grant from Meet the Composer program, which is funded by the National Endowment for the Arts, the Helene Rubinstein Foundation, the Alexander Rodchenko Fund for Music, Inc., and the Alice Dilson Fund.

Tickets for the performance are available now at the Y Box Office at 88 Ter. adults, \$2 for children, \$1 for students. Special prices for Y members.

### TURN-ONS



PACE BUICK IS ON FRANKLIN PLACE IN SUMMIT. HARD TO FIND, BUT HARD TO BEAT.

68-72 FRANKLIN PL., SUMMIT, (201) 322-1111

YENAGAERS find jobs by ringing WATAGS, Call 662-2700



This Year Give Him A... ROLEX. Authorized Rolex Distributor.



Authorized Rolex Distributor. Rolex Jewellers.



Authorized Rolex Distributor. Rolex Jewellers.



Authorized Rolex Distributor. Rolex Jewellers.



Authorized Rolex Distributor. Rolex Jewellers.

### Hit or Miss

MISSES AND JUNIOR SIZED FASHION AT YOUR PRICE.

### FINAL CLEARANCE

DRASTIC REDUCTIONS UP TO 75% This is a giant consolidation of merchandise for this spectacular sale. Brand name fashions at terrific savings. All fall and winter merchandise priced to go.

### Hit or Miss

The difference isn't in our clothes. It's in our prices.

### UNION PLAZA SHOPPING CENTER

RT. 22, UNION • NEAR PATRICK & NICKEL. Hours: Mon.-Sat. 10 a.m. to 10 p.m. • Phone: 964-9700

MILLBURN 726 MORRIS TURNPIKE A&P Shopping Center Hours: Mon.-Fri. 10 a.m. to 9 p.m. • Phone: 374-9629

WEST CALDWELL 608 BLOOMFIELD AVE. Bucky Mall Shopping Center Hours: Mon.-Fri. 10 a.m. to 9 p.m. • Phone: 523-9768

### Bennington Freedom Period Furniture

# Winter Sale and Show

Save \$602 - Complete 7 P.C. Dining Room Sale \$3,389 reg \$3,991

Reg	SALE	Reg	SALE
Elegantly informal country group: Oval Ext. Trestle Table with Heavy 3" Thick Mica-Wood Finish Top	\$849.75	Matching Arm Chair	\$218.50
3" Thick Mica-Wood Finish Top	\$222	Trestle Carriage Bench	\$185
Wagon Churn Buffet, 2 Spindle-Back Welsh Chairs	\$1938.75	*Oval Ext. Trestle Table with Standard Finish Top	\$383.50
and 2 Matching Arm Chairs	\$1648	Reg. \$764.50, sale \$569	
Spindle Back Side Chair	\$191	*Oval Ext. Trestle Table with 3" thick saddle seat, each	\$162

Manufacturer's Suggested Retail Prices. Optional with Dealer.

### N.J. Trailer Camping & Sport Show

ASBURY PARK CONVENTION HALL Jan. 25-28

50% OFF

Jan. 25, 26, 27 - 11 a.m. to 10 p.m.  
Jan. 28 - 11 a.m. to 7 p.m.

### Curtain Bin and Bath Shop

1036 Stuyvesant Ave. UNION

### FINAL DAYS!

Ready Made...Special Order DRAPERIES

### 40% OFF

REG. PRICES

### Music, mime in Y program

UNION PLAZA SHOPPING CENTER

RT. 22, UNION • NEAR PATRICK & NICKEL

Hours: Mon.-Sat. 10 a.m. to 10 p.m. • Phone: 964-9700

MILLBURN 726 MORRIS TURNPIKE A&P Shopping Center Hours: Mon.-Fri. 10 a.m. to 9 p.m. • Phone: 374-9629

WEST CALDWELL 608 BLOOMFIELD AVE. Bucky Mall Shopping Center Hours: Mon.-Fri. 10 a.m. to 9 p.m. • Phone: 523-9768

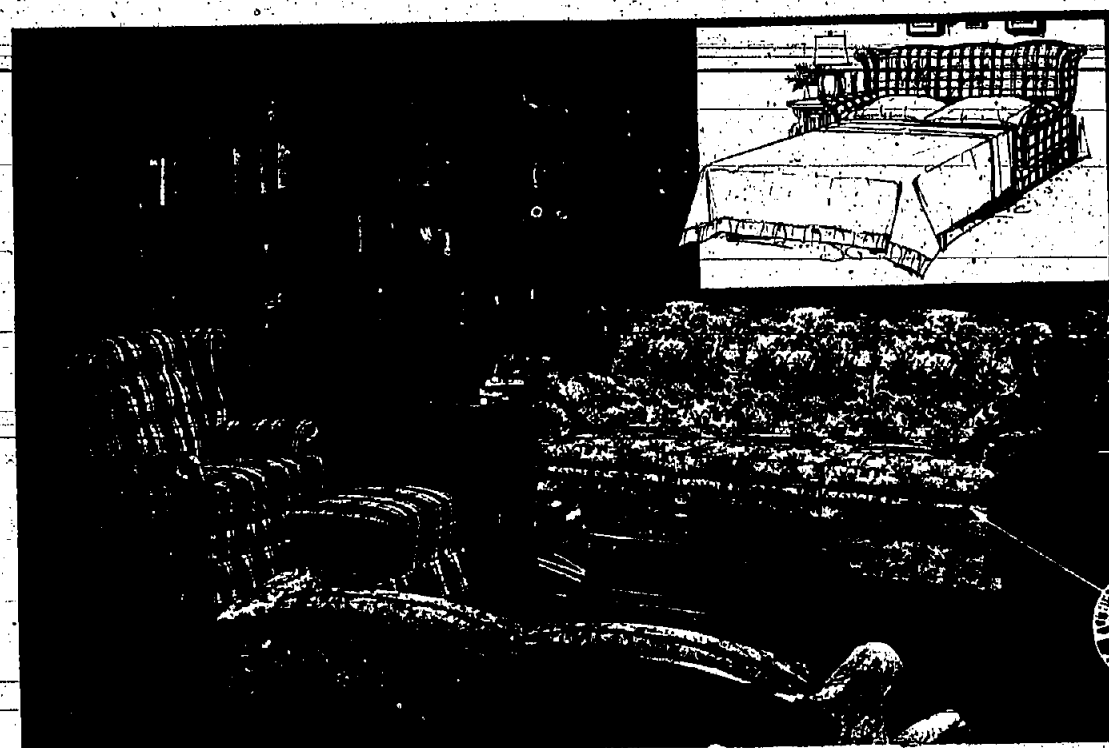
Advertising Supplement to the Union Leader, Springfield Leader, Mountaine Echo - January 11, 1979 Advertising Supplement to The Suburban News

### FLUSSER'S world of early americana



**Save \$877<sup>25</sup> Complete living room with a hidden bed inside the sofa.**

12 Pc. Group: Sleep Sofa, Love Sofa, Companion Chair, Ottoman, Collector's Left and Right End Tables, Coffee Table (all with Mica-Wood Finish Top) (2) 24" Bookstacks (2) 34" Bookstacks with Turn-A-Corner Panel. Reg. \$4,259 **Sale \$3,381.75** (as shown)



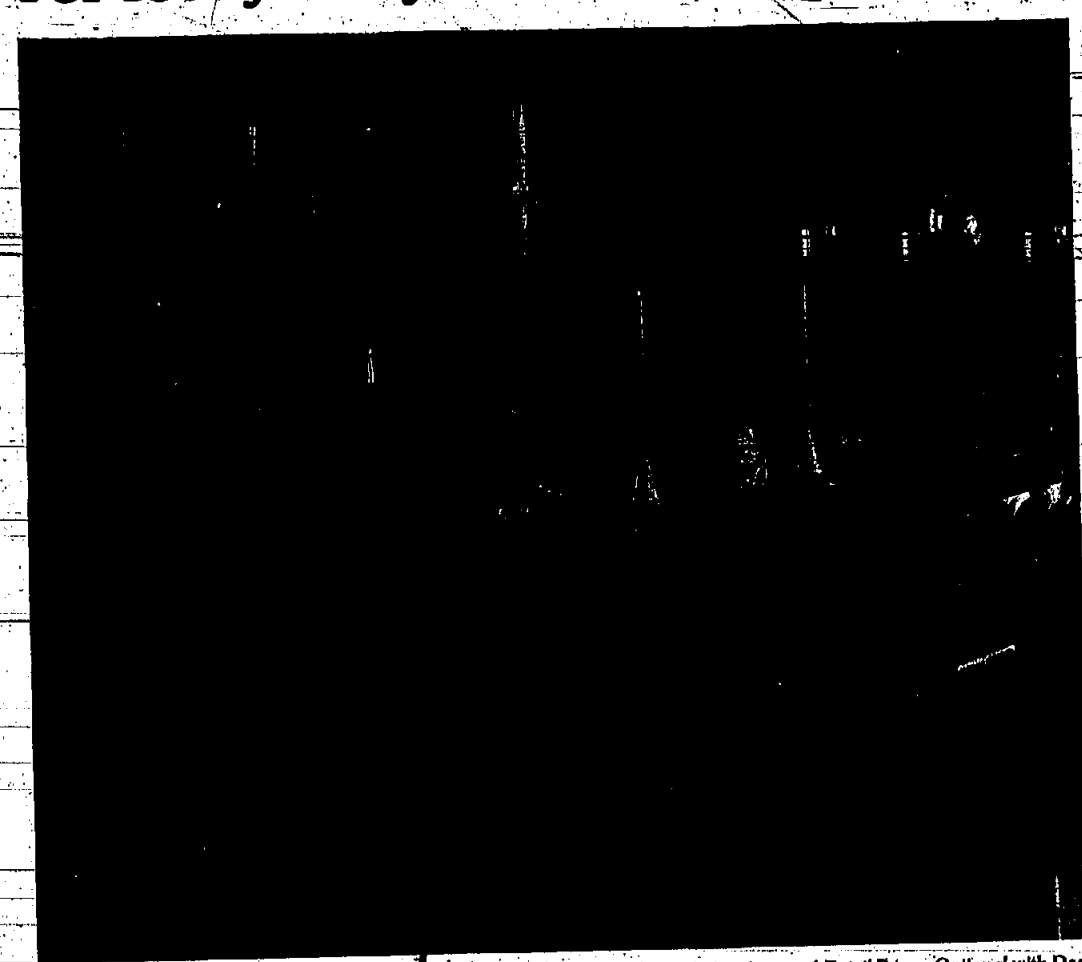
The handsome sofa in this group converts to a queen-size bed for two and will instantly transform your living room into a bedroom at night. Hand-sewing enhances the quality difference in this luxuriously upholstered furniture. The double stitched border hand-sewn on the spring edge of the 8-way hand-tied coil base unit is an exclusive Bennington feature that adds elegant design elegance, greater support to the seat cushions and longer life to the fabric. Included are 2 separate matching pillows for sofa and love sofa, plus arm covers for all pieces.

	Reg.	SALE
Sleep Sofa (opens to queen-size bed, see open-view inset) — (from) \$3,775	\$3,775	\$2,900
(as shown) \$531.75		\$445
Available as Sofa: (from) \$556		\$445
(as shown) \$771.75		\$617
Love Sofa (from) \$439.25		\$350
(as shown) \$596.25		\$477
Companion Chair (from) \$281.50		\$225
(as shown) \$295.25		\$236
Ottoman (from) \$110.50		\$88
(as shown) \$115.50		\$92
Collector's End Table with Mica-wood Finish Top, each	\$307.50	\$245
Coffee Table with Mica-Wood Finish Top	\$329.50	\$260
34" Bookstacks, each	\$405.25	\$319
24" Bookstacks, each	\$254	\$199
Turn-A-Corner Panel	\$57.25	\$45

Collector's End Table with Standard Finish Top, each: Reg. \$266.25, **Sale \$210**  
 Coffee Table with Standard Finish Top, Reg. \$265.75, **Sale \$210**

Inset at left shows unique double-attached border construction that creates elegant middle border design and adds extra durability to Bennington upholstery.

**Dining Rooms Designed For Today's Way of Life**



**Save \$493 Complete 6 pc. group in true Early American tradition Sale \$2,355 reg. \$2,848**

Consists of Welsh China Buffet, Heavy End Leaf Ext. Trestle Table with Mica-Wood Finish Top, (2) Ladder-Back Side Chairs with Woven Seats and 2 Matching Arm Chairs

The peak of colonial perfection in every quality detail, the best solid pine cabinet wood, authentic design with exposed ribbed-tenon and dove-tailed joints, hand-worn edges, rich golden-burnished Antique or sunlit Tawny finish. Here is pine unlike any other — now at not-to-be-missed Winter Sale savings!

	Reg.	SALE
Welsh China Buffet	\$1222	\$975
End Leaf Ext. Trestle Table with Mica-Wood Finish Top	\$824	\$699
Ladder-Back Side Chair with woven seat, each	\$184.75	\$157
Matching Arm Chair, each	\$216.25	\$183
End Leaf Ext. Trestle Table with Standard Finish Top, Reg. \$725, <b>Sale \$615</b>		

**ALL DINING TABLE TOPS ARE AVAILABLE WITH MICA-WOOD PROTECTION**

This exclusive Bennington polyester finish is resistant to marks, scratches, stains, boiling water — even alcohol. It not only protects the table top from household hazards, but also enhances the natural beauty of the pine wood with unequalled clarity and depth. Mica-Wood may be ordered in Antique or Tawny finish. It may be wiped clean with a damp cloth and will stay lustriously lovely.

All Items Available in Antique or Tawny Finish at Same Sale Prices. Manufacturer's Suggested Retail Prices, Optional with Dealers.

**3 GREAT TABLE VALUES**

(A) Trestle End Table classic favorite with heavy 2" thick top, convenient bottom shelf. 28" x 16" x 22 3/4" high. Reg. 169.50, **Sale \$135**  
 With Mica-Wood Finish Top, Reg. 198.50, **Sale \$155**

(B) Trestle Cocktail Table with heavy 2" thick top and convenient bottom shelf for magazines. 32" x 21" x 17 3/4" high. Reg. 209.50, **Sale \$165**  
 With Mica-Wood Finish Top, Reg. \$276, **Sale \$219**

(C) Hexagon Table a distinctive end-table accent piece with storage area behind doors. Adjustable shelf. 24" x 28" x 23" high. Reg. 346.50, **Sale \$275**

All Items Are Available in Antique or Tawny Finish at Same Sale Prices. Manufacturer's Suggested Retail Prices, Optional with Dealers.

**Action Lounger**  
 stays close to a wall . . . whether you use it as a chair or to recline.  
 Double duty comfort! Never has to be pulled back and forth from the wall for reclining. It glides forward with the greatest of ease when you want to be back and relax. Wide choice of pre-coordinated fabrics.  
 (from) Reg. \$353.75, **Sale \$283**  
 (as shown) reg. \$408.75 **Sale \$327**

**Save \$400<sup>25</sup> Complete 7 pc. group creates a gracious environment Sale \$2,060 reg. \$2,460.25**

Consists of Welsh Buffet, Dry Sink with Solid Copper Tray, Captain's Round Ext. Table with 2" Thick Top with Mica-Wood Finish, (2) Captain's Chairs and (2) Mate's Chairs

Make meals memorable with Bennington's mellow warmth and beauty. Big on charm, great on looks, incomparable in craftsmanship — here is Americana at its best. Make it yours now at substantial savings.

	Reg.	SALE
Welsh Buffet	\$949.50	\$609
Captain's Round Ext. Table with Mica-Wood Finish Top	\$480.75	\$405
Captain's Chair, each	\$149.75	\$125
Mate's Chair, each	\$131	\$110
Dry Sink	\$468.50	\$375
Captain's Round Ext. Table with Standard Finish Top, Reg. \$407, <b>Sale \$345</b>		

**Save \$210<sup>25</sup> Welsh China Buffet Sale \$975 reg. \$1,185.75**

This handsome wall piece has 3 loaded glass-door cabinets, adjustable plate-grooved glass shelves and interior lighting for dramatic focal interest.

Note: This Welsh China Top can replace the Welsh Top on the buffet. In group at left, at additional cost.

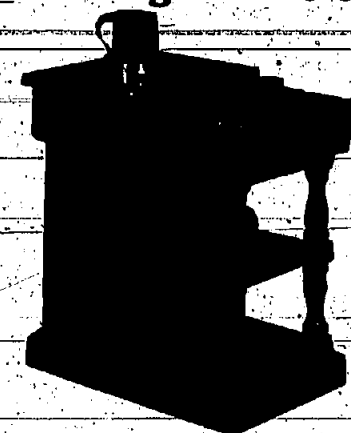


# Flusser's world of early americana Winter Sale and Show

## Decorative and Functional Accents from our large Bennington Pine Collection of tables and desks



**Dry Sink End Table**  
Sale \$170 reg. \$203  
Choice of right-facing or left-facing styles. Black plastic-lined dry sink well for plants, flowers, or other objects. Four drawers, storage area behind door. 22" x 14" x 24" H. With Mica-Wood Finish Top. Reg. \$220.50, Sale \$185.

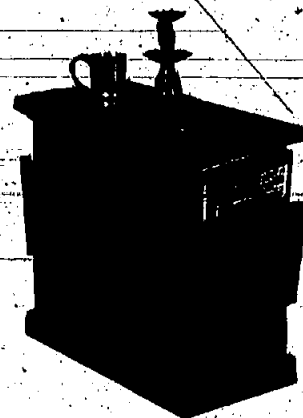


**Dry Sink End Table**  
Sale \$170 reg. \$203  
Choice of right-facing or left-facing styles. Black plastic-lined dry sink well. Open shelf area for books and things. One drawer, storage area behind door. 22" x 14" x 24" H. With Mica-Wood Finish Top. Reg. \$220.50, Sale \$185.

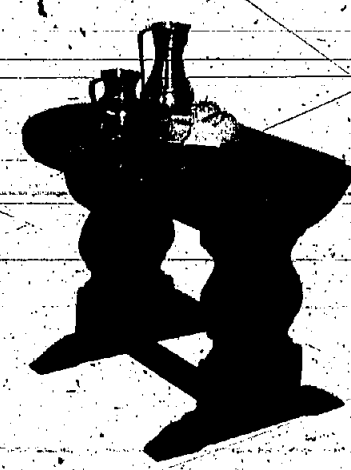


**Impressive Corner Table**  
Sale \$275 reg. \$346.50  
The perfect table for a corner arrangement — just see how beautifully it joins the sofa and love sofa in the living room setting opposite. Marvelously functional, too, with generous storage area behind the doors. 30" x 30" x 31 1/2" H.

All items available in Antique or Tawny Finish at Same Sale Prices. Manufacturer's Suggested Retail Prices. Optional With Dealers.



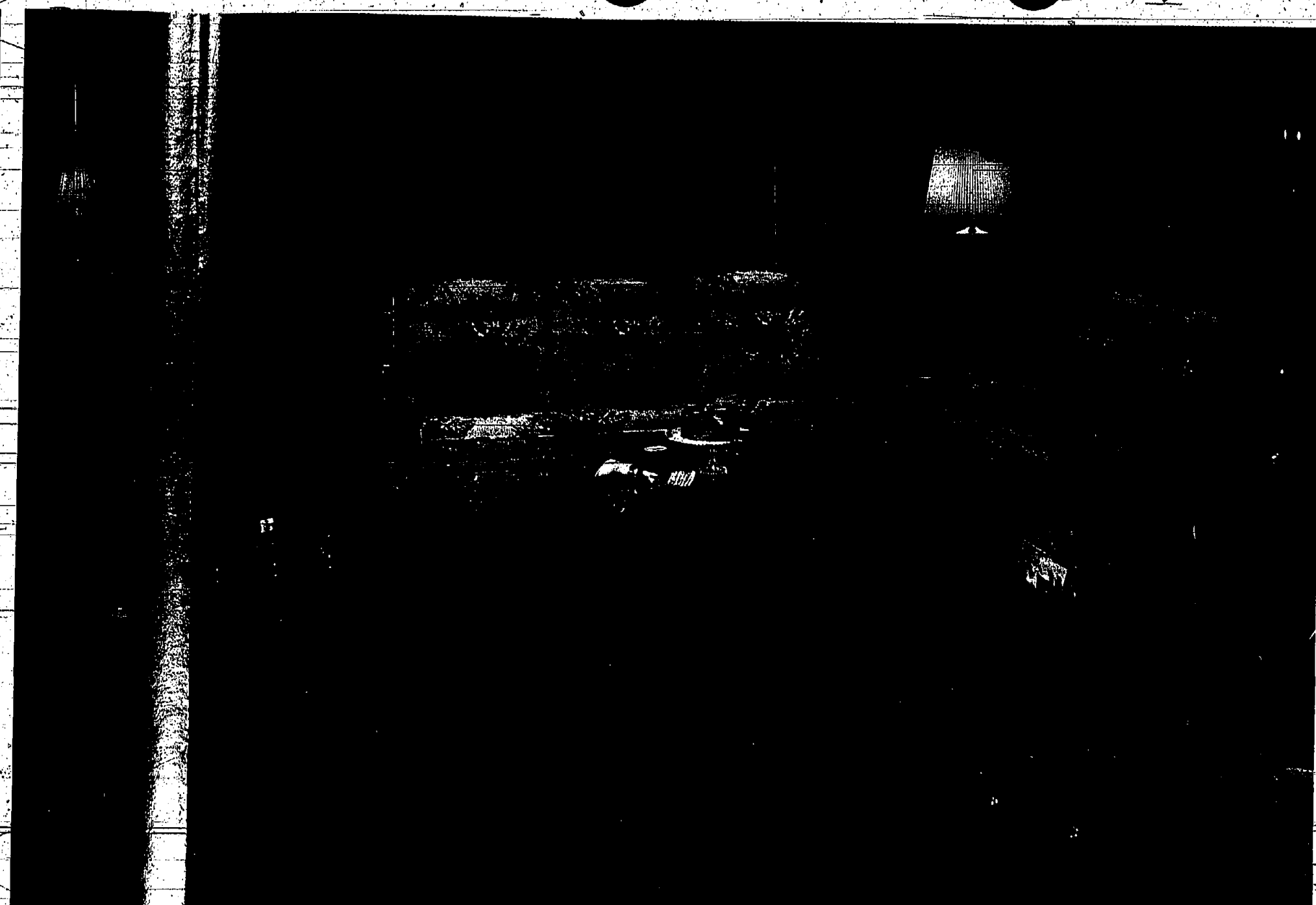
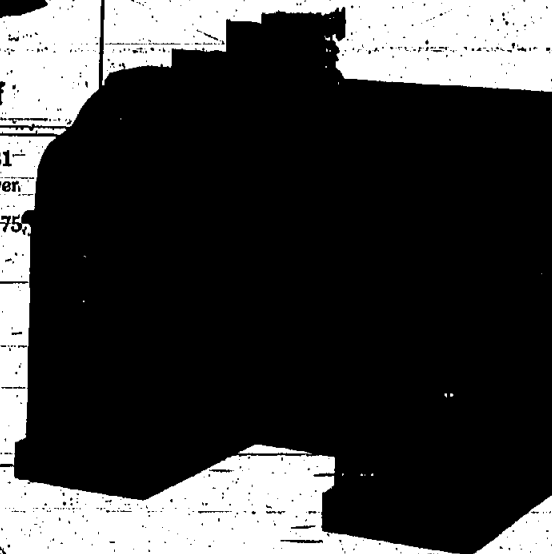
**Leisure End Table**  
Sale \$190 reg. \$227.25  
Competition priced for small spaces. 19" x 24" H. Two magazine racks, three drawers, storage area behind door. With Mica-Wood Finish Top. Reg. \$253.50, Sale \$215.



**Butterfly Drop-Leaf End Table**  
Sale \$185 reg. \$231  
Sturdy trestle base, one extra-deep drawer. 14" x 30" x 23" H. 30" diameter open. With Mica-Wood Finish Top. Reg. \$305.75, Sale \$242.50.

### Save \$202.50! Station Master's Solid Pine Roll-Top-Desk Sale \$1135

Reg. \$1337.50  
The roll-top (tambour) is made of "nesting" slats. It folds into top surface to protect valuable papers. Interior pigeon-hole compartments and 4 drawers. Furnished with executive desk blotter with inlaid writing surface with black leather corners hand-tooled in gold. Seven drawers, two are double depth (one on either side of line-well) for Pendaflex files. Center drawer lock automatically locks all drawers. Slide-out tablet on each side. 56" x 30" x 45" H.



### Save \$867! Complete 10 pc. living room with that Bennington custom look

Reg. \$4,500.75 (as shown)  
The luxurious setting (as shown) consists of Sofa, Love Sofa, Companion Chair, Swivel Rocker, Ottoman, Coffee Table with Mica-Wood Finish Top, Magazine End Table, Display Record End Table, Wash Stand with Mica-Wood Finish Top and Mirror.  
Highly styled upholstered furniture with many exclusive custom details: solid pine arms with unique built-in oval cushioned arm-rests supported by robust aluminum. Double-stitched middle border hand-sewn on the spring edge of the 8-way hand-tied coil base unit for greater support to the supplest PolyDec cushions; and longer life to the fabric. Custom-covered to your order from a great selection of pre-coordinated fabrics. A quality investment in lasting beauty and comfort.

	Reg.	SALE		Reg.	SALE
3-Seat Sofa	(from) \$692.50	\$554	Corner Table	\$346.50	\$275
(as shown) \$923.50	\$738**	Magazine End Table	\$191.75	\$139	
2-Seat Love Sofa	(from) \$552.25	\$441**	Display Record End Table	\$265.75	\$225
(as shown) \$721.50	\$577**	Wash Stand (with Mica-Wood Finish Top) and Toilet Mirror	\$542.25	\$469	
Companion Chair	(from) \$367.50	\$294	*Coffee Table with Standard Finish Top, reg. \$133.50, Sale \$265		
(as shown) \$481.75	\$385**	**Wash Stand with Standard Finish Top, reg. \$336, Sale \$285			
Swivel Rocker	(from) \$415.25	\$332**	Wash Stand with Mica-Wood Finish Top, reg. \$65.25, Sale \$310		
(as shown) \$529.50	\$423**				
Ottoman	(from) \$110.50	\$88			
(as shown) \$154.50	\$120				
*Coffee Table with Mica-Wood Finish Top	\$343.75	\$289			

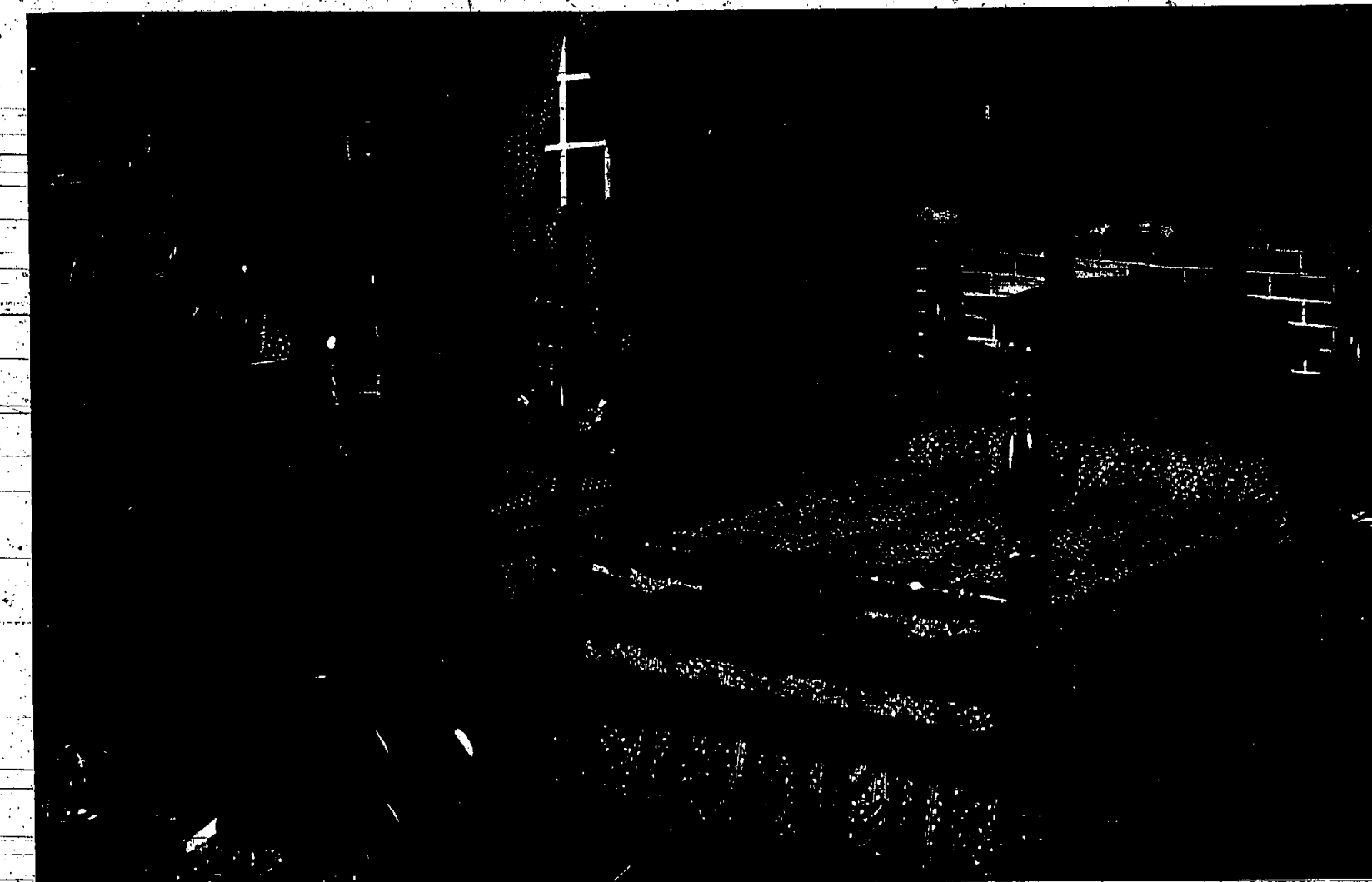
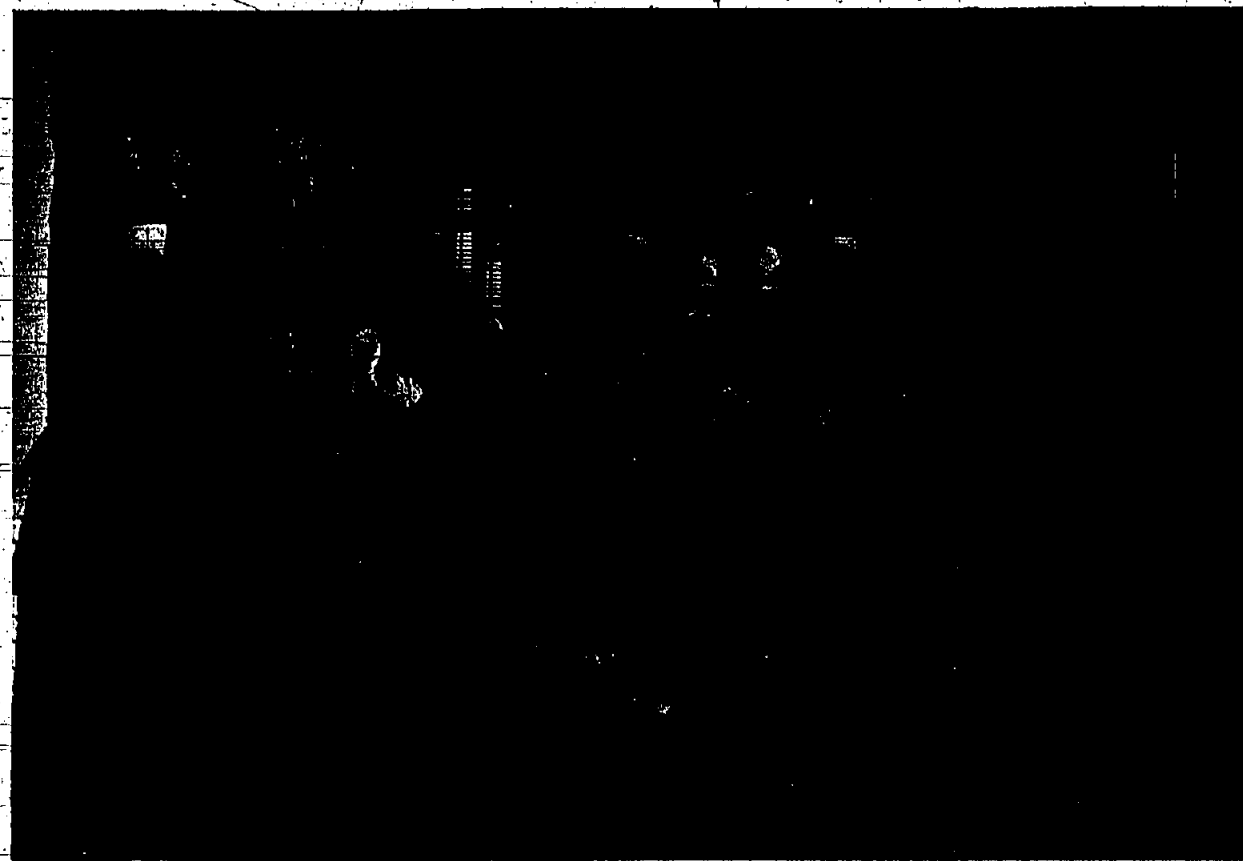


**Save \$288**  
**Magnificent 4 pc.**  
**Complete bedroom**  
**Sale \$1615** reg. \$1903

Consists of Queen Size Illuminated Hutch Bookcase Headboard, Dresser Base, Illuminated Hutch Mirror and Well-Chest.  
 So inviting and relaxing. Here is the utmost in comfort, practicality and traditional charm. You'll be really impressed with the unique illuminated hutch bookcase headboard. Beautiful and functional, it has two hand-etched, frosted glass-paned sliding doors. Combined with the handsome well-chest and hutch-mirrored dresser, here is truly exceptional value. Naturally, in an open stock collection, all pieces may be purchased separately, of course.

	Reg.	SALE
Illuminated Hutch Bookcase Headboard, Queen size	\$395.50	\$335**
Dresser Base	\$590.75	\$499**
Illuminated Hutch Mirror	\$311.75	\$265
Well-Chest	\$605	\$515

All Items Available in Antique or Young Finish at Same Sale Prices. Manufacturer's Suggested Retail Prices. Optional with Dealers.

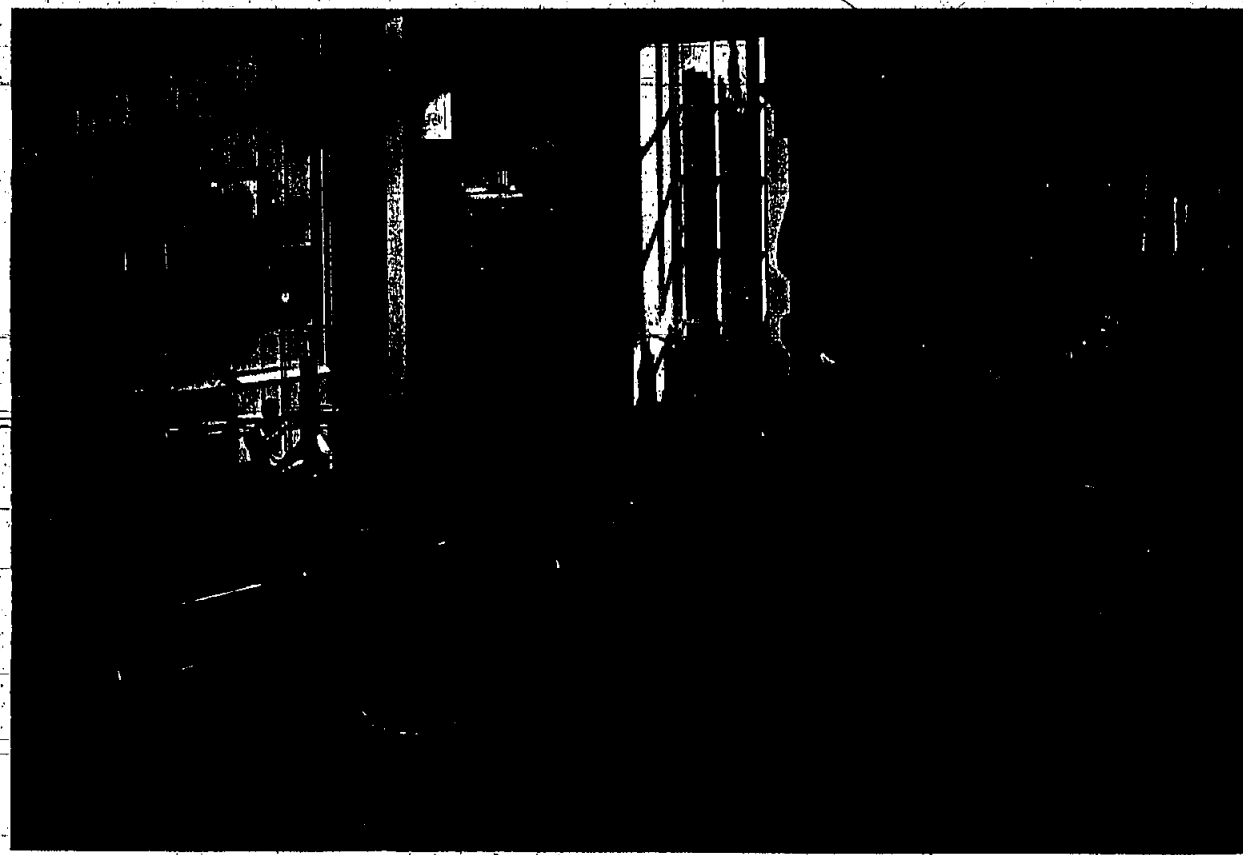


**Great Bennington Bedroom Buys... Americana at its Best**

**Save \$432<sup>75</sup>**  
**Complete 6 pc. group**  
**unequaled for beauty,**  
**quality and value**  
**Sale \$2,425** reg. \$2,857.75

This Beautiful Bedroom Consists of Dresser Base, Hutch Mirror, Chest-on-Chest, Queen Size Cannonball Bed and 2 Commodes.  
 Designed in the image of an earlier time for today's lifestyle. Gently rounded hand-worn edges, scalloped trim and husky turnings give these superbly crafted pieces the authentic look of historic masterpieces. Do not be misled by imitations — Bennington is the original heirloom pine. Make it yours now at a fabulous saving.

	Reg.	SALE
Dresser Base	\$725.75	\$428**
Hutch Mirror	\$495	\$428**
Chest-on-Chest, Queen size	\$708.50	\$599
Cannonball Bed, Queen size, with 60" siderails	\$440.50	\$375
Commode Night Stand, each	\$242	\$205



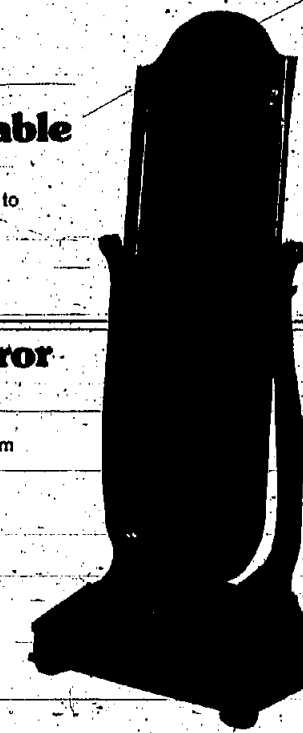
**Save \$570<sup>00</sup> on this complete 6 pc. bedroom**  
**with the Bennington country look you love Sale \$3,209** reg. \$3,779.50

**Save \$48<sup>00</sup>**  
**Commode Night Table**  
**Sale \$259** reg. \$307.50

Designed with paneled chamfered corners to match the dresser above. One drawer and two-door storage compartment.

**Save \$64**  
**Dressmaker's Mirror**  
**Sale \$249** reg. \$313

Here is that full-view mirror you've been longing for. Designed with traditional charm for today's lifestyle. Two lift-lids at bottom cover compartments for catch-alls: 27" x 16" x 68 1/2" H. 54" x 16" plate.



All Items Are Available in Antique or Young Finish at Same Sale Prices. Manufacturer's Suggested Retail Prices. Optional with Dealers.

**The Group Above Consists of the Dresser Base, Hutch Mirror, Armoire, Queen Size Jefferson Bed and 2 Wash Stands**

The hearty look, boldness of scale, lush and imaginative detailing typifies this country-style bedroom as distinctly Bennington. The handsome queen-size Jefferson bed, for example, has big, beautiful cannonball posts 60" tall. The 74" triple dresser is designed with paneled chamfered corners, and its magnificent mirrored hutch, with leaded glass-door side cabinets, is illuminated. Adjustable top shelves and partitions in the 42" armoire may be removed to install a full-size TV. Here is enduring beauty and utility at spectacular sale savings.

	Reg.	SALE
Dresser Base	\$833.75	\$709
Illuminated Hutch Mirror	\$515.75	\$495
Armoire	\$952.25	\$818
Jefferson Bed, Queen Size	\$690.75	\$585
Wash Stand, each	\$242	\$205



**Save \$637<sup>25</sup>**  
**Enjoy utmost comfort!**  
**7 pc. family room**  
**Sale \$2558<sup>50</sup>** reg. \$3195.75

Complete setting consists of Sofa, Low Sofa, Companion Chair, Ottoman, Dry Sink End Table and Cocktail Table with Mica-Wood Finish Tops, Mirrored Hall Stand. Updated American Traditional infused with Bennington quality and charm. Lustrous cloud-soft cushioning crafted for extra comfort and durability, wide choice of pre-coordinated fabrics.

	Reg.	SALE		Reg.	SALE
3-Seat Sofa (from \$705.75 (as shown) \$890.50)	\$564 <sup>00</sup>	\$712 <sup>00</sup>	Cocktail Table with Mica-Wood Finish Top	\$329.50	\$260
2-Seat Low Sofa (from \$562.75 (as shown) \$703.50)	\$450 <sup>00</sup>	\$562 <sup>00</sup>	Mirrored Hall Stand	\$410.25	\$325
Companion Chair (from \$374.50 (as shown) \$458.25)	\$299 <sup>00</sup>	\$366 <sup>00</sup>	Dry Sink End Table with Standard Finish Top	\$203	\$170
Ottoman (from \$189.25 (as shown) \$183.25)	\$111 <sup>00</sup>	\$146 <sup>00</sup>	Cocktail Table with Standard Finish Top	\$266.75	\$210
Dry Sink End Table with Mica-Wood Finish Top	\$220.50	\$185			

All items Available in Antique or Tawny Finish at Same Sale Prices. Manufacturer's Suggested Retail Prices, Optional with Dealers.



**Very Special!**  
**Magazine End Table \$139<sup>00</sup>** reg. 191.78  
 Start your own Bennington collection with this super-value. It combines traditional charm and contemporary function. Cabinet door on each side enables you to place this table at left or right of a sofa or chair.  
 Manufacturer's Suggested Retail Prices, Optional with Dealers.

**Winter Sale & Show**

Now is the best time to invest in Bennington Pine-Freedom Period Furniture. Every piece in our collection of these beloved traditional designs is tagged at exciting sale prices. Here are masterful reproductions and adaptations of American classics for the living room, family room, dining room and bedroom. Full ensembles plus dramatic accent pieces. All skillfully crafted in heavily distressed solid pine, hand-finished in your choice of rich, golden-burnished Antique or sunlit Tawny. Come save now on furniture unexcelled for quality, value and heirloom durability. In the storewide sale nobody can afford to miss.

**FLUSSER'S world**  
**of early americana**

2269 ROUTE 22 WEST (OPPOSITE FLAGSHIP) UNION, NEW JERSEY 07083 TELEPHONE: 964-1080

861 SPRINGFIELD AVENUE (AT GROVE STREET) IRVINGTON, N.J. 07111 TELEPHONE: 372-2268

Garden State Parkway Exit 142A and 143-A

Open Daily 10 to 9 P.M. Saturday 10 to 6:30 P.M.

Open Daily 9 A.M. to 5 P.M.