

In case of emergency
call
374-0400 for Police Department
or First Aid Squad
374-7470 for Fire Department

Springfield Leader

The Zip Code
for Springfield is
07081

Published Every Thursday by Truett Publishing Corp.
41 Mountain Ave., Springfield, N.J. 07081 - 686-7700

VOL. 50 NO. 27

Springfield, N.J., Thursday, April 15, 1977

Subscription Rate
\$12.00 Yearly

Second Class Postage
Paid at Springfield, N.J.

25 Cents Per Copy

Local school budget is a winner District budget is easy winner

Carrying five of the six constituent towns, the Regional High School District budget for 1978-80 swept to victory on Tuesday by a margin of 700 votes, 2,289 to 1,587. At the same time, three unopposed candidates were elected for three-year terms—incumbents Natalie Waldt in

District Dems plan screening talks Saturday

The board of trustees of the regular Democratic Party Organization of Union County will meet at 2 p.m. Saturday at 18 Poplar st., Rahway, to vote again on its endorsement of County Freeholder Joanne Rajoppi, former mayor of Springfield, for the vacant State Senate seat from the 22nd District.

The board also will screen candidates Saturday for the two State Assembly seats from the 22nd District.

Harry Pappas of Springfield, county Democratic party chairman and husband of Rajoppi, made the announcement that the State Senate backing, as well as the Assembly endorsements, will be on the agenda Saturday.

The party board, also known as the political-action committee, endorsed Rajoppi for Senate in January. But the endorsement at that time brought charges from Kenilworth Mayor Livo Maricno, who also wants the Senate nomination, that Pappas had pressured the screeners to back Rajoppi.

Republican regulars gave their endorsements March 24 to Donald T.

Springfield and John Conlin in Clark and newcomer David M. Hart in Mountainside. Hart succeeds his wife, Dr. Marilyn Hart.

Nothing that happens the first year the regional and local school board elections had been held on the same day, Dr. Donald Morachnik, superintendent of schools, commented that the regional budget passage had been aided by issues in several of the towns which tended to bring pro-budget voters to the polls.

Final figures showed that 9.8 percent of the eligible voters participated in the regional election this year, as compared to 1.87 percent last year—when the election was held during much colder weather in February.

The town-by-town vote for the \$11,891,948 current expense proposal, including absentee ballots, was as follows, with the yes vote given first:

Berkeley Heights, 294 to 92; Clark, 390 to 402; Garwood, 428 to 293; Kenilworth, 258 to 142; Mountainside, 465 to 228; Springfield, 474 to 375.

The vote for the capital outlay item of \$27,322 was: Berkeley Heights, 272 to 107; Clark, 358 to 418; Garwood, 384 to 321; Kenilworth, 215 to 163; Mountainside, 258 to 142.

The vote for the capital outlay item of \$27,322 was: Berkeley Heights, 272 to 107; Clark, 358 to 418; Garwood, 384 to 321; Kenilworth, 215 to 163; Mountainside, 258 to 142.

The vote for the capital outlay item of \$27,322 was: Berkeley Heights, 272 to 107; Clark, 358 to 418; Garwood, 384 to 321; Kenilworth, 215 to 163; Mountainside, 258 to 142.

(Continued on page 3)

Players finish casting for play

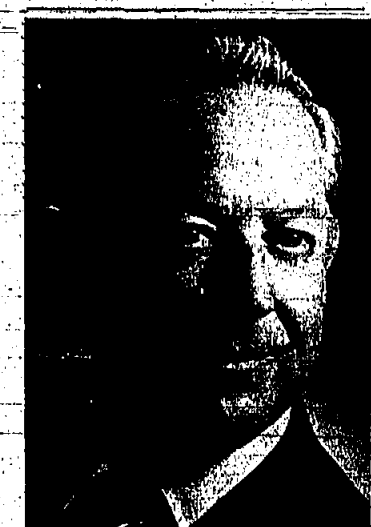
The Springfield Community Players have completed casting for "Snow White and the Seven Dwarfs" scheduled for presentation on Saturday and Sunday, April 28 and 29. Performances will be at 11 a.m. and at 2 p.m. at the Raymond Chisholm School on Shunpike road. Admission is \$1 for adults and 50 cents for children.

The production is under the direction of Shelley Wolfe and Bobbie Weinstein.

The cast includes Sherie Morrison as Snow White, Carl Vitale as Prince Frederick, Amy Horn as Jeanne Marie, Dottie Chen as Gretchen, Barbara Tullibeam as the Dark Queen, Karen Summers as the Voice of the Mirror.

The Seven Dwarfs are Jerry Cohen as Grumpy, Gil Wolfe as Sleepy, Herman Drill as Sneezy, Jay Horn as Bashful, Carl Weinstein as Dopey, Murray Weinberg as Doc and Marty Roff as Happy.

The maids are Ellen Weinberg, Enid Weidholz, Miriam Aptekar, Muriel Drill, Lydia Dowd, Yvette Rodburg, Stephanie Dippold, Ariene Morgenroth and Susan Warner. Animals and flowers are Barry Tullibeam, Scott and Matthew Summers, Jason and Drew Weisholz, Holly Greenapoon, Heidi and Lisa Warner and Michele Dippold.



QUEST AT ROAST—Township Clerk Arthur H. Buhrer will be "roasted" at a dinner-dance Saturday night at L'Affaire, Rt. 22, Mountainside, sponsored by the Springfield Rotary Club. Proceeds will be used for scholarships to graduating seniors at Jonathan Dayton Regional High School. Leonard Zucker, Rotary Club vice-president, is general chairman.



GENERAL VENDORIAL—Kirk Wogoy and Theresa Curcio are among vocal music students who will be selling flowers door to door from 9:30 a.m. to 5 p.m. Saturday in an annual project sponsored by the Jonathan Dayton Regional High School Choral Parents' Society to raise funds for equipment and scholarships. (Photo: Graphics)



CAN'T WAIT—Tanya Di Tona, 3, can't wait to see how a 1979 swimming pool badge will look on her bathing suit. Showing her, are Township Recreation Director Joe Rapuano and his assistant, Theresa Herkato. Springfield Community Pool membership renewal forms are going out into the mail this week. Prospective new members may apply after April 30 at the township recreation department. Cost is \$125 for a family, \$75 for an individual and \$25 for a senior citizen.

First steps to safety Firemen urge practice

Springfield firemen have launched a campaign to change the old notion that a fire drill is something only for kids in school.

"It's also for children at home—and for parents, grandparents and all other residents of town," according to fireman Bill Gras, co-chairman of the public-safety program for Local 57 of the Firemen's Mutual Benevolent Association (FMBBA).

"Every family should sit down and make step-by-step escape plans—then practice them," said Gras. He said the FMBBA recommends precautions including:

1. At least one smoke detector for every level of the home, especially the sleeping areas.
2. A written plan providing at least two exit routes from every room, especially a bedroom, and designating a pre-arranged meeting place outside the home.
3. An escape ladder for any second-floor bedroom that does not have outdoor stairs which could be used if the primary stairway were blocked.
4. Most of these ladders are chain, and the ladder can simply be hooked onto the window sill," said Gras. The chain rungs are usually light-weight metal that can be lifted easily by a child, Gras pointed out, and the ladder can be stored conveniently in a box in the bedroom. The ladders are available from many stores, he noted.
5. Decals marking both the inside doorway and an outside window of any bedroom used by a tot or a handicapped adult—to alert rescue workers. Decals, donated by the FMBBA, are available at Springfield fire headquarters.
6. A habit of sleeping with the bedroom door closed. The door will hold back heat and fire during an escape from another exit, such as a window, Gras explained.
7. Gras said rehearsals, or drills, should be conducted often enough for every person in the home "to know exactly what to do when a smoke detector sounds an alarm."
8. In a bedroom, he said, a person should feel the door.
9. "If it is cool, open it cautiously," said Gras. "If it is hot, you will have to use your alternate route. Children should be taught how to open a window, lower themselves from the first floor to the ground or use an escape ladder from a second floor."
10. If a person is trapped in a room with a hot door and no escape ladder, Gras said, "keep the door closed, wait at a window and signal to show your location to firemen. Don't hide, but stay in the room."

County council decision is due Wednesday on waste disposal

The Union County Solid Waste Advisory Council will hold a special meeting in the Courthouse Annex, Westfield at 4 p.m. Wednesday to make its final decision on solid waste disposal recommendations.

At a meeting last week, with 15 municipalities as well as some private industry and environmental groups represented, the council voted unanimously in favor of continued landfill arrangements as its preferred interim solution, covering the next four to six years.

It also made a preliminary ranking of long-range solutions, with the number one choice being a Port Authority of New York and New Jersey plan for creation of an industrial site at one of three locations in New Jersey. Mass burning of solid waste brought to this site or refuse-derived fuel (RDF) would produce steam to generate electricity. There also would be some resource recovery.

In considering the three sites being looked at by the Port Authority, the council made its selection on the basis of proximity: Elizabeth first, then Newark, then Jersey City.

Second choice in the preliminary ranking went to a proposal for incinerator with RDF, with some resource recovery; fourth, a Merck Company proposal for RDF to produce steam, with some resource recovery, at the Rahway-Linden line; fifth, a Union County refuse processing facility; at a site to be determined, for combustion-produced steam or electricity, with resource recovery where cost-effective. In connection with the county facility, transfer stations have been suggested as a possible way of reducing haulage costs.

Advisory unit members also voted, 13-5, to support continuation of community recycling programs which are in effect in many of the county's municipalities.

Formal recommendations will be presented to the Board of Freeholders after the April 11 meeting. The board then will hold public hearings before adopting the long-range plan which the state has called for by June 11.

The state Department of Environmental Protection is requiring Union and other counties to develop these

Tax levy ahead by 140 votes Three incumbents achieve new terms

By HELEN REYNOLDS
Springfield voters strongly approved higher property taxes for 1978-80 and re-elected incumbents Tuesday on the first-ever joint election day of both public school systems that serve township students.

Incumbents Gregory Clarke, who got 666 votes; Barbara Adler, 627, and Laura Rosenbaum, 542, won three-year terms on the Springfield Board of Education which governs kindergarten through eighth grade schools (K-8). Losing candidate Daniel Maitland 3rd got 470 votes.

Almost 58 percent of the voters approved a pair of levies that will increase K-8 property taxes by 10 points to 97 cents per \$100 assessed valuation. The \$3,023,528 current-expense levy passed 515 to 375. The vote was 594 to 388 on the capital-outlay levy of \$6,000—mainly to weatherproof school buildings and to rehabilitate their heating systems.

The newly passed levies, together with \$414,446 in bond debts that voters approved in the past, will result in local property taxes of \$485 on a \$50,000 house, an increase of \$45, to support K-8 schools—which receive only about 3 percent of their financing from state and federal taxes.

On the same election day, about 59 percent of Springfield voters favored a pair of tax levies for the Union County Regional High School District whose ninth through 12th-grade students includes the local Jonathan Dayton schools.

(Continued on page 3)

Dog's mess is public problem

With the coming of the warmer weather, Springfield's playgrounds are being groomed by the Township Road Department. However, it may turn into a case of the parks going to the dogs—literally, according to Vincent Cluffo, sanitation.

"It seems that dog owners are using the parks as sites for their pets to defecate," he said. "This is a problem for the children who would like to play but can't due to the indiscriminate droppings of dogs under the supervision of their owners."

He said that the Township of Springfield, there are laws which prohibit dogs off the leash; damage by dogs to public lawns, shrubs, flowers, grounds or property; placing of offensive, obnoxious and deleterious materials on the ground.

The police, Health Department and citizens urge all dog owners to please curb your dog, not to use the parks and to use common sense as to where your pets defecate.



IT'S EASY, DADDY—Yvette Lanthar, 9, climbs down a portable escape ladder, which she herself has placed at the window, in less time than it takes for flames to spread from smoke holes plotted by firemen in the vacant house. Yvette is the daughter of fireman Ray Lanthar, waiting at the bottom of the ladder. She volunteered for this escape demonstration, photographed by Fire Capt. Ted Johnson. (See story on this page.)

Junior loop umps sought

The Springfield Junior Baseball League is seeking umpires. Adults, as well as those of high school and college age, were urged to apply.

A series of four clinics, designed to teach the rules and the techniques of good umpiring, has been scheduled.

The first clinic will be held tomorrow at 7 p.m. at the Sarah Batley Civic Center, 30 Church Mall; applications will be taken at that time.

Attendance at the clinics is mandatory for all prospective umpires.

FIRE CALLS

The Springfield Fire Department reports handling the following calls in the two-week period that ended last Saturday:

MARCH 10
4:37 p.m.—Brush fire on Berkeley road.
7:14 p.m.—Report of a house fire on Albert Court; false alarm.

MARCH 20
6:59 p.m.—Investigated presence of fuel oil in brook by Rose avenue.

MARCH 22
10:54 a.m.—Auto accident on Milltown road; fire department's Jaws of Life used to free victim.

MARCH 23
10:24 a.m.—False alarm at Temple Beth Ahm.
11:07 a.m.—Brush fire on Golf Oval.

MARCH 24
2:29 a.m.—Fire in a jail cell in police headquarters; minor.
12:41 p.m.—Refrigerator fire on Gregory road.

MARCH 25
6:40 a.m.—Stand-by duty for Summit Fire Department.

MARCH 27
1:33 p.m.—Brush fire along railroad tracks.

MARCH 29
1:02 p.m.—Gasoline container burning at Morris and Springfield avenues.
6:49 p.m.—Small fire in Burger Express, extinguished before firemen arrive.

MARCH 30
9:57 p.m.—Brush fire on Tooker avenue.

MARCH 31
1:23 p.m.—Smoke in a store on Rt. 22; caused by overheated space heater.

Softball umps, coaches sought

The Springfield Recreation Department is seeking male or female coaches and umpires for the Girls' Softball Town League. Anyone interested may call the Recreation Department (376-5884).

Applications for summer employment are still being accepted for jobs at the town pool, day camp and parks. Applications can be obtained at the Recreation Department, Church Mall.

Oneg shabbat is sponsored

The annual oneg shabbat of the Rutgers-Douglas Hill Foundation will be sponsored jointly by the Springfield Chapter of B'nai B'rith Women, and the Springfield Men's Lodge, tomorrow at 8 p.m. at Rutgers University, New Brunswick.

Mrs. Ann Braverman is chairman for the Springfield Chapter, and Mrs. Harry Rice is president of the Springfield chapter. Yair Greenspan is president of the men's lodge.

Mr. Leon, 69; services held

Services were held last Friday for Benjamin Leon, 69, of Briar Hills circle, Springfield, who died March 28 in St. Barnabas Medical Center, Livingston.

Mr. Leon was born in Brooklyn and lived in Jersey City and Leonia before moving to Springfield 10 years ago.

He was a customs supervisor for the U.S. Treasury Department, Newark, where he was employed for 36 years, and retired three months ago.

Surviving are his wife, Sylvia, a daughter, Mrs. Alyce Sobel, two sons, Bruce and Arnold H.; two sisters, Mrs. Paula Shapiro and Mrs. Lillian Abramowitz, and six grandchildren.

The Menorah Chapel, at Millburn, Vauxhall road, Union, handled funeral arrangements.

Fasulo is in London for spring semester

Louis Fasulo, son of Mr. and Mrs. Louis Fasulo of Timber Avenue road, Springfield, is in London this spring studying comparative politics and economics as one of about 40 American students enrolled in the Drew University London semester.

A graduate of Jonathan Dayton Regional High School, he is a junior at Drew University, Madison, majoring in political science.

Milcke makes team

SELINSGRÖVE, Pa.—Bill Milcke, son of Mr. and Mrs. William Milcke, Chapel Hill, Mountaineer, N.J., will play in the outfield for Susquehanna University baseball team here. He is a junior.



Grossman is chosen for leadership course

Stanley Grossman, vocational education and home economics coordinator for the Union County Regional High School District has been selected by the department of industrial education and technology of Montclair State University to participate in the 1979 industrial arts leadership development seminar.

The seminar is a semester-long graduate credit course designed to develop an expanded group of leaders in the industrial arts profession. State seminars will feature national or state reports on development, supervision and administration of industrial arts capabilities in the state vocational education system. Goals for the seminar include expanding their knowledge of federal laws and regulations relevant to industrial arts and vocational education in New Jersey, developing and disseminating public and professional information through a variety of media and discerning sex-bias and stereotypes in order to develop plans for eliminating it.

Grossman, a graduate of Newark State College, has a master's degree from New York State University and has attended Carnegie Institute of Technology-Solon Hall University and Rutgers University. He was a graphic arts instructor at Jonathan Dayton Regional High School for eight years before assuming the position of department coordinator in 1964.

Local resident draws fine on reduced count

A Springfield man, William F. Schwab of Metcal avenue, has been fined \$50 for malicious mischief in breaking windows of a car owned by another local resident, Gary DiStefano.

Springfield Municipal Court Judge Malcolm Behrod fined Schwab Monday after the county prosecutor had recommended reducing the charge from an indictable offense to a petty crime.

In another criminal case Monday, the judge fined Edward J. Hanley of Elizabeth \$150 for loitering at Dogland with intent to commit theft.

Judge Behrod also ordered fines and court costs to be paid by:

- Springfield residents Mrs. Charles Meyer of Milltown road, and Mrs. Miriam Goldstein, Hanahaw avenue, \$5 apiece for failure to obtain 1979 licenses for their dogs.
- Terry J. Romano of Butterford, \$40 for making an improper turn in his car.
- Gerald J. Marino of Belleville, \$55 for improper license plates on his car and for failing to have his insurance card with him.
- Gary D. Southward Jr. of Hanahaw avenue, Springfield, a suspended fine for careless driving.

Search for Health

MECHANISMS OF SIGHT

Although the mechanics of sight are complex, research has provided a great deal of information about the visual system. Such information is valuable not only for understanding how the eye functions in health, but also for studying certain disease processes.

This article deals with some common terms describing the functioning of the visual system.

ACCOMMODATION—Ability of the eye to adjust its focus for near and distant vision.

CONES—Specialized visual (photo-receptor) cells in the retina, responsible for sharpness of vision and color vision (see "Rods").

DARK ADAPTATION—Biochemical and neurologic processes by which the eye becomes more sensitive to light in the dark.

DISTANCE VISION—Ability to perceive objects distinctly at a distance, usually measured at 20 feet.

NEAR VISION—Ability to perceive distinctly objects at normal reading distance, or about 14 inches from the eyes.

PERIPHERAL VISION—Ability to perceive "to the periphery," that is, to the sides of the field of vision.

REFRACTION—Bending of light rays when passing from one transparent medium into another of different density; in vision, refraction by the cornea and lens brings images to sharp focus on the retina.

RHOPOFIN—Light-sensitive pigment of the rods; bleaches in the light and regenerates in the dark. It plays a key role in the transformation of light energy into visual perception.

RODS—Straight, thin cells in the retina containing light-sensitive pigments; responsible for night vision (see "Cones").

VISUAL ACUITY—Expression of acuteness of vision, ability to discriminate fine details of objects.

Summit and Elizabeth

MEMBER OF THE SUMMIT BANCORPORATION

Summit (Main Office)
307 Springfield Ave., 277-6200
Berkeley Heights
145 Snyder Ave., 277-2000
Clark
1050 Raritan Rd., 277-4000
Westfield Office
10 Westfield Ave., 281-4000

Elizabeth
7 133 Jefferson Ave., 110 East Liberty St., 100 First St., 351-4000
Livingston
Livingston Mall (Upper Level) 964-3700
New Providence
15 South St., 277-6200
Great Hills Office
25 North Essex Turnpike, Summit, 277-6200

Summit and Elizabeth

MEMBER OF THE SUMMIT BANCORPORATION

Summit (Main Office)
307 Springfield Ave., 277-6200
Berkeley Heights
145 Snyder Ave., 277-2000
Clark
1050 Raritan Rd., 277-4000
Westfield Office
10 Westfield Ave., 281-4000

Elizabeth
7 133 Jefferson Ave., 110 East Liberty St., 100 First St., 351-4000
Livingston
Livingston Mall (Upper Level) 964-3700
New Providence
15 South St., 277-6200
Great Hills Office
25 North Essex Turnpike, Summit, 277-6200

SPICE O'LIFE CORNING WARE

2 1/2 cup Petite Pan w/plastic cover	FREE	FREE	ANY TWO FREE (in the \$500 or \$2500 category)	\$ 4.00
1 quart saucepan w/cover	FREE	FREE		5.00
Grab-it Set (Two 15 oz. Bowls)	FREE	FREE		6.00
7 1/2 pint Menu-ette saucepan w/cover	FREE	FREE		6.00
6 1/2" Menu-ette skillet w/cover	FREE	FREE		6.00
1 1/2 pt. lipped Menu-ette saucepan w/cover	FREE	FREE		6.00
2 qt. loaf dish w/plastic cover	FREE	FREE	(Choice of one)	8.00
Two 2 1/2 cup Petite Pans w/plastic covers and handle	FREE	FREE		10.00
6-cup teapot	FREE	FREE		10.00
Menu-ette 5 1/2" cov'd skillet cov'd. saucepan.				\$3.00
1 1/2 pt. lipped saucepan				14.00

One free gift per account while supplies last. Minimum amount required for gift must remain on deposit 14 months. Gifts not available for transfer of funds within the bank. SUMMIT reserves the right to substitute comparable items on all merchandise.

Summit and Elizabeth

MEMBER OF THE SUMMIT BANCORPORATION

Summit (Main Office)
307 Springfield Ave., 277-6200
Berkeley Heights
145 Snyder Ave., 277-2000
Clark
1050 Raritan Rd., 277-4000
Westfield Office
10 Westfield Ave., 281-4000

Elizabeth
7 133 Jefferson Ave., 110 East Liberty St., 100 First St., 351-4000
Livingston
Livingston Mall (Upper Level) 964-3700
New Providence
15 South St., 277-6200
Great Hills Office
25 North Essex Turnpike, Summit, 277-6200



We've cooked up a way for you to get free Corning Ware.

Here's a way to spice up your day. Get free Spice O'Life pattern Corning Ware just by saving at SUMMIT! This beautiful freezer-to-oven-to-table cookware is yours free with a deposit from \$500 to \$5000 or more in any SUMMIT high-interest savings account, except our 26-Week Money Market Certificate.

See the chart below for details. Join Our Special Corning Ware Club.

With your initial deposit for free Corning Ware you automatically become a member of our Special Corning Ware Club. Each time you deposit an additional \$100 or more to your account you're entitled to purchase any of the pieces in the promotion at reduced prices!

Ask your SUMMIT banker for details. It's a great way to build your Corning Ware collection.

Enter Our Gourmet Sweepstakes. We're giving away a La Machine by Mouline, plus 9 other valuable prizes at each SUMMIT office! Don't miss your chance to win one of these gourmet food preparation systems. Ask any SUMMIT employee for a Sweepstakes blank, and enter today! The Sweepstakes ends May 31, 1979. No deposit required to enter.



SPICE O'LIFE CORNING WARE

2 1/2 cup Petite Pan w/plastic cover	FREE	FREE	ANY TWO FREE (in the \$500 or \$2500 category)	\$ 4.00
1 quart saucepan w/cover	FREE	FREE		5.00
Grab-it Set (Two 15 oz. Bowls)	FREE	FREE		6.00
7 1/2 pint Menu-ette saucepan w/cover	FREE	FREE		6.00
6 1/2" Menu-ette skillet w/cover	FREE	FREE		6.00
1 1/2 pt. lipped Menu-ette saucepan w/cover	FREE	FREE		6.00
2 qt. loaf dish w/plastic cover	FREE	FREE	(Choice of one)	8.00
Two 2 1/2 cup Petite Pans w/plastic covers and handle	FREE	FREE		10.00
6-cup teapot	FREE	FREE		10.00
Menu-ette 5 1/2" cov'd skillet cov'd. saucepan.				\$3.00
1 1/2 pt. lipped saucepan				14.00

One free gift per account while supplies last. Minimum amount required for gift must remain on deposit 14 months. Gifts not available for transfer of funds within the bank. SUMMIT reserves the right to substitute comparable items on all merchandise.

Summit and Elizabeth

MEMBER OF THE SUMMIT BANCORPORATION

Summit (Main Office)
307 Springfield Ave., 277-6200
Berkeley Heights
145 Snyder Ave., 277-2000
Clark
1050 Raritan Rd., 277-4000
Westfield Office
10 Westfield Ave., 281-4000

Elizabeth
7 133 Jefferson Ave., 110 East Liberty St., 100 First St., 351-4000
Livingston
Livingston Mall (Upper Level) 964-3700
New Providence
15 South St., 277-6200
Great Hills Office
25 North Essex Turnpike, Summit, 277-6200



CANCER CRUSADE

Springfield Mayor Stanley Kalsh discusses plans with Andrew Briggs, municipal chairman for the American Cancer Society, Anyone wishing to help in the Crusade is asked to contact Andrew Briggs at 379-1294.

Ex-resident gets post Cannon to direct CBE

Former Springfield resident James Cannon has been appointed Executive Director of Citizens for a Better Environment (CBE), a national non-profit environmental research, litigation and activist organization with headquarters in Chicago.

Cannon is the former director of CBE's San Francisco office and had occupied that position for one year prior to his latest appointment. He is the author of seven books examining environmental and energy issues and worked for seven years with the New York based Council on Economic Priorities and INFORUM, Inc. before joining CBE.

His books include "Environmental Steel: Pollution in the Iron and Steel Industry," "A Clear View: A Citizen's Guide to Industrial Pollution Control" and "Energy Futures."

Cannon is the son of Ruth and Spencer Cannon of Wents avenue. He graduated first in the 1967 class at Jonathan Dayton Regional High School. While in high school, Cannon was a member of the Varsity Club (soccer) and the Key Club.

In addition to being an author, Cannon has written numerous magazine articles and frequently lectures and testifies on environmental and energy issues. He is a member of the Steel Industry Assessment Panel, U.S. Congress Office of Technology Assessment.

Cannon received his undergraduate degree in biochemistry from Princeton University in 1971 and later earned his master's in biochemistry from the University of Pennsylvania.

Summit lists activities for YWCA Week

The Summit YWCA will celebrate "National YWCA Week" April 16 to 20 with a variety of programs.

Free coffee will be available each morning in the lobby, national memberships may be obtained or renewed. There also will be a slide presentation of programs offered by the YWCA and sale prices on lotteries, lotto, decals and stationery. Members or non-members will be allowed to swim free during pool periods.

The schedule for the week will include:

- Monday, April 16—9:30 to 11:30 a.m., needlepoint drop-in taught by Sandy Williams (free); 7 to 8 p.m., jazz dance taught by Frank Ashley (free).
- Tuesday, April 17—1:30 to 2:30 p.m., drop-in recreation (free); 7 to 9:30 p.m., drop-in sewing taught by Norma Engelhardt (free); 8:30 to 10:30 p.m., folk dancing (free).
- Wednesday, April 18—8:45 a.m., kaffeeklatsch program on "Politics and People in China" (free to non-members); 9 a.m., Bronx Zoo trip for children (BY for a member, \$9 for a non-member); 7:00 p.m., YWCA gymnastic team demonstration at Wilson School.
- Thursday, April 19—10 a.m., aerobics class taught by Jean Burke (free); Friday, April 20—9:30 a.m., free bread-baking demonstration by Bess Bowditch and Gerri Harter.

New member added by Lions

Howard Thompson has been inducted into the Springfield Lions Club, according to Jack Moore, president.

More noted that transportation for the blind to meetings has been furnished by Bill Melick and Rudy Rou, and Harold Blahoff assisted in the recent township blood bank drive.

Union County Prosecutor John Stawick was the guest speaker at a Lions sponsored joint meeting with the Kwanza Club.

Mrs. Levine; services held

Services were held in the Bernheim-Goldsticker Memorial Home in Irvington Sunday for Mrs. Fannie Levine, 71, of Springfield, who died Friday at St. Barnabas Medical Center, Livingston.

Born in New York, Mrs. Levine lived in Newark before moving to Springfield in 1926. She was a member of the Summit Citizens of Temple Beth Ahm, corresponding secretary of B'nai B'rith Women of Springfield and a past chief of the State of Israel Circle, Companions of the Foresters of America.

Surviving are a daughter, Mrs. Carol Popper; a son, David; a sister, Mrs. Julia Kraft; a brother, Pauly Stein, and three grandchildren.

Bible Quiz

BY MIH-HAMM

BIBLE "TRIVIA" is an exciting, entertaining, relaxing, breathing and concentrating to promote a sense of well-being, a spokesman said.

Graded series of nine classes for beginners, intermediates and experienced intermediates are available Monday nights and Tuesday and Friday mornings. They are taught by Judy Freedman and Liz Boye.

Child care for enrolled parents is available in the mornings at the YWCA.

Dine With Us

DON'S PLAZA

OPEN SALAD BAR FREE WITH DINNER 4-10 P.M.

NON-ALCOHOLIC BAKED BREADS

1000 SOUTH BROAD STREET

SPRINGFIELD, N.J.

Bible Quiz

BY MIH-HAMM

BIBLE "TRIVIA" is an exciting, entertaining, relaxing, breathing and concentrating to promote a sense of well-being, a spokesman said.

Graded series of nine classes for beginners, intermediates and experienced intermediates are available Monday nights and Tuesday and Friday mornings. They are taught by Judy Freedman and Liz Boye.

Child care for enrolled parents is available in the mornings at the YWCA.

Don's Plaza

OPEN SALAD BAR FREE WITH DINNER 4-10 P.M.

NON-ALCOHOLIC BAKED BREADS

1000 SOUTH BROAD STREET

SPRINGFIELD, N.J.

School Lunches

GAUDINEER SCHOOL

Monday—Frankfurter on bun, sauerkraut, baked beans, applesauce.
Tuesday—Hamburger on bun, coleslaw, slice of onion, pickle, French fries, raisin fruit.
Wednesday—Pizza, cheese cubes, three-bean salad, roasted nuts or pears.
Thursday, April 13—Broiled chicken, cranberry sauce, mashed potatoes, carrots, pineapple, match.
Friday, April 13—School closed for Good Friday.

ELEMENTARY SCHOOLS

Monday—Frankfurter on bun, sauerkraut, baked beans, applesauce, milk.
Tuesday—Juice, turkey-salad sandwich, raitais and roasted nuts, milk.
Wednesday—Pizza, cheese cubes, three-bean salad, roasted nuts, milk.
Thursday, April 13—Broiled chicken, cranberry sauce, mashed potatoes, carrots, pineapple, chunks, milk.
Friday, April 13—School closed for Good Friday.

REGIONAL HIGH SCHOOL

Monday—Cheseburger on bun or ham-salad sandwich, each with corn and other vegetables or chicken, chow mein with vegetables, steamed rice, bread and butter. Lunch includes peaches.
Tuesday—Hot-bun sandwich with vegetables or tatoes, each with French fries, or cold submarine sandwich. Lunch includes fresh fruit.
Wednesday—Fried chicken, bun or salami sandwich, each with sweet potatoes, or lasagna with Italian salad and butter. Lunch includes folded salad and fruit, chicken.
Thursday—Frankfurter or chicken-salad, each with fruit and a roll or meltzoi, or pizza pie and a peanut butter cookie. Lunch includes coleslaw and juice.
Friday—School closed for Good Friday.
Available daily—Tuna-salad sandwiches, soup, snacks, desserts.

Congregation Israel to observe traditions

Two traditional pre-Passover customs will be observed under the auspices of Congregation Israel of Springfield, 330 Mountain Ave., at the corner of Stumpville Road.

The first is called "Mehiras chometz" (sale of chometz). Under Jewish religious law, no chometz (leaven) or "chometzige" utensils may remain in the possession of Jewish families during the Passover. Traditionally, arrangements are made for the transfer of title of such items before Passover to a non-Jewish owner.

Friday—School closed for Good Friday.
Tuesday—Tuna-salad sandwich, soup, snacks, desserts.

Teachers hear of new method

Andrea Wallace and Margaret Gerst, teachers at the Florence Gaudineer School in Springfield, recently attended a lecture in Morristown on the Slingerland multi-sensory approach to language arts.

Excelsior Gay Grossman, a learning disabilities specialist, said the approach is based on the interrelationships of hearing, seeing and kinesthetic in the development of speech, reading, writing, spelling and concept building.

Grossman directs the Pigeon Ridge summer program in Williamstown, which uses the multi-sensory method.

Gymnastic day planned by Y

The Summit YWCA will sponsor a special all-day gymnastics clinic for girls May 5 at Wilson School on Book Mountain terrace in Summit. The clinic will be open to gymnasts of all levels in grade 3 and up.

The registration fee will cover the day of gymnastics including a choice of classes in all areas, including balance beam, vaulting, uneven bars, tumbling and floor exercises, as well as a special gymnastics demonstration by members of the Rutgers University gymnastics team. Registrations are now being accepted at the YWCA pool desk, 79 Maple St.

Sichel is given corporate post

George S. Mennen, Chairman of the board of the Mennen Co., has announced the appointment of Leonard J. Sichel as Springfield director of Mennen. The Mennen Co., which is a worldwide manufacturer and marketer of toiletries and beauty aids, is headquartered in Morristown. Sichel, who joined the Mennen organization in 1971 as international controller, became an officer of the company in 1972 and was made vice-president in charge of the Springfield office in 1978. Sichel attended Rutgers University and received his bachelor's degree in 1968. He is a certified public accountant.

Sichel serves as a director for the Financial Executives Institute and provides financial and treasury advice for the United Way of Morris County and other civic and charitable organizations.

Regional board to meet Tuesday

An adjourned regular meeting of the Union County Regional High School District Board of Education will be held Tuesday at 8 p.m. in the Instructional media center of the Jonathan Dayton Regional High School.

The meeting is open to the public.

Growing Older

FOOD FOR THE ELDERLY income elderly persons can stretch their income through the national Food Stamp-Nutrition Program for food coupons that are used by Old Americans, low-cost like money at the grocery store and related social services are being from the government for provided to many people less than age 60 and older—and their individual need not be spouses of any age—who receiving assistance need such assistance, payments to qualify for food stamps, use of food stamps. Information program are provided in about the program can be obtained from the state.

Some circumstances, meals can be home-delivered to homebound, information about these programs can be obtained by writing the Administration on Aging, Washington, D.C., or by writing from your state or local agency on aging.

In addition, many low-

SELLING U.S. POSTAGE BELOW FACE VALUE

24¢	25¢
47¢	50¢
70¢	75¢
93¢	1.00

PHONY COUPONS Service
964-7349
ANS 5 PM

BEAGLE STAMP CO.
P.O. BOX 614
UNION, N.J. 07083



TAKING PART IN CAMPAIGN

As part of the nationwide State of Israel Bond "reinvestment" campaign, members of the congregation of Temple Beth Ahm, Springfield, are being urged to help locate Israel Bond holders whose bonds were purchased during the Six Day War have now reached maturity. As a result of their research, more than 3,000 letters were mailed asking people to contact the Israel Bond office at 2 W. Northfield road, Livingston, regarding reinvestment. Shown here at work is a group from Temple Beth Ahm, Springfield. Seated from left are: Susan Kipervirt, Ellen Goldstein, Dobby Stern, Paul Steinberg, Heidi Steinberg, Karen Goldberg. Standing are Debbie Diersch, Lori Steinberg, Susan Feig, Rhonda Greenblatt, and Rivka Mark.

TRAVEL NEWS

By Sylvia Rosenblum of Springfield Travel

If you like sunning yourself on glorious white sand beaches or swimming in crystal clear azure waters, or simply want to relax on your vacation; or perhaps you'd like to surf, deep sea fish, play golf on world famous courses, then Hawaii is the place for you.

No matter your age, no matter your desire, you'll be offered the best of two worlds when your vacation in Hawaii. You'll love watching the natives net fish from streams that flow into the sea, you'll love sailing the lagoons, looking out over distant bays from atop mountains. You'll simply love Hawaii.

Marsh introduces an exquisite Commemorative from the porcelain collection of Judaic art by world famous Boehm

Here at SPRINGFIELD TRAVEL SERVICE, 250 Mountain Ave., Springfield, you'll receive expert advice on how to make your next vacation even more enjoyable. Call us at 379-8767, or stop in, we're open daily to 5:30, Wednesday evenings till 9:00 and Saturdays till 1 P.M.

When you go to the beach bring along some plastic bags so you can separate wet clothes from dry belongings.



There is an ideal gift for the loved one who has a special interest in Judaic art. This commemorative porcelain plate, designed by the world famous artist, Boehm, is a beautiful addition to any collection of Judaic art. It is a perfect gift for the Jewish home, synagogue, or community center.

BEAGLE STAMP CO.

P.O. BOX 614
UNION, N.J. 07083



LIBRARY

Children get new books

By PATRICIA FENNIMORE
Children's librarians at the Springfield Public Library have selected the following titles among the recently received books in the children's department.

PAST TENSE

ONE YEAR AGO
The state's toughest housing mandates are effect. Local health officials say the state is ordering them to supply more services but is not following through on anticipated state aid.

TWENTY YEARS AGO
Final reports of committees investigating current and future needs for school facilities are submitted to the Springfield Board of Education.

THIRTY YEARS AGO
The Union County Board of Taxation announces that taxable rates in Springfield for 1939 dropped \$38,600 from the previous year's total of \$4,527,272.

Springfield Leader

Member SUBURBAN PRESS OF AMERICA

1st Mountain Ave., Springfield, N.J. 07081
Phone: 663-7700

Second Class Postage Paid at Springfield, N.J.
Yearly subscription rate \$12.00
Published each Thursday by
Springfield Publishing Corp.
Awarded first place by New Jersey Press Association in 1970 for general excellence

Asst. Mgr. & PUBLISHER
NEWS and EDITORIAL DEPARTMENT
Helen Reynolds
Lee M. Mankin, Director

BUSINESS DEPARTMENT
Vice President of Advertising
Advertising Manager
Cheryl L. Lerner
National Advertising Manager
Circulation Manager
Phone: 663-1149
Phone: 663-1199

Represented Nationally by
U.S. SUBURBAN PRESS, INC.

Death and Dying: Challenge and Change

DEATH AND DYING: CHALLENGE AND CHANGE
By VAN DER VLIET, R. FINE
From the 17th to the 19th centuries, the funeral was a religious ceremony. It was a rite of passage, a way of saying goodbye to the deceased and a way of preparing the soul for the afterlife.

Today, the funeral has become a social event. It is a time for family and friends to gather together and share their grief. The funeral home has become a business, and the funeral director has become a professional.

As a result of these changes, the funeral has become a more expensive and more elaborate affair. The average cost of a funeral in the United States is now over \$2,000.

Despite these changes, the funeral remains an important part of our culture. It is a time for us to reflect on our lives and to say goodbye to those who have passed on.

As we move forward, we must continue to challenge and change the way we view death and dying. We must find ways to make the funeral a more meaningful and less expensive experience.

One way to do this is to encourage the use of cremation. Cremation is a more affordable and less expensive alternative to a traditional funeral.

Another way to do this is to encourage the use of home funerals. Home funerals allow families to say goodbye to their loved ones in a more intimate and meaningful way.

Finally, we must encourage the use of pre-arranged funerals. Pre-arranged funerals allow individuals to make their own choices about their funeral and to avoid the financial burden of a funeral on their family.

Local schools

Local schools are facing a number of challenges in the coming year. One of the most significant is the need for more funding to support the growing number of students.

Another challenge is the need for more qualified teachers. The current shortage of teachers is a major concern for school administrators.

Finally, schools are facing the challenge of providing a high-quality education for all students, regardless of their background or ability.

Despite these challenges, local schools are working hard to provide the best possible education for their students.

One way to address these challenges is to increase funding for schools. This would allow schools to hire more teachers and provide more resources for their students.

Another way to address these challenges is to improve teacher training and recruitment. This would help to ensure that schools have a sufficient number of qualified teachers.

Finally, schools must continue to focus on providing a high-quality education for all students. This is the only way to ensure that every child has the opportunity to succeed.

PANCAKES and COFFEE 99c

(SERVED 6 A.M. - 11 A.M.)

BURGER EXPRESS

100 Morris Ave., Springfield, N.J. 07081
Phone: 663-1149

Bowling Highlights

By JAMES LADNER
Four Bowlers Bowled 23-100 in the Springfield Bowling League last night. The winners were Kay Schuler, 189-100-100; Doreen Johnson, 172-100-100; Madelyn Teja, 185-100-100; and Christine Hester, 185-100-100.

The Springfield Bowling League is a popular activity for many people in the area. It provides a fun and social way to spend time with friends and family.

The league is open to anyone who is interested in bowling. There are no membership fees, and the equipment is provided for all players.

If you are interested in joining the league, contact the Springfield Bowling League at 100 Morris Ave., Springfield, N.J. 07081.

The league is a great way to stay active and healthy. It is also a great way to meet new people and make friends.

So, if you are looking for a new hobby, why not try bowling? You'll be glad you did!

For more information, contact the Springfield Bowling League at 100 Morris Ave., Springfield, N.J. 07081.

AN APOLOGY

Due to a printer's error, an ad for CARTERET SAVINGS in the March 28 issue of this paper, the rate for the six-month certificate was wrong.

The rate for the six-month certificate should have been 9.887% effective annual yield on 9.496% per year.

We sincerely regret the inconvenience that may have been caused by this error.

SIX-MONTH CERTIFICATE

9.887%

effective annual yield on

9.496%

per year

Rate available week of April 5-11

T-Plus Six-Month Savings Certificates • \$10,000 minimum

Despite recent federal regulations that no longer permit compounding interest on six-month savings certificates, our T-Plus six-month non-negotiable savings certificate is still an excellent savings opportunity. For example, with the minimum \$10,000 investment at the current rate, you would get back \$10,480.07 at the end of six months (26 weeks). This represents the highest return offered by any financial institution. In addition, to make it even more attractive, there are no commission fees or charges of any kind and your savings are fully insured to \$40,000 by the FDIC. Stop in at any Carteret office and open your T-Plus Certificate.

SAVINGS CERTIFICATES

Interest compounded daily. Pays 1/4% more than commercial banks.

8.45%	annual yield on	8.00%
8 to 10 years (96-120 mos.) \$1,000. min.		
8.17%	annual yield on	7.75%
6 to 8 years (72-95 mos.) \$1,000. min.		
7.90%	annual yield on	7.50%
4 to 6 years (48-71 mos.) \$1,000. min.		
7.08%	annual yield on	6.75%
2 1/2 to 4 years (30-47 mos.) \$500. min.		
6.81%	annual yield on	6.50%
1 to 2 1/2 years (12-29 mos.) \$500. min.		

STATEMENT SAVINGS

The MORE! Account—Interest compounded daily, 1/4% higher than commercial banks, credited and paid monthly.

5.47%	annual yield on	5.25%
-------	-----------------	-------

CARTERET SAVINGS

AND LOAN ASSOCIATION

Assets in excess of \$600 million

727 Morris Turnpike, Oneida Shopping Plaza, Springfield, N.J. 07081 • (601) 487-0000
Main Office: 366 Broad Street, Newark, N.J. 07102 • (201) 622-8018

County council

The County Council is scheduled to meet on Tuesday, April 10, at 7:30 p.m. in the County Administration Center.

The agenda for the meeting includes the approval of the budget for the coming year and the appointment of new members to the Board of Education.

Democrats

The Democratic Party is holding a meeting on Wednesday, April 11, at 7:30 p.m. in the County Administration Center.

The meeting is open to all Democrats and will discuss the party's platform for the upcoming election.

Scrapbook

April 6, 1979—Trolley cars became a thing of the past in New York City on the last trolley run on the city's streets.

Equality

Equality in the 20th Century—A New Jersey Public Television documentary film may be viewed at the Summit YWCA Tuesday and Wednesday.

The film explores the challenges of achieving equality for all people in our society.

Trip leaders

Applications for leaders of the Springfield Area YWCA's annual trip to the Adirondacks are being accepted by the Summit YWCA.

Rev. Samuel to speak for auxiliary meeting

The Rev. Virginia Samuel, Hospital Chaplain at Overlook Hospital, will be the guest speaker at the Overlook Hospital Auxiliary Spring Meeting. Mrs. Samuel will discuss with auxiliary members the various aspects of her ministry in the care of the terminally ill patients as well as family members. Twigs, other auxiliaries and friends have been invited to attend this meeting which will be held Monday at 8:30 a.m. in the auditorium of Central Presbyterian Church, 70 Maple st.,

Women's Club will hold 'By the Sea' card party

An Evening by the Sea card party will be held by the Springfield Women's Club at 8 p.m. Friday, April 20, in the Springfield Elks Club. Mrs. Frank McCourt, chairman, said Mrs. James Willis, Mrs. Raymond Natscher and Mrs. Matthew Allen will be in charge of prizes.

Miss Kessler betrothal told

Mr. and Mrs. Bernard Horitz of North Brunswick have announced the engagement of their daughter, Harriet Ellen Kessler, of Atlanta, formerly of Springfield, N.J., to David Tesoy, son of Mrs. Rose and Mr. Herbert H. Sobel of Newton, Mass., and of the late Julius Silverman of Quincy, Mass.

Donna Bladis betrothal told

Mr. and Mrs. Robert Bladis of Mountauville, have announced the engagement of their daughter, Donna, to John R. Rosenk, son of Josephine M. Rosenk of North Plainfield.

Class planned to aid diabetics and their kin

Questions of concern to the diabetics will be explored in classes to be presented by Overlook Hospital. The classes will be taught by a team consisting of Dr. Robert Fulmer, chairman of the Clinical Society of the New Jersey Affiliate of the American Diabetic Association; Bruce Ellinger, RN, former instructor in diabetes education at Overlook Hospital; and Robert H. Harkins, therapeutic nutritionist and ambulatory services at Overlook.

Leslie Struble, former Unionite, marriage held

Leslie Ann Struble, daughter of Mr. and Mrs. Wesley Struble of Tewksbury, formerly of Union, was married Jan. 13 to Stephen M. Schneider, son of Mrs. Virginia P. Schneider of Whiting, formerly of Irvington.

Nuptials are held in Union for Maureen Lee Segale

Maureen Lee Segale, daughter of Mr. and Mrs. Jack Segale of Dover, N.J., was married Jan. 6 to William J. Glenn, son of Mr. and Mrs. William Glenn of South Plainfield.

Class planned to aid diabetics and their kin

Questions of concern to the diabetics will be explored in classes to be presented by Overlook Hospital. The classes will be taught by a team consisting of Dr. Robert Fulmer, chairman of the Clinical Society of the New Jersey Affiliate of the American Diabetic Association; Bruce Ellinger, RN, former instructor in diabetes education at Overlook Hospital; and Robert H. Harkins, therapeutic nutritionist and ambulatory services at Overlook.

Leslie Struble, former Unionite, marriage held

Leslie Ann Struble, daughter of Mr. and Mrs. Wesley Struble of Tewksbury, formerly of Union, was married Jan. 13 to Stephen M. Schneider, son of Mrs. Virginia P. Schneider of Whiting, formerly of Irvington.

Nuptials are held in Union for Maureen Lee Segale

Maureen Lee Segale, daughter of Mr. and Mrs. Jack Segale of Dover, N.J., was married Jan. 6 to William J. Glenn, son of Mr. and Mrs. William Glenn of South Plainfield.

Religious Notices

EVANGEL BAPTIST CHURCH
24 SHUNPIKE ROAD
SPRINGFIELD
DR. WILLIAM MIEROP
PASTOR
Sunday-9:45 a.m., Sunday school; 11 a.m., worship service; 7 p.m., prayer meeting.
Wednesday-7:45 p.m., prayer meeting.

HOLY CROSS LUTHERAN CHURCH
(THE CHURCH OF THE RADIO "LUTHERAN HOUR" AND TV'S "THIS IS THE LIFE")
639 MOUNTAIN AVENUE
SPRINGFIELD
REV. JOEL R. YOSS
PASTOR
TELEPHONE: 378-4225
Sunday-10 a.m., Bible study
Sunday-Senior high coffee house, Sunday-8:30 a.m., worship; 9:30 a.m., family growth hour; 10:45 a.m., Holy Communion.
Monday-8 p.m., missions and social concerns meeting.
Tuesday-7:30 p.m., trustee's meeting.
Wednesday-4:30 p.m., children's choir rehearsal; 7:45 p.m., adult choir rehearsal.

ANTIOCH BAPTIST CHURCH
MEADOWS STREET AND
50 SPRINGFIELD AVE.
SPRINGFIELD
REV. CLARENCE ALSTON
PASTOR
Sunday-9:30 a.m., church school choir rehearsal.
Sunday-10:30 a.m., Sunday School, 11 a.m., worship service, 7 p.m., evening fellowship.
Wednesday-9 p.m., midweek service.

ST. STEPHEN'S EPISCOPAL CHURCH
119 MAIN ST., MILLBURGH
REV. JOSEPH BERRING
RECTOR
Sunday-8 a.m., Holy Communion; 10 a.m., family worship service and sermon, church school and baptizing. (The 10 a.m. service includes Holy Communion on first and third Sundays and on festival occasions; morning prayer on other Sundays.)
Wednesday-10 to 11 a.m., Lenten study, "Thoughts on Living and Dying."

OUR LADY OF LOURDES CHURCH
MOUNTAINSIDE
REV. MSGR. RAYMOND J. POLLARD,
PASTOR
REV. EDWARD ELLERT,
ASSOCIATE PASTOR
REV. GERARD J. MCCARRY,
PASTOR EMERITUS
Mass schedule-Saturday, 6:30 p.m.; Sunday, 7, 8, 9:15 and 10:30 a.m. and noon; weekdays 8 a.m.; Holy days, 7, 8 and 10 a.m. and 8 p.m.; Novena, Mondays, 8 p.m.

FIRST PRESBYTERIAN CHURCH
MORRIS AVENUE
AT CHURCH MALL
SPRINGFIELD
THE REV. BRUCE WHITEFIELD EVANS, D.D.,
PASTOR
Today-8:30 p.m., confirmation class; 9 p.m., choir rehearsal.
Sunday-9 a.m., church school classes for all ages; 10:15 a.m., Palm Sunday worship service; 7 p.m., Westminster Fellowship.
Monday-7:30 p.m., Girl Scouts.
Tuesday-7:15 p.m., Holyday 7:30 p.m., Church committee meetings.
Wednesday-7 p.m., Christian Education Committee meeting; 8 p.m., Session meeting.

THE COMMUNITY PRESBYTERIAN CHURCH
Meeting House Lane
Mountainide, New Jersey
The Rev. Elmer A. Talcott, Pastor
PALM SUNDAY SERVICE - 10:30 a.m.
MAUNDY THURSDAY - 8:00 p.m.
Holy Communion-Office of Penitence
GOOD FRIDAY - 1:00 p.m.
Service on "The Seven Last Words"
EASTER SUNDAY - 10:30 a.m.
Family Service with special music

CONGREGATION ISRAEL OF SPRINGFIELD
338 MOUNTAIN AVE.
CORNER SHUNPIKE ROAD
RABBI ISRAEL TURNER
Friday-7:15 a.m. (at 338 Meisel ave.), minyan service; 6:10 p.m. (at 338 Meisel ave.) (at various addresses).
Springfield avenue), "Welcome to Sabbath" service.
Saturday-9:30 a.m. (at Chisholm School), Sabbath service; Bar Mitzvah of Greg Lambert, son of Mr. and Mrs. Gerald Lambert; sermon on "What Makes a Day or a Person Great"; kiddush after services, hosted by Mr. and Mrs. Lambert, followed by mitzvah service.
Sunday-8 a.m. (at 338 Meisel ave.), minyan service; 6:10 p.m., afternoon service followed by study session, then evening service.
Monday, Tuesday-7:15 a.m. (at 338 Meisel ave.), minyan service; 3:30 to 5:30 p.m. (at various addresses).
Religious school classes; 8:10 p.m. (at Meisel avenue), afternoon service followed by study session, then evening service.
Saturday-8 a.m., Sabbath service.
Sunday-7:30 p.m., B'nai B'rith auction.

TEMPLE BETH AEM UNITED SYNAGOGUE OF AMERICA
40 CHURCH MALL, SPRINGFIELD
RABBI: REUBEN R. LEVIN
CANTOR: ISRAEL J. BARZAK
Today-8:15 p.m., temple executive board meeting.
Friday-8:45 p.m., Sephardic Sabbath service.
Saturday-8 a.m., Sabbath service.
Sunday-7:30 p.m., B'nai B'rith auction.

SPRINGFIELD EMANUEL UNITED METHODIST CHURCH
40 CHURCH MALL, SPRINGFIELD
Today-8 p.m., chancel choir.
Saturday-7 to 10 p.m., AA; Springfield group.
Sunday-9:30 a.m., German worship service with sermon by the Reverend Fred Greber, church school, chapel service with lecture on "Renewal of Hope" by lay leader William Rossett; 10:30 a.m., fellowship hour; 11 a.m., worship service with sermon by the Rev. George C. Schlusinger on "I Believe in the Church"; 8 p.m., worship meeting; 7 p.m., Lenten program at the Summit Oaks Memorial United Methodist Church.
Monday-8 p.m., Methodist Men's meeting.
Tuesday-11 a.m., Christian Service Circle meeting.

TEMPLE SHARON AN AFFILIATE OF THE UNION OF AMERICAN HEBREW CONGREGATIONS
5 SPRINGFIELD AVENUE
AT SHUNPIKE ROAD, SPRINGFIELD
RABBI: HOWARD SPIRO
HONORARY: IRVING KRAMERMAN
Jared Fleischer, son of Alex and Shirley Fleischer of Springfield, was called to the Torah as a Sar Mitzvah on March 31.
Friday through Sunday-Dude ranch trip sponsored by youth group.
Friday-7:15 p.m., first section and trip sponsored by Religious Union will present a program of songs in celebration of Passover; 8:45 p.m., special Passover Seder for first, second and third grades; 10:30 a.m., Shabbat service.
Thursday, April 12-6 p.m., Sisterhood-sponsored annual Second Seder.

ST. JAMES CHURCH
45 SPRINGFIELD AVE.
SPRINGFIELD
MSGR. FRANCIS X. COYLE,
PASTOR
REV. STEPHEN P. LYNCH,
REV. PAUL J. KOCH,
ASSISTANT PASTORS
Sunday Masses-8:30 p.m., Saturday, 7, 8:15, 9:30 and 10:45 a.m. and noon.
Sunday, Daily Masses-7 and 8 a.m. Masses on holy days-7, 8, 9 and 10 a.m. and 7 p.m.
Sacrament of Penance (confession)-Monday, 7:15 to 7:45 p.m.; Thursday before first Friday of the month; 7:15 to 7:45 p.m.; Saturday 10 to 11 a.m. No scheduled confessions on Sundays, holy days and eves of holy days.

Religious Notices

EVANGEL BAPTIST CHURCH
24 SHUNPIKE ROAD
SPRINGFIELD
DR. WILLIAM MIEROP
PASTOR
Sunday-9:45 a.m., Sunday school; 11 a.m., worship service; 7 p.m., prayer meeting.
Wednesday-7:45 p.m., prayer meeting.

HOLY CROSS LUTHERAN CHURCH
(THE CHURCH OF THE RADIO "LUTHERAN HOUR" AND TV'S "THIS IS THE LIFE")
639 MOUNTAIN AVENUE
SPRINGFIELD
REV. JOEL R. YOSS
PASTOR
TELEPHONE: 378-4225
Sunday-10 a.m., Bible study
Sunday-Senior high coffee house, Sunday-8:30 a.m., worship; 9:30 a.m., family growth hour; 10:45 a.m., Holy Communion.
Monday-8 p.m., missions and social concerns meeting.
Tuesday-7:30 p.m., trustee's meeting.
Wednesday-4:30 p.m., children's choir rehearsal; 7:45 p.m., adult choir rehearsal.

ANTIOCH BAPTIST CHURCH
MEADOWS STREET AND
50 SPRINGFIELD AVE.
SPRINGFIELD
REV. CLARENCE ALSTON
PASTOR
Sunday-9:30 a.m., church school choir rehearsal.
Sunday-10:30 a.m., Sunday School, 11 a.m., worship service, 7 p.m., evening fellowship.
Wednesday-9 p.m., midweek service.

ST. STEPHEN'S EPISCOPAL CHURCH
119 MAIN ST., MILLBURGH
REV. JOSEPH BERRING
RECTOR
Sunday-8 a.m., Holy Communion; 10 a.m., family worship service and sermon, church school and baptizing. (The 10 a.m. service includes Holy Communion on first and third Sundays and on festival occasions; morning prayer on other Sundays.)
Wednesday-10 to 11 a.m., Lenten study, "Thoughts on Living and Dying."

OUR LADY OF LOURDES CHURCH
MOUNTAINSIDE
REV. MSGR. RAYMOND J. POLLARD,
PASTOR
REV. EDWARD ELLERT,
ASSOCIATE PASTOR
REV. GERARD J. MCCARRY,
PASTOR EMERITUS
Mass schedule-Saturday, 6:30 p.m.; Sunday, 7, 8, 9:15 and 10:30 a.m. and noon; weekdays 8 a.m.; Holy days, 7, 8 and 10 a.m. and 8 p.m.; Novena, Mondays, 8 p.m.

FIRST PRESBYTERIAN CHURCH
MORRIS AVENUE
AT CHURCH MALL
SPRINGFIELD
THE REV. BRUCE WHITEFIELD EVANS, D.D.,
PASTOR
Today-8:30 p.m., confirmation class; 9 p.m., choir rehearsal.
Sunday-9 a.m., church school classes for all ages; 10:15 a.m., Palm Sunday worship service; 7 p.m., Westminster Fellowship.
Monday-7:30 p.m., Girl Scouts.
Tuesday-7:15 p.m., Holyday 7:30 p.m., Church committee meetings.
Wednesday-7 p.m., Christian Education Committee meeting; 8 p.m., Session meeting.

THE COMMUNITY PRESBYTERIAN CHURCH
Meeting House Lane
Mountainide, New Jersey
The Rev. Elmer A. Talcott, Pastor
PALM SUNDAY SERVICE - 10:30 a.m.
MAUNDY THURSDAY - 8:00 p.m.
Holy Communion-Office of Penitence
GOOD FRIDAY - 1:00 p.m.
Service on "The Seven Last Words"
EASTER SUNDAY - 10:30 a.m.
Family Service with special music

CONGREGATION ISRAEL OF SPRINGFIELD
338 MOUNTAIN AVE.
CORNER SHUNPIKE ROAD
RABBI ISRAEL TURNER
Friday-7:15 a.m. (at 338 Meisel ave.), minyan service; 6:10 p.m. (at 338 Meisel ave.) (at various addresses).
Springfield avenue), "Welcome to Sabbath" service.
Saturday-9:30 a.m. (at Chisholm School), Sabbath service; Bar Mitzvah of Greg Lambert, son of Mr. and Mrs. Gerald Lambert; sermon on "What Makes a Day or a Person Great"; kiddush after services, hosted by Mr. and Mrs. Lambert, followed by mitzvah service.
Sunday-8 a.m. (at 338 Meisel ave.), minyan service; 6:10 p.m., afternoon service followed by study session, then evening service.
Monday, Tuesday-7:15 a.m. (at 338 Meisel ave.), minyan service; 3:30 to 5:30 p.m. (at various addresses).
Religious school classes; 8:10 p.m. (at Meisel avenue), afternoon service followed by study session, then evening service.
Saturday-8 a.m., Sabbath service.
Sunday-7:30 p.m., B'nai B'rith auction.

TEMPLE BETH AEM UNITED SYNAGOGUE OF AMERICA
40 CHURCH MALL, SPRINGFIELD
RABBI: REUBEN R. LEVIN
CANTOR: ISRAEL J. BARZAK
Today-8:15 p.m., temple executive board meeting.
Friday-8:45 p.m., Sephardic Sabbath service.
Saturday-8 a.m., Sabbath service.
Sunday-7:30 p.m., B'nai B'rith auction.

SPRINGFIELD EMANUEL UNITED METHODIST CHURCH
40 CHURCH MALL, SPRINGFIELD
Today-8 p.m., chancel choir.
Saturday-7 to 10 p.m., AA; Springfield group.
Sunday-9:30 a.m., German worship service with sermon by the Reverend Fred Greber, church school, chapel service with lecture on "Renewal of Hope" by lay leader William Rossett; 10:30 a.m., fellowship hour; 11 a.m., worship service with sermon by the Rev. George C. Schlusinger on "I Believe in the Church"; 8 p.m., worship meeting; 7 p.m., Lenten program at the Summit Oaks Memorial United Methodist Church.
Monday-8 p.m., Methodist Men's meeting.
Tuesday-11 a.m., Christian Service Circle meeting.

TEMPLE SHARON AN AFFILIATE OF THE UNION OF AMERICAN HEBREW CONGREGATIONS
5 SPRINGFIELD AVENUE
AT SHUNPIKE ROAD, SPRINGFIELD
RABBI: HOWARD SPIRO
HONORARY: IRVING KRAMERMAN
Jared Fleischer, son of Alex and Shirley Fleischer of Springfield, was called to the Torah as a Sar Mitzvah on March 31.
Friday through Sunday-Dude ranch trip sponsored by youth group.
Friday-7:15 p.m., first section and trip sponsored by Religious Union will present a program of songs in celebration of Passover; 8:45 p.m., special Passover Seder for first, second and third grades; 10:30 a.m., Shabbat service.
Thursday, April 12-6 p.m., Sisterhood-sponsored annual Second Seder.

ST. JAMES CHURCH
45 SPRINGFIELD AVE.
SPRINGFIELD
MSGR. FRANCIS X. COYLE,
PASTOR
REV. STEPHEN P. LYNCH,
REV. PAUL J. KOCH,
ASSISTANT PASTORS
Sunday Masses-8:30 p.m., Saturday, 7, 8:15, 9:30 and 10:45 a.m. and noon.
Sunday, Daily Masses-7 and 8 a.m. Masses on holy days-7, 8, 9 and 10 a.m. and 7 p.m.
Sacrament of Penance (confession)-Monday, 7:15 to 7:45 p.m.; Thursday before first Friday of the month; 7:15 to 7:45 p.m.; Saturday 10 to 11 a.m. No scheduled confessions on Sundays, holy days and eves of holy days.

Religious Notices

EVANGEL BAPTIST CHURCH
24 SHUNPIKE ROAD
SPRINGFIELD
DR. WILLIAM MIEROP
PASTOR
Sunday-9:45 a.m., Sunday school; 11 a.m., worship service; 7 p.m., prayer meeting.
Wednesday-7:45 p.m., prayer meeting.

HOLY CROSS LUTHERAN CHURCH
(THE CHURCH OF THE RADIO "LUTHERAN HOUR" AND TV'S "THIS IS THE LIFE")
639 MOUNTAIN AVENUE
SPRINGFIELD
REV. JOEL R. YOSS
PASTOR
TELEPHONE: 378-4225
Sunday-10 a.m., Bible study
Sunday-Senior high coffee house, Sunday-8:30 a.m., worship; 9:30 a.m., family growth hour; 10:45 a.m., Holy Communion.
Monday-8 p.m., missions and social concerns meeting.
Tuesday-7:30 p.m., trustee's meeting.
Wednesday-4:30 p.m., children's choir rehearsal; 7:45 p.m., adult choir rehearsal.

ANTIOCH BAPTIST CHURCH
MEADOWS STREET AND
50 SPRINGFIELD AVE.
SPRINGFIELD
REV. CLARENCE ALSTON
PASTOR
Sunday-9:30 a.m., church school choir rehearsal.
Sunday-10:30 a.m., Sunday School, 11 a.m., worship service, 7 p.m., evening fellowship.
Wednesday-9 p.m., midweek service.

ST. STEPHEN'S EPISCOPAL CHURCH
119 MAIN ST., MILLBURGH
REV. JOSEPH BERRING
RECTOR
Sunday-8 a.m., Holy Communion; 10 a.m., family worship service and sermon, church school and baptizing. (The 10 a.m. service includes Holy Communion on first and third Sundays and on festival occasions; morning prayer on other Sundays.)
Wednesday-10 to 11 a.m., Lenten study, "Thoughts on Living and Dying."

OUR LADY OF LOURDES CHURCH
MOUNTAINSIDE
REV. MSGR. RAYMOND J. POLLARD,
PASTOR
REV. EDWARD ELLERT,
ASSOCIATE PASTOR
REV. GERARD J. MCCARRY,
PASTOR EMERITUS
Mass schedule-Saturday, 6:30 p.m.; Sunday, 7, 8, 9:15 and 10:30 a.m. and noon; weekdays 8 a.m.; Holy days, 7, 8 and 10 a.m. and 8 p.m.; Novena, Mondays, 8 p.m.

FIRST PRESBYTERIAN CHURCH
MORRIS AVENUE
AT CHURCH MALL
SPRINGFIELD
THE REV. BRUCE WHITEFIELD EVANS, D.D.,
PASTOR
Today-8:30 p.m., confirmation class; 9 p.m., choir rehearsal.
Sunday-9 a.m., church school classes for all ages; 10:15 a.m., Palm Sunday worship service; 7 p.m., Westminster Fellowship.
Monday-7:30 p.m., Girl Scouts.
Tuesday-7:15 p.m., Holyday 7:30 p.m., Church committee meetings.
Wednesday-7 p.m., Christian Education Committee meeting; 8 p.m., Session meeting.

THE COMMUNITY PRESBYTERIAN CHURCH
Meeting House Lane
Mountainide, New Jersey
The Rev. Elmer A. Talcott, Pastor
PALM SUNDAY SERVICE - 10:30 a.m.
MAUNDY THURSDAY - 8:00 p.m.
Holy Communion-Office of Penitence
GOOD FRIDAY - 1:00 p.m.
Service on "The Seven Last Words"
EASTER SUNDAY - 10:30 a.m.
Family Service with special music

CONGREGATION ISRAEL OF SPRINGFIELD
338 MOUNTAIN AVE.
CORNER SHUNPIKE ROAD
RABBI ISRAEL TURNER
Friday-7:15 a.m. (at 338 Meisel ave.), minyan service; 6:10 p.m. (at 338 Meisel ave.) (at various addresses).
Springfield avenue), "Welcome to Sabbath" service.
Saturday-9:30 a.m. (at Chisholm School), Sabbath service; Bar Mitzvah of Greg Lambert, son of Mr. and Mrs. Gerald Lambert; sermon on "What Makes a Day or a Person Great"; kiddush after services, hosted by Mr. and Mrs. Lambert, followed by mitzvah service.
Sunday-8 a.m. (at 338 Meisel ave.), minyan service; 6:10 p.m., afternoon service followed by study session, then evening service.
Monday, Tuesday-7:15 a.m. (at 338 Meisel ave.), minyan service; 3:30 to 5:30 p.m. (at various addresses).
Religious school classes; 8:10 p.m. (at Meisel avenue), afternoon service followed by study session, then evening service.
Saturday-8 a.m., Sabbath service.
Sunday-7:30 p.m., B'nai B'rith auction.

TEMPLE BETH AEM UNITED SYNAGOGUE OF AMERICA
40 CHURCH MALL, SPRINGFIELD
RABBI: REUBEN R. LEVIN
CANTOR: ISRAEL J. BARZAK
Today-8:15 p.m., temple executive board meeting.
Friday-8:45 p.m., Sephardic Sabbath service.
Saturday-8 a.m., Sabbath service.
Sunday-7:30 p.m., B'nai B'rith auction.

SPRINGFIELD EMANUEL UNITED METHODIST CHURCH
40 CHURCH MALL, SPRINGFIELD
Today-8 p.m., chancel choir.
Saturday-7 to 10 p.m., AA; Springfield group.
Sunday-9:30 a.m., German worship service with sermon by the Reverend Fred Greber, church school, chapel service with lecture on "Renewal of Hope" by lay leader William Rossett; 10:30 a.m., fellowship hour; 11 a.m., worship service with sermon by the Rev. George C. Schlusinger on "I Believe in the Church"; 8 p.m., worship meeting; 7 p.m., Lenten program at the Summit Oaks Memorial United Methodist Church.
Monday-8 p.m., Methodist Men's meeting.
Tuesday-11 a.m., Christian Service Circle meeting.

TEMPLE SHARON AN AFFILIATE OF THE UNION OF AMERICAN HEBREW CONGREGATIONS
5 SPRINGFIELD AVENUE
AT SHUNPIKE ROAD, SPRINGFIELD
RABBI: HOWARD SPIRO
HONORARY: IRVING KRAMERMAN
Jared Fleischer, son of Alex and Shirley Fleischer of Springfield, was called to the Torah as a Sar Mitzvah on March 31.
Friday through Sunday-Dude ranch trip sponsored by youth group.
Friday-7:15 p.m., first section and trip sponsored by Religious Union will present a program of songs in celebration of Passover; 8:45 p.m., special Passover Seder for first, second and third grades; 10:30 a.m., Shabbat service.
Thursday, April 12-6 p.m., Sisterhood-sponsored annual Second Seder.

ST. JAMES CHURCH
45 SPRINGFIELD AVE.
SPRINGFIELD
MSGR. FRANCIS X. COYLE,
PASTOR
REV. STEPHEN P. LYNCH,
REV. PAUL J. KOCH,
ASSISTANT PASTORS
Sunday Masses-8:30 p.m., Saturday, 7, 8:15, 9:30 and 10:45 a.m. and noon.
Sunday, Daily Masses-7 and 8 a.m. Masses on holy days-7, 8, 9 and 10 a.m. and 7 p.m.
Sacrament of Penance (confession)-Monday, 7:15 to 7:45 p.m.; Thursday before first Friday of the month; 7:15 to 7:45 p.m.; Saturday 10 to 11 a.m. No scheduled confessions on Sundays, holy days and eves of holy days.

Religious Notices

EVANGEL BAPTIST CHURCH
24 SHUNPIKE ROAD
SPRINGFIELD
DR. WILLIAM MIEROP
PASTOR
Sunday-9:45 a.m., Sunday school; 11 a.m., worship service; 7 p.m., prayer meeting.
Wednesday-7:45 p.m., prayer meeting.

HOLY CROSS LUTHERAN CHURCH
(THE CHURCH OF THE RADIO "LUTHERAN HOUR" AND TV'S "THIS IS THE LIFE")
639 MOUNTAIN AVENUE
SPRINGFIELD
REV. JOEL R. YOSS
PASTOR
TELEPHONE: 378-4225
Sunday-10 a.m., Bible study
Sunday-Senior high coffee house, Sunday-8:30 a.m., worship; 9:30 a.m., family growth hour; 10:45 a.m., Holy Communion.
Monday-8 p.m., missions and social concerns meeting.
Tuesday-7:30 p.m., trustee's meeting.
Wednesday-4:30 p.m., children's choir rehearsal; 7:45 p.m., adult choir rehearsal.

ANTIOCH BAPTIST CHURCH
MEADOWS STREET AND
50 SPRINGFIELD AVE.
SPRINGFIELD
REV. CLARENCE ALSTON
PASTOR
Sunday-9:30 a.m., church school choir rehearsal.
Sunday-10:30 a.m., Sunday School, 11 a.m., worship service, 7 p.m., evening fellowship.
Wednesday-9 p.m., midweek service.

ST. STEPHEN'S EPISCOPAL CHURCH
119 MAIN ST., MILLBURGH
REV. JOSEPH BERRING
RECTOR
Sunday-8 a.m., Holy Communion; 10 a.m., family worship service and sermon, church school and baptizing. (The 10 a.m. service includes Holy Communion on first and third Sundays and on festival occasions; morning prayer on other Sundays.)
Wednesday-10 to 11 a.m., Lenten study, "Thoughts on Living and Dying."

OUR LADY OF LOURDES CHURCH
MOUNTAINSIDE
REV. MSGR. RAYMOND J. POLLARD,
PASTOR
REV. EDWARD ELLERT,
ASSOCIATE PASTOR
REV. GERARD J. MCCARRY,
PASTOR EMERITUS
Mass schedule-Saturday, 6:30 p.m.; Sunday, 7, 8, 9:15 and 10:30 a.m. and noon; weekdays 8 a.m.; Holy days, 7, 8 and 10 a.m. and 8 p.m.; Novena, Mondays, 8 p.m.

FIRST PRESBYTERIAN CHURCH
MORRIS AVENUE
AT CHURCH MALL
SPRINGFIELD
THE REV. BRUCE WHITEFIELD EVANS, D.D.,
PASTOR
Today-8:30 p.m., confirmation class; 9 p.m., choir rehearsal.
Sunday-9 a.m., church school classes for all ages; 10:15 a.m., Palm Sunday worship service; 7 p.m., Westminster Fellowship.
Monday-7:30 p.m., Girl Scouts.
Tuesday-7:15 p.m., Holyday 7:30 p.m., Church committee meetings.
Wednesday-7 p.m., Christian Education Committee meeting; 8 p.m., Session meeting.

THE COMMUNITY PRESBYTERIAN CHURCH
Meeting House Lane
Mountainide, New Jersey
The Rev. Elmer A. Talcott, Pastor
PALM SUNDAY SERVICE - 10:30 a.m.
MAUNDY THURSDAY - 8:00 p.m.
Holy Communion-Office of Penitence
GOOD FRIDAY - 1:00 p.m.
Service on "The Seven Last Words"
EASTER SUNDAY - 10:30 a.m.
Family Service with special music

CONGREGATION ISRAEL OF SPRINGFIELD
338 MOUNTAIN AVE.
CORNER SHUNPIKE ROAD
RABBI ISRAEL TURNER
Friday-7:15 a.m. (at 338 Meisel ave.), minyan service; 6:10 p.m. (at 338 Meisel ave.) (at various addresses).
Springfield avenue), "Welcome to Sabbath" service.
Saturday-9:30 a.m. (at Chisholm School), Sabbath service; Bar Mitzvah of Greg Lambert, son of Mr. and Mrs. Gerald Lambert; sermon on "What Makes a Day or a Person Great"; kiddush after services, hosted by Mr. and Mrs. Lambert, followed by mitzvah service.
Sunday-8 a.m. (at 338 Meisel ave.), minyan service; 6:10 p.m., afternoon service followed by study session, then evening service.
Monday, Tuesday-7:15 a.m. (at 338 Meisel ave.), minyan service; 3:30 to 5:30 p.m. (at various addresses).
Religious school classes; 8:10 p.m. (at Meisel avenue), afternoon service followed by study session, then evening service.
Saturday-8 a.m., Sabbath service.
Sunday-7:30 p.m., B'nai B'rith auction.

TEMPLE BETH AEM UNITED SYNAGOGUE OF AMERICA
40 CHURCH MALL, SPRINGFIELD
RABBI: REUBEN R. LEVIN
CANTOR: ISRAEL J. BARZAK
Today-8:15 p.m., temple executive board meeting.
Friday-8:45 p.m., Sephardic Sabbath service.
Saturday-8 a.m., Sabbath service.
Sunday-7:30 p.m., B'nai B'rith auction.

SPRINGFIELD EMANUEL UNITED METHODIST CHURCH
40 CHURCH MALL, SPRINGFIELD
Today-8 p.m., chancel choir.
Saturday-7 to 10 p.m., AA; Springfield group.
Sunday-9:30 a.m., German worship service with sermon by the Reverend Fred Greber, church school, chapel service with lecture on "Renewal of Hope" by lay leader William Rossett; 10:30 a.m., fellowship hour; 11 a.m., worship service with sermon by the Rev. George C. Schlusinger on "I Believe in the Church"; 8 p.m., worship meeting; 7 p.m., Lenten program at the Summit Oaks Memorial United Methodist Church.
Monday-8 p.m., Methodist Men's meeting.
Tuesday-11 a.m., Christian Service Circle meeting.

TEMPLE SHARON AN AFFILIATE OF THE UNION OF AMERICAN HEBREW CONGREGATIONS
5 SPRINGFIELD AVENUE
AT SHUNPIKE ROAD, SPRINGFIELD
RABBI: HOWARD SPIRO
HONORARY: IRVING KRAMERMAN
Jared Fleischer, son of Alex and Shirley Fleischer of Springfield, was called to the Torah as a Sar Mitzvah on March 31.
Friday through Sunday-Dude ranch trip sponsored by youth group.
Friday-7:15 p.m., first section and trip sponsored by Religious Union will present a program of songs in celebration of Passover; 8:45 p.m., special Passover Seder for first, second and third grades; 10:30 a.m., Shabbat service.
Thursday, April 12-6 p.m., Sisterhood-sponsored annual Second Seder.

ST. JAMES CHURCH
45 SPRINGFIELD AVE.
SPRINGFIELD
MSGR. FRANCIS X. COYLE,
PASTOR
REV. STEPHEN P. LYNCH,
REV. PAUL J. KOCH,
ASSISTANT PASTORS
Sunday Masses-8:30 p.m., Saturday, 7, 8:15, 9:30 and 10:45 a.m. and noon.
Sunday, Daily Masses-7 and 8 a.m. Masses on holy days-7, 8, 9 and 10 a.m. and 7 p.m.
Sacrament of Penance (confession)-Monday, 7:15 to 7:45 p.m.; Thursday before first Friday of the month; 7:15 to 7:45 p.m.; Saturday 10 to 11 a.m. No scheduled confessions on Sundays, holy days and eves of holy days.

Religious Notices

EVANGEL BAPTIST CHURCH
24 SHUNPIKE ROAD
SPRINGFIELD
DR. WILLIAM MIEROP
PASTOR
Sunday-9:45 a.m., Sunday school; 11 a.m., worship service; 7 p.m., prayer meeting.
Wednesday-7:45 p.m., prayer meeting.

HOLY CROSS LUTHERAN CHURCH
(THE CHURCH OF THE RADIO "LUTHERAN HOUR" AND TV'S "THIS IS THE LIFE")
639 MOUNTAIN AVENUE
SPRINGFIELD
REV. JOEL R. YOSS
PASTOR
TELEPHONE: 378-4225
Sunday-10 a.m., Bible study
Sunday-Senior high coffee house, Sunday-8:30 a.m., worship; 9:30 a.m., family growth hour; 10:45 a.m., Holy Communion.
Monday-8 p.m., missions and social concerns meeting.
Tuesday-7:30 p.m., trustee's meeting.
Wednesday-4:30 p.m., children's choir rehearsal; 7:45 p.m., adult choir rehearsal.

ANTIOCH BAPTIST CHURCH
MEADOWS STREET AND
50 SPRINGFIELD AVE.
SPRINGFIELD
REV. CLARENCE ALSTON
PASTOR
Sunday-9:30 a.m., church school choir rehearsal.
Sunday-10:30 a.m., Sunday School, 11 a.m., worship service, 7 p.m., evening fellowship.
Wednesday-9 p.m., midweek service.

ST. STEPHEN'S EPISCOPAL CHURCH
119 MAIN ST., MILLBURGH
REV. JOSEPH BERRING
RECTOR
Sunday-8 a.m., Holy Communion; 10 a.m., family worship service and sermon, church school and baptizing. (The 10 a.m. service includes Holy Communion on first and third Sundays and on festival occasions; morning prayer on other Sundays.)
Wednesday-10 to 11 a.m., Lenten study, "Thoughts on Living and Dying."

OUR LADY OF LOURDES CHURCH
MOUNTAINSIDE
REV. MSGR. RAYMOND

Host Seniors lose tourney title to Morristown

By CRAIG CLICKENGER
The Springfield Seniors' Minutemen reached the finals of their annual tournament only to lose to Morristown, 94-82. On their way to the championship game, the Minutemen beat Florham Park, 89-81, and St. Philomena's of Livingston, 94-83. The Minutemen are currently playing in the Summit tourney, which concludes Saturday evening.

Reaching the semifinals in the tournament at Gaudinor was the earliest step for the Seniors, who scored 32 points in the first quarter and took a 38-point halftime lead over Florham.

The Minutemen controlled the backboards throughout the contest, 38-21. Goals in the final period, Florham Park trailed, 81-59. High-scoring center Kyle Hudgins had 24 points, seven rebounds and five steals. Forward Thomas Ard contributed 17 points, eight rebounds, 10 assists and six steals. Victor Gutierrez missed the remaining tourney contests because of illness.

Tom Fusco had one of his best defensive games, getting nine steals and three assists to go with 10 points. Michael Berliner played very well in a starting role, scoring twice.

The first overtime with a basket at 2:42, but Hudgins immediately made it

71-61. Ard made it 73-71 but St. Phil's tied the score at 1:38. Roesener made it 75-73 at 1:30 but Livingston tied the score at 1:00. The Seniors and Livingston failed to score after timeouts at 1:08 and 1:40.

In the second overtime period, St. Phil's jumped ahead at 2:43. Ard scored twice, at 2:27 and 1:47 but Livingston scored at 2:16. At 1:31, the Ard free throw put Springfield on top, 81-76. After Livingston took the lead, 85-81, Ard's free throw at 1:35 made it 83-82.

Hudgins, with three seconds left, tipped in the tip-off that sent the Minutemen into the final. Ard's 34 points and 11 assists topped all players. He also had five rebounds and four steals.

Hudgins, with 17 points, was the leader in rebounds (18) and steals (8). Berliner collected 10 points, six assists and three steals. Fusco put 10 points on the scoreboard. Roesener finished with three and Hinkley and Johnson each had two points.

Although the Minutemen scored 82 points in the title game, they were the victims of a very powerful and multi-talented team from Morristown. Morristown played at a level just above Springfield's capability and it was a frustrating loss for the Seniors. The Minutemen cut for a five-point first-

HURRICANE FENCE CO.
914 E. St. George Ave.
Linden, N.J. 07036

Quality Chain Link Fences
30 Years Experience
Or Do-It-Yourself

WE LOAN THE TOOLS FREE

MAPLE LEAF RUN
10,000 METERS
APRIL 29, 1979-9:00 A.M.

(Limited to First 500 Entrants)

Maplewood Memorial Park, Dunnell Road, Maplewood
Proceeds to Maplewood First Aid Squad

Prizes, Trophies, T-Shirts
provided by
The Maplewood Bank and Trust Co.

For information call the Maplewood Bank 762-7100
or Maplewood Recreation Department 763-4202.

ENTRY FORM MAPLE LEAF RUN
APRIL 29, 1979-MAPLEWOOD MEMORIAL PARK, MAPLEWOOD, N.J.

To enter please print the following information:

NAME _____ TELEPHONE _____ AGE _____
ADDRESS _____ TOWN _____ ZIP _____

SEX: MALE FEMALE T-SHIRT SIZE _____ S M L XL (CIRCLES)
WEIGHT _____ HEIGHT _____

ENTRY DEADLINE: April 22, 1979. Entry Fee: \$4.00. Please make check payable to Maple Leaf Run and mail to: Maplewood Bank and Trust Co., 81 Maplewood Avenue, Maplewood, N.J. 07040

Booster Club
Because the Passover holidays start Wednesday night, monthly meeting of the Dayton Regional Booster Club will be held Tuesday at 8 p.m. in the men teachers lounge.



JOE GRAZIANO of Springfield is hoping for a big season this year with the Miami Dade Community College baseball team. After a disappointing season last year because of an arm injury, Graziano says he feels strong this year and hopes to return to his winning form of two years ago.

Track season will open today with boys, girls facing Linden

By KIRK KUBACEK
The Jonathan Dayton Regional High School varsity track team competes at Middlesex, last week in preparation for its season opener today against Linden.

In the pre-season meeting, the squad looked good. Although Coach Martin Taglienti's team lacks depth in all the events, it has been fortunate to escape injuries to its top athletes.

In the practices meet, Kevin King won the mile with junior team leader Jeff Knowles and Jon Fingerhut grabbing the remaining places in the two-mile. Jay Bruder took top honors ahead of Michael King and Hamilton will compete in the 800, Dave Barnes and Jeff Vargas appeared tough. Other distance

members awaiting the season debut are Rick Bantel, Steve Wright, and Kirk Kubacek. The quarter-mile was won by Greg Felpe, a young and gifted runner who will be aided this season by captain Pete Keramas and Jeff Vargas. Keramas was successful in the 200-yard versatile runner will have Tony Ciccilli and Ed Francis for back-up power.

In the jumping events, Paul Commarone won events in the hurdles, high jump and long jump. Bundles support will come from senior Nick Caricote and Jon Alexey Ed Hackett and Matt Hamann will compete in the jumps. Pole vaulters Jeff Ciccilli and Ed Francis for back-up power.

In the jumping events, Paul Commarone won events in the hurdles, high jump and long jump. Bundles support will come from senior Nick Caricote and Jon Alexey Ed Hackett and Matt Hamann will compete in the jumps. Pole vaulters Jeff Ciccilli and Ed Francis for back-up power.

Regional netters play Union Catholic today

By MIKE MEIXNER
The 17-player Jonathan Dayton varsity tennis team, coached by Rick Iacono, will open its 1979 home season today with a promising outlook and plenty of depth.

At first singles, sophomore Alan Berliner, a consistent player with varsity experience (the played first doubles as a freshman), has been very impressive in pre-season play. He topped his hillside foe in two sets, Mark Dooley, a junior, and Mike Clarke fill the first-doubles spot with poise. Both competed in doubles last season and have their added experience, about sparring.

Two talented seniors tried out for the first time this year and earned the berth at second doubles. Both Jim Reiner and Dave Gecchik showed with time, improve. They romped in the hillside match, working very well together.

Bob Steir and Danny Schlager appear to be coach Iacono's top hopes for the future. These freshmen will help out greatly in future years. Freshmen Bill Koppel and Jon Stein also have earned spots on the varsity roster.

Sadin, Demark spark Nettes to 48-24 victory

The Springfield Nettes (8-6) defeated East Hanover, 48-24, in a recent Suburban Girls' Basketball League game in Springfield. The Nettes took a commanding 15-4 lead after the first quarter and increased the margin to 20-14 at the half. The Nettes outscored their opponents by nine points in the third quarter, to put the game out of reach.

Elton Sadin led the Nettes with a season-high 14 points. She also led the team in rebounding. Jill Demark added 12 points (10 in the first half), while playing only three quarters. She led the team in steals and assists. Tracy Katz, the starting center, scored nine points, a season high. Tracy added rebounding and defensive strategy. Mary P. Arducci and Kathy Metzner, rounding out the starting five, added four points each. Both played a fine game, reacting well at both ends of the court. Both Teitelbaum contributed a strong performance and four points. Kathy Drummond added a point while playing a solid game.

Joanna Ciccilli, Maureen Smith, and Lori Pohlman also played.

Elton Sadin was named player of the week after her fine performance.

Dayton nine to open season on Saturday

The Jonathan Dayton baseball team, scheduled to open the season Monday against A.L. Johnson of Clark, will have to wait until Saturday to play the first game. Because of inclement weather, the opener was postponed.

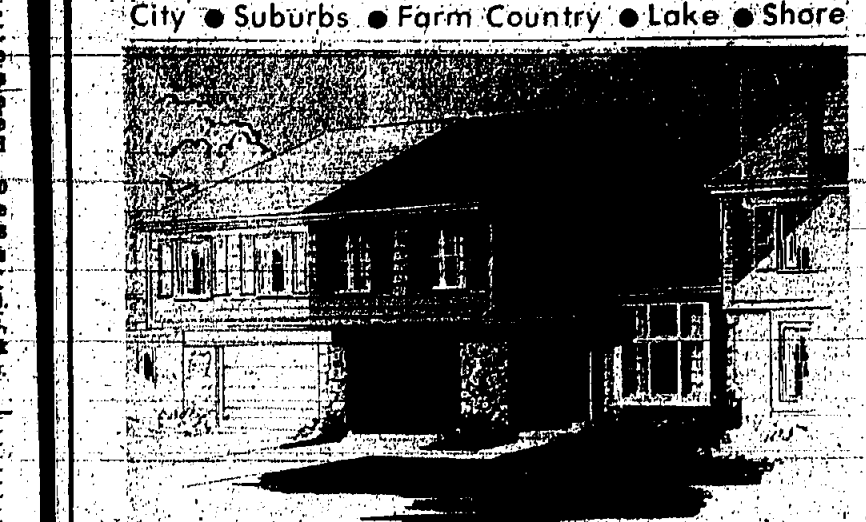
Dayton's starting batters will face Gov. Livingston. Berkeley's Rejay P. Meisel Field Saturday at 1:30 p.m.

Arnold a member of college team

ALLENTOWN, Pa.—Inese Arnold, a sophomore from Springfield, N.J., is a member of the Muhlenberg's women's varsity basketball team.

Arnold, a graduate of Jonathan Dayton Regional High School, competed in seven games and compiled the following statistical records: nine total points, six rebounds, two steals and one limited offense.

SUBURBAN REAL ESTATE MART



City • Suburbs • Farm Country • Lake • Shore

Shadow Lake chief predicts '79 sellout

Kovork S. Hovanian, president of Hovanian Enterprises and founder of Shadow Lake Village, predicts that this "adult community in Middletown will be sold out by September.

Shadow Lake, Hovanian said, will close out its construction in one of two blocks. The first block, which began in 1971, the rate of sales and values of Shadow Lake homes have both accelerated rapidly, he said. Annual sales there, during the first year, he noted, averaged around 60

homes while the current annual rate is almost 250 per year. The first models were priced from \$27,900. New models are selling from \$42,900 to \$74,900. The owner and older model has just sold for \$99,000, according to Hovanian. He said many original buyers have used appreciated equity to finance a second home in Florida. Many have purchased in one of two blocks to Ellen Court, then right to models.

The Homeowners' Association recently purchased a new 28' passenger bus to replace a smaller one. The new bus transports residents to convenient locations and on daily shopping tours. The bus runs on a regular schedule. Hovanian said many Shadow Lake homeowners have found that a family can get along without a second car or even one automobile because of the bus.

Vets to bolster volleyball team

The Dayton girls' volleyball team is eagerly awaiting the approach of this season. With a squad of mostly returning veterans, the team should be successful.

Returning to this year's varsity are Jeanne Winters, Shari Reich, Sharon McGurty and Cheryl Barron, all seniors, and Mary Jo Scuderi, a junior. Adding to this nucleus will be B.J. Beletto, June Glaser and Barbara Goldner, a freshman. Other members contributing to the varsity are Sue Svestal and Ilene Powers.

The junior varsity also appears impressive with Terri Brand and Hedge Allen returning to the lineup.

TURN ONS PAGE BUICK IS ON FRANKLIN PLACE IN SUMMIT, HARD TO FIND, BUT HARD TO BEAT.

6872 FRANKLIN PL., SUMMIT, (201) 622-1111

BUSINESS DIRECTORY

RAPID REFERENCE TO RELIABLE BUSINESS HOUSES

DORAN SALES-SERVICE-BODY SHOP
RENTALS-LEASING
NEW CARS 688-0840
RENTALS 688-0840
USED CARS 688-1373
BODY SHOP 687-2222
2037 MORRIS AV. UNION, NEAR UNION CENTER.

THE NATIONAL STATE BANK
Savings & Loans
193 MORRIS AVE. 376-1441

SCHOENWALDER
Auto Sales & Service
193 MORRIS AVE. 376-1441

MULTIPLY YOUR SAVINGS
1224 SPRINGFIELD AVE. PRINCETON, (609) 971-5800

CRESTMONT
Savings & Loans
193 MORRIS AVE. 376-1441

Houses at Barnegat cheaper than renting

When it costs less to own a home than to pay a landlord each month, today's young marrieds will be buying the first to find out about it.

At Barnegat Woods, small "hidden" communities of townhomes and townhouse homes in Barnegat, several young marrieds are making their first home their investment in the future at a monthly outlay of less money than they would be paying for rental of a home with less space!

"Why pay rent when you can own for so little?" one young wife said, stressing a trend that has surprised the developers of Barnegat Woods, which was planned as a monthly outlay of less money than they would be paying for rental of a home with less space!

This planned community of 60 home sites has half acre lots with 120' foot frontages at the building set-back line, which helps preserve the natural wooded area in which these homes are located.

Landing Lane Estates models are priced from \$44,000 and are conveniently located. The information center is open noon to 5 daily, except Wednesday, and may be reached by telephone at 201-679-8553.

For inspection of the models, exit from the Garden State Parkway at 122 (Route 9 South) and continue south on Route 9 bearing right at the exit. The road is a two-lane town road (Glenwood Diner) and proceed to traffic light. Turn left and continue to Norman Lane (second right turn). Turn right and continue two blocks to Ellen Court, then right to models.

The attached homes of Barnegat Woods are not condominiums, so buyers do not have to pay monthly maintenance fees. Each home comes with its own landscaped plus private parking in front. These are some of the plus benefits that attract young buyers as homeowners.

The two-bedroom ranch at Barnegat Woods has a tremendous expanse of living-dining room that makes for easy decorating and easy entertaining. The three-bedroom townhouse has both formal living room and an oversized country kitchen-dining



When you live at Panther Valley, it shows.

Panther Valley - the 1600-acre private luxury community. 24-hour security, private tennis and swimming. Panther Valley are the Panther Valley Golf & Country Club and the 18-hole championship course designed by Robert Trent Jones. Mortgages Available to Qualified Buyers. Single-family home from \$114,500. Townhomes from \$51,740.

Panther Valley
P.O. Box M
Allamuchy, New Jersey 07820
(201) 852-5300

DIRECTIONS: Use best route to Interstate Highway 88 west. Proceed on 88 to exit 19 (Anderson-Hackettstown). From exit ramp turn left onto Route 517. Continue 1/4 mile to Panther Valley entrance on right. Model homes are 10 A.M. - 5 P.M. daily.

YOU, TOO, CAN SHARE "THE AMERICAN DREAM!"

The New York Times
"We wanted a share of the 'American Dream' before it disappears." Ask Joseph and Gwen Komynal why they decided to purchase a home now at Holy Oaks development under way in Manchester Township, Ocean County, and that is what they will tell you.

And they are not alone.

The Dogwood model with 3 bedrooms, 2 1/2 baths, attached garage and full basement.

As stated in the recent lengthy "New York Times" article, "The American Dream" of spacious, quality-built homes at the right price, with low real estate taxes and affordable financing comes true at Holy Oaks. The dream comes true for young people who seek quality home life with all the important tax and equity advantages of home ownership.

The dream comes true for families who need lots of elbow room, as well as a private setting that's also near schools, services, shopping and highway commutation.

In all, the dream has come true for more than 150 Holy Oaks families. They got more home value (up to \$9000 more), and pay less in taxes (up to \$89 in savings per month versus comparable homes elsewhere).

The reality is that every Holy Oaks home is on a beautiful wooded homestead with city water, paved driveway, 150-amp electrical service, oven and range with hood, 240-pound self-sealing roof shingles, full-thick wall and ceiling insulation, plus a long list of other fine standard features at no extra cost.

Priced at \$60,800, the Dogwood model shown above comes complete with magnificent vaulted entry foyer & living room, dining room, spacious 27 foot family room, full basement, 3 bedrooms, 2 1/2 baths and attached garage. Other Holy Oaks models from \$54,900.

9 1/2% Mortgages available from 10% down*

Holy Oaks at Manchester

Sales Office open daily and weekends (201) 387-4242 DIRECTIONS: Take Garden State Parkway to Exit 88. Turn right onto Route 70 West. Continue 5 miles to Wilbur Avenue & Holy Oaks sales office on right.

Any way you cut it... it's a snap with a SNAPPER!

That's because a SNAPPER is a top quality, superior performing machine which is easy to maintain and will deliver years of dependable service. It's designed to get your work done faster and to perform more functions than its name suggests. Before you compare the quality and performance features of a SNAPPER, you'll find SNAPPER is worth more because it does more, and its price is competitive with other quality mowers.

SNAPPER belt-behind mowers can broadcast or vacuum, and with inexpensive optional attachments you can mulch cuttings for lawn food and won't have to rake or spread leaves or the catcher will hold over twice as many. SNAPPER extra "High Vacuum" mowers broadcast, bag and vacuum cuttings, leaves and other light litter, even during high moisture conditions.



Any way you cut it... it's a snap with a SNAPPER!

V-182 18" PUSH MOWER with GRASS CATCHER \$200.95
V-182 21" PUSH MOWER with GRASS CATCHER \$224.95

2550 RIDER BR800D GRASS CATCHER OPTIONAL

SNAPPERIZER \$32.00
MULCHERIZER \$32.00

ANDERSON LAWNMOWER & GARDEN SUPPLIES
1713 E. Second Street
Scotch Plains

GENERAL MOTION SERVICE
1085 Glebe Avenue
Mountainside

LA GRANDE, INC.
300 South Avenue E.
Westfield

CARDINAL LAWN & GARDEN CENTER
272 Millburn Road
Springfield

SUBURBAN REAL ESTATE MART City • Suburbs • Farm Country • Lake • Shore

New series is added at adult communities

Clearbrook and Rossmore are sister adult condominium communities for adults over 48. It is 4 1/2 miles from mid-Manhattan, off Exit 8A of the New Jersey Turnpike in Monroe Township.

Country Club Living In the Village of Toms River. River Rise, located across from the Toms River Country Club, in beautiful Toms River, in the finest of neighborhoods.



ONLY TWO units are left at Tins Court in Toms River. 100-foot long French provincial ranch in white brick.

Community previews large Colonial homes

A new community, space for additional The Red Oak Colonial—two bedrooms are on lower level of classic proportions that includes a den-family room at the opposite side of the main level from the full formal living room and dining room.

NEW BRICKTOWN COMMUNITY near Parkway Exit 91 will hold preview showing of Cherie Manor II. It offers ranch, bi-level and two-story colonial homes priced from \$51,900.

Deitz is given sales duties

The reassignment of Kandace Deitz of Union to sales associate of Jordan Baris, Inc. is announced by Jordan Baris, president.

Panther Valley adds third townhome unit

The new section, featuring two and three-bedroom townhomes priced from \$71,900 to \$91,800, is set among thickly wooded, rolling hills dotted with single-family homes.

SUBURBAN REAL ESTATE MART City • Suburbs • Farm Country • Lake • Shore

Panther Valley adds third townhome unit

The new section, featuring two and three-bedroom townhomes priced from \$71,900 to \$91,800, is set among thickly wooded, rolling hills dotted with single-family homes.

Early Bird Preview Cherie Manor II

Choice lots available now and going fast! RANCHES • BI-LEVELS • COLONIALS \$51,900 to \$59,900

Couple sent packing--for a 10-day cruise

Lions Head, the popular upgraded wall-to-wall new community for active adults in Bricktown, announced that it is sending a couple packing.

Down payment low at Barnegat

Excellent location and construction plus low cost of purchase and low upkeep spell out a variety of uses for the two and three-bedroom attached homes of Barnegat Woods.

NEW JERSEY IS MOVING TO HOVNANIAN'S FLORIDA. Florida sunshine? Sales at La Pinata Condominiums at Pine Ridge, Hovnanian's new adult community in the beautiful Palm Beaches.

New Jersey calls us home.

The best single family home values on the map. Priced in the \$50's, \$60's, \$70's and \$80's.

The Princeton Collection 8 models priced from the upper-\$70's. Glen Arden 5 models priced from the low-\$60's.

U.S. Home is the leading builder of one-family homes in New Jersey. Planned in excellent locations, our communities are designed to create fine residential neighborhoods.

If you hold out, you could be left out.



Shadow Lake Village. This is the last repeat, fast action war at Shadow Lake Village where the community that's the last word in carefree living for people 52 or over.

Shadow Lake Village. 8 magnificent floor plans from \$41,990 to \$56,990. Prices effective through April 14 only.

BYE-BYE STANHOPE MOUNTAIN HIGH

Next time you light up a cigarette, get a look at your kid's face. Last mountain townhomes from \$357 per month.

Highpoint At Stanhope. Last mountain townhomes from \$357 per month. 5% down, 7 3/4% for first 2 years.

DOVER WOODS. JUST A FEW MOMENTS AT DOVER WOODS YOU'LL SPEND A LIFETIME! A magnificent new community.

NEW JERSEY IS MOVING TO HOVNANIAN'S FLORIDA. Florida sunshine? Sales at La Pinata Condominiums at Pine Ridge, Hovnanian's new adult community in the beautiful Palm Beaches.

Pine Ridge III. To reach the sales exhibit in Middletown, take the Garden State Parkway south to Exit 114. Turn left on Red Hill Road for 2 1/10 miles, then right on Dwight Road.

Your Guide To Better Living in the SUBURBAN REAL ESTATE MART

City • Suburbs • Farm Country • Lake • Shore

Pine Ridge receives housing show award

Pine Ridge at Crestwood produced to the exact specifications of Crestwood's 4th national Manufactured Housing Show in Louisville, Ky.

Pine Ridge is an adult community with nearly 1,500 residents, founded six years ago by the largest home manufacturer in the country, with 37 plants in 25 states. The award cited Pine Ridge for leadership in community planning for retirees as well as design originality and quality construction standards for manufactured homes. All Pine Ridge residences are produced to the exact specifications of Crestwood's 4th national Manufactured Housing Show in Louisville, Ky.



AWARD-WINNER—Pine Ridge at Crestwood is honored by Skyline Corporation, nation's largest home manufacturer with award for outstanding achievement in community planning, design and construction standards and sales leadership. In presentation to executives of the adult community, located on Rt. 530 in Whiting, Ocean County, look place at the National Manufactured Housing Show in Louisville, Ky. From left are Pine Ridge general manager George Leopold and sales manager Joyce Guerin, Skyline chairman Arthur DeLoe, Pine Ridge vice-president Jerry J. Kokes and Skyline Division sales manager Eric R. Merling.

Salesman gets 'unique' award

George Leopold, Crestwood Communities general manager, said this is the 11th award he has received in the past few years. It is indeed gratifying to be so recognized and signally honored by his peers.

Joseph Santoro, Union County sales representative for Archie Schwartz Co., East Orange based Realtors, was awarded by Elmer Schwartz, president of the firm, the annual president's award for the most unique transaction of the year involving the huge former Pyro Plastics plant on Chestnut Street, Union. Santoro arranged the simultaneous sale and leasing to six firms of the entire plant area. In order to accept the financing for the vacated plant, it was necessary for the company to obtain commitments for 100 percent occupancy, which was arranged in a three-week period.

NEED HELP? Find the RIGHT PERSON with a Want Ad. Call 488-7700.

Workshops aimed at new proprietors

A schedule of seminars and workshops to be sponsored by the New Jersey Department of Labor and Industry in cooperation with the New Jersey District Office of the United States Small Business Administration (SBA).

Commissioner John J. Horn of the State Labor and Industry Department said the workshops and seminars were designed to prepare the would-be business owner as well as enhance the managerial and technical capabilities of those already in business.

Among subject areas are: buying or expanding a business; legal, tax and insurance requirements; success and failure factors; how to secure government contracts; in-depth business planning; bonding strategies; record-keeping; financial management; marketing and advertising; and special emphasis workshops for women and minorities.

Additional information is available from the Small Business Development Office, N.J. Dept. of Labor and Industry, P.O. Box 2768, Trenton 08628, or by calling the department at (609) 392-9087 or the SBA at (801) 645-0085.



High school students invited by college

High school junior and senior girls throughout the state have been invited to experience college life at a mini-weekend April 27 to 29 at the College of Saint Elizabeth, Convent Station.

Deadline for reservations, which will be limited to 125, is Friday, April 6. Plans for the weekend are being coordinated by Sister Maurice Sullivan, director of admissions, and Dorothy Callaghan, admissions counselor.

WATER HEATERS

A.O. SMITH Automatic Water Heaters On Sale

All sizes • Quick installation • Available for replacement • 1 year warranty • 100% satisfaction guarantee • Credit cards accepted

BEAUTIFUL BATHS

"The Water Heater Store" 2317 ROUTE 22, UNION 487-8555

Dysautonomia unit meets in Springfield

The Northern New Jersey Chapter of Dysautonomia will hold its regular monthly meeting tonight at 8:30 at the Temple Shalom Synagogue, Springfield.

Reading matter will be available and questions will be answered concerning the disease which strikes the autonomic nervous system. Helen Volein will preside.

Audition date told

Open auditions for professional quality soloists and chorists in all voice categories will be held by Suburban Opera Theatre on Monday at 7:30 p.m. at South Orange Junior High School, North Ridgewood Rd., South Orange.

The opera organization includes members from throughout Union County according to Lloyd Worthington of Springfield, general director.

The first production of the season, under the direction of Worthington and Rita Delman will be Mozart's "The Impresario" and Leon Cavallo's "Il Pagliaccio." Singers are asked to bring a resume and be prepared to sing two arias, one of them in English. Tapers and baritone are particularly urged to audition.

Singers may arrange for their audition time by calling Delman at 708-7909. Those interested in backstage work were also asked to call Delman.

SHOWER GIFTS for the BRIDE-TO-BE

Have a Bridal Shower Coming Up? Here is The Place To Start Looking For That Perfect Gift!

- SPREADS... All colors, all fabrics and all sizes from tiny twin to king size. All price ranges, too.
- TOWELS... Including pretty face towels to big, thick and thirsty bath size sets. Choose from colors galore.
- BATH BOUTIQUES... You name it... we have it in our new bath shop. Hundreds of new and unique gift ideas. Come in!

THE **Curtain Bin and Bath Shop**
1036 Stuyvesant Ave. UNION

Ocean County's finest adult community introduces its most exciting new model.

Grand Opening-The Elliot



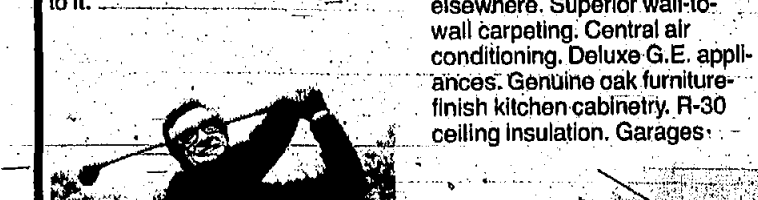
Featuring dramatic cathedral-ceiling living room with floor-to-ceiling brick fireplace.

It's no small feat to follow the kind of success that Lions Head has enjoyed in the short time since it opened. The first section proved to be such a hit, we were able to open Section II way ahead of schedule. So how do you improve on success? You add to it.

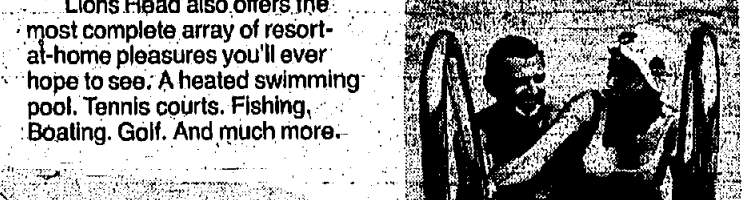
There's even a private clubhouse with fully equipped bar and hobby rooms. Through the nonprofit Lions Head Homeowners Association, you'll have plenty of time to enjoy yourself. Because while you own your fee simple home, the maintenance chores are taken care of for you by experts.

Lions Head also offers the most complete array of resort-at-home pleasures you'll ever hope to see. A heated swimming pool. Tennis courts. Fishing. Boating. Golf. And much more.

Introducing The Elliot. A brand new 2-bedroom home featuring a dramatic cathedral ceiling living room with floor-to-ceiling brick fireplace and energy-saving heat-o-lator. It's



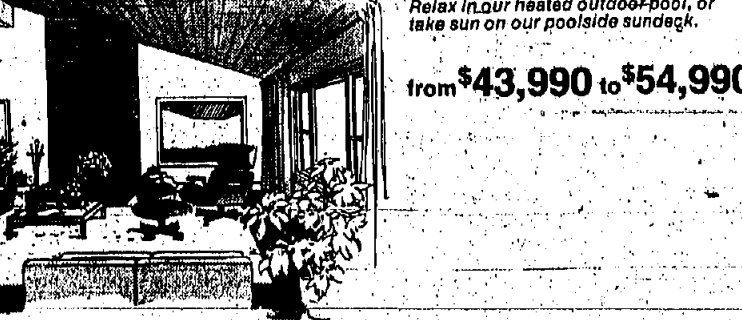
Fore! You'll soon be teeing off on Lions Head's private 9-hole executive golf course, proposed for the south side of Beaveron Boulevard, just 1/2 mile from Lions Head.



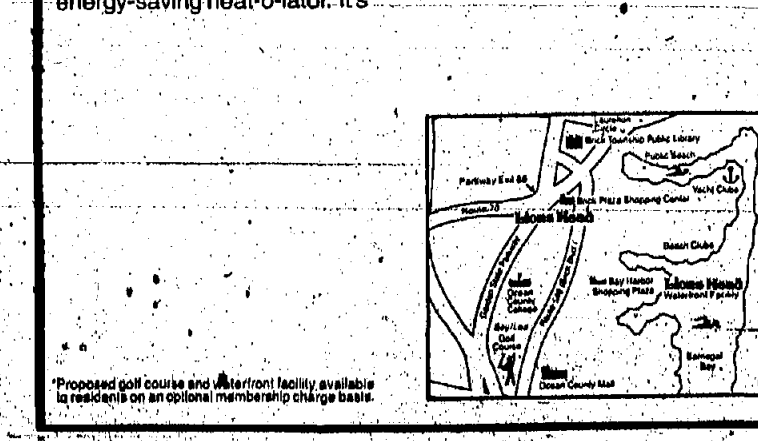
Relax in our heated outdoor pool, or take sun on our poolside sundeck.



Living-Dining Room area of the new Elliot Model



When in Ocean County, be sure to see the best. Lions Head. Who want more out of life should settle for less. Lions Head Boulevard off Beaveron Boulevard Brick Township, Ocean County, New Jersey.



From the Lincoln and Holland Tunnels: Take the New Jersey Turnpike south to Exit 11. Then take the Garden State Parkway south to Exit 88. Turn left on Route 70 to last light (Shorecrest St.). Turn right to end. Turn left onto Beaveron Blvd. and proceed to Lions Head entrance.

the suit



185.

the place

1024 Stuyvesant Ave. Union N.J. 687-1633 Open Evenings Monday & Friday

GOOD HEALTH IS UP TO ME!

Health Education Day May 10, 1979

Health Education Day has been sponsored by Gov. Brendan Byrne. The statewide program is being coordinated at The College of Medicine and Dentistry of New Jersey with a grant support from the Hunterdon High Fund.

EVE program begins sign-up for spring term

EVE, a community service to young women, will continue its series of Spring programs with several workshops scheduled to begin this month.

Health Education Day May 10

Health Education Day has been sponsored by Gov. Brendan Byrne. The statewide program is being coordinated at The College of Medicine and Dentistry of New Jersey with a grant support from the Hunterdon High Fund.

Accounting courses start at Kean in April

Two accounting courses, one designed for those working in non-profit organizations, the other for the small business entrepreneur, will start this month at Kean College.

Human values confab topic

A conference on the human values that apply in dealing with cancer will be held for allied health professionals, as well as for cancer patients and their families on April 20 and 21 at the Town and Campus in West Orange.

GOOD HEALTH IS UP TO ME!



Health Education Day May 10, 1979

Health Education Day has been sponsored by Gov. Brendan Byrne. The statewide program is being coordinated at The College of Medicine and Dentistry of New Jersey with a grant support from the Hunterdon High Fund.

Schmidt's Pork Store

1697 STUYVESANT AVE. Most of Our Items Are Nitrite Free

FREE PARKING CLOSED MONDAY

Home Made POLISH KIELBASA \$1.49 lb.	Home Made HAMBURGER PATTIES \$1.49 lb.
Home Made HOT OR SWEET ITALIAN SAUSAGE \$1.49 lb.	Home Made BREAKFAST SAUSAGE \$1.49 lb.
Home Made PURE PORK \$1.49 lb.	Home Made PURE PORK \$1.49 lb.

All Natural - NON NITRITE BACON \$1.00 lb.

SPECIALS GOOD THRU APRIL 11th

Mirons Ethan Allen Gallery

Sleeper Sofa Sale!

Choose from three of our best-selling styles available now in a special selection of durable long-wearing Hercules fabric and Scotchgard® protected prints. The luxurious Ethan Allen innerspring mattress easily slides to a convenient sitting position for reading or watching TV. Turn your living room or den into a spare bedroom now!

Ethan Allen Galleries soon!

THE CUPOLA

For senior citizens 70 and over to live in the grand manner in which you've been accustomed.

If you're tired to the bone, you'll want to consider The Cupola—the ultimate in senior citizens living. All suites are private, each with a full kitchen, each with a private bathroom, each with a private terrace or balcony. Features include: diversified menu, maid service, planned activities, theatre, golf, harbor and beach views, card rooms, libraries, delightful surroundings, even a "tutty tutty" staffed bar.

one month monthly fee you pay \$1,500.00 a month. Includes: telephone, gas, electric, water, sewer, trash, and all other charges.

ASK FOR OUR BROCHURE.

THE CUPOLA STORY

W. 100 Ridgewood Avenue Paramus, N.J. 07652 (201) 444-8200

THE CUPOLA

For senior citizens 70 and over to live in the grand manner in which you've been accustomed.

Accounting courses start at Kean in April

Two accounting courses, one designed for those working in non-profit organizations, the other for the small business entrepreneur, will start this month at Kean College.

Human values confab topic

A conference on the human values that apply in dealing with cancer will be held for allied health professionals, as well as for cancer patients and their families on April 20 and 21 at the Town and Campus in West Orange.

EVE program begins sign-up for spring term

EVE, a community service to young women, will continue its series of Spring programs with several workshops scheduled to begin this month.

A six-session "Vocational Development Group" for women considering employment, further education or career development will meet on Tuesdays, 9:30 to noon, from April 24 to May 29. Mary Ann Bottmann of Short Hills, EVE coordinator, is the instructor.

Additional information is available from Kean's Center for Continuing Education, 537-2210 or 2183.

Accounting courses start at Kean in April

Two accounting courses, one designed for those working in non-profit organizations, the other for the small business entrepreneur, will start this month at Kean College.

"Fund Accounting for Government and Non-Profit Agencies" will be taught by Charles Bellon, mayor of Westwood. Bellon will discuss the basic budgetary accounting systems used in municipal governments, schools, hospitals and non-profit agencies, comparing them with commercial accounting.

The Cupola For senior citizens 70 and over to live in the grand manner in which you've been accustomed.

Accounting courses start at Kean in April

Human values confab topic

Health Education Day May 10 will stress preventive medicine

Greater focus on blood pressure regulation, more stress on daily, even 20-minute, regular exercise, and more emphasis on preventive medicine by taking more responsibility for its health, a philosophy which is behind "Good Health is Up To Me," the slogan of the fourth annual statewide Health Education Day.

Gov. Brendan Byrne has proclaimed May 10 as the special day to encourage preventive medicine and has asked the College of Medicine and Dentistry of New Jersey (CMDNJ) to provide leadership in the statewide program.

Additional information is available from Kean's Center for Continuing Education, 537-2210 or 2183.

Human values confab topic

Accounting courses start at Kean in April

Health Education Day May 10

EVE program begins sign-up for spring term

Good Health is Up To Me!

Health Education Day May 10

Health Education Day May 10 will stress preventive medicine

Greater focus on blood pressure regulation, more stress on daily, even 20-minute, regular exercise, and more emphasis on preventive medicine by taking more responsibility for its health, a philosophy which is behind "Good Health is Up To Me," the slogan of the fourth annual statewide Health Education Day.

Gov. Brendan Byrne has proclaimed May 10 as the special day to encourage preventive medicine and has asked the College of Medicine and Dentistry of New Jersey (CMDNJ) to provide leadership in the statewide program.

Additional information is available from Kean's Center for Continuing Education, 537-2210 or 2183.

Human values confab topic

Accounting courses start at Kean in April

Health Education Day May 10

EVE program begins sign-up for spring term

Good Health is Up To Me!

Health Education Day May 10

THE CUPOLA

For senior citizens 70 and over to live in the grand manner in which you've been accustomed.

Accounting courses start at Kean in April

Two accounting courses, one designed for those working in non-profit organizations, the other for the small business entrepreneur, will start this month at Kean College.

Human values confab topic

A conference on the human values that apply in dealing with cancer will be held for allied health professionals, as well as for cancer patients and their families on April 20 and 21 at the Town and Campus in West Orange.

Health Education Day May 10

Health Education Day has been sponsored by Gov. Brendan Byrne. The statewide program is being coordinated at The College of Medicine and Dentistry of New Jersey with a grant support from the Hunterdon High Fund.

Additional information is available from Kean's Center for Continuing Education, 537-2210 or 2183.

Human values confab topic

Accounting courses start at Kean in April

Health Education Day May 10

EVE program begins sign-up for spring term

Good Health is Up To Me!

Health Education Day May 10

Health Education Day May 10

Health Education Day has been sponsored by Gov. Brendan Byrne. The statewide program is being coordinated at The College of Medicine and Dentistry of New Jersey with a grant support from the Hunterdon High Fund.

Additional information is available from Kean's Center for Continuing Education, 537-2210 or 2183.

Human values confab topic

Accounting courses start at Kean in April

Health Education Day May 10

EVE program begins sign-up for spring term

Good Health is Up To Me!

Health Education Day May 10

Health Education Day May 10

Health Education Day has been sponsored by Gov. Brendan Byrne. The statewide program is being coordinated at The College of Medicine and Dentistry of New Jersey with a grant support from the Hunterdon High Fund.

Additional information is available from Kean's Center for Continuing Education, 537-2210 or 2183.

Human values confab topic

Accounting courses start at Kean in April

Health Education Day May 10

EVE program begins sign-up for spring term

Good Health is Up To Me!

Health Education Day May 10

Health Education Day May 10

Health Education Day has been sponsored by Gov. Brendan Byrne. The statewide program is being coordinated at The College of Medicine and Dentistry of New Jersey with a grant support from the Hunterdon High Fund.

Additional information is available from Kean's Center for Continuing Education, 537-2210 or 2183.

Human values confab topic

Accounting courses start at Kean in April

Health Education Day May 10

EVE program begins sign-up for spring term

Good Health is Up To Me!

Health Education Day May 10

Health Education Day May 10

Health Education Day has been sponsored by Gov. Brendan Byrne. The statewide program is being coordinated at The College of Medicine and Dentistry of New Jersey with a grant support from the Hunterdon High Fund.

Additional information is available from Kean's Center for Continuing Education, 537-2210 or 2183.

Human values confab topic

Accounting courses start at Kean in April

Health Education Day May 10

EVE program begins sign-up for spring term

Good Health is Up To Me!

Health Education Day May 10

Health Education Day May 10

Health Education Day has been sponsored by Gov. Brendan Byrne. The statewide program is being coordinated at The College of Medicine and Dentistry of New Jersey with a grant support from the Hunterdon High Fund.

Additional information is available from Kean's Center for Continuing Education, 537-2210 or 2183.

Human values confab topic

Accounting courses start at Kean in April

Health Education Day May 10

EVE program begins sign-up for spring term

Good Health is Up To Me!

Health Education Day May 10

Health Education Day May 10

Health Education Day has been sponsored by Gov. Brendan Byrne. The statewide program is being coordinated at The College of Medicine and Dentistry of New Jersey with a grant support from the Hunterdon High Fund.

Additional information is available from Kean's Center for Continuing Education, 537-2210 or 2183.

Human values confab topic

Accounting courses start at Kean in April

Health Education Day May 10

EVE program begins sign-up for spring term

Good Health is Up To Me!

Health Education Day May 10

Health Education Day May 10

Health Education Day has been sponsored by Gov. Brendan Byrne. The statewide program is being coordinated at The College of Medicine and Dentistry of New Jersey with a grant support from the Hunterdon High Fund.

Additional information is available from Kean's Center for Continuing Education, 537-2210 or 2183.

Human values confab topic

Accounting courses start at Kean in April

Health Education Day May 10

EVE program begins sign-up for spring term

Good Health is Up To Me!

Health Education Day May 10

Health Education Day May 10

Health Education Day has been sponsored by Gov. Brendan Byrne. The statewide program is being coordinated at The College of Medicine and Dentistry of New Jersey with a grant support from the Hunterdon High Fund.

Additional information is available from Kean's Center for Continuing Education, 537-2210 or 2183.

Human values confab topic

Accounting courses start at Kean in April

Health Education Day May 10

EVE program begins sign-up for spring term

Good Health is Up To Me!

Health Education Day May 10

Health Education Day May 10

Health Education Day has been sponsored by Gov. Brendan Byrne. The statewide program is being coordinated at The College of Medicine and Dentistry of New Jersey with a grant support from the Hunterdon High Fund.

Additional information is available from Kean's Center for Continuing Education, 537-2210 or 2183.

Human values confab topic

Accounting courses start at Kean in April

Health Education Day May 10

EVE program begins sign-up for spring term

Good Health is Up To Me!

Health Education Day May 10

Health Education Day May 10

Health Education Day has been sponsored by Gov. Brendan Byrne. The statewide program is being coordinated at The College of Medicine and Dentistry of New Jersey with a grant support from the Hunterdon High Fund.

Additional information is available from Kean's Center for Continuing Education, 537-2210 or 2183.

Human values confab topic

Accounting courses start at Kean in April

Health Education Day May 10

EVE program begins sign-up for spring term

Good Health is Up To Me!

Health Education Day May 10

Health Education Day May 10

Health Education Day has been sponsored by Gov. Brendan Byrne. The statewide program is being coordinated at The College of Medicine and Dentistry of New Jersey with a grant support from the Hunterdon High Fund.

Additional information is available from Kean's Center for Continuing Education, 537-2210 or 2183.

Human values confab topic

Accounting courses start at Kean in April

Health Education Day May 10

EVE program begins sign-up for spring term

Good Health is Up To Me!

Health Education Day May 10

Amusement News

Jackson in 2 films

Glenda Jackson is starred in two features which came to the Elmore Theater. Elizabeth, yesterday. She heads the cast in "The Class of Miss MacMichael," and the absolute feature, "Nasty Habits."

JOHN RAITT stars in award-winning musical "Shenandoah" at Paper Mill Playhouse, Millburn, through April 22. Additional information may be obtained by calling 374-4343.

PACE BUICK IS ON FRANKLIN PLACE IN SUMMIT. HARD TO FIND, BUT HARD TO BEAT.

4872 FRANKLIN PL., SUMMIT, (201) 322-1111

ALL NEW AND DIFFERENT!

THE ROYAL HIPPIZZAN STALLIONS



CELEBRATE THE END OF WINTER WITH DINNER AT GEIGER'S

Geiger's

RESTAURANT 233-2280 BAKERY & PRODUCE

'Cabaret' continues

The stage musical, "Cabaret," which will continue through April 22 at the Meadowbrook Dinner Theater, Cedar Grove, stars Gillian Scallan, Sally Bowles, John Masi and Dorothy Stratten also are starred.

Miss Scallan, who starred on Broadway as Bebe in "Cora Lin" for two years, and as Carrie in "Very Good Eddie," recently returned from an international tour with the Hamburg Opera Company as Anita in West Side Story. She recently signed a recording contract with Polygram Records.

In addition, she has appeared in concert with the Elmore Theater, featuring Rosalind Murphy and Paolo Van Johnson as Lola in "Dann Yankee" and opposite Gordon Wells in "Shenandoah."

WALLA - Mercedes, Geraldine Page and Sandy Dennis are acting honors with Miss Jackson in "Nasty Habits."

EARLY COPY

Published to observe the Friday morning deadline for other than spot news, include your name, address and phone number.

Chateau Tavern & Restaurant

149 Chestnut St., Union

JOLLY TROLLEY SALOON

411 NORTH AVE., WESTFIELD 232-1207

CHARLIE BROWN (I)

756-1781

WHAT'S YOUR BEEF (II)

254 S. THIRD ST., PLAINFIELD 793-6641

Stars due at Strand

"Coming Tomorrow," which opens tomorrow at the Strand Theater, Summit, has been nominated for eight Academy Awards, including "Best Picture," "Best Actor," "Best Actress," "Best Director," "Best Supporting Actor" and "Best Supporting Actress."

The picture, which stars Jane Fonda, Jon Voight and Bruce Dern, and directed by Hal Ashby, tells a war story set in 1965 in Los Angeles. Miss Fonda plays an officer's wife, who volunteers for work in a veterans' hospital while her husband (Dern) is fighting in Vietnam.

Voight plays an embezzling Vietnam veteran whose love for Miss Fonda helps him to regain a sense of value in his life.

The picture was photographed in color. "Murder by Decree" ends its run tonight at the Strand.

ELMORA (Elizabeth)

NASTY HABITS, Thur., Fri., Mon., Tues., 7:30; Sat., 2, 8:15; Sun., 4:15.

Chateau Tavern & Restaurant

149 Chestnut St., Union

JOLLY TROLLEY SALOON

411 NORTH AVE., WESTFIELD 232-1207

CHARLIE BROWN (I)

756-1781

WHAT'S YOUR BEEF (II)

254 S. THIRD ST., PLAINFIELD 793-6641

Movie Times

All times listed are furnished by the theaters.

SHOW (Union) - WIFE MISTRESS, Thurs. Mon., Tues., 7:30, 9:15; Fri., Sat., 2, 8:15; Sun., 4:15.

BOULEVARD NIGHTS, Thursday 7:30, 9:15; Friday, 7:30, 9:15; Saturday, 2, 8:15, 9:15; Sunday, 4:15, 7:30, 9:15.

ELMORA (Elizabeth)

NASTY HABITS, Thur., Fri., Mon., Tues., 7:30; Sat., 2, 8:15; Sun., 4:15.

Chateau Tavern & Restaurant

149 Chestnut St., Union

JOLLY TROLLEY SALOON

411 NORTH AVE., WESTFIELD 232-1207

CHARLIE BROWN (I)

756-1781

WHAT'S YOUR BEEF (II)

254 S. THIRD ST., PLAINFIELD 793-6641

Music/dance

CHATHAM - The Garden State Ball, April 6, 8:00. Chatham township High School, 4000 N. Broad St., Chatham, N.J. 793-4400.

ELIZABETH - The Garden State Ball, April 6, 8:00. Elizabeth Public Library, 11 S. Broad St., Elizabeth, N.J. 735-4400.

MADISON - Fairleigh Dickinson University Orchestra, John Carlini conductor, 11:30 p.m., Madison, N.J. 470-4700.

ELMORA (Elizabeth)

NASTY HABITS, Thur., Fri., Mon., Tues., 7:30; Sat., 2, 8:15; Sun., 4:15.

Chateau Tavern & Restaurant

149 Chestnut St., Union

JOLLY TROLLEY SALOON

411 NORTH AVE., WESTFIELD 232-1207

CHARLIE BROWN (I)

756-1781

WHAT'S YOUR BEEF (II)

254 S. THIRD ST., PLAINFIELD 793-6641

SUBURBAN CALENDAR

BRASS CLASSIC FLOOR LAMPS

YOUR CHOICE 39.95 PERCH

LAMP CITY ROUTE 22, UNION 688-9430

Anniversary Sale

NO NAMES PLEASE!

Castle Theater

IRVINGTON CENTER 372-9324

EVELYN'S SPECIAL EARLY DINNER

1500 W. 20th St., Irvington

THE OPEN ROAD THEATRE COMPANY

372-9324

Geiger's

RESTAURANT 233-2280 BAKERY & PRODUCE

Theater

ELMORA (Elizabeth) NASTY HABITS, Thur., Fri., Mon., Tues., 7:30; Sat., 2, 8:15; Sun., 4:15.

BOULEVARD NIGHTS, Thursday 7:30, 9:15; Friday, 7:30, 9:15; Saturday, 2, 8:15, 9:15; Sunday, 4:15, 7:30, 9:15.

ELMORA (Elizabeth) NASTY HABITS, Thur., Fri., Mon., Tues., 7:30; Sat., 2, 8:15; Sun., 4:15.

Chateau Tavern & Restaurant

149 Chestnut St., Union

JOLLY TROLLEY SALOON

411 NORTH AVE., WESTFIELD 232-1207

CHARLIE BROWN (I)

756-1781

WHAT'S YOUR BEEF (II)

254 S. THIRD ST., PLAINFIELD 793-6641

Antipasta's set

A full-length play by a student, SEAN JOY Santoro, of Shrewsbury, is the major spring production of the theatre arts department at Drew University. Titled "Antipasta," it may be seen on the Bowme Theatre stage tonight through Sunday at 8 p.m. Admission is free.

ELMORA (Elizabeth) NASTY HABITS, Thur., Fri., Mon., Tues., 7:30; Sat., 2, 8:15; Sun., 4:15.

BOULEVARD NIGHTS, Thursday 7:30, 9:15; Friday, 7:30, 9:15; Saturday, 2, 8:15, 9:15; Sunday, 4:15, 7:30, 9:15.

Chateau Tavern & Restaurant

149 Chestnut St., Union

JOLLY TROLLEY SALOON

411 NORTH AVE., WESTFIELD 232-1207

CHARLIE BROWN (I)

756-1781

WHAT'S YOUR BEEF (II)

254 S. THIRD ST., PLAINFIELD 793-6641

Geiger's

RESTAURANT 233-2280 BAKERY & PRODUCE

Energy cost control planned for hospitals

The first statewide energy cost containment in the nation involving hospitals will be initiated in New Jersey, it was announced in a joint press conference held by the State Department of Energy and Health and the New Jersey Hospital Association.

Participating in the joint announcement were Jack W. Owen, president of the New Jersey Hospital Association (NJHA); Joel R. Jacobson, State Commissioner of Energy; Dr. Joanne E. Finley, M.D., State Commissioner of Health; and Harvey Z. Moros, President of Fuel and Energy Consultants, Inc. (FEC).

Up to 11 member hospitals of the NJHA could participate in the two-year program, which has been designed to serve as a model for the rest of the nation. Utility usage is expected to be reduced by 10 to 15 percent overall through implementation of the program.

Chateau Tavern & Restaurant

149 Chestnut St., Union

JOLLY TROLLEY SALOON

411 NORTH AVE., WESTFIELD 232-1207

CHARLIE BROWN (I)

756-1781

WHAT'S YOUR BEEF (II)

254 S. THIRD ST., PLAINFIELD 793-6641

Geiger's

RESTAURANT 233-2280 BAKERY & PRODUCE

Disc & Data

Pick Of The LP's, BOG BBAVEN - by Elvin Bishop (CAPRICORN)

Recorded at the Automatt in San Francisco, "Hog Heaven" proudly displays lots of Elvin's friends and a pourcentage of some of the finest musicians around. "Some of the material," Elvin notes, "has been around for a while, just like 'Foolish Around' had been, and then some of it's new."

Some of the many highlights are the rickrolling "It's A Feeling" sporting a vocal duet by Elvin and Maria Muldrup, especially enhanced by keyboard wizard Phil Albeau's salon-style "back piano" "Arkansas" as close to his familiar (un)lavin' bolsheroes Elvin, as his cooking huffie and stinging guitar struttin' "Struttin' My Stuff," which apyared the small group album. "Foolish Around And Fall In Love," "Homeward Bound" and "Goodbye" and "Goodbye" are the live double LP "Ratnin' Hall," a cross-section of Elvin's best to that point.

Chateau Tavern & Restaurant

149 Chestnut St., Union

JOLLY TROLLEY SALOON

411 NORTH AVE., WESTFIELD 232-1207

CHARLIE BROWN (I)

756-1781

WHAT'S YOUR BEEF (II)

254 S. THIRD ST., PLAINFIELD 793-6641

Geiger's

RESTAURANT 233-2280 BAKERY & PRODUCE

Two plays by Albee

Edward Albee will direct two of his own plays at the YM-YWHA of Metropolitan New Jersey, 700 Northfield Ave., West Orange, on Sunday evening, April 15, at 8 p.m.

The performances of "The American Dream" and "The Zoo Story," two one-act plays, will be presented as part of the Y's Theater Series.

The cast for "The American Dream," which was written by Albee in 1960, will include Patricia Kilgarriff, Wynan Pendleton and Stephen Rowe will perform "The Zoo Story," which was written by Albee in 1956.

Chateau Tavern & Restaurant

149 Chestnut St., Union

JOLLY TROLLEY SALOON

411 NORTH AVE., WESTFIELD 232-1207

CHARLIE BROWN (I)

756-1781

WHAT'S YOUR BEEF (II)

254 S. THIRD ST., PLAINFIELD 793-6641

Geiger's

RESTAURANT 233-2280 BAKERY & PRODUCE

Fashion show will aid opera

The Greater Newark Chapter of the Friends of the New Jersey State Opera will hold its annual fashion show on Thursday, May 3, at the Newark Museum. The show, with fashions by Sally Fuchs, will begin at 11:30 a.m. with champagne and refreshments in the Museum Garden.

ELMORA (Elizabeth) NASTY HABITS, Thur., Fri., Mon., Tues., 7:30; Sat., 2, 8:15; Sun., 4:15.

BOULEVARD NIGHTS, Thursday 7:30, 9:15; Friday, 7:30, 9:15; Saturday, 2, 8:15, 9:15; Sunday, 4:15, 7:30, 9:15.

Chateau Tavern & Restaurant

149 Chestnut St., Union

JOLLY TROLLEY SALOON

411 NORTH AVE., WESTFIELD 232-1207

CHARLIE BROWN (I)

756-1781

WHAT'S YOUR BEEF (II)

254 S. THIRD ST., PLAINFIELD 793-6641

Geiger's

RESTAURANT 233-2280 BAKERY & PRODUCE

Antipasta's set

A full-length play by a student, SEAN JOY Santoro, of Shrewsbury, is the major spring production of the theatre arts department at Drew University. Titled "Antipasta," it may be seen on the Bowme Theatre stage tonight through Sunday at 8 p.m. Admission is free.

ELMORA (Elizabeth) NASTY HABITS, Thur., Fri., Mon., Tues., 7:30; Sat., 2, 8:15; Sun., 4:15.

BOULEVARD NIGHTS, Thursday 7:30, 9:15; Friday, 7:30, 9:15; Saturday, 2, 8:15, 9:15; Sunday, 4:15, 7:30, 9:15.

Chateau Tavern & Restaurant

149 Chestnut St., Union

JOLLY TROLLEY SALOON

411 NORTH AVE., WESTFIELD 232-1207

CHARLIE BROWN (I)

756-1781

WHAT'S YOUR BEEF (II)

254 S. THIRD ST., PLAINFIELD 793-6641

Geiger's

RESTAURANT 233-2280 BAKERY & PRODUCE

Antipasta's set

A full-length play by a student, SEAN JOY Santoro, of Shrewsbury, is the major spring production of the theatre arts department at Drew University. Titled "Antipasta," it may be seen on the Bowme Theatre stage tonight through Sunday at 8 p.m. Admission is free.

ELMORA (Elizabeth) NASTY HABITS, Thur., Fri., Mon., Tues., 7:30; Sat., 2, 8:15; Sun., 4:15.

BOULEVARD NIGHTS, Thursday 7:30, 9:15; Friday, 7:30, 9:15; Saturday, 2, 8:15, 9:15; Sunday, 4:15, 7:30, 9:15.

Chateau Tavern & Restaurant

149 Chestnut St., Union

JOLLY TROLLEY SALOON

411 NORTH AVE., WESTFIELD 232-1207

CHARLIE BROWN (I)

756-1781

WHAT'S YOUR BEEF (II)

254 S. THIRD ST., PLAINFIELD 793-6641

Geiger's

RESTAURANT 233-2280 BAKERY & PRODUCE

Antipasta's set

A full-length play by a student, SEAN JOY Santoro, of Shrewsbury, is the major spring production of the theatre arts department at Drew University. Titled "Antipasta," it may be seen on the Bowme Theatre stage tonight through Sunday at 8 p.m. Admission is free.

ELMORA (Elizabeth) NASTY HABITS, Thur., Fri., Mon., Tues., 7:30; Sat., 2, 8:15; Sun., 4:15.

BOULEVARD NIGHTS, Thursday 7:30, 9:15; Friday, 7:30, 9:15; Saturday, 2, 8:15, 9:15; Sunday, 4:15, 7:30, 9:15.

Chateau Tavern & Restaurant

149 Chestnut St., Union

JOLLY TROLLEY SALOON

411 NORTH AVE., WESTFIELD 232-1207

CHARLIE BROWN (I)

756-1781

WHAT'S YOUR BEEF (II)

254 S. THIRD ST., PLAINFIELD 793-6641

Geiger's

RESTAURANT 233-2280 BAKERY & PRODUCE

Antipasta's set

A full-length play by a student, SEAN JOY Santoro, of Shrewsbury, is the major spring production of the theatre arts department at Drew University. Titled "Antipasta," it may be seen on the Bowme Theatre stage tonight through Sunday at 8 p.m. Admission is free.

ELMORA (Elizabeth) NASTY HABITS, Thur., Fri., Mon., Tues., 7:30; Sat., 2, 8:15; Sun., 4:15.

BOULEVARD NIGHTS, Thursday 7:30, 9:15; Friday, 7:30, 9:15; Saturday, 2, 8:15, 9:15; Sunday, 4:15, 7:30, 9:15.

Chateau Tavern & Restaurant

149 Chestnut St., Union

JOLLY TROLLEY SALOON

411 NORTH AVE., WESTFIELD 232-1207

CHARLIE BROWN (I)

756-1781

WHAT'S YOUR BEEF (II)

254 S. THIRD ST., PLAINFIELD 793-6641

Geiger's

RESTAURANT 233-2280 BAKERY & PRODUCE

Antipasta's set

A full-length play by a student, SEAN JOY Santoro, of Shrewsbury, is the major spring production of the theatre arts department at Drew University. Titled "Antipasta," it may be seen on the Bowme Theatre stage tonight through Sunday at 8 p.m. Admission is free.

ELMORA (Elizabeth) NASTY HABITS, Thur., Fri., Mon., Tues., 7:30; Sat., 2, 8:15; Sun., 4:15.

BOULEVARD NIGHTS, Thursday 7:30, 9:15; Friday, 7:30, 9:15; Saturday, 2, 8:15, 9:15; Sunday, 4:15, 7:30, 9:15.

Chateau Tavern & Restaurant

149 Chestnut St., Union

JOLLY TROLLEY SALOON

411 NORTH AVE., WESTFIELD 232-1207

CHARLIE BROWN (I)

756-1781

WHAT'S YOUR BEEF (II)

254 S. THIRD ST., PLAINFIELD 793-6641

Geiger's

RESTAURANT 233-2280 BAKERY & PRODUCE

Everybody's Market Place CLASSIFIED ADS

Call 686-7700 To Place An Ad * DEADLINES: Tuesday Noon For Thursday * Thursday Noon For Sunday * Call 686-7700 To Place An Ad

R.N. OPPORTUNITY
3-11 SHIFT
Put Your BASIC NURSING SKILLS To Work At
MEMORIAL GENERAL HOSPITAL
We are increasing our current staff.
On a medical floor with four private rooms and 30 semi-private beds.
AND
On a medical floor with 20 semi-private beds that includes ICU sleep down unit.
1800 position offering challenge. It's your opportunity to work on a unit where you'll be working with the most advanced medical equipment. You'll be working with the most advanced medical equipment. You'll be working with the most advanced medical equipment.

MEMORIAL GENERAL HOSPITAL
1000 HIGHLAND HILL RD.
Union, New Jersey 07083
Equal Opportunity Employer

TELLERS PART-TIME
Billions-Dollar First National State Bank of New Jersey has immediate openings for part-time Teller positions in our West Trenton Branch.
Please apply weekly
9:30 A.M. to 11 A.M.
1330 P.M. to 3 P.M.
Personal Department
First National State Bank of New Jersey
500 Broad St.
Newark, N.J.

CLERICAL PRODUCTION
If you work well with numbers, have a clear understanding of our industry, and are a fast learner, we have an excellent opportunity for you. We are seeking a Clerical Production person to join our team. This position involves data entry, proofreading, and general office support. We offer a competitive salary and benefits package. Apply to: **DATA ENTRY CLERK**, 1000 HIGHLAND HILL RD., UNION, NJ 07083.

CLERK TYPIST
Light duty position. This is a great opportunity for a person who is looking for a part-time position. We are seeking a Clerk Typist to handle general office duties and typing. We offer a competitive salary and benefits package. Apply to: **CLERK TYPIST**, 1000 HIGHLAND HILL RD., UNION, NJ 07083.

TYPIST FOR NEWSPAPER OFFSET SHOP
Full-time job for ambitious, energetic person. Must be willing to work long hours. Excellent benefits and training program. Apply to: **TYPIST**, 1000 HIGHLAND HILL RD., UNION, NJ 07083.

KEYPUNCH OPER.
Part-time position. We are seeking a Keypunch Operator to handle data entry and processing. We offer a competitive salary and benefits package. Apply to: **KEYPUNCH OPER.**, 1000 HIGHLAND HILL RD., UNION, NJ 07083.

COMPUTER KEY OPERATOR
Third Shift. We are seeking a Computer Key Operator to handle data entry and processing. We offer a competitive salary and benefits package. Apply to: **COMPUTER KEY OPERATOR**, 1000 HIGHLAND HILL RD., UNION, NJ 07083.

OVERLOOK HOSPITAL
We are seeking qualified individuals for various positions. For more information, please contact our Human Resources Department at 1000 HIGHLAND HILL RD., UNION, NJ 07083.

EMPLOYMENT OPPORTUNITIES AVAILABLE WITH Ginos
PERMANENT FULL & PART TIME POSITIONS
DAY SHIFT 9am-1pm
NIGHT POSITIONS CLOSERS
NO EXPERIENCE NECESSARY
FREE MEALS & UNIFORMS FURNISHED
APPLY IN PERSON TO MANAGER
2850 U.S. Route 22, Elizabeth
428-439 Morris Ave., Elizabeth
741 E. Edgar Rd., Linden

AUTO MECHANIC
On our R-12 Spd. Auto Center
Full Time
We offer a good starting salary, excellent benefits, and a challenging work environment. Apply to: **AUTO MECHANIC**, 1000 HIGHLAND HILL RD., UNION, NJ 07083.

PREPARATION
Our Travel Dept. is seeking qualified individuals for various positions. For more information, please contact our Human Resources Department at 1000 HIGHLAND HILL RD., UNION, NJ 07083.

SECRETARY
We are seeking a Secretary to handle general office duties and typing. We offer a competitive salary and benefits package. Apply to: **SECRETARY**, 1000 HIGHLAND HILL RD., UNION, NJ 07083.

LAB TECHNICIAN
We are seeking a Lab Technician to handle laboratory duties. We offer a competitive salary and benefits package. Apply to: **LAB TECHNICIAN**, 1000 HIGHLAND HILL RD., UNION, NJ 07083.

MAINTENANCE MECHANIC
We are seeking a Maintenance Mechanic to handle general maintenance duties. We offer a competitive salary and benefits package. Apply to: **MAINTENANCE MECHANIC**, 1000 HIGHLAND HILL RD., UNION, NJ 07083.

ORDER CLERK
We are seeking an Order Clerk to handle general office duties and typing. We offer a competitive salary and benefits package. Apply to: **ORDER CLERK**, 1000 HIGHLAND HILL RD., UNION, NJ 07083.

SALES REPRESENTATIVE
We are seeking a Sales Representative to handle general sales duties. We offer a competitive salary and benefits package. Apply to: **SALES REPRESENTATIVE**, 1000 HIGHLAND HILL RD., UNION, NJ 07083.

HELP WANTED-SALES
TELEPHONE SALES POSITIONS FOR OFFICE IN UNION. SELLING WEEKLY PUBLICATIONS OFF OUR LEADS. OUR REPS ARE CURRENTLY EARNING \$4-\$5 AN HOUR. IF YOU ARE INTERESTED IN WORKING MON-FRI. 9:00-1:00, AND EARNING EXCELLENT PAY, PLEASE CALL MR. MILICENT BETWEEN 3:00-8:00 AT 686-7700.

GENERAL HELP
Expanding company needs help. We are seeking qualified individuals for various positions. For more information, please contact our Human Resources Department at 1000 HIGHLAND HILL RD., UNION, NJ 07083.

SECRETARY
We are seeking a Secretary to handle general office duties and typing. We offer a competitive salary and benefits package. Apply to: **SECRETARY**, 1000 HIGHLAND HILL RD., UNION, NJ 07083.

LAB TECHNICIAN
We are seeking a Lab Technician to handle laboratory duties. We offer a competitive salary and benefits package. Apply to: **LAB TECHNICIAN**, 1000 HIGHLAND HILL RD., UNION, NJ 07083.

MAINTENANCE MECHANIC
We are seeking a Maintenance Mechanic to handle general maintenance duties. We offer a competitive salary and benefits package. Apply to: **MAINTENANCE MECHANIC**, 1000 HIGHLAND HILL RD., UNION, NJ 07083.

ORDER CLERK
We are seeking an Order Clerk to handle general office duties and typing. We offer a competitive salary and benefits package. Apply to: **ORDER CLERK**, 1000 HIGHLAND HILL RD., UNION, NJ 07083.

SALES REPRESENTATIVE
We are seeking a Sales Representative to handle general sales duties. We offer a competitive salary and benefits package. Apply to: **SALES REPRESENTATIVE**, 1000 HIGHLAND HILL RD., UNION, NJ 07083.

TECHNICAL SUPPORT
We are seeking a Technical Support person to handle general technical duties. We offer a competitive salary and benefits package. Apply to: **TECHNICAL SUPPORT**, 1000 HIGHLAND HILL RD., UNION, NJ 07083.

RENTAL
We are seeking qualified individuals for various rental positions. For more information, please contact our Human Resources Department at 1000 HIGHLAND HILL RD., UNION, NJ 07083.

RENTAL
We are seeking qualified individuals for various rental positions. For more information, please contact our Human Resources Department at 1000 HIGHLAND HILL RD., UNION, NJ 07083.

RENTAL
We are seeking qualified individuals for various rental positions. For more information, please contact our Human Resources Department at 1000 HIGHLAND HILL RD., UNION, NJ 07083.

RENTAL
We are seeking qualified individuals for various rental positions. For more information, please contact our Human Resources Department at 1000 HIGHLAND HILL RD., UNION, NJ 07083.

RENTAL
We are seeking qualified individuals for various rental positions. For more information, please contact our Human Resources Department at 1000 HIGHLAND HILL RD., UNION, NJ 07083.

RENTAL
We are seeking qualified individuals for various rental positions. For more information, please contact our Human Resources Department at 1000 HIGHLAND HILL RD., UNION, NJ 07083.

RENTAL
We are seeking qualified individuals for various rental positions. For more information, please contact our Human Resources Department at 1000 HIGHLAND HILL RD., UNION, NJ 07083.

RENTAL
We are seeking qualified individuals for various rental positions. For more information, please contact our Human Resources Department at 1000 HIGHLAND HILL RD., UNION, NJ 07083.

New Community Rossville Senior Citizen Apartments
180, 8th St. Newark
686-7777
Rent based on income Section 8

RENTAL
We are seeking qualified individuals for various rental positions. For more information, please contact our Human Resources Department at 1000 HIGHLAND HILL RD., UNION, NJ 07083.

RENTAL
We are seeking qualified individuals for various rental positions. For more information, please contact our Human Resources Department at 1000 HIGHLAND HILL RD., UNION, NJ 07083.

RENTAL
We are seeking qualified individuals for various rental positions. For more information, please contact our Human Resources Department at 1000 HIGHLAND HILL RD., UNION, NJ 07083.

RENTAL
We are seeking qualified individuals for various rental positions. For more information, please contact our Human Resources Department at 1000 HIGHLAND HILL RD., UNION, NJ 07083.

RENTAL
We are seeking qualified individuals for various rental positions. For more information, please contact our Human Resources Department at 1000 HIGHLAND HILL RD., UNION, NJ 07083.

RENTAL
We are seeking qualified individuals for various rental positions. For more information, please contact our Human Resources Department at 1000 HIGHLAND HILL RD., UNION, NJ 07083.

RENTAL
We are seeking qualified individuals for various rental positions. For more information, please contact our Human Resources Department at 1000 HIGHLAND HILL RD., UNION, NJ 07083.

EXECUTIVE SECRETARY
We have an opening for a mature, experienced executive secretary with our regional sales/marketing department. The successful candidate must be able to take short hand, utilize the telephone, handle multiple tasks and have excellent typing ability. Previous experience in sales/marketing is a plus but not absolutely necessary. We offer fully paid company benefits and a salary commensurate with experience and ability.

Getting a new lamp?
This is a fine time for a baby to be born. Through research doctors have almost out in half the chances of being born with cerebral palsy. You can make the good news even better by helping the research continue. Watch the Cerebral Palsy Telenovon on WBT-TV January 29th and 30th and please send your tax deductible contribution to: PALSY/BOX 555 TRENTON, N.J. 08604 Think what your money buys.

United Cerebral Palsy
AMERICAN CANCER SOCIETY
Charmglow
Pace Buick is on Franklin Place in Summit. Hard to find, but hard to beat.

DEATH NOTICES
We are seeking qualified individuals for various rental positions. For more information, please contact our Human Resources Department at 1000 HIGHLAND HILL RD., UNION, NJ 07083.

DEATH NOTICES
We are seeking qualified individuals for various rental positions. For more information, please contact our Human Resources Department at 1000 HIGHLAND HILL RD., UNION, NJ 07083.

DEATH NOTICES
We are seeking qualified individuals for various rental positions. For more information, please contact our Human Resources Department at 1000 HIGHLAND HILL RD., UNION, NJ 07083.

DEATH NOTICES
We are seeking qualified individuals for various rental positions. For more information, please contact our Human Resources Department at 1000 HIGHLAND HILL RD., UNION, NJ 07083.

DEATH NOTICES
We are seeking qualified individuals for various rental positions. For more information, please contact our Human Resources Department at 1000 HIGHLAND HILL RD., UNION, NJ 07083.