



HAPPY ENDING—Princess Snow White is played by Sherie Morrison of Springfield and Prince Frederick is played by Carl Vitale of Kenilworth in the Springfield Community Players production of 'Snow White and the Seven Dwarfs' scheduled for April 26 and 29 with performances at 11 a.m. and 2 p.m. at the Club School on Shunpike rd., Springfield. Admission is 50 cents for children and \$1 for adults.

Brown baggers to see 'Madrid'
"Madrid," a film tour of the capital city of Spain, will be shown at 7 p.m. Tuesday by the Springfield Public Library. Persons who live or work in or near Springfield may bring their lunches to eat while watching the movie of the Prado Museum, Guggenheim, a flamenco show, a soccer game and other famous scenes of Madrid and surrounding areas. The program lasts 45 minutes.

Irvin appointed as coordinator
John O. Irvin of Berkeley Heights has been appointed Common Cause coordinator for the 22 legislative district comprising the municipalities of Chatham, Berkeley Heights, Plainfield, Springfield, Clark, Kenilworth, Fanwood, Scotch Plains, and Mountaineer. This has been announced by Joseph P. Stoppa, Common Cause coordinator for the 12th congressional district of New Jersey. Dr. Irvin has been on the Berkeley Heights Board of Education for four years and has been active in Common Cause for seven years. He holds a Ph.D. degree in physics from the University of Colorado and has been employed in the Bell Telephone Laboratories in Murray Hill since 1967.

Mental Health
National Institutes of Health
UNDERSTANDING NEUROTIIC DISORDER.
The range of human emotions is as wide and varied as the spectrum on a decorative color wheel. Such expressions as "purple with rage," "red with anger," or "white with fear" are as familiar as the names of the primary colors and, because they depict feelings common to everyone, are as old as man's first attempts to provide a verbal image of the human condition.

School Lunches
GAUDINEER SCHOOL
Monday—Frankfurter on bun, sauerkraut, baked beans or potato pops, applesauce.
Tuesday—Hamburger on bun, slice of pickle & onion, coleslaw, gelatin with fruit.
Wednesday—Ravioli, green beans, French bread and margarine, roasted nuts or pineapple.
Thursday, April 26—Sliced turkey, roll, cranberry sauce, stuffing, gravy, mashed potatoes, green peas, plum cake or two tacsos, shredded lettuce and fruit.
Friday, April 27—Pizza cheese cubes, three-bean salad, fresh fruit or peaches.
Available daily—Juice, milk, cottage cheese and fruit, hard-cooked eggs, peanut butter and jelly sandwiches, matzo.

Elementary Schools
Monday—Frankfurter on bun, sauerkraut, potato pops, applesauce, milk.
Tuesday—Sliced meatball sandwich, coleslaw, Jello with fruit, milk, and dessert.
Wednesday—Ravioli, green peas, French bread and margarine, roasted nuts and raisins, milk.
Thursday, April 26—Meatball submarine sandwich, chesedog or Bologna sandwich, each with French fries, other vegetable and fresh fruit.
Friday, April 27—Pizza pie, pork roll on bun or salami and cheese sandwich, each with tossed salad, fruit and dessert bar.
Available daily—Salads, soup, tuna-salad sandwiches.

Have a nice weekend...
Dine With Us
DON'S PLAZA
DELICIOUS FOOD PLUS... AN EXTENSIVE MENU
DAILY SPECIALS
FREE COPY SALAD BAR WITH DINNER 4-10 P.M.
STEVE AND NICK

HERD HELP!
NILTON L. OGINTZ, INC.
550 MILBURN AVE. MILBURN, N.J. 07041
TEL. 973-831-1100

Russian Jews will be theme of discussion
"The Miracle and the Dream of the Russian Jewish Renaissance" will be the theme of the living room discussion sponsored by Congregation Israel at Springfield this Sunday evening at 8, at the home of Mr. and Mrs. Leif Anfeng, 15 Woodside Rd., Springfield. The discussion will be led by Alan and Ann Bernstein.

Bible Society exec to open adult course
The Rev. Arthur C. Borden, an executive of the American Bible Society, will open the adult education course Sunday at the First Presbyterian Church of Springfield in the Parish House at 57 Church Hill. His topic throughout the series will be "Today's Bible for Today's World."

Dr. Borden is one of three speakers who will institute the series of lectures and discussion scheduled for Sunday mornings at 9 through May 20. The series will be held at the Metropolitan New Jersey Conference on Russian Jews, a past president of the Jewish Counciling and Service Agency, and serves the Jewish community in other capacities. The Bernsteins have discussed the Russian Jewish story before many groups.

The overall theme of the congregation's discussion series this year is "The Contemporary Jewish Scene." The closing session is scheduled for Sunday evening, May 20. Information concerning the discussion series may be obtained from Sylvia Harsell, chairman, 78-201, or Allen Penn, co-chairman, 497-3478. Information about congregation activities may be obtained from Rabbi Israel E. Tarnai, 497-0217 or 279-2220.

On dean's list
Marlene Horvath of Springfield has been named to the dean's list for the fall semester at Union County Technical Institute, Scotch Plains. Mrs. Horvath is the wife of Joseph, and mother of Glen and Randy. She is a senior majoring in secretarial science. Two years ago she joined the staff of the County Council.



DR. ARTHUR C. BORDEN

We've cooked up a way for you to get free Corning Ware.
Here's a way to spice up your day. Get free Spice O'Life pattern Corning Ware just by saving at SUMMIT! This beautiful freezer-to-oven-to-table cookware is yours free with a deposit from \$500 to \$5500 or more in any SUMMIT high interest savings account except our 26-Week Money Market Certificates. See list chart below for details. Don't miss your chance to win one of these gourmet food preparation systems. Ask any SUMMIT employee for a Sweepstakes blank, and enter today! Sweepstakes ends May 31, 1979. No deposit required to enter.



Corning Ware products are recommended for use in Micro Wave ovens.

SPICE O' LIFE CORNING WARE	Deposit \$500 or more in a new or existing savings account. (Choice of one)	Deposit \$2,500 or more in a new or existing savings account. (Choice of one)	Deposit \$5,000 or more in a new or existing savings account. (Choice of one)	Special Club Price with deposit of \$500 or more
2K cup Petite Pan w/plastic cover	FREE	FREE	ANY TWO FREE (\$2500 cash/offer)	\$4.00
1 quart saucpan w/covr	FREE	FREE		\$5.00
Grab-It Set (Two 15.25. Bowls)	FREE	FREE		6.00
1 pint Menu-ette saucpan w/covr	FREE	FREE		4.00
6W Menu-ette skillet w/covr	FREE	FREE		4.00
1 1/2 pt. lipped Menu-ette saucpan w/covr	FREE	FREE		6.00
2 qt. lidded Dish w/plastic covr	FREE	FREE		6.00
Two 2Wcup Petite Pans w/plastic covers and handle	FREE	FREE		6.00
6-cup teapot	FREE	FREE		6.00
Menu-ette Set—6W, cov'd skillet, cov'd saucpan, 1 1/2 pt. lipped saucpan	FREE	FREE		12.00

Summit and Elizabeth
MEMBER OF THE SUMMIT BANK CORPORATION
100 MILBURN AVE. MILBURN, N.J. 07041
TEL. 973-831-1100

Refuse-derived fuel plan choice of council for disposal solution
A Port Authority of New York and New Jersey industrial complex powered by refuse-derived fuel was named the first choice of the Union County Solid Waste Advisory Council when it drew up its final recommendation to the Board of Freeholders last week.

The plan being drawn up by the Port Authority—which is looking at possible sites in Elizabeth, Newark or Jersey City—came in well ahead of other long-term solutions for the solid waste disposal problem.

With three points for each delegate's first choice, two points for second choice and one point for third, the Port Authority project received a total of 45 points.

White House advisor plans local speech
Edward Sanders, senior advisor to President Jimmy Carter and to the secretary of state, will speak at a breakfast meeting of the Springfield Lodge of B'nai B'rith at 10 a.m. Sunday in Temple Beth Ahim.

Dance team performs for Cub Scouts pack
The Order of the Arrow dance team will entertain Springfield Cub Scout Pack 70 at the Edward Walton School Tuesday at 8 p.m. The Order of the Arrow is an honorary unit of the Boy Scouts which specializes in Indian dances and costumes.

Lions sponsor variety show
Springfield Lions Club president Jack Moore this week announced that the annual variety show will be held on April 27 in Jonathan Dayton Regional High School auditorium, Mountain Avenue, Springfield. The following acts will be featured:

Workshop Sunday
Dr. Nellie D. Stone, a family therapist of Springfield, will share leadership of the Interpersonal Workshop on Freedom and Choice to be held on Sunday from 1:30 to 5:30 p.m. at the Center for Psychotherapy, 2840 Morris Ave., Union. Inquiries may be directed to 944-6666.

TRAVEL NEWS
When we're on a cruise, and we visit Nassau! This was asked us the other day by a visitor to our restaurant. Delgado and Margulies can combine both a cruise and a visit to Nassau. We might add that Nassau is a most beautiful place to visit. It's a fine place for mother and dad and for the children. There's lots of good shopping, a beautiful job of clean, fancy beaches for swimming and sunning. And a feature we think you'll particularly find enjoyable is the freshers' buds and making of sand castles. The latter is a sport that everyone enjoys enjoying.

Housecleaning sale slated by Summit Y
The Summit YWCA Spring housecleaning sale will be held Monday, April 23, from 10 a.m. to 4 p.m. at the YWCA, 79 Maple St. Donations of china, glassware, kitchenware, jewelry, toys, games, sport equipment, Christmas ornaments, small furniture and other usable items are being accepted for the sale.

THE LIBRARY OF ALBUMS AND POP TRAMS
AUTO SERVICE TIPS
SOD
YORK GRASS, INC.
378-8880

Remembrance for Holocaust victims slated
Temple B'nai B'rith of Springfield will commemorate Yom Ha-Shoah, the day of remembrance of the victims of the Holocaust, at services tomorrow at 8:45 p.m.



New riding season trots, gallops along
Each day groups of youngsters in uniform ride horseback in the practice rings of the Watching Stable. These youngsters, all members of the Watching Stable, are being taught according to Union County's instructional horseback riding tradition which is based on the "learn while you ride" theory.

Dance team performs for Cub Scouts pack
The Order of the Arrow dance team will entertain Springfield Cub Scout Pack 70 at the Edward Walton School Tuesday at 8 p.m. The Order of the Arrow is an honorary unit of the Boy Scouts which specializes in Indian dances and costumes.

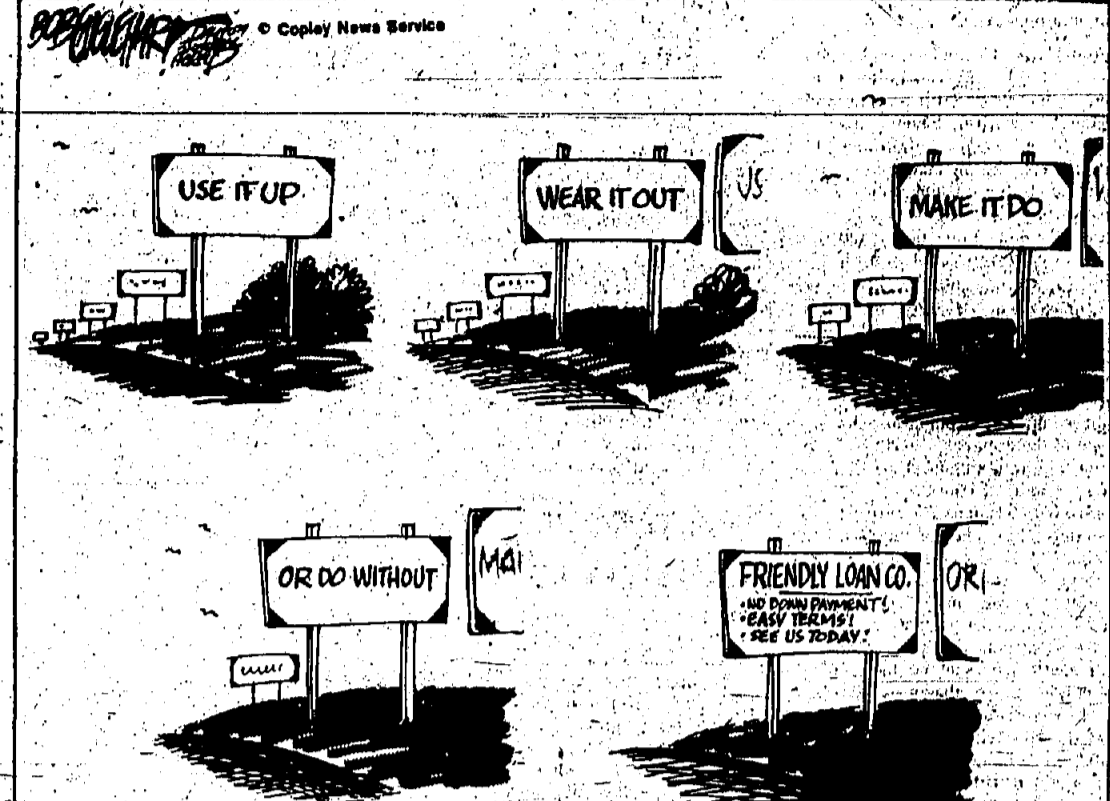
Lions sponsor variety show
Springfield Lions Club president Jack Moore this week announced that the annual variety show will be held on April 27 in Jonathan Dayton Regional High School auditorium, Mountain Avenue, Springfield. The following acts will be featured:

Workshop Sunday
Dr. Nellie D. Stone, a family therapist of Springfield, will share leadership of the Interpersonal Workshop on Freedom and Choice to be held on Sunday from 1:30 to 5:30 p.m. at the Center for Psychotherapy, 2840 Morris Ave., Union. Inquiries may be directed to 944-6666.

TRAVEL NEWS
When we're on a cruise, and we visit Nassau! This was asked us the other day by a visitor to our restaurant. Delgado and Margulies can combine both a cruise and a visit to Nassau. We might add that Nassau is a most beautiful place to visit. It's a fine place for mother and dad and for the children. There's lots of good shopping, a beautiful job of clean, fancy beaches for swimming and sunning. And a feature we think you'll particularly find enjoyable is the freshers' buds and making of sand castles. The latter is a sport that everyone enjoys enjoying.

Housecleaning sale slated by Summit Y
The Summit YWCA Spring housecleaning sale will be held Monday, April 23, from 10 a.m. to 4 p.m. at the YWCA, 79 Maple St. Donations of china, glassware, kitchenware, jewelry, toys, games, sport equipment, Christmas ornaments, small furniture and other usable items are being accepted for the sale.

THE LIBRARY OF ALBUMS AND POP TRAMS
AUTO SERVICE TIPS
SOD
YORK GRASS, INC.
378-8880



LETTERS

SEWER BLOCKAGE
(This is a copy of a letter sent to Walter Knapp, Township Engineer.)
On Wednesday, April 4, at 9:30 a.m., my husband discovered our basement had approximately 1 1/2 feet of water in it. His first reaction was to call the Fire Department to use their water pump. We had never had any water in our basement, and naturally, he thought a water pipe had broken or clogged.

YOU AND YOUR MONEY
Ratings offer a guide to safety of securities

By JUDITH RHODES
I received a question from E.R. of Los Angeles requesting some information on ratings of securities, so I thought a column on the subject would be of interest to my readers.
A security rating is an indication of the investment quality of the company. In the stock market, securities that are the highest grade are rated an A, the next best is a B, and poorest quality is a C or D.

Student poets

The following poems were written by pupils in the reading laboratory directed by Margaret Gerat at Springfield's Florence Gaidner School.
ROSES
Beautiful colors
Long and short stems
Smelling so sweetly
Roses
Stacey Gravina

Springfield Leader

Member SUBURBAN GRAMERICA
Second Class Postage Paid at Springfield, N.J.
Published each Thursday by Trueman Publishing Corp.
Awarded first place by New Jersey Press Association in 1977 for general circulation.

Death and Dying: Challenge and Change

This is the 15th in a series of articles exploring "Death and Dying: Challenge and Change." In this article, E.R. S. discusses the evolution of thanatology at the University of California, Los Angeles, and discusses changes in attitudes toward suicide from classical times to the present. This series was written for Courses by Newspaper, a program developed by University Extension, University of California, San Diego, and published by this newspaper in cooperation with Union College.

By EDWIN SHNEIDMAN
Dear Bill: Somewhere in this pile is the answer. I couldn't find it. Maybe you can. It's not your fault. You did your best, but it just couldn't be made a go of it. I specifically request that my body be disposed of cremation. Forget me as early as possible. I'll love you forever. Diane

That suicide note, written recently by a 29-year-old woman, leaves us puzzled. It does not tell us what we want to know. And even when a suicide note gives some specific precipitating reasons, such as ill health or financial loss, it still does not explain why that particular person committed suicide, because we all know someone who has suffered from the same reverses and is still alive and well.

Historically, corporations bitterly opposed ratings; many of them felt they were given inferior ratings by the services which did the ratings. Investors on the other hand, were very enthusiastic about them.
Today, the rating system is very useful not only to banks and other financial institutions but also to the individual investor as well. For example, if you have a trust which is managed by an outside investment firm or bank or trust company, you will probably find that the trust is limited to purchasing securities of a particular grade level.

When considering ratings with regard to investment purchases, you should remember that a rating is a long run judgment designed to show protection at the low point of the business cycle. Ratings are not lowered or raised due to business conditions. They are changed only when fundamental conditions affecting a particular issue change. Ratings are lowered only when the company is doing in relation to others in the same industry.

Legislative addresses
The Senate

Bill Bradley, Democrat of Devils, 315 Russell Senate Office Building, Washington, D.C. 20510 (telephone: 202-224-2324)
Matthew J. Rinaldo, Republican of Union, 314 Cannon House Office Building, Washington, D.C. 20515 (telephone: 484-0000)

In Trenton

District 20:
Including Union, Roselle Park, State Senate Anthony Russo, Democrat, North Ave. Cranford 07014.
Assembly: Charles J. Hardwick, Republican, 2315 Westfield 07099, C. 20515. District includes: Lawrence, Westfield, Cranford, North Ave. Cranford, and part of Monmouth County.

In Past Tense
Matthew Rinaldo

ONE YEAR AGO
ED "FRED" BARUCHIN, superintendent of schools, tells the Board of Education that declining enrollment is expected to chop four more teaching positions in the Springfield school district next year. The political party organizations endorse candidates for the sole seat on the Springfield Township Committee to be filled in November. The Democratic ticket is VIOLA ACCOURI and the GOP's is WILLIAM RUOCCO.

Forty years ago
A capacity crowd jammed the Town Hall in protest against the 90 point rise in the municipal budget at a hearing before the Township Committee. A five man citizens committee is formed to study the budget and make recommendations to the Township Committee who will make a final decision on the budget early next month.

Masons to hold church service

Springfield-Milburn Masons and members of the Eastern Star will hold their annual Masonic church services at Springfield Emmanuel United Methodist Church, Church Hall and Chapter 100, on Sunday at 11 a.m. The services are jointly sponsored by Continental Lodge 130, P.M.A.M. and Continental Chapter 142, O.E.S. The Rev. George G. Schaeffer, church pastor and honorary chaplain and Junior eacon of the lodge, will deliver the opening sermon.

Installation set for JWV units

The joint installation of officers for the 11th Junior Post and Auxiliary, Jewish War Veterans of the United States, will take place at 8:30 p.m. May 21 Temple Shalom Synagogue, Shingle road, at 8, Springfield avenue, Springfield.

Demonstration of dog training

An afternoon of dog obedience demonstration and education will be held at the Livingston Hall on Saturday from 1:30 to 3:30 p.m. The K-9 Obedience Training Club of Essex County will give two hours at obedience school, from elementary classes to advanced. There also will be a parade of many breeds of dogs.

College fund appeal aided by Brennan

LYNCHBURG, Va.—Patty Brennan, a junior at Lynchburg College, is daughter of Mr. and Mrs. John J. Brennan of Briar Hills Circle, Springfield, N.J., is one of 130 Lynchburg College students who are in a nationwide telephone fund-raising campaign to increase participation in the Annual Fund Drive for the College.

College to give fashion show

"Start Your Day with Style" will be the theme of the student fashion show at the College of Saint Elizabeth, Convent Station, Sunday April 22 at 2 p.m. in the upper lounge of Saint Joseph Hall. The show is sponsored by the Department of Home Economics and the Student Home Economics Association, the show will feature student modeling fashions created for themselves and others, including a formal wedding gown and a Halloween costume. A student craft show will be on display at the same time.

Three are named as clinic trustees

Three Springfield residents have been elected trustees of the Union County Psychiatric Clinic in Gladstone at the 25th annual meeting held earlier this month. Elected were Gregory Clarke, Dr. Morris Stenberg and Harriet Eitron.

Two on committee meeting Wednesday

Battle Hill Post 7683, Veterans of Foreign Wars, will meet Wednesday at 8:30 p.m. at the American Legion Home, Main street, Millburn. Refreshments will be served following the meeting.

Calabrese
Harrison Williams

IN CONGRESS
Calabrese
Instructor at Union College and security officer at Hamilton Construction Co.
Williams
Since 1917 Fort Dix, which is located in the southern part of our state, has been a vital part of our national effort to train and equip a modern army.

Swim courses registration on
The Summit Area YMCA is accepting registration for a concentration swim to swim' course for boys and girls in grades 1-12. All youths, both YM members and non-members, from Summit and the surrounding area are invited to participate. The nine-session course will be held after school on Mondays, Wednesdays, and Thursdays from 4:30 to 6:30 p.m. April 30. Advance registration is required; a nominal course fee is charged.

Tinker to talk on stars/kids
"Teaching Astronomy to Children" will be the subject of a presentation at the Summit YMCA Wednesday, the Rev. Allen Tinker will be the speaker. "Introducing a child to the stars," Tinker, "is to introduce him to a lifelong friend and his growth through evening. It is a great thrill when your child says to you, 'Let's go look at Zubenelgenubi!'"

Honors will go to Lieberman
Mr. and Mrs. Lester H. Lieberman of Springfield will be honored by the officers and members of Congregation B'nai Israel, Millburn, at an Israel Bond testimonial dinner Wednesday evening, May 23. Mrs. Lieberman, a past secretary of the Congregation B'nai Israel Starbuck, is a past chairman of the Metropolitan New Jersey State of Israel Bond Women's Division. She is a past vice-president of the Women's Division Board, United Jewish Appeal.

Chapter offers scholarship aid

The Summit Chapter of the National Secretaries Association (International) will offer scholarship assistance to individuals presently employed or returning to business who are studying secretarial subjects. Information is available from Mary Valenti during the day at 464-2000, ext. 214, before April 26.

Battle Hill Post sets meeting Wednesday

Battle Hill Post 7683, Veterans of Foreign Wars, will meet Wednesday at 8:30 p.m. at the American Legion Home, Main street, Millburn. Refreshments will be served following the meeting.

Simpson is named to UC alumni board

Larry Simpson of Springfield has been named to the executive board of the Union County Alumni Association. Simpson, youngest person ever elected to the Springfield Board of Education, is a 1976 graduate of Union College and received a bachelor's degree from Rowan College in 1978. She was elected last year at the age of 21.

Larry Massey elected to post

Larry Massey of Springfield, branch manager of the Union County Office of the Chicago Title Insurance Company, was elected by the 1,800-member New Jersey Builders Association as the vice-president of association affairs. The builders' organization held its 30th annual convention at the Playboy Resort and Country Club, McAlister, N.J. Massey, a New Jersey resident of Springfield, has been active in the Bergen County Republican Club, the Chamber of Commerce, the New Jersey Builders Association, and the Ridgefield Park Community Club. He is also a member of the Apartment Owners Association of New Jersey, an affiliate of the New Jersey Builders Association.

Weight joins board

Henry Wright of Springfield has been elected to the board of directors of the Union County Office of the Chicago Title Insurance Company. Wright, a New Jersey resident of Springfield, has been active in the Bergen County Republican Club, the Chamber of Commerce, the New Jersey Builders Association, and the Ridgefield Park Community Club. He is also a member of the Apartment Owners Association of New Jersey, an affiliate of the New Jersey Builders Association.

Advertisement for Berkeley Federal Savings and Loan, featuring a 10.03% effective annual rate and a 9.627% rate week of April 19-25. The ad includes details about the certificate's terms and conditions.



MR. AND MRS. LESTER LIEBERMAN

Honors will go to Lieberman

Mr. and Mrs. Lester H. Lieberman of Springfield will be honored by the officers and members of Congregation B'nai Israel, Millburn, at an Israel Bond testimonial dinner Wednesday evening, May 23.

Religious Notices

SPRINGFIELD EMANUEL UNITED METHODIST CHURCH
40 CHURCH HALL, SPRINGFIELD
REV. GEORGE C. SCHLESINGER, PASTOR
Thursday—9 p.m. chancel choir
Saturday—10 to 10 p.m., AA, Springfield group
Sunday—9:30 a.m., German worship service with sermon by the Rev. Fred Gruber; 10:30 a.m., fellowship hour; 11 a.m., worship service (annual Masonic service) with sermon by the Rev. George C. Schlesinger on "The Masonry teaches about God"; 6 p.m., youth meeting
Tuesday—7:45 p.m., Women's Mission Circle meeting

HOLY CROSS LUTHERAN CHURCH
(THE CHURCH OF THE RADIO "LUTHERAN HOUR," AND TV'S "THIS IS THE LIFE")
633 MOYEDALE AVENUE, SPRINGFIELD
REV. JOEL R. YOSS, PASTOR
TELEPHONE 479-4255
Sunday—9:30 a.m., worship; 9:30 a.m., family growth hour; 10:45 a.m., Holy Communion
Thursday—7:45 p.m., adult choir rehearsal

CONGREGATION ISRAEL OF SPRINGFIELD
339 MOUNTAIN AVENUE, CORNER SHUNPICK ROAD
RABBI ISRAEL E. TURNER
Friday—7:15 a.m., minyan service; 15 minutes before sundown, afternoon service and "Welcome to Sabbath" service
Saturday—8:30 a.m., Sabbath service; kiddush after service; one hour and 15 minutes before sunset, Talmud study group (Tosafot Shabbos); 15 minutes before sunset, afternoon service followed by discussion session and then "Farewell to Sabbath" service
Sunday—8 a.m., minyan service
Sunday through Thursday—15 minutes before sunset, afternoon service followed by study session and then by evening service
Monday through Thursday—7:15 a.m., minyan service; 3:30 to 5:30 p.m., Religious Circle classes

FIRST PRESBYTERIAN CHURCH
MORRIS AVENUE
AT CHURCH HALL, SPRINGFIELD
THE REV. BRUCE WHITFIELD RYAN, D.D., PASTOR
Sunday—9 a.m., church school classes and adult education series; 10:15 a.m., Fellowship Society service; 7 p.m., Westminster Fellowship meeting
Monday—7:30 p.m., Girl Scouts
Tuesday—4:30 p.m., Fellowship Society prayer time; 10 a.m., Ladies' Society Bible study; 11 a.m., Ladies' Society workshop; 7:15 p.m., Webelos

TEMPLE SHARON SHALOM AN AFFILIATE OF THE UNION OF AMERICAN HEBREW CONGREGATIONS
5 SPRINGFIELD AVENUE AT SHUNPICK ROAD, SPRINGFIELD
RABBI HOWARD SHAPIRO, CANTOR
IRVING KLAMERMAN
Friday—8:45 p.m., evrov Shabbat service commemorating Yom HaShoah ("In Memoriam, the Six Million")
Saturday—10:30 a.m., Shabbat service
Tuesday—8 p.m., ritual committee meeting
Wednesday—Interfaith luncheon sponsored by the Temple's Sisterhood

ST. JAMES CHURCH
455 SPRINGFIELD AVE., SPRINGFIELD
MSOR. FRANCIS X. COYLE, PASTOR
REV. STEPHEN P. LYNCH, ASSISTANT PASTOR
Sunday Masses—8:30 a.m., 10:30 a.m., 12:30 p.m., 4:30 p.m., 7:30 a.m., 9:30 a.m. and 10:30 a.m. and noon Sunday, Daily Masses—7 and 8 a.m. Masses on eves of holy days—7 p.m. Masses on holy days—7, 8, 9 and 10 a.m. and 7 p.m.
Sacrament of Penance (confession)—Monday, 7:15 to 7:45 p.m.; Thursday before first Friday of the month, 7:15 to 7:45 p.m.; Saturday, 1 to 2 p.m. No scheduled confessions on Sundays, holy days and eves of holy days

JOIN THE CHAIN GANG!
All items other than spot news should be in our office by noon on Friday.

FRIDAY DEADLINE
All items other than spot news should be in our office by noon on Friday.

SAVOY JEWELERS
870 Shunpike Ave., Union 688-2800



TO GIVE CONCERT—John Rose, organist and artist in residence at Trinity College in Hartford, Conn., will perform a concert at 4 p.m. Sunday in St. Stephen's Church, Millburn, where he played before capacity audiences when the Beckersath pipe organ was dedicated eight years ago. Tickets, \$3 each, will be available at the door or may be reserved from the church office, 374-0889.

Know Your Government

BILLS BANNING DUAL JOB HOLDING ADVANCE
Should a government official be permitted to hold more than one elective office?
Should one person be allowed to hold more than one paid governmental office, either elected or appointed?
Should there be specific limitations on dual job holding or only broad limitations?
Should prohibitions on multiple office holding be detailed in the State Constitution or in law?
These are some of the questions which legislators must answer when considering legislation to control dual job holding.
Historic New Jersey practice of simultaneous holding more than one public office has been extensive. The New Jersey Constitution contains few limitations on multiple office holding. A legislator may not be nominated, elected or appointed to any statutory salaried state civil or political office if he has been created during his term of office or the salary thereof has been created during his term of office. A Congressman may not also be governor. The governor cannot hold any salaried state or federal office while he is governor. New Jersey law further prohibits dual holding of the office of

Sale is started by sub-juniors

The Mountaineer Sub-Junior are holding their second annual bake sale on wheels. On weekdays the club will comb the community collecting orders for homemade baked goods, including brownies, cupcakes, chocolate chip cookies, pound cakes and other desserts.
On Sunday, April 22, the girls will deliver to each door the freshly baked goods ordered.
For orders or information on the bake sale, those interested may call Cheryl Baron at 232-1470 after 7 p.m.



TO BE AT BANQUET—Dr. and Mrs. Jack Murray will appear at the Mountaineer Gospel Chapel's "Spores and Fairs" spring banquet at the Kingston at Morris Avenue in Union May 3 at 7 p.m. Dr. Murray is chairman of the Board of Trustees and chief executive officer of Biblical Theological Seminary, Hartford, Pa. Mrs. Murray is a gospel and choir writer and piano and organ soloist. Further information is available by calling 232-7143.

Specializing in Income Tax Preparation Services
STRONIEWICZ INC.
PUBLIC ACCOUNTANTS
TAX CONSULTANTS
17 REMER AVENUE, SPRINGFIELD, N.J.
487-9585

First interfaith lunch is slated by Sisterhood

Temple Sh'aray Shalom's Sisterhood will sponsor Springfield's first interfaith luncheon on Wednesday at the temple.
Participating religious communities are Holy Cross Lutheran Church, Temple Beth'Ahm, Antioch Baptist Church, St. James Roman Catholic Church, First Presbyterian Church and Temple Sh'aray Shalom. The sponsors said that the interfaith luncheon will provide an "opportunity in an informal atmosphere in which members of the religious communities may better appreciate their common needs and goals."
The afternoon's program is being prepared by Rabbi Howard Shapiro of Temple Sh'aray Shalom and the Rev. John Yoss of Holy Cross Lutheran Church. The luncheon is open to the public by reservation only at a cost of \$20 a person. Reservations may be made by calling any of the participating churches or synagogues.
The afternoon's program is being prepared by Rabbi Howard Shapiro of Temple Sh'aray Shalom and the Rev. John Yoss of Holy Cross Lutheran Church. The luncheon is open to the public by reservation only at a cost of \$20 a person. Reservations may be made by calling any of the participating churches or synagogues.

Hadassah unit sets reception

The Springfield Chapter of Hadassah will hold a Youth Aliyah and Hadassah Israel education service reception at the home of Ethel Zarkoff, Youth Aliyah chairman, Tuesday at 8 p.m. Speaker will be Esther Kesselman, past president of the Northern New Jersey Region and past national Board Member of Hadassah.
Mrs. Kesselman graduated from Eastern College and is now attending the Eastern Baptist Theological Seminary in Philadelphia. He is the pastor of the Taylor Memorial Baptist Church in Philadelphia. An August wedding is planned in Springfield.

Twigs to hold spring luncheon

Echo Lake Country Club will be the scene of the annual spring luncheon of the Westfield-Mountaineer Overlook Hospital Twigs on April 28.
Margaret Shaw Knappe, of Pennington, North, a design studio located at Central and South avenues, will be the guest speaker. Her topic will be "Vintage to Good".
All Twigs members were urged to attend. Guests also are welcome. Tickets may be purchased from any Twig chairman.

Woman's Club meeting shifted

The Mountaineer Woman's Club Literature Chairman, Isabelle Boeman, has announced that the Literature Department meeting scheduled for Thursday, April 19, will be held instead on Thursday, May 3. This combined April and May meeting will be held at the home of Halie Tanguedon Lane, Mountaineer. Mrs. Hall will give a talk on Roger Tory Peterson and his book "Wildfowl of the World".
The activities chairman, Jeanne Blackburn, has announced that a few tickets will be available for the "evening at the races" Friday, May 4. The price (\$21.50) includes transportation, admission to the Meadowlands clubhouse and dinner.

Birthdays party for 90 year old

Joseph George Polakoff of Clark celebrated his 90th birthday at a recent open house held at the home of his daughter and son-in-law, Mr. and Mrs. Robert Grimm, of Mountaineer. Hosts were his granddaughters Marc and Heidi.
Mr. Polakoff was born in Charleston, West Virginia, moved to Orange, N.J., and operated Polly Brand Products in Newark, a collectible supply business. He was the husband of the late Elizabeth Polakoff. Mr. Polakoff is a past master of Tylmanian Masonic Lodge, a member of the Golden Group of Temple Beth-El in Cranford and Beth-Or Sedlers in Clark.

Susan Grimm to wed in May

Mr. and Mrs. Robert Grimm of Springfield have announced the engagement of their daughter, Susan Jane Grimm, to Michael S. Welch, son of Mr. and Mrs. Walter Welch of Trenton.
The bride-elect is a graduate of Jonathan Dayton High School and Trenton State College with a B.S. degree in health and physical education. She is employed by the Hamilton Township Board of Education.
Her fiancé is a graduate of Hamilton High School West and Seton Hall University with a B.S. in accounting. He is employed as an accountant by the RGA Research Center in Princeton. A May wedding is planned at St. Ann's Roman Catholic Church in Lawnside.

Charge for Pictures

There is a charge of \$5 for each picture taken for the year. The charge is for the picture and the album. The charge is for the picture and the album. The charge is for the picture and the album.

GET TO KNOW THE CHEZ-NA
FAMOUS DISCOUNT STORE
10% OFF EVERY DAY
1000 MORRIS AVENUE, UNION, N.J.
822-1100

3-0 Dayton netters beat Rahway, Clark

By MIKE MEDINER
The Jonathan Dayton Regional High School varsity tennis team swept to shutout victory over Rahway and Clark, bringing its record to 15-0 in individual matches and 3-0 in team play. The team will face a major challenge, however, when they play host to a powerful Millburn team tomorrow.
Leading off against Rahway, Gary Neutler won three sets, 6-4, 6-1, 6-0, in a first singles match. Hard-working Greg Wanner polished off his opponent by a identical score. Sophomore seattle "Barber" kept up the momentum with a 6-2, 6-2 victory at third singles.
Mike Clarke and Mark Dooley teamed up to shut out their opponent at first doubles, 6-0, 6-0. Regular Jim Reiner and top reserve Davey Simon also blanked their opponents at second doubles.
The Dayton Bulldogs also shut out Clark. Neutler won, 6-2, 6-1, Simon, moving up to second singles, ran into the year's first three-set match but managed to pull it out, 4-6, 6-3, 6-3. Berliner breezed in two sets, 6-3, 6-1. Dooley and Clark lost seven games in two sets at 1-6, 6-3. Reiner and Simon teamed up to shut out their opponent at first doubles, 6-0, 6-0. Regular Jim Reiner and top reserve Davey Simon also blanked their opponents at second doubles.
The Dayton Bulldogs also shut out Clark. Neutler won, 6-2, 6-1, Simon, moving up to second singles, ran into the year's first three-set match but managed to pull it out, 4-6, 6-3, 6-3. Berliner breezed in two sets, 6-3, 6-1. Dooley and Clark lost seven games in two sets at 1-6, 6-3. Reiner and Simon teamed up to shut out their opponent at first doubles, 6-0, 6-0. Regular Jim Reiner and top reserve Davey Simon also blanked their opponents at second doubles.

Track program registration set

Registration for the Springfield track and field program for boys and girls in the fifth through eighth grades will be held Tuesday at 5:30 p.m. at Meisel Field. The program will consist of practice Tuesdays, Wednesdays and Saturdays.
Meets will be set up with other towns, with Andy Berkalo as referee.

Sherman runs 10-mile race

Gary Sherman of Springfield completed the April 1 Parrier Washington, D.C., Cherry Blossom 10-mile race around West Potomac Park in 58:37. Sherman was 29th out of 4,000 runners and finished among 4700 entrants.
Sherman, who was coached by Coach Martin Tagliani at Jonathan Dayton Regional High School, is the son of Mr. and Mrs. Martin Sherman. He is a sophomore majoring in accounting at Georgetown University, Washington, D.C.
On Easter Sunday, Sherman completed a 10-mile race (Portuguese Club) eight-mile race on the Inboard streets in Newark.

College plans alumni events

The St. Peter's College Alumni Association has scheduled two spring sporting events for graduates of the Jersey City school.
Robert J. Donato, a 1955 graduate of St. Peter's, has announced that the alumni's third annual "Bubble Tennis Tournament" will be held at the college on Saturday, May 19, at 10 a.m. The tournament will be held at the college's tennis courts.
Alfred J. Jago, a 1961 graduate and a member of the St. Peter's Golf Club, has announced that the alumni's annual Golf Day has been set for May 3 at the Forgate County Club in Amesbury.
St. Peter's alumni are invited to participate in either the tennis tournament or the golf outing, can make arrangements by contacting Lawrence R. Forney, executive director of the alumni association.

Drew fencers paced by Dultz

Steve Dultz, a 1976 graduate of Jonathan Dayton Regional High, led the Yonkers team at Drew University in a recent fencing match. Dultz, who was coached by Coach Martin Tagliani at Jonathan Dayton Regional High School, is the son of Mr. and Mrs. Martin Sherman. He is a sophomore majoring in accounting at Georgetown University, Washington, D.C.

Teen Talk

GOING SKIING?
If you're headed to the ski slopes this winter and spring some new developments might pique your interest. The "assumption of risk" factor has changed a bit, and perhaps you deserve some clarification.
Previously, the operator of the ski slope was responsible for your safety until the one down was on you—legally speaking—to make it down safely. But a ruling in Vermont in 1977 upset that state's legal tradition and has sent legal experts scurrying across the country.
While the final outcome has yet to be determined, the Vermont ruling ruled that ski area operators no longer could rely on the assumption of risk doctrine because of today's "sophisticated trail maintenance programs."
Appeals in that state were upheld in 1978, but an uncertain legal climate quickly spread to other states.
Since ski insurance is a specialty form of insurance coverage, make sure yours is in order before taking that alpine vacation. The issue hasn't been settled yet, and the best recommendation is for you to get fully covered—both with insurance and clothing before beginning to enjoy yourself.
To Publicity Chairman:
Would you like some help in preparing newspaper releases? Write to this newspaper and ask for our Tips on Submitting News Releases.

Any way you cut it... it's a snap with a SNAPPER!

That's because a SNAPPER is a top quality, superior performing machine which is easy to maintain and will deliver years of dependable service. It's designed to get your work done faster and to perform more jobs than any other mower. Before you buy a mower, compare the quality performance features of a SNAPPER. You'll find SNAPPER is more worth because it does more, and its price is competitive with other quality mowers.
SNAPPER walk-behind mowers can broadcast or vacuum, and with inexpensive optional attachments you can mulch cuttings for lawn food, and won't have to rake or shred leaves so the catcher will hold over twice as many SNAPPER's extra large vacuum-catchers can broadcast, bag and vacuum cuttings, leaves and other light litter, even during high moisture conditions.

Any way you cut it... it's a snap with a SNAPPER!

5950 RIDER \$850.00
6000 RIDER \$900.00
6100 RIDER \$950.00
6200 RIDER \$1000.00
6300 RIDER \$1050.00
6400 RIDER \$1100.00
6500 RIDER \$1150.00
6600 RIDER \$1200.00
6700 RIDER \$1250.00
6800 RIDER \$1300.00
6900 RIDER \$1350.00
7000 RIDER \$1400.00
7100 RIDER \$1450.00
7200 RIDER \$1500.00
7300 RIDER \$1550.00
7400 RIDER \$1600.00
7500 RIDER \$1650.00
7600 RIDER \$1700.00
7700 RIDER \$1750.00
7800 RIDER \$1800.00
7900 RIDER \$1850.00
8000 RIDER \$1900.00
8100 RIDER \$1950.00
8200 RIDER \$2000.00
8300 RIDER \$2050.00
8400 RIDER \$2100.00
8500 RIDER \$2150.00
8600 RIDER \$2200.00
8700 RIDER \$2250.00
8800 RIDER \$2300.00
8900 RIDER \$2350.00
9000 RIDER \$2400.00
9100 RIDER \$2450.00
9200 RIDER \$2500.00
9300 RIDER \$2550.00
9400 RIDER \$2600.00
9500 RIDER \$2650.00
9600 RIDER \$2700.00
9700 RIDER \$2750.00
9800 RIDER \$2800.00
9900 RIDER \$2850.00
10000 RIDER \$2900.00

Dayton volleyballers beat Irvington easily

The Jonathan Dayton Regional High School volleyball team evened its ledger at 11 with an impressive victory over Irvington after disappointing loss to sixth-ranked Nutley in the season opener. The team will compete in a tournament at Columbia High School this week.
Against Nutley, the Bulldogs lost first game, 15-7, but fought hard in the second before falling in extended play, 17-15. The Bulldogs had little trouble with Irvington, winning, 15-8 and 15-10.
The Jonathan Dayton Regional High School Volleyball team evened its ledger at 11 with an impressive victory over Irvington after disappointing loss to sixth-ranked Nutley in the season opener. The team will compete in a tournament at Columbia High School this week.
Against Nutley, the Bulldogs lost first game, 15-7, but fought hard in the second before falling in extended play, 17-15. The Bulldogs had little trouble with Irvington, winning, 15-8 and 15-10.

Boosters to meet

The Jonathan Dayton Regional High School Booster Club will hold a special meeting Tuesday at 8 p.m. in the new teachers' lounge at the school.

Preschool program

Registration for the Summit YMCA's 3 Years program for children between 3 and 5 years old is currently being held. The seven-week program includes physical education, swimming, music, art, and craft projects.

1979 tryouts for Minutemen

Tryouts for the 1979 Springfield Junior Minutemen baseball team will be held this Sunday, April 29 and May 6 at 10 a.m. at Irwin Field.

Coaches are sought for softball leagues

Persons interested in coaching girls' softball this week were asked to call the Springfield Recreation Department at 376-8884.
The program involves two leagues—one for fourth and fifth graders, the other for sixth, seventh and eighth grade girls.

Brother, sister win awards

Millon Smith and his sister Julia of Mountaineer participated in the ISIA (Ice Skating Institute of America) competition held Saturday and Sunday, April 7-8, at the William G. Mennen Sports Arena, Morris-town.
Millon, 13, won second place in the Figure 2 (age 12-13) category. Julia, 10, won fourth place in the Gamma (age 10-12) category.
Both represented the Boots 'n' Blades Skating Club of South Mountain Arena.

Huntington's group plans bowling night

The New Jersey Chapter of the National Huntington's Disease Association will sponsor a bowling night on Saturday, April 28 at 11 p.m. at Linden Lane, 741 N. Siles at, Linden.
The \$7.50 registration fee will include three games, shoes, prizes and buffet. Further information about the event can be obtained by calling Jeanette Astorino at 372-5504.

Coaches are sought for softball leagues

Persons interested in coaching girls' softball this week were asked to call the Springfield Recreation Department at 376-8884.
The program involves two leagues—one for fourth and fifth graders, the other for sixth, seventh and eighth grade girls.

Soccer Scene

Several things took shape in my mind while watching the Cosmos defeat the Washington Dips last Sunday on the tube.
I must repeat what I said last week. Worcester is a future up in the broadcasting booth. He added much to the color coverage of the game, and it is nice to know what is running through the mind of an active player almost every minute of the game.
The next thing that impressed me was the shootout. If a soccer game in any given league cannot end in a tie, the shootout is the best way to settle the matter. I still would rather have the teams split the points because that is the game of soccer. Many teams in the top leagues in Europe will play for a tie on the road and not complain. The shootout between the Cosmos and the Dips was one of the most exciting soccer moments I have seen in the NASL. And the ending was to our liking also.
The shootout showed that it takes the two old reliable pros, Carlos Alberto and Franz Beckenbauer, to show the flashy forwards how the real masters control ball and put it in the net.
During the halftime interview, Beckenbauer said that he is a little concerned about the fast rate of soccer expansion and the large number of young boys and girls that are now registered in soccer programs. Not because of the number of youngsters but his concern about the coaching of these youngsters. This point really struck home.
The TEAMS IN THE UNION Lancer program on Tuesday and Wednesday nights are pretty well set and have just a few more games to go in the regular season. This does not mean that a youngster's playing in on a practice night will be turned away. The youngster will be fit into his or her age group and taught soccer by men who play the game and most who were trained to teach the game all over the world. I wish to see the youngsters who need no introduction to us of us. There are too many men playing on a practice session are banded together and sometimes play against another team in a neighboring town because they are the future players when some of the regulars move up into another age group.
The Union area is lucky to have the great systems going for it because the

Nettes' record stands at 6-8

A strong and tough first place Maplewood team closed the Springfield Nettes' season (6-8) with a 4-1 victory for the club at its home court at Columbia High School in Maplewood. Maplewood put on a clinic for the Springfield team in all facets of the game taking a 21-6 lead at the half. The pace continued in the second half with the Nettes not reciprocating.
The goal continued in the second half with the Nettes not reciprocating. The goal continued in the second half with the Nettes not reciprocating. The goal continued in the second half with the Nettes not reciprocating.

Brother, sister win awards

Millon Smith and his sister Julia of Mountaineer participated in the ISIA (Ice Skating Institute of America) competition held Saturday and Sunday, April 7-8, at the William G. Mennen Sports Arena, Morris-town.
Millon, 13, won second place in the Figure 2 (age 12-13) category. Julia, 10, won fourth place in the Gamma (age 10-12) category.
Both represented the Boots 'n' Blades Skating Club of South Mountain Arena.

Huntington's group plans bowling night

The New Jersey Chapter of the National Huntington's Disease Association will sponsor a bowling night on Saturday, April 28 at 11 p.m. at Linden Lane, 741 N. Siles at, Linden.
The \$7.50 registration fee will include three games, shoes, prizes and buffet. Further information about the event can be obtained by calling Jeanette Astorino at 372-5504.

Coaches are sought for softball leagues

Persons interested in coaching girls' softball this week were asked to call the Springfield Recreation Department at 376-8884.
The program involves two leagues—one for fourth and fifth graders, the other for sixth, seventh and eighth grade girls.

Coaches are sought for softball leagues

Persons interested in coaching girls' softball this week were asked to call the Springfield Recreation Department at 376-8884.
The program involves two leagues—one for fourth and fifth graders, the other for sixth, seventh and eighth grade girls.

Coaches are sought for softball leagues

Persons interested in coaching girls' softball this week were asked to call the Springfield Recreation Department at 376-8884.
The program involves two leagues—one for fourth and fifth graders, the other for sixth, seventh and eighth grade girls.

Coaches are sought for softball leagues

Persons interested in coaching girls' softball this week were asked to call the Springfield Recreation Department at 376-8884.
The program involves two leagues—one for fourth and fifth graders, the other for sixth, seventh and eighth grade girls.

TURN ON
What do you know about us?
Is this a snap with a SNAPPER?

PACE BUICK IS ON FRANKLIN PLACE IN SUMMIT. HARD TO FIND, BUT HARD TO BEAT.
4872 FRANKLIN PL., SUMMIT, (201) 522-1111

BUSINESS DIRECTORY
RAPID REFERENCE TO RELIABLE BUSINESS HOUSES

DORAN FORD SALES SERVICE BODY SHOP
RENTALS - LEASING
NEW CARS 688-0040
RENTALS - 688-0040
USED CARS 688-1373
BODY SHOP 687-2222
NEAR UNION CENTER

THE NATIONAL STATE BANK
112 1/2 SPRINGFIELD AVE.
193 MORRIS AVE., TEL. 3442

SCHOENWALDER
Call for the Water Heater, Heating, Air Conditioning, Electrical, Plumbing, and more services.
Dial 688-0746

CRESTMONT
Sales & Loan, Real Estate

WE SELL FOR LESS TRY US... BEFORE YOU BUY! DUKAY TOYOTA
322 MELBURN AVE., MELBURN
CALL 376-6960



Trash or treasure?
Get Cash...

Sell it! 3 lines

to our
320,000 readers

2 times

\$3

- ★ Garage Sales
- ★ Yard Sales
- ★ Washers & Dryers
- ★ TV & Stereos
- ★ Bikes & Toys
- ★ Pools & Furniture
- ★ Refrigerators
- ★ Musical Instruments
- ★ Drapes
- ★ Air Conditioners
- ★ Etc., Etc., Etc.

- Check or Money Order
Must Accompany Ad.
- Private Parties Only
- No Commercial, Businesses
Real Estate or Automotive

Example:

DEN FURNITURE, 2 pcs., rug,
washer & dryer, refrigerator,
baby crib, 10-5 p.m. R4-16

★ THURSDAY-EIGHT NEWSPAPERS
★ SUNDAY-The SUBURBANAIRE

Use this
easy
Want Ad
form, today!

Four (4) Words Of
Average Length Will Fit
On One Line. For Extra
Long Words Allow Two
(2) Spaces. Figure Your
Cost by Multiplying The
Number Of Lines By
\$1.00. Minimum Charge
\$3.00 (3 Average Lines).
Additional lines... \$1.45
per line.

Mall To:
SUBURBAN PUBLISHING CORP.
1291 Stuyvesant Ave.,
Union, N.J. 07083

Please insert the following classified ad:

Insert Ad.....Time(s) at \$.....

Per Insertion Starting.....(Date).....

Amount Enclosed Check Money Order

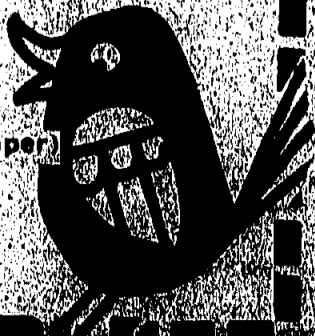
Check or money order must accompany order.

Want Ad Form must be in our office by Monday
noon for ad to appear in that week's papers.

.....
1	2	3	4
.....
5	6	7	8
.....
9	10	11	12
.....
13	14	15	

(If additional words are required, attach separate sheet of paper)

Name _____
Address _____
City _____ Phone _____



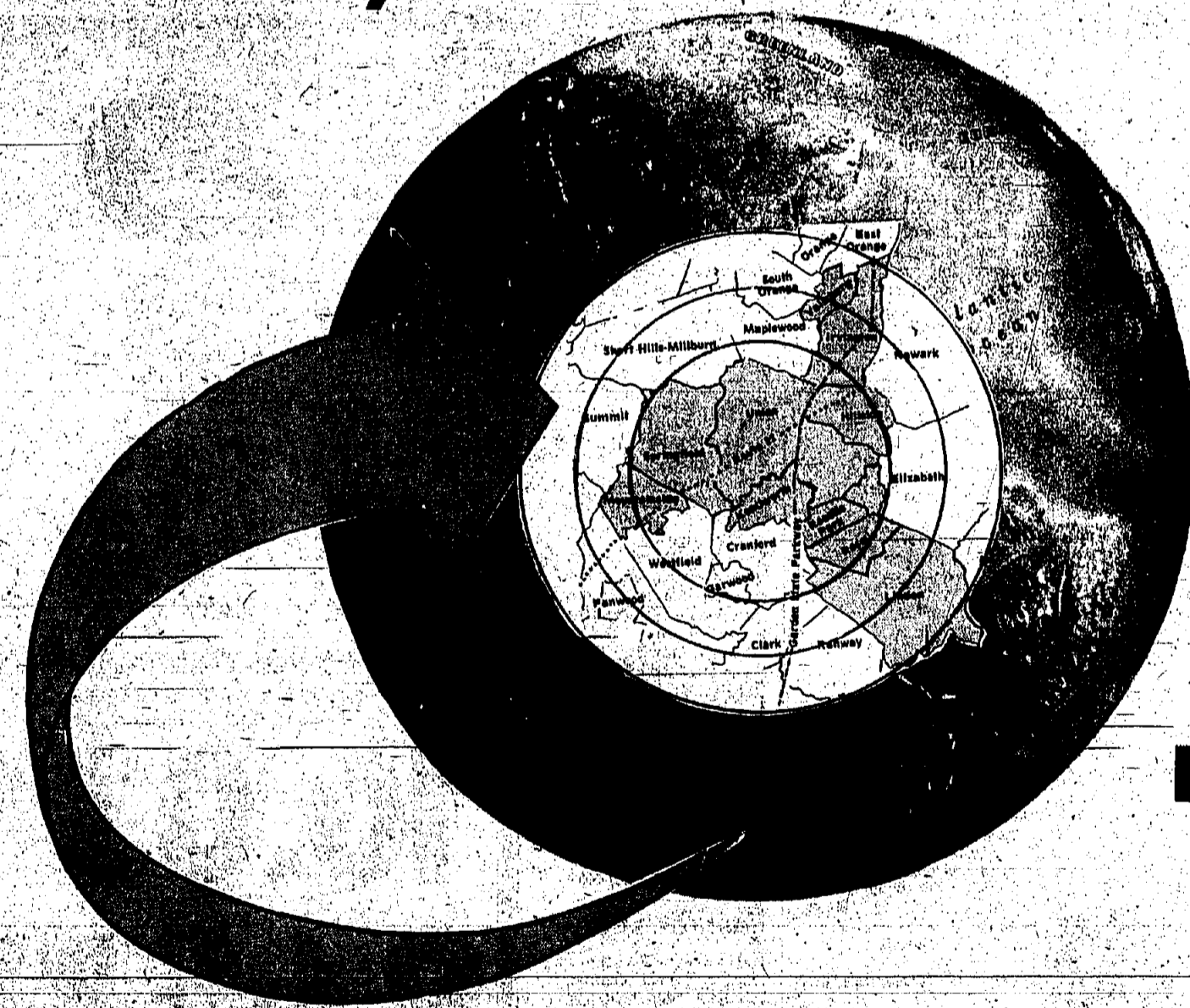
SUBURBAN PUBLISHING CORP.

SPRINGFIELD (N.J.) LEADER-Thursday, April 19, 1979-11

Mr. Advertiser,
Every Sunday we'll
show you how to
get your message to
80,000
households by using...

THE Suburbanaire

We can't promise
you the world...



...But we'll
deliver Union
Essex Counties

Every Sunday The Suburbanaire
used in conjunction with...

- Union Leader
- Irvington Herald
- Springfield Leader
- Suburban Leader
- The Spectator
- Vailsburg Leader
- Mountainside Echo
- Linden Leader

80,000

Households!!

To reserve your advertising space call 686-7700



KIM KUNDEL RICHARD GROEL

Kungel-Groel betrothal troel

Mr. and Mrs. William Kungel of Livingston have announced the engagement of their daughter, Kim, to Richard Groel, son of Mr. and Mrs. Robert H. Groel of Union.

The bride-elect, who was graduated from Livingston High School, attended William Patterson College, Wayne. She is employed by Sandoz in Hanover.

Her fiancé, who was graduated from Union High School and Fairleigh Dickinson University, where he received a B.S. degree in business management, is employed by Auldin, Bergida and Danks Food Corp., Long Island, N.Y.

A November wedding is planned.

Diabetes unit to hold show

The Juvenile Diabetes Foundation, Northern New Jersey Chapter, will hold its annual spring luncheon and fashion show Tuesday, May 1, at 11 a.m., at the Manor, Prospect Avenue, West Orange.

Fashions will be by Bonwit Teller, Rosalie Permuter, G. Garden oval, Springfield, will serve as chairman.

Additional information may be obtained by calling Juvenile Diabetes Foundation, 10 Plaza Pl., Livingston, 992-9076.

The Juvenile Diabetes Foundation is a volunteer, non-profit organization, with goals to support and fund research aimed at the prevention and cure of diabetes.

The foundation also provides family counseling, serves as a central agency for information and promotes nationwide awareness of diabetes.

Group to meet Monday night

The Sara Siffer Orthopedic Relief will meet Monday at 8 p.m. at the Crestmont Savings Bank, Maplewood, Ruth Amsterdam, president, will preside.

Election of officers will be held. Arrangements will be made for Mother's Night.

Fritz Peller will serve as installing officer at the club's installation next Tuesday evening, May 22, at John's in Union.

Sermonettes listed

The Rev. Dr. Estelle Piercy, founder-director of Higher New Thought Center, will discuss her sermonettes Monday at 11:30 a.m. at the Holiday Inn, Room 001, Kentwood.

This Sunday she will discuss "You Are What Your Subconscious Has Stored."

Group to meet Monday night

The Sara Siffer Orthopedic Relief will meet Monday at 8 p.m. at the Crestmont Savings Bank, Maplewood, Ruth Amsterdam, president, will preside.

Election of officers will be held. Arrangements will be made for Mother's Night.

Fritz Peller will serve as installing officer at the club's installation next Tuesday evening, May 22, at John's in Union.

REGM to meet Monday night in Springfield

The Ruth Estlin Goldberg Memorial for Cancer Research (REGM) will hold a general meeting Monday at 8 p.m. in Temple Shalom, Springfield.

Marilyn Levy, a REGM member, will discuss her encounter with cancer.

Mrs. Arlene Arnon of Union, past president, will serve as chairman, and she will be assisted by Gold Goldberg and Marilyn Greenberg, past-president.

Additional information may be obtained by writing to REGM, P.O. Box 184, Springfield (07081).

Miss Connors plans fall date

Mr. and Mrs. Regis J. Connors of Towley Avenue, Union, have announced the engagement of their daughter, Marilyn, to Kevin L. Smith, son of Mr. and Mrs. F. Paul Smith of Summit Place, Union.

The announcement was made March 24 at a party given by the prospective bride and groom's parents at the bride-elect's parents' home.

Miss Connors, who was graduated from Union Catholic Girls High School, and Muhlenberg Hospital School of Nursing and Union College, Cranford, is employed in the Intensive Care Unit of Muhlenberg Hospital.

Her fiancé, who was graduated from Union Catholic Boys High School and Keen College of Business Administration, is employed by New Jersey Rehabilitation Hospital.

A September wedding is planned in Holy Spirit Roman Catholic Church, Union, with a reception at the Sheraton Inn, Elizabeth.

Picking cranberries

When you're in the market for fresh cranberries, look for plump and firm berries. Most are sold pre-packaged in one-pound bags. Cranberries should keep in the refrigerator for up to a month.



READY FOR CHINESE AUCTION—Mrs. Carol O'Neil, left, auction chairman, and Mrs. Sally Jensen, program committee chairman, gather some of the items for the Livingston School event scheduled tonight at 7:30 in the school cafeteria. Refreshments will be served.

Couple plans July wedding

Mr. and Mrs. Richard S. Peters of Union have announced the engagement of their daughter, Kimberly Ann Dunleavy, to Lawrence Mazurkiewicz, son of Mr. and Mrs. George Mazurkiewicz of Irvington. The announcement was made at a family party on March 10.

The bride-elect, who was graduated from Irvington High School and Glassboro State College, is a physical education teacher at Myrtle Junior High School, Irvington.

Her fiancé, who was graduated from Irvington High School, will be graduated from Glassboro State College, where he will receive a B.A. degree in business administration.

A July wedding is planned in St. Joseph's Roman Catholic Church, Maplewood, with a reception at the Richfield Regency in Verona.

AAUW party set April 26

The Elizabeth Branch of the American Association of University Women (AAUW) will hold a card party and white elephant sale Thursday, April 26, from 7 p.m. to 11 p.m. at Downs Hall, Keon College of New Jersey, Union.

Tickets are \$2 each and are available by contacting Mrs. Mabel Gibson, chairman, at 265-7700. Mrs. Gibson will be assisted by Jeanette Simpson, Mary Di Tollo, Carolyn Rice, Charlotte and Christine Gensler, Barbara Cooley, Rose Schuyler and Nora Kalia.

Sermonettes listed

The Rev. Dr. Estelle Piercy, founder-director of Higher New Thought Center, will discuss her sermonettes Monday at 11:30 a.m. at the Holiday Inn, Room 001, Kentwood.

This Sunday she will discuss "You Are What Your Subconscious Has Stored."

Lynda Kloss is married Saturday in Union church

Lynda Kloss, daughter of Mr. and Mrs. Joseph Kloss of Bridgewater, formerly of Union, was married Saturday to Joseph A. Bottitta, son of Mr. and Mrs. Anthony Bottitta of Livingston.

The Rev. Benjamin McLaughlin and the Rev. Robert Stagg officiated at the ceremony in Townley Presbyterian Church, Union. A reception followed at the Chanticleer in Millburn.

Mrs. Cheryl K. D'Altri served as matron of honor for her sister. Bridesmaids were Maria B. Signitto, sister of the groom, and Joan Curran. Thomas D'Altri served as best man.

Ushers were Paul Signitto and Joseph Kloss, brother of the bride. The bride and groom were escorted by the bride's brother, Joseph Kloss, who was graduated from Union High School and Seton Hall University, is employed in the marketing department of Ronsom Corp., Bridgewater.

Her husband, who was graduated from Seton Hall University and Seton Hall Law School, is a partner with the law firm of Bisognia, Pugliese and Bisognia, Newark.

Church group to hold dinner

A Scottish theme will be featured at the annual fish and chips dinner Thursday, April 26, at the Presbyterian Parish House, 37 Church Mall, Springfield. The dinner will be sponsored by the Ladies' Evening Group of the First Presbyterian Church and will be served from 5 to 7 p.m. It will be catered by Argyle Restaurant of Kearny.

Tickets will be \$4.50 for adults and \$2.75 for children under 12 and are available from members of the group at the church office (375-4300). Proceeds will aid in the mission work of the Evening Group. Mrs. Bruno Becker is chairman of the dinner.

Chinese auction set by Jewish Center

An annual Chinese auction will be held Thursday, April 26, by the Sisterhood of Suburban Jewish Center, Temple Mekor Chayim, Deerfield Terrace and Academy Terrace, Linden. Doors will open at 7 p.m. for inspection of gifts. The event will begin at 8 p.m.

Among the prizes will be a television set, kitchen appliances, clothing and household and automobile items. Refreshments will be served. Donations will be \$2 a person, and tickets may be purchased at the door or in advance by calling 925-2294.

Luncheon is slated

The Maplewood South Branch of the B'nai B'rith Women will hold its luncheon Wednesday at noon at the Holiday Inn, Rt. 10, Livingston.

Among the officers installed will be Mrs. Shirley Fyfe, president, Mrs. Sally Shloffer, membership vice-president, and Mrs. Rena Weidiger, program vice-president, all of Union.

Daily devotion, by Jim Stalhaber called "Exotic Concepts with Flowers." Mrs. Mildred Dorfman of Maplewood is in "resurrection chairman."

Resuscitation talk

The Okin Cancer Relief will meet Wednesday at 8 p.m. in Temple Shalom, Springfield. It was announced by Karen Kesler of Union, chairman.

The program will feature a "Heart Saver" demonstration on cardiac pulmonary resuscitation given by Lewis C. Stein, a CPR instructor and member of the Essex County Heart Association.

Church plans trip to D.C.

St. Joseph's Catholic Church, 707 Prospect Ave., Maplewood, will participate in the Newark Archdiocesan Marian Pilgrimage to the National Shrine of the Immaculate Conception, Washington, D.C., Saturday, May 5.

The Most Rev. Peter L. Gerety, archbishop of Newark, will be the principal celebrant of the consecration. Mass will be celebrated at 8 a.m., and will arrive at the Shrine between noon and 1 p.m. Additional information may be obtained by calling the Rev. John Browne at 761-5633.

Fashion show

Miriam Rapoport, Chapter of B'nai B'rith of Elizabeth will hold its membership party and fashion show Wednesday at 8 p.m. in Temple Shalom Torah, 810 Salem Ave., Hillside. Mrs. Rose Lerman and Mrs. Gert Goh are co-chairmen. Desert and coffee will be served. Prizes will be featured.

Meeting set

General meeting of Gamblers Anonymous will be held Thursday, May 3, at 10 p.m. in Townley Presbyterian Church, Huguenot and Salem roads, Union. Refreshments will be served. Additional information may be obtained by calling 24-hour hotline at 418-418.

Essex Green villas spur family interest

Essex Green Villas, an exciting new sales program, according to the numbers of families that visited our community located in the suburbs West Orange, EGV's owner-developer.

The "condemns" in Essex Green villas are the numbers of families that visited our community located in the suburbs West Orange, EGV's owner-developer.

Designed as a private enclave and located within a half-mile of shopping, recreation and transportation, Essex Green offers the buyer a choice of one-, two- or three-bedroom villas.

With skyrocketing fuel costs and interest rates, renting an apartment at a particular time offers certain advantages, according to Woodrow Saland, spokesman for Golf View Commons.

Bergen deals are completed

Elmer Schwartz, president of the East Orange-based Archie Schwartz Company, New Jersey's largest real estate, office and income producing properties, reports that the investment Division of the direction of the Senior vice-president, Anthony Tamburo, and vice-president, Howard Friedman, recently completed two transactions in Bergen County.

Area sales representative Tom Gleason, who was named "Salesman of the Quarter" for his accomplishments, was responsible for negotiating both deals which involved purchase money mortgages.

One of these transactions was the sale of a modern garden complex located in a prime residential area of Hackensack for owner Gordon Hall.

This building contains all one-bedroom suites and is fully air-conditioned. The anticipated increase in fuel costs, the tenant consequently, is the recipient of a guaranteed heating cost even though our fuel cost is continuously climbing. This is in contrast to a property for more than Mrs. Sal was represented by Barry Cohen of the law firm of Beattie & Padavano as legal counsel.

FOR THOSE WHO KNOW AND GET EXACTLY WHAT THEY WANT

FOX HILL Run Custom homes at Farrington Lake North Brunswick from \$120,000 while you can.

Only thirteen lots remain, with a minimum half-acre of wooded, rolling land, a tranquil lake. Executive family privacy, yet seconds from major highways and just 10 minutes from the train service to North Jersey and Manhattan.

Exclusive Sales Representative Surrey Realty (201) 977-9274

Directions: Turnpike to I-95, Route 1 to North Brunswick, then south on Route 9 for about 1.2 miles to Old George Road (turn left) and the entrance will be (201) 780-4747.

Four new 3, 4 and 5 bedroom models. 2 1/2 baths, 2-car garages. Home \$185,000. 9 1/2% mortgages to qualified buyers. 4 1/2-year mortgages available to a maximum of \$75,000.

When can you find the best luxury housing in New Jersey? That's easy to answer. Start by checking out prices and mortgage interest rates around the State. Then compare floorplans, features and locations.

If you compare everything like we did, you'll probably become our neighbors at Meadow's Edge. It comes out ahead, in every score. Take it from us, you couldn't make a smarter home buying decision today.

To reach Meadow's Edge, take the Garden State Parkway south to Exit 122. Then go south on Route 9 for about 1.2 miles to Symmes Road (Steinbach's). Turn right to the sales center and furnished models. Meadow's Edge is open 105-ton weekdays, 10-6 weekends. The sales office phone is (201) 780-4747.

When can you find the best luxury housing in New Jersey? That's easy to answer. Start by checking out prices and mortgage interest rates around the State. Then compare floorplans, features and locations.

If you compare everything like we did, you'll probably become our neighbors at Meadow's Edge. It comes out ahead, in every score. Take it from us, you couldn't make a smarter home buying decision today.

To reach Meadow's Edge, take the Garden State Parkway south to Exit 122. Then go south on Route 9 for about 1.2 miles to Symmes Road (Steinbach's). Turn right to the sales center and furnished models. Meadow's Edge is open 105-ton weekdays, 10-6 weekends. The sales office phone is (201) 780-4747.

When can you find the best luxury housing in New Jersey? That's easy to answer. Start by checking out prices and mortgage interest rates around the State. Then compare floorplans, features and locations.

If you compare everything like we did, you'll probably become our neighbors at Meadow's Edge. It comes out ahead, in every score. Take it from us, you couldn't make a smarter home buying decision today.

To reach Meadow's Edge, take the Garden State Parkway south to Exit 122. Then go south on Route 9 for about 1.2 miles to Symmes Road (Steinbach's). Turn right to the sales center and furnished models. Meadow's Edge is open 105-ton weekdays, 10-6 weekends. The sales office phone is (201) 780-4747.

Essex Green villas spur family interest

Essex Green Villas, an exciting new sales program, according to the numbers of families that visited our community located in the suburbs West Orange, EGV's owner-developer.

The "condemns" in Essex Green villas are the numbers of families that visited our community located in the suburbs West Orange, EGV's owner-developer.

Designed as a private enclave and located within a half-mile of shopping, recreation and transportation, Essex Green offers the buyer a choice of one-, two- or three-bedroom villas.

With skyrocketing fuel costs and interest rates, renting an apartment at a particular time offers certain advantages, according to Woodrow Saland, spokesman for Golf View Commons.

Bergen deals are completed

Elmer Schwartz, president of the East Orange-based Archie Schwartz Company, New Jersey's largest real estate, office and income producing properties, reports that the investment Division of the direction of the Senior vice-president, Anthony Tamburo, and vice-president, Howard Friedman, recently completed two transactions in Bergen County.

Area sales representative Tom Gleason, who was named "Salesman of the Quarter" for his accomplishments, was responsible for negotiating both deals which involved purchase money mortgages.

One of these transactions was the sale of a modern garden complex located in a prime residential area of Hackensack for owner Gordon Hall.

This building contains all one-bedroom suites and is fully air-conditioned. The anticipated increase in fuel costs, the tenant consequently, is the recipient of a guaranteed heating cost even though our fuel cost is continuously climbing. This is in contrast to a property for more than Mrs. Sal was represented by Barry Cohen of the law firm of Beattie & Padavano as legal counsel.

FOR THOSE WHO KNOW AND GET EXACTLY WHAT THEY WANT

FOX HILL Run Custom homes at Farrington Lake North Brunswick from \$120,000 while you can.

Only thirteen lots remain, with a minimum half-acre of wooded, rolling land, a tranquil lake. Executive family privacy, yet seconds from major highways and just 10 minutes from the train service to North Jersey and Manhattan.

Exclusive Sales Representative Surrey Realty (201) 977-9274

Directions: Turnpike to I-95, Route 1 to North Brunswick, then south on Route 9 for about 1.2 miles to Old George Road (turn left) and the entrance will be (201) 780-4747.

Four new 3, 4 and 5 bedroom models. 2 1/2 baths, 2-car garages. Home \$185,000. 9 1/2% mortgages to qualified buyers. 4 1/2-year mortgages available to a maximum of \$75,000.

When can you find the best luxury housing in New Jersey? That's easy to answer. Start by checking out prices and mortgage interest rates around the State. Then compare floorplans, features and locations.

If you compare everything like we did, you'll probably become our neighbors at Meadow's Edge. It comes out ahead, in every score. Take it from us, you couldn't make a smarter home buying decision today.

To reach Meadow's Edge, take the Garden State Parkway south to Exit 122. Then go south on Route 9 for about 1.2 miles to Symmes Road (Steinbach's). Turn right to the sales center and furnished models. Meadow's Edge is open 105-ton weekdays, 10-6 weekends. The sales office phone is (201) 780-4747.

When can you find the best luxury housing in New Jersey? That's easy to answer. Start by checking out prices and mortgage interest rates around the State. Then compare floorplans, features and locations.

If you compare everything like we did, you'll probably become our neighbors at Meadow's Edge. It comes out ahead, in every score. Take it from us, you couldn't make a smarter home buying decision today.

To reach Meadow's Edge, take the Garden State Parkway south to Exit 122. Then go south on Route 9 for about 1.2 miles to Symmes Road (Steinbach's). Turn right to the sales center and furnished models. Meadow's Edge is open 105-ton weekdays, 10-6 weekends. The sales office phone is (201) 780-4747.

When can you find the best luxury housing in New Jersey? That's easy to answer. Start by checking out prices and mortgage interest rates around the State. Then compare floorplans, features and locations.

If you compare everything like we did, you'll probably become our neighbors at Meadow's Edge. It comes out ahead, in every score. Take it from us, you couldn't make a smarter home buying decision today.

To reach Meadow's Edge, take the Garden State Parkway south to Exit 122. Then go south on Route 9 for about 1.2 miles to Symmes Road (Steinbach's). Turn right to the sales center and furnished models. Meadow's Edge is open 105-ton weekdays, 10-6 weekends. The sales office phone is (201) 780-4747.

Essex Green villas spur family interest

Essex Green Villas, an exciting new sales program, according to the numbers of families that visited our community located in the suburbs West Orange, EGV's owner-developer.

The "condemns" in Essex Green villas are the numbers of families that visited our community located in the suburbs West Orange, EGV's owner-developer.

Designed as a private enclave and located within a half-mile of shopping, recreation and transportation, Essex Green offers the buyer a choice of one-, two- or three-bedroom villas.

With skyrocketing fuel costs and interest rates, renting an apartment at a particular time offers certain advantages, according to Woodrow Saland, spokesman for Golf View Commons.

Bergen deals are completed

Elmer Schwartz, president of the East Orange-based Archie Schwartz Company, New Jersey's largest real estate, office and income producing properties, reports that the investment Division of the direction of the Senior vice-president, Anthony Tamburo, and vice-president, Howard Friedman, recently completed two transactions in Bergen County.

Area sales representative Tom Gleason, who was named "Salesman of the Quarter" for his accomplishments, was responsible for negotiating both deals which involved purchase money mortgages.

One of these transactions was the sale of a modern garden complex located in a prime residential area of Hackensack for owner Gordon Hall.

This building contains all one-bedroom suites and is fully air-conditioned. The anticipated increase in fuel costs, the tenant consequently, is the recipient of a guaranteed heating cost even though our fuel cost is continuously climbing. This is in contrast to a property for more than Mrs. Sal was represented by Barry Cohen of the law firm of Beattie & Padavano as legal counsel.

FOR THOSE WHO KNOW AND GET EXACTLY WHAT THEY WANT

FOX HILL Run Custom homes at Farrington Lake North Brunswick from \$120,000 while you can.

Only thirteen lots remain, with a minimum half-acre of wooded, rolling land, a tranquil lake. Executive family privacy, yet seconds from major highways and just 10 minutes from the train service to North Jersey and Manhattan.

Exclusive Sales Representative Surrey Realty (201) 977-9274

Directions: Turnpike to I-95, Route 1 to North Brunswick, then south on Route 9 for about 1.2 miles to Old George Road (turn left) and the entrance will be (201) 780-4747.

Four new 3, 4 and 5 bedroom models. 2 1/2 baths, 2-car garages. Home \$185,000. 9 1/2% mortgages to qualified buyers. 4 1/2-year mortgages available to a maximum of \$75,000.

When can you find the best luxury housing in New Jersey? That's easy to answer. Start by checking out prices and mortgage interest rates around the State. Then compare floorplans, features and locations.

If you compare everything like we did, you'll probably become our neighbors at Meadow's Edge. It comes out ahead, in every score. Take it from us, you couldn't make a smarter home buying decision today.

To reach Meadow's Edge, take the Garden State Parkway south to Exit 122. Then go south on Route 9 for about 1.2 miles to Symmes Road (Steinbach's). Turn right to the sales center and furnished models. Meadow's Edge is open 105-ton weekdays, 10-6 weekends. The sales office phone is (201) 780-4747.

When can you find the best luxury housing in New Jersey? That's easy to answer. Start by checking out prices and mortgage interest rates around the State. Then compare floorplans, features and locations.

If you compare everything like we did, you'll probably become our neighbors at Meadow's Edge. It comes out ahead, in every score. Take it from us, you couldn't make a smarter home buying decision today.

To reach Meadow's Edge, take the Garden State Parkway south to Exit 122. Then go south on Route 9 for about 1.2 miles to Symmes Road (Steinbach's). Turn right to the sales center and furnished models. Meadow's Edge is open 105-ton weekdays, 10-6 weekends. The sales office phone is (201) 780-4747.

When can you find the best luxury housing in New Jersey? That's easy to answer. Start by checking out prices and mortgage interest rates around the State. Then compare floorplans, features and locations.

If you compare everything like we did, you'll probably become our neighbors at Meadow's Edge. It comes out ahead, in every score. Take it from us, you couldn't make a smarter home buying decision today.

To reach Meadow's Edge, take the Garden State Parkway south to Exit 122. Then go south on Route 9 for about 1.2 miles to Symmes Road (Steinbach's). Turn right to the sales center and furnished models. Meadow's Edge is open 105-ton weekdays, 10-6 weekends. The sales office phone is (201) 780-4747.

SUBURBAN REAL ESTATE MART

City • Suburbs • Farm Country • Lake • Shore

Mystic Shores offers spring enchantment

Surrounded by Mystic Shores offer a additional occupant. woodlands, Mystic Shores variety of attractive Designed for active adults, Mystic Shores has features commonly in Tuckerton is a blaze of color this time of year. a comfortable living with facilities for the exclusive Residents, home-seekers modern conveniences. use of residents and their and visitors find the special appeal 12,000-square-foot recreation building with 500-decked out in their colorful foliage and enchanting sights.

The variety of local birds and woodland animals including blue jays, robins, and flickers add to the charm of the adult-community. Spring also is the time of year when birds and geese migrate from nearby Brigantine Wildlife Refuge. It is a daily occurrence to hear and see them landing and flying information overhead.

Mystic Shores is located in the heart of South Jersey's vacationland, just 24 miles north of Atlantic City and south of Long Beach Island. It offers an ideal way of life for people over 52. For those not yet retired a home here can be a pleasant retreat, when retirement years come, singles and couples can settle in a best home boys in the state. All homeowners are eligible for membership in this lush association created for the benefit of its members. The information center, just 24 miles north of Atlantic City and south of Long Beach Island. It offers an ideal way of life for people over 52. For those not yet retired a home here can be a pleasant retreat, when retirement years come, singles and couples can settle in a best home boys in the state. All homeowners are eligible for membership in this lush association created for the benefit of its members. The information center, just 24 miles north of Atlantic City and south of Long Beach Island. It offers an ideal way of life for people over 52. For those not yet retired a home here can be a pleasant retreat, when retirement years come, singles and couples can settle in a best home boys in the state. All homeowners are eligible for membership in this lush association created for the benefit of its members. The information center, just 24 miles north of Atlantic City and south of Long Beach Island. It offers an ideal way of life for people over 52. For those not yet retired a home here can be a pleasant retreat, when retirement years come, singles and couples can settle in a best home boys in the state. All homeowners are eligible for membership in this lush association created for the benefit of its members. The information center, just 24 miles north of Atlantic City and south of Long Beach Island. It offers an ideal way of life for people over 52. For those not yet retired a home here can be a pleasant retreat, when retirement years come, singles and couples can settle in a best home boys in the state. All homeowners are eligible for membership in this lush association created for the benefit of its members. The information center, just 24 miles north of Atlantic City and south of Long Beach Island. It offers an ideal way of life for people over 52. For those not yet retired a home here can be a pleasant retreat, when retirement years come, singles and couples can settle in a best home boys in the state. All homeowners are eligible for membership in this lush association created for the benefit of its members. The information center, just 24 miles north of Atlantic City and south of Long Beach Island. It offers an ideal way of life for people over 52. For those not yet retired a home here can be a pleasant retreat, when retirement years come, singles and couples can settle in a best home boys in the state. All homeowners are eligible for membership in this lush association created for the benefit of its members. The information center, just 24 miles north of Atlantic City and south of Long Beach Island. It offers an ideal way of life for people over 52. For those not yet retired a home here can be a pleasant retreat, when retirement years come, singles and couples can settle in a best home boys in the state. All homeowners are eligible for membership in this lush association created for the benefit of its members. The information center, just 24 miles north of Atlantic City and south of Long Beach Island. It offers an ideal way of life for people over 52. For those not yet retired a home here can be a pleasant retreat, when retirement years come, singles and couples can settle in a best home boys in the state. All homeowners are eligible for membership in this lush association created for the benefit of its members. The information center, just 24 miles north of Atlantic City and south of Long Beach Island. It offers an ideal way of life for people over 52. For those not yet retired a home here can be a pleasant retreat, when retirement years come, singles and couples can settle in a best home boys in the state. All homeowners are eligible for membership in this lush association created for the benefit of its members. The information center, just 24 miles north of Atlantic City and south of Long Beach Island. It offers an ideal way of life for people over 52. For those not yet retired a home here can be a pleasant retreat, when retirement years come, singles and couples can settle in a best home boys in the state. All homeowners are eligible for membership in this lush association created for the benefit of its members. The information center, just 24 miles north of Atlantic City and south of Long Beach Island. It offers an ideal way of life for people over 52. For those not yet retired a home here can be a pleasant retreat, when retirement years come, singles and couples can settle in a best home boys in the state. All homeowners are eligible for membership in this lush association created for the benefit of its members. The information center, just 24 miles north of Atlantic City and south of Long Beach Island. It offers an ideal way of life for people over 52. For those not yet retired a home here can be a pleasant retreat, when retirement years come, singles and couples can settle in a best home boys in the state. All homeowners are eligible for membership in this lush association created for the benefit of its members. The information center, just 24 miles north of Atlantic City and south of Long Beach Island. It offers an ideal way of life for people over 52. For those not yet retired a home here can be a pleasant retreat, when retirement years come, singles and couples can settle in a best home boys in the state. All homeowners are eligible for membership in this lush association created for the benefit of its members. The information center, just 24 miles north of Atlantic City and south of Long Beach Island. It offers an ideal way of life for people over 52. For those not yet retired a home here can be a pleasant retreat, when retirement years come, singles and couples can settle in a best home boys in

SUBURBAN REAL ESTATE MART

City • Suburbs • Farm Country • Lake • Shore

Mid-rise unit being opened

A new cooperative Bank, a mid-rise near the apartment complex is Navesink River and opening this spring. It is marina, Graceland Towers, Red O's signed for

PRIVATE HOUSE LIVING WITH ALL THE CONVENIENCES OF AN APARTMENT HOUSE ELEGANT

STONEGATE AT ROSELAND

Passaic Ave. 1/2 mile north of Eagle Rock Ave. Roseland (201) 728-3065

2 & 3 bedroom townhouses Priced from the mid \$50's

Models open daily & Sunday 11 am to 5 pm, closed Tuesday

Directions: Garden State Parkway North to Exit 145 to Interstate 205 to Eisenhower Pkwy. Rte 145 to Exit 145 to Passaic Ave. 1/2 mile north of Eagle Rock Ave. 1/2 mile north of Eagle Rock Ave. 1/2 mile north of Eagle Rock Ave.

professionals, it has one and two bedroom units, each with an individual terrace. All apartment homes offer standard features such as frost-free refrigerator, self-cleaning oven, individually controlled electric heat and air conditioning and wall-to-wall carpeting.

An outdoor swimming pool with lifeguard, men's and women's saunas, recreation room and entertainment. Kitchen complete. The picture. There is 24-hour security in a residential area. Five blocks away are shops, restaurants and theater.

The sales office number is 942-1640. Take Garden State Parkway south to Exit 106, turn left to Half Mile road, make right-hand turn and follow for one mile. Make right on West Front street to Morford place and Graceland Towers.

NOW SHOWING 2nd Section EDISON, N.J.

JUST A FEW MOMENTS AT DOVER WOODS — YOU'LL SPEND A LIFETIME!

A Magnificent New Community

DOVER WOODS

EDISON, N.J. SELECTIVE LOTS from \$84,990

9 1/2% Mortgages Available

MODEL HOURS: Monday thru Sunday 1-5 p.m. Closed Tuesdays

MODEL PHONE: 201-382-5154

Sales Agent: Gene A. Tommaso Agency - 283-1041

ANOTHER FINE COMMUNITY FROM AMI CONSTRUCTION

DIRECTIONS: Garden State Parkway to Route 27, Exit 131, left one light to Oak Tree Road, left on Oak Tree Road to Wood Avenue, right on Wood Avenue, first light (New Dover Road) make left that proceed approximately 1/2 mile to model on right.

TWIN GATES of Manalapan

Invites You to Compare Their Homes with Any Others for Price and Quality

The Canterbury
a bedroom Colonial, 2 1/2 Baths, 2 Car garage, Brick Fireplace, Central A/C \$82,990

The Seville
a bedroom Colonial, 2 1/2 Baths, 2 Car garage, Ruffled rec room, 17 master bedroom \$77,990

The Boston
3 bedroom Colonial, 1 1/2 Baths, 1 Car garage, 16' master bedroom & w.c., 2nd bedroom \$69,990

Just 3 of 16 Styles Available

Standard Features in All Homes:

- Magic Chef self-cleaning ovens
- paneled rec rooms
- underground utilities
- Dow Chemical Sheathing
- marble sink tops
- Magic Chef dishwashers

One of the best school systems in Central New Jersey

SALES OFFICE OPEN 11 a.m. to 6 p.m. - 7 days

Telephone 201-446-3607 or 201-985-7850

DIRECTIONS: TWIN GATES, MANALAPAN N.J. Turn left to Exit 10, Route 287 South to Route 9 South, right on Garden State to take office

at long last, a new dimension in town house living

There's something special about a total community - especially if it includes luxury, comfort and security. That's why Essex Green Villas is special. Completed in July '80, Coleridge Place offers the perfect combination of condominium townhouses in a beautiful West Orange suburban neighborhood - within a half mile of great shopping, dining, recreation, schools and transportation - all just minutes away.

Five magnificent villas are still available from \$98,900 to \$125,900. All offering features seldom found in far more expensive townhouses.

Visit us and see Essex Green Villas for yourself - pictures tell only part of the story - there's nothing like the real thing!

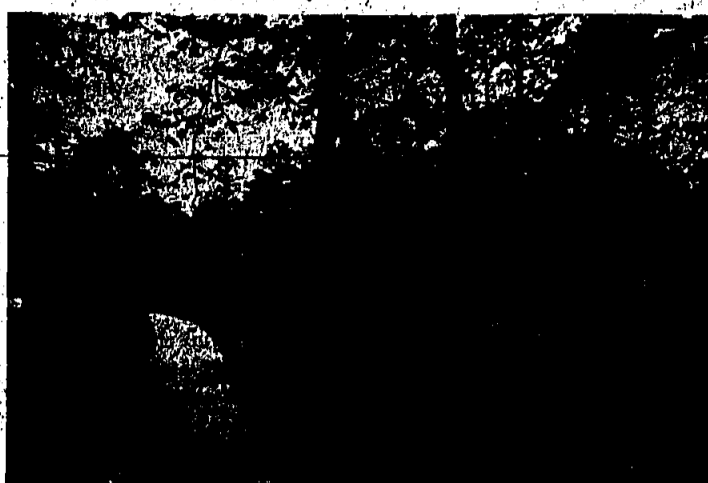
essex green villas

Mount Pleasant Avenue, West Orange, N.J.

Model Villages open Monday through Sunday, from 11 a.m.

MODEL VILLA PHONE: 731-3227

Andrew H. Owen, Realtor



Spring panorama at Mystic Shores

Surrounded with everything, five years ago can be enjoyed in this lush wooded-buyer area with new friends and neighbors - yet, a within an easy drive of relative and visitors find the giant stands of oak, pine, cedar and other native trees all year.

decker in their colorful. Seven model homes offer a variety of attractive features and meet the variety of local all requirements for birds and woodland comfortable living with modern conveniences. There are models with whirlpool baths and patio, shuffleboard courts, barbeque and covered patio front porch. In addition to the facilities at Mystic Shores is Great Bay, 1 1/2 miles away, which abounds in recreational opportunities. There are marinas, access for fishing, boating and bathing in the bay and its many tributaries including the Intercoastal Waterway and the Atlantic Ocean. Three golf courses serve the area: Atlantic Ocean Acres and Pomona Golf and Country Club, Lebanon, Bass River, Penn and Wharton state forests as well as a number of wildlife and fish preserves also are in the South Jersey area.

The information center, model homes and recreation complex at Mystic Shores are open daily and weekends. Now is the ideal time to visit the area. Driving north or south on the Garden State Parkway and through the woodlands to Mystic Shores presents a panorama of spring beauty everyone will enjoy. Just take parkway to exit 30 or 35; follow highway signs.

Giaquinto gets cited

James R. Giaquinto, of East Amwell, and a builder in Edison was named the New Jersey Builders Association's "Builder of the Year of 1978."

Giaquinto, who is one of the 1800 member association's most active members, has served on almost every voluntary committee of the association. On a local level, he has twice served as president of the Northwest New Jersey Builders Association and has been cited for his membership recruitment activities.

An active civic leader, Giaquinto has served on the East Amwell Township Committee for six years, was as president of the Township Committee. He has served as president of the Hunterdon County Republican Club and currently is a member of that organization.

WANT AD... call 686-7700 ask for an "Ad-Visor"

IN A CLASS BY ITSELF

Whether in a class by itself or in a class with others, these exceptional, a bedroom Colonial homes are being designed with the finest environmental care. Handsome, set on large, tree-covered properties in a beautiful, wooded setting.

TRAIL WOOD provides an outstanding selection of homes in an ideal suburban setting featuring particularly low rates and un-matched conditions. It's a class by itself and available from \$125,500.

OPEN DAILY & SUNDAY FROM 11 A.M. TO 5 P.M. CLOSED THURSDAY

SALES OFFICE HUTCH REALTY 201-539-9276 201-455-1686

TRAIL WOOD

Countrywood Drive, West Orange, N.J.

Call 201-539-9276

essex green villas

Mount Pleasant Avenue, West Orange, N.J.

Model Villages open Monday through Sunday, from 11 a.m.

MODEL VILLA PHONE: 731-3227

Andrew H. Owen, Realtor

Tri-Centennial preview

Four new home styles (fouramp electrical service, city water and sewer, underground garage) offered through the weekend during the preview showing of Stone Hill Homes, 11 at 775 Centennial Terrace in the woods of Old Bridge off Rte. 9.

According to Harry Rosenblum, building developer for the 44-home community, "We've tried very hard to include within the base purchase price all the extras most buyers want. Careful pre-planning and strict construction supervision has enabled us to do this for our buyers."

Included within the base purchase price of all four new models are walk-in wall-to-wall carpeting, dishwasher, large paneled family room, attached garage, paved driveway, double hung wood window treatment, custom wood kitchen cabinets, graded and seeded lawns, maintenance free siding.

GRAND 3rd OPENING

Glenwood Estates

SALES OFFICE 201-382-5154

Designed for the discerning buyer, these homes feature: 2 1/2 and 3 1/2 bedrooms, full bath, central air conditioning, wood paneling, granite counter tops, stainless steel appliances, in-law suite, finished basement, double garage, and more.

SPITS, RANCHES, COUNTRY HOMES ON WOODED LOTS

2 1/2 and 3 1/2 bedrooms, full bath, central air conditioning, wood paneling, granite counter tops, stainless steel appliances, in-law suite, finished basement, double garage, and more.

PRICED FROM \$59,490 TO \$74,490

MODELS OPEN DAILY A WEEK FROM 11 A.M. TO 5 P.M. CLOSED THURSDAY

Donald Glendenning builds confidence.

Confidence that your new Stone Hedge home will be everything you've always wanted. Because Don puts his personal talent and attention into every home. He not only designs your home, he is on the job day in and day out checking every phase of construction.

STONE HEDGE

CHURCH ROAD, TOMES RIVER, N.J. Directions: Garden State Parkway to Exit 88, use Rte. 70 West toward Lakewood, at the second traffic light, turn right on Church Road, right on Wood Avenue, first light (New Dover Road) make left that proceed approximately 1/2 mile to model on right.

Low 9 1/2% Mortgages

Guaranteed thru closing date TAKE ADVANTAGE OF OUR 10% DOWN PAYMENT

Forget what you've heard about 10% per cent, 30 year mortgages. For a limited time we can offer qualified buyers the great combination of 9 1/2% per cent, 30 year term mortgages for a 10% cash down payment. And upon purchase, all price and finance terms are guaranteed thru closing.

Check out our new expandable Colonial plus other home styles. Your new home can offer qualified buyers the great combination of 9 1/2% per cent, 30 year term mortgages for a 10% cash down payment. And upon purchase, all price and finance terms are guaranteed thru closing.

Let Our Family Build Your Family's Home

HEARTHSTONE

Directions: Garden State Parkway to Exit 88, use Rte. 70 West toward Lakewood, at the second traffic light, turn right on Church Road, right on Wood Avenue, first light (New Dover Road) make left that proceed approximately 1/2 mile to model on right.

Call 201-367-2222

Marlboro Lights

The spirit of Marlboro in a low tar cigarette

Warning: The Surgeon General Has Determined That Cigarette Smoking is Dangerous to Your Health.

Light (12 mg "tar", 0.8 mg nicotine av. per cigarette, FTC Report May '78: 100's "tar", 0.8 mg nicotine av. per cigarette by FTC Method)

Blood center gets year accreditation
The New Jersey Blood Center, East Orange, has been granted a two-year accreditation from the American Association of Blood Banks (AABB).

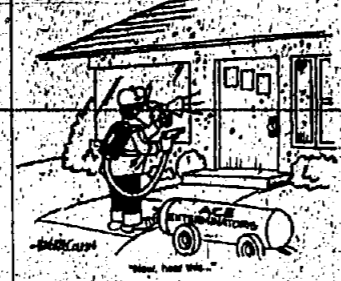
Conference planned on 'battered women'

The Women's Law Forum of the Seton Hall University School of Law, Newark, will present an all-day conference on "The Law and the Battered Woman" Saturday in the Law Center and the adjacent Robert Treat Hotel.

PACE BUICK IS ON FRANKLIN PLACE IN SUMMIT. HARD TO FIND, BUT HARD TO BEAT.

Antique show
The 23rd Annual Basking Ridge Antiques Show and Sale will take place on May 10, 11 and 12 at the Methodist Church, 22 South Finley Ave., Basking Ridge.

Join the Payroll Savings Plan.



Japanese art show opening at museum

John Cotton Dana, Connoisseur of the Japanese Print, opened at the Newark Museum last week. Dana, who founded the Newark Public Library, was an early collector of the Japanese ukiyo-e style woodblock print.

Disc & Data

By MILY HAMMER

Pick of The LPs... MISPLACED IDEALS by Sad Cafe (A&M Records, SR-4771).

Crossword puzzle grid with clues for Across and Down.

L'Affaire '79, Monday, is lunch by their talents. In celebrating executives of the National Secretary's Week.

BLAZING SADDLES: HELLO—Oliver Little stars as the wheel and Gene Wilder as his glibbing helper in Mel Brooks' film comedy western at the Linden Twin Theater.

Joe Valby, who won an Oscar for Best Actor in "Coming Home," and Jane Fonda, who won an Oscar for Best Actress in "Clash of the Titans," can be seen in the film drama, which arrived yesterday at the Linden Twin Theater.

Suburban Calendar listing various events, museums, art shows, and music performances in the area.

New ideas, new people, new horizons. Day or evening classes at Seton Hall this summer.

DR. CHRISTIAAN BARNARD, South African heart surgeon, will give a public lecture Tuesday at 8 p.m. at Drew University.

SECRETARIES CONTEST SET... EASTER SPECIAL! UNION CAMERA exchange. Reprint, Freeprint. The 4th is free when you order 3.

38 MPG BODY... JETPORT Holiday Inn... COCA-COLA... UNION CAMERA exchange.

Movie Times. All times listed are HOME, Thur., Fri., Mon. (unless otherwise noted).

Theater. BLOOMFIELD—Jacques Offenbach's "The Tales of Hoffmann" at the Irvington Center.

MAPLEWOOD... 5 POINTS CINEMA... BATTLE THEATER... ICE CASTLES... THE FORGE II.

SETON HALL UNIVERSITY. Director of Summer Sessions: Seton Hall University, South Orange, N.J. 07079.

Newark CYO workshop set. The Newark Archdiocesan CYO will hold a mini-convention Sunday at Felician College in Lodi.

FOR THE WEDDING... ELEGANCE PLUS... Cocktail Hour... UNION CAMERA exchange.

Ice Castles. Robby Benson, Lynn Holly Johnson and Coleen Dewhurst head the cast of "Ice Castles," which opened at the Park Theater, Roselle Park.

Ice Castles. Robby Benson, Lynn Holly Johnson and Coleen Dewhurst head the cast of "Ice Castles," which opened at the Park Theater, Roselle Park.

THE FORGE II... "THE CHATTERS"...

Geiger's Strawberry Cheese Pie. Our fabulous cheesecake in a pie crust, covered with glazed strawberries and topped with a whipped-non dairy topping.

This is What They Said About Evelyn's in Belmar! "Mouth Watering"... "Superb"...

The overwhelming favorite... The Manor... The first restaurant in New Jersey according to a statewide poll.

Swiss Chalet... JOLLY TROLLEY SALOON... CHARLIE BROWN (I)... SEYMOURS... WHAT'S YOUR BEEF (II)...

"All Aboard"...for the NEW UNION I HOP DOLLAR DINNER DEAL! From now until May 24 buy one of our Nine delicious FULL COURSE DINNERS...

THE FORGE II... "THE CHATTERS"...

Everybody's Market Place CLASSIFIED ADS

Call 686-7700 To Place An Ad * DEADLINES: Tuesday Noon For Thursday * Thursday Noon For Sunday * Call 686-7700 To Place An Ad

TELLERS

Visit the bank that ended BANKERS HOURS

OPEN HOUSE

Saturday, April 21, 1979

Join Franklin State Bank where experienced tellers can enjoy a flexible work schedule that benefits you and your future.

We have immediate opportunities for tellers in:

- UNION AREA
- ELIZABETH AREA
- TELSIDE AREA
- NEW PROVIDENCE AREA
- CLARK PLAINS AREA
- SCORRA AREA

If you have previous teller or cashier experience you can start with an excellent salary (starting salaries \$14,500-\$16,500) plus outstanding benefits and advancement potential in our bank area.

Call us today to let us know you're joining us for coffee and donuts and to discuss your career on April 21, 1979 at 200-745-4347 or 200-745-4348. You'll meet with our Open House on April 21. Call our Personnel Department every weekday to arrange an appointment.

We Are An Equal Opportunity Employer M/F

FRANKLIN STATE BANK Corporate Headquarters
630 Franklin Blvd., Somerset, N.J. 08877

BILINGUAL SECRETARY

Capable in 2 languages, German and English

Make German and English part of your career with a leading international research and development firm. You will work with outstanding scientists and engineers in a dynamic, fast-paced environment. Responsibilities grow as your ability does, when you take on and handle the translation of scientific and general correspondence. You can take on your own career on April 21, 1979 at 200-745-4347 or 200-745-4348. You'll meet with our Open House on April 21. Call our Personnel Department every weekday to arrange an appointment.

AMERICAN HOECHST CORP.
Route 200-200 North Somerset, N.J. 08876
An Affirmative Action Employer M/F

SECRETARY CUSTOMER SERVICE

Send us your resume and we will reward you

You'll be very happy in this job and you are qualified and experienced in the field. We offer an excellent starting salary and benefit package.

PLEASE APPLY ANY DAY 10:30 P.M. TO 2 P.M. FRIDAY

DEPARTMENT
FIRST NATIONAL STATE BANK OF NEW JERSEY
500 BROAD STREET
NEWARK, N.J. 07102
First National State Bank of New Jersey
Equal Opportunity Employer M/F

CLERK/TYPIST Sr

Currently has opening for EXPERIENCED TYPIST (For work only) We offer an excellent starting salary and benefit package.

PLEASE APPLY ANY DAY 10:30 P.M. TO 2 P.M. FRIDAY

DEPARTMENT
FIRST NATIONAL STATE BANK OF NEW JERSEY
500 BROAD STREET
NEWARK, N.J. 07102
First National State Bank of New Jersey
Equal Opportunity Employer M/F

PART TIME SALES

Nites & Saturdays

We are currently interviewing for Part Time Sales & Saturday Clearance Clerk. If you are interested in earning some extra money in a fun, fast-paced environment, please apply to our Personnel Department at 240 E. Front St., Plainfield, N.J. Equal Opportunity Employer M/F

RETAIL SERVICE MGR. NITES & SATS.

Clearance Clerk

Individual with strong retail background, preferably in a retail store, to manage night and Saturday operations. Must be able to handle customer complaints and maintain high standards of service. Good starting salary and benefits. Apply to Personnel Department at 240 E. Front St., Plainfield, N.J. Equal Opportunity Employer M/F

SALES MANAGER

Attractive position in a growing business. Excellent salary and benefits. Apply to Personnel Department at 240 E. Front St., Plainfield, N.J. Equal Opportunity Employer M/F

SECURITY DETECTIVE

PT Mornings

This unique and challenging position offers a good starting salary and excellent benefits. You will be responsible for patrolling and maintaining order in a busy retail environment. Good starting salary and benefits. Apply to Personnel Department at 240 E. Front St., Plainfield, N.J. Equal Opportunity Employer M/F

GENERAL HELP

Supervising company needs experienced general help. Good starting salary and benefits. Apply to Personnel Department at 240 E. Front St., Plainfield, N.J. Equal Opportunity Employer M/F

AVON OFFICE ASSISTANT

Morris Ave., Union, Pleasant office atmosphere. Applications accepted now.

Mrs. Blewett

GAL/GUY FRIDAY

Individuals with good communication skills and a friendly personality. Excellent salary and benefits. Apply to Personnel Department at 240 E. Front St., Plainfield, N.J. Equal Opportunity Employer M/F

MACHINE SHOP

General machine shop. Excellent salary and benefits. Apply to Personnel Department at 240 E. Front St., Plainfield, N.J. Equal Opportunity Employer M/F

Senior Bookkeeper

Challenging full-time position in a growing business. Excellent salary and benefits. Apply to Personnel Department at 240 E. Front St., Plainfield, N.J. Equal Opportunity Employer M/F

ELIZABETH TOWN GAS COMPANY

Male-Female Drivers (10 OPENINGS) GOOD HUMOR

On assigned routes in the Elizabeth area. Excellent salary and benefits. Apply to Personnel Department at 240 E. Front St., Plainfield, N.J. Equal Opportunity Employer M/F

FREE SPRING CLEAN UP

Other contracts to call for. Excellent salary and benefits. Apply to Personnel Department at 240 E. Front St., Plainfield, N.J. Equal Opportunity Employer M/F

SECRETARY

Medical Association Department. Excellent salary and benefits. Apply to Personnel Department at 240 E. Front St., Plainfield, N.J. Equal Opportunity Employer M/F

RECEPTIONIST/CLERK

Overlooking Hospital. Excellent salary and benefits. Apply to Personnel Department at 240 E. Front St., Plainfield, N.J. Equal Opportunity Employer M/F

SECRETARIES

Several interesting diversified & challenging opportunities are now available with our leading Pharmaceutical Division in the following areas:

- Sales Training & Development
- Medical
- Administrative
- Production
- Quality Control
- Inventory Control
- Shipping & Receiving
- Customer Service
- Human Resources
- Legal
- Finance
- Marketing
- Public Relations
- Information Systems
- Facilities Management
- Environmental Health & Safety
- Food Service
- Security
- Transportation
- Utilities
- Waste Management
- Insurance
- Legal
- Finance
- Marketing
- Public Relations
- Information Systems
- Facilities Management
- Environmental Health & Safety
- Food Service
- Security
- Transportation
- Utilities
- Waste Management
- Insurance

CIBA-GEIGY

SECRETARY

Excellent salary and benefits. Apply to Personnel Department at 240 E. Front St., Plainfield, N.J. Equal Opportunity Employer M/F

SECRETARY

Excellent salary and benefits. Apply to Personnel Department at 240 E. Front St., Plainfield, N.J. Equal Opportunity Employer M/F

RECEPTIONIST/CLERK

Overlooking Hospital. Excellent salary and benefits. Apply to Personnel Department at 240 E. Front St., Plainfield, N.J. Equal Opportunity Employer M/F

SECRETARIES

Several interesting diversified & challenging opportunities are now available with our leading Pharmaceutical Division in the following areas:

- Sales Training & Development
- Medical
- Administrative
- Production
- Quality Control
- Inventory Control
- Shipping & Receiving
- Customer Service
- Human Resources
- Legal
- Finance
- Marketing
- Public Relations
- Information Systems
- Facilities Management
- Environmental Health & Safety
- Food Service
- Security
- Transportation
- Utilities
- Waste Management
- Insurance

CIBA-GEIGY

SECRETARY

Excellent salary and benefits. Apply to Personnel Department at 240 E. Front St., Plainfield, N.J. Equal Opportunity Employer M/F

SECRETARY

Excellent salary and benefits. Apply to Personnel Department at 240 E. Front St., Plainfield, N.J. Equal Opportunity Employer M/F

APARTMENTS FOR RENT

Various listings for rent in various areas. Call 686-7700 for more information.

PACE BUICK IS ON FRANKLIN PLACE IN SUMMIT. HARD TO FIND, BUT HARD TO BEAT.

873 FRANKLIN PL., SUMMIT, (201) 522-1111

HONDA RUNS ON REGULAR GAS!

WAGONS, HATCHBACKS, STOCK LIQUIDATION

ALSO IN STOCK IS THE ALL NEW PRELUDE NEVER UNDERSOLD

WORLD HONDA

1665 NORTH BROAD ST. HILLSIDE • 926-1200

A REVOLUTIONARY NEW CAR FROM UNION COUNTY BUICK!

4 CYLINDER ENGINE FROM WHITE DRIVE TRANSVERSE ENGINE

THE ALL NEW X BODY FROM BUICK

38 MPG

RACK-AND-PINION STEERING. STANDARD FRONT-WHEEL DRIVE. STANDARD GLASS-BLOCKED RADIAL TIRES. STANDARD LUXURIOUS ROOF RAILS. STANDARD IMPRESSIVE BUICK RIDE. STANDARD GOOD LOOKS. STANDARD.

339 N. BROAD ST. ELIZABETH 354-3900