

Manpower Commission Clears Vacation Talk

The War Manpower Commission at Newark is beginning to feel the effects of "vacation" talk in industry.

Because of an apparent misunderstanding on the part of many employers concerning the mandatory 48-hour workweek which has been in effect in the Newark area since last August, many requests are being received by WMC from employers for permission to grant their employees Saturdays off and to go to a five-day workweek.

In reply to these requests and in order to clarify the thinking of employers in the Newark area, George S. Pfau, WMC Area Director here, today issued the following statement:

"Prominence which has been given in the public press to discussions of how long the wartime workweek should be has resulted in confused thinking on the part of many employers in the Newark area. Because of the heavy demand for war production and additional labor for this production, there has been no relaxation here in the application of the President's Executive Order 9801, establishing a minimum wartime workweek of 48 hours."

"The daily average population has been 345,287, 24,544 out of county and 318,744 Union County. This total (343,287) includes 84,100 children. The number of hospital days treatment for 1943 has been 125,296; 8,856 out of county, and 116,340 Union County. This total (125,296) includes 27,336 days for children. In 1942, the total hospital days treatment was 132,143; 11,869 out of county, and 120,285 Union County.

"During the year 1943, 52 fewer patients were admitted than in 1942; 244 adults being admitted in 1943 against 295 in 1942; and 91 children as against 118. This decline in admissions to the Sanatorium has been general throughout the State, and has been attributed to various causes. One is that patients, in spite of their disease, are continuing to work because of high wages and patriotic motives. Another reason given is that the incidence of tuberculosis is declining. We hope the latter is the real cause of the decrease in admissions. It is also to be noted that there is a marked decrease in clinic attendance, which may be another indication of the decline in the incidence of tuberculosis.

"The labor situation has been as bad, if not worse, than in 1942. The nursing shortage has been such that only the most essential surgical procedures have been delayed for weeks, and no improvement in the situation is in sight. However, in spite of the difficulties, we feel that no patient has suffered in any way because of the conditions. We appreciate very much the sympathetic handling of the difficult salary and wage question by your Honorable Board, and feel that your action did much to ease a very critical situation. For many years, the need for a hospital for chronic diseases has been advocated by the medical profession, boards of health and social workers. We feel that such a hospital would be a worthwhile post-war project, and all a long felt need in the County, and we are of the opinion that the proper place for such a hospital is in connection with Bonnie Burn, making this a County health unit for the care of all the needy.

"Another post-war project should be the revamping of our heating unit. We were compelled to convert from oil burning to coal by the all-severity, and this has entailed not only a large expense for conversion, but also an increase in operating costs. Many of our firemen, who have been with us for years and who have reached retirement age, could not handle coal. The coal we are able to get is probably the best obtainable under the circumstances, but it seems to require more to get results than it did when we were previously burning coal. Also coal burning is decidedly more expensive for our purpose than oil because of greater cost of handling. Living costs have continued to rise, and so has the cost of maintenance per patient. The gross per capita cost in 1942 was \$22.78 per week, and in 1943, \$26.04 per week.

"We are grateful to the faithful employees who, in spite of inducements of higher wages, have remained with us. We are very appreciative of the efforts of religious and lay workers to make the stay of the patients in the Sanatorium, a period that often extends to months, as pleasant and instructive as possible."

"Private Virginia Denson O'Grady, daughter of Mr. and Mrs. Clifford E. Denson of Baltimore road, Summit, formerly of town, a member of the Marine Corps, Women's Reserve, has recently finished a six-week "boot" training at Camp Lejeune, N. C. This course included such subjects as military courtesy, Marine Corps history, close-order drill, chemical warfare, map reading and other subjects pertinent to carrying out future assignments in the Marine Corps. Her first assignment will be as a tabulating-machine operator at the Department of the Pacific Marine Corps, in San Francisco, Calif. Pvt. O'Grady, the former Virginia Denson, graduated from Regional High in 1939.

Xavier Masterson, son of Mr. and Mrs. X. V. Masterson of Springfield avenue, Berkeley Heights, has been promoted to Technical Sergeant. He is with the Army Medical Corps in North Africa and has been overseas 13 months. T/Sgt. Masterson graduated from Regional High School in June, 1933.

William J. Gilbert, who has been advanced to a seaman, first class, U.S.N.R., has returned to his station at Little Creek, Va., where he is in ship service after spending a brief leave with his parents, Councilman and Mrs. William W. Gilbert of 412 Beech avenue, Garwood. Seaman Gilbert was a member of the senior class when he left to join the Navy.

Get into the fight with your paper scrap.

LAUNDRY WORKERS WANTED

High Wages and Bonuses Paid
White or Colored
No Experience Necessary
APPLY
Mayflower Laundry
56 Mechanic St. Millburn, N. J.
Millburn 6-1400

AT STATE G. O. P. CONVENTION



H. Alexander Smith of Princeton, Republican candidate for U. S. Senate, with several Union County leaders at the State Republican convention in Trenton Monday. From left to right—State Senator Herbert J. Pascoe, Mr. Smith and Mrs. Irene Griffin, Assemblywoman candidate from Union County.

YOUR RED-CROSS

LOCAL
The Red-Cross was well-represented in Springfield's Memorial Day parade. The day was hot and clear, but not too uncomfortable. Members of the Administration Corps, the Staff Assistants, Junior Staff Assistants, Production-Canteen, Canteen Aides, Motor Corps and Junior Red-Cross girls marched. The Station Wagon, manned by Mrs. Harry Spencer, Mrs. Edgar Jacobs, and Mrs. Richard Bunnell, dispensed water at strategic places along the way.

The Staff Assistant Corps had a meeting at the home of Mrs. Henry C. McMullen last Wednesday afternoon, May 24. Mrs. Stephen Terrel presided. After the business meeting, Mrs. McMullen presented Mrs. Terrel and Mrs. Clement Cook with Home Service Diplomas, both having taken the Home Service Course in Morrislona some time ago, and have been invaluable as Home Service workers under the direction of Charles Huff, chairman. After the meeting, tea was served.

NATIONAL
The Red-Cross is urging all persons who do not know how to swim to make use of the kick-board, a simple device which has been proven to help the beginner to learn any style of swimming known to man. The kick-board can be made out of any kind of wood. White-pine, spruce, cedar and bass wood are preferred. The board has in-curved hand grips on each side, and is twenty inches long, twelve inches wide, and one and three-eighths inches thick. It is designed to give maximum buoyancy, and still be readily maneuverable. The swimmer is able to learn the arm and leg strokes, while still being able to keep his face out of the water. It provides the user with a sense of security, so that he can become used to activity in water. Complete information on how to make and use the kick-board may be obtained from the water-safety service of any Red-Cross chapter. All non-swimmers are urged to use one of these, thereby reducing the number of drownings during the coming bathing season.

Asks Co-operation
TREASURY DEPARTMENT
Washington
War Finance Division
To Newspaper Advertising Managers:
The attached letter from Colonel Herron, Chairman of the Newspaper Advertising Executives Association, War Bond Committee, covers briefly the tough job ahead, in raising six thousand million dollars from individuals in

the coming Fifth War Loan drive. OUR COUNTRY NEEDS THE SUPPORT OF SPONSORED WAR BOND NEWSPAPER ADVERTISING. MORE THIS TIME THAN EVER BEFORE, AND YOUR FULL COOPERATION WILL BE GREATLY APPRECIATED.
Sincerely yours,
S. GEORGE LITTLE,
Special Consultant,

Grand Union Opens Super Market at Millburn Yesterday

Grand Union, America's second oldest food chain and well known to New Jersey residents for many years as successful operators of low price quality service markets, announces the opening of a modern, streamlined self-service market in Millburn.

This all-in-one food shopping center-planned, designed, and equipped to make shopping a single and pleasant event, opened yesterday at 319 Millburn avenue, Millburn.

Frank Kazimer will be in charge of the Grand Union Self Service Market. Charlie Strauss will be in charge of the Meat Department. Housewives will enjoy the friendly atmosphere of this newly streamlined, epic and span market and the great convenience of buying all their food needs under one roof in compactly arranged departments. Wide inviting aisles give plenty of room to select your needs at your leisure, or as quickly as possible. Prices and point values are plain to see on everything in every department, meat, produce, dairy and bakery.

Just before the opening, Mr. Kazimer said, you will get a thrill out of shopping in the ultra-modern, self-service Dairy Department—so inviting, so easy to help oneself. Crisp, sparkling, fresh vegetables and fruit are in abundance, we know that you will load your basket with these "farm-fresh" products.

"Your dessert problem is solved as soon as you approach the Baked Goods Department. This is a new innovation for Super Markets. A complete bakery service featuring delicious tender textured fresh baked goods—pies, cakes, cookies, rolls, breads and other tempting baked delicacies.

"As you walk from aisle to aisle through the grocery department you will find a complete variety of nationally known brands as well as the quality foods for which Grand Union is famous at the lowest prices.

"All through the 70 years that Grand Union has been in business it has been known for the exceptionally fine quality of its products and its friendly manner of doing business. It has built up a spirit of confidence in its integrity and reliability. We feel sure that housewives of Millburn, Springfield and vicinity are going to enjoy this streamlined, modern self-service market immensely. The new store will have the largest floor-space of any food store in Millburn. Plenty of parking space has been provided for in the rear of the store. It is just across the street from the municipal parking lot on Essex street.

VICTORY RALLY

An Opportunity to see and hear
JACK WYRTZEN
Director
"WORD OF LIFE HOUR"
WHN Broadcast from Times Square every Saturday night.
GIL DODDS
of Boston
Voted world's outstanding athlete by A.A.U.
Holder of the all time record for the mile run.
Time: 4:06.4

NORMAN CLAYTON | **CHRIS REILLY**
Song Writer and Accomplished Musician | of Paterson | Accordionist

Tuesday, June 6th, 7:30 P.M.

AT
FIRST BAPTIST CHURCH
REV. ROMAINE F. BATEMAN, Pastor
MILLBURN AVENUE Corner SPRING STREET, MILLBURN, N. J.
Capacity attendance expected. Public address system will cover entire audience. Everybody welcome.

Take Buses 70-72 to Millburn Center Lackawanna R.R. to Millburn

REGULAR SERVICES
OPEN ALL SUMMER
BIBLE SCHOOL - 9:45 A.M.
CLASSES FOR ALL AGES

MORNING WORSHIP 11 o'clock
YOUNG PEOPLE SOCIETIES - 7 P.M.
EVENING EVANGELISTIC SERVICE
STARTING WITH SINGING AT 7:45
PRAYER MEETING EVERY THURSDAY
at 8 P.M.

EXTRA!
INVITATION TO ATTEND
THE SUMMER BIBLE SCHOOL
at the First Baptist Church, Millburn, N. J.
JUNE 19-30 9:30 TO 11:45 A. M.
Bible Study Singing Handwork
Recreation
CLASSES FOR ALL AGES

Kresge DEPARTMENT STORE

"SPRED'S" 11 Lovely Colors

MAKE PAINTING A JOY

2.98 GAL.

It's so easy to create a beautiful and individual interior decorating scheme with this wonderful washable paint! Choose from:

Walrus blue	Peach bloom
Peacock blue	Forest green
Robin's egg blue	Antique green
Canary	Light ivory
Dusty rose	Cream
	White

Remember—a gallon of "Spred," mixed with a half-gallon of water, is sufficient to do the walls and ceiling of an average room. "Spred" goes on smooth as silk and dries in an hour—you can paint and use your room the same day. Qt., 98c.

PAINTS, SIXTH FLOOR

"TAVERN" CLEANING TIPS!

WINDOW CLEANER FOR GLASS.
For windows, mirrors, windshields, etc. Just apply and wipe clean. 59c qt.

NON-RUB WAX FOR FLOORS.
Dries to a satin luster without polishing; resists water-spotting. 1.59 1/2 gal.; 2.89 gal.

PAINT CLEANER FOR WALLS.
Use for furniture, too! Cleans all painted and varnished surfaces without streaking or reblowing glass. 1.19 gal.

DRY CLEANER FOR CLOTHES.
Use on everything from dresses to draperies. Safe, speedy, economical! 77c gal.

BETTER HOUSEWARES, KRESGE SIXTH FLOOR

EXTRAORDINARY GOVERNMENT RELEASE!

All-Purpose Pumps

1.79 with 10 ft. of hose and two nozzles!

- for spraying insecticide!
- for hailing out flooded basements!
- for fighting fires!
- for whitewashing poultry walls!
- for watering gardens!

There are plenty of other equally practical uses for these official OGD-approved stirrup pumps!

GARDEN LANE, SIXTH FLOOR

Mountainside

Record Crowd at Echo Lake Park Decoration Day

Mountainside—Echo Lake Park had one of its largest crowds on record on Decoration Day, according to Union County Park officials.

Union Chapel

Mountainside, N. J. REV. THOS. H. BURNS, Pastor... Morning Service, 11:30 A. M. Bible Study, 3 P. M.

Paraded in Westfield

Mountainside—The Intermediate Troops of the Girl Scouts marched in the Memorial Day Parade in Westfield on Tuesday.

AROUND THE BOROUGH

The Sew What Club met at the home of Mrs. Henry Sevovic... Temple Patton of Birch Hill road was guest of honor at a birthday supper.

LEGAL ADVERTISING

NOTICE OF INTENTION TAKE NOTICE that the Mountainside Drug Co., Inc. proposes to apply to the Council of Mountainside for a license to sell... Notice of Intention... Notice of Intention...

WE PAY TOP PRICES CASH FOR YOUR CAR. Wells-Cadillac Oldsmobile Co. Phone South Orange 2-7009

Softball League Starts Monday

Mountainside—Teams of the Adult Softball League had their first practice games Monday night at Echo Lake Park.

HAPPY BIRTHDAY

- Happy Birthdays extended this month by The SUN Mountainside: 1-Raymond Condon 2-Adede Roeder

Junior Garden Club On Outing

Mountainside—The Junior Garden Club under the leadership of Miss Elizabeth Johnson and Mrs. Charles Wadsworth...

Girl Scouts On New York Trip

Mountainside—On Saturday the Girl Scouts of Troop 24, under the leadership of Mrs. Elmer Hoff...

Library Notes

The library has just received "Fair-Strapped Misses for France" by H. E. Bates. This story is paired serially in the Saturday Evening Post.

CARTERET THE SCHOOL FOR YOUR BOY. Country Day School and Boarding School. At Carteret your boy is given these Five Essentials:

The World's News Seen Through THE CHRISTIAN SCIENCE MONITOR. An International Daily Newspaper. Published by THE CHRISTIAN SCIENCE PUBLISHING SOCIETY.

MacLellan-Brokaw Wedding Held On Holiday Morning

Mountainside—Mrs. Howard Wiess of Wilmington, Del., announces the marriage of her daughter Miss Betty Barton MacLellan, to Jack Garrison Brokaw...

Borough School Is Broken Into

Mountainside—Over the weekend the borough school was broken into, and also the principal's office.

Girl Scouts On New York Trip

Mountainside—On Saturday the Girl Scouts of Troop 24, under the leadership of Mrs. Elmer Hoff...

Pfc. Laurie Chatten, Former Resident, Created G.I. Poetry



PFC. LAURIE CHATTIN

Mountainside—Do you remember Laurie R. Chatten, Jr.? He's the son of Mr. and Mrs. Laurie R. Chatten who used to live in the Village.

CALENDAR

- June 5 (Mon.)—Library Board meeting, 8 P. M. June 5 (Mon.)—Rescue Squad meeting, headquarters, 8 P. M.

Fined 50 For Cruelty Charge

Mountainside—Jerry Greene, Negro, of Summit, was fined \$50 last Thursday night by Recorder W. L. Winckler on a charge of cruelty to animals.

Daughter To Brittons

Mountainside—Mr. and Mrs. Joseph Britton of Central avenue announce the birth of a daughter on Sunday, May 28, at the Rahway Hospital.

ENGRAVED WEDDING STATIONERY DELIVERED WITHIN 2 WEEKS! We're fully aware of the many problems attendant on last minute wedding plans...

SPRINGFIELD SUN STATIONERS — PRINTERS. 8 FLEMER AVENUE 2 Doors From Bank. Embossed Announcements and Invitations 100 for \$6.00—One Week Service.

WITH THE ARMED Services

In a recent issue of the Newark Evening News, there appeared a story by Warren H. Kanel, staff correspondent in England...

Mr. and Mrs. William Young of 47 Clinton avenue... Master Sergeant Edgar De Ronde was home recently on a 15-day furlough...

Lieutenant Norbert Ganska flew in from Salina, Kansas on Sunday to have dinner with his parents...

Private Charles H. Steinbacher, son of Mr. and Mrs. C. J. Steinbacher of 33 Battle Hill avenue...

Private First Class Lillian Young, WAC, was home on a 15-day furlough visiting her parents.

NOTICE OF HOURS

We will be closed on WEDNESDAY ALL DAY. During June, July and August. Now open Monday, Tuesday and Thursday 9 A. M. to 7 P. M.

Blivise Food Center MOUNTAINSIDE, N. J. Private First Class Lillian Young, WAC, was home on a 15-day furlough visiting her parents.

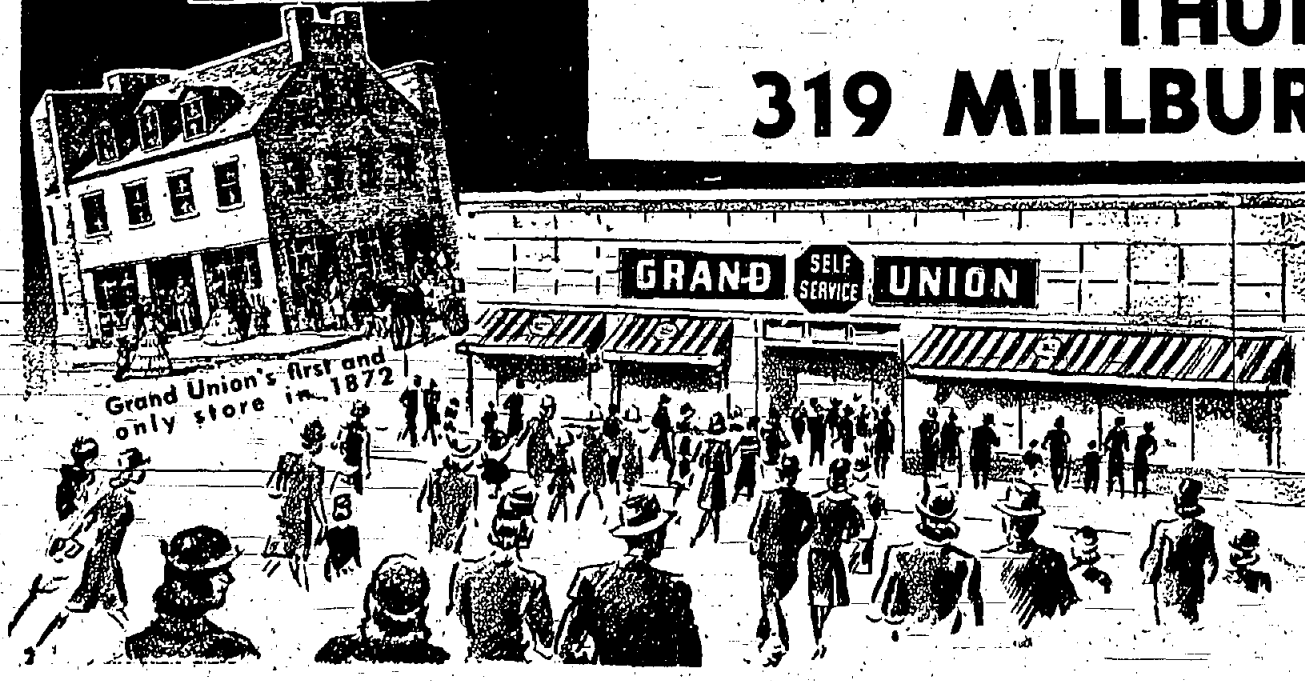
TELEPHONE SINEWS OF WAR. Day and night telephone operators are on duty at the switchboards, giving their best and their most for the war. When Long Distance lines are crowded, they may ask your help by saying—'Please limit your call to 3 minutes.'



AMERICA'S SECOND OLDEST FOOD CHAIN OPENS NEW SUPER-STREAMLINED FOOD MARKET, INTRODUCING ULTRA MODERN SELF SERVICE SHOPPING FEATURES

GRAND OPENING

THURSDAY, JUNE 1st
319 MILLBURN AVE., MILLBURN, N. J.



PLENTY OF PARKING SPACE AT REAR OF STORE!

Grand Union's LOW PRICE POLICY has been saving money for thrifty housewives for over 72 years. Your favorite nationally advertised brands, as well as Grand Union's OWN famous brands are all priced low. In the future, as in the past, we will continue to sell you your favorite foods at extremely low prices. Today, tomorrow and everyday, you get MORE FOR YOUR MONEY at GRAND UNION.

NABISCO
Shredded Wheat 2 Pkgs. **19c**

A SCOT PRODUCT
WALDORF TOILET TISSUE 3 ROLLS **10c**

DIAMOND CRYSTAL SALT box 7c
BETTY CROCKER SOUP MIX 3 pkgs. 27c
TOMATOES RIALTO or PACKER'S LABEL No. 2 can 10c
CORN WHOLE KERNEL KITCHEN GARDEN No. 2 can 14c
ASPARAGUS CUTS HURFF'S No. 2 can 18c

TREET and MOR 12 oz. can 33c
MAPLE FLAVORED HONEY 1 lb. jar 19c
IVORY SOAP PERSONAL med. 6c-3 lge. 29c
LIFEBUOY SOAP 2 cakes 9c cake 6c-3 cakes 29c
BAB-O CLEANSER 3 cakes 20c
2 boxes 21c

AMERICA'S FAVORITE SOUP
CAMPBELL'S TOMATO SOUP 2 10 1/2 oz. cans 3 Points **15c**

GRANULATED-SOAPS
Rinso, Oxydol, Duz Lge. pkg. **21c**

"Daily-Fresh" Bakery Service

FEATURING
Quality Baked Goods!



BITTERSWEET
Chocolate LAYER CAKES

DELIGHTFUL FRESH BAKED FLUFFY LAYERS FILLED AND ICED WITH RICH BITTERSWEET CHOCOLATE **42c**

Pineapple Pie Ea. **45c**
Danish Coffee Ring Ea. **37c**
Maple Walnut Bar Ea. **35c**
Angel Cake VANILLA ICED Ea. **37c**

Cloverleaf and Parkhouse
ROLLS doz. **20c**
Cup Cakes 6 for **18c**
Sugar Donuts doz **25c**
Coffee Cake ca. **32c**
Butter Cakes, ca. **32c**
Pan Biscuits, doz **15c**
Chocolate Bars, ea. **35c**



NOT RATIONED

Gold Medal Flour 10 lb. sk. 60c—5 lb. sk. 32c
Flour, Pocono, All Purpose 10 lb. sack **44c**—5 lb. sack **24c**
Golden Corn, Freshpak 20 oz. can **13c**
Sliced Beets, Grand Union 20 oz. can **10c**
Rosedale Peas, Libbys 20 oz. can **14c**
Spinach, Freshpak 27 oz. can **17c**
Uneda Biscuit, Nabisco 3 boxes **18c**
Krispy Crackers, Sunshine 1 lb. pkg. **19c**
Prunes, Freshpak, 50/60 size 2 lb. pkg. **31c**
French Style Green Beans, Starkey 20 oz. can **14c**
Prune Juice, Gold Seal qt. **24c**
Plum Preserves, Honeydew 2 lb. jar **39c**
National 3 Minute Oats 20 oz. pkg. **10c**
Olive Oil, Cal-Orest 4 oz. **33c**, 8 oz. **61c**, 2 oz. bot. **19c**
Mazola Oil pt. can **28c**, qt. can **53c**
Glapps Cereal & Instant Oat Meal 8 oz. pk. **2-27c**
Hershey Cocoa 8 oz. **10c**
Frizz Ice Cream Mix 5 oz. **27c**
Macaroni and Spaghetti, Muellers pkg. **9c**
Lux Toilet Soap 3 cakes **20c**
Palmolive Soap 3 cakes **20c**
Laundry Soap, Octagon 3 bars **14c**
Filt pt. bot. **21c**, qt. bot. **39c**
Blue Tip Matches box **5c**
Clothes Line 50 ft. length **39c**
Renuzil, Dry Cleaner gal. **65c**
Gorham Silver Polish 8 oz. **23c**
Noxon Metal Polish 8 oz. **19c**
Windex Cleans Windows Without Water, 6 oz. bot. **15c**—20 oz. bot. **29c**
Galnes Dog Meal 2 lb. pkg. **18c**

In Our Dairy Dept.

BUTTER 1 lb. print 12 points **47c**
OLEOMARGARINE, Pocono lb. **17c**
PARKAY OLEOMARGARINE lb. **24c**

GRAND UNION MEAT

Only the BEST QUALITY sold here

No Points FOR THESE VALUES

Fowl YOUNG, PLUMP. LB. **42c**
PORK LOINS LEAN-RIB END lb. **27c**
BROILERS & FRYERS FANCY lb. **47c**
DUCKLINGS LONG ISLAND-FANCY lb. **35c**
SLAB BACON ANY SIZE PIECE lb. **29c**

Lean, Fresh **HAMBURGER** lb. **23c**
Short Cut-Best **Smoked Tongues** lb. **39c**
To Brine or Stuff **BEEF HEARTS** lb. **21c**
Lean-Fresh or Corned **PLATE BEEF** Sliced lb. **15c**
PORK LIVER lb. **21c**
Best Quality **FRANKFURTERS** lb. **37c**
Machine Sliced Bologna lb. **33c**



Ocean Fresh SEA FOOD!
Your Grand Union Market has a wide variety of OCEAN FRESH SEA FOOD... the PICK-OF-THE-CATCH.



FRESH CALIFORNIA CHERRIES
1/2 lb. **30c** lb. **59c**

Fresh From The Farm!

FRUITS AND VEGETABLES

Day or night, stormy weather or starlight, farmers select "THE PICK-OF-THE-CROP" for Grand Union stores. Select your "VITAMINS" from the farm fresh crisp display of Fresh Fruits and Vegetables at your Grand Union Market.

JUICE ORANGES LARGE FLA. VALENCIA 12 for **35c**
GREEN PEAS FRESH GARDEN CALIFORNIA 2 lbs. for **25c**
FRESH CARROTS GREEN TOP CALIFORNIA 2 lge. bchs. **15c**
FRESH TOMATOES FIRM RED RIPE 2 lbs. **29c**
ICEBERG LETTUCE CRISP CALIF. 2 hds. **19c**

Home Grown **Scallions** 3 bchs. **10c**
Home Grown **Radishes** 3 bchs. **10c**
California Valencia **Oranges** 12 for **39c**
FRESH CRISP HOME GROWN **SPINACH** lb. **5c**
LONG WHITE CALIFORNIA **NEW POTATOES** 5 lbs. **29c**
JUICY CALIFORNIA **LEMONS** 12 for **25c**

SUPPLYING AMERICANS FOR OVER 72 YEARS

GRAND UNION

FOOD DISTRIBUTORS DURING THREE WARS

Where to Buy SUN
The SUN is on sale every Friday morning at the following newsstands in Springfield: Seel's, 234 Morris avenue; Melchior's, 247 Morris avenue; Katz, 279 Morris avenue; Phillips, 181 Morris avenue; Gessner's, 19 Morris avenue; Paul Maldelega, Millburn avenue; near Morris avenue, and Ludwig's, South Springfield and Evergreen avenues. In Mountaineer, at Bilwises, 1 Springfield road.

Lyric Theatre
SUMMIT - SU. 6-2079
Matinee 2:30; Evening 7:00-9:00
Cont. Sat. and Sun. from 2 P. M.

TODAY THRU WEDNESDAY
CHARLES K. FELDMAN presents
The Story of the Stars Who...

Follow the Boys
50 STARS!
4 BANDS!
20 SONGS!

Week Starting Thurs., June 8
GINGER ROGERS
in
Lady in the Dark
(In Technicolor)

Strand Theatre
SUMMIT - SU. 6-2400
Mat. 2:30; Eve. 7:00-9:00
Cont. Sat. and Sun. from 2

TODAY THRU SATURDAY
Darryl F. Zanuck's
"THE PURPLE HEART"

with
DANNA ANDREWS
PLUS
Leon Errol - Anne Rooney
IN
"SLIGHTLY TERRIFIC"

SUN - MON - TUES.
Ann Miller - Joe Bonser
IN
"HEY ROOKIE"

PLUS
Robert Lowery - Jean Parker
IN
"THE NAVY WAY"

WED. THUR SATURDAY
Wallace Beery - Marjorie Main
IN
"RATIONING"

PLUS
MARGARET O'BRIEN
IN
"LOST ANGEL"

Frank Dailey
predicts and presents
the
BAND SENSATION OF 1944
EDDY HOWARD
AND HIS ORCHESTRA
Commencing May 26th

Dinner & Dancing
from 8 P. M. ON
2 SHOWS-NIGHTLY

FRANK DAILEY'S TERRACE ROOM
MOSQUE THEATRE BLDG.
NEWARK, N. J.
MARKET 3-4930
BUY THAT EXTRA BOND
5th War Loan

PAPER MILL PLAYHOUSE
Rosmarie Brancato and Donald Gage
in
"The Fortune Teller"
Clara Lee, Nels Johnson, Harold Patrick, Yolanda Tupacul
PRICES:
Monday thru Friday - \$1.00, \$2.00, \$3.00
Saturday - \$1.25, \$2.25, \$3.25, \$4.00
Including Tax
WED. & SAT. MATS. 9:00, \$1.25, \$1.80
SAT. EVE. JUNE 8
Box Office Open 10:00 A. M. to 10:00 P. M.
Tickets Also on Sale at Kroger Department Store, Newark
Evenings at 8:30 - Matinees at 2:30 - No Sunday Performances

TOWN and FARM in WARTIME
Prepared by OFFICE OF WAR INFORMATION

RATION REMINDERS
MEATS, FATS—Red Stamps A8 through V8, good indefinitely. U.S. V8 and V8 became valid June 4 and remain good indefinitely.

PROCESSED FOODS—Blue Stamps A8 through V8, good indefinitely.

MOST PLENTIFUL FOODS—Onions and eggs over most of the country.

SUGAR—Sugar Stamps 30 and 31, each good for five pounds indefinitely. Sugar Stamp 40, good for five pounds of canned sugar through February, next year.

GASOLINE—A-10 coupons good through August 8.

FUEL OIL—Periods 4 and 5 coupons, good through September 30. New Period 1 coupons for the 1944-45 heating year may be used as soon as they are received from local boards.

SHOES—Airplane Stamps 1 and 2, good indefinitely.

OWI Reports On Food Situation
Although farm population of the United States is four million less than during the last war, American farmers produced 47 per cent more food in 1943 than in 1918, the Office of War Information said in reporting need for four million volunteer farm workers until after harvest this year. With the aid of the War Food Administration and the Office of Price Administration, OWI reported on the current food situation. Comparing this year with last, apples, peaches, pears and cherries will be more plentiful; slightly less fluid milk and cream will be consumed; less chicken will be available; eggs will continue plentiful. Other highlights: wartime increases of income and food have enabled millions of Americans to increase their diets; rationing will be needed until the war is won; current point-free meats will remain reasonably plentiful, with some cut of better grades less plentiful; the present point holiday on canned vegetables is only temporary and on some meats may be temporary; the 1943-44 citrus fruit production will be 30 per cent higher than last year; the last half of 1944 will show less butter and lard, but more margarine, shortening and vegetable oils than during the first half; sugar supply is adequate but no increase in household allotments is in sight this year. For nutritional reasons, the report recommends more production of Vitamin-C-rich foods, such as tomatoes, and consumption of milk, meat and enriched cereals as sources of riboflavin and niacin.

Weather stripping felt and the wood to keep stripping rigid will be in good supply at retail stores, the War Production Board said. A fair amount of zinc for stripping double hung windows will be available, as well as insulating mineral wool and asphalt roofing, which should be ordered now, before the fall rush for these materials, WPB says. Rubber and copper weather stripping are not available for the individual consumer.

About 90,000 more volunteers are needed to continue the price control program, OPA says. More than 40,000 price panel volunteers, recently visited 386,289 food stores in this nation-wide drive to tell community grocers about price control and help them comply with OPA regulations. Some volunteers in rural areas worked under considerable hardship, OPA points out. One island in Lake Michigan, reached only by mail plane, arrangements were made with the mail plane pilot to check the four stores located there. In Plaquemine Parish, Louisiana, boats were used to survey stores in swamp areas. And, in some rural moun-

MILLBURN
M 6-0800
TODAY-TOMORROW-SATURDAY
"The Fighting Seabees"
Plus
"NINE GIRLS"

"Standing Room Only"
ON THE SAME PROGRAM
"Bride Of San Luis Rey"
Eugene Pallette - Francis Lederer
WED. THUR. FRI. SAT. 8 P. M.
William Powell - Hedy Lamarr
IN
"HEAVENLY BODY"
ON THE SAME PROGRAM
"THE PURPLE HEART"
Dana Andrews - Richard Conte

MILLBURN, N. J.
1 MEN'S WALK FROM JACK AWANNA BLDG. STATION AND R. S. BUS STOP AT MILLBURN
Phone SHort Hills 7-9000
Frank Carrington, Director
Beg. Mon. Eve., June 5th

LOUELLA SWEET CREAM BUTTER
Richland Roll BUTTER, lb. 47¢
Winner of over 500 Prizes
The pure sweet cream from 10 quarts of rich, fresh milk goes into every pound of Louella. Winner of over 500 prizes for flavor and quality. Only 12 points per pound.

Serve Acme's Finer, Fresher Produce!
Fancy California PEAS 2 lbs. 29¢
You can't beat famous California peas for flavor and quality.
Iceberg Lettuce 12¢
Large, fancy heads! Serve a salad with sliced tomatoes.
TOMATOES 19¢
Perfect slicing a "must" for delicious salads and the lunch box.
Radishes Fancy Jersey 2 Bunches 9¢
ORANGES Large Florida Dozen 45¢
Big juicy Floridas, full of rich juice. Buy a supply now!

Gold Seal Large White "Grade A" Eggs Carton of 12 45¢
Silver Seal Eggs Large Grade B Carton of 12 39¢
TREET 33¢
Redi-Meat 33¢
Swift Prem 33¢
Lobster 41¢
Olives 10¢
HONEY 23¢
PEAS 14¢
Noodles 13¢
Presto 25¢
BAKING POWDER 14¢
GOLD MEDAL 10¢
Wax Paper 5¢
Soya Beans 15¢
Mustard 10¢

Bread Supreme Enriched 9¢
Dated for freshness. Enriched with vitamin B1, B2, niacin, iron.
VINEGAR 14¢
Plum Preserve Rob Roy 24¢
Nabisco Social Tea Biscuits 11¢
Nabisco Premium Crackers 19¢
Gumpert's Butterscotch Dessert 5¢
Kellogg Rice Krispies 11¢
ASCO "heat-flo" roasted Coffee 24¢
Heat-flo' roasting gives you fuller, finer flavor.
Acme Coffee 28¢
ASCO Orange Pekoe Tea 21¢

No Points Needed!
ASCO Golden Bantam CORN No. 2 13¢
Our finest cream-style golden bantam corn.
Whole Kernel Corn Acme Golden No. 2 Can 14¢
TOMATOES Standard Grade No. 2 Can 10¢
TOMATOES Farnidale No. 2 Can 11¢
PEAS Hurlock Brand No. 2 Can 11¢
Asparagus Hurlock All Given Center Cut, No. 2 Can 14¢
Wax Beans No. 2 Can 11¢
BEETS Shredding 10¢
NO POINTS NEEDED!

RATION CALENDAR
Red Stamps A1 to T1 Worth 10 Points Each
Blue Stamps A* to V* Worth 10 Points Each
Sugar Stamps 30-31 NOW REDEMPTIBLE FOR 5 STAMPS 40 REDEMPTIBLE FOR GAMING

Acme Super Markets
OWNED AND OPERATED BY THE AMERICAN STORES COMPANY

BLUE Stamp Features
HOM-DE-LITE Grape Jelly 19¢
ROB ROY Grape Preserve 19¢
WELCH'S Grape Juice 21¢
DOLE Pineapple Gems 21¢
ASCO Sliced Pineapple 26¢
V-8 Cocktail 15¢
COLLEGE INN TOMATO Juice Cocktail 20¢
CAMPBELL Pork & Beans 9¢
Baked Beans 10¢
Pork & Beans 8¢
Eveready Fruit Cocktail 33¢
Grapefruit Juice 29¢
Saltesea Clam Chowder 20¢
Campbell's Assorted Soups 11¢
RED STAMP Features
MILK Farmdale 3 Tall Evaporated 27¢
Bleu Cheese 51¢
Gorgonzola 50¢
Old Smoky 14¢
Philadelphia Cream Cheese 11¢
All-Sweet Margarine 24¢
Muenster Cheese 35¢
Provone 48¢
Pimento 14¢

NO POINTS NEEDED FOR THESE MEATS!
Fresh Pork Loins lb. 29¢
RIB HALF: Lean, delicious pork-loins are rich in Vitamin B.
PICNICS Fresh or Smoked lb. 29¢
Imagine, rich-flavored tender fresh or smoked picnics at only 29¢!
Pork Chops Center Cut lb. 35¢
Lean, tender, tasty pork chops are easily prepared in a jiffy.
Frankfurters 37¢
Bologna 9¢
Sausage 43¢
Luncheon Meat 10¢
Liverwurst 10¢
Meat Loaves 9¢
Beef Liver lb. 37¢
Dried Beef 21¢
Potato Salad lb. 23¢
Stewing Chickens Fancy Grade A 43¢
3 lbs and up
Grade "A" BEEF
Chuck Roast lb. 27¢
Rib Roast 7 Point Cut lb. 30¢ 8 Point Cut lb. 32¢
PLATE BEEF 19¢
No points needed for delicious eating.
For soups and stews. Not rationed.
Hickory-Smoked Bacon 32¢
FRESH FILLET OF HADDOCK lb. 33¢
FRESH PORGIES lb. 12¢
FRESH MACKEREL lb. 13¢
FRESH WHITINGS lb. 10¢
FRESH FILLET OF FLOUNDER lb. 37¢

Speed-Up Bleach Quart Bottle 9¢
Our finest quality bleach water. Why pay more? Feature value!
Oakite 2 10 1/2-oz. pkgs. 19¢
Saves up to 50% soap!
IvoryFlakes 12 1/2-oz. pkg. 23¢
2 5-oz. Packages 19¢
DUZ 21 1/2-oz. Package 23¢
2 8 1/2-oz. Packages 19¢
Oxydol 24-oz. pkg. 23¢
2 9-oz. Packages 19¢
WINDOW SCREENS 34"x53" EACH 65¢
Ivory Soap Medium Cake 6¢
Acme's everyday-low price!
Ivory 3 Large Cakes 29¢
Economy Sizes Ivory Soap
Camay 3 cakes 20¢
Famous toilet soap!
P & G 3 Bars 14¢
Famous Laundry Soap!
Bleachette Bluing 5¢

