

Social Security Affects Reviewed

Residents of this area are realizing more as to the way social security affects their lives.

"Others don't know enough about the program to protect their benefit rights," Sawvel said.

"The only way a person entitled to benefits can receive them is by filing a claim."

BERKELEY SCHOOL EAST ORANGE, N. J. 22 Prospect St.

monthly old-age insurance payments at the same time.

"A 68-year-old man who had been retired by his company last December came into our office this month."

For the convenience of residents of Union and Somerset counties, representatives of the Elizabeth office may also be contacted.

MUNICIPAL BAND PLANS UNDERWAY

Preliminary plans have been launched for a local municipal band, sponsored by the Springfield Fire Department.

STORES OPEN FRIDAY NIGHTS UNTIL NINE

NAMED TO NATIONAL ACCOUNTING GROUP



JOSEPH L. FOCHT Joseph L. Focht, a resident of 228 Baltusrol avenue, Springfield, for the past five years has been elected a member of The American Institute of Accountants, a national accounting organization.

Previous to establishing offices in Newark, Mr. Focht had spent fourteen years in public accounting with several firms in New York City.

Army Commissions Made Available

Men and women who possess medical, dental, nursing or veterinary qualifications can be commissioned in the Medical Department Reserve whether or not they have had prior military training, according to a recent Department of the Army directive.

FATHER'S DAY for PRESIDENTIAL CANDIDATES

Illustration featuring caricatures of political figures with humorous captions. Captions include: 'Gov. Dewey's Father Published the Owsosso (Mich.) Times', 'Pres. Truman's Father Was a Livestock Grower at Grandview, Mo.', 'Sen. Taft's Father Was 26th U.S. President and Chief Justice of the Supreme Court', 'Gen. MacArthur's Father Civil and Spanish War Veteran, Was a Lieutenant General', 'Ex-Gov. Stassen's Dad is a Minnesota Farmer', 'Sen. Vandenberg's Father Was a Harness Maker and Cobbler', 'Henry Wallace's Father a Farm Journal and Was U.S. Secretary of Agriculture', 'Harpy Working Dads Win Honors Everywhere on Sunday, June 20. Affectionate Father's Day Greeting Cards from the Whole Family Program. Hurrah for Dad!'.

Legion Convention Slated for Asbury

The 30th annual state convention of The American Legion in New Jersey will be held in Asbury Park on September 9, 10, and 11.

Joseph C. Flits, president of the Legion's Convention Corporation, in announcing plans for the convention stated: "With over 100,000 members in the Legion and its Auxiliary as of December 31, 1947, the convention this year should be the biggest and best we have ever held."

Joseph G. Carty, Legion State Commander, will preside at the convention. Morning and afternoon business sessions will be held on September 9 and 10, in the Convention Hall, Mrs. Frederick L. Suttle, president of the American Legion Auxiliary, will preside at similar sessions held by that organization at the same time, in the Asbury Park High School.

The Hotel Monterey has been selected as Legion Headquarters during the convention, with the Legion Auxiliary utilizing the Kingsley Arms Hotel for the same purpose. The 40 & 8 Society of the American Legion will assemble and conduct their business sessions at the Metropolitan Hotel.

Drum and Bugle Corps and Bands, from every part of New Jersey, will compete for cash awards in field contests to be held on Saturday morning, September 11. The convention will terminate with a mammoth street parade beginning in mid-afternoon on the 11th, and continuing until early evening.

His Gasoline Tax Plan for Vet Bonus

Emphasizing that he and his organization were not opposed to a state veterans' bonus, Herbert W. Voorhees, president of the New Jersey Farm Bureau and chairman of the New Jersey Highway Users Conference, today denounced the proposal to increase the state gasoline tax as the chief means of financing such a measure.

In a letter to members of the Legislature, Mr. Voorhees solicited their support in opposing the plan which he said would disgrace the very principle and ideal of a veterans' bonus.

"Since World War II we not fought especially for the highway users, how could anyone justify singling out the highway users to pay the biggest part of the bonus for the men and women who New Jersey who fought in the war?" he asked.

First Church of Christ, Scientist 232 Springfield Avenue, Summit, N. J. A branch of THE MOTHER CHURCH, THE FIRST CHURCH OF CHRIST, SCIENTIST, in Boston.

SPRING SONG PITTSBURGH PAINTS LOOK BETTER LONGER!

SUN PROOF PRE-SEASON PAINT WEEK PLAN NOW FOR EXTERIOR PROTECTION You can't buy better outside house paint than Pittsburgh Sun-Proof.

WALLHIDE COLORFUL INTERIORS Paint long lasting beauty into your home with Pittsburgh's Vitelized Oil Base Wallhide. One coat covers most any surface.

FLORHIDE REFINISHING OF SHABBY FLOORS For floors that keep their shining beauty longer use Pittsburgh Florhhide.

WATERSPAR PAINTING OF OUTDOOR FURNITURE Redecorate furniture and woodwork with Pittsburgh Waterspar Enamel. Is suitable for interior or exterior use.

For Best Results on all Surfaces PITTSBURGH PAINTS LOOK BETTER LONGER!

KARLIN'S PAINT and WALLPAPER CO. 254 Morris Avenue Springfield, N. J. WINDOW SHADES Telephone ML 6-2099 VENETIAN BLINDS FREE DELIVERY

HARM'S BROS. 19-23 Morris Ave. Mi. 6-4213. Week-end Savings FRIDAY AND SATURDAY ONLY VEGETABLES Florida Juice Oranges 1 doz. 29c Broccoli bunch 25c FROZEN FOODS Fordhook Lima Beans 39c Mixed Vegetables 27c Green Lima Beans 41c Fancy Peas 28c Spinach 25c GROCERIES Flagstaff Coffee, No. 1 can 56c Apricots, large can 25c Flagstaff Grape Jelly, 12 oz. jar 21c Sterling Salt, 2 1/2 lb. boxes 11c Golden Corn, No. 2 can 21c Sliced Beets, 2 No. 2 cans 19c Standard Peas, 2 No. 2 cans 29c MEATS Bacon, Sugar-cured, sliced, 1/2 pound 35c Chuck Roast, lb. 63c Cottage Ham, lb. 83c Fowl, lb. 49c We Carry a Complete Line of Fruits and Vegetables OPEN SUNDAYS 10 A. M. - 1 P. M. - 1 P. M. - 7 P. M. No Parking Worries Free Delivery

Veteran's Queries Q. A letter from a man in Burlington County says, "Will I be permitted to reinstate my United States Government Life Insurance policy which has lapsed for eight months, although I am not in good health as a result of a service-connected disability incurred in World War I?" A. Section 304 of the World War Veterans Act, 1924, states that a veteran who is not in good health and who has a service-connected disability arising from the World War, may apply for reinstatement of his United States Government Life Insurance within two years after the date of lapse, provided he is not totally and permanently disabled and submits proof to the Administrator of Veterans Affairs to that effect. Q. "Where the veteran has had two periods of service, the last terminated by a dishonorable discharge, may a flag be issued?" A. Yes, the veteran is entitled to a flag if he was discharged under conditions other than dishonorable from one period of service, even though his last period of service was terminated by a dishonorable discharge. Q. Does the age of World War I and World War II veterans affect the amount of compensation or pension paid to them? A. Compensation is not affected by pension for non-service-connected permanent total disability is increased upon reaching age 65. Q. From Sussex County comes a query, "Will the cost of travel incurred by a veteran, or provided by a friend, to effect veteran's admission to a hospital, be refunded?" A. Yes, if travel was authorized by the VA in advance of the travel. Q. A man residing in Hunterdon County writes, "Does a veteran, upon receiving his civilian position receive any promotional benefits to which he would have been entitled had he not entered the armed forces?" A. Yes, he shall be re-employed in any position to which, according to the records of the agency, and according to the promotion regulations then in effect, he would have been promoted if he had not been absent to perform military or naval service. Q. I have a discharge from the draft of World War I. May I consider myself a veteran? A. For the purposes of laws administered by the Veterans Administration in order to be classified as a veteran, you must have had active military service during a time of war. A discharge drafted is not considered to have had such service.

Get Your Ice Cold Beer From Harms Brothers BALLANTINE RHEINGOLD TROMMERS R. & H. BREIDTS SCHMIDTS RUPPERTS STAGMEIER HENSLERS FIELDS FOX-HEAD 400 HEIRLOOM PRIOR PERFECTION HARMS BROS. 19-23 Morris Avenue Springfield No Parking Worries We Deliver Phone Mil. 6-1157

KoolShade SUN SCREEN YOU CAN'T BEAT Install KoolShade on every sun-exposed window for cooler living this summer! With Our California Redwood Combination Storm Windows You Will Get Year Around Comfort and Convenience. Note These Valuable Features: Cut summer room heat as much as 15 degrees. Reduces winter fuel cost up to 33 1/3 per cent. Prevents fading of drapes and furnishings. Eliminates need for awnings or venetian blinds. Provides better insect protection. Inside operable—no ladders—no climbing. Tongue and groove construction for weather-stripping effect. Ideal for Porch Enclosures. BONDING INSULATION & CONSTRUCTION COMPANY. 321 Millburn Avenue, Millburn, N. J. - MI. 6-4316

Home Improvement Loans at 5% Discount ON A 36-MONTH PAYMENT PLAN Amount You Receive You Repay Monthly \$ 300. 9.58 \$ 500. 15.97 \$ 800. 28.50 \$ 1500. 47.91 Other Amounts Up to \$2500. At Same Rate Loans to Repair or Storm Damage at 4% Discount Any home-owner of good character with steady income may borrow on own signature. If inconvenient to come in for interview Phone Mr. Bolme, Summit 6-4096 The FIRST NATIONAL BANK and Trust Company of Summit

BONDING INSULATION & CONSTRUCTION COMPANY. MAIL THIS COUPON TODAY FOR FREE DEMONSTRATION. Bonded Insulation and Construction Co. 321 Millburn Ave., Millburn, N. J. Please send me without obligation your representative for KoolShade Sun Screens. Name: Address: City: State:

(Open Thursday Evening Until 11)

NEAR THE UNION LINE



Whenever You're
"In The Dark"
About Local Events
There's No Better
Authority Than Your

SPRINGFIELD SUN

Editorially it is always on
the alert to serve the best in-
terests of the community.

Its advertising columns keep
you straight on the available
merchandise and prices

SERVING THE
FAMILY AND
COMMUNITY

THE
SPRINGFIELD
SUN

NEWSSTAND COPIES 6c

YEARLY SUBSCRIPTION \$2.50

Prize Trap Shoot Planned on Sunday

Union County Trap and Shoot Club will make its first prize shoot, Sunday, May 23, at the Union County Park traps, Kentworth Boulevard, Cranford, a combination event, with a double popular appeal.

The entire receipts from the shoot, including proceeds from a souvenir program, will be donated to Union County Chapter, American Cancer Society, according to T. A. Manning, of Union, chairman of the shoot, while in the afternoon, there will be a dedication ceremony for a new flagpole and flag which the shooting club is giving to the Union County Park Commission.

Sanctioned by the National Shoot Association, shooters will toe the firing line at 11 a. m. There will be a trophy for overall high gun, as well as first, second and third awards for Classes A, B, C, and D, according to qualifications.

Presentation of the flag and pole and the flag-raising program will be at 2 p. m.

Ranking trap, and skeet shots from all over the state have expressed interest in the event and have endorsed the benefit angle by indicating they will enter.

Club officers are: President, D. G. Tomkins, Summit; vice-president, Mr. Manning; treasurer, John Brooks, Hillside; and secretary, William McCracken, Union.

Others on the shoot committee include: Barney Ebnarich, Union; Walter Jain, Cranford; William Butts-Ellizabeth, R. W. Weaver, of Summit, and G. A. Reichert, Elizabeth, who will be chief referee.

Early Detection Of Cancer Noted

Early detection of cancer is steadily increasing in New Jersey as the result of cooperation of doctors and clinical pathologists, Dr. L. S. Sniegoff, medical director of the New Jersey Division, American Cancer Society, said today.

Of the 1600 family doctors who have signified their willingness to conduct complete health maintenance examinations, over 1400 also are cooperating with the society's biopsy program, Dr. Sniegoff said. Under this plan the cancer society makes available tissue specimen containers, and necessary fixative to doctors, who send specimens to pathologists of their choice for diagnosis. While definite figures are not now available, many cases of cancer have been detected early through the biopsy program, the society reports. The time lapse between suspicion and diagnosis is also reduced.

The program has the approval and wholehearted cooperation of the Advisory Committee on Cancer Control, Medical Society of New Jersey, and the New Jersey Society of Clinical Pathologists. Early diagnosis is the key to successful control of cancer with present-known methods of treatment. Where clinical diagnosis is difficult or doubtful, a biopsy is the procedure which removes doubt and leads to the greatest opportunity for the treatment of cancer.

Winners in Derby



Springfield's 1948 scooter cart contest, held Saturday morning in Bryant avenue, attracted scores of spectators. Participants were members of the township's various Cub Scout Packs. Winners, left to right, as shown above were: Howard Mason, Curtis Merz, Eddie Kelsey and John Barr. Prizes will be awarded at a later date. (Photo by Ormond Mesker)

Military Academy Exams Are Slated

Representative Clifford P. Case announced today that July 12 has been selected for the designation examination to be given by the United States Civil Service Commission to assist him in selecting his nominees for the United States Military Academy for the class entering in July, 1949.

This examination is open to residents of Union County, which comprises the Sixth Congressional District of New Jersey.

The examination will be given in Elizabeth. However, for the convenience of applicants, it may be given also at various other places, pursuant to special arrangements between the applicant and the congressman. If an applicant is a member of the armed forces, located outside of the continental United States, the examination will be given, under the supervision of his commanding officer, wherever he may be stationed.

All persons desiring to take the examination should communicate directly with Representative Case at Room 239, House Office Building, Washington, D. C.

Candidates for the Military Academy must be not less than seventeen years, nor more than twenty-two years of age at the time of admission to the academy, except any appointee who has served honorably not less than one year in the armed forces of the United States during any of the present wars may be admitted between the ages of seventeen and twenty-four years.

No appointments to the United States Naval Academy will be available to residents of the Sixth Congressional District for the class entering in July, 1949. However, it now appears that there will be two and possibly three appointments to the Naval Academy available to residents of the district for the class entering in July, 1950.

GETS 30 DAYS
Robert M. Thompson, 28, also known as John Gill Martin, was sentenced this week by Recorder Spinning to 30 days in County Jail. Thompson's home is in Seattle, Washington. The defendant was charged with disorderly behavior after his arrest Monday night in a tavern at 250 Morris avenue by Patrolmen Pinkava and Lamb.

**STORES OPEN FRIDAY
NIGHTS UNTIL NINE**

Looking Into Yesteryear

From Files OF THE SUN

Five Years Ago
H. G. Merry resigned from the Regional High School Board of Education at the regular meeting of the Board. He was senior representative from Garwood and his three-year term would have been completed next February.

A farewell party in honor of Rev. John Wood, former assistant to the pastor of the Presbyterian Church, who was ordained this week and is leaving Springfield for an assistant pastorate in Duluth, Minn., was held in the Chapel.

Because of the enforced holiday last winter caused by lack of oil supplies to heat the Raymond Chisholm School, students at that school must continue classes until June 25, while students at James Caldwell will begin their summer vacation June 22, it was decided by the Board of Education.

Miss Annabel M. Cunningham, daughter of Mrs. Mary T. Cunningham of 75 Tooker avenue, was among the graduates from State Teachers College, Upper Merionide during its exercises last week.

Ten Years Ago
Construction of a \$70,000 post office in the future was forecast by Congressional approval of the Federal Government's new three-and-a-half billion "pump priming" spending program.

Postmaster Otto Helm indicated that he will submit a proposal to the Township Committee to donate a portion of the Town-Hall green facing Flermer avenue, as a step in the direction of inducing

Federal authorities to erect a building in the township.

Dr. Watson B. Morris, local president, was elected first vice-president of the Medical Society of New Jersey.

Charged with needlessly killing a cat, Frank L. Schreter of Warner avenue was fined \$25 and \$2.95 costs by Recorder Everett Spinning in a case that attracted 40 neighbors to fill the quarters of the temporary courtroom.

The Board of Health voted to enforce a township ordinance prohibiting the roaming of stray dogs, starting June 1. Action was taken, following a complaint from George Jackson of Bryant avenue that dogs swarm over his garden and destroy plants.

No Tilly



NEW YORK—Pinball enthusiasts need not miss their favorite sport while travelling on a crack eastern railroad line. The game has been installed in the road's new "recreation car" for the amusement of passengers.

School Lunch Aid Reviewed in Report

School lunch programs in New Jersey have received nearly eight million pounds of food and more than one million dollars from the Federal government so far this fiscal year.

This was announced by J. J. Dittick, who is in charge of food distribution in this area for the United States Department of Agriculture's Production and Marketing Administration. Dittick reports that more than 145 thousand New Jersey children are now receiving benefits from the school lunch program—an increase of over 11 thousand pupils since November, 1946. He attributes this to improvements in the program in its second year of operation under the National School Lunch Act, and greater demands

for noon meals to be served at school.

New Jersey will receive a total of \$1,106,149 from Federal school lunch funds this year. This money must be matched by funds from state and local sources. New Jersey's share of the funds was determined by the number of children of school age and the per capita income of the state.

MARBLE EXPERTS TO SHOOT SATURDAY

Union County's marble-shooting experts were ruined out, Saturday, as they were about to compete for the county championships. The event has been rescheduled for this Saturday, 10 a. m., at Warinanco Park, Roselle and Elizabeth, the Union County Park Commission has announced.

STORES OPEN FRIDAY NIGHTS UNTIL NINE

Examination of the Eyes

DR. N. KRANTMAN

Optometrist

- Contact Lenses
- Phone Millburn 6-4168
- Hours Daily
- And by Appointment

321 Millburn Avenue
Millburn, N. J.
(Above Woolworth's)

Intrigues Male Movie Stars



Movie stars were intrigued by the fan-palm printed tuxedo swimsuit shown above as pictured in the May issue of Cosmopolitan magazine. It was selected as one of the winners at a Cosmopolitan Male-Tested Fashion Show at the Beverly Hills Hotel, Beverly Hills, Cal. The jury included George Murphy, Walter Pidgeon, Van Johnson, Robert Ryan, James Fitzpatrick and Frank Morgan. They also approved the bench coat by Takak of California, and three other swimsuits featured in the May issue.

"Highly"
Becoming . . .

our natural-looking permanent designed for you . . . we specialize in feather cuts.



We extend a cordial invitation to you
to visit our new and attractive salon.

LOUIS HAIRDRESSERS

243 Morris Ave., Springfield Mi. 6-4392

MARKET BOY

WE HAVE THAT CHANGE
OF FOOD FOR
SPRING
WHEN BLOSSOMS
BLOOM AND
ROBINS
SING!

Springfield FISH & PRODUCE MARKET
256 MORRIS AVE. (SPRINGFIELD, N. J.)
"QUALITY FIRST—SERVICE ALWAYS"
Charles A. Schaffranok, Jr.

An Invitation

A FUNERAL DIRECTOR can serve you best when he knows you and your family beforehand. Our Consultation Service exists for this important purpose . . . as well as for the opportunity it affords you to know us. We cordially invite you to talk to us now.

**YOUNG'S
FUNERAL HOME**
Alfred L. Young, Director
MILLBURN 6-0406
145-49 MAIN ST. - MILLBURN

Now! GENERAL ELECTRIC HOME FREEZERS

FOR
CITY
SUBURBAN
AND
FARM
USE

Whether you live in the city, town or country, you can enjoy frozen food any time you want it. Just reach into your spacious General Electric Home Freezer and choose what you want. Imagine having delicious strawberries in January or game food any time of the year . . . freezing fresh fruit pies and other delicacies many months in advance. Meat, frozen when fresh, remains fresh and flavorful for many months. The delectable freshness is retained, and is safely protected at ZERO temperature. A General Electric Home Freezer is a time-saving convenience, with fewer trips to the market or to your locker plant; is a labor-saving convenience because frozen food is so easy to prepare for the table.

TWO MODELS TO CHOOSE FROM

- The NA-4, four-cubic-foot model, holds up to 140 pounds of frozen food.
- The NA-6, eight-cubic-foot model, holds up to 280 pounds.
- No. 1 dial position is set for zero degree F. Lower temperatures may be selected.
- Interior depth within reach of even short persons.
- Positive window latch.
- Heavy wire baskets provide convenient shelving of frozen food packages.
- Vibraclose insulation for efficient storage and economy.
- Commerbalanced lid.

SEE THESE BIG, NEW GENERAL ELECTRIC HOME FREEZERS AT

Residence Construction Company

165 Morris Ave., Springfield Mi. 6-0458



206 Morris Avenue Springfield, New Jersey

ESTABLISHED SEPTEMBER 27, 1929

Official newspaper of the Township of Springfield and Borough of Mountainside.

A Smart Investment
There is general recognition of the fact that buying Savings Bonds is one of the best investments an American can make.

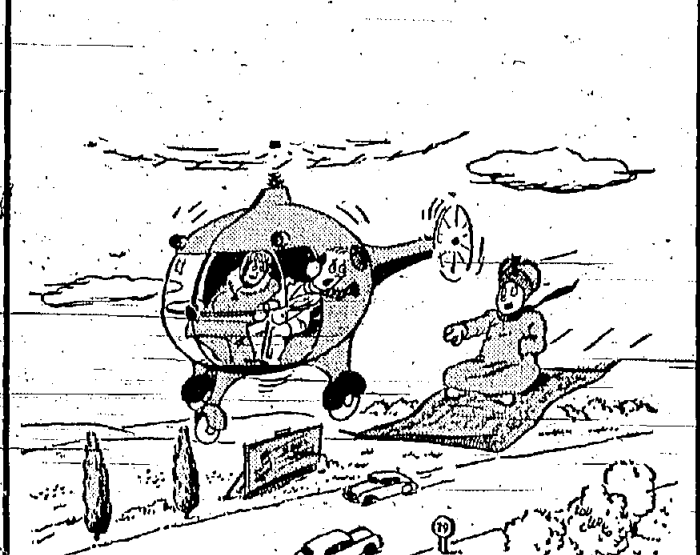
The three-day conference March 18-20 in Washington to decide sales goals and other final problems of the drive will be attended by public spirited leaders of groups expected to head up the volunteer selling organization.

INSULATION FIRM OPENS IN MILLBURN
Opening of branch offices in Millburn of the Bonded Insulation and Construction Company of Newark, was announced last week by Russell Goodman, manager.

BAZAAR!!
MAY 21
ST. STEPHEN'S CHURCH
Millburn, N. J.

RENT A TYPEWRITER
REPAIRS SUPPLIES

BEACON HILL CO.
239 MORRIS AVE. MI. 6-1250



For most people, the purchase of good rugs or deep pile broadloom is a major investment. Something that can't be decided by the flip of a coin.

SANDLER & WORTH
FINE CARPETS, RUGS & BROADLOOMS
ROUTE 29 AT SPRINGFIELD, N. J. (Phone Millburn 6-1929)

Church Notes

The Presbyterian Church
FRANCIS W. EVANS, Minister
9:45 a.m., Church School
11 a.m., Worship Service.

The Methodist Church

Rev. Charles F. Peterson, Minister
SUNDAY
9:45 a.m., Church School
11 a.m., Morning worship.

St. James Church

Springfield
Sunday Masses:
7:30 a.m.
8:45 a.m.
10:15 a.m.
11:15 a.m.

St. Stephen's Episcopal Church

Rev. Hugh W. Dickinson, Rector
8 a.m., Holy Communion
9:45 a.m., Church School and Bible Class.

St. John's Lutheran Church

Summit
Rev. W. S. Hinman, Ph.D.
Bible School Sunday, 9:45 a.m.
Worship 10:45 a.m., Sermon: "The Depth of the Riches."

First Church of Christ, Scientist

292 Springfield Avenue Summit, N. J.
FIRST CHURCH OF CHRIST, SCIENTIST
292 Springfield Avenue, Summit, New Jersey



EVERY 3 MINUTES SOMEONE DIES OF CANCER!
GIVE TO THE AMERICAN CANCER SOCIETY'S PROGRAM OF EDUCATION - SERVICE - RESEARCH - GIVE MORE THAN BEFORE

Girl Scout Corner

By TERESA DOHERTY
Camping registration by the local Association will close Monday, May 24. Leaders do not feel all the parents realize this, as registrations have been coming in slowly.

Parents, this is the last reminder! Take action now! If you wish to ask any further questions, call your daughter's leader or Mrs. Charles Frey, camp registrar, Millburn 6-0878-J. If you also Friday evening 7:30 - 9:30 and Wednesday Evening after Service, to 10 P. M.

These girls held their Court of Awards Wednesday in the Methodist Church study room. Many parents and friends attended. The list of awards will be given next week.

On Wednesday, May 20 at 8:15 p. m., this troop will hold its Court of Awards in the Methodist Church study room. Parents and friends are cordially invited to attend. An exhibit of the girls' work the past year will be on display.

Announcing The Opening of SPRINGFIELD AUTO PAINTING AND BODY REPAIRS, INC.
52-54 Springfield Avenue, Springfield

COLLISION, BODY and FENDER WORK PAINTING - SIMONIZING
Millburn 6-4355

Your Garden This Week

By Fred D. Gaman
Union County Agricultural Agent

Planting of perennials may be continued. If hardy chrysanthemums have roots formed on the new shoots, the old plants should be dug up, the rooted cuttings set 4 to 6 inches apart and the old roots thrown away.

Keep the cultivator going to kill weeds before they get a start. The soil should soon be warmed up enough to plant seeds of lima beans and a week after that, plants of tomato, pepper, eggplant, and such may be set out.

MRS. A. O. OSBORNE EX-RESIDENT, DIES
Mrs. Allene O. Osborne, mother of Mrs. Robert G. Smith, and grandmother of Robert, Roger and Barry Smith of 14 Henshaw Avenue, died recently after a long illness.

EXHIBITS WORK
James A. Clark of 186 Morris Avenue, is displaying his work as an artist in the Greenwich Village Outdoor Art Exhibit in New York City.

Stores Open Friday Nights Until Nine
You Are Invited To Attend A Free Public Lecture Entitled: "CHRISTIAN SCIENCE: THE REVELATION OF GOD'S HEALING SPIRITUAL IDEAS"

THE SUMMIT HIGH SCHOOL
Morris Avenue at Maple Street Summit, N. J.
TUESDAY EVENING, MAY 25, 1948
8:30 o'clock

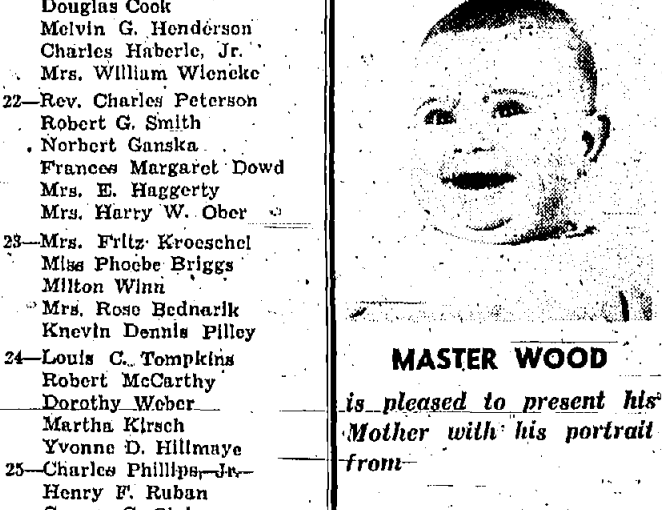
SQUARE DANCING Every Saturday Night
We Cater To Private Parties
Evergreen Lodge
Located in Singers' Park Springfield, N. J.

Our Great America



FLORIDA HAS A COASTLINE LONGER THAN ANY OTHER STATE - 12,077 MILES

HAPPY BIRTHDAY
21 - Clarence Buckalaw, Sr. Carl Torp, Jr. Douglas Cook Melvin G. Henderson Charles Haberle, Jr. Mrs. William Wlencke



MASTER WOOD is pleased to present his Mother with his portrait from THE SWAN STUDIO
308 Morris Ave. MI. 6-0497

NOW IS THE TIME!

SEND YOUR RUGS To BEDROSIAN for safe and thorough Cleaning and Storage
Phone Summit 6-0500
BEDROSIAN'S
428 Springfield Ave. Summit 6-0500



SQUARE DANCING Every Saturday Night
We Cater To Private Parties
Evergreen Lodge
Located in Singers' Park Springfield, N. J.
Millburn 6-1999 Millburn 6-0489

CLASSIFIED ADVERTISING

(6-IN-1 CLASSIFIED COMBINATION) Classified Advertising will be inserted in all six of the newspapers listed below for only seven cents per word.

80 ORANGE RECORD 5c. Or. 3-7070 MAPLEWOOD NEWS 5c. Or. 2-2322 CHATHAM COURIER 5c. Or. 4-0600

HELP WANTED—Female Help Wanted Male and Female

GIRLS! Telephone Work OFFERS \$32.00 A WEEK TO START For a Five Day Week

INTERESTING WORK FRIENDLY SURROUNDINGS PAY WHILE LEARNING and NO EXPERIENCE IS NEEDED

Call Chief Operator Apply—540—Broad St. Newark, N. J.

NEW JERSEY BELL TELEPHONE COMPANY

WHITE WOMAN, part time 2 days week \$1 hour. Maywood. SO 3-6422. GIRL or woman for general housework and helping with children.

WOMAN or young woman, knows a little sewing will teach the work, steady job, good salary, Call Belmont, 428 Springfield Ave., Summit, N. J. 4-1822.

SALESWOMAN wanted for general department store work. Good salary to start. Chatham Department Store, Chatham.

BOOKKEEPER and general office work. Full time, experience preferred. Good salary, pleasant surroundings. MI. 6-0342.

STENOGRAPHER, with telephone experience, for local office. Excellent salary. Pleasant surroundings. MI. 6-0342.

CLERKS - TYPISTS BOOKKEEPERS STENOGRAPHERS OFFICE TRAINEES

HELP WANTED—Male PORTER

FOR SALE 2-HOUSEHOLD GOODS KITCHEN CABINETS, metal or wood. FORMICA and Inoleum, sink type, backs to brick.

FOR SALE 11-BIRDS & PETS TWO black registered cockers left. Eight weeks old. Short Hills 7-2973-34.

FOR SALE 23-A-AUTOS FOR HIRE Hertz-Driv-UR-Self System Passenger cars and trucks to hire.

FOR SALE 24-CONTRACTORS GENERAL CONTRACTOR WALTER E. ENGLISH

FOR SALE 24-CONTRACTORS GENERAL CONTRACTOR WALTER E. ENGLISH

FOR SALE 24-CONTRACTORS GENERAL CONTRACTOR WALTER E. ENGLISH

FOR SALE 24-CONTRACTORS GENERAL CONTRACTOR WALTER E. ENGLISH

FOR SALE 24-CONTRACTORS GENERAL CONTRACTOR WALTER E. ENGLISH

FOR SALE 24-CONTRACTORS GENERAL CONTRACTOR WALTER E. ENGLISH

FOR SALE 24-CONTRACTORS GENERAL CONTRACTOR WALTER E. ENGLISH

FOR SALE 24-CONTRACTORS GENERAL CONTRACTOR WALTER E. ENGLISH

FOR SALE 24-CONTRACTORS GENERAL CONTRACTOR WALTER E. ENGLISH

FOR SALE 24-CONTRACTORS GENERAL CONTRACTOR WALTER E. ENGLISH

SERVICES OFFERED 31-MOVING-STORAGE EXPRESSING—TRUCKING, All Jersey

SERVICES OFFERED 32-PAINTING-DECORATING SCHMIDT & LANDWEHR

SERVICES OFFERED 33-CARPENTERS FRED STENGER, CARPENTER

SERVICES OFFERED 34-ROOFING-REPAIRS ROOF REPAIRING—ALL KINDS

SERVICES OFFERED 35-ELECTRICAL ELECTRICAL INSTALLATIONS REPAIRED

SERVICES OFFERED 36-FLOORING DELMAR—Floor Maintenance, Floor

SERVICES OFFERED 37-ROOFING-REPAIRS ROOF REPAIRING—ALL KINDS

SERVICES OFFERED 38-ROOFING-REPAIRS ROOF REPAIRING—ALL KINDS

SERVICES OFFERED 39-ROOFING-REPAIRS ROOF REPAIRING—ALL KINDS

SERVICES OFFERED 40-ROOFING-REPAIRS ROOF REPAIRING—ALL KINDS

SERVICES OFFERED 41-ROOFING-REPAIRS ROOF REPAIRING—ALL KINDS

SERVICES OFFERED 42-ROOFING-REPAIRS ROOF REPAIRING—ALL KINDS

SERVICES OFFERED 43-ROOFING-REPAIRS ROOF REPAIRING—ALL KINDS

Public Willing to Pay for Progress in Hospital, Overlook Poll Shows

Residents of the communities served by Overlook Hospital are almost unanimous in their belief that hospital standards in this area should keep abreast of the most advanced medical practice, even though costs be increased.

Reporting on the second analysis of returns, Ridley Watts, chairman of the committee appointed by the trustees of the hospital, said today: "It is beyond question that the people of Summit and nearby communities want to benefit from the great progress which is now being made in medical science and hospital care."

Among the voluntary comments in the questionnaires so far returned, Mr. Watts cites the following as typical: "The hospital has served our needs in the past. I think more emphasis should be given to cleanliness in the rooms and the provision of adequate nursing service."

"If you do not have a minimum x-ray treatment for cancer patients, it should be installed in the hospital. I think both are very necessary."

"Overlook Hospital seems to be well staffed but the physical plant is entirely inadequate and impractical in structure for the uses which are required of it."

STORIES OPEN FRIDAY NIGHTS UNTIL NINE

REAL ESTATE TRANSFERS

USED SCREENS Factory Built 2 35 1/2" x 37"



Mr. and Mrs. Francis A. Patton to Mr. and Mrs. Helmut C. Bolger, property in Baltusov way, 47.48 feet from Baltusov avenue, Springfield, N. J.

Mr. and Mrs. Arthur L. Betz to John Novak, Jr., property in Baltusov way, 136.26 feet from boundary line between Township of Springfield and City of Summit, Springfield, N. J.

Mr. and Mrs. Joseph Currid to Mr. and Mrs. Frank W. Wehrle, property in Shunpike road, 108 feet from Mountain avenue, Springfield, N. J.

Mr. and Mrs. W. Louis Morrison to Mr. and Mrs. Harold C. Ednal, property in Lyons place, 124 feet from Salter street, Springfield, N. J.

REAL ESTATE CLASSIFIED

MOUNTAINSIDE

Phone Westfield 2-6078

Jean H. Hershey, Reporter

SUN SPOTS

REAL ESTATE FOR SALE - 1-SUMMIT HOME SEEKERS CHOOSE YOUR HOME IN SUMMIT

REAL ESTATE FOR SALE 2-SUMMIT VICINITY SUMMIT SUBURB

REAL ESTATE FOR SALE 20- MADISON Now Ready for Inspection

REAL ESTATE FOR SALE 50 WEST CHANGE DELIGHTFUL new home, 6 rooms

SEE ANY SUMMIT REALTOR A COUPLE of generating ago one of our very substantial

A GOOD BUILDING LOT 1/2-acre building lot not gone up in price yet

SUMMER RENTALS ARE available with a new - perhaps a temporary stop-over while you shop

WE HAVE BUYERS FOR houses and lots in South Orange, Maplewood

Mountainside Students Participate In Annual Field and Track Program

MOUNTAINSIDE - At the annual Field Day program held Tuesday in Mountainside School

Elect Mrs. Weber Library Bd. Head MOUNTAINSIDE - Mrs. Henry Weber was elected president of the Board of Trustees of the Mountainside Library

Boro PTA Renames Mrs. F. H. Stedman

MOUNTAINSIDE - Mrs. F. H. Stedman was re-elected president of the Mountainside School Parent-Teacher Association

MEMORIAL SERVICE PLANS BEING MADE

MOUNTAINSIDE - The Blue Star Unit 388, American Legion Women's Auxiliary, made plans for a Memorial Service to be held at the Borough Hall

Social Activities At Mt Side Chapel

MOUNTAINSIDE - A social that turned into a surprise going away party for Mr. and Mrs. Deway Knoll

WASTE PAPER DRIVE SET BY TROOP 70

MOUNTAINSIDE - Sunday, May 23, has been set for the waste paper drive by Scouts of Troop 70

Mountainside Calendar

May 23 (Sat) - WASTE PAPER COLLECTION, Boy Scout Troop 70. May 24 (Sun) - Memorial Day. School closed all day.

UNEXCELLED VALUE NEW LIVING 142 well constructed white Colonial, 6 rooms

VILLAGE FARM with older residence in excellent neighborhood

SMALL GOLF COURSE 7 years old, exceptionally well built

COMFORTABLE VILLAGE home on the best lot in the area

MODERN BUNGALOW Living room with fireplace, bedrooms

BUNGALOW 5 rooms and bath, A-1 condition, 2-car garage

CHARMING 3 bedroom Dutch Colonial fireplace in living room

3 ROOM APARTMENT FURNISHED, JUNE 15 TO SEPTEMBER 15

MODERN BRICK COLONIAL built for 3 families

CHARMING HOME on several acres, high on a hill

FARM, country home, situated acreage, beautiful property

5 ROOM APARTMENT FURNISHED, JUNE 15 TO SEPTEMBER 15

VERY ATTRACTIVE bungalow, 8 years old, 3 bedrooms

MODERN BRICK COLONIAL built for 3 families

CHARMING HOME on several acres, high on a hill

5 ROOM APARTMENT FURNISHED, JUNE 15 TO SEPTEMBER 15

VERY ATTRACTIVE bungalow, 8 years old, 3 bedrooms

MODERN BRICK COLONIAL built for 3 families

CHARMING HOME on several acres, high on a hill

5 ROOM APARTMENT FURNISHED, JUNE 15 TO SEPTEMBER 15

HAPPY BIRTHDAY

Rev. Milton F. Ashby, clergian Sunday School, 9:45 a.m. Morning Service, 11:45 a.m.

MARKETING

Are you planning to head for your favorite picnic spot this week-end? Then now's the time to head for the big round-up of picnic foods at your thrifty A&P

BREADS FOR SPREADS

Please call for good sandwiches, so call for MARVEL bread at any A&P whenever there's an opening in the rolling

SPORTS

Service Insurance Details Explained

Many of our veteran readers have sent in questions concerning the designation of beneficiaries on their National Service Life Insurance.

Notifies the Veterans Administration of such change. Since any event such as the death of a beneficiary, the insured's marriage, or the birth of a child, may affect the distribution of the insurance proceeds, it is to the best interest of the veteran to keep his designation of beneficiaries up to date.

Spring Liberation Of Quail Reported

New Jersey's spring liberation of bobwhite quail designed to increase the game bird population in the State should aid considerably in boosting the popularity of the annual upland game season.

The Council plans to liberate 3,000 quail in covey lots of eight birds per covey within the next few weeks in ten counties of New Jersey. All birds will be banded. The date of liberation will be set by Superintendent Edward Roth of the State Quail Farm at Holmansville.

The insured may name one or more contingent beneficiaries and he may designate that they are the first, contingent, second contingent, etc., to receive in that order any remaining proceeds of the insurance in the event of the death of the preceding beneficiary.

The insured may select more than one of the available options for a beneficiary or he may even elect that the proceeds of his insurance be paid under different options to different beneficiaries.

In Atlantic, Burlington, Camden, Cumberland, Gloucester, Monmouth and Ocean counties, fifty-five coveys of quail totaling 440 bobwhites will be released on open lands this spring for the benefit of sportsmen.

The schedule does not include birds to be allotted to field trials, the State Fish and Game Council announced. After the field trial allotments have been made, any remaining quail will be distributed to the southern counties of the state on an equal basis.

Beginning May 7th, all Springfield storekeepers will remain open Friday evenings until 9 o'clock, sponsored by the Chamber of Commerce.

Regional High News

By JANET GOODWIN The Gideon Society of Essex County has provided New Testaments to be distributed by the main office to all students who are interested in having them.

for the speaking roles were conducted during and after school this past week by Miss Kelly and Miss Betty McCarthy, but no selections have been announced as yet. The graduation exercises will be held on June 17.

But some of the seniors have managed to cogitate. Evie Geljack, David Ott and Austin Van Pelt, the members of the Commencement planning committee, having been busy working on this year's program. They have decided, with the aid of Miss Claire Kelly, that the theme is to be "Memories of Regional."

The seniors are not the only ones taking a trip this week. Miss Charlotte Lehnert's second period biology class went on a field-trip to the Bronx Zoo, Museum of Natural History and other points of interest today. They were transported to New York by chartered bus, and returned home in the same fashion.

Eagles Win Opener In Softball Game

The 1948 edition of the Springfield Softball League got under way Tuesday evening. The Rialto "Clippers" and "Eagles" tangled for nearly six innings before darkness halted the game.

The "Eagles" wasted no time in showing the crowd it is the same hard-hitting club which came so close to winning the play-offs last year. It won by a 7 to 14 score. The "Clippers" batted first, and garnered one run from Tompkins, the "Eagle" pitcher.

Beginning May 7th, all Springfield storekeepers will remain open Friday evenings until 9 o'clock, sponsored by the Chamber of Commerce.

Shoe Pitchers to Battle on June 6

Entries close Thursday, June 3, for the John Rosseter Memorial Tournament, to be held at the Warminster Park courts, Roselle and Elizabeth, on June 6. The event is being conducted by the Union County Park Commission in cooperation with the New Jersey State Horseshoe Pitchers Association.

Rosseter, a resident of Elizabeth, lost his life in Germany two days before V-E Day. As a horseshoe pitcher, he won the Union County championship from 1937 to 1942, and competed in state and national tournaments, being rated with the best pitchers in the country.

The annual pike and pickerel season is the forerunner of the popular bass season which opens on June 15. Opening of the bass season, which also concludes on November 30, will complete the total number of open fishing seasons in New Jersey as the trout season has been underway since April 15.

Our Great America by Mack



THOMAS ROOSEVELT AT 42 WAS THE YOUNGEST MAN TO BE INAUGURATED AS PRESIDENT OF THE UNITED STATES

LEGAL ADVERTISEMENTS

Take notice that application has been made to the Mayor and Borough Council of the Borough of Mountaintop, New Jersey, to transfer to William Muter trading as The Tower Inn, the tavern liquor license...

LEGAL ADVERTISEMENTS

PUBLIC HEARING ZONING ORDINANCE Mountaintop, N. J. NOTICE IS HEREBY GIVEN that a public hearing will be held by the Board of Zoning Adjustment...

Box Score

Table with columns for team names (Eagles, Clippers) and individual player statistics (at-bats, runs, hits, errors).

Canada, Fishermen's Paradise



CANADA, coast to coast, is a fisherman's paradise. Its lakes and rivers teeming with game fish including eastern brook trout, lake trout, Atlantic and tye salmon, muskellunge, smallmouth black bass, large mouth bass, muskellunge, northern pike, walleye pike, steelhead, rainbow and Kamloops trout.

PICKEREL SEASON WILL OPEN TODAY

New Jersey's pike, pickerel and pike-perch season opens today to become the second fishing season of the year to be open to anglers.

LEGAL ADVERTISEMENTS

TOWNSHIP OF SPRINGFIELD COUNTY OF UNION SYNOPSIS OF AUDIT REPORT FOR CALENDAR YEAR 1947 CONDENSED CONSOLIDATED BALANCE SHEET - DECEMBER 31, 1947

LEGAL ADVERTISEMENTS

TOWNSHIP OF SPRINGFIELD COUNTY OF UNION CONDENSED CONSOLIDATED SURPLUS ACCOUNT FOR 1947 Balance December 31, 1946

LEGAL ADVERTISEMENTS

TOWNSHIP OF SPRINGFIELD NOTICE OF HEARING Notice is hereby given that the Board of Adjustment of the Township of Springfield, in the County of Union...

Advertisement for 'Beauty is as Beauty does' featuring illustrations of women and a large 'Beauty' logo.

Vets' Subsistence Checks to Increase

Springfield veterans and others presently enrolled in full time institutional training will receive an increase in subsistence allowance in the checks they will receive on or about May 15. This increase in most cases will be handled automatically by the Veterans Administration and will work like this:

Canada, Fishermen's Paradise

CANADA, coast to coast, is a fisherman's paradise. Its lakes and rivers teeming with game fish including eastern brook trout, lake trout, Atlantic and tye salmon, muskellunge, smallmouth black bass, large mouth bass, muskellunge, northern pike, walleye pike, steelhead, rainbow and Kamloops trout.

LEGAL ADVERTISEMENTS

TOWNSHIP OF SPRINGFIELD COUNTY OF UNION SYNOPSIS OF AUDIT REPORT FOR CALENDAR YEAR 1947 CONDENSED CONSOLIDATED BALANCE SHEET - DECEMBER 31, 1947

LEGAL ADVERTISEMENTS

TOWNSHIP OF SPRINGFIELD COUNTY OF UNION CONDENSED CONSOLIDATED SURPLUS ACCOUNT FOR 1947 Balance December 31, 1946

LEGAL ADVERTISEMENTS

TOWNSHIP OF SPRINGFIELD NOTICE OF HEARING Notice is hereby given that the Board of Adjustment of the Township of Springfield, in the County of Union...

LEGAL ADVERTISEMENTS

TOWNSHIP OF SPRINGFIELD NOTICE OF HEARING Notice is hereby given that the Board of Adjustment of the Township of Springfield, in the County of Union...

and NEW JERSEY Does it Well!

The twentieth century has seen the cosmetic industry in America become one of the most fascinating, scientific and remunerative of businesses. In the past ten years it has doubled itself, reaching a peak in 1946. A recent survey for that year sets the national consumption at \$477,872,425 retail value.

WARRNER'S MILLBURN

NOW PLAYING THRU SATURDAY DICK POWELL - SIGNE HARSO To the Ends of the Earth Co-Feature A Woman's Vengeance Charles Hoyer - Jessica Tandy

STRAHL

Springfield Ave. Su 6-3000 Mat. 2:00 - Eve. 7:00 8:45 Cont. Sat. and Sun. from 7 P. M.

Lurie

Beechwood Rd. Su. 6-2079 Mat. 2:00 - Eve. 7:00 8:00 Continging Sat. 3:00, 7:00 P. M.

WRITE YOUR OWN CLASSIFIED AD THE SPRINGFIELD SUN 206 Morris Ave., Springfield, N. J.

Table for classified ad rates showing word counts and charges for various publications like Springfield Sun, South-Orange-Record, Chatham-Courier, etc.

PUBLIC SERVICE advertisement with a map of New Jersey and contact information for the Public Service Commission.

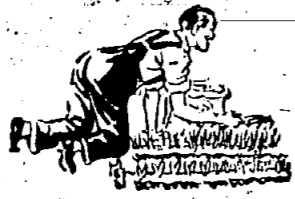
Advertisement for Warner's Millburn featuring a woman's vengeance and other theatrical works.

Advertisement for Strahl featuring a woman's vengeance and other theatrical works.

Advertisement for Lurie featuring a woman's vengeance and other theatrical works.

Advertisement for 'Write Your Own Classified Ad' with a detailed table of rates and contact information.

EXPERT ADVICE FOR HOME GROWING



Suburban Gardening



NOTES ON CLUBS AND GARDEN NEWS

Thinning System May Double Garden Harvest



THIN OUT EXCESS plants gradually, and allow the best plants to live, using discards for table when possible.

When a beginner in gardening has sown seed, and rejoiced in the quick appearance of numerous sturdy seedlings...

With rare exceptions, he has started too many seedlings for the space available to them.

Too often this task is shirked, and the plants engage in a struggle for existence which prevents the normal maturity of any.

There is no satisfactory way to avoid thinning. It can be reduced by sowing thinly, but the hazards of seed germination are so great that allowance must be made for the failure of some, by sowing two or three-times as many seeds as there is room for mature.

Select Best Plants. When too many come up, be thankful, and consider the thinning out as an opportunity to select the best plants as the ones to survive.

For best results, thinning should be done gradually. In case of a crop which grows best when the plants stand four inches apart, do not at first thin it to one-plant for each four inches. There are two reasons for this.

First, many vegetables, such as carrots and beets, are most delicate when half-mature. By thinning at first only enough to insure that each stands well alone in the row and then allowing them to grow awhile, many will soon reach the stage when they can be harvested for the table.

Work by Stages. Second, it is foolish to discard

EVERYTHING FOR YOUR GARDEN. Quality evergreens, trees, shrubs, flowers, fruit trees raised in and for this climate. Also seeds, fertilizer—all at reasonable prices.

Plant Now

AZALEAS LAUREL and Rhododendrons

J.H. Schmidt & Son, Inc. MORRIS TURNPIKE MILLBURN

Special! ROSE BUSHES 3 FOR \$1.00. Let Us Assist You In BEAUTIFYING YOUR GROUNDS WITH EVERGREENS - SHRUBBERY POTTED AND HARDY PLANTS ANNUALS ALSO SELECTION OF VEGETABLE PLANTS CUT FLOWERS WAYSIDE GARDENS HARRY G. KENNEDY, Prop. Open Evenings Until Dark 54 MORRIS TURNPIKE SUMMIT

Prune Dying Twigs to Avoid Fungus Disease

As the leaves come out on the trees this spring, observe the dead and dying twigs and branches. These are danger signals. They call for prompt action—proper pruning—before it is too late, advises Dr. R. P. Marshall.

First signs are small, round, red pustules. This is the beginning of the invasion of the live tissues of a tree. Later on this fungus penetrates the tree, causing unsightly cankers, deforming the tree, sometimes killing it.

Owners of trees should be especially watchful for dead and dying branches this spring, Dr. Marshall cautions, "because of the severity of the past winter. Ice has injured many small and large limbs. Twigs and branches may have damaged wide areas. Low temperatures have made the cambium, or growing layer of a tree weak. Terminal twig growth also may be sparse."

Sanitation, which means proper pruning of all dead and diseased twigs is the best means of controlling necrosis. "But it must be done as early as possible this spring," Dr. Marshall says, "be certain to eliminate all jagged wood and paint wounded surfaces with an approved antiseptic tree paint."

Feeding a tree substantial amounts of a well-balanced organic tree food will promote vigorous growth and restore a tree's vitality.

YOUR GARDEN THIS WEEK

R. E. Harman

Large evergreens, old shrubbery and shade trees also need food. Most gardeners feed their flowers and vegetables at least once a year. We can scarcely understand their reasoning when the same folks will plant an evergreen and then won't feed it for the next 10 or 20 years.

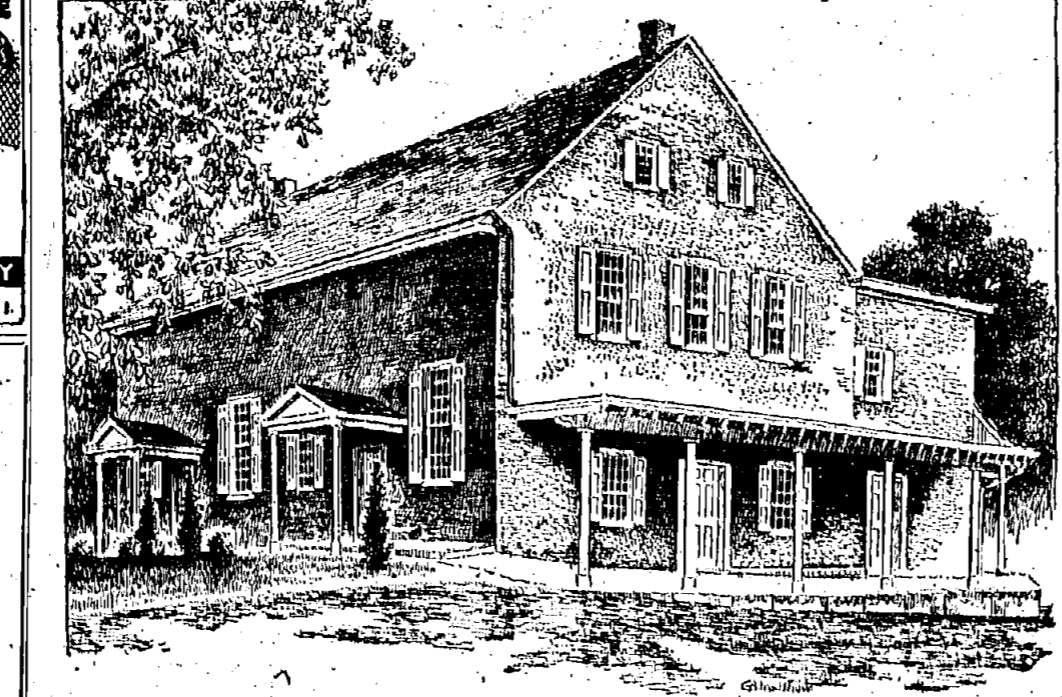
Rhododendrons, Mountain Laurel and Azaleas, particularly, have shallow roots and prefer an acid soil. Therefore, digging around them injures the roots and lime is toxic to this type of evergreen.

Balding the leaves, their natural food, away from under the plants also leaves the roots subject to the drying winds of summer and will tend to dry out the plants. Where leaves are considered unhealthily, a light covering of soil will improve the appearance. Injuries caused by these practices may not be noticed for several months but sooner or later they will show the results of these improper practices.

Overweight may actually be a serious menace to health. Insurance company records show that the length of life is reduced seriously in persons who are overweight. Overweight, although sometimes caused by a glandular condition, is very often caused by overeating.

KNOW NEW JERSEY

By G. A. BRADSHAW



Moorestown Meeting House, Burlington County. This old Meeting House, undoubtedly the oldest place of public worship in Moorestown, was built in 1802. The first Meeting House was a small log affair built before 1700 and burned in 1729. It was replaced by a larger stone building which accommodated the Quaker families of the neighborhood until the closing years of the century when it became evident that a still larger building was needed.

Watchung Dogwoods Sprout Blooms



THOUSANDS OF DOGWOODS are displaying their seasonal blooms in the Watchung Reservation.

Spray Elm Trees Now for Best Results

May is the month the beetles arrive. They begin a chain-like reaction that, unless stopped by man, may result in serious injury or death to his prized elm tree.

The great defoliator is the elm leaf beetle. These beetles, reports O. W. Spicer, have been known to destroy an entire crop of young elm leaves in early summer.

"The tree may then develop new leaves," he says, "but at considerable expense of vitality. But these too may be devoured by the beetles."

When they deposit their eggs on the under side of the leaves. These are in tiny yellow clusters. Each cluster contains 30 or 40 eggs. One female beetle can lay 600 eggs, Mr. Spicer says.

"The eggs hatch out in early June and the destruction to the leaves begins with renewed vigor."

An arsenate of lead spray applied now in early May will help control the adult beetle. But this spray must be repeated in early June to catch the young larvae as they ravenously feed on the leaves.

Where shrubs winter-killed there will be much dead wood in the spring. This should be removed.

General George Washington wrote his "Farewell Address" to the Army in New Jersey at the Berrien House, Rocky Hill.

Properly Cared for Shrubs Are Source of Beauty

Properly cared for, ornamental shrubs are a real source of beauty on your home grounds. The tasks to be performed in keeping them vigorous and in good form are not many, and they are quite simple.

During the first season, newly planted shrubs must be watered during dry periods. A hose should be turned on the bed and allowed to run slowly until the soil is thoroughly soaked. Or, if you prefer, apply a bucket full of water to each shrub occasionally.

Mature shrubs should be fed in spring and twice again before August 15. One rounded tablespoonful of complete plant food (Vigoro) should be worked into each square foot of space around each plant.

Larger bushes, like lilacs, snowball, spruce, weigela, dogwood etc. should be fed only once during the summer—in late June. Holes 8 to 10 inches deep and 1 1/2 inches in diameter should be made around the bush in zigzag fashion. Two handfuls of a mixture of half plant food and half soil should be placed in each hole. Afterwards, fill holes with soil and water.

If two of the older stems are removed to the ground each year, a shrub may be kept open and bushy and the new growth will be able to develop its normal form. Such shrubs as Hydrangeas, Honeysuckle, Forsythia, Privet and Sumac may be cut back to the ground every so often and new growth thinned to proper form.

These shrubs which bear blossoms on new growth in late spring or summer should be pruned in late winter or early spring. Shrubs which bear blossoms on last year's wood should be pruned soon after blooming. Still others should be pruned lightly after blooming and again lightly in the spring. Your nurseryman will give you valuable advice on just when you should prune your shrubs.

Garden sorrel is a hardy perennial which will live over winter and produce greens. It does best in light shade.

Kale is a fall and winter plant, sown in June, the plants set out in rows two feet apart, they will produce leaves which stand freezing, and are improved in flavor by that experience. Collards are a member of the cabbage family which do not make heads, but leaves with cabbage flavor.

DORMANT TB. Many people have TB germs in small quantities lying dormant in their bodies. If the natural resistance is lowered, the germs begin to develop and increase. Poor recovery from acute respiratory disease such as pneumonia, influenza, grippe, and colds will lower resistance and provide ideal conditions for an outbreak of the germs.

More than \$4 billion has been spent on veterans' education and training since 1945—more than half of it last year.

SCREENED TOP SOIL \$5.00 per Yard Well Rotted MANURE Also HYPER-HUMUS I. F. FEINS 2440 Morris Ave. Union UNVL 2-3500

Your Suburban Garden

By Alexander Forbes

In planning your garden have you considered the added delight you might have from the fragrance of your flowers? There are many perfumed varieties which may be enjoyed through a long season.

One of the first plants of sweet fragrance to scent the air is Epigaea repens, the not too easily established trailing arbutus. A planting of Dutch hyacinths in the border not too far away will delight you. These may be supplemented by viola odorata, the fragrant violet, and arabis alpina, the sweet scented rock cross.

Daphne Cneorum Exels One of the really choice garden perfumes comes from Daphne Cneorum, the garland flower. A display of real beauty with its pink blossoms in May, contrasting with the deep foliage, its sweet fragrance gives it double value.

There are many more fragrant garden subjects including flowering shrubs and trees. But try some of those mentioned this year. Some are readily grown from seeds, others are available as plants. There is nothing more satisfying than a nicely planned display of color and fragrance in your garden.

And don't overlook the lilacs such as candidum, the Madame Lily in June and July, the Regal Lily in July and August, and the pure white varieties, in August and September.

Many Annuals are Sweet Scented Every garden has room for annuals. Choose some for their fragrance, such as snapdragons; sweet sultan or centorea imperialis; dianthus chinensis—the Chinese Pink; candytuft; sweet peas, matthiola, mimulus moschatum, nigella, the annual phlox drummondii and be sure to include Nicotiana glauca, the white flowering tobacco. Plant this close to your house so that its perfume

Holland first introduced Chibbles into England in 1875.

Specializing in LAWN, LANDSCAPING and AMESITE DRIVEWAYS SHORT HILLS LANDSCAPING 716 MORRIS TURNPIKE - SHORT HILLS Tel. SH 7-3200

Complete Spring Planting Now With Azaleas, Rhododendrons and Laurels RALPH C. PORTER, JR. LANDSCAPE DESIGN AND CONSTRUCTION 6 Morris Turnpike Su. 6-9699 Summit, N. J. Evenings Su. 6-2748

ANNOUNCEMENT! We are pleased to inform Home Owners, Business Firms, and others, that we have been awarded the IDEAL DEALERSHIP giving complete service on these fine power mowers. We Have In Stock The Caretaker—\$820.00 The New 20" Victor—\$284.00 Whippet 21"—\$160.00 T. R. WOODRUFF SALES AND SERVICE For Ideal Mowers • Speedex Garden Tractors Retailers • Garden King 3 and 5 Hp. 108 MAIN ST. (Opp. Gulf Station) CHATHAM PHONE CHATHAM 4-6848

Lauds Efforts of Private Home Builders

By JOHN S. WRIGHT
Executive Secretary
New Jersey Home Builders' Association

Since the landing of the Pilgrims, America has been known for its homes and its citizen's pride in home ownership. The home-building industry is one of the largest industries in the country and holds a very important position in our national economy. Those people that take pride in home ownership have proven to be our best citizens and their children grow up to be our outstanding leaders in business, industry and government. Home ownership is the greatest contributing factor in the development of our fine residential communities, which are the envy of the entire world. The pride of home ownership maintains a high standard of living, is the largest factor in maintaining and stabilizing real estate values, creates interest in civic affairs and is the owner's greatest asset and security.

Since World War II the demand for homes in this country has greatly increased. More citizens of our country desire their own home today than ever before. It was apparently every GI's dream while he was at the front to return to his own ideal home.

The Home Builders of this country since the war have done an amazing job in the production of home units. Over 400,000 were produced in 1946, and in 1947 after restrictions were lifted they built over 300,000 units. This was accomplished against very discouraging odds. 1—Shortage of materials. 2—Black market distribution of materials. 3—Shortage of labor and the low productivity of labor which was caused in part by restrictive labor practices. New Jersey Record Good New Jersey can be proud of the splendid part it has played in this production record. New Jersey has also maintained a higher standard of construction and a better value per cubic foot. There were nearly 20,000 housing units produced in the state during 1947.

The housing problem in 1948 now becomes a paradox. There seems to be more houses and apartments available than there are buyers or renters. This is caused in part by an unfair comparison between present day and pre-war costs. Building costs will never reach the level that existed

between 1938 and 1939 and it should be recognized that most present day homes being offered are a far better value than those offered during the 1920's. The Home Builder is a fabricator of innumerable items and the cost of these items is out of his control. As a matter of fact the higher the cost goes the builder is forced to take a smaller profit. It seems reasonable to believe that in view of our foreign program and Government's buying for peace time preparedness, that the costs of construction will not be substantially reduced.

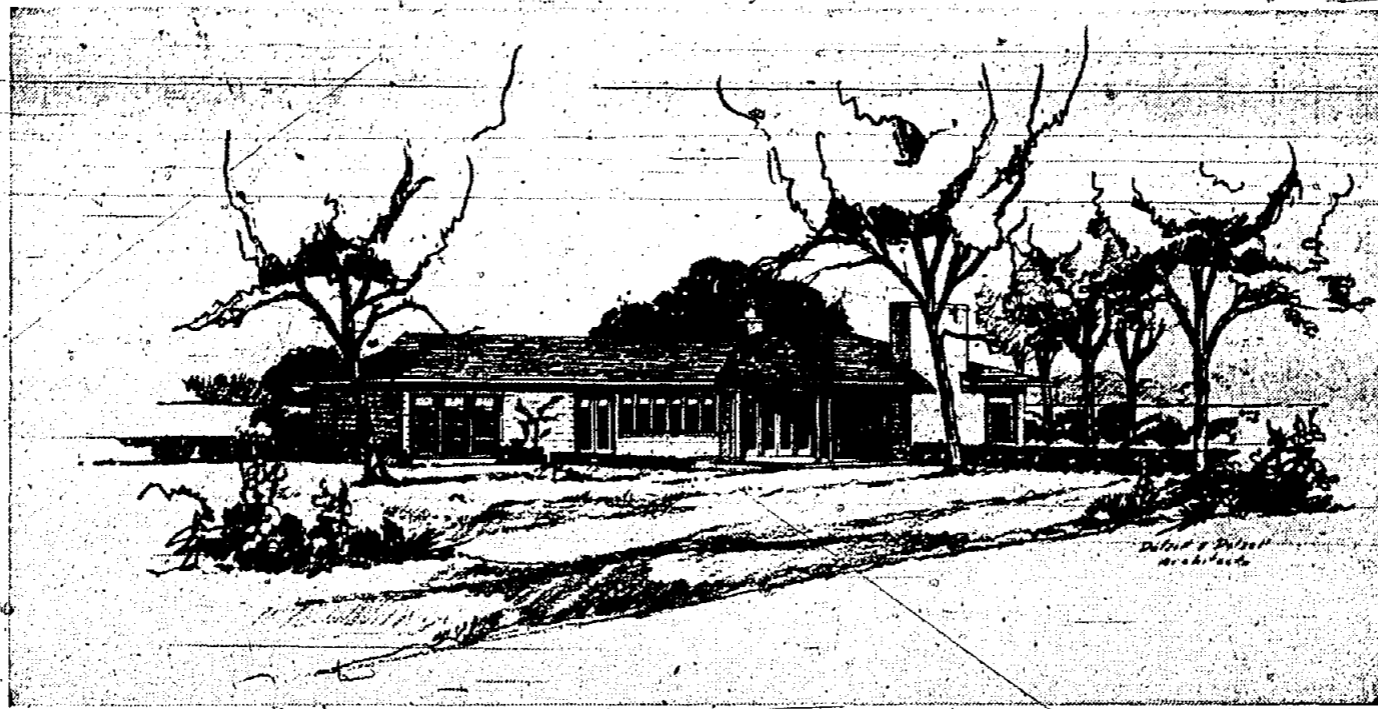
The Home Builders of New Jersey through their association, are working to eliminate other conditions and restrictions that contribute to increased costs. The factors that must be corrected in order to produce more and better housing for the public at the lowest possible cost are:

- 1—Feather bedding and restrictive practices on the part of labor.
- 2—The introduction of minimum uniform building and plumbing codes.
- 3—The amendment of restrictive zoning ordinances in order that they are in keeping with present day changes and public demands.
- 4—The correction of pyramiding profits in the distribution of materials and the relief of taxes levied against real estate.

All these changes can be made without decreasing quality or disturbing values.

Public Has Influence The public has a great influence on the use of new modern methods and materials. They should keep an open mind and accept new materials and methods that have U. S. Bureau of Standards approval and can be successfully worked into the architect's design and will contribute to better housing.

One Floor-It's Easy to Keep Up



THE ONE-FLOOR plan of this house simplifies work for the housewife and makes informal entertaining a pleasure.

By K. WHITNEY DALZELL, Jr.,
Short Hills Architect

Editor's Note: This is the first in a series of articles by local architects in which each will demonstrate an approach to the problem of designing a home to meet individual family needs.

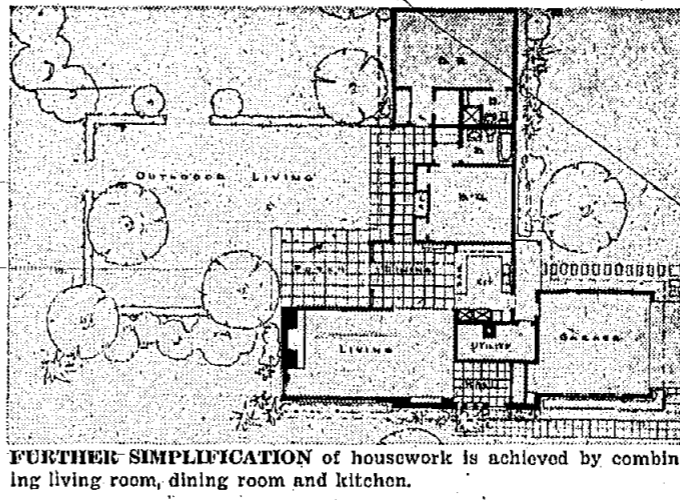
"We have no children; no servants and don't intend to have either, but we do a lot of informal entertaining, a good bit of it out of doors, and I have to do all the cleaning up." These words of an East Orange executive's wife started the design of this house. Their site is a beautiful corner lot some 250 feet square. It's the front yard of an old estate with some 60 gorgeous trees around the perimeter and the old masonry and a wrought iron entrance gate still standing.

Obviously the house must be on one floor for simplified house work—no up and down stairs. Informal entertaining without servants made us take the bold step of combining living room, dining room and kitchen.

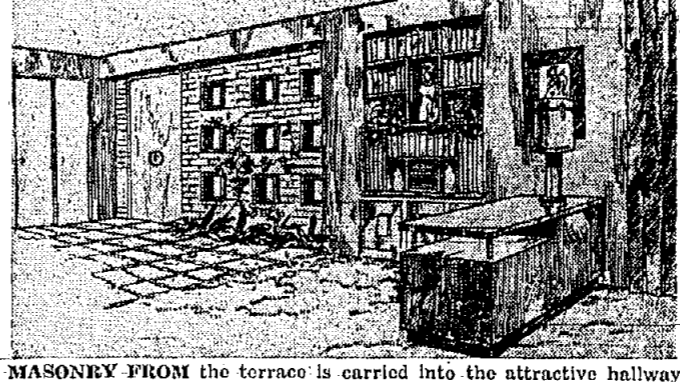
"Why should the hostess have to leave her guests and go into the kitchen like a servant?" asked our client's wife. Much of the living and entertaining is out of doors. This area is sheltered from the streets by the "L"-shaped plan and in order to express the lack of distinction between exterior and interior. Not only was glass used freely, but also the flagstone terrace and porches were carried inside the house. Masonry cannot be carried on wood and masonry on the earth is cold, therefore the house was radiant heated.

Roofing a bungalow is an expensive item for there is twice as much roof on a one-story house as on a two-story house. The built-up roof of felt and tar with a slag surface has been used for years in industrial buildings and is one of the few roofs that carries a 15 to 20 year manufacturer's guarantee. It costs half as much as slate, looks like the surface of a crushed bluestone driveway, and, though different, has proved very satisfactory.

This house, a far cry from the cramped Colonial cottage of our forefathers, is convenient and modern. Its one-floor plan saves steps and the plywood interior, second-hand brick exterior and unpainted aluminum sashes not only give a soft, friendly appearance but also require a minimum of maintenance. It is a modern house for convenient, comfortable living.



FURTHER SIMPLIFICATION of housework is achieved by combining living room, dining room and kitchen.



MASONRY FROM the terrace is carried into the attractive hallway.

Modern Design In Furniture By LEO MIRANER Industrial Designer

The recent furniture market openings revealed many double action, triple threat, furniture designs which fulfill two or more functions in the home. Considerable care has been taken by the designers not to make these pieces or gadgets "arty." They are, in most cases, modern adaptations of well-known period furniture designs. Rich dark woods are featured as well as smooth light finishes. Let's take a look at some of these two-in-one pieces. For example, there is a round, leather covered coffee table of handsome and very generous proportions which not only serves its original purpose but conceals in its interior a secret compartment. The cunningly hidden cache offers a secure holding place for the small apartment dweller, as it is large enough to hold the family strong box or a chest of silver.

Less Dramatic Type There are other ingenious pieces of furniture of a less dramatic type. A well-designed modern step table, in rich mahogany, is the perfect bedside companion. It not only serves as a lamp-table, but when the drawers are pulled out, they reveal a completely equipped sewing cabinet. Another now-you-see-it-now-you-don't, cabinet is cleverly combined with a modern magazine rack. The conventional exterior gives no hint of the well-stocked sewing box. I believe these are truly functional pieces and fairly worthwhile contributions to today's living. They are decorative and useful. The average homemaker, living in small quarters, is often without any suitable place to keep her vitally necessary sewing material. True efficiency of design is present in combining a utilitarian object in a decorative article of furniture.

Let's take a look at some of these two-in-one pieces. For example, there is a round, leather covered coffee table of handsome and very generous proportions which not only serves its original purpose but conceals in its interior a secret compartment. The cunningly hidden cache offers a secure holding place for the small apartment dweller, as it is large enough to hold the family strong box or a chest of silver.

Do Your Floors SAG?

Cracked Plaster? Doors Bind? These dangers indicate weak or uneven interior building support. Correct these conditions permanently.

Phone BL 2-3675 (Day or Evening) for FREE Analysis and Estimate

EXPERT WORKMEN TO DO YOUR REPAIRS

Illustrated Post Supports 100,000 lbs. Adjust-a-Post Co. 27 NEW JERSEY ST. Franklin St. Newark

Maplewood Authority Explains Radiant Heat

Editor's Note: The following article was written by Herbert J. Woolley of Short Hills. He has been studying the subject of heating systems for years and has recently completed a new office on Burnet Avenue, Maplewood, where radiant heating is installed.

Radiant heating is the most important development in heating during the last century and has many advantages over older more conventional arrangements; two main advantages being economy of operation and evenness of heat. Heretofore we have had radiant heating in fireplaces, pot stoves, etc., but all had the common fault of a relatively small high temperature surface which caused drafts because of wide differences in air temperatures within the room. The word radiant as applied to heating describes the emission of heat rays from any warm surface to a cooler surface. Interestingly a body may radiate heat to a cooler one even if both are below freezing temperature.

Differs From Older Method For its success—radiant panel heating, in contrast to older heating methods, depends upon a large area of radiating surface at only slightly higher temperature than the body. Preferably panels should be located in ceilings or side walls. Heat waves emitted from these surfaces travel in all directions striking floors, walls, and furniture. As these surfaces are warmed, radiation from the human body is slowed down and body comfort achieved.

Often the question is asked whether ceiling panels are effective since warm air rises, but in radiant heating no attempt is made to warm the air. Rather the air is indirectly warmed by heat emitted from ceilings and walls. The effect of radiance can be best illustrated by the difference in body comfort in winter time when one walks first on the shady side of the street then on the sunny side. When standing in sunshine one is comfortably warm but on moving into the shade there is a sensation of chilliness because the sun's radiant rays have been cut off.

Heats Evenly With this system copper tubing of 3/4-inch in diameter is coiled in various patterns and fastened to

Orange ALUMINUM Screen & Storm WINDOWS DOORS PORCH ENCLOSURES CLIMATE CONDITIONING COMPANY, INC.
1616-78 Springfield Avenue Maplewood, N. J. SO 3-2000

Why... DO 600 FAMILIES LIVE YEAR 'ROUND AT Packanack Lake

THE ANSWER: Gracious country living with club and lake privileges plus 45 minutes commuting N. Y. and Newark.

- \$13,200: Early American Farm House, 19' living room, full dining room, kitchen, 2 master bedrooms and tile bath upstairs.
- \$13,900: Cape Cod Colonial bungalow, 19' living room, 2 bedrooms, tiled bath, kitchen, dining and breakfast nook.
- \$14,500: Authentic center hall colonial, 20' living room, full dining room, 15' efficiency kitchen, 3 bedrooms and bath, 19' living room, full dining room, kitchen, lavatory and maid's room first floor, 3 master bedrooms, one 19' and bath.
- \$18,500: Spacious reception hall, powder room and lavatory, kitchen and 30' combination dining-living room with two picture windows, upstairs 3 bedrooms and bath.

OR—will build on contract from your plans and specifications or ours. All homes oil fired, air conditioned, copper tubing, 4" Rockwool, tiled basins, garage, porch, permanent drive, fireplace, granite, sealed, double and triple windows. Dry wall construction or plaster walls optional.

OWNER-BUILDER ON PREMISES DAILY AND SUNDAY
L. C. LARSEN CONSTRUCTION CO.
112 Chestnut Drive Mountain View 8-2052M
Packanack Lake, N. J.

DIRECTIONS: Route 23 to 112 Chestnut Drive—Packanack Lake. Turn right and left sign to 112 Chestnut Drive for key to model homes.

For Ideal Country Living

SMOKE RISE

THIS BROCHURE tells the story of Smoke Rise—unique and complete in every detail—30 miles from New York. This 3000 acre tract of lake and woodland beauty is the setting for a growing community where people are living among neighbors of similar tastes, culture and social standing. Land—one acre minimum—and house built to your own specifications \$22,500 to \$60,000. Club plan.

For brochure send to
THE SMOKE RISE COMPANY
Kinnelon Borough - Butler Post Office - New Jersey
Telephone Butler 9-0045

STORAGE-MOVING

STORAGE... for your valued possessions in clean, fireproof, modern facilities.

MOVING... across the street or to any place in the world... van—rail—boat.

SOUTH ORANGE STORAGE CO.
Dependable Since 1889

ALLIED VAN LINES, Inc.
No. 1 on the highways

219 Valley St. South Orange, N. J.
SOUTH ORANGE 2-4000

Wet Cellar CURE

ATLAS WATERPROOFING COMPOUND Applied by reliable ATLAS Service

- Efficient
- Economical
- Permanent
- Guaranteed

Atlas Waterproofing Co.
11 Hill Street Newark, N. J. MA-3-0845 OR 5-4704

BUYING A CAR? SELLING A CAR?

LOW FINANCE RATES!

If you are buying—or selling a new or used car... we will finance the transaction for you, confidentially and quickly.

Fidelity Discount Corp.
833 Springfield Avenue Irvington, N. J. Es 5-3000

THINKING of SELLING or BUYING a Home?

We invite you to list your requirements with our sales department. Our contacts experience and knowledge will prove most profitable to you.

NEW JERSEY REALTY CO.
Realtor

830 Broad St., Newark 1 Market 3-4305
Sales—Leasing—Mortgage Loans

TERMITES

are flying again. Watch for "Swarms" of "Flying Ants" that come with Spring, shed their wings, then disappear. These wood destroying insects are causing considerable damage to property throughout New Jersey.

Buildings not protected at the time of construction may require it later. We protect buildings during or after construction, using dependable methods.

We maintain a Technically Trained Staff devoting their full time to the protection of buildings against decay and termites and we attack the problem from an engineering angle. We are not simple exterminators.

Our work is thorough, dependable, and guaranteed in every respect. Every job is personally supervised by an experienced, technically trained, licensed engineer.

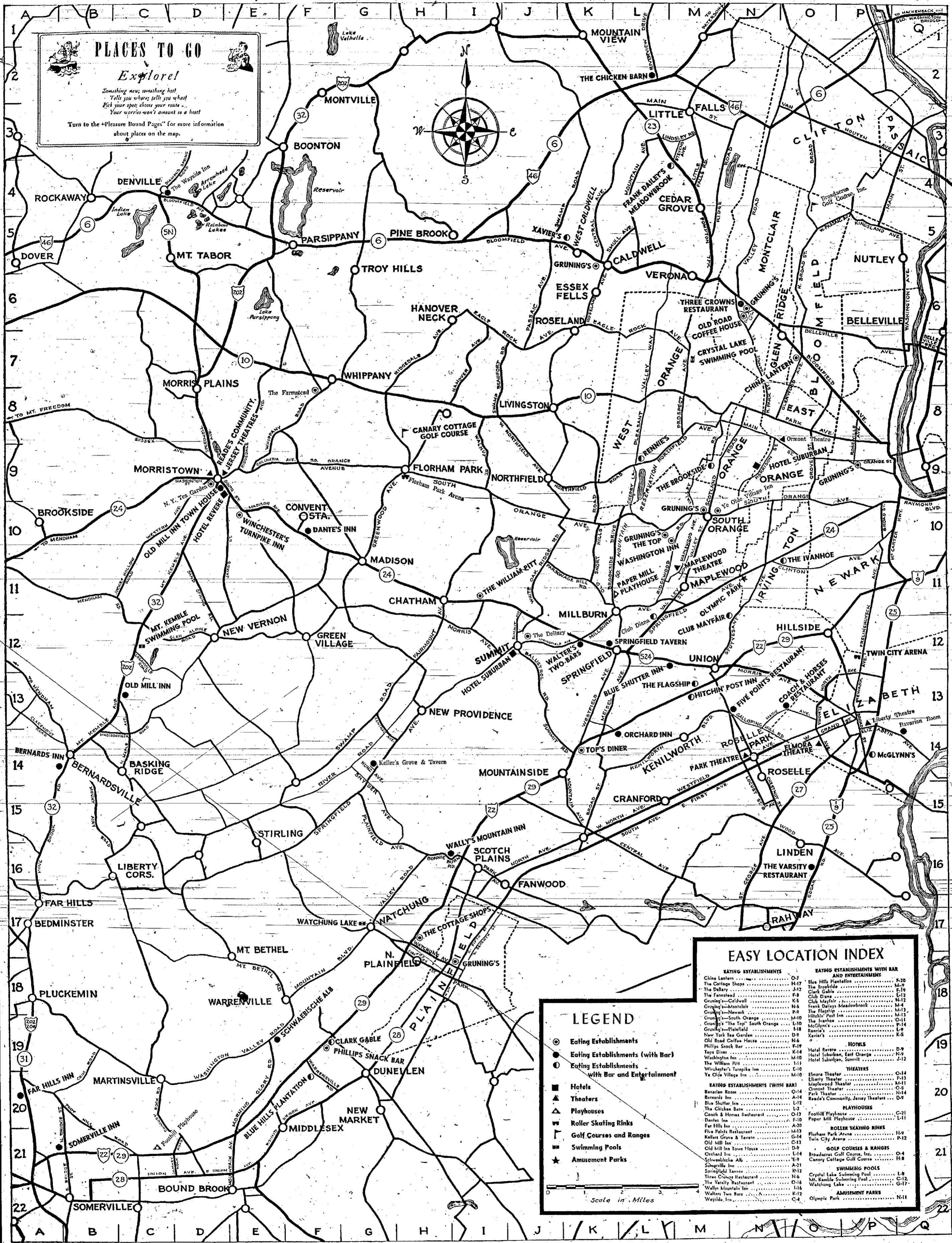
17 years of successful service to New Jersey property owners.

Protect Your Property Now—Delay Might Prove Costly.

WE GIVE: FREE INFORMATION... FREE INSPECTION OF PROPERTY...

TERMITE CONTROL BUREAU
ROSELLE PARK, N. J. ELIZABETH, N. J.
Telephone ROselle 4-1492
MANY LOCAL REFERENCES ARE AVAILABLE

PLACES TO GO
Explore!
 Something new, something hot!
 Tell you where, tell you what!
 Pick your spot, choose your route...
 Your worries won't amount to a hoist!
 Turn to the "Pleasure Bound Pages" for more information
 about places on the map.



LEGEND

- Eating Establishments
- Eating Establishments (with Bar)
- Eating Establishments with Bar and Entertainment
- Hotels
- ▲ Theaters
- ▲ Playhouses
- Roller Skating Rinks
- Golf Courses and Ranges
- Swimming Pools
- ★ Amusement Parks

Scale in Miles

EASY LOCATION INDEX

EATING ESTABLISHMENTS	EATING ESTABLISHMENTS WITH BAR AND ENTERTAINMENT	THEATERS
China Lanterns C-7	Blue Hill Plantation E-20	Elmore Theater C-14
The Cottage Shops H-17	The Brookside M-9	Maplewood Theater C-13
The Dairy J-12	Club Diane M-12	Orion Theater C-14
The Farmstead G-8	Club Diane M-12	Park Theater C-14
Gruning's - Caldwell K-5	Frank Dairy's Meadowbrook M-13	Read's Community Service Theater C-21
Gruning's - Montclair K-6	The Flagship M-11	
Gruning's - Newark K-9	Hillside Post Inn C-11	
Gruning's - South Orange K-10	The Innkeeper M-14	
Gruning's - The Top, South Orange K-10	McGlynn's M-14	
New York Tea Garden D-9	Ranney's M-14	
Old Road Coffee House E-19	Yankee's K-5	
Phillips Snack Bar E-19		
Top's Diner K-14	HOTELS	
Washington Inn M-10	Hotel Ravine D-9	
The William Pitt L-11	Hotel Suburban, East Orange N-9	
Winchester's Turnpike Inn E-10	Hotel Suburban, Summit J-12	
Ye Old Village Inn M-10		
		PLAYHOUSES
EATING ESTABLISHMENTS (WITH BAR)		Foot-Hill Playhouse C-21
Bavarian Room C-14		Paper Mill Playhouse L-11
Bernards Inn M-10		
Blue Shutter Inn L-12		ROLLER SKATING RINKS
The Chicken Barn L-2		Floham Park Arena H-9
Cash & Hines Restaurant C-13		Twin City Arena M-12
Far Hills Inn A-20		
Five Points Restaurant C-13		GOLF COURSES & RANGES
Hilary Grove & Tavern C-13		Canary Cottage Golf Course H-8
Old Mill Inn C-13		
Old Mill Inn Town House D-9		SWIMMING POOLS
Orchard Inn E-19		Crystal Lake Swimming Pool L-8
Springfield Tavern M-12		Mt. Kemble Swimming Pool C-12
Three Crowns Restaurant M-12		Watching Lake G-17
Wally Mountain Inn L-14		
Walter's Two Bars M-10		AMUSEMENT PARKS
Waylde, Inn C-4		Olympic Park N-11

THEATER-RECREATION

The "Pleasure Bound" Page

DINING-NITE SPOTS

News and Views on Places to Go and Things to Do

YOU WILL FIND
EXCELLENT FRENCH-ITALIAN CUISINE
CIRCULAR BAR
PLEASANT, QUIET ATMOSPHERE
MODERATE PRICES

DANTE'S INN

ROUTE 24 - CONVENT STATION, N. J.
Have Your Cocktail On Our Open Porches
Overlooking Beautiful Gardens

SPECIALTIES - OXTON SOUP AU GRATIN - FROG'S LEGS
FLYING MIGNON - CHICKEN DANTE
MORRISTOWN-4-5060

FAR HILLS INN

Somerset's Finest Restaurant
ROUTE 31, SOMERVILLE, N. J.
Phone Som. 8-2166

Where the Men's Clubs meet - Lions Club - Kiwanis Club - Exchange Club - Rotary Club. Private facilities for Weddings, Banquets, Parties. Closed All-Day Monday.

PEDEFLOUS RESTAURANT

ESTAB. 72 YEARS
MOUNTAIN BOULEVARD, WATCHUNG
For a Delicious STEAK or CHICKEN DINNER WITH MUSHROOMS

HITCHIN' POST INN

Route 29, Union UNVL. 2-3170
Specializing in WEDDINGS • BANQUETS • PARTIES
Daily LUNCHEON DINNER \$1.25 and up

Club Mayfair

PRESENTS NITELY LARRY MILLBURN "King of the Solosax" and His Toy Instruments
We Cater to WEDDINGS and PARTIES

Schwaebische Alb

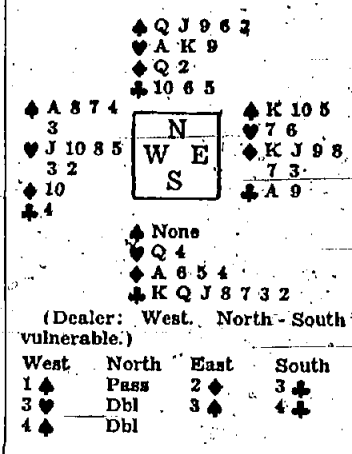
Enjoy a Good Home Cooked Meal AT THE WARRENVILLE, N. J.
For Reservations Phone Bound Brook 9-1219

We Invite You To Meet ... the TERRIFIC

Portrait of Georgie LANG at the PIANO Nightly CHESTNUT TAVERN
Serving Delicious STEAK DINNERS After 3 P. M. Continuous Entertainment Saturday Nights
Your Hosts: Malcolm MacRorie & John Callmano
CHESTNUT TAVERN 649 Chestnut St. Union, N. J.

BARCLAY ON BRIDGE By Shepard Barclay

A TIME TO BE HOGGY
Cupidity, if properly applied is an important tool in the kit-bag of the fine bridge player. It is not unsportsmanlike for him to use it, when the chance is offered. Part of the fun of the game lies in the fact that a good opponent uses the same weapon against him and he then gets his opportunity later to retaliate.



That contract was set exactly three tricks, for a score of 600 by North and South. The defenders got two tricks in trumps, three in spades and one in diamonds.

4-Spades into 6-Clubs, the contract was easy, despite the toughest possible lead, the singleton club to the A. Besides that, South lost only one trick, in diamonds, so made the game right on the head. Just notice also what might have happened in a 4-No Trumps contract, depending on what was led and how the ensuing play developed.

Jan Peerce To Appear at Opera Festival

One of many operatic stars who will appear in the Tenth Anniversary Opera Festival of the Griffith Music Foundation which starts next Thursday night with "Cavalleria Rusticana" and "Pagliacci", is Jan Peerce, recognized as a master of the Italian style of singing although he has never been abroad to study or perform.

That Eddie Cantor was first spotted in a West Coast musical comedy when Ziegfeld wired him to come east and join his "Midnight Frolic", and after he arrived he walked into the producer's office and Ziggy asked, "What do you do?"

Tops Diner To Have Grand Opening

Tops, new 87-seat diner, opposite the Somerset Bus Company Terminal on Route 29 in Mountaintide, has scheduled its grand opening for Thursday of this week. Guests that day, and for the two ensuing days, Friday and Saturday, will be given the opportunity of visiting the kitchen and basement preparation rooms to get a first-hand view of the equipment and organization behind the cooked meals that appear on their plates.

World's Championship PRO TENNIS
NEWARK ARMORY SUSSEX AVENUE
Wednesday Night - May 26 8:15
JACK KRAMER vs BOBBY RIGGS

THE MOUNTAINSIDE INN
on Route 29, Mountaintide near Echo Lake Park
Luncheon - 12 to 2 - 75c up
Dinner - 8 to 9 - \$1.25 up
Sunday 12 to 3
(Closed Monday)
Banquets and parties accommodated
Phone Westfield 2-2969

NOW OPEN! CRYSTAL LAKE PARK
"THE PLAYGROUND IN THE MOUNTAINS"
BOATING
KIDDIE RIDES
VARIETY AMUSEMENTS
PICNIC GROUNDS
EAGLE ROCK AVENUE AND PROSPECT AVENUE
WEST ORANGE - OR. 8-5203

DELICIOUS MEALS IN HOME-LIKE ATMOSPHERE AT YE OLDE VILLAGE INN
Luncheon 12 to 2 - Dinner 5:30 to 8
Sunday Dinner 12 to 3
139 So. Orange Ave. South Orange Phone 50 2-0768



WEAR A 27th ANNUAL SALE
V.W. BUDDY V.W. POPPY
Not more than 25 per cent of Norway is classified as habitable.

For Your Next Luncheon Date
Dinner From \$1.50 Open Daily at Noon
CHICKEN BARN
Route 6, East of 23 - Kotowa Boro Little Falls 4-0891

FLORHAM PARK ARENA
Ridgedale Ave. Florham Park, N. J. Madison 6-0465
Skating Daily 8 P. M. to 11 P. M. (except Mondays)
Matinee Sat., Sun. and Holiday 2:30 to 5 P. M.
Skating Classes Wed., Thurs. and Sun. evenings 11 P. M. to 12 midnite.
Jay Edvard, Professional
Ethel Hayward, Organist

'Hit The Air!' Play Miniature Golf
Fun for entire family
Obstacle Course
OPEN DAILY at 2 P. M.
WEEKDAYS till 6 P. M. - 20c game
HOLIDAYS & EVENINGS - 35c game
WIN-SUM GOLF
Route 23-Pompton Ave. Cedar Grove

Externally applied and internally administered drugs can cause an impressive variety of skin eruptions. For instance, phenobarbital, so useful for its sedative value or partial correction of insomnia, may cause a blotchy and itchy superficial dermatitis which appears on the shoulders, arms and torso. Penicillin may cause severe skin reactions in the form of giant hives. This can be controlled, however, by anti-histamine drugs.

RENNIE'S SOMETHING NEW-SOMETHING DIFFERENT
DINNERS
In Our BEAUTIFUL ROTUNDA GLASS-ENCLOSED DINING ROOM
OVERLOOKING THE RESERVATION
Entertainment Every Night By DAVID BULL At The Organ With BOB McKEVITT At The Piano
GRILLE ROOM
Private Room For Banquets With Bar
Excellent for Wedding Receptions and Parties
RENNIE'S
Cor. Northfield Ave. and Pleasant Valley Way OPPOSITE RESERVATION
West Orange Phone Orange 2-7756

VIC BROWN'S NEW DREAMLAND ARENA
988 FRELINGHUYSEN AVE., NEWARK
TELEPHONE BIGELOW 2-0448 - 0449
THE WORLD'S LARGEST UNOBSERVED ROLLER SKATING RINK
Roller Skating Every Evening, 7:30 to 11 P. M. Sat., Sun. and Holiday Afternoons, 2 to 5 P. M.
Floating Rotunda Floor - Beginners' Rink - Mystery Console Music - Roller Dance Classes
BOB AND BETTY LYTLE - PROFESSIONALS
RAY BOUGHNER - ORGANIST

ANNOUNCING THE GRAND OPENING - OF -
TOPS
97 SEAT DINER
ROUTE N. J. 29 - U. S. 22
Opposite Somerset Bus Terminal And 100 Yards To Echo Lake Memorial Park
MOUNTAINSIDE, N. J.
THIS WEEK-END THURSDAY MAY 20 FRIDAY MAY 21 SATURDAY MAY 22
GUESTS ARE INVITED TO INSPECT OUR KITCHEN AND FOOD PREPARATION ROOMS
"ONE OF THE WORLD'S FINEST AND BEST EQUIPPED"
ALL BAKING AND FOOD PREPARATION DONE ON THE PREMISES
UNDER THE DIRECTION OF LAURIE FOLKES, CHEF
Graduate of Domestic Science of The World Formerly Chef of American Yacht Club, NYC
SPECIAL BLUE PLATES AND FULL COURSE DINNERS
AMPLE PARKING SPACE FOR 100 CARS

THEATER-RECREATION

The "Pleasure Bound" Page

DINING-NITE SPOTS

News and Views on Places to Go and Things to Do

Soldiers and servicemen were able to take out their first Government Insurance policies during World War I.

WATER HEADS' MORRISTOWN MOVIE GUIDE

STARTS THURSDAY

The Love Story Of A Hero And Two Women!

CLARK GABLE

LANA TURNER

"HOMECOMING"

with ANN BAXTER JOHN HODIAK

The Team That Generates Steam

STARTS THURSDAY

The Screen's Most Terrific Duet Find Adventure In The Paris Of The Orions

LADD VERONICA LAKE

SAIGON

Wed. May 26th

England's Popular King of The Screen

JAMES MASON

"THE UPTURNED GLASS"

Rosamund John Pannelly Helline

Shown 7:30 - 9 p. m. Adults 75c. - Tax Included

RELAX IN THE TELEVISION LOUNGE

The Largest and Most Beautiful Television in North Jersey

SWIMMING'S FUN

in our fresh water pool... largest, cleanest, safest anywhere in the East... sunny, white sand beaches... refreshments, hair dryers... everything for your comfort



OLYMPIC PARK IRVINGTON - MAPLEWOOD

FOOTHILL PLAYHOUSE

On Route 29, Between Bound Brook and Somerville

WILL OPEN THE NEW SEASON ON WEDNESDAY, JUNE 2nd, at 8:30

PRESENTING "GEORGE AND MARGARET"

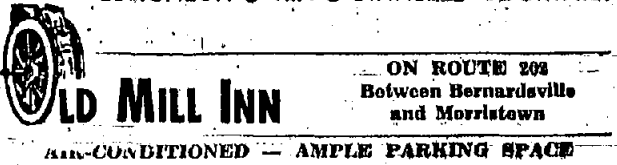
A HIGHLY ENJOYABLE 3-ACT FAMILY COMEDY

Tickets \$1.25 (Inc. Tax) or Subscription 4 Shows \$2.50

QUAINT, YET MODERN

IT'S DIFFERENT - RELIABLE - ENJOYABLE

See The NEW CYPRESS ROOM LUNCHEON • TEA • DINNER • COCKTAILS



OLD MILL INN ALL-CONDITIONED - AMPLE PARKING SPACE

When in Morristown Let's Meet at the TOWN HOUSE

For Cocktails, Soda or Delicious Dinner



OLD MILL INN TOWN HOUSE

40 PARK PLACE ON THE SQUARE Phone Morristown 4-0780

Nine years before the triumphal voyage of the "Clermont," Col. John Stevens of Hoboken had perfected a steamboat which had successfully run from Bellville to New York.

MAPLEWOOD

Now thru SATURDAY

Dick POWELL HARRY "TO THE ENDS OF THE EARTH"

Plus - Charles BOYCE "A WOMAN'S VENGEANCE"

SUN. - MON. - TUES. Mark HELLINGER'S "NAKED CITY"

Plus - "ADVENTURES OF CASANOVA" ALICE BACOPPOVA

Starting Wednesday The Academy Award Winner "GENTLEMAN'S AGREEMENT"

Plus - "Let's Live Again"

ONE OF NEW JERSEY'S MOST BEAUTIFUL THEATRES

Pictures, Plays and People

By PAUL PARKER

Review of the Week: If one were to judge pictures solely upon nobleness of motive, "To the Victor" would rate a top billing. Unfortunately for this film however, there are other standards for judgment such as ability of the actors and dramatic presentation.

This film, a story of black market operations in post-war France, gives the impression of at any moment turning into something above the usual "run-of-the-mill" movies. But that promise is never quite fulfilled and in the last analysis "To the Victor" turns out to be nothing more than a souped-up story of an unrealistic lot of international gangsters.

The motivation for the film is to demonstrate that the only victors in war are black marketeers and their like, and it condemns these scavengers for sowing the seeds of a third world war.

Donald Morgan plays the role of an American boy gone bad. A former army officer, he turns to the Paris black market for an easy buck after his discharge.

Morgan falls in love with an errant female, Vivona Lindfors, who has variously been wife of a black market chieftain, Nazi laboratorist and mistress of a police inspector.

Neither of these lovers gained much sympathy from this columnist as he followed them from Paris to Normandy and back again in an attempt to straighten out their tangled lives.

The plot is about as disjointed as the lives of the principal characters and betwixt the spouting of black market revolvers, there are a few fancy but unimpressive speeches concerning world conditions in general and possibility World War III all of which leaves you expecting more than you get.

Local citizens will be given a guided tour through New Jersey's newest giant diner "Tops," at its grand opening on Route 29 Mountaintop this Thursday, May 20.

So huge it blocked traffic in Elizabethtown three times while police and workmen struggled to twist it around corners on its trip to Mountaintop last February, the diner is twice as big as most and seats 97 persons.

Eighty tons of stainless steel and glass enough for a full-sized greenhouse went into its streamlined window-walls.

Open 24-hours a day every day, the diner's formal opening will start Friday and continue Saturday and Sunday. During that time, visitors will be shown through every corner from its curved glass-and-steel corners to round table eating to the walk-in refrigerators tall enough to admit a full-grown steer.

Laurie Folkes, formerly chef at the American Yacht Club, Rye, N. Y., is in charge of the kitchen. The newest wrinkle in the operation of the Maplewood Theater

Is the Patron's Suggestion Box? now in the theater lobby. It is the hope of the management that patrons will freely avail themselves of this opportunity to submit their opinions. Particularly of interest to the management is parent's opinion of the most suitable afternoon of the week for a children's matinee during summer months.

DRIVE-IN-THEATRE

Route 10, Morris Plains, N. J. MORRISTOWN 4-5312

SHOWS NIGHTLY STARTS AT DUSK

"RAIN OR CLEAR - LAST FEATURE 10:30" "NO PARKING WORRIES" "SMOKE IF YOU LIKE" "IDEAL FOR THE PHYSICALLY HANDICAPPED"



ON GIANT SCREEN

Tonight Thru Sat. Yvonne DeCarlo "SLAVE GIRL" In Technicolor "Secret of the Whirlwind" Is Beautiful!

Sunday Thru Tuesday Doug Fairbanks Jr. "THE EXILE" plus "When the Girl is Beautiful"

Wednesday (One Night Only) FAMILY FUN SHOW 7-11:30 Last Units - Comedies - Cartoons "Lana Skiff" "Moonlight"

Entertainment for the Whole Family

MIRACLE OF THE BELLS FRED MacMURRAY VALLI SINATRA

Paper Mill Playhouse MILLBURN N. J. Frank Carrington, Director "Telephone Booth Hills" X-3000

EVERLY DONALD CLARENCE WYCOFF * GAGE * NORDSTROM in the Sparkling Musical Romance

ROSALIE

RONNIE ALBERT MARY PETER CUNNINGHAM-CARROLL-DYER-BIRCH Made by SIGMUND ROMBERG and GEORGE GERSHWIN JOHN CHARLES SACCO Musical Director

MILLBURN INN

NOW SERVING LUNCHEONS 12 TO 2

DINNER - 5 to 8 - SUNDAY - 12 to 8 (Closed Tuesdays)

5 OLD SHORT HILLS RD. MILLBURN, N. J. MILLBURN 6-0928

THREE CROWNS RESTAURANT

Famous Swedish Smorgasbord with Luncheon and Dinner

Boh Quibny at the Grand Piano, with his Solovox from 8:30 to closing, Wednesday thru Saturday

Open until 2 A. M. Montclair 2-2254 John Porsson CATERING TO PRIVATE HOMES, WEDDING RECEPTIONS, ETC.

NEWSREEL THEATRE

MAIN AT PARK ORANGE CONTINUOUS DAILY - OR. 4-2321

CITY MEN PRISON WITHOUT BARS

THE TERRACE Cocktail Lounge WILL RE-OPEN MONDAY, MAY 31st For the Summer Months With GARDEN COCKTAIL SERVICE

HOTEL SUBURBAN 570 SPRINGFIELD AVE. SUMMIT

HUNT CLUB ROOM WILL CLOSE DECORATION DAY TO RE-OPEN LABOR DAY

HEARING AIDS AVAILABLE ORMONT ORANGE

DRIVE-IN THEATRE UNION

LIBERTY ELIZABETH 3-9295 HELD OVER!

ACADEMY AWARD PICTURE! GREGORY PECK DOROTHY McGUIRE JOHN GARFIELD

Gentleman's Agreement CELESTE HOLM - ANNE REVERE JUNE HAVOC - ALBERT DEKKER

LET'S LIVE AGAIN LATE SHOW SATURDAY NIGHT

FLAGSHIP RESTAURANT Now Serving Luncheons From 12 to 2 DINNER 5 TO 8 P. M. (SUNDAYS FROM 1 TO 9) (OPEN EVERY DAY)

the KORN KOBBLERS America's Funniest Band with their hilarious comedy, novelties and dance music that made them the sensation of New York for the past five years!

CECIL BENTZ AT THE ORGAN THE FLAGSHIP'S THE PLACE FOR BANQUETS and WEDDINGS

Flagship 29 CHARLES A. FITZE HIGHWAY 29 UNION, N. J. UNIONVILLE 2-3101 AMPLE PARKING SPACE

LIBERTY ELIZABETH 3-9295 HELD OVER!

*** NOW PLAYING ***

- Cranford: UNCONQUERED, T-MEN, ADVENTURES OF CASANOVA, NAKED CITY, OUT OF THE BLUE. East Orange: DARING DAUGHTERS, PRINCE OF THIEVES, WINTER COMES, WILD HORSE MESA. Hollywood: RELENTLESS, T-MEN, CHRISTMAS EVE. Ormont: DIAMOND HORSESHOE, BILL AND OOD, OPEN CITY, SITTING PRETTY. Elizabeth: THE BISHOP'S WIFE, OUT OF THE BLUE, A DOUBLE LIFE, APRIL SHOWERS, T-MEN. Liberty: GENTLEMAN'S AGREEMENT, LET'S LIVE AGAIN. News: WINGED VICTORY, ROAD TO HOLLYWOOD, NIGHT SONG, THE PRINCE OF THIEVES, KILLER MCCOY, MAY GIL HISA, HELLZANOPPIN, ARGENTINE NIGHTS. Regent: ARE YOU WITH IT, SLEEP MY LOVE. Ritz: TO THE VICTOR, TARZAN AND THE MERMAIDS, STATE AND SOUL. Steward: SITTING PRETTY, THE CHALLENGE, KILLER MCCOY, BLONDIET ANNIVERSARY, THE BISHOP'S WIFE, OUT OF THE BLUE. Summit: THE TRESPASSER, EXPOSED, FIGHTING MOOD, RETURN OF THE WHISTLER, SUN DOWN, THE KANBAN, STOP CHILD, PERILOUS WATERS. Irvington: THE BISHOP'S WIFE, OUT OF THE BLUE, LOST MOMENT, KILLER MCCOY, ALBUQUERQUE, APRIL SHOWERS. Sanford: WOMAN'S VENGEANCE, TO THE ENDS OF THE EARTH, ADVENTURES OF CASANOVA, NAKED CITY, LET'S LIVE AGAIN, GENTLEMAN'S AGREEMENT. Linden: THE SENATOR WAS INDISCREET, BLACK HART, THE DARING DAUGHTERS, WINTER COMES, GREEN HILL, THE BIG SIX. Madison: GENTLEMAN'S AGREEMENT, KILLER MCCOY, WOMAN'S VENGEANCE, HUGI TOWN AFTER DARK. Maplewood: TO THE ENDS OF THE EARTH, A WOMAN'S VENGEANCE, NAKED CITY, ADVENTURES OF CASANOVA, GENTLEMAN'S AGREEMENT, LET'S LIVE AGAIN. Millburn: WOMAN'S VENGEANCE, TO THE ENDS OF THE EARTH, NAKED CITY, ADVENTURES OF CASANOVA, GENTLEMAN'S AGREEMENT, LET'S LIVE AGAIN.

For Your Health's Sake

By Herman N. Sandesen, M.D.
Chicago Commissioner of Health

Even in the absence of disease, some of us are stronger, more energetic, and in a better general state of health than others. In many people this lack of constitutional vigor takes the form of indigestion. Nothing is organically wrong with them, that is they have no disease of the digestive system, but at the same time it does not function quite as it should.

Such people are highly nervous, over-irritable, and over-sensitive. Many worry too much about their symptoms and their troubles. It is scarcely strange that in this more or less constant state of tension, their nerves should begin to play tricks with their organs to produce all sorts of uncomfortable symptoms.

Color of Skin

These persons often can be recognized by their cold, clammy, hands; a slightly bluish color to the skin of the legs; rapid and noticeable heating of the heart; frequent emptying of the bladder, bleaching, and, at times, attacks of diarrhea. Such people do not stand up well under strain and infections may leave them exhausted for months.

Unfortunately, sometimes it takes quite some effort to rebuild these individuals into perfectly functioning persons. What must be done is to teach them to live within their physical means. They must learn how to put up with their discomforts and get rid of their fears and worries insofar as possible. They must be taught that their digestive attacks are in no way serious and will not lead to anything like cancer.

Many of these people have alternating attacks of diarrhea and constipation, together with some discomfort in the abdomen. Often they pass mucus with the bowel movement. Nervous excitement, cold, or the eating of some food that is difficult to digest may help to bring on the attacks. These

persons are said to have mucous colitis, even though there is no actual inflammation of the bowel. Fortunately, this disorder is no more serious than the other digestive symptoms mentioned earlier and, like them, it should cause no great concern or worry. It should be remembered that even a normal bowel may be upset by nervous disturbances or dietary factors.

In cases of nervous indigestion, the treatment is to eliminate excessive strain, worry, and fear, and to employ a bland diet, that is, one which contains no highly seasoned foods or those containing too much bulk or roughage.

Certain sedatives or quibbling preparations, such as phenobarbital, are often useful. Atropine also is helpful in some cases.

Some persons with so-called indigestion develop their symptoms because of overeating. They get along all right as long as they eat small meals, but when excessive food is put into the stomach and bowels, symptoms of indigestion occur. Of course, the indigestion may also occur because of eating too fast or of eating when excited or upset.

In all cases of indigestion there is need for careful study to determine the cause before successful treatment may be employed.

Questions and Answers

H. M. E.: My daughter had ringworm of the scalp and she still has dandruff scales in each place she had a ringworm. Will this disappear?

Answer: It is likely that the condition of the scalp will clear up as time passes.

New Look Skips Kindergarteners

By TRACY ADRIAN

"Sugar and spice . . . everything nice" has been the recipe for little girls for a long time, and it's both easy and appropriate to dress them up to suit the wrapping to the contents.

Here are three frocks . . . for tumble-play, ordinary daytime work and play, and for the birthday party or such, from current spring collections. It is plain to be seen that the so-called New Look has skipped kindergarten circles, and that the generous hems on these embroidery trimmed little dresses are there for growing convenience, and not for alterations.



TAFETTA FROCKS FOR little girls are back again, and this party-gar has Schiffl eyelet embroidery for its yoke insert and bertha collar trim.



BLACK AND WHITE checked cotton with plain black, and a touch of the same embroidery, is used for this play outfit: bloomers, skirt, suntop.

Give Children Chance to Learn Value of Money

By LUCIA MALLORY

"Oh no, Mother! I can make nice pictures with my old crayons."

While the young shopper was completing her purchase, her mother walked over to a counter on which bright boxes of water colors were being displayed. I could see that she was tempted to gratify her daughter's wish for a box; very wisely, she refrained.

As the two walked away, I noticed that the little girl was carrying her package and her purse, and I wished that more mothers would give their children opportunities to learn to take responsibility.

Bowlidement regarding money is the basis of many tragic mistakes in adult life. Parents foolishly decide not to "worry" their children about financial affairs, and so they permit them to grow up in a fancied world of ease and abundance. How much kinder it is to give boys and girls some understanding of earning, saving, and spending—so that they are guided naturally into the realization that money once spent cannot be reclaimed in order to purchase something else.

Give Them Practice
The only dependable way to help children to understand money is to give them practice in its use. Grown persons who began when very young to have the care of small sums of their own may be expected to handle, with reasonable confidence and success, the larger amounts that now come into their possession.

I refer to self-reliance and the child.
"Let me carry your purse" of you, Jane or you'll be likely to leave it here when you get off, you know." The speaker, a pleasant-looking woman, and the little girl who was with her had boarded the downtown bus on which I was riding. "When we reach town," she continued, "I'll help you select a nice present for Daddy."

All interest in their shopping trip faded from the child's face as she gave up the pretty red handbag, murmuring, "All right, Mother."

years old—quite mature enough to take care of her own purse. I wondered if the mother expected always to be at her daughter's side. How could this little girl ever learn to take care of her belongings if she were never given any practice?

Overheard Conversation

Later in the morning I was standing in one of the stores beside another mother and daughter, who, it seemed, were engaged in a similar shopping expedition. I couldn't help overhearing their conversation, and I thought of the first mother and wished she were with me. Before us many inexpensive articles were displayed on counters that were low enough to come within the range of a child's vision.

My attention was first attracted to this mother and daughter by the parent's kindly voice as she said, "You've had time to look at a number of things Daddy would enjoy, Virginia. Have you decided what you want to buy?"

"Yes, Mother," the little girl replied, holding up a small pocket diary. "I think Daddy would like to carry this diary in his pocket. It has ever so much space for notes, and it has three calendars—one for this year, one for last year, and one for the year after this—1949."

"Did you look at the price mark?" the mother inquired. "You must be sure you have enough money to pay for it."
Looked at Price
"I looked at the price before I decided, Mother," answered the child. "It's marked thirty-five cents. That will leave fifteen cents from this week's allowance to put away toward my box of paints."
"I thought you wanted to buy the paints this week," her mother said.
"I can buy my paints next week,"

Mother," declared the small Virginia. "This week I want to get Daddy a nice present for Father's Day."

Volcanic Mt. Popocatepetl is 17,888 feet high.

Watch for the first two winners of the "Best Recipes of the Week" contest. They'll appear next week.

SAFEGUARD YOUR FURS AT FLEMINGTON

OUR NEW MODERN FUR STORAGE PLAN ON OUR PREMISES.
PROTECTION AGAINST FIRE • THEFT MOths • HEAT
\$2.00 MINIMUM

SA-FURIZED FUR CLEANING EXCLUSIVE WITH FLEMINGTON FUR
Removes all dirt and grime
Restores original lustre
Preserves vital oils in pelts
Gives longer life to your furs
Includes Storage Val. to \$100.
Patent Applied For

Have your fur coat restyled and repaired at Flemington NOW! Or lay-a-way, your next winter fur coat. Choose from our 1948-1949 styles of custom made furs. A small deposit holds your selection.

FLEMINGTON FUR COMPANY
8 SPRING ST.
FLEMINGTON, N. J.
PHONE: FLEMINGTON 60

WALLPAPER SHOWROOM

A concentration of all New York and Newark Showrooms. Choose designs that create the correct background with the help of an experienced decorator.

THE L. H. NOLTE CO.

Member of the American Institute of Decorators
811 Springfield Avenue Summit 6-0604
Open Saturday afternoon by appointment only

CLEARANCE SALE

Special Group of Hats

Suburban Hat Bar

111 Summit Ave. Summit N. J.
Lillian M. Trussell, Prop.

Know What Rayon Means

Many of your spring and summer clothes will have "rayon" stamped on the price tag or somewhere else on the garment. Rayon that can mean lots of things. Rayon includes a whole family of fabrics of different weights, textures and appearances, according to Miss Inez La Bossiere, Extension Specialist in Clothing at Rutgers University.

All rayons are man-made. But the way they are manufactured varies considerably. Viscose and acetate are the two main types of rayon fibers. Each of these has different characteristics, Miss La Bossiere states.

Viscose rayons swell more than the acetates, and lose considerable strength when they are wet. They need to be handled very carefully when they are washed. Acetate rayons aren't as delicate when they are wet, but they will melt if too hot an iron is used.

Many dress fabrics are a combination of the acetate and viscose fibers. You cannot always tell whether the rayon you are buying is a combination or not. But if the dress or fabric is not marked, try to find out from the salesgirl what the material contains. And ask directions for taking care of it.

Rayon, because it is man-made, can be in long, continuous strands, or it can be cut into short lengths and spun into yarn. The latter is called spun rayon. It is used for gabardines, shantung and linen-like materials. The long strands are made into crepes, satins and taffetas.

Like any other fabric, the way the rayon cloth is made is as important as the fiber used. Firm, evenly woven cloth will give better service than loosely-woven, sloppy material.

Recent developments in finishing rayon clothes have given us fabrics that won't stretch or shrink and which will wrinkle far less than in former years.

Good Lighting Brings Sunshine Into Kitchen

The most used room in the American home, say many ages, is the kitchen. That is why it's so important to have the kitchen properly lighted. Proper lighting gives a kitchen color, convenience, and an all-important atmosphere of friendliness.

The incandescent bulb with its warm, sunshiny color should be used as the kitchen's central light. It is best to cover it with a globe, for shielded bulbs shed no wasteful rays. This type of lighting gives your kitchen and you a comfortable relaxed feeling.

The fluorescent light, on the other hand, is one of the best precision lights made. It is wonderful for any spot where close work is the rule: over the stove, above the sink, and in other areas frequently used. Fluorescent lighting gives more light per room space with less glare.

Fluorescent lights are more expensive to install because ordinary sockets will not accommodate them and because they require new wiring and outlets. A professional installation job is necessary to insure safe wiring and correct placement. Once sufficient wiring has been installed, however, fluorescent brackets are as easily put up as lamps. These brackets come with or without shades, and can be purchased with extra sockets. Have the man of the house place one of these in the kitchen cabinet or over the stove. If you prefer, use a strip of fluorescent light and hide it under a shelf with an apron front. One great advantage: fluorescent lighting is cheaper in operation than any other, gives more light per cent of current.

A wise combination of incandescent and fluorescent lighting in your kitchen will bring sunshine into every tired corner.

STORAGE

... with ease of mind

Relax in the confidence that your household goods and most precious possessions are safe within the walls of the Federal Warehouses.

- Fully insured in transit
- Moist protected at no extra cost
- Every piece carefully handled
- Private, sanitary storage vaults

FEDERAL STORAGE

Moving • Storage • Shipping
165 Washington St., Newark 2, N. J.
MA. 3-1766 • SO. 2-4373 • BU. 7-3478

Job PRINTING

... of every type expertly done
... all work to your satisfaction

Wedding Announcements

Bookkeeping & Accounting Forms

COMMUNITY PRINT SHOP

930-Stuyvesant Ave., Union UNVL 2-6700

For the Ultimate in Gracious Living

Best in Quality, Style and Price

FURNITURE • BEDDING CARPETS • RUGS

FISHER Furniture Galleries

505 MILLBURN AVE., MILLBURN, N. J.
Phone MI. 6-0290 • Open Evenings Till 8:30

Yasner has

UNUSUAL WEDDING RINGS

\$5 to \$750 tax included

So different, so distinctive—our huge selections of wedding rings are designed to delight the June bride! You'll find plain gold, platinum and diamond wedding bands, the proud creation of Yasner's own craftsmen. And every one is a remarkable value!

22 GREEN ST. NEWARK 2
Open Wed. to 9 P. M.

Yasner & Son
JEWELERS SINCE 1926

ONE HUNDRED YEARS IN JERSEY

Wiss

Sterling Silver Wedding Gifts

Low sterling silver candelabra with two arms. Pair \$20
Sterling silver sugar and creamer. \$16.50

Coasters or ash trays in crystal and sterling silver—Large size for bottles or decanters. \$6
Individual size. Each \$3.
Sterling silver steak set. \$12.50
Sterling silver bon bon dish. \$5.95
Sterling silver cigarette urn. \$5
Matching ash trays. Each \$2
Sterling silver candlesticks. Pair \$10

Prices include Federal Tax

FOUNDED 1848

Wiss

665 BROAD STREET, NEWARK 2
554 CENTRAL AVE., EAST ORANGE
Open Wednesday Evenings in Newark.