

SOMETHING NEW FOR RESIDENTS OF SPRINGFIELD IN FOOD SHOPPING!

SPRINGFIELD MARKET, INC.

272 MORRIS AVENUE

Announces the Grand Opening of Springfield's

MOST MODERN ONE STOP FOOD CENTER

5 CONVENIENT
EASY-TO-SHOP
DEPARTMENTS

1. Groceries
2. Meats
3. Produce
4. Dairy
5. Frozen Foods
Ice Cream

FRIENDLY PERSONAL SERVICE AND EVERY-DAY LOW
PRICES WILL PREVAIL. WE INVITE YOUR INSPECTION!

STORE HOURS **8-6 Friday 8-9**

Phone Mill. 6-0431-2

SUGAR
5 lb. bag **42c**

SCOT TOWELS
15c roll

FANCY TUNA
39c can

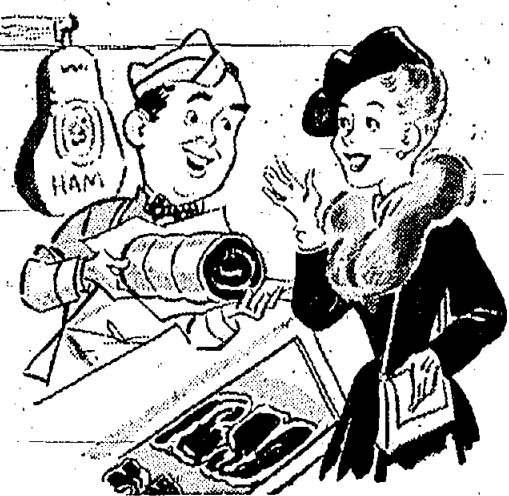
JELLO
7c pkg.

GRAPEFRUIT JUICE
No. 2 Can **6c**

DUZ OXYDOL
IVORY FLAKES
IVORY SNOW
Box **34c**

GERBER'S BABY FOOD
10 for 89c
PLUS 1 free with purchase of TEN

J. FUNCHEON AND L. SCHULMAN



Highest Quality MEATS

PORK LOINS **55c lb.**
(Rib End)

SWIFT'S **Premium RIBS OF BEEF** **73c lb.**
1st 6 Ribs

SWIFT'S PREMIUM OR **Armour's Star BACON** **75c lb.**

SWIFT'S **Premium FRANKFURTERS** 1 LB. CELLO **57c pkg.**

FINEST QUALITY, FRESHLY GROUND **CHOPPED BEEF** **69c lb.**

LAMBS LIVER **49c lb.**

FRESH FRUITS & VEGETABLES
Quality to Please Your Taste
Priced to Please Your Purse

SWEET TENDER **PEAS** 2 lbs. **19c**

CALIFORNIA **CARROTS** 2 bunches **19c**

U. S. No. 1 **NEW POTATOES** 5 lbs. **27c**

HARD-RIPE **TOMATOES** **19c box**

Sunkist ORANGES 4 doz. **\$1** | **CUKES RADISHES SCALLIONS** 2 for **9c**

BANANAS 13c pound



Come To Our

OPEN HOUSE

TODAY, THURSDAY, JUNE 24th
8 A. M. -- 9 P. M.

Everyone Invited!

FREE REFRESHMENTS!

FREE SAMPLES!

Valuable awards will be given at 8:00 P. M.

Seabrook Farms FROZEN FOODS

- Minute Maid **ORANGE JUICE** Makes 1 1/2 pints **25c**
- Dole's **PINEAPPLE CHUNKS** 16 oz. pkg. **39c**
- Seabrook Farms **PEAS** 12 oz. pkg. **25c**
- Seabrook Farms **Perch Fillets** 1 lb. pkg. **49c**

Budget Wise DAIRY BUYS

- ROLL BUTTER** **89c**
- Philadelphia or Borden's **CREAM CHEESE** 8 oz. pkg. **41c**
- 3 oz. pkg. **LA CHEDDA** 2 lb. loaf **99c**
- CHEESE**
- Sante Cottage Cheese **15c**
- Borden's Sour Cream **23c**
- BORDEN'S Homogenized Milk **23c**

THROUGH THE EFFORTS AND COOPERATION OF THE FOLLOWING OUR MARKET OFFERS ALL POSSIBLE CONVENIENCE FOR YOUR SHOPPING COMFORT AND THE VERY LATEST EQUIPMENT FOR THE FLAVOR-PROTECTION OF THE FOODS YOU BUY:

Lancaster Electrical Service
25 Alvin Terrace, Springfield, N. J.

Lieberman & Margull
Bananas and Citrus Fruits
215 Miller Street, Newark, N. J.

E. D. Baldwin
Paper-Bags and Twine
264-08 Main Street, East Orange, N. J.

General Paper & Twine Company
553 Belmont Avenue, Newark, N. J.

Arnold Baking Company
Bread, Rolls, Sugar Buns

Hill Refrigeration
30 Laurel Avenue, Summit, N. J.

WE FEATURE A FULL LINE OF



FINE FOODS!

FLAGSTAFF **Grape Juice** Pint Bottle **21c** Quart Bottle **39c**

FLAGSTAFF **GRAPE JELLY** 12 oz. jar **17c**

FLAGSTAFF **APPLE JUICE** quart bottle **15c**

FLAGSTAFF **FRUIT COCKTAIL** No. 1 can **29c**

FLAGSTAFF **TOMATO CATSUP** 14 oz. bottle **23c**

FLAGSTAFF CREAM STYLE **GOLDEN SWEET CORN** No. 2 can **21c**

FLAGSTAFF **CUT GREEN BEANS** No. 2 can **27c**

FLAGSTAFF HAND PACKED **WHOLE TOMATOES** No. 2 can **27c**

FLAGSTAFF **YELLOW CLING PEACH HALVES** No. 2 1/2 can **33c**

FLAGSTAFF **TOMATO JUICE** 2 No. 2 cans **27c**

FLAGSTAFF **LITTLE SIZE SWEET PEAS** No. 2 can **23c**

FLAGSTAFF **NORTHWEST BARTLETT PEARS** No. 2 1/2 can **47c**



Enjoy

FLAGSTAFF Extra-Rich **COFFEE**

One pound can **56c** 3 grinds

Enjoy Your Shopping at

SPRINGFIELD MARKET, INC.

272 Morris Avenue
Springfield, N. J.

Overlook Can't Save for New Building, Public Feels

That Overlook Hospital could not come from patients and all other pay rates high enough for the hospital to break even and not lose money on their care," Mr. Watts pointed out, "and, except for welfare patients, Overlook receives no financial aid from nearby local governments."

"Income from gifts and endowments," Mr. Watts added, "is not sufficient to finance all the free and below-cost care the hospital gives. Nor will the hospital's share in Community Chest funds, which it will receive for the first time this coming fall, be enough to pay the bill. The only way the hospital can make ends meet," Mr. Watts continued, "is through voluntary contributions from the people in the localities which the hospital serves."

More than half of the persons who have participated in the poll to date accepted the invitation to make comments of their own. A number of examples follow:

"We believe Summit and surrounding communities are prosperous enough to pay for enlargement of the hospital. Less fortunate communities must depend on government aid."

"The old building has outlived its usefulness. Good doctors, efficient and kindly nurses, cannot overcome this inadequate and poorly designed structure."

"It is my belief that an entirely new and modern hospital should be constructed. Salaries for charwomen, orderlies, and others should be sufficient to enable the hospital to hire help who are willing and able to properly care for the plant."

"Having had a member of our family in Overlook at one time or another in the last ten years, we were quite pleased with the improvement we met with last summer. Not only the improvement in the plant but the change in the morale of the nurses and workers was very noticeable."

"I feel very strongly that the excellent doctors who serve Summit's people in this area, deserve a better hospital and, with proper organization and a minimum of conflict therein, we could get it."

"I believe Overlook Hospital should be enlarged and modernized to meet the needs and requirements of a community of this size. Since endowments and income are not sufficient, I suggest we have a campaign or drive immediately."

Majority Are Insured

Seventy per cent of those who answered the poll questionnaire revealed that they belong to Blue Cross, or some other non-profit membership plan for the payment of hospital bills. Seventy-seven per cent indicated they favored voluntary plans to cover the cost of hospital care rather than compulsory insurance for the same purpose.

When asked how they thought Overlook Hospital meets the expense of free and below-cost care of patients, 32 per cent of those replying thought "income from gifts and endowments" was the principal source, 18 per cent selected "rates paid by private patients," 21 per cent "community chest funds," and 29 per cent "payment by county, city or borough, for care of public charges."

Only a comparatively small percentage of the patients are able to pay rates high enough for the hospital to break even and not lose money on their care," Mr. Watts pointed out, "and, except for welfare patients, Overlook receives no financial aid from nearby local governments."

Camping Days Are Here Again!



Blazing camp fires will light up the faces of thousands of young Girl Scouts again this spring and summer as the annual camping program for Girl Scouts of the USA gets under way. Camping is a world of fun and new experiences, all Girl Scouts agree.

New Cash Sickness Benefit Law Aids Both Employee and Employer

(FIRST OF A SERIES OF THREE factual stories, released for succeeding Thursdays beginning today, on the new State Cash Sickness Benefits legislation, and other amendments to the Unemployment Compensation Law)

Just before its recent adjournment until August, the New Jersey State Legislature passed bills which directly affect the state's 35,000 employers and 1,600,000 workers covered by the Unemployment Compensation Law.

The new legislation amending the Unemployment Compensation Law contains two main features. It establishes a system of temporary disability benefits, also known as cash sickness benefits, under which workers covered by unemployment compensation will be paid cash benefits for disabling accidents or illnesses resulting from causes not connected with the workers' jobs. It makes several important changes in unemployment compensation procedures and unemployment compensation financing, including one that gives employers substantial reductions in their unemployment compensation tax payments.

Because the new measure represents a sweeping extension of so-called "social security" legislation, because it affects every member of a family in which a bread-winner works in New Jersey, and because the requirements and procedures are complex, this story and two others to be published on succeeding Thursdays will summarize and simplify the subject. In Union County there are 2,774 employers and 103,172 employees.

The New Jersey State Chamber of Commerce, in an analysis of the new legislation, provides the following question-and-answer condensation of the new cash sickness benefits features.

1. What is meant by Temporary Disability Benefits?

Temporary disability benefits, or "cash sickness benefits," are cash payments to workers for time lost from employment because of non-occupational illness or injury.

Under the new law, employers and employees may decide whether the benefits would be payable under a state plan like unemployment compensation, or under an approved privately-insured plan.

2. How many states now have cash sickness benefits systems?

Three: California, Rhode Island and now New Jersey.

3. What is the distinction between cash sickness benefits and workmen's compensation?

Workmen's compensation awards benefits for illnesses or injuries caused by the worker's occupation. Cash sickness benefits covers disabilities not arising from the occupation.

4. What benefits are provided by the new legislation?

Eligible workers may receive from \$9 to \$22 a week for the period of the disability.

5. For how long a period are these benefits payable?

Workers are eligible for benefits beginning with the eighth day of illness or disability; thereafter, they may receive the cash payments for a maximum of 26 weeks in any year.

6. When will benefit payments start?

Benefits are payable in connection with disabilities commencing on January 1, 1949.

7. What determines the weekly amount of an employee's cash sickness benefit?

An employee's weekly benefit amount is in most cases approximately 89 per cent of his weekly wages. The exact amount is found by dividing by 22 the weekly wages in the calendar quarter in which they were the highest.

8. What conditions are necessary to establish a worker's eligibility for benefits?

The worker must be ill or disabled beyond an initial uncompensated seven-day period. He must be under the care of a physician who certifies to his disability; he must have earned thirty times the weekly benefit amount in the first four of the last completed five calendar quarters prior to the disability. The disability must not be self-inflicted or received during the worker's commission of a crime. Disabilities arising from pregnancy or associated ill, and disabilities arising during the period of a labor dispute for which unemployment compensation may not be received, are not subject to benefits.

9. May cash sickness benefits be received by unemployed workers?

Yes, whenever the disability prevents the worker actively seeking or holding a job. Maximum duration for both disability and unemployment, however, cannot exceed 150 per cent of the benefits payable for either unemployment or disability in a calendar year.

10. How is the payment of cash sickness benefits financed?

Employers and employees who choose the state fund alternative plan under the new legislation, pay taxes. Those covered by private plans do not pay taxes but must, of course, finance their own benefits system through one of the three possible choices: an insurance company, a "self-insurer" plan, or a financing agreement between the employer and union.

11. What are the tax rates for those covered by the state fund?

Effective January 1, 1949, employers whose employees are covered by the state fund, pay 3/4 of 1 per cent to the State Disability Benefit Fund; effective January 1, 1951, employer contribution is subject to a modification based on the amount of benefits paid his employees, the modified rate schedule ranging from 1/10 of 1 per cent to 3/4 of 1 per cent. For employees, the disability fund will be credited from June 1, 1948, effective date of the law, with 3/4 of 1 per cent currently required 1 per cent employees' unemployment compensation tax; the remaining 1/4 of 1 per cent will be credited to the Unemployment Compensation Fund.

12. What money will be available to pay initial benefit claims?

An initial reserve for the disability benefit fund is created for employed workers from the tax income. Interest on a \$50,000,000 fund from employee contributions, not aside from the Unemployment Compensation Fund, will pay unemployed workers' disability claims.

(The next article, to appear next Thursday, will cover: Employers' rights and responsibilities under the new legislation. The third article will cover other Unemployment Compensation Law amendments.)

Local Zionist Unit Seeks New Member

Mrs. Charles Urban, membership chairman of the Millburn, Springfield Chapter of Hadassah, entertained forty new and prospective members of this Women's Zionist Organization of America, in her home at 44 Greenwood drive, Millburn, recently. This integration tea had a manifold purpose. The work of the Hadassah organization was presented to the group through the brief reports by the following chairmen.

Mrs. Seth Ben-Ari, Hadassah medical organization chairman, described the responsible part played by the Rothschild-Hadassah Hospital in improving health conditions in Palestine. Mrs. Harry Fische, Youth Aliyah chairman, unfolded the effective results of the Youth Aliyah movement in rescuing thousands of Jewish children from European terror. Mrs. Jerome Ginter, Child Welfare chairman, explained Hadassah's school-luncheon program in which 30,000 children are fed a hot meal daily. Mrs. Gilbert Yeskey, Jewish National Fund chairman, discussed Hadassah's participation in the reconstruction of the Holy Land because of neglect. Mrs.

Louis Chivian, Musical Education chairman, presented her plan for the organization of a choral group within the chapter. Mrs. Jerome Dohan, retiring president of the Chapter, invited the new and prospective members to choose a phase of Hadassah's work which offered individual appeal and urged them to pursue that interest in the coming year.

Miss Gloria Jaffe, soloist, delighted the guests with her beautiful renditions with Mrs. Jules Perelman accompanying her at the piano. A cordial social hour followed, during which all present engaged both in pleasant conversation and delicious refreshments.

Stomach ulcers are more likely to occur in men because women, although they react more to stress, relax more rapidly and recover more quickly. The answer to sex differences in ulcers is explained by the way boys and girls react to stress. Dr. L. W. Sontag, of the Kels Research Institute, Yellow Springs, reported. He found that girls react more to stress but that they also relax and recover more effectively than boys.

Do you remember the state power of New Jersey? It is the violet.

Examination of the Eyes

DR. N. KRANTMAN
Optometrist
321 Millburn Avenue
Millburn, N. J.
(Above Woolworth's)

FAMOUS Knorr's Dairy Products

Now Being Delivered To Your Door in Springfield.

E. W. JACOBUS
Distributor
Phone Es. 3-3486
Un. 2-4379

THE GENERAL ELECTRIC ALL-AUTOMATIC WASHER

SOAKS clothes automatically

WASHES with "Activator" action

RINSES to sweet-smelling cleanliness

DAMP-DRIES ready for ironing

Here—in the G-E All-Automatic—is everything you've always wanted in an automatic washer. You set the controls—the washer does all the work. Clothes are washed amazingly clean... and so thoroughly damp-dried that many pieces are ready for ironing.

G-E Activator Washing! All the clothes are washed gently, but thoroughly, with this correctly designed G-E Activator. It has three zones of washing action—gets out all the dirt from heavy work clothes or delicate lingerie.

Come in and see the G-E All-Automatic Washer in action. A demonstration will show you that it's "automatic washing at its finest."

Trade-mark Reg. U. S. Pat. Off.

Priced at \$349.75

Residence Construction Company
165 Morris Avenue, Springfield, Millburn 6-0458

MARKET BOY
A SALAD'S VERY GOOD INDEED. WE'VE ALL THE MAKINGS THAT YOU NEED

Springfield Fish & Produce Market
256 MORRIS AVE. SPRINGFIELD, N. J.
"QUALITY FIRST—SERVICE ALWAYS"
Charles A. Schaffermoth, Jr.

Every minute... 10,000 calls

During an average week day busy hour, New Jersey people make 10,000 calls every minute. That's a lot of calls—an increase of 30% in the last two years.

To handle these calls and handle them promptly we have added more circuits in town and to out-of-town exchanges than ever before. And we're adding even more just as fast as we can secure the cable. This year alone, for example, we plan to put into use 575,000 miles of wire in cable.

Adding cable is only one of many things we're doing to improve New Jersey's telephone service. It's a program requiring about \$300,000,000.

NOTICE: Starting July 3, your telephone business office will be closed on Saturdays. Hours of business during the week remain unchanged.

NEW JERSEY BELL TELEPHONE COMPANY
BUILDING A GREATER TELEPHONE SERVICE FOR A GREATER NEW JERSEY

First Church of Christ, Scientist
202 Springfield Avenue, Summit, N. J.
A branch of THE MOTHER CHURCH—THE FIRST CHURCH OF CHRIST SCIENTIST, in Boston, Mass.
Sunday Service, 11:30 A. M.—Sunday School, 11:00 A. M.
Wednesday Meeting, 8:15 P. M.
Reading Room, 340 Springfield Ave. Open daily 11:00 to 4:30 except Sundays and Holidays; also Friday evenings 7:30 to 9:30 and after the Wednesday meeting.

USG United Service Grocers
WEEK-END SAVINGS
FRIDAY AND SATURDAY ONLY
GROCERIES
FLAGSTAFF

Flagstaff PRUNE JUICE	qt.	25c
FLAGSTAFF WHOLE KERNEL GOLDEN CORN	No. 2 can	23c
Dark Red KIDNEY BEANS	med. tin	18c
FLAGSTAFF BARTLETT PEARS	No. 2 1/2 can	47c
FLAGSTAFF CIDER VINEGAR	qt.	19c
Sunshine CHEEZ-IT JR.	pkg.	17c
SILVER SKILLET CORNED BEEF HASH	16 oz. tin	33c
REAL OVEN BAKED FRIEND'S BEANS	16 oz.	19c
NABISCO SHREDDED WHEAT	pkg.	18c

VEGETABLES		MEATS	
Cucumbers	5c	Fowl	lb. 49c
Potatoes	5 lbs. 25c	Pork Loin	lb. 58c
ICEBERG Lettuce	head 15c	Chuck Roast	lb. 73c
Peaches	lb. 15c	Cottage Hams	lb. 85c
		STEAKS AND CHOPS	
		CUT TO ORDER	

WE CARRY A COMPLETE LINE OF FROZEN FOODS
We Carry a Full Line of Fresh Fruits and Vegetables
OPEN SUNDAYS 10 A. M.—1 P. M.—4 P. M.—7 P. M.
No Parking Worries Free Delivery

HARMS BROS.
19-23 Morris Ave. Mi. 6-4213
NEAR THE UNION LINE

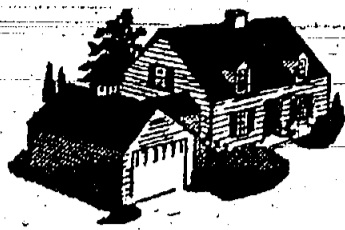
SATURDAY CLOSING
Effective July 1st, 1948

offices of the
JERSEY CENTRAL POWER & LIGHT CO.
will be
CLOSED EVERY SATURDAY
(Except for Emergencies)

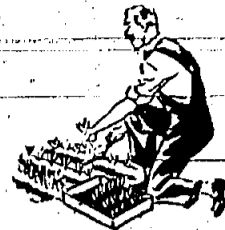
Business hours will now be
8:45 A.M. to 5 P.M.
MONDAY through FRIDAY

JERSEY CENTRAL POWER & LIGHT CO.

HOME DESIGNS FOR SUBURBANITES



Home and Garden Page



EXPERT ADVICE FOR HOME GROWING

New Wallpapers Taken From Old Patterns

SCREENED TOP SOIL \$5.00 per Yard

EVERYTHING FOR YOUR GARDEN

SAFEGWAY ASPHALT DRIVEWAYS

Funeral Sprays \$5.00 and up - Cut Flowers

MAKE T. R. WOODRUFF YOUR HEADQUARTERS

STORAGE-MOVING SOUTH ORANGE STORAGE CO.

into an important wall treatment. During that period, a small band of artists journeyed through the 13 States, chiefly in New England, decorating rooms for their living.

SPRAY PAINTING & FINISHING

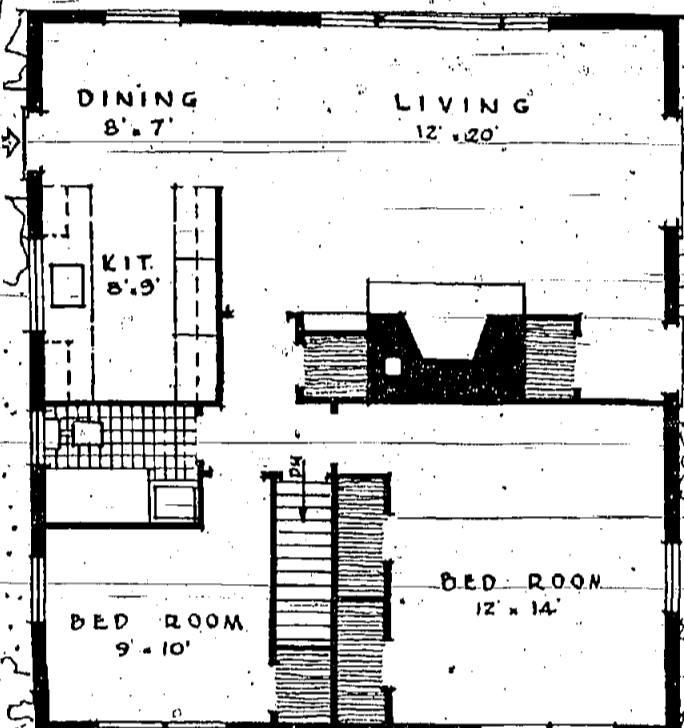
PRE-FAB LOG CABINS

It's a "Big Little House"



A SUMMIT COUPLE, whose children had married and settled elsewhere, asked the architect to design a small home for them.

BY WILLIAM CORBETT, Summit Architect (Second of a Series) A very definite problem presents itself to an older couple whose children have married and established homes of their own.



THE DINING NOOK is easily accessible to the kitchen, ready for dinner party or small snack room.

Lighted Work, Play Areas For More Outdoor Hours

Warm summer nights invite longer hours of outdoor living, so why not plan to light the family's favorite work and play spots this year.

YOUR GARDEN THIS WEEK

The County Agricultural Extension Service is "swamped" much of the time with letters and calls from individuals.



GRIST MILL ANTIQUES

Your Suburban Garden

For a really showy summer-flowering plant that loves shade try the tuberous rooted begonia.

How to Start Seeds in Hot Summer Weather

Summer sowings of vegetables are in a way the most important of the year. Upon their success will depend late summer and fall crops of all these vegetables.

Boarding Dogs and Cats

Individual exercise runs Bathing - Clipping - Plucking

MAN'S BEST FRIEND DESERVES GOOD FOOD

feed... HARGO DOG FOOD

MOUNTAIN VIEW FARM SUPPLY CO.

Wet Cellar CURE

ATLAS WATERPROOFING COMPOUND Applied by reliable ATLAS Service

BEST MADE KITCHENS

OFFERS COMPLETE PLANNING SERVICE WITH PRECISION-BUILT WOOD CABINETS

SCREENS

Aluminum & Bronze Wire Wardrobes, Corner Cabinets, Shutters

A Complete Decorating Service

WALLPAPER Representing all New York and Newark Showrooms.

STORAGE

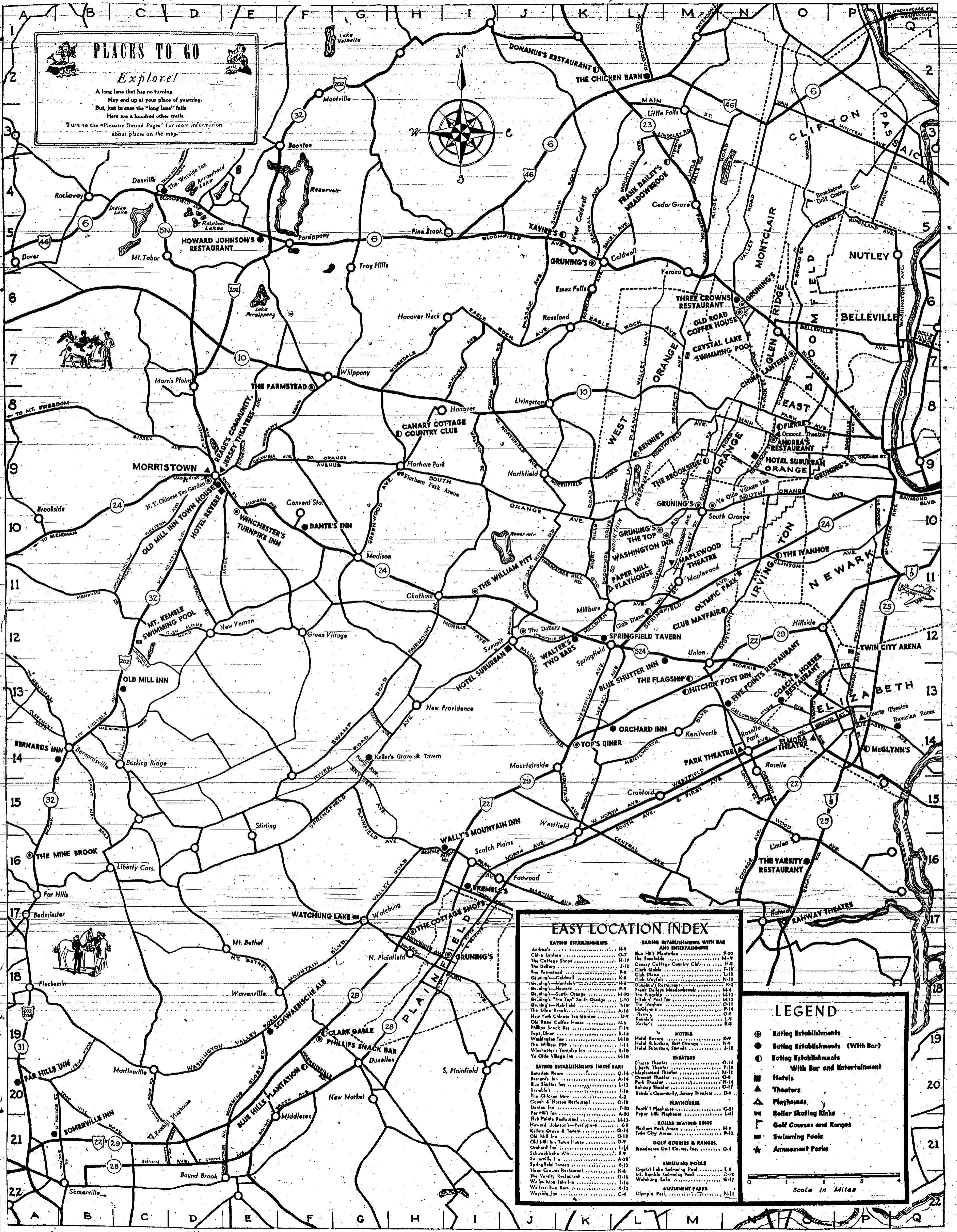
... with ease of mind

BEST MADE KITCHENS

OFFERS COMPLETE PLANNING SERVICE WITH PRECISION-BUILT WOOD CABINETS

PLACES TO GO
Explore!

A long lane that has no turning
May end up at your place of yearning.
But, just in case the "long lane" falls
Here are a hundred other trails.
Turn to the "Pleasure Bound Pages" for more information
about places on the map.



EASY LOCATION INDEX

EATING ESTABLISHMENTS	EATING ESTABLISHMENTS WITH BAR AND ENTERTAINMENT
Andrea's M-9	Blue Hill Restaurant F-20
Club Lancers O-7	The Brookside M-9
The Cottage Shoppe H-17	Canary Cottage Country Club H-8
The DeBarry J-12	Club Dab F-11
The Farmstead F-8	Club Diana L-12
Gruning's M-10	Club Mayfair N-12
Gruning's-Montclair M-4	Donahue's Restaurant K-2
Gruning's-Newark P-9	Frank Dalrymple Meadowbrook M-4
Gruning's-South Orange M-18	The Flagship M-19
Gruning's-The Top-South Orange L-10	Gruning's Pool Inn M-17
Gruning's-Plainfield L-19	The Innkeeper O-11
The Mine Brook A-16	McDermott's P-14
New York Chinese Tea Garden D-9	Pierre's O-8
Old Road Coffee House N-4	Randa's L-9
Phillips Snack Bar F-19	Walter's L-9
Top's Diner K-14	Yeast M-10
Walter's Two Bars M-10	
The William Pitt L-11	
Winchester's Turnpike Inn E-10	
Ye Old Village Inn M-10	
EATING ESTABLISHMENTS (WITH BARS)	EATING ESTABLISHMENTS WITH BAR AND ENTERTAINMENT
Bavarian Room Q-14	Blue Hill Restaurant F-20
Liberty Theatre Q-14	The Brookside M-9
Rembrandt Inn A-14	Canary Cottage Country Club H-8
Blue Shutter Inn M-10	Club Dab F-11
Trumbull's L-12	Club Diana L-12
Trumbull's L-12	Club Mayfair N-12
The Chicken Barn L-2	Donahue's Restaurant K-2
Cook's & Horne Restaurant O-11	Frank Dalrymple Meadowbrook M-4
Dante's Inn F-10	The Flagship M-19
Par Hills Inn A-20	Gruning's Pool Inn M-17
New York Chinese Tea Garden D-9	The Innkeeper O-11
Howard Johnson's-Parishippay E-4	McDermott's P-14
Kellogg's & Tavern O-14	Pierre's O-8
Old Mill Inn E-12	Randa's L-9
Old Mill Inn-Town House D-9	Walter's L-9
Orchard Inn K-14	Yeast M-10
Orchard Inn K-14	
Sensville Inn A-21	
Springfield Tavern M-10	
Three Crowns Restaurant N-4	
The Varsity Restaurant O-14	
Wally's Mountain Inn M-10	
Walter's Two Bars M-10	
Wayside Inn C-4	
THEATERS	THEATERS
Elmore Theatre O-14	Liberty Theatre Q-14
Maplewood Theatre M-10	Maplewood Theatre M-10
Park Theatre M-10	Park Theatre M-10
Railway Theatre M-10	Railway Theatre M-10
Read's Community-Society Theatre D-9	
PLAYHOUSES	PLAYHOUSES
Paper Mill Playhouse C-31	Paper Mill Playhouse C-31
ROLLER SKATING RINKS	ROLLER SKATING RINKS
Floram Park Arena M-10	Floram Park Arena M-10
Twin City Arena M-10	Twin City Arena M-10
GOLF COURSES & RANGES	GOLF COURSES & RANGES
Brookside Golf Course, Inc. O-4	Brookside Golf Course, Inc. O-4
SWIMMING POOLS	SWIMMING POOLS
Crystal Lake Swimming Pool E-8	Crystal Lake Swimming Pool E-8
Mt. Kemble Swimming Pool E-12	Mt. Kemble Swimming Pool E-12
Watchung Lake M-10	Watchung Lake M-10
AMUSEMENT PARKS	AMUSEMENT PARKS
Olympic Park N-11	Olympic Park N-11

LEGEND

- Eating Establishments
- Eating Establishments (With Bar)
- Eating Establishments With Bar and Entertainment
- Hotels
- ▲ Theaters
- ▲ Playhouses
- ▬ Roller Skating Rinks
- ▬ Golf Courses and Ranges
- ▬ Swimming Pools
- ★ Amusement Parks

Scale in Miles

THEATER-RECREATION

The "Pleasure Bound" Page

DINING-NITE SPOTS

News and Views on Places to Go and Things to Do

RENNIE'S
SOMETHING NEW—SOMETHING DIFFERENT

DINNERS
In Our BEAUTIFUL ROTUNDA GLASS-ENCLOSED DINING ROOM OVERLOOKING THE RESERVATION

Entertainment Every Night By DAVID BULL At The Organ With BOB McKEVITT At The Piano

GRILLE ROOM
Private Room For Banquets With Bar

Excellent for Wedding Receptions and Parties

RENNIE'S
Cor. Northfield Ave. and Pleasant Valley Way OPPOSITE RESERVATION West Orange Phone Orange 2-7756

'Hit The Air!'
Play Miniature Golf
Fun for entire family Obstacle Course

OPEN DAILY at 2 P. M.
WEEKDAYS till 6 P. M.—20c game
HOLIDAYS & EVENINGS—35c game

WIN-SUM GOLF
Route 23-Pompton Ave. Cedar Grove 1/2 Mile from Bloomfield Ave.

DINING — DANCING — ENTERTAINMENT
at the **GAY NINETIES CLUB**

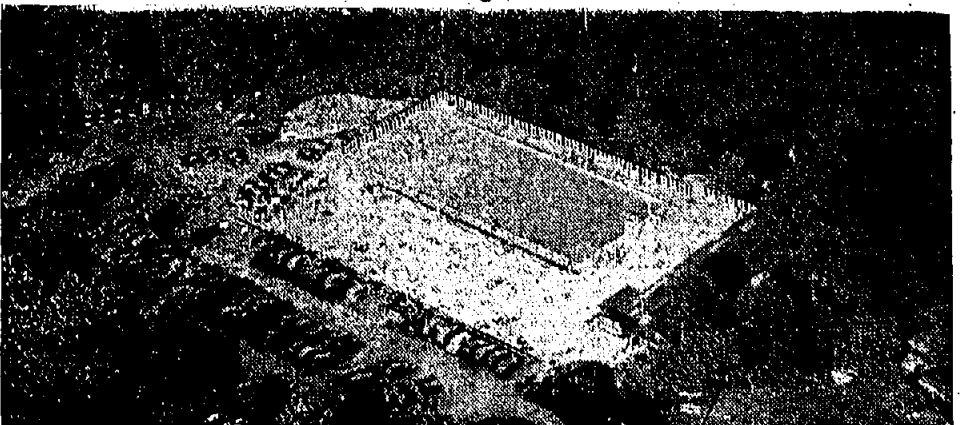
Two Big Shows — Friday and Saturday
Presenting MARGIE COATE in Songs
WILLIE SOLAR, Comedian of 29th Century Fox Picture
Billy Rose's "Diamond Horseshoe"
JOHN CASE, Marjorie and M.C.
Plus Talent Quest Winner, ROY FELLER, Novelty Entertainer
Music by John Parisi's Orchestra
458 Bloomfield Ave., Bloomfield Phone EL. 2-0908 - 3252
CATERING TO BANQUETS - WEDDINGS - PARTIES

A New Banquet Room
One of the Finest in the State
ACCOMMODATING 300 IS NOW
Open For Your Inspection

Pierre's
24 LINCOLN ST. EAST ORANGE
JUST AROUND THE CORNER FROM MAIN ST.
PIERRE IS BACK AT HIS
Cocktail Lounge and Restaurant
Luncheon—11:30-2:30; Cocktails; Dinner—5-9 P.M.
Party Accommodations Available
Famous for CHARCOAL BROILED STEAKS & CHOPS
Orange 3-9731
CONTINUOUS ENTERTAINMENT NIGHTLY

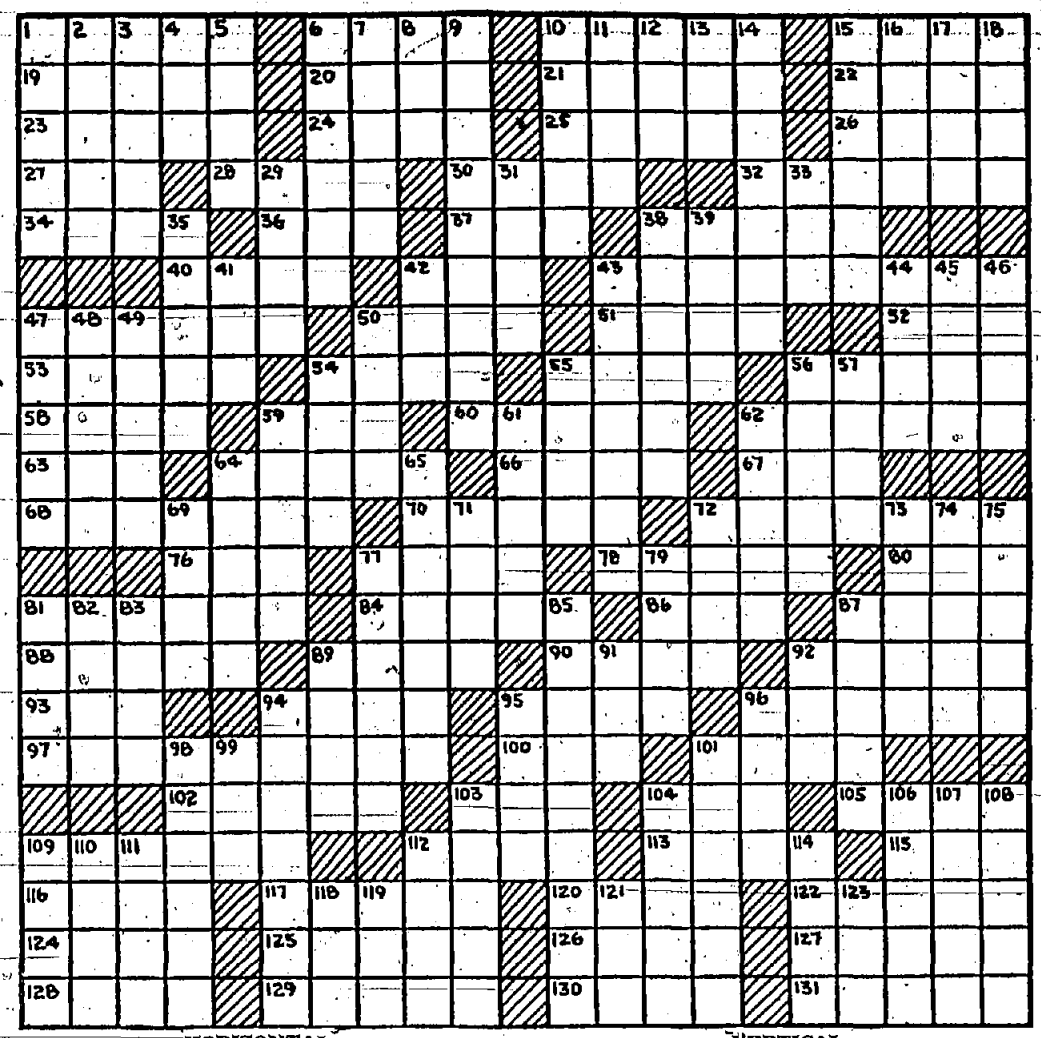
MT. KEMBLE POOL
"Swim In Water Fit To Drink"
OPEN EVERY DAY AT 10 A.M.

AVOID HEAVY TRAFFIC ● PLENTY OF FREE PARKING ● OCEAN SAND BEACH WATER CONTINUOUSLY FILTERED ● RED CROSS LIFE GUARD ON DUTY ALWAYS SEPARATE POOL FOR KIDDIES ● PICNIC PARTIES WELCOMED



MT. KEMBLE AVENUE — Route 32 — Between Morristown and Bernardsville

Weekly Crossword Puzzle



- | | | |
|-----------------------------|-------------------------------|-------------------------------|
| HORIZONTAL | VERTICAL | VERTICAL |
| 1—Scraped with the forefoot | 53—Over | 100—Norse goddess of the dead |
| 6—Transported with delight | 54—Permission to use | 101—Township of Attica |
| 10—Cudgel | 55—Margins | 102—Makes comfortable |
| 15—Molst | 56—Enwrap | 103—Sound of sheep |
| 19—Smell | 58—Erase | 104—Cattle |
| 20—One of the Great Lakes | 59—Entended | 105—Irish dramatist |
| 21—Fill | 60—Furnace | 106—Be on guard |
| 22—Pen-name of Charles Lamb | 61—Glams | 107—Agricultural tract |
| 23—Nocturnal animal | 62—Ashes (Scott.) | 108—Days |
| 24—Slight coloring | 64—Prods | 109—Sleeveless garment |
| 25—Astound | 66—Asleep | 110—Eager |
| 26—Affectionate | 67—Idiot | 111—Inventor of dynamite |
| 27—Single object | 68—Fly in the omelet | 112—Dutch cheese |
| 28—Demonstrative word | 69—Eggs | 113—Primeval deity |
| 30—Stout cord | 81—Beetle | 114—Sensitive to pain |
| 32—Soft fabrics | 84—Squeeze | 115—Hacked neyed |
| 34—Charred | 86—Help | 116—Fixed routine |
| 36—Wrath | 87—Mother of Helen of Troy | 117—Crest of a mountain range |
| 37—Hall | 88—Metric measure of capacity | 118—Propheet |
| 38—Silk fabric | 89—Armed conflicts | 119—Satisfies |
| 40—Garden implement | 90—Gull-like bird | 120—Saw |
| 42—Grow old | 92—City in Georgia | 121—Slow |
| 43—One sustained by another | 93—Fuss | 122—Saw |
| 47—Mental state | 94—Military assistant | 123—Paintings |
| 50—God of thunder | 95—Algonquian Indian | 124—Saddened |
| 51—Bamboozle | 96—Wall | |
| 52—Game at cards | 97—Saddened | |

William Franklin, the son of Benjamin Franklin, was governor of New Jersey when King George III of England granted Queen's College, now Rutgers University, its charter in 1766.

A DELICIOUS EATING PLACE
THE MOUNTAINSIDE INN
on Route 29, Mountsides near Echo Lake Park
Luncheon—12 to 3—15c up
Dinner—4 to 9—\$1.25 up
Sunday 12 to 9
(Closed Monday)
Banquets and parties accommodated
Phone Westfield 2-2969

SWIMMING POOL NOW OPEN
CRYSTAL LAKE PARK
"THE PLAYGROUND IN THE MOUNTAINS"
● BOATING
● KIDDIE RIDES
● VARIETY AMUSEMENTS
● PICNIC GROUNDS
EAGLE ROCK AVENUE AND PROSPECT AVENUE
WEST ORANGE — OR. 3-5203

The Whole Family
Will enjoy the ride—the pleasing service and the delicious meals
SERVED AT THE
SCHWAEBISHE ALB
WARRENVILLE, N. J.
For Reservations Phone Bound Brook 9-1219
COME AND HEAR
Professor Krauss and His Orch. every Saturday and Sunday
We Cater to Banquets, Parties, Clubs, etc.

DRIVE THROUGH THE BEAUTIFUL WATCHUNG MOUNTAINS TO THE
PEDEFLOUS RESTAURANT
ESTAB. 72 YEARS
MOUNTAIN BOULEVARD, WATCHUNG
For a Delicious STEAK or CHICKEN DINNER WITH MUSHROOMS
CATERING TO BANQUETS AND PARTIES
(Closed Tuesdays) PHONE PLAINFIELD 6-9804
PETER CHIDELLA, Prop.

The Pirate



WHICH IS featured at the Community Theater for one week starting Thursday. This technicolor romance stars Judy Garland and Gene Kelly. Cole Porter contributes the musical score for this film.

June Haver



WHO IS co-starred with Lon McCallister in "Scudda-Hoo! Scudda-Hay!", now showing at the Palace Theater, Orange. "Berlin Express" is the co-feature.

On The Summer Stage

FOOTHILL PLAYHOUSE
Route 29, Bridgewater Township, June 24, 25, 26, "YES AND NO."
MONTCLAIR THEATER
Montclair
June 24-26, "MY SISTER ELIEBEN"
Beginning June 28, "SEVEN KEYS TO BALDPATE"
PAPER MILL PLAYHOUSE
Millburn, now through July 10, "VAGABOND KING."
TB KILLER
The search for the spreader of TB has been in progress for many years, but TB is still the first cause of death from a preventable disease in adults less than 35 years of age.

For Your Next Luncheon Date
50 to \$1.50
Dinner From \$1.75
Open Daily at Noon
CHICKEN BARN
Route 6, East of 31, Totowa, N.J.
Little Falls 4-6891

TODAY THRU SATURDAY
"YES AND NO"
HILARIOUS COMEDY IN 3 ACTS
Tickets \$1.25 (Inc. Tax) or Subscription 4 Shows \$5.50
FOOTHILL PLAYHOUSE
On Route 29, Between Bound Brook and Somerville
TELEPHONE BOUND BROOK 9-2118
Next Attraction "CHRISTOPHER BEAN"

YOU WILL FIND
● EXCELLENT FRENCH-ITALIAN CUISINE
● CIRCULAR BAR
● PLEASANT, QUIET ATMOSPHERE
● MODERATE PRICES
AT
DANTE'S INN
ROUTE 24 — CONVENT STATION, N. J.
Have Your Cocktail On Our Open Porches
Overlooking Beautiful Gardens
SPECIALTIES—ONION SOUP AU GRATIN—FROG'S LEGS FILET MIGNON—CHICKEN DANTE
Our Facilities Available for Weddings, Banquets and Parties.
MORRISTOWN 4-4060
NEW LARGE DUMONT TELEVISION

HITCHIN' POST INN
Route 29, Union UNVL. 2-3170
Specializing in
WEDDINGS ● BANQUETS ● PARTIES
Daily LUNCHEON SUNDAY DINNER.
DINNER \$1.25 and up \$1.25 and up
COCKTAIL LOUNGE DANCING NIGHTLY

Enjoy Our Delicious Foods
Tastily Prepared — Pleasingly Served at the
FAR HILLS INN
Somerset's Finest Restaurant
ROUTE 31, SOMERVILLE, N. J.
Phone Som. 8-2166
Where the Men's Clubs meet—Lions Club—Kiwanis Club—Exchange Club—Rotary Club. Private facilities for Weddings, Banquets, Parties. Closed All Day Monday.

Club Mayfair COCKTAIL BAR and RESTAURANT
PRESENTS NITELY
LARRY MILLBURN
"King of the Solosax"
and His Toy Instruments
We Cater to WEDDINGS and PARTIES
Our Specialty: Sliced STEAK Sandwich \$1.00
RICHARD G. WALTER, Host
1664 Stayveant Avenue, Union Unvl. 2-5119

Where Food's the Thing And You Are King
famous for...
Charcoal Steaks - Chops - Chicken - Lobster
Ted Aurd and the Hammond Organ
From 6 P. M.
Orchard Inn
OPEN DAILY FROM 3 P. M.
HANS DEH, Proprietor
ROUTE 29 SPRINGFIELD, NEW JERSEY
Phone Millburn 6-1459

'Twas OUR PLEASURE TO ENTERTAIN WHEN FROM SUMMIT THE MCDORMANS' CAME; SO WATCH EACH WEEK AND READ BELOW — IS THIS YOUR NAME? WE SURE HOPE SO!
Mr. J. Celauro, Roselle Mr. George Dress, Linden
Mr. Ernest L. Morrison, Chatham Mrs. Helen McLaughlin, South Orange
You are invited to bring one guest each for Luncheon or Supper on Monday next



TOPS
"One of the World's Finest and Best Equipped Diners"
ROUTE 29 (Opposite Somerset Bus Terminal) Mountsides, N. J.

THEATER-RECREATION

The "Pleasure Bound" Page

News and Views on Places to Go and Things to Do

DINING-NITE SPOTS

"Up in Central Park" Comes to the Jersey

The Jersey Theater is showing Deanna Durbin and Dick Haymes in the gigantic musical, "Up in Central Park," Thursday through Saturday.

Directly from Radio City to You!

JUDY GARLAND · GENE KELLY THE Pirate

Thursday - Saturday Lifting Melody DEANNA DURBIN DICK HAYMES VINCENT PRICE

"UP IN CENTRAL PARK" MUSIC BY SIGMUND ROMBERG Sunday - Wednesday Sensational Drama!

FREDRIC MARCH ANN BYTH DAN BURYA EDMOND O'BRIEN

Relax in the TELEVISION LOUNGE The Largest and Most Beautiful Television in North Jersey

NOW! RKO PROCTORS

She went for two kinds of men - married ones and bachelors!

"SMART WOMAN" - OF THE RACKETS

"JERSEY JOE" LOUIS vs WALCOTT

MAKE THESE THREE PAGES A REGULAR READING HABIT

First Kiddie Vacation Matinee Tues., June 29

"BARBER OF SEVILLE" "JEANNIE"

"THE FLAME" John Carroll - Vera Halston

"MIRACLE OF THE BELLS" "THE HUNTED"

4 Days Starting Wednesday "UNCONQUERED"

LIBERTY ELIZABETH

MERLE OBERON · ROBERT CHARLES KORVIN · PAUL LUKAS

June HAVER SCUDDA-HOO! SCUDDA-HAY!

LON McCALLISTER LATE SHOW SATURDAY NIGHT

Pictures, Plays and People

Review of the Week: "The Pirate," its gay, its colorful, and it provides chuckling good entertainment.

Manuela's (Gene Kelly) is engaged by old Spanish custom to a fat chunk of a Caribbean mayor (Walter Blizak), but falls in love with an itinerant actor (Gene Kelly).

Manuela's cupulent boy friend had been the bad man all along, a slightly jaded edition to be sure, but the real McCoy nevertheless.

Two of the best scenes: When Miss Garland's enormous sun bonnet waltz (thanks to Mr. Kelly) giving her an appearance akin to that of a bedraggled cooler spaniel.

Unfortunately though it isn't all tea and crumpets. Kelly's dancing is stiff and awkward at times and his distinctly American diction seems out of place with the Caribbean setting.

Despite all that, "The Pirate" is a good evening's entertainment. Some of Mr. Kelly's dances are truly amazing; a pleasure to watch.

Just received a slight indication of aforesaid cooperation. "One motion picture studio has constructed a new type of trailer for its film, "Beyond Glory," starring Alan Ladd.

The trailer, shot in a television studio setting, shows Ladd before a television camera and being interviewed by a telecaster.

Not much perhaps, but at least the cinema is admitting the existence of the new medium.

Betty Hutton, who has devoted all of her time to filmland since leaving Broadway in 1941, has announced she is making a temporary return to the stage to learn at first hand what the public wants.

And the New Jersey Poll has just verified a suspicion we have had for a long, long time - namely that most people don't like to see double feature shows.

Let's hope movie operators look that report of public preference over with an eye to doing something about double feature shows.

Comedy-Thriller Opens June 28 At Montclair

As a change of pace in its parade of hit Broadway stage shows, the Montclair Theater will present the famous comedy thriller, "Seven Keys to Baldpate," as its next attraction opening Monday, June 28.

Starred in the satirical mystery play will be William Gaxton, the well known musical comedy and motion picture star, who with Victor Moore has appeared in such recent Broadway successes as "Anything Goes," "Louisiana Purchase" and who was starred in the musical film "Best Foot Forward" and "Diamond Horseshoe."

Mr. Gaxton will be supported by Marianne Stewart, the Hollywood actress who has been seen on Broadway in "Jacobowsky and the Colonel" and "The Survivors" and who, in private life, is the wife of Louis Calhern. Other prominent players include Frances Boreford, Linda King, Nat Burps, Kathleen Pielun, Emmett Rogers and David Tyrrell.

QUAINT, YET MODERN IT'S DIFFERENT - RELAXABLE - ENJOYABLE See The NEW CYPRESS ROOM LUNCHEON • TEA • DINNER • COCKTAILS

When in Morristown Let's Meet at the TOWN HOUSE For Cocktails, Soda or Delicious Dinner

OLD MILL INN TOWN HOUSE 40 PARK PLACE ON THE SQUARE Phone Morristown 4-0750

WILLIAM GAXTON (In Person) "SEVEN KEYS TO BALDPATE" Prices (Tax Incl.): Even, Mon, Thurs Fri. \$1.50; Sat. \$2.00; Sun. \$2.50; \$3.00.

Assure the success of your Reception thru the skilled services of our wedding consultant Garden and Terrace Weddings Featured HOTEL SUBURBAN

FLAGSHIP RESTAURANT Now Serving Luncheons From 12 to 2 DINNERS 5 TO 9 P. M. - (SUNDAYS FROM 1 TO 9) (OPEN EVERY DAY)

Held Over - Spring Season! the KORN KOBLERS America's Funniest Band with their hilarious comedy, novelties and dance music that made them the sensation of New York for the past five years!

CECIL BENTZ AT THE ORGAN THE FLAGSHIP'S THE PLACE FOR BANQUETS and WEDDINGS Flagship 29 CHARLES A. FITZE UNION, N. J. AMPLE PARKING SPACE

Park Theater Features Two Double Bills The Park Theater is featuring "Panhandle" with Rod Cameron, Thursday through Saturday with "French Leave" starring Jackie Cooper as the co-feature.

DRIVE-IN MORRIS PLAINS MO 4-5311

DRIVE-IN THE PRINCE OF THIEVES

WED. ONLY FAMILY FUN SHOW

Air Conditioned PALACE

COOLED BY REFRIGERATION REASON

Pix Newsreel

DELICIOUS MEALS IN HOME-LIKE ATMOSPHERE AT YE OLDE VILLAGE INN

Paper Mill Playhouse MILLBURN N. J. NOW PLAYING! MAXWELL ROSS INGRAM CLARENCE NORDSTROM

MILLBURN INN NOW SERVING LUNCHEONS 12 TO 2 DINNER - 5 TO 8 - SUNDAY - 12 TO 8 (Closed Tuesdays) 5 OLD SHORT HILLS RD. - MILLBURN, N. J. MILLBURN 6-0928

YOU WILL FIND THERMOSTATICALLY CONTROLLED AIR CONDITIONING at MARIO'S 35 Main Street, Millburn Reservations - Millburn 6-1724

THREE CROWNS RESTAURANT Famous Swedish Smorgasbord with Luncheon and Dinner Bob Quimby at the Grand Piano, with his Solovox from 8:30 to closing, Wednesday thru Saturday

- *** NOW PLAYING *** CRANFORD: June 24, "FIGHTING 69th," "WINTER MEETING" June 25, "10th AVENUE ANGEL," "B. F.'S DAUGHTER," June 27-29, "PANHANDLE," "MIRACLE OF THE BELLS," June 30, "ARGYLE SECRETS," "DUEL IN THE SUN." EAST ORANGE: June 24-26, "RELENTLESS," "TWO BLONDES AND A REDHEAD," June 27-30, "I REMEMBER MAMA," "ALBUQUERQUE." HOLLYWOOD: June 24-30, "SILVER RIVER," "ARE YOU WITH IT." ORMONT: June 24-26, "SAIGON," "CHRISTMAS EVE," June 27-29, "BLONDIS REWARD," "FRENCH LEAVE." ELIZABETH-ELMORA: June 24-26, "I REMEMBER MAMA," "THE HUNTED," June 27-29, "ALL MY SONS," "BLONDIS REWARD," "FRENCH LEAVE," "B. F.'S DAUGHTER," "10th AVENUE ANGEL." LIBERTY: June 24-26, "BERLIN EXPRESS," "SCUDDA HOO! SCUDDA HAY!" NEW: June 24, "FORN CORRESPONDENT," "GREAT GUY," June 25-26, "GENTLEMAN'S AGREEMENT," "LET'S LIVE AGAIN," June 27-29, "TO THE BEATS OF THE BATTLE," "ALIAS," "GENTLEMAN," June 30, "BLACK CAT," "BLACK FRIDAY." REGENT: June 24-30, "HOMECOMING." RIF: June 24-30, "RIVER LADY," "LETTERS FROM AN UNKNOWN WOMAN." STATE and ROYAL: June 24-26, "I REMEMBER MAMA," "THE HUNTED," June 27-29, "ALL MY SONS," "ARE YOU WITH IT." STRAND: June 24, "LINDA BE GOOD," "BURY ME DEAD," June 25-26, "RIVER LADY," "CAMPUS BLEUTH," "MAGIO TOWN," June 27-29, "I REMEMBER MAMA." IRVINGTON CASTLE: June 24-26, "10th AVENUE ANGEL," "B. F.'S DAUGHTER," "10th AVENUE ANGEL," "B. F.'S DAUGHTER," "10th AVENUE ANGEL," "B. F.'S DAUGHTER," "10th AVENUE ANGEL," "B. F.'S DAUGHTER," "10th AVENUE ANGEL," "B. F.'S DAUGHTER." LINDEN PLAZA: June 24-26, "DISHONORED LADY," "RELENTLESS," "TWO BLONDES AND A REDHEAD," "BLONDIS REWARD," June 27-29, "BATTING HOOPER," "BLACKMAIL." MADISON: June 24, "THE BIG CLOCK," June 25-26, "SAIGON," "LET'S LIVE AGAIN," June 27-29, "MAGIO TOWN," "I REMEMBER MAMA." ORANGE EMBASSY: June 24-26, "10th AVENUE ANGEL," "B. F.'S DAUGHTER," "10th AVENUE ANGEL," "B. F.'S DAUGHTER," "10th AVENUE ANGEL," "B. F.'S DAUGHTER," "10th AVENUE ANGEL," "B. F.'S DAUGHTER." PALACE: June 24-30, "BERLIN EXPRESS," "SCUDDA HOO! SCUDDA HAY!" PIX NEWSREEL: June 24-30, "TRAIL OF THE VIGILANTES," "BADLANDS OF DAKOTA."

