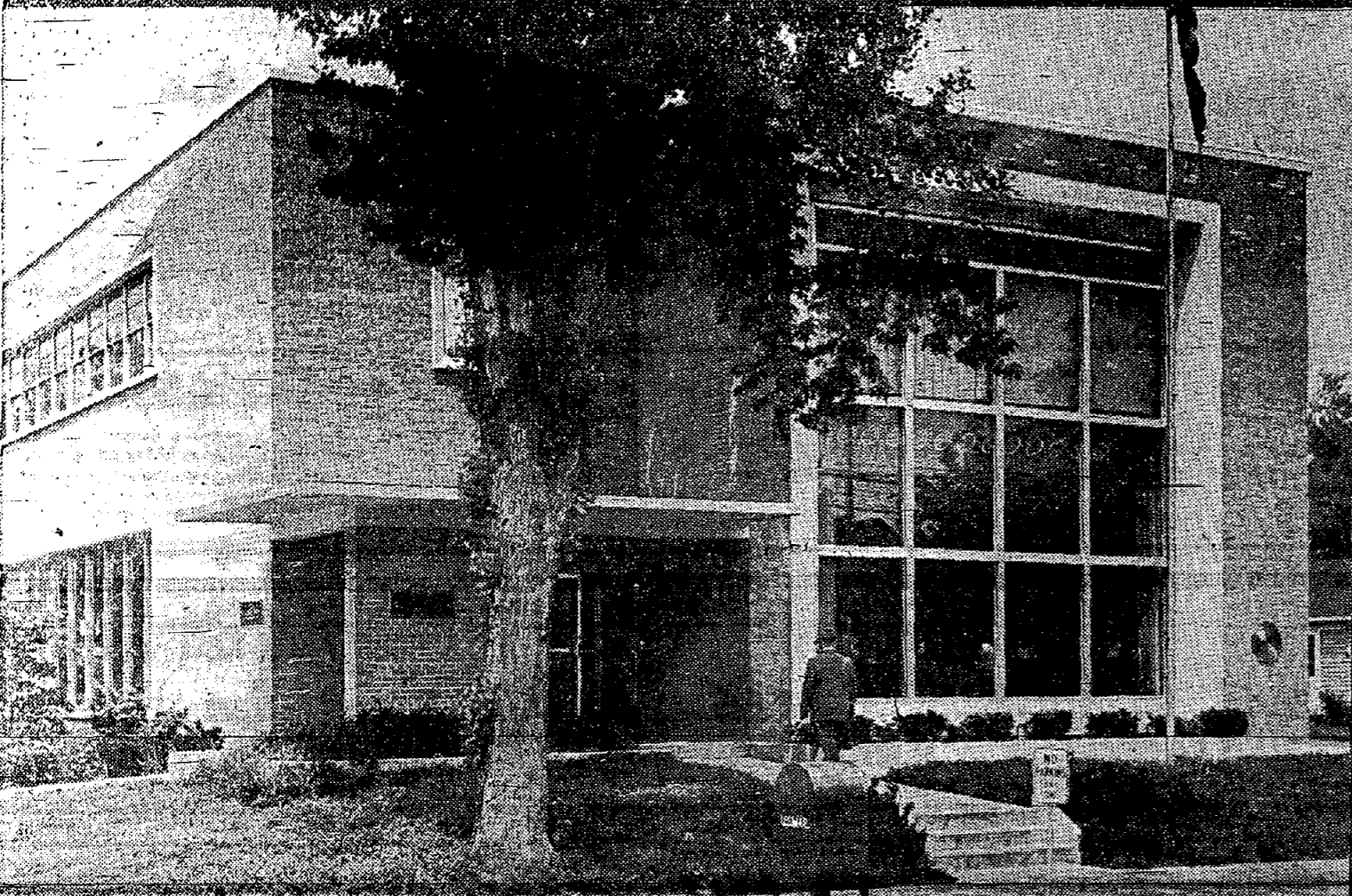




A warm, friendly atmosphere characterizes the efficiently arranged interior.



Modern and beautifully styled, the Bank symbolizes the progressive spirit of the community.

It's just a few minutes drive from your doorway to National State Bank in Millburn . . . just a few minutes that make a big difference to you in banking convenience!

At National State Bank of Newark you'll find every banking service at your disposal . . . all under one roof! There is a specialized and seasoned personnel to handle your specific requirements . . . a Trust Department with tax and investment counsellors at your service . . . Municipal Bond Department . . . officers in every Department who are pleased to offer helpful advice based on long and varied banking experience.

Among regular banking services open to you are savings accounts, safe deposit boxes, Christmas and Vacation Clubs, night depository, loans, escrows, checking accounts, money orders, letters of credit, trust services and many others.

Added conveniences are a "Drive-Up" teller's window, and plenty of available parking space. Banking hours are 7:45 A.M. to 2:00 P.M., Monday through Friday, and 6 P.M. to 8 P.M. every Monday evening.

You'll like doing business with National State Bank of Newark, one of the nation's largest and most respected banking institutions . . . backed by resources totaling \$280,000,000., and by nearly a century and a half of solid, sound and progressive banking experience.

CURRENTLY PAYING 2 1/2% INTEREST ON SAVINGS!

The Bank provides ample parking space for customers.

New

Banking

Convenience

for

Millburn,

Short Hills,

Springfield,

Maplewood,

Cranford Area!

Drive-up teller's window offers added convenience to motorists.



The NATIONAL STATE BANK OF NEWARK

FOUNDED 1812

Millburn-Short Hills • Orange • Irvington

Member Federal Deposit Insurance Corporation

P.T.A. NEWS

The winners of the PTA attendance awards, based on percentage of parents attending the Open House meetings on Monday, November 25 have been announced, as follows: James Caldwell School, Mrs. Cross—First Grade, 121%; Edward V. Walton School, Mrs. Arey—Third Grade, 128%; Raymond Chisholm School, Mrs. Kohn—Fourth Grade, 112%; and Florence M. Gaudinger School, Mr. Fallon—Seventh Grade, 103%.

The members of the Hospitality Committees are grateful to the kindergarten, third grade, and eighth grade mothers for assisting with plans for the refreshments at the Open House meetings on November 25.

From Mrs. E. Weinger, PTA Finance Chairman, comes an expression of many thanks to all of the people of Springfield who cooperated so wonderfully to make the PTA Cake Sale such a tremendous success. She feels that a special "thank you" is due the Grand Union Store, Mrs. S. Breier for posters, and the class mothers who did such a terrific job. Also thanks to the Springfield Sun for publicity for the sale.

Representatives of the Springfield PTA and the Board of Education met with the Township Committee on November 28 to discuss requested traffic lights and sidewalks. They report that the Township Committee announced that the township engineers will make a survey and take a traffic count at the locations under question during the month of December.

The Pre-School Survey Committee held the first meeting at the home of Mrs. Edward J. Harbach on Tuesday, December 4. Definite plans for the survey were made at this meeting. Mrs. Harbach needs volunteers who are willing to give of their time in making the survey. Call Mrs. Harbach at DR. 6-9472, any morning, to make arrangements for helping with this survey.

Mrs. S. Bryant Haas, International Relations Chairman for the PTA whose telephone number is DR. 6-3294, announces that the Springfield PTA will sponsor a collection of clean, warm clothes and blankets for Hungarian refugees from Monday, December 10 through Thursday, December 13. Mr. Conte has generously offered the use of his store on Mountain Avenue near Henshaw Avenue for the collection. A flier will follow through the schools. Watch for this flier which will give additional information on the collection.

Mrs. Edward J. Snider
PTA Publicity Chairman

"Ladies Nite" Set

The Rev. Dr. Aubry H. Guyn, popular minister at the Caldwell Methodist Church will be the guest speaker at the annual Ladies Night Methodist Men's dinner on Monday evening, December 10, at 7:00 o'clock, according to an announcement today by Mr. Howard J. Flammer, Club President.

Dr. Guyn has gained a reputation as an entertainer and actor of no small reputation. While pastor at the Irvington Methodist Church his following reached to nearby towns and cities. As a humorist he is unexcelled.

Mr. Flammer states that the men of the community are cordially invited to attend the dinner if accompanied by their wives or sweethearts.

Watch Out for High Pressure Salesmanship

Residents of Springfield are urged to check on all solicitations and pressure selling especially in these few weeks prior to the Christmas holidays.

One report this week was that a group of photographers were in Springfield representing themselves as being affiliated with the Disc and Shutter, the new Morris Avenue photography and record shop. The resident checked immediately by telephone Felix Gold, the proprietor of the shop, but the men had disappeared before the police could be called.

The police department asks that all solicitations be checked especially when the sales people are strangers.

Our Permanent Waves

Are...

- Style Cut
- Conditioning Shampooed
- Accuracy Test Curled
- Glamour Rinsed
- Individually Styled
- Moderately Priced
- Guaranteed

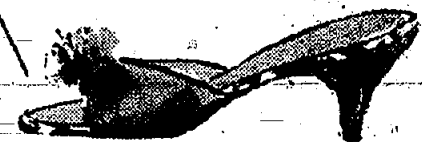
THE
Beauti-ette
Hair Stylists
261 Morris Ave., Springfield
Drexel 6-9877
Parking for 125 Cars



our beautiful

gift wraps...

highlights of evenings at home all exquisitely done up to make her the most beautiful hostess in town! Glimmering pastels, Christmas white, magnificent jewel tones in one of the most flattering collections of hostess robes, lounging pajamas and gowns. Come see them all, and see our beautiful slippers to complete her gift-wrapping. Altman negligees and lingerie and shoe salon, lower main



left to right: rayon brocade robe, champagne mauve or blue 10 to 20, 35.00
nylon-tricot gown, white with blue 32 to 36, 19.95
quilted robe, white/blue small or medium, 19.95
white rayon brocade robe with red cotton velveteen trousers, 10 to 14, 85.00
rayon satin robe with embroidered bodice, cognac avocado-mauve 10 to 16, 59.95
slippers left to right:
Italian printed leather, pink, white, royal, red, aqua, 10.95
gold and silver kid wedge mule, 12.95
gold and silver kid mule, 13.95
cotton velveteen mule in black with silver blue mink bow, 12.95

B. Altman & Co.

SHORT HILLS

MORRIS TURNPIKE AT RIVER ROAD... DREXEL 9-3000

Disc and Shutter Record Shop Finds Musical Way To Say 1st Merry Xmas

The Disc and Shutter are roaring into their first Christmas here with three big fields of gift suggestions that add to the variety of Springfield selections.

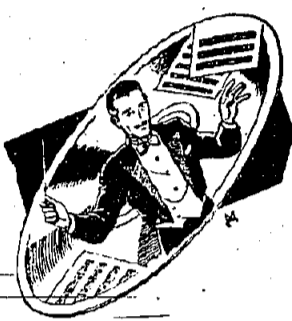
The big music department at Disc and Shutter has the instruments on which to play the records that line the walls. Phonographs, radio-phonograph combinations, miniature resistor radios, and tape recorders are among the many quality machines. In addition to a vast collection of records, Disc and Shutter has sheet music, music instruction manuals, record containers and racks.

A big feature of the music department is the three money saving clubs offered. First there is the RCA Save On Records club whereby if you buy a 3.98 coupon book you receive three free records over a year in addition to monthly selections which won't be released to the general public for 2 months after you receive them. Then there is the Disc and Shutter Record Club for Extended Play records and Long Playing records. Here for any ten records you purchase in the same price category you receive two free records of the same price category. Lastly there is the Popular record club in which you get a free popular record with ten purchases.

Other Disc and Shutter departments include the big photography and model shops.

MAKE IT A RECORD Christmas!

Our giant collection of Hi-Fi recordings includes just about every sound made by man. Our children's records are funny and educational, our classical records run the gamut from complete operas to a 40 second flight of the bumblebee, and our popular records include all the favorites of the whole 20th Century (so far).



MUSIC TO LIVE BY

...must be music that lives up to the quality of today's recordings. Our display room full of high fidelity instruments offers an immense selection at prices you can afford. These phonographs, radios, tape recorders, and combinations come in attractive cabinets and carrying cases that would brighten any Christmas tree.

NEVER BEFORE at this LOW PRICE!

Sensational All-New 1957 WEBCOR HI-FI TAPE RECORDER

\$149⁹⁵
VISCOUNT MODEL



All These Features!

- VERIFIED HIGH FIDELITY!
- 4-WAY MASTER CONTROL
- PROFESSIONAL-TYPE EDITING BUTTON
- EXCLUSIVE RECORDING HEAD!
- "MAGIC EYE" RECORDING LEVEL!
- AUTOMATIC TAPE COUNTER!

An amazing buy—see it, hear it, SAVE! With full-range PM speaker, Weber-built motor, speedometer-type tape-use indicator, Records and plays back 4 hours on one fast 30 to 10,000 cycles. Two speeds. Sandalwood Brown case.

1957 WEBCOR "Royal" HI-FI TAPE RECORDER

Records and plays back 4 hours in both directions without reel-turnover!

Renowned tone model at a sensational price! Verified High Fidelity, and other fine features, automatic shut-off. \$199.95

DISC AND SHUTTER
266 MORRIS AVE. SPRINGFIELD
DRexel 6-5651

Eddie Fisher says:

"When you give RCA VICTOR albums, the world's greatest artists say 'MERRY CHRISTMAS' for you."



Only \$1.49 for each 45 EP record
\$3.98 for each Long-Play record
(Nationally advertised prices)

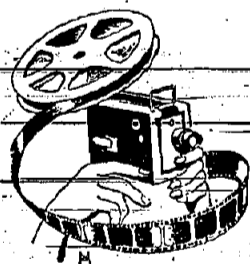
1. LANZA SINGS CHRISTMAS CAROLS	4. CHRISTMAS HYMNS BY GEORGE BEVERLY SHEA	7. CHRISTMAS BELLS	10. THE SOUNDS OF CHRISTMAS	13. TRUE LOVE SINGS
2. CHRISTMAS HYMNS & CAROLS	5. CHRISTMAS HYMNS AND CAROLS	8. CHRISTMAS CAROLS ON THE ORGAN	11. AMARIL AND THE NIGHT VISITORS	14. HOLLYWOOD PRESBYTERIAN CHURCH CHOIR
3. VOICES OF WALTER SCHUMANN	6. CHRISTMAS IN HIGH FIDELITY	9. PERRY COMO SINGS CHRISTMAS	12. GETTING FRIENDLY WITH MUSIC	15. COPPELIA

ALL ALBUMS SHOWN ARE RECORDED IN "NEW ORTHOPHONIC" HIGH FIDELITY SOUND.

See the EDDIE FISHER SHOW on NBC-TV and Eddie's great new movie, BUNDLE OF JOY

They Always Smile for the Birdie!

MOTION PICTURES FOR A FAMILY RECORD



- CAMERAS**
8mm Kodak Brownie . . . \$29.95
8mm Keystone Capri . . . \$59.95
- PROJECTORS**
8mm Kodak Brownie . . . \$62.00
8mm Keystone K-75 . . . \$74.95
K-100 . . . \$99.95

When Christmas Includes Gifts From Our Photography Department

- CHRISTMAS SPECIAL** WALZELEX 2 1/4 x 2 1/4 REFLEX With 3.5 Lens, Complete With Ever-Ready Carrying Case — plus — Coronet "B" Exposure Meter Both for \$69.95
- DARK ROOM FOR THE BUDDING HOBBIST**
KODAK DELUXE DEVELOPING KIT \$16.95
CONTACT PRINTERS
ENLARGERS, EASELS
And All Other Darkroom Needs



DISC



SNAP A CHRISTMAS SURPRIZE!



266 MORRIS AVE. SPRINGFIELD DRexel 6-5651

SHUTTER

• Gift Wrapping Free



Publisher — SAM O. SAROKIN
Associate Publisher & Editor — JULIAN SAROKIN
TELEPHONES:
Drexel 9-5070
ESTABLISHED SEPTEMBER 27, 1929
Published every Thursday at
282 Morris Avenue, Springfield, N. J.
by SPRINGFIELD SUN PUBLISHING CO.

Official newspaper of the Township of Springfield. Subscription rates by mail postpaid: One year, \$3.50; six months, \$1.75 payable in advance. Single copies ten cents. Entered as second class matter October 3, 1951 at the Post Office, Springfield, N. J. under act of March 3, 1879.

THURSDAY, DECEMBER 6, 1956

Overlook Plans New Building

F. Bruce Gerhard, president of the Overlook Hospital Association, today announced that Overlook trustees at a special meeting had approved a program to raise approximately \$3,500,000 to increase the capacity of the hospital from 230 to 340 beds in the first phase of construction and a longer term plan to increase bed capacity to 405. The first phase plan adopted calls for the construction of a new building. The entire plan was presented to the trustees with the full approval of the executive committee of the board, the building committee, the medical staff, the finance committee and the director.

"The needs of the hospital are pressing," Mr. Gerhard said, "and it was unanimously agreed that we must begin at once to prepare for the larger responsibilities which Overlook will be required to carry by the new facilities to be provided."

Facilities Over Taxed
It is generally accepted in hospital management that the maximum satisfactory occupancy is eighty per cent. Only then can you provide enough beds for emergency admissions and separation of patients by sex and medical necessity. Medical-surgical occupancy at Overlook for the fiscal year ended September 30, 1956 was 86.4 per cent and in one month it was actually 87.7 per cent.

To carry the heavy patient load Overlook is being asked to bear we have had to use one solarium on each floor for patients. No solarium has bathroom facilities. And withdrawing these solarium limits the facilities for recuperating patients and for visitors.

For more than a year Overlook has had to restrict many of its services to those in greatest need. We have had to cancel, delay and postpone admissions to the hospital—sometimes as many as eight in a day and on average two or three days a week.

The inadequacies of our maternity facilities are widely recognized. We need another delivery room. The nursery space is at least fifty-five per cent too small.

Actually our service facilities

are under an even greater strain. The kitchen for example is at least 1/2 too small for our current needs, and the high praise we have had for our food is an amazing achievement under all the circumstances.

"The list of our needs is a very long one and we must act now to meet the challenge of the present and the years ahead of us. MUST RAISE \$2 1/2 MILLION" Mr. Gerhard stated that "the minimum program for expansion would require \$3,500,000 of which the hospital now has available or in prospect approximately \$1,000,000.

"To adopt all the recommendations of the trustees—Taking into account not only building but equipment for the entire plan will call for a 2nd phase of construction, to begin when the 1st phase is finished. The second phase will cost an additional \$2,000,000, based on present day prices.

Detailed drawings and complete information will be published as soon as drawings are available. Mr. Gerhard said it was pointed out very clearly by architects and members of the building committee, that it is quite impractical to do the first phase of construction partially. It must, for reasons of costs and functions of the hospital, be done at one time and completed in its entirety.

ANNUAL GIFTS VITAL
"The annual giving campaigns of Overlook have made a tremendous difference to the hospital," Mr. Gerhard declared. "We now have a future development fund and reserves built up by a realistic depreciation policy which will provide approximately \$500,000 by the time construction begins. And we believe we can count on another \$500,000 from Foundations which have either promised us support or indicated a definite interest in our needs. We are also looking to Federal support under the Hill-Burton Act for \$150,000 to finance facilities for chronically ill patients.

A committee to organize the fund raising will be named in the very near future," Mr. Gerhard announced.

Overlook trustees authorized the immediate retention of James H. Ritchie & Associates of Boston, architects and Tamblin & Brown, Inc., Empire State Building, New York City to direct the fund raising campaign.

OPENING NEW STORE—David Friedlander, a registered pharmacist since 1929, is opening his own modern drug store, Roland Drugs, 100 Mountain Avenue this Friday.

Friedlander, a graduate of the New Jersey College of Pharmacy, was the former proprietor of one of Maplewood's leading drug stores.

Planting of 281 Shade Trees Ok'd

The Springfield Shade Tree Commission let out contracts for the planting of 281 shade trees here at a meeting Tuesday night.

Ed. Cardinal, Chairman of the Commission, said that M. Robinson and Son of Cranford was awarded a contract for planting 234 shade trees along township streets in the area south of Hillside Avenue. He says these trees will cover 12 streets.

Davey Tree Service was awarded a contract for the planting of 47 trees in the same area. The total cost for both planting contracts is \$3899.00.

Cardinal says that as part of the Commission's beautification program a different section of Springfield will be planted each year.

Cardinal also pointed out that a pruning program is underway on a 12 street in the northwest portion of town.

known as Vermont Street between Pennsylvania Avenue and Seward Ave., was referred to Roads and Bridges Committee.

Town of Westfield, enclosing resolution requesting approval of plans to enclose a 1/2 mile portion of stream between the Boulevard and the Greenwood-Westfield line and asking for a contribution toward same, was referred to Roads and Bridges Committee.

Ernest T. Brown, advising of bids received for the erection of a Garage Building for the bridge department, was referred to the Public Property Committee.

Union County Savings and Loan League, asking consideration to the establishment of accounts in each of the 16 insured savings and loan banks in the county, was referred to Finance Committee.

Board of Health of Elizabeth, relative to the obnoxious emission of the Elizabeth River of the North Avenue culvert and Union Lake, was referred to Roads and Bridges Committee.

Galloping Hill Civic Association, requesting that the shoulders of Galloping Hill Road between Lehigh Valley R.R. and Five Mile Union, be widened, was referred to Roads and Bridges Committee.

Township of Scotch Plains, enclosing resolution recommending that this Board apply for Federal Aid toward the construction of the proposed Marine Avenue extension from Baritan Road to Lake Avenue north of the Lehigh Valley Railroad Bridge, was referred to Roads and Bridges Committee.

Monthly report of the Auditor, Wm. F. Burke, was received and ordered filed.

The following resolutions were introduced and moved for adoption: (1) — Freeholder Anderson for Committee of the Whole, expressing sympathy of this Board at the passing of Robert E. C. Jones, one of the reporters from the Elizabeth Daily Journal, was on roll call unanimously adopted.

(2) — Freeholder Bailey for Public Safety Committee, accepting quote from Harry Chevrolet, Inc. of Westfield, for furnishing the Civil Defense and Disaster Control, one 1956 Chevrolet, 1956 Series, for \$2,298.25, less allowance of \$100 Chevrolet, \$478.25 less Federal Tax of \$45.00 making a net delivered price of \$1,625.00, was on roll call unanimously adopted.

(3) — Freeholder Carr for Public Property Committee, employing Albert N. Demarest as Building Maintenance Worker at \$20 per hour effective immediately, was on roll call unanimously adopted.

(4) — Freeholder Carr for Public Property Committee, requesting all bids received for the erection of a garage building for the Bridge Department in Scotch Plains and authorizing Committee to re-advertise for same, was on roll call unanimously adopted.

(5) — Freeholder Herlich for Finance Committee, authorizing transfer of various appropriations, was on roll call unanimously adopted.

(6) — Freeholder Herlich for Finance Committee, approving personnel actions in various departments, was on roll call unanimously adopted.

(7) — Freeholder Hitchcock for Roads and Bridges Committee, pursuant to the request of the Town of Westfield, the following streets be designated as through streets: North Avenue at intersection with Crossways Place, Dudley Avenue and Edgewood Avenue, was on roll call unanimously adopted.

(8) — Freeholder Hitchcock for Committee on Roads and Bridges, accepting work of construction new storm water sewer in Kenilworth Boulevard, from Market Street to South 21st Street, contract of Hanna & Damiano Contracting Co. and showing the payment of \$2,438.04 after the expiration of 60 days from date hereof, was on roll call unanimously adopted.

(9) — Freeholder Hitchcock for Roads and Bridges Committee, approving 2 personnel actions in the Road Dept., was on roll call unanimously adopted.

(10) — Freeholder Herlich for Public Welfare Committee, expressing sympathy of this Board at the passing of Mrs. Kathryn Hubner, a member and an officer of the Board of Education, was on roll call unanimously adopted.

There being no further business to be considered and upon motion duly made and seconded, the meeting adjourned. Next regular meeting will be held on Thursday, December 13, 1956, at ten A.M. A. Isabel Allington, Clerk of the Board, Dec. 6, 1956.



CLASSIC AT STRAND—Count Tolstoy's classic novel, "War and Peace," is now playing at the Strand theater through Tuesday of next week. Above, Audrey Hepburn comforts Mel Ferrer in a scene from the technicolor vista vision film.

The "pink sands" on Bermuda's beaches are really ting ground pink coral. There are 5,200 golf courses in the United States for an estimated four million golfers.



More than ever—Yellow Page Advertising Creates Buyers FOR ALERT BUSINESSMEN Is your business name easy to find in the Yellow Pages? Are your products and services adequately advertised? Remember, 9 out of 10 look for you in the Yellow Pages.



THE DEALER YOU'RE LOOKING FOR... is easy to spot in the Yellow Pages. (And the trademarked features help you find the brand of product you want fast.) SEE: Automobile Dealers, Beverages, Electric Appliances, Fences, Florists, Paint Dealers, Tires. To find "where-to-buy" anything... LOOK in the YELLOW PAGES of your phone book.



WINDOW SHADES Custom - Made Washable - Flame Proof Room Darkening Shantling Woven Wood, Plisse Custom Venetian Blinds FRANK G. CURRIE CO. 666 Morris Turnpike, near Millburn Ave. Short Hills DR. 6-2723 Over 35 Years Serving the Public

We here at General Greene Shopping Center are looking forward to serving you for the second Christmas of our existence. Our development was something Springfield needed for quite some time and during our first year and a half, I'm sure we are satisfying your every need with our variety of establishments and our service. We derive a great deal of pleasure on seeing our parking lot crowded with cars, not only from a monetary sense, but a feeling that you have confidence in our service.

Why don't you come down to our shop and browse around a bit. Our hundreds of brands of wines, liquors and beer are too numerous to mention here, and you really can't appreciate the beauty of our gift wrappings unless you actually see them on display.

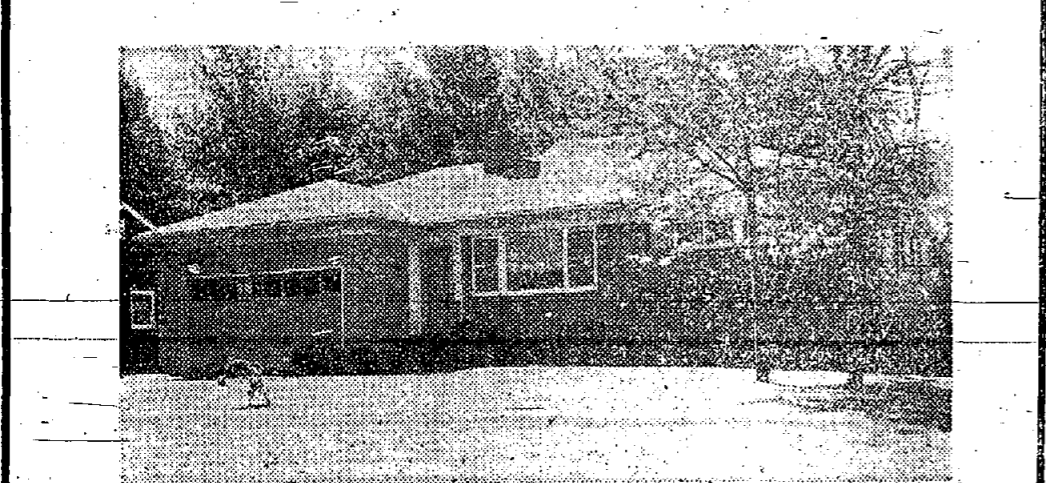


This year's decanter bottles far surpass last season's—in beauty and grace. Stop in and let us fill your needs, no matter how small or large with our suggestions as to what would be an appropriate gift item.

We would like to wish all our friends in Springfield and neighboring communities—A JOYOUS AND FESTIVE CHRISTMAS AND NEW YEAR'S HOLIDAY. This will be our tenth season together and we are happily looking forward to many, many more.

Happy Holiday MILTON MILTON'S LIQUORS General Greene Shopping Center, Springfield, N. J. Drexel 6-1621

FOR SMART SUBURBAN LIVING



- SPACIOUS LIVING ROOM IMPORTED MARBLE FIREPLACE
FULL DINING ROOM
3 TWIN-SIZE BEDROOMS
2 1/2 BATHS, MASTER WITH STALL SHOWER
LARGE PANELED DEN WITH BUILT-IN CABINETS
GORGEOUS FINISHED RECREATION BASEMENT
LARGE KITCHEN WITH LEATHER BREAKFAST CORNER
BIRCH-KITCHEN CABINETS, FORMICA COUNTERS, DISHWASHER
FULL BASEMENT PLUS LAUNDRY ROOM AND LAVATORY
OUTDOOR PATIO
BEAUTIFULLY LANDSCAPED
CHOICE LOCATION

ASKING \$35,000

This gracious ranch type residence is another example of country living with city conveniences. It is situated in one of the finest convenient residential areas.

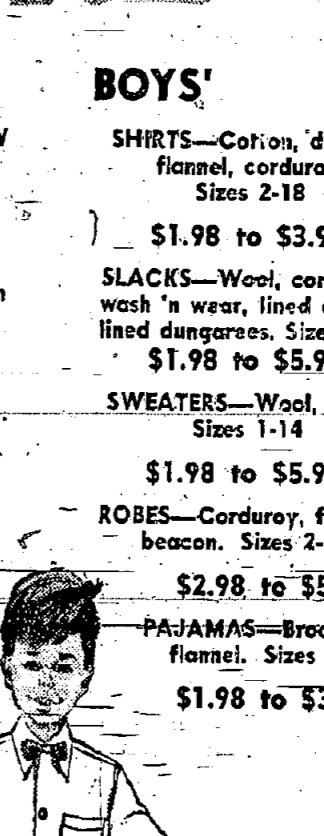
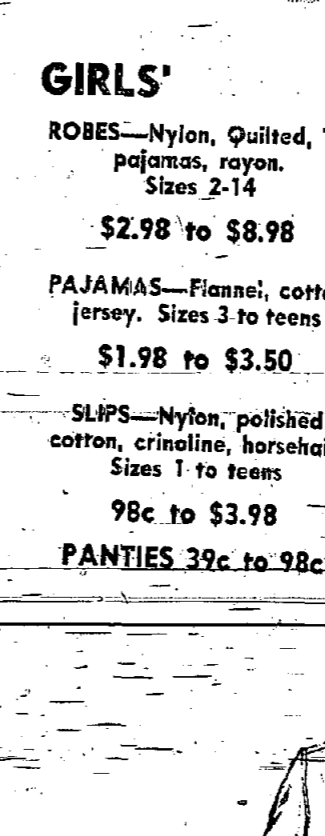
The construction is top quality in every respect and the layout provides maximum utilization of its large rooms. This completely custom-built home incorporates every worthwhile feature, all in good taste and in excellent condition.

The price includes wall-to-wall carpeting, laundry equipment and many other extras. The owner is anxious to sell. Inspect it and make an offer.

ANNE SYLVESTER'S REALTY CORNER Realtors 649 MORRIS AVENUE DREXEL 6-2300 SPRINGFIELD, N. J.

CHRISTMAS TREASURE

- GIRLS' ROBES—Nylon, Quilted, TV pajamas, rayon. Sizes 2-14 \$2.98 to \$8.98
PAJAMAS—Flannel, cotton jersey. Sizes 3 to teens \$1.98 to \$3.50
SLIPS—Nylon, polished cotton, crinoline, hairser. Sizes 1 to teens 98c to \$3.98
PANTIES 39c to 98c
BOYS' SHIRTS—Cotton, dacron, flannel, corduroy. Sizes 2-18 \$1.98 to \$3.98
SLACKS—Wool, corduroy, wash 'n wear, lined chinos, lined dungarees. Sizes 3-18 \$1.98 to \$5.98
SWEATERS—Wool, orlon. Sizes 1-14 \$1.98 to \$5.98
ROBES—Corduroy, flannel, beacon. Sizes 2-16 \$2.98 to \$5.98
PAJAMAS—Broadcloth, flannel. Sizes 2-16 \$1.98 to \$3.50



DRESSES AND SPORTSWEAR DRESSES—Nylons, polished cottons, velvets. Sizes 1-14 \$1.98 to \$8.98
NEW! SELECTED STUDENT SIZES FOR THE YOUNG MAN IN SHIRTS, PAJAMAS AND ROBES.
NEW PRE-TEEN DEPARTMENT, SKIRTS, BLOUSES, SLIPS AND SWEATERS
BLOUSES—Satin, dacron, cotton. Sizes 1 to teens \$1.98 to \$3.98

REINETTE YOUTH CENTER 246 MORRIS AVENUE, SPRINGFIELD Drexel 9-5135 LAYETTES • LAY-A-WAY • LOW PRICES



The FAMILY CLOSET

Is Chock Full Of Gifts for the Young!

LADIES—Hose, Lingerie, Or-lon Sweaters, Flannel Gowns, and Pajamas, Gotham Gold Stripe Lingerie and Hose.

BOYS—Gloves, Pants, Shirts, Underwear, Hose and Socks, Sweaters, Pajamas, Kay nee Suits.



HERE'S YOUR TICKET TO CHRISTMAS SAVINGS!

GIRLS—Gloves, Cinderella Dress, Sweaters, Underwear, Bathrobes, TV Pajamas, Blouses.

The FAMILY CLOSET
240 Morris Ave., Springfield

SAVINGS FOR SANTA

Only Those Shoppers Who Bring This Gift Coupon to the Family Closet Will Be Given OFF ALL PURCHASES

10%

With best season's greetings,
Ethel and Dorothy

Top Ten On Springfield Hit Parade

Felix and Ruth Gold of the Disc and Shutter have compiled a Springfield Hit Parade of records based on their sales over the last three months. The following is an album best seller list only and indicates how Springfield's music taste lies. Each record retails for \$3.98:

Name	Artist	Record
Calypso	Harry Belafonte	RCA Victor
Elvis Presley	Elvis Presley	RCA Victor
The Kind and I	Elvis Presley	Capitol
My Fair Lady	Original Cast	Columbia
Khatchaturian: Gayne	Ballet Suite	Capitol
Kabalevsky: The Comedians	Philadelphia Orch. (Ormandy)	Columbia
High Society	Sound Track	Capitol
Songs for Swinging Lovers	Frank Sinatra	Mercury
The Platters	The Platters	Mercury
Tchaikovsky, 1812 Overture	Capriccio Italian	Mercury
Minneapolis Orch (Dorati)	Mercury	Coral
Say It With Music	Lawrence Welk	Coral

Father of Springfield Resident Dies in Penn.
Friends of Mr. and Mrs. Harvey P. Sommerer of 40 Mapes Avenue, Springfield, were sorry to learn of the death of Mr. Sommerer's father, Harry L. Sommerer at the Grandview Hospital, Sellersville, Pa. last Thursday. Mr. Sommerer's father was 71, a retired official of Radio Corporation of America. He joined RCA in 1909 and was managing director of the firm's operations in Japan from 1930 to 1937. He also was a general purchasing agent and director of manufacturing. A 32nd degree Mason, he was born in Philadelphia where he lived until moving to Harleyville, Pa., after his retirement in 1947. Surviving are his wife, Mrs. Stella Price Sommerer; two sons, John P. of Englewood, and Harvey P. of Springfield, a daughter, Miss E. Virginia Sommerer at home, and two grandchildren. Services were held Monday at the Shelly Funeral Home, Lansdale, Pa. Burial was in Ardsley Burial Park, Glenside, Pa.



NEW SHOES FOR A NEW AMERICAN—are fitted on refugee Lajos Fejes of Mezolak, Hungary, by Red Cross volunteer, Mrs. Elinor Macaulay of 75 Flemer Avenue at the Army's refugee reception center at Camp Killmer. Mrs. Macaulay is one of scores of helpers from nearby chapters who are serving the first of the 3,000 Hungarians slated to come to the United States.

Woman's Club Is Holding Bazaar

The Springfield Woman's Club is attracting a large number of town people to the December Bazaar, being held today, December 6, at the Methodist Church at 65 Main Street, from 12:00 to 7:30 P. M.

All of the department chairmen have worked enthusiastically for weeks and have "dreamed up" many interesting and useful gifts. The list of salable items runs the gamut from handmade bean bags to knitted articles, jewelry, and gaily wrapped "surprise packages". For those who wish to find out what the future holds in store for them, there will be two Fortune Tellers, who will be glad to give private palm readings or forecast coming events through the Crystal Ball. For a nominal fee, Madame Redness or Madame Urenya will tell them what they wish to know! The "Lollipop Set" will be interesting in fishing to their heart's content at the fish pond provided for their entertainment. A popular spot for a break in the day's shopping will be the Snack Bar, where an assortment of sandwiches, beverages, and desserts will be offered for sale. Mrs. Edwin G. Davenport, 42 Edgewood Ave., is Chairman of the Bazaar, and Mrs. Daniel A. Donovan, 108 Edgewood Ave., is Co-chairman. Serving on the Committee will be, all of the members of the Ways and Means Committee.

Temple Sisterhood in Regular Monthly Session

The regular monthly meeting of the Sisterhood of Temple Beth Ahim was held last Monday at the Temple, Baltusrol way. Janet Lawit, president of the Sisterhood, presided. The speaker for the evening was Mrs. Benjamin Katz, of Temple Beth Sholem, Union, who spoke on "Torah Fund," which is the national fund-raising campaign of the National Women's League for the benefit of the Jewish Theological Seminary of America. Monies raised are used to maintain the Rabbinical School, the Teachers' Institute, the Eternal Light radio program and interfaith and youth activities.

A feature of the program was a panel discussion entitled "The Jewish Theological Seminary Comes to Our City." The members of the panel were Sylvia Stampler, Ruth Slapin, Helen Golden, Irma Josephson, Arlene Borsky, and Rabbi Reuben R. Levine. The meeting was opened with responsive reading conducted by Ruth Weisman. Rabbi Levine kindled the Hanukkah lights. Refreshments were served. The evening's program was planned by Roz Muinam, chairman of the Program Committee.

MENU FOR WEEK OF DECEMBER 10 AT GAUDINEER SCHOOL CAFETERIA

Monday: Spaghetti with meat sauce, applesauce, peanut butter sandwich, milk.
Tuesday: Meat loaf, whipped potatoes, gravy, buttered green beans, bread, butter, milk.
Wednesday: Creamed chicken on biscuit, buttered peas or carrots, peaches, peanutbutter sandwich, milk.
Thursday: Orange and pineapple juice, hamburger on a roll, potato chips, cole slaw, milk.
Friday: Cream of tomato soup, toasted cheese sandwich, tossed salad, milk.

Regional Varsity Guests At Dinner

The New York Football Giants, offensive star, Alex Webster, was the principal speaker last Thursday evening at the Orchard Inn, Route No. 22, Springfield, with 83 Regional gridders the guests of the Regional High School Booster Club. The entire team, junior varsity, freshmen and the Coaching staff, enjoyed a tender steak dinner, with dessert and beverage. Each boy was sponsored by interested merchants, citizens and parents of boys on the squad. The Regional Booster Club served as the collecting agent and helped organize the dinner. Alex Webster provided an interesting after dinner speech, emphasizing the importance of a good education, especially for those who have an objective in life. A question and answer period followed, with most of the questions dealing with professional football, training and records of various players and teams. The Regional Board of Education was represented by Dr. Minor C. K. Jones, President, and William Broderick, Athletic Chairman of the Regional Board. Dr. Randolph C. Jacobsen, Principal at the Regional High School also spoke on good sportsmanship and good citizenship. Edmund Hoffer of the Regional Booster Club introduced Alex Webster of the N. Y. Giants, and spoke briefly on membership in the Booster Club as well as plans which are being formulated for the future.

CHRISTMAS SPECIALS

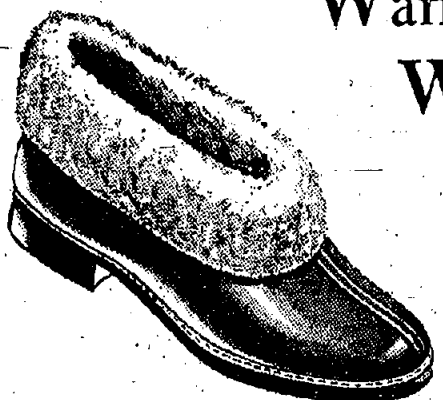
A Gift for the Whole Family

IT'S PRACTICAL AND WILL LAST FOR YEARS!

1" Alum. Combination Storm Doors	39.95
Full Piano Hinge	29.95
Alum. Door Canopies	79.95
Bath Tub Enclosures	52.95
Shower Doors	Int. on these optional

RAJAC PRODUCTS

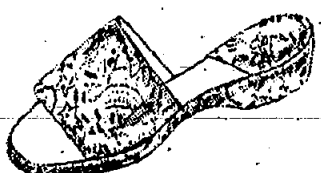
276 Morris Avenue
Springfield, N. J. DRexel 6-4649
Store Hours: Mon. Thru Sat: 9 to 5. Wed. and Fri: 7 to 9



Warm Feet
Warm Hearts
Welcome for Winter

We've slippers galore, to help you put all the family on easy feet for Christmas.

Come see and select now.



From sturdy leather moccasins with warm fleecy linings to glamorous slippers with a colorful Holiday touch, Colantone's has them all. The perfect gift for practical, year-round wear and sumptuous Christmas morning wear is a pair of gift wrapped slippers. Take a look at other fancy shoes for men, women and children. Make Christmas a family outfitting day.

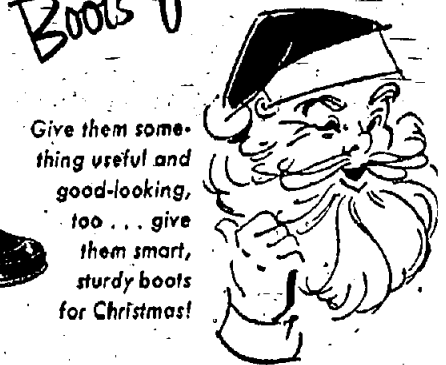
COLANTONE SHOE SHOP

OPEN 8 A.M. to 9 P.M.
245 Morris Avenue, Springfield
Free Parking In Rear DRexel 6-2682
"Springfield's Oldest and Most Reliable Fitters of Shoes for the Family"

WANTED

Boots for Christmas

Give them something useful and good-looking, too... give them smart, sturdy boots for Christmas!



A DAZZLE OF BUTTER COOKIES

Over 25 colorful varieties in our home baked Christmas cookies display.

Ready Wrapped Gift Boxes including samples of all the cookies

MOUNTAIN SPRING BAKE SHOP

721 Mountain Ave., 1/4 mile in from Rt. 22
SPRINGFIELD DRexel 6-4948
Hours: Tues. thru Sat. 9 a.m. to 10 p.m.
SUNDAY 7 a.m. to 7 p.m. — Closed Mondays



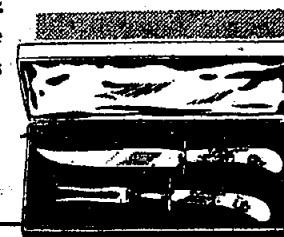
ESTWING Fine Hammers, Hatchets and Scour Axes... beautifully finished... unbreakable handles

Hammers 3.75 Axes 4.50
Reg. 4.50 Reg. 5.75

INDIVIDUAL COFFEE WARMERS... Carafette and Warmer Set... serves four with two cups each.
Reg. 10.98

Only 6.98

CARVING SET



CHRISTMAS TREE LIGHTS

that blink on and off... Paramount 20" Twinkling Light Set with transformer and multiple wiring.
Reg. 7.50

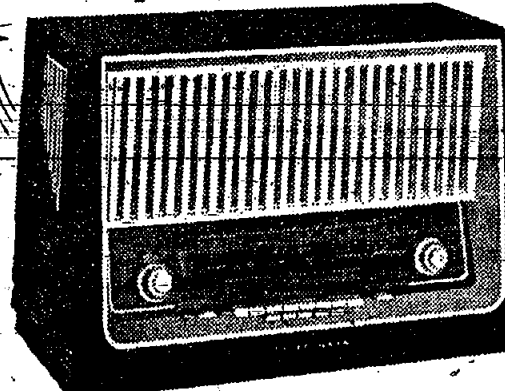
Only 5.49

CENTER HARDWARE

240 Morris Ave., DRexel 6-0459
Free Delivery Benj. Moore Paints
Open Sunday Mornings

"What is Christmas Without a SLED?" Flexible Flyers

WORLD'S FINEST HI-FI
TELEFUNKEN
"Opus 7" RADIO
with 6 SPEAKERS
Delivering Omniphonic Sound



FM, AM, SHORT WAVE — PLUS these Features:

- Selectox Tone Control
- 2 Built-In Antennas
- Bass and Treble Controls
- Jacks for Record Changer, Recorder, Extension Speaker
- Anti-Fade Control

Imported from West Germany—in every respect a superb expression of Old World electronics genius! Exclusive Omniphonic Sound gives you all the range, majesty and color you can hear. Choice of traditional, modern, blonde cabinets... from \$279.95

Special!
TELEFUNKEN "JUBILEE" \$99.95
HI-FI FM-AM RADIO, only

Easy Budget Terms Available

"See the Marks Bros."

RADIO SALES CORP.

SUMMIT MILLBURN
47 - 51 Maple St. 325 - 327 Millburn Ave.
CR 3-6800 DR 9-4200

SUMMIT STORE open Monday, Wednesday, Friday nights until 9 p.m.
MILLBURN STORE open every evening except Saturday until 9 p.m.



REALTY CORNER SALE—Residence at 126 Henshaw Avenue sold by ANNE SYLVESTER'S REALTY CORNER for Dr. John F. Triolo to Frank J. Hamilton. Mr. Hamilton is associated with Pfaff and Kendall of Newark.

ORT Meets Tonight

The Board of Springfield Chapter of Women's American O R T (Organization For Rehabilitation Through Training) will meet at the home of Mrs. Sheldon Wolf, 554 Ridgewood Rd., Millburn on Thursday evening December 6th at 8:00 P.M. A report will be given by Mrs. Daniel Gerber who is Tel-

Aviv Chairman. Mrs. Jack Slater and Mrs. Morris Chesler will also report on special projects of which they are chairman. Mrs. Ivan Crouch, Chapter President, will preside.

Women's Club News

The December meeting of the Springfield Woman's Club, which was held Wednesday evening, December 5th, was an outstanding one, and will be reported in next week's issue of the Sun, in order to give a full account of the program.

The Drama Department will hold their Christmas party at the home of Mrs. Michael Tatusko, 38 Lyon Place, on Monday evening, December 10th. Members will exchange surprise packages, and later during the evening they will enjoy games and charades. Mrs. John Williams will be co-hostess with Mrs. Tatusko.

Also, on the date December 10, Mrs. Edwin G. Davenport will be hostess to the Literature Department at her home, 42 Edgewood Avenue. At this time Mrs. S. Bryant Haas will review Guy Endore's "The King of Paris", based on the life of Alexandre Dumas.

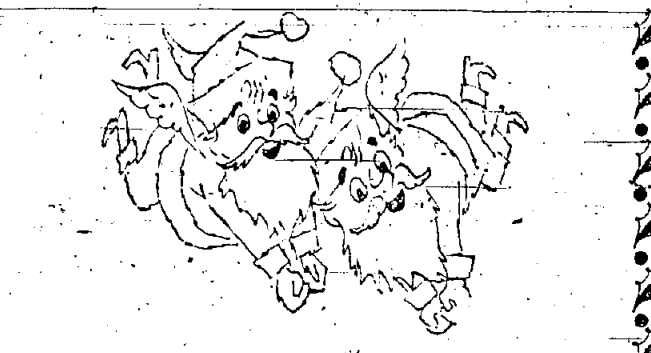
On Tuesday evening, December 11, the American Home Department will enjoy a Christmas party at the home of Mrs. Vincent Bonadies, Chairman of the Department. Miss Florence M. Gaudinier will be a guest at this meeting, and Mrs. Bonadies will present her with gifts from the department for underprivileged

Advisory Group Receives Reports

At the regularly scheduled meeting of the Citizens Advisory Committee on November 28 reports were presented covering steps so far undertaken in the committee's program.

The land committee headed by Kenneth Bandomer displayed maps of the township with the undeveloped areas clearly outlined, unit dwellings listed, and population allocated. The report children, to be distributed at Christmas time.

of the Fact-Finding Committee was presented by Henry Wasling, General Chairman, in the absence of Ike Freedman, the committee's chairman. Their plans are to make use of previous surveys by the Board of Education, the P.T.A. and earlier Citizens Advisory Committees. Part of their job, too, will be a forecast of the maximum population of the township. The township's engineer has been a helpful source of information. S. Bryant Haas was present as the representative of the Board of Education. The next meeting is scheduled for Thursday, January 3, in the Florence M. Gaudinier School.



Christmas Gift Suggestions FROM ENGLAND

- GIFT CERTIFICATE for Dover Street British Shoes
 - SLIPPERS, Camel Cloth \$ 3.50
 - Leather and Scotch Tartan..... \$ 6.95
 - PATENT LEATHER OXFORDS..... \$11.95
 - PATENT LEATHER COURT BOW PUMPS \$11.95
 - LOAFERS \$ 9.95
 - SLIP-ON CASUALS \$10.95
 - TASSEL CASUALS \$10.95
 - FLEECE LINED CHUKKA BOOT \$14.95
 - ALUMINUM SHOE TREES..... \$ 1.95
- Lightweight and compact for traveling

OUR BUSINESS is primarily selling British shoes by mail on direct factory representation at a fraction of their American retail price saving purchasers several dollars a pair.

So many local customers have liked our personal fitting service that we are now open six days a week from 9 A.M. to 6 P.M., with the exception of lunch hour from 12 until 1.

MAIL ORDER PRICES PREVAIL

Steven Williams, Ltd.
 40 CHATHAM ROAD SHORT HILLS, N. J.
 (Opposite Short Hills Lackawanna Station)
DROP IN !!
 See our complete selection of fine British shoes.

BOYS! GIRLS!

Santa

IS AT

Newberry's

COME IN
 (with an adult)

GET A FREE GIFT FROM SANTA!

SANTA'S HOURS:
 THURSDAY & FRIDAY NITES 7 to 9 P. M.
 SATURDAYS 10 A. M. to 5 P. M.

Your Child's Photo Taken With Santa at Newberry's. Photographer Will Be Here Friday Nights and All Day On Saturdays.



J. J. NEWBERRY CO.

B. Altman & Co.
 SHORT HILLS

a gift of great pleasure

can be a painting, a collage, a water color, an interesting old print. Perhaps you know someone who would like an original oil for his or her collection. For the connoisseur here is an opportunity to give a gift with a long and happy future! Our outstanding collection from 10.00 to 300.00

Altman Gallery of Fine Pictures, penthouse

Modern Era

DRAPERY SHOP
 Route 22, Springfield, N. J.
 DREXEL 6-0453

- DRAPERIES •
- SLIPCOVERS •
- BEDSPREADS •
- WALLPAPERS •

Lend a Festive Air To Your Home This Joyous Holiday Season. Let Us Help You Put New Life Into Your Wall Treatments and Accessories With Our Unusual and Distinctive Fabrics and Wallpapers.

Come in today and browse around in a relaxed atmosphere. See our displays and consult our trained decorator.

No PROBLEM too SMALL or too LARGE

Wiss Christmas Sale of 14 kt. Gold Jewelry

Some specially purchased . . . some reduced from regular stock . . . some with cultured pearls, diamonds and other precious stones.

This is just a hint of the many exciting values in fine jewelry you will find in The Wiss Stores at this Christmas season. No other gift is quite as impressive as a gift of precious jewelry . . . take advantage of this sale to play Santa in the grand manner . . . and make substantial savings while doing so. Open a CHARGE ACCOUNT or pay 10% down on our DIVIDED PAYMENT PLAN.

A. Cultured pearl brooch, reg. \$70,	\$42.50	H. Gold flower brooch with diamonds, reg. \$195,	\$125
B. Cultured pearl and sapphire bracelet, reg. \$350,	\$225	I. Gold charm with emeralds, rubies, diamonds, reg. \$175,	\$125
C. Flexible gold bracelet, reg. \$150,	\$95	K. Gold charm with cultured pearls, reg. \$16.50,	\$11.50
D. Gold bracelet with cultured pearls, reg. \$90,	\$55.50	L. Cultured pearl earrings, reg. \$30,	\$24.50
E. Cultured pearl grape cluster earrings, reg. \$125,	\$85.50	M. Gold ballerina brooch, reg. \$30.50,	\$25
F. Cultured pearl grape cluster brooch, reg. \$185,	\$115	N. Cultured pearl ring, reg. \$45,	\$30
G. Gold brooch with rubies and cultured pearls, reg. \$125,	\$83.50	O. Cultured pearl ring with two diamonds, reg. \$120,	\$82.50
Matching earrings (not shown) reg. \$115,	\$75	P. Opal ring with twelve diamonds, platinum, reg. \$450,	\$295

Prices include tax.

FOUNDED 1848

Wiss

NEWARK 2, 665 Broad Street
 MONTCLAIR, 28 Church Street
 EAST ORANGE, 594 Central Avenue

Open Wednesday and Friday Evenings In Newark
 Thursday and Friday In East Orange

Christmas Gifts

...They really go for!

MAKE OUT YOUR XMAS GIFT LIST FROM SOME OF THE MANY SUGGESTIONS OFFERED BY SPRINGFIELD HARDWARE

• APPLIANCES • HOME FURNISHINGS • HOUSEWARES

COME IN AND BROWSE AROUND!

SUNBEAM Coffeemaster \$37.50	ALL CHROME GENERAL Slicing Machine \$19.95
SUNBEAM GRILL \$33.50	G. E. STEAM & DRY IRON \$14.95
REVERE TEA KETTLE \$3.98 <small>Reg. \$5.50</small>	G. E. SANDWICH GRILL & WAFFLE BAKER \$19.95
Noma Xmas Lite Sets <small>Indoor and Outdoor — 7-15-20-25 Lite Strings</small>	T. V. TRAYETTE SETS <small>From \$9.95 to \$19.95</small>

OPEN FROM DEC. 10th TO XMAS
EVERY NITE 'TIL 9 PM

SPRINGFIELD HARDWARE CO.

265 MORRIS AVENUE
FREE DELIVERY

SPRINGFIELD, N. J.
DREXEL 6-0877

National Officer Of ORT To Speak



Mrs. Heyman Zimel
On December 13th at 8:30 P. M. at Temple Beth Ahm in Springfield Mrs. Ivan Crouch will preside at the meeting of the Springfield Chapter of Women's American ORT (Organization For Rehabilitation Through Training). The program for the evening will include Mrs. Heyman Zimel whose talk for the meeting will include her personal experiences as a member of the delegation, who visited ORT installations overseas during the summer of 1955.

Mrs. Zimel is National Vice-President of ORT. She was the organizer and first President of the Passaic-Bergen Region and is now Honorary President of that region. She is also now serving as national chairman of the ORT Student Health program.

Also on the program will be community singing led by Mrs. Leonard Golden, program chairman and Mrs. David Hendlin at the piano. Reports by Mesdames Meyer Lasky and Sheldon Wolt, Health Chairman will be given.

At Realty Conclave

The entire staff of Anne Sylvester's Realty Corner will participate in the annual convention of the New Jersey Association of Real Estate Boards being held in Atlantic City this week.

Mrs. Sylvester and Jean Hillman are attending the entire session and the rest of the staff arrives at the Hotel Traymore, for Salesmen's Day Friday.

NOTICES
TAKE NOTICE that application No. 10-217 of M. W. Fox Furniture Co., to erect a sign on premises, was approved by the Board of Adjustment, Township of Springfield, on November 29, 1956.
Dec. 6

Civil Defense Test Finds First Aid Squad "Ready"

If you'll recall, two weeks ago Sunday was a rainy dreary day—just perfect for spending the afternoon reading the comics with the kids. Such was the case with some Springfieldites.

At 1:54 p.m. this was the case with members of the Springfield First Aid Squad, too. However, just 60 seconds later when a regional Civil Defense alarm went out from Plainfield via state police teletype, the quiet Sunday afternoon changed considerably for several members. In a matter of seconds the 4-man crew was alerted—and a second "stand-by crew" was notified to keep watch over Springfield during the emergency while the first ambulance answered the urgent call coming from Plainfield.

When the ambulance arrived at the assembly point in Plainfield, members of Springfield's Squad—still kept in the dark as to the exact purpose of the emergency call, found themselves at a rendezvous with 30 other rescue squads from many different towns in North and Central N. J.

The "emergency" was a mock air crash supposedly having taken place in Cedar Brook Park at South Plainfield. Radio contact was set up between the "scene of the accident" and all squads as 40 auxiliary police from neighboring towns were called to maintain traffic control at intersections along ambulance routes.

Most of the squads found the cold downpour and not traffic their biggest problem. Boy and Girl Scouts—volunteer "victims"—were lying about on the wet ground, red ink smeared to simulate blood and with a variety of "injuries" rang-

ing from simple cuts to compound fractures and severe shock. A mobile hospital unit was established with facilities for four surgical operations. After the patient was removed from the "plane wreckage" and treated, he would be checked by the mobile unit's nurses who decided if he needed further hospitalization.

An elaborate system of street routes was worked out to avoid a criss-crossing of speeding ambulances. Squads were shifted from headquarters to the park and back to avoid congestion.

The drill ended at 4:30 p.m. after each unit enacted its roll of caring for one injury. The Springfield squad was detained even later since it "covered" for Plainfield's Rescue

Squad which had to answer a real emergency.

The members of the Springfield Squad who participated in the drill expressed the feeling that much was learned by the simulated operation. It is expected that many other such drills will take place in the near future. The operation was called highly successful by the observers. William Mathews, president of the N. J. First Aid Council; Everett Hatton, state mobilization director and Harley Ferrell, district mobilization director.

Other rescue squads participating were: Plainfield, South Plainfield, North Plainfield, Watchung, Scotch Plains, Dunellen, Arbor, Colonia, Highland Park, Avenel, Colonia.

Woodbridge, Iselin, Edison 1 and 2, South River, Matauchen, Hopewell, Spottswood, Milltown, Linden, Fairlawn, Maywood, New Milford, Middlesex, Bound Brook, Green Brook, Warren Township, Somerville, Millington and Berkeley Heights.

Perfection with consideration...

Perfection is no mere detail—but it is the consideration of details that makes for perfection. Smith and Smith service provides the thoughtful consideration that is so necessary.

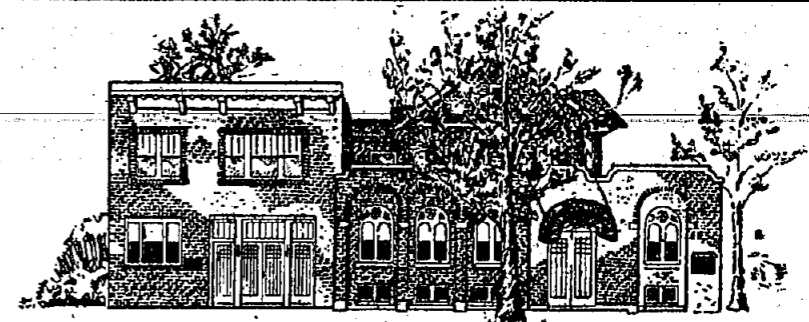


SMITH and SMITH FUNERAL DIRECTORS

An Outstanding Service "Within the Means of All"
HOME FOR SERVICES SUBURBAN
100 Clinton Ave., Newark 5, N. J. 415 Morris Ave., Springfield, N. J.
Blgelow 3-2123 Drexel 6-4262

costs so little to phone anywhere

- Cleveland..... 85¢
- Richmond..... 70¢
- From NEWARK after 5 PM and Sundays, 2 min. station rates, 10% tax not included.



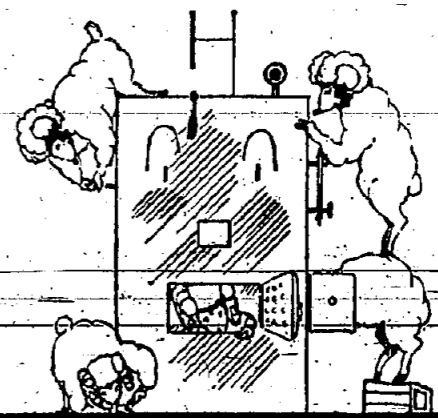
Courtesy and Understanding

Politeness with dignity and courtesy and understanding make our Service what it should be.

Tel. DREXEL 6-0406

YOUNG'S SERVICE HOME ESTABLISHED 1908

ALFRED L. YOUNG, Funeral Director
145-149 MAIN STREET, MILLBURN



LET YOUR FURNACE BE OUR RESPONSIBILITY

You needn't give your furnace a second thought when you do business with us. We assume full responsibility for keeping it in tip-top condition.

We provide routine and emergency service, day and night. We fill your tank with the highest grade fuel oil or your bin with the famous Old Company Lehigh premium anthracite.

You will be assured of clean-burning, dependable, economical heat.

CALL WOOLLEY AND RELAX.

WOOLLEY EST. 1914 - YOU MEAN IN FUEL
Maplewood, N. J.
COAL CO., INC. Phone: 80 3-7400
FUEL OIL • COAL • HEATING EQUIPMENT

"Your Comfort is Our Business"



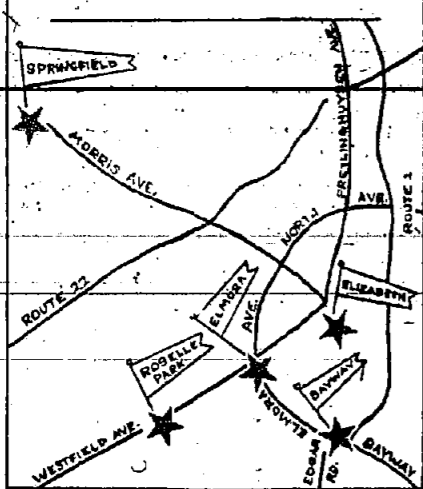
Don't be a "last-minute" Santa

SHOP EARLY

Save yourself time and energy by doing your holiday shopping now. Local merchants can offer you unhurried attention and complete stocks making it easy to find what you want.

If it's better banking service you want, you'll find it right here... anytime. Come in and learn how we can help you.

★ FIVE ★ CONVENIENT OFFICES



THE NATIONAL STATE BANK

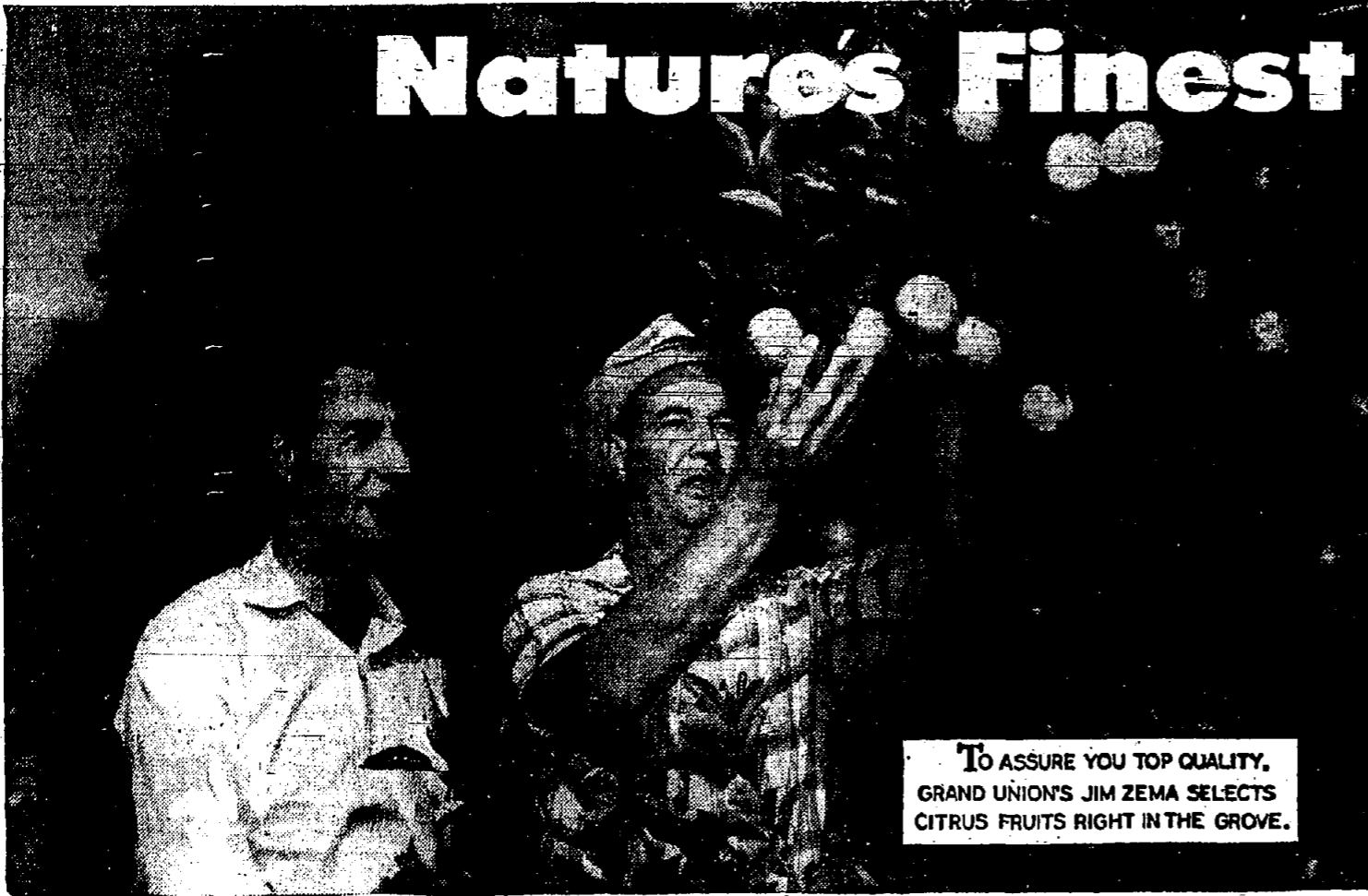


- ELIZABETH
- ROSELLE PARK
- SPRINGFIELD

MEMBER FEDERAL DEPOSIT INSURANCE CORPORATION

FIRST SINCE 1812

Nature's Finest Fruits are...



TO ASSURE YOU TOP QUALITY, GRAND UNION'S JIM ZEMA SELECTS CITRUS FRUITS RIGHT IN THE GROVE.

hand-picked for GRAND UNION

Citrus Fruits For Health All Year Long



Frozen food SALE

Quick and easy to make meals for busy Christmas Shoppers

- ORANGE JUICE** Freshpak 3 6 oz. cans **43¢**
- POT PIES** Swanson-Beef Chicken or Turkey 2 8 oz. pkgs. **51¢**
- TV DINNERS** Swanson-Chicken Pot Roast, Turkey 12 oz. **69¢**

FLORIDA

Oranges

Full of Juice
High In
Vitamin C

5 lb. bag **35¢**

The Perfect Gift - FLORIDA CITRUS FRUIT BASKETS
Prices Start as low as \$4.95
For Guaranteed Christmas Delivery - order on or before December 10th.

GRAPEFRUIT TANGERINES

Florida Pink, Seedless
Easy Peeling - Large Size

5 lb. bag **35¢**
doz. **29¢**

Finest Grocery Buys

COFFEE PRICES REDUCED!

Beechnut Maxwell House
Chase & Sanborn Old Dutch
Holland House

Now Only 1 lb. **\$1.12**
can

- Freshpak Peaches Sliced or Halves 29 oz. **27¢** can
- Whole Kernel Niblets Corn 2 12 oz. cans **27¢**
- Freshpak Margarine 2 1 lb. pkgs. **39¢**
- Freshpak Syrup For Pancakes and Waffles 24 oz. **43¢** bot.
- Realprune Prune Juice 24 oz. **23¢** bot.
- Wilson's Shortening Bakerite 1 lb. **25¢** can 3 lb. **69¢** can
- Pussy Cat Food 3 16 oz. cans **25¢**
- Gaines "new with DL-M" Dog Food 3 16 oz. cans **38¢**
- Martinson's Jomar Instant Coffee 2 oz. jar **53¢** 5 oz. jar **\$1.29**

FREE ONE PINT OF FRESH FLORIDA CITRUS SALAD **69¢**
WITH THE PURCHASE OF ONE QUART AT

Seabrook Farms FRENCH FRIED POTATOES

2 9 oz. pkgs. **29¢**

Seabrook Farms SQUASH

2 12 oz. pkgs. **27¢**

Seabrook Farms SUCCOTASH

2 10 oz. pkgs. **37¢**

Seabrook Farms FRENCH STYLE GREEN BEANS

2 10 oz. pkgs. **33¢**

Howard Johnsons Prepared MACARONI & CHEESE

14 oz. pkg. **39¢**

FRIED SCALLOPS

8 oz. pkg. **63¢**

FRIED CLAMS

8 oz. pkg. **63¢**

SHRIMP CROQUETTES

10 oz. pkg. **63¢**

CHICKEN CROQUETTES

10 oz. pkg. **63¢**

LOBSTER NEWBURGH

14 oz. **\$1.43** pkg.

Just Heat & Eat

Chun King Shrimp Chow Mein

12 oz. pkg. **49¢**

Chun King Egg Rolls

8 oz. pkg. **69¢**

Silver Skillet CORNED BEEF DINNER

12 oz. pkg. **79¢**

Downstar Lobster Pies

8 oz. **79¢** pkg.

Starline Tuna Pies

8 oz. **27¢** pkg.

Roman Cheese Ravioli

9 oz. **39¢** pkg.

Roman Meat Ravioli

9 oz. **39¢** pkg.

Roman Pizza Pie

7 oz. **29¢** pkg.

Roman Sauce

8 oz. **25¢** pkg.

Snow Crop Orange Juice

2 6 oz. cans **35¢**

Snow Crop Juice Grapefruit

2 6 oz. cans **29¢**

Minute Maid Juice Blended

2 6 oz. cans **33¢**

Minute Maid Juice Tangerine

2 6 oz. cans **31¢**

Birdseye Cut Green Beans

2 10 oz. pkgs. **37¢**

Birdseye French Beans

2 10 oz. pkgs. **37¢**

Birdseye Baby Lima Beans

10 oz. **25¢** pkg.

Birdseye Fordhook Limas

2 10 oz. pkgs. **51¢**

Birdseye Cut Corn

2 10 oz. pkgs. **35¢**

Birdseye Green Peas

2 10 oz. pkgs. **35¢**

Birdseye French Fried Potatoes

2 9 oz. pkgs. **33¢**

Birdseye Chopped & Lc. Spinach

2 10 oz. pkgs. **35¢**

Birdseye Orange Juice

2 6 oz. cans **35¢**

Birdseye Chicken Pies

2 8 oz. pkgs. **51¢**

Birdseye Beef Pies

2 8 oz. pkgs. **51¢**

Birdseye Pot Roast Dinner

10 oz. **75¢** pkg.

Rainbow CUPS & CONES

pkg. of 12 **19¢**

Excelsior - Breaded VEAL STEAKS

3 Servings 2 9 oz. **77¢** pkgs.

ICE CREAM

Flavor of the Month
Freshpak Milk Chocolate

ALMOND 2 pt. **49¢** 1/2 gal. **89¢**

Nancy Lynn PINEAPPLE GRAPE

1 qt. **33¢** 1/2 gal. **\$1.15**

Play-O-Rich Chopped BEEF STEAKS

8 Servings 1 1/2 lb. **89¢** pkg.

Grand Union COD FILLETS

2 1 lb. **77¢** pkgs.

Burry Festive Assortment

12 oz. **39¢** pkg.

Freshpak Grape Jelly

16 oz. **19¢** jar

Hash

14 oz. **30¢** can

Waxed Paper

125 sq. ft. **20¢** pkg.

Marcal Dinner Napkins

2 pkgs. of 20 **29¢**

Marcal Towels

2 rolls of 33 **33¢**

Marcal Napkins

2 pkgs. of 21 **21¢**

Diaperwife

16 oz. **25¢** pkg.

Soap

Sweetheart 3 bars **26¢** 2 ball bars **25¢**

Blue-White Flakes

2 reg. **19¢**

20 Mule Team Borax

1 lb. **20¢** pkg.

Hand Soap

Borax Powdered Bot. **17¢**

Christmas Values!

REGAL CHRISTMAS CARDS

50 STYLES box **98¢**

Baby Bunting Doll

\$2.69

Fancy Dress Doll

\$3.29

TV Games For Boys and Girls

\$1.98

Johnny & Mary Clean Set **\$1.59** Musical Doodle Balls **.88¢**

Automotive Fleet **\$1.77** Jolly Swinging Toys **.88¢**

Educational Games **.98¢** Complete Fire Fighter Set **\$2.98**

Texas Ranger Holster Sets **\$2.49** Land, Sea & Air Set **\$2.98**

Pirate Ship **\$1.29** Completely Equipped

Available in Most Stores

OXYDOL 1 gal. **32¢** qt. **77¢**

DASH 25 oz. **37¢** 9 lbs. 13 oz. **\$2.29** pkg.

SPIC & SPAN reg. **27¢** econ. **85¢** pkg.

TIDE 1 gal. **31¢** qt. **75¢** pkg.

LUX Liquid Detergent 12 oz. can **37¢** 22 oz. can **67¢**

SUNSHINE CHEEZ-IT CRACKERS

6 1/2 oz. **19¢** pkg.

CHOCOLATE FIDDLESTICKS

8 oz. **39¢** Weston pkg.

KRAFT CARAMELS

8 oz. **23¢** pkg.

KRAFT MACARONI DINNER

2 pkgs. **31¢**

KRAFT NEUFCHATEL PARTY SNACKS

2 4 oz. pkgs. **35¢**

UNDERWOOD DEVILED HAM

4 oz. **31¢** can

GERBER BABY FOODS

10 str. **99¢** 6 chop. jars **89¢**

LIPTON'S TEA

1/2 lb. **83¢** pkg.

LIPTON'S TEA BAGS

pkg. of 48 **63¢**

WESSON OIL

pt. **37¢** qt. **67¢** bot.

Jane Wilson Turkey Pies 14 oz. **39¢** can

Jane Wilson Scalloped Potatoes 17 oz. **45¢** can

Wilson's Corned Beef Hash 16 oz. **31¢** can

Wilson's Vienna Sausage 2 4 oz. **37¢** cans

Wilson's Tamales 16 oz. **31¢** jar

WE RESERVE THE RIGHT TO LIMIT QUANTITIES - NONE SOLD TO DEALERS.

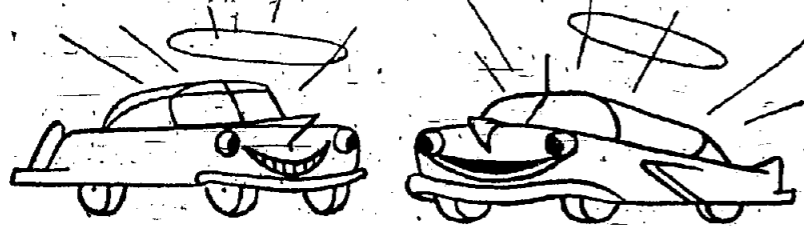
GENERAL GREENE SHOPPING CENTER,

SPRINGFIELD STORE HOURS: MON., WED. & SAT. 8:30 A.M. TO 6 P.M.
TUES. & THURS. 8:30 TO 9 P.M. - FRIDAYS 8:30 A.M. TO 10 P.M.

GROCERY PRICES EFFECTIVE DEC. 6th thru DEC. 12th. ALL OTHERS DEC. 6th thru DEC. 8th ONLY.

Morris and Flermer Avenues, SPRINGFIELD

Beautiful Gifts **FREE** with **TRIPLE-S BLUE STAMPS**



THEY HAVE TO BE GOOD... WE'RE IN BUSINESS TO STAY!

SPECIAL DECEMBER REDUCED CLOSE-OUT PRICES!

- 1956 CHRYSLER NEW YORKER CONVERTIBLE
1956 CHEVROLET CONVERTIBLE, Powerglide
1956 AUSTIN, A90 Westminster-6 cyl. sedan
1953 JAGUAR, MARK VII Sedan
1956 PLYMOUTH Belvedere V8, 4 Dr. Hardtop, Full Power

Buy These Low Mileage Suburban Trade-ins NOW At the Lowest Prices Possible!!



Safety Checked USED CARS

Two Used Car Lots CR. 3-4343-4-5-6

WERNER MOTOR Co.

Your Chrysler-Plymouth Dealer For This Area.

507-523 SPRINGFIELD AVE., SUMMIT

585 MORRIS AVE., SPRINGFIELD



Boy Scout Troop 73

On Wed. Evening, Nov. 28th, a scout rally was held at Regional High School, Springfield, N. J., for the scout troops of the Northern District of the Union Council.

The rally was opened by the color guard of Troop No. 73, of St. James, Springfield.

The purpose was to determine the best troop in the following events in which they qualified as follows:

Compass reading—Troop 69, 70 and 73.

Signaling—Troop 68, 70, and 167.

Knot tying—Troop 70, 73, and 68.

Bow Spindle—Troop 68.

Bandaging—Troop 68, 73, and 65. Flint and Steel fire-making and speed dressing were taken by Troop No. 73 with no difficulty...

On the candy sale put on by the scouts of troop 73, the committee reports a successful turnover—and as it promised, a grand prize will be awarded to the seller of the most candy.

The prize will be announced at the Dec. 11th Christmas party and Parents Nite, at 8 p.m. at St. James Auditorium, Springfield.

The committee hopes that all parents of the boys will attend this affair and lend moral support to everyone concerned—show your boys that you are interested in their activities.

Wednesday, November 28, Troop 70 of Springfield, sponsored by the First Presbyterian Church, won second place at the Northern District Rally of the Union Council. The rally was held at the

Regional High School Gym and six troops participated. From the various contests, one first place and three second places were acquired. The boys who participated in the rally were: Gary Anderson, Robert Hartz, Jeffrey Ward, Eugene Johnson, Jeffrey Grausan, Alan Easley, Kit Kennedy, De Hillyer, Dwight Hummel, William Gehagen, Howard Sealander, Harold Jones, Raymond Sism, Edwin Schnell, Robert Brucker, David Binislawski, Jack Mahr, Herby Drolshagen, Dennis Francis.

Notice To Mothers and Dads: Our Court of Honor is coming up sometime in the latter part of January. We would appreciate if you would check your Scout to see that he has done the necessary work to pass to another class or perhaps acquire a few merit badges which we would all like to see them get at the Court of Honor in January.

On November 20, William Bennett will give a talk on nature at our regular troop meeting.

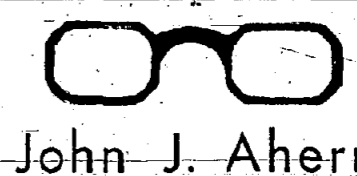
Cub Pack No. 172

The James Caldwell school looked like the Newark Airport at Pack 172's last meeting held on Friday, November 30th. The theme of the month was "Airports", which was followed out in every detail, even to a movie enjoyed by all the cubs and their families.

A highlight of the evening was welcoming a new den plus a new den mother into the pack. Mrs. Joan P. Lawrence and her cubs, Peter P. Lawrence, John Bodnar, Robert Shea, William Rankin and Ronald Fragner.

The following boys were given awards by Mr. Frank DiBiase, the advancement chairman: Jon Chisholm, Richard Moore, Thomas Lynch, David Ronco, Wayne Isley, David Gibbins and Jim Belleau. Sashes were also awarded to pack den chiefs: Victor Toma, Harold Jones, Alan Schumacker, Al Stender, Jack Moore, Charles Knowles, Richard Arends and Alan Isley. Games were enjoyed by all.

slippers and boots are the most popular gifts for the foot and they have laid in a big supply of them. They are featuring them in their bright Christmas window decorations and in several displays inside the large modern store. Springfield residents have learned to depend on Colantones over the years for new shoes and expert shoe repairing. When John Colantone first moved onto Morris Avenue in 1925, he found only one merchant there who is still there today—Springfield Pharmacy. Both of these old-time merchants have earned the respect of the town in the ensuing years.



John J. Ahern Prescription Optician

Laboratory on premises

DRexel 6-0756

219A Millburn Ave. (near Lord & Taylor) Millburn



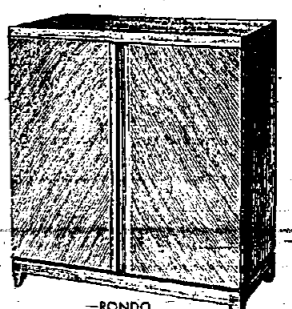
One of Our Best!

And Only \$595.00

FISHER Custom Electra RADIO-PHONOGRAPH

THE FISHER 19-tube Custom Electra Series has been designed to meet the need for a reproducing instrument embodying all of the tremendous advances in the high fidelity field, yet planned for extreme simplicity of operation.

Outstanding Features: Ultra-sensitive FM-AM tuner with locked-in, no-drift FM; an exclusive balanced antenna input; 20-watt music-quality amplifier with exclusive Z-Matic Control handles 50-watt peaks; Precision, interference-changer with levelled pickup and noise mutter; 15" Coaxial dual speaker system in acoustic compartment; Beautifully designed and custom-built Traditional, Provincial and Modern consoles.



"See the Marks Bros."

RADIO SALES CORP.

SUMMIT 47-51 Maple St. CR. 3-6800 MILLBURN 325-327 Millburn Ave. DR. 9-4200

SUMMIT STORE open Monday, Wednesday, Friday nights until 9 p.m. MILLBURN STORE open every evening except Saturday until 9 p.m.

BUSINESS DIRECTORY

57 MODELS are here! See Them At

These New Car Dealers Nearest To Springfield

BUICK GAYLIN BUICK "All Models On Display" 2140 Morris Ave., Union MURdock 8-9100

CADILLAC SPERCO MOTOR CO. CADILLAC Sales-Service Accessories 491 Morris Ave. Summit "Near Ciba" CRestview 3-1700

CHEVROLET L & S Chevrolet Co., Inc. E. Arthur Lynch Your Authorized Dealer 52 Franklin Place, Summit

OLDSMOBILE SPERCO MOTOR CO. OLDSMOBILE Big Showroom Big Cars 491 Morris Ave. Summit "Near Ciba" CR. 3-1700

CHRYSLER PLYMOUTH WERNER USED CARS 585 Morris Ave., Springfield NEW CAR SHOWROOM 517 Springfield Ave., Summit Car-Leasing Weekly Yearly

ALUMINUM PRODUCTS RAJAC PRODUCTS. 276 MORRIS AVE., SPRINGFIELD DRexel 6-4549

BAKERY HASELMANN'S BAKERY Quality Baked Goods 270 Morris Avenue Springfield DRexel 6-4128 Free Delivery Service, Open Sunday.

DRUGS PARK DRUGS Prescription & Surgical Pharmacy -OPEN SUNDAYS TEL. 6 P.M. General Greene Shopping Center DRexel 8-4942

FLOOR COVERING CENTER CARPET "Floor Coverings Of Every Description" Rubber Asphalt Cork Rug Cleaning & Storage 31 Summit Av. CRestview 7-2700

FLOOR COVERING IDEAL FLOOR COVERING CO. 1903 MORRIS AVE. UNION MU. 8-2556

FLOOR COVERING LINOLEUM & CARPET FACTORY OUTLET From the nation's leading manufacturers at low budget prices ROUTE 22 SPRINGFIELD DRexel 6-3220

FUEL OIL - COAL DRAKE FUEL SALES CO. DELCO OIL BURNERS Installation & Servicing COAL - FUEL OIL - COKE 578 Morris Ave. Springfield DRexel 6-0880

FUEL OIL - COAL COAL FUEL OIL COKE A Complete Heating Service SCHABLE OIL CO. 192 Mountain Ave. Springfield, N. J. DRexel 6-4500

KOSHER MEATS Strictly Kosher MORRIS AVE. KOSHER 2702 MORRIS AVE. UNION MU. 6-3860 MEAT DELICATESSEN CATERING

LETTERING Harry S. Keene TRUCKS Small Signs Delivery Trucks A Specialty KENILWORTH, N. J. BRIDGE 6-2970

MEATS & FISH DRexel 6-2064 We Deliver CENTER MEAT POULTRY and FISH MARKET Prime Meats Fresh-killed Poultry Fresh Fish Free Parking In Rear 254 Morris Avenue Springfield Open Daily 8 to 6 p.m. Friday 8 to 9 p.m.

MILK AND DAIRY PRODUCTS SCHMALZ Milk & Cream Buttermilk Cottage Cheese Butter & Eggs Delivered Fresh from Our Nearby Farm Call MILLINGTON 7-0025

NEWSPAPER DELIVERY Your Favorite Paper Delivered To Your Home Mornings - Afternoon - Evening - Sunday SPRINGFIELD NEWS DELIVERY Call DRexel 6-0786

NURSERIES CARDINAL'S NURSERY Consult Us On Your Landscape Problems Garden Supplies & Tools WHOLESALE - RETAIL 272 Milltown Road Springfield DR. 6-0440 Pickup and Delivery

PLUMBERS ALBERT SCHATZ Plumbing - Heating Contracting - Alterations Repairing Hours: Monday thru Saturday 8 a.m. to 5:30 p.m. 197 1/2 Side Avenue SPRINGFIELD DRexel 6-4276

ROOFING & SIDING All Work Guaranteed Fully Insured Springfield Roofing Co. Siding & Painting Gutters & Leaders Alterations Phone DRexel 9-4207 357 Mountain Ave., Springfield

SERVICE STATIONS BALDWIN'S SHELL STATION SHELL Gas - Oil - Lubrication Washing & Polishing Call For Delivery Service DRexel 9-8831 Mountain & S. Springfield Ave. SPRINGFIELD

SIMPSON'S ESSO 155 Morris Ave. Springfield DRexel 6-4210 Lubrication Repairs Accessories Washing

JIMBO'S TEXACO MARFAK LUBRICATION Anti-Freeze Tires Batteries Accessories MOTOR TUNE UPS Main St. & Morris Ave. SPRINGFIELD DR. 6-9880

TAVERNS OLD EVERGREEN LODGE SINGERS PARK, SPRINGFIELD Square Dancing Every Saturday Eve. Available for all affairs. DR. 6-0489

TRAVEL SERVICE SUBURBAN TRAVEL SERVICE Authorized Agents Air Lines Steamship Lines Railroad Tours Hotel Reservations 248 Millburn Ave. Millburn DR. 8-3600

TV REPAIR A & A 2708 Morris Ave., Union A. H. Jones, Prop.—Est. 1944 TV SERVICE—MU 8-5800 SAME DAY SERVICE Factory Authorized Philco & DuMont Service

WINES-LIQUORS SUBURBAN LIQUORS "Specializing in the Finest Beverages and Friendly Service" FREE DELIVERY 19-MORRIS AVE. SPRINGFIELD DRexel 9-5188

Colantone Has 32 Xmasses in Town

Colantone Shoe Shop is celebrating its 32nd Christmas on Morris Avenue in Springfield by featuring the largest selection of decorative footwear yet.

Springfield residents have found from past Christmases that

RAPPAPORT SPRING DRUG 273 Morris Ave., Springfield Free delivery--DRexel 9-2079 Cut-Rate Prices Prescriptions, Vitamins, Cosmetics

FOR A Merrier CHRISTMAS GIVE GIFTS FROM YOUR GAS RANGE Illustration of a woman holding a spoon over a gas range with a Christmas wreath.

SUN Classified Ad Returns Lost Pin

Advertisers using the classified columns of the Springfield Sun have always gotten "sensational results" but a small four line ad in last week's paper deserves the "gold medal."

A Mrs. George Starega of 18 West Emerson Avenue, Rahway, telephoned the Sun with an advertisement in the "Found" column as follows:

MARKED PIN FOUND at Regional Bakery, Football Field, 2 1/2 way, Thanksgiving Day, identify initials to claim pin. Telephone FUnion 2-2321 after 4 p.m.

The pin belonged to Mr. John Keith of 77 Spring Brook Road, Springfield. Mrs. Keith came to the Sun office to pay for Mrs. Starega's classified advertisement. "I'm very happy to pay for the ad," said Mrs. Keith, "because

I had given up all hope of recovering the valuable pin until I happened to spot the information in the Springfield Sun. I had reported it to the police both in Springfield and Rahway, and kept watching the daily newspapers. I saw the ad in the Sun, telephoned Mrs. Starega and identified the pin. She told me her boy had found it at the Regional football game and she was nice enough to make every effort to find the owner."

Survivors Social and Sunshine Club at Home

Mr. and Mrs. Fred R. Stach, 58 Kipling Avenue, entertained the Social and Sunshine Club at their home, Friday evening, November 30th.

Miss Virginia Stach, their daughter, gave a vivid description of her recent vacation in the Hawaiian Islands through the mediums of color slides and music.

CATHOLIC INFORMATION

WHY CALL A PRIEST?

The poor robber! He was impersonating a priest when a fire broke out in the neighborhood. A policeman hustled him to the side of a person trapped in the burning building. He didn't want to go, of course, but he knew that a priest would be expected to go through fire and water to get to a dying man—that if he refused to go the policeman would suspect he was an impostor—and the decent cost him his life.

It was only a story we once read, but it was realistic in its way. The author knew that priests have no fear when it comes to bringing consolation to the dying. Through epidemics of every kind, in fire, flood, or shipwreck, whatever it be, if there is a priest in the neighborhood, he'll manage to find his way to the dying. He doesn't reckon personal risk. He has only one thing on his mind: to get that soul ready for death.

Our Church has the strength of a good mother and, like a good mother, she is at the side of her children through life; she baptizes the newborn soul, confirms it, nourishes it throughout life with the body and blood of Jesus, blesses the marriage contract, forgives sin and, finally, when death approaches, she is just where you would expect a good mother to be: at the side of her dying child.

She knows well that our everlasting destiny depends on how we finish this life: on whether or not our soul is on friendly terms with God at the judgment. If the soul leaves this world a friend of God's, then heaven is assured. But if the soul departs, hating God, confirmed in sin, hardened and unrepentant, then that soul will be deprived of God forever.

This side of the grave, it is never too late for repentance. Our Lord Himself forgave the good thief on his deathbed. That is why a priest drops everything to help the dying. And that is why a dying Catholic, regardless of how he has lived, will always call for a priest to assist him in his last hour.

Why a priest? Because he brings the sacraments of his Church; he brings the forgiveness of sins, the body and blood of Christ in Holy Communion, and the last anointing, spoken of by St. James in his epistle. He uses the fullness of his priestly powers in preparing the departing soul to meet God.

St. James Catholic Information
A. L. Kirby, Chairman
14 Remer Avenue
Springfield, N. J.

Dr. Belliveau Moves Into His New Offices

Dr. William J. Belliveau has moved his offices from the Post Office Building to the new Colonial design building at 106 Morrison Road, which was recently constructed and sold by the Pic-One Realty with offices in Springfield Avenue, Maplewood. Sam Piccone, proprietor of the realty company, resides at 41 Kipling Avenue, Springfield.

Dr. Belliveau will shortly be joined by his brother, Dr. R. J. Belliveau in the practice of dentistry in the same building.

at my nursery at this time of year, because the risk is too great. The leaves transpire considerable moisture and often suffer winter burn. Azaleas that are young, or recently transplanted should be protected by covering with burlap or baskets.

NOTICE

AN ORDINANCE TO AMEND AN ORDINANCE ENTITLED "AN ORDINANCE TO ADOPT THE NATIONAL BUILDING CODE 1946 EDITION RECOMMENDED BY THE NATIONAL BOARD OF FIRE UNDERWRITERS" AS THE BUILDING CODE OF THE TOWNSHIP OF SPRINGFIELD WITH AMENDMENTS AND REPEALING ORDINANCES INCONSISTENT THEREWITH AND SAVING CERTAIN ORDINANCES OR PARTS THEREOF HEREBY SPECIALLY REFERRED TO.

BE IT ORDAINED BY THE Township Committee of the Township of Springfield in the County of Union, as follows:

1. That Section 104 relating to the issuance of certificates of occupancy be amended and supplemented by the inclusion of a new paragraph to be inserted between paragraphs 4 and 5 of Section 104 and to be known as paragraph 4.5, as follows:

4.5. Clearing of lands and premises. No certificate of occupancy shall

issue until the lands and premises involved shall have been thoroughly cleared of all debris, litter or other waste material. The lands and premises shall be certified to include or be applied for but also such other lands and premises as may have received debris, litter or other waste material from the lands and premises for which the certificate of occupancy is applied for.

2. This ordinance shall take effect 30 days after final reading, adoption and publication thereof as required by law.

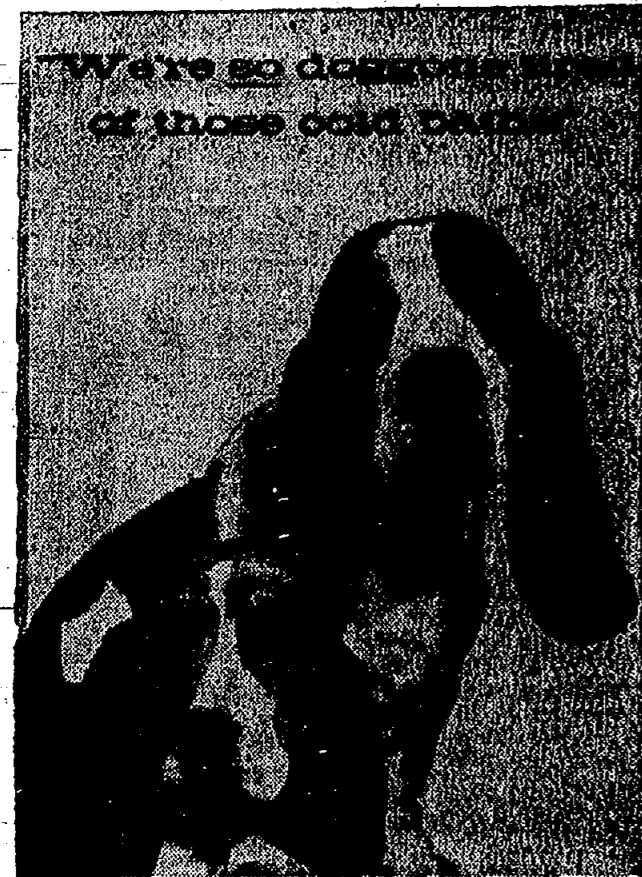
ELDONORE H. WORTHINGTON, Township Clerk.

PROPOSAL FOR FURNISHING FUEL OIL

Sealed proposals will be received by the Township Committee of the Township of Springfield at the Municipal Building, Mountain Avenue, Springfield, N. J., on Wednesday evening, December 13, 1956, at 7:30 p.m., for the furnishing of Number 3 fuel oil for heating the Municipal Building and the premises at 32 Mountain Avenue.

Bid forms and specifications may be obtained at the Office of the Township Clerk in the Municipal Building.

It would take 4,400 bulbs of the type Edison invented to produce the light emitted by one of today's fluorescent tubes according to General Electric engineers.



Maybe you're tired of cold baths, too. Or tired of running out of hot water every washday. Or shaving in lukewarm water. QUICK REMEDY? Dependable automatic electric water heating. With an electric water heater you have all the hot water you need—whenever you need it. You pay less for it, too, thanks to JCP&L's special rate. See your Reddy Kilowatt dealer today.

JCP&L
Jesse Coverd Power & Light

GO ALL-ELECTRIC
THE ONLY WAY TO MODERN LIVING!

TAKING CARE OF YOUR GARDEN

By Edward A. Cardinal
Chairman, Springfield Shade Tree Commission

With winter close on our heels we have little time left to clean up our grounds. Flowering shrubs can be finished out at this time and pruning of trees before the strong winter winds might save a lot of split branches. Be careful not to prune the tops of shrubs that bloom on old wood, such as Forsythia and Hiac, or you will not have any flowers next spring. Broad leaved plants such as Rhododendron and Azaleas should be mulched and in some cases screened from the wind.

QUESTION: When is the proper time to prune shrubs?
ANSWER: In our nursery we prune whenever we have the time, or when we feel a plant needs pruning. Usually it is safe

- costs so little
- to phone
- anywhere
- Cleveland..... 800
- Richmond..... 704
- Free SERVICE after 5 PM and
- outside N. J. area, within N. J.
- 10% the rest included.

for the man of action!

The right glasses are indispensable. rugged yet delicately fitted for accuracy in sports... accurately fitted and impressive in appearance for business or profession.

There is a difference in glasses. Drop in so that we can show you!

Eye Physicians Prescriptions Filled
Eye Glasses Repaired—Prompt Service

J. NORWOOD VAN NESS
Guild Opticians
14 Alvin Terrace Springfield, N. J.
DRexel 4-6108
Established 22 Years in Newark

Now Is The Time To

PLANT TREES

Large Selection of

SHADE TREES

Maples • Sycamores • Oaks
Clump White Birch
Weeping Willows

from \$4.95 to \$35.00

FRUIT TREES
Peach, Pear, Apple, Plum, Cherry \$1 up

MULCH YOUR PLANTS FOR WINTER
We carry large supply of German Peat and Michigan Peat at LOW LOW Prices!

BURLAP
4" Wide for Tree Wrap
36" Wide for Wind Breaks

MULCHING MATERIAL
Salt Hay
Oak Saw Dust

LAWN MOWER SERVICE
Sharpening - Repairs - Power & Hand Mowers
New Enlarged Facilities - Latest Equipment

Authorized BRIGGS and STRATTON SERVICE

Authorized Dealer
Jacobson-Eclipse
Reo-Homko-Cooper
Parker-Lawn Sweepers
And many others

CARDINAL NURSERIES

272 Milltown Rd., Springfield, N. J. DRexel 6-0440
Springfield's Garden Dept. Store

The Easiest Way to Save Ever Invented

Have you saved money recently at a modern savings and loan, such as Crestmont? If not, you have a pleasant surprise in store—saving has been made as easy as spending!

At Crestmont, you start any day with any amount you please—we'll welcome a \$1.00 account, or \$10,000, or more. Add any sums you choose, any business day of the week. Withdraw just as easily when you need to. Save by mail whenever it's more convenient. You enjoy knowing your money is insured up to \$10,000 by an instrumentality of the United States government. And, most-encouraging of all, you earn such good dividends at Crestmont!

3% current dividend per annum

FASTEST-GROWING IN AMERICA!

Did you know that the Savings and Loan Associations are the fastest-growing savings institutions in America today? Insured Savings and Loans now serve more than 15 million savers and investors. You'll like this friendly, modern thrift service, too. Stop in at Crestmont and enjoy it.

CRESTMONT SAVINGS and Loan Association

MAPLEWOOD OFFICE
1284 Springfield Avenue
corner Prospect Street
30 3-4190

SPRINGFIELD OFFICE
122 Morris Avenue
corner Linden Avenue
DR 6-0708

CRESTMONT SAVINGS:
Savings Accounts • Christmas Club
Vacation Club • Home Mortgage Loans
Home Construction Loans
Home Repair and Improvement Loans
Money Orders • Traveler's Cheques
Payable to Order Bills Collected
U.S. Savings Bonds

Oldsmobile's new Rocket T-400 Engine is a miler on fuel at normal driving speeds. For here's advanced "design" that offers you maximum fuel economy.

Here's a new high-in-power where you need it most—in your normal speed range. For the new Rocket T-400 Engine delivers its high torque at low rpm's.

OLDSMOBILE'S ROCKET T-400 ENGINE

PUTS THE ACCENT ON YOUR KIND OF PERFORMANCE!

Enjoy the new thrill of high-compression power that suits you to a T! And the T stands for Torque... it's terrific in Oldsmobile's power-packed new Rocket T-400 Engine!

Here's your kind of performance... plus "Modern Accent" styling that highlights the sweeping low-level look, the stable low-level ride! Come in soon and see the all-new Olds for '57! The 277-h.p. Rocket T-400 Engine powers all 17 exciting models in Oldsmobile's three great series—Golden Rocket 88, Super 88, Starfire 98!

Be our guest for a Rocket Ride now!

FOR '57... THE ACCENT'S ON

OLDSMOBILE

YOU'RE ALWAYS WELCOME AT YOUR OLDSMOBILE QUALITY DEALER'S!

SPERCO MOTOR CO., INC.

491 Morris Ave., Summit Open Evenings CR. 3-1700

TAKE NOTICE that application No. 44-58 of Broadway Holiday Shops, Inc., to erect a sign on premises, was denied by the Board of Adjustment, Township of Springfield, on November 29, 1956, Dec. 6.

TAKE NOTICE that application No. 44-59 of Atlantic & Pacific Paint Co., to erect a sign on premises, was denied by the Board of Adjustment, Township of Springfield on November 29, 1956, Dec. 6.

TAKE NOTICE that application No. 42-58 of Robert P. Dow and Johnson Restaurant, to erect a sign on premises, was approved by the Board of Adjustment, Township of Springfield, on November 29, 1956, Dec. 6.

GRAND OPENING

FRIDAY, SATURDAY, SUNDAY, DEC. 7, 8, 9
FREE GIFTS FOR THE FAMILY

ROLAND DRUGS

777 MOUNTAIN AVE. (1/2 mile from Route 22) SPRINGFIELD, N. J.
CALL DR. 9-2244 FREE DELIVERY
Daily and Sun. 9 a.m. - 10 p.m. FREE PARKING

Get acquainted SPECIALS and many others not listed.

We reserve right to limit quantity.

- ISOPROPYL ALCOHOL 13¢
Pint Reg. 39¢
- SACCHARIN 1/4 grain 19¢
1000's Reg. 69¢
- ASPIRIN 5 grain 27¢
250's Reg. 75¢
- EPSOM SALT 23¢
5 pounds Reg. 39¢
- TUMS—Reg. 10¢ ea. 5 for 19¢
- GOODRICH HOT WATER BOTTLE or fountain syringe 89¢
Reg. \$2.00
- FEVER THERMOMETERS 49¢
Oral or rectal Reg. \$1.00
- BATHROOM SCALES 3.49
Reg. \$5.75
- DOUBLE EDGE BLADES 59¢
100's Reg. \$1.00
- VACUUM BOTTLES 99¢
1 pint Reg. \$2.00
- PALMOLIVE SOAP 5 for 23¢
Reg. 10¢ each

PRESCRIPTIONS

You get "just what the doctor ordered" when you bring your prescriptions to be filled by our expertly trained pharmacists, from fresh, modern drugs in full selection. All prescriptions are double checked for accuracy.

Complete Line of Vitamins in well-known brands

Popular Brand Cigars
Humidor Fresh — 20% Off

FREE: One roll of film with each roll developed and printed

Full line of popular brand COSMETICS

Ask about our Charge Account Service

Friendly Dependable Service

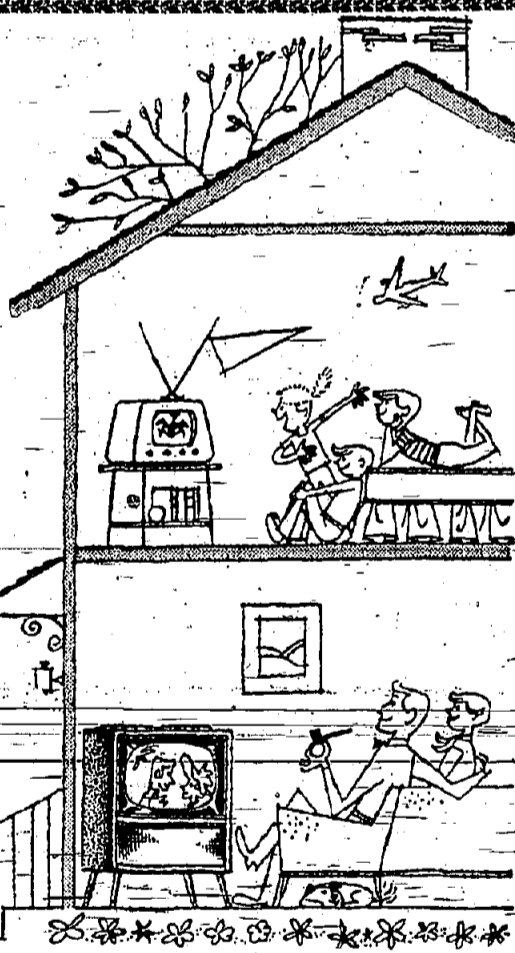
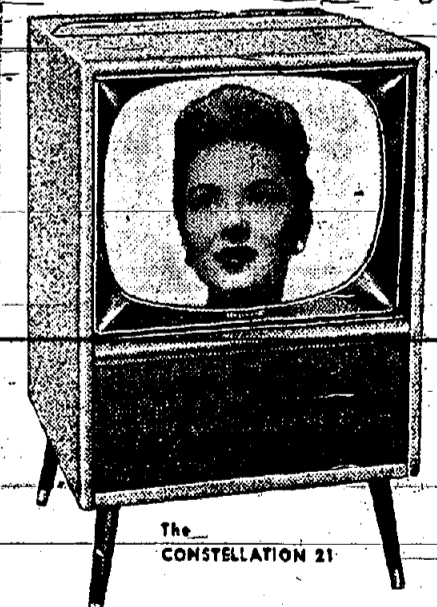
Complete Line of Christmas Gift Items for the Family

UNDER MANAGEMENT OF DAVID FRIEDLANDER, FORMER OWNER OF TOPP'S MAPLEWOOD PHARMACY

when it's time for a second set in your home...

Magnavox

television



This striking new example of console styling...distinctively smart and different...offers largest 21" screen in a beautiful compact cabinet. It requires no more space, costs no more than many ordinary table models. Magnavox superior quality performance features include: Full transformer-powered chassis, chromstone optical filter, aluminized picture tube, reflection barrier, big extended-range speaker plus top mounted controls for effortless stand-up tuning. This matchless value is priced so amazingly low, that you'll want to keep your old set for children's or recreation room.

In lovely Magnetex decorator finishes only \$199.50 (VHF)

"See the Marks Bros."

RADIO SALES CORP.

SUMMIT 47 - 51 Maple St. CR 3-6800
MILLBURN 325 - 327 Millburn Ave. DR 9-4200
SUMMIT STORE open Monday, Wednesday, Friday nights until 9 P.M.
MILLBURN STORE open every evening except Saturday until 9 P.M.

Springfield Minutemen Win Revolver Match

The Minutemen of the Springfield Revolver Club in a match on their home range yesterday defeated the Essex Radio team of the Essex County Special Deputies by a score of 1032 to 967. This was the Minutemen's second victory thus far in the North Jersey Revolver League's current season. Individual scores were as follows:

MINUTEMEN	
R. Nebergall	275
D. Caivano	268
S. Rosenberg	249
B. Yarrow	240
1032	

ESSEX RADIO	
G. J. Paradise	251
M. Cisz	243
M. Anastasio	241
P. H. Paradise	232
967	

PROPOSAL FOR FURNISHING GASOLINE

Sealed bids will be received by the Township Committee of the Township of Springfield in the County of Union at a regular meeting to be held in the Municipal Building, Mountain Avenue, Springfield, N. J., on Wednesday, December 12, 1956, at 7:15 p.m., for the furnishing of all gasoline that may be required for servicing of the automotive equipment of said municipality for the period from January 1, 1957 to December 31, 1957. Bidders must submit price for both standard and high test gasoline. Bids must be properly sealed, endorsed, and presented at said meeting. A complete analysis and specification of the quantities of the gasoline proposed to be delivered shall be furnished with each bid. The successful bidder shall be required to furnish and install a 3,000 gallon storage tank, pumps and other incidental mechanical equipment at the site of the Municipal Garage on Center Street. The successful bidder will be required to maintain the storage tank pump and incidental mechanical equipment in good working order during term of contract. The Township Committee reserves the right to reject any and/or all bids at its discretion whichever course appears advisable in the interest of the Township.

ELBONORE E. WORTHINGTON, Township Clerk. Nov. 29, Dec. 6



SUNNING SPORTS

By RITCHY SCHWARTZ

One of the most important organizations in any school system had its annual Football-Dinner last week and a good time was had by all. After the steak dinner supplied by the Boosters Club, the organization-in-pink, all gridiron gladiators sat back and heard interesting talks from influential men from Regional who knew their football and knew how to put over a message. But the thrill of the evening at the Orchard Inn occurred when Alex Webster, New York Giant star, took the floor, spoke for a minute or two and then held a question-answer period for a good half-hour. The Bulldogs appeared to be up on their professional football and asked some very good, tricky questions. In his speech to the ball club Mr. Webster made it very clear that education should come before football or any sport. By the nodding heads one could sense that the boys agreed with Alex.

On the RHIS wrestling front things appear to be moving at a rapid pace. The new Mat Coach this season is Mr. Herb Palmer, physical ed. instructor at Regional. Palmer is an old hand at grappling himself facing opposition at Maryville College of Tenn. and starting on the Regional squad of some years back in his youth. (Don't get the picture that he's an old man, he's not.) One thing coach Palmer advocates in all his training techniques and that is plenty of run-

ning. Coach himself states that "half the time the kids think they're on a cross-country team." But one can readily see that good condition is a key-factor in a winning club. The wrestlers face the same problem as the football team of two weeks previous - lack of experienced men and a complete rebuilding task. Palmer can only count on three men returning from last year Fred Rica, George Harms and Jerry Vinella. Rica tangles in the 160 lb. division and is a game fighter. Vinella, shoved out of the heavyweight picture last year by Joe Sisia, was probably the best wrestler ever to sit on a bench for Regional. Jerry shows the same hustle on the mats as he shows on the football field. Harms is a second year man on the squad and intramural champion in his freshman year. Harms should shape up very nicely. Although hordes showed up for the first few practices Coach Palmer realizes that his rebuilding job will be a great one. While the wrestlers work out upstairs, downstairs the Bulldog basketball team is also practicing. Coach Swedish, another new mentor this year began from scratch and has built up a five which shouldn't fare too badly in the Union County whirlwind. Starters will more than likely be Paul Heischuber, a returnee from last season, Buzzy Layng, also an old Jay Veer-er, Benner, a sophomore sensation who should be a great asset if he keeps it up, Bob Gwathney, a lanky boy who formerly performed for Linden and Warren Watkins who had Varsity experience last year. We wish the Hoopsters the best of luck with that tough schedule they are up against. Support both Winter teams, watch the Regional High-School Basketball Team tangle with Westfield Friday night at home-as-an opener.



AT BOOSTER DINNER—Carl Carpenter, chairman of the Boosters Club, Tom Scriba, Regional's All-County man, Bulldog mentor, Mike Suchena and special guest Alex Webster, star of the professional New York football Giants.

Beckmann's Fails to Slow S'field Market Bowlers

Nobody wants to catch Springfield Market in the Springfield Bowling League race. Prior to Monday night's action at the Springfield Bowling Alleys' Beckmann's Market was the chief contender. But when faced with an opportunity of cutting the league leaders margin in a direct duel, they were unable to bowl a single 800 team game score. The result was another

Frank's Auto Serv.	16	23
Cuzzolino Furs	108	153
American Legion No. 1	121 1/2	225 1/2
Monday, Dec. 3, 1956		
Legion No. 1 vs. D'Andrea's		
Ray Schramm	158	153
T. Smith	183	146
M. LaZala	188	148
J. Colaninno	190	138
B. Bazzilli	198	153
Total Pins	897	754
A. D'Andrea	148	152
T. Gagliardi	148	152
M. Sereno	169	152
M. D'Andrea	179	222
Jones	183	164
Total Pins	807	814

Bunnell Bros Inc. vs. Brunners		
Watson	148	172
B. Bunnell Jr.	161	177
D. Bunnell	163	180
B. Bunnell Sr.	169	151
H. Burdett	171	160
Total Pins	829	829
Wenzel	147	189
Howard	157	188
Brunner	168	192
Colangelo	163	182
Straub	179	181
Total Pins	874	882

Drake vs. Frank's Auto		
Rosenberg	167	154
Dougherty	161	137
Howe	159	147
Staubach	145	151
Total Pins	632	689
Conroy	162	195
Total Pins	829	829
Ziegler	176	168
Martin	119	152
H. Schwart	172	183
G. Gagliardi	159	178
G. Schwart	153	179
Total Pins	780	872

Parkview vs. Cuzzolino Furs		
Van-Pulsoglio	150	175
D. Pacifico	157	120
C. Pacifico	149	151
Juli Poloncaro	138	152
Ralph Poloncaro	138	147
Total Pins	705	831
Andreas	152	162
Baumann	155	131
Canollo	122	155
Zessai	152	152
Salzano	161	154
Total Pins	789	786

PUBLIC NOTICE is hereby given that the Board of Assessors of the Township of Springfield in the County of Union and State of New Jersey, in accordance with the statute in such cases made and provided, has designated Saturday, December 2, 1956 between the hours of 9 A.M. and 12 A.M., 1 P.M. and 5 P.M., as the time, and the Assessors' Office in the Municipal Building as the place, where and when the assessment roll prepared by the Board of Assessors may be inspected by any taxpayer, for the purpose of establishing the taxpayer to ascertain what assessments have been made against him or his property, and to confer informally with the Board of Assessors on the correctness of the assessments. W. W. LAYNG, Clerk, Board of Assessors. Nov. 20 Dec. 6.

TAKE THE FAMILY OUT FOR DINNER



Make dining out a weekly treat for the entire family. Bring them here for delicious food, expertly prepared, nicely served... sensible prices.

For your entertainment — PERCY POST, at the organ, to play all your favorite songs every Friday, Saturday and Sunday nights.

Dinner Served from 4:30 to 11 P.M. For Reservations, Call Draxel 9-9832

TERRY DEMPSEY'S

Restaurant & Cocktail Bar
Morris Ave. & Morris Turnpike, Springfield

2 1/2% INTEREST PER YEAR

SAVINGS DEPOSITS Received ON or BEFORE December 14 WILL DRAW INTEREST AS OF December 1

"One of the fastest growing banks in the U. S."

The FIRST STATE BANK OF UNION

Morris Avenue at Duane Parkway Union, New Jersey
Murdock 6-4800

We're SHOOTING THE WORKS

to give you the BEST NEW CAR DEAL IN TOWN

1956 PONTIACS

SAVE UP TO \$1400

OFF FACTORY RETAIL SELLING PRICE!
2 New '56 Pontiacs
3 Dealer Family '56 Pontiacs

• Regular Factory Guarantee • No Down Payment Necessary

Andersen Pontiac, Inc.

312 Springfield Ave. CR. 3-9150
IN THE HEART OF SUMMIT

IT WON'T BE LONG NOW!

19 Shopping Days to Xmas

Complete Shopping Center

- Gifts • Clothing
- Tools • Sporting Goods
- Toys • Housewares
- "Do-It-Yourself", Etc.

USE OUR LAY-AWAY PLAN

OPEN 7 DAYS A WEEK UNTIL CHRISTMAS!
EVENINGS TO 10 - SUNDAYS TO 7

ROCKAWAY SALES CO.

Rt. 46, Rockaway, N. J. RO 9-1030
Between Denville and Dover Only 30 Minutes From Springfield

GREETINGS & GIFTS

are brought to you from Friendly Neighbors & Civic & Social Welfare Leaders through

WELGOMB WAGON

On the Occasion Of Change of Residence Arrivals of Newcomers to City

Mrs. Josephine Marcy South Orange 3-0420 (No cost of obligation)

CHURCH SERVICES

HOLY CROSS LUTHERAN CHURCH
516 Prospect Street
Springfield

ST. JAMES' CHURCH
Springfield
Sunday Masses:
7 a.m.
8 a.m.
9 a.m.
10 a.m.
11 a.m.
12 Noon

ST. STEPHEN'S EPISCOPAL CHURCH
Millburn and Springfield Parish
Main Street, Millburn
Rev. Hugh W. Dickinson, Rector

FIRST CHURCH OF CHRIST
SCIENTIST
292 Springfield Avenue
Summit, N. J.

First Church of Christ, Scientist
292 Springfield Avenue, Summit, N. J.
4. A. A. of the MOTHER CHURCH THE FIRST CHURCH OF CHRIST SCIENTIST in Boston, Mass.

Is there a Church for the Non-Church Goer?
There is indeed. The American Ethical Movement observes no formal ritual and preaches no dogma, but it believes deeply in man's ability to achieve the highest ethical values

Learn more about the American Ethical Movement, its ideas and ideals' Come to our Sunday morning service at 11... Children's Sunday Assembly starts at 10:15.

THE SOCIETY FOR ETHICAL CULTURE
Henry Austin, Leader
516 Prospect St.
Maplewood, N. J.
(Tel. SO. 3-1905)

MILLBURN BAPTIST CHURCH
Rev. R. F. Bateman
Morningside in Vauxhall
Events: "Spiritual Conflict"

THE SOCIETY FOR ETHICAL CULTURE
516 Prospect Street
(Corner of Parker Ave.)
Maplewood, New Jersey
Henry D. Austin, Leader

THE METHODIST CHURCH
Academy Green, Springfield, N.J.
W. N. Bars, Organist-Director
Marvin W. Green, Ph.D., Pastor
Drexel 6-1693

THE BAHAI FAITH TEACHES:
"In the estimation of God there is no distinction of color; all are one in the color and beauty of servitude to Him. Color is not important; the heart is all-important."

MOUNTAINVIEW UNION CHAPEL
Rev. Milton F. Achey
Thursday, December 6-11:15 p.m. Women's Bible Class Meeting at the Parsonage

TEMPLE BETH AHM
Baltusrol Way
Rabbi Reuben E. Levine
Cantor Irving Kravitzman
Tomorrow 8:30 p.m. Sabbath Eve Services. Cantata - "Hannukah of the Maccabees"

THE BAHAI FAITH TEACHES:
"In the estimation of God there is no distinction of color; all are one in the color and beauty of servitude to Him. Color is not important; the heart is all-important."

NEXT WEEK
Tuesday-7:00 p.m. Junior Choir Rehearsal-Church

THE SOCIETY FOR ETHICAL CULTURE
516 Prospect Street
(Corner of Parker Ave.)
Maplewood, New Jersey
Henry D. Austin, Leader

THE METHODIST CHURCH
Academy Green, Springfield, N.J.
W. N. Bars, Organist-Director
Marvin W. Green, Ph.D., Pastor
Drexel 6-1693

MOUNTAINVIEW UNION CHAPEL
Rev. Milton F. Achey
Thursday, December 6-11:15 p.m. Women's Bible Class Meeting at the Parsonage

TEMPLE BETH AHM
Baltusrol Way
Rabbi Reuben E. Levine
Cantor Irving Kravitzman
Tomorrow 8:30 p.m. Sabbath Eve Services. Cantata - "Hannukah of the Maccabees"

THE BAHAI FAITH TEACHES:
"In the estimation of God there is no distinction of color; all are one in the color and beauty of servitude to Him. Color is not important; the heart is all-important."

THE BAHAI FAITH TEACHES:
"In the estimation of God there is no distinction of color; all are one in the color and beauty of servitude to Him. Color is not important; the heart is all-important."

of Duke
Rehearsal School-Sunday 10:30 a.m. at the YMCA.

SPRINGFIELD BAPTIST CHURCH
Holding Services in the Florence Candler School
Bill Vautin, Pastor
CE. 9-5191

BATTLE HILL COMMUNITY MORAVIAN CHURCH
THURSDAY-7:30 Choir rehearsal in the Church Sanctuary

MOUNTAINVIEW UNION CHAPEL
Rev. Milton F. Achey
Thursday, December 6-11:15 p.m. Women's Bible Class Meeting at the Parsonage

TEMPLE BETH AHM
Baltusrol Way
Rabbi Reuben E. Levine
Cantor Irving Kravitzman
Tomorrow 8:30 p.m. Sabbath Eve Services. Cantata - "Hannukah of the Maccabees"

THE BAHAI FAITH TEACHES:
"In the estimation of God there is no distinction of color; all are one in the color and beauty of servitude to Him. Color is not important; the heart is all-important."

THE BAHAI FAITH TEACHES:
"In the estimation of God there is no distinction of color; all are one in the color and beauty of servitude to Him. Color is not important; the heart is all-important."

VFW Continues Rapid Pace By Taking 2 From Jimbo's

The first Bumper Night of the season saw the V.F.W. team take two out of three from Jimbo's Texaco to further their lead against full game. Disc & Shutter also took advantage of BUMPER Night to win two out of three from Springhouse Tree. Lynn Decorators looked like TV champions in winning two out of three from the P.B.A.

Tom Kennedy, bowling for the first time in several weeks, was high man with 221. Hal Burdette rolled 220. B. Ronkavitz 219, Roy Hattersley 208 and D. Monroe 203.

Table with columns: Name, W, L, Pct., Av. Team Standings for VFW, Jimbo's Texaco, Springhouse Tree, Disc & Shutter, Lynn Decorators, P. B. A.

Initiated in Frat
Roger M. Weiss, 59 Bryant ave., Springfield, has been initiated into Theta Chi, national social fraternity at Lehigh University.

To Play Cards Monday

A gala card party will be given on Monday evening December 10 at 8:30 P.M. at Temple Beth Ahm by Springfield Chapter of Women's American O.R.T. (Organization for Rehabilitation Through Training). Members and guests

are invited. Tickets will be \$1.25 and sandwiches, cake and coffee will be served besides a variety of games will be played. Anyone interested in obtaining tickets may contact the card party chairman, Mrs. Al Rutkow at Drexel 9-2885.

Water Works advertisement featuring an illustration of a water tower and text: 'How Water Works', 'ST. MARY'S FALLS CANAL', 'CONNECTS LAKE SUPERIOR WITH THE OTHER FOUR GREAT LAKES', 'While this canal is open only 8 months of the year, the "500" carries more than twice the freight tonnage than that of the Panama, Suez, & Kiel canals combined!' and 'COMMONWEALTH WATER CO.'

Advertisement for phone rates: 'Talk as long as you like - phone rates for extra minutes are cheap'. Includes a small illustration of a person on a phone and text: '3 minute call to RICHMOND... 70¢ extra minutes, each only... 20¢'.

Accepted in Fraternity
Albert J. Corsaky, 41 Beverly road, Springfield, has been elected a member of Pi Kappa Psi fraternity at Union Junior College where he is enrolled as a day session sophomore in the engineering program.

Pontiac advertisement: 'Two More Surprises FOR '57!'. Features a large illustration of a white Pontiac Bonneville convertible.

Pontiac advertisement: 'Pontiac debuts a pair of Dazzlers Especially for the Show!'. Features a large illustration of a white Pontiac Custom Safari station wagon.

THE SENSATIONAL Bonneville FUEL INJECTION CONVERTIBLE
... a brilliantly styled limited edition... powered by Pontiac's mighty fuel injection engine...
THE ULTRA-LUXURIOUS STAR CHIEF Custom Safari
... the ultimate in station wagons... a sleek four-door creation, custom-styled inside and out... under the hood Pontiac's barrel-chested 347-cu.-in. Strato-Streak V-8 engine.

SEE THE PONTIAC EXHIBIT AT THE NATIONAL AUTOMOTIVE SHOW - THE COLISEUM - DECEMBER 8 THROUGH 16

ANDERSEN PONTIAC, Inc.
312 Springfield Ave., Summit CR. 3-9150

Morey LaRue's CHRISTMAS SPECIAL advertisement. Features a large illustration of a teddy bear. Text: 'Morey LaRue's CHRISTMAS SPECIAL to light up little eyes at Christmas... to acquaint you with our fine Dry Cleaning Service. A GIANT 2 1/2 Ft. PANDA Yours for Only \$2.69 (4.95 value) with a \$3.00 Dry Cleaning Order. This is a high quality plush Panda firmly stuffed. It has movable eyes and a special lifelike plastic nose and mouth. Children love Pandas... see them on display at our stores. We expect a big rush, so send in your dry cleaning and order your Panda early.' Morey LaRue logo and address: General Greene Shopping Center DREXEL 9-2344.

HELP WANTED—FEMALE

CLERK TYPISTS
FILE CLERKS
OFFICE CLERKS
(In typing)

For interesting work in a modern air-conditioned building with a progressive company which offers excellent wages, liberal employee benefits, beautiful cafeteria, 8 day 36 1/2 hour week, apply at

LUMBERMENS MUTUAL CASUALTY COMPANY

KEMPER INSURANCE

Beechwood Road at DeForest, Summit, N. J.
Monday through Friday 8:30 A. M. to 5:00 P. M.
CRestview 3-9000

B. ALTMAN & CO.

is receiving applications for
PRE-HOLIDAY
EMPLOYMENT
in their new
SHORT HILLS STORE

- SELLING
NON-SELLING
RESTAURANT
FULL TIME
PART TIME

Turn spare hours into pleasant and profitable days. Convenient schedules, no night openings, employee discounts, employee cafeteria. Apply in person Monday through Saturday, 9:30 A.M. - 5:00 P.M., Personnel Department, Upper Level.

ADDRESSOGRAPH OPERATORS
KEY PUNCH OPERS. (part time)
FILE CLERKS
TYPISTS
CLERICAL (part time)
CLERK-MATRON

WE OFFER:
TOP STARTING SALARY
AIR-CONDITIONING OFFICES AND CAFETERIA
DISCOUNT AT FRANK ROSENBERG & CO. STORES
EXCELLENT PROMOTIONAL OPPORTUNITIES
GROUP LIFE INSURANCE
GROUP HOSPITALIZATION
UNIQUE FROST-SHELDON PLAN
OPERATIVE HOLIDAYS ALLOWANCE PLAN
PAID VACATIONS
HOLIDAYS AND MANY OTHER PAID ABSENCES

ALLSTATE INSURANCE CO.
MOONMOUNT AVENUE, MOUNTAIN VIEW, N. J.
(Three miles from Summit)

PROCTER & GAMBLE IN SUMMIT offers excellent opportunity for High School graduates who have ability to work with figures. Computer experience helpful but not essential. Permanent position with opportunities for advancement. Modern, pleasant working conditions, day work, convenient transportation. Many benefits including profit sharing, 8 day work, 36 1/2 hour week, liberal insurance.

CLERK TYPIST
FEMALE & GAMBLES IN SUMMIT offers excellent opportunity for High School graduates who have ability to work with figures. Computer experience helpful but not essential. Permanent position with opportunities for advancement. Modern, pleasant working conditions, day work, convenient transportation. Many benefits including profit sharing, 8 day work, 36 1/2 hour week, liberal insurance.

SALES WOMAN
Women's and deb's shoes
Permanent position. Excellent salary plus commission. Write to Summit Herald, Summit, N. J. 07881. Box 602

WOMAN
to learn to press trousers in dry cleaning department. No experience necessary. 5 day week.
CORBY'S ENTERPRISE LAUNDRY
37 Summit Ave. Summit

GENERAL CLERICAL
Immediate opening for young lady. Must be able to type. Good chance for advancement. Only established firm conveniently located. (Number 70 bus passes our door). Modern air-conditioned office with comfortable lounge and luncheon facilities. Ample parking. 3 1/2 hour week. No Saturdays. 10 paid company holidays. Free luncheon. Excellent benefits.
C. R. BARD, INC.
Summit, N. J. CR. 3-1229

HELP WANTED—FEMALE

SECRETARY
Excellent opportunity with Summit law firm. Call CR. 3-6630 for interview-appointment.
HUGHES & HARTLAUB
40 Union Pl. Summit

CLERK
Accounts receivable
experience. Typing a must. Many employee benefits.

J. K. SMIT & SONS, INC.
711 Central Ave. New Providence CR. 3-7410

STENOGRAPHERS - secretarial ability. 40-45 years. 40-45; cashiers 40-50. Newark's Agency, 19 King St. Morristown. JERFerson 9-3889

ONE PEK Switchboard Operator and One Cashier. Experience preferred. Ages 20-40 years. Full time, 5-day week. Hours 8 a.m. to 5 p.m. All employees benefit. Centrally located air-conditioned office of large concern in Summit. Write Box 475, Millburn, N. J.

HOUSEKEEPER, European, neat like children. Permanent. References. Drexel 9-4329

PART TIME secretary for Summit law office. Flexible daily hours. Computer typing and general office duties required. Liberal experience desirable but not necessary. CR. 3-0188

ONE PEK Switchboard Operator and One Cashier - Experience preferred. Ages 20-40 years. Full time, 5-day week. Hours 8 a.m. to 5 p.m. All employees benefit. Centrally located air-conditioned office of large concern in Summit. Write Box 475, Millburn, N. J.

HEADTILER, all round operator. Closed. Wednesday, Call between 9 A.M. - 4 P.M. CR. 3-9418

PLEASANT telephone work. Bookkeeping. Call ME 3-5049 from 6 P.M. to 9 P.M.

BOOKKEEPER. Experienced, 3 day week. Write Box 67, Summit, N. J.

GERMAN speaking teacher to tutor girl, age 7. Phone CR. 3-6226

WOMAN for housekeeping, possibly 3 days a week. CR. 3-8528

MAN wanted for shipping department. Must have experience of receiving and shipping procedures. Good working conditions and company benefits. Ready employment. Write Box 67, Summit, N. J.

MAN with mechanical aptitude willing to learn machine operation. Good opportunity for steady reliable person. Good working conditions and company benefits. Ready employment. Write Box 67, Summit, N. J.

BILLING and shipping clerk. Must type and be capable of eventually assuming complete charge of shipping department. University of N. J. or equivalent. Write Box 67, Summit, N. J.

SEMI-METAL MECHANICS, skilled in auto and cabinet fabrication. Drexel 9-1830

MAN wanted mornings, grocery store delivery. No Saturday. CR. 3-7102

BOOKKEEPER. Experienced, 20-40, 5 day week. Write Box 68, Summit, N. J.

MAN wanted for shipping department. Must have experience of receiving and shipping procedures. Good working conditions and company benefits. Ready employment. Write Box 67, Summit, N. J.

MAN with mechanical aptitude willing to learn machine operation. Good opportunity for steady reliable person. Good working conditions and company benefits. Ready employment. Write Box 67, Summit, N. J.

HELP WANTED—MALE AND FEMALE

Employees wanted for varied and interesting work, good scope for advancement; Good compensation, many employee benefits including pension plan, sick benefits, paid holidays, etc. No Saturday work.
THE SUMMIT TRUST COMPANY
367 Springfield Avenue
Summit, N. J.
Tel. CR. 3-0082

FOR SALE
FOR SALE

CHRISTMAS SUGGESTIONS
CHRISTMAS SUGGESTIONS

NEOCHI-ELIAS Miracle sewing machine - New 1957 sews forward and reverse. Garment maker, patchwork. Only \$59.95. FRUBBERS, 100 Summit Ave., Summit, CR. 3-0226

LIONEL O-gauge trains (2 complete sets). Excellent condition. New \$249. CR. 3-0264 between 3 and 7 any evenings.

LADY'S English bicycle. Huffy Sportster, practically new. CR. 3-4858, after 7:00 p.m.

UNUSUALLY nice young black cocker spaniel, male, 7 months, suitable child's pet. Thoroughly house broken. Small deposit holds till Christmas. \$225. Fairview 2-5429

JAZZ record collection. 600 records: 128 Ellington, 75 Armstrong, 50 Goodman. Everything from Dixie to bebop. Excellent terms. Make offer over \$100. CR. 3-5522

GIRL'S 20" Schwinn bicycle with stabilizer. \$20. Call weekdays 9:30 to 2 p.m. CR. 3-4542

AMERICAN Flyer train. Complete set-up. 2 trains. ME 3-5301

BOYS' bicycle with speedometer. Full size. Excellent condition. \$19. CR. 3-4023

GIRL'S 16" red sidewall bicycle. Desirable tread. Wheels excellent condition. CR. 3-2522 after 6 P.M.

MISCELLANEOUS - Boys' outfit, high collar. Reasonable. CR. 3-0978

AFRICAN Violet for sale. A lovely gift for Christmas and New Year's. The African Violet, New York, N. Y. Call between 7 and 9 p.m. CR. 3-4122

TRICYCLES - Boys' 24" excellent condition. \$15. Drexel 9-4329

POODLES - black miniature Champion stock, six imported from England. Registered AKC. Christmas delivery. \$150. Write to Mrs. J. H. 1-1811

PEDIGREE English show pups. Excellent hunting strain. Wonderful price. Drexel 9-4999

CHAIN driven Murray tractor, dump attachment, excellent condition. \$15. Drexel 9-3228

OLD oil lamps, 2.50 each; hooded pine cradle - Queen Anne style; glass, electric, and brass. 1-3 p.m., 103 Main St., Milltown.

FOR SALE
FOR SALE

CHRISTMAS SUGGESTIONS
CHRISTMAS SUGGESTIONS

LIONEL trains, make offer. CR. 3-0264

FOR SALE

CHRISTMAS SUGGESTIONS
CHRISTMAS SUGGESTIONS

BAND worn articles for Christmas. Authentic Antiques. Phone Caldwell 6-1703

VOLIN, Picked German 1700, \$400. Student violin, German make, \$50. Drexel 9-2922

GIRL'S English Indian Princess bicycle. Full size. Good condition. Speedometer. CR. 3-4140

PENTRON magnetic tape recorder; office typewriter; Philco console radio including speaker and foreign bands and microphone attachments. CR. 3-2000

FREE. Clean oddities. Mirrors, paper, trained, to good homes. CR. 3-7688

ARTISTE Merry-go-round, Porterville. Original artist, acrylic of which are made for us also, also antiques and gifts. Good Wednesday.

ALMOST new girl's 20" bicycle, 3 speed. CR. 3-9074 after 5 P.M.

SET OF Lionel trains, including engine and 5 cars. Extra track. \$10. CR. 3-8142

1-ANTIQUES
DOUGH box, Marbled, child, knive tray, pine cherry cruet, cranberry glass. Valley Hill, Liberty Corner, 3rd house, past Veterans Hospital. ME 1-1811

3- CLOTHING
VISIT Merry-Go-Round resale shop 411 Lockwood place, Milltown. Drexel 6-1153, 10-2, closed Wednesday

NEVER worn, man's 1-trouser suit, size 44 short. CR. 7-1621

CASIMERE navy coat size 14-16. Almost new. Very reasonable. CR. 3-2380

BEAUTIFUL French lace dress, size 14, \$50. Beige net dress, size 14, with beaver. \$35. Drexel 9-2922

BEAVER suit, size 12, good condition. Reasonable. Drexel 9-2922

THE BOBBI hood, size 2 Taylor Street, Millburn, sets used clothing of better quality for every member of the family. Ask to see our evening dresses, fur coats, tuxedos, etc. Hours 10 to 5, closed all day Wednesday. Drexel 9-4122

BOY'S hockey skates, size 10; football shoes, size 6. CR. 3-4023

5-FURNITURE
CHILD'S chifferobe, chest, and table, refrigerator, matching code draw drapes. Must sell fast. Reasonable. CR. 7-4163

AMERICAN Oriental rug, 16x26, \$75; matching table with 2 chairs, antique drapes, \$15; telephone table with chair, \$8; must sell. CR. 3-6836

MOVING. Manages dining room set (table and chairs) and table, lamp, occasional chairs, chaises longue set, fireplace set. Good condition. CR. 3-4444

GUSTOM - boys' and girl's clothing, shoes, etc. Christmas light green leather turned headband. Drexel 6-5948

8-FURNITURE
SCHOOL, mason desk, \$22.4; antique rockers, \$4 to \$8 each; several antique chairs \$15 to \$35, guaranteed for 1 year; 1 reason desk \$15 to \$20; child's chair, refinished, \$15; old cradle, \$16; chest of drawers, \$18; dry desk, \$35; iron cupboard, \$20; sleigh bed, \$16; old quilt, \$12. Millington 7-1192

SOFA, CHAIR, Ottoman, mahogany buffet, china cabinet, 3 dining chairs, maple gateleg table, 4 chairs. Good condition, reasonable. 66 Wents Ave., Springfield, Drexel 6-8581

HOSPITAL bed, mattress, \$35. Cherry bureau \$10. Youth's knee-hole desk \$8. Drexel 6-8914. Between 7 & 9 p.m.

DOUBLE people-pumpkin 4 poster bed and Simmons mattress and box spring, 3 year old. \$50. CR. 3-4668

SECTIONAL sofa, dinette set, miscellaneous furniture. CR. 3-7243

21" CBS TV. Excellent condition. \$75. Phone CR. 3-4172

DINING room suite, mahogany, table, buffet, chairs. CR. 7-4551

SOFA bed, love seat, etc. CR. 3-8751

8-HOUSEHOLD GOODS
Deduce Estate gas range with high boiler and grill. Exceptionally clean condition. \$125

MAJOR appliance range 27" cooktop. Magic Chef gas range. Exceptional condition. \$85

Baby Euph washing machine. Portable. \$65

Hot Point automatic washer. All-steel. \$45. 60, 70

Easy Spinny washers. \$45, 60, 70

Crosley 8 cu. ft. apartment house refrigerator. One year old. \$55

EASTERN FUEL CO.
233 Broad St., Summit, CR. 3-0004

OPEN EVENINGS
AMPLE PARKING

22 1/2 CU. FT. Deep Freeze chest-type food freezer, 2 compartments. Like new. \$500. CR. 3-2826

2 BENDIX washers, and other household items. Call between 3 and 7 any evening. CR. 3-5858

STOVE, combination gas and oil; excellent condition. CR. 7-2911 after 6

ECONOMY - 500 lb. boiler. Good condition. Reasonable. CR. 3-4524

3-Piece living room with all copper, \$44. 100 lbs. of brass. \$45. 16 Princeton St., Maplewood.

CHRISTMAS presents? Practically new 18 foot upright, Alaska freezer, \$450. South Orange. CR. 3-1237

COMPLETE beds, bureaus, and chests of drawers and chairs, antique rockers, sets of dining and beds, children's room, 200 lbs. of brass, antique quilt top and hand knit bedspread, odds

HOLLYWOOD BED. Box spring, mattress, good condition. Refrigerator, workable condition. Drexel 6-6172

6 PIECE WALNUT DRESSING Set; 1 Venetian blind (8' x 23'); Reasonable. ME 3-6148

MOVING. Manages dining room set (table and chairs) and table, lamp, occasional chairs, chaises longue set, fireplace set. Good condition. CR. 3-4444

GUSTOM - boys' and girl's clothing, shoes, etc. Christmas light green leather turned headband. Drexel 6-5948

ELECTRIC RANGE - 3 1/2 year old. Excellent condition. Any reasonable offer. Drexel 6-6388

REAL ESTATE FOR SALE AND WANTED

1-SUMMIT
FOR THE BEST SERVICE
Always
Consult a Realtor
of the
SUMMIT
REAL ESTATE BOARD
covering
SUMMIT
BERKELEY HEIGHTS
NEW PROVIDENCE

BOARD MEMBERS
Walter A. McNamara CR. 3-3889
James M. O'Brien CR. 3-5224
Edward M. O'Brien CR. 3-7435
The Rockland CR. 3-7010
Butler Agency CR. 3-7770
Richard H. Stronze CR. 3-4024
Robert H. Steele CR. 3-0357
Joseph J. Agency CR. 3-7875
Whitmore and Johnson CR. 3-1404
Alfred S. Anderson CR. 3-8400
Butler Agency CR. 3-7770
Eyrak Bros. CR. 3-7680
Joan O. Chrystal CR. 3-8274
Butler Agency CR. 3-7770
Walter E. Edmondson CR. 3-2400
Charles H. Hand CR. 3-4350
Elmer Agency CR. 3-4400
Homes Agency CR. 3-4664
C. Kelly Agency CR. 3-1103
O. Kelly Agency CR. 3-2121
Clarence D. Long & Son CR. 3-4440
Specker Mabel CR. 3-1800

2-SUMMIT VICINITY
\$22,000
New split level, 3 bedrooms, 1 1/2 baths, full recreation room. Open for inspection Saturday and Sunday, 10 to 4:30, corner of South St. and Edman Dr., Murray Hill.
G. KELLY AGENCY, Realtors
76 Summit Ave. CR. 7-4121
Phone: CR. 3-6324, FR. 7-3638, CR. 3-1237

1-SUMMIT
TOO GOOD TO BE TRUE! ALL THIS FOR \$22,500
8 year old Cape-Cod on lot 233' deep. Living room (23x15), patio (with awning, 15x30), 4 bedrooms, 2 baths, full basement, low taxes and heating cost. Call Mrs. Timmholton, CR. 3-6930.

GLAZEBROOK-SHEPARD AGENCY
Move Right In
AN INVITATION
To this charming 6-month-old split level, located on an attractive landscaped lot in New Providence. This home is finished by the finest materials and has on the first level: living room, dining room, porch, kitchen with breakfast room, second level: 3 large bedrooms, tiled bath; third level: one large bedroom, three 1/2 bathrooms, full finished recreation room with adjoining laundry. There are 2 car garages, low taxes and landscaping in Florida. Only \$22,500.

RICHLAND CO.
41 Maple St., Summit CRestview 3-7010
Suh. & Brax. call
CR. 3-3007
or Mr. Syme CR. 3-6385

PLUTOCRAT
In exactly what you will be in this all-brick, split level, 3 bedrooms, 3 1/2 baths, full basement, full finished recreation room and recreation room, over sized 2 car attached garage with storage. Full size permanent driveway. Full buy the house on lot 100x100 for \$31,250 or the whole parcel with 2 additional lots that are also landscaped for \$10,000 more. Summit, N. J. 07881.

JOAN O. CHRYSAL, Realtor
9 DeForest Ave. CR. 3-8224

SOLID VALUE
MASONRY & SLATE
FINE LOCATION
-Beautifully built and well maintained, center hall, large living room with fireplace, full dining room, kitchen with dishwasher, den or TV room, powder room, one bedroom and bath, all on lot for \$42,000. Excellent good-size bedrooms and 2 tiled baths. Full size permanent driveway. Full insulation, weather stripping, etc. Located on well-landscaped lot, 100 by 100 with many fine trees. On Dr. Hill in Summit. Over moving soon. Priced at \$38,500. A most desirable property and location.

A. S. ANDERSON, Realtor
445 Springfield Avenue, Summit
CR. 3-6460. Even. Call 3-0221. CR. 3-0911

WOODLAND PARK
New center hall colonial brick front with side yard. Large property, 1st floor: large master bedroom and tiled bath, paneled study, tiled powder room, modern kitchen and breakfast room, butler's pantry, large living room, dining room, 2nd floor: 3 large bedrooms, 2 tiled baths, paneled recreation room and laundry in basement. 2 car garage. Florida room.

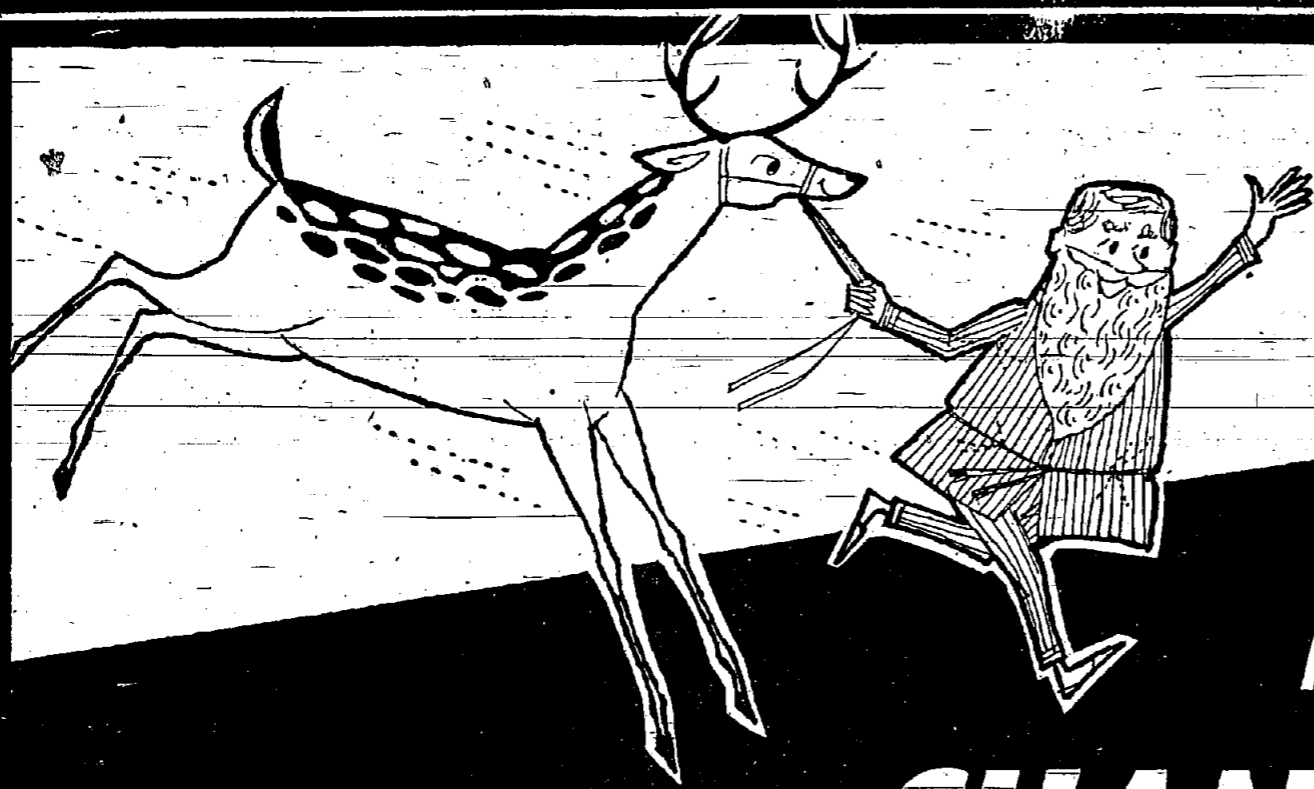
A. J. DUNNEN
CONSTRUCTION CO.
12 Keas Place, Summit, CR. 3-8546

BUILDING LOT
100 x 200 lot near 3rd and 4th streets in built up neighborhood of \$32-42,000 homes; nice trees, rising land, \$7800. Call 1-1811

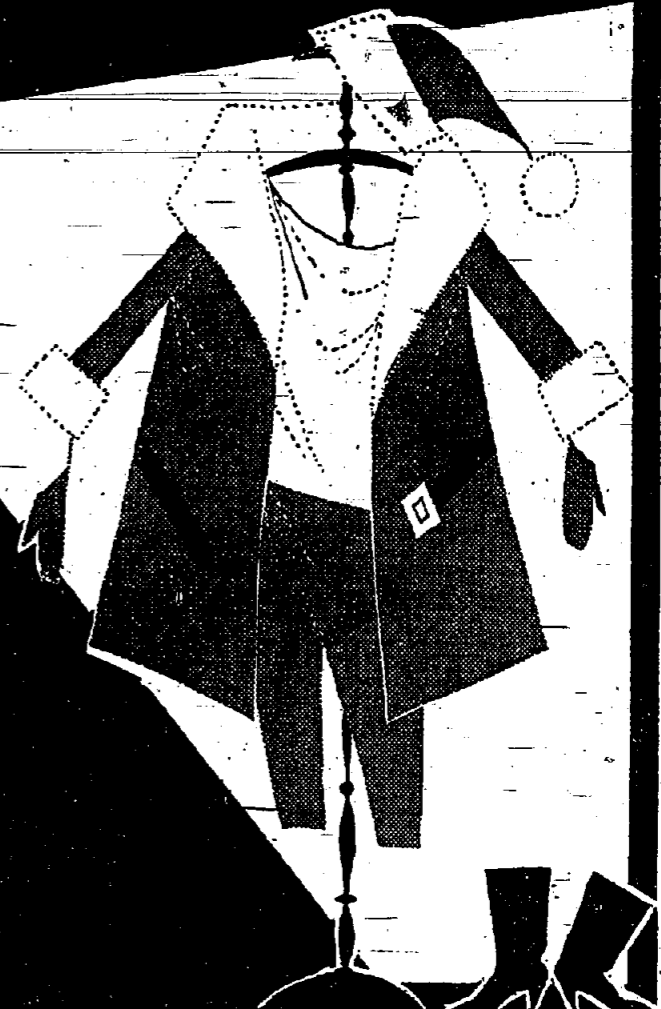
JOHN F. TAYLOR, Realtor
CR. 3-7676

drum hill
"HOMES • HOMESITES"
"SUMMIT'S NEWEST AND MOST BEAUTIFUL COMMUNITY"
WELLMORE BUILDERS or YOUR OWN BROKER Millington 7-1490

2-SUMMIT VICINITY
\$22,000
New split level, 3 bedrooms, 1 1/2 baths, full recreation room. Open for inspection Saturday and Sunday, 10 to 4:30, corner of South St. and Edman Dr., Murray Hill.
G. KELLY AGENCY, Realtors
76 Summit Ave. CR. 7-4121
Phone: CR. 3-6324, FR. 7-3638, CR. 3-1237



SANTAS WHO KNOW THE SCORE



HEAD FOR
CHANNEL LUMBER'S
CHRISTMAS SAVINGS

Sunbeam MIXMASTER

No gift would be more appreciated than a Sunbeam Mixmaster. Larger BOWL-FIT beaters for higher, lighter, fine-textured cakes. Saves tiring armwork. Puts extra deliciousness, extra success into cooking and baking. Better, easier food preparing around the clock.



OTHER Sunbeam GIFT HITS



MARY PROCTOR Sit-Down IRONING TABLE

Proctor is the easiest operating, most practical, most attractive, most popular ironing table in the world. Whether you're tall or short, whether you stand or sit to iron, this table adjusts to your most comfortable position at a finger's touch. Pure White Enamel Top . . . Contour Curved Chrome Legs . . . Turquoise Wheels and Rubber Tips. Finger touch, automatic adjustment to any height from 24" to 38". 70% more knee room because of gracefully curved, offset legs. Never-tilt, easy rolling wheels. Unique steam-vent top gives coolest possible ironing. Sturdiest tubular steel legs and counter-balanced top.



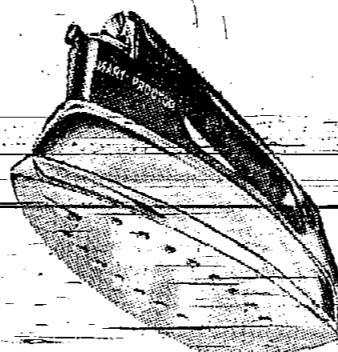
Mary Proctor Laundry Cart With Extra Big Wheels

BASKETS INTERCHANGEABLE . . . Basket fastens conveniently in three positions . . . upper, lower or center. EASILY FOLDED FOR STORAGE. One easy motion and cart folds compactly for convenient storage. BASKETS COLLAPSE, TOO . . . Even the baskets collapse. Can be stored away with cart in only 9" space.



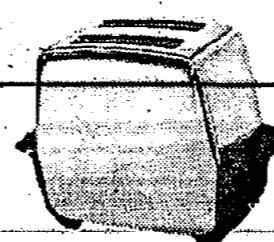
Mary Proctor Steam and Dry Iron

- 17 steam vents evenly distributed over the entire soleplate.
- Highest level water filler eliminates any splash.
- 32 square inches of ironing surface to save time and work.
- Designed for light or left hand ironing.
- Weights less than 3 pounds dry.
- More steam . . . faster . . . than any other iron.
- Fabric dial out front in cool, convenient position.
- Changes instantly from steam to dry, dry to steam at flip of switch.



Proctor Toaster

- Exclusive Proctor colorguard
- Handsome design
- Thermostatic
- Reheats cold
- Double insulated for electrical safety
- Snap open crumb tray



NEW JERSEY'S TOY HEADQUARTERS

See New Jersey's Largest Display of American Flyer Electric Trains—All at Big Discounts

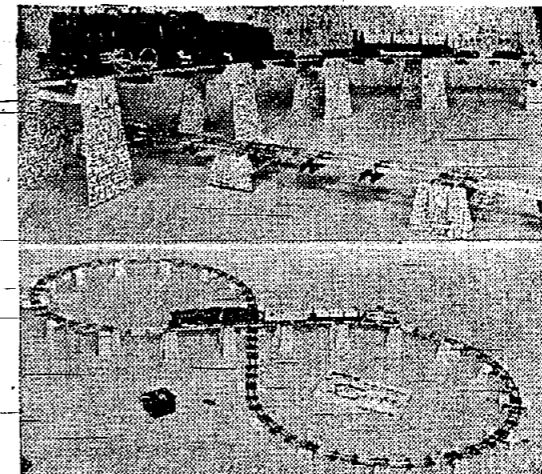
HUGE SELECTION OF

SPECIAL! AMERICAN FLYER

59-Pc. Train Set

ALL FOR \$18.88

Includes Locomotive and Tender, Reefer Car, Lumber Car, Caboose, 20 Section 1 1/2 Curved Track, 6 Sections Straight Track, Transformer, 25-piece Trestle Set and Track Terminal.



Paint Sets—Dolls—Guns—Games—Radio Sets—Slads—Educational Toys—Erector Sets—Microscopes—Doctor and Nurse Kits—Makeup Kits—Trucks—Intercom, Sets—Light Sets—Ornaments—Boats—Soldier Sets—Airplanes and Others.

Visit Our Hobby Department Model Airplanes—H-O Gauge Trains—Gas Motors—All Crafts and Hobbies

PORTER-CABLE 6 in 1 ROUTO-JIG

1. It's a Router 2. It's a Sander 3. It's a Plane 4. It's a Jig Saw 5. It's a Shaper 6. It's a Grass Trimmer

49.95 FIRST TIME AT THIS PRICE

SAVE \$20.00 ON ATTACHMENTS For the 6-1 ROUTO JIG

Here is one of the most versatile power tools ever offered! You can use the Routo-Jig as a portable router or a rotary jig saw. In addition, the Routo-Jig motor unit can be built into a complete power workshop! Attachments which convert the Routo-Jig to a Shaper, a Sander, a Plane, a Dovetailer, and a Grass Trimmer are available at BIG SAVINGS!

Each Savings Certificate has five (5) coupons attached. Each coupon has a value which you can deduct from the regular purchase price of the Attachment indicated on the face of the coupon. Coupon values are as follows: Coupon ATTACHMENTS Saves You Shaper Table, Model 5020 . . . \$ 1.00 Finishing Sander, Model 5026 . . . 2.00 Portable Plane, Model 5025 . . . 3.00 Grass Trimmer, Model 5024 . . . 3.00 Dovetail Template, Model 5008 . . . 4.00 TOTAL SAVINGS . . . \$20.00

PORTER CABLE 8" POWER SAW Heavy Duty \$69.95

1st Prize Awarded to Channel Lumber As Nation's Top Retailer of the Year



WESTINGHOUSE HOME APPLIANCE SALE



TOASTER
Gleaming chrome with black ebony. Color control dial can be set to any shade. Extra lift-up for small pieces of bread. Easy to clean crumb tray. Excelsive winding action. Thermostat maintains toasting temperature.

PORTABLE MIXER
Thumb tip control. Stand up base. Variety of colors. Heater ejector. Speed selector control. High, Medium, Low.

STEAM-DRY IRON
15 steam vents for faster ironing. Lightweight. Easy heat changing.

AUTOMATIC FRY PAN
Exclusive Thermometer-type control measures heat edge to edge. Exclusive cast-in square heating element eliminates hot spots—cold spots. Exclusive open safety handle stays cooler, makes washing easier.

LOW—LOW—LOW PRICES



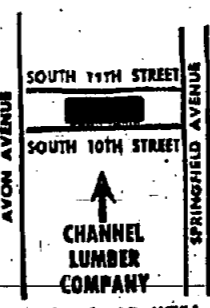
*FREE use of staple guns * FREE parking for 1,000 cars * FREE use of roof carriers — HOME OWNERS: Use Channel's No-Cost Charge It Service

CHANNEL

"DO-IT-YOURSELF SUPERMARKETS"

L SPRINGFIELD:
DREXEL 6-6000-1-2-3
ROUTE 22 (N. J. Route 29)
OPEN DAILY 9 A. M. to 9:30 P. M.
SATURDAY 8 A. M. to 9 P. M.
SUNDAY 9 A. M. to 7 P. M.

NEWARK: BIGELOW 2-3100
675 SO. 10th STREET
(Between Avon and Springfield Aves.)
OPEN DAILY 8 A. M. to 5:30 P. M.
MONDAY 8 A. M. to 9 P. M.
WEDNESDAY 8 A. M. to 9 P. M.
SATURDAY 8 A. M. to 4 P. M.
SUNDAY Shop at Springfield



BUILDERS! CONTRACTORS! SEND US YOUR LISTS, OR WE'LL PICK THEM UP.