

The Springfield Sun

Springfield Public Library
Main Street
Springfield, N.J.

VOL. 28th YEAR—NO. 8

SPRINGFIELD, N.J. THURSDAY, DECEMBER 5, 1957

OFFICIAL NEWSPAPER
TOWNSHIP OF SPRINGFIELD

10c A COPY, \$3.50 BY THE YEAR

HELICOPTER TO BRING SANTA HERE

Town Acts To Fight Highway; Hires Engineer

The Springfield Township Committee has fired its opening gun in the fight against the proposed realignment of the new Federal Highway by naming an engineering firm to make a thorough study of the problem in Springfield.

The firm of Theo. McCrosky & Associates of New York City was retained by resolution at last night's regular meeting of the Township committee with orders to start work immediately. They are to have a final report of their findings and recommendations by April first.

Last night's resolution carried with it authorization for payment of a \$5,000 fee to this engineering firm to act as consultants on the relocation of the new Route 22 as it affects Springfield.

Among the items to be made part of the report to Springfield—and the resolution calls for work to start immediately—will be an analysis of existing and future land uses as the result of the new highways, study of all possible alternate routes after conferences with various groups, analysis of the effects on assessments because of the new highways, study of all park properties, the effect of the highway cutting off streets and how the new route will cut into the land in Springfield, the lost assessment values and how they will affect the indebtedness and planned improvements.

The engineers will also be available for conferences and hearings with local groups as well as park commissioners in Millburn, Union and other communities. The firm will also have their engineers ready for appearances before the Highway Department officials in Trenton and Washington before any final routes are accepted.

Charter Study Expert Advises Commissioners

Alan V. Lowenstein, noted Newark attorney and one of New Jersey's leading authorities on Charter Study, addressed the Springfield Charter Commissioners at their regular meeting last week and gave chairman Wes Compton and the other members some very valuable advice on how to proceed.

Mr. Lowenstein was chairman of the Newark Charter Study Commission in 1953 and is conceded to be an expert on the subject.

Mr. Lowenstein discussed the manner in which the Newark Study group functioned, their organization, budget, public and closed meetings, and their report. He strongly recommended that the Springfield Commission secure the services of a professional consultant at the earliest possible moment. Mr. Lowenstein suggested a number of outstanding men in this field and these men are presently being considered by the Springfield Commission.

This past Tuesday, December 3, the Commission met with Mayor Albert G. Binder and Township Attorney Max Sherman to discuss the present form of government in Springfield and the manner in which it operates. Further meetings with township officials are planned.

Any citizen of Springfield, or organization, wishing to express their views would be welcomed by the Charter Study Commission. Arrangements to appear at a future closed meeting can be made by contacting the secretary of the group, Robert T. Southward at 194 Bryant avenue, telephone DRexel 6-4859.

The Charter Study Commission currently meets each Tuesday evening in the Town Hall.



SANTA STOPS AT SAKS: Large crowd on hand to greet Santa Claus as he arrives by helicopter on the Saks Fifth Avenue parking lot in Springfield. Children surround gift-bearing gentleman as Saks general manager Lawrence J. Rogers moves forward to welcome him. Santa Claus will be on hand in the Saks Fifth Avenue toy department to greet those kids who couldn't get close to him on arrival. (Photo Mickey Fox)

S. Claus Will Land At 1 P.M. Sat. At School

Springfield will get a close look at Mr. S. Claus' latest means of transportation Saturday when the merry gentleman will land at Jonathan Dayton Regional High School in a helicopter.

Santa is due to put down at the school at 1 p.m. this Saturday, Dec. 7.

Santa Claus is being lured to Springfield by the local Chamber of Commerce who have provided a gaily decorated platform for him to reign upon. Each child present will be personally introduced to Santa on the platform.

Kiwanis Sets Up Regional Student Prize

The establishment of an annual Citizenship Award in the Regional High School, Springfield, was announced this week by Dr. Randolph Jacobson, principal of the high school and Mr. Ellsworth Fischer, president of the Millburn-Springfield Kiwanis Club. Dr. Jerome Horowitz of Millburn was chairman of the Citizenship Committee for the Kiwanis Club.

"By presenting this award each year to an outstanding student of the high school, the Kiwanis club is desirous of promoting good citizenship and creating a tradition that will be looked forward to by the students," Horowitz said.

The citizenship award will be given annually to the boy or girl in the senior year at Jonathan Dayton Regional High School who displays outstanding leadership, high moral character and good citizenship.

The award will consist of a \$50 U. S. Savings Bond given at the general school assembly in June prior to graduation. Students may be nominated for the award by any member of the faculty or administrative officer of the school system.

Santa is coming to town in his traditional role of gift giver. He will give away presents and goodies to all good children present, and even some not-so-good children. Thousands of bags of candy, oranges and apples have been promised for all by Santa.

A large portion of the parking lot in front of Regional High School will be roped off to enable Santa's helicopter to land safely. During his sledding days, Santa could only travel when it snowed. Now that he has turned in his eight powerful reindeer for eight hundred horse powered helicopters, he can travel when it doesn't snow.

If wishing brings good weather then Springfield's children better wish hard. The Springfield Chamber of Commerce is also bringing its weight to bear on the weather. Put together these two groups ought to bring Santa in at one o'clock Saturday.

Children who miss Santa Saturday need not despair, according to Chamber officials. The willing benefactor will return twice more during the Christmas season to meet local children.

He will be in front of the National State Bank on the corner of Morris avenue and Plover avenue for the two Saturdays before Christmas. Children can meet him all day long on Saturday Dec. 14 and Saturday Dec. 21.

The Chamber of Commerce has provided a special mail box in front of the bank for literate children who want to put their requests to Santa in writing.

Springfield Is Bursting With Yule Bargains

Springfield merchants have kicked off the biggest Christmas buying spree in local history this week with 100 businesses putting their best foot forward.

The local Chamber of Commerce has led the shopping campaign by decorating the town with Christmas lights, inviting Santa Claus to come in a helicopter, and distributing a gift catalog to 30,000 homes in the area (a record for Springfield).

A survey of the four shopping areas in Springfield (Morris Avenue, General Greene Shopping Center, Mountain Avenue, and Route 22) reveals that stores are packed to rafters with Christmas gifts and other merchandise. Never has so much merchandise been ordered by local businessmen for the Holiday Season.

Preliminary reports indicate that buying has kept pace with the record inventories. Scattered examples show: Channel Lumber Co. running November 20% above last year's December; Modern Lighting doing over \$3,000 a week business at the "Five Corners" by Terry Dempsey; Manager Bob Davidson of J. J. Newberry confidently predicts this will be their biggest Yuletide season since setting in Springfield three years ago; Disc and Shutter on Morris Avenue says the present rate will find them doubling the volume of long playing records they sold last year for Christmas gifts.

The full page map of Springfield published in the Chamber of Commerce Christmas mailer reveals that there are over 10,000 free parking places in Springfield. With the plastic bags put over the parking meters on the streets by the Township and the Chamber, it can now be said that no one need ever pay to park anywhere in Springfield.

Springfield's change from small residential town of 7,500 in 1950 to bustling residential-commercial town of 15,000 today is an amazing story. In 1950 there were only about 20 shops along Morris Avenue with many of the residents shopping out of town for items they just couldn't get here.

There are now 106 commercial firms in Springfield selling everything from the Imperial automobile to a spool of thread. It is possible for homeowners to live for years without having to buy out of town. And it is also possible for them to shop day in day out without having to spend a nickel to park. None of Springfield's surrounding communities can make that statement.

B'nai B'rith to Meet Wednesday

On Wednesday evening Dec. 11th the B'nai B'rith Women's Chapter and the Men's Lodge will have a joint A.D.L. meeting at Temple Beth-El, Springfield.

Xmas Calendar Is Announced By Methodists

During the Advent season of the church year the Springfield Methodist Church has planned a calendar of festivities for the coming month.

Beginning with Monday, December 9, the Methodist Men's Club will entertain the ladies at the Ladies Night Annual Turkey Dinner with Rev. Robert Green of South Orange as the guest speaker.

Tuesday, December 10, the Woman's Society of Christian Service will have a Christmas program luncheon and meeting at 12:00 noon.

There will be a Family Christmas Carol Service on Sunday, December 15, 7:30 to 8:30 p.m., consisting of an evening of music with all church choirs. Visiting guest singers will sing with the congregation in a Carol service of song followed by a social hour.

The Wesleyan Service Guild will have a Christmas program early Tuesday, December 17, at 8:06 p.m., presenting the devotional theme, "You are My Witness." Hostesses for the evening—Dorothy Becker, Eileen Benitz, Ethel Benitz and Ruth Bradbury. There will be grab-bag gifts and if anyone will bring a gift for the Home for the Aged, marked for a gentleman or lady, it would be greatly appreciated.

(Continued on Page 2)

George Miller Appointed Mgr. At Kellogg Co.



George B. Miller, 805A Mountain avenue, has been appointed Manager of the Engineering-Schedules and Controls Division of The M. W. Kellogg Company, one of the leading engineering firms engaged in the design and construction of oil refineries and petrochemical plants world wide.

With the Company since 1938, he is a graduate of Rensselaer Polytechnic Institute in Electrical Engineering. A licensed Professional Engineer, he is a member of Sigma Xi, Tau Beta Pi, national engineering and scientific honor societies and the Scientific Research Society of America.

Residents Meet To Plan Fight Against New 22

Practically every organization in Springfield is expected to be represented at tomorrow (Friday) night's meeting in the Council Chambers of the new Municipal Building to plan a united fight against the proposed highway realignment.

Mayor Albert G. Binder has called Friday night's meeting with the idea of presenting a solid front in an effort to have the New Jersey Highway Department engineers consider alternate routes for the new highway. Invitations have been sent to all groups, civic associations, churches, veteran and fraternal organizations to select two representatives from each to attend Friday night's meeting.

The meeting is not intended to be a public session since the primary reason will be to organize and bring together all the groups in Springfield. State Senator Robert F. Crane, who has been carefully watching the highway program as it affects Union County, has promised Mayor Binder that he will be present Friday and there is every indication that Congressman Florence P. Dwyer will be on hand to give whatever information she has been able to gather from Washington sources. Senator Crane has also informed Mayor Binder that he will make every effort to bring some representative from the State Highway Department to Friday night's meeting.

Parking Meters Covered As Christmas Gift to Shoppers

The Springfield Chamber of Commerce and the Township Committee have already delivered their annual Christmas present to motorists and shoppers.

The Xmas gift is FREE PARKING EVERYWHERE from now until after the holidays. Plastic hoods were placed over all the parking meters in Springfield this past Monday with the following inscription:

MERRY CHRISTMAS! Springfield Chamber of Commerce and Township Committee.

This is the third year that the Chamber of Commerce has arranged for this good-will gesture and shoppers from neighboring communities are attracted to Springfield because there are no parking meters to feed anywhere in the Township during the Christmas season.

While all parking is free on Morris avenue the prohibition against parking between 4:30 and 6:30 on the north side of the avenue and from 7:45 to 8:45 in the morning on the south side is still in force. This "no parking" rule on Morris avenue is to permit a better flow of motor traffic during the peak of traveling.

Appointed As Design Chief Of Eng'g Firm



Robert H. Multhaup

Robert H. Multhaup, 25 Lyons place, has been appointed Chief Design Engineer of the M. W. Kellogg Company, one of the world's leading engineering firms engaged in the design and construction of oil refineries and petrochemical plants.

Prior to joining the Kellogg organization in 1951, Mr. Multhaup was engaged in developing work for the Elliot Company, where, as manager of the laboratory he pioneered in the design of gas turbines for marine and locomotive use. Since joining the Kellogg Company, he has served as Manager of the University of Iowa, Department of the Company's Jersey City Plant and Manager of the Heat Transfer Division, New York Office.

He received his engineering degree from the University of Iowa, is a member of the American Society of Mechanical Engineers, Pi Tau Sigma, national honor society in Mechanical Engineering, and is the author of several technical papers.

Police Ask Aid To Solve Death Of 10-Year Old

Springfield Police are seeking help from local residents as they continue to search for an explanation for the tragic death of 10-year-old Thomas Peart last week.

Peart's body was found in the middle of the intersection of Meisel avenue, Riverside drive and Linden avenue by a motorist Thanksgiving Day. He died the next morning of head injuries at Muhlenberg Hospital without regaining consciousness.

Springfield Police Chief Albert A. Sorge spent three days closeted with detectives from the Union County Prosecutors Office and the Chief said yesterday that "As far as we know from the condition of the boy's body, the location of the body and his shoes, Peart was the victim of a hit-and-run driver."

But police emphasized that they had no record of the boy's whereabouts for an hour before his body was found at 4:43 Thursday afternoon. They ask that if anybody saw the boy, wearing a fingertip length red mackinaw, between 3:45 and then, report to the police. Chief Sorge says that any report of Peart's activities would help police understand more fully how the first fatal traffic accident in Springfield in 20 months happened.

As of yesterday police reported they had no leads on who was responsible for the tragedy. One day last week police stopped and questioned all cars entering Riverside drive.

The child, police said, was found unconscious by Harold Alper of Milltown road, a passing motorist. The First Aid Squad took him to Overlook Hospital, Summit from where he later was transferred to Muhlenberg Hospital after it had been established he had suffered a fracture of the skull.

He underwent surgery but never regained consciousness, it was said.

The police, summoned by Mr. Alper, said persons in the accident area recalled hearing a noise like the screech of brakes about 15 minutes before the injured boy was found.

According to the family Thomas was on his way home after playing with a friend about a block away when he was struck by the car.

He was in the fifth grade of St. James School.

Besides his parents, he is survived by two sisters, Miss Patricia Peart, 21, and Dorothy, 13, a brother, Gilbert, 16, and his maternal grandmother, Mrs. Luc Aldroyd of Summit.

Special Tax Notice

ALL PROPERTY OWNERS DESIRING INFORMATION REGARDING THE RECENT VALUATION OF THEIR PROPERTY IN SPRINGFIELD ARE URGED TO VISIT THE TAX ASSESSORS OFFICE IN THE MUNICIPAL BUILDING.

OFFICE HOURS UNTIL DECEMBER 12 are:

9:00 a.m. to 5:00 p.m.—Week days (regular hours)

9:00 a.m. to 12:00 noon—Saturdays (special hours)

Evenings as follows:

7:00 to 9:00 p.m.

Friday, Dec. 6

Monday, Dec. 9—Wednesday, Dec. 11

Publisher — SAM O. SAROKIN
Associate Publisher & Editor — JULIAN SAROKIN

TELEPHONE: Drexel 9-5000
ESTABLISHED SEPTEMBER 27, 1929
Published every Thursday at 229 Morris Avenue, Springfield, N. J.
by SPRINGFIELD SUN PUBLISHING CO.

Official newspaper of the Township of Springfield. Subscription rates by mail: One year, \$3.50; six months, \$1.75 payable in advance. Single copies 10 cents. Entered as second class matter October 3, 1931 at the Post Office at Springfield, N. J. under an Act of March 3, 1879.

Page 2 The SPRINGFIELD SUN, Thurs., December 5, 1957

Letter to Editor

Editor, Sun:
I wish to take this opportunity to thank all of the many families in Springfield who contributed so generously toward our recent fund drive. Also, those business enterprises which "come through" for us year after year.

Without the help of these people

EXCLUSIVE WITH US IN SPRINGFIELD!
Every Garment Treated With

Sta-Nu FINISHING PROCESS
FREE AT DREXEL!

As advertised in "LIFE", "LOOK", "VOGUE". Your clothes stay clean longer, require less frequent cleaning, last longer!

OUR PLANT IS RIGHT ON OUR OWN PREMISES, INDIVIDUALLY OWNED & OPERATED BY A SPRINGFIELD RESIDENT.

1 HOUR SERVICE
FREE PLASTIC BAGS



DREXEL Quality CLEANERS

FREE PARKING SIDE & REAR
229 Mountain Ave., Springfield
Superior Cleaning, Shirt Laundering, Shoe Repairing

"Snowplace of Shoeplace" Opened by National Here

The first free-standing highway drive-in store in the 145-unit National Shoes chain will open here on U.S. 22 today, Thursday (December 5) with a festive three-day celebration.

The gala event will continue through Saturday (December 7), highlighted by personal appearances of well-known entertainers, personal gifts, a visit from "Santa Claus" for the youngsters, and gifts for all the family.

A battery of sky-probe searchlights and floodlights will pinpoint the site of the new store, a one-and-one-half-acre landscaped "island" just east of the intersection of Springfield avenue on Highway 22. Parking, in an area accommodating more than 150 cars, is accessible from either traffic direction.

Among the popular entertainers who will be on hand at the store opening day will be disc jockeys Jerry Marshall, from WMGM; Gallagher & O'Brien, Bob Kallen, Bert Knapp and Ed Welch, from WMCA.

Other features, extending through Saturday, will include the distribution of a valuable free gift with each pair of shoes purchased, plus the season's debut of "Santa," who will play host and hand out balloons and whistletoppys to children visiting the store with their parents.

Gifts For All
The selection of gifts, offering something for each member of the family, will include high-fashion "slim" umbrellas, in a choice of colors and handles, for the ladies; DuBarry simulated pearl necklaces in brocade evening bags, or Baronet wallets with zippered billfolds, for the teenagers; regulation type footballs, for the boys; three-foot high, soft and cuddly dolls, for the girls and toddlers; and Esquire Trav-Ler shoe shine

kits for the men and big boys.
Representing a new dimension in merchandising for the 35-year-old National Shoes, Inc., largest independent retail shoe chain in the country, the new highway drive-in store is described by company president Louis Fried as a "Snowplace of a Shoeplace." It is equal in size to three of the chain's standard units combined and is approximately 8,500 square feet in size, with more than 7,000 square feet of selling space.

Its glass exterior, framed by turquoise back, serves as a clear-view showcase for an attractive, modern interior which incorporates the latest shopping convenience techniques in colorful, eye-catching settings.

Other features of the store include separate service areas for men's, women's, and children's shoes, picturesque carousel display units, special bars and counters for self-selection shopping, luxurious carpeting, and year-round air-conditioning.

Of special interest to the younger set will be a gaily decorated "Small Fry Theatre" arcade equipped with suitable "view-it-yourself" movies of the nickelodeon variety.

Managing the new drive-in will be Victor Silver, currently a resident of Trenton, who has been associated with National Shoes more than ten years. He was most recently manager of the chain's store in Plainfield. Serving as assistant manager will be Hy Gray, who formerly held the same position at a National store in Newark.



TO MANAGE NEW NATIONAL

Victor Silver has been selected by National Shoe Stores to take charge of its newest—and largest drive-in store of the entire 145-unit chain which opens today on Route 22. Three day ceremonies include visit of "Santa Claus," gifts for all members of the family and entertainment.

Legion Christmas Party Next Week

The Regular meeting of the American Legion Auxiliary Unit No. 228 will be held on Thursday, December 12, at 8:30 p.m.

The order of business will be the annual Auxiliary Christmas party, the trimming of the Post Christmas tree, wrapping gifts for the hospitalized children at John E. Rannels Hospital and of course, Santa, gifts and delicious refreshments.

Hostesses for the evening will be Mrs. Stewart Douglas, Mrs. Sigurd Holme, Mrs. Joseph Natoli and Mrs. Thomas Palmer.

At the November meeting Girls State Night was held. Miss Myrna Cyre, daughter of Mr. and Mrs. Felix Cyre of Linden avenue and recent candidate for Girl State spoke of her most interesting week spent at Douglass College. Miss Nancy Bataille and Miss Rosemary Bednarik, both former Girls State Representatives of the 10-1 Auxiliary were guests.

The American Legion Auxiliary Juniors will hold their monthly meeting at the Legion Home on Saturday, December 7 at 2 p.m. They will bring the toys they have collected for the orphans and make Christmas decorations. At their last meeting they assembled a Thanksgiving basket that was given to a needy family.

On Pingry Honor Roll
Two Springfield boys made the honor roll at the Pingry School in Elizabeth for the month of November.

Charles Stevens of 778 Mountain avenue qualified in the Fifth Form and James Chalmers of 117 Meisel avenue qualified in the Third Form.

Mitchell, Safeway Manager Here, Dies

Thomas J. Mitchell, well known to many Springfield residents as the manager of the local Safeway supermarket at 727 Morris Turnpike, died last Saturday at Duke University Hospital, Durham, N. C., where he was undergoing medical treatment.

Mr. Mitchell was 43 and resided at 186 Summit road, Elizabeth. He was employed by Safeway the last 16 years.

A native of Elizabeth, Mr. Mitchell was a son of the late Henry and Catherine Ward Mitchell. He was educated in St. Mary's School in Elizabeth and was a communicant of St. Genevieve's Church and a member of its Holy Name Society.

Mr. Mitchell also was affiliated with the Springfield-Millburn Kiwanis Club, Elizabeth Council 253, Knights of Columbus, John Dawson Gilmarty Shea General Assembly, Fourth Degree Knights of Columbus, and Daniel O'Connell Division 2, Ancient Order of Hibernians.

He was a past president of the Safeway Employees' Assn. and a director of the Cerebral Palsy League of Union County.

Surviving are his wife, Mrs. Catherine Voitek Mitchell; a daughter, Barbara Ann at home; two brothers, Harry of Fanwood and Gerard of Scotch Plains, and a sister, Mrs. George Sahli of Linden.

About 300 million paper bound books were sold in the United States in 1956, 59% of total book sales.

About one-third of the 15 million World War 2 veterans now living have been granted GI loans for home-buying.

Xmas Calendar

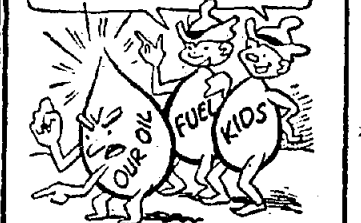
(Continued from page 1)
On Sunday, December 22 at 6 o'clock, there will be Church School Christmas Vespers with a dramatization in the Sanctuary and a Carol sing outdoors.

A Candlelight Service will be held on Christmas Eve, Tuesday, December 24, 11:00 to 12:00 p.m., with the music program conducted by Mr. Wilfred N. Barz, organist and music director of the church. In addition to the Christmas anthems there will be special solos with singing participation, by the congregation. The service will end

with Holy Communion.
The Methodist Church invites you and your friends to attend as many of these services as you can so that you may enjoy the Christmas fellowship that we need so much to add spiritual happiness in this glorious Yuletide season and once more recall the words of Tiny Tim "God Bless Each and Everyone."



OUR FUEL OIL SAYS "SEE HERE, YOU KNAVE! I'M BOSS - SO WINTER YOU BEHAVE!"



Keep winter under control—and buy your Fuel Oil from us. Real warmth. Service is regular—and prices fair!



CALL... Drexel 6-4300
COAL, FUEL OIL, COKE
192 MOUNTAIN AVE. Springfield, N.J.
Natural DELIVERIES - BUDGET PLAN

60¢

WILL TAKE YOU TO

Boston, Mass.
Alexandria, Va.
Concord, N. H.
Lowell, Mass.

BY PHONE
3 min. station rate from Newark after 6 P.M. and all day Sunday.
10% tax not included.

Attends Dinner

John J. Conley of 36 Colonial terrace attended the annual 25-Year-Club program of the Jersey Central-New Jersey Power & Light Company in Somerville last week.

Sincerely,
Otto Fürst
Fund Drive Chairman
Springfield First Aid Squad

TAXI?

Springfield-Nadel Cab Co.
Drexel 6-5200

6 NEW WAYS...

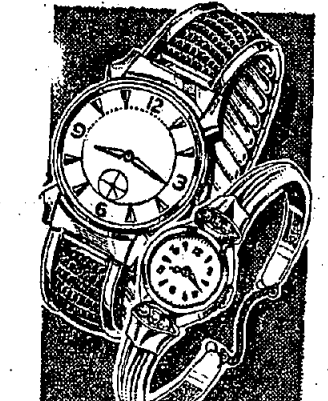
(A-M These Are Different!)
TO STYLE YOUR HAIR STYLE WITH OUR PERMANENT...

You'll love all the new easy-to-care-for styles that are soft-inspired. There isn't a hair texture in the world that doesn't take to our permanent. Big curls, little curls, large waves, small waves—all ways soft, always permanent.

FREE CONSULTATION

Paul & Louis Hairstylists
261 MORRIS AVENUE
SPRINGFIELD, NEW JERSEY
Drexel 6-9877 Free Parking in Rear

Mr. Louis, formerly of Charles of the Ritz
Mr. Paul, formerly of Hahn & Co.



17 Jewel
Famous Make
WATCHES
reg. 47.50

\$29.75
1 year guarantee

Mickey Mouse
Hopalong Cassidy
Cinderella

WESLEY Jewelers

173 Mountain Avenue
Springfield, N.J.
Drexel 6-6047

Big Christmas Selection of—Diamonds, Watches, Jewelry, and Gifts at Special Savings!

The Perfect Hostess
SERVES **HERSHEY'S**
Early American
ICE CREAM
45¢ PINT

A PREMIUM QUALITY for those who prefer the very finest

HERSHEY'S ICE CREAM CENTER
22 Flomer Ave.,
Springfield
(Adjoining Municipal Parking Lot)

HERSHEY'S ICE CREAM

OPEN 12 P.M. TO 9 P.M. (CLOSED MONDAYS)

CHILDREN'S WATCHES \$4.95
plus tax

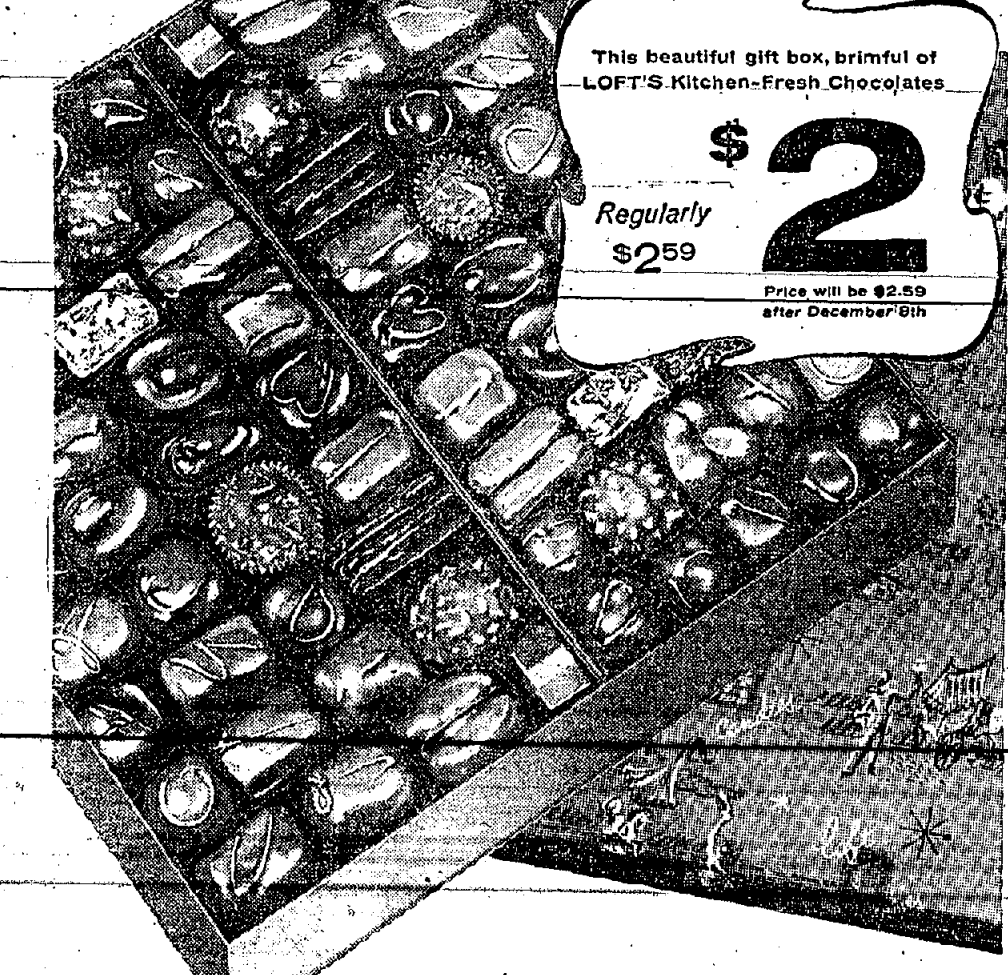


THIS WEEK ONLY

LOFT'S

exciting, annual

PRE-CHRISTMAS CANDY TREAT



This beautiful gift box, brimful of LOFT'S Kitchen-Fresh Chocolates

Regularly \$2.59
\$2
Price will be \$2.59 after December 8th

FREE...
A lovely Christmas Gift Card with every box

Let us mail for you anywhere in the world. Postage additional.

LOFT'S Candies...as fine as you can give
Candy Garden* U.S. Highway 2 2, Union and through New Jersey
*OPEN SUNDAYS

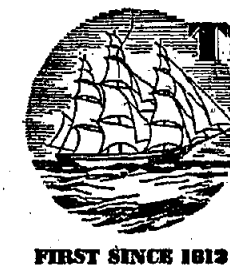
FOUNDED IN 1860 BY WILLIAM LOFT... NOW THE WORLD'S LARGEST CANDY KITCHEN

To be opened **BEFORE** Christmas*

***YOUR 1958 CHRISTMAS CLUB**

Extra cash is always welcome... especially when you're planning holiday shopping and entertaining. Make sure you'll have the money you want for next year's holidays. Join our 1958 Christmas Club now and save ahead for debt-free fun.

THERE'S A CLUB PLAN TO FIT EVERY PURSE and PURPOSE



THE NATIONAL STATE BANK

"Union County's Leading Bank"

ELIZABETH • SPRINGFIELD • ROSELLE PARK
SUMMIT • KENILWORTH

MEMBER FEDERAL DEPOSIT INSURANCE CORPORATION

FIRST SINCE 1813

New Year's Eve Party Planned

Mrs. Lewis Gash, Program Chairman for the Reform Jewish Congregation of Springfield, has announced the appointment of Mrs. Jerry Bierman as chairman of their first New Year's Eve Party to be held at Temple Emanuel on Northfield road Livingston.

The congregation extends a cordial invitation to all its members and guests to join in this social activity. Reservation may be obtained by contacting Mrs. Martin Bachrach DR 9-4707 and Mrs. Bernard Lesser DR 6-5176.

The Purple Heart was established by Gen. George Washington in 1782. It is the decoration for men wounded in action.

Hi Neighbor!!

NEWS AND TIDBITS ABOUT YOUR FRIENDS & NEIGHBORS.

If You Have Any News Call . . .

DREXEL 6-4502

LORRIE LEWIS



Attention was focused last Friday eve, November 29, at Howard Johnson's on a group of enthusiastic young gentlemen attending a supper party in honor of the 11th birthday of Fred Sussman, son of Mr. and Mrs. Ben Sussman of 399 Milltown Road. Fred's guests were Carmine Petti, Richard Friedman, Donnie Lewis, Robert Chodos, Jay Weiniger, Douglas Kappstatter, Kenneth Weiss, Marvin Segal, Richard Zegar, Larry Forster, Jimmy Murphy, Kenneth Max, and Robert Affilito.

Mr. and Mrs. Alvin Jay of 17 Lynn Drive became parents of their fourth son, on November 13 at the Beth Israel Hospital, Newark. Robert Ira weighed in at 7 lbs. His brother are Gary age 7, Lawrence age 5 and Jeffrey age 2. Mrs. Jay is the former Molly Tanner of Newark.

Mr. and Mrs. Heinz Mueller, formerly of Irvington, now reside at 69 Colonial Terrace. Their two daughters are Judith who is 6 years of age and 3 year old Linda. Their 8th wedding anniversary found Mr. and Mrs. Robert C. Smith of Kew Drive making merry at the Condor Restaurant with friends, Mr. and Mrs. Norman Cooperman.

Susan Savarin, daughter of Mr. and Mrs. William Savarin of 82 Garden Oval was birthday fete at a party on November 21. Susan, who was 10 years old, had as her party guests her brother and sister, Jimmy and Debbie; her cousin, Linda Duchin of Livingston; and Karen Duchin, Rhona Roth, Debbie Gash, Rhona Katz, Carol Spiegel, Kathy Frances, Sharon Lesser, and Madeline Birnbaum all of Springfield.

Mr. William Doyle of 29 Mapes Ave. was hostess at a stork shower given in honor of Mrs. Edward Culleton of 49 Mapes Ave. The guests were Mrs. Joseph Culleton of Short Hills; Mrs. Raymond De Coursey, Mrs. Michael Pettinechio, Mrs. Michael Kesilica, Mrs. H. Laimport, Mrs. Irving Shatton, Mrs. Arthur Mutschler, Mrs. Norman Le Beuf, Mrs. Thomas Warswick, Mrs. Milton Cooper, Mrs. Harvey Sommerer, Mrs. John Dunsuir, and Mrs. Anthony Lo Sanno all of Springfield.

Joe Kisch, son of Mr. and Mrs. J. Kisch of 25 Remer Ave. certainly did his share of helping during the Jerry Lewis Telethon. Joe collected \$15.00 from his neighbors and personally presented the money to Jim Brown at the Echo Lane Bowling Alleys (representing the telethon here in New Jersey).

Mr. and Mrs. William Hummel of 95 Hobart Place and their three children, Dwight, Mark, and Gail spent the Thanksgiving holidays visiting with relatives in Poughkeepsie, N. Y.

We welcome Mr. and Mrs.

Jack Middleton of 65 Springbrook Road who recently moved here from Phoenix, Arizona. Their son Jack Dale is 17 years of age. Mr. Middleton is operations manager for Safeway stores.

Mr. and Mrs. Jay R. Doros of Kew Drive announce a fourth addition to their family. Their son, Dennis Robert, was born on November 25 at the Beth Israel Hospital weighing 9 lbs. Their other youngsters are Paul age 6, Shari age 4 1/2 and Amy age 2 1/2. Mrs. Doros is the former Micki Meyers of Newark.

Birth congratulations to Mr. and Mrs. James Barrett of 6 Cypress Terrace who became parents of a daughter, Susan Beth, on November 23 at Overlook Hospital. Susan weighed in at 6 lbs. 14 oz. Mrs. Barrett is the former Betty Popple of Irvington.

Marjorie Fried, daughter of Mr. and Mrs. Robert Fried of 15 Glenview Drive, celebrated her 10th birthday at a party held on November 30.

Twin Brooks Form New Association

The newly formed Twin Brooks Civic Association held its first public meeting on Tuesday, Dec. 3 in the auditorium of James Caldwell School at 8 p. m.

Letters giving pertinent details about the organization will be delivered to most of the residents of Salter street, Lyons place, Dayton court, and Bryant avenue. After the association is formally incorporated, the first item on the agenda is expected to be action concerning the proposed highways which either traverse or come very close to the streets of this area.

The members of the Steering Committee are: Mr. and Mrs. Victor A. Bracht, Mrs. John Mentia, Mr. and Mrs. R. H. Humer, and Mr. and Mrs. R. D. Hardgrove. Further information may be obtained by telephoning Robert Hardgrove at Drexel 6-3348.

Pledged to Sorority

Miss Rosalie L. Gold of 21 Essex road, Springfield, has been pledged

to Sigma Alpha Pi sorority at Union Junior College, Cranford. A freshman in the Day Session, Miss Gold is a liberal arts major.

THE NATIONAL STATE BANK

Elizabeth, N. J.

SPECIAL NOTICE TO SPRINGFIELD DEPOSITORS

The above offices will not be open during the customary evening hours on Friday, December 13, 1957. They will, however, be open Thursday evening, December 12, instead. We ask your indulgence to enable the staff at this office to join with their associates in the bank's annual Christmas party.

FOR RENT
IN SPRINGFIELD
APPROXIMATELY 2,000 SQUARE FEET
OF BASEMENT SPACE
IN SUN BUILDING—Center of Springfield
Reasonable Rent
Write or telephone:
SPRINGFIELD SUN
262 Morris Avenue, Springfield Drexel 9-5000

LADIES AUXILIARY TO V.F.W.
BATTLE HILL POST 7683
Presents
FIRST ANNUAL SQUARE DANCE
At The
EVERGREEN LODGE
Springfield, N. J.
FRIDAY, DECEMBER 13, 1957
Dancing 8:30 p.m. to 2 a.m. Admission \$1.00
Hypnotist

SEE THE ALL NEW '58 CHEVROLET ON DISPLAY

This Week's Special ONLY \$1295

1954 Mercury Monterey, 2 color hard top; one owner. 2 Tone, Ivory and Black, Power Brakes, Power Steering, R/H, Defroster and Automatic Transmission.

Also Many Other Bargains in OK'd Used Cars

L&S "Authorized Chevrolet Dealer for Union, Kenilworth and Springfield"

CHEVROLET CO., INC.
Cor. Morris & Commerce Aves. Union-MURdock 6-2800

HOUSE of DONUTS
Weekend Specials
to introduce our new
Cut Rate Delicatessen Dept.

Bologna 49¢ lb.
Frankfurters . . 3 lbs. for 98¢
Pressed Ham . . . 59¢ lb.
Dill Pickles . . . 1/2 gal. 49¢

WITH THIS COUPON
HOME MADE POTATO SALAD 15¢ lb.
Limit one to a customer

Cole Slaw 29¢ lb.
Macaroni Salad . . 29¢ lb.
Hot Corned Beef & Pastrami

WITH THIS COUPON
HOME BAKED FRUIT PIES 59¢
3 lbs. AVERAGE 19 VARIETIES
Limit one to a customer

ROUTE 22 UNION
opposite Rickel's

Page Williams - Blanche Zeller Dance Studios
ONE OF NEW JERSEY'S MOST POPULAR DANCING SCHOOLS

Offering a complete program of Personality, Ballet, Tap, Modern Jazz, Balon, Dramatic, Art, and Ballroom Classes for children, teenagers and adults. Ballroom lessons include Cha-Cha-Cha, Merengue, Mambo, Fox Trot, Jitterbug and Waltz. Classes for beginners, intermediates and advanced students.

GROUP OR PRIVATE INSTRUCTIONS

PARENTS, here is the perfect way to develop grace, poise, skill, charm and personality in your child with Ballet, Tap and Personality Lessons given by highly trained, skilled instructors. All instruction conducted under the personal supervision of:

NORMAN PAGE, JOHN WILLIAMS and BLANCHE ZELLER

Registration Now Open — Call Immediately

15 So. Orange Ave., So. Orange, N.J. SO 3-6288
299 Millburn Ave., Millburn—DR 6-3234

Morey La Rue's Christmas Special!

These are high quality toys—children love them. We expect a big rush so send in your dry cleaning and order your toys early.

SUZIE the SQUIRREL
only \$1.79 (retail value \$2.98)
With a \$2.00 Dry Cleaning order SUZIE is an 11 inch high, plush covered, sitting squirrel, with a saucy plastic face and holds a tiny bouquet of flowers.

TOMMY THE TERRIER
only \$1.79 (retail value \$2.98)
With a \$2.00 Dry Cleaning order TOMMY is 14 inches high, plush covered and stands sturdily on his four reinforced legs.

MOREY La RUE TRUCK-BANK
only \$.69 (retail value \$1.25)
With a \$1.00 Dry Cleaning order Made of tough break-resistant plastic with genuine rubber wheels. Measures 7" long by 3" high.

Morey La Rue
General Greene Shopping Center
SPRINGFIELD

Honor Couple After 58 Years Of Marriage

Mr. and Mrs. Frederick R. Bohl of 73 Flermer Avenue, marked their 58th wedding anniversary on November 29th. They were honored at a family luncheon on Saturday at Muir's Towne House in East Orange, N. J.

The couple was married in Brooklyn by the Rev. Robert Bruce Hull. Hilma Johnson, now Mrs. Wm. Zink and Fred Condit were their attendants.

Mr. Bohl, who was born in Orange Valley, N. J. 85 years ago, is a retired Engineer of the Springfield Pumping Station of the Elizabethtown Consolidated Water Co. Mrs. Bohl, who is 79, was born in Brooklyn.

Both have been members of the Millburn Baptist Church for 38 years.

The couple has two sons, Roderick M. of Millburn, and Frederick M. of Dover, N. J. and three daughters, Mrs. Edward Mattern of Hempstead, Long Island, Mrs. Edith Bahring of Ocean Grove, N. J., and Mrs. Clyde Hiesler of Millburn, 4 grandchildren and 6 great grandchildren.

The world's longest vehicular bridge—24 miles—is across Lake Pontchartrain at New Orleans. It was opened in August 1956.

ARTISTS' GALLERY Original Paintings, Sculpture, Hand-crafts

\$5 to \$100 and up
Gift Certificates Available

Open Tues. thru Sat. 11 - 5 p.m.
Thurs. Eves. 7 - 9 p.m.
SUN. 1 - 3 p.m.
34 Essex St., Millburn, N. J.
opposite railroad station
DR. 6-7850

SAKS FIFTH AVENUE

for your Convenience at Christmas

S. F. A. WILL BE OPEN NIGHTS TILL 9 P. M.
December 5th through December 23rd
Mondays through Fridays
(Saturdays: 9:30 A. M. to 5:30 P. M.)
Tweed Room Restaurant open to 8:00 P. M. except Saturdays

Millburn and Short Hills Avenues, Springfield, N. J.

PAL SHOES

ONE OF N.J.'S LARGEST DISCOUNT SHOE CENTERS

Gifts for everyone

Women's Fleece Lined SLIPPERS 1.94 Reg. to \$3.50

Women's STADIUM BOOTS 5.94 Reg. \$9.95

Men's DRESS SHOES from 8.94 Reg. to \$12.95

Men's WORK SHOES 6.94 Reg. \$9.95

Children's and Women's RUBBER BOOTS 2.94 Reg. \$3.95

Girls' STRIDE-RITE and BUSTER BROWN DRESS SHOES 4.94 8 1/2 to 12, Reg. \$6.95

Women's TROYLING DRESS SHOES 9.94 Reg. \$14.95

Boys' and Girl's ORTHOPEDIC SHOES 7.94 Reg. \$10.95

Children's COWBOY BOOTS 2.94 Reg. \$4.95

Complete Line of Men's WORK SHOES 6.94 Reg. \$9.95

Women's NATURALIZERS 6.94 Reg. \$10.95

Men's DRESS SHOES from 8.94 Reg. to \$12.95

Children's and Women's RUBBER BOOTS 2.94 Reg. \$3.95

Girls' STRIDE-RITE and BUSTER BROWN DRESS SHOES 4.94 8 1/2 to 12, Reg. \$6.95

Women's TROYLING DRESS SHOES 9.94 Reg. \$14.95

Boys' and Girl's ORTHOPEDIC SHOES 7.94 Reg. \$10.95

Children's COWBOY BOOTS 2.94 Reg. \$4.95

Complete Line of Men's WORK SHOES 6.94 Reg. \$9.95

Women's NATURALIZERS 6.94 Reg. \$10.95

Men's DRESS SHOES from 8.94 Reg. to \$12.95

Children's and Women's RUBBER BOOTS 2.94 Reg. \$3.95

Girls' STRIDE-RITE and BUSTER BROWN DRESS SHOES 4.94 8 1/2 to 12, Reg. \$6.95

Women's TROYLING DRESS SHOES 9.94 Reg. \$14.95

Boys' and Girl's ORTHOPEDIC SHOES 7.94 Reg. \$10.95

Children's COWBOY BOOTS 2.94 Reg. \$4.95

Complete Line of Men's WORK SHOES 6.94 Reg. \$9.95

Women's NATURALIZERS 6.94 Reg. \$10.95

Men's DRESS SHOES from 8.94 Reg. to \$12.95

Children's and Women's RUBBER BOOTS 2.94 Reg. \$3.95

Girls' STRIDE-RITE and BUSTER BROWN DRESS SHOES 4.94 8 1/2 to 12, Reg. \$6.95

Women's TROYLING DRESS SHOES 9.94 Reg. \$14.95

Boys' and Girl's ORTHOPEDIC SHOES 7.94 Reg. \$10.95

Children's COWBOY BOOTS 2.94 Reg. \$4.95

Complete Line of Men's WORK SHOES 6.94 Reg. \$9.95

Women's NATURALIZERS 6.94 Reg. \$10.95

Men's DRESS SHOES from 8.94 Reg. to \$12.95

Children's and Women's RUBBER BOOTS 2.94 Reg. \$3.95

Girls' STRIDE-RITE and BUSTER BROWN DRESS SHOES 4.94 8 1/2 to 12, Reg. \$6.95

Women's TROYLING DRESS SHOES 9.94 Reg. \$14.95

Boys' and Girl's ORTHOPEDIC SHOES 7.94 Reg. \$10.95

Children's COWBOY BOOTS 2.94 Reg. \$4.95

Complete Line of Men's WORK SHOES 6.94 Reg. \$9.95

Women's NATURALIZERS 6.94 Reg. \$10.95

Men's DRESS SHOES from 8.94 Reg. to \$12.95

Children's and Women's RUBBER BOOTS 2.94 Reg. \$3.95

Girls' STRIDE-RITE and BUSTER BROWN DRESS SHOES 4.94 8 1/2 to 12, Reg. \$6.95

Women's TROYLING DRESS SHOES 9.94 Reg. \$14.95

Boys' and Girl's ORTHOPEDIC SHOES 7.94 Reg. \$10.95

Children's COWBOY BOOTS 2.94 Reg. \$4.95

Complete Line of Men's WORK SHOES 6.94 Reg. \$9.95

Women's NATURALIZERS 6.94 Reg. \$10.95

Men's DRESS SHOES from 8.94 Reg. to \$12.95

Children's and Women's RUBBER BOOTS 2.94 Reg. \$3.95

Girls' STRIDE-RITE and BUSTER BROWN DRESS SHOES 4.94 8 1/2 to 12, Reg. \$6.95

Women's TROYLING DRESS SHOES 9.94 Reg. \$14.95

Boys' and Girl's ORTHOPEDIC SHOES 7.94 Reg. \$10.95

Children's COWBOY BOOTS 2.94 Reg. \$4.95

Complete Line of Men's WORK SHOES 6.94 Reg. \$9.95

Women's NATURALIZERS 6.94 Reg. \$10.95

Men's DRESS SHOES from 8.94 Reg. to \$12.95

Children's and Women's RUBBER BOOTS 2.94 Reg. \$3.95

Girls' STRIDE-RITE and BUSTER BROWN DRESS SHOES 4.94 8 1/2 to 12, Reg. \$6.95

Women's TROYLING DRESS SHOES 9.94 Reg. \$14.95

Boys' and Girl's ORTHOPEDIC SHOES 7.94 Reg. \$10.95

Children's COWBOY BOOTS 2.94 Reg. \$4.95

Complete Line of Men's WORK SHOES 6.94 Reg. \$9.95

Women's NATURALIZERS 6.94 Reg. \$10.95

Men's DRESS SHOES from 8.94 Reg. to \$12.95

Children's and Women's RUBBER BOOTS 2.94 Reg. \$3.95

Girls' STRIDE-RITE and BUSTER BROWN DRESS SHOES 4.94 8 1/2 to 12, Reg. \$6.95

Women's TROYLING DRESS SHOES 9.94 Reg. \$14.95

Boys' and Girl's ORTHOPEDIC SHOES 7.94 Reg. \$10.95

Children's COWBOY BOOTS 2.94 Reg. \$4.95

Complete Line of Men's WORK SHOES 6.94 Reg. \$9.95

Women's NATURALIZERS 6.94 Reg. \$10.95

Men's DRESS SHOES from 8.94 Reg. to \$12.95

Children's and Women's RUBBER BOOTS 2.94 Reg. \$3.95

Girls' STRIDE-RITE and BUSTER BROWN DRESS SHOES 4.94 8 1/2 to 12, Reg. \$6.95

Women's TROYLING DRESS SHOES 9.94 Reg. \$14.95

Boys' and Girl's ORTHOPEDIC SHOES 7.94 Reg. \$10.95

Children's COWBOY BOOTS 2.94 Reg. \$4.95

Complete Line of Men's WORK SHOES 6.94 Reg. \$9.95

Women's NATURALIZERS 6.94 Reg. \$10.95

Men's DRESS SHOES from 8.94 Reg. to \$12.95

Children's and Women's RUBBER BOOTS 2.94 Reg. \$3.95

Girls' STRIDE-RITE and BUSTER BROWN DRESS SHOES 4.94 8 1/2 to 12, Reg. \$6.95

Women's TROYLING DRESS SHOES 9.94 Reg. \$14.95

Boys' and Girl's ORTHOPEDIC SHOES 7.94 Reg. \$10.95

Children's COWBOY BOOTS 2.94 Reg. \$4.95

Complete Line of Men's WORK SHOES 6.94 Reg. \$9.95

Women's NATURALIZERS 6.94 Reg. \$10.95

Men's DRESS SHOES from 8.94 Reg. to \$12.95

Children's and Women's RUBBER BOOTS 2.94 Reg. \$3.95

Girls' STRIDE-RITE and BUSTER BROWN DRESS SHOES 4.94 8 1/2 to 12, Reg. \$6.95

Women's TROYLING DRESS SHOES 9.94 Reg. \$14.95

Boys' and Girl's ORTHOPEDIC SHOES 7.94 Reg. \$10.95

Children's COWBOY BOOTS 2.94 Reg. \$4.95

Complete Line of Men's WORK SHOES 6.94 Reg. \$9.95

Women's NATURALIZERS 6.94 Reg. \$10.95

Men's DRESS SHOES from 8.94 Reg. to \$12.95

Children's and Women's RUBBER BOOTS 2.94 Reg. \$3.95

Girls' STRIDE-RITE and BUSTER BROWN DRESS SHOES 4.94 8 1/2 to 12, Reg. \$6.95

Women's TROYLING DRESS SHOES 9.94 Reg. \$14.95

Boys' and Girl's ORTHOPEDIC SHOES 7.94 Reg. \$10.95

Children's COWBOY BOOTS 2.94 Reg. \$4.95

Complete Line of Men's WORK SHOES 6.94 Reg. \$9.95

Women's NATURALIZERS 6.94 Reg. \$10.95

Men's DRESS SHOES from 8.94 Reg. to \$12.95

Children's and Women's RUBBER BOOTS 2.94 Reg. \$3.95

Girls' STRIDE-RITE and BUSTER BROWN DRESS SHOES 4.94 8 1/2 to 12, Reg. \$6.95

Women's TROYLING DRESS SHOES 9.94 Reg. \$14.95

Boys' and Girl's ORTHOPEDIC SHOES 7.94 Reg. \$10.95

Children's COWBOY BOOTS 2.94 Reg. \$4.95

Complete Line of Men's WORK SHOES 6.94 Reg. \$9.95

Women's NATURALIZERS 6.94 Reg. \$10.95

Men's DRESS SHOES from 8.94 Reg. to \$12.95

Children's and Women's RUBBER BOOTS 2.94 Reg. \$3.95

Girls' STRIDE-RITE and BUSTER BROWN DRESS SHOES 4.94 8 1/2 to 12, Reg. \$6.95

Women's TROYLING DRESS SHOES 9.94 Reg. \$14.95

Boys' and Girl's ORTHOPEDIC SHOES 7.94 Reg. \$10.95

Children's COWBOY BOOTS 2.94 Reg. \$4.95

Complete Line of Men's WORK SHOES 6.94 Reg. \$9.95

Women's NATURALIZERS 6.94 Reg. \$10.95

Men's DRESS SHOES from 8.94 Reg. to \$12.95

Children's and Women's RUBBER BOOTS 2.94 Reg. \$3.95

Girls' STRIDE-RITE and BUSTER BROWN DRESS SHOES 4.94 8 1/2 to 12, Reg. \$6.95

Women's TROYLING DRESS SHOES 9.94 Reg. \$14.95

Boys' and Girl's ORTHOPEDIC SHOES 7.94 Reg. \$10.95

Children's COWBOY BOOTS 2.94 Reg. \$4.95

Complete Line of Men's WORK SHOES 6.94 Reg. \$9.95

Women's NATURALIZERS 6.94 Reg. \$10.95

Men's DRESS SHOES from 8.94 Reg. to \$12.95

Children's and Women's RUBBER BOOTS 2.94 Reg. \$3.95

Girls' STRIDE-RITE and BUSTER BROWN DRESS SHOES 4.94 8 1/2 to 12, Reg. \$6.95

Women's TROYLING DRESS SHOES 9.94 Reg. \$14.95

Boys' and Girl's ORTHOPEDIC SHOES 7.94 Reg. \$10.95

Children's COWBOY BOOTS 2.94 Reg. \$4.95

Complete Line of Men's WORK SHOES 6.94 Reg. \$9.95

Women's NATURALIZERS 6.94 Reg. \$10.95

Men's DRESS SHOES from 8.94 Reg. to \$12.95

Children's and Women's RUBBER BOOTS 2.94 Reg. \$3.95

Girls' STRIDE-RITE and BUSTER BROWN DRESS SHOES 4.94 8 1/2 to 12, Reg. \$6.95

Women's TROYLING DRESS SHOES 9.94 Reg. \$14.95

Boys' and Girl's ORTHOPEDIC SHOES 7.94 Reg. \$10.95

Children's COWBOY BOOTS 2.94 Reg. \$4.95

Complete Line of Men's WORK SHOES 6.94 Reg. \$9.95

Women's NATURALIZERS 6.94 Reg. \$10.95

Men's DRESS SHOES from 8.94 Reg. to \$12.95

Children's and Women's RUBBER BOOTS 2.94 Reg. \$3.95

Girls' STRIDE-RITE and BUSTER BROWN DRESS SHOES 4.94 8 1/2 to 12, Reg. \$6.95

Women's TROYLING DRESS SHOES 9.94 Reg. \$14.95

Boys' and Girl's ORTHOPEDIC SHOES 7.94 Reg. \$10.95

Children's COWBOY BOOTS 2.94 Reg. \$4.95

Complete Line of Men's WORK SHOES 6.94 Reg. \$9.95

Women's NATURALIZERS 6.94 Reg. \$10.95

Men's DRESS SHOES from 8.94 Reg. to \$12.95

Children's and Women's RUBBER BOOTS 2.94 Reg. \$3.95

Girls' STRIDE-RITE and BUSTER BROWN DRESS SHOES 4.94 8 1/2 to 12, Reg. \$6.95

Women's TROYLING DRESS SHOES 9.94 Reg. \$14.95

Boys' and Girl's ORTHOPEDIC SHOES 7.94 Reg. \$10.95

Children's COWBOY BOOTS 2.94 Reg. \$4.95

Complete Line of Men's WORK SHOES 6.94 Reg. \$9.95

Women's NATURALIZERS 6.94 Reg. \$10.95

Men's DRESS SHOES from 8.94 Reg. to \$12.95

Children's and Women's RUBBER BOOTS 2.94 Reg. \$3.95

Girls' STRIDE-RITE and BUSTER BROWN DRESS SHOES 4.94 8 1/2 to 12, Reg. \$6.95

Women's TROYLING DRESS SHOES 9.94 Reg. \$14.95

Boys' and Girl's ORTHOPEDIC SHOES 7.94 Reg. \$10.95

Children's COWBOY BOOTS 2.94 Reg. \$4.95

Complete Line of Men's WORK SHOES 6.94 Reg. \$9.95

Women's NATURALIZERS 6.94 Reg. \$10.95

Men's DRESS SHOES from 8.94 Reg. to \$12.95

Children's and Women's RUBBER BOOTS 2.94 Reg. \$3.95

Girls' STRIDE-RITE and BUSTER BROWN DRESS SHOES 4.94 8 1/2 to 12, Reg. \$6.95

Women's TROYLING DRESS SHOES 9.94 Reg. \$14.95

Boys' and Girl's ORTHOPEDIC SHOES 7.94 Reg. \$10.95

Children's COWBOY BOOTS 2.94 Reg. \$4.95

Complete Line of Men's WORK SHOES 6.94 Reg. \$9.95

Women's NATURALIZERS 6.94 Reg. \$10.95

Men's DRESS SHOES from 8.94 Reg. to \$12.95

Children's and Women's RUBBER BOOTS 2.94 Reg. \$3.95

Girls' STRIDE-RITE and BUSTER BROWN DRESS SHOES 4.94 8 1/2 to 12, Reg. \$6.95

Women's TROYLING DRESS SHOES 9.94 Reg. \$14.95

Boys' and Girl's ORTHOPEDIC SHOES 7.94 Reg. \$10.95

Children's COWBOY BOOTS 2.94 Reg. \$4.95

Complete Line of Men's WORK SHOES 6.94 Reg. \$9.95

Women's NATURALIZERS 6.94 Reg. \$10.95

Men's DRESS SHOES from 8.94 Reg. to \$12.95

Children's and Women's RUBBER BOOTS 2.94 Reg. \$3.95

Girls' STRIDE-RITE and BUSTER BROWN DRESS SHOES 4.94 8 1/2 to 12, Reg. \$6.95

Women's TROYLING DRESS SHOES 9.94 Reg. \$14.95

Boys' and Girl's ORTHOPEDIC SHOES 7.94 Reg. \$10.95

Children's COWBOY BOOTS 2.94 Reg. \$4.95

Complete Line of Men's WORK SHOES 6.94 Reg. \$9.95

Women's NATURALIZERS 6.94 Reg. \$10.95

Men's DRESS SHOES from 8.94 Reg. to \$12.95

Children's and Women's RUBBER BOOTS 2.94 Reg. \$3.95

Girls' STRIDE-RITE and BUSTER BROWN DRESS SHOES 4.94 8 1/2 to 12, Reg. \$6.95

Women's TROYLING DRESS SHOES 9.94 Reg. \$14.95

Boys' and Girl's ORTHOPEDIC SHOES 7.94 Reg. \$10.95

Children's COWBOY BOOTS 2.94 Reg. \$4.95

Complete Line of Men's WORK SHOES 6.94 Reg. \$9.95

Women's NATURALIZERS 6.94 Reg. \$10.95

Men's DRESS SHOES from 8.94 Reg. to \$12.95

Children's and Women's RUBBER BOOTS 2.94 Reg. \$3.95

Girls' STRIDE-RITE and BUSTER BROWN DRESS SHOES 4.94 8 1/2 to 12, Reg. \$6.95

Women's TROYLING DRESS SHOES 9.94 Reg. \$14.95

Boys' and Girl's ORTHOPEDIC SHOES 7.94 Reg. \$10.95

Children's COWBOY BOOTS 2.94 Reg. \$4.95

Complete Line of Men's WORK SHOES 6.94 Reg. \$9.95

Women's NATURALIZERS 6.94 Reg. \$10.95

Men's DRESS SHOES from 8.94 Reg. to \$12.95

Children's and Women's RUBBER BOOTS 2.94 Reg. \$3.95

Girls' STRIDE-RITE and BUSTER BROWN DRESS SHOES 4.94 8 1/2 to 12, Reg. \$6.95

Women's TROYLING DRESS SHOES 9.94 Reg. \$14.95

Boys' and Girl's ORTHOPEDIC SHOES 7.94 Reg. \$10.95

Children's COWBOY BOOTS 2.94 Reg. \$4.95

Complete Line of Men's WORK SHOES 6.94 Reg. \$9.95

Women's NATURALIZERS 6.94 Reg. \$10.95

Men's DRESS SHOES from 8.94 Reg. to \$12.95

Children's and Women's RUBBER BOOTS 2.94 Reg. \$3.95

Girls' STRIDE-RITE and BUSTER BROWN DRESS SHOES 4.94 8 1/2 to 12, Reg. \$6.95

Women's TROYLING DRESS SHOES 9.94 Reg. \$14.95

Boys' and Girl's ORTHOPEDIC SHOES 7.94 Reg. \$10.95

Children's COWBOY BOOTS 2.94 Reg. \$4.95

Complete Line of Men's WORK SHOES 6.94 Reg. \$9.95

Women's NATURALIZERS 6.94 Reg. \$10.95

Men's DRESS SHOES from 8.94 Reg. to \$12.95

Children's and Women's RUBBER BOOTS 2.94 Reg. \$3.95

Girls' STRIDE-RITE and BUSTER BROWN DRESS SHOES 4.94 8 1/2 to 12, Reg. \$6.95

Women's TROYLING DRESS SHOES 9.94 Reg. \$14.95

Boys' and Girl's ORTHOPEDIC SHOES 7.94 Reg. \$10.95

Children's COWBOY BOOTS 2.94 Reg. \$4.95

Complete Line of Men's WORK SHOES 6.94 Reg. \$9.95

Women's NATURALIZERS 6.94 Reg. \$10.95

Men's DRESS SHOES from 8.94 Reg. to \$12.95

Children's and Women's RUBBER BOOTS 2.94 Reg. \$3.95

Girls' STRIDE-RITE and BUSTER BROWN DRESS SHOES 4.94 8 1/2 to 12, Reg. \$6.95

Women's TROYLING DRESS SHOES 9.94 Reg. \$14.95

Boys' and Girl's ORTHOPEDIC SHOES 7.94 Reg. \$10.95

Children's COWBOY BOOTS 2.94 Reg. \$4.95

Complete Line of Men's WORK SHOES 6.94 Reg. \$9.95

Women's NATURALIZERS 6.94 Reg. \$10.95

Men's DRESS SHOES from 8.94 Reg. to \$12.95

Children's and Women's RUBBER BOOTS 2.94 Reg. \$3.95

Girls' STRIDE-RITE and BUSTER BROWN DRESS SHOES 4.94 8 1/2 to 12, Reg. \$6.95

Women's TROYLING DRESS SHOES 9.94 Reg. \$14.95

Boys' and Girl's ORTHOPEDIC SHOES 7.94 Reg. \$10.95

Children's COWBOY BOOTS 2.94 Reg. \$4.95

Complete Line of Men's WORK SHOES 6.94 Reg. \$9.95

Women's NATURALIZERS 6.94 Reg. \$10.95

Men's DRESS SHOES from 8.94 Reg. to \$12.95

Children's and Women's RUBBER BOOTS 2.94 Reg. \$3.95

Girls' STRIDE-RITE and BUSTER BROWN DRESS SHOES 4.94 8 1/2 to 12, Reg. \$6.95

Women's TROYLING DRESS SHOES 9.94 Reg. \$14.95

Boys' and Girl's ORTHOPEDIC SHOES 7.94 Reg. \$10.95

Children's COWBOY BOOTS 2.94 Reg. \$4.95

Complete Line of Men's WORK SHOES 6.94 Reg



SOLD BY E. J. CHADWICK—Home at 260 Short | B. J. Chadwick Agency to Albert D. Briggs, an e-Hills avenue was sold for Bruce E. Rosbach by the | gineer from Springfield.

Two Residents Wed in Orange Church

Miss Pauline C. Pavlisko of 198 Hawthorne avenue, daughter of the late Mr. and Mrs. Joseph Anthony Pavlisko Sr. of West Orange, became the bride on Saturday, Nov. 23 of Lester E. Wanderer of 27 Forest drive, son of the late Mr. and Mrs. Edward Wanderer of Springfield.

The ceremony was performed at 4:30 p.m. in Redeemer Lutheran Church, Ridge street, Orange by the pastor, the Reverend Henry Lohr. A reception followed at Raritan Farms in Somerville. Given in marriage by her brother, Joseph A. Pavlisko, Jr. of Upper Montclair, the bride had

her sister Mrs. Oswald Thiele of Springfield as matron of honor and Mr. Thiele served as Mr. Wanderer's best man. Ushers were Joseph A. Pavlisko, 3rd of Florham Park, and Philip T. Pavlisko of Boonton, the bride's nephews.

Following a wedding trip to California the couple will reside at

27 Forest drive in Springfield. Mr. Wanderer is an accountant with the Public Service Electric and Gas Company in Newark, N.J.

The Island of Formosa is famous for its Oolong teas.

85¢

WILL TAKE YOU TO
Akron, Ohio
Chapel Hill, N. C.
Roanoke, Va.
Bar Harbor, Me.
BY PHONE
3 min. station rate from Newark after 6 P.M. and all day Sunday. 10% tax not included.



A QUICK LUNCH IS A REAL TREAT HERE
Lunchtime or any time, we're at your service fast with delicious food.
MOUNTAIN AVENUE LUNCHEONETTE
"Next To Walton School"
549 Mountain Ave., Springfield

Woman's Club News

The Springfield Woman's Club Drama Department will hold its Christmas Party on Monday, December 9, at the Cannon Ball house. Special holiday buffet supplied by members should put all present in a holiday mood. Games will be played and Santa will pay an early visit with his pack of "grab bag" gifts.

On the same evening, December 9, the Literature Department will hold its Christmas meeting at the home of Mrs. Frederick Mitchell at 21 Woodcrest Circle. Each member will bring her favorite Christmas selection from literature and share it with the group. Mrs. Mitchell is hostess.

December 10 is Federation Art Day at Trenton State Museum, Trenton, N. J.

December 12, Thursday is the bright day on the calendar for the members of the Springfield Woman's Club. This is the day members will relax and enjoy the luncheon, bridge and gift display at Altman's, Short Hills. It isn't too late yet to secure your tickets from either Mrs. Robert Hayer, chairman, or Mrs. Rupert Humer, co-chairman.

The Greens Show in Flemington, N. J., will be held on Thursday, December 5, until 9 p. m. and will close Friday, December 6, at 5 p. m. All members of the Springfield Woman's Club are invited to attend.

At the Art Department's meeting on Monday, December 2, in the home of Miss Gertrude Sala, members finished their flying

bracelets and Christmas tree ornaments were made from scraps of material left over. Members went home with the feeling of an evening of accomplishment and fun. Mrs. Charles Miller was hostess. Mrs. Harry Speicher did the serving.

PTA Variety Show Set for Saturday

The Regional High School Parent-Teachers Association will present a gala variety show to be held in the school auditorium this Saturday evening, at 8:30 p. m.

Proceeds from the show will go into the P.T.A. Scholarship Fund. Tickets at \$1.25 may still be purchased from Mrs. H. Wilson at Drexel 6-2318.

VFW Ladies Give Food to Needy

On Saturday afternoon November 30, members of the Ladies Auxiliary to Veterans of Foreign Wars Battle Hill Post 7683 held a "Coffee Hour" for a group of about 150 patients at East Orange Veterans Hospital.

Among the members who at-

tended were: Ruth Hattersley, Mary Hattersley, Marie Summerer, Ann Briggs and Hospital Chair-lady Doris Muller.

This week also the ladies of the Auxiliary delivered baskets of groceries to needy families in town for Thanksgiving, under the direction of Marie Summerer and Mary DeFino, Community service chair-

page 3 The SPRINGFIELD SUN, Thurs. December 5, 1957

"MARIA SCHELL is a wonderfully true actress... It is so wonderful she was given the best actress award at Cannes for this performance!"
N.Y. Times

MARIA SCHELL

The Last Bridge
PLAYHOUSE
252 Main St., West Orange
Phone OP-3300
(Opp. Edison) Free Parking

STRAND
447 Springfield Ave., Summit, N. J. CR. 3-3700

NOW PLAYING THRU SATURDAY
Millions Of New Fans For Elvis Presley

ELVIS PRESLEY
JAILHOUSE ROCK
CINEMASCOPE
JUDY TYLER
MICKEY SHAGHNESSY
DEAN JONES - JENNIFER HOLDEN

—PLUS EXCITING 2nd FEATURE—

SUSPENSE, ADVENTURE AND INTRIGUE!
VAN JOHNSON - MARTINE CAROL - HERBERT LOM
ACTION OF THE TIGER
FROM 11-64 IN CINEMASCOPE AND COLOR

SUN.-MON.-TUES. DEC. 8-9-10

SAMUEL FULLER'S
FORTY GUNS
CINEMASCOPE
with Barbara Stanwyck, Barry Sullivan

James Fenimore Cooper's
THE DEERSLAYER
CINEMASCOPE
with Lex Barker, Rita Moreno

WED. thru SAT. DEC. 11-12-13-14
"Exceedingly Funny"... N. Y. NEWS

HE HAD A VERY SUBTLE BUTTLE!
JUNE ALLYSON
DAVID NIVEN
MY MAN GODFREY
Walt Disney's
"MAN IN SPACE"

RKO PROCTORS NOW
NEWARK
ADVENTURE! INTRIGUE!
... in the city of the thousand passions!
ROBERT WAGNER
JOAN COLLINS
EDMOND O'BRIEN

STOP OVER TOKYO
plus 2nd Hit!
Color by DeLuxe CINEMASCOPE

Ride a Violent Mile
JOHN AGAR - FERRY BOWERS

Box Office Open Daily & Sun. 10 A.M.-10 P.M.

PAPER MILL PLAYHOUSE
MILLBURN, N. J. Drexel 6-4343
FRANK CARROLLTON, Director
Eves. 8:30—Tues. Through Sat. Sun. 2:30—8:30
Now through Sunday, Dec. 15
Dorothy Sandlin - Robert Busch

'SILK STOCKINGS'
Music & Lyrics by Cole Porter
Book by George S. Kaufman.
Lewontin MacGrath and Abe Burrows
Tickets 50c and All Ages
Order by Phone—Pay by Mail

PROPOSAL FOR FURNISHING GASOLINE
Sealed bids will be received by the Township Committee of the Township of Springfield in the County of Union, at a regular meeting to be held in the Municipal Building, Springfield, N. J., on Wednesday, December 18, 1957, at 8:15 a. m., for the furnishing of all gasoline that may be required for servicing of the equipment owned by the Township of Springfield for the period from January 1, 1958 to December 31, 1958.

Bidders must submit price for both standard and high test gasoline. Bids must be properly sealed, endorsed and presented at said meeting. A complete analysis and itemization of the quantities of the gasoline required to be delivered shall be furnished with each bid.

The successful bidder shall be required to furnish and install a 2,000 gallon storage tank, pumps and other incidental mechanical equipment at the site of the Municipal Garage on Center Street.

The successful bidder will be required to maintain the aforesaid tank, pumps and incidental mechanical equipment in good working order during term of contract.

A certified check in the amount of \$100.00 must accompany the bid.

The Township Committee reserves the right to reject any or all bids at its discretion whenever course appears advisable in the interest of the Township.

Eleanor H. Worthington, Township Clerk.
Dec. 5 - Dec. 12

PROPOSAL FOR FURNISHING FUEL OIL
Sealed proposals will be received by the Township Committee of the Township of Springfield in the County of Union, at a regular meeting to be held in the Municipal Building, Springfield, N. J., on Wednesday evening, December 18, 1957 at 8:15 p. m., for the furnishing of Number 2 fuel oil for heating the Municipal Building and the residences at 59 Mountain Avenue.

Bid forms and specifications may be obtained by the Office of the Township Clerk in the Municipal Building. A certified check in the amount of \$100.00 must accompany the bid.

The Township Committee reserves the right to reject any or all bids at its discretion whenever course appears advisable to do so.

Eleanor H. Worthington, Township Clerk.
Dec. 5 - Dec. 12

AN ORDINANCE TO LIMIT THE USE OF DRIVE-UP DRIVE-THRU DRIVE-INS AND WEST BRYANT AVENUE BETWEEN SHUNPIKE ROAD AND TROY DRIVE TO "WEST BRYANT AVENUE"
BE IT ORDAINED by the Township Committee of the Township of Springfield in the County of Union, and State of New Jersey, as follows:

1. That the portion of the Ordinance dated of this Ordinance, that part of Bryant Avenue lying between Shunpike Road and Troy Drive, shall be known and designated as West Bryant Avenue rather than Bryant Avenue, as heretofore.

2. Appropriate street signs shall be erected at the intersections of Troy Drive and Shunpike Road showing the name of said street as "West Bryant Avenue."

3. The foregoing Ordinance shall take effect upon adoption after final review and publication thereof as provided by law.

I, Eleanor H. Worthington, do hereby certify that the foregoing Ordinance was introduced for first reading at a regular meeting of the Township Committee of the Township of Springfield in the County of Union and State of New Jersey, held on Wednesday evening, November 27, 1957, and that the said Ordinance shall be submitted for confirmation and final passage at a regular meeting of the said Township Committee to be held on December 18, 1957, in the Municipal Building at 8:00 P.M., at which time and place any person or persons interested therein, will be given an opportunity to be heard in accordance with Ordinance No. 100.

Eleanor H. Worthington, Township Clerk.
December 5, 1957

The Alfa Romeo has crossed the United States, including all 48 states, in less than 61 million tons in 1956.

RAPPAPORT SPRING DRUG
273 Morris Ave., Springfield
Free delivery—Drexel 9-2079
Prescriptions, Vitamins, Cosmetics
Cut-Rate Prices

BUSINESS DIRECTORY

SPERCO MOTOR CO.
CADILLAC Sales-Service Accessories
491 Morris Ave. Summit
"Near Ciba" CRestview 3-1700

FUEL OIL - COAL
DRAKE FUEL SALES CO.
DELCO OIL BURNERS
Installation & Servicing
COAL • FUEL OIL • COKE
679 Morris Ave. Springfield
Drexel 6-0880

PLUMBERS
ALBERT SCHATZ
Plumbing - Heating
Contracting - Alterations
Repairing
Hours: Monday thru Saturday
8 a.m. to 5:30 p.m.
197 Hillside Avenue
SPRINGFIELD
Drexel 6-4276

CHEVROLET
L & S Chevrolet Co., Inc.
E. Arthur Lynch
Your Authorized
CHEVROLET
Dealer
Sales - Service
Parts - Repairs
Complete Body & Fender Work
Painting
Cor. Morris & Commerce Ave., Union
MURdock 6-2800

LETTERING
Harry S. Keene
TRUCK LETTERING
Delivery Trucks A Specialty
KENILWORTH, N. J.
BRidge 6-2970

SERVICE STATIONS
BALDWIN'S SHELL STATION
SHELL
Gas - Oil - Lubrication
Washing & Polishing
Call For Delivery Service
DREXEL 9 8831
Mountain & S. Springfield Ave.

MILK AND DAIRY PRODUCTS
SCHMALZ
• Milk & Cream
• Buttermilk
• Cottage Cheese
• Butter & Eggs
Delivered Fresh from Our Nearby Farm
Call ...
MILLINGTON 7-0025

ELECTRICAL CONTRACTOR
For Electrical work, phone ...
DREXEL 6-3181
• Industrial • Commercial • Residential
72 Forest Dr., Springfield, N. J.

BAKERY
HASELMANN'S BAKERY
Quality Baked Goods
270 Morris Avenue
Springfield
DREXEL 6-4120

NEWSPAPER DELIVERY
Your Favorite Paper
Delivered To Your Home
Mornings Afternoon Evening
Sunday
SPRINGFIELD NEWS DELIVERY
Call DREXEL 6-0788

ROOFING-SIDING
SPRINGFIELD ROOFING CO.
Remodeling, Attics and Basements Finished
Slate, Tile and Siding
Gutter and Leader Repair
Phone DREXEL 9-4207
357 Mountain Ave., Springfield, N.J.

DRUGS
PARK DRUGS
Prescription & Surgical Pharmacy
OPEN SUNDAYS
Til 6 P.M.
General Greene Shopping Center
Drexel 5-952

DRUGS
ROLAND DRUGS
777 Mountain Ave.
(Tab's Shopping Center)
PRESCRIPTIONS—COSMETICS
BABY NEEDS—VITAMINS
Free Delivery—DREXEL 9 2244
9 A.M. 10 P.M. including Sundays

TAVERNS
OLD EVERGREEN LODGE
SINGERS PARK, SPRINGFIELD
Make Reservations for
GROUP OUTINGS
Guarantee 150 Adults and up to 2,000
Arrangements for
PARTIES WEDDINGS
BAR OPEN YEAR AROUND
DREXEL 6-0489
SPRINGFIELD

DRUGS
CENTER CARPET TILE
"Floor Coverings Of Every Description"
Rubber Asphalt Cork
Rug Cleaning & Storage
31 Summit Av. CRestview 7-2700

The Twigs
Luncheon
Dinner
Supper
Make your reservation now for company and office Christmas Parties.
80 Springfield Ave., Springfield
DREXEL 6-9885
AIR CONDITIONED

ANNOUNCING A NEW HALF HOUR WESTINGHOUSE LAUNDRY SERVICE ON THE SPRINGFIELD BORDER
Located just over the Millburn border on Main Street, this sparkling big Laundromat has the latest equipment for spectacular laundry results. Millburn Westinghouse Laundromat is truly a glimpse at the future in Laundromats with savings for today in laundry bills.
CLIP THIS COUPON... VALUE 75¢ 75¢ 75¢

75¢ GET ACQUAINTED OFFER 75¢
This coupon good for **ONE LOAD* OF CLOTHES WASHED AND DRIED FREE**
This offer expires Dec. 21, 1957
*8 1/2 lb. LIMIT 1 TO A FAMILY!
Without charge, we will wash, rinse, damp-dry and dry one full Laundromat load of your soiled clothes. See for yourself how worthless washdays can be at our modern, half-hour laundry. Prove to yourself how beautifully white and bright garments come out of the Laundromat, how fluffy and soft from our Dryers. No obligation—we want you to come in.
MILLBURN WESTINGHOUSE LAUNDROMAT
160 Main St., Millburn DR 6-7375

Can't Use It? SELL IT THROUGH WANT ADS

Rotarians Hear Deborah Speaker

Mrs. Allen Borsky, Pres. and Mrs. Norman Strohmeyer, Vice Pres. were guests of the Spring-

field Rotary Club on Tuesday, Nov. 26th at the invitation of Ike Freedman. Mrs. Borsky introduced a film titled "I Loved You Daddy" that concerns the heart surgery performed at Deborah Sanatorium.

The film is available to all organizations in Springfield as a service of Suburban Deborah.

The Paid Up membership supper given at Temple Beth Ahm on Tuesday evening, Nov. 26th was well attended and greatly enjoyed by all. Guest speaker for the evening was Mr. Martin Myrowitz who is chairman of the Pythian Charity Foundation for the State of New Jersey. Mr. Myrowitz spoke about his personal experience with Deborah's Sanatorium. Mrs. Myrowitz has fully recovered from major heart surgery performed at Deborah's heart pavilion.

Also present, representing the Knights of Pythias were Mr. and Mrs. Victor Shapiro and Mr. and Mrs. Seymour Baucher. The Pythian order has endowed a room at Deborah Sanatorium.

Mr. and Mrs. Tony Fiorellino were honored with a special dessert to help celebrate their anniversary.

Mrs. Sanford Kessler was overwhelmed by the reception of the merchandise that has been obtained for sale to Deborah members and their friends. This merchandise is priced to represent fairly large savings to the people purchasing. This merchandise is now available to the general public. For further information, call: Mrs. Kessler, DR 6-3337.

Miss Stasik Wed At St. James Sat.



Mrs. Edwin G. Rieg

The marriage of Miss Margaret Elaine Stasik, daughter of Mr. and Mrs. Frank Stasik, 5 Prospect place, to Lt. Edwin Gordon Rieg, Jr., son of Mrs. E. G. Rieg and the late Mr. Rieg of Wichita, Kansas was solemnized at a Nuptial Mass on Saturday in Saint James Church, Springfield. The mass was celebrated by Reverend Edward Swierzbinski.

Miss Carol Stasik, sister of the bride, was maid of honor. Mr. Paul Hinzay, cousin of the bride, served as best man with Mr. Donald Tackitt, cousin of the groom, serving as usher.

Mrs. Rieg is a graduate of Jonathan Dayton Regional High School and the Berkeley Secretarial School. She was employed as a stenographer by Esso Standard Oil Company of New Jersey until her marriage.

Lt. Rieg is an alumnus of Kansas State College (B.S. Chem. Eng.), where he was a member of Beta Theta Pi Fraternity. He is employed as an engineer in the Technical Department of the Esso Standard Oil Company of New Jersey and is presently on military leave.

After a motor trip south, Lt. and Mrs. Rieg will reside at Fort Bragg, North Carolina where Lt. Rieg is stationed with the 11th Chemical Company.



Lois Walker

Lois Walker Is Engaged to Wed

Mr. and Mrs. Clifford D. Walker of Severna avenue announce the engagement of their daughter, Lois, to Randolph H. Hansen, the son of Mr. and Mrs. Ole Hansen of Lake Mohawk.

Miss Walker is a graduate of Jonathan Dayton Regional High School and Newark Presbyterian Hospital School of Nursing and is on the staff of that hospital. Mr. Hansen is a graduate of Brooklyn Technical High School, a veteran of the Korean War and has a business in Stanhope.

Betz Engaged to Girl From Summit

Mr. and Mrs. Joseph Maffei of Summit announce the engagement of their daughter JoAnn to Joseph V. Betz Jr., son of Joseph

Loesch-Fischer Betrothal Told



Marilyn A. Loesch

Mr. and Mrs. Raymond H. Loesch of 122 Waldo avenue, Bloomfield and Lake Mohawk announce the engagement of their daughter, Marilyn Apryl to Willard John Fischer, son of Mr. and Mrs. Albin Fischer of 95 Tooker avenue, Springfield.

Miss Loesch, a graduate of Bloomfield High School attended Paterson State Teachers College in North Haledon. She is now employed with the First National City Bank of New York. Her fiancé, an alumnus of Jonathan Dayton Regional High School attended Union Junior College. Mr. Fischer is with his father, Albin Fischer, general contractor.

A June wedding is planned.

V. Betz of Route 22, Springfield. The engagement party was celebrated at Kellers Grove, Berkeley Heights and attended by friends and relatives.

Narcotics Expert To Address ORT

The Springfield Chapter of Women's American ORT (Organization for Rehabilitation Through Training) will meet on Thursday evening, December 12, 8:30 p.m. at Temple Beth Ahm, Baltimore at Temple Beth Ahm, Baltimore will begin with a candle lighting ceremony in honor of Chanukah.

the Essex County Narcotics Squad will present a talk and show a movie.

Mrs. Seymour Margulies will preside at the meeting which will follow. Reports will be given by Mrs. Martin Fishbein on Guardianship, Mrs. Norman Lowenstein on the Dinner Dance, and Mrs. Jack Slater on Health and the Concord week-end. Reports will also be given by the committee chairmen and delegates who attended the Mid-Winter Planning Conference.

1958 CHRISTMAS CLUB NOW OPEN

\$1-\$2-\$3-\$5-\$10 CLUBS

Plus Dividends

on all completed clubs

INVESTORS SAVINGS

64 Main St.

Her Sweetest thrill on Christmas Day ... a cherished Fur.

MINK DYED FUR SEAL
NATURAL SHEARED RACCOON
DYED MUSKRAT
NATURAL SHEARED BEAVER
DYED PERSIAN LAMB
NATURAL STONE MARTEN
DYED SQUIRREL
NAT. GREY PERSIAN LAMB

AT OUR LOW, LOW CLOSE-TO-FACTORY-COST PRICES from \$49. to \$5250.

OPEN DAILY to 9 P.M.
SAT. & SUN. to 6 P.M.

FLEMINGTON FUR CO.
FLEMINGTON, N. J.
NEW JERSEY'S LARGEST MANUFACTURER & DISTRIBUTOR OF FINE FURS

DEATHS

MRS. DELMAR TAPPIN
Mrs. Mae Donahue Brown Tappin of 37 Maple avenue, widow of Delmar Tappin, died Wednesday, November 27 in Overlook Hospital, Summit, of a long illness.

Born in Newark, Mrs. Tappin lived in Springfield about six years, coming here from Summit. She was medical record librarian of the Essex County Sanatorium, Verona, for many years until her retirement in 1950.

She was a former president of the N. J. Assn. of Medical Record Librarians and a member of the Civil Service Assn. of N.J., the Springfield Women's Club and the Rosary Society of St. James Church.

Mrs. Tappin was the daughter of the late Thomas Henry Donahue and Mrs. Edna Donahue of Newark.

She leaves a daughter Mrs. Madelyn Fleming of Summit; three brothers, Edwin J. Donahue of Newark, Thomas J. Donahue of Jersey City and Frank Donahue of North Hollywood, Calif.; two sisters, Mrs. Madeline Poulson of East Orange and Mrs. Orabell Lueddecke of Daytona Beach, Fla. and a granddaughter.

NOTICE TO CREDITORS
ESTATE OF ELIZABETH M. COSTELLO, deceased.
Pursuant to the order of CHARLES A. OTTO, JR., Surrogate of the County of Union, made on the twenty-second day of November, A. D. 1957, upon the application of the undersigned, as Executor of the estate of said deceased, notice is hereby given to the creditors of said deceased to exhibit to the subscriber under oath or affirmation their claims and demands against the estate of said deceased within six months from the date of said order, or they will be forever barred from prosecuting or recovering the same against the estate.

ANDREW B. CRUMMY, Executor
Crummy, Gibbons & O'Neil, Attys.
11 Commerce St.
Newark, N. J.
Nov. 28 - Dec 5, 12, 19.
o n w 4 w Fees—\$11.70

Tapered Toe Opera Pumps

Specially Priced \$10.90 reg. 16.95

Nationally advertised "DeANGELO" OPERAS
Black suede, Brown or black calf.

Footwear INC., 354 Springfield Ave., Summit, N.J.
Nationally Advertised Cancellations—Factory Stock Shoes Sold at 1/3 to 1/2 Below Manufacturers' Fixed Price.
Open Daily 9 A.M. to 6 P.M.—Friday 9 A.M. to 9 P.M.

Christmas Gift Suggestions FROM ENGLAND

- GIFT CERTIFICATE for Dover Street British Shoes
- SLIPPERS, Camel Cloth \$ 3.50
- Leather and Scotch Tartan ... \$ 6.95
- PATENT LEATHER OXFORDS . \$11.95
- PATENT LEATHER COURT BOW PUMPS \$11.95
- LOAFERS \$ 9.95
- SLIP-ON CASUALS \$10.95
- TASSEL CASUALS \$10.95
- FLEECE LINED CHUKKA BOOT \$14.95
- ALUMINUM SHOE TREES ... \$ 1.95

Lightweight and compact for traveling

OUR BUSINESS is primarily selling British shoes by mail on direct factory representation at a fraction of their American retail price saving purchasers several dollars a pair.

So many local customers have liked our personal fitting service that we are now open six days a week from 9 A.M. to 6 P.M., with the exception of lunch hour from 12 until 1.

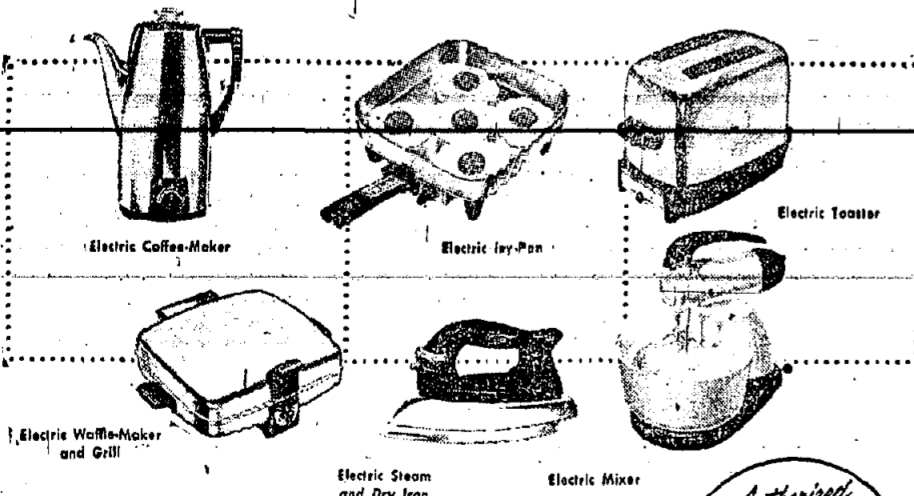
MAIL ORDER PRICES PREVAIL

Steven Williams, Ltd.
40 CHATHAM ROAD SHORT HILLS, N.J.
(Opposite Short Hills Lackawanna Station)
DROP IN !!
See our complete selection of fine British shoes.



Make this Christmas Merrier...

Electrically!



LIVE BETTER... Electrically

SEE YOUR AUTHORIZED REDDY KILOWATT DEALER

JCP & L
Jersey Central Power & Light



FOR VARICOSE VEINS

the first 51-gauge Elastic Stockings

- Full-foot
- Full-fashionet
- Full-support

\$16.95 a pair

Look like regular nylons on your legs...

BAUER & BLACK

SPRINGFIELD PHARMACY
52 Years of Reliability
238 Morris Ave. DRexel 6-3650

Dorothy Hughes has left her home because of a fire

Dorothy Hughes has found temporary quarters through the kindness of MR. ROOT of ROOTS.

Dorothy Hughes will be in Summit at—
SPRINGFIELD AVENUE & MAPLE STREET

all new

- lingerie
- blouses
- skirts
- sweaters
- robes
- hosiery
- handkerchiefs
- perfumes

Starting Friday December 6th

402 SPRINGFIELD AVENUE

CR. 3-4430

CHRISTMAS SHOPPERS' Guide to happy Gifting

SPRINGFIELD NOW OFFERS

- More Selections
- More Bargains
- More Parking

THAN ANY TOWN AROUND

From Now
Until Xmas

All Stores Open Nights Till 9

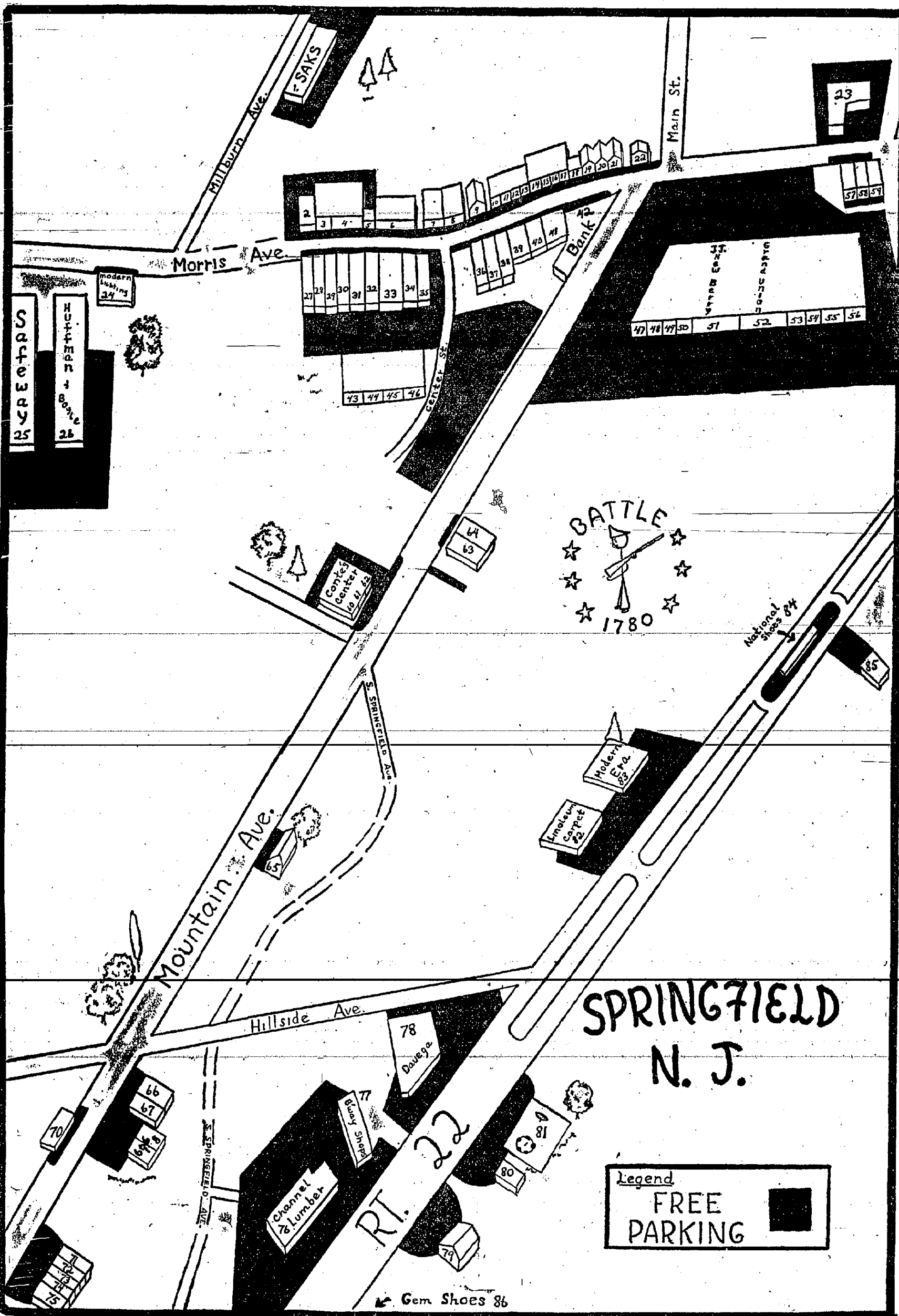
FREE PARKING Everywhere
In The Town
That Has Everything

- Key to Springfield**
- | | |
|------------------------------|------------------------|
| 1. Sales Fifth Avenue | 4. Springfield Market |
| 2. Rajac Aluminum Products | 5. Haselmann's Bakery |
| 3. Springfield Wine & Liquor | 6. Springfield Barbers |
| | 7. Courtesy Laundromat |
| | 8. Disc & Shutter |

- | | |
|-------------------------------|---------------------------------|
| 9. Springfield Sun | 27. Kay's Toy & Hobby |
| 10. Sam's Barber Shop | 28. Rappaport Spring Drug |
| 11. Suburban Cleaners | 29. Marcel's Luncheonette |
| 12. Center Meat Market | 30. Triple S Redemption |
| 13. Springfield Tavern | 31. Springfield Hardware |
| 14. Glimming Wallpaper | 32. Florence Lee Fashions |
| 15. Springfield Interior Dec. | 33. Russell's Men's Shop |
| 16. Eden Roc Fashions | 34. Paul & Louis Hairdressers |
| 17. Helmette Youth Center | 35. Pin 'n Feather Pot Supplies |
| 18. Bretler's Dept. Store | 36. Community Shop |
| 19. Center Hardware | 37. Colanone Shoe Shop |
| 20. Springfield Pharmacy | 38. E. Clayton Radio |
| 21. Nagel's Perk Shop | 39. Louis Hairdressers |
| 22. Beacon Hill Co. | 40. Grijack Jewelers |
| 23. Sip & Sup Drive-In | 41. Hotchiss Corner Fashions |
| 24. Modern Lighting | 42. National State Bank |
| 25. Safeway | 43. Hi-Way Cleaners |
| 26. Huffman & Boyle | 44. Business |
| | 45. Business |
| | 46. Karlin's Paint |

- | | |
|----------------------------|----------------------------|
| 47. Park Drugs | 61. G & B Variety |
| 48. Milton's Liquor | 62. Hyde & Ellis Hardware |
| 49. Mae Moon | 63. Mt. Spring Bake Shop |
| 50. National Shoes | 64. Puritan Supercette |
| 51. J. J. Newberry | 65. Vacant |
| 52. Grand Union | 66. Renee Beauty Salon |
| 53. Cake Cottage | 67. Stempler's Cleaners |
| 54. G & L Delicatessen | 68. Roland Drugs |
| 55. Morey La Rue | 69. Tabachnick Appetizers |
| 56. China Sky | 70. Chandel Lumber |
| 57. The Fabric Place | 71. Broadway Shops |
| 58. Marg's Sweet Shop | 72. Davaga Discount Center |
| 59. Morris Ave. Chrysler | 73. Howard Johnson's |
| 60. Conte's Delicatessen | 74. N. J. Route TV |
| 61. Regional Barbers | 75. Fairland |
| 62. Drexel Cleaners | 76. Linoleum Carpet Outlet |
| 63. Wesley Jewelers | 77. Modern Era |
| 64. Springfield Radio & TV | 78. National Shoes |
| 65. Mt. Ave. Luncheonette | 79. Harmony House |
| 66. Rau Quality Meats | 80. Gem Shoes |

- | | |
|----------------------------|----------------------------|
| 67. Vacant | 81. Fairland |
| 68. Renee Beauty Salon | 82. Linoleum Carpet Outlet |
| 69. Stempler's Cleaners | 83. Modern Era |
| 70. Chandel Lumber | 84. National Shoes |
| 71. Broadway Shops | 85. Harmony House |
| 72. Davaga Discount Center | 86. Gem Shoes |



Sarasota, Fla., Is Getting To Know "Bill" C. Jensen

Bill C. Jensen, former Springfield resident and now picking up a nice, healthy tan at Sarasota, Florida, has already conquered that Winter resort city.

Clippings from the newspapers in that area refer to Jensen as the "Sales Evangelist" and his services as a speaker are already in great demand throughout Sarasota.

The Sarasota Journal, in the issue of November 5, carried a story that "Selling is the Process of Good Living" will be the title of a talk given by Bill C. Jensen, a member of the adult Vocation Program at the Sarasota High School, to the Lions Club.

The Sarasota News calls Jensen the "Sales Evangelist" and gave his speaking program a 2 column

ment store and a large number of the store's personell have started the series at the high school."

Jensen scribbled a few notes to his many friends in Springfield— "Hello, everybody. At last I'm really started — making many friends and I want to say thanks to Springfield for all the experience I gained there. People are the same all over; serve them unselfishly and you'll make friends. I feel fine. Max Bros. is the biggest department store on the West coast of Florida. I have three classes on 'Sales Personality Development' on Tuesdays and Thursdays."

STORE FOR RENT

1400 square foot showroom with large display windows. Private office and adjoining 300 square foot stockroom are included. Prime location on busy Morris Turnpike in Springfield.

see Michael Screen Co.
673 Morris Turnpike
Springfield, D'Rexel 6-5512

Tax Assessor Is Given Certificate

Wilbert W. (Bert) Layng, Springfield Tax Assessor, doesn't say that he will have all the answers to the many tax questions to come, but he now has in his possession a certificate from Rutgers University which should qualify him.

The Institute for Assessing Officers conducted by the College of Arts and Sciences at Rutgers University, presented a certificate to Layng last week indicating "satisfactory completion of the basic Program of the 1957 Institute."

Following is the letter announcing the award:

Dear Mr. Layng:

I am happy to inform you that the Certification Committee of the Institute for Assessing Officers has recommended that you be awarded a certificate indicating satisfactory completion of the basic Program at the 1957 Institute.

Certificates will be awarded at the meeting of the Association of Municipal Assessors to be held in Atlantic City in conjunction with the annual conference of the New Jersey State League of Municipalities.

Sincerely yours,
Bennett M. Rich
Director

3% INTEREST

Savings Deposits Received On or Before

December 13

Will Draw Interest As Of

December 1

Safe Deposit Boxes Available in all Sizes.
"One of the Fastest Growing Banks in the U.S."

The FIRST STATE BANK OF UNION

Morris Avenue
at
Bucks Parkway



Union, New Jersey
MEMBER FEDERAL RESERVE BANKING CORPORATION
Murdoch 6-4800

Now...a pure white phone!



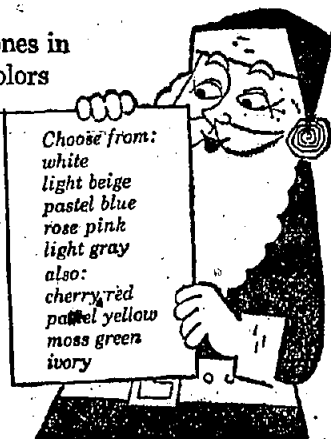
...one of 5 new colors for Christmas giving

In answer to the many requests for telephones in white and pastel shades—five brand new colors are now being offered.

"They're available right away to add new charm to your kitchen, bedroom or any room.

To order or for more information—just call your Telephone Business Office. Or better yet stop in and see them.

NEW JERSEY BELL TELEPHONE COMPANY



Choose from:
white
light beige
pastel blue
rose pink
light gray
also:
cherry red
pale yellow
moss green
ivory

New Hunter Safety Class Sought by Officer Wentz

Patrolman John E. Wentz who has been serving in Springfield as Hunter Safety Instructor for the New Jersey Division of Fish and Game, announces that applications for additional course instruction are now being accepted and new classes will be formed as the applications are received.

The Hunter Safety classes have been inaugurated by Dr. A. Heaton Underhill, Director of the Fish and Game Division, and five local residents have already passed the first of Officer Wentz's instruction course.

The courses are "to promote safer hunting and the proper handling of firearms." It is now the law of New Jersey that anyone between the ages of 14 and 21 must successfully complete a

course in hunter safety before he can obtain an initial hunting license.

"Anyone under 21," says Patrolman Wentz, "must present a former license or a Hunter Safety Certificate before a current license will be issued."

"The State Fish and Game Division," Wentz continued, "has adopted the National Rifle Association Hunter Safety Course as the official State course, and duly credited instructors have been designated as the official agents of the State for giving this course."

Application forms can be obtained at the Springfield Police

Headquarters or by contacting Patrolman Wentz at DRexel 6-5576. Those who have passed the course, finishing the instruction November 8, include the following:

Robert V. Pinkava, 17, of 23 Brook street, son of Sgt. Vincent Pinkava of Springfield Police Department.

Edward G. Cardinal, 14, of 248 Milltown road, son of Edward Cardinal, Sr., proprietor of Cardinal's Nursery.

Peter Dalrymple, 14, of 64 Colfax road, son of Eric G. Dalrymple, an engineer with Western Electric.

Alfred Peinhardt, 16, of 16 Tooker avenue, son of Alfred W.

Peinhardt, Sr., cabinet maker in Maplewood.

Joan Doering, 16, of 540 Ashwood road, daughter of Warner Doering, with Jabel Jewelers of Irvington.

The above will be able to apply for hunting licenses and Officer Wentz is anxious to get another class started. "Those who have taken this course," said Wentz, "are 12 times as safe as those who have not received the instruction. New Jersey had 64 hunting accidents during last year's open season. Eight of these wounds were self-inflicted and 12 of these were under 21 years of age. The 6-day deer season which brings out the

largest number of hunters, accounts for one third of all accidents."

All instructors are covered by liability insurance for any accident which may arise out of the course. The law provides that instructors shall receive no monetary fee for giving this course and all instructors, as Officer Wentz is doing, are most generously donating their time and expertise of firearms before they have an opportunity to make New Jersey a safer place in which to hunt. "Every parent," says Wentz, "should be instructed in the proper handling of firearms that now all youngsters in Springfield may receive in-

the SPRINGFIELD SUN, Thurs., December 5, 1957 Page 4

opportunity to hunt in New Jersey."

In 1870 at Montrose the New York Central Railroad made the first installation of a track pail and scoop to enable locomotive to take water on the fly. Since these installations were always in small towns and let the locomotives "jerk water" without stopping, small towns soon became known as "jerk-water" towns.

In the first six months of 1957, purchases of men's and boys' new clothing totaled less than 1.1 billion dollars while sales of women's clothes totaled twice that much.

The whitetailed Kalibab squirrel is found nowhere in the world but on the north rim of the Grand Canyon and the Kalibab plateau north of the section of Grand Canyon National Park.

Woodchucks gorge themselves with food before hibernating, then live off their own fat until spring.

Dogs in Stockholm, Sweden, are taxed, at the rate of 40 kroner (about \$8.00) annually.



Santa Brings Bonnie Dollar, The Gal with the saving ways, with great big bargains in Safeway's Dollar Days!



Advertised Prices Effective Thurs., Fri. and Sat., Dec. 5th, 6th & 7th. We reserve the right to limit quantities. None sold to dealers.

Gardenside Sweet Corn <small>CREAM STYLE reg. 2/27c</small> Save 35c 10 17 oz. cans 1	ManorHouse Frozen Pies <small>CHICKEN, TURKEY or BEEF reg. 2/51c</small> Save 28c 5 8 oz. pkgs. 1	Pooch Dog Food <small>reg. 3/25c</small> Save 25c 15 1 lb. cans 1	ManorHouse Beef Steaks <small>FROZEN reg. 29c</small> Save 16c 4 4 oz. pkgs. 1
Town House Sliced Beets <small>reg. 2/29c</small> Save 45c 10 1 lb. cans 1	Town House Sweet Peas <small>reg. 2/37c</small> Save 30c 7 17 oz. cans 1	Town House Prune Juice <small>reg. 29c</small> Save 16c 4 quart bts. 1	Pineapple Juice <small>DOLE'S - HAWAIIAN reg. 2/29c</small> Save 16c 8 18 oz. cans 1
Strawberry Preserves <small>EMPRESS reg. 33c</small> Save 32c 4 12 oz. jars 1	Town House Apple Sauce <small>reg. 2/29c</small> Save 31c 9 1 lb. cans 1	Freestone Peaches <small>GREER - HALVES reg. 29c</small> Save 16c 4 29 oz. cans 1	Kleenex Tissues <small>FACIAL - 200's reg. 2/29c</small> Save 16c 8 pkgs. 1

DOLLAR DAYS

For The Finest Meats... All You Need Remember is Safeway!

POT ROAST

CHUCK ROAST or STEAK

You Get The Full Cut Of Chuck. No Tender Lean Meat Removed.

43c

Fryers or Broilers

READY-TO-COOK GOVERNMENT GRADE A & Government Inspected

WHOLE, SPLIT, QUARTERED or CUT-UP

35c

SLICED BACON HAWTHORNE BRAND 2 1 lb. pkgs. **1**

STERLING BOLOGNA TASTY 3 lb. piece **1**

CANNED HAM ZWAN - READY-TO-EAT IMPORTED FROM HOLLAND 3 lb. can **3.45**

BOILING BEEF PLATE - BONE IN - U. S. CHOICE lb. **19c**

LOOK! Ideal Christmas Gift!

DOLLS OF ALL LANDS

Here is your chance to get a beautiful doll at a fraction of its original cost. Six lovely models to pick from: Irish, Dutch, Bride, Sanorita, Sweetheart and Colonial.

With Purchases of \$5.00 or Over. EACH **69c**

(Offer Expires December 31st, 1957)

For The Finest Produce - All You Need Remember Is Safeway!

ICEBERG LETTUCE

Each head a swirl of crisp, green leaves around a sweet, white heart.

RealLemon Fruit Drinks

MAMBO PUNCH, ORANGE, LEMON-ORANGE or LEMON-LIME

Save up to 24c

4 46 oz. cans **1** Supplies Limited

ScotTissue Toilet Tissue

WHITE - reg. 3/38c

Save 14c

9 rolls **1**

Grapefruit

SEEDLESS - FLORIDA PINK OR WHITE

2 large heads **27c**

5 lb. bag **39c**

Melrose Cookies

Save up to 32c

Choice of: Fig Bars, Van Wafers, Choc. Fudge Filled Sandwich, Asst. Cremes

4 pkgs. **1**

Pet Evap. Milk

AMERICA'S FIRST EVAPORATED MILK

First Choice For Babies, For Cooking, For Coffee

7 tall cans **1**

Solve your Christmas Gift Problems the easy way with a...

SAFEWAY GIFT ORDER

AVAILABLE IN \$5 & \$10 DENOMINATIONS

- ANJOU PEARS JUICY RIPE 2 lbs. **35c**
- FLORIDA ORANGES JUICY 5 lb. bag **39c**
- McINTOSH APPLES FANCY 3 lb. bag **29c**
- FRESH CARROTS CRISP AND TENDER 1 lb. bag **17c**
- CRISP SPINACH GARDEN FRESH 10 oz. bag **21c**
- FRESH CORN FLORIDA - NEW CROP - LARGE 4 large ears **23c**

Thank You For Shopping...

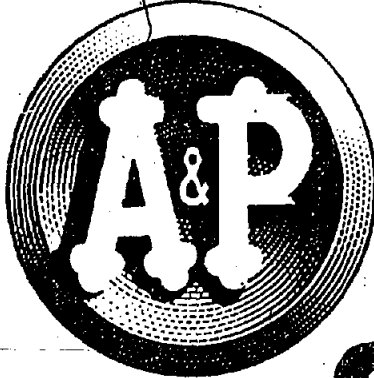
SAFEWAY

Serving the Springfield - Summit - Millburn Area

727 MORRIS TURNPIKE

SPRINGFIELD, N.J.

COME SEE... YOU'LL SAVE!



"My Wife's a THRIFTY Shopper!"

(SHE KNOWS A&P'S CASH SAVINGS ARE THE BEST SAVINGS!)

"SUPER-RIGHT" QUALITY

SMOKED HAM

Shank Portion	Butt Portion	Whole or Either Full Cut
29^c lb.	39^c lb.	49^c lb.



A Treat with Ham... New Green Cabbage... 5c

Ready-to-Eat Hams "Super-Right" Quality Shank Portion lb. 33c Butt Portion lb. 43c Whole or Either Half-Full Cut lb. 51c

POT ROAST BONELESS CHUCK

"Super-Right" Quality — (NO FAT ADDED) lb. **59^c**

STEWING BEEF "Super-Right" lb. 59^c	SAUSAGE BROWN 'N SERVE—Swift's Premium 8 oz. 45^c
SMOKED HAM SLICES Center Cuts "Super-Right" lb. 89^c	FRESH CODFISH STEAKS lb. 39^c

FARM-FRESH FAVORITES!

BANANAS YELLOW, GOLDEN RIPE 2 lbs. 19^c Our Lowest Price in Years!	McINTOSH APPLES 3 lb. coll. bag 25^c
Lettuce Iceberg 2 large heads 25^c Red, Ripe	Fresh Broccoli large bch. 29^c White or Pink
Fresh Tomatoes 3 to 4 25^c	Grapefruit Seedless 5 lb. bag 39^c

FROZEN FOODS!

Libby's Green Peas 3 10 oz. 47^c	Libby's Spinach Chopped or Leaf 2 10 oz. 35^c
Libby's Melon Balls 2 10 1/2 oz. cans 45^c	Downyflake Waffles 2 pkgs. of 6 31^c
Chicken Pot Pies Merion's Heat 'n eat 2 8 oz. 53^c	Cheeseburgers Excelior brand 8 oz. 39^c
Ocean Perch Fillet Cap'n John's 10 oz. 35^c	Breaded Shrimp Cap'n John's 7 oz. 59^c
Red L Fish Dinners Heat 'n serve 10 oz. 45^c	

Mix or Match 98^c EVENT!

B. C. COCKTAIL BLEND OF ORANGE & GRAPEFRUIT JUICE	SAVE 19 ^c 46 oz. can	Your Choice 3 FOR 98^c
CREAM CHEESE PHILADELPHIA BRAND	SAVE 13 ^c 8 oz. pkg.	
KELLOGG RICE KRISPIES	SAVE 7 ^c 13 oz. pkg.	
VEGAMATO VEGETABLE JUICE	SAVE 7 ^c 46 oz. can	Your Choice 5 FOR 98^c
SWEET POTATOES A&P BRAND WHOLE	SAVE 20 ^c 16 oz. can	
DROMEDARY DATES PITTED	SAVE 17 ^c 8 oz. pkg.	
MEL-O-BIT SLICES MILD AMERICAN	SAVE 17 ^c 6 oz. pkg.	
CLING PEACHES DEL MONTE Sliced or Halves	SAVE 15 ^c 16 oz. can	Your Choice 6 FOR 98^c
WELCH GRAPE JUICE FROZEN	SAVE 19 ^c 6 oz. can	
LIBBY'S BROCCOLI CHOPPED FROZEN	SAVE 13 ^c 10 oz. pkg.	
LIBBY'S SLICED BEETS	SAVE 7 ^c 16 oz. glass	Your Choice 8 FOR 98^c
CAMPBELL VEGETABLE SOUP	SAVE 18 ^c 10 1/2 oz. can	
DEL MONTE PINEAPPLE-GRAPEFRUIT DRINK	SAVE 10 ^c 12 oz. can	
DOLE'S PINEAPPLE JUICE	SAVE 10 ^c 11 oz. can	
CAMPBELL'S PORK and BEANS	SAVE 10 ^c 15 oz. can	

DAIRY FOODS!

Danish Blue Cheese Imported lb. 83^c	Switzerland Swiss A&P brand Imported 6 oz. 55^c
Muenster Slices A&P brand Fancy domestic 8 oz. 35^c	Sharp Cheddar Well aged Wisconsin wedge 8 oz. 35^c



BLUEBERRY PIE 59 ^c
Fruit Stollen Fruit studded each 49^c
Orange Chiffon Cake each 49^c
Jane Parker Fruit Cake America's favorite... over 75 fruits and nuts
1 1/2 lb. cake 1.39 3 lb. cake 2.75 5 lb. cake 3.95
DARK FRUIT CAKE 1 lb. cake 79^c 2 lb. cake 1.49^c

More Grocery Values!

Vienna Sausage Armour's 2 4 oz. 41^c	Liverwurst Spread Stahl 2 3 oz. 33^c
Broadcast Pigs Feet 9 oz. 29^c	Bumble Bee Tuna White Meat 7 oz. can 39^c
Star-Kist Tuna Light meat Chunk style 6 1/2 oz. can 33^c	Uncle Ben's Rice Converted 12 oz. 23^c
River Brand Brown Rice 12 oz. 15^c	Burry's Cookies Chocolate Chip 8 1/2 oz. 39^c
Nestle's Morsels 5 1/2 oz. 33^c	Q.T. Instant Frosting 2 5 1/2 oz. 33^c
Cocoa Marsh Chocolate 12 oz. 35^c	20 Mule Team Borax 2 lb. 39^c
Borax Powdered hand soap 8 oz. 19^c	Fels Naptha Soap 3 cakes 29^c

Oxydol Detergent For the family wash large 35 ^c giant 81 ^c	Colgate's AD Detergent for automatic washers 10 lb. pkg. With 50c off label 1.75	Blue Cheer New wash day suds large 32 ^c giant 77 ^c	Dash Dog Food Fortified with liver 3 16 oz. 47^c	Laddie Boy Chicken Dog Food All chicken 2 15 oz. 41^c
---	--	---	--	---

Tetley Tea 1/2 lb. 79^c pkg. of 48 63^c Tea bags
Salada Tea Bags pkg. of 16 25^c pkg. of 48 63^c
Appiberry Sauce 2 16 oz. 35^c
Tuna Fish Breast-O-Chicken White meat 7 oz. 97^c Solid pack
Fluffo Gold-colored shortening 1 lb. 35^c (1c off label) 83^c 3 lb. can
Crisco Pure vegetable shortening 1 lb. 35^c 3 lb. 93^c
Mazola Oil For salads, baking and cooking pint 35^c quart 65^c bottle
Gerber Baby Food Strained-Chopped 10 jar 99^c 6 jar 89^c
Heinz Sweet Gherkins 7 1/2 oz. 31^c jar
Borden's Camembert Cheese 4 oz. 39^c
Borden's Biscuits Plain or Buttermilk Oven-ready 2 pkg. 27^c
Blue Dot-Duz Blue and white detergent large 35^c giant 81^c pkg.
Spic & Span For washing painted surfaces large 29^c giant 91^c pkg.
Ivory Soap For toilet and bath 4 personal 27^c cakes
Ivory Soap For dishes, laundry or bath 2 large 33^c cakes
Ivory Soap For dishes, laundry or bath 3 medium 29^c cakes
Joy Liquid Detergent 12 oz. 39^c 22 oz. 69^c tin

P.T.A. NEWS

Mrs. J. Frank Jakobsen, Program Chairman of the Union County Council of Parent-Teacher Associations reports interesting plans for the Spring Meeting of the Council. Mrs. Jakobsen, accompanied by Mrs. Herman E. Wilde, PTA County Council President, met recently with Dr. Eugene Wilkins and Dr. Lenore Vaughn-Eames at the New Jersey State Teachers' College in Newark for the purpose of formulating plans for the Union County Council of Parent-Teacher Associations Spring Meeting. Dr. Wilkins, president of New Jersey State Teacher's College, Newark, invited the County Council of PTAs to hold the spring meeting on May 8 at the new college, which is nearing completion in Union now, and participate in the activities of Dedication Week. Both Mrs. Jakobsen and Mrs. Wilde were thrilled to accept the invitation so graciously extended to the council by the college! They feel that representatives of all the PTAs of Union County will be thrilled and excited to participate in the activities of Dedication Week at the new location of the college in Union of Union County, New Jersey.

Mrs. J. Frank Jakobsen, recording secretary of the Gaudineer School PTA, attended the meeting of the County Council of Parent-Teacher Associations which was held in Grant School, Westfield on November 20. Mrs. Jakobsen felt that the program offered topics of interest to all of the presidents of the various county PTAs. Mrs. Jakobsen, Program Chairman of the Union County Council of PTAs, is vitally interested in evaluations related by the presidents and other representatives of the County Council. Local presidents and delegates can help to sustain the programs by offering sincere and objective evaluations of the programs. The publicity chairman hopes that delegates of the local PTAs will select the topics of special interest (also vice versa—any) and advise the program chairman of the choices. The publicity chairmen were happy to discover that Springfield was represented at the meeting by the program chairman.

Walton School
Mrs. Leonard H. Garber, Chairman of the Book Sale Project, will make a detailed report at the next Executive Board Meeting. The following members volunteered their services at the Library during Book Week, representing the Edward V. Walton School: Mrs. Paul Weisman, Mrs. Joseph Gans, Mrs. Max Fruchter, Mrs. Stanley Cornfield, Mrs. Julius Blake, Mrs. Frank Haydu, Jr., Mrs. H. F. Huneke, Jr., Mrs. David Stamelman, Mrs. William Melinek, Mrs. Sidney Lester, and Mrs. Leonard Garber.

The Finance Committee would like to remind the membership that the date of the card party has been set for March 27, 1958 and will be held at the Schackamaxon Country Club, Scotch Plains. Mrs. Philip Goldhammer, Chairman of the committee, and Mrs. David Hecht, Co-Chairman, are making arrangements for this fund raising affair.

Regional High School
The Executive Board of the Jonathan Dayton Regional High School Parent-Teachers Association will meet on Wednesday evening December 11, 1957 at 8 p.m. in room 229 at the high school. Mrs. Horace J. Libby will preside.

Caldwell School
The members of the James Caldwell School PTA wish to express their appreciation to Miss Rainfield and the staff of the Springfield Public Library, and the representatives from each school, for their

time and assistance in the recent Book Sale.

Mrs. H. Heady, the Membership Chairman of the James Caldwell School PTA wishes to remind all parents that some families are not represented in the School PTA, and that those wishing to join are still able to do so by contacting the Chairman at DR 6-6052.

Chisholm School
Mrs. L. W. Eckelkamp, Publications Chairman, wishes to let all parents and other interested persons know that the very informative monthly, "National Parent-Teacher Magazine" is available to all at a yearly subscription rate of \$1.25. The magazine contains many authoritative articles on varying phases of child-rearing, plus discussions of current books, movies and television programs, with special reference as to their suitability for children of various ages. Subscriptions are available by writing to the magazine at 700 Rush Street, Chicago, Ill., or by calling Mrs. Eckelkamp at DR 6-2849.

Mrs. Robert Shaw, School Chairman, suggests the following slogan for this month: "An Accident's the Surest Way to Wreck Your Precious Holiday." Do Springfield parents need any reminder of the tragic truth of this statement? A child lost his life here at the hands of a careless driver on our joyous Thanksgiving Day. Need we say more???

National State to Give Xmas Bonus

W. Emlen Roosevelt, president of the National State Bank of Elizabeth, with one of its branches in Springfield, announces that the Board of Directors has authorized the payment of a 10 per cent Christmas bonus for its entire staff to be paid this Friday, December 6.

The bonus includes all branches which, in addition to Springfield, are located in Elizabeth, Roselle Park, Summit and Kenilworth.

Prescriptions Filled
Eyeglasses Repaired
Quick Service
J. NORWOOD VAN NESS
GUILD OPTICIAN
14 Alvin Terr., Springfield, N. J.
DRXEL 6-6108
Established 21 Years in Newark

75^c

WILL TAKE YOU TO

- Lewiston, Me.
- Pittsburgh, Pa.
- Charlottesville, Va.
- Toronto, Canada

BY PHONE

3 min. station rate from Newark after 6 P.M. and all day Sunday. 10% tax not included.



"INSURE YOURSELF of a MERRY CHRISTMAS

WITH A SPECIAL CHRISTMAS ACCOUNT OPENED TODAY"

CRESTMONT SAVINGS AND LOAN ASSOCIATION
INSURED MEMBER F.S.L.I.C.
1886 Springfield Ave. 175 Morris Ave.
Maplewood, N.J. Springfield, N.J.

21 SUMMIT AVE. SUMMIT MORRIS TURNPIKE West of MILLBURN
Open Tuesday, Thursday 'til 9 — Fridays 'til 10 Open Monday, Tuesday, Wednesday, Thursday, 'til 9 — Fridays 'til 10
FREE PARKING

GIRL SCOUT CORNER

Mrs. Cicconi, Mrs. K. Abrahamson and Mrs. A. O'Conne. On December 30 they will travel to New York and spend the day at the Museum of Natural History and Panetarium. They will make the trip with Mrs. Philip Del Vecchio's Troop 747. Mrs. D. Kaufhold is co-leader of 747.

Troop 740-Leader, Mrs. Roy Hattersley; co-leader, Mrs. V. Quin. The first year Brownies of this troop are working on Christmas gifts and making holiday decorations for their Christmas trees. Plans are being made for a trip during the holidays. New officers of the patrols are being elected this week. Last month's officers were: Treasure Patrol; President, Virginia Donovan; Secretary, Mary Ann Ferguson and Treasurer, Joanne Natello; Eagles Patrol, President, Susan

Troop 739-Leader, Mrs. Joseph Leonardis; co-leader, Mrs. Anthony Cicconi. The girls in this troop will make the children of the Nancy Luzon School for Retarded Children in Roselle very happy. They have finished making toys for the children and the gifts will be delivered to the school in time for Christmas. On December 14 the Brownies will visit Santa in Kresge's Store, Newark and have lunch with him. They will be accompanied by Mrs. Leonardis.

Babeck; Secretary, Anita Myrberg and Treasurer, Mary Jane Milatano.

New Troop, no number as yet; Leader, Mrs. Fred Spangler; co-leader, Mrs. Edward Porter. The girls in this troop are very busy giving they made large turkey placecards, made from construction paper. They scotch taped toothpicks on the turkeys for legs, which were then stuck in apples so they could stand. The apples were covered with aluminum paper. Stuffed animals are now being made for an orphanage in Roselle. The leaders will take gifts over to the home in time for Christmas. The nature scrapbook has also been an interesting project for the girls. After collecting the leaves, the girls will spatter paint them on construction paper and identify

them. They have collected pictures of animals, flowers, leaves, coal, iron, the sky, clouds, water, grass, etc. to also be included in the scrapbook. The newly elected patrol leaders are: Bluebells Patrol Mary Ann Lorber and the Rose Red Patrol, Irene Fillipone. The mothers' troop committee consists of: Mrs. Henry Bultman and Mrs. Joseph DiPalma, transportation and Mrs. A. J. Verlangieri, telephone. The troop will soon begin its study on First Aid and Knots.

Troop 756: Leader, Mrs. Frank Sammond; co-leader, Mrs. Herbert Myhrberg. Officers of this troop are: President, Grace Carracino; treasurer, Sandra Taluska and scribe, Debra Kalarasick. The mothers' troop committee includes: Mrs. James Caffrey, Mrs. Michael Tatuska, Mrs. John Siman, Mrs.

Otto Graessle, Mrs. Anthony Carracino and Mrs. L. A. Kameen. Plans are now underway for the girls to go caroling and visit shut-ins.

Troop 745: Leader, Mrs. Gerald London; co-leader, Mrs. Edward Eppinger. The 2nd year brownies of this troop are planning on visiting children in a hospital, presenting them with gifts and singing Christmas carols for them. They are now working on their Christmas gifts. Mrs. London is planning a trip to the Springfield library later on this month. The girls will be taught how to use the library. The present patrol leaders are Carla Gerstin, Tina Trunciale and Gretchen Purkisher. The troop committee under the leadership of Mrs. Milton Billet consists of: Mrs. H. Trunciale, telephone; Mr. O. Owens, refresh-

Town Will Receive \$7,721 State Fund

Springfield will receive \$7,721 as its share of the total of \$274,161 to be distributed to Union County's 21 municipalities during 1958 in state motor vehicle funds.

The allotment, the same as in 1957, is approximately \$2,000 less than the grant in 1956 according to Freeholder George W. Herlich, finance chairman for the county governing body.

Distribution of the funds is made directly among the state's 563 municipalities. Mr. Herlich

ments; Mrs. G. Hendrickson, transportation; Mrs. R. Schechter, calendars and Mrs. S. Learner, crafts.

Columbia Professor At Ethical Society

Dr. Joseph Blau will be the speaker at the Sunday morning meeting of the Society for Ethical Culture, 516 Prospect street, Maplewood, 11 a.m. A professor of Philosophy at Columbia University and a member of the Board of Leaders of the New York Society for Ethical Culture, Dr. Blau will talk on "Religion and Religiosity."

Board Meeting Tuesday For Asthma Home

The board of the Springfield League of the Jewish National Home for Asthmatic Children will meet on Tuesday, December 10, 1957, at 8:30 p.m. at the home of Mrs. Jack Hager, 17 Archibridge lane, Springfield.

Reports will be given by Mesdames June Axelrad, Rita Silver, Irma Ames, Ruth Schaffer, Mildred Schwartz, Dorothy Rudner and Edith Shapiro.

Mrs. Harry Katz is chapter president.

Atlantic City, N. J., is built on an island, about one mile wide and ten miles in length. Its famed "Boardwalk" is 5 and one-half miles in length.

SAVE CASH and STAMPS at...

\$1.00 SALE

Smart Grand Union customers are selecting the gifts for their Christmas lists... FREE OF COST... by redeeming their Triple-S Blue Stamps at the many beautiful Triple-S Redemption Centers. Join the thousands who save money on top quality foods and get Triple-S Blue Stamps, too!



GENUINE SPRING - PINK MEATED - REGULAR STYLE

Delicious **GREEN GIANT PEAS**
6 17-oz. cans \$1.00

Philadelphia or Borden's **CREAM CHEESE**
3 8-oz. pkgs. \$1.00

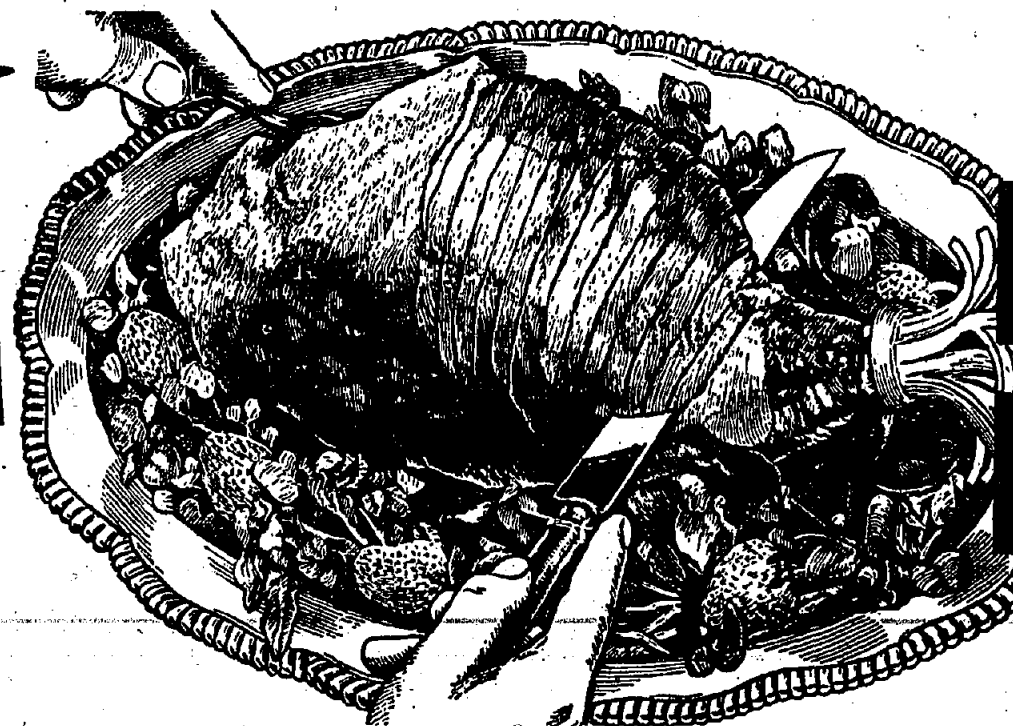
Campbell's **PORK & BEANS**
8 16-oz. cans \$1.00

Franco American **SPAGHETTI**
7 15 1/4-oz. cans \$1.00

Bella Maria - Italian Style **PLUM TOMATOES**
4 28-oz. cans \$1.00

Shedd's Lady Betty **CUCUMBER PICKLES**
5 15-oz. jars \$1.00

Coronet **PRUNE JUICE**
4 quart bottles \$1.00



LEGS of LAMB

Serve with delicious Freshpak Mint Jelly ^{11-oz.} _{jar} 19c

49c lb.

(SAVE \$1.70 on an avg. size leg of lamb)

- LAMB FORES**
- Sliced Bacon Early Morn. lb. 69c
 - Loin Lamb Chops Top Quality 99c
 - Skinless Franks Genuine Spring-Tender 55c
 - Hormel Deerfoot 1 lb. 41c
 - Hard 4-oz. Salami pkg. 45c
 - Genoa 4-oz. Salami pkg. 45c
- TWO MEALS IN ONE**
- Choice Shoulder Chops & Stew lb. 39c
 - Beef Steaks Darling's 12-oz. 59c
 - Perch Fillets Quick Frozen 1-lb. 69c
 - Sea Scallops Grand Union 2-pkg. 69c
 - Cod Cakes FRESH Snow White lb. 69c
 - Red-L Quick Frozen 2-pkg. 59c

- Chock-Full-O-Nuts COFFEE** 1-lb. can \$1.00
- SUNSHINE Oatmeal Cookies 1-lb. pkg. 41c
- MCCORMICK'S Vanilla Extract 2-oz. bottle 45c
- SCHIMMEL-STRAWBERRY Preserves 12-oz. jar 37c
- WESTON Chocolate Mints 6 1/2-oz. pkg. 43c
- BAKE YOUR GIFTS
- Wesson Oil pt. bottle 35c qt. bottle 65c
- FLUFFO Shortening 1-lb. can 35c 3-lb. can 95c
- "HOT"-BRACING Tetley Tea SAVE 10c 1/2-lb. pkg. 73c
- TOPS IN FLAVOR Tetley Tea Bags 48's pkg. 63c
- JUNKET Rennet Powder 3 pkgs. 37c
- DOLE-FROZEN Pineapple Juice 3 6-oz. cans 49c
- LIPTON SOUPS
- CHICKEN Noodle 3 pkgs. 39c
 - Green Pea 2 pkgs. 29c
 - Onion 2 pkgs. 33c
 - Veg. Beef 2 pkgs. 33c
 - Veg. Tomato with Noodles 3 pkgs. 39c

Golden Yellow **BANANAS**

lb. 9c

Healthful & Nutritious **CITRUS SALAD** pint jar 29c qt. jar 19c

Fresh-Crisp-Solid **ICEBERG LETTUCE**

2 large heads 25c

Firm-Fresh-Tasty **BRUSSELS SPROUTS** pt. bakt. 19c

FROZEN FOODS

SAVE \$1.00

Swift-Chicken, Beef or Turkey **POT PIES** 9-oz. pkg.

5 SEND 5 labels to Swift & Co. They will refund \$1.00. Net cost to you 5 for \$1.19

Rosa Royal-Save 30c Strawberry Cheese Pie 59c

DAIRY FOODS

Kraft **CHEEZ WHIZ** Cheese Spread 8-oz. jar 31c

Kraft Deluxe **MARGARINE** 1-lb. pkg. 39c

BAKED FOODS Nancy Lynn - Assorted **DANISH PASTRY** 5 for 39c

CHRISTMAS TOYS

20-inch-all vinyl. **FANCY DRESS DOLL** Reg. 5.98 ONLY \$3.98

Moving eyes, rooted bobbed hair, beautifully dressed.

Sturdy - Heavy Gauge Steel **DUMP TRUCK** by Buggy-1.98

New-Swamy Squirrel, Peter Penguin **KUSAN PULL TOYS 1.59**

DAZZLE BLEACH 19c bot. 19c 1/2 gal. bot. 33c	HARTZ Dog Yummies 2 16-oz. pkgs. 35c	SOFT WEVE Toilet Tissue ROLL 3 for 38c	MODESS with Feminine boxes of 12 89c box of 23 1.03	RED HEART Dog Food 3 16-oz. cans 47c	"Blue Dot" Duz Detergent 2 large pkgs. 58c SAVE 12c Giant pkg. 82c	SPIC & SPAN large pkg. 29c Giant large 91c	BURBY'S TIARA MALLOW'S 7 1/2-oz. pkgs. 35c
BOUQUET SOAP 4 bars 39c	AEROSOL DEODORANT FLORIENT 5 1/2-oz. can. 73c	AD large box 33c Giant Box 77c	LIQUID JOY 2 12-oz. cans 71c 22-oz. can 62c 7c off on 2 cans 7c OFF	DASH 9-lb. 13-oz. \$2.25 25-oz. pkg. 39c	IVORY SNOW large pkg. 34c Giant pkg. 81c	BLUE CHEER Save 5c large pkg. 28c Save 10c Giant pkg. 69c	TUNA ANCHOR SOFT FACIAL TISSUES 400 23c
IVORY FLAKES 6 bars 55c large pkg. 35c							FLAKO CORN MUFFIN MIX 2 1 1/4-oz. 37c
DREFT PALMOLIVE SOAP 2 bath 29c							BROADWAY CORNED BEEF 14-oz. can 35c
PINK CANARY SOAP 4 bars 39c							JINGLE BIRD'S RICE 14-oz. 23c
BORAX POWDERED HAND SOAP 8-oz. can 19c							WILD BIRD FOOD 5 1/2-lb. 63c
							PABLUM 8-oz. 21c

Classified Advertising Rates
Classified Ads. appear automatically in The Summit Herald, Millburn-Short Hills Item and Springfield Sun.

Summit Herald CR. 3-4000
Millburn Item DR. 6-1200
Springfield Sun DR. 9-5000

HELP WANTED FEMALE
YOUNG WOMEN

There's a career for you as a TELEPHONE OPERATOR
Liberal Starting Rates
Interesting Work Near Home

For information call Chief Operator, Millington 7-Official 11 or apply at Waverly Place, Millington New Jersey Bell Telephone Company

KEYPUNCH OPERATOR (SENIOR)
A leading northern N.J. Pharmaceutical Company offers excellent opportunity for experienced Keypunch Operator.

RECEIVING CLERK and STOCK ROOM MANAGER
Must be responsible and thorough.

HELP WANTED-MALE
WOMEN-MAINTENANCE
Cook, High help for elderly couple.

TAXI driver, full time, CR. 7-1100
TAXI driver, full time employment, days, CR. 7-0337

EMPLOYMENT WANTED
MAN wishes work general house cleaning, experienced, MU. 8-2868 after 6 p.m.

FOR SALE
ANTIQUE
A beautiful antique dining table, 12 place, with matching chairs.

CHRISTMAS SUGGESTIONS
SEVERAL choice sets of dishes, hundreds of hand painted pieces.

EMPLOYMENT WANTED
IRONING done at home, CR. 7-2828
IRONING done in my home, CR. 7-7189 after 4 p.m.

FOR SALE
CHRISTMAS SUGGESTIONS
REVERE 8 MM camera, 3 lens turret.

FOR SALE
MAGIC CHEF DELUXE GAS RANGE
High broiler almost like new.

EASTERN FUEL
AIR CONDITIONING - office moving, has 2-ton G.E. complete central water-cooled unit.

MISCELLANEOUS-3
APPLIANCES
Free delivery & stacking. Prompt service. FA 2-9169

HOSPITAL beds, wash basins, water, and linen, etc.
SUBURBAN and unimproved nursery.

APPLIANCES
FREE DELIVERY & STACKING. PROMPT SERVICE. FA 2-9169

FOR SALE
MAGIC CHEF DELUXE GAS RANGE
High broiler almost like new.

FOR SALE
MAGIC CHEF GAS RANGE, SUPER DELUXE CP WASTE HIGH BROILER.

FOR SALE
MAGIC CHEF GAS RANGE, SUPER DELUXE CP WASTE HIGH BROILER.

FOR SALE
MAGIC CHEF GAS RANGE, SUPER DELUXE CP WASTE HIGH BROILER.

FOR SALE
MAGIC CHEF GAS RANGE, SUPER DELUXE CP WASTE HIGH BROILER.

FOR SALE
MAGIC CHEF GAS RANGE, SUPER DELUXE CP WASTE HIGH BROILER.

FOR SALE
MAGIC CHEF GAS RANGE, SUPER DELUXE CP WASTE HIGH BROILER.

FOR SALE
MAGIC CHEF GAS RANGE, SUPER DELUXE CP WASTE HIGH BROILER.

FOR SALE
MAGIC CHEF GAS RANGE, SUPER DELUXE CP WASTE HIGH BROILER.

FOR SALE
MAGIC CHEF GAS RANGE, SUPER DELUXE CP WASTE HIGH BROILER.

FOR SALE
MAGIC CHEF GAS RANGE, SUPER DELUXE CP WASTE HIGH BROILER.

MISCELLANEOUS-3
AIR CONDITIONING - FREE PARKING
WOMEN TRY ALFRED'S PERALS.

UNDERWOOD ELLIOTT-FISHER
Bookkeeping machine, excellent condition, available for demonstration.

MISCELLANEOUS-3
APPLIANCES
Free delivery & stacking. Prompt service. FA 2-9169

MISCELLANEOUS-3
APPLIANCES
Free delivery & stacking. Prompt service. FA 2-9169

MISCELLANEOUS-3
APPLIANCES
Free delivery & stacking. Prompt service. FA 2-9169

MISCELLANEOUS-3
APPLIANCES
Free delivery & stacking. Prompt service. FA 2-9169

MISCELLANEOUS-3
APPLIANCES
Free delivery & stacking. Prompt service. FA 2-9169

MISCELLANEOUS-3
APPLIANCES
Free delivery & stacking. Prompt service. FA 2-9169

MISCELLANEOUS-3
APPLIANCES
Free delivery & stacking. Prompt service. FA 2-9169

MISCELLANEOUS-3
APPLIANCES
Free delivery & stacking. Prompt service. FA 2-9169

MISCELLANEOUS-3
APPLIANCES
Free delivery & stacking. Prompt service. FA 2-9169

MISCELLANEOUS-3
APPLIANCES
Free delivery & stacking. Prompt service. FA 2-9169

MISCELLANEOUS-3
APPLIANCES
Free delivery & stacking. Prompt service. FA 2-9169

MISCELLANEOUS-3
APPLIANCES
Free delivery & stacking. Prompt service. FA 2-9169

MISCELLANEOUS-3
APPLIANCES
Free delivery & stacking. Prompt service. FA 2-9169

MISCELLANEOUS-3
APPLIANCES
Free delivery & stacking. Prompt service. FA 2-9169

MISCELLANEOUS-3
APPLIANCES
Free delivery & stacking. Prompt service. FA 2-9169

WANTED TO BUY
ANTIQUES WANTED
Estates Bought & Sold.

USED CARS FOR SALE
HOLIDAY SALE!!
Foreign & Sports Car Specials

SERVICES OFFERED
23-CARPENTERS
FRED STENZEL
Carpentry repairs alterations, cabinets, base, trim, etc.

SERVICES OFFERED
23-CARPENTERS
FRED STENZEL
Carpentry repairs alterations, cabinets, base, trim, etc.

SERVICES OFFERED
23-CARPENTERS
FRED STENZEL
Carpentry repairs alterations, cabinets, base, trim, etc.

SERVICES OFFERED
23-CARPENTERS
FRED STENZEL
Carpentry repairs alterations, cabinets, base, trim, etc.

SERVICES OFFERED
23-CARPENTERS
FRED STENZEL
Carpentry repairs alterations, cabinets, base, trim, etc.

SERVICES OFFERED
23-CARPENTERS
FRED STENZEL
Carpentry repairs alterations, cabinets, base, trim, etc.

SERVICES OFFERED
23-CARPENTERS
FRED STENZEL
Carpentry repairs alterations, cabinets, base, trim, etc.

SERVICES OFFERED
23-CARPENTERS
FRED STENZEL
Carpentry repairs alterations, cabinets, base, trim, etc.

SERVICES OFFERED
23-CARPENTERS
FRED STENZEL
Carpentry repairs alterations, cabinets, base, trim, etc.

SERVICES OFFERED
23-CARPENTERS
FRED STENZEL
Carpentry repairs alterations, cabinets, base, trim, etc.

SERVICES OFFERED
23-CARPENTERS
FRED STENZEL
Carpentry repairs alterations, cabinets, base, trim, etc.

SERVICES OFFERED
23-CARPENTERS
FRED STENZEL
Carpentry repairs alterations, cabinets, base, trim, etc.

SERVICES OFFERED
23-CARPENTERS
FRED STENZEL
Carpentry repairs alterations, cabinets, base, trim, etc.

SERVICES OFFERED
23-CARPENTERS
FRED STENZEL
Carpentry repairs alterations, cabinets, base, trim, etc.

SERVICES OFFERED
23-CARPENTERS
FRED STENZEL
Carpentry repairs alterations, cabinets, base, trim, etc.

REAL ESTATE FOR SALE AND WANTED

1-SUMMIT
FOR THE BEST SERVICE
Always
Consult a Realtor

1-SUMMIT
REAL ESTATE BOARD
covering
SUMMIT
BERKELEY HEIGHTS
NEW PROVIDENCE

1-SUMMIT
BOARD MEMBERS
Grace A. Handwork, CR. 3-2420
Homes Agency 3-2400

1-SUMMIT
TIRE
OF CLIMBING STAIRS?
See this new Woodland Park listing immediately.

1-SUMMIT
STAFFORD AGENCY
10 Bank Street, Summit, CR. 3-1000

1-SUMMIT
EXCEPTIONAL BUY
In one of Summit's exclusive, highest residential areas - beautiful WOODLAND PARK.

1-SUMMIT
NORTH SIDE
Roomy older home, recently modernized excellent condition.

1-SUMMIT
MANOR HILL ROAD
This unusually fine home in the upper forties is available.

1-SUMMIT
BUTLER AGENCY
7 DeForest Ave., Summit, CR. 3-7000

1-SUMMIT
MAKE A DATE
with us and the minute you step in the front door of this center hall Colonial you will feel the warmth of love and care this home has enjoyed.

1-SUMMIT
SEE WYNNWOOD
There is no better neighborhood. There is no better value. There are no better builders.

1-SUMMIT
PROSPECT HILL
Lovely Colonial, stone and framework, built 1905, 3 years old.

1-SUMMIT
24-SHORT HILLS
4 LARGE BEDROOMS
BEAUTIFUL, NEARLY NEW COLONIAL WITH HIGH CEILING, PARTIAL FINISH.

1-SUMMIT
SOMETHING NEW!
GLENNWOOD 3 BEDROOMS, 2 BATHS, CLOSET, HALL, BREAKFAST ROOM, PORCH.

1-SUMMIT
HOLMES AGENCY
Realtor - Est. 1888
291 Morris Ave., Summit, CR. 3-2400

1-SUMMIT
FIRST TIME OFFERED
THIS DELUXE SPLIT LEVEL offers 4 bedrooms, built-in family room on 1st, modern kitchen, 2 car garage, patio and attractive lot 78x145.

1-SUMMIT
SPENCER M. MABEN, Realtor
22 Beechwood Road, Summit, N. J.
Sunday and Evenings CR. 7-2117

1-SUMMIT
COLONIAL RANCH
To a qualified buyer, a \$19,500 4 1/2 acreage, built in 1950, only 5 years old.

1-SUMMIT
BETTER THAN NEW!
Sparkling one year old spacious 7-room split level, 2 1/2 car garage, hot water heat, convenient to D.L.W. Park.

1-SUMMIT
THE RICHLAND CO.
41 Maple Street, Summit, CR. 3-7010

2A-SHORT HILLS
"IT IS SO CONVENIENT"
OUTSTANDING CORNER HALL STONE COLONIAL WITH 2 BATHS.

2A-SHORT HILLS
G.A. ALLSOPP, INC.
"Exclusive Homes" Realtor
DR. 6-2266, Even. CR. 3-6382

2A-SHORT HILLS
G.A. ALLSOPP, INC.
"Exclusive Homes" Realtor
DR. 6-2266, Even. CR. 3-6382

2A-SHORT HILLS
G.A. ALLSOPP, INC.
"Exclusive Homes" Realtor
DR. 6-2266, Even. CR. 3-6382

2A-SHORT HILLS
G.A. ALLSOPP, INC.
"Exclusive Homes" Realtor
DR. 6-2266, Even. CR. 3-6382

2A-SHORT HILLS
G.A. ALLSOPP, INC.
"Exclusive Homes" Realtor
DR. 6-2266, Even. CR. 3-6382

2A-SHORT HILLS
G.A. ALLSOPP, INC.
"Exclusive Homes" Realtor
DR. 6-2266, Even. CR. 3-6382

2A-SHORT HILLS
G.A. ALLSOPP, INC.
"Exclusive Homes" Realtor
DR. 6-2266, Even. CR. 3-6382

2A-SHORT HILLS
G.A. ALLSOPP, INC.
"Exclusive Homes" Realtor
DR. 6-2266, Even. CR. 3-6382

2A-SHORT HILLS
G.A. ALLSOPP, INC.
"Exclusive Homes" Realtor
DR. 6-2266, Even. CR. 3-6382

2A-SHORT HILLS
G.A. ALLSOPP, INC.
"Exclusive Homes" Realtor
DR. 6-2266, Even. CR. 3-6382

Boys Begin Brawn Build-up By Bouncing Basketballs

The Springfield Recreation Commission will inaugurate their 1957-58 winter basketball program this Saturday afternoon at the Florence Gaudineer School gym, with activity planned for boys in the (9 through 12) age group. Boys who are (13 through 15) years of age are invited to the practice sessions and clinics which will be staged on week-day evenings at the Florence Gaudineer School gym. Older boys and adults are invited to the 8:30-9:30 p.m. basketball program Monday through Thursday evenings.

Saturday afternoon will be devoted to the registration of all boys as well as an instruction and clinic session. The basketball program will start at 1 p.m. and last three hours, with all boys requested to bring their sneakers and athletic uniform.

Recreation Director Edward Ruby is anxious to form eight teams in the 9 through 12 year age group, hoping to provide more basketball for all boys by increasing the Small-Fry Basketball League from six to eight teams. The eight team league will be formed at the conclusion of a three week instructional period, with the makeup of the league and all player distribution under the supervision of the Recreation Commission. Every effort will be made to form a well-balanced league, with no club allowed to form an overpowering combination.

The four-team Youth Basketball League will operate on Tuesday and Thursday evenings, with games scheduled to start at 7:30 p.m., ending an hour later. Boys who are outstanding will be selected from this age group for the makeup of the Springfield Recreation "Minutemen" team which played 20 games last winter.

For further information and particulars on the above, please contact Ed Ruby, Director of Leagues, Springfield Recreation Commission.

C. I. to Carrets
Mr. and Mrs. James Barrett of 6 Cypress terrace announce the birth of a baby girl on November 23 at Overlook Hospital, Summit.

There are about 300,000 families in the United States in the \$25,000-a-year income category.

STORES TO RENT
4,300 SQ. FT. modern industrial building, heat, running water, 3 phase, 220 power. Phone CR 7-6564. evenings ADMS 2-6370.

BASEMENT FOR RENT
IN SPRINGFIELD Approximately 2,000 square feet in basement of Springfield Sun Building, 762 Morris Avenue, Springfield, Call Drexel 6-5512.

Rentals Wanted
UNFURN. HOUSE WANTED
FAMILY of 3 professional adults, who have been in Springfield for 10 years, want a 6-8 room unfurnished house in Summit. Will sign 2 or 3 yr. lease starting anytime between Feb. and July, 1958. Box 823, Summit Herald.

Furnished Apt. Wanted for Rent
BUSINESS woman desires 1 to 3 room furnished apt. in apt. bldg. CR 3-0210 or CR 3-0272 evs.

GARAGE WANTED
GARAGE, \$10 monthly. Phone after 6 p.m. CR 3-2268.

Too Late to Classify HELP WANTED FEMALE
CLEANING woman 1 day wk., preferably Thurs. or Fri. Must be children and have references. CR 3-6719 in Berkeley Heights.

LOST
LOST black male Labrador Retriever, Nov. 30, New Vernon vicinity. Reward, FR 7-2378.

SAVE 'EM!
OLD SHOES ARE LIKE OLD FRIENDS
Bring them to us and we'll make them look like new. We take the "oldness" - but the comfort remains.

Expert Shoe Repair
Calantone Shoe Shop
245 Morris Avenue
Springfield
Drexel 6-2682

LET BEAUTY GO TO YOUR HEAD!
Beauty starts with hair... and the loveliest hair-do's start here!

LET OUR EXPERTS WORK THEIR MAGIC

MR. ROBERT'S
Formerly with Chantey Salon of L. Bamberg & Co.

HOUSE OF HAIR FASHION
80 Springfield Road
Springfield
Drexel 6-9809

Evenings by Appointment
Completely Air Conditioned

Parkview Holds Slim Lead Over American Legion 1

by Charles Woodruff
Although Parkview Atlantic lost two out of three to American Legion Team No. 2, they kept their one game first place lead.

Excavating won two from Frank's Auto Service, Mendez's took two from Springfield Market, Drake Fuel Service won the odd one from Cazzolino Furs, Bunnell Bros. blanked D'Andrea Driveways, and American Legion Team No. 1 moved into second place by taking two games from Beckmann's Market.

In a night marked by some rather mediocre bowling, H. Brudett was high with 214, 221, bowling a 601 series. Salzano and Raab, both of Cazzolino Furs, had 211 and 215 respectively.

For further information and particulars on the above, please contact Ed Ruby, Director of Leagues, Springfield Recreation Commission.

Conte's Retains Wide League Lead

Conte's wins 2 of 3 games from Springhouse Trees. Fine all-around bowling by Conte's team continues as they increased their league lead to 4 games over the faltering P.B.A. Springhouse Trees dropped to fourth place by losing 2 games.

P.B.A., despite a 604 series by Del Tompkins and a 201 game by R. Merlucci, lost 3 games to Lynn Decorators. Hal Burdett and Jack Weber led Lynn's team with games of 224 and 243. Lynn, by winning all 3 games, moved into third place, 1 game behind the P.B.A. The P.B.A., who led the league 3 weeks ago, are having trouble winning games of late.

Drexel Cleaners rolled a new high league 3-game team total of 2831. Stereo, bowling against Drexel, rolled league second highest 3-game series of 2797. Although Drexel rolled the highest 3-game total, Stereo took 2 games of 3. The Sound boys were led by T. Peche with 234 and J. Pasquale with 216. Ed Schaffer was outstanding man for Drexel, bowling games of 210 and 200.

200 games were rolled by: Jack Weber, 243; Tony Feile, 234; H. Burdett, 224; J. Pasquale, 216; E. Schaffer, 210 and 200; D. Tompkins, 209 and 203; R. Giannattasio, 209; H. Spickler, 203; R. Merlucci, 201; and R. Jennings, 201.

JEWELERS
Wesley Jewelers
173 Mountain Ave.
DIAMONDS • WATCHES
JEWELRY
"Where You Can Afford Fine Quality"
Budget Terms Arranged
Drexel 6-5047

Wesley Jewelers
173 Mountain Ave.
DIAMONDS • WATCHES
JEWELRY
"Where You Can Afford Fine Quality"
Budget Terms Arranged
Drexel 6-5047

Wesley Jewelers
173 Mountain Ave.
DIAMONDS • WATCHES
JEWELRY
"Where You Can Afford Fine Quality"
Budget Terms Arranged
Drexel 6-5047

Wesley Jewelers
173 Mountain Ave.
DIAMONDS • WATCHES
JEWELRY
"Where You Can Afford Fine Quality"
Budget Terms Arranged
Drexel 6-5047

Wesley Jewelers
173 Mountain Ave.
DIAMONDS • WATCHES
JEWELRY
"Where You Can Afford Fine Quality"
Budget Terms Arranged
Drexel 6-5047

Wesley Jewelers
173 Mountain Ave.
DIAMONDS • WATCHES
JEWELRY
"Where You Can Afford Fine Quality"
Budget Terms Arranged
Drexel 6-5047

Wesley Jewelers
173 Mountain Ave.
DIAMONDS • WATCHES
JEWELRY
"Where You Can Afford Fine Quality"
Budget Terms Arranged
Drexel 6-5047

Wesley Jewelers
173 Mountain Ave.
DIAMONDS • WATCHES
JEWELRY
"Where You Can Afford Fine Quality"
Budget Terms Arranged
Drexel 6-5047

Wesley Jewelers
173 Mountain Ave.
DIAMONDS • WATCHES
JEWELRY
"Where You Can Afford Fine Quality"
Budget Terms Arranged
Drexel 6-5047

Wesley Jewelers
173 Mountain Ave.
DIAMONDS • WATCHES
JEWELRY
"Where You Can Afford Fine Quality"
Budget Terms Arranged
Drexel 6-5047

Wesley Jewelers
173 Mountain Ave.
DIAMONDS • WATCHES
JEWELRY
"Where You Can Afford Fine Quality"
Budget Terms Arranged
Drexel 6-5047

Wesley Jewelers
173 Mountain Ave.
DIAMONDS • WATCHES
JEWELRY
"Where You Can Afford Fine Quality"
Budget Terms Arranged
Drexel 6-5047

Wesley Jewelers
173 Mountain Ave.
DIAMONDS • WATCHES
JEWELRY
"Where You Can Afford Fine Quality"
Budget Terms Arranged
Drexel 6-5047

Wesley Jewelers
173 Mountain Ave.
DIAMONDS • WATCHES
JEWELRY
"Where You Can Afford Fine Quality"
Budget Terms Arranged
Drexel 6-5047

Wesley Jewelers
173 Mountain Ave.
DIAMONDS • WATCHES
JEWELRY
"Where You Can Afford Fine Quality"
Budget Terms Arranged
Drexel 6-5047

Wesley Jewelers
173 Mountain Ave.
DIAMONDS • WATCHES
JEWELRY
"Where You Can Afford Fine Quality"
Budget Terms Arranged
Drexel 6-5047

rel. Cr., 168, 169, 171; D. Bunnell, 174, 162, 167; H. Burdett, 166, 211, 214, 215, 216, 217, 218, 219, 220, 221, 222, 223, 224, 225, 226, 227, 228, 229, 230, 231, 232, 233, 234, 235, 236, 237, 238, 239, 240, 241, 242, 243, 244, 245, 246, 247, 248, 249, 250, 251, 252, 253, 254, 255, 256, 257, 258, 259, 260, 261, 262, 263, 264, 265, 266, 267, 268, 269, 270, 271, 272, 273, 274, 275, 276, 277, 278, 279, 280, 281, 282, 283, 284, 285, 286, 287, 288, 289, 290, 291, 292, 293, 294, 295, 296, 297, 298, 299, 300, 301, 302, 303, 304, 305, 306, 307, 308, 309, 310, 311, 312, 313, 314, 315, 316, 317, 318, 319, 320, 321, 322, 323, 324, 325, 326, 327, 328, 329, 330, 331, 332, 333, 334, 335, 336, 337, 338, 339, 340, 341, 342, 343, 344, 345, 346, 347, 348, 349, 350, 351, 352, 353, 354, 355, 356, 357, 358, 359, 360, 361, 362, 363, 364, 365, 366, 367, 368, 369, 370, 371, 372, 373, 374, 375, 376, 377, 378, 379, 380, 381, 382, 383, 384, 385, 386, 387, 388, 389, 390, 391, 392, 393, 394, 395, 396, 397, 398, 399, 400, 401, 402, 403, 404, 405, 406, 407, 408, 409, 410, 411, 412, 413, 414, 415, 416, 417, 418, 419, 420, 421, 422, 423, 424, 425, 426, 427, 428, 429, 430, 431, 432, 433, 434, 435, 436, 437, 438, 439, 440, 441, 442, 443, 444, 445, 446, 447, 448, 449, 450, 451, 452, 453, 454, 455, 456, 457, 458, 459, 460, 461, 462, 463, 464, 465, 466, 467, 468, 469, 470, 471, 472, 473, 474, 475, 476, 477, 478, 479, 480, 481, 482, 483, 484, 485, 486, 487, 488, 489, 490, 491, 492, 493, 494, 495, 496, 497, 498, 499, 500, 501, 502, 503, 504, 505, 506, 507, 508, 509, 510, 511, 512, 513, 514, 515, 516, 517, 518, 519, 520, 521, 522, 523, 524, 525, 526, 527, 528, 529, 530, 531, 532, 533, 534, 535, 536, 537, 538, 539, 540, 541, 542, 543, 544, 545, 546, 547, 548, 549, 550, 551, 552, 553, 554, 555, 556, 557, 558, 559, 560, 561, 562, 563, 564, 565, 566, 567, 568, 569, 570, 571, 572, 573, 574, 575, 576, 577, 578, 579, 580, 581, 582, 583, 584, 585, 586, 587, 588, 589, 590, 591, 592, 593, 594, 595, 596, 597, 598, 599, 600, 601, 602, 603, 604, 605, 606, 607, 608, 609, 610, 611, 612, 613, 614, 615, 616, 617, 618, 619, 620, 621, 622, 623, 624, 625, 626, 627, 628, 629, 630, 631, 632, 633, 634, 635, 636, 637, 638, 639, 640, 641, 642, 643, 644, 645, 646, 647, 648, 649, 650, 651, 652, 653, 654, 655, 656, 657, 658, 659, 660, 661, 662, 663, 664, 665, 666, 667, 668, 669, 670, 671, 672, 673, 674, 675, 676, 677, 678, 679, 680, 681, 682, 683, 684, 685, 686, 687, 688, 689, 690, 691, 692, 693, 694, 695, 696, 697, 698, 699, 700, 701, 702, 703, 704, 705, 706, 707, 708, 709, 710, 711, 712, 713, 714, 715, 716, 717, 718, 719, 720, 721, 722, 723, 724, 725, 726, 727, 728, 729, 730, 731, 732, 733, 734, 735, 736, 737, 738, 739, 740, 741, 742, 743, 744, 745, 746, 747, 748, 749, 750, 751, 752, 753, 754, 755, 756, 757, 758, 759, 760, 761, 762, 763, 764, 765, 766, 767, 768, 769, 770, 771, 772, 773, 774, 775, 776, 777, 778, 779, 780, 781, 782, 783, 784, 785, 786, 787, 788, 789, 790, 791, 792, 793, 794, 795, 796, 797, 798, 799, 800, 801, 802, 803, 804, 805, 806, 807, 808, 809, 810, 811, 812, 813, 814, 815, 816, 817, 818, 819, 820, 821, 822, 823, 824, 825, 826, 827, 828, 829, 830, 831, 832, 833, 834, 835, 836, 837, 838, 839, 840, 841, 842, 843, 844, 845, 846, 847, 848, 849, 850, 851, 852, 853, 854, 855, 856, 857, 858, 859, 860, 861, 862, 863, 864, 865, 866, 867, 868, 869, 870, 871, 872, 873, 874, 875, 876, 877, 878, 879, 880, 881, 882, 883, 884, 885, 886, 887, 888, 889, 890, 891, 892, 893, 894, 895, 896, 897, 898, 899, 900, 901, 902, 903, 904, 905, 906, 907, 908, 909, 910, 911, 912, 913, 914, 915, 916, 917, 918, 919, 920, 921, 922, 923, 924, 925, 926, 927, 928, 929, 930, 931, 932, 933, 934, 935, 936, 937, 938, 939, 940, 941, 942, 943, 944, 945, 946, 947, 948, 949, 950, 951, 952, 953, 954, 955, 956, 957, 958, 959, 960, 961, 962, 963, 964, 965, 966, 967, 968, 969, 970, 971, 972, 973, 974, 975, 976, 977, 978, 979, 980, 981, 982, 983, 984, 985, 986, 987, 988, 989, 990, 991, 992, 993, 994, 995, 996, 997, 998, 999, 1000.

Double-Barreled Gift Opportunity!

FREE Nationally Advertised \$4.50
RONSON "WindLite" LIGHTER
When You Give the ALL-NEW RONSON '66' ELECTRIC SHAVER
THE LIGHTER IS YOURS to keep or give whether or not he Regular \$28.50 \$5.00 Trade-In Allowance For Old Shaver YOU PAY \$23.50 ONLY
NO MONEY DOWN 1 WEEK
Springfield Pharmacy
238 Morris Avenue, Springfield
Drexel 6-5050
52 Years of Reliability

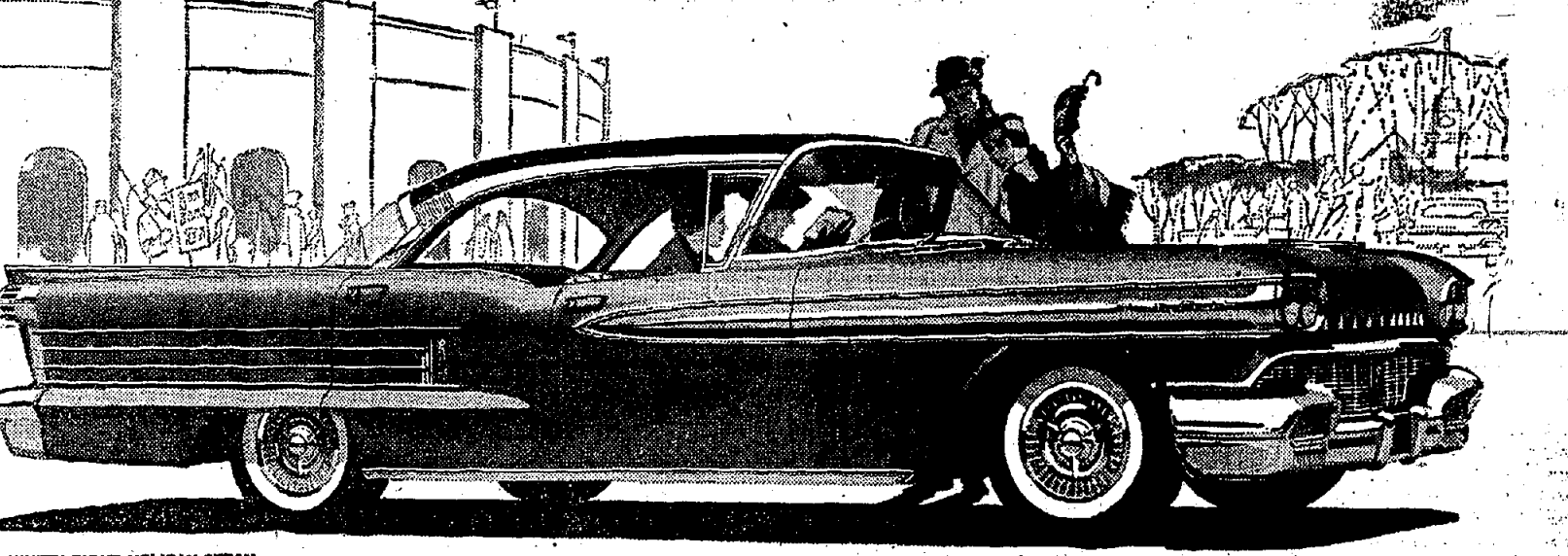
FOR THE FINEST IN EYEWEAR
Laboratory on Premises
ANDREW KOVACS
OPTICIAN
357 MILLBURN AVE., MILLBURN Near Theatre DR 9-4155

NOW... MORE FOR YOU
Beginning January 1, 1958
3 1/4% annual dividend to be compounded and paid...
QUARTERLY
HAYES SAVINGS and LOAN ASSOCIATION
• Savings insured up to \$10,000
• Save by mail—we pay postage both ways
955 Broad Street Newark 2, N. J.

NEW TRANS-PORTABLE... The car radio that goes where you go... lends enchantment to

OLDSmobility

THE NEW MEASURE OF PLEASURE FOR THE ROCKET AGE!



NINETY-EIGHT HOLIDAY SEDAN

Get the Features of the Future... in a '58 Olds!
The stunning Trans-Portable Radio is transistor equipped and powered by a long-life, 100-hour battery which uses a portable. For motoring use, it automatically connects with the car's regular electrical system.
So new! So practical! And so convenient! Oldsmobile's Trans-Portable Radio actually combines a car radio and a personal portable in one neat package! And it's just one of the fresh ideas that make OLDSmobility a totally new way of going places and doing things. You enjoy sure-footed safety with Oldsmobile's new Anti-Spin Rear Axle* that transmits power to the wheel with the best grip on the road—gives you new control in snow or mud and on ice! Brilliant new "Mobile Look" Styling is distinctive, original... in marked good taste... inside and out! And it's so easy to "see"... there's clear-visibility Safety-Plate Glass all around! The famous Rocket Engine, too, is greater than ever... delivering all the performance you can use with greatly improved gas mileage! So, enter the world of OLDSmobility... at your dealer's now!
*Optional extra cost.
OLDSMOBILE FOR '58
1908-1958
FORWARD FROM FIFTY... INTO THE ROCKET AGE!
SEE YOUR AUTHORIZED OLDSMOBILE QUALITY DEALER

The Springfield Sun Guidebook

AUTO BODY WORK ELERY - (155 Morris Ave., rear of Chrysler-Plymouth agency Springfield) Drexel 6-2020. When you need an out of shape look for: (1) a firm with the necessary fancy equipment, (2) a firm with the know-how of experience, and (3) a firm with the integrity to do the best job at the lowest rate. On all 3 counts, the SUN recommends Elery Auto Body Shop.	INSURANCE & REAL ESTATE ANNE SYLVESTER'S REALTY CORNER - (840 Morris Ave., Springfield) Drexel 6-2020. Wise was the man who said "Never underestimate the power of a woman." H. could well have had in mind Springfield's vigorous Realty Corner where Anne Sylvester's staff of exceptionally competent women are seeking local records for sales and reliability. For everything from selling your home to personal insurance, the SUN recommends these gals. BUNNELL BROS. - (6 Flanders Ave., Springfield) Drexel 9-2400. Springfield without the Bunnells would be like Boston without the Cabots. Robert and Richard Bunnell have been writing insurance of all kinds in town since 1916. Their big friendly office is in the bank building near all that big friendly money. Their advice on insurance matters, though is a good deal more than friendly; their years of experience show in the soundness of their advice.	RESTAURANTS CHINA SKY - (Springfield Shopping Center, Drexel 9-5910) Here's a random sampling from the menu showing that there's practically everything under the China Sky. SAM GOP TAI - sliced lobster meat, white meat of chicken, Chinese roast pork prepared with imported Chinese mushrooms, snow pea pods, water chestnuts, bamboo shoots and hearts of bok choy. All this for \$2.75 in Jack O'Neil's cheerful dining room. SIP & SUP DRIVE-IN RESTAURANT - (Corner of Morris Avenue and Springfield Avenue, Springfield) Drexel 6-2900. If you're one of a vanishing race of restaurant-goers who will still tuck out of your car and eat indoors, Jack Bullock's colonial-modern dining place offers a big new dining room. However, you'll get the same good food by simply staying in your car and let the girls run the food out to you. Either way the food is what makes stopping here an event. WALTER'S INN - (595 Morris Ave., opposite Millburn Ave., Springfield). The old boardwalk about the pizza pie being too big to eat must have originated here where the pizza came King size in both diameter and amount. We like splitting a pizza among everybody at the table and ordering individual portions of the delicious Lasagna, Bavoli, and veal and peppers. You sure know you've dined out after that. MOUNTAIN AVENUE LUNCHEONETTE - (549 Mountain Avenue, Springfield, Next to Walton School) Right in the middle of nowhere, that is Mountain Avenue, is a brand new luncheonette that would be hard to beat for cheerfulness. Mrs. German has outfitted a sparkling dining area and luncheon counter for breakfast, lunch and snacks. Her food is homemade and delicious.
AUTO REPAIR CLARK'S GARAGE - (Just over Route 22 overpass on South Springfield Avenue, Springfield) If you own a 1916 Ford, Frank Clark is probably the only person in town who knows how to service it. That was the year he first began undoing the mischief Detroit had wrought under the hood. Today his reputation is such that he needs no sign over his garage - people know him.	LAUNDROMAT COURTESY LAUNDROMAT - (268 Morris Ave., Springfield) Everybody knows that you just drop off your laundry here and come back in an hour to see that it's just as dry. But did you know that Adolf Mirabelli does expert shoe repairing here too? And he's fluff dry all the time.	TV SERVICE A & A TV - (278 Morris Ave., Union, 1/2 mile from Springfield, Murdoch 8-3300) All Jones has been in TV since 1936 when it was considered a laugh. Jones kept a straight face, though, and by seriously keeping abreast of the electronic world has made available to Springfield a shop that is top in its field. Fixed chassis, same day service, and guarantees of all work in the other reasons why people phone A & A. SPRINGFIELD RADIO & TELEVISION CENTER - (173 Mountain Ave., Springfield, Drexel 9-4545) Five mobile repair trucks, six mobile repair men, and enough testing equipment to man the CBS master control room, make this a logical choice when Lawrence Walk gets busy. The service is quick and all work is guaranteed. The proof of the pudding is the rate this firm has expanded in recent years.
FLOOR COVERINGS LINDHELM & CARPET FACTORY OUTLET - (Route 22, Springfield, Drexel 6-3200) Mel Horn's linoleum, tile, and broadloom emporium sports a vast range of floor coverings at low budget prices. Almost all of the nation's leading manufacturers are represented on the big display floors. The Outlet is particularly respected for the quality of its installations.	LUMBER & SUPPLIES COLUMBIA - (Maple Ave., Springfield, Drexel 6-9550) There are all sorts of convenient doors on the market now, most of them in the cheap modern variety. Columbia has the solution to this problem in the handsome grained wood used in the Peila-Wood Folding Door. These quality craftsmen doors come in a variety of rich woods. There is a substantial quality in these doors that would do credit to any home, whatever the decor.	PHONE NUMBERS POLICE - Drexel 6-0400 FIRE - Call Operator FIRST AID SQUAD - Drexel 6-4600 TOWNSHIP CLERK - Drexel 6-8800 PUBLIC LIBRARY - Drexel 6-4264 CALDWELL SCHOOL - Drexel 6-1431 CHESEBOLM SCHOOL - Drexel 6-4334 GAUDINEER SCHOOL - Drexel 6-5089 WALTON SCHOOL - Drexel 6-1454 REGIONAL HIGH - Drexel 6-3300 ST. JAMES SCHOOL - Drexel 6-5194 SPRINGFIELD SUN - Drexel 9-5000
FOOD MARKETS SPRINGFIELD MARKET - (72 Morris Ave., Springfield, Drexel 6-4311) If you're an expert shopper, or if you're a busy housewife, Springfield Market is a place that you can't do without. Springfield Market has only top quality foods at prices that can't be matched anywhere.	LIGHT FIXTURES MODERN LIGHTING - (815 Morris Ave., opposite Terry Dempsey's Springfield) Now that it is getting dark early in the evening, it's time to light the outside of your home both as a welcome to guests and a safety factor. Joe Hockaday has a great variety of outdoor lights, including low black mushroom lights, stake lights, lantern strings and bullet flood and spot. He gives away a booklet, "Light for Living Outdoors" as a guide to homeowners.	
HARDWARE HYDE AND ELLIS, INC. - (719 Mountain Ave., beside Mt. Spring Bake Shop, Springfield, Drexel 6-7900) A sparkling new hardware superstore has opened up in the growing south end of town and is showing Springfield what modern merchandising means. Everything from the builder's supplies to the big selection of housewares is arranged in neat displays to catch the eye. Free delivery is available from both the Springfield store and the even bigger Westfield home headquarters.	POULTRY R. GLENNING - (246 Morris Avenue, Springfield, Drexel 6-7785) Along with rick's supplies and about a million samples of wallpaper, Roy Gleaming carries the famous complete ERB line of paints. This firm has pioneered some startling developments in paint, including Akroy base and latex white paints that come in one coat. The Cicero-Match system of selecting the 324 color variations is the cleverest we've ever seen.	
HI FI & SOUND STEREO SOUND CORP. - (173 Mountain Ave., Springfield, Drexel 9-4547) You, two ears play an important part in listening to avoid the story of high fidelity sound reproduction is largely an effort to add another ear to the traditional one eared speakers. This development, called stereophonic sound is available for home listeners as well as the Radio City Music Hall. This firm has set you up with either dual recorded tape sound systems or AM-FM radio binocular sound.	HOME IMPROVEMENTS CHANNEL LUMBER CO. - (Route 22, Springfield, Drexel 6-8000) Channel's charge account system makes it possible to buy just about anything under the sun (or as advertised in the SUN) and take 18 months to pay for it. This, of course, includes lumber, home improvements, housewares, paints, hardware and so on. A service to the community is Channel's extending offer to loan extra chairs for card parties, club meetings, etc., absolutely free of charge.	

CHURCH SERVICES

THE SPRINGFIELD BAPTIST CHURCH
Preaching the same gospel message
As Dr. Billy Graham
Services in Chalmers School
South Springfield Avenue
Interim Pastor, Rev. Joseph Sueck

Sunday Morning—
9:15 Sunday school for all ages including adults.
11:00 Regular morning worship by the pastor.
1:15 p.m. Young people's meeting, 1st Sunday of every month only.
7:00 p.m. Evening Gospel Service, 1st Sunday of every month only.
Worship—
Prayer and praise service at 8 p.m. at the home of Mr. and Mrs. Ortel, 193 Henshaw Avenue.

BABY WORLD FAITH
Preside class every Friday evening at 8 p.m. Adult & children's classes. Sunday mornings 11 to 12. Home of Mr. and Mrs. J. C. Toas, 111 Sutter Street, Springfield.

ST. JAMES' CHURCH
Springfield
Sunday Masses:
7 a.m.
8 a.m.
9 a.m.
10 a.m.
11 a.m.
12 Noon

FEMALE BETH AHM
Belmont Way
Rabbi Reuben E. Levine
Cantor Irving Kramerson
Organist Lenora Greene

MILLBURN BAPTIST CHURCH
Rev. R. E. Bateman
Morning: "Waiting for God."
Evening: "Balancing the Books."

FIRST CHURCH OF CHRIST SCIENTIST
297 Springfield Avenue
Summit, N. J.
11 a.m.—Sunday Service
11 a.m.—Sunday School
Sermon Topic: "God the Only Cause and Creator."

REFORM JEWISH CONGREGATION OF SPRINGFIELD
Presbyterian Parish House
Main Street, Springfield
Rabbi Malcolm Mendelsohn
Friday Night Service—8 p.m.

FIRST PRESBYTERIAN CHURCH
Morris Avenue at Main Street
Springfield, New Jersey
Ministers:
DRUCE W. EVANS
GEORGE F. FORNER

A cordial welcome is extended to all who worship in this historic church. Representing over two hundred years of faith and service in this community it invites you to worship and work with those in its fellowship.

2:00 a.m. Church School
Classes for all children starting at the age of 3 years will meet in the Chapel and the Parish House. The Senior Department will meet in the Springfield Library Meeting Room.

9:30 and 11:00 a.m. Church Worship Services
The Sacrament of Holy Communion will be observed in this Holy Sunday in Advent. The Rev. George F. Forner will give the Communion Meditation. Music by the Junior and Senior Chorus. The Sacrament of Baptism will be observed at both Services. New Members will be received at the Second Service.

7:30 p.m. Minister's Fellowship
Three-D slides of "Around the World in Eighty Minutes" will be shown. Green Schenk and arithmetic recording will be the feature of this meeting. Following the meeting and this showing a song fest appropriate to the season will be held.

NEXT WEEK:
Tuesday—7:00 p.m. Junior Choir Rehearsal—Church.
7:30 p.m. Special meeting of the Trustees—P. H. Library room.
8:00 p.m. Session Meeting in the P. H. Wednesday—8 to 9 p.m. Fraternal Group meeting in homes for dessert.
9:00 p.m. Group meeting in Parish House to plan the tree and have Christmas Party.

Thursday—7:30 p.m. Boy Scout Troop 99, James Caldwell School.
8:00 p.m. Women's Bowling League.
Friday—7 & 9 p.m. Men's Club Bowling League.
8:00 p.m. Senior Choir Rehearsal—Church.

Saturday—2 to 3 p.m. Christmas Party in the Chapel for the Nursery and Kindergarten Dept.

THE METHODIST CHURCH
Academy Green, Springfield, N. J.
Virgil E. Mabry, Pastor
Parsonage: 15 Main Street
Telephone DRexel 6-608
Wilfred N. Barz
Organist and Music Director

The Strong must bear with the Weak. For whatsoever things were written aforetime were written for our learning, that we through patience and comfort of the scriptures might have hope.

THURSDAY, DECEMBER 5—
Junior Choir Rehearsal—7:00 p.m.
Senior Choir Rehearsal—8:00 p.m.
FRIDAY, DECEMBER 6—
Chorus Choir Rehearsal—8:15 p.m.
Methodist Men's Bowling at the Center Street Alley—7:00 to 8:00 p.m.

SATURDAY, DECEMBER 7—
M. Y. F. Banquet—7:30 p.m. Refreshments—afterward at home of Mr. and Mrs. E. Pollack.
Couples Club Meeting—7:30 p.m.

SUNDAY, DECEMBER 8—
Family Worship and Church School Classes—9:15 a.m.
Nursery Class for convenience of parents with small children—11:00 a.m.
Regular Worship Service—11:00 a.m.—Infant Baptism.
Sermon Topic: "Season of Expectancy" by the Pastor, Rev. Virgil E. Mabry, at both services.
M. Y. F. meeting at church 6:00 p.m. for Christmas Eve service.

MONDAY, DECEMBER 9—
Methodist Men's Club—Ladies Night—6:30 p.m.
Choir Rehearsal for "High School Chorus" at Morris F. Ortel, 192 So. Springfield Avenue, 7:00 p.m.
Nurses' Ladies Bible Class—8:00 p.m.

TUESDAY, DECEMBER 10—
W.S.C.S.—Luncheon—12:00 p.m. Christmas Program.
WEDNESDAY, DECEMBER 11—
Prayer Meeting and Bible Study Group, 8:00 p.m.
Commission on Education—9:00 p.m.

ROLY CROSS LUTHERAN CHURCH
623 Mountain Ave.
Springfield, N. J.
Lester P. Messerschmidt, Pastor
Telephone DRexel 9-4225

SATURDAY, DECEMBER 7—
9:00 a.m. Confirmation Instructions
10:30 a.m. Confirmation Instructions
SUNDAY, DECEMBER 8—
(UNIVERSAL BIBLE SUNDAY)
9:00 a.m. Sunday School
9:30 a.m. Adult Bible Study Hour
11:00 a.m. Home Missions

Sermon Text: 1 Sam. 21-9 and Eph. 6:17.
Sermon topic: "Nine Like It"
MONDAY, DECEMBER 9—
8:00 p.m. Voters' Meeting.
HOLY CROSS CHURCH EXTENDS A cordial welcome to all in the name of Christ, the Savior. COME AND BRING A FRIEND

THE ETHICAL MOVEMENT
is devoted to A Faith In Man. A Belief that it is possible for human beings to raise ever higher our standards of living together. For additional information regarding ETHICAL CULTURE, call DRexel 9-5485

CHAIRS
RUSH BOTTOMS REPLACED WITH GENUINE RUSH CANE and SPLINT SEATS. Refinishing • Stenciling
P. BENE DUCE
305 Main St. Madison
FR 7-4592

Carl Flemer, Sr., Dies at Age 67

Springfield lost another outstanding citizen last Wednesday, November 27, when Carl Henry Flemer, Sr., head of a family that has lived in Springfield for 60 years, died in Overlook Hospital, Summit, after a short illness. Mr. Flemer was 67 and resided at 22 Forest drive, in the Short Hills Village, Springfield.

The Flemer family owned and operated the F & F Nurseries in Springfield for a great many years and, a few years ago, moved the business to Holmdel to make room for the General Greene Shopping Center, Forest avenue is named for Mr. Flemer's late father, William Flemer.

Mr. Flemer was born in Roselle and was brought to Springfield as a boy. He was vice president of the board of trustees of First Presbyterian Church from 1925 until he retired several years ago because of ill health.

He was a past president of the New Jersey Nurserymen's Association. He was a former Springfield volunteer fireman and in the early 20's was on the township board of education.

Mr. Flemer was a member of Continental Lodge 190, F & A. M., and formerly was active in the Springfield Lions Club.

Mr. Flemer once was vice president of the First National Bank of Millburn and formerly served on the board of directors of what is now the National State Bank of Springfield.

Surviving are his wife, Mrs. Carrie Bishop Flemer; three sons, Carl H. Jr., of Chatham; Albert B. of Holmdel and Donald F. of Cincinnati; nine grandchildren, a brother, William Flemer of Kingston and two sisters, Mrs. William Heard of Springfield and Mrs. Maynard Bensley of South Woodstock, Vt.

Private services were held at the Smith and Smith (Suburban) funeral home, 415 Morris Avenue.

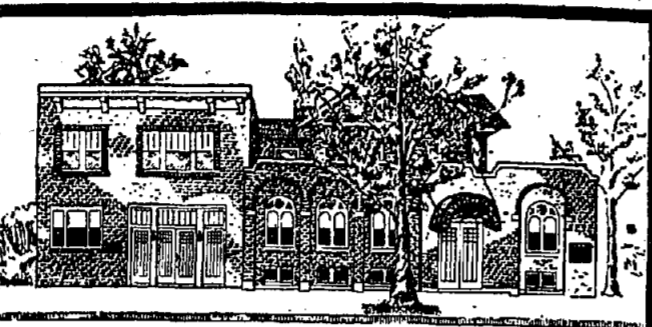
Jay Kuten Attends Washington Univ.

Jay Julius Kuten is among 13,650 students enrolled in Washington University for the 1957-58 year, Chancellor Elhan A. H. Shelley has announced. Kuten, son of Mr. and Mrs. Ar-

thur Kuten, 212 Springfield avenue, is a junior in the School of Medicine. A graduate of West Side High School, he previously attended the University of Chicago and Cornell University.

Washington University has 15 divisions, including graduate and undergraduate schools and University College, adult education division of the university.

First Church of Christ, Scientist
292 Springfield Avenue, Summit, N. J.
A branch of THE MOTHER CHURCH, THE FIRST CHURCH OF CHRIST, SCIENTIST in Boston, Mass.
Sunday Service at 11:00 A.M. Sunday School 11:00 A.M.
Wednesday Testimonial Meeting 8:15 P.M.
Reading Room, 340 Springfield Ave. Open daily to 4:30 except Sundays and Holidays; also Friday evenings, 7:30 to 9:30 and after the Wednesday meeting



What could give more solace and satisfaction to a family than to know that the service will be held in peaceful surroundings of dignity and refinement? This we strive to do.

YOUNG'S SERVICE HOME

ESTABLISHED 1908
ALFRED L. YOUNG, Funeral Director
145-149 MAIN STREET, MILLBURN
Drexel 6-0406

Perfection with consideration...

Perfection is no mere detail—but it is the consideration of details that makes for perfection. Smith and Smith service provides the thoughtful consideration that is so necessary.



SMITH and SMITH FUNERAL DIRECTORS
An Outstanding Service "Within the Means of All"
SERVING ALL RELIGIONS

SUBURBAN 415 Morris Ave., N. J. DRexel 6-7777
HOME FOR SERVICES 360 Cliff Ave., Newark 5, N. J. BRigelow 3-2123

Tax Receipts Run Far Ahead of '56

Tax collections for 1957 are running ahead of 1956 by almost \$30,000, the totals for this year being \$2,026,916 as compared with \$1,679,224, according to the latest report submitted by Collector of Taxes Charles H. Huff.

The report included the tax receipts as of the end of November and showed that \$229,998 of 1957 taxes had been collected last month for a total of \$1,850,206. This is an increase over the collections for the same month last year, the figures being \$171,213 and \$1,525,205, respectively. Collector Huff received \$1329 in November in payment of 1956 taxes and \$8.94 from some one who owed it for 1955.

Want a Cab In a Hurry?
Springfield-Nadel Cab Co.
DRexel 6-5200

Talk In The Market Place

Sue: "Out for the weekly buying spree?"
Marie: "Yes—but it's really not much of a spree. To feed Pete and Bobbie it takes a heap of money."
Sue: "It does seem it costs more and more to put a meal on the table."
Pete: "Whoa! To put a meal on the table—that is, the cost of the electricity and gas used to prepare a meal—doesn't cost very much. In fact they are the smallest items in our budget."
Sue: "I know we seem to be paying Public Service more each month, but we use electricity and gas in more ways than ever before. We have more appliances and thus more comforts."
Marie: "I think they are right when they say—
'Electricity and Gas do so much and cost so little.'"



PUBLIC SERVICE

A-371-57



"The Lord is my light and my salvation; whom shall I fear? The Lord is the strength of my life; of whom shall I be afraid?"

Find the strength for your life...

WORSHIP TOGETHER THIS WEEK

"I have never known a man to have faith in himself," goes an American adage, "unless he first has faith in God."
It takes such courage to face life... greater courage than any of us has alone. It takes such strength to accept success humbly, to overcome setbacks... greater strength than any of us has alone.
And yet the world is full of unclaimed heroes and heroines... men and women who have, in the course of their lives, faced seemingly insurmountable obstacles and griefs. Faced them, and conquered them. If they were the kind of people who talked about themselves, they'd tell you... "I never could have done it without the help of God."
The strong Faith they called on to help them can be yours. Build such a Faith for yourself. Make it the firm foundation of your family's security and happiness. Begin this week to worship together at your Church or Synagogue. There you'll find the strength for your life.

These Messages are being published each week in the Springfield Sun and are sponsored by the following interested individuals and business establishments:

CRESTMONT SAVINGS & LOAN ASSOCIATION
175 Morris Ave., Springfield

NATIONAL STATE BANK OF ELIZABETH
Springfield Branch
Member of Federal Reserve System

CHANNEL LUMBER CO.
Route #22, Springfield

OLAH TOOL & DIE CO.
52 Brown Avenue, Springfield

ALFRED YOUNG
Funeral Director
145-49 Main Street
Millburn

PAUL C. STECK, INC.
Precision Sheet Metal and Experimental Work
25 Brown Avenue, Springfield

DRAKE FUEL SALES CO.
679 Morris Avenue
Springfield

PENTAGON METAL PRODUCTS CORP.
58 Brown Avenue, Springfield

DAVEGA DISCOUNT-CENTER
Route #22, Springfield

RESIDENCE CONSTRUCTION CO.
321 Main St., Millburn

ELECTRICAL INSTALLATIONS, INC.
Commercials and Industrial Contractors,
48 Brown Ave., Springfield

RICHARD BEST PENCIL COMPANY, INC.
Springfield

GENERAL ELECTRIC COMPANY
Route 22
Springfield

SMITH AND SMITH
Funeral Directors
Springfield—Newark

H. SCOTT EXCAVATING CO.
115 Morris Ave., Springfield

SOMERSET BUS CO., INC.
Charter Coaches for Hire
ROUTE 22, MOUNTAINSIDE, N. J.

INVESTMENT CASTINGS CO.
60 Brown Avenue, Springfield

SPRINGFIELD WELDING CO., INC.
8 Commerce Street,
Springfield

INVESTORS LOAN ASSOCIATION
64 Main St., Millburn

WOODSIDE HOMES
A Fisher-Robbins Community
Springfield

METALS AND RESIDUES, INC.
65 Brown Avenue, Springfield