

The Springfield Sun

Springfield Public Library
Main Street
Springfield, N.J.

VOL. 24th YEAR—NO. 27

SPRINGFIELD, N. J., THURSDAY, APRIL 17, 1958

OFFICIAL NEWSPAPER
TOWNSHIP OF SPRINGFIELD

10¢ A COPY, \$4.00 BY THE YEAR

Mental Health Drive Readied By Bonadies

Springfield is being readied for National Health Week, April 27 - May 3, by a committee headed by Vincent J. Bonadies of 12 Sherwood road.

Bonadies was appointed Chairman of the 1958 Mental Health Fund Drive in May by the Union County Association for Mental Health. Bonadies, in turn has appointed two vice-chairmen, Canio Casale and Tony Fiorillo.

Bonadies announced this week that the Ladies of Unico have volunteered to act as district captains in the up coming drive.

The Union County chairman, Charles R. Nickerson of Hillside, says that \$97,000 is needed throughout the county. He said that accomplishments of the past year, made possibly the \$63,050 raised in the 1957 Fund Drive, had been dramatic, considering that the first fund drive was held only six years ago, with donations totaling \$12,500.

He noted that in Union County during the past year: Ten communities have conducted needed surveys; 165 persons have been assisted in locating help; a grant of \$9,737 was made to the Union County Psychiatric Clinic; clinic facilities have been expanded to serve five additional communities; free hospital treatment was provided for 12 who could not afford it; occupational therapy has been offered former patients; volunteers are serving patients at Marlboro State Hospital; 123 educational programs have been at (Continued on Page 2)

Has Thumb In Top Mrs. Wagner's Pie



Don F. Copell, Vice President of Wagner Baking Corporation has been elected a Voting Trustee and Director of the Corporation according to Mr. F. W. Birkenhauer, Chairman and President of Wagner Baking Corporation, Newark.

Don F. Copell, a resident of Short Hills Village, Springfield, started with Wagner Baking Corporation as Maintenance Supervisor in 1932, and was elected Vice President in 1951.

Wagner Baking Corporation, makers of Mrs. Wagner's Pie, operates plants in Newark, Elizabeth, Cleveland, Detroit, Chicago and Red Hook, New York.



NEW PRESIDENT—Mrs. Edward J. Schubert, incoming president, accepts the gavel from Mrs. M. J. Williams, outgoing president, at the helm of the Springfield Woman's Club. Looking on is Mrs. Allison Hearn of Montclair, 7th District Vice-President. (Bogard Photo)

Letter Finds Fault With Sun Editor's Arithmetic

The Springfield Sun is publishing a letter below from Leonard Atkin of 6 Lynn drive with the editor's comments in bold face type.

Editor, Sun:
On Thursday, April 3, your paper published an article on the subject of our Springfield tax rate and those of several surrounding communities. Its title was "Springfield Tax Rate—In Big Drop." Without additional qualifications, this statement is false, and admitted there were no qualifications in the body of the article.

In fact, your elementary arithmetic was so obviously in error that I certainly expected a correction to appear in this week's issue. I certainly expected some readers to have brought the mistake to your attention. But look and look and look as hard as I can at your latest issue nowhere was there even a mention of the corrected data. Nowhere!

Why should this be? Maybe the correction was printed but I missed it. Maybe no reader discovered that two times 5.77 is 11.54 and that 11.54 is larger (not smaller) than 10.69. Maybe even the staff of your organization doesn't realize this obvious fact. Maybe.

There are just too many maybe's for comfort. Your responsibility to the community is most clearly implied when you speak of yourselves as the "official newspaper of the Township of Springfield," a moral responsibility that demands more intelligent research, demands correction, demands that from a civic point of view that the retraction, and correction occupy the same prominence as the original article.

For without this your intentions become suspect.

Very truly,
Leonard Atkin
EDITOR'S COMMENTS
Mr. Atkin, writer of the letter, who has become one of the moral arbiters of all the "do-gooders" in Springfield, would lower his blood pressure considerably if he read the April 3 article without looking for a lot of skullduggery. We should resent the insinuations in the letter that the Sun is in collusion in cahoots with the tax assessors office—and that "your intentions become suspect."

The writer of the letter should head the April 3 article again before tossing the word "false" around so loosely. The Sun story stated that "this lowering of the tax rate was made possible by the fact that Springfield has completed its revaluation program and raised the assessments from a little over 20 per cent to 40 per cent of the true value."

The Local Property Tax Bureau, Division of Taxation, Trenton, certified that Springfield tax assessors used 21.87 per cent of the property valuation last year. For 1958 the Union County Board of Taxation has set a unit (Continued on Page 3)

Asking \$35,000 In Death Of Son, 10

A \$35,000 Superior Court suit was filed this week by Cuthbert A. Pearl of 39 Morris avenue, Springfield, asking for compensation for the death of his son, Thomas E. 10, who died of injuries after being struck by a hit and run driver Nov. 29, 1957. The suit is against the State's Unsatisfied Claim and Judgment Fund.

According to the suit, the boy was struck by an unknown person at the intersection of Meiser avenue and Riverside drive, Springfield. The suit asks \$35,000 for the benefit of the boy's family, his mother, father and brother and his sister, \$3,000 for medical expenses, and \$3,000 for loss of services to his family. Sanford J. Strader of Elizabeth is representing Pearl.

Channing Brown To Lead \$ Drive

Channing Brown of 6 Perry place, Springfield, has been appointed a section leader for the campaign of the alumni of Union Junior College, Cranford, to help raise \$1 million for the college's silver anniversary development fund.

He will serve under Mrs. Harriet Liebman of 29 Sycamore terrace, Springfield, chairman.

A goal of \$100,000 has been set by the alumni. The college plans to construct a new building on a new campus site in Cranford the former Nomahegan Golf Course.

Pingry Alumni Gather

A resident of Springfield, Robert M. Pizzini '48, Short Hills Village, is serving on the committee meeting plans for the 1958 dinner celebrating of the North Jersey Alumni Club of The Peddie School.

Mrs. Schubert Is Woman's Club Pres.

Mrs. Edward J. Schubert, of 284 Northview terrace, was elected President of the Springfield Woman's Club for the coming year 1958-1959, at the regular monthly meeting held at the Edward Walter School on April 2. She succeeds Mrs. Merton D. Williams of 222 S. Springfield avenue, who just completed her third term as President.

In the absence of the Nominating Chairman, Mrs. William Cosgrove, Mrs. Merton D. Williams read the new slate of officers and department chairmen for the coming year; all were accepted by the club members.

Mrs. Allison Hearn of Montclair, Seventh District Vice President, who was the honored guest, conducted the installation ceremonies. Officers elected for the 1958-1959 year were: President—Mrs. Edward J. Schubert, First Vice President—Mrs. Robert D. Hardgrove Jr., Second Vice President—Mrs. Merton D. Williams, Third Vice President—Mrs. Charles E. Miller, Corresponding Secretary—Miss Gertrude Sala, Recording Secretary—Mrs. Thomas Geddes, Treasurer—Mrs. Vincent J. Bonadies, Department chairman—elected were—American Home—Mrs. Adolf Sism, Art—Mrs. Glen Oyster, Drama—Mrs. Lee Andrews, Jr., Education—Mrs. Edward Murdock, Garden—Mrs. Robert Buffington, International Relations—Miss Ruth Leysen, Literature—Miss Alice Rieg, Nominating—Mrs. John Billings, Publicity—Mrs. Frederick Speer, Public Welfare—Mrs. Wesley Lewandowski, Telephone—Mrs. Elmer Arnold, Ways and Means—Mrs. Alfred Koppisch, Club Book and Historian—Mrs. Adam LaSota.

Local Boy Serves Near Iron Curtain

Army Specialist Third Class William C. Snyder, son of Mr. and Mrs. Clark M. Snyder, 45 "Proy" drive is serving with the 11th Armored Cavalry Regiment on the brink of the Iron Curtain, near the German-Czechoslovakian border.

Specialist Snyder, a mechanic in the regiment's 1st Battalion Headquarters Company, entered the Army in August 1956 and completed basic training at Fort Knox, Ky.

The 24-year-old soldier is a 1951 graduate of Summit High School and attended Stevens Institute of Technology in Hoboken.

Channing Brown To Lead \$ Drive

Channing Brown of 6 Perry place, Springfield, has been appointed a section leader for the campaign of the alumni of Union Junior College, Cranford, to help raise \$1 million for the college's silver anniversary development fund.

He will serve under Mrs. Harriet Liebman of 29 Sycamore terrace, Springfield, chairman.

A goal of \$100,000 has been set by the alumni. The college plans to construct a new building on a new campus site in Cranford the former Nomahegan Golf Course.

Pingry Alumni Gather

A resident of Springfield, Robert M. Pizzini '48, Short Hills Village, is serving on the committee meeting plans for the 1958 dinner celebrating of the North Jersey Alumni Club of The Peddie School.

Presbyterians To Launch New Sunday School

The consecration and ground-breaking ceremony for the addition to the Presbyterian Church Parish House will be held this Sunday, April 20 at 10:20 a.m.

One youngster from each department of the Church School will dig a spadeful of earth, joining other representatives from various segments of the church life in this symbolic act.

The 9:30 church service will be dismissed early as well as the church school, assembling on the parking lot. Those attending the 11 o'clock service are asked to come to the ground-breaking ceremony before attending church.

Dean Widmer of Springfield has been selected as general contractor for the addition, which will be three stories, dedicated primarily to church school space.

Earlier, as part of the Expansion Fund of the Presbyterian Church—a sprinkler system was installed in the church sanctuary.

Caldwell PTA To Hear Rev. Sageser

The regular meeting of the James Caldwell School PTA will be held on Monday evening April 21, at 8:15 p.m. in the school auditorium. Elections of officers will take place at this meeting.

The Rev. David B. Sageser will be the guest speaker, his topic will be "College—A Grade-School Decision." Rev. Sageser is the Executive Director of the Department of Campus Christian Life of the National Council of Churches, Consultant to the Commission on Standards for Wesley Foundation of the General Board of Education of the Methodist Church.

Rev. Sageser is also Survey Consultant to many schools of higher education throughout the country, and editor of a book called, "What Is A Christian College?"

An attendance award banner will be presented to the class having the highest percentage of parents in attendance at the meeting.

Lion's Roar

The Springfield Lions Club will present their professional variety show "The Lion's Roar" this coming Friday, April 25, at Regional High School.

Teen Combo Is Second In Big Amateur Show

The "Continental," a 15-member danceband composed of Jonathan Dayton Regional High School students, won second place in the Third Annual Amateur Contest sponsored by the Methodist Men's Club of Springfield. The three-day competition, which featured Bob Bevan of Springfield as Master of Ceremonies, was held April 10, 11 and 12.

The dance band, which appeared on stage in gaily-colored caps, silk scarves and sun-glasses, won the enthusiastic approval of an audience estimated at 1,000 persons in the Regional High auditorium.

The band played two numbers, Tuxedo Junction, and When The Saints Come Marching In. The "Continental" competed against 23 other finalists representing 11 towns in Union County. More than 120 acts were auditioned for this (Continued on Page 2)

School Board To Again Seek Smith Property

Members of the Board of Education voted unanimously at its regular meeting held Tuesday evening to reopen negotiations with the Smith family for the purchase of the property on Milltown road as the site for the very necessary school expansion program.

The School Board has been anxious to purchase the Smith property since last November but Arthur H. Smith, Sr., one of the owners of the large plot of land, stated recently that "the family was not interested and is not considering selling the land for the building of another school."

The decision to make further offers to the Smith family came after an exhaustive search for suitable sites for a new school. "The Smith property," said a member of the Board of Education, "is the only plot of land available to suit the needs for our school expansion program. We have explored the matter thoroughly and it was unanimous that another attempt be made to purchase this land."

A survey has been made by the School Board for an appropriate site and, according to Tuesday's meeting, "the only logical property is the Smith tract on either Milltown Road." One statement made Tuesday that the Woodside Home section alone had over 200 children already needing or will shortly need schooling.

Speaker To Aid Chamber; Begin Committee Work

The New Jersey Chamber of Commerce is coming to the assistance of the Springfield Chamber in President Donald S. Lenny's "Revitalization" program.

Lenny announced this week that a speaker from the State chamber would be present at the next local meeting, Tuesday, April 22 at the Andrew Wilson Company, Baltusrol Way, Springfield. The 8 p.m. gathering is expected to turn out even a larger percentage of the local business community than attended the last meeting a week ago.

The speaker is a Newark public relations man, Joseph Mayers, Jr. He is going to talk on such questions as "What is a Chamber of Commerce, what can it do for the community, how to promote it, and what it can do for its members?"

Lenny reports that he expects to have the standing committees organized and trained by the end of the coming meeting to take the first steps toward an active program.

Mr. Mayers, president of the Newark Public Relations firm which bears his name, has been active in his field for more than 20 years, as reporter, editor, advertising, sales promotion, and employee relations executive.

Immediately prior to organizing his own firm in 1937, Mayers was director of public relations for the New Jersey State Chamber of Commerce, an assignment which included industrial development activities for the organization.

Prior to his State Chamber assignment, Mr. Mayers was Manager of Advertising and Sales Promotion, RCA Service Company; Technical Products Division, Northern New Jersey News-Gazette; Industrial Development Association, and member of the Board of Directors of the Travelers Aid Society of Newark.

Kean Defeats Shanley Even In Springfield

The primary election results in Springfield Tuesday showed that only 1,448 eligible voters out of the 6500 registered were interested enough to go to the polls.

The only surprise, chiefly to the backers of Bernard M. Shanley in the Township, was that Robert W. Kean defeated Shanley even in Springfield despite the aggressive campaign waged by the local Republican organization in behalf of the former President Eisenhower appointment secretary.

Kean rolled up a total of 455 votes against 425 for Shanley. Morris received 186.

As usual, the big vote getter in the Republican column was Congresswoman Florence P. Dwyer, who seeks reelection to that office and was unopposed in Tuesday's election. She polled a total of 998 votes.

Votes in a primary—especially where there is no competition—are difficult to analyze but local political sages are trying to figure out why the two candidates for Township Committee didn't keep pace with Mrs. Dwyer, Frederick A. Handville seeking reelection as Township Committeeman, polled 909 votes and Isaac Freedman, the other Republican candidate for office in the governing body, received 896.

Harrison A. Williams, Jr., Democratic candidate for United States Senate, proved that he was still popular with Springfield voters, polling 293 against 33 for John J. Grogan, Hoboken's Mayor.

The two Democratic candidates for Township Committee, Howard A. Flammer and Daniel M. Luey, received more votes than "Pete" Williams, the former polling 317 and Luey receiving one less, 316.

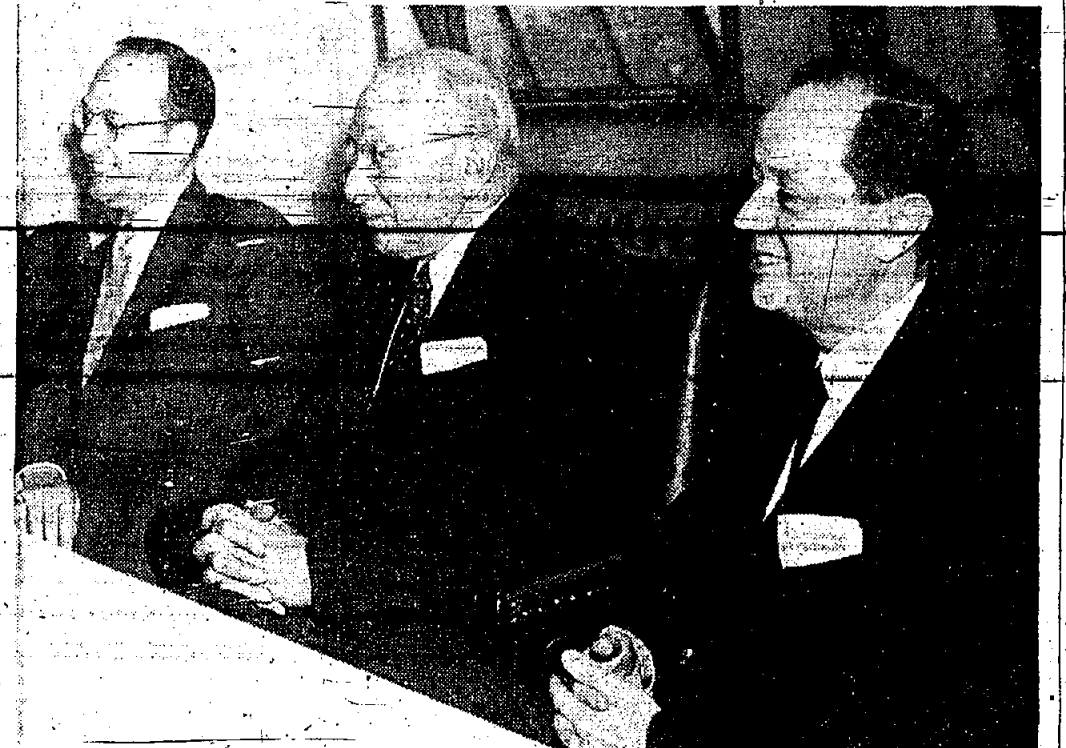
The only local contest in Springfield resulted in the election of Claire M. O'Connell over Eleanor Cucuzella by a 11-8 vote for the Township Democratic County Committee post in the Ninth District.

Approve \$300 For Psychiatric Aid

The Springfield Board of Education, at its regular meeting held Tuesday evening, voted to make \$300 available to inaugurate psychiatric services for the Township.

Members of the Township Committee, Board of Education, and Parent Teachers Association met in the James Caldwell School on March 31. A meeting was arranged by Mrs. Russell Hillier, President of the Board of Education, so that interested groups could explore the possibilities of psychiatric services for Springfield.

Recent legislation has made possible participation, by the towns of Union County, in the Plainfield Psychiatric Clinic through a contribution by the Township, or by both. The money contributed is matched by the county. Some state and federal funds are also available. Persons availing themselves of the services of the clinic pay for their treatments in accordance with their financial ability to do so. (Continued on Page 2)



DAVEGA LAUNCHES PROSPERITY CAMPAIGN: Photo shows, left to right, Matthew M. Roth, sales manager of the Davaega empire; H. M. Stein, president of the chain; and A. Davaega, vice president in charge of the greatest advertising campaign of all time.



COOL CATS—Regional High Schoolers walked (or rocked) off with 2nd prize at the three-day Methodist Men's Club Amateur Show last weekend. Club president Howard F. Flammer is shown presenting the winners their \$50 Savings Bond. (Robt. Jones Photo)

CLEAR RED CEDAR UMBRELLA TABLE

43" DIAMETER • Individually Cartoned

1150



43" CURVED BENCHES ea. 4.50

CLEAR RED CEDAR TABLE AND BENCH SET

60" LONG
TWO 60" BENCHES INCLUDED
Individually Cartoned

1795

ONLY AT CHANNEL'S POWER LAWN MOWER HEADQUARTERS DO YOU GET SO MUCH!!!!

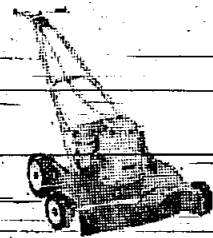
SERVICE — Authorized factory service on all makes and models of power mowers.

THE MOWER YOU BUY AT CHANNEL IS SERVICED AT CHANNEL

SELECTION — The largest selection of brand-name mowers in the state... Lawnboy... Pennsylvania... Pincor... Aircop... Turfmaster... Imperial Riding...

22" Rotary Power Mower

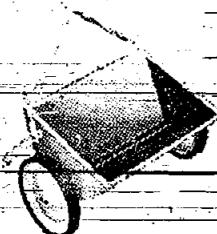
BRIGGS & STRATTON 4 Cycle engine 2 1/4 H. P. Recoil starter on handle. Choke-throttle & stop switch on handle. Staggered wheels. Side discharge. Includes mulcher. Cutting height from 1 1/2" to 3". 6" front wheels. 8" rear wheels. Ball bearing.



2 GAL. GAS CAN
98c **5995** List \$104.95

Seed and Fertilizer SPREADERS

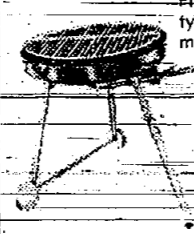
16" **6.95**
18" **8.95**
20" **11.95**



24" BRAZIER GRILL

With 6" Wheels
7" TUBULAR CHROME LEGS
Finger-rip ratchet type height adjustment. Plated grill.

795



GARDEN SUPPLIES

5-10-5 **\$2.19**

LIME **45c**

See Our Huge Selection of ROSE BUSHES FRUIT TREES and SHRUBS

Folding Aluminum WEB CHAIR

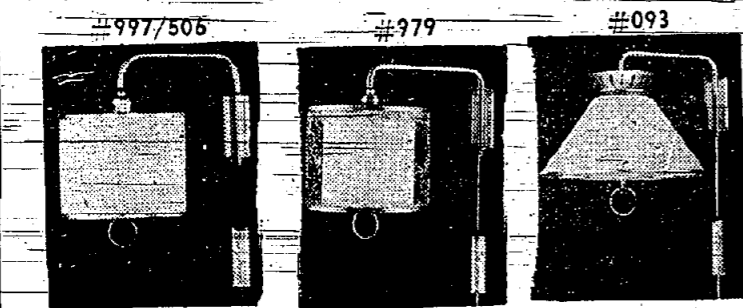
3 WEBS - 1" ALUMINUM TUBING CLEAR REDWOOD ARMS

899 List \$17.95



PULLEY-TYPE WALL LAMPS

#977/506 **5.95**
#979 **6.95**
#093 **7.95**



SHOPMATE ELECTRIC

HEDGE TRIMMER

EARLY BIRD SPECIAL
Lowest of the price
COMPLETELY GUARANTEED

Reg. \$29.95 **1995**



'SKIL' 6 1/2" POWER SAW

With Kick Proof Clutch
Cuts 2x4's WITH EASE
A REAL SAVING

LIST \$54.95 **3388**



OPEN SUNDAYS AND EVENINGS

SEE STORE HOURS LISTED BELOW

FREE DELIVERY ON PURCHASES OF \$30 OR MORE EXCEPT WHERE NOTED

CHANNEL LUMBER

THE STORES WITH THE *Friendly* PERSONALITY

RUN THEIR ANNUAL *Spring*

WING DING!

STARTS TODAY*
IN ALL **4 GREAT STORES**

We can say, with pardonable pride, that our wonderful new Neptune Store is THE TOAST OF THE COAST! Since our recent opening, thousands of people have come to look, admire, praise, and snap up the bargains! If you haven't been one of them yet, please accept our personal invitation to come visit! We know you'll like it!

CHANNEL HAS NO HIDDEN GIMMICKS, YOU BUY WHAT WE ADVERTISE

ONLY CHANNEL SAVES YOU SO MUCH on first quality nationally advertised merchandise. No seconds! No imperfects! No hidden defects!

PICK THE WAY YOU LIKE TO PAY 2 CREDIT PLANS

1 NO-COST CHARGE-IT SERVICE
NO DOWN PAYMENT
NO INTEREST
3 MONTHS TO PAY

2 FLEXO CON-TINUOUS CREDIT
NO DOWN PAYMENT
PAY AS YOU GO
UP TO 18 MONTHS TO PAY
CONTINUE BUYING EVEN THOUGH YOU OWE A BALANCE

VISIT OUR ALUMINUM DEPARTMENT



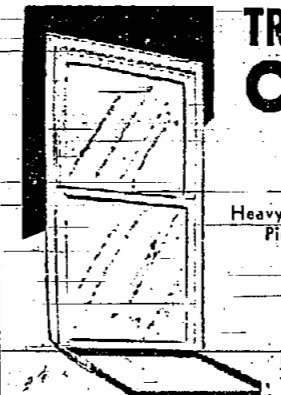
ALUMINUM AWNINGS

for WINDOWS • WALKS • PATIOS
PORCHES • DOORWAYS • STORES
No Seasonal Maintenance • Fireproof
• Windproof • Stormproof • Permanent



ALL-ALUMINUM Koolvent Ventilated Awnings

are designed for all-season, all-weather service. They keep out the sun and rain... provide air-cooled comfort. They're economical, too! The first cost is the only cost. Beautiful color combinations. COMPARE OUR PRICES.



TRIPLE-TRACK ALUMINUM COMBINATION WINDOWS

Heavy extruded aluminum. WOOL-PILE weather-stripped. Picture frame design. PRACTICALLY PAY FOR THEMSELVES IN FUEL SAVINGS

SPECIAL... **1395** Plus Installation

SPECIAL! ALL-ALUMINUM Metal CASEMENT SCREENS

Also in Stock
1 x 3
1 x 4
1 x 2 **139**



Highly Polished Aluminum and Glass TUB ENCLOSURE

Heavy glass panels fully assembled with 2 towel bars and everything needed for installation. We quote on all types of installations. Reduced bid or cost.

GRILLE 398
Installation \$10 **2995** Reg. \$69.95
4 1/2 Ft.

CHANNEL'S HOME SERVICE AND MODERNIZATION DEPT.

Every Channel installation is guaranteed by 50 years of Service to the home owner.

FREE ESTIMATES
Recreation Rooms — Attics
Basements — Garages — Etc.
USE CHANNEL'S EASY CHARGE PLAN
Our Crew of Thoroughly Experienced Construction Men Will Finish the Job Completely and to Your Satisfaction

1/8" PHILIPPINE MAHOGANY PLYWOOD
3'x7' SHEETS
Wonderful for walls, table tops, etc. A Real Buy.
195 SHEET

1/8" HARDBOARD
4'x8' SHEETS
LIMIT USES TABLE TOPS VENEER FOR DOORS WALL COVERING ETC.
169 SHEET

ALUMINUM LEADERS and GUTTERS
ALUMINUM GUTTER
H.R. 10" **2.45**
Lengths
ALUMINUM LEADER
Lengths 2"x4" 10" **1.89**

5/16" PLYSCORE
4'x8' SHEETS
SPECIAL **279** SHEET

LOWEST COST EVER! STANDARD "Adjusto-Ease" IRON RAILING... now only 98c



Install this QUALITY railing yourself and save! For indoors, for outdoors... Now yours at new low prices. Accessories Available

BIGGEST VALUES OF ALL
USE OF ROOF CARRIERS AND STAPLE GUNS
CHANNEL LUMBER CO.
"DO-IT-YOURSELF SUPERMARKETS"

FREE • FREE PARKING • FREE NO COST CHARGE-IT-SERVICE

<p>SPRINGFIELD: DR 6-6000-1-2-3 ROUTE 22 (N. J. ROUTE 29) OPEN DAILY 9 A. M. to 9:30 P. M. SATURDAY 8 A. M. to 6:30 P. M. SUNDAY 9 A. M. to 6:30 P. M.</p>	<p>NEWARK: BIGELOW 2-3100 675 SO. 10th STREET (Between Avon and Springfield Aves.) OPEN DAILY 8 A.M. to 5:30 P.M. SATURDAY 8 A.M. to 4:00 P.M. SUNDAY Shop at Springfield Builders - Contractors See us Year End or We'll Pick them Up</p>	<p>SAYREVILLE, N. J.: PA 1-6000 ROUTE #9 63 JULES SOUTH OF SOUTH AMBOY Suyre Woods Shopping Center Open Daily 9 A. M. to 7 P. M. Open Sat. & Sun. 9 A. M. to 6 P. M.</p>	<p>NEPTUNE: PROSPECT 6-8100 ON ROUTE 35 (Near Corlies Ave., Neptune) Open Daily 9 A. M. to 9 P. M. Sundays 9 A. M. to 6 P. M.</p>
---	---	---	--

CHANNEL LUMBER CO.
AS BRAND NAME RETAILER OF THE YEAR
ENTIRE AD COPYRIGHTED CHANNEL, 1958

Page 4 The SPRINGFIELD SUN, Thursday, April 17, 1958

Hi Neighbor!!

NEWS AND TIDBITS ABOUT YOUR FRIENDS & NEIGHBORS. If You Have Any News Call...

DREXEL 6-4502



Lorrie Lewis

Mrs. Frank Cardinal of 266 Milltown Road is one gal who takes her voting privilege seriously. Shortly before 8 a.m. on April 15, Mrs. Cardinal cast her vote in the primary. At 9 a.m. in Overlook Hospital, she became the mother of a baby daughter, Debra Fay, who weighed in at 7 lbs. 9 oz. Mr. and Mrs. Cardinal have two other youngsters—Darren age 5 1/2 years and Diane age 3 1/2 years.

Mr. and Mrs. Daniel Murray of Linden Ave. became the parents of their fourth child, Robert Joseph, on April 12 at Overlook Hospital. He weighed 7 lbs. 7oz. The Murrays' other children are Richard age 8 years, Debbie age 6 years, and Donald age one year.

Mr. Murray is the Principal of the Edward Walton and Raymond Chisholm schools.

An annual celebration marks the anniversary of Mr. and Mrs. S. Klugman of 534 Ashwood Road and the birthday of Jack Bobker of Newark. This year Mr. and Mrs. Klugman and Mr. and Mrs. Bobker made it dinner for four followed

by a performance of "Oh Captain." The Klugmans will be wed for 17 years on April 20.

Welcome to Mr. and Mrs. Arthur Thieberger of 6 South Gate who moved here recently from Hillside. Their two daughters are Jane age 6 years and Lisa age 4 years. Mr. Thieberger owns Art Jack DieCasters, Newark.

Mr. and Mrs. Donald Haws of 118 Fieldstone drive announce the birth of their son, James Kenneth, at Overlook Hospital on March 29. He tipped the scales at 8 lbs. 3 oz. The Haws also have a 20-month-old daughter, Dona Lynn. Mrs. Haws is the former Carol Glaser of Summit.

Among our newer residents are Mr. and Mrs. Dennis Monaghan of 28 Irwin street formerly of Sarnia, Ontario, Canada. Their two children are Jane age 5 years and James age 2 years. Mr. Monaghan is with Standard Oil of N. J.

Fight cancer with a check-up and a check!

Mr. and Mrs. B. Greenberg, formerly of Maplewood, have moved into their new home at 25 Hemlock terrace. Their two children are Susan age 4 years and Barry age 9 months.

Mr. Greenberg is a salesman with the Aaron Lippman Co., Newark.

Birth congratulations to Mr. and Mrs. Alvin Weiner of 174 Lelak Avenue, whose daughter was born on April 6 at the Beth Israel Hospital weighing 6 lbs. 4 oz. The Weiners also have a four-year-old son, Michael.

Mrs. Weiner is the former Barbara Radler of Newark.

Dinner Dance Sunday
Spring has arrived and so has the time for the annual dinner dance of the Springfield League of the Jewish National Home for Asthmatic Children to be held at the Shackamaxon Country Club on Sunday, April 20, 1958. Mrs. Rita Silver is in charge of the affair.

Hadassah Clears White Elephants

Springfield Chapter of Hadassah will meet on Wednesday evening, April 23, at 8:30 at Temple Beth Ahm. Mrs. Nathan Sherman will preside.

Mrs. Sherman and Mrs. Joseph Menkin, vice-president, will give their reports on the Spring Conference which they both attended last week-end at Laurel-in-the-Pines in Lakewood.

The program for the evening will be the annual White Elephant Sale. Mrs. Miriam Gershen, program chairman, has engaged two auctioneers to add authenticity to the occasion. All members are reminded that their admission to the sale is any piece of a bric-a-brac they wish to see auctioned off and buy in return.

The public is invited.

Always make slashes in the fat edge of a steak before broiling. Make the cuts about one and a half inches apart. This will prevent curling.



LOCAL PLAYWRIGHT UNVEILED — On Monday evening, April 21, at the Edward V. Walton School, the cast includes (left to right) Sam Breier, Mrs. Shirley LeBoeuf, Mrs. Edith Krueger, Dave Hecht, and Edena Franklin. (Mickey Fox Photo)

Trim & Fit Women To Resume Workout

The Springfield Recreation Commission's Trim and Fit Classes which were interrupted by Easter Vacation and the closing of schools, will be resumed on Friday, April 18, at 7:45 p.m.

The classes after Friday, will be held on Tuesday evenings, starting April 22nd and every Tuesday thereafter until the closing of school.

More than fifty women are enjoying these classes and new members are always made welcome. The only requirement is that you wear sneakers or soft soled shoes. Dress as you desire—slack, shorts, etc.

PTAs To Hear Talk On Mental Health

Dr. Ruth C. Boyle, psychologist, will be the discussion leader at the general meeting of the Raymond-Chisholm School PTA on Monday, April 21, at 8:15 p.m. in the school auditorium.

A mental health film, "Preface to a Life," will be shown and discussed by Dr. Boyle. The film deals with the actions of adults and trivial-seeming incidents in every day life which often influence a child's development.

Dr. Boyle, a psychologist on the staff of Newark State Teachers College, was formerly supervisor of special services for the Irvington and Summit public schools. She is an active member of many psychological and educational organizations. Dr. Boyle is a dynamic speaker and an excellent discussion leader.

At the short business-meeting preceding the program, the annual election of PTA officers will be held. Refreshments will be served.

Andersons Have Son

Mr. and Mrs. William S. Anderson of 66 Keeler street, Springfield, announce the birth of a son, Robert Rodgers, on April 7th at the Orange Memorial Hospital. They have two other children, Joan age 10, and William Jr., 5.

Want a Cab in a Hurry?
Springfield-Nadel Cab Co.
DREXEL 6-5200

JUST BETWEEN YOU & OUR COLOR EXPERTS

Color so natural-looking, so vibrant that only you will know for sure...
Why let "gray" or "fading" hair age your looks?
Look younger, prettier and actually feel more confident...
Mr. Anthony, formerly of East Orange, an expert and authority on all phases of Hair Coloring, is on our staff.

Paul & Louis Hairstylists
261 MORRIS AVENUE
SPRINGFIELD, NEW JERSEY
DREXEL 6-9877 Free Parking in Rear

Mr. Louis, formerly of Charles of the Ritz
Mr. Paul, formerly of Hahn & Co.

HUFFMAN & BOYLE

Fine Home Furnishings

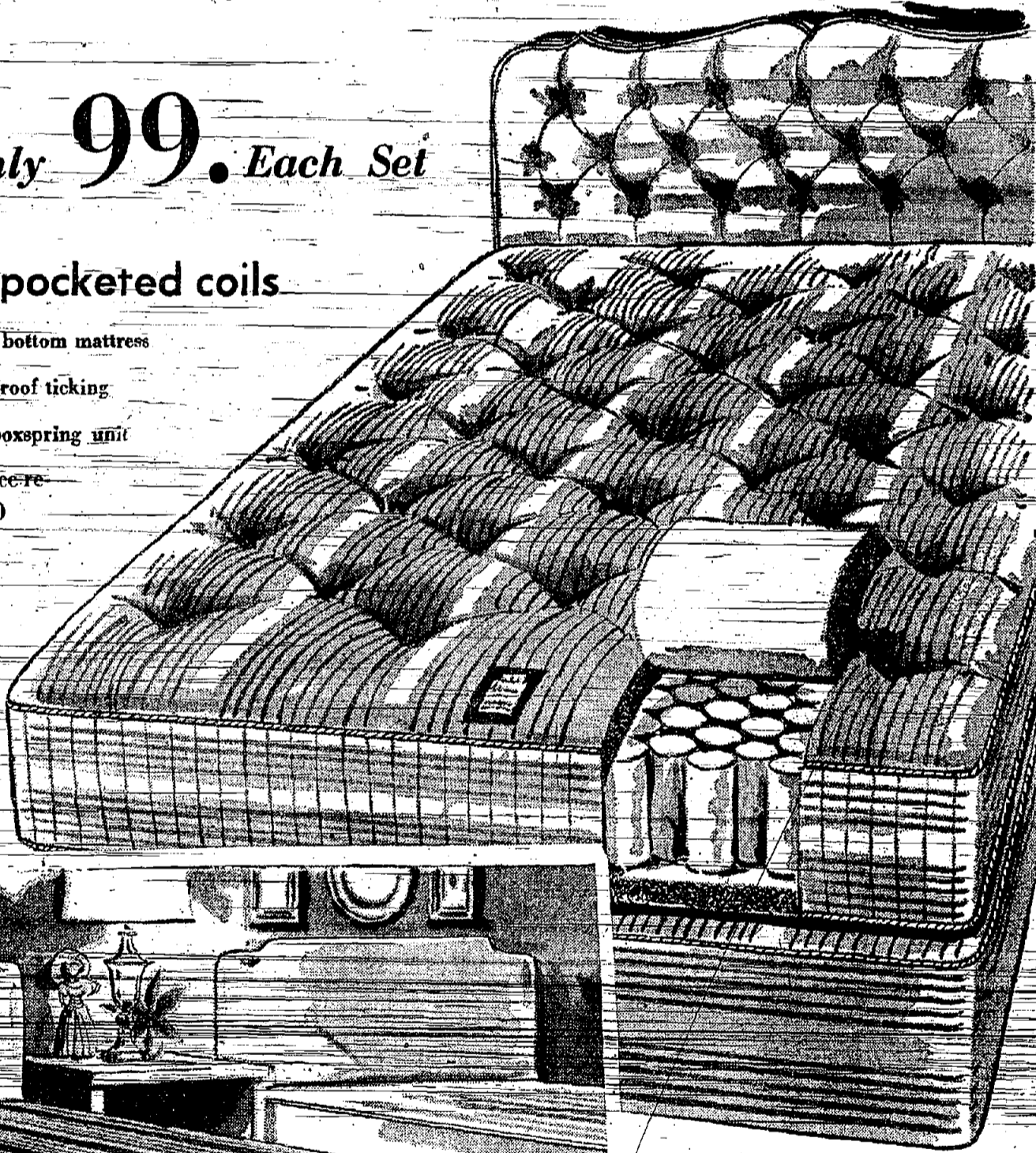
Your Best Sleep Ever!

Full or twin-mattress & boxspring sets by famous STEARNS & FOSTER

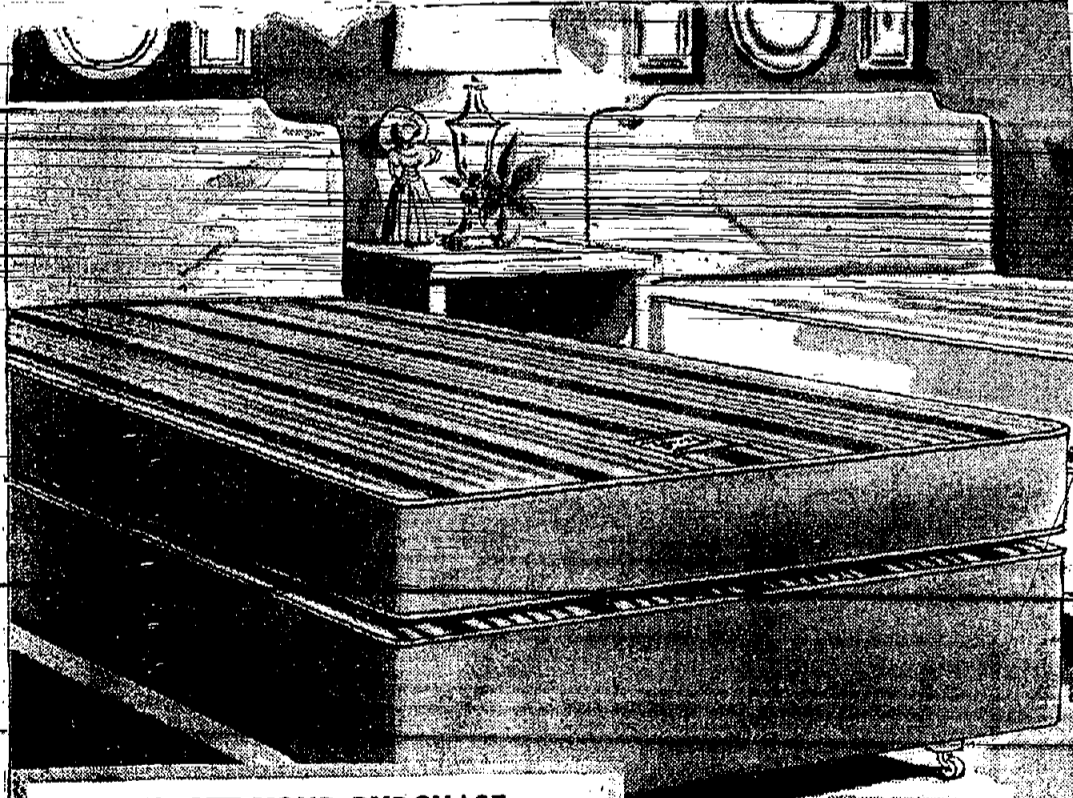
Special! Only 99. Each Set

837 muslin pocketed coils

- Pure hair top AND bottom mattress
- Durable 8 oz. hair proof ticking
- Specially-designed boxspring unit
- Your purchase price returned if within 30 days mattress not to your approval



All bedding guaranteed by H & B for 15 full years!



BUDGET YOUR PURCHASE
if you wish! Use our extended plan up to 18 months, as little as 10% down, no carrying charge if paid within 3 mos. Fully insured!

Order your mattress by phone.

Pure white foam rubber

- Full 4 1/2" deep foam rubber mattress
- Posture-balanced sleep support
- Specially-designed boxspring unit
- Non-allergy white foam rubber
- Your purchase price returned if within 30 days mattress not to your complete approval.

OPEN EVENINGS

HUFFMAN & BOYLE
Fine Home Furnishings

Route 24, SPRINGFIELD, DREXEL 9-4300

Open Thursday nights until 9 P.M.



our exclusive link-knit Orlon shirt

Orlon in a new guise — resembling alpaca in a looser, more porous knit. We recommend it highly for all active sports, and you'll find it extremely comfortable for your leisure hours. Washable, quick-drying and shape-retaining. White, oxford or bankers' grey, beige, maize, red, copen, navy or black. S, M, L, XL, 13.00. West Wing. Mail and phone orders; Sorry, no C.O.D.'s. DREXEL 6-7000.

THE MEN'S SHOPS

SAKS FIFTH AVENUE

Millburn and Short Hills Avenues, Springfield, N. J.

Doris Bonnet Is Married To Robert Balok Of Binghamton

Miss Doris Bonnet, daughter of Mr. and Mrs. William P. Bonnet of Morrison Road, Springfield, N. J., was wed on April 12 to Robert S. Balok, son of Mr. and Mrs. Stephen Balok of Binghamton, N. Y.

A double ring ceremony was performed by the Reverend Harold A. Murray at a nuptial mass in St. Teresa's Catholic Church, Summit, N. J. A dinner for the bridal party was held at The Arch, Short Hills, N. J., with a cocktail reception following.

Honor attendant for her sister was Mrs. William Lee. Misses Lynda Lee and Judy Bonnet were flower girls for their aunt. Mr. Stephen Balok, cousin of the groom, served as best man. Ushers were Mr. Robert Bonnet and Mr. William Lee.

The bride made her own gown a street length sheath of Italian imported silk peau de soie with applied lace, seed pearls and pearl sequins at the neckline. The overskirt was of lace and tulle. The Matron of Honor also made her own gown of embossed yellow taffeta with an overskirt of tulle, and the flower girls dresses of blue embossed taffeta with which they wore a short veil with a wreath of flowers and carried nosegays.

Mrs. Balok is a graduate of State Teachers College, Trenton, N. J. and is a teacher for the Los Angeles City School System. Mr. Balok, a graduate of Penn. State, is attending U.C.L.A. and is an engineer for the Autonetics Division of North American Aviation, Inc. in Los Angeles, Calif. The couple will reside in Englewood, California.



MRS. ROBERT S. BALOK

VFW Ladies Elect June Defino Pres.

On Tuesday evening, April 15, the Ladies Auxiliary to VFW Post 1111 held their monthly meeting at the Post Home on Morrison road. Election of officers was held and the following were elected: President, June Defino; Senior Vice Pres., Rose Miller; Jr. Vice Pres., Ann Briggs; Treasurer, Doris Muller; Chaplain, Lillian Cardinal; Guard, Hattie Schmidt; Conductress, Eleanor Cuzzella; Secretary, Doris Schmidt; Historian, Anita Hattersley; Trustees, Lillian Cardinal, Rose Miller, and Marie Summerer; Color Bearers, Mary Hattersley, Mary Schaffer, Clara Jerolman, and Jean Dziubaty; Delegates, Marie Summerer, Mary Hattersley, and Ann Briggs; Alternates, Doris Muller, Rose Miller and Hattie Schmidt; Flag-Bearer, Ruth Hattersley; Patriotic Instructor, Rose Miller; Musician, Madeline Lancaster; and Banner-Bearer, Ann Briggs.

There will be a joint installation of both new officers of the VFW Post and Auxiliary on Saturday evening April 26 at the Post Home. Members and friends are invited. Refreshments will be served.

REPLIQUE of THE SPRINGFIELD PHARMACY

Decorate your home with GRELCO MOVABLE SHUTTERS

6" x 18" \$1.49

Popular Sizes in Stock

Open Mon. & Fri. to 9 P.M.
Sat. 9-4. Sun. 9-1
Tues., Wed., Thurs. 8-5

ADLER HOME MART
Div. Adler Screen Mfg. Co.
Route #22, Mountainside
(Opposite Tops Diner)
ADams 3-5657

PTA County Council Will Hold May Meeting In Union

The setting for the Spring Council Meeting of the Union County Council of Parent-Teacher Associations is the New Campus of the New Jersey State Teachers' College which is located on the Kean property at the corner of Morris avenue and North avenue in Union. The theme chosen for the program is "Teachers - The T in P.T.A."

The meeting is scheduled to begin at 5:30 p.m. and continue to 10:00 p.m. on Thursday, May 8, 1958. This arrangement makes it possible for interested PTA members and friends of the local PTA units to attend all or part of the program. An evening meeting also makes it convenient for fathers, working mothers, and teachers to attend.

Features of interest to many local PTA members include the Buffet Supper which will be served in the cafeteria from 6:30-7:30 p.m. and a Guided Tour of the buildings to be conducted by the students of the College from 7:30-8:30 p.m. Reservations for the supper are limited to 350 and the deadline for making reservations is April 30th. All interested members should contact their respective local PTA presidents without further delay.

Dr. Eugene Wilkins, the president of the college, will deliver the keynote address of the County Council Meeting at 8:30 p.m. His topic for discussion will be "How Teachers Colleges Function in Training Teachers." Dr. David Scanlon, chairman of the Department of Education, will speak about "How to Interest High School Students in Becoming Teachers." Dr. Gene McCreery, chairman of Student Teaching and Placement, will explain "Why Teachers Are Important in P.T.A." These are topics of vital interest to all parents who live in communities of close proximity to the college.

The program plans also include a display of musical talent by the "Hi-Lows" Choral Group of

the College under the direction of Mr. Jack Platt, the Music Director of the College who is also the State Chairman of Music for the New Jersey Congress of Parents and Teachers.

Mr. Herman E. Wilde, the president of the Union County Council of Parent-Teacher Associations, will preside at this meeting. Dr. Lenore Vaughn-Eames, college chairman of the Graduate Program, has been serving as liaison in planning the program in co-operation with the County P.T.A. Program Chairman who is Mrs. J. Frank Jakobsen of Springfield. Dr. Vaughn-Eames has represented the college whereas Mrs. Jakobsen has represented all of the Union County P.T.A. units in entering the program around the topic of current interest to the parents and to the public, namely: School and Teacher Shortages, Higher Education, The Future of Our Children, and Parent-Teacher Relationships.

Sings Baritone
Jan Kennedy of 1 Warwick Circle will sing in a concert of the Piny Glee Club at the Hartridge School this Friday, April 18.
Kennedy is a baritone.

Enjoy Washington
Mr. and Mrs. L. Puopolo and children of 110 Remer avenue have returned from what they describe as "a most enjoyable week" in Washington, D.C. They also visited in Virginia according to a card received by the Sun.

WOMEN'S AND MEN'S

NATIONALLY ADVERTISED SHOES at DISCOUNT PRICES!

Cancellation - Surplus Stocks
Leading Manufacturers

9.95 value	\$ 6.90
12.95 value	\$ 7.90
14.95 value	\$ 8.90
16.95 value	\$ 9.90
18.95 value	\$10.90
21.95 value	\$11.90

Due to factory restrictions, we are unable to mention the names of these famous nationally advertised shoes. YOU WILL FIND THE NAME STAMPED IN EVERY PAIR.

FOOTWEAR INC.

354 Springfield Avenue
Summit, N. J.

Store Hours 9 A.M. to 6 P.M.
Friday Night to 9 P.M.

See Results Of Scholarship Fund

The benefits of the Pan American Scholarship Fund were observed first-hand by Mrs. Thomas Geddes of Springfield Woman's Club when she attended a meeting of the State Committee of International Relations, at the home of Mrs. Lawrence Hart, State Chairman.

Miss Margerite Rosas of Buenos Aires, the current exchange student from South America, and Miss Doris Sonle, the Douglass College student who spent last year in Paraguay, were the guests of honor during the luncheon hour. Both were charming young ladies who are doing much to cement good will between the northern and southern hemispheres.

A round table discussion of accomplishments during the past year and plans for convention work it a most interesting and worthwhile occasion.

Mrs. Thomas Geddes is Seventh District, International Relations, Chairman.

Women To Attend Big Convention

Mrs. David Weinstein, President and Mrs. Simon Heischuber, Counselor of the B'nai B'rith Women will represent the Springfield Chapter as their delegates at the forthcoming convention in Atlantic City, Saturday, Sunday and Monday, April 19, 20, and 21 at the Sheraton Ritz Carlton Hotel in Atlantic City, N.J.

The guest speaker at luncheon Saturday will be Arnold Forster, who is the chief counsel to the B'nai B'rith Anti-Defamation League.

A high spot of the Convention is planned for Saturday evening's banquet, when Mr. Philip M. Klutznick, President of the Order of B'nai B'rith, recently appointed as delegate to the United Nations will address the convention. Workshops will be held on all phases of B'nai B'rith activities.

4 Women Voters to Attend Convention

The 20th National Convention of the League of Women Voters will take place at Atlantic City from April 21 thru April 25. The official delegate from the Springfield League will be Mrs. L. At Douglas, Mrs. P. Fischl and Mrs. R. Moore.

The League is a nonpartisan organization whose purpose is to study and act on governmental issues, only after intensive study may it take a position on an issue. The two proposed top subjects for 1958-60 study are U.S. Foreign policy and national water resources.

Among the events at the Convention are the election of officers, the opening banquet and the "hat parade." The theme of the "hat parade" will be foreign trade—a League member from each state modeling a hat depicting exports from and imports to her state.

Ski Season Over
Members of the Short Hills Ski Club (one hundred twenty-five strong) will bring the 1957-58 ski season to a close with dining and dancing at the Hitchin' Post on Thursday evening, April 24.

Slate Card Party
The Women's Group of Shurey Shalom, Suburban Reform Congregation, will hold a card party on Tuesday, April 22 at 8 p.m. at the home of Mrs. Jack Slater, 22 Warwick Circle. Mrs. Slater and Mrs. Joe Gans are in charge of the affair.

BERMUDA MEXICO HAITI VIRGIN ISLES MIAMI BEACH HAVANA NASSAU JAMAICA

? WHERE ?
in the WORLD do You Want To Go?
Africa? Atlantic City? Mexico? The Mountains? Europe? SEE

FISCHER BROS. TRAVEL BUREAU, INC.
749 Springfield Ave. cor. Avon
IRVINGTON, N. J. ESsex 5-7600

Verdi & Liszt Entertain Here

The regular monthly meeting of the Music Appreciation Group of Temple Beth Ahm was held last Saturday night at the home of Mr. and Mrs. Joe Bender, 21 Ann place. A program featured compositions in recordings by Beethoven, Liszt, Brahms, Verdi and Grieg. A social hour followed the meeting.

Those present were Mr. and Mrs. Abner Gold, Mr. and Mrs. Leo Newman, Dr. and Mrs. Ben Simon, Mr. and Mrs. Manasseh Mendelsohn, Dr. and Mrs. Samuel Gross, Dr. and Mrs. Irving Shapiro, Mr. and Mrs. Hank Steiner, Mr. Irving Starr, Mr. and Mrs. Sid Krueger, Mr. and Mrs. Leo Aekerman and Mr. and Mrs. Joe Bender.

VFW Gives Essay Awards To Trio

Three Regional High School students from Berkeley Heights won the essay contest run by the local VFW in conjunction with the 23rd National Essay Contest. The VFW Ladies Auxiliary announced that Tim McCarthy won first place and will represent Regional in the State and National contests; Katherine Murphy and Betsy Gambrell took second and third places in the local contest.

Presentations of the awards will be made at the time of the joint installation of VFW and VFW Auxiliary officers at the Post Home on Morrison road on Saturday, April 26 at 8 p.m.

Game Night For Asthma Ladies

The Springfield League of the Jewish National Home for Asthmatic Children will hold a paid-up membership supper on Thursday, April 17, at 7:30 at Temple Beth Ahm in Springfield.

The supper will be catered by G. and J. DeHeatesen, Springfield.

"Game Night" has been arranged by Mrs. Clifford Schulman, program chairman and Mrs. Herbert Axelrad, membership chairman for the evening's entertainment.

Woman's Club Dance To Be Held Tomorrow
Springfield Woman's Club Annual Spring Dance will be held at the Hotel Suburban, Summit on April 18. Proceeds from this dance will go into the Club's

Scholarship Fund

Being able to obtain food will be an added feature at this year's dance. Members and friends wishing to secure tickets call Mrs. A. Pancazi, DRexel 9-4371 or Mrs. Vincent J. Bonadino, Dance Chairman, DRexel 9-4363.

Mayor Proclaims Asthma Tag Week

The Jewish National Home for Asthmatic Children at Denver, will benefit by a Tag Week Collection, beginning Monday April 21 and continuing to Saturday April 26 in Springfield.

Members of the Springfield League chapter of the Home, will serve as volunteers in a house-to-house collection for the non-sectarian Denver Home. Mrs. Harry Katz of 14 Garden Oval, and Mrs. Silver of 11 Locust Street, both of Springfield head the fund drive. Mayor Binder issued a proclamation supporting the drive.

TO EACH HER OWN

You-Cutlcraft-style-fashioned frames are selected and fitted just for you; achieving that wanted "custom-made" look.

To look smart, BE smart—Drop in to see our selection.

Eye Physicians Prescriptions Filled
Eye Glasses Repaired—Prompt Service

J. NORWOOD VAN NESS
Guild Opticians
14 Alvin Terrace—DRexel 6-6108 Springfield, N.J.
Established 23 Years in Newark

Open Thursday Nights—Until 9 P.M.

SALES FIFTH AVE NEWS

S.F.A.'s SPRING WHITE SALE
WAMSUTTA SUPERCAL
SHEETS AND CASES

Now through May, you can save substantially on Wamsutta's finest quality sheets and cases. They are made to last in close-woven combed cotton supercale—and they keep their sparkling whiteness or glowing colors through countless washings.

WHITE SUPERCALS	REG.	NOW
Sheets, plain hems, 72"x108"	5.45	4.45
Sheets, plain hems, 90"x108"	6.95	5.95
Sheets, plain hems, 108"x122 1/2"	13.45	9.95
Sheets, hemstitched, 72"x108"	5.85	4.85
Sheets, hemstitched, 90"x108"	7.35	6.35
Sheets, hemstitched, 108"x122 1/2"	11.95	10.35
Pillow cases, plain hems, 45"x38 1/2"	1.55	1.25
Pillow cases, hemstitched, 45"x38 1/2"	1.70	1.40
Sheets, bottom fitted, twin size	5.45	4.45
Sheets, bottom fitted, double size	6.45	5.45

WHITE WITH COLORED SCALLOP	REG.	NOW
Sheets, 72"x108"	6.45	5.45
Sheets, 90"x108"	7.95	6.95
Sheets, 108"x122 1/2"	12.45	10.95
Pillow cases, 45"x38 1/2"	1.95	1.65

COLORED BLOSSOM-TONED SUPERCALS	REG.	NOW
Sheets, plain hems, 72"x108"	6.95	5.45
Sheets, plain hems, 90"x108"	8.95	7.45
Pillow cases, plain hems, 45"x38 1/2"	1.95	1.65
Sheets, bottom fitted, twin size	6.95	5.45
Sheets, bottom fitted, double size	7.95	6.45

COLORED WITH WHITE SCALLOP	REG.	NOW
Sheets, 72"x108"	7.95	6.45
Sheets, 90"x108"	9.95	8.45
Pillow cases, 45"x38 1/2"	2.50	2.20

WAMSUTTA'S CANDY-STRIPED hem-stitched sheets and pillow cases in silky combed cotton percale. Choice of all striped or white with striped borders. Pink, blue, green, yellow, nutmeg, grey and lavender.

STRIPED SUPERCALS	REG.	NOW
Sheets, 72"x108"	7.35	5.85
Sheets, 90"x108"	9.35	7.85
Sheets, 108"x122 1/2"	14.95	12.70
Pillow cases, 45"x38 1/2"	2.20	1.90

Linen Shop. Mail and phone orders filled, no C.O.D's.
DRexel 6-2000

Millburn and Short Hills Avenues, Springfield, N. J.

They'll Come A-RUNNIN' for HERSHEY'S ICE CREAM NOVELTIES

still only a Nickel!

HERSHEY'S BANJO
Delicious chocolate coated vanilla ice cream on a stick. **5¢**

HERSHEY'S FUDJIO
A real chocolate fudge confection on a stick. **5¢**

HERSHEY'S CREAMSICLE
A refreshing combination of sherbet and vanilla ice cream on a stick. **5¢**

Your Choice This Weekend 6 for 29¢

HERSHEY'S ICE CREAM CENTER
22 Flamer Ave., Springfield
"Adjoining Municipal Parking Lot"
OPEN DAILY—12 Noon to 9 P.M. (Sunday included)

WOMAN'S CLUB NEWS

WOMAN'S CLUB PRESIDENT
Mrs. John T. Browne, now a resident of Springfield, at 64 Twin Oaks Oval, has been elected president of the Suburban Woman's Club of Union for 1958. Mrs. Browne has been a member of the Union organization for 7 years and one of the most active workers in the club. She has lived in Springfield since January.

Executive Board Meeting of the Springfield Woman's Club will be held on April 30, at the Cannon Ball Hotel. Hostesses for the evening will be Mrs. Thomas Geddes and Miss Ruth Levesen.

This is a reminder to Springfield Woman's Club members to take a day off on April 22, and attend the New Jersey State Federation of Women's Clubs, Drama Festival to be held in the Paper Mill Playhouse, Millburn, N. J. Admission will be seventy-five cents for six plays, where in the world can you get a better bargain. Morning session will start 10:00 a.m.—afternoon 1:30 p.m.

A Membership Tea in honor of new members of the Springfield Woman's Club will be given Saturday, April 26, at the Cannon Ball Hotel from 2:00 p.m. to 4:00 p.m. The new members will be given the opportunity to meet with Executive Board Officers, Department and Committee Chairmen and learn of their respective duties.

"Hobby Night", a yearly observance by the Springfield Woman's Club was held on April 12, in the Edward Walton School. Mrs. Merton D. Williams, president, at this her last meeting, as President of the club. Mrs. Allison Hearn, Seventh District Vice-President was honored guest and installing officer.

Mrs. DeForest Hillier, Membership Chairman introduced and welcomed two members into the club, Miss Lola Bevington, 44 Sherwood Rd. and Mrs. Robert Buffington, 64 Lyons Pl.

Verbal reports were given by officers and department chairmen of the club. On exhibit were various things made by members of different departments. There were displays showing the different countries discussed at meetings, books reported on and other subjects covered by departments. A silver candy dish from the Art Department and a chrome tray from the Drama Department were presented to the Hospitality Chairman. The Junior Volunteers were introduced by the Public Welfare Chairman who was pleased to report the girls and counselors have served a total of 1,234 hours in the Overlook Hospital. At the conclusion of Mrs. Merton D. Williams' Fiscal Report, the slate of officers and chairmen for 1958-1959 were presented. The entire slate was accepted by the membership and installation of officers followed with Mrs. Allison Hearn, officiating.

After an exciting and agreeable evening, refreshments of punch, Easter bunny cookies and different flavored tartlets were served by Hospitality Chairman Mrs. Robert D. Hadgrover Jr., and her gracious committee. The table looked beautiful with a flower arrangement of Easter flowers in a basket which was guarded by a big chocolate Easter bunny. The arrangements of this unusual and handsome arrangement were Mrs. Walter Anderson and Mrs. John Moore of the Garden Department.

ATTENTION!!! Members of the Springfield Woman's Club here's hoping you have April 18, circled on your calendar, that is the evening of our Annual Spring Dance at the Hotel Suburban, Summit. Monies derived from this dance are put in our Scholarship Fund. This is your dance so come out and make it a success. Call Mrs. A. Pancani, Drexel 9-4377 or Mrs. Vincent J. Bonadies, Dance Chairman, Drexel 9-4446 for tickets.

Polishing the Rough Ends—Three of the Headliners of the Springfield "Guys and Dolls" show, give special attention to their lines as curtaintime draws near. Pictured are Corinne Klein (Adelaide) backview; Harriet Harrison (Sarah) and Al Krause (Sky Masterson). The Temple Beth Ahm show hits the footlights on May 3 and 4 at the Regional High School.

Deborah Makes \$400 On Sale

Mrs. Allen Borsky, president of Suburban Deborah League was hostess to the Board Members of Suburban Deborah League at her home on April 14.

Mrs. Sanford Kessler, merchandise vice-president, presided and also gave a spring sales round-up report. Three new members of the board, Mrs. Ben Edelman, Mrs. Richard Kaveberg and Mrs. Bert Bruder were welcomed to the meeting.

Mrs. Tony Fiorelino announced that \$400.00 had been realized to date on the two day "Nearly New" sale which was held in Cranford last month. Mrs. Alvin Schneider and Mrs. Saul Speizer announced that plans are complete for Mother's Night and Installation. It will take place at Steiners in Newark on May 27. The Gerte Shop of Elizabeth will present a fashion show for which members and their mothers will model.

Mrs. Estelle Forman reported on plans for Suburban Tag Week which will take place during the week of April 28 through May 3. Mrs. Harold Berg presented a report on the results of a recent membership drive.

ORT Plans Sale in Elizabeth

The Springfield Chapter of Women's American ORT (Organization For Rehabilitation Through Training) will sponsor a Rummage Sale on Tuesday, May 20, at 30 First Street, Port of Elizabeth. Mrs. Harry Tzeses, chairman of the sale, will be assisted by Mrs. Seymour Margulies and Mrs. Harry Wemischner. For a rummage pick-up contact Mrs. Tzeses at Drexel 6-2179.

Values received from the sale will be used for the support of ORT Schools in Iran.

The word, Easter, comes from Eostre, the Anglo-Saxon-goddess of spring.

SAKS FIFTH AVENUE NEWS!

Safinia gives a summer preview

We think this is her most exciting show-in years! Come see what she's planned for daylight and for dark in her exclusive dress collection, sizes 5 to 13. Informal modeling, Saturday, April 19, 1-4 P.M. Young Elite Shop, East Wing.

SAKS FIFTH AVENUE
Millburn and Short Hills Avenues, Springfield, N. J.

Your Red Cross

The Springfield Chapter of the American Red Cross issued 203 Standard First Aid Certificates to sophomores at Regional High School. Mrs. Dorothy K. Dow, teacher of Health, is also an authorized, qualified instructor for First Aid Training under the American National Red Cross. While students also receive credit for First Aid in their Regular School Curriculum, they also have the privilege of holding Current Red Cross Certificates.

Mrs. Helen A. Bowles, First Aid Chairman for the Springfield Chapter, has just completed a Standard class for Springfield's Girl Scout Leaders. The following qualified for certificates: Jean Cicconi, Elsie Cowles, Ann Feller, Anne Growney, Claire Gillick, Ruth Hendlin, Peggy Kaulhold, Lucy Leonardis, Mary Myrberg, Jennie Kent, and Marion Rose.

Mrs. George J. Bowles, Jr., an Authorized Instructor, completed a class for Springfield's Auxiliary Police and Firemen. The following received certificates: Theodore Ganska, Edward Kisch, Edward Kisch, Jr., Bruce T. Kymor, Howard Monroe, Oliver G. Owens, R. Leslie Van Riper, George W. Wentz, Joseph S. Scidel and Eugene Campbell.

A Red Cross Gray Lady Training Program will be held on Tuesday Evenings April 22nd and April 29th, from 7:30 to 10:00 p.m. at the American Red Cross Plainfield Area Chapter. Any one who is sponsored by the Lyons Hospital while volunteer work at Lyons Veteran Hospital as part of a group from Springfield's Chapter call your Red Cross DR 6-1676 for full particulars. This course is sponsored by the Lyons Hospital Council.

Standard and Advance classes are being formed at regular intervals. One is scheduled for this spring. Any local resident or organization is eligible to sign up for First Aid. Call DR 6-1676 for further information.

Springfield Gaudineer School

Monday—Spaghetti with meat sauce, apple sauce or grapefruit, peanut butter sandwich, milk.

Tuesday—Chicken soup, ham and cheese sandwich, peaches, milk.

Wednesday—Hamburger on a roll, pickle, potato, fruit cocktail or pineapple, milk.

Thursday—Orange or tomato juice, chow mein, rice, Chinese noodles, peanut butter sandwich, milk.

Friday—Tuna fish salad, potato chips, lettuce with French dressing, roll, butter, milk.

The West Coast oyster industry, a \$20,000,000-a-year enterprise, extends from Alaska to California. The bulk is centered in Washington and Oregon.

NOW!!! STEREO RECORDS

First Records With True Stereophonic Sound

COME IN FOR A FREE DEMONSTRATION

STEREOPHONIC TAPE LIBRARY (All Major Labels in Stock)
STEREO CONVERSION SERVICE (Records or Phonographs)
TAPE RECORDER SPECIALISTS
AMPEX • BELL • PENTON
VM • RCA • WOLLENSAK
NORLCO • CAPITOL
WEBCOR & OTHERS

Visit Us Today
Open Even'g til 9

American Recording Co.
12-16 Jefferson Avenue
Elizabeth N. J.

Fit Comes First

with **DR. POSNER Scientific Shoes**

FUTTER BROS.
333 Millburn Ave. Millburn
Open Fri. Eve.

Everbody Is Saying!
"I Had My Set Refinished At Deco-Ray"

CUSTOM FURNITURE REFINISHING

• Bedrooms
• Dining Rooms
• Pianos
• Breakfronts
• Odd Pieces

... Because our PRICES ARE LOW and our finished work has that beautiful hand-rubbed luster you would expect, we have become one of the most talked about Refinishers of Furniture in both traditional and modern. We really DO mean it when we say "We make old furniture

LOOK BETTER THAN NEW!
Work Done For The Trade

Call: **DECO-RAY INTERIORS, INC.**
FINE FURNITURE FINISHERS
BI 8-0119 55-57 Brandford St. Newark, N. J.

BUYING A CAR THIS SPRING?

You can save substantially by financing through The First State Bank of Union.

You gain the added advantage of being able to place your insurance with your own agent who will give you good service should a claim arise and also of dealing with a local bank. This is more convenient, safer and more pleasant.

Safe Deposit Boxes Available in All Sizes
"One of the Fastest Growing Banks in the U. S."

The First State Bank of Union

UNION NEW JERSEY

MAIN OFFICE: Morris Ave. at Burke Pkwy.
HIGHWAY BRANCH: Route 22 at Monroe St.

Telephone MURdock 6-4800
Member Federal Deposit Insurance Corporation

Sell Springfield!

Join The Chamber of Commerce

FOLKS FAR AWAY? PHONE TODAY
costs little anywhere
Toronto 75¢

GUERLAIN
at THE SPRINGFIELD PHARMACY

JEWELERS

Wesley Jewelers
173 Mountain Ave.
DIAMONDS • WATCHES
JEWELRY
"Where You Can Afford Fine Quality"
Budget Terms Arranged
Drexel 6-6047

"Your Future, Son?"

"Here's the way I see it!"

"From what I've seen during the last couple of years, this country needs more scientific men — and more engineers. Almost every kind of business needs them. They are all looking for engineering help.

"So think of an engineering degree. It could lead to an exciting life . . . to a profitable career . . . to new and different opportunities. And these high school years are the ones in which you lay your ground work."

PUBLIC SERVICE

OPEN MONDAYS
Closed Wednesday

MAC'S
Choice and Prime Beef
Fresh Poultry
Roth's Smoked Hams

HENRY'S
Delicatessen
Quality Grocery
Fruits and Vegetables

BECKMANN'S FOOD MARKET
"The Friendly Neighborhood Market"

301 Morris Avenue, Springfield Drexel 9-4176

ORDINANCE
AN ORDINANCE PROVIDING FOR THE IMPROVEMENT OF EVERGREEN AVENUE FROM SOUTH SPRINGFIELD AVENUE TO THE UNION COUNTY PARK COMMISSION PROPERTY LINE PROVIDING FOR THE PAYMENT OF THE COST THEREOF BY THE PROPERTY OWNERS NECESSARY TO PAY THE COST OF SUCH IMPROVEMENTS.

BE IT ORDAINED by the Township Committee of the Township of Springfield in the County of Union as follows:

1. That Evergreen Avenue between South Springfield Avenue and the line of property of the Union County Park Commission be improved in the following manner:

a. By constructing granite block curbing along both sides of Evergreen Avenue except in such places where curbing is not in place.

b. By constructing a modified penetration macadam pavement with a bituminous concrete top for a total of 8 inches in depth and a width of 30 feet.

c. By constructing storm sewers and appurtenances as may be required, removing trees within the right-of-way of the improvements to said improvements where necessary due to change in grade and alignment.

d. By doing all other work incidental to and appurtenant to the work required in effecting the improvements herein provided for.

2. That the said improvements shall be done and performed in accordance with plans and specifications prepared by the Township Engineer, approved by the Township Committee and on file in the Township Engineer's office; said plans and specifications being hereby adopted for said purposes.

3. That the owners of all lands on the line of said improvements are hereby ordered and directed to make all necessary house connections with sewers, water and gas mains within said sections of Evergreen Avenue wherever said connections are to be installed, would require excavation into the improvements to be constructed.

4. That the owners of all lands on the line of said improvements shall not make such connections within the period of time aforesaid, the Township of Springfield shall cause such connections to be made and pay the cost and expense thereof and cause such cost and expense to be assessed upon the lands benefited.

5. That for the purpose of raising the funds necessary to carry out the provisions of this ordinance and the expenses and charges incidental thereto, there be and hereby is appropriated the sum of \$33,000.00, of which the sum of \$200.00 is hereby appropriated in accordance with Section 40-1.12 of the Local Bond Law of the State of New Jersey, to be used for the purpose of raising the sum of \$33,000.00 by the Township of Springfield, which sum of \$33,000.00 will be raised by bond, or bond anticipation notes of the Township of Springfield, pursuant to the provisions of R.S. 40-1.16 D, N.J.S.A. The estimated amount of money to be raised from all sources for the construction of the foregoing improvements is the sum of \$33,000.00. Of this foregoing sum of \$33,000.00, sums of money are estimated to be necessary to be expended as follows:

a. For the performance of the general improvements referred to in paragraph 1 hereof the sum of \$34,000.00.

b. The sum of \$1,000.00 is estimated to be necessary for the following purposes:

(1) Interest on such obligations to the extent permitted by law.

(2) Legal expenses.

(3) The cost of the issuance of obligations authorized for such purposes, including printing and advertising of ordinances, resolutions, notices of sale and legal expenses.

6. To finance said purpose there shall be issued pursuant to the provisions of the Local Bond Law of the State of New Jersey in anticipation of the issuance of bonds, bond anticipation notes of the Township, which shall not exceed in the aggregate the sum of \$33,000.00, said notes shall bear interest at a rate which shall not exceed 6% per annum and may be renewed from time to time pursuant to and within the limitations prescribed by said law.

All moneys with respect to said notes appropriated by this ordinance shall be determined by resolution to be hereafter adopted by the Township Committee.

The amount of the cost of all of the foregoing improvements, other than the installation of block curbing and the total cost required in the installation of said granite block curbing, shall be paid for by general taxation at large.

Special assessments for benefits against the property benefited by the installation of the granite block curbing shall be paid in three annual installments from the date of confirmation of such special assessments.

The period of usefulness of said improvements for which said bond or bond anticipation notes shall be issued is ten years.

The supplemental debt statement required by R.S. 40-1.1 et seq. has been made and filed in the Office of the Township Clerk and said statement shows that the gross debt of the Township is increased by the amount of \$33,000.00, and that the obligations authorized by this ordinance will all be within the limitations prescribed by R.S. 40-1.10.

This ordinance shall take effect five days after its passage and publication thereof in accordance with law.

I, ELEANORE H. WORTHINGTON, do hereby certify that the foregoing Ordinance was introduced for first reading at a regular meeting of the Township of Springfield in the County of Union and State of New Jersey, held on Wednesday, April 9, 1958, and that the said Ordinance shall be submitted for consideration at the next meeting of the said Township Committee to be held on April 23, 1958, at 8 P.M. in the Springfield Municipal Building at 8 P.M. at which time and place any person or persons interested therein, will be given an opportunity to be heard concerning such Ordinance.

ELEANORE H. WORTHINGTON, Township Clerk.

April 10th & 11th
OFFICE OF THE TOWNSHIP CLERK

TAKE NOTICE that at a meeting of the Township Committee held on April 9, 1958, approval was given to the submission of Resolution No. 10 for Application for Final Approval of Subdivision Plat, re Block 82, Part of Lots 1 and 2, northerly corner of South Springfield Avenue and Shunpike Road, Springfield, N. J. in the Office of the Township Clerk and is open for public inspection.

The only Southern capital not captured by federal troops in the Civil War was Florida's Tallahassee. Confederate troops repulsed many attempts by Union forces to penetrate the section of Florida in which the capital is situated.

CARDINAL'S Spectacular LAWN MOWER SALE

Only at CARDINAL'S can you find so many famous brands—all rated tops in the lawn mower field—all sold on a warranty basis—all lubricated and fully adjusted to operate properly. Remember... DON'T BUY A BOX—BUY A MOWER!

CLEARANCE SALE

Floor samples and last year's models. All brand new and guaranteed!

SOLD AT COST! ROTARY MOWERS

- 18" ECLIPSE PAL \$49.95
- 18" Jacobsen Model 50 54.95
- 18" Toro Whirl-trim 59.95
- 18" Worchester, Clinton Engine . . . 59.95
- 18" Reo Revo-Jet DeLuxe 79.95
- 18" Homko, Briggs & Stratton 84.50

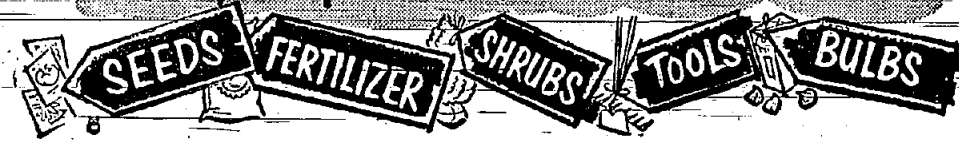
REEL MOWERS

- 18" Reo Scotty \$84.95
- 18" Worchester No. 750 89.95
- 18" Suburban, Briggs & Stratton . . 69.95
- 21" Suburban, B&S Engine 89.95

Many other models to choose from. Large selection of quality hand mowers in stock, at our usual low prices.

We are AUTHORIZED DEALERS for ECLIPSE, JACOBSEN and TORO. Come in and see our selection of fine 1958 mowers.

everything to help your garden grow!



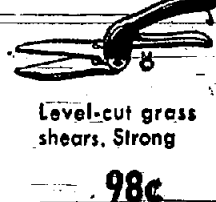
FERTILIZERS

- CARDINAL'S Professional 5-10-5 Reinforced with dried blood 50 lbs. \$1.95
- ARMORGANIC, 100% organic, long lasting 50 lbs. \$2.90
- DEHYDRATED Cow Manure. No filler 50 lbs. \$2.50
- CARDINAL'S 100% Vegetable organic. 100 lb. bags. Wonderful for lawns and shrubs. Regular \$7.50 \$4.95

COMPLETE LINE OF NATIONALLY ADVERTISED FERTILIZERS including Scott's, Agrico, Armours, Hyganic, Green D, Vertigreen, Patco, Espoma and many others.

the sure way to HAPPY GARDENING

Tool-up here and now for a banner gardening season. We've got everything you need to get growing!



Level-cut grass shears. Strong 98c

Top quality garden shovels, spades and pitchforks. Durable. From 2.79

Heavy duty hose on portable reel. 50 feet. Reg. \$11.95 NOW \$7.98

Buch Spreader Reg. \$9.95 NOW \$4.98

FAMOUS SCOTT'S SPREADERS

- (Rated Best Buy)
- Model ABC \$ 8.95
- Model No. 20 12.95
- Model No. 35 16.95
- Model No. 75 24.95

Accurate, positive controls, that spread finest materials.

We Carry A Full Line

Of Famous SCOTT'S LAWN PRODUCTS

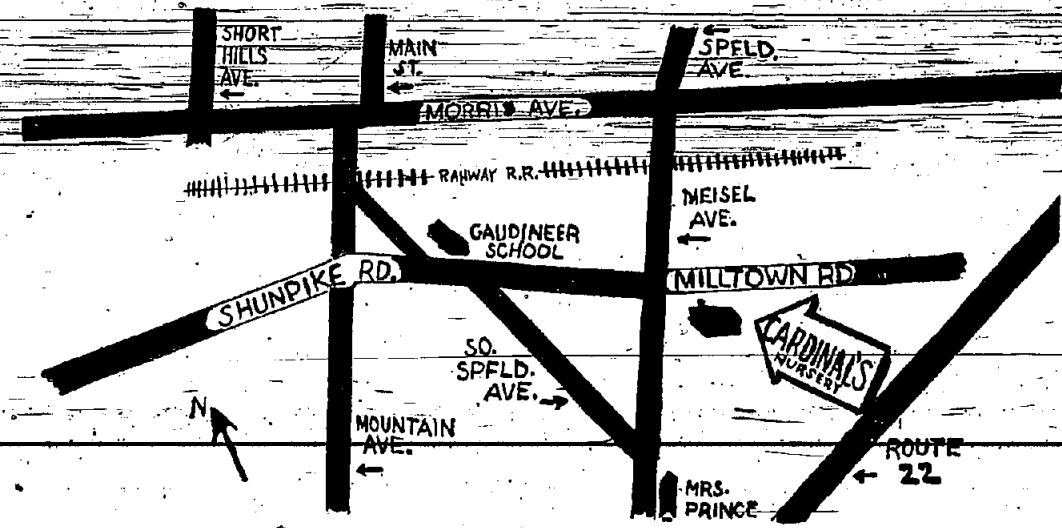
GARDEN TOPICS

by Ed Cardinal

Fertilizer should be applied as soon as possible so that the grass roots have a chance to grow deeply into the soft earth. Use a good grade of fertilizer, containing at least a sizable percentage of organics in order to insure a slow, steady growth of grass. The newer urea-form fertilizers are also very satisfactory and safe to apply.

The earlier you seed your lawn, the better its chance of surviving the summer drought. Kentucky bluegrass has proven to be desirable, but slow to produce a thick turf. Our blends of seed are mixed for this area and are reasonably priced to suit your needs.

CARDINAL'S doesn't handle garden supplies as a side line, or use them as a come-on to attract customers. We are a year 'round garden center with experienced help who can answer your problems intelligently. Over thirty years of agricultural experience to aid you in beautifying your grounds.



LANVIN at THE SPRINGFIELD PHARMACY

to RENT AUTOS (or anything) JUST LOOK IN THE YELLOW PAGES OF YOUR PHONE BOOK

H.C. Deuchler Since 1928 GUILD OPTICIAN

CHOOSE YOUR OPTICIAN AS YOU DO YOUR EYE PHYSICIAN

Highest quality workmanship. Quality frames and lenses. A reputation for service that built satisfied customers year after year.

612 CENTRAL AVENUE EAST ORANGE, N. J. DR. 3-1208 - CR. 6-4209

344 SPRINGFIELD AVE. SUMMIT, N. J. CR. 3-3888



Get the best LAWN SEED

FERTILIZER and ADVICE

FORBES GARDEN CENTERS

On Route 10, Hanover, N. J.

and Morris Turnpike at Millburn Ave., Millburn

Both Open 8:30 to 5:30, Including Sunday

(Millburn Store open Fri. and Sat. nights till 8:30)

CARDINAL NURSERIES

262 Milltown Road SPRINGFIELD

"Springfield's Garden Department Store" DRexel 6-0440

TAKING CARE OF YOUR GARDEN

By Edward A. Cardinal
Chairman, Springfield Shade-Tree-Commission

After fattening up on Tony's turkey legs all winter, the sudden rush of spring business was tough on the flabby muscles. Anyone working out on the lawn for the first time should be careful not to over do themselves, because it is an easy matter to strain muscles and cause other injury. Start off by raking over the lawn and removing all debris and loose, dead grass. You will

find many stones that came to the surface during the spring thaw, and these should be removed to prevent damage to the lawn mower. After this chore is completed you should limbered up enough to start the next phase. Fertilizing is next in order, and I advise you to select a brand that is noted for its lasting quality rather than price. The chemical fertilizers are like eating sugar for breakfast—plenty of calories, but it doesn't stick to your ribs. The organic combinations, or the newer urea-form fertilizers will work slowly and although not as sensational in turning your lawn green overnight you can depend on a slow steady growth of grass

for many weeks. Almost 100% of the soil tests made in this area show an acid reaction. This means that lime is badly needed on most lawns. A light application yearly should do no harm. Use pulverized limestone, which will not burn your lawn, and is safe to use at the same time you apply fertilizer. If the soil has a tendency to pack hard, an application of gypsum would be beneficial. Bulletins are available at my garden center, or write to this column and I will mail them to you.

QUESTION: I put in a new lawn last fall. Shall I treat it for grubs now?
ANSWER: No. You will not be troubled with grubs until August when the newly hatched eggs do their worst damage. Apply grub-proofing during the summer months to control other insects that may be in your lawn.

QUESTION: My lawn has been in several years. How can I tell if grub-proofing is necessary?
ANSWER: Every lawn needs grub-proofing in this area. Indications of grubs are many, such as a flock of birds feeding on the grubs in your lawn, small pencil-size holes over the lawn from birds digging for grubs, moles in a lawn show the presence of grubs. Don't take chances. Apply grub-proofing to all lawns over a year old.

QUESTION: Can lime and fertilizer be applied by hand?
ANSWER: Yes, but besides being tough on your hands it is hard to put these materials on evenly without a spreader. Buy your own spreader and keep it in good working order and it will pay for itself in a short time. In buying a spreader, don't buy price, or you will be very sorry. Bargain spreaders are usually not accurate and soon disperse the materials unevenly, sometimes doing great damage. Get a good spreader that you can use for weed killing chemicals as well as the course products. (Scott's spreaders are rated in Consumers Report magazine as a best buy.)

NOTE: I have many free bulletins available for the asking. Write to this column in care of Springfield Sun, and note the subject you are interested in.

Want a Cab In a Hurry?
Springfield-Nadel Cab Co.
DRexel 6-5200

7-BRIDGE NURSERY

and

PLANT MARKET

Look-See-Compare Our Prices

- Evergreens
- Rhodys Max.
- Hybrids
- Laurel
- Flowering Trees
- Shade Trees
- Fruit Trees
- Azaleas

--Special--
Forsythia and Sheared Hemlock
This Fri.,—Sat.,—Sun. ONLY

Located at—
Springfield Ave.
(7 Bridge Rd.)

Springfield, N. J.
Tel.: DR 6-7166

PFC Henderson On Army Court Team

Army PFC Clifford R. Henderson Jr., whose parents live at 68-B Waßeno-avenue, is a member of the 3d Armored Division's 3d Artillery basketball team at Buitzbach, Germany.

Henderson, a wireman in the 3d Artillery's Headquarters Battery, entered the Army in October 1955. He arrived overseas in April 1957 from an assignment.

The first railroad was opened in New York State in 1831, between Albany and Schenectady.

FOR A BETTER SPRINGFIELD
Join The Chamber of Commerce

SAY "HAPPY BIRTHDAY" BY PHONE
costs little anywhere
Lowell, Mass. 60¢

3-minute station rate from Newark after 6 P.M. Tax not included.

Your Library

Miss Helen C. Reyner, Director Springfield Free Public Library Dear Miss-Reyner:

At a meeting held today attended by Presidents and Principals of the four local Parent-Teacher Associations there was discussion on the value and importance of the library calendar as a clearing house for dates of local organizations. Everyone agreed that the service was invaluable and we wish to compliment you. We hope that you will continue to notify organizations that you have this service and that organizations will avail themselves of its use.

Sincerely yours,
Sylvia Bender Secretary
Springfield Council of Parent-Teacher Associations

Feed Your Trees—But Use Care

Tree lovers anxious to give their pets a good growing start this Spring should see that they are properly fed but must resist the temptation to overstuff them with prepared fertilizers. Woody youngsters loaded down with rich high nitrogen victuals don't just get tummyaches. Their root systems may be damaged beyond recovery.

The best way to dish out blue plate specials for tree friends is to follow strictly instructions on fertilizer packages.

Landscaping chow must be precisely applied, despite gardening enthusiasts' tendency to overdo things. Their theory is if some tree food is good, more is even better.

Actually, super-rich high nitrogen diet burns delicate new roots. This checks rather than stimulates root growth. In extreme cases, this means the Sawdust Trail.

Fertilizers must be doled out as per instructions with a given quantity for a specified area. Packaged kinds usually have instructions printed on the container. Bulkier ones are likely to come with both instructions and informative literature.

The average cost of operating a typical single-engine airplane flying 145 miles per hour, is 8 1/2 cents an hour. It costs an average of 3 1/2 cents a mile to run a low priced automobile.

Miss Helen C. Reyner, Director Springfield Free Public Library Dear Miss-Reyner:

At a meeting held today attended by Presidents and Principals of the four local Parent-Teacher Associations there was discussion on the value and importance of the library calendar as a clearing house for dates of local organizations. Everyone agreed that the service was invaluable and we wish to compliment you. We hope that you will continue to notify organizations that you have this service and that organizations will avail themselves of its use.

Sincerely yours,
Sylvia Bender Secretary
Springfield Council of Parent-Teacher Associations

Feed Your Trees—But Use Care

Tree lovers anxious to give their pets a good growing start this Spring should see that they are properly fed but must resist the temptation to overstuff them with prepared fertilizers. Woody youngsters loaded down with rich high nitrogen victuals don't just get tummyaches. Their root systems may be damaged beyond recovery.

The best way to dish out blue plate specials for tree friends is to follow strictly instructions on fertilizer packages.

Landscaping chow must be precisely applied, despite gardening enthusiasts' tendency to overdo things. Their theory is if some tree food is good, more is even better.

Actually, super-rich high nitrogen diet burns delicate new roots. This checks rather than stimulates root growth. In extreme cases, this means the Sawdust Trail.

Fertilizers must be doled out as per instructions with a given

If You Need Shade We Recommend MORAINE LOCUST



DISTINCTIVELY BEAUTIFUL, GRACEFUL AND STATELY.

THE DELICATE, GREEN FOLIAGE OF THIS GRACEFUL TREE, ITS FAST GROWTH AND RESISTANCE TO DISEASE AND INSECTS HAVE MADE THE MORAINE LOCUST AMERICA'S FAVORITE TREE. IT ATTAINS A TWENTY-FIVE FOOT HEIGHT IN JUST SEVEN YEARS. LAWN GRASS GROWS LUXURIOUSLY UNDERNEATH. THIS STAUNCH AND GRACEFUL HARDWOOD TREE IS WINNING NEW FRIENDS EVERYWHERE.

HERE ARE THE REASONS WHY THIS TREE SHOULD BE USED IN YOUR HOME LANDSCAPE.

1. Vigorous Fast Growth
2. Bright Green Foliage
3. Graceful Shape
4. Storm Resistant
5. Clean-Free of Maintenance
6. Encourages Luxuriant Lawn Growth
7. No Surface Roots
8. Grows Anywhere

AVAILABLE AT BRECK'S IN 12-15' TREES AT \$18.95
A WIDE SELECTION OF ALL TYPES OF SHADE AND FLOWERING TREES NOW AVAILABLE IN OUR SALES YARD.

MILLBURN, N. J.—ROUTE 24
(Morris Turnpike)
DR 6-1991

AMPLE FREE PARKING
Open Daily—9 A.M. to 9 P.M.
Sunday—9 A.M. to 6 P.M.

BRECK'S
RELIABLE SINCE 1878
Home and Garden Centers
PETER HENDERSON, STUMPP & WALTER

For over 30 years, D & P Products have been used enthusiastically by estate superintendents, golf course superintendents, landscapers, nursery men, florists and horticulturalists.

OUR NEW RETAIL STORE IS NOW OPEN

May we give you the benefit of our experience.

FREE ADVICE

- Fertilizers
- Lime
- Peat Moss
- Grass Seed
- Insecticides
- Weed Killers
- Flower & Vegetable Seeds
- Garden Supplies
- Hydromix Products

Visit Us For Your Gardening Needs

DOGGETT-PFEIL COMPANY

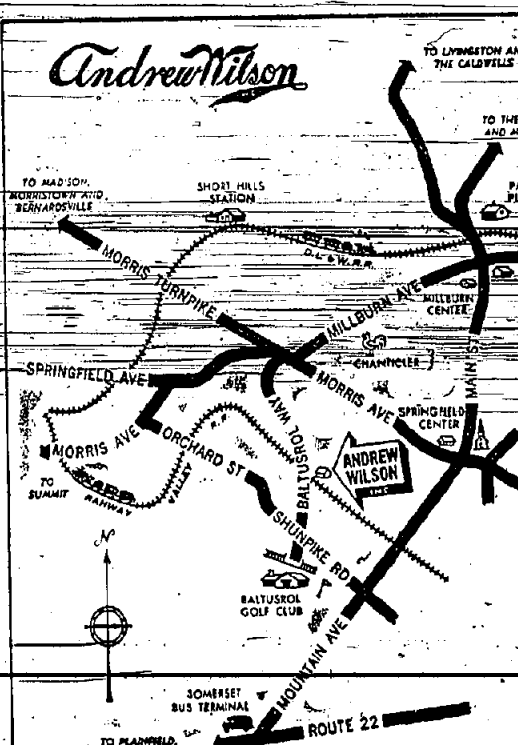
DEPENDABLE GARDEN PRODUCTS SINCE 1921

OPEN WEEKDAYS 8:30-6:00
SATURDAYS 8:30-1:00

191 MOUNTAIN AVE.
SPRINGFIELD

PREVENT SUMMERTIME CRAB-GRASS NOW WITH

PAK



Andrew Wilson

A Complete Line of Lawn and Garden Chemicals DESTROYS DORMANT CRAB-GRASS SEEDS

DRexel 6-1122

INSECTICIDES
FUNGICIDES - PLANT FOODS
WEED KILLERS
and GARDEN PRODUCTS

"WHY BOOB LEAVE HOME?"

Andrew Wilson
BALTUSROL WAY
SPRINGFIELD, N. J.

Regional Lists Honor Students

Honor roll students for the fourth marking period of the Jonathan Dayton Regional High School...

David Colvin, Myring Cogg, John Dally, George Eicks, Kurt Ger...

Honors Highest Honors Eugene Becker, Michael Besch, Peter Besch, Barbara Boyle, Walter...

Honors Lois Anthony, Lawrence Atkin, Kenard Ben-Ari, Linda Biwise, Barbara Browne, Steve Chodas...

Freshmen Highest Honors Edith Abramson, Judith Barlow, Mack Briddleman, Joanne Radina...

Honors Virginia Barnwell, Stephen Bender, Kenneth Blahut, Carl Brodian, Christine Cleveland, John Del...



WINS SECOND PRIZE—Miss Patricia M. Durand of 362 Short Hills avenue, in Springfield, took second place honors in the Fifth Annual Greater Newark Science Fair...

BRICK CHURCH APPLIANCE SLASHES FAMOUS BRANDS FOR A SELL-OUT!

3 DAY SELL-A-THON SALE AT UNION ONLY! This is it: your opportunity to get the FAMOUS NAME appliances you've always wanted at special DISCOUNT PRICES during Brick Church's 3-Day Price-Slashing SELL-A-THON Event...

New 1958 Roll-Out Hotpoint REFRIGERATOR-FREEZER Big 12 Cu. Ft. 2-Door Model! It's Got MOVE-ABILITY! It's Got STOR-ABILITY!

SAVE ON THESE FAMOUS MAKE Refrigerator, RCA 17" PORTABLE TV, GENERAL ELECTRIC Refrigerator, HOTPOINT DISHWASHER, RCA 21" TELEVISION, PHILCO Refrigerator, CALORIC GAS RANGE, FAMOUS MAKE FREEZER, WHIRLPOOL WASHER, FRIGIDAIRE Refrigerator, EASY WASHER

160 OFF! Hotpoint Model 7ED12 REFRIGERATOR-FREEZER NOW ONLY \$199.95 EASY TERMS! Look for These PLUS Features!

Save on These Sell-A-Thon Buys 14.95 CORY ELEC. KNIFE SHARPENER 6.88, WEBCOR 4 Speed-Auto Changer HI-FI Console \$84.88, REGINA WAXER \$31.88, 11.95 Westinghouse AUTOMATIC-IRON 4.88, 14.95 12-pc. KITCHEN TOOL & KNIFE SET 3.88, 24.75 WATERMAN PEN & PENCIL SET 6.88, 210 Pam. Make Grill-Waffle Baker 11.88, 1.49 Chrome Plated Cork Screws 59c, 98c ECKO-FLINT PARING KNIVES 39c, 26.95 1/2" Elec. Drill, Gear Chuck 11.88, 3.50 Aluminum ICE CUBE TRAYS 88c, 18.95 Knapp-Monarch Steam & Dry Irons 3.88, IRONING BOARD COVERS 29c, 12.95 Farberware 4-pc. Stainless Set 2.88, 1.59 EVEREADY FLASHLIGHTS 69c

Two Girls To Tour White House, FBI Miss Janice Pierson, daughter of Mr. and Mrs. Raymond Pierson of 147 Linden Avenue will leave Friday, April 18 to attend the National Convention of the Children of the American Revolution in Washington, D.C.

enjoy the glamorous new ZENITH Vogue EYEGLASS-HEARING AID So smart... there's no reason to hesitate about wearing hearing aid today.

DRESSES any 2 for \$1.98 BATHROBES any 2 for \$1.98 Safe-Refrigerated FUR and cloth garment STORAGE ★ Furs \$3.50 ★ Cloth coats, \$1.00*

Anspach Bros. Guild Opticians 348 Springfield Ave., Summit 533 Main St., Asbury Park East Orange

TOWNSHIP OF SPRINGFIELD - COUNTY OF UNION SYNOPSIS OF AUDIT REPORT FOR CALENDAR YEAR 1957 COMBINED COMPARATIVE BALANCE SHEET

TOWNSHIP OF SPRINGFIELD - COUNTY OF UNION SYNOPSIS OF AUDIT REPORT FOR CALENDAR YEAR 1957 COMPARATIVE STATEMENT OF OPERATIONS AND SURPLUS - CURRENT ACCOUNT

TOWNSHIP OF SPRINGFIELD - COUNTY OF UNION SYNOPSIS OF AUDIT REPORT FOR CALENDAR YEAR 1957 RECOMMENDATIONS (1) That the uncollected personal taxes for prior years be collected, and if determined uncollectible be cancelled in the manner prescribed by law.



TV STAR & STARLET—Joan Thayer, better known as "Miss Joan" of the WABD Romper Room television show poses with one of her latest discoveries, "Miss Frammer," better known as Pamela Kiesel, daughter of Mr. and Mrs. Howard Kiesel of 132 Hillside Avenue. Pam and Joan have teamed up these past two weeks on the J. J. Newberry sponsored show.

NOTICE OF HEARING
Notice is hereby given that the Board of Adjustment of the Township of Springfield, County of Union, State of New Jersey will hold a public hearing on Thursday, April 24, 1938 at 8:00 P. M., Eastern Standard Time, in the Municipal Building, Flomer Avenue, Springfield, N. J., to consider the application of Frank J. and Arthur Brown, partners in a C. 2 industrial property known as Block 66-E, Lots 12, 13, 14, 15, 22-A and 22-B, Eleonore H. Worthington, Township Clerk.

NOTICE OF HEARING
Notice is hereby given that the Board of Adjustment of the Township of Springfield, County of Union, State of New Jersey will hold a public hearing on Thursday, April 24, 1938 at 8:00 P. M., Eastern Standard Time, in the Municipal Building, Flomer Avenue, Springfield, N. J., to consider the application of Harold Oil Company for a variance and Special Exception to the Zoning Ordinance governing Block 76, Lots 1, 2, 3, 4, 5, 6, 7, 8, 9, 10, 11, 12, 13, 14, 15, 16, 17, 18, 19, 20, 21, 22, 23, 24, 25, 26, 27, 28, 29, 30, 31, 32, 33, 34, 35, 36, 37, 38, 39, 40, 41, 42, 43, 44, 45, 46, 47, 48, 49, 50, 51, 52, 53, 54, 55, 56, 57, 58, 59, 60, 61, 62, 63, 64, 65, 66, 67, 68, 69, 70, 71, 72, 73, 74, 75, 76, 77, 78, 79, 80, 81, 82, 83, 84, 85, 86, 87, 88, 89, 90, 91, 92, 93, 94, 95, 96, 97, 98, 99, 100, 101, 102, 103, 104, 105, 106, 107, 108, 109, 110, 111, 112, 113, 114, 115, 116, 117, 118, 119, 120, 121, 122, 123, 124, 125, 126, 127, 128, 129, 130, 131, 132, 133, 134, 135, 136, 137, 138, 139, 140, 141, 142, 143, 144, 145, 146, 147, 148, 149, 150, 151, 152, 153, 154, 155, 156, 157, 158, 159, 160, 161, 162, 163, 164, 165, 166, 167, 168, 169, 170, 171, 172, 173, 174, 175, 176, 177, 178, 179, 180, 181, 182, 183, 184, 185, 186, 187, 188, 189, 190, 191, 192, 193, 194, 195, 196, 197, 198, 199, 200, 201, 202, 203, 204, 205, 206, 207, 208, 209, 210, 211, 212, 213, 214, 215, 216, 217, 218, 219, 220, 221, 222, 223, 224, 225, 226, 227, 228, 229, 230, 231, 232, 233, 234, 235, 236, 237, 238, 239, 240, 241, 242, 243, 244, 245, 246, 247, 248, 249, 250, 251, 252, 253, 254, 255, 256, 257, 258, 259, 260, 261, 262, 263, 264, 265, 266, 267, 268, 269, 270, 271, 272, 273, 274, 275, 276, 277, 278, 279, 280, 281, 282, 283, 284, 285, 286, 287, 288, 289, 290, 291, 292, 293, 294, 295, 296, 297, 298, 299, 300, 301, 302, 303, 304, 305, 306, 307, 308, 309, 310, 311, 312, 313, 314, 315, 316, 317, 318, 319, 320, 321, 322, 323, 324, 325, 326, 327, 328, 329, 330, 331, 332, 333, 334, 335, 336, 337, 338, 339, 340, 341, 342, 343, 344, 345, 346, 347, 348, 349, 350, 351, 352, 353, 354, 355, 356, 357, 358, 359, 360, 361, 362, 363, 364, 365, 366, 367, 368, 369, 370, 371, 372, 373, 374, 375, 376, 377, 378, 379, 380, 381, 382, 383, 384, 385, 386, 387, 388, 389, 390, 391, 392, 393, 394, 395, 396, 397, 398, 399, 400, 401, 402, 403, 404, 405, 406, 407, 408, 409, 410, 411, 412, 413, 414, 415, 416, 417, 418, 419, 420, 421, 422, 423, 424, 425, 426, 427, 428, 429, 430, 431, 432, 433, 434, 435, 436, 437, 438, 439, 440, 441, 442, 443, 444, 445, 446, 447, 448, 449, 450, 451, 452, 453, 454, 455, 456, 457, 458, 459, 460, 461, 462, 463, 464, 465, 466, 467, 468, 469, 470, 471, 472, 473, 474, 475, 476, 477, 478, 479, 480, 481, 482, 483, 484, 485, 486, 487, 488, 489, 490, 491, 492, 493, 494, 495, 496, 497, 498, 499, 500, 501, 502, 503, 504, 505, 506, 507, 508, 509, 510, 511, 512, 513, 514, 515, 516, 517, 518, 519, 520, 521, 522, 523, 524, 525, 526, 527, 528, 529, 530, 531, 532, 533, 534, 535, 536, 537, 538, 539, 540, 541, 542, 543, 544, 545, 546, 547, 548, 549, 550, 551, 552, 553, 554, 555, 556, 557, 558, 559, 560, 561, 562, 563, 564, 565, 566, 567, 568, 569, 570, 571, 572, 573, 574, 575, 576, 577, 578, 579, 580, 581, 582, 583, 584, 585, 586, 587, 588, 589, 590, 591, 592, 593, 594, 595, 596, 597, 598, 599, 600, 601, 602, 603, 604, 605, 606, 607, 608, 609, 610, 611, 612, 613, 614, 615, 616, 617, 618, 619, 620, 621, 622, 623, 624, 625, 626, 627, 628, 629, 630, 631, 632, 633, 634, 635, 636, 637, 638, 639, 640, 641, 642, 643, 644, 645, 646, 647, 648, 649, 650, 651, 652, 653, 654, 655, 656, 657, 658, 659, 660, 661, 662, 663, 664, 665, 666, 667, 668, 669, 670, 671, 672, 673, 674, 675, 676, 677, 678, 679, 680, 681, 682, 683, 684, 685, 686, 687, 688, 689, 690, 691, 692, 693, 694, 695, 696, 697, 698, 699, 700, 701, 702, 703, 704, 705, 706, 707, 708, 709, 710, 711, 712, 713, 714, 715, 716, 717, 718, 719, 720, 721, 722, 723, 724, 725, 726, 727, 728, 729, 730, 731, 732, 733, 734, 735, 736, 737, 738, 739, 740, 741, 742, 743, 744, 745, 746, 747, 748, 749, 750, 751, 752, 753, 754, 755, 756, 757, 758, 759, 760, 761, 762, 763, 764, 765, 766, 767, 768, 769, 770, 771, 772, 773, 774, 775, 776, 777, 778, 779, 780, 781, 782, 783, 784, 785, 786, 787, 788, 789, 790, 791, 792, 793, 794, 795, 796, 797, 798, 799, 800, 801, 802, 803, 804, 805, 806, 807, 808, 809, 810, 811, 812, 813, 814, 815, 816, 817, 818, 819, 820, 821, 822, 823, 824, 825, 826, 827, 828, 829, 830, 831, 832, 833, 834, 835, 836, 837, 838, 839, 840, 841, 842, 843, 844, 845, 846, 847, 848, 849, 850, 851, 852, 853, 854, 855, 856, 857, 858, 859, 860, 861, 862, 863, 864, 865, 866, 867, 868, 869, 870, 871, 872, 873, 874, 875, 876, 877, 878, 879, 880, 881, 882, 883, 884, 885, 886, 887, 888, 889, 890, 891, 892, 893, 894, 895, 896, 897, 898, 899, 900, 901, 902, 903, 904, 905, 906, 907, 908, 909, 910, 911, 912, 913, 914, 915, 916, 917, 918, 919, 920, 921, 922, 923, 924, 925, 926, 927, 928, 929, 930, 931, 932, 933, 934, 935, 936, 937, 938, 939, 940, 941, 942, 943, 944, 945, 946, 947, 948, 949, 950, 951, 952, 953, 954, 955, 956, 957, 958, 959, 960, 961, 962, 963, 964, 965, 966, 967, 968, 969, 970, 971, 972, 973, 974, 975, 976, 977, 978, 979, 980, 981, 982, 983, 984, 985, 986, 987, 988, 989, 990, 991, 992, 993, 994, 995, 996, 997, 998, 999, 1000.

NOTICE OF HEARING
Notice is hereby given that the Board of Adjustment of the Township of Springfield, County of Union, State of New Jersey will hold a public hearing on Thursday, April 24, 1938 at 8:00 P. M., Eastern Standard Time, in the Municipal Building, Flomer Avenue, Springfield, N. J., to consider the application of National Shoe for a variance to the Zoning Ordinance concerning Block 76, Lots 1, 2, 3, 4, 5, 6, 7, 8, 9, 10, 11, 12, 13, 14, 15, 16, 17, 18, 19, 20, 21, 22, 23, 24, 25, 26, 27, 28, 29, 30, 31, 32, 33, 34, 35, 36, 37, 38, 39, 40, 41, 42, 43, 44, 45, 46, 47, 48, 49, 50, 51, 52, 53, 54, 55, 56, 57, 58, 59, 60, 61, 62, 63, 64, 65, 66, 67, 68, 69, 70, 71, 72, 73, 74, 75, 76, 77, 78, 79, 80, 81, 82, 83, 84, 85, 86, 87, 88, 89, 90, 91, 92, 93, 94, 95, 96, 97, 98, 99, 100, 101, 102, 103, 104, 105, 106, 107, 108, 109, 110, 111, 112, 113, 114, 115, 116, 117, 118, 119, 120, 121, 122, 123, 124, 125, 126, 127, 128, 129, 130, 131, 132, 133, 134, 135, 136, 137, 138, 139, 140, 141, 142, 143, 144, 145, 146, 147, 148, 149, 150, 151, 152, 153, 154, 155, 156, 157, 158, 159, 160, 161, 162, 163, 164, 165, 166, 167, 168, 169, 170, 171, 172, 173, 174, 175, 176, 177, 178, 179, 180, 181, 182, 183, 184, 185, 186, 187, 188, 189, 190, 191, 192, 193, 194, 195, 196, 197, 198, 199, 200, 201, 202, 203, 204, 205, 206, 207, 208, 209, 210, 211, 212, 213, 214, 215, 216, 217, 218, 219, 220, 221, 222, 223, 224, 225, 226, 227, 228, 229, 230, 231, 232, 233, 234, 235, 236, 237, 238, 239, 240, 241, 242, 243, 244, 245, 246, 247, 248, 249, 250, 251, 252, 253, 254, 255, 256, 257, 258, 259, 260, 261, 262, 263, 264, 265, 266, 267, 268, 269, 270, 271, 272, 273, 274, 275, 276, 277, 278, 279, 280, 281, 282, 283, 284, 285, 286, 287, 288, 289, 290, 291, 292, 293, 294, 295, 296, 297, 298, 299, 300, 301, 302, 303, 304, 305, 306, 307, 308, 309, 310, 311, 312, 313, 314, 315, 316, 317, 318, 319, 320, 321, 322, 323, 324, 325, 326, 327, 328, 329, 330, 331, 332, 333, 334, 335, 336, 337, 338, 339, 340, 341, 342, 343, 344, 345, 346, 347, 348, 349, 350, 351, 352, 353, 354, 355, 356, 357, 358, 359, 360, 361, 362, 363, 364, 365, 366, 367, 368, 369, 370, 371, 372, 373, 374, 375, 376, 377, 378, 379, 380, 381, 382, 383, 384, 385, 386, 387, 388, 389, 390, 391, 392, 393, 394, 395, 396, 397, 398, 399, 400, 401, 402, 403, 404, 405, 406, 407, 408, 409, 410, 411, 412, 413, 414, 415, 416, 417, 418, 419, 420, 421, 422, 423, 424, 425, 426, 427, 428, 429, 430, 431, 432, 433, 434, 435, 436, 437, 438, 439, 440, 441, 442, 443, 444, 445, 446, 447, 448, 449, 450, 451, 452, 453, 454, 455, 456, 457, 458, 459, 460, 461, 462, 463, 464, 465, 466, 467, 468, 469, 470, 471, 472, 473, 474, 475, 476, 477, 478, 479, 480, 481, 482, 483, 484, 485, 486, 487, 488, 489, 490, 491, 492, 493, 494, 495, 496, 497, 498, 499, 500, 501, 502, 503, 504, 505, 506, 507, 508, 509, 510, 511, 512, 513, 514, 515, 516, 517, 518, 519, 520, 521, 522, 523, 524, 525, 526, 527, 528, 529, 530, 531, 532, 533, 534, 535, 536, 537, 538, 539, 540, 541, 542, 543, 544, 545, 546, 547, 548, 549, 550, 551, 552, 553, 554, 555, 556, 557, 558, 559, 560, 561, 562, 563, 564, 565, 566, 567, 568, 569, 570, 571, 572, 573, 574, 575, 576, 577, 578, 579, 580, 581, 582, 583, 584, 585, 586, 587, 588, 589, 590, 591, 592, 593, 594, 595, 596, 597, 598, 599, 600, 601, 602, 603, 604, 605, 606, 607, 608, 609, 610, 611, 612, 613, 614, 615, 616, 617, 618, 619, 620, 621, 622, 623, 624, 625, 626, 627, 628, 629, 630, 631, 632, 633, 634, 635, 636, 637, 638, 639, 640, 641, 642, 643, 644, 645, 646, 647, 648, 649, 650, 651, 652, 653, 654, 655, 656, 657, 658, 659, 660, 661, 662, 663, 664, 665, 666, 667, 668, 669, 670, 671, 672, 673, 674, 675, 676, 677, 678, 679, 680, 681, 682, 683, 684, 685, 686, 687, 688, 689, 690, 691, 692, 693, 694, 695, 696, 697, 698, 699, 700, 701, 702, 703, 704, 705, 706, 707, 708, 709, 710, 711, 712, 713, 714, 715, 716, 717, 718, 719, 720, 721, 722, 723, 724, 725, 726, 727, 728, 729, 730, 731, 732, 733, 734, 735, 736, 737, 738, 739, 740, 741, 742, 743, 744, 745, 746, 747, 748, 749, 750, 751, 752, 753, 754, 755, 756, 757, 758, 759, 760, 761, 762, 763, 764, 765, 766, 767, 768, 769, 770, 771, 772, 773, 774, 775, 776, 777, 778, 779, 780, 781, 782, 783, 784, 785, 786, 787, 788, 789, 790, 791, 792, 793, 794, 795, 796, 797, 798, 799, 800, 801, 802, 803, 804, 805, 806, 807, 808, 809, 810, 811, 812, 813, 814, 815, 816, 817, 818, 819, 820, 821, 822, 823, 824, 825, 826, 827, 828, 829, 830, 831, 832, 833, 834, 835, 836, 837, 838, 839, 840, 841, 842, 843, 844, 845, 846, 847, 848, 849, 850, 851, 852, 853, 854, 855, 856, 857, 858, 859, 860, 861, 862, 863, 864, 865, 866, 867, 868, 869, 870, 871, 872, 873, 874, 875, 876, 877, 878, 879, 880, 881, 882, 883, 884, 885, 886, 887, 888, 889, 890, 891, 892, 893, 894, 895, 896, 897, 898, 899, 900, 901, 902, 903, 904, 905, 906, 907, 908, 909, 910, 911, 912, 913, 914, 915, 916, 917, 918, 919, 920, 921, 922, 923, 924, 925, 926, 927, 928, 929, 930, 931, 932, 933, 934, 935, 936, 937, 938, 939, 940, 941, 942, 943, 944, 945, 946, 947, 948, 949, 950, 951, 952, 953, 954, 955, 956, 957, 958, 959, 960, 961, 962, 963, 964, 965, 966, 967, 968, 969, 970, 971, 972, 973, 974, 975, 976, 977, 978, 979, 980, 981, 982, 983, 984, 985, 986, 987, 988, 989, 990, 991, 992, 993, 994, 995, 996, 997, 998, 999, 1000.

Boost Springfield!
Join The Chamber of Commerce

FOR FITTING and FOR WEAR CHILDREN'S
Jumping Jack Sr.
Expert Shoe Repair
GOLANTONE SHOE SHOP
245 Morris Avenue
Springfield
Drexel 6-2682
Free Parking in the Rear
Store Hours: 8 a.m. - 9 p.m.

CRESTMONT SAVINGS and LOAN Association
1886 SPRINGFIELD AVE. - 175 MORRIS AVE.
MAPLEWOOD, N.J. - SPRINGFIELD, N.J.

3 1/4% CURRENT RATE

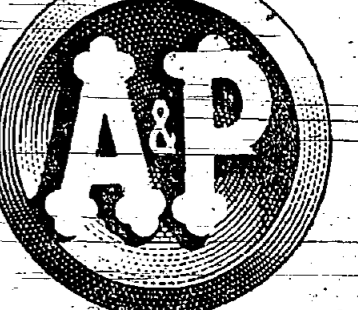
It's Always Going to Rain...
and the best place to save for that rainy day is in our Association where your account is invited, protected, and insured up to \$10,000 by an agency of the U. S. Government.

WHEN YOU TEAM UP WITH A&P... YOU'RE A CHAMP AT SAVING!
Come See... You'll Save at A&P!

- Kraft's Deluxe Slices**
American, Pimento, Swiss Process 8 oz. 33c
- Chicken Broth College Inn**
2 1 1/2 oz. cans 33c
- Kraft's Parkay Margarine**
1 1/2 lb. 16 oz. 29c
- Spry**
Pure vegetable shortening 1 lb. 35c 3 lb. 93c

FRESH, READY-TO-COOK, YOUNG BROILING & FRYING CHICKENS
"SUPER-RIGHT" QUALITY

You won't see the same grade chickens wrapped differently at a higher price at A&P, nor a higher price for cut-up or quartered chickens. Come see... you'll find one grade, the top... at one price, as advertised!



ONE PRICE ONLY!
33c
lb.

WHOLE, SPLIT, QUARTERED or CUT-UP ALL AT THE SAME LOW PRICE !!



- Mazola Oil**
For cooking, salads, baking 1 pint 37c quart 73c
- Lint Laundry Starch**
12 oz. 15c

"SUPER RIGHT" RIBS of BEEF GRAIN FED

Regular Style		Oven-Ready	
10 Inch Cut	7 Inch Cut	10 Inch Cut	7 Inch Cut
59c lb.	67c lb.	69c lb.	75c lb.

- RIB STEAKS** "Super-Right" Quality Beef 7 Inch Cut 1 lb. 75c
- BEEF LIVER** "Super-Right" Quality Specially Selected 1 lb. 49c
- SLICED BACON** Super-Right Brand 1 lb. 69c
- COD or HADDOCK** FILLET Fresh 1 lb. 49c

- Bab-O Cleanser**
With bleach 2 14 oz. 27c 21 oz. 20c
- Surf**
For the family wash and dishes 5c off large 28c giant 79c
- All Detergent**
Controlled sudsing 24 oz. 39c

NEW LOW PRICES!

RED D CIRCLE COFFEE
RICH & FULL-BODIED
1-LB. BAG 77c
3-LB. BAG 2.25

VIGOROUS & WINEY BOKAR
1-LB. BAG 81c
3-LB. BAG 2.37

Percolator, Drip or Extra Fine
A&P Vacuum Packed COFFEE 1 lb. 85c

Farm-Fresh Fruits and Vegetables!

- ASPARAGUS** California Large Spears 2 lbs. 39c
- BANANAS** Yellow Golden Ripe 1 lb. 10c
- String Beans</**

Give them a Faith to live by



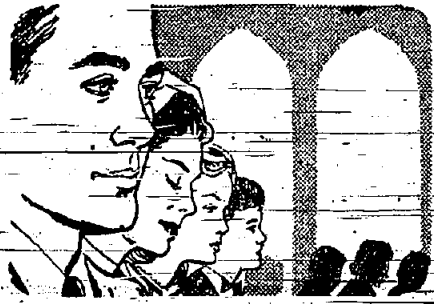
Worship with them this week

Naturally you want them to have all the good things in life... a happy home... a good education... plenty of chances to meet other nice young people. But be sure to give them the most precious gift of all... Faith.

The wonderful part is that faith is yours to give... no matter who you are, what you do for a living, how much money you have in the bank.

Faith is the gift you give a little at a time. Every week you worship with the children at your church or synagogue. The youngsters see you... the biggest, smartest, most important people in their world... asking God for help, thanking Him for blessings. Then it's clear to them... here they can always find the strength they need, always find the happiness they want.

Then you've done the best a parent—any parent—can do.



Contributed to the Religion in American Life Program by

These Messages are being published each week in the Springfield Sun and are sponsored by the following interested individuals and business establishments:

CRESTMONT SAVINGS & LOAN ASSOCIATION
175 Morris Ave., Springfield.

CHANNEL LUMBER CO.
Route #22, Springfield

ALFRED YOUNG
Funeral Director
145-49 Main Street
Millburn

DRAKE FUEL SALES CO.
679 Morris Avenue
Springfield

DAVEGA DISCOUNT CENTER
Route #22, Springfield

GENERAL ELECTRIC COMPANY
Route 22
Springfield

H. SCOTT EXCAVATING CO.
115 Morris Ave., Springfield

INVESTMENT CASTINGS CO.
60 Brown Avenue, Springfield

INVESTORS LOAN ASSOCIATION
64 Main St., Millburn

METALS AND RESIDUES, INC.
65 Brown Avenue, Springfield

ELECTRICAL INSTALLATIONS, INC.
Commercial and Industrial Contractors,
48 Brown Ave., Springfield

NATIONAL STATE BANK OF ELIZABETH
Springfield Branch
Member of Federal Reserve System

PAUL C. STECK, INC.
Precision Sheet Metal
and Experimental Work
25 Brown Avenue, Springfield

PENTAGON METAL PRODUCTS CORP.
59 Brown Avenue, Springfield

RESIDENCE CONSTRUCTION CO.
521 Main St., Millburn

RICHARD BEST PENCIL COMPANY, INC.
Springfield

SMITH AND SMITH
Funeral Directors
Springfield—Newark

SOMERSET BUS CO., INC.
Charter Coaches for Hire
ROUTE 22, MOUNTAINSIDE, N. J.

SPRINGFIELD WELDING CO., INC.
8 Commerce Street,
Springfield

CHURCH SERVICES

FIRST PRESBYTERIAN CHURCH
Morris Avenue at Main Street
Springfield, N. J.
Ministers: Bruce W. Evans
George F. Forner

A cordial welcome is extended to all...
Classes for all children will meet at this earlier hour in conjunction with the Church Worship Service at this time.

9:30 & 11 a.m. Church Worship Services...
These two services are identical with the Junior Choir singing at the First Service and the Senior Choir singing at the Second Service.

8:30 a.m. Church School...
Classes will meet in the Chapel, Parish House and Springfield Library Meeting Room.

7:30 p.m. Westminister Fellowship...
Rev. George F. Forner will speak on "Social Justice" after which the group will divide into small discussion groups.

7:30 p.m. Cub Scout Dinner for Pack 47...
Trustee's meeting in the Parish House.

7:30 p.m. Boy Scout 70, James Caldwell School...
8 p.m. Women's Bowling League

8 p.m. Senior Choir Rehearsal...
8:15 p.m. Men's Club-Bowling League.

THE METHODIST CHURCH
Academy Green, Springfield, N. J.
Vivian E. Mabry, Pastor
Telephone Drexel 6-1655

These things which we have learned...
Sunday, April 20—8 a.m. worship and Church School Classes—9:15 a.m.

8:30 a.m. Nursery for convenience of parents with small children—11 a.m. Regular Worship Service—11:45 a.m. Senior Choir Rehearsal—8:15-7:45 p.m. Junior Choir Rehearsal—7:30 p.m. Church Choir Rehearsal—3:15 p.m. Methodist Men's Bowling at Conner Street Alley—7:30 p.m. Saturday, April 19—7:30 p.m. Court Club-Bowling—7:30 p.m.

HOLY CROSS LUTHERAN CHURCH
607 Morris Avenue, Springfield, N. J.
Leslie F. Messerschmidt, Pastor
Telephone Reed 8-450

10:30 a.m. Pre-confirmation Class...
Sunday, April 20—8:30 a.m. Sunday School and Adult Bible Study Hour.

11 a.m. Divine Worship...
7:30 p.m. Church Club

7:45 p.m. Planning Committee...
8:30 p.m. Church Extends a Cordial Welcome to All in the Name of Christ—COME AND BRING A FRIEND

ST. STEPHENS CHURCH
(Serving the Millburn-Springfield Area)
Main Street, Millburn, N. J.
Rev. James Elliott Lindsley, Rector
(Serving the Millburn-Springfield Area)

Sunday—8 a.m. Holy Communion...
9:30 a.m. Holy Communion

BAHAI WORLD FAITH
Fireless chats every Friday evening at 8 p.m. Adult & children's classes. Sunday mornings—11 to 12:30 Home of Mr. and Mrs. C. C. Day, 111 Sales Street, Springfield.

ST. JAMES R. C. CHURCH
45 So. Springfield Avenue
Springfield, N. J.
Rev. John A. Farrell, Pastor
Rev. Edward M. Swierzbinski
Rev. Edward R. Oehling

Sunday Masses 6:7, 8, 9, 10, 11 and 12 o'clock...
Holy Days, Masses 6, 7, 8, 9 and 10 a.m.

THE SPRINGFIELD BAPTIST CHURCH
Following the same gospel message...
at Dr. Billy Graham's...
Rev. Ray Joseph Spurr
198 Treble Place

Sunday Morning—8:45 Sunday school for all ages including adults...
11:00 Regular morning worship by the pastor.

7:00 p.m. Evening Gospel Service, 1st Sunday on ever month only at 24 Shelley Road.

Wednesday—Prayer and praise service at 7:30 p.m. at the home of Mr. and Mrs. Vernon Drake, 24 Shelley Road.

MILLBURN BAPTIST CHURCH
Rev. R. F. Bateman
Morning—"The Call of God"
Evening—"That God Makes of Himself"

FIRST CHURCH OF CHRIST SCIENTIST
252 Springfield Avenue
Summit, N. J.

11 a.m. Sunday Service...
7:30 p.m. Wednesday Testimony Meeting 7:15 p.m. Sermon Topic: "Doctrine of Atone-ment."

TEMPLE BETH AHM
Baitzel Way
Rabbi Reuben R. Levine
Cantor Irving Krausman
Grassfield Lenox Greens

Friday, April 18—8:45 P.m. Sabbath Services—conducted by the 4th Graders of the Hebrew School...
Sermon—"The Omer Days"

Omeg Shabbat—Mr. and Mrs. D. Perl-mutter, Mr. and Mrs. W. Prokocimer, Candie Lightner—6:24 p.m.

Saturday, April 19—10 a.m. Sabbath Service Elliott Wortzel Bar Nitzvah (son of Seymour and Doris Wortzel)

Tuesday, April 22—7:30 p.m. Women's Meeting Wednesday, April 23—8:00 p.m. Men's Meeting B'nai B'rith Men's Board Meeting

Thursday, April 24—7:30 p.m. Youth Group—Pre-Tenets COMING EVENTS

Saturday, May 3—"Guys and Dolls"
Sunday, May 4—"Glow and Dolls"
Saturday, May 17—"Paid-Up Member-ship Dance"



GEORGIA McMULLEN SALE—Home at 17 Wood-Isolated with Public Service. The transaction was arranged by Fred Schenck arranged by Orene Root of Georgia McMullen, Inc. to Anthony D'Uva of Newark. Mr. D'Uva is as

TEMPLE SINAI
39 Summit Avenue
Summit
Rabbi—Mordecai D. Hal Cantor—Lewis Appleton

Tomorrow, 8:30 a.m. Sabbath Eve Services. Sermon Topic: "Our Return to be Blind"

Religious School, Sunday, 9-9:45 a.m.

SHARKEY SHALOM SUBURBAN REFORM CONGREGATION
Presbyterian Chapel
Main Street, Springfield
Rabbi, Shalom Stendelsohn
Milton Blumenthal, Publicity Chairman
923 Linden Lane, Cuyahoga N. J.
Tel. Naxel, 6-110

Friday, 8:30 p.m. Sabbath Services. Sermon Topic: "The Ethics of the Fathers"—a Liberal View. The Ethics of the Fathers of Pirke Aboth are also chapters from the Talmud traditionally read one chapter a week on Sabbaths between Pesach and Rosh Hashanah.

They contain the ethical view and will be discussed with modern applications. Omeg Shabbat—Mr. and Mrs. Harry Lowy, Mr. and Mrs. S. S. Schreiber. In memoriam, Joshua Gurian.

Tuesday, April 22, 8:30 p.m. Cantor Harry Lowy, Mr. and Mrs. S. S. Schreiber. In memoriam, Joshua Gurian.

Partly sponsored by Women's Group at 20 Warwick Circle, Springfield.

MOUNTAINSIDE UNION CHAPEL
The Rev. Hilton F. Achey

Thursday, April 17—1:15 p.m. Women's Bible Class meeting in the parsonage.

8 p.m. Choir rehearsal at the Chapel.

Sunday, April 20—8 a.m. Morning Worship Service with sermon by the Pastor.

2:15 a.m. Sunday School classes for all age groups from nursery through adult, bus transportation to and from Sunday School is available for children living in Mountain Side.

11 a.m. Men's Bible Study. Rev. Achey will preach on the topic "The Jews Impending Death and Esther's Intervention". Junior Church will be held in the first through sixth grades. Nursery supervision will be provided during hours with small children to attend the worship service.

8:45 p.m. Youth-Fellowship Meeting at the Chapel.

7:35 p.m. Evening Service. Rev. Achey's sermon topic will be "Great Failures—Adam."

Wednesday, April 16—8 p.m. Youth and Bible Study meeting at the Chapel.

Thursday, April 17—8:40 a.m. Rev. Achey will be heard on his regular radio-broadcast over station WAWZ-1590 K.C. VISITORS ARE WELCOME AT ALL SERVICES AT THE CHAPEL.

FIRST BAPTIST CHURCH
Colonial Ave. & Theorem Ter.
Union, N. J.
Rev. Winfield E. Ramish
MU. 6-121

Friday, 18—8 p.m. The Women's Missionary and Service League will meet at the church.

8:45 a.m. Sunday School 11 a.m.—Morning Worship Service. Sermon by the Pastor.

7:30 p.m. Evening Worship Service. Sermon by the Pastor.

7:30 p.m. The Board of Christian Education will meet.

Wednesday, 18—7:45 p.m. The Church at Prayer. Studies in the Gospel of John.

Thursday, 19—7 p.m. Youth Choir 8 p.m. Choir Rehearsal

Knights Elevate Father Oehling
Rev. Edward R. Oehling of St. James Church, Springfield, headed a group of 15 candidates who received their first degree last week by Bishop Wigger Council 1855, Knights of Columbus-of Irvington and Maplewood.

The degree in honor of Rt. Rev. Monsignor Charles G. McCormick, State Chaplain, was exemplified at St. Joseph's auditorium, Maplewood.

Other new members included in the class were: John S. Belinda, Vito Carello, William A. Danko, Jerry Paletano, Thomas J. Gallagher, Raymond J. Hoffman, Harry E. Idelberger, Chester L. Zawadzki, Joseph E. and Theodore C. Scheik, all of Irvington; also Michael J. Marcketta of Millburn; Robert G. Walent, Maplewood; Carl J. Kling Jr., Chatham; and Alfred L. Krautle of Newark.

Rev. Bernard A. Peters, O.S.B., Council Chaplain, Past State Deputy Frank Ott and Grand Knight John J. Roddy congratulated the new recruits.

Pvt. Robert Tuzik Is in New Orleans
Army Private Robert H. Tuzik, son of Mr. and Mrs. Henry J. Tuzik of 65-Denham road, arrived recently at Camp Leroy, Johnson, New Orleans, La.

Private Tuzik has been assigned to the U.S. Army Transportation Terminal Command, Gulf as a Construction Draftsman. He entered the Army on October 17, 1957 and completed basic training at Fort Dix, N.J.

Private Tuzik is a graduate of Regional High School, and Carnegie Institute of Technology, Pittsburgh, Pa. He is a member of Theta Xi Social Fraternity and was employed as an Architectural Draftsman for Frank Grad & Sons, Newark, N. J., prior to entering the service.

He and his wife Jacquelin, presently reside at 1226 St. Mary street, New Orleans, La.

Americans bought about 2.4 billion Christmas cards during the 1957 holiday season, an increase of 200,000,000 over 1956 sales and more than double the 1947 figure. Christmas cards account for about half the nation's greeting-card industry's sales.

THE ETHICAL MOVEMENT is devoted to a Faith in Man. A belief that it is possible for human beings to raise their higher standards of living together. For additional information regard ing "ETHICAL CULTURE," call Drexel 9-3485.

First Church of Christ, Scientist
252 Springfield Avenue, Summit, N. J.
A branch of THE MOTHER CHURCH, THE FIRST CHURCH OF CHRIST, SCIENTIST in Boston, Mass.
Sunday Service at 11:00 A.M. Sunday School 11:00 A.M. Wednesday Testimony Meeting 8:15 P.M. Open daily 9:45 a.m. except Sundays and Holidays also Friday evenings, 7:30 to 9:30 and after the Wednesday meeting

Everything's under control with a Flameless Electric Range!



You'll be a better cook... AUTOMATICALLY!

Meats, vegetables, cakes, even leftovers taste better when cooked on an electric range. That's because flameless electric cooking is so accurately controlled, automatically. It pampers flavor and vitamins with exactly the right amount of heat. There's no burning or sear-

ing to cook out taste and natural goodness. Vegetables simmer in their own natural juices. (Little or no water needed.) Meats roast or broil to their tender best with less shrinkage. And it's just a matter of setting the controls for perfect results every time.

COOK BETTER... Electrically
See your Authorized Reddy Kilowatt Dealer

JCP&L
Jersey Central Power & Light



Realtors Participate In "Acquaint Public Week"

Members of the Board of Realtors of the Oranges, Maplewood, Millburn and Springfield are participating in "Realtor Week" which William F. Bertschinger, president of the organization, explains is "to acquaint the public with the high professional services rendered by the Realtors."

Mr. Bertschinger pointed out that when persons engaged in the real estate calling are admitted to membership in the local real estate board and in the National Association of Real Estate Boards, they pledge themselves to observe nature's strict code of ethics, which is based upon the golden rule and embodies these words: "Whatever Ye Would That Men Should Do To You, Do Ye Even So To Them."

Their acceptance into the board is based upon good business character and a demonstration that they are capable of properly caring for the real estate matters entrusted to them.

"The term realtor has come to connote competence, fair dealing, and high integrity resulting from adherence to this lofty ideal of moral conduct in business relations," he declared. "Only those who are members of the real estate board and-namely may call themselves realtors."

Specifically, how does this code of ethics obligate the realtor to act in the best interest of the public? Mr. Bertschinger cites several of the things which the realtor pledges himself to do:

"1. Learn all pertinent facts about the property for which he accepts the agency so that in offering it he may fulfill his obligation to avoid error, exaggeration, or misrepresentation.

"2. Protect the public against fraud, misrepresentation, or unethical conduct in the real estate field by trying to prevent damaging practices and by cooperating with the state real estate commission in enforcing proper procedure.

"3. Be well informed on current market conditions and be in a position to advise his clients as to fair worth under the existing market.

"4. Attempt always to be informed regarding the law, proposed legislation, legal orders issued, and essential facts and public policies which affect the interests placed in his hands by the public."

Mr. Bertschinger stressed that the local board is empowered to see to it that its members live up to its provisions. Those cited for violation of the code's terms face loss of membership.

"Realtors throughout the country are recognized as a group who work closely with all citizens for the betterment of their communities," he concluded.

Letter Finds

(Continued from Page 1)
form 40 per cent for tax purposes, approved by the State.

So here is some more arithmetic: In 1957 21.87 per cent of the 10.69 tax rate comes to \$2.34 per \$100 of the true value. This year, 1958, the certified 40 per cent of the new tax rate of \$5.77 works out at the rate of just below \$2.31 per \$100 of the true value.

THIS MAKES THE NEW 1958 TAX RATE SMALLER—\$2.31 to \$2.34.

NOTHING TO HIDE.
No attempt was made to hide the fact that there was a difference in percentage of the valuation. Nor did the story mean to convey that the tax dollar would be fact for 1958. As a matter of fact the revaluation program will probably mean that the taxpayers' bills will be higher this year for many.

The Springfield Sun is the "official paper" only as the legal medium for the publication of ordinances, notices of hearings, etc. The paper reports the facts. It does not police the administration and we are just as concerned because of the rising costs of local government as every other taxpayer.

"Moral responsibility" is a top drawer phrase but it hardly belongs in the story of a tax rate story which is very confusing and frustrating at its best.

We don't want to become like the lady "who protesteth too much" but we are a bit impatient with those who see the cloak and dagger influence in every paragraph of the newspaper. The fact remains that the 1958 tax rate is lower than in 1957 and we explained that decrease.

OWE SOMEONE A LETTER? PHONE INSTEAD
costs little anywhere
ALTOONA, PA. 65

3-minute station rate from Newark after 5 P.M. Tax not included.



SOLD BY B. J. CHADWICK—Home at 53 Mountain, Chadwick Agency to Robert Bock. Mr. Bock is with avenue was sold for Robert McKellin by the B. J. Elastic Stop Nut Co. in Union.



News of Local Troops

Troop 740—Leader, Mrs. Roy Hattersley; co-leader, Mrs. V. Quinn; Troop 735 leader, Mrs. John Jordan; co-leader, Mrs. Robert Van Riper; Troop 897—leader, Mrs. Fred Spangler; co-leader, Mrs. Edward Porter. These three troops joined together on Tuesday of last week, April 8, and made a bus trip to New York. They visited the Statue of Liberty and had a picnic lunch on the grounds there. The girls were accompanied by Mrs. Hattersley, Mrs. Quinn, Mrs. Donovan and Mrs. Hryankiewicz of Troop 740, Mrs. Spangler, Mrs. Larher, Mrs. Mazur and Mrs. Verlangier of Troop 897 and Mrs. Jordan and Mrs. Van Riper of Troop 753.

Troop 741—Leader, Mrs. John Cowles; co-leader, Mrs. Frank Johnson. The girls are now working on their Game Badge. On Tuesday, following the close of school they went to Echo Lake and enjoyed a scavenger hunt, a requirement for the badge. The girls have all completed their roller skating badges.

Troop 745—Leader, Mrs. Gerald London; co-leader, Mrs. Edward Eppinger. On Thursday of last week, April 10, the girls went on a trip to Newark and attended the ballet, "Peter and the Wolf." On returning to Springfield they enjoyed refreshments at the Sip and Sup Restaurant. They recently made place mats and also Easter bouquets. The bouquets were made from jolly beans, pipe cleaners and dillies. This week they began working on their Mother's Day girls. The girls were accompanied on the Newark trip by Mrs. London, Mrs. Eppinger, Mrs. Yella Feldman, and Mrs. Gladys Henriksen.

Troop 749—Leader, Mrs. Paul Beck; co-leaders, Mrs. George Grimshaw, Mrs. D. Kender and Mrs. B. Edelstein. This troop, which meets every Monday at the Raymond Chisholm School have

been very busy working on their Fly-Up Requirements. The girls and their leaders are making plans for a cook-out to be held in the near future. This is one of the requirements the girls need.

P.T.A. NEWS

Chisholm School
Mrs. Thomas Argyris, Finance chairman of the Raymond Chisholm School P.T.A., wishes to remind all P.T.A. members that the Spring sale of T-shirts, sweat-shirts, scarves and baseball caps will continue through Wednesday, April 23. Details are on order blanks distributed to each school child.

Walter Baldwin, representative of the newly-formed citizen's advisory committee, attended the April 14 Raymond Chisholm School P.T.A. Board meeting. He assured the board members that the "whys, when and where of a new school" would be thoroughly studied from all angles and that he would keep the P.T.A. informed of developments.

Mrs. Edward Ries Jr., School Mother, reported Miss Alice Ries' second grade class won the attendance award at the March general meeting.

Walton School
Mrs. Joseph Bender, President will preside at the next general meeting of the Edward V. Walton School Parent-Teacher Association to be held in the school auditorium on Monday, April 21st, at 8:15 p.m. Reverend Joseph Speck of the Springfield Baptist Church will deliver the invocation.

Mrs. E. J. Harback, Nominating Committee Chairman, will present the following slate of officers for election at this meeting:
President, Mrs. E. G. Davenport; Vice-President, Mrs. Robert D. Jackson; Rec. Sec'y, Mrs. Irving Krauseman; Corres. Sec'y, Mrs. Norman LeBoeuf; Treasurer, Mrs. Saul Gladstone.

The pre-school census for the Walton School is now under way. If anyone has a pre-school child and has not been contacted, please call Mrs. Edward J. Harback at DR. 6-0472.

"The Pickle Jar," a one-act comedy written and directed by Mrs. Jerome Fingerhut, will be presented.

Gaudineer School
An executive board meeting of the Florence M. Gaudineer P.T.A. was held Monday evening, April 14th in the teachers' room of the Florence M. Gaudineer school. The nominating committee with Mrs. Charles Miller as chairman and consisting of the following members: Mrs. Philip Lewis, Mrs. John Brownlie, Mrs. George Lord and Mrs. G. M. Lueddecke, presented the slate of officers for next year. The members selected were for president, Mrs. J. Frank Jakobson, vice president, Mrs. Victor A. Dracht; secretary, Mrs. Robert Isley and treasurer, Mr. Norman Le Boeuf.

Caldwell School
The April meeting of the executive board of the James Caldwell School P.T.A. was held in the Grand Room of the Pleasanton Hotel on Monday evening, April 14th. The President, Mrs. Alan Cunningham, presided, and Committee reports were given by the Chairman.

Urges Township To Join County Clinic

The Raymond Chisholm School P.T.A. executive board voted unanimously at its meeting April 14 to send the Township Committee a second letter urging the committee to take immediate action in participating in the Union County Psychiatric Clinic.

The clinic has offices in Elizabeth, Westfield, Plainfield and Summit and provides low-cost treatment to residents of 15 of the 21 municipalities in Union County.

Mrs. Robert Shaw, P.T.A. Health and Safety chairman, gave a report on the meeting March 31 at James Caldwell School, at which members of the Board of Education, Township committee, and P.T.A. organizations learned of the services which could be made available to the township. Mrs. Shaw reported on the great need for adequate treatment of emotionally disturbed school children and the number who would benefit from clinical services.

In July 1958 the State of New Jersey signed into law an act providing for the establishment and expansion of community mental health services and providing for payment by the state of financial grants-in-aid for community men-

Society Studies Racial Problems

"Realities of Integration," particularly as it pertains to Federal Housing projects, will be the subject of a talk to be given by

Mr. and Mrs. Edward Schick at the Society of Ethical Culture, 516 Prospect street, Maplewood, on Sunday morning, April 20, at 11 a.m. Mr. Schick is a former President of the Bergen County Ethical Society.

On Saturday night, April 19 the Society is having a social evening. Entertainment will be provided by members of the society. Nathan Hart of Springfield is serving on the Committee of arrangements for the evening.

HOW IS PROPERTY SELLING?

That's a question we are asked most every day. Frankly, the way a property "moves" when it is offered for sale depends a lot on how it is handled. For this reason, we suggest that you consult our firm.

Moving property is our business! If you really want to sell—place full confidence in us. We won't let you down.

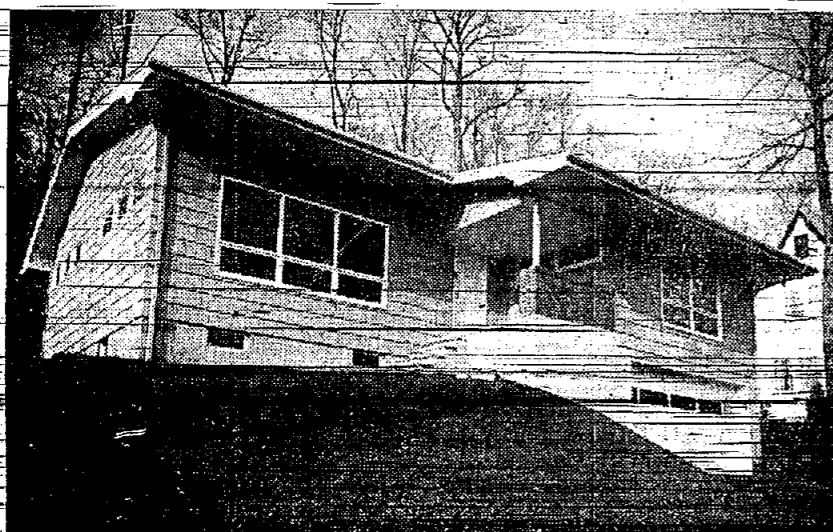
"Small enough to know you . . . large enough to serve you."

B. J. CHADWICK AGENCY Realtors
336 Morris Avenue (next to Post Office) Springfield, N. J.
DRexel 9-4653

Member of Board of Realtors of Oranges, Maplewood, Millburn, Short Hills, Livingston & Springfield

FOR THE FINEST IN EYEWEAR
HOURS:
Daily 9-5:30
Thurs. 9-9
Laboratory on Premises
ANDREW KOVACS
OPTICIAN
357 MILLBURN AVE., MILLBURN Near Theatre DR 9-4155

HOUSE WITH A VIEW



- California-Living Room With Cathedral Ceiling
- Beautiful Magazine Kitchen Completely Equipped
- Beautiful Hearthwall with Florentine Marble Fireplace
- Breakfast Area
- Separate Dining Room
- Basement Rec Room Area With Fireplace
- 3-Twin-size Bedrooms
- Over-size 2-car Garage
- 2 Full Tile Baths
- Gas-Hot Water Heat
- Master with Stall Shower

Priced in Mid-Thirties

This is one of the most attractive true California style ranch homes we have ever listed in this price range.

From the huge raised hearth and the cedar panelling in the very large family sunken living room to the ultra modern kitchen, this beauty has loads of warmth and charm.

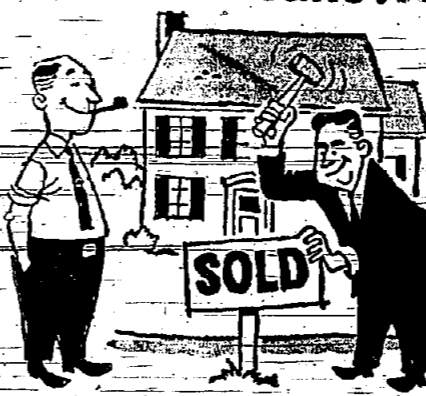
The picture window looks out on an unparalleled view of the Orange Mountains with New York's skyline as a backdrop.

Value galore for a discriminating home buyer. For appointment, call:

DREXEL 6-2300

Anne Sylvester's Realty Corner, Realtors
649 MORRIS AVENUE SPRINGFIELD, N. J.

For best results . . .



BUY OR SELL YOUR HOUSE THROUGH A REALTOR

HE IS PLEDGED TO PROTECT YOUR INTERESTS

Don't take a chance on what may be the most important financial transaction your family may ever undertake!

When it comes to real estate, the wisest decision you can make is to consult a broker entitled to call himself a REALTOR — one accepted for membership in the local real estate board and the National Association of Real Estate Boards.

Why?

A Realtor knows today's market. He handles hundreds of similar transactions. He knows how to evaluate a fair price for both buyer and seller.

A Realtor has a list of prospects who are honestly interested in finding a home. He shows by appointment, eliminating the stream of casual lookers who otherwise would troop through your house.

A Realtor screens out the prospects who are financially unable to meet your price. No wasting valuable time showing your home to those unqualified to buy.

A Realtor can offer you the multiple listing service . . . a comprehensive cataloging system that gets faster, surer, and more satisfactory action for both buyer and seller.

A Realtor is prepared to arrange the intricacies of financing to complete the deal.

A Realtor has the technique and "know how" necessary to close the transaction properly.

This is **NATIONAL REALTOR WEEK**

APRIL 13th TO 19th

ALWAYS LOOK FOR THESE EMBLEMS



Board of Realtors

of the Oranges and Maplewood, including Livingston, Millburn, Short Hills and Springfield

In Continuous Operation Since 1911

25 Haled Street

ORange 7-2323

East Orange N. J.

Rentals
FURNISHED APT. FOR RENT
SIX room furnished apartment available May 1 to Oct. 1. Rent \$100.00 to \$120.00. Call 7-3000.

FURNISHED HOUSE FOR RENT
CHATHAM Township - 3 bedroom furnished house available May 1st. Modern kitchen, central heat, etc. Call 7-3000.

UNFURNISHED APT. FOR RENT
KENT COURT
5 room duplex, available April 1st. Call between 9 and 5. CR. 7-3000-88.

EXCELLENT location in new apartment building. Rent \$120.00. Call 7-3000.

UNFURN HOUSE FOR RENT
THREE bedrooms, 2 baths, colonial style. Immediate occupancy. Call 7-3000.

THE RICHLAND COMPANY
41 Maple St. Summit, CR. 7-3000

OFFICE SPACE FOR RENT
OFFICES for rent. Center of town. Call CR. 3-4474.

MISCELLANEOUS
BARN for storage, good condition. water, light, 55 Main St., Chatham. Call evenings.

Rentals Wanted
Unfurnished Apt. Wanted
4 ROOMS, 2 adults, 1st occupancy. Summit vicinity. CR. 7-1792.

UNFURN. HOUSE WANTED
PROFESSIONAL 3 adults, short-term. \$12 monthly. Will pay \$100 up. Will permit to be shown for prospective buyer. CR. 8-1887.

UNFURN. HOUSE WANTED
MAY and June only. \$300 per month. House, trailer, w/steam with running water. Any size, any place in Summit. Call 7-3000.

REAL ESTATE FOR SALE
FOR DOCTOR, dentist or professional. New 6-room house with attached 900 sq. ft. office for sale or rent. Located at Green Village and Vinona roads, Madison. Available May 1. PR. 7-2779.

HELP WANTED FEMALE
BUSINESS LADY CARE FOR CHILDREN. LIGHT DUTIES. EVENINGS. OCCASIONAL WEEKENDS. EX. CHANGE ROOM. BOARD. BOX #27. Too Late to Classify

TYPISTS & STENOGRAPHERS
Immediate career opportunity for experienced typists & stenographers!

For further information contact: EMPLOYMENT SUPERVISOR WARNER - CHILCOTT LABORATORIES Morris Plains, New Jersey

SUNNING SPORTS
By MIKE GOODMAN

Get out your red pencil and circle April 25 because on that day Linden's Baseball Team will face Regional's Nine in what may decide the top team in the county. The columnist recently spoke to Mr. Gene Pickett, School Sports Director of the "Elizabeth Daily Journal" concerning the daily record books and from the Linden are on top of the heap. Linden now has a record of 4-1 while the Bulldogs have a 2-0 record. Linden has a 5-5 record to thank for all this prosperity. His name is Richie Cichowski and his 10 record includes two straight shutouts. In his last mound effort he limited Jefferson to three hits. Regional's overall success lies in the two strong right arms of John Kolessar and Charley Jansco. Each has notched a victory. Kolessar was the hero in the Roselle Park contest that ended in a tie. He came on to relieve a Bulldog hurler with the bases loaded and from out. He calmly struck out the side.

Lynn Lays League Low, Lead Longer
Lynn Decorators, a powerhouse of a team with Hal Byrdell and Jack Weber helping them with very good games, won three games from Stereo Sound, thus putting Lynn five games in the lead in the Springfield Bowling League at the Springfield Bowling Alleys. Conr's Delicatessen - awaking from a slump, won two games from Drexel Cleaners, to tie for second place.

Polish Group To Meet Sunday P.M.
The Alliance Club, a Polish-American Organization, will hold a brief quarterly meeting on Sunday afternoon, April 20, at 3 in the American Legion Hall. Afterward, membership and friends will enjoy the traditional "Swienconka" Easter season Get-together, and the Polish "Babka" Easter cake.

PEACE and QUIET With PIECE OF PIE
Nothing beats the calm beautiful surroundings here for a quick snack of delicious food. "Next To Walton School" MOUNTAIN AVENUE Luncheonette 549 Mountain Ave. SPRINGFIELD

Help Springfield! Join The Chamber of Commerce

PROCLAMATION
WHEREAS, there are innumerable children in the town of Springfield and throughout the State of New Jersey suffering and agonizing effects of asthma and who are in need of medical and psychiatric care in order to become happy and healthful members of society; and

WHEREAS, the responsibility of giving each child a chance to health and happiness is a responsibility we gladly assume because it is one of the major factors in the economic life of our Town and State; and

WHEREAS, the Jewish National Home for Asthmatic Children at Denver, Colorado, a non-sectarian organization, is dedicated to the free nation-wide treatment of children suffering from chronic intractable asthma and other allergic diseases; and

WHEREAS, the facilities of this Home are insufficient to provide for many of the asthmatic children now seeking admission and treatment therein; and

WHEREAS, we must together give our support to the Springfield League, Jewish National Home for Asthmatic Children and support its work and give generously to its annual Tag Week Drive which helps to make this Home's services possible;

THEREFORE, I, ALBERT G. BINDER, Mayor of the Town of Springfield, do hereby proclaim the week of April 21st through April 26th as "TAG DRIVE WEEK" for the Springfield League, Jewish National Home for Asthmatic Children and urge all our citizens to participate wholeheartedly in this worthy cause.

ALBERT G. BINDER MAYOR
DATED: April 17, 1958

Frank's Auto Slips Into Bowling Lead In Stretch

Frank's Auto Service won all three from D'Andrea Driveaway and with only a couple of weeks left took a one game lead over Beckmann's Market. Who lost two to Brunner Excavating, in the Springfield Bowling League at the Springfield Bowling Alleys.

Franks Auto Service 58 39
Beckmann Market 57 39
Parkview Garage 51 44 1/2
Springfield Market 49 47
American Legion No. 1 49 47
Bunnell Bros. 48 47 1/2
American Legion No. 2 48 48
Brunner Excavating 48 50
Mendes Florists 42 53 1/2
Cozzolino Furriers 42 54
Drakes Fuel 39 57

Regional Outruns Linden, But Loses
Coach Bob Lummer and his Tracksters opened their season last Tuesday, April 15, with a loss to Linden's Tigers. The Track totals gave Linden 7 1/2 points and Regional 42. The Bulldogs proved equal to the Tigers in the running events, scoring 31 points - Linden's 32. But the Lindenites snowed our cindermen under in the weights, pole-vault and other field events.

Local Boys On Pingry Roll
The usual group of Pingry boys made their school honor roll this month. Jan. Kennedy of Warwick Circle and Charles Stevens of 778 Mountain Avenue made the second honors list for the fifth form. Bruce Evans of 41 Main Street made first honors for the third form. Thomas Curtiss of 250 Short Hills Avenue qualified for first honors in the second form.

Deborah To Hear Heart Patient
A regular meeting of Suburban Deborah League will be held on Tuesday, April 22, at 8:30 p.m. in Temple Beth Ahm, Mrs. Allen Borsky will preside.

Ensign Is Aboard U.S.S. Saint Paul
Navy Ens. Ronald J. Reinhardt, son of Mr. and Mrs. John J. Reinhardt of 50 Severna ave., is serving aboard the heavy cruiser USS Saint Paul operating in the Western Pacific.

YOUNG'S SERVICE HOME
ESTABLISHED 1908
ALFRED L. YOUNG, Funeral Director
145-149 MAIN STREET, MILLBURN
Drexel 8-0406

Within the means of all...
For many people, costs are a major consideration... Smith and Smith provides the answer by making available funeral services to meet every circumstance.

RAPPAPORT SPRING DRUG
273 Morris Ave., Springfield
Free delivery - Drexel 9-2077
Prescriptions, Vitamins, Cosmetics
Cut-Rate Prices

SMITH and SMITH FUNERAL DIRECTORS
An Outstanding Service "Within the Means of All"
SERVING ALL RELIGIONS
SUMMIT HOME FOR SERVICES
415 Morris Ave., Springfield, N.J. 140 Clinton Ave., Newark 5, N.J.
Drexel 6-7777 Bigelow 3-2123

Put yourself behind the wheel!
WITH A THRIFTY BANK RATE
AUTO LOAN

Table with 3 columns: Amount Borrowed, NEW MODELS 36 Monthly Payments, OLDER MODELS 24 Monthly Payments. Rows for \$800, \$1,000, \$1,200, \$1,500, \$1,800.

THE NATIONAL STATE BANK
"Union County's Leading Bank"
ELIZABETH • SPRINGFIELD • ROSELLE PARK • SUMMIT • KENILWORTH
MEMBER FEDERAL DEPOSIT INSURANCE CORPORATION
FIRST SINCE 1812

Twin Brooks To Meet Wednesday
The next regular meeting of the Twin Brooks Civic Association will be held on Wednesday, April 23, at 8:00 p.m. at the Springfield Public Library. Members are invited to attend.

asked to notice the change of Gate-Circulars will be delivered to members giving the full agenda of the meeting. Residents in the area of Salter Street, Lyon Place, Dayton Court, and Bryant Ave. may join this association by contacting one of the trustees or Membership Chair.

For fifty years the name Young has been synonymous with fine Funeral Service in Millburn and its vicinity... And our costs are within the means of all.

Within the means of all...
For many people, costs are a major consideration... Smith and Smith provides the answer by making available funeral services to meet every circumstance.

RAPPAPORT SPRING DRUG
273 Morris Ave., Springfield
Free delivery - Drexel 9-2077
Prescriptions, Vitamins, Cosmetics
Cut-Rate Prices

SMITH and SMITH FUNERAL DIRECTORS
An Outstanding Service "Within the Means of All"
SERVING ALL RELIGIONS
SUMMIT HOME FOR SERVICES
415 Morris Ave., Springfield, N.J. 140 Clinton Ave., Newark 5, N.J.
Drexel 6-7777 Bigelow 3-2123

Put yourself behind the wheel!
WITH A THRIFTY BANK RATE
AUTO LOAN

Enjoy the car of your choice while you're paying for it in comfortable monthly installments.

Thrifty rates and liberal terms are features of our Auto Loan service. Insure locally with an agent of your choice.

Phone, write or visit us for financing that's geared to fit your budget.

THE NATIONAL STATE BANK
"Union County's Leading Bank"
ELIZABETH • SPRINGFIELD • ROSELLE PARK • SUMMIT • KENILWORTH
MEMBER FEDERAL DEPOSIT INSURANCE CORPORATION
FIRST SINCE 1812

PRINCE RANGE OPENS TOMORROW on MORRIS AVE. (RTE. 82) UNION!

ALL 4 STORES JOIN IN BIG

GRAND OPENING

PRINCE RANGE'S 4th BIG STORE

2626 MORRIS AVE. ROUTE 82 (Opp. Bards Farms Supermarket) UNION, N. J.

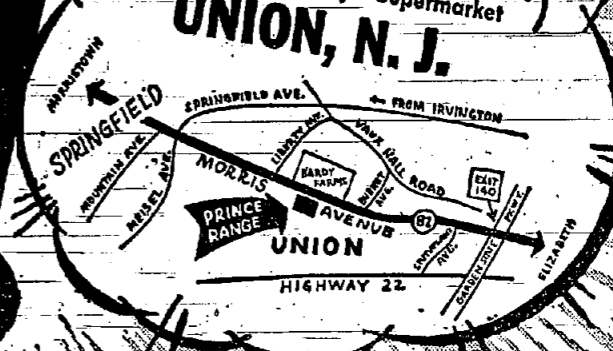


PRINCE CHARLIE Sez:
"FRIDAY—10 A.M. SPECIALS!
First 10 Customers Only!"

FAMOUS MAKE TABLE RADIO
LIMIT ONE TO EACH CUSTOMER
7.99

FAMOUS 16" LAWN MOWER
Reg. 24.95
ONE TO A CUSTOMER!
12.88

SALE!



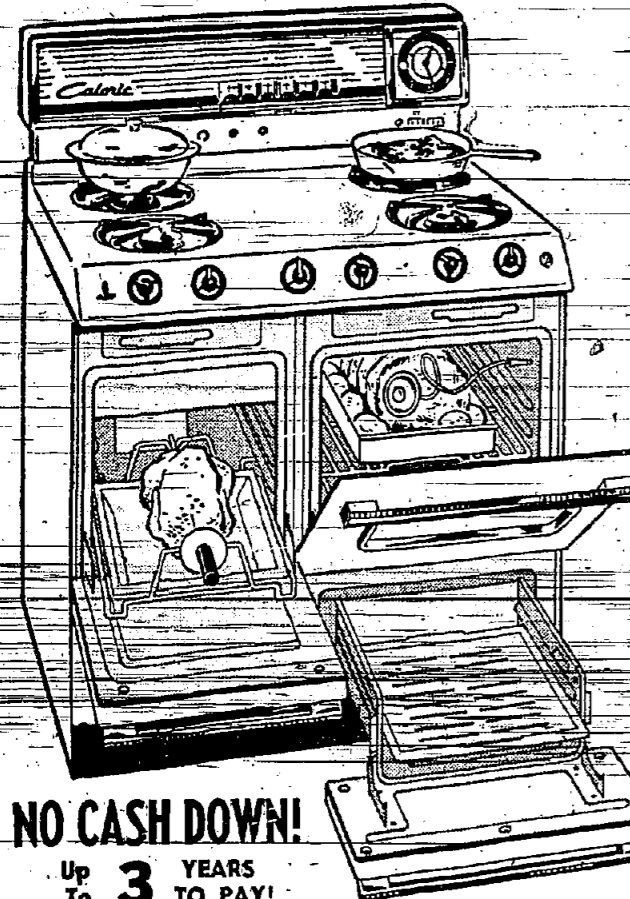
FREE Orchids Tomorrow For The Ladies! • **FREE** Balloons & Candy For The Children • **FREE** Refreshments For Everyone! • **FREE** PARKING in our own parking lots at All 4 Stores!

GRAND OPENING SUPER BARGAINS! ALL BELOW OUR ACTUAL COST! FIRST COME - FIRST SERVED! RUSH IN AND SAVE!

WESTINGHOUSE MOBEILAIRE FAN Complete with Stand LIMIT ONE! 33.88	UNIVERSAL 10-CUP COFFEE MAKER Reg. 29.95 LIMIT ONE! 15.99	TOASTMASTER 2-Slice TOASTER Reg. 19.95 1958 Model LIMIT ONE! 9.48	G-E STEAM & DRY IRON LIMIT ONE TO EACH CUSTOMER! 5.99	G-E SWIVEL TOP VACUUM CLEANER Reg. 54.95 Model C-6 LIMIT ONE! 33.88	GE Clock Radio Automatic Waken-up LIMIT ONE! 16.88
Famous Hi-Fi Phase, Webber Changer & Speed, Twin Speaker 37.88	RCA Victor 21" TV T.M. Res. 149.95 139.88	11 Cu. Ft. Freezer Upright, Famous Make, 305-lb. Cap. Res. 269.95 159.88	No. 1 Rated Washer Full-Width Control 8-lb. Cap. Gas Automatic 119.88	Welbilt 36" Gas Range, Super Special 68.88	Westinghouse Dehumidifier, Giant Capacity, Reg. 129.95 78.88
Famous 21" TV Mahog. Wood Cab. T.M. Reg. 239.85 89.88	21" Console TV Famous Make, Wood Cabinet, Res. 269.95 149.88	13 Cu. Ft. Refrig. Famous Make Auto. Defrost Refrig. 13 Cu. Ft. 114-lb. Freezer Res. 499.95 229.88	Hamilton Dryer Gas Automatic Heat Control 144.88	Harwick 30" Gas Range, Giant Wide Oven, Heat Control 89.88	Famous 7 1/2 Amp. Air Conditioner with Thermostat 1058 Model 99.88
G-E Portable TV Bargain! 89.88	Zenith 21" TV Aluminized Picture Tube 149.88	Philco 2-Door 13 Cu. Ft. 114-lb. Freezer 277.88	RCA Whirlpool Washer-Dryer 7 Rinse, Res. 218.95 149.88	Magic Chef Gas Range Super Bargain! 98.88	Fedders 3/4 Ton Air Conditioner, Lowest Price Ever! 144.88
17" Portable TV Famous Make 1958 Stimline 99.88	21" Console TV Swirlite, Wood Cab. Res. 269.95 159.88	Westinghouse 13 Cu. Ft. Refrig. Bottom Freezer 279.88	Washer-Dryer Combination, Famous Make, Limit One! 194.88	Caloric Gas Range 3-Speed "Summer" Burners 99.88	Famous 1-Ton Air Conditioner, "Stimline" 7 1/2 Amp. 149.88
RCA Victor TV 16" Portable, with handle 99.88	21" Lo-Boy TV Famous Make, Wood Cabinet, Res. 269.95 169.88	Frigidaire 14 Cu. Ft. Cold Pantry Bot. Freezer, Res. 629.95 378.88	Kitchen Aid Dishwasher, 24", Under-counter, Reg. 325.00 199.88	Dixie 36" Gas Range, Light Clock and Timer, 2 Appliance Outlets 99.88	G-E Thinline Air Conditioner 7 1/2 Amp. It's A Steal! 149.88
Dumont Hi-Fi Console, 4-Speed & Hours of Play 129.88	RCA Victor 21" TV Wood Console Res. 269.95 209.88	Thor Auto-Washer 2-Cycle, 8-lb. Cap. Reg. 278.95 88.88	RCA Whirlpool Imperial Washer 3-Speed, 2-Cycle Res. 369.95 219.88	RCA Estate 30" Gas Range, Light Clock, Timer 108.88	G-E Whirlpool 1 1/2-Ton Air Conditioner Flush Mount Therm. 164.88
RCA Victor 17" TV Portable Super Bargain! 134.88	Famous Refrig. Family Size, One-Top Freezer, WOW! 99.88	Maytag Washer Never Again at this LOW PRICE! 99.88	Apt. Size Range Gas, 4 Burners, Full Size Oven & Broiler 39.88	Tappan 36" Gas Range, Springout Broiler, All porcelain 109.88	

LOW, LOW PRICED
for our GRAND OPENING CELEBRATION!

Caloric 36" Gas Range



- INDIRECT BACKGUARD LIGHTING
- In-a-Line Timer with Bell
- Large Face Clock
- Appliance Outlet
- Four-Extra Capacity Speed-Set Burners
- Porcelain enamel drip trays
- Full Sized Oven with Light
- Non-Tilting Chrome Oven Racks with Handle
- Lo-Broiler with Removable Door
- Hi-Lo Broiler Pan and Grid
- Ultra-Ray Hi-Broiler
- Roto-Ray Barbequer
- Matchless Oven Broiler Ignition
- Air Cooled Body Sides
- Flush to wall, Flush to Floor Installation
- All Burners Guaranteed for Life

NO CASH DOWN!
Up To **3 YEARS TO PAY!**

Another Prince Range GRAND OPENING PRICE SMASH! While They Last!
99.88
Caloric Gas Ranges LOW, LOW PRICED from...

GRAND OPENING PRICE SLASH!

WESTINGHOUSE

13.2 Cu. REFRIGERATOR with FREEZER



\$260 OFF!

REGULAR LIST PRICE **559.95**

PRINCE RANGE'S GRAND OPENING LOW, LOW PRICE!

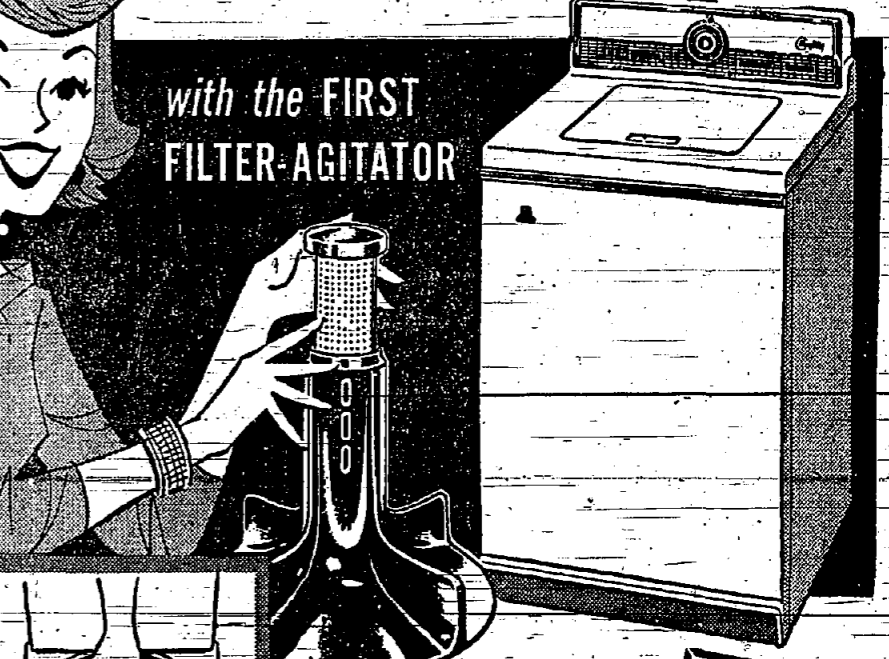
299.95

- Giant 13.2 Cu. Ft. Size!
- Huge 84-lb. Bottom Freezer!
- Automatic Cycle Defrosting!
- Easy Glide-Out Shelves!
- Separate Dairy Pantry!
- Lift-Out, Tilt-Down Crisper!
- 5-Year Protection Plan on Sealed-in Mechanism!

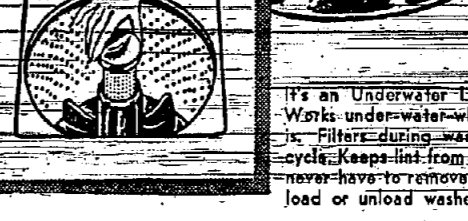
NO CASH DOWN! Up To **3 YEARS TO PAY!**

GRAND OPENING PRICE SMASH!

1958 MAYTAG All-Fabric AUTOMATIC WASHER



with the FIRST FILTER-AGITATOR



NO CASH DOWN!
Up To **3 YEARS TO PAY!**

- TWO Wash Speeds!
- THREE Water Temperatures (inc. "COLD")!
- TWO Spin Speeds!
- PUSHBUTTON Water Level Control!
- Detergent Dispenser!
- Built-in Suds Pump!

Another Prince Range GRAND OPENING SUPER BARGAIN! WHILE THEY LAST!
159.95
Maytag Automatic Washers LOW, LOW PRICED from...

PRINCE RANGE CO.

- Jersey's Fastest-Growing Chain of Appliance and TV Discount Centers!**
- 106 PRINCE ST. (Near Morton Street) NEWARK**
OPEN DAILY 9 'til 9
SUNDAY 11 'til 6
- ROUTE 23 (340 Pompton Avenue) CEDAR GROVE**
OPEN DAILY 10 'til 10
SUNDAY 12 'til 7
- ROUTE 10 (518 W. Mt. Pleasant Ave.) LIVINGSTON**
OPEN DAILY FROM 10 A.M. to 10 P.M.
- 2626 MORRIS AVE. (Rta. 82—Opp. BARDY FARMS) UNION**
OPEN DAILY 9 'til 10
SUNDAY 9 'til 6

Thursday, April 17, 1958

What Does Food Cost You?

Let It Cost a Little Thought and Imagination

Meat can be good without being expensive if you have a few good recipes to follow. Ground chuck sells at a lower price per pound than ground round steak and actually has a better flavor. Whatever ground beef you use when making hamburgers, try adding tomato juice to the meat. The hamburgers will be juicy and succulent. Four tablespoons to a pound of meat will be sufficient. Mix in thoroughly and handle the meat lightly when forming the patties.

Meat loaves made with ground chuck can be very good. Ground veal or pork can be added at the rate of one part to two or one part to three of ground chuck, if desired.

Flavorful Meat Loaf

Cook half-cup each onion, celery and carrot, cut small, in three-quarters cup of stock with one-quarter teaspoonful very finely chopped garlic. When cooked, mix with two cups shredded bread. Mix thoroughly with two pounds ground meat, adding salt and pepper to taste. Stir in one beaten egg and bake at 325 degrees F. Baste, if necessary, with hot stock.

Recipes frequently call for the use of stock. A very good stock can be made from the necks and backs of chicken which sell at a low price. Cover with water, salt to taste, and cook gently until chicken parts are well done. The liquid can be strained into heat-proof jars. The fat will rise to the top and form its own seal. This can safely be stored in the refrigerator for about two weeks, or in the freezer for much longer. The carcass of a roast chicken or turkey can also be used to make stock. Bones should be cracked, covered with water, and simmered. Veal bones also make an excellent stock. Good substitutes for stock are canned chicken bouillon or chicken bouillon cube dissolved in one cup of water.

As a general rule, stew meat should not be cooked in water which drains the meat of all its juice and leaves it little better than "soup" meat. Stew meat should be braised

in hot fat, quickly searing all sides and "sealing" the natural juices inside. The heat should then be reduced to the lowest point and the meat tightly covered. Usually enough steam will accumulate to keep the meat from sticking. Long, slow cooking will render even the toughest meat tender. When the vegetables are added, just enough water to cook them, and provide sufficient gravy, may be added.

Braised Mixed Stew

Use two pounds of beef and lamb or beef and veal cut in two-inch pieces. Trim the fat off the meat. Put pieces of fat in heavy skillet. When sizzling hot, add meat and turn until browned on all sides. Add salt and pepper and one-quarter teaspoonful garlic finely chopped. Reduce heat to lowest point, cover tightly, and cook until tender. For the finest flavor, cook vegetables separately. Remove the meat from the pan, add sufficient water to make gravy. When gravy has been thickened, return meat and vegetables to pan and cover until ready to serve. Stew can be prepared ahead of time and reheated for serving, if desired. Potatoes, carrots, celery and onions can be used. A small can of stewed tomatoes can be added, if desired.

An exception to the rule of never cooking stew meat in water can be found in a recipe using inexpensive breast of veal as the basis for a delicious one-dish meal.

Succulent Veal Stew

Cut one and a half pounds of breast of veal in small pieces. Cook with one stalk of celery, two sprigs of parsley, one-quarter teaspoonful thyme, one-half bay leaf and two cloves, in just enough water to cover, until meat is tender. Remove the meat and strain the liquid. Brown the meat well in three tablespoons of butter. Make a paste of three tablespoons of flour and two

(Continued on Page 2)



\$10 For Favorite Recipe

Every week someone's favorite recipe is worth \$10. Our favorite recipe contest is easy to enter. Just mail a copy of your favorite recipe to this paper at the address in the upper right-hand corner of this page.

Winner of \$10 this week is Mrs. Glenn W. Oylar of 23 Pitt Rd., Springfield. A native of Long Island, Mrs. Oylar was given her favorite recipe by a friend from India.

CHICKEN CURRY

Brown in 1/2 cup butter or margarine:
4 medium onions, chopped
1 green pepper, chopped
2 cups stewed tomatoes, canned or fresh
Simmer and stir for 20 minutes.

Add:
2 teaspoons salt
2 teaspoons curry powder
1/2 teaspoon chili powder
1/4 teaspoon turmeric
Simmer and stir 5 minutes.

Add:
1 cut-up chicken with skin removed, if desired
1 teaspoon curry powder
1/2 teaspoon paprika
1/4 teaspoon allspice

2 or 3 cups water
1 small can tomato paste (6 oz.)
5 cooked potatoes (optional)
Simmer until chicken is cooked. Let stand two to three hours while spices permeate chicken. Heat and serve over rice.

Louver Door Ideal For Rainwear Closet

Outdoor clothing, boots, and hats—wet from rain or snow—will dry out more quickly in a closet with a louver door.

Air circulating through the louvers does the drying job. It also prevents mustiness and discourages moths.

Ready-made louver doors of ponderosa pine are available from building material dealers in sizes to fit most door openings. The clear wood can be painted or stained to harmonize with any room decor.

Pictures Stay Straight

A picture or mirror that tends to hang crookedly can be straightened permanently by driving a brad halfway into one lower corner, filing the brad to a sharp point, and pressing the point into the wall.

INDIA-TO SPRINGFIELD... Mrs. Glenn W. Oylar of Springfield demonstrates method of preparing chicken taught her by friend from India. Recipe won her a \$10 prize in Favorite Recipe Contest.

Insulation Produced From Molten Minerals

Mineral wool insulation is made from three principal materials: rock, glass, or slag.

In the manufacturing process, one or more of these raw materials is mixed with coke and heated to a molten state. Jets of steam blow the molten mass into millions of fibers.

The fibers fall naturally into

a thick, interwoven mass containing millions of tiny dead-air spaces. These dead-air spaces provide an efficient barrier to heat transmission.

In the early 19th Century American newspaper, the paper on which newspapers are printed, was handmade from rags imported from Europe.

These are the kind of values that bring millions of men

to

Robert Hall

Natural, trim-look

ALL-WOOL SPORT COATS

19.95

\$27 VALUES

One look, one touch of the luxury fabric—you'll wonder how we can price 'em so low! Choose from handsome new Spring patterns and textures... quiet stripings, overplaids, long-wearing tweeds, silk effects! Good-looking 3-button models with center vent, carefully tailored along trim, natural lines. Regulars, shorts, longs.

Expert alterations included

Pleated or Ivy-styled

ALL-WOOL Flannel SLACKS

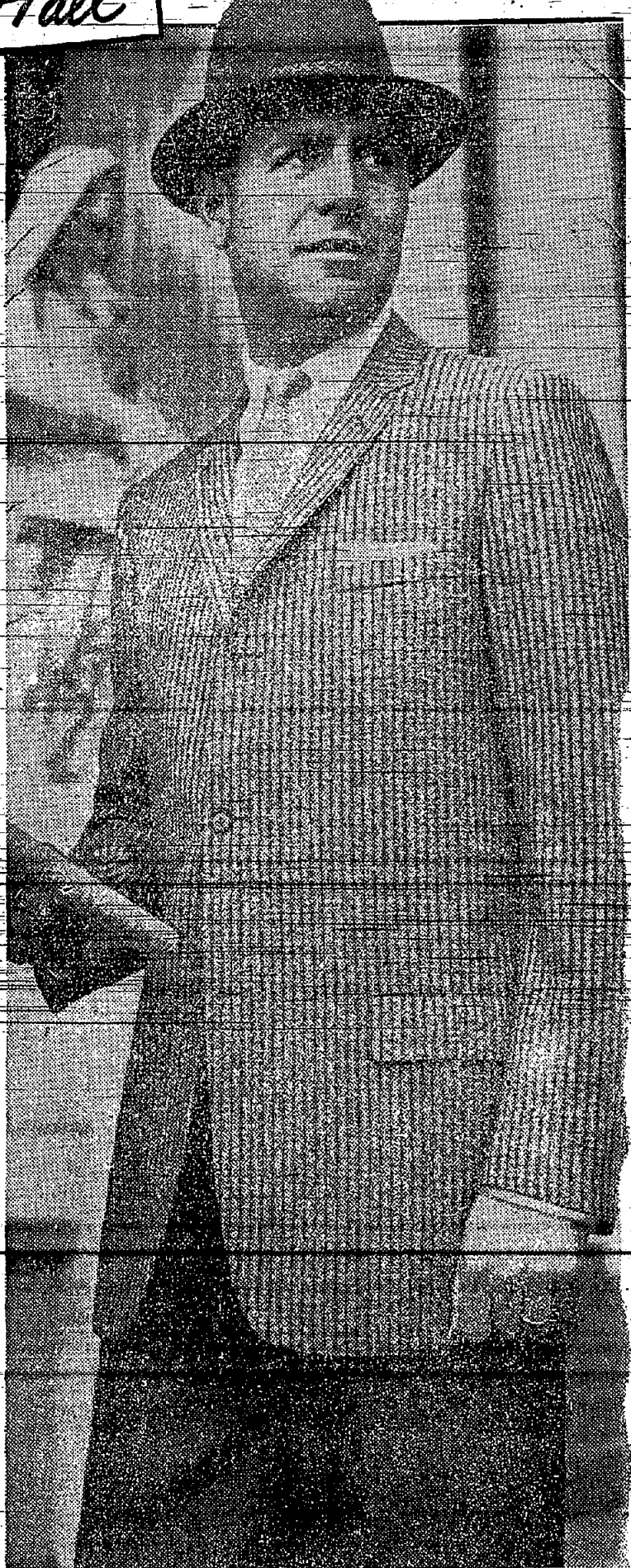
8.95

\$13 VALUES

Nationally famous Westfield flannels in regular pleated fronts or Ivy-tailored plain fronts with authentic buckled back-strap. Separate waistbands, hook and eye closures! Solids or Ivy stripes in medium and charcoal shades of grays and browns. 28-42.

Alterations included

USE OUR CONVENIENT LAY-AWAY PLAN... NO EXTRA CHARGE!

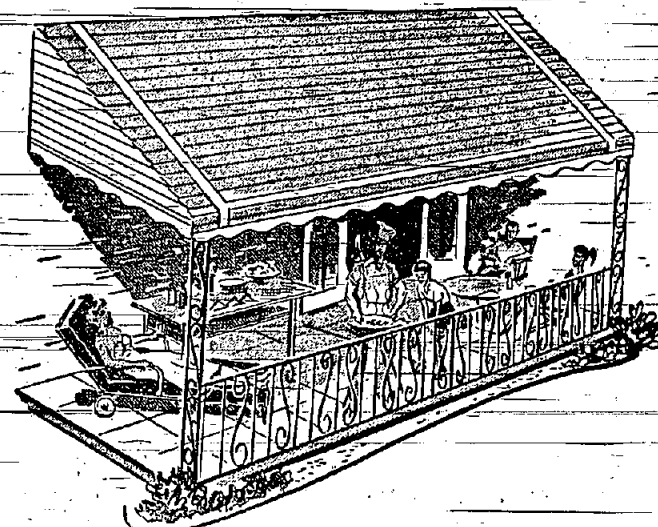


Robert Hall

OPEN EVERY NIGHT TILL 9 P.M.

UNION—ROUTE 22 Just West of Garden State Parkway
PLENTY OF FREE PARKING

add Beauty and comfort to your home



Outdoor Living Is Sweeping America!

This beautiful, all-aluminum patio adds a new room to your home at surprisingly low cost. And because it's aluminum, it will last a lifetime and retain its beauty. We install a patio with 70" projection and 102" width for only \$160.

And our installations are guaranteed to satisfy! Over the years, our customers have learned they can depend on the Swiss craftsmanship that is our hallmark.

See K.V. Sales, the Dun & Bradstreet rated craftsmen, before ordering from anyone. We install a superior line of aluminum door canopies, Warner storm windows and doors, awnings, aluminum siding, and jalousies.



JACOB SCHLUMPF Swiss Craftsman

No Down Payment
YEARS TO PAY
K-V SALES COMPANY
640 Rt. 22 Hillside
Showroom Open Daily 9-9
Sat. 9-4, Sun. 9-4
MU 8-7746

Your Last Chance To Vote

Contest Closes Sat. Mid-Night For April's "Girl-About-Towne"



Nancy Watts

Mrs. Joyce Saum



Mrs. Barbara Susser

Geraldine Ferrara



Mrs. Pat Steiner

Ann Casale

They're young, they're lovely and they're engaged... in business careers. And your votes are going to make one of them April's "Girl-About-Towne."

As you consider which you'll vote for, you'll agree that the right glasses can actually enhance charm. And because each of these alert girls wants to look as well as she sees, she selected her glasses with the help of Towne Opticians' experienced, imaginative eyewear stylists.

Won't you cast your vote to help one of these lovely young girls to win something she very much wants?—our "Girl-About-Towne" Contest, along with a complete wardrobe of fashion eyewear. Just drop the coupon at our salon or mail it to this newspaper.

Towne opticians
2006 Morris Ave., Union Center
Phone MURdock 8-6220

STORE HOURS:
9 A.M. - 9 P.M. Mon. & Fri.
9 A.M. - 6 P.M. DAILY & SAT.

VOTE! Here's My Vote for _____ as April's "Girl-About-Towne"

What Does Food Cost You?

(Continued from Page 1)

smooth. Pour gravy over browned meat and season to taste. Add vegetables which have been cooked separately. Potatoes, peas and carrots will make this a colorful, pleasant buttered add to stock and stir until orful, attractive dish.

A piece of pork loin can be purchased at lower cost than pork chops. If you have a frozen food saw, it is a simple matter to cut the chops to suit yourself. Pork chops represent one of the few meats which can be fried and still be good eating. They can also be made into a delightful "stew."

Pickled Pork Chops

Trim as much fat as possible from pork chops. Heat the fat in a heavy skillet. When sizzling, brown chops quickly on both sides, reduce heat to lowest point, barely cover with water. Salt and pepper to taste. Add one large dill pickle, sliced; one small onion, sliced; one-half green pepper, sliced; one-quarter teaspoonful finely chopped garlic. Cover and simmer until meat is tender. Add two tablespoons flour mixed with sufficient water to make a paste and stir until gravy is thickened.

TALL TIMBER

George Hoerner of Union is the tallest basketball player ever to play as a member of a Lafayette college team.

MUNI LEAGUE

Union Township Municipal Bowling League is in its 21st season. League is sponsored by Depart-

ment of Recreation.

COINCIDENCE
Sam Crosby's win in the Eastern Intercollegiate Wrestling Association championships this month was the first for Rutgers since Mike Perona won in 1952. Coincidentally, Perona also was 167-pound champion.

REPORT TO THE PEOPLE FROM YOUR CONGRESSWOMAN

FLORENCE P. DWYER



Congressional memories are of plan faithfully.

This past January, President Eisenhower delivered his annual State of the Union Message to the Congress. You will remember that it was widely judged to be the best of his six annual addresses and was vigorously applauded by Senators and Representatives of both parties, many of whom praised it for its hard-hitting, practical expression of leadership in facing the problems of national defense and of the increasing Soviet challenge.

No single part of this address was so enthusiastically received, judging from the applause I saw and heard on both sides of the House Chamber, as was the President's promise to reorganize the defense establishment.

Today, just about three short months later, we have received the President's detailed recommendations for the reorganization. Inevitably, his plan is a compromise, but a good compromise. And he has demonstrated courage, initiative and genuine leadership in proposing this careful and comprehensive plan.

But where, today, is all the applause? Instead, the President's plan has been greeted by a chilling silence, broken only by a few ominous-sounding statements from those described as "very powerful" Democrats and Republicans in Congress.

It is not unlikely that these influential leaders actually hoped to discourage the President from pushing his reorganization proposals so vigorously. If this is so, the President should have removed any doubts about his purposes when he said of the opposition last week:

"I don't care how strong they are or how numerous they are, here is something that is necessary for the United States... (for) its pocketbook first of all, out more than that, for its safety... I don't care just who is against this thing."

As only one of the 531 persons who must act on his reorganization plan, I welcome and applaud this expression of the President's determination. His promise to use every "productive" effort to "persuade" individual Congressmen of the soundness of his plan will in no way interfere in Congress' responsibility to examine it critically.

Rather, it will guarantee that Congress will not be allowed to forget or overlook the tremendous stake our country has in this proposed reorganization—no less than the urgent need to so organize our armed forces that they can function as a single unified force for a single purpose: the effective defense of the interests of the United States in an age when victory may be determined by accurate, instantaneous decision.

This is not an appropriate place to describe the details of the reorganization plan. The newspapers have carried most of them, and the precise legislative recommendations implementing them have not yet been sent to the Capitol. And, in any event, details are significant only insofar as they provide for carrying out the over-all

plan, it seems to me, is that I aim to require our military leaders to think and plan and act together, not separately, to make available for any one mission the resources of our whole military establishment, not the limited resources of a single branch; to achieve the needs of the military as a whole, not the sometimes conflicting and duplicating requirements of three separate services; and to recognize finally what has long been a fact of life: that in this nuclear age the land, the sea and the air are no longer exclusive and compartmentalized areas of operations but have shrunk to a single potential battlefield in which military operations must be directed from a unified and integrated organization.

There is further irony in the reluctance of some Congressmen to accept this plan. For it was Congress, soon after World War II experience, that established the present Defense Department and Joint Chiefs of Staff with the purpose of securing greater unification of purpose and planning. There is no question that this has failed. Instead of greater efficiency we've greater duplication and waste. Instead of unification, the system produced and encouraged competition between the services, competition for position, status, prestige and appropriations.

As the President bluntly said, "We've wasted ourselves a fully effective defense"—and we have, instead, a cumbersome and unreliable "chain of military command," "unnecessary delays" and "needless confusion."

Again, there is irony in the fact that many of these shortcomings have been revealed by the frequent studies and investigations which Congress itself has made of our defense set-up.

Why, then, should Congress hesitate to approach the President's program affirmatively? Ultimately, I believe Congress will approve the plan pretty much as proposed. An effective and unified force is a goal which a great many Congressmen have long proclaimed. Official and unofficial study groups, including the Hoover Commission, have almost unanimously recommended drastic reorganization. And the people, fed up with example after example of military waste, have seen in a unified military establishment the key to important economies as well as to increased effectiveness.

But, in the meantime, there are several handicaps—two in particular. There are what the President termed "emotional attachments" to the individual services inherited from easier, simpler days; each service has its vociferous champions who will resist anything that seems to lessen the sovereignty and prestige of that service.

A "together" handicap to overcome, however, may be the pattern of relationships established over the years between the several services and some of the committees of Congress, as well as with the leading individual members of those committees.

These relationships and ways of doing business are difficult to change for many reasons, no

Leisure Center Aids Spacious Look



A new concept of furniture, the leisure center is a flexible storage wall consisting of four free-standing, walnut finished units with molded plastic drawers and space for Hi-Fi and TV.

It's not the lack of space but the undisciplined use of it that is crowding American living rooms.

By the time today's housewife has fiddled the TV set, the record player, the desk, the china cupboard, the buffet, the bookshelves, the living room sofa and dad's easy chair, she is ready to admit that four walls are just not enough.

This is the stage when she might well take a tip from the newest design in furniture and consolidate her storage along one wall. There's a place for everything and everything is in place in the new leisure center that in four well planned units can replace up to seven separate pieces of furniture, including the desk and buffet.

The seven-foot-high units line up to fill a 12-foot wall, or in pairs, flank a fireplace or doorway.

All of the base units have molded styrene plastic drawers that never warp or stick, never snag. Their smooth-as-silk surfaces may be washed or wiped clean with a damp cloth. Three of the base units have pull out shelves finished in marproof, white melamine plastic laminate, perfect for buffet suppers and just as practical for hobbies and games. Tambour and glass doors have removable back-panels to simplify installation of Hi-Fi speakers, connections for TV antenna, or electrical outlets.

Prince Range Discount Store Opens Tomorrow

Charles Schultz, president of the Prince Range Company of Newark, has announced the opening of a fourth discount branch, at 2628 Morris Ave., tomorrow.

The Union branch, fourth in the fast-growing Prince Range chain and the third opened in the past year, is one of many planned through New Jersey.

The decision to open the Union branch was motivated by a customer survey taken some months ago. "The survey showed that a substantial number of Prince Range customers come from Union and surrounding areas and were attracted to the Prince Range store in Newark by the exceptionally low prices on a wide variety of famous brands of appliances, television, housewares and furniture," Schultz said.

"Location of the new Union branch was chosen because it is in the heart of a progressive, thriving, growing community of stores, because it offers ample parking facilities, and because it is easily accessible to the people of Union proper as well as surrounding communities," he added.

The new store in Union will offer a complete line of famous brands, including a complete department for major appliances (refrigerators, washers, dryers, ranges, dishwashers), a television, hi-fi and radio department, air conditioning department and a department for small appliances.

"The new store will operate on the same basis of low prices and exceptionally easy terms that have attracted more than a million customers to Prince Range during our 33 years in business," Schultz declared.

Ben Krich, formerly a member of the staff of the Prince Range Newark store, has been appointed manager of the new store in Union.

A Grand Opening Celebration Sale, in which all four Prince Range stores will participate, will begin tomorrow. Grand opening specials will be featured throughout the sale.

Extra sales personnel have been engaged for the sale, at all four stores, so that all customers may be assured of prompt and courteous service, Schultz said.

All four Prince Range Stores will remain open late every evening Monday through Saturday.

Prince Range Newark, Cedar Grove and Union Stores will be open Sundays also.

Truss Roof Lowers Cost Of Building

Families planning to build a new home may find they can get more house for the money by asking their architect or builder for a "truss roof" instead of conventional roof construction.

A truss roof is erected on a bridge-building principle in which angled supports span the entire weight of the roof on exterior walls. No load bearing partitions are needed.

Truss roof construction saves money in two important ways:

1. They usually are framed with 2x4's instead of more costly 2x6 and 2x8 rafters.
2. With trusses, partition walls don't have to be put in until much of the interior work is completed. An overall floor, for example, can be laid without tedious cutting and fitting around partitions, wallboard or other drywall finish can be installed all around the interior perimeter at a savings in labor costs. Wiring and plumbing also go faster.

A further advantage is that a truss roof always is a pitched roof. This means an attic space which can be ventilated for more summer comfort, plus an area usable for light storage. Asphalt shingles also can be applied on a pitched roof, giving the homeowner the advantage of a roof in his choice of colors, or in heat-reflecting white.

Although truss roofs are most commonly used on one-story houses whose attics are not designed for living space, there is a special type of truss roof construction which allows for an expansion attic.

Today's Home Materials Offer Rugged Beauty

Functional design has made today's homes look better and last longer. A good example of this in a building material is the use of millions of rock granules embedded in the surface of asphalt shingles.

These granules provide color, plus a tough surface which protects the roof from sun and the wearing effect of rain, ice, and snow.

A Gallup survey recently asked people what one section or feature of their daily newspaper they found most useful. Advertising headed the list.

Creamy Chiffon Pie Fruit Flavored



Lemonade, limeade, or orange juice... pick your choice of a fruit juice concentrate... let it flavor a light and creamy smooth chiffon pie filling.

Chiffon pie is one of the classics of go-cookery. For the fluffy filling, unflavored gelatine, water and egg yolks are cooked about five minutes in the top of a double boiler. Then a fruit juice concentrate is added full strength for flavor. In fact, by using the juice frozen, the chilling time of the pie is speeded-up.

Beaten egg whites and whipped evaporated milk are finally added to give the filling its creamy smoothness. It's the unflavored gelatine which congeals the air whipped into the milk... creates the light custard known as "chiffon."

Chiffon-Ade Pie
1 envelope unflavored gelatine
1/2 cup cold water
1/2 teaspoon salt
4 eggs, separated
1 can (6 c.) frozen concentrated limeade or lemonade or orange juice
1/2 cup sugar
3/4 cup very cold evaporated milk, whipped
1 9-inch baked pastry shell

Sprinkle gelatine on water in top of double boiler to soften. Add salt and egg yolks; mix well. Place over boiling water and cook, stirring constantly, until mixture thickens slightly and gelatine dissolves, about 3 to 5 minutes. Remove from heat and frozen concentrate. Chill until the mixture mounds slightly when dropped from a spoon. Beat egg whites until stiff, but not dry; gradually add sugar and beat until very stiff. Fold in gelatine mixture; fold in whipped evaporated milk. Turn into baked pastry shell. Chill until firm. If desired, garnish pie with fresh strawberries.

*To whip evaporated milk, chill in freezer tray of refrigerator until ice crystals form around edge. Turn into chilled bowl and whip with rotary beater or on high speed of electric mixer, until milk is stiff.

Wax Protects Tools

Wipe tools with waxed paper occasionally. This gives them just enough of a protective coat of wax to keep rust away, and avoids the messes of oil and the possibility of getting oil stains on wood.

Hose Seals Garage Door

A length cut from a discarded garden hose and nailed to the bottom of an overhead garage door serves as an ideal shock cushion and dust gasket, says The Family Handyman—a magazine for do-it-yourselfers.

more PROTEIN

The food element so vital to the good health of your family, is found in

Fischer's BUTTERCUP BREAD

because each pound of Buttercup contains the non-fat milk solids of 7-ounces of milk.



So-o-o delicious, too!

If you had a million dollars you couldn't buy better bread!

DO YOU WANT A SUMMER & WINTER PARADISE

ONLY

55 Miles From Union?

Exclusive planned permanent community now established on this breathtakingly beautiful land.

Natural sandy beaches, water skiing, fishing, boating, in the bay or eye filling lagoons, including a newly built marine and yacht basin nestled softly within lush vegetation.

Replete with a choice planned community—all who live graciously but not sumptuously. You can not help to fall in love with its grandeur.

Visit this beautiful paradise and retire to a real life of ease—away from the rest of the world and yet within commuting distance of city life.

Enjoy a gracious life as you deserve! You owe it to yourself to send for our brochure... or contact the home office in Union. Or better yet take the Garden State Parkway, get off at exit No. 51 and follow the signs to our Green Island Office. See Henry S. Seiwier Inc. Exclusive Agent.

R. Manne's & Co.
OWNERS
Realtors and Developers
MURDOCK 8-3000

American Shops SCOOP!

NEVER BEFORE
— and Maybe Never Again —
SUCH VALUE!

Sale! NOTE "SLIT" SLEEVES!

Single-Needle Imported
SWISS VOILE
WHITE - ON - WHITE
DRESS SHIRTS
with New "Slit" Short Sleeves!

NOW! 2.99 Reg. 6.95 and More!

Jacquard Weaves, Satin Stripes, Self-Figures — on WHITE Choice of Collar Styles 14 to 17 1/2.
You're Always a Guest, Not Just a Customer.

American Shops
New Jersey's Largest Clothiers
FOR MEN, WOMEN AND BOYS

HIGHWAY STORES OPEN EVERY NIGHT TILL 9 — SUNDAYS 10 to 7:30
Plenty of Free Parking at All Highway Stores

WOODBRIDGE On U.S. Hwy. No. 1 near Woodbridge Cloverleaf
NEWARK STORE 800 BROAD STREET NEWARK, N.J.
LODI On U.S. Hwy. No. 46 at Lodi Traffic Circle

Now Open In Union ANOTHER MIDAS MUFFLER SHOP

1449 Stuyvesant Ave. MU 8-0666
1/2 Mile North of Union Center Daily & Sat. 8-6. Tues. & Fri. Night to 9

You pay no more for the world's finest THE SAFE, SILENT **MIDAS MUFFLER**

And you SAVE the installation cost!

GUARANTEE In Writing For the Life of Your Car Backed by the MIDAS Coast-to-Coast Network

LIFE Muffler Shops

- FREE INSTALLATION By Specialists Takes Only 15 Minutes.
- Safe Driving, Quiet Comfort Assured by All Welded Construction.
- Mufflers, Tailpipes, Dual Exhausts for Every Car and Truck.

MIDAS MUFFLER SHOPS



DRIVE IN TODAY!

NEWARK - 975 Raymond Blvd.
Block Below Penn. Station • Free Parking All Day

MI 2-8567 OPEN DAILY & SAT. 8-6 MON. & THURS. NIGHTS TO 8

Clifton: 1340 Main Ave. GR 2-7400 — Jersey City: 771 Communipaw Ave. HE 2-1510



Shower of FOOD SAVINGS

LET'S GO



WHY PAY MORE? SHOP-RITE AND SAVE!

BRING THIS COUPON TO UNIONDALE AND SAVE 30¢

SHOP-RITE APPLESAUCE 11¢
16 OZ. CAN

3 CANS for only 3¢

30¢

REYNOLDS ALUMINUM WRAP 19¢
25 FEET

DEL MONTE PEACHES 29 oz. 29¢
SHOP-RITE WHITE MEAT TUNA FLAKES 4 for 89¢

Boneless U. S. Choice CHUCK ROAST 65¢ lb.
NO FAT ADDED

BONELESS PORK ROAST 59¢ lb.

SMOKED HAM SLICES 89¢ lb.
ARMOUR FRANKS 59¢ lb.

FROZEN FOOD PRICED RIGHT!

BIRDS-EYE PEAS 10 oz. 12¢
BIRDS-EYE LEAF & CHOPPED SPINACH 10 oz. 2 for 29¢
BIRDS-EYE Cut Corn & Cream Corn Peas & Carrots, Butter 10 Beans, Chopped Broccoli, Squash 6 for \$1.00

PLANTERS COCKTAIL PEANUTS 7 1/2 oz. 3 for \$1.00

DAIRY DEPARTMENT BUTTER PRICE DOWN

SHOP-RITE BUTTER 2 1/5 \$1.25
Solid 16 oz.

GOOD LUCK MARGARINE SAVE — Redeem Coupons Inside — Save 12¢

SHOP-RITE CHEESE LOAF 2 lbs. 79¢
IMPERIAL MARGARINE Save 6¢ lb. 37¢
SHOP-RITE MARGARINE 5 lbs. \$1.00

2 1/5 \$55¢

VEL LIQUID 4¢ off 1 gal. 35¢
WISK LIQUID 10¢ off qt. 63¢
FAB or SURF 5¢ off large 2 for 53¢
SHOP-RITE DETERGENT SAVE UP TO \$2.00 25 lbs. \$2.59
WELCHADE GRAPE DRINKS 32 oz. 29¢
CHEF BOY-AR-DEE Ravioli Meat 15 1/2 oz. 2 for 49¢
SHOP-RITE EVAPORATED MILK 14 oz. 8 for \$1.00
BOSCO 24 oz. 55¢

All Purpose Grind Shop-Rite COFFEE lb. 76¢
CHASE & SANBORN COFFEE lb. 83¢
MARTINSON COFFEE lb. 96¢
SAVARIN COFFEE lb. 89¢
MAXWELL HOUSE COFFEE lb. 88¢
BORDEN INST. COFFEE 10¢ off 5 oz. 92¢
SHOP-RITE INST. COFFEE 6 oz. 89¢
CHASE & SANBORN INST. COFFEE 6 oz. \$1.12

CATSUP 11¢ 14 oz.
EHLERS INST. COFFEE 15¢ off 6 oz. \$1.07
MAXWELL HOUSE INST. COFFEE 6 oz. \$1.16
NESTLE INST. COFFEE 10¢ off 4oz. 75¢
NESCAFE INST. COFFEE 15¢ off 6 oz. \$1.12
DECAFE INST. COFFEE 10¢ off 4 oz. 90¢
SANKA INST. COFFEE 10¢ off 4 oz. 89¢
SHOP-RITE APPLESAUCE 16 oz. can 11¢
LOG CABIN SYRUP 12 oz. 29¢
GRANULATED SUGAR 5 lb. bag 49¢
MUELLERS SPAGHETTI & MACARONI 2 16 oz. pkgs. 39¢
LA ROSA SPAGHETTI 2 16 oz. pkgs. 39¢
MAZOLA or WESSON OIL 1 qt. \$1.99
SHOP-RITE MAYONNAISE qt. 49¢
SHOP-RITE PEANUT BUTTER 18 oz. 45¢
SHOP-RITE PRESERVES PRES. STRAW., PEACH, PINEAPPLE, APRICOT 12 oz. 4 for \$1.00
SHOP-RITE GRAPE JELLY 12 oz. 3 for 50¢

SHOP-RITE JELLIES
Apple Grape, Apple Blackberry, Apple Raspberry—your choice 2 lb. 3 for \$1.00
HEARTS DELIGHT JUICY DRINK 46 oz. 3 for \$1.00
SHOP-RITE PRUNE JUICE qt. 4 for \$1.00
EHLERS TEA BAGS "FREE SPOON" 48's 43¢
SHOP-RITE TEA BAGS 48's 39¢
SHOP-RITE TEA BAGS 100's 69¢
LIBBY CORN CREOLE 12 oz. 11¢
LIBBY CREAM CORN 17 oz. 6 for 85¢
LIBBY PEAS 17 oz. 6 for 85¢
PENN-MANOR TOMATO PUREE 29 oz. 5 for \$1.00
ALL GREEN GRASS SEED 5 lbs. \$1.49
HOLLAND DUTCH TREAT ICE CREAM 1/2 gal. 69¢
PARD DOG MEAL 5 lbs. 49¢
Linit Liquid Starch 5¢ off 2 qts. for 29¢
Linit Liquid Starch 10¢ off 1/2 gal. 27¢

PRODUCE DEPARTMENT
LARGE SEEDLESS GRAPEFRUIT 4 for 29¢
CRISPY FRESH CARROTS cello pkg. 2 for 15¢
FRESH GARDEN GREEN PEAS 2 lbs. for 29¢

973 STUYVESANT AVENUE

UNION CENTER

Selling Your Home?

Look Out for "Sale Killers"

If you plan to sell your home, don't miss a chance for a quick sale. Here are some common "sale killers" and hints on how to get rid of them:

1. Unkept grounds. You don't have to re-landscape the place, but be sure lawns are neat and shrubbery is trimmed.
2. Broken and cracked concrete work in sidewalks, drives, founda-
3. Peeling or cracked paint on siding and trim. An investment in a complete paint job may pay for itself in a faster, more profitable sale. If the complete job isn't needed, a bit of touching up here and there can accomplish wonders.
4. Shabby, weathered roof. Since this usually is the largest expense visible from outside, an old, worn roof can ruin the exterior appearance of a house. An investment in a new roof of asphalt shingles in a color that complements the rest of the house can pay dividends.
5. Streaked, faded interior walls and ceilings. A weekend or two with paintbrush and roller is an inexpensive way to cure this "sale killer."

Some other things to be ready with after the "For Sale" sign goes up are good housekeeping with a minimum of clutter, an affirmative answer to the prospect's inevitable question, "Are the plumbing, heating, and electrical systems in good shape?" and the right answers to questions about transportation, shopping, schools, and taxes.

The first commercially successful electric range was developed in 1908. Today more than 13,000,000 electric ranges are in use.

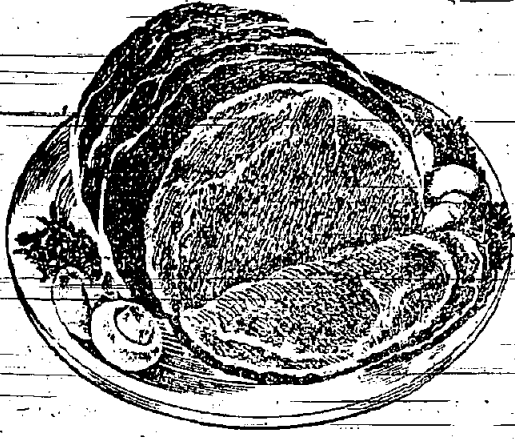


GET LOW, LOW PRICES
Plus
50¢
GREEN STAMPS!



LANCASTER BRAND "U. S. CHOICE" BONELESS BEEF

ROUND ROAST



More choice meat, less waste!
Lancaster Brand beef is Government Graded "U. S. Choice". Selected by ACME'S own super-critical experts!

or ROUND STEAK
lb. 89¢

Fresh Fish
BLUE FISH lb 29¢
SHAD BUCK lb 29¢
MACKERAL FLORIDA lb 35¢

OVEN-READY BELTSVILLE TURKEYS 4 TO 10 LBS. lb. 49¢
OVEN-READY ROASTING Chickens lb 49¢
LANCASTER BRAND SMOKED HAM HOCKS lb 29¢
LANCASTER SLICED SMOKED BEEF LOAF 4 oz. pkg. 39¢
EXCELLENT FOR CREAMED BEEF OR SANDWICHES!



DEL MONTE Corn CREAM STYLE 2 17 oz. cans 29¢

DEL MONTE Peas SUGAR 2 17 oz. cans 33¢

DEL MONTE - YELLOW CLING - SLICED or HALVES Peaches 2 29 oz. cans 55¢

Pork & Beans Van Camp's 3 16 oz. cans 35¢

Green Beans Ideal French Style 2 15 1/2 oz. cans 29¢

Toilet Tissue Swanee 5 rolls 49¢

Fresh Fruits and Vegetables

ASPARAGUS CALIFORNIA GREEN 2 lbs. 35¢
Tender! Firm! Extra Long! Low in calories—high in flavor!

BANANAS GOLDEN RIPE lb 10¢

APPLES EXTRA FANCY—WESTERN WINESAP 2 lbs 29¢

PINEAPPLES EXTRA LARGE RIPE each 29¢

Frozen Foods

FREE! Pint carton
Ideal Orange or Raspberry Sherbet when you buy 1/2 gallon package of Virginia Lee or Ideal Ice Cream!

Lancaster—Beef, Chicken, Turkey or Swiss Steak

Dinners 2 11 oz. pkgs. \$1

IDEAL—SLICED Strawberries 10 oz. pkg. 19¢

EXCELSIOR Veal Steaks 9 oz. pkg. 39¢

GRAND DUCHESS Beef Steaks 11 oz. pkg. 49¢

TASTE O' SEA Haddock Fillet 1 lb. pkg. 49¢

TASTE O' SEA—FRENCH FRIED Scallops 7 oz. pkg. 49¢

Prices Effective Thurs. thru Sat., April 17th thru April 19th

Bakery Special

VIRGINIA LEE - BLUEBERRY
Pies Special! 49¢
Pound Cake Golden, Marble, Raisin, large size 65¢
Almond Danish Ring each 45¢

DAIRY FAVORITES

KRAFT Velveeta 2 lb. box 77¢
KRAFT Cheez-Whiz 8 oz. jar 29¢



Yes! Here's the Paris-look...at a fabulous low price!

CHEMISE DRESSES

of cotton 'n Cupioni® rayon with the look of Italian silk!

5⁸⁹ Junior sizes!



Robert Hall has the Paris-look you want... priced lower than you dreamed possible! Chemise dresses... relaxed and graceful silhouettes dramatized with back-pleatings, drapings, bows! Lovely creations in rich cotton 'n Cupioni rayon—the closest rival to costly Italian silk! Glorious colors—willow green, maize, peach, powder blue, mint green, navy! Come in—take your pick!

USE OUR CONVENIENT LAY-AWAY PLAN... NO EXTRA CHARGE.



UNION—ROUTE 22 Just West of Garden State Parkway
PLENTY OF FREE PARKING



NEXT WEEK'S SCHOOL MENU

BATTLE HILL

Monday
Frank on roll, sauerkraut & relish, baked beans; fruit cup.
Tuesday
Chopped meat and macaroni casserole, corn, pears.
Wednesday
Chicken noodle soup, grilled cheese sandwich, peaches.
Thursday
Meat pattie, rice, peas, milk.
Friday
Tomato soup, tuna sandwich, pineapple.

FRANKLIN

Monday
Spaghetti with meat sauce, string beans, fruit Jello.
Tuesday
Barbecued beef on bun, buttered beets, apricot halves.
Wednesday
Frankfurters, sauerkraut or baked beans, apple sauce.
Thursday
Pea soup with croutons, bologna sandwich, peach slices.
Friday
Tuna fish salad, (carrots, celery, green pepper), cup cake.

HAMILTON

Monday
Beef stew, fruit.
Tuesday
Baked ham, scalloped potatoes, buttered vegetables, applesauce.
Wednesday
Spaghetti with meat sauce, coleslaw, Jello.
Thursday
Frankfurters on buttered roll, baked beans or sauerkraut, pudding.
Friday
Combination salad plate, cake.

JEFFERSON

Monday
Scalloped chicken and noodles, green peas, pears.
Tuesday
Pork sausage, mashed potatoes, sauerkraut, applesauce.
Wednesday
Barbecued hash, buttered corn, chocolate pudding.
Thursday
Hamburger on roll, potato salad, fried onions, Jello with fruit.
Friday
Clam chowder, tuna fish salad sandwich, grapefruit sections.

LIVINGSTON

Monday
Grilled cheese sandwich, vegetable salad, peaches.
Tuesday
Barbecue beef on bun, coleslaw salad, applesauce.
Wednesday
Meat loaf, buttered noodles, pineapple.
Thursday
Hot frankfurter on roll, sauerkraut, potato chips, Jello.
Friday
Baked cod fish, whipped potato.

Electric Heating Can Be Installed In Older Houses

Electricity is becoming more and more popular as heating fuel for many new homes across the country. But what about older homes? Can they have the modern convenience of electric heating at operating costs comparable with conventional fuels?

In areas where electricity rates are low, the answer is "yes" but only if the house is insulated properly. The amounts of insulation necessary are a 6-inch thickness of mineral wool in the ceiling, a minimum of 3 inches in walls, and 2 inches under the floor.

The "blowing wool" technique is used to install mineral wool in existing houses. An insulation contractor with special equipment forces the mineral wool into walls, ceilings, and floors under air pressure.

The gaps the insulation firmly around wires, braces, and into every crevice and corner. No "holes" are left through which heat might escape.

The insulation is blown through a long hose from a truck parked outside. When a wall is insulated, sections of siding are removed, and holes drilled in the sheathing. After the insulation is in place, the holes are sealed and the siding is skillfully replaced. To insulate an attic floor, a workman takes the hose into the attic and blows mineral wool evenly between the joists.

Beauty May Hide In Ugly Old House

Looking for a home to remodel? When you look at an old house, try to train your eye to see it, not as it is, but as it should be.

Ornate-looking houses are basically simple in plan—a rectangle or a "T". If you strip off useless porches and remove gingerbread trim moldings, you have a simple structure that lends itself to modern styling and easy maintenance.

Take a tall, awkward two- or three-story house, put on a roof of dark asphalt shingles and paint the top story darker than the lower floor. This will make the house look several feet lower and more modern. A garage connected to the house by a breezeway will give the structure the horizontal look of today's newer homes.

rot slaw, fruit
Friday
Tomato juice, French cheese toast, jelly, fruit.

HILLSIDE

Monday
Fruit juice, frankfurter in roll with sauerkraut, cookies, milk.
Tuesday
Vegetable soup, sandwich, cookies or Jello, milk.
Wednesday
Juice, sandwich, chocolate pudding, milk.
Thursday
Tomato soup, sandwich, cookie milk.
Friday
Tuna fish salad sandwich, canned fruit, milk.

Suggested Menus Are Very High In Nutrients

Dinner, as well as each of the other meals in the day, should contribute at least one-third of the day's nutritional requirements. Dinner menus are suggested by the Assistant Home Agent. These nutritional fitness and mental alertness. These needs will be met by this basic dinner pattern: three ounces of complete protein such as meat, cheese, eggs, fish, etc.; potato, or a substitute of rice, macaroni, etc.; two or more other vegetables, one of which is

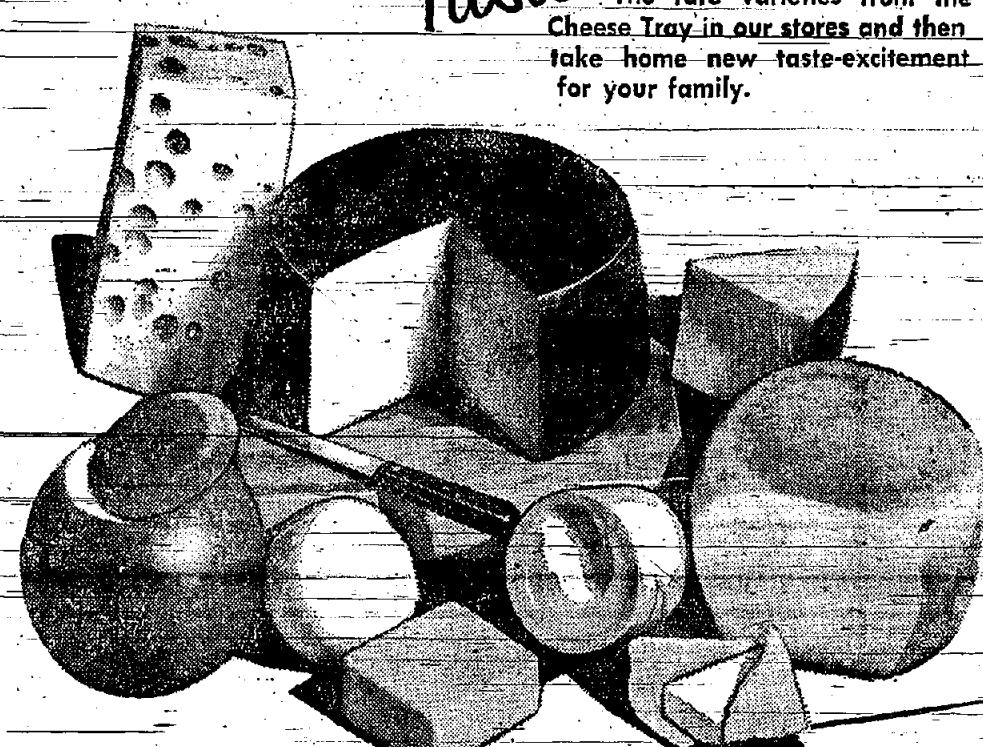
raw; whole grain or enriched bread or roll; fruit or other dessert; beverage, preferably milk. Here are seven dinner menus that meet these requirements.

French fried potatoes (frozen and reheated)
Buttered green beans (frozen or canned)
Waldorf salad
Corn meal muffins
Peaches, cookies
Tea or milk
Cold sliced lamb, hot gravy
Boiled potatoes
Carrot and raisin salad
Enriched white bread
Top of stove fruit pudding
Coffee or milk
Oven fried fish, tartar sauce
Steamed rice
Succotash
Perfection salad
Clover leaf rolls

Prune whip
Tea or milk
Meat and potato pie
Mashed turnip
Lettuce wedge
French bread
Cherry pie
Coffee or milk
Cheese tateries
Baked potatoes
Stewed tomatoes and mushrooms
Cole slaw
Bran muffins
Plain cake with fruit cocktail sauce
Tea or milk
Barbecued baked beans

with frankfurter
Hash browned potatoes
Broccoli
Celery and carrot sticks
Cinnamon raisin bread
Canned pears
Chocolate wafers
Tea or milk
Five states other than his place of New York are preparing to celebrate the centennial birthday observance of Theodore Roosevelt. He was born at 28 East 20th St., New York City, on Oct. 27, 1858.
Pierre Renoir, the French impressionist who died in 1919, produced more than 6,000 paintings.

things are happening at Grand Union...
BIG WORLD'S FAIR of CHEESES



Taste The rare varieties from the Cheese Tray in our stores and then take home new taste-excitement for your family.

- OLD-FASHIONED STORE CHEESE**
- FROM ITALY: Provolone 99c, Romano 99c, Parmesan Wedge 49c, Gruyere 39c, Sap Sago 19c, Genuine Swiss 59c, Hand Cheese 29c.
 - FROM UNITED STATES: Liederkranz 39c, Swiss Cheese 69c, C. V. Cooper 69c, Gouda 79c, Edam Sweet 79c, A Dutch Favorite 79c, Spiced Leyden 79c, Roquefort 69c.
 - FROM DENMARK: Bleu Cheese 85c, Port Du Salut 79c, Tilsiter 79c.
 - FROM NORWAY: Primula 25c, Gjetost 49c, Noekkelost 79c.
 - FROM SWEDEN: Kuminost 79c.

BIG 10¢ SALE
THE BIGGEST-BUYING DIMS IN TOWN

- MOTT'S APPLESAUCE 10¢
- SAUERKRAUT GRAND UNION 10¢
- PORK & BEANS FRESHPAK 10¢
- TOMATO SOUP FRESHPAK 10¢
- Green Giant Corn 10¢
- Whole Irish Potatoes 10¢
- Sliced Beets GRAND UNION 10¢
- Green Split Peas VARIOUS BRANDS 10¢
- Grand Foaming Cleanser 10¢
- Freshpak Vanilla Extract 10¢
- Pussy Cat Food 10¢
- Grand Toilet Tissue 10¢

TASTY...TENDER...DELICIOUS
LEGS of LAMB

59
SERVE WITH FRESHPAK APPLEMINT JELLY 10¢ 21c

- Loin Lamb Chops FLAVORFUL 99c
- Fresh Salads POTATO OR GELATIN 29c
- Sea Scallops BREAD AND FRY 69c
- Lamb Fores STEW AND CHOPS 39c
- Bologna or Liverwurst 49c
- Sliced Bacon DELICIOUS WITH EARLY MORNING TOP QUALITY QUALITY-MAID EGGS 79c

Famous brands you know and trust

- Tetley Tea 83c
- Tetley Teabags 65c
- Crisco 3 95c
- Blue Dot Duz 35c
- Corned Beef Hash 37c
- Aluminum Foil 19c
- Hi-Ho Crackers 21c
- Oxford Cremes 29c
- Duff Detergent 35c

CORN on the COB 45c

- Spinach 39c
- TV Dinners 63c
- Beefsteaks 57c
- Clam Chowder 35c
- SCATTER RUGS 2.89
- HI-LO LOOP COTTON 2.89

YOU CAN RELY ON GRAND UNION FOOD MARKETS FOR VARIETY plus SAVINGS

First of the Season
STRAWBERRIES

35
SERVE WITH NANCY LYNN SPONGE SHELLS AND FRESHPAK ICE CREAM

- MUSHROOMS 45c
- CANTALOUPE 29c

FREE 2 Seedling Trees
2 of your favorite varieties of Seedling trees with every Jumbo grade-2-year old Rose Bush \$1.99 value only 1.19

- Michigan Peat 100 2.59
- Golden Vigoro 50 2.98

PLUS TRIPLE-S BLUE STAMPS FOR FREE QUALITY GIFTS

GENERAL GREENE SHOPPING CENTER, Morris & Flemer Ave., Springfield

Visit your Triple-S Redemption Center at 250 Morris Ave., Springfield
Springfield Store Hours: Mon., Wed. & Sat., 8:30 A.M. to 6 P.M. Tues. & Thurs. 8:30 to 9 P.M.

5 POINTS SHOPPING CENTER Chestnut Street, UNION

Indonesia in the Southwest Pacific is divided into more than 1,000 island fragments. All of the islands have a total population of 10 million people.

Do-it-yourself enthusiasts in the United States are spending an estimated \$60,000,000 a year on tools for use in the home.

New Zealanders are the biggest milk drinkers in the world and rank second as butter eaters. The average New-Englander consumes 45.1 gallons of milk a year and eats 43 pounds of butter.

An inch of topsoil which may have taken centuries to accumulate can be washed away in a single bad storm.

BARDY FARMS



Exclusive at Robert Hall!

Suits of this fine quality... never before sold at this amazing price!



DACRON-WORSTED MEN'S SUITS

in light weights you'll wear NOW thru Fall!

27.95
ALTERATIONS INCLUDED

COMPLETE SELECTION... COME IN NOW FOR BEST CHOICE! USE OUR CONVENIENT LAY-AWAY PLAN... NO CHARGE!



You get built-in comfort and good-looks, a miracle wrinkle-resistant fabric of 55% Dacron, 45% worsted. Superbly styled and tailored—you can wear it now, right through Fall! And here's why the price is so low: we've cut out the extras... no fancy fixtures, no expensive credit systems, no high rents—you never pay for high overhead—you pay only for what you wear! We know this is an outstanding value—and you will, too, when you see these suits!

Robert Hall
AMERICA'S LARGEST FAMILY CLOTHING CHAIN

UNION — ROUTE 22
Just West of Garden State Parkway
PLENTY OF FREE PARKING

CHASE & SANBORN
COFFEE
ALL GRINDS
79c lb

KRAFT
Miracle Whip
Quart **49c**

SANKA
INSTANT COFFEE
Large 6 oz. Jar **89c** lb

DEL MONTE
CUT GREEN BEANS
303 Can
5 FOR \$1

DEL MONTE
PEAS
303 Can
6 FOR \$1

DEL MONTE
CREAMED CORN
303 Can
6 FOR \$1

DEL MONTE
Sliced or Halves
PEACHES
303 Can
5 FOR \$1

DEL MONTE
FRUIT COCKTAIL
2 1/2 Can
3 FOR \$1

DEL MONTE
GRAPEFRUIT SECTIONS
303 Can
5 FOR \$1

DEL MONTE
TOMATO SAUCE
11 FOR \$1

DEL MONTE
STEWED TOMATOES
303 Can
5 FOR \$1

Oven Ready
Fryers
33c lb

Brisket of
CORNER BEEF
69c LB.

IMPORTED
Sliced
HAM
1/2 lb. pkg. **59c**

Spring
LEG of LAMB
59c lb

COMPLETE SELECTION OF FROZEN FOODS

BIRDSEYE Peas **7 FOR \$1**
BIRDSEYE Chopped or Leaf Spinach **7 FOR \$1**
BIRDSEYE Cut Corn **7 FOR \$1**

DAIRY

KRAFT FRUIT SALAD **63c** qt. KRAFT SLICED SWISS CHEESE **37c** pkg.

FRESH BUNCH
RADISHES
07c bunch

SEEDLESS
GRAPEFRUIT
5 FOR 29c
Cantaloupes
25c EACH

VISIT OUR FRESH FISH DEPARTMENT TUESDAY thru FRIDAY

COD STEAK **49c** LB.
FRESH SHRIMP **98c** LB.

NOW IS THE TIME FOR ALL GOOD GARDENERS TO REJUVENATE THEIR LAWNS AND GARDENS AND BARDY FARMS' GARDEN DEPARTMENT IS JUST THE PLACE TO BUY WHAT YOU WILL NEED.

TIMELY GARDENING HINTS

- ★ For Picture Book Lawns, Fertilize and Lime NOW.
- ★ For Gorgeous Roses, Plant Your Prize Bushes NOW.