

Member of WATCHUNG WEEKLY Newspaper Group  
• Springfield Sun • Mountainside Echo • Berkeley Heights Beacon • Scotch Plains Times • Fanwood Independent.

# The Springfield

Springfield Public Library  
Main Street  
Springfield, N.J.  
FIELD  
E SUN

VOL. 30th YEAR NO. 24 DREXEL 9-5000 SPRINGFIELD, N. J., THURSDAY, MARCH 31, 1960 OFFICIAL NEWSPAPER TOWNSHIP OF SPRINGFIELD 10¢ A COPY, \$4.00 BY THE YEAR

## History Reviewed Of Vocational School Programs, Started In 1941; Appears To Be Reaching Climax

The origins of the proposed Union-County Vocational and Technical High School date back to a 1941 idea by Meritt W. Haynes, an Elizabeth schoolman who recommended a county program.

However, the idea lay dormant through World War II and afterward until April 6, 1953, when Councilman Thaddeus F. Gora put a resolution before the Elizabeth City Council advocating that it push the idea of a county vocational school with the idea of selling Edison Vocational High School in Elizabeth to the county.

He noted, at the time that the city would receive "well over \$1,000,000" for the school and would realize an annual savings, at 1953 prices, of "over \$250,000."

Battle started thereon—started part of the battle between Elizabeth and other portions of the county, who maintain that it would benefit Elizabeth most and cost that city the least amount, relatively speaking.

However, the plan received a setback in August 1958 when Dr. Frederick Raubinger, State Education Commissioner, said that a Union County vocational school system was not feasible.

However, Dr. Raubinger set about checking the laws to see if the plan could become a reality. By December 1958, the State Department of Education was on record advocating the plan.

During the 1958 election, several candidates for the State House of Representatives (Continued on Page 17)

## Hopping Takes Kerr Place On Board of Ed.



Frank M. Kerr

Union-County-Regional Board of Education has announced the resignation of Frank M. Kerr, member from Springfield, and the appointment of John A. Hopping to fill his place. The change takes place today March 31.

Mr. Kerr, who has served on the Regional Board since 1955, has purchased a home in Hunterdon County and is in process of moving to the new location. He was a resident of Springfield 19 years, living at 14 Crest Place.



### ANTI-DEFAMATION LITERATURE

Springfield Police Chief Wilbur Selander receives booklets from Robert Somer (left) and Mrs. Blanche Levine (right) chairmen of men's and women's divisions of Anti-Defamation League. The booklets will be distributed to police officers and serve as a public relations guide for police dealing with minority groups. Booklet was published by the Anti-Defamation League in cooperation with the International Association of Chiefs of Police and is endorsed by the Southern Police Institute.

## Board Members' Sons Not To Seek Summer Work at School

Howard S. Smith and Loran E. Skousen, president and vice-president, respectively, of Springfield Board of Education, told the Springfield Sun Tuesday evening that they were asking their sons to withdraw their applications for part-time summer work on school grounds.

It will be recalled that at the March 15 session of the Board of Education, a spectator inferred that allowing the boys to work for the school system while home from college subjected Mr. Smith and Mr. Skousen to a charge of "conflict of interest."

Tuesday evening both Board members told the Sun they saw nothing wrong in this summer activity by their boys but that, rather than lay the entire Board open to criticism, they would stop the practice.

The school trustees made it clear they felt the incident would be used as a "political football" and that this, while unjustified, might have a deleterious effect on the harmony and functioning of the Board of Education.

"Neither Mr. Skousen nor I want to place the Board in such a position," said Mr. Smith, adding that they would prefer to forestall embarrassment to their colleagues by having their sons withdraw their applications as candidates for the part-time work they normally would seek at the close of the school year.

## Tryouts For Two Leagues On Saturday

### Babe Ruth League and Youth League tryouts in Springfield will take place Saturday morning, April 2, at 10 o'clock, at the Meisel Avenue field.

Boys who may tryout for the Babe Ruth teams are those who will reach their 13th birthday on or before June 30, 1960, and played in the Youth League last season. Also eligible are boys who played in the Babe Ruth Minors last year and all new boys between the ages of 12 and 15 who have just moved into town.

Youth League Team

Those eligible for the Youth League teams are the boys who did not end up on a Major Youth League team last year and all new boys who will not have reached their 13th birthday by June 30.

In all cases, boys must bring their own gloves and registration cards completely filled out and signed by a parent. Registration cards are available at schools and at the Colantone Shoe Store, 245 Morris Avenue, and Westey Jewelers, 175 Mountain Avenue.

Should bad weather interfere with the tryouts, they will be held the following Saturday, April 9, at 1 P.M., after the fund drive.

The boys in the nine to 13 years-of-age group must participate in the fund drive to be held Saturday, April 9, at 10 A.M., rain or shine. The drive is being held to obtain money to finance the operations of the Youth League.

Boys are to meet at 10 o'clock Saturday morning in the year of the Florence M. Gaudineer School.

## Kappstatter To Head Temple For His Fifth Term



Milton Kappstatter was elected president of Temple Beth Ahm, of Springfield, for a fifth term at a recent general membership meeting of the temple.

In accordance with a new constitution provision, he will serve for the next two years.

Also elected for two-year terms were: Leonard Garber, first vice-president; Seymour Wortzel, second vice-president; Raymond Kravetz, third vice-president; Sol Levitt, fourth vice-president; Seymour Greene, financial secretary; Mrs. Gerard Burstein, recording secretary; Fred Neubarth, treasurer.

Elected as trustees for the three-year terms were Frank Hodas, Lee Lichter, Milton Rubenstein and Dr. Arthur G. Williams. Martin Spindler was elected a trustee for a two-year term and Irwin Markin and Meyer Biddelman were elected as trustees for a one-year term.

Hold-over trustees are Paul Weisman, Manasseh Mendelsohn, Arthur Falkin, Abbe Greenberg and Rutkow.

## Plan To Widen, Relocate Route 24 Confirmed By Highway Commissioner

## "Workshop" Meetings Dropped

Springfield Board of Education, at a special meeting Tuesday evening, March 29, decided not to inaugurate a system of informal "workshop" meetings. The special meeting was called to discuss the plan proposed at the regular meeting on March 15 to hold informal, closed meetings at a time other than the usual meeting night.

Criticism Heard

It had been decided at the regular meeting to have what were described as "workshop" sessions—however, following the meeting of March 15, criticism of the proposal was heard, fear was expressed that such closed meetings would circumvent the right of the public to hear the Board's discussions and that the formal meetings would develop into "cut-and-dried" gatherings with conclusions and decisions arrived at beforehand.

There was open and candid discussion Tuesday evening by all members present (a full board except for Joseph A. Bender) on what they understood by "workshop" meetings and how they felt about sessions closed to the public and the press.

It was apparent that a majority of the Board, including those members who had advocated it March 15, were ready to drop the "workshop" idea when its handicaps were brought out.

Two-Favor Plan

Dr. B. H. Josephson and August Caprio favored the practice purely, as they put it, as a method of learning what was being done and thought by the other members of the Board. Dr. Josephson made it clear he did not have the objectionable "caucus" type session in mind.

It was brought out that if a member felt he wanted to know what committees of which he was not a member were doing, he could attend the meetings of these committees. As a corollary to the dropping of the "workshop" scheme, it was decided to have all committee chairmen notify the entire Board when and where their committees were to meet and what was to be discussed.

"Eager Beavers"

It was brought out that what appeared to be at the bottom of the extra meeting proposal was twofold: first, a feeling that much good could be accomplished if discussions were to be conducted without notes or minutes being taken and second, an "eager-beaver" tendency on the part of the new members of the Board, as exemplified by Dr. Josephson and Mr. Caprio, to learn in a hurry (Continued on Page 17)

## Democrats Hear Primary Candidates

Thorne Lord, candidate for the Democratic nomination for United States Senator in this year's Primary Election, will be principal speaker at an open house meeting of Berkeley Heights Democratic Club Wednesday evening, April 6, at 8 P.M. The meeting which will be held at the Berkeley School, will also serve to introduce local Democratic candidates and candidates for the Congressional nomination.

The contest for the sixth district Congressional nomination will be highlighted by the appearance of both candidates, William DiBuono, Mayor of Hillsdale, and the 1958 Congressional candidate, Jack B. Dunn of Westfield.

Walter George, of Timber Drive; Frank Schade, of Old Farm Road, and Richard Wilson, of Timber Drive, nomination as Township Committee candidate, will speak on local problems.

Considerable local interest has been created by the fact that Fritz Schade, father of one of the township committee candidates, Frank Schade, is seeking a place on this year's Democratic ticket. The (Continued on Page 17)

## State O.K.'s Milltown Aid

Announcement was made Friday, March 25, by the New Jersey State Highway Dept. of the allocation of \$200,000 in state aid to complete the improvement of Milltown Road in Springfield.

This information came hard on the heels of the action taken by the Township Committee at its meeting Tuesday, March 22, to get Union County Board of Freeholders to replace the bridge in that road which crosses Springfield and Union Townships.

The governing board's decision to write to the Freeholders followed a report on the Milltown Road situation presented at the March 22 meeting by Township Engineer Alfred H. Swenson and was his recommendation.

Union Township was allowed \$15,000 to improve the part of Milltown Road lying in that municipality. It is expected that this township will join Springfield in petitioning the Board of Freeholders for a new bridge.

## Shelter To Be Dedicated Sunday

The dedication of the fallout shelter at the Civic Center in Springfield will take place Sunday, April 3, at 2 P.M. This project was completed through the joint efforts of Springfield Woman's Club's Public Welfare Department, Mrs. K. Bander, chairman, and Mrs. C. Koppisch, chairman, and their committees, and S. Freeman, director, Civil Defense Council of Springfield, and his committee.

Many to Participate

Among those participating in the dedication ceremonies will be Mayor V. J. Bonadies, Mr. Freeman, Mrs. B. D. Hardgrove, Jr., president, Springfield Woman's Club, the Color Guard of the American Legion Post, Father Edward R. Oshing, Rabbi Reuber R. Levine, the Rev. Donald C. Weber and Mrs. John Williams.

The public is invited to attend. If rain should prevent an outdoor ceremony, the event will be held in the Municipal Building.

Representatives of federal, state, county and local civil defense and governmental agencies, as well as officials of New Jersey State Federation of Women's Clubs and nearby Women's Clubs will be in attendance.

Materials Contributed

The shelter, which is ten feet by 12 feet, constructed of eight-inch concrete blocks, is the type recommended for basement construction in private homes and will accommodate an average family of six. The shelter is stocked with food, water, games, etc., sufficient for a two-week period of occupancy.

The construction and materials for this structure, as well as the provisions with which it is stocked, have been donated by local merchants and businessmen.

It has been estimated that do-it-yourself homeowners can erect a similar shelter at a cost of approximately \$150 for materials.

Open To Public

The shelter will be open to the general public from Tuesday, April 5, to Saturday, April 9, from 1 to 4 P.M., and will be staffed by members of Springfield Woman's Club, who will explain the functions of the shelter and its equipment and answer questions.

A program is being worked out with the schools in Springfield to make it possible for all children to tour the shelter under school supervision. It is hoped that by exhibiting this shelter, the first of its kind in Union County, enough interest will be stimulated to start a program of building by homeowners.

## Communion Breakfast Set For April 24

St. James Holy Name Society will hold its annual communion breakfast at the Hotel Suburban, Summit, Sunday, April 24, after the 8 o'clock Mass.

The committee includes the following: Moderator Father Edward Gehling, co-chairman, John Dzuma and John T. Browne; head table, James M. Coyle, reception, William A. Loeffler, publicity, Joseph A. Fittor, ushers, Bernard Machio and Leo Sadowski; treasurer, Larry Muehch; master of ceremonies, William Burns. At the door will be Bob Hannon and Lou Cellham.

All men of the parish are invited to attend.

## It Happens This Week In Springfield

TODAY, THURSDAY

Meeting: Millburn — Springfield Kiwanis Club, Chantrelor, Millburn; noon.

Dinner Luncheon: Springfield Chapter of Hadassah; Clinton Manor, Newark; noon.

Meeting: Civilian Defense personnel, Town Hall, 8:30 P.M.

Meeting: Springfield Historical Society; Methodist Church, Main St., Springfield; 8 P.M.

Antique Show: First Presbyterian Church, Parish House; Main Street, Springfield; 11 A.M. to 10 P.M.

SUNDAY, APRIL 3

Paper Collection; Continental Post, No 228, The American Legion; 10 A.M.

TUESDAY, APRIL 5

Meeting: Rotary Club; Baltusrol Golf Club; 12:15 P.M.

"Hospitality Tour" at Overlook Hospital, Summit; 8:15 P.M. — Every Tuesday through April.

## Baha'i Pioneer To Speak Here Sunday

Richard Summ of Hackensack will be guest speaker at the youth meeting to be held Sunday, April 3, at 4 p.m., at the home of Miss Gloria Rouse, 56 Denham Road, Springfield. He will speak on "The World of Tomorrow."

Mr. Summ and his wife were among the first volunteers from the American Baha'i Community to offer to pioneer in South Africa. He remained for several years, giving the message of the Baha'i World Faith.

Miss Rouse extends an invitation to the youth in this area to attend the meeting, which is open to the public. A social hour will follow the discussion period.

## Holy Cross To Dedicate New Organ

The newly installed electronic organ at Holy Cross Lutheran Church, 639 Mountain Avenue, Springfield, will be dedicated Sunday, April 3, at 10:30 A.M. "Officiating" will be the pastor of the congregation, the Rev. Lester E. Messerschmidt. The choir, under the direction of Mrs. Gordon Becker, will sing through the dedication of the organ. The instrument, valued at more than \$2,000, consists of two 48-note independent manuals, a 25-note pedal board, rockertype control tabs, a single expression pedal, and a built-in hi-fi sound-speaker system. The console is 30 inches wide, 38 inches high and 26 inches deep.

Purchase of the new organ was made possible through money gathered in an organ fund drive the past several years. Through the efforts of many individuals and through the gift of several church organists, principally the Ladies Guild and the Couples Club. The public is invited to the service.

## P. O. Variance Again Favored

When Springfield Township Committee meets Tuesday evening, April 12, an item of business on its agenda will be for the second time—action on a zoning code variance request to permit the erection of a building on Mountain Avenue for use by the Post Office Dept.

At its meeting Thursday evening, March 24, the township's Zoning Board of Adjustment acted favorably on a revised petition submitted by the builder and passed its approving action on to the Township Committee.

Returned Mar. 22

The matter landed back in the lap of the adjustment board following the Township Committee meeting on March 22. When it came to the attention of the governing board for the first time on March 8, action was deferred pending a study of the traffic situation that would result from operation of the Post Office at that spot.

At the March 22 governing board session, the results of the traffic study were in and they led to sending the petition back to the Board of Adjustment with the suggestion that the changes in parking and other traffic features submitted by the township's traffic consultant be taken into consideration.

## Candidates To Speak April 7 In Westfield

Republican candidates seeking election in the April 7 Primary Election will participate at a town-wide candidates meeting Thursday, April 7, at 8:15 P.M., at the Elm Street school auditorium, 302 Elm Street, Westfield.

The candidates might well be under the auspices of Westfield Republican Town Committee, Westfield Men's Republican Club, Young Republicans of the Westfield Area and Westfield Women's Republican Club.

The public is urged to attend to hear each candidate's views. Larry Newcomb, president of the Young Republicans, will preside.

Candidates for the office of (Continued on Page 17)

## Becomes Partner In Architectural Company In Union



Robert C. Miller of Springfield will be a partner in the new architectural firm of Frederick A. Elsassor, Architect — Miller, Ferguson and Gehlert, as announced today by Union architect Frederick A. Elsassor.

The other partners will be William E. Ferguson of Millburn and Sven M. Gehlert of Somerville. The firm's office will continue at 2613 Morris Avenue Union.

Mr. Miller, a registered architect in New Jersey, has been associated with Mr. Elsassor for ten years. A graduate of Columbia University with a Bachelor of Architecture degree, Mr. Miller received a Fellowship at Columbia for six months (Continued on Page 17)

## Committees Of C. Of C. Named

At the regular meeting of the board of directors of Springfield Chamber of Commerce, held at the home of the president, Drew Morrison, Thursday evening, March 24, the president announced the appointment of the following committees, each chairman or co-chairman to choose his own committees:

Publicity — Milton Keshen and Jack Stifelman, co-chairmen.

Membership and Attendance — Arthur H. Smith Jr.

By-Laws — James Cawley.

Civic Committee — Henry Grabarz.

Merchants Committee — Wesley Lewandowski.

Industrial Committee — James Secord.

Professional Committee — Judge Henry McMullen and Howard Casselman, co-chairmen.

Special Committee to keep in contact with the highway and jet port problems — Jack Stifelman.

Projects Committee — Kenneth Brands, John Schabille III. (Continued on Page 17)

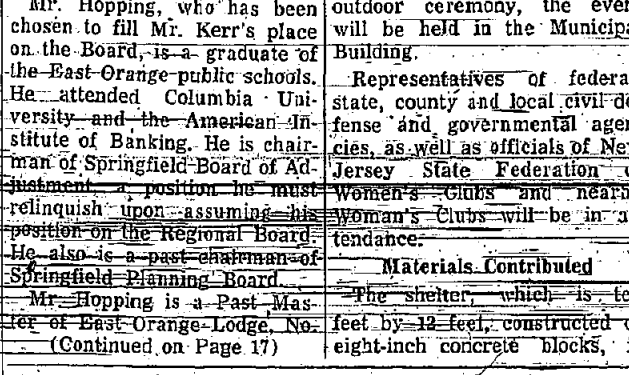
## P.T.A. Slate Of Officers Is Given

Mrs. Everett Howell, nominating chairman, announces the names of the slate of prospective officers for James Caldwell School Parent-Teacher-Association follows:

Honorary president, B. F. News-wanger, Superintendent of Schools; president, Mrs. George Kane; first vice-president, Mrs. Raymond Pierson; second vice-president, Mrs. H. E. Forsyth; secretary, Mrs. William Barry; treasurer, Stanley W. McCorkley.

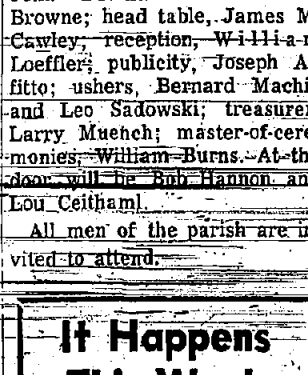
Officers will be elected and installed at the regular meeting Tuesday evening, April 26. The Region III Conference is being held at Fair Hills Inn, Somerville, today, Thursday, March 31.

The executive committee will meet Monday, April 11, at 8:15 p.m. in the library of the Florence Gaudineer School.



### LOCAL LADY IN CAST

Mrs. Gerard Rodie, of Troy Drive, Springfield, at left in photo above, and Mrs. Wendall Griffith of Short Hills have leading parts in "Beauty and the Beast," to be presented at the Paper Mill Playhouse in Millburn Saturday, April 9, at 11 a.m., by the Children's Theatre Group of the Junior League of the Oranges and Short Hills. The Springfield resident will portray "Father," while the part of "Beauty" will be Mrs. Griffith's role. All seats are reserved. Tickets are available from Mrs. Thomas Swartz, 18 Oak Hill Road, Short Hills.



PLEASSED WITH TONE: The Rev. Lester P. Messerschmidt, pastor of Holy Cross Lutheran Church, 639 Mountain Avenue, Springfield, Mrs. Gordon Becker, choir director, in center, and Mrs. James Dunlevy of Short Hills, organist, appear to be well pleased with the tone quality of the newly installed organ at the church. The instrument will be dedicated during the morning worship service Sunday, April 3.

# Springfield Sun

PUBLISHER JULIAN SAROKIN  
 ASSOCIATE PUBLISHER HENRY T. LALLY  
 MANAGING EDITOR S. E. LIEBERMAN  
 ADVERTISING DIRECTOR HERBERT AXELRAD

TELEPHONES:  
 DRExel 9-5000 DRExel 9-5005  
 ESTABLISHED SEPTEMBER 27, 1929  
 Published every Thursday at  
 267 Morris Avenue, Springfield, N. J.  
 by SPRINGFIELD SUN PUBLISHING CO.

Official newspaper of the Township of Springfield. Subscription rates by mail: "Regular" One Year \$10.00; six months \$5.00; payable in advance. Single copies ten cents. Entered as second class matter October 3, 1921 at the Post Office, Springfield, N. J., under an Act of March 3, 1879.

## SUN Rays

It's getting so one hesitates to open his morning newspaper for fear of seeing a story so bizarre as to make all the shockers that have gone before appear to have stepped out of Louisianna. Take the report of the boy being tied to a parking meter and set afire, and the one a week or so ago about the youth down south hanged by his heels... and the mugging stories that fill our papers! One would think that the thrill and publicity seekers were deliberating trying to outdo their predecessors just to make the front page.

Somewhere along the line, the Red Cross got sidetracked into a narrow of bad publicity. As a result, everytime March rolls around and the Red Cross launches its annual fund drive, all the old stories are dusted off and circulated to prove what the Red Cross is NOT and what it does NOT do.

Unfortunately, Red Cross personnel never has been very good at countering such defamatory tactics by calling public attention in a manner that is anywhere near strikingly emphatic to the GOOD that it DOES.

to say for the Red Cross... but it just is not being said. My What makes this so hard to take is that there is so much suggestion would be to make improvement of its public relations and publicly improvement a year-round project for the Red Cross on a strictly local level. Leaving it all to be said in one short month is ineffective.

SUGGESTION BOX: How about an urban renewal project for Springfield to get the trolley track off of Morris Avenue?

A number of Springfield Board of Education only since his and some other worth while municipal jobs done? election March 9 and head of the committee public relations and E. Werner has demonstrated an aptitude for this type of job which he was appointed since only about a month ago, Richard work that augurs well for the relationship between the school trustees and the public.

It is no accident that Werner should be making such rapid progress in this field. His background is liberally sprinkled with journalistic experience, particularly in the area of scholastic journalism.

His willingness to listen to suggestions to adopt them if he

### HOW Water Works

The LOCATION OF WATER CAN BE DETECTED BY THE USE OF A "DIVINING ROD" ACCORDING TO MANY PEOPLE!

SCIENTISTS DISMAYED - SAY THIS THING IN A HOLDUP FROM WITHCRAFT PAYS!

There is NOTHING MAGIC in THESE MAGNETIC PIPE FINDERS. THROUGH ELECTRONIC REACTION, TRAINED MEN DETECT AND LOCATE WATER LINES IN HOURS, NOT DAYS AS WAS NECESSARY BY OLDER METHODS!

COMMONWEALTH WATER CO.

agrees with their merit, and to argue for them with his colleagues, is a refreshing and welcome departure from the experience of most newspapermen with most Boards of Education.

There appears in this week's issue of the Berkeley Heights Beacon an article on municipal assessing and taxing which heartily commend to the attention of every taxpayer in every municipality. The business of assessing property for the raising of taxes appears to be mysterious to many people. It isn't - it can be understood by anyone who takes the time to try.

## A Report to the People

THE SPRINGFIELD-TOWNSHIP COMMITTEE PUBLISHES BELOW THE CONDENSED MINUTES OF THE LAST REGULAR MEETING. MINUTES TOWNSHIP COMMITTEE MEETING - March 8, 1960

Unanimous approval minutes regular meeting February 23 1960.

Unanimous approval on final reading of amendment to Zoning Ordinance.

Unanimous approval, on recommendation of Board of Adjustment, of variance for Robert Bauer, 48 Brown Avenue, Block 66B, Lot 22.

Unanimous approval, on recommendation of Board of Adjustment, of variance for Timber Enterprises, Inc., for variance 539 Morris Avenue, Block 53, Lot 42.

Unanimous approval, on recommendation of Board of Adjustment, of variance for Harold Searies, 146 Tooker Avenue Block 46B, Lot 76.

Unanimous decision to withhold approval of variance for Dean Widmer, Block 63D, Lots 3A, 3B and 3D1, pending traffic study by Traffic Consultant.

Unanimous approval, on recommendation of Planning Board of Tentative Approval of Preliminary Subdivision Plat, Block 77, Lots 15, 17-18, Mountain Avenue, as submitted by Frank Cardinali for Elmer Walker.

Unanimous approval, on recommendation of Planning Board for Crestview Builders, Inc. to construct 2 model homes on Baturai Top Section E, Lots 1 and 2 on Baturai Top Section E.

Unanimous approval, on recommendation of Fire Chief, of installation of fire hydrant at intersection of West Bryant Avenue and Troy Drive.

Unanimous approval on first reading of 1960 Salary Ordinance. Final reading to be held March 22, 1960.

Unanimous approval of contract with Dunellen Communications Service for maintenance of radio equipment of the Fire Department.

Unanimous approval of contract with James Petrozello Co. for extra services for the year 1960.

THOSE WISHING TO SEE THE OFFICIAL MINUTES IN FULL OR IF THERE ARE ANY QUESTIONS, ARE INVITED TO CONTACT MRS. ELEANORE H. WORTHINGTON, TOWNSHIP CLERK, AT DRExel 6-5800.

### DEATHS

MISS E. L. KESSLER

The Rev. Bruce Evans, minister of First Presbyterian Church, Springfield, officiated Friday, March 25, at the funeral services at Young's Funeral Home, Millburn for Miss Emma L. Kessler, 96, formerly of 256 Short Hills Avenue, Springfield, who died at Colonial Rest Home Tuesday, March 22.

Burial was made in Presbyterian Cemetery, Springfield. Miss Kessler and her surviving sister, Elizabeth, 88, were the oldest living residents of Springfield.

Miss Kessler had been at the nursing home for the past seven years. Her sister has been a resident at the home almost a year. Miss Kessler's father, the late George J. Kessler, came to the United States in 1851.

A brother, George Jr., was Postmaster of Millburn when he died in 1930.

Both sisters commuted to Orange for 52 years, until 1940, where they were employed as

Call DRExel 6-4300 "We Service Any Oil Burner"

Schaible Oil Co.

192 Mountain Avenue SPRINGFIELD

coal - FUEL OIL - coke

Motored Deliveries - Budget Plan

Member Springfield Chamber of Commerce

### DREXEL CLEANERS

Quality Cleaners

FREE PARKING SIDE & REAR 230 Mountain Ave., Springfield Superior Cleaning - Shirt Laundering, Shoe Repairing.

milliners at the Berg Company. In addition to her sister, Miss Kessler is survived by three nieces: Mrs. Harold J. Hughes of Short Hills, Mrs. Clement H. Wyas Jr. of Scarsdale, N. Y., and Mrs. Benjamin H. Heller of South Orange.

William Yeskel

Funeral services were held Tuesday morning, March 29, for William Yeskel, of 36A Forest Drive, Springfield, founder and president of Textile Products Co. of Newark, who died in Paul Kimball Hospital, Lakewood, Sunday, March 27, at the age of 48. Interment was made in Cheekamoket Cemetery in Newark.

In addition to his textile interests, Mr. Yeskel held an interest in a real estate business. He was president of the company which operates the Medical Tower Building in Newark.

Mr. Yeskel came to this country from Russia, the land of his birth, more than 52 years ago. He founded his business

## ARE YOU GAMBLING WITH TRAGEDY??

HOME FIRES WILL KILL, MAIM, DISFIGURE OR INJURE 1,200,000 PEOPLE THIS YEAR ALONE.

Why Gamble With Tragedy?

Science Has Developed the Revolutionary VANGUARD HOME FIRE ALARM That Is 100% Dependable Under Any Circumstances.

- NO BATTERIES
- NO WIRES
- NO ELECTRICITY
- NO GAS
- NO MAINTENANCE
- NO INSTALLATION COSTS

DO NOT DELAY!!

Call or Write for FREE information on Fire Safety.

UNION, N. J. MURdock 7-2880  
 SPRINGFIELD, N. J. DRExel 6-7039  
 SUMMIT, N. J. CREstview 7-4377  
 NEWARK, N. J. MARket 3-2150

Vanguard Union Corp.

1300 Burnet Ave., Union, N. J.

Please send me FREE booklet

NAME .....

ADDRESS .....

ATTENDS CONFERENCE

Dr. David L. Stone, of 2 South Gate, Springfield, attended the annual contact lens conference sponsored by the Pennsylvania Optometric Association Sunday, March 27, at Pennsylvania State College of Optometry in Philadelphia.

A 1958 payroll of \$4,047,000, for New Jersey manufacturing employees was shown in preliminary U.S. Census Bureau statistics, according to THE NEW JERSEY ECONOMIC REVIEW, prepared by the New Jersey Department of Conservation and Economic Development. The total average manufacturing employment in New Jersey was estimated at 765,000 workers.

A total of 210 fires was reported to the Forestry Section of the N.J. Department of Conservation and Economic Development from July, 1959 through January 1960, with an estimated 976 acres burned.

### MONTREAL

75¢

3 min. state rate from Newark after 6 P.M. 10% tax not included.

## MEN! The values are unbeatable!

Luxury fabric SPORT COATS you can wear year round

# 19.95

alterations at no extra charge!

- Plaids
- Checks
- Ivy Stripes
- Boucles

Now - be casual and confident in the new all-wools, rich blends of wool and Orlon... wool, nylon, and cashmere fabrics that combine the ultimate in luxury with long-wearing durability.

Nationally famous *Westerfield*

## ALL-WOOL FLANNEL SLACKS

# 7.88

Alterations at no extra charge

Regular pleated front and Ivy styles... tailored with separate waistbands, hook-eye closures. Medium and charcoal shades of gray and brown. Sizes 28-42.

### LUXURY COATS of Imported English Tweeds, Saxonomies, Fancy Tweeds

# 24.95

Alterations at no extra charge

Smartly styled coats with Bal collar, slash pockets, set-in and raglan sleeves! Choose from the newest tones and patterns... in gray, brown, heather and charcoal. Sizes for regulars, shorts, longs.

### Robert Hall

OPEN EVERY NIGHT TILL 9 P.M.

WEST OF GARDEN UNION - ROUTE 22 STATE PARKWAY

LINDEN - 416 WEST ST. GEORGE AVE. - (2 blocks south of High School)  
 ELIZABETH - 1004 ELIZABETH AVE., at Route No. 1 Highway  
 IRVINGTON - NEW ST. off Springfield Ave., at Irvington Center

Plenty of Free Parking

Cavemen had to put up with rock-hard water. You don't.

## CALL YOUR CULLIGAN MAN

Ask about our fully-automatic water softeners! Enjoy an unlimited supply of hot and cold soft water regardless of family size or water usage!

Free water analysis - no obligation

# CULLIGAN SOFT WATER

NELSON, PHILLIPS & CO., INC.

12 Holmes St., Millburn DRExel 9-5100 - MURdock 6-1661

## have a BEAUTIFUL LAWN

Use the right product at the right time. With these Lawn Aids - and an Early Start - you could so Easily make this your Best Lawn Year

Agrico for Lawns • Bone Meal • Pulverized Limestone Peat Moss • Baccto Michigan Peat • Milorganite • Agrinite Gypsum • Agrico for Turf with Urea-Form • Lawn Spur Hyper Humus • Scotts Turf Builder • Halts • Rid Chlorane • Di-Met P.C.C. • Pea • Erosionnet • Scotts Lawn Spreaders • Tools • Top Quality Lawn Seed • Advice

FREE

1 lb. "The Forbes" Lawn Seed with purchase of 100 lbs. Nationally Adv. Lawn Fertilizer (\$7.19 value for \$5.00)

or

5 lbs. "The Forbes" Lawn Seed with purchase of 300 lbs. & up Nationally Adv. Lawn Fertilizer (\$23.89 value for \$17.40)

Offer expires April 3, 1960

## FORBES GARDEN CENTERS

Route 10, Manover, N. J. TUCKER 7-0375

Morris Turnpike, Millburn, N. J. DRExel 9-4430

Both Open: 8:30 to 5 p.m., including Sundays

(Millburn Store open Fri. and Sat. nights 'til 8:30)



**HOME ECONOMICS AT JONATHAN RAYTON:** Illustrating the accompanying article on home and health activities at the regional high school, in Springfield, the three photos above show some of the students hard at work. In the top picture, from left to right, Pat Metz and Lois Pannolo, both of Springfield; in the center are shown, left to right, Maria Inamorate of Springfield and Ginny Reichelt of Kentworth. The lower panel shows, left to right, Donna Ferguson of Springfield and Carolyn Castro and Gail Beurer, both of Kentworth.



**CYNTHIA'S**

**CHATTER**

**GIRLS PUT ON SHOW**

In observance of St. Patrick's Day, on March 16 and 17 the members of the Girls After-school Athletics group put on an assembly for the student body. Girls in the show were: Mother — Cathie Silance; Children — Alberta Bell, Nancy Leonhard, Lord Mayor — Barbara Heller.

Leaping Leprechauns — Bonnie Opella, Joan Rohrer, Joan Ryder, Sue Sparks, Joan Stajack, Joan Stengel, Barbara Taylor, Roberta Weissman.

Nimble Nymphs — Joan Cunningham, Rosemary Hliva, Dolis Kuenzel, Joyce Mende, Gail Layne, Marlene Simon.

Mc Namara's Marchers — Connie Basham, Mary Hendricks, Gail Ledig, Janet Lehr.

Jane Loman, Arlene Resnick, Elaine Roberts, Gert Rohrer, Beverly and Sheila Ross, Carol Rutz, Carol Schiesl, Lorna Vielandese, Chris Wywrot, Lynn Yanowitz, Irene Zidonik.

Shaughnessy's Shenanigans — Wendie Beyer, Sandy Carson, Diane Chirba, Chris Cleaveland, Marcia Davies, Debbie Frost, Judy Lorenz, Judy Marchell, Arlene Tomko, Carol Wywrot.

Dunegal's College — Nancy Bishop, Laurel Dohy, Pam Francis, Dot Fuhrer, Joyce Hartung, Mary Hock, Shirley Keeler, Laura Metz, Linda Miller, Mariamne Miller, Joan Reuter-shan, Barb Starr, Myra Ferry, Ruthie Thomas.

Clancy, Denny, Mc Namara — Elaine Giamattolo, Amette Shordone, Pat Zaitko.

Francing Pixies — Shery Chava, Mary Forellino, Elaine Fisher, Marie Margo-Herberg, Dolores Kozlowski, Barb Kubach, Betsy Lange, Ginny Ward, Frances Wuerz.

**SPRINKLE SHAMROCKS** — Cindy Brandie, Irene Basteriovic, Carol Dougherty, Barbara Havala, Sue Mellick, Joyce Romond, Lois Schneider, Jean Wall.

**Blinkin' Blarney** — Pam Berg, Barbara Keeler, Nancy Marshall, Carol Tronotone, Pat Venturi.

The show ended with the musical acts singing "It's a Great Day for the Irish."

**NEWCOMER?**

Have you, or has someone you know, just moved to a new home?

**FANWOOD SCOTCH PLAINS HOSTESS**

**Georgia Benedict**  
12 Glenwood Rd., Fanwood  
FA 2-6201

**MOUNTAINSIDE HOSTESS**

**Cynthia Schiefel**  
748 E. Broad St., Westfield  
AD. 2-7681

Your Welcome Wagon Hostess will call with gifts and friendly greetings from the community.



**WELCOME WAGON**

**N.E.L. HOLDS CONTEST**

Wednesday, March 23, Dayton Chapter of the National Forensic League held an extemp speaking contest in which ten regional students participated.

The speakers chose three topics unknown to them and then selected one from the three. They were given 20 minutes to prepare their statements and were then graded on their content and oral interpretation. Bob Seltzer of Springfield came out on top by receiving an "A" for each of the three rounds held.

The first three periods of the Home Management classes took a trip to a department store Wednesday to "price" furniture for their newly acquired apartments.

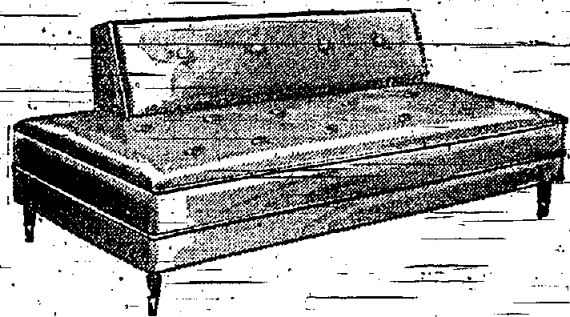
In preparation for marriage and future homemaking, Miss Mary Ann Ulrich and Mrs. Katherine Joslin, Rutgers teachers, issued "husbands" among their students. These "couples" have selected apartments according to their income.

Six industrial scientists and engineers have been named to an advisory committee to help plan a new Rutgers program in chemical engineering.

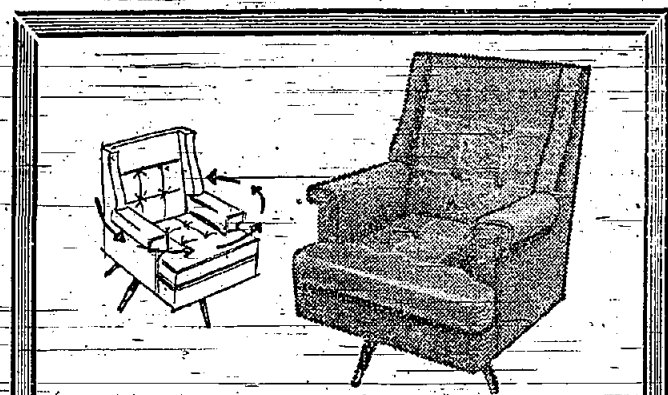
**HUGE SAVINGS ON HUNDREDS OF ITEMS**  
**Newberrys** **SALE STARTS THURSDAY**

**FREE! Bissell Shampoo Master**  
Worth 4.99 with any purchase in our furniture department of 25.00 and over. This offer limited to Thurs., Fri., Sat., Mon. only, March 31, April 1, 2, 4.

**STORE OPEN**  
Thurs., Fri., Mon. Nites  
Till 9 p.m.



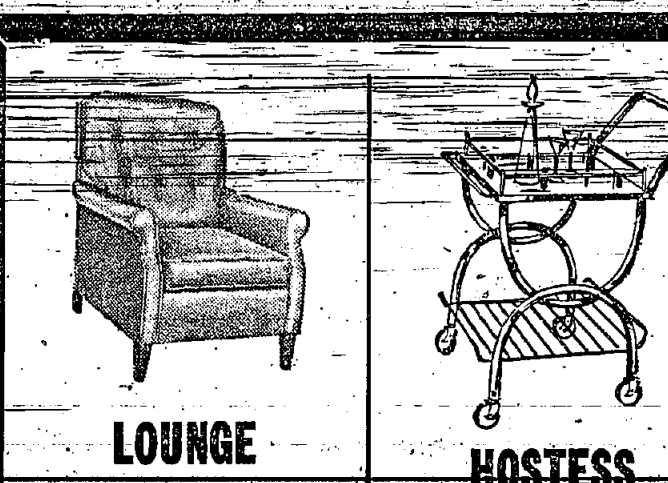
**SLEEPER LOUNGE**  
Luxury 50-coil lounge upholstered in rubberized hair, sisal and cotton. Heavy wipe-clean supported plastic cover. Matching bolster. Orange, tan, white, black, ivory, turquoise.  
**39<sup>77</sup>**  
Reg. 49.98



**SWIVEL CHAIR**  
King size high back rocker chair with foam filled back, seat, arms—sagless spring construction. Swivels 360 degrees — perfect for TV viewing. Available in turquoise, green, black, brown, grey or red high pile nylon-acetate cover.  
**34<sup>77</sup>**  
Reg. 44.95

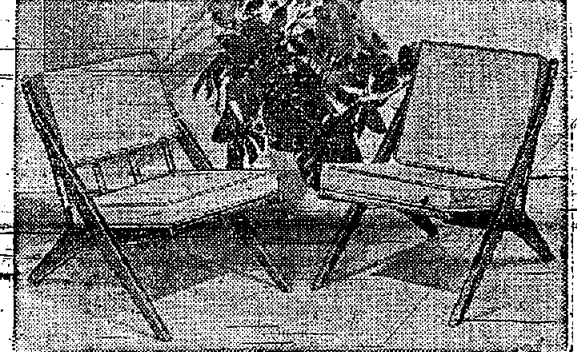


**UTILITY TABLE ON WHEELS**  
**2<sup>99</sup>**  
Reg. 3.98  
BIG BUY in a trim, attractive work-saver with its own electric outlet! Holds plenty—has 3 tiers, 15x21" each. Wheels smoothly on roll-ee casters. Sturdy steel in red, yellow, pink, white, or turquoise. 29 1/2" h.

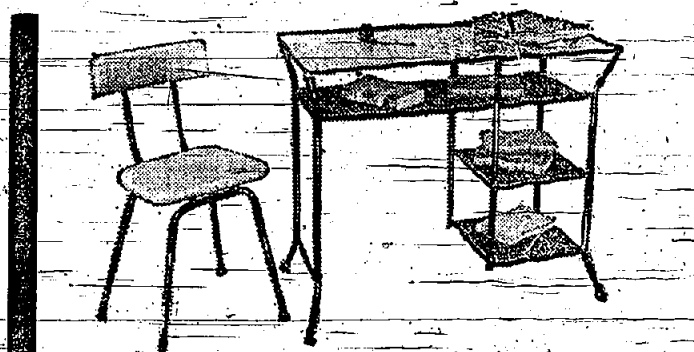


**STACK STOOLS**  
**2 for 4.99**  
Reg. 2.99 each  
Handsome stools—ideal for extra seats for parties, for outdoors. Sturdy tubular steel legs, upholstered seats covered in colorful plastic. Stack for storage.

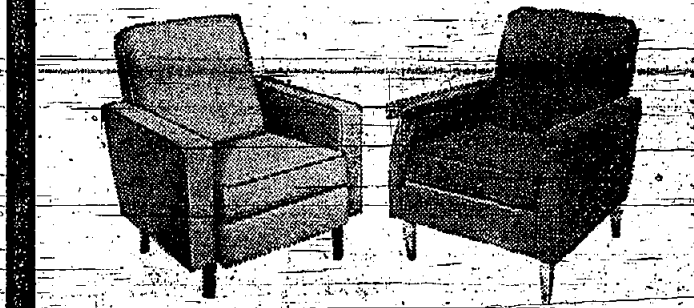
**FURNITURE JAMBOREE**  
**SAVE 10% TO 50%**



**FOAM-CUSHIONED FOLDING CHAIRS**  
**24<sup>88</sup>**  
each  
Reg. 30.98  
So new and smart! So comfortable! "Danmark" modern chairs in 3 styles. Sturdy wood frames in walnut finish—fold flat when desired. Plump polyether foam-filled back and seat cushions covered in rich fabric. Smart colors—black, peacock, mocha or tobacco. You'll want several.



**DESK AND CHAIR SET**  
Artfully combining the light airy look and efficient design in black wrought iron. Roomy desk-top of mar-resistant plastic; spacious storage shelves of perforated metal. Vinyl-upholstered chair. Tips on legs.  
**16<sup>47</sup>**  
Reg. 21.95



**SALE!**  
**UPHOLSTERED ARM CHAIRS**  
**36<sup>77</sup>**  
each  
Reg. 49.98

TERRIFIC values! Luxury-built chairs with rugged hardwood frames, no-sag spring construction. Choice of leather-look plastic or rich, textured fabric covers. Most have reversible inner-spring seat cushions, brass ferrules. Fashion colors.

 <b>LOUNGE CHAIR</b> Easy-care Bol-faxel—in green, ivory, oxblood. Also fabric cover. <b>55<sup>57</sup></b> Reg. 69.77	 <b>HOSTESS CART</b> Triple-plated brass cart with 3" casters. 24" high. <b>9<sup>77</sup></b> Reg. 11.97	 <b>SWIVEL HASSOCK</b> Black or bronze-tone metal, brass grill. Textured vinyl seat. 20 x 20 x 16" high. 2 for 18.00 <b>9<sup>47</sup></b>	 <b>DANISH CHAIR</b> Walnut finish hardwood. Supported plastic seat, and swivel back. <b>17<sup>77</sup></b> Reg. 22.93
---	---	---	---

*It's easy to open a Newberrys*

**CHARGE ACCOUNT**

With a Newberry Charge Account shopping is so fast and easy... you can have the things you want for your home, your family without waiting for cash... you can have the convenience of a regular Charge Account plus the privilege of spreading payments over many months with our Flexible Payment Plan, when you desire.

**FILL IN AND BRING IN, OR MAIL TODAY**

**J. J. NEWBERRY CO.**  
General Green Shopping Center  
Morris & Mountain Avenues, Springfield, N. J.

NAME \_\_\_\_\_  
ADDRESS \_\_\_\_\_  
OTHER CHARGE ACCOUNTS \_\_\_\_\_  
EMPLOYED BY \_\_\_\_\_  
HOW LONG \_\_\_\_\_  
POSITION \_\_\_\_\_  
SIGNATURE \_\_\_\_\_

**J. J. Newberry Co.** MORRIS & MOUNTAIN AVENUES SPRINGFIELD, N. J. GENERAL GREENE SHOPPING CENTER We advertise only a few items out of our huge furniture department... free delivery in 7-mile area.

### Funeral Held Sat For Crash Victim

A High Mass of Requiem was celebrated at St. James R. Church, Springfield, Saturday morning at 10 o'clock for the late Miss Joan Lea Mond, who died at Perth Amboy General Hospital late Tuesday night about two hours after she was injured in an automobile crash in Edison. Burial followed in Gate of Heaven Cemetery, Hanover, with Maplewood Funeral Home, 2122 Millburn Avenue, Maplewood, in charge of arrangements. Miss Lea Mond, who was 29 years old and lived with her parents, Mr. and Mrs. Charles C. Lea Mond, of 525 Ashwood Road, Springfield, was executive sales manager at Bamberger's Menlo Park store. She was born in Maplewood and had lived in Springfield a few years. A graduate of Columbia High School in Maplewood and Edgewood Junior High School, Providence, R.I., she had been with Bamberger's three years. Miss Lea Mond's car collided with a panel truck operated by Eugene Madey of Linden as she was leaving the Bamberger parking lot and attempting to turn into Route 1. Madey was reported to be traveling north on this highway.

### Speaks At Career Conference At H. S.

Miss Nancy Ann Frey, daughter of Mrs. Charles Frey, of 86 Salter Street, Springfield, and the late Mr. Fray, and an Eastern Airlines hostess, was guest speaker at the Hanover Park Regional High School, Hanover, N.J., career conference on Feb. 18.

Dr. L. B. Kenyon, director of the Guidance Dept., in his planning for these conferences, which are designed to help students select a vocation, invited Miss Frey to speak to the students as an airline hostess.

Miss Frey spoke to more than 100 students who were interested in airline work and she outlined the various phases of flying as an attendant. Miss Frey hopes to pursue this type of work of advising high school students who are interested in flying as a career.

She is a graduate of Jonathan Dayton Regional High School, Springfield, and attended Western College for Women in Ohio and Upsala College in East Orange for three years.

### Charter Member Of Military Unit At Vermont College

E. S. FOSTER, JR., formation of a Norwich University, Northfield, Vt., company of the Association of the United States Army has been announced by Maj. Gen. Ernest N. Jarmen, president of the military college, Edward S. Foster, Jr., of 53 Wentz Avenue, Springfield, is one of the unit's 34 charter members.

### Bowl's Lead Is Whittled Away

Springfield Bowl lost two games to Springfield Market on March 14 and had its first place Springfield Municipal Bowling League lead cut to half a game as second place Evergreen Lodge took the odd game from the Beckman Market five. Ehrhardt's and Legion No. 2 are tied for the third spot.

Individually, Coburn of Ehrhardt's Electronics was high man with games of 179, 206 and 236 for a 621 series. Others who had high single games were: Shoch, 236; Osmulski, 224; Smith, 223; Wallin, 222; Goodman, 209; Cobandrea, 219; Tausa, 218; Field, 214; Batalie, 213; Nans, 212; Anderson, 212; H. Burdick, 212; claim, 212; Pepe, 210.

### STANDINGS

Team	W	L
Springfield Bowl	47	31
Evergreen Lodge	46	34
Ehrhardt's Electronics	45	36
Legion No. 2	45	36
Baldwin's Shell	44	37
Frank's Auto Service	43	37
D'Andrea Driveways	43	38
Beckman's Market	41	40
Cuzzalino Furs	40	41
Policarpio's Atlantic	38	43
Bunnell Brothers	37	43
Mendes Florist	37	44
Brunner's Excavating	37	44
Casimiro Brothers	37	44
Springfield Market	36	45
Legion No. 1	29	51

### Reunion Slated By Club For Saturday

Spring Garden Country Club will hold a reunion at the Military Park Hotel, Newark, Saturday evening, April 2.

A special feature of the event will be the appearance of Jack Wakefield, entertainer, who has appeared on TV and in night clubs across the country.

There will be cocktails in the Rutgers Room and dinner will be served in the main ballroom. There will be dancing all evening.

Evergreen trees are not necessarily all green. There are evergreens with silver, white, blue, gray, yellow and plum.

# Larkey's Magnificent New Millburn Store

700 MORRIS TURNPIKE, SHORT HILLS

## GOES ALL OUT FOR EASTER!

OPEN TO 9 P. M. EVERY EVENING (SAT. TILL 6 P. M.) DURING THIS OPENING PARTY

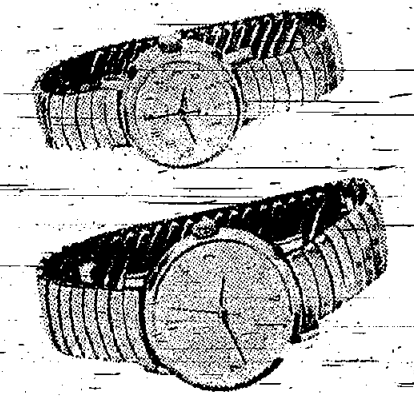


### WIN A FREE TRIP TO FLORIDA FOR 2

Nothing to buy! You may win a trip including air transportation to and from Florida—plus 7 days and 6 nights at a luxury hotel including meals—for Two! Just fill out a contest form at our store completing the last line of our jingle—the best rhyme wins!

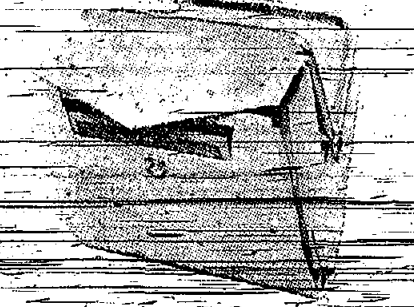
### A FREE GIFT FOR EVERYBODY

Our Opening Party gift to you... a beautiful Free Slim Line Pen!



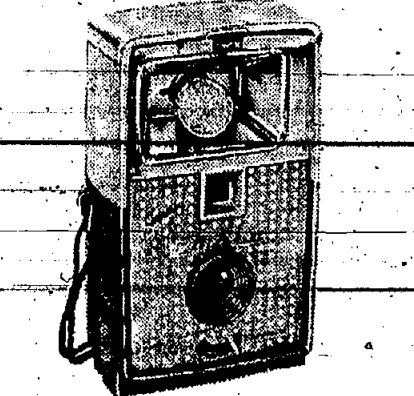
### FREE WATCHES FOR MEN & WOMEN

A magnificent Timex Watch—nationally advertised at \$11.95—either in a handsome masculine style or attractive feminine style... given Free with a purchase of \$45 or more in either our men's or beautiful women's department! Just one to a customer.



### A FREE PRINCESS-GARDNER FRENCH PURSE FOR WOMEN

Lustrous Cow Hide French Purse is our Free Gift with a purchase of \$17 or more in our stunning women's department. Just one to a customer.



### A FREE MARK 27 CAMERA FOR BOYS

A famous Imperial Mark 27 Flash Camera—given Free with a purchase of \$20 or more in our boys' department. This Hide-Away 3-in-1 Flash Camera takes color slides, full color snapshots or black & white snapshots. Just one to a customer.

All the news in elegance in the sportswear that is the mark of the smart suburban fashionable! Suits, separates, coats, sweaters, skirts, blouses, jackets, shorts and slacks by the most famous designers! Plus elegant dresses!



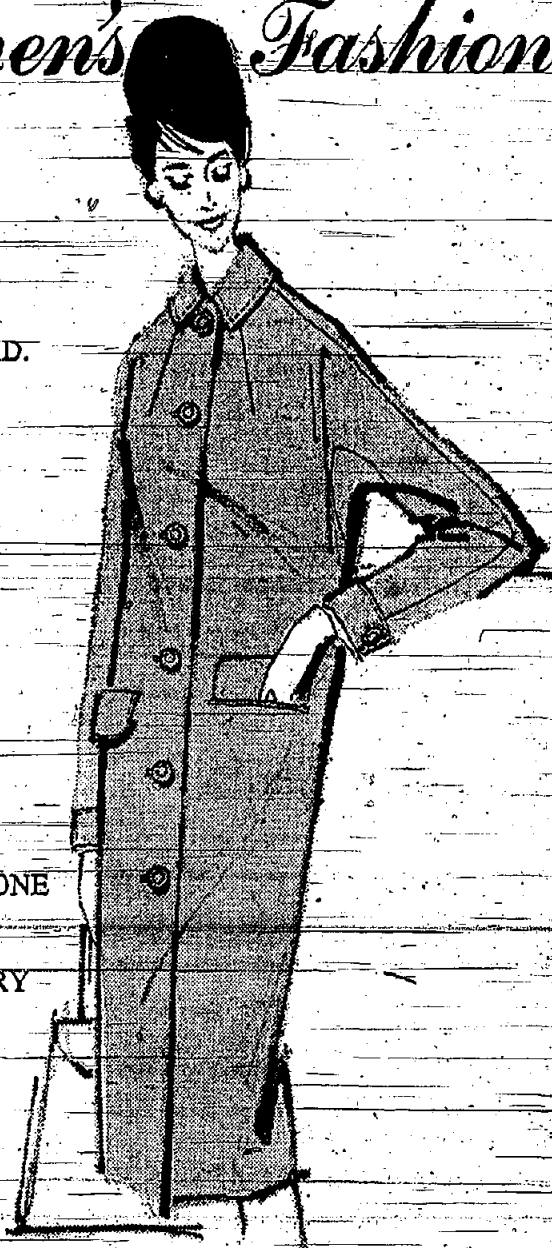
### New Women's Fashions

CUDDLECOAT IN AN IMPORTANT IMPORTED BOLD PLAID. THE CLUTCH STYLE FEATURES A FULL BACK...LIVELY AND LOVELY IN STONE OR BLUE.

\$55

THE BUTTON-FRONT CLASSIC...HERE IN SHETLAND HERRINGBONE WITH ELEGANT HAND-STITCHING. VERY SPRING-1960 IN SOFT BLUE OR GREEN.

\$45



TAKE 12 MONTHS TO PAY, NO DOWN PAYMENT

OR IF YOU PREFER: USE LARKEY'S

- (1) REGULAR CHARGE, PAY IN 30 DAYS.
- (2) 3 MONTH CHARGE, PAY 1/3 EACH MONTH.

## New Jersey's Most Complete Boys' and Students' Department



FAMOUS "PORTOFINO" SHIRT FROM THE DONMOOR INTERNATIONAL GROUP. NEW ROLL-OPEN COLLAR, STRIPED BIB FRONT, ANCHOR-EMBROIDERED SLEEVE. WASHABLE 100% COTTON-KNIT. BRASS, BLACK, WHITE. SIZES 6-16...\$3.95

SPORT COATS EXTRAORDINARY... IN COLORS AND PATTERNS NEWLY SOPHISTICATED FOR THE SCHOOL SET. IVY STYLES, CONTINENTAL CUTS, BLAZERS IN THE BRITISH MANNER. SIZES FOR JRS., PREPS, STUDENTS, HUSKY...\$12.95 to \$27.95

CONTINENTAL "WEARLON" SLACKS. GUARANTEED FOR ONE FULL YEAR OF SATISFACTORY WEAR BY BILLY THE KID. CONTINENTAL FRONT POCKETS, SIDE TABS, EXTENDED WAISTBAND. SANFORIZED, VAI-DYED CHARCOAL & KEAKI. SIZES FOR JRS. 22 TO 26, PREPS 27 TO 32...\$4.95 & \$5.95

NO CHARGE FOR ALTERATIONS ON BOYS' CLOTHING



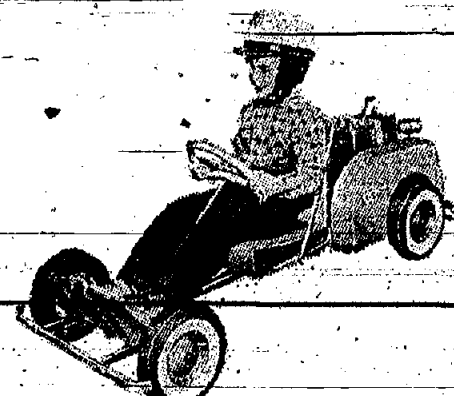
### BOTANY "Continental" SUITS FOR BOYS

Newest edition of the Continental... our spring-through-summer black and white checked suit. Handsomely tailored in the finest 100% light-weight wool.

- JUNIORS .....\$27.95
- PREPS .....\$34.95
- HUSKYS .....\$37.95
- STUDENTS .....\$42.95

Largest Department For Husky & Stout Boys

The largest selections, the most complete size ranges, the newest fashions, the most unusual styling, the most practical fabrics—that's Larkey's Boys' Department! Suits, Coats, Sport Coats, Slacks, Jackets by Botany and Carter Hall, Shirts, Sweaters, Pajamas, Ties, Hose by McGregor, Levi, Model, Mighty Mac, Carters, Jantzen, Dickies, Donmoor. Shoes by Bostonian Jr. and Mansfield. Sizes for juniors, preps, students—plus a huge department for husky and stout boys! Authorized Boy Scout Department!



### WIN A GAS-POWERED YARDSTER AUTO

Boys 16 years of age or younger! Nothing to buy! You may win the Yardster with a 2 H.P. engine, ready to drive with its own Drive-O-Matic transmission plus garage! Just fill out a contest form at our store telling us in 10 words or less why you like our boys' department. The best answer wins!

**Round-Up  
Information Given  
In Mountainside**

The following information relative to the Summer Round-Up at the Deerfield and Beechwood Schools in Mountainside, which will take place April 6, 7, 8, was released by the office of the Superintendent of Schools this week.

Each year in the Spring, the parents of the children who will enter Kindergarten in the Fall are asked to co-operate in getting their children ready to attend school in September.

1. Register your child in the school most convenient to you.
2. Take your child's birth certificate with you when you go to Registration.
3. We want you to bring your child with you so that he may see the room where he will start his school years.

When you arrive at either Beechwood or Deerfield School, go to the Kindergarten room and follow this procedure:

1. Fill out in detail a Kindergarten Registration Form.
2. Have your child's birth date, which you have written on the registration form, checked with the birth certificate by a member of the PTA committee so that any error may be corrected. This form remains in school and becomes part of the child's permanent record.
3. You will be given three other things to take home:
  - a. A Medical Record Form which must be filled out by your family physician and dentist and returned to the school office by August 15.
  - b. A Certificate of Immunization, which also must be filled out by your family physician and sent back with the Medical Record Form.
  - c. A small booklet entitled "My School," which will answer the questions you may have concerning your child's new school life.

If your child will be five years old on or before Dec. 1, 1960, he is eligible to enter Kindergarten in September 1960.

The following days have been designated for registration in the Beechwood and Deerfield Schools, in the Kindergarten rooms:

- Beechwood School — Wednesday, April 6, 3-5 p.m.
- Deerfield School — Thursday, April 7, 3-5 p.m. and Friday, April 8, 3-5 p.m.

**It's The Law**

This Legal Column is prepared under the supervision of the New Jersey State Bar Association as a public service. It is designed to inform citizens of their rights, duties, and obligations under our laws rather than to give advice concerning specific legal problems.

**WATCH FOR TAXES AND LIENS WHEN PURCHASING HOMES**

Buying a home is one of the most important events in the life of the average family. It usually represents the largest outlay of money which a family will ever make, coupled with the major responsibility of assuming the payment of the largest debt which the family will ever incur.

Here is some advice for those intending to buy a house.

There should be a written sale and purchase contract signed by the seller of the house as well as by the buyer, prior to the payment of the down payment. If the seller is married, the contract should be signed by the spouse of the seller. The contract should provide for the payment, by the seller, of all liens against the property and should provide that the purchaser is to receive good and marketable fee, simple title, with covenants of general warranty.

The payment of real estate taxes is often misunderstood. Contracts for purchase and sale usually provide for the proration of taxes for the current year, with the seller paying his share to the date of closing and the purchaser paying for the balance of the year.

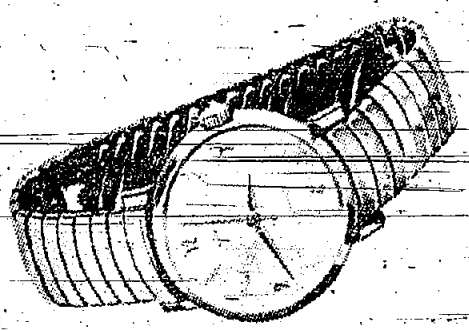
The purchaser should carefully inquire to see whether there are any special assessments on the property, particularly for public improvement such as paving, sewer and sidewalk, or whether there are any under construction which may become a lien on the property. Laborers, materialmen and contractors have a right to file liens against the property for work done or materials furnished. Waivers of these liens should be secured where any such work has been done. This is particularly important on a newly-constructed home.

*Larkey's New Millburn Store*

700 MORRIS TURNPIKE, SHORT HILLS

**SPECTACULAR SELECTIONS-SPECIAL SAVINGS**

OPEN TO 9 P. M. EVERY EVENING (SAT. TILL 6 P. M.) DURING THIS OPENING PARTY



**FREE WATCHES FOR MEN!**

A magnificent Timex watch — nationally advertised at \$11.95 — given Free with a purchase of \$45 or more in our men's department! Just one to a customer.



*Distinctive Sportswear*

Not merely the largest selections . . . but the impeccable styling, the flawless taste, the interesting tones that appeal to the gentleman who is very much "at home" in his suburban setting. In addition to GGG, Botany Brand "500" and Eagle Sport Coats, we present with pride our exclusive

**CARTER HALL SPORT COATS**

An unique group, including many imported fabrics, that look a great deal more expensive than their modest prices.

\$29.95 to \$45

**CARTER HALL SLACKS**

Including very fine pure wools. Cut with the infinite care that usually bespeaks an upper bracket price tag.

\$12.95 to \$24.50

**BOSTONIAN & MANSFIELD SHOES**

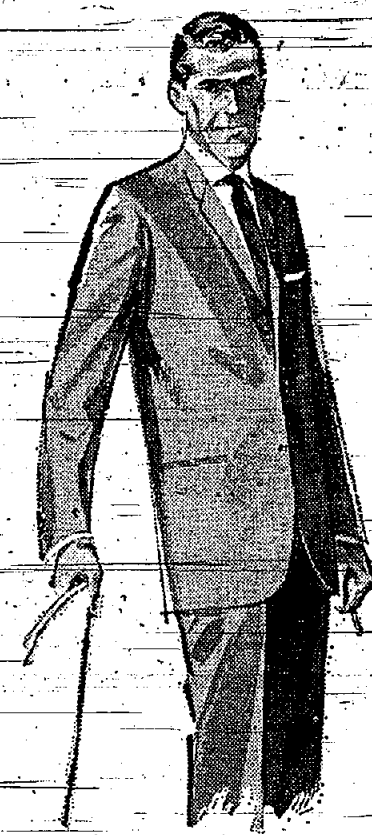
Glove-soft leathers, expert fitting, the widest selections of new colors and styles in every size.

BOSTONIANS  
MEN'S . . . \$18.95 to \$28.95  
BOY'S . . . \$ 9.95 to \$11.95  
MANSFIELDS  
\$11.95 to \$17.95

**SPECIAL!  
FINE 2-TROUSER SUITS OF PURE WORSTED**

Very handsome savings on our best-looking, best-wearing TWO-Trouser Suits. These are the fabrics that command a premium for their durability — Hard-Finished Sharkskins, clear-cut Worsteds, luxurious mill-finished Worsteds . . . in the most subtle and aristocratic patterns . . . in new Spring shades. Choose yours in the popular 3-button single-breasted model in sizes for Regulars, Shorts, Longs, Portlys, Short-Portlys.

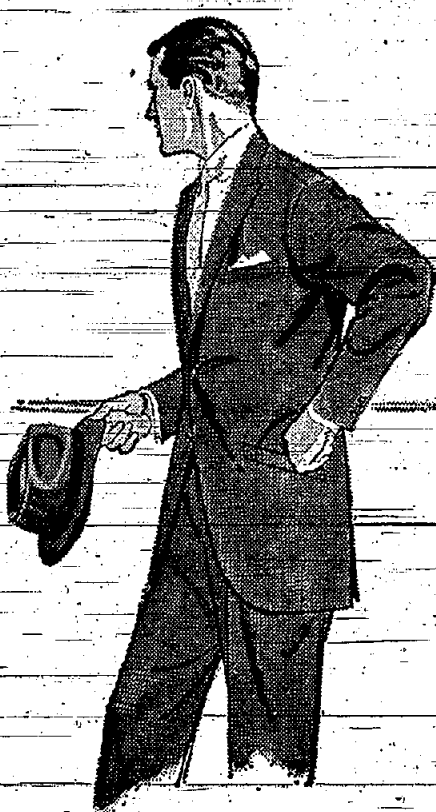
**\$49.90**  
REGULARLY \$65



**THE ELEGANCE  
OF  
EAGLE**

Unquestionably in the fore-front of good taste, high fashion. New this season is Eagle's Come Continental and their Roma Continental Ivy . . . suits with a slight European accent . . . destined to find favor with American men.

SUITS . . . . . \$75 to \$100  
TOPCOATS . . . . . \$79.50  
SPORT COATS . . . \$39.95 to \$49.95



**INTRODUCING  
AN OUTSTANDING  
BRAND**



**EXCLUSIVE IN OUR  
MILLBURN STORE**

Quite possibly the finest clothing in the entire world . . . tailored with the infinite care that is the hall-mark of aristocratic breeding. Preferred by top executives for the prestige of the exclusive fabrics, the custom hand-needling. We invite you to view our impressive selections.

SUITS . . . . . \$115 to \$150  
SPORT COATS . . . . . \$85

**BOTANY  
BRAND "500"**

**TAILORED BY DAROFF**

Botany "500" Clothing is unbeatable for a combination of character, elegance, comfort and value. That must be why this is one of America's most popular brands. The greatest selections in all sizes are at Larkey.

SUITS & TOPCOATS . . . . . \$65  
2-TROUSER SUITS . . . . . \$85  
SPORT COATS . . . \$39.95 to \$49.95



**OPULENT  
OLIVE  
BY PETROCELLI**

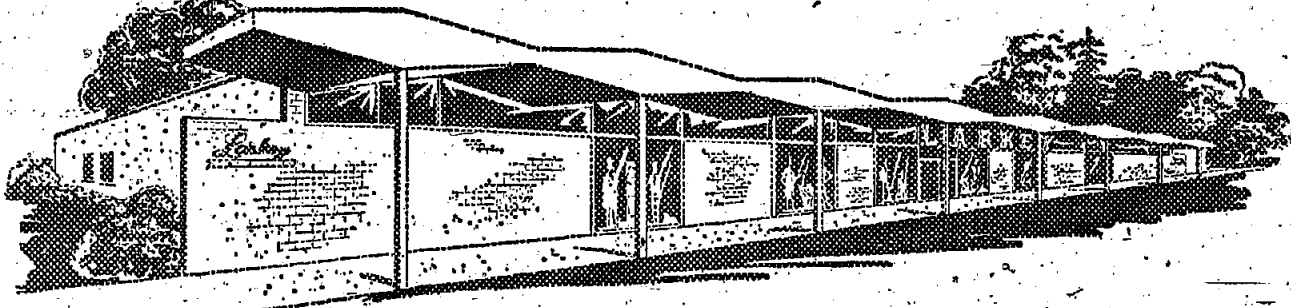
**\$85**

The suits that set a new fashion trend . . . smoldering combinations of Olive, Black and Gold . . . Gold, Black and Brown . . . tones that are different yet dignified. Fabulous Petrocelli tailoring. Sizes for Regulars, Shorts, Longs, Portlys, Short-Portlys.

**CARTER HALL "IVY"  
CONTINENTAL SUITS  
\$55**

The slim, distinguished lines, the superb fabrics, the careful Carter Hall tailoring that make Carter Hall the favorite with gentlemen who recognize an outstanding value when they see one.

**NO CHARGE FOR ALTERATIONS ON MEN'S CLOTHING  
TAKE 10 MONTHS TO PAY, NO DOWN PAYMENT  
OR IF YOU PREFER: USE LARKEY'S**  
(1) REGULAR CHARGE. PAY IN 30 DAYS.  
(2) 3 MONTH CHARGE. PAY 1/3 EACH MONTH.  
**700 MORRIS TURNPIKE, SHORT HILLS**  
OTHER LARKEY STORES IN NEWARK, PASSAIC & PATERSON



### Drama Group Chooses Cast For Musical 'Damn Yankees'

The dramatic group of Temple Beth Ahm of Springfield will present the musical comedy "Damn Yankees" at Millburn Junior High School Saturday night, April 30, Sunday, May 1, and Saturday and Sunday, May 7 and 8.

A "first night" party to honor the cast will be held April 29. All ticket holders for that evening are invited to an additional charge.

The leading roles in "Damn Yankees" are filled with names familiar to followers of the dramatic group. Corinne Klein of East Orange, noted for her excellent portrayal of "Adelaide" in the group's production of "Guys and Dolls" two seasons ago, has been selected to play "Lola."

"Opposite Mrs. Klein will be a newcomer to the group, but a man with many musical accomplishments: Lenny Wolfe of Maplewood, who will be "Joe Hardy."

Two Springfield men will be leading roles. They are Billy Fisher as "Mr. Applegate" and Paul Weisman as "The Boyd." Mr. Weisman and Mr. Fisher are longtime members of the unit.

Beverly Grunberg as "Meg" and Dennis Freedman as "Gloria Thorpe" are two Springfield women who will add much to the play. A trio of Springfield men will account

for the bulk of the comedy: Murray Zeidner as "Van Buron," Saul Gladstone as "Smookey" and Jake Silverman as "Rocky."

Featured roles will be played by Helen Nurkin, Harvey Epstein, Sid Lester, "Chuck" Kessler, Len Garber, Ed Corey, Ed Lewis, "Frankie" Zurav and Milt Kappstatter, who is president of Temple Beth Ahm.

Appearing as members of the "Joe Hardy Fan Club" will be Mark and Paul Biddelman, Steven and Ricky Rosenthal, Karen Kurnos and Janey Lester.

The female singing chorus will include Lenore Green, Rae Fried, Bennette Lowenstein, Corinne Greenstein, Selma Seroff, Ros Miniman, Beverly Rotweh, Ruth Gold, Lucille Mayer, Rhoda Wachtel, Shirley Shapiro, Marion Milstein, Sandy Mond, Irene Chotiner, Marion Siegel, Mickey Davis.

The male chorus will include Jerry Tillie, Alan Borsky, Lee Melamed, Jack Silverman, Saul Gladstone, Murray Zeidner, Sid Lester, "Chuck" Kessler.

The chorus line will be made up of "Frankie" Zurav, Beulah Garber, Bennette Lowenstein, Irene Weiss, Norma Lehrhaft, Shirley Kurtz, Audrey Cole, Merry Kurz, Blanche Levitt, Ruth Axelrad, Lynn Alpert and June Goldstein.

Sonny Dershowitz, Bernie Shapiro, Bernie Fridkis, Otto Granick, Al Rutkow and Mont Feurstein will portray baseball players.

Staging and direction of the production is in the hands of someone credited for his efforts with "Guys and Dolls." Music is under the direction of Cy Greene, assisted by Mort Neuberger.

Scenery construction is being handled by Morris Milstein and Mort Weiss, assisted by Rudy Bamberger, Stewart Szerlip, Nick Chergolis, Dave Feldman, Bob Hockstein and Sam Weinberg.

Production manager is Rose Lester, aided by "Chuck" Kessler and Ruth Gold. Assistant to the script director is Hannah Milstein.

Tickets for the performances are in the hands of Seymour Cohen, Frank Hodas, Ray Kravetz and Milt Rubinstein. The publicity committee is made up of Art Falkin, Ralph Feldman, Renee Shatten and Claire Falkin.



### ANOTHER REALTY CORNER SALE

Linda, Mr. Nahiry has been associated with this company for 22 years. This sale was arranged by Evelyn Schiodt, an associate of Anne Sylvester's REALTY CORNER.

### UNICO Ladies List Some of Fund Projects

The March meeting of Springfield Chapter of the Ladies of UNICO was held at the home of Mrs. Frank Defina, announced that a slate of officers will be presented to the membership at the April meeting.

The most important project of the Ladies of UNICO will be three scholarships for students at Jonathan Dayton Regional High School and Florence M. Gaudineer and St. James Schools, all in Springfield.

Mrs. Frank Defina announced that a slate of officers will be presented to the membership at the April meeting.

### New Cub Pack Is Formed By Church Group

A new Cub-pack was officially formed Wednesday evening, March 23, at Springfield Presbyterian Parish House. David Carbaugh presided at the meeting.

The session began with pledge of allegiance to the American flag led by a color-guard of Boy Scouts of Troop 70. Donald Weber gave the invocation. This was followed by the presentation of the charter for Cub Pack 70 by William Lynch to Al Krull, president of the First Side Group, which is sponsoring this pack. Mr. Krull, in turn, presented the charter to Edward Tackels, chairman of the newly formed pack.

It was decided that Robert Isley will inform the First Side Group of further progress of the pack.

Then came the Cub Promise and the presentation of a scarf to each member. Mr. Weber presented the pack with an American flag from Springfield Presbyterian Church.

The meeting culminated with a play by a group of Boy Scouts from Troop 70, with David Jackson as narrator.

The following is a list of the organizational structure of Pack 70 and the boys who are members:

The committee: Robert Isley, Edward Tackels, Walter Vosburgh, Phoebe Anderson, Donald Orbach, Harry Anderson, Thomas Geides, Mary Ann Beck.

Den 1: Den Mother, Mrs. J. Edwards; Assistant, Mrs. W. Vosburgh; John Edwards; Robin Tackels-Bear; Gary Vosburgh-Bear; Richard Grimm-Wolf; Gary Haydu-Bear.

Den 2: Den Mother, Mrs. G. Durand; Assistant, Mrs. Edward Johnson; Gordon Durand-Bear;

### P.T.A. To Hear Speaker On TV

Eugene Whitlock Jr., commercial unit manager of National Broadcasting Company, will be guest speaker at the Raymond Chisholm Parent-Teacher Association meeting in Springfield Monday night, April 4, 8:15 P.M.

Mr. Whitlock has been a member of the National Broadcasting Company's speakers bureau for the past three years. He has chosen the subject "TV T-N-T."

At this meeting the officers for the coming year will be installed: Mrs. Philip Lewis, past president of Springfield Parent-Teacher Association, will install Dr. Edna Troup as president; Mrs. David Sabo, vice-president; Mrs. J. W. Gleitsman, corresponding secretary; Miss Joan Meyers, secretary; W. Fallon, first vice-president; B. F. Newswanger, honorary president.

### Top Prizes, Honorable Mention Won By Gaudineer Scientists

Six students of the Florence M. Gaudineer School submitted science projects at the Union County Regional Science Fair, held at Clark Regional High School Thursday and Friday, March 24 and 25. Two projects took first and second prizes, and the remaining four were given honorable mention. The six outstanding projects were those that had won recognition in the Gaudineer Science Fair held six weeks ago in the cafeteria of the school.

The first prize was awarded to Evelyn Arnoff for her research project, "What Makes Grapes Turn into Wine?" Her project followed the process of fermentation step by step and all of her observations were recorded in a detailed written presentation. Joseph Rizzo won second prize for his project, "Proving Mendel's Law." He spent five months breeding mice and observing the results of the laws of heredity. His observations and conclusions were written in a detailed scientific paper.

Four other projects were entered from the Gaudineer School and each received recognition for a job well done.

Ronnie Weinberg presented "The Effects of Stains on Different Materials." Mark Frazier received mention for his project, "The Springfield Water Supply," and Barbara Levron a commendation for her project on "Optical Illusions." Each of the special awards was accompanied by a book on science donated to the Fair by a firm in the Union County area.

### MANUFACTURER'S SALE

Stop-Guessing... SEE What You Buy!

Visit ISLAND HOME CENTER. Over 5,000 square feet of exciting, lifelike displays complete in every detail. Drive in and save or phone today for FREE HOME CONSULTATION...

Liberal Budget Terms - UP TO 5 YEARS TO PAY!

### JALOUSIES

Size Checked Before Fabrication

OPEN MONDAY THRU FRIDAY 10 A.M. to 9 P.M. SATURDAYS, 10 A.M. to 6 P.M.

WIDTH	17"	21"	25"	29"	33"	37"	41"
1794	6.72	7.48	8.24	9.00	9.76	10.52	11.28
2174	9.52	10.88	12.24	13.60	14.96	16.32	17.68
2574	11.60	13.20	14.80	16.40	18.00	19.60	21.20
2974	14.00	15.76	17.52	19.28	21.04	22.80	24.56
3374	16.40	18.32	20.24	22.16	24.08	26.00	27.92
3774	18.80	20.88	22.96	25.04	27.12	29.20	31.28
4174	21.20	23.44	25.68	27.92	30.16	32.40	34.64
4574	23.60	26.00	28.32	30.64	32.96	35.28	37.56

We will completely install this beautiful enclosure or show you how to do it at EXTRA SAVINGS!

### AWNING WINDOWS PATIO SLIDING DOORS

Heavy extruded aluminum complete with glazing, screens & hardware included.

Room With A View!

19.95

89.95

All sizes available

### ALUMINUM COMBINATION DOORS & WINDOWS

Triple Swivel-Tilt "Budgeteer" Window 100% Extruded ALCOA Aluminum 11.95

Special Closeout! 1 WEEK ONLY!! FULL SCREEN, FULLY WEATHERSTRIPPED ALUMINUM COMB. WINDOWS All sizes up to giant 40 x 80 (installation arranged) 8.75

Custom Selection Of Shades & Venetian Blinds

Heavy, Fully-Extruded JALOUSIE DOORS 49.95

Triple-Tilt "Pacemaker" Fully Anodized Sun-Deflect (Installation arranged) 17.50

Woven Wood Fabric Shades from 1.75

Special Package RESERVE WITH PURCHASE of Storm Windows! VE. & TAN BLINDS \$1.99 ea.

### ALUMINUM SIDING

STONE · ASBESTOS LOWEST PRICES

Alum. Siding Average 5-room House \$695

PATIO AWNINGS

Alum. Door Canopy \$11.95

Wrought IRON RAILS 2.25

ALUM. WINDOW AWNINGS \$9.95

FOLDING DOORS 3 x 8 1/2" \$15.95

GLASS TUB ENCLOSURES for Standard 4 1/2 ft. tub 28.95

Island HOME CENTER RT. 22 UNION

"Serving the Public Since 1948" MU 8-3040

Manufacturers of Aluminum Products JAMES C. NOSTE, President

1/2 Mile West of Flagship on the

# DESTROY NEXT SUMMER'S CRAB-GRASS

## NOW Before It Grows

# PAX

KILLS CRAB-GRASS FERTILIZES & GRUB PROOFS ALL IN ONE APPLICATION

FERTILIZERS - LIME GRASS SEED - SPRAY

Andrew Wilson

DRexel 6-1122

INSECTICIDES FUNGICIDES · PLANT FOODS WEED KILLERS and GARDEN PRODUCTS

Andrew Wilson INC. BALTUSROL WAY SPRINGFIELD, N. J.

MEMBER OF SPRINGFIELD CHAMBER OF COMMERCE

## ADLER HOME MART

### SALE

# Custom Quality Cornices

### CARVED SCROLL REDWOOD

at Ready Made Prices

complete hardware solid wood dust cap 8" DEEP x 32" WIDE 69c

complete range of sizes 8" & 10" deep up to 144" wide, all reduced prices

### WALLPAPER

1960 Patterns 50% OFF

### PITTSBURG WALLHIDE

Rubberized Wall Paint 4.99 GAL.

### BOLTA WALL TILE 13c

### FLOOR TILE LOUVRE DOORS

1st Quality 19 1/2c ea 2-6x9 PINE 8.99 pr.

OPEN TIL 9 MON., WED. & FRI.

### JALOUSIE PORCH

30" Jalousie Complete with screens, includes 9 units \$269

37 x 54 and 60" Jalousie Door

### ADLER HOME MART

MON.-WED. FRI. 8 a.m. - 9 p.m. TUES. & THURS. 8 a.m. - 5 p.m. SATS. 9 a.m. - 4 a.m.

A Div. of Adler Screen Mfg. Co. Rf. 27 - Mountaineer Opp. Tops Diner AD 3-5657

FREE LOCAL DELIVERY

### ANYONE CAN BUILD THEM GET HI-FI HEATHKITS

DO-IT-YOURSELF ELECTRONIC KITS

get immediate delivery at

### Federated Electronics

Stop in at FEDERATED and see the complete HEATHKIT line... listen to the performance... see what you save. FEDERATED has every HI-FI HEATHKIT in stock... ready for over-the-counter delivery. You'll save money and obtain priceless satisfaction from building your own HI-FI rig. Stop in this week and save.

Model FR-4 Model SS-3 3-Watt Stereo Preamp Appl. Kit Model SS-2 HI-FI Speaker Kit

ANYONE CAN BUILD THEM. Simple, easy to understand instructions "walk" you for all to wire their own HEATHKITS. We'll give you all the help and advice you need.

CONVENIENT TIME PAYMENTS ARRANGED Call or See FEDERATED Before You Buy Any HI-FI Equipment

### Federated Electronics

AT OUR THREE STORES INC.

MOUNTAINSIDE, U. S. ROUTE 22 AD 2-8200 (NEXT TO ECHO LAKE BOULVING ALLEYS) OPEN DAILY 9:30 TO 9 - SAT. 8:30 TO 6

NEWARK, 114 HUDSON ST. MA 4-3915

SHREWSBURY, 483 BROAD ST. (Rte. 35) SH 1-8811

OPEN DAILY 8:30 TO 9 - SAT. 8:30 TO 6 OPEN MONDAY TO FRIDAY 9 A. M. TIL 9 P. M. - SAT. 8:30 TO 6

### Dunn Leaders In Springfield Are Announced

Francis Keane and Barbara Rothfeld, co-chairmen of the Springfield committee supporting the nomination of Jack B. Dunn, Union County Organization candidate for U. S. Congress, urged Springfield residents to vote in the April 19 Democratic Primary.

Keane and Mrs. Rothfeld were named to head the Springfield campaign committee by former Elizabeth Mayor James T. Kirk, Dunn's county campaign manager. Keane, a resident at 33 Henshaw Avenue for the past 22 years, has long been active on the Springfield political scene. He was a member of the Springfield Township Committee from 1947 to 1950 and now is a member of the Planning Committee. Mrs. Rothfeld resides at 81 Laurel Drive. She has been an active Democrat for many years.



JACK B. DUNN

**Mrs. Lewis Named**

At the same time Mrs. Lorraine Lewis, of 385 Milltown Road, Democratic Committee woman in the Eighth District, was named Dunn's county publicity director. Mrs. Lewis has worked with many local civic organizations and presently is serving as a member of the Union County Board of Mental Health. She was at one time social editor of The Springfield Sun.

**Assuming the Chairmanship**

Keane stated: "Your vote in the Primary Election on April 19 is just as important as the vote you will cast in the General Election in November. In our country we are not only blessed with a free election but we are given the special privilege of helping to select the candidate who is to run for office."

#### Voters To Decide

"This year in Union County the voters have to decide who is to be nominated as the Democratic candidate for the Congress of the United States. Jack B. Dunn has been endorsed by the regular Union County Democratic Organization. We believe he is excellent qualified to serve us in Congress and we urge a big Primary turnout to show our confidence that he will lead our party to victory in November."

Jack Dunn, a resident of Westfield, is an experienced businessman with a legal background. He served with distinction in the Pacific Theatre during World War II and was awarded the Legion of Merit by the War Dept. and the Oak Leaf Cluster by General MacArthur. He holds the rank of colonel in the active reserve and commands the 302nd Civil Affairs Group.

#### Heads Relief Unit

He is chairman of Gov. Meyner's Committee on Refugee Relief, president of the National Council-Governors Committee on Refugee Relief and was coordinator of the President's Committee during the Hungarian resettlement program at Camp Kilmer. He recently was appointed to head the New Jersey Committee for the World Refugee Year.

He is a member of the Foreign Policy Association and the American Academy of Political and Social Science.

#### School Menus

Menus at the Florence M. Gaudin School in Springfield for the week beginning April 4, which are subject to change when necessary, are as follows:

- Monday—Frankfurters, baked beans, sauerkraut, raisins, roll, buttermilk.
- Tuesday—Havon, cole slaw, peaches or grapefruit, bread and butter or peanut butter sandwich, milk.
- Wednesday—Cream of tomato soup, ham and cheese sandwich, pickles, pineapple or plums, milk.
- Thursday—Breaded veal cutlet, potato puffs, buttered green beans or carrots, fruit cocktail, bread, butter, milk.
- Friday—Egg salad, potato chips, lettuce with French dressing, cookies, roll, butter, milk.

#### Church Ladies To Hear Chaplain

The Ladies Benevolent Society of the First Presbyterian Church of Springfield will hold its regular monthly meeting Wednesday, April 6, at 1:30 P.M. The Rev. Ray O'Grubne, chaplain at Overlook Hospital.

#### To Collect Paper

Have you any paper left over from the paper drive of March 6 that was harassed by the blizzard? If so, get it ready together with whatever additional paper has accumulated—for the paper collection to be held Sunday, April 3, by the local American Legion Post.

Residents of Springfield are asked to bundle their paper and have it at the curb in time for the 10 A.M. pickup.

will be speaker.

The Rev. Mr. O'Grubne is a graduate of Pittsburgh Theological Seminary, served as a chaplain overseas with the army for two years, was in parish work for 15 years and trained in Philadelphia and Washington, D.C., to become a hospital chaplain. He resides in Summit with his wife and two children.

**OFFICE OF THE TOWNSHIP CLERK**  
SPRINGFIELD, N. J.

**NOTICE** is hereby given that the Township Committee of the Township of Springfield in the County of Union will hold a hearing in the Springfield Municipal Building, Springfield, New Jersey, on April 2, 1960, at 8:00 p.m., to consider the report of assessments of benefits conferred upon lots and parcels of land and real estate by reason of the installation of curbs along Madison Road between Janet Lane and a point 100 feet westerly from Cottage Avenue, and of damages in connection therewith, if any.

The purpose of such meeting is to consider, among other things, any objection or objections against the continuation of such assessments, and to take further and other action as may be deemed appropriate and proper, and as right and justice may require.

The report referred to is now on file in the Office of the Township Clerk for examination by parties interested therein.

Eleanor H. Worthington  
Township Clerk  
March 31st, April 2nd

**OFFICE OF THE TOWNSHIP CLERK**  
SPRINGFIELD, N. J.

**NOTICE** is hereby given that the Township Committee of the Township of Springfield in the County of Union will hold a hearing in the Springfield Municipal Building, Springfield, New Jersey, on April 2, 1960, at 8:00 p.m., to consider the report of assessments of benefits conferred upon lots and parcels of land and real estate by reason of the installation of a concrete sidewalk on certain sections of Madison Road between Janet Lane and a point 100 feet westerly from Cottage Avenue, and of damages in connection therewith, if any.

The purpose of such meeting is to consider, among other things, any objection or objections against the continuation of such assessments, and to take further and other action as may be deemed appropriate and proper, and as right and justice may require.

The report referred to is now on file in the Office of the Township Clerk for examination by parties interested therein.

Eleanor H. Worthington  
Township Clerk  
March 31st, April 2nd

**OFFICE OF THE SECRETARY OF THE BOARD OF ADJUSTMENT**  
UNION COUNTY, NEW JERSEY

**TAKE NOTICE** that a meeting of the Board of Adjustment held on March 24, 1960, the application as submitted by Elizabeth River, County of Union in the Freeholders' Meeting Room at the Court House, Elizabeth, New Jersey, on March 23, 1960, for the following described work:

Said application is on file in the office of the Secretary of the Board of Adjustment and is available for public inspection.

Witness my hand and the seal of the Board of Adjustment.

WILBERT J. BINDER, Secretary  
No. 6-56  
March 31

**PROPOSAL FOR BRIDGE CONSTRUCTION**  
UNION COUNTY, NEW JERSEY

Said proposals will be received by the Purchasing Committee of the Board of Chosen Freeholders in the County of Union in the Freeholders' Meeting Room at the Court House, Elizabeth, New Jersey, on Monday, April 4, 1960, for the following described work:

Construction of a new Concrete Balanced Cantilever Bridge on the Downstream Side of the West Grand Street Bridge spanning the Elizabeth River, Elizabeth Union County, New Jersey.

Plans and Specifications for this work may be examined at the Office of the Purchasing Committee of the Board of Chosen Freeholders in the Court House, Elizabeth, New Jersey, and at the Office of the Purchasing Agent, Court House, Elizabeth, New Jersey.

Plans and Specifications for professional services to be rendered by a Civil Engineer in connection with such work may be examined at the Office of the Purchasing Committee of the Board of Chosen Freeholders in the Court House, Elizabeth, New Jersey, and at the Office of the Purchasing Agent, Court House, Elizabeth, New Jersey.

Each bidder must submit with the bid a certificate from a Surety Company stating that such Surety Company will provide the Contractor with a Bond in the sum and upon such conditions as are required by the Specifications.

Such bid must be accompanied with a Certified Check for at least ten per cent (10%) of the amount of the bid, as required by the Specifications.

R. S. 10-2-1, etc.  
R. S. 10-2-2, etc.  
R. S. 10-2-3, etc.  
R. S. 10-2-4, etc.  
R. S. 10-2-5, etc.  
R. S. 10-2-6, etc.

Inspection of the Laws governing the work herein advertised.

Union County Board of Chosen Freeholders  
Thomas J. O'Brien, Director  
Purchasing Committee  
John V. Donohue, Chairman  
William Delist, P. Ward J. Carlin, M.D.  
Thomas G. Dunn  
Raymond Moore  
March 17, and March 31, 1960.

**NOTICE TO CREDITORS**  
ESTATE OF JOSEPH RAPUANO, Deceased.

Pursuant to the order of EUGENE J. KIRK, Surrogate of the County of Union, made on the sixteenth day of February, A.D. 1960, upon the application of the undersigned as Executor of the estate of said deceased, notice is hereby given to the creditors of said deceased to exhibit to the subscriber under oath or affirmation their claims and demands against the estate of said deceased, within six months from the date of said order, or they will be forever barred from prosecuting or recovering the same against the subscriber.

PETER C. TRIOLO,  
Attorney pro se  
382 Springfield Ave.,  
Summit, N. J. 07901  
March 10, 11, 24, 31, 1960  
Fees: \$11.75

# THE SALE IS ON at

## BELL APPLIANCES

ROUTE 22 UNION, N. J.

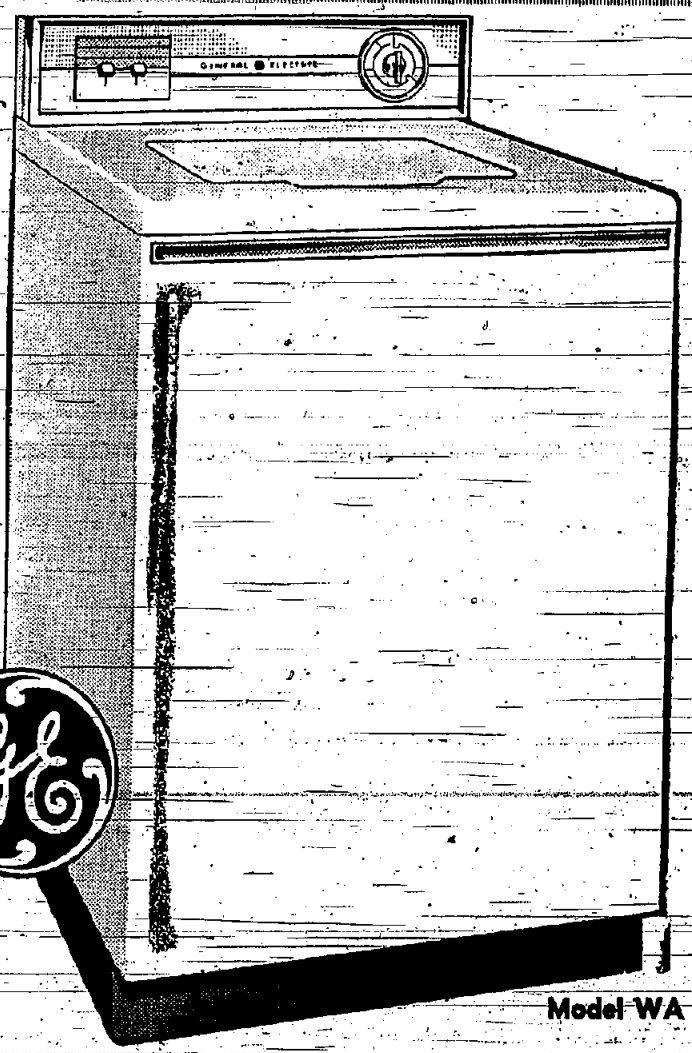


### GE FILTER-FLO AUTOMATIC WASHER

GE PROVED & APPROVED  
NON-CLOG FILTER Cleans and Recleans the Water as You Wash!

FREE FULL YEAR SERVICE  
plus 4 years of additional protection on the sealed-in-transmission.

- Check These Features!
- Big Capacity—10 lbs. Over 50% more than many other automatics.
  - Water-Saver for Small Loads. Saves gallons of hot water on each small load. Choice of HOT or WARM wash-water to suit fabric needs.
  - Porcelain Washbasket and Tub.



Model WA 600T

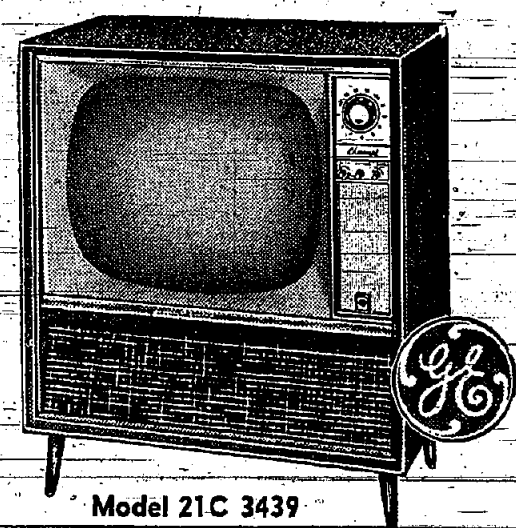
# \$188.88



### GE TV Console

With these advance-design Features:

- Powerful "ULTRA-VISION" Chassis, Full Power Transformer
- Precision-etched Circuitry
- Bright, Sharp, Crystal-Clear Picture
- Full Fidelity, Up-front Sound



Model 21C 3439

# \$198.77

#### Hi-Fi Stereo Console

Nationally Advertised  
Famous Brand  
**89.88**

General Electric  
**DRYER 149.88**  
LATEST MODEL

General Electric  
**FREEZER 198.88**  
11 Cubic Feet

#### Large Selection of Guaranteed Used

REFRIGERATORS  
FREEZERS  
Ideal For Your Summer Cottage, Spare Unit, Etc.  
**29.95**  
FROM

Westinghouse  
Portable Dishwasher  
**149.88**  
• Large capacity  
• Requires no plumbing

1960 FEDDERS  
AIR-CONDITIONER **159.88**  
• T.H.P. 7 1/2 Amp.

Sunbeam  
HAND MIXER **11.88**  
• Your choice of pink, turquoise, yellow, white  
Reg. \$21.00

Sunbeam  
AUTOMATIC FRY PAN **9.88**

OUR PRICES INCLUDE DELIVERY AND SERVICE YOUR ROUTE 22 GENERAL ELECTRIC DEALER.

## BELL APPLIANCES ROUTE 22 UNION, N. J.

FREE PARKING MONDAY THRU FRIDAY 10 — 10

SATURDAY TO 6

MU 8 - 6800

Mr. and Mrs. Richard Her... of 133 Laurel Drive, entertained at a cocktail party last Sunday evening...

Prompt Daily Service... ACADEMY T.V. SERVICE... Television - Radio - Phonograph - Reasonable Rates... Call TEL 2-0129 Until 10 P.M.



MAKE YOUR HOME Care Free with ALUMINUM PRODUCTS... REHNOLDS... PRE-HUNG AMERICA'S FINEST DO-IT-YOURSELF ALUMINUM COMBINATION DOOR

ALL HOLES PRE-PUNCHED... NO CUTTING NO DRILLING... Large glass and screen interchangeable panels... Exclusive no sag, no wear Uni-Hinge... Internal expander-door sill that stops drafts

DO-IT-YOURSELF AND SAVE \$31.95... \*New Exclusive Push-Lock Handle

WE GIVE S & H GREEN STAMPS... ALUMINUM SIDINGS, AWNINGS, RAILINGS, also BORMERS, PORCH ENCLOSURES, BASEMENTS, GARAGES.

REHNOLDS ALUMINUM PRODUCTS... SHOWROOM: 1612 E. Second St., Scotch Plains... Call FA 2-2144 or after 5 p.m. PL 6-7755

SPRINGFIELD PARTY LINE DR 6-4316... Call-in your news-items and join in the fun... with news of your neighbors, via The Sun.



Helen Sabo

and Mrs. Lawrence Fine, of 6 Redwood Road, celebrated his fifth birthday with a luncheon for children and mothers...

Mr. and Mrs. Al Hussell, of 15 Surrey Lane, are happy to announce the birth of a son, Jeffrey, on March 21st at Orange Memorial Hospital...

John Chamberlain, of 34 Colfax Road, son of Mr. and Mrs. John E. Chamberlain, was recently initiated into Alpha Mu Chapter of Sigma Pi fraternity...

Mr. and Mrs. Donald Lam, of 34 Cypress Terrace, have

Now Is The Time to schedule spraying to protect your Pin-Oak trees from SCALE INSECTS... TREE EXPERT CO. DONALD C. KRAUTER, Graduate Forester... We Specialize in Power Spraying... Fanwood 2-4545

Just returned from five days of rest, relaxation and fun at the New Jersey Country Club in Ellenville, N.Y. Small sideline: "We seemed to be the only non-honeymooners in the place."

The Misses Leslie and Ellen Bruden, aged two and four, respectively, and daughters of Mr. and Mrs. Bruden of the Happy Days Play School on Saker Street, graded WNTA television for a few minutes last Thursday afternoon...

The David Katzes, of 29 Cypress Terrace, had another birthday party last week when son Gary celebrated his eighth birthday with a Friday evening supper party...

Mrs. Ira Cohen, of 27-47 Cambridge Lane, has been named a delegate to the 1960 convention of B'nai B'rith Women to be held April 22 to 25 at the Warwick Hotel in Philadelphia...

Mrs. Mary Ritchwood, of 80 Hillside Avenue, became a grandmother again on March 23 when her son and daughter-in-law Mr. and Mrs. Theodore Ritchwood, who have been temporarily staying with her, became the parents of a seven-

LINDSAY AUTOMATIC WATER SOFTENER... FIBERGLASS TANKS WITH LIFETIME GUARANTEE... JAYSON SOFT WATER CO. 1691 Springfield Ave., Maplewood SO 3-5550

Co-Hosts Visit To Two ITT Buildings... Approximately 100 members of National Machine Accountants Association's Garden State Chapter recently visited ITT Laboratories, Nutley, and ITT Federal Division, Clifton...

Laboratories In Union To Expand... S-F-D Laboratories, Inc., 800 Rahway Avenue, Union, has announced expansion plans which will add 7200 square feet to its current 10,800-square foot facility.

Dr. Joseph A. Salom, of 395 Rolling Rock Road, Mountain Side, is president of the company and R. A. Angle, of 189 Russell Road, Fanwood, is head of mechanical engineering and development.

Walton P.T.A. May Spring Festival... Spring is here and the Edward Y. Walton Parent-Teacher Assn. is planning a Spring festival for Saturday, May 14...

Mrs. H. Wernischner, Spring festival chairman, has enlisted the aid of many parents in planning for the big day. Her committee chairmen include: Mrs. H. F. Huneke Jr. games; Mrs. J. Wilkoff, prizes; Mrs. M. J. Hoptka, tickets; Mrs. I. Yobansky, "white elephant"; Mrs. L. Goodman; Mrs. K. Miller, pantry shelf; Mrs. S. Beno, handicrafts; Mrs. W. Alexy, refreshment.

FLEMINGTON FUR COMPANY... Be your loveliest this Easter in a Flemington Fur... MINK • SABLE • SQUIRREL CHINCHILLA • FOX • BROADTAIL BEAVER • MUSKRAT • MARTEN... FLEMINGTON FUR CO. FLEMINGTON, NEW JERSEY

Watching Weeklies BUSINESS DIRECTORY

A guide to the best business organizations in the Watching-Weekly area. These firms offer prompt service and have reputations for the highest quality & reliability.

Business Directory grid with categories: AUTO DEALERS, DRUGS, FUEL OIL-COAL, INSURANCE, RESTAURANTS, TV SERVICE, BUTCHERS, ELECTRICAL CONTRACTOR, HOME IMPROVEMENTS, PLUMBING, TV-RADIO SERVICE, TAVERNS, etc.

Little Girls Are No Exception... Sometimes they play just as rough as boys. Mom wants a lawn that will do her proud and stand up to punishment, too. FAMILY\* fills the bill. Gives good looks, takes hard wear, needs minimum care. All-perennial, 99.91% weed-free... Scott's Turf Builder... CARDINAL'S Garden Center



RELIGIOUS SERVICES

FIRST CHURCH OF CHRIST, SCIENTIST... THE DIAMOND HILL COMMUNITY CHURCH... ST. BARTHOLOMEW, THE APOSTOLIC ROMAN CATHOLIC CHURCH... THE COMMUNITY FREE CHURCH OF SPRINGFIELD... ST. JAMES B. C. CHURCH... UNION VILLAGE METHODIST CHURCH... WILLOW GROVE PRESBYTERIAN CHURCH... TEMPLE ISRAEL OF SCOTCH PLAINS AND FANWOOD... THE METHODIST CHURCH OF SPRINGFIELD, NEW JERSEY... DIAMOND HILL COMMUNITY CHURCH... HOLY CROSS LUTHERAN CHURCH

FANWOOD PRESBYTERIAN CHURCH... ST. STEPHEN'S EPISCOPAL CHURCH... First Church of Christ, Scientist... A branch of THE METHODIST CHURCH OF CHRIST, SCIENTIST in Boston, Mass.

MUSIC AT ST. STEPHEN'S (Main St., Millburn) SUNDAY, APRIL 3rd at 4:00 p.m. CHAMBER MUSIC RECITAL Passion According to St. Luke (Att. J. S. Bach) Public Invited No Admission Charge

Gray FUNERAL DIRECTORS F. H. Gray, Sr. WESTFIELD 318 E. Broad St. Phone AD 3-0143 F. H. Gray, Jr. CRANFORD 12 Springfield Ave. Phone BR 6-0092

CARPETS AND TILES GALORE

IT'S AS EASY AS 1-2-3 To Quickly See Why Smart Shoppers Visit Us First! 1. Famous Brands 2. Unexcelled Selections 3. Over 40 Years of Reliability & Dependability

Big Savings famous KAYSER hosiery SPRING SALE Now to April 9th \$1.35 Kayser Hosiery on sale for 99c \$1.50 Kayser Hosiery (including Fit-All Tops) on sale for 1.19 Save now—and enjoy famous Kayser fit and fashion all year long! So many wonderful styles to choose from, and such luscious colorings. Stock up with a whole wardrobe of Kayser nylons—you owe it to your audience! Clara Louise Official Girl Scout Equipment Agency 121 Quimby Street Adams 2-1131 Open Mon. & Fri. Evenings 'til 9 o'clock

ROBBINS POMPEIIAN VINYL TILE 70¢ ea. LINOLEUM REMNANTS BY THE HUNDREDS SAVE TO 80% GOODYEAR VINYL TILE 15¢ ea. VINYL FORTIFIED RUBBER TILE 10¢ ea. ARMSTRONG LINOLEUM TILE 7 1/2¢ ea. WE FEATURE THE COMPLETE ARMSTRONG LINE SANDRAN IN STOCK (6", 9", 12" Widths)

Buy On A Linoleum & Carpet Factory Outlet Credit Plan and Enjoy Your Carpet & Tile While You Are Paying For It! 100% Nylon Tweed Broadloom Reg. \$6.95 sq. yd. 4'95 100% All Wool Twist Broadloom Reg. \$8.95 sq. yd. 5'95 MAGEE'S ALL WOOL VELVET BROADLOOM Reg. \$10.95 sq. yd. 8'95 Firth's Luxured Acrilan Broadloom Reg. \$13.95 sq. yd. 10'95 FREE SHOP-AT-HOME SERVICE DR 6-5220 Your Friendly Neighborhood Linoleum Factory & Carpet-Outlet will send a representative to your home for Free Estimates. No obligation. Call Linoleum & Carpet Factory Outlet Any Weekday. OPEN DAILY INCLUDING SAT. 9 A.M. to 9 P.M.

LINOLEUM & CARPET FACTORY OUTLET RT. 22 SPRINGFIELD N.J. DR 6-5220 OTHER STORES: NEWARK, 91 CLAY STREET; NEWARK, 81 CLAY ST. — ASBURY PARK, 1400 ASBURY AVE.

### Honor Rolls For Fourth Period Issued By H. S.

**Honors**  
 Elizabeth Aragona, Lorry Atkin, Eugene Becker, Hope Blawie, Linda Blawie, William Burnett, Donald Grabtree, Marcia Davies, Veronica Dehner, Mark Dewey, Carol Dolan, Carol Estoppey, Donald Evans, Nancy Farrar, Barbara Feller, Alfred Fengler, Jodie Fidel, Dorothy Fuhrer, Jay Gladstone, Paul Gorton.  
**SENIORS**  
 Highest Honors  
 Peter Besch, Barbara Boyle, June Della Sala, Eve Donato, Walter Duda.  
 Donald Gibbins, Josephine Golonka, Marcia Herberg, Fred Kluge, Claire Longfield, Carol Mazano, Paul Stock,

**Honors**  
 Lynn Urner, Richard Van Horn, Allen Westerberg.  
**Honors**  
 Laura Mertz, Katherine Murphy, Edward Nuttall, Kent Paccanis, Wid Painter, Maxene Parket, Karen Pennypacker, Fred Bettemaier, Leslie Rivkind, Herbert Rupp, Julie Ryder, Sue Shaffer, Ellen Southgate, Timothy Stewart, Vicki Tujague, Virginia Waters, Rosalie Waypa, Susan Williams, Josef Wuestman, Carol Wy-

**JUNIORS**  
 Highest Honors  
 Judith Bartow, Nelson Brown, Linda Buthe, Christine Cleaveland, Linda Hubach.  
 Bernice Mason, Patricia McGovern, Linda Miller, Stephen Pringle, Paul Samek.  
 Ronald Scelfo, Barbara Springer, Wendelin Tuttle, Carolyn Vasselli.  
**Honors**  
 Peter Alsberry, John Anderson, Elizabeth Bader, Jeanne Bodnar, Carl Bredlau, Eileen Breen, Robert Brenn, Phyllis Beink, Jean Cecchetti, Alan Chaiet, Diane Chirba, Russell Doeringer, Kenneth Duane, Virginia Dunn, Joseph Feely.  
 James Fish, William Fitzpatrick, Joseph Gellings, Jeff Grausam, Barbara Heller, Richard Johnson, Barbara Jones, Barbara Keeler, Ward Krupinski, David Lord, Rose Kelsey, David Klier, Christine Mziarana, Diane Mrozek, Maurreen Neal.  
 Nancy Oakman, Lorraine Painter, Roberta Parry, William Pegg, Louis Pigfolet, Beverly Rabinowitz, Helen Russell, Kenneth Ryder, Sharon Samp-ler, Barbara Starr, Myra Terry, Nadine Truppi, Donald Weiss, David Yancey, Steven Zegar.



**AN ISLAND OF ALUMINUM PRODUCTS FOR THE HOME**  
 Island Home Center, manufacturers of aluminum products since 1948, features over 5,000 square feet of life-size displays of products for the home. Their Union showroom is located on Route 22, in the center island, just West of the Flagship. A local man, JAMES C. NOSTE of Mountanside, is president of the firm.

**WEST-WINNING 26-16** in an exciting game. Hitchings and Buehrer scored 8 and 6 points, respectively, to spark the West, with Hazelman and Tittle the high men for the East.  
 The West scored 12 points in the second period to break open an otherwise even ball game. Hitchings tossed home two baskets, with Buehrer, Josephs, Sheehan and Kertz scoring one each to place the game out of reach of the East dribblers.  
**EAST 42, WEST 21 IN STATE LEAGUE ALL-STAR GAME**  
 The East "All-Stars" had too much scoring power for the West Wednesday night, March 23, gaining an easy win in the "State League" All-Star game. The game was played before a good-sized crowd of parents and friends, the East jumping off to a 10-2 first quarter advantage, then pulling away gradually, scoring 17 in a wild second quarter.  
 Jimmy Belliveau, Harold Hanson and Frank Heydt scored the bulk of the points for the winners, with Chip Argyris scoring seven. Bobby Reis, Jeff Hitchings and Kertz Tompkins scored the bulk of the points for the losers.  
 Mark Muller of the East didn't score many points but his aggressive and pressing defense seemed to harass the West into making untimely mistakes, giving the ball to the opposition.  
**Jewish Suburbia To Be Subject of Talk**  
 Mrs. Lee Lichter, president of the Sisterhood of Temple Beth Ahm, Springfield, will preside at the meeting to be held Monday, April 4, 8:30 P.M. Mrs. Reuber R. Levine will offer the opening prayer. Mrs. Meyer Bidelman will present the slate of new officers.  
 Dr. Morris R. Werb, rabbi

**WEST-WINNING 26-16** in an exciting game. Hitchings and Buehrer scored 8 and 6 points, respectively, to spark the West, with Hazelman and Tittle the high men for the East.  
 The West scored 12 points in the second period to break open an otherwise even ball game. Hitchings tossed home two baskets, with Buehrer, Josephs, Sheehan and Kertz scoring one each to place the game out of reach of the East dribblers.  
**EAST 42, WEST 21 IN STATE LEAGUE ALL-STAR GAME**  
 The East "All-Stars" had too much scoring power for the West Wednesday night, March 23, gaining an easy win in the "State League" All-Star game. The game was played before a good-sized crowd of parents and friends, the East jumping off to a 10-2 first quarter advantage, then pulling away gradually, scoring 17 in a wild second quarter.  
 Jimmy Belliveau, Harold Hanson and Frank Heydt scored the bulk of the points for the winners, with Chip Argyris scoring seven. Bobby Reis, Jeff Hitchings and Kertz Tompkins scored the bulk of the points for the losers.  
 Mark Muller of the East didn't score many points but his aggressive and pressing defense seemed to harass the West into making untimely mistakes, giving the ball to the opposition.  
**Jewish Suburbia To Be Subject of Talk**  
 Mrs. Lee Lichter, president of the Sisterhood of Temple Beth Ahm, Springfield, will preside at the meeting to be held Monday, April 4, 8:30 P.M. Mrs. Reuber R. Levine will offer the opening prayer. Mrs. Meyer Bidelman will present the slate of new officers.  
 Dr. Morris R. Werb, rabbi

**TO LEAVE ON CRUISE**  
 Mr. and Mrs. Walter Becker of 61 Bryant Avenue, Springfield, will leave Saturday, April 2, on a seven-day cruise to Bermuda. They will be accompanied by Mr. and Mrs. John Schwarz, of Putnam Road, Union.  
 The second student-organized student-taught and student-directed course in the history of Douglass College is currently under way. It is a 13-week course in music and art. A similar student-taught course at Douglass last year won a National Student Association award as the most original and creative student project in the U.S.

**TO LEAVE ON CRUISE**  
 Mr. and Mrs. Walter Becker of 61 Bryant Avenue, Springfield, will leave Saturday, April 2, on a seven-day cruise to Bermuda. They will be accompanied by Mr. and Mrs. John Schwarz, of Putnam Road, Union.  
 The second student-organized student-taught and student-directed course in the history of Douglass College is currently under way. It is a 13-week course in music and art. A similar student-taught course at Douglass last year won a National Student Association award as the most original and creative student project in the U.S.



**Now!**  
 We Are Featuring  
**Chubbette fashions**  
 for the younger, chubby girl

delight your youngsters with our new array of luscious colors and patterns designed especially for that gel with a bit of a weight problem. Won't you come in... we're sure we can help you.

**b-z STORES**

also specializing in "TRIM-TEENS," CHILDREN'S WEAR FOR INFANTS - UP.

120 E. Broad St., Westfield AD 2-2156

**SOPHOMORES**  
 Highest Honors  
 Cynthia Brandle, Jean Breen, Elsa Dixler, Joan Stadeck, Carl Wamser.  
**Honors**  
 Judy Arledge, Paul Becker, Wendy Ebert, Mary Falcone, Roberta Finney, Norman Goldberg.  
 Martha Huleatte, Joan Moluso, Tom Murphy, Barbara Nadler, Bonnie Opella, Deborah Powets.  
 Alan Preston, JoAnn Rohrer, Jean Stengel, Janet Uitte, Elliot Wortzel, Christine Wywrot, Carol Ann Young.

**FRESHMEN**  
 Highest Honors  
 Prudence Allen, Richard Ar-

**WE RENT**  
 • LAWN & GARDEN TOOLS  
 • PARTY GOODS  
 • FLOOR MACHINES  
 • POWER TOOLS  
 • TABLES & CHAIRS  
 • MECHANICS TOOLS  
 • PAINTERS EQUIPMENT  
 • INVALID NEEDS  
**United Rent-Alls**  
 RT-22 N. Plainfield CALL PL 7-6930

**Springfield Recreation Sports**

**PRINCETON OUSTS DARTMOUTH, YALE SUFFERS FIRST LOSS**  
 Princeton triumphed Dartmouth 51-47 Monday evening, March 21, at the Gaudineer School gym to remain "alive" in the double elimination "Ivy League" playoffs. It looked like a Dartmouth win all the way as the Indians held the lead after the first, second and third quarters, but the Princeton five came on with a rush in the final canto to take the big win, sidelining Dartmouth.  
 Marshall Anthony pumped home six field goals in the final period, adding one foul for a 33-point total. Other point makers were Mike Rekoon with ten in the last half and little Jimmy Lies with ten.  
 Rick Multhaup and Rip Franklin were the leaders for Dartmouth, Multhaup scoring 12 and Franklin 13, with Steve Hart getting 8 points.  
 The Harvard-Yale game was

**WEST "SMALL-FRY" ALL STARS TRIM EAST 26-16**  
 The "East-West" All-Star game was played Wednesday evening, March 23, at the Gaudineer School gym, with the

**PRINCETON OUSTS DARTMOUTH, YALE SUFFERS FIRST LOSS**  
 Princeton triumphed Dartmouth 51-47 Monday evening, March 21, at the Gaudineer School gym to remain "alive" in the double elimination "Ivy League" playoffs. It looked like a Dartmouth win all the way as the Indians held the lead after the first, second and third quarters, but the Princeton five came on with a rush in the final canto to take the big win, sidelining Dartmouth.  
 Marshall Anthony pumped home six field goals in the final period, adding one foul for a 33-point total. Other point makers were Mike Rekoon with ten in the last half and little Jimmy Lies with ten.  
 Rick Multhaup and Rip Franklin were the leaders for Dartmouth, Multhaup scoring 12 and Franklin 13, with Steve Hart getting 8 points.  
 The Harvard-Yale game was

**WEST "SMALL-FRY" ALL STARS TRIM EAST 26-16**  
 The "East-West" All-Star game was played Wednesday evening, March 23, at the Gaudineer School gym, with the

**WEST "SMALL-FRY" ALL STARS TRIM EAST 26-16**  
 The "East-West" All-Star game was played Wednesday evening, March 23, at the Gaudineer School gym, with the

your Easter "Bonnet"

We've gathered a bouquet of the prettiest and most fashionable  
 from 2.98 to 25.00  
 also, see our Seton-washable leather pouch bags, and our unusual jewelry - yes, come see!  
**EDITH HAT SHOP**  
 Mary L. Murphy  
 10 ELM ST., WESTFIELD AD 2-5980

**WE LIKE TO MAKE LOANS**

Whenever you want money for any sound purpose come in and talk with us.

Helping people and businesses borrow wisely at reasonable rates is one of our most important services.

- EIGHT CONVENIENT OFFICES**
- ★ MAIN OFFICE  
68 BROAD STREET  
Tel. Elizabeth 4-3400
  - ★ BAYWAY OFFICE  
South Elmore Ave. at Edgar Rd.  
Tel. Elizabeth 4-9400
  - ★ ELMORA OFFICE  
Corner of Elmore Ave. at West Grand  
Tel. Elizabeth 4-2500
  - ★ ROSELLE PARK OFFICE  
1 Westfield Avenue, East  
Tel. Chester 3-1120
  - ★ SPRINGFIELD OFFICE  
Morris Ave. at Fianer  
Tel. Dixwell 6-1442
  - ★ SUMMIT OFFICE  
3 Maple Street  
Tel. Chester 7-4000
  - ★ KENILWORTH OFFICE  
Boulevard at South Twenty-second  
Tel. Bridge 2-5000
  - ★ WESTFIELD OFFICE  
1 Elm Street  
Tel. Adams 2-4000

**THE NATIONAL STATE BANK**  
 "Union County's Leading Bank"  
 ELIZABETH • SPRINGFIELD • ROSELLE PARK  
 SUMMIT • KENILWORTH • WESTFIELD  
 MEMBER FEDERAL DEPOSIT INSURANCE CORPORATION  
 FIRST SINCE 1812

**Milady's Shop**  
 as seen on TV

limited time only  
 get \$10.00

"HANDY-CHARGE" USE OUR

you get \$1.00 for any old bra... when you buy any  
**playtex living bra**  
 \$3.95 and up

As a special service of Milady's Shop we will wrap your old bra for easy mailing

**MILADY'S SHOP**  
 167 East Broad St. Open Monday Evenings ADams 3-2758

### Woman's Club News

Club Woman's Day at Hahne & Co. last week.

Two thousand New Jersey Clubwomen attended the 25th annual observance Thursday, March 24.

**CLUB WINS AWARD: MEETING MONDAY: OTHER NOTES**

We are pleased to announce that Springfield Woman's Club won the \$20 award for having the greatest percentage of members registered in the 101-175-member category at the

Monday, April 4. The Woman's Club of Caldwell will act as host to the Seventh District Spring State Federation of Women's Clubs. The conference will be a day-long affair beginning at 10 A.M. and lasting until 3 P.M. Luncheon will be served.

A large group representing Springfield Woman's Club will attend. They will meet in front of American Legion Hall at 9:15 A.M. and proceed to Caldwell in caravan style. Those expected to attend are: Mmes. R. D. Hardgrove Jr., V. J. Bonadies, F. O. Speer, A. P. Panchan, A. Sota, C. E. Miller, W. Lewandowski, K. Bandomer, W. Konrad, E. J. Schubert, S. W. McKinney, T. Geddes, A. Koppisch, W. Kish, E. Sylvestsen.

Wednesday, April 6, is the date for the regular meeting of Springfield Woman's Club. Our April meeting is of special interest since it is "hobby night" when all departments display projects worked on during the year. The pressbook and yearbook will also be on display.

Annual reports are read and the officers for the new year are installed. This year Mrs. Charles D. Lindridge, Seventh District vice-president, will preside at the installation ceremony.

**EXHIBIT TIES IN WITH ANTIQUE SHOW**

This week the neighborhood around the Free Public Library of Springfield is very busy. Cars crowd streets and parking lots in all directions. The antique show and sale is drawing a big crowd to the Presbyterian Church Parish House.

One of the exhibits in the public library was arranged with the antique show in mind. There are 40 books covering

many phases of collecting, identifying and restoring antiques. Besides the three-volume set of "The Concise Encyclopedia of Antiques" and "The Dictionary of Antique and Decorative Arts," some outstanding subjects are old silver, pewter, dolls, candles, furniture, old guns, China marks.

Anyone interested may ask for a list of titles.

**JUVENILE DEPT. HAS OWN EXHIBIT**

The other exhibit in the juvenile department might be entitled "From Dinosaurs to Jets." Models covering this long range of time have been assembled and loaned by the Cub Scout dens. The bad weather of the last few weeks did not keep the boys and their leaders at home but spurred them on to come out and set up this exhibit on time.

Included in the display are miniatures of two types of dinosaurs and a totem pole to represent the more distant past. A group of knights with plumes or fancy crests on the helmets likewise belong to history. One of the two cannons is historical, the old-fashioned ramrod type.

The six boat models could not be more varied: a Chinese junk, an outrigger sailboat, a South Sea sailboat, a yacht, an army transport, an outboard motorboat.

Nature study is represented by a plastic woodpecker. A model of the human body called "the invisible man" is transparent in order to reveal body structure.

Among the models representing modern times are two automobiles, an Air Force plane and a commercial plane. Three models of satellites, including the Vanguard and the Jupiter, bring the exhibit up to the age of rockets.

With all of the models, books are on display to show where information on all of these topics may be found. There also are handbooks used by Boy Scouts and Cub Scouts.

To Mrs. Keller, the children's librarian, and the den mothers go the credit for arranging the beautifully displayed exhibit. The color scheme is the Scout blue and gold. Small replicas of the flags for Dens One, Five, Seven are placed among the models. The caption on the bulletin board is "Do you have a hobby? Cub Scouts do."

To add to the excitement, April 3-9 is National Library Week. It is appropriate that the series of four book discussions held this spring will end the April 7. On that last evening, during the national celebration, A. R. Kropinicki will conduct a discussion of "Brave New World" at the library at 8 o'clock.

**Church News**

(Continued from Page 9)

**Methodist Episcopal Church**  
 Sunday, April 3: 10:30 a.m. - Divine Service with Holy Communion. Dedication of new organ.  
 Monday, April 4: 8:00 p.m. - Lenten Vespers. Sermon topic: "Suffering and the Cross."  
 Tuesday, April 5: 8:00 p.m. - Ladies' Guild Meeting. Meeting topic: "The Power of Prayer."  
 Wednesday, April 6: 8:00 p.m. - Lenten Vespers. Sermon topic: "The Resurrection."  
 Thursday, April 7: 8:00 p.m. - Lenten Vespers. Sermon topic: "The Ascension."  
 Friday, April 8: 8:00 p.m. - Lenten Vespers. Sermon topic: "The Pentecost."  
 Saturday, April 9: 8:00 p.m. - Lenten Vespers. Sermon topic: "The Resurrection."  
 Sunday, April 10: 10:30 a.m. - Divine Service with Holy Communion. Dedication of new organ.

**ANNOUNCE THIRD CHILD**

Announcement has been made by Mr. and Mrs. Abner Gold, of 219 Lelak Avenue, Springfield, of the birth of a daughter, Joanne Myra, Wednesday, March 23, at Beth Israel Hospital, Newark. The new arrival, who weighed seven pounds, ten ounces, and Rachel Benson, 4 1/2 years old.

**MEAT BUYERS** FREE DELIVERY

BONE-IN CHUCK ROAST or STEAK 49¢ lb.

HOME MADE COTTAGE HAMS 69¢ lb.

LOIN VEAL CHOPS 95¢ lb.

FREE Plastic Refrigerator Container With each purchase of 2 lbs. of chuck FREE

**FREEZER SPECIALS**

RIBS OF BEEF 30-35 lbs. Average 63¢

Roasts, Club Steaks and Chop Meat

715 MOUNTAIN AVE. SPRINGFIELD

**RAU** QUALITY MEATS DR 6-4151

OUR MEATS ARE TOP QUALITY

**CAR "WIDOWS"**

Take Advantage of our SPECIAL 1-HOUR SERVICE ON CAR RENTALS

Phone 3-0800

**TV RADIO** Service Dept.

The Ultimate in Service ON ALL MAKES

Broadway Electronics 16 Blacks Lane, Springfield DR 9-2200

**Springfield Library**

With all of the models, books are on display to show where information on all of these topics may be found. There also are handbooks used by Boy Scouts and Cub Scouts.

To Mrs. Keller, the children's librarian, and the den mothers go the credit for arranging the beautifully displayed exhibit. The color scheme is the Scout blue and gold. Small replicas of the flags for Dens One, Five, Seven are placed among the models. The caption on the bulletin board is "Do you have a hobby? Cub Scouts do."

To add to the excitement, April 3-9 is National Library Week. It is appropriate that the series of four book discussions held this spring will end the April 7. On that last evening, during the national celebration, A. R. Kropinicki will conduct a discussion of "Brave New World" at the library at 8 o'clock.

**Church News**

(Continued from Page 9)

**Methodist Episcopal Church**  
 Sunday, April 3: 10:30 a.m. - Divine Service with Holy Communion. Dedication of new organ.  
 Monday, April 4: 8:00 p.m. - Lenten Vespers. Sermon topic: "Suffering and the Cross."  
 Tuesday, April 5: 8:00 p.m. - Ladies' Guild Meeting. Meeting topic: "The Power of Prayer."  
 Wednesday, April 6: 8:00 p.m. - Lenten Vespers. Sermon topic: "The Resurrection."  
 Thursday, April 7: 8:00 p.m. - Lenten Vespers. Sermon topic: "The Ascension."  
 Friday, April 8: 8:00 p.m. - Lenten Vespers. Sermon topic: "The Pentecost."  
 Saturday, April 9: 8:00 p.m. - Lenten Vespers. Sermon topic: "The Resurrection."  
 Sunday, April 10: 10:30 a.m. - Divine Service with Holy Communion. Dedication of new organ.

**FOUNTAIN** Authorized KODAK Dealer

Color & Black & White Processing

**JARVIS DRUG STORE** 54 ELM STREET WESTFIELD, N. J. ADams 3-0662

**NEW 1960 General Electric Combination Washer-Dryer Solves Bleaching Problem**

Bleach Can Now Be Conveniently Added and Automatically Diluted With The New G.E. Bleach Dispenser

Just pour the proper amount of bleach into this handy spout. Automatically, bleach is injected into the outer tub of the Combination Washer-Dryer where it is thoroughly mixed with the wash water. The diluted bleach then filters into the tumbling clothes load for proper bleaching action—to give you clean, bright clothes.

**WASH AND DRY IN ONE COMPLETELY AUTOMATIC OPERATION**

This new General Electric Combination Washer-Dryer does the work of a separate washer and dryer. With a single setting of the controls, most all of your family washables—even delicate garments—can be washed thoroughly clean and conveniently dried, all in one continuous operation. The complete laundering job is done for you automatically from start to finish.

**PIECE BY PIECE LAUNDERING MEANS LESS WEAR**

New six-baffle, extra big 26-inch porcelain clothes basket gives the space and washing action needed for clothes to be thoroughly laundered piece by piece. General Electric's new tumbling action gently flexes, dips and tumbles clothes reducing needless wear. Clothes look so new, last so long.

**FAMILY SIZE CAPACITY.**

As much as 8 pounds of clothes can be washed and dried in one continuous operation. Yet, automatically you save water and electricity on smaller loads since amount of water and drying time are determined by size of load.

**FOR AS LOW AS \$2.00 week**

**ALL THESE FEATURES TOO...**

- Automatic Water Saver • Exhaust-Free Installation • Dry-Dry Control • Choice of Colors or White • G.E. Written Warranty • Standard Counter Height, Standard Counter Depth—Fits Almost Anywhere

**Get THE BEST at Acme MARKETS**

Famous S&H Green Stamps... Lancaster Brand Top Quality Meats. Our aim is to serve you better.

There's Still Time to Redeem Your Coupon for 100 S&H Green Stamps from last Thursday's Acme Advertisement

**Seafood Specials for Lent**

Sea Scallops	Fancy	lb. 65¢
Halibut Steak		lb. 45¢
Perch Fillet		lb. 33¢
Cod Fillet		lb. 25¢
Flounder Fillet		lb. 49¢
Whiting	Pan-Red	lb. 17¢

**Lancaster Brand Boneless TOP or BOTTOM ROUND ROAST lb. 79¢**

**Eye Round Roast lb. 99¢**

**Top Sirloin Roast BONELESS lb. 99¢**

**Top Round Steak BONELESS lb. 99¢**

**Beef Tongues LANCASTER BRAND SMOKED lb. 55¢**

**Jones Sausage Links 1-lb. pkg. 79¢**

**Fruits and Vegetables**

**Del Monte DRINK** 4 46 oz. cans \$1.00

**Toilet Tissue** Marcal Assorted Colors 5 rolls 43¢

**Tomato Juice** Sacramento 3 46 oz. cans 79¢

**Planters Peanuts** 3 7 1/2 oz. cans 85¢

**Dog Food** Alpo-Beef or Horsemeat 4 15 oz. cans 89¢

**Gran. Sugar** Jack Frost or Domino 5-lb. bag 47¢

**Ehler's Coffee** Regular Drip, Silax 1-lb. can 66¢

**Crab Meat** Pacific Pearl 6 1/2 oz. can 55¢

**Simonize** quart 79¢ 1/2 gallon \$1.39

**Bananas** GOLDEN RIFE 6 10¢

**Asparagus** CALIFORNIA 2 lbs. 35¢

**Sharp Cheese** EXTRA 6 79¢

**Muenster Cheese** IDEAL NATURAL SLICED 8 oz. pkg. 35¢

**Biscuits** PILLSBURY BUTTERMILK 3 8 oz. pkgs. 25¢

**Chiffon Cake** ORANGE each 49¢

**Blueberry Pie** VIRGINIA LEE each 49¢

**Danish Ring** ALMOND each 39¢

**Pot Pies** Lancaster Brand-Beef, Chicken, Turkey 5 8 oz. pkgs. \$1.00

All Prices Effective thru Saturday, April 2nd

Route 22 and Mountain Avenue, SPRINGFIELD, N. J. BLUE STAR SHOPPING CENTER ROUTE 22, BONNIE BURN RD., WATCHUNG 1252 Springfield Avenue, NEW PROVIDENCE, N. J. 512 Park Ave., SCOTCH PLAINS 252 E. 1st St., PLAINFIELD

**SPECIAL CLOSEOUT PRICES ON 1959 MERCHANDISE !!**

**AUSTER'S APPLIANCES**

143 E. Broad Street, Westfield • AD 3-2121

OPEN MONDAY AND FRIDAY EVENINGS UNTIL 9 P.M.

# HYDE & ELLIS

HARDWARE  
717 Mountain Ave.  
Springfield  
DR 6-7990

## Half An Hour Now Dooms Crabgrass



How does HALTS® work? Just like a watchdog for the lawn! It lies in wait for the first sign of crabgrass — then attacks as crabgrass sprouts, all through Spring. Come on — the dial's set to 10. The Scotts Spreader is full. Let's take a walk. HALTS goes on evenly, easily — just right. Amazing, isn't it?

More and more folks are coming to us for advice on improving their lawns through an easy-to-follow Scotts Program. Come in anytime. We'll be glad to prescribe the correct Program for your lawn.

Save \$5.00! Scotts Spreader (16.95) plus Halts (9.95) together only 21.90



# HYDE & ELLIS

HARDWARE  
540 South Ave. W.  
Westfield  
AD 2-6700



**REALTOR WEEK SPEAKERS:** Jay E. Longfield (at left) of Benjamin Chadwick's office in Springfield, will address Springfield Lions Club, of which he is a member, during Realtor Week April 3 to 9. Robert E. Marshall of Milburn will address Milburn Rotary Club during the same period. In each case the talk will be accompanied by the showing of the new national Realtor colored sound film, "The House-Hunters."

### To Show Colored Movie At Museum

A color-sound movie, "Gift from the Earth," that reveals man's ingenuity in transporting natural gas 2000 miles underground from the Southwest to

the Atlantic Seaboard, will be shown at Union County Park Commission's Trailside Museum, Watchung Reservation, Sunday, April 3, at 3 P.M. Admission is free and Trailside Museum is open every Saturday, Sunday and legal holiday, from 1 to 5 P.M., and from 3 to 5 P.M. every weekday, except Friday.

### TYPEWRITER RENTALS

Latest Models  
All Makes  
SPECIAL STUDENT RATES



**BEACON HILL CO.**  
Printers • Stationers  
226 Morris Avenue  
DRexel 6-1256 Springfield  
1929-Our 30th Year-1959

**CONVERSION GAS UNITS**  
**WOOLLEY COAL CO.**  
MAPLEWOOD, N. J.  
**SO2-7400**

## Hikes Set For The Week-End

Members of Union County Hiking Club will include a Saturday hike, a Sunday hike and a Sunday morning ramble in the schedule, planned for the week-end of April 2-3.

The Saturday, April 2, hike with Bob Gasser, North Plainfield, as leader will be in the Greenwood Lake, N.Y. area.

Members and others participating in the Saturday hike will meet at Union County Park Commission's Bunting, Warranceo Park, Elizabeth, at 8:30 A.M.

Sunday, April 3, Fred Douhy, Union will be leader of a seven-mile hike that will include an inspection of the new state park being developed on Rockland Lake near Rockland Lake, N.Y.

The Sunday hikers will meet at the Administration Building at 8:30 A.M.

The ramble, with Charles Trelease, East Orange, as leader, will be in the Watchung Reservation, starting at 9:30 A.M. and ending at 12:30 P.M.

Members and others going on the ramble will meet in the parking area above Lake Surprise adjacent to Trailside Nature Museum, Watchung Reservation.

**FINAL YWCA DROP-IN OF SEASON**

Last Summit YWCA Sunday afternoon Drop-In for this season will be held April 3, from 3 to 7 p.m. These informal get-togethers are open to single young adults from this area from age 18 to 40.

"Spring Olympics" is to be the theme for the day. There will be food, music, and fun and a chance to get acquainted.

### Rotary Head To Speak In County

The president-elect of Rotary International will speak at an inter-city dinner meeting of Rotary Clubs of Eastern Union County at 6:30 p.m. Wednesday at the Chi-Am Chateau Restaurant, Mountainside.

Joseph A. Abey of Reading, Pa., will address more than 200 Rotarians who are expected to attend, according to Dr. Edward M. Coe, past president of the Cranford club, who is general chairman.

P. E. Fitzpatrick, governor of the 75th Rotary District, will greet the guests who will be entertained by the Esso Choristers.

Mr. Abey, circulation director of the Reading Eagle-Times, has served Rotary International as director, district governor and committee chairman. He is a past president of his local club.

**GIRLS TO GO SKATING**

Brownie and Girl Scouts of Springfield will attend a skating party Wednesday, April 20, at the South Mountain Arena, West Orange. Scouts from Union will also be present.

Plans are under way for the annual mother and daughter get-together to be held in May.

"Verily I say, this is the Day in which mankind can behold the Face, and hear the Voice, of the Promised One. The Call of God hath been raised, and the light of His countenance hath been lifted up upon men."

Great indeed is this Day!  
—1870. From Bahai Writings.

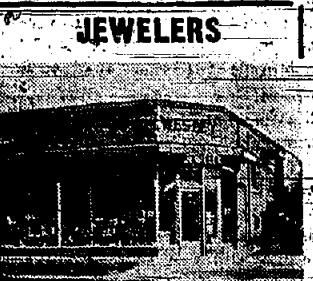
**BAHAI CENTER**  
141 Salter St.  
Free Literature On Request.

### Elected President Of College Group

Miss Donna Sweeney, daughter of Mr. and Mrs. William Sweeney of 162 Meisel Avenue, Springfield, was elected president earlier this month of the administrative board of the Women's Self-Government Association at The College of Wooster, Wooster, Ohio.

Miss Sweeney, a Junior, is active in International Relations Club and Triumps, a social club, as well as in the self-government group.

**JOINS 25-YEAR CLUB**  
Mrs. Ann Wake of Springfield, who is employed at the Ironbound Trust Office of Fidelity Union Trust Company of Newark, has joined the bank's honorary organization of employees who have completed 25 years with the financial institution.



**Wesley Jewelers**  
173 Mountain Ave.  
JEWELRY  
DIAMONDS • WATCHES  
"What You Can Afford Fine Quality"  
Budget Terms Arranged  
DRexel 6-6047  
Member-Springfield Chamber of Commerce.

**NORFOLK**  
70¢  
3 min. staying rate from Newark after 6 P.M. 10¢ tax included.

**CENTER MEAT & POULTRY MARKET**  
254 Morris Ave., Springfield (In the Middle of Town)  
FINEST QUALITY MEATS  
SAUERBRATEN, Ready to Cook  
ALL KINDS OF HOMEMADE BOLOGNAS  
HICKORY SMOKED MEATS  
DRexel 6-2064 FREE DELIVERY

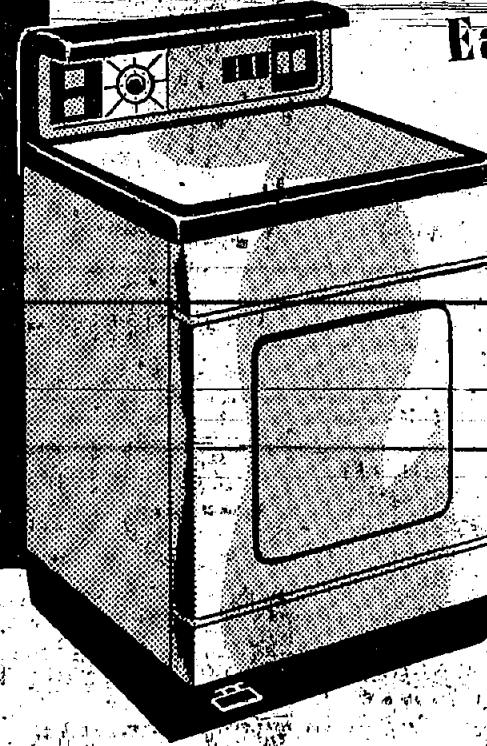
## PUT THAT BASKET DOWN FOREVER!

# Get an Automatic Gas CLOTHES DRYER

- NO more back-breaking trips outdoors
- NO more putting up clotheslines
- NO more wear and tear on clothes
- NO MORE LUGGING WET CLOTHES...



**GET SOFTER, BRIGHTER, CLEANER CLOTHES**  
Easy On Clothes — Easy On You!



**BUY AN AUTOMATIC GAS CLOTHES DRYER AT YOUR FAVORITE STORE**

**PUBLIC SERVICE**

OTHERS MAY "PULL" THEIR PRICES OUT OF A HAT... BUT AT L & S..



THE ONLY "MAGIC" WE DO IS ON THE UNBEATABLE PRICE WE GIVE ON NEW 1960 CHEVROLETS!

**L & S CHEVROLET**  
MORRIS & COMMERCE AVES.  
UNION MU 6-2800

### HAIR STYLE OF THE MONTH

Casual Elegance



**Paul & Louis Hairstylists**  
261 MORRIS AVENUE SPRINGFIELD, N. J.  
DRexel 6-9877... Free Parking in Rear  
CLOSED MONDAYS

**W U**  
**SAVE TODAY for**  
the same things people wanted in 1931 when Savings Associations were founded  
\* New Furniture — "The more things change, the more they are the same."  
Old woodcut courtesy of The New Jersey Historical Society  
CURRENT ANTICIPATED DIVIDEND 3 3/4% PER ANNUM  
Your savings are insured up to \$10,000 by the Federal Savings and Loan Insurance Corporation

**Crestmont Savings AND LOAN ASSOCIATION**  
1886 Springfield Avenue 175 Morris Avenue  
Maplewood, N. J. Main Office Springfield, N. J.

## Home and Hearth at Dayton Regional A Close View At Home Economics Dept.

By E. Kulawiec  
Close on the heels of the report which highlighted the activities of the boys at Jonathan Dayton Regional High School in Springfield, it was decided to focus this month's attention on the Home Economics Department, one of the most popular of the school offerings, thanks to a well-planned and integrated course of study.

At school meetings are held there attempt to this accolade. When initial inquiries were made as to what goes on in home-economics, this writer learned that it was nothing new in so far as school offerings go, and that cooking and sewing classes were as old as some high schools. If any regrets were felt by this writer, who might have felt that he had stumbled upon old stuff, it was perhaps in the modern terminology "home economics" itself, which might have spelled something sinister or even worse, dried out. And this notion, too, was quickly erased: a home management room is the "meat" room in the school. The fact that so many informal at-

home planning, home furnishing and the accompanying problems of home management. The biggest event of the course comes in the Spring when each girl acquires a "mock" husband. The idea behind this scheme is to give to each student a near practical situation for which she must plan, manage, invest, and thereby learn.

For example, each "mock" husband has a particular job, a salary, a possible bank account, special hobbies and traits, etc. Even a mother-in-law makes her way into the course. The teacher is charged with the list of "husbands" and the students choose from a list. The teacher tries to keep the selection within practical bounds, that is to say, there are never any millionaires, oil tycoons or beatnik-artists involved.

This is the focal point of the course. Around this, the girls attempt to solve all the problems that might make up the marriage in question. These problems might entail home decorating, apartment hunting, home chore management, budgeting, insurance, buying and the like. The girls use practical means at trying to solve make-believe problems, like a field trip to a department store, newspaper advertisement scanning, visits to super-markets for price quoting, etc. It must be reported, however, that the problem of the mother-in-law still remains. The problem of children also is approached within the framework of the course.

This particular unit is handled by group participation, demonstrations, oral reports and individual presentations. Special attention is given to baby care, nursery furnishings, diets, etc. Finally, the work of the year is collected in a highly prized scrap book which contains all reports, the personality profile, the mass of research material and even a verse on children written by a former student.

This scrap book is as much a prize to the Senior girl as is her year book, and it is no wonder that so much enthusiasm accompanies its making. This unique course of study, which has been adopted in about five schools throughout the state, is the personal handwork of Miss Mary Ann Ulbrich, the department chairman, who gets excellent assistance from Miss Kathryn Joslin, a colleague.

Another subject which is very popular among the girls is cooking. The foods course is completely elective. Mrs. Alice Leschick, the popular foods teacher, has organized her foods courses in such a way that a similar progression from elementary description to complex "dinner" planning, is met with there as in home management.

The culmination of the course is the planning, serving and preparation of complete meals in a practical, dining room environment. Usually, outside guests are invited to sample these meals. Recently, the foods classes hosted two ministers of secondary education from Tallman. One not only is attention given to the food, but stress is also laid on decor, invitations, settings, hostess etiquette and associated details involved in dinner planning.

**Floors without flaws!**  
Come see how we can add new glamor and drama to your home with Gullistan Carpet—flawlessly installed by our experts.

**GULLISTAN CARPETS**  
Located 1/2 mile from Roselle Park Factory open from 9:30 AM to 8:30 P.M., Wed. and Sat. to 6 P.M.

**RUGS, Inc.**  
1135 CHESTNUT ST., ROSELLE CHESTNUT 8-7838

Home management, a full-year course, carries a full major for Senior girls and has been the most popular course over the last few years. It is open to all senior girls. Personal and social relations are stressed, together with personal appearance, posture, poise, etc.

This is followed by a section on life planning, careers, job opportunities and future plans, wherein the students investigate in some detail their post-graduate interests. Then a unit is covered on courtship and dating, marriage,

and, finally, after a year of cooking and sewing and home planning, the Home Economics Department holds its annual Home Arts Show at which the scrapbooks, compiled by the home management students are displayed, as a fashion show of clothing made by the clothing students is held and the teachers again sample the wares of the foods students.

After viewing the particular set-up of the "home-ec" department, it is no wonder that the courses are the most popular among the girls. And it is easy to see, too, that the day of making aprons and white sauce has long since faded.

Children's Asthma Research Institute and Hospital in Denver, life home accepts only intractable asthmatic children; that is, those children who will no longer respond to any medication or treatment at home.

Mrs. David Adler, president of Springfield League, asks all residents to help make this drive a huge success. If anyone wishes a Tag Week kit to help this drive, or information on the home, Mrs. Adler, DR 9-5480 or Mrs. Hager, DR 9-2976 should be contacted.

The new radioisotope laboratory at Rutgers-Camden College of Pharmacy, Newark, will help prepare specialists for work with community civil defense teams in the event of emergency.

**Robert Hall**  
9 to 9

**Our lowest price in 10 years!**

**OUR REGULAR 14.95**  
**GIRLS' WASHABLE**  
**ACRILAN EASTER COAT**

Friday & Saturday Only at this Low, Low Price!

The pyramid coat makes fashion news for spring in softest Acrilan Acrylic that emerges fresh as new after each washing! Beautifully tailored and detailed with pearlized buttons underscored with bows and a detachable white overcollar. Red, 7-14.

**12<sup>88</sup>**

**OIL BURNER INSTALLATIONS**  
**WOOLLEY COAL CO.**  
MAPLEWOOD, N. J.  
**\$027400**

**Safe at 403 Miles PER HOUR!**

**DUNLOP TIRES**

Special Discounts:  
NEW FIRESTONE, GOODRICH, U.S. ROYAL & GOODYEAR

**STANDARD DISCOUNT LUMBER**  
OPEN DAILY & SAT. 'TIL 9 P.M.

**SPRAYIT 400**  
Complete Portable Paint Spraying Outfit—The Paint Sprayer That is Taking America by Storm!

Throw away that messy paint brush; Here's the answer to painting anything—from a toy to a house! Thousands are giving daily service all over America and many foreign countries.

**NATIONALLY ADVERTISED IN: POPULAR MECHANICS, HOUSE & GARDEN, HOUSE BEAUTIFUL, TRUE ESQUIRE**

**OPEN SUNDAY 9 A.M. to 5 P.M.**  
For Sale of This Item!

**\$39.95**  
complete, ready to spray  
(\$25-N SPRAY GUN ONLY \$8.95)

**SPRAYIT PAINTER-PAK**  
Designed for industrial and institutional maintenance, and Contractor-use.

**SPRAYIT Uni-Pak**  
SERIES 700  
Designed For The Home Owner, Priced For Every Budget—Plenty Of Capacity For The Biggest Spray Jobs.

- Oil-less operation . . . never needs lubrication.
- Aluminum die-cast body.
- Can run off any regular extension cord.
- Weight of compressor, 6 1/2 lbs.; with gun, 7 lbs.
- 120-volt universal AC/DC motor, 1/2 H.P.
- Two-wire 6-foot cord, with plug.
- 8 feet of hose.
- Guaranteed unbreakable one-piece nylon gun-body.
- Easy-to-use two-finger trigger gun.
- One year warranty.

**HERE'S WHY PRICES ARE LOW AT ROBERT HALL**

- We sell for cash only!
- No high rental
- No fancy fixtures!
- No show window!

**UNION—ROUTE 22 WEST OF GARDEN STATE PARKWAY**

LINDEN — 416 WEST ST. GEORGE AVE. — (2 blocks south of High School)  
ELIZABETH — 1004 ELIZABETH AVE., at Route No. 1 Highway  
IRVINGTON — NEW ST. off Springfield Ave., at Irvington Center

Plenty of Free Parking

**FREE WHEEL BALANCING**  
**COMPLETE STOCK OF FOREIGN CAR TIRES**  
**CHARGE ACCOUNTS SOLICITED**

Open 9 1/2 A.M. to 8 P.M. including Saturdays

**WORLD TIRE CO.**  
1701 SPRINGFIELD AVE.  
(Opp. Kline Branch of Mapletown Library)  
Maplewood \$0 3-1700

WORLD SPECIALISTS SINCE 1914 NEWARK STORE: 1199 BROAD ST.

**"Weyerhaeuser" V-Groove KNOTTY CEDAR PLYWOOD PANELING**  
4 x 7 SHEET  
**4.95** (Reg. price \$11.20)

**CEILING TILE**  
7 1/2 Sq. Ft.  
Reg. 12 1/2¢ sq. ft.  
**11.87** (Reg. \$22.95)

All The Name-Brand Ceiling Tiles Available At Discount Prices!!

**SLIDING DOOR UNITS**  
Makes every inch of your closet more accessible. Complete package includes rich mahogany doors with genuine STANLEY hardware.

**STANDARD LUMBER**  
1024 ELIZABETH AVE. ELIZABETH (Next to Robert Hall) EL4-2646

**for TV REPAIRS**  
(or any repair service)  
"Find It Fast" in the **YELLOW PAGES**

**THERE'S Beauty IN SIGHT!**  
FASHION RIGHT!  
GOOD LOOKING!  
PERFECTLY FITTED!

For today's most fashionable collection see us!

**H.C. Deuchler**  
GUILD OPTICIANS

**NAMED DELEGATE**  
Mrs. Bernard Schwartz, 52 Warwick Circle, Springfield, has been named district representative from the Northern New Jersey Council of B'nai

Brith Women to the convention of District Three to be held in Philadelphia April 22-25.

### 17 Hit-200: Top Spots Unchanged

The March 23 action in the Springfield Sports Bowling League saw the top four positions remain unchanged, even though 17 koglers hit for 200 or better.

Drexel Cleaners failed to pick up any ground on the league-leading Conte's team as fifth-place Highland Metal up-

ended the second-place Cleaners a 213 for an even 600 series. ers twice while first-place Conte and M. Conte each had a 213. Others who topped 200 in the 17-kogler series were: P.B.A., third, Cavello, 204-207; La Motte, 213; Damiano, 205; La Motte, 213; Damiano, 205; Conte's Dalcasson, 392; 375; Drexel Cleaners, 445; 434; Milton's Liquors, 434; 444; Highland Metal, 434; 444; Sam's Service, 424; 445; Board Electronics, 412; 466; Renberg also hit Colontone Shes, 362; 5012.

### New "Y" Building To Be Accessible

The proposed new Fanwood Scotch Plains YMCA building will be located on South Martine Avenue, Fanwood. It was revealed today by President William A. Tidridge.

Tidridge announced that the "Y" has obtained an option to purchase a one and one-half acre tract of land at the intersection of South Martine Avenue and Saville Place, a street to be constructed.

"Two surveys by the National 'Y' organization strongly indicated the desirability of locating the new building centrally for Scotch Plains and Fanwood. The site chosen by the 'Y' almost ideally fits this requirement. In addition, it is readily accessible to sections of Clark Township," Tidridge said.

In addition to the new building the land will provide room for parking 75 cars.

The Eagleton Institute of Politics, Rutgers, under the study of practical politics and government, has been awarded a total of \$135,000 from units of the Ford Foundation, to develop nine half-hour films on the Congress and Presidency for use in high schools.

### Temple Sharey Shalom Gets Ready For May Election Of Officers

SLATE OF OFFICERS CHOSEN; ELECTION IN MAY

Robert Silverman, chairman of Temple Sharey Shalom's nominating committee, presented a slate of officers for the 1960-61 year at a congregational meeting Thursday, March 24. The slate to be voted on in May at a congregational meeting follows:

President, Charles Danziger; first vice-president, Phillip Ames; second vice-president, Selwyn Schlechter; treasurer, Arthur Jacobs; financial secretary, Saul Sepner; recording secretary, Mrs. Ethel Steiner; corresponding secretary, Mrs. Evelyn Schapiro; three-year trustees, Martin Sherman, Murray Hurwitz; two-year trustees, Harry Lowy Jr.; one-year trustees, Harold Bass, David Belas; trustee Herman Horowitz.

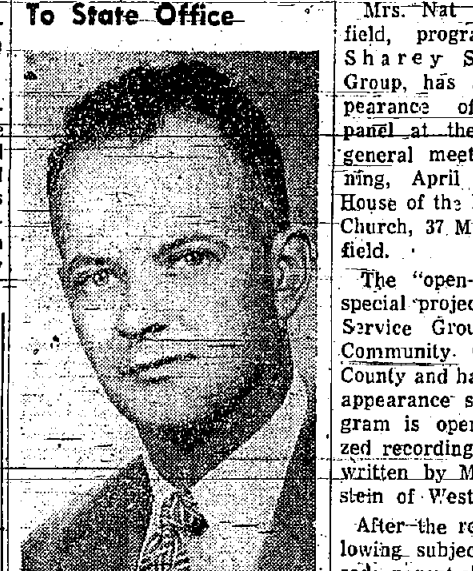
### Regional High Teacher Elected To State Office

Adam La Sota was elected to the presidency of the New Jersey Section of the American Vocational Teachers Association.

La Sota has been teaching vocational agriculture at Jonathan Dayton Regional High School in Springfield for the past 13 years. During this time he has been secretary of the American Vocational Association and president of the New Jersey Vocational Agriculture Teachers Association.

He also is active in the Rotary Club of Springfield, of which he is a past president. He is a member of Springfield Shade Tree Commission.

La Sota resides with his wife, Vera, and two children, Larry and Nancy, at 15 Country Lane, Springfield.



ADAM LA SOTA

At the recent convention of vocational and industrial arts teachers at Asbury Park, Adam La Sota was elected to the presidency of the New Jersey Section of the American Vocational Teachers Association.

La Sota has been teaching vocational agriculture at Jonathan Dayton Regional High School in Springfield for the past 13 years. During this time he has been secretary of the American Vocational Association and president of the New Jersey Vocational Agriculture Teachers Association.

He also is active in the Rotary Club of Springfield, of which he is a past president. He is a member of Springfield Shade Tree Commission.

La Sota resides with his wife, Vera, and two children, Larry and Nancy, at 15 Country Lane, Springfield.

### DAY CAMP PLANS

Plans for the sixth season of a day camp program for young children of Summit and surrounding area have been announced by Summit YWCA. Girls through eight years of age and boys aged five and six are eligible. Two two-week camp periods will again be offered, from 9 a.m. to 12 noon.

As July 4 comes this year on Monday, first camp period will open Tuesday, July 5, and will include Saturday, July 9, but the second week will run as usual from Monday through Friday, ending July 15.

Second camp period will run Mondays through Fridays from July 18 through July 29. Activities will be scheduled on the YWCA grounds except in case of rain, when the program will be held inside the building.

Persons wishing to receive full information about registrations, which will not be taken until the end of April, may call the YWCA, CR 3-4242.

PRINCETON UPSETS YALE 46-41 TO REACH FINALS

Jimmy Lies and Marshall Anthony provided the scoring punch as Princeton trimmed a favored Yale five 46-41 in the Springfield Recreation Ivy League playoffs. The Tigers jumped off to a three-point lead at halftime, then moved ahead to a ten-point lead at the middle of the final period. Coach Richie Bell then substituted freely for the remainder of the game. Steve Berger, Bruce Ledig and Alan Greenberg were the leaders for the Yale five.

A thermostat so sensitive it can instantly react to the heat of a match struck 10 feet away has been perfected at the Naval Ordnance Laboratory, Silver Spring, Md. It operates on an iodine solution.

To probe the laws in solid steel, scientists at the Naval Ordnance Laboratory, Silver Spring, Md., peer deep into the metal mass with the aid of a super-X-ray machine generating 10 million electron volts.



...and a moment ago, she was lonely!

It's so easy to be thoughtful by phone. The miles melt in seconds — and loneliness disappears in a burst of smiles. To many, the happiness the phone brings is one of the most appreciated advantages of today's low-cost telephone service.

...good telephone service does so much for you.

### HARD OF HEARING!

the world's first HIGH FIDELITY Hearing Aid

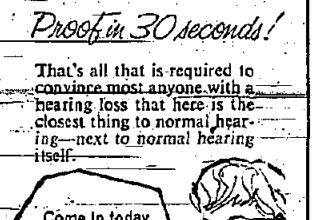


85% wider frequency range brings in sounds never before reproduced through present conventional hearing aids.

Vastly improved the hearing of 9 out of 10 wearers tested in actual test among people who wear hearing aids.

Proven in 30 seconds!

That's all that is required to combine most amazing with hearing loss that here is the closest thing to normal hearing—next to normal hearing itself.



Come in today for a home demonstration.

### ANSPACH BROS. Guild Opticians

348 Springfield Ave. Summit

533 Main St. Asbury Park East Orange

Lenses, frame fronts, and related professional services in connection with Zenith Eye-Glasses, Hearing Aid are available only through your optometrist, optician, or optician.

We Handle Batteries and Accessories for Most Hearing Aids.

## AUTO FINANCE CAN BE LESS EXPENSIVE THAN REPAIRS

When your auto repair bills start arriving too regularly, it's time for a change. Buy your car with care and select your financing with equal discrimination. Finance with The First State Bank.

Our new car financing is only \$4.50 per year for each \$100 borrowed.

Cash You Receive	12 Monthly Payments	24 Monthly Payments	36 Monthly Payments
\$ 500	\$ 43.64	\$ 22.73	\$ 15.75
1000	87.27	45.45	31.51
1500	130.91	68.18	47.26
2500	218.18	113.63	78.77
3000	261.81	136.35	94.53

## The "Colonial" Man In The Straw Hat ... Is Looking for You!

He'll do anything, go anywhere to make a deal with you.

And what is more, you'll be glad you found him because his friendly handsake means sincerity all the way through... from the sale right on down to the service. Invite the "straw hat" man to your home and settle on a new PONTIAC or a Colonial approved used car.

Dollar For Dollar Colonial Gives You More.

# Colonial PONTIAC

312 SPRINGFIELD AVE., SUMMIT CR. 7-6700

WE WANT YOUR BUSINESS!

OPEN EVENINGS TILL 9 Wed. & Sat. 'Til 6

## Half An Hour Now Doooms Crabgrass

How does HALTS® work? Just like a watchdog for the lawn! It lies in wait for the first sign of crabgrass — then attacks as crabgrass sprouts, all through Spring. Come on — the dial's set to 10. The Scotts Spreader is full. Let's take a walk. HALTS goes on evenly, easily — just right. Amazing, isn't it?

More and more folks are coming to us for advice on improving their lawns through an easy-to-follow Scotts Program. Come in anytime. We'll be glad to prescribe the correct Program for your lawn.

Save \$5.00! Scotts Spreader (16.95) plus Halts (9.95) together only 21.90

# FORBES GARDEN CENTERS

Route 10, Hanover, N. J. 8:30 to 5 p.m., including Sundays  
Tucker 7-0375 Friday & Saturday Nights 'til 8:30

8th Open: Millburn Store open —  
Morris Turnpike, Millburn, N. J. DRexel 9-4430

PRINCETON UPSETS YALE 46-41 TO REACH FINALS

Jimmy Lies and Marshall Anthony provided the scoring punch as Princeton trimmed a favored Yale five 46-41 in the Springfield Recreation Ivy League playoffs. The Tigers jumped off to a three-point lead at halftime, then moved ahead to a ten-point lead at the middle of the final period. Coach Richie Bell then substituted freely for the remainder of the game. Steve Berger, Bruce Ledig and Alan Greenberg were the leaders for the Yale five.

A thermostat so sensitive it can instantly react to the heat of a match struck 10 feet away has been perfected at the Naval Ordnance Laboratory, Silver Spring, Md. It operates on an iodine solution.

To probe the laws in solid steel, scientists at the Naval Ordnance Laboratory, Silver Spring, Md., peer deep into the metal mass with the aid of a super-X-ray machine generating 10 million electron volts.

## Now at Stickel Auto Sales Corp. Surprise car of the 1960's! The New 1960 Hillman

The only 4-door sedan with Automatic Transmission that costs less than \$2000! You can own this beautiful four-door sedan for only \$1994

Eastern p.o.e. price including automatic transmission and heater

Hillman is the only low-priced 4-door import with automatic transmission! And look what else you get for the same low price! A Turnpike Power engine that cruises easily at highway speeds. Safety-Matched brakes for super stopping power. An interior so roomy it seats five comfortably. Full-size trunk for all your luggage. Solid unitized construction. Compare Hillman-features to feature, price for price. See why Hillman is the surprise of the sixties! Test-drive it at Stickel Auto Sales Corp. Today! Five models from \$1639. Eastern port of entry.

A Rootes Product  
A BETTER BUY BECAUSE IT'S BETTER BUILT

See George Stickel Jr., Fred Brush or Honer Richards

# STICKEL AUTO SALES CORP.

73-79 MILLBURN AVE., MILLBURN S.O. 3-3090

## Half An Hour Now Doooms Crabgrass

How does HALTS® work? Just like a watchdog for the lawn! It lies in wait for the first sign of crabgrass — then attacks as crabgrass sprouts, all through Spring. Come on — the dial's set to 10. The Scotts Spreader is full. Let's take a walk. HALTS goes on evenly, easily — just right. Amazing, isn't it?

More and more folks are coming to us for advice on improving their lawns through an easy-to-follow Scotts Program. Come in anytime. We'll be glad to prescribe the correct Program for your lawn.

Save \$5.00! Scotts Spreader (16.95) plus Halts (9.95) together only 21.90

# FORBES GARDEN CENTERS

Route 10, Hanover, N. J. 8:30 to 5 p.m., including Sundays  
Tucker 7-0375 Friday & Saturday Nights 'til 8:30

8th Open: Millburn Store open —  
Morris Turnpike, Millburn, N. J. DRexel 9-4430



### It's the Law

**HISTORICALLY SPEAKING...**  
Trial by jury and arguments before them go back to Greek colonies in Sicily about 600 B. C. In lawsuits over lands seized by tyrants.

Soon Athens itself adopted the system, but appears to have worked out no rules or evidence of judicial control of the trial. Jurors often cheered or booed the parties. They talked together and shouted back to the speakers. What one man knew about the case he told his neighbors. All evidence could go: Personal knowledge, hearsay, prejudice, and the juror's opinion. The Athenian jury had power. Each "dicast" (chosen by lot) was both juror and judge. Each juror got one "obol" a day—about three cents.

Each accused person had to come before the jury personally to defend himself—which was especially hard if he didn't know the art of advocacy, since he was assumed to be guilty.

Indeed, many hold that if Socrates had taken independent advice he would never have offended the hoisterous and biased Athenian jury which sentenced him to die "hanging there on the hillside" in 399 B. C.

Less-outspoken defendants in those days—sought bootleg legal advice.

Antiphon (415) ghost-wrote and sold briefs to plaintiffs who had to put their own cases to the jury. He set out four steps of an Athenian trial: 1) the accused's charge, 2) the accused's reply, 3) the accuser's reply, and 4) the accused's response.

Afterwards the jury let the accused off or found him guilty. The jury sentenced the guilty then and there, allowing some—Socrates, for one—to propose their own penalties, and even to bid them upward if they failed to please the jury.

After the trial, the speakers (or—in Socrates' case—his friend Plato) often worked their talks over, and sent them out for friends to admire or criticize.

Pretty much the same appeals which are heard today were then used to win the jury over. Aristotle listed a few, as follows:

The values the jurors shared with the speaker—reverence for justice, the law, and the city's founding fathers; the sanctity of the juror's oath; the verdict's effect upon public and foreign opinion, and sometimes upon women and youth.

**SPACE LAW**  
Who owns outer space? This is a problem as new as the space age, but one in desperate need of a solution in the near future, especially in view of the Russian moon rocket and the earth satellites.

Scientists tell us that earth satellites will soon be usable in our everyday affairs. Satellites would aid meteorologists in weather forecasting and would be invaluable in the field of worldwide communications. Television signals, which will not bend around the earth's surface, can cover but a few hundred miles at most. But an earth satellite properly placed and used as a relay station could cover entire continents with a single broadcast.

With such technical developments upon us, the question of space ownership becomes more acute. In 1944 it was agreed at the Convention on International Civil Aviation in Chicago that "every state has complete and exclusive sovereignty over the air space above its territory."

At the time air space was thought of in terms of conventional aircraft flight. The convention failed to include a definition of air space.

Authorities in the field of space law hold widely divergent views on space ownership. One suggests that each nation's territory extends into space as far as it is physically and scientifically possible to exert control. Another adopts the theory that

The Eagleton Institute of Politics—Rutgers' unit for the study of practical politics and government, has been awarded a total of \$135,000 from units of the Ford Foundation, to develop nine half-hour films on the Congress and Presidency for use in high schools.

### This Legal Column is prepared UNDER THE SUPERVISION OF THE NEW JERSEY STATE BAR ASSOCIATION OF A PUBLIC SERVICE OFFICER AND IS DESIGNED TO INFORM CITIZENS OF THEIR RIGHTS AND OBLIGATIONS UNDER THE LAW RATHER THAN TO ADVISE CONCERNING SPECIFIC LEGAL PROBLEMS.

a nation's sovereignty extends to the point where aerodynamic lift disappears (about 275,000 feet). Beyond this there is no national sovereignty. This theory is similar to the rules followed with respect to the high seas, where free and equal use prevails outside of a nation's territorial

### How to File Valuable Papers is Important

Of course you have some insurance policies and any stocks and bonds put away in a safe place. But what about other documents? A rainy spring day is an ideal time for weeding out unnecessary papers and making inventory of important ones. To help you decide what to throw away and what to keep, follow these suggestions:

1. If any member of the family is still in service, save everything. But with discharge certificate, file permanently records of orders, commissions, medical treatment, disability or GI education.
2. Keep duplicate copies of tax returns, marriage or divorce records, naturalization papers, birth certificates, wills and all papers pertinent to the ownership of property. The stub of your social security card is also important for quick replacement if the card itself is lost.
3. An inventory of your household possessions is needed in case of fire or robbery. And while you are on inventories, make a list of savings bonds. An investment record of all

stocks and bonds, is another piece of paper even a modest investor should have.

4. Papers concerning business with the bank are not permanently canceled checks are valuable for an indefinite period when they show payments for anything connected with taxes—checks for payments of debts including mortgages should be saved, the length of time varying with the debt.
5. Any other checks that show the date and purchase price of investments, insurance, personal adjustments within the household purchases or family are frequently valuable in years to come. Keep them in a safe place. Other checks can be discarded after six years.
6. A bank statement loses value after you're satisfied your check book balance with it. Check stubs and duplicate receipts are in the same classification. Receipts and receipts bills can be weeded out. Usually you can tell in a few months if they should be kept. You may need, however, receipts for taxes, rent or mortgages, payments, interest, insurance premiums or bills for expenses that you have deducted or expect to deduct on income taxes.
7. Copies of evidence of debt such as promissory notes, in-

vestment contracts, liens and chattels should be kept until several years after the debt is paid.

Know that the papers showing ownership of a car are safe too.

9. A guarantee or a warranty and the instruction book that comes with each piece of mechanical equipment is important. It is useful only if at hand so store in a careproof place for frequent reference.

Spring housecleaning time approaching in your house? The first step is to list all the clean-

ing supplies and equipment needed to do the job right. It's together a good supply of cleaning cloths can also inspire you to get busy.

ing supplies and equipment needed to do the job right. It's together a good supply of cleaning cloths can also inspire you to get busy.

none but the best  
**Floor Waxing**  
and cleaning  
• ALL TYPES OF FLOORS!  
• PROUD RESULTS!!  
Joseph Principe Jr. - AD 2-3575  
MOUNTAINSIDE

We are proud of the products we sell... Every item sold in Grand Union is...

**"Backed-by-Bond"**  
YOU are completely satisfied or your money back!

**CAMPBELL'S Pork & Beans** 16 oz. CAN **10¢**

**JELLO** 3 REG. PKGS. **25¢**

**SKIPPY Peanut Butter** 12 oz. JAR **35¢**

**Waldorf** 4 ROLLS **33¢**

Join the Parade to **LOW PRICES at Grand Union**

**Ribs of Beef** **59¢**  
The King of Oven Roasts!

**Green Beans** 2 9-oz. pkgs. **37¢**

**CUT CORN** 2 10-oz. pkgs. **37¢**

**GRAPE JUICE** 3 6-oz. cans **49¢**

**LIBBY SWEET PEAS** Economy 7-oz. pkgs. **25¢**

**CLEANED SHRIMP** TEDDY 8-oz. pkgs. **69¢**

**FISHCAKE DINNER** MRS. PAUL'S 8-oz. pkg. **35¢**

**PARTY PIZZA** ROMAN 15-oz. pkg. **59¢**

**GAVATELLI** 16-oz. pkg. **29¢** **MANICOTTI** 16-oz. pkg. **49¢**

**PORK SHOULDERS** 29¢ lb.

**RIB STEAKS** Short Cut lb. **69¢**

**NEWPORT ROAST** lb. **99¢**

**JONES SAUSAGE** lb. **79¢**

**SHORT RIBS** lb. **49¢**

**ALL MEAT FRANKS** lb. **49¢**

**CLUB STEAKS** lb. **1.49**

**Dollar Sale**

**SWEET PEAS** 6 17-oz. cans **\$1.00**

**CORN** CREAM-STYLE 6 17-oz. cans **\$1.00**

**FRUIT COCKTAIL** 4 17-oz. cans **\$1.00**

**TOMATO SAUCE** 12 8-oz. cans **\$1.00**

**TOMATO SAUCE** 12 8-oz. cans **\$1.00**

**PINEAPPLE-GRAPEFRUIT DRINK** 4 46-oz. cans **\$1.00**

**PEACHES** 5 16-oz. cans **\$1.00**

**GRAPEFRUIT** 5 16-oz. cans **\$1.00**

**SLICED BEETS** 6 16-oz. jars **\$1.00**

**Cake Mixes** 2 19-oz. pkgs. **49¢**

**TUNA FISH** CHUNK STYLE 6 1/2-oz. can **27¢**

**SPRY** HOMOGENIZED 3 lb. deal can **72¢**

**WILSON'S** BEEF STEW 47¢ 12-oz. can **49¢** MOR 12-oz. can **39¢**

**Instant-COFFEE** 10-oz. 15¢ Sweet-Gherkins 7 1/2-oz. jar **31¢**

**Asparagus** **15¢** lb.

**WATERMELON** RIPE RED 10¢

**TOSSED SALAD** FRESHLY MADE 8-oz. pkg. **19¢**

**FRESH RADISHES** TANGY 2 cello pkgs. **13¢**

**SCALLIONS** GARDEN FRESH 2 bunches **17¢**

**Nancy Lynn BAKERY TREATS**  
WITH THAT HOME-MADE GOODNESS!

**Apple Pie** reg. 55¢ now only **49¢**

**CINNAMON BUNS** 6 for **39¢**

**HOT CROSS BUNS** 8 for **39¢**

**BIG JELLY ROLL** .. **39¢**

**RING CAKE** CHOCOLATE DELIGHT .. **55¢**

**DETROIT** **90¢**

**Freshly roasted GRAND UNION COFFEES**  
A GRIND FOR EVERY TASTE!

**EARLY MORN** lb bag **57¢**

**FRESHPAK** lb bag **61¢**

**GRAND UNION** lb bag **65¢**

**Garden Supplies!**

**GRASS SEED** Save 30¢ 5-LB. BAG **\$1.49**

**SOIL CONDITIONER** 100-lb. bag **\$1.89**

**PEAT HUMUS** 12-oz. can **49¢**

**CLIMBERS and EVER BLOOMING ROSE BUSHES** ea. **79¢**

**FERTILIZER** 6-10-4 50-lb. bag **\$1.79**

**FLOWERING BULBS** 39¢

**Lenten Seafood Specials!**

**DEEP SEA SCALLOPS** Fresh from the Ocean **69¢**

**SWORDFISH STEAKS** Center Cut lb. **59¢**

**STEAMER CLAMS** lb. **25¢**

**FLOUNDER FILLET** Fried lb. **79¢**

**SAVE TRIPLE-S BLUE STAMPS FOR WONDERFUL FREE GIFTS!**

NEW STORE HOURS AT TRIPLE-S REDEMPTION STORE IN SPRINGFIELD: 9:30 a.m. to 6 p.m. Tuesday, Wednesday, Thursday, Friday—9 a.m. to 9 p.m. Closed Monday.

Egg Hunt Set For April 16
The annual Easter Egg Hunt will be held in Taylor Park on Saturday, April 16, at 10:30 a.m.



"PORGY AND BESS COMPOSER"—The immortal George Gershwin is shown above composing the score for "Porgy and Bess," now playing through Tuesday at the Strand Theater.

The Twigs COCKTAIL LOUNGE
A new concept in intimate decor OPEN EVERY DAY
member: 30 Springfield Ave. Springfield, N. J. Drexel 6-9885

Movie-Time Table
UNION UNION
Mar. 31-Apr. 1—Porgy & Bess, 2:30, 7:00, 9:15. Apr. 2—Seven Thieves, 2:00, 7:00, 9:15.

EAST ORANGE URGES STATE INCOME TAX
New Jersey taxes was the subject of a talk given by Seymour Friedland before the Millburn Rotary Club at their Tuesday-luncheon meeting.

Ormanly At Mosque Concert
The full program for the Garden State Concerts final symphony program of the season by the Philadelphia Orchestra at the Mosque Theater, Newark, on Tuesday evening, April 19, was announced this week by Eugene Ormanly, conductor of the orchestra.

Reformation symphony, formidable work in four movements. At this concert, the Philadelphians will also perform for the first time in New Jersey among early examples of what today we term "program music."

HOLIDAY THEATRE PROUDLY PRESENTS
FASTER SEASON—BALLET PROGRAM
FRIDAY EVENING, APRIL 22nd
LYNNE GOLDING—Prima Ballerina, Australian National Ballet

MILLBURN THEATRE
Mar. 31-Apr. 1—On The Beach, 2:05, 7:10, 9:15. Apr. 2—The Student Prince, 2:05, 7:10, 9:15.

La MARTINIQUE COCKTAILS
ROUTE 22 • MOUNTAINSIDE, N. J. ADAMS 2-9812
ITALIAN - AMERICAN FOOD

The TOWER Inn STEAK HOUSE
ROUTE 22 MOUNTAINSIDE

NEW PARK MORRISTOWN, N. J. JEFFERSON 9-1414
HELD OVER! 2ND BIG WEEK SEVEN THIEVES
CINEMASCOPE

EXCLUSIVE ENGAGEMENT! WINDJAMMER
Daily 8:30 P.M.—Wed. & Sat. 2 P.M. Sun. 2:30 & 7:00 P.M.

MILLBURN THEATRE
Now Thru Tues. Gregory Poek in "ON THE BEACH" plus this Command Performance

Saturday 1:00 P.M. Only Special Children's Show "THE STUDENT PRINCE" with the Singing Voice of the late Mario Lanza

Rialto Theater WESTFIELD AD-21288
Now Thru Mon. GLENN FORD DEBBIE REYNOLDS THE GAZEBO

THE PARK HOTEL PLAINFIELD
RECEPTIONS • PARTIES • BANQUETS
Reservations Albert W. Stender PL 6-3400 Owner-Management

The Harvest House EAST MAIN ST. CHESTER, N. J.
Approved by Duncan Hines and Gourmet Will Re-open Tuesday, April 5th
Luncheon: 12 to 2:30 Dinner: 5:30 to 8:30

Trotola's ESTABLISHED 1930 RESTAURANT and COCKTAIL LOUNGE
ITALIAN-AMERICAN cuisine a la carte entrees

STRAND 447 Springfield Ave., Summit, N. J. CR 3-3900
NOW! FOR THE FIRST TIME AT POPULAR PRICES!
Porgy and Bess
GERSHWIN! IS GLORIOUS! IS GREAT!

THE COMMUNITY A WALTER READE THEATRE MORRISTOWN JE 8-2020
Held Over • 2nd Big Week
Yul Brynner Gina Lollobrigida "Solomon & Sheba"

UNION MATINEE 2:00-5:00 P.M.
Today Thru Monday "OPERATION PETTICOAT"
BIG 3 FEATURE COMEDY SHOW SATURDAY MATINEE

MEADOWBROOK DINNER THEATRE
Route 23, Cedar Grove, N. J.
Now Presenting (FRI, SAT, & SUN. ONLY) 2 hour Broadway musical-comedy "THE BOY FRIEND"

GRUNING'S FINE... ANYTIME
Complete LUNCHEONS 11 A.M. to 2:30 P.M.
DINNER A Variety of Short Orders

GRUNING'S Hours: Weekdays, 10 A.M. to 12 Midnight
Sunday 10 A.M. to 11 P.M. ... CLOSED TUES.
780 Morris Turnpike Millburn

Play in the Sun [MOONLIGHT TOO!]
Bowcraft Woodland Playland
Route 22 AD 3-0675 Scotch Plains
ELEVEN ACRES—Miniature Golf Archery Range—Outdoor Roller Rink

Snack Bars—Refreshments—Unlimited Parking
Fun Spree Passes—3 Hours Fun \$1.00 and \$1.25
Special Party Rates
Fund Raising Program Available to Groups
NOW OPEN EVERY EVENING

GRUNING'S Own Home Made Candy
For Your Home Sundaes Try Our FUDGE WALNUTS MARSHMALLOW
Treat Yourself To a Box of GRUNING'S

LEAGUES • TEAMS • INDIVIDUALS are cordially invited to participate in BOWLING AND FUN
AT THE NEWEST AND FINEST BOWLING AND FUN CENTER ON THE EAST COAST

RESERVATION APPLICATION FOR BOWLING
NAME OF LEAGUE OR TEAM TEAM AVER. AGE GROUP
PRES. SEC. OR INDIVIDUAL TITLE (IF ANY)
CITY STATE PHONE NO.
BEGINNING DAY DATE NO. OF TEAMS PER TEAM
PREFERENCE TO BE INDICATED BY CIRCILING AS TO: DAY MON. TUE. WED. THUR. FRI. SAT. SUN. ANY DAY



### Candidates To

(Continued from Page 1)

S. Senator are Robert Morris, Peter Pleasanti, Clifford J. P. Dwyer, incumbent, who will not be present, and David Deane, Jr., incumbent, who will not be present.

Candidates for county freeholders are: Peter Y. McDonough III of Plainfield, Albert V. Kopf of Elizabeth, Harry V. Osborne Jr. of Cranford, Edward Pizzit of Summit, Edward J. Piller of Garwood, Phillip F. Mathews of Plainfield, Charles A. Deeri of Westfield, Richard P. Muscatello of Elizabeth, Joseph Rusciano of Elizabeth, Eugene F. Daly of Summit.

### Becomes Partner

(Continued from Page 1)

Mr. Miller is a member of the Columbia Alumni Association, Central Jersey Chapter of the New Jersey Society of Architects, Union Lodge Club and Continental Lodge, No. 180, F. & A. M., Millburn. He resides with his wife, the former Ruth Eisasser of Union, and two daughters at 45 Highlands Avenue, Springfield.

### Democrats

(Continued from Page 1)

elder Schade, candidate for Tax Assessor, will discuss tax issues.

Thorne Lord, a lawyer, resides in Princeton. Long active in political affairs, he is Democratic Chairman of Mercer County.

The meeting is open to all. Neighboring Democratic Clubs have been invited. Refreshments will be served.

### Hopping Takes

(Continued from Page 1)

208, F. & A. M. He also is a member of the Hi Twelve Club of East Orange.

Mr. Hopping, his wife, Kathleen, and their daughter, Kathy, reside at 28 Colfax Road, Springfield. Kathy is a student in Jonathan Dayton Regional High School.

Mr. Hopping is assistant vice-president of Carteret Savings and Loan Association, Newark, and a member of the East Orange Advisory Board of the Association.

### Workshop

(Continued from Page 1)

all a Board member should know.

After considerable discussion, Mr. Caprio seemed to veer to the view that it might be just as effective to learn more slowly.

the Board be carried on, in large measure, by committees, with the entire Board making decisions based on reports submitted by the committees, and on discussion of these reports.

Audience Is Quiet

There were several men and women in the audience at the meeting. No one addressed the Board, but everyone appeared to be intensely interested in every remark uttered as the talk at the meeting flowed back and forth.

After adjournment, one of the spectators put it this way to this reporter: "School board meetings are an example of democracy at work. We may consider them cumbersome, over-lengthy and over-talkative at times, but that is the democratic way of doing things and we like it. Let them argue and debate if they want to. All of that is good — so long as it is done in the open and the public can listen. In the long run, truth prevails and the people benefit."

### History

(Continued from Page 1)

eral Democrats were swept in to office on a platform which advocated construction of the county school.

Tuition Plan Offered

Before the newly-elected Democrats took office, Freeholder George W. Herrlich went on record as being for a vocational school system set up along regional high school district lines.

In January 1959, Freeholder John V. Donahue, who campaigned for the high school, asked for an appropriation of \$150,000 in the 1959 budget as a down payment on a bond issue to cover the cost of the school.

In the event the county decided to proceed with construction this year.

Workers Needed

In the background of the Freeholders' action were reports that the county was not attracting industry because here were not enough trained workers prepared to meet modern demands. One educator said that there would be "a dearth of skilled workers in the most productive span of life—between 21 and 40—in 10 or 20 years."

The plan by this time had incurred the wrath of school boards in the Union County regional high school system who declared that the vocational school needs of their youngsters were being cared for adequately.

On April 23, 1959, the Board of Freeholders adopted a resolution to set up a vocational

school program. Freeholder Donahue proposed the resolution.

Cost of the school was put initially at \$3,330,000, with an annual cost of about \$300,000 for operating expenses.

On June 11, 1959, the Freeholders named a five-member board for the vocational school, and by June 15, the proposal was so concrete that one Freeholder already was suggesting that the school be dedicated to the county's war veterans.

Superintendent-Sought

The school board started a search for a superintendent for the new school in July of the same year and later the same month inspected Edison High School to "see what a grade school set-up is like."

And in August a board of estimate for the new school was being established and a proposed operating budget of \$32,000 was established.

However, on August 13, 1959 Freeholder Edward J. Carlin really threw a red flag in front of the charging express. He declared that it would cost the county a million dollars a year to operate the school.

Upkeep Cost Differs

The estimate was brought out after then Freeholder Albert J. Benninger of Mountainside said he understood the annual cost of the system would be \$2,000,000. Freeholder Donahue said that they estimated the cost at closer to \$600,000.

At the same meeting a resolution was received from the Mountainside borough council asking that the regional high school district be excluded from the trade school program and that it be relieved of any financial responsibility for it.

The issue was referred to committee.

In September 1959, Mayor Edward H. Tiller of Garwood made a personal appeal to the Board of Freeholders stating that borough's opposition to county levies for the vocational

school.

He again stressed that Garwood had no use for the school because the regional high school district offers "excellent facilities."

For the next couple of months the Board debated the merits of the various forms of financing with the various municipal officials who appealed to the Board because of the high costs that had been cited.

The opposition of the regional high school communities did not seem to greatly influence the Freeholders. But in November there was one event that apparently had a great influence on the county board—the election.

Despite the establishment of a lower yearly budget by the Democratic-controlled Board, Republicans won all three Freeholder races. That defeat, coupled with the realization that 1960 was a doubly important year, seems to have slowed down the vocational school plans.

The Democrats are not anxious to receive the appellation of "free spenders."

By Dec. 22, 1959, there was talk that the Freeholders might put the whole vocational school plan on the ballot. Freeholder Dr. Carlin was advocating a "progress with caution" view on the school.

State Bill Asked

Dr. Carlin noted a "shifting in sentiment among school superintendents and others on the school since the planning began."

The Freeholders finally voted to ask the State Legislature for a bill that would enable the question of financing to be put to a referendum. The two methods are a general tax levy or a per student assessment on the sending community.

Freeholder Dr. Carlin indicated that he still wished to put the whole question to a referendum.

The action was taken by the Freeholders shortly before the end of last year, thus having the effect of not binding the Legislature. So the issue probably will come up again.

On Jan. 15, Dr. Minor C. K. Jones, speaking in Mountainside, made his proposal that a post-graduate technical institute be created to replace the vocational high school idea. He said the county plan would duplicate many of the facilities contained in municipal and regional high schools.

Arouses Stir

The plan aroused quite a stir—a debate which is still continuing on top of a proposal that the institute be located at Union Junior College. The college has said that it would consider the plan.

Meanwhile, in February the Freeholders named George H. Bxel, principal of Essex County Vocational and Technical High School in Bloomfield, as \$13,000-a-year director of the vocational school. It ended a nine-month search for a school head.

In March, a poll of students in the Eighth and Tenth Grades indicated that there was a need for a vocational high school. Of about 13,000 students questioned some 2,500 indicated a definite preference for a specific vocational or technical program.

Issue Outlined

The state previously had polled Ninth-Grade pupils.

Thus the issue stands in 1960, the election year of 1960. The vocational school history has been a maze of claims and

counterclaims about the needs and facilities for a vocational education and its cost.

The program has lost much of its original steam. But there is a superintendent for the school, a school board and a board of estimate.

### Committees of

(Continued from Page 1)

Auditing Committee—Irving B. Leventhal, CPA, Arthur Smith, Carl Becker.

The president further announced that he had taped the following speech for the WYTA Radio Station, which saluted Springfield Monday through Wednesday, March 14 to 16.

"This is Drew Morrison, As president of the Chamber of Commerce of Springfield, may I thank WYTA radio for saluting our city. Speaking on behalf of the Chamber of Commerce, I believe that the rapid growth of Springfield can be attributed in great part to our business and financial institutions.

"In a community primarily residential and steeped in Colonial tradition, the people op-

Brand new wedding gowns leading manufacturers' samples, ranging up to \$240, sold from \$30 to \$98. Latest styles as shown in brides' magazine and best shops. All perfect dresses. Many beautiful designers—originals—\$1.99. All retail price in this area's LARGEST COLLECTION OF BRIDALS. Also latest Bridesmaids' gowns. Wonderful opportunity for Brides-to-Be. BUDGETS OF SATISFIED CUSTOMERS. PHONE: TOMERS, PHOENIX.

MARGE McGEVNA  
BRIDGE 6-1763  
ALSO OPEN EVENINGS

### Rotarians Tour

Overlook Hospital

Members of Springfield Rotary Club, with their president, Chas. J. Jehlen, last week took a special tour of Overlook Hospital to see the many medical and scientific advances incorporated in the hospital's new

Overlook last fall, some 1,500 people have toured Overlook to get a closer look at the complexities of hospital life and the many services that mean the finest of medical care to the community.

Old Queen's, 151-year-old administrative building of the State University, located in New Brunswick, is considered to be one of the finest examples of Federal architecture in the United States.

## NOW IS THE TIME TO PLANT!

EVERGREENS	FLOWERING SHRUBS
SHADE & ORNAMENTAL TREES	ROSE BUSHES
FRUIT TREES	SCOTT'S LAWN PRODUCTS

PRICES THAT ARE REASONABLE

South Mountain Nurseries  
Established 1930  
Millburn Ave. and Yaux Hall Road, Millburn  
Open Daily & Sunday Until Dark DR 4-1330

### ERIE, PA.

80¢

8 MILL 315051 sets from Newark offer 8 P.M. 10% tax not included.

Prescriptions Filled  
Eyeglasses Repaired  
Quick Service

J. NORWOOD VAN NESS  
Cauter's Optician

248 MORRIS AVENUE  
SPRINGFIELD, N. J.  
DITTEL 6-6108  
Established 24 Years  
in Newark

THE SCHOOL OF LANGUAGES

Unique Method  
Children—Adults  
Tutoring Also  
Specialist Teacher in Each Language  
Courses designed to suit your needs

CR 7-2255  
Summit, N. J.  
P.O. Box 342

QUALITY FUEL OIL  
WOOLLEY  
COAL CO.  
MAPLEWOOD, N. J.  
SO2-7400

EARLY BIRD EVERGREENS SALE

CHOOSE FROM 15 VARIETIES

Golden Arborvitae	Greek Juniper
Globe Birta	Irish Juniper
American Boxwood	Taxus cuspidata
English Boxwood	Upright Pyramidal Taxus
Silver Euonymus	Globe Arborvitae
Japanese Holly	Dark American Arborvitae
Juniper Depressa	Pyramidal Arborvitae
Juniper Glauca Herz	

You Had Better Come Early Or You'll Miss A Buy.

Just 1500 balled and burlapped Evergreens up to 12" in height. Every tree fresh from one of the largest North Eastern Nurseries. Never have we offered plants of this quality at below the usual wholesale price.

98<sup>c</sup> ea

WHILE THEY LAST—QUANTITIES LIMITED—CASH AND CARRY

57-VARIETIES OF ROSES NOW IN STOCK.  
All American Winners Including Hawaii.

**BRECK'S**  
HOME AND GARDEN CENTER  
ROUTE 24 (Mortis Turnpike)  
OPEN DAILY 9 to 6 MILLBURN, N. J. AMPLE FREE PARKING

YOU DON'T HAVE TO BE A...

Pot Watcher Meat Shrinker Baking Flop

EVERYTHING'S UNDER CONTROL WITH A FLAMELESS ELECTRIC RANGE

Electricity can be so accurately controlled it takes the guesswork out of cooking. For instance, on electric surface cooking units you can dial any one of at least five or seven exact heats. Result? Vegetables and potatoes can be cooked in as little as one-half cup of water, arrive at the table with all their goodness intact. And, with exactly controlled electric broiling and roasting, there's no need to sear or baste. Meat shrinkage is kept to a minimum. Good baking's easier, too. Only an electric oven can be so accurately regulated and completely insulated that the heat never varies more than 5° up or down. It practically eliminates baking failures. In fact, no matter what you cook with an electric range, it just has to be good.

JCP & L  
Jersey Central Power & Light

Buy with assurance from your local Reddy Kilowatt Dealer who displays this emblem.

HELP WANTED - FEMALE
BANKING
We have openings for
Young women to train for various permanent positions.

THE SUMMIT TRUST COMPANY
307 Springfield Avenue
Summit, N. J.
Tel. CRestview 7-6200

TEMPORARY EMPLOYMENT
BUSCH EMPLOYMENT AGENCY
7 Union Place
Summit, N. J. CR 7-8900

PERSONNEL
Ass't. to Manager
EXCELLENT CHANCE
FOR PROMOTION

WOMAN, 21, cleaver, 8 hours, \$9.75 to \$12.00 weekly. Phone CR 3-7335, 5 to 8 p.m.

HELP WANTED - MALE
Teller - Typist
Male or female, for Summit Federal Savings & Loan Association, 303 Springfield Avenue, CR 3-6150.

HELP WANTED - MALE
ELEVATOR OPERATOR
Part-time. Apply in person Hotel Buchanan, Summit.

HELP WANTED - MALE
MULTITASK OPERATOR with job lettering experience. Vacation and day-staterooms. Dayton H. & G. 610, 500 hours. CR 3-7812.

HELP WANTED - MALE
MAN for service station, must be experienced. Apply in person, 440 Main Street, Summit, N. J.

HELP WANTED - MALE
MAN to assist grounds keeper in private club. 440 Main Street, Summit, N. J.

HELP WANTED - MALE
MAIL CLERK
High school graduate. Interesting and diversified duties. Good opportunity for the right man.

HELP WANTED - MALE
HEAD COUNSELOR
Experienced in financial institution. Excellent opportunity for professional growth and to perform highly interesting and challenging work.

HELP WANTED - MALE
C. R. BARD INC.
480 Morris Ave., Summit, N. J.
CRestview 3-1600

HELP WANTED - MALE
SALES LADY
Wanted. Young woman familiar with department store. Excellent opportunity for professional growth and to perform highly interesting and challenging work.

HELP WANTED - MALE
LILLIAN O'GRADY INC.
Summit, N. J.

HELP WANTED - MALE
WHITMORE & JOHNSON
6 Bank Street, Summit, N. J.
CR 3-2525 (Mrs. Bannister)

HELP WANTED - MALE
BYSTRAK
1276 Sprig Ave., New Providence, CR 3-7090

HELP WANTED - MALE
MOUNTAIN AGENCY
85 Summit Ave., Summit, CR 3-2415

HELP WANTED - MALE
SHORT HILLS
Pink and White
2-year-old, custom built split level. 4 1/2 bedrooms, 2 1/2 baths, full basement, recreation room, full kitchen, full bath, full laundry, full garage, full driveway, full parking.

HELP WANTED - MALE
REALESTATE
Anne Sylvester's REALTY CORNER
560 MORRIS AVENUE REALTORS
SPRINGFIELD DREXEL 6-2200

HELP WANTED - MALE
BEST BUYS
SPRINGFIELD DREXEL 6-2200

HELP WANTED - MALE
EDMONDSON & FISHER
31-3200
32 Springfield Avenue

HELP WANTED - MALE
A. S. Anderson
307 Springfield Avenue, Summit, N. J.
CR 3-8400

HELP WANTED - MALE
HOLMES AGENCY
291 Morris Ave., Summit, CR 3-2400

HELP WANTED - MALE
COLONIAL CAPE COD
Frame and shingle dwelling with living room and dining area, full kitchen, full bath, full laundry, full garage, full driveway, full parking.

HELP WANTED - MALE
ONE ACRE LOT
Prime Summit location - Wilson-Flange School.

HELP WANTED - MALE
THE RICHLAND CO.
41 Maple St., Summit, CR 3-7070

HELP WANTED - MALE
FOR SMALL FAMILY
An attractive Colonial with all the conveniences of HOME.

HELP WANTED - MALE
UNUSUAL OPPORTUNITY for real estate salesmen. Experienced real estate salesmen.

HELP WANTED - MALE
BUTLER AGENCY, Realtor
210 Sprig Ave., Summit, N. J.
CR 3-7090

HELP WANTED - MALE
NURSE - Licensed - Practical - Patients, days, part-time. CR 3-3215.

HELP WANTED - MALE
WOMAN interested working several days a week. Apply in person, 440 Main Street, Summit, N. J.

HELP WANTED - MALE
EXPERIENCED typist desires work to be done at home. MI 7-2875.

HELP WANTED - MALE
DAY'S work, Tuesdays and Fridays. References. Call area CR 3-2280.

HELP WANTED - MALE
HOUSEKEEPER with 9-year-old son wants live-in position. Summit, N. J. CR 3-6539.

HELP WANTED - MALE
MEDICAL SECRETARY, college graduate, experienced, 40 hours week, convenient location. Summit, N. J. CR 3-7520.

HELP WANTED - MALE
COLORED WOMAN part time of day work. References. Orange 2-6122.

HELP WANTED - MALE
MAN, colored, wishes position as a janitor. References. Drexel 6-2828.

HELP WANTED - MALE
WOMAN wants day work. References. Drexel 6-2828.

HELP WANTED - MALE
IRONING done at my home. Experienced with all types of fabrics. References. FR 7-699.

HELP WANTED - MALE
RELIABLE woman desires days work or ironing. References. FR 7-699.

HELP WANTED - MALE
EXCELLENT worker wants 4 days work per week, washing, ironing, cleaning. References. FR 7-699.

HELP WANTED - MALE
RELIABLE woman desires days work or ironing. References. FR 7-699.

HELP WANTED - MALE
EXCELLENT worker wants 4 days work per week, washing, ironing, cleaning. References. FR 7-699.

HELP WANTED - MALE
RELIABLE woman desires days work or ironing. References. FR 7-699.

HELP WANTED - MALE
EXCELLENT worker wants 4 days work per week, washing, ironing, cleaning. References. FR 7-699.

HELP WANTED - MALE
RELIABLE woman desires days work or ironing. References. FR 7-699.

HELP WANTED - MALE
EXCELLENT worker wants 4 days work per week, washing, ironing, cleaning. References. FR 7-699.

HELP WANTED - MALE
RELIABLE woman desires days work or ironing. References. FR 7-699.

HELP WANTED - MALE
EXCELLENT worker wants 4 days work per week, washing, ironing, cleaning. References. FR 7-699.

HELP WANTED - MALE
RELIABLE woman desires days work or ironing. References. FR 7-699.

HELP WANTED - MALE
EXCELLENT worker wants 4 days work per week, washing, ironing, cleaning. References. FR 7-699.

EMPLOYMENT WANTED
JANET'S hand laundry, 60 Park Avenue, Summit, N. J. CR 3-8011

EMPLOYMENT WANTED
WASHING, ironing, done at home. References. CR 3-7090.

EMPLOYMENT WANTED
NURSE - Licensed - Practical - Patients, days, part-time. CR 3-3215.

EMPLOYMENT WANTED
WOMAN interested working several days a week. Apply in person, 440 Main Street, Summit, N. J.

EMPLOYMENT WANTED
EXPERIENCED typist desires work to be done at home. MI 7-2875.

EMPLOYMENT WANTED
DAY'S work, Tuesdays and Fridays. References. Call area CR 3-2280.

EMPLOYMENT WANTED
HOUSEKEEPER with 9-year-old son wants live-in position. Summit, N. J. CR 3-6539.

EMPLOYMENT WANTED
MEDICAL SECRETARY, college graduate, experienced, 40 hours week, convenient location. Summit, N. J. CR 3-7520.

EMPLOYMENT WANTED
COLORED WOMAN part time of day work. References. Orange 2-6122.

EMPLOYMENT WANTED
MAN, colored, wishes position as a janitor. References. Drexel 6-2828.

EMPLOYMENT WANTED
WOMAN wants day work. References. Drexel 6-2828.

EMPLOYMENT WANTED
IRONING done at my home. Experienced with all types of fabrics. References. FR 7-699.

EMPLOYMENT WANTED
RELIABLE woman desires days work or ironing. References. FR 7-699.

EMPLOYMENT WANTED
EXCELLENT worker wants 4 days work per week, washing, ironing, cleaning. References. FR 7-699.

EMPLOYMENT WANTED
RELIABLE woman desires days work or ironing. References. FR 7-699.

EMPLOYMENT WANTED
EXCELLENT worker wants 4 days work per week, washing, ironing, cleaning. References. FR 7-699.

EMPLOYMENT WANTED
RELIABLE woman desires days work or ironing. References. FR 7-699.

EMPLOYMENT WANTED
EXCELLENT worker wants 4 days work per week, washing, ironing, cleaning. References. FR 7-699.

EMPLOYMENT WANTED
RELIABLE woman desires days work or ironing. References. FR 7-699.

EMPLOYMENT WANTED
EXCELLENT worker wants 4 days work per week, washing, ironing, cleaning. References. FR 7-699.

EMPLOYMENT WANTED
RELIABLE woman desires days work or ironing. References. FR 7-699.

EMPLOYMENT WANTED
EXCELLENT worker wants 4 days work per week, washing, ironing, cleaning. References. FR 7-699.

EMPLOYMENT WANTED
RELIABLE woman desires days work or ironing. References. FR 7-699.

EMPLOYMENT WANTED
EXCELLENT worker wants 4 days work per week, washing, ironing, cleaning. References. FR 7-699.

SERVICES OFFERED
FRID STERN
Carpet cleaning, alterations, drapery, etc.

SERVICES OFFERED
CARPENTRY ALTERATIONS repairs
Repairs, alterations, etc.

SERVICES OFFERED
DRAPERY MAKING
Alterations, repairs, etc.

SERVICES OFFERED
CUSTOM made - rows, remodeling
By appointment only. CR 3-4377.

SERVICES OFFERED
DRAPERY MAKING, alterations, tailoring
Button holes, etc.

SERVICES OFFERED
PAGGI CREATIONS
Alterations, repairs, etc.

SERVICES OFFERED
LANDSCAPE GARDENING
Complete landscape services.

SERVICES OFFERED
DOMESTIC CLEANING
General house cleaning.

SERVICES OFFERED
LANDSCAPE GARDENING
Repairs, alterations, etc.

SERVICES OFFERED
MASON CONTRACTORS
Brick, stone, etc.

SERVICES OFFERED
W. M. MATTEO
Alterations and repairs.

SERVICES OFFERED
BALTIMORE Construction Co.
General contracting.

SERVICES OFFERED
PLASTERING and PATTERING
Mason work.

SERVICES OFFERED
INCOME TAX RETURNS
Personal and business.

SERVICES OFFERED
USED CARS FOR SALE
1958 Studebaker, etc.

SERVICES OFFERED
REPAIRS and alterations
Plumbing, etc.

SERVICES OFFERED
RENTALS
FURNISHED APT. For Rent

SERVICES OFFERED
RENTALS
NEW LUXURY 9 STORY APARTMENT

SERVICES OFFERED
RENTALS
FURNISHED APT. For Rent

SERVICES OFFERED
RENTALS
FURNISHED APT. For Rent

SERVICES OFFERED
RENTALS
FURNISHED APT. For Rent

SERVICES OFFERED
RENTALS
FURNISHED APT. For Rent

SERVICES OFFERED
RENTALS
FURNISHED APT. For Rent

SERVICES OFFERED
RENTALS
FURNISHED APT. For Rent

REAL ESTATE FOR SALE AND WANTED

AROUND THE CORNER
Between town and the Beacon Hill Club is the perfect place for a growing family. Owner transferred. Two years ago she bought the house but had to sell it in a matter of hours as many Summit buyers wanted it. Now it has the added advantage of an original \$24,000, 5 1/2% 20-year assumable mortgage. We have a KLAZEBROCK-SHEPARD Realtors, CR 3-6850.

DRUID HILL
(BUILD OFFERING)
Beautifully built on the top of Druid Hill. Large deep lot, nicely landscaped. Attractively designed 4 1/2 bedrooms, 2 1/2 baths, full kitchen, full bath, full laundry, full garage, full driveway, full parking.

FLORHAM PARK
4% SPECIAL
Assume existing 4% mortgage, \$105,000. 4 bedrooms, 2 1/2 baths, full kitchen, full bath, full laundry, full garage, full driveway, full parking.

ALLENBURG'S
ELIZABETH, N. J.
Open Daily 10:00 - 6:00 P.M.
Lowest Prices - All - Why?
Magnus Church Organ, \$499.00

PERSONAL
GIFTED Mrs. SARAH
Horseshoe Bendings & Advice

ALL BRICK
Large brick lot on the Ches. Occ. with first floor detached garage. 2 1/2 bedrooms, 2 1/2 baths, full kitchen, full bath, full laundry, full garage, full driveway, full parking.

WHITMORE & JOHNSON
6 Bank Street, Summit, N. J.
CR 3-2525 (Mrs. Bannister)

REALESTATE
Anne Sylvester's REALTY CORNER
560 MORRIS AVENUE REALTORS
SPRINGFIELD DREXEL 6-2200

ALLENBURG'S
ELIZABETH, N. J.
Open Daily 10:00 - 6:00 P.M.
Lowest Prices - All - Why?
Magnus Church Organ, \$499.00

PERSONAL
GIFTED Mrs. SARAH
Horseshoe Bendings & Advice

My Owners
are so very happy because they have only lived here for 5 months and now they are transferring. They have been so nice to me they have even covered my living room, dining room and stairs floors with wall to wall carpet. My kitchen has separate eating area opening onto a porch. Drapery, etc.

BYSTRAK
1276 Sprig Ave., New Providence, CR 3-7090

REALESTATE
Anne Sylvester's REALTY CORNER
560 MORRIS AVENUE REALTORS
SPRINGFIELD DREXEL 6-2200

ALLENBURG'S
ELIZABETH, N. J.
Open Daily 10:00 - 6:00 P.M.
Lowest Prices - All - Why?
Magnus Church Organ, \$499.00

PERSONAL
GIFTED Mrs. SARAH
Horseshoe Bendings & Advice

STAFFORD AGENCY
10-1100
32 Springfield Avenue

REALESTATE
Anne Sylvester's REALTY CORNER
560 MORRIS AVENUE REALTORS
SPRINGFIELD DREXEL 6-2200

REALESTATE
Anne Sylvester's REALTY CORNER
560 MORRIS AVENUE REALTORS
SPRINGFIELD DREXEL 6-2200

ALLENBURG'S
ELIZABETH, N. J.
Open Daily 10:00 - 6:00 P.M.
Lowest Prices - All - Why?
Magnus Church Organ, \$499.00

PERSONAL
GIFTED Mrs. SARAH
Horseshoe Bendings & Advice

PICTURESQUE
100 ft. of frontage and a dozen beautiful trees. Beautifully landscaped. 4 1/2 bedrooms, 2 1/2 baths, full kitchen, full bath, full laundry, full garage, full driveway, full parking.

REALESTATE
Anne Sylvester's REALTY CORNER
560 MORRIS AVENUE REALTORS
SPRINGFIELD DREXEL 6-2200

REALESTATE
Anne Sylvester's REALTY CORNER
560 MORRIS AVENUE REALTORS
SPRINGFIELD DREXEL 6-2200

ALLENBURG'S
ELIZABETH, N. J.
Open Daily 10:00 - 6:00 P.M.
Lowest Prices - All - Why?
Magnus Church Organ, \$499.00

PERSONAL
GIFTED Mrs. SARAH
Horseshoe Bendings & Advice

BUTLER AGENCY
7-DeForest Avenue, CR 3-7700

REALESTATE
Anne Sylvester's REALTY CORNER
560 MORRIS AVENUE REALTORS
SPRINGFIELD DREXEL 6-2200

REALESTATE
Anne Sylvester's REALTY CORNER
560 MORRIS AVENUE REALTORS
SPRINGFIELD DREXEL 6-2200

ALLENBURG'S
ELIZABETH, N. J.
Open Daily 10:00 - 6:00 P.M.
Lowest Prices - All - Why?
Magnus Church Organ, \$499.00

PERSONAL
GIFTED Mrs. SARAH
Horseshoe Bendings & Advice

EDMONDSON & FISHER
31-3200
32 Springfield Avenue

REALESTATE
Anne Sylvester's REALTY CORNER
560 MORRIS AVENUE REALTORS
SPRINGFIELD DREXEL 6-2200

REALESTATE
Anne Sylvester's REALTY CORNER
560 MORRIS AVENUE REALTORS
SPRINGFIELD DREXEL 6-2200

ALLENBURG'S
ELIZABETH, N. J.
Open Daily 10:00 - 6:00 P.M.
Lowest Prices - All - Why?
Magnus Church Organ, \$499.00

PERSONAL
GIFTED Mrs. SARAH
Horseshoe Bendings & Advice

BEAUTIFUL SMALL ESTATE
A lovely Georgian Colonial with everything to offer for the executive ideal for a family with children. Three 1/2-bath service porches. Large level entrance. Beautifully landscaped grounds which include a tennis court, swimming pool, etc.

REALESTATE
Anne Sylvester's REALTY CORNER
560 MORRIS AVENUE REALTORS
SPRINGFIELD DREXEL 6-2200

REALESTATE
Anne Sylvester's REALTY CORNER
560 MORRIS AVENUE REALTORS
SPRINGFIELD DREXEL 6-2200

ALLENBURG'S
ELIZABETH, N. J.
Open Daily 10:00 - 6:00 P.M.
Lowest Prices - All - Why?
Magnus Church Organ, \$499.00

PERSONAL
GIFTED Mrs. SARAH
Horseshoe Bendings & Advice

A. S. Anderson
307 Springfield Avenue, Summit, N. J.
CR 3-8400

REALESTATE
Anne Sylvester's REALTY CORNER
560 MORRIS AVENUE REALTORS
SPRINGFIELD DREXEL 6-2200

REALESTATE
Anne Sylvester's REALTY CORNER
560 MORRIS AVENUE REALTORS
SPRINGFIELD DREXEL 6-2200

ALLENBURG'S
ELIZABETH, N. J.
Open Daily 10:00 - 6:00 P.M.
Lowest Prices - All - Why?
Magnus Church Organ, \$499.00

PERSONAL
GIFTED Mrs. SARAH
Horseshoe Bendings & Advice

HOLMES AGENCY
291 Morris Ave., Summit, CR 3-2400

REALESTATE
Anne Sylvester's REALTY CORNER
560 MORRIS AVENUE REALTORS
SPRINGFIELD DREXEL 6-2200

REALESTATE
Anne Sylvester's REALTY CORNER
560 MORRIS AVENUE REALTORS
SPRINGFIELD DREXEL 6-2200

ALLENBURG'S
ELIZABETH, N. J.
Open Daily 10:00 - 6:00 P.M.
Lowest Prices - All - Why?
Magnus Church Organ, \$499.00

PERSONAL
GIFTED Mrs. SARAH
Horseshoe Bendings & Advice

COLONIAL CAPE COD
Frame and shingle dwelling with living room and dining area, full kitchen, full bath, full laundry, full garage, full driveway, full parking.

REALESTATE
Anne Sylvester's REALTY CORNER
560 MORRIS AVENUE REALTORS
SPRINGFIELD DREXEL 6-2200

REALESTATE
Anne Sylvester's REALTY CORNER
560 MORRIS AVENUE REALTORS
SPRINGFIELD DREXEL 6-2200

ALLENBURG'S
ELIZABETH, N. J.
Open Daily 10:00 - 6:00 P.M.
Lowest Prices - All - Why?
Magnus Church Organ, \$499.00

PERSONAL
GIFTED Mrs. SARAH
Horseshoe Bendings & Advice

ONE ACRE LOT
Prime Summit location - Wilson-Flange School.

REALESTATE
Anne Sylvester's REALTY CORNER
560 MORRIS AVENUE REALTORS
SPRINGFIELD DREXEL 6-2200

REALESTATE
Anne Sylvester's REALTY CORNER
560 MORRIS AVENUE REALTORS
SPRINGFIELD DREXEL 6-2200

ALLENBURG'S
ELIZABETH, N. J.
Open Daily 10:00 - 6:00 P.M.
Lowest Prices - All - Why?
Magnus Church Organ, \$499.00

PERSONAL
GIFTED Mrs. SARAH
Horseshoe Bendings & Advice

STAFFORD AGENCY
10-1100
32 Springfield Avenue

REALESTATE
Anne Sylvester's REALTY CORNER
560 MORRIS AVENUE REALTORS
SPRINGFIELD DREXEL 6-2200

REALESTATE
Anne Sylvester's REALTY CORNER
560 MORRIS AVENUE REALTORS
SPRINGFIELD DREXEL 6-2200

ALLENBURG'S
ELIZABETH, N. J.
Open Daily 10:00 - 6:00 P.M.
Lowest Prices - All - Why?
Magnus Church Organ, \$499.00

PERSONAL
GIFTED Mrs. SARAH
Horseshoe Bendings & Advice

REALESTATE
Anne Sylvester's REALTY CORNER
560 MORRIS AVENUE REALTORS
SPRINGFIELD DREXEL 6-2200

REALESTATE
Anne Sylvester's REALTY CORNER
560 MORRIS AVENUE REALTORS
SPRINGFIELD DREXEL 6-2200

REALESTATE
Anne Sylvester's REALTY CORNER
560 MORRIS AVENUE REALTORS
SPRINGFIELD DREXEL 6-2200

ALLENBURG'S
ELIZABETH, N. J.
Open Daily 10:00 - 6:00 P.M.
Lowest Prices - All - Why?
Magnus Church Organ, \$499.00

PERSONAL
GIFTED Mrs. SARAH
Horseshoe Bendings & Advice



**10" COUGH DROPS 3/21c**

**CHOCOLATE COATED CHERRIES IN CREAM**

DELICIOUS BRACH'S **49c**

69c Box

**BOX 100 TEA BAGS 39c**



**"CHIC" Priced Low!**

**PINKING SHEARS 59c**

Smooth Cutting - Pink Fabrics Easily and evenly...

**LUNCH KITS 1.59**

Barn, Plain, Character Assorted-Styles

With VACUUM BOTTLE

**LET US FILL YOUR PRESCRIPTIONS**

**SAV-ON DRUGS**

WE GIVE S&H GREEN STAMPS

Right Reserved to Limit Quantities

**SERVE SELF - SAVE**

OPEN SUNDAYS

Route No. 22 & Mountain Ave. Springfield, N. J.

OPEN SUNDAYS

**SOLO Bobby Pins 9c**

Card of 60

**REG. 1.00 SIZE ODO-RO-NO Cream Deodorant 50c**

**Reg. 1.00 CASTILE SHAMPOO 29c**

16 oz.

**DELUXE WAVE SET 16c**

8 oz. Reg. 39c

**WORRIED about your HEART?**

Medical science has made great strides in the study and treatment of heart conditions. Now, with early and proper treatment, a person with heart trouble can still live a long and active life.

If you have any symptoms of a heart condition, see your doctor early—see him now. And when he prescribes, remember that

**YOU CAN ALWAYS RELY ON YOUR SAV-ON PHARMACIST**

**49c 12 oz. ON-HENRY PARTY PAC 19c**

**ENTER Pepsodent's Jingle CONTEST**

**\$25,000.00**

CASH FIRST PRIZE plus 80 additional cash prizes with PERSODENT TOOTH PASTE - TOOTHBRUSHES

314 534 686 834 984 • 394 494 694

Complete For Details and Entry Blanks

**160 COUNT PAPER NAPKINS 19c**

39c VALUE

**WILLSON CLOSE-OUT SUPER SPECIAL LADIES' SUN GLASSES 29c**

1.98 Val.

**REG. 34c DUZ 17c**

**REG. 33c VALUE IODINE 9c**

**5.00 VALUE GIANT TEDDY BEAR 1.69**

Cuddly, Soft Pet

**Cutlery Trays 68c**

IMPORTED HAND POLISHED

Reg. 1.98

**DIRECTRONIC 3-D TV ANTENNA 1.69**

Handy 6-position beam selector. Two 3-section staffs...

**BEST BUYS FOR BABY**

**GERBER'S BABY FOOD STRAINED 10 for 88c**

**BIRDSEYE DIAPERS 99c**

Why Pay 1.59? 6 in a pack

**1.00 BATH BUDDY SQUEEZE TOY 59c**

PROG. FISH

**2.98 BABY CAR SEATS 1.59**

**80c VALUE ROUX CREME HAIR TINT 49c**

1.50 Value. GENUINE LUCITE

**MAKE-UP MIRROR 98c**

**WITH VITAMINS Quik 1.00 Value 69c**

2 lbs. 6 oz.

**39c BALL POINT PEN 2 for 39c**

Key Chain

**1.00 VALUE DESK SET 59c**

Assorted Colors Pen and Stand

**SAV-ON GARDEN NEEDS**

2-YR. FIELD GROWN NORTHERN GROWN **ROSES 79c**

PKG. of 2

50 LB. BAG FERTILIZER 1.19

5-10-5 REG. 1.99

5 LB. POLY BAG GRASS SEED 1.19

1.98 Value

**ROSE FOOD 27c**

FEED 6 ROSES FOR A YEAR

ON SALE

**GIANT PORTA-FILE 2.19**

Holds 1600 Documents With Index Folders, Lock and Key—ONLY

**PORTA CHECK-FILE 1.49**

Holds Over 1500 Checks Steel with Lock and Key—ONLY

**Cigar-Special!**

**1.39 PIPE TOBACCO**

PRINCE ALBERT or HALF & HALF

Crimp Cut Long-Burning 1.09

**19c VELVET TOBACCO**

Pocket Tin 10c

**HAVANA CIGAR 4.98**

150 Top Quality CLEAR LONG FILLER 9 for \$1.00

Box 50 \$4.98

**1.99 Value—Full Gallon RENUZIT 99c**

HOUSEHOLD-CLEANER

**69c Feather Dusters 29c**

**69c GLADE—10c OFF AEROSOL BOMB 59c**

SPICE BLOSSOM • EVERGREEN • LEMON BOUQUET

By JOHNSON'S, WAX

**Photo Finishing 49c**

Any 8-exp. roll of BLACK & WHITE Jumbo Prints ONLY

Super Service on COLOR FILM:

- Kodacolor
- Kodachrome
- Ektachrome
- Movie

**10c Value INVISIBLE NYLON HAIR NETS 3c each**

**25c Value TRIPLE CUT NAIL FILES 7c**

**2.98 ICE BUCKET 1.49**

Highly Polished Hammered Aluminum with Handle Fibra Glass Insulation

NOW ONLY

**FREE LADIES' KERCHIEF WITH COUPON**

NO PURCHASE REQUIRED

Limit 1 While They Last