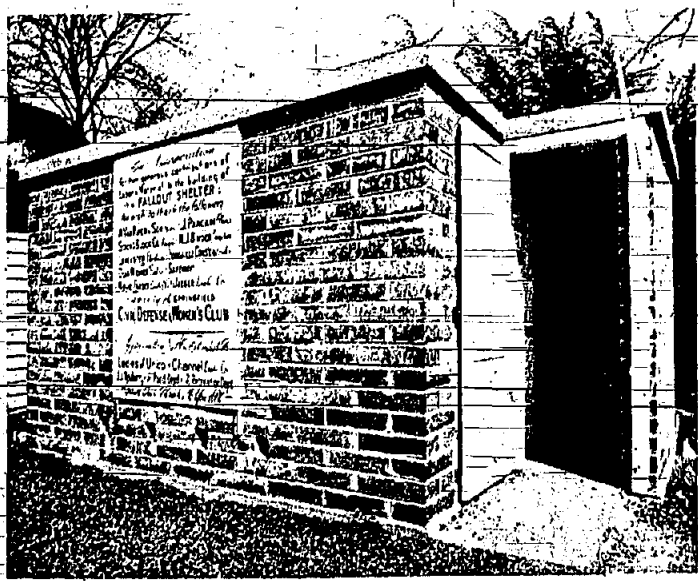


## Director Urges Citizens To Join Civil Defense



Model of front of Fall-Out Shelter

Civil Defense authorities, under the direction of Saul Freeman, urge the people of Springfield to throw off their indifference to their own safety and begin to prepare for a possible attack on this country. Mr. Freeman and the local civil defense organization want all residents to recognize the seriousness of the world situation and the increasing tensions prevalent amongst the world powers. "We at any time during the past decade and that any preparations made by our Civil Defense organization can only be successful if we have the cooperation of the residents of this town," Mr. Freeman stated.

"Our president, in his most recent address, plainly showed his concern at the lack of awareness on the part of the people in general, and his order placing civil defense under the Department of Defense is a clear indication of that concern. His emphasis on shelter from radioactive fallout and the need for protective measures on the part of all of us, is totally in keeping with the thinking of Springfield's civil defense organization," he continued.

"The longest warning time we can expect of an impending attack is probably no more than 15 minutes. In view of this fact evacuation is a physical impossibility—even if we knew where to evacuate. This is impossible to plan in advance for a projected reception area may be too radioactive to be tenable due to wind conditions prevailing after an attack. Judging by traffic conditions on any ordinary day when conditions are normal, what would the result be when everyone is heading for the hills," explained Mr. Freeman.

"In view of those conditions shelter is the only safe course to pursue. If any course can be considered safe, this appears to offer the best chance of survival. Therefore, we feel we would be lacking in our duty to the people of this town if we did not urge you to prepare a shelter in the basement of your home. Plans for this purpose are available at the Civil Defense Headquarters, situated in the Municipal Building basement plus information on food and water."

"As the days and weeks go by the tense international situation will undoubtedly grow worse and should the worst happen there will not be much time to prepare ourselves. We therefore urge all interested citizens to join Civil Defense now; so that we can prepare Springfield for any emergency. Residents must be educated as to what to do in case of an attack. They cannot believe it can't happen here," he emphatically stated.

continued on page 2



MAYOR TEES OFF—Displaying gold form, Mayor Vincent Bonadies tees off on the Mayor's Golf Day at Baltusrol Golf Club, Springfield. (Fred Keating)

## Mayor's Golf Day Outing: Pleasure With A Purpose

Three years ago several Springfield residents got together and decided that their town ought to have a golf day. They developed their idea and organized the Mayor's Golf Day Outing. This year the Mayor's Golf Day was held on Thursday, July 27, at the Baltusrol Golf Club in Springfield.

Tickets for this popular event were sold out weeks before the scheduled date of the game. The profits made, both through the sale and tickets and private donations, will go to youth organizations in Springfield. This day of pleasure for golfers has quite a worthwhile purpose.

At a dinner the evening of the golf day, trophies were presented to the winners. There are two categories of prizes; one group is for Springfield residents; the other is for participants from out of town. Trophies are donated by the merchants of the town.

The low gross winner with a score of 74 was Vincent De Rosa who received the National State Trophy. George "Chick" Wolfe was second with a score of 78. The low net winner with a handicap was E. Friedland scoring 70. He received the Crestmont Savings Trophy. C. La Malta was second with a score of 70.

continued on page 2

a Smith and Smith Trophy. Arthur "Pete" Smith was second with a score of 72.

The donors of the trophies are as follows:

Adler Screen-Mfg. Co., American Optical Co., Marty Bachrach, Barty Farms; Barworth, Inc.; Beacon Hill Stationery; Bruhs Jewelry Store; The Cake Cottage; Carter Bell Mfg. Co.; Celentano Bros., Inc.; Ben J. Chadwick; Channel-Lumber Co.; Cluyat Jeweler; Frank Clark's Garage; Colantone Shoe Store; Colonial Motor Court; Columbia Lumber & Millwork Co.; Conte's Delicatessen; The Crest; Crestmont Savings & Loan Assoc.; DeVeiga Stores; Doggett & Pfeil Co.; Doré Ann Shop; Drake Fuel; Durham Co.; Dutch Maid Motels; Emery Book Co.; Kaevic Farber Lumber Co., Inc.; Ferguson; Frank's Auto Service; Furniture Craft Co.; Geljack Jewelry Store; Gem Shoe Store; General Electric Co.; General Greene Shopping Center; Sam Goldman; Harmony House; Hershhey Creamery Company; Houaille Construction Materials, Inc.; Dr. Henry Hueneke; Huffman—Boyle Furniture; Howard Johnson Motel; Howard Johnson Restaurant; Kays Stationery; Lancaster Electrical Service; Lido-Diner; Dr. Gabriel Lull; Lu-Max Mfg. Co.; Richard Martinka; Metals & Residues, Inc.; Miles Shoe Store; Miltons Liquor Store; Montgomery Tool; Morey La Rue Laundry Co.; Morris Avenue Motor Car Co., Inc.; Murray Construction Co., Inc.; Nagel's Pork Store; National Shoes; J. J. Newberry's; Moe

continued on page 2

## Pool Proposal Meets Warm Reception

### 135 Oldsters File for Tax Exemptions

Only 135 property owners of the age of 65 years or over have filed applications claiming exemption on dwellings in Springfield, according to Tax Assessor Wilbert W. Layng.

The filing date was July 1 in order to establish their claim for exemption on tax payments payable this year. In order to claim exemption in respect to taxes payable in 1952, application should be in the hands of the Tax Assessor's office no later than November 1 for those who did not make application the first of July.

Dwelling owners, 65 years of age or over, may obtain an exemption not in excess of \$5,000 per year and residing in the house owned by him shall be entitled to exemption of \$800 on the assessed valuation.

Tax Assessor Layng stated that the 135 applications are being processed and those entitled to the exemption will be notified.

### Playgrounds Plan Tourney

On Wednesday, August 9th, at Regional Playground the Springfield Playgrounds will hold their annual playground championships. These championships are held to determine a girl and boy champion in each playground activity provided at the playgrounds throughout the playground season. The events will begin at 10:00 A.M. sharp and continue through out the day.

The eight playgrounds in Springfield will send representatives to Regional Playground to compete in the following events: Chess, Checkers, Jacks, Washers, Tether Ball, Paddle Tennis, Horseshoes, Broad Jumping, Foul Shooting, Ring Tennis, Baseball Throw, Softball Throw, and Dashes. The participants will compete for individual honors as well as team points.

The winning team will be noted as Springfield Champion Playground. The individuals who win will be honored as Springfield Champion and will earn the right to represent Springfield in the upcoming County Championships to be held in Elizabeth on August 16th.

### Government Investigating Financing, Site Selection

The survey, recommending the construction of a municipal swimming pool in Springfield, has been received with enthusiastic acceptance throughout the Township and indications now point to having this recreational facility available as soon as some of the problems can be worked out.

The study on the community swimming pool for Springfield was part of a professional survey being made by a Newark firm and the report, submitted to the Township Committee meeting last week, showed the need for such a pool "for Springfield's rapidly growing community."

Mayor Vincent J. Bonadies and members of the governing body immediately set in motion the necessary machinery to determine the method of financing such a project, to select the best site for the swimming pool and whether or not to put the question on the local ballot this November as a referendum for the voters to decide many of the questions.

Mayor Bonadies stated that members of the Township Committee are not certain that they want such a referendum left to

the decision of the voters since this may delay and complicate immediate action on the project. A thorough study is being made of the financing methods employed in other municipalities and the Livingston plan is getting special consideration by Mayor Bonadies and the Township Committee. Livingston has been very successful in forming a non-profit private corporation, made up of residents, whose small cost membership for the year enabled that community to operate the facility at no direct cost to the municipality.

However, as the study pointed out, "the main disadvantage of this residents-plan of financing, is the intricate legal problems that might arise, particularly if the pool becomes non-profitable."

Complete municipal operation would be financed by a bond issue and run by the Recreational Commission as a municipal function. The study stated that a 25-year bond would cost the township \$20,000 the first year and \$400, less each subsequent year. Thus, the total cost, amortization and upkeep would be \$32,000 the first year and less each successive year as the principal is repaid.

"The total cost of this municipal pool would be about \$2.25 per capita during the first year," the report further stated. "However, a nominal admission charge could lower the per capita cost to \$1.25 for the first year and less each succeeding year."

No decision has, as yet, been made on the method of financing municipal swimming pool but such a project has always been near the top of the list of future planning for Springfield by Mayor Bonadies and the Township Committee and will receive priority on the agenda from now on.

### Scrap Drive

The regular monthly scrap drive sponsored by the Springfield Legion will take place this coming Sunday, August 6. Residents, who wish to cooperate, may do so by leaving all newspapers, magazines, etc., neatly tied in bundles and placed at the curb for pickup by 10 a.m. on Sunday, August 6.

### Promoted

Arthur E. Menig, 98-B Babeno Avenue, Springfield, has been promoted to Senior Art Director at Paul Klemm & Company, Inc., a New York pharmaceutical advertising agency.

## Continue Fall Riding

### Union Services

Summer union worship services of the Springfield Methodist Church and the First Presbyterian Church of Springfield will continue next Sunday, August 6, at 10 A.M. in the Presbyterian Church.

Dr. B. W. Gilber, pastor of the Methodist Church, will preach for the next five Sundays. The topic of his first sermon will be, "That Which is Lost."

### Joins Law Firm

Miss Marsha Wilson, 73 Warwick Circle, Springfield, who recently completed her work at the Katherine Gibbs School in Montclair, has secured a position through the Placement Department of the school with the law firm of Barrett and Miller, Madison. She is a graduate of Jonathan Dayton Regional High

## Fall Riding

The Watching Junior Troop, sponsored by The Union-County Park Commission, will start its autumn season of horseback riding activities on Tuesday, September 5, at the Park Commission's Watching Stables, Glenside Avenue, Summit.

Boys and girls, eight years of age and older, who are residents of Union County, may register for membership in the troop at the Watching Stable any day, except Sunday, from 9:00 a.m. to 5:00 p.m., starting Tuesday, August 1. Out-of-county boys and girls will be permitted to register beginning August 8.

It is not necessary to have previous riding experience to become a member of the Watching Troop. The troop is formed into squads for sub- novice, intermediate and advanced riders and the instruction is given according to each squad's degree of horsemanship.



TROPHY WINNERS—Left to right are: George Wolfe, Summit; Frank Cardinal, Springfield; Vince De Rosa, Orange; Mayor Vincent Bonadies of Springfield; Marty Bachrach, Springfield; Pete Smith, Springfield; and Conrad LaMalta, West Orange who bear the trophies they won on Mayor's Golf Day at Baltusrol Golf Club. (Edward Stine)



PAUSING FOR A PICTURE—Left to right: Irv Weinberg, William Koons, Henry Grabarz, and Mike Giovanna take time out during the game to have their picture snapped. They were a few of many golfers who took part in the Mayor's Golf Day at Baltusrol Golf Club, Springfield. (Edward Stine)



# Springfield Sun

PUBLISHER.....JULIAN SAROKIN  
 ASSOCIATE PUBLISHER.....HENRY J. LALLY  
 MANAGING EDITOR.....MARIE MASTORAKIS  
 ADVERTISING DIRECTOR.....HERBERT AXELRAD

TELEPHONES:  
 DR 9-5000 DR 9-5001 DR 9-5005  
 MU 2-9191 MU 2-9192

ESTABLISHED SEPTEMBER 21, 1899

Published every Thursday at 200 Morris Avenue, Springfield, N.J.

SPRINGFIELD SUN PUBLISHING CO. INC

Subscription rates by mail postpaid. One year \$4.00. Six months \$2.00 payable in advance. Single copies ten cents. Entered as second class at the Post Office, Springfield, N.J., under an Act of March 8, 1879.

### FROM THE SUN FIELD

1. Bob Fitzsimmons knocked out Jim Corbett in Carson City in 1897.
2. Fred Merkle failed to touch 2nd base.
3. Fred Snodgrass was playing center field.
4. Francis Outmet won the Open in 1913.
5. Jess Willard beat Jack Johnson in 1915.
6. It was the Brooklyn Robins.
7. Paavo Nurmi.
8. Fourteen hours, thirty-one minutes.
9. Tilden lost in 1926.
10. The 'Long Count' took place in Chicago.
11. Tom Zachary, and he pitched for the Senators.
12. Roy Riegels ran the wrong way.
13. Bobby Jones was 28 years old.
14. The score was 7 to 0.
15. Helen Wills Moody.
16. It was the 12th round.
17. Gottfried Von Cramm.
18. The Brooklyn Dodgers.
19. The first round.

Razors pain you;  
 Rivers are damp;  
 Acids stain you;  
 and drugs cause cramp.  
 Gums aren't lawful;  
 Noses give;  
 Gas smells awful;  
 You might as well live.

Dorothy Parker

## HAYES PAYS



POSTAGE BOTH WAYS FOR EASY SAVING BY-MAIL

## HAYES PAYS

**33% to 34%** Per Annum PAID-QUARTERLY  
 Accounts insured to \$10,000  
 OPEN YOUR ACCOUNT NOW

## HAYES SAVINGS and LOAN ASSOCIATION

955 Broad St., Newark 2, N. J.

## NOBODY BEATS Brehm's WAREHOUSE DISCOUNTS!

Save **33% to 50%**  
 OFF REGULAR PRICES ON QUALITY RUGS AND CARPETS

**Brehm's**  
 DISCOUNT WAREHOUSE OUTLET  
 1070 MAGNOLIA AVE. ELIZABETH  
 Daily: 9 to 4:30 P.M.  
 Evenings: By Appointment  
 Call FL 1-1100

### B'nai B'rith...

continued from page 1  
 city will honor 50 Congolese students now learning English at Georgetown University in Washington as the preparatory stage of their four-year study programs in America. They are here under Department of State auspices. Mrs. Kudler added the July event marks an initial step toward the implementation of a coast program of home hospitality to welcome foreign visitors with true friendliness. She said the Homefront Peace Corps, spearheaded by B'nai B'rith Women to rally women's organizations of all faiths as participants, was endorsed in the form of a resolution at the organization's recent biennial convention.

The Congolese, like other visitors, will go from the Nation's Capital to study in other sections of the United States. The reception for them, in the library located in the same building as B'nai B'rith Women headquarters, is expected to open opportunities for further expressions of hospitality by 135,000 B'nai B'rith Women members in communities throughout the United States and Canada.

### Director...

continued from page 1  
 "Permission has been granted by Township authorities to survey the Municipal Building with a view to making the basement of the building radiation proof; so that government, police, fire and civil defense can continue to operate in case of disaster. In addition the Prototype Fallout Shelter built by Civil Defense a year ago will be refitted and opened for public inspection. This type of shelter can be built in the basement of your home and will give you complete protection from radioactive fallout. The shelter will be on display at 59 Caldwell Place in the near future," Mr. Freeman concluded.

Anyone desiring Civil Defense information may attend the civil defense meeting tonight at 8:15 pm in the Municipal Building basement.

## Suggest Quarry Hole as Site for Town Swim Pool

### Suitable for Cultural Events

Selection of a site for the proposed municipal swimming pool in Springfield is not expected to present too great a problem. The survey made by Candelub, Flawisig and Associates of Newark at the request of the Township Committee included seven locations in Springfield, rated acceptable for the community pool.

Mayor Vincent J. Bonadies and members of the governing body have asked that the suggested sites should not be disclosed at this time, stating that careful consideration will be given each of the locations before any formal steps are taken on the project.

One suggestion being explored by the Township Committee as a possible site for the pool is the large hole on the former quarry property, now owned by Nicholas Angleton, builder of the Troy garden apartments.

With proper engineering advice, this large, unsightly and dangerous hole might easily be converted into a natural amphitheatre for concerts and other cultural programs as well as being the site of the new proposed swimming pool.

Mr. Angleton, it is understood, has been planning a building at that location for commercial and industrial uses. However, many residents believe this large excavation lends itself to the construction of a community pool as well as making it an open air site for cultural programs to attract music lovers from all sections of this area.

The survey, advocating the construction of a municipal pool in Springfield, states that "the site should be adequate in size to provide for a main pool, a wading pool, bathhouse, related sunning and play areas and adequate off-street parking."

It also says that "the pool should be located so as to minimize any possible nuisance condition to surrounding users."

The survey recommended a site that is four acres as a minimum, with 7 to 10 acres as desirable. In addition to the 77 sites, which will be made public shortly, the survey also named "several other sites which were superficially inspected and may prove warranted for use if none of the others are suitable."

These other sites include the Board of Education property between Mountain Avenue and South Springfield Avenue; the Union County Park Commission lands, the New Jersey Quarry Co. land, and the possibility of acquiring part of the Baltusrol Country Club land along either Mountain Avenue or Shunpike Road. Some of these sites should be considered if a second pool is envisioned in the future for Springfield.

The method of acquiring a site for the pool has not yet been determined but Township authorities look for no obstacles once the location has been agreed upon.

### Mayor...

continued from page 1  
 O'Keefe, Old Evergreen Lodge, 1056 Tavern; Park Drugs, Springfield, Inc.; Mrs. Prince's Farms; Rappaport's Spring Drugs; Reinecke Youth Store; Republic Metals; Russel's Men's Shop; Saks Fifth Avenue; Sam's Friendly Service; Sheehan Appraisal Ser-

vice; Sip & Sup; John A. Spaeth; Spring Liquors - Echo Plaza; Springfield Garage; Springfield Hardware & Paint Co.; Springfield Nursery, Inc.; Springfield Steak House; Springfield Tavern (Pasch); Stifelman & Goldfinger; Swingle's Diner; Anne Sylvester's Realty Corner; Tappan Supply; Tomie's Esso; Dr. Edna K. Tropp; The Twigg; Universal Cyclops Steel Corp.; Van Nee; Condit; V. S. Engineering Co.; Andrew Wilson, Inc.; World of Tile, Inc.; Springfield Tool & Die Co.; Joe Galini, Springfield Sheet Metal; John D'Elia, Four Plating; Helmuth Enz, Enz Machine Co.; Smith & Smith (2 trophies); National State Bank of Elizabeth.

You can improvise an extra "saw horse" by opening a ladder about two-thirds the way while it is laying on its side.

## CULLIGAN

### 25th ANNIVERSARY SPECIAL OFFER

#### Fully Electric

## AUTOMATIC WATER SOFTENER

## DOUBLE-HULL SOFTENER TANK

### WITH LIFETIME GUARANTEE

ONLY **\$4.95** per month

Includes Normal Installation.

## NELSON, PHILLIPS & CO., INC.

12 Holmes St., Millburn DRexel-9-5100 - MUrdock 6-1661

Call DRexel 6-4300  
 "We Service Any Oil Burner"

**Schaible Oil Co.**  
 112 Mountain Avenue  
 SPRINGFIELD  
 coal - FUEL OIL - coke  
 Metered Deliveries  
 Budget Plan  
 Member of Springfield Chamber of Commerce

### CHAIRS - TABLES - PARTY NEEDS - CEMENT MIXER

## United Rent-Alls

of Maplewood  
 670 SPRINGFIELD AVE.  
 PO 1-520

### TRAILERS GARDEN TILLER PAINT SPRAYER

Because customers have confidence in the high quality of our work, our business is constantly increasing.

Every garment treated with Sta-No (Exclusive with us in Springfield) Free 1 Hour Service Free Plastic Bags.

## DREXEL

Quality CLEANERS

FREE PARKING  
 204 Mountain Ave. Springfield Superior Cleaning Shirts Laundering Shoe Repairing

### IT'S EASY TO PHONE

# DERBY

— or any place else in the Denver, Colorado area. Just dial Area Code Number 303, then the number you want. Area Codes are the key to easy telephoning to any place. Every area has a code. You'll find them all in the front pages of your telephone book. Please use them for out-of-state calls.

NEW JERSEY BELL

## 5 reasons why you should buy a GAS Refrigerator-Freezer

1. Saves extra trips to the store
2. Gives greater menu variety
3. Is a life-saver when unexpected guests drop in
4. Saves money on food bargains and leftovers
5. Saves time. Cook double—serve one...freeze one

### Buy a GAS Refrigerator-Freezer at your favorite store.

**PUBLIC SERVICE**

## TOWN HOUSE

### Designed for Carefree Comfort

- Hotpoint Labor-Saving Electric Appliances: Refrigerator-freezer, dishwasher, electric range and wall oven.
- Jalousied Den: Overlooking the Campus-Type Interior Courtyard of The Town House.
- Heating and Air-Conditioning: Thermostatically controlled in each apartment.

Open Daily for Your Inspection  
 81 Morris Avenue, Springfield, New Jersey  
 Rental Agent: Daniel C. Hanrahan

**JCP & L**  
 Jersey Central Power & Light



**Hunterdon Hills Announces Stars, Shows For August**

Hunterdon Hills Playhouse, 5 miles west of Clinton, N.J., off the Pattenburg turn-off of Route 22, announces a top line up of 5 shows, and 7 stars for the month of August.

Craig Stevens, TV's Peter Gunn and his lovely wife, Alexis Smith, start the line-up on Monday, July 31 in the hit Broadway comedy, "Critic's Choice". Then video, stage and film personality Edie Adams opens August 7 in Tennessee Williams' "Sweet Bird of Youth" followed August 14 by a new pre-Broadway comedy, "Future Perfect" starring Martha Scott and Donald Woods. Bert Lahr opens in a delightful new play, "The Ostrich and His Egg", on August 21 and William Bendix rounds out the month of August starting "Father of the Bride" from Aug. 28, through Sept. 2.

History is merely gossip.

**Palmer Gives No Info On Highway 78**

**Where Will Road Go?**

Springfield still hasn't been able to get detailed and specific information on the alignment of the new Highway 78 as it slashes through the Township.

Union, Irvington, Hillside and other communities in the path of the new federal highway have been given pin-pointed information, with block and lot numbers of the properties needed for right of way.

But Springfield officials have been begging, in vain, for a map or list of properties affected by the new highway.

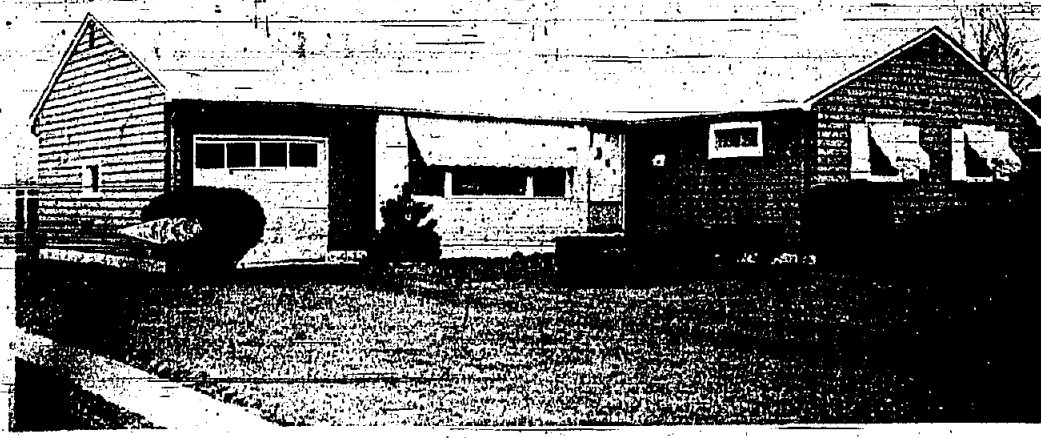
As a matter of fact, the towns of Union, Hillside and Newark were given full information on these three routes, Springfield, with only the one alignment, arrived at by State Highway Commissioner Dwight R. G. Palmer without giving any consideration to the impact of highway on the residential area of the Township, still doesn't know just where the new roadway is to be constructed.

Many formal requests, in writing, have been made for a complete list of those properties in the path of the new Highway 78 but Commissioner Palmer has ignored them all.

The right-of-way division of the State Highway Department has been in Springfield for months negotiating with owners of property needed for the new highway. However, a telephone call to the Highway Department offices elicited the information that "they knew nothing about it... and would look into the matter."

Contracts have already been signed by the Highway Department with owners of several properties in the alignment path of the new highway. One home owner, claiming that his was a hardship case, completed his contract and sale to the highway department. The house on the property has been sold at auction to be moved to a lot on Morris Avenue.

It is also understood that the Highway Department has completed negotiations with the owners of the Charles Jenco property - all the vacant land just north of Morris Avenue extending all the way from Morrison Road to Main Street - at nearly \$20,000 per acre. The deal with the Highway Department, if reported, also calls for the State Highway Department purchasing enough property - at Morrison Road to make ingress and egress easier at this point and to build a road for the owners of the re-



ANOTHER REALTY CORNER SALE—Property at 105 Fieldstone Drive, Springfield, sold for Mr. and Mrs. Donald J. Cooke to Mr. and Mrs. Bernard Ruff of Union. Mr. Ruff is owner of the G. & M. Markets in Newark and Roselle. This sale was arranged by Jean Hellman, an associate of ANNE SYLVESTER'S REALTY CORNER.

covered that the present alignment was decided and accepted as far back as 1953 and the public hearings held in Springfield were, as they say, "merely going through the motions."

Now for Schick Injector Razor users, an edge so smooth you won't believe there's a blade in the razor!

**NEW-DIMENSION IN SHAVING COMFORT**

**THE NEW SCHICK INJECTOR BLADE WITH KRONA EDGE!**

15 Blades 98¢

**SAVE-ON DRUGS ECHO SHOPPING CENTER**

MOUNTAIN AVE. & ROUTE 22, SPRINGFIELD, N.J.

OPEN SUNDAY 9 A.M. TO 6 P.M.

OPEN WEEKDAYS 9-10 OPEN SATURDAY 9-9

**DID YOU KNOW??**

SEARS Roebuck & Co. has an Appliance Service Center in Union, N. J. Phone MURDOCK 7-1800.

SEARS stocks 1/4 Million Dollars in parts at this Service Center.

SEARS Services ALL Sears Appliances—Television—Radio—Lawnmowers and Outboard Motors at this Service Center.

SEARS has 100 servicemen to service the Non-Portable Appliances in Your Home—We Service what we sell.

SEARS has the Facilities and Shops to Service Portable Sears Appliances and Portable Silvertone T.V. and Radio at this Service Center.

We Use Genuine Sears Parts—Allstate—David Bradley—Homart—Coldspot—Dunlap—Kenmore—Silvertone—Craftsman.

We are located in Union, N. J. off Morris Ave., on Lousons Road in The Garden Industrial Park. Turn Right After Ideal Farms Going Toward Springfield or Left at Ideal Farms Going Towards Union Center.

**SEARS ROEBUCK & CO.**

APPLIANCE SERVICE CENTER

LOUONS ROAD UNION, N. J.

MURDOCK 7-1800

Open Mon. thru Sat. — 9:30 - 4:45

maining property.

It was further reported that Lester Robbins, well-known home and building developer, is now owner of the remainder of this property and plans to build apartments on this site.

Reports of other properties already contracted for by the State Highway Department include all those in the rear of the business places along Morris Avenue adjoining the Jenco vacant land.

Highway Commissioner Palmer has been carrying on a personal feud with Springfield ever since he came in office on the question of removing the exposed trolley tracks on Morris Avenue. When the new federal Highway No. 78 was activated, Mr. Palmer refused to consider any other route except one that would slash into the residential area of Springfield.

He refused to do anything about an acceptable engineering alternate that would divert some of the highway through his own community, Millburn. It has been dis-



**Why will our customers pass up all other stores to come to Good Deal for Fruits & Vegetables?**

To bring you "down-on-the-farm" freshness in the fruits and vegetables you buy, Good Deal selects only the finest from the country's leading farms, orchards and groves. To get these good things at peak-fresh flavor Good Deal refrigerated trucks rush them fast to you direct from farm to your neighborhood Good Deal Supermarket. The chances are the fruits and vegetables you and your family enjoy tomorrow will arrive the same day—or a day earlier. And to assure you peak fresh perfection, we display them only in refrigerated cases. The result—Good Deal fruits and vegetables are farm-fresh when we buy them—and farm-fresh when you buy them.

**BLUEBERRIES** Large, Cultivated, Sweet SAVE 10¢ pt. **25¢**

**WATERMELON** Sugar Sweet, Red, Ripe SAVE 20¢ ea. **69¢**

**PEACHES** Yellow Jersey SAVE 10¢ 3 lbs. **29¢**

**PLUMS** Sweet, July California SAVE 6¢ lb. **19¢**

**NECTARINES** Sweet California SAVE 6¢ lb. **19¢**

**GREEN PEPPERS** Thick Meat Sweet SAVE 4¢ for **19¢**

**CORN** Sugar Sweet SAVE 10¢ 6 ears **29¢**

**CUCUMBERS** CHIEF LEAF SAVE 4¢ for **19¢**

**BOSTON LETTUCE** Tender Bibb Type SAVE 1¢ head **10¢**

**ROMAINE LETTUCE** Long Leaf Crisp SAVE 1¢ head **10¢**

**GENERAL ELECTRIC SPACEMAKER REFRIGERATOR-FREEZER**

18.8 CU. FT. FITS SPACE OF AN OLD 10!

**88% MORE STORAGE SPACE**

**MORE VALUE THROUGHOUT**  
Revolutionary new THIN-WALL foamed plastic insulation makes more room for your food on the inside and for you on the outside! Only 67 in. high, 33 3/4 in. wide, 24 3/4 in. deep (less handles).

**FROST NEVER FORMS, even in the freezer. No defrosting, ever with Frost-Guard.**

**EXCLUSIVE ROLL-OUT FREEZER opens with touch of foot pedal.**

**MOBILE COOL—keeps meats fresh up to 7 days or more.**

**ONLY \$3.00 per week after small down payment.**

MODEL TC-469V  
18.8 CU. FT. net storage volume

EXCLUSIVE G-E ICE SERVICE—Just flip over top 3 EXCLUSIVE GREEN SPRING-OFF SHELVES STRAIGHT-LINE DESIGN—no-calls-around

**CHUCK ROAST** U.S. Choice Iowa Beef SAVE 26¢ **29¢**

**CHUCK STEAK** U.S. Choice Iowa Beef SAVE 29¢ **35¢**

**BONELESS CROSS-RIB ROAST** FULLY COOKED SAVE 10¢ **69¢**

**SMOKED HAM** butt portion **39¢**, shank portion **33¢**, butt half 5 1/2 lb. **89¢**, shank half 4 1/2 lb. **89¢**

**SMOKED TONGUES** SAVE 10¢ **39¢**

**CHOPPED CHUCK** SAVE 20¢ **59¢**

**BONELESS CHUCK ROAST** SAVE 14¢ **65¢**

**CALIFORNIA ROAST** SAVE 10¢ **55¢**

**MEDIUM SHRIMP** SAVE 20¢ **59¢**

**SCALLOPS** SAVE 20¢ **59¢**

**ITALIAN Tomatoes** SAVE 7¢ **23¢**

**STAFF SOLID WHITE Tuna** SAVE 20¢ **23¢**

**GREEN GIANT Niblets** SAVE 6¢ **\$1**

**DEL MONTE Fruit Cocktail** SAVE 10¢ **\$1**

**CHASE & SANBORN, BEEHUNY, or MINUET Coffee** SAVE 12¢ **53¢**

**BAKERY TREATS**  
Good Deal Enriched White BREAD 2 1/2 lb. **25¢**

**ROLLS** Good Deal Hamburger or French **19¢**

**CHERRY PIE** After SAVE 10¢ **59¢**

**PASTRY** Danish SAVE 10¢ **39¢**

**GROCERY VALUES**  
HELLOGO **Corn Flakes** SAVE 10¢ **23¢**

**RITZ Crackers** SAVE 4¢ **29¢**

**Pineapple Grapefruit Drink** STAFF SAVE 25¢ **5¢**

**Soda** No Deposit, No Return **6¢**

**STAFF PEACHES** SAVE 24¢ **4¢**

Formers General Electric Dependability! 6 Million G-E Refrigerators in Use 30 Years or More.

**SPECIAL! \$20.00 IN FROZEN FOODS** of your own selection with purchase of any combination refrigerator or freezer.

**AUSTERS APPLIANCES**

143 E. Broad St., Westfield AD 3-2121

OPEN MON. & FRI. EVENINGS UNTIL 9

SHOP YOUR NEAREST GOOD DEAL

DAILY 9-9 FRIDAY 9-10 SUNDAY FOR STATED HOURS 9-6

MAPLEWOOD—Irvington Ave., Ivy Hill  
W. ORANGE—Essex Green Shopping Plaza  
UNION—174 Suppess Ave.

WHYHARE—543 Springfield Ave.  
COATLICK—293 Main St.  
CLIFTON—1578 Main Ave.

MILWAUKEE—543 Springfield Ave.  
WE ORANGE—500 Central Ave.  
MELBARTH—447 Newark Ave.

SMILWOOD—220 Main St.  
SPRINGFIELD—10 Mill Road  
IRVINGTON—35 Mill Road

Any Questions? CALL ES 4-5900  
Also Good Deal Delivery  
After 10 Your Home!



● NEW SPINET (WITH BENCH) 498.00  
 ● LOWREY ORGANS From 885.00  
 ● REBUILT GRANDS From 395.00  
 (Terms to 36 months)  
 Rental Purchase Plan Available

118 Terwill Rd.  
 (Just off 8th St.)  
 SCOTCH PLAINS, N. J.  
 PL 5-3708 FA 2-2363  
 Evenings 'til 9

**The Piano Shop**  
 PIANOS - ELECTRONIC ORGANS

### Adult School Plans Varied Courses for Fall Semester

New, exclusive courses, many with limited enrollment, are offered local residents with the release of the Union County Regional Adult School catalogue shortly after Labor Day. Sponsored by the Regional Board

of Education, the Adult School offers programs at the three Regional High Schools in Berkeley Heights, Springfield, and Clark. Since the catalogue will be distributed to over 60,000 residents in the area, this will be the first in a series of articles describing some of the outstanding course offerings at Jonathon Dayton High School in Springfield. This should afford Springfield residents an opportunity to register for these courses before the general public.

Mail registration will begin with the release of the catalogue; personal registration at Jonathon Dayton will be on Monday, Sept. 18, and classes are scheduled to begin Sept. 27.

Among the courses to be described in detail in future articles will be Fine Furniture Finishing, Mosaic Tilecraft, Psychology, Interior Decorating, Steffans Charm Course, Public Speaking, Sculpture, Photography, Antiques, Piloting and Small Boat Handling, Golf, Mr. and Mrs. Fixit (a course in do-it-yourself appliances repair), and Citizenship and Americanization.

The Regional Adult School Board of Trustees, a volunteer group composed of residents of the Regional District communities, are responsible for the planning and implementing of the Adult School program. Members from Springfield include Mrs. Jeanne Haas, Mr. Thomas Creede, Mrs. Donald Lan, and Mrs. E. B. May.

### Letters to The Editor

Editor, Sun:

I address this letter to the people of the world and especially to the citizens of America. The crisis on Berlin has reached a peak of disaster. It is too late; war cannot be avoided. The problem of Berlin is like the time in 1938 when Hitler took over the Sudetenland, which was a large stepping stone to the 2nd World War. The Americans love and cherish their peace and democracy but they will have to face up to facts. The U.S. and our allies are stronger now than Russia but in time to come we will let the Russians build up a nation more powerful than ours. We now have 5 million unemployed people while Soviet Union is now straining their manpower to prepare for world conquest. Will we let that happen? No! We must call Krushchev's bluff and see if he is ready for war, which he isn't. He knows the odds against him are too great now, but give him time and he'll be ready. For reference I am sure that if you read any magazine, you will find it to be true, (U.S. NEWS & WORLD REPORT) The Americans cannot afford to wait any longer they must stop the Reds before they strike. Many lives could have been saved in the 2nd World War if we had stopped Hitler in his tracks towards world conquest. America and her allies must do now what they should have done a long time ago, Stop Russia. If this is not done there will never be any peace, for if we wait and then fight a war, we cannot afford to lose it for the sake of mankind. Now is the time for Americans to act.



"I JUST LOVE WATERMELON"—Eager beaver George Force didn't even wait for the watermelon contest at Irwin Playground to begin. He began eating just as soon as they handed him his piece of watermelon. When told that the contest hadn't started, he said he just wasn't interested in any contest; he only wanted to eat watermelon and had worn his bathing suit so he could really enjoy himself! (Dick Schwartz)

**Water Works**

HONOLULU IS THE LARGEST CITY IN THE WORLD, BUT MOST OF IT IS WATER!  
 In area, Honolulu stretches from close to Johnston Island on the west almost to Christmas Island on the South!

DOES ANY OF YOUR MONEY GO DOWN THE DRAIN  
 Because of unnecessary wastage or leaks?

COMMONWEALTH WATER CO.

**HAVE FOOD... WILL TRAVEL**

FREE DELIVERY  
 FINEST MEATS & PRODUCE  
 LARGE SELECTIONS

272 MORRIS AVE.  
 SPRINGFIELD, N.J. DR 6-4531

**KATHARINE GIBBS**  
 PRIVATE BUS SERVICE  
 SUMMIT-MAPLEWOOD AND VICINITY TO  
 KATHARINE GIBBS  
 140 N. HIGHLAND  
 One and Two Year Courses  
 SECRETARIAL

Write or telephone for full information  
 82 Plymouth St., Montclair, N. J. PL 4-2818

Mr. Suburban suggests you open a  
**CONVENIENCE CHECKING ACCOUNT TO-DAY!**  
 Suburban TRUST COMPANY  
 GRANFORD-BARWOOD-PLAINFIELD  
 ROBERT PLAINS-WESTFIELD

**FOR RENT**  
 Wallpaper Steamer, Waxers, Hand and Floor Sanders, Rug Shampoo Machine, Garden Equipment.  
 AT  
**COOPER'S HARDWARE**  
 54 Park Ave., Scotch Plains  
 FA 2-3852

### Five On NCE Dean's List

Five students from this area have qualified for academic honors for the term which ended in June at the Newark College of Engineering. A student qualified for honors if he attains a B average with no grade lower than C while taking at least 75 per cent of the credit hours in a regular course of study.

The students are as follows:  
 Victor P. Merlo, 464 Park Avenue, Berkeley Heights;  
 Robert M. Berry, 86 Portland Avenue, Fanwood; Paul C. Michaels, 2088 Nicholl Avenue, Scotch Plains; Dennis E. Beebe, 15 Park Land, Springfield, and Walter H. Kraft, 79 Washington Avenue, Springfield.

### Report to the People

Unanimous approval, on recommendation of Board of Adjustment of approval of application of Furniture Craft Company for special exception use to erect an attached addition to their present building on Route 22.

Unanimous approval, on recommendation of Township Engineer, of acceptance of Joanne Way and Cain Street as Township Streets. Unanimous approval of award of bid in the amount of \$45,429.90 to the lowest bidder, Valentino Della Pella of Bloomfield, for the improvement of Siles, Meckes, Ruby and Diven Streets.

Unanimous approval of acceptance of bid of Lancaster Electrical Company in the amount of \$9,500.00 for installation of traffic signals at Hillside and South Springfield Avenues.

Unanimous approval of rejection of bids, as being in excess of engineer's program, for the expansion of recreational facilities at Irwin Street Playground. Bids to be re-advertised and received at a later meeting.

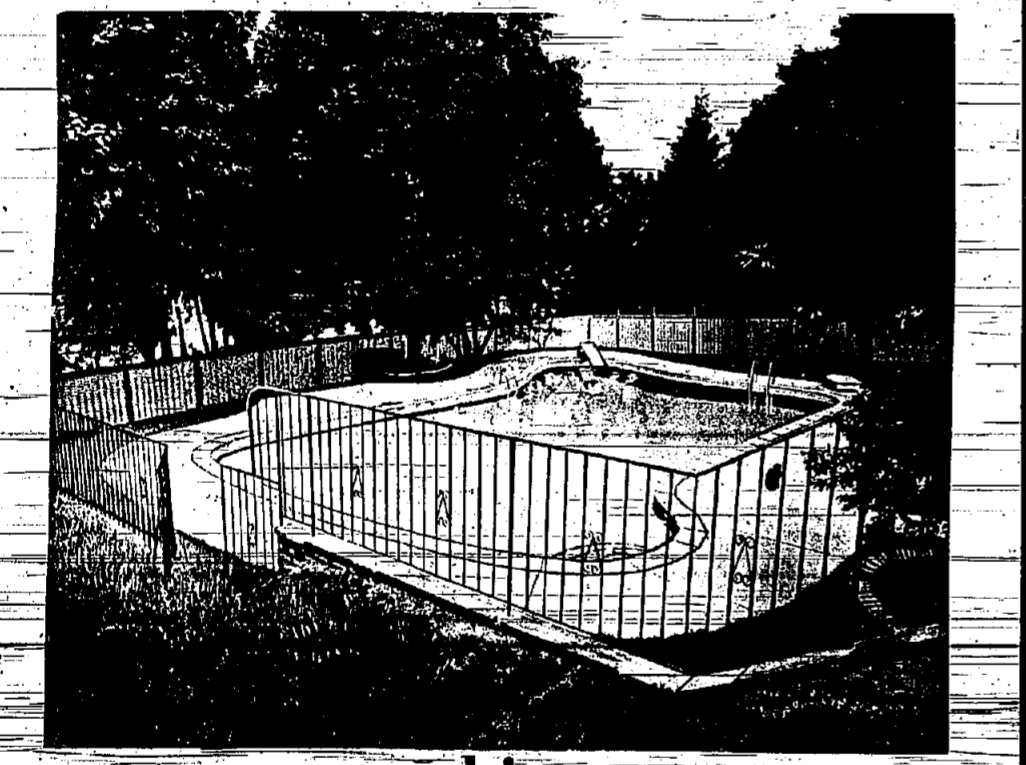
Unanimous approval of taking no action on request of Commonwealth Water Co. to make Morrison Road two-way street until certified copies of proposed alignment of Route 78 are received from the State Highway Department.

Unanimous approval of acceptance of report of Traffic Consultant providing for extension of Commerce Street to provide ingress and egress to industrial tract, with certain stipulations.

Unanimous approval of reinvesting \$50,000 U.S. Bond maturing August 1st and rolling over U.S. Treasury Bills maturing August 7. Adjournment.

**Sylvan Pool office now open in SPRINGFIELD N.J.**  
 301 Morris Ave.  
 DRexel 6-4500

Sylvan Pools, nationally recognized leader in residential and commercial pools, now has a display showroom in Springfield, New Jersey. Consult with this office for your new pool or, if you are a pool-owner, buy all your chemicals, supplies and accessories at a cash-and-carry 10% introductory discount.



more big news

**14th annual summer SALE famous "SYLVAN S" 3 pools in 1.**  
 now... for the first time at no extra cost!

**POOL #1** safe wading area... provides shallow water for tots and other waders, plus spacious steps for relaxed water lounging.

**POOL #2** clear swimming lanes... for all active people who enjoy unobstructed swimming and racing.

**POOL #3** free diving area offers complete freedom and safety for the beginning or experienced diver.

**BUY NOW & SWIM THIS SEASON**

SYLVAN POOLS  
 301 Morris Ave.  
 Springfield, N. J.

Springfield DRexel 6-4500  
 Princeton WAInt 1-6166  
 Doylestown, Pa. FHilmbre 8-2686

Name.....  
 Address.....  
 City..... State.....  
 Phone.....

## WESTFIELD SALES DAYS

**LANCASTER LTD.** is proud to be of service to Westfield, and feels privileged to participate in Westfield's Sales Days.

This is our first specially-priced sale and we have gone out to find quality merchandise at a special price for you here in Westfield and environs.

From **ROYAL IMPRINT**  
 Cocktail and Luncheon napkins—20 in a package  
 Our regular stock - now on sale for **15¢** each  
 or **6/79¢** regularly **30¢** pkg.

**CASE WRITING PAPER**  
 a special purchase, made to sell for \$1.00 a box white  
 or colors now on sale for  
**59¢ - 2 for 99¢**

**DURATONE QUALITY PLAYING CARDS**  
 Plastic coated - limited designs and quantities - excellent for bridge, poker, canasta, samba or gin rummy - buy more than one and save - these are cellophane wrapped (not boxed)  
 if boxed **\$1.00** each. or **2 for \$1.09**

**ARTIFICIAL POTTED FLOWERS**  
 assorted floral arrangements in white pots - look like the real thing but need no care - now on sale  
**89¢** each  
**4 for \$3.39**  
 regularly **\$1.00** each

**CHRISTMAS IN AUGUST**  
 special purchase of "Artis Publishers" Christmas cards - 25 per box - all alike - now on sale .89 box or **2 boxes for \$1.69**  
 after sale for Christmas season 1961

**DECORATOR CANDLES**  
 Limited Quantities.  
 Paper Goods, assorted  
**1/2 price**

**Lancaster Ltd.** 76 ELM STREET, WESTFIELD • AD-2-2232  
 • OPEN MONDAY & FRIDAY 'TIL 9 P.M. •  
 OPEN DAILY 9:00 A.M. TO 8:00 P.M. MONDAY 'TIL 9 P.M.

**Carteret**  
 SUPERIOR COLLEGE PREPARATION  
 CLASSES PLUS TUTORING  
 Extremely effective college preparatory course, with additional tutors available to assist students obtain a complete command of the subjects studied. Not a remedial school, but each student's personal needs are recognized and served. HOW TO STUDY is taught and stressed. Sports program. Write for your copy of "Royal Roads" on study habits. Guidance Director, Dept. W.  
 CARTERET SCHOOL - WEST ORANGE

**JEWELERS**  
**WESLEY JEWELERS**  
 173 Mountain Ave  
 JEWELRY  
 DIAMONDS WATCHES  
 "Where You Can Afford Fine Quality"  
 Budget Terms Arranged  
 DRexel 6-4047  
 Member Springfield Chamber of Commerce

**FOUNTAIN Authorized KODAK Dealer**  
 Color & Black & White Processing  
**JARVIS DRUG STORE**  
 144 ELM STREET  
 WESTFIELD, N. J.  
 ADams 3-6662



## Phyllis Beyer Weds James Baxter, Jr.

### Teacher-Insurance Agent Recite Vows in Church of Little Flower

Miss Phyllis Jean Beyer, daughter of Mr. and Mrs. William J. Beyer, Jr. of Berkeley Heights, became the bride of James Burton Baxter, Jr., son of Mr. and Mrs. James Baxter of Summit. The wedding took place in the Church of the Little Flower in Berkeley Heights. Father Carl Arico performed the double ring ceremony. The bride was given in marriage by her father.

Mrs. Ronald Coles of Garwood was the bride's honor attendant. The Misses Prudence Madura, Patricia Baker and Nancy Boiles, all of Springfield, were bridesmaids. Alexander Geiger of Berkeley Heights served as best man. Ushering were Edward Farr, David McKowan and Richard Cowe.

The bride was attired in a white eyellet organza gown with a chapel train. She carried a bouquet of white orchids and stephanotis. Her matron of honor carried a semi-crescent of yellow roses; the bridesmaids carried orange delight roses.

Mrs. Baxter, a graduate of Trenton State College, is a teacher in the Berkeley Heights school system. Mr. Baxter is employed as a special agent for Pan-American Life Insurance Company. After a Bermuda honeymoon, the couple will reside in Murray Hill.

### Conduct Summer Services At Temple Sharey Shalom

David Bejasco, ritual committee of Temple Sharey Shalom of Springfield, has announced that the following congregants will conduct summer Sabbath Eve services for the congregation: Benjamin Seplovin of Berkeley Heights, August 4; Mr. and Mrs. Albert Schenfeld of Union, August 11; Bernard Lesser, August 18; Philip Gurian, August 29; and Selwyn Schechter, Sept. 1. Lesser, Gurian and Schechter are all of Springfield.

Summer Sabbath Eve services are held in the Temple House, 78 So. Springfield Ave., Springfield, at 8:15 p.m.

## Cadet Foster Given Honors

Cadet Edward S. Foster, Jr., 53 Wenz Avenue, Springfield, who was graduated from Norwich University last month, has been to the Dean's List for his academic standing in the second semester of the college year. He was designated a gold star man which is a scholastic standing attained by less than three per cent of the student body.

Cadet Foster was graduated with highest honors and stood at the top of his senior class academically. He also held the cadet rank of Colonel as such was Cadet Commander of the Regiment of Cadets at Norwich.

### Son Born to Keiffers

Mr. and Mrs. Robert E. Kieffer, Woodland Avenue, Fairwood, announce the birth of a son, Edward Brian, on July 17 in Muhlenberg Hospital, Plainfield.

### Visit Silver Springs

Mr. and Mrs. F.W. Sommer and family of Springfield were recent visitors at Florida's Silver Springs. They returned home July 29.

### Returns from Shore

Mrs. Mabel Smith, 119 South Maple Avenue, Springfield, has returned home after spending a week with her son and daughter-in-law, Mr. and Mrs. Elmer Smith of Long Branch.

## Bernadine Churla Engaged to Marry

Bernadine Lorraine Churla is engaged to Robert Joseph McMillan, son of Mr. and Mrs. Justin J. McMillan, Stacey Avenue, Trenton, announced Mr. and Mrs. Joseph M. Churla, Morris Ave., Springfield, parents of the bride-elect.

Mrs. Churla is a secretary with S.F.D. Laboratories, Inc., Union.

## Sharey Shalom Plans August Bar-b-que

Temple Sharey Shalom's annual free Bar-b-que will be held on Sunday evening, August 20, in the Temple House, 78 South Springfield Avenue, Springfield, from 8 to 11 p.m.

Sharey Shalom, along with members of the Board of Trustees, invites this Bar-b-que every August for all congregants, friends and residents of the area.

OPEN DAILY TO 9 P.M. - SATURDAY AND SUNDAY TO 6 P.M.

# FLEMINGTON'S GREATEST AUGUST FUR SALE

more fur... more coat...  
... more fashion for your money

A truly great sale to save you real dollars over the price you will pay later in the fall.

MINK... FOX... BROADTAIL  
MINK PAW... FUR SEAL  
MUSKRAT... RACCOON  
PERSIAN LAMB...  
SHEARED BEAVER  
RIVER OTTER  
SQUIRREL...  
SABLE...

at our SPECIAL LOW AUGUST PRICES from \$110 to \$4950

CLOTH COATS & SUITS  
A host of lovely imported fabrics... beautifully fashioned... glamorously furred... at wonderfully low prices! from \$69 to \$395

Imported Furs are labeled to country of origin.

ONE OF THE WORLD'S LARGEST SPECIALISTS IN FINE FURS.

## 1962 FUR CATALOGUE

PLEASE SEND ME FREE YOUR NEW 1961-62 FUR BROCHURE

NAME \_\_\_\_\_  
ADDRESS \_\_\_\_\_  
CITY \_\_\_\_\_ STATE \_\_\_\_\_

**FLEMINGTON FUR CO.**  
FLEMINGTON, N.J.  
ONE OF THE WORLD'S LARGEST SPECIALISTS IN FINE FURS

McManus Elizabeth & Woodbridge  
OPEN EVENINGS... Free delivery  
most anywhere, free parking



America's Most Famous Brands  
In Quality Furniture at Year's Lowest Prices!

# McManus Bros.

"One of Union County's Largest Furniture Stores"

## 80th August Furniture Sale

Whatever your style preference, whatever your need - you'll find it savings-tagged at McManus Bros. during this event.

Choose from America's most famous brands. Shop with complete confidence at McManus Bros., since 1880 the quality furniture store of value, reliability and service.

• McMANUS ELIZABETH  
1152 E. Jersey St., EL 2-5600

• McMANUS WOODBRIDGE  
Hwy. 9 at King Geo Rd., VA 6-4700

# THOUSANDS OF SALES DAYS BARGAINS

*jane smith*

129-139 Central Ave. Westfield, N.J. Adams 2-4800

\$1.00 SPECIALS EVERY DEPARTMENT  
CHILDREN'S SPECIALS

- Dresses 1.00 to 12.99  
were to 29.98
- Shorts 99¢ to 4.99
- Boy's & Girls P.J's 1/3 off
- Sweaters 25% to 1/3 off
- McKee T-Shirts 99¢ to 1.29  
values to 2.98
- Rainwear 2.99 to 10.99
- Winter Coats 5.00 to 29.99

**BOXED CHRISTMAS CARDS**  
1/2 off

**Fruit DESSERT PLATES** 99¢

**EARTHENWARE**  
16pc. and 20 pc. Sets 5.00 and up

**PRE-SEASON SALE**  
CHILDREN'S TEEN WINTER JACKETS 8.99, 9.99, 10.99

## MISSES SPECIALS

- Cashmere and Fur Blend
- Sweaters to 1/2 off
  - Dresses 70 dresses values to 50.00 5.00 to 10.00
  - Lingerie 20% to 50% off
  - Blouses 1.99 to 14.99
  - Summer Skirts 2.99 and up
  - Suits Cottons and wool to 1/2 off
  - Beach Towels 1/3 off

**MILK GLASS**  
Serving Pieces to 1/2 off

**ALL LINENS**  
20% off

**MEN'S LEATHER LUGGAGE** to 40% off

**ATTACHE CASES** 20% off

Unadvertised Groups of Specials in every department

*jane smith*

129-139 Central Ave. Westfield, N.J. Adams 2-4800


**THE ITEM PRESS PRINTING**  
20 Main St., Millburn  
Phone DRexel 6-4600  
From Business Cards to Catalogs

**P.S. BUSES to Atlantic City Race Track**  
Every Racing Day

**ROUND TRIP \$400**  
plus tax  
Leave Morris and Millburn Aves., Springfield 10:55 A.M. (Sat., 10:25 A.M.)  
Leave Springfield Center 11:05 A.M. (Sat., 10:35 A.M.)  
PUBLIC SERVICE COORDINATED TRANSPORT.



**WOOLLEY FUEL CO.**  
 YOUR COMPANY IS OUR BUSINESS  
 Since 1924



FUEL OIL - COAL  
 MAPLEWOOD, N. J. - SO 2-7400

SUN

BOARD OF EDUCATION

SEALED PROPOSALS will be received by the Board of Education of the Union County Regional High School District No. 1 at the Jonathan Dayton Regional High School, Mountain Avenue, Springfield, New Jersey. The Board of Education reserves the right to reject any or all bids and/or to accept the bid that in their judgment will be for the best interest of the Union County Regional High School District No. 1, Springfield, N.J.

Instructions to Bidders and specifications may be obtained at the office of the Secretary at the Jonathan Dayton Regional High School, Mountain Avenue, Springfield, New Jersey.  
 Helen R. Smith  
 Secretary  
 August 1, 1961

NOTICE TO CREDITORS

ESTATE OF W. THAYER FIELD

Pursuant to the order of Eugene J. Kirk, Judge of the County of Essex, made on the twenty-first day of July, A.D., 1961, upon the application of the undersigned Executors of the estate of said deceased, notice is hereby given to the creditors of said deceased to exhibit to the undersigned under oath or affirmation their claims and demands against the estate of said deceased within six months from the date of said order, or they will be forever barred from prosecuting or recovering the same against the subscribers.

Amy L. Field, Edward H. Allison and Philip P. Weckel  
 Executors

Carey & Jardine,  
 Raymond Commerce Bldg.  
 Newark 2, N.J.  
 Attorneys

August 3, 10, 17, 24, 1961

SUN

OFFICE OF THE SECRETARY OF THE BOARD OF ADJUSTMENT

Take notice that at a meeting of the Board

Carteret School

In addition to the college preparatory school for boys, there is available our co-educational ELEMENTARY AND PRE-SCHOOL.

Elementary School: Fundamentals and drill work are stressed under well experienced teachers.

Pre-School: Children 2 to 6 years of age are accepted and given proper training to make them ready for First Grade. Social adjustment accompanies the learning process. Not a play school.

Hot Noonday Luncheon • Bus Service  
 Registered Nurse in attendance  
 Write for brochure or call  
 RE 1-3300. (Pre-School RE 1-8888)  
 CARTERET SCHOOL - WEST ORANGE



WINS TALENT AWARD—Miss Judith Genovese, daughter of Mr. and Mrs. Michael Genovese, 72 Briar Hill Circle, Springfield, received the talent award at a recent recital given by Miss Bunny's School of Dance in Springfield. Judy has been a student at the dance school for five years; she is now 12 years old. Pictured are Judy, center, standing, being congratulated by Miss Cord and Miss Bunny. The girl on the extreme left is unidentified.

of Adjustment held on July 27, 1961 the application as submitted by Richard Lomakin for a variance to construct a two-family dwelling on 48 Center St., was approved. Said application is on file in the office of the Secretary of the Board of Adjustment (Building Inspector, Room #208) and is available for public inspection.

Robert Pellegrino, Secretary  
 Board of Adjustment.

No. 18-61

Date: August 3, 1961

SUN

OFFICE OF THE SECRETARY OF THE BOARD OF ADJUSTMENT

Take notice that at a meeting of the Board of Adjustment held on July 27, 1961, the application as submitted by Al Bridges & White Diamond for a variance to erect a business sign A) in front of store and B) in rear of the building was approved. Said application is on file in the office of the Secretary of the Board of Adjustment (Building Inspector, Room #208) and is available for public inspection.

Robert Pellegrino, Secretary  
 Board of Adjustment.

No. 21-61

Date: August 3, 1961

SUN

OFFICE OF THE SECRETARY OF THE BOARD OF ADJUSTMENT

Take notice that at a meeting of the Board of Adjustment held on July 27, 1961, the application as submitted by Dwight D. Boss for a variance to alter existing dwelling for a two-family use was denied. Said application is on file in the office of the Secretary of the Board of Adjustment (Building Inspector, Room #208) and is available for public inspection.

Robert Pellegrino, Secretary  
 Board of Adjustment.

No. 17-61

Date: August 3, 1961

SUN

OFFICE OF THE SECRETARY OF THE BOARD OF ADJUSTMENT

**MEATS** FREE DELIVERY  
 THAT MAKE THE MEAL! Freezer orders filled to your specifications. Watch our window for early week specials.

**ROUND ROAST SALE**

- EYE ROUND • TOP SIRLOINS RUMP ROASTS 99¢
- BOTTOM & TOP ROUND 89¢
- SHANKS OF LAMB 10¢
- SHOULDER LAMB CHOPS 69¢
- LEAN LAMB PATTIES 49¢

LIMA BEANS - 2 for 41¢  
 ORANGE JUICE NEW 4-PACK - 79¢  
 FREEZER SPECIAL OF THE MONTH  
 HIND QTR. of BEEF SPECIAL 65¢

Average Wt. 180-180 lbs. Comb. of oven roast, pot roast, ground round, sirloin or porterhouse steaks cut & wrapped to your specifications.

**RAU** 763 MOUNTAIN AVENUE  
 QUALITY MEATS SPRINGFIELD DR 6-8505  
 LOW PRICES

THIS WAY TO A  
**Wonderful Vacation**

BOOK NOW FOR  
 Fall & Winter CRUISES  
 MIAMI • BERMUDA • EUROPE  
 Fischer Bros. Travel  
 749 Springfield Ave., Irvington ESsex 5-9600

The United States Life  
 INSURANCE COMPANY IN THE CITY OF NEW YORK

REPRESENTED IN YOUR COMMUNITY BY  
**MILLBURN AGENCY**

FRANK D. ROTHENBERG, AGENCY MANAGER  
 321 MILLBURN AVE., MILLBURN, N.J.  
 TEL. DRexel 6-3143  
 Representatives in  
 Berkeley Heights • Scotch Plains  
 Mountainside • Fanwood • Springfield

"CALL-US FOR MAXIMUM UTILIZATION OF YOUR INSURANCE DOLLARS"

THE OLDEST STOCK LIFE INSURANCE COMPANY IN AMERICA

The United States Life  
 INSURANCE COMPANY IN THE CITY OF NEW YORK

# NATIONAL STATE BANK'S BANKRITE CHECKS

Your best money order buy . . .

A National State Bank checking account is the best way of all to send money or to pay bills. But if you don't have a checking account with us yet, use these economical, easy-to-buy money orders.

Bankrite Checks are cheaper than Post-Office money orders.



There's no safer or more convenient way to pay bills than with Bankrite Checks . . . and look how low cost they are — only 15 cents for the first \$100 and 10 cents for each additional \$100 up to \$1,000. You get

a copy for your records, too. No doubt about it — Bankrite Checks are an outstanding buy . . . and couldn't be simpler to use. Get them at your nearest National State Bank office.



**THE NATIONAL STATE BANK**  
 ELIZABETH • SPRINGFIELD • ROSELLE PARK  
 SUMMIT • KENILWORTH • WESTFIELD  
 MEMBER FEDERAL DEPOSIT INSURANCE CORPORATION

"Make a date with National State... Union County's Leading Bank"

**J. NORWOOD VAN NESS**  
 Guild Opticians  
 248 MORRIS AVENUE  
 SPRINGFIELD, N. J.  
 DRexel 6-6118  
 Established 24 Years  
 in Newark

IT'S EASY TO PHONE  
**Happy Jack**  
 — or any place else in the New Orleans, Louisiana area. Just dial Area Code Number 504, then the number you want. Area Codes are the key to easy telephoning to any place. Every area has a code. You'll find them in the front pages of your phone book. Please use them for out-of-state calls. NEW JERSEY BELL

## A practical vacation for the busy housewife

Take a vacation these hot, muggy days from many of your tedious chores and let Pan American help you enjoy the summer . . . while you enjoy your family and the summer.

We'll get your wash and wear looking like new. As you know, there are certain types of dirt that can't be removed in your home washing machine, but offer no resistance to our drycleaning methods. We also press them to perfection so that they'll look better longer.

Shirts and summer washables can be a drudge . . . and tie you down to a hot iron for many hours. So drop them off at Pan American and let us show you how our "personalized" laundry service satisfies the most discriminating. Those shirts, pillow cases, sheets and linens will look better and last longer than they ever have.

We're open 7 A.M. to 7 P.M. Monday through Saturday to serve you. So, drive down to Pan American and let us start you on a vacation from needless hot weather work.

- Drive-In Parking Facilities
- Same Day Dry Cleaning at No Extra Charge
- All Dry Cleaning and Laundering Done on Premises

*Pan American* on the circle  
 at south avenue  
 Westfield



CLASSIFIED ADS

HELP-WANTED WOMEN

SECRETARY

TO DIVISION-MANAGER

INSURANCE COMPANY

DAY WORKER

CLEANING

OPPORTUNITY KNOCKS

TWO SECRETARIES

FOR SALE - FURNITURE

HOUSEHOLD GOODS FOR SALE

REGULATION pool table

FOR SALE MISG.

TO settle estate

BELGIUM BLOCKS

PIECE rattan set, \$25.4 swivel bar stools, \$20.1 Tuxedo with white and blue jackets, size 39-40, \$45, Parakeet cages, DR. 6-0610.

USED CARS FOR SALE. 1955 FORD 2 dr sedan, needs rear main seat, \$200, or best offer. Leaving for school. Call DR. 6-5709.

WE BUY BOOKS, P.M. Book Shop, 830 Park Avenue, Plainfield, PL 4-3900, Please call for details.

BALTUSROL CONSTRUCTION COMPANY, Mason, contractor, and builder. Stone, brick, sidewalks. All type concrete work and construction. Nicholas Rudis, CR. 3-4262.

FRED STENGL, Carpentry, repairs, alterations, cabinets, bars, formica tops, recreation rooms, additions, 1248 Magnolia Place, Union, N.J. MU 8-6632.

CARPENTRY, ALTERATIONS, repairs. Free estimates. Call evenings. DRexel 6-6420.

LANDSCAPE GARDENING. LANDSCAPE SERVICE-Monthly care; build and repair lawns; top dressing; shrub arrangements; tree service; free estimate. DRexel-6-2165.

LANDSCAPE GARDENER: Repair and put in new lawns, spring cleanup, seeding, fertilizing and soiling. Monthly care. Designing, trim and remove shrubs. Tree service. Mason work; drain work. DRexel 6-4568.

SCREENED and unscreened top soil, landscaping, permanent paving. Call DRexel 6-0058.

SCHMIEDE TREE EXPERT CO. Trimming - Power Spraying - Modern Tree Surgery - Topping - Land Clearing. Insured Services. Free Estimates.

CERTIFIED TREE EXPERTS. STATE FA 2-9109

SERVICES OFFERED MOVING. MOVING-STORAGE. Pianos, appliances, furniture, etc. We specialize in prompt, efficient service. Free estimates. Call Briggs Movers, DR. 9-4954.

MOVING-AND-HAULING; reasonable rates. Anytime, anywhere. DR 9-3771 or DR 9-4059.

RELIGIOUS SERVICES

SERVICES OFFERED FLOOR-WAXING

DUN-RITE MAINTENANCE CORPORATION. Fully insured Personnel. Janitorial - Window Cleaning. Floor Waxing - Vacuum Cleaning. PO 1-4708

PIANO TUNING. ALL MAKES of pianos tuned and repaired. Complete piano service. Call L. Rudman, Poplar 1-4565, 30 Berkeley St., Maplewood.

SERVICES OFFERED MISC. ARE YOU GOING ON A VACATION? We'll provide EFFICIENT DOOR-TO-DOOR AUTO-TRANSPORTATION to and from any vacation area! Maximum of four people at the same price. Prompt and Courteous Service. CALL MI 3-9432. (Between 9 and 10 AM-6 and 8 PM preferably) Airport and local transportation-Messenger and Delivery Service.

APARTMENT FOR RENT. 3 ROOM apartment, single or business couple only. Call DR 9-4314.

REAL ESTATE FOR SALE. TWELVE TREES (over 25 ft. high) shelter this 4 bedroom home with 1-1/2 baths up in Mountside on a quiet circular street. Yes, it's just as pretty as a picture with an island patio arrangement. It has a charming fireplace, a 17 ft. kitchen nice, dining room, full basement and garage. The house is just in immaculate condition and there's lots of closets and storage space. Five blocks away the new Catholic school is opening-up this September. Price is just \$23,900. Call Walter Koester, Inc., Realtors, Fanwood 2-5363, 409 Park Avenue, Scotch Plains, or evenings, Adams 3-5169.

Schmiede Care - It's surprising how many people seem to feel that the only care swimsuits need is hanging them up to dry. Actually, they should be rinsed in clean, fresh water after every use. At fairly frequent intervals, they should be washed with mild soapsuds in lukewarm water. Swimsuits should never be packed away wet, and never ironed. Ironing can destroy the stretch qualities of modern swimwear.

COMMUNITY CHURCH. Diamond Hill Road, Berkeley Heights, N.J. The Rev. Kenneth A. Fowler, Minister.

Church School 9:30 A.M. - Morning Worship 11:00 a.m. - Holy Communion 1st Sunday of each month.

COMMUNITY FREE CHURCH. 740 Shunpike Road, Springfield, N.J. Rev. Harold S. Lundin, Pastor. DRexel 9-8887

SUNDAY. 9:45 a.m. Bible School (Nursery thru Adult Classes). 11:00 a.m. Beginners' Church (Pre School age). 11:00 a.m. Children's Chapel (Ages 6-11). 11:00 a.m. Morning Worship. 6:15 p.m. Youth Fellowship. 7:30 p.m. Evening Gospel Service - Nursery care during all services.

WEDNESDAY. 7:30 p.m. Prayer and Praise Service. WELCOME INTO OUR MIDST.

ST. BARTHOLOMEW THE APOSTLE ROMAN-CATHOLIC CHURCH. Pastor: John J. Cain. Assistants: Rev. John B. Connelly, Rev. David E. O'Connell, Rev. Thomas J. McCann, Rev. Robert J. Raskowski.

9:15, 10:30, 12:12 Church Auditorium. Weekday Masses, 6:30, 7:15, 8, 8:45. Confessions - Every Monday evening at 8:30 p.m. Saturday afternoons - 4 to 5:45. Saturday evenings - 7 till 9.

Teenage Canteen - Friday evening 8:00 to 10:30 p.m. Sunday Masses: 7, 8, 9:15, 10:30, 12 in Church. Catholic Information - Anyone wishing information concerning the Catholic Church or desiring instruction in the Catholic Religion is asked to call the rectory and speak to one of the priests. The number is FA 2-5192. The address of the rectory is 2032 Westfield Avenue.

FIRST PRESBYTERIAN CHURCH. Morris Avenue at Main Street, Springfield, New Jersey. Ministers: Bruce W. Evans - Donald C. Weber.

A cordial welcome is extended to all who worship in this historic church. Representing over two hundred years of faith and service in this community, it invites you to worship and work with those in its fellowship. 10:00 a.m. Church worship service. Union Summer services in conjunction with the Methodist Church will be held in the Methodist Church during the month of July with the Rev. Donald C. Weber preaching.

FIRST CHURCH OF CHRIST SCIENTIST. 429 Westfield St., Westfield, N.J. Sunday School: 11:00 a.m. Nursery School: 11:00 a.m. Sunday Services: 9:30 and 11:00 a.m. Lesson-Sermon Topic: "Spirit" Wednesday Evening Testimony Meetings 8:15 p.m.

FIRST CHURCH OF CHRIST SCIENTIST. 282 Springfield Avenue, Summit, N.J. Sunday School: 11 a.m. Sunday Service: 11 a.m. Lesson-Sermon Topic: "Spirit" Wednesday Evening Testimony Meetings 8:15 p.m.

BAHA'IS WORLD FAITH. Bahai Open House every Thursday evening at 8 p.m. at the Lake Home, 141 Salter street, Springfield. Anyone interested in acquiring knowledge of the teaching of the Baha'i World Faith Call DR 9-5093.

OUR LADY OF LOURDES PARISH. Mountside, New Jersey. Rev. Gerard J. McGarry, Pastor. Rev. Francis F. McDermott, Assistant. Rectory: 122 Wyoming Drive. Phone Adams 1-4801.

Sunday Masses: 7:30, 9:00, 11:00, 12:00. Daily masses 7:00, 8:00. Confessions: Saturday and eve. of Holydays, 4:00 to 5:30 and 7:30 to 9:00. Baptism: Arrange in advance at Rectory or by phone. Marriages: Call at Rectory at least 6 weeks in advance, unless special circumstances demand otherwise. Sick Calls: Urges calls at any hour of day or night, if possible have your sick attend before urgency arises.

MOUNTAINEIDE CHAPEL. Mountside, N.J. Sunday, Aug. 6 9:45 a.m. Sunday School classes for all age groups from nursery through adult. Bus transportation to and

from Sunday School is available for children living in Mountside. 11:00 a.m. Morning Worship Service. 7:15 p.m. Prayer Service. 7:45 p.m. Evening Service. 9:15 p.m. Young People's Hymn Sing. Monday, Aug. 7 thru Friday Aug. 11, 9:30 a. m. to 12 noon Vacation Bible School for children 4-14 years. Wed., Aug. 9 8:00 p. m. Prayer and Bible Study meeting at the Chapel. VISITORS ARE WELCOME AT ALL SERVICES AT THE CHAPEL.

SHAREY SHALOM TEMPLE HOUSE. 28 South Springfield Avenue cor. So. Springfield Ave. & Shunpike Rd. Springfield, New Jersey Rabbi Dr. David S. Study. DRexel 9-5887.

Friday, August 4: Sabbath Eve services 8:15 p.m. Candle-Lighting Times 7:49 p.m. Religious services held in the SHAREY SHALOM - TEMPLE HOUSE 78 South Springfield Ave. (Cor. So. Springfield Ave. & Shunpike Rd.) Springfield, New Jersey.

WOODSIDE CHAPEL. Morse Avenue, Fanwood. Sunday, 11:00 A.M. - Mr. Charles Armerding will be the speaker at the Family Bible Hour service. The Sunday School will be in session in departmental groups at the same hour. 7:30 P.M. - Mr. Armerding will also bring the message at the regular evening service. Tuesday, 8:00 P.M. - Prayer and Bible Study time with studies continuing in the Book of Colossians.

CLINTON HILL BAPTIST CHURCH OF UNION, NEW JERSEY. 782 Clinton Avenue, Newark, N.J. August 3, 1961: THURSDAY PRAYER MEETING 8:30 P. M. (Educational Building) August 6, 1961 - THE LORD'S DAY (American Legion Hall) 1:45 A.M. Bible School 11:00 A.M. MORNING WORSHIP 11:00 A.M. Nursery Class 7:00 P. M. EVANGELISTIC SERVICE Our Pastor, Rev. John D. Fissel, will preach at both services.

HOLY CROSS LUTHERAN CHURCH (serving Springfield & Mountside). 888 Mountain Ave., Springfield. Lester P. Messerschmidt, Pastor. Telephone: DR 9-4526. If no answer: CR 7-6888. Thursday, August 3, 8:00 p.m. Evangelism Committee. Sunday, August 6, 1961 9:00 a.m. Sunday School 10:00 a.m. Divine Worship with Holy Communion. August 14 - 15 Vacation Bible School. HOLY CROSS EXTENDS A CORDIAL WELCOME TO ALL IN THE NAME OF CHRIST, THE SAVIOR. Nursery Care Provided; Ample Parking.

COMMUNITY PRESBYTERIAN CHURCH. Meeting House Lane, Mountside. The following will be in charge of the services at the Community Free Church, Springfield while the pastor, Rev. Harold S. Lundin will be on vacation: Sunday, August 6th - Morning Worship Hour and Evening Service - Mr. Herrmann Gerdes; Wednesday, August 9th - Prayer Service - Mr. Ray Schneiderman; Sunday, August 13th - Morning Worship Hour and Evening Service - Rev. Stewart Cuthbertson, missionary from Nigeria; Wednesday, August 16th - Prayer Service - Mr. Robert Moir. Rev. and Mrs. Stewart Cuthbertson and family will be returning to their mission work in Nigeria on August 22nd, so we urge as many as possible to take this opportunity to hear him speak for the last time on this furlough.

FANWOOD PRESBYTERIAN CHURCH. Maritime Avenue and Marian Avenue. Fanwood, New Jersey. Harold Albert, Scott, Minister. Pastoral Services are always available by calling the Church Office - 889-8891 or 889-7570. The Church Office will be closed on Mondays until September 11. Two identical worship services - 9:45 and 11:15 A.M. - will commence September 17. Note change of time. New members will be received on October 1, when the Sacrament of the Lord's Supper will be observed.

ST. JAMES R. O. CHURCH. 45 So. Springfield Avenue, Springfield, N.J. Rev. Edward N. Gehling, Rev. Richard W. Nardano, Rev. John A. Farrell, Pastor. Sunday Masses 7, 8, 9, 10, 11, and 12 o'clock. Holy Days, Masses 6, 7, 8, 9, and 10 a.m. First Friday, Distribution of Holy Communion 6:30 a.m. Masses at 7 and days and Holy Days of Obligation, 4 to 5:30 p.m. and 7:30 to 9 p.m. Baptisms - Sunday at 2 p.m. Medal. Confessions: Saturday 4:00-5:00 p.m. and 7:30 to 9 p.m., Eve. of First Friday.

TEMPLE BETH ANW. The Jewish Center of Springfield, 60 Baltusrol Way, Springfield, N.J. DRexel 9-8888. Study: DRexel 6-0839. Rabbi Reuben R. Levine. Cantor Irving Kramerman. Principal of Rel. school - Levi Ness. President Milton Kappastatter. Monday through Thursday 7 a.m. and 8:15 p.m.; Friday 7:00 a.m. and 8:45 p.m.; Saturday and Sunday 9 a.m. and 8:15 p.m.

All are cordially invited to worship with us. ST. JOHN'S LUTHERAN CHURCH. 159 Springfield Avenue, Rev. W. S. Hinman, PH. D.

Notice is hereby given that sealed bids will be received by the Township of Springfield, for the construction of a shelter house at Irwin St. Playground. The size of the shelter house will be 30' x 55' and shall contain toilet facilities. Bids will be opened and read in public at the Springfield Municipal Building on August 8, 1961 at 8:15 P.M. prevailing time. Bids must be accompanied by a certified check in an amount equal to ten (10) percent of the amount bid. Bids must also be accompanied by a Surety Company Certificate stating that said Surety Company will provide the bidder with the required bond and shall be enclosed in a sealed envelope, bearing the name of the bidder on the outside and shall be delivered at the place and on the hour above named. Plans and specifications may be seen and procured at the office of Alfred H. Swenson, Township Engineer, Municipal Building, Mountside Avenue, Springfield, N.J. The Township Committee reserves the right to reject any or all bids, if, in the interest of the Township it is deemed advisable to do so. By order of the Township Committee of the Township of Springfield, New Jersey. July 27, 1961 Edward Ruby, Director of Recreation. August 3, 1961

FIRST CHURCH OF CHRIST SCIENTIST. 211 Springfield Avenue, Summit, N.J. A branch of THE MOTHER CHURCH, THE FIRST CHURCH OF CHRIST SCIENTIST in Boston, Mass. Sunday School at 11:00 A.M. Wednesday Testimony Meetings 8:15 P.M. Reading Room, 248 Springfield Ave. Sunday and Holydays, and after the Wednesday meeting 8:15 to 9:30. Also Friday Evenings 7:30 to 9:30 - except July and August.

SHAREY SHALOM TEMPLE HOUSE. 28 South Springfield Avenue cor. So. Springfield Ave. & Shunpike Rd. Springfield, New Jersey Rabbi Dr. David S. Study. DRexel 9-5887.

Friday, August 4: Sabbath Eve services 8:15 p.m. Candle-Lighting Times 7:49 p.m. Religious services held in the SHAREY SHALOM - TEMPLE HOUSE 78 South Springfield Ave. (Cor. So. Springfield Ave. & Shunpike Rd.) Springfield, New Jersey.

WOODSIDE CHAPEL. Morse Avenue, Fanwood. Sunday, 11:00 A.M. - Mr. Charles Armerding will be the speaker at the Family Bible Hour service. The Sunday School will be in session in departmental groups at the same hour. 7:30 P.M. - Mr. Armerding will also bring the message at the regular evening service. Tuesday, 8:00 P.M. - Prayer and Bible Study time with studies continuing in the Book of Colossians.

CLINTON HILL BAPTIST CHURCH OF UNION, NEW JERSEY. 782 Clinton Avenue, Newark, N.J. August 3, 1961: THURSDAY PRAYER MEETING 8:30 P. M. (Educational Building) August 6, 1961 - THE LORD'S DAY (American Legion Hall) 1:45 A.M. Bible School 11:00 A.M. MORNING WORSHIP 11:00 A.M. Nursery Class 7:00 P. M. EVANGELISTIC SERVICE Our Pastor, Rev. John D. Fissel, will preach at both services.

HOLY CROSS LUTHERAN CHURCH (serving Springfield & Mountside). 888 Mountain Ave., Springfield. Lester P. Messerschmidt, Pastor. Telephone: DR 9-4526. If no answer: CR 7-6888. Thursday, August 3, 8:00 p.m. Evangelism Committee. Sunday, August 6, 1961 9:00 a.m. Sunday School 10:00 a.m. Divine Worship with Holy Communion. August 14 - 15 Vacation Bible School. HOLY CROSS EXTENDS A CORDIAL WELCOME TO ALL IN THE NAME OF CHRIST, THE SAVIOR. Nursery Care Provided; Ample Parking.

COMMUNITY PRESBYTERIAN CHURCH. Meeting House Lane, Mountside. The following will be in charge of the services at the Community Free Church, Springfield while the pastor, Rev. Harold S. Lundin will be on vacation: Sunday, August 6th - Morning Worship Hour and Evening Service - Mr. Herrmann Gerdes; Wednesday, August 9th - Prayer Service - Mr. Ray Schneiderman; Sunday, August 13th - Morning Worship Hour and Evening Service - Rev. Stewart Cuthbertson, missionary from Nigeria; Wednesday, August 16th - Prayer Service - Mr. Robert Moir. Rev. and Mrs. Stewart Cuthbertson and family will be returning to their mission work in Nigeria on August 22nd, so we urge as many as possible to take this opportunity to hear him speak for the last time on this furlough.

FANWOOD PRESBYTERIAN CHURCH. Maritime Avenue and Marian Avenue. Fanwood, New Jersey. Harold Albert, Scott, Minister. Pastoral Services are always available by calling the Church Office - 889-8891 or 889-7570. The Church Office will be closed on Mondays until September 11. Two identical worship services - 9:45 and 11:15 A.M. - will commence September 17. Note change of time. New members will be received on October 1, when the Sacrament of the Lord's Supper will be observed.

ST. JOHN'S LUTHERAN CHURCH. 159 Springfield Avenue, Rev. W. S. Hinman, PH. D.

Notice is hereby given that sealed bids will be received by the Township of Springfield, for the construction of a shelter house at Irwin St. Playground. The size of the shelter house will be 30' x 55' and shall contain toilet facilities. Bids will be opened and read in public at the Springfield Municipal Building on August 8, 1961 at 8:15 P.M. prevailing time. Bids must be accompanied by a certified check in an amount equal to ten (10) percent of the amount bid. Bids must also be accompanied by a Surety Company Certificate stating that said Surety Company will provide the bidder with the required bond and shall be enclosed in a sealed envelope, bearing the name of the bidder on the outside and shall be delivered at the place and on the hour above named. Plans and specifications may be seen and procured at the office of Alfred H. Swenson, Township Engineer, Municipal Building, Mountside Avenue, Springfield, N.J. The Township Committee reserves the right to reject any or all bids, if, in the interest of the Township it is deemed advisable to do so. By order of the Township Committee of the Township of Springfield, New Jersey. July 27, 1961 Edward Ruby, Director of Recreation. August 3, 1961

FIRST CHURCH OF CHRIST SCIENTIST. 211 Springfield Avenue, Summit, N.J. A branch of THE MOTHER CHURCH, THE FIRST CHURCH OF CHRIST SCIENTIST in Boston, Mass. Sunday School at 11:00 A.M. Wednesday Testimony Meetings 8:15 P.M. Reading Room, 248 Springfield Ave. Sunday and Holydays, and after the Wednesday meeting 8:15 to 9:30. Also Friday Evenings 7:30 to 9:30 - except July and August.

SHAREY SHALOM TEMPLE HOUSE. 28 South Springfield Avenue cor. So. Springfield Ave. & Shunpike Rd. Springfield, New Jersey Rabbi Dr. David S. Study. DRexel 9-5887.

Friday, August 4: Sabbath Eve services 8:15 p.m. Candle-Lighting Times 7:49 p.m. Religious services held in the SHAREY SHALOM - TEMPLE HOUSE 78 South Springfield Ave. (Cor. So. Springfield Ave. & Shunpike Rd.) Springfield, New Jersey.

WOODSIDE CHAPEL. Morse Avenue, Fanwood. Sunday, 11:00 A.M. - Mr. Charles Armerding will be the speaker at the Family Bible Hour service. The Sunday School will be in session in departmental groups at the same hour. 7:30 P.M. - Mr. Armerding will also bring the message at the regular evening service. Tuesday, 8:00 P.M. - Prayer and Bible Study time with studies continuing in the Book of Colossians.

CLINTON HILL BAPTIST CHURCH OF UNION, NEW JERSEY. 782 Clinton Avenue, Newark, N.J. August 3, 1961: THURSDAY PRAYER MEETING 8:30 P. M. (Educational Building) August 6, 1961 - THE LORD'S DAY (American Legion Hall) 1:45 A.M. Bible School 11:00 A.M. MORNING WORSHIP 11:00 A.M. Nursery Class 7:00 P. M. EVANGELISTIC SERVICE Our Pastor, Rev. John D. Fissel, will preach at both services.

HOLY CROSS LUTHERAN CHURCH (serving Springfield & Mountside). 888 Mountain Ave., Springfield. Lester P. Messerschmidt, Pastor. Telephone: DR 9-4526. If no answer: CR 7-6888. Thursday, August 3, 8:00 p.m. Evangelism Committee. Sunday, August 6, 1961 9:00 a.m. Sunday School 10:00 a.m. Divine Worship with Holy Communion. August 14 - 15 Vacation Bible School. HOLY CROSS EXTENDS A CORDIAL WELCOME TO ALL IN THE NAME OF CHRIST, THE SAVIOR. Nursery Care Provided; Ample Parking.

COMMUNITY PRESBYTERIAN CHURCH. Meeting House Lane, Mountside. The following will be in charge of the services at the Community Free Church, Springfield while the pastor, Rev. Harold S. Lundin will be on vacation: Sunday, August 6th - Morning Worship Hour and Evening Service - Mr. Herrmann Gerdes; Wednesday, August 9th - Prayer Service - Mr. Ray Schneiderman; Sunday, August 13th - Morning Worship Hour and Evening Service - Rev. Stewart Cuthbertson, missionary from Nigeria; Wednesday, August 16th - Prayer Service - Mr. Robert Moir. Rev. and Mrs. Stewart Cuthbertson and family will be returning to their mission work in Nigeria on August 22nd, so we urge as many as possible to take this opportunity to hear him speak for the last time on this furlough.

FANWOOD PRESBYTERIAN CHURCH. Maritime Avenue and Marian Avenue. Fanwood, New Jersey. Harold Albert, Scott, Minister. Pastoral Services are always available by calling the Church Office - 889-8891 or 889-7570. The Church Office will be closed on Mondays until September 11. Two identical worship services - 9:45 and 11:15 A.M. - will commence September 17. Note change of time. New members will be received on October 1, when the Sacrament of the Lord's Supper will be observed.

ST. JOHN'S LUTHERAN CHURCH. 159 Springfield Avenue, Rev. W. S. Hinman, PH. D.

Notice is hereby given that sealed bids will be received by the Township of Springfield, for the construction of a shelter house at Irwin St. Playground. The size of the shelter house will be 30' x 55' and shall contain toilet facilities. Bids will be opened and read in public at the Springfield Municipal Building on August 8, 1961 at 8:15 P.M. prevailing time. Bids must be accompanied by a certified check in an amount equal to ten (10) percent of the amount bid. Bids must also be accompanied by a Surety Company Certificate stating that said Surety Company will provide the bidder with the required bond and shall be enclosed in a sealed envelope, bearing the name of the bidder on the outside and shall be delivered at the place and on the hour above named. Plans and specifications may be seen and procured at the office of Alfred H. Swenson, Township Engineer, Municipal Building, Mountside Avenue, Springfield, N.J. The Township Committee reserves the right to reject any or all bids, if, in the interest of the Township it is deemed advisable to do so. By order of the Township Committee of the Township of Springfield, New Jersey. July 27, 1961 Edward Ruby, Director of Recreation. August 3, 1961

FIRST CHURCH OF CHRIST SCIENTIST. 211 Springfield Avenue, Summit, N.J. A branch of THE MOTHER CHURCH, THE FIRST CHURCH OF CHRIST SCIENTIST in Boston, Mass. Sunday School at 11:00 A.M. Wednesday Testimony Meetings 8:15 P.M. Reading Room, 248 Springfield Ave. Sunday and Holydays, and after the Wednesday meeting 8:15 to 9:30. Also Friday Evenings 7:30 to 9:30 - except July and August.

TEMPLE BETH ANW. The Jewish Center of Springfield, 60 Baltusrol Way, Springfield, N.J. DRexel 9-8888. Study: DRexel 6-0839. Rabbi Reuben R. Levine. Cantor Irving Kramerman. Principal of Rel. school - Levi Ness. President Milton Kappastatter. Monday through Thursday 7 a.m. and 8:15 p.m.; Friday 7:00 a.m. and 8:45 p.m.; Saturday and Sunday 9 a.m. and 8:15 p.m.

All are cordially invited to worship with us. ST. JOHN'S LUTHERAN CHURCH. 159 Springfield Avenue, Rev. W. S. Hinman, PH. D.

Notice is hereby given that sealed bids will be received by the Township of Springfield, for the construction of a shelter house at Irwin St. Playground. The size of the shelter house will be 30' x 55' and shall contain toilet facilities. Bids will be opened and read in public at the Springfield Municipal Building on August 8, 1961 at 8:15 P.M. prevailing time. Bids must be accompanied by a certified check in an amount equal to ten (10) percent of the amount bid. Bids must also be accompanied by a Surety Company Certificate stating that said Surety Company will provide the bidder with the required bond and shall be enclosed in a sealed envelope, bearing the name of the bidder on the outside and shall be delivered at the place and on the hour above named. Plans and specifications may be seen and procured at the office of Alfred H. Swenson, Township Engineer, Municipal Building, Mountside Avenue, Springfield, N.J. The Township Committee reserves the right to reject any or all bids, if, in the interest of the Township it is deemed advisable to do so. By order of the Township Committee of the Township of Springfield, New Jersey. July 27, 1961 Edward Ruby, Director of Recreation. August 3, 1961

FIRST CHURCH OF CHRIST SCIENTIST. 211 Springfield Avenue, Summit, N.J. A branch of THE MOTHER CHURCH, THE FIRST CHURCH OF CHRIST SCIENTIST in Boston, Mass. Sunday School at 11:00 A.M. Wednesday Testimony Meetings 8:15 P.M. Reading Room, 248 Springfield Ave. Sunday and Holydays, and after the Wednesday meeting 8:15 to 9:30. Also Friday Evenings 7:30 to 9:30 - except July and August.

TEMPLE BETH ANW. The Jewish Center of Springfield, 60 Baltusrol Way, Springfield, N.J. DRexel 9-8888. Study: DRexel 6-0839. Rabbi Reuben R. Levine. Cantor Irving Kramerman. Principal of Rel. school - Levi Ness. President Milton Kappastatter. Monday through Thursday 7 a.m. and 8:15 p.m.; Friday 7:00 a.m. and 8:45 p.m.; Saturday and Sunday 9 a.m. and 8:15 p.m.

All are cordially invited to worship with us. ST. JOHN'S LUTHERAN CHURCH. 159 Springfield Avenue, Rev. W. S. Hinman, PH. D.

Notice is hereby given that sealed bids will be received by the Township of Springfield, for the construction of a shelter house at Irwin St. Playground. The size of the shelter house will be 30' x 55' and shall contain toilet facilities. Bids will be opened and read in public at the Springfield Municipal Building on August 8, 1961 at 8:15 P.M. prevailing time. Bids must be accompanied by a certified check in an amount equal to ten (10) percent of the amount bid. Bids must also be accompanied by a Surety Company Certificate stating that said Surety Company will provide the bidder with the required bond and shall be enclosed in a sealed envelope, bearing the name of the bidder on the outside and shall be delivered at the place and on the hour above named. Plans and specifications may be seen and procured at the office of Alfred H. Swenson, Township Engineer, Municipal Building, Mountside Avenue, Springfield, N.J. The Township Committee reserves the right to reject any or all bids, if, in the interest of the Township it is deemed advisable to do so. By order of the Township Committee of the Township of Springfield, New Jersey. July 27, 1961 Edward Ruby, Director of Recreation. August 3, 1961

FIRST CHURCH OF CHRIST SCIENTIST. 211 Springfield Avenue, Summit, N.J. A branch of THE MOTHER CHURCH, THE FIRST CHURCH OF CHRIST SCIENTIST in Boston, Mass. Sunday School at 11:00 A.M. Wednesday Testimony Meetings 8:15 P.M. Reading Room, 248 Springfield Ave. Sunday and Holydays, and after the Wednesday meeting 8:15 to 9:30. Also Friday Evenings 7:30 to 9:30 - except July and August.

TEMPLE BETH ANW. The Jewish Center of Springfield, 60 Baltusrol Way, Springfield, N.J. DRexel 9-8888. Study: DRexel 6-0839. Rabbi Reuben R. Levine. Cantor Irving Kramerman. Principal of Rel. school - Levi Ness. President Milton Kappastatter. Monday through Thursday 7 a.m. and 8:15 p.m.; Friday 7:00 a.m. and 8:45 p.m.; Saturday and Sunday 9 a.m. and 8:15 p.m.

All are cordially invited to worship with us. ST. JOHN'S LUTHERAN CHURCH. 159 Springfield Avenue, Rev. W. S. Hinman, PH. D.

Notice is hereby given that sealed bids will be received by the Township of Springfield, for the construction of a shelter house at Irwin St. Playground. The size of the shelter house will be 30' x 55' and shall contain toilet facilities. Bids will be opened and read in public at the Springfield Municipal Building on August 8, 1961 at 8:15 P.M. prevailing time. Bids must be accompanied by a certified check in an amount equal to ten (10) percent of the amount bid. Bids must also be accompanied by a Surety Company Certificate stating that said Surety Company will provide the bidder with the required bond and shall be enclosed in a sealed envelope, bearing the name of the bidder on the outside and shall be delivered at the place and on the hour above named. Plans and specifications may be seen and procured at the office of Alfred H. Swenson, Township Engineer, Municipal Building, Mountside Avenue, Springfield, N.J. The Township Committee reserves the right to reject any or all bids, if, in the interest of the Township it is deemed advisable to do so. By order of the Township Committee of the Township of Springfield, New Jersey. July 27, 1961 Edward Ruby, Director of Recreation. August 3, 1961

Crestmont Savings Money saved by the 15th earns dividends from the 1st. CURRENT DIVIDEND 3 3/4% per annum. Crestmont Savings AND LOAN ASSOCIATION. 1886 Springfield Ave. Mapletown, N. J. SO 2-4700 (Main Office). 175 Morris Ave. Springfield, N. J. DR 6-5240 (Springfield Office). 1634 Springfield Ave. Mapletown, N. J. SO 2-1771 (Tuscon Office). Single are insured up to \$10,000 by the Federal Savings and Loan Insurance Corporation.

Mid-Summer SALE DUNLOP TIRES. 1st Line from 99¢. Unconditional Guarantee against cuts and bruises. EXTRA DISCOUNTS FIRESTONE U.S. ROYAL GOODRICH GOODYEAR. New showroom tires exchanged for used Dunlop tires. WORLD Tire Co. 1701 SPRINGFIELD AVE. (Opp. Hillon Branch of Mapletown Library) Mapletown SO 3-1700. TIRE SPECIALISTS SINCE 1914 Newark Street 1189 BRIDGE ST.

FIRST in friendly service! IMAGINE YOURSELF IN PARIS! Then hurry over to First Federal and start a profitable Savings Account. Save \$10 a week for 52 weeks and you'll have enough for one far to France. Use our postage-paid Save-By-Mail Envelopes to keep on a savings schedule with ease. Save by the 10th - Earn from the 1st. Save Where You See The Cupola Clock. Save First at Friendly First Federal. FIRST FEDERAL SAVINGS 150 ELM STREET, WESTFIELD, NEW JERSEY. Includes illustration of a Parisian cafe scene and a church cupola.



## Town Playgrounds Feature Pet Shows

French Poodle "Ins At Irwin Playground

At the Springfield Playground season rolled past the half way point, the children kept all the activities humming. As a highlight last week, however, the children shared their fun with their pets. Each of the eight Springfield Playgrounds featured a pet show last week. The children turned out, the pets turned out and fun-and-frolic was enjoyed by all.

At Irwin Playground Barbara Kornish and her little French poodle "Napoleon" won first place in the Pet Show. Tommy Rossiter was also a first place winner. Tommy brought two very new puppies to the pet show and they won awards for being the cutest pets. Eileen Schramm presented the most unusual pet, a very large rabbit. Those who took summer ribbons for their pets were: Robert and Steven Sergi, twin kittens, Cynthia Sergi; a bird Patricia Howarth; dachshund,

and Lynn Gerber; a beagle. A Hobby Show was also held at Irwin last week. Missy Sheehan, Barbara Kornish, and Susan Wnek each took a portion of first place. Missy's hobby is sewing. Barbara is a dog enthusiast and Susan has a very interesting doll collection. These table-top place were Marlene Mettrione for her shell collection and Patricia Howarth, who is a do-it-yourself artist. The third place finishers in this hobby show were: Patty Sheehan for her "Barbie" dolls

Ricky Wnek for his rock collection, and Lynn Gerber for her paper-dolls. Irwin Playground attempted to beat the heat last week with a Watermelon eating contest. Leaders Maryann Donington and Al Hector supplied the watermelon and we don't know if any was substantially cooled, but we do know by the watermelon stained faces that fun was had by all. Paul DeVecchio won the prize for eating his piece of watermelon the fastest. Judy Wnek placed second in this category and Jackie Gargano was third. The winner for collecting the most pits was Linda Barrett. Val De Vecchio and Arthur Kravitz were second and third. Collecting pits in a watermelon eating contest is a most interesting activity and can insure much fun.

### Hurricanes Stage Comeback

The Irwin Indians kick-ball team defeated Caldwell twice last week by scores of 40-19 and 11-3. The Indians played outstanding ball at both games. Spanky LaMotta, Robert Arnold, Missy Sheehan, Steven Alexy, Judy Wnek, Robert and Steven and Cynthia Sergi, Brian Mullen and the rest of the team all played well. The Irwin

Indians baseball team to first place in the Playground Baseball League last week. Wilbur Hill the Irwin star pitcher was most responsible for the Indians success. Wilbur twice last week turned in 1-0 shut outs. The Regional Tigers and the Henshaw Hurricanes were opponents for these games. Wilbur won a third game in the week as he defeated the Riverside Rockets 6-2. Heavy hitting for the Irwin team was provided by George P. ... .. Steve Segal, and Jimmy Cannon.

### 5 Take 1st Place At Caldwell

Caldwell Playground located in the rear of James Caldwell School presented a pet show as its feature attraction last week. First place ribbons were won by: Kathy and Mike Kopeck, Buddy Haas, Joanne Crosser, and Bill Chisholm. Don Cubberly, Peg Gramer, Pete Metrick, and Lucida Crosset took second place ribbons. Those winning third place ribbons were Jeff Chisholm, Lucille Hardgrove, Phillip Logan Dawn Zarell, and John Meirdierck. Honorable mention was given to Lucille Hardgrove, Nola Mattice, Charla Maas and Dawn Zarell. Two washclothes, some ribbon and a little patience was all that was needed to make Eskimos. All enjoyed them. Recent winners of the Around the

World in Eight Weeks Contest are: Joan Swan, Janice Hardgrove, Annette Viscardi, Denise Lester, Joe Pepe, and Kathy Kopeck. The various Caldwell Champions so far are: Checkers - Scott Gordon and Lucida Smith, Chess - Fred Melroy and Chyrsie Jo Landrigan, Tetherball - Mike Lester, Hopscotch - Janice Hartgrove, and Jacks - Annette Viscardi.

### 8 Win at Regional

show at Regional Playground produced eight winners. Those who won prizes for their pets were: Janet Brindell, Kathy Decker, Richard Damiano, Patty Lalak, Kathy Francis, Lenny Scelfe, Gil VanBuskirk, and Roberta Wexler. Last week at Regional Playground Japanese water color fans were made by the children. The best among those were made by Janet Brindell, Nancy VanFrankin, and Lois Roth. Clown Faces from paper were made by Mary Fitzsimmons Elaine Fleischman, and Patty Caruse. Lenny Scelfe, Elaine Fleischman, Patty Lalak and Joe Slipka made stuffed animals. A Hopscotch tournament was held at Regional Playground last week. Marie Lewandewski defeated all the other girls to become the Playground Champion. Patricia Anderson was second and Sherry Greenfelt placed third. Pete Lawrence won the Regional Washer Championship by defeating all the other boys in the contest. Richard Damiano was second in this event and Pete Sayki was third. Sherry Greenfelt, Vivian Geiger, and Michelle Sierchio were the winners in a paper doll contest last week. A very exciting contest was held by Regional last week. This was a bubble-gum blowing event. This was fun and sticky and the winners were: Robin Geiger and Lenny Scelfe. Sherry Greenfelt and Michelle Sierchio composed the team which won the Scavenger Hunt. Eileen Francis and Sandy Caffery were the team that finished second. Leader Myrna Cyr planned this activity and the children all had fun hunting for the odd items which were listed. Those who showed talent in Plaster of Paris work were: JoAnn Smith, Lenny Scelfe, and Lisa Olesky. Another major event of last week at Regional Playground was a hat contest. The hats judged to be the prettiest were made and worn by Ellen Nielsen and Robin Geiger, the cutest were by Ruth Weiss and Patty Lalak, the funniest hats were made by Lenny Scelfe and Sherry Greenfelt. Those which were most original were created by Michelle Sierchio and Elaine Fleischman. Pipe cleaner men were made by

Lisa Olesky, Patty Lalak, and Kathy Stevens. At Regional Playground, playcraft birds were made by Peter Sayki and John Gaddella.

### Pat Foley's Worms Win Special Prize at Riverside

There was great excitement at Riverside Playground when four dogs, two cats, four goldfish, and one jar of worms got together. The children paraded their animals past the judges stand as Cathie Werle and Tina D'Andrea made careful selection. The first prize winners were: Debby Graveman who entered a toy poodle, "Frenchie", Michael Robinson who entered Siamese cat "Coco" and Frances Moore who entered her goldfish.

"Goldie" The second place winners were: Gretchen Keat for her two German shepherds "Ola and Debby", Michael Bordesca for his cat, "Tiger" and Joyce Martini for her goldfish. The third place winners were: Dolores Mainelli for her scottie, "Skippy" and Louis Dantel for his goldfish. A special prize went to Pat Foley for his jar of trained worms. The best show award was won by "Frenchie" the French poodle entered by Debby Graveman. Last Friday Riverside Playground held a "farewell party" in honor of Louis Dantel, the Georgian, who has been with the playground for the past four weeks. Saturday-Louis leaves for home in Atlanta. Some of the girls and boys baked cakes.

**EMKAY PAINT & WALLPAPER CO.**

RT. 22  
PL 6-0089

**NORTH PLAINFIELD  
OPEN DAILY & SUNDAY**

## WESTFIELD CITY-WIDE SALE DAYS

THURSDAY AUG. 3      FRIDAY AUG. 4      SATURDAY AUG. 5

Get Your Sale Bargains and FREE MOVIE TICKETS ...to "Dog of Flanders" and "5 Color Cartoons"

10 A.M. Monday, August 7 At The Rialto Theatre, Westfield.

**GET YOUR SALE BARGAINS AND FREE MOVIE TICKETS AT THE STORES DISPLAYING THE RED, WHITE AND BLUE SALE BANNERS.**

**FREE MOVIE TICKETS** with your purchases ...to "Dog of Flanders" and "5 Color Cartoons" 10 A.M. Monday, August 7 At The Rialto Theatre, Westfield.

**STORES OPEN LATE** Thursday & Friday Night

Sale Sponsored by the Retail Trades Division, Westfield Area Chamber of Commerce.

**Black Areas Show Westfield Parking Lots**

Parking is never a problem in Westfield. Six off-the-street parking areas and numerous on-the-street spaces are available to you. Parking facilities for over 4,000 cars a day!

# FREE! 100 *Stamps* GREEN STAMPS

with Meat purchase of \$3 or more in addition to your regular stamps and coupon at right

## Free 100 *Stamps* GREEN STAMPS

with purchase of \$3 or more

Name \_\_\_\_\_  
Address \_\_\_\_\_  
Town \_\_\_\_\_

Expires Sat., Aug. 5th, 1961

Duncan Hines Layer Cake White, Yellow, Spice, Devil's Food, Coconut Surprise, Fudge Marble	3	pkgs.	\$1
Princess Colored Napkins	3	pkgs. of 250	\$1
Ideal Orange-Pineapple Drinks or Orange Apricot	3	46 oz. cans	89c
Tender Delicious Niblets Corn	3	12 oz. cans	55c
Snappy Dog Food	6	15 1/2 oz. cans	55c
Libby Tomato Juice	3	46 oz. cans	89c
Manger Hotel Coffee		1 lb. can	79c
<b>Fruits &amp; Vegetables</b>			
<b>JERSEY SWEET CORN</b>	<b>12</b>	ears	<b>39c</b>
Le Grand Nectarines	2	lbs.	35c
Red Ripe Watermelons	Cut Up lb. 5c	Whole lb.	4c
<b>Frozen Foods</b>			
Birds Eye Mixed Vegetables	3	10 oz. pkgs.	55c
Birds Eye Peas & Carrots	3	10 oz. pkgs.	55c
Morton's Apple Pies		each	29c
Lancaster Brand Cheeseburgers	2	8 oz. pkgs.	89c
Sliced Swordfish Steaks		lb.	69c
<b>Bakery Specials</b>			
Virginia Lee Blueberry Pie		each	59c
Farmdale Enriched White Bread	2	loaves	39c

All prices effective thru Saturday, August 5th

## Famous Lancaster Brand BIG BEEF SALE!

Sirloin Steaks	lb.	79c
Porterhouse Steaks	lb.	89c
Rib Roast Oven-Ready	1st Cuts Slightly Higher	lb. 65c
Chuck Roast Bone In	lb.	35c
Chuck Steak	lb.	39c
California Roast	lb.	49c
Arm Pot Roast	lb.	59c
Boneless Chuck Roast	lb.	69c
Cross Rib Roast Boneless	lb.	79c
Round Roast Top or Bottom - Boneless	lb.	99c
Boneless Brisket Beef	lb.	79c
Eye Round Roast	lb.	\$1.09
Top Sirloin Roast	lb.	99c
Short Ribs of Beef	lb.	39c
Plate Beef	lb.	19c
Ground Beef	lb.	45c
Ground Chuck	lb.	69c
Ground Round	lb.	99c
Beef Liver	lb.	49c
Beef Tripe	lb.	29c
Ox Tails	lb.	29c
Smoked Beef Tongues	lb.	49c

## THE LEGAL LIMIT

The legal limit is always a good catch... and when you save at The First State Bank, you get the maximum interest on your deposits - 3% per year. No insured commercial bank in the United States is allowed by law to pay more.

For maximum safety and maximum interest, open your Savings Account today at any office of The First State Bank.

"One of the fastest growing banks in the United States"

## FIRST STATE BANK OF UNION

UNION NEW JERSEY

BWY BRANCH  
Route 11 at  
Monroe Street

Towhee Branch  
Morris Ave.  
at Potter Ave.

Main Office: Morris Avenue at Burke Parkway  
Member Federal Deposit Insurance Corporation  
MURdock 6-4800



**MOVIE CLOCK**  
 Nurse, 1:30, 9:10. School for Scoundrels, 3:00, 7:35. Aug. 5--Return of the Fly, 1:25. Johnny Giant Killer, 2:50. Carry on Nurse, 4:20, 7:25, 10:30. School for Scoundrels, 5:50, 9:00, Aug. 6--Carry on Nurse, 1:00, 4:00, 7:10, 10:20. School for Scoundrels, 2:30, 5:30, 8:40.  
**SUMMIT**  
 Aug. 2, 3, 4, 7, 8--Carry on Nurse, 1:30, 4:30, 7:30, 10:30. School for Scoundrels, 2:30, 5:30, 8:30, 11:30.  
**WESTFIELD**  
 Aug. 2, 3, 4, 8--Pepe, 2:30, 7:00, 9:40. Aug. 5--Pepe, 2:40, 5:55, 9:10. Aug. 6--Canadians, 2:00, 5:10, 8:20. Ladies Man, 3:35, 6:45, 9:55. Aug. 7, 8--Canadians, 2:30, 5:40. Ladies Man, 3:55, 7:00, 10:05. Aug. 9, 10--Patrick, 2:40, 7:00, 9:25.  
**UNION**  
**UNION THEATRE**  
 Aug. 3, 4, 7--On the Double, 1:15, 7:00, 10:25. Wild in the Country, 2:50, 8:35. Aug. 5--On the Double, 1:40, 5:05, 8:35. Wild in the Country, 3:05, 6:35, 10:08. Aug. 6--On the Double, 1:15, 4:45, 8:15. Wild in the Country, 2:45, 6:15, 9:45. Aug. 7, 8--Fabulous World of Jules Verne, 2:45, 8:30. On the Double, 1:05, 7:00, 10:05. Aug. 9, 10--Carry on Nurse, 2:30, 5:40. School for Scoundrels, 7:00, 10:00.  
**WESTFIELD**  
**RIALTO THEATRE**  
 Aug. 2--Kiddie Matinee, 1:00. On the Double, 7:00, 10:25. Wild in the Country, 8:30. Aug. 3, 4, 7--On the Double, 7:30, 10:25. Wild in the Country, 8:30. Aug. 5, 6--On the Double, 3:20, 6:55, 10:25. Wild in the Country, 1:30, 5:00, 8:35.

**Trotola's**  
 ESTABLISHED 1920  
**RESTAURANT**  
 and COCKTAIL LOUNGE  
 finest ITALIAN-AMERICAN cuisine  
 a la carte entrees  
 TWO DINING ROOMS  
 PRIVATE ROOMS FOR PARTIES  
 1/2 mile from Parkway Exit # 138  
 RECOMMENDED BY DUNCAN HINE  
**5 POINTS UNION, N. J.**  
 for RESERVATIONS • MUdock 7-0707  
 NOON TO 10 P.M. • MIDNIGHT SATURDAYS  
 CLOSED SUNDAY AND MONDAY

**HAVE YOU TRIED Sip & Sup**  
 DRIVE-IN RESTAURANTS LATELY  
 Our Menu Now Includes  
 Hot Roast Beef and Hot Turkey Sandwiches  
 Mashed Potatoes  
 Ham Steak with Pineapple Ring  
 Daily Specials  
 Delicious Steaks, Shrimp, Chicken-in-Basket  
 "Where the Right Crowd Meets To Eat"  
 Morris & Springfield Aves. Springfield - DRexel 6-2006  
 ROUTE 10 Morris Plains - JR 6-8813  
 Open Daily 8:30 a.m. to 12:30 a.m.  
 Fri.-Sat. 'til 2 a.m.  
 Car Service Extraordinary

**EAT OUT WITH THE FAMILY**  
 Enjoy fine food in a gracious atmosphere where reasonable prices prevail. Catering to the entire family.  
**SPRINGFIELD DINER**  
 593 Morris Avenue Springfield  
 (At the 5 Corners)  
 • Open 24 hours a day  
 • Featuring Business Men's Lunch 11 to 2  
 • Parking - In Rear

**AIR CONDITIONED RIALTO**  
 WESTFIELD AD 2-1288  
 MON. THRU TUES.  
 DANNY KAY  
 ON THE DOUBLE  
 ALSO  
 ELVIS PRESLEY  
 WILD IN THE COUNTRY  
 WED. MATINEE ONLY 8/9  
 BOWERY BOYS in  
 PARIS PLAYBOYS  
 ELEPHANT STAMPEDE  
 COLOR-CARTOONS

**UNION**  
 NOW THRU SUNDAY  
 Danny Kaye • Dana Wynter  
 "ON THE DOUBLE"  
 Elvis Presley Hope Lange  
 "WILD IN THE COUNTRY"  
 Starts Mon. for 2 Days  
 "FABULOUS WORLD OF JULES VERNE"  
 "BIMBO THE GREAT"  
 Starts Wednesday EVE.  
 "CARRY ON NURSE"  
 SCHOOL FOR SCOUNDRELS

**PAPER MILL PLAYHOUSE**  
 CELESTINE  
 INVITATION TO A MARCH

**LOEWS NEWARK**  
 JAMES RICHARD SHIRLEY STEWART WIDMARK JONES  
 "TWO RODE TOGETHER"  
 IN COLOR  
 STOP ME BEFORE I KISS YOU  
**LOEWS JERSEY CITY**  
 WILLIAM WYLER'S  
**BENHUR**  
 TECHNICOLOUR

**AIR-CONDITIONED NEW PARK**  
 Held Over 2nd Big Week!  
 POPULAR PRICES  
**BENHUR**  
 Performance Twice Daily  
 Mat. 2 p.m. Eve. 8 p.m. Except Sat. 8:30 p.m. Box Office Opens Daily 1:15 & 6:30 p.m.  
 Seats Not Reserved; Children 75c

**The TOWER Inn**  
 STEAK HOUSE  
 ROUTE 22 MOUNTAINSIDE

**BELLEVUE**  
 UPPER MONTCLAIR, N. J.  
 EXCLUSIVE No. Jersey ENGAGEMENT  
 STARTS FRIDAY  
 ALL SEATS RESERVED.  
 BOX OFFICE OPEN DAILY  
 PHONE PI 4-1453  
 EYES. \$2.50-3.50  
 MATS. \$1.75-2.25

**3 HOURS of FUN**  
 1:25 Weekdays 1:50 Eve., Sat., Sun. & Holidays  
 ARCHERY • MINIATURE GOLF • CANOEING  
 ROLLER SKATING • PING PONG • BADMINTON  
 PONY & HORSE RIDING & INSTRUCTIONS  
**Bowcraft Woodland Playland**  
 Rte 22 Scotch Plains AD 3-0675

**Meadowbrook**  
 DINNER THEATER  
 TUESDAY THRU SUNDAY  
**DENNIS DAY**  
**FINIAN'S RAINBOW**  
 ROUTE 23 • CEDAR GROVE, N. J. • Res. GL-6-1455

**THE PARK HOTEL**  
 PLAINFIELD  
 RECEPTIONS • PARTIES • BANQUETS  
 Reservations Albert W. Stender  
 PL 6-3400 Owner-Management

A guide to the best business organizations in the Watching Weekly area. These firms offer prompt service and have reputations for the highest quality & reliability.  
**BUSINESS DIRECTORY**  
 FEATURE OF: SPRINGFIELD SUN • MOUNTAINSIDE ECHO • BERKELEY BEACON  
 SCOTCH PLAINS TIMES • FANWOOD INDEPENDENT

<b>AUTO DEALERS</b> <b>SPERCO MOTOR CO.</b> CADILLAC Sales - Service 491 Morris Ave. Summit Near Ciba... CR 3-1700	<b>GARDEN SUPPLIES</b> Split Rail Fences Lawn Mower Service Lawn Care Garden Equipment <b>CARDINAL GARDEN CENTER</b> 272 Milltown Road Springfield DRexel 6-0440	<b>INTERIOR DECORATORS</b> <b>WAVERLY DECORATORS</b> Reupholstery Slip Covers • Draperies 1928 Westfield Ave. Scotch Plains Shop at Home, Call FA 2-5171
<b>DRUGS</b> <b>PARK DRUGS</b> Prescription & Surgical Pharmacy OPEN SUNDAYS 11:30-6 P.M. General Greene Shopping Center DRexel 9-4942	<b>INSURANCE and REAL ESTATE</b> Michael A. SANTACROSS REAL ESTATE INSURANCE "CONQUER THE MOUNTAINS" If you're SELLING or BUYING make one call - and call	<b>SHOES</b> Since 1924 "The House of Better Shoes" Normal and Orthopedic Shoes <b>CRISANTI SHOE HOSPITAL</b> 304-6 Centennial Avenue CRANFORD, N.J.
<b>ROLAND DRUGS</b> 777 MOUNTAIN AVENUE (Tab's Shopping Center) Russell Stover-Candies Prescriptions Cosmetics Baby Needs OPEN 9 A.M. TO 10 P.M. INCLUDING SUNDAYS "Your Prescription Is Our First Consideration" DR 9-2244	<b>FOR BEST RESULTS CALL</b> CR 3-1540 1700 Springfield Ave. New Providence	<b>TV-RADIO SAME DAY SERVICE</b> Est. 1944 <b>A &amp; A Radio &amp; TV Service</b> 2708 Morris Avenue Union, N.J. MUdock 8-5800
<b>RAPPAPORT SPRING DRUG</b> 273 Morris Ave. Springfield Free-Delivery Ample Parking, Front & Rear DRexel 9-2079 Prescriptions, Vitamins Cosmetics Cut Rate Prices WESTERN UNION AGENCY We Accept Charge Accounts	<b>PLUMBING PLUMBING &amp; HEATING CONTRACTOR</b> Sales and installations Gas Heating; Boilers and Conversion Burners, Gas Water Heaters Harry C. Anderson and Son 140 Mountain Ave. Springfield	<b>TAVERNS</b> <b>OLD EVERGREEN LODGE</b> SINGERS-PARK <b>SPRINGFIELD</b> Arrangements For WEDDINGS Guarantee 150 Adults and up to 2,000. Make Reservation for GROUP OUTINGS PARTIES Bar Open Year Round Springfield DRexel 6-0489
<b>FLOOR COVERING</b> <b>Linoleum &amp; Carpet Factory Outlet</b> Biggest Selection Quality Installation Route 22, Springfield DRexel 6-5220	<b>RESTAURANTS</b> Popular American and Chinese Cuisine Liberal Portions Delicate Flavors <b>CHINA SKY</b> Springfield Shopping Center DRexel 9-5010 Real homemade German cooking in a charming breakfast, lunch and snack headquarters. Near Walton School. <b>MOUNTAIN LUNCHEONETTE</b> 549 Mountain Av. Springfield	<b>RESTAURANTS</b> Rutgers U Receives \$3000 JMC Grant Rutgers University at New Brunswick has received a \$3,000 grant from International Minerals & Chemical Corporation for soil fertility and plant nutrition research. The grant will continue support of studies on the relationship of apple disorders to soil nutritional deficiencies, with special emphasis on magnesium shortages. Dr. Warren C. Stiles of the University's agricultural experiment station will direct the study
<b>HOME SERVICE</b> meetings, etc., absolutely free loaned for card parties, club of charge <b>CHANNEL LUMBER CO.</b> Route 22, Springfield DR 6-6000		

**WHERE THE SWIMMING'S BEST**  
 FREE CIRCUS 4 and 9:30 p.m.  
**BASILE'S BAND** afternoon and night  
 4,000,000 gallons of sparkling water fresh from our own wells; constantly changing; white sand beaches; sanitary lockers; hair driers; all conveniences; Pool open 10 a.m. to 7 p.m. every day.  
 parking for 2000 cars  
**OLYMPIC PARK**  
 IRVINGTON-MAPLEWOOD

**HITCHIN' POST INN**  
 • LUNCHEONS & DINNERS SERVED DAILY  
 • WEDDINGS & BANQUETS OUR SPECIALTY  
 For Your Dancing Pleasure  
**"THE SENTIMENTALISTS"**  
 DANCING NITELY Air Conditioned For Your Comfort CLOSED MONDAYS  
 Lunch 11 to 2  
 Route 22, Union, N.J. MU. 6-4666

**AIR-CONDITIONED STRAND**  
 447 SPRINGFIELD AVE., SUMMIT, N.J. CR 3-3700  
 NOW PLAYING THRU SATURDAY  
**CANTINFLAS**  
 CINEMASCOPE COLOR  
**THE CREATION OF "JIMMY THE WORLD IS HIS OATH"**  
 CO-STARRING DAN DAILEY and SHIRLEY JONES  
 "A Bright and Happy Package... Full of Fun and Frolic!"  
 35 GUEST STARS in the big wonderful story  
 SUNDAY MONDAY TUESDAY  
**JERRY'S BIGGEST, BROADEST, FUNNIEST EVER!**  
**Jerry Lewis** **Ladies Man???**  
 CO-STARRING HELEN TRAUDEL, NATHANIEL FREEMAN, HOPE HOLIDAY, and PAT STANLEY. Guest Stars BUDDY LESTER, GEORGE RAFT and HARRY JAMES and his Band.  
 PLUS ROBERT RYAN in "THE CANADIANS"  
 ENTIRE WEEK - STARTS WED. AUG. 9  
 DIRECT FROM RADIO CITY MUSIC HALL  
**PARRISH**  
 TROY DONAHUE • CLAUDETTE COLBERT • KARL MALDEN • DEAN JAGGER  
 and Patricia's three lovers  
 CONNIE STEVENS • DIANE MCBAIN • SHARON HUGHES  
 TECHNICOLOUR From WARNER BROS.

**MILLBURN**  
 MILLBURN DR 111-6-0800  
 Held Over 4th Big Week  
 Now Thru Tues.  
 See The First Suburban Showing In The New York Tri-State Area  
 "A Summer Kite of Laughter"  
**"CARRY ON NURSE"**  
 Shirley Eaton, Wilfred Hyde-White.  
 Terry Thomas, Alastair Sim in "SCHOOL FOR SCOUNDRELS"  
 Its a Riot!  
 Sat. Mat. Kiddie Show. Big Cartoons Showings.  
 "Johnny The Giant Killer"  
 "Return of the Fly"

**RKO PROCTORS NOW**  
 NEWARK  
**DRAMATIC DYNAMITE!**  
 WHEN 2 GREAT STARS  
**ROCK HUNTERSON KIRK DOUGLAS**  
 CLASH IN  
**THE LAST SUNSET**  
 DOROTHY MALONE  
 PLUS NEW 2nd FEATURE  
 Spectacular high-tension drama of 1st Age!  
 ELIZABETH SEAL • GEO. SANDERS  
 ("Time To Die")  
**"TROUBLE IN THE SKY"**

**OLD Mr. BOSTON**  
 YE INTELLIGENT BUYER'S GUIDE TO FINEST LIQUORS AT FAIREST PRICES  
**SUMMER'S THE TIME FOR LIGHT "REFRESHERS"**  
**OLD Mr. BOSTON VACUUM DISTILLED DRY GIN**  
 Distilled in a unique glass-lined vacuum still... for sparkling smoothness with just a whisper of flavor and perfect mellow!  
 \$429 QUART \$339 FIFTH \$220 PINT  
**OLD Mr. BOSTON VODKA**  
 ONE OF AMERICA'S 2 TOP SELLERS!  
 Most highly refined and filtered of Old Mr. Boston's spirits! The clear, crisp, dry liquor for cooling, summertime delights.  
 \$425 QUART \$369 FIFTH \$239 PINT  
**OLD Mr. BOSTON RUM**  
 Mellow, light bodied Virgin Islands rum... carefully selected for delicate flavor and superior mixing qualities.  
 \$335 FIFTH  
 "INTELLIGENCE IN THE PURCHASE... MODERATION IN THE ENJOYMENT."  
 Old Mr. Boston



**SPRINGFIELD PARTY LINE**

DR 6-4316

Call in your news items and join in the fun...with news of your neighbors via The Sun.



HELEN SABO

Shella, and a good time was had by all. Congratulations on her sixteenth birthday of Mr. and Mrs. S.W. Kutz of 33 Janet Lane, Naomi played hostess at a luncheon in her honor given by her parents at the Arch on July 31. Thirty guests gathered to wish her well on this delightful occasion.

Mr. and Mrs. Roy Lipton, formerly of New York, who have moved into their new home at 15 Smithfield Drive, Younger members of the family are seven-year-old Robin, four-year-old Alan and baby Jill. Mr. Lipton is with Bell Labs in Murray Hill.

Mr. and Mrs. H.F. Ruban of 248 Hillside Avenue, have just returned from a two week flying trip to Florida, where they stayed at the Monaco Hotel in Miami. While there, they visited in No. Miami with Mr. and Mrs. Frank Matrone, who were formerly residents of Springfield. The Matrone's resided for forty years on Salter Street, and Mrs. Matrone was employed at Jonathan Dayton for twenty-two years. Mr. Ruban, who was born in Springfield and has lived here all his life is now Head Custodian at Jonathan Dayton, where Mrs. Ruban is also on the custodial staff.

Congratulations go to Mr. and Mrs. William Alexy of 20 Remer

Avenue on birth of son John Hilton on July 22 at Overlook Hospital. The new addition, who weighed seven pounds, four ounces at birth, joins a family that includes nine-year-old brother Steven, and Sisters Ellen and Kathy, who are seven and four.

Mr. and Mrs. Lou Maas, of 98 Irwin Street, have returned from a week's camping trip to the Adirondacks. The children, "Pitching in" were Susie, Lisa, David and Peter, who are eleven, nine, six and two years old respectively.

Colored lanterns were strung in the back yard at 104 Evergreen Avenue last Saturday night, when

Mr. and Mrs. Zip Lemmerman entertained eighty guests at a sumptuous bar-b-que. Those present were Otto and Mrs. Lemmerman, of which Mr. Lemmerman is a vice-president.

Mr. and Mrs. Richard Herman, of 133 Laurel Drive, have two small female puppies, who are happy to give to dog lovers or parents of dog lovers, who would like a canine addition to their families. The puppies are six weeks old, and are part of a litter presented to the Hermans by their dog Susie. Those interested can contact Mrs. Herman at MU 2-9274.

Mr. and Mrs. Robert Hardgrove, Jr., of 125 Salter Street, have returned from a week's trip with daughters Janice and Lucille, aged ten and eight years respectively. They visited Washington's headquarters at Valley Forge; the battlefields and museums at Gettysburg; the Amish country around Lancaster; and Washington's home in Mount Vernon. They also toured the nation's Capitol, where they went through the White House, the Capitol, the Bureau of Engraving and the U.S. Mint, in addition to visiting the Washington Monument, the Jefferson and Lincoln Memorials, the Tomb of the Unknown Soldier, and the two Jimma Statue.

Birthday congratulations go to Alan Cohen, son of Mr. and Mrs. Seymour Cohen of Jefferson Ave., who was sixteen years old on July 19.

Best wishes on their wedding anniversary go to Mr. and Mrs. Lou Solkoff, of 5 Sycamore Ter., who marked twenty-four years of "wedded bliss" on July 25.

Here's to a happy birthday for Mrs. Frank Cardinal, of 266 Milltown Road, who became one year younger on July 21.

**ZEPHYR**  
ALL-SEASON AWNINGS  
"Coolest covering under the sun"

Ventilated Construction  
Keep Rooms up to 12' C-O-O-L-E-R on HOT summer days!

CALL US TODAY  
SO 3-4777

**JOHNSON'S**  
1799 SPRINGFIELD AVENUE MAPLEWOOD  
EVENINGS BY APPOINTMENT

Grand Union brings you our

**LOWEST PRICE on RECORD**

U.S. GOV'T INSPECTED - GRADE A - FANCY YOUNG TOM

**TURKEYS**

Ready to Cook

Avg. wgt. 18 to 24 lbs.

**299**

Get Blue Stamps 100!

SUPPLY LIMITED  
No Sales to Dealers

Half Turkeys Priced Slightly Higher

**GRAND UNION SUPERMARKETS**

BONELESS BRISKET  
CORNED BEEF

MILD CURE 49¢  
FIRST CUTS 69¢

ANY SIZE PIECE BOLOGNA or LIVERWURST 49¢  
GRAND UNION ALL MEAT

SKINLESS FRANKS 55¢

20 EXTRA TRIPLE-S BLUE STAMPS  
Grand Union Variety Pack or Family Pack  
COLD CUTS 79¢

FANCY LARGE WHITE SHRIMP 5-lb. \$3.39 69¢

FANCY CANADIAN LOBSTER MEAT 14-oz. \$1.79

FRESH PICKED CRAB-MEAT 8-oz. 59¢

**SALE**

**CONVERTIBLES**

1958 CHEVROLET IMPALA CONV. \$1495.  
1956 CADILLAC ELDOURADO CONV. \$1495.  
1955 FORD PLANE CONV. \$595.

**HARDTOPS**

1959 CADILLAC \$3,395.  
1958 CHEVROLET IMPALA H.T. \$1,395.  
1957 LINCOLN ANDNV 4D H.T. \$1,295.  
1955 CADILLAC COUPE DEVILLE \$995.

**SPECIALS**

1953 CHEVROLET PANEL AS IS \$95.  
1953 OLDSMOBILE 4-DR. 88' AUTO TRANS. \$395.  
1954 STUDEBAKER V-8 STD. TRANS., OVERDRIVE \$245.  
1955 BUICK 2 DOOR HARDTOP \$595.

**STATION WAGONS**

1960 CHEVROLET AUTO. TRANS. V-8 \$2195.  
1957 CHEVROLET 4-DR. V-8, AUTO \$1095.  
1959 PLYMOUTH V-8, AUTO TRANS. \$1695.

**SEDANS**

1958 PONTIAC 4-DR. CHIEFTON \$1195.  
1958 MERCURY 2-DR. BEST BUY \$895.

**FLETCHER LINCOLN-MERCURY USED CAR DIVISION**  
38 MORRIS TURNPIKE - SUMMIT, N.J.  
(ACROSS FROM SHCRT HILL DRIVING RANGE)

**WATERMELON**

SWEET - RED - RIPE

**59**

WHOLE MELON

SWEET CORN 10 large ears 39¢  
Hydro-Cooled...when Picked - To Insure That "Just Picked Flavor"

FRESH - CRISP PASCAL CELERY 2 29¢  
ROMAINE LETTUCE LOCALLY GROWN 2 lb. 15¢

**Frozen Features**

KITCHEN GARDEN FRENCH FRIES 2 29¢  
SEABROOK FARMS GREEN PEAS 2 29¢  
KITCHEN GARDEN SLICED STRAWBERRIES 2 45¢  
BIRDS EYE MIXED VEGETABLES 2 39¢  
GRAND DUTCHESS BEEF STEAKS 14-oz. 49¢

WILRICK GRAPE DRINK 4 49¢  
SARA LEE BANANA CAKE 69¢  
GRAND UNION SCALLOPS 2 69¢  
TEDDY BREADED FANTAIL SHRIMP 55¢

**DEL MONTE SUMMER SHOW BOAT**

PINEAPPLE-GRAPEFRUIT DRINK WITH THAT SUPERB HAWAIIAN FLAVOR 2 46-oz. cans 45¢

FIVE DELICIOUS FRUITS FRUIT COCKTAIL 2 16-oz. cans 45¢

YELLOW CLING PEACHES SLICES AND HALVES 29-oz. can 29¢

MATCHLESS TOMATO FLAVOR TOMATO SAUCE 6 8-oz. cans 55¢

EARLY GARDEN GREEN PEAS 2 17-oz. cans 37¢

GOLDEN - FLORIDA GRAPEFRUIT SECTIONS 2 16-oz. cans 39¢

SERVE IT ANYTIME TOMATO JUICE 46-oz. can 31¢

More Del Monte Favorites!

CATSUP 2 14-oz. cans 39¢  
TOMATOES 2 16-oz. cans 45¢  
PEARS SLICED 2 16-oz. cans 35¢  
FIGS PACKED IN HEAVY SYRUP 15-oz. can 39¢

BEETS SLICED 2 15-oz. cans 43¢  
GREEN BEANS 2 16-oz. cans 33¢  
CORN BEAN STEW 2 8-oz. cans 27¢  
PRUNES STEWED 15-oz. jar 29¢

Check these Low Prices ON GRAND UNION'S OWN BRANDS OF FRESHLY ROASTED COFFEES

**EARLY MORN COFFEE** 1-lb. bag **53**¢  
GRAND UNION COFFEE 1-lb. 63¢

Weston SUMMER SPECTACULAR  
Lead Animal Cracker • Wafer Stix  
Fiesta Wafers • Iced Jumbles  
Picnic Assortment • Sugar Jumbles  
YOUR CHOICE **39**¢

Nancy Lynn BLUEBERRY CRUMB PIE SPECIAL only **59**¢

**ajax CLEANSER** 2 14-oz. deodor. cans **23**¢  
GRAND BRAND - EMBOSSED PAPER TOWELS 2 rolls in poly bag **39**¢

BLITZ SPAGHETTINI 2 8-oz. cans **39**¢  
BLITZ SPAGHETTINI SAUCE 16-oz. can **35**¢  
DUNCAN HINES DELUXE LAYER CAKE MIXES 18-oz. pkg. **39**¢

HOFFMAN HOT PEPPER OR PIZZA CHEESE STIX 9-oz. pkg. **39**¢  
SEATEST COTTAGE CHEESE 1-lb. cup. **31**¢

SHERSTONE YOGURT 2 2-oz. cups **27**¢  
PORTO DU SALUT 2 4-oz. cans **41**¢

Be our Guest...  
**Free TICKETS TO STORYLAND**

STARTING MONDAY, AUGUST 7th  
GET A FREE TICKET WORTH ONE TO STORYLAND IN WESTTUNE N.J. WITH EACH PURCHASE OF \$3.00

**FRONTIER CITY**  
THRILLING RIDES  
EXCITING SHOWS  
FUNNY CLOWNS

54 ACRES OF FUN  
**STORYLAND**  
ON ROUTE 66 ASBURY PARK CIRCLE NEPTUNE, N.J.  
FREE PARKING OPEN NOON TO DUSK

**SAVE CASH TRIPLE-S BLUE STAMPS**

**CLIP THIS COUPON**

FREE 50 EXTRA TRIPLE-S STAMPS  
WITH COUPON AND PURCHASE OF ANY AEROSOL CAN JOHNSON RAID Insecticide Spray  
Limit One Coupon per customer  
Coupon good thru Sat., Aug. 5th

**CLIP THIS COUPON**

FREE 30 EXTRA TRIPLE-S STAMPS  
WITH COUPON AND PURCHASE OF ONE BOX OF 50 BOOK MATCHES  
Limit One coupon per customer  
Coupon good thru Sat., Aug. 5th

**CLIP THIS COUPON**

FREE 30 EXTRA TRIPLE-S STAMPS  
WITH COUPON AND PURCHASE OF ONE 9-OZ. DEAL JAR BORDEN'S INSTANT COFFEE  
Limit One coupon per customer  
Coupon good thru Sat., Aug. 5th